

**REPORT ON THE BR PROSPECT:
2011 PROSPECTING PROGRAM.
DAWSON MINING DISTRICT
YUKON, CANADA**

(May 20, 2011 – September 10, 2011)

Property Coords: [NAD83; U7] 573512E / 6960011N

Claim	Grant Number	NTS Map Number	Claim Holder
BR-1	YD47271	115J13	Goldspike Exploration Inc.
BR-3	YD47273	115J13	Goldspike Exploration Inc.
BR-5	YD47275	115J13	Goldspike Exploration Inc.
BR-7	YD47277	115J13	Goldspike Exploration Inc.
BR-15	YD47285	115J13	Goldspike Exploration Inc.
BR-16	YD47286	115J13	Goldspike Exploration Inc.
BR-17	YD47287	115J13	Goldspike Exploration Inc.
BR-18	YD47288	115J13	Goldspike Exploration Inc.
BR-20	YD47290	115J13	Goldspike Exploration Inc.
BR-44	YD61634	115J13	Goldspike Exploration Inc.
BR-45	YD61635	115J13	Goldspike Exploration Inc.
BR-46	YD61636	115J13	Goldspike Exploration Inc.
BR-51	YD61641	115J13	Goldspike Exploration Inc.
BR-59	YD61619	115J13	Goldspike Exploration Inc.
BR-61	YD61621	115J13	Goldspike Exploration Inc.
BR-62	YD61622	115J13	Goldspike Exploration Inc.

082413

Prepared on behalf of:

GOLDSTRIKE RESOURCES LTD.
730 - 1130 West Pender Street
Vancouver, British Columbia
Canada, V6E 4A4

095473

by

Clayton Jones
Box 1489, Dawson City, Yukon Territory, Canada, Y0B 1G0
September 10, 2011

Costs associated with this report have been approved in the amount of \$ 6600.00 for assessment credit under Certificate of Work No. QW28796

M. Scalet
Mining Recorder
Whitehorse Mining District

095473

854380

SUMMARY

In May 2011, a three-man prospecting team completed two traverses on the BR Prospect claim group to carry out a preliminary assessment of the gold potential of the property. The BR Prospect property is located in the Whitehorse Mining District, Yukon Territory, Canada, approximately 144 kilometres south of Dawson and is comprised of 66 Quartz Mining Claims (1296 hectares). There are no roads or lakes in the area; access to the property is best gained utilizing helicopter.

The property is in an unglaciated area and is characterized by thick mantling of till resulting in rounded ridge tops and steep V-shaped stream valleys associated with a well developed dendritic stream pattern. The claim group covers divide between the Coffee Creek and Independence Creek drainage systems, both of which feed into the Yukon River. The claims were staked to cover a recessive linear structural feature in close proximity to the contact the potential source of a 95th percentile gold in silt anomaly of 16 parts per billion gold. The sample, taken from a tributary to Coffee Creek, was part of a regional survey by the Geological Survey of Canada.

The BR Prospect is situated within the Dawson Range gold trend located near the southerly margin of the Tintina Gold province and within the Yukon-Tanana terrane. The property is underlain by the mid-Cretaceous Dawson range batholith and minor lower Eocene volcanic rocks. The suite of mid-Cretaceous intrusives found within the Dawson range gold trend are prospective for gold mineralization.

In the late 1960's and early 1970's, exploration activity in the area was focused on intrusion related Cu-Mo mineralization. Since the late 1990's, the focus shifted to orogenic gold mineralization. This latter episode of exploration appears to have been triggered by the release of the regional geochemical survey data by the Geological Survey of Canada.

The property is situated approximately 15 kilometres from the Kaminak Gold Corp. Coffee Gold Project where a number of high-grade, orogenic gold zones have been identified. The Silver Quest Resources Boulevard project where intrusion related Au-Mo has been identified adjoins the BR Prospect. The Casino Cu-Au-Mo deposit is located to the east-southeast.

The helicopter supported 2011 sampling program resulted in a number of rock chip, till and silt samples taken. All sample coordinates were determined using a hand-held GPS unit. Samples were logged and then submitted to Acme Analytical Laboratories Limited's Whitehorse facility for gold analysis.

The geochemical results for both rock and soil samples were sub-standard. The gold values were all consistent with regional background concentrations with no anomalous signatures arising. All samples however did contain detectable gold which proves gold is associated with the underlying geology on the property. Only a small portion of the property was sampled indicating potential for anomalous gold elsewhere on the property.

TABLE OF CONTENTS

1.0	INTRODUCTION	1
1.1	General	1
1.2	Units and Currency	1
2.0	PROPERTY LOCATION AND DESCRIPTION	2
2.1	Location and Access.....	2
2.2	Description of Mining Claims.....	3
3.0	PHYSIOGRAPHY, VEGETATION AND CLIMATE.....	6
4.0	PROPERTY HISTORY	7
5.0	GEOLOGY SETTING	8
6.0	MINERALIZATION	10
7.0	2011 PROSPECTING PROGRAM.....	11
8.0	QUALITY ASSURANCE AND QUALITY CONTROL	12
9.0	DISCUSSION AND CONCLUSIONS	13
9.1	Discussion	13
9.2	Conclusions	13
10.0	RECOMMENDATIONS.....	15
11.0	REFERENCES	16
12.0	STATEMENT OF QUALIFICATIONS OF AUTHOR[S]	17

TABLES

TABLE 1:	BR Prospect claim group data.....	3
TABLE 2:	Sample descriptions	APPENDIX II
TABLE 3	Sample results	APPENDIX II

FIGURES

FIGURE 1:	BR Prospect claim group location map	2
FIGURE 2:	BR Prospect claim group	5
FIGURE 3:	Physiography of the BR Prospect, Yukon	6
FIGURE 4:	Regional geological setting of the BR Prospect	9
FIGURE 5:	Gold values for the BR Prospect samples	14

APPENDICES

APPENDIX I:	Sample Location Map
APPENDIX II:	Sample Descriptions and Sample Results
APPENDIX III:	Analytical Methods and Certificates of Analysis
APPENDIX IV	Certificate[s] of Work

1.0 INTRODUCTION

1.1 General

On 20 May 2011, a prospecting program was completed on the BR Prospect claim group located in the Whitehorse Mining District, Yukon Territory, Canada. The prospecting traverses were carried out as a preliminary assessment of the gold potential of the property. A total of 25 samples of rock, soil and silt were collected for gold analysis. The prospecting team consisted of Clayton Jones (geologist), and two prospectors Franz Vidmar and Michel Glyn. The program was supervised by Jones.

The BR prospect was staked by the YCS Syndicate to cover the inferred source of a 95th percentile gold in silt sample (16 ppb Au) in a tributary of Coffee Creek, as well as a linear, recessive structural feature. The anomaly was identified during a regional geochemical survey carried out by the Geological Survey of Canada. A regional gold silt anomaly from the same survey led to Kaminak Resources' Coffee Creek discovery located approximately 15 kilometres to the northeast.

1.2 Units and Currency

Metric units are used throughout this report. Tonnages are shown as tonnes (1,000 kg), linear measurements as metres ("m"), or kilometres ("km") and precious metal values as grams ("g") and/or grams per tonne ("gpt").

Conversions:

- 31.1034 grams = 1 troy ounce
- 1 gram per tonne = 0.0292 troy ounces per ton
- 1.0 metric ton (1,000 kg) = tonne ("t") = 1.10231 short tons ("T")
- 1.0 metre ("m") = 3.28 feet
- 1.0 hectare ("ha") = 2.47105 acres

Currency amounts are expressed in Canadian dollars ("CDN\$"), unless indicated otherwise.

2.0 PROPERTY LOCATION AND LOCATION

2.1 Location and Access

The BR Prospect is situated within the Whitehorse Mining District in west-central Yukon. The claim group is situated approximately 144 kilometres south of Dawson City, a community of approximately 1900 inhabitants, and approximately 322 kilometres northwesterly from Whitehorse, the Yukon capital (Figure 1).

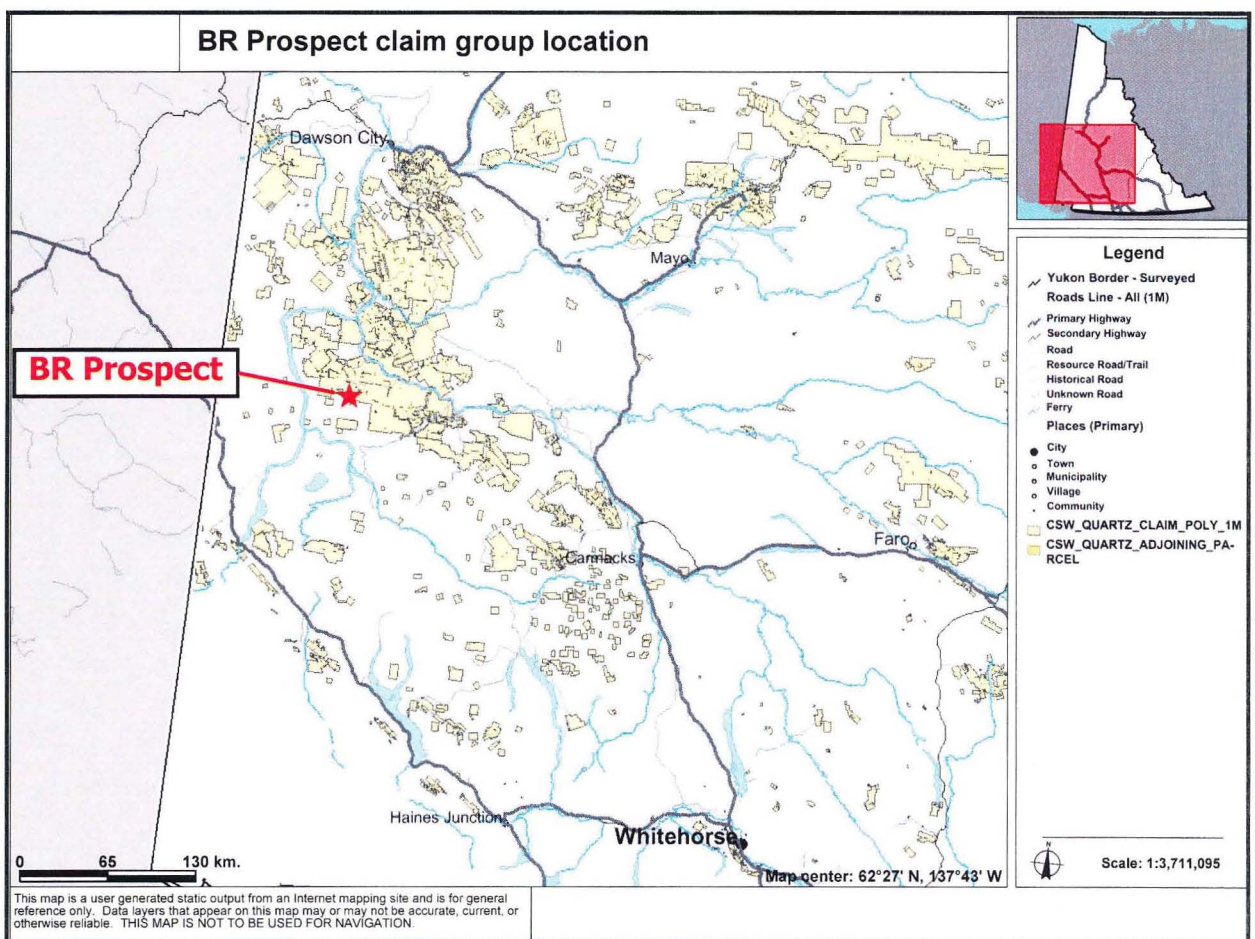


Figure 1: BR Prospect claim group location map

The claim group adjoins the Silver Quest Resources Ltd. Boulevard Au-Mo project and is situated approximately 10 kilometres south of the west end of the Kaminak Gold Corp., Coffee Creek gold project property. Additional claims have since been tied onto the BR Prospect claim

group and the Silver Quest Resources claims by D. Visser, B. Magnuson and M. Hockley, all of Whitehorse.

The property is situated between the Yukon River to the east and White River to the West. The Donjeck River occurs to the south of the property. Access to the property is best gained by helicopter as there are no roads or lakes in the area. Helicopter bases are located in both Dawson and Whitehorse.

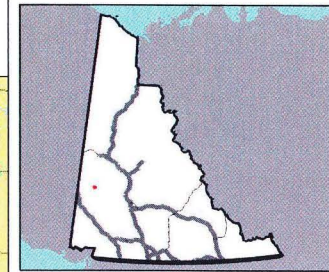
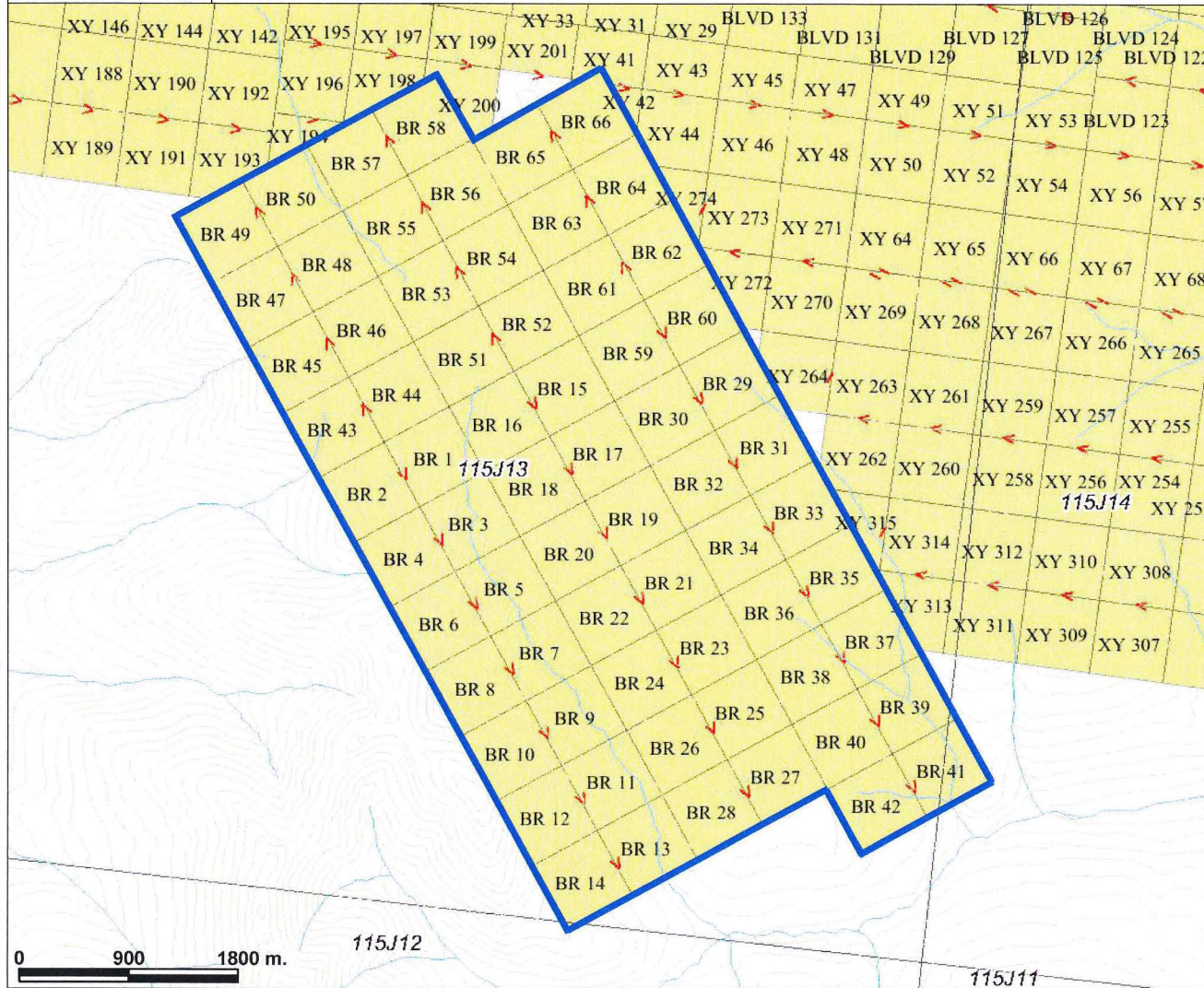
2.2 Description of Mining Claims

The BR Prospect consists of 66 Quartz Mining Claims (1336.5 hectares) located in the Whitehorse Mining District, Yukon Territory, Canada. The claims were staked by the YCS Syndicate and are presently held by Goldspike Exploration Inc. The claim group is currently under option to Goldstrike Resources Ltd. by the vendor, Goldspike Exploration Inc. The claim data is shown below in Table 1. The claim group is shown in Figure 2.

Table 1. BR Prospect claim group data.

Claim	Grant Number	Reg.	Staking Date	Recording Date	Claim Expiry Date	Claim Status	NTS Map	Claim Holder	% Held
BR-1	YD47271	QMA	19/05/2010	26/05/2010	26/05/2011	active	115J13	Goldspike Exploration Inc.	100
BR-2	YD47272	QMA	19/05/2010	26/05/2010	26/05/2011	active	115J13	Goldspike Exploration Inc.	100
BR-3	YD47273	QMA	19/05/2010	26/05/2010	26/05/2011	active	115J13	Goldspike Exploration Inc.	100
BR-4	YD47274	QMA	19/05/2010	26/05/2010	26/05/2011	active	115J13	Goldspike Exploration Inc.	100
BR-5	YD47275	QMA	19/05/2010	26/05/2010	26/05/2011	active	115J13	Goldspike Exploration Inc.	100
BR-6	YD47276	QMA	19/05/2010	26/05/2010	26/05/2011	active	115J13	Goldspike Exploration Inc.	100
BR-7	YD47277	QMA	19/05/2010	26/05/2010	26/05/2011	active	115J13	Goldspike Exploration Inc.	100
BR-8	YD47278	QMA	19/05/2010	26/05/2010	26/05/2011	active	115J13	Goldspike Exploration Inc.	100
BR-9	YD47279	QMA	19/05/2010	26/05/2010	26/05/2011	active	115J13	Goldspike Exploration Inc.	100
BR-10	YD47280	QMA	26/05/2010	26/05/2010	26/05/2011	active	115J13	Goldspike Exploration Inc.	100
BR-11	YD47281	QMA	19/05/2010	26/05/2010	26/05/2011	active	115J13	Goldspike Exploration Inc.	100
BR-12	YD47282	QMA	19/05/2010	26/05/2010	26/05/2011	active	115J13	Goldspike Exploration Inc.	100
BR-13	YD47283	QMA	19/05/2010	26/05/2010	26/05/2011	active	115J13	Goldspike Exploration Inc.	100
BR-14	YD47284	QMA	19/05/2010	26/05/2010	26/05/2011	active	115J13	Goldspike Exploration Inc.	100
BR-15	YD47285	QMA	19/05/2010	26/05/2010	26/05/2011	active	115J13	Goldspike Exploration Inc.	100
BR-16	YD47286	QMA	19/05/2010	26/05/2010	26/05/2011	active	115J13	Goldspike Exploration Inc.	100
BR-17	YD47287	QMA	19/05/2010	26/05/2010	26/05/2011	active	115J13	Goldspike Exploration Inc.	100
BR-18	YD47288	QMA	19/05/2010	26/05/2010	26/05/2011	active	115J13	Goldspike Exploration Inc.	100
BR-19	YD47289	QMA	19/05/2010	26/05/2010	26/05/2011	active	115J13	Goldspike Exploration Inc.	100
BR-20	YD47290	QMA	19/05/2010	26/05/2010	26/05/2011	active	115J13	Goldspike Exploration Inc.	100
BR-21	YD47291	QMA	19/05/2010	26/05/2010	26/05/2011	active	115J13	Goldspike Exploration Inc.	100
BR-22	YD47292	QMA	19/05/2010	26/05/2010	26/05/2011	active	115J13	Goldspike Exploration Inc.	100

Figure 2: BR Prospect claim group



Legend

- Yukon Border - Surveyed
- National Road Network - All Roads**
 - Expressway / Highway
 - Arterial
 - Collector
 - Ramp
 - Resource / Recreation
 - Local / Street
 - Local / Strata
 - Local / Unknown
 - Alley or Service Lane
 - Service Lane
 - Winter
- Places (All)**
 - City
 - Town
 - Municipality
 - Village
 - Community
 - Settlement
 - Native Settle
 - Hamlet
 - Historic Site
- CSW_QUARTZ_CLAIM_DIRECTION_LN
- CSW_QUARTZ_ADJOINING_PARCEL
- CSW_QUARTZ_CLAIM**
 - Active
 - Expired

0 900 1800 m. 115J12

Scale: 1:50,000

This map is a user generated static output from an Internet mapping site and is for general reference only. Data layers that appear on this map may or may not be accurate, current, or otherwise reliable. THIS MAP IS NOT TO BE USED FOR NAVIGATION.
Date Printed: 18-Jul-2011 1:15:03 PM

Figure 2: BR Prospect claim group

3.0 PHYSIOGRAPHY AND VEGETATION

The BR prospect is within an area of subarctic or boreal climate characterized by discontinuous permafrost, hot and humid, short summers, and extremely cold, long winters. The daily mean temperature ranges from -27°C in January to $+16^{\circ}\text{C}$ in July. The average temperature ranges from a low of -31° in January to a high of $+23^{\circ}$ in July. The average total annual precipitation is 324 mm.

The area is unglaciated resulting in a thick cover of soil and weathered bedrock. The terrain is characterized by generally rounded ridges (Figure 3). Dendritic stream patterns are well developed with tributaries occupying narrow V-shaped valleys and generally having steep gradients.

Elevations on the property range from a high of approximately 1465 metres above sea level (m.a.s.l.) in the saddle area in the north central portion of the claim group to a low of approximately 1190 m.a.s.l. where the northerly flowing stream crosses the northern boundary of the claim group.

Vegetation is limited to sparse and stunted evergreens on the lower extents of the sides of the ridges with the tops of the ridges essentially barren. Evergreen are dominant in the stream valleys.

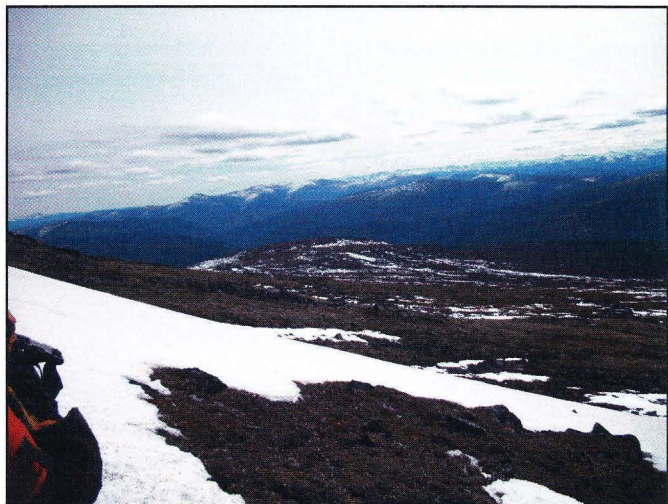


Figure 3: Physiography of the BR Prospect, Yukon.

4.0 PROPERTY HISTORY

The area covered by the BR Prospect claim group has been subjected to limited previous exploration. In and around 1970, any exploration in the area was focused on intrusive related Cu-Mo mineralization. It wasn't until the 1986 release of re-analysis of the 1976-1977 regional geochemical survey (Friske et al, 1991) that the area started to be explored for its gold potential as companies followed up on the anomalous results identified by the government survey. A 95th percentile, 16 parts per billion (ppb) gold in silt sample from this survey led to the staking of the BR Prospect.

During 1969-1970, Atlas Explorations Ltd. completed an exploration program on their BID claim group which covered the Home Creek drainage area located immediately west of the current BR claim group. The program was focused on porphyry-type Cu-Mo mineralization and was comprised of systematic soil and stream silt surveys, geologic mapping and a ground magnetic survey.

In 1970, Fawn Bay Development Co. Ltd. and Hanna Gold Mines Ltd. explored their FBH claim group for intrusive related Cu-Mo mineralization. The property which was situated north of the current BR claim group covered some of the headwaters for Independence Creek and to a lesser extent, Home Creek. The companies identified a large copper in soil anomaly, but there is no record of any follow-up work.

In 2000, Prospectors International Resources Inc. explored for intrusion related gold mineralization on portions of the ground currently held by Kaminak Resources and to a minor extent, Silver Quest Resources. The geological and geochemical program identified a few Au-As-Sg-Hg in soil anomalies.

In 1999, Deltango Gold Ltd. completed a program of geology and geochemistry over three blocks of claims which covered anomalous responses of Au-As-Sb in soil identified by the 1991 Geological Survey of Canada regional geochemical survey. The claim groups included ground currently held by and Kaminak Resources and Silver Quest Resources.

5.0 GEOLOGICAL SETTING

The BR Prospect is situated within the central portion of the Dawson Range gold trend which is located close to the southerly margin of the Tintina Gold Province, a broad arcuate belt that extends across central Alaska and the Yukon, and hosts the Fort Knox, Brewery Creek, Dublin Gulch and Pogo gold deposits. This province is characterized geologically by gold occurrences proximal to intrusions of Cretaceous granitoids (Hart et al, 2001).

The Dawson Range trend extends approximately 250 km from the Mt. Nansen former high-grade gold producer located west of Carmacks northwest to the Moosehorn high-grade former artisanal gold producer located near the Alaska border and is situated within the Yukon-Tanana terrane (YTT), which underlies much of central and western Yukon and east-central Alaska. The YTT is an accreted, pericratonic, lithological sequence bounded by the dextral Tintina fault along the northeast and the dextral Denali fault along the southwest, and comprised of several metamorphic assemblages which were later intruded by post-accretion, Cretaceous granitic plutons (Hart).

The region within which the BR Prospect sits includes the Devonian Nasina metasedimentary assemblage comprised predominantly of quartzite and micaceous quartzite (\pm chlorite; \pm feldspar augen) with minor conglomerate and grit, and a series of mid-Cretaceous granitoids of generally intermediate composition (Figure 4).

Lesser exposures of metapelitic and metavolcanic rocks of the Carboniferous/Permian Klondike schist are found within the Nasina assemblage metasediments and the assemblage has been intruded by the early Jurassic foliated intermediate granitoids of the Aishihik suite and the weakly foliated, commonly K-feldspar megacrystic, predominantly felsic granitoids belonging to the Long Lake suite. The mid-Cretaceous granitoids have been intruded by early Tertiary granitic to felsic rocks of the Nisling Range suite, and overlain by a package of lower Eocene intermediate to felsic volcanic and volcanic sedimentary rocks.

Devonian to Cretaceous ultramafic rocks of harzburgite and dunite compositions have intruded along the fault defining contact between the Devonian metasediments and the Dawson Range batholith.

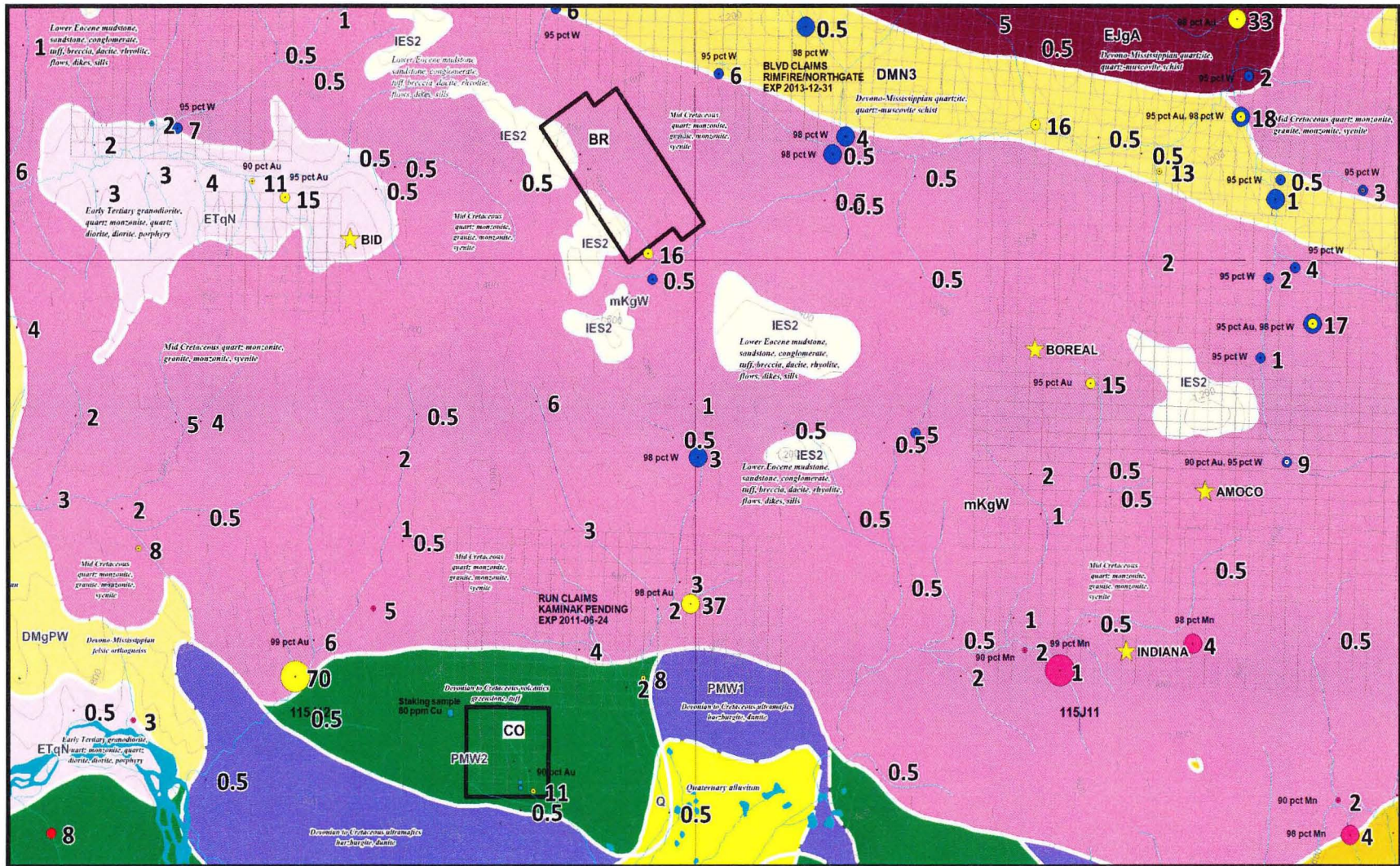


Figure 4: Regional geological setting of the BR Prospect.

The immediate area of the BR Prospect is dominated by the mid-Cretaceous Dawson Range batholith which is bound by the Nasina metasediments to the northeast and the variably deformed, predominantly intermediate granitic rocks of the Pelly gneiss suite to the southwest. Within the claim group, the batholith is of intermediate composition, medium to coarse grained, generally equigranular and locally, may display potassium feldspar phenocrysts. The exposure of the lower Eocene volcanic and volcanic sedimentary rocks is limited to the western portion of the property.

Structurally, little is known of the area. There appears to be a linear feature trending 325° that may mark the contact between the batholith and the volcanics. This recessive feature coincides with a possible magnetic low and hosts quartz veining. Geochemical anomalies on Kaminak Resources' Coffee Creek gold property appear to have a strong east-west orientation which may reflect an underlying east west structure. Regional first derivative magnetics also indicate the presence of possible east-west structures.

6.0 MINERALIZATION

The Dawson Range gold trend is in part, comprised of a suite of plutonic rocks in the northern Cordillera which is prospective for orogenic and intrusion-related base and precious metal gold mineralization. The best known deposits of each type are the orogenic Pogo and Golden Saddle deposits, and the intrusion related Fort Knox and Mt. Nansen and Casino deposits.

While staking of the BR claims, a quartz vein striking 325° was noted in the area of the saddle. The system was traced intermittently downhill for approximately 500 metres along a recessive structure which may be the faulted contact between the granitoid and the volcanics. Along this NW structure, the granite was silicified and altered with epidote, chlorite, and iron oxides. The structure remains open in both directions.

In the immediate area of the BR property, known mineral occurrences include the Kaminak Gold Corp. Coffee Gold Project where a number of high grade gold zones have been identified, the intrusion related Au-Mo prospect on the adjoining Boulevard property of Silver Quest Resources Ltd., the Casino Cu-Au-Mo deposit located to the east-southeast, and the BID porphyry Cu-Mo showing (Minfile 115J 044).

The Coffee Creek gold zones include pyritic hydrothermal quartz breccias over narrow widths and pervasive pyritic hydrothermal quartz over broader widths (Kaminak Gold Corp., 2011). The gold mineralization is associated with a regional scale structural corridor termed the "Coffee Fault" which is defined by a pronounced east-west trending topographic and magnetic lineament.

The Boulevard project of Silver Quest Resources Ltd. adjoins both the Kaminak Gold Corp. claim group and the BR Prospect claims. Gold on the Boulevard project occurs within shear-hosted quartz veining systems within regional northwest structures which occur at major lithologic contacts.

The Casino Cu-Au-Mo porphyry-type deposit located 33 kilometres east-southeast of the BR Prospect, is associated with Cretaceous alkali intrusive.

7.0 2011 PROSPECTING PROGRAM

The reconnaissance prospecting program of the BR Prospect was carried out to complete a preliminary assessment of the property's gold potential and to identify a potential source for the 95th percentile, 16 ppb gold in silt sample found in a tributary to Coffee Creek located at the south end of the claim group.

The helicopter supported, prospecting program took place on 20 May 2011. The prospecting team consisted of geologist Clayton Jones, and two prospectors Franz Vidmar and Michel Glyn. The program was supervised by Jones. The property was accessed from Dawson by means of a Bell 206L helicopter chartered from Whitehorse based Heli Dynamics Ltd.

A total of approximately twelve kilometres of traverse were completed by the two crews. A total of 25 samples consisting of 13 rock samples, 11 soil samples and 1 silt sample, were collected from the Coffee Peak area, the saddle area that marks the divide for the drainage basins of the Home, Independence and Coffee Creeks, and adjacent to the stream course feeding into Coffee Creek. Ground conditions were not ideal due to the late spring with creek beds still frozen, and soils and silts being frozen at shallow depths. Rock Samples were taken based on

mineralogy, structure and change in lithology. During the traverses, no economic mineralization was observed.

All sample data was logged in the field and actual sample sites were recorded using handheld GPS units (accuracy 5-7 m). Samples were collected in Kraft paper soil bags and each sample was given a unique sample ID number. All samples were sent to ACME Laboratories in Whitehorse for sample preparation and analyzed in Vancouver by ICP-MS ultra trace.

The traverses and sample locations are shown on map in Appendix I, and the sample descriptions and sample results are presented in Tables 2 and 3, respectively, in Appendix II.

A description of the analytical procedure and the Certificates and Analysis are presented in Appendix "C".

8.0 QUALITY ASSURANCE AND QUALITY CONTROL

No QA/QC samples were included in the samples submitted for analysis. Both the Acme Analytical Laboratories Limited facility in Whitehorse where the sample preparation is carried out and the Vancouver facility where the analysis is carried out are ISO 9001 certified.

Acme Labs inserts blanks (analytical and method), duplicates and standard reference materials in the sequences of client samples to provide a measure of background noise, accuracy and precision. QA/QC protocol incorporates a granite or quartz sample-prep blank(s) carried through all stages of preparation and analysis as the first sample(s) in the job. Typically an analytical batch will be comprised of 34-36 client samples, a pulp duplicate to monitor analytical precision, a -10 mesh reject duplicate to monitor sub-sampling variation (drill core only), a reagent blank to measure background and an aliquot of Certified Reference Material (CRM) or In-house Reference Material to monitor accuracy. In the absence of suitable CRMs in-house Reference Materials are prepared and certified against internationally certified reference materials such as CANMET and USGS standards where possible and will be externally verified at a minimum of three other commercial laboratories. Using these inserted quality control samples each analytical batch and complete job is rigorously reviewed and validated prior to release.

9.0 DISCUSSION AND CONCLUSIONS

9.1 Discussion

All soil and rock samples returned gold values below or equal to the background values for the region. No other elements appeared to be anomalous. All samples however, did contain detectable gold concentration ranging from 0.2 – 9.9 ppb providing evidence that the underlying geology does host gold mineralization (Figure 5). A very little portion of the property was actually sampled thus the remaining property has potential to still host anomalous gold values.

The most significant gold values on the property are located in the north-west corner of the property. One soil and one rock sample with gold values of 9.0 ppb and 8.0 ppb are spaced 350 meters apart on the western side of the major saddle running north south, perpendicular to the length of the property. These however, are still only background values.

The property is dominated by an intrusive pluton with a composition ranging from a granodiorite to syenite. No metamorphic rocks were mapped although the intrusive rock contained a strong flow fabric indicating metamorphic condition occurred within the underlying lithology of the property.

9.2 Conclusions

The regional geology and geochemistry suggest that the BR property has potential for structurally controlled orogenic veins and breccias similar to those described on the nearby Coffee Creek property, as well as for intrusive-related veins and breccias similar to those in the Mt. Nansen gold camp at the south end of the trend.

Despite no anomalous gold values were obtained from the property, the consistence of the background gold values prove the underlying lithology does in fact host gold mineralization. The strong flow fabric observed in the majority of the rocks shows that the underlying lithology has experience significant metamorphic conditions. There is potential that unmapped metamorphic assemblages, similar to Kaminak Resources' Coffee Creek project feldspar-schist

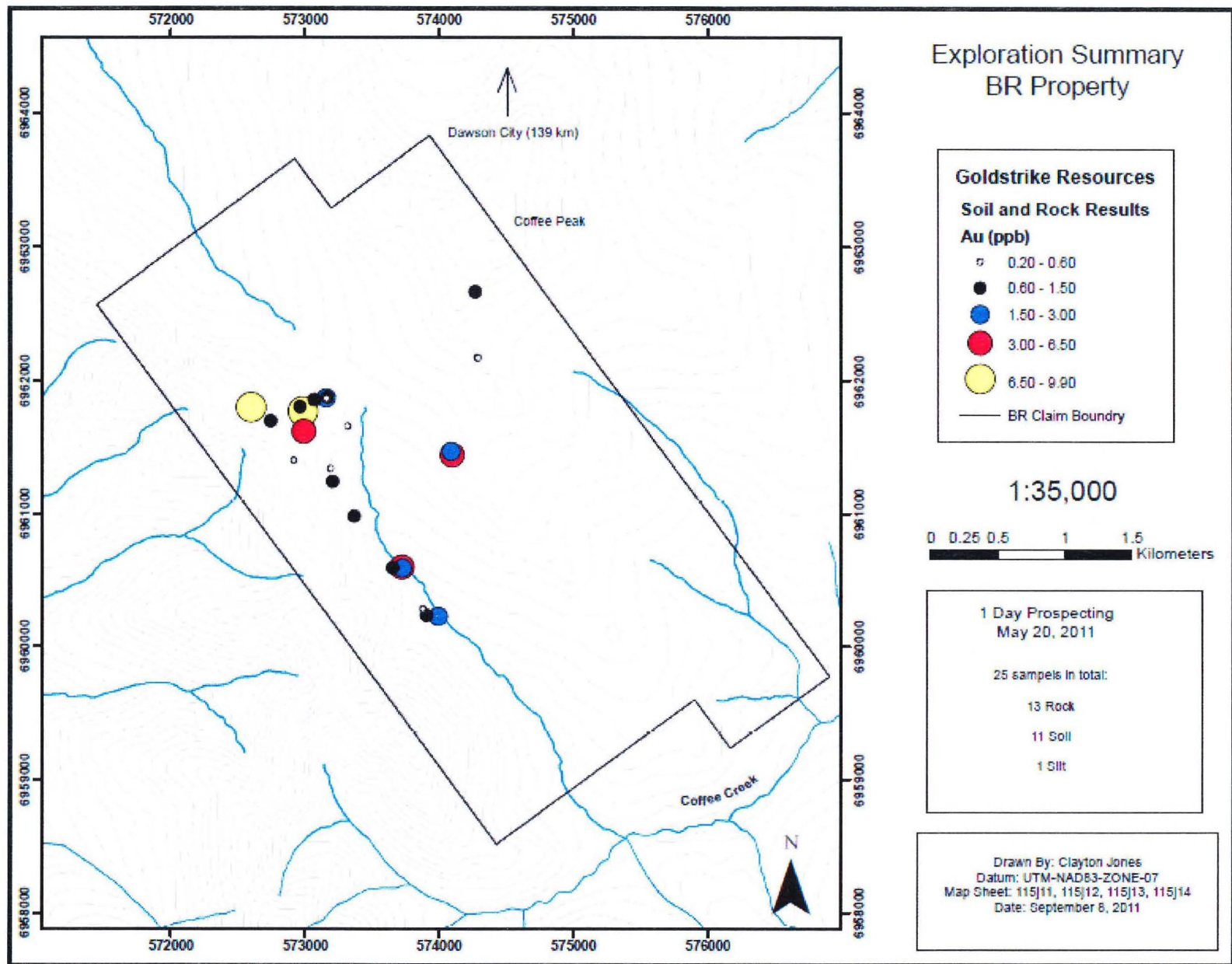


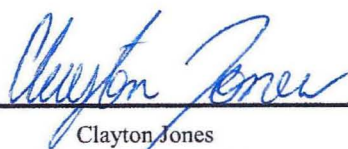
Figure 5: Gold values for all samples taken on the BR property.

and augen-gneiss that host high grade gold, occur within the BR property. The majority of the property remains under-explored for orogenic gold mineralization.

10.0 RECOMMENDATIONS

Based on the one-day prospecting program completed on the property, it is recommended that a more thorough exploration pass be carried out. This program should include soil sample lines along the ridges and spurs with samples taken at 50 – 100 meter intervals. Additionally, a detailed silt survey should be conducted to determine whether the high gold silt sample taken by the GSC is repeatable. The quartz veining noted during the staking of the claims should also be mapped and sampled to assess its economic potential. Aster satellite imagery should be acquired if the budget permits and sericite, clay and iron oxide alteration should be targeted as this proved successful for Kaminak Resource's nearby Coffee Creek project. The claims need to be worked later in the summer season as permafrost and snow cover prevented adequate exploration during the 2011 program. A two day reconnaissance soil sampling and prospecting program is recommended to be carried out any time after July 1, 2012.

Respectfully submitted,



Clayton Jones
Project Geologist
September 6, 2011

11.0 REFERENCES

- Friske, P.W.B., Hronbrook, E.H.W., Lynch, J.J., McCurdy, M.W., Gross, H., Galletta, A.C. and Durham, C.C. (1991): National Geochemical Reconnaissance Stream Sediment and Water Data, West Central Yukon, (NTS 116B, parts of 116C, 116F and 116G). Geological Survey of Canada, Open File 2365.
- Hart, C.: The Geological Framework of the Yukon Territory. Yukon Geological Survey, (www.geology.gov.yk.ca/geology_metallogeny.html).
- Hart, C.J.R., Selby, D., and Creaser, R.A. (2001): Timing Relationships between plutonism and gold mineralization in the Tintina Gold Belt (Yukon and Alaska) using Re-Os molydenite dating. *In: A Hydrothermal Odyssey, Extended Conference Abstracts*, P.J. Williams, Ed., Townsville, Australia, EGRU Contribution 59, p. 72-73.
- Kaminak Gold Corp. (2011): Technical Report, Coffee Gold Project, Yukon Territory, Canada. Prepared for Kaminak Gold Corp. by SRK Consulting, 115 p.

12.0 STATEMENT OF QUALIFICATIONS OF AUTHOR[S]

I, Clayton Jones, of:

Dawson City, Yukon Territory

Y0B 1G0,

867-993-6155

Do hereby certify that:

1. I am a mineral exploration geologist with over 1 years of experience working in the Yukon and British Columbia.
2. I am a graduate of University of British Columbia Okanagan (UBCO), with a degree in geology (B.Sc., 2011) and have been involved in geology and mineral exploration continuously since 2009.
3. I am a member of The Association for Mineral Exploration British Columbia, AME BC.
4. I am the author of this report on the BR Property located in the Dawson District, Yukon. The report is based on my personal examination of the ground on May 21, 2011 and on referenced sources.

Clayton Jones, B.Sc.

September 10, 2010

13.0 STATEMENT OF QUALIFICATIONS OF AUTHOR[S]

I, Clayton Jones, of:

Dawson City, Yukon Territory
Y0B 1G0,
867-993-6155

Do hereby certify that:

1. I am a mineral exploration geologist with over 1 years of experience working in the Yukon and British Columbia.
2. I am a graduate of University of British Columbia Okanagan (UBCO), with a degree in geology (B.Sc., 2011) and have been involved in geology and mineral exploration continuously since 2009.
3. I am a member of The Association for Mineral Exploration British Columbia, AME BC.
4. I am the author of this report on the BR Property located in the Dawson District, Yukon.

The report is based on my personal examination of the ground on May 21, 2011 and on referenced sources.

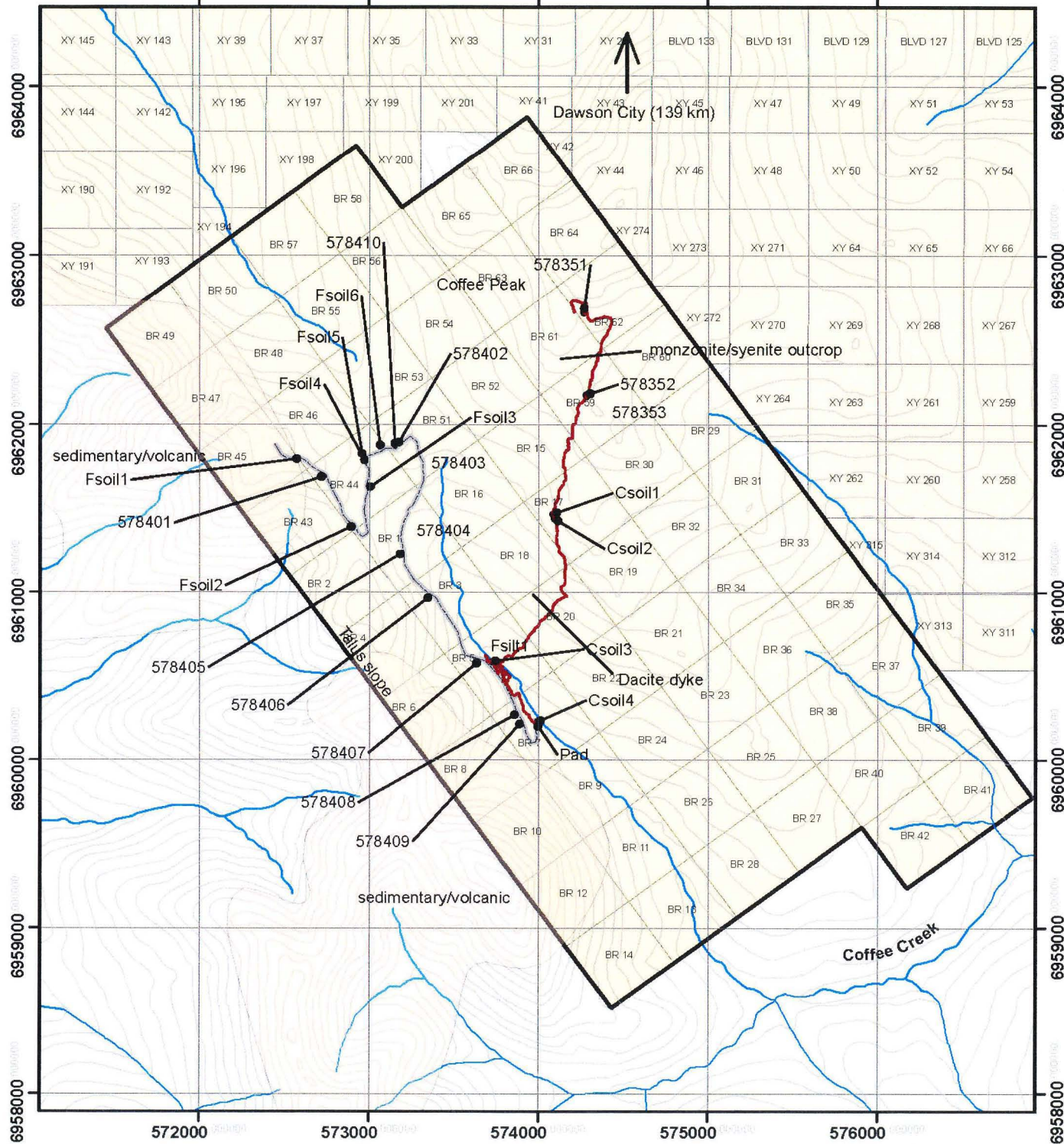
Clayton Jones, B.Sc.



September 10, 2010

APPENDIX I

Sample Location Map



N

1:34,500

APPENDIX I

Sample Location

- Goldstrike Resources**
- Clayton/Mike-Prospecting-Traverse
 - Samples
 - Franz-Prospecting-Traverse
 - Bedrock Geology
 - BR Claim Boundry

1 Day Prospecting
May 20, 2011

25 sampels in total:

- 13 Rock
- 11 Soil
- 1 Silt

Prospecting was conducted along the traverse line and were walked in a north to south direction

Traverse lines were determined from track data download from handheld GPS units.

Drawn By Clayton Jones

UTM-NAD83-ZONE-07
MAP SHEET 115j11, 115j12, 115j13, 115j14

APPENDIX II

Sample Descriptions

Sample Results

Goldstrike Resources Ltd. 2011 Prospecting Sample Descriptions

Project	Sample No	Sample Type	Sampler	Sample Description	Sample Date	Sample Co-ords (UTM NAD83)				Notes	Photo #
						Eastings	Northing	Elev	Zone		
BR	578401	rock	Franz Vidmar	intrusive (quartz, feldspar); float	20-May-2011	572741	6961697	n/a	07		578401
BR	578402	rock	Franz Vidmar	intrusive (quartz, feldspar); float	20-May-2011	573162	6961876	n/a	07		578402
BR	578403	rock	Franz Vidmar	intrusive (quartz, feldspar); float	20-May-2011	573315	6961659	n/a	07		578403
BR	578404	rock	Franz Vidmar	intrusive (quartz, feldspar); float	20-May-2011	573185	6961339	n/a	07	n/a	578404
BR	578405	rock	Franz Vidmar	intrusive (quartz, feldspar); float	20-May-2011	573202	6961242	n/a	07	n/a	578405
BR	578406	rock	Franz Vidmar	intrusive (quartz, feldspar); float	20-May-2011	573364	6960981	n/a	07	n/a	578406
BR	578407	rock	Franz Vidmar	intrusive (quartz, feldspar); float	20-May-2011	573651	6960592	n/a	07	n/a	578407
BR	578408	rock	Franz Vidmar	intrusive (quartz, feldspar); float	20-May-2011	573878	6960281	n/a	07	n/a	578408
BR	578409	rock	Franz Vidmar	intrusive (quartz, feldspar); float	20-May-2011	573903	6960232	n/a	07	n/a	578409
BR	578410	rock	Franz Vidmar	rhyolite (stk @ 006° / dip @ 70°E); in contact with intrusive; float sampled	20-May-2011	573153	6961866	n/a	07	n/a	578410
BR	Fsoil-1	soil	Franz Vidmar	Fsoil 1	20-May-2011	572595	6961799	n/a	07	n/a	n/a
BR	Fsoil-2	soil	Franz Vidmar	Fsoil 2	20-May-2011	572913	6961402	n/a	07	n/a	n/a
BR	Fsoil-3	soil	Franz Vidmar	Fsoil 3	20-May-2011	572986	6961618	n/a	07	n/a	n/a
BR	Fsoil-4	soil	Franz Vidmar	Fsoil 4	20-May-2011	572981	6961769	n/a	07	n/a	n/a
BR	Fsoil-5	soil	Franz Vidmar	Fsoil 5	20-May-2011	572959	6961804	n/a	07	n/a	n/a
BR	Fsoil-6	soil	Franz Vidmar	n/a	20-May-2011	573066	6961856	n/a	07	n/a	n/a
BR	Fsoil-7	soil	Franz Vidmar	n/a	20-May-2011	573154	6961870	n/a	07	n/a	n/a
BR	Fsilt-1	silt	Franz Vidmar	n/a	20-May-2011	573720	6960595	n/a	07	n/a	n/a
BR	578351	rock	Clayton Jones	granite+diorite; margin of finer grained diorite dyke cutting coarser grained granite maybe float/frost heave	20-May-2011	574268	6962665	n/a	07	n/a	578351
BR	578352	rock	Clayton Jones	Monzonite/qtz monzonite with bio phenos; quartz rich zone; weak cpy/py;	20-May-2011	574283	6962177	n/a	07	felsenmeer	578352
BR	578353	rock	Clayton Jones	Monzonite/qtz monzonite with bio phenos; weak cpy/py;	20-May-2011	574287	6962170	n/a	07	felsenmeer	578353
BR	Csoil-1	soil	Clayton Jones	12° S-facing slope; animal burrow; near monzonite	20-May-2011	574087	6961468	n/a	07	n/a	n/a
BR	Csoil-2	soil	Clayton Jones	35° S-facing slope; amongst OB-1 chips; 0.5m deep.	20-May-2011	574095	6961441	n/a	07	n/a	P4 (looking W); start of creek. P5 (looking SE)
BR	Csoil-3	soil	Clayton Jones	beside stream; silt/clay (frozen &/or compact); up to 20% organics	20-May-2011	573725	6960587	n/a	07	partially frozen	P6 (silt sample and soil site)
BR	Csoil-4	soil	Clayton Jones	beside creek; sandy-silty soil; partial organic.	20-May-2011	573992	6960225	n/a	07	frozen	P7 (looking W); saddle; intrusion-seds contact area

Goldstrike Resources Ltd.
Sample Results

Sample No	Sample Type	Easting	Northing	Ag ppm	Al %	As ppm	Au ppb	B ppm	Ba ppm	Bi ppm	Ca %	Cd ppm	Co ppm	Cr ppm	Cu ppm	Fe %	Ga ppm	Hg ppm	K %	La ppm	Mg %	Mn ppm	Mo ppm	Na %	Ni ppm	P %	Pb ppm	S %	Sb ppm	Sc ppm	Se ppm	Sr ppm	Te ppm	Th ppm	Ti %	Tl ppm	V ppm	W ppm	Zn ppm
578401	rock	572741	6961697	0.1	0.31	0.2	0.9	1	23	0.7	0.04	0.1	0.9	10	2.2	0.42	1	0.01	0.19	1	0.08	93	0.7	0.037	1.1	0.001	4.4	0.03	0.1	0.2	0.2	4	0.1	3.8	0.001	0.1	4	0.1	16
578402	rock	573162	6961876	0.1	1.70	0.2	1.0	1	326	0.1	0.35	0.1	8.1	13	2.0	2.68	6	0.01	0.74	15	0.83	654	0.5	0.152	3.6	0.039	4.0	0.03	0.1	5.7	0.2	29	0.1	10.2	0.143	0.3	60	0.1	44
578403	rock	573315	6961659	0.1	2.49	1.1	0.2	1	227	0.1	2.06	0.1	10.4	49	1.9	3.50	7	0.01	0.38	15	1.64	681	0.3	0.215	18.5	0.184	1.5	0.03	0.3	5.4	0.2	126	0.1	5.8	0.163	0.2	80	0.4	46
578404	rock	573185	6961339	0.1	0.88	0.2	0.2	1	43	0.3	0.29	0.1	2.0	6	1.3	0.93	4	0.01	0.14	7	0.15	358	1.0	0.106	1.2	0.010	19.6	0.03	0.2	1.1	0.2	12	0.1	20.6	0.040	0.1	9	0.7	55
578405	rock	573202	6961242	0.1	0.35	0.2	0.9	1	43	0.1	0.16	0.1	0.6	10	1.2	0.49	1	0.01	0.13	2	0.04	165	0.3	0.063	0.8	0.003	6.4	0.03	0.4	0.4	0.2	8	0.1	6.9	0.002	0.1	3	0.1	10
578406	rock	573364	6960981	0.1	0.52	0.2	1.2	1	61	0.1	0.08	0.1	2.0	12	2.7	0.71	2	0.01	0.19	3	0.18	209	0.3	0.059	1.3	0.007	9.4	0.03	0.2	0.8	0.2	8	0.1	5.6	0.019	0.1	11	0.1	16
578407	rock	573651	6960592	0.1	1.31	0.7	1.5	1	68	0.1	0.32	0.1	6.6	10	1.6	2.11	5	0.01	0.13	14	0.67	551	0.2	0.082	2.2	0.034	5.4	0.03	0.1	3.3	0.2	19	0.1	15.3	0.064	0.1	37	0.1	56
578408	rock	573878	6960281	0.1	0.42	1.7	0.2	1	34	0.5	0.74	0.1	4.4	7	1.0	1.36	2	0.01	0.11	7	0.10	448	1.2	0.048	2.3	0.013	10.9	0.03	0.5	2.1	0.2	24	0.1	8.4	0.005	0.1	33	0.2	42
578409	rock	573903	6960232	0.1	1.67	1.1	1.5	1	66	0.2	0.46	0.1	9.5	12	5.3	2.53	6	0.01	0.12	19	0.96	691	0.2	0.094	3.5	0.055	7.4	0.03	0.2	3.3	0.2	31	0.1	16.4	0.126	0.1	48	0.5	65
578410	rock	573153	6961866	0.1	0.47	0.2	0.6	1	27	0.3	0.03	0.1	0.3	7	2.9	0.60	2	0.01	0.16	2	0.02	34	0.4	0.027	1.1	0.004	9.3	0.03	0.2	0.4	0.2	3	0.1	18.9	0.001	0.1	1	0.1	41
Fsoil-1	soil	572595	6961799	0.1	3.42	9.0	9.9	2	104	0.3	0.17	0.2	14.0	43	22.9	3.69	7	0.03	0.08	10	0.76	603	1.6	0.016	32.1	0.056	19.2	0.09	0.5	2.6	0.2	16	0.1	3.8	0.093	0.1	81	0.3	79
Fsoil-2	soil	572913	6961402	0.1	2.37	9.5	0.6	2	87	0.3	0.16	0.2	9.3	48	21.3	3.79	9	0.06	0.05	7	0.47	521	2.8	0.012	27.7	0.064	44.5	0.10	0.7	2.1	0.2	15	0.1	2.2	0.069	0.1	86	0.1	76
Fsoil-3	soil	572986	6961618	0.1	3.08	7.4	3.9	2	61	0.4	0.13	0.2	7.1	41	17.2	3.48	7	0.10	0.03	8	0.26	488	1.8	0.011	13.6	0.090	19.1	0.07	0.5	2.3	1.1	12	0.1	3.4	0.061	0.1	70	0.1	40
Fsoil-4	soil	572981	6961769	0.2	2.21	4.2	8.0	1	114	0.8	0.28	0.1	10.2	37	21.1	3.28	7	0.04	0.07	86	0.67	816	1.5	0.013	23.4	0.087	30.9	0.03	0.4	3.9	0.2	21	0.1	10.0	0.049	0.1	71	0.1	73
Fsoil-5	soil	572959	6961804	0.1	2.51	5.2	1.0	1	113	0.3	0.25	0.1	10.5	34	19.3	3.69	7	0.03	0.06	24	0.82	505	1.6	0.011	23.3	0.079	14.2	0.03	0.6	3.0	0.7	19	0.1	5.7	0.069	0.2	78	0.1	71
Fsoil-6	soil	573066	6961856	0.1	3.36	3.8	1.2	1	164	0.6	0.48	0.1	17.8	44	19.0	4.26	10	0.02	0.14	17	1.43	773	0.4	0.011	26.6	0.085	19.4	0.03	0.2	4.2	0.5	30	0.1	6.8	0.008	0.2	76	0.1	62
Fsoil-7	soil	573154	6961870	0.1	2.43	5.8	2.1	1	78	0.2	0.22	0.2	12.4	31	19.8	3.21	6	0.04	0.05	12	0.70	588	0.7	0.014	29.1	0.061	22.2	0.03	0.4	3.2	0.8	15	0.1	4.3	0.075	0.1	66	0.1	81
Fsilt-1	silt	573720	6960595	0.1	1.83	2.8	4.5	2	143	0.1	0.50	0.1	11.2	27	13.7	2.64	5	0.02	0.10	13	0.68	655	1.1	0.015	16.6	0.080	10.9	0.03	0.2	3.2	0.2	33	0.1	3.1	0.086	0.1	69	0.1	58
578351	rock	574268	6962665	0.2	2.30	0.6	1.3	1	359	0.1	1.10	0.2	12.2	44	26.4	4.02	8	0.01	1.17	4	1.25	1101	0.4	0.195	6.1	0.054	3.5	0.03	0.3	13.7	0.2	31	0.1	3.0	0.224	0.4	97	0.1	88
578352	rock	574283	6962177	0.1	1.65	0.2	0.2	1	204	0.1	0.43	0.1	6.3	13	2.8	2.03	5	0.01	0.78	25	0.58	447	0.3	0.212	3.1	0.035	5.0	0.03	0.1	2.6	0.2	36	0.1	19.7	0.135	0.4	42	0.1	41
578353	rock	574287	6962170	0.1	1.73	0.2	0.2	1	285	0.1	0.25	0.1	8.4	12	3.1	2.72	6	0.01	0.78	13	0.80	640	0.3	0.112	2.9	0.046	3.7	0.03	0.1	5.8	0.2	18	0.1	11.9	0.145	0.4	57	0.1	60
Csoil-1	soil	574087	6961468	0.1	2.71	7.1	3.0	3	103	0.2	0.17	0.3	9.7	37	19.4	3.36	7	0.05	0.05	14	0.55	347	1.6	0.013	20.9	0.042	15.6	0.14	0.5	3.1	0.7	16	0.1	3.4	0.082	0.1	82	0.1	54
Csoil-2	soil	574095	6961441	0.1	2.40	4.9	6.5	4	229	0.2	0.34	0.2	13.0	34	23.0	3.52	6	0.03	0.14	15	0.85	710	0.5	0.021	29.5	0.056	9.8	0.12	0.4	3.9	0.2	25	0.1	6.9	0.127	0.1	84	0.2	69
Csoil-3	soil	573725	6960587	0.1	1.90	2.8	2.1	2	150	0.1	0.41	0.1	8.7	28	15.4	2.64	6	0.02	0.08	16	0.64	356	0.9	0.016	17.3	0.070	9.1	0.11	0.3	2.8	0.2	31	0.1	2.7	0.091	0.1	71	0.3	62
Csoil-4	soil	573992	6960225	0.1	2.04	3.4	2.0	1	128	0.2	0.38	0.1	10.0	28	14.8	2.78	6	0.04	0.07	12	0.69	405	1.1	0.014	17.2	0.056	11.5	0.08	0.2	2.9	0.2	28	0.1	3.3	0.096	0.1	74	0.2	62

APPENDIX III

**Analytical Methods
Certificates of Analysis**

Sample Preparation

Soils, tills and sediments samples are dried at 60°C to minimize loss of volatile elements such as mercury). Soils, tills and sediments are screened to -180 microns (-80 mesh ASTM). For rock samples, 1 kilogram of sample is crushed to 80% passing 10 mesh. A 250 gram split is then pulverize to 85% passing 200 mesh.

Analysis

Sample splits of 0.15 grams are leached in hot (95°C) aqua regia followed by ICP-MS analysis for the 36 elements shown in the table below.

The 36 elements in the 1DX2 analytical suite

Element	Lower Limit	Upper Limit
Ag*	0.1 ppm	100 ppm
Al*	0.01 %	10 %
As	0.5 ppm	10000 ppm
Au*	0.5 ppb	100 ppm
B*†	20 ppm	2000 ppm
Ba*	1 ppm	10000 ppm
Bi	0.1 ppm	2000 ppm
Ca*	0.01 %	40 %
Cd	0.1 ppm	2000 ppm
Co	0.1 ppm	2000 ppm
Cr*	1 ppm	10000 ppm
Cu	0.1 ppm	10000 ppm
Fe*	0.01 %	40 %
Ga*	1 ppm	1000 ppm
Hg‡	0.01 ppm	50 ppm
K*	0.01 %	10 %
La*	1 ppm	10000 ppm
Mg*	0.01 %	30 %
Mn*	1 ppm	10000 ppm
Mo	0.1 ppm	2000 ppm
Na*	0.001 %	5 %
Ni	0.1 ppm	10000 ppm
P*	0.001 %	5 %
Pb	0.1 ppm	10000 ppm
S*	0.05 %	10 %
Sb	0.1 ppm	2000 ppm
Sc	0.1 ppm	100 ppm
Se	0.5 ppm	100 ppm
Sr*	1 ppm	10000 ppm
Te	0.2 ppm	1000 ppm
Th*	0.1 ppm	2000 ppm
Ti*	0.001 %	5 %
Tl‡	0.1 ppm	1000 ppm
V*	2 ppm	10000 ppm
W*	0.1 ppm	100 ppm
Zn	1 ppm	10000 ppm

*Solubility of some elements will be limited by mineral species present.

†Detection limit = 1 ppm for 15g / 30g analysis.

APPENDIX IV

Certificate[s] of Work



1020 Cordova St. East Vancouver BC V6A 4A3 Canada

Acme Analytical Laboratories (Vancouver) Ltd.

www.acmelab.com

Client: Goldstrike Resources (Petro One Energy Co)
1300 - 111 West Georgia Street
Vancouver BC V6E 4M3 Canada

Submitted By: Lucy Zhang
Receiving Lab: Canada-Whitehorse
Received: May 30, 2011
Report Date: June 10, 2011
Page: 1 of 2

CERTIFICATE OF ANALYSIS

WHI11000155.1

CLIENT JOB INFORMATION

Project:
Shipment ID:
P.O. Number
Number of Samples: 13

SAMPLE PREPARATION AND ANALYTICAL PROCEDURES

Table with 6 columns: Method Code, Number of Samples, Code Description, Test Wgt (g), Report Status, Lab. Contains two rows of sample preparation data.

SAMPLE DISPOSAL

STOR-PLP Store After 90 days Invoice for Storage
DISP-RJT Dispose of Reject After 90 days

ADDITIONAL COMMENTS

Acme does not accept responsibility for samples left at the laboratory after 90 days without prior written instructions for sample storage or return.

Invoice To: Druid Exploration
Box 1485
Dawson City YT Y0B 1G0
Canada

CC:



This report supersedes all previous preliminary and final reports with this file number dated prior to the date on this certificate. Signature indicates final approval; preliminary reports are unsigned and should be used for reference only. All results are considered the confidential property of the client. Acme assumes the liabilities for actual cost of analysis only.

** asterisk indicates that an analytical result could not be provided due to unusually high levels of interference from other elements.



Acme Analytical Laboratories (Vancouver) Ltd.
 1020 Cordova St. East Vancouver BC V6A 4A3 Canada
 Phone (604) 253-3158 Fax (604) 253-1716

www.acmelab.com

Client: **Goldstrike Resources (Petro One Energy Co)**
 1300 - 111 West Georgia Street
 Vancouver BC V6E 4M3 Canada

Project:
 Report Date: June 10, 2011

Page: 2 of 2 Part 1

CERTIFICATE OF ANALYSIS

WHI11000155.1

Method	WGHT	1DX15	1DX15	1DX15	1DX15	1DX15	1DX15	1DX15	1DX15	1DX15	1DX15	1DX15	1DX15	1DX15	1DX15	1DX15	1DX15	1DX15	1DX15	1DX15	
Analyte	Wgt	Mo	Cu	Pb	Zn	Ag	Ni	Co	Mn	Fe	As	Au	Th	Sr	Cd	Sb	Bi	V	Ca	P	
Unit	kg	ppm	ppm	ppm	ppm	ppm	ppm	ppm	ppm	%	ppm	ppb	ppm	ppm	ppm	ppm	ppm	ppm	%	%	
MDL	0.01	0.1	0.1	0.1	1	0.1	0.1	0.1	1	0.01	0.5	0.5	0.1	1	0.1	0.1	0.1	2	0.01	0.001	
578401	Rock	0.44	0.7	2.2	4.4	16	<0.1	1.1	0.9	93	0.42	<0.5	0.9	3.8	4	<0.1	<0.1	0.7	4	0.04	0.001
578402	Rock	0.78	0.5	2.0	4.0	44	<0.1	3.6	8.1	654	2.68	<0.5	1.0	10.2	29	<0.1	0.1	0.1	60	0.35	0.039
578403	Rock	0.59	0.3	1.9	1.5	46	<0.1	18.5	10.4	681	3.50	1.1	<0.5	5.8	126	<0.1	0.3	<0.1	80	2.06	0.184
578404	Rock	1.03	1.0	1.3	19.6	55	<0.1	1.2	2.0	358	0.93	<0.5	<0.5	20.6	12	<0.1	0.2	0.3	9	0.29	0.010
578405	Rock	1.28	0.3	1.2	6.4	10	<0.1	0.8	0.6	165	0.49	<0.5	0.9	6.9	8	<0.1	0.4	<0.1	3	0.16	0.003
578406	Rock	0.74	0.3	2.7	9.4	16	<0.1	1.3	2.0	209	0.71	<0.5	1.2	5.6	8	<0.1	0.2	<0.1	11	0.08	0.007
578407	Rock	1.07	0.2	1.6	5.4	56	<0.1	2.2	6.6	551	2.11	0.7	1.5	15.3	19	<0.1	0.1	<0.1	37	0.32	0.034
578408	Rock	0.36	1.2	1.0	10.9	42	<0.1	2.3	4.4	448	1.36	1.7	<0.5	8.4	24	<0.1	0.5	0.5	33	0.74	0.013
578409	Rock	0.55	0.2	5.3	7.4	65	<0.1	3.5	9.5	691	2.53	1.1	1.5	16.4	31	<0.1	0.2	0.2	48	0.46	0.055
578410	Rock	0.59	0.4	2.9	9.3	41	<0.1	1.1	0.3	34	0.60	<0.5	0.6	18.9	3	<0.1	0.2	0.3	<2	0.03	0.004
578351	Rock	0.46	0.4	26.4	3.5	88	0.2	6.1	12.2	1101	4.02	0.6	1.3	3.0	31	0.2	0.3	<0.1	97	1.10	0.054
578352	Rock	0.46	0.3	2.8	5.0	41	<0.1	3.1	6.3	447	2.03	<0.5	<0.5	19.7	36	<0.1	<0.1	<0.1	42	0.43	0.035
578353	Rock	0.69	0.3	3.1	3.7	60	<0.1	2.9	8.4	640	2.72	<0.5	<0.5	11.9	18	<0.1	<0.1	<0.1	57	0.25	0.046

This report supersedes all previous preliminary and final reports with this file number dated prior to the date on this certificate. Signature indicates final approval; preliminary reports are unsigned and should be used for reference only.



AcmeLabs

Acme Analytical Laboratories (Vancouver) Ltd.

1020 Cordova St. East Vancouver BC V6A 4A3 Canada

Phone (604) 253-3158 Fax (604) 253-1716

www.acmelab.com

Client: Goldstrike Resources (Petro One Energy Co)
1300 - 111 West Georgia Street
Vancouver BC V6E 4M3 Canada

Project:

Report Date: June 10, 2011

Page: 2 of 2 **Part** 2

CERTIFICATE OF ANALYSIS

WHI11000155.1

Method	Analyte	1DX15	1DX15	1DX15	1DX15	1DX15	1DX15	1DX15	1DX15	1DX15	1DX15	1DX15	1DX15	1DX15	1DX15	1DX15	1DX15	
		La	Cr	Mg	Ba	Ti	B	Al	Na	K	W	Hg	Sc	Tl	S	Ga	Se	Te
Unit		ppm	ppm	%	ppm	%	ppm	%	%	ppm	ppm	ppm	ppm	%	ppm	ppm	ppm	
MDL		1	1	0.01	1	0.001	1	0.01	0.001	0.01	0.1	0.01	0.1	0.05	1	0.5	0.2	
578401	Rock	<1	10	0.08	23	<0.001	<1	0.31	0.037	0.19	<0.1	<0.01	0.2	<0.1	<0.05	1	<0.5	<0.2
578402	Rock	15	13	0.83	326	0.143	<1	1.70	0.152	0.74	<0.1	<0.01	5.7	0.3	<0.05	6	<0.5	<0.2
578403	Rock	15	49	1.64	227	0.163	<1	2.49	0.215	0.38	0.4	<0.01	5.4	0.2	<0.05	7	<0.5	<0.2
578404	Rock	7	6	0.15	43	0.040	<1	0.88	0.106	0.14	0.7	<0.01	1.1	<0.1	<0.05	4	<0.5	<0.2
578405	Rock	2	10	0.04	43	0.002	<1	0.35	0.063	0.13	0.1	<0.01	0.4	<0.1	<0.05	1	<0.5	<0.2
578406	Rock	3	12	0.18	61	0.019	<1	0.52	0.059	0.19	<0.1	<0.01	0.8	<0.1	<0.05	2	<0.5	<0.2
578407	Rock	14	10	0.67	68	0.064	<1	1.31	0.082	0.13	0.1	<0.01	3.3	<0.1	<0.05	5	<0.5	<0.2
578408	Rock	7	7	0.10	34	0.005	<1	0.42	0.048	0.11	0.2	<0.01	2.1	0.1	<0.05	2	<0.5	<0.2
578409	Rock	19	12	0.96	66	0.126	1	1.67	0.094	0.12	0.5	<0.01	3.3	<0.1	<0.05	6	<0.5	<0.2
578410	Rock	2	7	0.02	27	0.001	<1	0.47	0.027	0.16	0.1	<0.01	0.4	<0.1	<0.05	2	<0.5	<0.2
578351	Rock	4	44	1.25	359	0.224	1	2.30	0.195	1.17	<0.1	<0.01	13.7	0.4	<0.05	8	<0.5	<0.2
578352	Rock	25	13	0.58	204	0.135	<1	1.65	0.212	0.78	<0.1	<0.01	2.6	0.4	<0.05	5	<0.5	<0.2
578353	Rock	13	12	0.80	285	0.145	<1	1.73	0.112	0.78	<0.1	<0.01	5.8	0.4	<0.05	6	<0.5	<0.2



AcmeLabs

Acme Analytical Laboratories (Vancouver) Ltd.

1020 Cordova St. East Vancouver BC V6A 4A3 Canada

Phone (604) 253-3158 Fax (604) 253-1716

www.acmelab.com

Client: Goldstrike Resources (Petro One Energy Co)
1300 - 111 West Georgia Street
Vancouver BC V6E 4M3 Canada

Project:

Report Date: June 10, 2011

Page: 1 of 1 Part 1

QUALITY CONTROL REPORT

WHI11000155.1

Method	WGHT	1DX15	1DX15	1DX15	1DX15	1DX15	1DX15	1DX15	1DX15	1DX15	1DX15	1DX15	1DX15	1DX15	1DX15	1DX15	1DX15	1DX15	1DX15	1DX15	1DX15
Analyte	Wgt	Mo	Cu	Pb	Zn	Ag	Ni	Co	Mn	Fe	As	Au	Th	Sr	Cd	Sb	Bi	V	Ca	P	
Unit	kg	ppm	ppm	ppm	ppm	ppm	ppm	ppm	ppm	%	ppm	ppb	ppm	ppm	ppm	ppm	ppm	ppm	%	%	
MDL	0.01	0.1	0.1	0.1	1	0.1	0.1	0.1	1	0.01	0.5	0.5	0.1	1	0.1	0.1	0.1	2	0.01	0.001	
Reference Materials																					
STD DS8	Standard	14.3	115.0	127.8	341	1.8	39.8	7.9	649	2.50	26.9	121.2	7.0	70	2.7	6.3	7.0	41	0.70	0.081	
STD DS8	Standard	14.0	108.7	122.3	319	1.8	37.8	7.6	638	2.43	26.8	111.6	6.7	70	2.6	6.0	6.6	40	0.70	0.079	
STD DS8 Expected		13.44	110	123	312	1.69	38.1	7.5	615	2.46	26	107	6.89	67.7	2.38	5.7	6.67	41.1	0.7	0.08	
BLK	Blank	<0.1	<0.1	<0.1	<1	<0.1	<0.1	<0.1	<1	<0.01	<0.5	<0.5	<0.1	<1	<0.1	<0.1	<0.1	<2	<0.01	<0.001	
Prep Wash																					
G1	Prep Blank	1.1	2.1	3.4	48	<0.1	3.7	4.3	576	1.95	<0.5	<0.5	5.1	71	<0.1	<0.1	<0.1	36	0.54	0.079	
G1	Prep Blank	1.2	2.1	3.3	49	<0.1	4.5	4.4	572	1.90	<0.5	<0.5	5.6	76	<0.1	<0.1	<0.1	36	0.55	0.078	



AcmeLabs

Acme Analytical Laboratories (Vancouver) Ltd.

1020 Cordova St. East Vancouver BC V6A 4A3 Canada

Phone (604) 253-3158 Fax (604) 253-1716

www.acmelab.com

Client: Goldstrike Resources (Petro One Energy Co)
1300 - 111 West Georgia Street
Vancouver BC V6E 4M3 Canada

Project:

Report Date: June 10, 2011

Page: 1 of 1 Part 2

QUALITY CONTROL REPORT

WHI11000155.1

Method		1DX15	1DX15	1DX15	1DX15	1DX15	1DX15	1DX15	1DX15	1DX15	1DX15	1DX15	1DX15	1DX15	1DX15	1DX15	1DX15	
Analyte		La	Cr	Mg	Ba	Ti	B	Al	Na	K	W	Hg	Sc	Tl	S	Ga	Se	Te
Unit		ppm	ppm	%	ppm	%	ppm	%	%	%	ppm	ppm	ppm	ppm	%	ppm	ppm	ppm
MDL		1	1	0.01	1	0.001	1	0.01	0.001	0.01	0.1	0.01	0.1	0.1	0.05	1	0.5	0.2
Reference Materials																		
STD DS8	Standard	16	122	0.64	306	0.124	3	0.98	0.096	0.43	3.3	0.18	2.1	5.7	0.16	5	5.0	5.1
STD DS8	Standard	16	118	0.61	288	0.119	3	0.95	0.089	0.44	3.1	0.21	1.9	5.5	0.16	5	5.3	5.6
STD DS8 Expected		14.6	115	0.6045	279	0.113	2.6	0.93	0.0883	0.41	3	0.192	2.3	5.4	0.1679	4.7	5.23	5
BLK	Blank	<1	<1	<0.01	<1	<0.001	<1	<0.01	<0.001	<0.01	<0.1	<0.01	<0.1	<0.1	<0.05	<1	<0.5	<0.2
Prep Wash																		
G1	Prep Blank	12	17	0.57	227	0.135	<1	1.07	0.101	0.51	<0.1	<0.01	1.8	0.3	<0.05	5	<0.5	<0.2
G1	Prep Blank	12	15	0.58	228	0.138	<1	1.06	0.106	0.52	<0.1	<0.01	1.8	0.3	<0.05	5	<0.5	<0.2



1020 Cordova St. East Vancouver BC V6A 4A3 Canada

Acme Analytical Laboratories (Vancouver) Ltd.

www.acmelab.com

Client: Goldstrike Resources (Petro One Energy C)
1300 - 111 West Georgia Street
Vancouver BC V6E 4M3 Canada

Submitted By: Lucy Zhang
Receiving Lab: Canada-Whitehorse
Received: May 30, 2011
Report Date: June 10, 2011
Page: 1 of 2

CERTIFICATE OF ANALYSIS WHI11000156.1

CLIENT JOB INFORMATION

Project:
Shipment ID:
P.O. Number
Number of Samples: 12

SAMPLE PREPARATION AND ANALYTICAL PROCEDURES

Table with 6 columns: Method Code, Number of Samples, Code Description, Test Wgt (g), Report Status, Lab. Rows include SS80, Dry at 60C, and 1DX2.

SAMPLE DISPOSAL

STOR-PLP Store After 90 days Invoice for Storage
DISP-RJT-SOIL Immediate Disposal of Soil Reject

ADDITIONAL COMMENTS

Acme does not accept responsibility for samples left at the laboratory after 90 days without prior written instructions for sample storage or return.

Invoice To: Druid Exploration
Box 1485
Dawson City YT Y0B 1G0
Canada

CC:



This report supersedes all previous preliminary and final reports with this file number dated prior to the date on this certificate. Signature indicates final approval; preliminary reports are unsigned and should be used for reference only. All results are considered the confidential property of the client. Acme assumes the liabilities for actual cost of analysis only. "*" asterisk indicates that an analytical result could not be provided due to unusually high levels of interference from other elements.



AcmeLabs

Acme Analytical Laboratories (Vancouver) Ltd.

1020 Cordova St. East Vancouver BC V6A 4A3 Canada

Phone (604) 253-3158 Fax (604) 253-1716

www.acmelab.com

Client: Goldstrike Resources (Petro One Energy Co)
1300 - 111 West Georgia Street
Vancouver BC V6E 4M3 Canada

Project:

Report Date: June 10, 2011

Page: 2 of 2 **Part** 1

CERTIFICATE OF ANALYSIS

WHI11000156.1

Method	Analyte	1DX15	1DX15	1DX15	1DX15	1DX15	1DX15	1DX15	1DX15	1DX15	1DX15	1DX15	1DX15	1DX15	1DX15	1DX15	1DX15	1DX15	1DX15	1DX15	1DX15
		Mo	Cu	Pb	Zn	Ag	Ni	Co	Mn	Fe	As	Au	Th	Sr	Cd	Sb	Bi	V	Ca	P	La
Unit		ppm	ppm	ppm	ppm	ppm	ppm	ppm	%	ppm	ppb	ppm	ppm	ppm	ppm	ppm	ppm	%	%	ppm	
MDL		0.1	0.1	0.1	1	0.1	0.1	0.1	1	0.01	0.5	0.5	0.1	1	0.1	0.1	0.1	2	0.01	0.001	1
CSOIL1	Soil	1.6	19.4	15.6	54	0.1	20.9	9.7	347	3.36	7.1	3.0	3.4	16	0.3	0.5	0.2	82	0.17	0.042	14
CSOIL2	Soil	0.5	23.0	9.8	69	<0.1	29.5	13.0	710	3.52	4.9	6.5	6.9	25	0.2	0.4	0.2	84	0.34	0.056	15
CSOIL3	Soil	0.9	15.4	9.1	62	0.1	17.3	8.7	356	2.64	2.8	2.1	2.7	31	0.1	0.3	0.1	71	0.41	0.070	16
CSOIL4	Soil	1.1	14.8	11.5	62	0.1	17.2	10.0	405	2.78	3.4	2.0	3.3	28	0.1	0.2	0.2	74	0.38	0.056	12
FSOIL1	Soil	1.6	22.9	19.2	79	<0.1	32.1	14.0	603	3.69	9.0	9.9	3.8	16	0.2	0.5	0.3	81	0.17	0.056	10
FSOIL2	Soil	2.8	21.3	44.5	76	0.1	27.7	9.3	521	3.79	9.5	0.6	2.2	15	0.2	0.7	0.3	86	0.16	0.064	7
FSOIL3	Soil	1.8	17.2	19.1	40	0.1	13.6	7.1	488	3.48	7.4	3.9	3.4	12	0.2	0.5	0.4	70	0.13	0.090	8
FSOIL4	Soil	1.5	21.1	30.9	73	0.2	23.4	10.2	816	3.28	4.2	8.0	10.0	21	0.1	0.4	0.8	71	0.28	0.087	86
FSOIL5	Soil	1.6	19.3	14.2	71	<0.1	23.3	10.5	505	3.69	5.2	1.0	5.7	19	0.1	0.6	0.3	78	0.25	0.079	24
FSOIL6	Soil	0.4	19.0	19.4	62	<0.1	26.6	17.8	773	4.26	3.8	1.2	6.8	30	<0.1	0.2	0.6	76	0.48	0.085	17
FSOIL7	Soil	0.7	19.8	22.2	81	<0.1	29.1	12.4	588	3.21	5.8	2.1	4.3	15	0.2	0.4	0.2	66	0.22	0.061	12
FSILT1	Silt	1.1	13.7	10.9	58	<0.1	16.6	11.2	655	2.64	2.8	4.5	3.1	33	0.1	0.2	0.1	69	0.50	0.080	13



1020 Cordova St. East Vancouver BC V6A 4A3 Canada
 Phone (604) 253-3158 Fax (604) 253-1716

Acme Analytical Laboratories (Vancouver) Ltd.

www.acmelab.com

Client: **Goldstrike Resources (Petro One Energy Co)**
 1300 - 111 West Georgia Street
 Vancouver BC V6E 4M3 Canada

Project:
 Report Date: June 10, 2011

Page: 2 of 2 Part 2

CERTIFICATE OF ANALYSIS

WHI11000156.1

Method	Analyte	1DX15	1DX15	1DX15	1DX15	1DX15	1DX15	1DX15	1DX15	1DX15	1DX15	1DX15	1DX15	1DX15	1DX15	1DX15	1DX15
		Cr	Mg	Ba	Ti	B	Al	Na	K	W	Hg	Sc	Tl	S	Ga	Se	Te
Unit		ppm	%	ppm	%	ppm	%	%	%	ppm	ppm	ppm	ppm	%	ppm	ppm	ppm
MDL		1	0.01	1	0.001	1	0.01	0.001	0.01	0.1	0.01	0.1	0.05	1	0.5	0.2	
CSOIL1	Soil	37	0.55	103	0.082	3	2.71	0.013	0.05	0.1	0.05	3.1	0.1	0.14	7	0.7	<0.2
CSOIL2	Soil	34	0.85	229	0.127	4	2.40	0.021	0.14	0.2	0.03	3.9	0.1	0.12	6	<0.5	<0.2
CSOIL3	Soil	28	0.64	150	0.091	2	1.90	0.016	0.08	0.3	0.02	2.8	0.1	0.11	6	<0.5	<0.2
CSOIL4	Soil	28	0.69	128	0.096	1	2.04	0.014	0.07	0.2	0.04	2.9	0.1	0.08	6	<0.5	<0.2
FSOIL1	Soil	43	0.76	104	0.093	2	3.42	0.016	0.08	0.3	0.03	2.6	0.1	0.09	7	<0.5	<0.2
FSOIL2	Soil	48	0.47	87	0.069	2	2.37	0.012	0.05	0.1	0.06	2.1	0.1	0.10	9	<0.5	<0.2
FSOIL3	Soil	41	0.26	61	0.061	2	3.08	0.011	0.03	0.1	0.10	2.3	<0.1	0.07	7	1.1	<0.2
FSOIL4	Soil	37	0.67	114	0.049	<1	2.21	0.013	0.07	0.1	0.04	3.9	<0.1	<0.05	7	<0.5	<0.2
FSOIL5	Soil	34	0.62	113	0.069	1	2.51	0.011	0.06	<0.1	0.03	3.0	0.2	<0.05	7	0.7	<0.2
FSOIL6	Soil	44	1.43	164	0.008	<1	3.36	0.011	0.14	<0.1	0.02	4.2	0.2	<0.05	10	0.5	<0.2
FSOIL7	Soil	31	0.70	78	0.075	1	2.43	0.014	0.05	0.1	0.04	3.2	<0.1	<0.05	6	0.8	<0.2
FSILT1	Silt	27	0.68	143	0.086	2	1.83	0.015	0.10	0.1	0.02	3.2	0.1	<0.05	5	<0.5	<0.2



Acme Analytical Laboratories (Vancouver) Ltd.
 1020 Cordova St. East Vancouver BC V6A 4A3 Canada
 Phone (604) 253-3158 Fax (604) 253-1716

www.acmelab.com

Client: **Goldstrike Resources (Petro One Energy Co)**
 1300 - 111 West Georgia Street
 Vancouver BC V6E 4M3 Canada

Project:

Report Date: June 10, 2011

Page: 1 of 1 Part 1

QUALITY CONTROL REPORT

WHI11000156.1

Method	Analyte	1DX15 Mo	1DX15 Cu	1DX15 Pb	1DX15 Zn	1DX15 Ag	1DX15 Ni	1DX15 Co	1DX15 Mn	1DX15 Fe	1DX15 As	1DX15 Au	1DX15 Th	1DX15 Sr	1DX15 Cd	1DX15 Sb	1DX15 Bi	1DX15 V	1DX15 Ca	1DX15 P	1DX15 La
Unit		ppm	ppm	ppm	ppm	ppm	ppm	ppm	ppm	%	ppm	ppb	ppm	ppm	ppm	ppm	ppm	ppm	%	%	ppm
MDL		0.1	0.1	0.1	1	0.1	0.1	0.1	1	0.01	0.5	0.5	0.1	1	0.1	0.1	0.1	2	0.01	0.001	1
Pulp Duplicates																					
CSOIL1	Soil	1.6	19.4	15.6	54	0.1	20.9	9.7	347	3.36	7.1	3.0	3.4	16	0.3	0.5	0.2	82	0.17	0.042	14
REP CSOIL1	QC	1.5	20.1	16.9	56	<0.1	21.6	10.0	353	3.41	8.2	2.3	3.5	17	0.2	0.5	0.2	82	0.19	0.042	14
Reference Materials																					
STD DS8	Standard	12.4	108.1	129.7	315	1.8	38.1	7.2	623	2.48	24.8	106.9	6.2	64	2.3	5.1	6.3	45	0.68	0.081	13
STD DS8	Standard	13.1	110.9	134.5	319	1.8	40.2	7.6	643	2.53	25.1	117.8	6.3	67	2.3	5.4	6.8	46	0.68	0.084	13
STD DS8 Expected		13.44	110	123	312	1.69	38.1	7.5	615	2.46	26	107	6.89	67.7	2.38	5.7	6.67	41.1	0.7	0.08	14.6
BLK	Blank	<0.1	<0.1	<0.1	<1	<0.1	<0.1	<0.1	<1	<0.01	<0.5	<0.5	<0.1	<1	<0.1	<0.1	<0.1	<2	<0.01	<0.001	<1



Acme Analytical Laboratories (Vancouver) Ltd.

1020 Cordova St. East Vancouver BC V6A 4A3 Canada

Phone (604) 253-3158 Fax (604) 253-1716

www.acmelab.com

Client: **Goldstrike Resources (Petro One Energy Co)**
 1300 - 111 West Georgia Street
 Vancouver BC V6E 4M3 Canada

Project:

Report Date: June 10, 2011

Page: 1 of 1 Part 2

QUALITY CONTROL REPORT

WHI11000156.1

Method	Analyte	1DX15	1DX15	1DX15	1DX15	1DX15	1DX15	1DX15	1DX15	1DX15	1DX15	1DX15	1DX15	1DX15	1DX15	1DX15	1DX15
		Cr	Mg	Ba	Ti	B	Al	Na	K	W	Hg	Sc	Tl	S	Ga	Se	Te
Unit		ppm	%	ppm	%	ppm	%	%	%	ppm	ppm	ppm	ppm	%	ppm	ppm	ppm
MDL		1	0.01	1	0.001	1	0.01	0.001	0.01	0.1	0.01	0.1	0.05	1	0.5	0.2	
Pulp Duplicates																	
CSOIL1	Soil	37	0.55	103	0.082	3	2.71	0.013	0.05	0.1	0.05	3.1	0.1	0.14	7	0.7	<0.2
REP CSOIL1	QC	35	0.56	103	0.084	2	2.73	0.014	0.05	0.1	0.04	3.2	0.1	0.11	7	0.8	<0.2
Reference Materials																	
STD DS8	Standard	118	0.59	276	0.103	3	0.89	0.089	0.39	2.9	0.20	1.5	5.5	0.17	4	5.8	4.5
STD DS8	Standard	119	0.62	293	0.112	2	0.93	0.095	0.45	3.0	0.20	1.8	5.6	0.19	5	5.4	4.6
STD DS8 Expected		115	0.6045	279	0.113	2.6	0.93	0.0883	0.41	3	0.192	2.3	5.4	0.1679	4.7	5.23	5
BLK	Blank	<1	<0.01	<1	<0.001	<1	<0.01	<0.001	<0.01	<0.1	<0.01	<0.1	<0.1	<0.05	<1	<0.5	<0.2

APPENDIX IV

Certificate[s] of Work

Costs incurred on the BR project
May-20th-2011

ITEM	Unit	Per Unit	Total
Prospector	2 x 1 Day	450	900
Geologist / data compilation	1 x 1 Day	500	500
Helicopter wet	2 hrs	1837.5	3675
Cartography	2 x days	250	500
Assay + shipping (25-samples)	\$28/ sample		700
Report Writing			2000
		TOTAL	8275

Justin Mac Gravit

Office Use Only

QUARTZ MINING ACT FORM 12 SECTION 55
APPLICATION TO GROUP MINERAL CLAIMS

Whitehorse MINING DISTRICT

Office Date Stamp

I, (We) the undersigned owners or agent(s) of the owners of following mineral claims.
(Additional sheets or an appendix may be used) (Claim names and grant numbers to be listed in sequence eg. TOM 1-40, YC10001 - YC10040)

GRANT NUMBER	CLAIM NAME	MAP SHEET
	<i>See attached list of claims.</i>	

Give notice of intention to group the said claims for the performance of work and do hereby apply under the provisions of section 55 of the *Quartz Mining Act* for a certificate in form 6.

I (We) hereby certify that the above claims are adjoining as shown on the attached sketch

Dated at Dawson City

This 20th day of May, 2011


Applicant(s)

Access to Information and Protection of Privacy Act
The personal information requested on this form is collected under the authority of and used for the purpose of administering the *Quartz Mining Act*.
Questions about the collection and use of this information can be directed to the Mining Records Office, Mineral Resources, Department of Energy, Mines and Resources,
Yukon Government, Box 2703, Whitehorse, Yukon Territory, Y1A 2C6 (867) 667-3190

Claim Status Report

24 May 2011

Claim Name and Nbr.	Grant No.	Expiry Date	Registered Owner	% Owned	NTS #'s
BR 1 - 28	YD47271 - YD47298	2011/05/26	Goldspike Exploration Inc.	100.00	115J13
BR 29 - 30	YD47149 - YD47150	2011/05/26	Goldspike Exploration Inc.	100.00	115J13
BR 31 - 42	YD61601 - YD61612	2011/05/26	Goldspike Exploration Inc.	100.00	115J13
BR 43 - 56	YD61633 - YD61646	2011/05/26	Goldspike Exploration Inc.	100.00	115J13
BR 57 - 58	YD47267 - YD47268	2011/05/26	Goldspike Exploration Inc.	100.00	115J13
BR 59 - 66	YD61619 - YD61626	2011/05/26	Goldspike Exploration Inc.	100.00	115J13

Criteria(s) used for search:

CLAIM NAME: BR CLAIM STATUS: ACTIVE & PENDING OWNER(S): KING TERRENCE (TERRY) REGULATION TYPE: QUARTZ

Terrence Mac Beaville, May 26th - 2011

Left column indicator legend:

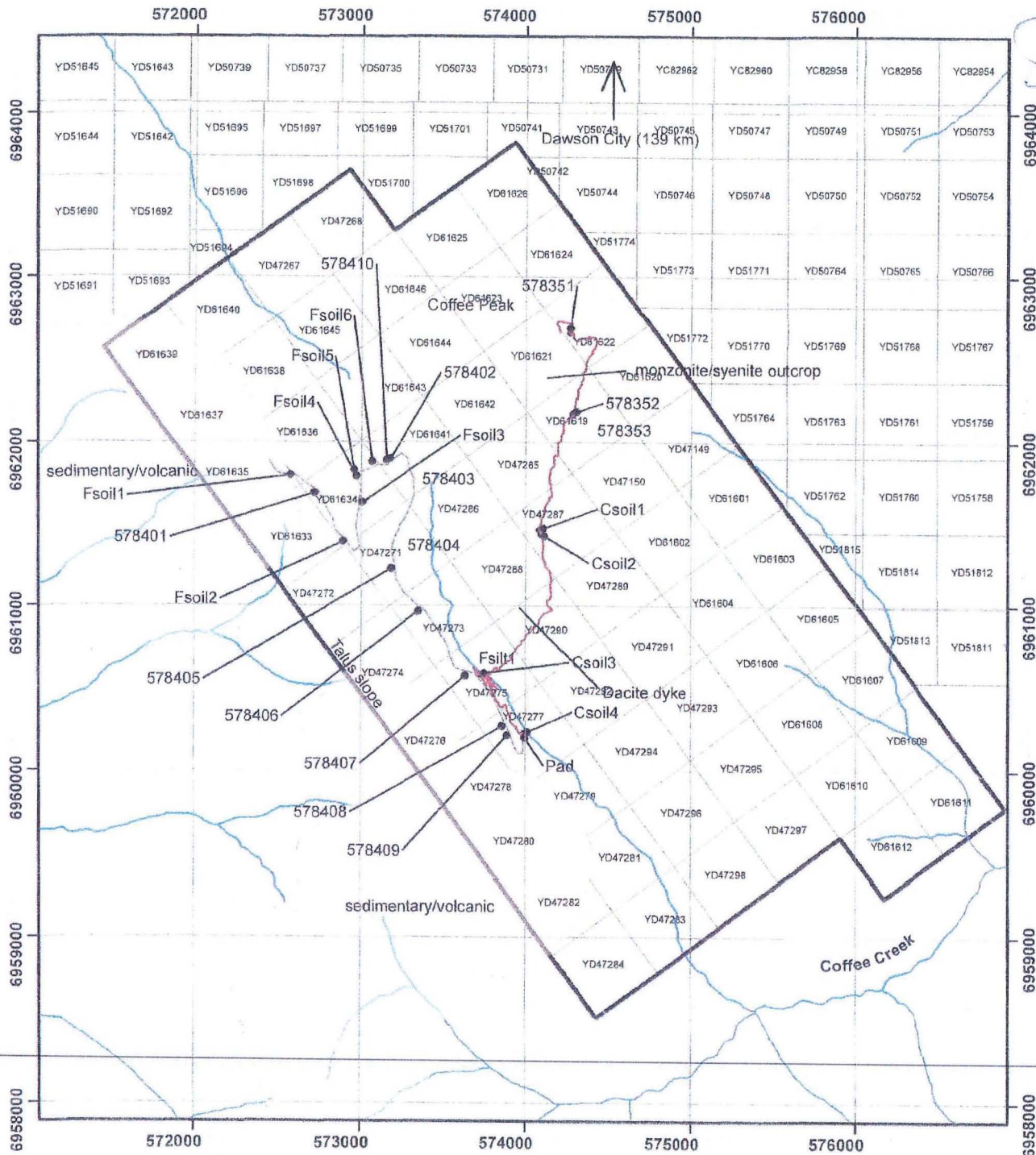
R - Indicates the claim is on one or more pending renewal(s).
P - Indicates the claim is pending.

Right column indicator legend:

L - Indicates the Quartz Lease.
F - Indicates Full Quartz fraction (25+ acres)
P - Indicates Partial Quartz fraction (<25 acres)

D - Indicates Placer Discovery
C - Indicates Placer Codiscovery
B - Indicates Placer Fraction

Total claims selected : 66



D. Mac
 N
 May 26th 2011
 1:34,500

Goldstrike Resources

- Traverse (Clayton and Michel)
- samples
- Traverse (Franz)
- Bedrock Geology
- BR Claim Boundry

**1 Day Prospecting
 May 20, 2011**

25 sampels in total:
 13 Rock
 11 Soil
 1 Silt

Prospecting was conducted along the traverse line and were walked in a north to south direction

Traverse lines were determined from track data download from handheld GPS units.

Drawn By Clayton Jones
 UTM-NAD83-ZONE-07
 MAP SHEET 115j11, 115j12, 115j13, 115j14

I, Daithi Mac Gearailt

of Dawson City - Box 1485 Y0R3 1G0

Phone 867-993-6155

make oath and say that:



1. I am the owner, or agent of the owner, of the mineral claim(s) to which reference is made herein.
2. I have done, or caused to be done, work, on the following mineral claim(s): (Here list claims on which work was actually done by number and name)

YD47271 - BR1, YD47273 - BR3, YD47275 - BR5, YD47277 - BR7
YD47285 - BR15, YD47287 - BR17, YD47290 - BR20,
YD61619 - BR59, YD61622 - BR62, YD61634 - BR44,
YD61635 - BR45, YD61636 - BR46, YD61641, BR51

situated at Coffee Creek Claim sheet No. 115j 11,12,13 &14

in the Whitehorse Mining District, to the value of at least \$8275 dollars,

since the 20th day of May 2011,

to represent the following mineral claims under the authority of Grouping Certificate No. _____
(Here list claims to be renewed in numerical order, by grant number and claim name, showing renewal period requested).

Please renew the following claims for a 1 year period:

~~BR1 - BR28~~ BR1 - BR28 (YD47271 - YD47298) + BR29 - BR30
(YD47149 - YD47150) + BR31 - BR42 (YD61601 - YD61612)
+ BR43 - BR56 (YD61633 - YD61646) + BR57 - BR58
(YD47267 - YD47268) + BR59 - BR66 (YD61619 - YD61626)

3. The following is a detailed statement of such work: (Set out full particulars of the work done indicating dates work commenced and ended in the twelve months in which such work is required to be done as shown by Section 56).

On the 20th of May 2011 two prospectors and 1 geologist chartered a longranger helicopter from HeliDynamics in Dawson

City and flew to the BR property located in the Whitehorse Mining District. A full day of prospecting, mapping soil and

silt sampling was conducted along two traverse lines that were traveled in a north to south direction.

In total 25 samples were sent to Acme lab in whitehorse for assay. Results are pending.

Sworn before me at Dawson this 24 day of May 2011

[Signature]
Notary Public

[Signature]
Owner or Authorized Agent