

Assessment Report on the

2011 AIRBORNE GEOPHYSICAL and SOIL GEOCHEMICAL SURVEY

on the

BOULEVARD PROJECT, YUKON

YC46726-YC46733	TIGER 1-TIGER 8		YD51801-YD51810	BDW 1-BDW 10
YC64776-YC64871	BLVD 1-BLVD 96		YD51901-YD51932	XZ 1-XZ 32
YC65316-YC65319	AVE 1-AVE 4		YD51236-YD51238	XT 236-XT 238
YC81284-YC81315	DRIVE 1-DRIVE 32		YD12511-YD12516	VIP 501-VIP 506
YC82926-YC83031	BLVD 97-BLVD 202		YD51028	XT 28
YC98845-YC98852	HAN 1-HAN 8		YD51053	XT 53
YD8611-YD8694	SOL 1-SOL 84		YD51055	XT 55
YD15231-YD15240	GRT 1-GRT 10		YD51379-YD51382	XT 379-XT 382
YD15241-YD15242	GRT 11-GRT 12		YD51391-YD51398	XT 391-XT 398
YD15243-YD15248	GRT 13-GRT 18		YD51405-YD51414	XT 405-XT 414
YD15269-YD15270	GRT F 19-GRT 20		YD51435-YD51446	XT 435-XT 446
YD15271-YD15286	GRT F 21-GRT 37		YD51451-YD51460	XT 451-XT 460
YD49101-YD49194	BDW 11-BDW 104		YD61666-YD61667	VIP 326-VIP 327
YD50701-YD50754	XY 1-XY 54		YD62088-YD62097	VIP 388-VIP 397
YD50756-YD50780	XY 56-XY 80		YD62182-YD62195	VIP 342-VIP 355
YD51240	XT 240		YD62198-YD62200	VIP 358-VIP 360
YD51242	XT 242		YD62233-YD62244	VIP 433-VIP 444
YD51244	XT 244		YD62257-YD62268	VIP 457-VIP 468
YD51269-YD51286	XT 269-XT 286		YD62287-YD62292	VIP 487-VIP 492
YD51301-YD51328	XT 301-XT 328		YD62299-YD62309	VIP 499-VIP 369
YD51331-YD51358	XT 331-XT 358		YD62384-YD62387	VIP 384-VIP 387
YD51361-YD51378	XT 361-XT 378		YE27221-YE27226	XT 463-XT 468
YD51595-YD51640	XY 95-XY 140		YD51702-YD51800	XY 202-XY 300
YD51642-YD51701	XY 142-XY 201		YD51811-YD51815	XY 311-XY 315
YE27205	XY 93		YE27297-YE27306	XY 301-XY 310

WHITEHORSE MINING DISTRICT
Date(s) Worked: July 8 to July 16 & July 27, 2011

NTS Map 115J13, 115J14
 UTM 566,200E; 6,970,200N (NAD 83 Zone 7)

Prepared by:
 Ryan Congdon, BSc, Geologist

Prepared for:
 Silver Quest Resources Ltd.
 P.O. Box 11584
 Suite 1410 – 650 West Georgia Street
 Vancouver, British Columbia, V6B4N8

December 2, 2011
 Revised January 9, 2012

Table of Contents

SUMMARY	4
INTRODUCTION	4
CLAIM DATA AND OWNERSHIP	6
PROPERTY DESCRIPTION	7
LOCATION.....	7
CLIMATE AND GEOMORPHOLOGY.....	7
INFRASTRUCTURE.....	8
HISTORY.....	8
PREVIOUS WORK.....	8
RECENT HISTORY.....	9
GEOLOGICAL SETTING	9
REGIONAL GEOLOGY	9
PROPERTY GEOLOGY	11
GEOCHEMISTRY.....	12
SOIL GEOCHEMISTRY	12
GEOPHYSICS	15
QUALITY ASSURANCE/QUALITY CONTROL	15
DISCUSSIONS AND CONCLUSIONS.....	16
RECOMMENDATIONS.....	22
REFERENCES	23
STATEMENT OF QUALIFICATIONS.....	24
STATEMENT OF EXPENDITURES.....	25

List of Table

Table 1 – Claim Data	6
Table 2 – Soil Geochemical Survey Percentile Values	13

List of Figures

Figure 1 – Location Map	5
Figure 3 – Regional Geology.....	Error! Bookmark not defined.
Figure 4 – Soil Geochemical Sample Locations	14
Figure 5a – Soil Geochemistry – Gold.....	17
Figure 5b - Soil Geochemistry – Silver	18
Figure 5c – Soil Geochemistry – Arsenic.....	19
Figure 5d - Soil Geochemistry – Bismuth	20
Figure 5e - Soil Geochemistry - Lead.....	21

List of Appendices

Appendix 1 Figure 2 - Claim Map	26
Appendix 2 Laboratory Certificates	27
Appendix 3 Airborne Geophysical Survey Report and Accompanying Maps	28
Appendix 4 Geophysical Data CD	Back Cover

SUMMARY

The Boulevard project operated by Silver Quest Resources Ltd. (Silver Quest) contains a broad 20 kilometre (km) long gold arsenic anomaly that was further explored by soil sampling, geological mapping, airborne geophysics and diamond drilling during the 2011 exploration program. Boulevard is located in west-central Yukon approximately 135 kilometres (km) south of Dawson City and approximately 60 km east of the Yukon-Alaska border (Figure 1).

This report discusses the airborne magnetic and radiometric geophysical survey that was carried out from July 8 to July 16, 2011, totalling 3,410 line km on the Boulevard project. The geophysical survey provided valuable data, providing insights into geological units and possible NW to NE structural breaks.

This report also describes a small reconnaissance soil geochemical survey totalling 61 samples, collected over 8 man days on the southwest portion of the Boulevard project. This small soil sample grid is part of much larger geochemical soil survey that was completed on the Boulevard project this summer that is not included in this assessment report. No anomalous zones of gold were outlined from the small geochemical soil survey; however, a minor elevated zone of bismuth, lead, molybdenum and tellurium appeared to be correlated to an underlying Eocene felsic unit.

INTRODUCTION

This report primarily describes an airborne magnetic and radiometric geophysical survey conducted on the Boulevard project on from July 8 to July 16, 2011. Work on the Boulevard project was completed for Silver Quest by Aeroquest Airborne of Mississauga, Ontario. This report also describes a small reconnaissance soil geochemical survey conducted on the southwest portion of the Boulevard project on July 27, 2011. The author was on the project site during the program and the Statement of Qualifications is contained within this report.

The objective of the airborne geophysical survey was to further evaluate the mineralized potential of the Boulevard project by collecting magnetic and radiometric data to aid in geological and structural interpretation. The soil geochemical sampling grid aimed to assess previously untested ground in the southern area of the Boulevard project.

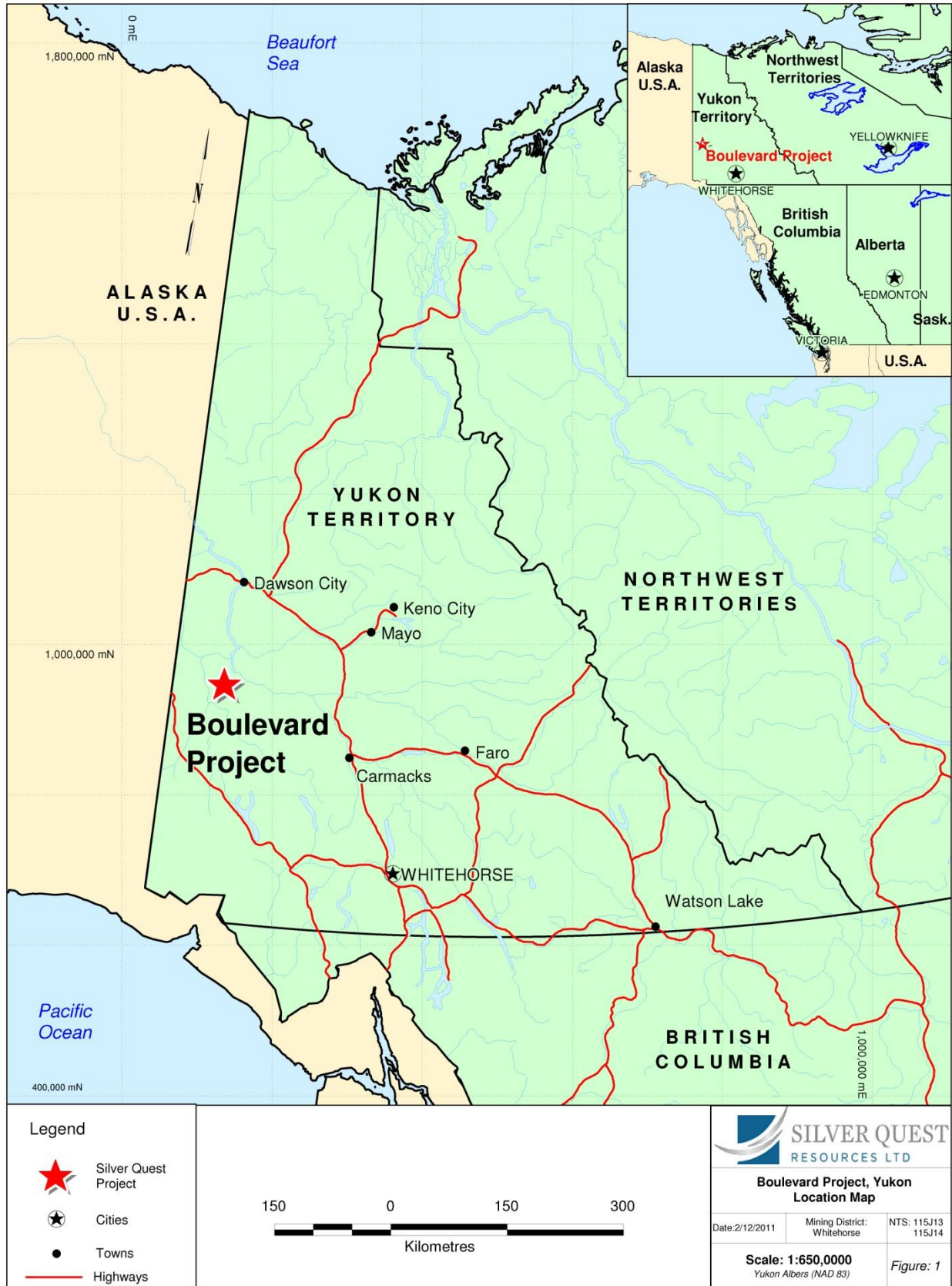


Figure 1 – Location Map

CLAIM DATA AND OWNERSHIP

Silver Quest Resources Ltd. optioned the BLVD, Ave, and Drive claims from Rimfire Minerals and Northgate Minerals in July 2009, and acquired the remaining claims via staking in 2010 and 2011. The Boulevard project comprises 820 contiguous quartz claims and covers a total area of approximately 17,000 hectares (ha). The claim block centers on 566,200E; 6,970,200N (NAD 83, Zone 7) on NTS map sheet 115J13 and 115J14 as shown on (Figure 2, Appendix 1).

Quartz claims are registered with the Whitehorse Mining Recorder. Claim data is listed below.

Table 1 – Claim Data

Grant Number	Claim Name	Registered Owner
YC46726-YC46733	TIGER 1-TIGER 8	Shawn Ryan
YC64776-YC64871	BLVD 1-BLVD 96	Rimfire/Northgate
YC65316-YC65319	AVE 1-AVE 4	Rimfire/Northgate
YC81284-YC81315	DRIVE 1-DRIVE 32	Rimfire/Northgate
YC82926-YC83031	BLVD 97-BLVD 202	Rimfire/Northgate
YC98845-YC98852	HAN 1-HAN 8	Silver Quest Resources Ltd.
YD8611-YD8694	SOL 1-SOL 84	Silver Quest Resources Ltd.
YD15231-YD15240	GRT 1-GRT 10	Silver Quest Resources Ltd.
YD15241-YD15242	GRT 11-GRT 12	Silver Quest Resources Ltd.
YD15243-YD15248	GRT 13-GRT 18	Silver Quest Resources Ltd.
YD15269-YD15270	GRT F 19-GRT 20	Silver Quest Resources Ltd.
YD15271-YD15286	GRT F 21-GRT 37	Silver Quest Resources Ltd.
YD49101-YD49194	BDW 11-BDW 104	Silver Quest Resources Ltd.
YD50701-YD50754	XY 1-XY 54	Silver Quest Resources Ltd.
YD50756-YD50780	XY 56-XY 80	Silver Quest Resources Ltd.
YD51240	XT 240	Silver Quest Resources Ltd.
YD51242	XT 242	Silver Quest Resources Ltd.
YD51244	XT 244	Silver Quest Resources Ltd.
YD51269-YD51286	XT 269-XT 286	Silver Quest Resources Ltd.
YD51301-YD51328	XT 301-XT 328	Silver Quest Resources Ltd.
YD51331-YD51358	XT 331-XT 358	Silver Quest Resources Ltd.
YD51361-YD51378	XT 361-XT 378	Silver Quest Resources Ltd.
YD51801-YD51810	BDW 1-BDW 10	Silver Quest Resources Ltd.
YD51901-YD51932	XZ 1-XZ 32	Silver Quest Resources Ltd.
YD51236-YD51238	XT 236-XT 238	Silver Quest Resources Ltd.
YD12511-YD12516	VIP 501-VIP 506	Silver Quest Resources Ltd.
YD51028	XT 28	Silver Quest Resources Ltd.
YD51053	XT 53	Silver Quest Resources Ltd.
YD51055	XT 55	Silver Quest Resources Ltd.
YD51379-YD51382	XT 379-XT 382	Silver Quest Resources Ltd.
YD51391-YD51398	XT 391-XT 398	Silver Quest Resources Ltd.
YD51405-YD51414	XT 405-XT 414	Silver Quest Resources Ltd.
YD51435-YD51446	XT 435-XT 446	Silver Quest Resources Ltd.
YD51451-YD51460	XT 451-XT 460	Silver Quest Resources Ltd.
YD61666-YD61667	VIP 326-VIP 327	Silver Quest Resources Ltd.

YD62088-YD62097	VIP 388-VIP 397	Silver Quest Resources Ltd.
YD62182-YD62195	VIP 342-VIP 355	Silver Quest Resources Ltd.
YD62198-YD62200	VIP 358-VIP 360	Silver Quest Resources Ltd.
YD62233-YD62244	VIP 433-VIP 444	Silver Quest Resources Ltd.
YD62257-YD62268	VIP 457-VIP 468	Silver Quest Resources Ltd.
YD62287-YD62292	VIP 487-VIP 492	Silver Quest Resources Ltd.
YD62299-YD62309	VIP 499-VIP 369	Silver Quest Resources Ltd.
YD62384-YD62387	VIP 384-VIP 387	Silver Quest Resources Ltd.
YE27221-YE27226	XT 463-XT 468	Silver Quest Resources Ltd.
YD51595-YD51640	XY 95 – XY 140	Silver Quest Resources Ltd.
YD51642-YD51701	XY 142 – XY 201	Silver Quest Resources Ltd.
YE27205	XY 93	Silver Quest Resources Ltd.
YD51702-YD51800	XY 202-XY 300	Silver Quest Resources Ltd.
YD51811-YD51815	XY 311-XY 315	Silver Quest Resources Ltd.
YE27297-YE27306	XY 301-XY 310	Silver Quest Resources Ltd.

PROPERTY DESCRIPTION

LOCATION

The Boulevard project is located in the Independence Creek area of west-central Yukon approximately 135 km south of Dawson City and approximately 60 km east of the Yukon-Alaska boarder (Figure 1).

CLIMATE AND GEOMORPHOLOGY

The Boulevard project lies within the Dawson Range in an area of gentle undulating relief. Local elevations range from 600 to 1,300 metres (m) above sea level. The higher parts of the project are thinly vegetated with stunted, aspen and spruce trees, scrub brush and thin moss cover. Lower elevations support a mixture of aspen and spruce forest with thick brush, willows and moss-covered slopes. The parts of the project that are above tree line commonly contain felsenmeer and boulder fields.

The Dawson Range remained unglaciated during the Pleistocene making outcrops rare, the few outcrops that are present are located along sparsely vegetated ridges and in the main creek drainages. The project is drained by Independence, Carlisle and Coffee Creek which flow into the Yukon River. Climate in the region is described as sub-arctic with short mild summers and long cold winters.

INFRASTRUCTURE

Access to the Boulevard project in 2011 was via small plane (Beaver or Navajo) operated by Tintina Air of Whitehorse to the Independence Airstrip located on the Boulevard project. Access between the airstrip and camp as well as around the project was via an A-Star helicopter operated by Trans North Helicopters, of Whitehorse or Trinity Helicopters, of Yellowknife. Helicopters were based out of Silver Quest's 2011 Independence Creek Camp.

Alternatively, several boat operators in Dawson City and a barge operating out of Minto Landing are available for hire to transport supplies to points along the Yukon River where they can be subsequently mobilized by helicopter to the project. There is no road access to the project.

HISTORY

PREVIOUS WORK

The first work recorded on the property was completed by the Dawson Range Joint Venture in 1969 and 1970. The Joint Venture completed a regional silt sampling program in the summer of 1969 that was aimed at finding "Casino" style copper-molybdenum porphyry deposits. The program led to the staking of the eastern side of the current Boulevard project, and a subsequent soil sampling and trenching program. This program identified a 12 ha molybdenum anomaly of greater than 10 parts per million (ppm) with a maximum value of 185 ppm, which was later tested by 7 trenches (Ogilvie, 1970). Two copper molybdenum mineralized units were discovered which are described in the Yukon Geological Survey Minfile 115J052 – Toni Tiger.

In June 2006, Rimfire Minerals and Northgate Minerals completed a regional silt sampling program across various area's in the Dawson Range looking for Pogo-style intrusion-related gold targets (Roberts and Baker, 2007). The program identified elevated gold targets including one sample which returned 323 parts per billion (ppb) gold from a small creek draining the Toni Tiger area. A follow-up program of prospecting, geological mapping and soil sampling was completed in August, and the Boulevard project was subsequently staked in March 2007 (Roberts and Baker, 2007).

Rimfie and Northgate continued to explore the property throughout 2007 and 2008. Further mapping, prospecting and soil sampling were completed out lining a 1.2 km by 450 m gold-

arsenic anomaly defined by the 95th percentiles for gold (greater than 21 ppb) and arsenic (greater than 21 ppm). This anomaly which trends northwest was mechanically trenched and drill tested by 7 diamond drill holes in 2008. A small grid of ground magnetics and an Induced polarization ground geophysics survey was completed during 2008 (Lehtinen & Lui 2009)

RECENT HISTORY

Silver Quest optioned the Boulevard property from Rimfire and Northgate in 2009 and conducted a small soil sampling survey that summer. The 2009 program was conducted as a reconnaissance mission for Silver Quest employees to plan for a large 2010 program.

The 2010 program was completed for Silver Quest by Equity Exploration. The program included staking, mechanical trenching, prospecting, soil sampling, geological mapping, 62.5 line km of ground geophysics, and 20 diamond drill holes (3,005.79 m) (Baker, 2011). During this program, Silver Quest expanded their land position in all directions and identified a broad 20 km long gold, arsenic, antimony soil anomaly. Silver Quest also identified narrow anomalous gold values in the majority of their drill holes. The best drill intervals returned were 2.43 grams per tonne (g/t) gold over 6.43 m (hole BV10-23) and 1.65 g/t gold over 10.55 m (hole BV10-15) (Baker, 2011).

GEOLOGICAL SETTING

REGIONAL GEOLOGY

The Boulevard property is situated within the Yukon-Tanana Terrane in west-central Yukon. This area is characterised by various pericratonic terranes that were accreted to the ancestral continental margin of North America in the early Jurassic. During the mid-Cretaceous the pericratonic terranes were intruded by a northwest-southeast trending plutonic suite known as the Dawson Range plutonic belt (Hart et al. 2004), which trends northwest through the Boulevard property. The Yukon Tanana Terrane consists mainly of a poorly exposed assemblage of poorly-deformed metamorphic rocks derived from a variety of igneous and sedimentary protoliths (Jaworski, 2001).

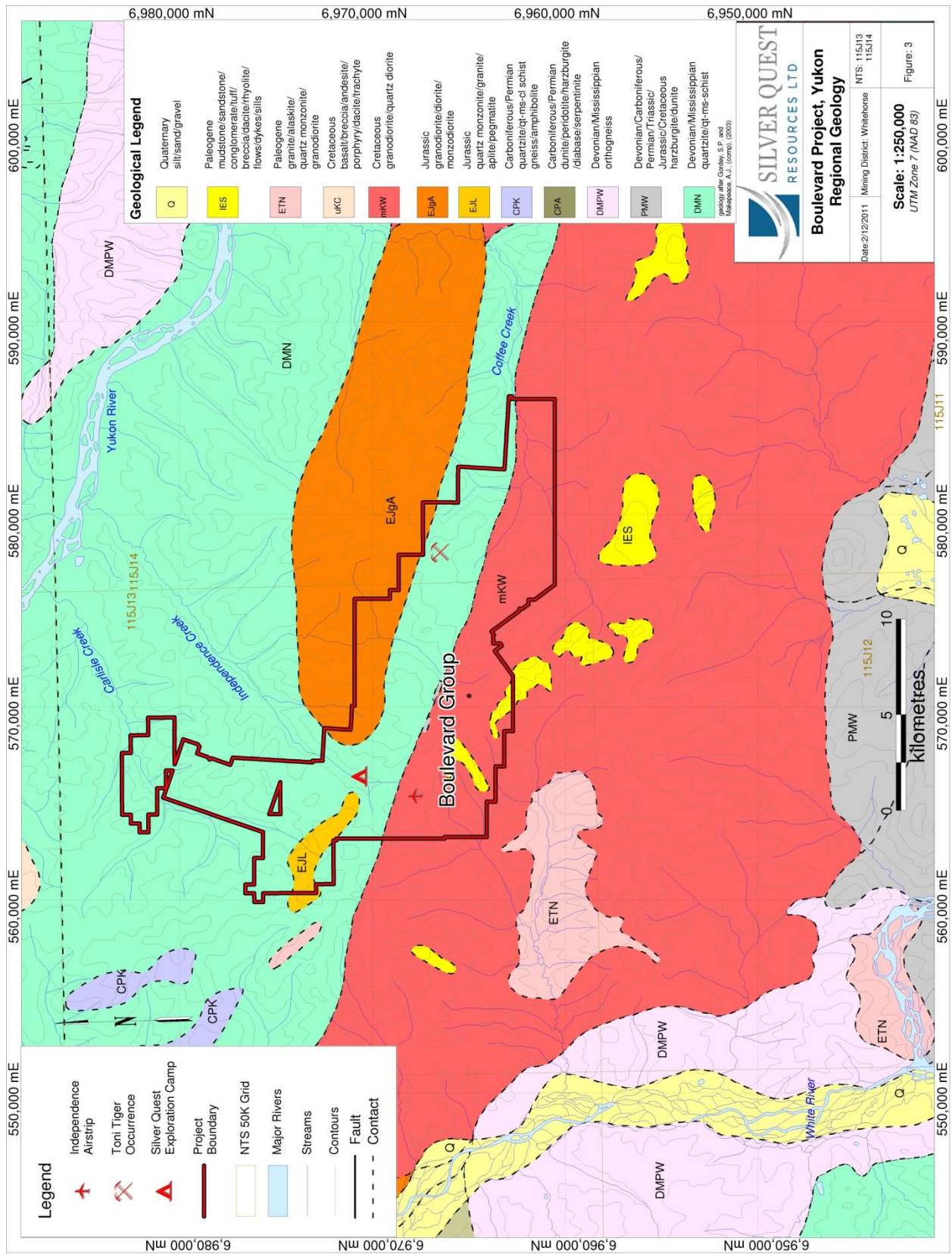


Figure 2 – Regional Geology

PROPERTY GEOLOGY

The majority of the property is underlain by a wide range of Yukon-Tanana Terrane metamorphic rocks, including metasedimentary rocks (quartz-muscovite schist and calcareous schist), metavolcanic rocks (amphibolite, biotite-chlorite-actinolite schist), meta-plutonic rocks (leucogranite, quartz/feldspar augen schist), and ultramafic rocks (harzburgite) (Allan, et al. 2011). The metamorphic package is intruded to the north and south by the Dawson Range Batholith, a mid-Cretaceous body dominated by a hornblende-biotite granodiorite. The northern unit is differentiated as the Coffee Creek intrusive suite; an un-deformed biotite granite and garnet leucogranite which form linear intrusions that are conformable with the metamorphic fabric (Allan, et al. 2011).

There are minor areas of andesite in the south and western portion of the property likely to be late-Cretaceous in age. Flat lying plateaus in the south of the property are inferred to be capped by Paleocene-Eocene aged rhyolitic porphyrys (Allan, et al. 2011). The dominant schistosity within the metamorphic package is steeply dipping and trending NW to WNW (Baker, 2011). The area has undergone numerous deformation events resulting in strong folding and crenulations textures identified in drill core and outcrop. Known mineralization on the property is represented in outcrop at the Toni Tiger - molybdenum occurrence, comprising of sheeted quartz stockwork veins and associated garnet-diopside-actinolite skarn in schistose rocks (Ogilvie, 1970). Gold mineralisation encountered during drilling at the Boulevard zone consisted several styles of quartz veining. The main type associated with gold mineralization consisted of planar quartz carbonate veins cross-cutting the tectonic foliation. Locally veins exhibit centimetre scale bleached sericite alteration selvages and contain pyrite and arsenopyrite in adjacent wall rock (Baker, 2011).

GEOCHEMISTRY

SOIL GEOCHEMISTRY

The 2011 soil geochemical survey at Boulevard contained in this report consisted of 1 day of work for 8 soil samplers and/or prospectors. A total of 61 soil samples from two contour survey lines were collected at a sample spacing of 100 m (figure 4). No rock samples were taken in this area.

All samplers were trained to use the same sampling procedures when collecting the B-horizon soil samples. Sampler began by removing a 30 centimetre (cm) by 30 cm section of moss matt or vegetative cover. Second, a soil pit of similar dimensions was hand excavated exposing A and B soil horizon boundaries, reaching the top of the C-horizon where feasible. The depth of the pit varied from 20 cm to 60 cm, depending on horizon thicknesses and sampling conditions. Soil material (300 grams to 400 grams) was collected from the walls of the pit utilizing a clean plastic trowel. Samples were collected and stored in standard KRAFT soil sample bags and transported to the 2011 Independence Camp in polyurethane bags for drying and subsequent analysis by a hand held X-Ray Fluorescence (XRF) device.

All sample locations were rehabilitated; by back-filling the soil pit and replacing the moss mat or vegetative cover. This was done to minimize the environmental impact. Locations with permafrost or areas lacking mineral soils were not sampled. Equipment such as shovels and trowels were cleaned between samples and waterlogged samples were stored in separate polyurethane bags to minimize cross-contamination. All sample locations were recorded using a hand-held GPS. All maps and UTM coordinates are referenced to the 1983 North American Datum (NAD 83), Zone 7. A complete description of soil type, depth, thickness of the sample and surrounding environment and terrain was recorded at each location.

Samples were submitted to the ALS Laboratory Group preparation facility in Whitehorse, a ISO9001 certified preparation facility. Samples were analysed by aqua regia digestion and a combination of inductively coupled plasma with atomic emission spectroscopy or mass spectroscopy (ICP-AES and ICP-MS) analysis for 51-elements including gold. Gold was also analysed by fire assay and atomic absorption spectroscopy (Au-AA23) for more accuracy. Assay certificates of analysis are presented in Appendix 2 at the end of this report. Assay

statistics for the 2011 geochemical soil survey are listed below (Table 2), values denoted with a 'less than' symbol indicate samples are below detection limit for the given element.

Table 2 – Soil Geochemical Survey Percentile Values

Values	Au (ppb)	Ag (ppm)	As (ppm)	Cu (ppm)	Mo (ppm)	Sb (ppm)	Zn (ppm)	Pb (ppm)	W (ppm)
Max	7.00	0.47	16.0	36.8	2.82	0.67	79.0	43.8	0.32
Min	<5	0.03	2.40	8.90	0.46	0.21	23.0	6.80	0.08
99th	7	0.38	14.67	34.65	2.75	0.66	77.84	36.43	0.31
98th	6.84	0.32	13.70	32.88	2.65	0.64	77.00	30.99	0.30
95th	<5	0.29	12.08	31.52	2.37	0.55	75.20	26.44	0.28
90th	<5	0.26	8.86	26.54	1.81	0.50	74.00	17.88	0.27
85th	<5	0.20	8.23	24.63	1.42	0.47	71.00	14.55	0.23
75th	<5	0.16	7.20	21.60	1.19	0.37	69.00	12.50	0.21
50th	<5	0.10	5.90	19.50	0.91	0.33	63.00	8.10	0.19

GEOPHYSICS

An airborne magnetic and radiometric geophysical survey was conducted on the Boulevard project on behalf of Silver Quest by Aeroquest Airborne. An A-star 350BA Helicopter owned and operated by Abitibi Helicopters Ltd. of Calgary, Alberta and survey personnel were based at Silver Quest's 2011 Independence Camp. The principle geophysical sensor was a helicopter stinger mounted caesium vapour magnetometer. The secondary sensor was Aeroquest's Airborne Gamma Ray Spectrometer (AGRS) system which was installed in the helicopters cabin (Aeroquest Airborne, 2011).

The total survey coverage was 3,410 line km flown in 35/215 degrees of heading line direction. Survey flying took place on July 8 to July 16, 2011. A full report completed by Aeroquest describing survey logistics, data processing, presentation and specifications of the survey is provided in Appendix 3. The report is titled "Report on a Helicopter – Borne Magnetic and Radiometric Survey" dated August, 2011. Full survey data is provided in Appendix 4.

QUALITY ASSURANCE/QUALITY CONTROL

For Quality Assurance-Quality Control (QAQC) purposes, field check samples were inserted into the sample stream every 10 samples. Blanks, comprised of silica sand, were inserted on odd sample identification numbers (i.e. numbers ending in 10, 30, 50, 70, 90); while duplicates were inserted on even sample identification number (i.e. numbers ending in 20, 40, 60, 80, 100). Duplicates were acquired from the same soil pit, or from a separate pit at the same location. The field sample checks were analysed with the rest of the soil samples and resulting values were used to check the consistency of our sampling procedures and the analytical procedures used by ALS Laboratory Group. ALS Laboratory Group blanks, duplicates and standards were also used to confirm results.

A classification system was applied for QAQC samples. Field blanks for main pathfinder elements were flagged when above the 20th percentile mark for the sample population for each project area. Field duplicates past when less than a 20% variance was noted. ALS Laboratory Group standards did not pass when recorded results exceeded two standard deviations or what was deemed above thresholds by ALS Laboratory Group. Erroneous QAQC results were investigated and appropriate re-analysis undertaken when necessary.

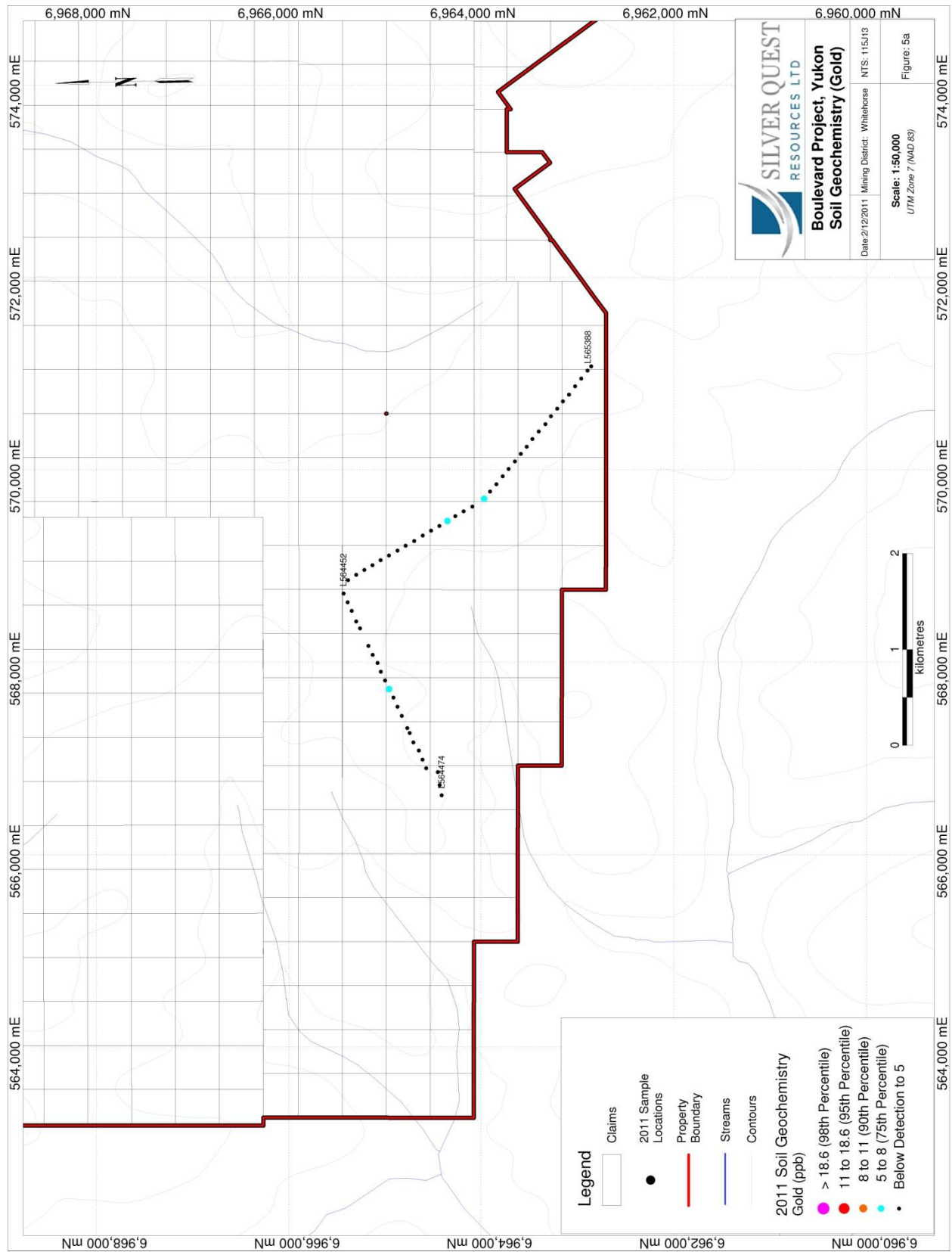
Quality Assurance-Quality Control (QAQC) samples for the Boulevard survey grid passed without any significant concerns.

DISCUSSIONS AND CONCLUSIONS

Final maps of the geophysical magnetic and radiometric survey are provided in Appendix 3. Based on the airborne magnetic and radiometric data the Boulevard project is interpreted to consist of Devonian-Mississippian meta-sediments/volcanics intruded by relatively large mid-Cretaceous intermediate to felsic plutonic stocks and subsequently by late-Cretaceous andesitic volcanic flows. The magnetic grain indicates the dominant west northwest trend of the metamorphic package fabric. This magnetic grain is inferred to be disrupted by subtle NE-trending structures, the most prominent of which is observed on the southern contact of the Coffee Creek granite (Allen, et al. 2011).

Low angle thrust faulting appears to exist on the Boulevard property, with structures again trending WNW. Evidence suggesting this conclusion, consists of magnetic breaks between amphibolite units and non-magnetic schist/granitoids correlating approximately to topography despite the steep metamorphic fabrics. Further evidence is the presence of ultramafic lenses on the Boulevard property which throughout the Yukon Tanana Terrane are known to occur along thrust surfaces, as possible remnants Slide Mountain Terrane units (Allen, et al. 2011). Post mid-Cretaceous deformation is apparent as NW-trending breaks offsetting both the metamorphic package and the Dawson Range batholiths, in some cases up to 1 km of dextral offset (Allen, et al. 2011).

The 2011 soil geochemical survey on the southern portion of the solitude claims returned low scattered results for gold, with a high of 7 ppb (Figure 5a). A minor elevated zone of bismuth, lead, molybdenum and tellurium occurs on the most western section and the tip of the eastern most section of the survey line (Figure 5d, 5e). This seems to correlate with the mapped Eocene rhyolitic (porphyry) unit and its contact with the Dawson Range batholith. The contact could be a structural conduit for fluid movement or the rhyolite unit may contain higher concentration of these elements.



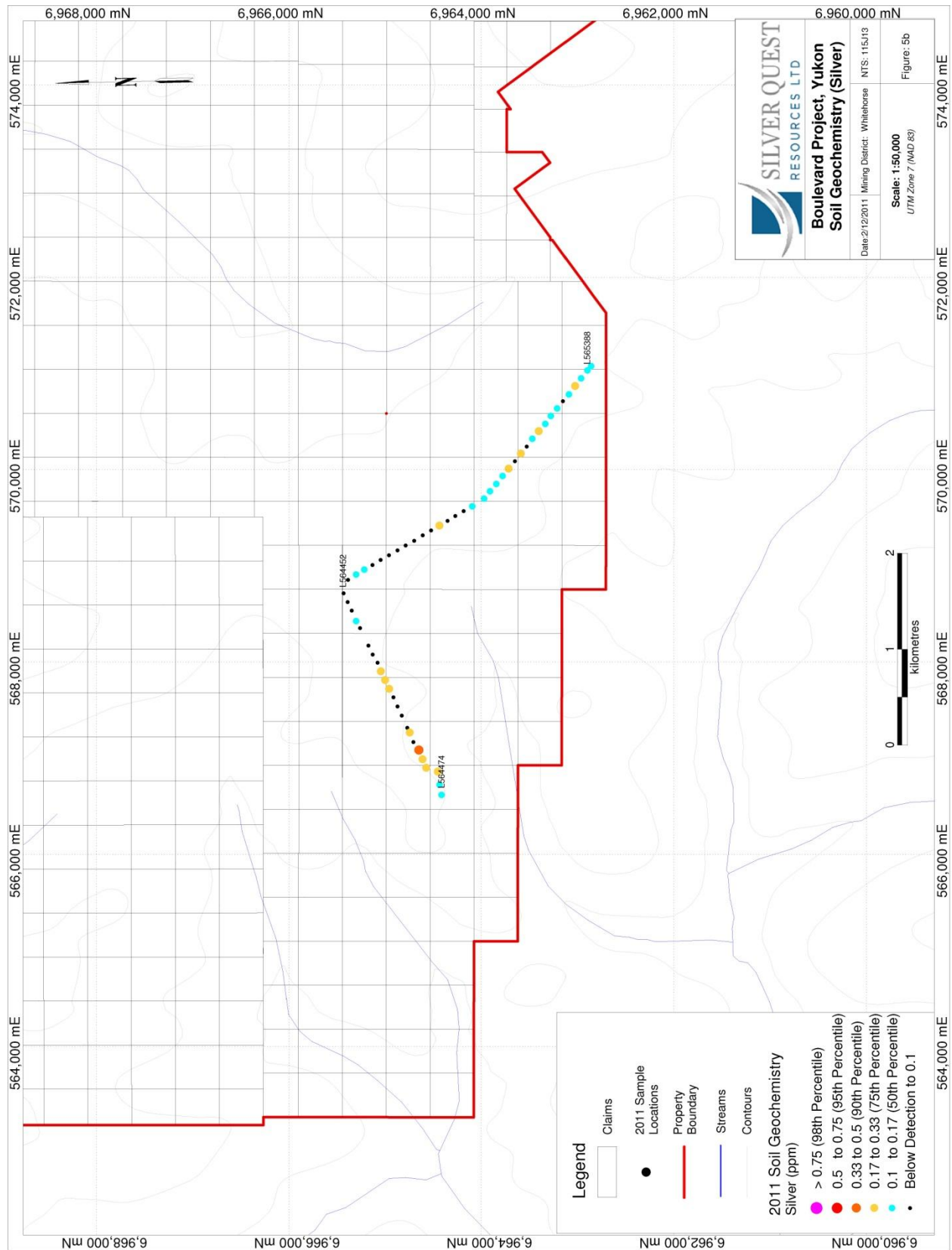
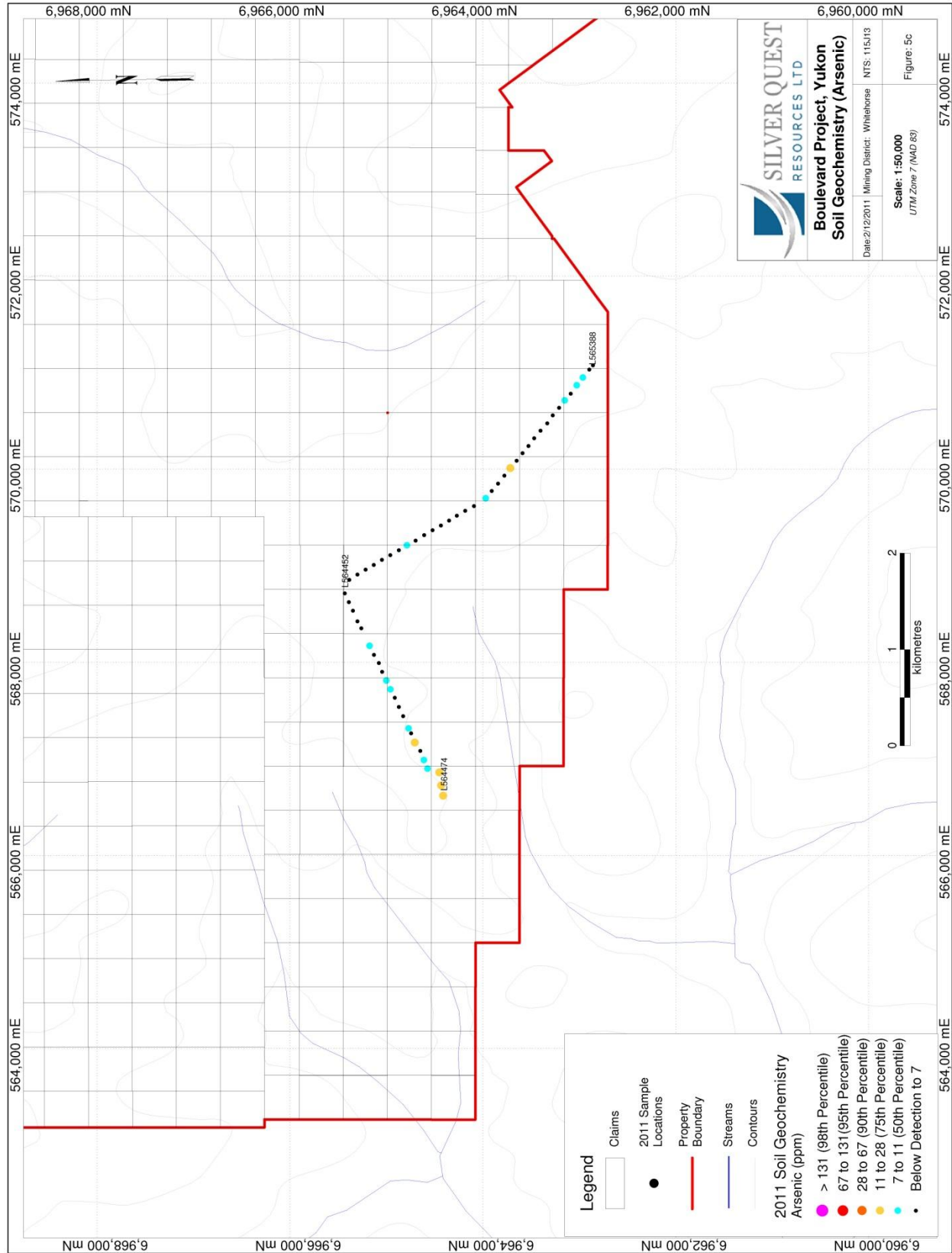


Figure 5b - Soil Geochemistry – Silver



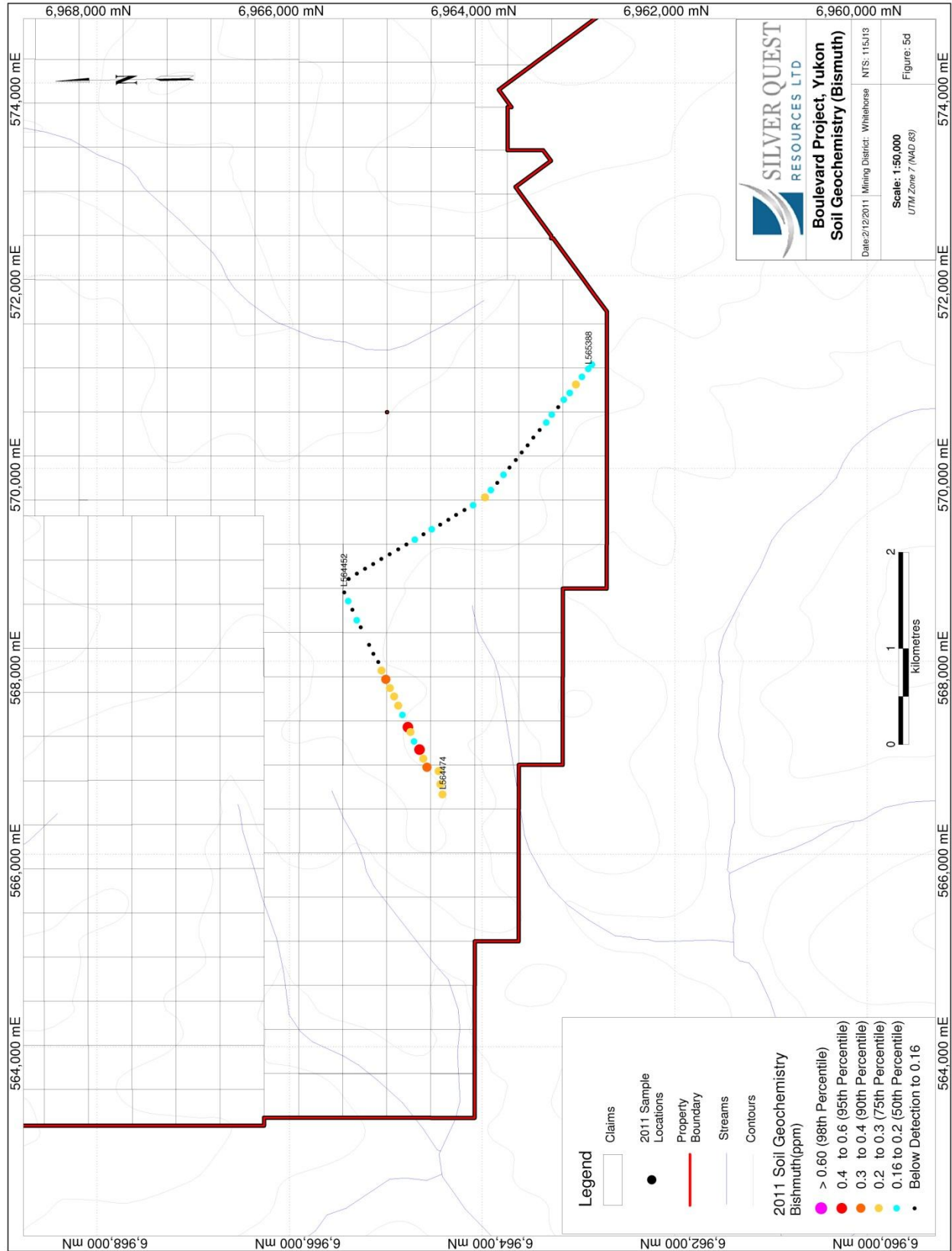


Figure 5d - Soil Geochemistry – Bismuth

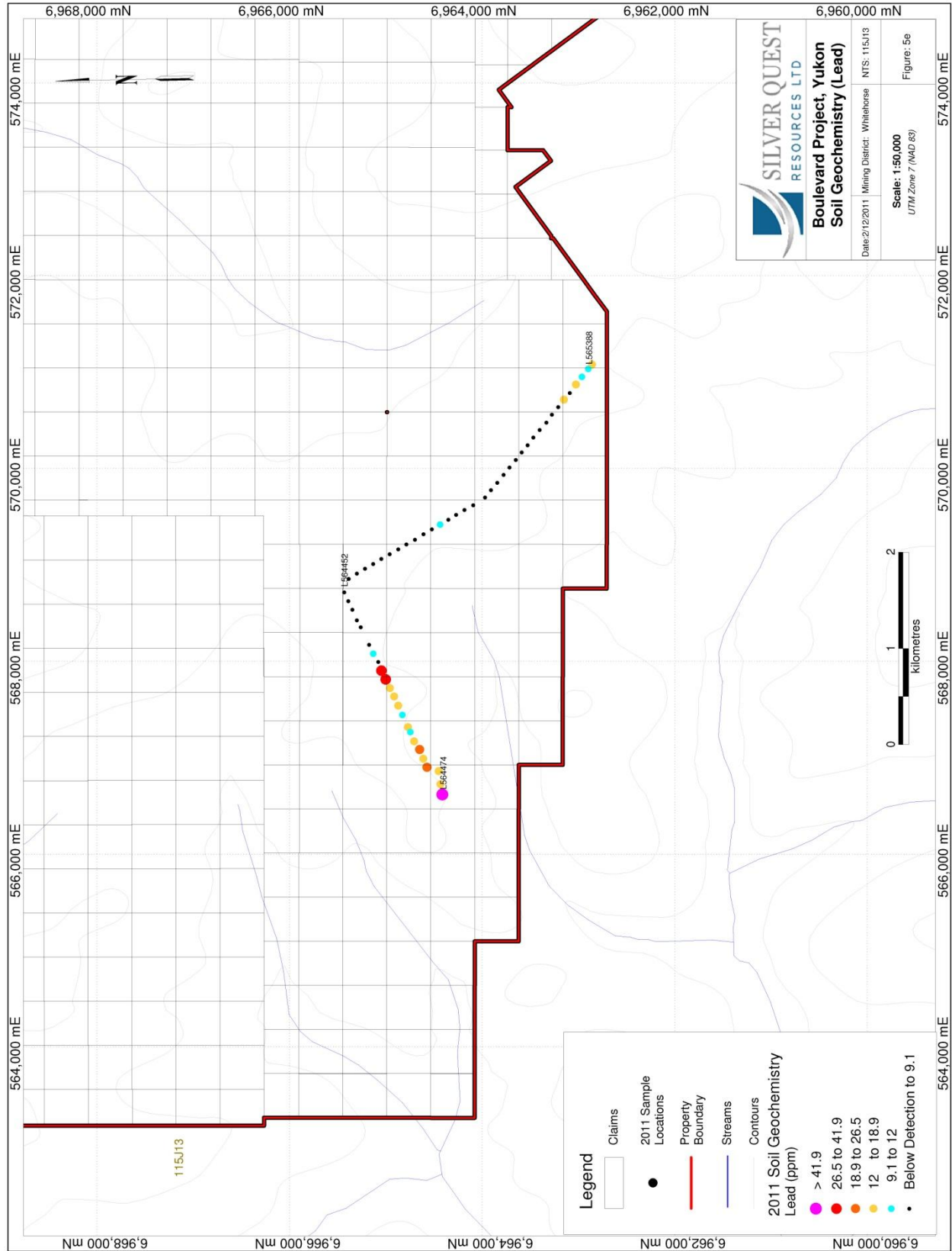


Figure 5e - Soil Geochemistry - Lead

RECOMMENDATIONS

Further reconnaissance geochemical sampling, geological mapping and prospecting is recommended over the project. Interpretation of geophysical data together with geochemical results and geological mapping will allow follow-up testing of co-incident structural lineaments, anomalous geochemistry and favourable felsic lithologies. Geological mapping and prospecting is recommended to ascertain controls concerning the minor elevated zone identified in the 2011 soil geochemical survey described in this report. However, other higher priority targets on the Boulevard project require follow-up before this area is further explored.

REFERENCES

Aeroquest Airborne, 2011, Report on a Helicopter-Borne Magnetic and Radiometric Survey, Prepared by Aeroquest Airborne for Silver Quest Resources Ltd. Internal Report.

Allan, M., Hart, C. & McKenzie, G., 2011, Yukon Gold Project, Geology of Silver Quest's Boulevard Project, Mineral Deposit Research Unit, Internal Memorandum.

Baker, D (2011), 2010 Geological, Geochemical, Geophysical and Diamond Drilling Report on the Boulevard Property, Equity Exploration Consultants Ltd., Assessment Report submitted to the Yukon Mining Recorder.

Gordey, S.P. and Makepeace, A.J. (comp.) 2003. Yukon digital geology, version 2.0; Geological Survey of Canada Open File 1749 and Yukon Geological Survey Open File 2003-9(D)

Hart, J. R., Goldfarb, R., Lewis, L. L., and Mair, J. L. (2004), The northern Cordilleran mid-Cretaceous plutonic province: Ilmenite/ magnetite-series granitoids and intrusion-related mineralization: *Resource Geology*, v. 54, p. 253-280.

Lehtinen, J., and Lui, D. (2009), 2008 Geological, Geochemical, Geophysical, Trenching and Diamond Drilling Report on the Boulevard Property, Equity Exploration Consultants Ltd., Assessment Report submitted to the Yukon Mining Recorder.

Jaworski, B.J. and Vanwermeskerken. M. 2001, Geological and geochemical report on the Rude Creek intrusion-related gold target, west central Yukon Territory / for Prospector International Resources Inc. Yukon Mines, Energy and Resources Assessment Report 094213

Ogilvie, A. C. (1970), Dawson Range Joint Venture, Coffee Creek Area, Yukon, Assessment Report 060249.

Roberts, M., and Baker, D. (2007), 2006 Geological and Geochemical Report on the Rimfire-Northgate Alliance; Stewart River area, Yukon, unpublished company report.

Yukon Geological Survey, 1991: Yukon Minfile #115J052-Toni Tiger

STATEMENT OF QUALIFICATIONS

I, Ryan J. F. Congdon, BSc, of Suite 1605-1146 Harwood Street, Vancouver, British Columbia, hereby certify that:

I am a graduate of the Curtin University of Perth, Australia having obtained the degree of Bachelor of Science in Applied Geology, 2005.

I am a graduate of the Curtin University of Perth, Australia having obtained the degree of Bachelor of Science in Environmental Biology, 2005.

I am a member of the Australian Institute of Mining and Metallurgy.

I have been employed in the mineral exploration and mining industry in Western Australia every field season (November-February) between 2003 and 2005.

I have been continuously employed as a geologist in the mineral exploration and mining industry since 2006.

I am currently employed as a Geologist by Silver Quest Resources Ltd. Suite 1410-650 West Georgia Street, Vancouver, British Columbia, Canada, V6B 4N8.

I am the author of the report entitled "2011 Airborne Geophysical and Soil Geochemical Survey on the Boulevard Project Yukon" dated December 2, 2011.

I participated in the geological work reported herein.

Dated this 2nd day of December, 2011.

Ryan J. F. Congdon, BSc Geology

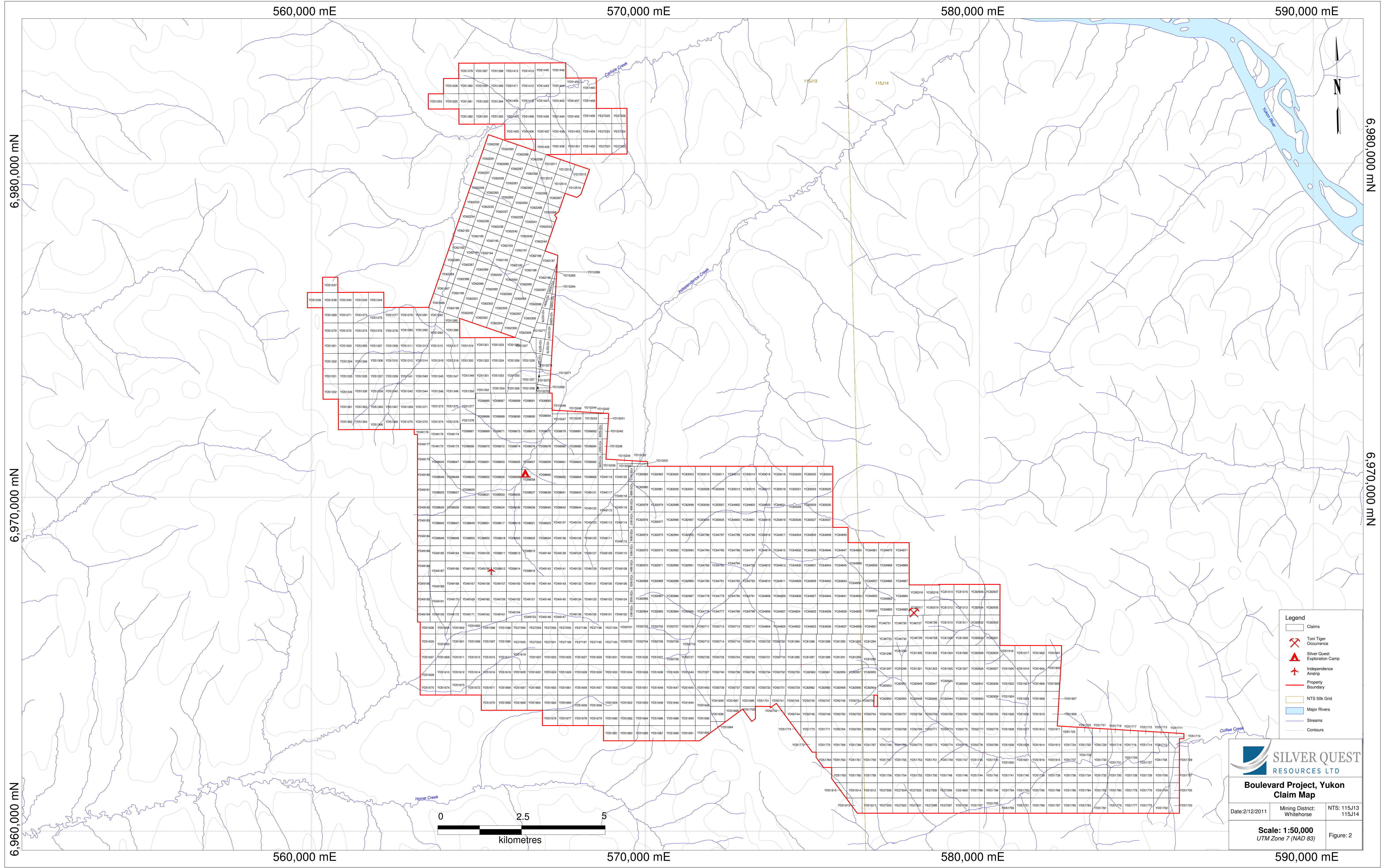
STATEMENT OF EXPENDITURES

	<u>Quantity</u>	<u>Rate</u>	<u>Cost</u>	
Soil samples collected	60	\$ 40.00	\$ 2,400.00	
Airborne Geophysics (line KMs)	2812	\$ 66.35	\$186,572.75	
Sampler day(s)	4	\$ 350.00	\$ 1,400.00	
Prospector day(s)	4	\$ 500.00	\$ 2,000.00	
Project manager day(s)	6	\$ 600.00	\$ 3,600.00	
Geophysicist day(s)	17	\$ 600.00	\$ 10,200.00	
Geophysical Technician day(s)	35	-	-	
Camp Costs (per man day)	66	\$ 450.00	\$ 29,700.00	
Helicopter Hour(s)	23.25	\$ 1,550.00	\$ 36,037.50	
Helicopter Fuel (drum)	57.5	\$ 700.00	\$ 40,250.00	
			<u>\$312,160.25</u>	
		Supervision: 12%	<u>\$ 37,459.23</u>	
		Total:	<u><u>\$349,619.48</u></u>	
		Claims Worked: 1041	\$ 335.85	per claim worked
		Fractional Claims Worked: 14	\$ 24,972.82	per claim grouped

Dates Worked: July 8 - 16, July 27 2011

Work done by: Silver Quest Resources Ltd. and Aeroquest Airborne

Appendix 1
Figure 2 - Claim Map

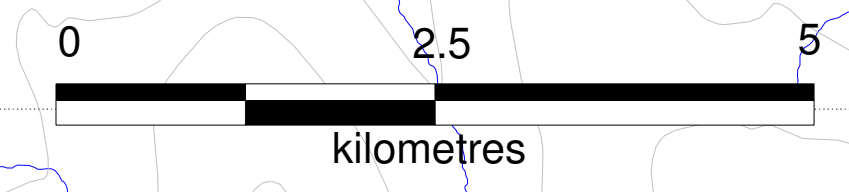


- Legend**
- Claims
 - ✕ Tori Tiger Occurrence
 - ▲ Silver Quest Exploration Camp
 - ✈ Independence Airstrip
 - Property Boundary
 - NTS 50k Grid
 - Major Rivers
 - Streams
 - Contours

SILVER QUEST RESOURCES LTD

Boulevard Project, Yukon Claim Map

Date: 2/12/2011	Mining District: Whitehorse	NTS: 115J13 115J14
Scale: 1:50,000 UTM Zone 7 (NAD 83)		Figure: 2



6 970 000 mN

6 980 000 mN

6 960 000 mN

6 970 000 mN

6 980 000 mN

560,000 mE

570,000 mE

580,000 mE

590,000 mE

560,000 mE

570,000 mE

580,000 mE

590,000 mE

Appendix 2
Laboratory Certificates

Appendix 3

Airborne Geophysical Survey Report and Accompanying Maps

Report on a Helicopter-Borne Magnetic and Radiometric Survey



Aeroquest Job # 11-039

For

Silver Quest Resources Ltd.

by



7687 Bath Road,
Mississauga, ON, L4T 3T1
Tel: (905) 672-9129
Fax: (905) 672-7083
www.aeroquestairborne.com

Report date: August 2011

Report on a Helicopter-Borne Magnetic and Radiometric Survey

Aeroquest Job # 11-039

For

Silver Quest Resources Ltd.

Suite 1410, 650 West Georgia Street

VANCOUVER, BC

V6B 4N8

by



7687 Bath Road,
Mississauga, ON, L4T 3T1
Tel: (905) 672-9129
Fax: (905) 672-7083

www.aeroquestairborne.com

Report date: August 2011

TABLE OF CONTENTS

TABLE OF CONTENTS	i
LIST OF FIGURES	2
LIST OF MAPS (1:50,000)	2
1. INTRODUCTION	3
2. SURVEY AREA	3
3. SURVEY SPECIFICATIONS AND PROCEDURES	4
4. AIRCRAFT AND EQUIPMENT	5
4.1. Aircraft	5
4.2. Magnetometer	5
4.3. Magnetic Base Station	5
4.4. Airborne Gamma Ray Spectrometer (AGRS) System	6
4.5. Altimeters	6
4.6. Digital Data Acquisition System	6
4.7. Video Tracking and Recording System	6
4.8. GPS Navigation System	7
5. PERSONNEL	7
6. DELIVERABLES	7
6.1. Hardcopy Deliverables	7
6.2. Digital Deliverables	7
6.3. Final Database of Survey Data (.GDB)	7
6.4. Geosoft Grid files (.GRD)	8
6.5. Digital Versions of Final Maps (.MAP, .PDF)	8
6.5.1. Free Viewing Software	8
6.5.2. Digital Copy of this Document (.PDF)	8
7. DATA PROCESSING AND PRESENTATION	8
7.1. Base Map	8
7.2. Radiometric Data	8
7.2.1. Equipment and General Adherence to IAEA Standards	8
7.2.2. Spectral Calibration	8
7.2.3. Data Quality Assurance and Control	9
7.2.4. Live-time Correction	9
7.2.5. Filtering to Prepare for Background Corrections	10
7.2.6. Cosmic and Aircraft Background	10
7.2.7. Radon Background	10
7.2.8. Computation of Effective Height above Ground Level	10
7.2.9. Compton Stripping Correction	11
7.2.10. Altitude Attenuation Correction	11
7.2.11. Apparent Radioelement Concentrations	11
7.2.12. Computation of Radioelement Ratios	12
7.3. Magnetic Compensation test	12
7.4. Total Field Magnetics	12

APPENDIX 1: Survey Boundaries..... 13
APPENDIX 2: Description of Database Fields 14
APPENDIX 3: Radiometrics pRocessing parameters 16

LIST OF FIGURES

Figure 1. Survey blocks overview 4

LIST OF MAPS (1:50,000)

- TMI – Coloured Total Magnetic Intensity (TMI) with contours.
- 1VD – Calculated First Vertical Derivative of TMI colour grid with contours.
- TC – Gamma Ray Spectrometer Total Counts colour grid with contours.
- Th_K_Ratio – Gamma Ray Spectrometer Thorium-Potassium Ratio colour grid with contours.

1. INTRODUCTION

This report describes a helicopter-borne geophysical survey carried out on behalf of Silver Quest Resources Ltd. on their Property in Yukon, Canada. The principal geophysical sensor was a helicopter stinger mounted caesium vapor magnetometer. The secondary sensor was Aeroquest's Airborne Gamma Ray Spectrometer (AGRS) system, which is installed in the helicopter cabin. The AGRS system utilizes four (4) downward looking NaI crystals used as the main gamma-ray sensors and one upward looking crystal for monitoring non-geologic sources. Ancillary equipment included a GPS navigation system, radar altimeter, digital video acquisition system, and a base station magnetometer.

The total survey coverage is 3410 km, of which 3274 line-km fell within the defined Boulevard project area (Appendix 1), flown in 35/215 degrees of heading line direction. Survey flying described in this report took place on July 8th to July 16th, 2011. This report describes the survey logistics, the data processing, presentation, and provides the specifications of the survey.

2. SURVEY AREA

The project contains Boulevard surveyed block located approximately 330km northwest of Whitehorse, Yukon (Figure 1). The detail description of Boulevard block with line direction has been described in the table 1.

The survey block corner-coordinates are tabulated in Appendix 1. The base of survey operations was Boulevard camp in Yukon.



Figure 1. Boulevard Survey block overview

3. SURVEY SPECIFICATIONS AND PROCEDURES

The survey specifications are summarised in the following table:

Block name	Line Spacing (metres)	Line Direction	Tie Line Spacing (metres)	Tie Line Direction	Survey Coverage (line-km)	Dates flown
Boulevard	100	35°/215°	1000	125°/305°	3410	July 08 th to July 16 th , 2011

Table 1. Survey specifications summary

The survey coverage was calculated by adding up the survey and control (tie) line lengths as presented in the final Geosoft database.

The nominal helicopter stinger terrain clearance was 30 m but was periodically higher or lower over due to the rugged terrain and the capability of the aircraft. The scan rate of the helicopter stinger data acquisition was 0.10 seconds.

4. AIRCRAFT AND EQUIPMENT

This section provides a brief description of the geophysical and auxiliary instruments used to acquire the survey data:

4.1. Aircraft

An A-star 350BA helicopter – registration C-FXED was used as survey platform. The helicopter was owned and operated by Abitibi Helicopters Ltd. of Calgary, Alberta, Canada. The helicopter flew at an average airspeed of 70 knots per hour.

4.2. Magnetometer

The following magnetometer was installed inside the stinger:

Model: Geometrics G823A

Type: Airborne caesium-vapor magnetometer

Sensitivity: 0.01 nT

Sample rate: 10Hz

Magnetic Compensator:

The compensator employed was a RMS Data Acquisition & Adaptive Aeromagnetic Real-Time Compensator (DAARC500). Compensation is achieved by combining the frequency measurement from any continuous reading sensor (Cs, K, He) with the measurements of analog outputs of a tri-axial fluxgate magnetometer. A proprietary algorithm combines these measurements and eliminates most of the influence caused by airframe movement through the magnetic field – pitch, roll yaw and aircraft heading.

4.3. Magnetic Base Station

Model: Geometrics G823A

Type: portable Caesium magnetometer

Sensitivity: 0.01nT

Sample rate: 1Hz

A digital recorder is operated in conjunction with the base station magnetometer to record the diurnal variations of the earth's magnetic field. The clock of the base station is synchronized with that of the airborne system using GPS data to permit subsequent removal of diurnal drift.

4.4. Airborne Gamma Ray Spectrometer (AGRS) System

The Aeroquest AGRS system consists of an RSX-5 sensor pack, which is installed on the floor of the helicopter cabin and a DAARC500 acquisition system designed and manufactured by RMS Instruments Inc. (RMS).

The system has 4 downward looking NaI crystals (16.75 L) used as the main sensors and 1 upward looking crystal (4.18 L) for monitoring non-geologic sources. The system features automatic peak detection and real-time calibration to ensure spectrum stability and a high quality final product. The full spectrum is recorded (256 or 512 channels) to allow for subsequent noise reduction processing such as NASVD. The data are processed to produce the standard IAGA ROI channels – Total Count, Potassium, Uranium and Thorium. The dose rate, potassium percentage, equivalent uranium and thorium concentrations are also derived and ratios of these concentrations are computed to enhance the interpretation of the survey results.

4.5. Altimeters

Radar altimeter

Manufacturer: Terra
Type: TRA 3000 Radar Altimeter and TRI 40 Indicator
Sensitivity: 5% @200ft

Barometric altimeter

Manufacturer: Honeywell
Type: PPT
High Accuracy: Achieves +/-0.05 Full-Scale, Including Temperature Effects over -40 to +85°C

4.6. Digital Data Acquisition System

Manufacturer: RMS Instruments
Model: DAARC 500 acquisition system (DAS & Adaptive Aeromagnetic Real-Time Compensator)

4.7. Video Tracking and Recording System

A wide angle Sanyo video camera was connected to Archos video recorder to provide the image. Using a video overlay board (Overland Technology Inc.) the GPS time is recorded continuously and is displayed on the margin of each image. This procedure ensures accurate correlation of digital data with respect to visible features on the ground.

4.8. GPS Navigation System

Navigation is carried out using a GPS receiver, an AGNAV GUIA system for navigation control, and DAARC500 data acquisition system which records the GPS coordinates. The x-y-z position of the aircraft, as reported by the GPS, is recorded at 0.1 second intervals. The system has a published accuracy of less than 3 metres. A recent static ground test of the Mid-Tech WAAS GPS yielded a standard deviation in x and y of less than 0.6 metres and for z less than 1.5 metres over a two-hour period.

5. PERSONNEL

The following Aeroquest personnel were involved in the project:

- Senior Project Manager: Troy Will
- Field Data Processor: Edward You
- Field Operator: Leonard Luke
- Office Data Processor: Asif Mirza / Chris Kahue
- Map Preparation and Reporting: Asif Mirza / Chris Kahue

The survey pilot, Joey Campbell was employed directly by the helicopter operator – Abitibi Helicopters Ltd.

6. DELIVERABLES

6.1. Hardcopy Deliverables

The report includes a set of 1: 50,000 scale maps of Boulevard block. The survey area is covered by one map plate for Boulevard block, and four geophysical data products are delivered as listed below:

- TMI – Coloured Total Magnetic Intensity (TMI) with contours.
- 1VG – Calculated First Vertical Derivative of TMI colour grid with contours.
- TC – Gamma Ray Spectrometer Total Counts colour grid with contours.
- Th_K_Ratio – Gamma Ray Spectrometer Thorium-Potassium Ratio colour grid with contours.

The coordinate/projection system for the Boulevard Block maps is NAD83 – UTM Zone 07N. For reference, the latitude and longitude in WGS84 are noted on the maps.

6.2. Digital Deliverables

6.3. Final Database of Survey Data (.GDB)

The geophysical profile data is archived digitally in Geosoft GDB binary database format. A description of the contents of the individual channels in the database can be found in Appendix 2.

6.4. Geosoft Grid files (.GRD)

Levelled Grid products used to generate the geophysical map images.

6.5. Digital Versions of Final Maps (.MAP, .PDF)

Map files in Geosoft .map and Adobe PDF format.

6.5.1. Free Viewing Software

- Geosoft Oasis Montaj Viewing Software
- Adobe Acrobat Reader

6.5.2. Digital Copy of this Document (.PDF)

7. DATA PROCESSING AND PRESENTATION

7.1. Base Map

The geophysical maps accompanying this report are based on positioning in the NAD83 datum. The survey geodetic GPS positions have been projected using the Universal Transverse Mercator projection in Zone 07 North. A summary of the map datum and projection specifications is given following:

- Ellipse: Clarke 1866
- Ellipse major axis: 6378206.4
- Inverse Flattening: 294.9787
- Datum: NAD83
- Map Projection: Universal Transverse Mercator Zone 07 North
- Central Scale Factor: 0.9996
- False Easting, Northing: 500,000m, 0m

For reference, the latitude and longitude in WGS84 are noted on the maps.

7.2. Radiometric Data

7.2.1. Equipment and General Adherence to IAEA Standards

Aeroquest Limited generally adopts the standards for airborne gamma-ray spectrometry (the radiometric method) as laid out in the IAEA Technical Report 323 – Airborne Gamma-Ray Spectrometry Surveying.

7.2.2. Spectral Calibration

When calibrated (with thorium source about once a year) linearity of the each detector is measured and linearity correction coefficients are calculated. When operating in real time (collecting data), the linearity of each detector is mathematically corrected for each measurement. Individual detector tracking (tuning)

and linearity correction provide better fit of the individual spectra that are being summed and therefore a sharper (better resolution) spectrum is obtained.

Calibration of the 5 detectors was carried out on March 08th, 2011 as follows:

Crystal	S/N	Cs resolution (%)
1	5517UA	6.83
2	5517UB	7.06
3	5517UC	7.52
4	5517UD	6.99
5	5517DE	7.82

Results from Calibration Pad Test

Calibrations were performed by RSI at their Mississauga facility on March 08th, 2011.

Stripping Ratios	Spectrometer Unit	Ideal Values
Th into U (alpha)	0.276	0.250
Th into K (beta)	0.392	0.400
U into K (gamma)	0.765	0.810
U into Th (a)	0.045	0.060

7.2.3. Data Quality Assurance and Control

The spectrometer data are referenced to the other ancillary data sets using the RSI data acquisition system. After each flight, preliminary ROI channels are generated and profiles are then plotted from the digital data to check for any missing data, spikes or data corrupted by other noise sources. Where necessary, the data are corrected or flagged for re-flight depending on the severity or duration of the noise.

7.2.4. Live-time Correction

Generally, the radiometric data is acquired in units measured in counts per second. The instrumentation may require some time each second to process the incoming data, during this time period no counts are made. This time referred as Dead-time. Alternatively, some systems record the time during which the crystal is actually ‘on’ in which case the resulting value referred to as the live-time. The data was corrected by using Live-Time channels from the RSI spec pack.

$$N = n * 10^{-3} / lt$$

Where:

- N = Corrected counts in each second
- n = raw recorded counts in each second
- lt = equipment live time

7.2.5. Filtering to Prepare for Background Corrections

The radar altimeter data are filtered (low pass 5 fiducial) in order to ensure that no noise sources from the altimeter data are introduced to the radiometric data processing. The upward looking data are also filtered to improve the count statistics. In order to establish radon background levels from the upward-looking detector data, temporary heavily filtered (31 points mean filter) downward looking uranium and downward looking thorium data are utilized. The original unfiltered data are, of course, retained.

7.2.6. Cosmic and Aircraft Background

Cosmic and aircraft background expressions are determined for each spectral window as described in chapter 4 of the IAEA Technical Report 323. The general form of these expressions is $N = a + bC$, where N is the combined cosmic and aircraft background for each window; a is the aircraft background in the window; C is the cosmic channel count; and b is the cosmic stripping factor for the window.

The expressions are evaluated for each ROI window for each sample and used as a subtractive correction for the data.

7.2.7. Radon Background

Correction of the data for variations in background due to radon is a multi-step process. First, test flights at various elevations over water are carried out in the field to establish the contribution of atmospheric radon to the ROI windows. A least squares analysis of the data from these test flights yields the constants for equations 4.9 to 4.12 (IAEA Report 323). Second, the response of the upward looking detector to radiation from the ground is established. Here a departure from the IAEA Report has been recommended by Grasty and Hovgaard (1996). The expression for the radon component in the downward looking uranium window is given by $U_r = (u - a_1U - a_2T + a_2b_T - b_u) / (a_u - a_1 - a_2a_T)$ (see Eq. 4.3 – IAEA 323) where, U_r is the radon background detected in the downward U window; u is the measured count in the upward uranium window; U is the measured count in the downward uranium window; T is the measured count in the downward thorium window; a_1 , a_2 , a_u and a_T are proportionality factors; and b_u and b_T are constants determined experimentally. Using a_1 or a_2 (see above) in this equation will result in a good estimate of U_r permitting correction of the other ROI windows.

Survey altitude test data will be collected and used to establish atmospheric background and calibrate the upward and downward looking detector systems. Variations in count rates due to soil moisture content and altimeter variations can largely be overcome by a normalization procedure using the thorium count. The procedure correlates the thorium count to the uranium count assuming the contribution to each ROI from the ground is proportional.

7.2.8. Computation of Effective Height above Ground Level

Radar altimeter data are used in adjusting the stripping ratios for altitude and to carry out the height attenuation corrections. They are then converted to effective height (h_e)

at STP by the expression $h_e = (h * 273.15)/(T + 273.15) * (P/1013)$, where h is the observed radar altitude; T is the temperature in degrees C; and P is the barometric pressure in mbars

7.2.9. Compton Stripping Correction

The stripping ratios α , β , γ , a , b and g are determined during tests over calibration pads. The principal ratios a , β and g should be adjusted for temperature, pressure and altitude (above ground) before stripping is carried out. These stripping ratios are used to remove the contribution in each of the three ROI windows from higher energy sources, leaving only the contribution from potassium, uranium and thorium.

7.2.10. Altitude Attenuation Correction

The altitude attenuation correction corrects the data in each of the ROI windows for the effects of altitude. The count rates decrease exponentially with altitude and therefore the counts are corrected to a constant altimeter datum at the nominal survey height of 30m.

7.2.11. Apparent Radioelement Concentrations

The corrected count rate data can be converted to estimate the ground concentrations of each of the three radioelements, potassium, uranium and thorium. The procedure assumes an infinite horizontal slab source geometry with a uniform radioelement concentration. The calculation assumes radioactive equilibrium in the U and Th decay series. Therefore the U and Th concentrations are assigned as equivalent concentrations using the nomenclature eU and eTh .

An estimate of the air absorbed dose rate can be made from the apparent concentrations, $K\%$, eU ppm and eTh ppm using the following formula:

$$E = 13.08 * K + 5.43 * eU + 2.69 * eTh$$

where: E is the absorption dose rate in nG/h

K is the concentration of potassium (%)

eU is the equivalent concentration of uranium (ppm)

eTh is the equivalent concentration of thorium (ppm)

A description of how most of the constants were determined can be found in: Exploranium, I.A.E.A. Report, Airborne Gamma-Ray Spectrometer Surveying, Technical Report No. 323, 1991.

7.2.12. Computation of Radioelement Ratios

Standard ratioing of the three radioelements (eU/eTh , eU/K and eTh/K) can be carried out and presented in profile or plan map form. In order to ensure statistical confidence in generating these ratios, we generally take the following precautions:

- Reject all data point where the apparent potassium concentration is less than 0.25% as these measurements are likely taken over water.
- Carry out cumulative summing along the survey line of each radioelement, rejecting areas where the summation does not exceed a certain threshold value (usually 10 counts for both numerator and denominator).
- Compute the ratios using the cumulative sums.

7.3. Magnetic Compensation test

Test lines were flown to check the real time magnetic compensation, in four cardinal directions corresponding to the survey line direction. The compensation test was carried out near Prospector Mountain Camp, Yukon to ensure the sensor was completely removed of ground effect.

7.4. Total Field Magnetics

The total field aeromagnetic data are corrected for the diurnal variation, by subtracting the base station magnetic data (low pass filtered to remove spikes due to cultural interference). Then the line data was corrected for heading and any remaining small levelling errors. The geophysical data are interpolated onto a regular grid using bi-directional interpolation technique. The gridded data was micro-levelled to remove small amplitude, in between flight line, levelling errors. The resulting grid is suitable for generating contour maps of excellent quality.

APPENDIX 1: SURVEY BOUNDARIES

The following table presents the project block boundaries. All geophysical data presented in this report have been windowed to 100m outside these outlines.

X and Y positions are in NAD83 UTM Zone 07N.

Boulevard Block

X	Y	X	Y
560502.4	6977431.5	584153.6	6960470.7
562973.8	6975683.8	576381.9	6960495.1
564104.7	6977314.3	575067.9	6962236.2
567288.9	6975076.5	573386.7	6963390
566755.5	6974292.1	572816.8	6962582.2
566743.3	6973114.6	572090.1	6963049.4
567217.1	6973115.0	571496.7	6962258.2
567233.2	6972730.2	570897.9	6962663.7
567980.4	6972202.8	570327.6	6961876.7
568589.9	6972202.5	569152.8	6962686.5
568584.7	6971774.2	568746.6	6962691.3
569771.5	6970928.1	568738.6	6962994.4
575619.6	6970922.8	568491.2	6963165.6
575594.2	6970508.1	567955.2	6962367.1
580025.1	6967405.9	566101.3	6963620.8
580624.4	6967387.4	565548.7	6962825.8
580621.0	6966991.8	563713.4	6964060.2
583032.9	6965302.6	563241.3	6964067.7
582471.7	6964486.6	563184.9	6970542.0
584544.6	6963024.4	560814.0	6972192.6
585396.1	6962963.8	560085.7	6972699.2
585704.6	6963418.6	560351.7	6973053.9
587280.1	6962314.2	560354.6	6973759.6
585418.8	6959676.7	558701.8	6974880.6

APPENDIX 2: DESCRIPTION OF DATABASE FIELDS

The GDB file is a Geosoft binary database. In the database, the Survey lines and Tie Lines are prefixed with an "L" for "Line" and "T" for "Tie".

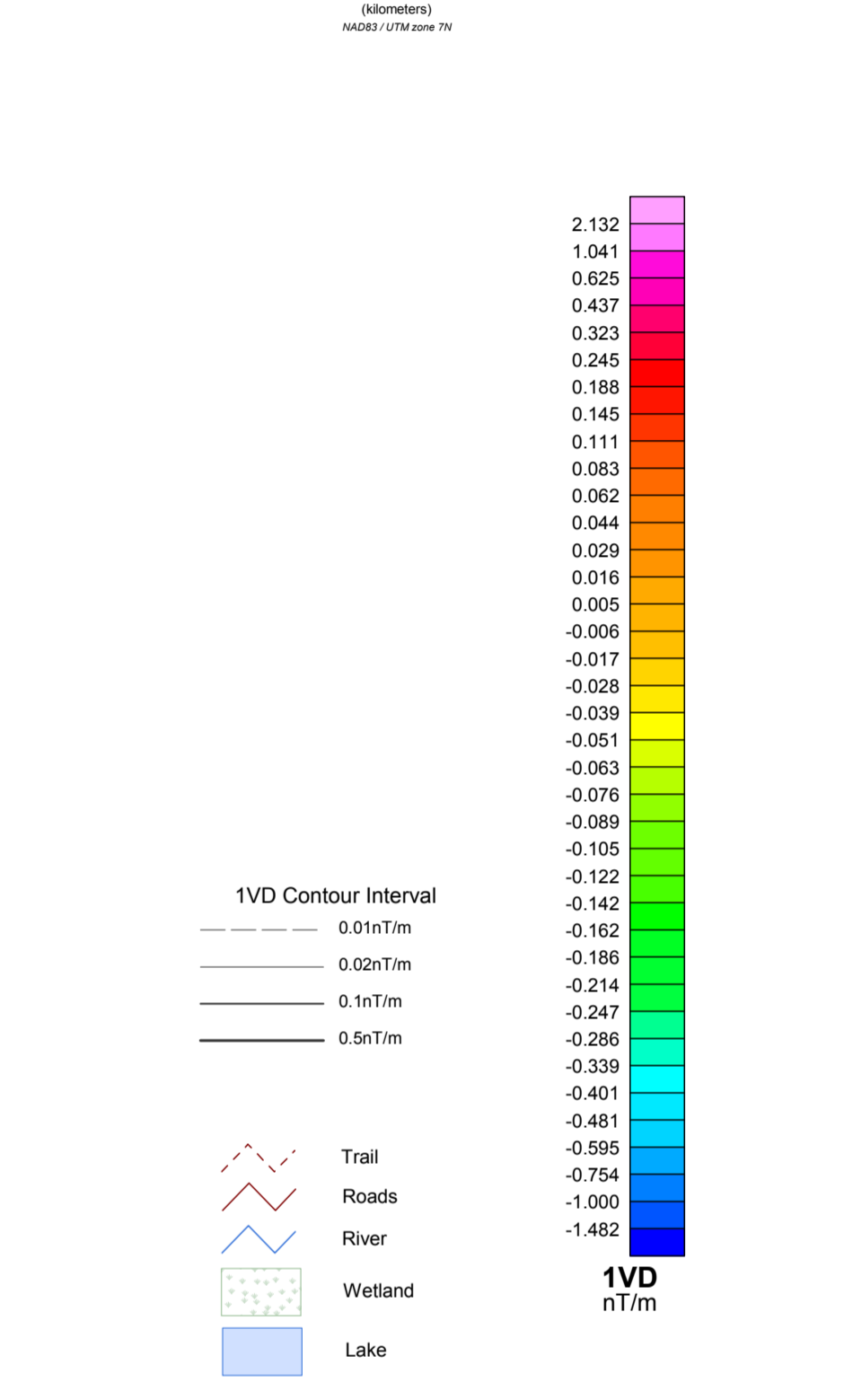
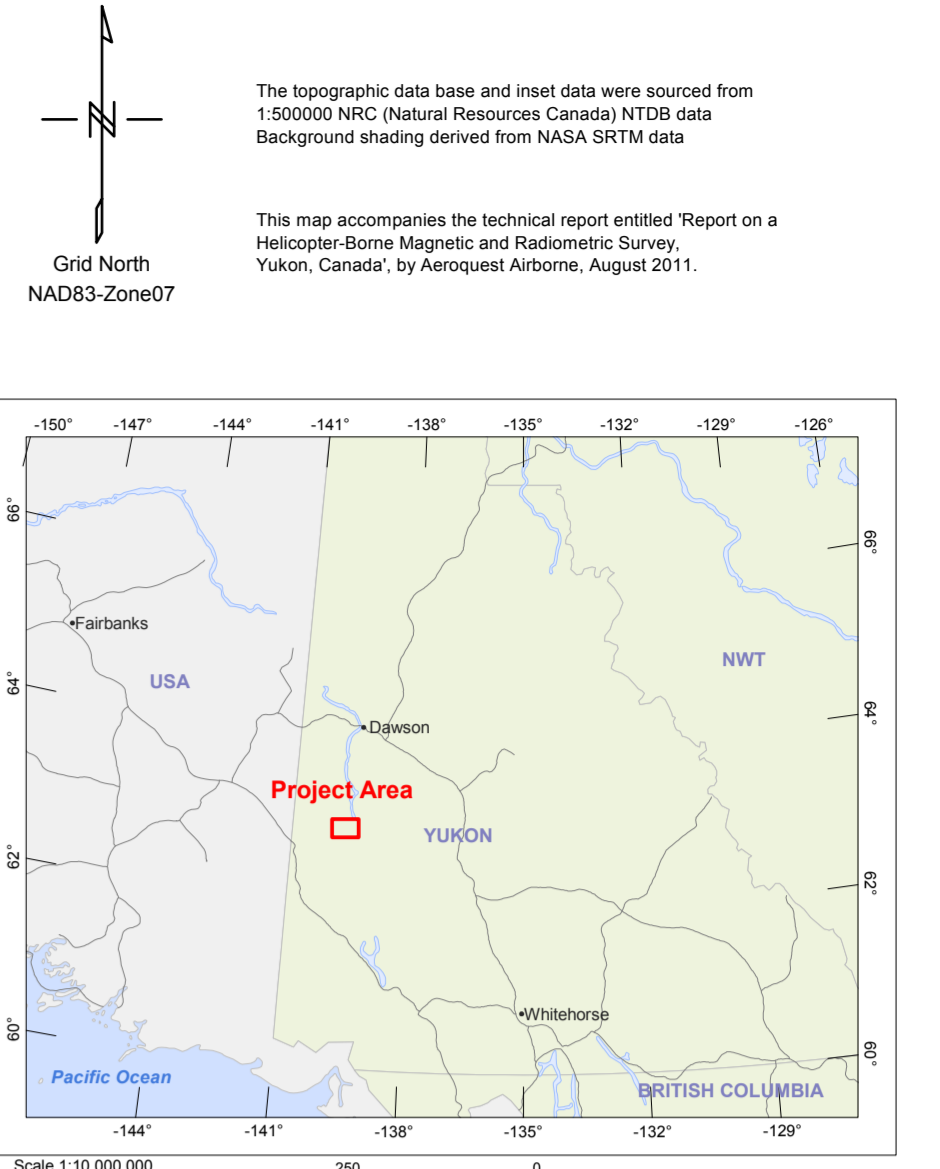
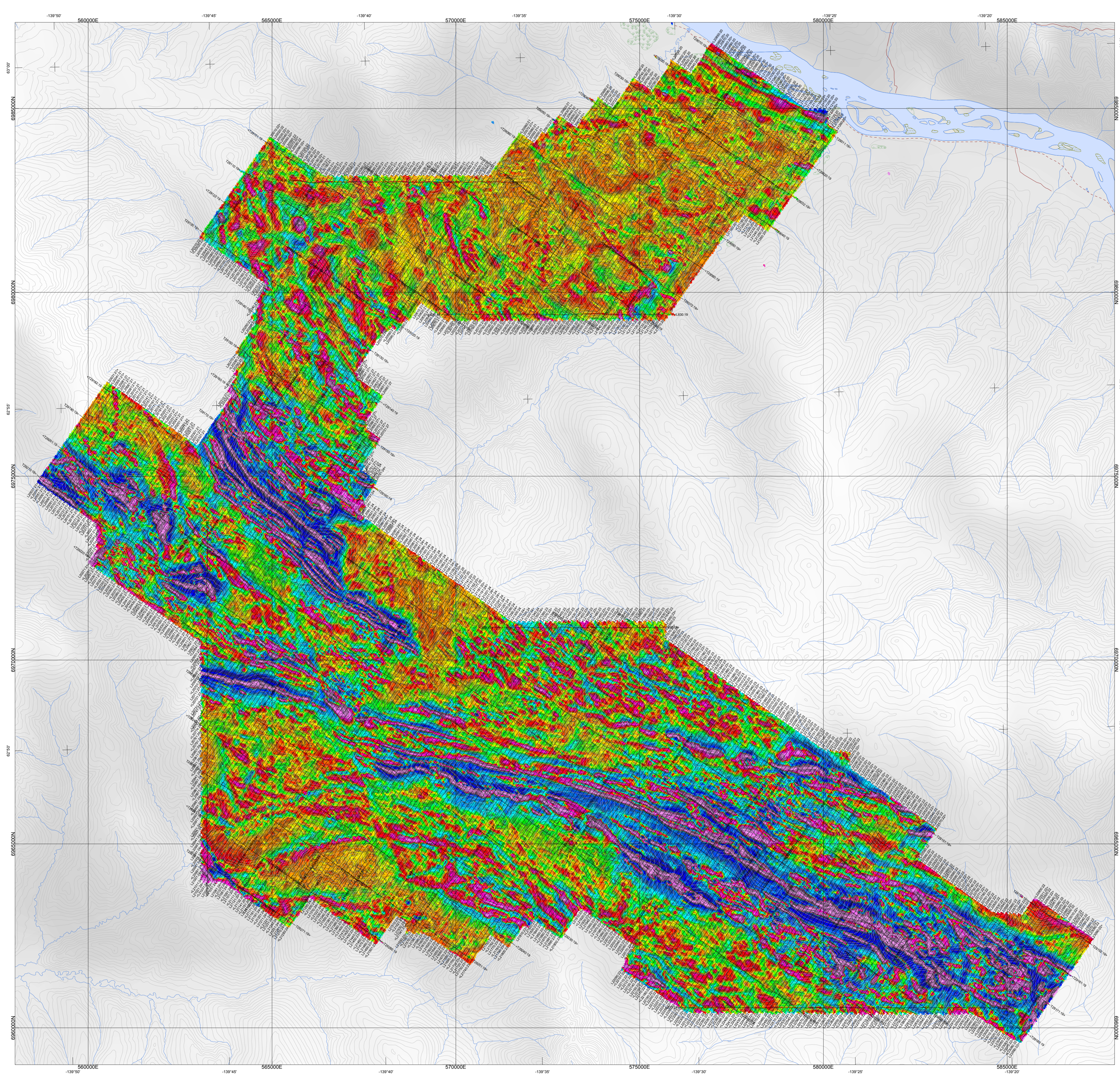
Magnetic databases:

Column	Units	Description
X	m	UTM Easting (NAD83, Zone 07N)
Y	m	UTM Northing (NAD83, Zone07N)
Ralt	m	Radar Altitude
Galt	m a.s.l.	GPS Elevation
DTM	m a.s.l.	Digital Terrain Model using radar altimeter data
Lalt	m	Laser Altitude
UTCTime	HH:MM:SS.ss	UTC Time
BASEMAG	nT	Basemag value
Mag_raw	nT	Uncompensated raw magnetic data
Mag	nT	Diurnal Corrected compensated Magnetic data
Mag_heading	nT	Diurnal & Heading Corrected compensated Magnetic data
TMI	nT	Levelled Magnetic data

Radiometrics databases:

Column	Units	Description
Utc_time	hh:mm:ss.s	utc time
K_raw	Cps	Radiometrics – potassium
Th_raw	Cps	Radiometrics – Thorium
U_raw	Cps	Radiometrics – Uranium
TC_raw	Cps	Radiometrics – Total Counts
UpU_raw	Cps	Radiometrics - Uranium upward looking counts
Live Time	s	System Live Time
Ralt_stp	m	radar altitude at standard temperature and pressure
K_CPS	Cps	Radiometrics – corrected potassium
Th_CPS	Cps	Radiometrics – corrected Thorium
U_CPS	Cps	Radiometrics – corrected Uranium
TC_CPS	Cps	Radiometrics – corrected Total Counts
Cosmic_upUranium	Cps	Radiometrics - Cosmic Corrected Uranium upward looking counts
K_Percentage	%	Radiometrics – potassium (%K)
Th_ppm	ppm	Radiometrics – equivalent Thorium
U_ppm	ppm	Radiometrics – equivalent Uranium
Dose_Rate	uR/hr	Radiometrics – exposure rate
Th_K_Ratio		Thorium – Potassium Ratio
U_K_Ratio		Uranium – Potassium Ratio
U_Th_Ratio		Uranium – Thorium Ratio

Column	Units	Description
Down	counts per second	512 channel spectral data (Downward looking)
Up	counts per second	512 channel spectral data (Upward looking)
X	m	UTM Easting (NAD83, Zone 07N)
Y	m	UTM Northing (NAD83, Zone 07N)
Temperature	°C	temperature
Pressure	mbar	Barometric Pressure
Cosmic	Cps	Radiometric s- Cosmic



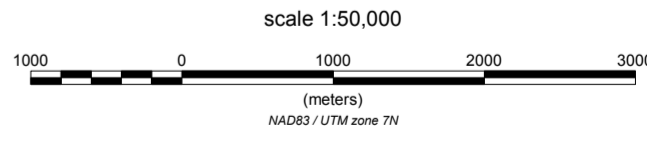
SURVEY SPECIFICATIONS:
 Survey flown: July 08 - July 16, 2011
 Traverse / Tie line spacing: 100 / 1000 metres
 Traverse / Tie line direction: (35°/215°) / (125°/305°)
 Aircraft: Aerospatiale A-Star 350BA (C-FXED)
 Nominal aircraft height: 30 metres

INSTRUMENTATION:
 Data acquisition: DAARC500
 Magnetometer: Geometrics G-823A Caesium vapour
 Installation: mounted as stinger on belly of aircraft
 Sensitivity: .02 nanoTesla
 Compensator: DAARC500
 Gamma Ray Spectrometer: RSI AGRS RSX-5
 Downward looking crystal vol. - 16.75L (1024cu in)
 Upward looking crystal vol. - 4.18L (256cu in)
 Sample Interval: 1.0 seconds
 Channels: 512
 Installation: In aircraft

NAVIGATION:
 Navigation: Differential Global Positioning System (DGPS)
 Navigation equipment: Ag-Nav Guida system
 Radar Altimeter: Terra TRA3000/TRI-40
 Laser Altimeter: Riegl LD90-3300HR

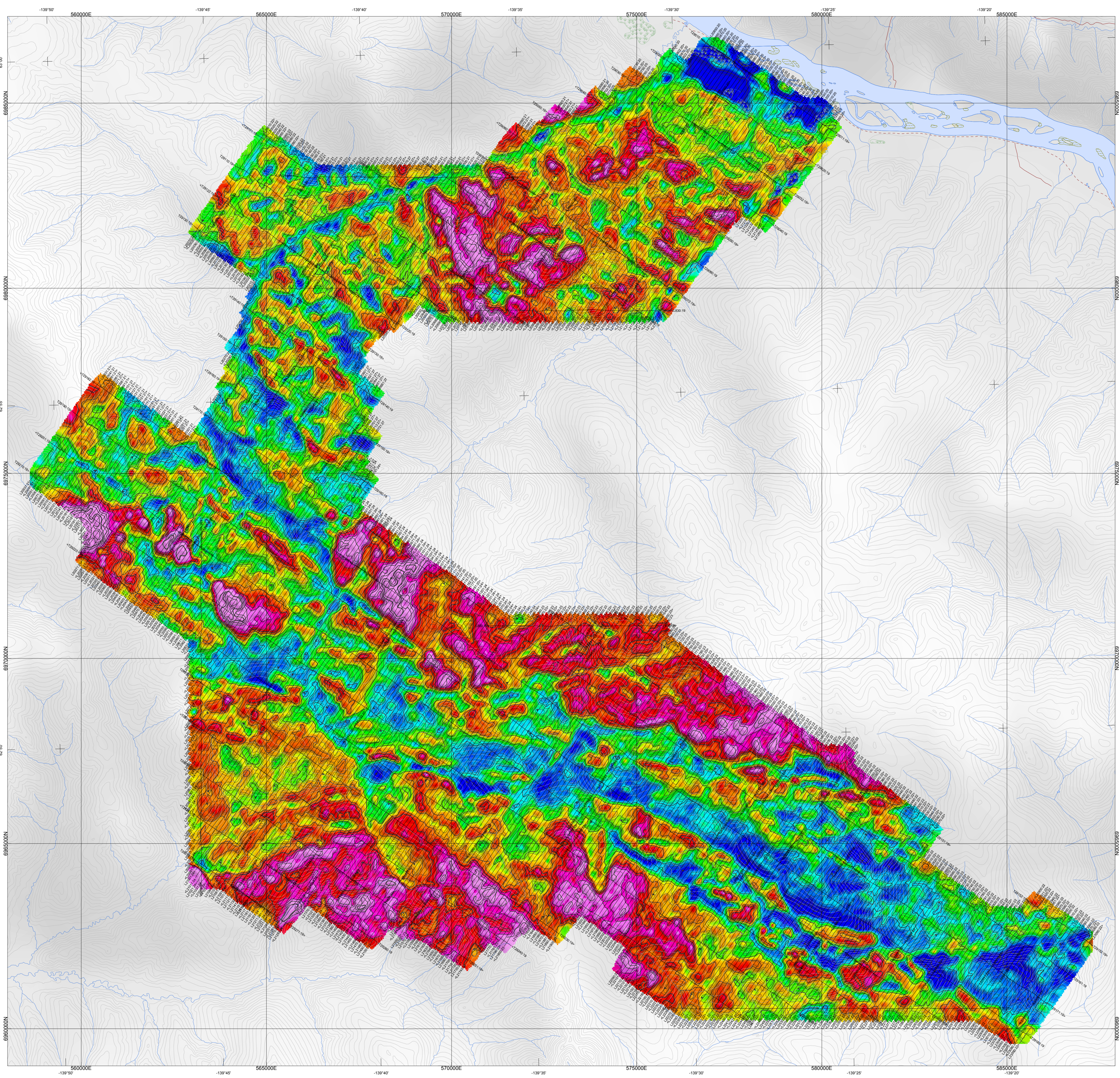
POSITIONING:
 Datum: NAD83
 Major Axis: 6378137
 Inverse Flattening: 298.25722

MAP PROJECTION:
 Projection: Universal Transverse Mercator
 Central Meridian: 141°W (Zone 07)
 Central Scale Factor: 0.9996
 False Easting/Northing: 500,000m/0m



Yukon, Canada
 Silver Quest Resources Ltd.
**FIRST VERTICAL
 DERIVATIVE of TMI**
 Boulevard Block
 NTS 115J13,14 & O03, 04

AEROQUEST
 7667 Bath Road, Mississauga, ON L4T 3T1, CANADA
 Tel: (905) 672-9129 Fax: (905) 672-7083
 www.aerquestarborne.com
 August 2011



The topographic data base and inset data were sourced from 1:500000 NRC (Natural Resources Canada) NTDB data. Background shading derived from NASA SRTM data.

This map accompanies the technical report entitled "Report on a Helicopter-Borne Magnetic and Radiometric Survey, Yukon, Canada," by Aeroquest Airborne, August 2011.

Grid North
NAD83-Zone07

Scale 1:10,000,000

0 250 500 1000 2000 3000
Meters
NAD83 / UTM zone 7N

TC Contour Interval

- 20 cps
- 40 cps
- 200 cps
- 1000 cps

TC cps

- 1584
- 1421
- 1314
- 1229
- 1160
- 1096
- 1038
- 987
- 941
- 903
- 870
- 839
- 811
- 785
- 761
- 739
- 718
- 698
- 678
- 660
- 642
- 624
- 606
- 588
- 569
- 550
- 530
- 510
- 490
- 470
- 449
- 427
- 406
- 385
- 362
- 337
- 308
- 266

Legend:

- Trail
- Roads
- River
- Wetland
- Lake

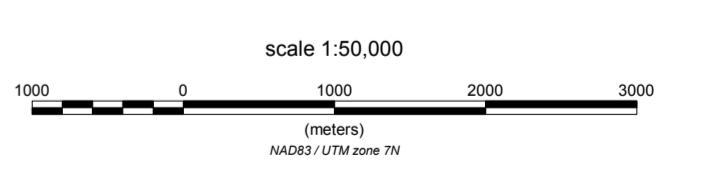
SURVEY SPECIFICATIONS:
 Survey flown: July 08 - July 16, 2011
 Traverse / Tie line spacing: 100 / 1000 metres
 Traverse / Tie line direction: (35°/12.15°) / (125°/308°)
 Aircraft: Aerospatiale A-Star 3502A (C-FXED)
 Nominal aircraft height: 30 metres

INSTRUMENTATION:
 Data acquisition: DAARC500
 Magnetometer: Geometrics G-823A Caesium vapour
 Installation: mounted as stinger on belly of aircraft
 Sensitivity: .02 nanoTesla
 Compensator: DAARC500
 Gamma Ray Spectrometer: RSI AGRS RSX-6
 Downward looking crystal vol. - 16.75L (1024cu in)
 Upward looking crystal vol. - 4.18L (256cu in)
 Sample Interval: 1.0 seconds
 Channels: 512
 Installation: in aircraft

NAVIGATION:
 Navigation: Differential Global Positioning System (DGPS)
 Navigation equipment: Ag-Nav Cuisa system
 Radar Altimeter: Terra TRA3000/TRI-40
 Laser Altimeter: Riegl LD90-3300HR

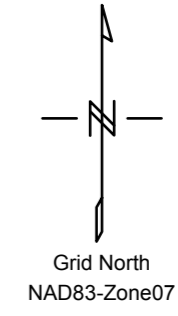
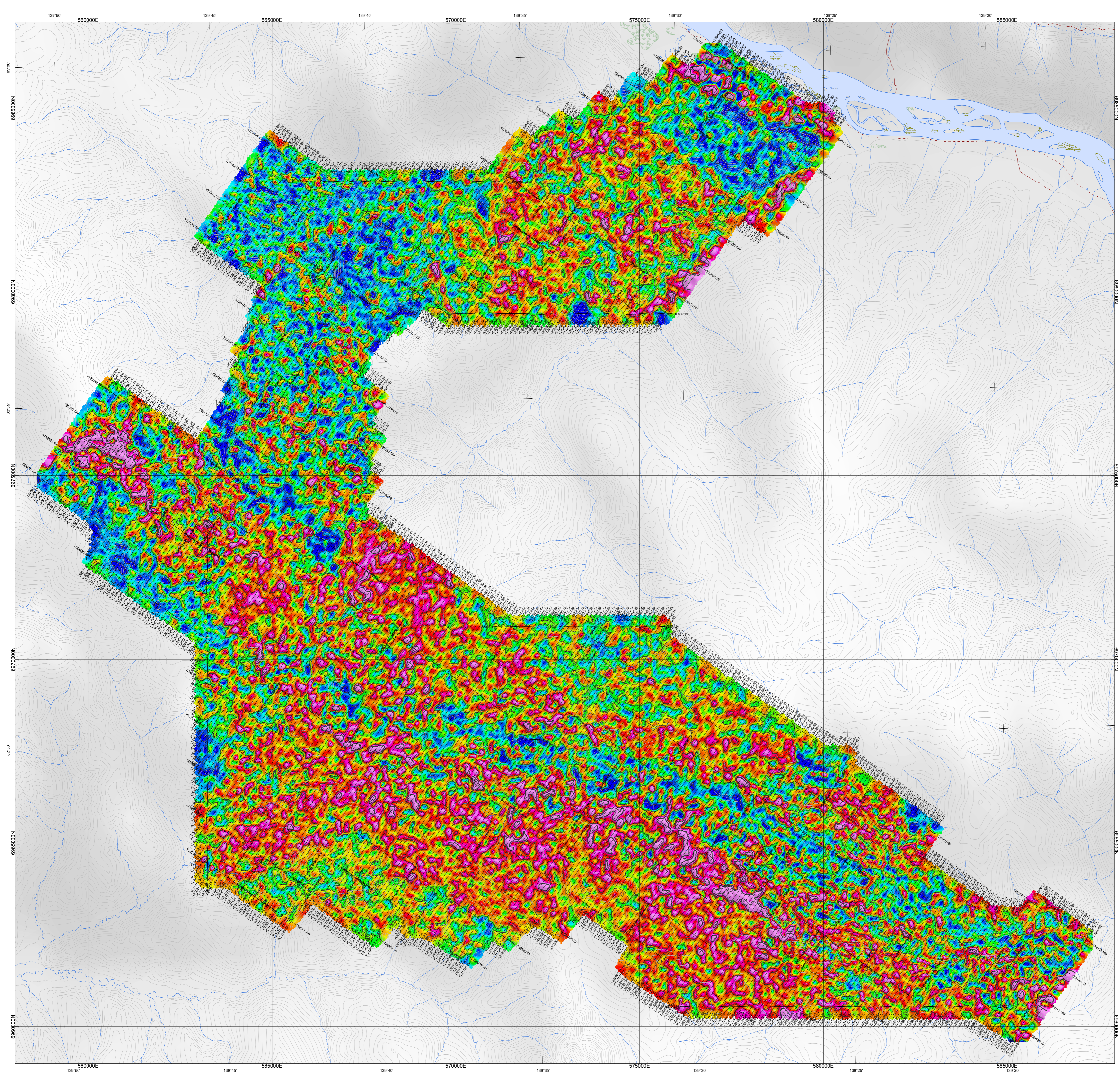
POSITIONING:
 Datum: NAD83
 Major Axis: 6378137
 Inverse Flattening: 298.25722

MAP PROJECTION:
 Projection: Universal Transverse Mercator
 Central Meridian: 141°W (Zone 07)
 Central Scale Factor: 0.9996
 False Easting/Northing: 500,000m/0m



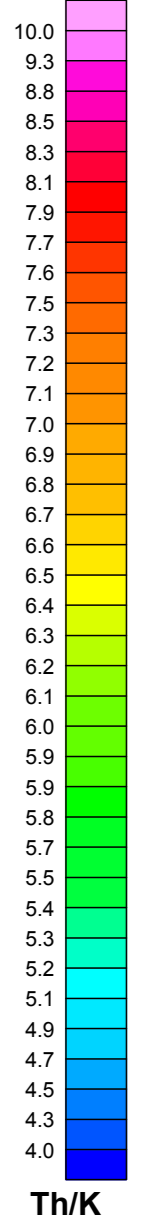
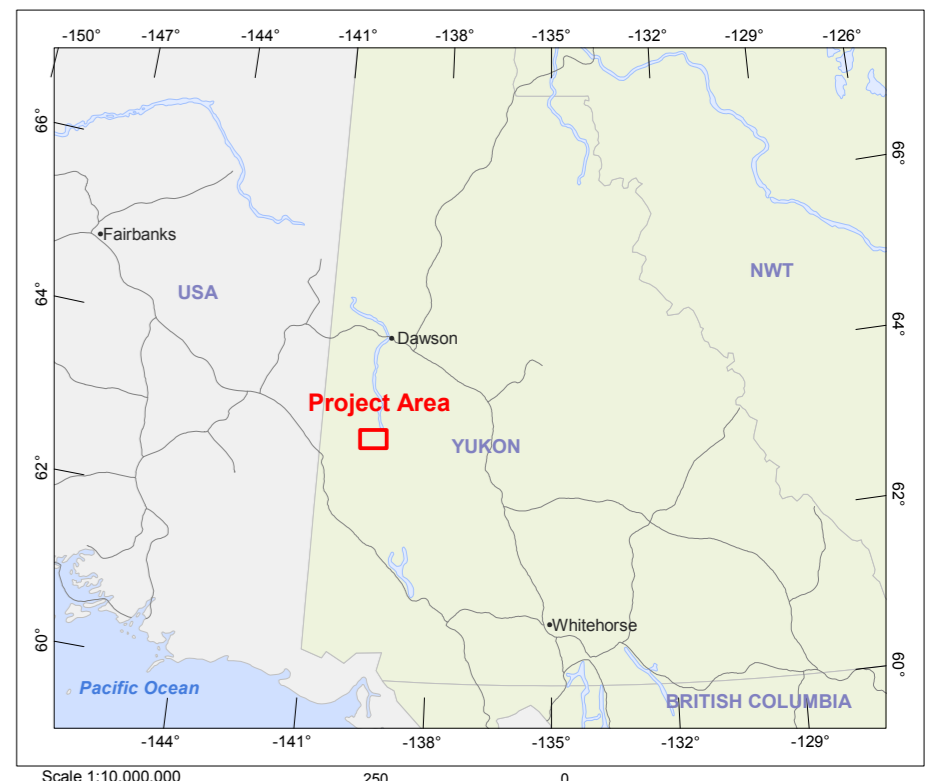
Yukon, Canada
 Silver Quest Resources Ltd.
TOTAL COUNTS
Boulevard Block
 NTS 115J13,14 & O03, 04





The topographic data base and inset data were sourced from 1:500000 NRC (Natural Resources Canada) NTDB data. Background shading derived from NASA SRTM data.

This map accompanies the technical report entitled "Report on a Helicopter-Borne Magnetic and Radiometric Survey, Yukon, Canada, by Aeroquest Airborne, August 2011."



- Th/K Contour Interval**
- 0.2
 - 0.4
 - 2.0
 - 10.0
- Legend:**
- Trail
 - Roads
 - River
 - Wetland
 - Lake

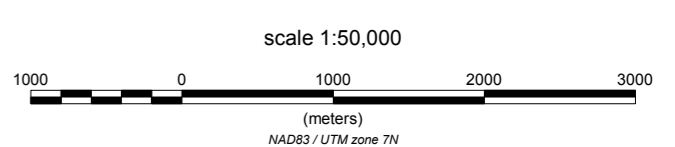
SURVEY SPECIFICATIONS:
 Survey flown: July 08 - July 16, 2011
 Traverse / Tie line spacing: 100 / 1000 metres
 Traverse / Tie line direction: (35°/215°) / (125°/305°)
 Aircraft: Aerospatiale A-Star 350BA (C-FXED)
 Nominal aircraft height: 30 metres

INSTRUMENTATION:
 Data acquisition: DAARC500
 Magnetometer: Geometrics G-823A Caesium vapour
 Installation: mounted as stinger on belly of aircraft
 Sensitivity: .02 nanoTesla
 Compensator: DAARC500
 Gamma Ray Spectrometer: RSI AGRS RSX-5
 Downward looking crystal vol. - 16.75L (1024cu in)
 Upward looking crystal vol. - 4.18L (256cu in)
 Sample Interval: 1.0 seconds
 Channels: 512
 Installation: In aircraft

NAVIGATION:
 Navigation: Differential Global Positioning System (DGPS)
 Navigation equipment: Ag-Nav Guida system
 Radar Altimeter: Terra TRA3000/TRI-40
 Laser Altimeter: Riegl LD90-3300HR

POSITIONING:
 Datum: NAD83
 Major Axis: 6378137
 Inverse Flattening: 298.25722

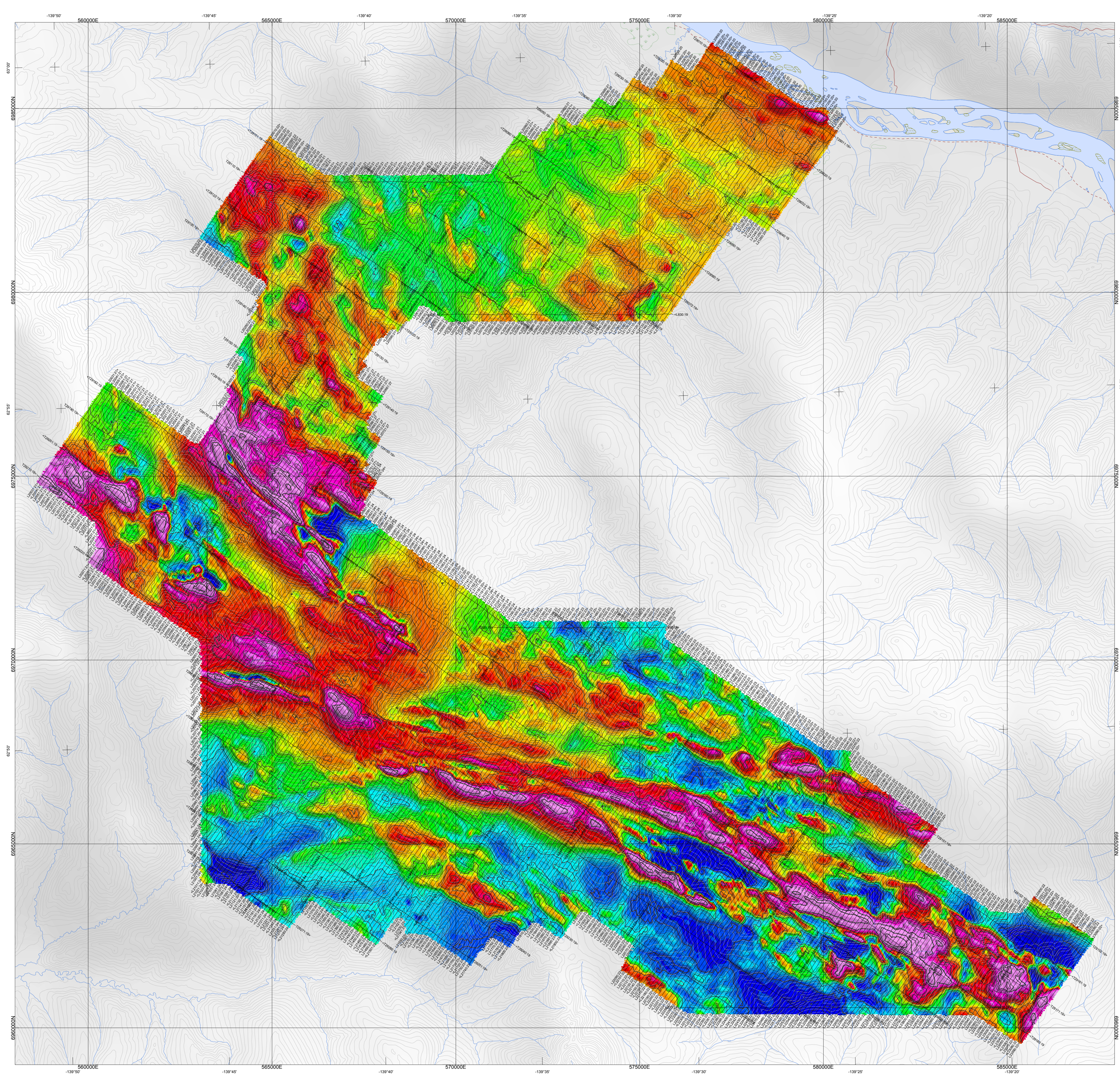
MAP PROJECTION:
 Projection: Universal Transverse Mercator
 Central Meridian: 141°W (Zone 07)
 Central Scale Factor: 0.9996
 False Easting/Northing: 500,000m/0m



Yukon, Canada
 Silver Quest Resources Ltd.
Th/K Ratio
Boulevard Block
 NTS 115/13, 14 & 003, 04



August 2011

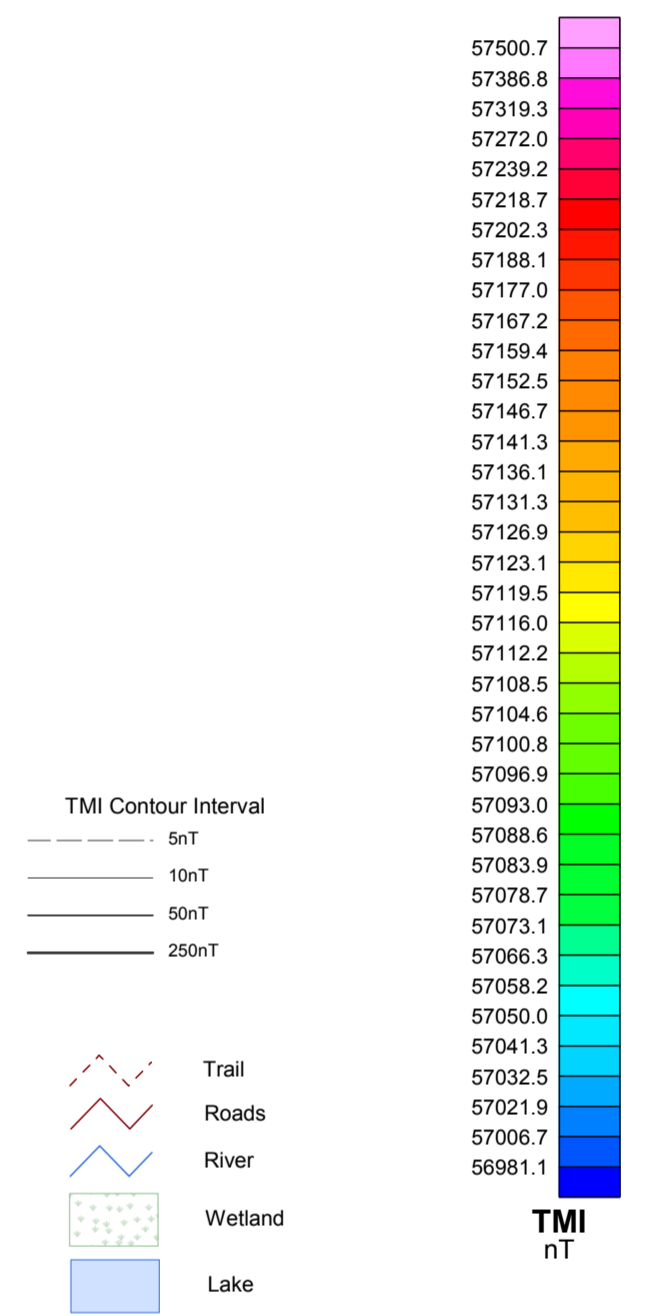


The topographic data base and inset data were sourced from 1:500000 NRC (Natural Resources Canada) NTDB data
Background shading derived from NASA SRTM data

This map accompanies the technical report entitled "Report on a Helicopter-Borne Magnetic and Radiometric Survey, Yukon, Canada, by Aeroquest Airborne, August 2011."

Grid North
NAD83-Zone07

Scale 1:10,000,000
250 (kilometers)
1:10,000,000



- TMI Contour Interval
- 5nT
 - 10nT
 - 50nT
 - 250nT
- Trail
- Roads
- River
- Wetland
- Lake

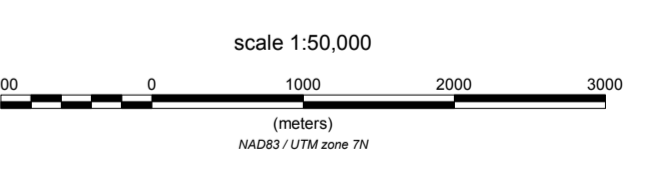
SURVEY SPECIFICATIONS:
 Survey flown: July 08 - July 16, 2011
 Traverse / Tie line spacing: 100 / 1000 metres
 Traverse / Tie line direction: (35°/215°) / (125°/305°)
 Aircraft: Aerospatiale A-Star 350BA (C-FXED)
 Nominal aircraft height: 30 metres

INSTRUMENTATION:
 Data acquisition: DAARC500
 Magnetometer: Geometrics G-823A Caesium vapour
 Installation: mounted as stinger on belly of aircraft
 Sensitivity: .02 nanoTesla
 Compensator: DAARC500
 Gamma Ray Spectrometer: RSI AGRS RSX-5
 Downward looking crystal vol. - 16.75L (1024cu in)
 Upward looking crystal vol. - 4.18L (256cu in)
 Sample Interval: 1.0 seconds
 Channels: 512
 Installation: In aircraft

NAVIGATION:
 Navigation: Differential Global Positioning System (DGPS)
 Navigation equipment: Ag-Nav Guida system
 Radar Altimeter: Terra TRA3000/TRI-40
 Laser Altimeter: Riegl LD90-3300HR

POSITIONING:
 Datum: NAD83
 Major Axis: 6378137
 Inverse Flattening: 298.25722

MAP PROJECTION:
 Projection: Universal Transverse Mercator
 Central Meridian: 141°W (Zone 07)
 Central Scale Factor: 0.9996
 False Easting/Northing: 500,000m/0m



Yukon, Canada
 Silver Quest Resources Ltd.
TOTAL MAGNETIC INTENSITY
 Boulevard Block
 NTS 115J13,14 & O03, 04

7667 Bath Road, Mississauga, ON L4T 3T1, CANADA
 Tel: (905) 672-9129 Fax: (905) 672-7083
 www.aeroquestairborne.com
 August 2011

APPENDIX 3: RADIOMETRICS PROCESSING PARAMETERS

Aircraft Background and Cosmic Stripping Factors

COEFFICIENTS		
	Cosmic Stripping Factor (b)	Aircraft Background Value (a)
TC	1.0975	101.18
K	0.0597	12.7
U	0.0436	4.884
Th	0.0696	0.089
Uup	0.0153	0.6172

Altitude Attenuation Coefficients

COEFFICIENTS	
Element	Attenuation Coeff.
TC	-0.00532
K	-0.00618
U	-0.00512
Th	-0.00653

Sensitivity Factors

Sensitivity Factors	
Element	Sensitivity Factor at 30 m STP Height
K	64.59947 cps/%
U	7.29807 cps/ppm eU
Th	3.45573 cps/ppm eTh
Dose rate	20.81085 cps/nG/hr

Appendix 4 Geophysical Data CD