

ASSESSMENT REPORT

SOIL SURVEYS

on the

HORN PROPERTY

Horn 1-16 YC29189 – YC29204

Horn 17 - 30 YC31965 – YC31978

Horn 31 - 146 YD130041 – YD130156

Longitude 61°N 58.818'; Latitude 128°W 51.328'
NTS 105H/15 & 105I/02

Watson Lake Mining District
YUKON TERRITORY

Prepared by:
Joyia Chakungal, PhD

FOR:



1 Adelaide Street East
Suite 2800
Toronto, Ontario, M5C 2V9

December 2011

SUMMARY

The Horn prospect is situated west of the Hyland River in the Watson Lake Mining District, roughly 20 km west of the Tungsten Road and ~ 215 km north of Watson Lake, Yukon. Claims are registered to 45127 Yukon Inc. (30%) and the Ryan Gold Corp. (70%). The claim block is located within the traditional territory of the Kaska Dena First Nation, on Crown Land such that the mineral claims fall under the jurisdiction of the Yukon Government. The surrounding terrain is steep with mountain peaks reaching elevations in excess of 2200 m where ridges and hillsides are moderate to sparsely covered with alpine vegetation and valley bottoms at altitudes below ~ 1500 m, are moderate to densely forested. Outcropping of the underlying bedrock is abundant. At altitudes greater than 1500 m, slopes can be steep making it near impossible to access outcrops in places.

The prospect was originally staked in 2005 with no record of exploration activity prior to the original staking or within the currently defined claim boundaries that was staked in 2010. Based on the Yukon Geological Survey's mineral occurrence database, a number of skarn and vein hosted mineral occurrences have been identified to the south and west of the prospect. In addition, a number of active quartz claim blocks registered to a several different companies also surround the area of interest.

Since the 2010 staking rush, exploration work on the Horn was limited to 4 days at the end of the 2011 field season. The two person crew spent four days mapping and sampling bedrock exposed along the north slope of the main peak, and western most edge of the main northeast-southwest trending ridge. Half a day was spent in the vicinity of the 2006 soil grid where a number of bedrock samples were collected.

Bedrock in the area predominantly comprises coarse-grained to small (≤ 1 cm) quartz pebble conglomerates belonging to the Neoproterozoic – Cambrian Hyland Group. Coarse grained clastic rocks are interbedded with shales and lesser amounts of dolomite - dolomitic sandstones. The entire package is tightly folded and intruded by a network of sheeted quartz veins. Pyrite mineralization is ubiquitous throughout siliciclastic rocks, particularly in close proximity to veins. Sulphide mineralization within quartz veins has not been noted to date. Rock samples collected on the north slope of the main peak did not yield significant geochemical results however, of those collected in proximity to the soil grid one sample yielded results in excess of 1000 ppb Au.

Based on the data available to date, the main recommendation for further exploration is to conduct detailed, property scale mapping beginning in areas where anomalous gold values were obtained in soils (2006 soil survey) and expanding outward from there.

TABLE OF CONTENTS

1. INTRODUCTION1

2. PROPERTY, LOCATION AND ACCESS1

3. REGIONAL GEOLOGY1

 3.1 Regional Geophysics1

 3.2 Regional Exploration Activity.....6

4. EXPLORATION PROGRAM6

 4.1 Project Costs6

7. CONCLUSIONS9

8. RECOMMENDATIONS9

9. STATEMENT OF QUALIFICATIONS9

10. REFERENCES10

LIST OF FIGURES

Figure 1 RYG prospect location map.2

Figure 2 Horn claim distribution map.3

Figure 3 RYG prospect location map and underlying bedrock geology.4

Figure 4 RYG prospect location map in relation to underlying aeromagnetic data.5

Figure 5 Distribution of 2006 soil survey and underlying bedrock geology.7

Figure 6 Distribution of 2011 bedrock and rock geochemical data.8

LIST OF TABLES

Table 1. List of Horn claims on which assessment work was completed.6

APPENDICES

Appendix A – 2011 Field Data11

Horn – 2011 Bedrock observations12

Horn – 2011 Rock Geochemistry19

Appendix B – List of claims & Certificates of work28

Horn – Schedule B Claim List29

Horn – Claim Status Report30

Horn – Certificate of Work31

1. INTRODUCTION

In Yukon, to maintain title of a mineral claim as outlined in the regulations of the Yukon Quartz Mining Act, the holder of the claim is required to perform and document assessment work within one year of staking the claim. Quantitatively, the minimum dollar value of assessment work conducted per claim should equate to \$100.00 per year. If work could not be completed, the claim holder might pay the equivalent amount per claim unit per year to the Yukon Government as “Cash in Lieu” to maintain title to the claims.

This document is a summary of work that has been completed to date on the Horn prospect which was staked in three phases – summer 2005; 2006 and 2010, and is currently registered to 45127 Yukon Inc. (30%) and the Ryan Gold Corp. (70%).

2. PROPERTY, LOCATION AND ACCESS

The Horn property is situated in southeast Yukon near the border with the Northwest Territories, within the Watson Lake Mining District (Figure 1). A majority of the claim units are in NTS map sheet 105H/15 while the northern most 11 units fall within NTS 105I/02. The property comprises 146 contiguous claim blocks (29 km²; Figure 2), and is centred over longitude 61° 58.818’N and latitude 128° 51.328’W – immediately west of the Hyland River, roughly 20 km west of the Tungsten Road and ~ 215 km north of Watson Lake in the traditional territory of the Kaska Dena First Nation. Access to the property from the Tungsten Road is by helicopter only.

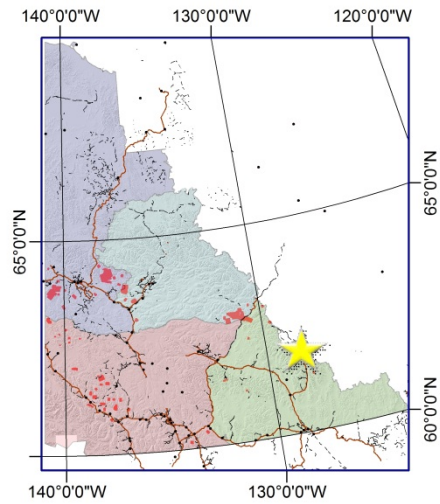
The prospect area is nestled in a region of the territory that was affected by the McConnell glaciation approximately 15 thousand years ago. The surrounding terrain is steep with mountain peaks reaching elevations in excess of 2200 m where ridges and hillsides are moderate to sparsely covered with alpine vegetation, and valley bottoms at altitudes below ~ 1500 m, are moderate to densely forested. Outcropping of the underlying bedrock is abundant. At altitudes greater than 1500 m, slopes can be steep making it near impossible to access outcrops in places.

3. REGIONAL GEOLOGY

To date, property scale geological mapping has not been carried out to completion on the Horn property. Bedrock geology underlying the Horn prospect was last mapped by Roots et al. (1966). Rocks in the area are predominantly comprised of siliciclastic rocks that are associated with the lower Paleozoic Selwyn Basin which was built on the passive margin of ancestral North American (Figure 3). The reader is referred to Roots et al. (1966), Gordey and Makepeace (2001) and references therein, for further geological details and concepts not presented in this report.

3.1 Regional Geophysics

The most recent airborne geophysical data for the area is available through the Geological Survey of Canada and presented in Figure 4. Siliciclastic rocks are characterized by aeromagnetic low signatures (i.e. blue tones) while mid-Cretaceous intrusions are highlighted by aeromagnetic highs (i.e. yellow – orange - pink).



Yukon Mining Districts

- Dawson Mining District
- Watson Lake Mining District
- Mayo Mining District
- Whitehorse Mining District

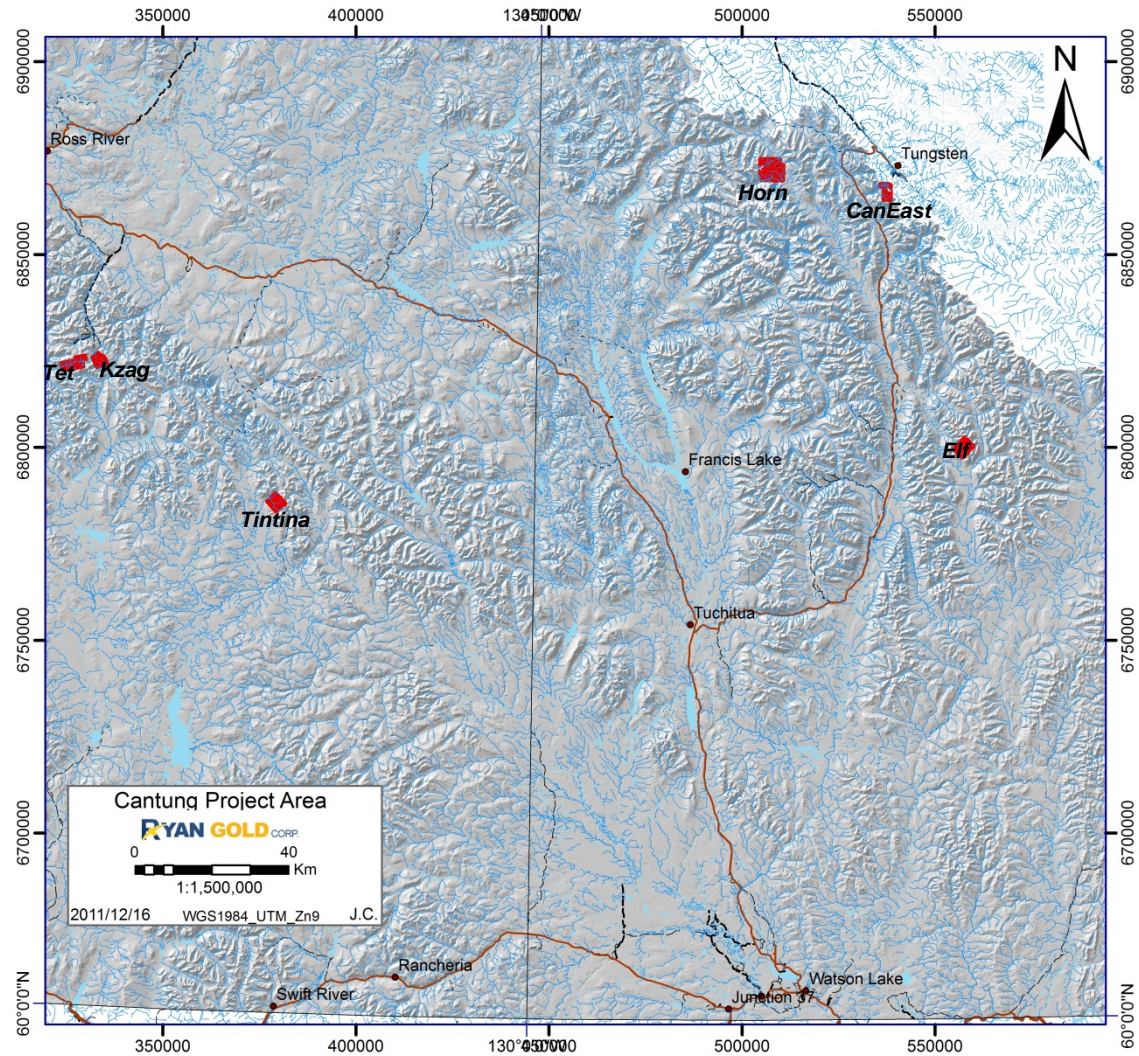


Figure 1: (a) Index map illustrating distribution of Yukon Mining districts. Yellow star indicates location of the map presented in (b). (b) Ryan Gold Corp. properties situated north of Watson Lake, including properties in the Cantung Project area (Elf, CanEast and Horn).

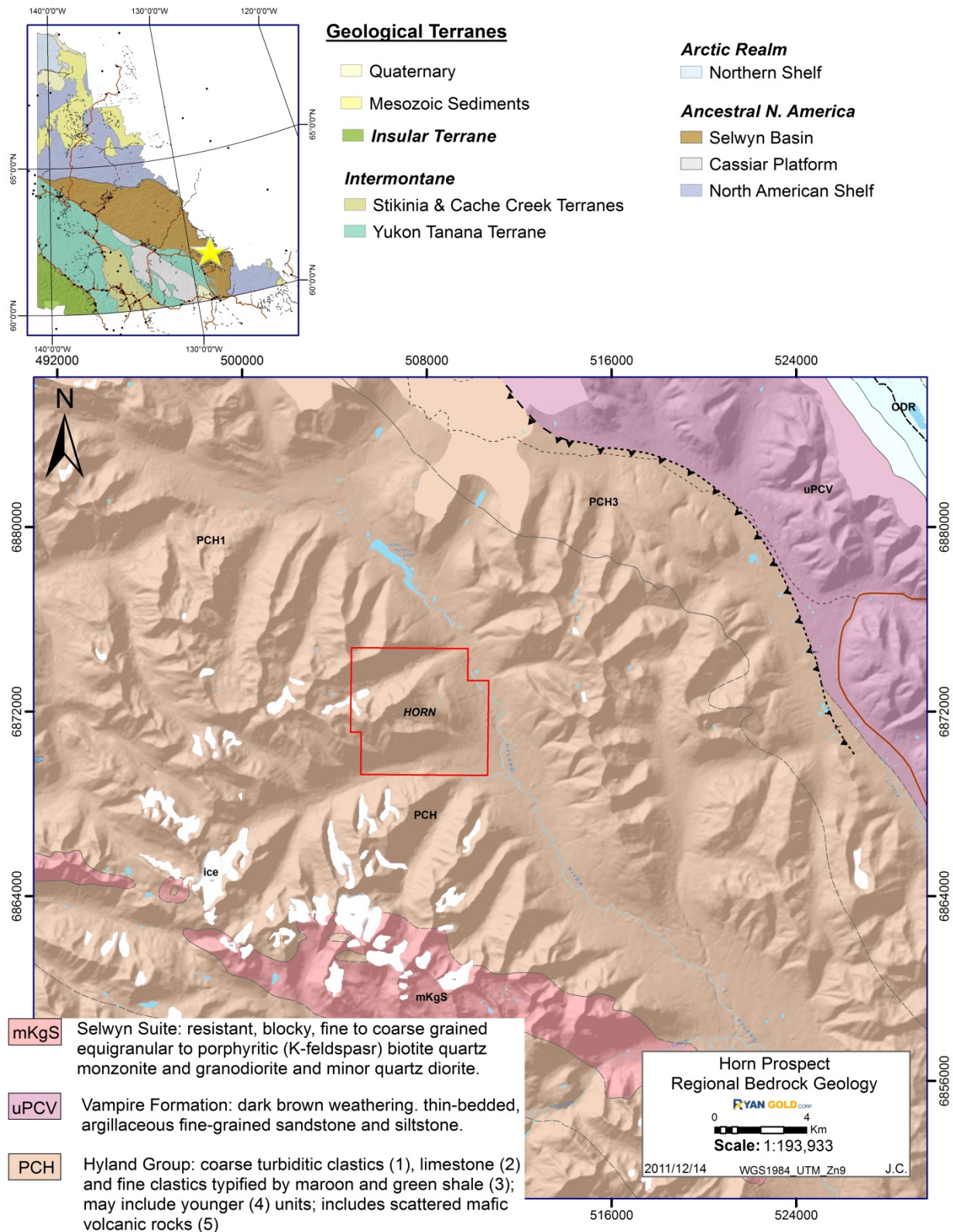


Figure 3: (a) Geological terrane map of the Yukon Territory. Yellow star indicates location of the map presented in (b), within the Selwyn basin of Ancestral North America. (b) Ryan Gold Corp.'s Horn prospect in relations to the underlying regional geology of Gordey and Makepeace (2001).

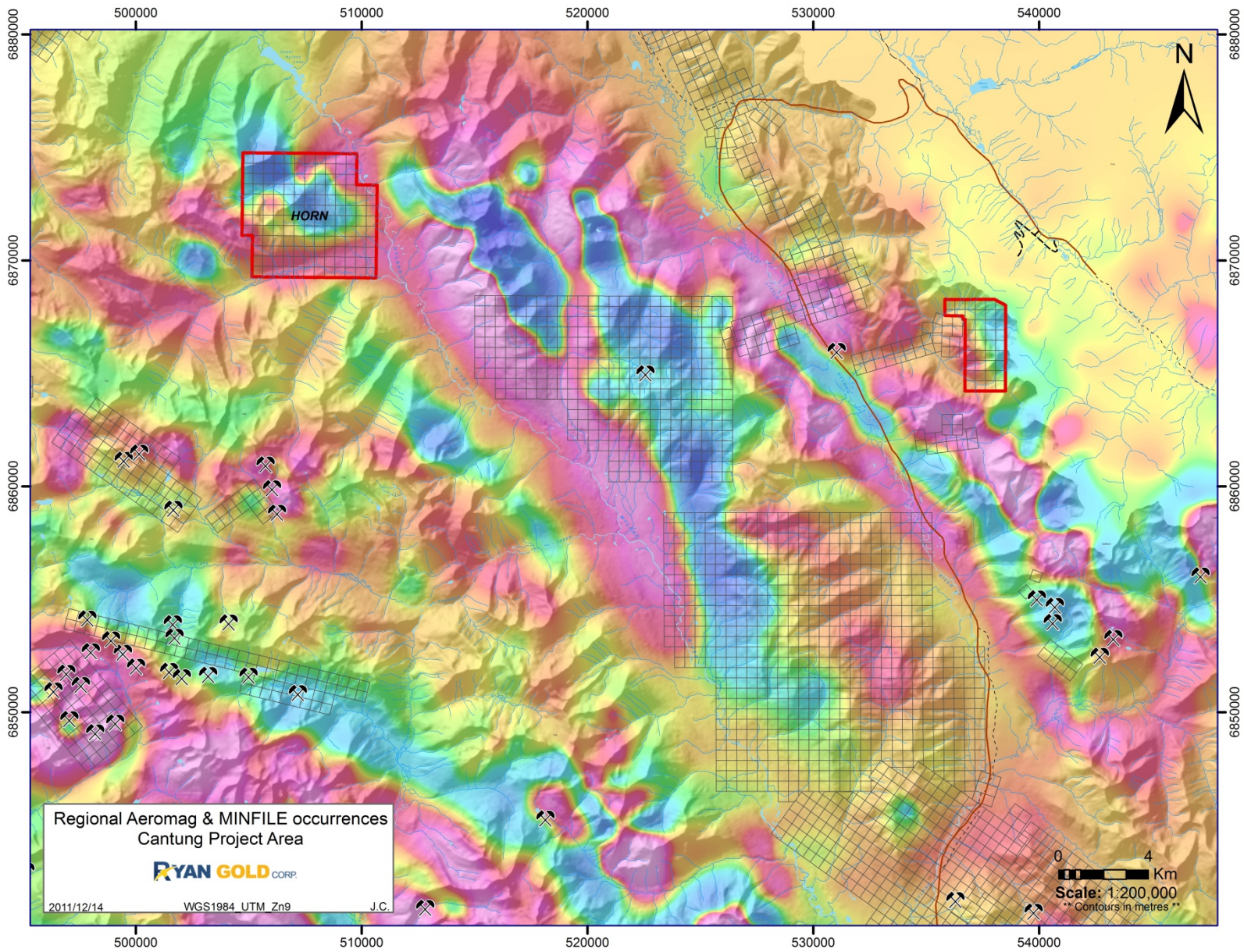


Figure 4: Regional aeromagnetic map for the northern half of Ryan Gold Corp.'s Cantung project area. Outlined in red are Ryan Gold's Horn and CanEast properties relative to active quartz claim blocks in the area. # = Yukon MINFILE occurrences.

3.2 Regional Exploration Activity

There is no record of previous mineral exploration activity within the boundaries of the currently defined Horn prospect. The area is however, situated in close proximity to several active quartz claims owned by a number of companies exploring for gold (e.g. Bearing Resources Ltd.; Northern Tiger Resources; Yankee Hat Minerals Ltd). With respect to the Yukon Geological Survey’s MINFILE database (YGS IDS, 2011) several previously recognized vein associated mineral occurrences have been identified south of the prospect area (Figure 4).

The original Horn claim units (#1-16) were staked in 2005 followed by staking of an additional 14 (#17 – 30) units in summer 2006. Following this subsequent staking activity, a soil survey comprising 496 soil samples was conducted over the original 30 claim units. Results of the reconnaissance level soil survey proved interesting (i.e. four samples with Au = 692 – 1056 ppb; Figure 5), leading to staking of the remaining 116 claim units in the early winter 2010.

4. EXPLORATION PROGRAM

Following the reconnaissance soil survey conducted in 2006, follow-up exploration of the Horn prospect was completed in late summer 2011 on eleven of the 146 claim units (Table 1). Preliminary mapping of the northern slope immediately below the main peak, and follow-up of a handful of anomalous 2006 soil locations was completed by two company geologists over four days in late September. Highlights of the mapping and bedrock sampling program are provided in Figure 6. Details of the field observations and resulting rock geochemistry are provided in Appendix A.

Grant #	ClaimName	Claim#	ClaimOwner
YC29197	Horn	9	45127 Yukon Inc. (30%) Ryan Gold Corp. (70%)
YC31966	Horn	18	
YC31967	Horn	19	
YD130105	Horn	95	
YD130106	Horn	96	
YD130107	Horn	97	
YD130115	Horn	105	
YD130116	Horn	106	
YD130117	Horn	107	
YD130119	Horn	109	
YD130120	Horn	110	

Table 1: Horn claims on which work was completed in 2011.

Two days of mapping has revealed the prospect area is largely underlain by coarse-grained to small (\leq 1cm) quartz pebble conglomerates belonging to the Neoproterozoic – Cambrian Hyland Group (PCH). Coarse-grained clastic rocks are interbedded with shales and lesser amounts of dolomite - dolomitic sandstones. The entire package is tightly folded and intruded by a network of sheeted quartz veins. Pyrite mineralization is ubiquitous throughout siliciclastic rocks, particularly in close proximity to veins. Sulphide mineralization within quartz veins has not been noted to date. Rock samples collected on the north slope of the main peak did not yield significant geochemical results however, of those collected in proximity to the soil grid one sample yielded results in excess of 1000 ppb Au.

4.1 PROJECT COSTS

In total, \$17,169.42 was spent on the Horn prospect. Costs were incurred in conducting reconnaissance level bedrock mapping and follow-up of selected 2006 soil geochemistry locations. A detailed breakdown of expenditures for both properties is available for review in Appendix B.

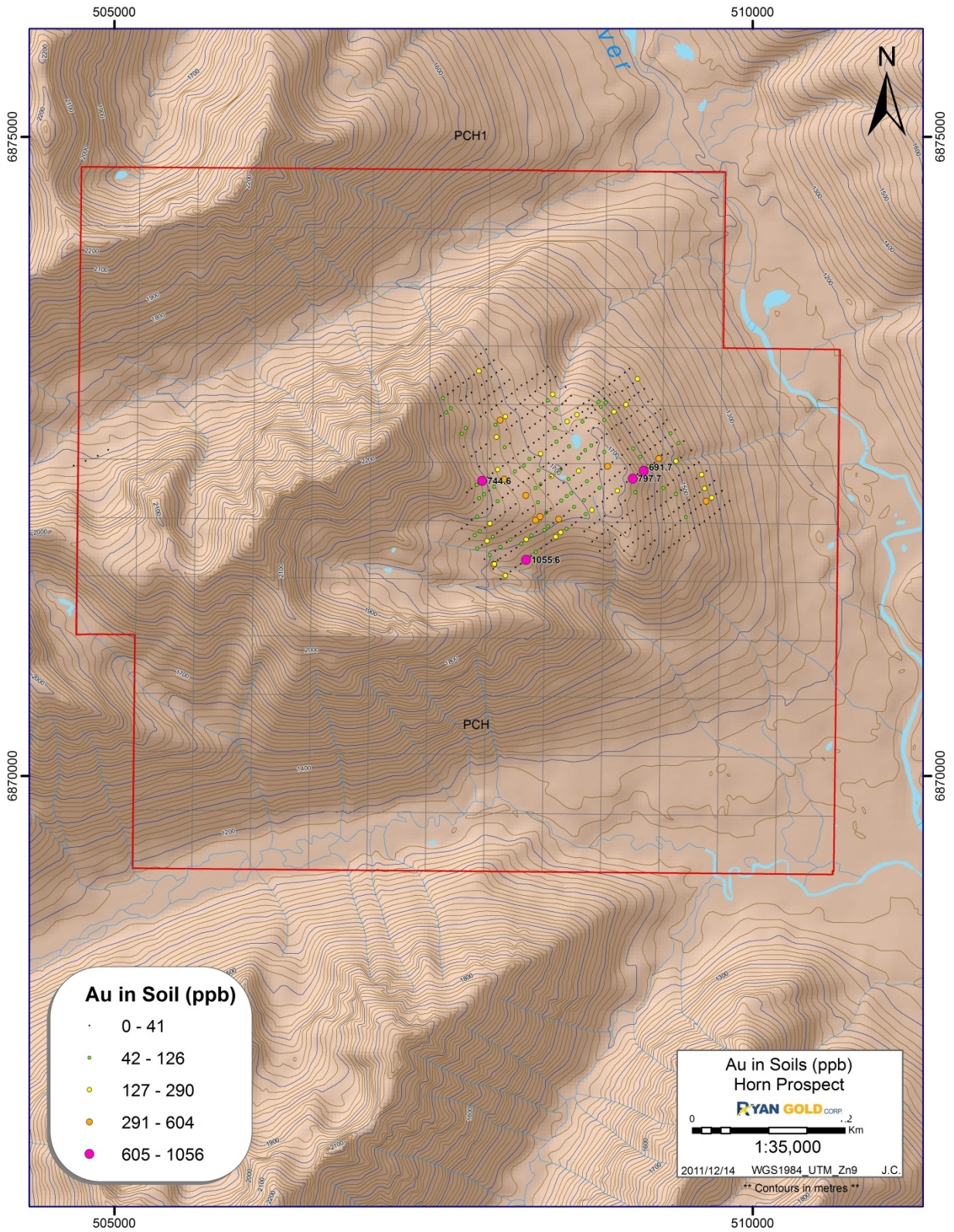


Figure 5: Distribution of 2006 soil survey conducted by Ground Truth Exploration for the Horn property. Only highest gold in soil values are labeled. Underlying bedrock geology polygon is that of Gordey and Makepeace (2001). Topographic contour interval = 10 metres.

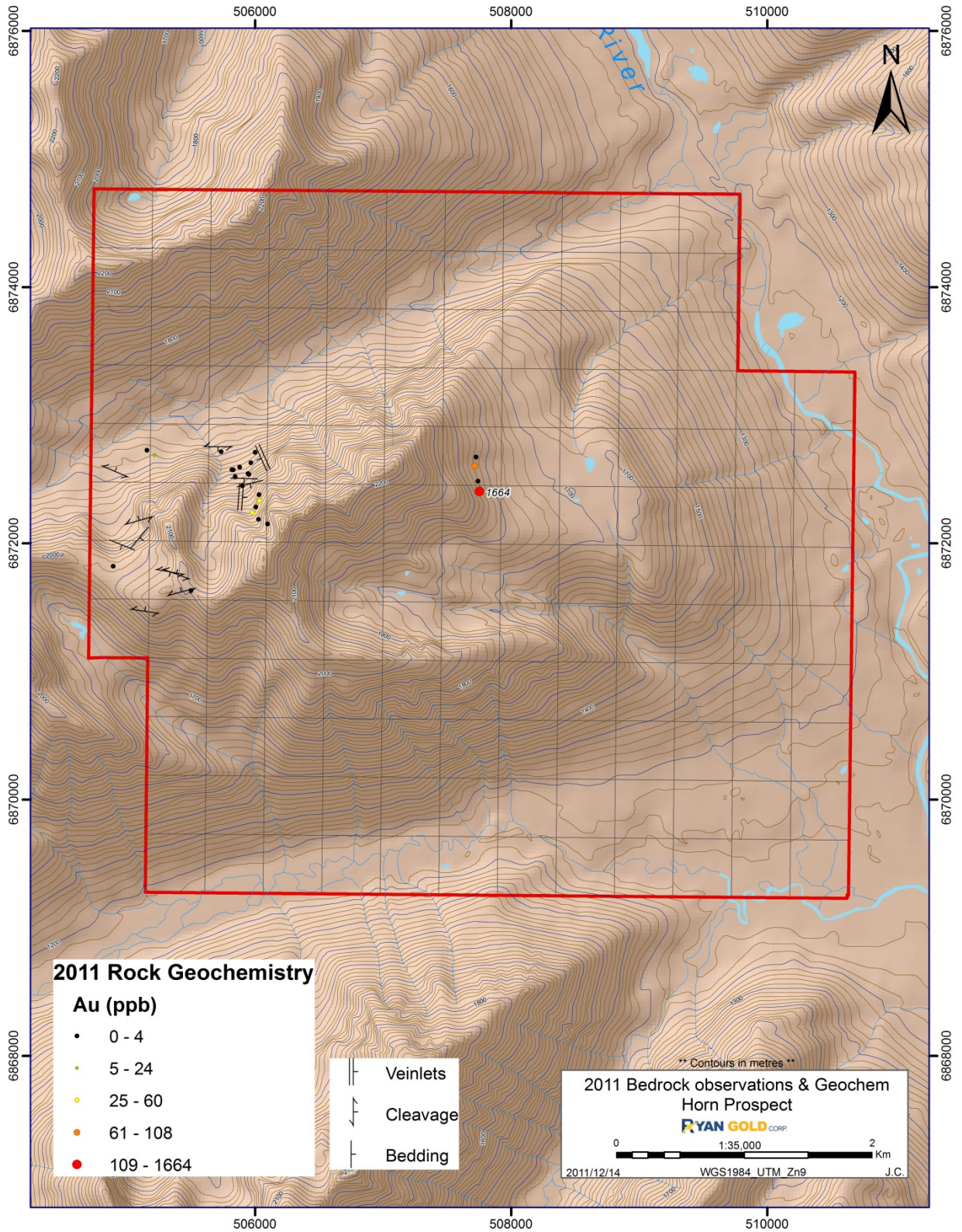


Figure 6: Distribution of 2011 bedrock and rock geochemical data. Only highest gold in rock value is labeled. Underlying bedrock geology polygon is that of Gordey and Makepeace (2001). Topographic contour interval = 10 metres.

5. CONCLUSIONS

The Horn prospect is underlain by siliciclastic rocks representing the basal unit(s) of the Selwyn Basin. Rocks have been intensely folded and are likely part of a larger, more regional fold and thrust belt in which sheeted and stock-work quartz veining (m – mm scale) is prevalent. Although visible gold mineralization has not been identified with quartz veins on the Horn property, elsewhere in the region (e.g. 3 Ace property of Northern Tiger), visible gold mineralization is known to be associated with metre thick quartz veins. Gold values exceeding 1000 ppb in soil and rock samples collected within the boundaries of the Horn prospect area may point to the presence of such gold bearing quartz veins on the east side of the property, and more specifically may be associated with hinge-parallel veins.

6. RECOMMENDATIONS

Based on data presented in this report, recommendations for further exploration include:

- i) Detailed, property scale mapping beginning in the eastern part of the property where anomalous Au values were obtained in the 2006 soil survey, and corroborated with 2011 rock geochemical data.
- ii) Expand mapping outward from areas with known enriched Au values with particular importance placed on establishing a solid understanding of the orientation of large scale folds relative to the orientation of quartz veins.

7. STATEMENT OF QUALIFICATIONS

I, Joyia Chakungal, of #20 Cranberry Road in Mendenhall Subdivision, Yukon Territory do hereby certify that:

1. I am a graduate of the University of Western Ontario (1999) and Dalhousie University (2002 & 2007) with a Bachelor of Science, Master of Science and PhD in Earth Sciences.
2. Since 2006, upon completion of the PhD degree, I have practiced my profession as a full-time geologist.
3. I was hired by the Ryan Gold Corp. in the spring of 2011, and have actively engaged in mineral exploration in Yukon since that time.
4. I personally participated in the field work reported herein, and have completed this report on behalf of my employer, the Ryan Gold Corp.

Joyia Chakungal, PhD

8. REFERENCES

Héon, D. (compiler), 2003. Yukon Regional Geochemical Database 2003 - Stream sediment analyses. Exploration and Geological Services Division, Yukon Region, Indian and Northern Affairs Canada.

Lowe, C., Miles, W., Kung, R. and Makepeace, A.J. 2003. Aeromagnetic data over the Yukon Territory *in* Yukon digital geology, Version 2.0, S.P. Gordey and A.J. Makepeace (comp.); Geological Survey of Canada Open File 1749 and Yukon Geological Survey Open File 2003-9(D).

Roots, E.F.; Green, L.H.; Roddick, J.A.; Blusson, S.L. 1966. Geology, Frances Lake, Yukon Territory and District of Mackenzie. Geological Survey of Canada, Preliminary Map, 6-1966.

YGS IDS, 2011. Yukon Geological Survey integrated database system. Yukon Geological Survey, <http://data.geology.gov.yk.ca> [accessed October 28, 2011]

APPENDIX A

2011 Field data

ObservID	Project	Prospect	Area	ObservType	Long_Dec	Lat_Dec	LatLongDatum	LatLongSource	Easting	Northing	EastNorthDatum	Elevation	SurveyType	Date
RG07_11082816151	Cantung	Horn	Horn	Geology	-128.892208	61.98758	LL_WGS84	GeoInfoMobile	505648.1478	6872801.24	UTMZ9N_WGS84	1620.9	GPS	28/08/2011
RG07_11082816462	Cantung	Horn	Horn	Geology	-128.889027	61.985642	LL_WGS84	GeoInfoMobile	505815.1968	6872585.627	UTMZ9N_WGS84	1701.9	GPS	28/08/2011
RG07_11082817303	Cantung	Horn	Horn	Geology	-128.887935	61.985317	LL_WGS84	GeoInfoMobile	505872.4822	6872549.52	UTMZ9N_WGS84	1796.7	GPS	28/08/2011
RG07_11083009365	Cantung	Horn	Horn	Geology	-128.887433	61.984342	LL_WGS84	GeoInfoMobile	505898.9766	6872440.95	UTMZ9N_WGS84	1839.7	GPS	30/08/2011
RG07_11083010396	Cantung	Horn	Horn	Geology	-128.885955	61.982342	LL_WGS84	GeoInfoMobile	505976.8213	6872218.284	UTMZ9N_WGS84	1985.1	GPS	30/08/2011
RG07_11083011527	Cantung	Horn	Horn	Geology	-128.883605	61.98171	LL_WGS84	GeoInfoMobile	506100.1053	6872148.097	UTMZ9N_WGS84	2136.3	GPS	30/08/2011
RG07_11083013578	Cantung	Horn	Horn	Geology	-128.886337	61.982655	LL_WGS84	GeoInfoMobile	505956.7406	6872253.117	UTMZ9N_WGS84	1978	GPS	30/08/2011
RG07_11083014489	Cantung	Horn	Horn	Geology	-128.885708	61.983543	LL_WGS84	GeoInfoMobile	505989.5304	6872352.099	UTMZ9N_WGS84	1941.7	GPS	30/08/2011
RG07_11083014520	Cantung	Horn	Horn	Geology	-128.885727	61.98357	LL_WGS84	GeoInfoMobile	505988.5294	6872355.105	UTMZ9N_WGS84	1946.1	GPS	30/08/2011
RG07_11083112341	Cantung	Horn	Hornn	Geology	-128.88612	61.986033	LL_WGS84	GeoInfoMobile	505967.4526	6872629.448	UTMZ9N_WGS84	1756.4	GPS	31/08/2011
RG07_11090112392	Cantung	Horn	Hornn	Geology	-128.852117	61.984213	LL_WGS84	GeoInfoMobile	507749.7121	6872430.292	UTMZ9N_WGS84	1850.7	GPS	01/09/2011
RG07_11090113193	Cantung	Horn	Hornn	Geology	-128.847905	61.98377	LL_WGS84	GeoInfoMobile	507970.5546	6872381.452	UTMZ9N_WGS84	1758.4	GPS	01/09/2011
RG14_11083009014	Cantung	Horn		Geology	-128.891013	61.986242	LL_WGS84	GeoInfoMobile	505711.0144	6872652.291	UTMZ9N_WGS84	1727.5	GPS	30/08/2011
RG14_11083012085	Cantung	Horn		Geology	-128.887178	61.983852	LL_WGS84	GeoInfoMobile	505912.4345	6872386.387	UTMZ9N_WGS84	1888.7	GPS	30/08/2011
RG14_11083109577	Cantung	Horn		Geology	-128.906203	61.979292	LL_WGS84	GeoInfoMobile	504916.1643	6871876.813	UTMZ9N_WGS84	1929.3	GPS	31/08/2011
RG14_11083111388	Cantung	Horn		Geology	-128.906	61.977717	LL_WGS84	GeoInfoMobile	504927.0582	6871701.372	UTMZ9N_WGS84	1997.5	GPS	31/08/2011
RG14_11083112009	Cantung	Horn		Geology	-128.901685	61.976562	LL_WGS84	GeoInfoMobile	505153.426	6871573.04	UTMZ9N_WGS84	2067.3	GPS	31/08/2011
RG14_11083112120	Cantung	Horn		Geology	-128.898562	61.977467	LL_WGS84	GeoInfoMobile	505316.9682	6871674.109	UTMZ9N_WGS84	2087.8	GPS	31/08/2011
RG14_11083113021	Cantung	Horn		Geology	-128.89703	61.977895	LL_WGS84	GeoInfoMobile	505397.1937	6871721.915	UTMZ9N_WGS84	2109.1	GPS	31/08/2011
RG14_11083113432	Cantung	Horn		Geology	-128.896637	61.979125	LL_WGS84	GeoInfoMobile	505417.5747	6871858.97	UTMZ9N_WGS84	2083.7	GPS	31/08/2011
RG14_11083114363	Cantung	Horn		Geology	-128.900987	61.980127	LL_WGS84	GeoInfoMobile	505189.4075	6871970.238	UTMZ9N_WGS84	1949.5	GPS	31/08/2011
RG14_11083115244	Cantung	Horn		Geology	-128.903342	61.982903	LL_WGS84	GeoInfoMobile	505065.5182	6872279.3	UTMZ9N_WGS84	1817.9	GPS	31/08/2011
RG14_11083116125	Cantung	Horn		Geology	-128.90561	61.986317	LL_WGS84	GeoInfoMobile	504946.107	6872659.447	UTMZ9N_WGS84	1665.1	GPS	31/08/2011
RG14_11083116256	Cantung	Horn		Geology	-128.905535	61.986492	LL_WGS84	GeoInfoMobile	504950.0086	6872678.948	UTMZ9N_WGS84	1673.2	GPS	31/08/2011

ObservID	Observer	Country	StateProvince	LoadFile	Geo_ObservType	Geo_Lithology	Geo_LithModifier	Geo_LithModifier2	Geo_Colour
RG07_11082816151	IGendall	Canada	Yukon	Observations_RG07_201109020623.txt	Float	Quartzite	Veined		BrownLight
RG07_11082816462	IGendall	Canada	Yukon	Observations_RG07_201109020623.txt	Float	Quartzite			BrownDark
RG07_11082817303	IGendall	Canada	Yukon	Observations_RG07_201109020623.txt	Talus	Phyllite	Foliated		Grey
RG07_11083009365	IGendall	Canada	Yukon	Observations_RG07_201109020623.txt	Talus	Shale	Veined		BrownLight
RG07_11083010396	IGendall	Canada	Yukon	Observations_RG07_201109020623.txt	Talus	Quartzite	Veined		GreyLight
RG07_11083011527	IGendall	Canada	Yukon	Observations_RG07_201109020623.txt	Outcrop	Quartzite	Veined		BrownLight
RG07_11083013578	IGendall	Canada	Yukon	Observations_RG07_201109020623.txt	Talus	Quartzite	Veined		GreyLight
RG07_11083014489	IGendall	Canada	Yukon	Observations_RG07_201109020623.txt	Outcrop	Quartzite	Veined		GreyLight
RG07_11083014520	IGendall	Canada	Yukon	Observations_RG07_201109020623.txt	Outcrop	Quartzite	Veined		GreyLight
RG07_11083112341	IGendall	Canada	Yukon	Observations_RG07_201109020623.txt	Outcrop	Siltstone	Fractured	Foliated	BrownLight
RG07_11090112392	IGendall	Canada	Yukon	Observations_RG07_201109020623.txt	Talus	Conglomerate	Veined		BrownLight
RG07_11090113193	IGendall	Canada	Yukon	Observations_RG07_201109020623.txt	Outcrop	Siltstone	Veined		GreyDark
RG14_11083009014	JChakungal	Canada	Yukon	Observations_RG14_201108311718.txt	Outcrop	Siltstone	Foliated	Veined	Brown
RG14_11083012085	JChakungal	Canada	Yukon	Observations_RG14_201108311718.txt	Outcrop	Conglomerate	Veined	Foliated	Grey
RG14_11083109577	JChakungal	Canada	Yukon	Observations_RG14_201108311718.txt	Outcrop	Dolomite	Siliceous	Bedded	Orange
RG14_11083111388	JChakungal	Canada	Yukon	Observations_RG14_201108311718.txt	Talus	Sandstone	Veined	Disseminated	Green
RG14_11083112009	JChakungal	Canada	Yukon	Observations_RG14_201108311718.txt	Outcrop	Shale	Foliated		Grey
RG14_11083112120	JChakungal	Canada	Yukon	Observations_RG14_201108311718.txt	Outcrop	Dolomite	Siliceous	Disseminated	Orange
RG14_11083113021	JChakungal	Canada	Yukon	Observations_RG14_201108311718.txt	Outcrop	Sandstone	Disseminated	Foliated	Green
RG14_11083113432	JChakungal	Canada	Yukon	Observations_RG14_201108311718.txt	Outcrop	Sandstone	Veined	GrainedCoarse	Grey
RG14_11083114363	JChakungal	Canada	Yukon	Observations_RG14_201108311718.txt	Outcrop	Sandstone	Veined		GreenLight
RG14_11083115244	JChakungal	Canada	Yukon	Observations_RG14_201108311718.txt	Outcrop	Shale	Foliated	Disseminated	Green
RG14_11083116125	JChakungal	Canada	Yukon	Observations_RG14_201108311718.txt	Outcrop	Shale	Foliated		Grey
RG14_11083116256	JChakungal	Canada	Yukon	Observations_RG14_201108311718.txt	Outcrop	Conglomerate	Veined		Grey

ObservID	Geo_Oxidation	Geo_AltType	Geo_AltStyle	Geo_AltIntensity	Geo_AltMin1	Geo_AltMin1Percent	Geo_AltMin2	Geo_MinStyle	Geo_MinIntensity	Geo_MinMin1
RG07_11082816151	Oxidized		Veinlet<1cm	1_Trace	Goethite	5		Disseminated	1_Trace	Pyrite
RG07_11082816462	Oxidized							Disseminated	3_Moderate	Pyrite
RG07_11082817303			Patchy	2_Weak	Goethite	2		Patchy	2_Weak	Malachite
RG07_11083009365			Pervasive	3_Moderate	Chlorite	15		Vein>1cm	3_Moderate	Pyrite
RG07_11083010396								Vein>1cm	2_Weak	Pyrite
RG07_11083011527										
RG07_11083013578		Chloritic	Disseminated	3_Moderate	Chlorite	2		DissemVeins	2_Weak	Pyrite
RG07_11083014489										
RG07_11083014520										
RG07_11083112341										
RG07_11090112392										
RG07_11090113193										
RG14_11083009014										Pyrite
RG14_11083012085					Goethite		Jarosite			Pyrite
RG14_11083109577					Goethite					Pyrite
RG14_11083111388										
RG14_11083112009										
RG14_11083112120										
RG14_11083113021										Pyrite
RG14_11083113432										
RG14_11083114363										
RG14_11083115244										Pyrite
RG14_11083116125										
RG14_11083116256										

ObservID	Geo_MinMin1Percent	Geo_MinMin2	Geo_MinMin2Percent	Geo_StructureType	Geo_StructureAzm	Geo_StructureDecl	Geo_StructureDip	Geo_StructureDipDirection
RG07_11082816151	0.2							
RG07_11082816462	2	Pyrrhotite	2					
RG07_11082817303	0.5	Pyrite	0.5					
RG07_11083009365	2							
RG07_11083010396	0.5							
RG07_11083011527				Vein>1cm	68		58	158
RG07_11083013578	1							
RG07_11083014489				Bedding	76		52	166
RG07_11083014520				Veinlet<1cm	4		80	94
RG07_11083112341				Veinlet<1cm	156		85	246
RG07_11090112392					238		60	328
RG07_11090113193								
RG14_11083009014				Cleavage	90		50	180
RG14_11083012085				Bedding	92		35	182
RG14_11083109577		Malachite		Bedding	112		29	202
RG14_11083111388								
RG14_11083112009				Cleavage	278		37	8
RG14_11083112120				Cleavage	100		40	190
RG14_11083113021				Cleavage	255		28	345
RG14_11083113432				Cleavage	290		55	20
RG14_11083114363				Bedding	40		30	130
RG14_11083115244				Cleavage	254		50	344
RG14_11083116125				Cleavage	293		80	23
RG14_11083116256								

ObservID	Geo_Structure2Type	Geo_Structure2Azm	Geo_Structure2Decl	Geo_Structure2Dip	Geo_Structure2DipDirection
RG07_11082816151					
RG07_11082816462					
RG07_11082817303					
RG07_11083009365					
RG07_11083010396					
RG07_11083011527					
RG07_11083013578					
RG07_11083014489					
RG07_11083014520					
RG07_11083112341	Bedding	90		47	180
RG07_11090112392					
RG07_11090113193					
RG14_11083009014					
RG14_11083012085	Cleavage	97		80	187
RG14_11083109577	Cleavage	100		55	190
RG14_11083111388					
RG14_11083112009					
RG14_11083112120	Bedding	132		60	222
RG14_11083113021					
RG14_11083113432	Bedding	338		25	68
RG14_11083114363					
RG14_11083115244	Bedding	176		55	266
RG14_11083116125					
RG14_11083116256					

ObservID	Geo_Comments
RG07_11082816151	
RG07_11082816462	
RG07_11082817303	
RG07_11083009365	
RG07_11083010396	
RG07_11083011527	
RG07_11083013578	
RG07_11083014489	
RG07_11083014520	
RG07_11083112341	
RG07_11090112392	
RG07_11090113193	
RG14_11083009014	122-25 = intersection lineation of bedding on cleavage surface. See photos 1019-1023.jpg. siltstones interbedded with shales, minor limestone and fine-med sandstone. situated above thickly bedded
RG14_11083012085	w/ loads of disseminated, iron oxide. qtz filled (dextral?) fault surface: 130/85; slickenlines: 310-05; fracture: 356/74. See photos 1026-1031.jpg.
RG14_11083109577	pyrite looks diagenetic as it is confined to certain beds within the o/c. Cleavage development is obvious though not pronounced. see photos 1049-1055.jpg. At structural base, unit is interbedded with
RG14_11083111388	no o/c apparent. intensely veined. See photos 1064, 1065.jpg
RG14_11083112009	(see photos 1066).
RG14_11083112120	bedding orientation has swung a bit to the west and steepend (see photos 1067,1071). cleavage orientation here is opposite that measured in dolostones at beginning of day.
RG14_11083113021	
RG14_11083113432	for bedding - cleavage relationship see photos 1075.jpg. measured in fine sandstones - siltstones down slope from stn location.
RG14_11083114363	interbedded with green shales
RG14_11083115244	see photos 1076,1077.
RG14_11083116125	300-10 = intersection lineation of bedding with cleavage surface (see photo 1078.jpg).
RG14_11083116256	pebble are predominantly qtz. probably the same bed as the one 'below' yesterday's first obs stn. in otherwords, may likely be the same bed as the o/c immediately above camp. photo 1079.jpg.

ObservID	Easting_MapInfo	Northing_MapInfo
RG07_11082816151	505648.1478	6872801.24
RG07_11082816462	505815.1968	6872585.627
RG07_11082817303	505872.4822	6872549.52
RG07_11083009365	505898.9766	6872440.95
RG07_11083010396	505976.8213	6872218.284
RG07_11083011527	506100.1053	6872148.097
RG07_11083013578	505956.7406	6872253.117
RG07_11083014489	505989.5304	6872352.099
RG07_11083014520	505988.5294	6872355.105
RG07_11083112341	505967.4526	6872629.448
RG07_11090112392	507749.7121	6872430.292
RG07_11090113193	507970.5546	6872381.452
RG14_11083009014	505711.0144	6872652.291
RG14_11083012085	505912.4345	6872386.387
RG14_11083109577	504916.1643	6871876.813
RG14_11083111388	504927.0582	6871701.372
RG14_11083112009	505153.426	6871573.04
RG14_11083112120	505316.9682	6871674.109
RG14_11083113021	505397.1937	6871721.915
RG14_11083113432	505417.5747	6871858.97
RG14_11083114363	505189.4075	6871970.238
RG14_11083115244	505065.5182	6872279.3
RG14_11083116125	504946.107	6872659.447
RG14_11083116256	504950.0086	6872678.948

SampleNum	SampleType	SampleDate	Sampler	Country	StateProvince	Project	Prospect	Area	Long_Dec	Lat_Dec	LatLongDatum	LatLongSource	Elevation	SurveyType	Easting
50101	Rock	28/08/2011	JChakungal	Canada	Yukon	Cantung	Horn		-128.901598	61.986915	LL_WGS84	GeoInfoMobile	1657.8	GPS	505156.2377
50102	Rock	28/08/2011	JChakungal	Canada	Yukon	Cantung	Horn		-128.900472	61.986583	LL_WGS84	GeoInfoMobile	1674.9	GPS	505215.2965
50103	Rock	30/08/2011	JChakungal	Canada	Yukon	Cantung	Horn		-128.888935	61.985543	LL_WGS84	GeoInfoMobile	1759.4	GPS	505820.0366
50104	Rock	30/08/2011	JChakungal	Canada	Yukon	Cantung	Horn		-128.888465	61.985057	LL_WGS84	GeoInfoMobile	1797.6	GPS	505844.7586
50105	Rock	30/08/2011	JChakungal	Canada	Yukon	Cantung	Horn		-128.885382	61.982938	LL_WGS84	GeoInfoMobile	1986.3	GPS	506006.7336
50106	Rock	30/08/2011	JChakungal	Canada	Yukon	Cantung	Horn		-128.884865	61.983372	LL_WGS84	GeoInfoMobile	1972.4	GPS	506033.742
50107	Rock	31/08/2011	JChakungal	Canada	Yukon	Cantung	Horn		-128.906662	61.978805	LL_WGS84	GeoInfoMobile	1955.6	GPS	504892.1849
50108	Rock	31/08/2011	JChakungal	Canada	Yukon	Cantung	Horn		-128.895087	61.977082	LL_WGS84	GeoInfoMobile	2118.7	GPS	505499.1828
50551	Rock	28/08/2011	IGendall	Canada	Yukon	Cantung	Horn	Horn	-128.888742	61.985543	LL_WGS84	GeoInfoMobile	1753.7	GPS	505830.1502
50552	Rock	30/08/2011	IGendall	Canada	Yukon	Cantung	Horn	Horn	-128.887403	61.984425	LL_WGS84	GeoInfoMobile	1838.9	GPS	505900.5327
50553	Rock	30/08/2011	IGendall	Canada	Yukon	Cantung	Horn	Horn	-128.883738	61.981713	LL_WGS84	GeoInfoMobile	2136	GPS	506093.1344
50554	Rock	30/08/2011	IGendall	Canada	Yukon	Cantung	Horn	Horn	-128.883643	61.981743	LL_WGS84	GeoInfoMobile	2145.6	GPS	506098.1072
50555	Rock	30/08/2011	IGendall	Canada	Yukon	Cantung	Horn	Horn	-128.885002	61.982068	LL_WGS84	GeoInfoMobile	2061.4	GPS	506026.8198
50556	Rock	30/08/2011	IGendall	Canada	Yukon	Cantung	Horn	Horn	-128.885895	61.982532	LL_WGS84	GeoInfoMobile	2001.5	GPS	505979.9286
50557	Rock	30/08/2011	IGendall	Canada	Yukon	Cantung	Horn	Horn	-128.884903	61.983795	LL_WGS84	GeoInfoMobile	1935.3	GPS	506031.667
50558	Rock	31/08/2011	IGendall	Canada	Yukon	Cantung	Horn	Hornn	-128.890557	61.986803	LL_WGS84	GeoInfoMobile	1711.7	GPS	505734.8038
50559	Rock	31/08/2011	IGendall	Canada	Yukon	Cantung	Horn	Hornn	-128.886542	61.985272	LL_WGS84	GeoInfoMobile	1791.8	GPS	505945.4875
50560	Rock	31/08/2011	IGendall	Canada	Yukon	Cantung	Horn	Hornn	-128.887768	61.985727	LL_WGS84	GeoInfoMobile	1734.9	GPS	505881.1544
50561	Rock	31/08/2011	IGendall	Canada	Yukon	Cantung	Horn	Hornn	-128.88639	61.985223	LL_WGS84	GeoInfoMobile	1770	GPS	505953.4623
50562	Rock	31/08/2011	IGendall	Canada	Yukon	Cantung	Horn	Hornn	-128.886117	61.986033	LL_WGS84	GeoInfoMobile	1755.7	GPS	505967.6098
50563	Rock	31/08/2011	IGendall	Canada	Yukon	Cantung	Horn	Hornn	-128.885498	61.986765	LL_WGS84	GeoInfoMobile	1754.2	GPS	505999.9023
50566	Rock	01/09/2011	IGendall	Canada	Yukon	Cantung	Horn	Hornn	-128.852542	61.986397	LL_WGS84	GeoInfoMobile	1827.1	GPS	507726.8875
50567	Rock	01/09/2011	IGendall	Canada	Yukon	Cantung	Horn	Hornn	-128.852735	61.985773	LL_WGS84	GeoInfoMobile	1824.9	GPS	507716.9319
50568	Rock	01/09/2011	IGendall	Canada	Yukon	Cantung	Horn	Hornn	-128.852265	61.984713	LL_WGS84	GeoInfoMobile	1838.2	GPS	507741.8295
50569	Rock	01/09/2011	IGendall	Canada	Yukon	Cantung	Horn	Hornn	-128.85205	61.983987	LL_WGS84	GeoInfoMobile	1822.3	GPS	507753.2806
50570	Rock	01/09/2011	IGendall	Canada	Yukon	Cantung	Horn	Hornn	-128.8479	61.983773	LL_WGS84	GeoInfoMobile	1759.1	GPS	507970.8158

SampleNum	Northing	EastNorthDatum	EastNorthSource	LoadFile	LoadComment	R_SampleType	R_SampleWidth	R_Lithology
50101	6872726.377	UTMZ9N_WGS84		GeochemSC_RG14_201108311718.txt	; UTM values converted from Lat Longs	FloatGrab		VeinQuartz
50102	6872689.482	UTMZ9N_WGS84		GeochemSC_RG14_201108311718.txt	; UTM values converted from Lat Longs	FloatGrab	10	Conglomerate
50103	6872574.606	UTMZ9N_WGS84		GeochemSC_RG14_201108311718.txt	; UTM values converted from Lat Longs	FloatGrab		Conglomerate
50104	6872520.508	UTMZ9N_WGS84		GeochemSC_RG14_201108311718.txt	; UTM values converted from Lat Longs	FloatGrab		Siltstone
50105	6872284.731	UTMZ9N_WGS84		GeochemSC_RG14_201108311718.txt	; UTM values converted from Lat Longs	OutcropGrab		Siltstone
50106	6872333.127	UTMZ9N_WGS84		GeochemSC_RG14_201108311718.txt	; UTM values converted from Lat Longs	OutcropGrab		Conglomerate
50107	6871822.526	UTMZ9N_WGS84		GeochemSC_RG14_201108311718.txt	; UTM values converted from Lat Longs	OutcropGrab	5	VeinQuartz
50108	6871631.509	UTMZ9N_WGS84		GeochemSC_RG14_201108311718.txt	; UTM values converted from Lat Longs	OutcropGrab		Sandstone
50551	6872574.624	UTMZ9N_WGS84		GeochemSC_RG07_201109020623.txt	; UTM values converted from Lat Longs	FloatGrab		Quartzite
50552	6872450.199	UTMZ9N_WGS84		GeochemSC_RG07_201109020623.txt	; UTM values converted from Lat Longs	FloatGrab		Shale
50553	6872148.419	UTMZ9N_WGS84		GeochemSC_RG07_201109020623.txt	; UTM values converted from Lat Longs	OutcropGrab		Quartzite
50554	6872151.77	UTMZ9N_WGS84	GeoInfoMobile	GeochemSC_RG07_201109020623.txt	; UTM values converted from Lat Longs	OutcropChip		Quartzite
50555	6872187.848	UTMZ9N_WGS84	GeoInfoMobile	GeochemSC_RG07_201109020623.txt	; UTM values converted from Lat Longs	OutcropGrab		Quartzite
50556	6872239.455	UTMZ9N_WGS84		GeochemSC_RG07_201109020623.txt	; UTM values converted from Lat Longs	FloatGrab		Quartzite
50557	6872380.246	UTMZ9N_WGS84		GeochemSC_RG07_201109020623.txt	; UTM values converted from Lat Longs	OutcropGrab		Shale
50558	6872714.827	UTMZ9N_WGS84		GeochemSC_RG07_201109020623.txt	; UTM values converted from Lat Longs	TalusGrab		Quartzite
50559	6872544.634	UTMZ9N_WGS84		GeochemSC_RG07_201109020623.txt	; UTM values converted from Lat Longs	TalusGrab		Shale
50560	6872595.209	UTMZ9N_WGS84		GeochemSC_RG07_201109020623.txt	; UTM values converted from Lat Longs	TalusGrab		Quartzite
50561	6872539.189	UTMZ9N_WGS84		GeochemSC_RG07_201109020623.txt	; UTM values converted from Lat Longs	OutcropGrab		Shale
50562	6872629.448	UTMZ9N_WGS84		GeochemSC_RG07_201109020623.txt	; UTM values converted from Lat Longs	OutcropChip		Siltstone
50563	6872711.051	UTMZ9N_WGS84		GeochemSC_RG07_201109020623.txt	; UTM values converted from Lat Longs	OutcropChip		Shale
50566	6872673.541	UTMZ9N_WGS84		GeochemSC_RG07_201109020623.txt	; UTM values converted from Lat Longs	TalusGrab		Quartzite
50567	6872604.004	UTMZ9N_WGS84		GeochemSC_RG07_201109020623.txt	; UTM values converted from Lat Longs	TalusGrab		Quartzite
50568	6872485.975	UTMZ9N_WGS84		GeochemSC_RG07_201109020623.txt	; UTM values converted from Lat Longs	TalusGrab		Shale
50569	6872405.124	UTMZ9N_WGS84		GeochemSC_RG07_201109020623.txt	; UTM values converted from Lat Longs			Conglomerate
50570	6872381.787	UTMZ9N_WGS84		GeochemSC_RG07_201109020623.txt	; UTM values converted from Lat Longs	OutcropGrab		Siltstone

SampleNum	R_LithModifier	R_LithModifier2	R_Colour	R_Oxidation	R_AltType	R_AltStyle	R_AltIntensity	R_AltMin1	R_AltMin1Percent	R_AltMin2	R_AltMin2Percent	R_MinStyle
50101			White					Goethite		Epidote		
50102	Foliated	Veined	Grey					Jarosite		Goethite		
50103	Veined	Disseminated	Green					Goethite				
50104	Foliated	Veined	Grey									
50105	Foliated	Disseminated	Grey	Oxidized				Jarosite		Goethite		
50106	Veined	Disseminated	Grey									
50107			White									
50108	Veined	Disseminated	GreyDark									
50551	Foliated	Fractured	BrownDark	Oxidized		Fracture	3_Moderate	Goethite	20			Disseminated
50552	Veined		BrownLight			Pervasive	3_Moderate	Chlorite	15			Vein>1cm
50553	Veined		BrownLight									Veinlet<1cm
50554	Veined		BrownDark				2_Weak	Chlorite	2			DissemVeins
50555	Veined		BrownDark			Pervasive	2_Weak	Chlorite	5			DissemVeins
50556	Veined		GreyLight		Chloritic	Disseminated	2_Weak	Chlorite	10			DissemVeins
50557	Veined		BrownLight									DissemVeins
50558	Veined		GreenLight	PartlyOxidized	Chloritic	Pervasive	3_Moderate	Chlorite	10	Goethite	5	DissemVeins
50559	Veined	Foliated	GreyLight	PartlyOxidized		Patchy	2_Weak	Chlorite	1			Patchy
50560	Veined		GreenLight		Chloritic	Pervasive	3_Moderate	Chlorite	10			DissemVeins
50561	Carbonaceous	Veined	GreyDark	Oxidized				Goethite	5			Fracture
50562	Foliated	Fractured	BrownLight					Goethite	5			Disseminated
50563	Carbonaceous	Veined	GreyDark	PartlyOxidized				Goethite	10			Fracture
50566	Veined	Chlorite	GreyLight		Chloritic			Chlorite	5			Fracture
50567	Veined		BrownLight			Pervasive	2_Weak	Chlorite	2			DissemVeins
50568	Veined		GreyDark									DissemVeins
50569			BrownLight									Fracture
50570	Veined		GreyDark									

SampleNum	R_MinIntensity	R_MinSecStyle	R_MinSecIntensity	R_MinMin1	R_MinMin1Percent	R_MinMin2	R_MinMin2Percent	R_MinMin3	R_MinMin3Percent	R_StructureType
50101				Arsenopyrite						
50102				Pyrite						
50103				Pyrite						
50104				Pyrite		Pyrrhotite		Chalcopyrite		
50105				Pyrite		Pyrrhotite		Chalcopyrite		Cleavage
50106										Cleavage
50107										Cleavage
50108				Pyrite						Cleavage
50551	3_Moderate			Pyrrhotite	10	Pyrite	3	Chalcopyrite	1	
50552	3_Moderate			Pyrite	2					
50553	3_Moderate			Pyrite	1					
50554	3_Moderate			Pyrite	2	Pyrrhotite	1			
50555	2_Weak			Pyrite	1					
50556	2_Weak			Pyrite	2					
50557	2_Weak			Pyrite	1					
50558	2_Weak			Pyrite	1					
50559	2_Weak			Goethite	10					
50560	3_Moderate			Goethite	2	Pyrite	1			
50561	3_Moderate			Goethite	5					Cleavage
50562	2_Weak			Goethite	5					Bedding
50563	3_Moderate	Stringers	3_Moderate	Goethite	10					
50566	2_Weak			Goethite	5					
50567	3_Moderate			Goethite	5	Pyrite	2			
50568	2_Weak			Goethite	5					
50569	3_Moderate			Goethite	10	Pyrite	1			Vein>1cm
50570										

SampleNum	R_StructureAzm	R_StructureDecl	R_StructureDip	R_StructureDipDirection	R_Structure2Type	R_Structure2Azm	R_Structure2Decl	R_Structure2Dip	R_Structure2DipDirection
50101									
50102									
50103									
50104									
50105	112		70	202					
50106	100		80	190					
50107	71		40	161	Bedding	55		20	145
50108	300		25	30					
50551									
50552									
50553									
50554	66		60	156					
50555									
50556									
50557									
50558									
50559									
50560									
50561	300		60	30					
50562	90		50	180					
50563									
50566									
50567									
50568									
50569	271		50	1					
50570									

SampleNum R_Comments

50101 intruding qtz pebble cgl's that are interbedded with med-fine sandstones, siltstones and shales. Qtz veins most commonly w/very drk brown weathered sulphides, minor epidote, fe-carbonate? See photos 1009-1013.jpg

50102 pyrite looks like it may have precipitated along cleavage planes in qtzite small pebble (<1cm) conglomerate. See photos 1009-1013.jpg

50103 maybe some chalcopyrite? no pyrrhotite. see hand sample.

50104 grab sample of siltstones and shales. siltstones have pyrrhotite and possible chalcopyrite, shales on the other hand have maggot shaped blebs of pyrite and pyrrhotite with chalcopyrite along fractures (?). see photos 1034-1040.jpg

50105 intersection lineation of bedding with cleavage surface: 182-67. see photos 1034-1040.jpg

50106 measured in carbonaceous shales 2m north of sample location. See photos 1042-1048.jpg

50107 qtz vein intrudes grey well bedded and foliated siltstones-shales. Shales have disseminated pyrite throughout. Qtz looks bland and devoid of any sulphides. (see photos 1062,1063). note, qtz vein was not sampled

50108 (see photos 1072,1073.jpg). fine disseminated pyrite throughout. cleavage measured 5m north of sample site, in shales. heading down towards camp as hail beginning.

50551

50552

50553

50554

50555

50556

50557

50558

50559

50560

50561

50562

50563

50566

50567

50568

50569

50570

SampleNum	R_LineID	R_From	R_To	SampleNo	Fraction	Batch	Lab	Ag (ppm)	Al (%)	As (ppm)	Au (ppb)	Au (ppb)	B (ppm)	Ba (ppm)	Bi (ppm)	Ca (%)	Cd (ppm)	Co (ppm)	Cr (ppm)
50101	;le o/c, but float. structural m			50101	Unknown	WHI11001466	Acme	0.05	0.12	0.7	1	1	10	4	0.05	0.2	0.05	2.2	3
50102				50102	Unknown	WHI11001466	Acme	0.05	0.59	4.4	1	9.2	10	11	0.05	0.32	0.05	4.2	8
50103				50103	Unknown	WHI11001466	Acme	0.05	0.44	2.2	1	0.7	10	10	0.05	0.7	0.05	2.2	6
50104				50104	Unknown	WHI11001466	Acme	0.1	3.25	71.5	9	3.3	10	30	2	0.19	0.05	62.7	42
50105				50105	Unknown	WHI11001466	Acme	0.1	3.74	41.8	3	2.4	10	25	1.1	0.1	0.05	32.3	45
50106				50106	Unknown	WHI11001466	Acme	0.1	0.68	1.2	2	37.5	10	0.5	0.5	0.02	0.05	1.6	11
50107				50107	Unknown	WHI11001466	Acme	0.05	0.01	0.25	1	0.6	10	1	0.05	0.005	0.05	0.2	0.5
50108			50108	Unknown	WHI11001466	Acme	0.1	2.17	6.7	1	0.25	10	16	1.5	0.12	0.05	13.5	22	
50551				50551	Unknown	WHI11001466	Acme	0.05	2.1	2.9	1	0.25	10	8	0.3	0.21	0.05	25.4	42
50552				50552	Unknown	WHI11001466	Acme	0.5	3.07	4.6	1	1.8	10	12	1.5	0.1	1.5	11.4	24
50553				50553	Unknown	WHI11001466	Acme	0.05	0.65	0.5	4	24.1	10	6	0.2	0.36	0.05	6	8
50554				50554	Unknown	WHI11001466	Acme	0.05	0.94	0.7	1	1.1	10	9	0.2	0.64	0.05	10.2	11
50555				50555	Unknown	WHI11001466	Acme	0.2	0.42	1.9	1	3.5	10	7	0.8	0.24	0.05	5.2	9
50556				50556	Unknown	WHI11001466	Acme	0.05	0.39	8.1	7	59.6	10	10	0.2	0.38	0.05	3.5	6
50557				50557	Unknown	WHI11001466	Acme	0.2	2.24	3.6	1	0.9	10	16	0.6	0.17	0.05	20.3	24
50558				50558	Unknown	WHI11001466	Acme	0.05	1.43	2.3	1	1.2	10	2	0.05	0.06	0.05	6.7	20
50559				50559	Unknown	WHI11001466	Acme	0.05	2.33	13.8	1	2.3	10	16	0.4	0.15	0.05	7	22
50560				50560	Unknown	WHI11001466	Acme	0.05	0.78	0.25	1	0.5	10	3	0.05	0.26	0.05	4.4	13
50561				50561	Unknown	WHI11001466	Acme	0.2	1.58	22.3	3	0.25	10	16	1.3	1.27	0.05	22.4	17
50562				50562	Unknown	WHI11001466	Acme	0.2	2.57	38.5	4	0.25	10	36	2.9	0.17	0.05	18.7	35
50563				50563	Unknown	WHI11001466	Acme	0.1	1.17	12.5	1	0.25	10	25	0.2	0.17	0.2	11.2	14
50566				50566	Unknown	WHI11001466	Acme	0.05	1.63	9.5	3	2.5	10	12	0.2	0.02	0.05	5.2	14
50567				50567	Unknown	WHI11001466	Acme	0.05	0.62	369.3	234	107.6	10	20	0.1	1.11	0.05	4	9
50568				50568	Unknown	WHI11001466	Acme	0.1	2.66	21.5	12	2.2	10	43	0.5	0.05	0.05	5.1	28
50569				50569	Unknown	WHI11001466	Acme	0.3	0.41	887.2	1084	1664.3	10	18	0.05	0.04	0.2	16.3	4
50570				50570	Unknown	WHI11001466	Acme	0.05	1.25	404.7	95	10.6	10	39	0.3	0.005	0.05	3.4	14

SampleNum	Cu (ppm)	Fe (%)	Ga (ppm)	Hg (ppm)	K (%)	La (ppm)	Mg (%)	Mn (ppm)	Mo (ppm)	Na (%)	Ni (ppm)	P (%)	Pb (ppm)	S (%)	Sb (ppm)	Sc (ppm)	Se (ppm)	Sr (ppm)	Te (ppm)
50101	4.6	0.5	0.5	0.005	0.01	4	0.04	183	0.1	0.003	8.2	0.009	15.7	0.025	0.05	0.3	0.25	5	0.1
50102	7.4	1.2	2	0.005	0.07	10	0.22	148	0.05	0.021	9	0.011	9	0.025	0.05	1.8	0.25	8	0.1
50103	3.8	1.01	1	0.005	0.06	7	0.16	254	0.2	0.024	6.1	0.009	11.5	0.14	0.05	1.3	0.25	25	0.1
50104	118	6.4	8	0.005	0.14	10	1.56	1029	0.9	0.019	64.7	0.091	48.2	0.72	1.5	2.2	0.25	29	0.1
50105	87.2	7.23	10	0.005	0.11	10	2.01	1523	0.6	0.011	45.7	0.055	62	0.6	0.6	2.9	0.25	18	0.1
50106	3.5	1.35	2	0.005	0.005	7	0.31	232	0.05	0.026	3.5	0.009	42.7	0.025	0.05	1.1	0.25	2	0.1
50107	1.3	0.18	0.5	0.005	0.005	1	0.005	31	0.05	0.001	0.4	0.0005	3.1	0.025	0.05	0.05	0.25	1	0.1
50108	30	4.2	5	0.005	0.07	13	1.05	2621	1.5	0.014	37.1	0.011	258.1	0.025	0.05	2.2	0.25	9	0.4
50551	37.1	4.83	6	0.005	0.04	25	1.02	1111	0.2	0.025	52.3	0.011	40.5	0.46	0.2	4.4	0.25	9	0.1
50552	54.1	5.64	7	0.005	0.07	8	1.61	842	0.1	0.004	30	0.042	350	0.17	0.3	2.5	0.6	13	0.1
50553	9.3	2.16	2	0.005	0.03	5	0.39	843	0.05	0.015	12	0.008	25	0.34	0.1	1	0.25	21	0.1
50554	16.3	2.56	3	0.005	0.06	6	0.44	684	0.1	0.018	22.2	0.006	19.2	0.23	0.1	1.7	0.25	22	0.1
50555	15.5	1.37	1	0.005	0.03	6	0.17	710	0.1	0.01	12.1	0.005	100.7	0.025	0.2	1.1	0.25	7	0.1
50556	4.9	1.1	1	0.005	0.07	5	0.13	188	0.2	0.022	6.7	0.007	10.5	0.34	0.1	1.1	0.25	9	0.1
50557	86	4.01	6	0.005	0.1	29	1.02	757	0.8	0.007	41.5	0.027	51.3	0.025	0.3	2.1	0.25	8	0.1
50558	9	3.01	4	0.005	0.01	13	0.62	1005	0.05	0.032	18.5	0.011	11.8	0.025	0.1	2.6	0.25	3	0.1
50559	39.3	4.25	6	0.005	0.11	17	0.99	407	1.1	0.006	25.7	0.073	31.6	0.025	0.05	2.2	0.25	11	0.1
50560	13.1	1.71	2	0.005	0.02	6	0.34	371	0.05	0.021	8.4	0.008	3.5	0.025	0.05	1.9	0.25	9	0.1
50561	82.7	3.39	4	0.005	0.06	8	0.75	837	0.6	0.015	36.8	0.011	61.3	0.13	0.3	1.4	0.25	36	0.2
50562	86.3	6.21	7	0.005	0.14	13	1.17	548	1.2	0.03	43.4	0.046	46.6	0.06	0.5	1.9	0.7	16	0.4
50563	38.2	3.57	3	0.005	0.1	11	0.54	295	1.9	0.012	26.6	0.022	41.3	0.06	0.3	1.5	0.5	11	0.1
50566	8.6	3	4	0.005	0.05	7	0.71	448	0.2	0.016	20.6	0.015	22.4	0.025	0.05	2.4	0.25	3	0.1
50567	7.4	1.55	2	0.005	0.11	16	0.24	253	0.05	0.014	9.9	0.011	19.1	0.025	0.2	1.6	0.25	33	0.1
50568	16.7	4.74	6	0.005	0.18	23	1.06	524	0.3	0.012	25.4	0.043	34.7	0.025	0.05	2.2	0.25	8	0.1
50569	8.8	0.91	0.5	0.005	0.05	11	0.15	211	0.2	0.014	6.6	0.02	10	0.025	0.2	0.5	0.25	6	0.1
50570	20.1	2.68	3	0.005	0.2	12	0.61	214	0.4	0.015	6.5	0.006	13	0.11	0.2	1.6	0.25	5	0.1

SampleNum	Th (ppm)	Ti (%)	Tl (ppm)	V (ppm)	W (ppm)	Wgt_kg_WT_NA	Zn (ppm)	Easting_MapInfo	Northing_MapInfo
50101	0.6	0.0005	0.05	1	0.05	2.47	8	505156.2377	6872726.377
50102	5.1	0.001	0.05	4	0.05	2.78	21	505215.2965	6872689.482
50103	5.3	0.001	0.05	3	0.05	2.6	16	505820.0366	6872574.606
50104	4.1	0.003	0.05	18	0.05	2.23	140	505844.7586	6872520.508
50105	4.7	0.004	0.05	26	0.05	1.64	148	506006.7336	6872284.731
50106	2.1	0.001	0.05	8	0.05	1.87	20	506033.742	6872333.127
50107	0.1	0.0005	0.05	1	0.05	1.92	0.5	504892.1849	6871822.526
50108	7.1	0.006	0.05	16	0.05	1.59	91	505499.1828	6871631.509
50551	6.2	0.004	0.05	30	0.05	2.78	125	505830.1502	6872574.624
50552	2.5	0.005	0.05	19	0.05	1.99	157	505900.5327	6872450.199
50553	3.5	0.002	0.05	5	0.05	1.56	29	506093.1344	6872148.419
50554	4.4	0.001	0.05	10	0.05	2.31	47	506098.1072	6872151.77
50555	3.5	0.0005	0.05	4	0.05	2.01	23	506026.8198	6872187.848
50556	6.3	0.0005	0.05	3	0.05	1.77	14	505979.9286	6872239.455
50557	8	0.002	0.05	15	0.05	2.12	116	506031.667	6872380.246
50558	5.4	0.004	0.05	16	0.05	1.95	58	505734.8038	6872714.827
50559	7.1	0.003	0.05	15	0.05	1.72	81	505945.4875	6872544.634
50560	4.2	0.002	0.05	8	0.05	2.04	29	505881.1544	6872595.209
50561	7.1	0.002	0.05	9	0.05	2.52	76	505953.4623	6872539.189
50562	14.6	0.003	0.05	16	0.05	1.61	114	505967.6098	6872629.448
50563	7.4	0.002	0.05	8	0.05	1.86	92	505999.9023	6872711.051
50566	4.3	0.002	0.05	12	0.05	2.05	60	507726.8875	6872673.541
50567	8.2	0.001	0.05	6	0.05	3.06	23	507716.9319	6872604.004
50568	12.7	0.002	0.05	15	0.05	2.77	81	507741.8295	6872485.975
50569	5	0.0005	0.05	2	0.3	2.44	15	507753.2806	6872405.124
50570	9	0.001	0.05	9	0.1	2.85	43	507970.8158	6872381.787



1020 Cordova St. East Vancouver BC V6A 4A3 Canada

Acme Analytical Laboratories (Vancouver) Ltd.

www.acmelab.com

Client: Ryan Gold Corp.
600 - 666 Burrard St.
Vancouver BC V6C 1H2 Canada

Submitted By: Ian Gendall
Receiving Lab: Canada-Whitehorse
Received: September 21, 2011
Report Date: October 12, 2011
Page: 1 of 2

CERTIFICATE OF ANALYSIS

WHI11001466.1

CLIENT JOB INFORMATION

Project: HORN BET-R
Shipment ID: HORN1
P.O. Number
Number of Samples: 28

SAMPLE DISPOSAL

STOR-PLP Store After 90 days Invoice for Storage
DISP-RJT Dispose of Reject After 90 days

Acme does not accept responsibility for samples left at the laboratory after 90 days without prior written instructions for sample storage or return.

Invoice To: Ryan Gold Corp.
600 - 666 Burrard St.
Vancouver BC V6C 1H2
Canada

CC: Hua Jin
Carrie Wong

SAMPLE PREPARATION AND ANALYTICAL PROCEDURES

Table with 6 columns: Method Code, Number of Samples, Code Description, Test Wgt (g), Report Status, Lab. Rows include R200-250, 3B01+3B04, and 1DX1.

ADDITIONAL COMMENTS



This report supersedes all previous preliminary and final reports with this file number dated prior to the date on this certificate. Signature indicates final approval; preliminary reports are unsigned and should be used for reference only. All results are considered the confidential property of the client. Acme assumes the liabilities for actual cost of analysis only. Results apply to samples as submitted. ** asterisk indicates that an analytical result could not be provided due to unusually high levels of interference from other elements.



Acme Analytical Laboratories (Vancouver) Ltd.
 1020 Cordova St. East Vancouver BC V6A 4A3 Canada
 Phone (604) 253-3158 Fax (604) 253-1716

www.acmelab.com

Client: **Ryan Gold Corp.**
 600 - 666 Burrard St.
 Vancouver BC V6C 1H2 Canada

Project: HORN BET-R
 Report Date: October 12, 2011

Page: 2 of 2 Part 1

CERTIFICATE OF ANALYSIS

WHI11001466.1

Method	WGHT	3B-50	1DX	1DX	1DX	1DX	1DX	1DX	1DX	1DX	1DX	1DX	1DX	1DX	1DX	1DX	1DX	1DX	1DX	1DX	
Analyte	Wgt	Au	Mo	Cu	Pb	Zn	Ag	Ni	Co	Mn	Fe	As	Au	Th	Sr	Cd	Sb	Bi	V	Ca	
Unit	kg	ppb	ppm	ppm	ppm	ppm	ppm	ppm	ppm	ppm	%	ppm	ppb	ppm	ppm	ppm	ppm	ppm	ppm	%	
MDL	0.01	2	0.1	0.1	0.1	1	0.1	0.1	0.1	1	0.01	0.5	0.5	0.1	1	0.1	0.1	0.1	2	0.01	
50104	Rock	2.23	9	0.9	118.0	48.2	140	0.1	64.7	62.7	1029	6.40	71.5	3.3	4.1	29	<0.1	1.5	2.0	18	0.19
50561	Rock	2.52	3	0.6	82.7	61.3	76	0.2	36.8	22.4	837	3.39	22.3	<0.5	7.1	36	<0.1	0.3	1.3	9	1.27
50562	Rock	1.61	4	1.2	86.3	46.6	114	0.2	43.4	18.7	548	6.21	38.5	<0.5	14.6	16	<0.1	0.5	2.9	16	0.17
50105	Rock	1.64	3	0.6	87.2	62.0	148	0.1	45.7	32.3	1523	7.23	41.8	2.4	4.7	18	<0.1	0.6	1.1	26	0.10
50107	Rock	1.92	<2	<0.1	1.3	3.1	<1	<0.1	0.4	0.2	31	0.18	<0.5	0.6	0.1	1	<0.1	<0.1	<0.1	<2	<0.01
50565	Rock Pulp	0.14	982	1.6	23.0	49.6	46	0.3	58.8	17.3	353	4.48	2.2	910.0	2.0	126	0.2	0.3	0.3	34	0.48
50106	Rock	1.87	2	<0.1	3.5	42.7	20	0.1	3.5	1.6	232	1.35	1.2	37.5	2.1	2	<0.1	<0.1	0.5	8	0.02
50553	Rock	1.56	4	<0.1	9.3	25.0	29	<0.1	12.0	6.0	843	2.16	0.5	24.1	3.5	21	<0.1	0.1	0.2	5	0.36
50555	Rock	2.01	<2	0.1	15.5	100.7	23	0.2	12.1	5.2	710	1.37	1.9	3.5	3.5	7	<0.1	0.2	0.8	4	0.24
50559	Rock	1.72	<2	1.1	39.3	31.6	81	<0.1	25.7	7.0	407	4.25	13.8	2.3	7.1	11	<0.1	<0.1	0.4	15	0.15
50554	Rock	2.31	<2	0.1	16.3	19.2	47	<0.1	22.2	10.2	684	2.56	0.7	1.1	4.4	22	<0.1	0.1	0.2	10	0.64
50557	Rock	2.12	<2	0.8	86.0	51.3	116	0.2	41.5	20.3	757	4.01	3.6	0.9	8.0	8	<0.1	0.3	0.6	15	0.17
50564	Rock Pulp	0.15	<2	1.3	28.5	4.9	45	<0.1	82.2	21.4	413	3.08	<0.5	0.9	1.4	149	<0.1	<0.1	<0.1	53	0.55
50558	Rock	1.95	<2	<0.1	9.0	11.8	58	<0.1	18.5	6.7	1005	3.01	2.3	1.2	5.4	3	<0.1	0.1	<0.1	16	0.06
50563	Rock	1.86	<2	1.9	38.2	41.3	92	0.1	26.6	11.2	295	3.57	12.5	<0.5	7.4	11	0.2	0.3	0.2	8	0.17
50560	Rock	2.04	<2	<0.1	13.1	3.5	29	<0.1	8.4	4.4	371	1.71	<0.5	0.5	4.2	9	<0.1	<0.1	<0.1	8	0.26
50102	Rock	2.78	<2	<0.1	7.4	9.0	21	<0.1	9.0	4.2	148	1.20	4.4	9.2	5.1	8	<0.1	<0.1	<0.1	4	0.32
50551	Rock	2.78	<2	0.2	37.1	40.5	125	<0.1	52.3	25.4	1111	4.83	2.9	<0.5	6.2	9	<0.1	0.2	0.3	30	0.21
50103	Rock	2.60	<2	0.2	3.8	11.5	16	<0.1	6.1	2.2	254	1.01	2.2	0.7	5.3	25	<0.1	<0.1	<0.1	3	0.70
50108	Rock	1.59	<2	1.5	30.0	258.1	91	0.1	37.1	13.5	2621	4.20	6.7	<0.5	7.1	9	<0.1	<0.1	1.5	16	0.12
50556	Rock	1.77	7	0.2	4.9	10.5	14	<0.1	6.7	3.5	188	1.10	8.1	59.6	6.3	9	<0.1	0.1	0.2	3	0.38
50552	Rock	1.99	<2	0.1	54.1	350.0	157	0.5	30.0	11.4	842	5.64	4.6	1.8	2.5	13	1.5	0.3	1.5	19	0.10
50101	Rock	2.47	<2	0.1	4.6	15.7	8	<0.1	8.2	2.2	183	0.50	0.7	1.0	0.6	5	<0.1	<0.1	<0.1	<2	0.20
50569	Rock	2.44	1084	0.2	8.8	10.0	15	0.3	6.6	16.3	211	0.91	887.2	1664	5.0	6	0.2	0.2	<0.1	2	0.04
50567	Rock	3.06	234	<0.1	7.4	19.1	23	<0.1	9.9	4.0	253	1.55	369.3	107.6	8.2	33	<0.1	0.2	0.1	6	1.11
50570	Rock	2.85	95	0.4	20.1	13.0	43	<0.1	6.5	3.4	214	2.68	404.7	10.6	9.0	5	<0.1	0.2	0.3	9	<0.01
50566	Rock	2.05	3	0.2	8.6	22.4	60	<0.1	20.6	5.2	448	3.00	9.5	2.5	4.3	3	<0.1	<0.1	0.2	12	0.02
50568	Rock	2.77	12	0.3	16.7	34.7	81	0.1	25.4	5.1	524	4.74	21.5	2.2	12.7	8	<0.1	<0.1	0.5	15	0.05



Acme Analytical Laboratories (Vancouver) Ltd.
 1020 Cordova St. East Vancouver BC V6A 4A3 Canada
 Phone (604) 253-3158 Fax (604) 253-1716

www.acmelab.com

Client: **Ryan Gold Corp.**
 600 - 666 Burrard St.
 Vancouver BC V6C 1H2 Canada

Project: HORN BET-R
 Report Date: October 12, 2011

Page: 2 of 2 Part 2

CERTIFICATE OF ANALYSIS

WHI11001466.1

Method	1DX	1DX	1DX	1DX	1DX	1DX	1DX	1DX	1DX	1DX	1DX	1DX	1DX	1DX	1DX	1DX	1DX	1DX	
Analyte	P	La	Cr	Mg	Ba	Ti	B	Al	Na	K	W	Hg	Sc	Tl	S	Ga	Se	Te	
Unit	%	ppm	ppm	%	ppm	%	ppm	%	%	%	ppm	ppm	ppm	ppm	%	ppm	ppm	ppm	
MDL	0.001	1	1	0.01	1	0.001	20	0.01	0.001	0.01	0.1	0.01	0.1	0.1	0.05	1	0.5	0.2	
50104	Rock	0.091	10	42	1.56	30	0.003	<20	3.25	0.019	0.14	<0.1	<0.01	2.2	<0.1	0.72	8	<0.5	<0.2
50561	Rock	0.011	8	17	0.75	16	0.002	<20	1.58	0.015	0.06	<0.1	<0.01	1.4	<0.1	0.13	4	<0.5	0.2
50562	Rock	0.046	13	35	1.17	36	0.003	<20	2.57	0.030	0.14	<0.1	<0.01	1.9	<0.1	0.06	7	0.7	0.4
50105	Rock	0.055	10	45	2.01	25	0.004	<20	3.74	0.011	0.11	<0.1	<0.01	2.9	<0.1	0.60	10	<0.5	<0.2
50107	Rock	<0.001	1	<1	<0.01	1	<0.001	<20	0.01	0.001	<0.01	<0.1	<0.01	<0.1	<0.1	<0.05	<1	<0.5	<0.2
50565	Rock Pulp	0.082	10	46	1.22	63	0.318	<20	1.15	0.496	0.32	0.1	0.01	0.6	0.4	2.76	4	0.7	<0.2
50106	Rock	0.009	7	11	0.31	<1	0.001	<20	0.68	0.026	<0.01	<0.1	<0.01	1.1	<0.1	<0.05	2	<0.5	<0.2
50553	Rock	0.008	5	8	0.39	6	0.002	<20	0.65	0.015	0.03	<0.1	<0.01	1.0	<0.1	0.34	2	<0.5	<0.2
50555	Rock	0.005	6	9	0.17	7	<0.001	<20	0.42	0.010	0.03	<0.1	<0.01	1.1	<0.1	<0.05	1	<0.5	<0.2
50559	Rock	0.073	17	22	0.99	16	0.003	<20	2.33	0.006	0.11	<0.1	<0.01	2.2	<0.1	<0.05	6	<0.5	<0.2
50554	Rock	0.006	6	11	0.44	9	0.001	<20	0.94	0.018	0.06	<0.1	<0.01	1.7	<0.1	0.23	3	<0.5	<0.2
50557	Rock	0.027	29	24	1.02	16	0.002	<20	2.24	0.007	0.10	<0.1	<0.01	2.1	<0.1	<0.05	6	<0.5	<0.2
50564	Rock Pulp	0.103	11	56	1.55	45	0.418	<20	1.45	0.555	0.34	<0.1	<0.01	0.7	<0.1	<0.05	5	<0.5	<0.2
50558	Rock	0.011	13	20	0.62	2	0.004	<20	1.43	0.032	0.01	<0.1	<0.01	2.6	<0.1	<0.05	4	<0.5	<0.2
50563	Rock	0.022	11	14	0.54	25	0.002	<20	1.17	0.012	0.10	<0.1	<0.01	1.5	<0.1	0.06	3	0.5	<0.2
50560	Rock	0.008	6	13	0.34	3	0.002	<20	0.78	0.021	0.02	<0.1	<0.01	1.9	<0.1	<0.05	2	<0.5	<0.2
50102	Rock	0.011	10	8	0.22	11	0.001	<20	0.59	0.021	0.07	<0.1	<0.01	1.8	<0.1	<0.05	2	<0.5	<0.2
50551	Rock	0.011	25	42	1.02	8	0.004	<20	2.10	0.025	0.04	<0.1	<0.01	4.4	<0.1	0.46	6	<0.5	<0.2
50103	Rock	0.009	7	6	0.16	10	0.001	<20	0.44	0.024	0.06	<0.1	<0.01	1.3	<0.1	0.14	1	<0.5	<0.2
50108	Rock	0.011	13	22	1.05	16	0.006	<20	2.17	0.014	0.07	<0.1	<0.01	2.2	<0.1	<0.05	5	<0.5	0.4
50556	Rock	0.007	5	6	0.13	10	<0.001	<20	0.39	0.022	0.07	<0.1	<0.01	1.1	<0.1	0.34	1	<0.5	<0.2
50552	Rock	0.042	8	24	1.61	12	0.005	<20	3.07	0.004	0.07	<0.1	<0.01	2.5	<0.1	0.17	7	0.6	<0.2
50101	Rock	0.009	4	3	0.04	4	<0.001	<20	0.12	0.003	0.01	<0.1	<0.01	0.3	<0.1	<0.05	<1	<0.5	<0.2
50569	Rock	0.020	11	4	0.15	18	<0.001	<20	0.41	0.014	0.05	0.3	<0.01	0.5	<0.1	<0.05	<1	<0.5	<0.2
50567	Rock	0.011	16	9	0.24	20	0.001	<20	0.62	0.014	0.11	<0.1	<0.01	1.6	<0.1	<0.05	2	<0.5	<0.2
50570	Rock	0.006	12	14	0.61	39	0.001	<20	1.25	0.015	0.20	0.1	<0.01	1.6	<0.1	0.11	3	<0.5	<0.2
50566	Rock	0.015	7	14	0.71	12	0.002	<20	1.63	0.016	0.05	<0.1	<0.01	2.4	<0.1	<0.05	4	<0.5	<0.2
50568	Rock	0.043	23	28	1.06	43	0.002	<20	2.66	0.012	0.18	<0.1	<0.01	2.2	<0.1	<0.05	6	<0.5	<0.2



Acme Analytical Laboratories (Vancouver) Ltd.

1020 Cordova St. East Vancouver BC V6A 4A3 Canada
 Phone (604) 253-3158 Fax (604) 253-1716

www.acmelab.com

Client: **Ryan Gold Corp.**
 600 - 666 Burrard St.
 Vancouver BC V6C 1H2 Canada

Project: HORN BET-R
 Report Date: October 12, 2011

Page: 1 of 2 Part 1

QUALITY CONTROL REPORT

WHI11001466.1

Method	WGHT	3B-50	1DX	1DX	1DX	1DX	1DX	1DX	1DX	1DX	1DX	1DX	1DX	1DX	1DX	1DX	1DX	1DX	1DX	1DX	
Analyte	Wgt	Au	Mo	Cu	Pb	Zn	Ag	Ni	Co	Mn	Fe	As	Au	Th	Sr	Cd	Sb	Bi	V	Ca	
Unit	kg	ppb	ppm	ppm	ppm	ppm	ppm	ppm	ppm	ppm	%	ppm	ppb	ppm	ppm	ppm	ppm	ppm	ppm	%	
MDL	0.01	2	0.1	0.1	0.1	1	0.1	0.1	0.1	1	0.01	0.5	0.5	0.1	1	0.1	0.1	0.1	2	0.01	
Pulp Duplicates																					
REP G1	QC		0.1	2.0	2.8	43	<0.1	2.2	3.5	542	1.88	<0.5	<0.5	5.4	69	<0.1	<0.1	<0.1	35	0.43	
50568	Rock	2.77	12	0.3	16.7	34.7	81	0.1	25.4	5.1	524	4.74	21.5	2.2	12.7	8	<0.1	<0.1	0.5	15	0.05
REP 50568	QC		0.4	17.0	33.2	85	<0.1	25.6	4.8	528	4.83	22.6	4.0	12.5	8	<0.1	<0.1	0.5	15	0.05	
Core Reject Duplicates																					
50105	Rock	1.64	3	0.6	87.2	62.0	148	0.1	45.7	32.3	1523	7.23	41.8	2.4	4.7	18	<0.1	0.6	1.1	26	0.10
DUP 50105	QC		3	0.6	91.6	59.5	144	<0.1	45.0	29.8	1537	7.30	39.6	2.3	4.9	19	<0.1	0.6	1.1	26	0.10
Reference Materials																					
STD DS8	Standard		12.0	102.1	115.3	282	1.5	36.1	7.2	562	2.29	23.6	78.3	5.9	64	2.4	4.6	6.4	37	0.63	
STD DS8	Standard		12.6	102.6	111.4	297	1.6	36.6	7.2	573	2.34	21.7	129.8	5.5	52	2.1	3.8	5.2	39	0.65	
STD OREAS45CA	Standard		0.9	465.6	20.9	56	0.4	227.3	82.9	858	14.00	4.1	37.8	7.0	17	<0.1	0.2	0.2	194	0.40	
STD OREAS45CA	Standard		0.9	519.8	19.1	63	0.3	255.6	93.4	932	16.19	3.9	42.8	6.3	13	<0.1	<0.1	0.2	224	0.44	
STD OXC88	Standard		194																		
STD OXC88	Standard		183																		
STD OXC88	Standard		189																		
STD OXH82	Standard		1295																		
STD OXH82	Standard		1279																		
STD DS8 Expected			13.44	110	123	312	1.69	38.1	7.5	615	2.46	26	107	6.89	67.7	2.38	4.8	6.67	41.1	0.7	
STD OREAS45CA Expected			1	494	20	60	0.275	240	92	943	15.69	3.8	43	7	15	0.1	0.13	0.19	215	0.4265	
STD OXC88 Expected			203																		
STD OXH82 Expected			1278																		
BLK	Blank		<0.1	<0.1	<0.1	<1	<0.1	<0.1	<0.1	<1	<0.01	<0.5	<0.5	<0.1	<1	<0.1	<0.1	<0.1	<2	<0.01	
BLK	Blank		<2																		
BLK	Blank		<2																		
BLK	Blank		<0.1	<0.1	<0.1	<1	<0.1	<0.1	<0.1	<1	<0.01	<0.5	<0.5	<0.1	<1	<0.1	<0.1	<0.1	<2	<0.01	
BLK	Blank		<2																		
BLK	Blank		<2																		
BLK	Blank		<2																		
BLK	Blank		<2																		

This report supersedes all previous preliminary and final reports with this file number dated prior to the date on this certificate. Signature indicates final approval; preliminary reports are unsigned and should be used for reference only.



Acme Analytical Laboratories (Vancouver) Ltd.

1020 Cordova St. East Vancouver BC V6A 4A3 Canada
 Phone (604) 253-3158 Fax (604) 253-1716

www.acmelab.com

Client: **Ryan Gold Corp.**
 600 - 666 Burrard St.
 Vancouver BC V6C 1H2 Canada

Project: HORN BET-R
 Report Date: October 12, 2011

Page: 1 of 2 Part 2

QUALITY CONTROL REPORT

WHI11001466.1

Method	1DX	1DX	1DX	1DX	1DX	1DX	1DX	1DX	1DX	1DX	1DX	1DX	1DX	1DX	1DX	1DX	1DX	1DX	1DX
Analyte	P	La	Cr	Mg	Ba	Ti	B	Al	Na	K	W	Hg	Sc	Tl	S	Ga	Se	Te	
Unit	%	ppm	ppm	%	ppm	%	ppm	%	%	%	ppm	ppm	ppm	ppm	%	ppm	ppm	ppm	
MDL	0.001	1	1	0.01	1	0.001	20	0.01	0.001	0.01	0.1	0.01	0.1	0.1	0.05	1	0.5	0.2	
Pulp Duplicates																			
REP G1	QC	0.071	12	4	0.49	155	0.129	<20	0.86	0.074	0.44	<0.1	<0.01	1.7	0.3	<0.05	4	<0.5	<0.2
50568	Rock	0.043	23	28	1.06	43	0.002	<20	2.66	0.012	0.18	<0.1	<0.01	2.2	<0.1	<0.05	6	<0.5	<0.2
REP 50568	QC	0.043	23	28	1.06	40	0.002	<20	2.69	0.013	0.18	<0.1	<0.01	2.2	<0.1	<0.05	6	<0.5	<0.2
Core Reject Duplicates																			
50105	Rock	0.055	10	45	2.01	25	0.004	<20	3.74	0.011	0.11	<0.1	<0.01	2.9	<0.1	0.60	10	<0.5	<0.2
DUP 50105	QC	0.054	11	44	2.02	30	0.004	<20	3.89	0.013	0.13	<0.1	<0.01	2.9	<0.1	0.60	10	<0.5	<0.2
Reference Materials																			
STD DS8	Standard	0.075	12	105	0.57	263	0.109	<20	0.81	0.072	0.38	2.3	0.19	1.7	4.5	0.16	4	4.5	4.6
STD DS8	Standard	0.074	12	112	0.57	269	0.104	<20	0.88	0.083	0.38	2.2	0.17	2.1	5.1	0.15	4	4.5	4.5
STD OREAS45CA	Standard	0.039	15	530	0.16	151	0.149	<20	3.31	0.008	0.07	0.1	0.03	33.0	<0.1	<0.05	16	0.9	<0.2
STD OREAS45CA	Standard	0.038	16	821	0.13	164	0.114	<20	3.89	0.009	0.08	<0.1	0.02	38.4	<0.1	<0.05	20	0.5	<0.2
STD OXC88	Standard																		
STD OXC88	Standard																		
STD OXC88	Standard																		
STD OXH82	Standard																		
STD OXH82	Standard																		
STD DS8 Expected		0.08	14.6	115	0.6045	279	0.113	2.6	0.93	0.0883	0.41	3	0.192	2.3	5.4	0.1679	4.7	5.23	5
STD OREAS45CA Expected		0.0385	15.9	709	0.1358	164	0.128		3.592	0.0075	0.0717		0.03	39.7	0.07	0.021	18.4	0.5	
STD OXC88 Expected																			
STD OXH82 Expected																			
BLK	Blank	<0.001	<1	<1	<0.01	<1	<0.001	<20	<0.01	<0.001	<0.01	<0.1	<0.01	<0.1	<0.1	<0.05	<1	<0.5	<0.2
BLK	Blank																		
BLK	Blank																		
BLK	Blank	<0.001	<1	<1	<0.01	<1	<0.001	<20	<0.01	<0.001	<0.01	<0.1	<0.01	<0.1	<0.1	<0.05	<1	<0.5	<0.2
BLK	Blank																		
BLK	Blank																		
BLK	Blank																		
BLK	Blank																		

This report supersedes all previous preliminary and final reports with this file number dated prior to the date on this certificate. Signature indicates final approval; preliminary reports are unsigned and should be used for reference only.



Acme Analytical Laboratories (Vancouver) Ltd.

1020 Cordova St. East Vancouver BC V6A 4A3 Canada

Phone (604) 253-3158 Fax (604) 253-1716

www.acmelab.com

Client: Ryan Gold Corp.
600 - 666 Burrard St.
Vancouver BC V6C 1H2 Canada

Project: HORN BET-R

Report Date: October 12, 2011

Page: 2 of 2 **Part** 1

QUALITY CONTROL REPORT

WHI11001466.1

		WGHT	3B-50	1DX	1DX	1DX	1DX	1DX	1DX	1DX	1DX	1DX	1DX	1DX	1DX	1DX	1DX	1DX	1DX	1DX	
		Wgt	Au	Mo	Cu	Pb	Zn	Ag	Ni	Co	Mn	Fe	As	Au	Th	Sr	Cd	Sb	Bi	V	Ca
		kg	ppb	ppm	ppm	ppm	ppm	ppm	ppm	ppm	ppm	%	ppm	ppb	ppm	ppm	ppm	ppm	ppm	ppm	%
		0.01	2	0.1	0.1	0.1	1	0.1	0.1	0.1	1	0.01	0.5	0.5	0.1	1	0.1	0.1	0.1	2	0.01
Prep Wash																					
G1	Prep Blank		<2	<0.1	2.1	3.5	43	<0.1	2.5	3.9	529	1.88	0.7	<0.5	5.8	62	<0.1	<0.1	<0.1	35	0.45
G1	Prep Blank		<2																		
G1	Prep Blank			0.1	2.0	2.8	43	<0.1	2.2	3.6	528	1.84	<0.5	<0.5	5.0	65	<0.1	<0.1	<0.1	34	0.40



Acme Analytical Laboratories (Vancouver) Ltd.
 1020 Cordova St. East Vancouver BC V6A 4A3 Canada
 Phone (604) 253-3158 Fax (604) 253-1716

www.acmelab.com

Client: **Ryan Gold Corp.**
 600 - 666 Burrard St.
 Vancouver BC V6C 1H2 Canada

Project: HORN BET-R
 Report Date: October 12, 2011

Page: 2 of 2 Part 2

QUALITY CONTROL REPORT

WHI11001466.1

		1DX P %	1DX La ppm	1DX Cr ppm	1DX Mg %	1DX Ba ppm	1DX Ti %	1DX B ppm	1DX Al %	1DX Na %	1DX K %	1DX W ppm	1DX Hg ppm	1DX Sc ppm	1DX Tl ppm	1DX S %	1DX Ga ppm	1DX Se ppm	1DX Te ppm
Prep Wash		0.001	1	1	0.01	1	0.001	20	0.01	0.001	0.01	0.1	0.01	0.1	0.1	0.05	1	0.5	0.2
G1	Prep Blank	0.071	12	5	0.50	165	0.136	<20	0.87	0.070	0.45	<0.1	<0.01	1.8	0.3	<0.05	4	<0.5	<0.2
G1	Prep Blank																		
G1	Prep Blank	0.068	12	4	0.49	149	0.120	<20	0.85	0.075	0.44	<0.1	<0.01	1.7	0.3	<0.05	4	<0.5	<0.2

APPENDIX B

List of Claims & Certificates of Work

Ryan Gold Corp.

Schedule B

Horn Property

Claims to be renewed:

CLAIM NAME & #	GRANT #	EXPIRY DATE	# Of Claims	# Of Years	\$100/yr	\$5/Yr Fee	NEW EXPIRY DATE
Horn 1 - 16	YC29189 - YC29204	August 16, 2012	16	1.5	\$ 2,400.00	\$ 120.00	December 3, 2013
Horn 17 - 30	YC31965 - YC31978	September 14, 2011	14	1.25	\$ 1,750.00	\$ 87.50	December 3, 2012
Horn 31 - 78	YD130041 - YD130088	December 13, 2011	48	1	\$ 4,800.00	\$ 240.00	December 3, 2012
Horn 79 - 90	YD130089 - YD130100	December 3, 2011	12	1	\$ 1,200.00	\$ 60.00	December 3, 2012
Horn 91 - 136	YD130101 - YD130146	December 13, 2011	46	1	\$ 4,600.00	\$ 230.00	December 3, 2012
Horn 137 - 146	YD130147 - YD130156	December 3, 2011	10	1	\$ 1,000.00	\$ 50.00	December 3, 2012
146					\$ 15,750.00	\$ 787.50	
					Work Required	Fees	

Claim Name and Nbr.	Grant No.	Expiry Date	Registered Owner	% Owned	NTS #'s
HORN 1 - 16	YC29189 - YC29204	2012/08/16	45127 YUKON INC. Ryan Gold Corp	30.00 70.00	105H15
HORN 17 - 30	YC31965 - YC31978	2011/09/14	45127 YUKON INC. Ryan Gold Corp	30.00 70.00	105H15
HORN 31 - 78	YD130041 - YD130088	2011/12/13	45127 YUKON INC. Ryan Gold Corp	30.00 70.00	105H15
HORN 79 - 90	YD130089 - YD130100	2011/12/03	45127 YUKON INC. Ryan Gold Corp	30.00 70.00	105H15
HORN 91 - 136	YD130101 - YD130146	2011/12/13	45127 YUKON INC. Ryan Gold Corp	30.00 70.00	105H15, 105I02
HORN 137 - 146	YD130147 - YD130156	2011/12/03	45127 YUKON INC. Ryan Gold Corp	30.00 70.00	105H15

Criteria(s) used for search:

CLAIM DISTRICT: 1000005 CLAIM NAME: HORN CLAIM STATUS: ACTIVE & PENDING REGULATION TYPE: QUARTZ

Left column indicator legend:

- R - Indicates the claim is on one or more pending renewal(s).
- P - Indicates the claim is pending.

Right column indicator legend:

- L - Indicates the Quartz Lease.
- F - Indicates Full Quartz fraction (25+ acres)
- P - Indicates Partial Quartz fraction (<25 acres)

Total claims selected : 146

- D - Indicates Placer Discovery
- C - Indicates Placer Codiscovery
- B - Indicates Placer Fraction

CERTIFICATE OF WORK

Schedule C

HORN Property

2 Geologists performed Geological Mapping and collected 26 Rock Samples on Aug.28&29, 2011
 - were in fly camp from Aug.28 to Sept.1/11 but could not perform work all days due to bad weather

Description			Rate	Unit	Total
WAGES:					
	Senior Geologist	per day	\$ 730.00	2	\$ 1,460.00
	Geologist	per day	\$ 385.00	2	\$ 770.00
DATA MANAGEMENT & PROCESSING SERVICES:					
	GIS/Job Layout/Mapping Results Plotting	per hour	\$ 75.00	2	\$ 150.00
CONSUMABLE SAMPLING SUPPLIES:					
	Flagging, Metal ID Tags, Sample Bags, etc.	per sample	\$ 1.00	26	\$ 26.00
EQUIPMENT RENTAL (per unit, per day):					
	Iridium Satellite Phone: 1 per crew, charge 10 min/day	per day&min	\$ 35.00	4	\$ 140.00
	Radio: ICOM Handheld: 1 per person	per day	\$ 5.00	8	\$ 40.00
	Handheld GPS/Camera/Data Recorder	per day	\$ 15.00	4	\$ 60.00
ACCOMODATION and FOOD:					
	Remote Camp Fee: full fly camp/kitchen/generator	per man day	\$ 35.00	8	\$ 280.00
	Food	per man day	\$ 50.00	8	\$ 400.00
HELICOPTER SUPPORT:					
		per hour	\$ 1,575.00	4.2	\$ 6,615.00
	Trans North (Inv. 47921+53034)	per hour	\$ 990.00	4.4	\$ 4,356.00
		FUEL per litre	\$ 1.45	1299.6	\$ 1,884.42
ANALYTICAL ANALYSIS COSTS:					
	Acme Laboratories, Vancouver, B.C./Rock	per sample	\$ 38.00	26	\$ 988.00
TOTAL =					\$ 17,169.42