

ARCHER, CATHRO & ASSOCIATES (1981) LIMITED
1016 - 510 West Hastings Street
Vancouver, B.C. V6B1L8

Telephone: 604-688-2568

Fax: 604-688-2578

ASSESSMENT REPORT

describing

STREAM SEDIMENT AND SOIL GEOCHEMICAL SAMPLING

at the

BALI PROPERTY

Bali 1-22 YD71473-YD71494

NTS 095D/8

Latitude 60°21'N; Longitude 126°10'W

located in the

Watson Lake Mining District
Yukon Territory

prepared by

Archer, Cathro & Associates (1981) Limited

for

PRECIPITATE GOLD CORP.
and
STRATEGIC METALS LTD.

by

S. Eaton, B.Sc., GIT

October 2011

CONTENTS

INTRODUCTION	1
PROPERTY LOCATION, CLAIM DATA AND ACCESS	1
HISTORY AND PREVIOUS WORK	1
GEOMORPHOLOGY AND CLIMATE	2
GEOLOGY	2
STREAM SEDIMENT AND SOIL GEOCHEMISTRY	3
DISCUSSION AND CONCLUSIONS	4
REFERENCES	5

APPENDICES

- I STATEMENT OF QUALIFICATIONS
- II CERTIFICATE OF ANALYSIS

FIGURES

<u>No.</u>	<u>Description</u>	<u>Follows Page</u>
1	Property Location	1
2	Claim Locations	1
3	Tectonic Setting	2
4	Geology	2
5	Sample Locations	3
6	Arsenic Geochemistry	3

TABLES

I	Lithological Units	2
---	--------------------	---

INTRODUCTION

The Bali property is located in southeastern Yukon and covers the headwaters of a creek that yielded regionally anomalous arsenic and mercury values from a government stream sediment sample. The property is owned by Strategic Metals Ltd. and is under option to Precipitate Gold Corp.

This report describes stream sediment and soil geochemical sampling conducted on June 1, 2011 by Archer, Cathro and Associates (1981) Limited on behalf of Precipitate Gold. The author interpreted all data from this project and her Statement of Qualifications is in Appendix I.

PROPERTY LOCATION, CLAIM DATA AND ACCESS

The Bali property comprises 22 contiguous quartz claims located in southeastern Yukon at latitude 60°21' north and longitude 126°10' west on NTS map sheet 095D/08 (Figure 1). The property covers an area of about 450 hectares (4.5 km²). The claims are registered with the Watson Lake Mining Recorder in the name of Archer Cathro, which holds them in trust for Strategic Metals. Specifics concerning claim registration are tabulated below, while the locations of individual claims are shown on Figure 2.

<u>Claim Name</u>	<u>Grant Number</u>	<u>Expiry Date*</u>
Bali 1-22	YD71473-YD71494	March 8 ,2016

*Expiry date includes 2011 work which has been filed for assessment credit but not yet accepted.

Access to the property was provided by a Hughes 500D helicopter operated by Kluane Airways from Coal River, B.C., which is located approximately 90 km south-southwest of the property. All personnel stayed at the Coal River Lodge.

The community of Watson Lake is the nearest supply centre. It lies 145 km northwest of the property. The closest road access is from the Alaska Highway, which at its nearest point is 90 km southwest of the property. The Alaska Highway is usable in all seasons by two wheel drive vehicles.

HISTORY AND PREVIOUS WORK

In 1995, the Geological Survey of Canada (GSC) completed a low-density stream sediment and water sampling survey on parts of NTS map sheets 095D and 105A (Friske *et. al.*, 1996). A sample collected from a creek draining the Bali property returned 98th percentile arsenic (61.6 ppm) and 95th percentile mercury (180 ppb) values for those map sheets (Figure 2).

There is no record of previous staking in the area.

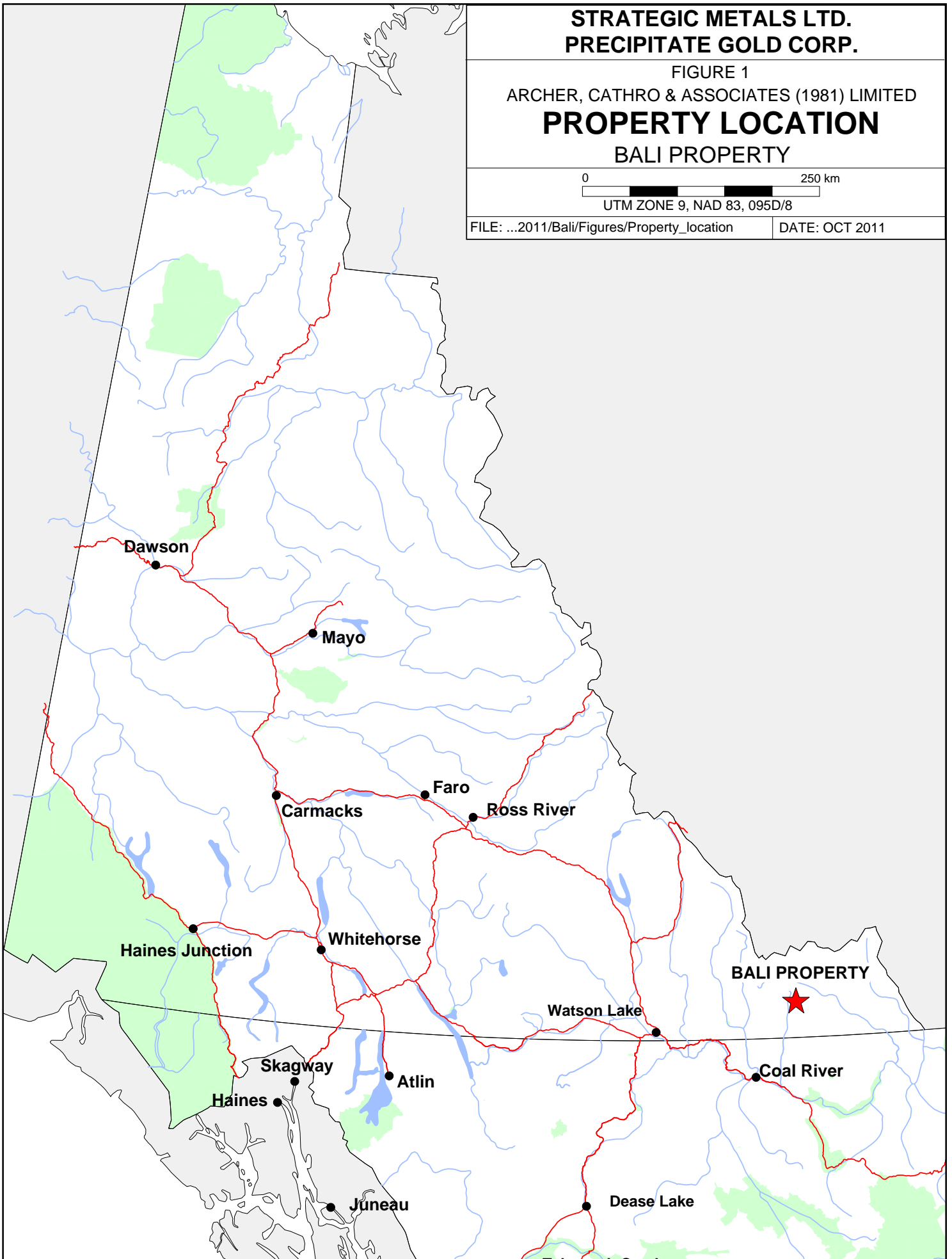
**STRATEGIC METALS LTD.
PRECIPITATE GOLD CORP.**

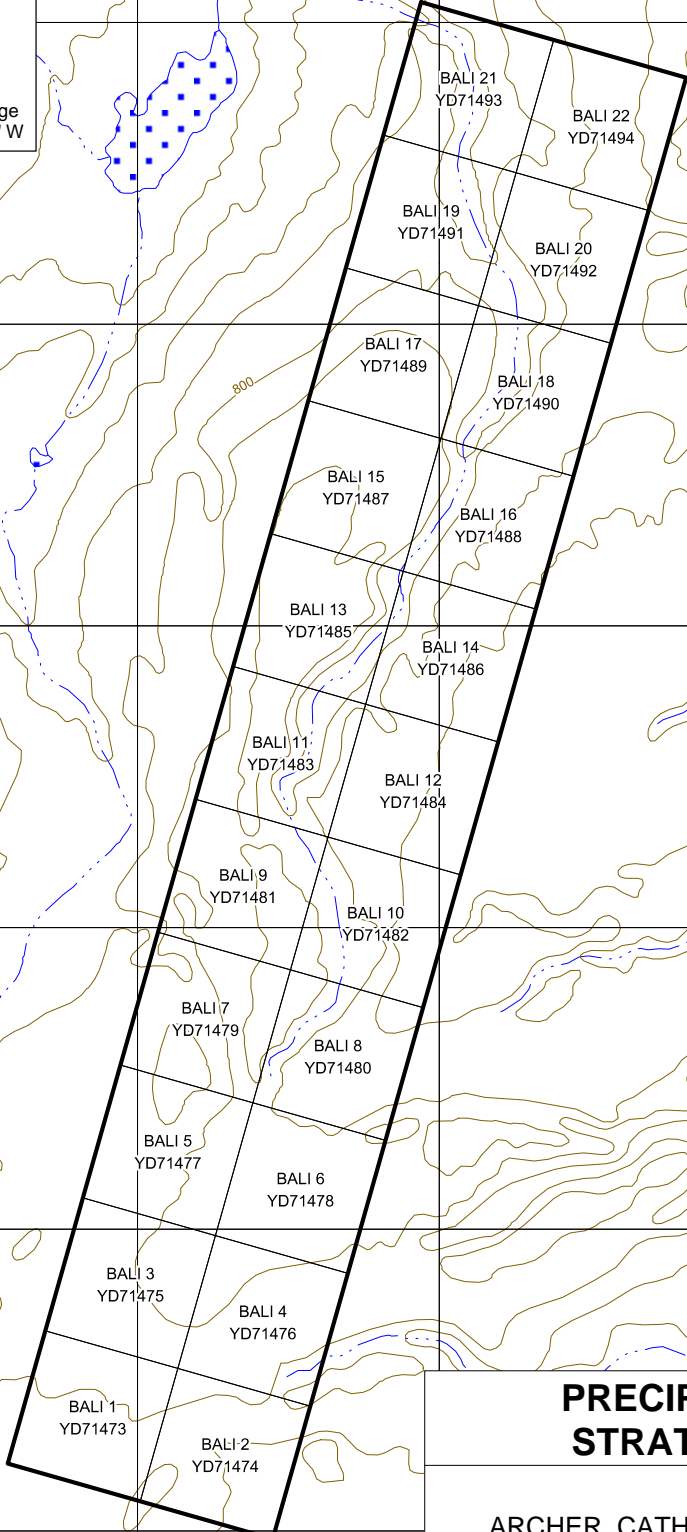
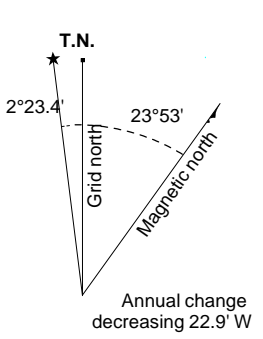
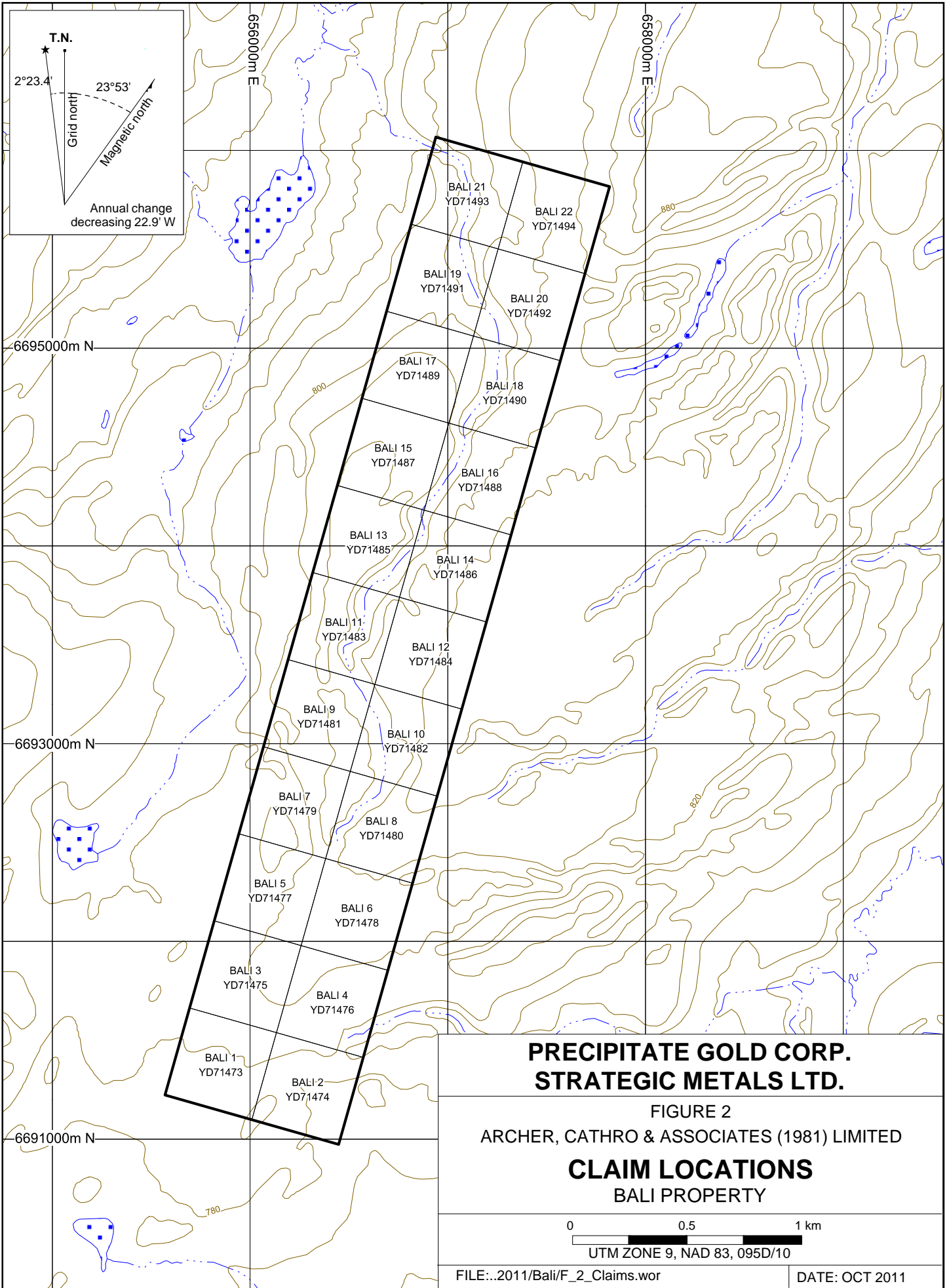
FIGURE 1
ARCHER, CATHRO & ASSOCIATES (1981) LIMITED
PROPERTY LOCATION
BALI PROPERTY

0 250 km
UTM ZONE 9, NAD 83, 095D/8

FILE: ...2011/Bali/Figures/Property_location

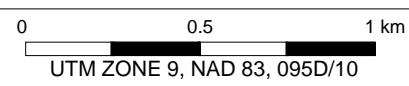
DATE: OCT 2011





**PRECIPITATE GOLD CORP.
 STRATEGIC METALS LTD.**

FIGURE 2
 ARCHER, CATHRO & ASSOCIATES (1981) LIMITED
CLAIM LOCATIONS
 BALI PROPERTY



GEOMORPHOLOGY AND CLIMATE

The Bali property is situated in the Liard Plateau south of the Selwyn Mountains. It is drained by creeks that flow into the Beaver River, which ultimately connects to the Arctic Ocean via the Liard and Mackenzie rivers. The property lies five kilometres east of Toobally Lakes.

The property covers a northerly trending creek valley, with local elevations ranging from 780 to 860 m above sea level (asl). Topographic relief in the area is gentle. Outcrop is rare because the property lies entirely below treeline. Vegetation comprises black spruce and alder with an understory of low shrubs and moss.

Much of the overburden in the region is associated with the most recent Cordilleran ice sheet, the McConnell glaciation, which is believed to have covered south and central Yukon between 26,500 and 10,000 years ago (Yukon Geological Survey, 2010). The area was covered by the Liard Lobe of the ice sheet, which moved in an eastward to north-eastward direction.

The climate in the Bali property area is typical of northern continental regions with long, cold winters, truncated fall and spring seasons and short, mild summers. The property is mostly snow free from early May to mid October.

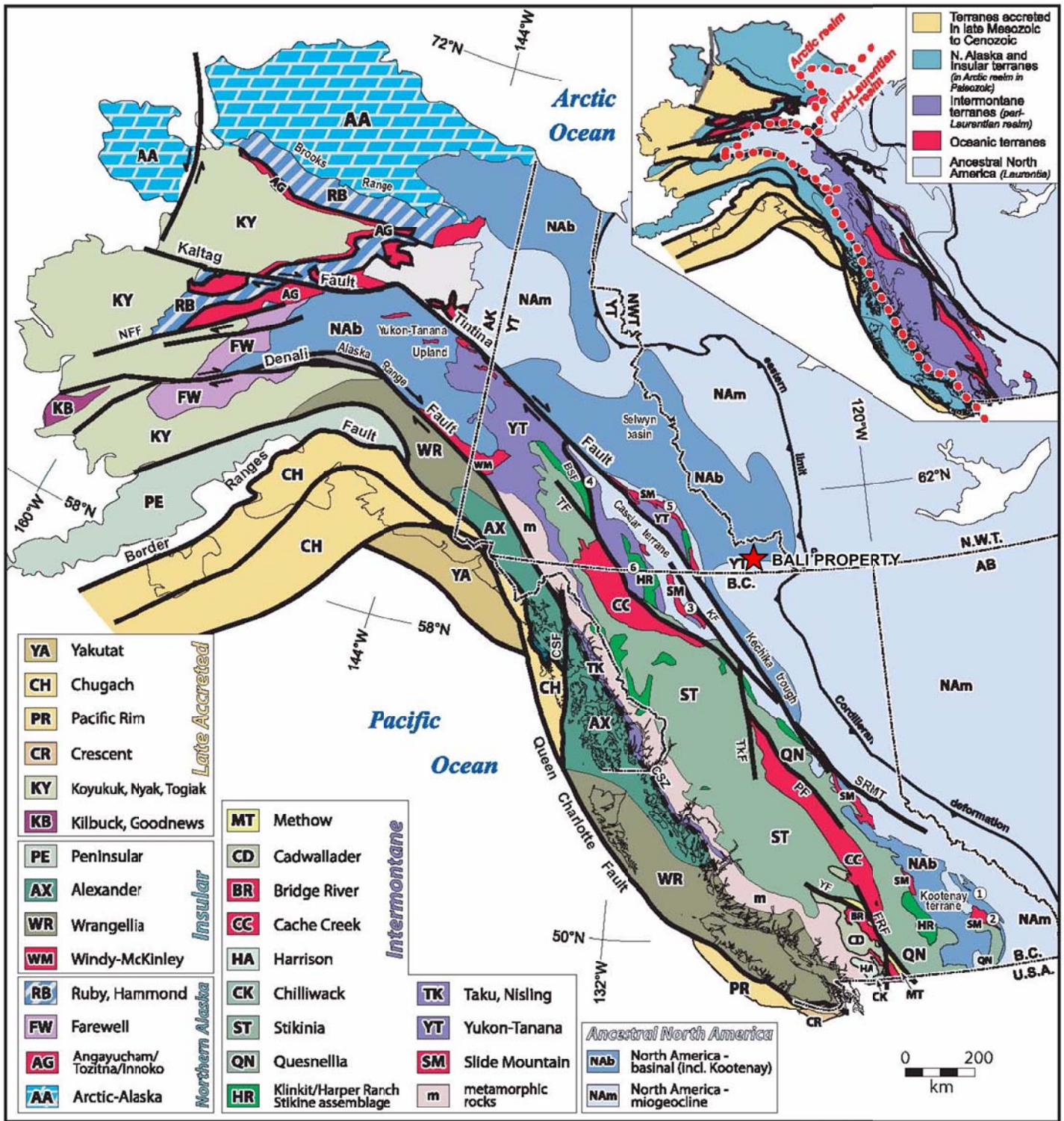
GEOLOGY

The Coal River map sheet (NTS 095D) was mapped at a regional scale (1:250,000) by the Geological Survey of Canada in 1969 (Gabrielse and Blusson, 1969) and the Yukon Geological Survey in 2009 and 2010 (Pigage et. al., 2010).

The Bali property is located within Selwyn Basin (Figure 3), a tectonic element comprising deep water clastic rocks, chert and minor carbonate accumulated along the North American continental margin during Paleozoic time (Pigage, 2004). In the Bali property area, the package comprises a basement of Cambrian to Ordovician Crow Formation sandstone with conformably overlying Ordovician Sunblood Formation. Sunblood Formation is in turn conformably overlain by a sequence that consists of Ordovician to Silurian unnamed quartzose sandstone to pebbly sandstone, Silurian to Devonian Road River Group shale and siltstone, and Mississippian Mattson Formation quartzose sandstone (Figure 4). Descriptions of these units are provided in Table I.

Table I – Lithological Units (after Pigage et. al., 2010)

Unit Name	Map Name	Age	Description
MM	Mattson Formation	Mississippian	Pale grey, grey weathering, strongly indurated, fine grained, quartzose sandstone; locally contains trace amounts of organic material and detrital muscovite; interbedded locally with black, pale grey weathering,



**PRECIPITATE GOLD CORP.
STRATEGIC METALS LTD.**

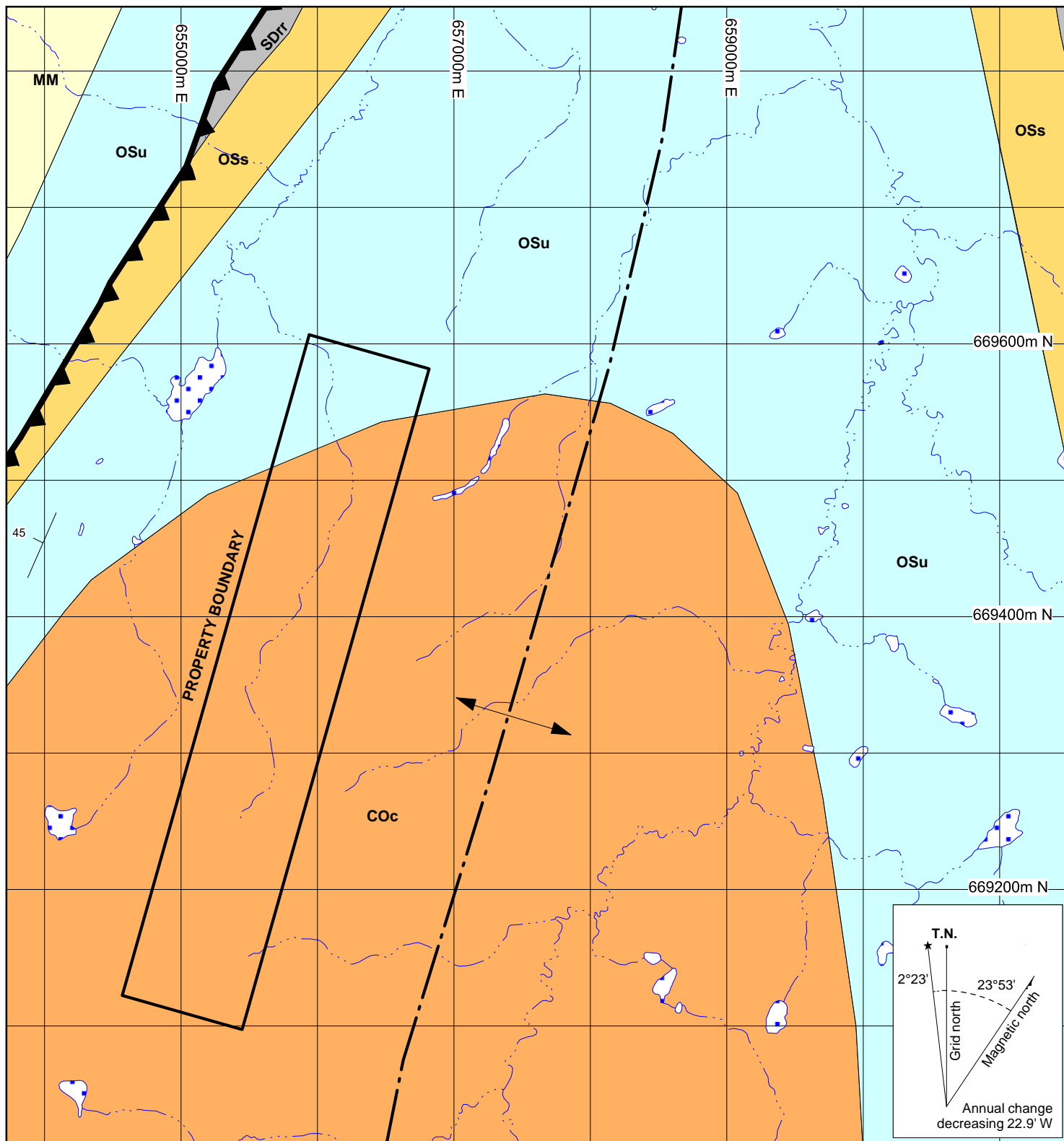
FIGURE 3
ARCHER, CATHRO & ASSOCIATES (1981) LIMITED

**TECTONIC SETTINGS
BALI PROPERTY**

UTM ZONE 9, NAD 83, 095D/08

FILE:..2011/Bali/F_3_Tectonic_setting.wor

DATE: OCT 2011



- Mississippian Mattson Formation (MM)
Quartzose sandstone
 - Silurian to Devonian Road River Group (SDrr)
Shale and siltstone
 - Ordovician to Silurian Unnamed (OSs)
Quartzose sandstone to pebbly sandstone
 - Ordovician Sunblood Formation (OSu)
Dolostone or limestone
 - Cambrian to Ordovician Crow Formation (COc)
Sandstone
- Anticline Strike and dip of bedding
- Thrust fault (teeth on hangingwall side)

**PRECIPITATE GOLD CORP.
STRATEGIC METALS LTD.**

FIGURE 4
ARCHER, CATHRO & ASSOCIATES (1981) LIMITED

GEOLOGY

BALI PROPERTY

0 0.5 1 km

UTM ZONE 9, NAD 83, 095D/08

FILE:..2011/Bali/F_4_Regional_Geology.wor DATE: OCT 2011

			siliceous shale.
SD _{RR}	Road River Group	Silurian to Devonian	Dark grey to black, pale grey weathering, locally calcareous or dolomitic, locally graptolitic, recessive shale or siltstone; lesser very fine-grained sandstone, bedded chert, dolostone and limestone.
OS _S	Unnamed	Ordovician to Silurian	Grey to buff, quartzose sandstone to pebbly sandstone; contains interbeds of bioturbated, slightly dolomitic, very fine-grained sandstone and siltstone; minor dark grey shale.
OS _U	Sunblood Formation	Ordovician	Light to dark grey, light brownish-grey, buff or orange weathering, mottled, thin to thick bedded dolostone or limestone; commonly bioturbated; locally laminated.
CO _C	Crow Formation	Cambrian to Ordovician	Cream to pink, indistinctly bedded, quartzose to subarkosic sandstone; lesser maroon to greyish red, laminated siltstone to argillite; minor quartz-sandstone conglomerate, limestone and dolostone interbeds.

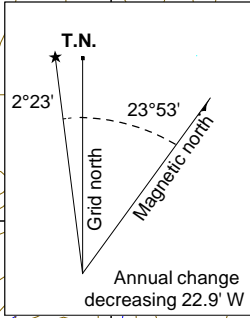
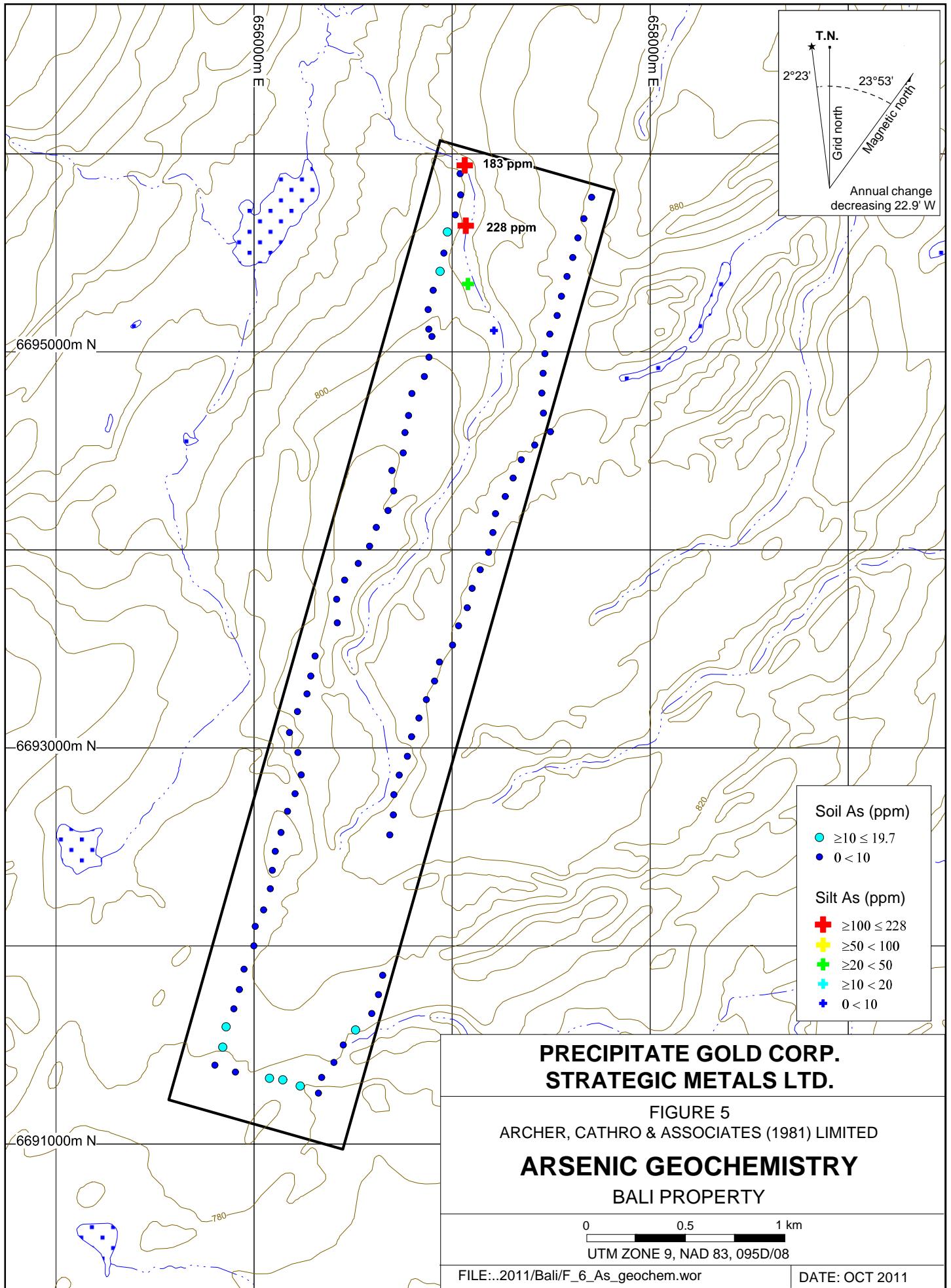
The property is located within an area that has undergone significant large-scale folding and faulting. It is situated within the western limb of a broad, north-northeasterly trending anticline, the axis of which lies one kilometre east of the property. A high-angle thrust fault is located two kilometres northwest of the property and juxtaposes Sunblood Formation to the west against younger Road River Group and the unnamed Ordovician to Silurian unit to the east. The property lies within the hanging wall of this fault and is underlain by Crow Formation and Sunblood Formation.

STREAM SEDIMENT AND SOIL GEOCHEMISTRY

In 2011, Precipitate Gold collected four stream sediment samples and ninety-four contour soil samples on the property. Sample locations are plotted on Figure 5 and results for arsenic are illustrated thematically on Figures 6.

Stream sediment samples were collected from creeks by hand, while soil samples were collected from 10 to 40 cm deep holes dug by hand-held auger. All samples were placed into individually pre-numbered Kraft paper bags. Sample sites are marked by aluminum tags inscribed with the sample numbers and affixed to 0.5 m wooden lath that were driven into the ground. All sample locations were recorded using hand-held GPS units.

All samples were sent to ALS Chemex in Whitehorse, Yukon and/or Vancouver, B.C., where they were dried, screened to -180 microns, and then analyzed for 51 elements using an aqua regia



Soil As (ppm)	
●	≥10 ≤ 19.7
●	0 < 10
Silt As (ppm)	
+	≥100 ≤ 228
+	≥50 < 100
+	≥20 < 50
+	≥10 < 20
+	0 < 10

**PRECIPITATE GOLD CORP.
STRATEGIC METALS LTD.**

FIGURE 5
ARCHER, CATHRO & ASSOCIATES (1981) LIMITED

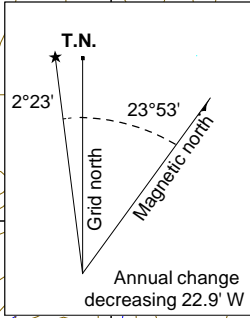
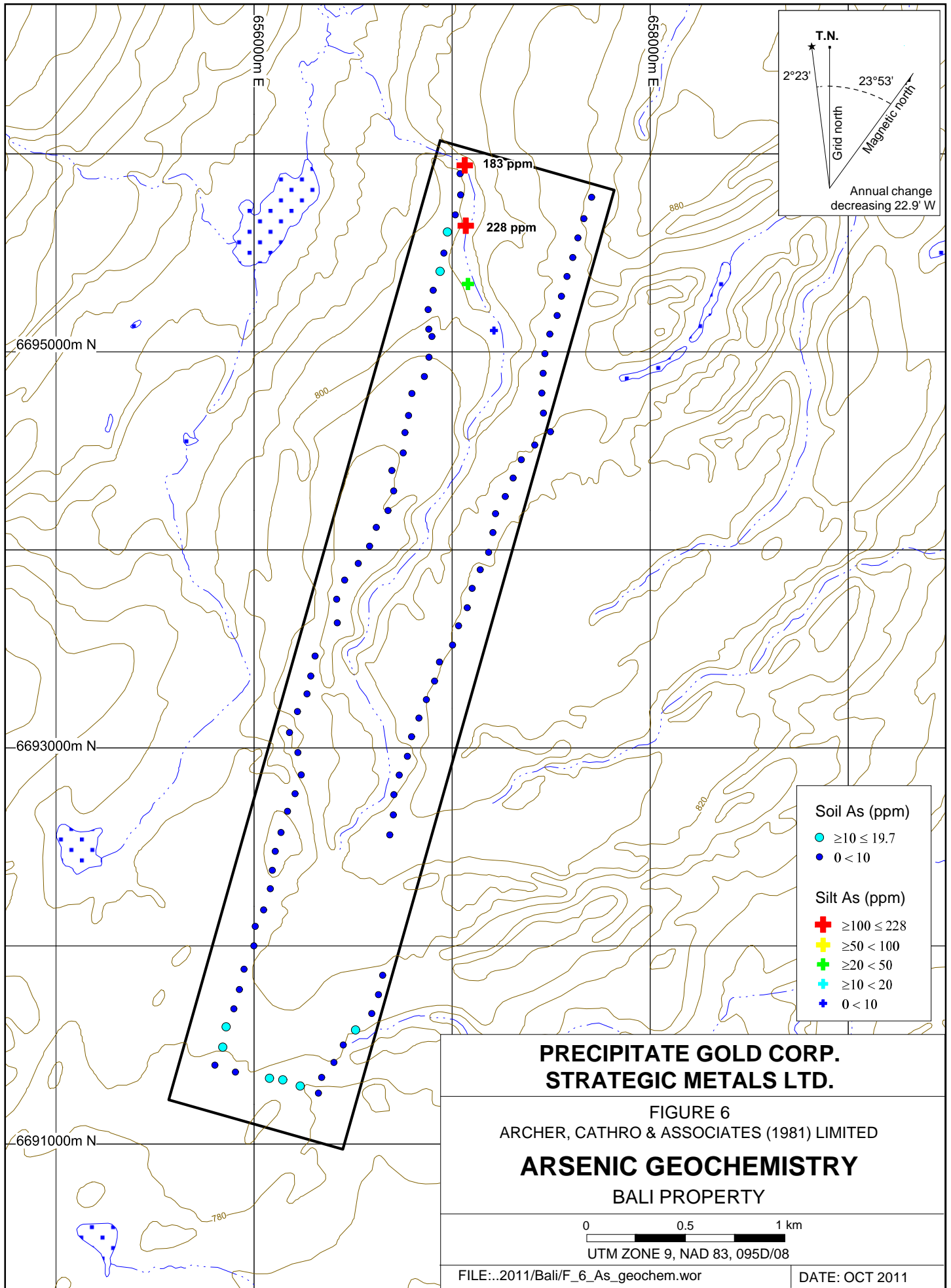
**ARSENIC GEOCHEMISTRY
BALI PROPERTY**

0 0.5 1 km

UTM ZONE 9, NAD 83, 095D/08

FILE:...2011/Bali/F_6_As_geochem.wor

DATE: OCT 2011



Soil As (ppm)	
● (Cyan)	≥10 ≤ 19.7
● (Blue)	0 < 10
Silt As (ppm)	
✚ (Red)	≥100 ≤ 228
✚ (Yellow)	≥50 < 100
✚ (Green)	≥20 < 50
✚ (Cyan)	≥10 < 20
✚ (Blue)	0 < 10

**PRECIPITATE GOLD CORP.
STRATEGIC METALS LTD.**

FIGURE 6
ARCHER, CATHRO & ASSOCIATES (1981) LIMITED

**ARSENIC GEOCHEMISTRY
BALI PROPERTY**

0 0.5 1 km

UTM ZONE 9, NAD 83, 095D/08

FILE:..2011/Bali/F_6_As_geochem.wor

DATE: OCT 2011

digestion followed by inductively coupled plasma combined with mass spectroscopy and atomic emission spectroscopy (ME-MS41). An additional 25 g charge was further analysed for gold by aqua regia digestion with inductively coupled plasma mass spectroscopy finish (Au-TL43).

The stream sediment sample taken furthest upstream returned a background value for arsenic. The next sample downstream yielded a weakly elevated arsenic value (40.5 ppm), while the lowest two samples returned strongly anomalous values (183 and 228 ppm). All stream sediment samples yielded background values for gold and its other pathfinder elements.

The soil samples returned subdued values for all elements of interest (gold, arsenic, bismuth, mercury, antimony and thallium). The soil sampling was done in spring when much of the ground was still frozen, and the weak values are likely due in part to poor quality samples.

DISCUSSION AND CONCLUSIONS

Precipitate Gold's exploration program was designed to test the economic potential (particularly Carlin-style gold) of the Bali property. Although no significant precious metal values were obtained from stream sediment and soil sampling, stream sediment sample values for arsenic were strongly elevated. Exploration elsewhere in Yukon has shown that gold response from stream sediment and soil samples is relatively subdued in the vicinity of some Carlin-style exploration prospects, while values pathfinder elements, especially arsenic, are often weakly to strongly anomalous.

Due to the importance of arsenic as a gold pathfinder element, the Bali property warrants more work. This work should be done in mid to late summer when seasonal thaw in soil is at its maximum depth, and should comprise grid soil sampling at 50 m spacings on lines located 100 m apart and oriented perpendicular to the length of the property. Emphasis should be on the area immediately uphill from the strongest arsenic stream sediment anomalies.

Respectfully submitted,

ARCHER, CATHRO & ASSOCIATES (1981) LIMITED

Sarah Eaton, B.Sc., GIT

REFERENCES

- Friske, P.W.B., McCurdy, M.W., Balma, R.G., Day, S.J.A., Lynch, J.J. and Durham, C.C.
 1996 Regional Stream Sediment and Water Geochemical Data, Southeastern Yukon (Parts of NTS 95D and 105A); Geological Survey of Canada Open File 3293.
- Gabrielse, H. and Blusson, S.L.
 1969 Geology of Coal River map-area, Yukon Territory and District of Mackenzie (95D); Geological Survey of Canada, Paper 68-38, 22 p.
- Nelson, J.L. and Colpron, M.
 2007 Tectonics and metallogeny of the Canadian and Alaskan Cordillera, 1.8 Ga to present; *in* Mineral Deposits of Canada: A Synthesis of Major Deposit Types, District Metallogeny, the Evolution of Geological Provinces, and Exploration Methods; W.D. Goodfellow (ed.), Mineral Deposit Division, Geological Association of Canada, Special Publication 5, p. 755-791. Available at: http://gsc.nrcan.gc.ca/mindep/synth_prov/cord/pdf/nelson_colpron_cordillera_n_metallogeny.pdf
- Pigage, L.C.
 2004 Bedrock geology compilation of the Anvil District (parts of 105K/2, 3, 5, 7 and 11), central Yukon; Yukon Geological Survey, Bulletin 15.
- Pigage, L.C., Abbott, J.G. and Roots, C.F.
 2010 Bedrock geology of Coal River map area (NTS95D), Yukon (1:250 000 scale); Yukon Geological Survey, Open File 2010-(in press).
- Yukon Geological Survey
 2010 Geoprocess File Summary Report for Coal River Map Area N.T.S. 095D; Available at: http://ygsftp.gov.yk.ca/publications/openfile/2002/of2002_8d_geoprocess_file/documents/map_specific/095d.pdf

APPENDIX I
STATEMENT OF QUALIFICATIONS

STATEMENT OF QUALIFICATIONS

I, Sarah Eaton, geologist, with business addresses in Whitehorse, Yukon Territory and Vancouver, British Columbia and residential address in North Vancouver, British Columbia, hereby certify that:

1. I graduated from the University of British Columbia in 2007 with a B.Sc. in Honours Geological Sciences.
2. From 2002 to present, I have been actively engaged in mineral exploration in Yukon Territory, British Columbia and Northwest Territories.
3. I am a Geoscientist in Training (GIT) with the Association of Professional Engineers and Geoscientists of British Columbia (Member Number 154922).
4. I have interpreted all data resulting from this work.

Sarah Eaton, B.Sc. (Hon.) Geology, GIT

APPENDIX II
CERTIFICATE OF ANALYSIS



ALS Canada Ltd.
 2103 Dollarton Hwy
 North Vancouver BC V7H 0A7
 Phone: 604 984 0221 Fax: 604 984 0218 www.alsglobal.com

To: **ARCHER, CATHRO AND ASSOCIATES (1981) LIMITED**
1016- 510 W HASTINGS ST
VANCOUVER BC V6B 1L8

Page: 1
 Finalized Date: 3- JUL- 2011
 Account: F

CERTIFICATE WH11099286

Project: Fireside- Bali
 P.O. No.:
 This report is for 98 Soil samples submitted to our lab in Whitehorse, YT, Canada on 14- JUN- 2011.
 The following have access to data associated with this certificate:
 DOUG EATON SARAH EATON JOAN MARIACHER

SAMPLE PREPARATION	
ALS CODE	DESCRIPTION
WEI- 21	Received Sample Weight
LOG- 22	Sample login - Rcd w/o BarCode
SCR- 41	Screen to - 180um and save both

ANALYTICAL PROCEDURES		
ALS CODE	DESCRIPTION	INSTRUMENT
Au- TL43	Trace Level Au - 25g AR	ICP- MS
ME- MS41	51 anal. aqua regia ICPMS	

To: **ARCHER, CATHRO AND ASSOCIATES (1981) LIMITED**
ATTN: JOAN MARIACHER
1016- 510 W HASTINGS ST
VANCOUVER BC V6B 1L8

This is the Final Report and supersedes any preliminary report with this certificate number. Results apply to samples as submitted. All pages of this report have been checked and approved for release.

Signature: 
 Colin Ramshaw, Vancouver Laboratory Manager



ALS Canada Ltd.
 2103 Dollarton Hwy
 North Vancouver BC V7H 0A7
 Phone: 604 984 0221 Fax: 604 984 0218 www.alsglobal.com

To: ARCHER, CATHRO AND ASSOCIATES (1981)
 LIMITED
 1016- 510 W HASTINGS ST
 VANCOUVER BC V6B 1L8

Page: 2 - A
 Total # Pages: 4 (A - D)
 Plus Appendix Pages
 Finalized Date: 3- JUL- 2011
 Account: F

Project: Fireside- Bali

CERTIFICATE OF ANALYSIS WH1109286

Sample Description	Method Analyte Units LOR	Au- TL43	ME- MS41	ME- MS41	ME- MS41	ME- MS41	ME- MS41	ME- MS41	ME- MS41	ME- MS41	ME- MS41	ME- MS41	ME- MS41	ME- MS41	ME- MS41	
		Au ppm	Ag ppm	Al %	As ppm	Au ppm	B ppm	Ba ppm	Be ppm	Bi ppm	Ca %	Cd ppm	Ce ppm	Co ppm	Cr ppm	Cs ppm
CC79684		<0.001	0.06	0.55	5.3	<0.2	<10	80	0.25	0.09	0.02	0.21	13.55	3.3	12	0.48
CC79685		0.002	0.04	0.48	2.1	<0.2	<10	60	0.13	0.10	0.04	0.10	18.25	1.9	9	0.53
CC79686		0.001	0.03	0.96	9.1	<0.2	<10	80	0.31	0.19	0.03	0.25	23.5	5.2	19	0.73
CC79687		<0.001	0.03	0.69	5.2	<0.2	<10	90	0.28	0.11	0.03	0.15	18.20	3.6	14	0.49
CC79688		<0.001	0.03	0.62	5.6	<0.2	<10	100	0.27	0.09	0.04	0.22	19.30	3.1	13	0.42
CC79689		<0.001	0.03	0.43	5.3	<0.2	<10	80	0.19	0.09	0.04	0.19	16.45	2.6	12	0.44
CC79690		<0.001	0.03	0.29	4.3	<0.2	<10	60	0.13	0.08	0.02	0.13	15.40	2.0	10	0.31
CC79691		0.001	0.03	0.94	6.6	<0.2	<10	100	0.42	0.12	0.04	0.20	21.6	4.9	16	0.60
CC79692		<0.001	0.02	0.84	5.3	<0.2	<10	90	0.31	0.10	0.02	0.13	19.45	3.6	16	0.62
CC79693		<0.001	0.02	0.49	5.8	<0.2	<10	90	0.30	0.07	0.02	0.17	19.70	3.6	15	0.36
CC79694		<0.001	0.02	0.49	4.1	<0.2	<10	70	0.23	0.05	0.01	0.16	14.10	2.6	11	0.35
CC79695		0.002	0.06	0.68	7.5	<0.2	<10	130	0.43	0.11	0.05	0.33	27.7	4.9	17	0.54
CC79696		0.001	0.02	0.56	5.7	<0.2	<10	70	0.24	0.09	0.02	0.13	15.65	2.9	12	0.49
CC79697		0.001	0.03	1.04	7.1	<0.2	<10	90	0.34	0.13	0.02	0.15	16.15	5.2	18	0.61
CC79698		<0.001	0.02	0.50	5.5	<0.2	<10	100	0.22	0.08	0.01	0.15	14.20	3.4	12	0.34
CC79699		0.001	0.04	0.57	5.4	<0.2	<10	80	0.27	0.09	0.02	0.15	13.90	3.0	12	0.43
CC79700		<0.001	0.02	0.38	2.0	<0.2	<10	70	0.11	0.08	0.03	0.09	17.15	1.1	7	0.32
CC79720		<0.001	0.02	0.21	4.7	<0.2	<10	80	0.12	0.04	0.05	0.16	13.75	2.1	14	0.20
CC79721		0.001	0.09	0.34	9.1	<0.2	<10	280	0.30	0.06	3.11	0.53	19.30	5.6	16	0.32
CC79722		<0.001	0.02	1.39	9.4	<0.2	<10	120	0.44	0.19	0.05	0.17	25.4	4.7	22	0.82
CC79723		0.001	0.05	1.63	11.9	<0.2	<10	160	0.68	0.21	0.04	0.41	29.1	8.5	27	1.09
CC79724		0.001	0.06	0.27	4.8	<0.2	<10	100	0.27	0.05	1.01	0.31	15.95	4.3	15	0.31
CC79725		0.002	0.06	1.10	11.4	<0.2	<10	90	0.43	0.17	0.07	0.28	25.9	5.2	25	0.71
CC79726		0.001	0.02	0.81	6.1	<0.2	<10	90	0.39	0.09	0.02	0.13	15.80	5.3	23	0.55
CC79727		<0.001	0.02	0.32	3.6	<0.2	<10	70	0.14	0.06	0.03	0.13	9.45	2.3	18	0.29
CC79728		<0.001	0.02	0.52	6.0	<0.2	<10	90	0.25	0.09	0.04	0.27	11.20	3.1	18	0.44
CC79729		0.001	0.01	0.64	2.7	<0.2	<10	50	0.17	0.12	0.03	0.10	22.9	2.0	12	0.45
CC79730		<0.001	0.02	0.53	5.8	<0.2	<10	110	0.29	0.09	0.05	0.23	14.55	4.6	25	0.40
CC79731		0.001	0.02	0.61	2.2	<0.2	<10	90	0.22	0.07	0.05	0.09	18.25	2.9	14	0.47
CC79732		0.001	0.02	1.07	5.4	<0.2	<10	120	0.41	0.14	0.05	0.14	26.3	5.4	24	0.65
CC79733		<0.001	0.01	0.56	2.3	<0.2	<10	90	0.27	0.07	0.05	0.06	18.15	3.1	19	0.47
CC79734		0.001	0.02	1.32	5.7	<0.2	<10	140	0.48	0.18	0.06	0.10	27.2	5.5	27	0.86
CC79735		0.001	0.17	1.78	6.7	<0.2	<10	380	0.89	0.26	0.37	0.79	44.9	12.4	36	1.47
CC79736		<0.001	0.05	0.87	5.3	<0.2	<10	110	0.36	0.11	0.04	0.17	18.95	4.3	18	0.62
CC79737		<0.001	0.04	1.19	7.6	<0.2	<10	120	0.56	0.14	0.04	0.24	21.5	7.8	28	0.72
CC79738		<0.001	0.02	0.36	3.1	<0.2	<10	80	0.18	0.05	0.02	0.11	14.30	3.2	23	0.29
CC79739		0.001	0.03	0.76	4.5	<0.2	<10	100	0.38	0.09	0.03	0.13	17.35	4.2	23	0.49
CC79740		<0.001	0.03	0.61	3.6	<0.2	<10	80	0.24	0.07	0.02	0.11	15.40	3.1	13	0.51
CC79784		<0.001	0.03	0.91	6.7	<0.2	<10	90	0.37	0.12	0.03	0.18	20.8	4.5	17	0.69
CC79785		0.001	0.02	0.89	5.3	<0.2	<10	90	0.29	0.12	0.03	0.12	21.4	3.6	17	0.61



ALS Canada Ltd.
 2103 Dollarton Hwy
 North Vancouver BC V7H 0A7
 Phone: 604 984 0221 Fax: 604 984 0218 www.alsglobal.com

To: ARCHER, CATHRO AND ASSOCIATES (1981)
 LIMITED
 1016- 510 W HASTINGS ST
 VANCOUVER BC V6B 1L8

Page: 2 - B
 Total # Pages: 4 (A - D)
 Plus Appendix Pages
 Finalized Date: 3- JUL- 2011
 Account: F

Project: Fireside- Bali

CERTIFICATE OF ANALYSIS WH1109286

Sample Description	Method Analyte Units LOR	ME- MS41	ME- MS41	ME- MS41	ME- MS41	ME- MS41	ME- MS41	ME- MS41	ME- MS41	ME- MS41	ME- MS41	ME- MS41	ME- MS41	ME- MS41	ME- MS41	
		Cu ppm	Fe %	Ga ppm	Ge ppm	Hf ppm	Hg ppm	In ppm	K %	La ppm	Li ppm	Mg %	Mn ppm	Mo ppm	Na %	Nb ppm
		0.2	0.01	0.05	0.05	0.02	0.01	0.005	0.01	0.2	0.1	0.01	5	0.05	0.01	0.05
CC79684		5.2	1.28	1.79	0.07	0.02	0.06	0.011	0.02	6.6	6.5	0.09	47	1.21	<0.01	0.97
CC79685		2.7	0.77	2.31	0.08	<0.02	0.05	0.008	0.02	9.3	6.3	0.12	45	0.47	<0.01	0.83
CC79686		7.9	2.64	4.12	0.08	0.02	0.04	0.016	0.03	12.0	14.6	0.21	134	1.84	<0.01	1.66
CC79687		5.2	1.47	2.15	0.07	0.02	0.04	0.012	0.02	9.0	6.0	0.11	77	0.96	<0.01	1.16
CC79688		5.3	1.66	2.35	0.08	0.02	0.04	0.013	0.03	9.7	7.4	0.10	68	1.15	<0.01	1.15
CC79689		4.9	1.26	1.88	0.07	<0.02	0.03	0.009	0.03	8.6	3.6	0.09	71	0.94	<0.01	0.82
CC79690		4.6	1.09	1.64	0.07	<0.02	0.02	0.008	0.02	7.7	1.8	0.05	52	0.93	<0.01	0.71
CC79691		7.0	1.72	2.49	0.08	0.09	0.03	0.014	0.03	11.1	8.5	0.20	103	1.11	<0.01	1.04
CC79692		5.5	1.50	2.61	0.08	0.03	0.03	0.014	0.03	9.8	8.3	0.13	71	0.95	<0.01	1.04
CC79693		6.8	1.34	1.49	0.08	0.02	0.03	0.011	0.03	9.6	3.7	0.09	76	1.10	<0.01	0.62
CC79694		6.4	0.98	1.18	0.07	0.04	0.02	0.011	0.03	7.4	4.2	0.07	40	0.88	<0.01	0.53
CC79695		13.6	1.63	2.01	0.09	<0.02	0.06	0.016	0.04	14.3	5.4	0.12	126	1.67	<0.01	0.60
CC79696		4.9	1.38	2.09	0.07	<0.02	0.02	0.012	0.03	7.8	4.9	0.08	58	0.99	<0.01	1.04
CC79697		6.5	2.05	3.01	0.07	0.02	0.03	0.019	0.04	8.4	10.2	0.12	84	1.22	<0.01	1.42
CC79698		4.9	1.27	1.72	0.07	0.02	0.01	0.012	0.02	7.1	5.0	0.07	52	0.96	<0.01	0.71
CC79699		6.0	1.43	1.68	0.07	0.02	0.02	0.015	0.04	7.0	4.7	0.08	67	0.98	<0.01	0.81
CC79700		2.8	0.63	2.38	0.07	<0.02	0.01	<0.005	0.02	8.9	2.2	0.05	35	0.50	0.01	0.60
CC79720		3.0	0.99	1.11	0.07	<0.02	0.01	0.007	0.02	6.8	2.3	0.04	41	0.85	<0.01	0.48
CC79721		9.4	1.22	1.07	0.08	0.03	0.04	0.013	0.04	9.8	3.1	1.70	311	1.33	0.01	0.44
CC79722		6.0	2.25	4.46	0.08	0.04	0.03	0.020	0.03	12.8	13.4	0.23	154	1.43	<0.01	1.76
CC79723		9.6	2.79	5.37	0.09	0.09	0.02	0.023	0.04	15.4	15.5	0.32	197	1.87	<0.01	1.50
CC79724		8.0	1.09	0.89	0.08	<0.02	0.03	0.010	0.03	8.0	2.3	0.57	177	0.79	0.01	0.34
CC79725		5.6	2.80	4.46	0.08	<0.02	0.02	0.026	0.03	13.5	13.8	0.27	178	1.36	<0.01	2.09
CC79726		6.2	1.84	1.79	0.07	0.09	0.01	0.017	0.03	7.7	6.8	0.13	99	1.17	<0.01	0.66
CC79727		3.3	1.30	1.33	0.07	<0.02	0.01	0.009	0.02	4.9	2.9	0.05	54	0.81	<0.01	0.70
CC79728		5.9	1.85	2.11	0.08	<0.02	0.01	0.020	0.03	5.6	4.2	0.05	79	1.16	<0.01	0.99
CC79729		2.7	1.14	3.32	0.08	0.02	<0.01	0.008	0.02	11.7	7.3	0.09	55	0.78	<0.01	1.41
CC79730		5.6	1.89	2.05	<0.05	0.02	0.02	0.016	0.03	8.2	5.1	0.07	83	1.05	<0.01	0.92
CC79731		4.0	0.91	1.80	<0.05	<0.02	0.02	0.014	0.03	9.2	6.0	0.11	40	0.59	0.01	0.65
CC79732		6.4	1.94	3.14	<0.05	0.06	0.03	0.018	0.03	13.6	9.7	0.22	115	0.87	0.01	1.06
CC79733		3.3	1.06	1.64	<0.05	0.03	0.02	0.013	0.02	9.3	6.2	0.09	43	0.55	<0.01	0.65
CC79734		6.5	2.12	3.96	<0.05	0.06	0.03	0.023	0.04	14.2	14.8	0.23	97	1.25	0.01	1.47
CC79735		19.4	2.89	5.74	0.05	0.02	0.07	0.036	0.06	24.4	15.6	0.40	643	0.99	0.01	1.85
CC79736		6.0	1.63	2.53	<0.05	0.03	0.03	0.017	0.03	9.8	8.1	0.15	89	1.11	<0.01	1.09
CC79737		8.5	2.29	2.83	<0.05	0.05	0.03	0.021	0.04	12.0	10.2	0.20	143	1.38	<0.01	1.67
CC79738		4.5	1.23	0.96	<0.05	0.02	0.03	0.008	0.02	7.5	2.9	0.06	49	0.80	<0.01	0.56
CC79739		5.3	1.55	1.94	<0.05	0.05	0.04	0.013	0.02	9.5	7.0	0.12	67	0.97	<0.01	0.87
CC79740		4.9	1.10	1.63	<0.05	0.03	0.03	0.012	0.03	8.1	6.5	0.09	40	0.87	<0.01	0.71
CC79784		6.6	1.95	2.59	<0.05	0.04	0.04	0.018	0.04	11.2	11.1	0.17	92	1.32	0.01	1.17
CC79785		5.7	1.50	2.48	<0.05	0.03	0.04	0.016	0.04	11.2	9.4	0.14	66	0.98	<0.01	1.23



ALS Canada Ltd.
 2103 Dollarton Hwy
 North Vancouver BC V7H 0A7
 Phone: 604 984 0221 Fax: 604 984 0218 www.alsglobal.com

To: ARCHER, CATHRO AND ASSOCIATES (1981)
 LIMITED
 1016- 510 W HASTINGS ST
 VANCOUVER BC V6B 1L8

Page: 2 - C
 Total # Pages: 4 (A - D)
 Plus Appendix Pages
 Finalized Date: 3- JUL- 2011
 Account: F

Project: Fireside- Bali

CERTIFICATE OF ANALYSIS WH11099286

Sample Description	Method Analyte Units LOR	ME- MS41	ME- MS41	ME- MS41	ME- MS41	ME- MS41	ME- MS41	ME- MS41	ME- MS41	ME- MS41	ME- MS41	ME- MS41	ME- MS41	ME- MS41	ME- MS41		
		Ni	P	Pb	Rb	Re	S	Sb	Sc	Se	Sn	Sr	Ta	Te	Th	Ti	
		ppm	ppm	ppm	ppm	ppm	%	ppm	ppm	ppm	ppm	ppm	ppm	ppm	ppm	%	
		0.2	10	0.2	0.1	0.001	0.01	0.05	0.1	0.2	0.2	0.2	0.2	0.01	0.01	0.2	0.005
CC79684		11.1	220	7.0	6.1	<0.001	0.01	0.53	0.9	0.2	0.2	3.4	<0.01	0.02	1.5	0.012	
CC79685		5.8	260	7.4	7.8	<0.001	0.01	0.31	0.6	<0.2	0.3	4.6	<0.01	0.01	1.0	0.015	
CC79686		13.9	700	12.3	9.3	<0.001	0.01	0.93	1.4	<0.2	0.5	4.8	<0.01	0.02	2.9	0.018	
CC79687		12.0	280	9.5	5.7	<0.001	0.01	0.53	1.1	<0.2	0.3	3.9	<0.01	0.01	2.0	0.015	
CC79688		10.3	280	8.8	5.3	<0.001	0.01	0.58	1.1	<0.2	0.3	4.5	<0.01	0.04	2.1	0.017	
CC79689		10.1	610	8.0	6.1	0.001	0.01	0.61	1.0	<0.2	0.2	5.0	<0.01	0.03	1.5	0.015	
CC79690		6.9	480	7.0	5.3	<0.001	0.01	0.50	0.8	<0.2	0.2	3.6	<0.01	0.01	1.0	0.012	
CC79691		17.0	290	10.3	6.2	<0.001	0.01	0.69	1.7	<0.2	0.3	5.1	<0.01	0.02	3.6	0.017	
CC79692		12.4	260	8.4	6.3	<0.001	0.01	0.56	1.3	<0.2	0.3	3.9	<0.01	0.01	2.4	0.014	
CC79693		14.8	250	8.2	3.7	0.001	0.01	0.67	1.4	0.2	0.2	4.7	<0.01	<0.01	2.2	0.010	
CC79694		12.3	320	6.5	4.1	<0.001	0.01	0.57	1.1	<0.2	0.2	3.6	<0.01	0.01	1.9	0.008	
CC79695		20.4	350	10.4	5.1	<0.001	0.01	0.84	2.6	0.5	0.3	7.9	<0.01	0.03	2.2	0.009	
CC79696		10.0	430	7.0	6.4	<0.001	0.01	0.54	0.9	<0.2	0.3	3.6	<0.01	0.03	1.1	0.011	
CC79697		16.7	560	10.5	6.8	<0.001	0.01	0.59	1.3	<0.2	0.4	4.2	<0.01	0.03	1.9	0.015	
CC79698		10.6	290	7.1	3.6	<0.001	0.01	0.55	1.0	0.2	0.2	3.3	<0.01	0.02	1.6	0.010	
CC79699		11.0	490	7.2	4.9	<0.001	0.01	0.55	1.0	<0.2	0.2	3.7	<0.01	0.02	1.4	0.009	
CC79700		3.6	210	5.7	4.6	<0.001	0.01	0.27	0.4	<0.2	0.3	3.4	<0.01	0.01	0.6	0.013	
CC79720		6.9	150	5.1	3.5	0.001	0.01	0.48	0.6	<0.2	0.2	4.6	<0.01	0.01	1.0	0.011	
CC79721		19.3	540	8.4	2.8	<0.001	0.02	0.85	2.2	0.4	0.2	25.6	<0.01	0.01	1.6	0.009	
CC79722		12.5	570	12.8	8.7	0.001	0.01	0.55	1.6	0.2	0.6	5.9	<0.01	0.01	3.9	0.023	
CC79723		21.2	780	14.3	12.8	<0.001	0.01	0.82	2.5	0.3	0.7	6.7	<0.01	0.04	5.1	0.032	
CC79724		15.3	410	7.1	2.1	<0.001	0.01	0.60	2.2	<0.2	<0.2	12.2	<0.01	0.02	1.3	0.009	
CC79725		12.8	1360	12.1	8.5	<0.001	0.01	0.59	1.6	0.3	0.5	6.4	<0.01	0.02	3.1	0.025	
CC79726		16.4	540	9.2	6.7	<0.001	0.01	0.55	1.5	<0.2	0.2	5.1	<0.01	0.01	2.7	0.011	
CC79727		8.5	460	5.0	3.7	<0.001	0.01	0.45	0.9	<0.2	0.2	5.5	<0.01	0.02	0.8	0.010	
CC79728		11.1	2500	12.5	4.7	<0.001	0.01	0.62	1.3	0.2	0.2	6.6	<0.01	0.02	1.2	0.010	
CC79729		4.8	230	7.1	6.4	<0.001	0.01	0.30	0.7	<0.2	0.5	4.0	<0.01	0.01	2.7	0.021	
CC79730		14.6	1180	9.1	4.9	<0.001	<0.01	0.58	1.5	0.4	0.3	8.9	<0.01	0.02	1.5	0.012	
CC79731		12.4	210	5.9	5.3	<0.001	<0.01	0.32	1.0	0.2	0.3	5.7	<0.01	0.01	1.5	0.011	
CC79732		17.1	230	9.7	6.7	<0.001	<0.01	0.55	1.9	0.5	0.4	8.0	<0.01	0.01	3.8	0.020	
CC79733		12.5	230	5.9	4.8	<0.001	<0.01	0.30	1.1	0.3	0.3	7.9	<0.01	0.01	2.0	0.012	
CC79734		18.4	250	11.1	7.9	<0.001	<0.01	0.51	2.2	0.4	0.5	8.7	<0.01	0.02	3.7	0.020	
CC79735		31.8	940	14.4	14.3	<0.001	<0.01	0.62	4.1	0.6	0.9	19.9	<0.01	0.02	3.0	0.027	
CC79736		15.5	230	9.8	5.5	<0.001	<0.01	0.54	1.5	0.2	0.4	5.8	<0.01	0.02	2.3	0.014	
CC79737		23.3	750	11.3	8.1	<0.001	<0.01	0.74	1.9	0.4	0.5	8.0	<0.01	0.02	3.5	0.021	
CC79738		12.9	160	5.9	3.2	<0.001	<0.01	0.49	1.1	0.2	0.2	6.9	<0.01	0.01	1.6	0.010	
CC79739		15.9	210	7.5	4.9	<0.001	<0.01	0.52	1.4	0.2	0.3	7.0	<0.01	0.01	2.3	0.012	
CC79740		13.3	180	6.1	5.4	<0.001	<0.01	0.48	1.0	0.2	0.2	4.2	<0.01	0.01	1.7	0.009	
CC79784		15.9	280	10.0	8.3	<0.001	<0.01	0.70	1.4	0.2	0.3	5.0	<0.01	0.02	2.7	0.014	
CC79785		12.8	190	8.3	6.4	<0.001	<0.01	0.57	1.3	0.3	0.3	4.1	<0.01	0.01	2.6	0.016	



ALS Canada Ltd.
 2103 Dollarton Hwy
 North Vancouver BC V7H 0A7
 Phone: 604 984 0221 Fax: 604 984 0218 www.alsglobal.com

To: ARCHER, CATHRO AND ASSOCIATES (1981)
 LIMITED
 1016- 510 W HASTINGS ST
 VANCOUVER BC V6B 1L8

Page: 2 - D
 Total # Pages: 4 (A - D)
 Plus Appendix Pages
 Finalized Date: 3- JUL- 2011
 Account: F

Project: Fireside- Bali

CERTIFICATE OF ANALYSIS WH11099286

Sample Description	Method Analyte Units LOR	ME- MS41	ME- MS41	ME- MS41	ME- MS41	ME- MS41	ME- MS41	WEI- 21	
		Tl ppm	U ppm	V ppm	W ppm	Y ppm	Zn ppm	Zr ppm	Recvd Wt. kg
		0.02	0.05	1	0.05	0.05	2	0.5	0.02
CC79684		0.06	0.23	27	0.09	1.60	37	0.9	0.26
CC79685		0.06	0.28	18	0.10	1.73	33	<0.5	0.26
CC79686		0.09	0.37	47	0.23	2.00	66	0.7	0.24
CC79687		0.11	0.31	30	0.11	1.71	47	0.7	0.28
CC79688		0.07	0.31	36	0.13	2.01	46	1.2	0.28
CC79689		0.08	0.27	30	0.13	2.00	41	<0.5	0.26
CC79690		0.05	0.24	27	0.12	1.75	30	<0.5	0.36
CC79691		0.10	0.44	31	0.12	3.01	61	3.5	0.26
CC79692		0.07	0.32	33	0.18	2.00	53	1.1	0.32
CC79693		0.08	0.40	30	0.09	2.60	42	1.0	0.24
CC79694		0.07	0.26	23	0.08	1.92	36	2.2	0.32
CC79695		0.15	0.53	38	0.09	8.02	66	0.6	0.38
CC79696		0.07	0.27	31	0.11	1.61	39	<0.5	0.28
CC79697		0.09	0.30	41	0.16	1.65	52	0.7	0.24
CC79698		0.06	0.24	32	0.09	1.70	39	0.9	0.20
CC79699		0.07	0.29	29	0.12	1.77	37	0.9	0.26
CC79700		0.06	0.21	21	0.10	1.17	19	<0.5	0.14
CC79720		0.05	0.22	26	0.08	1.31	26	<0.5	0.24
CC79721		0.12	0.44	31	0.12	6.08	52	1.3	0.30
CC79722		0.10	0.46	46	0.24	1.99	61	1.7	0.18
CC79723		0.13	0.62	52	0.25	2.91	122	4.4	0.18
CC79724		0.09	0.33	24	0.07	5.96	37	0.5	0.28
CC79725		0.08	0.48	54	0.24	2.39	75	0.5	0.08
CC79726		0.07	0.37	34	0.09	2.08	49	3.2	0.22
CC79727		0.04	0.22	28	0.08	1.47	31	0.7	0.18
CC79728		0.07	0.33	42	0.11	2.26	53	0.5	0.20
CC79729		0.06	0.28	29	0.15	1.47	24	1.0	0.18
CC79730		0.07	0.32	42	0.11	2.21	46	0.7	0.18
CC79731		0.08	0.29	24	0.09	2.00	39	<0.5	0.20
CC79732		0.11	0.48	40	0.14	2.84	56	2.9	0.18
CC79733		0.07	0.29	27	0.07	2.26	26	1.4	0.26
CC79734		0.13	0.44	45	0.16	3.14	52	3.0	0.18
CC79735		0.18	3.98	61	0.22	12.20	149	0.7	0.16
CC79736		0.12	0.36	37	0.12	2.37	73	1.3	0.24
CC79737		0.10	0.54	42	0.18	2.63	75	2.5	0.22
CC79738		0.05	0.28	26	0.06	1.92	26	1.1	0.24
CC79739		0.09	0.34	31	0.09	2.17	43	2.0	0.24
CC79740		0.10	0.26	27	0.09	1.76	34	1.6	0.36
CC79784		0.10	0.38	38	0.12	2.24	61	1.9	0.26
CC79785		0.10	0.34	34	0.12	1.99	43	1.6	0.36



ALS Canada Ltd.
 2103 Dollarton Hwy
 North Vancouver BC V7H 0A7
 Phone: 604 984 0221 Fax: 604 984 0218 www.alsglobal.com

To: ARCHER, CATHRO AND ASSOCIATES (1981)
 LIMITED
 1016- 510 W HASTINGS ST
 VANCOUVER BC V6B 1L8

Page: 3 - A
 Total # Pages: 4 (A - D)
 Plus Appendix Pages
 Finalized Date: 3- JUL- 2011
 Account: F

Project: Fireside- Bali

CERTIFICATE OF ANALYSIS WH1109286

Sample Description	Method Analyte Units LOR	Au- TL43	ME- MS41	ME- MS41	ME- MS41	ME- MS41	ME- MS41	ME- MS41	ME- MS41	ME- MS41	ME- MS41	ME- MS41	ME- MS41	ME- MS41	ME- MS41	
		Au ppm	Ag ppm	Al %	As ppm	Au ppm	B ppm	Ba ppm	Be ppm	Bi ppm	Ca %	Cd ppm	Ce ppm	Co ppm	Cr ppm	Cs ppm
CC79786		0.002	0.02	0.81	5.8	<0.2	<10	90	0.29	0.09	0.02	0.14	15.25	4.6	15	0.52
CC79787		0.002	0.02	0.73	4.3	<0.2	<10	110	0.28	0.13	0.04	0.21	24.2	4.0	14	0.61
CC79788		0.001	0.05	0.75	5.2	<0.2	<10	100	0.31	0.09	0.02	0.24	15.40	3.4	13	0.57
CC79789		0.001	0.03	0.58	5.2	<0.2	<10	70	0.23	0.10	0.03	0.13	18.05	3.1	13	0.54
CC79790		0.001	0.07	0.53	5.4	<0.2	<10	100	0.26	0.08	0.03	0.15	17.45	3.0	11	0.45
CC79791		<0.001	0.03	0.44	3.8	<0.2	<10	70	0.22	0.08	0.02	0.20	13.30	2.2	10	0.33
CC79792		<0.001	0.05	1.14	4.8	<0.2	<10	90	0.38	0.17	0.05	0.18	26.6	3.7	18	0.68
CC79793		0.002	0.03	0.55	5.6	<0.2	<10	100	0.28	0.09	0.02	0.19	15.35	2.9	12	0.47
CC79794		<0.001	0.03	0.91	6.4	<0.2	<10	110	0.35	0.11	0.06	0.24	17.85	6.7	15	0.60
CC79795		<0.001	0.03	0.44	5.4	<0.2	<10	80	0.20	0.11	0.03	0.14	16.60	2.4	11	0.49
CC79796		0.001	0.03	0.56	7.8	<0.2	<10	90	0.28	0.09	0.02	0.13	15.00	5.3	12	0.38
CC79797		0.001	0.04	0.40	5.0	<0.2	<10	130	0.46	0.10	0.31	0.48	28.8	5.6	12	0.40
CC79798		<0.001	0.03	0.31	4.4	<0.2	<10	120	0.34	0.08	0.07	0.34	20.6	4.4	9	0.32
CC79799		0.001	0.08	0.59	6.9	<0.2	<10	170	0.55	0.15	3.43	1.08	40.2	8.9	14	0.96
CC79800		0.003	0.02	0.52	5.0	<0.2	<10	70	0.20	0.08	0.03	0.11	14.40	2.9	11	0.42
CC79801		<0.001	0.05	1.42	9.0	<0.2	<10	120	0.55	0.19	0.04	0.28	26.0	7.2	26	1.05
CC79821		0.003	0.03	0.88	6.1	<0.2	<10	90	0.34	0.12	0.04	0.18	19.95	4.6	17	0.62
CC79822		0.001	0.04	0.37	4.8	<0.2	<10	90	0.28	0.07	0.02	0.18	15.95	3.2	11	0.38
CC79823		<0.001	0.02	0.41	2.9	<0.2	<10	60	0.17	0.07	0.04	0.11	16.05	2.2	9	0.33
CC79824		<0.001	0.03	0.84	4.7	<0.2	<10	110	0.28	0.12	0.05	0.41	22.7	4.1	15	0.54
CC79825		<0.001	0.01	0.73	4.8	<0.2	<10	90	0.27	0.08	0.02	0.13	14.50	3.7	15	0.48
CC79826		<0.001	0.03	0.74	3.3	<0.2	<10	70	0.20	0.10	0.04	0.12	20.1	2.5	13	0.54
CC79827		<0.001	0.03	0.80	4.8	<0.2	<10	70	0.24	0.13	0.04	0.33	18.40	3.6	16	0.46
CC79828		0.001	0.09	0.67	5.5	<0.2	<10	180	0.55	0.14	0.10	0.21	41.5	6.6	17	0.55
CC79829		<0.001	0.03	0.46	3.1	<0.2	<10	100	0.29	0.07	0.03	0.29	18.85	3.3	10	0.41
CC79830		0.001	0.04	1.58	8.5	<0.2	<10	160	0.52	0.21	0.08	0.23	26.3	9.2	27	0.83
CC79831																
CC79832																
CC79833																
CC79834																
CC79835																
CC79836																
CC79837																
CC79838																
CC79839																
CC79840																
CC79841																
CC79842																
CC79843																
CC79844																

***** See Appendix Page for comments regarding this certificate *****



ALS Canada Ltd.
 2103 Dollarton Hwy
 North Vancouver BC V7H 0A7
 Phone: 604 984 0221 Fax: 604 984 0218 www.alsglobal.com

To: ARCHER, CATHRO AND ASSOCIATES (1981)
 LIMITED
 1016- 510 W HASTINGS ST
 VANCOUVER BC V6B 1L8

Page: 3 - B
 Total # Pages: 4 (A - D)
 Plus Appendix Pages
 Finalized Date: 3- JUL- 2011
 Account: F

Project: Fireside- Bali

CERTIFICATE OF ANALYSIS WH1109286

Sample Description	Method Analyte Units LOR	ME- MS41	ME- MS41	ME- MS41	ME- MS41	ME- MS41	ME- MS41	ME- MS41	ME- MS41	ME- MS41	ME- MS41	ME- MS41	ME- MS41	ME- MS41	ME- MS41	
		Cu ppm	Fe %	Ga ppm	Ge ppm	Hf ppm	Hg ppm	In ppm	K %	La ppm	Li ppm	Mg %	Mn ppm	Mo ppm	Na %	Nb ppm
		0.2	0.01	0.05	0.05	0.02	0.01	0.005	0.01	0.2	0.1	0.01	5	0.05	0.01	0.05
CC79786		6.5	1.59	1.86	<0.05	0.06	0.03	0.018	0.04	8.6	7.0	0.08	55	1.15	<0.01	1.08
CC79787		4.1	1.55	2.96	<0.05	0.04	0.02	0.012	0.04	13.4	9.3	0.14	148	1.12	0.01	1.18
CC79788		5.9	1.59	1.84	<0.05	<0.02	0.03	0.016	0.04	8.3	7.3	0.07	70	0.94	<0.01	0.97
CC79789		4.8	1.56	2.47	<0.05	0.02	0.03	0.013	0.04	9.8	6.3	0.11	81	0.98	<0.01	1.21
CC79790		6.3	1.25	1.71	<0.05	0.04	0.02	0.011	0.04	9.7	4.9	0.08	56	1.02	<0.01	0.74
CC79791		3.6	1.27	1.85	<0.05	0.03	0.02	0.011	0.02	7.3	5.3	0.04	43	0.79	<0.01	0.85
CC79792		4.7	1.98	4.54	<0.05	<0.02	0.02	0.016	0.03	14.2	13.1	0.21	91	1.03	<0.01	1.98
CC79793		5.7	1.39	1.94	<0.05	<0.02	0.02	0.015	0.04	8.5	5.0	0.06	49	0.87	<0.01	0.87
CC79794		8.4	1.54	2.09	<0.05	<0.02	0.02	0.017	0.03	10.2	7.0	0.14	100	1.20	0.01	1.14
CC79795		4.2	1.46	1.85	<0.05	<0.02	0.02	0.011	0.03	9.1	4.2	0.09	62	1.30	<0.01	1.02
CC79796		7.2	1.56	1.56	<0.05	0.02	0.02	0.016	0.03	8.1	6.0	0.06	61	0.98	<0.01	0.75
CC79797		13.6	1.15	1.42	<0.05	0.08	0.06	0.014	0.03	14.6	3.4	0.21	160	1.17	<0.01	0.55
CC79798		9.4	1.04	1.06	<0.05	0.02	0.03	0.012	0.02	10.5	2.7	0.07	121	0.96	<0.01	0.46
CC79799		21.5	1.59	2.10	0.05	0.23	0.13	0.022	0.05	21.5	5.9	2.17	344	1.46	0.01	0.50
CC79800		5.1	1.33	1.69	<0.05	0.02	0.02	0.011	0.03	8.1	5.9	0.10	47	0.96	<0.01	0.71
CC79801		9.8	2.85	4.36	<0.05	0.03	0.03	0.026	0.05	14.1	15.7	0.28	170	1.33	<0.01	2.40
CC79821		6.0	1.83	2.60	<0.05	0.02	0.02	0.016	0.03	10.8	10.3	0.15	97	1.31	<0.01	1.18
CC79822		7.4	1.28	1.22	<0.05	<0.02	0.02	0.010	0.03	9.1	3.4	0.07	60	1.17	<0.01	0.54
CC79823		3.6	0.94	1.95	<0.05	<0.02	0.02	0.007	0.03	8.9	3.6	0.06	40	0.66	0.01	0.69
CC79824		4.8	1.77	3.02	<0.05	0.03	0.02	0.014	0.03	12.5	10.1	0.14	93	1.04	<0.01	1.57
CC79825		5.4	1.46	1.73	<0.05	0.03	0.02	0.018	0.03	7.8	6.8	0.11	49	0.91	<0.01	0.80
CC79826		3.1	1.24	2.63	<0.05	0.03	0.03	0.012	0.03	11.0	9.6	0.13	53	0.84	<0.01	1.04
CC79827		4.7	2.01	3.50	<0.05	<0.02	0.01	0.014	0.03	9.8	11.1	0.13	74	1.10	<0.01	1.55
CC79828		14.3	1.31	2.24	0.08	0.09	0.04	0.021	0.03	22.3	7.2	0.17	89	0.94	<0.01	0.55
CC79829		3.9	1.06	1.99	0.05	<0.02	0.01	0.012	0.02	10.0	5.6	0.09	86	0.76	<0.01	0.86
CC79830		7.6	3.00	5.61	0.08	0.08	0.01	0.027	0.05	13.7	21.0	0.34	203	1.98	<0.01	2.58
CC79831																
CC79832																
CC79833																
CC79834																
CC79835																
CC79836																
CC79837																
CC79838																
CC79839																
CC79840																
CC79841																
CC79842																
CC79843																
CC79844																

***** See Appendix Page for comments regarding this certificate *****



ALS Canada Ltd.
 2103 Dollarton Hwy
 North Vancouver BC V7H 0A7
 Phone: 604 984 0221 Fax: 604 984 0218 www.alsglobal.com

To: ARCHER, CATHRO AND ASSOCIATES (1981)
 LIMITED
 1016- 510 W HASTINGS ST
 VANCOUVER BC V6B 1L8

Page: 3 - C
 Total # Pages: 4 (A - D)
 Plus Appendix Pages
 Finalized Date: 3- JUL- 2011
 Account: F

Project: Fireside- Bali

CERTIFICATE OF ANALYSIS WH1109286

Sample Description	Method Analyte Units LOR	ME- MS41	ME- MS41	ME- MS41	ME- MS41	ME- MS41	ME- MS41	ME- MS41	ME- MS41	ME- MS41	ME- MS41	ME- MS41	ME- MS41	ME- MS41	ME- MS41	
		Ni	P	Pb	Rb	Re	S	Sb	Sc	Se	Sn	Sr	Ta	Te	Th	Ti
		ppm	ppm	ppm	ppm	ppm	%	ppm	ppm	ppm	ppm	ppm	ppm	ppm	ppm	%
		0.2	10	0.2	0.1	0.001	0.01	0.05	0.1	0.2	0.2	0.2	0.01	0.01	0.2	0.005
CC79786		14.9	250	8.3	5.9	<0.001	<0.01	0.61	1.2	0.4	0.3	3.9	<0.01	0.01	1.9	0.011
CC79787		10.0	350	9.4	8.9	<0.001	<0.01	0.59	1.1	0.3	0.4	5.3	<0.01	0.02	2.9	0.017
CC79788		10.7	1050	9.0	5.9	<0.001	<0.01	0.56	1.1	0.3	0.3	3.5	<0.01	0.01	1.5	0.010
CC79789		9.3	520	6.8	7.5	<0.001	<0.01	0.47	1.0	<0.2	0.4	4.1	<0.01	0.02	1.9	0.016
CC79790		11.3	380	7.2	6.0	<0.001	<0.01	0.57	1.1	0.3	0.2	4.0	<0.01	0.01	1.8	0.011
CC79791		6.1	700	6.6	4.2	<0.001	<0.01	0.42	0.7	0.2	0.3	2.8	<0.01	0.01	1.4	0.012
CC79792		10.3	420	10.2	8.8	<0.001	<0.01	0.40	1.4	<0.2	0.6	5.3	<0.01	0.02	2.8	0.026
CC79793		10.2	690	8.2	5.4	<0.001	<0.01	0.54	1.0	<0.2	0.3	3.9	<0.01	0.02	1.2	0.010
CC79794		18.8	330	9.1	7.0	<0.001	<0.01	0.73	1.2	0.2	0.3	5.9	<0.01	0.01	1.6	0.015
CC79795		8.4	900	7.8	6.9	<0.001	<0.01	0.56	0.8	0.2	0.2	4.3	<0.01	0.02	1.4	0.013
CC79796		13.6	220	8.4	3.9	<0.001	<0.01	0.68	1.3	0.3	0.2	3.4	<0.01	0.01	1.5	0.009
CC79797		19.3	220	15.2	3.2	<0.001	<0.01	0.86	2.5	0.4	0.3	8.4	<0.01	0.02	2.9	0.008
CC79798		12.6	210	11.3	3.1	<0.001	<0.01	0.60	1.4	0.3	0.2	5.7	<0.01	0.01	1.8	0.006
CC79799		27.9	450	24.8	5.4	<0.001	<0.01	1.19	3.4	0.5	0.4	23.7	<0.01	0.03	4.5	0.013
CC79800		10.0	360	5.7	5.6	<0.001	<0.01	0.48	0.9	0.2	0.2	3.9	<0.01	0.01	1.4	0.009
CC79801		19.8	910	12.4	11.1	<0.001	<0.01	0.70	1.9	0.3	0.6	5.9	<0.01	0.03	3.5	0.034
CC79821		14.3	440	10.1	7.1	<0.001	<0.01	0.66	1.3	0.3	0.4	4.9	<0.01	0.02	2.4	0.015
CC79822		13.0	430	7.5	5.0	<0.001	<0.01	0.69	1.1	0.5	0.2	3.8	<0.01	0.02	1.4	0.007
CC79823		7.3	320	4.8	4.2	<0.001	<0.01	0.32	0.7	0.2	0.3	3.4	<0.01	<0.01	1.4	0.012
CC79824		12.3	410	8.4	7.5	<0.001	<0.01	0.63	1.1	0.4	0.5	4.8	<0.01	0.02	2.5	0.019
CC79825		13.6	230	5.5	5.3	<0.001	<0.01	0.54	1.2	0.2	0.3	3.8	<0.01	0.02	1.7	0.010
CC79826		7.5	190	8.1	7.6	<0.001	<0.01	0.41	1.0	0.2	0.4	4.2	<0.01	0.01	2.4	0.017
CC79827		9.8	560	7.4	5.7	<0.001	<0.01	0.49	1.0	0.2	0.5	3.8	<0.01	0.02	1.6	0.024
CC79828		24.6	180	20.5	5.1	<0.001	<0.01	0.83	3.1	0.4	0.3	8.9	<0.01	0.02	4.1	0.009
CC79829		9.3	210	6.8	5.5	<0.001	<0.01	0.40	1.1	0.2	0.3	5.3	<0.01	0.01	1.6	0.013
CC79830		20.8	510	12.1	10.8	<0.001	<0.01	0.76	2.1	0.4	0.7	9.5	0.01	0.03	4.1	0.036
CC79831																
CC79832																
CC79833																
CC79834																
CC79835																
CC79836																
CC79837																
CC79838																
CC79839																
CC79840																
CC79841																
CC79842																
CC79843																
CC79844																



ALS Canada Ltd.
 2103 Dollarton Hwy
 North Vancouver BC V7H 0A7
 Phone: 604 984 0221 Fax: 604 984 0218 www.alsglobal.com

To: ARCHER, CATHRO AND ASSOCIATES (1981)
LIMITED
 1016- 510 W HASTINGS ST
 VANCOUVER BC V6B 1L8

Page: 3 - D
 Total # Pages: 4 (A - D)
 Plus Appendix Pages
 Finalized Date: 3- JUL- 2011
 Account: F

Project: Fireside- Bali

CERTIFICATE OF ANALYSIS WH11099286

Sample Description	Method Analyte Units LOR	ME- MS41	ME- MS41	ME- MS41	ME- MS41	ME- MS41	ME- MS41	ME- MS41	WEI- 21
		Tl ppm	U ppm	V ppm	W ppm	Y ppm	Zn ppm	Zr ppm	Recvd Wt. kg
		0.02	0.05	1	0.05	0.05	2	0.5	0.02
CC79786		0.09	0.27	36	0.11	1.83	36	2.7	0.26
CC79787		0.10	0.35	36	0.20	2.09	73	1.7	0.24
CC79788		0.08	0.29	37	0.10	1.88	53	0.5	0.28
CC79789		0.08	0.27	34	0.13	1.61	45	0.9	0.26
CC79790		0.09	0.25	31	0.09	1.89	43	1.8	0.30
CC79791		0.06	0.22	33	0.10	1.39	42	1.5	0.30
CC79792		0.11	0.36	42	0.19	2.10	54	0.5	0.26
CC79793		0.09	0.24	39	0.10	1.80	43	<0.5	0.30
CC79794		0.10	0.32	30	0.12	2.12	49	0.8	0.18
CC79795		0.08	0.27	31	0.16	1.61	38	<0.5	0.22
CC79796		0.09	0.23	33	0.09	2.01	31	1.1	0.26
CC79797		0.13	0.41	31	0.09	9.28	66	4.7	0.32
CC79798		0.08	0.32	24	0.08	3.90	51	1.1	0.46
CC79799		0.28	0.53	40	0.10	11.15	110	13.5	0.38
CC79800		0.08	0.23	25	0.38	1.60	32	0.8	0.30
CC79801		0.12	0.45	47	0.20	2.70	78	1.6	0.24
CC79821		0.10	0.36	37	0.16	2.08	59	0.8	0.26
CC79822		0.08	0.28	30	0.08	2.24	50	0.8	0.24
CC79823		0.06	0.20	23	0.11	1.30	24	<0.5	0.20
CC79824		0.08	0.33	37	0.13	1.98	64	1.2	0.26
CC79825		0.08	0.26	29	0.08	1.66	37	1.7	0.32
CC79826		0.08	0.29	31	0.12	1.71	46	1.5	0.22
CC79827		0.06	0.27	43	0.17	1.50	55	<0.5	0.26
CC79828		0.15	0.52	34	0.09	8.42	84	4.4	0.22
CC79829		0.07	0.28	25	0.09	2.24	51	0.7	0.26
CC79830		0.10	0.44	55	0.31	2.63	111	3.9	0.18
CC79831									Not Recvd
CC79832									Not Recvd
CC79833									Not Recvd
CC79834									Not Recvd
CC79835									Not Recvd
CC79836									Not Recvd
CC79837									Not Recvd
CC79838									Not Recvd
CC79839									Not Recvd
CC79840									Not Recvd
CC79841									Not Recvd
CC79842									Not Recvd
CC79843									Not Recvd
CC79844									Not Recvd



ALS Canada Ltd.
 2103 Dollarton Hwy
 North Vancouver BC V7H 0A7
 Phone: 604 984 0221 Fax: 604 984 0218 www.alsglobal.com

To: ARCHER, CATHRO AND ASSOCIATES (1981)
 LIMITED
 1016- 510 W HASTINGS ST
 VANCOUVER BC V6B 1L8

Page: 4 - A
 Total # Pages: 4 (A - D)
 Plus Appendix Pages
 Finalized Date: 3- JUL- 2011
 Account: F

Project: Fireside- Bali

CERTIFICATE OF ANALYSIS WH11099286

Sample Description	Method Analyte Units LOR	Au- TL43	ME- MS41	ME- MS41	ME- MS41	ME- MS41	ME- MS41	ME- MS41	ME- MS41	ME- MS41	ME- MS41	ME- MS41	ME- MS41	ME- MS41	ME- MS41	
		Au ppm	Ag ppm	Al %	As ppm	Au ppm	B ppm	Ba ppm	Be ppm	Bi ppm	Ca %	Cd ppm	Ce ppm	Co ppm	Cr ppm	Cs ppm
CC79845 CC79846 CC79847 CC79848 CC79849		0.001	0.01	0.01	0.1	0.2	10	10	0.05	0.01	0.01	0.01	0.02	0.1	1	0.05
CC79850 CC79851 CC79852 CC79853 CC79854																
CC79855 CC79856 CC79857 CC79779 CC79780		0.001 0.004	0.08 0.10	0.34 0.40	183.0 228	<0.2 <0.2	<10 10	580 250	0.27 0.33	0.05 0.05	1.87 1.78	0.67 1.16	11.40 10.30	4.2 3.4	11 11	0.89 1.91
CC79781 CC79782 CC79783		0.001 <0.001 <0.001	0.13 0.05 0.02	0.66 0.24 0.72	40.5 1.5 5.4	<0.2 <0.2 <0.2	10 <10 <10	680 170 80	0.49 0.17 0.27	0.09 0.04 0.11	1.74 0.78 0.02	2.19 0.66 0.11	15.85 10.65 17.00	5.2 1.9 4.0	17 6 15	0.52 0.23 0.61

***** See Appendix Page for comments regarding this certificate *****



ALS Canada Ltd.
 2103 Dollarton Hwy
 North Vancouver BC V7H 0A7
 Phone: 604 984 0221 Fax: 604 984 0218 www.alsglobal.com

To: ARCHER, CATHRO AND ASSOCIATES (1981)
 LIMITED
 1016- 510 W HASTINGS ST
 VANCOUVER BC V6B 1L8

Page: 4 - B
 Total # Pages: 4 (A - D)
 Plus Appendix Pages
 Finalized Date: 3- JUL- 2011
 Account: F

Project: Fireside- Bali

CERTIFICATE OF ANALYSIS WH11099286

Sample Description	Method Analyte Units LOR	ME- MS41	ME- MS41	ME- MS41	ME- MS41	ME- MS41	ME- MS41	ME- MS41	ME- MS41	ME- MS41	ME- MS41	ME- MS41	ME- MS41	ME- MS41	ME- MS41	
		Cu ppm	Fe %	Ga ppm	Ge ppm	Hf ppm	Hg ppm	In ppm	K %	La ppm	Li ppm	Mg %	Mn ppm	Mo ppm	Na %	Nb ppm
CC79845		0.2	0.01	0.05	0.05	0.02	0.01	0.005	0.01	0.2	0.1	0.01	5	0.05	0.01	0.05
CC79846																
CC79847																
CC79848																
CC79849																
CC79850																
CC79851																
CC79852																
CC79853																
CC79854																
CC79855																
CC79856																
CC79857																
CC79779		6.7	1.98	0.98	0.06	0.05	0.05	0.009	0.03	5.9	3.4	0.59	647	0.77	0.01	0.37
CC79780		10.0	1.36	0.98	0.07	0.07	0.06	0.009	0.03	5.3	3.9	0.32	70	5.77	<0.01	0.39
CC79781		12.9	1.14	1.93	0.07	0.09	0.08	0.014	0.03	8.1	6.7	0.31	64	1.62	0.01	0.67
CC79782		4.2	0.44	0.85	<0.05	0.03	0.03	0.006	0.02	5.7	2.3	0.29	72	0.33	<0.01	0.27
CC79783		5.6	1.58	2.93	0.05	0.03	0.01	0.015	0.03	8.9	12.6	0.19	58	1.08	<0.01	0.90

***** See Appendix Page for comments regarding this certificate *****



ALS Canada Ltd.
 2103 Dollarton Hwy
 North Vancouver BC V7H 0A7
 Phone: 604 984 0221 Fax: 604 984 0218 www.alsglobal.com

To: ARCHER, CATHRO AND ASSOCIATES (1981)
 LIMITED
 1016- 510 W HASTINGS ST
 VANCOUVER BC V6B 1L8

Page: 4 - C
 Total # Pages: 4 (A - D)
 Plus Appendix Pages
 Finalized Date: 3- JUL- 2011
 Account: F

Project: Fireside- Bali

CERTIFICATE OF ANALYSIS WH11099286

Sample Description	Method Analyte Units LOR	ME- MS41 Ni ppm	ME- MS41 P ppm	ME- MS41 Pb ppm	ME- MS41 Rb ppm	ME- MS41 Re ppm	ME- MS41 S %	ME- MS41 Sb ppm	ME- MS41 Sc ppm	ME- MS41 Se ppm	ME- MS41 Sn ppm	ME- MS41 Sr ppm	ME- MS41 Ta ppm	ME- MS41 Te ppm	ME- MS41 Th ppm	ME- MS41 Ti %
CC79845		0.2	10	0.2	0.1	0.001	0.01	0.05	0.1	0.2	0.2	0.2	0.01	0.01	0.2	0.005
CC79846																
CC79847																
CC79848																
CC79849																
CC79850																
CC79851																
CC79852																
CC79853																
CC79854																
CC79855																
CC79856																
CC79857																
CC79779		10.3	1510	5.1	6.4	0.004	0.11	0.54	1.4	2.6	<0.2	25.2	<0.01	0.03	0.8	0.006
CC79780		13.7	470	4.7	10.6	0.014	1.20	1.42	1.5	7.4	<0.2	24.3	<0.01	0.01	1.0	0.006
CC79781		16.3	700	8.6	7.5	0.007	0.32	1.81	2.0	7.9	0.2	28.8	<0.01	0.02	1.2	0.008
CC79782		5.7	290	4.2	2.8	<0.001	0.02	0.30	0.9	0.6	<0.2	10.4	<0.01	0.01	0.9	0.006
CC79783		12.4	180	6.4	6.0	<0.001	<0.01	0.43	1.3	0.2	0.3	4.5	<0.01	0.01	2.1	0.013

***** See Appendix Page for comments regarding this certificate *****



ALS Canada Ltd.
 2103 Dollarton Hwy
 North Vancouver BC V7H 0A7
 Phone: 604 984 0221 Fax: 604 984 0218 www.alsglobal.com

To: ARCHER, CATHRO AND ASSOCIATES (1981)
 LIMITED
 1016- 510 W HASTINGS ST
 VANCOUVER BC V6B 1L8

Page: 4 - D
 Total # Pages: 4 (A - D)
 Plus Appendix Pages
 Finalized Date: 3- JUL- 2011
 Account: F

Project: Fireside- Bali

CERTIFICATE OF ANALYSIS WH11099286

Sample Description	Method Analyte Units LOR	ME- MS41 Ti ppm 0.02	ME- MS41 U ppm 0.05	ME- MS41 V ppm 1	ME- MS41 W ppm 0.05	ME- MS41 Y ppm 0.05	ME- MS41 Zn ppm 2	ME- MS41 Zr ppm 0.5	WEI- 21 Recvd Wt. kg 0.02
CC79845									Not Recvd
CC79846									Not Recvd
CC79847									Not Recvd
CC79848									Not Recvd
CC79849									Not Recvd
CC79850									Not Recvd
CC79851									Not Recvd
CC79852									Not Recvd
CC79853									Not Recvd
CC79854									Not Recvd
CC79855									Not Recvd
CC79856									Not Recvd
CC79857									Not Recvd
CC79779		0.09	1.02	19	0.14	4.52	49	1.7	0.10
CC79780		0.19	4.88	19	0.32	4.56	60	3.0	0.12
CC79781		0.22	5.91	29	0.19	6.87	120	3.5	0.14
CC79782		0.04	0.80	12	0.08	3.13	36	1.1	0.12
CC79783		0.09	0.28	27	0.11	1.84	33	1.4	0.38

***** See Appendix Page for comments regarding this certificate *****



ALS Canada Ltd.
2103 Dollarton Hwy
North Vancouver BC V7H 0A7
Phone: 604 984 0221 Fax: 604 984 0218 www.alsglobal.com

To: ARCHER, CATHRO AND ASSOCIATES (1981)
LIMITED
1016- 510 W HASTINGS ST
VANCOUVER BC V6B 1L8

Page: Appendix 1
Total # Appendix Pages: 1
Finalized Date: 3- JUL- 2011
Account: F

Project: Fireside- Bali

CERTIFICATE OF ANALYSIS WH11099286

Method	CERTIFICATE COMMENTS
ME- MS41	Gold determinations by this method are semi- quantitative due to the small sample weight used (0.5g).



ALS Canada Ltd.
 2103 Dollarton Hwy
 North Vancouver BC V7H 0A7
 Phone: 604 984 0221 Fax: 604 984 0218 www.alsglobal.com

To: **ARCHER, CATHRO AND ASSOCIATES (1981)
 LIMITED
 1016- 510 W HASTINGS ST
 VANCOUVER BC V6B 1L8**

**Page: 1
 Finalized Date: 18- JUL- 2011
 Account: F**

CERTIFICATE VA11124590

Project: Fireside - Bali
 P.O. No.:
 This report is for 27 Soil samples submitted to our lab in Vancouver, BC, Canada on 4- JUL- 2011.
 The following have access to data associated with this certificate:
 DOUG EATON SARAH EATON JOAN MARIACHER

SAMPLE PREPARATION	
ALS CODE	DESCRIPTION
WEI- 21	Received Sample Weight
LOG- 22	Sample login - Rcd w/o BarCode
SCR- 41	Screen to - 180um and save both

ANALYTICAL PROCEDURES		
ALS CODE	DESCRIPTION	INSTRUMENT
Au- TL43	Trace Level Au - 25g AR	ICP- MS
ME- MS41	51 anal. aqua regia ICPMS	

To: **ARCHER, CATHRO AND ASSOCIATES (1981) LIMITED
 ATTN: JOAN MARIACHER
 1016- 510 W HASTINGS ST
 VANCOUVER BC V6B 1L8**

This is the Final Report and supersedes any preliminary report with this certificate number. Results apply to samples as submitted. All pages of this report have been checked and approved for release.

Signature: 
 Colin Ramshaw, Vancouver Laboratory Manager



ALS Canada Ltd.
 2103 Dollarton Hwy
 North Vancouver BC V7H 0A7
 Phone: 604 984 0221 Fax: 604 984 0218 www.alsglobal.com

To: ARCHER, CATHRO AND ASSOCIATES (1981)
 LIMITED
 1016- 510 W HASTINGS ST
 VANCOUVER BC V6B 1L8

Page: 2 - A
 Total # Pages: 2 (A - D)
 Plus Appendix Pages
 Finalized Date: 18- JUL- 2011
 Account: F

Project: Fireside - Bali

CERTIFICATE OF ANALYSIS VA11124590

Sample Description	Method Analyte Units LOR	WEI- 21	Au- TL43	ME- MS41	ME- MS41	ME- MS41	ME- MS41	ME- MS41	ME- MS41	ME- MS41	ME- MS41	ME- MS41	ME- MS41	ME- MS41	ME- MS41	
		Recvd Wt. kg	Au ppm	Ag ppm	Al %	As ppm	Au ppm	B ppm	Ba ppm	Be ppm	Bi ppm	Ca %	Cd ppm	Ce ppm	Co ppm	Cr ppm
		0.02	0.001	0.01	0.01	0.1	0.2	10	10	0.05	0.01	0.01	0.01	0.02	0.1	1
CC79831		0.20	<0.001	0.02	0.62	5.8	<0.2	<10	90	0.26	0.08	0.04	0.14	16.90	3.8	14
CC79832		0.24	<0.001	0.09	0.45	7.3	<0.2	<10	110	0.52	0.08	0.35	0.64	24.6	5.4	13
CC79833		0.20	0.001	0.04	1.01	5.7	<0.2	<10	90	0.27	0.22	0.07	0.37	29.9	3.3	19
CC79834		0.22	<0.001	0.03	0.85	5.9	<0.2	<10	100	0.36	0.10	0.03	0.10	19.30	4.2	17
CC79835		0.32	<0.001	0.03	0.89	5.6	<0.2	<10	100	0.38	0.10	0.02	0.10	23.0	4.1	16
CC79836		0.22	0.004	0.02	0.62	5.3	<0.2	<10	90	0.33	0.10	0.02	0.11	20.7	4.3	14
CC79837		0.24	0.002	0.05	1.52	6.0	<0.2	<10	270	0.65	0.20	0.20	0.28	36.6	5.7	26
CC79838		0.22	0.001	0.06	1.25	8.0	<0.2	<10	90	0.43	0.22	0.06	0.31	30.6	4.0	22
CC79839		0.24	0.001	0.04	1.06	5.3	<0.2	<10	100	0.46	0.16	0.05	0.28	28.0	6.2	21
CC79840		0.22	<0.001	0.04	0.98	4.8	<0.2	<10	100	0.28	0.13	0.03	0.10	25.2	3.4	17
CC79841		0.32	<0.001	0.03	0.91	6.2	<0.2	<10	90	0.36	0.13	0.03	0.16	21.7	4.7	18
CC79842		0.36	<0.001	0.03	0.59	5.8	<0.2	<10	70	0.22	0.11	0.02	0.14	21.2	3.3	12
CC79843		0.32	0.001	0.02	0.87	11.7	<0.2	<10	70	0.39	0.14	0.02	0.11	18.25	5.7	17
CC79844		0.36	<0.001	0.04	0.95	10.7	<0.2	<10	80	0.41	0.15	0.04	0.12	25.0	5.3	19
CC79845		0.30	<0.001	0.03	0.74	9.2	<0.2	<10	100	0.41	0.12	0.02	0.16	19.25	5.3	16
CC79846		0.22	<0.001	0.01	0.08	2.4	<0.2	<10	110	0.05	0.03	0.04	0.05	10.55	0.8	3
CC79847		0.16	0.001	0.07	0.41	13.1	<0.2	<10	100	0.38	0.13	1.85	0.39	20.2	8.3	10
CC79848		0.38	0.001	0.08	0.97	19.7	<0.2	<10	130	0.96	0.23	0.80	0.35	29.5	16.2	21
CC79849		0.08	0.001	0.16	0.77	10.6	<0.2	<10	450	0.49	0.13	1.58	0.45	16.45	8.5	13
CC79850		0.26	0.001	0.14	0.75	9.6	<0.2	<10	730	0.65	0.18	1.09	1.20	22.0	12.2	15
CC79851		0.38	<0.001	0.01	0.63	7.8	<0.2	<10	70	0.20	0.13	0.03	0.18	25.7	4.3	13
CC79852		0.32	0.001	0.04	0.95	9.4	<0.2	<10	100	0.54	0.14	0.05	0.09	23.3	5.7	17
CC79853		0.46	<0.001	0.05	0.55	8.5	<0.2	<10	80	0.28	0.12	0.04	0.20	16.35	4.5	13
CC79854		0.32	0.001	0.04	0.73	10.2	<0.2	<10	90	0.37	0.14	0.05	0.15	22.3	7.8	18
CC79855		0.38	0.001	0.03	0.87	7.8	<0.2	<10	110	0.28	0.13	0.05	0.10	17.95	5.2	16
CC79856		0.22	<0.001	0.03	0.74	4.0	<0.2	<10	80	0.23	0.14	0.04	0.13	23.9	3.7	12
CC79857		0.32	0.001	0.04	0.59	3.3	<0.2	<10	60	0.15	0.11	0.04	0.06	19.65	2.3	11

***** See Appendix Page for comments regarding this certificate *****



ALS Canada Ltd.
 2103 Dollarton Hwy
 North Vancouver BC V7H 0A7
 Phone: 604 984 0221 Fax: 604 984 0218 www.alsglobal.com

To: ARCHER, CATHRO AND ASSOCIATES (1981)
 LIMITED
 1016- 510 W HASTINGS ST
 VANCOUVER BC V6B 1L8

Page: 2 - B
 Total # Pages: 2 (A - D)
 Plus Appendix Pages
 Finalized Date: 18- JUL- 2011
 Account: F

Project: Fireside - Bali

CERTIFICATE OF ANALYSIS VA11124590

Sample Description	Method Analyte Units LOR	ME- MS41	ME- MS41	ME- MS41	ME- MS41	ME- MS41	ME- MS41	ME- MS41	ME- MS41	ME- MS41	ME- MS41	ME- MS41	ME- MS41	ME- MS41	ME- MS41	
		Cs ppm	Cu ppm	Fe %	Ga ppm	Ge ppm	Hf ppm	Hg ppm	In ppm	K %	La ppm	Li ppm	Mg %	Mn ppm	Mo ppm	Na %
		0.05	0.2	0.01	0.05	0.05	0.02	0.01	0.005	0.01	0.2	0.1	0.01	5	0.05	0.01
CC79831		0.43	7.1	1.40	1.85	0.09	0.02	0.01	0.013	0.03	9.2	7.4	0.11	61	1.20	0.01
CC79832		0.34	10.9	1.43	1.53	0.09	<0.02	0.01	0.014	0.03	12.3	5.3	0.21	218	1.43	0.01
CC79833		0.69	8.3	2.45	7.86	0.10	0.02	0.01	0.018	0.04	15.9	13.3	0.21	182	1.66	0.01
CC79834		0.53	7.1	1.71	2.54	0.08	0.03	0.01	0.017	0.03	9.9	9.2	0.15	72	1.09	0.01
CC79835		0.59	6.9	1.57	2.79	0.09	0.04	0.01	0.017	0.03	12.3	10.0	0.16	71	1.08	0.01
CC79836		0.41	5.7	1.27	1.65	0.08	0.03	0.01	0.014	0.03	10.6	5.6	0.10	67	0.82	0.01
CC79837		0.88	6.0	2.29	5.39	0.09	<0.02	0.02	0.023	0.04	17.6	15.0	0.43	181	0.80	0.01
CC79838		1.03	6.7	2.52	6.16	0.10	<0.02	0.01	0.021	0.05	15.4	15.2	0.24	148	1.95	0.01
CC79839		0.82	6.5	1.97	4.18	0.09	<0.02	0.01	0.019	0.05	14.9	11.9	0.24	219	1.37	0.01
CC79840		0.61	4.2	1.80	4.14	0.09	0.04	0.01	0.015	0.03	12.9	13.1	0.19	77	1.56	0.01
CC79841		0.56	7.2	1.95	3.34	0.08	0.02	0.01	0.017	0.04	11.3	15.6	0.24	97	1.73	0.01
CC79842		0.45	6.2	1.46	2.83	0.08	<0.02	0.01	0.012	0.03	11.0	9.0	0.15	58	1.21	0.01
CC79843		0.56	12.2	2.30	2.69	0.08	0.04	0.01	0.024	0.04	9.2	13.9	0.19	80	1.46	0.01
CC79844		0.75	10.0	2.33	3.70	0.10	0.05	0.01	0.022	0.04	12.3	17.1	0.24	111	1.43	0.01
CC79845		0.58	11.5	1.98	2.34	0.08	0.02	0.01	0.021	0.04	10.3	10.7	0.17	107	1.66	0.01
CC79846		0.23	2.1	0.36	0.74	<0.05	<0.02	0.01	<0.005	0.01	6.0	0.3	0.01	14	0.90	<0.01
CC79847		0.35	23.6	1.78	1.44	0.09	0.05	0.07	0.020	0.03	10.5	7.2	1.02	249	1.00	0.02
CC79848		1.05	45.3	3.11	2.88	0.10	0.09	0.07	0.036	0.07	14.7	15.8	0.63	418	1.82	0.01
CC79849		0.54	21.9	2.14	2.31	0.09	0.05	0.06	0.021	0.04	8.4	8.3	0.32	679	1.18	0.03
CC79850		0.70	26.0	2.29	2.12	0.09	0.08	0.09	0.030	0.04	11.0	10.5	0.36	1460	2.05	0.02
CC79851		0.48	7.4	1.92	3.56	0.09	0.02	<0.01	0.014	0.03	13.4	10.6	0.14	111	1.85	0.01
CC79852		0.68	18.2	2.27	3.19	0.08	0.05	0.03	0.026	0.03	11.6	13.3	0.26	112	1.27	0.01
CC79853		0.57	8.5	1.66	2.12	<0.05	0.02	0.01	0.019	0.03	8.6	7.9	0.13	92	1.26	<0.01
CC79854		0.64	11.2	1.95	2.52	0.05	0.04	0.01	0.020	0.04	11.4	10.3	0.22	176	1.64	<0.01
CC79855		0.59	7.7	2.09	3.36	<0.05	0.03	0.01	0.020	0.03	9.3	12.3	0.21	101	1.55	<0.01
CC79856		0.50	3.8	1.35	3.87	<0.05	0.02	0.02	0.011	0.03	12.1	8.9	0.16	103	0.83	<0.01
CC79857		0.43	3.0	1.05	3.11	<0.05	0.04	0.01	0.011	0.03	9.9	9.2	0.12	48	0.79	<0.01

***** See Appendix Page for comments regarding this certificate *****



ALS Canada Ltd.
 2103 Dollarton Hwy
 North Vancouver BC V7H 0A7
 Phone: 604 984 0221 Fax: 604 984 0218 www.alsglobal.com

To: ARCHER, CATHRO AND ASSOCIATES (1981)
 LIMITED
 1016- 510 W HASTINGS ST
 VANCOUVER BC V6B 1L8

Page: 2 - C
 Total # Pages: 2 (A - D)
 Plus Appendix Pages
 Finalized Date: 18- JUL- 2011
 Account: F

Project: Fireside - Bali

CERTIFICATE OF ANALYSIS VA11124590

Sample Description	Method Analyte Units LOR	ME- MS41	ME- MS41	ME- MS41	ME- MS41	ME- MS41	ME- MS41	ME- MS41	ME- MS41	ME- MS41	ME- MS41	ME- MS41	ME- MS41	ME- MS41	ME- MS41	
		Nb ppm	Ni ppm	P ppm	Pb ppm	Rb ppm	Re ppm	S %	Sb ppm	Sc ppm	Se ppm	Sn ppm	Sr ppm	Ta ppm	Te ppm	Th ppm
CC79831		0.84	16.2	200	8.2	5.3	<0.001	0.01	0.56	1.3	0.3	0.3	4.1	<0.01	0.01	1.7
CC79832		0.69	19.4	450	13.6	4.0	<0.001	0.01	0.85	2.0	0.6	0.2	6.7	<0.01	0.01	1.5
CC79833		5.71	8.9	630	17.5	9.5	<0.001	0.01	0.35	1.4	0.2	1.2	6.3	<0.01	0.01	3.3
CC79834		1.27	15.6	180	8.4	5.5	<0.001	<0.01	0.52	1.3	0.2	0.4	4.1	<0.01	0.01	2.3
CC79835		1.11	14.5	160	8.4	6.5	<0.001	<0.01	0.48	1.5	0.2	0.4	4.1	<0.01	0.01	3.0
CC79836		0.81	14.7	190	7.5	5.0	<0.001	<0.01	0.42	1.2	0.2	0.2	3.3	<0.01	<0.01	2.3
CC79837		1.85	21.5	300	13.6	8.6	<0.001	<0.01	0.30	2.4	0.5	0.7	8.2	<0.01	0.01	3.6
CC79838		2.44	16.4	1480	15.4	12.4	<0.001	0.01	0.63	1.7	0.3	0.8	6.4	<0.01	0.01	2.6
CC79839		2.11	15.7	720	11.0	13.9	<0.001	0.01	0.49	1.5	0.4	0.6	5.9	<0.01	0.01	2.4
CC79840		1.75	10.9	190	8.7	6.2	<0.001	<0.01	0.37	1.3	0.2	0.5	4.3	<0.01	0.01	3.2
CC79841		1.01	16.1	170	7.8	7.9	<0.001	<0.01	0.35	1.4	0.3	0.4	4.9	<0.01	0.01	2.7
CC79842		0.92	10.6	180	6.4	8.1	<0.001	<0.01	0.35	1.1	0.3	0.4	4.4	<0.01	<0.01	2.3
CC79843		0.72	16.8	320	9.4	6.5	<0.001	<0.01	0.72	1.5	0.3	0.3	4.8	<0.01	0.01	2.7
CC79844		1.40	15.2	280	9.3	9.5	<0.001	<0.01	0.63	1.6	0.3	0.4	5.8	<0.01	0.02	3.6
CC79845		0.90	16.6	390	7.8	7.1	<0.001	<0.01	0.69	1.4	0.4	0.3	5.2	<0.01	0.01	2.5
CC79846		0.35	2.3	110	4.8	2.4	<0.001	<0.01	0.37	0.5	<0.2	<0.2	3.5	<0.01	0.01	0.7
CC79847		0.38	19.7	430	11.2	2.4	<0.001	0.02	0.98	2.5	0.5	0.2	16.4	<0.01	0.03	2.0
CC79848		0.50	36.8	390	20.6	5.9	<0.001	0.01	1.42	5.2	0.6	0.3	15.7	<0.01	0.03	3.8
CC79849		0.68	19.4	670	9.8	5.4	0.001	0.06	0.77	2.0	0.6	0.3	18.6	<0.01	0.01	0.8
CC79850		0.59	28.0	760	17.9	8.2	0.008	0.07	0.83	3.3	1.9	0.2	20.4	<0.01	0.02	1.7
CC79851		1.69	12.1	360	8.8	5.9	<0.001	<0.01	0.68	1.2	0.4	0.5	4.5	<0.01	0.01	2.8
CC79852		0.84	20.7	160	12.4	6.1	<0.001	<0.01	0.66	2.5	0.5	0.4	7.0	<0.01	0.02	3.2
CC79853		0.91	11.5	300	8.8	5.9	<0.001	<0.01	0.63	1.3	0.2	0.3	5.8	<0.01	0.02	1.9
CC79854		1.12	17.4	160	10.1	7.6	<0.001	<0.01	0.83	1.7	0.4	0.4	6.5	<0.01	0.02	2.9
CC79855		1.27	13.7	260	9.5	6.0	<0.001	<0.01	0.64	1.5	0.3	0.4	5.3	<0.01	0.02	2.2
CC79856		1.40	7.5	560	8.6	6.1	<0.001	<0.01	0.30	1.2	0.2	0.5	4.5	<0.01	0.01	2.6
CC79857		1.57	6.2	170	7.7	5.9	<0.001	<0.01	0.25	1.1	0.2	0.5	4.4	<0.01	0.01	2.4



ALS Canada Ltd.
 2103 Dollarton Hwy
 North Vancouver BC V7H 0A7
 Phone: 604 984 0221 Fax: 604 984 0218 www.alsglobal.com

To: ARCHER, CATHRO AND ASSOCIATES (1981)
 LIMITED
 1016- 510 W HASTINGS ST
 VANCOUVER BC V6B 1L8

Page: 2 - D
 Total # Pages: 2 (A - D)
 Plus Appendix Pages
 Finalized Date: 18- JUL- 2011
 Account: F

Project: Fireside - Bali

CERTIFICATE OF ANALYSIS VA11124590

Sample Description	Method Analyte Units LOR	ME- MS41	ME- MS41	ME- MS41	ME- MS41	ME- MS41	ME- MS41	ME- MS41	ME- MS41
		Ti %	Ti ppm	U ppm	V ppm	W ppm	Y ppm	Zn ppm	Zr ppm
		0.005	0.02	0.05	1	0.05	0.05	2	0.5
CC79831		0.010	0.08	0.30	30	0.07	2.09	41	0.9
CC79832		0.006	0.13	0.49	36	0.08	7.56	67	0.7
CC79833		0.050	0.10	0.39	61	0.30	2.16	86	1.1
CC79834		0.013	0.09	0.31	34	0.10	2.01	40	1.6
CC79835		0.014	0.11	0.38	33	0.09	2.32	42	2.1
CC79836		0.010	0.08	0.35	26	0.07	2.18	35	1.7
CC79837		0.030	0.14	0.62	45	0.17	4.19	95	0.6
CC79838		0.029	0.16	0.47	56	0.21	2.56	96	<0.5
CC79839		0.030	0.11	0.63	38	0.19	2.65	101	<0.5
CC79840		0.022	0.10	0.33	40	0.13	1.90	44	2.1
CC79841		0.012	0.10	0.34	31	0.11	2.19	42	1.2
CC79842		0.012	0.09	0.29	26	0.08	1.91	36	0.9
CC79843		0.008	0.13	0.33	31	0.07	2.25	41	2.4
CC79844		0.021	0.14	0.38	35	0.12	2.29	50	2.4
CC79845		0.010	0.11	0.36	28	0.08	2.57	51	1.3
CC79846		0.005	0.04	0.19	22	0.07	1.15	18	<0.5
CC79847		0.006	0.15	0.43	23	0.06	6.12	62	1.9
CC79848		0.005	0.28	0.61	37	0.06	9.64	81	4.6
CC79849		0.010	0.12	1.28	24	0.07	5.86	57	1.6
CC79850		0.006	0.29	2.19	26	<0.05	7.62	92	2.4
CC79851		0.018	0.07	0.36	41	0.13	1.99	49	1.0
CC79852		0.010	0.11	0.43	33	0.10	3.50	44	3.0
CC79853		0.012	0.11	0.30	28	0.12	2.05	48	0.7
CC79854		0.020	0.13	0.37	30	0.16	2.27	49	2.4
CC79855		0.014	0.10	0.32	37	0.14	1.99	45	1.3
CC79856		0.020	0.09	0.29	29	0.20	1.71	33	0.6
CC79857		0.024	0.07	0.28	26	0.14	1.63	24	1.4



ALS Canada Ltd.
2103 Dollarton Hwy
North Vancouver BC V7H 0A7
Phone: 604 984 0221 Fax: 604 984 0218 www.alsglobal.com

To: ARCHER, CATHRO AND ASSOCIATES (1981)
LIMITED
1016- 510 W HASTINGS ST
VANCOUVER BC V6B 1L8

Page: Appendix 1
Total # Appendix Pages: 1
Finalized Date: 18- JUL- 2011
Account: F

Project: Fireside - Bali

CERTIFICATE OF ANALYSIS VA11124590

Method	CERTIFICATE COMMENTS
ME- MS41	Gold determinations by this method are semi- quantitative due to the small sample weight used (0.5g).

Bali Project

Project Expenditures = \$10,298.59