

ARCHER, CATHRO & ASSOCIATES (1981) LIMITED
1016 - 510 West Hastings Street
Vancouver, B.C. V6B1L8

Telephone: 604-688-2568

Fax: 604-688-2578

ASSESSMENT REPORT

describing

STREAM SEDIMENT AND SOIL GEOCHEMICAL SAMPLING

at the

PAPUA PROPERTY

Papua 1-34 YD29755-YD29788

NTS 095D/9

Latitude 60°42'N; Longitude 126°12'W

located in the

Watson Lake Mining District
Yukon Territory

prepared by

Archer, Cathro & Associates (1981) Limited

for

PRECIPITATE GOLD CORP.
and
STRATEGIC METALS LTD.

by

S. Eaton, B.Sc., GIT

October 2011

CONTENTS

INTRODUCTION	1
PROPERTY LOCATION, CLAIM DATA AND ACCESS	1
HISTORY AND PREVIOUS WORK	1
GEOMORPHOLOGY AND CLIMATE	2
GEOLOGY	2
STREAM SEDIMENT AND SOIL GEOCHEMISTRY	3
DISCUSSION AND CONCLUSIONS	4
REFERENCES	5

APPENDICES

- I STATEMENT OF QUALIFICATIONS
- II CERTIFICATE OF ANALYSIS

FIGURES

<u>No.</u>	<u>Description</u>	<u>Follows Page</u>
1	Property Location	1
2	Claim Locations	1
3	Tectonic Setting	2
4	Geology	2
5	Sample Locations	3
6	Gold Geochemistry	3
7	Antimony Geochemistry	3
8	Thallium Geochemistry	3
9	Molybdenum Geochemistry	3

TABLES

I	Lithological Units	2
---	--------------------	---

INTRODUCTION

The Papua property is located in southeastern Yukon and covers the headwaters of a creek that yielded a regionally anomalous arsenic value from a government stream sediment sample. The property is owned by Strategic Metals Ltd. and is under option to Precipitate Gold Corp.

This report describes stream sediment and soil geochemical sampling conducted on May 31, 2011 by Archer, Cathro and Associates (1981) Limited on behalf of Precipitate Gold. The author interpreted all data from this project and her Statement of Qualifications is in Appendix I.

PROPERTY LOCATION, CLAIM DATA AND ACCESS

The Papua property comprises 34 contiguous quartz claims located in southeastern Yukon at latitude 60°42' north and longitude 126°12' west on NTS map sheet 095D/09 (Figure 1). The property covers an area of about 690 hectares (6.9 km²). The claims are registered with the Watson Lake Mining Recorder in the name of Archer Cathro, which holds them in trust for Strategic Metals. Specifics concerning claim registration are tabulated below, while the locations of individual claims are shown on Figure 2.

<u>Claim Name</u>	<u>Grant Number</u>	<u>Expiry Date*</u>
Papua 1-34	YD29755-YD29788	March 8, 2015

*Expiry date includes 2011 work which has been filed for assessment credit but not yet accepted.

Access to the property was provided by a Hughes 500D helicopter operated by Kluane Airways from Coal River, B.C., which is located approximately 130 km south-southwest of the property. All personnel stayed at the Coal River Lodge.

The community of Watson Lake is the nearest supply centre. It lies 160 km southwest of the property. The closest road access is from the Alaska Highway, which at its nearest point is 110 km southwest of the property. The Alaska Highway is usable in all seasons by two wheel drive vehicles.

HISTORY AND PREVIOUS WORK

In 1995, the Geological Survey of Canada (GSC) completed a low-density stream sediment and water sampling survey on parts of NTS map sheets 095D and 105A (Friske *et. al.*, 1996). A sample collected from a creek draining the Papua property returned a 90th percentile arsenic (22 ppm) value for those map sheets (Figure 2).

No further record of work in this area could be found.

**PRECIPITATE GOLD CORP.
STRATEGIC METALS LTD.**

FIGURE 1
ARCHER, CATHRO & ASSOCIATES (1981) LIMITED

**PROPERTY LOCATION
PAPUA PROPERTY**

0 250 km

UTM ZONE 9, NAD 83, 95D

FILE: ...Papua-F_1-Property_Location.wor

DATE: OCTOBER 2011

NORTHWEST TERRITORIES

PAPUA PROPERTY

BRITISH COLUMBIA

ALASKA

PACIFIC OCEAN

Dawson

Mayo

Faro

Ross River

Carmacks

Whitehorse

Haines Junction

Watson Lake

Coal River

Skagway

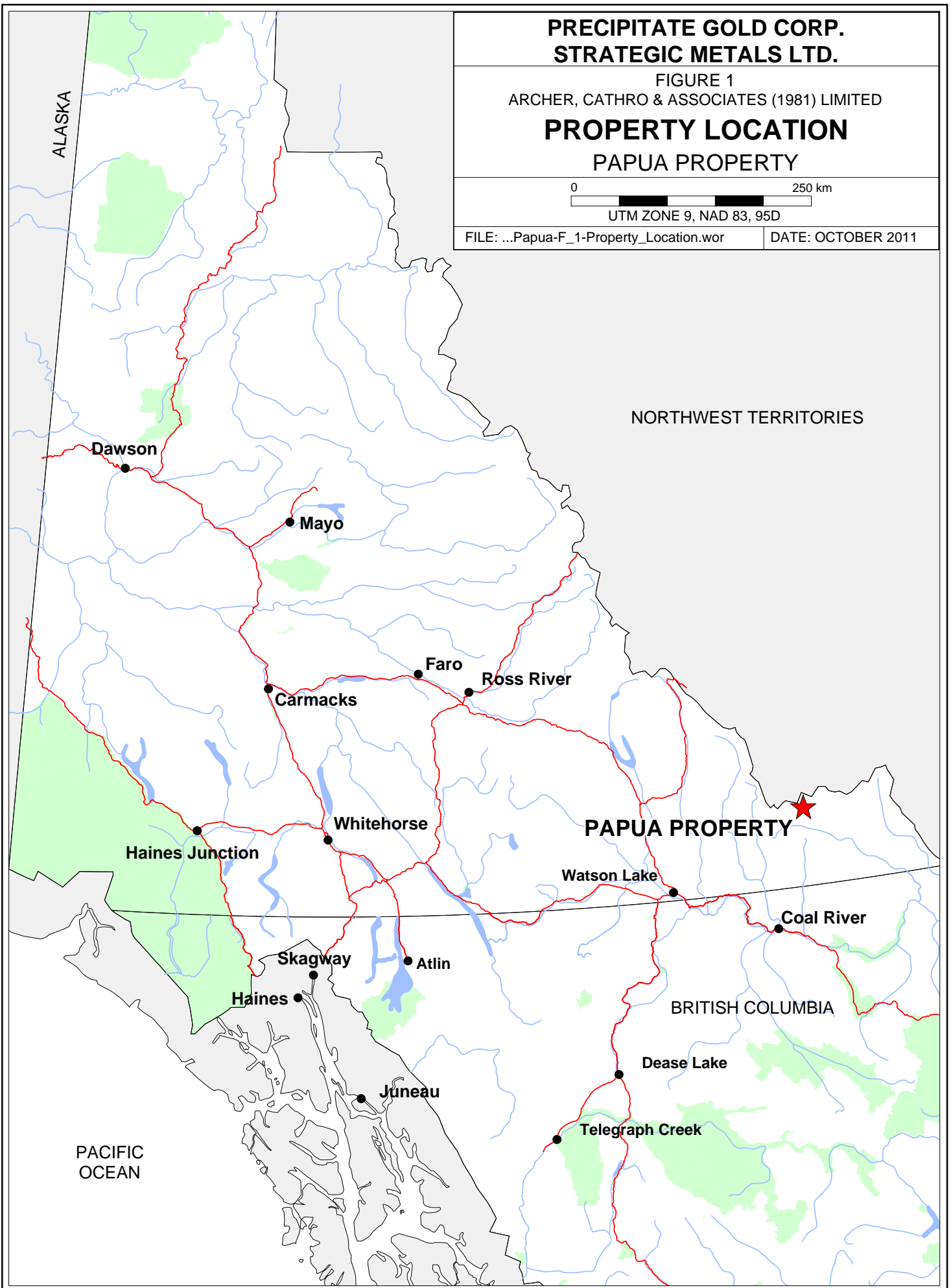
Atlin

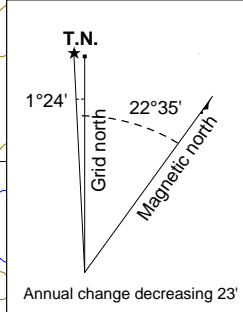
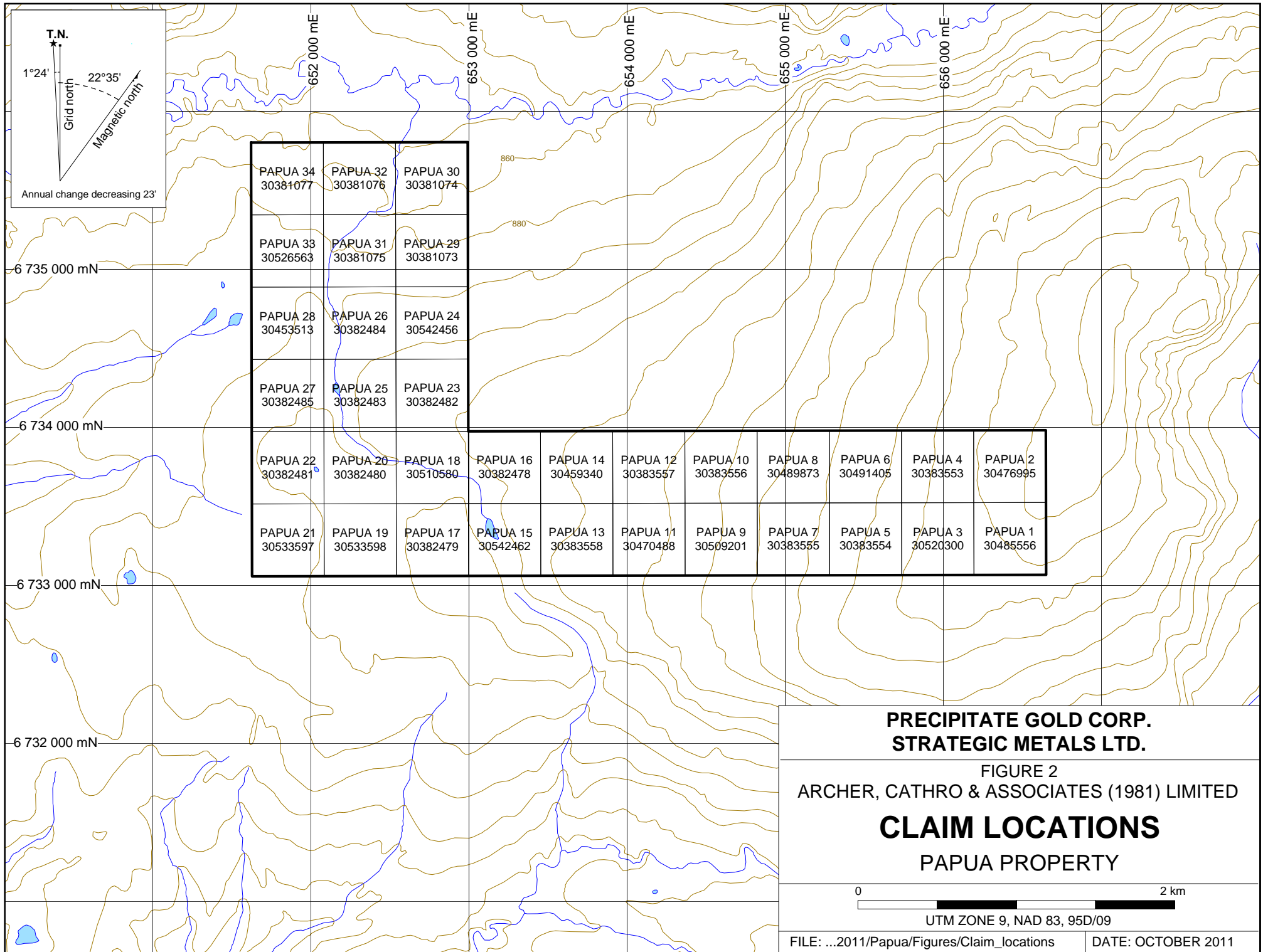
Haines

Juneau

Dease Lake

Telegraph Creek





PAPUA 34 30381077	PAPUA 32 30381076	PAPUA 30 30381074								
PAPUA 33 30526563	PAPUA 31 30381075	PAPUA 29 30381073								
PAPUA 28 30453513	PAPUA 26 30382484	PAPUA 24 30542456								
PAPUA 27 30382485	PAPUA 25 30382483	PAPUA 23 30382482								
PAPUA 22 30382481	PAPUA 20 30382480	PAPUA 18 30510580	PAPUA 16 30382478	PAPUA 14 30459340	PAPUA 12 30383557	PAPUA 10 30383556	PAPUA 8 30489873	PAPUA 6 30491405	PAPUA 4 30383553	PAPUA 2 30476995
PAPUA 21 30533597	PAPUA 19 30533598	PAPUA 17 30382479	PAPUA 15 30542462	PAPUA 13 30383558	PAPUA 11 30470488	PAPUA 9 30509201	PAPUA 7 30383555	PAPUA 5 30383554	PAPUA 3 30520300	PAPUA 1 30485556

**PRECIPITATE GOLD CORP.
STRATEGIC METALS LTD.**

FIGURE 2
ARCHER, CATHRO & ASSOCIATES (1981) LIMITED

**CLAIM LOCATIONS
PAPUA PROPERTY**



UTM ZONE 9, NAD 83, 95D/09

GEOMORPHOLOGY AND CLIMATE

The Papua property is situated in the Liard Plateau south of the Selwyn Mountains. It is drained by creeks that flow into the Beaver River, which ultimately connects to the Arctic Ocean via the Liard and Mackenzie rivers.

The property covers a northwest facing slope, with local elevations ranging from 840 to 1,120 m above sea level (asl). Topographic relief in the area is gentle to moderate. Outcrop is rare because the property lies entirely below treeline. Vegetation comprises black spruce and alder with an understory of low shrubs and moss.

Much of the overburden in the region is associated with the most recent Cordilleran ice sheet, the McConnell glaciation, which is believed to have covered south and central Yukon between 26,500 and 10,000 years ago (Yukon Geological Survey, 2010). The area was covered by the Liard Lobe of the ice sheet, which moved in an eastward to north-eastward direction.

The climate in the Papua property area is typical of northern continental regions with long, cold winters, truncated fall and spring seasons and short, mild summers. The property is mostly snow free from mid May to late September.

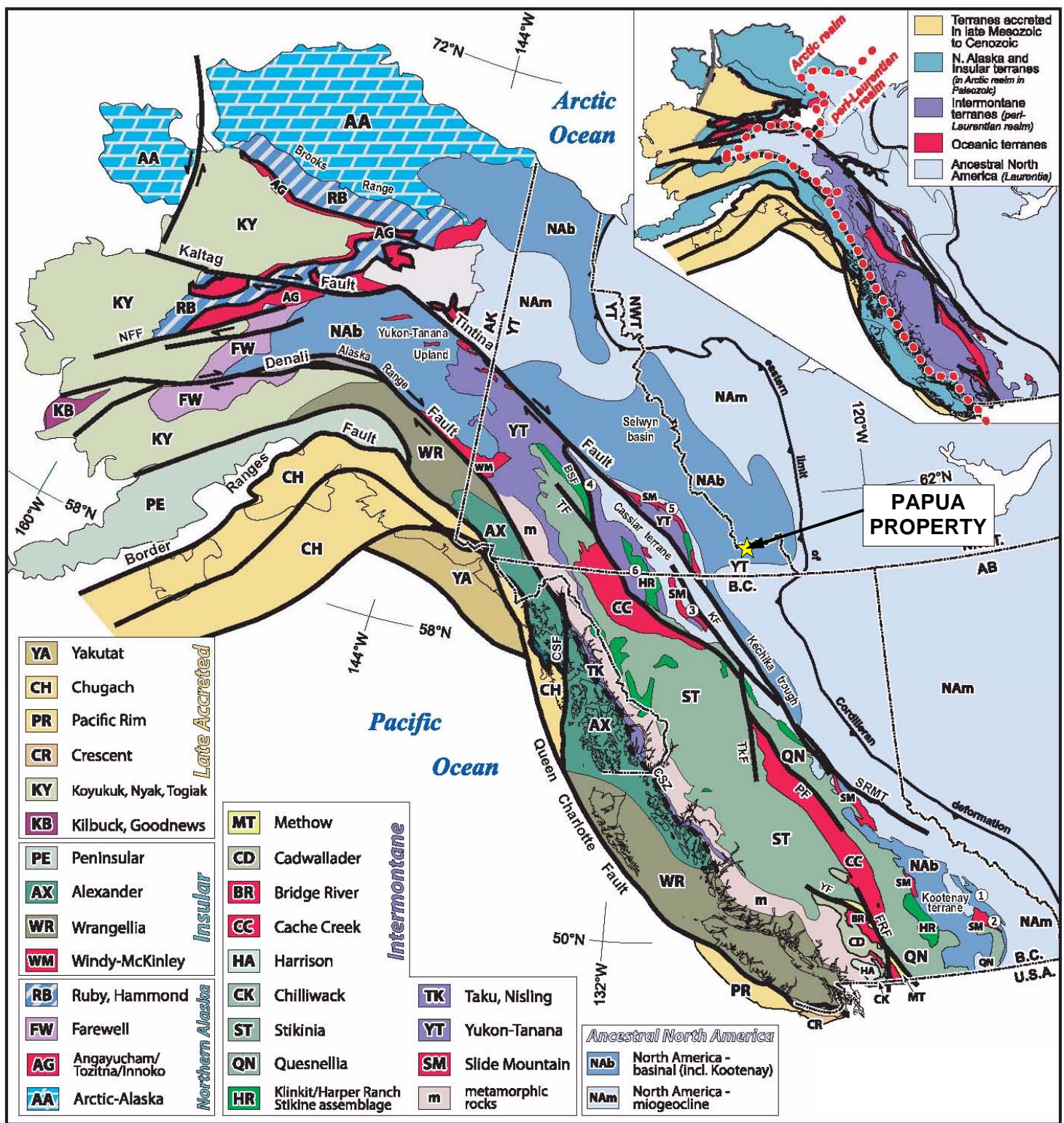
GEOLOGY

The Coal River map sheet (NTS 095D) was mapped at a regional scale (1:250,000) by the Geological Survey of Canada (GSC) in 1969 (Gabrielse and Blusson, 1969) and the YGS in 2009 and 2010 (Pigage et. al., 2010).

The Papua property is located within Selwyn Basin (Figure 3), a tectonic element comprising deep water clastic rocks, chert and minor carbonate accumulated along the North American continental margin during Paleozoic time (Pigage, 2004). In the Papua property area, the package comprises a basement of Ordovician Sunblood Formation dolostone and limestone with conformably overlying Ordovician to Silurian unnamed sandstone. The sandstone is in turn conformably overlain by undivided Silurian to Mississippian Road River Group – Besa River Formation shale, Mississippian Mattson Formation quartzose sandstone, and Permian Fantasque Formation shale (Figure 4). An unnamed Cretaceous plug cuts Mattson Formation three kilometres north of the property. Descriptions of these units are provided in Table I.

Table I – Lithological Units (after Pigage et. al., 2010)

Unit Name	Map Name	Age	Description
mKg	Unnamed	Cretaceous	Medium to dark grey, medium grained, equigranular to porphyritic, biotite ± hornblende granodiorite; typically contains disseminated magnetite; minor biotite-muscovite granodiorite.
P _F	Fantasque	Permian	Dark grey, brown weathering,

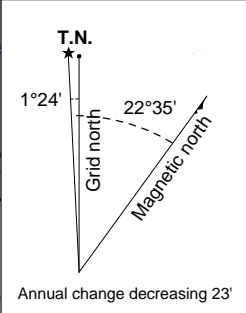
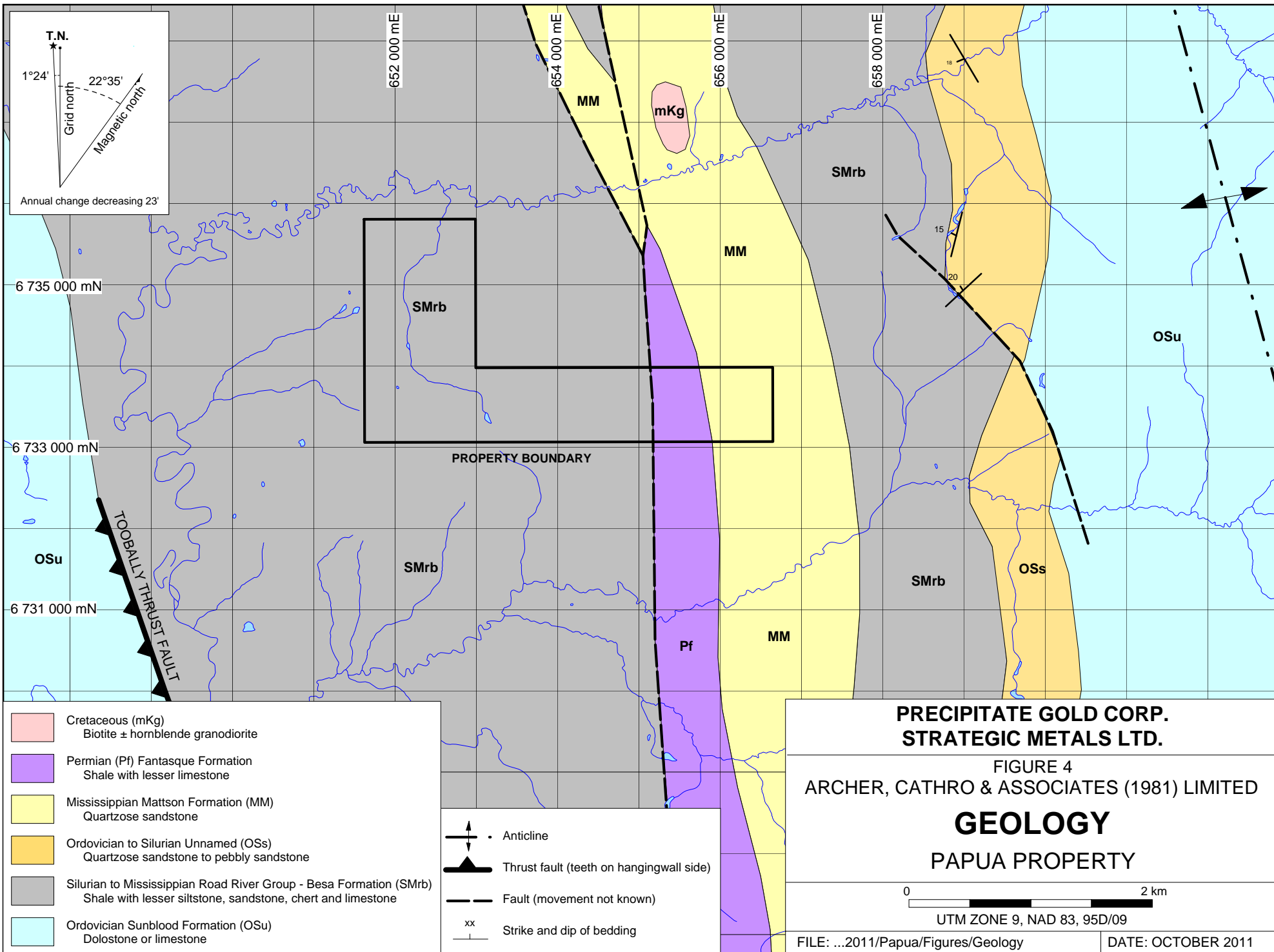


**PRECIPITATE GOLD CORP.
STRATEGIC METALS LTD.**

**FIGURE 3
ARCHER, CATHRO & ASSOCIATES (1981) LIMITED**

**TECTONIC SETTING
PAPUA PROPERTY**

0 300 km



6 735 000 mN

6 733 000 mN

6 731 000 mN

652 000 mE

654 000 mE

656 000 mE

658 000 mE

SMrb

MM

mKg

SMrb

MM

OSu

PROPERTY BOUNDARY

OSu

SMrb

SMrb

OSs

Pf

MM

Cretaceous (mKg)
Biotite ± hornblende granodiorite

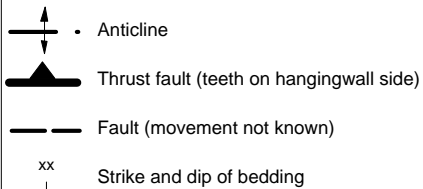
Permian (Pf) Fantasque Formation
Shale with lesser limestone

Mississippian Mattson Formation (MM)
Quartzose sandstone

Ordovician to Silurian Unnamed (OSs)
Quartzose sandstone to pebbly sandstone

Silurian to Mississippian Road River Group - Besa Formation (SMrb)
Shale with lesser siltstone, sandstone, chert and limestone

Ordovician Sunblood Formation (OSu)
Dolostone or limestone



**PRECIPITATE GOLD CORP.
STRATEGIC METALS LTD.**

FIGURE 4
ARCHER, CATHRO & ASSOCIATES (1981) LIMITED

GEOLOGY
PAPUA PROPERTY

0 2 km

UTM ZONE 9, NAD 83, 95D/09

FILE: ...2011/Papua/Figures/Geology

DATE: OCTOBER 2011

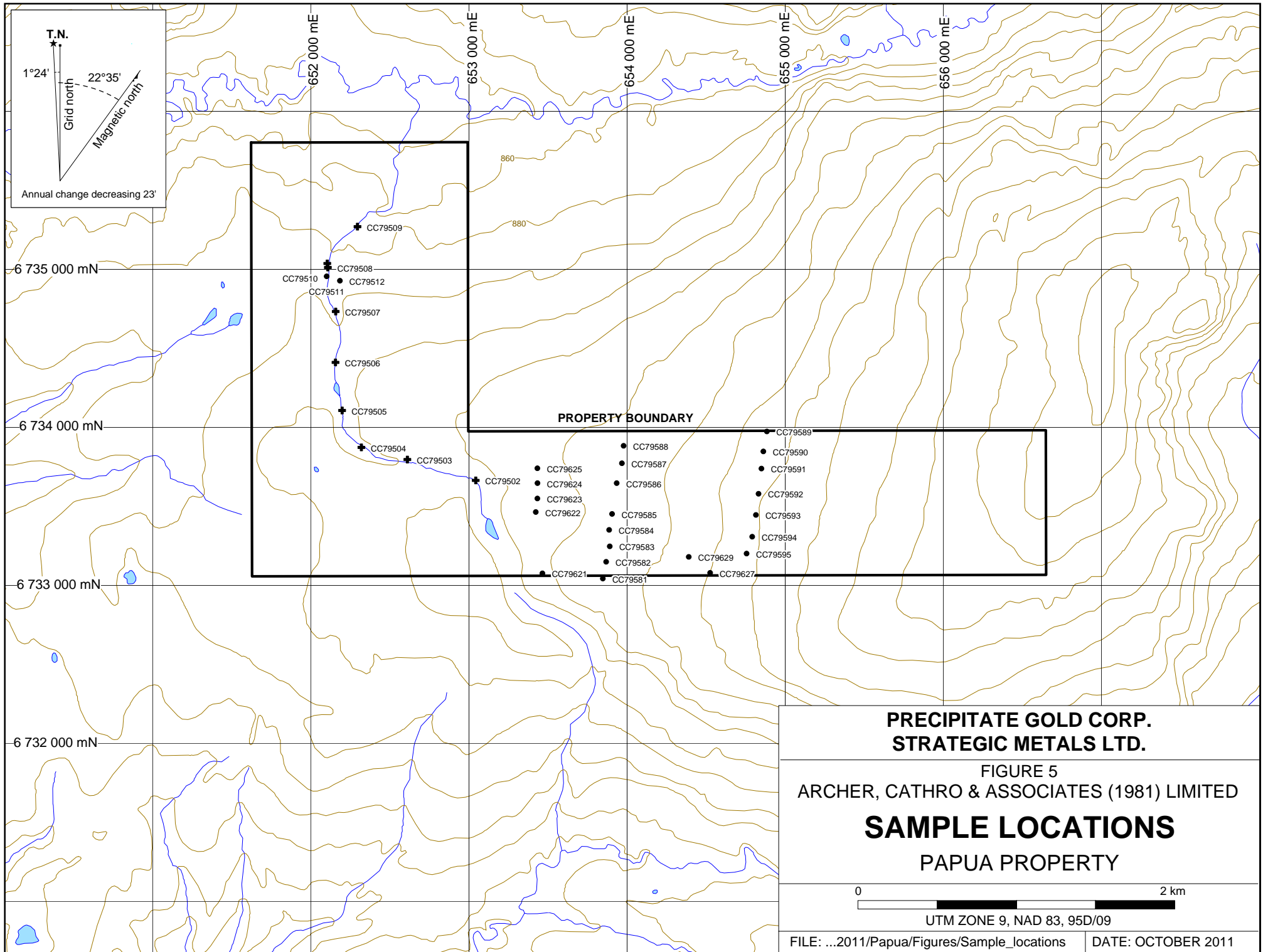
	Formation		siliceous, bedded shale; lesser thin interbeds of limestone, sandy limestone and limestone concretions.
MM	Mattson Formation	Mississippian	Pale grey, grey weathering, strongly indurated, fine grained, quartzose sandstone; locally contains trace amounts of organic material and detrital muscovite; interbedded locally with black, pale grey weathering, siliceous shale.
SM _{RB}	Road River Group – Besa River Formation	Silurian to Mississippian	Dark grey to black, pale grey weathering, recessive shale with lesser siltstone, sandstone, bedded chert and limestone.
OS _S	Unnamed	Ordovician to Silurian	Grey to buff, quartzose sandstone to pebbly sandstone; contains interbeds of bioturbated, slightly dolomitic, very fine-grained sandstone and siltstone; minor dark grey shale.
OS _U	Sunblood Formation	Ordovician	Light to dark grey, light brownish-grey, buff or orange weathering, mottled, thin to thick bedded dolostone or limestone; commonly bioturbated; locally laminated.

The property lies within an area that has undergone significant large-scale folding and faulting. The eastern third of the property is underlain by Mattson Formation and Fantasque Formation. These units comprise part of the western limb of a broad, north-trending anticline, the axis of which lies five kilometres east of the property. A localized strike-slip fault situated three kilometres east of the property offsets part of this fold limb. A steeply dipping fault that trends northerly across the property separates the eastern units from Road River Group – Besa River Formation to the west. The high angle Toobally Fault juxtaposes Road River Group – Besa River Formation against Sunblood Formation three kilometres west of the property boundary.

STREAM SEDIMENT AND SOIL GEOCHEMISTRY

In 2011, Precipitate Gold collected nine stream sediment samples and twenty-four contour soil samples on the property. Sample locations are plotted on Figure 5, while results for gold, antimony, thallium and molybdenum are illustrated thematically on Figures 6 to 9, respectively.

Stream sediment samples were collected from creeks by hand, while soil samples were collected from 10 to 40 cm deep holes dug by hand-held auger. All samples were placed into individually pre-numbered Kraft paper bags. Sample sites are marked by aluminum tags inscribed with the sample numbers and affixed to 0.5 m wooden lath that were driven into the ground. All sample locations were recorded using hand-held GPS units.



**PRECIPITATE GOLD CORP.
STRATEGIC METALS LTD.**

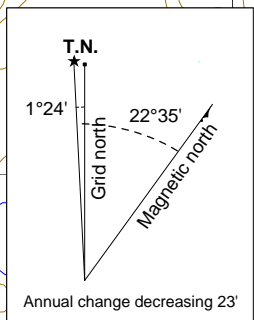
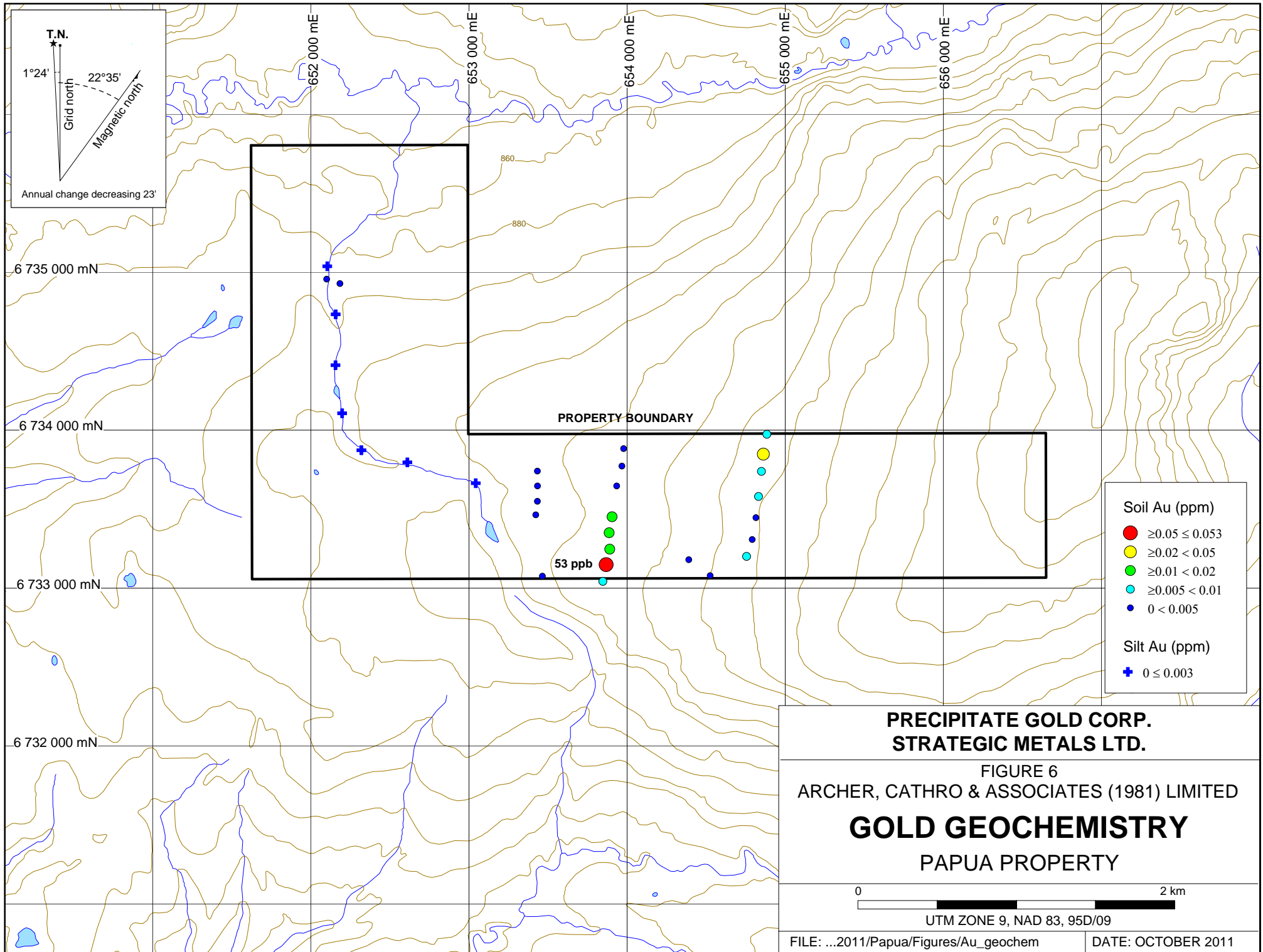
FIGURE 5
ARCHER, CATHRO & ASSOCIATES (1981) LIMITED

SAMPLE LOCATIONS

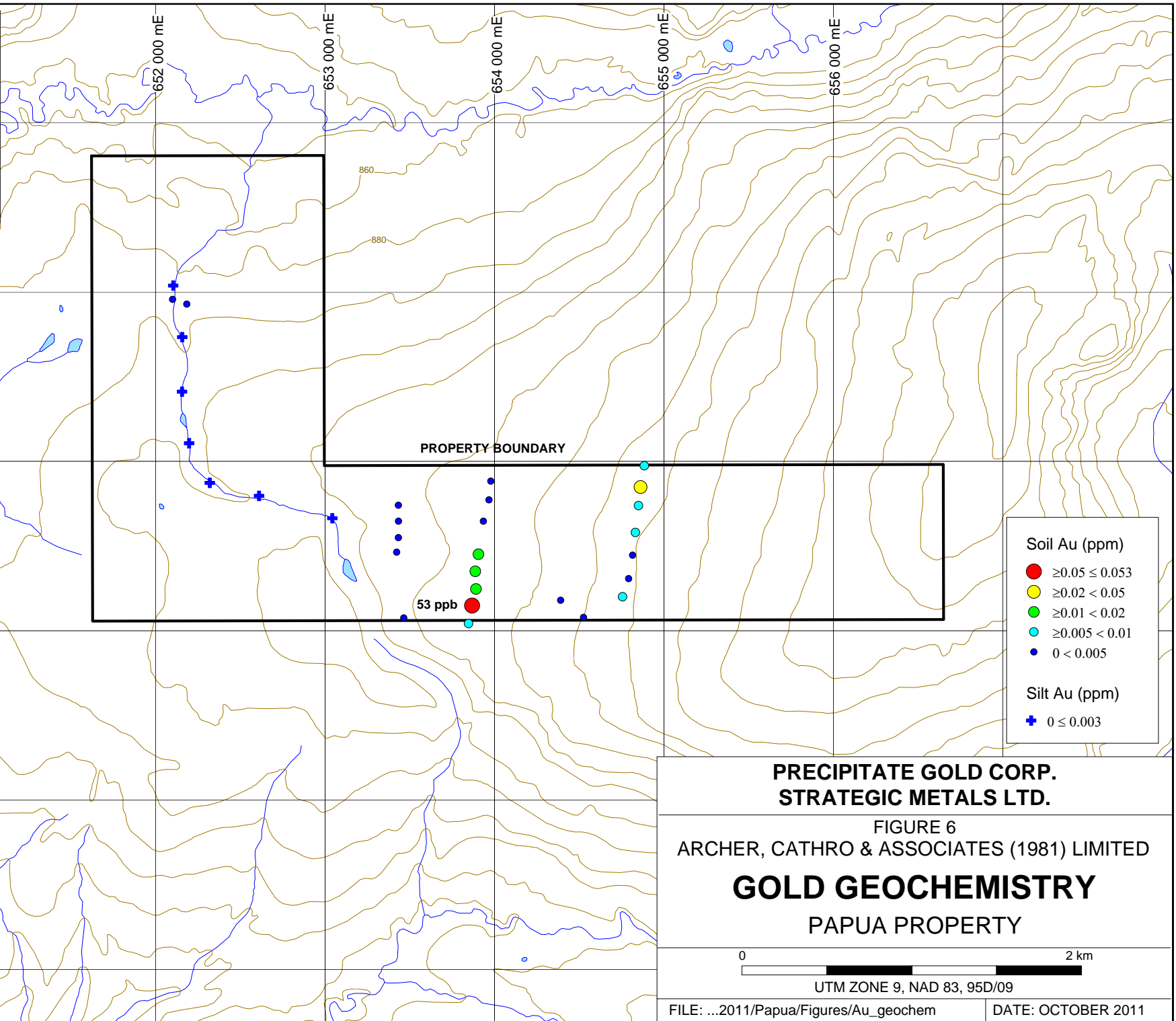
PAPUA PROPERTY

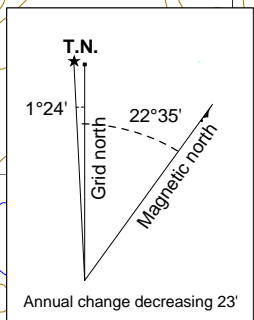
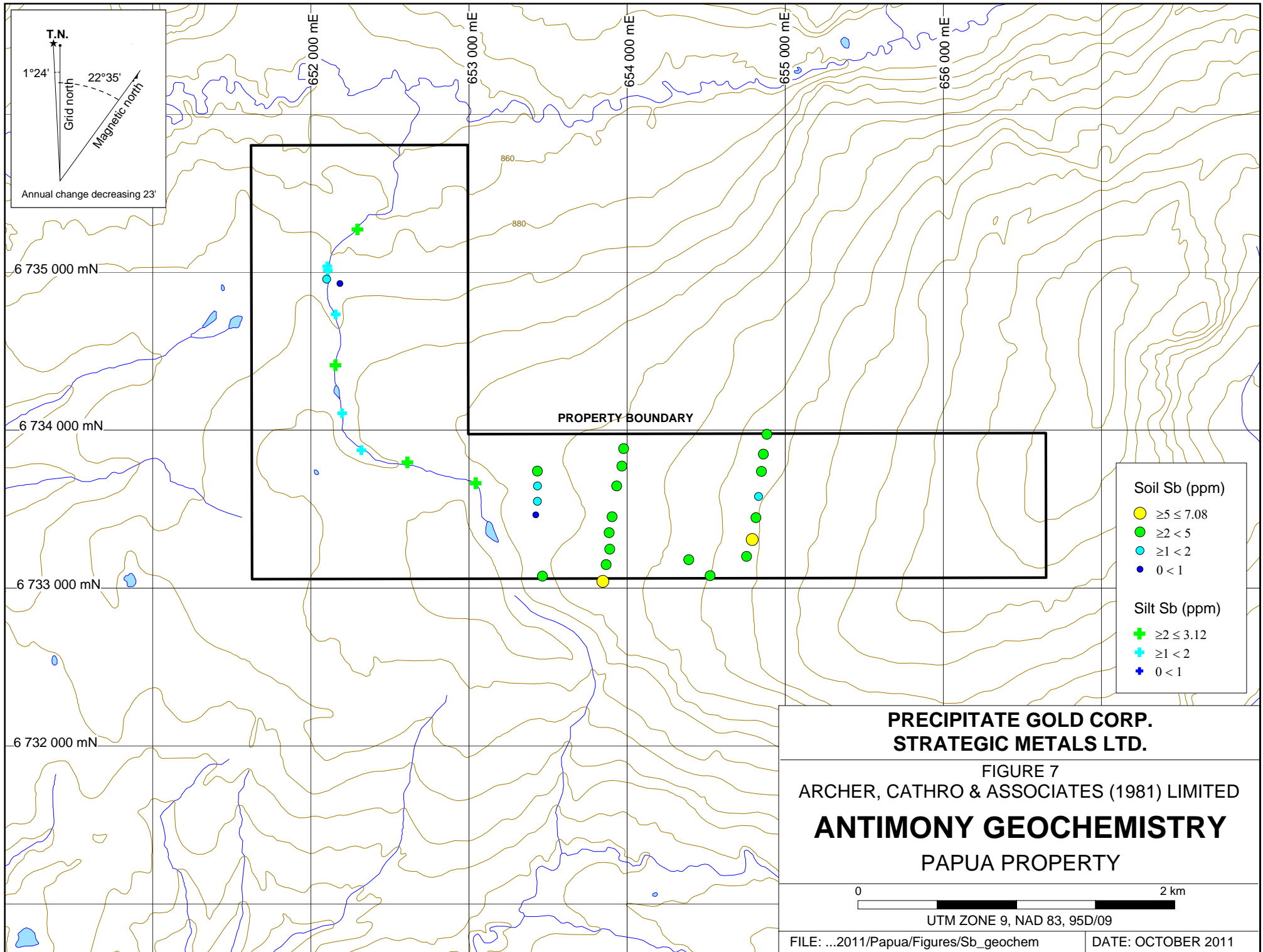


UTM ZONE 9, NAD 83, 95D/09



6 735 000 mN
6 734 000 mN
6 733 000 mN
6 732 000 mN

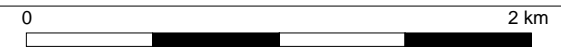




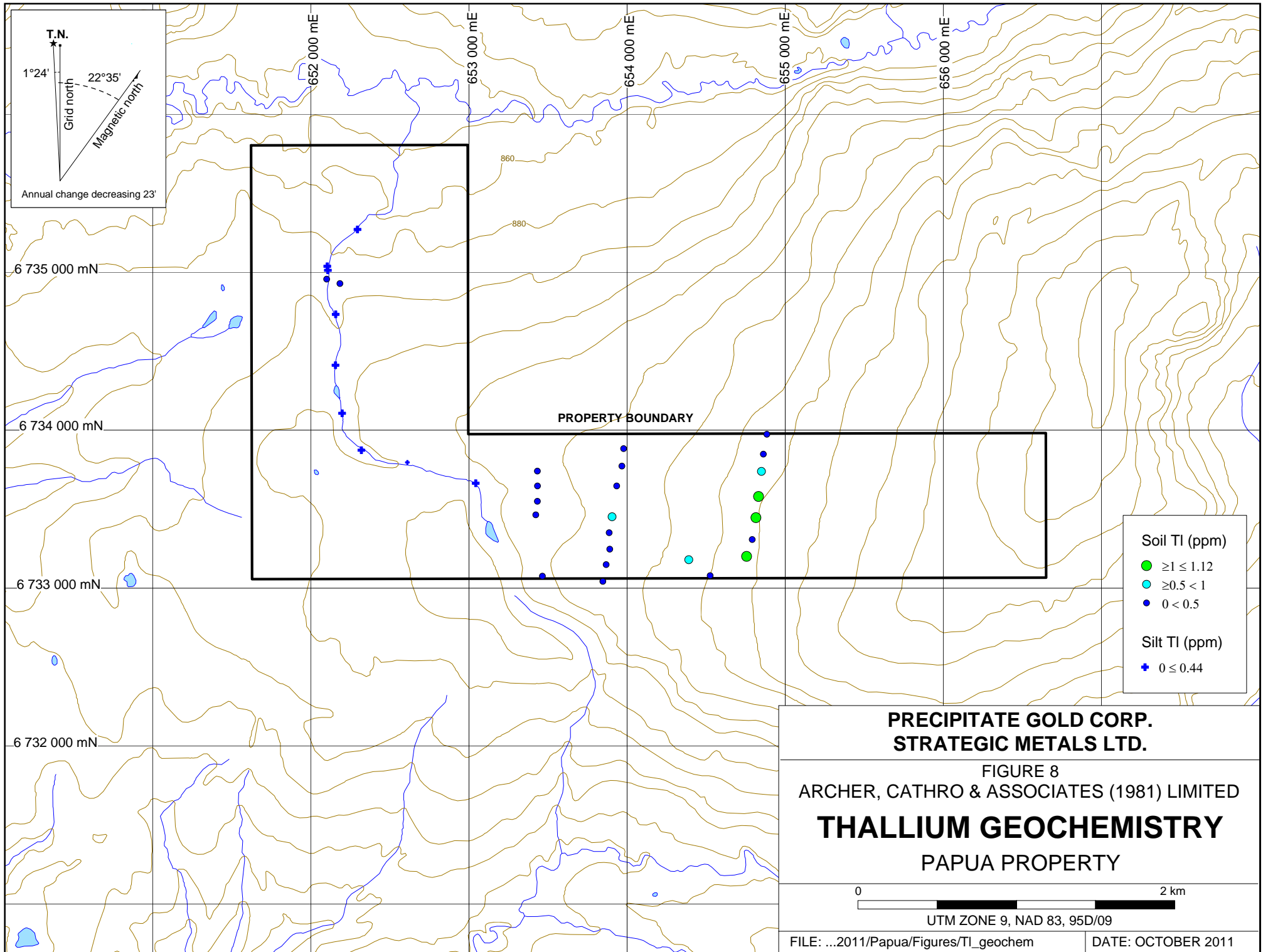
- | Soil Sb (ppm) | |
|---------------|--------------------|
| Yellow circle | $\geq 5 \leq 7.08$ |
| Green circle | $\geq 2 < 5$ |
| Cyan circle | $\geq 1 < 2$ |
| Blue circle | $0 < 1$ |
-
- | Silt Sb (ppm) | |
|---------------|--------------------|
| Green cross | $\geq 2 \leq 3.12$ |
| Cyan cross | $\geq 1 < 2$ |
| Blue cross | $0 < 1$ |

**PRECIPITATE GOLD CORP.
STRATEGIC METALS LTD.**

FIGURE 7
ARCHER, CATHRO & ASSOCIATES (1981) LIMITED
ANTIMONY GEOCHEMISTRY
PAPUA PROPERTY



UTM ZONE 9, NAD 83, 95D/09

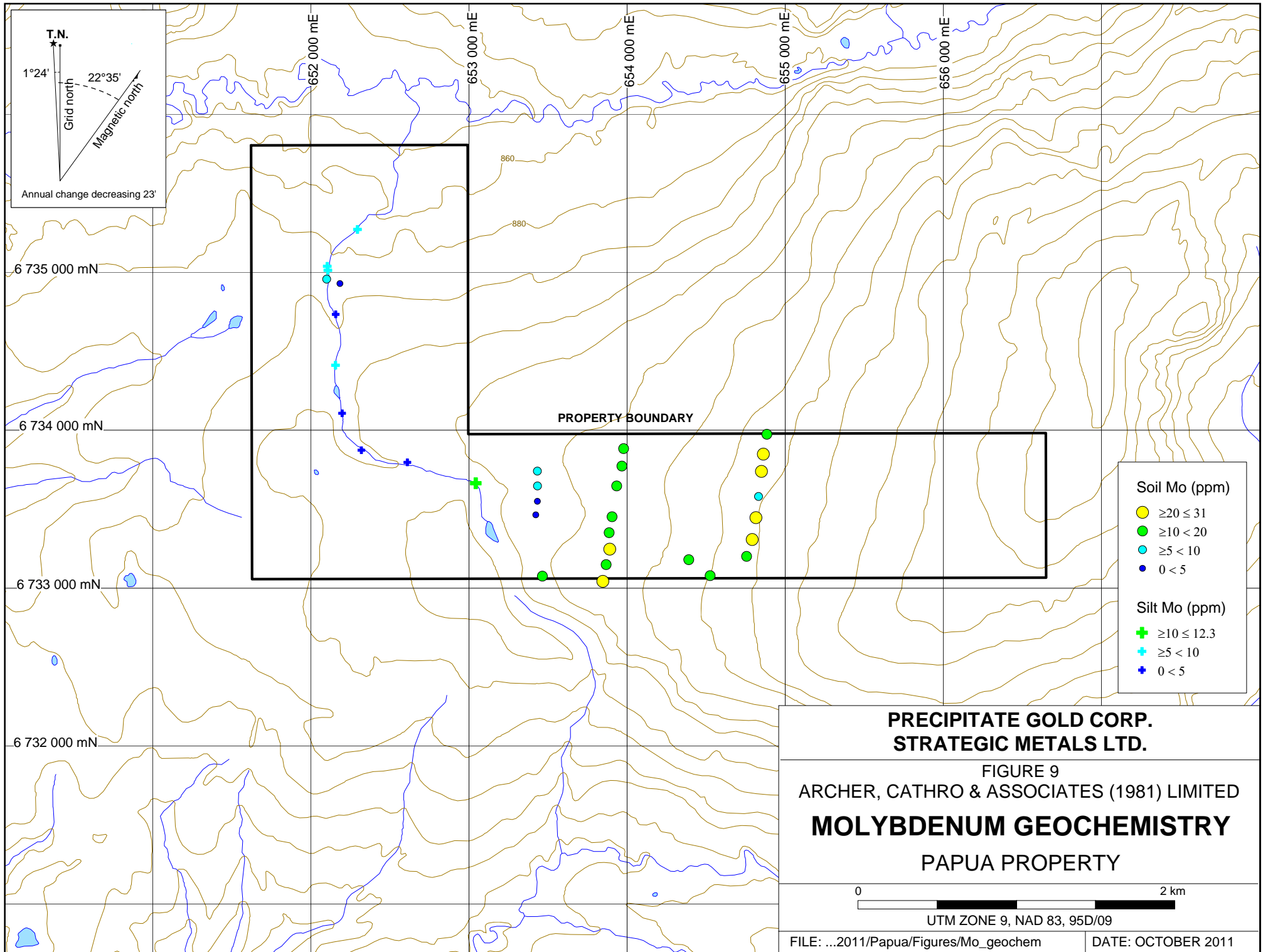


Soil Tl (ppm)	
●	$\geq 1 \leq 1.12$
●	$\geq 0.5 < 1$
●	$0 < 0.5$
Silt Tl (ppm)	
+	$0 \leq 0.44$

PRECIPITATE GOLD CORP.
STRATEGIC METALS LTD.
 FIGURE 8
 ARCHER, CATHRO & ASSOCIATES (1981) LIMITED
THALLIUM GEOCHEMISTRY
 PAPUA PROPERTY



UTM ZONE 9, NAD 83, 95D/09

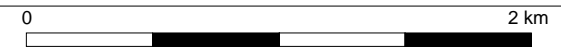


Soil Mo (ppm)	
Yellow circle	$\geq 20 \leq 31$
Green circle	$\geq 10 < 20$
Cyan circle	$\geq 5 < 10$
Blue circle	$0 < 5$

Silt Mo (ppm)	
Green cross	$\geq 10 \leq 12.3$
Cyan cross	$\geq 5 < 10$
Blue cross	$0 < 5$

**PRECIPITATE GOLD CORP.
STRATEGIC METALS LTD.**

FIGURE 9
ARCHER, CATHRO & ASSOCIATES (1981) LIMITED
MOLYBDENUM GEOCHEMISTRY
PAPUA PROPERTY



UTM ZONE 9, NAD 83, 95D/09

All samples were sent to ALS Chemex in Whitehorse, Yukon and/or Vancouver, B.C., where they were dried, screened to -180 microns, and then analyzed for 51 elements using an aqua regia digestion followed by inductively coupled plasma combined with mass spectroscopy and atomic emission spectroscopy (ME-MS41). An additional 25 g charge was further analysed for gold by aqua regia digestion with inductively coupled plasma mass spectroscopy finish (Au-TL43).

The three stream sediment samples returned background values for gold (up to 3 ppb) and thallium (up to 0.44 ppm) and background to weakly elevated values for antimony (up to 3.12 ppm) and molybdenum (up to 12.3 ppm). Arsenic values from these samples were subdued.

Two elevated gold values (53 and 36 ppb) were obtained from soil samples in the eastern half of the property. The northeasterly of these two samples is isolated, while the other is supported by adjacent, weakly anomalous gold values. Weakly to moderately elevated antimony (2 to 7.08 ppm) and molybdenum (10 to 31 ppm) values are coincident with the gold anomalies. Weakly elevated thallium (1 to 1.12 ppm) values were obtained from samples collected immediately south of the northeasterly gold anomaly.

DISCUSSION AND CONCLUSIONS

Precipitate Gold's exploration program was designed to test the economic potential (particularly gold) of the Papua property. Despite the limited number of samples collected in 2011, exploration successfully identified weakly to strongly elevated values for gold and two of its pathfinders (antimony and thallium).

The Papua property warrants more work, to be conducted on a low priority basis. This work should comprise additional, closer-spaced contour or grid sampling across the property, with emphasis upon areas located uphill from the highest of the known gold anomalies. Particular attention should be paid to the fault that is mapped on the anomalous hillside. The claim block should be expanded if this follow-up work identifies larger and/or stronger anomalies.

Respectfully submitted,

ARCHER, CATHRO & ASSOCIATES (1981) LIMITED

Sarah Eaton, B.Sc., GIT

REFERENCES

- Friske, P.W.B., McCurdy, M.W., Balma, R.G., Day, S.J.A., Lynch, J.J. and Durham, C.C.
 1996 Regional Stream Sediment and Water Geochemical Data, Southeastern Yukon (Parts of NTS 95D and 105A); Geological Survey of Canada Open File 3293.
- Gabrielse, H. and Blusson, S.L.
 1969 Geology of Coal River map-area, Yukon Territory and District of Mackenzie (95D); Geological Survey of Canada, Paper 68-38, 22 p.
- Nelson, J.L. and Colpron, M.
 2007 Tectonics and metallogeny of the Canadian and Alaskan Cordillera, 1.8 Ga to present; *in* Mineral Deposits of Canada: A Synthesis of Major Deposit Types, District Metallogeny, the Evolution of Geological Provinces, and Exploration Methods; W.D. Goodfellow (ed.), Mineral Deposit Division, Geological Association of Canada, Special Publication 5, p. 755-791. Available at: http://gsc.nrcan.gc.ca/mindep/synth_prov/cord/pdf/nelson_colpron_cordillera_n_metallogeny.pdf
- Pigage, L.C.
 2004 Bedrock geology compilation of the Anvil District (parts of 105K/2, 3, 5, 7 and 11), central Yukon; Yukon Geological Survey, Bulletin 15.
- Pigage, L.C., Abbott, J.G. and Roots, C.F.
 2010 Bedrock geology of Coal River map area (NTS95D), Yukon (1:250 000 scale); Yukon Geological Survey, Open File 2010-(in press).
- Yukon Geological Survey
 2010 Geoprocess File Summary Report for Coal River Map Area N.T.S. 095D; Available at: http://ygsftp.gov.yk.ca/publications/openfile/2002/of2002_8d_geoprocess_file/documents/map_specific/095d.pdf

APPENDIX I
STATEMENT OF QUALIFICATIONS

STATEMENT OF QUALIFICATIONS

I, Sarah Eaton, geologist, with business addresses in Whitehorse, Yukon Territory and Vancouver, British Columbia and residential address in North Vancouver, British Columbia, hereby certify that:

1. I graduated from the University of British Columbia in 2007 with a B.Sc. in Honours Geological Sciences.
2. From 2002 to present, I have been actively engaged in mineral exploration in Yukon Territory, British Columbia and Northwest Territories.
3. I am a Geoscientist in Training (GIT) with the Association of Professional Engineers and Geoscientists of British Columbia (Member Number 154922).
4. I have interpreted all data resulting from this work.

Sarah Eaton, B.Sc. (Hon.) Geology, GIT

APPENDIX II
CERTIFICATE OF ANALYSIS



ALS Canada Ltd.
 2103 Dollarton Hwy
 North Vancouver BC V7H 0A7
 Phone: 604 984 0221 Fax: 604 984 0218 www.alsglobal.com

To: **ARCHER, CATHRO AND ASSOCIATES (1981) LIMITED**
1016- 510 W HASTINGS ST
VANCOUVER BC V6B 1L8

Page: 1
 Finalized Date: 6- JUL- 2011
 Account: F

CERTIFICATE WH11107175

Project: Fireside- Papua
 P.O. No.:
 This report is for 35 Soil samples submitted to our lab in Whitehorse, YT, Canada on 13- JUN- 2011.
 The following have access to data associated with this certificate:
 DOUG EATON SARAH EATON JOAN MARIACHER

SAMPLE PREPARATION	
ALS CODE	DESCRIPTION
WEI- 21	Received Sample Weight
LOG- 22	Sample login - Rcd w/o BarCode
SCR- 41	Screen to - 180um and save both

ANALYTICAL PROCEDURES		
ALS CODE	DESCRIPTION	INSTRUMENT
Au- TL43	Trace Level Au - 25g AR	ICP- MS
ME- MS41	51 anal. aqua regia ICPMS	

To: **ARCHER, CATHRO AND ASSOCIATES (1981) LIMITED**
ATTN: JOAN MARIACHER
1016- 510 W HASTINGS ST
VANCOUVER BC V6B 1L8

This is the Final Report and supersedes any preliminary report with this certificate number. Results apply to samples as submitted. All pages of this report have been checked and approved for release.

Signature: 
 Colin Ramshaw, Vancouver Laboratory Manager



ALS Canada Ltd.
 2103 Dollarton Hwy
 North Vancouver BC V7H 0A7
 Phone: 604 984 0221 Fax: 604 984 0218 www.alsglobal.com

To: ARCHER, CATHRO AND ASSOCIATES (1981)
 LIMITED
 1016- 510 W HASTINGS ST
 VANCOUVER BC V6B 1L8

Page: 2 - A
 Total # Pages: 2 (A - D)
 Plus Appendix Pages
 Finalized Date: 6- JUL- 2011
 Account: F

Project: Fireside- Papua

CERTIFICATE OF ANALYSIS WH11107175

Sample Description	Method Analyte Units LOR	WEI- 21	Au- TL43	ME- MS41	ME- MS41	ME- MS41	ME- MS41	ME- MS41	ME- MS41	ME- MS41	ME- MS41	ME- MS41	ME- MS41	ME- MS41	ME- MS41	
		Recvd Wt. kg	Au ppm	Ag ppm	Al %	As ppm	Au ppm	B ppm	Ba ppm	Be ppm	Bi ppm	Ca %	Cd ppm	Ce ppm	Co ppm	Cr ppm
		0.02	0.001	0.01	0.01	0.1	0.2	10	10	0.05	0.01	0.01	0.01	0.02	0.1	1
CC79502		0.12	0.001	0.12	0.47	19.2	<0.2	<10	1080	0.45	0.11	0.22	0.77	11.40	4.2	10
CC79503		0.12	0.002	0.25	0.86	8.2	<0.2	<10	1440	0.55	0.16	0.27	2.36	16.90	4.3	14
CC79504		0.18	0.001	0.17	0.60	19.3	<0.2	<10	960	0.52	0.11	0.28	1.28	15.35	10.7	11
CC79505		0.18	0.001	0.19	0.66	10.6	<0.2	<10	1160	0.48	0.12	0.55	1.97	15.45	9.8	12
CC79506		0.10	0.001	0.19	0.86	23.8	<0.2	<10	1400	0.60	0.14	0.58	2.44	17.80	26.4	13
CC79507		0.16	0.002	0.10	0.45	13.1	<0.2	<10	860	0.37	0.07	0.42	1.57	15.20	14.4	9
CC79508		0.12	NSS	0.11	0.48	15.0	<0.2	<10	800	0.40	0.09	0.36	1.61	14.25	13.9	11
CC79509		0.06	NSS	0.28	0.95	23.5	<0.2	<10	1500	0.71	0.16	0.70	3.65	19.10	28.4	13
CC79510		0.08	0.003	0.18	0.60	16.5	<0.2	<10	920	0.44	0.11	0.44	1.59	16.00	12.6	11
CC79511		0.14	0.001	0.22	0.79	17.3	<0.2	<10	1090	0.69	0.14	0.87	1.17	18.70	12.8	15
CC79512		0.18	0.001	0.04	0.52	6.9	<0.2	<10	230	0.13	0.17	0.16	0.32	24.5	2.1	10
CC79581		0.20	0.006	0.06	0.31	19.9	<0.2	<10	430	0.35	0.13	0.01	0.29	11.20	1.6	9
CC79582		0.18	0.053	0.07	0.36	13.3	<0.2	<10	390	0.32	0.13	0.03	0.25	15.05	1.9	9
CC79583		0.14	0.013	0.23	0.49	17.3	<0.2	<10	2410	0.39	0.17	0.12	0.57	11.75	3.5	10
CC79584		0.20	0.012	0.29	0.61	16.5	<0.2	<10	2370	0.44	0.17	0.14	0.59	13.90	2.7	12
CC79585		0.22	0.015	0.25	0.98	13.8	<0.2	<10	1900	0.67	0.19	0.35	1.24	15.75	4.7	14
CC79586		0.26	0.004	0.27	0.72	16.0	<0.2	<10	1790	0.60	0.19	0.22	0.45	20.3	4.1	14
CC79587		0.24	0.002	0.20	0.72	12.5	<0.2	<10	1400	0.52	0.18	0.64	0.35	18.25	3.5	14
CC79588		0.24	0.002	0.20	0.81	13.1	<0.2	<10	1690	0.69	0.16	0.59	0.40	17.00	3.8	14
CC79589		0.14	0.005	0.08	0.43	14.4	<0.2	<10	2670	0.38	0.15	0.08	1.10	16.25	3.9	12
CC79590		0.22	0.036	0.07	0.27	12.6	<0.2	<10	430	0.25	0.11	0.02	0.39	8.60	1.5	11
CC79591		0.16	0.006	0.28	0.95	11.9	<0.2	<10	1720	0.45	0.21	0.13	0.42	14.55	1.3	14
CC79592		0.20	0.006	0.40	1.17	6.2	<0.2	<10	1570	0.46	0.19	0.14	0.55	11.70	1.1	15
CC79593		0.22	0.004	0.33	1.03	12.3	<0.2	<10	1560	0.65	0.23	0.12	0.72	13.35	1.6	15
CC79594		0.34	0.003	0.09	0.36	15.2	<0.2	<10	3180	0.33	0.15	0.07	0.80	12.50	2.1	10
CC79595		0.14	0.006	0.24	1.04	10.3	<0.2	<10	1320	0.60	0.19	0.07	0.52	11.70	1.1	14
CC79621		0.22	0.002	0.44	0.62	17.6	<0.2	<10	1650	0.53	0.17	0.36	0.89	19.60	5.1	14
CC79622		0.06	0.001	0.15	0.57	3.4	<0.2	<10	670	0.31	0.10	2.32	1.03	10.70	3.9	8
CC79623		0.18	0.002	0.19	0.80	7.5	<0.2	<10	1560	0.51	0.14	0.16	0.99	15.65	2.1	12
CC79624		0.14	0.002	0.30	0.92	6.9	<0.2	<10	1230	0.50	0.15	1.01	1.53	16.20	10.5	14
CC79625		0.42	0.001	0.28	0.77	14.3	<0.2	<10	1340	0.55	0.17	0.56	0.68	15.25	3.8	13
CC79626		0.18	0.001	0.30	0.99	13.7	<0.2	<10	1560	0.75	0.22	0.76	1.44	20.8	5.4	16
CC79627		0.26	0.001	0.17	0.85	9.3	<0.2	<10	1450	0.63	0.19	0.07	1.73	14.70	1.7	15
CC79628		0.14	0.003	0.29	1.06	13.9	<0.2	<10	1700	0.43	0.22	0.12	0.83	11.70	1.6	16
CC79629		0.20	0.004	0.29	1.25	11.9	<0.2	<10	1480	0.61	0.25	0.08	0.97	12.30	1.3	19

***** See Appendix Page for comments regarding this certificate *****



ALS Canada Ltd.
 2103 Dollarton Hwy
 North Vancouver BC V7H 0A7
 Phone: 604 984 0221 Fax: 604 984 0218 www.alsglobal.com

To: ARCHER, CATHRO AND ASSOCIATES (1981)
 LIMITED
 1016- 510 W HASTINGS ST
 VANCOUVER BC V6B 1L8

Page: 2 - B
 Total # Pages: 2 (A - D)
 Plus Appendix Pages
 Finalized Date: 6- JUL- 2011
 Account: F

Project: Fireside- Papua

CERTIFICATE OF ANALYSIS WH11107175

Sample Description	Method Analyte Units LOR	ME- MS41	ME- MS41	ME- MS41	ME- MS41	ME- MS41	ME- MS41	ME- MS41	ME- MS41	ME- MS41	ME- MS41	ME- MS41	ME- MS41	ME- MS41	ME- MS41	
		Cs ppm	Cu ppm	Fe %	Ga ppm	Ge ppm	Hf ppm	Hg ppm	In ppm	K %	La ppm	Li ppm	Mg %	Mn ppm	Mo ppm	Na %
CC79502		0.63	15.2	2.29	1.66	0.10	0.02	0.09	0.028	0.04	5.6	2.9	0.07	93	12.30	0.01
CC79503		1.12	22.5	1.18	2.38	0.10	0.03	0.17	0.035	0.05	8.2	5.8	0.12	89	2.61	0.01
CC79504		0.90	12.6	2.20	1.71	0.10	0.05	0.10	0.027	0.04	7.2	4.0	0.10	348	4.38	<0.01
CC79505		0.75	14.5	1.74	1.79	0.10	0.04	0.13	0.022	0.04	7.6	4.4	0.14	337	2.99	0.01
CC79506		0.81	15.0	3.29	2.27	0.10	0.04	0.14	0.031	0.06	8.7	5.8	0.15	1080	8.00	0.01
CC79507		0.47	8.7	1.84	1.35	0.10	0.03	0.07	0.015	0.04	7.7	3.3	0.12	785	4.45	<0.01
CC79508		0.46	10.2	2.53	1.44	0.10	0.03	0.06	0.019	0.04	7.1	3.5	0.12	901	6.11	<0.01
CC79509		0.76	21.7	3.59	2.33	0.11	0.06	1.02	0.034	0.07	9.1	6.4	0.17	1600	7.44	0.01
CC79510		0.60	12.1	2.67	1.58	0.10	0.03	0.12	0.022	0.05	8.1	4.1	0.13	656	5.41	0.01
CC79511		0.57	16.1	3.40	2.45	0.11	0.05	0.10	0.023	0.04	9.6	4.9	0.18	791	7.36	0.01
CC79512		0.50	3.6	1.43	3.22	0.11	<0.02	0.02	0.011	0.03	13.0	6.3	0.14	99	2.28	<0.01
CC79581		0.48	29.3	2.69	1.77	0.10	0.03	0.04	0.033	0.05	6.1	0.5	0.01	27	31.0	<0.01
CC79582		0.42	22.7	1.95	1.74	0.10	<0.02	0.06	0.020	0.04	8.4	1.8	0.04	51	19.60	<0.01
CC79583		0.57	24.1	2.49	1.96	0.10	0.02	0.12	0.038	0.06	5.9	1.9	0.06	75	21.0	<0.01
CC79584		0.89	27.7	2.49	2.11	0.10	<0.02	0.16	0.036	0.07	7.1	3.1	0.07	47	19.80	0.01
CC79585		0.89	25.9	2.62	2.87	0.11	0.02	0.23	0.036	0.08	8.6	5.5	0.11	114	18.80	0.01
CC79586		0.58	25.1	2.34	2.32	0.10	0.02	0.12	0.033	0.06	11.0	5.2	0.15	123	10.85	<0.01
CC79587		0.53	20.6	2.03	2.25	0.10	<0.02	0.08	0.026	0.06	10.4	4.7	0.34	96	11.35	<0.01
CC79588		0.63	23.4	2.05	2.58	0.10	<0.02	0.09	0.030	0.06	9.5	4.3	0.30	99	11.35	<0.01
CC79589		0.57	25.0	2.46	1.80	0.10	<0.02	0.15	0.038	0.05	8.9	2.3	0.06	84	18.75	0.01
CC79590		0.56	15.5	1.86	1.54	0.10	<0.02	0.02	0.021	0.06	4.8	0.5	0.02	61	21.9	<0.01
CC79591		1.12	21.5	1.81	3.10	0.10	0.02	0.32	0.027	0.09	8.0	4.4	0.08	23	21.6	0.01
CC79592		1.08	17.2	1.04	3.85	0.10	0.03	0.27	0.018	0.13	6.1	3.3	0.07	22	9.44	0.01
CC79593		1.17	37.5	1.85	3.02	0.11	0.03	0.39	0.029	0.11	6.9	3.2	0.07	40	20.1	0.01
CC79594		0.53	27.8	2.57	1.63	0.10	0.04	0.21	0.039	0.05	6.3	1.0	0.04	36	23.5	<0.01
CC79595		1.04	42.0	1.85	2.89	0.09	0.03	0.39	0.034	0.10	6.1	3.3	0.05	18	17.20	0.01
CC79621		0.72	25.2	2.06	2.07	0.12	0.06	0.14	0.042	0.07	10.0	4.4	0.21	128	10.55	0.01
CC79622		0.35	14.2	1.04	1.64	0.10	0.05	0.08	0.013	0.03	5.1	3.4	0.23	197	3.38	0.02
CC79623		0.93	19.4	1.28	2.23	0.09	0.02	0.19	0.028	0.06	8.3	4.7	0.08	31	3.76	0.01
CC79624		0.73	20.5	1.93	2.64	0.10	0.05	0.17	0.024	0.04	8.0	5.6	0.20	577	5.86	0.01
CC79625		0.58	15.6	1.95	2.32	0.10	0.03	0.12	0.030	0.06	8.2	4.0	0.15	168	7.44	<0.01
CC79626		0.67	26.5	2.21	3.08	0.10	0.05	0.07	0.038	0.06	11.6	5.8	0.19	192	7.81	0.01
CC79627		0.77	67.1	1.82	2.66	0.10	0.02	0.16	0.036	0.09	8.1	1.7	0.05	34	16.25	<0.01
CC79628		0.85	31.9	2.45	3.07	0.10	0.03	0.38	0.034	0.11	5.8	3.3	0.07	22	18.40	0.01
CC79629		0.81	39.2	2.26	3.45	0.10	0.03	0.52	0.039	0.13	6.4	4.6	0.07	24	17.15	<0.01

***** See Appendix Page for comments regarding this certificate *****



ALS Canada Ltd.
 2103 Dollarton Hwy
 North Vancouver BC V7H 0A7
 Phone: 604 984 0221 Fax: 604 984 0218 www.alsglobal.com

To: ARCHER, CATHRO AND ASSOCIATES (1981)
 LIMITED
 1016- 510 W HASTINGS ST
 VANCOUVER BC V6B 1L8

Page: 2 - C
 Total # Pages: 2 (A - D)
 Plus Appendix Pages
 Finalized Date: 6- JUL- 2011
 Account: F

Project: Fireside- Papua

CERTIFICATE OF ANALYSIS WH11107175

Sample Description	Method Analyte Units LOR	ME- MS41	ME- MS41	ME- MS41	ME- MS41	ME- MS41	ME- MS41	ME- MS41	ME- MS41	ME- MS41	ME- MS41	ME- MS41	ME- MS41	ME- MS41	ME- MS41	
		Nb	Ni	P	Pb	Rb	Re	S	Sb	Sc	Se	Sn	Sr	Ta	Te	Th
		ppm	ppm	ppm	ppm	ppm	ppm	%	ppm	ppm	ppm	ppm	ppm	ppm	ppm	ppm
CC79502	0.19	11.6	590	9.8	6.2	0.002	0.03	3.12	2.6	1.7	0.3	13.7	<0.01	0.04	1.2	
CC79503	0.23	13.1	650	12.7	8.3	0.002	0.05	2.20	3.3	2.0	0.4	17.7	<0.01	0.04	1.2	
CC79504	0.23	13.7	820	10.2	7.7	0.002	0.03	1.98	2.9	1.6	0.3	15.6	<0.01	0.04	1.2	
CC79505	0.28	17.4	640	9.6	7.3	0.001	0.04	1.70	2.7	1.9	0.3	19.0	<0.01	0.02	1.5	
CC79506	0.28	19.8	880	11.3	10.5	0.003	0.05	2.04	3.6	1.8	0.4	22.7	<0.01	0.04	1.6	
CC79507	0.26	14.4	720	7.0	5.4	0.002	0.02	1.44	2.0	1.5	0.2	16.8	<0.01	0.02	1.4	
CC79508	0.26	17.2	650	8.2	5.3	0.001	0.02	1.73	2.2	1.3	0.2	14.7	<0.01	0.04	1.4	
CC79509	0.31	26.1	920	12.8	10.3	0.004	0.07	2.22	3.9	2.4	0.4	23.8	<0.01	0.05	1.6	
CC79510	0.27	17.6	710	9.0	6.7	0.002	0.04	1.67	2.8	1.7	0.3	16.3	<0.01	0.03	1.6	
CC79511	0.43	25.9	820	11.8	6.9	0.001	0.04	1.73	3.1	2.4	0.4	24.7	<0.01	0.04	1.4	
CC79512	0.94	6.3	190	8.9	5.9	<0.001	0.01	0.77	1.0	0.5	0.5	8.4	<0.01	0.02	2.9	
CC79581	0.12	13.2	390	8.8	5.3	<0.001	0.02	7.08	2.5	2.0	0.4	9.7	<0.01	0.08	2.2	
CC79582	0.28	12.2	300	7.9	4.5	<0.001	0.02	4.93	1.6	1.7	0.4	8.5	<0.01	0.07	1.7	
CC79583	0.17	18.4	380	10.6	5.4	0.001	0.04	4.15	3.3	1.6	0.4	17.1	<0.01	0.07	2.1	
CC79584	0.17	16.0	490	11.5	8.0	0.001	0.04	3.75	3.8	2.3	0.4	18.9	<0.01	0.06	1.9	
CC79585	0.22	23.2	690	13.5	11.2	0.001	0.03	2.73	4.0	2.2	0.6	19.2	<0.01	0.08	1.2	
CC79586	0.28	20.1	400	13.1	5.8	<0.001	0.03	3.02	3.6	1.6	0.4	17.8	<0.01	0.05	2.7	
CC79587	0.26	17.6	440	10.8	6.4	0.001	0.02	2.36	3.0	1.3	0.4	18.7	<0.01	0.04	1.8	
CC79588	0.23	21.0	500	11.7	7.5	<0.001	0.03	2.77	3.0	1.8	0.5	19.6	<0.01	0.06	1.3	
CC79589	0.20	18.3	500	9.7	5.0	<0.001	0.07	4.99	3.2	1.9	0.4	17.7	<0.01	0.08	2.3	
CC79590	0.13	14.5	360	7.5	6.3	<0.001	0.03	4.62	1.4	1.4	0.4	8.6	<0.01	0.06	0.9	
CC79591	0.25	15.5	750	13.7	13.3	0.001	0.05	3.45	2.7	1.7	0.7	18.2	<0.01	0.09	1.0	
CC79592	0.23	13.9	920	15.3	15.1	0.001	0.07	1.84	2.4	1.4	0.8	19.4	<0.01	0.05	0.9	
CC79593	0.28	19.6	900	15.0	14.0	0.001	0.05	3.21	2.5	2.6	0.7	18.5	<0.01	0.11	0.7	
CC79594	0.10	21.4	440	9.5	4.3	0.001	0.08	5.79	3.5	2.0	0.4	18.3	<0.01	0.09	2.9	
CC79595	0.21	16.7	760	13.8	12.3	<0.001	0.04	3.08	3.3	1.9	0.6	15.6	<0.01	0.09	0.9	
CC79621	0.26	26.8	450	13.1	6.3	<0.001	0.03	3.71	4.5	1.9	0.4	22.6	<0.01	0.06	3.0	
CC79622	0.43	13.1	710	6.6	3.4	0.006	0.17	0.94	1.2	2.9	0.3	42.2	<0.01	0.03	0.7	
CC79623	0.23	13.0	730	10.7	9.5	0.002	0.04	1.88	3.1	1.4	0.4	14.9	<0.01	0.05	1.3	
CC79624	0.50	16.9	1030	10.1	6.0	0.006	0.08	1.72	2.7	4.3	0.4	24.1	<0.01	0.03	1.1	
CC79625	0.30	12.1	450	11.6	7.2	0.004	0.02	2.03	3.3	3.0	0.4	22.8	<0.01	0.04	2.3	
CC79626	0.47	21.5	660	13.7	7.9	0.003	0.04	1.60	3.4	4.4	0.5	23.8	<0.01	0.03	2.0	
CC79627	0.24	18.0	670	13.9	11.0	<0.001	0.03	2.65	2.4	1.4	0.6	13.1	<0.01	0.07	1.1	
CC79628	0.22	13.5	910	15.2	11.2	0.001	0.05	3.10	2.9	1.8	0.6	16.5	<0.01	0.09	0.8	
CC79629	0.23	14.9	1010	17.6	12.6	<0.001	0.04	3.07	3.4	2.2	0.7	15.8	<0.01	0.08	0.9	

***** See Appendix Page for comments regarding this certificate *****



ALS Canada Ltd.
 2103 Dollarton Hwy
 North Vancouver BC V7H 0A7
 Phone: 604 984 0221 Fax: 604 984 0218 www.alsglobal.com

To: ARCHER, CATHRO AND ASSOCIATES (1981)
 LIMITED
 1016- 510 W HASTINGS ST
 VANCOUVER BC V6B 1L8

Page: 2 - D
 Total # Pages: 2 (A - D)
 Plus Appendix Pages
 Finalized Date: 6- JUL- 2011
 Account: F

Project: Fireside- Papua

CERTIFICATE OF ANALYSIS WH11107175

Sample Description	Method Analyte Units LOR	ME- MS41	ME- MS41	ME- MS41	ME- MS41	ME- MS41	ME- MS41	ME- MS41	ME- MS41
		Ti %	Ti ppm	U ppm	V ppm	W ppm	Y ppm	Zn ppm	Zr ppm
		0.005	0.02	0.05	1	0.05	0.05	2	0.5
CC79502		<0.005	0.20	3.56	76	0.12	8.14	85	0.6
CC79503		<0.005	0.44	5.26	69	0.07	11.65	93	1.1
CC79504		<0.005	0.25	3.68	73	0.08	10.00	106	1.6
CC79505		<0.005	0.23	5.64	60	0.08	10.90	130	1.4
CC79506		<0.005	0.30	5.79	87	0.12	14.70	180	1.5
CC79507		<0.005	0.15	3.77	48	0.07	9.14	115	1.0
CC79508		<0.005	0.17	2.73	57	0.09	8.61	146	0.9
CC79509		<0.005	0.33	6.01	95	0.11	17.05	267	1.8
CC79510		<0.005	0.23	3.49	64	0.08	10.85	156	1.1
CC79511		<0.005	0.17	4.95	62	0.10	11.05	135	1.7
CC79512		0.023	0.08	0.45	43	0.16	1.95	52	0.8
CC79581		<0.005	0.20	3.36	103	0.14	4.15	91	2.0
CC79582		0.007	0.18	2.49	88	0.16	4.62	78	<0.5
CC79583		<0.005	0.21	2.87	72	0.10	6.66	96	0.8
CC79584		<0.005	0.37	3.83	87	0.11	11.05	94	0.6
CC79585		<0.005	0.64	6.47	116	0.14	16.80	128	0.5
CC79586		0.005	0.21	2.87	70	0.12	9.79	97	0.8
CC79587		<0.005	0.19	2.77	66	0.12	8.91	78	<0.5
CC79588		<0.005	0.27	2.64	74	0.11	10.05	85	0.5
CC79589		0.005	0.22	3.50	75	0.12	8.71	116	0.8
CC79590		<0.005	0.18	1.94	94	0.15	3.68	85	<0.5
CC79591		<0.005	0.84	5.33	143	0.18	11.45	62	0.7
CC79592		<0.005	1.11	3.70	102	0.12	8.88	53	1.1
CC79593		<0.005	1.08	7.73	124	0.20	13.20	69	0.8
CC79594		<0.005	0.22	3.43	79	0.12	6.96	126	2.7
CC79595		<0.005	1.01	8.09	107	0.16	12.10	66	0.8
CC79621		<0.005	0.24	1.33	72	0.09	10.35	134	3.7
CC79622		0.008	0.10	19.45	21	0.07	4.44	51	1.7
CC79623		<0.005	0.38	5.40	71	0.09	11.30	77	0.5
CC79624		0.006	0.22	11.30	60	0.11	9.61	76	1.5
CC79625		<0.005	0.16	6.74	62	0.11	7.26	56	1.5
CC79626		0.005	0.17	18.95	75	0.16	10.30	62	1.4
CC79627		<0.005	0.46	8.65	93	0.17	13.10	66	<0.5
CC79628		<0.005	0.64	5.06	102	0.16	8.52	68	0.9
CC79629		<0.005	0.84	7.34	128	0.17	11.05	61	1.0



ALS Canada Ltd.
2103 Dollarton Hwy
North Vancouver BC V7H 0A7
Phone: 604 984 0221 Fax: 604 984 0218 www.alsglobal.com

To: ARCHER, CATHRO AND ASSOCIATES (1981)
LIMITED
1016- 510 W HASTINGS ST
VANCOUVER BC V6B 1L8

Page: Appendix 1
Total # Appendix Pages: 1
Finalized Date: 6- JUL- 2011
Account: F

Project: Fireside- Papua

CERTIFICATE OF ANALYSIS WH11107175

Method	CERTIFICATE COMMENTS
ALL METHODS ME- MS41	NSS is non- sufficient sample. Gold determinations by this method are semi- quantitative due to the small sample weight used (0.5g).

Papua Project

Project Expenditures = \$12,784.53