

ARCHER, CATHRO & ASSOCIATES (1981) LIMITED
1016 - 510 West Hastings Street
Vancouver, B.C. V6B1L8

Telephone: 604-688-2568

Fax: 604-688-2578

ASSESSMENT REPORT

describing

STREAM SEDIMENT AND SOIL GEOCHEMICAL SAMPLING

at the

BURT PROPERTY

BURT 1-8 YD118419-YD118426

NTS 105A/09

Latitude 60°36'N; Longitude 128°14'W

located in the

Watson Lake Mining District
Yukon Territory

prepared by

Archer, Cathro & Associates (1981) Limited

for

PRECIPITATE GOLD CORP.
and
STRATEGIC METALS LTD.

by

S. Eaton, B.Sc., GIT

October 2011

CONTENTS

INTRODUCTION	1
PROPERTY LOCATION, CLAIM DATA AND ACCESS	1
HISTORY AND PREVIOUS WORK	1
GEOMORPHOLOGY AND CLIMATE	2
GEOLOGY	2
STREAM SEDIMENT AND SOIL GEOCHEMISTRY	3
DISCUSSION AND CONCLUSIONS	4
REFERENCES	5

APPENDICES

- I STATEMENT OF QUALIFICATIONS
- II CERTIFICATE OF ANALYSIS

FIGURES

<u>No.</u>	<u>Description</u>	<u>Follows Page</u>
1	Property Location	1
2	Claim Locations	1
3	Tectonic Setting	3
4	Geology	3
5	Sample Locations	3
6	Gold Geochemistry	3
7	Zinc Geochemistry	3

TABLES

I	Lithological Units	3
---	--------------------	---

INTRODUCTION

The Burt property was intended to cover a historical high-grade silver-copper-lead vein occurrence that an old version of Minfile erroneously reported to be located on the northwest bank of the Hyland River in southeastern Yukon (Deklerk and Traynor, 2005). Unfortunately, this area actually hosts a lower grade target, while the higher grade occurrence is situated three and a half kilometres to the southeast. Both occurrences were staked by another company a few days before the Burt claims were staked. As a result, the Burt property is smaller than intended and does not cover either of the known mineral occurrences. It is situated immediately west of the lower grade target. The Burt property is owned by Strategic Metals Ltd. and is under option to Precipitate Gold Corp.

This report describes stream sediment and soil geochemical sampling conducted on June 2, 2011 by Archer, Cathro and Associates (1981) Limited on behalf of Precipitate Gold. The author interpreted all data from this project and her Statement of Qualifications is in Appendix I.

PROPERTY LOCATION, CLAIM DATA AND ACCESS

The Burt property comprises eight contiguous quartz claims located in southeastern Yukon at latitude 60°36' north and longitude 128°14' west on NTS map sheet 105A/09 (Figure 1). The property covers an area of about 160 hectares (1.6 km²). The claims are registered with the Watson Lake Mining Recorder in the name of Archer Cathro, which holds them in trust for Strategic Metals. Specifics concerning claim registration are tabulated below, while the locations of individual claims are shown on Figure 2.

<u>Claim Name</u>	<u>Grant Number</u>	<u>Expiry Date*</u>
Burt 1-8	YD118419-YD118426	March 8, 2016

*Expiry date includes 2011 work which has been filed for assessment credit but not yet accepted.

Access to the property was provided by a Hughes 500D helicopter operated by Kluane Airways from Coal River, B.C., which is located approximately 130 km southeast of the property. All personnel stayed at the Coal River Lodge.

The community of Watson Lake is the nearest supply centre. It lies 65 km west-southwest of the property. The closest road access is from the Robert Campbell Highway, which at its nearest point is 50 km west of the property. The Robert Campbell Highway is usable in all seasons by two wheel drive vehicles.

HISTORY AND PREVIOUS WORK

Mineralization was reportedly discovered in the area in 1892 and was not followed up again until the late 1960s, when an independent prospector (A. McMillan) staked the Green 1 to 4 claims to cover several quartz-carbonate veins with tetrahedrite, pyrite, galena, chalcopyrite, arsenopyrite and azurite that he found along the banks of the Hyland River. This occurrence (Green Showing, Minfile #105A 032) is located three and a half kilometres southeast of the current Burt property

**PRECIPITATE GOLD CORP.
STRATEGIC METALS LTD.**

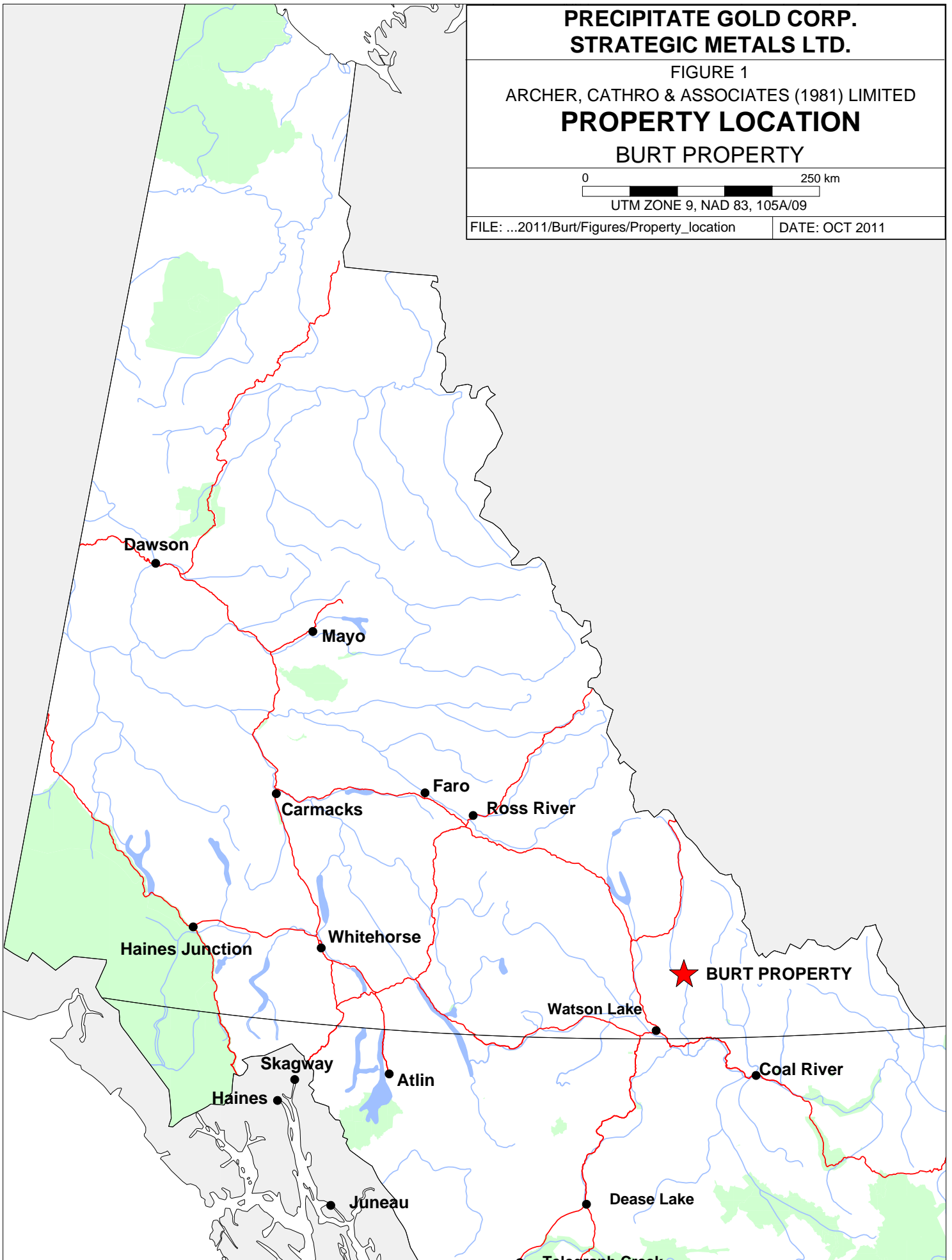
FIGURE 1
ARCHER, CATHRO & ASSOCIATES (1981) LIMITED

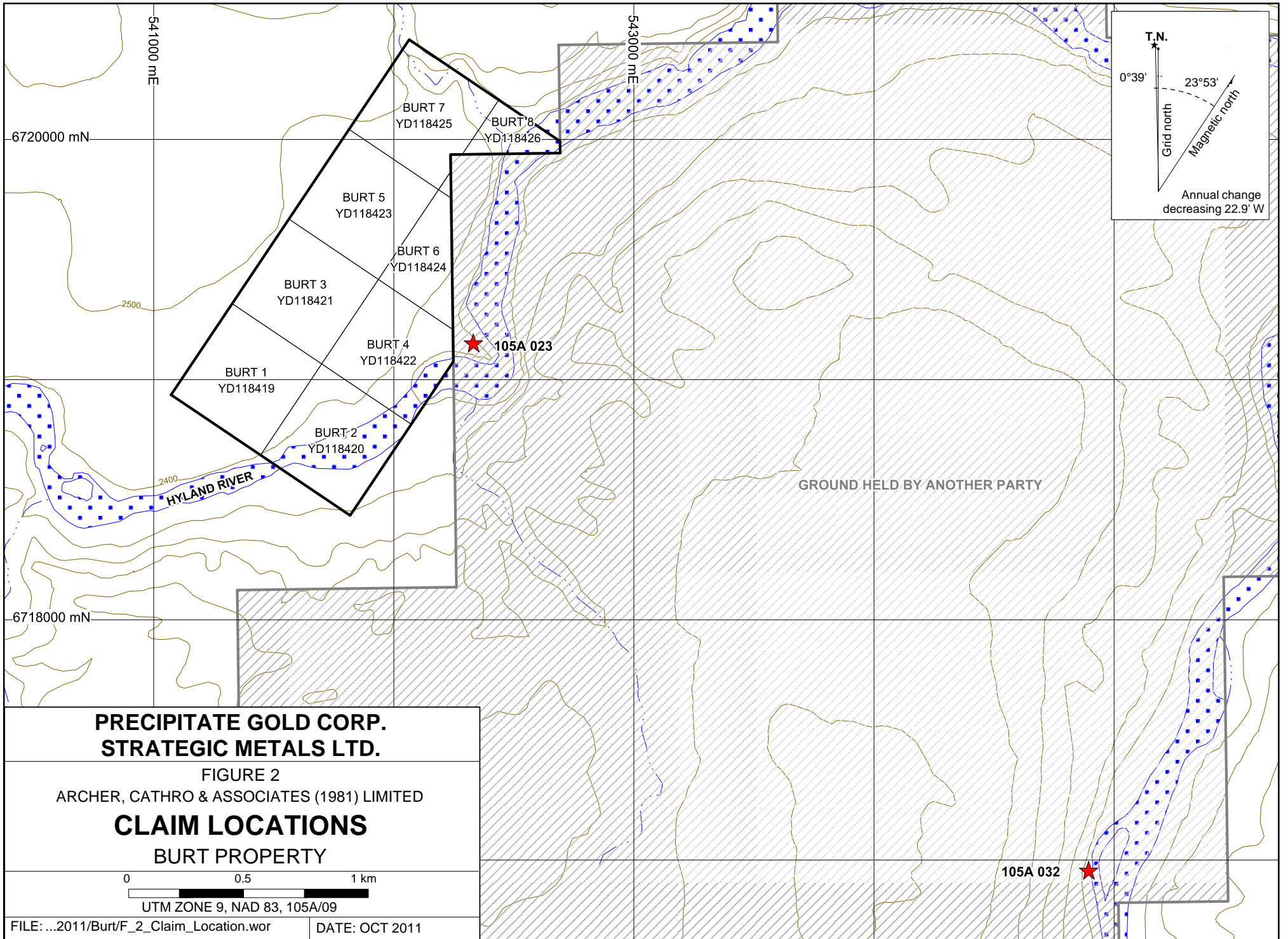
**PROPERTY LOCATION
BURT PROPERTY**

0 250 km
UTM ZONE 9, NAD 83, 105A/09

FILE: ...2011/Burt/Figures/Property_location

DATE: OCT 2011





(Deklerk and Traynor, 2005). The Green claims were optioned to Warburton Minerals Incorporated, which added the River 1 to 68 claims in 1981 as part of its option agreement with McMillan. Warburton carried out prospecting, hand trenching and rock and soil sampling that year, primarily in the vicinity the Green Showing. The River and Green claims covered both the Green Showing and the lower grade occurrence (Warburton Showing, #105A 023) that lies immediately east of the Burt property (Figure 2). A grab sample collected from the Green Showing returned 15.66% copper and 6,655.75 g/t silver, while a 60 cm chip sample yielded 4.6% copper and 1,817.1 g/t silver (Deklerk and Traynor, 2005). The veins at the Warburton Showing are reportedly similar in composition to those at the Green Showing, but two grab samples collected from these veins yielded only 20.2 and 12.0 g/t silver. No results were reported for lead, copper and gold. All of the Green and River claims were subsequently allowed to expire.

In 1995, the Geological Survey of Canada (GSC) completed a low-density stream sediment and water sampling survey on parts of NTS map sheets 095D and 105A (Friske *et. al.*, 1996). A sample collected from a creek that crosses the Burt property returned a 95th percentile zinc (478 ppm) value for those map sheets (Figure 2).

GEOMORPHOLOGY AND CLIMATE

The Burt property is situated south of the Selwyn Mountains. It is drained by the Hyland River, which ultimately connects to the Arctic Ocean via the Liard and Mackenzie rivers.

The property covers a gentle, east-facing slope, with local elevations ranging from 700 to 760 m above sea level (asl). Outcrop is mostly limited to the banks of the Hyland River. The property lies entirely below treeline. Vegetation comprises black spruce and alder with an understory of low shrubs and moss.

Much of the overburden in the region is associated with the most recent Cordilleran ice sheet, the McConnell glaciation, which is believed to have covered south and central Yukon between 26,500 and 10,000 years ago (Yukon Geological Survey, 2010). Glacial movement in the area was primarily directed to the east and north-east. Bedrock on the property is usually capped by glacial till.

The climate in the Burt property area is typical of northern continental regions with long, cold winters, truncated fall and spring seasons and short, mild summers. The property is mostly snow free from early May to mid October.

GEOLOGY

The Geological Survey of Canada performed geological mapping in the vicinity of the Burt property (NTS map sheets 105A and 095D) at 1:250,000 scale in the late 1960s (Gabrielse, 1967 and Gabrielse and Blusson, 1969). In 2003, Gordey and Makepeace completed a compilation of Yukon-wide geology and updated lithological unit names in the Burt property area. The following geological descriptions are based on the published maps.

The Burt property is located within Selwyn Basin (Figure 3), a tectonic element comprising deep water clastic rocks, chert and minor carbonate accumulated along the North American continental margin during Paleozoic time (Pigage, 2004). In the Burt property area, the exposed units comprise a basement of Upper Proterozoic to Lower Cambrian Vampire Formation sandstone and siltstone and overlying Upper Cambrian to Ordovician Rabbitkettle Formation limestone and calcareous phyllite (Figure 4). Descriptions of these units are provided in Table I.

Table I – Lithological Units (after Pigage et. al., 2010)

Unit Name	Map Name	Age	Description
COR1	Rabbitkettle Formation	Upper Cambrian to Ordovician	Thin bedded, wavy banded, silty limestone and grey lustrous calcareous phyllite; limestone intraclast breccia and conglomerate; massive to laminated, grey quartzose siltstone and chert and rare black slate; local mafic flows, breccia, and tuff.
uPCV	Vampire Formation	Upper Proterozoic to Lower Cambrian	Dark brown weathering, thin-bedded, argillaceous, fine-grained sandstone and siltstone; minor interbedded, medium to coarse grained, white to light grey orthoquartzite, phyllite, slate, and argillite.

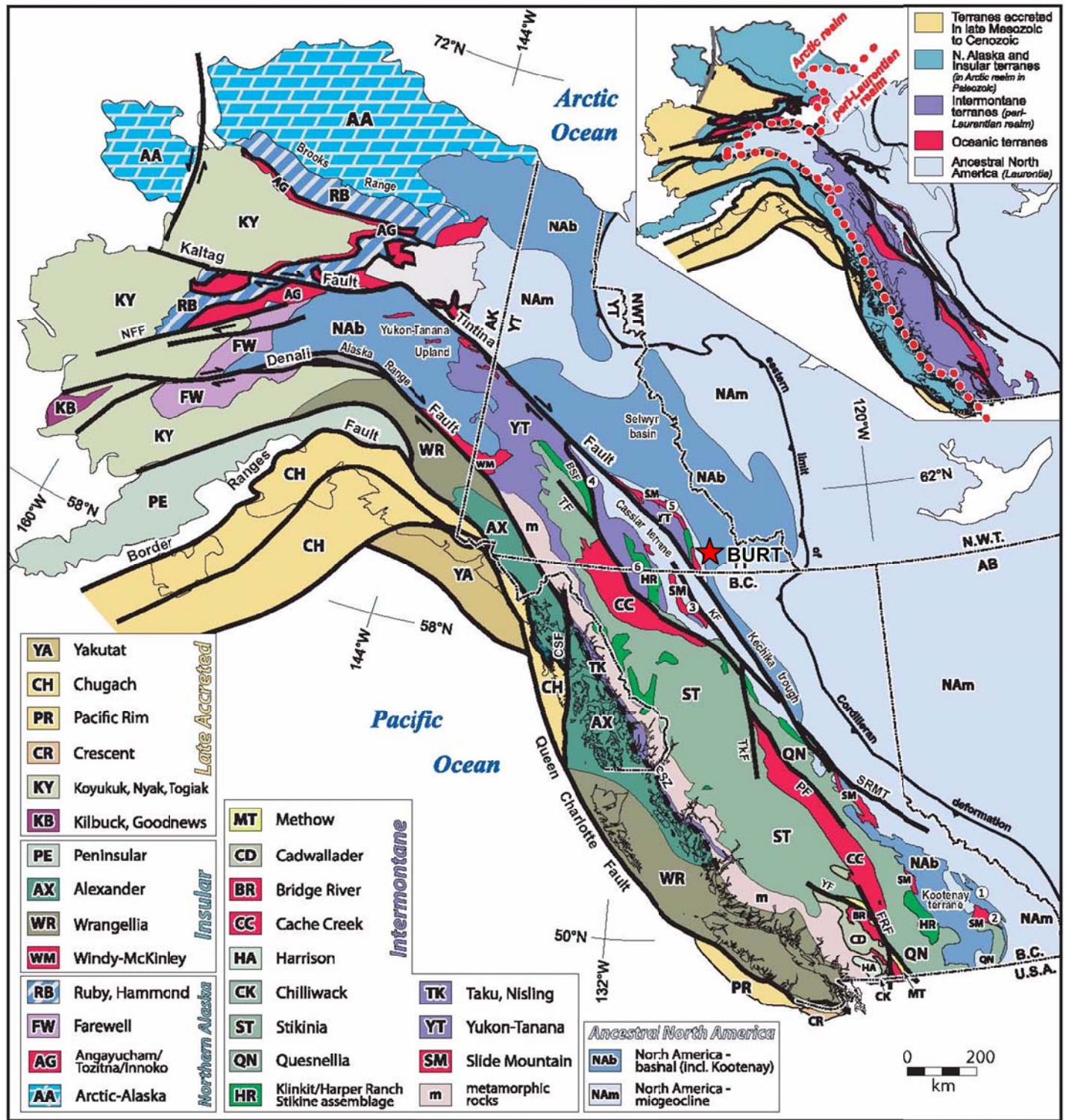
No major structures have been mapped in the area.

STREAM SEDIMENT AND SOIL GEOCHEMISTRY

In 2011, Precipitate Gold collected two stream sediment samples and seventy-three grid soil samples on the property. Sample locations are plotted on Figure 5, while results for gold and zinc are illustrated thematically on Figures 6 and 7, respectively.

Stream sediment samples were collected from creeks by hand, while soil samples were collected from 10 to 40 cm deep holes dug by hand-held auger. All samples were placed into individually pre-numbered Kraft paper bags. Sample sites are marked by aluminum tags inscribed with the sample numbers and affixed to 0.5 m wooden lath that were driven into the ground. All sample locations were recorded using hand-held GPS units.

All samples were sent to ALS Chemex in Whitehorse, Yukon and/or Vancouver, B.C., where they were dried, screened to -180 microns, and then analyzed for 51 elements using an aqua regia digestion followed by inductively coupled plasma combined with mass spectroscopy and atomic emission spectroscopy (ME-MS41). An additional 25 g charge was further analysed for gold by aqua regia digestion with inductively coupled plasma mass spectroscopy finish (Au-TL43).



**PRECIPITATE GOLD CORP.
STRATEGIC METALS LTD.**

FIGURE 3
ARCHER, CATHRO & ASSOCIATES (1981) LIMITED

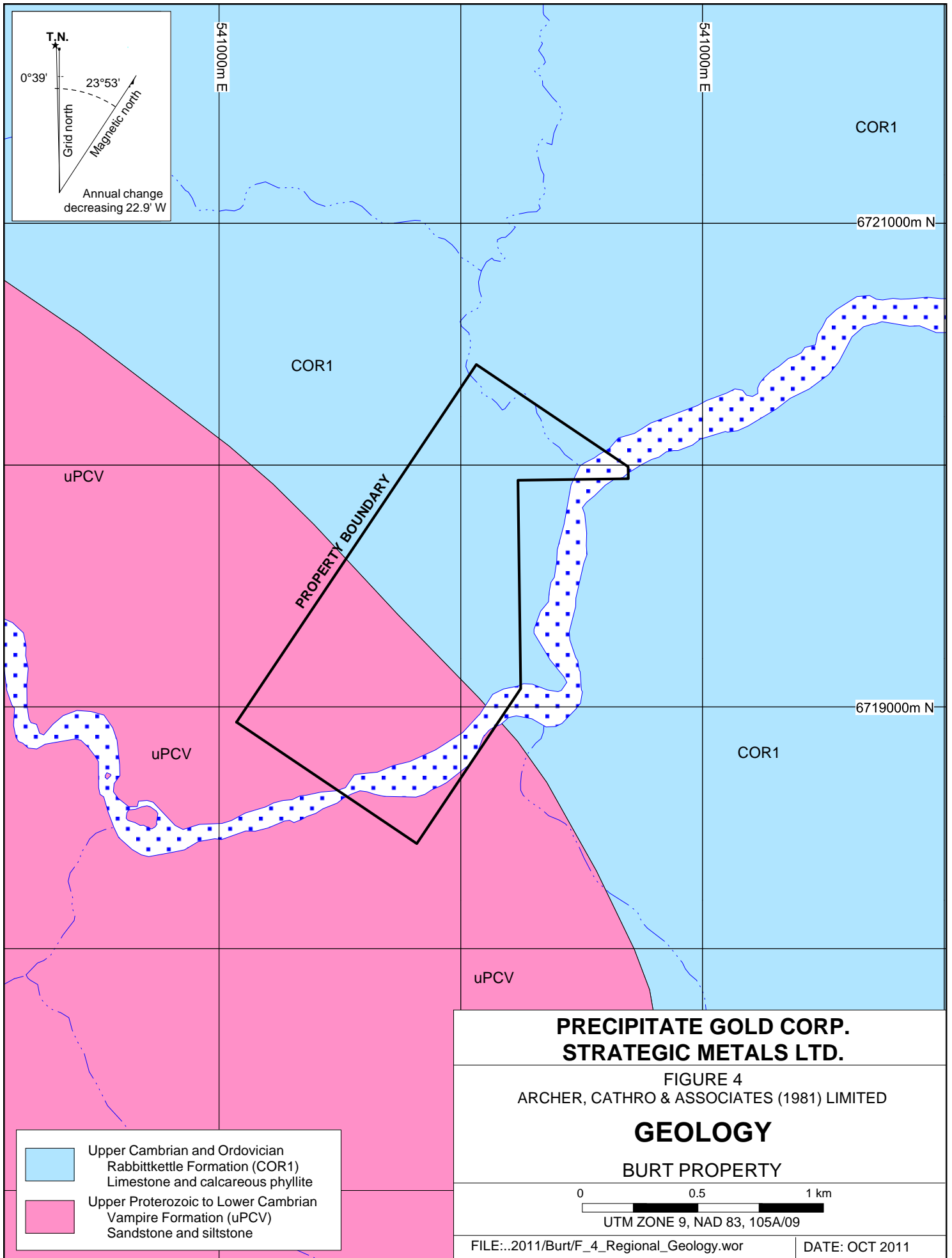
TECTONIC SETTINGS

BURT PROPERTY

UTM ZONE 9, NAD 83

FILE:..2011/Burt/F_3_Tectonic_setting.wor

DATE: OCT 2011



COR1

6721000m N

COR1

uPCV

PROPERTY BOUNDARY

6719000m N

uPCV

COR1

uPCV

**PRECIPITATE GOLD CORP.
STRATEGIC METALS LTD.**

FIGURE 4
ARCHER, CATHRO & ASSOCIATES (1981) LIMITED

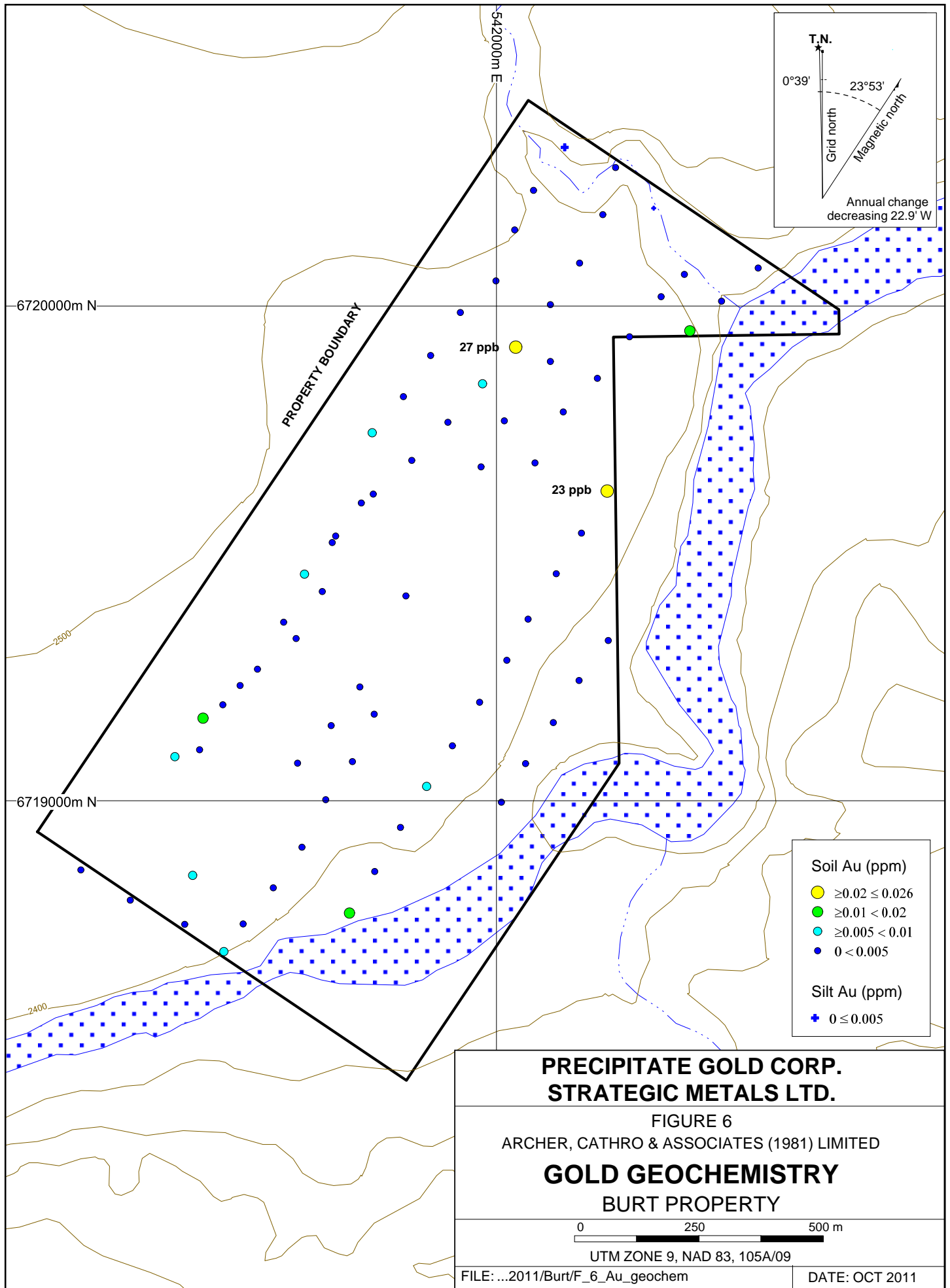
GEOLOGY

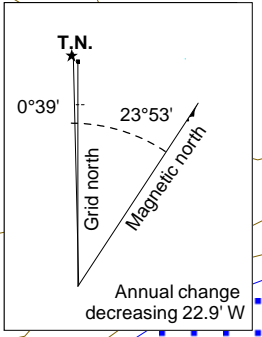
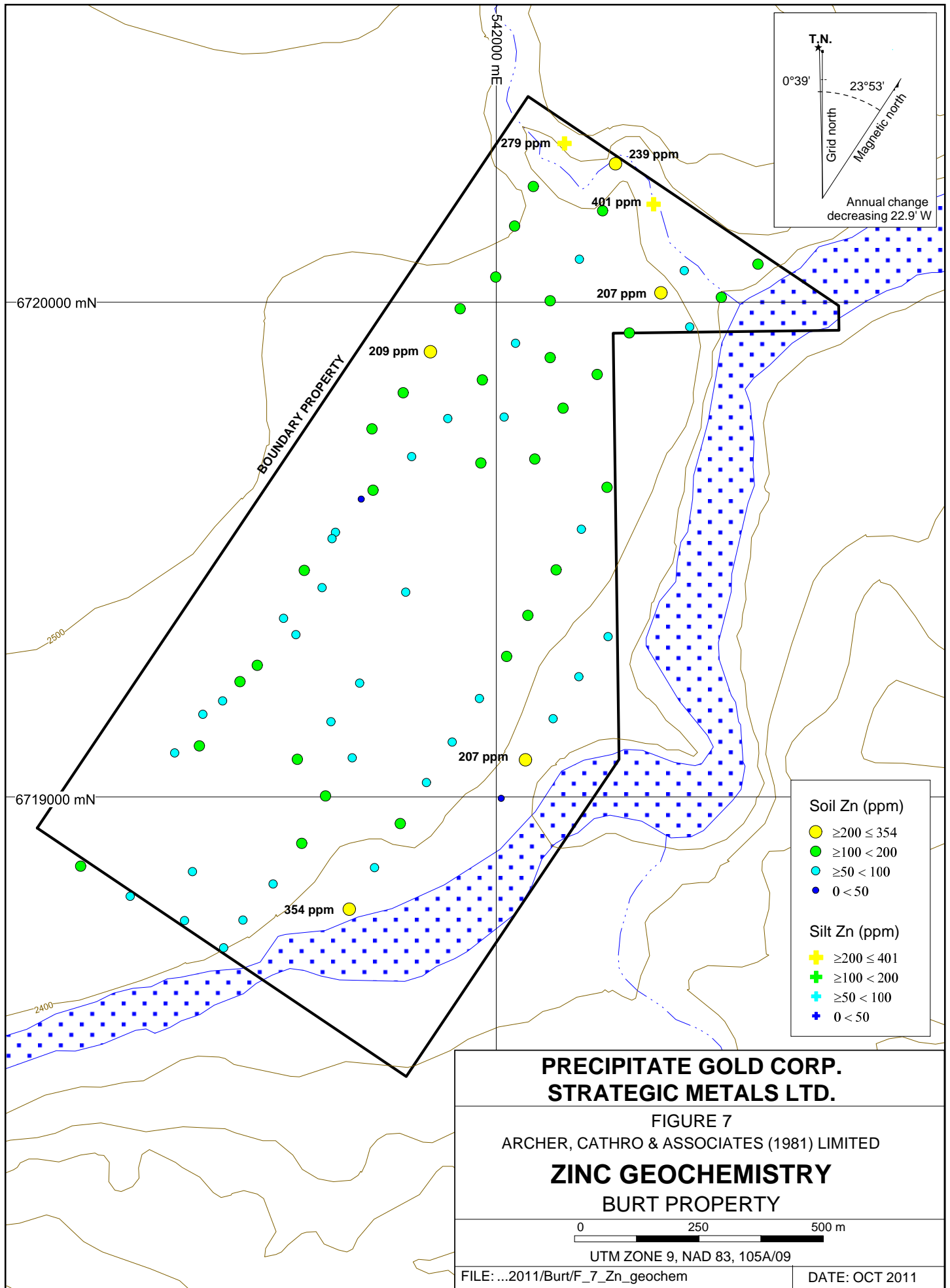
BURT PROPERTY

0 0.5 1 km

UTM ZONE 9, NAD 83, 105A/09

- Upper Cambrian and Ordovician Rabbitkettle Formation (COR1)
Limestone and calcareous phyllite
- Upper Proterozoic to Lower Cambrian Vampire Formation (uPCV)
Sandstone and siltstone





Soil Zn (ppm)	
●	≥200 ≤ 354
●	≥100 < 200
●	≥50 < 100
●	0 < 50
Silt Zn (ppm)	
+	≥200 ≤ 401
+	≥100 < 200
+	≥50 < 100
+	0 < 50

**PRECIPITATE GOLD CORP.
STRATEGIC METALS LTD.**

FIGURE 7
ARCHER, CATHRO & ASSOCIATES (1981) LIMITED

ZINC GEOCHEMISTRY
BURT PROPERTY

0 250 500 m

UTM ZONE 9, NAD 83, 105A/09

FILE: ...2011/Burt/F_7_Zn_geochem DATE: OCT 2011

The two stream sediment samples returned moderately elevated values for zinc (279 and 401 ppm), with subdued values for all other elements of interest.

Two isolated moderately anomalous gold values (23 and 27 ppb) were obtained from soil samples in the northern half of the property. Several soil samples scattered the length of the property yielded moderately anomalous zinc values (207 to 354 ppm). The most southerly of these samples (CC79973) returned the strongest zinc value and also yielded the only elevated values for copper (268 ppm), silver (1.46 ppm), antimony (5.16 ppm) and molybdenum (18.1 ppm) that were obtained from samples taken on the property.

DISCUSSION AND CONCLUSIONS

Precipitate Gold's exploration program was designed to test the economic potential of ground adjacent to a known silver-, copper- and lead-bearing vein target. The program successfully identified two samples that yielded moderate gold values and another sample that returned coincident, encouraging results for zinc, copper, silver, antimony and molybdenum.

The Burt property warrants additional work, which should include: 1) closer-spaced grid soil sampling around both gold anomalies and the multi-element anomaly; 2) detailed prospecting in the vicinity of the multi-element anomaly and along the bank of the Hyland River, with particular emphasis on sulphide-bearing quartz-carbonate veins; and 3) hand trenching to better expose mineralization, if it is discovered, and/or to test the site of the sample with multi-element geochemical response. This program should be conducted in mid to late summer when seasonal thaw in soil is at its maximum depth.

Respectfully submitted,

ARCHER, CATHRO & ASSOCIATES (1981) LIMITED

Sarah Eaton, B.Sc., GIT

REFERENCES

- Deklerk, R. and Traynor, S.
 2005 Yukon MINFILE – A database of mineral occurrences; Yukon Geological Survey. Available at:
<http://servlet.gov.yk.ca/ygsmin/occurrence.do?occurrenceID=105A+023>
- Friske, P.W.B., McCurdy, M.W., Balma, R.G., Day, S.J.A., Lynch, J.J. and Durham, C.C.
 1996 Regional Stream Sediment and Water Geochemical Data, Southeastern Yukon (Parts of NTS 95D and 105A); Geological Survey of Canada Open File 3293.
- Gabrielse, H.
 1967 Geology of Watson Lake map sheet, Yukon Territory; Geological Survey of Canada, Preliminary map 19-1966.
- Gabrielse, H. and Blusson, S.L.
 1969 Geology of Coal River map-area, Yukon Territory and District of Mackenzie (95D); Geological Survey of Canada, Paper 68-38, 22 p.
- Gordey, S.P. and Makepeace, A.J.
 2003 Yukon Digital Geology, version 2.0, S.P. Gordey and A.J. Makepeace (comp); Geological Survey of Canada, Open File 1749 and Yukon Geological Survey, Open File 2003-9 (D).
- Nelson, J.L. and Colpron, M.
 2007 Tectonics and metallogeny of the Canadian and Alaskan Cordillera, 1.8 Ga to present; *in* Mineral Deposits of Canada: A Synthesis of Major Deposit Types, District Metallogeny, the Evolution of Geological Provinces, and Exploration Methods; W.D. Goodfellow (ed.), Mineral Deposit Division, Geological Association of Canada, Special Publication 5, p. 755-791. Available at:
http://gsc.nrcan.gc.ca/mindep/synth_prov/cord/pdf/nelson_colpron_cordillera_n_metallogeny.pdf
- Pigage, L.C.
 2004 Bedrock geology compilation of the Anvil District (parts of 105K/2, 3, 5, 7 and 11), central Yukon; Yukon Geological Survey, Bulletin 15.
- Pigage, L.C., Abbott, J.G. and Roots, C.F.
 2010 Bedrock geology of Coal River map area (NTS95D), Yukon (1:250 000 scale); Yukon Geological Survey, Open File 2010-(in press).
- Yukon Geological Survey
 2010 Geoprocess File Summary Report for Coal River Map Area N.T.S. 095D; Available at: http://ygsftp.gov.yk.ca/publications/openfile/2002/of2002_8d_geoprocess_file/documents/map_specific/095d.pdf

APPENDIX I
STATEMENT OF QUALIFICATIONS

STATEMENT OF QUALIFICATIONS

I, Sarah Eaton, geologist, with business addresses in Whitehorse, Yukon Territory and Vancouver, British Columbia and residential address in North Vancouver, British Columbia, hereby certify that:

1. I graduated from the University of British Columbia in 2007 with a B.Sc. in Honours Geological Sciences.
2. From 2002 to present, I have been actively engaged in mineral exploration in Yukon Territory, British Columbia and Northwest Territories.
3. I am a Geoscientist in Training (GIT) with the Association of Professional Engineers and Geoscientists of British Columbia (Member Number 154922).
4. I have interpreted all data resulting from this work.

Sarah Eaton, B.Sc. (Hon.) Geology, GIT

APPENDIX II
CERTIFICATE OF ANALYSIS



ALS Canada Ltd.
 2103 Dollarton Hwy
 North Vancouver BC V7H 0A7
 Phone: 604 984 0221 Fax: 604 984 0218 www.alsglobal.com

To: **ARCHER, CATHRO AND ASSOCIATES (1981) LIMITED**
1016- 510 W HASTINGS ST
VANCOUVER BC V6B 1L8

Page: 1
 Finalized Date: 5- JUL- 2011
 Account: F

CERTIFICATE WH11107174


Project: Fireside - BURT
 P.O. No.:
 This report is for 82 Soil samples submitted to our lab in Whitehorse, YT, Canada on 14- JUN- 2011.
 The following have access to data associated with this certificate:
 DOUG EATON SARAH EATON JOAN MARIACHER

SAMPLE PREPARATION	
ALS CODE	DESCRIPTION
WEI- 21	Received Sample Weight
LOG- 22	Sample login - Rcd w/o BarCode
EXTRA- 01	Extra Sample received in Shipment
SCR- 41	Screen to - 180um and save both

ANALYTICAL PROCEDURES		
ALS CODE	DESCRIPTION	INSTRUMENT
Au- TL43	Trace Level Au - 25g AR	ICP- MS
ME- MS41	51 anal. aqua regia ICPMS	

To: **ARCHER, CATHRO AND ASSOCIATES (1981) LIMITED**
ATTN: JOAN MARIACHER
1016- 510 W HASTINGS ST
VANCOUVER BC V6B 1L8

This is the Final Report and supersedes any preliminary report with this certificate number. Results apply to samples as submitted. All pages of this report have been checked and approved for release.

Signature: 
 Colin Ramshaw, Vancouver Laboratory Manager



ALS Canada Ltd.
 2103 Dollarton Hwy
 North Vancouver BC V7H 0A7
 Phone: 604 984 0221 Fax: 604 984 0218 www.alsglobal.com

To: ARCHER, CATHRO AND ASSOCIATES (1981)
 LIMITED
 1016- 510 W HASTINGS ST
 VANCOUVER BC V6B 1L8

Page: 2 - A
 Total # Pages: 4 (A - D)
 Plus Appendix Pages
 Finalized Date: 5- JUL- 2011
 Account: F

Project: Fireside - BURT

CERTIFICATE OF ANALYSIS WH11107174

Sample Description	Method Analyte Units LOR	WEI- 21	Au- TL43	ME- MS41	ME- MS41	ME- MS41	ME- MS41	ME- MS41	ME- MS41	ME- MS41	ME- MS41	ME- MS41	ME- MS41	ME- MS41	ME- MS41	
		Recvd Wt. kg	Au ppm	Ag ppm	Al %	As ppm	Au ppm	B ppm	Ba ppm	Be ppm	Bi ppm	Ca %	Cd ppm	Ce ppm	Co ppm	Cr ppm
		0.02	0.001	0.01	0.01	0.1	0.2	10	10	0.05	0.01	0.01	0.01	0.02	0.1	1
CC79802		0.34	0.002	0.33	1.33	10.7	<0.2	<10	450	0.62	0.28	0.50	0.70	46.1	10.8	31
CC79803		0.12	0.001	0.08	1.22	6.0	<0.2	<10	150	0.41	0.18	0.09	0.14	30.5	5.6	22
CC79804		0.14	0.002	0.24	0.92	11.1	<0.2	<10	230	0.42	0.20	0.36	0.69	37.4	9.0	25
CC79805		0.22	0.001	0.08	0.66	4.6	<0.2	<10	240	0.28	0.12	0.27	0.27	25.2	5.6	21
CC79806		0.10	0.001	0.13	1.21	8.5	<0.2	<10	310	0.51	0.19	0.10	0.49	25.9	8.7	37
CC79807		0.18	0.004	0.08	1.03	3.2	<0.2	<10	210	0.26	0.18	0.06	0.14	31.3	3.3	20
CC79808		0.16	0.002	0.30	1.04	9.5	<0.2	<10	400	0.39	0.21	0.60	1.01	31.8	7.2	21
CC79809		0.20	0.008	0.25	0.89	8.1	<0.2	<10	300	0.32	0.19	0.12	0.52	26.6	4.5	22
CC79858		0.34	0.001	0.44	0.83	9.5	<0.2	<10	340	0.38	0.19	2.01	1.27	25.6	7.8	17
CC79859		0.38	<0.001	0.82	0.69	12.9	<0.2	<10	360	0.33	0.18	3.70	2.54	22.5	7.7	19
CC79860		0.40	0.002	0.17	1.20	9.2	<0.2	<10	290	0.47	0.23	0.27	0.70	44.2	8.4	24
CC79861		0.28	0.001	0.34	1.01	7.8	<0.2	<10	400	0.42	0.19	0.19	0.79	22.0	9.8	26
CC79862		0.44	0.016	0.06	0.90	10.7	<0.2	<10	210	0.47	0.19	0.13	0.39	32.6	7.6	21
CC79863		0.18	0.026	0.27	1.03	8.8	<0.2	<10	460	0.45	0.21	0.64	1.18	31.0	8.9	25
CC79864		0.28	0.002	0.06	1.06	5.2	<0.2	<10	250	0.28	0.15	0.44	0.27	23.9	4.5	34
CC79865		0.28	0.002	0.40	1.82	9.8	<0.2	<10	120	0.59	0.23	0.07	0.38	32.0	8.5	27
CC79866		0.26	0.004	0.32	1.34	15.3	<0.2	<10	320	0.74	0.25	0.19	0.77	32.1	13.9	51
CC79867		0.36	0.002	0.14	0.80	9.7	<0.2	<10	220	0.34	0.19	1.39	0.84	33.6	6.9	15
CC79868		0.24	0.001	0.10	0.81	7.4	<0.2	<10	190	0.38	0.18	0.41	0.40	22.4	5.7	15
CC79869		0.30	0.002	0.12	0.57	8.1	<0.2	<10	230	0.25	0.14	0.36	0.58	26.7	6.2	14
CC79870		0.32	0.006	0.10	1.13	5.8	<0.2	<10	120	0.36	0.17	0.04	0.14	29.0	5.4	18
CC79871		Not Recvd														
CC79872		Not Recvd														
CC79873		Not Recvd														
CC79874		Not Recvd														
CC79875		Not Recvd														
CC79876		Not Recvd														
CC79877		Not Recvd														
CC79878		Not Recvd														
CC79901		0.18	0.003	0.07	0.79	8.5	<0.2	<10	200	0.36	0.13	0.08	0.24	25.6	5.8	14
CC79902		0.18	0.005	0.56	1.47	8.6	<0.2	<10	270	0.38	0.15	0.14	0.32	27.1	9.2	20
CC79903		0.30	0.002	0.22	0.74	8.2	<0.2	<10	260	0.37	0.13	0.29	0.29	25.4	6.6	15
CC79904		0.20	0.004	0.24	1.39	14.4	<0.2	<10	150	0.62	0.21	0.13	0.69	23.0	12.3	37
CC79905		0.18	0.002	0.28	1.21	9.1	<0.2	<10	300	0.45	0.23	0.30	0.83	40.7	7.7	17
CC79906		0.02	0.001	0.36	1.14	2.1	<0.2	<10	450	0.26	0.20	0.80	2.42	21.7	5.1	15
CC79907		0.18	0.001	0.19	1.36	5.7	<0.2	<10	210	0.41	0.20	0.13	0.32	30.1	4.4	20
CC79908		0.04	0.002	NSS	NSS	NSS	NSS	NSS	NSS	NSS	NSS	NSS	NSS	NSS	NSS	NSS
CC79909		0.20	0.001	0.66	1.89	13.7	<0.2	<10	240	0.73	0.25	0.09	0.74	29.7	14.1	34
CC79910		0.14	0.003	0.21	1.50	8.8	<0.2	<10	160	0.47	0.21	0.09	0.45	24.5	8.9	32
CC79911		0.24	0.001	0.12	1.62	12.7	<0.2	<10	190	0.64	0.25	0.07	0.48	28.8	13.9	34

***** See Appendix Page for comments regarding this certificate *****



ALS Canada Ltd.
 2103 Dollarton Hwy
 North Vancouver BC V7H 0A7
 Phone: 604 984 0221 Fax: 604 984 0218 www.alsglobal.com

To: ARCHER, CATHRO AND ASSOCIATES (1981)
 LIMITED
 1016- 510 W HASTINGS ST
 VANCOUVER BC V6B 1L8

Page: 2 - B
 Total # Pages: 4 (A - D)
 Plus Appendix Pages
 Finalized Date: 5- JUL- 2011
 Account: F

Project: Fireside - BURT

CERTIFICATE OF ANALYSIS WH11107174

Sample Description	Method Analyte Units LOR	ME- MS41	ME- MS41	ME- MS41	ME- MS41	ME- MS41	ME- MS41	ME- MS41	ME- MS41	ME- MS41	ME- MS41	ME- MS41	ME- MS41	ME- MS41	ME- MS41	
		Cs ppm	Cu ppm	Fe %	Ga ppm	Ge ppm	Hf ppm	Hg ppm	In ppm	K %	La ppm	Li ppm	Mg %	Mn ppm	Mo ppm	Na %
CC79802		0.91	35.9	2.86	4.30	0.06	0.05	0.08	0.028	0.09	23.8	21.3	0.63	501	1.83	0.02
CC79803		0.65	9.9	2.00	3.77	<0.05	<0.02	0.01	0.019	0.04	15.3	16.6	0.36	147	0.81	0.01
CC79804		0.66	31.2	2.32	3.06	0.06	0.04	0.07	0.022	0.06	18.7	14.2	0.48	448	1.91	0.02
CC79805		0.41	14.2	1.49	2.19	<0.05	0.04	0.03	0.015	0.04	12.2	11.6	0.34	109	0.93	0.02
CC79806		0.83	20.0	2.63	3.42	<0.05	<0.02	0.03	0.023	0.06	13.0	12.7	0.52	276	2.70	0.02
CC79807		0.65	4.4	1.37	4.36	<0.05	<0.02	0.01	0.013	0.03	16.1	13.0	0.22	83	0.81	0.01
CC79808		0.60	27.1	2.28	3.34	<0.05	0.04	0.08	0.022	0.06	16.5	16.7	0.50	333	2.20	0.02
CC79809		0.61	29.2	1.88	3.36	<0.05	<0.02	0.07	0.018	0.05	14.9	9.9	0.28	195	2.67	0.01
CC79858		0.77	29.5	1.98	2.35	0.05	0.06	0.09	0.016	0.09	13.8	11.4	1.10	440	4.04	0.02
CC79859		0.92	40.4	1.89	2.04	0.06	0.07	0.13	0.016	0.09	11.8	9.3	1.74	402	7.09	0.02
CC79860		0.65	18.2	2.45	3.65	0.05	0.02	0.04	0.022	0.07	21.6	17.1	0.48	373	3.16	0.01
CC79861		0.50	18.1	2.15	2.96	<0.05	0.02	0.04	0.018	0.05	13.0	10.8	0.31	871	1.50	0.01
CC79862		0.55	29.9	1.98	2.75	0.06	0.04	0.04	0.018	0.05	17.6	12.5	0.35	329	1.41	0.01
CC79863		0.81	37.9	2.25	3.13	<0.05	0.09	0.09	0.026	0.07	16.3	13.9	0.55	389	3.31	0.02
CC79864		0.57	5.5	2.08	4.06	<0.05	0.02	0.02	0.015	0.06	12.8	19.5	0.54	187	2.25	0.02
CC79865		1.02	12.2	2.80	5.15	<0.05	0.02	0.05	0.029	0.04	15.9	21.8	0.34	268	1.57	0.01
CC79866		0.91	40.9	3.08	3.79	<0.05	0.02	0.06	0.031	0.07	15.5	15.2	0.77	561	2.68	0.01
CC79867		0.77	26.3	2.01	2.60	0.06	0.10	0.05	0.017	0.09	16.4	12.5	0.49	338	1.45	0.02
CC79868		0.44	17.2	1.70	2.91	0.11	0.04	0.03	0.015	0.05	11.6	11.2	0.26	193	1.42	0.02
CC79869		0.45	19.4	1.56	2.05	0.14	0.05	0.05	0.013	0.06	13.5	8.3	0.29	276	1.20	0.03
CC79870		0.51	8.1	1.85	3.92	0.12	0.02	0.02	0.017	0.03	14.1	13.4	0.30	136	0.96	0.02
CC79871																
CC79872																
CC79873																
CC79874																
CC79875																
CC79876																
CC79877																
CC79878																
CC79901		0.49	27.7	1.61	2.53	0.12	0.03	0.02	0.015	0.04	12.7	9.2	0.24	124	2.22	0.02
CC79902		0.54	62.1	2.65	4.20	0.11	0.12	0.07	0.018	0.13	14.5	20.1	1.11	119	4.54	0.02
CC79903		0.45	36.8	1.77	2.50	0.11	0.05	0.06	0.016	0.07	13.5	9.9	0.28	150	2.04	0.02
CC79904		0.90	25.0	2.82	4.21	0.12	0.06	0.05	0.027	0.06	11.3	15.8	0.48	268	2.65	0.02
CC79905		0.83	27.2	2.55	4.06	0.14	0.09	0.04	0.022	0.14	20.0	17.7	0.51	339	3.63	0.03
CC79906		0.69	11.8	1.30	5.04	0.11	0.04	0.03	0.015	0.06	11.1	20.9	0.29	365	1.02	0.05
CC79907		0.76	8.9	2.16	5.44	0.12	<0.02	0.02	0.019	0.05	15.0	18.7	0.30	122	2.59	0.03
CC79908		NSS	NSS	NSS	NSS	NSS	NSS	NSS	NSS	NSS	NSS	NSS	NSS	NSS	NSS	NSS
CC79909		1.36	22.0	3.23	5.76	0.11	0.09	0.05	0.036	0.06	14.4	21.6	0.54	560	3.45	0.02
CC79910		0.96	13.0	2.74	4.99	0.12	0.05	0.03	0.023	0.05	12.6	18.1	0.47	575	1.96	0.02
CC79911		0.94	19.2	2.89	4.57	0.11	0.08	0.03	0.028	0.06	14.9	18.1	0.52	309	2.29	0.02



ALS Canada Ltd.
 2103 Dollarton Hwy
 North Vancouver BC V7H 0A7
 Phone: 604 984 0221 Fax: 604 984 0218 www.alsglobal.com

To: ARCHER, CATHRO AND ASSOCIATES (1981)
 LIMITED
 1016- 510 W HASTINGS ST
 VANCOUVER BC V6B 1L8

Page: 2 - C
 Total # Pages: 4 (A - D)
 Plus Appendix Pages
 Finalized Date: 5- JUL- 2011
 Account: F

Project: Fireside - BURT

CERTIFICATE OF ANALYSIS WH11107174

Sample Description	Method Analyte Units LOR	ME- MS41	ME- MS41	ME- MS41	ME- MS41	ME- MS41	ME- MS41	ME- MS41	ME- MS41	ME- MS41	ME- MS41	ME- MS41	ME- MS41	ME- MS41	ME- MS41	
		Nb ppm	Ni ppm	P ppm	Pb ppm	Rb ppm	Re ppm	S %	Sb ppm	Sc ppm	Se ppm	Sn ppm	Sr ppm	Ta ppm	Te ppm	Th ppm
CC79802		0.81	47.7	850	14.5	10.0	0.001	0.02	1.13	4.3	0.7	0.6	27.2	0.01	0.04	6.7
CC79803		0.92	19.9	520	8.9	8.6	<0.001	0.01	0.36	1.9	0.3	0.5	6.6	<0.01	0.02	3.8
CC79804		0.71	42.5	810	11.3	6.6	0.001	0.02	1.06	3.3	0.9	0.4	24.5	<0.01	0.03	5.4
CC79805		0.60	26.3	610	6.2	4.4	0.001	0.02	0.56	2.1	0.8	0.3	16.0	<0.01	0.01	3.7
CC79806		0.61	46.6	900	10.0	9.6	<0.001	0.03	0.94	1.7	0.8	0.4	10.2	<0.01	0.02	1.4
CC79807		1.16	9.8	220	8.8	11.3	<0.001	0.02	0.23	1.3	0.3	0.6	5.0	<0.01	0.01	3.4
CC79808		1.17	33.6	590	10.9	8.3	0.001	0.02	1.32	2.7	0.7	0.5	33.6	<0.01	0.02	4.0
CC79809		0.60	25.3	410	9.9	8.6	0.001	0.02	0.87	1.5	1.0	0.4	11.5	<0.01	0.03	1.7
CC79858		0.57	44.6	920	10.9	8.6	0.006	0.11	1.77	2.2	2.6	0.3	103.0	<0.01	0.03	4.7
CC79859		0.40	65.2	1170	10.4	8.8	0.007	0.14	3.43	2.3	4.4	0.4	178.0	<0.01	0.03	4.2
CC79860		0.75	33.3	610	10.8	9.9	0.001	0.02	0.99	2.6	1.5	0.4	22.2	<0.01	0.03	4.8
CC79861		0.57	25.2	680	10.7	7.6	<0.001	0.02	0.64	1.9	0.8	0.4	14.3	<0.01	0.03	2.2
CC79862		0.49	34.3	620	9.3	5.6	0.001	0.01	0.87	3.1	0.7	0.4	11.3	<0.01	0.01	5.0
CC79863		0.98	46.7	510	14.6	8.3	0.001	0.03	1.29	4.0	1.1	0.4	37.1	<0.01	0.05	4.3
CC79864		0.97	21.3	290	7.3	14.0	<0.001	0.02	0.37	1.9	0.3	0.4	23.8	<0.01	0.02	2.8
CC79865		1.55	21.8	1410	11.2	12.5	<0.001	0.02	0.58	2.3	0.5	0.6	5.9	0.01	0.02	4.0
CC79866		0.62	77.0	980	17.0	10.0	<0.001	0.02	1.42	4.4	1.4	0.4	14.6	<0.01	0.04	3.9
CC79867		0.61	25.2	670	9.5	7.6	0.001	0.02	1.10	2.2	0.7	0.3	50.6	<0.01	0.03	5.1
CC79868		0.83	25.1	330	8.8	6.7	0.002	<0.01	0.67	1.9	0.4	0.3	25.6	<0.01	0.02	3.3
CC79869		0.57	24.2	590	8.5	5.3	0.002	<0.01	0.96	2.1	0.5	0.2	21.2	<0.01	0.01	4.2
CC79870		0.95	16.9	400	8.6	6.8	0.002	<0.01	0.31	1.8	0.3	0.5	4.9	<0.01	0.01	3.8
CC79871																
CC79872																
CC79873																
CC79874																
CC79875																
CC79876																
CC79877																
CC79878																
CC79901		0.47	30.4	370	7.3	7.7	0.002	<0.01	0.99	1.7	0.2	0.3	9.0	<0.01	0.03	3.7
CC79902		0.33	39.0	560	13.3	12.1	0.002	0.08	0.90	1.6	1.2	0.2	56.9	<0.01	0.04	6.2
CC79903		0.81	32.3	210	7.7	8.2	0.002	<0.01	1.05	2.4	0.6	0.3	13.9	<0.01	0.02	4.1
CC79904		0.93	55.9	1240	14.2	12.1	0.002	<0.01	1.03	2.8	1.0	0.5	11.2	<0.01	0.03	4.7
CC79905		1.13	30.8	460	9.5	13.3	0.002	<0.01	1.53	2.5	0.8	0.5	23.3	<0.01	0.02	5.6
CC79906		1.72	10.3	140	10.5	12.1	0.003	<0.01	0.34	1.9	0.6	0.7	44.6	<0.01	0.02	2.3
CC79907		1.50	14.6	340	10.9	13.5	0.002	<0.01	0.46	1.8	0.5	0.7	10.9	<0.01	0.02	3.4
CC79908		NSS	NSS	NSS	NSS	NSS	NSS	NSS	NSS	NSS	NSS	NSS	NSS	NSS	NSS	NSS
CC79909		1.07	63.2	1460	14.9	18.8	0.002	<0.01	1.00	3.3	0.8	0.6	7.9	<0.01	0.05	5.1
CC79910		0.81	33.6	1220	12.4	17.0	0.002	<0.01	0.68	2.6	0.3	0.5	8.0	<0.01	0.03	4.3
CC79911		0.80	40.8	970	14.8	14.7	0.002	<0.01	0.89	3.1	0.5	0.5	6.6	<0.01	0.04	5.2

***** See Appendix Page for comments regarding this certificate *****



ALS Canada Ltd.
 2103 Dollarton Hwy
 North Vancouver BC V7H 0A7
 Phone: 604 984 0221 Fax: 604 984 0218 www.alsglobal.com

To: ARCHER, CATHRO AND ASSOCIATES (1981)
 LIMITED
 1016- 510 W HASTINGS ST
 VANCOUVER BC V6B 1L8

Page: 2 - D
 Total # Pages: 4 (A - D)
 Plus Appendix Pages
 Finalized Date: 5- JUL- 2011
 Account: F

Project: Fireside - BURT

CERTIFICATE OF ANALYSIS WH11107174

Sample Description	Method Analyte Units LOR	ME- MS41	ME- MS41	ME- MS41	ME- MS41	ME- MS41	ME- MS41	ME- MS41	ME- MS41
		Ti %	Ti ppm	U ppm	V ppm	W ppm	Y ppm	Zn ppm	Zr ppm
		0.005	0.02	0.05	1	0.05	0.05	2	0.5
CC79802		0.025	0.14	0.74	37	0.23	11.25	113	2.3
CC79803		0.021	0.07	0.50	30	0.30	3.24	64	0.5
CC79804		0.024	0.13	0.84	31	0.22	10.30	100	2.2
CC79805		0.018	0.06	0.57	20	0.56	6.45	56	1.5
CC79806		0.017	0.12	0.64	44	0.27	3.18	86	<0.5
CC79807		0.026	0.10	0.36	33	0.20	2.04	68	0.7
CC79808		0.031	0.14	1.01	56	0.21	9.23	133	1.4
CC79809		0.014	0.13	0.71	37	0.33	4.27	87	<0.5
CC79858		0.018	0.22	2.07	39	0.14	9.39	279	3.0
CC79859		0.015	0.33	2.97	57	0.21	12.00	401	4.2
CC79860		0.018	0.13	0.88	42	0.20	5.99	130	0.7
CC79861		0.012	0.11	1.14	38	0.36	7.04	109	0.5
CC79862		0.019	0.11	0.89	25	0.25	10.30	81	2.0
CC79863		0.023	0.20	1.50	62	0.16	10.90	134	3.6
CC79864		0.023	0.08	0.47	39	0.15	2.57	73	0.8
CC79865		0.025	0.11	0.51	41	0.37	2.90	105	0.9
CC79866		0.017	0.20	1.20	44	0.18	9.50	128	0.7
CC79867		0.021	0.14	0.63	27	0.32	7.38	106	4.6
CC79868		0.017	0.09	0.60	35	0.27	4.84	84	1.3
CC79869		0.015	0.11	0.63	22	0.18	8.50	79	2.2
CC79870		0.024	0.06	0.39	26	0.25	2.82	71	0.9
CC79871									
CC79872									
CC79873									
CC79874									
CC79875									
CC79876									
CC79877									
CC79878									
CC79901		0.012	0.09	0.50	25	0.32	2.98	69	1.6
CC79902		0.011	0.11	1.74	31	0.13	3.54	85	5.4
CC79903		0.018	0.11	0.53	48	0.16	7.39	74	2.6
CC79904		0.019	0.11	0.75	38	0.56	4.11	98	2.9
CC79905		0.025	0.14	1.04	42	0.18	5.35	159	3.6
CC79906		0.034	0.10	1.26	35	0.13	2.21	141	1.9
CC79907		0.027	0.09	0.37	50	0.25	2.37	70	0.6
CC79908		NSS	NSS	NSS	NSS	NSS	NSS	NSS	NSS
CC79909		0.021	0.16	0.60	50	0.28	3.58	191	4.1
CC79910		0.018	0.12	0.48	42	0.26	2.88	120	2.4
CC79911		0.018	0.13	0.67	41	0.30	3.62	107	3.5



ALS Canada Ltd.
 2103 Dollarton Hwy
 North Vancouver BC V7H 0A7
 Phone: 604 984 0221 Fax: 604 984 0218 www.alsglobal.com

To: ARCHER, CATHRO AND ASSOCIATES (1981)
 LIMITED
 1016- 510 W HASTINGS ST
 VANCOUVER BC V6B 1L8

Page: 3 - A
 Total # Pages: 4 (A - D)
 Plus Appendix Pages
 Finalized Date: 5- JUL- 2011
 Account: F

Project: Fireside - BURT

CERTIFICATE OF ANALYSIS WH11107174

Sample Description	Method Analyte Units LOR	WEI- 21	Au- TL43	ME- MS41	ME- MS41	ME- MS41	ME- MS41	ME- MS41	ME- MS41	ME- MS41	ME- MS41	ME- MS41	ME- MS41	ME- MS41	ME- MS41	
		Recvd Wt. kg	Au ppm	Ag ppm	Al %	As ppm	Au ppm	B ppm	Ba ppm	Be ppm	Bi ppm	Ca %	Cd ppm	Ce ppm	Co ppm	Cr ppm
CC79912		0.24	0.003	0.62	1.69	7.8	<0.2	<10	240	0.60	0.19	0.06	0.43	27.3	9.8	28
CC79913		0.32	0.001	0.26	0.78	9.8	<0.2	<10	490	0.59	0.13	0.95	4.39	15.75	8.2	25
CC79914		0.26	0.002	0.02	0.85	7.0	<0.2	<10	110	0.33	0.16	0.13	0.37	27.4	7.0	21
CC95510		0.04	0.001	0.43	0.61	22.2	<0.2	<10	350	0.18	0.15	2.83	2.17	25.4	6.8	12
CC95511		0.30	0.003	0.09	1.07	8.2	<0.2	<10	260	0.40	0.13	0.09	0.32	30.0	6.1	16
CC95512		0.20	0.001	0.06	1.36	10.9	<0.2	<10	120	0.55	0.18	0.06	0.24	25.8	11.7	25
CC95513		0.24	0.001	0.78	1.95	12.9	<0.2	<10	170	0.78	0.23	0.07	0.58	23.9	14.8	34
CC95514		0.24	0.023	0.31	1.33	9.4	<0.2	<10	190	0.59	0.20	0.06	0.33	33.8	9.2	24
CC95515		0.16	0.005	0.49	1.77	17.0	<0.2	<10	210	0.73	0.24	0.06	0.71	26.8	12.3	34
CC95516		0.24	0.001	0.08	1.28	6.7	<0.2	<10	230	0.43	0.18	0.07	0.15	37.9	7.6	24
CC95517		0.14	0.001	0.07	0.86	7.8	<0.2	<10	70	0.19	0.17	0.05	0.17	14.95	4.8	47
CC95518		0.22	0.002	0.51	1.81	10.3	<0.2	<10	330	0.80	0.23	0.06	0.74	29.7	12.0	37
CC95519		0.20	0.001	0.04	1.13	9.1	<0.2	<10	190	0.54	0.19	0.05	0.17	31.5	8.8	22
CC95520		0.20	0.006	0.52	1.83	12.7	<0.2	<10	240	0.74	0.24	0.07	0.59	27.8	12.5	34
CC95521		0.24	0.001	0.13	1.36	9.6	<0.2	<10	170	0.56	0.19	0.04	0.23	28.1	8.9	24
CC95522		0.18	0.003	0.26	1.60	14.4	<0.2	<10	210	0.65	0.23	0.05	0.46	27.9	10.8	33
CC95523		0.18	0.004	0.10	0.45	5.7	<0.2	<10	60	0.12	0.22	0.04	0.12	22.6	3.7	21
CC95524		0.08	<0.001	0.33	1.19	4.4	<0.2	<10	120	0.34	0.16	0.04	0.63	25.4	6.0	19
CC95525		0.22	0.002	0.64	1.09	7.5	<0.2	<10	150	0.43	0.15	0.13	0.27	27.5	6.8	20
CC95526		0.28	0.004	0.45	1.28	6.0	<0.2	<10	350	0.47	0.14	0.16	0.47	30.2	8.4	20
CC95527		0.18	0.007	0.11	0.72	8.1	<0.2	<10	190	0.36	0.14	0.23	0.29	28.3	7.3	19
CC95528		0.16	0.015	0.20	1.16	9.5	<0.2	<10	150	0.33	0.18	0.05	0.38	30.2	6.9	24
CC95529		0.28	0.001	0.33	1.48	7.7	<0.2	<10	210	0.46	0.19	0.05	0.29	25.7	7.0	26
CC95530		0.20	0.001	0.20	1.42	9.9	<0.2	<10	150	0.53	0.22	0.06	0.31	27.3	8.6	25
CC95531		0.14	0.001	0.06	0.97	6.2	<0.2	<10	160	0.34	0.14	0.10	0.11	22.0	4.6	19
CC95532		0.22	0.002	0.14	1.40	9.2	<0.2	<10	300	0.60	0.21	0.06	0.19	31.9	9.0	26
CC95533		0.12	<0.001	0.07	0.84	5.0	<0.2	<10	120	0.27	0.11	0.04	0.12	18.40	2.9	16
CC95534		0.16	0.005	0.29	2.04	13.9	<0.2	<10	210	0.77	0.27	0.07	0.56	26.7	12.8	42
CC95535		0.22	0.001	0.87	1.82	10.0	<0.2	<10	250	0.66	0.22	0.08	0.63	28.6	11.3	31
CC95536		0.16	0.001	0.68	2.07	12.8	<0.2	<10	240	0.91	0.22	0.11	0.76	22.5	15.6	40
CC95537		0.22	<0.001	0.49	2.01	8.5	<0.2	<10	260	0.75	0.20	0.07	0.71	26.9	11.3	38
CC95538		0.14	0.001	0.30	1.47	8.8	<0.2	<10	280	0.68	0.24	0.55	1.02	30.5	9.6	29
CC95539		0.16	<0.001	0.43	1.48	9.0	<0.2	<10	190	0.53	0.19	0.07	0.46	23.2	8.8	27
CC95540		0.12	0.002	0.27	1.28	11.6	<0.2	<10	510	0.52	0.23	4.55	0.72	35.1	9.8	27
CC79971		0.32	0.001	0.24	1.41	7.4	<0.2	<10	360	0.39	0.17	0.09	0.53	38.6	5.2	17
CC79972		0.22	0.002	0.12	0.96	10.5	<0.2	<10	90	0.24	0.25	0.09	0.29	26.6	3.7	19
CC79973		0.16	0.012	1.46	0.46	16.5	<0.2	<10	280	0.31	0.20	1.92	2.63	14.20	9.4	10
CC79974		0.14	0.003	0.47	0.56	3.7	<0.2	<10	200	0.19	0.14	0.73	0.61	13.65	1.4	7
CC79975		0.14	0.003	0.63	2.04	6.9	<0.2	<10	250	0.79	0.22	0.06	0.57	26.8	9.0	25
CC79976		0.26	0.004	0.46	1.35	9.5	<0.2	<10	100	0.46	0.23	0.06	0.31	28.8	7.6	19

***** See Appendix Page for comments regarding this certificate *****



ALS Canada Ltd.
 2103 Dollarton Hwy
 North Vancouver BC V7H 0A7
 Phone: 604 984 0221 Fax: 604 984 0218 www.alsglobal.com

To: ARCHER, CATHRO AND ASSOCIATES (1981)
 LIMITED
 1016- 510 W HASTINGS ST
 VANCOUVER BC V6B 1L8

Page: 3 - B
 Total # Pages: 4 (A - D)
 Plus Appendix Pages
 Finalized Date: 5- JUL- 2011
 Account: F

Project: Fireside - BURT

CERTIFICATE OF ANALYSIS WH11107174

Sample Description	Method Analyte Units LOR	ME- MS41	ME- MS41	ME- MS41	ME- MS41	ME- MS41	ME- MS41	ME- MS41	ME- MS41	ME- MS41	ME- MS41	ME- MS41	ME- MS41	ME- MS41	ME- MS41	
		Cs ppm	Cu ppm	Fe %	Ga ppm	Ge ppm	Hf ppm	Hg ppm	In ppm	K %	La ppm	Li ppm	Mg %	Mn ppm	Mo ppm	Na %
CC79912		0.95	12.4	2.61	5.26	0.12	0.05	0.04	0.024	0.04	13.9	15.7	0.37	430	1.63	0.02
CC79913		0.34	39.5	1.74	2.62	0.11	0.03	0.09	0.018	0.05	8.2	5.9	0.27	275	9.83	0.03
CC79914		0.51	16.3	1.87	2.74	0.11	<0.02	0.02	0.014	0.05	13.0	12.7	0.39	284	1.32	0.02
CC95510		0.65	33.0	2.10	2.03	0.12	0.15	0.08	0.012	0.07	13.1	9.5	0.95	288	5.53	0.03
CC95511		0.53	19.9	1.83	3.01	0.12	0.03	0.02	0.018	0.07	15.6	11.6	0.28	138	2.12	0.02
CC95512		0.71	18.1	2.32	3.64	0.11	0.06	0.02	0.021	0.05	12.8	15.5	0.38	280	1.85	0.02
CC95513		1.06	18.6	2.97	4.97	0.11	0.09	0.04	0.032	0.06	12.1	19.9	0.44	494	2.53	0.02
CC95514		0.68	16.7	2.30	4.22	0.11	0.04	0.03	0.021	0.04	16.9	15.1	0.37	196	1.43	0.02
CC95515		1.05	20.4	3.13	4.56	0.11	0.09	0.04	0.033	0.05	13.7	18.3	0.42	214	2.87	0.02
CC95516		0.67	10.3	2.15	4.24	0.12	0.02	0.01	0.017	0.04	18.8	16.5	0.38	200	1.12	0.02
CC95517		0.69	18.0	2.20	4.33	0.10	0.04	0.01	0.013	0.05	7.3	7.1	0.39	152	3.07	0.02
CC95518		0.93	22.8	2.99	5.67	0.12	0.08	0.03	0.028	0.05	14.3	16.5	0.47	279	2.03	0.02
CC95519		0.62	17.8	2.18	3.50	0.12	0.04	0.02	0.017	0.04	15.3	15.5	0.36	213	1.13	0.02
CC95520		1.01	19.6	2.91	4.70	0.11	0.11	0.03	0.029	0.05	14.2	19.0	0.46	337	1.99	0.02
CC95521		0.70	17.6	2.25	3.69	0.11	0.03	0.03	0.018	0.04	14.4	15.9	0.37	190	1.21	0.02
CC95522		0.94	20.0	2.95	4.18	0.11	0.03	0.04	0.027	0.05	13.7	16.9	0.41	297	2.49	0.02
CC95523		1.22	7.3	1.53	3.64	0.10	<0.02	0.01	0.009	0.04	11.6	4.0	0.13	418	1.97	0.02
CC95524		0.72	5.1	2.16	4.81	0.11	0.02	0.02	0.015	0.03	12.9	14.3	0.21	171	1.16	0.02
CC95525		0.70	27.2	2.16	3.47	0.10	0.04	0.06	0.019	0.04	14.2	17.2	0.42	150	2.66	0.02
CC95526		0.90	59.2	2.26	3.70	0.10	0.04	0.05	0.022	0.08	15.5	17.7	0.50	123	2.77	0.02
CC95527		0.54	20.7	1.76	2.53	0.12	0.02	0.05	0.015	0.04	14.3	11.1	0.39	289	1.18	0.03
CC95528		0.81	10.2	2.46	4.26	0.09	0.02	0.02	0.020	0.04	15.0	16.5	0.32	263	1.56	0.02
CC95529		0.68	8.7	2.46	4.18	0.08	0.02	0.02	0.019	0.04	13.8	17.1	0.34	212	1.23	0.01
CC95530		0.72	14.4	2.49	4.14	0.08	0.03	0.02	0.021	0.05	14.4	17.2	0.37	207	1.33	0.01
CC95531		0.36	11.9	1.74	3.08	0.07	0.02	0.01	0.014	0.03	11.8	13.3	0.31	123	0.61	0.01
CC95532		0.70	13.7	2.42	4.57	0.09	0.04	0.02	0.021	0.04	16.8	18.1	0.39	218	1.25	0.01
CC95533		0.42	6.5	1.31	3.38	0.05	<0.02	0.01	0.012	0.02	9.8	8.5	0.18	85	0.83	0.01
CC95534		0.93	16.4	3.18	5.83	0.09	0.11	0.04	0.031	0.05	14.0	22.1	0.47	450	1.86	0.01
CC95535		0.99	14.9	2.80	6.10	0.10	0.08	0.03	0.028	0.05	15.3	20.6	0.41	597	1.73	0.01
CC95536		1.17	20.7	2.87	5.44	0.10	0.06	0.05	0.034	0.06	11.5	21.7	0.55	946	2.54	0.02
CC95537		1.00	13.0	2.95	6.98	0.09	0.05	0.04	0.030	0.04	14.2	21.3	0.42	438	1.89	0.01
CC95538		0.62	26.2	2.75	4.69	0.10	0.07	0.06	0.027	0.10	16.1	24.2	0.58	416	2.16	0.02
CC95539		0.68	8.9	2.54	4.70	0.09	0.03	0.03	0.021	0.04	12.7	15.7	0.30	156	1.56	0.02
CC95540		0.54	32.9	2.76	4.03	0.11	0.07	0.07	0.027	0.08	18.8	21.9	0.93	408	1.83	0.03
CC79971		0.49	19.6	2.08	4.39	0.09	0.02	0.02	0.018	0.08	22.0	18.8	0.37	133	3.71	0.01
CC79972		0.68	14.0	2.65	4.32	0.08	<0.02	0.01	0.017	0.05	14.3	16.6	0.31	129	2.39	0.01
CC79973		1.08	268	2.57	1.34	0.09	0.08	0.25	0.032	0.12	7.8	5.5	0.73	207	18.05	0.01
CC79974		0.37	10.5	0.83	2.85	<0.05	0.02	0.02	0.008	0.04	7.3	9.0	0.14	67	0.82	0.02
CC79975		0.95	16.3	3.09	5.50	0.09	0.09	0.04	0.025	0.07	14.5	37.6	0.45	274	2.18	0.01
CC79976		0.69	11.2	2.58	4.11	0.08	0.03	0.03	0.019	0.04	14.5	17.3	0.34	177	1.16	0.01

***** See Appendix Page for comments regarding this certificate *****



ALS Canada Ltd.
 2103 Dollarton Hwy
 North Vancouver BC V7H 0A7
 Phone: 604 984 0221 Fax: 604 984 0218 www.alsglobal.com

To: ARCHER, CATHRO AND ASSOCIATES (1981)
 LIMITED
 1016- 510 W HASTINGS ST
 VANCOUVER BC V6B 1L8

Page: 3 - C
 Total # Pages: 4 (A - D)
 Plus Appendix Pages
 Finalized Date: 5- JUL- 2011
 Account: F

Project: Fireside - BURT

CERTIFICATE OF ANALYSIS WH11107174

Sample Description	Method Analyte Units LOR	ME- MS41	ME- MS41	ME- MS41	ME- MS41	ME- MS41	ME- MS41	ME- MS41	ME- MS41	ME- MS41	ME- MS41	ME- MS41	ME- MS41	ME- MS41	ME- MS41	
		Nb ppm	Ni ppm	P ppm	Pb ppm	Rb ppm	Re ppm	S %	Sb ppm	Sc ppm	Se ppm	Sn ppm	Sr ppm	Ta ppm	Te ppm	Th ppm
CC79912		1.29	31.3	1090	10.9	14.5	0.002	<0.01	0.54	2.6	0.2	0.6	6.1	0.01	0.03	3.9
CC79913		0.37	55.2	750	10.1	4.0	0.003	0.05	3.91	1.6	3.7	0.4	58.1	<0.01	0.05	0.8
CC79914		0.61	29.8	550	8.1	6.2	0.002	<0.01	0.60	1.9	0.4	0.3	9.5	<0.01	0.01	3.4
CC95510		0.41	38.5	960	9.1	6.3	0.005	0.02	1.98	1.9	1.6	0.3	138.5	<0.01	0.02	4.9
CC95511		0.66	31.5	500	6.8	8.8	0.002	<0.01	0.97	1.6	0.4	0.3	7.6	<0.01	0.02	3.9
CC95512		0.91	34.4	890	11.0	9.6	0.002	<0.01	0.81	2.4	0.5	0.4	5.9	<0.01	0.03	5.5
CC95513		1.15	41.8	1650	15.2	16.4	0.002	<0.01	0.89	2.9	0.5	0.5	6.3	<0.01	0.05	5.4
CC95514		0.65	28.4	620	10.6	8.8	0.002	<0.01	0.63	2.8	0.4	0.5	6.5	<0.01	0.02	5.5
CC95515		0.89	45.3	1150	14.1	13.6	0.002	<0.01	1.13	2.8	0.6	0.5	6.4	0.01	0.05	5.3
CC95516		0.78	24.6	450	10.2	9.4	0.002	<0.01	0.43	2.6	0.4	0.5	7.3	<0.01	0.03	4.9
CC95517		0.74	37.6	390	5.5	13.1	0.002	<0.01	0.87	2.4	0.5	0.4	4.7	<0.01	0.03	2.8
CC95518		1.00	49.1	860	13.1	15.4	0.002	<0.01	0.83	3.5	0.4	0.7	7.5	<0.01	0.03	5.3
CC95519		0.64	32.0	360	10.3	8.4	0.002	<0.01	0.58	2.4	0.2	0.5	6.6	0.01	0.02	6.1
CC95520		0.93	49.0	1110	13.4	16.0	0.002	<0.01	0.84	3.0	0.5	0.5	6.7	<0.01	0.04	5.0
CC95521		0.82	32.5	550	10.3	8.3	0.002	<0.01	0.56	2.3	0.3	0.4	4.7	<0.01	0.02	5.2
CC95522		0.84	41.7	840	14.8	13.3	0.002	<0.01	0.95	2.9	0.6	0.5	5.7	<0.01	0.02	5.2
CC95523		0.83	12.4	500	7.0	20.8	0.002	<0.01	0.60	1.0	<0.2	0.4	3.7	<0.01	0.03	1.1
CC95524		1.80	13.6	510	8.8	8.8	0.002	<0.01	0.40	1.5	<0.2	0.7	4.0	<0.01	0.01	2.9
CC95525		0.84	32.5	770	8.3	9.0	0.002	<0.01	0.61	1.8	0.5	0.4	10.8	<0.01	0.03	4.1
CC95526		0.74	40.8	720	7.8	17.8	0.002	<0.01	0.75	1.9	0.7	0.4	15.3	<0.01	0.02	4.5
CC95527		0.55	33.5	640	8.5	4.6	0.003	<0.01	0.74	2.8	0.5	0.3	16.6	<0.01	0.02	3.8
CC95528		0.96	23.0	710	9.9	13.3	0.002	<0.01	0.61	2.0	<0.2	0.5	4.9	<0.01	0.03	3.9
CC95529		0.80	20.9	740	9.3	10.8	<0.001	0.01	0.48	2.3	0.3	0.5	4.5	<0.01	0.03	3.8
CC95530		0.92	29.0	770	11.7	9.2	<0.001	0.01	0.61	2.3	0.5	0.5	5.4	<0.01	0.03	4.6
CC95531		0.60	20.0	490	6.6	5.3	<0.001	0.01	0.32	1.9	0.3	0.4	7.2	<0.01	0.02	2.6
CC95532		0.70	29.0	370	10.5	8.6	<0.001	0.01	0.57	2.9	0.4	0.6	6.9	<0.01	0.03	5.2
CC95533		0.71	13.2	290	5.4	5.5	<0.001	0.01	0.31	1.3	0.3	0.4	3.6	<0.01	0.01	2.2
CC95534		1.14	40.7	1540	15.0	15.7	<0.001	0.01	0.83	3.4	0.7	0.7	5.7	0.01	0.05	5.1
CC95535		0.93	37.2	1200	10.7	15.3	<0.001	0.01	0.69	3.1	0.5	0.8	7.2	<0.01	0.05	4.2
CC95536		1.08	59.9	1810	13.1	20.8	<0.001	0.02	0.93	3.7	1.2	0.7	8.2	<0.01	0.06	3.7
CC95537		1.54	36.4	1350	10.7	14.5	<0.001	0.01	0.70	3.3	0.6	0.9	6.0	0.01	0.05	3.7
CC95538		0.96	41.6	900	10.7	10.7	0.002	0.03	0.83	3.4	1.2	0.5	42.5	<0.01	0.05	2.8
CC95539		1.21	23.5	880	10.0	10.9	<0.001	0.01	0.57	2.2	0.5	0.6	7.7	<0.01	0.03	3.5
CC95540		0.78	41.0	860	12.4	6.9	0.001	0.03	1.38	4.0	0.9	0.5	117.0	<0.01	0.04	5.2
CC79971		0.83	24.8	530	8.7	8.8	<0.001	0.01	1.36	1.9	0.8	0.5	11.2	<0.01	0.03	3.6
CC79972		1.14	15.3	1750	10.8	10.1	<0.001	0.02	0.52	1.5	0.6	0.4	8.7	<0.01	0.04	3.0
CC79973		0.22	75.3	2530	13.1	8.3	0.002	0.06	5.16	2.0	4.4	<0.2	102.0	<0.01	0.15	2.1
CC79974		0.55	6.6	280	6.6	5.6	0.002	0.04	0.39	0.9	1.4	0.4	36.3	<0.01	0.01	0.9
CC79975		1.27	17.5	840	11.5	24.8	<0.001	0.01	0.41	2.3	0.6	0.6	6.3	0.01	0.04	5.4
CC79976		1.43	21.8	640	9.4	8.0	<0.001	0.01	0.38	1.9	0.5	0.5	5.5	0.01	0.03	4.9



ALS Canada Ltd.
 2103 Dollarton Hwy
 North Vancouver BC V7H 0A7
 Phone: 604 984 0221 Fax: 604 984 0218 www.alsglobal.com

To: ARCHER, CATHRO AND ASSOCIATES (1981)
 LIMITED
 1016- 510 W HASTINGS ST
 VANCOUVER BC V6B 1L8

Page: 3 - D
 Total # Pages: 4 (A - D)
 Plus Appendix Pages
 Finalized Date: 5- JUL- 2011
 Account: F

Project: Fireside - BURT

CERTIFICATE OF ANALYSIS WH11107174

Sample Description	Method Analyte Units LOR	ME- MS41	ME- MS41	ME- MS41	ME- MS41	ME- MS41	ME- MS41	ME- MS41	ME- MS41
		Ti %	Ti ppm	U ppm	V ppm	W ppm	Y ppm	Zn ppm	Zr ppm
		0.005	0.02	0.05	1	0.05	0.05	2	0.5
CC79912		0.030	0.10	0.44	44	0.26	2.80	116	2.1
CC79913		0.009	0.15	1.89	93	0.16	8.24	207	1.1
CC79914		0.019	0.07	0.56	22	0.35	4.66	60	0.5
CC95510		0.015	0.21	1.36	45	0.14	9.04	239	6.8
CC95511		0.015	0.12	0.50	32	0.17	2.84	107	1.1
CC95512		0.020	0.09	0.63	31	0.34	3.23	78	3.4
CC95513		0.021	0.17	0.70	49	0.29	2.76	154	3.5
CC95514		0.022	0.10	0.64	33	0.33	4.31	75	2.1
CC95515		0.019	0.14	0.65	47	0.39	3.05	175	4.1
CC95516		0.027	0.07	0.50	31	0.25	3.96	61	0.8
CC95517		0.019	0.14	0.35	43	0.16	1.70	71	1.5
CC95518		0.030	0.14	0.73	47	0.23	3.29	125	3.7
CC95519		0.022	0.08	0.61	26	0.32	3.58	55	2.1
CC95520		0.018	0.12	0.54	41	0.39	3.36	123	4.1
CC95521		0.020	0.08	0.51	28	0.35	3.04	58	1.5
CC95522		0.020	0.13	0.66	46	0.41	3.48	101	1.4
CC95523		0.019	0.11	0.33	36	0.32	1.50	61	<0.5
CC95524		0.033	0.07	0.28	39	0.27	1.57	113	0.9
CC95525		0.017	0.08	0.57	28	0.24	3.81	72	1.7
CC95526		0.018	0.14	0.71	31	0.16	3.94	116	1.9
CC95527		0.018	0.08	0.62	22	0.18	9.23	64	0.6
CC95528		0.017	0.10	0.39	37	0.31	2.39	95	1.1
CC95529		0.024	0.10	0.47	38	0.34	2.22	105	0.7
CC95530		0.021	0.10	0.53	34	0.33	2.69	82	1.3
CC95531		0.015	0.06	0.40	25	0.26	3.53	50	<0.5
CC95532		0.030	0.09	0.62	35	0.34	3.72	64	1.7
CC95533		0.016	0.07	0.29	26	0.19	1.48	39	<0.5
CC95534		0.019	0.14	0.63	50	0.34	2.80	164	4.1
CC95535		0.029	0.12	0.48	47	0.27	2.92	123	3.8
CC95536		0.015	0.17	0.63	53	0.24	3.28	209	2.3
CC95537		0.030	0.13	0.54	55	0.24	2.71	158	2.4
CC95538		0.018	0.09	3.81	35	0.16	7.58	132	1.8
CC95539		0.030	0.09	0.49	44	0.29	2.30	119	1.4
CC95540		0.022	0.10	0.85	34	0.20	9.37	104	2.5
CC79971		0.013	0.12	0.66	54	0.15	2.56	124	0.7
CC79972		0.022	0.08	0.49	40	0.43	2.37	85	<0.5
CC79973		0.008	0.25	2.81	30	0.11	14.10	354	3.9
CC79974		0.012	0.06	0.47	14	0.17	1.65	32	0.6
CC79975		0.024	0.11	0.71	44	0.36	2.24	207	3.9
CC79976		0.034	0.07	0.58	31	0.60	3.00	61	1.3



ALS Canada Ltd.
 2103 Dollarton Hwy
 North Vancouver BC V7H 0A7
 Phone: 604 984 0221 Fax: 604 984 0218 www.alsglobal.com

To: ARCHER, CATHRO AND ASSOCIATES (1981)
 LIMITED
 1016- 510 W HASTINGS ST
 VANCOUVER BC V6B 1L8

Page: 4 - A
 Total # Pages: 4 (A - D)
 Plus Appendix Pages
 Finalized Date: 5- JUL- 2011
 Account: F

Project: Fireside - BURT

CERTIFICATE OF ANALYSIS WH11107174

Sample Description	Method Analyte Units LOR	WEI- 21 Recvd Wt. kg	Au- TL43 Au ppm	ME- MS41 Ag ppm	ME- MS41 Al %	ME- MS41 As ppm	ME- MS41 Au ppm	ME- MS41 B ppm	ME- MS41 Ba ppm	ME- MS41 Be ppm	ME- MS41 Bi ppm	ME- MS41 Ca %	ME- MS41 Cd ppm	ME- MS41 Ce ppm	ME- MS41 Co ppm	ME- MS41 Cr ppm
		0.02	0.001	0.01	0.01	0.1	0.2	10	10	0.05	0.01	0.01	0.01	0.02	0.1	1
CC79977		0.18	0.001	0.46	1.08	6.2	<0.2	<10	140	0.38	0.20	0.06	0.50	27.0	4.6	17
CC79978		0.26	0.002	0.04	1.18	7.9	<0.2	<10	110	0.43	0.22	0.13	0.20	31.6	6.5	18

***** See Appendix Page for comments regarding this certificate *****



ALS Canada Ltd.
 2103 Dollarton Hwy
 North Vancouver BC V7H 0A7
 Phone: 604 984 0221 Fax: 604 984 0218 www.alsglobal.com

To: ARCHER, CATHRO AND ASSOCIATES (1981)
 LIMITED
 1016- 510 W HASTINGS ST
 VANCOUVER BC V6B 1L8

Page: 4 - B
 Total # Pages: 4 (A - D)
 Plus Appendix Pages
 Finalized Date: 5- JUL- 2011
 Account: F

Project: Fireside - BURT

CERTIFICATE OF ANALYSIS WH11107174

Sample Description	Method Analyte Units LOR	ME- MS41 Cs ppm 0.05	ME- MS41 Cu ppm 0.2	ME- MS41 Fe % 0.01	ME- MS41 Ga ppm 0.05	ME- MS41 Ge ppm 0.05	ME- MS41 Hf ppm 0.02	ME- MS41 Hg ppm 0.01	ME- MS41 In ppm 0.005	ME- MS41 K % 0.01	ME- MS41 La ppm 0.2	ME- MS41 Li ppm 0.1	ME- MS41 Mg % 0.01	ME- MS41 Mn ppm 5	ME- MS41 Mo ppm 0.05	ME- MS41 Na % 0.01
CC79977		0.64	8.8	2.03	4.21	0.08	0.02	0.03	0.016	0.04	14.4	17.4	0.28	140	1.18	0.01
CC79978		0.70	14.6	2.21	3.69	0.09	0.02	0.01	0.018	0.05	16.4	19.2	0.41	193	0.99	0.01

***** See Appendix Page for comments regarding this certificate *****



ALS Canada Ltd.
 2103 Dollarton Hwy
 North Vancouver BC V7H 0A7
 Phone: 604 984 0221 Fax: 604 984 0218 www.alsglobal.com

To: ARCHER, CATHRO AND ASSOCIATES (1981)
 LIMITED
 1016- 510 W HASTINGS ST
 VANCOUVER BC V6B 1L8

Page: 4 - C
 Total # Pages: 4 (A - D)
 Plus Appendix Pages
 Finalized Date: 5- JUL- 2011
 Account: F

Project: Fireside - BURT

CERTIFICATE OF ANALYSIS WH11107174

Sample Description	Method Analyte Units LOR	ME- MS41 Nb ppm 0.05	ME- MS41 Ni ppm 0.2	ME- MS41 P ppm 10	ME- MS41 Pb ppm 0.2	ME- MS41 Rb ppm 0.1	ME- MS41 Re ppm 0.001	ME- MS41 S % 0.01	ME- MS41 Sb ppm 0.05	ME- MS41 Sc ppm 0.1	ME- MS41 Se ppm 0.2	ME- MS41 Sn ppm 0.2	ME- MS41 Sr ppm 0.2	ME- MS41 Ta ppm 0.01	ME- MS41 Te ppm 0.01	ME- MS41 Th ppm 0.2
CC79977		1.21	12.4	520	8.1	9.6	<0.001	0.01	0.27	1.6	0.4	0.5	5.2	<0.01	0.03	3.5
CC79978		1.05	22.2	570	9.3	8.4	<0.001	0.01	0.36	1.9	0.5	0.4	7.3	<0.01	0.02	4.7



ALS Canada Ltd.
 2103 Dollarton Hwy
 North Vancouver BC V7H 0A7
 Phone: 604 984 0221 Fax: 604 984 0218 www.alsglobal.com

To: ARCHER, CATHRO AND ASSOCIATES (1981)
 LIMITED
 1016- 510 W HASTINGS ST
 VANCOUVER BC V6B 1L8

Page: 4 - D
 Total # Pages: 4 (A - D)
 Plus Appendix Pages
 Finalized Date: 5- JUL- 2011
 Account: F

Project: Fireside - BURT

CERTIFICATE OF ANALYSIS WH11107174

Sample Description	Method Analyte Units LOR	ME- MS41 Ti %	ME- MS41 Ti ppm	ME- MS41 U ppm	ME- MS41 V ppm	ME- MS41 W ppm	ME- MS41 Y ppm	ME- MS41 Zn ppm	ME- MS41 Zr ppm
		0.005	0.02	0.05	1	0.05	0.05	2	0.5
CC79977		0.027	0.07	0.58	29	0.36	2.86	61	0.5
CC79978		0.026	0.07	0.71	25	0.40	4.07	55	0.6



ALS Canada Ltd.
2103 Dollarton Hwy
North Vancouver BC V7H 0A7
Phone: 604 984 0221 Fax: 604 984 0218 www.alsglobal.com

To: ARCHER, CATHRO AND ASSOCIATES (1981)
LIMITED
1016- 510 W HASTINGS ST
VANCOUVER BC V6B 1L8

Page: Appendix 1
Total # Appendix Pages: 1
Finalized Date: 5- JUL- 2011
Account: F

Project: Fireside - BURT

CERTIFICATE OF ANALYSIS WH11107174

Method	CERTIFICATE COMMENTS
ALL METHODS ME- MS41	NSS is non- sufficient sample. Gold determinations by this method are semi- quantitative due to the small sample weight used (0.5g).

Burt Project

Project Expenditures = \$6,294.62