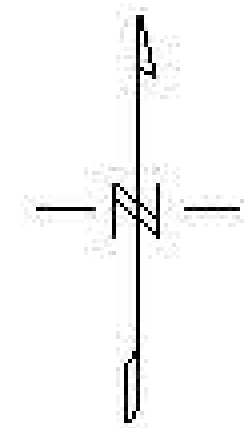
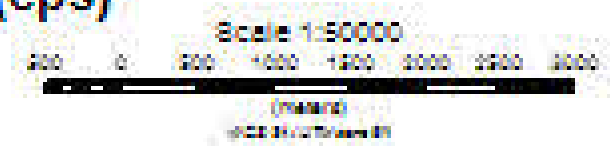


Survey and Equipment:
-Survey Flown from Aug 11, 2010 to August 13, 2010.
-Survey Base: Minto Airstrip, Yukon
-Scintrex CS-3 cesium vapor magnetic sensor used to sample the Earth's magnetic field at 10Hz.
-All radiometric data sampled at 1Hz by 8.4L of NaI synthetic crystal
- Topography from Geogratia.

Potassium (cps)



Precision
GeoSurveys Inc.

Canadian Dehua International Mines Group Inc.
Oprah Block
Potassium (cps)
Created By: Precision GeoSurveys Inc.
August 23, 2010