

ARCHER, CATHRO & ASSOCIATES (1981) LIMITED  
1016 – 510 West Hastings Street  
Vancouver, B.C. V6B 1L8

Telephone: 604-688-2568

Fax: 604-688-2578

---

**ASSESSMENT REPORT**

describing

**SOIL SAMPLING, PROSPECTING, GEOLOGICAL  
MAPPING AND HAND TRENCHING**

at the

**EVOY PROPERTY**

Evoy 1-6 YC73940-YC73945

NTS 105G/09

Latitude 61°41'23"N; Longitude 130°05'58"W

located in the

Watson Lake Mining District  
Yukon Territory

prepared by

Archer, Cathro & Associates (1981) Limited

for

**STRATEGIC METALS LTD.**

by

Dan Gregory, B.Sc. Geology, GIT  
February 2010

## **CONTENTS**

INTRODUCTION	1
PROPERTY LOCATION, CLAIM DATA AND ACCESS	1
HISTORY	1
GEOMORPHOLOGY	2
REGIONAL GEOLOGY	2
PROPERTY GEOLOGY	3
DEPOSIT MODEL	4
GEOCHEMISTRY	5
HAND TRENCHING	5
DISCUSSION AND CONCLUSIONS	6
REFERENCES	7

## **APPENDICES**

I	STATEMENT OF QUALIFICATIONS
II	SAMPLE HANDLING AND ANALYTICAL PROCEDURES
III	CERTIFICATES OF ANALYSIS
IV	ROCK SAMPLE DESCRIPTIONS

## FIGURES

<u>No.</u>	<u>Description</u>	<u>Follows Page</u>
1	Property Location	1
2	Claim Locations	1
3	Regional Geology	2
4	Property Geology	3
5	2009 Sample Locations	5
6	Silver Geochemistry	5
7	Lead Geochemistry	5
8	Zinc Geochemistry	5
9	Copper Geochemistry	5
10	EV09-TR01 Trench Map	6
11	EV09-TR02 Trench Map	6

## **INTRODUCTION**

The Evoy property was staked in September 2008 following a research study, which identified silver-lead-zinc targets within the Finlayson Lake area of the Yukon Territory. The property is owned 100% by Strategic Metals Ltd.

This report describes work conducted between July 12 and 18, 2009 by Archer, Cathro & Associates (1981) Limited on behalf of Strategic. The work consisted of geological mapping, prospecting, soil sampling and hand trenching. It was completed by a crew of two people from a helicopter-supported camp on the property. The author participated in and supervised the program. Appendix I contains the author's Statement of Qualifications.

## **PROPERTY LOCATION, CLAIM DATA AND ACCESS**

The Evoy property is located in southeastern Yukon at latitude 61°41'23" north and longitude 130°05'58" west on NTS mapsheet 105G/09 (Figure 1). The claims are registered with the Watson Lake Mining Recorder in the name of Archer Cathro which holds them in trust for Strategic. Claim registration data is listed below while locations of individual claims are shown on Figure 2.

<u>Claim Name</u>	<u>Grant Number</u>	<u>Expiry Date*</u>
Evoy 1-6	YC73940-YC73945	March 23, 2014

\* Expiry date includes 2009 work that has been filed for assessment credit but not yet accepted.

The Evoy claims lie approximately 286 km east-northeast of Whitehorse and 127 km east-southeast of Ross River. The closest road is the Robert Campbell Highway, 10 km south of the property. McEvoy Lake, which lies 13 km north of the property, is suitable for float equipped aircraft and an airstrip, which services a fishing lodge on the northeast side of the lake (15 km northeast of the property), is suitable for wheel equipped aircraft.

In 2009, the property was accessed by a Hughes 500C helicopter operated by Kluane Airways from a seasonal base at Inconnu Lodge on the northeast side of McEvoy Lake.

## **HISTORY**

The area underlain by the Evoy claims was first staked in 1976 as the Til claims by Mountaineer Mines Ltd., which conducted minor soil sampling and geological mapping in fall of that year. Follow up geophysical surveys, soil sampling and mapping were performed in 1977, and additional soil sampling and geological mapping were completed in 1978. The claims were allowed to lapse after no significant sulphide mineralization was discovered in any of the programs. The area was restaked in 2003, but those claims were allowed to lapse in 2005 without any work being recorded.

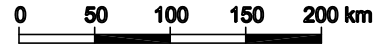
STRATEGIC METALS LTD.

FIGURE 1

ARCHER, CATHRO & ASSOCIATES (1981) LIMITED

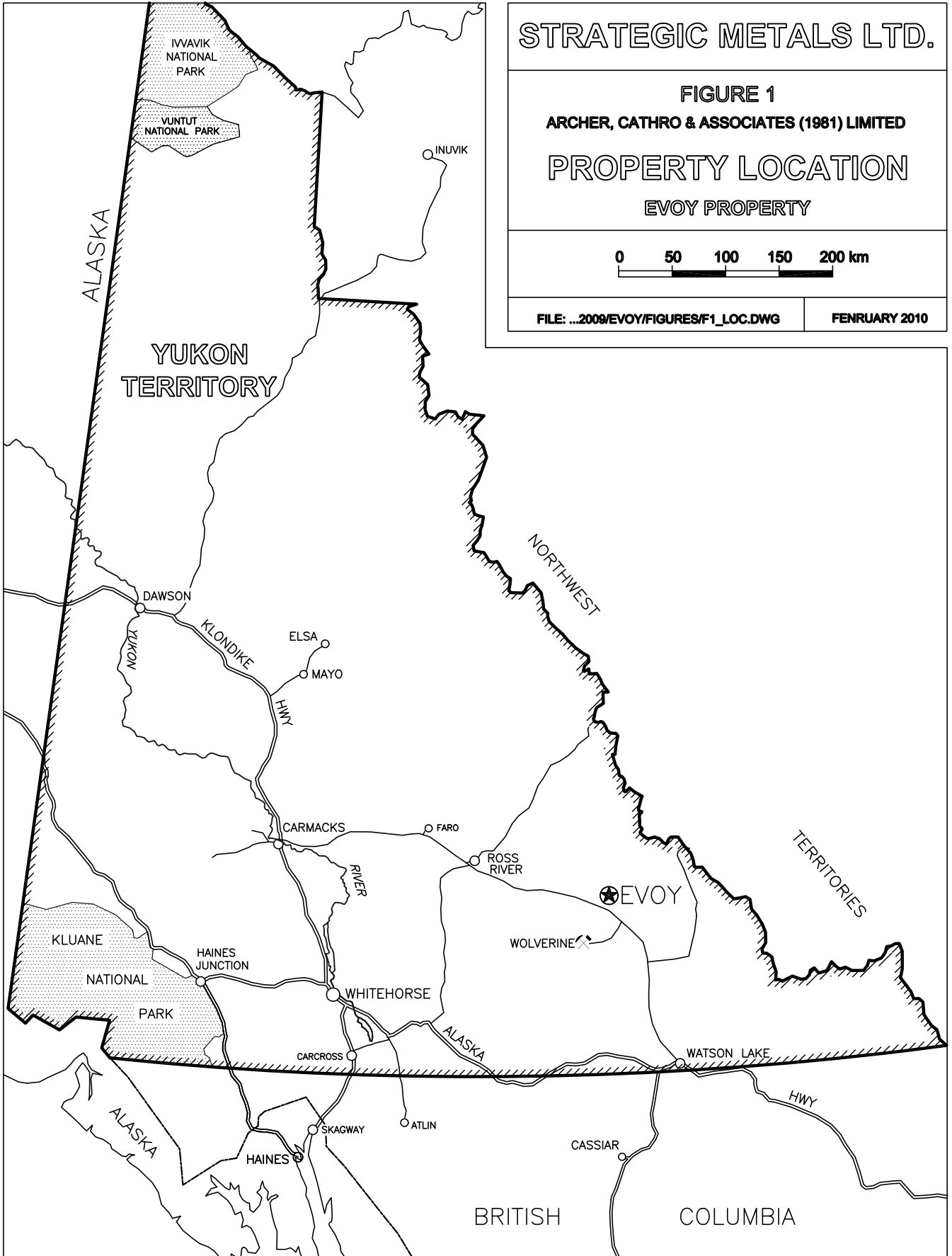
PROPERTY LOCATION

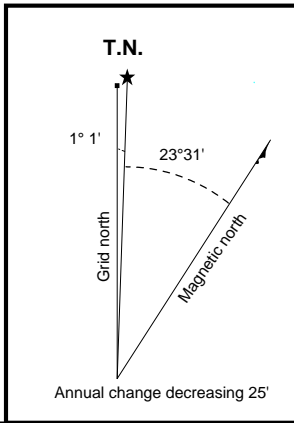
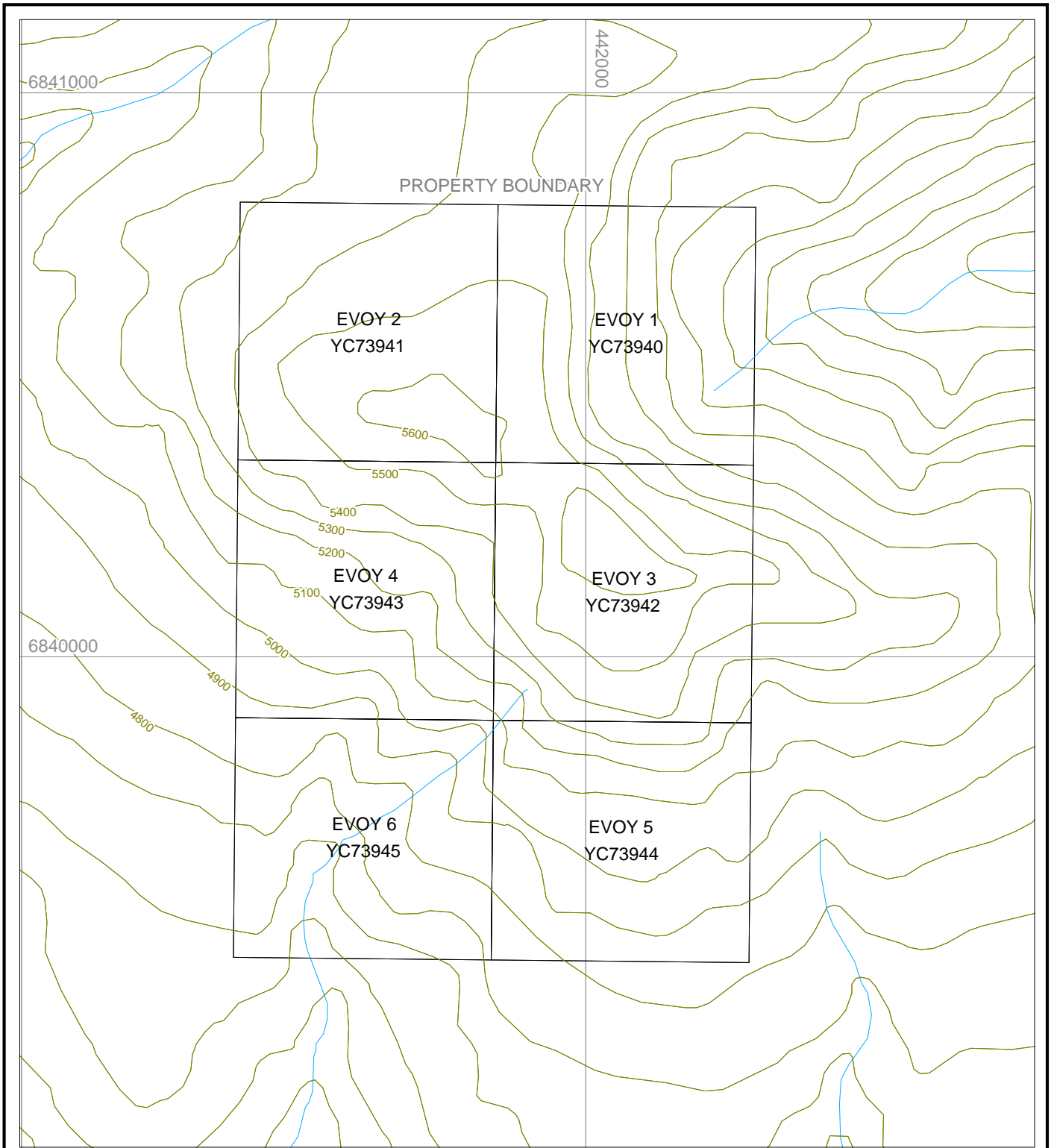
EVOY PROPERTY



FILE: ...2009/EVOY/FIGURES/F1\_LOC.DWG

FENRUARY 2010





**STRATEGIC METALS LTD.**

**FIGURE 2**  
**ARCHER, CATHRO & ASSOCIATES (1981) LIMITED**  
**CLAIM LOCATIONS**  
**EVOY PROPERTY**

0 200 400 600 800 m

UTM Zone 9, NAD83, NTS sheet 105 G/09

FILE: .../2009/FINLAYSON/EVOY.WOR

DATE: FEBRUARY 2010

## **GEOMORPHOLOGY**

Topography on the property is steep, with elevations ranging from 1400 to 1700 m above sea level. Vegetation comprises thick stands of spruce and patches of arctic black birch at lower elevations giving way to grass and fine talus at higher elevations.

Creeks draining the property flow into the Finlayson River which ultimately connects to the Arctic Ocean via the Frances, Liard and Mackenzie Rivers.

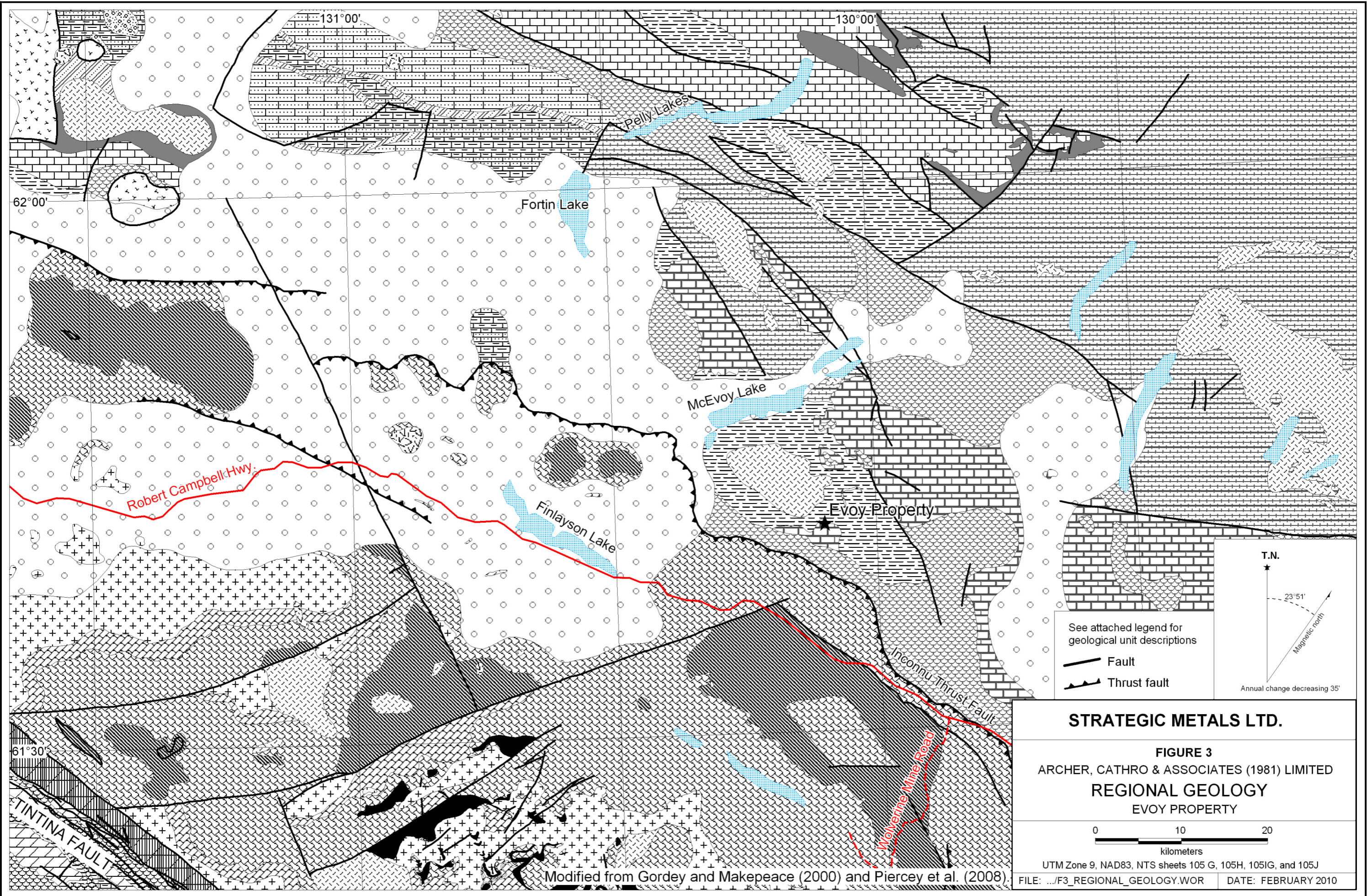
## **REGIONAL GEOLOGY**

The McEvoy Lake area is located approximately 80 km northeast of the Tintina Fault, a major transcurrent structure, and 6 km northeast of the Inconnu Fault, a regional-scale feature that juxtaposed autochthonous rocks to the northeast against allochthonous rocks to the southwest (Figure 3). The area is underlain by relatively unmetamorphosed Selwyn Basin stratigraphy. Selwyn Basin is a large, elongate sedimentary trough that occupies the western margin of ancestral North America. Rocks of the Selwyn Basin represent the complete sedimentary architecture of an intracratonic rift. This includes a Late Proterozoic syn-rift clastic sequence of mostly oxidized and locally derived coarse and fine grained clastic rocks, and a Paleozoic post-rift basinal sedimentary sequence of mostly black carbonaceous shale and chert (Goodfellow, 2007). The basinal successions merge into platform strata of the Mackenzie Platform on the northeastern margin of the basin.

The following unit descriptions are largely summarized from Murphy (1997).

The Hyland Group is the oldest exposed unit of Selwyn Basin. It consists of thick turbidite deposits that are intruded by Cambrian mafic sills. The Hyland Group is overlain by a thin, basal, discontinuous limestone conglomerate and a dominant, fine clastic assemblage of the Gull Lake Formation. Basinal silty limestone of the Rabbitkettle Formation unconformably overlies the Gull Lake Formation and grades southward and westward into the Kechika Group of northern B.C. The Rabbitkettle Formation is in turn overlain by the Ordovician to Silurian Road River Group, which includes black shale, chert and limestone. Shallow water siltstone, carbonate and quartzite of the Silurian to Devonian McEvoy Platform occur in the McEvoy Lake area (S. Gordey, pers. comm. in Murphy *et al.*, 2002) but its relationship to the stratigraphically lower Road River Group is unknown. The overlying Devonian to Mississippian Earn Group is characterized primarily by black siliceous shale, chert, and chert-pebble conglomerate. It has a complex internal stratigraphy and is interpreted to have been deposited in restricted, deep marine basins disrupted by tensional or transtensional rifts (Gordey *et al.*, 1991). Clastic rocks and carbonates of the Tay, Mount Christie, and Jones Creek Formations overlie the Earn Group (Murphy, 1997 and Murphy *et al.*, 2002).

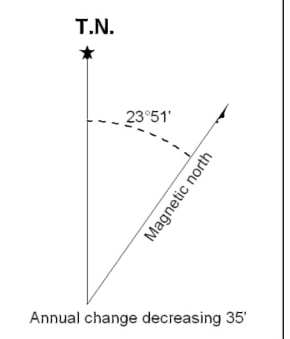
The pericratonic rocks of the Yukon-Tanana Terrane and the oceanic rocks of the Slide Mountain Terrane are juxtaposed against rocks of the North American continental margin sequence along the post-Late Triassic Inconnu Thrust Fault (Murphy *et al.*, 2006). The Yukon-Tanana and Slide Mountain terranes represent a continental arc and back-arc basin sequence that developed along the ancient Pacific margin of North America during the late Devonian and



See attached legend for geological unit descriptions

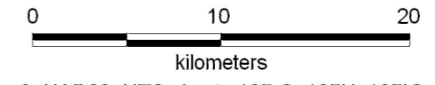
— Fault

▲ Thrust fault



**STRATEGIC METALS LTD.**

**FIGURE 3**  
 ARCHER, CATHRO & ASSOCIATES (1981) LIMITED  
**REGIONAL GEOLOGY**  
 EVOY PROPERTY



UTM Zone 9, NAD83, NTS sheets 105 G, 105H, 105IG, and 105J  
 FILE: .../F3\_REGIONAL\_GEOLOGY.WOR DATE: FEBRUARY 2010

Modified from Gordey and Makepeace (2000) and Piercey et al. (2008).

## LEGEND (Figure 3, modified from Gordey and Makepeace, 2000)

### INTRUSIVE ROCKS

Mid-Cretaceous

Selwyn Suite



equiangular to porphyritic (K-feldspar), intermediate to felsic plutonic rocks, rarely syenitic.

Late Devonian to Mississippian

Pelly Gneiss Suite



deformed granitic rocks, mostly felsic to intermediate composition.

Proterozoic and Paleozoic

Amphibolite Suite



metamorphosed mafic rocks including amphibolite and ultramafic rocks.

### LAYERED ROCKS

Quaternary



unconsolidated glacial, fluvial, soil, and organic deposits.

Lower Tertiary, most (?) Eocene

Ross Formation



basalt, rhyolite and terrestrial clastics, minor scattered rhyolitic dykes.

Mid-Cretaceous

South Fork Volcanics



massive, locally columnar jointed, biotite-quartz-hornblende-feldspar crystal-lithic tuff.

Lower Cretaceous

Sharp Mountain Formation



fine and coarse clastic assemblage deposited in foredeep of Cordilleran orogen.

Upper Triassic



synorogenic clastics, resistant, massive poorly sorted conglomerate with pebble to cobble size clasts.

Middle to Upper Triassic  
Jones Lake Formation



calcareous fine grained clastics with cross-lamination and bioturbation.

Carboniferous and Permian  
Anvil assemblage



dominantly oceanic assemblage of mafic volcanics, ultramafics, chert, pelite, limestone, and gabbroic rocks.

Carboniferous to Permian

Mount Christie Formation



interbedded shale/cherty shale, black siliceous slate and siltstone, minor quartzite and carbonate.

Mississippian

Tay Formation



mixed, generally fine clastic and carbonate assemblage.

Devonian and Mississippian

Earn Group



black siliceous shale/chert with chert-pebble conglomerate, bedded barite.

Devonian, Mississippian and (?) older  
Nasina assemblage



graphitic quartzite, muscovite-quartz schist, and biotite schist/gneiss with interspersed marble.

Middle Silurian to Middle Devonian

Askin Group



platy dolomitic siltstone overlain by dolostone and orthoquartzite with rare volcanic rocks.

Silurian to Middle Devonian

McEvoy Platform



buff, platy siltstone overlain by carbonate and quartzite.

Ordovician to Lower Devonian

Road River Group



thinly bedded, black shale and chert overlain by siltstone or platy limestone.

Cambrian to Devonian or younger

St. Cyr assemblage



poorly defined, fine clastic and carbonate assemblage.

Upper Cambrian and Ordovician

Rabbitkettle Formation



basinal limestone with local older or younger basinal pelitic strata.

Upper Cambrian and Lower Ordovician

Kechika Formation



basinal fine grained calcareous pelitic strata with locally intercalated mafic volcanic rocks.

Lower Cambrian

Gull Lake Formation



fine clastic assemblage with local mafic metavolcanic and volcanoclastic rocks, siltstone and argillite.

Upper Proterozoic to Lower Cambrian

Hyland Group



coarse turbiditic clastics, limestone, fine clastics, and scattered mafic volcanic rocks.

Late Proterozoic and Paleozoic

Nisling assemblage



mica-quartz-feldspar schist and abundant, locally thick limestone sequences.

through the Permian (Piercey *et al.*, 2006). Rocks of the Yukon-Tanana and Slide Mountain terranes in the McEvoy Lake area are characterized by variably deformed, and metamorphosed, lower greenschist to amphibolite facies metasedimentary and metavolcanic rocks and affiliated metaplutonic suites.

Massive, poorly stratified crystal-lithic tuff of the Cretaceous South Fork Volcanics occurs west of Fortin Lake, about 28 km northwest of the property. Lithic clasts within the tuff, which include blocks of Silurian dolostone, suggest that the volcanic rocks erupted through rocks of the McEvoy Platform (Murphy *et al.*, 2002). Granitic intrusions of the Mid-Cretaceous Selwyn Suite are common in the McEvoy Lake area and are found on both sides of the Inconnu Thrust Fault.

### **PROPERTY GEOLOGY**

There is very little outcrop on the Evoy property, and it mostly occurs atop an east-west trending ridge near the center of the claim block. The flanks of the ridge are covered with dense vegetation. A geological map was produced by examining small outcrops and by extrapolating bedrock from talus and rock chips collected from soil sample pits (Figure 4). The following unit descriptions are based on 2009 field observations and previous reports (Ikona, 1976, Ikona *et al.*, 1977 and Ralfs, 1978).

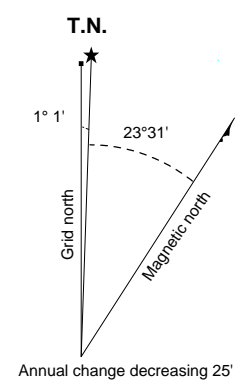
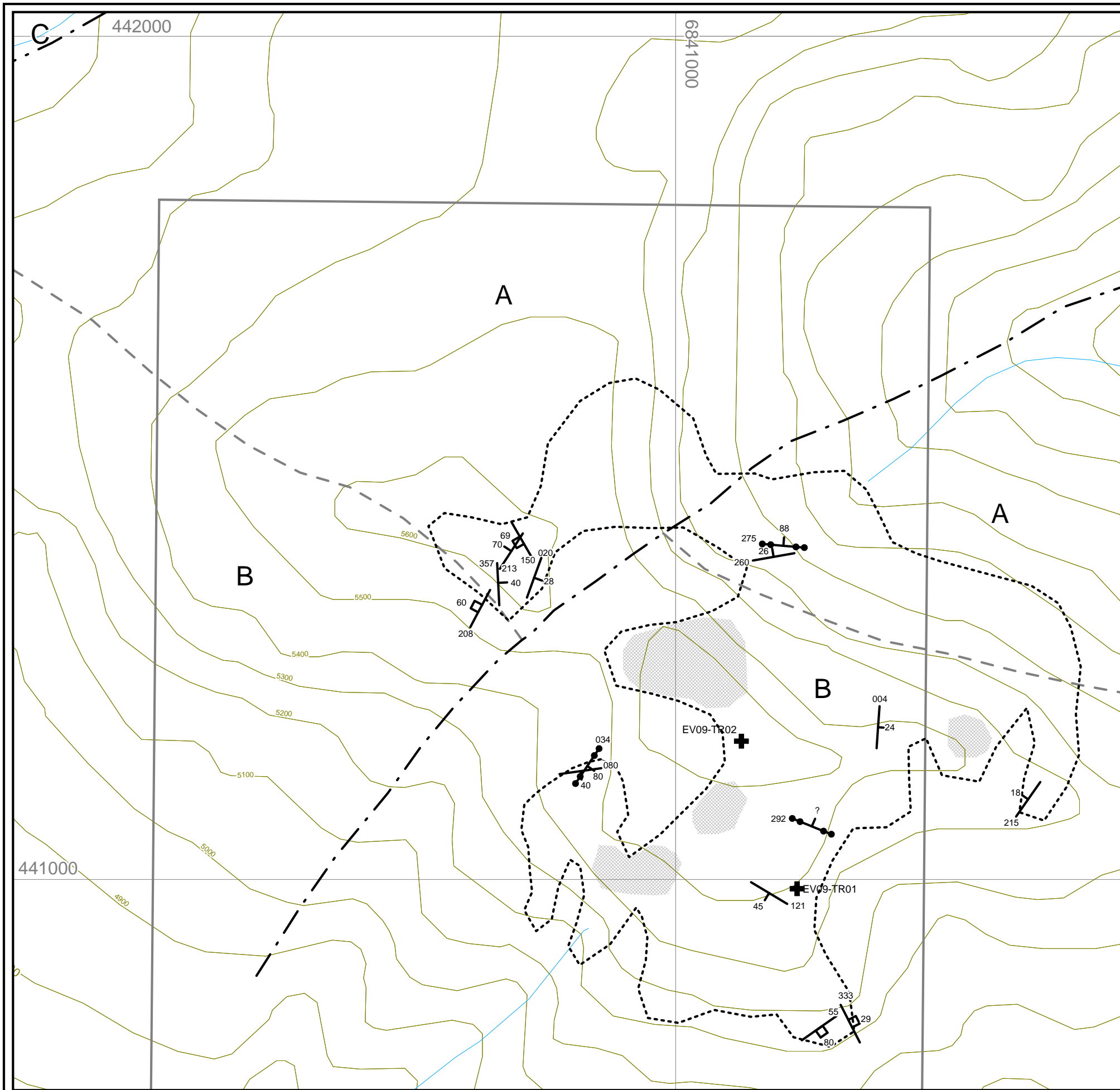
The property is underlain by southeasterly striking and shallowly southwest dipping sedimentary rocks of the Devonian McEvoy Platform and the Ordovician-Silurian Road River Group. The basal Road River Group is exposed in the northern part of the property. It is composed of dark grey, finely bedded siliceous shale (Unit A). The overlying carbonate rocks of the McEvoy Platform (Unit B) include two rock types: a massive, medium grey, fine grained, variably dolomitic limestone and a dark grey, calcareous, locally fossiliferous mudstone. It is believed that these strata were deposited at the same time and that they represent reef (massive limestone) and lagoon (mudstone) depositional environments. The presence of both, one and two hole crinoids in the mudstone suggests that Unit B is either Emsian or Eifelian in age (Johnson and Lane, 1969). Near the center of the property the contact between these units is laterally offset 200 m by a northeast trending fault.

Two hundred metres northwest of the property, a second northeasterly trending fault has juxtaposed Unit A and Unit B against a light grey weathering, massively bedded quartzite (Unit C) (Ralfs, 1978). The quartzite is believed to be a younger unit within the McEvoy Platform, but exact age relationships have not been determined.

#### **Unit Descriptions**

**A:** Dark grey to black siliceous shale that weathers grey and slightly rusty. It ranges from very fissile to competent and blocky. Locally it may be slightly graphitic or weakly calcareous.

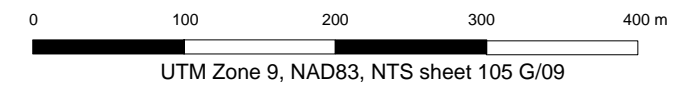
**B:** Interbedded limestone and mudstone. The limestone is medium grey, fine grained and fetid. It is variably dolomitic and rarely contains minor tremolite. The more dolomitic sections are



- Trench location
- Strike and dip of bedding
- Strike and dip of vein
- Strike and dip of fracture
- Fault
- Approximate contact
- Outline of mixed float and minor outcrop
- Area with mineralized float
- A** Non-calcareous shale
- B** Dolomitic limestone and calcareous, fossiliferous mudstone
- C** Quartzite

**STRATEGIC METALS LTD.**

**FIGURE 4**  
 ARCHER, CATHRO & ASSOCIATES (1981) LIMITED  
**PROPERTY GEOLOGY**  
 EVOY PROPERTY



tan on weathered surfaces. The mudstone is dark grey, dolomitic and massive. Locally it contains abundant one and two hole crinoids and coral.

**C:** Light grey weathering, massively bedded quartzite with minor shale interbeds.

### **DEPOSIT MODEL**

Based on the lithologies mapped in the area, the Evoy property has potential to host a carbonate replacement deposit (CRD). CRDs average 10-13 Mt of ore with grades ranging from 2-12% lead, 2-18% zinc, 60-600 g/t silver, trace to 2% copper, and trace to 6 g/t gold. The following summary of CRDs is largely summarized from Megaw (1998) and is intended to provide a model for exploring and assessing the Evoy property.

Carbonate replacement deposits (CRD) are high temperature (>250 °C), intrusion-related deposits that comprise pods, lenses, and pipe-shaped Pb-Zn-Ag-Cu-Au sulphide ore bodies in carbonate host rocks. These deposits predominantly occur within deformed miogeoclinal carbonate rocks in tectonostratigraphic terranes underlain by ancient continental rocks. Many deposits occur as clusters along platform margins or basement highs and along structures cutting sedimentary basins. Limestone, dolomite, and dolomitized limestone are the most common host rocks, but there are minor deposits in calcareous sedimentary rocks. Mineralization is associated with polyphase intrusions that evolved from early intermediate phases towards late highly felsic plutons and related extrusive phases. The intrusions most closely related to mineralization are usually the most evolved late phases.

CRD mineralization is characterized by galena, sphalerite, chalcopyrite, arsenopyrite, pyrite, and pyrrhotite with gangue minerals such as carbonate, sulphate, fluorite, and quartz. The deposits that are closer to basement or intrusions tend to be Cu-Zn-(Au)-rich, while those higher in the section are Ag-Pb-Mn-rich (Titley, 1993). Ore body geometry ranges from irregular pods/lenses to high angle chimneys and low angle, tabular mantos. Lenses are more commonly found along the margin of the intrusive contact, and pods along structural inflections and intersections. In the absence of post-mineral deformation, chimneys indicate vertical movement of ore fluids away from the heat source, while mantos indicate lateral fluid flow, usually controlled by bedding, permeability barriers, or fluid interfaces. Chimneys may cut across hundreds of metres of a carbonate section while mantos can extend laterally for similar distances along bedding in a single bed or group of beds.

Structural fabrics impose a strong control on mineralization. They affect the emplacement of plutons and channel ore bearing fluids to favourable strata. Most CRDs are located in fold-thrust belts on major structural domes, arches, anticlines, synclines, or homoclines (Titley and Megaw, 1985). Many of these deposits are capped by volcanic rocks or other impermeable and unreactive units. Acquitards direct fluid flow and contrasts in permeability are also important in the localization of mineralizing fluids in horizontally developed systems.

The skarns and hornfels are the principal alteration types developed in carbonate rocks close to intrusions. Iron-calcic skarns may be found at great distances from the magmatic body in some systems (Megaw, 1990). More distal to the intrusive contacts, the carbonate rocks are generally

altered by lower temperature fluids which include meteoric water, non-metalliferous brines, and depleted ore fluids. This results in an alteration halo marked by marbleization and recrystallization, dolomitization, sanding, carbonate flooding, argentiferous Mn-oxide mineralization, silicification, or a change in stable isotope contents. Capping rocks are often affected by argillic alteration or silicification and sometimes contain mineralization in the form of veins.

## **GEOCHEMISTRY**

### **Soil Sampling**

The area covered by the Evoy property was soil sampled between 1976 and 1978. This sampling defined a silver-lead-zinc anomaly on the central part of the claim block, which trends approximately north-south and covers a 400 by 900 m area. The lead anomaly is discontinuous but strong, ranging from 200 to 2520 ppm. The zinc is much more erratic, with values between 200 and 7000 ppm occurring over the entire grid. However, the highest zinc values are concentrated in the area of the lead anomaly. Anomalous silver values range from 2 to 32 ppm. They approximately coincide with the best lead values but tend to be more erratic and cover a slightly larger area (Ikona, 1976, Ikona *et. al.*, 1977 and Ralfs, 1978).

In 2009, a total of 76 soil samples were taken to acquire multi-element soil geochemical data over the most anomalous parts of the historic soil grids. Sample handling and analytical procedures used during the various soil sampling programs can be found in Appendix II while Certificates of Analysis for 2009 samples are in Appendix III. Locations for the 2009 samples are shown on Figure 5.

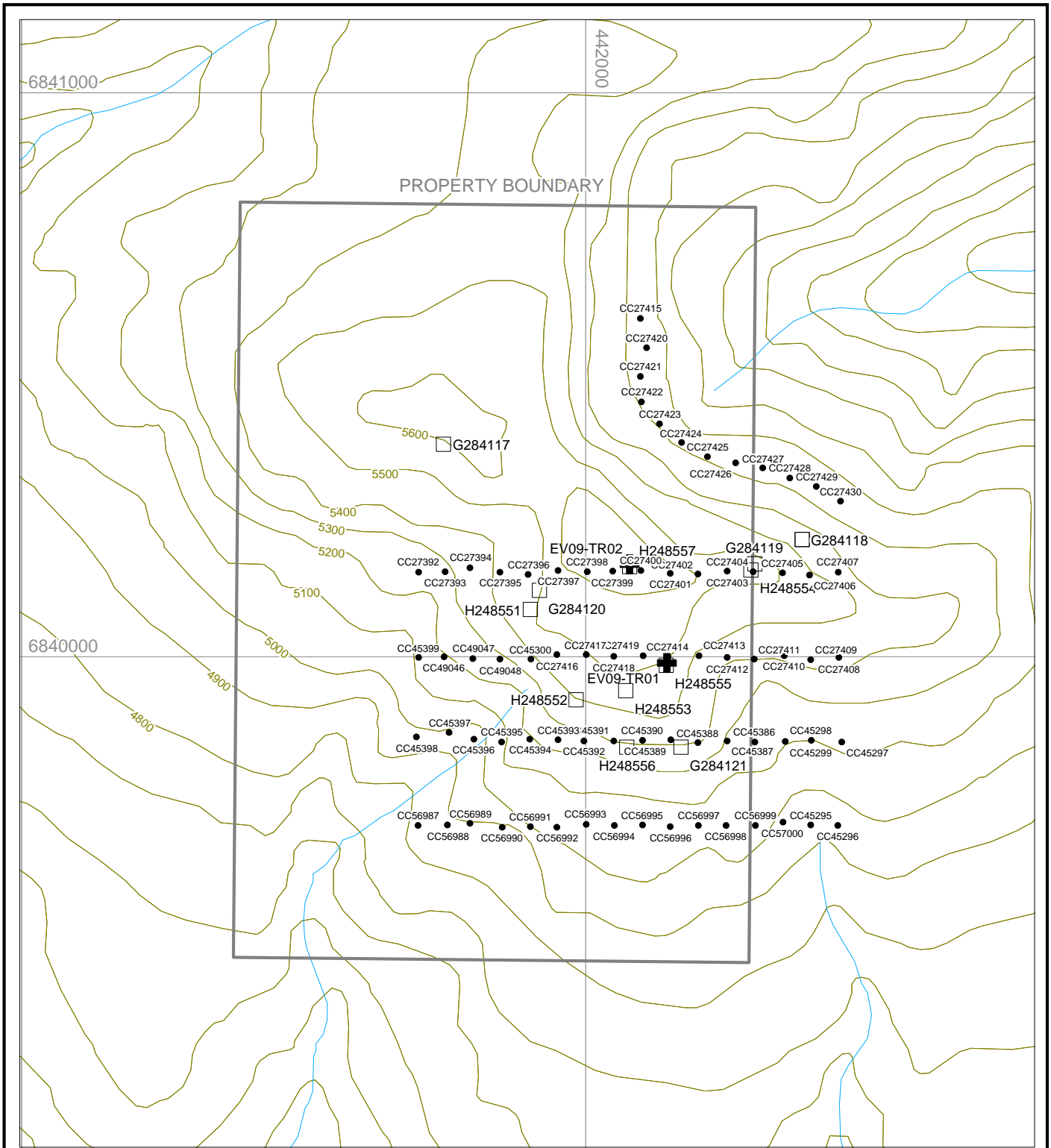
Results from soil sampling completed in 2009 have been compiled with historical data. Figures 6, 7, 8 and 9 thematically illustrate silver, lead, zinc and copper values respectively. The 2009 results confirmed historic anomalies and determined that copper is subdued over much of the property. The samples were also analyzed for gold; however, the gold levels were low (2 to 8 ppb).

### **Rock Sampling**

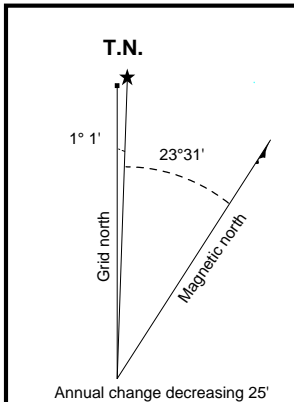
Thirteen rock samples were taken on prospecting and mapping traverses in 2009 (Figure 5). Sample handling and analytical procedures can be found in Appendix II, Certificates of Analysis are in Appendix III and rock sample descriptions are in Appendix IV. These samples were taken of variably limonized breccia fragments and were largely found on the central part of the property. Assays for anomalous samples vary from 0.09 to >20% lead, 0.175 to 1.68% zinc, trace to 0.405% copper and 6.4 to 1095 g/t silver. Only one rock sample returned significant gold; it graded 0.204 g/t.

## **HAND TRENCHING**

Two hand trenches were excavated where prospecting identified breccia that appeared to be close to source. General trench locations are shown on the geochemical maps (Figures 6-9).



- cc27415 Soil sample
- G284117 Rock sample
- ⊕ Trench location

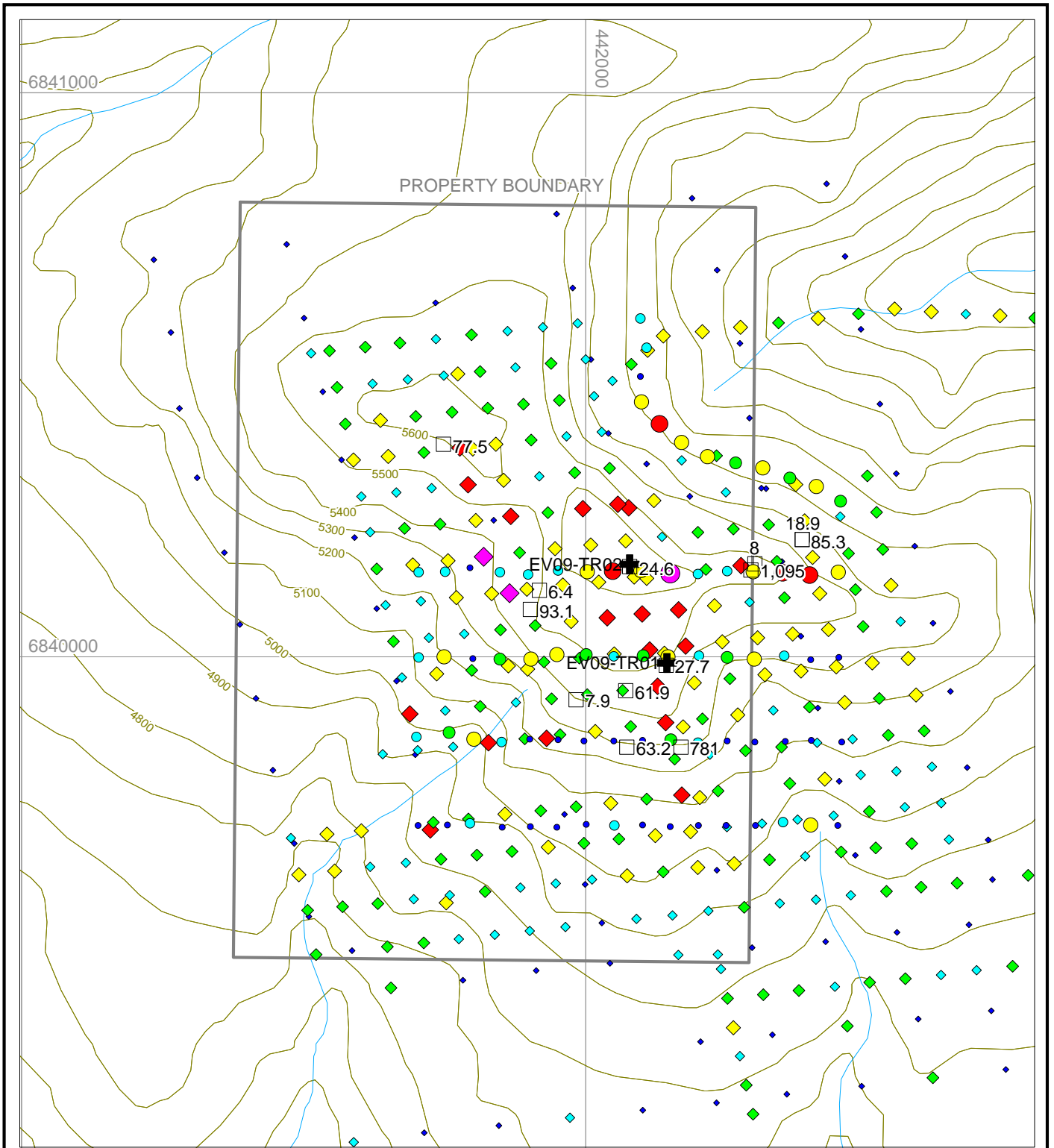


## STRATEGIC METALS LTD.

**FIGURE 5**  
 ARCHER, CATHRO & ASSOCIATES (1981) LIMITED  
 SAMPLE LOCATIONS  
 EVOY PROPERTY

0 200 400 600 800 m

UTM Zone 9, NAD83, NTS sheet 105 G/09

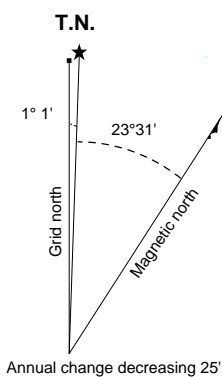


Silver (ppm) 2009 samples    Silver (ppm) Historic samples

- |                  |                  |
|------------------|------------------|
| ● $\geq 10 < 32$ | ◆ $\geq 10 < 32$ |
| ● $\geq 5 < 10$  | ◆ $\geq 5 < 10$  |
| ● $\geq 2 < 5$   | ◆ $\geq 2 < 5$   |
| ● $\geq 1 < 2$   | ◆ $\geq 1 < 2$   |
| ● $\geq 0.5 < 1$ | ◆ $\geq 0.5 < 1$ |
| ● $\geq 0 < 0.5$ | ◆ $\geq 0 < 0.5$ |

□ 93.1    Rock sample (ppm)

⊕    Trench location



# STRATEGIC METALS LTD.

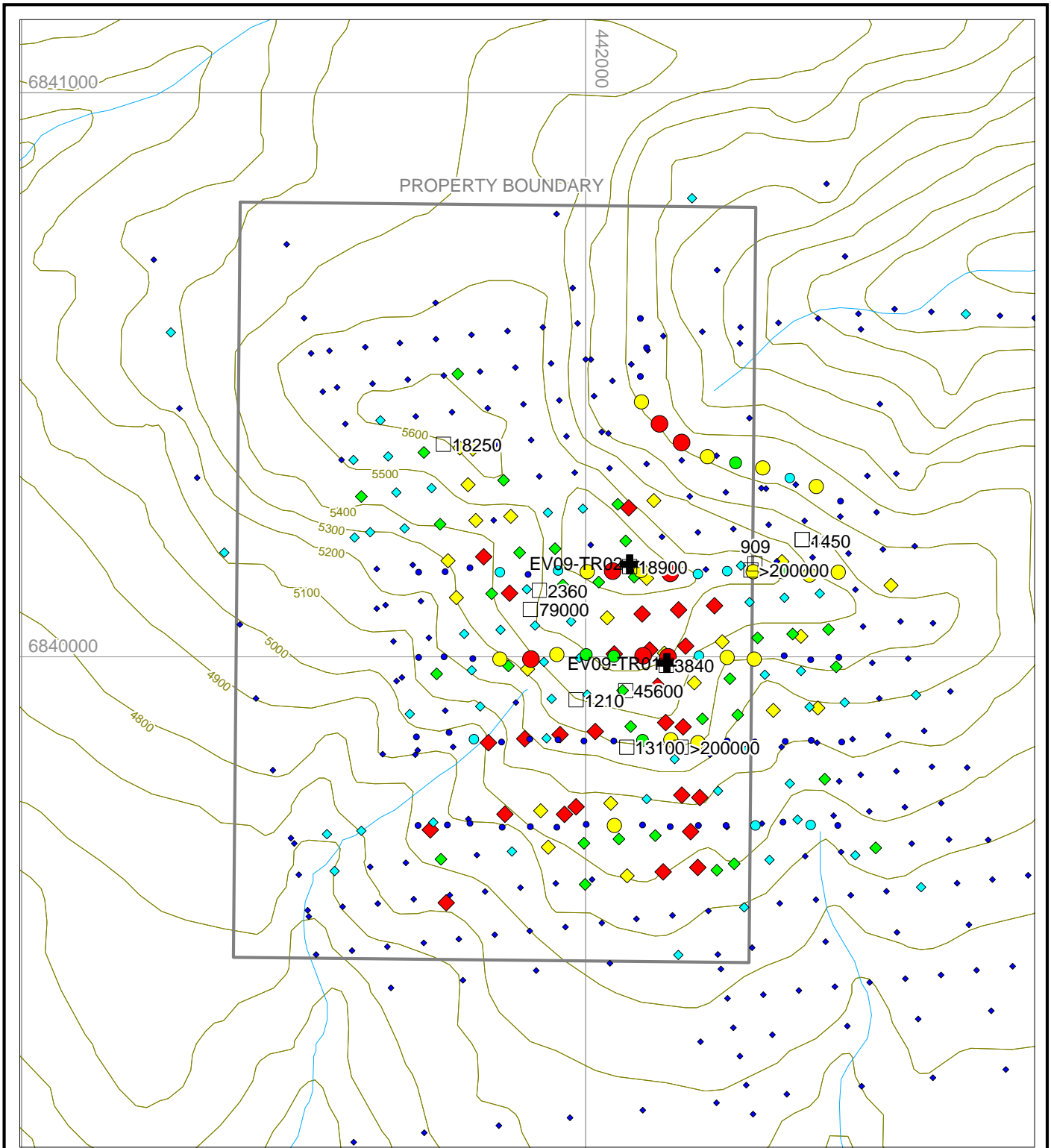
**FIGURE 6**  
 ARCHER, CATHRO & ASSOCIATES (1981) LIMITED  
 SILVER GEOCHEMISTRY  
 EVOY PROPERTY

0      200      400      600      800 m

UTM Zone 9, NAD83, NTS sheet 105 G/09

FILE: .../2009/FINLAYSON/EVOY.WOR

DATE: FEBRUARY 2010

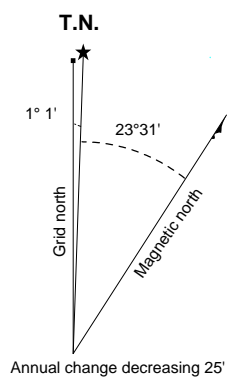


Lead (ppm) 2009 samples      Lead (ppm) Historic samples

- $\geq 500 < 2,520$       ◆  $\geq 500 < 2,520$
- $\geq 200 < 500$       ◆  $\geq 200 < 500$
- $\geq 100 < 200$       ◆  $\geq 100 < 200$
- $\geq 50 < 100$       ◆  $\geq 50 < 100$
- $\geq 0 < 50$       ◆  $\geq 0 < 50$

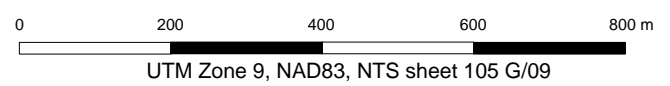
□ 4050      Rock sample (ppm)

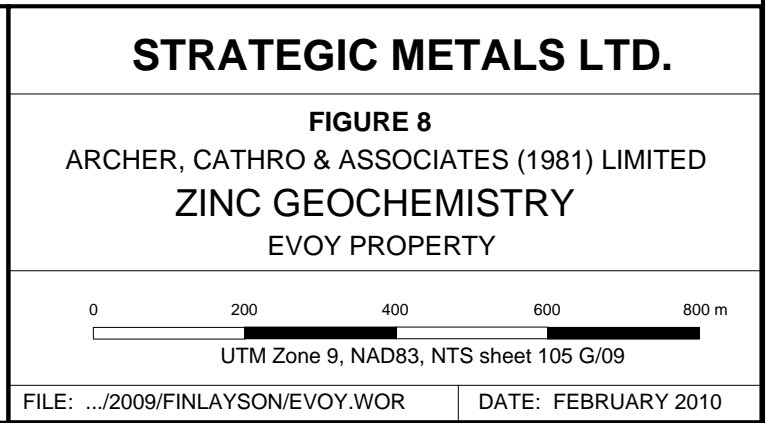
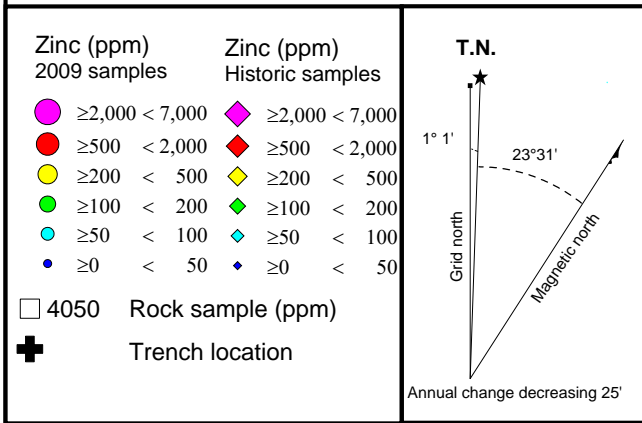
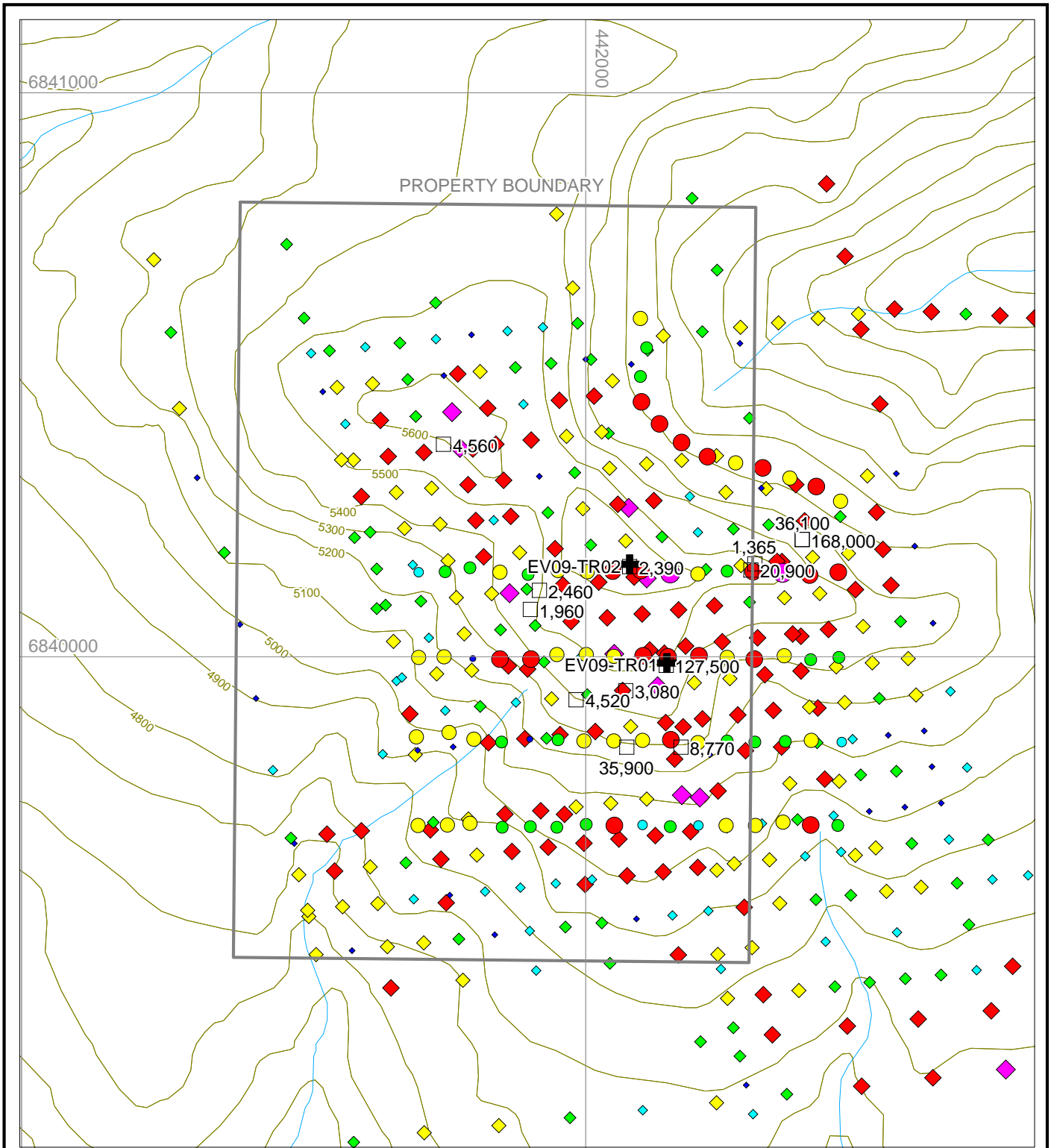
✚      Trench location

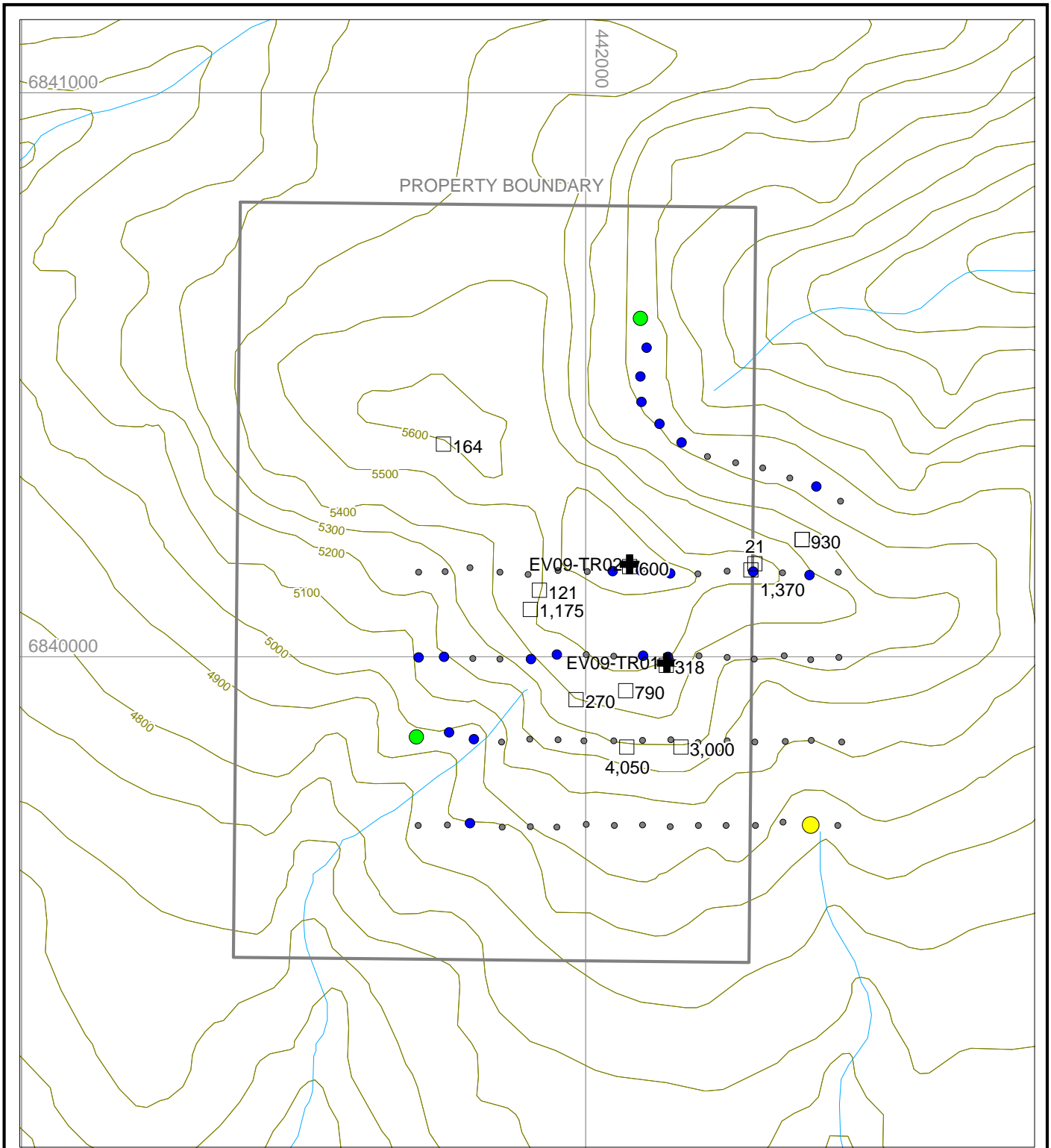


## STRATEGIC METALS LTD.

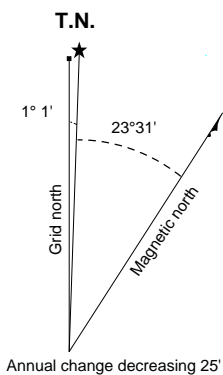
**FIGURE 7**  
**ARCHER, CATHRO & ASSOCIATES (1981) LIMITED**  
**LEAD GEOCHEMISTRY**  
**EVOY PROPERTY**







- 100 to 200
- 50 to 100
- 20 to 50
- 0 to 20
- 4050 Rock sample (ppm)
- ⊕ Trench location



**STRATEGIC METALS LTD.**

**FIGURE 9**  
 ARCHER, CATHRO & ASSOCIATES (1981) LIMITED  
**COPPER GEOCHEMISTRY**  
 EVOY PROPERTY

0 200 400 600 800 m

UTM Zone 9, NAD83, NTS sheet 105 G/09

Trench EV09-TR01 was dug parallel to slope near a large subcrop of breccia containing galena and EV09-TR02 targeted an area 200 m south of EV09-01, where breccia fragments were found atop the ridge.

Trench EV09-TR01 is 10 m long and 0.8 m deep (Figure 10). It exposed medium grey dolomitic limestone with minor bands of limonite and silica alteration. Chip samples taken along the floor of the trench produced generally subdued results, with the most anomalous sample returning 2.7 ppm silver, 740 ppm lead and 481 ppm zinc across 2.5 m. This sample included the majority of the silica altered sections.

Trench EV09-TR02 is 5 m long and 0.7 m deep (Figure 11). No mineralization was found in this trench; however, a specimen of breccia float collected near it graded 24.6 ppm silver, 1.89% lead and 0.24% zinc.

### **DISCUSSION AND CONCLUSIONS**

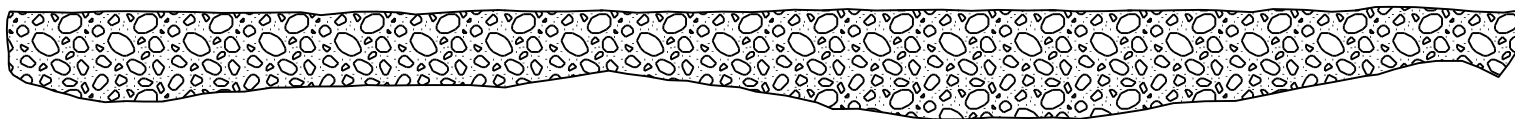
Soil geochemical sampling has defined a large silver, lead and zinc anomaly on the property. Prospecting within the anomaly has revealed breccia style mineralization in carbonate host rocks. Due to the size of the geochemical anomaly and the relatively high grades obtained from some strongly weathered specimens, further work should be done on a high priority basis. Work should consist of hand or machine trenching to determine orientations and controls on the mineralized bodies followed by diamond drilling to determine extent of the mineralization at depth.

Respectfully submitted,

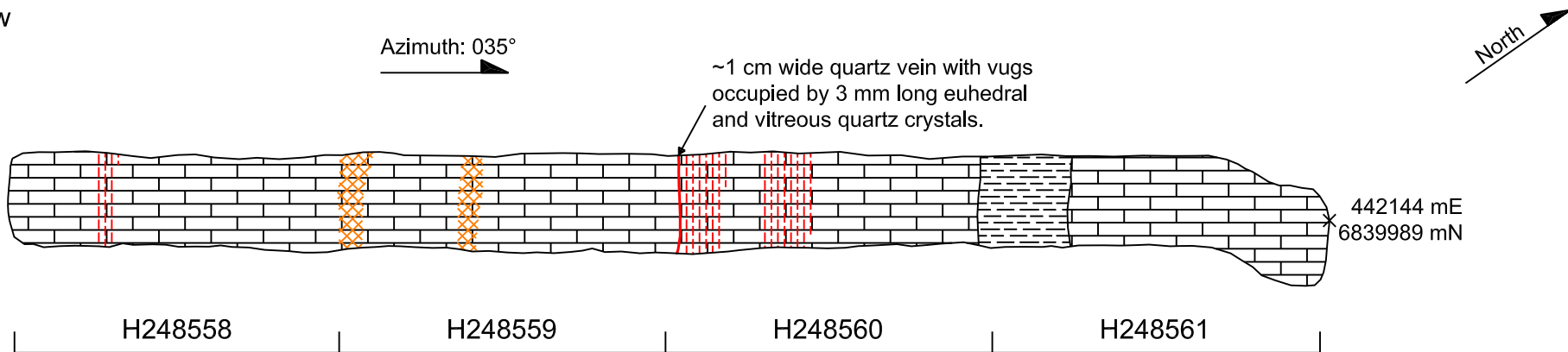
ARCHER, CATHRO & ASSOCIATES (1981) LIMITED

Dan Gregory, B.Sc. Geology, GIT

Section View (looking west)



Plan View



\* Veinlets are erratic but appear to trend ~113° dipping steeply to the north(?).

Sample No.	Ag (ppm)	Pb (ppm)	Zn (ppm)	Sample Interval
H248558	0.5	243	663	2.5 m
H248559	0.5	215	450	2.5 m
H248560	2.7	740	481	2.5 m
H248561	0.6	239	559	2.5 m



Overburden.



Medium grey, weakly recrystallized dolomitic limestone with 2 to 5 % quartz stringer veins that are stained yellow/brown by limonite alteration.



Dark grey to black, very fissile mudstone; rock breaks into small cubic pieces.



Silica alteration ~15% of rock.



Limonite alteration ~5% of rock.



Assay interval and sample number.

STRATEGIC METALS LTD.

FIGURE 10

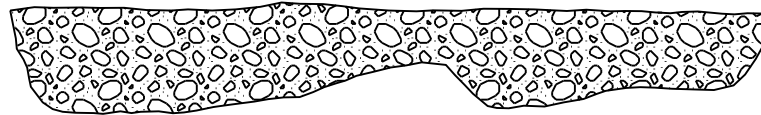
ARCHER, CATHRO & ASSOCIATES (1981) LIMITED

EV09-TR01 TRENCH MAP

EVOY PROPERTY



Section View (looking west)

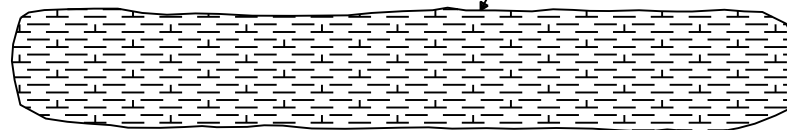


Plan View

Azimuth: 120°



Vuggy quartz float with ~20% limonite; voids lined by 1-3 mm euhedral quartz crystals (H248557)



442078 mE  
6840164 mN

\* EV09-TR02 did not encounter any mineralized or altered units and was not sampled.

Sample No.	Ag (ppm)	Cu (ppm)	Pb (ppm)	Zn (ppm)
H248557	24.6	600	18900	2390



Overburden.



Dark grey, soft, fine grained dolomitic mudstone with no observed bedding; unit is cut by rare, steeply dipping quartz veinlets trending ~080°.



Assay interval and sample number.

STRATEGIC METALS LTD.

FIGURE 11

ARCHER, CATHRO & ASSOCIATES (1981) LIMITED

EV09-TR02 TRENCH MAP

EVOY PROPERTY

0 0.5 1.0 1.5 2.0 2.5 m

## REFERENCES

- Bond, J.D., Murphy, D.C., Colpron, M., Gordey, S.P., Plouffe, A., Roots, C.F., Lipovsky, P.S., Stronghill, G., and Abbott, J.G.  
 2002 Digital compilation of bedrock geology and till geochemistry, northern Finlayson Lake map area, Southeastern Yukon (105G); Exploration and Geological Services Division, Yukon Region, Indian and Northern Affairs Canada, Open File Report, 2002-7(D) and Geological Survey of Canada, Open File 4243.
- Goodfellow, W.D.  
 2007 Base metal metallogeny of the Selwyn Basin, Canada; *in* Goodfellow, W.D., Eds., Mineral Deposits of Canada: A Synthesis of Major Deposit-Types, District Metallogeny, the Evolution of Geological Provinces, and Exploration Methods; Geological Association of Canada, Mineral Deposits Division, Special Publication no. 5, p. 553-579.
- Gordey, S.P., Geldsetzer, H.H.J., Morrow, D.W., Bamber, E.W., Henderson, C.M., Richards, B.C., McGugan, A., Gibson, D.W. and Poulton, T.P.  
 1991 Ancestral North America; Upper Devonian to middle Jurassic assemblages; Chapter 8, *in* Gabrielse, H. and Yourath, C.J., Eds., Geology of the Cordilleran orogen in Canada; Geological Survey of Canada, p. 221-329.
- Gordey, S.P., Makepeace, A.J. (compilers).  
 2000 Yukon Digital Geology, 2 CD-ROM set; Geological Survey of Canada, Open File D3826 or Exploration and Geological Services Division, Yukon Region, Indian and Northern Affairs Canada, Open File 1999-1(D).
- Ikona, C.K.  
 1976 Geological, Geochemical and Geophysical Report on the Til 1-24 Mineral Claims, Yukon Territory. Assessment report 090165 written for Mountaineer Mines Ltd.
- Ikona, C.K., Nielson P.P., and Stammers, M.A.  
 1977 Geological, Geochemical and Geophysical Report on the Til 1-24 Mineral Claims, Yukon Territory; Assessment report 090282 written for Mountaineer Mines Ltd.
- Johnson, J.G. and Lane, N.G.  
 1969 Two New Devonian Crinoids from Central Nevada; *Journal of Paleontology*, v. 43, no. 1, p. 14, January 1969.
- Lee, K.S.  
 1973 Assessment Report Describing Work Done on the McEvoy Lake Property, Yukon Territory; Assessment report 060939 written for Vestor Explorations Ltd.

- Megaw, P.K.M.  
1990 Geology and Geochemistry of the Santa Eulalia Mining District, Chihuahua, Mexico; Ph.D. Thesis, University of Arizona, Tucson, Arizona.
- Megaw, P.K.M.  
1998 Carbonate-Hosted Pb-Zn-Ag-Cu-Au Replacement deposits: an Exploration Perspective; *in* Lentz, D.R. Eds., Mineralized Intrusion-Related Skarn Systems; Mineralogical Association of Canada, Short Course 26, p. 337-357.
- Mair, J.L., Hart, C.J.R., and Stephens, J.R.  
2006 Deformation history of the northwestern Selwyn Basin, Yukon, Canada: Implications for orogen evolution and mid-Cretaceous magmatism: Geological Society of America Bulletin; March 2006, v. 118, no. 3-4, p. 304-323.
- Murphy, D.C.  
1998 Stratigraphic framework for syngenetic mineral occurrences, Yukon-Tanana terrane south of Finlayson Lake: a progress report; *in* Yukon Exploration and Geology 1997; Exploration and Geological Services Division, Yukon, Indian and Northern Affairs Canada, p. 51-58.
- Murphy, D.C.  
1997 Geology of the McQuesten River Region, Northern McQuesten and Mayo Map Area, Yukon Territory (115P/14, 15, 16; 105M/13, 14); Exploration and Geological Services Division, Yukon Region, Indian and Northern Affairs Canada, Bulletin 6, 120 p.
- Murphy, D.C., Colpron, M., Roots, C.F., Gordey, S.P., and Abbott, J.G.  
2002 Finlayson Lake Targeted Geoscience Initiative (southeastern Yukon), Part 1: Bedrock geology; *in* Edmond, D.S. and Weston, L.H., Eds., Yukon Exploration and Geology 2001: Exploration and Geological Services Division, Yukon Region, Indian and Northern Affairs Canada, p. 189-207.
- Murphy, D.C., Mortensen, J.K., Piercey, S.J., Orchard, M.J., and Gehrels, G.E.  
2006 Tectonostratigraphic evolution of Yukon-Tanana Terrane, Finlayson Lake massive sulphide district, southeastern Yukon; *in* Colpron, M. and Nelson, J.L. Eds., Paleozoic Evolution and Metallongeny of Pericratonic Terranes at the Ancient Pacific Margin of North America, Canadian and Alaskan Cordilleras Geological Association of Canada, Special Paper 45, p. 75-105.
- Piercey, S.J., Peter, J.M., Mortensen, J.K., Paradis, S., Murphy, D.C. and Tucker, T.L.  
2008 Petrology and U-Pb Geochronology of Footwall Porphyritic Rhyolites from the Wolverine Volcanogenic Massive Sulphide Deposit, Yukon, Canada: Implications for the Genesis of Massive Sulphide Deposits in Continental Margin Environments; Economic Geology, vol. 103, p. 5-33.

- Piercey, S.J., Nelson, J.L., Colpron, M., Dusel-Bacon, C., Simard, R.L., and Roots, C.F.  
2006 Paleozoic magmatism and crustal recycling along the ancient Pacific margin of North America, northern Cordillera; *in* Colpron, M. and Nelson, J.L. Eds., Paleozoic Evolution and Metallongeny of Pericratonic Terranes at the Ancient Pacific Margin of North America, Canadian and Alaskan Cordillera: Geological Association of Canada, Special Paper 45, p. 281-322.
- Ralfs, K.  
1978 Geological and Geochemical Report on the Til Claims, Yukon Territory; Assessment report 090396 written for Mountaineer Mines Ltd.
- Titley, S.R.  
1993 Characteristics of high temperature carbonate-hosted replacement ores and some comparisons with Mississippi Valley-type ores *in* Sangster, D.F. Eds, Carbonate-hosted Lead-Zinc Deposits: Society of Economic Geology, Special Publication No. 4, p. 244-254.
- Titley, S.R. and Megaw, P.K.M.  
1985 Carbonate-hosted ores of the Western Cordillera: an overview; American Institute of Mining Engineers, preprint 85-115, 17 p.

**APPENDIX I**  
**STATEMENT OF QUALIFICATIONS**

## **STATEMENT OF QUALIFICATIONS**

I, Daniel Gregory, geologist, with business addresses in Vancouver, British Columbia and Whitehorse, Yukon Territory and residential address in Richmond, British Columbia, do hereby certify that:

1. I graduated from the University of British Columbia in 2007 with a B.Sc. (Hons.) in Geology.
2. From 2004 to present, I have been actively engaged in mineral exploration in the Yukon Territory.
3. I am a Geoscientist in Training (GIT) with the Association of Professional Engineers and Geoscientists of British Columbia (Member Number 153805).
4. I have personally participated in the fieldwork reported herein.

Daniel Gregory, B.Sc., GIT

**APPENDIX II**  
**SAMPLE HANDLING AND ANALYTICAL PROCEDURES**

## **ASSAY METHODS FOR GEOCHEMICAL SAMPLING**

Between 1976 and 1978 Mountaineer Mines Ltd. conducted soil in the vicinity of the current Evoy claim block. Soil samples were taken from B or C horizon soil. The 1976 and 1977 samples were sent to ALS Chemex's analytical laboratory in Vancouver, B.C. and the 1978 samples were sent to Vangeochem Laboratories in North Vancouver. Both labs dried and sieved the samples to -80 mesh and dissolved it in an aqua regia solution. The labs both analyzed for silver, lead and zinc using the atomic absorption technique.

All 2009 soil samples were located by means of compass and hip-chain surveys with frequent checks using handheld GPS units. Sample sites are marked by aluminum tags inscribed with the sample numbers and affixed to 0.5 m long wooden laths that were driven into the ground. Soil samples were collected from 40 to 60 cm deep holes dug by hand auger. They were placed into individually pre-numbered paper bags.

The 2009 samples were sent to ALS Chemex in North Vancouver, B.C. where they were dried, screened to -180 microns, dissolved in an aqua regia solution and then analyzed for 35 elements using the inductively coupled plasma-atomic emission spectroscopy technique (ME-ICP41). The samples were re-analyzed for gold using the atomic absorption technique (AA).

A total of 23 rock samples were taken in 2009. They were sent to ALS Chemex in North Vancouver, B.C. where they were dried and fine crushed to better than 70% passing 2 mm. A 250 g split was then pulverized to better than 85% passing 75 micron. A portion of this material was digested in aqua regia and analysed for 35 elements by inductively coupled plasma-atomic emission spectroscopy technique (ME-ICP41) and gold using the atomic absorption technique.

**APPENDIX III**  
**CERTIFICATES OF ANALYSIS**



# ALS Chemex

**EXCELLENCE IN ANALYTICAL CHEMISTRY**

ALS Canada Ltd.

2103 Dollarton Hwy  
North Vancouver BC V7H 0A7

Phone: 604 984 0221 Fax: 604 984 0218 www.alschemex.com

To: STRATEGIC METALS LTD.

C/O ARCHER, CATHRO & ASSOCIATES (1981)

LIMITED

1016-510 W HASTINGS ST

VANCOUVER BC V6B 1L8

Page: 1

Finalized Date: 19-OCT-2009

Account: MTT

## CERTIFICATE VA09107976

Project: Fin (Evoy)

P.O. No.:

This report is for 6 Rock samples submitted to our lab in Vancouver, BC, Canada on 1-OCT-2009.

The following have access to data associated with this certificate:

AL ARCHER  
VANCOUVER OFFICE

DOUG EATON  
BILL WENGZYNOWSKI

JOAN MARIACHER

## SAMPLE PREPARATION

ALS CODE	DESCRIPTION
WEI-21	Received Sample Weight
LOG-22	Sample login - Rcd w/o BarCode
BAG-01	Bulk Master for Storage
PUL-QC	Pulverizing QC Test
CRU-31	Fine crushing - 70% <2mm
PUL-36	Pulverize 1.5 kg to 85% <75 um


## ANALYTICAL PROCEDURES

ALS CODE	DESCRIPTION	INSTRUMENT
ME-OG46	Ore Grade Elements - AquaRegia	ICP-AES
Zn-OG46	Ore Grade Zn - Aqua Regia	VARIABLE
Pb-OG46	Ore Grade Pb - Aqua Regia	VARIABLE
ME-ICP41	35 Element Aqua Regia ICP-AES	ICP-AES
Ag-OG46	Ore Grade Ag - Aqua Regia	VARIABLE

To: STRATEGIC METALS LTD.  
C/O ARCHER, CATHRO & ASSOCIATES (1981) LIMITED  
1016-510 W HASTINGS ST  
VANCOUVER BC V6B 1L8

This is the Final Report and supersedes any preliminary report with this certificate number. Results apply to samples as submitted. All pages of this report have been checked and approved for release.

Signature:

  
Colin Ramshaw, Vancouver Laboratory Manager



# ALS Chemex

**EXCELLENCE IN ANALYTICAL CHEMISTRY**

ALS Canada Ltd.

2103 Dollarton Hwy

North Vancouver BC V7H 0A7

Phone: 604 984 0221 Fax: 604 984 0218 www.alschemex.com

To: STRATEGIC METALS LTD.

C/O ARCHER, CATHRO & ASSOCIATES (1981)

LIMITED

1016-510 W HASTINGS ST

VANCOUVER BC V6B 1L8

Project: Fin (Evoy)

Page: 2 - A

Total # Pages: 2 (A - C)

Finalized Date: 19-OCT-2009

Account: MTT

## CERTIFICATE OF ANALYSIS VA09107976

Sample Description	Method Analyte Units LOR	WEI-21	ME-ICP41	ME-ICP41	ME-ICP41	ME-ICP41	ME-ICP41	ME-ICP41	ME-ICP41	ME-ICP41	ME-ICP41	ME-ICP41	ME-ICP41	ME-ICP41	ME-ICP41	ME-ICP41
		Recvd Wt. kg	Ag ppm	Al %	As ppm	B ppm	Ba ppm	Be ppm	Bi ppm	Ca %	Cd ppm	Co ppm	Cr ppm	Cu ppm	Fe %	Ga ppm
		0.02	0.2	0.01	2	10	10	0.5	2	0.01	0.5	1	1	1	0.01	10
G284116		0.26	85.3	0.09	7	<10	40	<0.5	82	10.20	>1000	2	1	420	3.73	10
G284117		1.00	77.5	0.05	51	<10	30	<0.5	8	14.0	110.5	2	2	164	1.64	<10
G284118		1.02	18.9	0.04	5	<10	60	<0.5	56	22.2	437	1	<1	93	0.65	<10
G284119		0.78	8.0	0.03	15	<10	60	<0.5	12	19.9	15.2	2	1	21	0.74	<10
G284120		0.68	6.4	0.06	19	<10	50	<0.5	<2	10.15	80.8	<1	5	121	0.49	<10
G284121		0.30	>100	0.03	190	<10	20	0.9	2	0.44	122.0	<1	2	3000	5.01	10



# ALS Chemex

**EXCELLENCE IN ANALYTICAL CHEMISTRY**

ALS Canada Ltd.

2103 Dollarton Hwy

North Vancouver BC V7H 0A7

Phone: 604 984 0221 Fax: 604 984 0218 www.alschemex.com

To: STRATEGIC METALS LTD.

C/O ARCHER, CATHRO & ASSOCIATES (1981)

LIMITED

1016-510 W HASTINGS ST

VANCOUVER BC V6B 1L8

Project: Fin (Evoy)

Page: 2 - B

Total # Pages: 2 (A - C)

Finalized Date: 19-OCT-2009

Account: MTT

## CERTIFICATE OF ANALYSIS VA09107976

Sample Description	Method Analyte Units LOR	ME-ICP41	ME-ICP41	ME-ICP41	ME-ICP41	ME-ICP41	ME-ICP41	ME-ICP41	ME-ICP41	ME-ICP41	ME-ICP41	ME-ICP41	ME-ICP41	ME-ICP41	ME-ICP41	ME-ICP41
		Hg	K	La	Mg	Mn	Mo	Na	Ni	P	Pb	S	Sb	Sc	Sr	Th
		ppm	%	ppm	%	ppm	ppm	%	ppm	ppm	ppm	%	ppm	ppm	ppm	ppm
		1	0.01	10	0.01	5	1	0.01	1	10	2	0.01	2	1	1	20
G284116		2	0.01	30	1.39	2020	4	0.01	31	140	4010	0.01	316	<1	143	<20
G284117		<1	0.01	10	0.90	106	1	0.01	15	290	>10000	0.01	548	<1	97	<20
G284118		<1	<0.01	40	1.28	2380	1	0.01	6	90	1450	<0.01	188	<1	285	<20
G284119		<1	<0.01	10	9.86	1040	<1	0.01	9	150	909	<0.01	10	<1	464	<20
G284120		<1	0.02	20	6.62	795	2	0.01	5	200	2360	0.01	10	<1	283	<20
G284121		1	0.01	70	0.10	90	38	<0.01	18	100	>10000	0.28	3290	<1	128	<20



# ALS Chemex

**EXCELLENCE IN ANALYTICAL CHEMISTRY**

ALS Canada Ltd.

2103 Dollarton Hwy

North Vancouver BC V7H 0A7

Phone: 604 984 0221 Fax: 604 984 0218 www.alschemex.com

To: STRATEGIC METALS LTD.

C/O ARCHER, CATHRO & ASSOCIATES (1981)

LIMITED

1016-510 W HASTINGS ST

VANCOUVER BC V6B 1L8

Project: Fin (Evoy)

Page: 2 - C

Total # Pages: 2 (A - C)

Finalized Date: 19-OCT-2009

Account: MTT

## CERTIFICATE OF ANALYSIS VA09107976

Sample Description	Method Analyte Units LOR	ME-ICP41	ME-ICP41	ME-ICP41	ME-ICP41	ME-ICP41	ME-ICP41	Ag-OG46	Zn-OG46	Pb-OG46
		Ti	Ti	U	V	W	Zn	Ag	Zn	Pb
		%	ppm	ppm	ppm	ppm	ppm	ppm	%	%
		0.01	10	10	1	10	2	1	0.001	0.001
G284116		<0.01	<10	<10	6	10	>10000		16.80	
G284117		<0.01	<10	10	6	10	4560			1.825
G284118		<0.01	<10	<10	4	70	>10000		3.61	
G284119		<0.01	<10	<10	20	<10	1365			
G284120		<0.01	<10	<10	20	<10	2460			
G284121		<0.01	<10	10	15	<10	8770	781		>20.0



# ALS Chemex

**EXCELLENCE IN ANALYTICAL CHEMISTRY**

ALS Canada Ltd.

2103 Dollarton Hwy  
North Vancouver BC V7H 0A7

Phone: 604 984 0221 Fax: 604 984 0218 www.alschemex.com

To: STRATEGIC METALS LTD.  
C/O ARCHER, CATHRO & ASSOCIATES (1981)  
LIMITED  
1016-510 W HASTINGS ST  
VANCOUVER BC V6B 1L8

Page: 1  
Finalized Date: 7-SEP-2009  
Account: MTT

## CERTIFICATE VA09091964

Project: EVOY (FIN)

P.O. No.:

This report is for 76 Soil samples submitted to our lab in Vancouver, BC, Canada on 24-AUG-2009.

The following have access to data associated with this certificate:

AL ARCHER  
VANCOUVER OFFICE

DOUG EATON  
BILL WENGZYNOWSKI

JOAN MARIACHER

## SAMPLE PREPARATION

ALS CODE	DESCRIPTION
FND-02	Find Sample for Addn Analysis

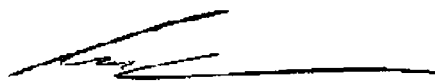
## ANALYTICAL PROCEDURES

ALS CODE	DESCRIPTION	INSTRUMENT
Au-ICP21	Au 30g FA ICP-AES Finish	ICP-AES

To: STRATEGIC METALS LTD.  
C/O ARCHER, CATHRO & ASSOCIATES (1981) LIMITED  
1016-510 W HASTINGS ST  
VANCOUVER BC V6B 1L8

This is the Final Report and supersedes any preliminary report with this certificate number. Results apply to samples as submitted. All pages of this report have been checked and approved for release.

Signature:

  
Colin Ramshaw, Vancouver Laboratory Manager



# ALS Chemex

EXCELLENCE IN ANALYTICAL CHEMISTRY

ALS Canada Ltd.

2103 Dollarton Hwy

North Vancouver BC V7H 0A7

Phone: 604 984 0221 Fax: 604 984 0218 www.alschemex.com

To: STRATEGIC METALS LTD.

C/O ARCHER, CATHRO & ASSOCIATES (1981)

LIMITED

1016-510 W HASTINGS ST

VANCOUVER BC V6B 1L8

Project: EVOY (FIN)

Page: 2 - A

Total # Pages: 3 (A)

Finalized Date: 7-SEP-2009

Account: MTT

## CERTIFICATE OF ANALYSIS VA09091964

Sample Description	Method Analyte Units LOR	Au-ICP21 Au ppm 0.001
CC27392		0.003
CC27393		0.004
CC27394		0.003
CC27395		0.003
CC27396		0.002
CC27397		0.003
CC27398		0.005
CC27399		0.003
CC27400		0.005
CC27401		0.008
CC27402		0.002
CC27403		0.002
CC27404		0.003
CC27405		0.003
CC27406		0.003
CC27407		0.003
CC27408		0.002
CC27409		0.002
CC27410		0.003
CC27411		0.003
CC27412		0.003
CC27413		0.003
CC27414		0.003
CC27415		0.004
CC27416		0.003
CC27417		0.003
CC27418		0.005
CC27419		0.004
CC27420		0.006
CC27421		0.003
CC27422		0.005
CC27423		0.005
CC27424		0.007
CC27425		0.002
CC27426		0.006
CC27427		0.003
CC27428		0.002
CC27429		0.003
CC27430		0.002
CC45295		0.004



# ALS Chemex

**EXCELLENCE IN ANALYTICAL CHEMISTRY**

ALS Canada Ltd.

2103 Dollarton Hwy

North Vancouver BC V7H 0A7

Phone: 604 984 0221 Fax: 604 984 0218 www.alschemex.com

To: STRATEGIC METALS LTD.

C/O ARCHER, CATHRO & ASSOCIATES (1981)

LIMITED

1016-510 W HASTINGS ST

VANCOUVER BC V6B 1L8

Project: EVOY (FIN)

Page: 3 - A

Total # Pages: 3 (A)

Finalized Date: 7-SEP-2009

Account: MTT

## CERTIFICATE OF ANALYSIS VA09091964

Sample Description	Method Analyte Units LOR	Au-ICP21 Au ppm 0.001
CC45296		0.002
CC45297		0.002
CC45298		0.003
CC45299		0.002
CC45300		0.005
CC45386		0.003
CC45387		0.002
CC45388		0.002
CC45389		0.003
CC45390		0.003
CC45391		0.002
CC45392		0.002
CC45393		0.002
CC45394		0.002
CC45395		0.004
CC45396		0.006
CC45397		0.005
CC45398		0.008
CC45399		0.006
CC49046		0.004
CC49047		0.002
CC49048		0.003
CC56987		0.003
CC56988		0.002
CC56989		0.003
CC56990		0.002
CC56991		0.002
CC56992		0.002
CC56993		0.002
CC56994		0.004
CC56995		0.003
CC56996		0.002
CC56997		0.003
CC56998		0.002
CC56999		0.002
CC57000		0.002



# ALS Chemex

**EXCELLENCE IN ANALYTICAL CHEMISTRY**

ALS Canada Ltd.

2103 Dollarton Hwy  
North Vancouver BC V7H 0A7

Phone: 604 984 0221 Fax: 604 984 0218 www.alschemex.com

To: STRATEGIC METALS LTD.  
C/O ARCHER, CATHRO & ASSOCIATES (1981)  
LIMITED  
1016-510 W HASTINGS ST  
VANCOUVER BC V6B 1L8

Page: 1  
Finalized Date: 12-AUG-2009  
Account: MTT

## CERTIFICATE VA09075486

Project: EVOY (FIN)

P.O. No.:

This report is for 76 Soil samples submitted to our lab in Vancouver, BC, Canada on 21-JUL-2009.

The following have access to data associated with this certificate:

AL ARCHER  
VANCOUVER OFFICE

DOUG EATON  
BILL WENGZYNOWSKI

JOAN MARIACHER

## SAMPLE PREPARATION

ALS CODE	DESCRIPTION
WEI-21	Received Sample Weight
LOG-22	Sample login - Rcd w/o BarCode
SCR-41	Screen to -180um and save both

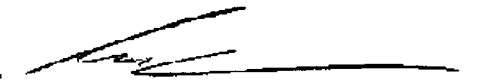
## ANALYTICAL PROCEDURES

ALS CODE	DESCRIPTION	INSTRUMENT
ME-ICP41	35 Element Aqua Regia ICP-AES	ICP-AES

To: STRATEGIC METALS LTD.  
C/O ARCHER, CATHRO & ASSOCIATES (1981) LIMITED  
1016-510 W HASTINGS ST  
VANCOUVER BC V6B 1L8

This is the Final Report and supersedes any preliminary report with this certificate number. Results apply to samples as submitted. All pages of this report have been checked and approved for release.

Signature:

  
Colin Ramshaw, Vancouver Laboratory Manager



# ALS Chemex

**EXCELLENCE IN ANALYTICAL CHEMISTRY**

ALS Canada Ltd.

2103 Dollarton Hwy

North Vancouver BC V7H 0A7

Phone: 604 984 0221 Fax: 604 984 0218 www.alschemex.com

TO: STRATEGIC METALS LTD.

C/O ARCHER, CATHRO & ASSOCIATES (1981)

LIMITED

1016-510 W HASTINGS ST

VANCOUVER BC V6B 1L8

Project: EVOY (FIN)

Page: 2 - A

Total # Pages: 3 (A - C)

Finalized Date: 12-AUG-2009

Account: MTT

## CERTIFICATE OF ANALYSIS VA09075486

Sample Description	Method	WEI-21	ME-ICP41	ME-ICP41	ME-ICP41	ME-ICP41	ME-ICP41	ME-ICP41	ME-ICP41	ME-ICP41	ME-ICP41	ME-ICP41	ME-ICP41	ME-ICP41	ME-ICP41	ME-ICP41
	Analyte	Recvd Wt.	Ag	Al	As	B	Ba	Be	Bi	Ca	Cd	Co	Cr	Cu	Fe	Ga
Units	LOR	kg	ppm	%	ppm	ppm	ppm	ppm	ppm	%	ppm	ppm	ppm	ppm	%	ppm
		0.02	0.2	0.01	2	10	10	0.5	2	0.01	0.5	1	1	1	0.01	10
CC27392		0.16	0.6	1.79	9	<10	290	0.8	<2	0.92	<0.5	3	32	11	1.24	<10
CC27393		0.14	0.6	1.46	6	<10	140	0.6	<2	0.85	1.3	2	20	12	0.97	<10
CC27394		0.22	0.4	1.72	10	<10	360	0.7	<2	0.56	<0.5	3	26	11	1.45	<10
CC27395		0.18	0.6	2.14	10	<10	320	0.9	<2	1.34	2.0	4	35	14	1.35	<10
CC27396		0.22	0.6	1.57	9	<10	400	0.6	<2	1.25	0.8	3	28	8	1.04	<10
CC27397		0.20	0.7	1.71	9	<10	1250	0.5	<2	2.91	1.5	3	31	9	1.12	<10
CC27398		0.24	2.3	0.45	10	<10	130	<0.5	<2	12.20	2.7	<1	9	12	0.57	<10
CC27399		0.20	7.8	0.88	21	<10	290	0.5	<2	8.89	4.6	3	18	28	1.63	<10
CC27400		0.20	3.0	0.52	19	<10	100	<0.5	<2	12.35	15.4	2	10	22	1.10	<10
CC27401		0.32	15.5	0.56	39	<10	110	<0.5	<2	12.20	10.5	3	10	45	1.39	<10
CC27402		0.32	0.5	0.45	7	<10	450	<0.5	<2	12.30	1.8	3	7	9	0.90	<10
CC27403		0.20	0.6	1.38	10	<10	270	0.5	<2	0.59	1.3	4	23	11	1.49	<10
CC27404		0.28	3.1	0.39	8	<10	90	<0.5	11	8.92	10.3	44	7	44	2.09	<10
CC27405		0.22	6.4	1.04	8	<10	180	<0.5	48	4.84	10.7	5	14	17	1.20	<10
CC27406		0.26	5.6	0.47	6	<10	80	<0.5	26	12.40	12.2	5	7	21	0.79	<10
CC27407		0.30	4.2	1.30	11	<10	140	<0.5	16	6.77	10.0	6	14	19	1.09	<10
CC27408		0.24	0.4	2.61	21	<10	200	1.0	<2	0.78	<0.5	3	30	7	0.99	10
CC27409		0.22	0.2	1.69	10	<10	50	1.0	<2	0.29	1.9	5	19	11	1.64	<10
CC27410		0.20	0.6	2.14	5	<10	130	0.7	2	0.60	2.2	2	27	6	0.99	10
CC27411		0.20	3.1	1.91	17	<10	320	0.8	<2	0.51	9.0	5	25	13	1.23	10
CC27412		0.16	1.4	1.75	10	<10	430	0.7	<2	2.26	4.1	2	24	12	1.03	<10
CC27413		0.22	0.9	2.16	14	<10	310	0.8	<2	0.58	2.3	4	33	8	1.05	10
CC27414		0.26	3.3	0.95	44	<10	280	0.7	<2	8.46	9.9	5	16	28	2.57	<10
CC27415		0.24	0.5	3.05	26	<10	240	1.5	3	0.81	<0.5	14	57	64	3.89	10
CC27416		0.26	2.4	0.38	7	<10	160	<0.5	<2	12.65	4.7	4	36	31	0.89	<10
CC27417		0.20	1.2	0.35	14	<10	120	<0.5	<2	12.80	3.4	2	12	11	1.12	<10
CC27418		0.24	0.7	0.54	11	<10	110	<0.5	2	10.50	4.7	4	9	10	1.34	<10
CC27419		0.30	1.7	0.23	27	<10	60	<0.5	<2	16.3	9.8	8	6	39	1.14	<10
CC27420		0.22	0.8	2.32	53	<10	270	1.0	3	0.24	0.9	13	51	49	4.61	10
CC27421		0.20	0.3	2.35	9	<10	240	0.8	6	0.13	0.8	7	53	25	3.72	10
CC27422		0.18	4.3	1.18	33	<10	390	0.8	15	5.86	9.3	5	21	21	2.05	<10
CC27423		0.24	7.0	0.91	26	<10	420	0.5	12	9.76	6.6	4	13	24	1.23	<10
CC27424		0.24	3.6	2.13	45	<10	350	1.0	<2	4.47	9.8	5	26	20	1.26	10
CC27425		0.22	2.4	2.57	7	<10	260	1.0	<2	3.38	7.4	4	27	14	1.24	10
CC27426		0.26	1.8	2.92	9	<10	230	1.4	2	1.15	2.5	6	32	13	1.49	10
CC27427		0.24	2.7	2.39	10	<10	270	1.1	6	1.18	7.8	7	22	17	1.39	10
CC27428		0.18	1.4	2.41	5	<10	200	1.0	7	1.71	4.5	4	28	10	1.13	10
CC27429		0.28	4.5	2.64	11	<10	250	1.1	16	2.27	11.2	6	35	22	1.34	10
CC27430		0.20	1.0	3.20	6	<10	140	1.3	4	1.78	2.0	6	40	12	1.40	10
CC45295		0.28	2.4	1.76	116	<10	170	0.9	<2	0.56	3.7	12	34	109	3.71	10



# ALS Chemex

**EXCELLENCE IN ANALYTICAL CHEMISTRY**

ALS Canada Ltd.

2103 Dollarton Hwy

North Vancouver BC V7H 0A7

Phone: 604 984 0221 Fax: 604 984 0218 www.alschemex.com

To: STRATEGIC METALS LTD.

C/O ARCHER, CATHRO & ASSOCIATES (1981)

LIMITED

1016-510 W HASTINGS ST

VANCOUVER BC V6B 1L8

Project: EVOY (FIN)

Page: 2 - B

Total # Pages: 3 (A - C)

Finalized Date: 12-AUG-2009

Account: MTT

## CERTIFICATE OF ANALYSIS VA09075486

Sample Description	Method Analyte Units LOR	ME-ICP41	ME-ICP41	ME-ICP41	ME-ICP41	ME-ICP41	ME-ICP41	ME-ICP41	ME-ICP41	ME-ICP41	ME-ICP41	ME-ICP41	ME-ICP41	ME-ICP41	ME-ICP41	
		Hg	K	La	Mg	Mn	Mo	Na	Ni	P	Pb	S	Sb	Sc	Sr	Th
		ppm	%	ppm	%	ppm	ppm	%	ppm	ppm	ppm	%	ppm	ppm	ppm	ppm
		1	0.01	10	0.01	5	1	0.01	1	10	2	0.01	2	1	1	20
CC27392		<1	0.05	10	1.47	243	1	0.02	16	2360	20	0.13	2	1	21	<20
CC27393		<1	0.05	10	1.13	116	1	0.03	16	1610	18	0.10	3	1	15	<20
CC27394		<1	0.07	10	1.54	240	2	0.01	19	1360	39	0.06	4	1	11	<20
CC27395		<1	0.16	20	3.58	256	3	0.02	27	580	89	0.03	10	4	13	<20
CC27396		<1	0.13	20	2.66	210	<1	0.01	18	500	46	0.03	7	2	10	<20
CC27397		<1	0.22	10	3.82	214	1	0.01	27	460	83	0.01	10	3	16	<20
CC27398		<1	0.02	10	7.88	411	<1	0.01	11	760	289	0.06	9	<1	54	<20
CC27399		<1	0.03	20	5.91	1305	1	0.02	22	1140	1115	0.06	49	1	80	<20
CC27400		<1	0.02	10	8.32	718	<1	0.01	20	510	438	0.03	31	1	89	<20
CC27401		<1	0.02	10	8.34	1120	1	0.02	24	620	2020	0.04	148	1	82	<20
CC27402		<1	0.02	10	8.40	531	<1	0.02	21	520	65	0.04	4	<1	70	<20
CC27403		<1	0.06	20	1.19	224	2	0.02	21	380	52	0.03	2	2	13	<20
CC27404		<1	0.01	10	5.72	2000	2	0.01	60	510	382	0.04	8	<1	147	<20
CC27405		<1	0.03	30	4.15	772	<1	0.01	40	1300	199	0.08	2	<1	37	<20
CC27406		1	0.01	20	8.45	838	<1	0.01	32	630	262	0.04	2	<1	198	<20
CC27407		<1	0.03	20	6.76	860	<1	0.01	54	1130	244	0.04	9	1	107	<20
CC27408		<1	0.23	10	2.54	184	<1	0.08	19	360	20	0.02	2	3	26	<20
CC27409		<1	0.13	10	2.40	257	5	<0.01	21	290	26	0.01	3	2	4	<20
CC27410		<1	0.06	10	2.96	188	<1	0.01	16	740	49	0.03	2	2	10	<20
CC27411		<1	0.06	20	2.07	628	<1	0.01	24	810	471	0.04	11	2	12	<20
CC27412		<1	0.08	10	3.01	238	<1	0.02	19	980	224	0.06	18	2	19	<20
CC27413		<1	0.12	20	3.06	199	<1	0.01	27	440	75	0.02	10	3	8	<20
CC27414		<1	0.04	20	5.81	1630	2	0.02	41	860	561	0.08	19	1	74	<20
CC27415		1	0.10	10	1.81	268	8	0.02	146	1210	14	0.09	2	3	42	<20
CC27416		<1	0.02	10	8.32	811	<1	0.02	19	750	276	0.05	12	1	129	<20
CC27417		<1	0.02	10	8.49	533	<1	0.02	15	560	191	0.02	8	1	76	<20
CC27418		<1	0.02	10	6.73	1060	1	0.01	12	1230	162	0.12	11	<1	73	<20
CC27419		<1	0.01	10	10.00	1295	2	0.01	33	460	794	<0.01	14	<1	134	<20
CC27420		<1	0.08	10	1.18	629	10	<0.01	60	1330	21	0.09	6	1	20	<20
CC27421		<1	0.11	10	1.09	508	7	<0.01	33	1020	25	0.10	2	1	18	<20
CC27422		<1	0.05	20	4.38	889	2	0.01	33	1220	204	0.07	12	2	71	<20
CC27423		<1	0.03	20	7.25	629	1	0.01	29	880	546	0.04	26	1	106	<20
CC27424		<1	0.08	20	4.11	721	2	0.03	24	840	622	0.07	17	2	48	<20
CC27425		<1	0.10	10	4.03	572	1	0.04	19	570	375	0.05	14	2	35	<20
CC27426		<1	0.10	20	2.62	331	1	0.02	29	870	105	0.08	5	3	34	<20
CC27427		1	0.06	10	1.87	483	1	0.03	30	600	216	0.07	9	2	40	<20
CC27428		<1	0.06	10	2.49	358	<1	0.04	16	750	63	0.10	4	2	34	<20
CC27429		<1	0.07	10	4.63	438	1	0.03	33	660	205	0.03	10	3	37	<20
CC27430		1	0.17	10	4.78	374	1	0.03	30	570	47	0.03	2	4	29	<20
CC45295		<1	0.12	20	1.74	322	25	<0.01	134	2960	50	0.06	18	1	42	<20



# ALS Chemex

**EXCELLENCE IN ANALYTICAL CHEMISTRY**

ALS Canada Ltd.

2103 Dollarton Hwy

North Vancouver BC V7H 0A7

Phone: 604 984 0221 Fax: 604 984 0218 www.alschemex.com

To: STRATEGIC METALS LTD.

C/O ARCHER, CATHRO & ASSOCIATES (1981)

LIMITED

1016-510 W HASTINGS ST

VANCOUVER BC V6B 1L8

Project: EVOY (FIN)

Page: 2 - C

Total # Pages: 3 (A - C)

Finalized Date: 12-AUG-2009

Account: MTT

## CERTIFICATE OF ANALYSIS VA09075486

Sample Description	Method Analyte Units LOR	ME-ICP41	ME-ICP41	ME-ICP41	ME-ICP41	ME-ICP41	ME-ICP41
		Ti	Ti	U	V	W	Zn
		%	ppm	ppm	ppm	ppm	ppm
		0.01	10	10	1	10	2
CC27392		0.03	<10	<10	145	<10	65
CC27393		0.03	<10	<10	87	<10	114
CC27394		0.03	<10	<10	119	<10	105
CC27395		0.09	<10	<10	61	<10	238
CC27396		0.05	<10	<10	50	<10	135
CC27397		0.06	<10	<10	44	<10	219
CC27398		0.01	<10	<10	20	<10	389
CC27399		0.01	<10	<10	62	<10	1030
CC27400		0.01	<10	<10	43	<10	1210
CC27401		0.01	<10	<10	45	<10	2220
CC27402		0.01	<10	<10	34	<10	465
CC27403		0.04	<10	<10	66	<10	153
CC27404		0.01	<10	<10	36	<10	1720
CC27405		0.02	<10	<10	44	<10	2150
CC27406		0.01	<10	<10	32	<10	1330
CC27407		0.02	<10	<10	42	<10	1600
CC27408		0.07	<10	<10	38	<10	113
CC27409		0.04	<10	<10	32	<10	109
CC27410		0.06	<10	<10	50	<10	246
CC27411		0.04	<10	<10	50	<10	633
CC27412		0.04	<10	<10	47	<10	476
CC27413		0.07	<10	<10	30	<10	540
CC27414		0.02	<10	<10	62	<10	1480
CC27415		0.05	<10	10	404	<10	226
CC27416		0.01	<10	<10	34	<10	351
CC27417		0.01	<10	<10	24	<10	452
CC27418		0.01	<10	<10	31	<10	490
CC27419		<0.01	<10	<10	39	<10	1630
CC27420		0.04	<10	<10	427	<10	117
CC27421		0.06	<10	<10	405	<10	186
CC27422		0.02	<10	<10	97	<10	943
CC27423		0.01	<10	<10	47	<10	1185
CC27424		0.04	<10	<10	50	<10	1085
CC27425		0.06	<10	<10	50	<10	783
CC27426		0.06	<10	<10	59	<10	445
CC27427		0.04	<10	<10	50	<10	1075
CC27428		0.05	<10	<10	40	<10	448
CC27429		0.07	<10	<10	69	<10	1400
CC27430		0.10	<10	<10	111	<10	313
CC45295		0.02	<10	<10	459	<10	1815



# ALS Chemex

EXCELLENCE IN ANALYTICAL CHEMISTRY

ALS Canada Ltd.

2103 Dollarton Hwy

North Vancouver BC V7H 0A7

Phone: 604 984 0221 Fax: 604 984 0218 www.alschemex.com

o: STRATEGIC METALS LTD.

C/O ARCHER, CATHRO & ASSOCIATES (1981)

LIMITED

1016-510 W HASTINGS ST

VANCOUVER BC V6B 1L8

Project: EVOY (FIN)

Page: 3 - A

Total # Pages: 3 (A - C)

Finalized Date: 12-AUG-2009

Account: MTT

## CERTIFICATE OF ANALYSIS VA09075486

Sample Description	Method Analyte Units LOR	WEI-21	ME-ICP41	ME-ICP41	ME-ICP41	ME-ICP41	ME-ICP41	ME-ICP41	ME-ICP41	ME-ICP41	ME-ICP41	ME-ICP41	ME-ICP41	ME-ICP41	ME-ICP41	ME-ICP41
		Recvd Wt. kg	Ag ppm	Al %	As ppm	B ppm	Ba ppm	Be ppm	Bi ppm	Ca %	Cd ppm	Co ppm	Cr ppm	Cu ppm	Fe %	Ga ppm
		0.02	0.2	0.01	2	10		2	0.01	0.5	1	1	1	0.01	10	
CC45296		0.22	0.2	1.84	6	<10	60	0.7	<2	0.29	<0.5	4	41	6	1.00	10
CC45297		0.28	<0.2	1.52	6	<10	120	0.6	2	0.26	0.8	3	23	6	1.11	10
CC45298		0.26	<0.2	2.20	8	<10	110	1.2	<2	0.29	0.8	5	46	16	1.58	10
CC45299		0.26	0.2	1.83	9	<10	60	0.8	2	0.53	1.1	4	55	8	1.08	10
CC45300		0.24	3.4	0.64	51	<10	230	0.7	<2	10.40	5.1	4	13	40	1.32	<10
CC45386		0.22	0.2	1.94	16	<10	140	0.9	<2	0.30	0.7	4	67	5	1.33	10
CC45387		0.24	0.2	1.74	7	<10	240	0.8	<2	0.34	1.2	4	30	7	1.45	10
CC45388		0.22	0.5	0.70	12	<10	100	<0.5	<2	6.67	4.0	3	9	12	1.42	<10
CC45389		0.28	1.4	0.24	16	<10	80	<0.5	<2	17.2	6.8	3	7	11	0.87	<10
CC45390		0.20	0.4	0.29	5	<10	100	<0.5	<2	12.20	4.8	2	8	7	0.87	<10
CC45391		0.24	0.4	0.18	6	<10	60	<0.5	<2	12.20	<0.5	2	6	<1	0.34	<10
CC45392		0.20	0.4	0.38	9	<10	310	<0.5	<2	8.79	0.9	2	8	2	0.53	<10
CC45393		0.22	0.3	1.48	11	<10	220	0.6	<2	3.69	0.5	3	30	5	0.83	<10
CC45394		0.22	0.3	2.77	21	<10	110	2.2	<2	0.56	<0.5	11	45	19	2.94	10
CC45395		0.18	0.5	1.03	26	<10	150	0.6	2	0.12	0.7	5	32	13	1.85	<10
CC45396		0.24	3.1	0.66	81	<10	90	1.1	<2	0.29	2.4	5	19	23	1.88	<10
CC45397		0.22	1.4	2.32	25	<10	240	1.2	2	1.71	4.6	9	45	44	2.22	10
CC45398		0.28	0.7	0.52	149	<10	80	0.6	2	0.07	1.2	14	13	57	5.43	<10
CC45399		0.24	0.6	2.12	158	<10	330	1.2	<2	0.87	2.2	33	190	44	5.37	10
CC49046		0.24	2.9	1.50	60	<10	120	1.5	2	1.14	2.8	5	43	38	2.16	<10
CC49047		0.22	<0.2	2.30	3	<10	340	0.5	<2	4.08	<0.5	3	26	2	0.76	10
CC49048		0.26	1.2	0.50	21	<10	80	0.9	<2	12.30	6.7	6	12	13	0.98	<10
CC56987		0.18	0.4	1.71	23	<10	110	0.6	<2	0.31	1.4	4	39	18	1.53	10
CC56988		0.16	0.2	2.09	10	<10	50	0.6	<2	0.35	<0.5	2	29	8	0.86	<10
CC56989		0.18	0.8	2.07	13	<10	130	1.1	<2	0.93	3.8	5	47	30	1.67	10
CC56990		0.22	<0.2	1.92	11	<10	40	0.7	<2	0.46	0.8	4	40	12	1.23	<10
CC56991		0.16	0.2	1.93	10	<10	60	0.6	<2	0.37	0.8	4	31	8	1.16	<10
CC56992		0.20	<0.2	1.64	7	<10	60	0.6	<2	0.34	0.5	3	38	7	0.99	<10
CC56993		0.18	0.2	1.76	9	<10	90	0.7	<2	0.36	<0.5	3	28	5	0.96	<10
CC56994		0.22	0.8	0.79	13	<10	90	0.5	<2	6.49	3.5	2	15	13	1.00	<10
CC56995		0.26	<0.2	1.98	3	<10	50	0.6	<2	0.35	0.8	2	18	5	0.92	10
CC56996		0.28	0.3	1.60	7	<10	20	0.6	<2	0.16	0.6	3	45	11	1.19	10
CC56997		0.20	<0.2	1.00	3	<10	20	<0.5	<2	0.08	<0.5	2	37	6	0.80	<10
CC56998		0.28	<0.2	1.93	7	<10	40	0.5	<2	0.07	1.3	3	30	9	1.28	10
CC56999		0.20	0.3	1.57	2	<10	40	<0.5	<2	0.10	0.5	1	14	4	0.75	10
CC57000		0.22	0.6	0.85	32	<10	120	1.1	<2	0.23	5.7	7	10	3	2.76	<10



# ALS Chemex

**EXCELLENCE IN ANALYTICAL CHEMISTRY**

ALS Canada Ltd.

2103 Dollarton Hwy

North Vancouver BC V7H 0A7

Phone: 604 984 0221 Fax: 604 984 0218 www.alschemex.com

To: STRATEGIC METALS LTD.

C/O ARCHER, CATHRO & ASSOCIATES (1981)

LIMITED

1016-510 W HASTINGS ST

VANCOUVER BC V6B 1L8

Project: EVOY (FIN)

Page: 3 - B

Total # Pages: 3 (A - C)

Finalized Date: 12-AUG-2009

Account: MTT

## CERTIFICATE OF ANALYSIS VA09075486

Sample Description	Method Analyte Units LOR	ME-ICP41	ME-ICP41	ME-ICP41	ME-ICP41	ME-ICP41	ME-ICP41	ME-ICP41	ME-ICP41	ME-ICP41	ME-ICP41	ME-ICP41	ME-ICP41	ME-ICP41	ME-ICP41	ME-ICP41
		Hg	K	La	Mg	Mn	Mo	Na	Ni	P	Pb	S	Sb	Sc	Sr	Th
		ppm	%	ppm	%	ppm	ppm	%	ppm	ppm	ppm	%	ppm	ppm	ppm	ppm
		1	0.01	10	0.01	5	1	0.01	1	10	2	0.01	2	1	1	20
CC45296		1	0.10	10	2.90	89	5	<0.01	25	420	13	0.02	2	2	6	<20
CC45297		<1	0.07	10	1.54	145	3	<0.01	17	600	15	0.04	2	1	6	<20
CC45298		<1	0.09	20	3.11	151	4	<0.01	44	870	14	0.01	3	2	9	<20
CC45299		<1	0.17	10	2.89	137	3	<0.01	33	870	13	0.02	2	3	8	<20
CC45300		<1	0.03	30	7.48	694	1	0.01	32	960	772	0.04	25	1	89	<20
CC45386		<1	0.14	10	2.27	200	2	<0.01	27	1270	23	0.04	5	1	6	<20
CC45387		<1	0.07	10	1.69	361	3	0.01	17	1270	35	0.06	3	1	11	<20
CC45388		<1	0.02	10	4.08	1005	1	0.03	10	880	234	0.06	5	<1	35	<20
CC45389		1	0.01	10	10.40	1200	<1	0.01	11	720	419	<0.01	7	<1	176	<20
CC45390		<1	0.01	10	7.77	1030	<1	0.02	7	900	180	0.08	3	<1	98	<20
CC45391		<1	0.02	30	7.60	324	1	0.01	14	670	14	0.02	2	<1	190	<20
CC45392		<1	0.03	20	5.74	315	1	0.01	16	670	25	0.04	4	<1	100	<20
CC45393		<1	0.11	20	4.44	187	2	0.01	20	490	24	0.03	4	3	25	<20
CC45394		1	0.61	20	4.30	268	21	0.01	54	350	27	0.08	3	6	7	<20
CC45395		<1	0.07	10	0.47	505	10	<0.01	31	960	32	0.05	6	<1	10	<20
CC45396		<1	0.07	20	0.39	328	15	<0.01	54	1020	64	0.03	16	2	7	<20
CC45397		1	0.20	10	2.73	261	11	0.02	73	1200	45	0.07	6	5	39	<20
CC45398		<1	0.07	30	0.09	324	23	<0.01	90	1650	35	0.06	15	1	22	<20
CC45399		<1	0.10	50	1.07	1290	17	0.01	146	2550	27	0.06	18	7	31	<20
CC49046		<1	0.17	20	1.13	362	10	<0.01	88	5000	27	0.04	16	1	26	<20
CC49047		<1	0.37	10	3.69	191	<1	0.01	8	680	8	0.01	<2	4	23	<20
CC49048		<1	0.04	30	8.19	594	1	0.01	36	910	233	0.04	14	1	111	<20
CC56987		<1	0.12	10	2.03	160	5	<0.01	29	1190	20	0.01	2	1	12	<20
CC56988		<1	0.05	10	3.43	52	2	<0.01	20	410	9	<0.01	<2	2	8	<20
CC56989		<1	0.15	10	2.93	270	6	<0.01	45	1380	25	0.01	6	3	20	<20
CC56990		<1	0.17	10	3.12	171	5	0.01	25	720	13	<0.01	3	3	8	<20
CC56991		<1	0.17	10	3.29	196	8	<0.01	28	410	16	<0.01	2	2	8	<20
CC56992		<1	0.08	10	2.30	118	1	<0.01	17	670	9	<0.01	<2	1	7	<20
CC56993		<1	0.06	10	2.13	168	1	0.01	14	640	17	0.02	<2	1	10	<20
CC56994		<1	0.03	20	4.50	618	1	0.01	16	890	261	0.02	4	1	54	<20
CC56995		<1	0.08	10	2.93	118	1	0.01	8	210	9	<0.01	<2	3	6	<20
CC56996		<1	0.16	10	2.18	96	2	<0.01	29	710	9	<0.01	<2	1	3	<20
CC56997		<1	0.09	10	1.06	79	2	<0.01	13	510	7	0.01	2	<1	4	<20
CC56998		<1	0.13	10	2.51	112	5	<0.01	15	200	11	<0.01	5	2	6	<20
CC56999		<1	0.03	10	1.91	114	1	<0.01	7	390	63	0.01	4	1	6	<20
CC57000		<1	0.05	20	1.19	725	2	<0.01	27	660	25	0.02	3	5	10	<20



# ALS Chemex

**EXCELLENCE IN ANALYTICAL CHEMISTRY**

ALS Canada Ltd.

2103 Dollarton Hwy

North Vancouver BC V7H 0A7

Phone: 604 984 0221 Fax: 604 984 0218 www.alschemex.com

To: STRATEGIC METALS LTD.

C/O ARCHER, CATHRO & ASSOCIATES (1981)

LIMITED

1016-510 W HASTINGS ST

VANCOUVER BC V6B 1L8

Project: EVOY (FIN)

Page: 3 - C

Total # Pages: 3 (A - C)

Finalized Date: 12-AUG-2009

Account: MTT

## CERTIFICATE OF ANALYSIS VA09075486

Sample Description	Method Analyte Units LOR	ME-ICP41	ME-ICP41	ME-ICP41	ME-ICP41	ME-ICP41	ME-ICP41
		Ti	Ti	U	V	W	Zn
		%	ppm	ppm	ppm	ppm	ppm
		0.01	10	10	1	10	2
CC45296		0.06	<10	<10	125	<10	128
CC45297		0.03	<10	<10	116	<10	95
CC45298		0.07	<10	<10	312	<10	262
CC45299		0.07	<10	<10	149	<10	176
CC45300		0.01	<10	<10	56	<10	1530
CC45386		0.04	<10	<10	350	<10	182
CC45387		0.03	<10	<10	138	<10	165
CC45388		0.02	<10	<10	36	<10	463
CC45389		<0.01	<10	<10	28	<10	744
CC45390		<0.01	<10	<10	21	<10	376
CC45391		<0.01	<10	<10	19	<10	266
CC45392		<0.01	<10	<10	15	<10	489
CC45393		0.07	<10	<10	93	<10	116
CC45394		0.12	<10	<10	67	<10	26
CC45395		0.01	<10	<10	189	<10	131
CC45396		<0.01	<10	<10	80	<10	351
CC45397		0.09	<10	<10	593	<10	424
CC45398		<0.01	<10	<10	80	<10	306
CC45399		0.02	<10	<10	390	<10	473
CC49046		0.02	<10	<10	261	<10	366
CC49047		0.12	<10	<10	30	<10	11
CC49048		0.01	<10	<10	46	<10	559
CC56987		0.05	<10	<10	206	<10	238
CC56988		0.07	<10	<10	78	<10	200
CC56989		0.06	<10	<10	250	<10	265
CC56990		0.07	<10	<10	139	<10	144
CC56991		0.06	<10	<10	175	<10	143
CC56992		0.04	<10	<10	107	<10	102
CC56993		0.04	<10	<10	77	<10	122
CC56994		0.02	<10	<10	34	<10	593
CC56995		0.07	<10	<10	34	<10	81
CC56996		0.04	<10	<10	126	<10	159
CC56997		0.02	<10	<10	123	<10	66
CC56998		0.08	<10	<10	261	<10	282
CC56999		0.04	<10	<10	41	<10	263
CC57000		<0.01	<10	<10	39	<10	391



# ALS Chemex

**EXCELLENCE IN ANALYTICAL CHEMISTRY**

ALS Canada Ltd.

2103 Dollarton Hwy  
North Vancouver BC V7H 0A7

Phone: 604 984 0221 Fax: 604 984 0218 www.alschemex.com

To: STRATEGIC METALS LTD.  
C/O ARCHER, CATHRO & ASSOCIATES (1981)  
LIMITED  
1016-510 W HASTINGS ST  
VANCOUVER BC V6B 1L8

Page: 1  
Finalized Date: 21-AUG-2009  
Account: MTT

## CERTIFICATE VA09075485

Project: EVOY (FIN)

P.O. No.:

This report is for 11 Rock samples submitted to our lab in Vancouver, BC, Canada on 21-JUL-2009.

The following have access to data associated with this certificate:

AL ARCHER  
VANCOUVER OFFICE

DOUG EATON  
BILL WENGZYNOWSKI

JOAN MARIACHER

## SAMPLE PREPARATION

ALS CODE	DESCRIPTION
WEI-21	Received Sample Weight
LOG-21	Sample logging - ClientBarCode
CRU-31	Fine crushing - 70% <2mm
SPL-21	Split sample - riffle splitter
PUL-36	Pulverize 1.5 kg to 85% <75 um
BAG-01	Bulk Master for Storage
PUL-QC	Pulverizing QC Test

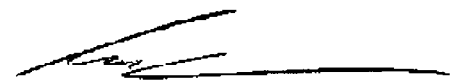
## ANALYTICAL PROCEDURES

ALS CODE	DESCRIPTION	INSTRUMENT
ME-OG46	Ore Grade Elements - AquaRegia	ICP-AES
Zn-OG46	Ore Grade Zn - Aqua Regia	VARIABLE
Pb-OG46	Ore Grade Pb - Aqua Regia	VARIABLE
Au-ICP21	Au 30g FA ICP-AES Finish	ICP-AES
ME-ICP41	35 Element Aqua Regia ICP-AES	ICP-AES
Ag-OG46	Ore Grade Ag - Aqua Regia	VARIABLE

To: STRATEGIC METALS LTD.  
C/O ARCHER, CATHRO & ASSOCIATES (1981) LIMITED  
1016-510 W HASTINGS ST  
VANCOUVER BC V6B 1L8

This is the Final Report and supersedes any preliminary report with this certificate number. Results apply to samples as submitted. All pages of this report have been checked and approved for release.

Signature:

  
Colin Ramshaw, Vancouver Laboratory Manager



# ALS Chemex

**EXCELLENCE IN ANALYTICAL CHEMISTRY**

ALS Canada Ltd.

2103 Dollarton Hwy

North Vancouver BC V7H 0A7

Phone: 604 984 0221 Fax: 604 984 0218 www.alschemex.com

TO: STRATEGIC METALS LTD.

C/O ARCHER, CATHRO & ASSOCIATES (1981)

LIMITED

1016-510 W HASTINGS ST

VANCOUVER BC V6B 1L8

Project: EVOY (FIN)

Page: 2 - A

Total # Pages: 2 (A - C)

Finalized Date: 21-AUG-2009

Account: MTT

## CERTIFICATE OF ANALYSIS VA09075485

Sample Description	Method Analyte Units LOR	WEI-21	Au-ICP21	ME-ICP41	ME-ICP41	ME-ICP41	ME-ICP41	ME-ICP41	ME-ICP41	ME-ICP41	ME-ICP41	ME-ICP41	ME-ICP41	ME-ICP41	ME-ICP41	ME-ICP41
		Recvd Wt. kg	Au ppm	Ag ppm	Al %	As ppm	B ppm	Ba ppm	Be ppm	Bi ppm	Ca %	Cd ppm	Co ppm	Cr ppm	Cu ppm	Fe %
		0.02	0.001	0.2	0.01	2	10	10	0.5	2	0.01	0.5	1	1	1	0.01
H248551		0.88	0.019	93.1	0.03	310	<10	190	<0.5	<2	0.23	13.5	4	11	1175	5.07
H248552		0.76	0.070	7.9	0.26	2150	<10	70	0.5	<2	0.13	34.0	1	7	270	15.2
H248553		0.80	0.009	61.9	0.02	288	<10	90	<0.5	<2	0.06	13.6	2	9	790	6.54
H248554		0.26	0.204	>100	0.19	4520	<10	30	<0.5	134	0.13	281	5	<1	1370	20.9
H248555		1.22	0.011	27.7	0.07	89	<10	200	<0.5	<2	0.11	819	5	11	318	2.35
H248556		1.32	0.007	63.2	0.03	15	<10	40	<0.5	<2	7.22	746	3	6	4050	1.33
H248557		0.74	0.005	24.6	0.03	123	<10	70	<0.5	3	0.10	16.1	2	9	600	3.74
H248558		5.00	0.005	0.5	0.08	30	<10	70	<0.5	<2	18.2	7.2	1	2	27	0.89
H248559		2.38	0.005	0.5	0.07	29	<10	110	<0.5	<2	17.9	4.1	1	3	12	0.74
H248560		2.58	0.006	2.7	0.07	35	<10	70	<0.5	<2	17.1	5.7	1	2	29	0.80
H248561		1.78	0.005	0.6	0.12	42	<10	120	<0.5	<2	16.6	4.6	2	10	29	1.05



# ALS Chemex

**EXCELLENCE IN ANALYTICAL CHEMISTRY**

ALS Canada Ltd.

2103 Dollarton Hwy

North Vancouver BC V7H 0A7

Phone: 604 984 0221 Fax: 604 984 0218 www.alschemex.com

To: STRATEGIC METALS LTD.

C/O ARCHER, CATHRO & ASSOCIATES (1981)

LIMITED

1016-510 W HASTINGS ST

VANCOUVER BC V6B 1L8

Project: EVOY (FIN)

Page: 2 - B

Total # Pages: 2 (A - C)

Finalized Date: 21-AUG-2009

Account: MTT

## CERTIFICATE OF ANALYSIS VA09075485

Sample Description	Method	ME-ICP41	ME-ICP41	ME-ICP41	ME-ICP41	ME-ICP41	ME-ICP41	ME-ICP41	ME-ICP41	ME-ICP41	ME-ICP41	ME-ICP41	ME-ICP41	ME-ICP41	ME-ICP41	ME-ICP41
	Analyte	Ga	Hg	K	La	Mg	Mn	Mo	Na	Ni	P	Pb	S	Sb	Sc	Sr
	Units LOR	ppm	ppm	%	ppm	%	ppm	ppm	%	ppm	ppm	ppm	%	ppm	ppm	ppm
		10	1	0.01	10	0.01	5	1	0.01	1	10	2	0.01	2	1	1
H248551		<10	<1	0.01	240	0.07	177	45	0.01	25	350	>10000	0.15	151	<1	24
H248552		<10	<1	0.04	10	0.05	308	7	0.01	49	350	1210	0.05	50	<1	4
H248553		<10	1	0.01	10	0.01	158	3	0.01	7	40	>10000	0.27	113	<1	5
H248554		10	2	0.01	20	0.05	231	9	0.01	90	60	>10000	0.48	2250	<1	77
H248555		10	3	0.02	<10	0.10	1590	4	0.01	33	50	3840	0.13	36	<1	6
H248556		<10	1	0.01	30	4.44	840	1	0.02	20	510	>10000	0.03	66	<1	101
H248557		<10	1	<0.01	10	0.04	118	3	<0.01	16	60	>10000	0.14	91	<1	5
H248558		<10	<1	0.02	10	11.50	922	<1	0.01	10	90	243	<0.01	9	<1	281
H248559		<10	<1	0.02	10	11.00	698	1	0.02	9	60	215	<0.01	8	<1	226
H248560		<10	<1	0.02	10	10.30	1200	2	0.02	10	80	740	<0.01	9	<1	264
H248561		<10	<1	0.03	10	9.97	708	1	0.02	21	120	239	<0.01	10	1	317



# ALS Chemex

**EXCELLENCE IN ANALYTICAL CHEMISTRY**

ALS Canada Ltd.

2103 Dollarton Hwy

North Vancouver BC V7H 0A7

Phone: 604 984 0221 Fax: 604 984 0218 www.alschemex.com

To: STRATEGIC METALS LTD.

C/O ARCHER, CATHRO & ASSOCIATES (1981)

LIMITED

1016-510 W HASTINGS ST

VANCOUVER BC V6B 1L8

Project: EVOY (FIN)

Page: 2 - C

Total # Pages: 2 (A - C)

Finalized Date: 21-AUG-2009

Account: MTT

## CERTIFICATE OF ANALYSIS VA09075485

Sample Description	Method Analyte Units LOR	ME-ICP41	ME-ICP41	ME-ICP41	ME-ICP41	ME-ICP41	ME-ICP41	ME-ICP41	Ag-OG46	Zn-OG46	Pb-OG46
		Th ppm	Ti %	Ti ppm	U ppm	V ppm	W ppm	Zn ppm	Ag ppm	Zn %	Pb %
		20	0.01	10	10	1	10	2	1	0.001	0.001
H248551		<20	<0.01	<10	<10	8	10	1960			7.90
H248552		<20	<0.01	<10	10	23	10	4520			
H248553		<20	<0.01	<10	<10	4	<10	3080			4.56
H248554		<20	<0.01	<10	20	8	20	>10000	1095	2.09	>20.0
H248555		<20	<0.01	<10	<10	8	<10	>10000		12.75	
H248556		<20	<0.01	<10	<10	20	<10	>10000		3.59	1.310
H248557		<20	<0.01	<10	<10	4	<10	2390			1.890
H248558		<20	<0.01	<10	<10	19	<10	663			
H248559		<20	<0.01	<10	<10	14	<10	450			
H248560		<20	<0.01	<10	<10	14	<10	481			
H248561		<20	<0.01	<10	<10	17	<10	559			

**APPENDIX IV**  
**ROCK SAMPLE DESCRIPTIONS**

---

**Rock Sample Descriptions**Project: FinlaysonProperty: Evoy

---

Sample Number: H248551    Grid East: 441902 E    Grid North: 6840084 N    Type: specimen    Dimension:  
UTM: 441902 E    UTM: 6840084 N    Sample Width:    Abundance: few pieces in talus  
Elevation: m

Comments: 2 cm thick quartz calcite veins with 75% qtz, 15% calcite and 10% limonite, minor dark grey metallic mineral  
705

---

Sample Number: H248552    Grid East: 441983 E    Grid North: 6839924 N    Type: specimen    Dimension:  
UTM: 441983 E    UTM: 6839924 N    Sample Width:    Abundance: few pieces in talus  
Elevation: m

Comments: Drk brown hydrothermal breccia with minor purple stain. ~65% fine grained limonitic matrix with 35% 2 mm diameter subrounded dark grey siltstone  
517 clasts.

---

Sample Number: H248553    Grid East: 442071 E    Grid North: 6839940 N    Type: specimen    Dimension:  
UTM: 442071 E    UTM: 6839940 N    Sample Width:    Abundance: rare  
Elevation: m

Comments: Medium brown very limonitic rock with ~30% milky white quartz.  
518

---

Sample Number: H248554    Grid East: 442293 E    Grid North: 6840154 N    Type: specimen    Dimension:  
UTM: 442293 E    UTM: 6840154 N    Sample Width:    Abundance: rare  
Elevation: m

Comments: Fragments of extremely heavily limonized rock. Near contact between dark grey phyllite and dolomitic limestone.

---

Sample Number: H248555    Grid East: 442143 E    Grid North: 6839985 N    Type: specimen    Dimension:  
UTM: 442143 E    UTM: 6839985 N    Sample Width:    Abundance:  
Elevation: m

Comments: Breccia within dolomitic limestone. ~35% erratic coarse grained quartz veinlets and ~20% angular limestone clast. Rest of rock is fine grained limonite  
538 infilling, within limonite I a lens of galena 10 mm x 3 mm

---

Sample Number: H248556    Grid East: 442073 E    Grid North: 6839840 N    Type: specimen    Dimension:  
UTM: 442073 E    UTM: 6839840 N    Sample Width:    Abundance:  
Elevation: m

Comments: ~6 cm wide vuggy quartz calcite vein with 5 mm x 3 mm well shaped quartz crystals with 5% bright orange/brown limonite and 5% pale orange  
547 limonite?. Minor malacite stain on the pale limonite and trace galena crystals.

---