

**ARCTURUS VENTURES INC.**

**ASSESSMENT REPORT ON THE  
2010 GEOLOGICAL AND GEOCHEMICAL PROGRAM**

**ON**

**RB 1 – 12      YB93186 – YB93197  
RB 23 – 38    YB93208 – YB93223  
RB 45 – 52    YB93230 – YB93237**

**Claims**

**Grass Lakes Area  
Finlayson Lake District**

**June 20 – June 25, 2011**

**NTS 105 G/7  
61° 17' N and 130° 45' W  
In the**

**Watson Lake Mining District  
Yukon Territory**

**Prepared by  
R. Stroshein, P.Eng.**

**February 18, 2011**

## Table of Contents

	<b>Page No.</b>
1.0 SUMMARY AND CONCLUSIONS	3
2.0 INTRODUCTION	3
3.0 LOCATION AND ACCESS	3
4.0 PROPERTY	5
5.0 HISTORY	5
6.0 GEOLOGICAL SETTING	7
6.1 REGIONAL GEOLOGY	7
6.2 PROPERTY GEOLOGY	7
7.0 MINERALIZATION	10
8.0 EXPLORATION	10
9.0 SAMPLING METHODS AND APPROACH	10
10.0 SAMPLE PREPARATION, ANALYSIS AND SECURITY	11
11.0 INTERPRETATION AND CONCLUSIONS	11
12.0 RECOMMENDATIONS	12
13.0 REFERENCES	16

## List of Figures

	<b>Page No.</b>
Figure 1 LOCATION MAP	4
Figure 2 CLAIM MAP	6
Figure 3 REGIONAL GEOLOGY	8
Figure 4 PROPERTY GEOLOGY	9
Figure 5 ROCK SAMPLE LOCATION MAP	13
Figure 5 SOIL SAMPLE LOCATION MAP	14
Figure 7 STRATIGRAPHIC CROSS-SECTION	15

## List of Appendices

Appendix 1	STATEMENT OF QUALIFICATIONS
Appendix 2	STATEMENT OF EXPENDITURES
Appendix 3	GEOLOGICAL AND ROCK SAMPLE SUMMARY
Appendix 4	LIST OF SOIL SAMPLE LOCATIONS
Appendix 5	ANALYTICAL RESULTS ALS – MINERALS CANADA

## **1.0 SUMMARY AND CONCLUSIONS**

The RB claim group is located in the Finlayson Lake Region on NTS Map Sheet 105 G/7 of the Watson Lake Mining District, Yukon. The property is 200 kilometres northwest of Watson Lake, Yukon. Access to the property is by Helicopter from Ross River, Yukon or the Robert Campbell Highway staging area 50 kilometres north of the property. Figure 1 Location Map.

The RB claim group is composed of 36 Quartz claims with an area of 742 hectares.

The RB claims are located in the Finlayson Lake VMS (Volcanogenic Massive Sulphide) district of east central Yukon Territory. The district hosts significant mineral resources in multiple deposits. The deposits in the district occur in volcanic rocks of Devonian-Mississippian and Carboniferous ages. These deposits have been classified as Kuroko- and Besshi-types. The deposits are generally stratbound within units of felsic volcanic rocks (Kuroko-type) or mafic volcanic rocks (Besshi-type). The stratigraphy on the RB claims correlates with the regional geology of the Besshi-type deposit at the Fire Lake deposit.

The RB claim group has undergone limited exploration including; airborne EM and magnetic surveys, reconnaissance silt and soil geochemical sampling, prospecting and reconnaissance geological mapping. These preliminary surveys have identified a prospective horizon within stratigraphy that correlates with the Fyre Lake deposit host volcanic rocks.

Two (2) mineralized showings have been located and sampled. Channel samples from the JD showing assayed 0.184 g/t gold and 672 ppm copper across a true width of 0.65 metres. The upper 0.35 metres assayed 0.248 g/t gold and 1335 ppm copper. An assay from the DM showing assayed 0.163 g/t gold and 9970 ppm copper.

An unexplained gold-in-soil anomaly remains to be explained on the property and it is recommended to carry out a detailed sampling program in the northeastern portion of the claim block centered on the anomaly.

Diamond drilling is recommended to further evaluate the prospective horizon on the RB claims.

## **1.0 INTRODUCTION**

The 2010 exploration program involved 18.5 man days with three (3) geologists carrying out prospecting, geological mapping and geochemical rock, soil and stream sediment sampling. A total of 30 rock, 142 soil and 8 stream sediment samples were collected. The exploration was carried out between June 20 and 25, 2010.

The exploration was carried out by Ketza Enterprises Ltd. The personnel were R. Stroshein, Brandon Macdonald, E. Grantiva and Blake Macdonald.

## **2.0 LOCATION AND ACCESS**

The RB claims are located four (4) kilometres southeast of Grass Lakes and 200 kilometres northwest of Watson Lake, Yukon. Access to the property is by helicopter from Ross River and staging areas along the Robert Campbell Highway near Finlayson Lake. Helicopter was supplied by Trans North Helicopters from the permanent base at Ross River for the 2010 exploration program.

The property covers a prominent northerly trending ridge with adjacent valleys. The terrain is alpine featuring rocky cirques and steep slopes divided by steep sided creek valleys.



ARCTURUS VENTURES INC.	
RB PROPERTY YUKON TERRITORY	
LOCATION MAP	
DATE: February, 2011	FIGURE: 1

#### 4.0 PROPERTY

The property is comprised of 36 quartz claims as shown in Figure 2 and listed in Table I. The claims are located in the Watson Lake Mining District on NTS map sheet 105G/07 at 61° 17' N and 130° 45' W. The claims are 200 kilometres north of Watson Lake, Yukon.

**Table I RB Claims**

RB 1 – 12	YB93186 – YB93197	August 30, 2015
RB 23 – 38	YB93208 – YB93223	August 30, 2015
RB 45 – 52	YB93230 – YB93237	August 30, 2015

#### 5.0 HISTORY

The RB claims area has been intermittently explored since 1966 by a number of different companies. The exploration consisted of reconnaissance geochemical and geophysical surveys that have never been followed up with diamond drilling. The phases of exploration coincided with discoveries of base metal deposits beginning with Faro in 1966 and Kudz Ze Kayah in 1994. A summary report of these exploration programs is outlined in Minfile occurrence 105 G 48.

Arcturus Ventures Inc. acquired the current claims by staking on May 30, 2001. Arcturus Ventures Inc. carried out reconnaissance mapping and geochemical sampling in 2002 Assessment Report # 094398 and 2003 and 2004 and the work is reported in Assessment Report # 094503. Widely spaced reconnaissance soil sample baselines, reconnaissance soil sample lines, silt sediment sampling, prospecting and geological mapping was carried out. The focus of the programs was to explore for VMS type base metal deposits and assess the potential for emerald occurrences.

In summary the exploration programs identified the potential for the RB claims to host a beshi-type VMS deposit based on geology and setting similar to the Fyre Lake deposit, two VMS style mineral occurrences on the property and limited geochemical sampling. Two stratabound mineralized base-metal showings were identified; the JD and DM showings.

UTM NAD 83

ARCTURUS VENTURES INC.  
FINLAYSON PROJECT

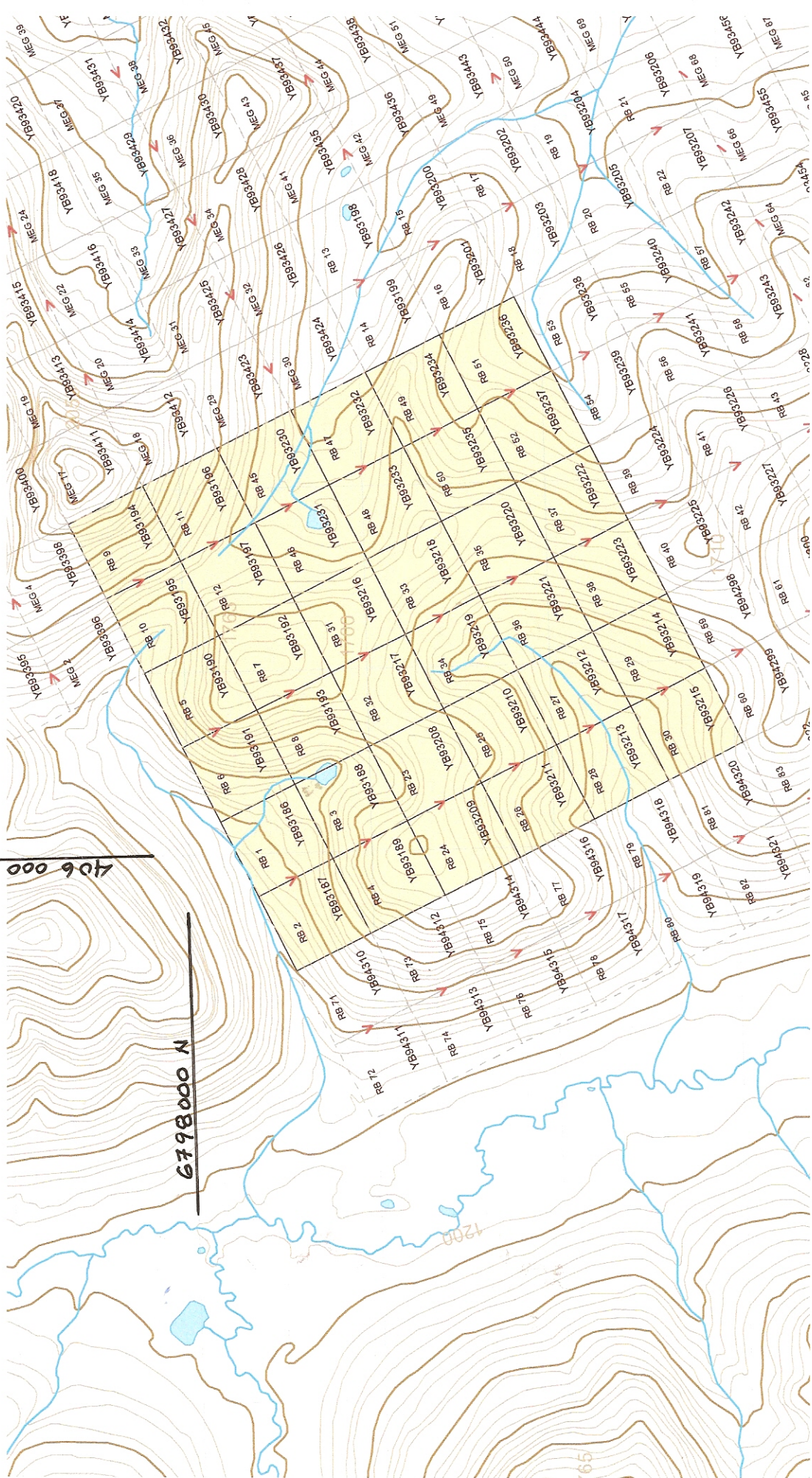


Figure 2.  
CLAIM LOCATION MAP  
RB CLAIMS  
105607

MARCH 29, 2010

WATSON LAKE MINING DISTRICT

## 6.0 GEOLOGICAL SETTING

### 6.1 Regional Geology

The RB property is in the Yukon Tanana Terrane (YTT) in southeastern Yukon. The YTT in the RB area is composed of a package of rocks termed the Layered Metamorphic Sequence (LMS). The LMS is a penetratively deformed volcano-sedimentary assemblage previously referred to as the Nasina Quartzite and Klondike Schist. The LMS has been intruded by contemporaneous meta-gabbro sills and a group of Palaeozoic plutonic and meta-plutonic rocks. Cretaceous to Tertiary aged volcanic, sub-volcanic and plutonic rocks intruded the package of rocks. Figure 3.

Two (2) phases of deformation with regional metamorphism are recognized in the YTT. The regional metamorphism is in the green schist to lower amphibolite facies. The sub-horizontal foliation is sub-parallel to the compositional layering. The foliation in the RB area strikes west to northwest and dips gently to the north and northwest.

### 6.2 Property Geology

There are four (4) rock units mapped on the RB property. Figure 4. The rock units are meta-sedimentary or meta-volcanic rocks. The units correlate with regional units mapped by Murphy and Piercey (1999).

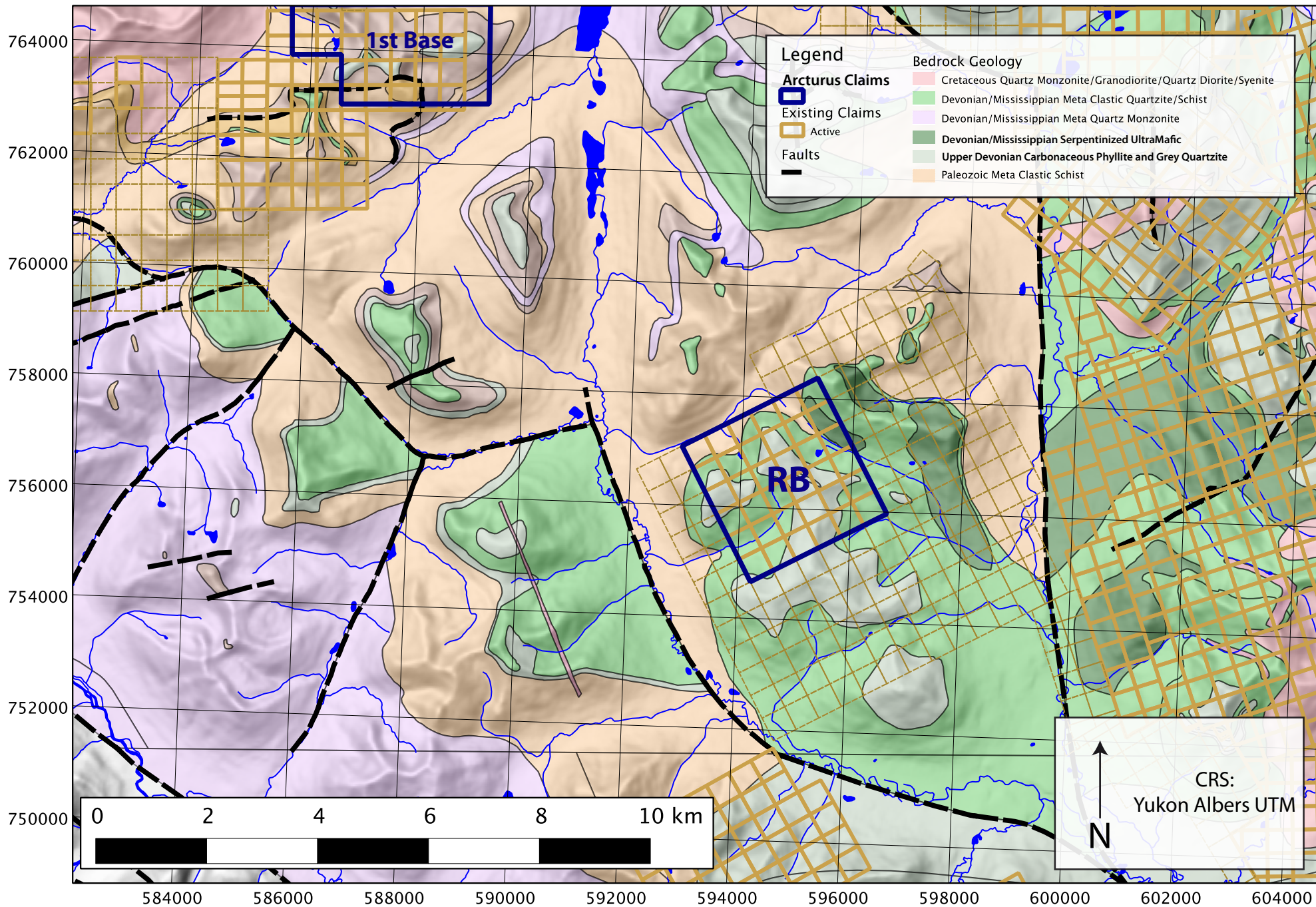
The oldest unit is 1qsu called the upper quartzite meta-clastic unit of Murphy. The unit is composed of quartz schist and micaceous quartzite with lesser quartz-pebble conglomerate and chlorite-biotite schist and grey carbonaceous quartzite.

Conformably overlying the quartzite unit are the 2m meta-volcanic rocks. The unit is composed of massive bedded calcareous plagioclase-chlorite-biotite-actinolite schist interlayered with weakly layered plagioclase-chlorite-biotite-actinolite schist and minor carbonaceous phyllite and quartzite. The lower contact is a thrust fault with the quartzite unit. The 2m unit hosts the mineralized magnetite-sulphide mineralized horizon.

Unit 3f is composed of light grey, tan to white thin platy quartz-muscovite schist with local small scale augen of quartz and feldspar. The unit occurs near the contact of the underlying meta-volcanic unit locally within the overlying carbonaceous unit. The unit indicates felsic volcanism at the end of the mafic volcanic activity and transition to the sedimentary deposition.

The upper most unit on the property is unit 3cp composed of medium to dark grey carbonaceous muscovite-quartz schist or phyllite, quartzite and rare light grey marble occurrences. The unit is an erosional remnant although the unit appears to be dramatically thicker in the southwest area of the property. This may be indicative of the postulated contemporaneous growth fault through the property.

# Regional Geology - Figure 3



# RB Claims - Sulphide Showings and Copper Anomalies

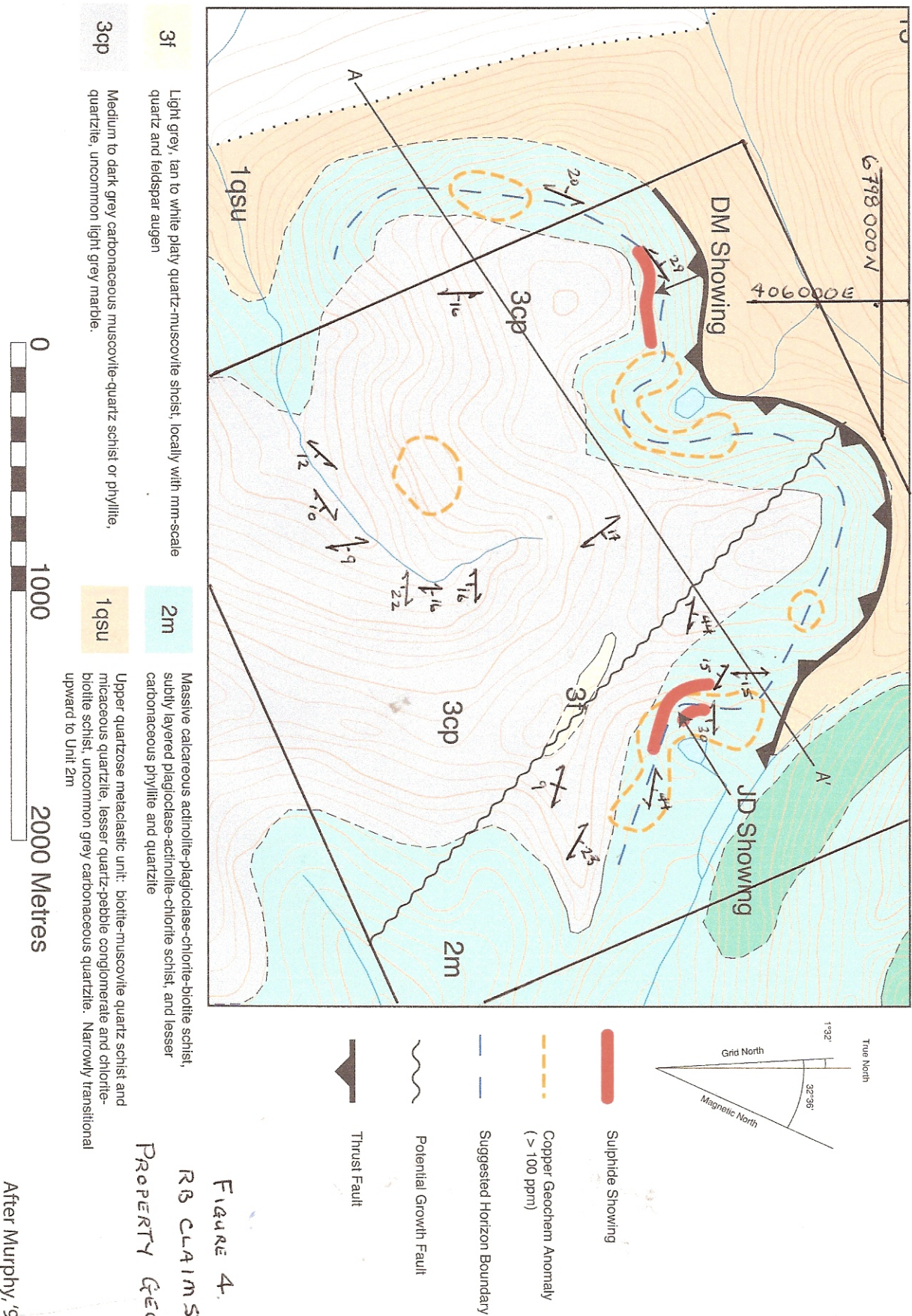


Figure 4.

RB CLAIMS  
PROPERTY GEOLOGY

After Murphy, '97

## **7.0 MINERALIZATION**

Two (2) gold-base metal showings have been located on the RB property. The location of the showings is exhibited on Figure 3.

The JD Showing is located near UTM co-ordinates 407836 E and 6796924 N (Nad 83). Channel samples from 2010 across the mineralization yielded values of 0.184 g/t gold and 672 ppm copper over 65 centimetres. The upper half of the interval yielded 0.248 g/t gold and 1335 ppm copper. The lower half of the interval assayed 0.068 g/t gold and 365 ppm copper.

The mineralization consists of coarse grained euhedral black magnetite crystals up to six (6) millimeters along bands of strongly foliated chlorite schist. Pyrite and rare chalcopyrite grains are disseminated along thin horizons within the foliated schist. The showing occurs in a low outcrop two (2) metres tall and five (5) metres long. Low outcrops and coarse talus blocks of mineralized schist can be traced over a total strike length of 30 metres.

The DM Showing is located near UTM co-ordinates 406300 E and 6796910 N (Nad 83) on the western side of the property. Sampling of narrow horizons (10 – 30 centimetres) within a sequence of strongly foliated chlorite schist yielded assay values of up to 0.163 g/t gold and 9970 ppm copper. Mineralization consists of disseminated pyrite and chalcopyrite with malachite weathering on surface.

The showing consists of abundant narrow horizons spread over a large exposure of chlorite schist on a steep west facing slope 150 metres wide and a 40 metre true thickness.

## **8.0 EXPLORATION**

In 2010 Arcturus Ventures Inc. conducted geologic mapping, prospecting and stream sediment and soil sampling on the RB property. A total of 16.5 man days were spent in the field with additional preparation time and expediting. Twenty-one (21) rock samples were collected from outcrops or float on the property. 159 soil samples were collected from systematic grid lines in the vicinity of the known mineralized showings. The lines were positioned to trace the projected trend of the mineralization. Eight (8) silt sediment samples were collected from the creek drainage in the south western corner of the claim group. Sample locations are displayed on Figure 5 – Rock Sample Locations and Figure 6 – Soil Sample Line Locations.

## **9.0 SAMPLING METHODS AND APPROACH**

Rock chip samples were collected from rusty weathering and mineralized horizons in bedrock exposures or from mineralized float. Representative rock chips across the stratigraphic intervals with location, width of sample and descriptions of the samples recorded in the field. The sample locations and outcrops were determined by hand-held GPS instruments. The sample location was marked in the field with an identifying station tag and flagging tape. The sample locations and descriptions are recorded in Appendix 3 and displayed on Figure 5.

Soil samples were collected along lines located by hand-held GPS instruments and compass. In the area of the JD showing lines were located 50 metres apart and samples collected at 25 metre intervals along the lines. Other lines outside the immediate area of the JD showing were located at 100 metre separation and samples collected along the lines at 25 metre intervals. Soil samples were collected from the “B” soil horizon using mattock. Depths and color of the soil sample with adjacent float material was recorded. Depths of sample ranged from 10 centimetres

to 40 centimetres. Sample locations were marked in the field with the station number on flagging tape. The sample locations are recorded in Appendix 4 and displayed on Figure 6.

Silt sediment samples were obtained from the active stream bed. The sample sites were located by hand held GPS in the UTM co-ordinate system. The site was marked with flagging tape and the sample number recorded on the flag.

## **10.0 SAMPLE PREPARATION, ANALYSIS AND SECURITY**

The samples collected in the field were under supervision to Whitehorse. The samples were sorted, air dried and delivered to ALS Laboratories at Whitehorse and transported under ALS Laboratories to ALS Minerals Laboratory in North Vancouver for analysis.

Assay certificates are included in Appendix 5 of this report.

The soil and silt sediment samples were dried, screened to -180 microns, dissolved in aqua regia solution and then analyzed for 51 elements using the inductively coupled plasma with atomic emission spectroscopy technique (ME-MS41). An additional 30 gram charge was further analysed for gold by fire assay with inductively coupled plasma-atomic emissions spectroscopy finish (Au-TL42).

Multi-element analyses for rock samples were carried out at ALS Canada at the Minerals Laboratory in North Vancouver, B.C. Each sample was dried, fine crushed to better than 70% passing -2mm and then a 250 g split was pulverized to better than 85% passing 75 micron. The fine fraction was then analyzed for gold using fire assay followed by inductively coupled plasma-atomic emission spectroscopy analysis and for 35 other elements using an aqua regia digestion and inductively coupled plasma-atomic emission spectroscopy analysis (Au-TL42) and ME-MS41).

Analyses were done using industry-standard fire assay and ICP techniques. The ALS Canada's Minerals Laboratory in Vancouver carries ISO 9001:2000 registration and is accredited to ISO 17025 by Standards Council of Canada for a number of specific test procedures including fire assay Au by AA, ICP and gravimetric finish, and multi-element ICP and AA assays for Ag, Cu, Pb and Zn.

## **11.0 INTERPRETATION AND CONCLUSIONS**

Geological mapping indicates that the magnetite-sulphide occurrences on the RB property are volcanogenic and stratabound. The property is underlain by the same stratigraphic units that host the Fyre Lake VMS Besshi-type deposit. The increased thickening of the upper carbonaceous unit is further support for the previously postulated contemporaneous growth fault trending through the property (Foreman, 2004). The magnetite (oxide) iron formation deposits form distal to VMS mineralization often overlying the deposits.

Two (2) mineralized showings have been located and sampled. Channel samples from the JD showing assayed 0.184 g/t gold and 672 ppm copper across a true width of 0.65 metres. The upper 0.35 metres assayed 0.248 g/t gold and 1335 ppm copper. An assay from the DM showing assayed 0.163 g/t gold and 9970 ppm copper.

Soil and rock geochemistry indicates a broad copper anomaly north and south of the JD showing. Copper has a peak value of 383 ppm 200 metres north of the showing. The anomalous values continue to the southeast following the topography suggesting that the horizon is shallow to near flat dipping. Zinc values correlate to the high copper zone the peak zinc value is 422 ppm 500

metres north of the showing. Samples 600 metres north and 400 metres west of the JD showing has a peak gold value of 0.22 ppm gold with 147.5 ppm copper and weakly anomalous zinc. Peak values of 230 ppm copper, 298 zinc and 0.13 ppm gold occur southeast of the JD showing.

Sampling east of the DM showings covered the prospective stratigraphy and yielded anomalous copper (up to 404 ppm), zinc (up to 593 ppm) and detectable gold-in-soil samples. The trend also suggests a shallow dipping horizon that is at least intermittent for a kilometer of strike length.

Figures 4 and 7 highlight the shallow dipping nature of the stratigraphy with coincident copper geochemical anomalies and the prospective horizon for hosting a Besshi-type VMS deposit..

The anomalous gold-in-soil north of the JD showing appears to be located higher in the stratigraphy. It occurs in the upper thrust plate. The thrust fault exposed in the north-facing cliffs is composed orange weathering iron carbonate with quartz and spotty mariposite and pyrite. The setting is prospective for gold vein type mineralization.

## **12.0 RECOMMENDATIONS**

Additional detail soil sampling, geological mapping is recommended especially in the area of the gold-in-soil anomaly in the northeastern area of the property.

Diamond drilling is recommended to test the stratigraphy along the prospective horizon, specifically targeting the area of the showings. Drill holes should be steeply inclined, oriented east-west and designed to probe the lower contact of the meta-volcanic unit (2m).

Helicopter support for drilling program is recommended. A quality control program is also recommended including use of commercial standard samples for copper and gold.

The recommended program is estimated to cost \$250 - \$300 per metre including geological, geotechnical, assay and support costs. A minimum of 2000 metres of drilling is estimated to cost %500,000 to \$600,000.

Figure 7 - Rock Sample Locations and Station Numbers

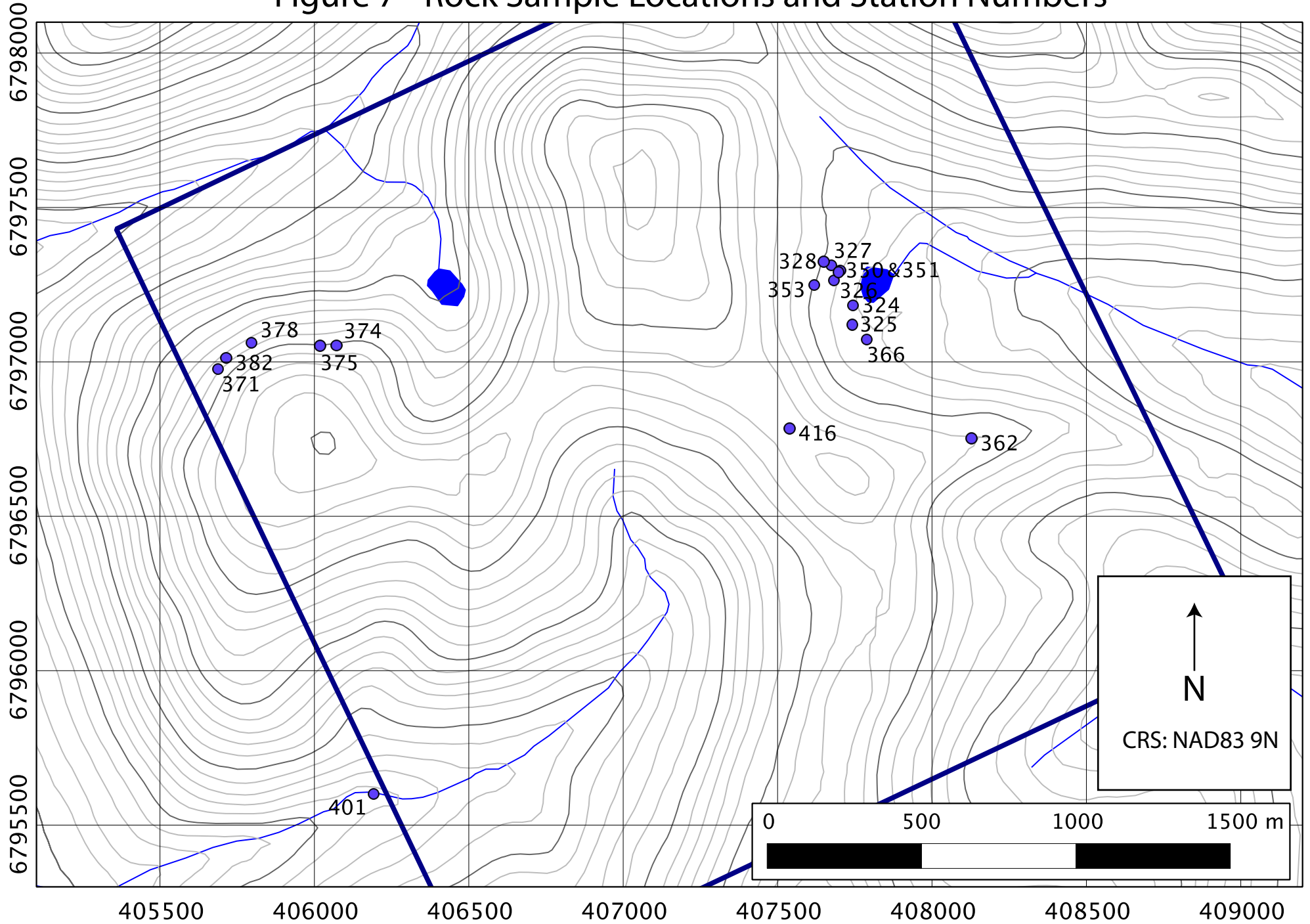
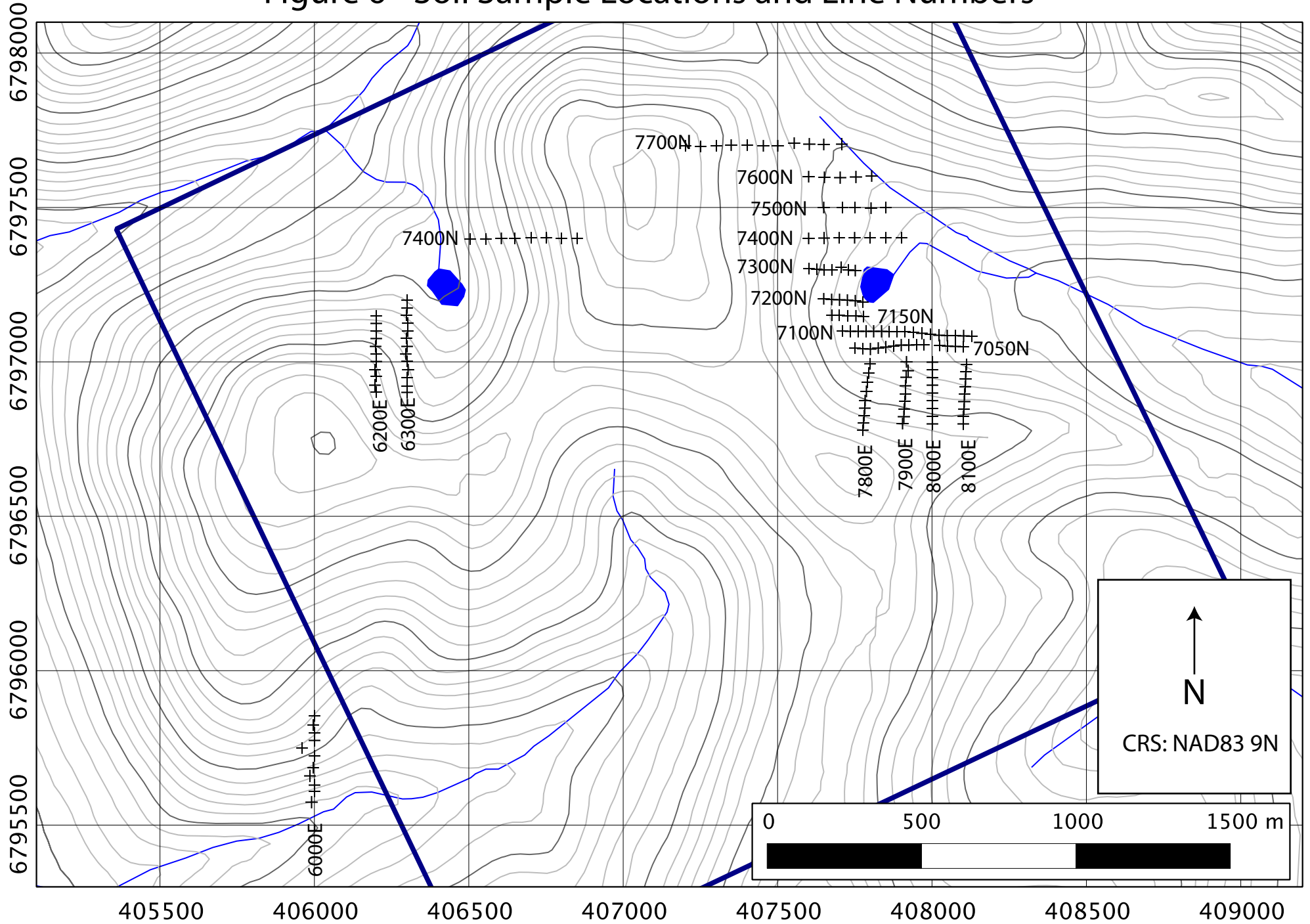
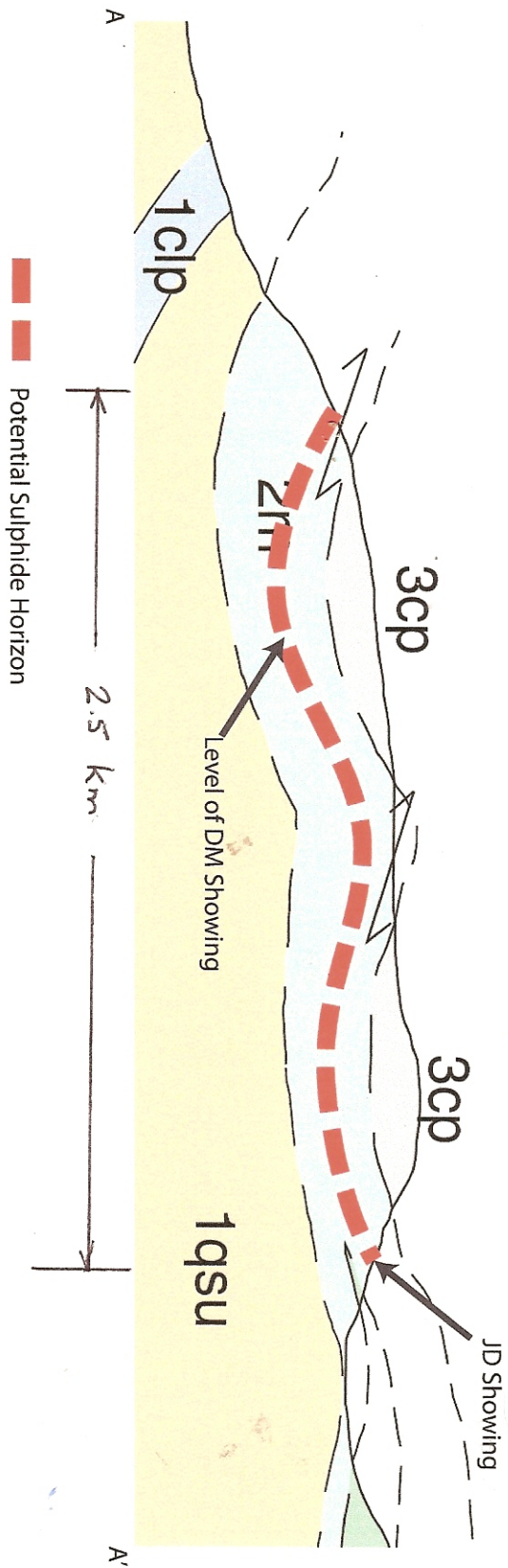


Figure 6 - Soil Sample Locations and Line Numbers



# RB Claims - Cross Section with Sulphide Horizon



Looking Northwest

After Murphy, '97

Arcturus Ventures Inc.

Stratigraphic Cross Section

A-A'

Figure 7

### 13.0 REFERENCES

- Davidson, G.S., 1997. Assessment Report on the Bas 1 – 64 claims (YB83822 – YB83885) and Ket 1 – 48 claims (YB83886 – YB83933)
- Foreman, I.J., 1998. The Fyre Lake Project 1997: Geology and Mineralization of the Kona massive sulphide deposit. In: Yukon Exploration and Geology 1997, Exploration and Geological Services Division, Yukon, Indian and Northern Affairs Canada, p.105-113.
- Foreman, I.J., 2004. Assessment Report on Geological and Geochemical Surveys of the RB 1 – 94 Claims (YB93186 – YB93243 and YB94198 – YB94333).
- Mitchell, M.A., 2002. Assessment Report on the RB 1 – 58 Claims (YB93186 – YB93243).
- Murphy, D.C. and Piercey, S.J., 1999. Open File 1999 – 4, Geological map of parts of Finlayson Lake (105 G/7,8 and parts of 1, 2 and 9) and Frances Lake (parts of 105H/5 and 12) map areas, southeastern Yukon (1:100,000 scale).
- Murphy D.C. and Piercey, S.J., 2000. Syn-mineralization faults and their re-activation, Finlayson Lake massive sulphide district, Yukon-Tanana Terrane, southeastern Yukon. In: Yukon Exploration and Geology 1999, Exploration and Geological Services Division, Yukon, Indian and Northern Affairs Canada, p.55-66.
- Yukon Minfile. Map Sheet 105 G. Yukon Geology Program, Whitehorse, Yukon.

## APPENDIX 1

### STATEMENT OF QUALIFICATIONS

I, Robert W. Stroshein, P.Eng. do hereby certify that:

- 1) I am currently self-employed, with an office at  
106 – #3 Glacier Lane  
P.O. Box 10559 Station Main  
Whitehorse, Yukon, Canada  
Y1A 7A1
- 2) I graduated with a BSc. Degree in Geological Engineering from the University of Saskatchewan at Saskatoon, SK in 1973.
- 3) I am a member of the Association of Professional Engineers of Yukon Territory (Registered Professional Engineer, No. 1165).
- 4) I have worked as an Exploration Geologist for a total of thirty-seven years since graduation from university primarily in the Yukon Territory.
- 5) I have examined the mineralization and host lithologies in the Finlayson Lake VMS district and have been an active participant in exploration programs in the region since 1974. I have conducted geochemical and geophysical surveys, geological mapping and diamond drilling on a number of properties in the region including the Fire Lake Property.
- 6) I conducted geological mapping and sampling on the RB property from June 20 – 25, 2010. I am responsible for preparation of this report titled **ASSESSMENT REPORT ON THE 2010 GEOLOGICAL AND GEOCHEMICAL PROGRAM ON RB 1 – 12 (YB93186 – YB93197) RB 23 – 38 (YB93208 – YB93223) RB 45 – 52 (YB93230 – YB93237)**

Dated at Whitehorse, Yukon Territory this 18<sup>th</sup> day of February, 2011

Robert W. Stroshein, P.Eng.

**Arcturus Ventures Inc.  
RB Claims  
Statement of Expenditures 2010**

**Appendix 2**

<b>Supplier</b>	<b>Number</b>	<b>Item</b>	<b>Rate</b>	<b>Cost</b>
Trans North Helicopters June 20	1.6	Hours	\$1,100.00	\$1,760.00
Jet Fuel June 20	182.4	Liters	\$1.40	\$255.36
Trans North Helicopters June 25	2.6	Hours	\$1,100.00	\$2,860.00
Jet Fuel June 25	296.4	Liters	\$1.40	\$414.96
Camp Costs				\$1,912.61
Salary Blake Macdonald	2.5	Days	\$500.00	\$1,250.00
Salary R. Stroshein	5.5	Days	\$700.00	\$3,850.00
Salary Brandon Macdonald	8.5	Days	\$460.00	\$3,910.00
Salary E. Gantiva	6.5	Days	\$400.00	\$2,600.00
Assays - Rock Samples ALS	21	Samples	\$31.60	\$663.60
Assays - Silt Samples - ALS	8	Samples	\$28.40	\$227.20
Assays - Soil Samples - ALS	159	Samples	\$28.40	\$4,515.60
<b>Total Expenses June 2010</b>				<b>\$24,219.33</b>

Arcturus Ventures Inc.  
RB Claims  
Geological Descriptions 2010

Appendix 3

Station	Type	UTM (E)	UTM (N)	Elev.	Sample No.	Rock Type	Description	Foliation	Dip	Lineation	Jointing	Au ppm	Cu ppm	Zn ppm
315	camp	407799	6797184	1570										
316	otc	407738	6797119	1570		Meta volc	JD foliaform py-mag-cpy	121	15 S					
317	otc	407852	6796999	1571		Meta volc	Grey weath foliated of mod bn	116	26 S					
318	otc	407792	6997072	1571		Meta volc	JD rusty weath lim tr py							
319	otc	407670	6797168	1586		Meta volc	f.g. grey green	0	15 E					
320	otc	407702	6797188	1580		Meta volc	JD up dip fine lam dis py							
321	otc	407688	6797257	1578		Meta volc	JD up dip rusty weath py w/leach cav	110	16					
322	flt	407671	6797320	1598		Meta volc	rusty w/ lim and py dis							
323	flt	407708	6797484	1603		Meta volc	orange rusty lim cobble							
324	otc	407743	6797183	1569	B666651	Meta volc	Coarse sulph py and cpy, mal 40 cm in 2 bns of 10 cm	91	30 S			0.529	6350	150
325	otc	407742	6797121	1573	B666652	Meta volc	JD 65 cm mag, py, cpy					0.184	672	181
					B666653	Meta volc	JD upper					0.248	1335	116
					B666654	Meta volc	JD lower					0.068	365	230
326	otc	407682	6797264	1574	B666655	Meta volc	JD up dip					0.027	169.5	74
327	otc	407674	6797314	1590	B666656	Meta volc	JD up dip 40 cm					0.008	57.1	74
328	flt	407649	6797325	1601	B666657	Meta volc	5 - 7 % dis py					0.012	174.5	89
329	otc	407632	6797330	1605		Meta volc	weak rusty weathered	30	15 E	90				
330	flt	407608	6797342	1606		Meta volc	rusty orange weathered w/dis py							
331	otc	407249	6797713	1733		Meta volc	Thick bedded w/ biotite	100	17 S	110				
332	talus	407238	6797	1748		Carb phyll								
333	grid	407336	6797435	1695			old soil grid picket							
334	otc	407297	6797283	1730		Carb phyll	dark grey weathere. Black platy phyllite	105	44 N	104				
335	grid	407173	6797108	1727			old soil grid picket							
336	grid	407700	6797150				soil grid station							
337	grid	407650	6797200				soil grid station							
338	grid	407600	6797300				soil grid station							
339	grid	407600	6797400				soil grid station							
340	otc	407803	6797339	1559		Meta volc	lens of qz-chl w/mal 25 cm by 10cm. Pillow in volc	104	42 S					
341	otc	407773	6797375	1558		Meta volc	mal w/qz boudin. Small scale fault 100/66 S							
342	otc	407789	6797387	1583		Meta volc	green weathering well foliated green chl-qz sch	60	6 S	95				
343	otc	407805	6797408	1584		Meta volc	grey weath mod/well foliated irreg bn green chl-qz sch	40	12 E					
344	otc	407826	6797458	1589		Meta volc	grey green weath mod/well folia beds chl-qz sch	105	9 S	70	000/72 E			
345	otc	407872	6797467	1581		Meta volc	light grey green finely bn chl-qz sch light grey sandy laminae	163	5 E	85	132/79 E			
346	talus	407846	6797516	1580		Qz-feld sch	grey brown weath light grey qz-feldsp sch/gn							
347	creek	407903	6797518	1568		Qz-feld sch	grey brown weath light grey qz-feldsp sch/gn							
348	otc	407864	6797401	1566		Meta volc	light green mod well folia chl-qz sch small scale fold	162	21 E		010/73 W			
349	otc	407842	6797386	1595		Meta volc	green well folia chl-qz sch	0	10 E		018?64 E			
350	otc	407702	6797296	1588	B666658	Meta volc	0.5 m 5-7 % lim/py cav tr mal					0.018	143.5	89
351	otc	407697	6797291	1589	B666659	Meta volc	multi bns lim/dis py	125	6 W			0.012	194	46
352	otc	407612	6797278	1612		Meta volc	grey green mod well folia chl-qz sch	132	18 W		140/75 E			
353	otc	407618	6797250	1612	B666660	Meta volc	dis lim/py along folia 2m	90	16 S	115	170/71 E	0.038	937	216
354	otc	407927	6797001	1560		Meta volc	green chl-qz-bio sch well folia tr mag grains tr diss f.g. py	85	8 S	120				
355														
356	otc	407960	6797967	1569		Meta volc	green chl-qz-bio sch well folia tr mag grains tr diss f.g. py							
357	otc	408162	6796930	1562		Meta volc	green chl-qz-bio sch well folia	115	32 E	125				
358	otc	408221	6796867	1575		Carb phyll	grey brown weath dark greymeta-silt w/ inter qz-chl sch	5	35 E					
359	otc	408284	6796846	1595		Carb phyll	blue grey- black weath carb phyll							
360	otc	408310	6796841	1597		Carb phyll	brown black weath thin platy well laminae/folia carb phyll	122	5 E					
361	otc	408336	6796773	1609		Carb phyll	brown black weath thin platy well laminae/folia carb phyll	115	23 E	104				
362	otc	408127	6796753	1620	B666661	Qz vn	1.5 rusty weathered dis py/lim	15	90			0.003	28.2	7
363	otc	407790	6796610	1664		Carb phyll	fine lamina car siltstone	120	6 E					
364	otc	407726	6796639	1685		Carb phyll	flat lying carb phyll dark grey - black well banded							
365	otc	407550	6796783	1632		Qz-musc Sch	Well foliated tan to light yl-brn musc sch							
366	otc	407788	6797073	1563	B666662	Meta volc	rusty lim/py folia bns 25-30 cm					0.109	343	59

Arcturus Ventures Inc.

RB Claims

Appendix 3

Geological Descriptions 2010

367	DM	406336	6796904			location co-ords							
368	otc	406910	6797036	1668		Carb phyll	mod well folia grey-brown weath dark grey carb phyll	148	9 N				
369	otc	406703	6796909	1653		Carb phyll	light grey weath grey phyll	150	17 N	90			
370	otc	405762	6796908	1636		Meta volc	Chl-qz sch weak rusty f.g dis py						
371	otc	405687	6796978	1586	B666663	Meta volc	DM 1.2 m tr-1 % dis py				0.035	116	549
372	flt	405784	6797079	1572		Meta volc	rusty orange weathered w/dis py						
373	otc	405915	6797145	1505		Meta volc	1.5 rusty horizon weakly min w/dis py	35	20 N				
374	otc	406071	6797054	1612	B666664	Meta volc	DM zone 3 -% py w/mal, azu				0.163	9970	114
375	otc	406018	6797053	1598	B666665	Meta volc	DM 0.5 m dis py (1-3 %) mal	61	29 N		0.015	970	73
376	flt	405972	6797055	1607		Meta volc	med grained diss mag						
377	flt	405840	6797054	1608		Meta volc	fine grains mag diss along folia						
378	flt	405795	6797063	1579	B666666	Meta volc	3-5% dis py				0.015	683	33
379	flt	405780	6797061	1572		Meta volc	3-5% dis py orange brown rusty weathered						
380	flt	405749	6797062	1571		Meta volc	f.g. dis py grains along foliation, orange brown weatered						
381	flt	405717	6797032	1574		Meta volc	f.g. dis py grains along foliation, orange brown weatered						
382	flt	405714	6797013	1581	B666667	Meta volc	2-3 % dis py, orange rusty weathered, lim, leach cavities				0.015	194.5	103
383	grid	405900	6796603	1678			soil grid potential stn						
384	grid	406900	6796600				soil grid potential stn						
385	otc	406458	6796261	1615		Carb phyll	dark grey weathered. Black platy phyllite	180	16 E				
386	otc	407337	6796705	1644		Carb phyll	carb phyll over qz-musc sch	70	19 N				
387	otc	407147	6796259	1434	silt samp	Carb phyll	well foliated grey carb phyll	54	12 S		0.002	34.2	96
388	silt	407141	6796215	1441	silt samp						<0.001	47.8	80
389	otc	407023	6796034	1423		Carb phyll	well folia grey carb phyll	95	22 S				
390	otc	407014	6796041	1419		Carb phyll	well folia grey carb phyll						
391	otc	407001	6795983	1417		Carb phyll	well folia grey carb phyll	155	21 S				
392	otc	406973	6795936	1405		Carb phyll	well folia grey carb phyll						
393	silt	406947	6795933	1403	silt samp						<0.001	48.7	100
394	otc	406894	6795887	1399		Carb phyll	well folia grey carb phyll	175	9 E				
395	otc	406803	6795834	1385		Carb phyll	well folia grey carb phyll	10	14 E				
396	otc	406723	6795739	1374		Carb phyll	well folia grey carb phyll	60	10 S				
397	creek	406613	6795670	1347		Carb phyll	well folia grey carb phyll						
398	otc	406504	6795662	1338		Carb phyll	well folia grey carb phyll						
399	silt	406377	6795596	1332	silt samp								
400	silt	406304	6795569	1335	silt samp						<0.001	37.9	112
401	otc	406191	6795602	1321	B666668	Meta volc	Tr dis py				0.009	72.8	22
402	otc	406095	6795541	1311		Meta volc	well folia chl sch w/small qz boudins	40	12 S	50/74 W			
403	silt	406006	6795513	1309	silt samp						0.003	50	120
404	grid						soil grid						
405	soil	405990	6795576	1309	405990/6795575		10 cm - light brown				0.001	56.1	91
406	soil	405998	6795608	1321	406000/6795610		20 cm - dark brown - meta volc				0.008	52.5	99
407	soil	405998	6795630	1351	406000/6795630		25 cm - brown - meta volc, carb phyll				0.003	50.6	86
408	soil	405986	6795660	1346	405985/6795660		20 cm - brown - meta volc, carb phyll, felsic sch				NSS	NSS	NSS
409	soil	405994	6795686	1363	405995/6795686		20 cm - brown - meta volc, carb phyll				0.001	63.1	55
410	soil	406001	6795728	1381	406000/6795725		20 cm - brown - meta volc, carb phyll				0.003	51.4	49
411	soil	405997	6795753	1398	405960/6795750		20 cm - brown - meta volc, carb phyll				0.001	19.4	20
412	soil	405997	6795776	1407	406000/6795775		20 cm - brown - meta volc, carb phyll, felsic sch - tr py- ash				0.001	21.3	45
413	soil	405998	6795800	1421	406000/6795800		15 cm - brown - meta volc - ash layer present				0.001	15.3	41
414	soil	405993	6795823	1420	405995/6795825		25 cm - brown - carb phyll				0.001	25	59
415	soil	406004	6795856	1438	406000/6795855		20 cm - red brown - carb phyll, qz vn				0.003	105.5	139
416	otc	407538	6796785	1678	B666669	Qz vn	orange weathering bull quartz				0.002	14.2	5
BM033					B666670						0.009	243	176
BM059					B666671						0.001	16.1	5

**Arcturus Ventures Inc.**  
**RB Claims 2010 Soil Sample Locations**

**Appendix 4**

Name	UTM-Zone	Ex-East	Ex-North	Au	Ag	As	Cu	Pb	Zn
7050N 7700E	9	407701	6797050	0.001	NSS	NSS	NSS	NSS	NSS
7050N 7725E	9	407726	6797048	#N/A	#N/A	#N/A	#N/A	#N/A	#N/A
7050N 7750E	9	407751	6797046	0.007	0.07	5.2	153.0	29.2	402.0
7050N 7775E	9	407775	6797044	0.002	0.07	7.9	66.6	10.0	253.0
7050N 7800E	9	407800	6797042	<0.001	0.11	1.2	10.1	3.4	26.0
7050N 7825E	9	407825	6797045	<0.001	0.03	0.5	2.6	1.3	5.0
7050N 7850E	9	407850	6797049	0.004	0.04	7.2	31.7	5.7	87.0
7050N 7875E	9	407875	6797052	0.009	0.05	6.8	28.3	4.9	80.0
7050N 7900E	9	407900	6797055	0.016	0.34	2.1	64.8	3.0	116.0
7050N 7925E	9	407925	6797055	0.030	0.09	6.9	171.0	5.0	152.0
7050N 7950E	9	407949	6797056	0.014	0.16	2.7	65.4	3.5	247.0
7050N 7975E	9	407974	6797056	0.012	0.17	2.5	36.3	4.8	73.0
7050N 8000E	9	407998	6797056	#N/A	#N/A	#N/A	#N/A	#N/A	#N/A
7050N 8025E	9	408024	6797054	0.015	0.18	3.1	230.0	3.5	196.0
7050N 8050E	9	408049	6797053	0.002	0.02	0.8	140.5	0.5	232.0
7050N 8075E	9	408075	6797051	0.006	0.16	2.2	57.8	3.3	102.0
7050N 8100E	9	408140	6797044	<0.001	0.16	0.1	16.7	1.2	5.0
7100N 7700 000E	9	407710	6797100	0.024	0.10	9.2	94.9	10.5	211.0
7100N 7700 025E	9	407735	6797100	0.013	0.17	7.6	89.4	10.6	149.0
7100N 7700 050E	9	407760	6797100	0.001	0.24	6.6	45.1	2.3	66.0
7100N 7700 075E	9	407785	6797100	0.010	0.18	4.9	52.9	3.6	89.0
7100N 7700 100E	9	407811	6797100	0.005	0.04	7.5	37.7	4.2	63.0
7100N 7700 125E	9	407836	6797099	0.004	0.05	1.5	64.2	1.3	101.0
7100N 7700 150E	9	407861	6797099	0.001	0.12	1.4	8.0	2.1	23.0
7100N 7700 175E	9	407886	6797099	0.042	0.15	6.0	187.5	5.9	298.0
7100N 7700 200E	9	407911	6797099	0.031	0.11	5.2	166.0	4.7	282.0
7100N 7700 225E	9	407939	6797096	0.021	0.13	4.2	266.0	3.8	223.0
7100N 7700 250E	9	407967	6797093	0.001	0.07	0.6	34.0	1.6	19.0
7100N 7700 275E	9	407994	6797090	0.003	0.18	0.9	20.1	2.1	18.0
7100N 7700 300E	9	408022	6797087	0.003	0.24	0.6	7.7	3.9	13.0
7100N 7700 325E	9	408049	6797086	0.014	0.44	2.9	76.6	4.5	110.0
7100N 7700 350E	9	408075	6797086	0.017	0.16	4.2	106.5	4.0	144.0
7100N 7700 375E	9	408102	6797085	0.005	0.21	1.2	10.0	3.2	48.0
7100N 7700 400E	9	408128	6797084	0.013	0.07	3.4	40.0	2.8	97.0
7800E 7200N	9	407776	6796779	0.002	0.28	11.4	53.9	21.8	129.0
7800E 7175N	9	407777.75	6796803	0.002	0.30	8.9	43.1	20.2	112.0
7800E 7150N	9	407779.5	6796827	0.001	0.31	0.6	4.1	3.3	9.0
7800E 7125N	9	407781.25	6796851	0.001	0.18	6.6	23.8	14.3	61.0
7800E 7100N	9	407783	6796875	0.002	0.18	6.6	19.4	14.5	50.0
7800E 7075N	9	407787	6796905	0.001	0.08	2.0	16.7	5.2	41.0
7800E 7050N	9	407791	6796935	0.001	0.12	3.5	11.5	7.5	30.0
7800E 7025N	9	407794	6796965	<0.001	0.04	1.3	11.5	3.2	19.0
7800E 7000N	9	407798	6796995	0.002	0.05	1.9	20.4	4.7	35.0
7900E 7200N	9	407904	6796801	0.001	0.34	3.3	39.9	15.3	103.0
7900E 7175N	9	407908	6796823	0.001	0.22	0.5	5.8	2.3	8.0
7900E 7150N	9	407910	6796847	<0.001	0.09	0.2	2.4	1.5	6.0
7900E 7125N	9	407911	6796873	<0.001	0.20	0.8	9.0	2.0	16.0
7900E 7100N	9	407913	6796896	0.001	0.20	0.9	6.9	2.5	16.0
7900E 7075N	9	407914	6796923	<0.001	0.02	0.3	2.6	1.9	3.0
7900E 7050N	9	407915	6796951	0.012	0.19	21.5	82.2	12.7	159.0
7900E 7025N	9	407922	6796972	0.004	0.10	6.4	25.6	5.6	71.0
7900E 7000N	9	407917	6797001	0.016	0.04	3.3	36.8	10.3	160.0
8000E 6800N	9	408000	6796800	0.005	0.33	12.2	53.9	12.7	111.0
8000E 6825N	9	408000	6796825	<0.001	0.15	0.5	3.7	2.2	9.0

**Arcturus Ventures Inc.**  
**RB Claims 2010 Soil Sample Locations**

**Appendix 4**

8000E 6850N	9	408000	6796850	0.002	0.47	4.1	50.8	14.5	120.0
8000E 6875N	9	408000	6796875	0.001	0.57	3.7	49.5	20.6	131.0
8000E 6900N	9	408000	6796900	0.002	0.32	87.3	16.5	9.9	70.0
8000E 6925N	9	408000	6796925	0.005	0.15	55.5	77.2	12.8	223.0
8000E 6950N	9	408000	6796950	0.001	0.14	2.7	11.1	3.1	18.0
8000E 6975N	9	408000	6796975	0.020	0.32	3.4	105.0	12.4	283.0
8000E 7000N	9	408000	6797000	0.002	0.16	2.2	89.7	2.6	66.0
8100E 6800N	9	408100	6796800	0.005	0.79	9.9	82.1	12.3	182.0
8100E 6825N	9	408101	6796824	0.012	3.22	28.2	196.0	24.6	486.0
8100E 6850N	9	408103	6796848	0.015	1.23	13.1	122.0	17.9	301.0
8100E 6875N	9	408104	6796872	0.024	1.55	18.6	115.0	18.7	444.0
8100E 6900N	9	408106	6796897	0.010	0.29	71.3	89.6	12.3	135.0
8100E 6925N	9	408107	6796921	NSS	0.22	39.2	75.5	14.2	116.0
8100E 6950N	9	408108	6796945	0.015	0.15	33.2	92.6	8.2	199.0
8100E 6975N	9	408110	6796969	0.009	0.25	13.7	56.8	7.8	161.0
8100E 7000N	9	408111	6796993	0.134	0.16	3.4	147.0	3.4	172.0
7150N 7675E	9	407675	6797151	0.003	0.09	1.6	37.5	3.1	79.0
7150N 7700E	9	407699	6797151	0.001	0.03	0.5	5.9	1.7	8.0
7150N 7725E	9	407726	6797150	0.014	0.18	4.5	177.5	6.6	94.0
7150N 7750E	9	407753	6797149	0.003	0.09	2.1	33.9	1.7	48.0
7150N 7775E	9	407778	6797148	0.060	0.39	6.8	123.0	7.9	470.0
7200N 7650E	9	407649	6797205	<0.001	0.04	0.2	5.5	1.7	24.0
7200N 7675E	9	407675	6797204	0.019	0.08	1.4	43.5	4.8	78.0
7200N 7700E	9	407700	6797202	0.030	0.10	3.9	28.0	4.5	304.0
7200N 7725E	9	407726	6797201	0.008	0.26	1.8	711.0	2.9	247.0
7200N 7750E	9	407751	6797199	0.008	0.06	2.0	208.0	4.1	68.0
7200N 7775E	9	407776	6797195	0.025	0.07	7.0	58.7	3.7	214.0
7300N 000E	9	407601	6797302	<0.001	0.20	5.2	13.6	1.3	11.0
7300N 025E	9	407626	6797301	0.031	0.24	25.0	95.3	9.8	339.0
7300N 050E	9	407650	6797299	0.016	0.48	11.1	203.0	10.5	249.0
7300N 075E	9	407676	6797299	<0.001	0.14	0.2	20.8	0.5	12.0
7300N 100E	9	407705	6797307	0.004	0.11	2.4	142.5	3.4	95.0
7300N 125E	9	407728	6797299	0.001	0.10	0.7	99.5	1.9	35.0
7300N 150E	9	407751	6797296	0.003	0.08	5.4	213.0	3.3	69.0
7400N 7600E	9	407600	6797400	0.001	0.39	68.4	42.0	4.6	61.0
7400N 7650E	9	407650	6797402	0.005	0.02	18.5	383.0	1.3	46.0
7400N 7700E	9	407699	6797403	0.011	0.07	30.3	212.0	1.8	101.0
7400N 7750E	9	407749	6797403	0.014	0.04	22.5	176.0	8.6	150.0
7400N 7800E	9	407799	6797402	0.009	0.09	14.2	285.0	13.5	136.0
7400N 7850E	9	407850	6797402	0.002	0.05	6.6	54.9	45.3	105.0
7400N 7900E	9	407901	6797402	0.014	0.10	6.5	45.9	41.2	131.0
7500N 7600 000E	9	407596	6797504	0.005	NSS	NSS	NSS	NSS	NSS
7500N 7600 050E	9	407649	6797501	0.002	0.05	2.6	28.4	3.6	24.0
7500N 7600 100E	9	407709	6797501	0.004	0.17	4.4	36.7	2.1	29.0
7500N 7600 150E	9	407750	6797500	0.001	0.14	2.3	13.6	6.2	24.0
7500N 7600 200E	9	407802	6797499	0.001	0.62	1.7	11.3	8.2	10.0
7500N 7600 250E	9	407849	6797501	<0.001	0.27	0.5	3.2	4.0	11.0
7500N 7600 300E	9	407849	6797501	<0.001	0.60	0.3	2.3	2.8	4.0
7600N 7600E	9	407600	6797600	0.011	0.23	8.3	137.0	9.7	422.0
7600N 7650E	9	407651	6797599	<0.001	0.19	5.6	20.7	28.4	29.0
7600N 7700E	9	407702	6797597	<0.001	0.08	6.7	19.2	31.7	86.0
7600N 7750E	9	407753	6797600	<0.001	0.39	3.2	16.9	82.1	75.0
7600N 7800E	9	407804	6797602	0.002	0.05	4.6	20.8	31.1	49.0
7700N 7750 000E	9	407553	6797709	0.001	0.07	1.0	5.8	2.8	11.0
7700N 7750 050E	9	407602	6797706	0.001	0.04	4.4	15.5	31.9	94.0

**Arcturus Ventures Inc.**  
**RB Claims 2010 Soil Sample Locations**

**Appendix 4**

7700N 7750 100E	9	407649	6797704	0.001	0.04	1.6	9.8	7.7	28.0
7700N 7750 150E	9	407708	6797706	0.001	0.10	5.1	20.4	21.0	53.0
6300E 6900N	9	406300	6796902	0.005	0.14	21.6	88.5	3.1	66.0
6300E 6925N	9	406300	6796922	<0.001	0.19	4.1	13.7	2.1	21.0
6300E 6950N	9	406300	6796950	<0.001	0.12	4.9	14.2	3.1	30.0
6300E 6975N	9	406303	6796975	0.008	0.10	23.9	44.6	4.4	74.0
6300E 7000N	9	406300	6797003	<0.001	0.81	1.3	20.7	1.6	9.0
6300E 7025N	9	406296	6797026	<0.001	0.32	2.8	16.2	2.4	11.0
6300E 7050N	9	406300	6797051	0.001	0.53	1.5	15.6	1.4	9.0
6300E 7075N	9	406297	6797077	0.003	0.14	24.5	147.0	6.6	124.0
6300E 7100N	9	406302	6797101	0.010	0.15	23.5	270.0	5.3	115.0
6300E 7125N	9	406301	6797126	0.006	0.12	17.2	205.0	4.7	102.0
6300E 7150N	9	406298	6797151	0.010	0.12	8.4	246.0	2.6	179.0
6300E 7175N	9	406299	6797175	0.006	0.12	1.3	200.0	0.5	190.0
6300E 7200N	9	406300	6797200	0.009	0.08	4.1	333.0	1.5	161.0
6200E 7000N	9	406199	6796903	0.001	0.25	17.6	48.7	8.6	115.0
6200E 7025N	9	406196	6796925	<0.001	0.25	8.5	12.1	2.7	25.0
6200E 7050N	9	406199	6796954	0.002	0.54	34.3	65.1	10.4	140.0
6200E 7075N	9	406196	6796976	0.004	0.43	31.5	103.0	14.3	170.0
6200E 7100N	9	406199	6797002	0.007	0.21	24.4	83.1	7.3	115.0
6200E 7125N	9	406200	6797026	0.002	0.50	9.4	120.5	5.6	52.0
6200E 7150N	9	406198	6797051	0.007	0.75	95.2	88.4	8.0	116.0
6200E 7175N	9	406200	6797076	0.003	0.15	9.1	59.6	2.2	63.0
6200E 7200N	9	406200	6797100	0.005	0.26	59.9	87.0	8.6	124.0
6200E 7225N	9	406199	6797125	0.005	0.24	3.5	188.0	1.5	51.0
6200E 7250N	9	406200	6797150	0.003	0.10	23.6	105.5	3.0	97.0
7400N 000E	9	406503	6797398	0.004	0.21	16.6	119.5	42.6	593.0
7400N 050E	9	406554	6797399	0.018	0.35	15.8	270.0	7.4	195.0
7400N 100E	9	406605	6797400	0.024	0.35	5.3	404.0	7.0	245.0
7400N 150E	9	406649	6797401	0.017	0.24	3.2	187.5	5.5	153.0
7400N 200E	9	406701	6797402	0.005	0.21	39.1	62.6	12.9	157.0
7400N 250E	9	406751	6797402	0.020	0.61	45.1	117.5	16.9	229.0
7400N 300E	9	406800	6797400	0.006	0.86	41.3	64.4	13.6	173.0
7400N 350E	9	406850	6797400	0.007	0.67	38.9	81.3	15.9	241.0
7700N 7200E	9	407201	6797701	0.072	0.66	19.5	206.0	30.0	157.0
7700N 7250E	9	407250	6797698	0.224	0.29	19.0	147.5	7.1	98.0
7700N 7300E	9	407301	6797701	0.008	0.25	22.8	104.5	2.7	96.0
7700N 7350E	9	407349	6797702	0.009	0.26	26.5	90.5	5.6	137.0
7700N 7400E	9	407401	6797703	0.002	0.18	3.2	24.2	3.0	38.0
7700N 7450E	9	407453	6797700	0.002	0.10	20.7	23.6	35.2	57.0
7700N 7500E	9	407500	6797701	0.003	0.04	4.9	30.9	12.2	71.0
405990X 6795575Y	9	405990	6795575	0.001	0.76	2.3	56.1	12.2	91.0
406000X 6795610Y	9	406000	6795610	0.008	0.20	5.8	52.5	12.1	99.0
406000X 6795630Y	9	406000	6795630	0.003	0.60	6.6	50.6	15.1	86.0
400985X 6795660Y	9	400985	6795660	NSS	NSS	NSS	NSS	NSS	NSS
405995X 6795686Y	9	405995	6795686	0.001	0.35	3.4	63.1	6.9	55.0
406000X 6795725Y	9	406000	6795725	0.003	0.20	5.8	51.4	7.8	49.0
405960X 6795750Y	9	405960	6795750	0.001	0.14	2.1	19.4	6.3	20.0
406000X 6795775Y	9	406000	6795775	0.001	0.21	4.4	21.3	6.0	45.0
406000X 6795800Y	9	406000	6795800	0.001	0.17	2.4	15.3	10.6	41.0
405995X 6795825Y	9	405995	6795825	0.001	0.13	5.0	25.0	11.4	59.0
406000X 6795855Y	9	406000	6795855	0.003	0.14	5.1	105.5	10.2	139.0
0405985E-6795660N	9	405985	6795660	0.006	0.11	4.2	53.5	7.8	68.0

