

ARCHER, CATHRO & ASSOCIATES (1981) LIMITED
1016 – 510 West Hastings Street
Vancouver, B.C. V6B 1L8

Telephone: 604-688-2568

Fax: 604-688-2578

ASSESSMENT REPORT

describing

SOIL SAMPLING

at the

FOUR CORNERS WEST PROPERTY

4C 7-22	YC22686-YC22701
29-42	YC22708-YC22721
51-58	YC22730-YC22737
277-288	YC22862-YC22873
299	YC22884
301	YC22886
303	YC22888
305-308	YC22890-YC22893
355-356	YC22922-YC22923
377-382	YC22944-YC22949
403-404	YC22970-YC22971
405-408	YC23110-YC23113
429-434	YC22988-YC22993

NTS 105B/16 and 105G/01
Latitude 61°02'N; Longitude 130°09'W

located in the

Watson Lake Mining District
Yukon Territory

prepared by

Archer, Cathro & Associates (1981) Limited

for

WOLVERINE MINERALS CORP.
and
STRATEGIC METALS LTD.

by

S. Eaton, B.Sc., GIT
March 2011

CONTENTS

INTRODUCTION	1
PROPERTY LOCATION, CLAIM DATA AND ACCESS	1
HISTORY	1
GEOMORPHOLOGY	2
REGIONAL GEOLOGY	3
PROPERTY GEOLOGY	5
MINERALIZATION	6
SOIL GEOCHEMISTRY	6
DISCUSSION AND CONCLUSIONS	7
REFERENCES	8

APPENDICES

I	STATEMENT OF QUALIFICATIONS
II	SAMPLING AND ANALYTICAL PROCEDURES
III	CERTIFICATE OF ANALYSIS

FIGURES

<u>No.</u>	<u>Description</u>	<u>Following Page</u>
1	Property Location	1
2	Claim Locations	1
3	Tectonic Setting	3
4	Regional Geology	3
5	Property Geology	5
6	Soil Sample Locations	6
7	Copper Soil Geochemistry	6
8	Silver Soil Geochemistry	6
9	Gold Soil Geochemistry	6
10	Arsenic Soil Geochemistry	6
11	Antimony Soil Geochemistry	6

TABLES

<u>No.</u>	<u>Description</u>	<u>Page</u>
I	Lithological Units at the Four Corners West property	5

INTRODUCTION

The Four Corners West property covers anomalous gold-, arsenic-, copper- and silver-in-soil targets and at least two gold showings. The property is located in the Finlayson Lake VMS District of southeastern Yukon. Wolverine Minerals Corp. can earn a 100% interest in the property subject to an option agreement with Strategic Metals Ltd.

This report describes contour soil sampling conducted on July 16, 2010 by Archer, Cathro & Associates (1981) Limited on behalf of Strategic Metals. The author participated in and supervised the program. Appendix I contains the author's Statement of Qualifications.

PROPERTY LOCATION, CLAIM DATA AND ACCESS

The Four Corners West property is located in southeastern Yukon at latitude 61°02' north and longitude 130°09' west on NTS map sheets 105B/16 and 105G/1 (Figure 1). The claims are registered with the Watson Lake Mining Recorder in the name of Archer Cathro which holds them in trust for Strategic Metals. Claim registration data are listed below while locations of individual claims are shown on Figure 2.

<u>Claim Name</u>	<u>Grant Number</u>	<u>Expiry Date*</u>
4C 7-22	YC22686-YC22701	March 13, 2015
29-42	YC22708-YC22721	March 13, 2015
51-58	YC22730-YC22737	March 13, 2015
277-288	YC22862-YC22873	March 13, 2015
299	YC22884	March 13, 2015
301	YC22886	March 13, 2015
303	YC22888	March 13, 2015
305-308	YC22890-YC22893	March 13, 2015
355-356	YC22922-YC22923	March 13, 2015
377-382	YC22944-YC22949	March 13, 2015
403-404	YC22970-YC22971	March 13, 2015
405-408	YC23110-YC23113	March 13, 2015
429-434	YC22988-YC22993	March 13, 2015

* Expiry dates include 2010 work that has been filed for assessment credit but not yet accepted.

The 4C claims lie approximately 115 km northwest of Watson Lake. The closest road access is from the Robert Campbell Highway, which at its nearest point is 45 km east of the property. In 2010, the property was accessed by a Hughes 500D helicopter operated by Kluane Airways from a seasonal base at McEvoy Lake, 85 km to the north.

HISTORY

Regional-scale geological mapping in the vicinity of the Four Corners West property was performed by the Geological Survey of Canada (GSC) in 1960 and 1977 (Poole *et al.*, 1960 and Tempelman-Kluit, 1977). Drainages in the vicinity of the Four Corners West property were

WOLVERINE MINERALS CORP.

FIGURE 1
ARCHER, CATHRO & ASSOCIATES (1981) LIMITED

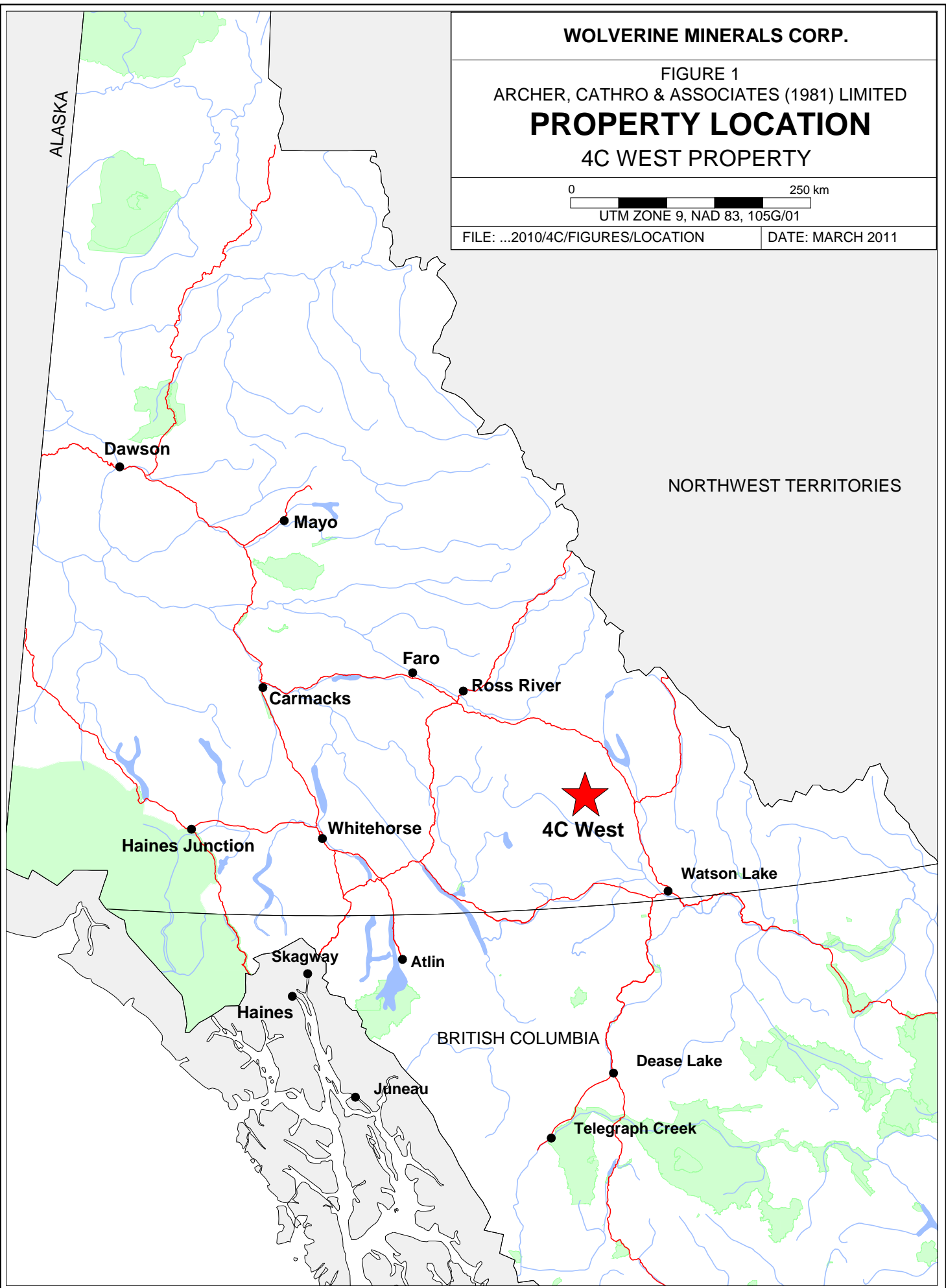
PROPERTY LOCATION
4C WEST PROPERTY

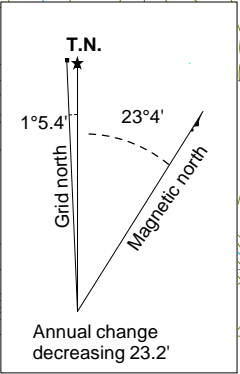
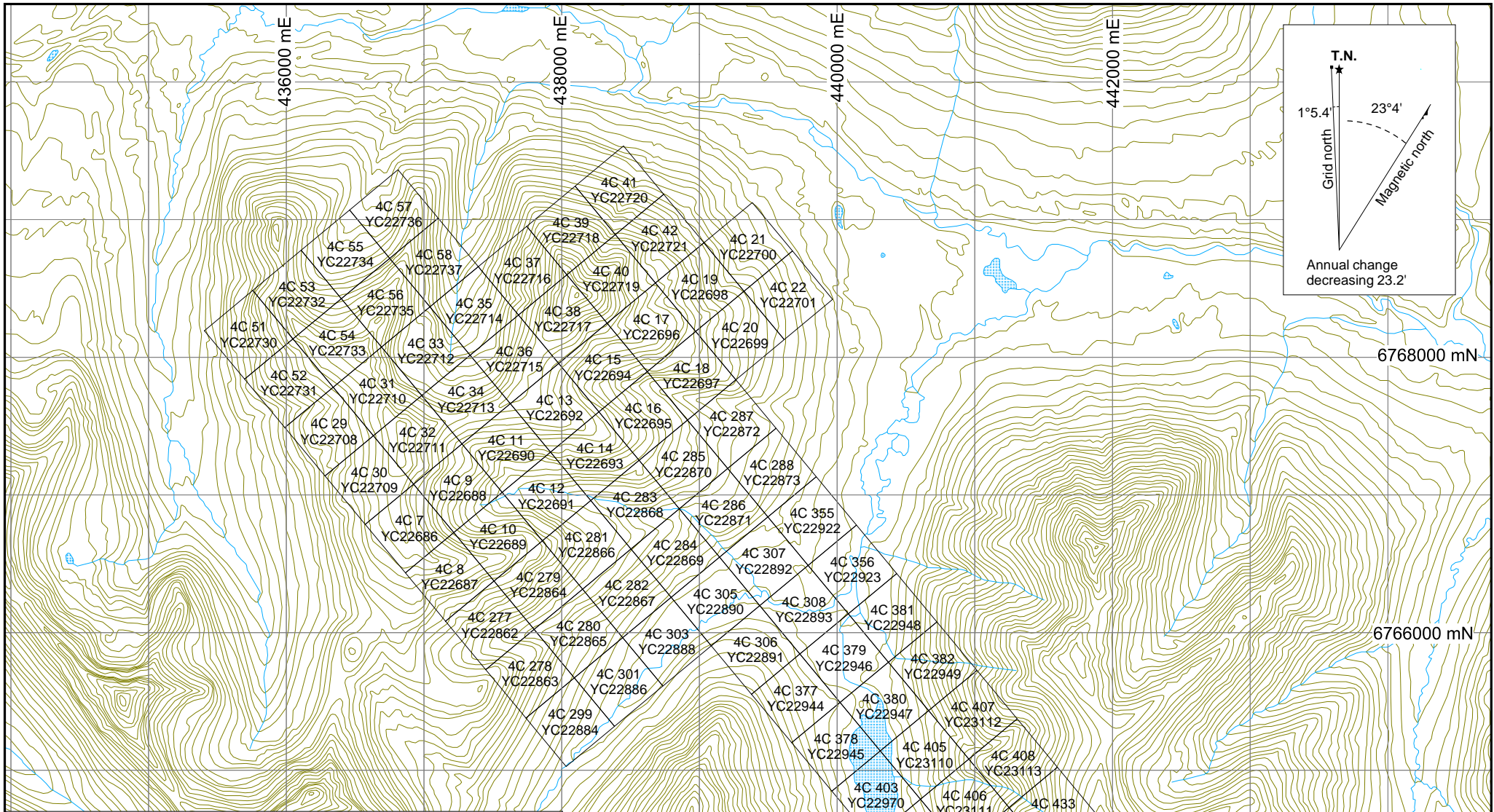
0 250 km

UTM ZONE 9, NAD 83, 105G/01

FILE: ...2010/4C/FIGURES/LOCATION

DATE: MARCH 2011





6768000 mN

6766000 mN

WOLVERINE MINERALS CORP.

FIGURE 2
 ARCHER, CATHRO & ASSOCIATES (1981) LIMITED
CLAIM LOCATIONS
 4C WEST PROPERTY

0 0.5 2 km
 UTM ZONE 9, NAD 83, 105G/01

FILE: ...2010/4C/FIGURES/WF_2_Claims.wor DATE: MARCH 2011

sampled in 1978 during reconnaissance-scale stream sediment geochemical surveys supervised by the GSC (Hornbrook and Ballantyne, 1978 and Hornbrook and Friske, 1988).

The only record of previous exploration in the area now covered by the Four Corners West property is work conducted by Cominco Ltd. between 1995 and 1996. That work targeted VMS mineralization modelled on the Kudz Ze Kayah deposit, located 60 km north-northwest of the Four Corners West property. Cominco flew helicopter-borne geophysical surveys over most of the Finlayson Lake District following the discovery of Kudz Ze Kayah, and it later staked numerous claim blocks to cover the resulting geophysical anomalies. Results from the geophysical surveys were not reported for assessment credit.

In 1996 and 1997, Cominco staked three claim blocks (BL 1-93, Wat 1-165 and IC 1-28) in the area (Senft, 1997). Parts of the Wat and BL claim blocks overlapped with the northern and southern portions of the current Four Corner West property. Cominco performed reconnaissance-scale soil and stream sediment sampling, geological mapping and prospecting. Both claim blocks were subsequently allowed to expire.

In early spring 2003, Strategic Metals staked its initial 4C claims and later that spring it optioned those claims to Fyrestone Ventures Inc. (Wengzynowski, 2003). Exploration for emeralds was conducted that summer. This work resulted in the discovery of a few small beryl crystals, but no green or gem quality stones were found. Some rock samples collected during that program returned elevated gold assays but no systematic follow-up was done.

In 2005, after Fyrestone dropped its option, Strategic Metals explored the property for VMS potential by soil sampling, prospecting and geological mapping (Wengzynowski, 2006).

In 2006, Geotech Ltd. conducted helicopter-borne magnetic and variable time domain electromagnetic (VTEM) surveys over part of the 4C claim block on behalf of Strategic Metals (Wengzynowski, 2007). Very little of the survey overlapped with the Four Corners West property and no features of interest were noted in that area.

GEOMORPHOLOGY

The Four Corners West property lies within the Simpson Range of the Pelly Mountains, near the headwaters of the Liard River. Elevations range between 1100 and 1860 m. Topography is rugged with predominantly north flowing creeks draining U-shaped valleys that often emanate from cirques. Slopes are moderate to steep, typically ranging between 20 and 45°. Ridge crests are mostly rounded uplands with extensive felsenmeer. Ice sheets covered the entire Pelly Mountain area during the Pleistocene with the main ice flows directed southeasterly along the larger river valleys. Alpine glacial features such as cirques, tarn lakes and lateral moraines are common.

Much of the property lies above tree line, which is at about 1500 m. Vegetation ranges from scattered stunted spruce, balsam and willow at lower elevations, giving way to buckbrush and moss and ultimately to grass and lichen at higher elevations.

The creeks draining the claim block flow into tributaries of the Liard River and then into the Arctic Ocean via the Mackenzie River.

REGIONAL GEOLOGY

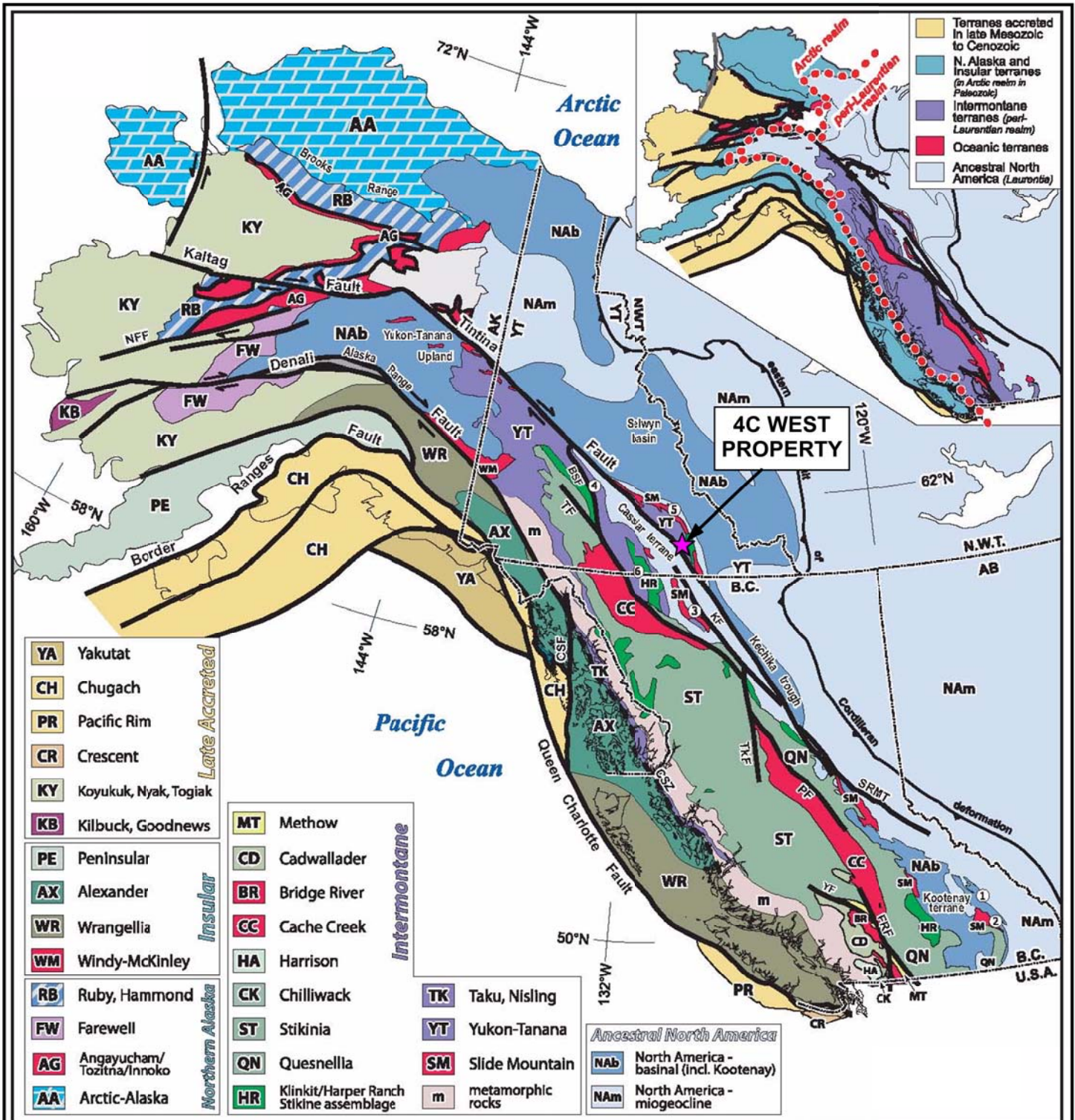
The Four Corners West property lies within the Finlayson Lake VMS District. This district has been the focus of numerous government and industry sponsored studies due to its VMS potential. The Geological Survey of Canada mapped the Finlayson Lake area (NTS map sheet 105G) twice at a 1:250,000 scale (Wheeler *et al.*, 1960 and Tempelman-Kluit, 1977). In the late 1990s and early 2000s, the Yukon Geological Survey performed more detailed (1:50,000 scale) mapping in the area and in 2002, it completed a geological compilation and updated the lithological names (Bond *et al.*, 2002). In 2003, Gordey and Makepeace incorporated this data into a Yukon-wide geological compilation. The following geological descriptions are based on the published data.

The Finlayson Lake District comprises an isolated outlier of Yukon-Tanana and Slide Mountain Terranes and affiliated overlap assemblages (Figure 3). The district is bounded by the Tintina Fault to the southwest and the Inconnu Thrust Fault to the northeast. Five major VMS deposits have been discovered in the district (Figure 4). The Fyre Lake, Kudze Kayah, GP4F and Wolverine Deposits, all occur within Yukon-Tanana Terrane, while the Ice Deposit is hosted in Slide Mountain Terrane.

Yukon-Tanana and Slide Mountain Terranes represent continental arc and back-arc basin sequences that developed along the ancient Pacific margin of North America during late Devonian and through Permian (Piercey *et al.*, 2006). Pericratonic rocks of Yukon-Tanana Terrane and oceanic rocks of Slide Mountain Terrane are juxtaposed against rocks of the North American continental margin sequence along the post-Late Triassic Inconnu Thrust Fault (Murphy *et al.*, 2006). Rocks of Yukon-Tanana and Slide Mountain Terranes in the Finlayson Lake District are characterized by variably deformed and metamorphosed, lower greenschist to amphibolite facies metasedimentary and metavolcanic rocks and affiliated metaplutonic suites.

The following descriptions of Yukon-Tanana and Slide Mountain Terranes are largely summarized from Murphy *et al.* (2006).

Rocks of Yukon-Tanana Terrane in the Finlayson Lake District lie between the Tintina Fault and the Jules Creek Fault. Yukon-Tanana Terrane is subdivided into a number of fault- and unconformity-bounded groups and formations. From the structurally deepest levels of the district outwards, these include: (1) North River Formation, Grass Lakes and Wolverine Lake Groups, and affiliated metaplutonic rocks in the Big Campbell Thrust Sheet; (2) North River, Waters Creek and Tuchtua River Formations and affiliated intrusions in the Money Creek Thrust Sheet; and (3) Cleaver Lake Formation and intrusions of the Cleaver Lake Thrust Sheet (Figure 4). Regional shortening, uplift, erosion and synorogenic clastic sedimentation took place during Early Permian. Lower Permian Money Creek Formation was deposited unconformably atop folded Mississippian and Pennsylvanian rocks and was subsequently folded and overthrust by the Cleaver Lake and Money Creek Thrust Faults. The movement of the Money Creek Thrust Fault is constrained to Early Permian because both the hanging wall and footwall are



WOLVERINE MINERALS CORP.

FIGURE 3
ARCHER, CATHRO & ASSOCIATES (1981) LIMITED

TECTONIC SETTING
4C WEST PROPERTY

0 300 km

WOLVERINE MINERALS CORP.

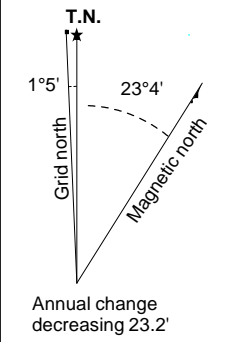
FIGURE 4
ARCHER, CATHRO & ASSOCIATES (1981) LIMITED
REGIONAL GEOLOGY
4C WEST PROPERTY

0 10 20 km

NTS sheets 105A, B, G and H

FILE: ...FIGURES/EF_4_RegionalGeology.wor

DATE: MARCH 2011

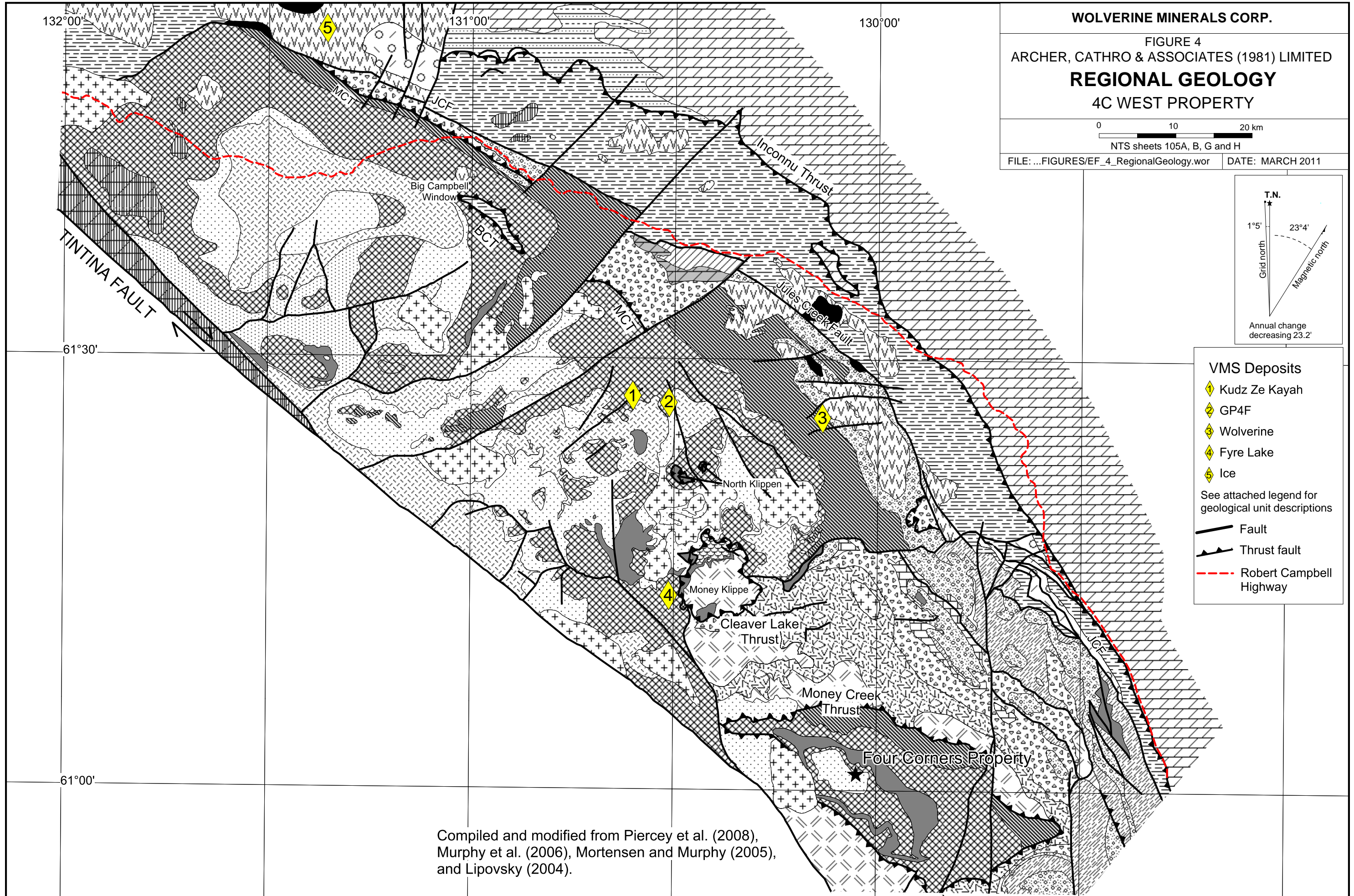


VMS Deposits

- ◆ Kudz Ze Kayah
- ◆ GP4F
- ◆ Wolverine
- ◆ Fyre Lake
- ◆ Ice

See attached legend for geological unit descriptions

- Fault
- Thrust fault
- - - Robert Campbell Highway



Compiled and modified from Piercey et al. (2008),
Murphy et al. (2006), Mortensen and Murphy (2005),
and Lipovsky (2004).

unconformably overlain by Lower Permian rocks of Campbell Range Formation of Slide Mountain Terrane.

North River Formation quartzose metaclastic rocks and metapelites are the oldest exposed rock units in the Big Campbell Thrust Sheet. North River Formation is overlain by chloritic schist and lesser carbonaceous phyllite of Fyre Lake Formation of Grass Lakes Group. This formation hosts the Besshi-style Fyre Lake VMS Deposit (Hunt, 2002). This Late Devonian deposit is associated with chloritic phyllite and greenstone of boninitic composition (Piercey *et al.*, 2004). Mafic and variably serpentinized ultramafic rocks are present as sills and dikes in Fyre Lake and North River Formations, respectively. Stratigraphically overlying Fyre Lake Formation is a carbonaceous phyllite-dominated succession which has been divided into two parts. The lower part, Kudz Ze Kayah Formation, contains felsic metavolcanic rocks that host the Kuroko-style Kudz Ze Kayah and GP4F VMS Deposits, while the upper part, Wind Lake Formation, contains mafic metavolcanic rocks and quartzite (Murphy, 1998). Grass Lakes Group is intruded by Late Devonian to Early Mississippian Grass Lakes Plutonic Suite and Early Mississippian Simpson Range Plutonic Suite.

Wolverine Lake Group unconformably overlies Grass Lakes Group and hosts the Kuroko-style Wolverine VMS Deposit. This deposit occurs in a thick sequence of Carboniferous rhyolitic metavolcanic rocks and carbonaceous argillite (Tucker *et al.*, 1997). Together, the Grass Lakes and Wolverine Groups have been interpreted to represent a continental back-arc rift to back-arc basin assemblage.

During Early Permian, Yukon-Tanana Terrane experienced regional shortening and uplift. The deformation and erosion of the Mississippian and Pennsylvanian rocks were followed by unconformable deposition of Money Creek Formation. Money Creek Formation comprises carbonaceous phyllite and sandstone, varicoloured chert, chert-pebble conglomerate, and diamictite. This formation was emplaced atop units of Wolverine Lake Group in the Big Campbell Thrust Sheet and Tuchtua River Formation, Whitefish Limestone, White Lake Formation, King Arctic Formation and Finlayson Creek Limestone in the Money Creek Thrust Sheet by the Cleaver Lake and Money Creek Thrust Faults. Money Creek Formation is preserved in the Big Campbell and Money Creek Klippen.

The imbricated rocks of Yukon-Tanana Terrane are juxtaposed against rocks of Slide Mountain Terrane along the Jules Creek Fault. Slide Mountain Terrane of the Finlayson Lake District consists of Mississippian to Lower Permian Fortin Creek Group, Lower Permian Campbell Range Formation and spatially associated plutonic rocks, and Lower Permian limestone and quartzite. The Ice VMS Deposit is hosted in Campbell Range Formation basalt (Hunt, 2002).

Middle Permian and younger sequences in the Finlayson Lake District are derived from, or deposited on both Yukon-Tanana and Slide Mountain Terranes. Middle Permian to Triassic Simpson Lake Group is composed of clastic rocks derived from both terranes and Middle Permian felsic and mafic metavolcanic rocks (Mortensen *et al.*, 1999). Slide Mountain Terrane, Yukon-Tanana Terrane and overlapping rocks are juxtaposed against Triassic shale and siltstone and older rocks of the North American continental margin sequence along the Inconnu Thrust Fault.

During the Mesozoic era, two types of intrusion were emplaced in the Finlayson area. The first comprises several unmetamorphosed Early Jurassic mafic and intermediate composition plutons. The second consists of Late Cretaceous two-mica quartz monzonite and granite (Mortensen and Jilson, 1985).

PROPERTY GEOLOGY

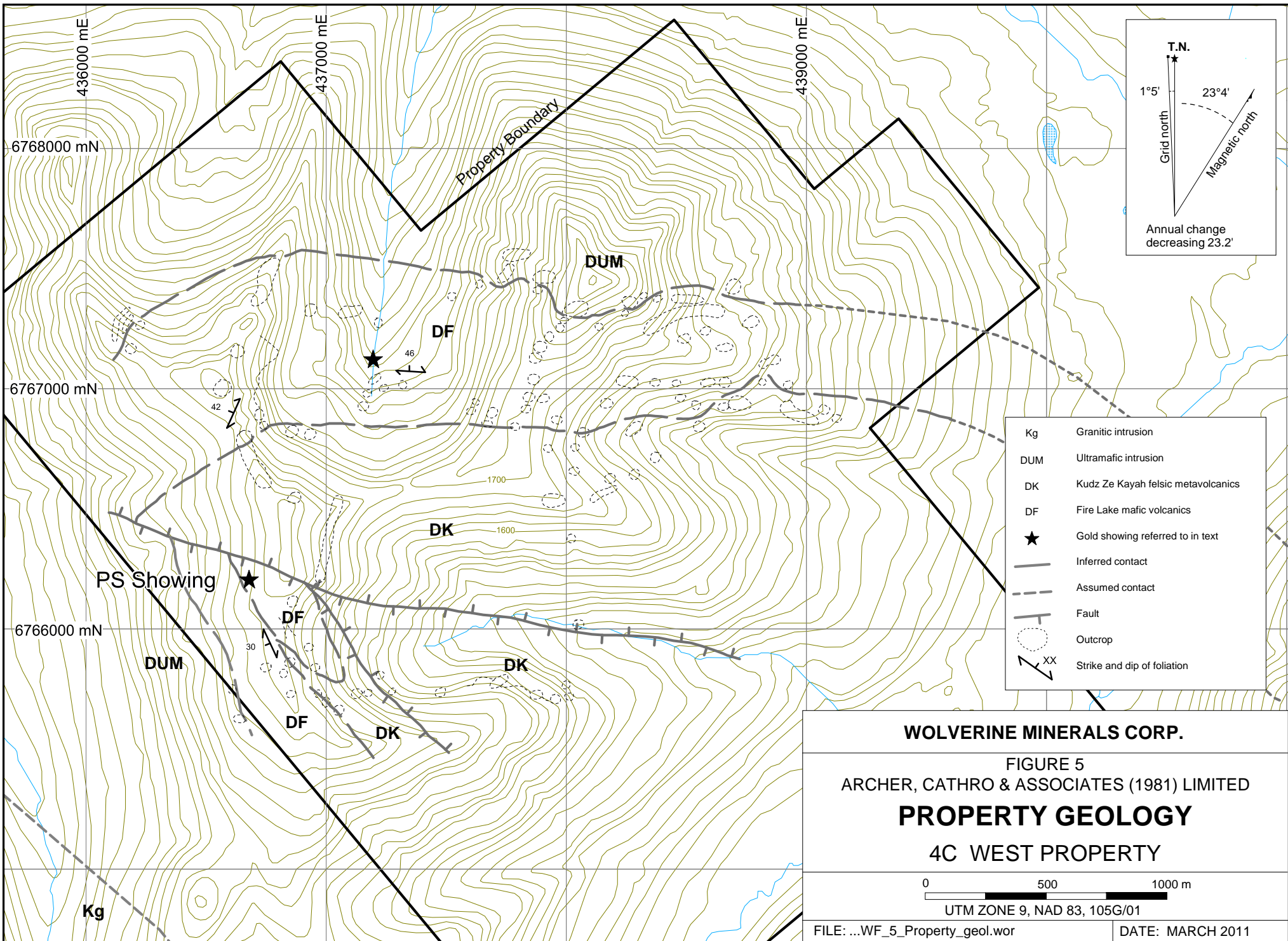
Geology of the Four Corners West property is shown on Figure 5. The lithological units and contacts are inferred because little detailed property mapping has been done and most contacts are obscured by talus, glacial till or vegetation. Unit descriptions and terminology used throughout this section are based on mapping done by the Yukon Geological Survey (Murphy and Piercey, 1999 and Murphy *et al.*, 2003).

Yukon-Tanana rocks on the Four Corners West property comprise stratigraphic volcanic units and laterally extensive ultramafic intrusions. The lowest stratigraphic unit consists of mafic metavolcanic rocks of Late Devonian Fyre Lake Formation (DF). This unit is conformably overlain by felsic metavolcanic rocks of Late Devonian Kudz Ze Kayah Formation (DK). These stratigraphic units have been intruded by Late Devonian, variably serpentinized ultramafic rocks (Dum). The youngest rocks in close proximity to the Four Corners East property are found one kilometre to the southwest of the claim block, where the older units are cut by a north-northwesterly elongated, approximately 10 km long granitic stock (Kg). Unit descriptions are summarized in the following table.

Table I: Lithological Units at the Four Corners West property
(after Murphy and Piercey, 1999 and Murphy *et al.*, 2003)

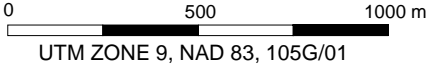
<u>Unit (Age)</u>	<u>Description</u>
Kg (Mid-Cretaceous)	Massive to weakly foliated, medium to coarse grained biotite-muscovite granite, generally equigranular.
Dum (Late Devonian)	Brown weathering, dark green to black, variably serpentinized dunite, includes gabbro and/or pyroxenite locally.
DK (Late Devonian)	Kudz Ze Kayah felsic metavolcanic formation: feldspar-muscovite-quartz schist.
DF (Late Devonian)	Fyre Lake mafic metavolcanic formation: massive to subtly layered chlorite-biotite-plagioclase-actinolite schist.

Foliation attitudes strike northwesterly and dip moderately to the north. Compositional layering in the stratified rocks is approximately parallel to foliation.



WOLVERINE MINERALS CORP.

FIGURE 5
 ARCHER, CATHRO & ASSOCIATES (1981) LIMITED
PROPERTY GEOLOGY
 4C WEST PROPERTY



The Four Corners West property lies in a thrust window that is bound to the north and south by the Money Creek thrust fault.

MINERALIZATION

Gold mineralization (PS Showing) was discovered in the western part of the property (Figure 5) in 2003 by Strategic Metals. The PS Showing consists of gold bearing, silica-altered rocks that form a more than 100 m long talus train within Fyre Lake chlorite schist. The talus train is about 8 m wide and consists primarily of white quartz flooded material. In the centre of the train there is a one to three metre wide band of distinctive green chalcedony believed to be coloured by finely disseminated chrome mica. In 2003, a sample composed of several chips from two 70 cm diameter boulders of the green chalcedony assayed 4.28 g/t gold and 2.64 g/t silver. Another chip sample taken nearby across three metres of talus centered on the green chalcedony band returned 198 ppb gold. The source material of the gold-bearing talus is not exposed.

A second gold showing was also reportedly discovered in 2003. It is exposed along an actively eroding creek bank that is located one kilometre north-northeast of the PS Showing. The showing comprises disseminated pyrite and arsenopyrite in a three to five metre thick, dark grey siliceous horizon within a section of chlorite schist. This horizon was not sampled but rusty soil collected a few metres uphill returned 591 ppb gold.

SOIL GEOCHEMISTRY

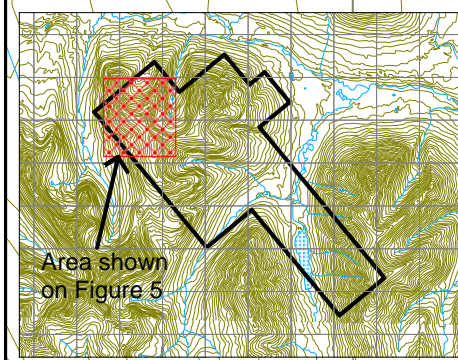
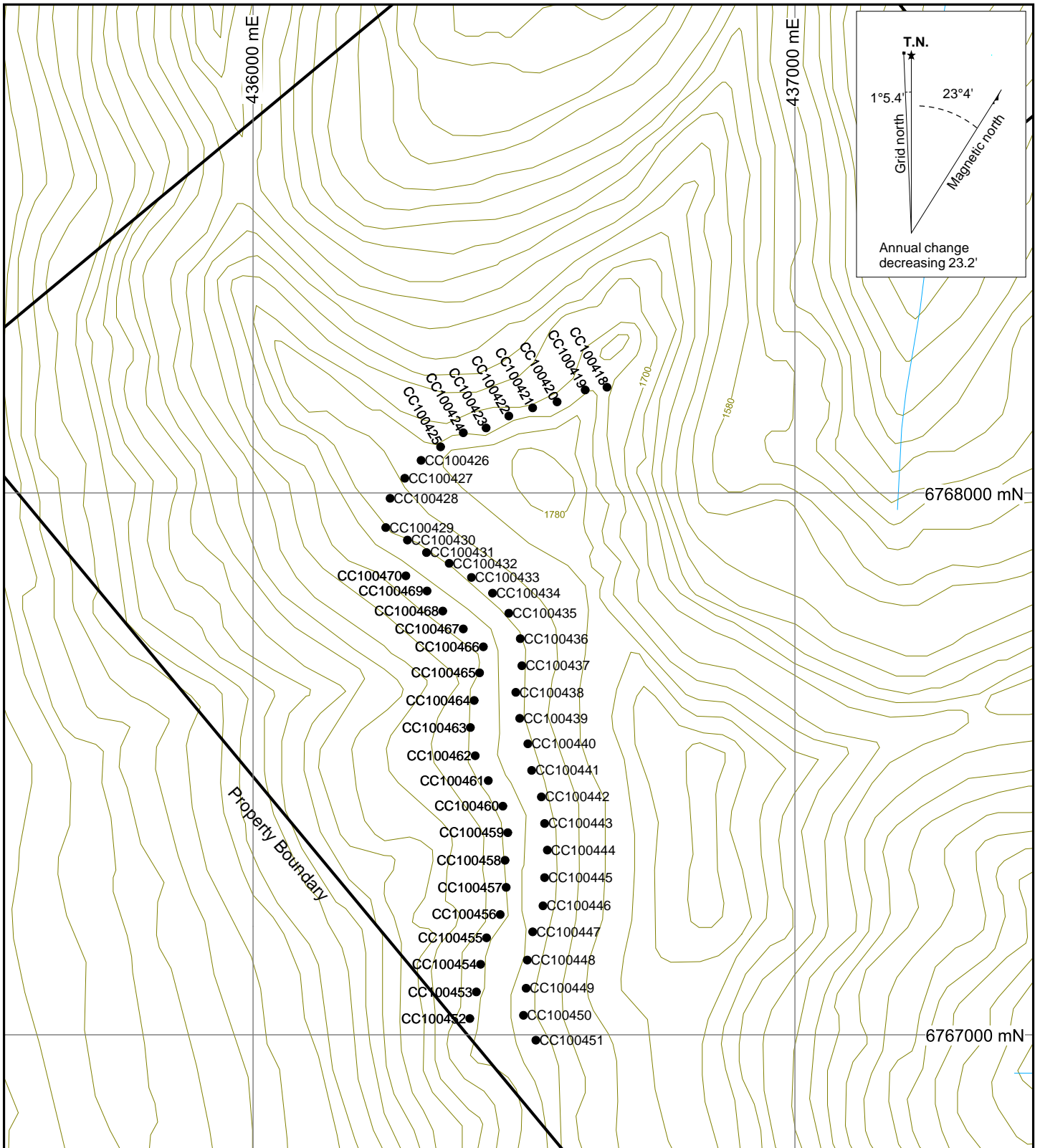
Different parts of the area covered by the Four Corners West property have been soil sampled at various times since 1996. In 2010, 53 soil samples were taken on two parallel contour lines that run north from the PS Showing. Sampling and Analytical Procedures used during the various soil sampling programs are provided in Appendix II. Certificates of Analysis for 2010 samples are in Appendix III and 2010 sample locations are shown on Figure 6. Results for all samples for copper, silver, gold, arsenic and antimony are plotted thematically on Figures 7 and 11.

Collectively sampling has defined a relatively continuous, arcuate, 3500 by 400 m copper anomaly in the central and eastern parts of the property. Values within this anomaly range from 100 to 398 ppm copper (Figure 7). The copper anomaly closely conforms to the inferred trace of the Fyre Lake metavolcanic strata.

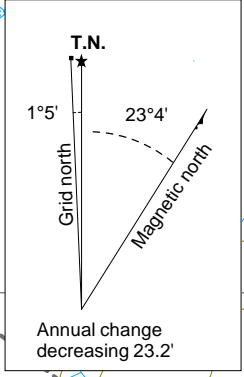
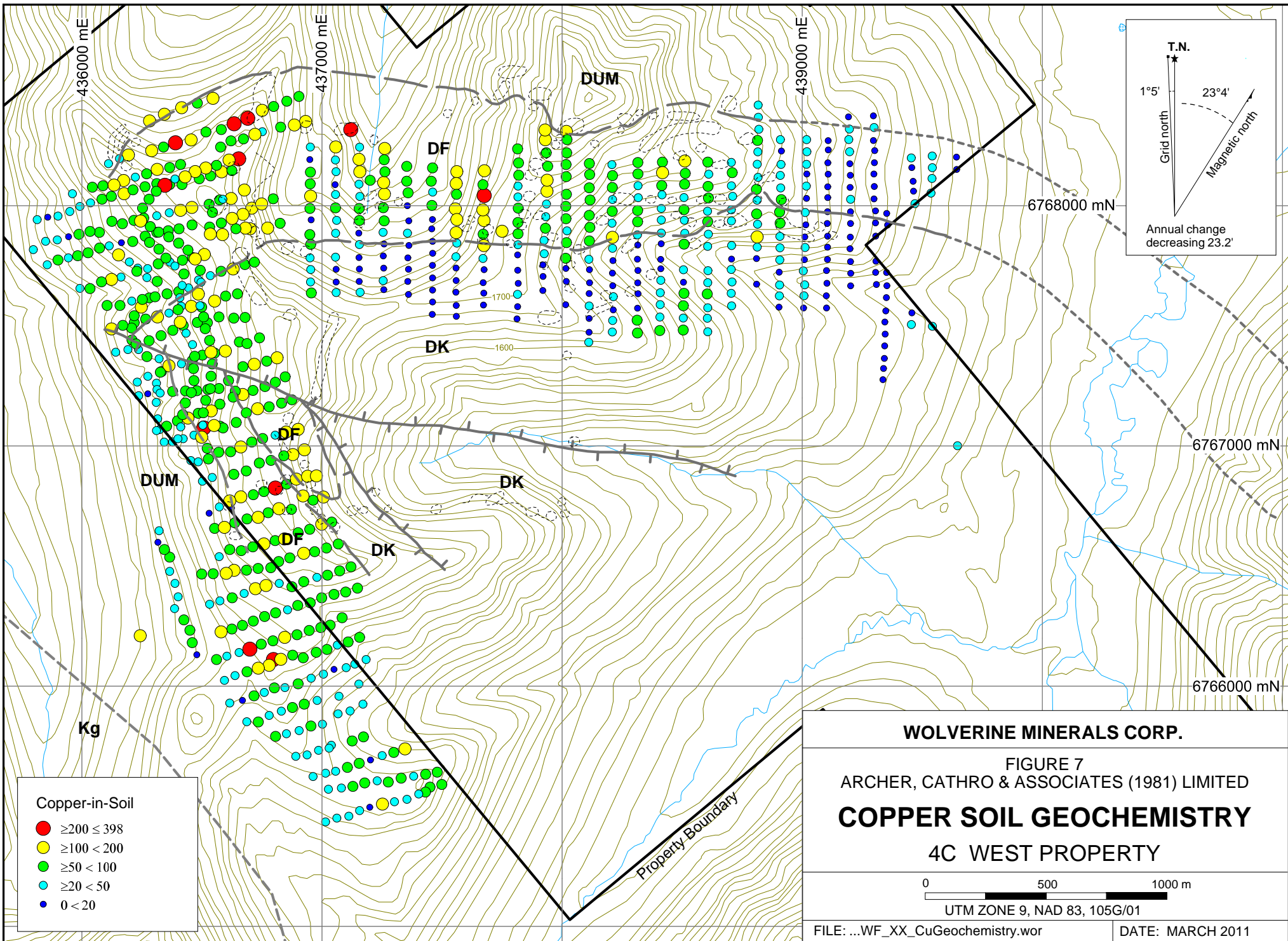
The strongest silver response straddles the contact between Fyre Lake and Kudz Ze Kayah metavolcanics, at the head of a north-facing cirque. Four samples yielded between 1.0 and 2.4 ppm silver within a 550 by 200 m area.

Limited data is available for gold because the majority of the 2003 soil samples and all of the 2006 samples were not analyzed for that element. Within this limited data set, four samples yielded between 50 and 591 ppb gold. These samples are all hosted in Fyre Lake Formation metavolcanics and most are near the known showings.

Anomalous arsenic and antimony values are also clustered near the known showings. Elevated values range from 20 to 382 ppm arsenic and 5 to 12 ppm antimony.



WOLVERINE MINERALS CORP.	
FIGURE 6 ARCHER, CATHRO & ASSOCIATES (1981) LIMITED SOIL SAMPLE LOCATIONS 4C WEST PROPERTY	
UTM ZONE 9, NAD 83, 105G/01	
FILE: ...4C/FIGURES/WF_5_Soil.wor	DATE: MARCH 2011



Property Boundary

436000 mE

437000 mE

439000 mE

6768000 mN

6767000 mN

6766000 mN

DUM

DF

DK

DUM

DF

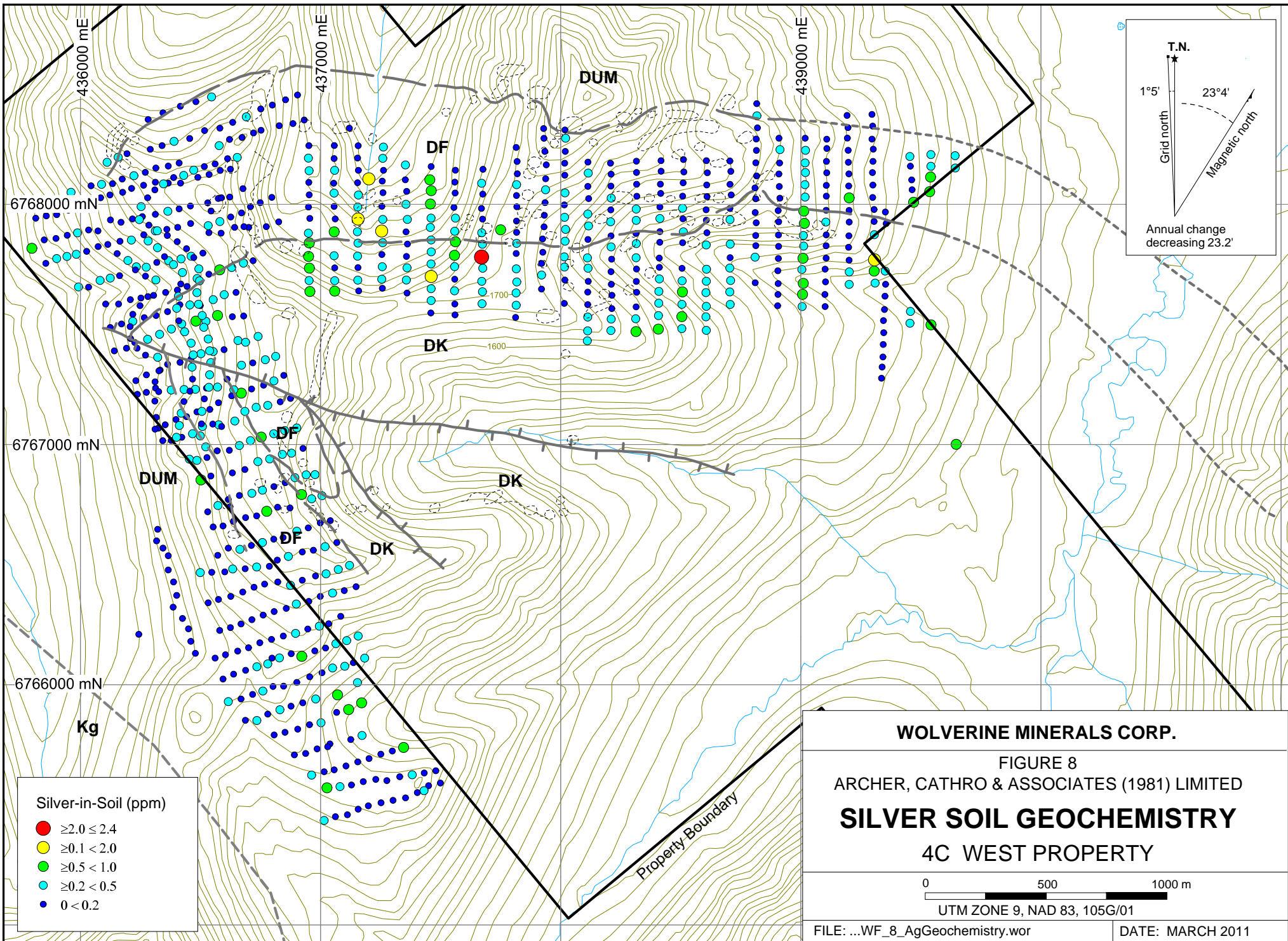
DK

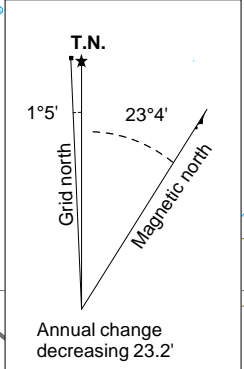
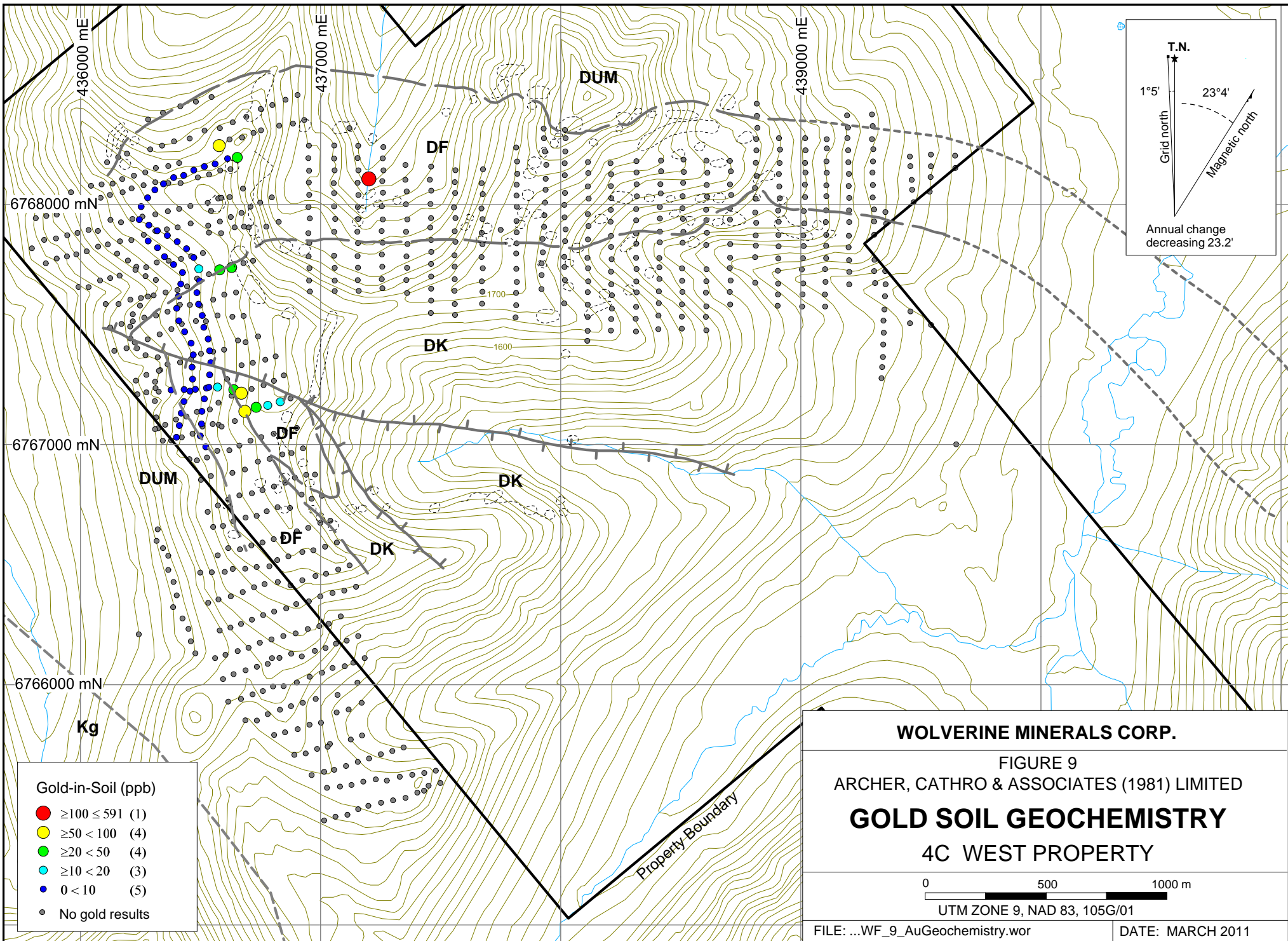
DK

Kg

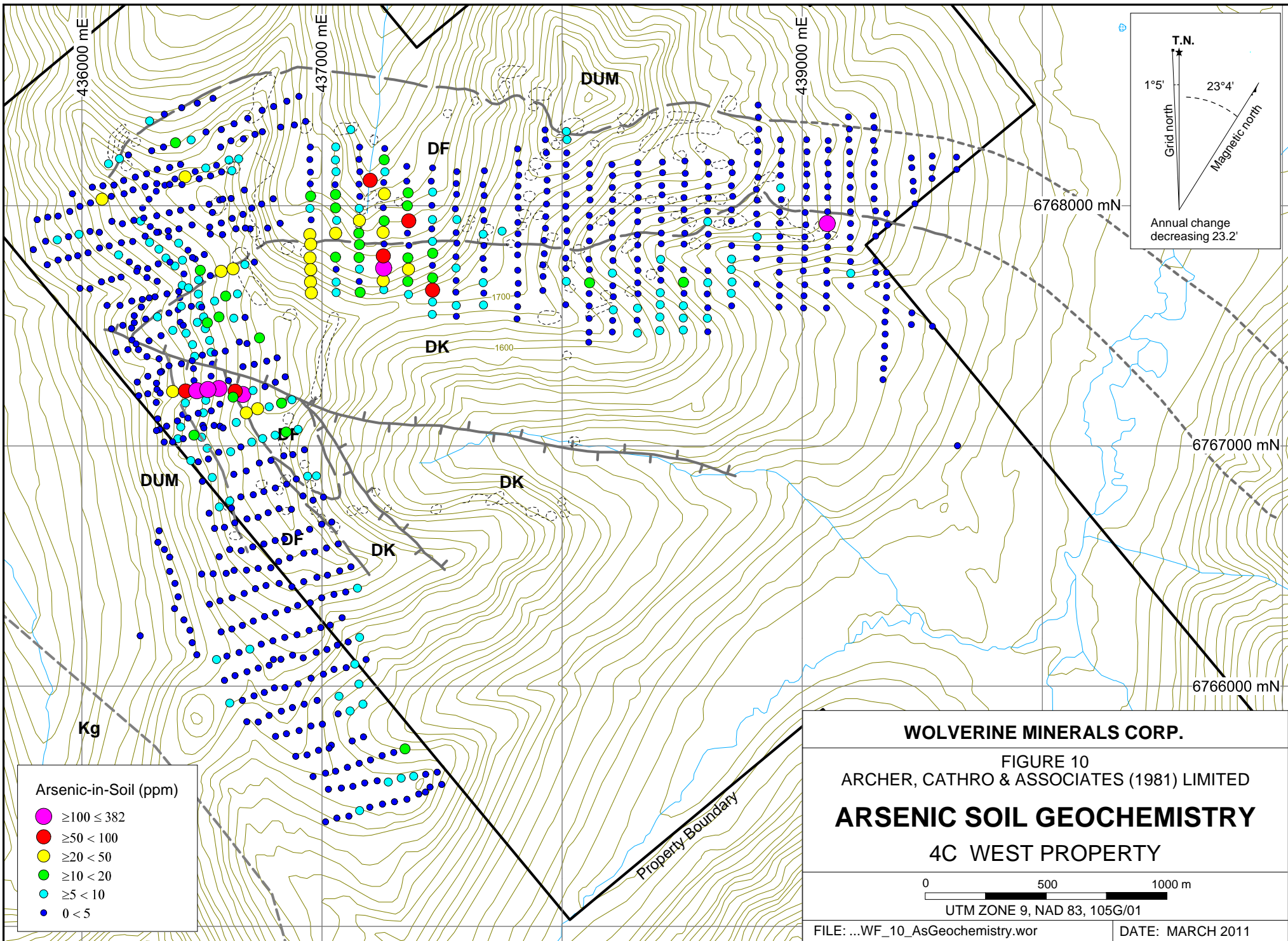
1700

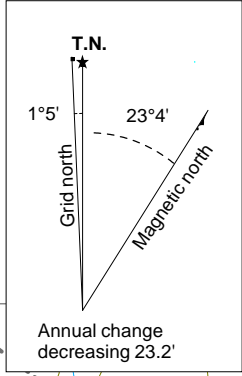
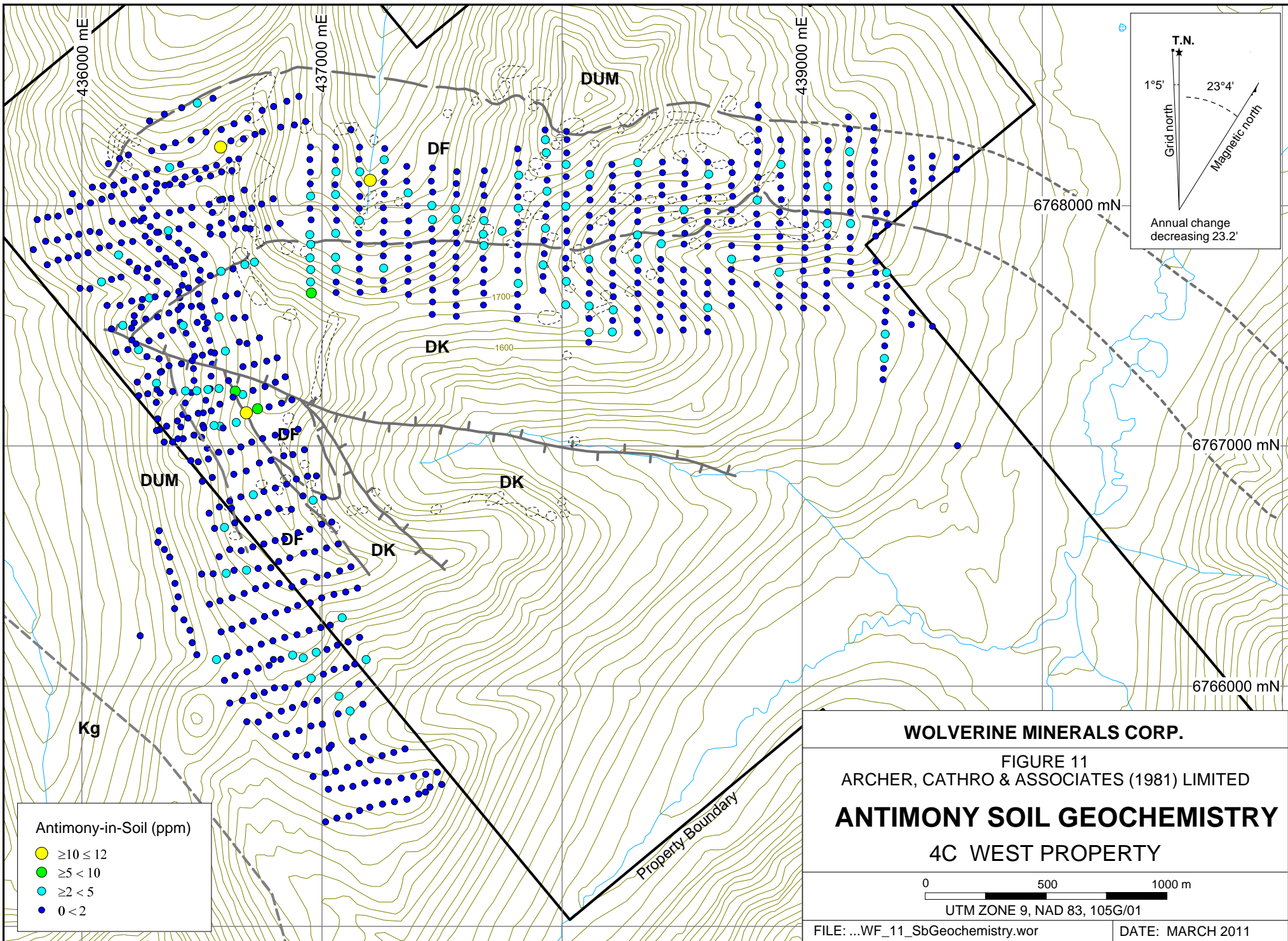
1600





Property Boundary





Property Boundary

Kg

DUM

DF

DK

DK

DK

DUM

DF

436000 mE

437000 mE

439000 mE

6768000 mN

6767000 mN

6766000 mN

1700

1600

DISCUSSION AND CONCLUSIONS

The Four Corners West property lies within the Finlayson Lake District, an area is best known for its precious metal enriched VMS base metal deposits. Modern studies are beginning to examine the spatial relationship between gold deposits and VMS deposits. No direct association has been established as of yet (ie. one deposit type can form without the other); however, it has been observed that orogenic gold deposits commonly occur within VMS districts (Goldfarb pers. comm., 2011).

The gold potential of the Four Corners West property has not been thoroughly assessed. Soil sampling outlined localized gold-arsenic anomalies within a broader band of elevated copper values. These anomalies are hosted within Fyre Lake Formation mafic metavolcanics, the unit which hosts the Fyre Lake VMS Deposit 30 km to the northwest of the Four Corners West property. Prospecting identified two gold occurrences within this unit on the property. One of these occurrences appears to be a discordant vein or alteration zone and the other may be stratabound.

Additional work is definitely warranted on the Four Corners West property to better define the nature and extent of the known gold occurrences and to identify any potential new targets. Property-scale mapping should be conducted to better constrain the geological contacts, particularly the bounds of the Fyre Lake Formation. Detailed prospecting should be carried out along the entire trace of the Fyre Lake Formation. Systematic chip sampling and hand trenching (if required) should be done at the two known showings and any showings that may be identified in future.

Respectfully submitted,

ARCHER, CATHRO & ASSOCIATES (1981) LIMITED

S. Eaton, B.Sc., GIT

REFERENCES

- Bond, J.D., Murphy, D.C., Colpron, M., Gordey, S.P., Plouffe, A., Roots, C.F., Lipovsky, P.S., Stronghill, G., and Abbott, J.G.
 2002 Digital compilation of bedrock geology and till geochemistry, northern Finlayson Lake map area, Southeastern Yukon (105G): Exploration and Geological Services Division, Yukon Region, Indian and Northern Affairs Canada, Open File Report, 2002-7(D) and Geological Survey of Canada Open File 4243.
- Goldfarb, R.J.
 2011 Gold Deposit Models; Gold Geology and Deposit Types SEG Course; PDAC International Convention; March 4 and 5, 2011; US Geological Survey.
- Hornbrook, E.H.W. and Ballantyne, S.B.
 1978 Regional Stream Sediment and Water Geochemical Reconnaissance Data, Yukon Territory (NTS 105B); Geological Survey of Canada, Open File 563, 1978.
- Hornbrook, E.H.W. and Ballantyne, S.B.
 1988 Regional Stream Sediment and Water Geochemical Data, Southeastern Yukon (NTS 105G); Geological Survey of Canada, Open File 1648, 1988.
- Hunt, J.A.
 2002 Volcanic-associated massive sulphide (VMS) mineralization in the Yukon-Tanana terrane and coeval strata of the North American miogeocline, in the Yukon and adjacent areas; Exploration and Geological Services Division, Yukon Region, Indian and Northern Affairs Canada, Bulletin 12, 107 p.
- Lipovsky, P.S.
 2004 Yukon MINFILE - Mineral Occurrence Map: 105B - Wolf Lake (1:250 000 scale), Version 2004-1: Yukon Geological Survey, Energy, Mines and Resources, Yukon Government.
- Mortensen, J.K. and Murphy, D.C. (compilers)
 2005 Bedrock geological map of part of Watson Lake area (all or part of NTS 105A/2, 3, 5, 6, 7, 10, 11, 12, 13, 14), southeastern Yukon (1:150 000 scale): Yukon Geological Survey, Open File 2005-10.
- Mortensen, J.K., Erdmer, P., Piercey, S.J., and Ghent, E.D.
 1999 Evidence for Late Triassic terrane accretion in the northern Canadian Cordillera in southeastern Yukon [abstract]; *in* Evenchick, C.A., Woodsworth, G.J., and Jongens, R., Eds., Terrane Paths 99, Circum-Pacific Terrane Conference Abstract Volume, Geological Survey of Canada/Geological Association of Canada, p. 55.
- Mortensen, J.K. and Jilson, G.A.
 1985 Evolution of the Yukon-Tanana Terrane: evidence from southeastern Yukon Territory; *Geology*, vol.13, p.806-810.

- Murphy, D.C.
1998 A progress report on stratigraphic framework for syngenetic mineral occurrences, Yukon-Tanana terrane south of Finlayson Lake; *in* Yukon Exploration and Geology 1997: Exploration and Geological Services Division, Yukon, Indian and Northern Affairs Canada, p. 51-58.
- Murphy, D.C., and Piercey, S.J.
1999 Geological Map of Parts of the Finlayson Lake (105G/7, 8 and parts of 1,2 and 9) and Frances Lake (parts of 105H/5 and 12) Map Areas, Southeastern Yukon; Indian and Northern Affairs Canada, Exploration and Geological Services Division, Yukon Region, Open File 1999-4.
- Murphy, D.C., Lipovsky, P.S., Stuart, A., Fonseca, A., Groat, L. and Piercey, S.J.
2003 Geological Setting of Emeralds at Regal Ridge (S.E. Yukon) Provides Clues to Their Origin and to Other Places to Explore; Yukon Geological Survey, Government of Yukon, Poster Presentation, 2003 Cordilleran Geology and Exploration Roundup, Vancouver.
- Murphy, D.C., Mortensen, J.K., Piercey, S.J., Orchard, M.J., and Gehrels, G.E.
2006 Tectonostratigraphic evolution of Yukon-Tanana Terrane, Finlayson Lake massive sulphide district, southeastern Yukon; *in* Colpron, M. and Nelson, J.L. Eds., Paleozoic Evolution and Metallongeny of Pericratonic Terranes at the Ancient Pacific Margin of North America, Canadian and Alaskan Cordillera: Geological Association of Canada Special Paper 45, p. 75-105.
- Nelson, J.L. and Colpron, M.
2007 Tectonics and metallogeny of the Canadian and Alaskan Cordillera, 1.8 Ga to present; *in* Mineral Deposits of Canada: A Synthesis of Major Deposit Types, District Metallogeny, the Evolution of Geological Provinces, and Exploration Methods; W.D. Goodfellow (ed.), Mineral Deposit Division, Geological Association of Canada, Special Publication 5, p. 755-791. Available at: http://gsc.nrcan.gc.ca/mindep/synth_prov/cord/pdf/nelson_colpron_cordillera_n_metallogeny.pdf
- Piercey, S.J., Murphy, D.C., Mortensen, J.K., and Creaser, R.A.
2004 Mid-Paleozoic initiation of the northern Cordilleran marginal back-arc basin: Geological, geochemical and neodymium isotopic evidence from the oldest mafic magmatic rocks in Yukon-Tanana terrane, Finlayson Lake district, southeast Yukon, Canada; Geological Society of America Bulletin, v. 116, p. 1087-1106.
- Piercey, S.J., Nelson, J.L., Colpron, M., Dusel-Bacon, C., Simard, R.-L., and Roots, C.F.
2006 Paleozoic magmatism and crustal recycling along the ancient Pacific margin of North America, northern Cordillera; *in* Colpron, M. and Nelson, J.L. Eds., Paleozoic Evolution and Metallongeny of Pericratonic Terranes at the Ancient Pacific Margin of North America, Canadian and Alaskan Cordillera: Geological Association of Canada Special Paper 45, p. 281-322.

- Poole, W.H., Roddick, J.A., and Green, L.H.
 1960 Geology, Wolf Lake, Yukon Territory (NTS 105B); Geological Survey of Canada, Map 10-1960.
- Tempelman-Kluit, D.J.
 1977 Geology, Quiet Lake (NTS 105F) and Finlayson Lake (NTS 105 G), Yukon Territory; Geological Survey of Canada, Open File 486.
- Tucker, T.L., Turner, A.J., Terry, D.A. and Bradshaw, G.D.,
 1997 Wolverine massive sulphide project, Yukon Territory, Canada, *in* Yukon Exploration and Geology, 1996, Exploration and Geological Services Division, Yukon Region, Indian and Northern Affairs Canada, p. 53-55.
- Senft, D.A.
 1997 Wat 1-65 and BL 1-93 claims, Simpsons Range Area, Pelly Mountains; assessment report for Cominco Ltd. (093883).
- Wengzynowski, W.A.
 2003 Report on geology, mineralization and geochemistry at the Four Corners property; assessment report for Fyrestone Ventures Inc.
- Wengzynowski, W.A.
 2006 Geology, mineralization and geochemistry on the Four Corners property; assessment report for Strategic Metals Ltd.
- Wengzynowski, W.A.
 2007 VTEM geophysical surveys at the Four Corners property; assessment report for Strategic Metals Ltd.
- Wheeler, J.O., Green, L.H. and Roddick, J.A.
 1960 Finlayson Lake map area, Yukon Territory: Geological Survey of Canada, Map 8-1960, 1:253,440.

APPENDIX I
STATEMENT OF QUALIFICATIONS

STATEMENT OF QUALIFICATIONS

I, Sarah Eaton, geologist, with business addresses in Whitehorse, Yukon Territory and Vancouver, British Columbia and residential address in North Vancouver, British Columbia, hereby certify that:

1. I graduated from the University of British Columbia in 2007 with a B.Sc. in Honours Geological Sciences.
2. From 2002 to present, I have been actively engaged in mineral exploration in Yukon Territory, British Columbia and Northwest Territories.
3. I am a Geoscientist in Training (GIT) with the Association of Professional Engineers and Geoscientists of British Columbia (Member Number 154922).
4. I have personally participated in the field work reported herein and have interpreted all data resulting from this work.

Sarah Eaton, B.Sc. (Hon.) Geology, GIT

APPENDIX II
SAMPLING AND ANALYTICAL PROCEDURES

ASSAY METHODS FOR GEOCHEMICAL SAMPLING

1996 and 1997 Soil Samples

In 1996 and 1997 Cominco conducted soil sampling in the vicinity of the current 4C claim block. The samples were taken from B or C horizon soil at 100 m intervals on lines spaced approximately 100 m apart. Analytical techniques were not reported; however, judging from similar programs conducted by Cominco at the same time, the samples were probably sent to Cominco's exploration laboratory in Vancouver, B.C., where they were dried, sieved to -80 mesh and dissolved in aqua regia. They were likely then analyzed for 27 elements using the induced coupled plasma (ICP) technique, for gold using atomic absorption and for Ba using loose packed pellet X-ray fluorescence (XRF).

2003 Rock Samples

The 2003 chip samples were collected across a specified width or length to characterize material within that interval. Regularly spaced chips were taken from the rock face using a rock hammer. The rock chips were placed in double plastic bags along with a numbered sample tag.

The chip samples were shipped to ALS Chemex Labs in North Vancouver, B.C. They were dried then the entire sample was crushed to better than 70% passing -2mm, before a 250 g split was taken and pulverized to better than 85% passing 75 microns. The pulverized material was later digested in aqua regia. The samples were routinely analysed for 34 elements by the induced coupled plasma (ICP) technique and for gold using fire assay followed by atomic absorption.

2003 Soil Samples

Soil sampling was conducted using baselines that were located with GPS readings at several locations along their lengths. The baselines are marked with wooden pickets at 100 m intervals and orange flagging at 25 m intervals. Samples were taken at 50 m intervals along lines spaced 100 m apart and oriented perpendicular to baselines. Each sample site is marked with a 0.5 m wooden picket bearing an aluminum tag inscribed with the sample number and grid coordinate. The sample was taken from B or C horizon soil, usually at depths between 20 and 30 cm below surface. About 200 g of soil was collected and placed in pre-numbered, heavy gauge paper bags.

The samples were shipped to ALS Chemex Labs in North Vancouver, B.C., where they were dried, screened to -80 mesh and digested in aqua regia. They were subsequently analyzed for 34 elements by the ICP technique. A few soil samples were also analyzed for gold using fire assay followed by atomic absorption.

2006 Soil Samples

Soil samples were mostly taken on a grid located in the northwest corner of the property. The samples were collected at approximately 50 m intervals on lines spaced 100 m apart. Sample locations are marked with 0.5 m wooden lath bearing aluminum tags inscribed with the sample number.

The soil samples were shipped to ALS Chemex Labs in North Vancouver, where they were dried and sieved to minus 180 microns. They were then dissolved in aqua regia and analyzed by inductively coupled plasma with atomic emission spectroscopy.

2010 Soil Samples

The 2010 soil samples were located by means of handheld GPS. Sample sites are marked by aluminum tags inscribed with the sample numbers and affixed to 0.5 m thick wooden lath that were driven into the ground. Soil samples were collected from 40 to 60 cm deep holes dug by hand auger. They were placed into individually pre-numbered Kraft paper bags.

The soil samples were sent to ALS Chemex, where they were dried, screened to -180 microns, and then analyzed for 35 elements using ME-ICP41. An additional 30 g charge was further analysed for gold using Fyre assay with inductively coupled plasma-atomic emission spectroscopy finish (Au-ICP21).

APPENDIX III
CERTIFICATE OF ANALYSIS



ALS Chemex

EXCELLENCE IN ANALYTICAL CHEMISTRY

ALS Canada Ltd.

2103 Dollarton Hwy

North Vancouver BC V7H 0A7

Phone: 604 984 0221 Fax: 604 984 0218 www.alschemex.com

To: STRATEGIC METALS LTD.

C/O ARCHER, CATHRO & ASSOCIATES (1981)

LIMITED

1016-510 W HASTINGS ST

VANCOUVER BC V6B 1L8

Page: 1

Finalized Date: 27-JUL-2010

Account: MTT

CERTIFICATE VA10098073

Project: 4C

P.O. No.:

This report is for 108 Soil samples submitted to our lab in Vancouver, BC, Canada on 19-JUL-2010.

The following have access to data associated with this certificate:

JOAN MARIACHER

BILL WENGZYNOWSKI

SAMPLE PREPARATION

ALS CODE	DESCRIPTION
WEI-21	Received Sample Weight
LOG-22	Sample login - Rcd w/o BarCode
SCR-41	Screen to -180um and save both

ANALYTICAL PROCEDURES

ALS CODE	DESCRIPTION	INSTRUMENT
Au-ICP21	Au 30g FA ICP-AES Finish	ICP-AES
ME-ICP41	35 Element Aqua Regia ICP-AES	ICP-AES

To: **STRATEGIC METALS LTD.**
ATTN: JOAN MARIACHER
C/O ARCHER, CATHRO & ASSOCIATES (1981) LIMITED
1016-510 W HASTINGS ST
VANCOUVER BC V6B 1L8

This is the Final Report and supersedes any preliminary report with this certificate number. Results apply to samples as submitted. All pages of this report have been checked and approved for release.

Signature:

Colin Ramshaw, Vancouver Laboratory Manager



ALS Chemex

EXCELLENCE IN ANALYTICAL CHEMISTRY

ALS Canada Ltd.

2103 Dollarton Hwy
North Vancouver BC V7H 0A7

Phone: 604 984 0221 Fax: 604 984 0218 www.alschemex.com

To: STRATEGIC METALS LTD.
C/O ARCHER, CATHRO & ASSOCIATES (1981)
LIMITED
1016-510 W HASTINGS ST
VANCOUVER BC V6B 1L8

Page: 2 - A
Total # Pages: 4 (A - C)
Finalized Date: 27-JUL-2010
Account: MTT

Project: 4C

CERTIFICATE OF ANALYSIS VA10098073

Sample Description	Method	WEI-21	Au-ICP21	ME-ICP41	ME-ICP41	ME-ICP41	ME-ICP41	ME-ICP41	ME-ICP41	ME-ICP41	ME-ICP41	ME-ICP41	ME-ICP41	ME-ICP41	ME-ICP41	ME-ICP41
	Analyte	Recvd Wt.	Au	Ag	Al	As	B	Ba	Be	Bi	Ca	Cd	Co	Cr	Cu	Fe
	Units	kg	ppm	ppm	%	ppm	ppm	ppm	ppm	ppm	%	ppm	ppm	ppm	ppm	%
	LOR	0.02	0.001	0.2	0.01	2	10	10	0.5	2	0.01	0.5	1	1	1	0.01
CC100418		0.20	0.022	0.2	2.35	5	<10	90	<0.5	<2	0.36	<0.5	25	62	214	2.54
CC100419		0.18	0.007	<0.2	3.68	5	<10	280	<0.5	<2	0.58	<0.5	23	174	110	3.09
CC100420		0.26	0.002	<0.2	0.71	2	<10	140	<0.5	<2	0.55	<0.5	13	37	70	2.02
CC100421		0.22	0.002	<0.2	0.76	7	<10	130	<0.5	<2	0.34	<0.5	23	27	148	1.47
CC100422		0.28	0.006	0.2	0.74	4	<10	90	<0.5	<2	0.39	<0.5	23	27	147	1.68
CC100423		0.44	0.004	0.2	0.95	23	<10	70	<0.5	<2	0.35	<0.5	19	35	148	2.26
CC100424		0.26	<0.001	<0.2	0.75	2	<10	50	<0.5	<2	0.19	<0.5	6	50	40	0.98
CC100425		0.28	0.001	0.4	2.63	4	<10	240	<0.5	<2	0.40	2.3	81	115	303	5.61
CC100426		0.24	<0.001	<0.2	1.57	3	<10	40	<0.5	<2	0.29	<0.5	10	50	54	1.40
CC100427		0.22	<0.001	<0.2	1.93	2	<10	80	<0.5	<2	0.46	<0.5	10	62	69	1.32
CC100428		0.26	<0.001	0.2	2.21	3	<10	110	<0.5	<2	0.58	<0.5	9	71	82	1.40
CC100429		0.26	<0.001	0.2	1.28	5	<10	70	<0.5	<2	0.18	<0.5	22	36	108	3.16
CC100430		0.24	0.001	<0.2	1.35	4	<10	110	<0.5	<2	0.26	<0.5	11	44	94	1.35
CC100431		0.22	<0.001	0.2	1.98	4	<10	240	<0.5	<2	0.42	<0.5	17	63	95	3.24
CC100432		0.24	0.002	<0.2	2.38	2	<10	360	<0.5	<2	0.59	<0.5	14	66	73	2.41
CC100433		0.20	0.002	<0.2	2.05	6	<10	180	<0.5	<2	0.61	<0.5	16	65	84	2.44
CC100434		0.22	0.001	<0.2	1.48	4	<10	160	<0.5	<2	0.62	<0.5	9	39	53	1.98
CC100435		0.26	0.001	<0.2	1.31	3	<10	380	0.7	<2	0.67	<0.5	29	76	111	3.71
CC100436		0.30	0.011	0.3	1.88	11	<10	290	0.8	<2	0.49	<0.5	22	107	80	4.39
CC100437		0.24	0.004	0.2	0.41	4	<10	160	<0.5	<2	0.05	<0.5	4	25	29	1.51
CC100438		0.22	0.004	0.2	1.36	6	<10	340	1.4	<2	0.11	<0.5	14	78	130	4.21
CC100439		0.22	0.002	0.2	1.31	5	<10	310	<0.5	<2	0.05	<0.5	6	43	33	2.56
CC100440		0.18	0.002	0.3	1.50	8	<10	310	0.8	<2	0.09	<0.5	10	51	62	3.29
CC100441		0.24	0.001	0.3	1.81	7	<10	500	1.2	<2	0.25	<0.5	13	60	59	3.47
CC100442		0.26	0.003	0.3	2.13	9	<10	580	1.4	<2	0.59	<0.5	25	120	85	4.43
CC100443		0.18	0.001	0.3	2.38	6	<10	170	1.1	<2	0.60	<0.5	15	94	115	2.71
CC100444		0.26	<0.001	0.3	2.19	4	<10	230	0.8	2	0.48	<0.5	12	62	87	2.56
CC100445		0.24	<0.001	0.2	1.21	3	<10	70	<0.5	<2	0.38	<0.5	9	29	65	1.39
CC100446		0.22	0.006	0.3	1.52	22	<10	270	0.8	<2	0.46	<0.5	23	136	76	3.88
CC100447		0.26	0.003	<0.2	1.94	6	<10	160	<0.5	<2	0.30	<0.5	13	68	76	2.57
CC100448		0.28	0.002	0.2	2.93	7	<10	300	0.5	<2	0.52	<0.5	23	135	92	3.84
CC100449		0.18	<0.001	<0.2	0.54	3	<10	40	<0.5	<2	0.14	<0.5	4	20	47	1.09
CC100450		0.20	<0.001	0.2	1.92	5	<10	140	<0.5	<2	0.39	<0.5	31	48	177	3.37
CC100451		0.28	<0.001	0.2	1.46	8	<10	140	<0.5	<2	0.31	<0.5	15	43	91	2.64
CC100452		0.22	0.001	0.4	0.62	5	<10	160	0.7	<2	0.25	<0.5	113	923	26	7.26
CC100453		0.30	<0.001	0.3	2.11	7	<10	350	<0.5	<2	0.62	<0.5	17	82	40	3.73
CC100454		0.28	0.001	0.4	3.11	4	<10	410	0.7	<2	0.79	<0.5	23	75	72	5.46
CC100455		0.24	0.002	<0.2	1.82	6	<10	130	<0.5	<2	0.22	<0.5	10	49	56	2.40
CC100456		0.22	0.002	<0.2	2.17	5	<10	210	0.5	<2	0.36	<0.5	15	77	82	2.68
CC100457		0.22	<0.001	<0.2	1.51	4	<10	80	<0.5	<2	0.34	<0.5	14	49	80	2.06



ALS Chemex

EXCELLENCE IN ANALYTICAL CHEMISTRY

ALS Canada Ltd.

2103 Dollarton Hwy
North Vancouver BC V7H 0A7

Phone: 604 984 0221 Fax: 604 984 0218 www.alschemex.com

To: STRATEGIC METALS LTD.

C/O ARCHER, CATHRO & ASSOCIATES (1981)

LIMITED

1016-510 W HASTINGS ST

VANCOUVER BC V6B 1L8

Project: 4C

Page: 2 - B

Total # Pages: 4 (A - C)

Finalized Date: 27-JUL-2010

Account: MTT

CERTIFICATE OF ANALYSIS VA10098073

Sample Description	Method Analyte Units LOR	ME-ICP41	ME-ICP41	ME-ICP41	ME-ICP41	ME-ICP41	ME-ICP41	ME-ICP41	ME-ICP41	ME-ICP41	ME-ICP41	ME-ICP41	ME-ICP41	ME-ICP41	ME-ICP41	
		Ga	Hg	K	La	Mg	Mn	Mo	Na	Ni	P	Pb	S	Sb	Sc	Sr
		ppm	ppm	%	ppm	%	ppm	ppm	%	ppm	ppm	ppm	%	ppm	ppm	ppm
		10	1	0.01	10	0.01	5	1	0.01	1	10	2	0.01	2	1	1
CC100418		<10	1	0.04	<10	1.00	454	<1	0.03	50	510	<2	0.04	<2	7	13
CC100419		10	1	0.46	<10	2.25	304	<1	0.09	57	470	<2	0.02	<2	5	16
CC100420		<10	1	0.03	<10	0.32	263	<1	0.03	28	480	<2	0.02	<2	8	9
CC100421		<10	<1	0.02	<10	0.42	358	<1	0.02	34	450	<2	0.01	<2	4	14
CC100422		<10	1	0.04	<10	0.40	185	<1	0.03	45	530	<2	0.02	<2	4	8
CC100423		<10	1	0.03	<10	0.36	316	<1	0.02	43	520	2	0.02	<2	7	9
CC100424		<10	<1	0.06	<10	0.44	86	<1	0.02	19	380	<2	0.02	<2	1	3
CC100425		10	1	0.21	<10	1.81	1600	1	0.03	186	400	<2	0.01	<2	16	9
CC100426		<10	1	0.03	<10	0.54	199	<1	0.03	36	440	2	0.03	<2	2	10
CC100427		<10	1	0.06	<10	0.69	209	<1	0.06	37	540	<2	0.01	<2	3	18
CC100428		<10	<1	0.04	<10	0.89	136	<1	0.03	43	540	<2	0.01	<2	4	32
CC100429		<10	1	0.03	<10	0.61	144	<1	0.03	37	500	2	0.09	<2	4	11
CC100430		<10	1	0.04	<10	0.56	191	<1	0.02	24	480	<2	0.02	<2	2	19
CC100431		<10	<1	0.16	<10	0.82	364	<1	0.03	38	530	3	0.03	<2	6	14
CC100432		<10	1	0.11	<10	1.17	258	<1	0.04	36	540	2	0.01	<2	5	25
CC100433		<10	1	0.12	<10	0.94	389	<1	0.03	39	560	2	0.03	<2	5	15
CC100434		<10	1	0.06	<10	0.57	375	<1	0.03	21	600	3	0.04	<2	3	13
CC100435		<10	1	0.22	<10	0.73	758	<1	0.04	70	710	<2	0.01	<2	12	13
CC100436		<10	1	0.10	10	0.70	628	<1	0.03	91	700	3	0.03	<2	12	14
CC100437		<10	1	0.06	10	0.05	798	2	<0.01	16	1220	8	0.08	<2	<1	5
CC100438		10	<1	0.15	20	0.55	1420	1	<0.01	80	880	7	0.03	<2	7	7
CC100439		10	<1	0.15	10	0.36	890	1	0.01	22	850	8	0.07	<2	1	5
CC100440		10	1	0.17	10	0.56	643	1	0.01	43	570	9	0.02	<2	5	9
CC100441		10	1	0.26	10	0.76	864	1	0.01	47	810	9	0.01	<2	7	11
CC100442		<10	1	0.21	10	0.84	1050	<1	0.03	97	830	5	0.01	<2	14	16
CC100443		10	1	0.08	10	0.90	368	1	0.03	70	1000	2	0.06	<2	5	24
CC100444		10	1	0.23	10	0.87	357	<1	0.02	38	670	7	0.02	<2	5	15
CC100445		<10	1	0.04	<10	0.39	176	<1	0.03	22	520	2	0.01	<2	4	11
CC100446		<10	1	0.05	10	1.01	790	<1	0.02	238	620	5	0.02	<2	11	18
CC100447		<10	1	0.05	<10	0.88	316	<1	0.02	53	500	3	0.02	<2	5	17
CC100448		10	1	0.27	10	1.80	646	<1	0.02	60	790	2	0.03	<2	10	22
CC100449		<10	1	0.01	<10	0.19	92	1	0.01	12	350	2	0.02	<2	1	7
CC100450		<10	1	0.05	<10	0.94	474	1	0.02	52	590	2	0.05	<2	6	24
CC100451		<10	1	0.06	<10	0.76	428	<1	0.02	34	430	2	0.03	<2	6	13
CC100452		<10	1	0.03	<10	5.37	1295	<1	0.01	2540	400	3	0.03	<2	9	16
CC100453		10	1	0.75	10	1.27	554	<1	0.02	71	1570	2	0.04	<2	9	22
CC100454		10	1	0.58	20	1.48	787	<1	0.02	67	2060	4	0.01	<2	15	23
CC100455		<10	<1	0.07	10	0.66	254	1	0.01	30	590	3	0.03	<2	3	13
CC100456		10	<1	0.07	10	0.95	469	<1	0.02	61	620	3	0.03	<2	5	18
CC100457		<10	<1	0.02	<10	0.76	281	<1	0.02	39	650	2	0.03	<2	3	9



ALS Chemex

EXCELLENCE IN ANALYTICAL CHEMISTRY

ALS Canada Ltd.

2103 Dollarton Hwy
North Vancouver BC V7H 0A7

Phone: 604 984 0221 Fax: 604 984 0218 www.alschemex.com

To: STRATEGIC METALS LTD.
C/O ARCHER, CATHRO & ASSOCIATES (1981)
LIMITED
1016-510 W HASTINGS ST
VANCOUVER BC V6B 1L8

Page: 2 - C
Total # Pages: 4 (A - C)
Finalized Date: 27-JUL-2010
Account: MTT

Project: 4C

CERTIFICATE OF ANALYSIS VA10098073

Sample Description	Method Analyte Units LOR	ME-ICP41	ME-ICP41	ME-ICP41	ME-ICP41	ME-ICP41	ME-ICP41	ME-ICP41
		Th	Ti	Ti	U	V	W	Zn
		ppm	%	ppm	ppm	ppm	ppm	ppm
		20	0.01	10	10	1	10	2
CC100418		<20	0.03	<10	<10	64	<10	23
CC100419		<20	0.23	<10	<10	74	<10	48
CC100420		<20	0.03	<10	<10	42	<10	16
CC100421		<20	0.05	<10	<10	31	<10	52
CC100422		<20	0.07	<10	<10	33	<10	181
CC100423		<20	0.03	<10	<10	44	<10	49
CC100424		<20	0.07	<10	<10	27	<10	17
CC100425		<20	0.07	<10	<10	134	<10	901
CC100426		<20	0.05	<10	<10	30	<10	48
CC100427		<20	0.06	<10	<10	35	<10	20
CC100428		<20	0.04	<10	<10	36	<10	27
CC100429		<20	0.04	<10	<10	58	<10	33
CC100430		<20	0.06	<10	<10	34	<10	15
CC100431		<20	0.08	<10	<10	72	<10	46
CC100432		<20	0.08	<10	<10	62	<10	32
CC100433		<20	0.09	<10	<10	54	<10	43
CC100434		<20	0.06	<10	<10	47	<10	39
CC100435		<20	0.09	<10	<10	74	<10	38
CC100436		<20	0.06	<10	<10	91	<10	62
CC100437		<20	<0.01	<10	<10	45	<10	43
CC100438		<20	0.06	<10	<10	109	<10	174
CC100439		<20	0.07	<10	<10	78	<10	56
CC100440		<20	0.10	<10	<10	85	<10	87
CC100441		<20	0.13	<10	<10	86	<10	106
CC100442		<20	0.09	<10	<10	98	<10	73
CC100443		<20	0.06	<10	<10	67	<10	43
CC100444		<20	0.10	<10	<10	66	<10	53
CC100445		<20	0.04	<10	<10	32	<10	18
CC100446		<20	0.04	<10	<10	85	<10	87
CC100447		<20	0.10	<10	<10	62	<10	47
CC100448		<20	0.18	<10	<10	106	<10	59
CC100449		<20	0.04	<10	<10	36	<10	15
CC100450		<20	0.04	<10	<10	75	<10	198
CC100451		<20	0.06	<10	<10	61	<10	51
CC100452		<20	0.02	<10	<10	40	<10	47
CC100453		<20	0.30	<10	<10	124	<10	66
CC100454		<20	0.33	<10	<10	161	<10	84
CC100455		<20	0.07	<10	<10	55	<10	45
CC100456		<20	0.07	<10	<10	64	<10	52
CC100457		<20	0.03	<10	<10	50	<10	71



ALS Chemex

EXCELLENCE IN ANALYTICAL CHEMISTRY

ALS Canada Ltd.

2103 Dollarton Hwy

North Vancouver BC V7H 0A7

Phone: 604 984 0221 Fax: 604 984 0218 www.alschemex.com

To: STRATEGIC METALS LTD.

C/O ARCHER, CATHRO & ASSOCIATES (1981)

LIMITED

1016-510 W HASTINGS ST

VANCOUVER BC V6B 1L8

Project: 4C

Page: 3 - A

Total # Pages: 4 (A - C)

Finalized Date: 27-JUL-2010

Account: MTT

CERTIFICATE OF ANALYSIS VA10098073

Sample Description	Method Analyte Units LOR	WEI-21	Au-ICP21	ME-ICP41	ME-ICP41	ME-ICP41	ME-ICP41	ME-ICP41	ME-ICP41	ME-ICP41	ME-ICP41	ME-ICP41	ME-ICP41	ME-ICP41	ME-ICP41	ME-ICP41
		Recvd Wt.	Au	Ag	Al	As	B	Ba	Be	Bi	Ca	Cd	Co	Cr	Cu	Fe
		kg	ppm	ppm	%	ppm	ppm	ppm	ppm	ppm	%	ppm	ppm	ppm	ppm	%
		0.02	0.001	0.2	0.01	2	10	10	0.5	2	0.01	0.5	1	1	1	0.01
CC100458		0.26	0.001	0.2	1.73	3	<10	100	0.7	<2	0.51	<0.5	11	48	82	1.73
CC100459		0.30	0.002	0.2	1.92	5	<10	240	0.7	<2	0.38	<0.5	12	73	67	2.45
CC100460		0.22	0.002	0.2	0.81	7	<10	220	<0.5	<2	0.11	<0.5	4	36	27	2.16
CC100461		0.22	0.003	0.3	0.84	6	<10	230	<0.5	<2	0.12	<0.5	4	38	28	2.27
CC100462		0.26	0.002	<0.2	3.24	3	<10	340	0.8	2	0.53	<0.5	21	84	119	3.61
CC100463		0.24	0.004	0.2	2.46	4	<10	300	0.7	<2	0.64	<0.5	17	69	94	2.60
CC100464		0.24	<0.001	0.2	0.94	4	<10	160	<0.5	<2	0.05	<0.5	3	36	22	1.60
CC100465		0.30	0.008	<0.2	1.42	9	<10	180	0.6	<2	0.15	<0.5	11	51	43	2.84
CC100466		0.22	0.005	0.2	1.30	4	<10	170	0.8	<2	0.39	<0.5	16	79	57	3.13
CC100467		0.24	0.004	0.2	1.49	5	<10	110	<0.5	<2	0.48	<0.5	10	36	45	1.68
CC100468		0.26	0.004	<0.2	1.67	6	<10	90	<0.5	<2	0.51	<0.5	10	46	58	1.89
CC100469		0.22	0.002	0.2	1.95	5	<10	210	<0.5	<2	0.36	<0.5	10	45	80	2.07
CC100470		0.22	0.005	0.2	1.93	6	<10	190	<0.5	<2	0.30	<0.5	11	49	97	2.10



ALS Chemex

EXCELLENCE IN ANALYTICAL CHEMISTRY

ALS Canada Ltd.

2103 Dollarton Hwy

North Vancouver BC V7H 0A7

Phone: 604 984 0221 Fax: 604 984 0218 www.alschemex.com

To: STRATEGIC METALS LTD.

C/O ARCHER, CATHRO & ASSOCIATES (1981)

LIMITED

1016-510 W HASTINGS ST

VANCOUVER BC V6B 1L8

Project: 4C

Page: 3 - B

Total # Pages: 4 (A - C)

Finalized Date: 27-JUL-2010

Account: MTT

CERTIFICATE OF ANALYSIS VA10098073

Sample Description	Method Analyte Units LOR	ME-ICP41	ME-ICP41	ME-ICP41	ME-ICP41	ME-ICP41	ME-ICP41	ME-ICP41	ME-ICP41	ME-ICP41	ME-ICP41	ME-ICP41	ME-ICP41	ME-ICP41	ME-ICP41	
		Ga	Hg	K	La	Mg	Mn	Mo	Na	Ni	P	Pb	S	Sb	Sc	Sr
		ppm	ppm	%	ppm	%	ppm	ppm	%	ppm	ppm	ppm	%	ppm	ppm	ppm
		10	1	0.01	10	0.01	5	1	0.01	1	10	2	0.01	2	1	1
CC100458		<10	1	0.06	<10	0.62	257	<1	0.03	30	550	2	0.02	<2	4	21
CC100459		10	<1	0.10	10	0.93	309	<1	0.02	37	410	5	0.03	<2	4	19
CC100460		10	1	0.12	10	0.23	268	1	<0.01	19	790	8	0.06	<2	<1	6
CC100461		10	<1	0.12	10	0.24	281	1	<0.01	21	840	9	0.06	<2	<1	7
CC100462		10	1	0.22	10	1.42	661	<1	0.02	49	550	11	0.01	<2	9	31
CC100463		10	<1	0.14	10	1.02	533	<1	0.02	47	780	3	0.01	<2	6	24
CC100464		<10	1	0.07	10	0.17	196	1	<0.01	15	1080	7	0.09	<2	<1	5
CC100465		<10	<1	0.11	10	0.61	484	1	0.01	38	610	8	0.02	<2	3	10
CC100466		<10	1	0.04	<10	0.40	523	<1	0.02	62	700	2	0.04	<2	5	11
CC100467		<10	<1	0.04	<10	0.40	786	1	0.02	20	980	3	0.06	<2	<1	13
CC100468		<10	1	0.08	<10	0.53	291	<1	0.03	29	720	3	0.03	<2	2	14
CC100469		<10	<1	0.22	10	0.62	198	1	0.03	33	540	5	0.02	<2	4	12
CC100470		<10	1	0.08	<10	0.63	144	<1	0.02	30	500	3	0.04	<2	3	34



ALS Chemex

EXCELLENCE IN ANALYTICAL CHEMISTRY

ALS Canada Ltd.

2103 Dollarton Hwy

North Vancouver BC V7H 0A7

Phone: 604 984 0221 Fax: 604 984 0218 www.alschemex.com

To: STRATEGIC METALS LTD.

C/O ARCHER, CATHRO & ASSOCIATES (1981)

LIMITED

1016-510 W HASTINGS ST

VANCOUVER BC V6B 1L8

Project: 4C

Page: 3 - C

Total # Pages: 4 (A - C)

Finalized Date: 27-JUL-2010

Account: MTT

CERTIFICATE OF ANALYSIS VA10098073

Sample Description	Method Analyte Units LOR	ME-ICP41	ME-ICP41	ME-ICP41	ME-ICP41	ME-ICP41	ME-ICP41	ME-ICP41
		Th	Ti	Tl	U	V	W	Zn
		ppm	%	ppm	ppm	ppm	ppm	ppm
		20	0.01	10	10	1	10	2
CC100458		<20	0.06	<10	<10	42	<10	29
CC100459		<20	0.12	<10	<10	65	<10	51
CC100460		<20	0.02	<10	<10	64	<10	45
CC100461		<20	0.02	<10	<10	67	<10	47
CC100462		<20	0.16	<10	<10	114	<10	81
CC100463		<20	0.15	<10	<10	67	<10	53
CC100464		<20	0.02	<10	<10	44	<10	32
CC100465		<20	0.08	<10	<10	60	<10	74
CC100466		<20	0.02	<10	<10	62	<10	38
CC100467		<20	0.02	<10	<10	35	<10	30
CC100468		<20	0.05	<10	<10	38	<10	41
CC100469		<20	0.08	<10	<10	48	<10	41
CC100470		<20	0.08	<10	<10	51	<10	40