

2010 GEOLOGICAL AND GEOCHEMICAL ASSESSMENT REPORT

FOR THE

FIRE (Chzerpnough) and ICE (BNOB) Properties

Watson Lake Mining Division
Mapsheets 105-F-09,10
Latitude 61° 35' N, Longitude 132°29'W
NTS 6832001 N / 633500 E

Prepared for

EAGLE PLAINS RESOURCES LTD.

Suite 200 44-12th Ave. S.
Cranbrook, B.C., V1C 2R7

by

Aaron Higgs, B.Sc. (Geol)
TerraLogic Exploration Inc.
Suite 200 44-12th Ave. S.
Cranbrook, B.C., V1C 2R7
and

Jarrold Brown, M.Sc., P.Geo.
TerraLogic Exploration Inc.
Suite 200 44-12th Ave. S.
Cranbrook, B.C., V1C 2R7

March 8, 2011

SUMMARY

The FIRE (formerly the Chzerpnough), ICE (formerly the BNOB) properties consist of 292 units located in the McConnell / Ketz River area of the Yukon Territories, approximately 40 km south of Ross River in the Watson Lake Mining district. The claims are centered at Latitude 61° 35' N, Longitude 132°29'W; NTS 6832001 N / 633500 E. The claims are owned 100% by Eagle Plains Resources Ltd.

The claims overlie Mississippian aged intermediate to felsic volcanic rocks and similar aged sediments of the Pelly Mountain Volcanic Belt. The stratigraphy includes pyritic trachyte, pyritic lapilli tuffs, crystal tuffs, and volcanoclastic debris flows and is thought to be correlative to the host stratigraphy at the nearby Wolf and MM VMS exhalative type base metal deposits. Historical geological fieldwork on the properties by Atna Resources, Cyprus Anvil and others identified favorable stratigraphy and mineralization associated with Volcanogenic Massive Sulphide (VMS) deposits including extensive barium – mercury – lead – zinc - silver soil geochemical anomalies and barite – sphalerite – galena - pyrite mineralization within a pyrite altered felsic volcanic package.

The 2010 exploration program consisted of the following:

- A crew of 3 spent 5 days were prospecting and sampling near the Fox and Fire targets, in areas with syenite stocks or anomalous REE assay values. Scintillometers were used to find rocks with high Th values as Th is associated closely associated with REE mineralization, the mineral monazite in particular. Other minerals of interest include fluorite and xenotime. A total of 26 rock samples were taken in the vicinity of the Fire camp.
- A crew of 2 spent 1 day on the BNOB, using the scintillometer and prospecting to test the syenite and its surrounding areas for potential REE mineralization. A total of 3 rock samples were taken .

Conclusions and Recommendations from the 2010 program are as follows:

By virtue of the numerous intrusive stocks of alkaline affinity in close proximity to other known REE mineralization showings to the south (e.g. Guano), the Fire-Ice proeprty was deemed prospective for REE + Nb mineralization. The specific REE 2010 field investigation in the vicinity of several syenite stocks and feeder systems at the VMS Fire and Ice showings did not return overly encouraging analytical results for REE and Nb. The scintillometer and some of the analytical results are anomalous, but not economically significant for the specific areas studied.

General recommendation to assess the regional potential for REE and Nb mineralization should include additional attempts to reanalyze any and all historical silt-stream and/or soil pulps with a robust analytical method such as INAA or fusion. YK geological survey pulps are currently held by the GSC, but attempts to get access to the pulps this year were unsuccessful. In the current rock dataset there is a clear correlation between the REEs, Nb and Th ($r^2 > 0.78$). An airborne radiometric survey is strongly recommended to develop additional regional scale targets.

Table of Contents

INTRODUCTION.....	1
LOCATION AND ACCESS.....	1
TENURE.....	1
HISTORY AND PREVIOUS WORK.....	11
GEOLOGY.....	14
REGIONAL GEOLOGY.....	14
PROPERTY GEOLOGY.....	18
2010 EXPLORATION PROGRAM.....	22
2010 EXPLORATION RESULTS	22
GEOLOGICAL MAPPING.....	22
GEOCHEMISTRY.....	22
CONCLUSIONS AND RECOMMENDATIONS.....	28
REFERENCES.....	29

List of Figures

FIGURE 1 – PROPERTY LOCATION MAP.....	9
FIGURE 2 – TENURE MAP.....	10
FIGURE 3A – REGIONAL GEOLOGY MAP.....	16
FIGURE 3B – REGIONAL GEOLOGY LEGEND.....	17
FIGURE 4 – PROPERTY GEOLOGY MAP.....	21
FIGURE 5 – 2010 STATION AND SAMPLE LOCATION MAP.....	24
FIGURE 6A – 2010 GEOCHEMISTRY RESULTS - TREE.....	25
FIGURE 6B – 2010 GEOCHEMISTRY RESULTS - Y.....	26
FIGURE 6C – 2010 GEOCHEMISTRY RESULTS - NB.....	27

List of Tables

TABLE 1 – FIRE – ICE TENURE SUMMARY.....	1
TABLE 2 – ROCK STATISTICS FOR ELEMENTS OF INTEREST.....	22
TABLE 3 – ROCK ELEMENTAL CORRELATIONS.....	23

List of Appendices

APPENDIX I – Statement of Qualifications
APPENDIX II - Statement of Expenditures
APPENDIX III – Geochemical Protocol
APPENDIX IV – Sample Location and Descriptions
APPENDIX V – Analytical Certificates

INTRODUCTION

The Fire-Ice properties are situated in south-central Yukon (Figure 1) roughly 44 kilometres south of Ross River. The Fire, Ice, Ash, Salt, Char, Eva and Cole claim groups comprise a number of adjoining claims that make up the property.

Mapping of correlative PMVB rocks on other Eagle Plains Resources properties elsewhere in Pelly Mountains, mainly on the MM (Ash, Brown and Gallagher, 2007) and EROS properties (Ash and Brown, 2006), in conjunction with a detailed analysis of the available PMVB literature (Ash, 2007), a stratigraphic section for the belt is being developed. Results of this work to date have shown that mafic volcanic rocks are much more prevalent than previously recognized and are suggested to be a lower stratigraphic component of PMVB. The presence of these rocks also appear to play an important role in localizing VMS styles of mineralization.

Location And Access

The FIRE (Chzerpnough) and ICE (BNOB) properties are located in the south-central Yukon Territory between the Ketzka River and McConnell River drainages, centered at approximately Latitude 61° 35' N, Longitude 132°29' W; NTS 6832001 N / 633500 E (Figure 1). Access to the property is by helicopter, with the nearest base in Ross River approximately 35 km north of the property boundary. Gear and personnel mobilization can be carried out from the Ketzka River Mine road located approximately 15 km east of the property boundary. There is also an established exploration trail located west of the ICE / BNOB showing area which could provide access from the Seagull Lake – Ground Hog Creek area. The claims cover alpine to subalpine terrain within the St. Cyr Range of the Pelly Mountains. Elevations on the claims range from 1150 to 2001 meters, with topography ranging from moderate to very steep. Outcrop exposure is 10 – 20 % with a thin veneer of colluvium or talus typically developed.

Tenure

The property consists of 292 Quartz claims (Table 1; Figure 2), located on the Cloutier Creek and Pass Peak Map sheets within the Watson Lake Mining District. The claims are owned 100% by Eagle Plains Resources Ltd., with an underlying 1% NSR carried by Bernie Kreft of Whitehorse, Yukon.

Table 1 – Fire – Ice Tenure Summary

Mining District	Quartz Claim ID	Claim Name	Claim Number	Owner	Recorded Date	Expiry Date
Watson Lake	YB84517	CHAR	1	EPL	6/20/1996	11/6/2012
Watson Lake	YB84518	CHAR	2	EPL	6/20/1996	11/6/2012
Watson Lake	YB84519	CHAR	3	EPL	6/20/1996	11/6/2012
Watson Lake	YB84520	CHAR	4	EPL	6/20/1996	11/6/2012
Watson Lake	YB84521	CHAR	5	EPL	6/20/1996	11/6/2012
Watson Lake	YB84522	CHAR	6	EPL	6/20/1996	11/6/2012
Watson Lake	YB84523	CHAR	7	EPL	6/20/1996	11/6/2012
Watson Lake	YB84524	CHAR	8	EPL	6/20/1996	11/6/2012
Watson Lake	YB84525	CHAR	9	EPL	6/20/1996	11/6/2012
Watson Lake	YB84526	CHAR	10	EPL	6/20/1996	11/6/2012
Watson Lake	YB84527	CHAR	11	EPL	6/20/1996	11/6/2012
Watson Lake	YB84528	CHAR	12	EPL	6/20/1996	11/6/2012
Watson Lake	YB84529	CHAR	13	EPL	6/20/1996	11/6/2012
Watson Lake	YB84530	CHAR	14	EPL	6/20/1996	11/6/2012
Watson Lake	YB84531	CHAR	15	EPL	6/20/1996	11/6/2012
Watson Lake	YB84532	CHAR	16	EPL	6/20/1996	11/6/2012
Watson Lake	YB84533	CHAR	17	EPL	6/20/1996	11/6/2012
Watson Lake	YB84534	CHAR	18	EPL	6/20/1996	11/6/2012

Mining District	Quartz Claim ID	Claim Name	Claim Number	Owner	Recorded Date	Expiry Date
Watson Lake	YB84535	CHAR	19	EPL	6/20/1996	11/6/2012
Watson Lake	YB84536	CHAR	20	EPL	6/20/1996	11/6/2012
Watson Lake	YB84537	CHAR	21	EPL	6/20/1996	11/6/2012
Watson Lake	YB84538	CHAR	22	EPL	6/20/1996	11/6/2012
Watson Lake	YB84539	CHAR	23	EPL	6/20/1996	11/6/2012
Watson Lake	YB84540	CHAR	24	EPL	6/20/1996	11/6/2012
Watson Lake	YB84541	CHAR	25	EPL	6/20/1996	11/6/2012
Watson Lake	YB84542	CHAR	26	EPL	6/20/1996	11/6/2012
Watson Lake	YB84543	CHAR	27	EPL	6/20/1996	11/6/2012
Watson Lake	YB84544	CHAR	28	EPL	6/20/1996	11/6/2012
Watson Lake	YB84545	CHAR	29	EPL	6/20/1996	11/6/2012
Watson Lake	YB84546	CHAR	30	EPL	6/20/1996	11/6/2012
Watson Lake	YB92936	CHAR	31	EPL	9/14/2000	11/6/2012
Watson Lake	YB92937	CHAR	32	EPL	9/14/2000	11/6/2012
Watson Lake	YB92938	CHAR	33	EPL	9/14/2000	11/6/2012
Watson Lake	YB92939	CHAR	34	EPL	9/14/2000	11/6/2012
Watson Lake	YB93144	CHAR	41	EPL	10/10/2000	11/6/2012
Watson Lake	YB93145	CHAR	42	EPL	10/10/2000	11/6/2012
Watson Lake	YB93146	CHAR	43	EPL	10/10/2000	11/6/2012
Watson Lake	YB93147	CHAR	44	EPL	10/10/2000	11/6/2012
Watson Lake	YB93030	COLE	1	EPL	9/14/2000	11/6/2012
Watson Lake	YB93031	COLE	2	EPL	9/14/2000	11/6/2012
Watson Lake	YB93032	COLE	3	EPL	9/14/2000	11/6/2012
Watson Lake	YB93033	COLE	4	EPL	9/14/2000	11/6/2012
Watson Lake	YB93034	COLE	5	EPL	9/14/2000	11/6/2012
Watson Lake	YB93035	COLE	6	EPL	9/14/2000	11/6/2012
Watson Lake	YB93036	COLE	7	EPL	9/14/2000	11/6/2012
Watson Lake	YB93037	COLE	8	EPL	9/14/2000	11/6/2012
Watson Lake	YB93038	COLE	9	EPL	9/14/2000	11/6/2012
Watson Lake	YB93039	COLE	10	EPL	9/14/2000	11/6/2012
Watson Lake	YB93040	COLE	11	EPL	9/14/2000	11/6/2012
Watson Lake	YB93041	COLE	12	EPL	9/14/2000	11/6/2012
Watson Lake	YB93042	COLE	13	EPL	9/14/2000	11/6/2012
Watson Lake	YB93043	COLE	14	EPL	9/14/2000	11/6/2012
Watson Lake	YB93044	COLE	15	EPL	9/14/2000	11/6/2012
Watson Lake	YB93045	COLE	16	EPL	9/14/2000	11/6/2012
Watson Lake	YB93046	COLE	17	EPL	9/14/2000	11/6/2012
Watson Lake	YB93047	COLE	18	EPL	9/14/2000	11/6/2012
Watson Lake	YB93048	COLE	19	EPL	9/14/2000	11/6/2012
Watson Lake	YB93049	COLE	20	EPL	9/14/2000	11/6/2012
Watson Lake	YB93050	COLE	21	EPL	9/14/2000	11/6/2012
Watson Lake	YB93051	COLE	22	EPL	9/14/2000	11/6/2012

Mining District	Quartz Claim ID	Claim Name	Claim Number	Owner	Recorded Date	Expiry Date
Watson Lake	YB93052	COLE	23	EPL	9/14/2000	11/6/2012
Watson Lake	YB93053	COLE	24	EPL	9/14/2000	11/6/2012
Watson Lake	YB93054	COLE	25	EPL	9/14/2000	11/6/2012
Watson Lake	YB93056	COLE	27	EPL	9/14/2000	11/6/2012
Watson Lake	YB93057	COLE	28	EPL	9/14/2000	11/6/2012
Watson Lake	YB93058	COLE	29	EPL	9/14/2000	11/6/2012
Watson Lake	YB93059	COLE	30	EPL	9/14/2000	11/6/2012
Watson Lake	YB93599	EROS	1	EPL	2/11/2002	11/6/2012
Watson Lake	YB93600	EROS	2	EPL	2/11/2002	11/6/2012
Watson Lake	YB93601	EROS	3	EPL	2/11/2002	11/6/2012
Watson Lake	YB93602	EROS	4	EPL	2/11/2002	11/6/2012
Watson Lake	YB93802	EROS	5	EPL	7/22/2002	11/6/2012
Watson Lake	YB93803	EROS	6	EPL	7/22/2002	11/6/2012
Watson Lake	YB93804	EROS	7	EPL	7/22/2002	11/6/2012
Watson Lake	YB93805	EROS	8	EPL	7/22/2002	11/6/2012
Watson Lake	YB93806	EROS	9	EPL	7/22/2002	11/6/2012
Watson Lake	YB93807	EROS	10	EPL	7/22/2002	11/6/2012
Watson Lake	YB93808	EROS	11	EPL	7/22/2002	11/6/2012
Watson Lake	YB93809	EROS	12	EPL	7/22/2002	11/6/2012
Watson Lake	YB93810	EROS	13	EPL	7/22/2002	11/6/2012
Watson Lake	YB93811	EROS	14	EPL	7/22/2002	11/6/2012
Watson Lake	YB92856	ICE	25	EPL	9/14/2000	11/6/2012
Watson Lake	YB92857	ICE	26	EPL	9/14/2000	11/6/2012
Watson Lake	YB92858	ICE	27	EPL	9/14/2000	11/6/2012
Watson Lake	YB92859	ICE	28	EPL	9/14/2000	11/6/2012
Watson Lake	YB92860	ICE	29	EPL	9/14/2000	11/6/2012
Watson Lake	YB92861	ICE	30	EPL	9/14/2000	11/6/2012
Watson Lake	YB92862	ICE	31	EPL	9/14/2000	11/6/2012
Watson Lake	YB92863	ICE	32	EPL	9/14/2000	11/6/2012
Watson Lake	YB92864	ICE	33	EPL	9/14/2000	11/6/2012
Watson Lake	YB92865	ICE	34	EPL	9/14/2000	11/6/2012
Watson Lake	YB92866	ICE	35	EPL	9/14/2000	11/6/2012
Watson Lake	YB92867	ICE	36	EPL	9/14/2000	11/6/2012
Watson Lake	YB92868	ICE	37	EPL	9/14/2000	11/6/2012
Watson Lake	YB92869	ICE	38	EPL	9/14/2000	11/6/2012
Watson Lake	YB92870	ICE	39	EPL	9/14/2000	11/6/2012
Watson Lake	YB92871	ICE	40	EPL	9/14/2000	11/6/2012
Watson Lake	YB92872	ICE	41	EPL	9/14/2000	11/6/2012
Watson Lake	YB92873	ICE	42	EPL	9/14/2000	11/6/2012
Watson Lake	YB92874	ICE	43	EPL	9/14/2000	11/6/2012
Watson Lake	YB92875	ICE	44	EPL	9/14/2000	11/6/2012
Watson Lake	YB92876	ICE	45	EPL	9/14/2000	11/6/2012

Mining District	Quartz Claim ID	Claim Name	Claim Number	Owner	Recorded Date	Expiry Date
Watson Lake	YB92877	ICE	46	EPL	9/14/2000	11/6/2012
Watson Lake	YB92878	ICE	47	EPL	9/14/2000	11/6/2012
Watson Lake	YB92879	ICE	48	EPL	9/14/2000	11/6/2012
Watson Lake	YB92880	ICE	49	EPL	9/14/2000	11/6/2012
Watson Lake	YB92881	ICE	50	EPL	9/14/2000	11/6/2012
Watson Lake	YB92882	ICE	51	EPL	9/14/2000	11/6/2012
Watson Lake	YB92883	ICE	52	EPL	9/14/2000	11/6/2012
Watson Lake	YB92884	ICE	53	EPL	9/14/2000	11/6/2012
Watson Lake	YB92885	ICE	54	EPL	9/14/2000	11/6/2012
Watson Lake	YB92886	ICE	55	EPL	9/14/2000	11/6/2012
Watson Lake	YB92887	ICE	56	EPL	9/14/2000	11/6/2012
Watson Lake	YB92888	ICE	57	EPL	9/14/2000	11/6/2012
Watson Lake	YB92889	ICE	58	EPL	9/14/2000	11/6/2012
Watson Lake	YB92890	ICE	59	EPL	9/14/2000	11/6/2012
Watson Lake	YB92891	ICE	60	EPL	9/14/2000	11/6/2012
Watson Lake	YB92892	ICE	61	EPL	9/14/2000	11/6/2012
Watson Lake	YB92893	ICE	62	EPL	9/14/2000	11/6/2012
Watson Lake	YB92894	ICE	63	EPL	9/14/2000	11/6/2012
Watson Lake	YB92895	ICE	64	EPL	9/14/2000	11/6/2012
Watson Lake	YB92896	ICE	65	EPL	9/14/2000	11/6/2012
Watson Lake	YB92897	ICE	66	EPL	9/14/2000	11/6/2012
Watson Lake	YB92898	ICE	67	EPL	9/14/2000	11/6/2012
Watson Lake	YB92899	ICE	68	EPL	9/14/2000	11/6/2012
Watson Lake	YB92900	ICE	69	EPL	9/14/2000	11/6/2012
Watson Lake	YB92901	ICE	70	EPL	9/14/2000	11/6/2012
Watson Lake	YB92902	ICE	71	EPL	9/14/2000	11/6/2012
Watson Lake	YB92903	ICE	72	EPL	9/14/2000	11/6/2012
Watson Lake	YB92904	ICE	73	EPL	9/14/2000	11/6/2012
Watson Lake	YB92905	ICE	74	EPL	9/14/2000	11/6/2012
Watson Lake	YB92906	ICE	75	EPL	9/14/2000	11/6/2012
Watson Lake	YB92907	ICE	76	EPL	9/14/2000	11/6/2012
Watson Lake	YB92908	ICE	77	EPL	9/14/2000	11/6/2012
Watson Lake	YB92909	ICE	78	EPL	9/14/2000	11/6/2012
Watson Lake	YB92910	ICE	79	EPL	9/14/2000	11/6/2012
Watson Lake	YB92911	ICE	80	EPL	9/14/2000	11/6/2012
Watson Lake	YB92912	ICE	81	EPL	9/14/2000	11/6/2012
Watson Lake	YB92913	ICE	82	EPL	9/14/2000	11/6/2012
Watson Lake	YB92914	ICE	83	EPL	9/14/2000	11/6/2012
Watson Lake	YB92915	ICE	84	EPL	9/14/2000	11/6/2012
Watson Lake	YB92916	ICE	85	EPL	9/14/2000	11/6/2012
Watson Lake	YB92917	ICE	86	EPL	9/14/2000	11/6/2012
Watson Lake	YB92918	ICE	87	EPL	9/14/2000	11/6/2012

Mining District	Quartz Claim ID	Claim Name	Claim Number	Owner	Recorded Date	Expiry Date
Watson Lake	YB92919	ICE	88	EPL	9/14/2000	11/6/2012
Watson Lake	YB92920	ICE	89	EPL	9/14/2000	11/6/2012
Watson Lake	YB92921	ICE	90	EPL	9/14/2000	11/6/2012
Watson Lake	YB92922	ICE	91	EPL	9/14/2000	11/6/2012
Watson Lake	YB92923	ICE	92	EPL	9/14/2000	11/6/2012
Watson Lake	YB92928	ICE	97	EPL	9/14/2000	11/6/2012
Watson Lake	YB92929	ICE	98	EPL	9/14/2000	11/6/2012
Watson Lake	YB92930	ICE	99	EPL	9/14/2000	11/6/2012
Watson Lake	YB92931	ICE	100	EPL	9/14/2000	11/6/2012
Watson Lake	YB93530	ROCKY	1	EPL	11/6/2001	11/6/2012
Watson Lake	YB93531	ROCKY	2	EPL	11/6/2001	11/6/2012
Watson Lake	YB93532	ROCKY	3	EPL	11/6/2001	11/6/2012
Watson Lake	YB93533	ROCKY	4	EPL	11/6/2001	11/6/2012
Watson Lake	YB93534	ROCKY	5	EPL	11/6/2001	11/6/2012
Watson Lake	YB93535	ROCKY	6	EPL	11/6/2001	11/6/2012
Watson Lake	YB93536	ROCKY	7	EPL	11/6/2001	11/6/2012
Watson Lake	YB93537	ROCKY	8	EPL	11/6/2001	11/6/2012
Watson Lake	YB93538	ROCKY	9	EPL	11/6/2001	11/6/2012
Watson Lake	YB93547	ROCKY	19	EPL	11/6/2001	11/6/2012
Watson Lake	YB93548	ROCKY	20	EPL	11/6/2001	11/6/2012
Watson Lake	YB93549	ROCKY	21	EPL	11/6/2001	11/6/2012
Watson Lake	YB93550	ROCKY	22	EPL	11/6/2001	11/6/2012
Watson Lake	YB93551	ROCKY	23	EPL	11/6/2001	11/6/2012
Watson Lake	YB93552	ROCKY	24	EPL	11/6/2001	11/6/2012
Watson Lake	YB93557	ROCKY	29	EPL	11/6/2001	11/6/2012
Watson Lake	YB93558	ROCKY	30	EPL	11/6/2001	11/6/2012
Watson Lake	YB93559	ROCKY	31	EPL	11/6/2001	11/6/2012
Watson Lake	YB93560	ROCKY	32	EPL	11/6/2001	11/6/2012
Watson Lake	YB93561	ROCKY	33	EPL	11/6/2001	11/6/2012
Watson Lake	YB93562	ROCKY	34	EPL	11/6/2001	11/6/2012
Watson Lake	YB93563	ROCKY	35	EPL	11/6/2001	11/6/2012
Watson Lake	YB93564	ROCKY	36	EPL	11/6/2001	11/6/2012
Watson Lake	YB93565	ROCKY	37	EPL	11/6/2001	11/6/2012
Watson Lake	YB93566	ROCKY	38	EPL	11/6/2001	11/6/2012
Watson Lake	YB93014	SALT	1	EPL	9/14/2000	11/6/2012
Watson Lake	YB93015	SALT	2	EPL	9/14/2000	11/6/2012
Watson Lake	YB93016	SALT	3	EPL	9/14/2000	11/6/2012
Watson Lake	YB93017	SALT	4	EPL	9/14/2000	11/6/2012
Watson Lake	YB93018	SALT	5	EPL	9/14/2000	11/6/2012
Watson Lake	YB93019	SALT	6	EPL	9/14/2000	11/6/2012
Watson Lake	YB93020	SALT	7	EPL	9/14/2000	11/6/2012
Watson Lake	YB93021	SALT	8	EPL	9/14/2000	11/6/2012

Mining District	Quartz Claim ID	Claim Name	Claim Number	Owner	Recorded Date	Expiry Date
Watson Lake	YB93055	COLE	26	EPL	9/14/2000	11/16/2012
Watson Lake	YB92830	ASH	1	EPL	9/14/2000	11/6/2013
Watson Lake	YB92831	ASH	2	EPL	9/14/2000	11/6/2013
Watson Lake	YB92832	ASH	3	EPL	9/14/2000	11/6/2013
Watson Lake	YB92833	ASH	4	EPL	9/14/2000	11/6/2013
Watson Lake	YB92834	ASH	5	EPL	9/14/2000	11/6/2013
Watson Lake	YB92835	ASH	6	EPL	9/14/2000	11/6/2013
Watson Lake	YB92836	ASH	7	EPL	9/14/2000	11/6/2013
Watson Lake	YB92837	ASH	8	EPL	9/14/2000	11/6/2013
Watson Lake	YB92838	ASH	9	EPL	9/14/2000	11/6/2013
Watson Lake	YB92839	ASH	10	EPL	9/14/2000	11/6/2013
Watson Lake	YB92840	ASH	11	EPL	9/14/2000	11/6/2013
Watson Lake	YB92841	ASH	12	EPL	9/14/2000	11/6/2013
Watson Lake	YB92842	ASH	13	EPL	9/14/2000	11/6/2013
Watson Lake	YB92843	ASH	14	EPL	9/14/2000	11/6/2013
Watson Lake	YB92844	ASH	15	EPL	9/14/2000	11/6/2013
Watson Lake	YB92845	ASH	16	EPL	9/14/2000	11/6/2013
Watson Lake	YB92846	ASH	17	EPL	9/14/2000	11/6/2013
Watson Lake	YB92847	ASH	18	EPL	9/14/2000	11/6/2013
Watson Lake	YB92848	ASH	19	EPL	9/14/2000	11/6/2013
Watson Lake	YB92849	ASH	20	EPL	9/14/2000	11/6/2013
Watson Lake	YB92940	CHAR	35	EPL	9/14/2000	11/6/2013
Watson Lake	YB92941	CHAR	36	EPL	9/14/2000	11/6/2013
Watson Lake	YB92942	CHAR	37	EPL	9/14/2000	11/6/2013
Watson Lake	YB92943	CHAR	38	EPL	9/14/2000	11/6/2013
Watson Lake	YB92944	CHAR	39	EPL	9/14/2000	11/6/2013
Watson Lake	YB92945	CHAR	40	EPL	9/14/2000	11/6/2013
Watson Lake	YB93567	EVA	1	EPL	11/6/2001	11/6/2013
Watson Lake	YB93568	EVA	2	EPL	11/6/2001	11/6/2013
Watson Lake	YB93569	EVA	3	EPL	11/6/2001	11/6/2013
Watson Lake	YB93570	EVA	4	EPL	11/6/2001	11/6/2013
Watson Lake	YB93571	EVA	5	EPL	11/6/2001	11/6/2013
Watson Lake	YB93572	EVA	6	EPL	11/6/2001	11/6/2013
Watson Lake	YB93573	EVA	7	EPL	11/6/2001	11/6/2013
Watson Lake	YB93574	EVA	8	EPL	11/6/2001	11/6/2013
Watson Lake	YB93575	EVA	9	EPL	11/6/2001	11/6/2013
Watson Lake	YB93576	EVA	10	EPL	11/6/2001	11/6/2013
Watson Lake	YB93577	EVA	11	EPL	11/6/2001	11/6/2013
Watson Lake	YB93578	EVA	12	EPL	11/6/2001	11/6/2013
Watson Lake	YB93579	EVA	13	EPL	11/6/2001	11/6/2013
Watson Lake	YB93580	EVA	14	EPL	11/6/2001	11/6/2013
Watson Lake	YB93581	EVA	15	EPL	11/6/2001	11/6/2013

Mining District	Quartz Claim ID	Claim Name	Claim Number	Owner	Recorded Date	Expiry Date
Watson Lake	YB93582	EVA	16	EPL	11/6/2001	11/6/2013
Watson Lake	YB93583	EVA	17	EPL	11/6/2001	11/6/2013
Watson Lake	YB93584	EVA	18	EPL	11/6/2001	11/6/2013
Watson Lake	YB93585	EVA	19	EPL	11/6/2001	11/6/2013
Watson Lake	YB93586	EVA	20	EPL	11/6/2001	11/6/2013
Watson Lake	YB93587	EVA	21	EPL	11/6/2001	11/6/2013
Watson Lake	YB93588	EVA	22	EPL	11/6/2001	11/6/2013
Watson Lake	YB93589	EVA	23	EPL	11/6/2001	11/6/2013
Watson Lake	YB93590	EVA	24	EPL	11/6/2001	11/6/2013
Watson Lake	YB93591	EVA	25	EPL	11/6/2001	11/6/2013
Watson Lake	YB93592	EVA	26	EPL	11/6/2001	11/6/2013
Watson Lake	YB93593	EVA	27	EPL	11/6/2001	11/6/2013
Watson Lake	YB93594	EVA	28	EPL	11/6/2001	11/6/2013
Watson Lake	YB74423	ICE	1	EPL	2/6/1996	11/6/2013
Watson Lake	YB74424	ICE	2	EPL	2/6/1996	11/6/2013
Watson Lake	YB74425	ICE	3	EPL	2/6/1996	11/6/2013
Watson Lake	YB74426	ICE	4	EPL	2/6/1996	11/6/2013
Watson Lake	YB74427	ICE	5	EPL	2/6/1996	11/6/2013
Watson Lake	YB74428	ICE	6	EPL	2/6/1996	11/6/2013
Watson Lake	YB84555	ICE	7	EPL	6/20/1996	11/6/2013
Watson Lake	YB84556	ICE	8	EPL	6/20/1996	11/6/2013
Watson Lake	YB87288	ICE	9	EPL	8/23/1996	11/6/2013
Watson Lake	YB87289	ICE	10	EPL	8/23/1996	11/6/2013
Watson Lake	YB89927	ICE	11	EPL	9/16/1997	11/6/2013
Watson Lake	YB89928	ICE	12	EPL	9/16/1997	11/6/2013
Watson Lake	YB89929	ICE	13	EPL	9/16/1997	11/6/2013
Watson Lake	YB89930	ICE	14	EPL	9/16/1997	11/6/2013
Watson Lake	YB89931	ICE	15	EPL	9/16/1997	11/6/2013
Watson Lake	YB89932	ICE	16	EPL	9/16/1997	11/6/2013
Watson Lake	YB89933	ICE	17	EPL	9/16/1997	11/6/2013
Watson Lake	YB89934	ICE	18	EPL	9/16/1997	11/6/2013
Watson Lake	YB92850	ICE	19	EPL	9/14/2000	11/6/2013
Watson Lake	YB92851	ICE	20	EPL	9/14/2000	11/6/2013
Watson Lake	YB92852	ICE	21	EPL	9/14/2000	11/6/2013
Watson Lake	YB92853	ICE	22	EPL	9/14/2000	11/6/2013
Watson Lake	YB92854	ICE	23	EPL	9/14/2000	11/6/2013
Watson Lake	YB92855	ICE	24	EPL	9/14/2000	11/6/2013
Watson Lake	YB92924	ICE	93	EPL	9/14/2000	11/6/2013
Watson Lake	YB92925	ICE	94	EPL	9/14/2000	11/6/2013
Watson Lake	YB92926	ICE	95	EPL	9/14/2000	11/6/2013
Watson Lake	YB92927	ICE	96	EPL	9/14/2000	11/6/2013
Watson Lake	YB92932	ICE	101	EPL	9/14/2000	11/6/2013

Mining District	Quartz Claim ID	Claim Name	Claim Number	Owner	Recorded Date	Expiry Date
Watson Lake	YB92933	ICE	102	EPL	9/14/2000	11/6/2013
Watson Lake	YB92934	ICE	103	EPL	9/14/2000	11/6/2013
Watson Lake	YB92935	ICE	104	EPL	9/14/2000	11/6/2013
Watson Lake	YB93022	SALT	9	EPL	9/14/2000	11/6/2013
Watson Lake	YB93023	SALT	10	EPL	9/14/2000	11/6/2013
Watson Lake	YB93024	SALT	11	EPL	9/14/2000	11/6/2013
Watson Lake	YB93025	SALT	12	EPL	9/14/2000	11/6/2013
Watson Lake	YB93026	SALT	13	EPL	9/14/2000	11/6/2013
Watson Lake	YB93027	SALT	14	EPL	9/14/2000	11/6/2013
Watson Lake	YB93028	SALT	15	EPL	9/14/2000	11/6/2013
Watson Lake	YB93029	SALT	16	EPL	9/14/2000	11/6/2013
Watson Lake	YB74411	FIRE	1	EPL	2/6/1996	11/6/2014
Watson Lake	YB74412	FIRE	2	EPL	2/6/1996	11/6/2014
Watson Lake	YB74413	FIRE	3	EPL	2/6/1996	11/6/2014
Watson Lake	YB74414	FIRE	4	EPL	2/6/1996	11/6/2014
Watson Lake	YB74415	FIRE	5	EPL	2/6/1996	11/6/2014
Watson Lake	YB74416	FIRE	6	EPL	2/6/1996	11/6/2014
Watson Lake	YB74417	FIRE	7	EPL	2/6/1996	11/6/2014
Watson Lake	YB74418	FIRE	8	EPL	2/6/1996	11/6/2014
Watson Lake	YB74419	FIRE	9	EPL	2/6/1996	11/6/2014
Watson Lake	YB74420	FIRE	10	EPL	2/6/1996	11/6/2014
Watson Lake	YB74421	FIRE	11	EPL	2/6/1996	11/6/2014
Watson Lake	YB74422	FIRE	12	EPL	2/6/1996	11/6/2014

140°0'0"W

135°0'0"W

130°0'0"W



Eagle Plains Resources Ltd.

EPL:TSX-V

FIM Property

Figure 1 - Property Location

Projection - NAD 83 UTM Zone 09N

Scale - 1:4 000 000

28/01/2011

ALASKA

YUKON TERRITORY

NORTHWEST TERRITORIES

Dawson

Mayo

Carmacks

Ross River

FIM

Haines Junction

Whitehorse

Teslin

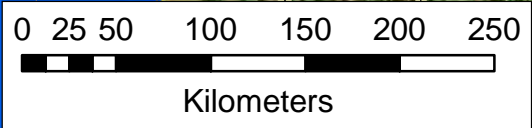
BRITISH COLUMBIA

65°0'0"N

65°0'0"N

60°0'0"N

60°0'0"N



Legend

FIM Location

Major City

Town

Road

Trail

Territorial Boundary

Proposed Mackenzie Valley Pipeline

140°0'0"W

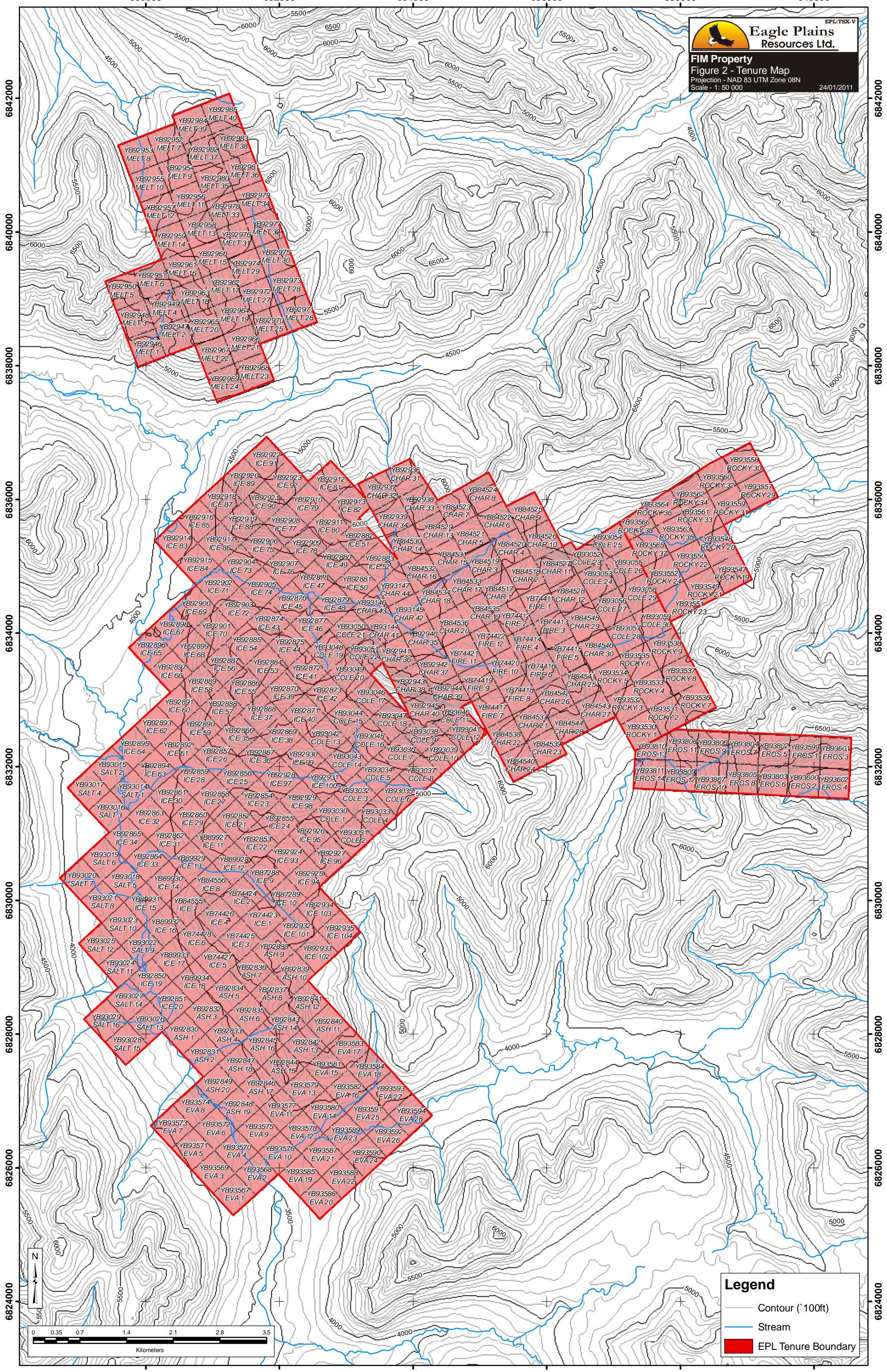
135°0'0"W

130°0'0"W

630000 632000 634000 636000 638000 640000

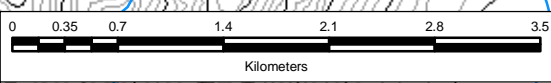


FIM Property
Figure 2 - Tenure Map
Projection - NAD 83 UTM Zone 08N
Scale - 1: 50 000
24/01/2011



Legend

- Contour (100ft)
- Stream
- EPL Tenure Boundary



630000 632000 634000 636000 638000 640000

History And Previous Work

The FIRE and ICE showing areas are located approximately seven kilometers apart and have been worked in the past as separate properties. The original FIRE 1 – 12 claims were staked by Bernie Kreft of Whitehorse, YT, in 1996 on behalf of Eagle Plains Resources. The twelve contiguous claims were staked to cover a soil geochemical anomaly, a geophysical (magnetic and I.P.) target, and associated mineralized outcrops which were thought to represent a positive exploration environment for volcanogenic massive sulphide (VMS) mineralization.

The exploration target was originally recognized during an exploration program carried out by Cyprus-Anvil Mining Corporation in 1977 that worked the area as the Chzerpough Claims. A soil geochemical survey conducted in 1977, using a chained and picketed grid, outlined soil anomalies that were interpreted as being (potentially) more extensive than would be expected from the mineralization observed in outcrop. Ground based magnetic and IP geophysical surveys conducted by Cyprus-Anvil revealed a small conductive target associated with a magnetic anomaly, coincident with both a large Zn-Pb soil geochemical anomaly and a sedimentary barite horizon outlined by previous workers.

After staking the FIRE claims in 1996, Eagle Plains Resources undertook a reconnaissance geological exploration program consisting of geological mapping, minor hand trenching, and sampling. The work program was designed to test the mineral potential of the property through following up on anomalous results from previous soil geochemical surveys and a previous geological mapping and sampling program. The program was conducted under the direction of John Dickie, M.Sc. The program identified many features associated with VMS type deposits including vent-proximal felsic volcanic stratigraphy, represented by lapilli-boulder tuff and clastic debris shed from a volcanic edifice, and a strong geochemical trend in talus fines, reflected by large anomalies with highly anomalous zinc, lead, silver and copper values.

Anomalous fluorine, occurring as purple fluorite, was found associated with the vent-proximal stratigraphy. Since high fluorine values are commonly associated with lead-zinc mineralization in other volcanogenic massive sulphide deposits, fluorite is regarded as a positive exploration feature on the FIRE claims. The program also identified a distinct stratigraphic horizon mineralized with barite-sphalerite-galena and minor chalcopyrite that appeared to explain part of the soil anomaly. Selected rock samples returned up to 7.12% zinc, 7.82% lead, 72.9 gm/t silver and 1.063 gm/t gold. The sedimentary barite horizon containing sphalerite and galena could not be sampled due to extensive snow cover. The conclusions from the program were that mineralization appears to be stratiform and the strongest geochemical indications, from rock and talus fine sampling, are that the target horizon lies along the northwest edge of the property. As part of the 1996 program, additional contiguous claims (CHAR 1 – 30) were staked to cover prospective VMS stratigraphy to the northwest. Additional work was recommended for the FIRE 1-12 and CHAR 1-30 claims in order to further test the extent of known mineralization.

In 1997, Eagle Plains Resources continued geological work on the FIRE and CHAR claims with a program of hand trenching, geological mapping and rock sampling. The purpose of the work was to locate and assess a barite float train reported to occur on the property. The program successfully identified the barite float train without finding the source. Samples of barite float returned values of up to 56.1 gm/t Ag, 5760 ppm Pb and 812 ppm Zn. The program also located a heavily pyritized, flow banded rhyolite which returned values of up to 2280 ppm Pb and 1709 ppm Zn. Again, more work was recommended.

Eagle Plains Resources optioned the FIRE / CHAR claims to Atna Resources Ltd in October 1997 after Atna's discovery of VMS mineralization at the Wolf property in the Finlayson Lake area. In 1998 Atna carried out geological mapping, soil and rock geochemistry, and airborne and ground geophysical surveys. The program was very successful. Geological mapping confirmed the presence of a widespread package of silica and sericite altered intermediate to felsic volcanic and volcanoclastic rocks containing pyrite, barite, and galena. Associated with these rocks were a number of coincident barium – mercury – lead – zinc soil geochemical anomalies. Both the ground based MaxMin horizontal loop EM survey and the airborne EM – VLF surveys located anomalies consistent with that associated with the Wolf deposit mineralization. Although Atna recommended further work on the property including diamond drilling, the option agreement was terminated in 1999 and the property was returned to Eagle Plains Resources.

The ICE property was originally staked in 1976 as the BNOB claims during a prospecting joint venture between Hudson's Bay Oil and Gas Company Limited and Cyprus Anvil Mining Corporation. The claims were staked to cover a surface showing of massive sedimentary barite. Work completed from 1976 to 1980 by Cyprus Anvil included soil sampling, mapping, magnetometer and EM geophysical surveying. In 1980 a single drillhole was completed in an attempt to test for VMS style mineralization associated with the barite horizon of 1980. The hole failed to intersect barite or VMS

mineralization and it was interpreted to have been collared below the barite horizon (Pigage, 1980). This interpretation is borne out by more recent work which indicates that the hole was collared in the stratigraphic footwall of the barite horizon.

The area was restaked in 1996 on behalf of Eagle Plains Resources Ltd as the ICE claims by Bernie Kreft of Whitehorse, Yukon. A program of limited geological mapping plus soil/talus geochemical sampling was completed along with prospecting during 1996. The grid geochemistry outlined an anomalous area of Zn/Pb geochemistry spatially associated with the trend of a bedded exhalative? barite showing. A new showing of barite with galena and sphalerite was also discovered and sampled. In 1997, Eagle Plains Resources continued geological assessment of the ICE claims for VMS style mineralization. Hand trenching and rock sampling in the areas of the barite showings was undertaken. Results confirmed the tenor and style of the mineralization as VMS type and further work was recommended.

Atna Resources Ltd. optioned the property in 1997 after discovering the Wolf massive sulphide deposit within similar rocks 60km southeast of the ICE claims. The 1998 Atna program included geological mapping, gridding, soil sampling and 5.6km of ground HLEM geophysical surveys. Soil geochemistry defined three zones of coincident anomalous lead and zinc corresponding to the BNOB, ICE 1 and GULLY Zone showing areas. Geological mapping of the BNOB showing area defined a NE trending NW dipping strataform barite body occurring within a pyrite-lapilli tuff and a pyritic trachyte. The HLEM survey located two weak conductors which were interpreted to be related to a black, graphitic argillite unit occurring in the area of the anomaly trace. Atna geologists concluded that the BNOB barite showing occurs in the correct stratigraphic position relative to the Wolf property to represent the same mineralized horizon. A single drillhole was recommended to test the BNOB stratigraphy but was not drilled. The property was returned to Eagle Plains Resources in 1999.

Eagle Plains Resources completed a two phase work program on the FIRE/ICE properties in 2000. The initial phase was completed in July 2000 and consisted of geological mapping and ground truthing of past work. Field crews were stationed in Ross River and mobilized to the properties using a Trans North Helicopters Bell 206. Field mapping carried out by C. J. Greig, PhD focused on areas of prospective VMS host stratigraphy identified in past work programs. Priority drill targets on both properties were identified. The second phase of the 2000 FIRE / ICE exploration work involved diamond drill testing of selected phase one targets. On the FIRE property, six holes were collared on two different sites, and a single hole was completed on the ICE property. A total of 616 m / 2021 feet was completed using a heliportable diamond drill.

VMS exhalative type base metal mineralization similar to the nearby Wolf and MM deposits was intersected on both the FIRE and ICE properties at drill locations approximately 7km apart. On the FIRE property one of the targets was a coincident lead-zinc soil geochemical anomaly associated with a well developed gossanous trachyte outcrop. A fan of holes from the second drillsite intersected strataform barite mineralization. The barite horizon is hosted within an argillaceous to muddy subunit of a thin bedded to thin laminated weakly sericitized volcanoclastic package. This is underlain in turn by a package of volcanic and volcanoclastic rocks including tuffs, crystal tuffs, lapilli tuffs, fragmentals, and multilithic breccias with local well developed silicification and pyritization, which is associated in part with anomalous metal values. The barite occurs in part as replacement and nodules within the muddy unit, and as a distinct massive to semi-massive strataform horizon. The best intersection was in DDHF00-02 which returned values of 22.39 gm/T Ag, 50 ppm Cu, 51 ppm Cd, 4930 ppm Pb, 6033 ppm Zn from 23.0 - 38.1m including 3.3m averaging 65.5 gm/T Ag, 109 ppm Cu, 162 ppm Cd, 4930 ppm Pb and 2.16% Zn.

A single drillhole was completed on the ICE property. DDH I00-01 targeted an outcrop of sucrosic bedded barite with sphalerite, pyrite and galena identified by Charlie Greig during 2000 fieldwork. The hole was collared in a blocky, strongly jointed syenite sill? unit which overlies a volcanic package that includes pyritic lapilli tuffs and multilithic breccias and debris flows. Within this volcanic package is a sequence of barite / pyrite / sphalerite mineralization thought to be of exhalative origin. The barite exhalative horizon is approximately 48 meters in thickness and consists of a 10 m thick massive to semi massive barite cap overlying a series of barite horizons associated with a pyritic lapilli tuff unit. The best interval within the barite cap zone was 33.2 – 36.3 meters which returned values of 11.4 gm/t Ag, 61 ppm Cu, 3180 ppm Pb and 1.1% Zn over 3.1meters true width. Field relationships and drilling results confirmed that the only other hole drilled on the ICE property to date was collared stratigraphically below the barite horizon.

Based on the preliminary results of the diamond drilling program, Eagle Plains Resources carried out an aggressive staking program in the McConnell River – Ketz River area in the late summer of 2000. A further 212 claims were staked to cover prospective geology. Total 2000 exploration expenditures by Eagle Plains Resources was \$149,921.10. The 2000 work report by Eagle Plains Resources recognized the potential for VMS style deposits in the McConnell River area and further work was recommended.

The 2001 Eagle Plains Resources field program focused on geological mapping and extensive silt and soil geochemical sampling and prospecting. The program was very successful, with the identification of several areas underlain by favorable stratigraphy (submarine volcanism, intensely altered felsic volcanics and locally associated fine-grained clastic sedimentary rocks that would be conducive to preservation of sulphides deposited on the sea floor) which also have strongly anomalous VMS-type geochemical signatures. Eagle Plains Resources staked a further 65 Quartz claims contiguous with the established property boundary to cover prospective stratigraphy in the area. The total cost of the 2001 geological exploration work on the FIRE / ICE / MELT properties was \$118,269.18.

In 2006, Eagle Plains commissioned an helicopter borne time domain geophysical survey over the Fire - Ice - Melt project area. The geophysical contractor was GeoTech Limited, with helicopter support provided by TransNorth Helicopters Helicopters using an AStar 350B2. The original contract was for 1250.6 line km, but due to issues related to the relatively rugged nature of the terrane and inexperience of the pilot, only 368 line km were completed. All preliminary survey data was integrated into the GIS data base and was followed up by a two man one day site visit. Site visit included geochemical sampling for whole rock analysis. Total 2006 exploration expenditures by Eagle Plains Resources on the Fire - Ice - Melt Project were \$157,636.73.

The 2007 field program consisted of detailed mapping and sampling to follow up the 2006 exploration program which included a geophysical survey. An Aster survey of the properties was also performed during this field season. Conclusions from the mapping program are as follows:

Mapping of the FIM properties in 2007 has been successful in confirming the consistency of the stratigraphic section developed largely from the mapping of other Eagle Plains Resources properties (MM and EROS) elsewhere in the PMVB. Significantly it also demonstrates the stratigraphic controls on the preferred setting for the development of VMS mineralization. Mineralization is developed within either the felsic or mafic volcanic unit and appears to be concentrated at the stratigraphic contact interval between felsic and mafic volcanic rocks.

This work has also highlighted that the intermediate volcanics which comprises the dominant volcanic component of the PMVB on the FIM properties is not a particularly perspective host rock for VMS styles of mineralization. Such a realization is helpful in focusing exploration attention on the more prospective lithologies and the observation of gossanous felsic lapilli appearing within this unit on approaching more perspective felsic volcanic rocks provides a useful prospecting vectoring tool.

Quartz Fe-Mn-carbonate veined and often associated flooded zones have been recognized to occur intermittently throughout the belt. Although insignificant from an economic standpoint these zones are locally elevated in precious and base metal and may influence the interpretation of soil and silt exploration sampling results. Previous mapping has not delineated the distribution of these zones within the belt and therefore any

Though a relatively localized feature at this stage, the broad, flat-lying, Fe-Mn-carbonate thrust fault identified within or above the South Fire Creek Section may represent a significant feature in modifying the stratigraphy. Therefore, a more detailed examination of the feature to delineate its overall extent and influence may prove useful in understanding the distribution of the volcanic stratigraphy on the FIM property.

Mapping on the BNOB property has demonstrated that the expanse of felsic volcanic rocks at this locality defines a bedded stratigraphic interval that has been affect by large scale upright open folding. More importantly the identification mafic volcanic rocks on the BNOB anticlinal dome area suggest that the contact interval between the felic and mafic volcanic rocks occurs below the dome area. An IP survey across this dome could test the potential for VMS development along that contact zone that could define potential drill targets in an area not previously examined.

The total expenditures for the 2007 exploration program was \$77,312.99.

GEOLOGY

Regional Geology

The volcano-sedimentary rocks which host the Wolf and MM deposits as well as the FIRE/ICE claims form a narrow arcuate belt that extends 80 kilometres along a northwesterly trend within the Pelly Mountains of the southwestern Yukon (Figure 3). These rocks have been termed the Pelly Mountains Volcanic Belt (PMVB) by Hunt (1999) and are characterized by high potassium content and, locally, bedded barite and volcanogenic massive sulphide deposits and showings. The PMVB is early to middle Paleozoic in age and occurs within the Pelly-Cassiar Platform, considered to be part of ancestral North America (Templeman-Kluit, 1977). The tectonic framework for the Pelly Mountains area is described by Gabrielse and Yorath (1991), Templeman-Kluit and Blusson, (1977) and Gordey (1977) and is summarized below.

The miogeoclinal sequence and related rocks which underlie much of the Pelly Mountains are part of a large area about 70km wide and 600km long that is referred to as the Pelly-Cassiar Platform (PCP) (Figure 3). The PCP formed slightly outboard of, but parallel to the craton edge and consisted of a thick accumulation of volcanic rocks and related sediments upon which shallow water sedimentation, predominantly carbonate, took place until late Devonian time. To the northeast of the PCP during late Proterozoic through to Silurian time, a sequence of shallow water carbonates, tuffaceous shale and andesitic rocks were deposited on the western edge of ancestral North America in the Selwyn Basin and, to the south, in the Kechika Trough.

During late Devonian to Mississippian time, shale, greywacke, and chert pebble conglomerate was deposited over much of the PCP and Selwyn Basin. These rocks were derived from a westerly source, or from locally uplifted parts of the PCP. Felsic igneous activity, including intrusion and volcanism, occurred locally within the PCP, possibly within rifts or graben-like structures created by variable uplift and block faulting within the platformal rocks. Sedimentation resumed within PCP sub-basins during the Upper Triassic.

Deformation of the Paleozoic rocks took place post-Late Triassic and consisted of compression and/or transpression along a northeasterly axis which resulted in northwesterly trending and northeasterly verging folds and southwesterly dipping thrust faults. The Anvil-Campbell allochthon, part of the Omineca Crystalline belt, was emplaced during this event as a large thrust-sheet and is now preserved as local klippen on mountain ridges. An anastomosing system of steeply dipping, strike-slip faults related to movement along the northwesterly trending Tintina Fault cuts the folds and thrust faults and extends for up to 20 kilometres southwest of the Tintina Trench. Late normal faults cross-cut earlier structures and divide the region into a number of panels which commonly represent different structural levels. Cretaceous intrusions develop thermal and structural aureoles in the western part of the Pelly Mountains. Metamorphism and degree of deformation varies from block to block but generally increases in a westerly direction and varies from lower to upper greenschist facies.

The Pelly Mountains Volcanic Belt is composed of localized volcanic centres separated by basins in-filled with sediments and volcanoclastic rocks. Associated with these volcanic rocks are at least two VMS deposits (the Wolf and the MM) and a number of historical showings, including the Chzernpough (FIRE claims), and the BNOB (ICE claims).


The volcanic rocks are predominantly felsic, but in some areas significant accumulations of andesite to basalt occur. The most common feature of the belt are flows, epi-zonal sills, and small plugs of trachyte. The trachyte flows and/or sills are laterally very extensive, probably due to low magmatic viscosity caused in part by high alkali element content. Typically the trachyte contains significant amounts of pyrite which gives rise to extensive gossans. The trachytes are commonly cream coloured, with very fine to medium grained phenocrysts of feldspar and rare quartz and are locally massive, amygdaloidal or brecciated. Syenite intrusions have been noted at a number of locations within the PMVB (Mortensen, 1981; Morin, 1977) and are thought to be rounded plugs which represent volcanic feeders. Although they may still represent volcanic feeders, drill data from the Wolf and ICE properties indicates that the syenite intrusions are sills.

The structural and stratigraphic relationship of the Pelly Mountains Volcanic Belt with other parts of the Pelly-Cassiar Platform are not always clear. In the southern part in the belt near the Wolf deposit, the PMVB rocks are separated from platformal carbonates and associated sediments by thrust, and possibly, steeply dipping normal faults. In the northeastern most part of the belt, immediately northeast of Ketzka River Mine site, the volcanic sequence is very thin (+/- 100m) and is overlain by chert and chert pebble conglomerate and underlain by shale. Both contacts appear conformable but are not well exposed.

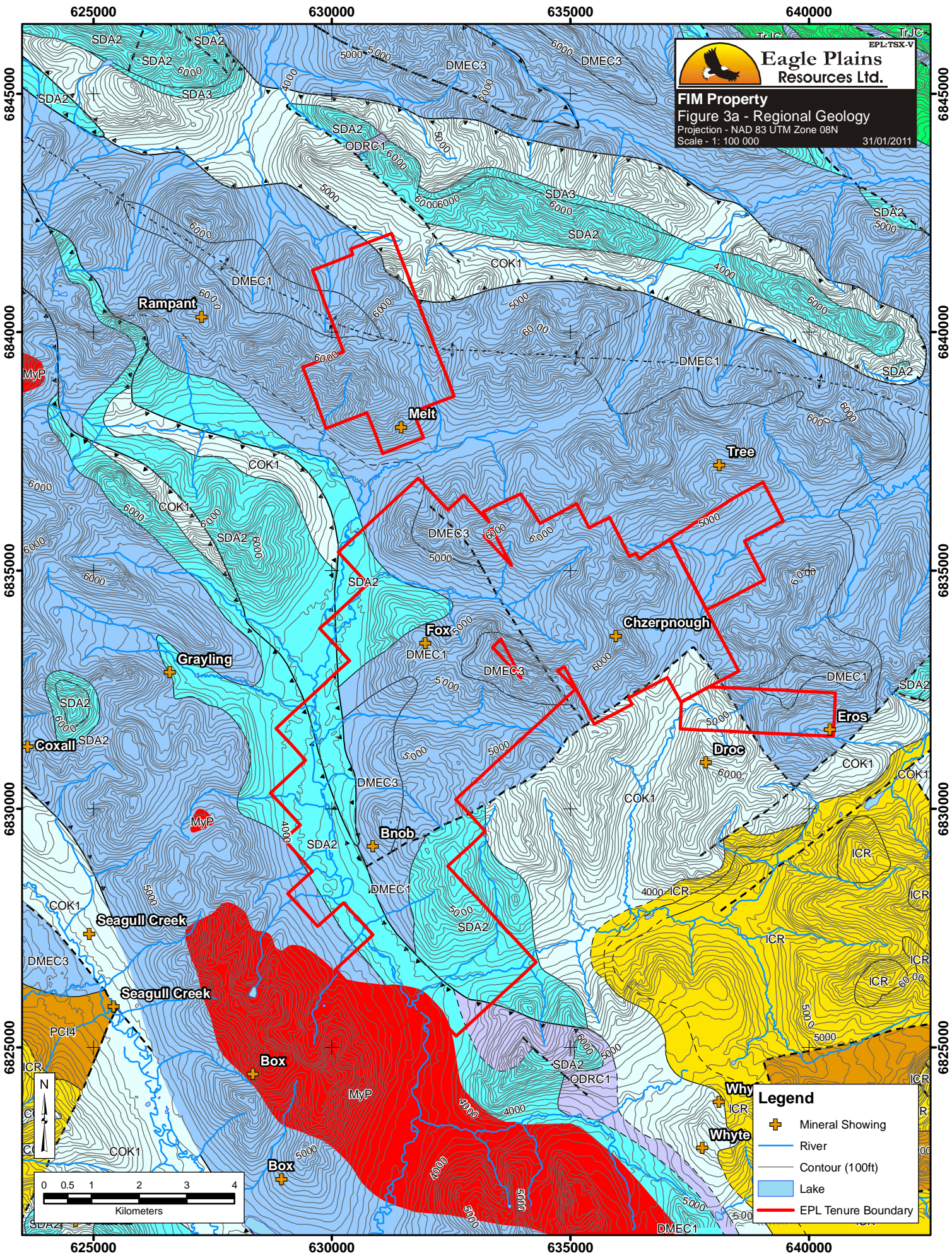
The shale and conglomerate are considered age equivalent with the volcanic rocks that have been mapped in conformable

relationships by Gordey (1977). On the FIRE (Chzerpnough) and Tree claim area, the PMVB appears to conformably overlie, and in places be intercalated with, a relatively thick sequence of shale and minor greywacke. Similarly on the Mamu property, adjacent to the McConnell River, volcanic rocks conformably overlie an extensive shale-greywacke sequence. On the ICE (BNOB) property, between the Tree-FIRE and Mamu properties, the volcanic rocks are surrounded by an argillite-limestone sequence that appears to be continuous with the shale-sequence of the FIRE property. Gordey (1977) describes a Siluro-Devonian assemblage of shallow water dolomite and platy siltstone which represent a stable marine carbonate bank environment, and are supposed basement for the PMVB. The Siluro-Devonian siltstones, however, are quartz bearing and tan weathering and do not seem to be a good match with the shale attached to the Pelly Mountain Volcanic rocks. Similarly, the younger Triassic sedimentary package has not been observed in contact with PMVB. Consequently, there is little or no contact information that gives a clear indication of the tectono-stratigraphic environment in which the PMVB was deposited other than the nature of the rocks within the belt itself.


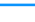



The platformal setting on the continental margin, the high potassium geochemistry of the volcanic rocks, and the presence of bedded barite and volcanogenic massive sulphide deposits indicate that the Pelly Mountain Volcanic Belt was likely deposited in a continental rift-type environment (Mortensen and Godwin, 1982). The coarse volcanic debris flows that overlie the Wolf deposit indicate a high energy environment consistent with a graben type structure.



Eagle Plains Resources Ltd.
 FIM Property
 Figure 3a - Regional Geology
 Projection - NAD 83 UTM Zone 08N
 Scale - 1: 100 000
 31/01/2011



Legend

-  Mineral Showing
-  River
-  Contour (100ft)
-  Lake
-  EPL Tenure Boundary



EPL:TSX-V

**Eagle Plains
Resources Ltd.**

FIM Property

Figure 3b - Regional Geology Legend

Projection - NAD 83 UTM Zone 08N

Scale - 1: 100 000

31/01/2011

Geology Legend*

Geology after Gordey and Makepeace, (1999)

Contacts Faults and Folds

- - Fault, approximate, movement undefined
- - Fault, approximate, normal/reverse
- - Fault, approximate, thrust, upright
- - - Fault, assumed
- - - Fault, defined, movement undefined
- - - Fault, defined, normal/reverse
- ▲ - Fault, defined, thrust, upright

- - Contact, approximate
- - - Contact, inferred
- - Contact, defined

- ⤴ - Fold, approximate, anticline, upright
- ⤵ - Fold, approximate, syncline, upright

Bedrock Geology

LOWER TERTIARY, MOSTLY(?) EOCENE

ITR2: ROSS: rhyolite flows, tuffs, ash-flow tuffs and breccias, locally laminated; small stocks and necks of white weathering, flow-banded, quartz-sanidine porphyry to granite porphyry, locally obsidian bearing; local shale, sandstone and conglomerate

MID-CRETACEOUS

mKqC: CASSIAR SUITE: medium to coarse grained, equigranular to porphyritic (K-feldspar) granite and biotite quartz monzonite; biotite-hornblende quartz monzonite and granodiorite (Cassiar Suite)

UPPER TRIASSIC

TrJC: JONES LAKE - CASSIAR: calcareous siltstone and shale, commonly finely cross laminated; dark grey and buff weathering, recessive, thin bedded locally bioclastic limestone and interbedded sandy or silty limestone

MISSISSIPPIAN

MyP: PELLY MOUNTAINS SUITE: resistant, massive, medium to fine grained equigranular syenite; magmatic hornblende replaced by actinolite, but K-feldspar is fresh perthite; gradational to trachyte; intrusive equivalents to felsic volcanics of the Earn assemblage

UPPER DEVONIAN TO LOWER MISSISSIPPIAN

- DMEC1: EARN - CASSIAR: dark grey, recessive weathering, thin bedded, black siliceous slate with interbeds and members of quartz-chert greywacke, chert granule grit and chert pebble to cobble conglomerate; may include lenses of intermediate to felsic volcanoclastic rocks
- DMEC2: EARN - CASSIAR: rusty orange weathering, resistant, apple green and dark grey, thin bedded chert and cherty tuff; local nodular and bedded barite
- DMEC3: EARN - CASSIAR: heterogeneous, rusty, black, white, and orange weathering rhyolite-trachyte to andesite flows, breccias and tuffs; locally highly pyritic; local black slate and grey-green cherty tuff; minor fine crystalline limestone; locally abundant trachyte dykes

MIDDLE SILURIAN TO MIDDLE DEVONIAN

- SDA2: ASKIN: medium grey to buff weathering, medium to thick bedded dolostone, silty and sandy dolostone, limestone; medium to thick bedded, medium grained mature orthoquartzite; dolomitized laminated mudstone and dolostone with vugs, birdseye and fenestral cavities (Askin Gp.)
- SDA3: ASKIN: orange weathering, recessive, maroon and green lapilli tuff and volcanic breccia with interbedded bioclastic dolomite (Askin Gp.)

ORDOVICIAN TO DEVONIAN, LOCALLY ?MISSISSIPPIAN

ODRC1: ROAD RIVER - CASSIAR: recessive, black, locally calcareous, fissile, graptolitic shale; local thick to very thick interbeds of grey quartz arenite; includes thin sills or flows of dark green basalt undifferentiated

CAMBRIAN TO DEVONIAN OR YOUNGER

- CDS1: ST. CYR: orange to brown weathering, recessive, medium grey interlaminated calcareous shale and silty limestone or calcareous siltstone; proportion of carbonate to clastic material varies widely; includes slaty and phyllitic equivalents (Cambro-Ordovician?)
- CDS2: ST. CYR: orange brown weathering, recessive, thin bedded, medium to dark grey, calcareous shale, siltstone and argillaceous limestone; includes slate and phyllitic slate (Cambrian to Lower Devonian?)
- CDS3: ST. CYR: black, recessive weathering, calcareous graphitic "sooty" slate and silty shale; includes thin beds of dark grey graphitic, very fine grained quartzite and black "sooty" crinoidal limestone (Ordovician and Silurian?)
- CDS4: ST. CYR: orange buff weathering, medium grey, thin to medium bedded, finely laminated and cross-laminated calcareous quartz siltstone and very fine grained orthoquartzite, with slaty phyllite partings; minor massive, light grey orthoquartzite (Siluro-Devonian?)
- CDS5: ST. CYR: orange to dark blue-grey phyllite and thinly laminated phyllitic limestone; minor laminated siltstone, green slate, and rare chert; platy, fetid limestone, locally crinoidal; minor shale, basalt, tuff and breccia (Upper Devonian or younger?)

UPPER CAMBRIAN AND ORDOVICIAN

- COK1: KECHIKA: thin bedded, lustrous, calcareous, grey slate, phyllite, limestone, minor grey dolostone and dolomitic limestone; quartz-carbonate veins; minor sills and flows of basalt and basaltic tuff ; may include Ordovician black slate at top of succession (Kechika)
- COK2: KECHIKA: massive, dark green and maroon amygdaloidal basalt flows and volcanoclastics; medium to fine grained diabase or diorite sills with chilled margins; medium grey, chlorite muscovite quartz phyllite with abundant undifferentiated lenses of "greenstone"

LOWER CAMBRIAN

ICR: ROSELLA: resistant, thick bedded to massive, limestone and argillaceous limestone; local archaeocyathid buildups, trilobite fragments, oolites, and pisolites; pisolitic massive dolostone and limestone; marble, calc-silicate, calcareous phyllite and minor schist (Rosella)

UPPER PROTEROZOIC TO LOWER CAMBRIAN

- PC11: INGENIKA: calcareous sandstone, shale, quartz-eye grit, quartzite, micaceous quartzite and minor grey limestone generally overlain by phyllite, quartzite, and dolomitic marble; muscovite-chlorite schist, biotite schist, metasandstone and minor calc-silicate (Swannel and Tsaydiz of the Ingenika Gp.)
- PC14: INGENIKA: thin bedded slate, siltstone, quartzite and minor limestone with local medium to coarse grained, feldspathic sandstone to orthoquartzite; muscovite biotite garnet schist, micaceous quartzite, minor amphibolite and marble; rare granodiorite gneiss (Ketza Gp., Harvey Gp.)

Property Geology

Stratigraphy

In general, the rocks exposed in the FIRE/ICE property area are similar to parts of the stratigraphy on Atna Resources' Wolf property (Wilson, Holbek 1999). The volcanic rocks of the Pelly Mountains Volcanic Belt (PMVB) are bounded to the west by a fault, marked by the McConnell River. On the other three sides the volcanic rocks are bounded by underlying or overlying shale and argillite (+/- carbonate) that appear to be conformable and part of the PMVB, or the Devonian to Mississippian Black Clastic unit (Pigage, 1980), or the Upper Triassic assemblage of shale, siltstone and carbonate (Gordey, 1977).

The general stratigraphy of the FIRE/ICE claim area consists of (1) a basal carbonate unit of probable Silurian-Devonian age which crops out close to the McConnell River Valley and appears to be related to other base-metal and skarn-type mineral showings in the region, (2) siliceous, medium-to dark-grey, carbonaceous argillite (commonly phyllite to slate), believed to be Mississippian in age, and (3) rhyodacite to rhyolite tuffs and flows, ranging from unwelded ash to lapilli tuff and agglomerate, to aphyric, locally amygdaloidal flows. The felsic volcanic succession is dominated by fine to coarse lapilli tuffs and flows. Felsic (rhyodacite to dacite) dykes and sills intrude the felsic stratigraphy but are probably comagmatic with the surrounding rhyolitic-trachytic extrusive succession.

Felsic volcanic rocks weather pale green-grey to buff and are dark green-grey on fresh surfaces in non-mineralized zones. Where pervasive mineralization occurs, typically in the form of disseminated pyrite, reaching 10-12% locally, the rocks are heavily oxidized and stained bright red. Amygdules within flows contain either silica or a combination of silica and pyrite. The latter is a positive exploration indicator and, where base metal mineralization within amygdules can be identified, amygdules may serve as a vector for locating massive sulphide bodies, as has been demonstrated for the deposits in the Noranda region in the Canadian Shield. A number of chalcopyrite (rare galena) blebs within amygdaloidal rhyolites on the property indicate a proximity to a base metal source.

The stratigraphy of the property is relatively simple, although intercalations of various volcanic flows and fragmental facies have created a repetitious succession, a feature expected of near-vent (proximal) facies associations in a VMS setting. Following is a more detailed description of the McConnell River area stratigraphy based on Eagle Plains and Atna Resources observations and using Fig. 2 map unit contacts:

UNITS 1 & 2

Limestone and argillite units: Brown to buff weathering, fine-grained grey fresh surface, probably in most part tuffaceous limestone interbedded on a centimeter to decimeter scale with dark grey to black argillite. Locally, this unit maybe intercalated with lapilli lithic tuff. On the western portions of the FIRE claim block this unit is thin, less than 20 meters, and forms a readily recognizable marker unit that is stratigraphically positioned directly over the mineralized horizon. Where the stratigraphy is less well defined, on the eastern portions of the claim block, a limestone-argillite unit is positioned above one mineralized horizon, but is separated from the horizon by 75+ meters of lithic lapilli tuffs. These tuffs grade up into bedded tuffs and into a lime-stone-argillite unit. Close to this locality, a mineralized horizon occurs above the limestone –argillite unit. A limestone-argillite unit was not seen in much of the volcanic stratigraphy that underlies the claim block.

UNIT 3

Purple weathering volcanic or volcanoclastic lithic lapilli tuff: A distinctive purple, flaggy weathering, fine-grained, feldspathic, minor black argillite (?) lithic fragments volcanic or volcanoclastic unit that occurs locally at the northeast end of the property.

Argillite: Grey to black weathering and fresh surface, generally foliated, often well laminated or bedded, occasionally lineation or crenulated, occasionally carbonaceous, fine-grained argillite. This unit occurs in thick (10-75 meter) "sub basins" in the volcanic stratigraphy, as thin (less than 10 meter) inter-volcanic flow sedimentary packages throughout the volcanic stratigraphy. Argillite is frequently intercalated with thick to thin bedded tuffs, minor limestone, or more rarely, thick bedded volcanic flows(?).

UNIT 4

Volcaniclastic rocks: Intermediate to felsic volcaniclastic debris flows and deposits, crystal or ash tuffs with evidence of tuffaceous layering (reworking). This unit includes clast supported heterolithic lapilli tuffs, heterolithic lapilli tuffs with extreme clast variability, lapilli tuffs with a large percentage of sedimentary fragments. Clast size is usually less than 10cm. This unit also encompasses sections that include pyroclastic flows (not uncommon) or other volcanic flows or sills. However, this assemblage is dominantly composed of volcaniclastics +/- argillite. Also included in this unit is a rare occurrence of monolithic lapilli tuff with rounded siliceous clasts.

Mineralized horizon: Intermediate to felsic volcanic to volcaniclastic rocks that are altered (silica and/or sericite) or altered and mineralized with pyrite, barite or rarely galena. Although dominantly composed of ash and lapilli and lithic lapilli tuffs, this unit hosts a significant quantity of mineralized "yellow" trachyte. In hand sample, the trachyte typically displays ghosts of <2mm feldspar and/or monolithic or heterolithic fragments and/or a breccia texture defined by silica +/- sericite veinlets. Less commonly, a <2mm white feldspar porphyritic trachyte occurs. The trachyte, and to a lesser degree, all the rocks comprising this unit can be extremely hard, grey, silica over sericite altered or softer yellowish green sericite over silica altered. Less intensely altered and mineralized trachytes that are interpreted to occur in the less intensely altered and mineralized "distal" portions of the mineralized horizon can appear to have a chalky, more brittle "porcelaneous" alteration. The mineralization that defines the mineralized horizon consists of fine-grained disseminated pyrite and approximately 1% green barium mica (?). Locally and usually internal to the horizon the pyrite mineralization intensifies to massive dissemination's and/or irregularly oriented ptigmatically folded veinlets.

Trachyte and mud chip conglomerate: A 1 to 5 meter thick, well sorted and graded trachyte and mud chip conglomerate, or bedded tuff grading to massive lithic lapilli tuff unit that directly overlies the mineralized horizon.

UNIT 5

Volcanic rocks: Augite bearing mafic through to felsic or unmineralized trachytic primary volcanic flows, crystal tuffs, and synvolcanic intrusions. Includes monolithic or near monolithic lapilli tuffs, crystal or ash matrix supported heterolithic lapilli tuffs, lapilli tuffs with large, generally angular, (10cm to greater than 40cm) blocks or bombs, lapilli tuffs bearing evidence for deposition in hot volcanic flows (alteration rims on clasts or fragments or partially reabsorbed clasts or fragments). Included within this unit are altered (silicified) rocks, often of uncertain protolith. Alteration of these rocks is assumed to be hydrothermal and syngenetic, suggesting a proximal position to a volcanic centre. The occurrence of occasional accidental sedimentary fragments was noted in all the above rock types. While this unit is primarily volcanic it also includes minor layered tuffs and argillites that are interpreted as interflow deposits.

UNIT 6

Trachydacite to trachybasalt sills or flows and syenite: This unit is most prominent in the area of the BNOB showing and was the collar lithology for the diamond drillhole I00-01. This unit consists of fine to medium grained, equigranular, pink to grey feldspar and hornblende. The rock is fresh in appearance, unfoliated and has blocky weathering in outcrop due to widely spaced, perpendicular joint sets. Initially this unit was thought to represent a small plug or pipe-like intrusion. Based on limited exposure, however, the lower contact appears to be somewhat strataform and this unit wasn't intersected in the Cyprus-Anvil drill hole, indicating that it may be sill like. This is consistent with 2001 field observations of the same unit near the northern part of the ICE claims.

UNIT 7

Undifferentiated Intermediate to mafic metavolcanic rocks

Structure

Most of the rocks on the property lie on the gently northerly-dipping limb of a large-scale antiform that is part of a train of west-northwesterly to northwesterly trending, gently dipping folds that appear, in general, to be tighter to the NW. Although the rocks have been deformed, the stratigraphy appears to be intact and many primary volcanic textures are preserved and readily recognizable; although the work is preliminary, the minor structures observed are not suggestive of severe structural disruption, overturning or other such complication.

The rocks have a ubiquitous S1 fabric, expressed in the less competent lithologies (fine grained clastic rocks; ash, and

fine to medium grained tuffs) as a pervasive phyllitic foliation, and in the more competent lithologies as a less obvious though still pervasive spaced cleavage; a second phase crenulation cleavage is also common, and particularly notable in the well-foliated metasedimentary rocks and finer grained tuff. The stratified rocks on the property outline broad-wavelength, open folds which appear to post-date the foliation-forming event. A strong joint system measured on the property is best developed within either massive flows or indurated, coarse crystal, lithic tuff.

Alteration And Mineralization

Fire Property Area

Mineralization identified to date on the FIRE is of two types. The first is sucrosic sedimentary barite with bands of disseminated pyrite and galena. Barite mineralization is best developed as float boulders, but has been identified in-situ in some locations on the property and was intersected in 2000 diamond drilling in diamond drillholes F00-02,03,04, and 05. Where found in place, the barite is associated with yellow to orange gossan horizons developed within a trachyte unit. Geochemically the barite mineralization is highly anomalous in silver, lead, and cadmium, and weakly anomalous in zinc. The second type of mineralization is flow-banded rhyolite with syngenetic pyrite. In comparison to the barite mineralization, the rhyolite is more anomalous in zinc, copper and cadmium, and weakly anomalous in silver and lead.

Alteration on the FIRE property is predominantly represented by a quartz - sericite - pyrite assemblage, with local chlorite and rare fluorite. Diamond drill hole F00-01 intersected a zone that possibly represents a skarn type of alteration with pervasive hematite - silica - epidote flood. The hole also cut a zone of pervasive to selective-pervasive potassium feldspar flood and veining.

Ice Property Area

Mineralization on the ICE property consists of bedded barite locally containing significant galena, sphalerite, and accessory pyrite. Mineralization is found in-situ at the BNOB and Greig showing areas, and also in extensive float boulder showings in a number of locations including the Gully Zone and the ICE1 Zone. At the BNOB showing the barite is strataform, up to 4m in width, and is exposed in trenches and outcrop over a strike length of 250m. The Greig showing area, identified by Eagle Plains Resources in 2000 and successfully tested by 2000 drilling, is only partially exposed at the toe of a syenite talus field. The strataform bedded barite here contains sphalerite, galena and pyrite.

Alteration noted from drillhole I00-01 includes strong sericite and pyrite flood with local strong silicification.

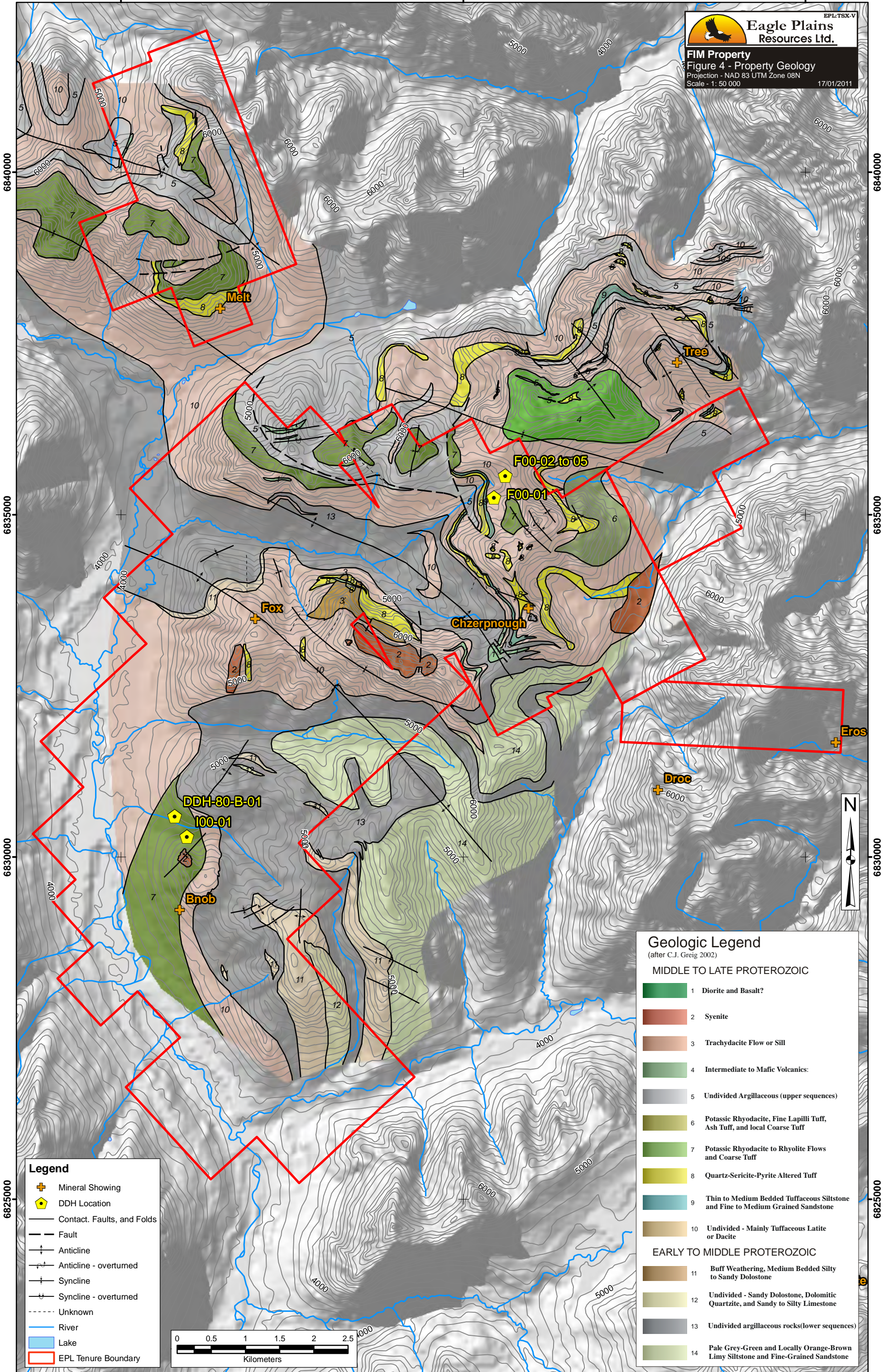
As part of the 2001 exploration program about three days were spent in the Whitehorse Core Library examining drill core from previous programs (Eagle Plains in 2000, and Cyprus Anvil in 1980), and slabbing and staining representative samples collected from the core and from traverses undertaken in 2000 and 2001. Staining indicates that extremely potassium feldspar-rich rocks are common on the property, as they are elsewhere in the vicinity of VMS-style mineralization in the Pelly Mountains (e.g., the Wolf property) and in similar VMS-hosting volcanic environments in the Yukon (e.g., Wolverine) and beyond. Reexamination of the Cyprus Anvil drill core revealed that the exhalative barite horizon intersected in the 2000 drill program is underlain by a thick package of very poorly exposed, but heavily pyrite- and sericite-altered tuffaceous rocks which also contain local sphalerite, chalcopyrite, and galena—the core from this hole has never been analyzed.

630000

635000

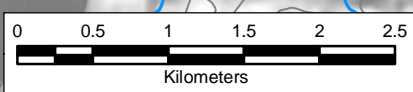
640000

Eagle Plains Resources Ltd.
 EPL:TSX-V
FIM Property
 Figure 4 - Property Geology
 Projection - NAD 83 UTM Zone 08N
 Scale - 1: 50 000
 17/01/2011



Legend

- ⊕ Mineral Showing
- ⬠ DDH Location
- Contact, Faults, and Folds
- - - Fault
- ⊕ Anticline
- ⊕ Anticline - overturned
- ⊕ Syncline
- ⊕ Syncline - overturned
- ⋯ Unknown
- River
- Lake
- ⬠ EPL Tenure Boundary



Geologic Legend
 (after C.J. Greig 2002)

MIDDLE TO LATE PROTEROZOIC

- 1 Diorite and Basalt?
- 2 Syenite
- 3 Trachydacite Flow or Sill
- 4 Intermediate to Mafic Volcanics:
- 5 Undivided Argillaceous (upper sequences)
- 6 Potassic Rhyodacite, Fine Lapilli Tuff, Ash Tuff, and local Coarse Tuff
- 7 Potassic Rhyodacite to Rhyolite Flows and Coarse Tuff
- 8 Quartz-Sericite-Pyrite Altered Tuff
- 9 Thin to Medium Bedded Tuffaceous Siltstone and Fine to Medium Grained Sandstone
- 10 Undivided - Mainly Tuffaceous Latite or Dacite

EARLY TO MIDDLE PROTEROZOIC

- 11 Buff Weathering, Medium Bedded Silty to Sandy Dolostone
- 12 Undivided - Sandy Dolostone, Dolomitic Quartzite, and Sandy to Silty Limestone
- 13 Undivided argillaceous rocks(lower sequences)
- 14 Pale Grey-Green and Locally Orange-Brown Limy Siltstone and Fine-Grained Sandstone

6825000

6830000

6835000

6840000

6825000

6830000

6835000

6840000

630000

635000

640000

2010 EXPLORATION PROGRAM

Fire-Ice (FOX and FIRE)

A camp of three was set up close to these target areas and 5 days were spent prospecting and sampling in areas with syenite stocks or anomalous REE assay values. Scintillometers were used to find rocks with high Th values as Th is associated closely associated with REE mineralization, the mineral monazite in particular. Other minerals of interest include fluorite and xenotime. A total of 26 rock samples were taken in the vicinity of the Fire camp.

Fire-Ice (BNOB)

The MM camp moved over to the BNOB, where one day was spent using the scintillometer and prospecting to test the syenite and its surrounding areas for potential REE mineralization. A total of 3 rock samples were taken on the property.

2010 EXPLORATION RESULTS

Geological Mapping

Fire-Ice (FOX and FIRE)

An anomalous area, approximately 200 by 800 m, was outlined using the scintillometers at a cut off value of 500 counts per second (cps). This area encompasses felsic volcanic rocks and had previous anomalous REE values in grab samples. Several chip samples were taken within the area. Generally, the cps were uniformly elevated with few spot highs. This may indicate that REE values in chip samples apply to the entire area of equivalent cps.

3 syenite stocks were prospected during the work program. No high scintillometer readings were obtained within the stocks. Some 10-45cm layers of serpentinized volcanics on the margins of the stocks did have elevated scintillometer readings and were sampled. These layers commonly had azurite and malachite staining and disseminated pyrite. Prospecting of one stock was cut short by a bear encounter, however, no elevated scintillometer readings had been obtained in the area.

Fire-Ice (BNOB)

There were very little anomalous scintillometer readings recorded over the BNOB syenite stock or its surrounding area. The background values for the volcanics in the area was 500-600 c/m while the stock had values of 800-1,000. A few samples were taken at localities of minor scint anomalies, where scintillometer readings returned 1,100-1,300 c/m.

Geochemistry

Basic statistical analysis of the total rock samples taken during the program along with elemental correlations are found in the tables below. The statistics were derived from the combined Fire-Ice and MM 2010 samples.

Table 2 – Rock Statistics for Elements of Interest

<i>RSAMP Summary Stats</i>	<i>Nb_pp m</i>	<i>TREE</i>	<i>HREE</i>	<i>Y_pp m</i>	<i>Th_pp m</i>	<i>U_pp m</i>	<i>Ba_pp m</i>	<i>Cu_pp m</i>	<i>Zn_pp m</i>
Count Numeric	46	46	46	46	46	46	46	46	46
Minimum	1.4	52.56 2802.1	7.03 280.0	10.6	0.4	2	64	0.6	4
Maximum	873.4	4	1	304.2	154.6	175.8	50000	8559.5	10000
Mean	318	861	87	104	61	19	5424	263	1044
Median	270	666	76	83	57	14	2324	9	129
Standard Deviation	206	592	61	71	39	26	10174	1263	2510
75 percentile	399	995.05 1451.0	90.51 182.1	119.6	75.6	21.9	4336	38.6	446
90 percentile	591.7	4	5	214	120	30.7	7228	245.9	2139

		2090.0	224.4						
95 percentile	790.2	3	8	269.9	131.5	37.9	17517	531.7	3637
		2802.1	280.0						
99 percentile	873.4	4	1	304.2	154.6	175.8	50000	8559.5	10000

Table 3 – Rock Elemental Correlations

Correlation	Nb_ppm	TREE	HREE	Y_ppm	Th_ppm	U_ppm	Ba_ppm	Cu_ppm	Zn_ppm
Nb_ppm	1	0.88	0.94	0.97	0.78	0.35	-0.2	-0.25	-0.32
TREE	0.88	1	0.97	0.94	0.78	0.36	-0.19	-0.17	-0.21
HREE	0.94	0.97	1	0.99	0.77	0.39	-0.2	-0.18	-0.24
Y_ppm	0.97	0.94	0.99	1	0.79	0.38	-0.2	-0.22	-0.27
Th_ppm	0.78	0.78	0.77	0.79	1	0.42	-0.25	-0.22	-0.35
U_ppm	0.35	0.36	0.39	0.38	0.42	1	-0.13	-0.09	-0.18
Ba_ppm	-0.2	-0.19	-0.2	-0.2	-0.25	-0.13	1	-0.041	0.72
Cu_ppm	-0.25	-0.17	-0.18	-0.22	-0.22	-0.09	-0.041	1	0.58
Zn_ppm	-0.32	-0.21	-0.24	-0.27	-0.35	-0.18	0.72	0.58	1

FOX showing area

The Fox showing area (105F 083) does include at least two mappable syenite stocks (Greig 2002). Traverses completed in 2010, resulted in the collection of 6 rock samples in the vicinity of the westernmost 700 meter elongate syenite body. Samples collected were tuff and syenite with relatively low scintillometer counts. The best scintillometer count of 700 counts per second (CPS) returned the highest analytical values of 606 ppm TREE and 237 ppm Nb, with respective average values of 495 ppm and 191 ppm for all 6 samples.

Four rock samples were collected from rocks of- or adjacent to the eastern syenite stock, located 2.6 km east of the Fox showing. These samples returned maximum values of 858 ppm TREE and 288 ppm Nb.

Chzerpnough (FIRE) showing area

Traverses in the Fire showing area (105F 071), resulted in the collection of 16 rock samples from mostly felsic to intermediate altered volcanic rocks. At least one basalt rock was sampled with negligible REE or Nb results. The best REE sample (BWFMR006) is a fractured, pyritiferous, serpentine altered tuff which returned 1055 ppm TREE. The best Nb sample (BWFMR013) is a fractured yellowish dacite, which returned 507 ppm Nb. Two samples containing significant sulphide Zn-Cu-Pb mineralization were collected from the area (BWFMR002 and ETFMR001); neither of these sample returned significant TREE or Nb mineralization.

BNOB (ICE) showing area

Three rock samples were collected over the main syenite stock along the gossanous BNOB ridge. All three samples were selected due to anomalous scintillometer responses greater than 1000 counts/second. Results for these three samples (two syenite and 1 felsic volcanic), were low, with maximum values of 629 ppm TREE and 184 ppm Nb (see LJFMR001 to 003). The results are somewhat problematic because both uranium and thorium results were low (all less than 60 ppm) for all three samples; thus there is a disconnect between the high scintillometer counts and the rock material that was sent to the lab for analysis. If laboratory or scintillometer faults can be ruled out, then it is possible that the radiogenic and potentially mineralized minerals in the sampled areas may have been missed.

625000

630000

635000

640000

645000

Geologic Legend

(after C.J. Greig 2002)

MIDDLE TO LATE PROTEROZOIC

- 1 Diorite and Basalt?
- 2 Syenite
- 3 Trachydacite Flow or Sill
- 4 Intermediate to Mafic Volcanics
- 5 Undivided Argillaceous (upper sequences)
- 6 Potassic Rhyodacite, Fine Lapilli Tuff, Ash Tuff, and local Coarse Tuff
- 7 Potassic Rhyodacite to Rhyolite Flows and Coarse Tuff
- 8 Quartz-Sericite-Pyrite Altered Tuff
- 9 Thin to Medium Bedded Tuffaceous Siltstone and Fine to Medium Grained Sandstone
- 10 Undivided - Mainly Tuffaceous Latite or Dacite

EARLY TO MIDDLE PROTEROZOIC

- 11 Buff Weathering, Medium Bedded Silty to Sandy Dolostone
- 12 Undivided - Sandy Dolostone, Dolomitic Quartzite, and Sandy to Silty Limestone
- 13 Undivided argillaceous rocks (lower sequences)
- 14 Pale Grey-Green and Locally Orange-Brown Limy Siltstone and Fine-Grained Sandstone



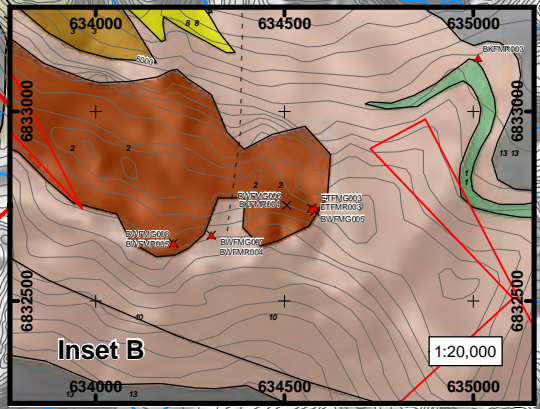
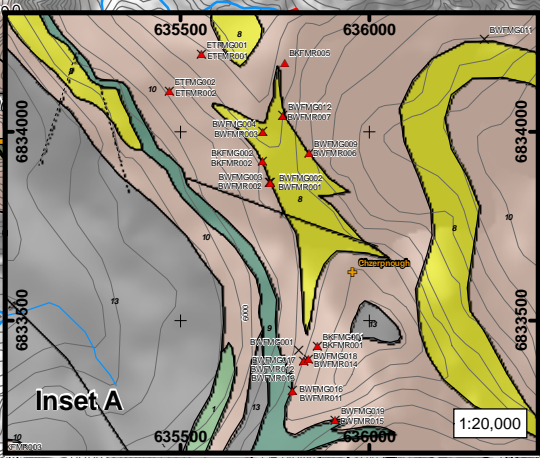
Eagle Plains Resources Ltd.

EPL-TSX-V

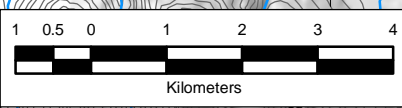
FIM Property

Figure 5 - 2010 Sample and Station Location
Projection - NAD 83 UTM Zone 08N
Scale - 1: 100 000

31/01/2011



- ### Legend
- Geologic Station
 - Mineral Showing
 - Rock Sample
 - Contour (100ft)
 - Contact
 - Fault
 - Cleavage
- ### Fold
- Anticline
 - Anticline - overturned
 - Syncline
 - Syncline - overturned
 - Unknown
 - River
 - Lake
 - EPL Tenure Boundary



625000

630000

635000

640000

645000

684000

6835000

6830000

6825000

684000

6835000

6830000

6825000



630000

635000

EPL:TSX-V



Eagle Plains Resources Ltd.

FIM Property

Figure 6a - Sample Geochemistry - TREE
Projection - NAD 83 UTM Zone 08N
Scale - 1: 40 000
31/01/2011

Geologic Legend

(after C.J. Greig 2002)

MIDDLE TO LATE PROTEROZOIC

- 1 Diorite and Basalt?
- 2 Syenite
- 3 Trachydacite Flow or Sill
- 4 Intermediate to Mafic Volcanics
- 5 Undivided Argillaceous (upper sequences)
- 6 Potassic Rhyodacite, Fine Lapilli Tuff, Ash Tuff, and local Coarse Tuff
- 7 Potassic Rhyodacite to Rhyolite Flows and Coarse Tuff
- 8 Quartz-Sericite-Pyrite Altered Tuff
- 9 Thin to Medium Bedded Tuffaceous Siltstone and Fine to Medium Grained Sandstone
- 10 Undivided - Mainly Tuffaceous Latite or Dacite

EARLY TO MIDDLE PROTEROZOIC

- 11 Buff Weathering, Medium Bedded Silty to Sandy Dolostone
- 12 Undivided - Sandy Dolostone, Dolomitic Quartzite, and Sandy to Silty Limestone
- 13 Undivided argillaceous rocks(lower sequences)
- 14 Pale Grey-Green and Locally Orange-Brown Limy Siltstone and Fine-Grained Sandstone

Legend

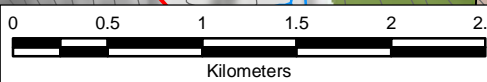
- + Mineral Showing
- Rock Sample TREE (ppm)**
- ▲ 0.00 - 400.00
- ▲ 400.01 - 600.00
- ▲ 600.01 - 800.00
- ▲ > 800.01
- Contour (100ft)
- Contact
- Fault
- Fold**
- Anticline
- Anticline - overturned
- Syncline
- Syncline - overturned
- Unknown
- River
- Lake
- EPL Tenure Boundary

6835000

6835000

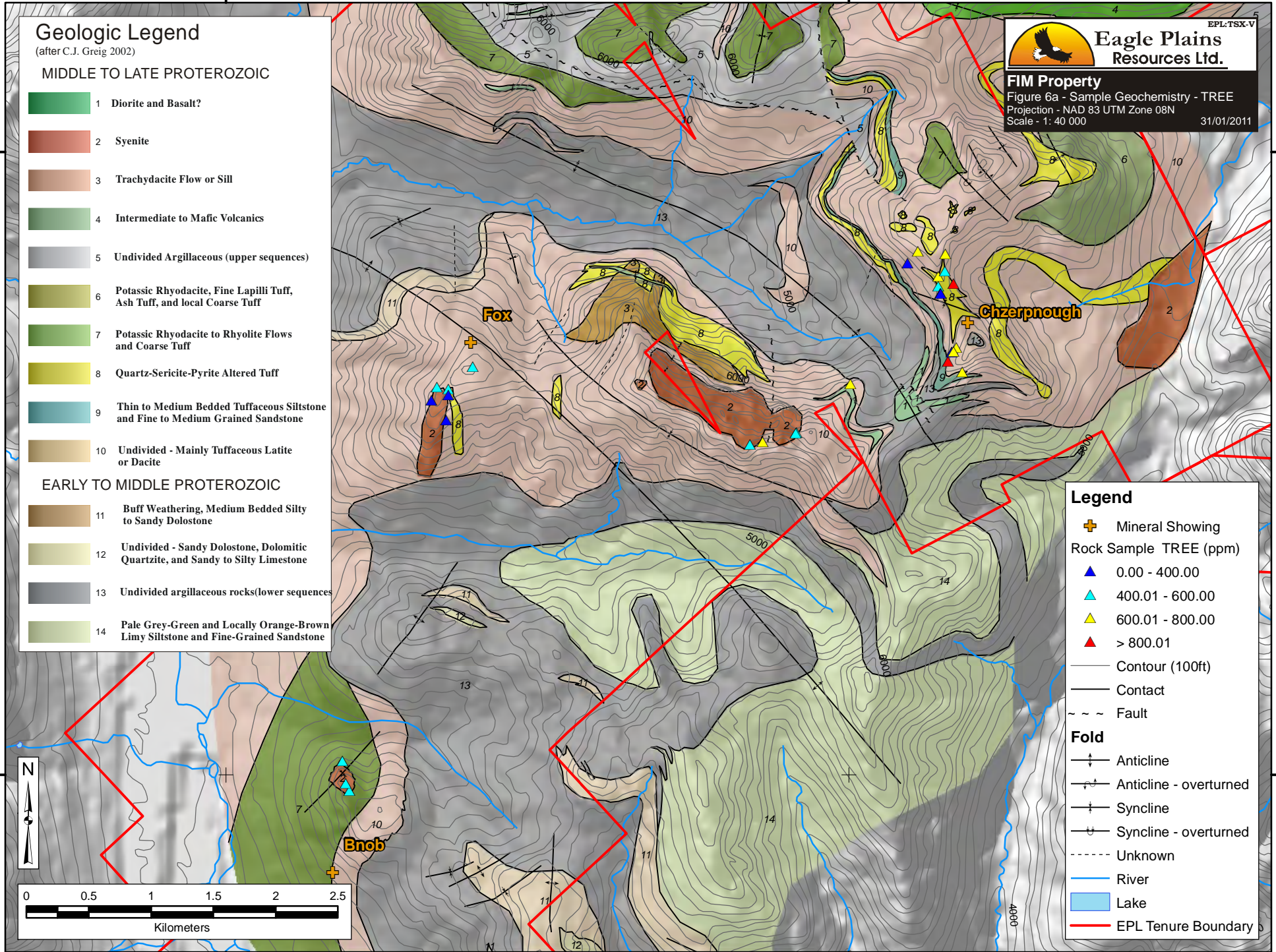
6830000

6830000



630000

635000



630000

635000

Geologic Legend

(after C.J. Greig 2002)

MIDDLE TO LATE PROTEROZOIC

- 1 Diorite and Basalt?
- 2 Syenite
- 3 Trachydacite Flow or Sill
- 4 Intermediate to Mafic Volcanics
- 5 Undivided Argillaceous (upper sequences)
- 6 Potassic Rhyodacite, Fine Lapilli Tuff, Ash Tuff, and local Coarse Tuff
- 7 Potassic Rhyodacite to Rhyolite Flows and Coarse Tuff
- 8 Quartz-Sericite-Pyrite Altered Tuff
- 9 Thin to Medium Bedded Tuffaceous Siltstone and Fine to Medium Grained Sandstone
- 10 Undivided - Mainly Tuffaceous Latite or Dacite

EARLY TO MIDDLE PROTEROZOIC

- 11 Buff Weathering, Medium Bedded Silty to Sandy Dolostone
- 12 Undivided - Sandy Dolostone, Dolomitic Quartzite, and Sandy to Silty Limestone
- 13 Undivided argillaceous rocks (lower sequences)
- 14 Pale Grey-Green and Locally Orange-Brown Limy Siltstone and Fine-Grained Sandstone



Eagle Plains Resources Ltd.
EPL-TSX-V

FIM Property

Figure 6b - Sample Geochemistry - Y
Projection - NAD 83 UTM Zone 08N
Scale - 1: 40 000
31/01/2011

6835000

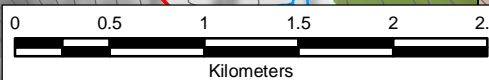
6835000

6830000

6830000

Legend

- + Mineral Showing
- Rock Sample Y (ppm)
- 0.00 - 93.10
- 93.11 - 109.92
- 109.93 - 120.04
- 120.05 - 123.21
- > 123.22
- Contour (100ft)
- Contact
- Fault
- Fold**
- Anticline
- Anticline - overturned
- Syncline
- Syncline - overturned
- Unknown
- River
- Lake
- EPL Tenure Boundary



630000

635000

630000

635000

Geologic Legend

(after C.J. Greig 2002)

MIDDLE TO LATE PROTEROZOIC

- 1 Diorite and Basalt?
- 2 Syenite
- 3 Trachydacite Flow or Sill
- 4 Intermediate to Mafic Volcanics
- 5 Undivided Argillaceous (upper sequences)
- 6 Potassic Rhyodacite, Fine Lapilli Tuff, Ash Tuff, and local Coarse Tuff
- 7 Potassic Rhyodacite to Rhyolite Flows and Coarse Tuff
- 8 Quartz-Sericite-Pyrite Altered Tuff
- 9 Thin to Medium Bedded Tuffaceous Siltstone and Fine to Medium Grained Sandstone
- 10 Undivided - Mainly Tuffaceous Latite or Dacite

EARLY TO MIDDLE PROTEROZOIC

- 11 Buff Weathering, Medium Bedded Silty to Sandy Dolostone
- 12 Undivided - Sandy Dolostone, Dolomitic Quartzite, and Sandy to Silty Limestone
- 13 Undivided argillaceous rocks (lower sequences)
- 14 Pale Grey-Green and Locally Orange-Brown Limy Siltstone and Fine-Grained Sandstone



Eagle Plains Resources Ltd.

EPL-TSX-V

FIM Property

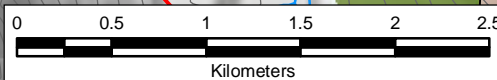
Figure 6c - Sample Geochemistry - Nb
Projection - NAD 83 UTM Zone 08N
Scale - 1: 40 000
31/01/2011

6835000

6835000

6830000

6830000

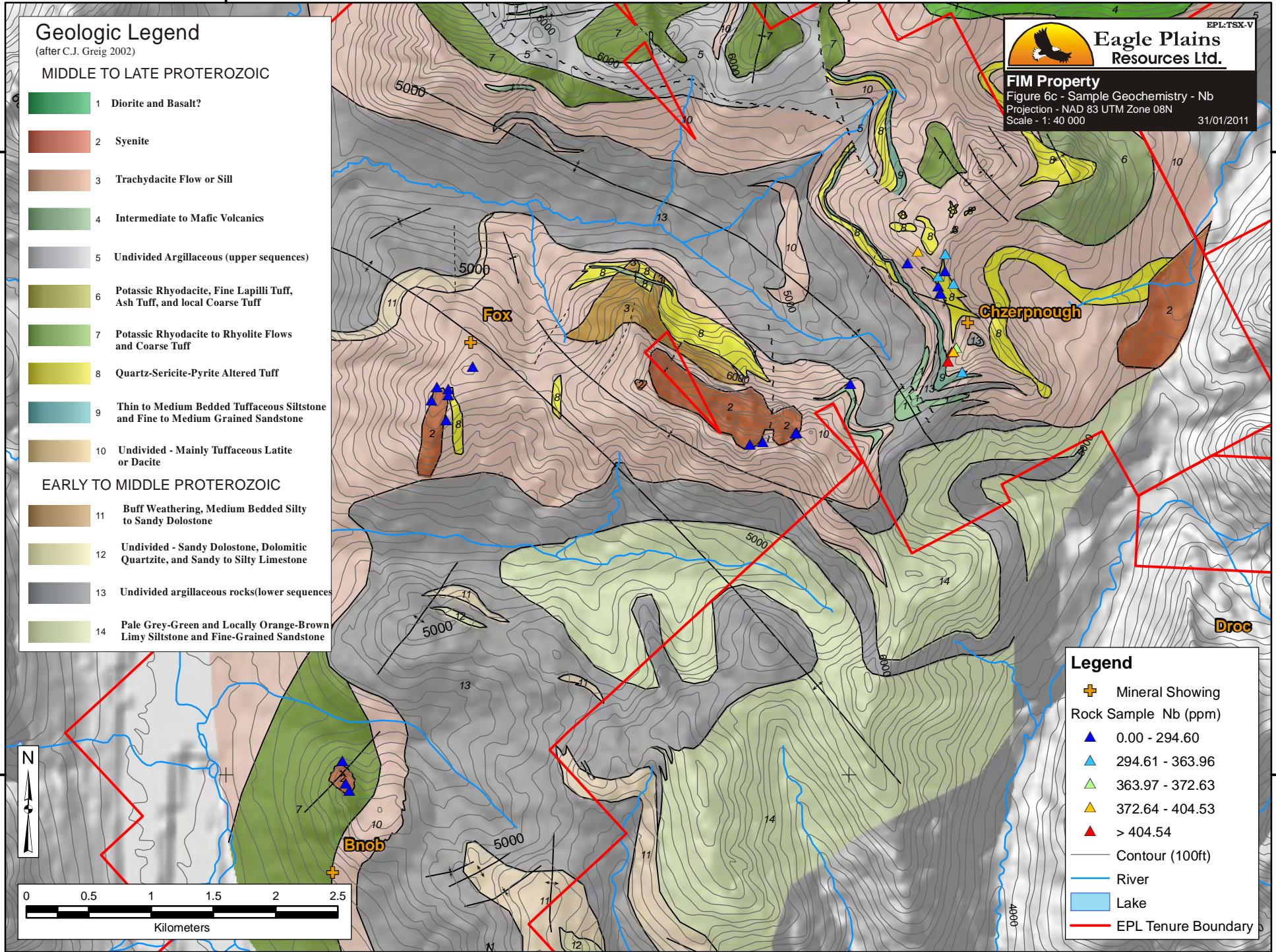


630000

635000

Legend

- Mineral Showing
- Rock Sample Nb (ppm)
- 0.00 - 294.60
- 294.61 - 363.96
- 363.97 - 372.63
- 372.64 - 404.53
- > 404.54
- Contour (100ft)
- River
- Lake
- EPL Tenure Boundary



CONCLUSIONS AND RECOMMENDATIONS

By virtue of the numerous intrusive stocks of alkaline affinity in close proximity to other known REE mineralization showings to the south (e.g. Guano), the Fire-Ice property was deemed prospective for REE + Nb mineralization. The specific REE 2010 field investigation in the vicinity of several syenite stocks and feeder systems at the VMS Fire and Ice showings did not return overly encouraging analytical results for REE and Nb. The scintillometer and some of the analytical results are anomalous, but not economically significant for the specific areas studied.

General recommendation to assess the regional potential for REE and Nb mineralization should include additional attempts to reanalyze any and all historical silt-stream and/or soil pulps with a robust analytical method such as INAA or fusion. YK geological survey pulps are currently held by the GSC, but attempts to get access to the pulps this year were unsuccessful. In the current rock dataset there is a clear correlation between the REEs, Nb and Th ($r^2 > 0.78$). An airborne radiometric survey is strongly recommended to develop additional regional scale targets.

REFERENCES

- Ash, C.H. and Brown, J.A., 2007. Geology Report for the EROS property, Pelly Mountain Project, Yukon Assessment Report
- Ash, C.H., Brown, J.A. and Gallagher, C., 2007. A coherent
- Ash, C.H., 2007. Summary & Recommendation Report for Eagle Plains Resources Ltd. Pelly Mountain Properties, Yukon Territory; Eagle Plains Resources, Internal Report
- Brown, J.A., 2007. 2007 Geological and Geochemical Assessment Report for the Pelly Mountain Project
- Dean, P. 1977a. Geological and Geophysical report, BNOB claim group, Watson Lake Mining District, Yukon Territory, Assessment Report No. #090193, 8 pages, 4 maps.
- Dean, P., 1977b. Geochemical report BNOB claim group, Watson Lake Mining District, Yukon Territory, Assessment Report No. #090174, 9 pages, 1 map
- Greig, C.J., 2000. Geological Examination of the FIRE and ICE Properties, Pelly Mountains, Yukon Territory; Eagle Plains Resources Internal Report
- Greig, C.J., 2001. Geological Examination of the FIRE / ICE / MELT Properties, Pelly Mountains, Yukon Territory; Eagle Plains Resources Internal Report
- Greig, C.J., 2002. Recommendations for exploration and notes to accompany geological Compilation, Fire-Ice-Melt Properties, Pelly Mountains, South Central Yukon Territory, In house report for Eagle Plains Resources Ltd., 9 p.
- Gordey, S.P. and Makepeace, A.J., 1999. Yukon Digital Geology. Exploration and Geological Services Division, Yukon Region, Indian and Northern Affairs Canada, Open File 1999-1(D), two CDs. Also available as Geological Survey of Canada, Open File D3826.
- Wheeler, J.O., 1960, Quiet Lake, Yukon Territory; *Geological Survey of Canada*, Map 7-1960.

Appnedix I – Statement of Qualifications

Aaron A. Higgs, B. Sc.

I, Aaron Ashwell Higgs, B.Sc. do hereby certify that:

I am currently employed as a Geologist by TerraLogic Exploration Inc., with business location of Suite 200, 44-12th Ave S., Cranbrook, BC, V1C 2R7 (Telephone: 778-520-2000, email: aah@terralogicexploration.com)

I graduated with a B.Sc. in Geology from the University of British Columbia in the year 2005.

I have worked as a Geologist in Western Canada for 6 years.

I am responsible for the preparation of this Technical Report entitled "2010 Geological and Geochemical Assessment Report on the Fire-Ice Property", prepared for Eagle Plains Resources Ltd.

Dated at Cranbrook, British Columbia, Canada this 8th day of March, 2011.

Respectfully submitted


Aaron A. Higgs, B.Sc. (Geol)

March 8, 2011

Appendix II – Statement of Expenditures

2010 Fire-Ice Expenditures								
Exploration Work type	Comment	Days					Totals	
Personnel (Name) / Position	Field Days (list actual days)	Days	Rate	Subtotal				
Aaron Higgs, Project Geologist		2.00	575	\$ 1,150.00				
Bronwen Wallace, Geologist		7.00	525	\$ 3,675.00				
Ben Kary, Technician/Data Manager		7.00	425	\$ 2,975.00				
Lewis Jones, Junior Geologist		2.00	425	\$ 850.00				
Eric Termuende, Field Technician		7.00	425	\$ 2,975.00				
				\$11,625.00			\$11,625.00	
Office Studies	List Personnel							
Project Planning	Jarrod Brown, Chief Geologist	0.50	600	\$ 300.00				
Project Planning - Analytical	Chris Gallagher, Chief Geotechnologist	0.60	700	\$ 420.00				
Database Mangement	Glen Hendrickson, GIS Specialist	1.45	525	\$ 761.25				
Project Planning and Research	Aaron Higgs, Project Geologist	5.38	575	\$ 3,093.50				
Reporting - Figures and Data	Fiona Katay, Geologist	0.60	525	\$ 315.00				
Reporting - Figures and Data	Jason Kolcun, GIS	4.42	385	\$ 1,701.70				
Database and Equipment Mangement	Brad Robison, GIS Specialist	0.43	525	\$ 225.75				
Project planning and reasearch	Bronwen Wallace, Geologist	0.56	525	\$ 294.00				
Travel to project	Eric Termuende, Field Technician	0.64	425	\$ 272.00				
Travel to project	Ben Kary, Technician/Data Manager	0.16	425	\$ 68.00				
Travel to project	Lewis Jones, Junior Geologist	0.60	425	\$ 255.00				
Reporting - Text and Data	Aaron Higgs, Project Geologist	3.00	575	\$ 1,725.00				
				\$9,431.20			\$9,431.20	
Geochemical Surveying	Number of Samples	No.	Rate	Subtotal				
Soil				\$64.25				
Rock				\$1,121.52				
				\$1,185.77			\$1,185.77	
Transportation		No.	Rate	Subtotal				
truck rental		7.00	\$100.00	\$700.00				
kilometers				\$194.17				
fuel				\$153.70				
Helicopter (hours)				\$4,052.74				
Fuel (litres/hour)				\$659.15				
				\$5,759.76			\$5,759.76	
Accommodation & Food	Rates per day							
Hotel			\$0.00	\$337.78				
Camp			\$0.00	\$367.76				
Meals	day rate or actual costs-specify		\$0.00	\$475.64				
				\$1,181.18			\$1,181.18	
Geological and Geochemical								
Map Plotting				\$195.31				
Geological Supplies				\$21.58				
Air Photos				\$59.98				
Sampling Consumables	sample bags, tags, flagging, etc...			\$300.00				
				\$576.87			\$576.87	

Equipment Rentals			per day		
Scintillometers				\$ 741.00	
Satellite Internet				\$ 35.11	
Satellite Phone Airtime				\$ 65.84	
Field Gear (Specify)	pack with gear, GPS, palm, etc...	25.00	\$35.00	\$875.00	
Trailers		7.00	\$100.00	\$700.00	
Sat Phone		9.00	\$15.00	\$135.00	
Hand Held Radios		25.00	\$10.00	\$250.00	
Chainsaw		7.00	\$10.00	\$70.00	
Rock Saw		7.00	\$15.00	\$105.00	
Computer		9.00	\$10.00	\$90.00	
Guns		7.00	\$10.00	\$70.00	
Generators	\$45-\$165	9.00	\$45.00	\$405.00	
Field Fly Camp		9.0	\$150.00	\$1,350.00	
Wall Tent		7.0	\$25.00	\$175.00	
Water Pump		7.0	\$25.00	\$175.00	
				\$5,241.95	\$5,241.95
Freight				\$150.00	
				\$150.00	\$150.00
TerraLogic Exploration Handling and Administration Fees				\$1,193.91	\$1,193.91
<i>TOTAL Expenditures</i>					\$36,345.64

Appendix III – Geochemical Protocol

3.1 – Field Sampling Techniques

3.2 Analytical Procedures

APPENDIX III – GEOCHEMICAL PROTOCOL

3.1 Geochemistry- Field sampling techniques

The purpose of rock and stream silt sampling at Fire-Ice and MM properties was to locate areas with elevated base metals and high-tech metals, as well as other potential pathfinder elements, in order to assess the overall economic potential of the area.

Rock samples were collected in the field by placing 1-3 kg of material in heavy grade plastic sample bags with the sample number written on both sides in permanent marker. Each sample bag was then sealed with a plastic cable tie and samples were transported back to camp at the end of each day. A representative piece of each sample was often collected and returned to camp for further examination in the event of an interesting or exceptional analytical result.

Silt samples were collected from active creeks whenever possible. Silt samples were placed and sealed into brown paper kraft bags. Samples were dried in the field daily, weather permitting. Relevant details pertaining to the soil and silt samples such as location parameters, depth, horizon, quality, were recorded by the sampler in the field.

Sample sites were marked in the field with orange or pink arctic-grade flagging and an aluminum tag, both having been marked with the appropriate sample number. Sample locations were determined by hand-held GPS set to report locations in UTM coordinates using the North American datum established in 1983 (NAD 83). The Ice River property lies within UTM zone 08N. Thus, all maps, figures and UTM coordinates referring to herein may be assumed to reference UTM NAD 83 zone 08N.

All surface geochemical samples were collected by company geologists or sampling technician employees trained by TerraLogic Exploration staff geologists. Once returned to camp, samples were organized, dried and catalogued and then placed in poly woven “rice” bags. All rock and silt samples were sent for analysis at ACME labs in Vancouver BC.

3.2 Geochemistry- Analytical techniques

All samples were sent to ACME Laboratories in Vancouver BC, which is a certified lab under the Assayers Certification Program of British Columbia. Rock and silt samples were analyzed using the *Group 4B* package which is a two part analysis. Rare earth and refractory elements are determined by ICP mass spectrometry (ICP-MS) following a Lithium metaborate/tetraborate fusion; while precious and base metals are determined using the 1Dx package by aqua regia digestion followed by ICP-MS. All samples were collected, handled, catalogued and prepared for shipment by TerraLogic Exploration staff.

2010 Analyses by Acme Labs (<http://www.acmelab.com>)

Package	Elements
Group 4B: LiBO ₂ Fusion + Nitric Acid ICP-MS - 5g	Be,Co,Cs,Ga,Hf,Nb,Rb,Sn,Sr,Ta,Th,U,V,W ,Zr,Y, La,Ce,Pr,Nd,Sm,Eu,Gd,Tb,Dy,Ho,Er, Tm,Yb,Lu

Appendix IV – Sample Locations and Descriptions

4.1 – Rock Samples

Appendix 4.1 - Rock Sample Locations and Descriptions

Sample Number	Sampler	Date (m/d/y)	UTM - East	UTM - North	Channel (m)	Channel (Az)	Map Unit	Rock Type - Major	Rock Type - Minor	Colour - Fresh	Colour - Weathered	Grain Size	Texture	Metamorphic Indicator	Mineralization - Major	Mineralization - Minor	Mineralization Style	Min. %	Alteration	Alt. Degree	Rock Description
BKFMR001	BK	8/1/2010	635863	6833433				Dacite		grey green		very fine						0	0	0	Fit within qtz stockwork
BKFMR002	BK	8/1/2010	635716	6833922				Dacite		grey green		very fine						0	0	0	
BKFMR003	BK	2/8/2010	635012	6833141	0			Argillite					foliated					0	0	0	well foliated agillite with disseminated oxide, non magnetic
BKFMR004	BK	2/8/2010	634580	6832747	0			Dacite					foliated				Serpentinized	0	0	0	vein of serpentine alteration with malachite staining
BKFMR005	BK	3/8/2010	635776	6834182	0			Tuff				very fine	foliated					0	0	0	taken from same location as historic rock sample with high Niobium
BKFMR006	BK	4/8/2010	631982	6833276	0			Tuff					foliated					0	0	0	Near Syenite, with peak scint cpm:700 and bkgr:400 assay: TOT 2256cpm, K 429cpm, U 0cpm, Th 166cpm, TOT 385.7ppm
BKFMR007	BK	4/8/2010	631692	6833111	0			Syenite		dark green	dark purple	very fine						0	0	0	scint peak: 380, background: 300, assay TOT 1367cpm, K 347cpm, U 0cpm, Th 119cpm, TOT 233.3ppm
BKFMR008	BK	4/8/2010	631648	6833006	0			Syenite	Tuff									0	0	0	interfingering of tuff and syenite, assay: TOT 1770cpm, K 448cpm, U 0cpm, Th 115cpm. TOT 302.7ppm
BWFM001	BW	8/1/2010	635735.04	6833865.1				Basalt	Dacite	dark grey	brownish	fine	aphanitic					0	0	0	
BWFM002	BW	8/1/2010	635738.8	6833865.5				Volcaniclastic rock	Tuff	brownish	rusty	fine	massive					0	0	0	Cu staining
BWFM003	BW	8/1/2010	635718.5	6833999.6				Volcaniclastic rock	Lithic Tuff	greenish	brown	fine-medium	banded					0	0	0	
BWFM004	BW	8/2/2010	634307.64	6832674				Serpentinite	Dacite	green	greenish	medium	veined					0	0	0	8cm thick bed, continuous along strike
BWFM005	BW	8/2/2010	634207.61	6832651.5				Syenite	Contact - Lithologic	dark grey	dark grey	fine-medium	veined					0	0	0	Right at contact, 2m thick zone, continues along contact
BWFM006	BW	8/3/2010	635839.76	6833942.8	0.5	30		Tuff		greenish	brown	fine-medium	fractured					0	0	0	Some pyr, mostly serpentine, also pink mineral
BWFM007	BW	8/3/2010	635771	6834043	1	30		Tuff		greyish	brownish	fine-medium	fractured					0	0	0	
BWFM008	BW	8/4/2010	631785.95	6833095.7	0.6	30		Tuff		green	grey	fine-medium	laminated					0	0	0	Chip across layers
BWFM009	BW	8/4/2010	631785.94	6833047.2				Tuff		dark grey	rusty	fine	fractured					0	0	0	
BWFM010	BW	8/4/2010	631766.58	6832845				Tuff		greenish	rusty	fine-medium	clast within					0	0	0	
BWFM011	BW	8/5/2010	635796.14	6833314.7	1	120		Dacite	Tuff	greenish	brown	fine-medium	granular					0	0	0	
BWFM012	BW	8/5/2010	635826.56	6833391.9	1	80		Dacite		greenish	yellowish	fine	fractured					0	0	0	Upper chip
BWFM013	BW	8/5/2010	635826.56	6833391.9	1	80		Dacite		greenish	yellowish	fine	fractured					0	0	0	Lower chip
BWFM014	BW	8/5/2010	635838.06	6833399	1.2	100		Dacite	Tuff	green	brown	medium	fractured					0	0	0	
BWFM015	BW	8/5/2010	635910.31	6833236.3	3	140		Dacite	Tuff	greenish	brown	fine-medium	clast within					0	0	0	
ETFMR001	ET	8/1/2010	635556	6834205				Volcaniclastic rock	Tuff	grey	dark grey	fine-medium	banded					0	0	0	
ETFMR002	ET	8/1/2010	635471	6834107				Tuff	Chert									0	0	0	
ETFMR003	ET	8/2/2010	634573	6832744				Serpentinite	Dacite	grey	yellowish							0	0	0	
LJCAR001	LJ	8/5/2010	630935	6830114				Syenite		bluish	grey	medium-coarse	aphyric					0	0	0	Sampled syenite along contact with meta volcanic. trace amounts of pyrite. scint count 15000/min.
LJCAR002	LJ	8/5/2010	630992	6829875				Felsic Metavolcanic	Int Volcanic	light	rusty	fine	aphanitic					0	0	0	Sampled felsic- intermediate meta volcanic near syenite contact. no mineralization. scint count 7000/min.
LJCAR003	LJ	8/5/2010	630963	6829930				Syenite		greyish	dark grey	medium-coarse	aphyric					0	0	0	Sampled syenite. scint count 11000/min. trace pyrite mineralization.
LJFMR001	LJ	8/5/2010	630935	6830114				Syenite		bluish	grey	medium-coarse	aphyric					0	0	0	Sampled syenite along contact with meta volcanic. trace amounts of pyrite. scint count 15000/min.
LJFMR002	LJ	8/5/2010	630992	6829875				Felsic Metavolcanic	Int Volcanic	light	rusty	fine	aphanitic					0	0	0	Sampled felsic- intermediate meta volcanic near syenite contact. no mineralization. scint count 7000/min.
LJFMR003	LJ	8/5/2010	630963	6829930				Syenite		greyish	dark grey	medium-coarse	aphyric					0	0	0	Sampled syenite. scint count 11000/min. trace pyrite mineralization.

Appendix V – Analytical Certificates

5.1 – Rock Samples

5.1 – Rock Samples



1020 Cordova St. East Vancouver BC V6A 4A3 Canada

Acme Analytical Laboratories (Vancouver) Ltd.

www.acmelab.com

Client: TerraLogic Exploration Inc.

Suite 200, 44 - 12th Ave. S.
Cranbrook BC V1C 2R7 Canada

Submitted By: Aaron Higgs

Receiving Lab: Canada-Whitehorse

Received: August 13, 2010

Report Date: September 02, 2010

Page: 1 of 2

CERTIFICATE OF ANALYSIS

WHI10000249.1

CLIENT JOB INFORMATION

Project: FM
Shipment ID: FM10-001
P.O. Number
Number of Samples: 29

SAMPLE PREPARATION AND ANALYTICAL PROCEDURES

Method Code	Number of Samples	Code Description	Test Wgt (g)	Report Status	Lab
R200-250	29	Crush, split and pulverize 250 g rock to 200 mesh			WHI
4B02	29	LiBO2/Li2B4O7 fusion ICP-MS analysis	0.2	Completed	VAN

SAMPLE DISPOSAL

RTRN-PLP Return
DISP-RJT Dispose of Reject After 90 days

ADDITIONAL COMMENTS

Acme does not accept responsibility for samples left at the laboratory after 90 days without prior written instructions for sample storage or return.

Invoice To: TerraLogic Exploration Inc.
Suite 200, 44 - 12th Ave. S.
Cranbrook BC V1C 2R7
Canada

CC: Chris Gallagher



This report supersedes all previous preliminary and final reports with this file number dated prior to the date on this certificate. Signature indicates final approval; preliminary reports are unsigned and should be used for reference only. All results are considered the confidential property of the client. Acme assumes the liabilities for actual cost of analysis only. ** asterisk indicates that an analytical result could not be provided due to unusually high levels of interference from other elements.



Acme Analytical Laboratories (Vancouver) Ltd.

1020 Cordova St. East Vancouver BC V6A 4A3 Canada
Phone (604) 253-3158 Fax (604) 253-1716

www.acmelab.com

Client: **TerraLogic Exploration Inc.**
Suite 200, 44 - 12th Ave. S.
Cranbrook BC V1C 2R7 Canada

Project: FM
Report Date: September 02, 2010

Page: 2 of 2 Part 1

CERTIFICATE OF ANALYSIS

WHI10000249.1

Method	WGHT	4B	4B	4B	4B	4B	4B	4B	4B	4B	4B	4B	4B	4B	4B	4B	4B	4B	4B	4B	
Analyte	Wgt	Ba	Be	Co	Cs	Ga	Hf	Nb	Rb	Sn	Sr	Ta	Th	U	V	W	Zr	Y	La	Ce	
Unit	kg	ppm	ppm	ppm	ppm	ppm	ppm	ppm	ppm	ppm	ppm	ppm	ppm	ppm	ppm	ppm	ppm	ppm	ppm	ppm	
MDL	0.01	1	1	0.2	0.1	0.5	0.1	0.1	0.1	1	0.5	0.1	0.2	0.1	8	0.5	0.1	0.1	0.1	0.1	
BKFM001	Rock	0.87	4100	7	2.0	1.8	40.1	39.2	368.2	372.1	16	55.8	22.7	63.5	16.2	<8	3.9	1789	107.5	191.2	351.3
BKFM002	Rock	2.53	6750	3	1.7	0.9	24.0	27.0	238.3	145.1	7	164.1	15.7	41.4	9.9	<8	2.3	1236	74.4	132.1	242.3
BKFM003	Rock	1.39	929	8	1.0	2.6	27.8	17.9	161.5	200.3	11	4.4	10.8	53.9	9.4	<8	2.8	632.7	86.7	157.0	280.9
BKFM004	Rock	1.37	2275	7	9.2	1.7	32.2	20.3	252.5	128.2	27	32.2	21.6	130.0	27.0	37	<0.5	554.5	78.7	145.8	265.0
BKFM005	Rock	1.73	3446	10	1.8	2.5	43.1	38.4	362.9	312.5	14	26.9	23.3	58.2	13.5	<8	3.3	1720	99.5	202.4	343.6
BKFM006	Rock	1.21	2372	8	0.9	2.1	26.2	17.1	154.2	209.4	11	90.1	10.4	51.0	10.0	8	4.3	569.5	68.5	131.2	226.4
BKFM007	Rock	2.02	2781	4	3.2	2.2	34.0	19.4	204.5	139.1	10	7.0	11.8	27.5	6.5	<8	5.1	825.2	58.4	110.3	209.0
BKFM008	Rock	2.20	3027	6	0.6	2.7	32.7	18.2	190.1	170.7	7	46.5	11.5	26.6	8.5	<8	3.2	813.6	58.4	87.0	164.7
ETFM001	Rock	2.31	7228	6	1.5	1.5	43.9	41.9	391.9	325.7	16	85.6	24.5	68.5	17.8	<8	4.9	1971	114.4	207.7	332.5
ETFM002	Rock	2.51	4336	1	1.4	0.4	14.2	18.6	192.9	80.0	4	49.8	11.9	26.7	5.4	<8	2.3	809.0	49.5	95.4	171.8
ETFM003	Rock	1.58	2236	7	8.5	2.4	29.2	17.7	211.1	111.5	23	67.2	21.3	116.2	26.4	41	0.5	495.5	72.1	148.7	269.1
LJFMR001	Rock	1.09	1380	5	0.8	0.9	28.7	22.6	179.6	157.0	12	32.4	12.7	57.1	11.8	<8	5.4	890.8	67.2	139.7	255.0
LJFMR002	Rock	1.73	6647	8	1.2	1.3	27.1	20.5	184.5	219.1	12	56.2	12.8	55.9	11.1	<8	5.2	891.5	65.1	133.1	230.1
LJFMR003	Rock	1.06	925	8	2.2	1.1	27.2	15.6	143.4	101.5	8	70.1	9.4	38.3	7.8	<8	6.0	658.7	54.0	101.2	193.3
BWFM001	Rock	1.60	2095	3	29.9	8.3	15.1	3.5	20.1	134.6	2	401.9	1.1	22.7	8.4	220	3.5	122.6	21.9	43.8	90.2
BWFM002	Rock	1.92	252	2	1.8	0.3	12.6	3.7	36.4	25.9	11	74.9	2.5	7.0	2.0	<8	0.6	173.9	22.1	82.6	148.3
BWFM003	Rock	1.71	4522	6	1.3	1.2	34.2	37.5	301.6	224.2	13	81.9	22.1	62.0	16.1	<8	2.0	1752	104.6	165.5	295.7
BWFM004	Rock	1.36	4990	6	3.3	1.7	40.9	21.3	287.6	125.9	28	19.9	25.0	131.5	21.9	36	<0.5	561.3	75.1	214.3	368.3
BWFM005	Rock	1.42	3983	2	6.2	4.1	28.3	13.2	155.6	222.1	6	39.3	10.2	22.6	6.2	22	2.9	561.9	56.1	89.9	173.5
BWFM006	Rock	1.94	2005	12	1.7	1.8	44.4	39.5	340.7	183.7	24	22.5	23.5	78.2	175.8	<8	4.3	1585	124.0	201.9	410.6
BWFM007	Rock	1.33	3467	4	2.6	1.0	27.8	17.3	190.1	184.3	7	24.5	12.2	26.8	7.1	<8	4.5	824.6	50.4	101.8	183.6
BWFM008	Rock	1.39	812	6	1.3	1.8	31.0	18.2	190.0	155.9	7	65.5	11.4	26.7	6.7	<8	3.0	813.4	59.0	100.0	189.5
BWFM009	Rock	1.70	2404	2	0.8	1.9	26.9	16.3	169.4	117.0	7	7.0	10.4	23.9	5.9	<8	3.3	725.1	52.8	89.1	170.9
BWFM010	Rock	1.57	1712	4	1.3	1.5	32.5	23.4	236.9	128.0	8	5.3	15.8	37.4	9.5	11	4.6	1148	72.5	88.6	166.1
BWFM011	Rock	1.69	2952	13	1.2	1.7	43.6	45.2	412.5	325.6	18	26.7	26.4	73.1	23.1	<8	4.6	2129	119.6	215.8	390.6
BWFM012	Rock	1.65	8545	10	<0.2	1.7	52.0	46.8	432.4	321.0	21	32.9	27.6	68.1	17.3	<8	5.4	2191	121.6	95.9	176.5
BWFM013	Rock	1.41	13993	7	0.2	1.9	54.4	54.8	506.9	342.4	22	49.4	32.3	66.9	24.2	<8	5.3	2613	137.9	40.3	63.9
BWFM014	Rock	1.44	2669	14	1.7	1.9	44.5	43.0	399.0	349.2	19	42.7	25.1	67.7	18.7	<8	5.1	2000	114.3	181.9	343.3
BWFM015	Rock	1.37	1940	8	1.6	1.3	41.1	36.9	359.4	189.9	14	33.5	23.4	59.8	15.6	<8	9.4	1775	97.5	171.3	319.6



1020 Cordova St. East Vancouver BC V6A 4A3 Canada
Phone (604) 253-3158 Fax (604) 253-1716

Acme Analytical Laboratories (Vancouver) Ltd.

www.acmelab.com

Client: TerraLogic Exploration Inc.
Suite 200, 44 - 12th Ave. S.
Cranbrook BC V1C 2R7 Canada

Project: FM
Report Date: September 02, 2010

Page: 2 of 2 Part 2

CERTIFICATE OF ANALYSIS

WHI10000249.1

Method	Analyte	4B	4B	4B	4B	4B	4B	4B	4B	4B	4B	4B	1DX	1DX	1DX	1DX	1DX	1DX	1DX	1DX	
		Pr	Nd	Sm	Eu	Gd	Tb	Dy	Ho	Er	Tm	Yb	Lu	Mo	Cu	Pb	Zn	Ni	As	Cd	Sb
Unit	MDL	ppm	ppm	ppm	ppm	ppm	ppm	ppm	ppm	ppm	ppm	ppm	ppm	ppm	ppm	ppm	ppm	ppm	ppm	ppm	
		0.02	0.3	0.05	0.02	0.05	0.01	0.05	0.02	0.03	0.01	0.05	0.01	0.1	0.1	0.1	1	0.1	0.5	0.1	0.1
BKFM001	Rock	34.62	117.8	18.28	1.03	16.41	2.87	17.33	3.57	11.23	1.84	11.77	1.64	7.5	12.2	116.0	134	2.0	12.5	0.7	2.0
BKFM002	Rock	24.23	83.5	13.08	1.19	11.71	2.07	12.14	2.52	7.83	1.27	8.18	1.15	1.5	50.8	235.8	161	1.4	13.2	2.2	2.9
BKFM003	Rock	30.69	106.6	17.22	0.28	15.89	2.63	15.07	2.89	8.68	1.31	8.18	1.09	5.7	7.0	12.5	4	2.7	14.9	<0.1	0.8
BKFM004	Rock	24.78	76.7	10.08	1.08	8.57	1.68	11.27	2.56	8.78	1.54	10.26	1.43	5.1	151.6	22.8	8	5.0	2.8	<0.1	0.1
BKFM005	Rock	35.66	118.7	18.22	1.25	15.59	2.71	16.36	3.34	10.63	1.76	11.28	1.58	4.5	8.8	21.7	361	2.3	7.7	2.9	0.8
BKFM006	Rock	26.38	93.9	14.66	0.34	12.72	2.09	12.03	2.26	6.97	1.09	6.94	0.97	1.3	3.5	15.4	57	1.3	5.9	0.3	0.2
BKFM007	Rock	22.18	78.8	12.29	1.53	9.94	1.60	9.67	2.05	6.39	1.04	6.53	0.97	0.6	156.8	199.0	1324	3.2	5.8	4.2	0.2
BKFM008	Rock	17.19	62.5	10.60	0.92	9.70	1.71	10.10	2.00	6.20	0.99	6.34	0.93	4.2	0.6	18.9	29	0.1	0.9	<0.1	0.1
ETFMR001	Rock	33.95	109.2	16.80	1.06	15.37	2.87	17.84	3.79	11.98	1.96	12.73	1.79	2.5	12.5	211.5	2139	1.3	11.4	11.4	2.5
ETFMR002	Rock	17.57	60.6	9.22	0.97	8.28	1.44	8.61	1.71	5.36	0.86	5.47	0.80	0.4	2.6	43.6	581	1.6	7.6	4.0	0.9
ETFMR003	Rock	24.95	76.2	10.50	0.97	8.24	1.65	10.94	2.38	8.01	1.39	9.31	1.28	10.0	388.6	22.3	20	6.8	10.0	0.1	0.5
LJFMR001	Rock	25.49	85.3	12.93	0.86	11.40	1.90	11.11	2.25	6.95	1.14	7.46	1.10	5.9	3.5	6.0	93	1.1	2.5	1.4	0.4
LJFMR002	Rock	23.94	80.0	12.12	0.86	10.71	1.75	10.12	2.17	6.75	1.10	7.38	1.08	4.1	4.6	15.5	137	2.3	10.8	0.4	0.4
LJFMR003	Rock	18.27	61.7	9.67	1.21	8.79	1.52	9.03	1.91	5.65	0.90	5.76	0.83	2.7	1.9	27.9	138	0.7	<0.5	0.6	0.5
BWFM001	Rock	10.82	45.3	7.67	1.65	5.76	0.77	3.88	0.73	2.08	0.32	2.04	0.30	0.9	40.2	10.5	103	109.5	0.8	0.4	0.2
BWFM002	Rock	14.77	52.7	9.20	3.22	8.40	1.15	5.16	0.80	2.01	0.27	1.69	0.22	4.4	8559	211.7	>10000	4.6	47.3	191.1	93.6
BWFM003	Rock	28.79	98.3	16.26	1.63	15.73	2.77	16.80	3.45	10.63	1.69	11.31	1.53	0.4	35.4	289.4	706	0.8	8.6	6.9	4.4
BWFM004	Rock	33.61	104.5	13.23	0.94	9.46	1.79	11.77	2.62	8.98	1.53	10.78	1.49	1.0	531.7	4.4	36	2.9	<0.5	0.6	0.3
BWFM005	Rock	18.75	69.4	11.79	1.04	10.38	1.73	10.05	2.01	6.05	0.97	6.16	0.92	23.1	8.5	27.3	51	8.3	4.1	<0.1	0.4
BWFM006	Rock	43.59	159.7	28.16	0.64	25.52	4.48	23.85	4.45	12.57	1.92	12.46	1.74	10.9	245.9	37.1	123	1.9	19.7	5.0	0.7
BWFM007	Rock	18.23	62.3	9.78	1.13	8.73	1.42	8.21	1.70	5.18	0.89	5.30	0.78	1.7	6.0	8.4	481	1.6	9.2	4.1	0.4
BWFM008	Rock	19.88	73.9	11.69	0.97	10.39	1.72	10.14	2.05	6.15	0.98	6.49	0.93	4.0	8.3	19.0	84	<0.1	5.7	0.3	0.1
BWFM009	Rock	17.58	65.2	10.57	1.21	9.41	1.53	9.07	1.86	5.42	0.87	5.73	0.84	9.8	1.3	11.6	347	0.3	1.8	2.2	0.1
BWFM010	Rock	16.73	57.6	9.72	1.19	9.82	1.89	11.41	2.44	7.28	1.17	7.68	1.09	12.7	58.0	11.5	275	5.3	29.1	1.4	0.3
BWFM011	Rock	38.38	134.4	20.50	1.03	17.78	3.18	19.32	4.06	12.81	2.07	13.59	1.93	1.5	6.3	10.1	91	0.2	3.0	0.3	0.2
BWFM012	Rock	16.17	57.6	10.85	0.62	12.39	2.79	19.17	4.27	13.22	2.16	13.99	1.97	1.9	6.9	34.0	123	<0.1	8.1	0.6	0.6
BWFM013	Rock	6.10	23.1	6.17	0.36	10.16	2.86	20.83	4.92	15.64	2.49	16.38	2.35	1.9	3.9	250.9	88	<0.1	12.0	0.7	1.3
BWFM014	Rock	32.97	113.6	18.80	0.94	17.89	3.04	18.63	3.97	12.58	2.06	13.07	1.87	1.9	6.0	49.4	297	<0.1	6.9	1.7	0.4
BWFM015	Rock	31.32	108.3	17.47	1.09	15.56	2.74	16.79	3.47	10.82	1.73	11.47	1.64	3.7	2.8	12.2	39	0.2	6.2	0.1	0.3



Acme Analytical Laboratories (Vancouver) Ltd.
 1020 Cordova St. East Vancouver BC V6A 4A3 Canada
 Phone (604) 253-3158 Fax (604) 253-1716

www.acmelab.com

Client: TerraLogic Exploration Inc.
 Suite 200, 44 - 12th Ave. S.
 Cranbrook BC V1C 2R7 Canada

Project: FM
Report Date: September 02, 2010

Page: 2 of 2 **Part** 3

CERTIFICATE OF ANALYSIS

WHI1000249.1

Method	Analyte	1DX	1DX	1DX	1DX	1DX	1DX
		Bi	Ag	Au	Hg	Tl	Se
Unit		ppm	ppm	ppb	ppm	ppm	ppm
MDL		0.1	0.1	0.5	0.01	0.1	0.5
BKFMR001	Rock	0.2	1.0	1.6	0.05	0.2	<0.5
BKFMR002	Rock	0.2	0.7	3.4	<0.01	<0.1	<0.5
BKFMR003	Rock	0.2	0.1	0.6	<0.01	<0.1	<0.5
BKFMR004	Rock	0.1	0.1	0.9	<0.01	<0.1	<0.5
BKFMR005	Rock	0.2	0.3	0.9	<0.01	0.2	<0.5
BKFMR006	Rock	0.3	<0.1	2.8	<0.01	<0.1	<0.5
BKFMR007	Rock	0.1	0.9	1.6	0.32	<0.1	<0.5
BKFMR008	Rock	<0.1	<0.1	<0.5	<0.01	<0.1	<0.5
ETFMR001	Rock	0.2	0.6	2.3	0.35	<0.1	<0.5
ETFMR002	Rock	<0.1	0.1	<0.5	0.06	<0.1	<0.5
ETFMR003	Rock	0.1	0.2	2.3	0.02	<0.1	<0.5
LJFMR001	Rock	<0.1	<0.1	<0.5	<0.01	<0.1	<0.5
LJFMR002	Rock	0.2	<0.1	<0.5	<0.01	<0.1	<0.5
LJFMR003	Rock	0.2	<0.1	6.5	0.02	<0.1	<0.5
BWFM001	Rock	0.1	<0.1	2.1	0.02	0.6	<0.5
BWFM002	Rock	0.3	10.5	412.2	0.35	<0.1	0.9
BWFM003	Rock	0.3	0.6	2.6	0.02	<0.1	<0.5
BWFM004	Rock	<0.1	0.2	0.6	<0.01	<0.1	<0.5
BWFM005	Rock	0.8	0.2	1.7	<0.01	0.4	<0.5
BWFM006	Rock	0.8	0.5	3.1	0.05	0.5	<0.5
BWFM007	Rock	<0.1	0.1	0.7	<0.01	<0.1	<0.5
BWFM008	Rock	<0.1	0.1	1.3	<0.01	<0.1	<0.5
BWFM009	Rock	<0.1	<0.1	1.0	0.01	<0.1	<0.5
BWFM010	Rock	<0.1	0.2	5.9	<0.01	0.1	<0.5
BWFM011	Rock	0.3	0.2	1.1	<0.01	0.1	<0.5
BWFM012	Rock	0.2	0.3	1.7	0.10	<0.1	<0.5
BWFM013	Rock	<0.1	0.7	2.0	0.15	0.1	<0.5
BWFM014	Rock	0.2	0.3	0.9	0.02	<0.1	<0.5
BWFM015	Rock	0.2	0.1	2.9	0.02	<0.1	<0.5

This report supersedes all previous preliminary and final reports with this file number dated prior to the date on this certificate. Signature indicates final approval; preliminary reports are unsigned and should be used for reference only.



Acme Analytical Laboratories (Vancouver) Ltd.

1020 Cordova St. East Vancouver BC V6A 4A3 Canada
 Phone (604) 253-3158 Fax (604) 253-1716

www.acmelab.com

Client: TerraLogic Exploration Inc.
 Suite 200, 44 - 12th Ave. S.
 Cranbrook BC V1C 2R7 Canada

Project: FM
Report Date: September 02, 2010

Page: 1 of 1 **Part** 1

QUALITY CONTROL REPORT

WHI10000249.1

Method	WGHT	4B	4B	4B	4B	4B	4B	4B	4B	4B	4B	4B	4B	4B	4B	4B	4B	4B	4B	4B	
Analyte	Wgt	Ba	Be	Co	Cs	Ga	Hf	Nb	Rb	Sn	Sr	Ta	Th	U	V	W	Zr	Y	La	Ce	
Unit	kg	ppm	ppm	ppm	ppm	ppm	ppm	ppm	ppm	ppm	ppm	ppm	ppm	ppm	ppm	ppm	ppm	ppm	ppm	ppm	
MDL	0.01	1	1	0.2	0.1	0.5	0.1	0.1	0.1	1	0.5	0.1	0.2	0.1	8	0.5	0.1	0.1	0.1	0.1	
Pulp Duplicates																					
BKFMRO01	Rock	0.87	4100	7	2.0	1.8	40.1	39.2	368.2	372.1	16	55.8	22.7	63.5	16.2	<8	3.9	1789	107.5	191.2	351.3
REP BKFMRO01	QC																				
ETFMR001	Rock	2.31	7228	6	1.5	1.5	43.9	41.9	391.9	325.7	16	85.6	24.5	68.5	17.8	<8	4.9	1971	114.4	207.7	332.5
REP ETFMR001	QC		7360	6	1.3	1.7	43.9	41.6	394.6	323.6	15	85.2	24.4	68.4	17.8	<8	4.8	1968	112.5	209.2	333.5
BWFMR012	Rock	1.65	8545	10	<0.2	1.7	52.0	46.8	432.4	321.0	21	32.9	27.6	68.1	17.3	<8	5.4	2191	121.6	95.9	176.5
REP BWFMR012	QC																				
Reference Materials																					
STD DS7	Standard																				
STD DS7	Standard																				
STD DS7	Standard																				
STD DS7	Standard																				
STD OREAS45PA	Standard																				
STD OREAS45PA	Standard																				
STD OREAS45PA	Standard																				
STD OREAS45PA	Standard																				
STD SO-18	Standard		504	1	25.6	6.8	17.0	9.5	21.4	27.4	14	395.6	7.3	10.4	15.7	198	14.9	288.9	30.2	11.6	25.9
STD SO-18	Standard		505	<1	25.5	6.9	17.2	9.5	20.6	27.2	14	395.5	7.2	9.8	15.5	197	14.7	288.7	29.8	11.4	25.7
STD SO-18 Expected			514	1	26.2	7.1	17.6	9.8	21.3	28.7	15	407.4	7.4	9.9	16.4	200	14.8	280	31	12.3	27.1
STD DS7 Expected																					
STD OREAS45PA Expected																					
BLK	Blank		<1	<1	<0.2	<0.1	<0.5	<0.1	<0.1	<0.1	<1	<0.5	<0.1	<0.2	<0.1	<8	<0.5	0.7	<0.1	<0.1	<0.1
BLK	Blank																				
BLK	Blank																				
BLK	Blank																				
BLK	Blank																				
Prep Wash																					
G1	Prep Blank		978	3	4.4	4.6	19.4	4.5	24.3	131.9	2	755.3	1.6	11.5	3.7	58	<0.5	146.8	16.5	33.7	65.5
G1	Prep Blank		1018	3	4.6	4.6	19.0	4.0	26.0	124.7	2	729.0	1.6	10.2	3.4	57	<0.5	140.6	16.7	36.6	69.1

This report supersedes all previous preliminary and final reports with this file number dated prior to the date on this certificate. Signature indicates final approval; preliminary reports are unsigned and should be used for reference only.



Acme Analytical Laboratories (Vancouver) Ltd.

1020 Cordova St. East Vancouver BC V6A 4A3 Canada
 Phone (604) 253-3158 Fax (604) 253-1716

www.acmelab.com

Client: TerraLogic Exploration Inc.
 Suite 200, 44 - 12th Ave. S.
 Cranbrook BC V1C 2R7 Canada

Project: FM
Report Date: September 02, 2010

Page: 1 of 1 Part 2

QUALITY CONTROL REPORT

WHI10000249.1

Method	Analyte	Unit	MDL	4B Pr	4B Nd	4B Sm	4B Eu	4B Gd	4B Tb	4B Dy	4B Ho	4B Er	4B Tm	4B Yb	4B Lu	1DX Mo	1DX Cu	1DX Pb	1DX Zn	1DX Ni	1DX As	1DX Cd	1DX Sb
		ppm		0.02	0.3	0.05	0.02	0.05	0.01	0.05	0.02	0.03	0.01	0.05	0.01	0.1	0.1	0.1	1	0.1	0.5	0.1	0.1
Pulp Duplicates																							
BKFMRO01	Rock			34.62	117.8	18.28	1.03	16.41	2.87	17.33	3.57	11.23	1.84	11.77	1.64	7.5	12.2	116.0	134	2.0	12.5	0.7	2.0
REP BKFMRO01	QC															7.9	11.1	116.0	143	1.7	13.4	0.7	1.8
ETFMR001	Rock			33.95	109.2	16.80	1.06	15.37	2.87	17.84	3.79	11.98	1.96	12.73	1.79	2.5	12.5	211.5	2139	1.3	11.4	11.4	2.5
REP ETFMR001	QC			33.87	114.1	16.64	1.05	15.72	2.93	17.85	3.87	12.18	2.03	12.70	1.86								
BWFMR012	Rock			16.17	57.6	10.85	0.62	12.39	2.79	19.17	4.27	13.22	2.16	13.99	1.97	1.9	6.9	34.0	123	<0.1	8.1	0.6	0.6
REP BWFMR012	QC															1.8	6.6	35.2	125	<0.1	8.2	0.5	0.6
Reference Materials																							
STD DS7	Standard															22.3	104.9	73.1	418	52.2	53.1	6.6	4.6
STD DS7	Standard															21.3	116.3	68.7	407	57.3	52.1	6.4	3.7
STD DS7	Standard															21.3	112.3	70.0	401	57.1	51.8	5.9	4.4
STD DS7	Standard															22.1	112.6	70.9	411	57.8	46.2	6.8	4.0
STD OREAS45PA	Standard															1.1	619.7	24.4	129	308.6	3.3	0.1	0.2
STD OREAS45PA	Standard															0.7	553.0	18.5	120	267.4	4.7	0.1	0.1
STD OREAS45PA	Standard															1.1	629.4	19.9	130	321.1	5.5	<0.1	0.1
STD OREAS45PA	Standard															0.8	595.4	19.4	120	292.7	3.6	<0.1	0.1
STD SO-18	Standard			3.26	13.9	2.75	0.81	2.79	0.46	2.76	0.58	1.63	0.26	1.67	0.26								
STD SO-18	Standard			3.20	13.6	2.73	0.81	2.80	0.47	2.78	0.56	1.68	0.27	1.73	0.25								
STD SO-18 Expected				3.45	14	3	0.89	2.93	0.53	3	0.62	1.84	0.27	1.79	0.27								
STD DS7 Expected																20.5	109	70.6	411	56	48.2	6.4	4.6
STD OREAS45PA Expected																0.9	600	19	119	281	4.2	0.09	0.13
BLK	Blank			<0.02	<0.3	<0.05	<0.02	<0.05	<0.01	<0.05	<0.02	<0.03	<0.01	<0.05	<0.01								
BLK	Blank															<0.1	<0.1	<0.1	<1	<0.1	<0.5	<0.1	<0.1
BLK	Blank															<0.1	<0.1	<0.1	<1	<0.1	<0.5	<0.1	<0.1
BLK	Blank															<0.1	<0.1	<0.1	<1	<0.1	<0.5	<0.1	<0.1
BLK	Blank															<0.1	<0.1	<0.1	<1	<0.1	<0.5	<0.1	<0.1
Prep Wash																							
G1	Prep Blank			7.34	27.9	4.19	1.09	3.30	0.51	2.79	0.52	1.68	0.27	1.89	0.30	0.3	9.2	3.3	51	3.3	2.4	<0.1	<0.1
G1	Prep Blank			7.55	29.0	4.44	1.09	3.37	0.52	2.79	0.52	1.64	0.27	1.86	0.27	0.1	2.8	3.1	48	3.9	3.6	<0.1	<0.1

This report supersedes all previous preliminary and final reports with this file number dated prior to the date on this certificate. Signature indicates final approval; preliminary reports are unsigned and should be used for reference only.



Acme Analytical Laboratories (Vancouver) Ltd.

1020 Cordova St. East Vancouver BC V6A 4A3 Canada
 Phone (604) 253-3158 Fax (604) 253-1716

www.acmelab.com

Client: TerraLogic Exploration Inc.
 Suite 200, 44 - 12th Ave. S.
 Cranbrook BC V1C 2R7 Canada

Project: FM
Report Date: September 02, 2010

Page: 1 of 1 Part 3

QUALITY CONTROL REPORT

WHI10000249.1

Method	Analyte	Unit	MDL	1DX Bi	1DX Ag	1DX Au	1DX Hg	1DX TI	1DX Se
				ppm	ppm	ppb	ppm	ppm	ppm
				0.1	0.1	0.5	0.01	0.1	0.5
Pulp Duplicates									
BKFMR001	Rock			0.2	1.0	1.6	0.05	0.2	<0.5
REP BKFMR001	QC			0.2	1.0	0.6	0.05	0.2	<0.5
ETFMR001	Rock			0.2	0.6	2.3	0.35	<0.1	<0.5
REP ETFMR001	QC								
BWFMRO12	Rock			0.2	0.3	1.7	0.10	<0.1	<0.5
REP BWFMRO12	QC			0.1	0.3	1.6	0.11	<0.1	<0.5
Reference Materials									
STD DS7	Standard			5.2	1.0	91.3	0.26	4.2	2.7
STD DS7	Standard			5.2	0.9	81.4	0.22	4.1	3.2
STD DS7	Standard			4.6	0.9	67.0	0.22	4.0	3.0
STD DS7	Standard			5.0	1.0	56.3	0.22	4.0	3.2
STD OREAS45PA	Standard			0.2	0.4	47.6	<0.01	<0.1	0.7
STD OREAS45PA	Standard			0.2	0.3	42.2	0.03	<0.1	<0.5
STD OREAS45PA	Standard			0.2	0.3	51.6	0.03	<0.1	0.7
STD OREAS45PA	Standard			0.2	0.3	46.2	0.02	<0.1	<0.5
STD SO-18	Standard								
STD SO-18	Standard								
STD SO-18 Expected									
STD DS7 Expected				4.5	0.9	70	0.2	4.2	3.5
STD OREAS45PA Expected				0.18	0.3	43	0.03	0.07	0.54
BLK	Blank								
BLK	Blank			<0.1	<0.1	<0.5	<0.01	<0.1	<0.5
BLK	Blank			<0.1	<0.1	<0.5	<0.01	<0.1	<0.5
BLK	Blank			<0.1	<0.1	<0.5	<0.01	<0.1	<0.5
BLK	Blank			<0.1	<0.1	<0.5	<0.01	<0.1	<0.5
Prep Wash									
G1	Prep Blank			<0.1	<0.1	1.5	<0.01	0.3	<0.5
G1	Prep Blank			<0.1	<0.1	1.7	<0.01	0.3	<0.5

Appendix VI – Bedrock Geological Mapping

6.1 – Geology Stations

6.2 - Lithology

Appendix 6.1 - 2010 Field Mapping Station Locations

Station Number	Date (dd/mm/yyyy)	Type	Elevation (m)	Easting (m)	Northing (m)	Location Method	GPS Accuracy (m)	Comments
BKFMG001	8/1/2010	scree		635863	6833433	GPS	5	
BKFMG002	8/1/2010	outcrop		635716	6833922	GPS	8	
BWFMG001	8/1/2010	subcrop	1916	635813	6833420.1	GPS	2	Rubble just below outcrop
BWFMG002	8/1/2010	outcrop	1907	635735	6833865.1	GPS	1	
BWFMG003	8/1/2010	subcrop	1915	635739	6833865.5	GPS	1	
BWFMG004	8/1/2010	outcrop	1934	635719	6833999.6	GPS	1	
BWFMG005	8/2/2010	outcrop	2031	634581	6832736.1	GPS	2	Near syrnite contact
BWFMG006	8/2/2010	outcrop	1998	634507	6832751.3	GPS	2	Syenite/dacite contact?
BWFMG007	8/2/2010	outcrop	1962	634308	6832674	GPS	3	25m from syenite contact
BWFMG008	8/2/2010	outcrop	1945	634208	6832651.5	GPS	3	
BWFMG009	8/3/2010	outcrop	1924	635840	6833942.8	GPS	2	20x30m outcrop
BWFMG010	8/3/2010	outcrop		637214	6833629	GPS	8	Numerous m to 5m size outcrops/subcrops
BWFMG011	8/3/2010	outcrop		636305	6834244	GPS	11	
BWFMG012	8/3/2010	outcrop		635771	6834043	GPS	8	
BWFMG013	8/4/2010	outcrop	173	631786	6833095.7	GPS	2	
BWFMG014	8/4/2010	outcrop	1731	631786	6833047.2	GPS	2	
BWFMG015	8/4/2010	outcrop	1661	631767	6832845	GPS	2	4x2m outcrop
BWFMG016	8/5/2010	outcrop	1913	635796	6833314.7	GPS	2	
BWFMG017	8/5/2010	outcrop	1920	635827	6833391.9	GPS	2	In area of JBFMR010
BWFMG018	8/5/2010	outcrop	1930	635838	6833399	GPS	1	
BWFMG019	8/5/2010	outcrop	1886	635910	6833236.3	GPS	1	
ETFMG001	8/1/2010	outcrop		635556	6834205	GPS	9	
ETFMG002	8/1/2010	outcrop		635471	6834107	GPS	9	
ETFMG003	8/2/2010	outcrop		634573	6832744	GPS	10	
LJFMG001	8/5/2010	outcrop		630935	6830114	GPS	6	
LJFMG002	8/5/2010	outcrop		630992	6829875	GPS	7	
LJFMG003	8/5/2010	outcrop		630963	6829930	GPS	6	

Appendix 6.2 - Lithology

Station Number	User	Date (dd/mm/yyyy)	Station Type	Map Unit	Rock Type	Colour	Colour Weathered	Grain size	Texture	Mineralization	Mineralization Minor	Min. Style	Min. %	Alteration	Alt. Degree
BKFMG001	BK	8/1/2010	scree		Dacite	grey green		very fine					0		0
BKFMG002	BK	8/1/2010	outcrop		Dacite	grey green		very fine					0		0
BWFMG001	BW	8/1/2010	subcrop		Volcaniclastic rock	greenish	grey	medium-coars	clast within				0		0
BWFMG002	BW	8/1/2010	outcrop		Basalt	dark grey	brownish	fine	aphanitic				0		0
BWFMG003	BW	8/1/2010	subcrop		Volcaniclastic rock	brownish	rusty	fine	massive				0		0
BWFMG004	BW	8/1/2010	outcrop		Volcaniclastic rock	greenish	brown	fine-medium	banded				0		0
BWFMG005	BW	8/2/2010	outcrop		Dacite	grey	brown	fine-medium	extrusive				0		0
BWFMG006	BW	8/2/2010	outcrop		Syenite	dark grey	maroon	fine	massive				0		0
BWFMG007	BW	8/2/2010	outcrop		Serpentine	green	greenish	medium	veined				0		0
BWFMG008	BW	8/2/2010	outcrop		Syenite	dark grey	dark grey	fine-medium	veined				0		0
BWFMG009	BW	8/3/2010	outcrop		Tuff	greenish	brown	fine-medium	fractured				0		0
BWFMG010	BW	8/3/2010	outcrop		Syenite	dark grey	dark grey	fine	massive				0		0
BWFMG011	BW	8/3/2010	outcrop		Tuff	green	brown	fine-medium	clast within				0		0
BWFMG012	BW	8/3/2010	outcrop		Tuff	greyish	brownish	fine-medium	fractured				0		0
BWFMG013	BW	8/4/2010	outcrop		Tuff	green	grey	fine-medium	laminated				0		0
BWFMG014	BW	8/4/2010	outcrop		Tuff	dark grey	rusty	fine	fractured				0		0
BWFMG015	BW	8/4/2010	outcrop		Tuff	greenish	rusty	fine-medium	clast within				0		0
BWFMG016	BW	8/5/2010	outcrop		Dacite	greenish	brown	fine-medium	granular				0		0
BWFMG017	BW	8/5/2010	outcrop		Dacite	greenish	yellowish	fine	fractured				0		0
BWFMG018	BW	8/5/2010	outcrop		Dacite	green	brown	medium	fractured				0		0
BWFMG019	BW	8/5/2010	outcrop		Dacite	greenish	brown	fine-medium	clast within				0		0
ETFMG001	ET	8/1/2010	outcrop		Volcaniclastic rock	grey	dark grey	fine-medium	banded				0		0
ETFMG002	ET	8/1/2010	outcrop		Tuff								0		0
ETFMG002	ET	8/1/2010	outcrop		Chert	grey	rusty	coarse					0		0
ETFMG003	ET	8/2/2010	outcrop		Serpentine	grey	yellowish						0		0
LJFMG001	LJ	8/5/2010	outcrop		Syenite	bluish	grey	medium-coars	aphyric				0		0
LJFMG002	LJ	8/5/2010	outcrop		Felsic Metavolcanic	light	rusty	fine	aphanitic				0		0

Station Number	User	Date (dd/mm/yyyy)	Station Type	Map Unit	Rock Type	Colour	Colour Weathered	Grain size	Texture	Mineralization	Mineralization Minor	Min. Style	Min. %	Alteration	Alt. Degree
LJFMG003	LJ	8/5/2010	outcrop		Syenite	greyish	dark grey	medium-coars	aphyric				0		0