

**TAC Claims Assessment Work Report**

**Soil and Rock Geochemistry Surveys  
July 21 - 23, 2010**

**NTS 105D5 and 105D6  
Latitude 60°22'N  
Longitude 135°30'W**

**UTM Zone 8N  
6692000N, 472000E**

**By**

**Christopher Baldys, P.Eng.  
Consulting Geologist**

**September 3, 2010**

## TABLE OF CONTENTS

	Page
Summary	
1. Location and Access	1
2. Climate, Topography and Vegetation	1
3. Claim Status	1
4. History	2
5. Regional Geology	2
6. Property Geology	3
7. Alteration and Mineralization	4
8. 2010 Soil and Rock Geochemistry Surveys	5
9. 2010 Geochemistry Survey Results	7
10. 2010 Work Cost Breakdown	7
11. References	8

## LIST OF FIGURES AND APPENDIXES

	Following	
Figure 1	Location Map	Summary
Figure 2	TAC Claims Map	Page 1
Figure 3a	Regional Geology Map	Page 2
Figure 3b	Legend for Regional Geology Map	Page 2
Figure 4	Structural Geology – Mineralization Map, Rhyolite Zone	Page 3
Figure 5	Sample Location Map	Page 5
Figure 6a	Thematic Map, Gold Geochemistry	Page 6
Figure 6b	Thematic Map, Silver Geochemistry	Page 6
Figure 6c	Thematic Map, Arsenic Geochemistry	Page 6
Figure 6d	Thematic Map, Antimony Geochemistry	Page 6
Appendix	Analytical Results	Page 9

## Summary

A field crew consisting of two geologists and one soil sampler had conducted a three day fieldwork in July 2010 to fulfill the requirements of annual work expenditure on the TAC claims.

The claims are situated 45 kilometres southwest of Whitehorse, Yukon Territory. The registered owners of the claims are Timothy A. Young of Calgary and Chris Baldys of Maple Ridge, BC.

The claims were staked in 2009 to follow-up on encouraging gold and silver exploration results obtained by Kerr Addison Mines in 1985. Exploration work during that time identified mineralized boulder trains traversing the mountain side east of Later Creek. Sample analyses from the intensely altered rhyolitic volcanics and metasediments produced several results exceeding 0.3 oz/t gold and up to and 92.83 oz/t silver. The boulder trains were located at higher elevations between the “Skarn Zone” and the “Creek Zone”.

Drilling in 1986 produced relatively low gold-silver results. However, the best samples from drill core returned values up to 850ppb gold and 8.1ppm silver from rhyolite tuffs outcropping at along the Later Creek (“Rhyolite Zone”).

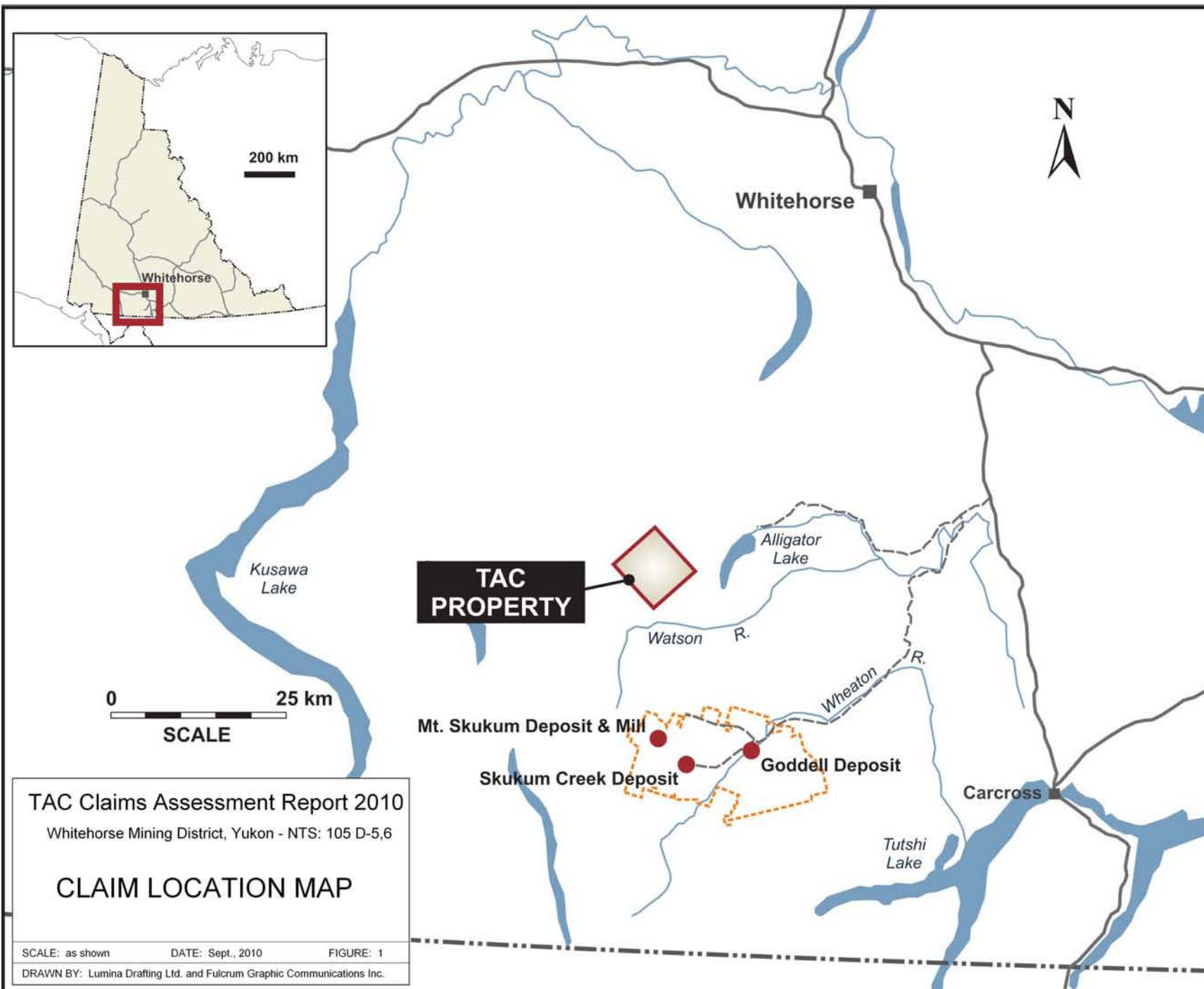
The 1986 drill program was limited in scope and consisted of 9 holes totaling 933 metres. It utilized three helicopter-supported drill set-ups. Two drill hole locations were determined based on gold and silver anomalies in soils and in the vicinity of the best mineralized boulders. The most prominent target – the “Rhyolite Zone” – was drilled from the third location where Later Creek exposed the zone along its banks.

The bedrock source of the highest gold and silver samples from boulders located at higher elevations was not found. Due to disappointing results in 1986 the Kerr Addison Mines dropped the project the following year.

The 2010 soil and rock geochemistry surveys confirmed the existence of the two most significant exploration targets on the property - the Creek Zone and the Rhyolite Zone – both exposed at the banks of the Later Creek. The zones are concealed by a heavy overburden up-slope from the sampled exposures near the creek.

The holes drilled in 1986 had not exceeded the maximum depths of 110 metres each. An underpowered, BQ-sized core rig, was utilized during the drilling. As a consequence the zones were not adequately tested for a large tonnage low-grade open-pitabile gold-silver mineralization.

In July 2010 one grab sample was collected from the most prominent zone exposed along the Later Creek – the “Rhyolite Zone”. The sample returned 0.80 ppm gold (Figure 4 and 5). Detailed sampling and mapping conducted in 1985 also focused on this area where the zone is crossing the Later Creek and forms outcroppings along its banks. Nineteen samples collected from outcrops along the creek produced gold contents ranging from 420 to 1600 ppb.



TAC Claims Assessment Report 2010  
Whitehorse Mining District, Yukon - NTS: 105 D-5,6

### CLAIM LOCATION MAP

SCALE: as shown      DATE: Sept., 2010      FIGURE: 1  
DRAWN BY: Lumina Drafting Ltd. and Fulcrum Graphic Communications Inc.

The presence of another mineralized outcrop, the “Creek Zone”, was confirmed during the course of this work. It has 5 x 10m size and is exposed on the west bank of the Later Creek, 200 metres northwest from the “Rhyolite Zone” (Figure 4). Two grab outcrop samples were collected from this exposure for the purpose of this work. The samples produced 0.95 and 0.51 ppm gold.

The 2010 work confirmed that the most significant exploration target on the property – the “Rhyolite Zone” – is exposed along the banks of Later Creek along the distance of 180 metres and represents a significant surface width of the zone crossing the drainage at near right angle. There are indications from talus covered slopes along the creek that the zone extends in both strike direction for a minimum total distance of 500 metres. The zone is marked along the creek by continuous iron-stained outcrops formed by the erosion of silicified and sericitized rhyolite tuffs containing minor disseminated pyrite and arsenopyrite. This target represent an epithermal style mineralization hosted by Tertiary felsic volcanics of Skukum Group.

As a result of the 3-day structural mapping and sampling reconnaissance it is now believed that the highest grading gold-silver samples analyzed from boulder trains located in 1985 originate from the bedrock concealed under the thick overburden at elevations of 1640 – 1660 metres between the “Skarn Zone” and the “Creek Zone”. This area coincides with the inferred projection of the “Rhyolite Zone” at the contact with the “Upper Tuff” (Figure 4). None of the holes drilled in 1986 by Kerr Addison Mines had tested this area.

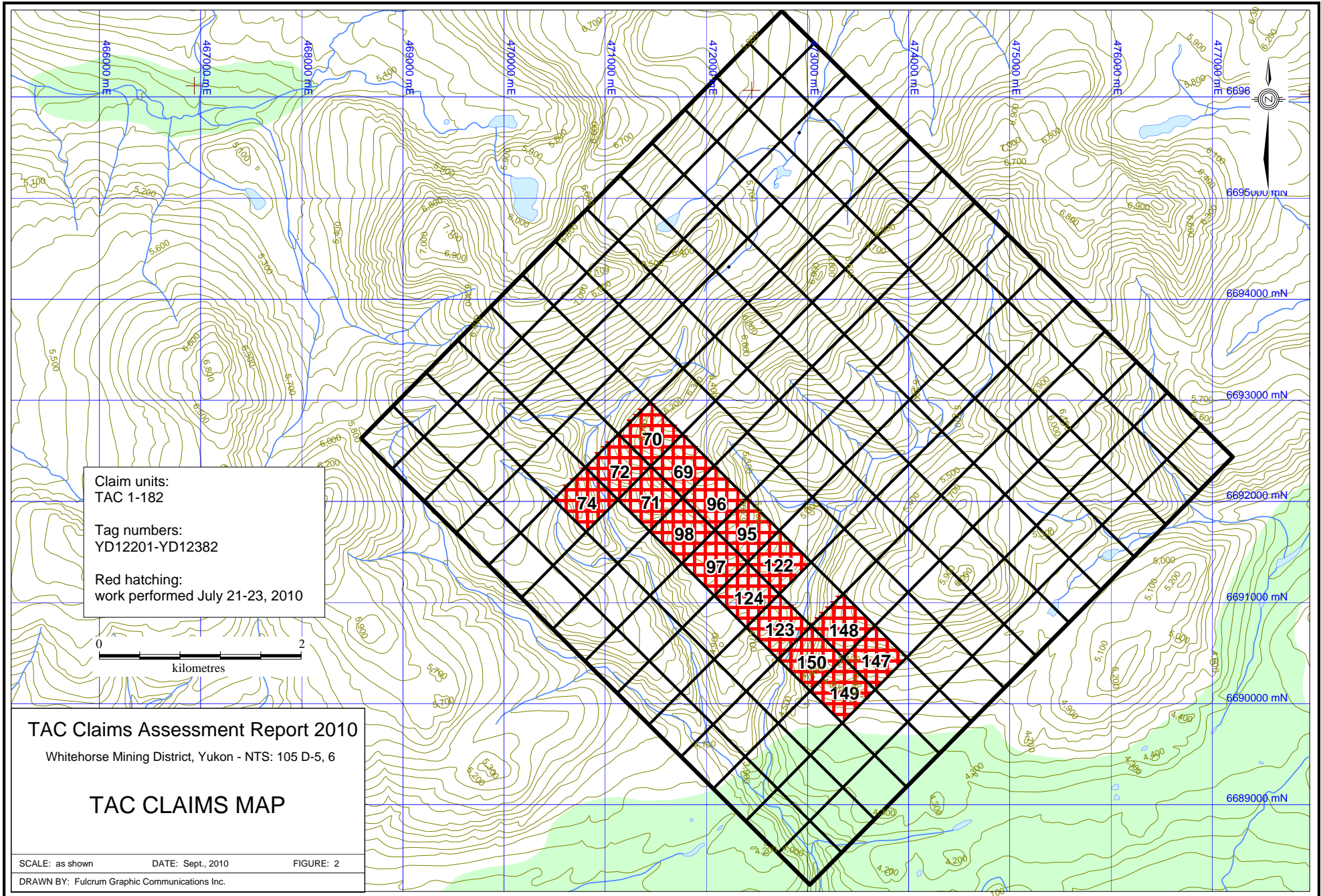
In addition during the course of 2010 fieldwork and sampling program a new gold-in-soil anomaly was identified by a single soil line crossing the northern bank of the No Name Creek in the southwestern part of the TAC claims.

## **1. Location and Access**

The TAC claims are situated 45 kilometres southwest of Whitehorse and 18 kilometres north of the Mt. Skukum gold-silver deposit within map sheet 105 D5 (Figure 1 and 2).

Access to the property is by helicopter; a rough 4-wheel drive road east of Alligator Lake passes within 8 km and another one follows Watson River to within 3 kilometres of the claims. A well maintained gravel road along the Wheaton River valley provides access to the Mt Skukum deposit and the mill site. The distance from the mill site to TAC claims is 16 kilometres (Fig 2).

The 2010 work program utilized a daily helicopter access from Whitehorse for 3 man crew. One way trip to the project area, situated 45 kilometres southwest of Whitehorse, requires 0.4 hour flight.



## 2. Climate, Topography and Vegetation

The topography of the property consists of subdued alpine terrain and deeply incised stream valleys. Later Creek, Ibex Creek and No Name Creek flow throughout the field season, whereas some creeks are dry after July (Figures 5 and 6). The exploration season on the property extends from mid-May through to October.

The property lies above the tree line at elevations ranging from 1250 to 1900 metres. The vegetation consists of alpine shrubs and grasses with sparse dwarf birch and willow developed in the valleys.

## 3. Claim Status

TAC claims consist of 182 contiguous mineral claims located in NTS sheet 105 D5 and 105 D6 of the Whitehorse Mining District (Figure 2). The claim status is listed as follows:

<b>Claim Number/Name</b>	<b>Tag Number</b>	<b>Recording Date</b>	<b>Claim Expiry Date</b>
<b>TAC 1-182</b>	<b>YD12201–YD12382</b>	<b>July 31<sup>st</sup>, 2009</b>	<b>July 31<sup>st</sup>, 2011</b>

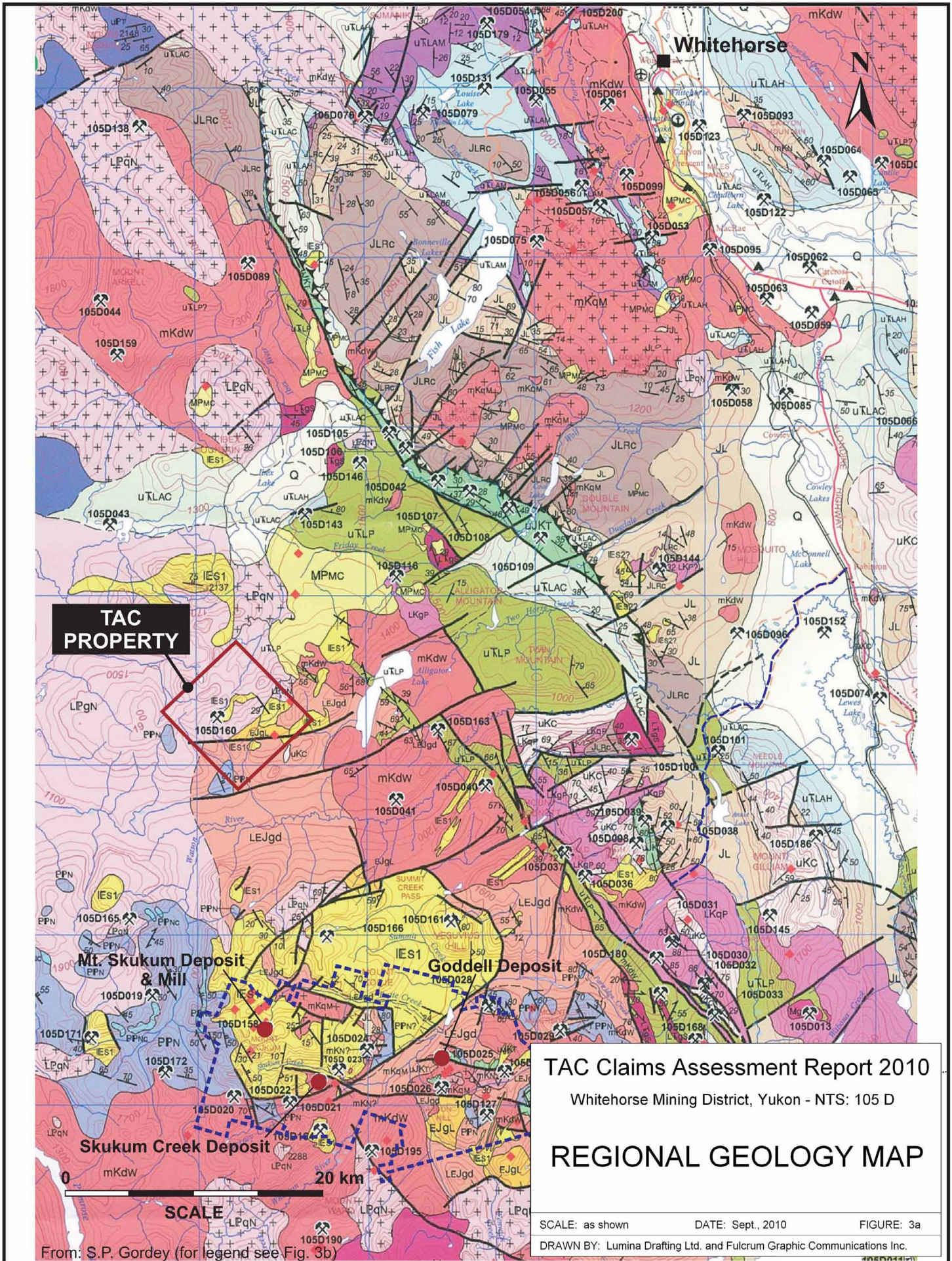
The registered owners of the claims are Timothy A. Young of Calgary and Chris Baldys of Maple Ridge, BC each holding one half interest in the property.

## 4. History

The TAC claims were staked as gold-silver target in July 2009 to cover a prospective area underlain by a segment of the Tertiary volcanic arc (Figure 3a and 3b). The area in question is situated at the headwaters and tributaries of Later Creek, 10 km west of Aligator Lake.

The project area lies within Mt Skukum gold mining district. The first staking in the Wheaton River and Bennett Lake area occurred in 1893. Exploration activity in the district peaked in 1980's with the temporary opening of the Venus mine and the discovery of Mt. Skukum gold-silver deposit situated 16 km south of the TAC property (Figure 3a). The opening of the Mt Skukum gold mine in 1986 was a landmark in the history of the mineral production in Yukon Territory. However, the mine operated for only two years producing a total of 77 790 ounces of gold.

Similarly to Mt Skukum gold camp, Later Creek area has not seen exploration activity since the late 1980's. At that time Kerr Addison Mines had explored epithermal gold and silver occurrences within a gold-in-soil anomaly at Later Creek. This work included a small drill program in 1986 which consisted of nine shallow holes (933 metres). The holes had been drilled from three locations (Figure 4). The azimuth and the inclination of the holes are unknown.



Legend for: TAC Claims Assessment Report 2010

FIGURE: 3b



Prior to the 1986 drilling a total of 317 samples were collected from the Later Creek area. 152 samples returned anomalous values (>30 ppb Au) with 18 of these exceeding 1000 ppb gold. The most significant was the boulder train traversing the slope east of Later Creek that produced several samples exceeding 0.3 ounces per ton gold and up to 6.51 g/t silver from silicified metasediments. Another boulder was an intensely sulphide mineralized rhyolite tuff that returned 2390 ppb Au and 92.83 opt of silver. The boulder train in question is situated between the “Skarn Zone” and the “Creek Zone” (Figure 4). Numerous attempts at trenching and overburden sampling in 1986 and 1988 did not establish a conclusive bedrock source for these samples.

Drilling in 1986 produced relatively low gold-silver results. However the best samples from the drill core returned values up to 850ppb gold and 8.1ppm silver in rhyolite tuffs that form widespread outcrop exposures along the banks of Later Creek (“Rhyolite Zone”). Kerr Addison Mines elected to drop option on the project the following year.

The Later Creek Minfile occurrence is situated in the west-central part of the TAC claims and was the focus of the 2010 assessment work that is the subject of this report. The YGS database erroneously describes the occurrence as “Polymetallic Veins Ag-Pb-Zn+/-Au” prospect while the historical reports summarized above clearly describe it as an epithermal gold target.

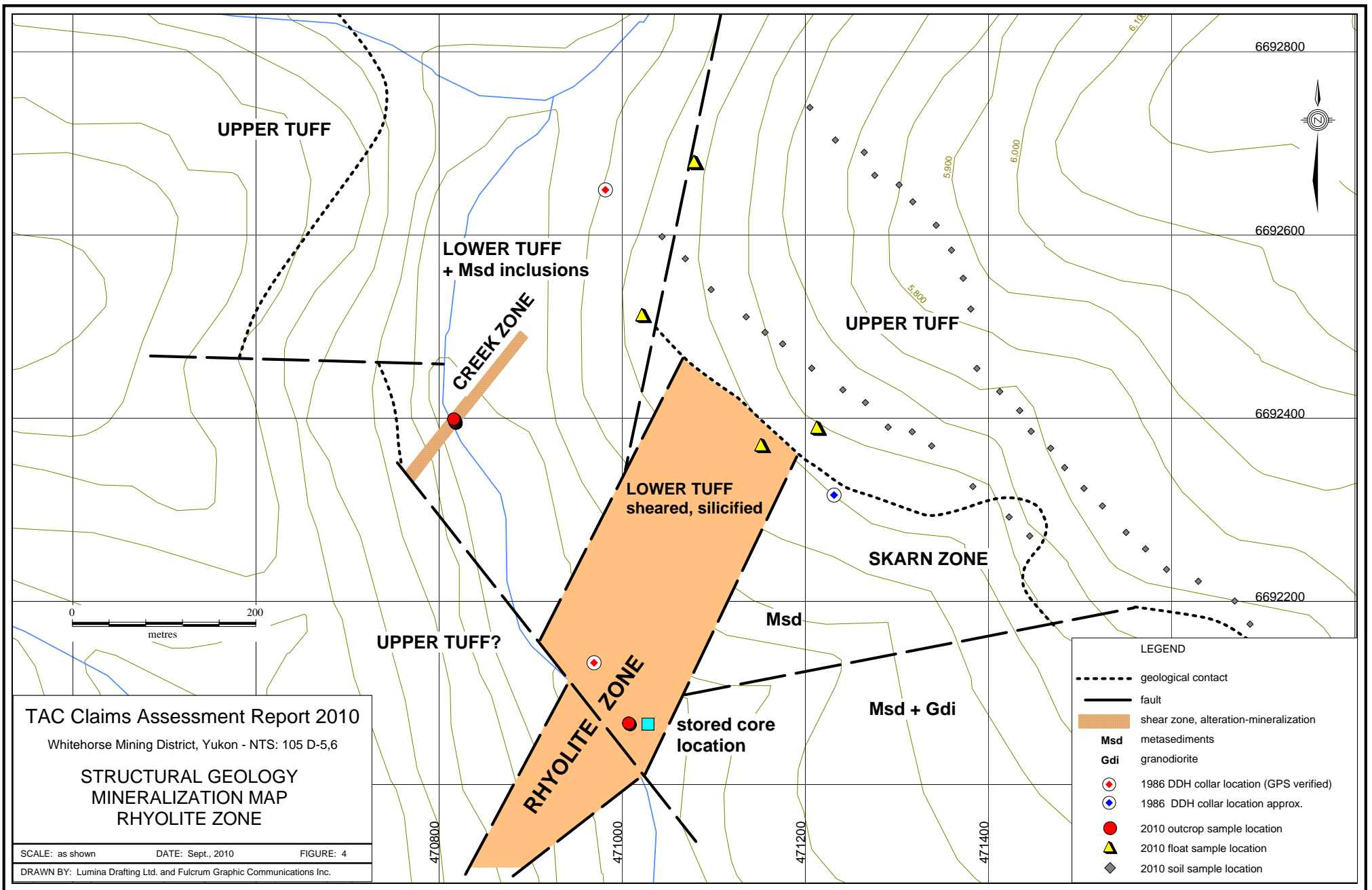
## **5. Regional Geology**

Recent mapping compilation (2008) of the Whitehorse map sheet (105D) done by S.P. Gordey of GSC includes the area of the Later Creek Minfile occurrence 105D 160 (Figure 3a and 3b). The geological components are dominated by the latest igneous event in the area consisting of abundant granite and granodiorite of the Paleogene Nisling Range Plutonic Suite (LPgN, LPqN) and coeval extrusive felsic volcanics of the Skukum Group (IEs). The oldest components are Paleozoic metamorphic rocks of Yukon Tanana and Stikine terranes locally cropping out as roof pendants.

A major fault is transecting the Later Creek and No Name Creek in WSW-ENE direction in the south part of the claim area (Figure 3a).

## **6. Property Geology**

The Later Creek area is underlain by a pile of rhyolitic volcanics belonging to the Skukum Group (Figure 3A and B). This volcanic sequence was mapped in detail in 1985 at the headwaters of Later Creek (C.Baldys, et al, 1985). There are indications that Skukum volcanics underlie significant part of the current property area and include rhyolite to andesite tuffs, flows, sills and dykes. These younger volcanics are unconformably overlying Paleozoic metasediments and granitic intrusions of Jurassic age. Younger granitoids of Tertiary age (Paleogene) had been



assigned in 2008 by Gordey et al within the 105 D map sheet. However, their extent within the TAC claim area is uncertain at present time.

The main components of the Tertiary volcanic stratigraphy are the Upper Tuff and the Lower Tuff. The latter unit hosts the gold-silver mineralization of the Later Creek prospect.

The above volcanic sequences were mapped in detail in the past and were described as follows:

#### Upper Tuff

This volcanic sequence consists of rhyolite lapilli tuffs and volcanic breccias outcropping at higher elevations and overlying the lower sequence of pyroclastic volcanics (Lower Tuff). It consists of dark to grey groundmass with multicolored heterolithic clasts. The clast size is variable but generally between 0.5 and 3.0 cm comprising up to 70% of the rock volume. Towards its base this unit grades into volcanic breccia. Locally the unit is pyritic, pyrrhotitic, argillic, sericitized, propylitized, silicified and highly fractured or any combination of the above.

#### Lower Tuff

This rhyolitic pyroclastic sequence is generally light to medium grey, weathering to light grey to brown or buff and exhibiting distinct flow banding often with feldspar phenocrysts. Ash size rhyolitic and welded groundmass is quartz and K-spar rich as determined from staining and thin section study in the past. These rocks contain fragments ranging from lithic to breccia in size that are typically rhyolitic and locally metasedimentary in composition. This sequence is devoid of outcrop exposures away from the banks of the Later Creek. The rhyolitic tuffs are susceptible to silicification and sericitic alteration along a prominent shear and fracture zone ("Rhyolite Zone") observed along the banks of the Later Creek (Figure 4). The Lower Tuff is shallow dipping at 15° to the south-west. This unit is unconformably overlain by the Upper Tuff.

To the north the above pyroclastic sequences are believed to have been intruded by a large, possibly hypabyssal, rhyolite porphyry body. This prominent subvolcanic? intrusion has yet to be included on the current geological maps of this area. It may be representing an unrecognized dome complex upon which the pyroclastic tuffs (Upper and Lower Tuff) with the interceding bands of rhyolitic lavas have accumulated.

Also exposed in the area are pendants and inclusions of Paleozoic metasediments. The overall picture is of a volcanic-subvolcanic complex emplaced at the edge of an older intrusive event (Baldys et al, 1985).

The structure is summarized in the 1985 report as follows: "Regionally, the Later claim group lies to the north of a major NE-SW fault that generally strikes along Watson River valley to the southern end of Rose Lake. No prominent faulting was found on the Later claims although zones of weakness, as evidenced by intense fracturing and shearing are present with a similar NE-SW strike direction".

A major fault is transecting the Later Creek and No Name Creek. The fault strikes in WSW-ENE direction. It is a defining structural feature of the southern part of the claim area where the geology and structure were mapped in 2008 by the GSC. This work identified more segments of the Tertiary volcanic belt in the area (Figure 3a).

## **7. Alteration and Mineralization**

The target area is characterized by a gossan which measures 800 x 500 metres and surrounds a large hydrothermal alteration zone. The alteration zone measures on surface a minimum 500 metres in length and 60 to 180 metres in width at surface (“Rhyolite Zone”). It is situated near the headwaters of the Later Creek in the west-central part of the TAC claims and appears to be open in both strike directions (Figure 4). The alteration zone consists of silicified and sericitized rhyolitic tuffs carrying low-grade gold values that are believed to host significant gold-silver mineralization in quartz-stringer stockworks and breccias under the overburden and stratigraphically below the capping sequence of Upper Tuffs.

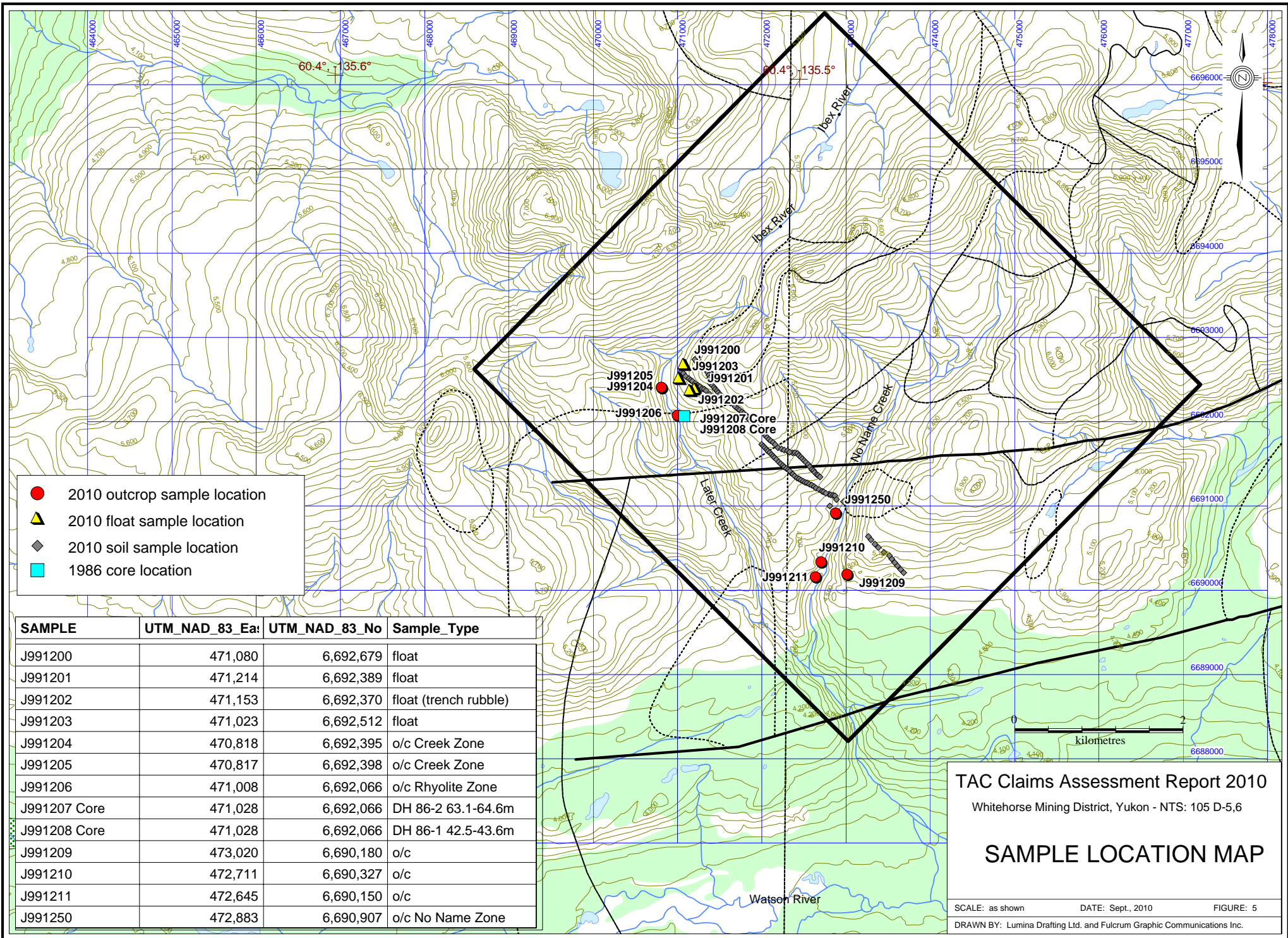
The bedrock is poorly exposed; however, extensive sampling by Kerr Addison in 1985 along the banks of the Later Creek had defined the grades of the 160 metre wide zone in a range of 420 to 1600 ppb gold based on 13 chip samples. Only one grab sample was collected from this zone in 2010. The sample returned 0.80 ppm gold (Figure 6a and 6b).

The “Rhyolite Zone” strikes in northeasterly direction. The dip direction is presently unknown. The zone is entirely covered by a deep overburden along the 350 metre distance between the Later Creek and the Upper Tuff contact. Further northeast the zone appears to be capped by the near-flat lying Upper Tuff sequence (Figure 4). The presumed strike extension of this zone is based on the exposures in the Later Creek, 1985 float sample locations and indications from 1988 trenching. The presence of the zone under the overburden is additionally substantiated by a strong calc-silicate alteration along its contact with the metasediments. This area was historically referred to as the “Skarn Zone” and produced anomalous silver-lead-zinc values in rock samples collected in 1985 (Figure 4).

The “Rhyolite Zone” also traverses the western slopes of the Later Creek valley where it is almost entirely covered by the colluvial talus originating from higher elevations.

The textures of altered and mineralized rhyolite tuffs include the presence of silicification, sericitic alteration in outcrop and local hydrothermal breccias and quartz stringer-stockworks of epithermal origin as identified in boulder trains.

The presence of another mineralized outcrop was confirmed in 2010. It has 5 x 10m size dimensions and is exposed on the west bank of the Later Creek and 200 metres northwest from the “Rhyolite Zone” (Figure 4). The outcrop is a defining feature of a relatively narrow zone on surface referred to as the “Creek Zone” in 1985. Two grab outcrop samples collected from it during the course of work reported here produced 0.95 and 0.51 ppm gold.



- 2010 outcrop sample location
- ▲ 2010 float sample location
- ◆ 2010 soil sample location
- 1986 core location

SAMPLE	UTM_NAD_83_East	UTM_NAD_83_No	Sample_Type
J991200	471,080	6,692,679	float
J991201	471,214	6,692,389	float
J991202	471,153	6,692,370	float (trench rubble)
J991203	471,023	6,692,512	float
J991204	470,818	6,692,395	o/c Creek Zone
J991205	470,817	6,692,398	o/c Creek Zone
J991206	471,008	6,692,066	o/c Rhyolite Zone
J991207 Core	471,028	6,692,066	DH 86-2 63.1-64.6m
J991208 Core	471,028	6,692,066	DH 86-1 42.5-43.6m
J991209	473,020	6,690,180	o/c
J991210	472,711	6,690,327	o/c
J991211	472,645	6,690,150	o/c
J991250	472,883	6,690,907	o/c No Name Zone

TAC Claims Assessment Report 2010  
 Whitehorse Mining District, Yukon - NTS: 105 D-5.6

## SAMPLE LOCATION MAP

Historically, the best grades in outcrop correlate with stronger silicification and also the presence of disseminations and thin sulphide stringers (1-5 mm). Pyrite and arsenopyrite are the main constituents of the sulphide mineralization and comprise a maximum 5% of the rock volume.

## **8. 2010 Soil and Rock Geochemistry Surveys**

A total of 9 man-days were spent during the course of 2010 assessment work performed on the claims on July 21 through to July 23, 2010. Daily helicopter set-outs from Whitehorse were utilized to perform the fieldwork.

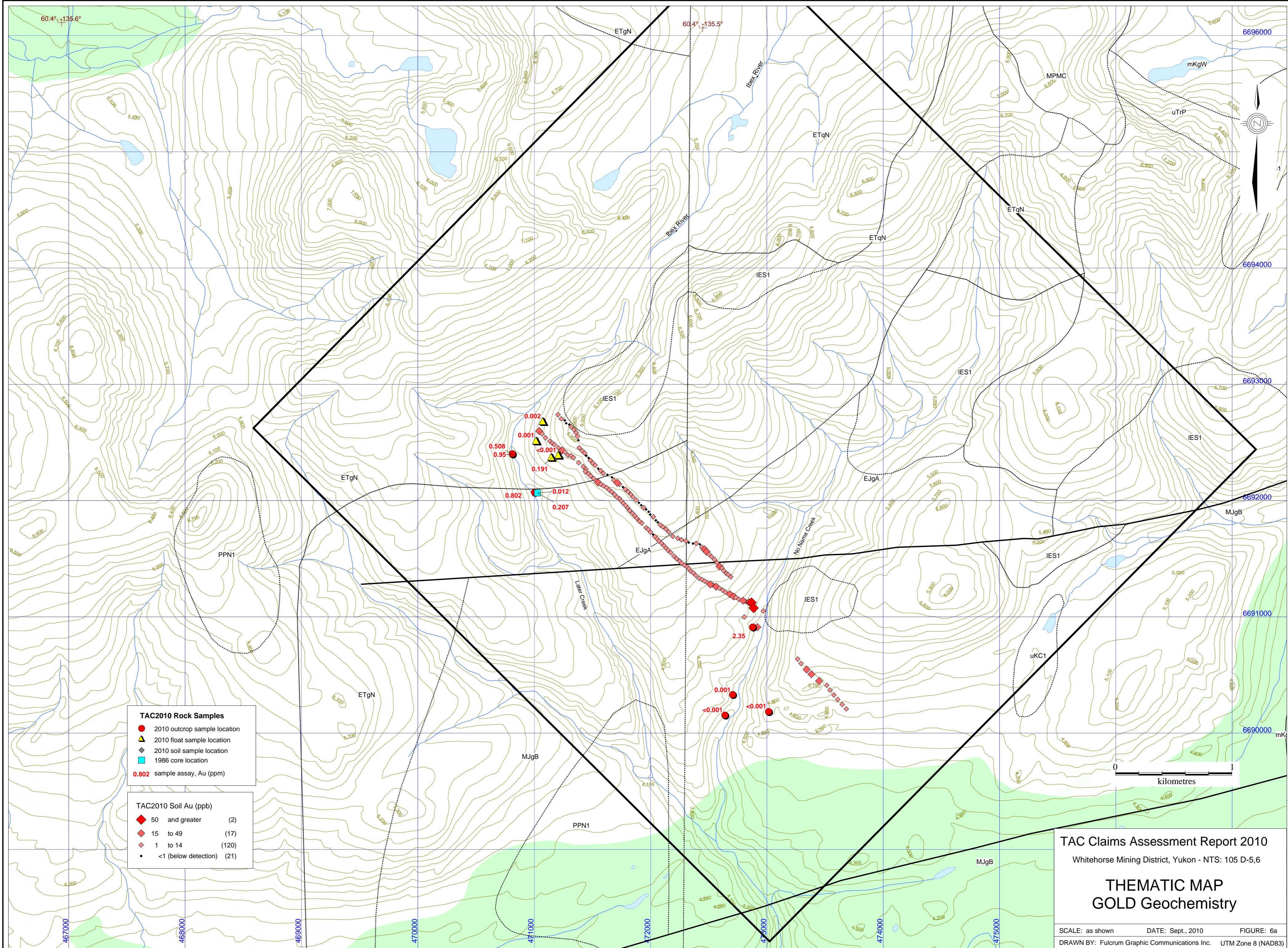
The work consisted of soil sampling, rocks sampling, prospecting and structural mapping. Soil sampling was of limited extent (two sub-parallel soil lines), and was conducted with the purpose of providing soil orientation survey data for the future exploration programs.

A total of 160 soil samples and 13 rock samples were collected (Figure 5). The samples were collected on 25 metre station intervals along NW-SE lines. Soil spades, Kraft paper bags, and a GPS Garmin map60 were used to collect the samples and record the location. The sample depth, horizon, color, slope aspect and soil descriptions were recorded at each station.

The soil samples were analyzed at ALS Global Labs in North Vancouver after 5 soil blanks were inserted into the analytical stream. The samples were dried and sieved to -180 mesh, downsized to a minimum 1g analytical charge and analyzed using aqua regia digestion and emission spectrometry (ICP-AES). The instrumental analysis utilized in this project recorded 36 elements including silver, arsenic, antimony, tungsten and base metals (ME-MS41 package code). For gold, a 30 gram nominal sample size was used for fire assay pre-concentration and ICP-AES instrumental analysis.

Rock samples were analyzed using the same methods as above after the crushed samples were split-downsized to 250 grams and pulverized to better than 85% passing 75 microns. Three pulp standards (reference material CDN-GS-P3A) were inserted into the analytical stream prior to the digestion and analytical stage.

Structural mapping was carried out in an area centered on TAC 72 and 74 claim units where the the main target, the "Rhyolite Zone", was identified in the past. In addition, limited prospecting was done during the soil sampling traverse across the TAC 123 claim unit where indications of new, gold-mineralized, hydrothermal system were found on July 23<sup>rd</sup>, 2010 (No Name Creek area).



**TAC2010 Rock Samples**

- 2010 outcrop sample location
- ▲ 2010 float sample location
- ◆ 2010 soil sample location
- 1986 core location
- 0.802 sample assay, Au (ppm)

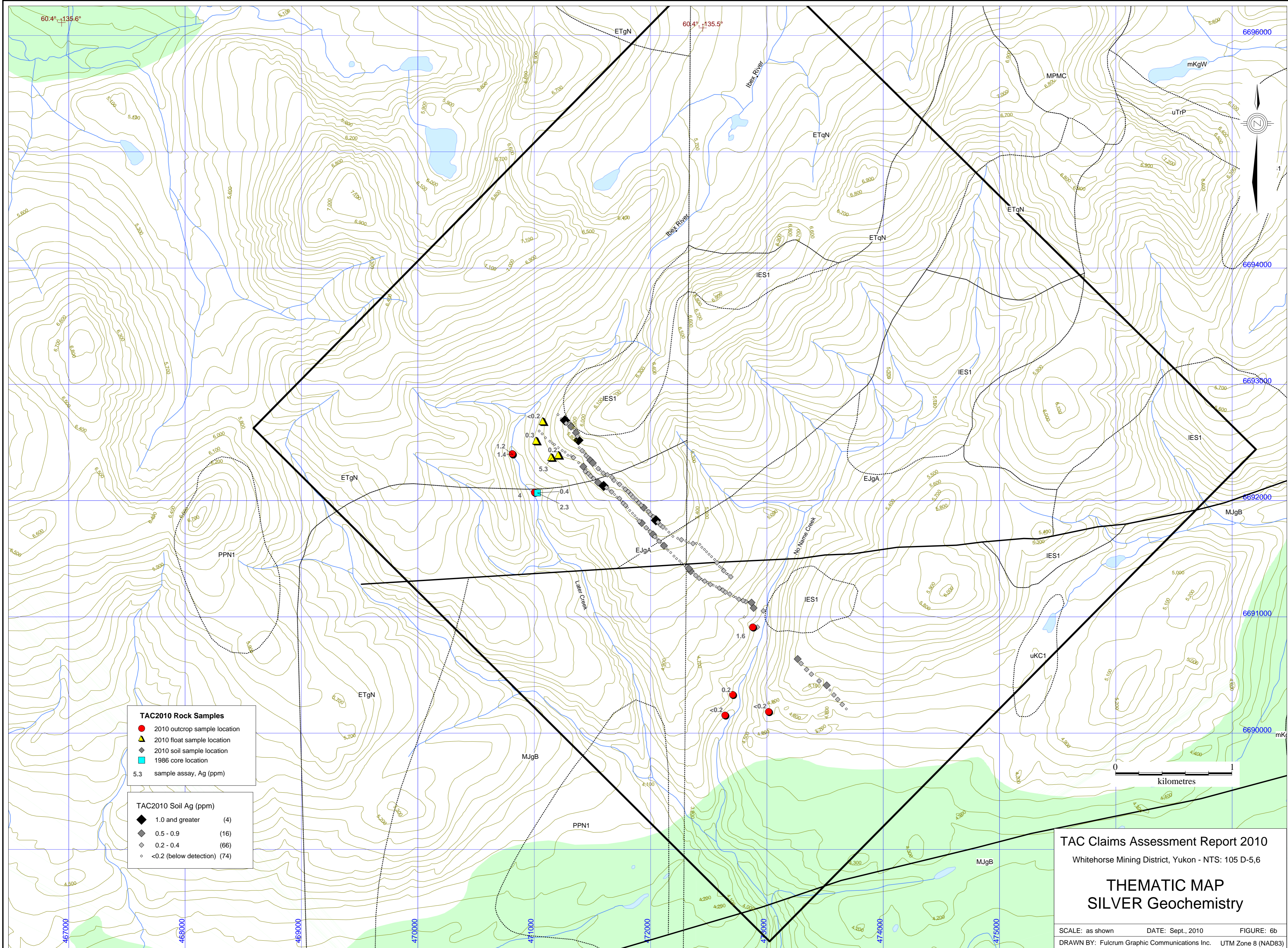
**TAC2010 Soil Au (ppb)**

- ◆ 50 and greater (2)
- ◆ 15 to 49 (17)
- ◆ 1 to 14 (120)
- <1 (below detection) (21)

TAC Claims Assessment Report 2010  
Whitehorse Mining District, Yukon - NTS: 105 D-5.6

**THEMATIC MAP  
GOLD Geochemistry**

SCALE: as shown      DATE: Sept., 2010      FIGURE: 6a  
DRAWN BY: Fulcrum Graphic Communications Inc.      UTM Zone 8 (NAD83)



**TAC2010 Rock Samples**

- 2010 outcrop sample location
- ▲ 2010 float sample location
- ◆ 2010 soil sample location
- 1986 core location
- 5.3 sample assay, Ag (ppm)

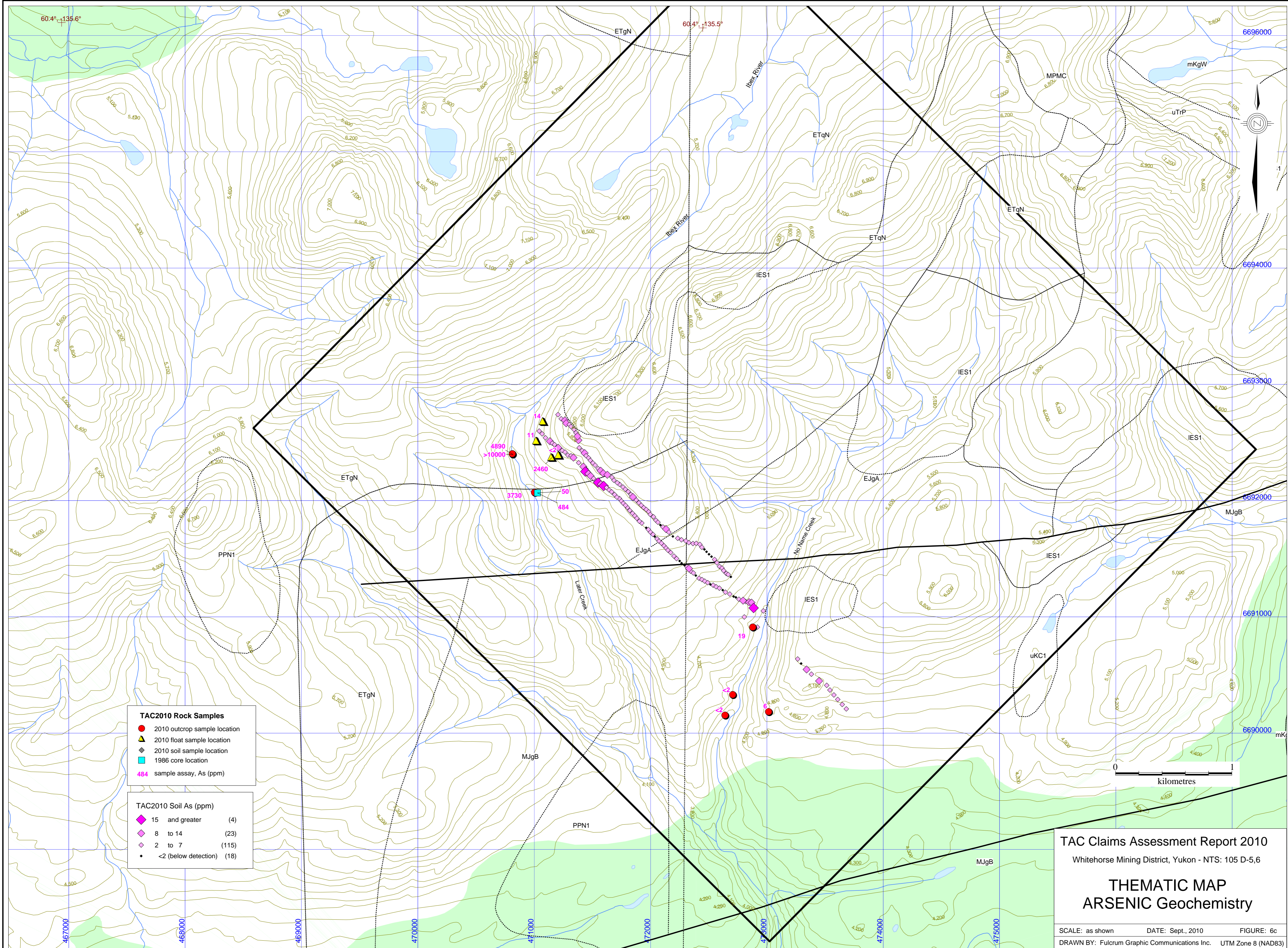
**TAC2010 Soil Ag (ppm)**

- ◆ 1.0 and greater (4)
- ◆ 0.5 - 0.9 (16)
- ◆ 0.2 - 0.4 (66)
- <0.2 (below detection) (74)

TAC Claims Assessment Report 2010  
Whitehorse Mining District, Yukon - NTS: 105 D-5.6

**THEMATIC MAP  
SILVER Geochemistry**

SCALE: as shown      DATE: Sept., 2010      FIGURE: 6b  
DRAWN BY: Fulcrum Graphic Communications Inc.      UTM Zone 8 (NAD83)



**TAC2010 Rock Samples**

- 2010 outcrop sample location (4)
- ▲ 2010 float sample location
- ◆ 2010 soil sample location
- 1986 core location
- 484 sample assay, As (ppm)

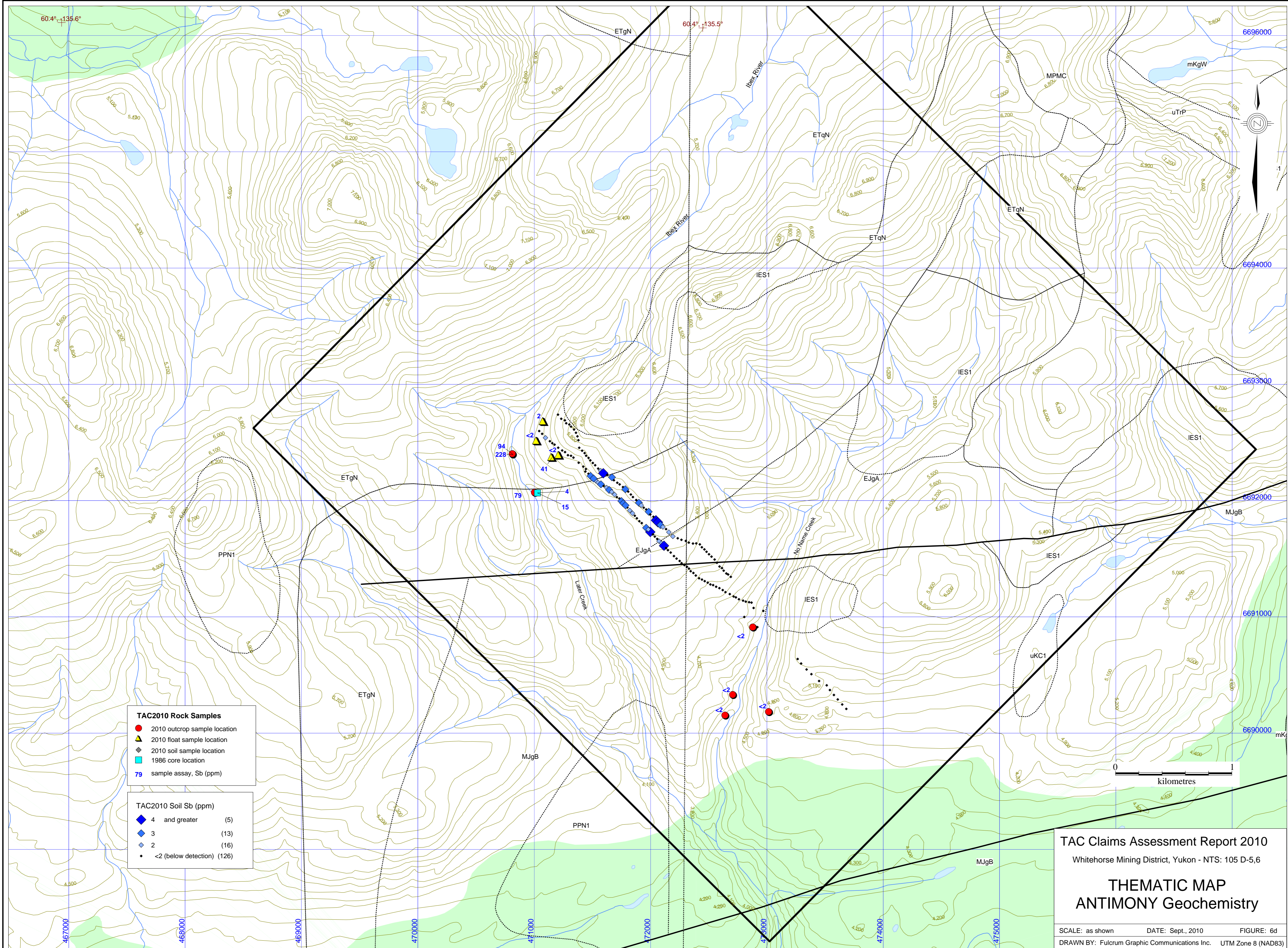
**TAC2010 Soil As (ppm)**

- ◆ 15 and greater (4)
- ◆ 8 to 14 (23)
- ◆ 2 to 7 (115)
- <math><2</math> (below detection) (18)

TAC Claims Assessment Report 2010  
Whitehorse Mining District, Yukon - NTS: 105 D-5.6

**THEMATIC MAP  
ARSENIC Geochemistry**

SCALE: as shown      DATE: Sept., 2010      FIGURE: 6c  
DRAWN BY: Fulcrum Graphic Communications Inc.      UTM Zone 8 (NAD83)



- TAC2010 Rock Samples**
- 2010 outcrop sample location
  - ▲ 2010 float sample location
  - ◆ 2010 soil sample location
  - 1986 core location
  - 79 sample assay, Sb (ppm)

- TAC2010 Soil Sb (ppm)**
- ◆ 4 and greater (5)
  - ◆ 3 (13)
  - ◆ 2 (16)
  - <2 (below detection) (126)

TAC Claims Assessment Report 2010  
 Whitehorse Mining District, Yukon - NTS: 105 D-5.6

### THEMATIC MAP

### ANTIMONY Geochemistry

SCALE: as shown      DATE: Sept., 2010      FIGURE: 6d  
 DRAWN BY: Fulcrum Graphic Communications Inc.      UTM Zone 8 (NAD83)

## 9. 2010 Geochemistry Survey Results

The soil horizons in the drill-target area (claims TAC 69, 70, 71 and 72) are poorly developed and consist mainly of talus fines (grit-sized rock chips). The soil lines traversed the area underlain by the Upper Tuff volcanic sequence and appear to confirm the “capping nature” of these rocks in relation to the altered and mineralized Lower Tuff. The Lower Tuff occupies the lower position in the stratigraphy. The lab analyses established that no elevated values of gold or silver exist within this youngest pyroclastic unit.

The soil lines were extended over the southwestern part of the TAC claims to evaluate further the promising segments of the Tertiary volcanic stratigraphy near the No Name Creek. New compilation of the structural geology indicates a possible graben and horst tectonics based on the map by GSC (Gordey, 2008). Encouraging results were returned from a single soil line completed in this area (Figure 6a and 6b). Out of 18 consecutive soil samples collected in the area (350 metre distance) nine samples returned anomalous gold values exceeding 15 ppb gold with a maximum value of 81 ppb.

Short prospecting traverse in the area identified a limonite stained outcrops and argillic altered zone following a shear in volcanic rocks. A grab sample from narrow quartz veins hosted by the porphyritic volcanic host analyzed 2.35 g/t gold, 1.6 g/t silver and 260 ppm tungsten. The altered zone traverses the north bank of a major creek drainage in the area (No Name Creek) at the confluence of a minor tributary creek (Figure 6a and 6b).

## 10. 2010 Assessment Work Cost Statement

Work Item	\$ Cost
Daily Helicopter Access (3 days, 0.8 hours/day)	4,886.00
Prospecting (1.5 days @ 450/day)	900.00
Soil Sampling (6.5 man-days @ \$ 300/day)	1,950.00
Structural Mapping (1 man-day @ \$ 600/day)	600.00
Field & Safety Supplies	650.00
Sat Phone and Field Radios, Rental	410.00
Food & Accommodation	2259.00
Vehicle and Gas, 3 days @ \$80/day	240.00
Analytical Standards (rock pulps and soil blanks)	400.00
Sample Prep and Analyses (13 rock, 160 rock samples)	5,737.55
Report and Geospatial Data Compilation	1,200.00
Total	\$19,232.55

## 11. References

D. Arscott, C.Baldys, L.Lyons, 1985

1985 Program Report of the Later Claims,  
Assessment Report 091837

T.Garagan, L.Walton, 1988

Trenching and Exploration Report, Later 1-35  
Claims, Assessment Report 092612

S. Gordey, 2008

Bedrock geology, Whitehorse (105D) Yukon  
Open file (Geological Survey of Canada); 5640

**APPENDIX**

**ANALYTICAL RESULTS**

**2010 TAC Claims Assessment Work Report**



ALS Canada Ltd.

2103 Dollarton Hwy  
North Vancouver BC V7H 0A7

Phone: 604 984 0221 Fax: 604 984 0218 www.alsglobal.com

To: **BALDYS, CHRISTOPHER**  
23035 CLIFF AVENUE  
MAPLE RIDGE BC V2X 3L9

Page: 1  
Finalized Date: 9-AUG-2010  
Account: FDN

**CERTIFICATE WH10101135**

Project: TAC  
P.O. No.: CB1-2010  
This report is for 16 Rock samples submitted to our lab in Whitehorse, YT, Canada on 24-JUL-2010.

The following have access to data associated with this certificate:

CHRISTOPHER BALDYS

TIMOTHY YOUNG

**SAMPLE PREPARATION**

ALS CODE	DESCRIPTION
WEI-21	Received Sample Weight
LOG-21	Sample logging - ClientBarCode
CRU-QC	Crushing QC Test
LOG-24	Pulp Login - Rcd w/o Barcode
CRU-31	Fine crushing - 70% <2mm
SPL-21	Split sample - riffle splitter
PUL-31	Pulverize split to 85% <75 um

**ANALYTICAL PROCEDURES**

ALS CODE	DESCRIPTION	INSTRUMENT
ME-ICP41	35 Element Aqua Regia ICP-AES	ICP-AES
Au-ICP21	Au 30g FA ICP-AES Finish	ICP-AES

To: **BALDYS, CHRISTOPHER**  
23035 CLIFF AVENUE  
MAPLE RIDGE BC V2X 3L9

This is the Final Report and supersedes any preliminary report with this certificate number. Results apply to samples as submitted. All pages of this report have been checked and approved for release.

Signature:

Colin Ramshaw, Vancouver Laboratory Manager



ALS Canada Ltd.  
 2103 Dollarton Hwy  
 North Vancouver BC V7H 0A7  
 Phone: 604 984 0221 Fax: 604 984 0218 www.alsglobal.com

To: **BALDYS, CHRISTOPHER**  
**23035 CLIFF AVENUE**  
**MAPLE RIDGE BC V2X 3L9**

Page: 2 - A  
 Total # Pages: 2 (A - C)  
 Plus Appendix Pages  
 Finalized Date: 9-AUG-2010  
 Account: FDN

Project: TAC

**CERTIFICATE OF ANALYSIS WH10101135**

Sample Description	Method Analyte Units LOR	WEI-21 Recvd Wt. kg	Au-ICP21 Au ppm	ME-ICP41 Ag ppm	ME-ICP41 Al %	ME-ICP41 As ppm	ME-ICP41 B ppm	ME-ICP41 Ba ppm	ME-ICP41 Be ppm	ME-ICP41 Bi ppm	ME-ICP41 Ca %	ME-ICP41 Cd ppm	ME-ICP41 Co ppm	ME-ICP41 Cr ppm	ME-ICP41 Cu ppm	ME-ICP41 Fe %
PULP01TAC		0.02	0.357	0.3	1.16	541	<10	580	<0.5	<2	0.42	<0.5	1	108	25	6.60
J991200		1.78	0.002	<0.2	0.79	14	<10	30	<0.5	<2	0.26	<0.5	1	8	4	1.91
J991201		1.74	<0.001	0.2	0.68	<2	<10	40	<0.5	<2	0.22	<0.5	2	10	4	1.98
J991202		0.84	0.191	5.3	0.46	2460	<10	90	1.2	<2	0.11	4.2	3	17	66	12.55
J991203		1.30	0.001	0.3	1.22	11	<10	50	0.5	<2	0.32	<0.5	1	3	2	1.08
J991204		1.18	0.950	1.4	1.02	>10000	<10	90	0.8	<2	0.23	<0.5	3	2	13	2.08
J991205		1.28	0.508	1.2	0.66	4890	<10	40	0.7	<2	0.11	<0.5	2	1	6	1.16
PULP02TAC		0.02	0.339	<0.2	1.09	546	<10	660	<0.5	<2	0.41	<0.5	2	104	25	6.59
J991206		2.52	0.802	4.0	0.49	3730	<10	110	<0.5	<2	0.02	<0.5	1	2	3	1.37
J991207		3.74	0.012	0.4	1.30	50	<10	90	<0.5	<2	0.77	<0.5	4	1	7	3.36
J991208		2.90	0.207	2.3	0.72	484	<10	60	0.5	<2	0.21	<0.5	5	1	7	3.61
J991209		1.34	<0.001	<0.2	0.34	6	<10	40	<0.5	<2	0.02	<0.5	<1	2	1	1.30
J991210		0.86	0.001	0.2	1.77	<2	<10	150	0.7	<2	0.67	<0.5	3	1	6	4.76
J991211		1.80	<0.001	<0.2	0.49	<2	<10	40	<0.5	<2	0.14	<0.5	<1	2	3	1.07
J991250		1.66	2.35	1.6	0.51	19	<10	40	<0.5	<2	0.32	<0.5	3	19	7	2.71
PULP03TAC		0.02	NSS	<0.2	1.05	519	<10	810	<0.5	<2	0.39	<0.5	1	101	24	5.94



ALS Canada Ltd.  
 2103 Dollarton Hwy  
 North Vancouver BC V7H 0A7  
 Phone: 604 984 0221 Fax: 604 984 0218 www.alsglobal.com

To: **BALDYS, CHRISTOPHER**  
**23035 CLIFF AVENUE**  
**MAPLE RIDGE BC V2X 3L9**

Page: 2 - B  
 Total # Pages: 2 (A - C)  
 Plus Appendix Pages  
 Finalized Date: 9-AUG-2010  
 Account: FDN

Project: TAC

**CERTIFICATE OF ANALYSIS WH10101135**

Sample Description	Method Analyte Units LOR	ME-ICP41	ME-ICP41	ME-ICP41	ME-ICP41	ME-ICP41	ME-ICP41	ME-ICP41	ME-ICP41	ME-ICP41	ME-ICP41	ME-ICP41	ME-ICP41	ME-ICP41	ME-ICP41	
		Ga	Hg	K	La	Mg	Mn	Mo	Na	Ni	P	Pb	S	Sb	Sc	Sr
		ppm 10	ppm 1	% 0.01	ppm 10	% 0.01	ppm 5	ppm 1	% 0.01	ppm 1	ppm 10	ppm 2	% 0.01	ppm 2	ppm 1	ppm 1
PULP01TAC		<10	9	0.20	20	0.05	35	5	0.05	11	390	10	0.43	39	2	185
J991200		10	<1	0.21	10	0.14	312	18	0.08	<1	220	17	0.27	2	2	11
J991201		<10	<1	0.16	10	0.18	349	2	0.11	<1	260	6	0.26	<2	3	13
J991202		<10	<1	0.05	20	0.03	231	9	<0.01	27	1390	15	0.04	41	3	59
J991203		<10	1	0.21	10	0.13	386	5	0.11	<1	80	20	0.02	<2	1	21
J991204		<10	<1	0.46	10	0.08	69	9	0.04	1	270	20	0.88	228	1	26
J991205		<10	<1	0.35	10	0.03	29	19	0.01	1	340	20	0.62	94	<1	11
PULP02TAC		<10	9	0.19	20	0.05	34	5	0.05	11	360	8	0.40	38	2	174
J991206		<10	<1	0.33	10	0.04	20	3	<0.01	1	240	14	0.86	79	<1	5
J991207		<10	<1	0.33	10	0.45	344	3	0.04	<1	780	16	0.72	4	2	34
J991208		<10	<1	0.40	10	0.06	60	1	0.03	2	440	18	3.61	15	1	15
J991209		<10	<1	0.14	10	0.01	25	3	0.08	<1	100	9	<0.01	<2	1	4
J991210		10	<1	0.13	20	0.54	1020	2	0.05	<1	1670	10	<0.01	<2	15	48
J991211		<10	<1	0.13	30	0.03	178	2	0.10	<1	110	13	0.02	<2	2	4
J991250		<10	<1	0.08	<10	0.11	114	13	0.02	8	200	11	0.29	<2	1	60
PULP03TAC		<10	8	0.17	20	0.05	33	5	0.06	9	340	9	0.40	37	2	179



ALS Canada Ltd.  
 2103 Dollarton Hwy  
 North Vancouver BC V7H 0A7  
 Phone: 604 984 0221 Fax: 604 984 0218 www.alsglobal.com

To: **BALDYS, CHRISTOPHER**  
**23035 CLIFF AVENUE**  
**MAPLE RIDGE BC V2X 3L9**

Page: 2 - C  
 Total # Pages: 2 (A - C)  
 Plus Appendix Pages  
 Finalized Date: 9-AUG-2010  
 Account: FDN

Project: TAC

**CERTIFICATE OF ANALYSIS WH10101135**

Sample Description	Method Analyte Units LOR	ME-ICP41	ME-ICP41	ME-ICP41	ME-ICP41	ME-ICP41	ME-ICP41	
		Th	Ti	Tl	U	V	W	Zn
		ppm	%	ppm	ppm	ppm	ppm	ppm
		20	0.01	10	10	1	10	2
PULP01TAC		<20	0.02	10	<10	98	10	22
J991200		<20	0.07	<10	<10	7	<10	31
J991201		<20	0.09	<10	<10	14	<10	26
J991202		<20	0.03	<10	<10	59	<10	317
J991203		<20	0.05	<10	<10	1	<10	29
J991204		<20	0.02	<10	<10	4	<10	44
J991205		<20	0.01	<10	<10	2	<10	31
PULP02TAC		<20	0.02	<10	<10	93	10	22
J991206		<20	0.01	<10	<10	2	<10	8
J991207		<20	0.02	<10	<10	9	<10	79
J991208		<20	0.01	<10	<10	3	<10	53
J991209		<20	0.01	<10	<10	2	<10	23
J991210		<20	0.04	<10	<10	7	<10	140
J991211		<20	<0.01	<10	<10	4	<10	56
J991250		<20	0.03	<10	<10	10	260	13
PULP03TAC		<20	0.01	10	<10	87	10	20



ALS Canada Ltd.  
 2103 Dollarton Hwy  
 North Vancouver BC V7H 0A7  
 Phone: 604 984 0221 Fax: 604 984 0218 www.alsglobal.com

To: **BALDYS, CHRISTOPHER**  
 23035 CLIFF AVENUE  
 MAPLE RIDGE BC V2X 3L9

Page: 1  
 Finalized Date: 11-AUG-2010  
 This copy reported on  
 26-AUG-2010  
 Account: FDN

**CERTIFICATE WH10101136**

Project: TAC  
 P.O. No.: CB1-2010  
 This report is for 165 Soil samples submitted to our lab in Whitehorse, YT, Canada on 24-JUL-2010.

The following have access to data associated with this certificate:

CHRISTOPHER BALDYS

TIMOTHY YOUNG

**SAMPLE PREPARATION**

ALS CODE	DESCRIPTION
WEI-21	Received Sample Weight
LOG-22	Sample login - Rcd w/o BarCode
PUL-31	Pulverize split to 85% <75 um
LOG-22d	Sample login - Rcd w/o BarCode dup
SCR-41	Screen to -180um and save both

**ANALYTICAL PROCEDURES**

ALS CODE	DESCRIPTION	INSTRUMENT
Au-ICP21	Au 30g FA ICP-AES Finish	ICP-AES
ME-ICP41	35 Element Aqua Regia ICP-AES	ICP-AES

To: **BALDYS, CHRISTOPHER**  
 23035 CLIFF AVENUE  
 MAPLE RIDGE BC V2X 3L9

This is the Final Report and supersedes any preliminary report with this certificate number. Results apply to samples as submitted. All pages of this report have been checked and approved for release.

Signature:   
 Colin Ramshaw, Vancouver Laboratory Manager



ALS Canada Ltd.  
 2103 Dollarton Hwy  
 North Vancouver BC V7H 0A7  
 Phone: 604 984 0221 Fax: 604 984 0218 www.alsglobal.com

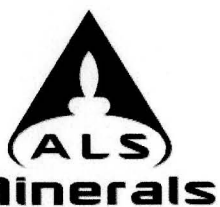
To: BALDY, CHRISTOPHER  
 23035 CLIFF AVENUE  
 MAPLE RIDGE BC V2X 3L9

Page: 2 - A  
 Total # Pages: 6 (A - C)  
 Finalized Date: 11-AUG-2010  
 Account: FDN

Project: TAC

**CERTIFICATE OF ANALYSIS WH10101136**

Sample Description	Method Analyte Units LOR	WEI-21	Au-ICP21	ME-ICP41	ME-ICP41	ME-ICP41	ME-ICP41	ME-ICP41	ME-ICP41	ME-ICP41	ME-ICP41	ME-ICP41	ME-ICP41	ME-ICP41	ME-ICP41	
		Recvd Wt. kg	Au ppm	Ag ppm	Al %	As ppm	B ppm	Ba ppm	Be ppm	Bi ppm	Ca %	Cd ppm	Co ppm	Cr ppm	Cu ppm	Fe %
TAC-1A		0.50	0.002	<0.2	1.00	4	<10	60	0.5	<2	0.18	0.5	3	12	10	1.62
TAC-2A		0.54	0.001	<0.2	1.66	6	<10	80	1.2	<2	0.21	0.9	4	11	28	2.37
TAC-3A		0.22	<0.001	1.4	1.69	9	<10	80	1.1	<2	0.21	1.2	4	18	38	3.79
TAC-4A		0.34	<0.001	0.4	1.61	9	<10	50	1.2	<2	0.20	0.5	5	17	17	2.35
TAC-5A		0.46	<0.001	0.2	2.30	3	<10	60	1.0	<2	0.16	0.5	7	18	26	2.90
TAC-6A		0.48	0.001	0.7	2.18	5	<10	60	1.9	2	0.47	3.2	6	11	38	2.62
TAC-7A		0.34	0.004	<0.2	1.48	2	<10	70	0.7	<2	0.11	0.5	5	17	15	2.32
TAC-8A		0.20	0.004	0.6	2.46	7	<10	60	1.8	<2	0.41	0.9	5	16	27	2.63
TAC-9A		0.38	0.002	0.2	2.15	13	<10	60	1.1	<2	0.17	0.5	7	19	24	2.84
TAC-10A		0.30	<0.001	1.0	2.81	12	<10	50	2.4	<2	0.29	0.7	6	14	32	3.04
TAC-11A		0.42	0.010	<0.2	1.58	7	<10	50	1.0	<2	0.32	<0.5	3	11	10	1.70
TAC-12A		0.44	0.001	0.3	2.08	7	<10	70	1.4	<2	0.37	0.7	5	11	17	2.00
TAC-13A		0.48	0.002	<0.2	1.50	8	<10	90	0.8	<2	0.35	0.8	4	13	13	1.86
TAC-14A		0.30	<0.001	0.3	2.36	7	<10	130	1.2	<2	0.20	<0.5	6	17	20	2.54
TAC-15A		0.56	<0.001	0.3	2.25	6	<10	70	1.2	<2	0.21	0.7	5	16	22	2.53
TAC-16A		0.52	0.003	0.7	1.58	2	<10	50	0.8	<2	0.14	0.9	4	13	13	2.09
TAC-17A		0.48	0.006	0.6	1.30	6	<10	60	0.7	2	0.20	0.5	4	11	17	1.98
TAC-18A		0.48	0.001	<0.2	1.45	7	<10	70	0.6	2	0.13	<0.5	5	16	12	1.93
TAC-19A		0.40	<0.001	0.3	1.56	5	<10	70	1.8	2	0.27	1.1	8	15	18	2.04
TAC-20A		0.44	0.001	<0.2	1.94	8	<10	150	1.2	2	0.22	1.0	7	16	19	2.44
TAC-21A		0.42	0.010	0.4	2.34	10	<10	150	1.7	2	0.42	1.3	11	23	24	2.85
TAC-22A		0.42	<0.001	0.3	1.84	8	<10	180	1.1	2	1.18	1.6	7	15	19	2.08
TAC-23A		0.28	<0.001	0.3	1.52	2	<10	80	1.0	<2	0.39	1.2	4	15	15	2.18
TAC-24A		0.40	0.002	0.2	1.16	4	<10	50	0.7	<2	0.19	<0.5	3	12	12	1.97
TAC-25A		0.36	0.020	<0.2	2.12	6	<10	80	1.3	<2	0.65	0.8	6	13	17	2.42
TAC-26A		0.30	0.001	0.2	1.45	4	<10	70	0.9	<2	0.27	1.0	4	13	13	2.04
TAC-27A		0.30	<0.001	<0.2	1.15	3	<10	70	0.5	<2	0.23	0.7	4	15	10	1.94
TAC-28A		0.36	0.001	0.3	3.00	6	<10	160	1.4	<2	0.37	<0.5	9	30	27	3.37
TAC-29A		0.34	0.003	0.2	1.82	3	<10	100	0.9	<2	0.40	<0.5	7	23	17	2.57
TAC-30A		0.40	0.001	0.2	1.87	3	<10	100	0.7	<2	0.25	<0.5	6	23	15	2.40
TAC-31A		0.38	0.001	0.2	2.49	8	<10	110	1.2	<2	0.27	0.6	7	19	18	2.29
TAC-32A		0.48	0.001	0.4	1.94	6	<10	70	0.8	<2	0.21	0.6	6	20	15	2.44
TAC-33A		0.42	<0.001	0.2	1.90	5	<10	80	0.9	<2	0.20	<0.5	7	19	15	2.30
TAC-34A		0.28	<0.001	0.3	1.55	5	<10	70	0.5	<2	0.18	<0.5	4	17	10	1.91
TAC-35A		0.44	0.008	0.5	1.53	3	<10	80	0.8	<2	0.22	0.5	5	15	14	1.83
TAC-36A		0.54	<0.001	<0.2	1.54	5	<10	70	0.7	<2	0.22	<0.5	6	19	13	2.10
TAC-37A		0.50	<0.001	0.4	1.91	4	<10	60	0.9	<2	0.16	<0.5	4	15	14	2.30
TAC-38A		0.44	<0.001	0.4	1.30	7	<10	70	0.6	<2	0.30	0.5	5	14	13	1.89
TAC-39A		0.42	0.004	0.4	1.35	6	<10	120	0.7	<2	0.25	<0.5	4	15	15	1.91
TAC-500		0.16	<0.001	<0.2	0.77	<2	<10	40	<0.5	<2	0.38	<0.5	4	9	9	1.34



ALS Canada Ltd.  
 2103 Dollarton Hwy  
 North Vancouver BC V7H 0A7  
 Phone: 604 984 0221 Fax: 604 984 0218 www.alsglobal.com

To: **BALDYS, CHRISTOPHER**  
 23035 CLIFF AVENUE  
 MAPLE RIDGE BC V2X 3L9

Page: 2 - B  
 Total # Pages: 6 (A - C)  
 Finalized Date: 11-AUG-2010  
 Account: FDN

Project: TAC

**CERTIFICATE OF ANALYSIS WH10101136**

Sample Description	Method Analyte Units LOR	ME-ICP41	ME-ICP41	ME-ICP41	ME-ICP41	ME-ICP41	ME-ICP41	ME-ICP41	ME-ICP41	ME-ICP41	ME-ICP41	ME-ICP41	ME-ICP41	ME-ICP41	ME-ICP41	
		Ga ppm 10	Hg ppm 1	K % 0.01	La ppm 10	Mg % 0.01	Mn ppm 5	Mo ppm 1	Na % 0.01	Ni ppm 1	P ppm 10	Pb ppm 2	S % 0.01	Sb ppm 2	Sc ppm 1	Sr ppm 1
TAC-1A		<10	<1	0.05	10	0.27	291	1	0.02	7	490	29	0.01	<2	2	11
TAC-2A		10	<1	0.05	20	0.26	1190	5	0.02	5	640	150	0.05	<2	2	16
TAC-3A		10	<1	0.07	10	0.25	1130	9	0.02	9	1420	191	0.17	<2	1	20
TAC-4A		10	<1	0.05	10	0.36	389	6	0.02	10	570	63	0.07	<2	1	18
TAC-5A		10	<1	0.08	10	0.39	1240	3	0.02	12	1310	107	0.12	<2	1	15
TAC-6A		10	<1	0.07	30	0.42	1135	1	0.03	8	800	122	0.03	<2	3	20
TAC-7A		10	<1	0.06	10	0.36	478	2	0.01	10	450	24	0.04	<2	1	10
TAC-8A		10	1	0.06	10	0.39	547	5	0.02	10	800	74	0.08	<2	1	29
TAC-9A		10	<1	0.06	10	0.39	794	8	0.01	11	890	48	0.09	<2	1	15
TAC-10A		10	<1	0.06	20	0.24	368	37	0.02	8	1310	42	0.19	<2	1	32
TAC-11A		<10	<1	0.04	10	0.22	331	1	0.01	6	670	23	0.01	<2	2	25
TAC-12A		10	<1	0.07	10	0.29	719	2	0.02	6	720	44	0.03	<2	2	25
TAC-13A		10	<1	0.06	10	0.26	437	2	0.01	9	860	24	0.06	<2	1	32
TAC-14A		10	<1	0.08	20	0.30	683	6	0.01	12	590	44	0.05	<2	2	22
TAC-15A		10	<1	0.10	10	0.28	726	1	0.01	12	670	37	0.02	<2	4	13
TAC-16A		10	<1	0.06	10	0.26	396	1	0.01	7	600	17	0.06	<2	1	14
TAC-17A		<10	1	0.05	10	0.23	325	1	0.02	6	700	19	0.06	<2	1	19
TAC-18A		<10	<1	0.04	10	0.34	277	<1	0.02	9	320	12	0.03	<2	2	13
TAC-19A		<10	1	0.06	20	0.29	633	1	0.02	9	1230	16	0.07	<2	2	23
TAC-20A		10	1	0.10	10	0.41	676	1	0.02	10	1140	20	0.07	2	2	20
TAC-21A		10	1	0.10	20	0.55	969	1	0.03	13	1350	26	0.10	4	2	41
TAC-22A		10	1	0.08	10	0.39	824	1	0.03	10	2070	19	0.16	<2	1	100
TAC-23A		10	<1	0.07	10	0.33	423	1	0.01	8	980	25	0.08	3	1	31
TAC-24A		10	<1	0.06	10	0.24	274	1	<0.01	7	510	13	0.05	<2	1	17
TAC-25A		10	<1	0.07	20	0.39	505	1	0.02	6	810	16	0.05	<2	2	56
TAC-26A		10	<1	0.05	20	0.27	414	1	0.01	6	740	15	0.07	<2	2	24
TAC-27A		10	<1	0.08	10	0.32	259	<1	<0.01	8	520	12	0.05	<2	1	20
TAC-28A		10	<1	0.10	20	0.73	729	<1	0.01	16	880	37	0.08	3	4	37
TAC-29A		10	<1	0.09	10	0.49	572	1	0.01	10	1210	16	0.11	<2	1	43
TAC-30A		10	<1	0.08	10	0.51	341	<1	0.01	14	490	13	0.03	<2	2	23
TAC-31A		10	<1	0.07	10	0.44	570	<1	0.01	12	1440	15	0.13	<2	1	34
TAC-32A		10	<1	0.07	10	0.44	388	<1	0.01	10	690	21	0.06	<2	2	23
TAC-33A		10	<1	0.07	10	0.47	571	<1	0.01	12	930	23	0.08	3	1	23
TAC-34A		10	<1	0.04	10	0.34	312	<1	0.01	9	690	15	0.07	2	1	23
TAC-35A		10	<1	0.06	10	0.37	401	<1	0.01	9	440	37	0.03	<2	2	25
TAC-36A		10	<1	0.07	10	0.45	393	<1	0.01	11	380	30	0.03	<2	2	22
TAC-37A		10	<1	0.06	10	0.43	430	<1	0.01	9	480	41	0.04	3	1	21
TAC-38A		10	<1	0.08	10	0.29	785	<1	0.01	8	1020	23	0.09	<2	1	45
TAC-39A		10	<1	0.09	10	0.34	318	<1	0.01	11	730	21	0.06	<2	1	31
TAC-500		<10	<1	0.08	<10	0.26	177	<1	0.07	4	260	<2	<0.01	<2	2	33



ALS Canada Ltd.  
 2103 Dollarton Hwy  
 North Vancouver BC V7H 0A7  
 Phone: 604 984 0221 Fax: 604 984 0218 www.alsglobal.com

To: **BALDYS, CHRISTOPHER**  
 23035 CLIFF AVENUE  
 MAPLE RIDGE BC V2X 3L9

Page: 2 - C  
 Total # Pages: 6 (A - C)  
 Finalized Date: 11-AUG-2010  
 Account: FDN

Project: TAC

**CERTIFICATE OF ANALYSIS WH10101136**

Sample Description	Method Analyte Units LOR	ME-ICP41	ME-ICP41	ME-ICP41	ME-ICP41	ME-ICP41	ME-ICP41	ME-ICP41
		Th	Ti	Tl	U	V	W	Zn
		ppm 20	% 0.01	ppm 10	ppm 10	ppm 1	ppm 10	ppm 2
TAC-1A	<20	0.06	<10	<10	27	<10	109	
TAC-2A	<20	0.03	<10	<10	23	<10	776	
TAC-3A	<20	0.04	<10	<10	28	<10	229	
TAC-4A	<20	0.06	<10	<10	39	<10	107	
TAC-5A	<20	0.05	<10	<10	39	<10	143	
TAC-6A	<20	0.02	<10	<10	27	<10	1080	
TAC-7A	<20	0.06	<10	<10	38	<10	111	
TAC-8A	<20	0.04	<10	<10	34	<10	233	
TAC-9A	<20	0.05	<10	<10	38	<10	167	
TAC-10A	<20	0.03	<10	<10	28	<10	145	
TAC-11A	<20	0.06	<10	<10	28	<10	98	
TAC-12A	<20	0.05	<10	<10	25	<10	152	
TAC-13A	<20	0.04	<10	<10	28	<10	102	
TAC-14A	<20	0.07	<10	<10	36	<10	136	
TAC-15A	<20	0.07	<10	<10	25	<10	176	
TAC-16A	<20	0.06	<10	<10	30	<10	93	
TAC-17A	<20	0.04	<10	<10	27	<10	89	
TAC-18A	<20	0.06	<10	<10	33	<10	56	
TAC-19A	<20	0.04	<10	<10	27	<10	88	
TAC-20A	<20	0.05	<10	<10	32	<10	105	
TAC-21A	<20	0.06	<10	<10	42	<10	115	
TAC-22A	<20	0.03	<10	<10	30	<10	111	
TAC-23A	<20	0.04	<10	<10	33	<10	125	
TAC-24A	<20	0.05	<10	<10	29	<10	77	
TAC-25A	<20	0.04	<10	<10	34	<10	130	
TAC-26A	<20	0.05	<10	<10	29	<10	114	
TAC-27A	<20	0.06	<10	<10	32	<10	65	
TAC-28A	<20	0.09	<10	<10	60	<10	130	
TAC-29A	<20	0.05	<10	<10	46	<10	73	
TAC-30A	<20	0.09	<10	<10	44	<10	66	
TAC-31A	<20	0.04	<10	<10	39	<10	104	
TAC-32A	<20	0.07	<10	<10	40	<10	104	
TAC-33A	<20	0.06	<10	<10	37	<10	101	
TAC-34A	<20	0.05	<10	<10	34	<10	66	
TAC-35A	<20	0.06	<10	<10	29	<10	94	
TAC-36A	<20	0.08	<10	<10	37	<10	87	
TAC-37A	<20	0.06	<10	<10	33	<10	132	
TAC-38A	<20	0.04	<10	<10	26	<10	104	
TAC-39A	<20	0.04	<10	<10	32	<10	88	
TAC-500	<20	0.06	<10	<10	37	<10	19	



ALS Canada Ltd.  
 2103 Dollarton Hwy  
 North Vancouver BC V7H 0A7  
 Phone: 604 984 0221 Fax: 604 984 0218 www.alsglobal.com

To: BALDYS, CHRISTOPHER  
 23035 CLIFF AVENUE  
 MAPLE RIDGE BC V2X 3L9

Page: 3 - A  
 Total # Pages: 6 (A - C)  
 Finalized Date: 11-AUG-2010  
 Account: FDN

Project: TAC

**CERTIFICATE OF ANALYSIS WH10101136**

Sample Description	Method	WEI-21	Au-ICP21	ME-ICP41	ME-ICP41	ME-ICP41	ME-ICP41	ME-ICP41	ME-ICP41	ME-ICP41	ME-ICP41	ME-ICP41	ME-ICP41	ME-ICP41	ME-ICP41	
	Analyte	Recvd Wt.	Au	Ag	Al	As	B	Ba	Be	Bi	Ca	Cd	Co	Cr	Cu	Fe
Units		kg	ppm	ppm	%	ppm	ppm	ppm	ppm	ppm	%	ppm	ppm	ppm	ppm	%
LOR		0.02	0.001	0.2	0.01	2	10	10	0.5	2	0.01	0.5	1	1	1	0.01
TAC-40A		0.44	<0.001	1.9	4.17	2	<10	70	1.9	<2	2.56	<0.5	1	2	127	1.23
TAC-41A		0.44	<0.001	0.3	1.54	4	<10	110	0.7	<2	0.19	0.6	7	18	21	2.19
TAC-42A		0.46	0.001	0.2	1.30	<2	<10	50	0.6	<2	0.18	<0.5	3	14	12	1.69
TAC-43A		0.52	0.002	0.3	1.71	6	<10	90	0.7	<2	0.18	<0.5	5	19	15	2.13
TAC-44A		0.50	0.001	<0.2	1.67	8	<10	70	0.7	<2	0.21	<0.5	5	20	12	2.01
TAC-45A		0.54	0.002	<0.2	1.76	4	<10	70	0.7	<2	0.30	<0.5	5	14	9	1.82
TAC-46A		0.58	0.002	<0.2	1.45	<2	<10	60	0.5	<2	0.14	<0.5	3	12	6	1.75
TAC-47A		0.64	0.003	<0.2	1.59	4	<10	90	0.5	<2	0.19	<0.5	5	17	10	1.87
TAC-48A		0.54	0.002	0.3	1.89	4	<10	100	1.1	<2	0.19	0.8	7	16	16	2.21
TAC-49A		0.58	0.003	<0.2	1.93	4	<10	90	0.7	<2	0.18	<0.5	5	15	14	2.07
TAC-50A		0.54	<0.001	<0.2	1.20	2	<10	50	<0.5	<2	0.15	<0.5	3	10	7	1.47
TAC-51A		0.50	<0.001	0.2	2.02	2	<10	80	1.0	<2	0.25	0.7	5	11	13	1.59
TAC-52A		0.50	0.002	<0.2	2.34	7	<10	70	0.8	<2	0.20	<0.5	6	20	14	2.32
TAC-53A		0.52	<0.001	<0.2	1.34	6	<10	70	0.5	<2	0.29	<0.5	5	15	10	1.74
TAC-54A		0.50	0.014	<0.2	1.40	2	<10	60	0.5	<2	0.25	<0.5	4	13	8	1.70
TAC-55A		0.58	0.019	<0.2	0.95	<2	<10	40	<0.5	<2	0.22	<0.5	3	10	6	1.30
TAC-56A		0.72	0.020	<0.2	1.07	<2	<10	50	<0.5	<2	0.33	<0.5	4	11	6	1.42
TAC-57A		0.46	0.003	<0.2	1.27	<2	<10	60	<0.5	<2	0.23	<0.5	4	11	7	1.52
TAC-58A		0.62	0.013	<0.2	1.00	<2	<10	50	<0.5	<2	0.46	<0.5	4	14	7	1.58
TAC-59A		0.60	0.007	<0.2	1.05	3	<10	50	<0.5	<2	0.46	<0.5	4	15	7	1.68
TAC-60A		0.66	0.007	0.3	1.70	6	<10	90	0.5	<2	0.23	<0.5	5	17	8	1.99
TAC-61A		0.46	0.040	<0.2	1.43	4	<10	60	0.5	<2	0.31	<0.5	5	15	8	1.82
TAC-62A		0.48	0.010	<0.2	1.77	2	<10	80	0.5	<2	0.28	<0.5	5	17	9	1.87
TAC-63A		0.48	0.008	0.3	1.38	5	<10	50	<0.5	<2	0.28	<0.5	4	14	6	1.79
TAC-64A		0.34	0.012	<0.2	1.78	3	<10	80	0.5	<2	0.33	0.5	5	18	8	2.03
TAC-65A		0.56	0.012	<0.2	1.94	3	<10	80	0.7	<2	0.26	<0.5	5	18	10	1.97
TAC-66A		0.44	0.008	0.3	1.91	<2	<10	70	0.8	<2	0.20	0.5	3	17	10	1.66
TAC-200		0.14	<0.001	<0.2	0.75	<2	<10	40	<0.5	2	0.37	<0.5	3	21	8	1.33
TAC-1B		0.58	0.023	<0.2	1.69	7	<10	70	1.0	<2	0.25	<0.5	9	16	15	2.50
TAC-2B		0.46	0.003	<0.2	1.60	3	<10	80	0.9	<2	0.27	<0.5	7	19	14	2.25
TAC-3B		0.62	0.006	<0.2	1.35	5	<10	70	0.7	<2	0.22	<0.5	6	17	13	1.94
TAC-4B		0.84	0.009	<0.2	1.53	9	<10	100	0.8	<2	0.26	0.6	6	17	14	2.17
TAC-5B		0.42	0.003	<0.2	2.06	7	<10	90	1.1	<2	0.22	0.5	8	20	19	2.58
TAC-6B		0.70	0.007	<0.2	1.64	5	<10	80	0.9	2	0.18	1.9	5	16	15	2.50
TAC-7B		0.84	0.007	<0.2	2.29	10	<10	140	1.5	<2	0.22	1.4	12	17	23	2.78
TAC-8B		0.70	0.015	<0.2	1.17	3	<10	60	0.6	<2	0.17	<0.5	5	15	11	2.09
TAC-9B		0.70	0.006	<0.2	1.18	5	<10	60	0.5	<2	0.14	0.5	3	14	11	2.03
TAC-10B		0.58	0.009	<0.2	1.42	5	<10	70	0.8	<2	0.24	<0.5	5	14	17	2.11
TAC-11B		0.60	0.005	<0.2	1.32	2	<10	60	0.6	<2	0.18	<0.5	4	14	10	1.87
TAC-12B		0.72	0.003	0.4	2.20	8	<10	80	1.2	<2	0.26	0.7	9	15	22	2.86



ALS Canada Ltd.  
 2103 Dollarton Hwy  
 North Vancouver BC V7H 0A7  
 Phone: 604 984 0221 Fax: 604 984 0218 www.alsglobal.com

To: BALDYS, CHRISTOPHER  
 23035 CLIFF AVENUE  
 MAPLE RIDGE BC V2X 3L9

Page: 3 - B  
 Total # Pages: 6 (A - C)  
 Finalized Date: 11-AUG-2010  
 Account: FDN

Project: TAC

**CERTIFICATE OF ANALYSIS WH10101136**

Sample Description	Method Analyte Units LOR	ME-ICP41	ME-ICP41	ME-ICP41	ME-ICP41	ME-ICP41	ME-ICP41	ME-ICP41	ME-ICP41	ME-ICP41	ME-ICP41	ME-ICP41	ME-ICP41	ME-ICP41	ME-ICP41	
		Ga ppm 10	Hg ppm 1	K % 0.01	La ppm 10	Mg % 0.01	Mn ppm 5	Mo ppm 1	Na % 0.01	Ni ppm 1	P ppm 10	Pb ppm 2	S % 0.01	Sb ppm 2	Sc ppm 1	Sr ppm 1
TAC-40A		<10	<1	0.15	20	0.12	491	<1	0.02	1	90	120	0.01	4	1	176
TAC-41A		10	<1	0.10	10	0.34	2750	1	0.01	11	1110	33	0.10	4	1	24
TAC-42A		10	<1	0.05	10	0.29	250	<1	0.01	7	420	24	0.04	3	1	20
TAC-43A		10	<1	0.07	10	0.39	326	<1	0.01	12	670	24	0.06	2	1	21
TAC-44A		10	<1	0.07	10	0.44	248	<1	<0.01	12	380	15	0.02	<2	2	20
TAC-45A		10	<1	0.08	10	0.36	309	<1	0.01	8	250	13	0.01	2	2	45
TAC-46A		10	<1	0.04	10	0.23	178	<1	<0.01	5	280	12	0.02	2	1	16
TAC-47A		10	<1	0.06	10	0.36	269	<1	0.01	10	300	13	0.02	<2	2	18
TAC-48A		10	<1	0.09	20	0.31	927	<1	0.01	9	790	23	0.07	<2	1	28
TAC-49A		10	<1	0.06	10	0.37	294	1	0.02	11	380	22	0.01	<2	2	25
TAC-50A		<10	<1	0.05	10	0.26	211	<1	0.01	6	290	12	<0.01	<2	1	16
TAC-51A		<10	1	0.07	10	0.26	742	1	0.02	7	1550	16	0.10	<2	1	24
TAC-52A		10	<1	0.08	10	0.44	293	1	0.02	12	640	20	0.03	<2	2	18
TAC-53A		<10	<1	0.06	10	0.37	284	<1	0.02	8	630	12	0.01	<2	2	21
TAC-54A		<10	<1	0.06	10	0.36	227	<1	0.01	7	470	8	0.01	<2	2	21
TAC-55A		<10	<1	0.04	10	0.27	181	<1	0.01	4	370	8	<0.01	<2	1	19
TAC-56A		<10	<1	0.05	10	0.33	210	<1	0.01	5	580	9	<0.01	<2	2	25
TAC-57A		<10	<1	0.04	10	0.30	209	<1	0.02	5	550	9	<0.01	<2	2	20
TAC-58A		<10	<1	0.05	20	0.36	311	<1	0.02	6	770	18	<0.01	<2	2	37
TAC-59A		<10	<1	0.05	20	0.39	303	<1	0.02	6	770	16	<0.01	<2	2	37
TAC-60A		10	<1	0.07	10	0.41	215	<1	0.01	8	350	13	<0.01	<2	2	25
TAC-61A		<10	<1	0.08	10	0.43	268	<1	0.02	7	640	14	<0.01	<2	2	23
TAC-62A		10	<1	0.08	10	0.46	357	<1	0.02	8	600	17	0.01	<2	2	29
TAC-63A		10	<1	0.05	10	0.40	225	<1	0.02	6	380	12	<0.01	<2	2	34
TAC-64A		10	<1	0.06	10	0.53	414	<1	0.02	8	420	13	<0.01	<2	2	40
TAC-65A		10	<1	0.06	10	0.47	326	<1	0.02	8	720	16	0.02	<2	2	28
TAC-66A		10	<1	0.05	10	0.39	233	<1	0.01	8	1090	10	0.06	<2	<1	23
TAC-200		<10	<1	0.07	<10	0.26	171	<1	0.08	4	250	2	<0.01	<2	2	32
TAC-1B		<10	<1	0.09	20	0.37	472	2	0.03	11	890	17	0.08	<2	2	32
TAC-2B		10	<1	0.05	20	0.39	443	1	0.02	11	660	18	0.04	<2	1	23
TAC-3B		<10	<1	0.06	20	0.35	318	1	0.02	10	640	13	0.01	2	2	15
TAC-4B		<10	<1	0.06	20	0.37	454	1	0.02	10	620	40	0.02	<2	2	18
TAC-5B		10	<1	0.06	20	0.40	631	3	0.02	12	500	39	0.02	<2	4	18
TAC-6B		<10	1	0.07	10	0.29	610	2	0.02	10	870	25	0.08	<2	1	19
TAC-7B		10	<1	0.09	20	0.38	1480	2	0.02	13	1300	34	0.06	<2	3	19
TAC-8B		<10	<1	0.04	20	0.28	393	1	0.01	8	280	20	0.01	<2	2	12
TAC-9B		<10	<1	0.04	10	0.23	283	2	0.01	7	460	21	0.03	<2	1	12
TAC-10B		10	<1	0.05	20	0.30	464	1	0.01	8	560	54	0.01	<2	2	16
TAC-11B		<10	<1	0.04	10	0.26	201	1	0.01	8	380	18	0.01	<2	2	13
TAC-12B		10	<1	0.08	20	0.35	800	2	0.02	11	780	34	0.03	<2	3	20



ALS Canada Ltd.  
 2103 Dollarton Hwy  
 North Vancouver BC V7H 0A7  
 Phone: 604 984 0221 Fax: 604 984 0218 www.alsglobal.com

To: BALDYS, CHRISTOPHER  
 23035 CLIFF AVENUE  
 MAPLE RIDGE BC V2X 3L9

Page: 3 - C  
 Total # Pages: 6 (A - C)  
 Finalized Date: 11-AUG-2010  
 Account: FDN

Project: TAC

**CERTIFICATE OF ANALYSIS WH10101136**

Sample Description	Method Analyte Units LOR	ME-ICP41	ME-ICP41	ME-ICP41	ME-ICP41	ME-ICP41	ME-ICP41	
		Th	Ti	Tl	U	V	W	Zn
		ppm 20	% 0.01	ppm 10	ppm 10	ppm 1	ppm 10	ppm 2
TAC-40A	<20	0.01	<10	<10	11	<10	179	
TAC-41A	<20	0.04	<10	<10	35	<10	104	
TAC-42A	<20	0.05	<10	<10	30	<10	67	
TAC-43A	<20	0.05	<10	<10	38	<10	79	
TAC-44A	<20	0.07	<10	<10	39	<10	61	
TAC-45A	<20	0.06	<10	<10	32	<10	56	
TAC-46A	<20	0.06	<10	<10	32	<10	45	
TAC-47A	<20	0.07	<10	<10	34	<10	55	
TAC-48A	<20	0.05	<10	<10	37	<10	81	
TAC-49A	<20	0.07	<10	<10	36	<10	74	
TAC-50A	<20	0.06	<10	<10	25	<10	47	
TAC-51A	<20	0.03	<10	<10	22	<10	78	
TAC-52A	<20	0.08	<10	<10	40	<10	67	
TAC-53A	<20	0.08	<10	<10	33	<10	51	
TAC-54A	<20	0.07	<10	<10	31	<10	50	
TAC-55A	<20	0.06	<10	<10	24	<10	36	
TAC-56A	<20	0.07	<10	<10	27	<10	43	
TAC-57A	<20	0.06	<10	<10	28	<10	41	
TAC-58A	<20	0.08	<10	<10	29	<10	58	
TAC-59A	<20	0.08	<10	<10	30	<10	53	
TAC-60A	<20	0.07	<10	<10	35	<10	57	
TAC-61A	<20	0.08	<10	<10	33	<10	53	
TAC-62A	<20	0.06	<10	<10	35	<10	67	
TAC-63A	<20	0.06	<10	<10	30	<10	60	
TAC-64A	<20	0.07	<10	<10	35	<10	79	
TAC-65A	<20	0.06	<10	<10	33	<10	80	
TAC-66A	<20	0.02	<10	<10	27	<10	73	
TAC-200	<20	0.06	<10	<10	36	<10	17	
TAC-1B	<20	0.08	<10	<10	35	<10	85	
TAC-2B	<20	0.05	<10	<10	39	<10	78	
TAC-3B	<20	0.07	<10	<10	38	<10	65	
TAC-4B	<20	0.07	<10	<10	36	<10	112	
TAC-5B	<20	0.09	<10	<10	41	<10	132	
TAC-6B	<20	0.05	<10	<10	36	<10	104	
TAC-7B	<20	0.06	<10	<10	37	<10	153	
TAC-8B	<20	0.07	<10	<10	35	<10	70	
TAC-9B	<20	0.05	<10	<10	32	<10	73	
TAC-10B	<20	0.07	<10	<10	31	<10	96	
TAC-11B	<20	0.06	<10	<10	33	<10	60	
TAC-12B	<20	0.07	<10	<10	35	<10	175	



ALS Canada Ltd.  
 2103 Dollarton Hwy  
 North Vancouver BC V7H 0A7  
 Phone: 604 984 0221 Fax: 604 984 0218 www.alsglobal.com

To: BALDYS, CHRISTOPHER  
 23035 CLIFF AVENUE  
 MAPLE RIDGE BC V2X 3L9

Page: 4 - A  
 Total # Pages: 6 (A - C)  
 Finalized Date: 11-AUG-2010  
 Account: FDN

Project: TAC

**CERTIFICATE OF ANALYSIS WH10101136**

Sample Description	Method Analyte Units LOR	WEI-21 Recvd Wt. kg	Au-ICP21 Au ppm	ME-ICP41 Ag ppm	ME-ICP41 Al %	ME-ICP41 As ppm	ME-ICP41 B ppm	ME-ICP41 Ba ppm	ME-ICP41 Be ppm	ME-ICP41 Bi ppm	ME-ICP41 Ca %	ME-ICP41 Cd ppm	ME-ICP41 Co ppm	ME-ICP41 Cr ppm	ME-ICP41 Cu ppm	ME-ICP41 Fe %
TAC-13B		0.60	0.003	<0.2	1.13	5	<10	70	0.5	2	0.25	<0.5	4	12	10	1.70
TAC-14B		0.68	0.004	0.7	1.74	9	<10	90	1.0	<2	0.24	0.5	6	16	18	2.25
TAC-15B		0.76	0.004	<0.2	1.73	6	<10	100	0.9	<2	0.21	0.5	5	15	20	2.09
TAC-16B		0.48	0.003	0.3	1.15	16	<10	50	1.1	<2	0.30	0.5	6	14	13	2.03
TAC-17B		0.64	0.006	0.4	1.99	9	<10	90	0.9	2	0.15	<0.5	5	18	17	2.36
TAC-18B		0.54	0.002	0.3	1.50	8	<10	70	0.6	<2	0.15	0.5	6	19	20	2.28
TAC-19B		0.52	0.007	0.2	1.64	7	<10	90	1.1	<2	0.29	0.5	6	17	17	2.27
TAC-20B		0.50	0.002	<0.2	1.51	7	<10	80	0.9	<2	0.20	<0.5	4	16	13	2.09
TAC-21B		0.48	0.029	0.8	1.74	26	<10	170	0.8	<2	0.28	<0.5	4	14	12	3.04
TAC-22B		0.54	0.004	<0.2	1.70	8	<10	100	0.7	<2	0.23	<0.5	7	20	13	2.21
TAC-23B		0.44	0.006	1.1	2.06	21	<10	110	0.9	<2	0.31	0.5	7	23	17	2.71
TAC-24B		0.48	0.007	0.2	1.34	5	<10	110	0.5	<2	0.21	<0.5	4	17	13	2.15
TAC-25B		0.84	0.002	<0.2	2.04	7	<10	100	1.1	<2	0.20	0.7	6	21	18	2.62
TAC-26B		0.52	0.001	0.2	1.43	7	<10	60	0.9	<2	0.27	<0.5	4	14	12	1.88
TAC-27B		0.48	0.002	<0.2	1.24	2	<10	80	0.7	<2	0.40	0.6	4	14	12	1.86
TAC-28B		0.48	0.001	<0.2	1.45	3	<10	90	0.5	<2	0.28	<0.5	6	18	12	2.04
TAC-29B		0.68	0.003	0.3	2.17	6	<10	130	0.8	<2	0.41	<0.5	9	29	20	2.81
TAC-30B		0.64	0.003	<0.2	2.07	6	<10	110	0.6	<2	0.37	<0.5	9	23	39	3.30
TAC-31B		0.58	0.001	0.2	2.00	6	<10	120	0.8	<2	0.26	<0.5	6	19	17	2.56
TAC-32B		0.54	0.002	0.2	1.53	3	<10	70	0.6	<2	0.21	<0.5	5	17	14	2.01
TAC-33B		0.74	0.004	<0.2	1.83	6	<10	90	0.7	<2	0.18	<0.5	6	19	12	2.02
TAC-34B		0.74	0.001	<0.2	1.64	4	<10	70	0.6	<2	0.20	<0.5	4	18	10	2.11
TAC-35B		0.68	0.003	<0.2	1.43	4	<10	80	0.7	<2	0.18	<0.5	4	17	8	1.72
TAC-36B		0.66	0.003	<0.2	1.02	2	<10	40	0.7	<2	0.22	<0.5	3	11	8	1.45
TAC-37B		0.56	0.007	<0.2	1.20	6	<10	60	0.6	<2	0.16	<0.5	3	12	9	1.54
TAC-38B		0.82	0.003	0.4	1.25	5	<10	70	0.6	<2	0.23	<0.5	3	11	14	1.57
TAC-39B		0.66	0.002	0.5	2.21	6	<10	100	1.8	<2	0.45	1.5	6	19	24	2.39
TAC-300		0.12	0.001	<0.2	0.71	<2	<10	40	<0.5	<2	0.34	<0.5	3	8	8	1.30
TAC-40B		0.74	0.002	0.3	1.40	<2	<10	50	0.6	<2	0.17	0.6	4	14	17	2.15
TAC-41B		0.50	0.001	<0.2	1.23	4	<10	60	<0.5	<2	0.17	<0.5	4	12	9	1.55
TAC-42B		0.78	0.004	0.3	1.43	5	<10	80	0.8	<2	0.24	<0.5	4	14	16	1.88
TAC-43B		0.66	<0.001	0.9	2.21	4	<10	40	1.0	<2	0.29	<0.5	3	10	32	1.93
TAC-44B		0.66	0.002	0.2	1.97	<2	<10	90	0.7	<2	0.43	0.7	10	48	15	2.47
TAC-45B		0.52	0.005	<0.2	0.98	3	<10	50	<0.5	<2	0.18	<0.5	3	10	6	1.22
TAC-46B		0.82	0.005	0.2	1.27	4	<10	90	<0.5	<2	0.15	<0.5	4	12	10	1.79
TAC-47B		0.70	0.003	<0.2	1.08	3	<10	40	<0.5	<2	0.12	<0.5	3	9	6	1.26
TAC-48B		0.64	0.003	0.5	3.28	7	<10	190	1.6	<2	0.32	<0.5	11	48	48	3.24
TAC-49B		0.70	0.001	<0.2	1.32	5	<10	50	0.5	<2	0.23	<0.5	5	14	9	1.69
TAC-50B		0.50	0.002	<0.2	1.35	3	<10	60	0.5	<2	0.24	<0.5	5	15	10	1.62
TAC-51B		0.56	0.004	<0.2	1.24	5	<10	50	0.5	<2	0.14	<0.5	4	12	8	1.49



ALS Canada Ltd.  
 2103 Dollarton Hwy  
 North Vancouver BC V7H 0A7  
 Phone: 604 984 0221 Fax: 604 984 0218 www.alsglobal.com

To: **BALDYS, CHRISTOPHER**  
 23035 CLIFF AVENUE  
 MAPLE RIDGE BC V2X 3L9

Page: 4 - B  
 Total # Pages: 6 (A - C)  
 Finalized Date: 11-AUG-2010  
 Account: FDN

Project: TAC

**CERTIFICATE OF ANALYSIS WH10101136**

Sample Description	Method	ME-ICP41	ME-ICP41	ME-ICP41	ME-ICP41	ME-ICP41	ME-ICP41	ME-ICP41	ME-ICP41	ME-ICP41	ME-ICP41	ME-ICP41	ME-ICP41	ME-ICP41	ME-ICP41	
	Analyte	Ga	Hg	K	La	Mg	Mn	Mo	Na	Ni	P	Pb	S	Sb	Sc	Sr
	Units	ppm	ppm	%	ppm	%	ppm	ppm	%	ppm	ppm	ppm	%	ppm	ppm	ppm
	LOR	10	1	0.01	10	0.01	5	1	0.01	1	10	2	0.01	2	1	1
TAC-13B		<10	<1	0.05	10	0.25	261	1	0.01	7	720	16	0.01	<2	2	12
TAC-14B		<10	<1	0.05	10	0.33	500	1	0.02	10	740	26	0.05	<2	2	19
TAC-15B		<10	<1	0.05	10	0.35	363	1	0.02	10	690	24	0.04	<2	2	16
TAC-16B		<10	<1	0.05	10	0.36	464	<1	0.01	9	650	33	0.01	<2	2	17
TAC-17B		<10	<1	0.05	10	0.31	379	1	0.01	9	840	20	0.06	<2	1	14
TAC-18B		<10	<1	0.06	10	0.34	273	1	0.01	18	260	13	0.02	3	2	16
TAC-19B		<10	1	0.05	10	0.35	414	5	0.01	10	370	23	0.01	3	2	25
TAC-20B		<10	<1	0.07	10	0.34	252	1	0.01	10	440	12	0.03	2	2	17
TAC-21B		10	<1	0.15	10	0.40	366	2	0.04	7	930	14	0.23	2	2	78
TAC-22B		<10	1	0.07	10	0.45	354	1	0.01	12	590	15	0.03	3	2	22
TAC-23B		10	<1	0.09	10	0.44	448	2	0.01	14	690	15	0.04	<2	2	33
TAC-24B		10	<1	0.05	10	0.31	224	1	0.01	10	530	11	0.05	2	1	21
TAC-25B		10	<1	0.08	20	0.48	337	1	0.01	12	680	16	0.05	3	2	20
TAC-26B		<10	1	0.05	10	0.30	308	1	0.01	8	630	11	0.03	2	2	23
TAC-27B		<10	<1	0.07	10	0.27	377	2	0.01	8	1060	13	0.09	2	1	43
TAC-28B		<10	<1	0.13	10	0.45	356	1	0.01	11	820	10	0.03	<2	3	19
TAC-29B		10	<1	0.12	10	0.62	575	1	0.02	15	750	16	0.03	<2	4	38
TAC-30B		10	<1	0.17	10	0.96	653	1	0.01	13	740	9	0.01	3	7	38
TAC-31B		10	1	0.08	10	0.41	475	1	0.01	11	680	32	0.06	3	2	33
TAC-32B		<10	<1	0.05	10	0.40	310	<1	0.01	13	510	10	0.03	3	2	23
TAC-33B		10	1	0.06	10	0.40	287	<1	0.01	11	530	12	0.03	<2	2	18
TAC-34B		<10	<1	0.05	10	0.35	246	1	0.01	9	550	13	0.03	2	2	21
TAC-35B		<10	<1	0.04	20	0.31	280	<1	0.01	11	480	18	0.02	2	2	15
TAC-36B		<10	<1	0.06	10	0.27	250	<1	0.01	6	420	13	0.02	<2	2	22
TAC-37B		<10	<1	0.04	10	0.26	230	<1	0.01	7	460	17	0.03	<2	1	16
TAC-38B		<10	<1	0.05	10	0.26	288	1	0.01	6	510	26	0.03	<2	1	29
TAC-39B		10	1	0.09	20	0.43	1060	1	0.01	12	2070	52	0.15	<2	1	69
TAC-300		<10	<1	0.07	<10	0.25	173	<1	0.06	4	260	<2	<0.01	<2	2	29
TAC-40B		10	<1	0.05	10	0.42	456	1	0.01	9	350	19	0.03	3	1	34
TAC-41B		<10	<1	0.05	10	0.29	220	<1	0.01	7	330	14	0.01	2	1	21
TAC-42B		<10	<1	0.06	10	0.31	259	1	0.01	8	710	16	0.06	4	1	35
TAC-43B		10	<1	0.07	10	0.29	261	1	0.01	6	460	29	0.04	<2	1	42
TAC-44B		10	<1	0.06	10	0.80	812	1	0.02	23	1090	19	0.09	<2	1	60
TAC-45B		<10	<1	0.04	10	0.21	223	<1	0.01	5	360	13	0.03	<2	1	22
TAC-46B		<10	<1	0.04	10	0.22	361	1	0.01	7	520	15	0.04	2	1	23
TAC-47B		<10	1	0.04	10	0.22	180	<1	0.01	5	190	13	0.01	2	1	12
TAC-48B		10	<1	0.12	30	0.64	690	1	0.02	24	670	49	0.04	4	4	50
TAC-49B		<10	<1	0.06	10	0.37	276	1	0.01	8	530	19	0.01	<2	2	17
TAC-50B		<10	1	0.06	10	0.35	256	<1	0.01	10	470	13	0.01	<2	2	21
TAC-51B		<10	<1	0.06	10	0.29	232	<1	0.01	8	270	11	0.02	<2	1	15



ALS Canada Ltd.  
 2103 Dollarton Hwy  
 North Vancouver BC V7H 0A7  
 Phone: 604 984 0221 Fax: 604 984 0218 www.alsglobal.com

To: BALDYS, CHRISTOPHER  
 23035 CLIFF AVENUE  
 MAPLE RIDGE BC V2X 3L9

Page: 4 - C  
 Total # Pages: 6 (A - C)  
 Finalized Date: 11-AUG-2010  
 Account: FDN

Project: TAC

**CERTIFICATE OF ANALYSIS WH10101136**

Sample Description	Method Analyte Units LOR	ME-ICP41	ME-ICP41	ME-ICP41	ME-ICP41	ME-ICP41	ME-ICP41	
		Th	Ti	Tl	U	V	W	Zn
		ppm 20	% 0.01	ppm 10	ppm 10	ppm 1	ppm 10	ppm 2
TAC-13B	<20	0.06	<10	<10	28	<10	69	
TAC-14B	<20	0.06	<10	<10	33	<10	75	
TAC-15B	<20	0.05	<10	<10	31	<10	92	
TAC-16B	<20	0.06	<10	<10	30	<10	113	
TAC-17B	<20	0.05	<10	<10	39	<10	74	
TAC-18B	<20	0.08	<10	<10	42	<10	79	
TAC-19B	<20	0.06	<10	<10	34	<10	103	
TAC-20B	<20	0.06	<10	<10	35	<10	58	
TAC-21B	<20	0.07	<10	<10	41	<10	69	
TAC-22B	<20	0.07	<10	<10	39	<10	70	
TAC-23B	<20	0.07	<10	<10	47	<10	84	
TAC-24B	<20	0.05	<10	<10	38	<10	52	
TAC-25B	<20	0.08	<10	<10	45	<10	97	
TAC-26B	<20	0.05	<10	<10	29	<10	85	
TAC-27B	<20	0.04	<10	<10	31	<10	82	
TAC-28B	<20	0.08	<10	<10	37	<10	73	
TAC-29B	<20	0.11	<10	<10	55	<10	95	
TAC-30B	<20	0.10	<10	<10	83	<10	113	
TAC-31B	<20	0.05	<10	<10	39	<10	131	
TAC-32B	<20	0.07	<10	<10	35	<10	89	
TAC-33B	<20	0.07	<10	<10	37	<10	74	
TAC-34B	<20	0.07	<10	<10	36	<10	72	
TAC-35B	<20	0.06	<10	<10	33	<10	66	
TAC-36B	<20	0.05	<10	<10	23	<10	75	
TAC-37B	<20	0.04	<10	<10	24	<10	67	
TAC-38B	<20	0.03	<10	<10	25	<10	72	
TAC-39B	<20	0.02	<10	<10	38	<10	148	
TAC-300	<20	0.06	<10	<10	35	<10	19	
TAC-40B	<20	0.05	<10	<10	35	<10	96	
TAC-41B	<20	0.06	<10	<10	29	<10	54	
TAC-42B	<20	0.04	<10	<10	32	<10	64	
TAC-43B	<20	0.02	<10	<10	27	<10	83	
TAC-44B	<20	0.08	<10	<10	45	<10	96	
TAC-45B	<20	0.04	<10	<10	22	<10	42	
TAC-46B	<20	0.04	<10	<10	32	<10	49	
TAC-47B	<20	0.05	<10	<10	22	<10	43	
TAC-48B	<20	0.08	<10	<10	59	<10	108	
TAC-49B	<20	0.07	<10	<10	31	<10	55	
TAC-50B	<20	0.07	<10	<10	32	<10	47	
TAC-51B	<20	0.06	<10	<10	27	<10	45	



ALS Canada Ltd.  
 2103 Dollarton Hwy  
 North Vancouver BC V7H 0A7  
 Phone: 604 984 0221 Fax: 604 984 0218 www.alsglobal.com

To: BALDYS, CHRISTOPHER  
 23035 CLIFF AVENUE  
 MAPLE RIDGE BC V2X 3L9

Page: 5 - A  
 Total # Pages: 6 (A - C)  
 Finalized Date: 11-AUG-2010  
 Account: FDN

Project: TAC

**CERTIFICATE OF ANALYSIS WH10101136**

Sample Description	Method	WEI-21	Au-ICP21	ME-ICP41	ME-ICP41	ME-ICP41	ME-ICP41	ME-ICP41	ME-ICP41	ME-ICP41	ME-ICP41	ME-ICP41	ME-ICP41	ME-ICP41	ME-ICP41	
	Analyte Units LOR	Recvd Wt. kg	Au ppm	Ag ppm	Al %	As ppm	B ppm	Ba ppm	Be ppm	Bi ppm	Ca %	Cd ppm	Co ppm	Cr ppm	Cu ppm	Fe %
TAC-52B		0.58	0.005	<0.2	1.49	5	<10	90	0.6	<2	0.27	<0.5	5	17	12	1.83
TAC-53B		0.64	0.003	<0.2	1.63	7	<10	90	0.6	<2	0.29	<0.5	5	18	18	1.85
TAC-54B		0.56	0.005	<0.2	1.01	<2	<10	50	<0.5	<2	0.20	<0.5	3	12	10	1.56
TAC-55B		0.58	0.002	<0.2	1.61	<2	<10	90	0.7	<2	0.17	<0.5	2	13	11	1.61
TAC-56B		0.54	0.001	<0.2	1.32	<2	<10	80	<0.5	<2	0.16	0.5	5	17	13	2.23
TAC-57B		0.64	0.002	0.3	2.61	6	<10	110	1.0	<2	0.18	0.6	6	24	18	2.59
TAC-58B		0.50	0.005	0.8	4.26	10	<10	210	1.7	<2	0.28	<0.5	8	34	27	3.36
TAC-59B		0.50	0.004	0.5	3.87	7	<10	210	1.5	<2	0.30	<0.5	9	29	22	3.10
TAC-60B		0.64	0.004	<0.2	1.51	3	<10	60	0.5	<2	0.20	<0.5	4	14	7	1.79
TAC-61B		0.54	0.003	0.2	1.41	<2	<10	70	0.5	<2	0.18	<0.5	3	14	9	1.59
TAC-62B		0.68	0.007	0.3	2.20	5	<10	100	0.8	<2	0.26	<0.5	5	18	12	2.13
TAC-63B		0.58	0.008	<0.2	1.70	5	<10	80	0.5	<2	0.26	<0.5	4	17	8	2.02
TAC-64B		0.68	0.008	0.2	1.29	4	<10	60	<0.5	<2	0.24	<0.5	3	15	7	1.85
TAC-65B		0.64	0.006	<0.2	2.50	5	<10	90	0.9	<2	0.26	<0.5	10	27	13	2.64
TAC-66B		0.66	0.026	0.2	1.13	<2	<10	80	<0.5	<2	0.24	<0.5	4	15	8	1.83
TAC-67B		0.56	0.006	<0.2	1.23	3	<10	70	<0.5	<2	0.19	<0.5	4	14	7	1.68
TAC-68B		0.50	0.019	<0.2	1.23	3	<10	70	<0.5	<2	0.29	<0.5	4	14	7	1.74
TAC-69B		0.50	0.006	0.4	1.50	3	<10	70	<0.5	<2	0.23	<0.5	5	16	8	1.91
TAC-70B		0.54	0.010	0.4	1.57	<2	<10	80	<0.5	<2	0.30	<0.5	4	19	8	1.83
TAC-71B		0.58	0.006	0.2	1.03	4	<10	110	<0.5	<2	0.33	0.7	4	15	7	1.70
TAC-72B		0.66	0.031	0.2	1.68	3	<10	80	0.7	<2	0.46	<0.5	5	13	17	1.96
TAC-73B		0.66	0.019	<0.2	1.11	<2	<10	50	<0.5	<2	0.39	<0.5	4	12	6	1.59
TAC-74B		0.64	0.014	<0.2	1.50	<2	<10	80	0.5	<2	0.33	<0.5	5	17	8	2.02
TAC-75B		0.70	0.013	0.4	1.55	5	<10	100	0.5	<2	0.33	<0.5	5	18	10	2.20
TAC-76B		0.78	0.019	0.3	1.65	8	<10	80	0.6	<2	0.34	0.5	5	16	10	1.99
TAC-77B		0.50	0.009	0.2	1.38	5	<10	90	0.5	<2	0.34	1.0	8	18	11	2.05
TAC-78B		0.56	0.018	<0.2	1.66	9	<10	110	0.6	<2	0.31	<0.5	6	19	10	2.33
TAC-79B		0.60	0.081	0.5	2.20	12	<10	110	0.8	<2	0.28	<0.5	6	23	13	2.74
TAC-400		0.10	0.005	<0.2	0.83	<2	<10	40	<0.5	<2	0.40	<0.5	3	25	8	1.39
TAC-80B		0.62	0.081	0.8	4.14	58	<10	150	2.8	<2	0.52	0.9	7	25	25	3.39
TAC-81B		0.70	0.009	0.4	1.41	4	<10	90	1.1	<2	0.31	0.8	6	18	19	2.33
TAC-82B		0.68	0.015	0.4	1.45	4	<10	100	1.0	<2	0.37	1.2	6	19	17	2.23
TAC-83B		0.48	0.005	<0.2	1.10	2	<10	80	<0.5	<2	0.26	<0.5	3	14	5	1.65
TAC-W77		0.20	0.014	<0.2	1.20	5	<10	240	<0.5	<2	0.33	1.4	9	16	13	2.34
TAC-W78		0.32	0.007	0.4	1.41	4	<10	210	0.5	<2	0.46	3.1	5	18	10	2.10
TAC-W79		0.42	0.008	0.3	1.21	4	<10	180	0.5	<2	0.40	0.7	6	17	9	1.81
TAC-600		0.16	0.002	<0.2	0.69	<2	<10	30	<0.5	<2	0.31	<0.5	2	8	8	1.27
TAC-W80		0.24	0.004	0.3	1.10	3	<10	360	<0.5	<2	0.70	3.6	9	17	16	1.98
TAC-W81		0.34	0.007	<0.2	1.39	3	<10	80	0.5	<2	0.23	0.5	6	19	11	1.85
TAC-W82		0.26	0.007	0.8	1.90	3	<10	120	0.8	<2	0.27	0.5	6	24	18	2.01



ALS Canada Ltd.  
 2103 Dollarton Hwy  
 North Vancouver BC V7H 0A7  
 Phone: 604 984 0221 Fax: 604 984 0218 www.alsglobal.com

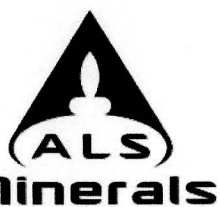
To: **BALDYS, CHRISTOPHER**  
 23035 CLIFF AVENUE  
 MAPLE RIDGE BC V2X 3L9

Page: 5 - B  
 Total # Pages: 6 (A - C)  
 Finalized Date: 11-AUG-2010  
 Account: FDN

Project: TAC

**CERTIFICATE OF ANALYSIS WH10101136**

Sample Description	Method Analyte Units LOR	ME-ICP41	ME-ICP41	ME-ICP41	ME-ICP41	ME-ICP41	ME-ICP41	ME-ICP41	ME-ICP41	ME-ICP41	ME-ICP41	ME-ICP41	ME-ICP41	ME-ICP41	ME-ICP41	
		Ga ppm	Hg ppm	K %	La ppm	Mg %	Mn ppm	Mo ppm	Na %	Ni ppm	P ppm	Pb ppm	S %	Sb ppm	Sc ppm	Sr ppm
TAC-52B		<10	<1	0.07	10	0.42	309	<1	0.01	11	640	16	0.01	<2	2	24
TAC-53B		10	<1	0.06	10	0.40	301	1	0.02	15	660	26	0.01	<2	2	26
TAC-54B		<10	<1	0.06	10	0.32	199	1	0.01	9	420	11	<0.01	<2	1	19
TAC-55B		10	<1	0.04	10	0.26	203	1	0.01	7	630	15	0.04	<2	1	25
TAC-56B		10	<1	0.10	10	0.36	593	2	0.02	10	530	15	0.02	<2	2	20
TAC-57B		10	<1	0.13	10	0.58	312	1	0.02	15	680	16	0.04	<2	2	24
TAC-58B		10	<1	0.11	20	0.66	563	2	0.02	18	1150	34	0.09	<2	2	47
TAC-59B		10	<1	0.13	20	0.58	707	1	0.02	14	1050	30	0.06	<2	3	48
TAC-60B		<10	<1	0.08	10	0.40	196	1	0.02	6	480	11	0.01	<2	2	18
TAC-61B		<10	<1	0.04	10	0.30	194	1	0.01	6	710	9	0.05	<2	<1	27
TAC-62B		10	<1	0.07	10	0.45	298	1	0.02	9	730	14	0.03	<2	2	32
TAC-63B		<10	<1	0.06	10	0.44	260	1	0.02	8	580	12	0.02	<2	2	31
TAC-64B		10	<1	0.10	10	0.36	282	1	0.02	7	410	10	0.01	<2	2	28
TAC-65B		10	<1	0.08	10	0.56	852	1	0.02	11	510	33	0.01	<2	2	36
TAC-66B		10	1	0.09	10	0.35	252	1	0.02	8	760	12	0.01	<2	2	23
TAC-67B		<10	<1	0.09	10	0.36	218	1	0.01	7	200	11	<0.01	<2	2	26
TAC-68B		<10	<1	0.09	10	0.40	243	1	0.02	6	560	10	<0.01	<2	2	27
TAC-69B		10	<1	0.10	10	0.39	298	1	0.01	8	490	12	0.01	<2	2	24
TAC-70B		10	<1	0.08	10	0.45	217	1	0.01	8	670	11	0.01	<2	2	32
TAC-71B		10	<1	0.14	10	0.39	402	1	0.01	7	670	10	0.01	<2	2	34
TAC-72B		10	<1	0.07	10	0.49	457	1	0.02	9	810	36	<0.01	<2	2	51
TAC-73B		<10	<1	0.06	10	0.36	287	1	0.02	5	780	16	<0.01	<2	2	35
TAC-74B		10	<1	0.15	10	0.46	310	1	0.02	8	880	15	<0.01	<2	2	33
TAC-75B		10	<1	0.15	10	0.50	272	1	0.02	8	1110	15	0.01	<2	2	32
TAC-76B		<10	<1	0.12	10	0.43	374	1	0.02	8	1560	11	0.01	<2	2	31
TAC-77B		10	<1	0.18	10	0.44	712	1	0.02	8	640	15	0.01	<2	2	48
TAC-78B		10	<1	0.20	10	0.56	447	1	0.01	9	920	14	0.01	<2	2	33
TAC-79B		10	<1	0.16	10	0.65	318	1	0.02	10	350	19	0.01	<2	3	33
TAC-400		<10	<1	0.08	<10	0.26	184	<1	0.10	4	250	3	<0.01	<2	2	37
TAC-80B		10	<1	0.17	30	0.65	610	2	0.02	13	1380	21	0.06	<2	3	80
TAC-81B		10	<1	0.11	30	0.41	768	2	0.02	9	620	57	0.02	<2	2	28
TAC-82B		10	<1	0.13	20	0.44	670	2	0.02	8	830	47	0.03	<2	2	33
TAC-83B		<10	<1	0.08	10	0.38	192	<1	0.02	5	400	8	<0.01	<2	2	24
TAC-W77		10	<1	0.11	30	0.28	1675	2	0.02	8	630	19	0.03	<2	2	42
TAC-W78		10	<1	0.19	20	0.45	634	1	0.02	10	590	16	0.02	<2	2	42
TAC-W79		<10	<1	0.16	20	0.44	832	1	0.02	9	650	12	0.02	<2	2	39
TAC-600		<10	<1	0.06	<10	0.25	164	1	0.06	5	250	3	<0.01	<2	2	26
TAC-W80		10	<1	0.16	10	0.40	2230	1	0.01	11	1120	19	0.03	<2	1	75
TAC-W81		<10	1	0.10	10	0.41	524	1	0.01	6	1150	12	0.05	<2	<1	22
TAC-W82		10	1	0.07	20	0.51	666	1	0.01	10	1440	11	0.07	<2	<1	31



ALS Canada Ltd.  
 2103 Dollarton Hwy  
 North Vancouver BC V7H 0A7  
 Phone: 604 984 0221 Fax: 604 984 0218 www.alsglobal.com

To: BALDYS, CHRISTOPHER  
 23035 CLIFF AVENUE  
 MAPLE RIDGE BC V2X 3L9

Page: 5 - C  
 Total # Pages: 6 (A - C)  
 Finalized Date: 11-AUG-2010  
 Account: FDN

Project: TAC

**CERTIFICATE OF ANALYSIS WH10101136**

Sample Description	Method Analyte Units LOR	ME-ICP41	ME-ICP41	ME-ICP41	ME-ICP41	ME-ICP41	ME-ICP41	
		Th	Ti	Tl	U	V	W	Zn
		ppm	%	ppm	ppm	ppm	ppm	ppm
		20	0.01	10	10	1	10	2
TAC-52B		<20	0.07	<10	<10	36	<10	58
TAC-53B		<20	0.07	<10	<10	37	<10	66
TAC-54B		<20	0.06	<10	<10	29	<10	57
TAC-55B		<20	0.03	<10	<10	29	<10	47
TAC-56B		<20	0.08	<10	<10	40	<10	71
TAC-57B		<20	0.07	<10	<10	45	<10	83
TAC-58B		<20	0.05	<10	<10	60	<10	114
TAC-59B		<20	0.07	<10	<10	55	<10	94
TAC-60B		<20	0.07	<10	<10	32	<10	45
TAC-61B		<20	0.02	<10	<10	29	<10	46
TAC-62B		<20	0.05	<10	<10	36	<10	70
TAC-63B		<20	0.05	<10	<10	36	<10	69
TAC-64B		<20	0.08	<10	<10	33	<10	66
TAC-65B		<20	0.08	<10	<10	44	<10	94
TAC-66B		<20	0.06	<10	<10	34	<10	53
TAC-67B		<20	0.08	<10	<10	31	<10	58
TAC-68B		<20	0.07	<10	<10	32	<10	51
TAC-69B		<20	0.07	<10	<10	35	<10	60
TAC-70B		<20	0.06	<10	<10	33	<10	66
TAC-71B		<20	0.08	<10	<10	32	<10	77
TAC-72B		<20	0.07	<10	<10	31	<10	92
TAC-73B		<20	0.07	<10	<10	27	<10	60
TAC-74B		<20	0.08	<10	<10	35	<10	91
TAC-75B		<20	0.08	<10	<10	39	<10	90
TAC-76B		<20	0.06	<10	<10	37	<10	79
TAC-77B		<20	0.09	<10	<10	38	10	117
TAC-78B		<20	0.09	<10	<10	43	<10	93
TAC-79B		<20	0.10	<10	<10	51	10	85
TAC-400		<20	0.07	<10	<10	38	<10	19
TAC-80B		<20	0.04	<10	<10	52	10	194
TAC-81B		<20	0.06	<10	<10	35	<10	174
TAC-82B		<20	0.05	<10	<10	35	<10	175
TAC-83B		<20	0.09	<10	<10	34	<10	60
TAC-W77		<20	0.08	<10	<10	46	<10	132
TAC-W78		<20	0.07	<10	<10	35	<10	286
TAC-W79		<20	0.06	<10	<10	32	<10	90
TAC-600		<20	0.06	<10	<10	35	<10	18
TAC-W80		<20	0.06	<10	<10	33	<10	191
TAC-W81		<20	0.02	<10	<10	34	<10	101
TAC-W82		<20	0.02	<10	<10	43	<10	79



ALS Canada Ltd.  
 2103 Dollarton Hwy  
 North Vancouver BC V7H 0A7  
 Phone: 604 984 0221 Fax: 604 984 0218 www.alsglobal.com

To: **BALDYS, CHRISTOPHER**  
 23035 CLIFF AVENUE  
 MAPLE RIDGE BC V2X 3L9

Page: 6 - A  
 Total # Pages: 6 (A - C)  
 Finalized Date: 11-AUG-2010  
 Account: FDN

Project: TAC

**CERTIFICATE OF ANALYSIS WH10101136**

Sample Description	Method Analyte Units LOR	WEI-21	Au-ICP21	ME-ICP41	ME-ICP41	ME-ICP41	ME-ICP41	ME-ICP41	ME-ICP41	ME-ICP41	ME-ICP41	ME-ICP41	ME-ICP41	ME-ICP41	ME-ICP41	ME-ICP41
		Recvd Wt. kg	Au ppm	Ag ppm	Al %	As ppm	B ppm	Ba ppm	Be ppm	Bi ppm	Ca %	Cd ppm	Co ppm	Cr ppm	Cu ppm	Fe %
		0.02	0.001	0.2	0.01	2	10	10	0.5	2	0.01	0.5	1	1	1	0.01
TAC-W83		0.28	0.038	0.4	1.75	8	<10	140	0.7	2	0.35	<0.5	10	27	18	2.61
TAC-W84		0.32	0.025	0.4	1.54	5	<10	110	0.5	3	0.24	0.6	8	24	12	2.16
TAC-W85		0.38	0.046	0.4	2.47	9	<10	260	0.7	<2	0.85	0.7	15	179	22	3.38
TAC-W86		0.24	0.004	0.3	1.48	<2	<10	240	<0.5	<2	0.35	<0.5	6	18	7	2.17
TAC-W87		0.22	0.003	0.5	1.51	5	<10	100	0.5	<2	0.13	<0.5	4	19	10	2.28



ALS Canada Ltd.  
 2103 Dollarton Hwy  
 North Vancouver BC V7H 0A7  
 Phone: 604 984 0221 Fax: 604 984 0218 www.alsglobal.com

To: **BALDYS, CHRISTOPHER**  
 23035 CLIFF AVENUE  
 MAPLE RIDGE BC V2X 3L9

Page: 6 - B  
 Total # Pages: 6 (A - C)  
 Finalized Date: 11-AUG-2010  
 Account: FDN

Project: TAC

**CERTIFICATE OF ANALYSIS WH10101136**

Sample Description	Method Analyte Units LOR	ME-ICP41	ME-ICP41	ME-ICP41	ME-ICP41	ME-ICP41	ME-ICP41	ME-ICP41	ME-ICP41	ME-ICP41	ME-ICP41	ME-ICP41	ME-ICP41	ME-ICP41	ME-ICP41	
		Ga	Hg	K	La	Mg	Mn	Mo	Na	Ni	P	Pb	S	Sb	Sc	Sr
		ppm	ppm	%	ppm	%	ppm	ppm	%	ppm	ppm	ppm	%	ppm	ppm	ppm
		10	1	0.01	10	0.01	5	1	0.01	1	10	2	0.01	2	1	
TAC-W83		10	1	0.07	10	0.67	715	<1	0.01	16	850	8	0.03	<2	2	30
TAC-W84		<10	<1	0.11	10	0.53	714	<1	0.01	13	790	9	0.04	<2	1	26
TAC-W85		10	2	0.24	10	1.62	1055	<1	0.03	75	1460	9	0.06	<2	5	72
TAC-W86		10	1	0.08	10	0.58	367	<1	0.02	6	380	10	0.03	<2	2	36
TAC-W87		10	1	0.09	10	0.37	355	<1	0.01	8	580	11	0.05	<2	1	20



ALS Canada Ltd.  
 2103 Dollarton Hwy  
 North Vancouver BC V7H 0A7  
 Phone: 604 984 0221 Fax: 604 984 0218 www.alsglobal.com

To: BALDYS, CHRISTOPHER  
 23035 CLIFF AVENUE  
 MAPLE RIDGE BC V2X 3L9

Page: 6 - C  
 Total # Pages: 6 (A - C)  
 Finalized Date: 11-AUG-2010  
 Account: FDN

Project: TAC

**CERTIFICATE OF ANALYSIS WH10101136**

Sample Description	Method Analyte Units LOR	ME-ICP41	ME-ICP41	ME-ICP41	ME-ICP41	ME-ICP41	ME-ICP41	ME-ICP41
		Th	Ti	Tl	U	V	W	Zn
		ppm 20	% 0.01	ppm 10	ppm 10	ppm 1	ppm 10	ppm 2
TAC-W83		<20	0.05	<10	<10	47	<10	63
TAC-W84		<20	0.06	<10	<10	41	<10	84
TAC-W85		<20	0.12	<10	<10	72	<10	114
TAC-W86		<20	0.09	<10	<10	47	<10	57
TAC-W87		<20	0.08	<10	<10	45	<10	74