

ARCHER, CATHRO & ASSOCIATES (1981) LIMITED  
1016 -510 West Hastings Street  
Vancouver, B.C. V6B 1L8

Telephone: 604-688-2568

Fax: 604-688-2578

---

**ASSESSMENT REPORT**

describing

**SOIL GEOCHEMICAL SAMPLING**

at the

**HAN PROPERTY**

HAN 1-8      YC98845-YC98852

NTS 115J/13

Latitude 62°50'N; Longitude 139°44'W

located in the

Whitehorse Mining District  
Yukon Territory

prepared by

Archer, Cathro & Associates (1981) Limited

for

**ATAC RESOURCES LTD.**  
and  
**SILVER QUEST RESOURCES LTD.**

by

H. Smith, B.Sc. Geology, GIT  
January 2010

## **CONTENTS**

	<b><u>PAGE</u></b>
INTRODUCTION	1
PROPERTY LOCATION, CLAIM DATA AND ACCESS	1
HISTORY	1
GEOMORPHOLOGY	2
GEOLOGY	2
ROCK GEOCHEMISTRY	3
SOIL GEOCHEMISTRY	3
DISCUSSION AND CONCLUSIONS	3
REFERENCES	4

## **APPENDICES**

- I STATEMENT OF QUALIFICATIONS
- II CERTIFICATES OF ANALYSIS

## FIGURES

<u>No.</u>	<u>Description</u>	<u>Follows Page</u>
1	Property Location	1
2	Claim Locations	1
3	Tectonic Setting	2
4	Geology	2
5	Soil Sample Locations	3

## **INTRODUCTION**

The HAN property hosts a copper-molybdenum porphyry target with unknown gold potential. It is located in west-central Yukon, eight kilometres west of the Coffee property where a recent gold discovery was made by Kaminak Gold Corporation. At the time of the exploration program the property was owned 100% by ATAC Resources Ltd.; however, it has subsequently been sold to Silver Quest Resources Ltd.

This report describes a soil sampling program that was conducted by a three person crew on August 23, 2009. The work was done by Archer, Cathro & Associates (1981) Limited on behalf of ATAC. The author participated in the program and her Statement of Qualifications is in Appendix I.

## **PROPERTY LOCATION, CLAIM DATA AND ACCESS**

The HAN property comprises eight contiguous mineral claims. The claims lie at latitude 62°50'N and longitude 139°44'W on NTS map sheet 115J/13 as shown on Figure 1. They are registered with the Whitehorse Mining Recorder in the name of Archer Cathro, which holds them in trust for ATAC. Claim data are listed below while the locations of individual claims are illustrated on Figure 2.

<u>Claim Name</u>	<u>Grant Number</u>	<u>Expiry Date*</u>
HAN 1-8	YC98845-YC98852	June 26, 2010

\*Expiry date does not include 2009 work, which has not yet been filed for assessment credit.

Access to the property in 2009 was via Bell 206B helicopter owned and operated by Fireweed Helicopters Ltd. from its permanent base in Dawson City. There is no road access to the HAN property.

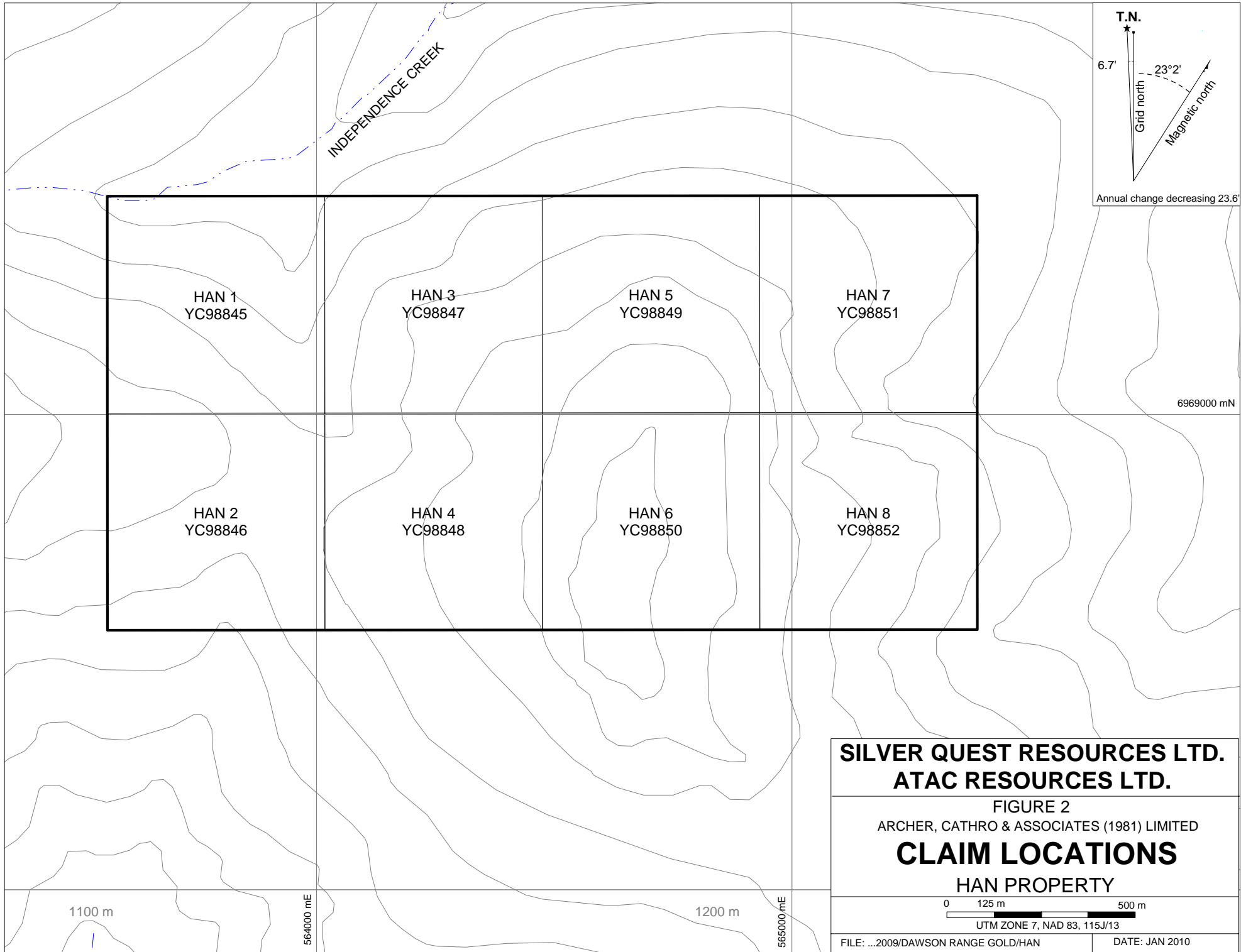
A small airstrip is located approximately two kilometres southeast of the property. This airstrip could accommodate a small to medium sized aircraft such as a Cessna 206. An overgrown four wheel-drive trail connects the airstrip to an old campsite in the headwaters of Independence Creek, about one kilometre northeast of the property.

## **HISTORY**

In 1969, Fawn Bay Development Company Ltd. and Hanna Gold Mines Ltd. staked the area currently covered by the HAN property. Reconnaissance grid soil sampling and minor geological mapping were performed in 1970. This work outlined a 200 by 1200 m copper-in-soil anomaly (Scott and Aikins, 1970).

ATAC staked the HAN property in June 2009 and sold it to Silver Quest in December 2009.





HAN 1  
YC98845

HAN 3  
YC98847

HAN 5  
YC98849

HAN 7  
YC98851

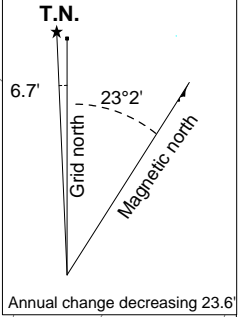
HAN 2  
YC98846

HAN 4  
YC98848

HAN 6  
YC98850

HAN 8  
YC98852

INDEPENDENCE CREEK



6969000 mN

1100 m

564000 mE

1200 m

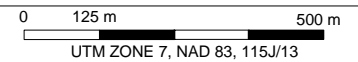
565000 mE

**SILVER QUEST RESOURCES LTD.  
ATAC RESOURCES LTD.**

FIGURE 2  
ARCHER, CATHRO & ASSOCIATES (1981) LIMITED

**CLAIM LOCATIONS**

HAN PROPERTY



FILE: ...2009/DAWSON RANGE GOLD/HAN

DATE: JAN 2010

## GEOMORPHOLOGY

The property lies within the Dawson Range in an area of gentle relief. Local elevations range from 1100 to 1300 m above sea level. Most of the property is vegetated with small spruce and buckbrush in valley bottoms and on hillsides. The main ridge on the property is near tree line and only has thin moss cover.

The Dawson Range escaped Pleistocene glaciation. Bedrock exposure on the property is limited to ridge tops.

The property is drained by Independence Creek, which flows directly into the Yukon River.

## GEOLOGY

The HAN property lies within the Yukon-Tanana Terrane approximately 70 km northeast of the Denali Fault and 140 km southwest of the Tintina Fault (Figure 3).

The area was mapped by Tempelman-Kluit (1974) and his geology was re-evaluated as part of a territory-wide compilation by Gordey and Makepeace (1999). The geological units were re-assigned again by Colpron (2006) as part of a Yukon-Tanana Terrane compilation. Geology is illustrated on Figure 4.

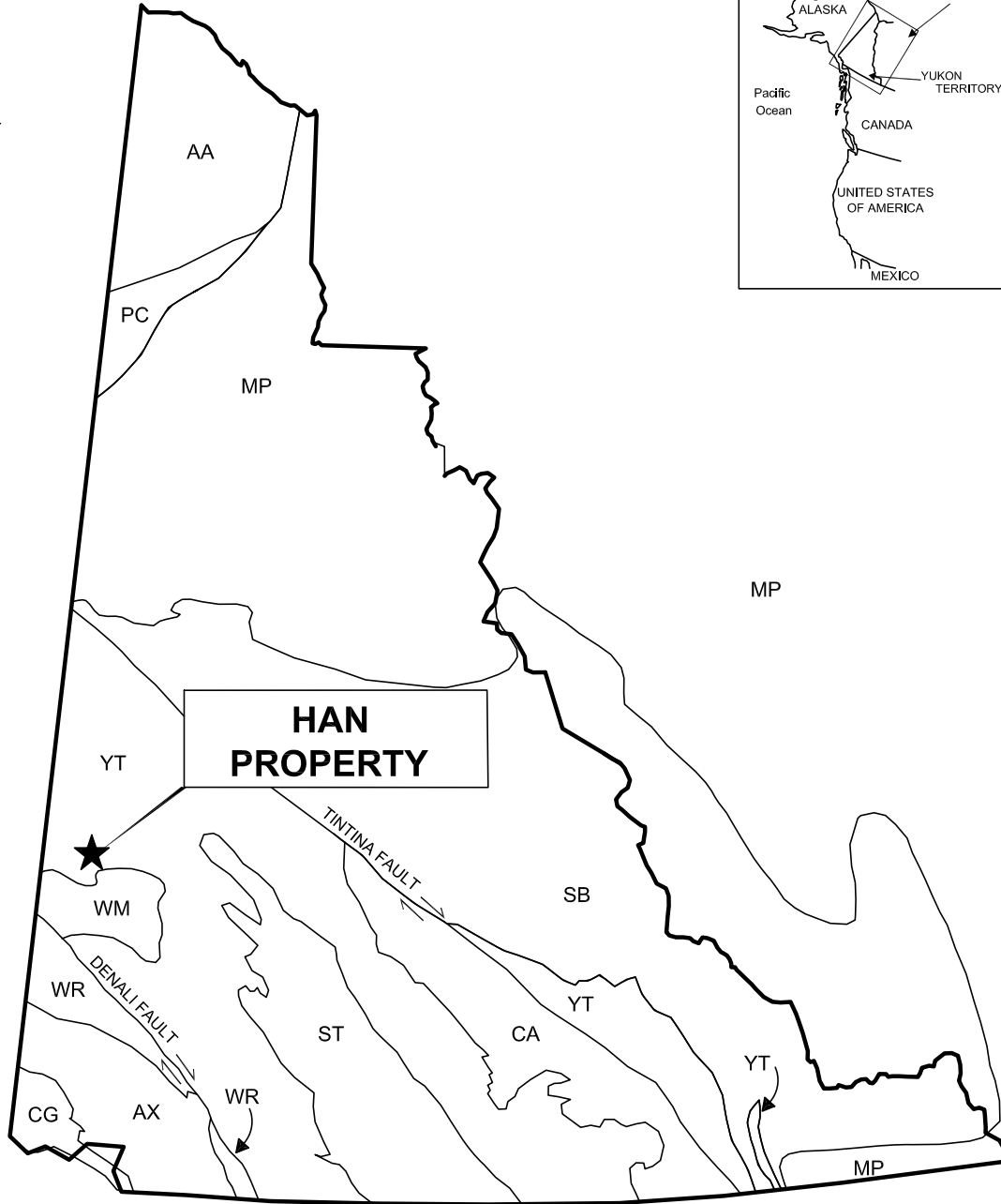
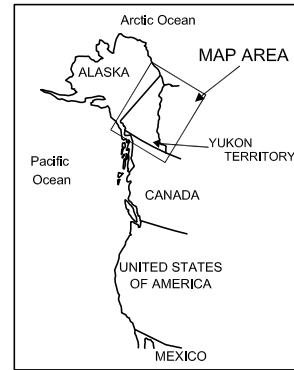
The northern half of the HAN property is underlain by Upper Devonian and older Snowcap Assemblage (Ps). This unit is described by Colpron (2006) as polydeformed and metamorphosed: quartzite; psammite, pelite and marble; and amphibolite as Ps. Unit Ps is synonymous with Devonian, Mississippian and older (?) Nasina Assemblage (DMN3).

A six kilometre long, roughly northwest-trending pluton of Early Jurassic Long Lake Suite (EJL) lies approximately one kilometre north of the HAN property. A smaller, northwest-trending EJL intrusion is situated one kilometre west of the main EJL pluton. EJL intrudes Ps and has been described as massive to weakly foliated, fine to coarse grained biotite, biotite-muscovite and biotite-hornblende quartz monzonite to granite, including abundant pegmatite and aplite phases. It commonly hosts potassium feldspar megacrysts (Gordey and Makepeace, 1999).

The southwestern half of the HAN property is underlain by a pluton of the Mid Cretaceous Whitehorse Suite (mKg). Gordey and Makepeace (1999) describe mKg as biotite-hornblende granodiorite, hornblende quartz diorite and hornblende diorite; and leucocratic, biotite-hornblende granodiorite locally with sparse grey and pink potassium feldspar phenocrysts. Another mKg intrusion has been mapped three kilometres east-northeast of the property.

A northwest-trending strike-slip fault bisects the centre of the HAN property. This fault forms the contact between Units Ps and mKg.

No property-scale mapping was completed in 2009.



**HAN  
PROPERTY**

**ANCESTRAL NORTH AMERICA**

- MP Mackenzie Platform
- SB Selwyn Basin

**TERRANES**  
Displaced Continental Margin

- AA Arctic Alaska
- CA Casslar
- PC Porcupine

Pericratonic Terranes

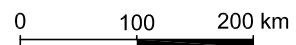
- YT Yukon-Tanana / Slide Mountain

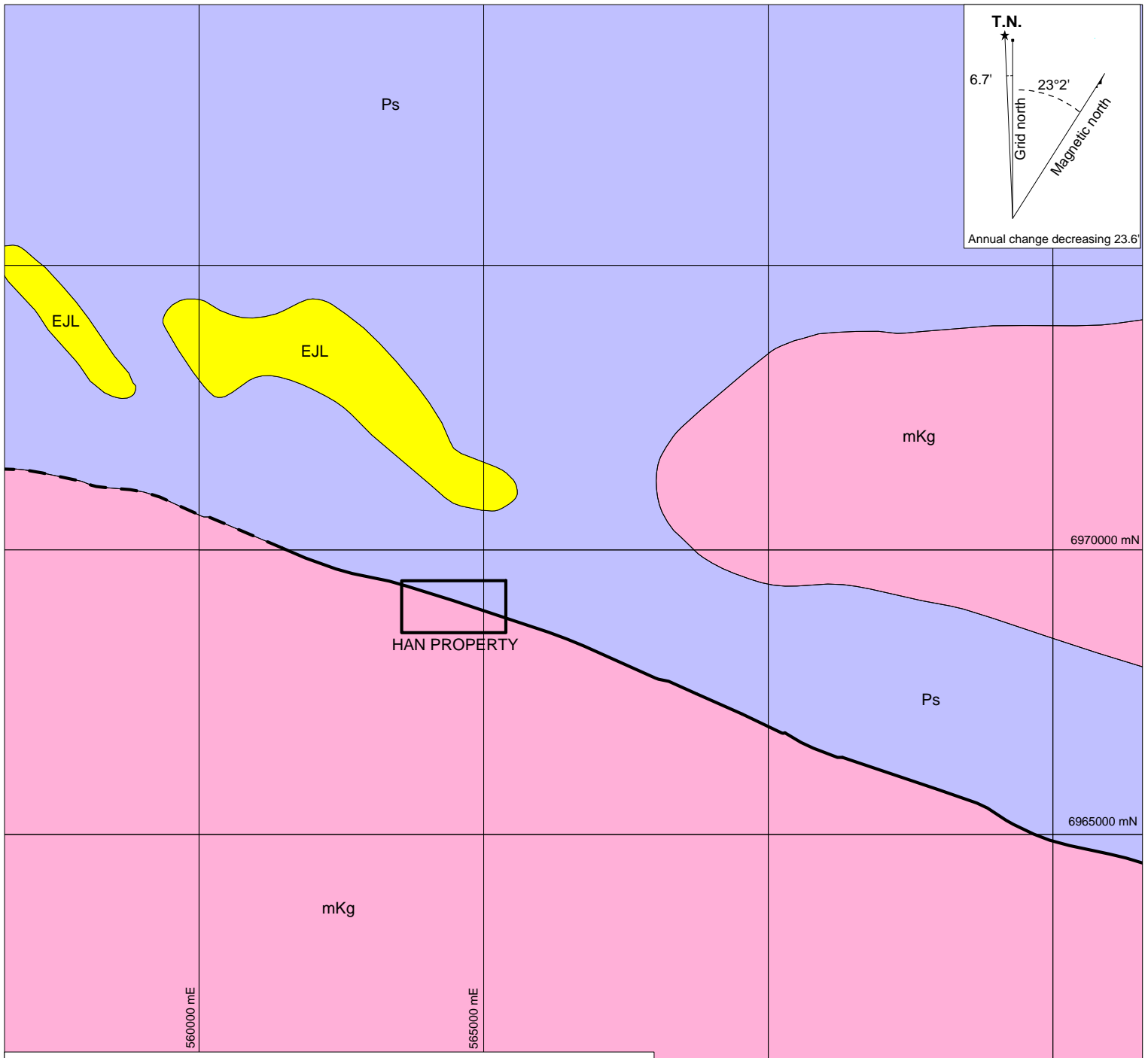
**ACCRETED TERRANES**

- ST Slikinia / Cache Creek
- AX Alexander
- WR Wrangellia
- CG Chugach
- WM Windy McKinley

**SILVER QUEST RESOURCES LTD.  
ATAC RESOURCES LTD.**

**FIGURE 3**  
ARCHER, CATHRO & ASSOCIATES (1981) LIMITED  
**TECTONIC SETTING**  
**HAN PROPERTY**





- Known strike-slip fault
- - - Inferred strike-slip fault

**MID CRETACEOUS**

**mKg** **WHITEHORSE SUITE**  
 Biotite-hornblende granodiorite, hornblende quartz diorite and hornblende diorite; leucocratic, biotite-hornblende granodiorite locally with sparse grey and pink potassium feldspar phenocrysts.

**EARLY JURASSIC**

**EJL** **LONG LAKE SUITE**  
 Massive to weakly foliated, fine to coarse grained biotite, biotite-muscovite and biotite-hornblende quartz monzonite to granite, including abundant pegmatitic and aplitic plases; commonly potassium feldspar megacrystic.

**UPPER DEVONIAN AND OLDER**

**Ps** **SNOWCAP ASSEMBLAGE**  
 polydeformed and metamorphosed quartzite, psammite, pelite and marble; amphibolite.

*\*After Colpron (2006) and Templeman-Kluit (1974)*

**SILVER QUEST RESOURCES LTD.  
 ATAC RESOURCES LTD.**

FIGURE 4  
 ARCHER, CATHRO & ASSOCIATES (1981) LIMITED

**GEOLOGY  
 HAN PROPERTY**

0 1000 m 5000 m

UTM ZONE 7, NAD 83, 115J/13

## **ROCK GEOCHEMISTRY**

No rock samples were collected in 2009.

## **SOIL GEOCHEMISTRY**

A total of 56 augered soil samples were taken during the 2009 program. Augered samples were used to test as deep in the weathered soil profile as possible. They were collected at 50 m spacings on three lines positioned 200 m apart. All soil sample sites were located by means of compass and hip chain surveys with frequent checks using handheld GPS units. The sites were marked with two pieces of orange flagging labelled with the corresponding sample number. Soil samples were taken from the bottoms of 25 to 60 cm deep holes. Sample material was then placed into individually pre-numbered kraft paper bags. Soil sample locations are illustrated on Figure 5.

Multi-element analyses (Au-ICP21 and ME-ICP41) for soil samples were carried out at ALS Chemex in North Vancouver, B.C. Soil samples were dried and sieved to -80 mesh. The fine fraction was then analyzed for gold and 35 other elements. Certificates of Analysis are in Appendix II.

Results from the 2009 soil sampling program are mildly encouraging for copper. Twenty-two of them yielded greater than 35 ppm copper to a peak of 72 ppm. These values are considered anomalous according to the threshold established for the property in 1970. The elevated copper-in-soil values are typically underlain by Unit Ps. On the northern-most sample line there is a 200 m long string of anomalous samples. The distribution of anomalous samples within Unit mKg is more erratic. Results for other elements were generally low.

## **DISCUSSION AND CONCLUSIONS**

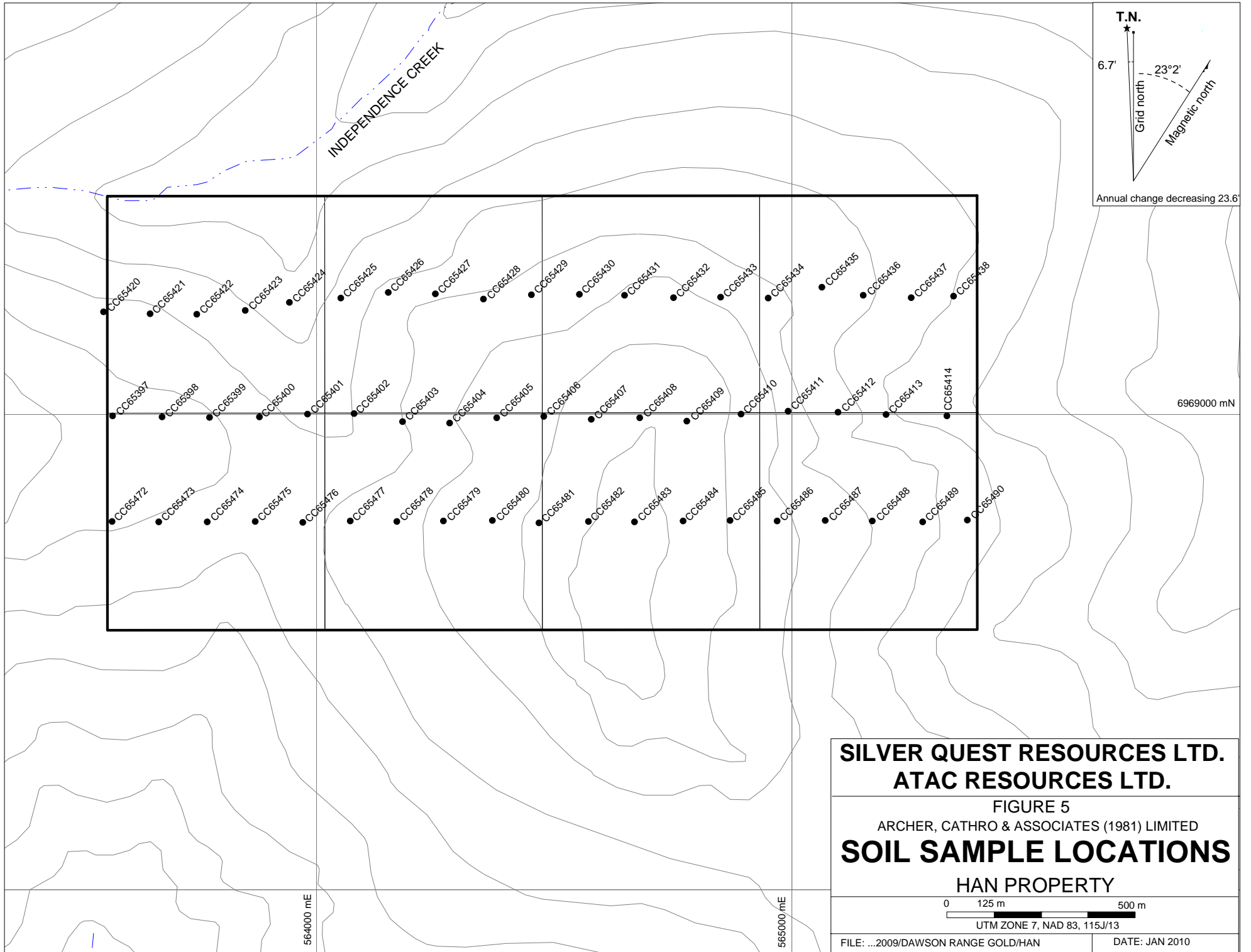
The HAN property is favourably situated over a strike-slip fault structure, which defines the contact between Units Ps and mKg. The 2009 soil geochemistry confirmed the presence of weakly anomalous copper values, usually within Unit Ps. At Kaminak Gold Corporation's nearby Coffee property gold mineralization occurs in a structure cutting Unit Ps.

Additional work is warranted on the HAN property. This work should include a property-wide, closely-spaced, deep auger grid soil sampling program to better define the known copper anomaly and to further test for gold.

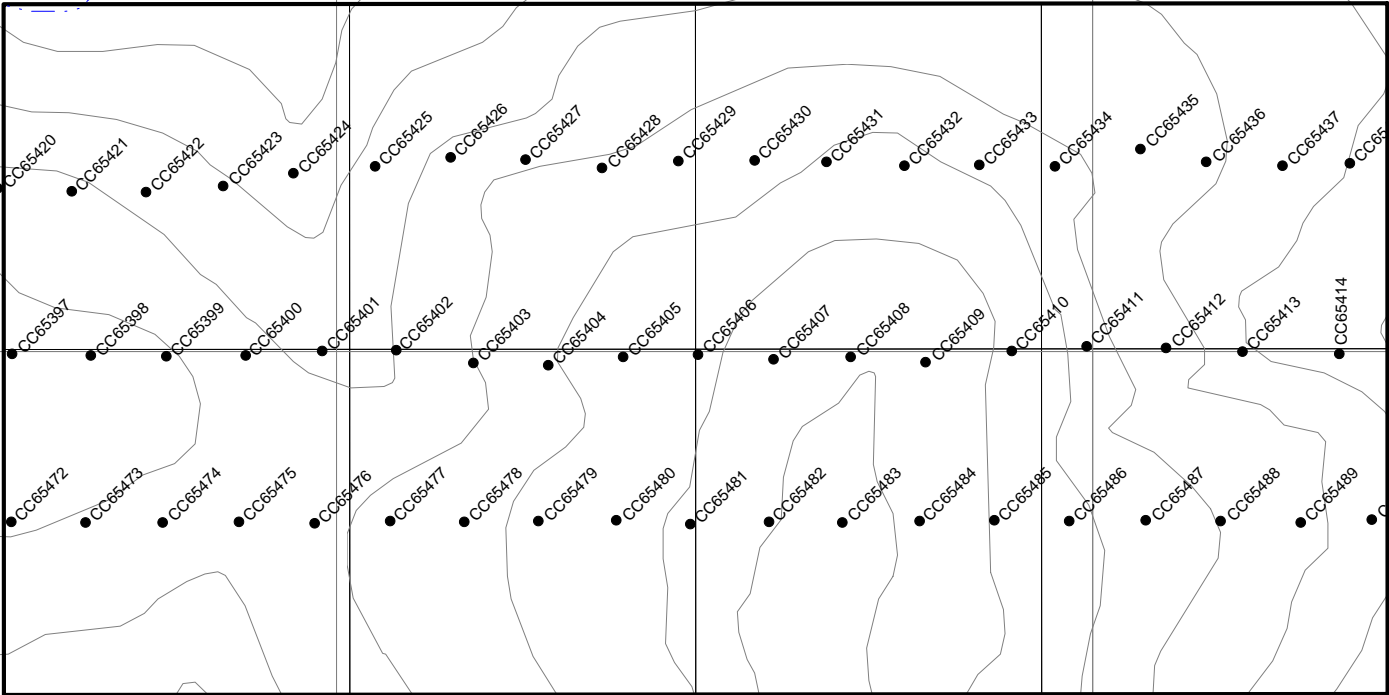
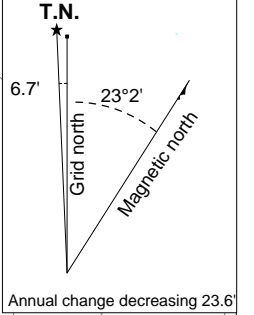
Respectfully submitted,

ARCHER, CATHRO & ASSOCIATES (1981) LIMITED

Heather Smith B.Sc. Geology, GIT



INDEPENDENCE CREEK



6969000 mN

564000 mE

565000 mE

**SILVER QUEST RESOURCES LTD.  
 ATAC RESOURCES LTD.**

FIGURE 5  
 ARCHER, CATHRO & ASSOCIATES (1981) LIMITED  
**SOIL SAMPLE LOCATIONS**  
 HAN PROPERTY

0 125 m 500 m  
 UTM ZONE 7, NAD 83, 115J/13

FILE: ...2009/DAWSON RANGE GOLD/HAN      DATE: JAN 2010

**REFERENCES**

Colpron, M.

- 2006 Tectonic Assemblage Map of Yukon-Tanana and Related Terranes in Yukon and Northern British Columbia; Yukon Geological Survey, Open File 2006-1.

Gordey, S.P. and Makepeace, A.J. (comp.).

- 1999 Yukon digital geology; Geological Survey of Canada, Open File D3826 and Exploration and Geological Services Division, Yukon Region, Indian and Northern Affairs Canada.

Scott, D. and Aikins, H.S.

- 1970 Geochemical Report on the FBH Claim Group; Report prepared for Fawn Bay Development Company Ltd. and Hanna Gold Mines Ltd, Assessment Report Number 060610.

Templelman-Kluit, D.J.

- 1974 Reconnaissance Geology of the Snag River Map Area, Yukon; Geological Survey of Canada.

**APPENDIX I**  
**STATEMENT OF QUALIFICATIONS**

## STATEMENT OF QUALIFICATIONS

I, Heather Smith, geologist, with business addresses in Vancouver, British Columbia and Whitehorse, Yukon Territory and residential address at #604-175 West 1 Street, North Vancouver, British Columbia, V7M 3N9 do hereby certify that:

1. I graduated from the University of British Columbia in 2006 with a B. Sc in Geological Sciences.
2. From 2004 to present, I have been actively engaged in mineral exploration in the Yukon Territory, British Columbia and Northwest Territories.
3. I am a Geoscientist in Training (GIT) with the Association of Professional Engineers and Geoscientists of British Columbia (Member Number 150000).
4. I have personally participated in the fieldwork reported herein and have interpreted all data resulting from this work.

Heather Smith, B.Sc. Geology, GIT

QW28538

ARCHER, CATHRO & ASSOCIATES (1981) LIMITED  
1016 - 510 West Hastings Street  
Vancouver, B.C. V6B 1L8

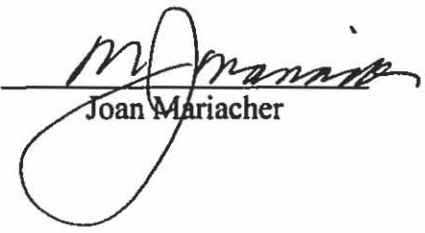
Telephone: 604-688-2568



AFFIDAVIT

I, Joan Mariacher, of Vancouver, B.C. make oath and say:

That to the best of my knowledge the attached Statement of Expenditures for exploration work on the Han 1-8 mineral claims on Claim Sheet 115J/13 is accurate.

  
Joan Mariacher

Sworn before me at Vancouver, B.C.

this 18th day of March 2010.

  
Barrister & Solicitor

**IAN J. TALBOT**  
Barrister & Solicitor  
281 East 5th Street  
North Vancouver  
British Columbia  
Canada V7L 1L8

Statement of Expenditures  
HAN 1-8 Mineral Claims  
February 3, 2010



Labour

H. Smith (geologist) August 23 – 1/2 day @ \$560/day plus January 2010 – 12.5 hrs @ \$70/hr	\$1,212.75
R. Nelson (field assistant) August 23 – 1/2 day @ \$440/day	231.00
E. Jacobsen (field assistant) August 23 – 1/2 day @ \$288/day	<u>151.20</u>
	1,594.95

Expenses

Field room and board – 1 1/2 day @ \$125/day	196.88
Fireweed Helicopters – 1.1 hrs Bell 206 @ \$995/hr plus fuel	1,289.28
ALS Chemex	<u>1,104.04</u>
	2,590.20

Total	<u>\$4,185.15</u>
-------	-------------------



# FLIGHT TICKET / INVOICE

WHITEHORSE DAWSON CITY  
 867-668-5888 @ 867-993-5700 No 5969  
 fax: 867-668-7875 fax: 867-993-6839  
 Box 26, Whitehorse, Yukon Y1A 5X9 GST # 128659828

CHARTERER Archer Cathro		PILOT K. Scholz		DATE Aug 23 109	
		SIGNATURE <i>K. Scholz</i>		AIRCRAFT FW4	
		CHEQUE	CASH	CHARGE	
TELEPHONE		POSTAL CODE		PURCHASE ORDER NO.	
				BASE YDA	
CUSTOMER FUEL		FLIGHT ITINERARY		PASS	TIME
45.6 LIT FROM Eureka		Dawson - Eureka PLU3 - BDR		3	
LIT FROM		D103 - HAN D103 - Eureka -		3	
		Dawson		3	
FIREWEED FUEL					
205.2 LIT FROM Dawson @ 1.30					
LIT FROM @ \$					
LIT FROM @ \$		<div style="border: 1px solid black; border-radius: 50%; padding: 5px; display: inline-block;">           1.1 Hrs BDR            1.1 Hrs HAN         </div>		227.89	1227.89
					1289.20
					1289.18
OTHER CHARGES	DESCRIPTION	AMOUNT			
					2.2
PILOT EXPENSES	DESCRIPTION	AMOUNT	RATE PER HOUR WET/DRY	TOTAL	
			995.00		
	PASSENGERS (names)	FLIGHT		GST	
		2189.00		109.45	\$ 2298.45
	Heather, Ryan	FUEL	266.76	GST 13.34	\$ 280.10
	Eric	OTHER		GST	\$
AUTHORIZED BY (print)			TOTAL	122.79	\$ 2578.55
SIGNATURE	x <i>Heather Smith</i>		2455.78		

Heather Smith.





# ALS Chemex

EXCELLENCE IN ANALYTICAL CHEMISTRY

ALS Canada Ltd

2103 Dollarton Hwy  
North Vancouver BC V7H 0A7

Phone: 604 984 0221 Fax: 604 984 0218 www.alschemex.com

To: ATAC RESOURCES LTD.  
C/O ARCHER, CATHRO & ASSOCIATES (1981) LIMITED  
1016-510 W HASTINGS ST  
VANCOUVER BC V6B 1L8

INVOICE NUMBER 1965260

### BILLING INFORMATION

Certificate: **VA09096828**

Sample Type: **Soil**

Account: **RCM**

Date: **23-SEP-2009**

Project: **HAN** *AK*

P.O. No.:

Quote: **ALSC-CW09-032-F-R1**

Terms: **Net 30 Days** **C1**

Comments:

ANALYSED FOR			UNIT	TOTAL
QUANTITY	CODE	DESCRIPTION	PRICE	
56	PREP-41	Dry, Sieve (180 um) Soil	0.96	53.76
14.06	PREP-41	Weight Charge (kg) - Dry, Sieve (180 um) Soil	1.80	25.31
55	Au-ICP21	Au 30g FA ICP-AES Finish	10.61	583.55
55	ME-ICP41	35 Element Aqua Regia ICP-AES	4.72	259.60
55	GEO-AR01	Aqua regia digestion	2.35	129.25

*DRG  
NAV*

SUBTOTAL (CAD) \$ 1,051.47

R100938885 GST \$ 52.57

**TOTAL PAYABLE (CAD) \$ 1,104.04**

To **ATAC RESOURCES LTD.**  
**ATTN: ACCOUNTS PAYABLE**  
**C/O ARCHER, CATHRO & ASSOCIATES (1981) LIMITED**  
**1016-510 W HASTINGS ST**  
**VANCOUVER BC V6B 1L8**

Payment may be made by: Cheque or Bank Transfer

Beneficiary Name: **ALS Canada Ltd.**  
 Bank: **Royal Bank of Canada**  
 SWIFT: **ROYCCAT2**  
 Address: **Vancouver, BC, CAN**  
 Account: **003-00010-1001098**

Please Remit Payments To :  
**ALS Chemex**

2103 Dollarton Hwy  
 North Vancouver BC V7H 0A7



**APPENDIX II**  
**CERTIFICATES OF ANALYSIS**



# ALS Chemex

**EXCELLENCE IN ANALYTICAL CHEMISTRY**

ALS Canada Ltd.

2103 Dollarton Hwy

North Vancouver BC V7H 0A7

Phone: 604 984 0221 Fax: 604 984 0218 www.alschemex.com

To: ATAC RESOURCES LTD.

C/O ARCHER, CATHRO & ASSOCIATES (1981)

LIMITED

1016-510 W HASTINGS ST

VANCOUVER BC V6B 1L8

Page: 1

Finalized Date: 22-SEP-2009

Account: RCM

## CERTIFICATE VA09096828

Project: HAN

P.O. No.:

This report is for 56 Soil samples submitted to our lab in Vancouver, BC, Canada on 8-SEP-2009.

The following have access to data associated with this certificate:

AL ARCHER  
BILL WENGZYNOWSKI

DOUG EATON

JOAN MARIACHER

## SAMPLE PREPARATION

ALS CODE	DESCRIPTION
WEI-21	Received Sample Weight
LOG-22	Sample login - Rcd w/o BarCode
SCR-41	Screen to -180um and save both

## ANALYTICAL PROCEDURES

ALS CODE	DESCRIPTION	INSTRUMENT
Au-ICP21	Au 30g FA ICP-AES Finish	ICP-AES
ME-ICP41	35 Element Aqua Regia ICP-AES	ICP-AES

To: ATAC RESOURCES LTD.  
 ATTN: AL ARCHER  
 C/O ARCHER, CATHRO & ASSOCIATES (1981) LIMITED  
 1016-510 W HASTINGS ST  
 VANCOUVER BC V6B 1L8

This is the Final Report and supersedes any preliminary report with this certificate number. Results apply to samples as submitted. All pages of this report have been checked and approved for release.

Signature:

Colin Ramshaw, Vancouver Laboratory Manager



# ALS Chemex

**EXCELLENCE IN ANALYTICAL CHEMISTRY**

ALS Canada Ltd.

2103 Dollarton Hwy

North Vancouver BC V7H 0A7

Phone: 604 984 0221 Fax: 604 984 0218 www.alschemex.com

To: ATAC RESOURCES LTD.

C/O ARCHER, CATHRO & ASSOCIATES (1981)

LIMITED

1016-510 W HASTINGS ST

VANCOUVER BC V6B 1L8

Project: HAN

Page: 2 - A

Total # Pages: 3 (A - C)

Plus Appendix Pages

Finalized Date: 22-SEP-2009

Account: RCM

## CERTIFICATE OF ANALYSIS VA09096828

Sample Description	Method Analyte Units LOR	WEI-21	Au-ICP21	ME-ICP41	ME-ICP41	ME-ICP41	ME-ICP41	ME-ICP41	ME-ICP41	ME-ICP41	ME-ICP41	ME-ICP41	ME-ICP41	ME-ICP41	ME-ICP41	ME-ICP41
		Recvd Wt. kg	Au ppm	Ag ppm	Al %	As ppm	B ppm	Ba ppm	Be ppm	Bi ppm	Ca %	Cd ppm	Co ppm	Cr ppm	Cu ppm	Fe %
		0.02	0.001	0.2	0.01	2	10	10	0.5	2	0.01	0.5	1	1	1	0.01
CC65397		0.26	0.008	0.2	0.67	<2	<10	60	<0.5	<2	0.12	<0.5	2	12	10	1.05
CC65398		0.40	0.008	<0.2	2.81	2	<10	190	<0.5	3	0.40	<0.5	17	54	61	3.85
CC65399		0.28	0.004	<0.2	2.57	5	<10	260	<0.5	<2	0.36	<0.5	15	42	43	3.88
CC65400		0.24	0.005	<0.2	2.50	6	<10	290	0.5	<2	0.47	<0.5	18	58	68	4.13
CC65401		0.20	0.001	<0.2	2.36	9	<10	80	0.5	<2	0.18	<0.5	9	30	15	3.28
CC65402		0.22	0.002	<0.2	2.41	8	<10	220	<0.5	<2	0.57	<0.5	12	44	36	3.66
CC65403		0.24	0.004	NSS	NSS	NSS	NSS	NSS	NSS	NSS	NSS	NSS	NSS	NSS	NSS	NSS
CC65404		0.26	0.003	<0.2	2.73	7	<10	260	<0.5	2	0.49	<0.5	12	40	24	3.57
CC65405		0.34	0.004	<0.2	2.63	4	<10	230	<0.5	<2	0.46	<0.5	11	59	34	3.51
CC65406		0.30	0.003	<0.2	2.36	8	<10	150	0.5	2	0.27	<0.5	13	58	27	3.55
CC65407		0.24	0.008	<0.2	2.80	10	<10	210	0.5	<2	0.32	<0.5	12	47	33	3.67
CC65408		0.32	0.006	<0.2	3.82	8	<10	370	0.8	<2	0.54	<0.5	16	38	56	4.96
CC65409		0.16	0.009	<0.2	2.40	11	<10	110	0.5	2	0.20	<0.5	10	33	22	3.34
CC65410		0.26	0.008	<0.2	2.38	7	<10	150	<0.5	2	0.30	<0.5	13	43	34	3.58
CC65411		0.20	0.005	<0.2	1.78	5	<10	140	0.8	2	0.34	<0.5	8	29	27	2.87
CC65412		0.24	0.006	<0.2	2.09	12	<10	160	0.5	2	0.39	<0.5	13	44	48	3.45
CC65413		0.24	0.003	<0.2	2.42	7	<10	250	0.6	3	0.42	<0.5	14	46	39	3.62
CC65414		0.28	0.005	<0.2	2.52	8	<10	340	0.6	<2	0.69	<0.5	16	54	65	3.74
CC65420		0.22	0.002	<0.2	2.04	<2	<10	230	<0.5	<2	0.52	<0.5	13	44	26	3.12
CC65421		0.32	0.005	<0.2	2.05	2	<10	160	<0.5	2	0.35	<0.5	12	36	30	2.82
CC65422		0.20	0.004	0.3	1.85	4	<10	180	<0.5	<2	0.35	<0.5	11	37	23	2.81
CC65423		0.30	0.005	<0.2	2.37	7	<10	260	<0.5	2	0.45	<0.5	14	47	33	3.53
CC65424		0.16	NSS	0.6	3.31	11	<10	370	0.8	3	0.64	<0.5	20	64	71	4.35
CC65425		0.20	0.003	<0.2	3.22	15	<10	570	2.6	2	0.36	<0.5	20	113	41	4.70
CC65426		0.16	0.004	<0.2	1.83	10	<10	110	<0.5	<2	0.12	<0.5	9	38	23	3.71
CC65427		0.20	0.005	<0.2	2.04	15	<10	260	<0.5	3	0.27	<0.5	14	70	53	2.99
CC65428		0.26	0.018	<0.2	2.53	16	<10	400	<0.5	2	0.43	<0.5	18	105	72	3.94
CC65429		0.20	0.006	<0.2	3.20	22	<10	420	0.6	2	0.52	<0.5	19	149	59	4.58
CC65430		0.16	0.004	<0.2	2.12	16	<10	270	0.5	2	0.35	<0.5	10	68	49	3.15
CC65431		0.30	0.007	<0.2	2.95	32	<10	390	0.6	2	0.50	<0.5	24	255	65	4.53
CC65432		0.16	0.003	<0.2	1.08	2	<10	140	<0.5	2	0.20	<0.5	6	23	20	1.82
CC65433		0.18	0.009	<0.2	2.52	31	<10	320	0.6	2	0.40	<0.5	27	199	62	4.64
CC65434		0.18	0.002	<0.2	2.09	6	<10	150	<0.5	2	0.27	<0.5	39	104	43	3.70
CC65435		0.26	0.004	<0.2	1.58	<2	<10	140	<0.5	<2	0.50	<0.5	17	95	34	2.12
CC65436		0.30	0.004	<0.2	1.85	<2	<10	150	<0.5	2	0.45	<0.5	25	131	37	2.99
CC65437		0.24	0.019	<0.2	1.92	2	<10	120	<0.5	3	0.38	<0.5	35	298	28	3.13
CC65438		0.26	0.004	<0.2	2.45	5	<10	350	<0.5	3	0.47	<0.5	15	65	52	3.56
CC65472		0.16	0.002	0.3	0.56	<2	<10	60	<0.5	2	0.13	<0.5	5	13	12	0.83
CC65473		0.24	0.003	<0.2	2.22	7	<10	130	<0.5	<2	0.33	<0.5	11	43	28	3.63
CC65474		0.30	0.004	<0.2	2.61	10	<10	130	0.6	<2	0.22	<0.5	9	39	23	3.57



# ALS Chemex

**EXCELLENCE IN ANALYTICAL CHEMISTRY**

ALS Canada Ltd.

2103 Dollarton Hwy  
North Vancouver BC V7H 0A7

Phone: 604 984 0221 Fax: 604 984 0218 www.alschemex.com

To: ATAC RESOURCES LTD.  
C/O ARCHER, CATHRO & ASSOCIATES (1981)  
LIMITED  
1016-510 W HASTINGS ST  
VANCOUVER BC V6B 1L8

Project: HAN

Page: 2 - B  
Total # Pages: 3 (A - C)  
Plus Appendix Pages  
Finalized Date: 22-SEP-2009  
Account: RCM

## CERTIFICATE OF ANALYSIS VA09096828

Sample Description	Method	ME-ICP41	ME-ICP41	ME-ICP41	ME-ICP41	ME-ICP41	ME-ICP41	ME-ICP41	ME-ICP41	ME-ICP41	ME-ICP41	ME-ICP41	ME-ICP41	ME-ICP41	ME-ICP41	
	Analyte	Ga	Hg	K	La	Mg	Mn	Mo	Na	Ni	P	Pb	S	Sb	Sc	Sr
	Units LOR	ppm	ppm	%	ppm	%	ppm	ppm	%	ppm	ppm	ppm	%	ppm	ppm	ppm
		10	1	0.01	10	0.01	5	1	0.01	1	10	2	0.01	2	1	1
CC65397		<10	<1	0.03	<10	0.15	79	1	0.02	6	320	6	0.03	<2	1	11
CC65398		10	1	0.27	10	1.14	402	<1	0.03	33	840	7	0.03	<2	8	19
CC65399		10	1	0.25	10	0.97	464	1	0.02	25	720	8	0.03	<2	7	20
CC65400		10	<1	0.36	20	1.02	837	2	0.03	43	820	6	0.04	<2	9	28
CC65401		10	<1	0.04	10	0.42	294	1	0.02	23	360	14	0.02	<2	3	14
CC65402		10	1	0.14	10	0.77	356	1	0.03	27	780	10	0.06	<2	7	31
CC65403		NSS	NSS	NSS	NSS	NSS	NSS	NSS	NSS	NSS	NSS	NSS	NSS	NSS	NSS	NSS
CC65404		10	1	0.16	10	0.83	343	1	0.03	25	690	10	0.05	<2	8	31
CC65405		10	1	0.29	20	0.94	510	1	0.03	34	690	8	0.03	<2	9	28
CC65406		10	1	0.16	20	0.83	561	1	0.02	37	530	9	0.03	<2	6	19
CC65407		10	<1	0.17	20	0.83	414	1	0.02	31	610	9	0.03	<2	7	21
CC65408		10	<1	0.89	20	1.41	762	<1	0.04	22	980	10	0.02	<2	15	40
CC65409		10	1	0.05	10	0.51	386	1	0.02	25	420	13	0.03	<2	4	17
CC65410		10	<1	0.17	10	0.82	537	1	0.02	27	620	9	0.03	<2	6	16
CC65411		<10	1	0.16	20	0.53	498	1	0.03	17	710	11	0.05	<2	4	22
CC65412		10	1	0.11	10	0.72	544	1	0.03	28	610	11	0.03	<2	7	23
CC65413		10	1	0.12	10	0.87	641	1	0.02	27	680	15	0.04	<2	7	29
CC65414		10	1	0.15	20	0.83	933	1	0.03	32	710	10	0.06	<2	10	32
CC65420		10	<1	0.28	10	0.91	411	1	0.02	26	740	6	0.02	<2	7	25
CC65421		10	<1	0.20	10	0.77	344	1	0.01	22	770	6	0.02	<2	6	17
CC65422		10	1	0.21	10	0.72	530	1	0.02	21	750	6	0.03	<2	6	22
CC65423		10	1	0.24	10	0.89	643	1	0.02	30	740	6	0.03	<2	7	27
CC65424		10	1	0.17	30	0.70	1360	2	0.03	42	1150	10	0.12	<2	10	46
CC65425		10	1	0.30	40	1.35	1010	1	0.04	69	620	19	0.02	<2	14	26
CC65426		10	<1	0.08	10	0.41	488	2	0.01	19	320	14	0.03	<2	4	12
CC65427		10	<1	0.14	10	0.69	507	1	0.02	73	540	20	0.04	<2	4	23
CC65428		10	1	0.28	20	1.25	1000	1	0.02	83	800	8	0.03	<2	9	25
CC65429		10	<1	0.27	20	1.57	996	1	0.03	93	760	14	0.05	<2	12	34
CC65430		10	1	0.13	10	0.77	446	1	0.02	49	690	11	0.05	<2	5	26
CC65431		10	<1	0.31	20	1.91	957	1	0.02	242	890	6	0.03	<2	12	29
CC65432		<10	<1	0.06	10	0.36	269	1	0.02	15	390	5	0.03	<2	2	15
CC65433		10	1	0.31	20	1.74	1110	1	0.03	235	740	7	0.02	<2	11	20
CC65434		10	1	0.04	10	1.60	755	1	0.02	315	250	9	0.02	<2	5	24
CC65435		10	<1	0.03	10	0.87	290	<1	0.03	200	460	7	0.03	<2	7	33
CC65436		10	<1	0.03	10	1.36	246	<1	0.03	285	410	6	0.02	<2	7	29
CC65437		<10	<1	0.03	10	2.35	661	<1	0.02	335	410	6	0.02	<2	7	25
CC65438		10	1	0.16	20	1.13	421	1	0.02	93	390	5	0.03	<2	10	24
CC65472		<10	<1	0.03	<10	0.15	211	1	0.03	9	260	4	0.04	<2	1	12
CC65473		10	<1	0.19	10	0.95	458	1	0.02	23	650	8	0.03	<2	6	18
CC65474		10	1	0.09	10	0.75	363	1	0.02	21	450	16	0.03	<2	7	16



# ALS Chemex

**EXCELLENCE IN ANALYTICAL CHEMISTRY**

ALS Canada Ltd.

2103 Dollarton Hwy

North Vancouver BC V7H 0A7

Phone: 604 984 0221 Fax: 604 984 0218 www.alschemex.com

To: ATAC RESOURCES LTD.

C/O ARCHER, CATHRO & ASSOCIATES (1981)

LIMITED

1016-510 W HASTINGS ST

VANCOUVER BC V6B 1L8

Project: HAN

Page: 2 - C

Total # Pages: 3 (A - C)

Plus Appendix Pages

Finalized Date: 22-SEP-2009

Account: RCM

## CERTIFICATE OF ANALYSIS VA09096828

Sample Description	Method Analyte Units LOR	ME-ICP41	ME-ICP41	ME-ICP41	ME-ICP41	ME-ICP41	ME-ICP41	ME-ICP41
		Th	Ti	Tl	U	V	W	Zn
		ppm	%	ppm	ppm	ppm	ppm	ppm
		20	0.01	10	10	1	10	2
CC65397		<20	0.04	<10	<10	24	<10	17
CC65398		<20	0.18	<10	<10	98	<10	76
CC65399		<20	0.20	<10	<10	104	<10	73
CC65400		<20	0.18	<10	<10	109	<10	86
CC65401		<20	0.11	<10	<10	72	<10	67
CC65402		<20	0.11	<10	<10	92	<10	58
CC65403		NSS	NSS	NSS	NSS	NSS	NSS	NSS
CC65404		<20	0.13	<10	<10	83	<10	72
CC65405		<20	0.14	<10	<10	80	<10	63
CC65406		<20	0.12	<10	<10	78	<10	66
CC65407		<20	0.12	<10	<10	83	<10	63
CC65408		<20	0.23	<10	<10	128	<10	87
CC65409		<20	0.10	<10	<10	71	<10	54
CC65410		<20	0.15	<10	<10	88	<10	63
CC65411		<20	0.09	<10	<10	66	<10	69
CC65412		<20	0.10	<10	<10	83	<10	69
CC65413		<20	0.11	<10	<10	93	<10	89
CC65414		<20	0.11	<10	<10	93	<10	72
CC65420		<20	0.17	<10	<10	83	<10	62
CC65421		<20	0.16	<10	<10	75	<10	63
CC65422		<20	0.14	<10	<10	71	<10	53
CC65423		<20	0.16	<10	<10	87	<10	77
CC65424		<20	0.09	<10	<10	111	<10	72
CC65425		<20	0.16	<10	<10	153	<10	132
CC65426		<20	0.14	<10	<10	101	<10	54
CC65427		<20	0.09	<10	<10	84	<10	57
CC65428		<20	0.16	<10	<10	106	<10	90
CC65429		<20	0.14	<10	<10	118	<10	96
CC65430		<20	0.09	<10	<10	77	<10	71
CC65431		<20	0.11	<10	<10	104	<10	101
CC65432		<20	0.07	<10	<10	46	<10	32
CC65433		<20	0.12	<10	<10	105	<10	94
CC65434		<20	0.11	<10	<10	78	<10	52
CC65435		<20	0.11	<10	<10	62	<10	49
CC65436		<20	0.12	<10	<10	77	<10	49
CC65437		<20	0.08	<10	<10	62	<10	46
CC65438		<20	0.12	<10	<10	97	<10	54
CC65472		<20	0.04	<10	<10	22	<10	17
CC65473		<20	0.19	<10	<10	95	<10	64
CC65474		<20	0.14	<10	<10	86	<10	65



# ALS Chemex

**EXCELLENCE IN ANALYTICAL CHEMISTRY**

ALS Canada Ltd.

2103 Dollarton Hwy  
North Vancouver BC V7H 0A7

Phone: 604 984 0221 Fax: 604 984 0218 www.alschemex.com

To: ATAC RESOURCES LTD.  
C/O ARCHER, CATHRO & ASSOCIATES (1981)  
LIMITED  
1016-510 W HASTINGS ST  
VANCOUVER BC V6B 1L8

Project: HAN

Page: 3 - A  
Total # Pages: 3 (A - C)  
Plus Appendix Pages  
Finalized Date: 22-SEP-2009  
Account: RCM

<b>CERTIFICATE OF ANALYSIS</b>	<b>VA09096828</b>
--------------------------------	-------------------

Sample Description	Method Analyte Units LOR	WEI-21 Recvd Wt. kg	Au-ICP21 Au ppm	ME-ICP41 Ag ppm	ME-ICP41 Al %	ME-ICP41 As ppm	ME-ICP41 B ppm	ME-ICP41 Ba ppm	ME-ICP41 Be ppm	ME-ICP41 Bi ppm	ME-ICP41 Ca %	ME-ICP41 Cd ppm	ME-ICP41 Co ppm	ME-ICP41 Cr ppm	ME-ICP41 Cu ppm	ME-ICP41 Fe %
CC65475		0.34	0.002	<0.2	1.96	8	<10	70	0.8	2	0.16	<0.5	5	24	13	2.76
CC65476		0.26	0.003	<0.2	2.34	6	<10	120	0.8	<2	0.25	<0.5	10	34	21	2.81
CC65477		0.24	0.004	<0.2	2.56	4	<10	210	<0.5	<2	0.38	<0.5	12	34	31	3.38
CC65478		0.18	0.004	<0.2	2.34	8	<10	210	0.8	2	0.49	<0.5	11	42	29	3.24
CC65479		0.20	0.007	<0.2	1.53	4	<10	90	0.6	<2	0.34	<0.5	11	39	24	2.90
CC65480		0.26	0.005	<0.2	2.41	7	<10	200	0.6	2	0.42	<0.5	13	38	32	3.40
CC65481		0.34	0.003	<0.2	2.57	7	<10	170	0.8	2	0.31	<0.5	12	33	27	3.56
CC65482		0.14	0.006	<0.2	1.97	3	<10	360	<0.5	2	0.50	<0.5	12	28	28	2.83
CC65483		0.32	0.004	<0.2	2.39	<2	<10	300	<0.5	<2	0.44	<0.5	12	32	28	3.17
CC65484		0.22	0.007	<0.2	2.24	7	<10	250	<0.5	<2	0.54	<0.5	16	45	45	3.72
CC65485		0.32	0.006	<0.2	1.80	7	<10	200	<0.5	3	0.40	<0.5	11	32	32	2.75
CC65486		0.34	0.002	<0.2	2.17	3	<10	220	<0.5	<2	0.36	<0.5	12	34	28	2.96
CC65487		0.30	0.005	<0.2	2.58	4	<10	310	<0.5	3	0.51	<0.5	13	35	39	3.60
CC65488		0.32	0.004	<0.2	2.58	6	<10	310	<0.5	<2	0.44	<0.5	13	32	30	3.62
CC65489		0.28	0.004	<0.2	2.59	5	<10	340	<0.5	<2	0.58	<0.5	15	37	28	3.94
CC65490		0.36	0.002	<0.2	2.77	5	<10	230	<0.5	<2	0.50	<0.5	18	69	49	3.93



# ALS Chemex

**EXCELLENCE IN ANALYTICAL CHEMISTRY**

ALS Canada Ltd.

2103 Dollarton Hwy

North Vancouver BC V7H 0A7

Phone: 604 984 0221 Fax: 604 984 0218 www.alschemex.com

To: ATAC RESOURCES LTD.

C/O ARCHER, CATHRO & ASSOCIATES (1981)

LIMITED

1016-510 W HASTINGS ST

VANCOUVER BC V6B 1L8

Project: HAN

Page: 3 - B

Total # Pages: 3 (A - C)

Plus Appendix Pages

Finalized Date: 22-SEP-2009

Account: RCM

## CERTIFICATE OF ANALYSIS VA09096828

Sample Description	Method	ME-ICP41	ME-ICP41	ME-ICP41	ME-ICP41	ME-ICP41	ME-ICP41	ME-ICP41	ME-ICP41	ME-ICP41	ME-ICP41	ME-ICP41	ME-ICP41	ME-ICP41	ME-ICP41	ME-ICP41
	Analyte	Ga	Hg	K	La	Mg	Mn	Mo	Na	Ni	P	Pb	S	Sb	Sc	Sr
Units		ppm	ppm	%	ppm	%	ppm	ppm	%	ppm	ppm	ppm	%	ppm	ppm	ppm
LOR		10	1	0.01	10	0.01	5	1	0.01	1	10	2	0.01	2	1	1
CC65475		10	1	0.06	10	0.39	201	1	<0.01	13	140	20	0.01	<2	3	11
CC65476		<10	1	0.07	10	0.56	331	<1	0.01	25	310	14	0.02	<2	5	17
CC65477		10	1	0.17	10	0.88	403	<1	0.02	28	690	6	0.03	<2	6	24
CC65478		10	<1	0.15	20	0.72	760	1	0.02	36	800	15	0.04	<2	6	29
CC65479		10	1	0.15	10	0.57	461	1	0.02	21	610	15	0.02	<2	5	16
CC65480		10	1	0.14	10	0.82	470	1	0.02	25	620	10	0.02	<2	6	24
CC65481		10	1	0.14	20	0.74	507	1	0.02	23	610	21	0.02	<2	5	19
CC65482		10	<1	0.13	20	0.65	1355	1	0.03	18	890	6	0.07	<2	6	31
CC65483		10	1	0.12	20	0.86	266	<1	0.01	23	820	8	0.01	<2	7	29
CC65484		10	1	0.22	10	1.02	490	1	0.03	30	750	8	0.03	<2	5	27
CC65485		10	<1	0.11	10	0.69	358	1	0.02	22	710	5	0.02	<2	4	23
CC65486		10	1	0.08	10	0.71	403	1	0.02	22	650	7	0.02	<2	5	21
CC65487		10	<1	0.18	10	0.97	553	1	0.02	25	760	6	0.03	<2	7	31
CC65488		10	<1	0.17	10	0.98	436	1	0.02	25	650	7	0.02	<2	7	28
CC65489		10	1	0.25	10	1.10	526	<1	0.02	25	670	8	0.02	<2	8	36
CC65490		10	1	0.34	10	1.43	455	1	0.02	36	710	6	0.01	<2	8	24



# ALS Chemex

**EXCELLENCE IN ANALYTICAL CHEMISTRY**

ALS Canada Ltd.

2103 Dollarton Hwy

North Vancouver BC V7H 0A7

Phone: 604 984 0221 Fax: 604 984 0218 www.alschemex.com

To: ATAC RESOURCES LTD.

C/O ARCHER, CATHRO & ASSOCIATES (1981)

LIMITED

1016-510 W HASTINGS ST

VANCOUVER BC V6B 1L8

Project: HAN

Page: 3 - C

Total # Pages: 3 (A - C)

Plus Appendix Pages

Finalized Date: 22-SEP-2009

Account: RCM

## CERTIFICATE OF ANALYSIS VA09096828

Sample Description	Method	ME-ICP41	ME-ICP41	ME-ICP41	ME-ICP41	ME-ICP41	ME-ICP41	ME-ICP41
	Analyte	Th	Ti	Tl	U	V	W	Zn
	Units	ppm	%	ppm	ppm	ppm	ppm	ppm
LOR	20	0.01	10	10	1	10	2	
CC65475	<20	0.05	<10	<10	58	<10	67	
CC65476	<20	0.10	<10	<10	60	<10	49	
CC65477	<20	0.17	<10	<10	85	<10	55	
CC65478	<20	0.10	<10	<10	75	<10	63	
CC65479	<20	0.12	<10	<10	77	<10	66	
CC65480	<20	0.14	<10	<10	81	<10	67	
CC65481	<20	0.13	<10	<10	81	<10	77	
CC65482	<20	0.09	<10	<10	69	<10	48	
CC65483	<20	0.15	<10	<10	81	<10	63	
CC65484	<20	0.18	<10	<10	106	<10	68	
CC65485	<20	0.14	<10	<10	70	<10	49	
CC65486	<20	0.13	<10	<10	77	<10	56	
CC65487	<20	0.15	<10	<10	89	<10	67	
CC65488	<20	0.16	<10	<10	89	<10	61	
CC65489	<20	0.16	<10	<10	99	<10	65	
CC65490	<20	0.21	<10	<10	108	<10	64	



# ALS Chemex

**EXCELLENCE IN ANALYTICAL CHEMISTRY**

ALS Canada Ltd.

2103 Dollarton Hwy

North Vancouver BC V7H 0A7

Phone: 604 984 0221 Fax: 604 984 0218 www.alschemex.com

To: ATAC RESOURCES LTD.  
C/O ARCHER, CATHRO & ASSOCIATES (1981)  
LIMITED  
1016-510 W HASTINGS ST  
VANCOUVER BC V6B 1L8

Project: HAN

File: Appendix 1  
Total # Appendix Pages: 1  
Finalized Date: 22-SEP-2009  
Account: RCM

**CERTIFICATE OF ANALYSIS VA09096828**

<b>Method</b>	<b>CERTIFICATE COMMENTS</b>
ALL METHODS	NSS is non-sufficient sample.