

GEOCHEMICAL

REPORT

CREAM 1- 22 CLAIMS

YC60088 – YC60109

CREAM 23 – 68 CLAIMS

YC83144 – YC83189

NTS # 115 J \ 13

LAT: 62° 55 N

LONG: 139° 37 W

WHITEHORSE MINING DISTRICT

AUTHOR OF REPORT SHAWN RYAN

WORK PERFORMED SEPTEMBER 06, 2009

DATE OF REPORT MARCH 24, 2010

TABLE OF CONTENT

1.0	Summary	p.3
2.0	INTRODUCTION	p.3
3.0	PROJECT LOCATION	p.3
4.0	ACCESS	p.3
	LOCATION MAP	p.4
5.0	GEOLOGY	p.5
5.1	REGIONAL GEOLOGY	p.5
6.0	WORK PERFORMED / METHODS	p.6
6.1	Soil Survey	p.6
7.0	INTERPRETATION	p.7
7.1	Soil Survey	p.7
8.0	RECOMMENDATION	p.7
9.0	REFERENCES CITED	p.7
10.0	Cost	p.7
11.0	Qualification	p.8
	Soil Sample Location Map	Figure 2
	Arsenic Soil Map	Figure 3
	Antimony Soil Map	Figure 4
	Lead Soil Map	Figure 5
	Zinc Soil Map	Figure 6
	Assay Data / GPS Soil Location Data	Appendix

1.0 SUMMARY

The Cream Claims had three soil samplers (Jesse Jewel, David Newell, and Mathew McHugh) all employees of Ryanwood exploration visit the property on September 6 2009. A total of 96 soils were collected and proved to be anomalous in lead, zinc, arsenic, and antimony.

2.0 INTRODUCTION

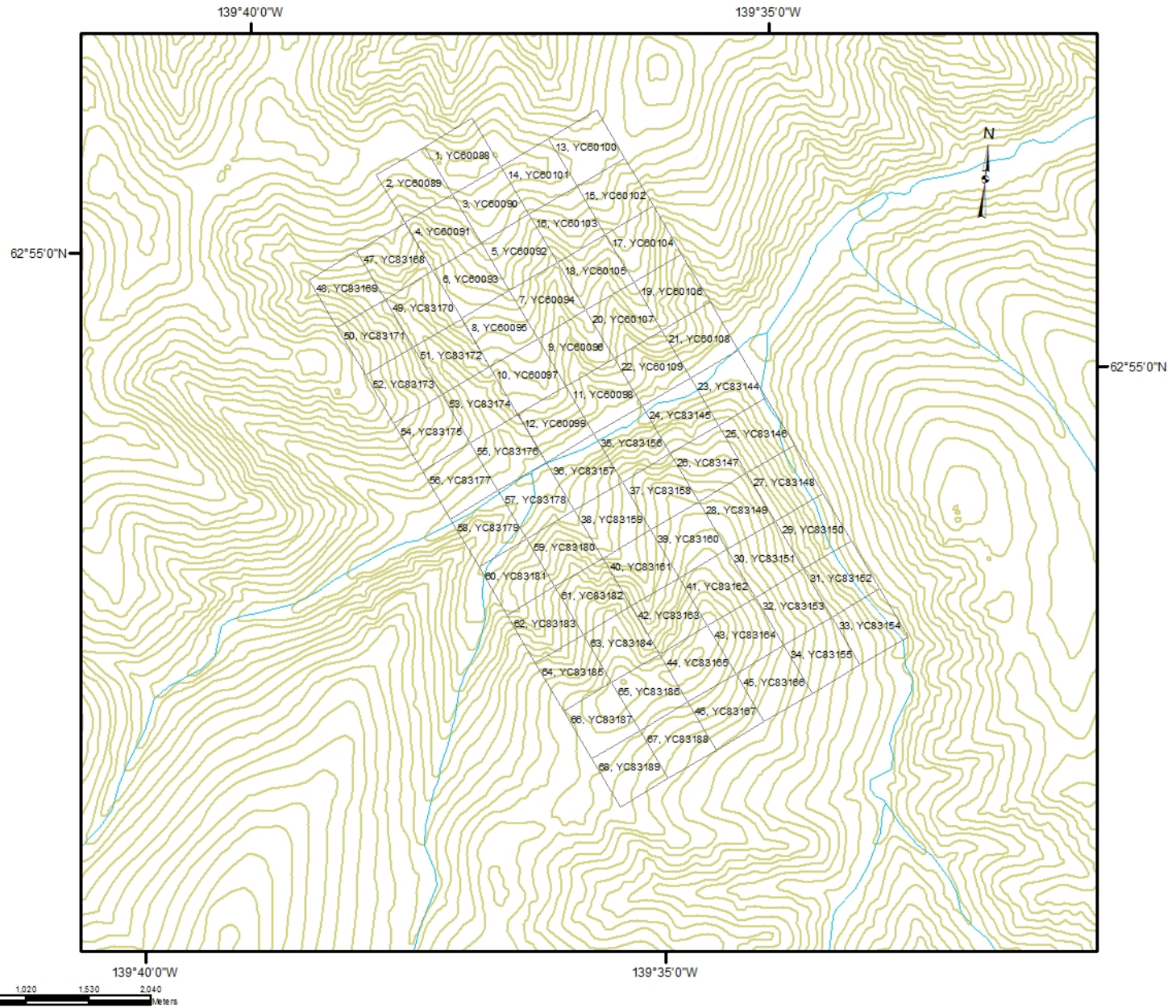
The Cream Claims are part of a regional soil survey undertaken by Ryanwood Exploration to reevaluated Deltango Gold Limited 1999 regional silt survey. ,Deltango regional silt survey notice an anomalous population of copper, molybdenum, silver, arsenic and minor lead, zinc, antimony and tungsten coming from the property. The 2009 soil survey targeted the south east part of the property.

3.0 LOCATION

The Cream claims are located 128 kilometers south - south west of Dawson City. More specifically 12 kilometers up Independence Creek which is a large creek draining on the on the south side of the Yukon River. ; It's in Whitehorse Mining Division, on NTS sheet # 115 J / 13 at the latitude 62°55'N and longitude 139°37'W.

4.0 ACCESS

The Cream claims can be reached via helicopter from Dawson City.

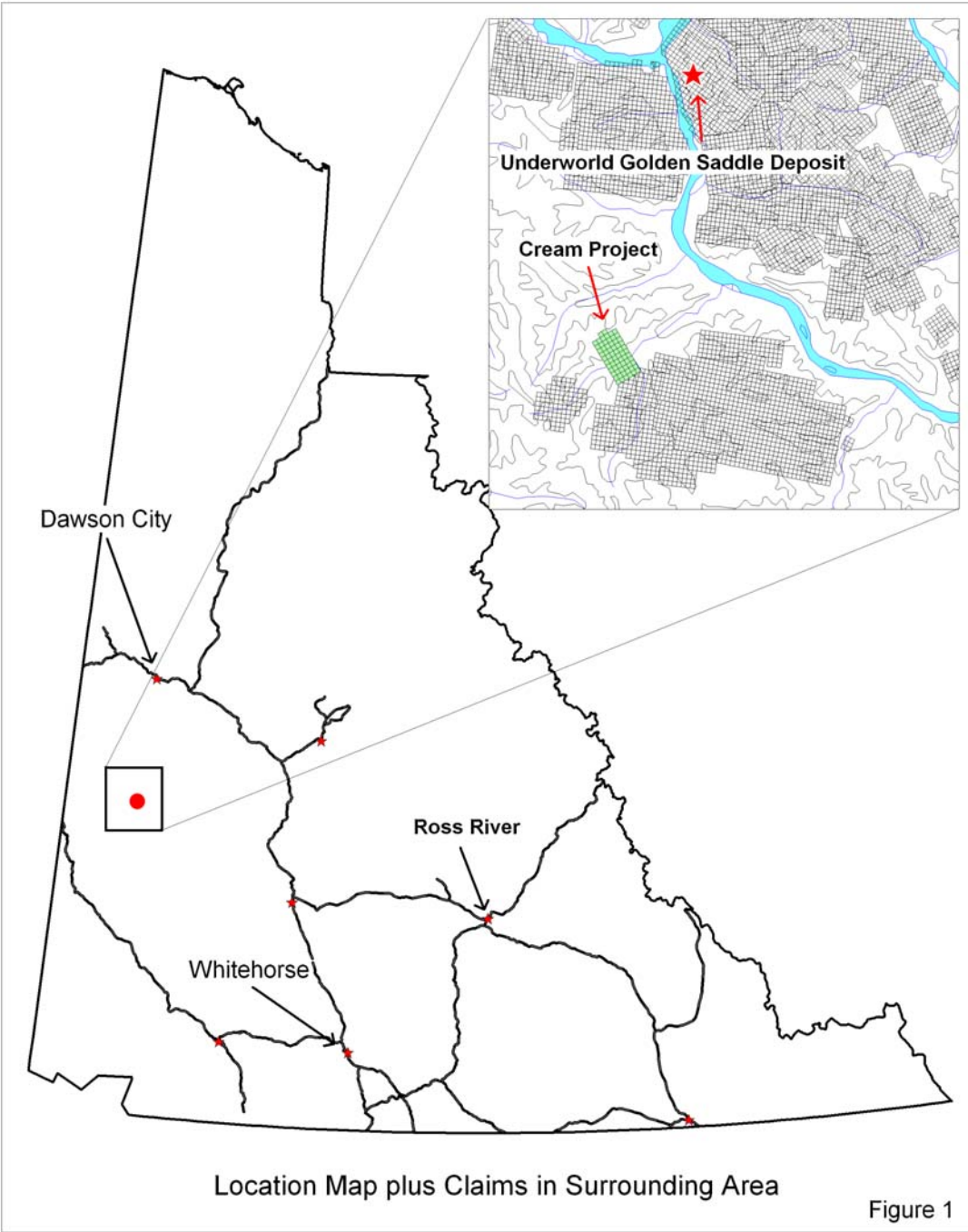


Cream Claims 1 - 68

Cream Claims

NTS 115J/13

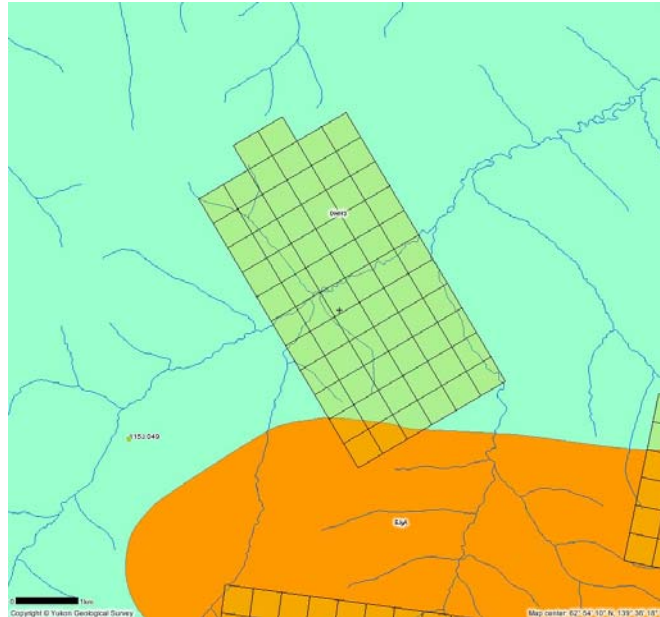
Nad 83, Yukon Albers Projection



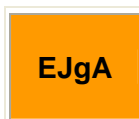
5.0 REGIONAL AND PROPERTY GEOLOGY

5.1 REGIONAL GEOLOGY

The Yukon geology map indicates the Cream Claims are straddling two rock units. One known as (EJgA) Coffee Creek Intrusive and the second unit is a (DMN3) Devonian to Mississippian called the Nasina ; a quartzite, micaceous quartzite, quartz muscovite (+/- chlorite; +/- feldspar augen) schist, and minor metaconglomerate and metagrit



EARLY JURASSIC



EJgA: AISHIHIK SUITE

medium- to coarse- grained, foliated biotite-hornblende granodiorite; biotite rich screens and gneiss schlieren; foliated hornblende diorite to monzodiorite with local K-feldspar megacrysts; may include unfoliated monzonite of the Long Lake Suite (**Aishihik Suite**)

DEVONIAN, MISSISSIPPIAN AND(?) OLDER



DMN: NASINA

graphitic quartzite and muscovite quartz-rich schist (1), (3)-(5), and(?) (6) with interspersed marble (2) and probable correlative successions (7) - (9)

3. quartzite, micaceous quartzite, quartz muscovite (+/-chlorite; +/- feldspar augen) schist, and minor metaconglomerate and metagrit as in (1), but may locally include significant Nisling Assemblage

6.0 WORK PERFORMED / METHODS

6.1 Soil Survey

The Cream 2009 soil survey collected 96 soils on a grid pattern of 200 meter line spacing and 50 meter station spacing.

Soil sampling Description

All soil samples are taken with one meter soil probes and sometime with a prospector pick. We carried both on rocky talus slope. Soil samples are gathered from an average depth of 70 centimeter. Soil sample locations are marked in the field with pink flagging and aluminum tags. The sample number is inscribed on the aluminum tag and tied to a tree or shrub at shoulder height above sample site.

The sample number is recorded with a Garmin Map76 GPS in UTM NAD 83.

Sample description such as color, depth, slope, sample quality, ground vegetation, tree cover and GPS coordinates (backup) are recorded in a Palm PDA data recorder.

A total of 400-500 grams of soil is collected and place in well mark kraft soil bags.

The GPS and PDA are downloaded every night and stored in the crew chief personal computer. A second backup copy of the data is transferred to a memory stick and the memory stick is relocated to a secondary tent (in case of fire).

All samples are brought back to Dawson City and air dried, repacked in rice bags, and sent to Acme Labs in Vancouver.

Samples are process with Aqua Regia ICP-MS for 36 elements (Acme Labs 1DX-15 gram).

7.0 INTERPRETATION

7.1 Soil Survey

The soil survey indicated high arsenic (Figure 3) values up to 280 ppm As, antimony (Figure 4) values up to 42.1 ppm Sb, lead (Figure 5) values up to 593 ppm Pb, and zinc (Figure 6) values up to 681 ppm Zn. The gold values were low and not worth plotting. I wonder if the anomalous elements we are seeing and given we are just outside the Coffee Creek intrusive that the elements are like a halo or distal zoning around a more potential gold rich system. Ideas but it's interesting that these lead values are the highest found to date in the area.

8.0 RECOMMENDATION

I would recommend completing a large soil survey to cover the entire claim block, at this point we will be able to see if the anomalous soil values (Arsenic, antimony, lead and zinc) are part of a large regional zoning.

I would also recommended prospecting the known high soils, with value like these something should be able to found on surface.

9.0 REFERENCES CITED

Deltango Gold Limited, 1999. Assessment Report # 094174 by Gregg Jilson.

10.0 COST

Wage 3 man days @ \$325.00 per day	\$990.00
Food 3 man days @\$50.00 per day	\$150.00
Camp Cost 3 man days @\$50.00 per day	\$150.00
Assay Cost 96 soil @ \$24.00 per sample	\$2,304.00
Helicopter Cost 2.3 hour @ \$1,300.00 per hour	\$2,990.00
Report writing	\$500.00
Total	\$7084.00

11.0 QUALIFICATION

I Shawn Ryan located in Dawson City, Yukon work as a professional prospector. I run a small exploration company located in Dawson City.

I have worked in the exploration business for the last 27 years. I worked the first 12 years as a contractor working on numerous projects in the NWT, Ontario, Quebec and the Yukon. I have worked the last 14 years as a local prospector for myself.

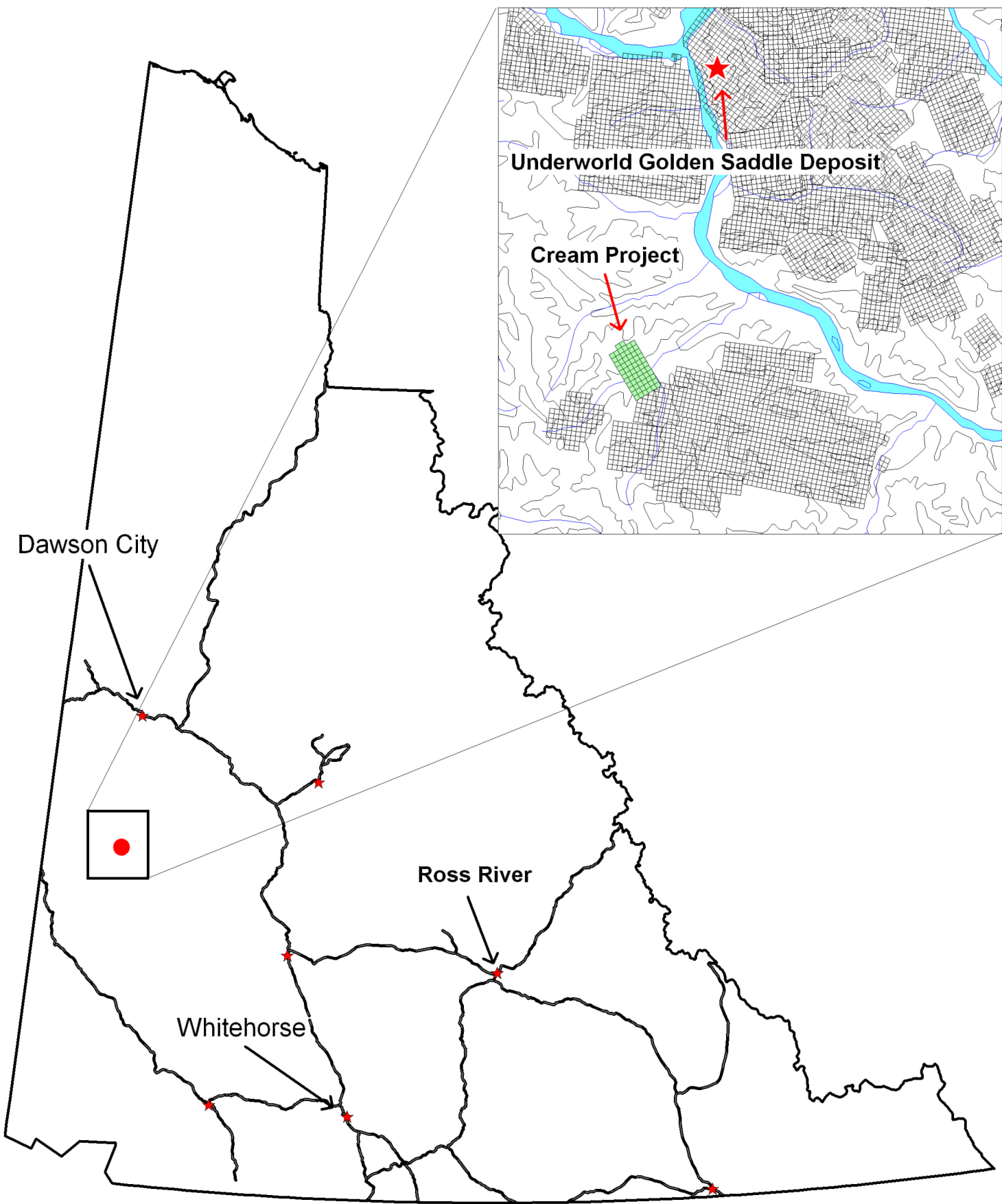
I have overseen the entire Cream Soil Survey.

I own 100% of the Cream claims and now have option them to Kaminak Gold Corp.

Dated this 24 of March 2010 in Dawson City, Yukon.

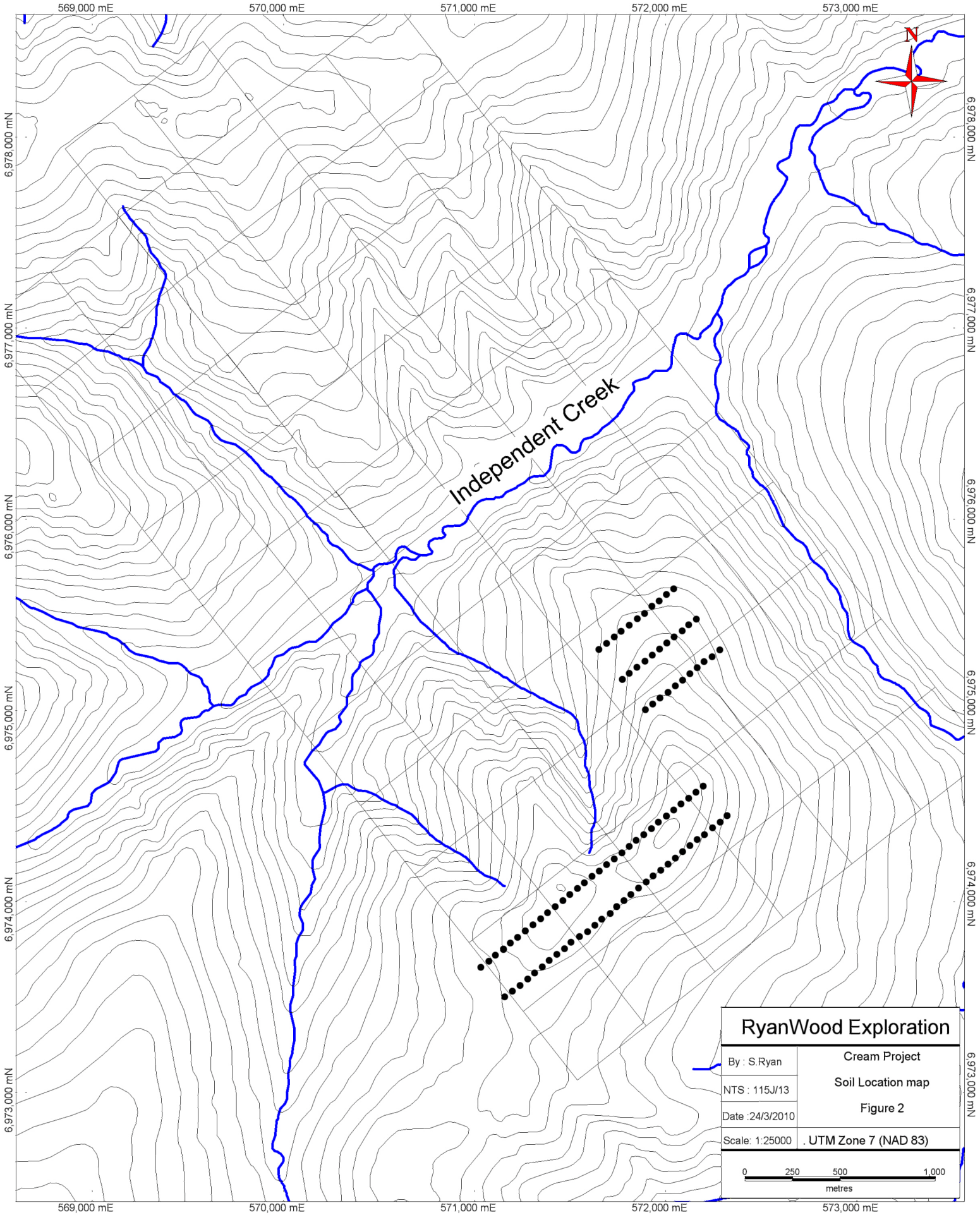
Respectfully submitted

Shawn Ryan

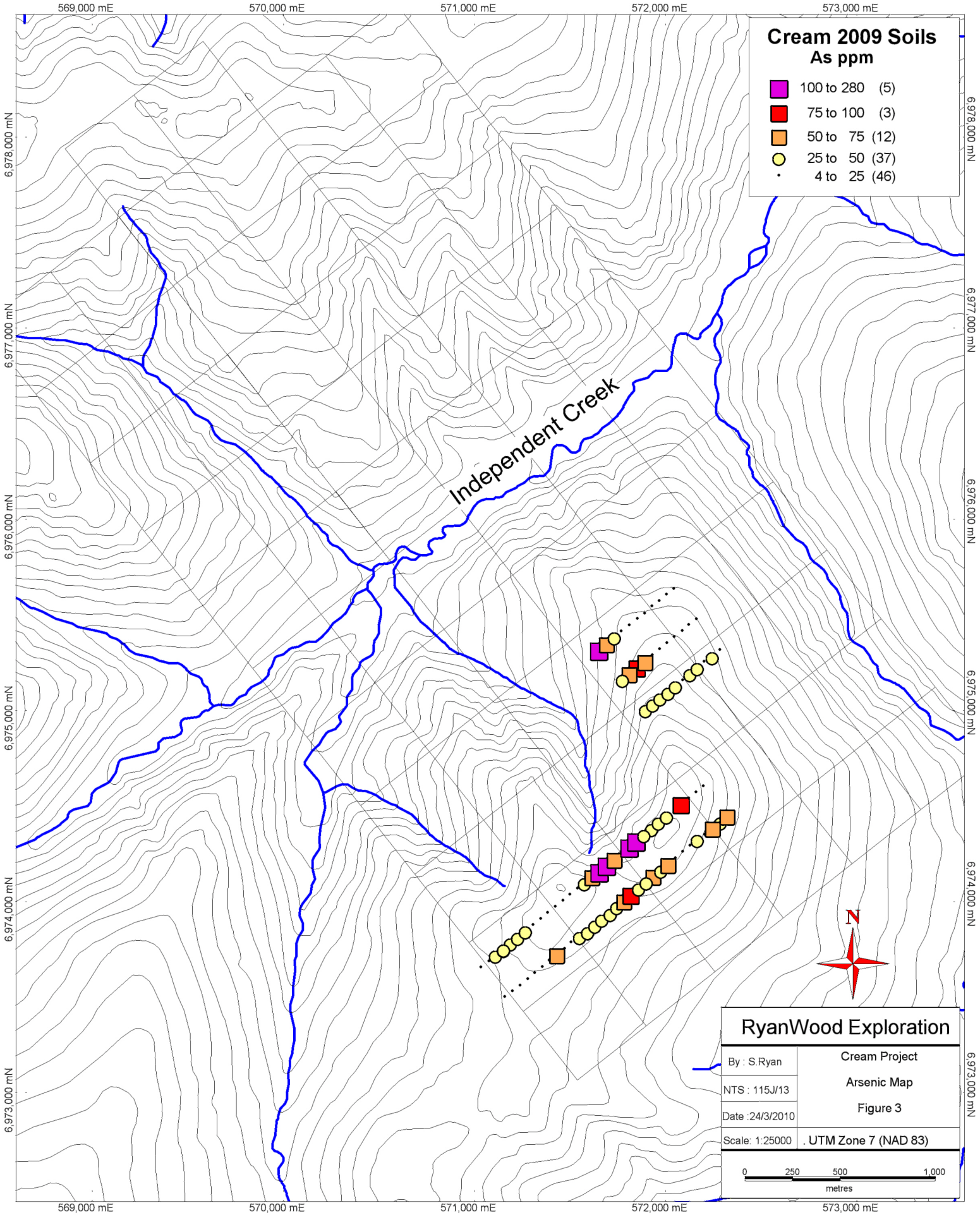


Location Map plus Claims in Surrounding Area

Figure 1

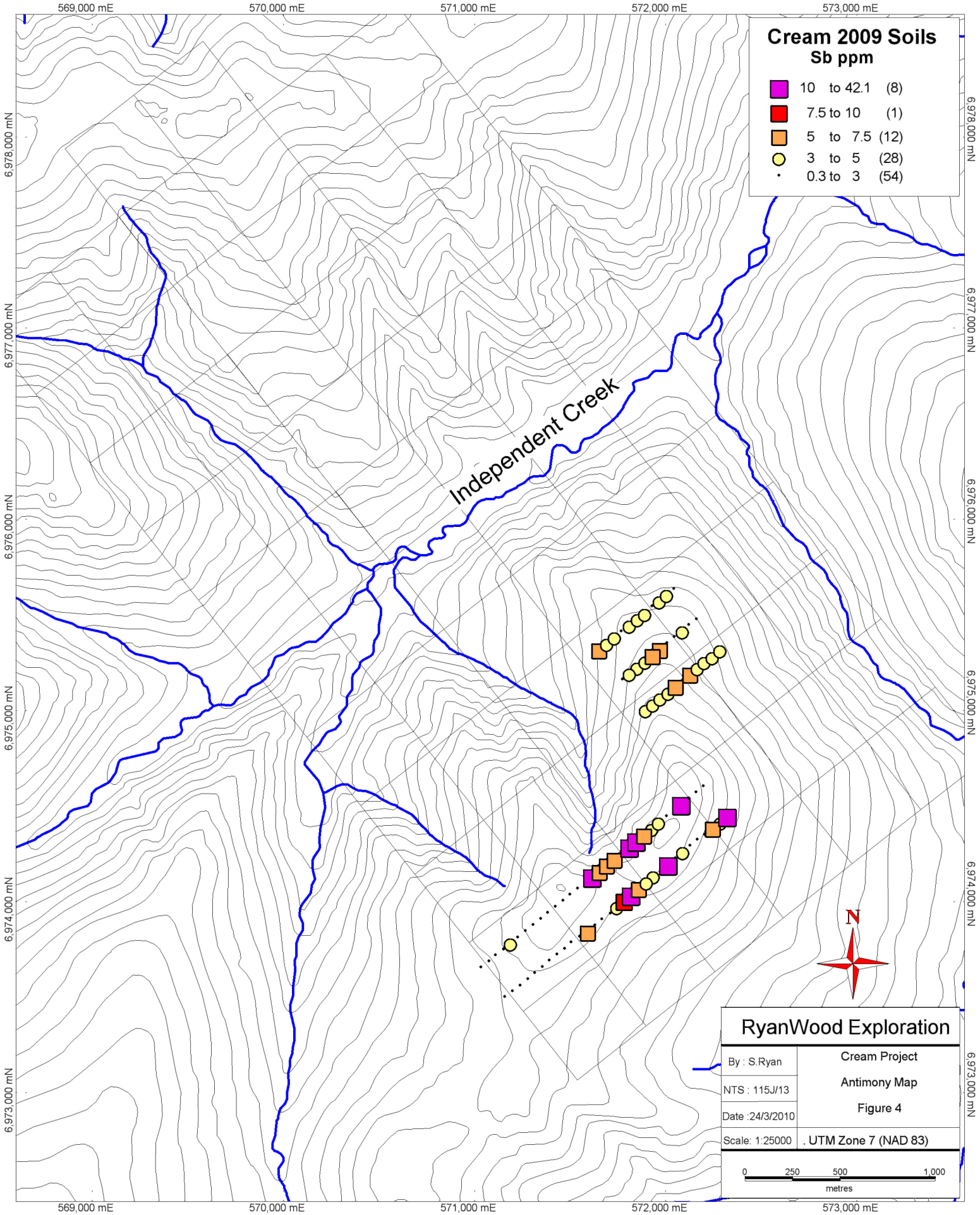


RyanWood Exploration	
By : S.Ryan	Cream Project
NTS : 115J/13	Soil Location map
Date :24/3/2010	Figure 2
Scale : 1:25000	UTM Zone 7 (NAD 83)
0 250 500 1,000 metres	



Independent Creek



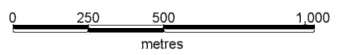


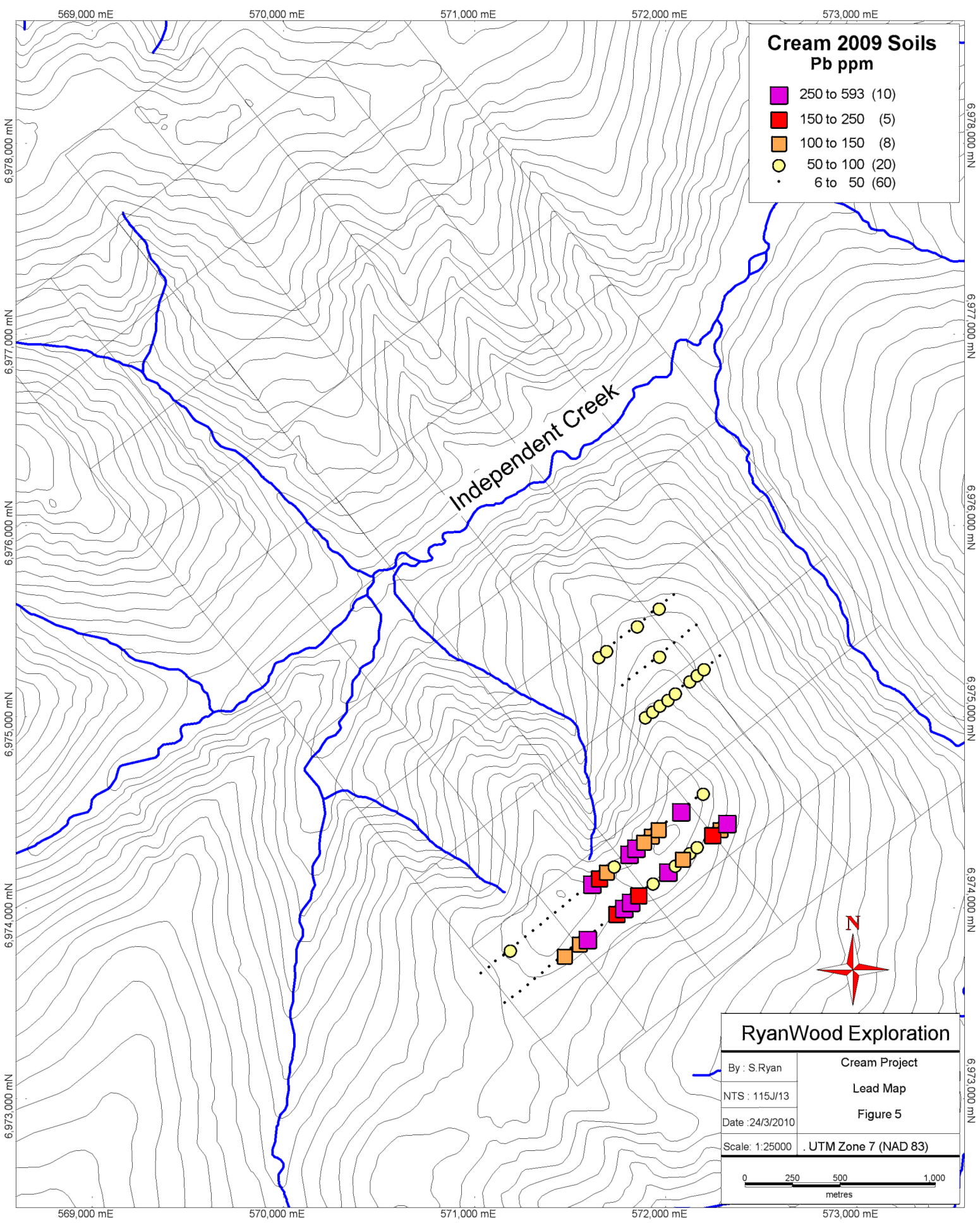
**Cream 2009 Soils
Sb ppm**

- 10 to 42.1 (8)
- 7.5 to 10 (1)
- 5 to 7.5 (12)
- 3 to 5 (28)
- 0.3 to 3 (54)

RyanWood Exploration

By : S.Ryan	Cream Project
NTS : 115J/13	Antimony Map
Date :24/3/2010	Figure 4
Scale: 1:25000	UTM Zone 7 (NAD 83)

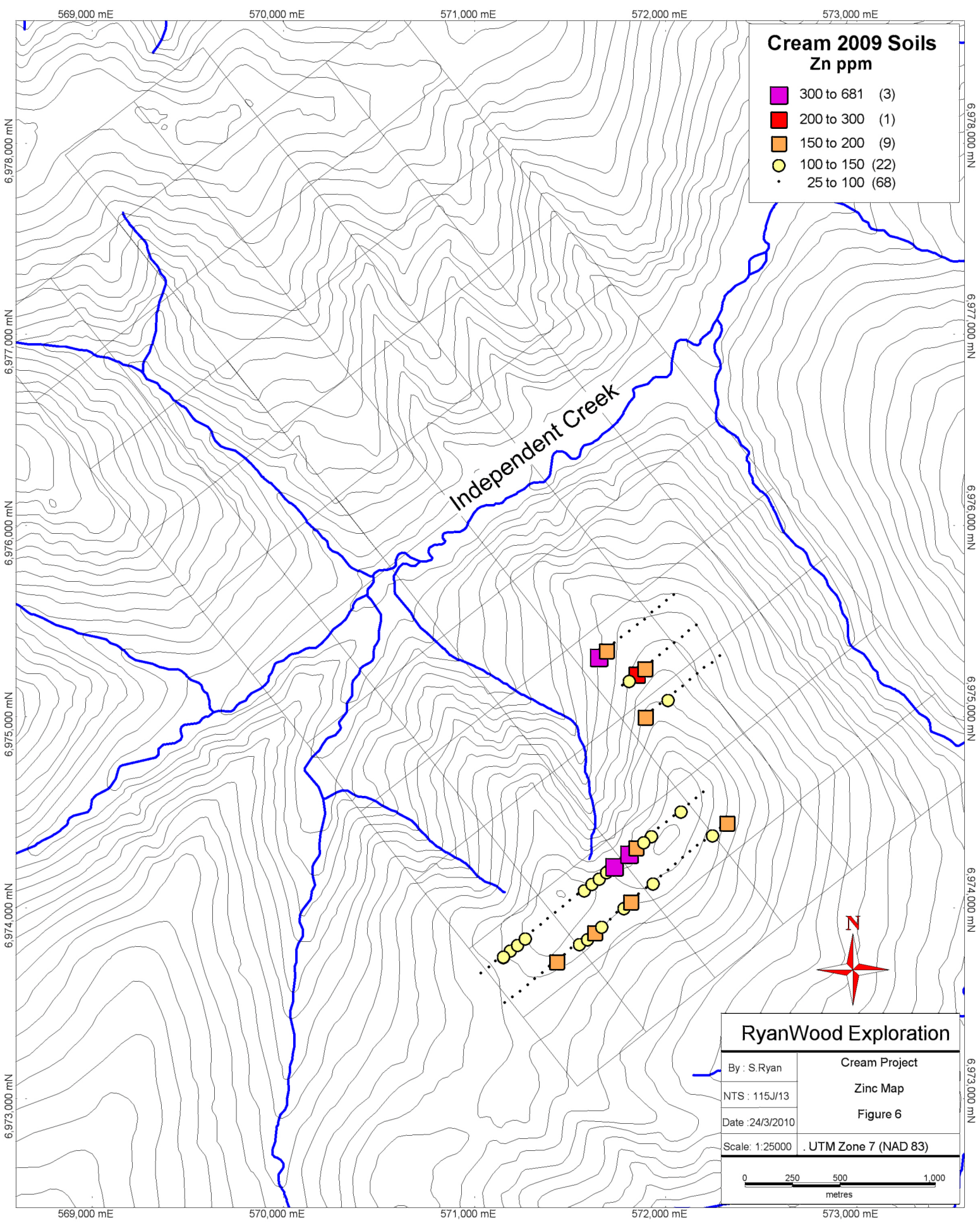




**Cream 2009 Soils
Pb ppm**

- 250 to 593 (10)
- 150 to 250 (5)
- 100 to 150 (8)
- 50 to 100 (20)
- 6 to 50 (60)

RyanWood Exploration	
By : S.Ryan	Cream Project
NTS : 115J/13	Lead Map
Date :24/3/2010	Figure 5
Scale: 1:25000	UTM Zone 7 (NAD 83)



**Cream 2009 Soils
Zn ppm**

- 300 to 681 (3)
- 200 to 300 (1)
- 150 to 200 (9)
- 100 to 150 (22)
- 25 to 100 (68)

RyanWood Exploration	
By : S.Ryan	Cream Project
NTS : 115J/13	Zinc Map
Date :24/3/2010	Figure 6
Scale : 1:25000	UTM Zone 7 (NAD 83)

SampleID	Easting	Northing	UTM	Mo	Cu	Pb	Zn	Ag	Ni	Co	Mn	Fe
CRM63126	571894	6975003	NAD83-07V	4.8	24.9	58.7	165	0.05	33.8	14.6	578	3.23
CRM63127	571932	6975033	NAD83-07V	2.9	30.7	62.9	87	0.2	19.5	6.9	167	2.42
CRM63128	571970	6975066	NAD83-07V	3.1	37.3	54.7	73	0.1	22.4	10	236	2.84
CRM63129	572012	6975096	NAD83-07V	4	37.2	53.3	110	0.2	26.1	11.2	250	2.86
CRM63130	572050	6975129	NAD83-07V	3.2	26.9	53	67	0.1	19.3	10.5	296	2.73
CRM63131	572088	6975159	NAD83-07V	2.4	14.9	36.4	47	0.05	12.7	5.7	171	2.62
CRM63132	572126	6975192	NAD83-07V	2.8	18.5	72	96	0.05	15.3	8.5	340	2.27
CRM63133	572165	6975223	NAD83-07V	4.2	18.9	62.1	87	0.1	18.2	7.9	252	3.09
CRM63134	572201	6975256	NAD83-07V	3.7	33.9	59.5	95	0.2	15.8	7.2	295	2.18
CRM63135	572242	6975282	NAD83-07V	4.3	20.3	42.1	89	0.05	21.9	10.4	482	3.49
CRM63136	572282	6975318	NAD83-07V	3.5	21.3	37.2	90	0.05	18.9	9.5	397	2.68
CRM63137	572160	6975478	NAD83-07V	1.9	10.5	20	50	0.05	10.4	4.6	313	1.85
CRM63138	572120	6975449	NAD83-07V	3.3	22	22.4	64	0.05	27.6	12.9	457	4.15
CRM63139	572085	6975416	NAD83-07V	3.7	23.3	37.1	73	0.1	18.7	9.2	438	2.5
CRM63140	572043	6975385	NAD83-07V	8.9	15.6	31	55	0.05	14.9	8	235	3.08
CRM63141	572005	6975354	NAD83-07V	2.7	24.8	25.1	60	0.05	33.7	15.2	298	3.59
CRM63141	572005	6975354	NAD83-07V	2.5	25.7	24.4	59	0.05	33.2	15	289	3.47
CRM63142	571967	6975321	NAD83-07V	1.3	9.8	72.5	50	0.05	10	4.8	178	1.96
CRM63143	571929	6975289	NAD83-07V	1.1	20	35.8	62	0.05	19	8.6	284	2.17
CRM63144	571892	6975258	NAD83-07V	4.2	34.9	40.5	198	0.1	29	11.1	336	3.78
CRM63145	571849	6975227	NAD83-07V	3.5	73.9	37.3	243	0.2	38.8	12	373	3.88
CRM63146	571809	6975194	NAD83-07V	3.6	35.2	19.3	122	0.05	20.1	7.8	191	2.8
CRM63147	571772	6975163	NAD83-07V	3.3	33.5	22.8	90	0.2	17.6	6.8	186	2.25
CRM63147	571772	6975163	NAD83-07V	3.3	33.5	21.9	89	0.2	17	6.8	182	2.24
CRM63148	571651	6975320	NAD83-07V	7	48.7	62.4	301	0.5	31.5	10.4	417	3.48
CRM63149	571690	6975351	NAD83-07V	5.1	29.5	53.4	172	0.1	32.1	10	428	3.56
CRM63150	571731	6975384	NAD83-07V	4.3	18.4	41.8	89	0.05	22.2	6.7	427	2.46
CRM79201	571767	6975415	NAD83-07V	3.8	20.8	36	78	0.05	21.6	10.1	526	3.1
CRM79202	571808	6975446	NAD83-07V	4.8	22.9	48.8	55	0.05	19.7	7.3	364	2.54
CRM79203	571851	6975480	NAD83-07V	2.2	17.6	61.5	58	0.05	14.5	6.4	294	2.2
CRM79204	571889	6975508	NAD83-07V	5.2	21.8	44.4	71	0.05	19	9.3	500	2.68
CRM79205	571928	6975546	NAD83-07V	4.9	18.3	24	35	0.2	10.3	4.3	209	1.71
CRM79206	571966	6975574	NAD83-07V	13.2	17.4	52.1	70	0.2	17	7.1	274	2.43
CRM79207	572003	6975606	NAD83-07V	3.3	20.4	29.7	62	0.1	17.1	5.4	139	2.08
CRM79244	572042	6975636	NAD83-07V	7.3	14.3	23.4	55	0.05	14.2	8	399	2.22
CRM80287	571158	6973503	NAD83-07V	4.4	23.9	21.7	78	0.05	22.3	13.3	801	3.03
CRM80288	571198	6973532	NAD83-07V	5.9	36.5	17	73	0.1	30.5	13.9	593	3.2
CRM80289	571237	6973562	NAD83-07V	7.1	42.8	21.5	86	0.1	31.9	12.8	624	3.37
CRM80290	571277	6973595	NAD83-07V	7.8	21	19.5	61	0.1	20.4	10.9	452	2.76
CRM80291	571313	6973628	NAD83-07V	8.2	32.5	25.8	88	0.2	24.2	9.9	524	2.72
CRM80292	571355	6973658	NAD83-07V	8.7	30.5	22.9	94	0.1	26.8	11.7	555	3.08
CRM80293	571391	6973693	NAD83-07V	2.6	39.7	17.3	68	0.2	22.4	9.7	353	2.84
CRM80294	571431	6973724	NAD83-07V	2.4	24.3	31.4	154	0.2	14.1	6.9	469	2.3
CRM80295	571470	6973754	NAD83-07V	2.9	40.5	116.5	95	0.2	16	16.6	1445	2.2
CRM80296	571505	6973787	NAD83-07V	3.5	36	10	64	0.3	24.7	9.2	296	2.83
CRM80297	571548	6973817	NAD83-07V	4.2	33.6	132.1	107	0.3	23.6	8.9	354	2.87
CRM80298	571590	6973843	NAD83-07V	5.4	29.5	300.3	115	0.7	22.2	6.7	209	2.95
CRM80299	571629	6973877	NAD83-07V	4.4	39.9	45.3	184	0.2	36.2	11.9	520	4
CRM80300	571666	6973909	NAD83-07V	3	47.8	23.2	113	0.3	27.3	9.2	315	2.97
CRM80301	571709	6973937	NAD83-07V	2.6	25.7	34.9	73	0.3	17.7	7.1	230	3.46
CRM80302	571743	6973973	NAD83-07V	1.1	32.1	178.7	89	0.8	14.8	6.1	279	1.93
CRM80302	571743	6973973	NAD83-07V	1	32.7	171.4	91	0.8	15	6.2	269	1.97
CRM80303	571782	6974005	NAD83-07V	2.1	25.4	251.2	143	1.7	18.7	9.6	565	2.89

SampleID	As	U	Au	Th	Sr	Cd	Sb	Bi	V	Ca	P	La	Cr	Mg	Ba	Ti
CRM63126	42.9	1	3.8	4.5	26	2.3	3.3	0.3	82	0.31	0.057	8	38	0.6	207	0.121
CRM63127	32	1.7	4.1	3.5	24	1.2	3.3	0.2	64	0.3	0.055	10	33	0.53	192	0.095
CRM63128	37.6	2.1	3.5	4.4	24	0.9	4	0.3	80	0.27	0.052	12	36	0.57	179	0.102
CRM63129	32.6	2.3	3.8	4.1	24	1.1	4.1	0.5	83	0.27	0.051	11	38	0.58	188	0.102
CRM63130	35.6	1.9	2.2	4.6	21	0.4	5.1	0.8	77	0.25	0.049	10	32	0.49	143	0.086
CRM63131	22.2	0.8	2.9	2.8	13	0.4	2.9	0.9	79	0.11	0.017	6	25	0.27	111	0.091
CRM63132	26.3	5.6	2.5	7.2	16	0.9	5.2	1	64	0.18	0.033	10	28	0.38	111	0.099
CRM63133	34.2	2.5	1.3	5.4	14	0.6	4.7	1.1	86	0.13	0.023	8	33	0.39	112	0.115
CRM63134	21.2	18.6	2.1	6.5	18	0.8	3.8	1.7	59	0.15	0.028	11	29	0.3	120	0.097
CRM63135	28.7	4.5	1.4	5.7	21	0.6	4.3	1.6	95	0.23	0.032	9	40	0.53	161	0.128
CRM63136	21.2	7.7	8.1	5.4	24	0.5	4	1.1	77	0.25	0.035	11	34	0.48	158	0.112
CRM63137	7.2	3	0.25	5.2	14	0.2	2.1	0.4	52	0.15	0.024	7	20	0.23	84	0.094
CRM63138	16.2	1.3	0.8	4	23	0.2	1.9	0.5	96	0.21	0.023	8	46	0.57	225	0.12
CRM63139	12.8	13.4	3.9	11.1	24	0.2	3.3	0.7	62	0.29	0.038	17	34	0.47	158	0.116
CRM63140	14.7	1.6	1.2	5.3	13	0.3	2.5	0.9	80	0.11	0.022	9	27	0.31	123	0.104
CRM63141	16.2	1.7	2.2	4.6	23	0.2	1.6	0.4	88	0.21	0.015	8	45	0.59	199	0.126
CRM63141	16.5	1.6	2.3	4.5	23	0.2	1.7	0.4	88	0.22	0.015	8	44	0.59	192	0.125
CRM63142	20.9	4.8	1.5	14.6	13	0.2	7	0.7	34	0.13	0.019	10	17	0.22	74	0.055
CRM63143	22.7	7.7	2.4	19.5	17	0.3	5.8	0.5	46	0.18	0.023	15	25	0.37	113	0.078
CRM63144	60.3	4.6	4	6.8	16	0.8	4.8	0.9	96	0.13	0.045	13	40	0.39	149	0.101
CRM63145	94.5	3.3	3.3	3.8	29	1.5	4	0.5	112	0.25	0.063	14	65	0.91	443	0.209
CRM63146	65.6	1.1	2	2.4	15	0.8	3.5	0.8	90	0.1	0.04	9	33	0.34	131	0.111
CRM63147	45.3	1	2.5	1.4	16	1.8	2.1	0.5	71	0.12	0.047	8	29	0.33	166	0.085
CRM63147	45.3	1	1.8	1.4	16	1.6	2.2	0.5	72	0.12	0.045	8	30	0.32	164	0.087
CRM63148	139.3	23.1	7	7.4	28	2.6	5.1	0.6	86	0.26	0.053	15	46	0.52	220	0.105
CRM63149	50.7	9.6	2.7	12.3	25	0.8	4.6	1.6	80	0.23	0.026	14	42	0.53	182	0.118
CRM63150	38.5	11.4	2.6	17.6	18	0.4	3.7	0.7	54	0.19	0.019	15	44	0.37	144	0.08
CRM79201	24.2	9.8	4.5	10.2	19	0.5	2.6	0.8	75	0.19	0.03	13	39	0.45	154	0.106
CRM79202	20	14.5	2.7	21.7	19	0.1	3.9	1.6	50	0.19	0.021	13	32	0.36	138	0.078
CRM79203	18.5	14.1	1.9	13.1	16	0.2	3.4	0.8	56	0.17	0.021	13	27	0.34	72	0.114
CRM79204	13.9	18.6	2.7	11.1	26	0.2	3	0.8	64	0.29	0.035	15	35	0.42	173	0.118
CRM79205	9.6	11.3	1.8	1.4	25	0.3	1.4	0.5	37	0.24	0.097	7	21	0.17	101	0.042
CRM79206	14.5	16.2	3.7	12.7	23	0.1	3.6	1	59	0.26	0.037	12	30	0.39	129	0.1
CRM79207	11.5	13.9	3.4	9.4	26	0.2	3.1	0.7	62	0.3	0.033	12	32	0.41	130	0.106
CRM79244	11.2	7.8	2.4	5.2	18	0.1	1.7	0.6	62	0.2	0.045	10	28	0.36	96	0.084
CRM80287	12.5	4.8	2.6	11	23	0.4	1.1	0.5	71	0.27	0.039	11	42	0.49	177	0.126
CRM80288	12.9	9.8	2.5	7.4	33	0.2	1	0.5	77	0.39	0.032	18	49	0.6	356	0.153
CRM80289	15.2	10.7	3.5	12.4	33	0.2	1.5	0.6	79	0.4	0.032	20	51	0.6	347	0.159
CRM80290	11.1	3.8	2	4.5	22	0.3	1	0.4	66	0.23	0.028	10	35	0.46	214	0.096
CRM80291	10.9	8.5	2.4	7.8	32	0.2	1.6	0.5	66	0.37	0.05	16	40	0.53	269	0.115
CRM80292	13.4	6.6	3.5	5.7	31	0.4	1.6	0.7	70	0.36	0.043	15	43	0.59	276	0.131
CRM80293	24.1	1.3	1.6	2.7	29	0.4	0.9	0.3	83	0.29	0.026	14	36	0.48	1259	0.09
CRM80294	56.2	0.5	2.8	1.2	45	3.8	2.3	0.3	67	0.63	0.035	5	22	0.27	2302	0.07
CRM80295	22.9	0.9	5.2	1.1	20	3.5	1	0.3	54	0.19	0.039	9	23	0.27	1016	0.071
CRM80296	14.6	0.7	1.5	1.9	23	0.6	0.7	0.2	72	0.2	0.056	10	37	0.5	304	0.102
CRM80297	37.1	1.2	1.1	3	18	2.2	1.9	0.4	83	0.14	0.037	11	44	0.48	222	0.121
CRM80298	42.3	2.3	3	1.3	17	1.4	5.6	0.3	94	0.11	0.047	10	41	0.46	139	0.09
CRM80299	31.3	0.9	4.6	2.8	27	1.3	2.1	0.3	117	0.21	0.066	12	59	0.64	260	0.124
CRM80300	28.1	1.1	1.3	1.5	23	1.6	1.6	0.3	78	0.17	0.051	10	45	0.5	381	0.097
CRM80301	27.9	0.7	1.3	1.6	14	1.5	1.3	0.4	89	0.09	0.043	6	31	0.3	131	0.09
CRM80302	38.8	1.6	1.4	2.3	15	3	3.2	0.3	50	0.12	0.028	11	22	0.26	122	0.094
CRM80302	38.7	1.6	3	2.4	15	2.8	3.3	0.3	50	0.12	0.027	10	23	0.26	124	0.092
CRM80303	62.1	1.4	1.9	1.7	20	3.2	7.9	0.6	79	0.16	0.043	10	33	0.41	215	0.09

SampleID	B	Al	Na	K	W	Hg	Sc	Tl	S	Ga	Se	Method	JobNumber
CRM63126	2	2.29	0.017	0.06	0.2	0.02	3.4	0.3	0.025	6	0.25	1DX15	VAN09005405
CRM63127	1	1.89	0.015	0.06	0.2	0.11	3.9	0.5	0.025	6	0.25	1DX15	VAN09005405
CRM63128	2	1.97	0.016	0.07	0.2	0.08	4.4	0.4	0.025	6	0.25	1DX15	VAN09005405
CRM63129	1	2.07	0.015	0.07	0.2	0.09	4.3	0.5	0.025	6	0.25	1DX15	VAN09005405
CRM63130	1	1.81	0.014	0.05	0.1	0.07	3.6	0.3	0.025	5	0.6	1DX15	VAN09005405
CRM63131	0.5	1.61	0.011	0.03	0.1	0.02	2.3	0.3	0.025	8	0.25	1DX15	VAN09005405
CRM63132	0.5	1.64	0.011	0.04	0.2	0.03	3	0.5	0.025	5	0.25	1DX15	VAN09005405
CRM63133	0.5	2.39	0.012	0.05	0.2	0.03	3.1	0.4	0.025	7	0.25	1DX15	VAN09005405
CRM63134	0.5	1.74	0.014	0.04	0.1	0.05	3.4	0.4	0.025	7	0.25	1DX15	VAN09005405
CRM63135	0.5	2.44	0.013	0.06	0.2	0.02	3.7	0.2	0.025	8	0.25	1DX15	VAN09005405
CRM63136	0.5	1.91	0.014	0.05	0.2	0.03	3.7	0.2	0.025	7	0.25	1DX15	VAN09005405
CRM63137	0.5	1.21	0.013	0.04	0.2	0.02	1.9	0.1	0.025	5	0.25	1DX15	VAN09005405
CRM63138	0.5	3.2	0.015	0.05	0.1	0.02	3.9	0.1	0.025	8	0.25	1DX15	VAN09005405
CRM63139	0.5	1.88	0.017	0.04	0.2	0.06	5	0.2	0.025	5	0.25	1DX15	VAN09005405
CRM63140	0.5	1.88	0.009	0.04	0.05	0.03	3	0.1	0.025	7	0.25	1DX15	VAN09005405
CRM63141	0.5	3.18	0.018	0.05	0.1	0.03	4	0.1	0.025	7	0.25	1DX15	VAN09005405
CRM63141	1	3.17	0.014	0.05	0.05	0.03	4.1	0.2	0.025	7	0.25	1DX15	VAN09005405
CRM63142	1	1.3	0.009	0.05	0.2	0.09	2.8	0.2	0.025	4	0.25	1DX15	VAN09005405
CRM63143	0.5	1.52	0.012	0.05	0.2	0.2	4.5	0.4	0.025	5	0.25	1DX15	VAN09005405
CRM63144	1	1.71	0.01	0.1	0.3	0.03	4.4	0.7	0.025	7	0.25	1DX15	VAN09005405
CRM63145	2	2.28	0.024	0.37	0.2	0.03	6.2	1.2	0.15	8	0.8	1DX15	VAN09005405
CRM63146	0.5	1.41	0.014	0.13	0.05	0.02	2.7	0.4	0.09	7	0.25	1DX15	VAN09005405
CRM63147	0.5	1.45	0.018	0.1	0.1	0.03	2.5	0.4	0.06	6	0.25	1DX15	VAN09005405
CRM63147	0.5	1.37	0.016	0.1	0.1	0.03	2.4	0.4	0.05	6	0.25	1DX15	VAN09005405
CRM63148	1	2.11	0.014	0.12	0.3	0.12	4.6	1.4	0.05	7	0.7	1DX15	VAN09005405
CRM63149	2	2.2	0.013	0.1	0.1	0.07	5.4	0.8	0.025	7	0.25	1DX15	VAN09005405
CRM63150	0.5	1.63	0.011	0.05	0.2	0.09	4.3	0.5	0.025	5	0.25	1DX15	VAN09005405
CRM79201	0.5	2.26	0.012	0.06	0.2	0.06	4.5	0.4	0.025	7	0.25	1DX15	VAN09005405
CRM79202	0.5	1.89	0.011	0.05	0.2	0.1	5.5	0.2	0.025	5	0.25	1DX15	VAN09005405
CRM79203	0.5	1.48	0.013	0.04	0.2	0.1	3.8	0.3	0.025	5	0.25	1DX15	VAN09005405
CRM79204	0.5	2.05	0.016	0.05	0.2	0.12	5.1	0.2	0.025	6	0.25	1DX15	VAN09005405
CRM79205	0.5	1.02	0.014	0.04	0.1	0.14	2.8	0.1	0.12	4	0.25	1DX15	VAN09005405
CRM79206	1	1.93	0.014	0.06	0.2	0.21	4.6	0.3	0.025	6	0.25	1DX15	VAN09005405
CRM79207	0.5	1.75	0.02	0.05	0.2	0.15	4.9	0.2	0.025	5	0.25	1DX15	VAN09005405
CRM79244	1	1.62	0.015	0.04	0.2	0.09	3.5	0.2	0.025	6	0.25	1DX15	VAN09005405
CRM80287	0.5	2.4	0.013	0.09	0.2	0.07	5.3	0.3	0.025	7	0.25	1DX15	VAN09005405
CRM80288	2	2.39	0.019	0.11	0.2	0.07	7.3	0.3	0.025	7	0.25	1DX15	VAN09005405
CRM80289	1	2.27	0.02	0.12	0.3	0.13	8	0.4	0.025	7	0.25	1DX15	VAN09005405
CRM80290	2	1.9	0.012	0.06	0.2	0.03	3.4	0.2	0.025	6	0.25	1DX15	VAN09005405
CRM80291	1	1.76	0.019	0.08	0.2	0.05	5.6	0.2	0.025	5	0.25	1DX15	VAN09005405
CRM80292	1	1.92	0.019	0.11	0.2	0.03	5.7	0.3	0.025	6	0.25	1DX15	VAN09005405
CRM80293	2	2.05	0.013	0.05	0.2	0.03	4.5	0.3	0.025	6	0.25	1DX15	VAN09005405
CRM80294	2	1.21	0.017	0.06	0.2	0.02	2	0.9	0.025	5	0.25	1DX15	VAN09005405
CRM80295	0.5	1.44	0.019	0.05	0.2	0.03	2.4	0.5	0.025	5	0.25	1DX15	VAN09005405
CRM80296	2	1.87	0.014	0.11	0.2	0.03	3.3	0.2	0.025	6	0.25	1DX15	VAN09005405
CRM80297	2	1.66	0.018	0.14	0.1	0.02	3.2	0.6	0.025	7	0.25	1DX15	VAN09005405
CRM80298	2	1.68	0.011	0.08	0.2	0.03	2.5	0.6	0.025	6	0.25	1DX15	VAN09005405
CRM80299	2	2.36	0.013	0.12	0.2	0.02	4.2	0.7	0.025	8	0.7	1DX15	VAN09005405
CRM80300	1	2.01	0.016	0.13	0.2	0.03	3.5	0.5	0.025	6	0.25	1DX15	VAN09005405
CRM80301	2	1.81	0.014	0.08	0.1	0.03	2.6	0.3	0.025	9	0.25	1DX15	VAN09005405
CRM80302	1	1.21	0.018	0.1	0.4	0.02	2.3	0.3	0.025	5	0.25	1DX15	VAN09005405
CRM80302	1	1.19	0.018	0.1	0.3	0.03	2.2	0.3	0.025	5	0.25	1DX15	VAN09005405
CRM80303	2	1.85	0.012	0.09	0.2	0.05	3	0.9	0.025	7	0.25	1DX15	VAN09005405

SampleID	Easting	Northing	UTM	Mo	Cu	Pb	Zn	Ag	Ni	Co	Mn	Fe
CRM80304	571817	6974037	NAD83-07V	5.1	81.6	532.2	154	1.5	31.6	12.2	512	3.47
CRM80305	571857	6974071	NAD83-07V	2.4	30.4	224.2	78	0.5	26.1	11.4	309	3.43
CRM80306	571897	6974103	NAD83-07V	3.6	30.7	32.9	62	0.5	14.1	6.7	332	2.35
CRM80307	571934	6974134	NAD83-07V	1.9	18.8	52	123	0.4	13.1	6.8	394	2.88
CRM80308	571974	6974165	NAD83-07V	1.3	24.8	49.7	77	0.5	9.1	6.6	326	1.58
CRM80309	572011	6974196	NAD83-07V	1.9	40.3	366.9	98	0.2	22.3	7.9	269	2.69
CRM80310	572051	6974228	NAD83-07V	2	21.3	81.4	87	0.2	21.9	13.8	509	3.5
CRM80311	572089	6974262	NAD83-07V	1.1	14.3	125.2	73	0.05	9.9	6.3	548	2.14
CRM80312	572126	6974293	NAD83-07V	1.9	17.4	54	72	0.1	13.8	8.2	415	2.6
CRM80313	572165	6974324	NAD83-07V	1.7	23.8	61.2	91	0.1	13.9	6.7	311	2.32
CRM80314	572202	6974351	NAD83-07V	1.2	23.5	43.3	84	0.1	14.3	7.4	377	2.34
CRM80315	572244	6974387	NAD83-07V	3.7	54.1	202.9	119	0.5	21.7	9.7	426	3.1
CRM80316	572284	6974416	NAD83-07V	3.8	34.8	105	74	0.4	12.4	7.8	353	2.02
CRM80317	572321	6974449	NAD83-07V	6.4	47.2	256.3	185	0.6	25.2	9.9	385	2.84
CRM80322	572321	6974449	NAD83-07V	6.2	47	254.2	181	0.6	25.8	9.6	374	2.71
CRM80451	571074	6973689	NAD83-07V	16.9	49.6	44.8	77	0.2	23.1	10	503	3.06
CRM80452	571109	6973720	NAD83-07V	21.2	26.6	27.8	88	0.05	20.1	10.2	666	3.83
CRM80453	571150	6973750	NAD83-07V	12.3	70.1	23.8	121	0.1	35.7	13.3	703	4.37
CRM80454	571187	6973783	NAD83-07V	9.1	76	82.8	114	0.2	35.2	16.9	789	4.05
CRM80455	571226	6973814	NAD83-07V	6.1	91.6	20	104	0.4	29.7	10.2	451	3.32
CRM80456	571265	6973847	NAD83-07V	4.8	36.7	16.1	128	0.1	32.3	13.5	549	4.16
CRM80456	571265	6973847	NAD83-07V	4.6	34.4	16.2	123	0.05	30.6	12.6	539	4.17
CRM80457	571306	6973879	NAD83-07V	2.1	38.9	8.7	67	0.2	39.7	16.2	369	3.68
CRM80458	571345	6973910	NAD83-07V	1.3	34.5	11	53	0.05	28.9	12.2	286	3.02
CRM80459	571381	6973943	NAD83-07V	1.6	13.7	6	25	0.05	6.4	2.5	75	1.42
CRM80460	571422	6973974	NAD83-07V	1.8	37.4	8.3	74	0.05	38.9	10.6	260	2.94
CRM80461	571461	6974006	NAD83-07V	2.2	24.8	12.8	56	0.05	25.6	11.4	271	3.68
CRM80462	571498	6974037	NAD83-07V	1.9	43.9	12.1	73	0.1	16.1	5.1	144	2.91
CRM80463	571539	6974070	NAD83-07V	1.7	36.6	19.8	88	0.05	37.7	11.2	290	3.83
CRM80464	571575	6974099	NAD83-07V	2.1	43.8	31.7	136	0.05	40.3	14.7	412	3.55
CRM80465	571615	6974132	NAD83-07V	1.8	35.6	284.2	129	0.9	30.8	13.1	408	4.25
CRM80466	571653	6974161	NAD83-07V	1.6	28.6	180.7	112	0.1	22.4	10.9	362	3.67
CRM80467	571691	6974193	NAD83-07V	2.9	60.8	114	131	0.7	19.4	4.5	180	2.42
CRM80468	571730	6974223	NAD83-07V	4.1	112.2	62.2	473	0.2	66.5	21.4	722	4.98
CRM80469	571770	6974256	NAD83-07V	1.9	21.3	9.2	38	0.6	8.1	2.9	81	1.12
CRM80470	571809	6974289	NAD83-07V	3.7	75.2	286.3	681	0.4	33.1	12.9	485	3.77
CRM80472	571150	6973752	NAD83-07V	13.2	72.9	26.9	117	0.1	41.3	14.6	692	4.25
CRM80472	571150	6973752	NAD83-07V	13.3	75	27.3	120	0.05	39.9	14.9	694	4.21
CRM80473	571033	6973657	NAD83-07V	13	39	41.9	75	0.2	23.6	11.9	678	3.07
CRM80474	571845	6974320	NAD83-07V	2.7	49.3	592.5	157	0.5	26.2	10.8	334	3.39
CRM80475	571885	6974350	NAD83-07V	1.9	21.5	117.1	111	0.2	14.8	6.7	263	2.95
CRM80476	571925	6974383	NAD83-07V	1.4	26.6	124.4	100	0.1	14.2	6.4	198	2.42
CRM80477	571962	6974416	NAD83-07V	1.7	20.7	110.4	94	0.1	13.8	6.6	332	2.91
CRM80478	572003	6974448	NAD83-07V	2.6	26.5	36.7	69	0.05	14.5	6.5	186	2.78
CRM80478	572003	6974448	NAD83-07V	2.7	26.9	36.6	70	0.05	13.9	6.6	176	2.75
CRM80479	572041	6974480	NAD83-07V	1.6	27.8	14.5	81	0.1	22.7	11.3	389	3.48
CRM80480	572080	6974511	NAD83-07V	3.7	66.4	502.8	105	0.4	33	20.5	545	3.22
CRM80481	572119	6974541	NAD83-07V	2.2	29.2	22.6	68	0.9	27.2	10.9	262	3.7
CRM80482	572157	6974573	NAD83-07V	1.4	24.7	16.4	82	0.2	26.7	12.2	325	3.94
CRM80483	572196	6974604	NAD83-07V	1.7	26.6	52.2	75	0.3	17.2	9.8	392	3

SampleID	As	U	Au	Th	Sr	Cd	Sb	Bi	V	Ca	P	La	Cr	Mg	Ba	Ti
CRM80304	98.3	6.5	3.7	3.2	41	3.1	18	2.6	111	0.41	0.049	20	48	0.58	1132	0.088
CRM80305	49.2	1.8	2	3	23	1.9	6.2	0.2	120	0.2	0.025	8	45	0.61	330	0.097
CRM80306	45	1.5	3.9	1.4	17	3.2	3.5	0.2	135	0.12	0.038	9	33	0.35	215	0.089
CRM80307	50	0.5	2.6	1.2	19	3	3.1	0.2	85	0.17	0.037	7	27	0.29	272	0.081
CRM80308	31.7	0.7	1.4	0.8	18	2.7	2.3	0.2	45	0.14	0.03	7	18	0.2	188	0.066
CRM80309	55.8	1.1	2.9	1.9	29	1.9	12.7	0.2	85	0.23	0.035	9	33	0.5	245	0.088
CRM80310	19.5	0.6	4.7	2.2	21	2.3	2.5	0.2	90	0.19	0.03	8	39	0.53	264	0.092
CRM80311	20.8	0.4	0.8	1	16	3.2	3.1	0.2	61	0.13	0.046	5	18	0.24	182	0.078
CRM80312	17.4	0.4	0.8	0.6	16	2.2	1.5	0.2	71	0.14	0.083	6	24	0.31	153	0.068
CRM80313	33.5	0.4	1.9	0.7	20	2.6	2.3	0.2	60	0.18	0.049	6	23	0.27	167	0.069
CRM80314	18.5	0.6	3.9	1.4	21	2.4	1.6	0.2	63	0.21	0.043	8	24	0.33	393	0.08
CRM80315	52.5	5.1	3.1	3.1	33	1.7	7.4	0.4	92	0.28	0.05	12	38	0.55	743	0.113
CRM80316	32.3	1.7	1.3	1.7	29	1.8	3.1	0.3	62	0.26	0.05	8	22	0.25	696	0.071
CRM80317	68.6	5.5	3.7	5.9	36	2.5	11.5	0.7	106	0.25	0.047	11	36	0.44	463	0.109
CRM80322	67.9	5.6	5.2	6	35	2.7	11.8	0.7	104	0.23	0.047	12	34	0.43	439	0.108
CRM80451	23.6	9.2	4	7	36	0.2	1.8	1.5	71	0.42	0.05	19	39	0.57	465	0.128
CRM80452	29.1	3.1	1.7	8.7	14	0.5	2	2.6	92	0.13	0.047	11	38	0.51	200	0.129
CRM80453	32.4	2.9	3.8	6.5	41	0.3	1.8	0.9	106	0.42	0.057	23	64	0.78	941	0.149
CRM80454	40.1	2.3	2.6	4.7	29	0.5	3.5	1	99	0.28	0.052	17	53	0.77	596	0.138
CRM80455	27.5	1.6	3.2	3.3	24	0.6	1.3	0.5	78	0.25	0.045	13	39	0.54	494	0.115
CRM80456	29.2	0.7	1.2	3.4	17	0.8	1.5	0.4	98	0.12	0.035	11	44	0.6	386	0.138
CRM80456	28.9	0.6	0.9	3.4	17	1	1.5	0.5	98	0.13	0.035	11	45	0.6	391	0.141
CRM80457	14.2	0.6	7.8	3.9	19	0.4	0.8	0.3	89	0.17	0.021	9	47	0.76	221	0.145
CRM80458	10.2	0.8	1.7	3.6	19	0.2	0.6	0.2	80	0.17	0.022	9	40	0.63	160	0.094
CRM80459	4.1	0.4	0.8	0.7	7	0.05	0.3	0.2	48	0.04	0.019	6	16	0.14	43	0.066
CRM80460	5.1	0.9	2.2	3.1	22	0.2	0.3	0.1	87	0.22	0.029	13	65	0.7	191	0.154
CRM80461	12.4	0.6	3.3	2.5	17	0.5	0.7	0.2	94	0.15	0.03	8	44	0.49	161	0.087
CRM80462	16.6	0.7	0.9	2.5	21	0.4	0.5	0.2	59	0.07	0.037	9	34	0.41	98	0.088
CRM80463	16.3	0.5	1.8	2.4	14	0.5	0.9	0.2	108	0.14	0.037	8	48	0.6	98	0.155
CRM80464	31.9	1.2	2.1	4.1	20	0.8	2.5	0.2	113	0.24	0.056	13	61	0.78	197	0.163
CRM80465	61.4	2.2	2.6	5.2	12	0.9	42.1	0.8	100	0.1	0.026	13	50	0.55	118	0.142
CRM80466	149.3	1.7	1.9	4.8	12	0.7	6.1	0.5	80	0.11	0.032	13	36	0.33	86	0.129
CRM80467	100.4	5	7.7	1.1	21	1.8	7.2	0.4	57	0.2	0.108	11	38	0.44	212	0.065
CRM80468	54	3	2.6	3.8	49	5.3	6.2	0.3	123	0.41	0.125	17	73	1.1	461	0.205
CRM80469	10.3	0.9	0.6	0.05	14	0.7	1	0.1	38	0.09	0.079	4	14	0.07	259	0.02
CRM80470	279.1	1.9	2.9	3.3	33	5.6	28.5	0.3	121	0.24	0.082	11	59	0.81	529	0.158
CRM80472	29.9	2.9	2.9	6.1	37	0.3	1.7	0.8	109	0.38	0.054	21	66	0.77	735	0.16
CRM80472	30.4	3	5.2	6.4	37	0.3	1.7	0.8	111	0.39	0.055	22	67	0.78	754	0.163
CRM80473	16.9	8.3	3.5	6	29	0.2	1.5	0.9	77	0.33	0.043	15	44	0.58	300	0.136
CRM80474	110.3	1.4	14.5	2.5	24	2.9	19.8	0.2	92	0.18	0.053	8	46	0.51	227	0.112
CRM80475	32.3	0.6	1.9	1.1	14	3.7	5.8	0.2	93	0.1	0.035	6	25	0.21	121	0.105
CRM80476	27.8	0.6	1.2	1.3	13	1.9	4.2	0.2	73	0.11	0.035	6	26	0.25	108	0.102
CRM80477	45.7	0.6	4.9	0.9	13	1.1	3.8	0.2	80	0.1	0.039	6	24	0.21	110	0.084
CRM80478	40.9	0.5	2.8	1.3	11	1.4	2.8	0.2	78	0.1	0.034	6	26	0.28	78	0.114
CRM80478	41.1	0.5	15.4	1.3	11	1.4	2.6	0.2	74	0.09	0.033	6	26	0.27	76	0.11
CRM80479	14.2	0.7	2.4	2.6	17	0.6	0.8	0.2	84	0.15	0.036	9	40	0.52	148	0.1
CRM80480	79.4	2.1	2.6	4	30	1.8	22.6	0.8	80	0.09	0.049	11	40	0.33	345	0.073
CRM80481	15.2	0.8	3.3	2.4	20	0.6	1.2	0.2	96	0.17	0.032	8	44	0.46	345	0.091
CRM80482	16.8	0.5	1.5	1.8	17	1.4	1	0.2	99	0.15	0.043	7	40	0.44	274	0.114
CRM80483	21.1	0.7	2	1.2	15	2.3	1.8	0.2	86	0.14	0.044	8	31	0.33	436	0.079

SampleID	B	Al	Na	K	W	Hg	Sc	Tl	S	Ga	Se	Method	JobNumber
CRM80304	1	2.73	0.017	0.09	0.4	0.12	6.8	0.7	0.025	8	1.5	1DX15	VAN09005405
CRM80305	2	2.72	0.016	0.06	0.1	0.05	4	0.4	0.025	8	0.25	1DX15	VAN09005405
CRM80306	1	1.38	0.015	0.07	0.2	0.03	2.8	0.9	0.025	6	1.1	1DX15	VAN09005405
CRM80307	2	1.6	0.014	0.04	0.05	0.03	2.3	0.4	0.025	8	0.25	1DX15	VAN09005405
CRM80308	2	1.12	0.018	0.05	0.05	0.04	2	0.5	0.025	5	0.25	1DX15	VAN09005405
CRM80309	2	1.8	0.016	0.06	0.2	0.09	3.9	0.4	0.025	6	1.1	1DX15	VAN09005405
CRM80310	1	2.48	0.013	0.05	0.05	0.03	3.4	0.3	0.025	8	0.25	1DX15	VAN09005405
CRM80311	0.5	1.17	0.016	0.05	0.2	0.03	1.8	0.3	0.025	6	0.25	1DX15	VAN09005405
CRM80312	1	1.48	0.013	0.05	0.1	0.03	2	0.3	0.025	6	0.25	1DX15	VAN09005405
CRM80313	1	1.37	0.015	0.07	0.1	0.03	2.1	0.3	0.025	6	0.25	1DX15	VAN09005405
CRM80314	2	1.6	0.015	0.06	0.05	0.05	2.8	0.2	0.025	6	0.25	1DX15	VAN09005405
CRM80315	2	2.05	0.016	0.11	0.2	0.12	4.2	0.6	0.025	7	0.6	1DX15	VAN09005405
CRM80316	2	1.38	0.016	0.07	0.2	0.06	2.3	0.4	0.025	7	0.25	1DX15	VAN09005405
CRM80317	1	1.5	0.017	0.08	0.3	0.11	3.4	0.8	0.025	6	1.5	1DX15	VAN09005405
CRM80322	2	1.54	0.017	0.08	0.3	0.11	3.4	0.9	0.025	5	1.2	1DX15	VAN09005405
CRM80451	2	2.09	0.018	0.07	0.9	0.06	6.3	0.5	0.025	6	0.25	1DX15	VAN09005405
CRM80452	1	2.06	0.011	0.09	1.1	0.05	3.9	0.5	0.025	8	0.6	1DX15	VAN09005405
CRM80453	2	2.48	0.02	0.2	1.6	0.05	8.9	0.7	0.025	8	0.25	1DX15	VAN09005405
CRM80454	3	2.59	0.016	0.19	0.6	0.03	6.3	0.6	0.025	8	0.25	1DX15	VAN09005405
CRM80455	2	2.33	0.02	0.15	0.3	0.04	4.5	0.4	0.025	8	0.5	1DX15	VAN09005405
CRM80456	2	2.6	0.013	0.12	0.4	0.03	4.2	0.5	0.025	9	0.25	1DX15	VAN09005405
CRM80456	1	2.59	0.015	0.11	0.3	0.02	4.3	0.4	0.025	10	0.25	1DX15	VAN09005405
CRM80457	1	2.84	0.015	0.12	0.4	0.03	4.4	0.2	0.025	8	0.25	1DX15	VAN09005405
CRM80458	0.5	2.33	0.016	0.07	0.1	0.02	4.1	0.1	0.025	6	0.25	1DX15	VAN09005405
CRM80459	0.5	0.66	0.014	0.07	0.05	0.02	1.2	0.1	0.025	4	0.25	1DX15	VAN09005405
CRM80460	0.5	2.16	0.016	0.2	0.1	0.01	5.4	0.3	0.025	6	0.25	1DX15	VAN09005405
CRM80461	0.5	2.39	0.015	0.06	0.2	0.02	3.4	0.2	0.025	8	0.25	1DX15	VAN09005405
CRM80462	0.5	1.27	0.034	0.24	0.1	0.02	2.4	0.5	0.2	6	0.25	1DX15	VAN09005405
CRM80463	2	2.05	0.011	0.11	0.2	0.02	3.6	0.2	0.025	9	0.25	1DX15	VAN09005405
CRM80464	1	2.17	0.016	0.2	0.1	0.02	5	0.5	0.025	7	0.9	1DX15	VAN09005405
CRM80465	0.5	2.71	0.01	0.18	0.3	0.04	4.4	0.8	0.025	10	0.25	1DX15	VAN09005405
CRM80466	2	2.03	0.012	0.11	0.9	0.03	3.5	0.7	0.025	9	0.25	1DX15	VAN09005405
CRM80467	2	1.73	0.014	0.16	0.3	0.12	4.8	1.8	0.12	6	1.5	1DX15	VAN09005405
CRM80468	2	2.16	0.05	0.63	0.3	0.03	6.8	1.3	0.24	7	1	1DX15	VAN09005405
CRM80469	0.5	0.55	0.014	0.05	0.1	0.11	0.6	0.3	0.11	2	0.6	1DX15	VAN09005405
CRM80470	3	1.98	0.036	0.36	0.2	0.29	5.8	3.8	0.12	7	1.8	1DX15	VAN09005405
CRM80472	2	2.43	0.017	0.22	1.8	0.03	8.5	0.8	0.025	7	0.25	1DX15	VAN09005405
CRM80472	2	2.46	0.018	0.22	1.8	0.03	8.7	0.7	0.025	7	0.5	1DX15	VAN09005405
CRM80473	1	2.29	0.015	0.05	0.4	0.04	5.6	0.3	0.025	6	0.25	1DX15	VAN09005405
CRM80474	1	2.27	0.015	0.08	0.2	0.15	4.2	1.5	0.07	6	1.2	1DX15	VAN09005405
CRM80475	0.5	1.31	0.011	0.04	0.1	0.03	2.1	0.8	0.025	8	0.25	1DX15	VAN09005405
CRM80476	0.5	1.22	0.014	0.05	0.1	0.03	2.1	0.6	0.025	5	0.25	1DX15	VAN09005405
CRM80477	1	1.63	0.014	0.03	0.1	0.06	2	0.3	0.025	7	0.25	1DX15	VAN09005405
CRM80478	0.5	1.15	0.014	0.06	0.2	0.02	2.2	0.4	0.025	6	0.25	1DX15	VAN09005405
CRM80478	0.5	1.17	0.013	0.06	0.1	0.03	2.2	0.3	0.07	6	0.25	1DX15	VAN09005405
CRM80479	1	2.49	0.011	0.07	0.2	0.04	3.7	0.1	0.025	7	0.25	1DX15	VAN09005405
CRM80480	0.5	2.72	0.008	0.03	0.2	0.15	4	0.5	0.025	6	1.3	1DX15	VAN09005405
CRM80481	0.5	2.7	0.01	0.04	0.1	0.08	3.5	0.1	0.025	8	0.6	1DX15	VAN09005405
CRM80482	1	2.35	0.011	0.05	0.2	0.02	3.1	0.2	0.025	8	0.25	1DX15	VAN09005405
CRM80483	0.5	1.88	0.012	0.04	0.1	0.04	2.7	0.2	0.025	7	0.25	1DX15	VAN09005405