

WILLIAM D. MANN, M.Sc., P.Geo., CONSULTING GEOLOGIST

19 Hayes Cres., Whitehorse, Yukon, Y1A 0E1

Phone: 867-667-7409

**ASSESSMENT REPORT**

**describing**

**2009 SOIL GEOCHEMISTRY AND PROSPECTING**

**AT THE STUMP PROPERTY**

AT 1 – 4      YB91866 – YB91869

KS 1 – 5      YC97817 – YC97820

**NTS 105F/9**

Latitude 61° 32'N, Longitude 132° 09'W

in the

**WATSON LAKE MINING DISTRICT**

**YUKON TERRITORY, CANADA**

Prepared for:

**KLONDIKE SILVER CORP.**

Prepared by: William D. Mann, M.Sc., P.Geo., May 2010

FIELD WORK CONDUCTED AUGUST 22 – 27, 2009

## **CONTENTS**

INTRODUCTION	1
PROPERTY LOCATION, CLAIM DATA AND ACCESS	1
PREVIOUS WORK	1
GEOMORPHOLOGY AND VEGETATION	2
GEOLOGY AND MINERALIZATION	3
2009 EXPLORATION PROGRAM	4
CONCLUSIONS AND RECOMMENDATIONS	5
REFERENCES	5

## **APPENDICES**

I	STATEMENT OF EXPENDITURES
II	STATEMENT OF QUALIFICATIONS
III	ANALYTICAL CERTIFICATES - SOILS
IV	ANALYTICAL CERTIFICATES – ROCKS
V	ROCK SAMPLE DESCRIPTIONS

## **FIGURES**

1.	Property Location	after page 1
2.	Claim Location	after page 1
3.	Tectonic Setting	after page 3
4.	2009 Sample Locations	in pocket

## **INTRODUCTION**

The Stump property hosts silver-lead vein mineralization that has been partially delineated by bulldozer trenches, diamond drilling, underground development and bulk sampling. The property was sold by a group of private investors to Klondike Silver Corp. in spring 2006.

This report describes results of a short program of claim staking followed by soil geochemical sampling and prospecting in August, 2009. The work was conducted by the author, whose statement of qualifications is presented in Appendix II.

## **PROPERTY LOCATION, CLAIM DATA AND ACCESS**

The property consist of nine contiguous mineral claims located in the southern Yukon at latitude 61°32'N and longitude 132°09'W on NTS map sheet 105F/9 (Figure 1). The claims are registered with the Watson Lake Mining Recorder in the name of Klondike Silver Corp. (KS claims) and Archer Cathro (AT claims), which holds them in trust for Klondike Silver. Claim registration data are listed below while the locations of individual claims are shown on Figure 2.

<u>Claim Number</u>	<u>Grant Number</u>	<u>Expiry Date*</u>
AT 1-4	Y1391866- Y1391869	February 04, 2020
KS 1-5	YC 97817- YC97821	February 04, 2015

\* Expiry date includes 2009 assessment work which has been filed but not yet accepted.

The Stump property is accessible by two available four-wheel drive trails approximately 4 km long that extend south from Ketza Road (Figure 2). One trail leaves the road from the elevation of the airstrip beside Ketza River, while the second departs about 1km further southwest. The Ketza Road is a two-lane haulage road that links the dormant Ketza Gold Mine to the Robert Campbell Highway at a point approximately 36 km by road southeast of Ross River. From the turnoff onto the Stump Road to the highway is about 30 km. The Ketza Road is in excellent condition.

The Robert Campbell Highway is part of the main Yukon road network and is maintained by the territorial government year round. It provides access to the seaport at Skagway in Alaska by first travelling west from the property to Carmacks, then south on the Klondike Highway through Whitehorse to Skagway (Figure 1). Alternatively, Watson Lake and the Alaska Highway can be reached by travelling southeast along the Robert Campbell Highway.

## **PREVIOUS WORK**

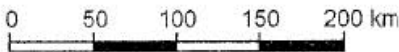
The Stump property is described in Yukon Minfile as occurrence 105F 056. The first recorded staking in the area was done in 1954 by Prospector Airways on behalf of a syndicate that included Noranda Exploration Company Ltd. and Kerr Addison Gold Mines Ltd. This syndicate trenched in 1955.

**KLONDIKE SILVER CORP.**

FIGURE 1

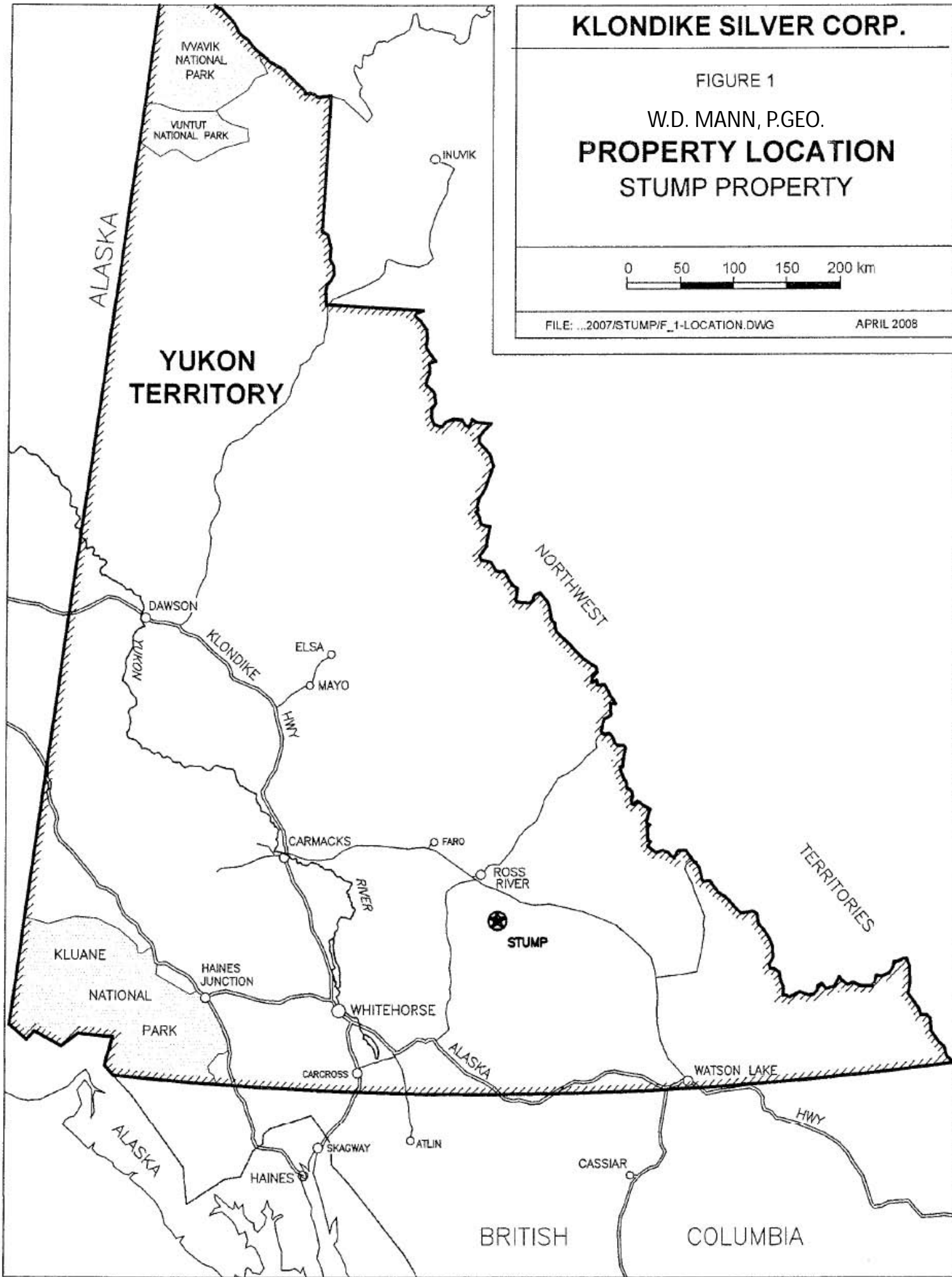
W.D. MANN, P.GEO.

**PROPERTY LOCATION  
STUMP PROPERTY**



FILE: ...2007/STUMP/F\_1-LOCATION.DWG

APRIL 2008





The area was restaked in 1961 by G. Dickson and again in 1965 by a joint venture between Stump Mines Ltd. and Silver Key Mines Ltd. This joint venture conducted grid soil sampling and bulldozer trenching in 1966, drilled five holes totalling 289.6 m in 1967 and completed 427 m of underground development in 1968-69. The underground development included crosscutting, drifting and some raising on an upper level, 37 m below surface, and crosscutting on an uncompleted lower level, 83 m below surface. Silver Key changed its name to Nordev Resources Ltd. in 1972, then optioned Stump Mines' interest in 1974 and conducted a prefeasibility study in 1975, before dropping the claims.

H. Regeher and partners restaked the property and performed bulldozer trenching in 1976. Late that year they formed Iona Silver Mines Ltd. which conducted more trenching in 1977-78, completed the lower crosscut in 1979 and advanced the lower adit another 66.8m in 1980. Iona's claims were optioned in 1985 to Canamax Resources Inc., which performed geophysical and geochemical surveys later that year and drilled four holes in totalling 1,692.2m in 1987. This work included a 95.1m hole that tested the A1 vein to the north. In 1988 Canamax drilled to the northwest of the A1 vein area, including holes IS88- 53, 54, 55 on the current KS 5 claim. Hole IS88- 56 & 58 are located less than 100m from the KS 5 claim boundary. The option was dropped, and eventually the claims were allowed to lapse.

In 2000, the property was restaked by a group of private investors. That summer a site visit was performed to identify logistical and geological factors that could influence effectiveness of a small scale mining operation (Eaton, 2000).

In 2006 a program of trench sampling and metallurgical testing was conducted by Archer, Cathro and Associates on behalf of Klondike Silver. Ore samples were tested to evaluate recovery of partially oxidized galena by gravity methods, with inconclusive results (Eaton, 2007).

In 2007 Archer, Cathro conducted excavator trenching and bulk sampling. The main vein was stripped along a 300m length, with channel samples cut at 5m intervals. A 73 tonne bulk sample with a head grade of 50.28 oz/ton silver, 40.55% lead and 0.89% zinc was shipped to Klondike Silver's mill in Sandon, B.C. (Eaton, 2008).

In 2008 the bulk sampling was continued by a contractor on behalf of Klondike Silver, This work was not filed for assessment purposes, and had limited field documentation. The 2008 shipment totalled 1344.4 tonnes with a grade of 35.05 oz/ton silver, 26.21% lead and 0.78% zinc. The Sandon mill produced 413.53 tonnes of lead sulphide flotation concentrate from the Stump ore grading 89.59 oz/ton silver, 66.67% lead and 1.12% zinc. Recovery of lead and silver was significantly impacted by oxidation of lead sulphide to oxide and/or carbonate minerals. Tailings from the Stump milling assay about 8% lead and 11 oz/ton silver (internal Klondike Silver corporate communication).

## **GEOMORPHOLOGY AND VEGETATION**

The Stump property lies within the St. Cyr Range of the Pelly Mountains. It is drained by creeks that are tributaries of the Ketzka River, which ultimately drains into the Pacific Ocean via the Pelly and Yukon Rivers. Local elevations range from 1300 m along the Ketzka River to 1920 m

atop a peak west of the main vein. The main area of interest is on an easterly trending ridge at about 1500 m above sea level. The vein trace approximately parallels topography on a 10 to 20°, east-facing slope.

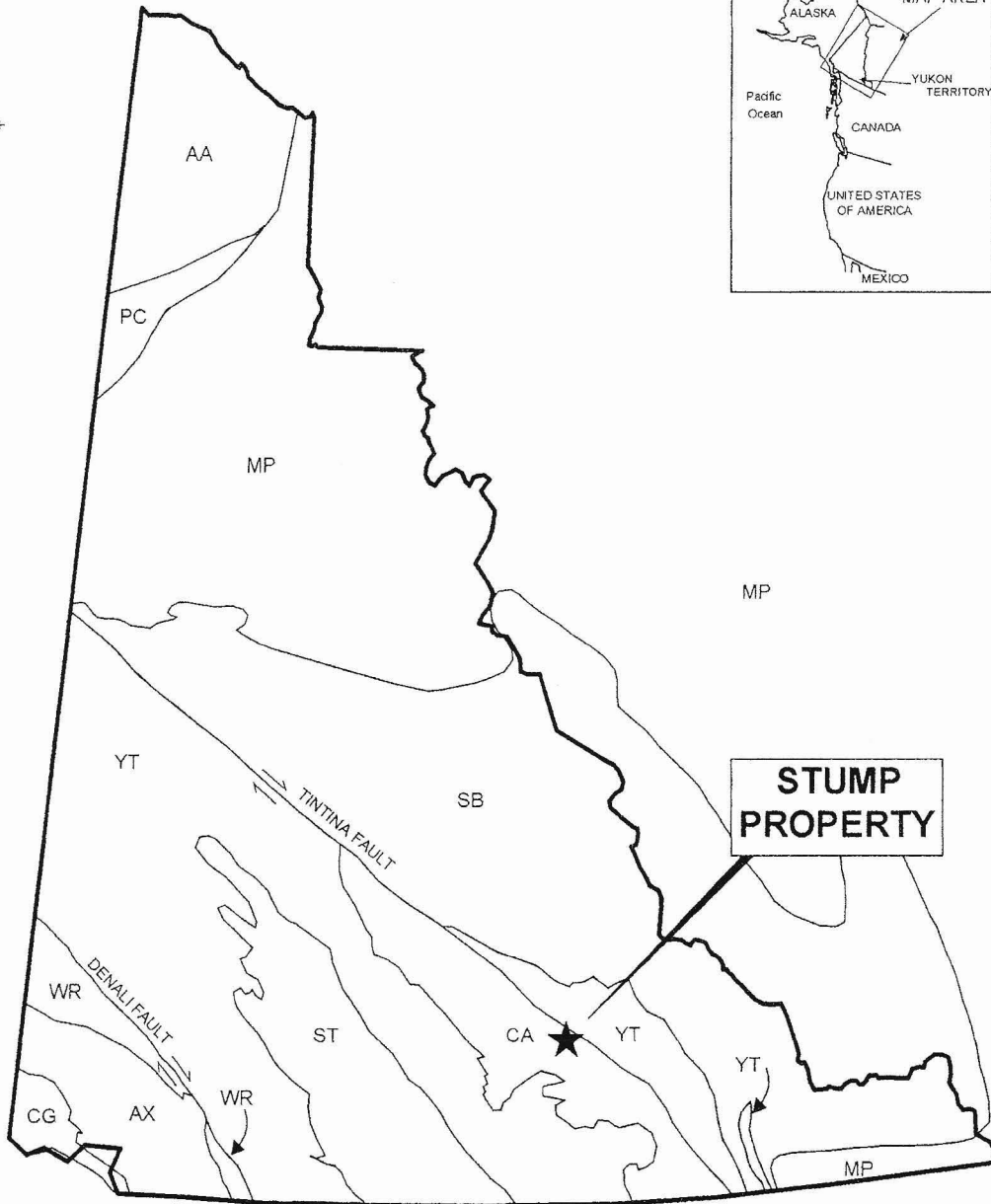
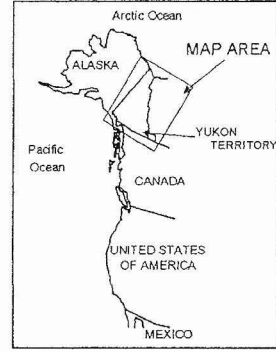
The claims straddle treeline. Downhill are scatter clumps of stunted spruce and balsam interspersed with buck bush and slide alder. Uphill are barren talus slopes. The alpine vegetation gives way to mature spruce forest on lower slopes and floor of the Ketzka River valley. Soil development is poor and permafrost is likely present throughout the area of interest.

## **GEOLOGY AND MINERALIZATION**

The property lies about 25 km southwest of the Tintina Fault within a package of rocks that are assigned to the Cassiar Platform tectonic element (Figure 3). The Cassiar Platform is a metamorphosed sequence predominantly composed of Paleozoic shallow water carbonate rocks that were deposited atop a Proterozoic clastic wedge on the western margin of the North American craton. The rocks were deformed and metamorphosed during accretion of allochthonous terranes during Mesozoic times. The carbonate strata are widely intruded by pre- and post-deformation plutons. The two major intrusive events are syenitic bodies of Mississippian age and granodiorite to quartz monzonite plutons of Mid-Cretaceous age. The closest mapped intrusion is about 4 km south of the property. Stratigraphy in the vicinity of the property is Cambrian to Lower Ordovician in age and predominantly consists of phyllite that locally grades to limestone or dolomite. An orthoquartzite forms a resistant knob, locally named “Quartzite Mountain” at the summit above the A1 vein. Bedrock exposures are limited in the immediate vicinity of the silver-lead vein and most are in old bulldozer trenches. The wallrocks to the vein are weakly foliated dolomite that shows a wide range of strikes and dips.

The A-1 silver-lead vein strikes northerly and dips at 58° to the west into the hill. It has been traced about 850 m along strike. The vein averages 1.2 m wide and has sharp contacts with the wallrock. The best mineralized parts of the vein usually have 30-75 cm wide cores of semimassive to massive sulphide. This sulphide-rich material is mostly fine grained galena in a compact siderite gangue that includes occasional, up to 1 cm diameter clasts of dolomite country rock. Other sulphides such as pyrite and sphalerite are rare. The remainder of the vein consists of siderite, more abundant dolomite clasts and minor galena. The silver to lead ratios in the vein are relatively consistent, averaging about 38 g/t silver for each percent lead.

Sampling along a 247 m length of the vein in 1967 yielded a weighted average grade of 853.6 g/t (24.9 opt) silver and 22.2% lead across 1.2 m. The grade decreases at depth and samples taken from a drift on the upper level, 37 m below surface averaged 329.1 g/t (9.6 opt) silver and 7.5% lead across 1.2 m for a length of 202 m. In 1975, Nordev reported "proven reserves" of 36,280 tonnes grading 353.1 g/t (10.3 opt) silver and 8.4% lead (note: this "reserve" estimate predated NI 43-101 and is not compliant with that policy. It should therefore not be relied upon). The lower adit and step out diamond drilling did not encounter significant silver-lead mineralization, though abundant siderite is present at the lower adit dump.



ANCESTRAL NORTH AMERICA

- MP Mackenzie Platform
- SB Selwyn Basin

TERRANES

Displaced Continental Margin

- AA Arctic Alaska

- CA Cassiar

- PC Porcupine

Pericratonic Terranes

- YT Yukon-Tanana / Slide Mountain

ACCRETED TERRANES

- ST Stikinia / Cache Creek

- AX Alexander

- WR Wrangellia

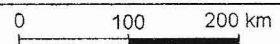
- CG Chugach

KLONDIKE SILVER CORP.

FIGURE 3

W.D.MANN, P.GEO.

**TECTONIC SETTING  
STUMP PROPERTY**



## **2009 EXPLORATION PROGRAM**

Five KS claims were staked in August adjacent to the AT claims on the north, west and south sides to cover geologically favourable ground that appears to have seen little exploration (except on the north side).

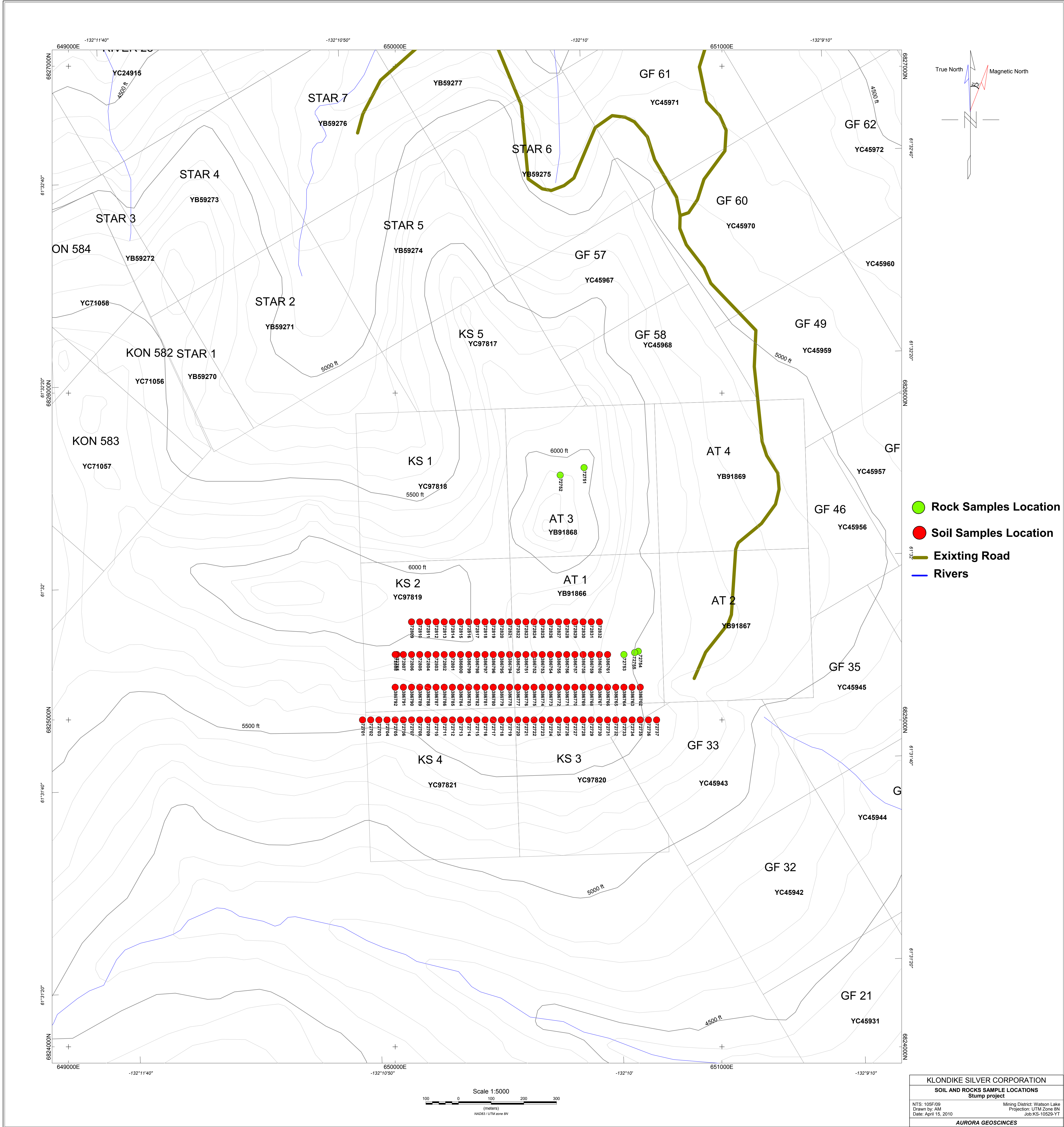
After registration of the claims, the author returned to the property with prospector Matt Little to conduct assessment work. The area staked surrounding the AT claims is thought to possess significant untested potential for gold mineralization. A 1967 report indicates a drill hole which returned 0.76 oz/ton gold over 11 feet within about 1km of the claims. Canamax drilled this area for gold in the 1987- 1988 era when they operated the Ketz River gold mine, located about 5km to the northwest. It is thought that Canamax drilled through the quartzite formation to test underlying carbonate-rich strata for gold-rich mantos. At least 3 of these drillholes are located on the new KS 5 claim. The Canamax drilling was only partly filed for assessment credit, and the results from these holes are not publically available.

A soil geochemistry grid was established to the west and southwest of the A1 vein, in an area of good quality soils with little outcrop (fig. 4). This area was apparently not sampled during the original geochemical survey ca. 1966, when the A1 vein was discovered. The 1966 era survey covered a large area, but was restricted to the analysis of lead and silver only.

The intent of the soil survey was to seek parallel or offset mineralized structures similar to the A1 vein, and also to look for gold-bearing mineralization. A multi-element ICP analysis tested for gold, silver and pathfinder elements down to very low trace levels. 119 samples were collected in four east-west trending UTM grid lines spaced 100m apart, with samples spaced 25m apart on each line to target narrow north-south trending veins. Analytical results are presented in Appendix III.

The results of the soil geochemistry survey are disappointing. Values for both gold and silver were low, with maximum values of 1.89 ppm Ag, 175.5ppm Pb, and 0.0027ppm (2.7ppb) Au. A weak silver anomaly (> 1ppm Ag) runs north-south through the grid, with a width of 200 to 300m. Three adjacent samples (72826- 72828) within this anomaly are also above 100ppm Pb. The silver and lead soil values returned in this program are considered to be weak in relation to the outcropping A1 lead-silver vein located within 200m of the grid, however the anomaly may indicate the weakly mineralized upper edges of a vein system.

Six rock samples were collected for analysis from favourable-looking float rock. These samples returned weak results, with maximum values of 14ppm Ag and 270ppm Pb, with all samples below the detection limit of 0.005ppm Au. The highest values for Ag, Pb, Zn, Cu and Fe were from sample 72753, a porous iron oxide boulder that has a similar appearance to “oxide ore” at the nearby Ketz Gold mine.



- Rock Samples Location
- Soil Samples Location
- Existing Road
- Rivers

**KLONDIKE SILVER CORPORATION**  
**SOIL AND ROCKS SAMPLE LOCATIONS**  
 Slump project  
 NTS: 105F-00 Mining District: Watson Lake  
 Drawn by: AM Projection: UTM Zone 8N  
 Date: April 15, 2010 Job: KS-1052B-YT  
**AURORA GEOSCIENCES**

## **CONCLUSIONS AND RECOMMENDATIONS**

The short geochemical and prospecting survey conducted in 2009 was not particularly encouraging, however the Stump claims have a proven high grade silver vein exposed at surface and in underground workings that suggests good potential for more silver nearby. The district has numerous high grade silver veins. The weak but broad silver anomaly located southwest of the A1 vein, and running north-south should be followed up with further soils to confirm and extend the trend. Further claims could be staked to the south of the existing block to give more room for this theory to develop.

The exploration work conducted by Canamax on the north side of the claims indicates reasonable gold potential even without known results, as five holes were drilled at close spacing. The Ketz River Gold Mine is located about 5km to the northwest of the Stump property, and hosts numerous carbonate-hosted manto and vein deposits. The gold target previously identified and drilled by Canamax on the KS 5 claim should be investigated on the ground, and the results of the drilling determined by research, as much as possible. The property adjacent to the Stump, held by prospector Ron Berdahl, is currently available for option. His claims are reported to have showings of both gold and silver.

A geological map of the claims should be produced (at 1:5,000 scale), which should also show all existing bulldozer trails, clearings, drill holes, adits and other important features.

Several hundred tonnes of high grade silver-lead ore are reported to be readily available for bulk sampling. Additional tonnage would require greater stripping in harder host rocks with depth. Bulk sampling for shipment to the Sandon mill might be conducted profitably if the prices of silver and lead are sufficiently high.

## **REFERENCES**

ARCHER, CATHRO and ASSOCIATES LTD, Dec/2000. Assessment Report #094153 by W.D. Eaton.

ARCHER, CATHRO and ASSOCIATES LTD, Mar/2007. Assessment Report by W.D. Eaton.

ARCHER, CATHRO and ASSOCIATES LTD, April/2008. Assessment Report by W.D. Eaton.

CATHRO, M.S., 1988. Gold and silver, lead deposits of the Ketz River District, Yukon: Preliminary results of field work; in Yukon Geology, Vol 2; Exploration and Geological Services Division, Yukon, Indian and Northern Affairs Canada, p. 8-25.

GORDEY, S.P. and MAKEPEACE, A.J., 2003. Yukon Digital Geology, version 2.0, S.P. Gordey and A.J. Makepeace (comp); Geological Survey of Canada, Open File 1749 and Yukon Geological Survey, Open File 2003-9(D).

**APPENDIX I**

**STATEMENT OF EXPENDITURES**

**KLONDIKE SILVER CORP.**

**Stump project, field work August 22- 27, 2009**

**AT & KS CLAIMS**

<u>Item</u>	<u>Rate</u>	<u>Units</u>	<u>Total</u>	<u>Comments</u>
<u>Wages</u>				
William Mann	400	10	\$4,000	6 field days plus 4 days report writing
Matt Little	250	7	\$1,750	prospector
<u>Field Costs</u>				
Food \$/man/day	25	12	\$300	
Camp Gear	50	6	\$300	camp and exploration gear provided by Mann
Truck	100	2	\$200	Mann's personal vehicle: days used only
diesel			\$200	
Exploration Supplies			\$100	sample bags, flagging tape etc.
<u>Other</u>				
Sample Analysis	30	120	\$3,600	Multi-element ICP for soils & rocks ALS Chemex
Little - flights			\$300	Vancouver - Whitehorse return
Map production			\$500	
Report			\$300	print, bind, mail report
<b>TOTAL:</b>			<b>\$11,550</b>	

SIGNED: \_\_\_\_\_

DATE: \_\_\_\_\_

William D. Mann, P.Geol.

## APPENDIX II

### STATEMENT OF QUALIFICATIONS

**WILLIAM D. MANN, M.Sc., P.Geo.**

**19 HAYES CRESCENT, WHITEHORSE, YUKON Y1A 0E1**

1. I am a member in good standing of the Association of Professional Engineers and Geoscientists of BC, Licence #31907.
2. I am a Graduate of Queen's University, 1986, with a Master of Science Degree in Mineral Exploration Geology.
3. I am a Graduate of the University of British Columbia, 1983, with a Bachelor of Science Degree in Geology.
4. I have worked in mineral exploration and mining continuously since 1979.
5. I designed, supervised and participated in the work program on the STUMP Project in 2009.
6. I am contract project geologist for Klondike Silver Corp., owner of the claims, and hold stock options in the company.

May 29, 2010

-----  
William D. Mann, M.Sc., P.Geo.



# ALS Chemex

**EXCELLENCE IN ANALYTICAL CHEMISTRY**

ALS Canada Ltd.

2103 Dollarton Hwy

North Vancouver BC V7H 0A7

Phone: 604 984 0221 Fax: 604 984 0218 www.alschemex.com

To: KLONDIKE SILVER  
PO BOX 189  
NEW DENVER BC V0G 1S0

Page: 1  
Finalized Date: 24-SEP-2009  
Account: KLOSIL

## CERTIFICATE VA09098584

Project: Stump

P.O. No.:

This report is for 119 Soil samples submitted to our lab in Vancouver, BC, Canada on 10-SEP-2009.

The following have access to data associated with this certificate:

JOHN DE JONG

WILLIAM MANN

## SAMPLE PREPARATION

ALS CODE	DESCRIPTION
WEI-21	Received Sample Weight
LOG-22	Sample login - Rcd w/o BarCode
SCR-41	Screen to -180um and save both

## ANALYTICAL PROCEDURES

ALS CODE	DESCRIPTION	INSTRUMENT
Au-ST43	Super Trace Au - 25g AR	ICP-MS
ME-MS61	48 element four acid ICP-MS	

To: KLONDIKE SILVER  
ATTN: WILLIAM MANN  
19 HAYES CRES  
WHITEHORSE YT Y1A 0E1

This is the Final Report and supersedes any preliminary report with this certificate number. Results apply to samples as submitted. All pages of this report have been checked and approved for release.

Signature:

Colin Ramshaw, Vancouver Laboratory Manager



# ALS Chemex

**EXCELLENCE IN ANALYTICAL CHEMISTRY**

ALS Canada Ltd.

2103 Dollarton Hwy  
North Vancouver BC V7H 0A7

Phone: 604 984 0221 Fax: 604 984 0218 www.alschemex.com

To: KLONDIKE SILVER  
PO BOX 189  
NEW DENVER BC V0G 1S0

Page: 2 - A  
Total # Pages: 4 (A - D)  
Plus Appendix Pages  
Finalized Date: 24-SEP-2009  
Account: KLOSIL

Project: Stump

CERTIFICATE OF ANALYSIS	VA09098584
-------------------------	------------

Sample Description	WEI-21	Au-ST43	ME-MS61	ME-MS61	ME-MS61	ME-MS61	ME-MS61	ME-MS61	ME-MS61	ME-MS61	ME-MS61	ME-MS61	ME-MS61	ME-MS61	ME-MS61	ME-MS61
	Recvd Wt.	Au	Ag	Al	As	Ba	Be	Bi	Ca	Cd	Ce	Co	Cr	Cs	Cu	
	kg	ppm	ppm	%	ppm	ppm	ppm	ppm	ppm	%	ppm	ppm	ppm	ppm	ppm	ppm
Method Analyte Units LOR	0.02	0.0001	0.01	0.01	0.2	10	0.05	0.01	0.01	0.02	0.01	0.1	1	0.05	0.2	
72701	0.44	0.0010	0.85	8.37	11.2	520	2.27	0.21	7.96	0.11	61.9	20.6	66	7.53	24.6	
72702	0.42	0.0001	0.14	6.75	5.0	350	1.72	0.16	9.74	0.05	52.6	17.1	53	5.59	22.8	
72703	0.46	<0.0001	0.22	5.63	5.0	460	1.52	0.26	9.44	0.07	58.2	19.0	42	3.87	24.5	
72704	0.48	<0.0001	0.21	6.65	5.3	460	1.83	0.24	8.40	0.08	63.8	20.2	53	5.07	33.6	
72705	0.50	<0.0001	0.21	6.14	4.7	450	1.57	0.19	8.66	0.06	58.1	17.3	47	4.20	22.7	
72706	0.46	<0.0001	0.13	5.25	3.2	540	1.19	0.15	9.12	0.05	51.9	13.1	39	2.07	11.4	
72707	0.42	0.0001	0.27	5.78	7.8	770	1.46	0.18	9.08	0.10	55.7	16.3	44	3.00	21.1	
72708	0.34	0.0006	0.22	6.42	10.7	710	1.53	0.17	8.19	0.07	65.9	13.9	49	4.13	22.2	
72709	0.38	<0.0001	0.31	6.36	9.2	750	1.54	0.18	8.12	0.05	69.9	20.5	50	3.84	25.9	
72710	0.30	0.0002	0.52	6.83	11.9	960	1.92	0.29	3.43	0.08	64.5	18.6	67	3.56	30.5	
72711	0.30	0.0003	0.49	6.73	11.6	890	2.01	0.22	4.49	0.06	65.0	17.7	63	3.52	27.7	
72712	0.34	0.0001	0.46	7.09	13.1	910	1.98	0.21	5.65	0.05	68.4	17.3	64	5.42	22.0	
72713	0.32	0.0001	0.51	6.60	11.5	880	1.87	0.22	6.22	0.10	74.1	20.4	66	3.69	33.5	
72714	0.36	0.0001	0.72	7.23	13.0	1170	1.83	0.21	4.76	0.03	69.1	19.9	70	3.35	29.0	
72715	0.38	0.0012	0.68	7.65	15.7	1120	2.28	0.20	4.54	0.08	66.1	19.5	80	5.71	31.8	
72716	0.38	0.0015	1.00	7.07	14.3	1190	1.97	0.18	4.49	0.04	58.7	18.4	84	4.93	48.9	
72717	0.30	0.0021	1.29	7.52	20.7	1640	2.46	0.20	1.55	0.11	65.1	13.7	114	6.13	44.3	
72718	0.32	0.0014	1.88	5.96	34.3	1430	1.77	0.22	5.14	0.07	64.0	21.1	106	3.52	66.6	
72719	0.36	0.0019	1.63	6.46	21.6	2100	2.05	0.20	5.91	0.05	61.6	16.9	92	4.52	52.9	
72720	0.32	0.0017	1.68	6.90	23.0	2200	2.01	0.19	6.41	0.07	66.7	18.0	88	4.78	55.5	
72721	0.30	0.0014	1.86	6.43	14.6	2300	2.07	0.20	5.53	0.07	64.7	16.2	103	4.44	50.8	
72722	0.34	0.0002	1.79	7.44	21.8	5210	2.37	0.23	5.98	0.04	62.9	22.2	103	6.07	62.3	
72723	0.36	0.0008	1.41	6.96	13.5	3080	2.36	0.19	4.21	0.05	71.7	14.9	95	4.88	47.5	
72724	0.30	0.0010	1.12	6.77	11.3	2980	2.06	0.17	6.42	0.07	63.1	12.7	86	4.22	47.2	
72725	0.38	0.0010	1.03	6.43	8.9	2130	1.71	0.17	7.68	0.07	64.3	12.3	70	3.88	35.3	
72726	0.28	0.0013	1.13	6.62	9.5	2100	1.91	0.15	5.34	0.11	52.6	11.8	89	4.89	40.5	
72727	0.40	0.0020	1.22	7.16	10.9	2170	2.20	0.16	3.51	0.08	57.1	12.8	95	4.84	36.7	
72728	0.36	0.0004	0.37	6.98	5.5	1420	2.19	0.14	3.73	0.07	56.0	15.6	59	5.60	22.3	
72729	0.34	0.0011	0.67	6.81	8.1	1520	2.11	0.16	6.08	0.08	52.7	13.5	79	4.47	33.8	
72730	0.32	0.0004	0.41	7.11	6.3	1510	2.30	0.13	2.36	0.08	52.9	13.7	65	5.95	24.9	
72731	0.42	0.0003	0.68	7.52	12.4	1190	2.19	0.19	3.89	0.06	67.9	18.0	74	5.15	27.4	
72732	0.40	0.0001	0.54	7.14	11.6	1160	1.80	0.19	6.47	0.04	68.1	22.5	59	4.30	29.3	
72733	0.44	0.0002	0.49	7.95	10.7	1320	2.61	0.22	3.67	0.04	65.1	19.5	79	5.30	32.9	
72734	0.32	0.0004	0.34	7.34	7.3	1150	2.72	0.17	1.21	0.10	68.7	15.8	65	4.78	24.3	
72735	0.32	0.0003	0.79	7.88	9.3	1020	2.83	0.21	1.35	0.14	68.0	19.5	79	12.10	46.2	
72736	0.34	0.0005	0.72	8.02	9.9	1090	2.85	0.21	0.75	0.10	71.6	16.7	81	9.10	28.7	
72737	0.34	0.0005	0.69	7.80	19.2	1010	2.59	0.21	1.74	0.07	65.9	17.2	67	5.51	30.3	
386751	0.28	0.0016	1.21	7.03	20.7	1840	2.24	0.22	1.05	0.14	65.5	15.4	92	4.72	46.2	
386752	0.34	0.0015	1.44	7.01	20.2	2530	2.22	0.24	1.03	0.11	59.1	10.9	108	5.63	56.0	
386753	0.32	0.0013	1.43	6.93	21.1	2270	2.24	0.21	1.00	0.11	59.9	13.1	98	5.12	42.1	



# ALS Chemex

**EXCELLENCE IN ANALYTICAL CHEMISTRY**

ALS Canada Ltd.

2103 Dollarton Hwy

North Vancouver BC V7H 0A7

Phone: 604 984 0221 Fax: 604 984 0218 www.alschemex.com

To: KLONDIKE SILVER  
PO BOX 189  
NEW DENVER BC V0G 1S0

Page: 2 - B  
Total # Pages: 4 (A - D)  
Plus Appendix Pages  
Finalized Date: 24-SEP-2009  
Account: KLOSIL

Project: Stump

## CERTIFICATE OF ANALYSIS VA09098584

Sample Description	Method Analyte Units LOR	ME-MS61	ME-MS61	ME-MS61	ME-MS61	ME-MS61	ME-MS61	ME-MS61	ME-MS61	ME-MS61	ME-MS61	ME-MS61	ME-MS61	ME-MS61	ME-MS61	
		Fe	Ga	Ge	Hf	In	K	La	Li	Mg	Mn	Mo	Na	Nb	Ni	P
		%	ppm	ppm	ppm	ppm	%	ppm	ppm	%	ppm	ppm	%	ppm	ppm	ppm
		0.01	0.05	0.05	0.1	0.005	0.01	0.5	0.2	0.01	5	0.01	0.1	0.2	10	
72701		3.90	22.3	0.15	2.3	0.064	2.56	38.1	26.6	2.05	663	1.02	0.28	16.9	28.7	1040
72702		3.80	17.65	0.12	1.8	0.059	1.81	28.9	30.8	1.70	692	0.55	0.24	12.5	27.4	790
72703		3.99	15.25	0.12	1.8	0.067	1.28	30.9	52.4	1.68	811	0.70	0.20	14.1	26.8	880
72704		3.97	17.05	0.14	2.3	0.060	1.74	34.0	40.1	1.19	767	0.68	0.24	14.3	26.3	1080
72705		3.86	15.00	0.12	2.1	0.055	1.56	31.6	32.6	1.12	715	0.57	0.21	12.3	23.3	1010
72706		3.85	13.20	0.11	1.5	0.064	1.13	27.1	13.9	1.22	832	0.31	0.13	8.5	21.9	640
72707		4.03	15.10	0.13	1.9	0.064	1.25	31.8	36.2	1.34	727	0.76	0.18	12.9	24.6	1740
72708		3.09	15.80	0.12	2.3	0.047	1.49	38.1	40.1	1.14	510	0.54	0.18	14.7	20.7	1040
72709		4.25	17.80	0.15	2.1	0.069	1.38	36.4	57.6	1.41	697	1.10	0.20	17.6	29.5	1900
72710		4.05	20.6	0.12	2.5	0.069	1.23	32.1	30.1	0.28	557	1.11	0.16	16.9	32.8	1450
72711		3.50	20.6	0.14	2.7	0.054	1.32	35.6	46.1	0.36	520	1.32	0.18	17.3	29.8	2010
72712		3.24	22.4	0.15	2.5	0.056	1.62	37.5	57.4	0.76	360	1.17	0.15	17.6	30.3	1500
72713		3.81	21.0	0.15	2.3	0.059	1.25	39.0	24.7	0.56	500	1.10	0.15	16.3	36.4	1350
72714		4.16	20.7	0.13	2.7	0.053	1.55	37.7	63.9	1.12	472	1.23	0.16	17.7	35.4	1580
72715		3.77	24.4	0.14	2.6	0.067	1.52	35.9	69.4	0.75	474	1.06	0.16	18.8	35.4	1010
72716		4.36	21.6	0.14	2.7	0.062	1.47	34.0	113.0	0.61	483	1.39	0.14	17.2	48.5	2060
72717		3.54	22.3	0.13	3.3	0.060	1.47	36.3	48.7	0.25	224	1.90	0.16	23.0	49.5	2890
72718		5.05	18.60	0.16	3.9	0.064	1.06	40.2	55.7	1.41	396	3.51	0.10	29.7	70.3	4870
72719		3.29	21.7	0.14	3.5	0.043	1.29	38.2	41.0	1.17	428	2.74	0.14	25.9	49.3	2870
72720		3.19	21.0	0.16	3.5	0.053	1.38	38.5	77.5	0.99	441	2.97	0.14	26.8	49.3	2480
72721		3.63	20.0	0.15	3.6	0.051	1.34	37.6	58.0	1.09	407	2.63	0.14	27.0	53.4	3560
72722		3.64	23.9	0.15	3.3	0.043	1.72	35.9	50.6	1.82	432	4.66	0.22	25.0	61.2	2690
72723		3.29	23.4	0.15	3.2	0.053	1.39	41.0	41.4	0.77	350	2.21	0.17	22.4	46.9	2610
72724		3.26	21.3	0.15	2.7	0.049	1.31	35.5	30.9	1.03	426	1.58	0.16	18.0	38.2	2240
72725		3.13	18.75	0.15	2.4	0.044	1.20	37.7	22.4	1.25	357	1.55	0.13	15.3	36.5	2240
72726		2.76	21.7	0.14	2.4	0.046	1.38	30.2	27.0	0.56	324	1.66	0.16	16.8	38.0	1310
72727		3.68	21.9	0.13	2.6	0.056	1.43	33.1	28.9	0.54	377	1.66	0.18	17.9	41.9	1940
72728		3.59	20.1	0.14	1.9	0.062	1.68	25.7	38.4	0.43	622	1.02	0.31	24.0	24.0	1880
72729		3.86	20.7	0.14	2.4	0.058	1.62	29.9	39.0	0.54	496	1.12	0.24	16.9	31.4	1100
72730		3.63	21.7	0.15	1.9	0.060	1.66	25.5	44.4	0.34	615	1.03	0.27	16.6	26.1	1170
72731		4.05	23.1	0.16	2.7	0.059	1.70	35.7	30.7	0.43	445	1.87	0.24	17.8	35.8	1280
72732		4.14	21.8	0.17	2.1	0.060	1.63	37.4	30.5	0.61	667	1.30	0.21	15.7	36.1	870
72733		3.82	26.5	0.16	2.8	0.066	2.03	34.1	116.5	0.47	663	1.06	0.29	18.4	34.0	1030
72734		4.41	22.9	0.21	1.9	0.075	1.86	36.7	108.0	0.29	1250	0.64	0.30	14.3	28.8	860
72735		4.02	26.3	0.20	2.4	0.070	1.82	36.9	43.5	0.27	649	1.06	0.28	20.1	36.7	1340
72736		4.44	27.0	0.20	2.4	0.078	1.83	39.4	45.1	0.21	618	1.36	0.28	18.8	34.4	1020
72737		4.69	23.9	0.19	3.1	0.088	1.72	35.2	91.8	0.23	1080	4.09	0.53	15.2	33.9	3000
386751		4.52	21.9	0.19	3.0	0.076	1.29	37.7	50.0	0.31	802	4.80	0.45	19.6	48.5	2420
386752		4.04	20.9	0.14	2.7	0.071	1.31	33.0	53.8	0.19	344	8.02	0.23	19.2	53.4	3410
386753		4.17	20.5	0.14	2.6	0.071	1.30	30.7	58.3	0.21	567	7.43	0.27	18.1	55.4	3100



# ALS Chemex

EXCELLENCE IN ANALYTICAL CHEMISTRY

ALS Canada Ltd.

2103 Dollarton Hwy

North Vancouver BC V7H 0A7

Phone: 604 984 0221 Fax: 604 984 0218 www.alschemex.com

To: KLONDIKE SILVER  
PO BOX 189  
NEW DENVER BC V0G 1S0

Page: 2 - C  
Total # Pages: 4 (A - D)  
Plus Appendix Pages  
Finalized Date: 24-SEP-2009  
Account: KLOSIL

Project: Stump

## CERTIFICATE OF ANALYSIS VA09098584

Sample Description	Method Analyte Units LOR	ME-MS61	ME-MS61	ME-MS61	ME-MS61	ME-MS61	ME-MS61	ME-MS61	ME-MS61	ME-MS61	ME-MS61	ME-MS61	ME-MS61	ME-MS61	ME-MS61	ME-MS61
		Pb	Rb	Re	S	Sb	Sc	Se	Sn	Sr	Ta	Te	Th	Ti	Tl	U
		ppm	ppm	ppm	%	ppm	ppm	ppm	ppm	ppm	ppm	ppm	ppm	%	ppm	ppm
		0.5	0.1	0.002	0.01	0.05	0.1	1	0.2	0.2	0.05	0.05	0.2	0.005	0.02	0.1
72701		175.5	110.5	<0.002	0.09	3.01	14.7	3	2.5	435	1.17	<0.05	15.2	0.407	0.38	1.8
72702		24.9	85.1	<0.002	0.04	1.63	12.2	3	1.9	503	0.86	<0.05	13.2	0.327	0.25	1.3
72703		18.3	59.0	<0.002	0.09	1.72	10.5	1	1.7	526	0.93	0.07	12.0	0.356	0.17	1.2
72704		35.9	77.3	<0.002	0.09	2.00	10.7	1	2.1	476	1.08	0.05	15.3	0.376	0.25	1.5
72705		19.6	66.9	<0.002	0.08	1.74	9.5	<1	1.6	456	0.95	0.07	13.4	0.335	0.22	1.3
72706		10.9	46.2	<0.002	0.04	1.51	8.5	1	1.3	447	0.63	0.06	11.8	0.233	0.15	1.0
72707		43.6	51.1	<0.002	0.09	2.52	10.0	1	1.6	532	0.96	0.06	12.8	0.352	0.19	1.6
72708		18.8	62.6	<0.002	0.04	5.40	9.2	1	2.0	536	1.12	0.08	13.0	0.394	0.25	1.6
72709		26.4	59.8	<0.002	0.17	2.88	11.2	1	2.0	694	1.18	0.06	13.6	0.435	0.25	2.1
72710		23.5	46.9	<0.002	0.07	2.90	11.5	1	2.5	616	1.22	<0.05	14.5	0.451	0.36	2.7
72711		20.3	49.7	<0.002	0.07	2.92	11.1	1	2.3	653	1.20	0.06	15.4	0.436	0.33	3.0
72712		23.6	54.5	<0.002	0.09	3.52	11.3	1	2.4	654	1.24	0.07	15.1	0.434	0.46	2.1
72713		30.6	47.5	<0.002	0.10	2.92	11.4	1	2.3	730	1.17	0.05	15.6	0.418	0.41	2.0
72714		43.0	43.5	<0.002	0.15	4.11	11.1	1	2.4	746	1.23	0.07	15.0	0.494	0.40	2.4
72715		26.1	50.0	<0.002	0.10	6.85	12.4	1	2.6	661	1.32	<0.05	15.5	0.482	0.42	2.3
72716		39.6	58.1	<0.002	0.14	4.48	13.1	2	2.2	699	1.20	0.05	13.2	0.444	0.37	4.5
72717		34.3	60.4	<0.002	0.10	5.84	14.0	4	2.6	725	1.67	<0.05	13.9	0.523	0.48	5.2
72718		69.7	39.3	<0.002	0.13	12.65	10.3	5	2.6	979	2.07	<0.05	11.7	0.428	0.38	6.7
72719		34.2	49.7	<0.002	0.06	6.14	11.6	2	2.4	782	1.79	0.07	12.1	0.400	0.49	4.6
72720		40.0	52.8	<0.002	0.08	5.96	11.7	2	2.6	865	1.81	0.06	11.7	0.389	0.47	4.2
72721		39.4	52.4	<0.002	0.07	3.86	11.1	3	2.4	869	1.92	0.08	12.1	0.397	0.48	5.6
72722		41.8	47.9	<0.002	0.10	3.77	11.0	2	3.1	849	1.64	0.08	12.5	0.435	0.62	4.0
72723		28.5	56.5	<0.002	0.06	2.93	13.0	2	2.7	765	1.55	0.11	13.1	0.390	0.61	4.6
72724		27.0	44.1	<0.002	0.07	2.50	11.7	2	2.8	763	1.23	0.09	11.2	0.352	0.47	2.9
72725		21.9	53.0	<0.002	0.06	2.14	10.7	1	1.9	773	1.06	0.07	10.8	0.313	0.39	3.3
72726		37.8	55.1	<0.002	0.08	2.23	10.7	2	2.3	599	1.16	0.07	10.0	0.339	0.46	3.4
72727		39.1	56.4	<0.002	0.05	2.33	13.4	4	2.1	571	1.26	<0.05	11.9	0.387	0.49	3.8
72728		16.8	69.2	<0.002	0.09	1.46	13.3	1	1.9	804	1.61	0.05	12.3	0.552	0.35	1.8
72729		25.5	61.0	<0.002	0.05	2.23	12.3	2	2.1	779	1.19	0.06	11.3	0.404	0.37	2.6
72730		17.1	76.2	<0.002	0.11	1.60	12.5	2	1.9	669	1.13	0.06	11.8	0.396	0.39	2.7
72731		24.2	69.8	<0.002	0.07	2.87	14.5	1	2.2	580	1.23	0.06	14.8	0.458	0.54	3.6
72732		24.9	66.3	<0.002	0.09	2.99	12.1	1	2.2	517	1.05	0.06	13.9	0.399	0.40	2.5
72733		23.8	68.5	<0.002	0.06	2.39	13.8	1	2.6	528	1.31	0.05	15.1	0.449	0.41	2.2
72734		21.4	81.3	<0.002	0.08	1.50	15.4	1	2.0	427	1.00	<0.05	15.2	0.341	0.33	1.7
72735		24.6	84.5	<0.002	0.07	2.39	19.1	2	3.4	419	1.38	<0.05	19.2	0.463	0.48	2.3
72736		23.6	68.9	<0.002	0.05	2.29	19.2	2	2.4	377	1.30	<0.05	18.8	0.457	0.47	2.7
72737		28.2	69.5	<0.002	0.07	2.65	15.9	2	2.0	465	1.07	<0.05	15.5	0.393	0.74	5.5
386751		47.1	59.3	<0.002	0.04	4.64	17.6	2	2.3	464	1.34	0.06	14.0	0.431	0.67	5.0
386752		54.2	60.7	<0.002	0.03	5.86	13.8	4	3.5	487	1.33	0.06	11.8	0.449	0.94	6.4
386753		61.0	58.4	<0.002	0.03	6.11	13.9	4	2.2	458	1.19	0.07	12.0	0.423	0.84	5.8



# ALS Chemex

**EXCELLENCE IN ANALYTICAL CHEMISTRY**

ALS Canada Ltd

2103 Dollarton Hwy  
North Vancouver BC V7H 0A7

Phone: 604 984 0221 Fax: 604 984 0218 www.alschemex.com

To: KLONDIKE SILVER  
PO BOX 189  
NEW DENVER BC V0G 1S0

Page: 2 - D  
Total # Pages: 4 (A - D)  
Plus Appendix Pages  
Finalized Date: 24-SEP-2009  
Account: KLOSIL

Project: Stump

<b>CERTIFICATE OF ANALYSIS VA09098584</b>
---

Sample Description	ME-MS61	ME-MS61	ME-MS61	ME-MS61	ME-MS61
	V	W	Y	Zn	Zr
	ppm	ppm	ppm	ppm	ppm
Method Analyte Units LOR	1	0.1	0.1	2	0.5
72701	78	1.3	13.5	63	90.2
72702	51	0.9	12.2	58	65.7
72703	50	0.8	14.4	61	62.7
72704	53	1.0	13.7	75	73.9
72705	49	0.9	12.8	63	62.9
72706	38	0.6	12.2	55	47.6
72707	55	0.8	14.0	76	61.9
72708	56	1.0	12.8	52	70.4
72709	63	0.9	15.8	59	79.6
72710	77	1.1	13.9	70	86.2
72711	68	1.1	13.7	61	87.9
72712	66	1.2	13.1	48	86.9
72713	67	1.1	13.5	76	79.0
72714	92	1.2	14.3	32	90.4
72715	84	1.3	13.7	62	91.4
72716	93	1.2	15.9	36	91.9
72717	152	1.3	20.3	49	108.5
72718	165	1.2	26.8	31	135.0
72719	181	1.2	20.8	27	117.5
72720	179	1.1	18.9	28	122.5
72721	166	1.2	22.2	29	126.5
72722	226	1.3	17.3	18	126.5
72723	194	1.2	20.2	22	118.0
72724	166	1.1	18.2	23	96.9
72725	159	0.9	17.0	18	82.4
72726	170	1.0	14.5	34	90.9
72727	186	1.1	19.2	37	90.2
72728	92	1.0	19.3	31	66.0
72729	96	1.1	17.7	40	84.3
72730	74	0.9	17.1	42	62.7
72731	83	1.1	15.3	46	89.6
72732	65	1.0	13.9	38	75.1
72733	69	1.3	14.2	36	90.6
72734	60	0.9	21.4	42	62.9
72735	88	1.3	20.2	73	85.1
72736	94	1.3	21.4	61	81.0
72737	79	1.0	21.3	44	101.0
386751	264	1.2	25.6	68	98.9
386752	397	1.1	26.1	61	91.4
386753	366	1.0	26.2	60	87.7



# ALS Chemex

**EXCELLENCE IN ANALYTICAL CHEMISTRY**

ALS Canada Ltd.

2103 Dollarton Hwy  
North Vancouver BC V7H 0A7

Phone: 604 984 0221 Fax: 604 984 0218 www.alschemex.com

To: KLONDIKE SILVER  
PO BOX 189  
NEW DENVER BC V0G 1S0

Page: 3 - A  
Total # Pages: 4 (A - D)  
Plus Appendix Pages  
Finalized Date: 24-SEP-2009  
Account: KLOSIL

Project: Stump

## CERTIFICATE OF ANALYSIS VA09098584

Sample Description	Method Analyte Units LOR	WEI-21	Au-ST43	ME-MS61	ME-MS61	ME-MS61	ME-MS61	ME-MS61	ME-MS61	ME-MS61	ME-MS61	ME-MS61	ME-MS61	ME-MS61	ME-MS61	ME-MS61
		Recvd Wt. kg	Au ppm	Ag ppm	Al %	As ppm	Ba ppm	Be ppm	Bi ppm	Ca %	Cd ppm	Ce ppm	Co ppm	Cr ppm	Cs ppm	Cu ppm
386754		0.30	0.0016	1.16	6.40	16.0	1900	2.02	0.20	0.99	0.09	57.9	9.7	90	3.95	31.7
386755		0.32	0.0014	1.21	6.89	15.4	1920	1.97	0.21	1.24	0.15	53.8	11.6	83	3.96	38.4
386756		0.34	0.0013	1.63	6.46	17.2	1900	2.02	0.19	1.20	0.12	56.0	10.4	81	3.55	38.1
386757		0.26	0.0012	1.31	6.79	17.4	2160	2.16	0.20	1.33	0.19	56.1	13.2	88	3.98	45.0
386758		0.28	0.0014	1.21	6.33	13.0	1680	1.85	0.17	1.62	0.09	49.7	10.7	67	2.87	38.2
386759		0.22	0.0012	0.72	6.97	10.2	1760	1.78	0.18	1.44	0.07	50.6	9.7	67	3.03	31.8
386760		0.22	0.0009	0.52	7.17	6.9	1540	1.65	0.21	1.64	0.06	42.4	8.6	54	2.51	31.5
386761		0.26	0.0018	0.97	6.99	12.2	2020	1.89	0.20	1.45	0.12	52.6	14.9	73	2.85	43.3
386762		0.24	0.0012	0.71	7.11	10.0	1650	2.27	0.20	1.37	0.13	51.1	15.3	91	3.75	43.8
386763		0.24	0.0013	0.88	7.13	10.3	1770	2.30	0.19	1.28	0.09	54.9	13.6	99	4.21	38.5
386764		0.28	0.0016	0.90	6.75	10.6	1710	2.05	0.19	1.51	0.15	53.0	14.0	94	3.45	36.4
386765		0.28	0.0012	1.16	7.24	12.7	1940	2.23	0.20	1.54	0.16	56.9	15.7	104	4.29	41.6
386766		0.22	0.0021	1.16	6.84	12.5	1870	2.05	0.19	1.13	0.15	48.9	14.4	99	3.84	39.1
386767		0.24	0.0015	1.19	7.11	13.2	2070	2.12	0.21	1.55	0.18	53.9	15.9	105	4.08	44.3
386768		0.36	0.0024	1.32	6.66	13.6	1850	2.09	0.22	2.63	0.20	55.2	14.9	99	4.08	48.7
386769		0.32	0.0019	1.75	6.57	15.1	1860	2.03	0.22	2.90	0.18	47.2	17.5	97	4.50	62.5
386770		0.26	0.0020	0.68	6.19	9.1	1610	1.76	0.15	2.13	0.16	55.3	11.2	72	2.41	29.2
386771		0.38	0.0010	1.06	6.16	11.3	2050	1.78	0.18	5.69	0.08	46.3	15.9	85	3.26	42.0
386772		0.32	0.0009	1.23	6.62	12.5	2100	1.68	0.20	7.31	0.08	51.1	14.8	85	3.85	45.4
386773		0.32	0.0009	1.25	6.64	16.2	2450	1.78	0.21	6.02	0.09	59.7	18.2	98	4.91	47.6
386774		0.24	0.0016	1.10	5.94	11.0	1940	1.78	0.18	4.33	0.07	49.6	13.9	85	4.10	40.6
386775		0.28	0.0013	1.19	6.22	11.0	1790	1.57	0.18	5.98	0.08	54.8	13.7	89	3.66	40.2
386776		0.26	0.0007	1.25	6.26	16.4	1720	1.44	0.17	7.74	0.09	62.9	18.9	73	3.32	58.0
386777		0.24	0.0025	1.61	6.60	13.7	1760	1.93	0.20	1.91	0.13	56.9	12.1	102	4.65	44.8
386778		0.22	0.0027	1.52	6.48	19.3	1590	2.08	0.21	2.11	0.09	54.5	12.0	110	5.08	47.9
386779		0.40	0.0015	1.22	7.53	11.7	1880	2.73	0.22	1.16	0.05	44.8	12.0	122	5.54	40.0
386780		0.38	0.0012	0.65	7.20	11.3	1630	2.65	0.19	1.65	0.07	48.6	17.1	96	5.60	38.8
386781		0.36	0.0004	0.32	6.03	6.0	970	1.46	0.14	8.70	0.08	59.5	12.5	59	2.62	11.7
386782		0.38	0.0003	0.37	6.06	6.0	890	1.63	0.21	5.59	0.08	68.7	16.1	69	2.60	17.9
386783		0.46	0.0004	0.41	6.47	7.6	1000	1.71	0.19	5.19	0.08	70.3	18.3	72	3.55	23.1
386784		0.42	0.0003	0.42	6.72	7.4	850	1.71	0.19	5.69	0.05	67.4	18.2	70	2.93	20.4
386785		0.42	0.0001	0.49	7.79	12.7	1590	2.54	0.19	6.10	0.03	58.4	24.0	71	7.39	25.7
386786		0.34	0.0002	0.53	6.91	10.0	1130	2.03	0.19	6.09	0.08	59.5	17.6	72	4.07	24.5
386787		0.32	0.0004	0.42	7.21	8.0	1060	1.73	0.17	7.33	0.06	61.5	15.0	67	3.34	18.5
386788		0.28	0.0001	0.36	6.30	10.6	1460	1.53	0.21	9.31	0.17	66.3	17.0	56	3.79	19.9
386789		0.40	<0.0001	0.23	6.77	5.4	1470	1.73	0.13	8.06	0.04	67.5	18.5	57	4.54	16.6
386790		0.42	<0.0001	0.16	5.50	<5	900	1.33	0.13	10.85	0.04	54.8	14.3	47	2.48	14.4
386791		0.42	<0.0001	0.19	5.96	4.5	690	1.43	0.14	9.93	0.04	58.1	17.0	51	3.47	15.6
386792		0.46	0.0001	0.16	5.58	6	620	1.48	0.14	10.25	0.05	48.2	17.2	45	2.83	13.5
386793		0.32	0.0013	1.34	7.37	13.3	2360	2.91	0.20	1.07	0.06	48.0	15.4	124	5.89	52.8



# ALS Chemex

**EXCELLENCE IN ANALYTICAL CHEMISTRY**

ALS Canada Ltd.  
 2103 Dollarton Hwy  
 North Vancouver BC V7H 0A7  
 Phone: 604 984 0221 Fax: 604 984 0218 www.alschemex.com

To: KLONDIKE SILVER  
 PO BOX 189  
 NEW DENVER BC V0G 1S0

Page: 3 - B  
 Total # Pages: 4 (A - D)  
 Plus Appendix Pages  
 Finalized Date: 24-SEP-2009  
 Account: KLOSIL

Project: Stump

<b>CERTIFICATE OF ANALYSIS VA09098584</b>
---

Sample Description	Method	ME-MS61	ME-MS61	ME-MS61	ME-MS61	ME-MS61	ME-MS61	ME-MS61	ME-MS61	ME-MS61	ME-MS61	ME-MS61	ME-MS61	ME-MS61	ME-MS61	
	Analyte	Fe	Ga	Ge	Hf	In	K	La	Li	Mg	Mn	Mo	Na	Nb	Ni	P
	Units LOR	%	ppm	ppm	ppm	ppm	%	ppm	ppm	%	ppm	ppm	%	ppm	ppm	ppm
		0.01	0.05	0.05	0.1	0.005	0.01	0.5	0.2	0.01	5	0.05	0.01	0.1	0.2	10
386754		4.17	18.25	0.15	2.6	0.075	1.22	34.2	51.5	0.23	413	5.34	0.36	17.9	43.3	3220
386755		3.59	20.9	0.12	2.9	0.057	1.37	30.8	53.4	0.27	285	5.04	0.56	18.2	41.1	3480
386756		3.66	19.10	0.14	2.7	0.069	1.19	28.2	49.5	0.19	345	6.20	0.31	17.4	45.9	4290
386757		4.01	20.6	0.15	2.7	0.063	1.29	30.4	53.0	0.27	404	6.65	0.37	18.4	54.3	4370
386758		3.71	18.05	0.14	2.4	0.057	1.24	27.2	39.2	0.27	349	3.68	0.65	15.2	38.3	3670
386759		3.43	19.55	0.13	2.6	0.054	1.40	28.1	39.3	0.31	407	2.33	0.96	15.3	30.6	2680
386760		3.11	20.1	0.12	2.7	0.051	1.57	20.9	34.0	0.39	412	1.94	1.34	12.7	22.6	2060
386761		3.85	20.3	0.14	2.6	0.055	1.45	28.6	52.0	0.27	601	3.05	0.88	16.8	49.9	3730
386762		4.46	20.8	0.15	2.3	0.071	1.46	29.1	48.6	0.20	602	1.72	0.30	18.2	42.5	4630
386763		4.40	21.0	0.15	2.4	0.073	1.46	29.8	48.3	0.20	429	1.64	0.31	19.4	40.4	3860
386764		4.44	19.60	0.16	2.4	0.068	1.31	27.8	45.1	0.22	483	1.65	0.30	19.2	39.8	5120
386765		4.57	21.2	0.15	2.6	0.064	1.41	31.5	45.0	0.29	519	1.78	0.31	20.9	43.9	3910
386766		4.49	19.95	0.15	2.5	0.065	1.33	26.0	40.8	0.19	567	1.69	0.30	19.7	42.4	2770
386767		4.51	21.8	0.14	2.8	0.071	1.40	26.6	53.7	0.27	563	1.97	0.37	22.3	45.0	3970
386768		4.15	20.2	0.14	2.9	0.058	1.31	32.1	55.9	0.53	507	2.23	0.43	24.6	45.4	4280
386769		3.89	20.1	0.15	3.2	0.077	1.27	26.1	37.0	0.28	522	2.88	0.40	25.2	55.8	2930
386770		3.91	17.10	0.14	2.2	0.062	1.22	30.5	31.9	0.52	688	1.28	0.91	14.4	32.1	2190
386771		3.73	18.95	0.13	2.4	0.058	1.07	28.0	31.8	0.44	653	1.83	0.26	18.4	44.2	4090
386772		3.25	18.65	0.13	2.6	0.053	1.15	29.1	33.1	0.55	471	2.11	0.25	19.9	44.2	3930
386773		3.91	19.40	0.15	2.6	0.051	1.24	34.7	41.8	0.98	679	2.16	0.24	20.4	51.4	2890
386774		3.43	19.20	0.13	2.3	0.053	1.23	28.0	39.3	0.49	444	1.93	0.44	17.5	41.3	2590
386775		3.64	18.15	0.12	2.2	0.039	1.05	31.5	24.7	0.73	482	1.83	0.23	15.8	46.5	2620
386776		3.81	16.80	0.13	2.1	0.045	0.96	37.8	19.7	1.17	474	1.35	0.19	15.1	44.7	2730
386777		3.55	19.70	0.13	2.8	0.047	1.22	32.7	32.1	0.42	319	1.85	0.19	24.7	42.5	2700
386778		3.78	19.00	0.13	3.0	0.058	1.17	30.4	40.8	0.31	328	2.52	0.16	26.0	49.2	3200
386779		3.85	23.0	0.14	2.8	0.068	1.47	25.9	44.8	0.19	272	1.95	0.21	21.5	47.2	2510
386780		4.28	21.9	0.13	2.3	0.073	1.50	24.8	53.3	0.18	647	2.09	0.25	17.3	44.8	4670
386781		4.06	16.30	0.12	1.7	0.047	1.02	31.3	22.4	1.55	790	0.62	0.16	12.0	27.9	660
386782		3.48	20.3	0.13	2.5	0.058	1.14	36.1	21.6	0.42	621	0.93	0.17	17.9	29.4	780
386783		3.76	21.3	0.14	2.3	0.067	1.18	38.3	23.8	0.45	619	0.98	0.18	17.8	32.6	1380
386784		3.80	19.80	0.14	1.9	0.056	1.14	36.6	20.1	0.67	532	0.92	0.18	16.9	32.8	1030
386785		3.81	24.0	0.14	2.4	0.062	1.74	29.5	102.5	1.34	623	1.87	0.34	24.1	29.3	2750
386786		3.75	21.9	0.13	2.0	0.058	1.38	30.7	36.1	0.51	474	1.00	0.20	18.6	30.7	1310
386787		3.32	21.0	0.13	1.8	0.052	1.36	33.6	29.1	1.26	479	0.95	0.18	16.9	27.5	1250
386788		4.11	17.15	0.13	2.1	0.061	1.33	37.5	49.1	1.38	798	1.14	0.25	15.0	26.4	2060
386789		3.89	18.10	0.13	2.2	0.061	1.54	34.3	83.6	1.17	756	0.87	0.28	18.2	23.9	1540
386790		4.17	14.75	0.12	1.7	0.060	1.20	30.6	13.1	1.35	943	0.39	0.17	10.4	23.7	590
386791		3.72	15.60	0.13	1.6	0.054	1.43	31.7	29.7	1.64	738	0.40	0.23	12.0	25.3	870
386792		4.31	14.55	0.13	1.5	0.064	1.33	24.7	28.4	1.39	764	0.47	0.22	12.4	25.9	860
386793		3.97	22.3	0.13	3.4	0.059	1.46	28.8	34.9	0.17	345	2.01	0.24	20.3	54.8	3120



# ALS Chemex

**EXCELLENCE IN ANALYTICAL CHEMISTRY**

ALS Canada Ltd

2103 Dollarton Hwy  
North Vancouver BC V7H 0A7

Phone: 604 984 0221 Fax: 604 984 0218 www.alschemex.com

To: KLONDIKE SILVER  
PO BOX 189  
NEW DENVER BC V0G 1S0

Page: 3 - C  
Total # Pages: 4 (A - D)  
Plus Appendix Pages  
Finalized Date: 24-SEP-2009  
Account: KLOSIL

Project: Stump

CERTIFICATE OF ANALYSIS	VA09098584
-------------------------	------------

Sample Description	ME-MS61	ME-MS61	ME-MS61	ME-MS61	ME-MS61	ME-MS61	ME-MS61	ME-MS61	ME-MS61	ME-MS61	ME-MS61	ME-MS61	ME-MS61	ME-MS61	ME-MS61
	Pb	Rb	Re	S	Sb	Sc	Se	Sn	Sr	Ta	Te	Th	Ti	Tl	U
	ppm	ppm	ppm	%	ppm	ppm	ppm	ppm	ppm	ppm	ppm	ppm	%	ppm	ppm
	0.5	0.1	0.002	0.01	0.05	0.1	1	0.2	0.2	0.05	0.05	0.2	0.005	0.02	0.1
386754	45.5	55.0	<0.002	0.03	3.91	15.0	3	1.9	442	1.25	0.05	11.9	0.394	0.66	5.4
386755	41.5	54.0	<0.002	0.02	4.35	12.6	3	2.2	524	1.23	0.05	11.3	0.421	0.66	4.6
386756	68.6	49.8	<0.002	0.02	4.60	13.4	4	1.9	500	1.19	0.05	11.0	0.396	0.67	4.9
386757	65.8	51.8	<0.002	0.03	4.24	13.4	4	2.1	514	1.25	0.05	11.3	0.429	0.71	5.5
386758	35.2	50.7	<0.002	0.04	3.30	13.3	4	1.7	481	1.02	0.05	10.5	0.348	0.51	4.0
386759	28.2	52.1	<0.002	0.04	2.17	12.2	3	1.7	479	1.07	<0.05	10.0	0.355	0.47	3.6
386760	19.7	49.3	<0.002	0.04	1.48	10.8	3	1.7	501	0.92	<0.05	8.0	0.338	0.41	2.6
386761	26.9	53.4	<0.002	0.04	2.73	13.4	3	1.8	451	1.15	<0.05	10.8	0.385	0.46	3.4
386762	30.1	59.7	<0.002	0.03	2.67	14.5	3	2.6	540	1.27	0.05	11.4	0.479	0.39	3.7
386763	32.2	60.9	<0.002	0.03	2.66	15.0	3	2.2	527	1.34	<0.05	11.5	0.481	0.42	3.9
386764	33.1	53.4	<0.002	0.03	2.52	14.2	3	2.0	519	1.37	<0.05	11.5	0.472	0.39	3.6
386765	38.7	56.0	<0.002	0.04	2.75	15.9	4	2.2	526	1.46	<0.05	12.2	0.497	0.45	3.9
386766	35.5	52.6	<0.002	0.04	2.64	15.1	3	2.0	452	1.37	<0.05	10.8	0.437	0.43	3.8
386767	40.5	52.0	<0.002	0.04	2.87	15.0	3	2.1	519	1.55	<0.05	11.3	0.479	0.46	4.0
386768	41.7	50.5	<0.002	0.03	2.97	14.0	3	2.2	542	1.66	<0.05	11.9	0.465	0.43	4.4
386769	33.9	49.3	<0.002	0.03	3.51	14.0	3	2.3	505	1.78	0.05	11.3	0.447	0.47	5.1
386770	24.8	48.9	<0.002	0.06	1.80	14.6	3	1.5	444	1.02	0.05	9.7	0.361	0.36	3.0
386771	22.5	36.4	<0.002	0.03	2.43	12.3	3	2.0	590	1.26	<0.05	10.7	0.367	0.42	3.2
386772	23.8	36.5	<0.002	0.03	2.65	10.9	3	2.0	718	1.37	0.05	10.1	0.380	0.41	3.4
386773	30.9	43.9	<0.002	0.04	2.85	11.8	3	2.2	547	1.40	0.06	12.3	0.416	0.45	3.8
386774	22.7	47.1	<0.002	0.05	2.47	11.5	4	1.9	585	1.18	0.05	10.8	0.375	0.49	3.4
386775	21.6	39.2	<0.002	0.04	2.51	12.3	5	1.8	550	1.06	<0.05	11.7	0.370	0.52	3.8
386776	25.6	34.9	<0.002	0.04	3.43	11.4	3	1.9	557	1.00	<0.05	12.4	0.348	0.48	2.5
386777	32.6	50.6	<0.002	0.07	3.56	13.2	3	2.0	532	1.66	0.05	12.3	0.442	0.57	4.5
386778	37.2	53.9	<0.002	0.10	5.23	13.8	4	2.1	579	1.88	0.05	11.8	0.454	0.56	5.8
386779	25.6	64.9	<0.002	0.05	3.85	16.4	3	2.4	664	1.51	<0.05	11.3	0.519	0.49	4.9
386780	27.2	58.5	<0.002	0.05	3.18	14.7	3	2.1	800	1.21	<0.05	11.1	0.474	0.40	4.9
386781	13.9	47.3	<0.002	0.07	1.38	10.8	3	1.7	761	0.82	<0.05	11.9	0.316	0.26	1.5
386782	15.9	38.7	<0.002	0.05	2.04	11.1	2	2.3	566	1.21	<0.05	16.2	0.448	0.31	2.1
386783	18.3	44.5	<0.002	0.07	2.21	12.7	3	2.3	580	1.24	<0.05	16.1	0.452	0.33	2.1
386784	17.8	45.7	<0.002	0.11	2.40	12.4	3	2.4	594	1.17	<0.05	15.6	0.464	0.28	2.1
386785	23.0	45.9	<0.002	0.19	2.60	12.8	3	2.4	1005	1.62	<0.05	12.9	0.601	0.44	2.3
386786	18.9	48.1	<0.002	0.07	3.02	12.2	3	2.4	629	1.28	<0.05	14.2	0.499	0.36	1.7
386787	19.1	41.2	<0.002	0.07	2.90	11.7	2	2.2	674	1.15	<0.05	13.3	0.453	0.29	1.3
386788	23.6	53.0	<0.002	0.10	3.12	11.6	1	1.8	630	0.99	<0.05	14.2	0.416	0.22	2.0
386789	15.5	62.4	<0.002	0.09	2.07	11.3	1	1.9	558	1.20	0.05	13.1	0.524	0.22	1.5
386790	10.3	50.2	<0.002	0.04	1.65	9.4	1	1.5	477	0.72	<0.05	12.5	0.271	0.16	1.2
386791	12.8	58.0	<0.002	0.11	1.77	9.7	1	1.5	489	0.81	<0.05	12.4	0.347	0.19	1.2
386792	35.5	53.8	<0.002	0.14	1.69	10.8	1	1.4	474	0.85	<0.05	11.5	0.353	0.18	1.0
386793	26.3	63.9	<0.002	0.03	4.08	15.4	2	2.4	623	1.47	<0.05	12.1	0.549	0.49	4.5



# ALS Chemex

**EXCELLENCE IN ANALYTICAL CHEMISTRY**

ALS Canada Ltd.

2103 Dollarton Hwy  
North Vancouver BC V7H 0A7

Phone: 604 984 0221 Fax: 604 984 0218 www.alschemex.com

To: KLONDIKE SILVER  
PO BOX 189  
NEW DENVER BC V0G 1S0

Page: 3 - D  
Total # Pages: 4 (A - D)  
Plus Appendix Pages  
Finalized Date: 24-SEP-2009  
Account: KLOSIL

Project: Stump

<b>CERTIFICATE OF ANALYSIS VA09098584</b>
---

Sample Description	Method	ME-MS61	ME-MS61	ME-MS61	ME-MS61	ME-MS61
	Analyte	V	W	Y	Zn	Zr
	Units	ppm	ppm	ppm	ppm	ppm
LOR		1	0.1	0.1	2	0.5
386754		285	1.0	31.9	52	82.5
386755		299	1.0	22.7	70	93.6
386756		361	1.0	28.5	63	86.0
386757		317	1.0	26.9	85	89.4
386758		217	0.9	25.4	57	85.1
386759		160	0.9	20.6	50	90.1
386760		127	0.9	17.1	47	89.8
386761		149	1.0	24.9	63	87.9
386762		133	1.0	24.9	56	74.4
386763		146	1.1	24.5	55	81.2
386764		150	1.1	24.1	62	75.6
386765		175	1.1	24.6	72	83.3
386766		170	1.0	22.1	67	82.2
386767		183	1.1	24.8	73	89.2
386768		173	1.1	25.2	80	96.6
386769		174	1.2	25.7	65	104.5
386770		135	0.9	25.3	55	73.1
386771		163	1.0	21.4	34	79.2
386772		171	1.0	19.0	28	84.6
386773		192	1.1	21.4	29	89.0
386774		159	1.0	19.6	41	83.2
386775		160	0.9	20.9	29	78.3
386776		115	0.9	18.4	35	73.2
386777		160	1.0	20.0	55	93.5
386778		186	1.0	22.7	42	97.4
386779		155	1.2	19.8	35	86.5
386780		116	1.1	21.7	48	73.7
386781		55	0.8	15.3	64	54.2
386782		99	1.2	15.7	60	86.3
386783		91	1.1	15.9	69	75.8
386784		81	1.1	13.6	62	61.3
386785		98	1.1	14.2	42	80.9
386786		80	1.1	13.7	72	67.3
386787		74	1.0	13.7	50	69.9
386788		62	0.9	16.4	88	74.4
386789		73	0.9	16.3	45	78.0
386790		41	0.7	14.0	57	55.2
386791		48	0.8	13.5	45	56.6
386792		50	0.7	14.4	54	55.7
386793		167	1.3	19.8	41	106.5



# ALS Chemex

**EXCELLENCE IN ANALYTICAL CHEMISTRY**

ALS Canada Ltd.

2103 Dollarton Hwy

North Vancouver BC V7H 0A7

Phone: 604 984 0221 Fax: 604 984 0218 www.alschemex.com

To: KLONDIKE SILVER  
PO BOX 189  
NEW DENVER BC V0G 1S0

Page: 4 - A  
Total # Pages: 4 (A - D)  
Plus Appendix Pages  
Finalized Date: 24-SEP-2009  
Account: KLOSIL

Project: Stump

## CERTIFICATE OF ANALYSIS VA09098584

Sample Description	WEI-21	Au-ST43	ME-MS61	ME-MS61	ME-MS61	ME-MS61	ME-MS61	ME-MS61	ME-MS61	ME-MS61	ME-MS61	ME-MS61	ME-MS61	ME-MS61	ME-MS61	ME-MS61
	Recvd Wt. kg	Au ppm	Ag ppm	Al %	As ppm	Ba ppm	Be ppm	Bi ppm	Ca %	Cd ppm	Ce ppm	Co ppm	Cr ppm	Cs ppm	Cu ppm	
	0.02	0.0001	0.01	0.01	0.2	10	0.05	0.01	0.01	0.02	0.01	0.1	1	0.05	0.2	
386794	0.38	0.0009	1.33	6.95	13.5	2130	2.79	0.20	1.60	0.05	42.4	15.5	120	6.26	66.4	
386795	0.40	0.0006	0.83	6.82	10.4	2030	2.80	0.19	2.96	0.06	41.9	15.4	105	5.50	50.7	
386796	0.34	0.0009	0.84	7.04	13.4	1860	2.51	0.21	4.24	0.07	60.6	18.2	103	5.99	45.0	
386797	0.36	0.0013	1.06	8.61	20.8	2140	2.76	0.46	1.95	0.06	101.5	22.8	113	7.17	74.2	
386798	0.40	0.0001	0.82	8.02	17.8	2500	3.13	0.38	3.40	0.06	47.4	22.3	113	7.40	45.8	
386799	0.36	0.0004	0.32	6.39	7.0	1010	1.79	0.14	5.86	0.17	60.2	14.0	67	2.89	21.5	
386800	0.42	0.0003	0.35	7.13	6.6	960	1.65	0.16	8.29	0.06	77.9	15.6	64	3.56	20.3	
72801	0.38	0.0003	0.50	7.30	10.0	1460	1.84	0.15	5.34	0.15	62.5	16.3	84	4.34	40.8	
72802	0.44	0.0001	0.49	7.24	10.5	2640	2.31	0.17	6.23	0.17	49.3	17.3	83	5.85	22.1	
72803	0.40	<0.0001	0.51	7.50	8.8	4050	1.89	0.13	6.07	0.07	59.6	14.2	67	4.66	20.9	
72804	0.44	0.0001	0.37	7.11	7.9	2780	1.73	0.13	7.41	0.04	63.3	13.3	60	3.53	15.7	
72805	0.40	<0.0001	0.38	6.74	7.8	2420	1.78	0.15	6.15	0.03	61.9	13.2	63	3.44	23.9	
72806	0.48	<0.0001	0.21	6.19	4.7	1340	1.48	0.13	9.31	0.06	67.8	13.5	50	3.09	16.7	
72807	0.46	<0.0001	0.20	6.90	4.9	1300	1.55	0.14	8.66	0.07	75.8	16.1	55	3.26	16.6	
72808	0.42	0.0002	0.17	5.42	<5	970	1.40	0.12	11.55	0.05	51.4	16.1	46	2.81	14.5	
72809	0.40	0.0006	0.46	7.09	14.8	2800	2.19	0.17	5.00	0.05	63.9	17.0	75	4.08	25.7	
72810	0.42	0.0002	0.44	7.10	8.3	2370	1.93	0.14	6.67	0.05	58.9	15.7	68	3.72	19.9	
72811	0.34	<0.0001	0.38	7.73	9.5	3540	2.34	0.12	1.96	0.05	47.8	12.1	74	3.83	18.2	
72812	0.46	<0.0001	0.50	7.05	9.4	4330	1.73	0.14	8.18	0.04	68.1	15.2	61	3.70	17.0	
72813	0.42	0.0002	0.58	7.22	11.1	3820	1.75	0.20	6.17	0.06	56.7	17.9	71	4.03	21.4	
72814	0.38	0.0002	0.50	7.17	9.3	3300	1.87	0.14	4.06	0.07	48.8	15.8	70	4.05	18.2	
72815	0.48	0.0002	0.64	7.26	12.2	2790	2.02	0.19	5.98	0.06	59.8	22.7	79	5.11	33.6	
72816	0.40	0.0009	0.78	7.35	15.5	2490	2.29	0.19	5.58	0.06	50.8	19.0	105	5.64	46.9	
72817	0.44	0.0005	1.18	8.30	15.3	2980	3.18	0.27	3.40	0.09	57.7	28.3	126	6.96	47.2	
72818	0.38	0.0012	1.03	7.96	12.9	2210	2.41	0.21	0.91	0.08	61.6	17.6	106	4.84	36.8	
72819	0.46	0.0009	0.78	8.03	10.8	2470	2.58	0.19	0.73	0.08	59.8	12.3	97	4.89	29.4	
72820	0.40	0.0006	0.71	8.08	10.6	2500	2.58	0.18	0.86	0.07	63.8	13.6	92	4.70	28.7	
72821	0.32	0.0008	1.34	7.68	21.4	2360	2.52	0.19	1.28	0.13	61.2	17.0	97	5.25	42.7	
72822	0.32	0.0005	1.02	6.92	19.0	1960	1.98	0.16	2.77	0.15	52.5	13.9	78	4.74	30.8	
72823	0.34	0.0003	1.67	7.34	20.6	3510	2.72	0.18	1.79	0.16	52.3	12.3	119	6.74	37.4	
72824	0.22	0.0008	1.54	6.01	18.0	2370	2.00	0.17	1.33	0.20	43.9	8.7	92	4.98	35.7	
72825	0.36	0.0005	1.32	6.29	19.7	3020	1.96	0.19	1.36	0.30	50.3	9.5	109	4.92	30.2	
72826	0.28	0.0008	1.89	7.09	27.7	5180	2.65	0.21	0.93	0.49	40.3	11.9	137	8.45	42.7	
72827	0.30	0.0003	1.34	6.88	20.3	3360	2.01	0.20	1.30	0.33	51.2	9.8	111	5.64	29.3	
72828	0.30	0.0006	1.77	7.73	26.0	5200	2.81	0.23	0.56	0.31	49.9	11.1	154	10.05	37.7	
72829	0.32	0.0009	0.84	6.47	19.4	2850	2.05	0.17	0.69	0.18	58.7	8.7	109	5.40	24.3	
72830	0.26	0.0007	1.18	7.12	21.8	3710	2.21	0.19	0.80	0.14	58.1	9.8	115	8.88	28.8	
72831	0.32	0.0013	0.23	5.66	15.2	1310	1.30	0.17	0.80	0.15	64.4	6.9	73	3.20	14.4	
72832	0.38	0.0002	0.93	4.37	27.2	1270	0.64	0.15	0.14	0.03	56.4	2.4	76	2.53	10.7	



# ALS Chemex

**EXCELLENCE IN ANALYTICAL CHEMISTRY**

ALS Canada Ltd.

2103 Dollarton Hwy

North Vancouver BC V7H 0A7

Phone: 604 984 0221 Fax: 604 984 0218 www.alschemex.com

To: KLONDIKE SILVER  
PO BOX 189  
NEW DENVER BC V0G 1S0

Page: 4 - B  
Total # Pages: 4 (A - D)  
Plus Appendix Pages  
Finalized Date: 24-SEP-2009  
Account: KLOSIL

Project: Stump

## CERTIFICATE OF ANALYSIS VA09098584

Sample Description	Method Analyte Units LOR	ME-MS61	ME-MS61	ME-MS61	ME-MS61	ME-MS61	ME-MS61	ME-MS61	ME-MS61	ME-MS61	ME-MS61	ME-MS61	ME-MS61	ME-MS61	ME-MS61	
		Fe	Ga	Ge	Hf	In	K	La	Li	Mg	Mn	Mo	Na	Nb	Ni	P
		%	ppm	ppm	ppm	ppm	%	ppm	ppm	%	ppm	ppm	%	ppm	ppm	ppm
		0.01	0.05	0.05	0.1	0.005	0.01	0.5	0.2	0.01	5	0.05	0.01	0.1	0.2	10
386794		4.31	21.4	0.14	3.2	0.066	1.39	24.7	30.0	0.16	377	2.10	0.23	18.5	54.2	2470
386795		3.88	21.1	0.13	2.9	0.064	1.42	19.8	38.3	0.19	339	1.56	0.26	18.2	43.5	3020
386796		4.14	22.2	0.15	3.2	0.056	1.45	34.2	119.5	0.43	441	1.97	0.28	20.6	46.4	3080
386797		3.54	30.8	0.19	3.8	0.077	1.62	55.6	50.9	0.25	327	2.20	0.26	58.6	58.2	2030
386798		4.11	29.1	0.13	4.3	0.054	1.92	24.1	84.6	0.28	446	1.98	0.30	24.5	59.2	1550
386799		4.17	18.25	0.14	1.4	0.058	1.26	34.4	24.9	1.04	724	0.80	0.22	14.3	27.0	1000
386800		3.27	20.7	0.14	2.1	0.055	1.25	40.1	25.4	0.78	563	1.10	0.18	16.3	26.8	820
72801		3.39	21.8	0.13	2.1	0.055	1.58	34.7	33.5	1.36	433	0.89	0.22	17.2	33.2	1240
72802		3.88	23.3	0.12	2.3	0.060	1.94	27.4	53.2	1.24	818	1.40	0.42	18.4	30.7	2230
72803		3.89	20.9	0.13	1.8	0.053	1.65	30.7	17.7	0.58	779	0.98	0.28	16.2	25.0	1190
72804		3.58	19.10	0.12	2.0	0.052	1.56	35.7	15.2	0.89	753	0.90	0.21	14.9	23.0	1360
72805		3.48	20.3	0.13	1.8	0.053	1.63	30.8	17.0	1.04	580	0.69	0.21	14.9	23.5	1210
72806		3.48	16.50	0.12	1.9	0.049	1.38	37.0	9.5	1.34	704	0.40	0.18	11.7	21.9	610
72807		3.80	18.25	0.15	2.0	0.062	1.57	39.4	10.9	1.05	889	0.37	0.20	13.1	24.0	630
72808		4.16	14.15	0.11	1.4	0.061	1.31	26.9	17.2	1.84	829	0.40	0.19	10.5	25.3	770
72809		4.01	21.7	0.13	3.2	0.056	1.76	34.8	22.1	0.73	710	2.49	0.24	16.1	28.2	2330
72810		3.92	21.3	0.14	2.2	0.059	1.62	32.6	13.0	0.80	807	0.94	0.21	16.0	27.1	1010
72811		3.21	22.2	0.13	2.1	0.050	1.77	26.3	16.0	0.32	488	1.38	0.24	15.4	23.7	1870
72812		4.13	20.0	0.15	2.1	0.055	1.46	38.4	9.4	0.85	843	0.92	0.20	15.9	27.3	1210
72813		4.56	20.9	0.13	2.0	0.063	1.56	26.9	12.4	0.52	975	0.97	0.23	17.2	30.4	1050
72814		4.38	21.1	0.14	1.7	0.066	1.63	23.1	22.5	0.63	887	0.89	0.29	15.7	27.3	1230
72815		4.68	22.3	0.14	2.4	0.071	1.70	33.1	78.1	1.23	777	1.60	0.33	20.9	37.5	2770
72816		4.34	22.2	0.20	3.0	0.063	1.79	27.0	40.0	0.55	556	2.67	0.28	18.8	54.7	7180
72817		4.03	29.2	0.14	3.8	0.081	1.83	29.8	48.1	0.35	408	1.51	0.29	31.8	59.2	1980
72818		4.70	24.3	0.17	3.2	0.076	1.57	35.0	45.3	0.20	593	1.90	0.28	23.1	43.8	3180
72819		4.39	23.9	0.17	2.9	0.071	1.65	32.7	38.4	0.20	380	1.34	0.36	20.4	33.2	2000
72820		4.55	23.7	0.17	2.7	0.077	1.63	32.9	41.2	0.20	497	1.25	0.34	19.8	34.9	2710
72821		4.80	22.4	0.16	3.3	0.069	1.46	33.2	49.9	0.27	485	6.43	0.30	19.1	60.8	3040
72822		3.83	21.7	0.14	3.3	0.054	1.46	25.8	56.6	0.42	533	5.02	0.50	16.9	44.6	1620
72823		3.72	21.7	0.15	3.5	0.079	1.78	30.9	44.2	0.50	472	11.10	0.28	19.1	65.2	1940
72824		3.48	15.80	0.14	2.7	0.058	1.35	25.5	31.4	0.29	252	8.66	0.25	16.5	62.0	2220
72825		3.65	16.65	0.14	2.6	0.064	1.64	28.7	31.9	0.60	835	9.09	0.65	14.0	58.0	880
72826		3.27	19.75	0.14	3.5	0.067	2.19	24.3	29.5	0.40	535	19.55	0.17	16.3	94.6	840
72827		3.38	17.85	0.14	3.1	0.058	1.81	31.9	33.0	0.47	489	11.15	0.72	16.2	60.0	1270
72828		3.49	22.4	0.17	3.5	0.080	2.32	30.9	35.5	0.32	506	16.65	0.26	17.1	86.4	1150
72829		3.40	18.05	0.16	3.0	0.060	1.61	35.2	35.2	0.38	405	9.80	0.60	18.0	50.0	1600
72830		3.16	19.90	0.16	3.1	0.068	1.87	36.1	35.9	0.35	377	10.35	0.54	19.4	60.4	1340
72831		2.42	15.05	0.14	2.8	0.027	1.28	38.3	36.6	0.41	299	4.51	0.93	18.2	18.2	1250
72832		1.58	11.00	0.13	4.7	0.015	0.63	38.0	47.8	0.09	51	11.40	0.20	22.6	8.5	630



# ALS Chemex

**EXCELLENCE IN ANALYTICAL CHEMISTRY**

ALS Canada Ltd.

2103 Dollarton Hwy  
North Vancouver BC V7H 0A7

Phone: 604 984 0221 Fax: 604 984 0218 www.alschemex.com

To: KLONDIKE SILVER  
PO BOX 189  
NEW DENVER BC V0G 1S0

Page: 4 - C  
Total # Pages: 4 (A - D)  
Plus Appendix Pages  
Finalized Date: 24-SEP-2009  
Account: KLOSIL

Project: Stump

CERTIFICATE OF ANALYSIS	VA09098584
-------------------------	------------

Sample Description	ME-MS61	ME-MS61	ME-MS61	ME-MS61	ME-MS61	ME-MS61	ME-MS61	ME-MS61	ME-MS61	ME-MS61	ME-MS61	ME-MS61	ME-MS61	ME-MS61	ME-MS61
	Pb	Rb	Re	S	Sb	Sc	Se	Sn	Sr	Ta	Te	Th	Ti	Tl	U
	ppm	ppm	ppm	%	ppm	ppm	ppm	ppm	ppm	ppm	ppm	ppm	%	ppm	ppm
	0.5	0.1	0.002	0.01	0.05	0.1	1	0.2	0.2	0.05	0.05	0.2	0.005	0.02	0.1
386794	29.8	57.9	<0.002	0.03	3.72	14.7	2	2.6	612	1.30	<0.05	10.9	0.516	0.43	4.2
386795	25.0	51.1	<0.002	0.04	3.45	12.8	2	2.4	658	1.26	<0.05	10.7	0.509	0.39	3.5
386796	24.9	62.9	<0.002	0.06	3.85	13.9	2	2.9	638	1.39	<0.05	15.1	0.527	0.38	4.1
386797	33.1	65.2	<0.002	0.04	4.73	14.4	3	6.9	612	5.78	<0.05	26.1	0.568	0.46	2.8
386798	25.3	60.1	<0.002	0.10	5.32	13.2	2	3.2	692	1.67	<0.05	11.5	0.684	0.47	5.0
386799	16.0	53.3	<0.002	0.07	1.85	12.1	2	2.2	560	0.97	<0.05	13.7	0.382	0.28	1.1
386800	14.6	50.9	<0.002	0.06	2.34	12.4	1	2.2	705	1.13	<0.05	15.8	0.427	0.28	1.6
72801	41.1	58.8	<0.002	0.14	3.54	11.9	2	3.1	559	1.15	<0.05	14.7	0.471	0.30	2.3
72802	22.1	58.8	<0.002	0.08	3.33	11.9	1	2.4	692	1.24	<0.05	12.6	0.499	0.35	2.3
72803	17.0	54.6	<0.002	0.06	3.23	11.3	2	2.6	538	1.08	<0.05	11.9	0.459	0.34	1.6
72804	15.4	57.1	<0.002	0.06	2.53	10.5	1	2.1	479	1.02	<0.05	13.6	0.396	0.31	1.6
72805	15.1	58.3	<0.002	0.06	2.56	11.3	1	2.5	380	1.02	<0.05	14.1	0.402	0.29	1.6
72806	11.0	55.8	<0.002	0.04	1.76	10.0	1	1.8	459	0.80	<0.05	13.0	0.316	0.18	1.5
72807	12.3	63.2	<0.002	0.06	1.85	10.9	1	1.9	429	0.90	<0.05	15.1	0.346	0.21	1.3
72808	13.4	50.0	<0.002	0.07	1.64	10.1	1	1.4	499	0.72	<0.05	11.4	0.294	0.16	1.6
72809	19.5	61.9	<0.002	0.10	3.08	12.1	1	2.4	390	1.11	<0.05	15.9	0.443	0.38	4.3
72810	15.6	56.6	<0.002	0.07	3.10	12.3	2	2.2	441	1.09	<0.05	13.6	0.418	0.38	1.8
72811	15.3	67.8	<0.002	0.10	2.96	12.1	2	2.0	394	1.05	<0.05	12.0	0.439	0.47	2.4
72812	16.2	55.1	<0.002	0.09	3.49	11.8	1	2.1	510	1.06	<0.05	14.0	0.434	0.31	1.8
72813	18.4	48.5	<0.002	0.07	3.62	11.9	1	2.3	473	1.17	<0.05	13.3	0.470	0.38	1.3
72814	18.0	57.7	<0.002	0.08	3.27	12.5	2	1.9	508	1.10	<0.05	12.0	0.432	0.34	1.5
72815	27.7	55.3	<0.002	0.07	3.86	13.8	2	2.4	559	1.39	<0.05	15.0	0.565	0.36	2.6
72816	24.3	62.6	<0.002	0.06	4.45	13.0	2	2.2	588	1.29	<0.05	12.9	0.541	0.41	5.9
72817	38.5	59.8	<0.002	0.03	5.22	15.3	2	3.8	551	2.25	<0.05	15.0	0.643	0.52	3.1
72818	29.1	65.1	<0.002	0.03	3.86	16.3	2	2.4	514	1.60	<0.05	15.1	0.546	0.43	4.2
72819	25.5	68.4	<0.002	0.03	3.24	15.7	2	2.3	498	1.44	<0.05	14.9	0.518	0.42	3.6
72820	26.2	65.4	<0.002	0.03	3.39	16.2	2	2.3	499	1.36	<0.05	15.2	0.516	0.39	3.4
72821	46.8	61.8	<0.002	0.04	4.94	16.4	3	2.1	460	1.31	0.05	14.8	0.471	0.74	5.4
72822	36.5	47.8	<0.002	0.03	4.48	13.2	2	2.0	377	1.15	0.05	12.1	0.444	0.82	4.2
72823	63.9	72.6	<0.002	0.04	6.54	14.8	3	2.1	352	1.25	0.07	13.4	0.453	1.28	5.6
72824	57.9	61.3	<0.002	0.09	5.22	14.7	4	1.4	306	1.11	<0.05	11.1	0.382	1.07	6.8
72825	84.8	69.9	<0.002	0.06	6.39	15.8	3	1.6	274	1.02	0.05	11.5	0.376	1.25	4.8
72826	118.0	91.3	<0.002	0.07	8.90	15.3	5	1.9	144.5	1.11	0.10	13.6	0.418	2.00	7.4
72827	132.5	74.1	<0.002	0.08	5.91	15.1	4	1.7	255	1.10	0.07	11.8	0.423	1.22	6.3
72828	130.5	85.5	<0.002	0.08	7.98	16.8	5	2.1	181.5	1.16	0.08	14.0	0.439	2.03	8.2
72829	64.7	70.7	<0.002	0.05	4.88	14.2	3	1.7	277	1.22	0.06	12.1	0.423	1.14	6.3
72830	77.9	74.6	<0.002	0.08	6.00	14.9	3	1.8	341	1.30	0.07	13.3	0.458	1.57	6.9
72831	40.0	48.1	<0.002	0.05	2.57	10.4	3	1.5	294	1.32	<0.05	11.2	0.465	0.54	3.6
72832	65.2	21.6	<0.002	0.11	3.56	9.0	3	1.2	257	1.47	0.06	13.3	0.495	0.60	8.2



# ALS Chemex

**EXCELLENCE IN ANALYTICAL CHEMISTRY**

ALS Canada Ltd.

2103 Dollarton Hwy

North Vancouver BC V7H 0A7

Phone: 604 984 0221 Fax: 604 984 0218 www.alschemex.com

To: KLONDIKE SILVER  
PO BOX 189  
NEW DENVER BC V0G 1S0

Page: 4 - D  
Total # Pages: 4 (A - D)  
Plus Appendix Pages  
Finalized Date: 24-SEP-2009  
Account: KLOSIL

Project: Stump

CERTIFICATE OF ANALYSIS VA09098584
------------------------------------

Sample Description	Method	ME-MS61	ME-MS61	ME-MS61	ME-MS61	ME-MS61
	Analyte	V	W	Y	Zn	Zr
	Units	ppm	ppm	ppm	ppm	ppm
LOR		1	0.1	0.1	2	0.5
386794		168	1.2	17.6	44	103.0
386795		130	1.2	16.4	43	92.4
386796		127	1.4	20.0	58	105.0
386797		135	1.9	21.5	39	113.5
386798		125	1.8	13.8	77	138.0
386799		73	1.0	16.0	77	50.8
386800		85	1.1	15.9	52	72.8
72801		90	1.2	14.2	99	69.5
72802		103	1.1	14.9	49	80.6
72803		73	1.0	12.4	53	62.7
72804		57	1.0	13.4	45	70.1
72805		58	1.0	12.6	47	59.6
72806		44	0.9	13.6	54	65.0
72807		49	1.0	14.9	61	68.9
72808		46	0.7	13.6	54	50.7
72809		85	1.1	15.4	37	110.5
72810		68	1.0	14.0	47	76.1
72811		76	1.0	12.4	40	74.1
72812		70	1.0	14.2	44	72.5
72813		79	1.1	12.8	61	69.7
72814		78	0.9	13.0	62	59.0
72815		114	1.3	18.2	52	85.4
72816		158	1.3	23.1	64	101.0
72817		145	2.0	16.8	67	122.5
72818		152	1.3	22.4	58	103.5
72819		132	1.3	20.0	64	93.7
72820		122	1.2	20.9	65	89.8
72821		330	1.2	25.3	72	113.0
72822		310	1.1	18.3	90	114.5
72823		555	1.4	21.3	62	119.5
72824		350	1.1	23.4	57	86.5
72825		549	1.3	27.8	83	85.6
72826		831	1.5	20.5	115	114.5
72827		487	1.4	20.3	79	101.0
72828		856	1.5	22.4	79	115.0
72829		412	1.3	19.3	56	93.0
72830		474	1.3	20.8	43	100.5
72831		139	1.4	13.1	41	86.7
72832		112	1.1	14.5	8	155.0

\*\*\*\*\* See Appendix Page for comments regarding this certificate \*\*\*\*\*



# ALS Chemex

**EXCELLENCE IN ANALYTICAL CHEMISTRY**

ALS Canada Ltd.  
2103 Dollarton Hwy  
North Vancouver BC V7H 0A7  
Phone: 604 984 0221 Fax: 604 984 0218 www.alschemex.com

To: KLONDIKE SILVER  
PO BOX 189  
NEW DENVER BC V0G 1S0

Page: 1  
Finalized Date: 5-OCT-2009  
Account: KLOSIL

## CERTIFICATE VA09098585

Project: Stump  
P.O. No.:  
This report is for 15 Rock samples submitted to our lab in Vancouver, BC, Canada on 10-SEP-2009.  
The following have access to data associated with this certificate:  
JOHN DE JONG                      WILLIAM MANN

## SAMPLE PREPARATION

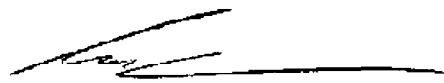
ALS CODE	DESCRIPTION
WEI-21	Received Sample Weight
LOG-22	Sample login - Rcd w/o BarCode
CRU-QC	Crushing QC Test
CRU-31	Fine crushing - 70% <2mm
SPL-21	Split sample - riffle splitter
PUL-31	Pulverize split to 85% <75 um

## ANALYTICAL PROCEDURES

ALS CODE	DESCRIPTION	INSTRUMENT
Ag-GRA21	Ag 30g FA-GRAV finish	WST-SIM
Ag-OG46	Ore Grade Ag - Aqua Regia	VARIABLE
ME-OG46	Ore Grade Elements - AquaRegia	ICP-AES
Pb-OG46	Ore Grade Pb - Aqua Regia	VARIABLE
Pb-VOL70	Pb by Titration	
Au-AA23	Au 30g FA-AA finish	AAS
ME-ICP61a	High Grade Four Acid ICP-AES	ICP-AES

To: KLONDIKE SILVER  
ATTN: WILLIAM MANN  
19 HAYES CRES  
WHITEHORSE YT Y1A 0E1

This is the Final Report and supersedes any preliminary report with this certificate number. Results apply to samples as submitted. All pages of this report have been checked and approved for release.

Signature:   
Colin Ramshaw, Vancouver Laboratory Manager



# ALS Chemex

**EXCELLENCE IN ANALYTICAL CHEMISTRY**

ALS Canada Ltd.

2103 Dollarton Hwy

North Vancouver BC V7H 0A7

Phone: 604 984 0221 Fax: 604 984 0218 www.alschemex.com

To: KLONDIKE SILVER  
PO BOX 189  
NEW DENVER BC V0G 1S0

Page: 2 - A  
Total # Pages: 2 (A - C)  
Finalized Date: 5-OCT-2009  
Account: KLOSIL

Project: Stump

CERTIFICATE OF ANALYSIS VA09098585
------------------------------------

Sample Description	Method Analyte Units LOR	WEI-21	Au-AA23	ME-ICP61a	ME-ICP61a	ME-ICP61a	ME-ICP61a	ME-ICP61a	ME-ICP61a	ME-ICP61a	ME-ICP61a	ME-ICP61a	ME-ICP61a	ME-ICP61a	ME-ICP61a	
		Recvd Wt.	Au	Ag	Al	As	Ba	Be	Bi	Ca	Cd	Co	Cr	Cu	Fe	Ga
		kg	ppm	ppm	%	ppm	ppm	ppm	ppm	%	ppm	ppm	ppm	ppm	%	ppm
		0.02	0.005	1	0.05	50	50	10	20	0.05	10	10	10	10	0.05	50
72751		0.26	<0.005	1	0.32	<50	70	<10	<20	<0.05	<10	<10	10	10	0.34	<50
72752		0.38	<0.005	2	0.48	<50	120	<10	<20	<0.05	<10	<10	20	<10	0.78	<50
72753		0.44	<0.005	14	1.19	<50	7540	<10	<20	0.09	<10	<10	20	240	37.8	<50
72754		0.26	<0.005	2	1.05	<50	360	<10	<20	<0.05	<10	<10	20	<10	0.54	<50
72755		0.28	<0.005	<1	0.29	<50	90	<10	<20	13.10	<10	<10	10	<10	0.66	<50
72756		0.18	<0.005	1	6.34	230	710	<10	<20	2.33	<10	40	1020	10	8.59	<50
72757		0.48	0.008	2	2.27	60	2740	<10	<20	0.35	<10	<10	40	40	1.11	<50
72758		0.34	0.036	>200	1.19	940	510	<10	<20	1.75	230	<10	20	5280	2.36	<50
72759		0.36	0.018	>200	2.05	140	720	<10	<20	4.42	220	<10	20	1460	3.60	<50
72760		0.32	0.036	39	0.16	70	80	<10	<20	0.21	310	<10	20	100	1.31	<50
72761		0.34	0.020	11	1.73	110	1960	<10	<20	14.75	40	<10	20	20	5.68	<50
72762		0.54	0.007	3	2.38	50	570	<10	<20	0.05	<10	10	<10	20	18.00	<50
72763		0.22	0.133	>200	0.07	150	<50	<10	<20	0.32	380	<10	10	40	1.80	<50
72764		0.38	0.106	>200	0.57	150	1200	<10	<20	1.13	1160	<10	10	2580	2.97	<50
72765		0.28	<0.005	14	7.38	<50	630	<10	<20	0.89	<10	30	20	80	16.85	<50



# ALS Chemex

**EXCELLENCE IN ANALYTICAL CHEMISTRY**

ALS Canada Ltd.

2103 Dollarton Hwy

North Vancouver BC V7H 0A7

Phone: 604 984 0221 Fax: 604 984 0218 www.alschemex.com

To: KLONDIKE SILVER  
 PO BOX 189  
 NEW DENVER BC V0G 1S0

Page: 2 - B  
 Total # Pages: 2 (A - C)  
 Finalized Date: 5-OCT-2009  
 Account: KLOSIL

Project: Stump

## CERTIFICATE OF ANALYSIS VA09098585

Sample Description	Method Analyte Units LOR	ME-ICP61a	ME-ICP61a	ME-ICP61a	ME-ICP61a	ME-ICP61a	ME-ICP61a	ME-ICP61a	ME-ICP61a	ME-ICP61a	ME-ICP61a	ME-ICP61a	ME-ICP61a	ME-ICP61a	ME-ICP61a	
		K %	La ppm	Mg %	Mn ppm	Mo ppm	Na %	Ni ppm	P ppm	Pb ppm	S %	Sb ppm	Sc ppm	Sr ppm	Th ppm	Ti %
		0.1	50	0.05	10	10	0.05	10	50	20	0.1	50	10	10	50	0.05
72751		0.1	<50	<0.05	30	<10	<0.05	10	<50	<20	<0.1	<50	<10	20	<50	<0.05
72752		0.2	<50	<0.05	100	<10	<0.05	<10	100	70	<0.1	<50	<10	30	<50	<0.05
72753		0.2	<50	0.12	270	<10	0.09	50	1310	270	0.3	<50	<10	210	<50	<0.05
72754		0.2	50	<0.05	90	<10	<0.05	<10	160	30	<0.1	<50	<10	60	<50	0.06
72755		<0.1	<50	0.81	350	<10	<0.05	<10	<50	<20	<0.1	<50	<10	670	<50	<0.05
72756		2.8	<50	2.90	1280	<10	<0.05	240	1580	<20	<0.1	<50	30	70	<50	0.92
72757		0.8	<50	0.23	180	10	<0.05	<10	440	210	0.1	<50	<10	110	<50	0.20
72758		0.4	<50	0.83	2040	20	<0.05	10	150	>100000	6.0	6690	<10	130	<50	0.07
72759		0.8	<50	2.09	4300	<10	<0.05	10	160	92400	3.0	1270	<10	240	<50	0.11
72760		<0.1	<50	0.07	1020	<10	<0.05	<10	50	3590	0.3	80	<10	10	<50	<0.05
72761		0.5	<50	4.27	10800	<10	<0.05	10	220	1230	0.4	<50	<10	220	<50	0.10
72762		2.0	<50	0.36	110	10	0.22	20	90	410	16.0	<50	<10	10	<50	0.11
72763		<0.1	<50	0.10	880	<10	<0.05	10	<50	>100000	8.5	820	<10	20	<50	<0.05
72764		0.2	<50	0.43	5520	<10	<0.05	10	80	>100000	4.1	2370	<10	40	<50	<0.05
72765		0.7	<50	0.73	310	<10	0.19	20	5720	430	1.6	<50	10	240	<50	0.88



# ALS Chemex

**EXCELLENCE IN ANALYTICAL CHEMISTRY**

ALS Canada Ltd.  
 2103 Dollarton Hwy  
 North Vancouver BC V7H 0A7  
 Phone: 604 984 0221 Fax: 604 984 0218 www.alschemex.com

To: KLONDIKE SILVER  
 PO BOX 189  
 NEW DENVER BC V0G 1S0

Page: 2 - C  
 Total # Pages: 2 (A - C)  
 Finalized Date: 5-OCT-2009  
 Account: KLOSIL

Project: Stump

<b>CERTIFICATE OF ANALYSIS VA09098585</b>
---

Sample Description	Method Analyte Units LOR	ME-ICP61a TI ppm 50	ME-ICP61a U ppm 50	ME-ICP61a V ppm 10	ME-ICP61a W ppm 50	ME-ICP61a Zn ppm 20	Ag-GRA21 Ag ppm 5	Ag-OG46 Ag ppm 1	Pb-OG46 Pb % 0.001	Pb-VOL70 Pb % 0.01
72751		<50	<50	<10	<50	<20				
72752		<50	<50	10	<50	20				
72753		<50	<50	40	<50	70				
72754		<50	<50	20	<50	<20				
72755		<50	<50	20	<50	<20				
72756		<50	<50	230	<50	180				
72757		<50	<50	190	<50	250				
72758		<50	<50	20	<50	26800	2910	>1500	>20.0	37.20
72759		<50	<50	40	<50	32500		391		
72760		<50	<50	<10	<50	50200				
72761		<50	<50	30	<50	7680				
72762		<50	<50	<10	<50	210				
72763		<50	<50	<10	<50	69200		840	>20.0	34.72
72764		<50	<50	10	130	>100000	1860	>1500	12.35	
72765		<50	<50	210	<50	800				

## APPENDIX V

### 2009 Stump project rock sample locations and descriptions

<u>Sample</u>	<u>Easting</u>	<u>Northing</u>	<u>Description</u>
72751	650578	6825772	white quartz veins with tr. limonite and MnOx
72752	650505	6825749	20 pebbles, rusty quartzite with quartz veining
72753	650700	6825200	highly porous iron oxide (limonite, goethite) boulders in 5m x 5m area
72754	650744	6825210	breccia - white QV frags in a sericitic matrix, chips from 2 boulders
72755	650733	6825206	Qtz.-carbonate vein float, local bladed quartz (after calcite?)
			<i>Note: samples 72756- 72764 are from another property</i>
72765	650005	6825200	porous iron oxide (collected on soil grid)