

**GEOLOGICAL**

**REPORT**

**LION 1 - 16 CLAIMS  
YC83761 - YC83776**

**NTS # 115 J \ 14**

**LAT: 62° 49 N**

**LONG: 139° 24 W**

**WHITEHORSE MINING DISTRICT**

**AUTHOR OF REPORT SHAWN RYAN**

**WORK PERFORMED SEPTEMBER 15-16, 2009**

**DATE OF REPORT AUGUST 09, 2010**

## TABLE OF CONTENT

1.0	Summary	p.3
2.0	INTRODUCTION	p.3
3.0	PROJECT LOCATION	p.3
4.0	ACCESS	p.3
5.0	GEOLOGY	p.3
5.1	REGIONAL GEOLOGY	p.3
6.0	WORK PERFORMED / METHODS	p.3
7.0	INTERPRETATION	p.4
8.0	RECOMMENDATION	p.4
9.0	REFERENCES CITED	p.4
10.0	Cost	p.4
11.0	Qualification	p.5
	Claim Map	p.6
	Location Map	Figure 1
	Jean Pautler Report	Appendix

## **1.0 SUMMARY**

The Lion 2009 field exploration program consists of Jean Pautler conducting a two day property evaluation. The 2009 program was successful with grab samples running as high 2.6 g/t Au.

## **2.0 INTRODUCTION**

The Lion Claims were stake to cover an old quartz galena showing found by Atlas Exploration in 1970.

## **3.0 LOCATION**

The Lion 1 - 16 claims are located 87 kilometers north east of the community of Beaver Creek, or 138 S-SW of the community of Dawson City ; it's in Whitehorse Mining Division, on NTS sheet # 115 J / 14 at the latitude 62°49'N and longitude 139°24'W.

## **4.0 ACCESS**

The Lion 1 - 16 claims can be reached via helicopter from Beaver Creek or the Transnorth base located in Dawson City.

## **5.0 REGIONAL AND PROPERTY GEOLOGY**

### **5.1 PROPERTY GEOLOGY**

Please Refer to Jean Pautler Report

## **6.0 WORK PERFORMED / METHODS**

Please Refer to Jean Pautler Report

## 7.0 INTERPRETATION

Please Refer to Jean Pautler Report

## 8.0 RECOMMENDATION

I would recommend running a soil survey across the entire claim block and follow up any anomalous gold values with prospecting.

## 9.0 REFERENCES CITED

Jean Pautler Interoffice Memorandum Report .

Pearse, G.H.K., Karvinen, W.O. and Brabec, D., 1970. Report on geology and geochemistry of the Leo Lion and Crown mineral claim groups. Report for Atlas Exporations Limited.

## 10.0 COST

Wage 2 man days @ \$787.50 per day	\$1,575.00
Assay Cost 14 Rocks @ \$34.00 per sample	\$476.00
Helicopter Cost 1.5 hour @ \$1,334.00 per hour	\$2,001.00
Total	\$4,052.00

## 11.0 QUALIFICATION

I Shawn Ryan located in Dawson City, Yukon work as a professional prospector. I run a small exploration company located in Dawson City.

I have worked in the exploration business for the last 26 years. I worked the first 14 years as a contractor working on numerous projects in the NWT, Ontario, Quebec and the Yukon. I have worked the last 12 years as a local prospector for myself.

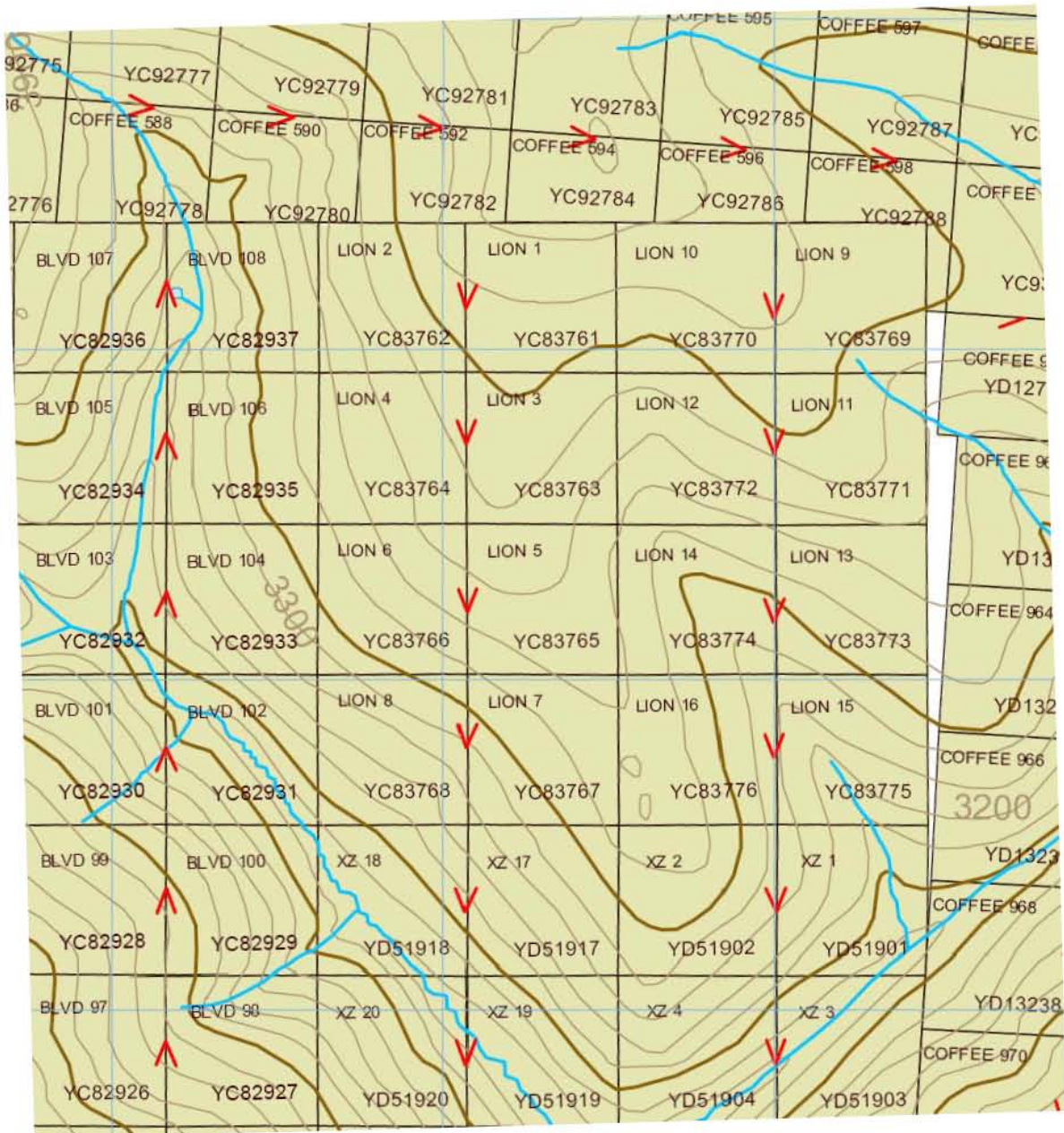
I have overseen the Lion Exploration Program.

I own 100% of the Lion 1 - 16 claims.

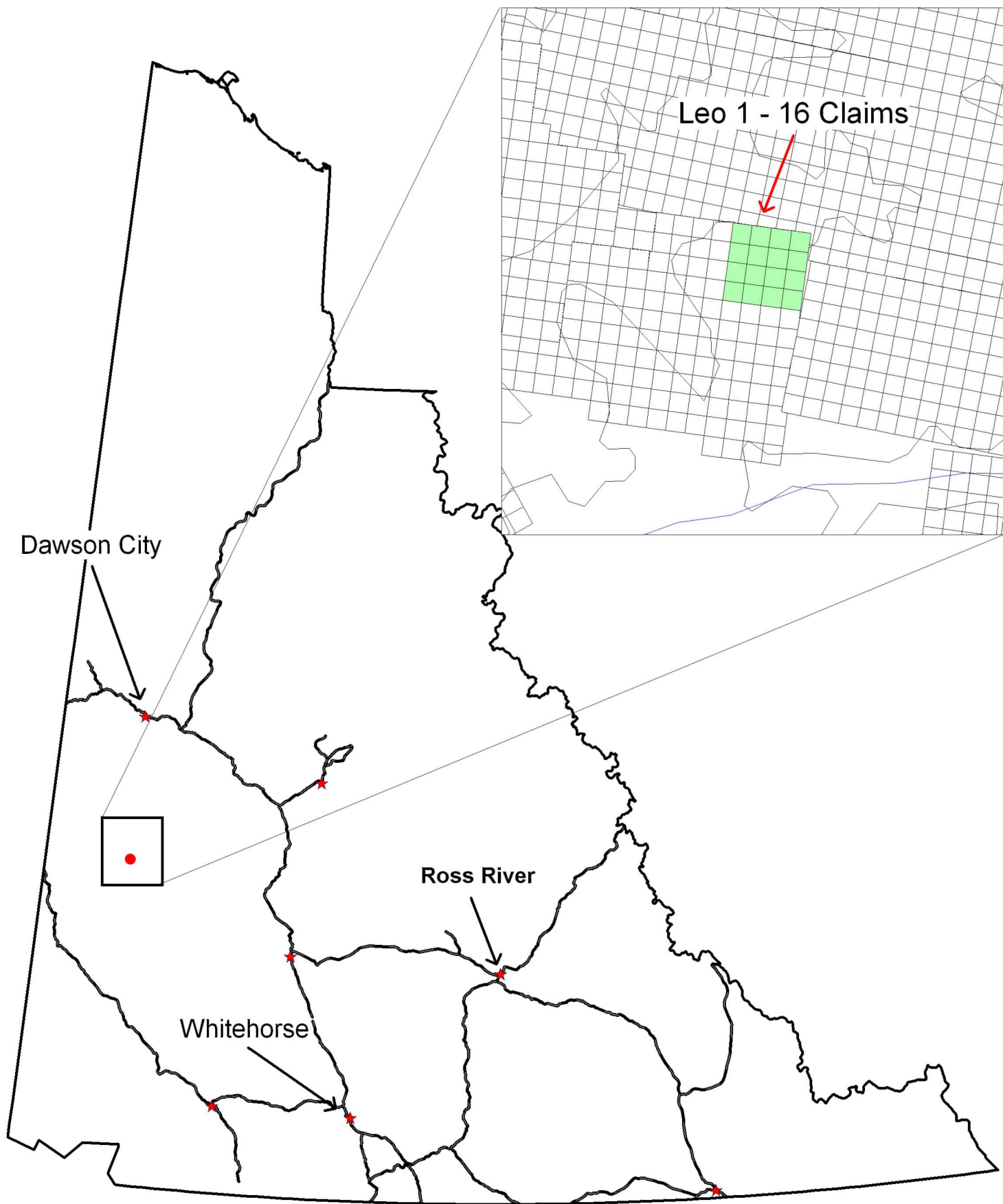
Dated this 09 of August 2010 in Dawson City, Yukon.

Respectfully submitted

Shawn Ryan



Lion Claim Map



Location Map plus Claims in Surrounding Area

Figure 1

---

---

## INTEROFFICE MEMORANDUM

---

---

**TO:** SHAWN RYAN  
**FROM:** JEAN PAUTLER, P. GEO.  
**SUBJECT:** LION PROJECT SUMMARY  
**DATE:** 09/08/2010  
**CC:** ROB CARPENTER

---

### 1.0 INTRODUCTION

This memo summarizes the results of a two day evaluation involving prospecting and mapping, with concurrent geochemical sampling, on the 333 hectare Lion property (Lion 1-16 claims), NTS map sheet 115J/14, Whitehorse Mining District. The registered owner of the property is Shawn Ryan of Dawson City, Yukon under option to Kaminak Gold Corporation.

The project is located within the White Gold District, 35 km south of the >1,000,000 ounce gold White Gold Deposit, recently acquired by Kinross Gold Corporation from Underworld Resources Ltd. The Lion property also lies immediately south of Kaminak's Coffee Project where drill intersections include 17.07 g/t Au over 15.5m from the Supremo zone (a 2.5 km long by 2 km wide gold in soil anomaly) and 2.35 g/t Au over 51m from the Latte Zone (an east trending 1 km by 100m wide gold in soil anomaly averaging 600 ppb Au), 1 km to the south. Silverquest's Boulevard property adjoins the Lion property to the west.

### 2.0 CURRENT PROGRAM

A total of 14 rock samples were collected by the author for analysis during a two day geological and geochemical evaluation on September 15 and 16, 2009. Sample descriptions with gold, silver, arsenic antimony, bismuth and select Pb, Zn, Cu results, mapping and sample locations accompany this memo. Control was provided by GPS and reported in Nad 83, Zone 7 projection. All work in 2009 was undertaken by helicopter support from a placer camp near the Thistle Creek airstrip at 586164mE, 6995692mN. Geochemical results are discussed under section 5.0, "Mineralization".

### 3.0 HISTORY

Prior to the acquisition by Shawn Ryan in 2009 the Lion claims were previously staked as the Crown claims by Atlas Explorations Limited in 1969. In 1970 Atlas conducted geological mapping prospecting with concurrent geochemical sampling and grid soil sampling (soils analyzed for Cu, Pb, Zn and Mo).

The 1970 work uncovered a number of quartz-galena-sphalerite veins, with some tetrahedrite, referred to as the A, B, and C showings (*Pearse et al., 1970*). The D and F showings are reported as contact ±fault related pyrite ±magnetite ±pyrrhotite and chalcopyrite mineralization hosted by amphibolite. The soil survey produced a northwest trending copper anomaly along the intrusive contact (*Pearse et al., 1970*).

#### 4.0 PROPERTY GEOLOGY

The Lion property is primarily underlain by granitic rocks of the mid Cretaceous Coffee Creek pluton (**Kg**), a 26 km by 7 km wide northwest trending pluton, generally consisting of coarse grained and equigranular granite. Broad zones of leucocratic granite (**Kg1**), devoid of biotite, occur within the granite which appear to be an alteration effect, possibly related to potassic alteration.

The Coffee Creek pluton intrudes Paleozoic metamorphic rocks, which are exposed in the southern property area. The metamorphic rocks include quartz-feldspar-biotite gneiss and schist (**1**) with local quartzite (**1q**) and minor marble, and amphibolite (**2a**). Feldspar augen were noted by Atlas, indicating the presence of orthogneiss.

Numerous west-northwest to northwest trending faults were interpreted by Atlas to transect the property.

#### 5.0 MINERALIZATION

The A (samples 253091-92), B (samples 253089-90, 94, 97), and C (samples 253095-96) showings were located in 2009 consisting of quartz-galena-stibnite veins with some sphalerite, tetrahedrite (possibly freibergite based on the high silver values relative to lead), chalcopyrite and pyrite. High bismuth is associated with the veins and brecciation is locally evident. The B and C veins are narrow, from 5 to 15 cm. The A vein is the most significant with quartz vein boulders up to 0.6m exposed. Grab samples returned maximum values of 2.6 g/t Au, 634 g/t Ag, 3.0% Pb and 0.8% Zn with >2,000 ppm Sb, 366 ppm As and 859 Bi. Similar vein material was found 300m to the southwest, (sample 253093), which may lie along strike, with similar results (0.3 g/t Au, 669 g/t Ag, and 0.8% Pb with >2,000 ppm Sb, 242 ppm As and 273 Bi). A proposed trench was flagged in on the A showing in 2009 to test the strike of the vein.

Minor pyrite and magnetite was found hosted by talc-chlorite altered amphibolite at the D showing but not re-sampled due to lack of anomalous results in previous sampling. The F showing, also hosted by amphibolite was not located.

At the north end of the property silicified, bleached granite with fine pyrite and dark chalcedony veins and stringers to quartz breccia is exposed but did not contain significant precious or base metal values (samples 253088, 99-101). However, the samples contain anomalous arsenic with values up to 604 ppm As. The mineralization

may be high level with better values at depth. Atlas describes the zone as a breccia and mylonite (*Pearse et al., 1970*). Thin section work is proposed.

## **6.0 SELECTED REFERENCES:**

Bostock, H.S., 1942. Geology of the Ogilvie map area, Y.T.; Geological Survey of Canada Map 711A, scale 1:250,000.

Deklerk, R. (compiler), 2008. Yukon MINFILE 2008 - A database of mineral occurrences. Yukon Geological Survey.

Gordey, S.P. and Ryan, J.J. 2005: Geology, Stewart River area, Yukon Territory; Geological Survey of Canada, Open File 4970, scale 1:250,000.

Gordey, S.P. and Makepeace, A.J., (compilers), 2000. Yukon Digital Geology; Exploration and Geological Services Division (EGSD), Yukon Region, Indian and Northern Affairs Canada (DIAND) EGSD Open File 1999-1(D).

Gordey, S.P., Williams, S.P., Cocking, R. and Ryan, J.J. (comp.) 2006: Digital geology, Stewart River area, Yukon (v. 1, DVD-ROM), Geological Survey of Canada. Open File 5122 (DVD-ROM).

Kaminak Gold Corp., 2010. Website at [www.kaminak.com](http://www.kaminak.com) .

Pearse, G.H.K., Karvinen, W.O. and Brabec, D., 1970. Report on geology and geochemistry of the Leo Lion and Crown mineral claim groups. Report for Atlas Exporations Limited. Yukon Geological Survey assessment report.

Ryan, J.J. and Gordey, S.P. 2004: Geology, Stewart River area, Yukon Territory; Geological Survey of Canada, Open File 4641.

Shives, R.B.K., Carson, J.M., Ford, K.L., Holman, P.B., Grant, J.A., Gordey, S. and Abbott, G., 2002. Multisensor airborne geophysical survey, Stewart River Area, Yukon, phases 1 and 2. GSC Open File, 4311, Shelf No. 15-63, also known as YGS/DIAND Open File 2002-17(D)

Tempelman-Kluit, D. J., 1974. Reconnaissance geology of the Aishihik Lake, Snag and part of Stewart River map-areas, west-central Yukon; Geological Survey of Canada, Paper 73-41, 97 pages.

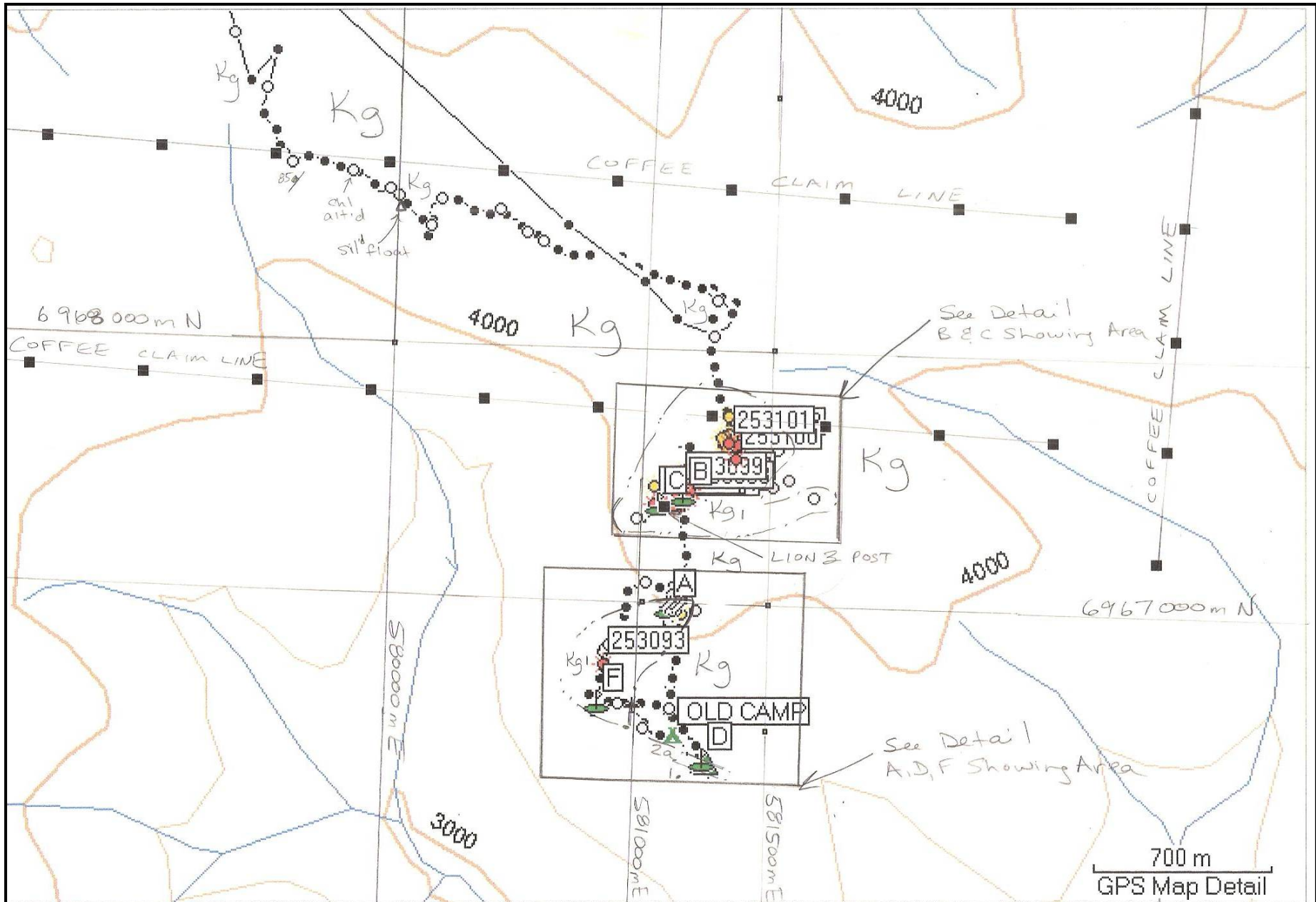
Underworld Resources Ltd., 2009. Website at [www.underworldresources.com](http://www.underworldresources.com) .

White Gold District, 2009. The new White Gold area play in the Yukon. Website at [www.whitegolddistrict.com](http://www.whitegolddistrict.com) .

**LION PROJECT, YT**  
**2009 SAMPLE DESCRIPTIONS AND RESULTS - JP**

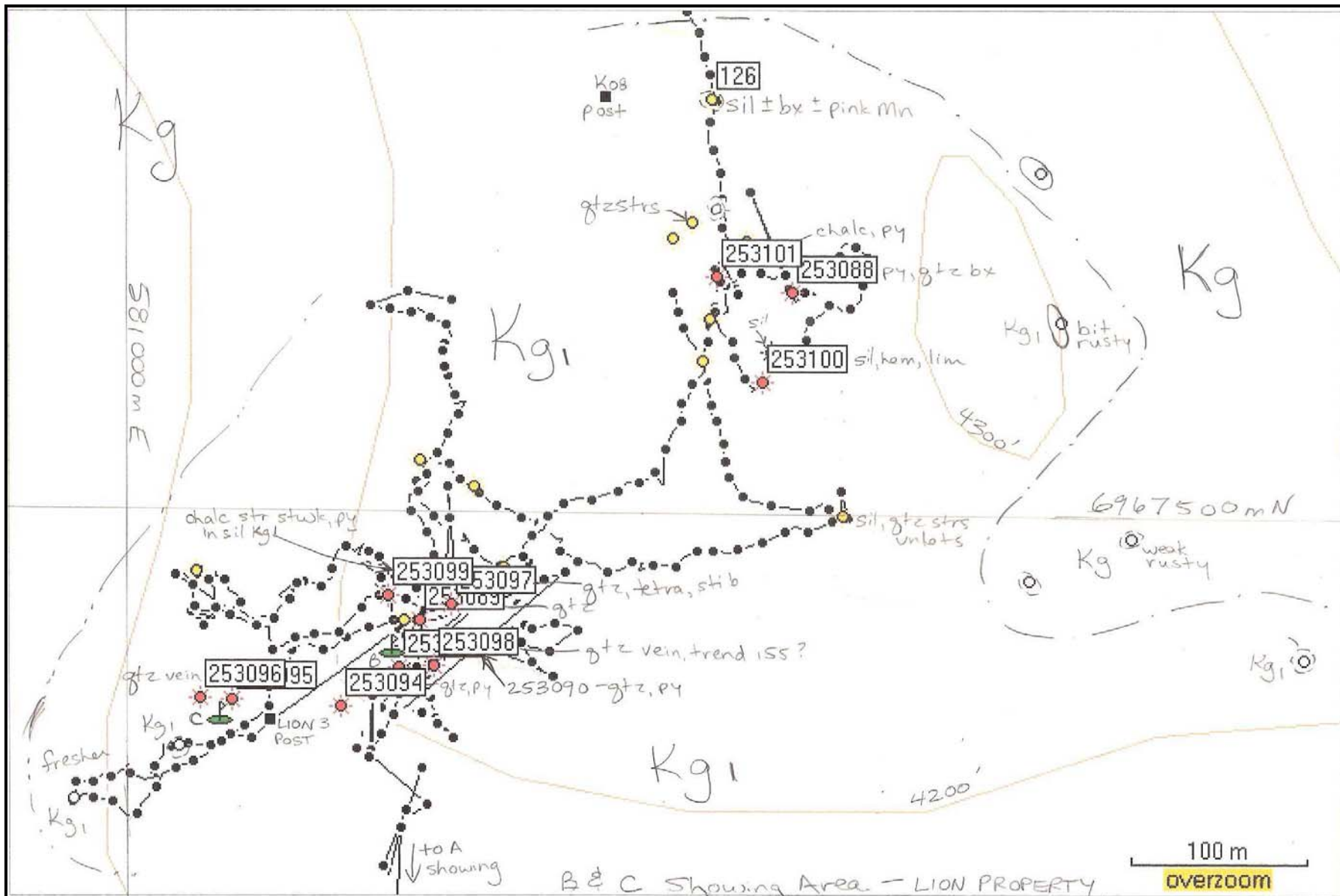
Pb in red in %

SAMPLE NUMBER	NAD 83, ZONE 7		ELEV. (m)	TYPE	DESCRIPTION	Au	Ag	As	Sb	Pb/Zn/Cu	Bi
	EASTING	NORTHING				ppb	ppm	ppm	ppm	ppm	ppm
253088	581372	6967627	1334	rock grab	moderate to intensely silicified leucogranite (no mafics left) with dark grey silica, 1-2% fine pyrite with white quartz angular fragments	56	1.4	335.4	2.6		1.4
253089	581165	6967436	1314	rock grab	quartz vein subcrop up to 10-15 cm wide, with <1% cubic pyrite, some weathered out, rusty weathering; in boulder pile near "B" showing	<2	0.1	24.5	28.4		<0.1
253090	581154	6967408	1310	rock grab	rusty, banded quartz vein float with ribbons of Mn and limonite, trace galena, up to 10X7cm pieces, near "B" showing	43	54.1	827.9	1958.5	3732 Pb	33.3
253091	581132	6966977	1253	0.6m chip	quartz vein with galena>>pyrite>>>>chalcopyrite, tetrahedrite, stibnite, "A" showing; possible trend 120/40-60N, possible 135 or 155 trend	145	204	66.7	>2000.0	7776 Pb 122 Cu	252
253092	581132	6966977	1253	rock grab	white quartz vein with galena, tetrahedrite, stibnite, sphalerite; banded margins with more galena and brecciated and intensely silicified granite wallrock with galena and white quartz fragments; "A" showing	2633	634	366.6	>2000.0	2.96 Pb 8406 Zn 845 Cu	859
253093	580855	6966751	1193	rock grab	20X15 cm rusty, angular quartz boulders with banded galena, tetrahedrite rich margins and stibnite needles towards centre, rusty to grey quartz	295	669	242.4	>2000.0	7845 Pb 601Cu	273
253094	581121	6967386	1297	rock grab	quartz vein float up to 15 cm wide, with <1% cubic pyrite, much weathered out, possible trace sphalerite, "B" showing area near CP#1 of Lion 3,4	16	20	227.2	213.2		5.8
253095	581059	6967388	1301	rock grab	quartz vein float up to 5 cm wide, with weathered out pyrite, minor galena and or sphalerite, "C" showing area	145	265	116.6	>2000.0	7258 Pb 1142 Zn	570
253096	581040	6967389	1300	rock grab	rusty, vuggy quartz vein float up to 10 cm wide, with pyrite	8	14.8	59.6	135		44.9
253097	581183	6967446	1314	rock grab	rusty quartz vein subcrop up to 15cm wide with drusy vugs, galena on margins, trace tetrahedrite and stibnite in centre; "B" showing area	125	116	54.7	>2000.0	4233 Pb	22.1
253098	581174	6967410	1316	0.15m chip	chip across 15cm quartz vein boulder; trend 155?	<2	3.8	32.4	153.5		7.6
253099	581147	6967450	1315	rock grab	intensely silicified granite with chalcedony stringer stockwork with 5% fine pyrite along stringers and as aggregates, also cubic; vuggy, weak brecciation with pyrite around quartz grains, bladed silica after calcite	109	1.0	604.1	16		0.4
253100	581357	6967576	1341	rock grab	weak to moderate silicified granite with Mn, hematite and limonite stain, vuggy fractures	<2	<0.1	63.5	2.5		0.1
253101	581330	6967636	1335	rock grab	6 cm black chalcedony vein with 3% disseminated pyrite, some cubic, surrounds quartz, in sericite altered, strongly silicified granite with < 1% disseminated and cubic pyrite	102	7.1	438.8	20.3		1.8



Legend See Details

S. COFFEE & LION PROPERTY  
 Sept 15-16, 18, 2009  
 Jean Pautler



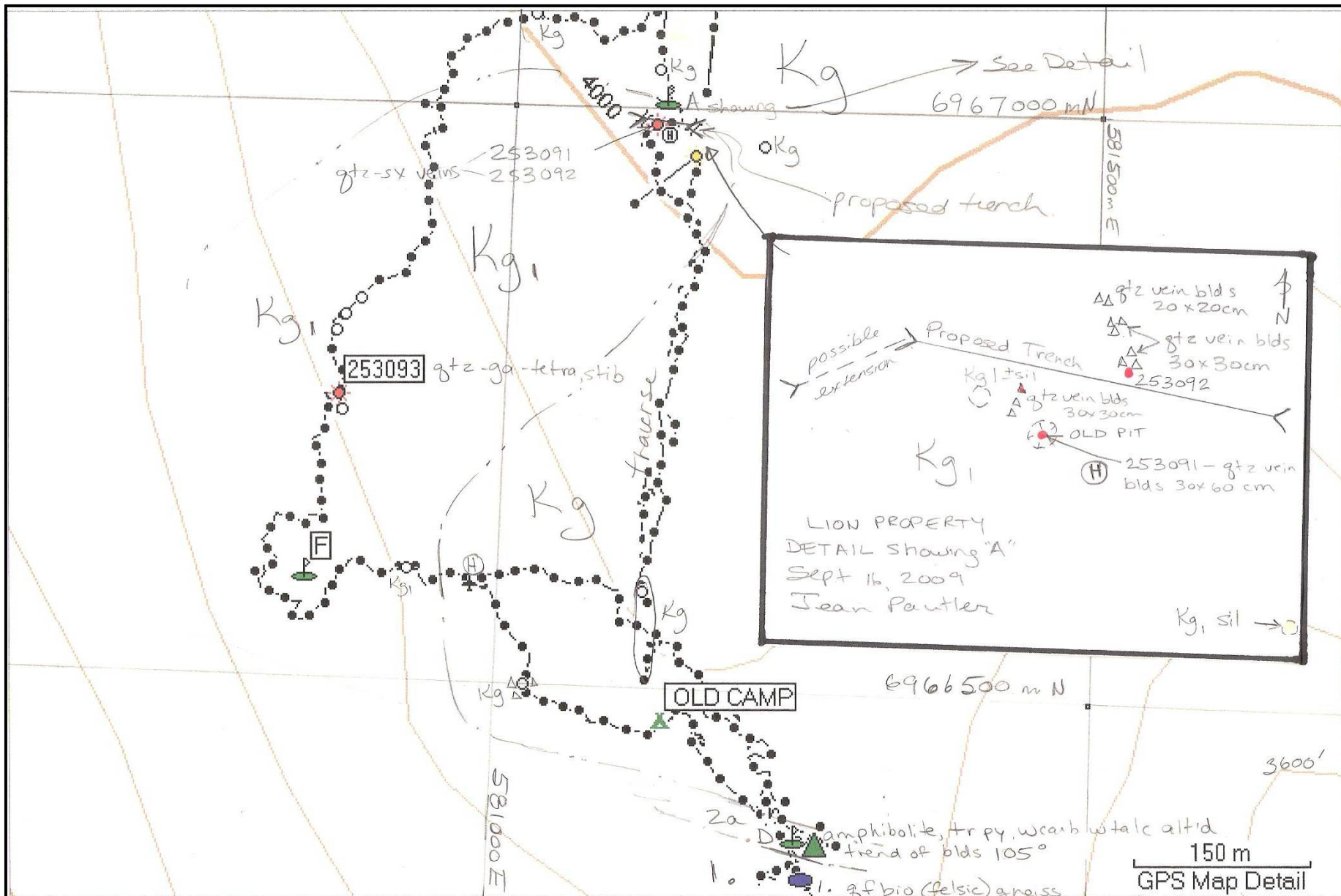
LEGEND

Cretaceous

- Kg Granite, cg., unless specified
- Kg1 Altered granite with magics bleached out

- yellow denotes silicified
- red denotes sample.

Sept 15-16, 2009  
 LION Property  
 B & C Showing A  
 Tom Partridge



possible extension → Proposed Trench  
 Kg1 sil  
 △ gtz vein blds 20x20cm  
 △ gtz vein blds 30x30cm  
 △ 253092  
 △ gtz vein blds 30x30cm  
 △ OLD PIT  
 (H) 253091 - gtz vein blds 30x60cm  
 Kg1 sil →

LION PROPERTY  
 DETAIL Showing "A"  
 Sept 16, 2009  
 Jean Pautler

LEGEND

Cretaceous

● Kg Granite eg

○ Kg<sub>1</sub> Altered granite with mafics bleached out

○ yellow denotes sil

2a amphibolite

1. gneiss

1g quartzite

2a amphibolite, tr py, wcarb w tale alt'd  
 trend of blds 105°

1. gfbio (felsic) gneiss  
 minor lg, felsite subcrop

150 m  
 GPS Map Detail

LION PROPERTY  
 Sept 15, 16, 2009  
 A, D & F Showing  
 Jean Pautler