

BCGold Corporation

2009 Geophysical Report on the COPPER Property

Claims: COPPER 1-46
Grant Numbers: YC 46772 – YC 4678
YC 60140 – YC 60163

Owned by Shawn Ryan (100%)

Located 35km NW of Carmacks, Yukon
Whitehorse Mining District
NTS 115I/07

409 000 mE
6 915 000 mN

For:
BCGold Corporation
Suite 1400, 625 Howe Street
Vancouver, BC
V6C 2T6

Prepared by
April Barrios, BSc, GIT
and
Geoff Newton, BSc, GIT

Work performed
June-July, 2008

Abstract

The COPPER property consists of 46 claims: COPPER 1–46. Work on the COPPER claims 11-22 and 27-30 during the 2008 season was line cutting and a geophysical IP survey. The property is located near Western Copper Corporation's Carmacks Copper Project in the Whitehorse Mining District of central Yukon. The Copper claims are 100% owned by Shawn Ryan of Dawson City, YT and are under option to BCGold Corporation. Exploration in the area stretches back to the turn of the century when copper mineralization was first discovered at Williams Creek some 40 km south of the Minto copper gold deposit (Doherty 2008). The property is underlain by Early Jurassic Aishihik Suite foliated and non-foliated granitoid rocks of the Granite Mountain Batholith (Hood et al, 2009). Field work between June 13 and July 12, 2008 consisted of line cutting and a pole-dipole induced polarization survey. The geophysical survey outlined elevated apparent resistivity and chargeability in the northeastern section of COPPER Claims. Geological mapping and prospecting and a tighter-spaced follow up induced polarization survey are recommended to define drill targets.

Table of Contents

Abstract	
1.0 Introduction and Terms of Reference	1
2.0 Reliance on other Experts	1
3.0 Property Description and Location	1
4.0 Accessibility, Climate, Local Resources, Infrastructure and Physiography	5
5.0 History	5
6.0 Geology	5
6.1 Regional geology	5
6.2 Property geology	5
7.0 Exploration Program	6
7.1 Line Cutting	6
7.2 Induced Polarization Survey	6
8.0 Results and Interpretation	6
9.0 Recommendations	6
10.0 Statement of Costs	8
11.0 Certificates of Qualifications	9
12.0 References	10

List of Figures

Figure 1. COPPER Claims location and regional geology	2
Figure 2. COPPER Claim Map	3
Figure 3. COPPER Claims and IP Lines	7
Figure 4. COPPER IP Grid	Back Pocket
Figure 5. COPPER Line 100N pseudosection plots	Back Pocket
Figure 6. COPPER Line 102N pseudosection plots	Back Pocket
Figure 7. COPPER Line 104N pseudosection plots	Back Pocket

Figure 8. COPPER Line 106N pseudosection plots Back Pocket
 Figure 9. COPPER stacked pseudosection plots: apparent chargeability Back Pocket
 Figure 10. COPPER stacked pseudosection plots: apparent resistivity Back Pocket

List of Tables

Table 1. COPPER Claims 4

List of Appendices

Appendix 1. Aurora Geosciences Ltd. Field Crew Log 11
 Appendix 2. Aurora Geosciences Ltd. Field Report, August 11th 2008 17
 Appendix 3. Aurora Geosciences Ltd. Memorandum, October 13th, 2008 23
 Appendix 4. Aurora Geosciences Ltd. digital data CD-ROM



1.0 Introduction and Terms of Reference

The COPPER property consists of 46 claims. The COPPER property is owned 100% by Shawn Ryan, of Dawson City, YT subject to an option agreement with BCGold Corporation (“BCGold”) whereby BCGold can earn a 100% in the COPPER property as part of a larger set of claims located in the Carmacks copper-gold belt.

This report describes work completed on June 13th – July 12th, 2008 on the COPPER 1-22 and 27-30 claims to comply with assessment work reporting requirements under the Yukon Quartz Mining Act.

2.0 Reliance on Other Experts

This report is based upon the results of geophysical fieldwork supervised by Steven Kramer of Aurora Geosciences Ltd. (“Aurora”) and a geophysical summary report by Dave Hildes of Aurora for BCGold as well as publicly-available assessment reports and certain private reports prepared for and provided by BCGold. There is no reason to believe that any of this information is incorrect.

The author has relied on information provided by the Yukon Mining Recorder’s website to describe the mineral tenure status of the property. This information is believed to be correct.

3.0 Property Description and Location

The COPPER property is located 226 kilometres N of Whitehorse and 7 kilometres NW of Western Copper Corporation’s Carmacks Copper Project, formerly known as Williams Creek, (Fig. 1,2). The property falls within the Whitehorse Mining District on NTS map sheets 115I/07 and is centered at an Easting of 409 000 and a Northing of 6 915 000. The COPPER property consists of claims COPPER 1–46 (Fig. 2). The COPPER Claims are all 100% owned by Shawn Ryan and are under option to BCGold (Table 1).

In accordance with the Yukon Quartz Mining Act, yearly extensions to the expiry dates of quartz claims are dependent upon conducting \$100 of work per claim or paying the equivalent cash in lieu of work. Work must be filed in the year the work was completed. Excess work can be used to extend expiry dates up to a maximum of four years. Assessment costs can be applied to adjoining claims through filing grouping certificates. Filing a statement of work and costs and submission of an assessment report to the Whitehorse Mining Recorder verifying completion of the work, are also required no later than six months after the anniversary date of the claim.

The claims are located within the Traditional Territory of the Little Salmon Carmacks First Nation and Selkirk First Nation, which have land claim settlement Agreements under the Yukon Umbrella Final Agreement (Doherty 2008).



Figure 1: Carmacks area location map

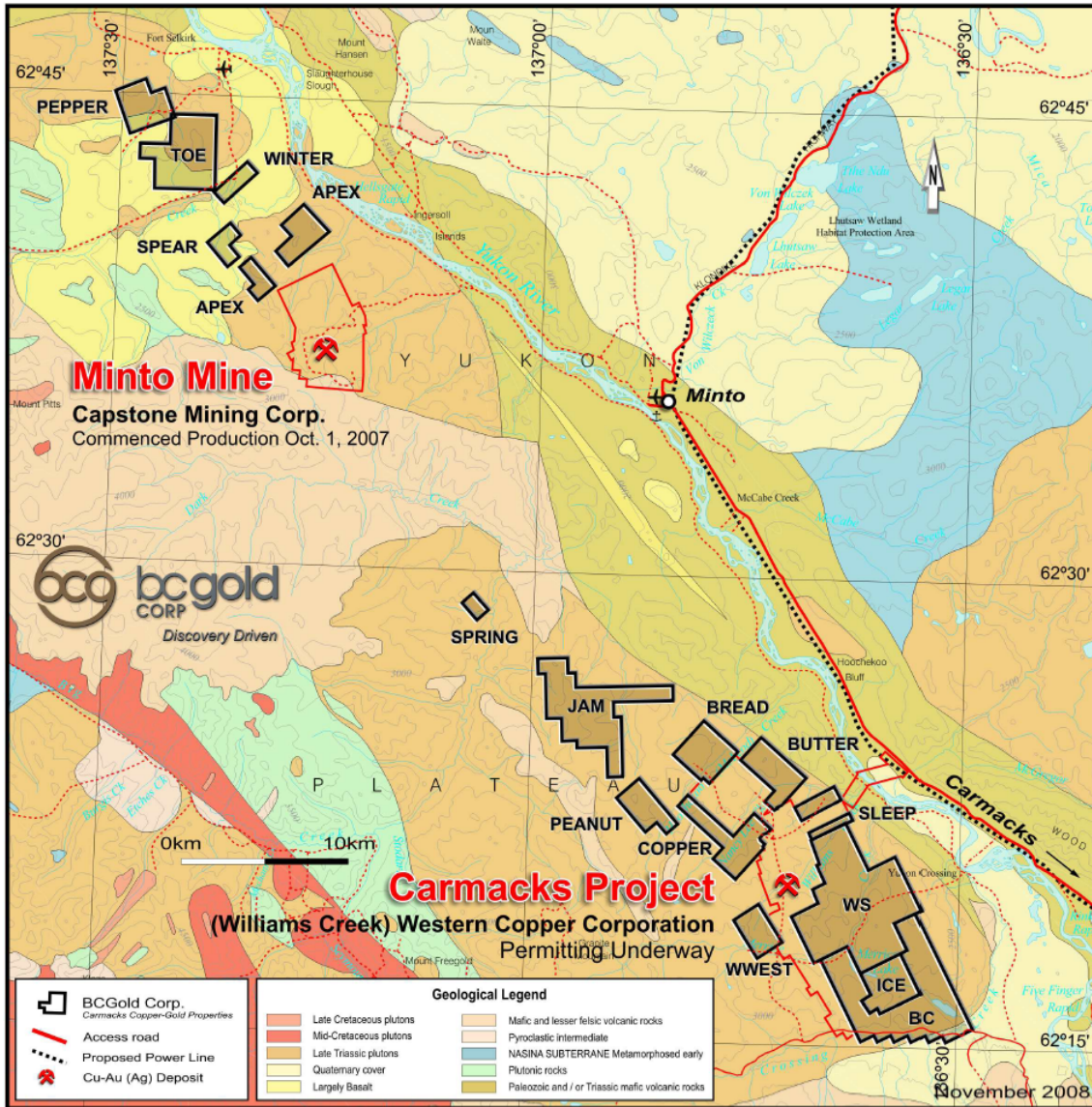


Figure 2: Carmacks regional geology and claim location map

Table 1: COPPER Claim Status

District	Grant Number	Claim Name	Claim Number	Claim Owner	Recording Date	Claim Expiry Date	Status	NTS Map Number
Whitehorse	YC46762	COPPER	1	Shawn Ryan - 100%.	4/12/2006	4/2/2014	Active	115107
Whitehorse	YC46763	COPPER	2	Shawn Ryan - 100%.	4/12/2006	4/2/2014	Active	115107
Whitehorse	YC46764	COPPER	3	Shawn Ryan - 100%.	4/12/2006	4/2/2014	Active	115107
Whitehorse	YC46765	COPPER	4	Shawn Ryan - 100%.	4/12/2006	4/2/2014	Active	115107
Whitehorse	YC46766	COPPER	5	Shawn Ryan - 100%.	4/12/2006	4/2/2014	Active	115107
Whitehorse	YC46767	COPPER	6	Shawn Ryan - 100%.	4/12/2006	4/2/2014	Active	115107
Whitehorse	YC46768	COPPER	7	Shawn Ryan - 100%.	4/12/2006	4/2/2014	Active	115107
Whitehorse	YC46769	COPPER	8	Shawn Ryan - 100%.	4/12/2006	4/2/2014	Active	115107
Whitehorse	YC46770	COPPER	9	Shawn Ryan - 100%.	4/12/2006	4/2/2014	Active	115107
Whitehorse	YC46771	COPPER	10	Shawn Ryan - 100%.	4/12/2006	4/2/2014	Active	115107
Whitehorse	YC46772	COPPER	11	Shawn Ryan - 100%.	4/12/2006	4/2/2014	Active	115107
Whitehorse	YC46773	COPPER	12	Shawn Ryan - 100%.	4/12/2006	4/2/2014	Active	115107
Whitehorse	YC46774	COPPER	13	Shawn Ryan - 100%.	4/12/2006	4/2/2014	Active	115107
Whitehorse	YC46775	COPPER	14	Shawn Ryan - 100%.	4/12/2006	4/2/2014	Active	115107
Whitehorse	YC46776	COPPER	15	Shawn Ryan - 100%.	4/12/2006	4/2/2014	Active	115107
Whitehorse	YC46777	COPPER	16	Shawn Ryan - 100%.	4/12/2006	4/2/2014	Active	115107
Whitehorse	YC46778	COPPER	17	Shawn Ryan - 100%.	4/12/2006	4/2/2014	Active	115107
Whitehorse	YC46779	COPPER	18	Shawn Ryan - 100%.	4/12/2006	4/2/2014	Active	115107
Whitehorse	YC46780	COPPER	19	Shawn Ryan - 100%.	4/12/2006	4/2/2014	Active	115107
Whitehorse	YC46781	COPPER	20	Shawn Ryan - 100%.	4/12/2006	4/2/2014	Active	115107
Whitehorse	YC46782	COPPER	21	Shawn Ryan - 100%.	4/12/2006	4/2/2014	Active	115107
Whitehorse	YC46783	COPPER	22	Shawn Ryan - 100%.	4/12/2006	4/2/2014	Active	115107
Whitehorse	YC60140	COPPER	23	Shawn Ryan - 100%.	4/2/2007	4/2/2014	Active	115107
Whitehorse	YC60141	COPPER	24	Shawn Ryan - 100%.	4/2/2007	4/2/2014	Active	115107
Whitehorse	YC60142	COPPER	25	Shawn Ryan - 100%.	4/2/2007	4/2/2014	Active	115107
Whitehorse	YC60143	COPPER	26	Shawn Ryan - 100%.	4/2/2007	4/2/2014	Active	115107
Whitehorse	YC60144	COPPER	27	Shawn Ryan - 100%.	4/2/2007	4/2/2014	Active	115107
Whitehorse	YC60145	COPPER	28	Shawn Ryan - 100%.	4/2/2007	4/2/2014	Active	115107
Whitehorse	YC60146	COPPER	29	Shawn Ryan - 100%.	4/2/2007	4/2/2014	Active	115107
Whitehorse	YC60147	COPPER	30	Shawn Ryan - 100%.	4/2/2007	4/2/2014	Active	115107
Whitehorse	YC60148	COPPER	31	Shawn Ryan - 100%.	4/2/2007	4/2/2014	Active	115107
Whitehorse	YC60149	COPPER	32	Shawn Ryan - 100%.	4/2/2007	4/2/2014	Active	115107
Whitehorse	YC60150	COPPER	33	Shawn Ryan - 100%.	4/2/2007	4/2/2014	Active	115107
Whitehorse	YC60151	COPPER	34	Shawn Ryan - 100%.	4/2/2007	4/2/2014	Active	115107
Whitehorse	YC60152	COPPER	35	Shawn Ryan - 100%.	4/2/2007	4/2/2014	Active	115107
Whitehorse	YC60153	COPPER	36	Shawn Ryan - 100%.	4/2/2007	4/2/2014	Active	115107
Whitehorse	YC60154	COPPER	37	Shawn Ryan - 100%.	4/2/2007	4/2/2014	Active	115107
Whitehorse	YC60155	COPPER	38	Shawn Ryan - 100%.	4/2/2007	4/2/2014	Active	115107
Whitehorse	YC60156	COPPER	39	Shawn Ryan - 100%.	4/2/2007	4/2/2014	Active	115107
Whitehorse	YC60157	COPPER	40	Shawn Ryan - 100%.	4/2/2007	4/2/2014	Active	115107
Whitehorse	YC60158	COPPER	41	Shawn Ryan - 100%.	4/2/2007	4/2/2014	Active	115107
Whitehorse	YC60159	COPPER	42	Shawn Ryan - 100%.	4/2/2007	4/2/2014	Active	115107
Whitehorse	YC60160	COPPER	43	Shawn Ryan - 100%.	4/2/2007	4/2/2014	Active	115107
Whitehorse	YC60161	COPPER	44	Shawn Ryan - 100%.	4/2/2007	4/2/2014	Active	115107
Whitehorse	YC60162	COPPER	45	Shawn Ryan - 100%.	4/2/2007	4/2/2014	Active	115107
Whitehorse	YC60163	COPPER	46	Shawn Ryan - 100%.	4/2/2007	4/2/2014	Active	115107

4.0 Accessibility, Climate, Local Resources, Infrastructure and Physiography

The *COPPER* claims can be accessed by ATV trails leading north from the 13 km access road to Western Copper Corporation's Carmacks Copper Project camp. The start of this road is located at kilometer 34 of the Freegold Road from Carmacks, Yukon. Low precipitation and a wide temperature range characterize the climate. Winters are cold, and temperatures of -30°C to -40°C are common. Summers are moderately cool to hot, with daily highs of 15°C to 30°C. The Town of Carmacks is the closest centre for obtaining groceries, fuel, accommodation and some limited rental and contracted exploration services. Trans North Helicopters maintains a summer helicopter base at Carmacks.

5.0 History

The area covered by the *COPPER* claims has seen some prior reconnaissance exploration work as part of the property work around the Williams Creek deposit primarily by Hudson Bay Exploration. Geological mapping and soil sampling by Keno Hill Mines Ltd outlined soil anomalies on the *COPPER* claims (Newman and Joy, 1980).

In 2007 BCGold completed an airborne magnetic and radiometric survey over the claims as part of a regional airborne survey.

BCGold conducted MMI soil sampling, geological mapping and prospecting on the *COPPER* Claims during the 2007 and 2008 field seasons.

6.0 Geology

6.1 Regional Geology

The *COPPER* claims are located approximately 7 kilometres NW of the Carmacks Copper Project (Western Copper Corporation) copper-gold deposits and 38 km SE of the Minto Mine (Capstone Mining Corporation). This area of the Yukon is bounded by the Stikinia Terrane rocks to the east, Yukon Tanana Terrane rocks to the north and the Coast Plutonic Complex rocks to the west.

The Williams Creek and Minto Areas are underlain by the Early Jurassic Granite Mountain Batholith and the related Minto Pluton, which are unconformably overlain by sedimentary rocks and flows of the Late Cretaceous Tantalus Formation and the Late Cretaceous Carmacks Group. These units are further overlain by Quaternary volcanic rocks.

6.2 Property Geology

The *COPPER* claims are located north of the Carmacks Copper Project and north of the Freegold Road. Rocks underlying the property are primarily foliated to non-foliated hornblende-biotite granodiorite with aplite dykes. Traces of malachite, magnetite and 1-2% epidote were noted in a number of locations. Outcrop is scarce (< 5%) and normally confined to rounded ridge tops and stream cuts.

7.0 Exploration Programs

7.1 Line Cutting

A field crew from Coureur des Bois Ltd. of Whitehorse, YT cut the 13.4 line-kilometer IP grid on the COPPER claim block from June 13 to July 4th 2008 (Fig. 3).

7.2 Pole-Dipole Induced Polarization Survey

A field crew from Aurora conducted a pole-dipole induced polarization survey at 100m dipole spacing from July 5th to July 12th. Details of the survey are included in appendices 1, 2 and 3. The digital data from the survey is included in Appendix 4, on the CD-ROM included with this report.

8.0 Results and Interpretation

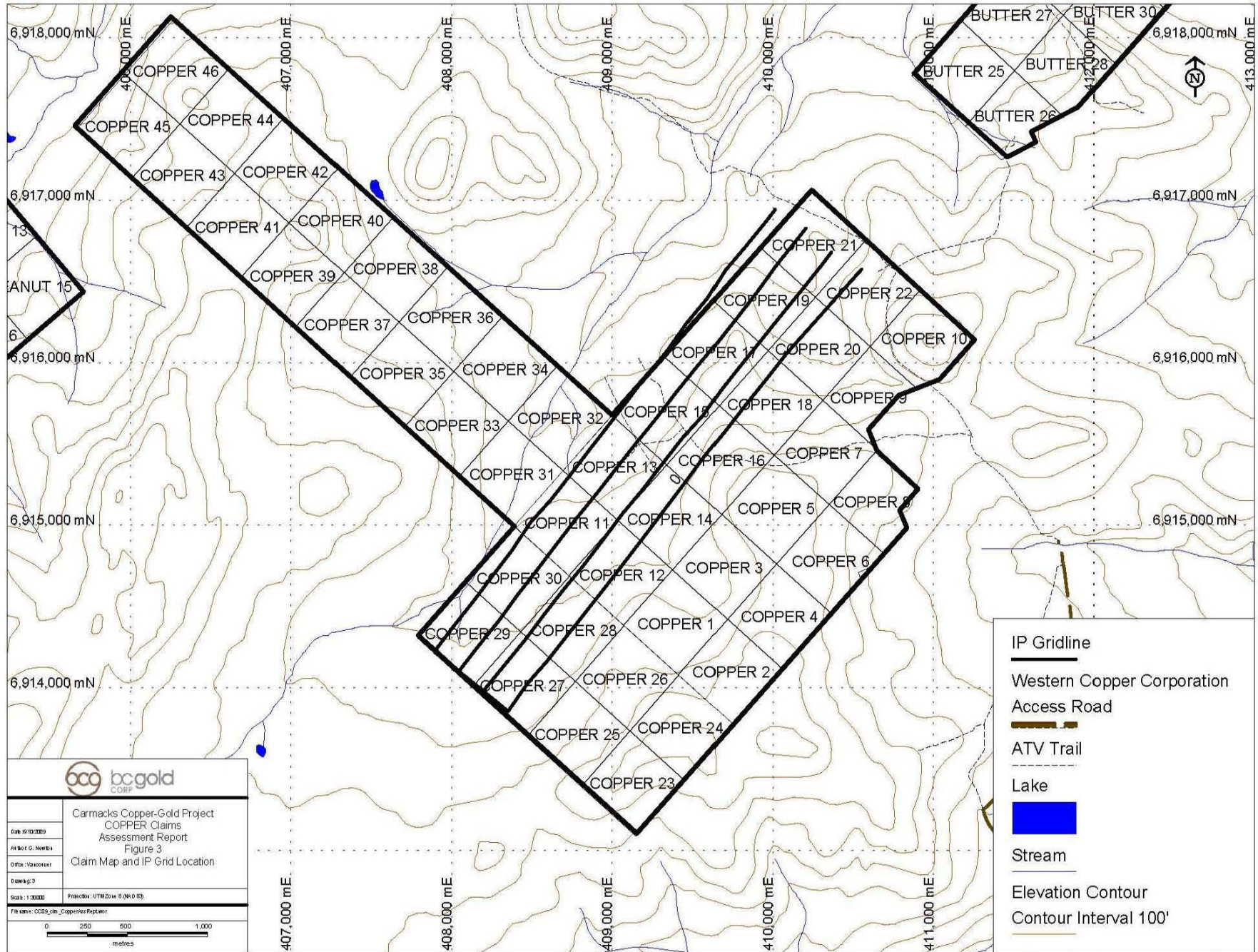
The apparent resistivity shows a resistive zone to the northeast (Figs 5 and 10). This area correlates well with a broad zone of anomalous apparent chargeability (Figs 5 and 9). The strongest IP target would be on L104 at station 12700 (Hildes 2008).

Broad zones of higher and lower apparent chargeability and apparent resistivity correlate well with one another (Figs 9 and 10). The geophysical interpretation suggests that this correlation might indicate that the changes in IP response are due to changes in lithology rather than indicating mineralization (Hildes, 2008).

9.0 Recommendations

The anomalies identified by the pole-dipole induced polarization survey should be thoroughly mapped and prospected to determine if changes in the chargeability and resistivity responses correlate to a variation in lithology. If there is insufficient outcrop to confirm the cause of the anomalies, a closer-spaced follow up pole-dipole or dipole-dipole induced polarization survey is recommended over the strongest chargeability anomaly on L104. The current data, and any data from further surveys, should be inverted to best coalesce the soil geochemistry and IP data prior to deciding on drill targets

If mapping and prospecting results support Aurora's drilling recommendations (Appendix 3) then the target should be tested by diamond drilling.



10.0 Statement of Costs

COPPER 1-22 Claims **YC 46762 – YC 46783** **NTS 115I/07**
COPPER 23-46 Claims **YC 60140 – YC 60163** **NTS 115I/07**

Certificates of work were filed in June 2008 on NTS 115I/07 the work was completed June 13th to July 13th, 2008 on the following claims.

COPPER 11-22, YC 46772-YC46783 and YC60144-YC60147 NTS 115I/07 \$49,016.53

Renewals were requested for:

COPPER 23-46 YC 60140 – YC 60163 **NTS115I/07** **Renew for 5 years to 4/2/2014**
COPPER 1-22 YC 46762 – YC46783 **NTS115I/07** **Renew for 1 year to 4/2/2014**
 Total exploration expenditures required \$14,200.00

Table 3: Statement of Expenditures

Item	Cost
Coureur des Bois Ltd. 23-Jun-08	\$18,520.14
Total invoices from Coureur des Bois Ltd. Were \$144,291.47 for 104.4km of linecutting. The average cost per km was \$1,382.10.	
Coureur des Bois cut 13.4km of line on the COPPER claims, for an estimated cost of \$18520.14	
Aurora Geosciences Ltd. 31-Jul-08	\$30,496.39
Total invoices from Aurora Geosciences Ltd. were \$197,771.17 for 86.9km of IP surveys. The average cost per km was \$2,275.85.	
Aurora Surveyed 13.4km of line on the COPPER claims, for an estimated cost of \$30496.39	
Total	\$49,016.53

Geoff Newton, BSc G.I.T.
 Project Geologist
 October 1st, 2009

11.0 Certificate of Qualifications

11.1 Fieldwork Supervisor

I, Geoff Newton, hereby certify that:

1. I am a Project Geologist with BCGold Corp, #1400, 625 Howe Street, Vancouver, BC, V6C 2T6
2. I am a graduate of Laurentian University, with a degree in Geology (B.Sc. Honours, 2005).
3. I have been involved in mineral exploration in the Yukon continuously since 2005.
4. I am a member in good standing of the Association of Professional Engineers and Geoscientists of British Columbia and have been registered as a Geoscientist in training since 2008.
5. I was the supervisor of the fieldwork on the COPPER 1-46 claims. The report is based on fieldwork conducted in June and July 2008 and company files.

Geoff Newton, G.I.T.
Project Geologist
BCGold Corp
October 1st, 2009

11.2 Author

I, April Barrios, of #5 411 3rd Ave New Westminster in the Province of British Columbia hereby certify that:

- 1) I am a self-employed Consulting Geologist
- 2) I am a graduate of the University of Victoria (2004) and hold a B.Sc. Degree in Earth and Ocean Science
- 3) I am member in good standing with the Association of Professional Engineers and Geoscientists of British Columbia Canada, Registration No. 144798, and have been registered as a **Geoscientist-in-training** since 2007.
- 4) I have been employed in my profession as Geologist continuously since graduation, and worked periodically in geology while attending University.
- 5) This assessment report on the **COPPER 1-46** Claims is based upon data collected by BCGold Corp staff on their Carmacks properties in the Whitehorse Mining District during the 2008 field season under the supervision of Project Geologist Geoff Newton (GIT).
- 6) I hold no interest in the Carmacks Project Claims.

Dated this 1st of October, 2009 at New Westminster BC Canada.

April Barrios 1 October, 2009

April Barrios, G.I.T.

12.0 References

Doherty, R.A. 2008. Assessment Report on the WS Total Claims. Target Evaluation Program Carmacks Area.(Dated January 31, 2008 from BCGold Corp files)

Hood, S., Hickey, K., Colpron, M. and Mercer, B.. 2009. *High-grade hydrothermal copper-gold mineralization in foliated granitoids at the Minto mine, central Yukon*. Yukon Exploration and Geology 2008: 137-146.

Newman, D and Joy, R. J. 1980. *Geological and Geochemical Report on the Noon Claim Group Hoochekoo Creek Area Whitehorse Mining District*. Assessment Report 090775

Hildes, Dave, 2008. *Memorandum: BCG 2008 IP Survey-Interpretation Supplement*. From Aurora Geosciences. pp 4

Appendix 1

Aurora Geosciences Ltd. Field Crew Log

SURVEY LOG

BCG-8533-YT BC Gold Carmacks IP

CREW:	Crew chief	Steven Kramar	June 13 - July 12 /2008
	Tech	Luc Harvey	June 13 - July 12 /2008
	Helper	Mike Krause	June 13 - July 12 /2008
	Helper	Dan Mawhinney	June 13 - July 12 /2008

Date	Grid	IP/DC Resistivity		Total	Survey type #2		Total	Work	Remarks
		Lines	Stations	(line-km)	Lines	Stations	(line-km)	Hours	
June 13 2008	WS							10	Crew mobed into camp, Location 413922E 6910488W (NAD83 Zn7N) Camp was set up survey will commence June 14. Weather was acceptable, mild rain for short periods. Helicopter used was Jet Ranger from Trans-North, (Dick was pilot) 5 Sling loads and 2 Internals needed. Celeste was driver, used rental truck.
									Expenses: A few items were needed to be purchased, light grocery items+snacks, (Porter Creek Super A - \$43-81) batteries and bear banger pens (Tatchun Centre, Carmacks - \$163.45) Fuel at Carmacks (Sunrise Services Centre - \$177.78) The fuel was on an Aurora account, and the rest was paid by debit card by Steven.
June 14 2008	WS	155000N	11000 13000	2				10	Immediate problem: The grid given by the office, is wrong compared to what is on the ground. Camp location on ground is at the end of line 15500, and when plotted by map provided we are claimed to be 800m up the line 15500 (going east). Survey crew will start on line 15500, and await coordinates from office or further instruction. Mike-Cables, Dan-Current, Luc-Reciever, Steven-Transmitter(not by choice)
									Radio communiucation may be an issue
June 15 2008	WS	155000N	13000 14000	1					Very bad day for radio communication, needed dan(cables) and mike(current) to use as relay(s). Steven did the Rx, and Luc was on Tx. Production included finishing like 155000N, and packing and returning gear to camp. Awaiting further instruction regarding the grid issue.
June 16 2008	WS	152000N	11000 12800	1.8					Geoff flew into camp, discussed the grid issue, started line 15200N. Steven(Rx) Luc(current) Mike(Tx). Production halted when radio communication was failing and ran out of current wire. (happened in tandum) Geoff demobed from camp at about 4:30PM.
June 17 2008	WS	152000N	12800 13900	1.1					Luc(Rx) Steven(Current) Mike(Tx) Dan(Cables) Slight rain periods throughout the day. Radio communication was ONCE AGAIN an issue, and Steven was acting as a relay/current to get a radio signal to Mike. Line ended one dipole short of finishing as Rx ran out of batteries. Gear was packed to the start of line 152000N, and will wait till instruction from Geoff/Dave regarding line extensions and where to end.
									No GPS, Luc fogot it, needs to hike to the outer reaches of L 152N to collect last 500m of GPS points.

June 18 2008	WS							Raining in the morning, waiting for linecutters to put proper extensions in, Steven will hike to find a TRUE/PROPER line end, otherwise, standing by. Rain all morning.
								Linecutters flew into camp (Martin/Helper) at around 8:30AM, will cut extensions to the lines starting with 155000N.
June 19 2008	WS	152N	11600 10100	1.5				Finish up line 152N. Bushwacked 800m with current, to get to station 11800, from the current tie in at 11000. This ensures a full overlap of the array from previous days. Weather was mild, sort of cool with periods of no more than 15 minutes of thunder and lightning. Steven(cables) Luc(Rx) Dan(Tx) Mike(current)
								Note: It is MUCH easier to bushwack 800m unrolling wire, but to roll it is a headache.
June 20 2008	WS	155	10200 11600	1.4				Steven(Tx) Mike(Current) Dan(Cables) Luc(Rx). Current path is PROPERLY tied in for the rest of the grid, heading north after today. Heavy rain storm, survey stopped, restarted after dinner (6PM) to finish, when rain also stopped.
June 21 2008	WS	159	10200 111000	0.9				Luc(Tx) Steven(Rx) Mike(Cables) Dan(Current) Aftermath of line still in bushes of line 152, rolled up. Everybody had a bad day, current snapping bushwacking to the next line, cables tangling unrolling, open loop to walk.
June 22 2008	WS	159	11100 11200	0.1				Luc(tx) Steven(Rx) Dan(Current) Mike(Cables) Line set up, open loop found by Steven+Dan walking current path, then around 1PM, bear on line. around station 11200, start of the valley. Everybody called back to camp. Later, going to take missing GPS points, Luc seen the bear with cubs on line 152 station 13000.
								NOTE: Generators 1st oil change
June 23 2008	WS	159	11100 11700	0.6				Heavy rain from 7AM-9AM. Rained all day. Noise or signal error on machine, could have a leaking splice in wire. Steven(Rx) Luc(Tx) Dan(Current) Mike(Cables) Very low primary voltage, suspicious readings. Rain ALL DAY, for 15+ hours.
June 24 2008	WS	Line 159	11200 12800	1.6				Steven(Rx) Luc(Cables) Mike(Tx) Dan(Current) Problems solved, squirrels are really becoming an issue, as at least one open loop a day from those things chewing through the current path is frustrating. Dan and Steven stayed and finished the line getting into camp at about 11PM. Long day, needed to get off that line.(Finally)
June 25 2008	WS	Line 159 Line 162						Line moved over to 162N. Current moved, and cables set up. Again, with things ready to go, open loops. Approximately 5KM of current path to walk. Other than line moved, no production. Squirrels REALLY becoming annoying.

June 26 2008	WS	162N	10300 12300	2					Luc(Cables)Steven(Rx) Dan(Tx) Mike(Current) With one open loop at the start of the day, otherwise good production. Nice weather, bugs not bad, readings great with little noise all day. Dan and Steven walked the grid to line 141 and 147 to confirm they are cut to spec according to the map provided by BC Gold.
June 27 2008	WS	162	12400 13100	0.7					Steven(Rx/Line walker to find open loops) Dan(Tx/Line walker to find open loops) Mike(Current) Luc(Rx/Cables) Finished line 162, the north and heavily squirrel infested side is finished. Moving south until transmitter relocation. Only one open loop to start the day.
June 28 2008	WS	149	10200 11000	0.8					Steven (Rx) Mike (Tx) Luc (Cables) Dan (Current) Helicopter Resupply (Dick with Transnorth; Bell Jetranger II) Food and supplies at 10:45AM. Mike and Luc rolled up stray wire on 155 and 152. Steven and Dan rolled up current path from 162-152. Lunch at camp, and line set up by 6PM. Hail storm slightly before 6PM, light/moderate rain the rest of the night.
June 29 2008	WS	149	11000 12900	1.9					Steven (Rx) Dan(Current) Mike(Tx) Luc(Cables) 3 breaks in current path, line 149 finished.
June 30 2008	WS	147	10200 11200	1					Steven (Rx) Luc (Tx) Dan (Current) Mike (Cables) Minor transmitter relocation in AM, about 10-12m increase in elevation (antenna) and 100m closer to south facing lines. Line 147 finished, will call for helicopter support to finish line 135 and line 141.
									Note: Quite a long day, as all lines were cleaned up of wire to be ready for transmitter relocation followed by camp move.
July 1 2008	WS	141	9800 11000	1.2					Dan (Current) Luc(Tx) Mike (Cables) Steven (Rx) Rain, all morning and afternoon. Helicopter support at 9:AM to relocate Tx site. (413887E,6908740N) Line set up, swamp from 9800E-10000E. Possible current dissipation from very wet conditions. Problems with moisture in cable heads. 13:00 Heavy rain periods, storm clouds overhead, thunder close overhead, very high self potential on Rx.
July 2 2008	WS	135	10000 10300	0.3					Dan(Tx) Luc(Current) Steven(Rx) Mike(Cables) Logistics meeting in AM to discuss camp move, set up L135, walk current path to find open loops (2 chew throughs, 1 burn out as a result of chew marks) Line 135 on side hill, steep(50 degree side hill) Very hot, hard to walk with full pack of gear. 400m until everybody was exhausted.
July 3 2008	WS	135	10300 11300	1					Mike(Cables/Relay) Dan(Tx)Steven(Rx) Luc(Current) AM started with walking current path to cut out chew marks/throughs, and burn outs. Finished Line 135, packed sling and will call for helicopter support to move Tx site to redo last kilometer of line 162. Camp move expected on the 5th to Copper grid. (Cannot be done today as helicopter is booked for a Minto Mine job move.
									Note: Again 2.5 kilometer round trip to and from L135, elevation change of approx 125m.
		162	12000 13200	1.2					REDO: Steven(Rx)Luc(Current)Dan(Tx)Mike(Cables) Last kilometer of line 162 redone, packed up camp for helicopter to move to "Copper" Grid.

July 4 2008	WS								
July 5 2008	WS & Copper	0	0						Mobe Day, Camp moved to Copper grid, (408353E,6913862N) Was expected camp move at 9AM, but fogged in till after 11AM. Camp moved by Dick from Transnorth, (Bell Jetranger II) 5 Slingloads and 2 Internals.
July 6 2008	Copper	106	10200 12800	2.6					BEAR overnight. Bear came into kitchen/transmitter tent overnight, dragged a cooler just outside of the tent until it got stuck in trees, opened electronic cooled cooler, ate ziplock bag of porkchops also dragged into bushes just outside of kitchen tent. Not aggressive at all, was hanging around till 10:30AM, came back twice after bear banger and shotgun fired near him. Spooked after a round was fired in the dirt in front of him.
									Otherwise great day, nice weather, no equipment problems, not a single squirrel.
July 7 2008	Copper	106	12800 13400	0.6					BEAR overnight. Kitchen Tent damaged, (Pictures appended to the digital version) All meat eaten, some dry good eaten. Including: 2 packs sausages, 9 steaks, 2lb hamburger, 2lb stewing beef, 60 eggs, 8L milk, 2 pack bacon, 2-3lbs bread, 2 packs breakfast sausage, 4 packs lunch meat. Survey halted at 5:30 when Mike(Tx) saw bear hanging around camp and would not scare.
		104	10200 11000	0.8					TIMELINE: approx 5PM, bear in camp, approx 6PM Steven shot round into bear, approx 7PM went looking for bear no trace, trail of food in bushes.
									Luc(Cables)Steven(Rx) Dan(Tx) Mike(Current) With one open loop at the start of the day, otherwise good production. Nice weather, bugs not bad, readings great with little noise all day. Dan and Steven walked the grid to line 141 and 147 to confirm they are cut to spec according to the map provided by BC Gold.
July 8 2008	Copper	104	11000 13400	2.4					Steven(Rx) Luc(Tx) Dan(current) Mike(cables) Good production, nothing significant to report.
July 9 2008	Copper	102	10200 12300	2.1					Steven (Rx) Luc(Tx) Dan(Current) Mike(Cables) Helicopter at 11AM to shoot bear, Transnorth (Bell Jetranger III) Kiwi pilot, RCMP, and conservation officer. Did not introduce themselves, no names. Landed in camp, took doors off, flew unnecessarily close to sleep tent damaging pole, Shot bear, (8 rounds, 30 minutes later) and landed once more. Instructions were to leave the bear, and do nothing.
July 10 2008	Copper	102	12300 13400	1.1					Steven(Rx) Luc(Current) Dan(Tx) Mike(Cables) Nothing significant to report.
		100	10200 11600	1.4					
July 11 2008	Copper	100	11600 13400	1.8					Steven(Rx) Luc(Current) Dan(Tx) Mike(Cables) Finishes grid, nothing else to report
Demobe to Whitehorse, Dick in camp at around noon, (Transnorth									

July 12 2008	Copper								Bell Jetranger III) camp flown out to staging coordinates. Stephan driver, 1 ton truck.
--------------	--------	--	--	--	--	--	--	--	---

TOTAL 34.9
 WORK DAYS = 26
 STANDBY DAYS = 4

Appendix 2

Aurora Geosciences Ltd. Field Report 11 August, 2008



Whitehorse Office
34A Laberge Road
Whitehorse, YT
Y1A - 5Y9

Phone: (867) 668-7672
Fax: (867) 393-3577
www.aurorageosciences.com
aurora@klondiker.com

MEMORANDUM

To: Geoff Newton
BC Gold Corp.

Date: 11 August 2008

From: Ivan Drury, Steven Kramar

Re: 2008 Induced Polarization Survey Preliminary Field Report

This memorandum is a preliminary field report describing an induced polarization (IP) survey conducted on BC Gold properties. A modified pole-dipole IP survey was conducted on the WS, Copper, and Peanut grids and a gradient IP survey was conducted on the Spear, Toe, and Pepper grids, Whitehorse Mining District, Yukon Territory. The survey was conducted from June 13 to August 5 2008 by two separate crews.

The first crew surveyed a total of 22.1 line-km on the WS grid over 20 working days and 12.8 line-km were surveyed on the Copper grid over 6 working days. There was a bear problem on the Copper grid which resulted in the Conservation officer flying in to camp to destroy the bear. The WS grid lines were not completely cut upon arrival which adversely affected production. A full survey log is attached to this report.

The second crew surveyed a total of 27.55 line-km of gradient IP on the Spear, Toe, and Pepper grids and 18 line-km of in-line modified pole-dipole IP was surveyed on the Peanut grid over a total of 25 working days. A separate bear incident on the Spear grid resulted in four stand-by days for the crew due to safety concerns. A conservation officer and RCMP officer flew into camp to investigate the incident but were not able to locate the wounded bear. The Toe grid was cut 1.5km off of where it had been planned, so after the initial survey of the Toe grid was complete a linecutting crew was flown in to re-cut the grid. The second crew returned to re-survey Toe when the re-cutting was complete. A separate full survey log for the second crew is attached to this report.

a. Crew and equipment.

The IP surveys were conducted by the following personnel:

Crew #1		
Steven Kramar	Crew chief	June 13 – July 12
Luc Harvey	Technician	June 13 – July 12
Dan Mawhinney	Helper	June 13 – July 12
Mike Krause	Helper	June 13 – July 12

Crew #2		
Ivan Drury	Crew chief	July 4 – August 5
Stacey Bishop	Helper	July 4 – August 1
Olivier Barre	Helper	July 4 – August 1
Nicolas Tremblay	Helper	July 4 – August 1
Gaetan Cyr	Helper	August 1 – August 5
Kim Ayles	Helper	August 1 – August 5
Dan MacKenzie	Helper	August 1 – August 5

The linecutting done on the Toe grid was conducted by the following personnel:

Gaetan Cyr	Linecutter / Crew chief	July 25 – July 31
Dan MacKenzie	Brusher	July 25 – July 31
Richard Smaslet	Linecutter	July 25 – August 1
Ben Power	Brusher	July 25 – August 1

The IP crews were equipped with the following instruments and equipment:

IP receiver	1	Iris Elrec 6 S/N: 120
IP receiver	1	Iris Elrec Pro S/N: 166
IP transmitter	2	GDD TxII 3.6 kW S/N: TX-242 & TX-267
Generator	2	Honda 5kW generator
IP equipment	2	Repair tools & spare IP parts
	14 km	18 gauge wire

	23	6 conductor 100m IP cables
	3	6 conductor 300m IP cables
	9	VHF handheld radios
		Geo-reels & spools, Speedy winders and spools, stainless steel electrodes
	2	Laptops with Geosoft IP packages
Other	2	4 man summer camps
	3	Garmin 72 GPS units
		Truck and driver for each mobe / demobe
		Helicopter for camp-moves between grids

b. IP survey specifications.

The modified pole-dipole IP surveys were conducted according to the following specifications:

Array	Modified Pole-Dipole Array
Dipole spacing	100 m on all lines
Dipoles Read	N=1 through 6 (6 Channels)
Tx	Time domain, 50% duty cycle, reversing polarity, 0.125 Hz.
Stacks	Minimum 15
Rx error	5 mV/V or less, otherwise repeated several times until repeatability assured
Grid registration	Handheld GPS points at line ends and every 200m minimum averaged 60 s or until estimated accuracy < 10 m, whichever was longer. All coordinates in NAD83 UTM Zone 8N.

The gradient IP survey was conducted according to the following specifications:

Array	Gradient rectangular array
Dipole spacing	50 m on all lines

Tx	Time domain, 50% duty cycle, reversing polarity, 0.125 Hz.	
Stacks	Minimum 15	
Rx error	5 mV/V or less, otherwise repeated several times until repeatability assured	
Grid registration	Handheld GPS points at line ends and every 300m minimum averaged 60 s or until estimated accuracy < 10 m, whichever was longer. All coordinates in NAD83 UTM Zone 8N.	
Gradient Arrays read	Spear grid	800m x 1800m with current electrodes at
	1 box	379499E 6949355N and 377074E 6952267N
	Toe grid	800m x 900m with current electrodes at
	4 boxes	375928E 6953605N and 376015E 6957928N
		800m x 900m with current electrodes at
		375928E 6953605N and 376052E 6958490N
		800m x 600m with current electrodes at
		376001E 6955086N and 376044E 6959085N
		800m x 950m with current electrodes at
		376045E 6954886N and 376046E 6959757N
	Pepper Grid	600m x 900m with current electrodes at
	3 boxes	374370E 6956989N and 372491E 6960814N
		600m x 900m with current electrodes at
		374370E 6956989N and 372151E 6961537N
		600m x 900m with current electrodes at
		373628E 6958189N and 371948E 6962275N

c. Data Processing.

Data was downloaded nightly from the receiver and imported into Geosoft Oasis Montaj IP package. Every reading was inspected and readings which did not repeat were rejected from the database. Apparent resistivity was recalculated using a four electrode equation assuming a homogeneous earth. Average apparent resistivity and chargeability were calculated using a weighted mean based on the number of stacks and the standard deviation of the chargeability; except in the case of the WS and Copper grids where the number of stacks taken in each reading was not downloaded from the receiver.

The ground provided clear and consistent readings. However, in those areas that produced a relatively lower signal to noise ratio additional readings as well as greater stacks of averaged readings were taken in order to ensure repeatability. On the Peanut grid, Line 11400, and the Copper grid, Lines 104 and 106, single data points were deleted from the final database because they stood apart too greatly from the chargeability patterns noticeable on said and surrounding lines.

GPS points were dumped from the handheld units and the coordinates for the stations determined by linear interpolation between GPS units. Elevations were determined from a digital elevation model equivalent to NTS 1:50:000 maps.

For those grids surveyed with a modified pole-dipole array pseudosections of apparent resistivity, apparent chargeability, and apparent chargeability error, draped over topography, were produced with Oasis Montaj. For those grids surveyed with a gradient array separate maps for apparent resistivity, apparent chargeability, and apparent chargeability error were produced with contoured topography. Each map was then exported in .pdf format.

d. **Products.**

The following data files are appended to the digital version of this report:

Data	Final data in Geosoft ASCII xyz and gdb format. The GPS files have all GPS coordinates taken in NAD83, UTM zone 8N coordinates.
Images	Plan maps and pseudosections in .pdf format of apparent chargeability, apparent resistivity, & chargeability error (scale = 1:2500 or 1:5000). Grid maps with GPS coordinates in NAD83, UTM zone 8N (scale = 1:5000).
Raw	A folder with all the raw instrument dump files.
BC Gold 2008 IP Field Report.pdf	A PDF of this report.
BC Gold IP Crew #1 Survey Log.pdf	Survey log for IP crew #1
BC Gold IP Crew #2 Survey Log.pdf	Survey log for IP crew #2 and the linecutting crew

Respectfully submitted,
AURORA GEOSCIENCES LTD.

Steven Kramar

Ivan Drury

Appendix 3

Aurora Geosciences Ltd. Memorandum 10 September, 2008



Whitehorse Office Phone: (867) 668-7672 34A Laberge Road
Fax: (867) 393-3577 Whitehorse, YT
www.aurorageosciences.com

MEMORANDUM

To: BC Gold Corporation **Date:** 15 October 2008 Brian Fowler Geoff Newton Gary Lustig

From: Dave Hildes
Dave.Hildes@aurorageosciences.com

Re: BCG 2008 IP Survey -Interpretation Supplement

This memorandum is a supplement to the previously delivered field report which described an induced polarization (IP) survey conducted on several BC Gold properties in the Yukon. This supplement contains an interpretation of the data and recommendations based on the IP data and 2D IP inversions performed by Aurora Geosciences Ltd. on the WS grid. Figures were provided by BC Gold showing the results of 3D IP inversions on the WS grid (performed by Mira Geosciences) and MMI Cu soil geochemistry results on all 6 grids that were surveyed by Aurora in 2008.

Three grids were surveyed with an expanding pole-dipole array geometry using 100 m dipoles and reading to the 6th dipole separation; the WS, Peanut and Copper grids.

Copper grid

Figures *BCG_Copper_Stacked_Apparent_IP.pdf* and *BCG_Copper_Stacked_Apparent_Res.pdf* show stacked pseudosections of apparent chargeability and apparent resistivity for the Copper grid. All the apparent chargeability pseudosections use a common linear colour scale while all the apparent resistivity pseudosections use a common log-linear colour scale.

The apparent resistivity shows a resistive zone to the northeast that coincides well with the area immediately north of the magnetic feature as imaged by the airborne total magnetic field. There is a slightly more complicated resistivity structure on L100.

There are broad zones of anomalous apparent chargeability which correlate well with the areas of increased apparent resistivity, suggesting that the differences in chargeability are caused by broad lithological changes rather than mineralization. The MMI Cu soil geochemistry results show elevated Cu values throughout most of the grid, with no particular area distinguishing itself.

The strongest IP target would be on L104 at station 12700; there are elevated MMI Cu values proximal to this station (to the east), which could be consistent with the IP if there were a westward dipping structure (so that the MMI results would be up-dip)

Prior to drilling, further IP at 25 metre dipole spacing is recommended over the strongest chargeability anomaly on line 104 with infill lines 103 and 102 also being surveyed. The current data (and further surveyed data) should be inverted to best coalesce the soil geochemistry and IP data prior to deciding on a drill targets.

Yours Sincerely,
AURORA GEOSCIENCES LTD.

Dave Hildes, P.Geo, Ph.D.

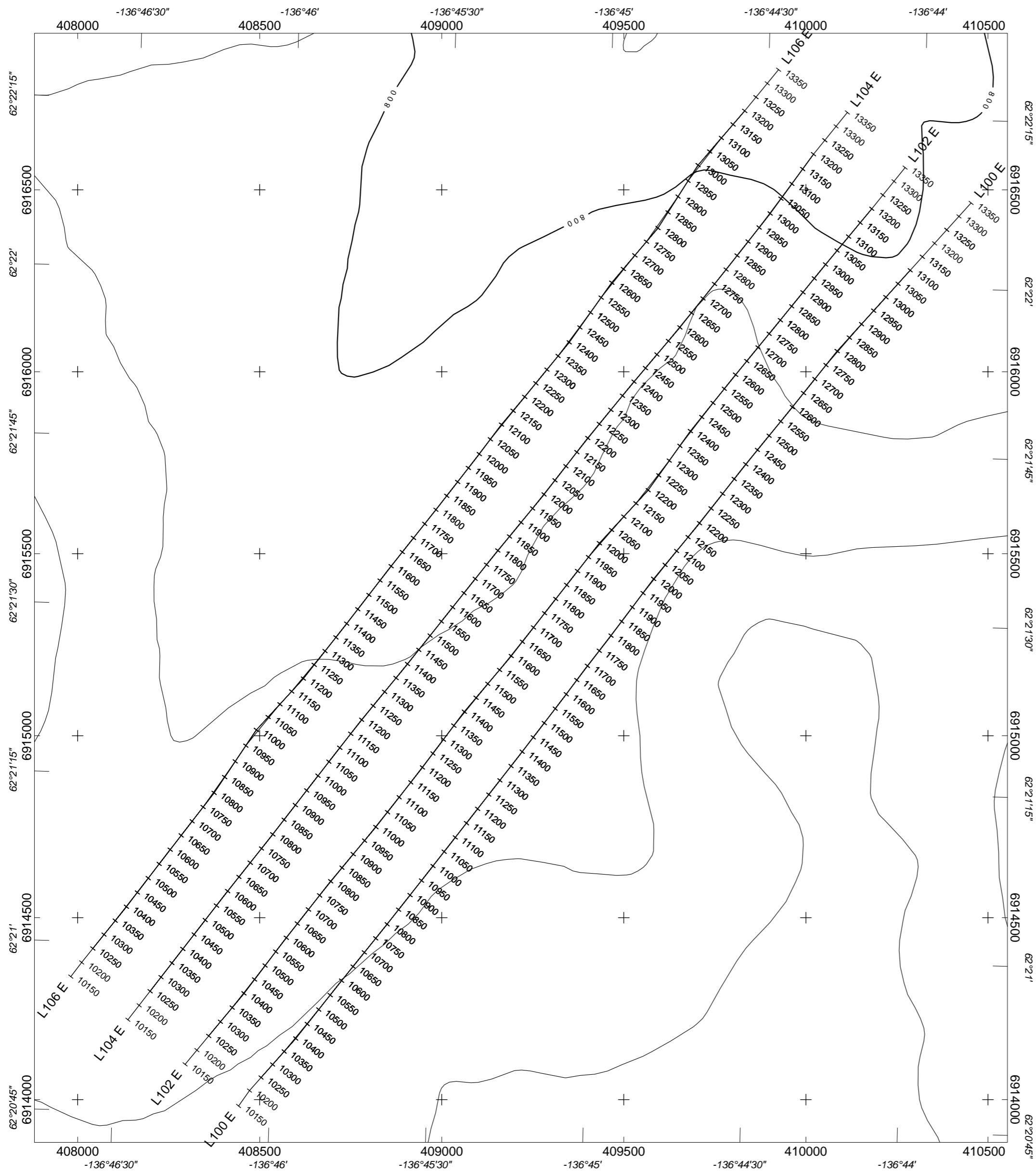
References

Bhattacharya, B.B. & I. Dutta, 1982. Depth of investigation studies for gradient arrays over homogeneous isotropic half-space. *Geophysics* **47**, 1198-1203.

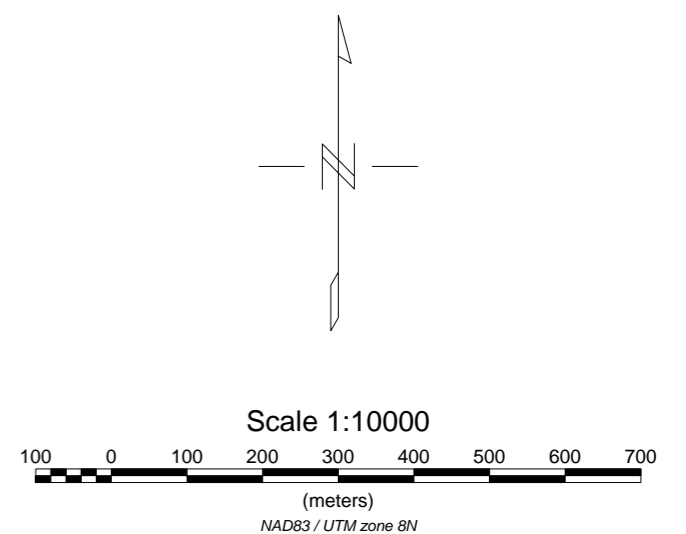
Coggon, J.H. 1973. A Comparison of IP Electrode Arrays. *Geophysics* **38**, 737-761.

Furness, P. 1993. Gradient Array Profiles over Thin Resistive Veins. *Geophysical Prospecting* **43**, 113-130.

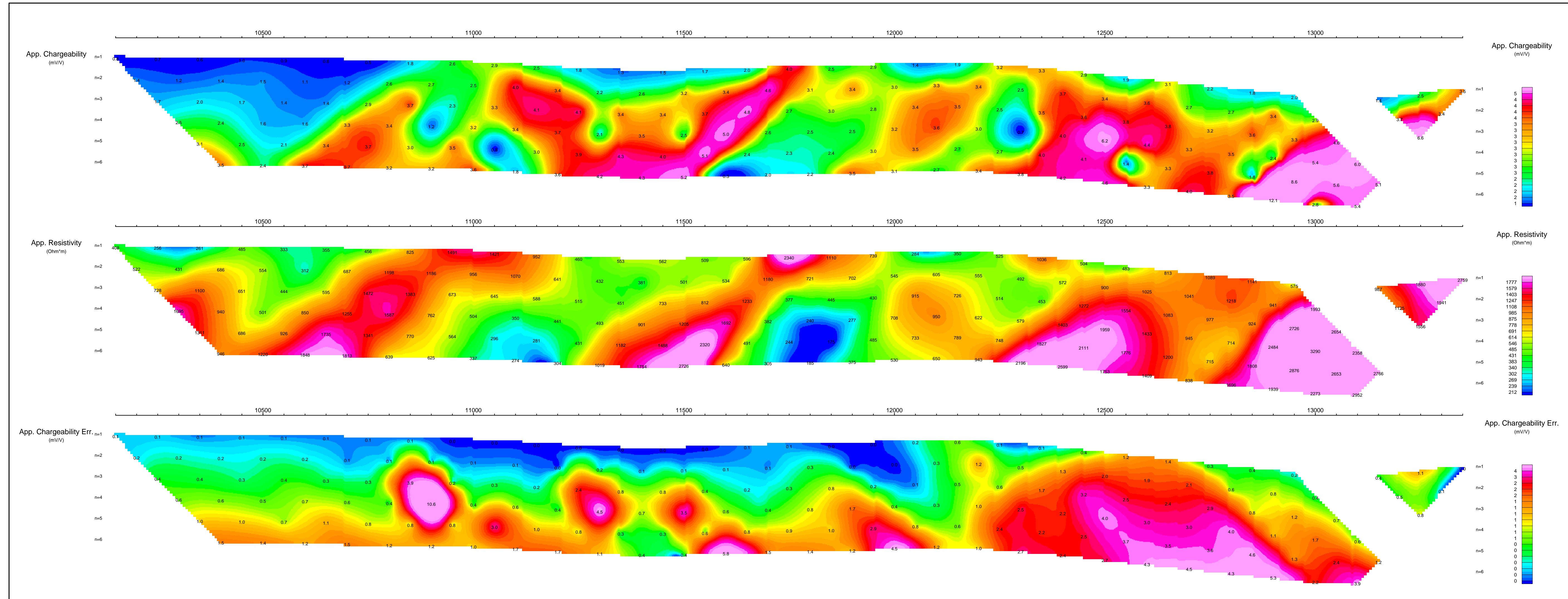
Quick, D.H. 1974. The Interpretation of Gradient Array Chargeability Anomalies. *Geophysical Prospecting* **22**, 736-746.



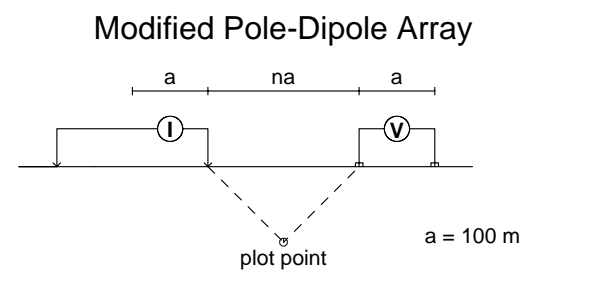
PRELIMINARY



BC GOLD CORPORATION	
COPPER GRID MAP EXPANDING POLE-DIPOLE IP SURVEY	
Mining District: Whitehorse Date: August 2008 NTS: 115 I/07	NAD 83 UTM8N Job: BCG-8533-YT Drawn by: SK
AURORA GEOSCIENCES LTD.	

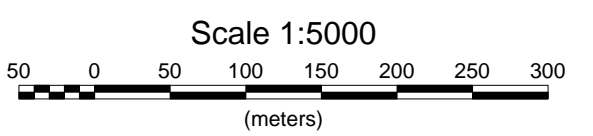


**PSEUDOSECTION PLOTS
L100**



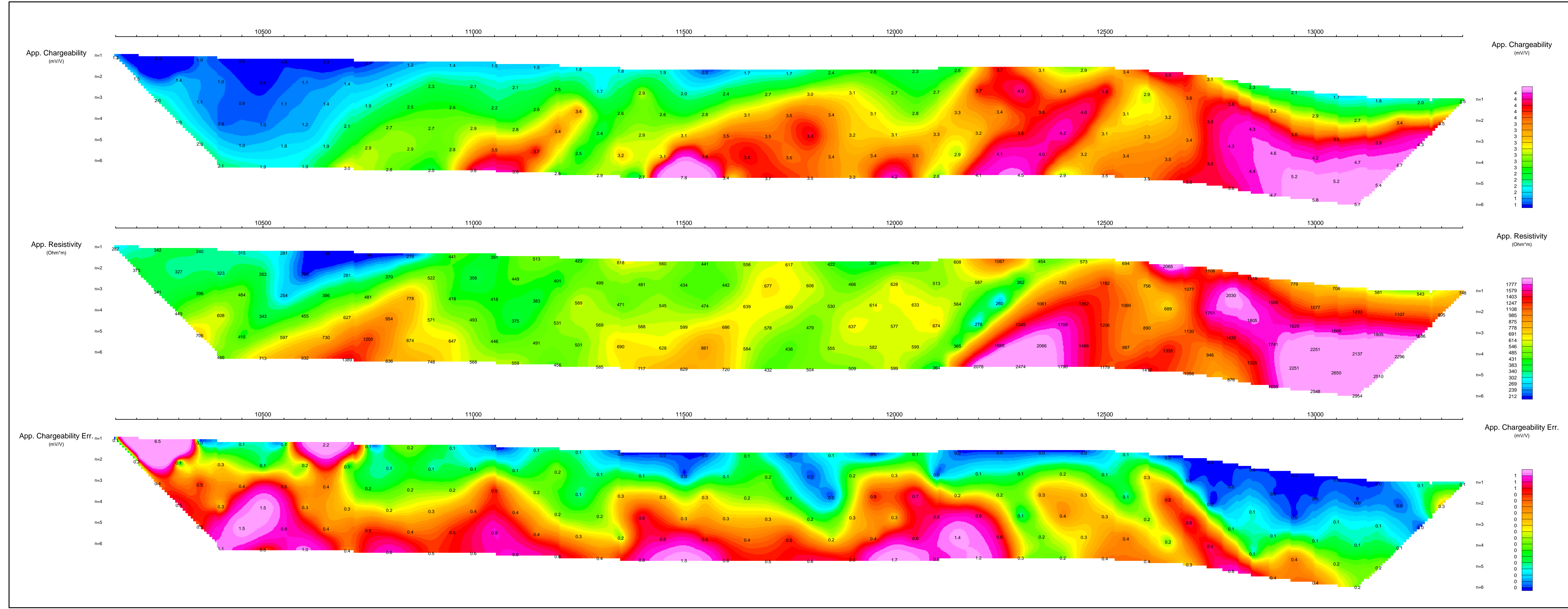
Stationary electrode at 1000E (moving E).
 Receiver: Iris Elrec6
 Transmitter: GDD Tx-II 3.6kW
 Dates Surveyed : July 2008

PRELIMINARY

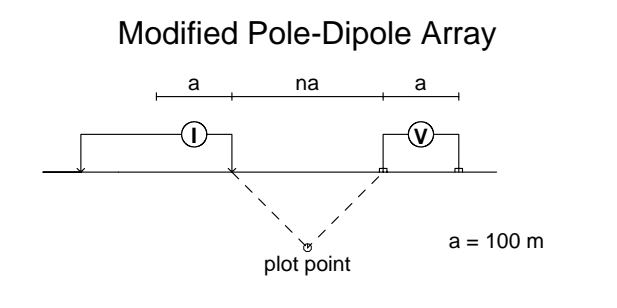


BC GOLD CORPORATION
INDUCED POLARIZATION SURVEY
COPPER GRID
PSEUDOSECTION PLOTS L100

Mining District: Whitehorse NAD83 UTM8N
 Date: AUGUST 10, 2008 Job: BCG-8533-YT
 NTS: 115 I/07 Drawn by: SK
AURORA GEOSCIENCES LTD.

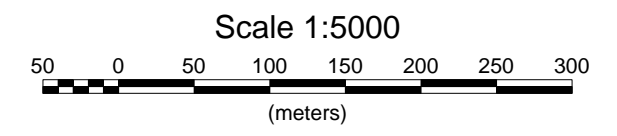


**PSEUDOSECTION PLOTS
L102**



Stationary electrode at 1000E (moving E).
Receiver: Iris Elrec6
Transmitter: GDD Tx-II 3.6kW
Dates Surveyed: July 2008

PRELIMINARY

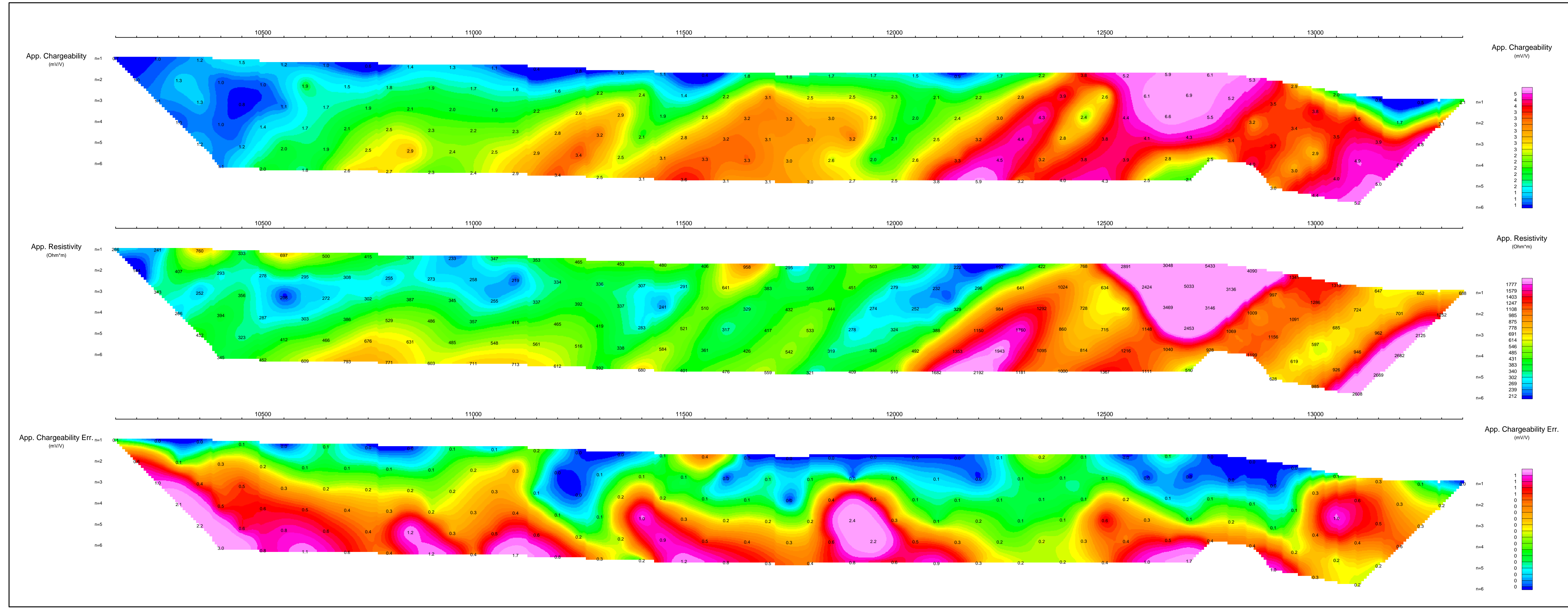


BC GOLD CORPORATION
INDUCED POLARIZATION SURVEY
COPPER GRID
PSEUDOSECTION PLOTS L102

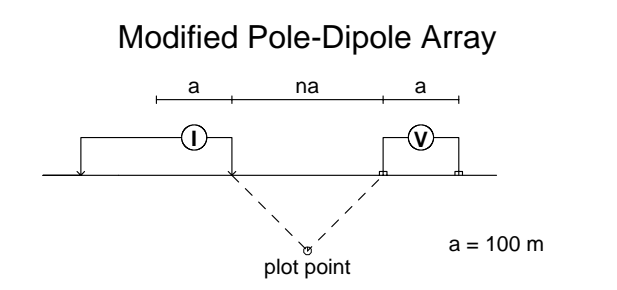
Mining District: Whitehorse
Date: AUGUST 10, 2008
NTS: 115 1/07

NAD83 UTM8N
Job: BCG-8533-YT
Drawn by: SK

AURORA GEOSCIENCES LTD.

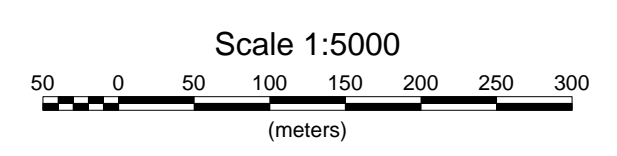


**PSEUDOSECTION PLOTS
L104**



Stationary electrode at 1000E (moving E).
 Receiver: Iris Elrec6
 Transmitter: GDD Tx-II 3.6kW
 Dates Surveyed : July 2008

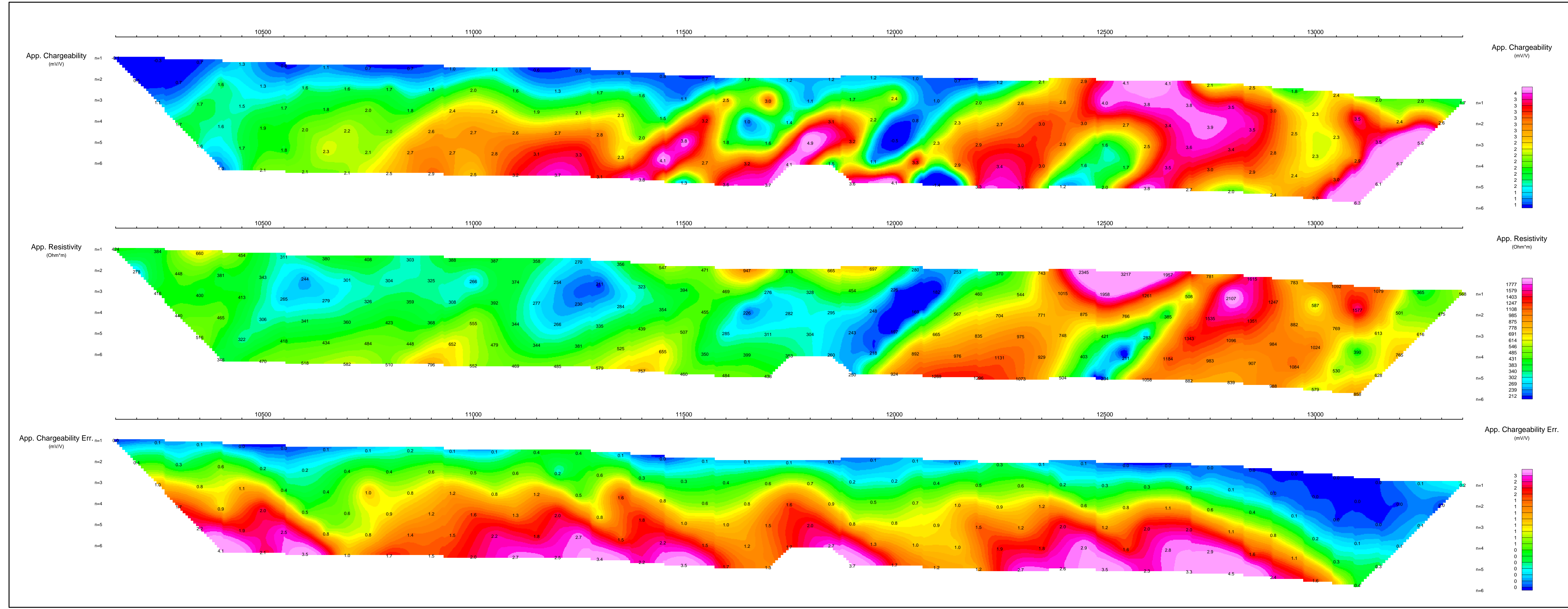
PRELIMINARY



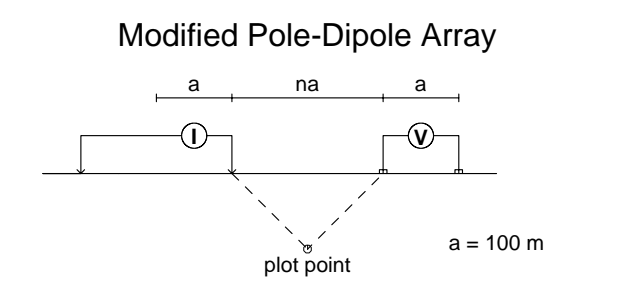
BC GOLD CORPORATION
INDUCED POLARIZATION SURVEY
COPPER GRID
PSEUDOSECTION PLOTS L104

Mining District: Whitehorse NAD83 UTM8N
 Date: AUGUST 10, 2008 Job: BCG-8533-YT
 NTS: 115 I/07 Drawn by: SK

AURORA GEOSCIENCES LTD.

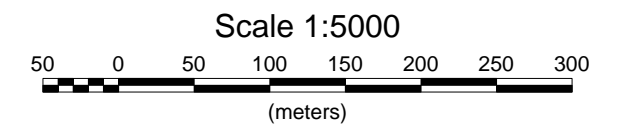


**PSEUDOSECTION PLOTS
L106**



Stationary electrode at 1000E (moving E).
Receiver: Iris Eirec6
Transmitter: GDD Tx-II 3.6kW
Dates Surveyed : July 2008

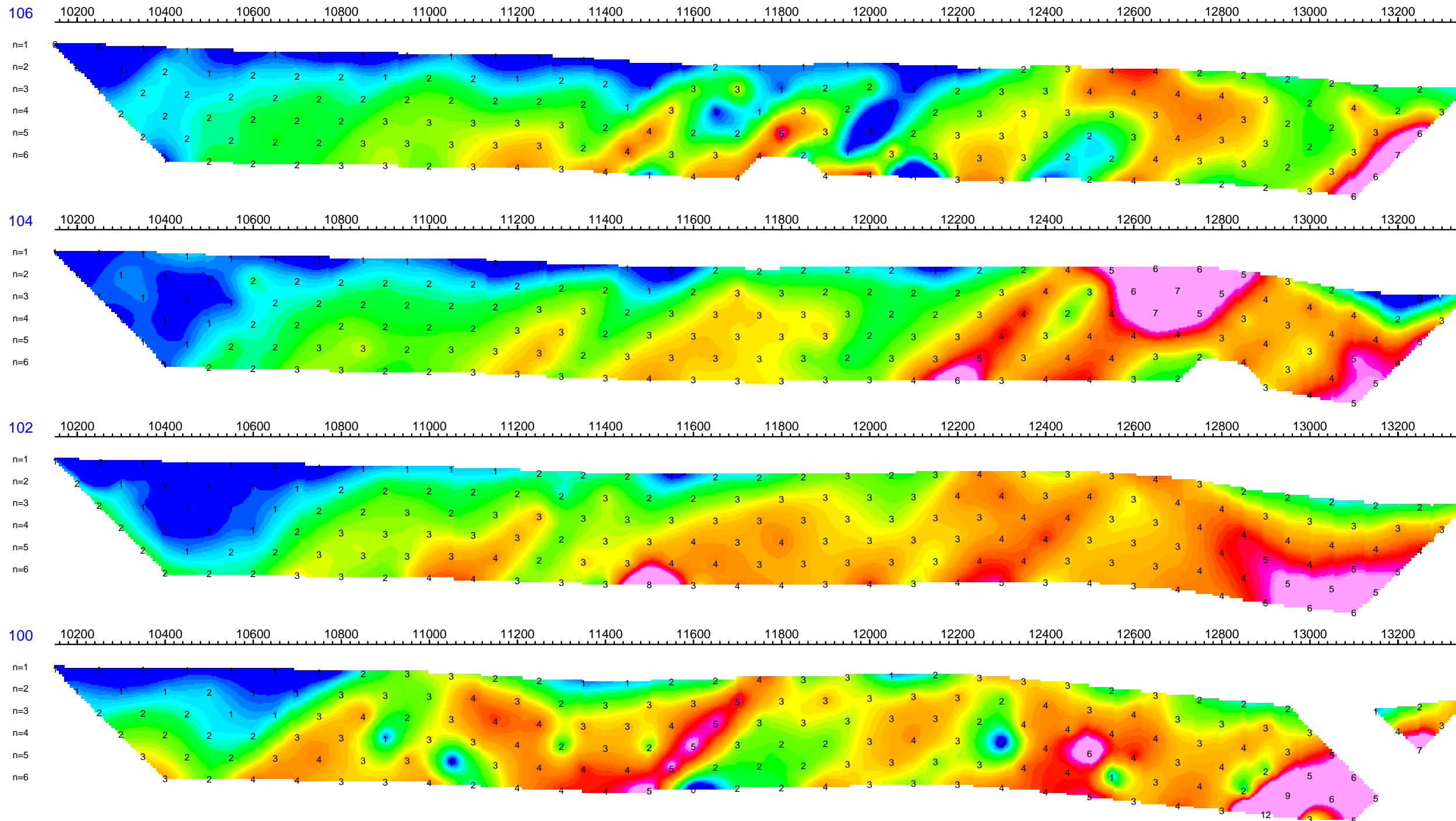
PRELIMINARY



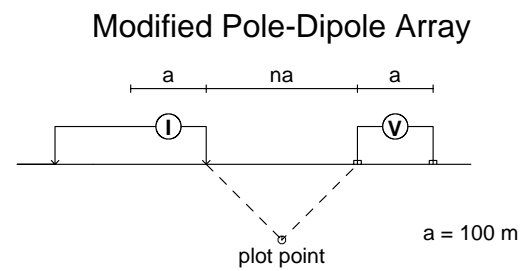
BC GOLD CORPORATION
INDUCED POLARIZATION SURVEY
COPPER GRID
PSEUDOSECTION PLOTS L106

Mining District: Whitehorse NAD83 UTM8N
Date: AUGUST 10, 2008 Job: BCG-8533-YT
NTS: 115 1/07 Drawn by: SK

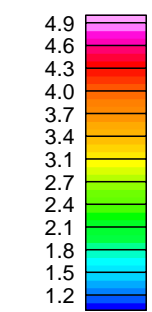
AURORA GEOSCIENCES LTD.



**STACKED PSEUDOSECTION PLOTS
APPARENT CHARGEABILITY**

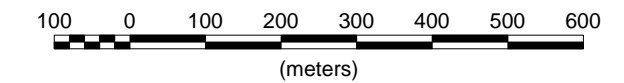


Stationary electrode at 10000 (moving E).
Receiver: Iris ElrecPro
Transmitter: GDD Tx-II 3.6kW
Dates Surveyed : July 2008



**Apparent Chargeability
(mV/V)**

Scale 1:10000

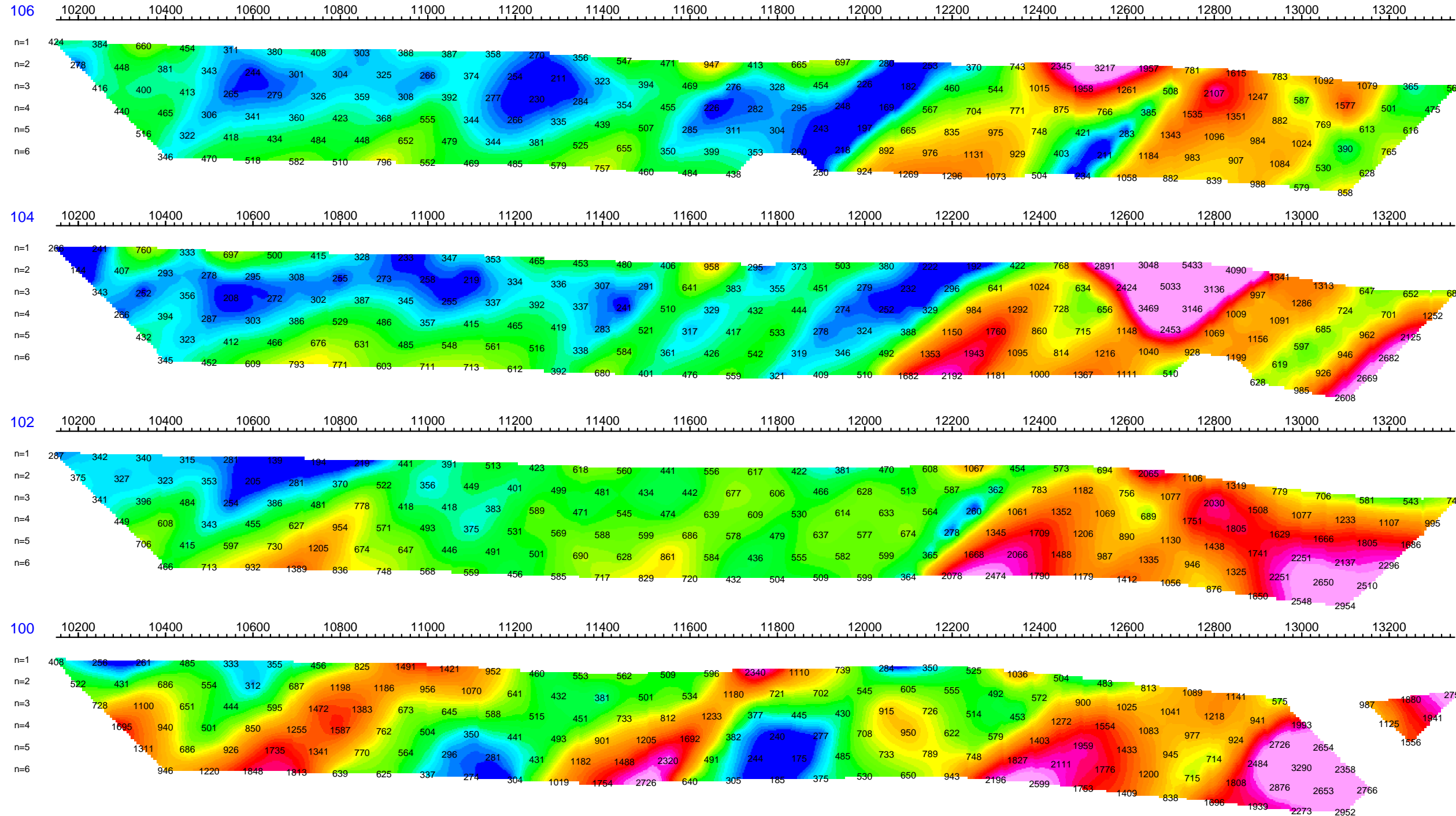


BC GOLD CORPORATION
INDUCED POLARIZATION SURVEY
COPPER GRID
STACKED PSEUDOSECTION PLOTS
APPARENT CHARGEABILITY

Mining District: Whitehorse
Date: Oct 15, 2008
NTS: 115 I/07

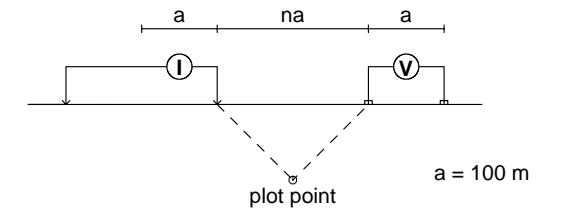
NAD83 UTM8N
Job: BCG-8533-YT
Drawn by: DH

AURORA GEOSCIENCES LTD.



STACKED PSEUDOSECTION PLOTS APPARENT RESISTIVITY

Modified Pole-Dipole Array

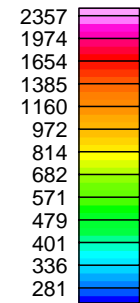


Stationary electrode at 10000 (moving E).

Receiver: Iris ElrecPro

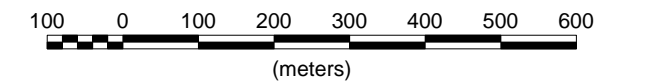
Transmitter: GDD Tx-II 3.6kW

Dates Surveyed : July 2008



Apparent Resistivity
(Ohm-m)

Scale 1:10000



BC GOLD CORPORATION

INDUCED POLARIZATION SURVEY
COPPER GRID
STACKED PSEUDOSECTION PLOTS
APPARENT RESISTIVITY

Mining District: Whitehorse
Date: Oct 15, 2008
NTS: 115 I/07

NAD83 UTM8N
Job: BCG-8533-YT
Drawn by: DH

AURORA GEOSCIENCES LTD.