

GEOCHEMICAL REPORT

CU 1- 8 CLAIMS

GRANT #

YC08871 - YC08878

NTS # 115 N \ 01

LAT 63 °03'

LONG 140° 09'

WHITEHORSE MINING DISTRICT

AUTHOR OF REPORT SHAWN RYAN

WORK PERFORMED JUNE 20, 2008

DATE OF REPORT JANUARY 08, 2009

Table of Content

Summary	P.3
1.0 Introduction	P.3
2.0 Locations and Access	P.3
3.0 Property Description	P.3
4.0 Physiographic	P.3
5.1 Regional Geology	P.4
Geology Description	P.5
6.0 Work Methods	P.6
7.0 Interpretation	P.7
8.0 Recommendation	P.7
9.0 References Cited	P.7
10.0 Cost	P.8
11.0 Qualification	P.8
Claim / Geology Location Map	Figure 1
Gold Soil Anomaly Map	Figure 1
Soil Location Map	Figure 2
Gold Soil Anomaly Map	Figure 3
Arsenic Soil Anomaly Map	Figure 4
Antimony Soil Anomaly Map	Figure 5
Copper Soil Anomaly Map	Figure 6
Molybdenum Soil Anomaly Map	Figure 7
Assay Data/ GPS Soil Location Data	Appendix

SUMMARY

The CU 1-8 2008 field exploration program consists of Joe McCann, Andy Crowther, Ben McGragh, and Chris Arsenault all employees of Ryanwood Exploration Inc., mobilizing to the to the Claim block on June 20, 2008 and gathering 40 soils from the claim block and another 85 soils from the area surrounding the claims.

1.0 INTRODUCTION

The Cu 1-8 will be renewed for a period 3.5 years. The 2008 exploration was conducted partly on the Cu claims and partly in the surrounding area. So I have pro rated the program and only charge for two employees, assay from the claims and partial helicopter cost.

2.0 LOCATIONS AND ACCESS

The CU 1-8 claims are located on NTS 115 N / 1 in the Whitehorse Mining District. The Property lies 115 kilometer southwest of Dawson City, Yukon. The claim block covers a very prominent mountain that overlooks the White river. Access is via helicopter from Dawson City, Yukon.

3.0 PROPERTY DESCRIPTION

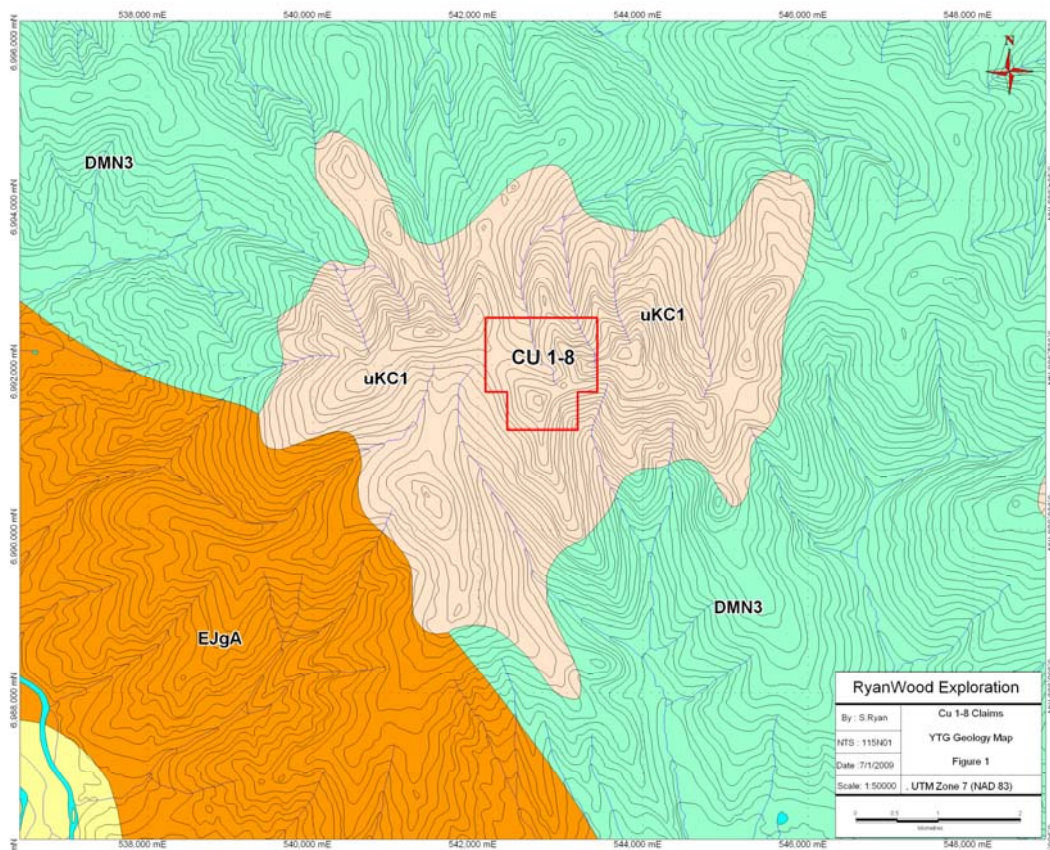
The Cu Claim block consists of 8 full Yukon Quartz Mining claims that are registered in the Whitehorse Mining district to Shawn Ryan.

4.0 PHYSIOGRAPHY

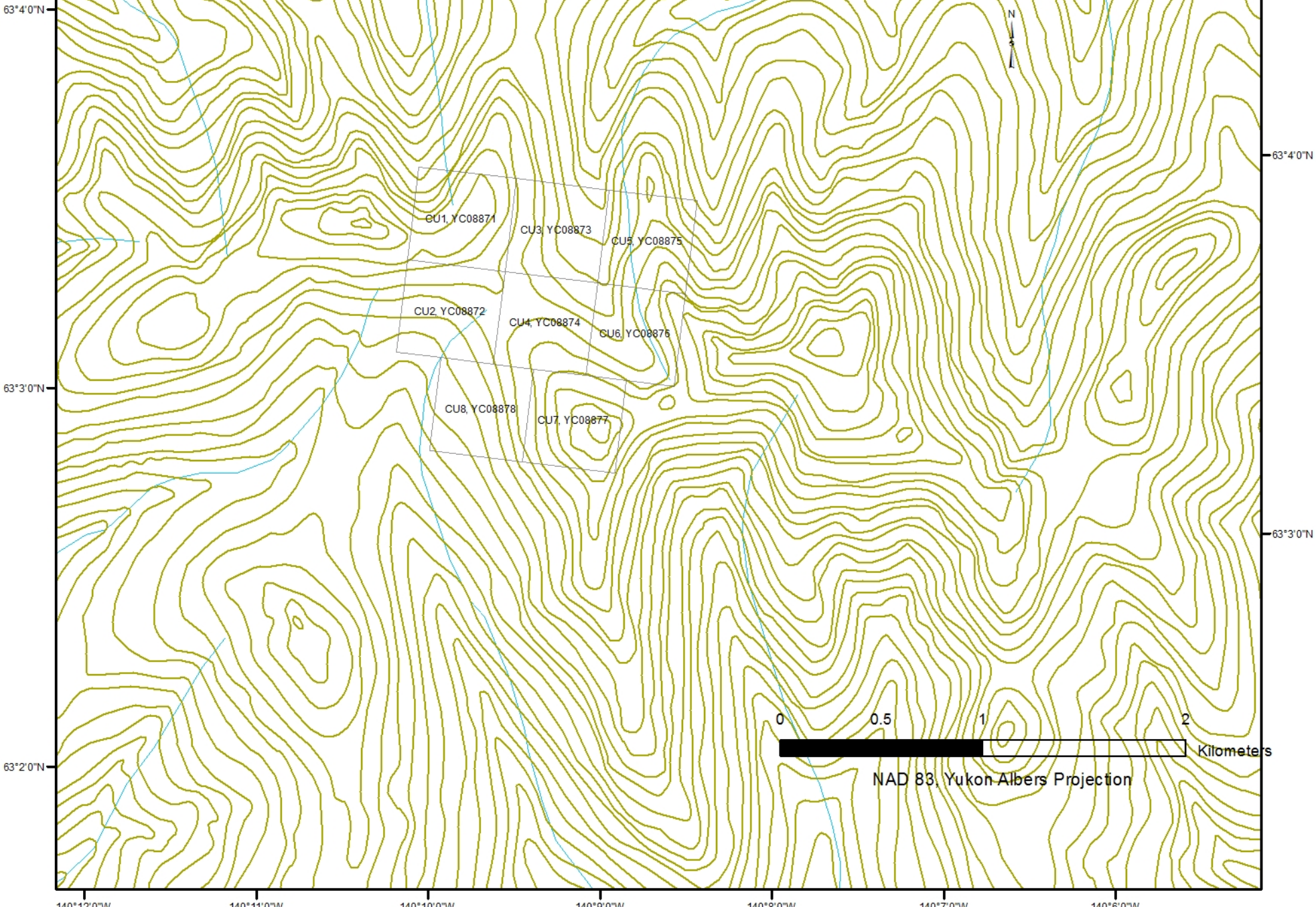
The property lies between the elevations of 3700 feet and 4700 feet. The entire property is covered sparse vegetation such as willow bush around the creek to just tundra moss on the ridge top.

5.0 REGIONAL GEOLOGY

The YTG geology Map indicates the Cu 1-8 claims are sitting in Upper Cretaceous (uKC1) Carmacks Volcanics. The geology map also indicates a large Early Jurassic (EJgA) Aishihik Siute intrusive sitting to the south west of the claim block and the major rock type around the Carmacks Volcanics is Devonian, Mississippian (DMN3) Nasina quartzite.



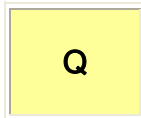
Claim Map



NAD 83, Yukon Albers Projection

YTG Geology Description

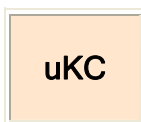
QUATERNARY



Q: QUATERNARY

unconsolidated glacial, glaciofluvial and glaciolacustrine deposits; fluvial silt, sand, and gravel, and local volcanic ash, in part with cover of soil and organic deposits

UPPER CRETACEOUS



uKC: CARMACKS

a volcanic succession dominated by basic volcanic strata (1), but including felsic volcanic rocks dominantly (?) at the base of the succession (2) and locally, basal clastic strata (3) (70 ma approx)

1. augite olivine basalt and breccia; hornblende feldspar porphyry andesite and dacite flows; vesicular, augite phyric andesite and trachyte; minor sandy tuff, granite boulder conglomerate, agglomerate and associated epiclastic rocks (**Carmacks Gp., Little Ridge Volcanics, Casino Volcanics**)

EARLY JURASSIC



EJgA: AISHIHIK SUITE

medium- to coarse- grained, foliated biotite-hornblende granodiorite; biotite rich screens and gneiss schlieren; foliated hornblende diorite to monzodiorite with local K-feldspar megacrysts; may include unfoliated monzonite of the Long Lake Suite (**Aishihik Suite**)

DEVONIAN, MISSISSIPPIAN AND(?) OLDER



DMN: NASINA

graphitic quartzite and muscovite quartz-rich schist (1), (3)-(5), and(?) (6) with interspersed marble (2) and probable correlative successions (7) - (9)



3. quartzite, micaceous quartzite, quartz muscovite (+/-chlorite; +/- feldspar augen) schist, and minor metaconglomerate and metagrit as in (1), but may locally include significant Nisling Assemblage

6.0 WORK PERFORMED / METHODS

6.1 Soil Survey

The Cu 2008 soil survey had a total of 2 man days of soil work collecting 40 plus soil samples on 3 kilometers of traverse. All the traverses were on 100 meter station spacing.

Soil sampling Description

All soil samples are taken with one meter soil probes and sometime with a prospector pick. We carried both on rocky talus slope. Soil samples are gathered from an average depth of 70 centimeter. Soil sample locations are marked in the field with pink flagging and aluminum tags. The sample number is inscribed on the aluminum tag and tied to a tree or shrub at shoulder height above sample site.

The sample number is recorded with a Garmin Map76 GPS in UTM NAD 83.

Sample description such as color, depth, slope, sample quality, ground vegetation, tree cover and GPS coordinates (backup) are recorded in a Palm PDA data recorder.

A total of 400-500 grams of soil is collected and place in well mark kraft soil bags.

The GPS and PDA are downloaded every night and stored in the crew chief personal computer. A second backup copy of the data is transferred to a memory stick and the memory stick is relocated to a secondary tent (in case of fire).

All samples are brought back to Dawson City and air dried, repacked in rice bags, and sent to Acme Labs in Vancouver.

Samples are process with Aqua Regia ICP-MS for 36 elements (Acme Labs 1DX-15 gram).

7.0 INTERPRETATION

SOIL SURVEY

The 2008 soil survey highlighted spotty anomalous gold (Figure 3), arsenic (Figure 4), antimony (Figure 5), copper (Figure 6) and molybdenum (Figure 7) on the CU claim block.

A second interesting soil anomaly appeared on the most southern ridge top soil sample. Anomalous soil values in gold, antimony, copper, and a very nice molybdenum anomaly, all sitting in the intrusive (Figure 1). This geochemical signature is indicating a porphyry style target.

8.0 RECOMMENDATION

I would recommend a large soil grid on 200 meter line spacing and 100 meter station spacing and run from the center of the Cu claim block and extended the grid to the south and west as to cover the anomalous soil ridge.

A ground magnetic survey is always useful as to helping understand the regional or mineralized structure.

9.0 REFERENCES CITED

DELTANGO GOLD LTD, Dec/2000. Assessment Report #094173 by G. Jilson and D.J.Brownlee

YTG Geology Map

10.0 Cost

Assay Cost 40 soil at \$22.00	\$800.00
Wages 2 man days at \$330.00 per day	\$660.00
Helicopter travel .9 hours at \$1300.00	\$1,170.00
Report	\$350.00
Total	\$2,980.00

11.0 QUALIFICATION

I Shawn Ryan located in Dawson City, Yukon work as a professional prospector. I run a small exploration company located in Dawson city.

I have worked in the exploration business for the last 25 years. I worked the first 12 years as a contractor working on numerous projects in the NWT, Ontario, Quebec and the Yukon. I have worked for the last 13 years as a local prospector for myself.

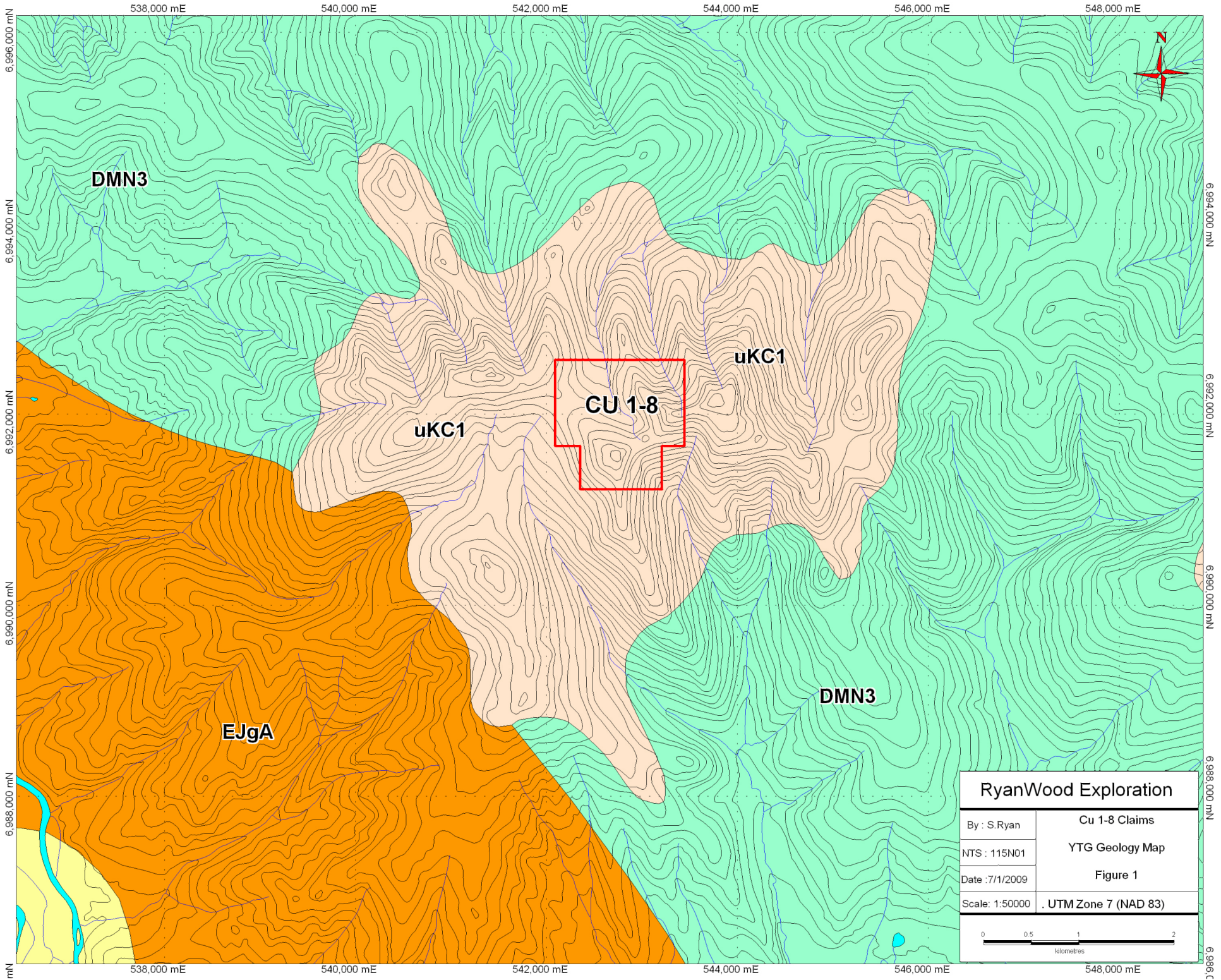
I have overseen the whole Cu Project.

I own 100 % of the Cu claims.

Dated this 15 of January 2009 in Dawson City, Yukon.

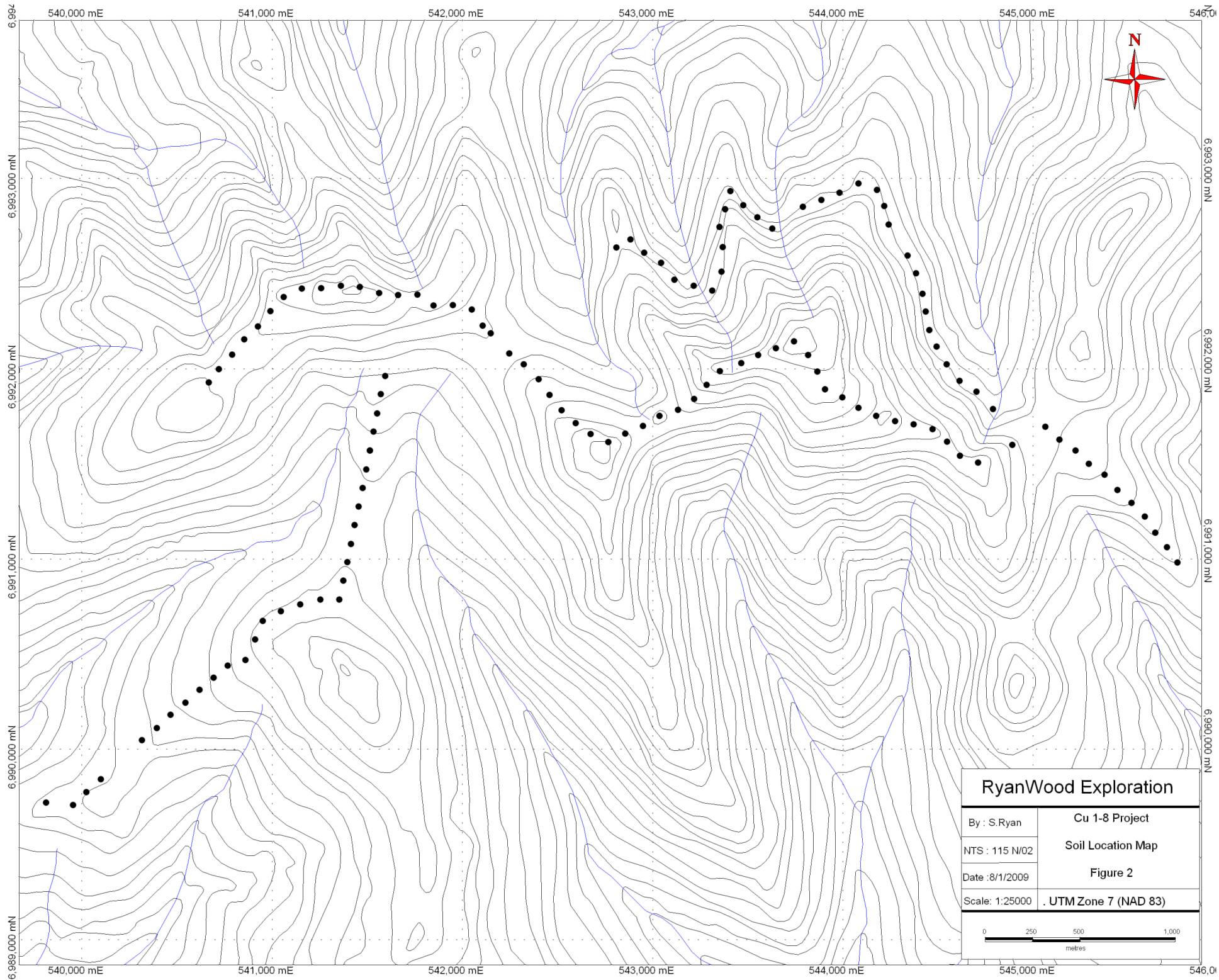
Respectfully submitted

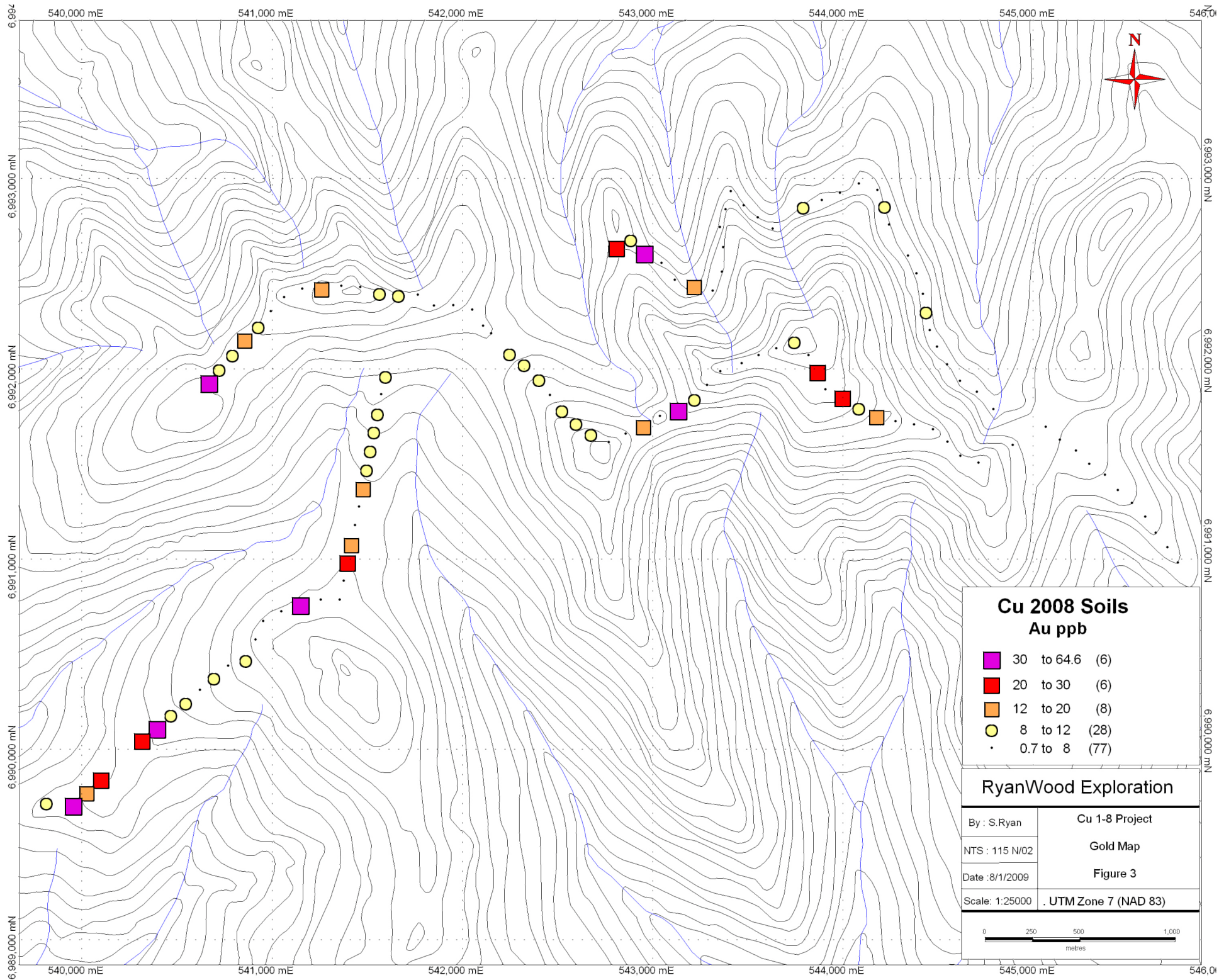
Shawn Ryan

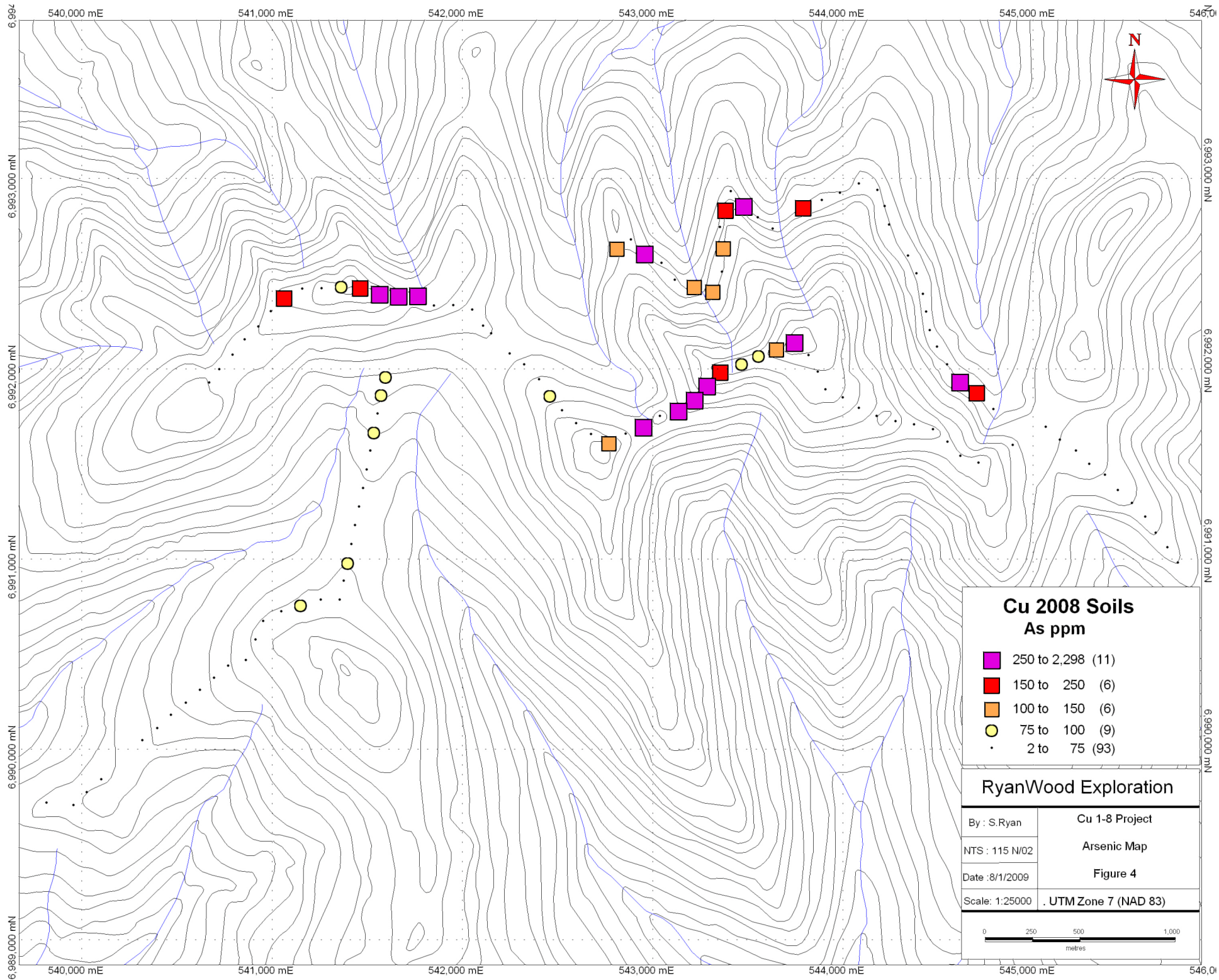


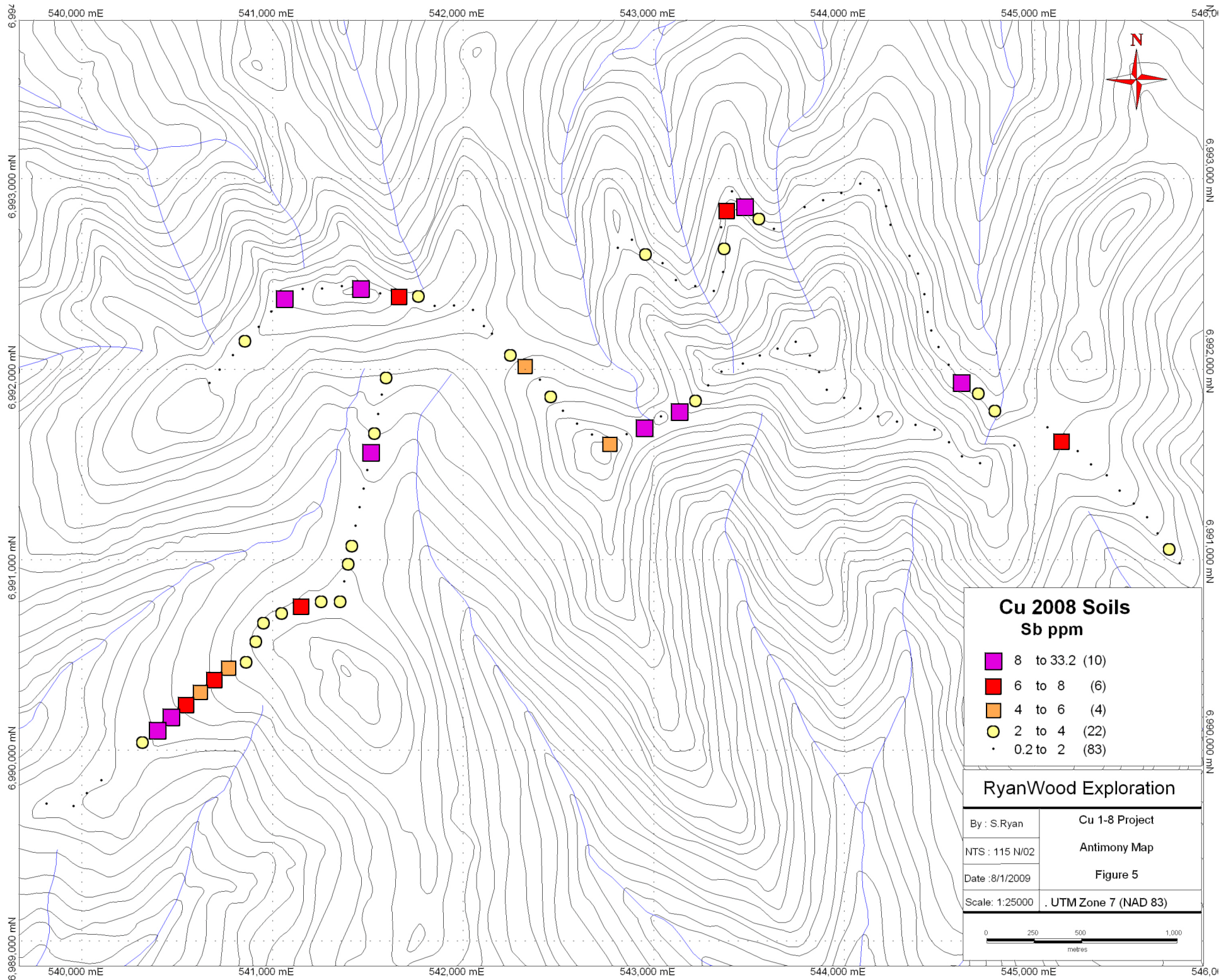
RyanWood Exploration	
By : S.Ryan	Cu 1-8 Claims
NTS : 115N01	YTG Geology Map
Date : 7/1/2009	Figure 1
Scale : 1:50000	. UTM Zone 7 (NAD 83)

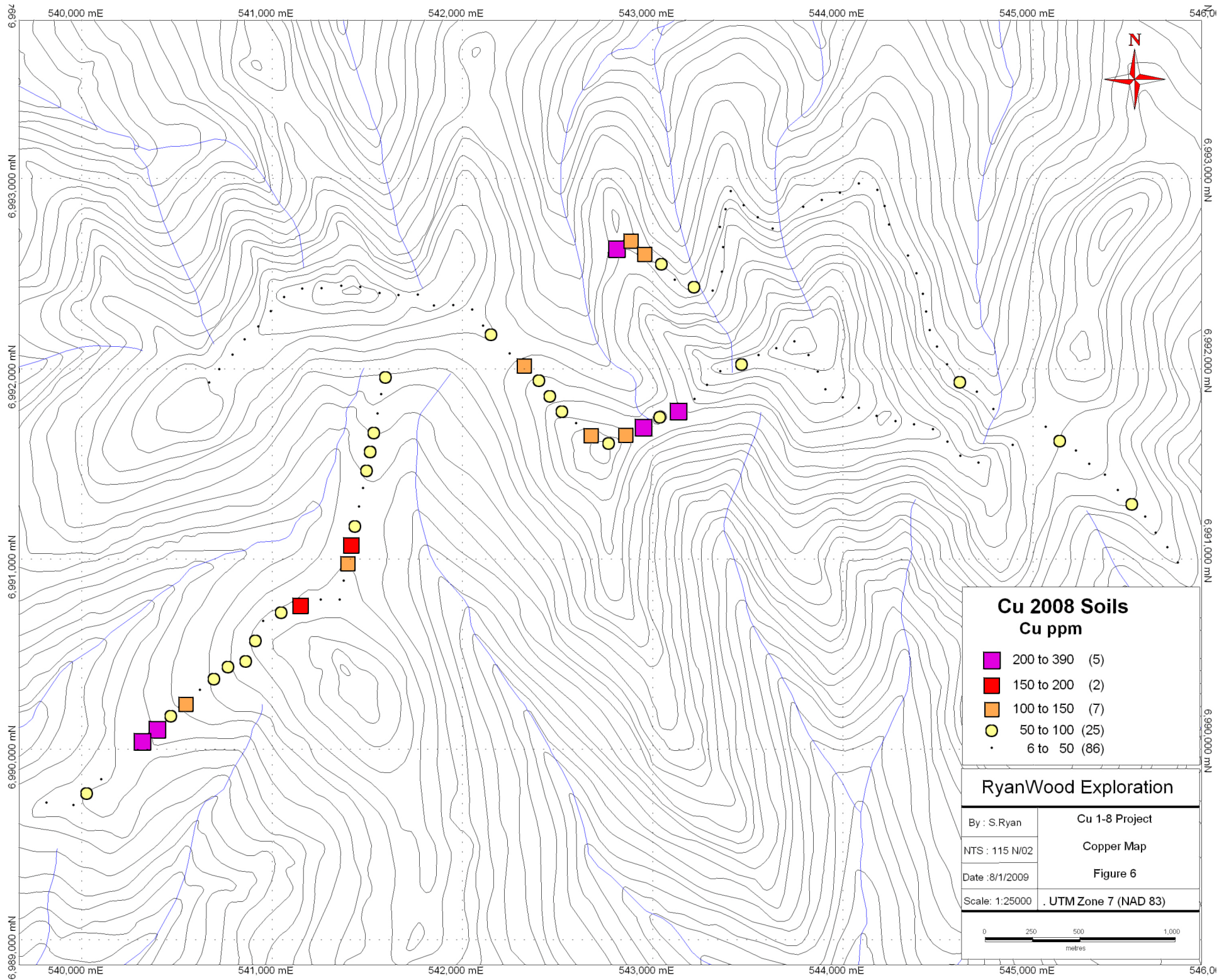
0 0.5 1 2
kilometres

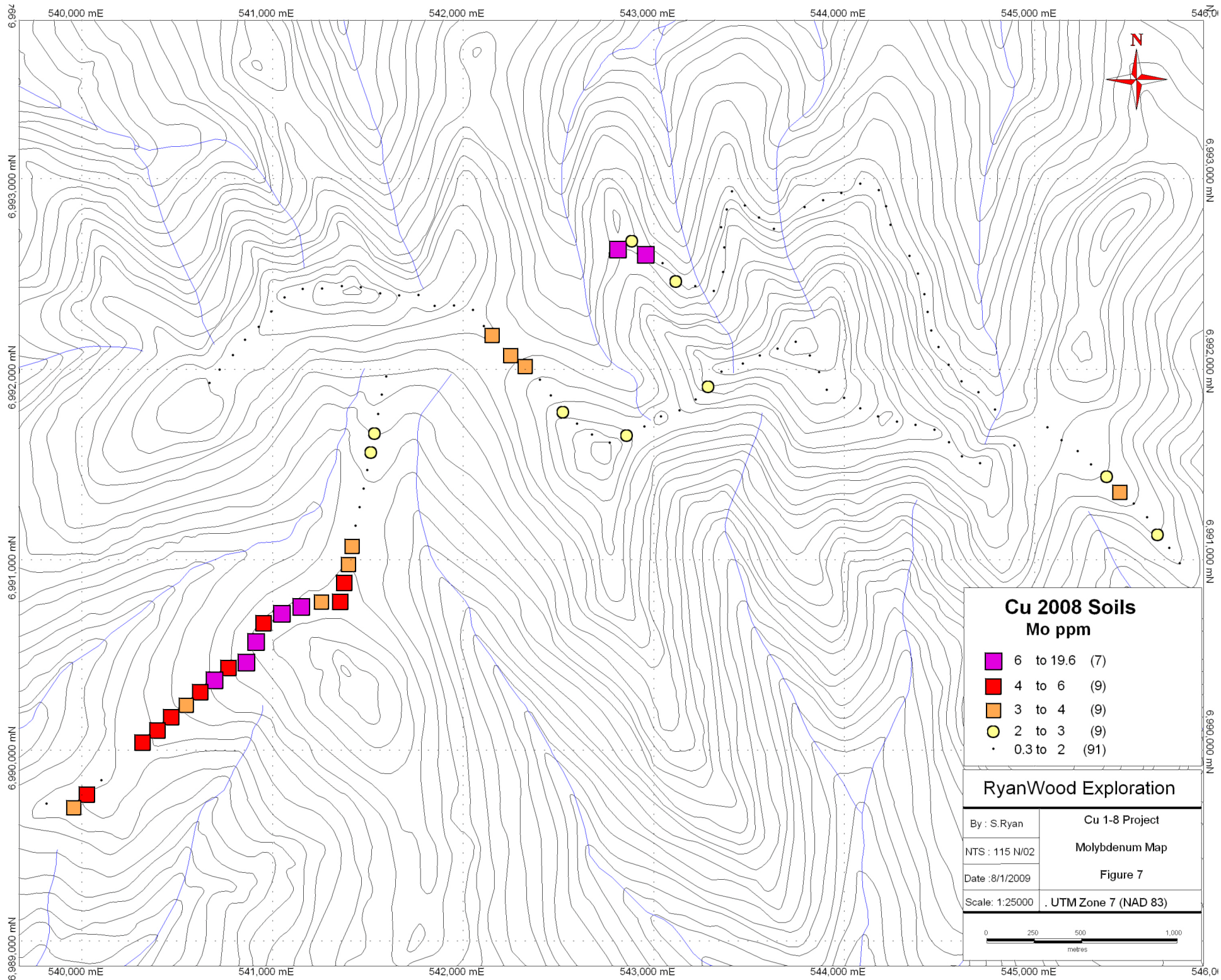












Sample ID	Easting	Northing	UTM Zone	Mo	Cu	Pb	Zn	Ag	Ni	Co	Mn	Fe	As
WCU28651	540913	6990576	NAD 83-07V	6	72.9	39.9	79	0.3	35.2	13.3	462	3.45	29.8
WCU28652	540863	6990469	NAD 83-07V	7.5	57.3	27.6	64	0.2	27.6	12.9	452	3.25	25.8
WCU28653	540769	6990438	NAD 83-07V	4.3	56.5	58.6	65	0.2	31.2	12.7	469	3.32	23.1
WCU28654	540696	6990376	NAD 83-07V	9.6	67.5	84.8	89	0.3	30.4	11.4	418	3.42	42.9
WCU28655	540621	6990311	NAD 83-07V	4.3	36.1	38.4	70	0.2	24.4	10.6	378	3.43	21.4
WCU28656	540548	6990244	NAD 83-07V	3.2	107.4	44.3	65	0.4	34.1	13.3	429	3.46	33.9
WCU28657	540469	6990180	NAD 83-07V	4.3	99.6	29.2	67	0.9	21	10.5	291	3.2	24.4
WCU28658	540396	6990111	NAD 83-07V	5.2	261.8	17.4	52	0.6	25.9	13.5	289	3.4	32.6
WCU28659	540319	6990048	NAD 83-07V	5.5	219.9	19.4	47	0.7	13	6.1	127	2.02	19.2
WCU28660	540102	6989842	NAD 83-07V	1.8	39.3	22.1	58	0.3	18.2	10.5	129	2.64	12.9
WCU28661	540027	6989775	NAD 83-07V	4	72.9	16.2	66	0.2	22.7	17.7	228	3.11	13.1
WCU28662	539957	6989706	NAD 83-07V	3.1	38.9	20.1	69	0.2	26.1	13.8	248	4	15.8
WCU28663	539815	6989720	NAD 83-07V	1.1	21.2	26.7	44	0.2	15.6	7.1	200	2.25	9.3
WCU28701	544178	6991752	NAD 83-07V	0.9	22.7	19.6	56	0.05	22.1	12.2	289	3.01	9.5
WCU28702	544277	6991723	NAD 83-07V	1.7	20	10.9	59	0.05	19.5	8.6	343	3.25	9
WCU28703	544375	6991706	NAD 83-07V	1.4	17.9	8.8	60	0.05	22.1	15.1	638	3.14	9.5
WCU28704	544475	6991682	NAD 83-07V	0.7	17.6	8.3	56	0.05	22.7	11.6	351	2.92	7.6
WCU28705	544551	6991616	NAD 83-07V	0.6	25.5	11.3	63	0.05	43	15.2	583	3.38	7.2
WCU28706	544619	6991542	NAD 83-07V	1.2	18	7.8	48	0.05	21	10.8	435	3.12	10.4
WCU28707	544714	6991506	NAD 83-07V	1.8	16	14.8	55	0.05	19.7	10.9	285	3.61	28.6
WCU28708	544894	6991598	NAD 83-07V	1.7	15.3	12.6	44	0.05	15.2	8.2	275	3.24	9
WCU28709	545068	6991694	NAD 83-07V	0.6	35.5	9	49	0.05	39.1	16.9	168	3.48	21.6
WCU28710	545142	6991626	NAD 83-07V	0.7	60.8	9.4	63	0.1	48.1	19.6	301	4.02	20.8
WCU28711	545225	6991569	NAD 83-07V	1.5	39.8	9	43	0.1	52.5	26.2	506	3.23	19.9
WCU28712	545296	6991499	NAD 83-07V	1.4	38.6	9.1	53	0.1	48.6	24.4	317	3.45	17.4
WCU28713	545378	6991442	NAD 83-07V	2.7	42.6	8.8	47	0.1	51.6	24.8	451	3.27	16.2
WCU28714	545445	6991362	NAD 83-07V	3	39.3	8.5	44	0.2	60.3	21.8	375	2.8	14.7
WCU28715	545520	6991295	NAD 83-07V	0.8	51.6	34.4	70	0.4	77.7	29.6	623	3.09	18.8
WCU28716	545590	6991222	NAD 83-07V	0.7	30.3	9.7	52	0.1	43.7	20.8	527	3.07	11
WCU28717	545645	6991138	NAD 83-07V	2.9	43.8	15	48	0.3	89.5	31.6	497	3.74	40.6
WCU28718	545706	6991062	NAD 83-07V	0.3	39	5.7	47	0.1	133.9	27.7	611	3.36	48.7
WCU28719	545761	6990980	NAD 83-07V	0.5	46.4	9.5	60	0.2	173.5	43.9	778	3.71	27.8
WCU28733	541597	6991962	NAD 83-07V	1.3	54.5	15.1	59	0.3	25.2	10.1	221	2.73	96.2
WCU28734	541573	6991865	NAD 83-07V	1.1	40.2	15.7	63	0.2	22.8	12.6	400	3.1	83.1
WCU28735	541554	6991765	NAD 83-07V	1.1	38.1	14.2	60	0.3	21.2	10.5	344	2.85	59.2
WCU28736	541535	6991668	NAD 83-07V	2.3	58.1	28.6	75	0.5	23.5	11.7	371	3.18	79.1
WCU28737	541517	6991569	NAD 83-07V	1.9	55.4	44.4	91	0.3	20.1	11.2	431	2.88	66.9
WCU28738	541517	6991570	NAD 83-07V	2.2	53.9	41.1	85	0.3	16.5	10	371	2.69	59
WCU28739	541498	6991470	NAD 83-07V	0.9	54.5	22	61	0.1	20.2	10	383	2.84	17.4
WCU28740	541479	6991372	NAD 83-07V	1	29.5	15.4	54	0.05	22.3	11.7	293	2.75	11.5
WCU28741	541457	6991275	NAD 83-07V	1.2	34.2	19.7	57	0.1	22	9.4	216	2.67	10.8
WCU28742	541437	6991177	NAD 83-07V	1.2	54.7	20.3	63	0.3	24.3	10.9	375	2.96	19
WCU28743	541417	6991079	NAD 83-07V	3.7	185.1	44.5	72	1.7	22.3	9.9	230	2.84	43.8
WCU28744	541398	6990983	NAD 83-07V	3.5	148.5	43.4	86	0.6	33.4	15.3	457	3.33	86.3
WCU28745	541377	6990886	NAD 83-07V	5.8	34.3	41.7	87	0.4	17.4	11.4	945	2.73	39.7

Sample ID	U	Au	Th	Sr	Cd	Sb	Bi	V	Ca	P	La	Cr	Mg	Ba	Ti
WCU28651	6.5	4.3	15.1	46	0.3	2.9	0.6	88	0.47	0.079	19	50	0.77	156	0.122
WCU28652	3.6	8.1	12.5	41	0.4	2.4	0.6	85	0.4	0.079	14	43	0.7	114	0.116
WCU28653	4.5	6.4	15.7	30	0.2	5.4	0.5	86	0.42	0.07	16	46	0.75	144	0.118
WCU28654	4.1	8.2	15	30	0.7	6.1	1.7	92	0.47	0.075	20	49	0.78	130	0.131
WCU28655	1.7	2.9	9.9	30	0.2	5	2.1	93	0.38	0.058	13	46	0.7	98	0.13
WCU28656	4.9	9.8	16.9	34	0.3	7.6	4.3	86	0.44	0.056	18	50	0.73	172	0.118
WCU28657	3.8	11.1	8.7	26	0.3	16.9	0.5	86	0.34	0.051	15	37	0.64	144	0.119
WCU28658	6.6	31.1	8.8	31	0.2	8.3	0.4	83	0.32	0.055	17	40	0.7	137	0.136
WCU28659	5.1	27.5	3	43	0.3	3.3	0.5	51	0.31	0.076	14	25	0.47	98	0.099
WCU28660	2.8	21.3	2.8	30	0.6	0.6	0.5	56	0.19	0.05	12	30	0.52	79	0.086
WCU28661	2.8	18.7	3.9	26	0.3	0.6	0.3	61	0.24	0.056	12	31	0.51	104	0.084
WCU28662	1.9	54.8	4.6	30	0.3	0.8	0.4	76	0.24	0.049	10	38	0.59	130	0.108
WCU28663	0.7	8.6	3.4	25	0.3	0.4	0.3	55	0.27	0.032	9	29	0.37	102	0.067
WCU28701	1.1	13	2.7	24	0.2	0.7	0.1	83	0.37	0.093	11	36	0.67	140	0.093
WCU28702	0.6	4	0.6	14	0.2	0.7	0.1	77	0.13	0.046	7	31	0.39	94	0.056
WCU28703	0.6	2.5	0.6	18	0.1	0.5	0.1	64	0.22	0.074	6	31	0.54	99	0.059
WCU28704	0.4	2.6	1.5	23	0.2	0.5	0.05	74	0.25	0.038	7	28	0.76	98	0.091
WCU28705	0.8	2.1	3.2	21	0.1	0.3	0.1	84	0.26	0.046	11	76	1.32	154	0.121
WCU28706	0.5	1.6	1	22	0.1	0.6	0.1	71	0.26	0.059	7	30	0.56	98	0.06
WCU28707	0.5	3.4	1.3	16	0.1	0.6	0.2	74	0.19	0.047	8	34	0.46	65	0.067
WCU28708	0.4	1.9	0.7	27	0.2	0.4	0.1	75	0.23	0.056	7	29	0.4	87	0.067
WCU28709	0.4	2.9	1.7	30	0.1	1.1	0.2	99	0.6	0.08	8	69	1.15	126	0.124
WCU28710	0.5	2.6	2	40	0.05	6.5	0.4	112	0.7	0.075	8	110	1.89	164	0.14
WCU28711	0.9	7.8	2.1	36	0.1	1.4	0.5	69	0.92	0.088	10	46	0.72	103	0.089
WCU28712	0.9	2.4	2.1	31	0.05	0.6	0.2	92	1.06	0.111	8	49	1.09	129	0.102
WCU28713	1.8	2.9	1.7	31	0.1	0.4	0.3	83	0.93	0.082	9	61	0.73	142	0.081
WCU28714	0.9	2.5	0.9	27	0.2	0.5	0.3	72	1.35	0.081	8	77	0.61	123	0.057
WCU28715	0.6	5.4	1.9	30	0.3	0.3	0.3	99	1.33	0.081	9	130	1.05	124	0.083
WCU28716	0.8	1.9	1.8	23	0.1	0.3	0.2	85	0.87	0.046	11	68	0.66	132	0.064
WCU28717	0.5	5.5	1.9	40	0.1	0.2	0.5	112	1.5	0.072	7	187	1.2	117	0.1
WCU28718	0.3	2.3	2.4	36	0.05	2.5	0.05	138	1.71	0.126	9	258	1.75	101	0.098
WCU28719	0.5	1.6	3.1	71	0.1	0.3	0.2	146	1.25	0.132	11	266	2.06	78	0.119
WCU28733	1.6	11.4	2.1	25	0.1	2.3	0.7	84	0.32	0.07	10	57	0.77	160	0.124
WCU28734	1.4	5.3	2.7	29	0.2	1.6	0.6	92	0.37	0.078	11	51	0.77	171	0.133
WCU28735	1.4	8	3	25	0.3	1.4	0.6	81	0.3	0.067	9	42	0.64	123	0.095
WCU28736	4.1	8.6	7.2	27	0.5	3	1	83	0.32	0.066	17	43	0.67	133	0.095
WCU28737	2.5	6.6	13.3	51	0.8	8.4	0.9	79	0.54	0.079	17	38	0.69	136	0.121
WCU28738	2.7	8.3	13	48	0.8	10	1.1	71	0.52	0.072	18	32	0.64	124	0.105
WCU28739	2.4	9.4	6.7	36	0.3	1.5	0.4	74	0.44	0.069	16	35	0.7	128	0.106
WCU28740	1.5	17.6	6.4	28	0.3	1	0.3	70	0.37	0.067	11	34	0.65	113	0.104
WCU28741	2.2	4.4	8.3	22	0.3	1.1	0.3	70	0.33	0.07	15	38	0.57	114	0.095
WCU28742	2.6	6.7	6.2	29	0.3	1	0.8	74	0.41	0.067	16	39	0.59	149	0.086
WCU28743	7.7	15.3	11.1	18	0.5	2.4	6.4	69	0.26	0.056	31	35	0.52	114	0.066
WCU28744	5	23	21	24	0.7	3.9	5.9	79	0.3	0.064	16	41	0.67	121	0.117
WCU28745	3.3	5.1	8.5	28	0.9	1.9	1.4	77	0.29	0.083	15	32	0.58	82	0.103

Sample ID	B	Al	Na	K	W	Hg	Sc	Tl	S	Ga	Se	Method	Acme File
WCU28651	2	2.29	0.018	0.1	0.5	0.02	4.9	0.3	0.025	8	0.8	1DX15	VAN08007925
WCU28652	0.5	2.01	0.014	0.08	0.5	0.03	3.6	0.2	0.025	8	0.7	1DX15	VAN08007925
WCU28653	2	2.4	0.018	0.08	0.4	0.01	4.7	0.2	0.025	8	0.25	1DX15	VAN08007925
WCU28654	3	2.23	0.016	0.1	0.7	0.02	4.3	0.2	0.025	9	0.9	1DX15	VAN08007925
WCU28655	2	2	0.014	0.09	0.5	0.03	3.3	0.2	0.025	9	1.1	1DX15	VAN08007925
WCU28656	3	2.64	0.019	0.08	5.4	0.03	5.4	0.2	0.025	8	1	1DX15	VAN08007925
WCU28657	1	2.34	0.015	0.07	0.2	0.04	4.4	0.3	0.025	9	0.25	1DX15	VAN08007925
WCU28658	1	2.52	0.019	0.07	0.2	0.03	5	0.3	0.025	7	1	1DX15	VAN08007925
WCU28659	2	1.54	0.016	0.09	0.2	0.03	4.2	0.2	0.06	5	1	1DX15	VAN08007925
WCU28660	0.5	1.91	0.014	0.04	0.2	0.04	4.4	0.2	0.025	6	0.9	1DX15	VAN08007925
WCU28661	1	2.18	0.017	0.05	0.2	0.02	4.7	0.1	0.025	6	0.9	1DX15	VAN08007925
WCU28662	0.5	2.47	0.015	0.04	0.5	0.02	4.3	0.2	0.025	7	0.25	1DX15	VAN08007925
WCU28663	2	1.52	0.015	0.02	0.2	0.01	3.5	0.05	0.025	5	0.25	1DX15	VAN08007925
WCU28701	0.5	2.11	0.016	0.07	0.3	0.05	4.1	0.2	0.025	6	1.1	1DX15	VAN08007925
WCU28702	0.5	2.19	0.008	0.04	0.1	0.05	2.1	0.1	0.025	8	0.6	1DX15	VAN08007925
WCU28703	1	2.7	0.011	0.06	0.1	0.07	2.1	0.05	0.025	6	0.8	1DX15	VAN08007925
WCU28704	1	2.31	0.015	0.12	0.1	0.02	3.6	0.05	0.025	6	0.25	1DX15	VAN08007925
WCU28705	0.5	2.38	0.026	0.13	0.2	0.02	5.1	0.2	0.025	7	0.25	1DX15	VAN08007925
WCU28706	1	2.14	0.012	0.05	0.1	0.05	3	0.05	0.025	6	0.25	1DX15	VAN08007925
WCU28707	0.5	2.17	0.011	0.04	0.1	0.04	2.6	0.1	0.025	8	0.9	1DX15	VAN08007925
WCU28708	1	1.88	0.01	0.05	0.1	0.04	2.3	0.1	0.025	7	0.9	1DX15	VAN08007925
WCU28709	0.5	2.69	0.025	0.16	0.2	0.02	6.9	1	0.025	7	0.25	1DX15	VAN08007925
WCU28710	1	3.02	0.03	0.38	0.1	0.02	8.8	1.3	0.025	9	1.2	1DX15	VAN08007925
WCU28711	2	2.23	0.051	0.06	0.2	0.02	5.8	0.3	0.025	6	0.7	1DX15	VAN08007925
WCU28712	2	2.91	0.103	0.12	0.1	0.02	6.5	0.5	0.025	8	1.3	1DX15	VAN08007925
WCU28713	0.5	2.65	0.044	0.06	0.1	0.03	5.9	0.2	0.025	7	0.9	1DX15	VAN08007925
WCU28714	0.5	2.26	0.04	0.05	0.1	0.03	4.6	0.2	0.025	6	0.8	1DX15	VAN08007925
WCU28715	0.5	2.63	0.059	0.08	0.1	0.03	6.2	0.4	0.025	7	1.1	1DX15	VAN08007925
WCU28716	0.5	2.29	0.023	0.04	0.05	0.03	5	0.2	0.025	6	0.7	1DX15	VAN08007925
WCU28717	0.5	3.11	0.157	0.15	0.1	0.03	7.2	0.7	0.025	9	1	1DX15	VAN08007925
WCU28718	0.5	3.09	0.09	0.26	0.05	0.02	13.5	0.9	0.025	10	0.25	1DX15	VAN08007925
WCU28719	0.5	3.8	0.139	0.32	0.05	0.02	14.4	1.4	0.025	10	0.9	1DX15	VAN08007925
WCU28733	0.5	2.11	0.016	0.11	0.2	0.09	5.4	0.5	0.025	6	0.9	1DX15	VAN08007925
WCU28734	0.5	2	0.017	0.13	0.2	0.03	5.4	0.4	0.025	7	1	1DX15	VAN08007925
WCU28735	0.5	1.9	0.012	0.07	0.2	0.03	4	0.3	0.025	6	0.25	1DX15	VAN08007925
WCU28736	0.5	2.18	0.011	0.07	0.3	0.04	5.4	0.3	0.025	7	1.1	1DX15	VAN08007925
WCU28737	0.5	2.05	0.021	0.08	0.4	0.02	5.6	0.2	0.025	7	0.5	1DX15	VAN08007925
WCU28738	0.5	1.9	0.016	0.09	0.5	0.01	4.9	0.3	0.025	7	0.9	1DX15	VAN08007925
WCU28739	0.5	1.76	0.014	0.07	0.3	0.03	4.9	0.2	0.025	6	0.6	1DX15	VAN08007925
WCU28740	0.5	2.4	0.015	0.06	0.2	0.03	4.3	0.2	0.025	6	1.2	1DX15	VAN08007925
WCU28741	0.5	2.36	0.011	0.05	0.3	0.02	4.5	0.2	0.025	6	0.8	1DX15	VAN08007925
WCU28742	0.5	2.09	0.013	0.05	0.2	0.03	5.6	0.2	0.025	7	1	1DX15	VAN08007925
WCU28743	0.5	2.09	0.011	0.05	0.5	0.07	4.4	0.2	0.025	7	1.6	1DX15	VAN08007925
WCU28744	3	2.61	0.019	0.07	1.4	0.02	4.5	0.2	0.025	7	0.6	1DX15	VAN08007925
WCU28745	2	1.37	0.013	0.09	0.5	0.02	2.8	0.3	0.025	7	0.25	1DX15	VAN08007925

Sample ID	Easting	Northing	UTM Zone	Mo	Cu	Pb	Zn	Ag	Ni	Co	Mn	Fe	As
WCU28746	541357	6990787	NAD 83-07V	4.3	46.5	25.2	66	0.2	25.2	11	241	2.59	26.4
WCU28747	541256	6990787	NAD 83-07V	3.9	27.5	34.8	75	0.2	18.6	7.7	398	2.13	27.9
WCU28748	541150	6990761	NAD 83-07V	12.6	163.2	96.5	126	0.9	31.5	12.8	482	3.14	89.2
WCU28749	541048	6990724	NAD 83-07V	6.8	74.9	58.4	69	0.4	22.4	7.8	286	2.31	60.4
WCU28750	540953	6990674	NAD 83-07V	5.5	37.2	33.8	56	0.2	20.6	7.8	268	2.35	18.4
WCU28801	543357	6991986	NAD 83-07V	1.3	22.3	19.3	55	0.2	22	11.2	378	2.72	178.9
WCU28802	543287	6991915	NAD 83-07V	2.3	37.9	28.2	74	0.2	18.8	13	642	3.57	320.7
WCU28803	543221	6991840	NAD 83-07V	1	41.6	45.2	72	0.2	22.7	17.7	488	3.6	509.4
WCU28804	543136	6991784	NAD 83-07V	1.2	201.3	55.6	77	0.9	21	17	422	6.04	2298
WCU28805	543040	6991751	NAD 83-07V	1.9	60.4	10.5	58	0.2	36.6	15.4	389	3.28	30.1
WCU28806	542953	6991699	NAD 83-07V	1.5	265.1	14.3	83	0.2	29.5	36.8	449	5.06	393.3
WCU28807	542860	6991659	NAD 83-07V	2.1	121.5	29.6	71	0.3	28.3	15.6	609	3.6	40.3
WCU28808	542770	6991614	NAD 83-07V	1.4	97.7	26.8	69	0.4	27.4	14.4	526	3.16	134.4
WCU28851	542677	6991656	NAD 83-07V	1	135.6	38.9	80	0.1	31	13	389	3.09	38.9
WCU28852	542599	6991714	NAD 83-07V	1.3	46.3	50.5	60	0.2	25.5	10.3	313	3	58.2
WCU28853	542525	6991780	NAD 83-07V	2.4	66.8	21.8	68	0.2	27.8	12.7	454	3.25	20.9
WCU28854	542461	6991861	NAD 83-07V	1.9	50.7	28.8	51	0.2	25.5	12.5	341	3.18	81.2
WCU28855	542404	6991943	NAD 83-07V	1.5	52.7	30	71	0.1	31.1	12.8	333	2.92	38.1
WCU28856	542326	6991012	NAD 83-07V	3.4	141.4	37.1	80	0.6	25.2	9.2	208	2.45	42.5
WCU28857	542250	6992080	NAD 83-07V	3.7	35	20	58	0.2	21.4	12	537	3.03	28.5
WCU28858	542152	6992185	NAD 83-07V	3.8	98.8	29.2	59	0.2	25.4	11.6	537	3.08	48.4
WCU28859	542110	6992226	NAD 83-07V	1.7	43.5	49.5	58	0.2	31.8	12.9	421	3.14	33.5
WCU28860	542052	6992311	NAD 83-07V	0.9	27.7	12.9	45	0.1	23.9	10.7	254	2.28	50.1
WCU28861	541954	6992333	NAD 83-07V	1.3	27.3	15.5	33	0.9	12.8	4.1	158	1.5	64.7
WCU28862	541852	6992332	NAD 83-07V	0.9	32.3	18.9	59	0.05	36.7	16.2	436	3.44	37
WCU28863	541766	6992388	NAD 83-07V	0.9	27.5	26.7	66	0.05	37.5	18.7	604	2.95	315.1
WCU28864	541666	6992387	NAD 83-07V	1.1	36.2	59.4	72	0.1	26.7	22.6	483	3.3	277.9
WCU28865	541565	6992396	NAD 83-07V	0.8	28.1	9.9	50	0.05	29.9	17.8	335	3.11	720.5
WCU28866	541465	6992428	NAD 83-07V	1.2	27.4	48.1	79	0.2	18.2	14.7	451	3.51	209.9
WCU28867	541365	6992436	NAD 83-07V	1.3	26.5	15.2	57	0.1	25.7	16.9	482	2.98	80.7
WCU28868	541261	6992422	NAD 83-07V	1	19.7	22.7	67	0.05	21.9	12.7	425	2.59	18.3
WCU28869	541160	6992421	NAD 83-07V	1.5	18	12.7	52	0.05	17.8	8.3	307	2.99	14
WCU28907	543468	6992028	NAD 83-07V	1.6	68.6	33.8	100	0.2	30.7	38.8	597	4.14	78.9
WCU28908	543558	6992072	NAD 83-07V	1.7	22.9	46.5	56	0.05	24.7	13.2	403	3.03	79.9
WCU28909	543651	6992108	NAD 83-07V	1.1	24.1	58.9	84	0.2	21.6	15.2	546	3.12	100.2
WCU28910	543747	6992142	NAD 83-07V	1.2	25	29.7	67	0.5	16.7	11.8	360	3.06	266.1
WCU28911	543412	6992933	NAD 83-07V	1.2	48.7	75.2	42	0.1	37.1	15.7	356	4.36	63
WCU28912	543480	6992859	NAD 83-07V	1.7	29.4	64.5	95	1.2	21.1	15.2	470	3.31	388.9
WCU28913	543554	6992796	NAD 83-07V	1.4	23	17.7	47	0.2	12	11.5	795	2.08	22.3
WCU28914	543631	6992736	NAD 83-07V	1	10.6	4.7	28	0.3	5.2	2.3	34	0.67	11.3
WCU28915	543792	6992851	NAD 83-07V	0.8	12.7	47.8	69	0.7	8	6.1	199	1.15	161.1
WCU28916	543890	6992885	NAD 83-07V	1.5	12.4	8.7	33	0.05	9.4	4.1	150	2.18	6.9
WCU28917	543985	6992925	NAD 83-07V	0.9	19.2	25.1	48	0.1	14.9	7.5	174	2.65	16.1
WCU28918	544085	6992972	NAD 83-07V	0.8	17.2	18.7	62	0.1	20.9	10	384	2.59	25.3
WCU28919	544182	6992940	NAD 83-07V	0.9	30.8	34.2	65	0.2	28	16.4	466	3.11	38.5

Sample ID	U	Au	Th	Sr	Cd	Sb	Bi	V	Ca	P	La	Cr	Mg	Ba	Ti
WCU28746	5.7	6	15.6	42	0.3	3.7	0.7	69	0.36	0.084	17	44	0.74	124	0.128
WCU28747	4.2	4.6	9.8	71	1	3	0.5	60	0.44	0.084	16	38	0.47	77	0.081
WCU28748	7.1	33.4	22.6	47	1	6.9	2.1	81	0.51	0.093	21	49	0.8	100	0.136
WCU28749	4.6	3.8	12.8	69	0.5	3.3	1.1	60	0.58	0.075	19	37	0.62	88	0.082
WCU28750	2.7	7.1	7.6	41	0.5	2	0.7	68	0.37	0.073	13	36	0.5	84	0.114
WCU28801	0.7	4	0.6	22	0.2	0.9	2.1	70	0.16	0.075	8	31	0.57	81	0.065
WCU28802	0.8	4.3	0.4	26	0.5	1.8	1.7	84	0.17	0.087	7	31	0.54	79	0.067
WCU28803	0.6	8.6	2.2	33	0.5	3.7	7.3	101	0.18	0.045	10	32	0.83	94	0.159
WCU28804	0.8	39.2	1.9	66	1.2	11.9	33.5	94	0.16	0.08	10	36	0.79	141	0.111
WCU28805	0.9	2.8	0.6	25	0.2	0.9	1.6	69	0.14	0.084	8	37	0.55	71	0.069
WCU28806	0.7	15.2	2.3	78	0.3	8.3	6.4	100	0.23	0.082	13	41	0.75	80	0.134
WCU28807	1	4.2	1.1	20	0.3	1.3	2	86	0.16	0.06	10	38	0.59	89	0.091
WCU28808	0.6	6	1.6	23	0.4	5.3	5.8	76	0.22	0.054	8	34	0.58	98	0.089
WCU28851	0.6	8	1.3	17	0.4	1.4	0.8	84	0.18	0.037	7	35	0.55	98	0.098
WCU28852	0.9	11.4	1.9	17	0.3	1.4	1.9	85	0.22	0.041	8	40	0.58	70	0.11
WCU28853	1.4	9.6	3.5	18	0.3	1.8	1.8	86	0.23	0.042	10	35	0.67	86	0.127
WCU28854	1.4	7.3	3.4	15	0.2	2.6	0.9	80	0.14	0.035	11	38	0.54	95	0.106
WCU28855	1.2	9.1	4.2	20	0.7	1.5	2.9	74	0.34	0.077	9	38	0.56	89	0.119
WCU28856	7.2	9.6	7.4	25	0.7	4.6	6.6	75	0.39	0.093	14	33	0.59	102	0.109
WCU28857	2.8	11.8	6.6	17	0.4	2	1.4	83	0.23	0.073	11	36	0.58	81	0.107
WCU28858	2.9	4.1	19.7	50	0.4	1.7	5.5	75	0.4	0.072	18	37	0.74	162	0.098
WCU28859	3.6	3.4	13.9	31	0.3	0.9	0.7	80	0.25	0.074	14	67	0.84	108	0.124
WCU28860	0.8	5.4	1.5	17	0.1	1.2	0.2	63	0.21	0.048	8	38	0.54	97	0.089
WCU28861	0.7	6.2	0.4	9	0.5	0.9	0.4	39	0.07	0.039	5	22	0.15	55	0.044
WCU28862	1	3.4	4	29	0.2	1.6	0.3	99	0.25	0.042	9	78	0.97	116	0.169
WCU28863	0.7	3.4	3	16	0.3	3.2	0.6	71	0.23	0.055	10	42	0.8	109	0.106
WCU28864	0.7	8.3	1.6	96	0.4	6	0.6	90	0.22	0.049	7	35	0.64	74	0.132
WCU28865	0.6	10.5	2	28	0.1	1.4	3.3	83	0.2	0.035	8	37	0.62	82	0.107
WCU28866	0.7	2	2.7	123	0.3	8.4	1.1	97	0.17	0.036	10	51	0.67	79	0.058
WCU28867	0.6	3	1.2	48	0.1	1.3	0.3	82	0.22	0.056	8	42	0.61	112	0.096
WCU28868	0.4	16.4	1.4	26	0.3	1	0.3	77	0.24	0.051	7	36	0.51	87	0.116
WCU28869	0.6	2.7	1	16	0.2	0.6	0.2	75	0.15	0.052	6	34	0.38	92	0.07
WCU28907	0.5	4.4	1.7	24	0.5	1.2	1.5	82	0.17	0.064	8	36	0.55	99	0.099
WCU28908	0.5	6.5	1.4	18	0.3	0.9	0.3	84	0.17	0.045	8	33	0.56	103	0.096
WCU28909	0.6	7.8	1.3	18	0.6	1.1	0.5	84	0.17	0.057	8	33	0.74	79	0.105
WCU28910	0.6	9.4	1.1	21	0.5	0.9	3.4	86	0.18	0.065	8	30	0.66	69	0.093
WCU28911	3.8	2.5	18.3	116	0.2	1.5	0.8	94	0.78	0.057	15	101	1.08	121	0.049
WCU28912	1.5	4.3	7.3	33	1.7	8.7	0.5	71	0.35	0.065	14	28	0.67	106	0.062
WCU28913	0.5	4.8	0.2	20	0.3	3.5	0.3	56	0.17	0.106	5	20	0.35	65	0.043
WCU28914	0.4	4.6	0.1	21	1	0.4	0.2	21	0.21	0.085	2	14	0.06	36	0.021
WCU28915	0.4	9.9	0.4	22	0.8	1.8	0.3	30	0.24	0.043	4	14	0.23	53	0.032
WCU28916	0.4	2.7	0.4	12	0.1	0.5	0.2	64	0.09	0.045	4	21	0.18	52	0.062
WCU28917	0.9	5.6	1.1	21	0.2	0.6	0.2	76	0.23	0.074	10	32	0.44	101	0.066
WCU28918	1.3	2	3.8	42	0.1	1.5	0.4	67	0.47	0.049	9	30	0.56	97	0.09
WCU28919	1.1	5.1	3.9	38	0.2	1.1	1.7	74	0.39	0.046	11	35	0.79	109	0.105

Sample ID	B	Al	Na	K	W	Hg	Sc	Tl	S	Ga	Se	Method	Acme File
WCU28746	2	2.06	0.016	0.07	0.4	0.03	4	0.2	0.025	6	0.25	1DX15	VAN08007925
WCU28747	2	1.37	0.015	0.07	0.4	0.03	2	0.1	0.025	7	0.25	1DX15	VAN08007925
WCU28748	1	2.31	0.018	0.09	0.7	0.04	4.3	0.3	0.025	8	0.6	1DX15	VAN08007925
WCU28749	1	2.12	0.026	0.09	0.3	0.03	2.9	0.3	0.025	6	0.25	1DX15	VAN08007925
WCU28750	1	1.4	0.016	0.07	0.5	0.01	2.2	0.2	0.025	6	0.25	1DX15	VAN08007925
WCU28801	1	2.23	0.014	0.05	0.2	0.05	2	0.2	0.025	6	0.7	1DX15	VAN08007925
WCU28802	1	2.56	0.013	0.06	0.5	0.07	2	0.4	0.1	8	0.9	1DX15	VAN08007925
WCU28803	2	2.63	0.031	0.14	0.9	0.02	4.4	0.7	0.025	7	0.25	1DX15	VAN08007925
WCU28804	2	3.77	0.023	0.2	3.9	0.04	5	0.8	0.11	8	1.8	1DX15	VAN08007925
WCU28805	2	2.57	0.015	0.05	0.3	0.07	2.4	0.2	0.06	6	0.8	1DX15	VAN08007925
WCU28806	1	2.44	0.03	0.15	0.3	0.21	6.8	1.3	0.08	6	1	1DX15	VAN08007925
WCU28807	2	2.39	0.013	0.06	1.3	0.06	2.7	0.4	0.025	7	0.8	1DX15	VAN08007925
WCU28808	2	2	0.016	0.06	0.3	0.07	4	0.2	0.025	5	0.25	1DX15	VAN08007925
WCU28851	1	1.95	0.011	0.03	0.6	0.04	2.7	0.1	0.025	7	0.25	1DX15	VAN08007925
WCU28852	2	1.89	0.012	0.04	0.6	0.07	2.9	0.2	0.025	6	0.25	1DX15	VAN08007925
WCU28853	2	1.94	0.016	0.05	1.2	0.03	3.2	0.2	0.025	6	0.25	1DX15	VAN08007925
WCU28854	2	2.79	0.013	0.04	0.2	0.05	4	0.2	0.025	7	0.5	1DX15	VAN08007925
WCU28855	2	2.2	0.015	0.04	1.1	0.03	3.3	0.05	0.025	5	0.25	1DX15	VAN08007925
WCU28856	2	1.55	0.024	0.05	2.6	0.03	3.4	0.1	0.025	5	0.25	1DX15	VAN08007925
WCU28857	1	1.9	0.01	0.05	1.9	0.03	3.1	0.1	0.025	7	0.25	1DX15	VAN08007925
WCU28858	1	2.25	0.015	0.07	1.8	0.005	5	0.4	0.025	7	0.25	1DX15	VAN08007925
WCU28859	1	2.03	0.014	0.09	0.3	0.02	4	0.3	0.025	8	0.5	1DX15	VAN08007925
WCU28860	1	1.59	0.016	0.04	0.2	0.03	2.9	0.2	0.025	5	0.25	1DX15	VAN08007925
WCU28861	0.5	0.82	0.015	0.03	0.05	0.03	1.1	0.2	0.025	4	0.25	1DX15	VAN08007925
WCU28862	1	2.48	0.02	0.12	0.2	0.02	4.7	0.4	0.025	7	0.25	1DX15	VAN08007925
WCU28863	1	1.99	0.015	0.08	0.2	0.02	4.4	0.3	0.025	6	0.5	1DX15	VAN08007925
WCU28864	2	2.23	0.018	0.05	0.5	0.03	3.5	0.3	0.025	6	0.25	1DX15	VAN08007925
WCU28865	2	2.37	0.016	0.05	0.3	0.03	3.6	0.2	0.025	5	0.25	1DX15	VAN08007925
WCU28866	1	3.18	0.015	0.12	0.1	0.02	5.9	0.7	0.025	9	0.25	1DX15	VAN08007925
WCU28867	2	2.43	0.016	0.08	0.2	0.04	4	0.3	0.025	7	0.25	1DX15	VAN08007925
WCU28868	1	1.78	0.016	0.05	0.2	0.03	2.8	0.1	0.025	6	0.25	1DX15	VAN08007925
WCU28869	2	2.32	0.01	0.03	0.2	0.06	2.3	0.1	0.025	7	0.25	1DX15	VAN08007925
WCU28907	2	2.27	0.017	0.04	0.3	0.03	3.8	0.2	0.025	6	0.6	1DX15	VAN08007925
WCU28908	2	2.06	0.014	0.04	0.2	0.03	2.9	0.2	0.025	7	0.6	1DX15	VAN08007925
WCU28909	1	2.47	0.019	0.08	0.2	0.05	3.4	0.5	0.025	6	0.25	1DX15	VAN08007925
WCU28910	2	2.38	0.019	0.08	0.3	0.05	3.2	0.5	0.025	6	0.6	1DX15	VAN08007925
WCU28911	1	3.03	0.015	0.15	0.3	0.03	4.7	0.9	0.025	11	0.25	1DX15	VAN08007925
WCU28912	1	1.75	0.011	0.25	0.1	0.09	3.4	0.2	0.025	7	0.25	1DX15	VAN08007925
WCU28913	2	1.14	0.021	0.06	0.1	0.11	1.6	0.2	0.09	5	0.5	1DX15	VAN08007925
WCU28914	3	0.34	0.025	0.04	0.05	0.09	0.9	0.05	0.12	1	0.9	1DX15	VAN08007925
WCU28915	2	0.68	0.014	0.04	0.1	0.07	1.6	0.2	0.025	2	0.25	1DX15	VAN08007925
WCU28916	0.5	0.99	0.012	0.02	0.1	0.07	1.3	0.05	0.025	6	0.5	1DX15	VAN08007925
WCU28917	1	1.9	0.013	0.04	0.2	0.06	3	0.2	0.05	5	0.6	1DX15	VAN08007925
WCU28918	2	1.52	0.024	0.07	0.2	0.04	2.6	0.1	0.025	5	0.25	1DX15	VAN08007925
WCU28919	2	2.25	0.027	0.09	0.2	0.03	3.1	0.5	0.025	6	0.25	1DX15	VAN08007925

Sample ID	Easting	Northing	UTM Zone	Mo	Cu	Pb	Zn	Ag	Ni	Co	Mn	Fe	As
WCU28920	544221	6992854	NAD 83-07V	0.8	11.5	6	26	0.05	6.9	3.3	227	1.18	3.9
WCU28921	544244	6992757	NAD 83-07V	1.8	16.9	14.7	47	0.05	15	6.9	254	3.73	12.1
WCU28922	544344	6992593	NAD 83-07V	1.8	23	10.8	51	0.05	16.7	7.6	347	3.1	8.8
WCU28923	544388	6992501	NAD 83-07V	1.3	17.4	7.1	27	0.1	9.5	4	189	1.82	4.2
WCU28924	544422	6992393	NAD 83-07V	1.2	18.9	12.7	45	0.2	14.1	7.4	287	2.55	11.8
WCU28925	544439	6992300	NAD 83-07V	1.6	11.4	7.8	25	0.05	8.2	4	130	1.84	6.3
WCU28926	544458	6992203	NAD 83-07V	0.8	15.8	22	42	0.3	10.5	4.5	104	1.36	16.6
WCU28927	544495	6992116	NAD 83-07V	1.2	15.2	14.7	34	0.1	10.8	6.2	253	1.79	10.8
WCU28928	544549	6992023	NAD 83-07V	0.9	12.1	4.6	21	0.05	5.4	2.5	83	1.16	2.3
WCU28929	544616	6991935	NAD 83-07V	1	55.7	8	63	0.5	67.4	22	513	2.83	610.7
WCU28930	544704	6991878	NAD 83-07V	1.8	27.4	14.7	56	0.4	24.6	16.8	460	2.41	164.3
WCU28931	544791	6991787	NAD 83-07V	1.4	14.7	24.3	45	0.5	10.2	7	190	1.49	46.6
WCU28940	543820	6992072	NAD 83-07V	1.1	20.1	12.5	47	0.05	17.1	10.3	349	3.24	27.2
WCU28941	543868	6991984	NAD 83-07V	0.8	23	23.4	73	0.05	23.6	13.1	595	3.29	24.3
WCU28942	543909	6991892	NAD 83-07V	0.6	13.8	21.2	67	0.05	12.7	11.3	582	3.44	13.9
WCU28943	543999	6991848	NAD 83-07V	0.9	29	9.8	64	0.05	31	15	686	3.3	11.1
WCU28944	541064	6992375	NAD 83-07V	1.5	28	26.5	95	0.3	21.1	11	467	3.78	248
WCU28945	540993	6992301	NAD 83-07V	1.1	27.5	19.2	54	0.2	23.8	12.3	359	3.14	46.2
WCU28946	540929	6992222	NAD 83-07V	1.2	28.9	12.8	58	0.05	29.3	11.5	376	3.09	24.1
WCU28947	540856	6992153	NAD 83-07V	1	33	28.8	75	0.2	24.1	11.7	331	3.34	35.3
WCU28948	540792	6992074	NAD 83-07V	0.8	40.1	18.7	56	0.1	25.4	18.4	330	3.53	18.3
WCU28949	540724	6991998	NAD 83-07V	0.6	23.7	10.1	46	0.05	21.4	11.6	194	2.92	11.9
WCU28950	540670	6991928	NAD 83-07V	0.8	23.3	17.5	54	0.05	24.3	16.9	507	3.46	18.1
WCU28951	544084	6991793	NAD 83-07V	0.9	24.6	15.2	62	0.05	27.7	14.1	652	3.58	12.8
WCU28978	542812	6992637	NAD 83-07V	19.6	390	61.1	93	2.9	24.4	9.8	279	2.76	142.8
WCU28979	542886	6992679	NAD 83-07V	2.2	114.1	12.4	62	0.3	28.7	16.8	399	4.41	18.6
WCU28980	542958	6992608	NAD 83-07V	8	115.1	375.3	181	2	52.1	36.2	953	4.22	378.7
WCU28981	543047	6992556	NAD 83-07V	1.6	77.2	27.6	53	0.3	29.5	12.1	586	3.51	21.4
WCU28982	543118	6992466	NAD 83-07V	2.1	23.8	18.5	58	0.2	15.8	11	508	3.79	19
WCU28983	543218	6992435	NAD 83-07V	1.8	61.1	65.8	68	0.5	32	18.4	423	4.15	143.9
WCU28984	543317	6992410	NAD 83-07V	1.8	25.2	71.4	74	0.2	17.5	29.6	1544	2.85	136.8
WCU28985	543366	6992509	NAD 83-07V	0.4	6.8	2.8	19	0.2	2.9	2	42	0.8	5.2
WCU28986	543372	6992638	NAD 83-07V	1.3	29.8	38	66	0.5	12.8	12.4	728	2.24	135.9
WCU28987	543354	6992745	NAD 83-07V	1.3	27.8	22.8	63	0.2	19.4	12.9	644	2.22	36.8
WCU28988	543383	6992838	NAD 83-07V	1.6	32.8	47.6	105	1.1	22.8	20.4	847	3.44	194.2

Sample ID	U	Au	Th	Sr	Cd	Sb	Bi	V	Ca	P	La	Cr	Mg	Ba	Ti
WCU28920	0.4	11.7	0.3	15	0.2	0.4	0.1	38	0.17	0.039	4	12	0.14	67	0.033
WCU28921	0.4	6.3	1.4	13	0.2	0.9	0.3	110	0.1	0.035	6	29	0.34	87	0.123
WCU28922	0.4	3	0.5	16	0.4	0.7	0.2	90	0.15	0.046	7	28	0.33	102	0.067
WCU28923	0.4	1.9	0.3	15	0.1	0.4	0.1	56	0.12	0.039	4	16	0.17	76	0.053
WCU28924	0.5	4.5	0.3	50	0.3	0.8	0.2	90	0.43	0.092	5	26	0.42	105	0.063
WCU28925	0.4	11.1	0.8	13	0.1	0.5	0.2	64	0.09	0.024	4	16	0.2	54	0.08
WCU28926	0.5	2.8	0.3	56	0.6	0.7	0.2	34	0.44	0.09	8	19	0.3	106	0.033
WCU28927	0.5	3	0.3	20	0.2	0.6	0.2	52	0.14	0.065	6	19	0.27	77	0.048
WCU28928	0.2	3.1	0.3	7	0.05	0.3	0.1	43	0.04	0.02	2	11	0.1	21	0.062
WCU28929	0.5	5.2	0.2	49	0.2	33.2	0.2	61	0.71	0.112	6	86	0.91	65	0.023
WCU28930	0.8	5.8	0.5	51	0.3	2	0.2	62	0.48	0.116	8	35	0.58	91	0.047
WCU28931	0.7	3.1	0.2	37	0.4	2.4	0.1	38	0.41	0.106	7	21	0.33	73	0.038
WCU28940	0.6	7.2	1	35	0.2	0.9	0.4	101	0.21	0.069	8	34	0.61	76	0.109
WCU28941	1	29.3	1.6	42	0.4	0.8	0.2	107	0.38	0.121	12	33	0.72	109	0.135
WCU28942	0.7	7.5	2.3	29	0.4	0.9	0.2	117	0.43	0.134	13	29	0.87	146	0.154
WCU28943	0.8	24	2	20	0.5	0.6	0.2	105	0.27	0.077	11	38	0.65	90	0.143
WCU28944	1.1	6.4	3.4	60	0.3	26	1.3	97	0.52	0.078	17	48	0.84	207	0.105
WCU28945	1	6.5	3.3	22	0.2	1.6	0.9	84	0.24	0.04	10	34	0.63	63	0.122
WCU28946	0.9	9.3	2.2	25	0.3	1.2	0.6	78	0.23	0.044	8	37	0.66	118	0.112
WCU28947	2.2	12.3	4.4	63	0.3	2.3	1.1	79	0.44	0.033	15	42	0.62	87	0.141
WCU28948	0.9	8.1	2.8	57	0.2	1.4	0.6	102	0.66	0.084	12	58	0.78	100	0.155
WCU28949	0.6	11.8	2.5	45	0.2	0.9	0.5	101	0.55	0.105	11	48	0.72	100	0.154
WCU28950	0.8	64.6	2.3	119	0.3	0.7	0.5	109	0.39	0.064	9	52	0.66	99	0.157
WCU28951	0.8	8.9	2.2	26	0.2	0.7	0.1	108	0.23	0.064	10	40	0.74	112	0.147
WCU28978	17.2	23.2	11.2	30	0.8	1.7	3.6	71	0.45	0.083	49	32	0.54	114	0.095
WCU28979	1.6	8.2	3.4	28	0.2	0.5	0.9	104	0.24	0.048	12	50	0.94	122	0.148
WCU28980	3.3	30	4.8	37	1.8	2.6	1	82	0.22	0.077	13	58	0.88	136	0.116
WCU28981	1.2	1.8	1.1	16	0.3	1	0.4	86	0.11	0.072	5	78	0.85	140	0.133
WCU28982	0.7	2.6	1.2	17	0.2	0.9	0.4	90	0.13	0.057	7	32	0.28	75	0.094
WCU28983	1	13	1.7	116	0.4	1.9	2.4	98	0.42	0.087	8	83	1.22	238	0.118
WCU28984	0.7	6.2	0.4	62	1	1.3	0.7	67	0.44	0.121	13	25	0.43	263	0.04
WCU28985	0.2	0.7	0.05	16	0.05	0.3	0.05	19	0.13	0.029	2	6	0.04	33	0.028
WCU28986	0.6	7.5	0.3	37	2.3	2.2	0.3	57	0.48	0.106	7	18	0.44	120	0.031
WCU28987	0.6	1.2	0.3	39	0.7	0.9	0.7	52	0.41	0.102	7	25	0.39	158	0.03
WCU28988	0.9	4.7	0.7	51	0.8	6.2	0.6	78	0.31	0.076	9	32	0.42	127	0.067

Sample ID	B	Al	Na	K	W	Hg	Sc	Tl	S	Ga	Se	Method	Acme File
WCU28920	0.5	0.63	0.018	0.02	0.05	0.03	0.7	0.05	0.025	4	0.25	1DX15	VAN08007925
WCU28921	0.5	1.61	0.01	0.04	0.2	0.02	2.3	0.2	0.025	10	0.25	1DX15	VAN08007925
WCU28922	0.5	1.75	0.013	0.04	0.1	0.06	1.8	0.1	0.025	8	0.6	1DX15	VAN08007925
WCU28923	0.5	0.86	0.017	0.02	0.1	0.05	1.1	0.05	0.025	6	0.6	1DX15	VAN08007925
WCU28924	1	1.26	0.019	0.08	0.05	0.07	1.7	0.2	0.09	5	0.25	1DX15	VAN08007925
WCU28925	0.5	1.01	0.018	0.03	0.05	0.02	1.4	0.05	0.025	6	0.25	1DX15	VAN08007925
WCU28926	2	1.18	0.019	0.04	0.1	0.08	1.6	0.1	0.11	4	0.25	1DX15	VAN08007925
WCU28927	1	1.22	0.02	0.04	0.1	0.05	1.5	0.1	0.025	5	0.25	1DX15	VAN08007925
WCU28928	0.5	0.39	0.016	0.03	0.05	0.03	0.7	0.05	0.025	4	0.25	1DX15	VAN08007925
WCU28929	6	1.9	0.019	0.05	0.05	0.12	3.1	0.6	0.12	5	0.6	1DX15	VAN08007925
WCU28930	2	1.58	0.018	0.06	0.1	0.1	3.2	0.2	0.11	5	0.6	1DX15	VAN08007925
WCU28931	2	1.06	0.019	0.06	0.1	0.09	1.9	0.2	0.11	4	0.6	1DX15	VAN08007925
WCU28940	1	2.25	0.018	0.06	0.2	0.03	2.7	0.3	0.07	7	0.25	1DX15	VAN08007925
WCU28941	1	2.4	0.019	0.12	0.2	0.04	3.5	0.4	0.025	7	0.25	1DX15	VAN08007925
WCU28942	1	2.67	0.018	0.39	0.1	0.005	6.5	0.8	0.025	8	0.25	1DX15	VAN08007925
WCU28943	2	2.38	0.021	0.06	0.2	0.05	3.2	0.2	0.025	6	0.5	1DX15	VAN08007925
WCU28944	2	2.58	0.02	0.2	0.1	0.99	7	3.2	0.025	8	0.25	1DX15	VAN08007925
WCU28945	2	2.59	0.021	0.05	0.4	0.03	3.7	0.1	0.025	6	0.5	1DX15	VAN08007925
WCU28946	2	2.79	0.015	0.05	0.2	0.06	3.5	0.1	0.025	6	0.6	1DX15	VAN08007925
WCU28947	2	2.26	0.035	0.06	0.3	0.02	5.3	0.2	0.025	6	0.25	1DX15	VAN08007925
WCU28948	2	2.25	0.045	0.12	0.2	0.03	7.7	0.2	0.025	7	0.25	1DX15	VAN08007925
WCU28949	2	1.79	0.034	0.14	0.2	0.03	4.7	0.3	0.025	5	0.25	1DX15	VAN08007925
WCU28950	1	2.25	0.03	0.11	0.4	0.04	3.5	0.2	0.025	6	0.25	1DX15	VAN08007925
WCU28951	2	2.92	0.019	0.09	0.2	0.03	3.9	0.2	0.025	7	0.5	1DX15	VAN08007925
WCU28978	2	1.81	0.022	0.07	2.2	0.05	4.4	0.2	0.025	6	0.8	1DX15	VAN08007925
WCU28979	0.5	3.16	0.022	0.15	0.5	0.03	7.5	0.4	0.025	7	1.1	1DX15	VAN08007925
WCU28980	2	2.53	0.02	0.15	0.3	0.08	4.4	0.5	0.025	8	1.7	1DX15	VAN08007925
WCU28981	0.5	1.88	0.027	0.25	0.6	0.09	2.8	0.5	0.18	7	1.2	1DX15	VAN08007925
WCU28982	1	2.1	0.01	0.04	0.1	0.11	2.1	0.2	0.025	10	0.6	1DX15	VAN08007925
WCU28983	4	2.64	0.042	0.43	1	0.09	5.4	0.8	0.37	7	1.2	1DX15	VAN08007925
WCU28984	2	1.93	0.019	0.08	0.2	0.1	1.9	0.4	0.14	7	0.5	1DX15	VAN08007925
WCU28985	0.5	0.28	0.014	0.02	0.05	0.05	0.5	0.05	0.025	2	0.25	1DX15	VAN08007925
WCU28986	2	1.35	0.019	0.09	0.4	0.22	1.6	0.2	0.15	5	0.7	1DX15	VAN08007925
WCU28987	2	1.54	0.022	0.05	0.2	0.12	1.5	0.2	0.14	5	0.25	1DX15	VAN08007925
WCU28988	2	2.02	0.017	0.07	0.2	0.11	2.4	0.2	0.08	7	0.7	1DX15	VAN08007925