

095 1 9 3

Rec'd
22 Dec '08

DRILLING AND GEOPHYSICAL ASSESSMENT REPORT

ON THE

WHITEHORSE COPPER BELT PROJECT

(Ace 30; Denis 9; Dennis 1, 3, 5; Gem 1-3; Jim 10-14, 27-30, 35, 36, 38; Lobo 1; and Sue
1-4 Claims)

LOCATED

SOUTH OF WHITEHORSE
60° 34' N 134° 55' W
NTS 105D10

IN YUKON TERRITORY, CANADA

WHITEHORSE MINING DISTRICT

FOR WORK DONE
APRIL 2008 TO AUGUST 2008

PREPARED FOR

LOBO DEL NORTE LTD. (OWNER)
AND
YANKEE HAT MINERALS LTD. (OPERATOR)

BY

C. Davis, B.Sc., GIT.

December 19, 2008

TABLE OF CONTENTS

1. Introduction	4
2. History	4
2.1 <i>Brief History of the Whitehorse Copper Belt</i>	4
2.2 <i>Brief History of the Cowley Park showing</i>	7
2.3 <i>Brief History of the Gem, Black Cub South and Keewenaw showings</i>	7
3. Claims	8
4. Geology	13
4.1 <i>Regional Geologic Setting</i>	13
4.2 <i>Local and Property Geological Setting within the Whitehorse Copper Belt</i>	15
5. Exploration	19
5.1 <i>Diamond Drilling</i>	19
5.2 <i>Induced Polarity Survey</i>	20
6. Expenditures	22
7. References	23
8. Certificate of Qualifications	25
Appendix A: Drill Logs	26
Appendix B: Assay Results from Drilling	38
Appendix C: Assay Certificates	42
Appendix D: IP Profiles	43
Appendix E: Selected Bedrock Unit Descriptions	47

LIST OF FIGURES AND TABLES:

Figure 1. Selected Mineral Occurrences of the Whitehorse Copper Belt.....	6
Figure 2. Whitehorse Copper Belt Project General Location Map.....	10
Figure 3. Regional Location Map.....	11
Figure 4. Whitehorse Copper Belt Project Claim Map.....	12
Figure 5. Regional Geological Setting.....	14
Figure 6. Local Geological Setting – Southern Whitehorse Copper Belt.....	17
Figure 7. Geology of the Cowley Park Occurrence.....	18
Figure 8. Cross section and pit design of the Cowley Park Occurrence.....	19
Figure 9. 2008 and Historic drill hole locations.	20
Figure 10. IP Survey Line Locations.....	43
Figure 11. IP Survey Pseudosection Plot Line 1.....	44
Figure 12. IP Survey Pseudosection Plot Line 2.....	45
Figure 13. IP Survey Pseudosection Plot Line 3.....	46
Table 1. Claim Information.....	8
Table 2 Costs for program.	22
Table 3 Collar information for Cowley Park drilling.....	26
Table 4 Drill Log from CP-140.....	27
Table 5 Drill Log from CP-141.....	29
Table 6 Drill Log from CP-142.....	31

Table 7 Drill Log from CP-143	32
Table 8 Drill Log from CP-144	34
Table 9 Assay results from CP-140	38
Table 10 Assay results from CP-141	39
Table 11 Assay results from CP-142	39
Table 12 Assay results from CP-143	39
Table 13 Assay results from CP-144	40

1. Introduction

The following report summarizes the drilling and geophysical work done on the Whitehorse Copper claims held by Lobo del Norte Ltd. Work was completed between April 2008 and August 2008. This report is modified from Ivan Young's "Geological Report on the Whitehorse Copper Belt Project"

The objectives of the diamond drilling were to assess the historical work done on Cowley Park and evaluate size and feasibility of the deposit. This was done with a 21 hole drill program totalling 2134.1m. Preliminary results show extensive copper and molybdenum mineralization.

The geophysical survey was designed to evaluate the effectiveness of using induced polarity to define skarn structures on the Gem and Black Cub South deposits. Three IP lines with a total of 2.1 line kilometres were run.

A statement of costs is provided in Section 6 Expenditures.

2. History

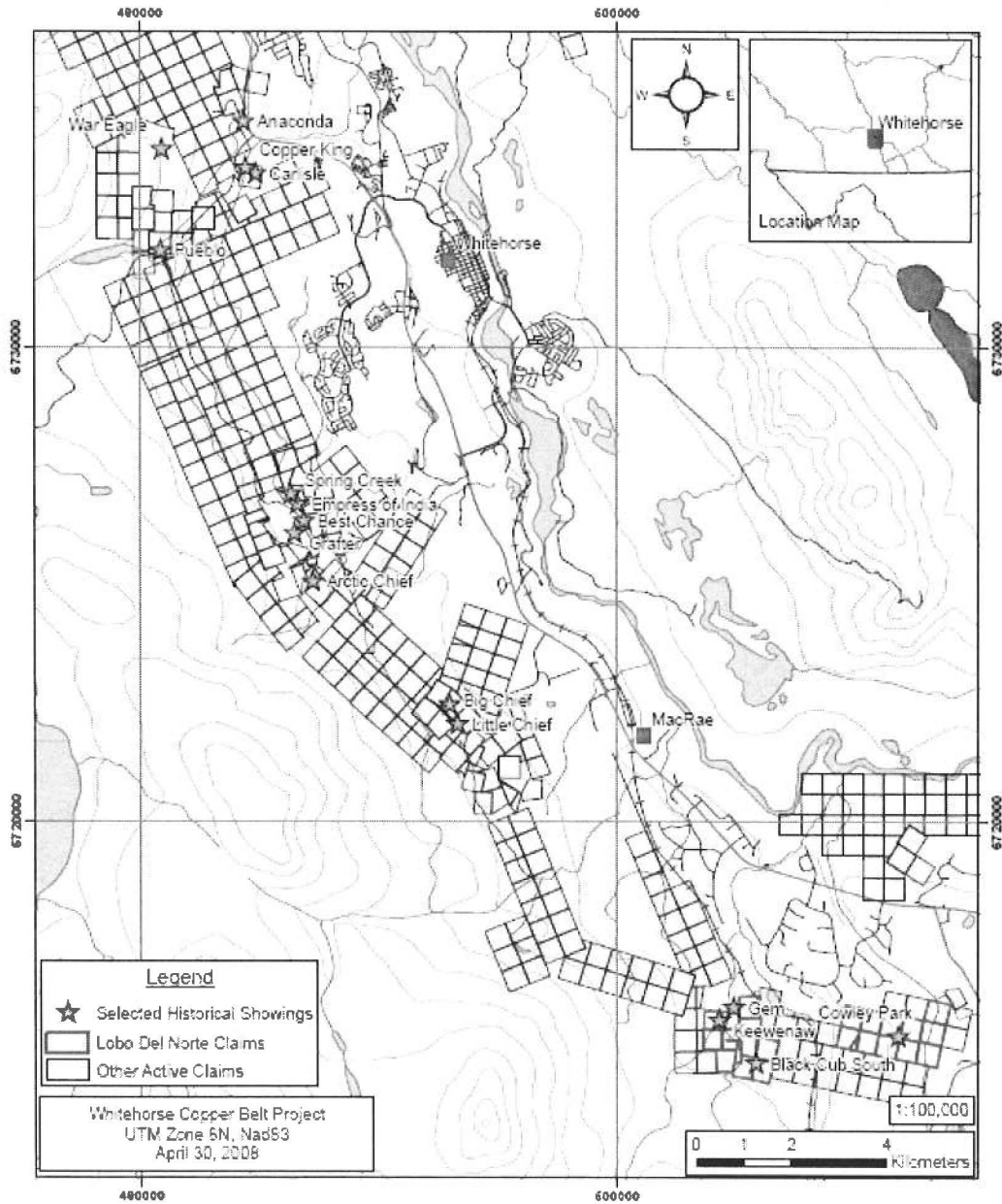
2.1 Brief History of the Whitehorse Copper Belt

The Whitehorse Copper Belt comprises over 30 copper-related primarily skarn occurrences over a 35 by 5 km in a north westerly trending arc (Figure 1) (Heon 2004, Tenney 1981). The belt of mineralization sits both within and outside the current city limits of Whitehorse to the west. First reportedly discovered in 1897, the belt of rocks has seen considerable attention over the last 100+ years in two distinct phases. The first phase of mining occurred in the early 1900's and nine of the higher grade showings were mined by underground methods (such as the Copper King and War Eagle sites). Mining activity declined into the late 20's. In the 1960's the second phase of mining began and focused on exploiting the larger but lower grade deposits by open pit methods, (such as the Little Chief and Keewenaw sites). The last mining activity in the region ceased in

1982 with the closer of the Little Chief mine. The proximity to the historical site of the city of Whitehorse both facilitated past mining activities, but also resulted in the synergistic development of the resource-friendly community.

A number of technical and non-technical publications have been produced on the history of the Whitehorse Copper Belt (e.g., Dobrowolsky & Ingram 1993, Hart & Radloff 1990, Heon 2004, MacKay *et al.* 1993, Tenney 1981, Turner *et al.* 2003, and Watson 1984)

Figure 1. Selected Mineral Occurrences of the Whitehorse Copper Belt



2.2 Brief History of the Cowley Park showing

Cowley Park (also known as the Dugdale Showing, MINFILE 105D059) sits at the southern end of the Whitehorse Copper Belt and had reached feasibility stage before being shut down in the early 1980's due to a declining economy and copper prices. It was discovered early in the century but received little work until the mid 60's when magnetic and IP geophysical techniques were focused around the area. Minor diamond drilling was also carried out to start defining the occurrence and in the 1970's more thorough drilling was conducted culminating in ~125 holes and ~11,500 meters of core (e.g., Hureau, 1981). Approximately 884,000 tonnes of potential ore at the Main Zone (at 1.04% Cu, 3.77 g Ag/t, 0.21 g Au/t, and 0.066% MoS₂) and 668,000 tonnes at the South Zone (at 0.9% Cu) were calculated (Tenney, 1981; Watson, 1984). MacKay et al. (1993) state that "except for the minor underground work in the early 1900's and a 45000 tonne test pit in the 1970's, Cowley Park was never mined and remains the largest open-pittable reserve in the Copper Belt today."

2.3 Brief History of the Gem, Black Cub South and Keewenaw showings

These three occurrences belong to a cluster of showings sometimes referred to as the Bear Cub Deposits and are west of the Cowley Park showing but still within the southern part of the Whitehorse Copper Belt. They are covered by the western claim block and have received variable attention up to the early 1980's. Much of the information presented here is derived from Tenney (1981), Watson (1984) and Deklerk & Traynor (2004). The Gem deposit is the northern most of the three and was the only one not to have seen production. It was discovered in 1967 via geophysical methods which guided the initial diamond drilling. Subsequent exploration work allowed an historical reserve estimate (non-NI 43101 compliant) that showed 625,000 tonnes of 1.01 % Cu. The Black Cub South deposit saw advanced exploration via geophysical surveys and diamond drilling and produced via open pit 180,000 tonnes of copper ore at 1.33 % Cu with gold, silver, and molybdenum credits. There is an estimate 20,000 tonnes of ore at 1.25 % Cu

remaining. The Keewenaw is the westernmost outlier of this southern group and received enough geophysical surveying and diamond drilling to advance this area to a production stage. It saw production of 159,000 tonnes of ore at 0.95 % Cu with an estimated remaining 202,000 tonnes of ore at 1.06 % Cu with additional gold, silver, and molybdenum credits.

3. Claims

The Whitehorse Copper Belt Project consists of two separate blocks of 15 (West Block) and 12 (East Block) contiguous mineral claims owned 100% by Lobo Del Norte Exploration Inc. The claims consist of both full and partial claims, are located in Whitehorse Mining District of south central Yukon Territory (Latitude 60° 34' N, Longitude 134° 55' W, Figure 2), and lie within National Topographic System map sheet 105D10. The general property location is shown in Figure 3 and the location of individual mineral claims is illustrated on Figure 4. All claims are registered with the Whitehorse Mining Recorder in the name of Lobo Del Norte Exploration Inc. In aggregate, the claims cover an area of approximately 401 hectares (East Block: 219 hectares, West Block: 182 hectares). Mineral claim tenure information is summarized below:

Table 1. Claim Information

Claim Names	Owner	Operator	Grant Number	Claim Expiry Date	Block
GEM 2	Lobo Del Norte	Yankee Hat	75221	01/01/2009	West
GEM 1	Lobo Del Norte	Yankee Hat	75346	01/01/2009	West
GEM 3	Lobo Del Norte	Yankee Hat	75474	01/01/2009	West
SUE 1	Lobo Del Norte	Yankee Hat	75653	01/01/2009	East
SUE 2	Lobo Del Norte	Yankee Hat	75654	01/01/2009	East
SUE 3	Lobo Del Norte	Yankee Hat	75655	01/01/2009	East
SUE 4	Lobo Del Norte	Yankee Hat	75656	01/01/2009	East
JIM 9	Lobo Del Norte	Yankee Hat	85337	01/01/2009	East
JIM 10	Lobo Del Norte	Yankee Hat	85338	01/01/2009	East
JIM 11	Lobo Del Norte	Yankee Hat	85339	01/01/2009	West
JIM 12	Lobo Del Norte	Yankee Hat	85340	01/01/2009	West
JIM 13	Lobo Del Norte	Yankee Hat	85341	01/01/2009	West
JIM 14	Lobo Del Norte	Yankee Hat	85342	01/01/2009	West
JIM 27	Lobo Del Norte	Yankee Hat	85355	01/01/2009	East
JIM 28	Lobo Del Norte	Yankee Hat	85356	01/01/2009	East

JIM 29	Lobo Del Norte	Yankee Hat	85357	01/01/2009	East
JIM 30	Lobo Del Norte	Yankee Hat	85358	01/01/2009	East
JIM 35	Lobo Del Norte	Yankee Hat	85363	01/01/2009	West
JIM 36	Lobo Del Norte	Yankee Hat	85364	01/01/2009	West
JIM 38	Lobo Del Norte	Yankee Hat	85366	01/01/2009	East
ACE 30	Lobo Del Norte	Yankee Hat	85476	01/01/2009	East
DENNIS 1	Lobo Del Norte	Yankee Hat	91274	01/01/2009	West
DENNIS 3	Lobo Del Norte	Yankee Hat	91289	01/01/2009	West
DENNIS 5	Lobo Del Norte	Yankee Hat	91291	01/01/2009	West
DENIS 9	Lobo Del Norte	Yankee Hat	Y 25815	01/01/2009	West
JIM 38	Lobo Del Norte	Yankee Hat	Y 37220	01/01/2009	West
LOBO 1	Lobo Del Norte	Yankee Hat	YB12802	01/01/2009	West

Figure 2. Whitehorse Copper Belt Project General Location Map

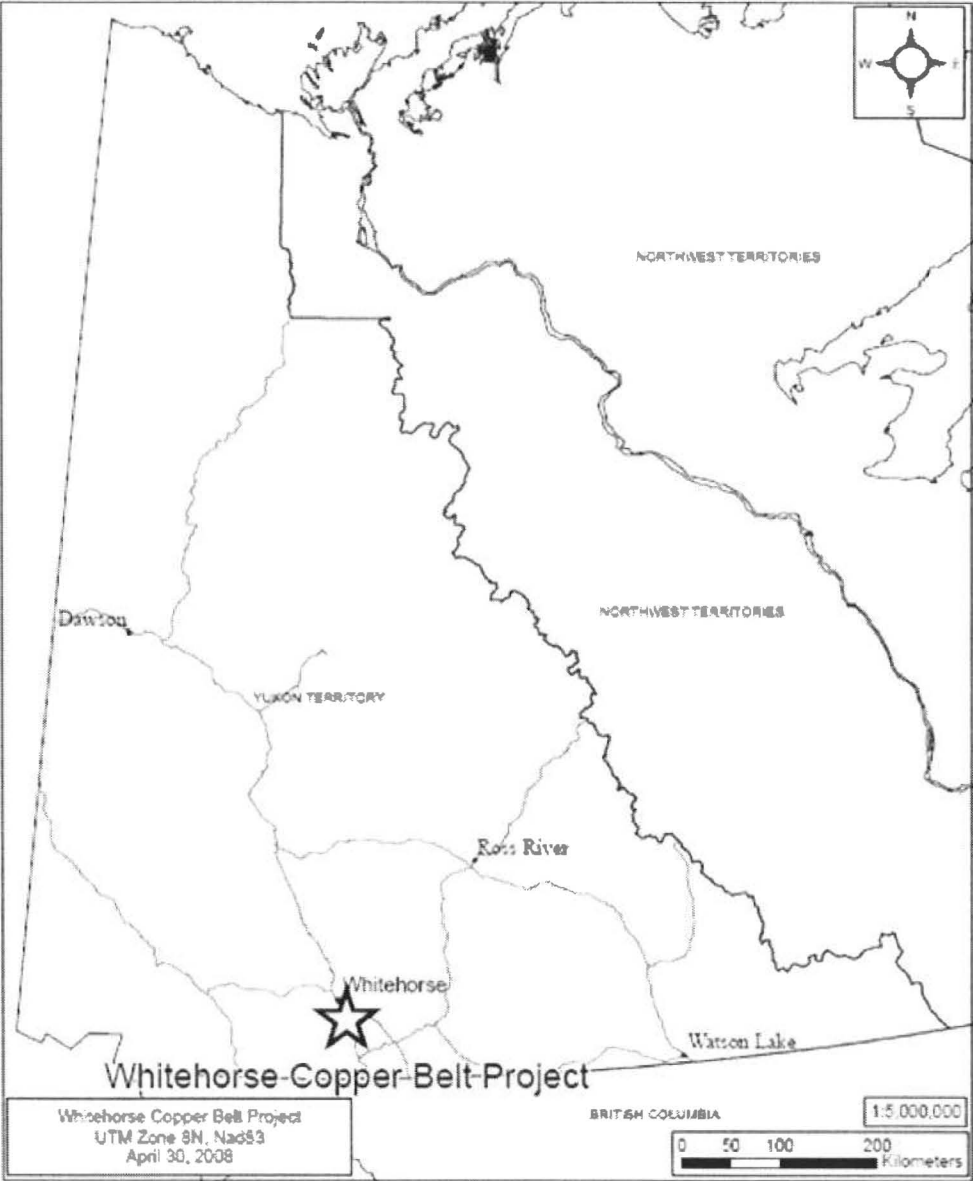


Figure 3. Regional Location Map

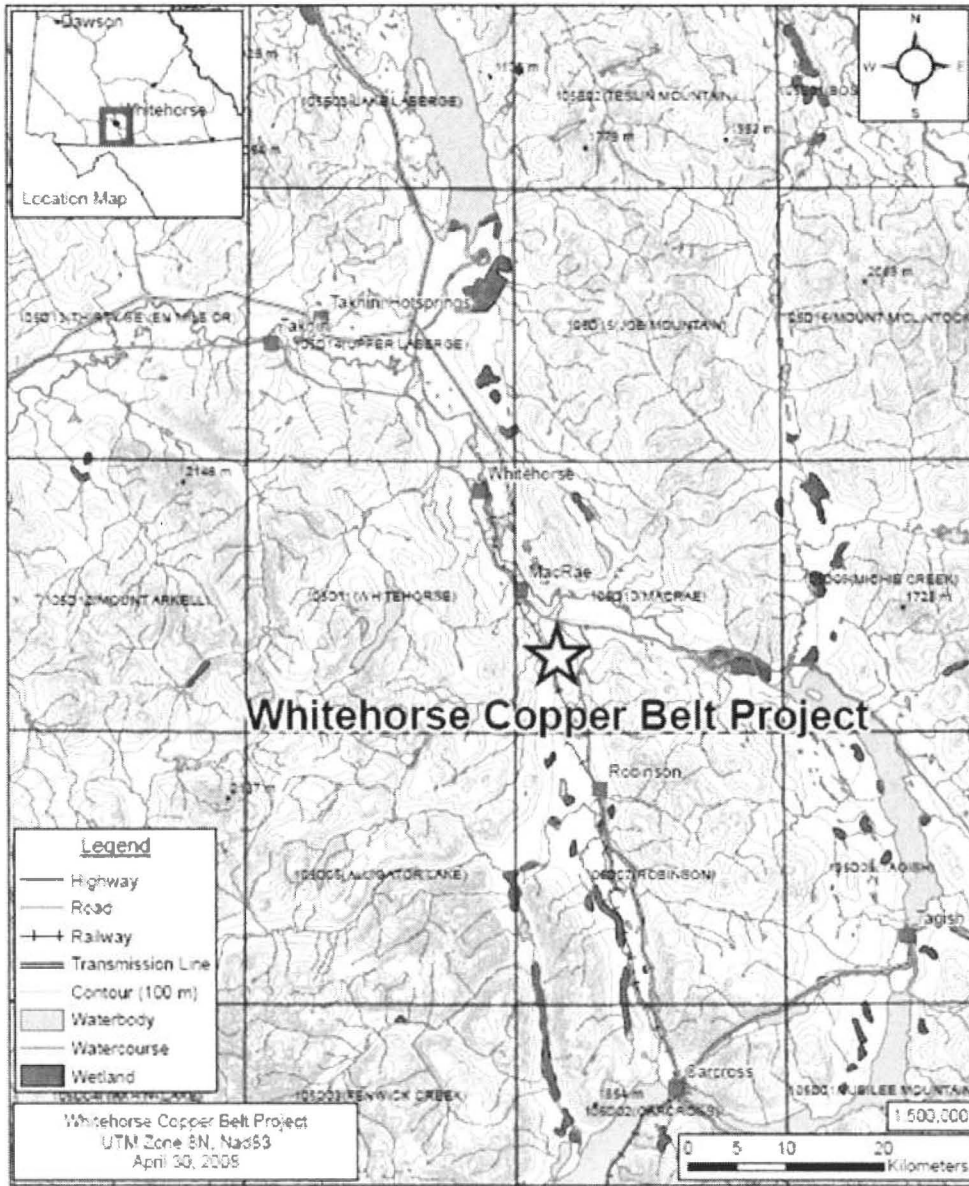
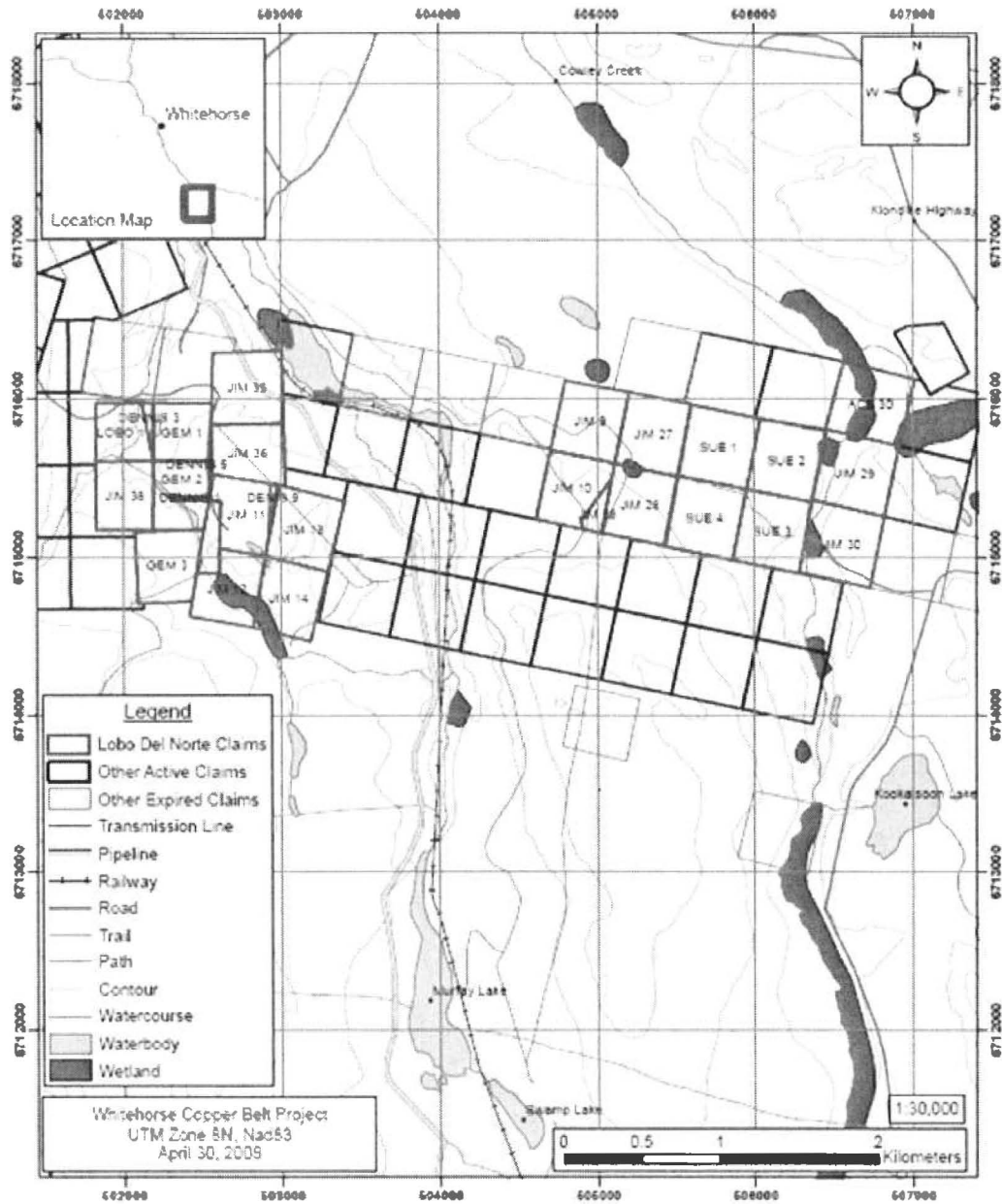


Figure 4. Whitehorse Copper Belt Project Claim Map



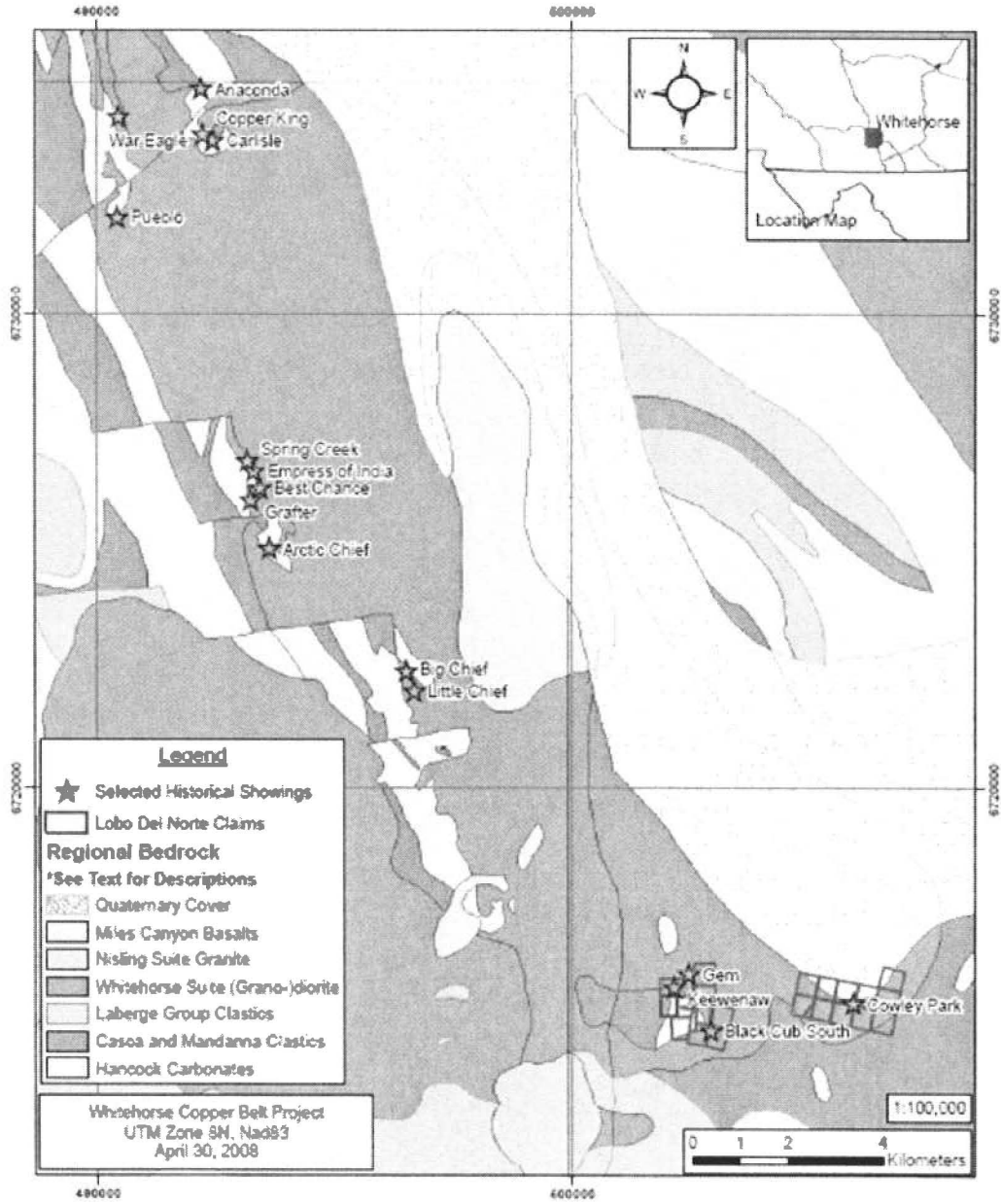
4. Geology

4.1 Regional Geologic Setting

Due to the economic significance of the Whitehorse Copper Belt and the proximity to a major city in Yukon Territory, the rocks in the area have been well studied. A number of regional geological and compilation studies have been carried out on the Whitehorse Copper Belt and associated Whitehorse Trough (e.g., Hart and Pelletier 1989; Heon, 2004; Kindle 1964; Morrison 1981; Tenney 1981; Watson 1984; and Wheeler 1961) and the most recent mapping with relevant annotations is depicted in Figure 5. Descriptions of rock units were taken from Gordey & Makepeace (2000) and can be found in Appendix E.

The intrusive rocks of the region are predominantly granodioritic to dioritic and Cretaceous in age (109 – 199 Ma). They are thought to form the upper reaches of a large batholith belonging to the Whitehorse Plutonic Suite of the Coast Plutonic Complex and intrude primarily into Triassic to Jurassic Lewes River (also known as the Aksala Group) Group clastic (Casca and Mandanna Members) and carbonate (Hancock Member) metasediments. These marine rocks belong to the Whitehorse Trough, part of the Stikinia Terrane within the Intermontane Superterrane; an island arc complex of Paleozoic to Jurassic age. Above these Cretaceous and older rocks are the Miles Canyon basalt, a locally abundant tertiary volcanic sequence, and Quaternary glaciofluvial deposits. A series of folds run the length of the Whitehorse Copper Belt with fold hinges trending roughly NNW.

Figure 5. Regional Geological Setting



Reaction skarns developed at the contacts between the intrusives and carbonate host rock fall into two broad categories; (1) calcsilicate skarns with more magnetic granodiorite and (2) serpentine-magnetite-garnet iron-rich skarns with less magnetic granodiorite. These two broad types have been correlated with host rock where more dolomitic (magnesian) carbonate host rocks give rise to iron-rich skarns and simple limestone host rocks give rise to calc-silicate skarns. Skarns are typically tabular in form, parallel to bedding and occur most often on the flanks of intrusives and within roof pendants. The most extensive ore zones tend to be developed when bedding planes are parallel with intrusive contacts.

4.2 Local and Property Geological Setting within the Whitehorse Copper Belt

The southern end of the Copper Belt is occupied by 10 main showings: Keewenaw, Gem, Kodiak Cub, Grizzly Cub, Black Cub North, Black Cub South, Brown Cub, Railway, Sue and Cowley Park (Figure 6). Of those, the Keewenaw, Gem, Black Cub South, and Cowley Park are the most significant.

In a review of the Whitehorse Copper Belt, Heon (2004) briefly summarizes those latter four – the following is paraphrased from that report. The **Keewenaw** showing is the only official endoskarn of the Whitehorse Copper Belt. Consequently, the mineralization that is hosted predominantly within the host intrusive (endoskarn) shows different ore mineralogy than other showings. Copper is hosted primarily in bornite, chalcopyrite, chalcocite and covellite with minor malachite and chrysocolla. Native gold has also been reported from the Keewenaw deposit and silver and molybdenum have also been noted as credits for the ore. Mineralization at the **Gem** showing is in the form of chalcopyrite and valleriite with associated magnetite within a serpentine-garnet-phlogopite dominant skarn assemblage. **Black Cub South** is a magnetite-serpentine skarn and ore mineralogy here is similar to the Gem deposit. However, it also includes bornite, native copper, and cuprite as a copper minerals and actinolite as one of the skarn mineral phases. Finally, the **Cowley Park** occurrence is reported as a calc-silicate skarn with the primary ore minerals as chalcopyrite, bornite, and molybdenite. Consequently,

this skarn shows a multi element signature of significant copper and molybdenite with additional silver and gold.

The Keewenaw, Black Cub South, and Gem deposits all fall along the flanks of an anticline with a fold hinge trending roughly NNW. The Keewenaw endoskarn deposit, however, is described as being 'pipe-like' in shape and does not show the typical morphology seen in the other skarns hosted within the carbonate rocks. Black Cub South and Gem are in a roof pendant setting and a fault zone crosses the main ore body at Black Cub South. At Cowley Park, the carbonate host rocks are deformed into a syncline and exist as a roof pendant suspended in the intrusive that has dimensions of approximately 1,200 m by 400 m. The overall shape of the pendant is keel-like and skarning is found along the lengths of the contact. Figures 7 and 8 are from Tenney (1981) and show the rough geology of Cowley Park roof pendant and the outline of the pit design proposed in 1979. Interestingly, Tenney (1981) also notes mineralization within with intrusion and an aplite plug in addition to within the skarn zones.

Figure 6. Local Geological Setting – Southern Whitehorse Copper Belt

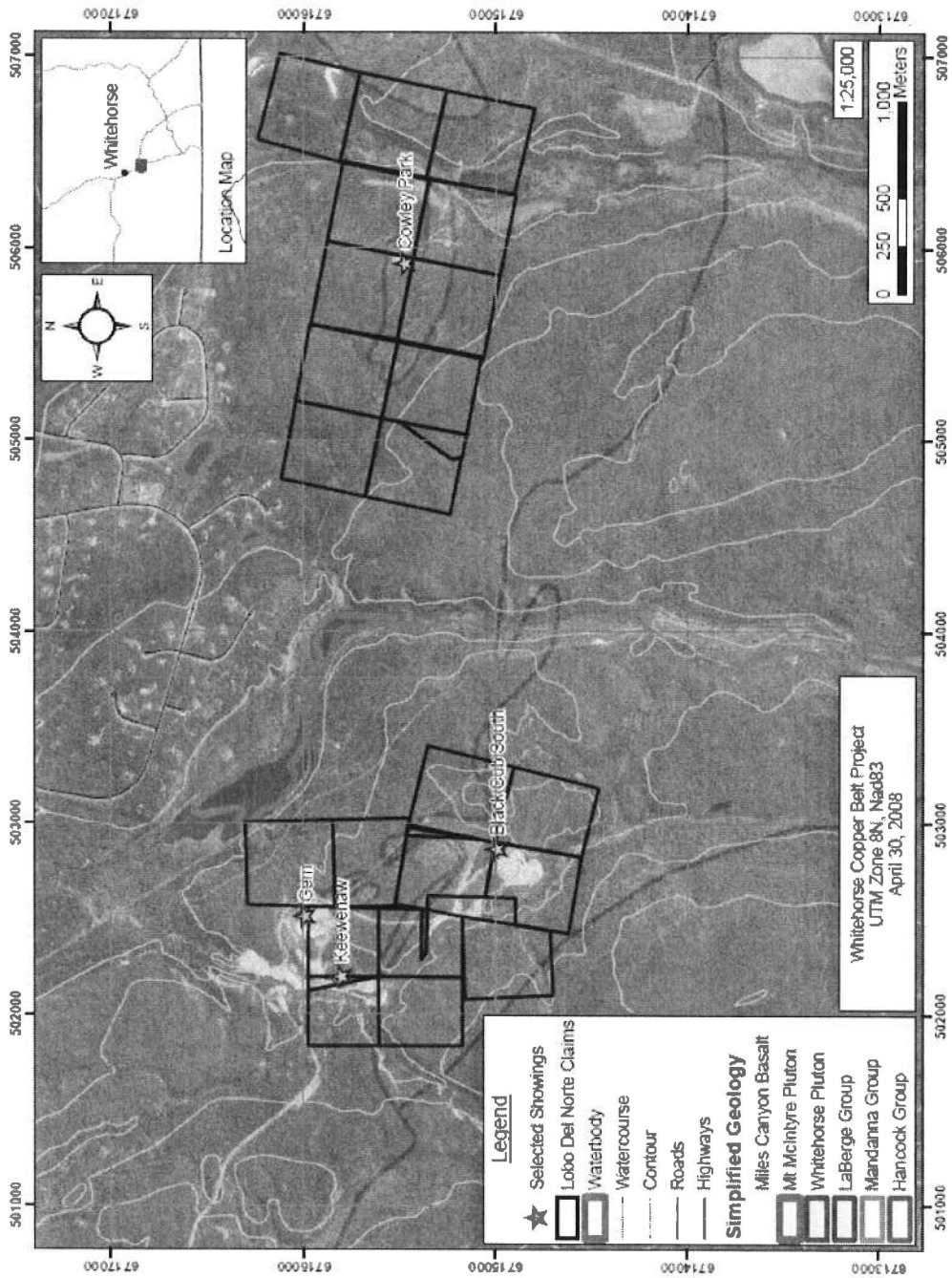


Figure 7. Geology of the Cowley Park Occurrence

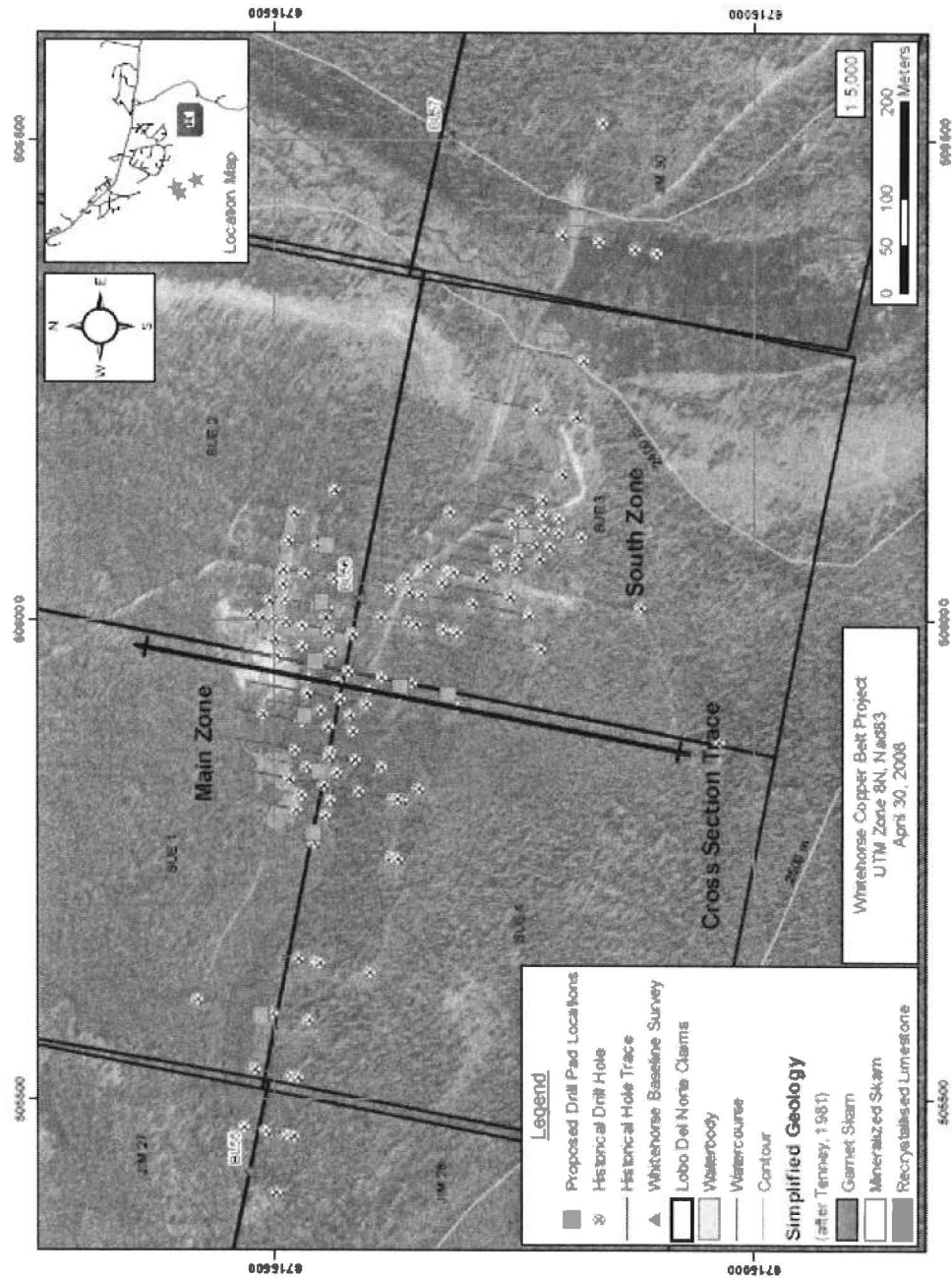


Figure 8. Cross section and pit design of the Cowley Park Occurrence

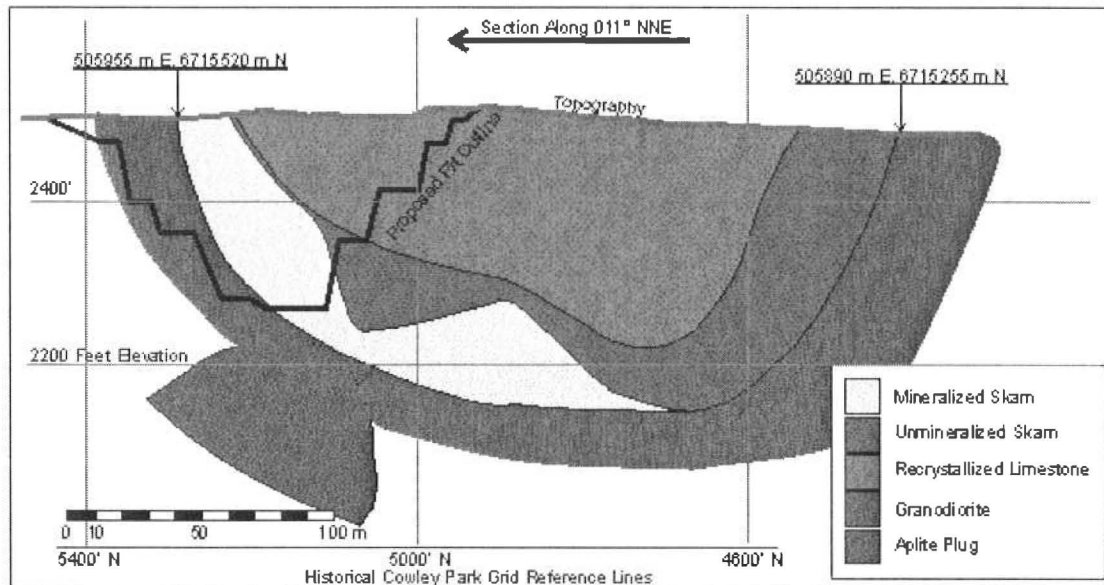


Figure 8. Vertical Cross Section and Pit Design of the Cowley Park Deposit. Vertical cross section orientation is along 011 degrees NNE and location is indicated in Figure 7. Location on the original Cowley Park Grid was along Section 7550E. Pit limits originate from a 1979 feasibility study by Whitehorse Copper Mines Ltd. No Vertical Exaggeration. (Modified after Tenney, 1981) UTM Coordinates: Nad83, Zone 8N.

5. Exploration

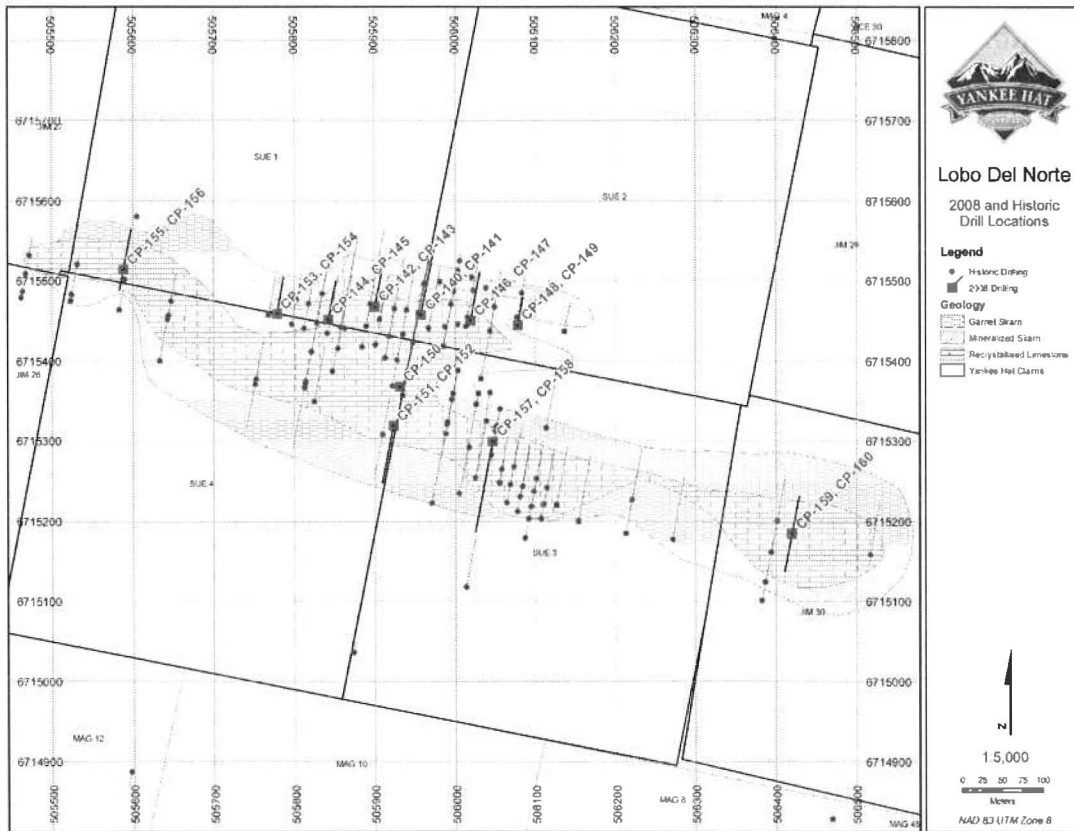
5.1 Diamond Drilling

Kluane Drilling Ltd was contracted to drill the 21 holes between April 2, 2008 and April 30, 2008 (see Figure 9). A total of 2134.1m of NTW sized core was drilled. Aurora Geosciences Ltd. is carrying out the logging and sampling of the core. At the time of the report the core logging is incomplete and results are not discussed here. Only holes CP-140 to CP-144 are summarized in this report in Appendixes A and B.

The holes were sighted by Chris Davis and David Turner on April 2, 2008. They were designed to test the historical drilling by targeting both high and low grade zones in the middle of the deposit as well as along the edges. Several holes were also planned to test the geological interpretation of the area instead of testing for high grade ore.

All drill holes were drilled in previously cleared areas so only a minor amount of bush was disrupted in moving the drill around. The drill was placed on skid gear and dragged around the property with a cat. Water for the drill was pumped out of the nearby Cowley Creek. Core was shipped to the secure Kluane Drilling compound and transferred to Aurora Geoscience for logging. Upon completion of logging the core is being stored at the Kluane Drilling compound. It is currently stored outside, cross stacked with lids.

Figure 9. 2008 and Historic drill hole locations.



5.2 Induced Polarity Survey

The IP survey was conducted from May 26, 2008 to May 27, 2008 by Aurora Geosciences Ltd. Two lines were placed over historical IP anomalies along existing lines where possible. The UTM coordinates for the approximate centre of the anomalies was determined from historic maps. Line 1 was placed over IP anomaly 1, UTM coordinates 503326E 6715872N, on an existing line for 800m. Line 2 was placed over IP anomaly 2,

UTM coordinates 504091E 6714759N, however an existing line couldn't be found, so a 700m line was cut over the anomaly. Line 3 was placed over a previously mined zone (GEM pit); a 600 m line was placed over it. Station spacing was 25m on all lines. Lines were cut to 1.5m in width and cleared to ground level of all bush.

The IP survey was conducted according to the following specifications:

Array	Expanding Pole-Dipole
Dipole	spacing 25 m on all lines
Separations read	n = 1 to 10
TX	Time domain, 50% duty cycle, reversing polarity, 0.125 Hz.
Stacks	Minimum 15
Rx error	A standard deviation 5 mV/V or less on 15 stacks on first 6 dipoles, otherwise repeated several times until repeatability assured
Grid registration	Handheld GPS points every 200 m (nominal) averaged 60 s or until estimated accuracy < 10 m, whichever was longer. All coordinates in NAD83 UTM Zone 8N.

Data were downloaded nightly from the receiver and imported into the Geosoft Oasis Montaj IP package. Every reading was inspected and individual outlier readings were rejected from the dataset. Apparent resistivity was recalculated using a four electrode equation assuming a homogeneous earth. Average apparent resistivity and chargeability were calculated when repeat reading were present (excluding the rejected outliers) using a weighted mean based on the number of stacks and the standard deviation of the chargeability. Averages of other parameters were calculated with a simple mean.

GPS points were dumped from the handheld units and the coordinates for the stations determined by linear interpolation between GPS points. Elevations were determined by applying the topography from the NRCAN Geobase DEM (equivalent to a 1:50000 NTS map), to the coordinates measured by GPS.

Pseudosections of apparent resistivity, apparent chargeability and apparent Chargeability error were produced draped over topography with the Oasis Montaj IP package.

Appendix C provides a map of line locations and preliminary pseudosections for the IP survey completed.

6. Expenditures

Expenditures for the drilling and IP survey are outlined in Table 2. For the purposes of assessment the IP portion of the expenditures was applied to the western claims (see table 1). The drilling portion was applied to the eastern claims.

Table 2 Costs for program.

Item	Cost
Drilling	\$ 343,358.05
IP Survey	
Wages	\$ 7387.00
Equipment	\$ 1250.00
Field Report	\$ 1330.00
Other	\$ 73.27
GST	
IP Survey Total	\$ 10,542.28
Total	\$ 353,900.33

7. References

- Deklerk, R. & Traynor, S. 2004: Yukon Minfile 2004 – A database of mineral occurrences. Yukon Geological Survey, CDROM.
- Dobrowolsky, H. & Ingram, R. 1993: A History of the Whitehorse Copper Belt. Indian and Northern Affairs Canada -Yukon Region. Open File 1993-1 (1).
- Gordey, S.P., & Makepeace, A.J. 2000: Yukon Digital Geology. Indian and Northern Affairs Canada, Open File 1999-1 (D).
- Hart, C.J.R. & Pelletier, K. S. 1989: Geology of Carcross (105D12) and part of Robinson (105D11) Map Areas. Indian and Northern Affairs Canada -Yukon Region, Open File 1989-1.
- Hart, C.J.R. & Radloff, J.K. 1990: Geology of Whitehorse, Alligator Lake, Fenwick Creek, Carcross and part of Robinson Map Areas (105D/11, 6, 3, 2 & 7). Indian and Northern Affairs Canada: Yukon Region, Open File 1990-4.
- Heon, D., 2004: The Whitehorse Copper Belt, Yukon – An annotated geology map (1:50 000 scale). YGS Open File 2004-15.
- Hureau, A., 1981: WHITEHORSE COPPER MINES LTD Assessment Report (#090899)
- Kindle, E.D. 1964: Copper and Iron Resources, Whitehorse Copper Belt, Yukon Territory. Geological Survey of Canada, Paper 63-41
- MacKay, G., Diment, R., & Falkiner, J.A., 1993: Whitehorse Copper Belt - A Simplified Technical History. Indian and Northern Affairs Canada, Northern Affairs: Yukon Region, Open File 1993-2 (1).
- Morrison, G.W., 1981: Setting and Origin of Skarn Deposits in the Whitehorse Copper Belt, Yukon. Unpublished Ph.D. thesis, University of Western Ontario.
- Ray, G. E. (1995): Cu Skarns, in Selected British Columbia Mineral Deposit Profiles, Volume 1 - Metallics and Coal, Lefebure, D.V. and Ray, G.E., Editors, British Columbia Ministry of Energy of Employment and Investment, Open File 1995-20, pages 59-60.
- Tenney, D., 1981: The Whitehorse Copper Belt: Mining, Exploration and Geology (1967 - 1980). Indian and Northern Affairs Canada, Geology Section Yukon, Bulliten 1.
- Turner, R.J.W., Mougeot, C.M., Roots, C.F., Clague, J.J., & Franklin, R., 2003: Geoscape Whitehorse - geoscience for a Yukon community, Geological Survey of Canada, Miscellaneous Report 82.

Watson, P.H., 1984: The Whitehorse Copper Belt - A Compilation. Indian and Northern Affairs Canada, Exploration and Geological Services Division-Yukon, Open File 1984.

Wheeler, J.O., 1961: Whitehorse Map Area, Yukon Territory 105 D. Geological Survey of Canada, Memoir 312.

Young, I., 2008: Geological Report on the Whitehorse Copper Belt Project. Unpublished Technical Report, Yankee Hat Minerals Ltd.

8. Certificate of Qualifications

I, Chris Davis, of 539 4th Street East, North Vancouver, BC, V7L 1J7 do hereby certify:

(a) that this Certificate applies to the Geological Report entitled, "Drilling and Geophysical Assessment Report On The Whitehorse Copper Belt Project (Ace 30; Denis 9; Dennis 1, 3, 5; Gem 1-3; Jim 10-14, 27-30, 35, 36, 38; Lobo 1; and Sue 1-4 Claims)" dated December 19, 2008.

(b) I am a graduate of the University of Victoria with a Bachelor of Science Degree in Geology (2005) and I am registered as a Geologist in Training with the Association of Professional Engineers and Geoscientists of British Columbia (Member #147439). I have practiced my profession continuously since 2005 and have direct experience in the exploration and development of gold, copper and tungsten in Canada.

(d) I am responsible for the preparation of the report dated December 19, 2008 "Drilling and Geophysical Assessment Report On The Whitehorse Copper Belt Project (Ace 30; Denis 9; Dennis 1, 3, 5; Gem 1-3; Jim 10-14, 27-30, 35, 36, 38; Lobo 1; and Sue 1-4 Claims)" and have relied on publicly available information including assessment reports, and research papers; and

(g) as of the date of this Certificate, and to the best of my knowledge, information and belief, this Geological Report contains all scientific and technical information that is required to be disclosed to make the technical report not misleading.

Dated this 19 day of December, 2008

Vancouver, British Columbia



Chris Davis, B.Sc., GIT

Appendix A: Drill Logs

Table 3 Collar information for Cowley Park drilling

Pad_ID	Hole_ID	Started	Completed	Easting	Northing	Dip	Azimuth	Proposed Depth	Actual Depth
A				505958	6715458				m
	CP-140	02-Apr-08	04-Apr-08			-45	11	75	125.0
	CP-141	04-Apr-08	05-Apr-08			-90	11	100	86.0
B				505901	6715468				
	CP-142	07-Apr-08	08-Apr-08			-50	11	75	76.2
	CP-143	08-Apr-08	09-Apr-08			-90	11	100	97.5
C				505843	6715452				
	CP-144	05-Apr-08	06-Apr-08			-50	11	75	76.5
	CP-145	06-Apr-08	07-Apr-08			-90	11	100	77.7
D				505778	6715459				
	CP-153	17-Apr-08	18-Apr-08			-50	11	75	71.6
	CP-154	18-Apr-08	19-Apr-08			-90	11	100	96.0
E				505589	6715514				
	CP155	19-Apr-08	20-Apr-08			-50	11	75	79.3
	CP156	20-Apr-08	21-Apr-08			-50	191	75	41.2
F				506019	6715451				
	CP146	09-Apr-08	10-Apr-08			-50	11	75	94.5
	CP147	10-Apr-08	12-Apr-08			-90	11	100	131.0
G				506078	6715445				
	CP148	12-Apr-08	13-Apr-08			-50	11	75	54.9
	CP149	13-Apr-08	14-Apr-08			-90	11	100	134.1
H				505932	6715368				
	CP150	14-Apr-08	15-Apr-08			-90	0	125	143.3
I				505923	6715319				
	CP151	15-Apr-08	16-Apr-08			-50	191	75	112.8
	CP152	16-Apr-08	17-Apr-08			-90	0	100	118.9
J				506420	6715185				
	CP159	23-Apr-08	25-Apr-08			-65	11	130	123.0
	CP160					-65	191	130	114.7
K				506047	6715300				
	CP157	21-Apr-08	22-Apr-08			-50	191	115	179.9
	CP158	22-Apr-08	23-Apr-08			-90		100	100.0
Total									2134.1

Table 4 Drill Log from CP-140

From_m	To_m	Lith_code	Lithology Notes
0.00	3.63	Casing	Casing
3.63	25.88	Limestone	Variable Limestone-- starts out as a nicely bedded, (pink) calcic, often vuggy limestone and grades into a more typical grey-white, bedded to swirly/chaotically layered Limestone with euhedral coarse calcite fracture fillings. Overall rock is more competent down interval except for a small (~10cm) section of calcic, soft, fault gouge @ 16.84m-16.94m. Further down this interval the Limestone has a swirly appearance but overall has a bedding orientation of 115° to 120° with respect to (wrt) core axis (CA). Trace disseminated pyrite is present from 17.71m to 19.28m. From 22.08m to 24.22m is a sub-interval of Greywacke that is bordered up hole/up interval by wavy-bedded Limestone and below by 'altered' Limestone +/- epidotodotodote. An 'epidotodotodote-front' is present from 24.45m through.
25.88	28.10	Calc-Silicate Skarn	("Barren") Calc-Silicate Skarn-- with diopside, garnet and epidotodotodote. From 27.79 to 28.02m is an 'epidotodotodote-front' that is distinct pistachio-green. Rock in this interval is generally competent except for within the 'epidotodotodote-front' zone where it is more brittle. @ 26.47m is a malachite+/- bornite filled/altered fracture. Skarnified Limestone section shows a wavy texture of garnet and lesser amounts of epidotodotodote and diopside. Interval overall is barren. Rock grades into a small interval of diorite +/- epidotodotodote.
28.10	30.17	Diorite	Medium-grained 'altered' diorite with mafics often altered to/replaced by actinolite. Garnet and diopside present at upper contact, some interstitial 'veinlet' garnet within interval. Fractures in the middle of this interval are filled/lined-by malachite+calcite+/-chrysotile-- around this fractured section is interstitial pyrite+chalcopyrite.
30.17	32.18	Calc-Silicate Skarn	Relatively sharp contact (124 degrees wrt CA) of unit with barren calc-silicate skarn. Rock is pinkish-red (garnet) and green (diopside +/- epidotodotodote). Generally very competent and contains nice euhedral calcite filled fractures that are vuggy (partially empty). Minor chalcopyrite+bor in late calcic veins. Gradational lower contact with Unit 2. Calcite-lined fractures and increased mineralization grade into next interval.
32.18	44.20	Mineralized Calc-silicate Skarn	Rock grades into a more mineralized interval with a marked increase in mineralization at 37.15m. Rock is skarnified but competent. Fracture at 35.05m contains tenorite+moly+magnetite. Interstitial bor+moly+chalcopyrite is present and becomes common down interval-- and where rock is reddish in color (more garnet rich). Barren section from 35.18m to 36.31m (not sampling interval). Unit becomes much more heavily mineralized down interval with chalcopyrite+/- bor+/-pyrite-- beautiful rock! Rock contains variable amounts of interstitial magnetite and is variable skarnified. Two intensely mineralized zones in box 10. End of interval slowly decreased in grade/mineralization and splotches of malachite begin to appear.

44.20	49.46	Diorite	Gradational upper contact with a rusty fracture separating the two lithologies-- diorite is 'altered' at upper contact and contains trace interstitial chalcopyrite+/-moly, some malachite along fractures and late medium to coarse-grained calcite veinlets. Thin (mm-scale) magnetite+/-chalcopyrite veinlets. Further down interval rock begins to look like more typical diorite and has thin chalcopyrite+/-pyrite and moly present as interstitial crystals and mm-scale discontinuous veinlets-- in these weakly mineralized zones magnetite is more common. Rock overall is competent.
49.46	52.94	Calc-Silicate Skarn	Sharp' contact with 8a (14° wrt CA). Rock is very competent and contains 2% bor+chalcopyrite+/-moly over interval, magnetite is present throughout (3-5%) and is more common in more mineralized zones. Towards lower contact with 8a rock looks less granitic and has more well-defined/distinct magnetite veinlets. Lower contact with lithology 8 is very sharp.
52.94	54.60	Dyke	Sharp upper (54°) and lower (42°) contacts-- upper contact plane is rusty, lower contact plane is magnetite -bearing. Rock is fine-grained, greenish in color and is the same composition of the dyke present at 46.38m-46.52m. Minor epidotedotedote (?) veination within, un-mineralized, siliceous, competent intermediate-dyke. Has felsic porphyritic crystals within (likely plagioclase). Although the rock is quite dark green in color, may actually be quite felsic in composition.
54.60	62.67	Calc-Silicate Skarn	Sharp upper contact with 8a. Overall, rock is fairly typical calc-silicate skarn with <2% mineralization over interval. Rock is fairly competent throughout. From 54.60m to 56.07m the rock illustrates what appears to be foliation (<3%) and there is cpy, bor and moly mineralization (sampled last 77cm of this foliated section and first 23cm of non-foliated, more typical section)-- it is in this zone that there is considerable magnetite (<3%) and there is cpy, bor and moly mineralization (<3% over interval, rock can be vuggy in this interval). Cpy is present as a 'band' (>7% over <10cm interval (55.06m to 55.13m) and is also found as disseminations; moly is sporadically present as disseminations and bornite is often present as 'blebs' and rimming cpy disseminations. Past 56.07m the rock looks like more typical garnet-diopside-calc-silicate skarn, contains trace mineralization and is very competent. In the latter half of this lithologic interval, epidote is present as very thin veinlets and can have trace moly within.
62.67	64.23	Magnetite skarn	Rock fairly abruptly changes to magnetite skarn-- a rubbly, relatively incompetent layer that is often 'vuggy'. Overall the unit contains abundant pyrite and -chalcopyrite. Visible remnant texture looks granitic. Magnetite is often fibrous/needle-like and associated with pyrite (possibly replacing Actinolite?). Lower contact is more gradational and next unit (Diorite) starts out with the appearance of barren, calc-silicate skarn (3gd). Sampled 1.20m of this interval.

64.23	66.56	Diorite	Unit starts out (64.23m to 64.40m) looking like calc-silicate skarn-- likely is to some degree-- did not split this out of log. From 64.40m to 65.20m the rock looks vuggy and grades into 8a with interstitial chalcopyrite+pyrite (2% overall) with some epidote+pyrite veinlets. There is a rusty-altered section from 65.14m to 65.42m-- rubbly/poor competence. Other than minor magnetite veinlets, the rock contains relatively little magnetite.
66.56	69.01	Dyke	Green, fine-grained dyke with porphyritic sections-- looks relatively felsic (intermediate composition). Indescript, unmineralized, locally porphyritic and has variable competence. Small section of granite (8a) from 67.82m to 68.47m-- this is marked by sharp contacts on both sides. Granitic section is typical unmineralized granitic diorite. Lower contact with hbl-Diorite/Granodiorite is sharp.
69.01	124.47	Diorite / Granodiorite with intermediate dykes	Remainder of hole is un-mineralized Granodiorite/Hbl-Diorite with intermediate dykes present at: 80.37m to 81.02m, 81.99m to 82.93m, 84.94m to 87.07m, 91.26m to 91.51m, 96.01m to 96.34m, 96.80m to 97.62m, 100.14m to 103.22m (this dyke is quite porphyritic) and ~110m (rubbly) to 115.57m. Rock looks like a medium to coarse-grained hornblende-Diorite to Granodiorite (nice texture), is generally competent less a fault zone at 82.98m to 83.18m (this fault gouge zone is very soft). Overall the unit is unmineralized less calcite veins with oxidized Bornite (deep-blue to purple) from 72.03m to 72.95m (<1% over 75cm interval. At 91.75m to 93.0m are coarse-grained pink calcite crystals filling in veins (former fractures).
124.47		EOH	

Table 5 Drill Log from CP-141

From_m	To_m	Lith_code	Lithology Notes
0.00	3.55	Casing	Casing
3.55	11.14	3gwd	"Barren" Calc-Silicate Skarn with variable competence for approximately the first 7m. Creamy-peach to light-maroon (> garnet rich) in color, generally un-mineralized less minor (trace overall) interstitial, tiny (<1mm) flakes of pyrite. Some 'splotches' of thulite. At 5.56m-5.64m the rock is more diopside rich, following that the rock is fractured from 6.35m-6.60m. Towards the bottom of the interval the rock is more competent and contains more distinct garnets that are reddish-brown in color. Lower contact with Limestone is relatively sharp and oriented at approximately 153° wrt CA.
11.14	32.16	5	Overall the interval is comprised of typical Limestone that is competent, white-grey in color and has nice local bedding that is typically around 040° (35°-45°) wrt CA. Towards the top of the interval the Limestone contains "blebs" of 3gwd (@11.71m-11.84m, 12.19m-12.25m). Trace disseminated pyrite is present in boxes 3 and 5 and to a lesser degree box 6.

32.16	35.70	3dw/2dwe	Quick logged as lithology 3 (Barren Calc-Silicate skarn) but once the core is cleaned mineralization is evident. Overall the rock is quite dark in color, competent and indescript. Mineralization is generally hard to see. Some sections within that are epidote rich, very minimal magnetite is evident within core. Sampled two 1.25m intervals (if these run well this should be more extensively sampled). Over the entire interval ~3-5% pyrite is present-- in some places may be Chalcopyrite but is difficult to tell (rock is dark). Pyrite is present as interstitial crystals and 'blebs' and veinlets. Lower contact towards fault (gauge) is gradual.
35.70	36.76	5	Soft, white, brecciated Limestone fault gauge. Calcic zone, indescript, unmineralized, interval that starts out more competent. "Competant" pieces of core that are surrounded by soft, calcic gauge.
36.76	38.65	5	Overall a more competent Limestone but with thin (3-10cm) intervals of fault gauge within. Weak pyrite mineralization at 38.45m to 38.49m post fault gauge. Rock grades into unit 3dw/2.
38.65	42.96	3/2 dw	Overall this unit is quite variable with bands of mineralization and sections of unmineralized indescript calc-silicate skarn. From 40.35m to 41.93m the rock is quite soft, vuggy, white in colour and contains ~5% pyrite. Primary bedding appears to still be evident within the rock and is oriented at approximately 045°. From 41.93m to 42.96m the rock is hard, very competent and contains approximately 5% pyrite+chalcopyrite. Locally not a "true skarn" but rather like a cooked up Limestone that has some faulting and/or internal fracture controlled fluid movement. Sampled first meter and last meter of section-- might have high gold values (~5% Pyrite content)-- if these values are high additional sampling should be completed. Lower contact with unmineralized, more true calc-silicate skarn is gradual.
42.96	82.22	3dg +/- e	Rock gradually grades into more typical calc-silicate skarn that is competent, generally un-mineralized (overall ~1% pyr+/-cpy and interstitial and disseminated rare trace molybdenite). Rock alternates between greenish (diopside-rich) and reddish (garnet-rich) in colour. Euhedral cubic pyrite is rare over the interval but is present from 46.94m to 47.14m. Multiple fine-grained, intermediate, green-coloured dykes are present in boxes 11, 12 & 13-- these dykes have an orientation of roughly 010° wrt CA and occur at 48.56m to 49.50m (rubbly), 51.70m to 52.52m and 53.14m to 53.74m. The rock is highly fractured and rubbly within this interval proximal to the intruding dykes. The rock increases in competence at 54.86m to 82.22m and contains trace to 2% moly, bornite, chalcopyrite +/- pyrite (all minerals are found as interstitial blebs and along veinlets). Molybdenite often has a purplish hue to it. From ~63.70m to 70.55m the rock looks more granitic in texture. The more notable sulfide is cpy+/-pyr at 71.56m to 71.63m at ~20% and over the 7cm interval. A small medium to coarse-grained (granitic) diorite vein is present from 77.02m to 77.10m and is oriented at approximately 135°. Some magnetite is present proximal to the lower, granitic, diorite intrusive. Another small diorite vein intrudes at 80.01m to 80.26m. Below these granitic intrusions is veinlet magnetite +/- bornite +/- chalcopyrite (trace over interval). Vuggy, coarse-grained prismatic tremolite (?) + calcite are present from 82.00m to 82.02m, this is lined by magnetite. Lower contact is sharp and oriented at approximately 145° with the next unit.

82.22	86.00	8a	Sharp upper contact with calc-silicate skarn. Coarse-grained granitic diorite that is green-pink-white in color. Competant rock with some near vertical (wrt CA) fractures that are often lined by calcite. A long xenolith is present from 84.97m to 95.10m. This unit is likely the 'feeder' to the smaller dioritic intrusives above. Unit is wholly unmineralized. Hole was stopped at approximately 86m.
86.00		EOH	

Table 6 Drill Log from CP-142

From_m	To_m	Lith_code	Lithology Notes
0.00	2.28		
2.28	10.62	5	Typical grey-white Limestone, generally competent rock with bedding visible locally (45°-50°). Generally un-mineralized core. Small (27cm) intermediate, green, un-mineralized, indescrpt, intrusive present in box 1. Upper contact is sharp and oriented roughly at 135°, lower contact is sharp and oriented roughly at 125°. Limestone becomes fairly incompetent to very incompetent at 9.14m -- could be due to lower intrusive unit.
10.62	23.50	9π	Sharp, brecciated upper contact with Limestone. Overall unit is relatively competent, unmineralized, green-dark green-black groundmass with <0.5cm feldspar phenocrysts (some biotite booklets). Some rafts/xenoliths of Limestone that are generally not skarnified. Later dioritic intrusion at 14.38m to 14.69m. Both upper and lower contacts are sharp. Xenoliths of Limestone are present at: 17.37m to 17.67m (upper contact- 153°, lower contact- 174° but is wavy) trace pyrite in feldspar porphyry near contact; 19.32m- 19.81m (upper contact- 020°, lower contact- 190°, both are wavy contacts); 20.73m to 21.09m (skarnified Limestone with odd contacts that are sharp but chaotic); 21.90m to 22.08m (slightly skarnified).
23.50	25.79	5	Upper contact with feldspar porphyry is sharp and oriented at 143°. Limestone is competent, relatively typical with nice bedding (140°), some vuggy fractures/veins (?), unmineralized with local skarnification (3g) at 24.50m to 24.60m and 24.97m to 25.13m. Lower contact with calc-silicate skarn is quite nicely defined by epidote + garnet + calcite band that is oriented at 142°.
25.79	27.85	3gt (with thulite)	Nice, competent, pink to reddish-green calc-silicate skarn. Nice bright pink thulite from 26.98m to 27.65m. Unit is unmineralized. Lower contact with green, intermediate intrusive is sharp and oriented at ~140°.
27.85	28.96	9	Fine-grained, unmineralized, green dyke. Some calcite-lined fractures, relatively indescrpt rock with the same composition as the dykes up hole. Lower contact with calc-silicate skarn is sharp and oriented at 052°.

28.96	58.10	3g/tde + 2gdm	Fairly typical calc-silicate skarn that is relatively competent. Color ranges from green to reddish to creamy white. Generally unmineralized until 30.30m to 30.37m. 2% interstitial bornite from 31.14m to 31.27m. 4% malachite +/- bornite (interstitial + fracture) from 31.58m to 31.68m. Rock is unmineralized from 31.68m to 49.14m, here the rock is darker in colour and contains trace to 10% (local) magnetite. From 49.14m the rock is lithologically consistent calc-silicate skarn but here the rock is maroon and green in colour and there is interstitial bornite and magnetite (locally there can be >10% magnetite). From 50.26m to 50.43m is a band of massive bornite that is bright purple in colour, here bornite is >99% of this small interval (broke off this interval and sampled it separately, then sampled 1.5m on both sides of it). At 51.79m the rock begins to look like endoskarn-- local granitic texture but more typical calc-silicate persists from 51.29m to 53.35m. After 53.35m rock looks like unit 3 and endoskarn (very gradual contact). Sampled this whole interval because there is banded/veined cpy +/- magnetite, interstitial cpy + bornite and occasionally moly. From 57.0m to 58.19m rock looks like endoskarn. Overall very competent rock. Massive, interstitial cpy (~10%) from 56.47m to 56.60m. Broke up lithology from 3g/tde to lower unit 8/9 at fault (gauge).
58.10	62.48	8\9π	Gradual upper contact with calc-silicate, picked fault gauge as contact. Unit is generally diorite with feldspar porphyry (feldspar porphyry intrudes diorite, contact is wavy and roughly parallel to CA). In some areas the diorite is mineralized (<1% veinlet cpy and interstitial cpy), typically proximal to feldspar porphyry intrusion(s). Unit shows three areas of fault gauge and several (3+) faulted-fractures (gauge like). Appears that faulting is related to later intrusive because where the diorite is not intruded the rock is fairly competent. Lower contact is sharp.
62.48	64.55	9	Non-porphyratic, massive appearing, fine-grained, unmineralized, fairly competent dyke. Upper contact is ~065° and lower contact is sharp (145°) with altered diorite.
64.55	65.77	8a	Upper contact is sharp and altered (faulted contact, soft). Altered diorite in areas looks slightly skarnified. Unmineralized interval. Around 65.45m to 65.58m visible cpy is present and the rock is soft and fault gauged.
65.77	67.06	9	Soft, crumbly, fault gauge, rock here looks like protomylonite to mylonite in areas. Cannot see visible mineralization, more competent towards lower contact.
67.06	67.56	8a	Relatively competent altered diorite (compared to surrounding rock). Deformed granitic diorite with a cooked -up xenolith within. Unit is unmineralized and lower contact is faulted.
67.56	67.63	9π	Finer-grained feldspar porphyry, looks like an intermediate between fine-grained, massive appearing green dyke and the feldspar porphyry. Unit is unmineralized. Lower contact is faulted.
67.63	74.31	8 +/- a	Relatively competent more typical diorite. Some areas within are skarnified and faulted, interval is unmineralized. Xenolith present from 71.40m to 71.55m Upper contact is faulted, lower contact is sharp.
74.31	76.20	9	Intermediate, green, gritty appearing dyke that is (rarely) locally porphyritic, relatively incompetent and unmineralized.
76.20		EOH	

Table 7 Drill Log from CP-143

From_m	To_m	Lith_code	Lithology Notes
--------	------	-----------	-----------------

0.00	2.13	Casing	
2.13	7.78	5	Relatively typical competent Limestone but with wavy oxidation (red-orange) bands within. Generally un-mineralized less trace pyrite mineralization as disseminations and (overall) trace mineralization as 'blebs' near veins (?) or felsic-bands. Rock is fractured and fault-gauge-like at lower contact with feldspar porphyry.
7.78	13.45	9π	Competant, intensely feldspar +/- biotite porphyritic intrusive. Wholly un-mineralized with sharp upper and lower contacts, upper contact is brecciated (the Limestone) and lower contact is oriented at ~ 015° and both units are relatively coherent.
13.45	40.64	5	Unit starts out as relatively typical Limestone, grey-white, competent rock with evident bedding at ~60°. But this unit has multiple skarnified sections that may or may not be pyrite-mineralized. When pyrite-mineralization is evident in skarnified zones the pyrite mineralization is generally disseminated but can also be present as veinlet mineralization. Limestone may also exhibit wavy bedding and towards the bottom of the interval an odd, white, speckly texture emerges (coral?). Skarnified intervals within are as follows: 14.42m-14.61m- looks granitic, fine-grained texture +epidote and disseminated (<5%) pyrite; 15.04m-15.34m- >typical calc-silicate skarn (3gd +/- e), unmineralized; 15.66m to 16.02m- calc-silicate skarn +/- garnet, <2% cubic + disseminated pyrite; from 16.12m to 18.74m the rock is weakly skarnified +/- diopside and is un-mineralized; 19.06m to 19.66m- generally weakly skarnified less last ~20cm where the rock is epidote rich and has 1-2% disseminated pyrite; 23.89m-23.98m- small calc-silicate bleb + garnet + diopside, un-mineralized. Nicely bedded from 27.33m to 34.35m, from 27.33m to 31.50m rock shows odd speckly texture (coral?). From 38.56m-38.80m- calc-silicate skarn + garnet +/- diopside + blebs of pyrite (<2% over interval); from 39.88m-40.06m- intensely pyritized, rotten, rubbly rock (20% cpy +/- pyr) may be related to faulting. Lower contact is relatively sharp.
40.64	49.70	3degw	Creamy-coloured, relatively competent calc-silicate skarn that is periodically altered and contains cavity-filling disseminated pyrite and to a lesser degree pyritic clots and veinlets. Some vuggy calcic veins within. At 43.48m the rock becomes darker black-green in colour and contains magnetite. Zones are unevenly mineralized by pyrite-- not noticeable cpy, moly or bornite. Chose not to sample until 46.70m-- 3m's before the higher grade mineralization. Towards the bottom of the interval, veinlet and fracture-related mineralization is more common.
49.70	50.29	2/3de + pyr	Sampled the entire mineralized interval-- separated from the mineralized interval above and un-mineralized interval below (but lithologically the rock is the same calc-silicate skarn).
50.29	50.88	3g	Relatively barren pinkish-red calc-silicate skarn between 2 relatively high-grade pyrite-mineralized intervals (sampled). Rock is competent and has relatively sharp contacts with mineralized skarns. Lower contact orientation is ~33°.
50.88	51.22	1/3 gde + magnetite + pyr	Vuggy, pyritized skarn with no visible chalcopyrite. Rock is intensely mineralized and has a sharp upper contact (33°) and a wavy lower contact. Separated interval and sampled interval because of the magnetite-skarn mineralization.

51.22	54.70	3weg	Creamy-white to pink-green, relatively incompetent pyrite-rich calc-silicate skarn. Pyrite is present as disseminated clots and cavity fillings. Rock is fairly vuggy. Late euhedral calcite mineralization along fracture planes. Some patches with thulite, towards lower contact is (weak) banded magnetite. Lower contact is gradually becomes more and more incompetent (fault?).
54.70	56.48	3wl	Whole interval is fault rubble, calc-silicate skarn that contains considerable amounts of pyrite-- rock is soft, white, and incompetent, and often crumbly. Did not sample interval. Lower 'contact' was chosen at section with more competent rock.
56.48	67.03	3wed +/- g	More coherent calc-silicate skarn that is still quite soft and incompetent for the first four meters. Mungy, dirty-looking rock. Fairly high amounts of mineralization until 62.65m as disseminated clots and veinlet pyrite (if sample 7R23633 runs fairly high this interval should be more extensively sampled). Rock looks more like endoskarn until ~65.13m
67.03	77.35	9	Indescript, massive-appearing, intermediate dyke that is green in colour and generally very competent. Rock looks gritty, compact and is very fine grained. Texturally the rock is aphanitic and locally sucrosic. At 76.68m to 76.84m is a dioritic intrusion (sharp to wavy contact) that is mineralized on the margins with the dyke (unit 9 intrudes unit 8). Further down interval at 75.78m the rock is more brittly deformed and incompetent. By 76.76m the rock is rubbly (fault gauge). The lower contact with diorite is very sharp and is oriented at ~160°.
77.35	97.54	8/8a	Remainder of this drillhole is variably altered and variably mineralized (interstitial and veinlet pyr) diorite. Rock is generally competent however there are a few zones where the rock is crumbly/rubbly and incompetent (these zones do not necessarily coincide with alteration). Mineralization is inconsistent for the remainder of the interval and does not appear to coincide with alteration or faulting. Compositional variations are evident and from 59.64m - 59.94m is what appears to be a leucocratic xenolith (may not actually be a xenolith at all because it has angular fragments of the diorite within it?). At 95.43m to 95.77m is an epidote front (vuggy, bright lime-green) that suggests that the drillhole is exiting the calc-silicate skarn zone (the front surrounds the skarn).
97.54		EOH	

Table 8 Drill Log from CP-144

From_m	To_m	Lith_code	Lithology Notes
0.00	2.80	Casing	

2.80	16.85	5	Relatively typical Limestone but less competent than per usual (local fault gouge, soft rock next to fractures). Locally skarnified over small intervals, rock exhibits strong (70°) to weak bedding and wavy/chaotic and shows relatively intense FeO alteration from 9.53m to 0.20m. Faulted, rubbly, zones appear to have significant fluid flow through them. Bedding variations may reflect shear/faulting (at the top of the unit it is ~65° and at the bottom of the unit it is ~85°). The lower contact is relatively sharp and marked by malachite lining the fracture between the two lithologies.
16.85	20.88	3gt + malachite	Upper contact is a malachite-lined fracture with Limestone. Calc-silicate unit starts out with a greenish-brown to red (garnet-rich) hue to it. A 'thulite (epidote) front' is present from 17.12m to 17.47m and could act like the common epidote front common at the skarn margins. Rock is very competent until malachite mineralized zone (sharp mineralized 'contacts'). (Note: Sampled the Malachite-zone for total Cu and Non-Sulfide Cu).
20.88	21.85	7/8 + 9π	Smaller interval of intrusives, upper and lower contacts with calc-silicate skarns are brecciated. This small interval is mostly diorite/granodiorite with interstitial malachite and trace interstitial pyrite. The diorite is later intruded by intermediate dykes and feldspar porphyry. Upper and lower contacts are ~40° and ~25°.
21.85	28.55	3gtd	Relatively typical Calc-silicate skarn-- competent garnet and diopside (+/- thulite)-bearing rock. Calc-silicate skarn in this interval has what appears to be the texture of Limestone. At the upper contact the rock is brecciated, the lower contact is oriented at ~40°. The unit starts out relatively mineralized with fracture-related malachite and interstitial bornite and to a lesser degree interstitial chalcocopyrite. Interstitial bornite often looks like dull, black splotches but upon breaking the rock it becomes evident that it is metallic navy-purple in colour (penetratively oxidized). Lower half of interval is barren.
28.55	30.25	9π	Distinct feldspar-porphyry that has medium-grained (porphyritic crystals), is very competent, barren, with epidote veins within oriented at ~140° to 145°. Nice sharp upper (040°) and lower (140°) contacts with ~2cm chilled margins. Trace interstitial pyrite at lower contact.
30.25	32.36	3dge	Very competent, typical garnet-diopside-rich calc-silicate skarn with sharp upper and lower contacts. Generally un-mineralized, less trace interstitial moly @ 31.53m and a malachite-lined lower contact with Limestone. The unit starts out green-beige and becomes more pinkish down interval (more garnet). The lower contact is oriented at ~55° and the last 7 to 10cm of the interval have interstitial fine-grained bornite (difficult to see).
32.36	33.98	5 (+ chalcocopyrite + bor)	Small interval of Limestone with rusty fractured section from 32.42m to 32.72m. Otherwise the interval is comprised of competent and fairly typical white-grey Limestone. The last 10cm's are mineralized with bornite + chalcocopyrite +/- malachite (malachite is rimming bornite which is rimming chalcocopyrite). Last 2 to 3cm of the interval is massive calcite. Lower contact is very sharp with the magnetite skarn-- cannot orientate contact due to rubbly nature of the contact (wrt magnetite skarn).

33.98	38.10	1	Very typical magnetite skarn but without notable pyrite. Unit is banded and has zones that appear more calc-silicate skarn-like within (separated these out for sampling). Malachite lining fractures locally. "Blebs" of chalcopyrite in calcite-rich zones. Likely more bornite than estimated (interstitial, <1%) but massive nature of magnetite makes deciphering bornite modal %'s difficult. Overall, the rock is competent and locally vuggy. Sharp upper and lower contacts. Sampled from top to bottom.
38.10	38.73	3	Massive Calcite-vein with sharp upper and lower contacts. Contacts are brecciated but appear to be oriented at ~090°. Vugs are filled with coarse, euhedral, clear to milky calcite crystals. Lower contact with intermediate dyke is interesting--the calcite vein has brecciated (angular) pieces of the intermediate dyke within (the calcite veining occurred post-tectonic wrt the intermediate dyke intruding). Un-mineralized unit (paired with the intermediate dyke for sampling as both are barren).
38.73	39.36	9	Gritty, green, intermediate dyke with ~10 to 15% calcite veining. No visible mineralization. Dyke intruded post-calcite veining. Sharp lower contact with mineralized-calc-silicate skarn, oriented at ~050°.
39.36	48.17	2gd +/- e	Different calc-silicate skarn, first 0.26m look fairly typical but at 39.62m the rock gets very vuggy, rusty and intensely altered. Interstitial malachite is generally the only visible mineralization until ~42.50m where veinlet native Cu appears. Intense, soft, gungy, rubbly fault gouge at ~42.67m and again at ~43.47m to 43.81m. Beautiful Cu mineralization at ~44.20m. Sections of more typical mineralized calc-silicate skarn are present at 44.63m to 46.20m. From 46.20m to 46.33m is a band of massive magnetite, the rock here looks "rotten" and is black in colour. From 46.69m to 48.17m the rock is very soft, rotten and bright rusty orange in colour, the last 20cm of this interval is grey in colour. Lower contact with intermediate dyke is very sharp and rubbly.
48.17	49.04	9	Competent, massive-appearing intermediate dyke that is un-mineralized, non-porphyrific and contains small calcite veins running near parallel with the core axis (fractures follow these veinlets). Sharp lower contact with calc-silicate skarn oriented at ~040°.
49.04	58.37	3/2 dm +/- eg	Fairly competent calc-silicate skarn with a variable appearance, some areas are garnet+epidote rich while others are more endoskarn-like. This interval is variably mineralized; short bands of vuggy calcite +/- chalcopyrite are present (120°-125°) at: 49.40m-49.50m and 49.70m-49.81m. At 54.58m to 54.77m is a band of massive magnetite (85%) that has sharp margins with the calc-silicate skarn (contacts are nearly perpendicular to CA). From 55.55m to 56.39m the rock has an odd endoskarn texture (like skarnified greywacke). From 57.57m to 57.91m is an interval that contains ~15% interstitial chalcopyrite interval was separated during sampling). Sharp wavy lower contact with unit 3gde.
58.37	60.10	3gde	Very competent, typical un-mineralized calc-silicate skarn that is pink/reddish-green in colour (garnet + diopside) and has rare, interstitial molybdenite + chalcopyrite. Minor epidote + calcite veining throughout and chalcopyrite veinlets are present towards the 'sharp' lower "contact" with 4/3 dm.

60.10	64.55	4/3 dm	Very odd appearing skarnified greywacke/siltstone (?). At ~61.22m to 61.39m is a diorite/granodiorite vein that appears to be syntectonic with local/proximal brecciation in the host rock. This intrusive has veinlet and interstitial chalcopyrite and at 61.22m is a slickenslide. At 61.51m to 61.96m is fault gouge (soft, white crumbly rock).
64.55	66.57	7/8a	Interval starts out as fault gouge/rubble and appears to be diorite/granodiorite. The granite in this interval is different than the granitoids noted in previous drillholes in that this rock is clearly deformed (proto-mylonite). A nice, well-developed planar fabric is highlighted by the mafic component/mineralogy. 3% interstitial chalcopyrite is present throughout (syntectonic?). Lower contact is wavy and very shallow wrt CA (~170°).
66.57	69.23	3ge	Upper undulating contact is marked by epidote and a visibly vuggy appearance. The rock in this interval grades into very competent pink-green calc-silicate skarn. Trace interstitial bornite, molybdenite and chalcopyrite are present throughout. Odd white coloured bleb is present from 68.05m to 68.18m and is speckled with bornite. Lower contact is sharp with skarnified granite (endoskarn) at ~60°.
69.23	71.63	8a/3	Endoskarn (altered diorite) is variably skarnified, generally competent with fault gouge/fractures at 69.42m-68.48m, 69.73m, 69.93m, 70.55m, 70.68m, 70.81m and the lower "contact". Rock is generally greenish-grey in colour.
71.63	72.55	8a	"Contact" at fault with partly/variably skarnified granitic diorite/granodiorite. This interval is not skarnified but is intensely altered and faulted (the whole interval is gouge). Lower contact is very sharp and oriented at ~35° and shows a chilled margin within intruding dyke.
72.55	76.20	9	Non-porphyrific, massive-appearing, fine-grained, greenish rock with intermediate competence and an enclave of granitic diorite at 74.68m to 74.88m. Towards EOH the rock has a creamy-white wavy internal fabric (~10%). Fractures are clean/un-altered and may be lined in calcite.
76.20		EOH	

Note: Results are not complete for holes CP-145 to CP-160

Appendix B: Assay Results from Drilling

Table 9 Assay results from CP-140

Width m	Sample ID	From m	To m	Description	Cu %	Mo %	Ag (g/t)	Au (g/t)
1.50	23601	32.18	33.68	Mineralized Calc-Silicate Skarn-- interstitial bornite rimming calcopyrite common	0.96	0.002	8.3	0.11
1.50	23602	33.68	35.18	A less mineralized zone within the calc-silicate skarn. Actual core recovery here is only 86%	0.09	0.001	0.1	0.12
1.00	23604	36.33	37.33	Mineralized Calc-Silicate Skarn-- interstitial disseminations of calcopyrite, bornite and moly.	1.66	0.027	14.3	0.22
1.17	23605	37.33	38.50	A more mineralized zone within this calc-silicate interval-- >5% interstitial massive cpy + bor, and interstitial cpy+pyr <10%.	4.40	0.120	40.20	0.16
1.00	23606	38.50	39.50	A more mineralized zone within this calc-silicate interval-- <10% interstitial cpy +/- bor +/- pyr.	2.66	0.073	10.9	0.19
1.00	23607	39.50	40.50	Mineralized Calc-Silicate Skarn-- interval starts out with some interstitial cpy +/- bor +/- pyr and then is relatively barren.	3.77	0.027	6.5	0.07
1.00	23608	40.50	41.50	Mineralized Calc-Silicate Skarn-- interval preceding an intensely mineralized zone.	2.92	0.041	6.2	0.05
0.50	23609	41.50	42.00	Mineralized Calc-Silicate Skarn-- > 35% massive cpy +/- pyr.	13.00	0.123	25.0	0.28
0.55	23610	42.00	42.55	Mineralized Calc-Silicate Skarn-- relatively unmineralized zone between to mineralized zones.	1.17	0.058	2.9	0.04
0.55	23611	42.55	43.10	Mineralized Calc-Silicate Skarn-- < 20% massive cpy +/- pyr.	7.96	0.121	17.7	0.08
1.10	23612	43.10	44.20	Mineralized Calc-Silicate Skarn-- interval post-mineralized zone	2.37	0.322	4.4	0.03
1.00	23613	55.03	56.03	Mineralized Calc-Silicate Skarn-- last 0.75m of foliated calc-silicate skarn and first 0.25m of non-foliated calc-silicate skarn.	2.65	0.390	13.2	0.21

1.34	23614	62.67	64.01	Magnetite skarn-- 10+% pyr and 5% cpy over entire interval.	8.37	0.002	9.9	0.03
------	-------	-------	-------	---	------	-------	-----	------

Table 10 Assay results from CP-141

Width m	Sample ID	From m	To m	Description	Cu %	Mo %	Ag (g/t)	Au (g/t)
1.25	23616	33.07	34.32	Mineralized Calc-Silicate Skarn-- interstitial bornite rimming calcopyrite common	0.05	0.009	0.02	0.00
1.25	23617	34.32	35.57	A less mineralized zone within the calc-silicate skarn. Actual core recovery here is only 86%	0.06	0.004	0.02	0.00
0.97	23618	38.65	39.62	Mineralized Calc-Silicate Skarn-- interstitial disseminations of calcopyrite, bornite and moly.	0.06	0.001		
1.00	23619	41.96	42.96	A more mineralized zone within this calc-silicate interval-- >5% interstitial massive cpy + bor, and interstitial cpy+pyr <10%.	0.72	0.001		

Table 11 Assay results from CP-142

Width m	Sample ID	From m	To m	Description	Cu %	Mo %	Ag (g/t)	Au (g/t)
1.52	23620	48.77	50.29	Magnetite + Bor in calc-silicate before massive band of bornite.	1.11	0.001	9.2	0.05
0.14	23621	50.29	50.43	Massive purple bornite	47.10	0.038	32.4	0.02
1.50	23622	50.43	51.93	Calc-silicate below massive bornite band	0.89	0.064	6.3	0.04
1.50	23623	51.93	53.43	Banded cpy and magnetite in calc-silicate skarn	1.14	0.064	6.1	0.07
1.50	23624	53.43	54.93	Relatively 'dry' calc-silicate between 2 more mineralized zones	1.10	0.063	6.5	0.07
1.50	23625	54.93	56.43	Calc-silicate skarn with veinlet and interstitial cpy	2.68	0.120	13.8	0.11
1.00	23626	56.43	57.43	Massive interstitial cpy for 15+ cm (~10%) +/- bornite in calc-silicate skarn near intermediate dyke	4.36	0.100	14.7	0.11

Table 12 Assay results from CP-143

Width m	Sample ID	From m	To m	Description	Cu %	Mo %	Ag (g/t)
1.50	23627	46.70	48.20	Unit 2/3-- veinlet and fracture cpy +/- pyr	0.10	0.01	0.3
1.50	23628	48.20	49.70	Interval before high-grade pyr +/- cpy zone	0.12	0.00	0.2

0.59	23629	49.70	50.29	High grade pyr (+/- cpy) + magnetite within calc silicate skarn	0.36	0.00	1.1
0.59	23630	50.29	50.88	"Barren" pink, calc-silicate skarn between two (pyr-rich) mineralized intervals	0.01	0.00	0.1
0.34	23631	50.88	51.22	High grade pyr (+/- cpy) + magnetite within vuggy calc-silicate skarn	0.48	0.00	1.5
1.50	23632	51.22	52.72	Zone after nicely mineralized section	0.10	0.00	0.3
1.40	23633	52.72	54.12	Mineralized (pyr-rich) calc-silicate before fault gauge	0.06	0.00	0.1
1.34	23651	54.12	55.46	Fault gauge + pyr	0.00	0.00	0.1
1.34	23652	55.46	56.80	Fault gauge + cpy + pyr	0.01	0.01	0.1
1.34	23653	56.80	58.14	Fault gauge into more competent calc-silicate	0.00	0.052	0.1
1.34	23654	58.14	59.48	Competant calc-silicate skarn	0.15	0.00	0.4
1.34	23655	59.48	60.82	Faulted, altered	0.07	0.00	0.1
1.35	23656	60.82	62.17	Competant calc-silicate skarn + pyrite	0.04	0.00	0.1
1.50	23657	62.17	63.67	Competant calc-silicate skarn with faulted lower contact	0.16	0.00	0.3
1.19	23658	63.67	64.86	Faulted upper contact, grades into more competent rock + pyr	0.45	0.01	1.2
1.96	23659	44.74	46.70	Calc-silicate skarn with veinlet pyr + cpy	0.09	0.00	0.2

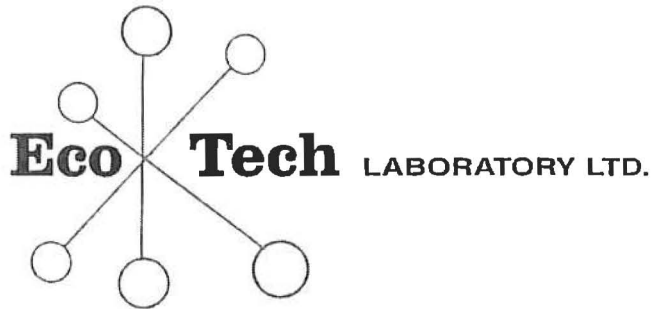
Table 13 Assay results from CP-144

Width m	Sample ID	From m	To m	Description	Cu %	Mo %	Ag (g/t)	Au (g/t)
1.04	23634	19.17	20.21	Malachite zone: analyzing total Cu + non-s Cu (Cu - oxide)	3.77	0.005	1.4	0.02
2.41	23635	16.76	19.17	Start of Calc-Silicate skarn B/F Malachite zone	0.04	0.001	0.2	
2.11	23636	20.21	22.32	Zone below Malachite rich zone, with unit 7/8 + 9it + start of 3gd	0.24	0.002	1.8	
2.06	23637	22.32	24.38	weak - mod Malachite, Min in Calc-Silicate (3gd)	0.37	0.003	5.9	
1.70	23638	32.28	33.98	Calc-Silicate / Lime contact + small limes int. B/F Magn. Skarn (some vis cpy/bor/mal)	0.10	0.000	1.0	
1.07	23639	33.98	35.05	start of Magn skarn	2.17	0.004	3.8	0.05
1.00	23640	35.05	36.05	Magn skarn, notable cpy + mal, increasingly magn rich	1.73	0.003	3.0	0.02
1.03	23641	36.05	37.08	< magn - increasezone within magn skarn (>Calc-Silic like)	1.39	0.002	2.0	0.02

1.02	23642	37.08	38.1	~ int. between > magn rich and slightly Calc-Silic. Rich in magn skarn	0.64	0.015	1.4	0.03
1.26	23643	38.1	39.36	Calcic vein + int dyke with calcite veins (barren)	0.09	0.001	0.5	
1.25	23644	39.36	40.61	starts out as competant calc-silic. Then into intently rusted +bfx'd (fault)	1.62	0.012	6.4	0.08
1.25	23645	40.61	41.86	rusty, vuggy calc-silic, might have native Cu?!	2.46	0.017	7.3	0.07
1.19	23646	41.86	43.05	>competant calc-silicate skarn with visible Au @ ~42.50-42.65	1.95	0.025	4.7	0.02
1.35	23647	43.05	44.4	rusty calc-silic skarn with most of the primary visible native Cu	1.95	0.030	7.7	0.04
1.25	23648	44.4	45.65	downhole from visible Cu-- starts out v. vuggy	1.02	0.010	3.0	0.02
1.25	23649	45.65	46.9	magn vein, ends in rusty rock	0.88	0.009	2.8	0.02
1.27	23650	46.9	48.17	very rotten rusty rock	0.53	0.023	2.4	0.02
0.87	23660	48.17	49.04	competant calc-silicate	0.00	0.000	0.1	
1.50	23661	49.04	50.54	heavy mineralization	1.87	0.042	4.6	0.03
1.50	23662	50.54	52.04	competant calc-silicate with fault + vis Cpy	1.93	0.028	11.3	0.08
1.50	23663	52.04	53.54	competant calc-silicate with veinlet and int cpy	2.33	0.015	7.1	0.07
1.50	23664	53.54	55.04	magn vein	1.10	0.054	5.8	0.06
1.27	23665	55.04	56.31	int bor + cpy + moly	1.87	0.060	11.8	0.21
1.26	23666	56.31	57.57	competant calc-silicate with veinlets	2.91	0.094	20.2	0.27
0.34	23667	57.57	57.91	heavy mineralization cpy	4.71	0.188	12.6	0.27
0.46	23668	57.91	58.37	2dm unmin	4.13	0.309	25.9	0.27
1.73	23669	58.37	60.1	competant calc-silicate	1.18	0.044	3.7	0.07
1.86	23670	60.1	61.96	competant calc-silicate ending with fault +cpy	1.93	0.066	5.7	0.12
1.33	23671	61.96	63.29	competant calc-silicate with fault	2.21	0.040	5.3	0.07
1.26	23672	63.29	64.55	cpy veinlets and moly	1.91	0.068	8.9	0.22
2.02	23673	64.55	66.57	Fault, int cpy then fault with meta diorite	2.89	0.118	10.4	0.41
1.33	23674	66.57	67.9	start of calc-Silicate, magn +cpy +moly in veinlet (3ge)	1.05	0.066	4.0	0.06
1.33	23675	67.9	69.23	calc sil, + bor	1.51	0.072	7.1	0.18
1.20	23676	69.23	70.43	variably skarned 8a	2.83	0.121	17.6	0.50
1.20	23677	70.43	71.63	end os endo int. bor+cpy+moly, ends with fault	2.25	0.106	13.7	0.54
0.92	23678	71.63	72.55	8a/7 -- super rubbly faulted	2.07	0.009	14.0	0.49
1.50	23679	72.55	74.05	dead rock -- 9 -- flanks fault	0.03	0.001	0.3	

Note: Results are not complete for holes CP-145 to CP-160

Appendix C: Assay Certificates



ASSAYING, GEOCHEMISTRY
ANALYTICAL CHEMISTRY
ENVIRONMENTAL TESTING
ISO 9001 Accredited Co.

10041 Dallas Drive, Kamloops, BC V2C 6T4
Phone (250) 573-5700 Fax (250) 573-4557
E-mail: info@ecotechlab.com
www.ecotechlab.com


CERTIFICATE OF ASSAY AW 2008-8054

Yankee Hat Minerals Ltd
Suite 1010-789 W Pender St
Vancouver, BC
V6C 1H2

1-Jul-08

No. of samples received: 49
Sample Type: Core
Project : KHT-8525-YT
Submitted by: Lauren Blackburn

ET #.	Tag #	Au (g/t)	Au (oz/t)	Cu (%)	Mo (%)
3	7R23682	0.43	0.013	2.97	0.106
5	7R23684	<0.03	<0.001		0.029
6	7R23685	<0.03	<0.001		0.040
7	7R23686	<0.03	<0.001		0.076
10	7R23689	<0.03	<0.001		0.148
11	7R23690	0.03	0.001		0.101
12	7R23691	0.03	0.001		1.960
13	7R23692	<0.03	<0.001		0.468
14	7R23693	0.05	0.001	1.54	0.093
15	7R23694	<0.03	<0.001	0.76	
16	7R23695	<0.03	<0.001	0.62	
17	7R23696	<0.03	<0.001	1.18	0.029
18	7R23697	0.03	0.001	1.91	0.053
19	7R23698	<0.03	<0.001		0.085
20	7R23699	<0.03	<0.001		0.094
21	7R23700	<0.03	<0.001	0.70	0.097
22	7R55501	<0.03	<0.001	0.53	
24	7R55503	<0.03	<0.001	0.87	
25	7R55504	<0.03	<0.001	1.62	
26	7R55505	<0.03	<0.001	1.61	
27	7R55506	<0.03	<0.001	3.54	
28	7R55507	<0.03	<0.001	0.57	0.104
29	7R55508	<0.03	<0.001	0.71	
30	7R55509	<0.03	<0.001	0.50	0.036




ECO TECH LABORATORY LTD.
Jutta Jealouse
B.C. Certified Assayer

Yankee Hat Minerals Ltd AW8-8054

1-Jul-08

ET #.	Tag #	Au (g/t)	Au (oz/t)	Cu (%)	Mo (%)
31	7R55510	0.07	0.002	1.17	0.058
32	7R55511	0.10	0.003	1.21	0.091
33	7R55512	0.05	0.001	1.22	0.071
34	7R55513	0.03	0.001		
35	7R55514	<0.03	<0.001		0.118
36	7R55515	0.12	0.003	2.11	
37	7R55516	0.08	0.002	2.86	
38	7R55517	0.06	0.002	3.52	0.043
39	7R55518	0.08	0.002	1.85	
Repeat:					
3	7R23682	0.39	0.011	2.92	0.110
19	7R23698	<0.03	<0.001		0.085
22	7R55501			0.54	
23	7R55502				
36	7R55515	0.12	0.003	2.11	
Resplit:					
1	7R23680	<0.03	<0.001		
36	7R55515	0.15	0.004		
Standard:					
	OXI67	1.80	0.052		
	OXI67	1.83	0.053		
	MP2				0.279
	MP2				0.281
	Cu120			1.51	

JJ/nw
XLS/07


ECO TECH LABORATORY LTD.
 Jutta Jealous
 B.C. Certified Assayer



ASSAYING, GEOCHEMISTRY
ANALYTICAL CHEMISTRY
ENVIRONMENTAL TESTING
ISO 9001 Accredited Co.

10041 Dallas Drive, Kamloops, BC V2C 6T4
Phone (250) 573-5700 Fax (250) 573-4557
E-mail: info@ecotechlab.com
www.ecotechlab.com

CERTIFICATE OF ASSAY AW 2008-8037

Yankee Hat Minerals Ltd
Suite 1010-789 W Pender St
Vancouver, BC
V6C 1H2

17-Jun-08

No. of samples received: 5
Sample Type: Rock
Submitted by: Burry

ET #.	Tag #	Au (g/t)	Au (oz/t)	Cu (%)
2	7R23702	0.76	0.022	0.64
3	7R23703	3.00	0.087	2.08
4	7R23704	1.30	0.038	1.03
5	7R23705	1.29	0.038	1.04

QC DATA:

Repeat:

3 7R23703 3.13 0.091

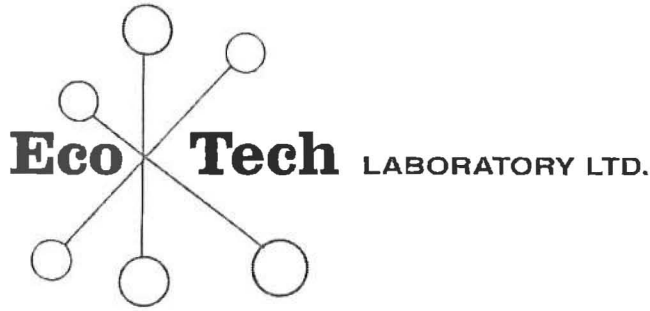
Standard:

Cu120 1.52
OXI67 1.82 0.053

JJ/nw
XLS/07



ECO TECH LABORATORY LTD.
Jutta Jealous
B.C. Certified Assayer



ASSAYING, GEOCHEMISTRY
ANALYTICAL CHEMISTRY
ENVIRONMENTAL TESTING
ISO 9001 Accredited Co.

10041 Dallas Drive, Kamloops, BC V2C 6T4
Phone (250) 573-5700 Fax (250) 573-4557
E-mail: info@ecotechlab.com
www.ecotechlab.com

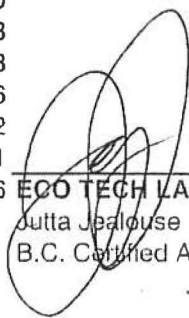
CERTIFICATE OF ASSAY AW 2008-8029

Yankee Hat Minerals Ltd
Suite 1010-789 W Pender St
Vancouver, BC
V6C 1H2

13-Jun-08

No. of samples received: 37
Sample Type: Core
Project : KHT-8525-YT
Submitted by: Lauren Blackburn

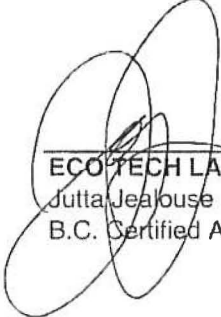
ET #.	Tag #	Au (g/t)	Au (oz/t)	Cu (%)	Mo (%)
1	7R23634	<0.03	<0.001	3.77	
6	7R23639	0.05	0.001	2.17	
7	7R23640	<0.03	<0.001	1.73	
8	7R23641	<0.03	<0.001	1.39	
9	7R23642	0.03	0.001	0.64	
11	7R23644	0.08	0.002	1.62	
12	7R23645	0.07	0.002	2.46	
13	7R23646	<0.03	<0.001	1.95	
14	7R23647	0.04	0.001	1.95	0.030
15	7R23648	<0.03	<0.001	1.02	
16	7R23649	<0.03	<0.001	0.88	
17	7R23650	<0.03	<0.001	0.53	
19	7R23661	0.03	0.001	1.87	0.042
20	7R23662	0.08	0.002	1.93	
21	7R23663	0.07	0.002	2.33	
22	7R23664	0.06	0.002	1.10	0.054
23	7R23665	0.21	0.006	1.87	0.060
24	7R23666	0.27	0.008	2.91	0.094
25	7R23667	0.27	0.008	4.71	0.188
26	7R23668	0.27	0.008	4.13	0.309
27	7R23669	0.07	0.002	1.18	0.044
28	7R23670	0.12	0.003	1.93	0.066
29	7R23671	0.07	0.002	2.21	0.040
30	7R23672	0.22	0.006	1.91	0.068
31	7R23673	0.41	0.012	2.89	0.118
32	7R23674	0.06	0.002	1.05	0.066
33	7R23675	0.18	0.005	1.51	0.072
34	7R23676	0.50	0.015	2.83	0.121
35	7R23677	0.54	0.016	2.25	0.106
36	7R23678	0.49	0.014	2.07	



Jutta Jealous
B.C. Certified Assayer

ET #.	Tag #	Au (g/t)	Au (oz/t)	Cu (%)	Mo (%)
QC DATA:					
Repeat:					
1	7R23634			3.69	
19	7R23661			1.89	
28	7R23670			1.91	0.065
31	7R23673	0.41	0.012		
35	7R23677	0.48	0.014		
Standard:					
	OxI67	1.86	0.054		
	Cu120			1.52	
	MP2				0.282
	MP2				0.280

JJ/nw
XLS/07



ECOTECH LABORATORY LTD.
Jutta Jealous
B.C. Certified Assayer



ASSAYING, GEOCHEMISTRY
ANALYTICAL CHEMISTRY
ENVIRONMENTAL TESTING
ISO 9001 Accredited Co.

10041 Dallas Drive, Kamloops, BC V2C 6T4
Phone (250) 573-5700 Fax (250) 573-4557
E-mail: info@ecotechlab.com
www.ecotechlab.com

CERTIFICATE OF ASSAY AW 2008-8020

Yankee Hat Minerals Ltd
Suite 1010-789 W Pender St
Vancouver, BC
V6C 1H2

10-Jun-08

No. of samples received: 8
Sample Type: Core
Project : KHT-8525-YT
Submitted by: Lauren Blackburn


ET #.	Tag #	Mo (%)
2	7R23653	0.052

QC DATA:

Repeat:
2 7R23653 0.051

Standard:
MP2 0.280

JJ/dc
XLS/07


ECO TECH LABORATORY LTD.
Julia Jealouse
B.C. Certified Assayer



ASSAYING, GEOCHEMISTRY
ANALYTICAL CHEMISTRY
ENVIRONMENTAL TESTING
ISO 9001 Accredited Co.

10041 Dallas Drive, Kamloops, BC V2C 6T4
Phone (250) 573-5700 Fax (250) 573-4557
E-mail: info@ecotechlab.com
www.ecotechlab.com

CERTIFICATE OF ASSAY AW 2008-8018

Yankee Hat Minerals Ltd
Suite 1010-789 W Pender St
Vancouver, BC
V6C 1H2

6-Jun-08

No. of samples received: 5
Sample Type: Core
Project : KHT-8525-YT
Submitted by: Lauren Blackburn

ET #.	Tag #	Au (g/t)	Au (oz/t)	Cu (%)	Mo (%)
1	7R23622	0.04	0.001		0.064
2	7R23623	0.07	0.002	1.14	0.064
3	7R23624	0.07	0.002	1.10	0.063
4	7R23625	0.11	0.003	2.68	0.120
5	7R23626	0.11	0.003	4.36	0.100

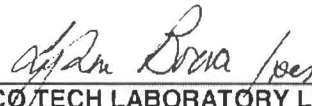
QC DATA:

Repeat:
4 7R23625 0.15 0.004

Standard:

Cu120 1.52
OXI67 1.82 0.053
MP2 0.283

JJ/nw
XLS/07


ECO TECH LABORATORY LTD.
Julia Jealouse
B.C. Certified Assayer



ASSAYING, GEOCHEMISTRY
ANALYTICAL CHEMISTRY
ENVIRONMENTAL TESTING
ISO 9001 Accredited Co.

10041 Dallas Drive, Kamloops, BC V2C 6T4
Phone (250) 573-5700 Fax (250) 573-4557
E-mail: info@ecotechlab.com
www.ecotechlab.com

CERTIFICATE OF ASSAY AW 2008-8017

Yankee Hat Minerals Ltd
Suite 1010-789 W Pender St
Vancouver, BC
V6C 1H2

6-Jun-08

No. of samples received: 10
Sample Type: Core
Project : KHT-8525-YT
Submitted by: Lauren Blackburn

ET #.	Tag #	Au (g/t)	Au (oz/t)	Ag (g/t)	Ag (oz/t)	Cu (%)	Mo (%)	Zn (%)
1	7R3611	0.08	0.002			7.96	0.121	
2	7R3612	0.03	0.001			2.37	0.322	
3	7R3613	0.21	0.006			2.65	0.390	
4	7R3614	0.03	0.001			8.37		
5	7R3616	<0.03	<0.001					2.46
6	7R3617	<0.03	<0.001					
9	7R3620	0.05	0.001			1.11		
10	7R3621	<0.03	<0.001	324	9.449	47.1	0.038	

QC DATA:

Repeat:

1	7R3611			26.0	0.758		0.118	0.06
3	7R3613	0.23	0.007					
10	7R3621							0.04

Standard:

Cu120						1.53		
MP2							0.285	
Pb129				24.7	0.720			1.99
OXD57		0.42	0.012					

Julia Jealouse
ECO TECH LABORATORY LTD.
 Julia Jealouse
 B.C. Certified Assayer

JJ/nw/dc
XLS/07



ASSAYING, GEOCHEMISTRY
ANALYTICAL CHEMISTRY
ENVIRONMENTAL TESTING
ISO 9001 Accredited Co.

10041 Dallas Drive, Kamloops, BC V2C 6T4
Phone (250) 573-5700 Fax (250) 573-4557
E-mail: info@ecotechlab.com
www.ecotechlab.com

CERTIFICATE OF ASSAY AW 2008-8094

Yankee Hat Minerals Ltd
Suite 1010-789 W Pender St
Vancouver, BC
V6C 1H2

21-Jul-08

No. of samples received: 29
Sample Type: Core
Project : **KHT-8525-YT**
Submitted by: Lauren Blackburn

ET #.	Tag #	Au (g/t)	Au (oz/t)	Cu (%)	Mo (%)
6	7R55535	<0.03	<0.001	0.53	
7	7R55536	<0.03	<0.001	1.47	
8	7R55537	<0.03	<0.001	2.24	
9	7R55538	<0.03	<0.001	0.81	
10	7R55539	<0.03	<0.001	1.08	
12	7R55541	<0.03	<0.001		0.275
14	7R55543	0.08	0.002	0.73	0.104
15	7R55544	0.13	0.004	1.28	0.246
16	7R55545	0.18	0.005	2.99	
17	7R55546	0.12	0.003	1.44	
20	7R55549	0.07	0.002		0.041
21	7R55550	<0.03	<0.001	1.20	
22	7R55551	<0.03	<0.001		0.035
23	7R55552	<0.03	<0.001	0.94	
24	7R55553	<0.03	<0.001	0.53	
26	7R55555	0.03	0.001		0.394
28	7R55557	<0.03	<0.001		0.102
29	7R55558	<0.03	<0.001		0.137


QC DATA:

Repeat:

12	7R55541				0.273
15	7R55544			1.29	
17	7R55546				0.028

ET #.	Tag #	Au (g/t)	Au (oz/t)	Cu (%)	Mo (%)
Standard:					
	Cu120			1.53	
	MP2				0.280
	MP2				0.283
	OXI67	1.84	0.054		

JJ/nw
XLS/07



ECO TECH LABORATORY LTD.
Jutta Jealous
B.C. Certified Assayer

Appendix D: IP Profiles

Figure 10. IP Survey Line Locations

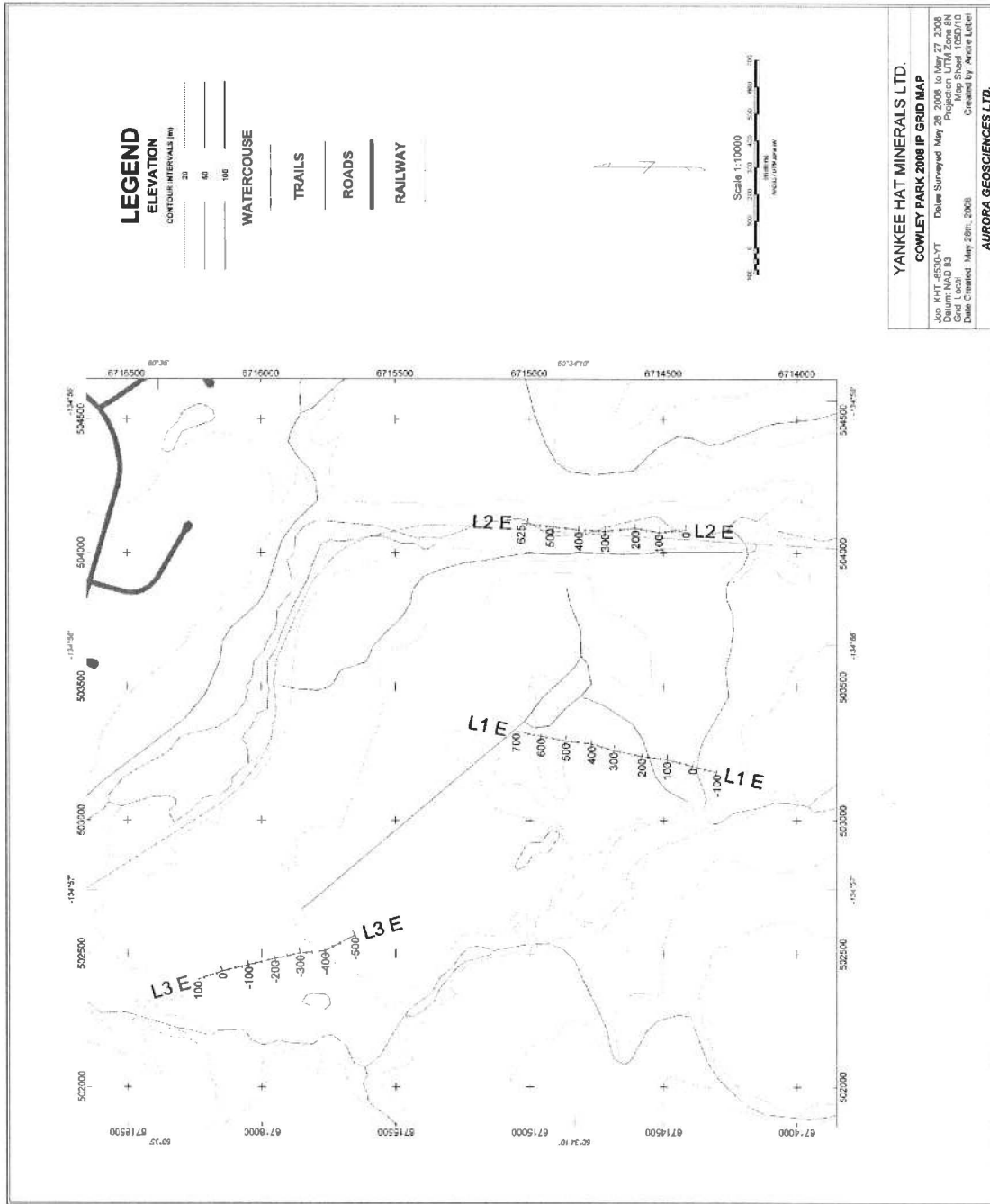
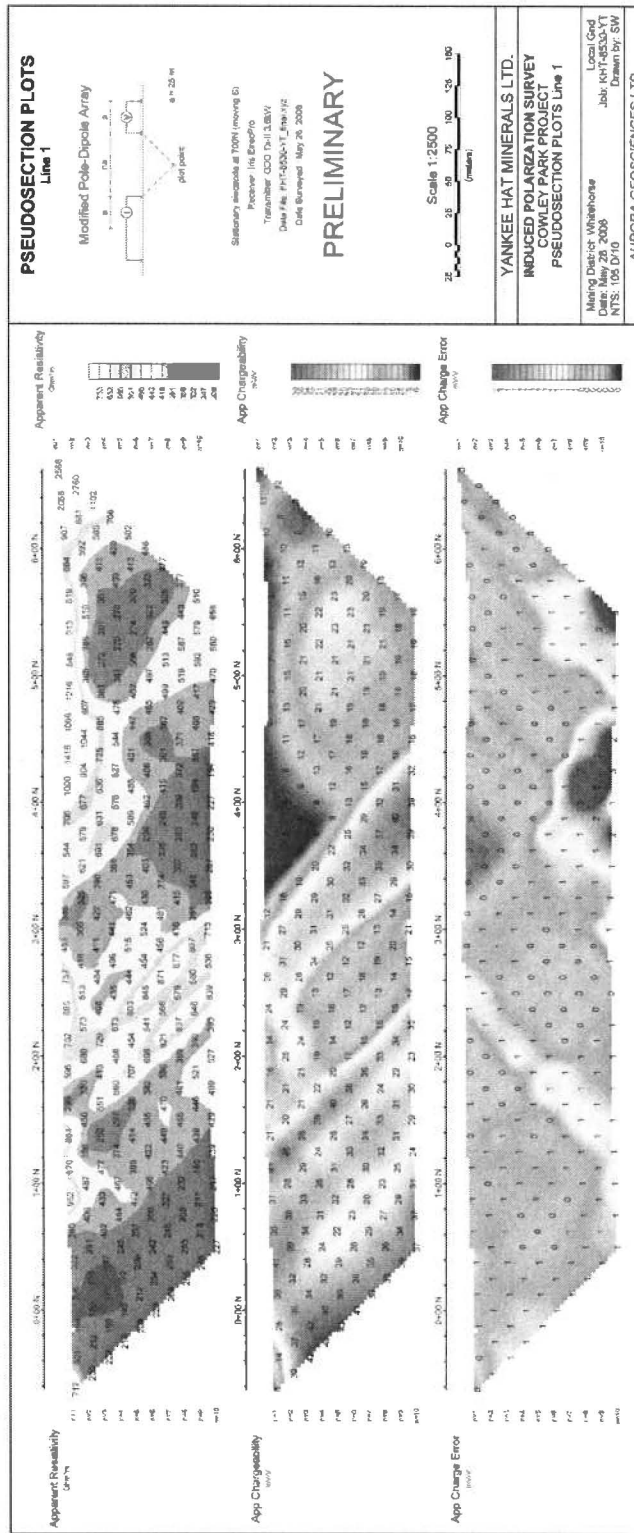


Figure 11. IP Survey Pseudosection Plot Line 1



Appendix E: Selected Bedrock Unit Descriptions
(After Gordey & Makepeace, 2000)

Quaternary	<p>Q: QUATERNARY unconsolidated glacial, glaciofluvial and glaciolacustrine deposits; fluviatile silt, sand, and gravel, and local volcanic ash, in part with cover of soil and organic deposits</p>
Miocene to Pliocene	<p>MPMC: MILES CANYON dark red to brown weathering, columnar jointed olivine basalt flows, commonly amygdaloidal and vesicular; ultramafic xenoliths (Miles Canyon Basalt)</p>
Early Tertiary	<p>ETN: NISLING RANGE SUITE medium to coarse grained equigranular to porphyritic rocks of intermediate composition (g), fine to coarse grained, equigranular and porphyritic granitic rocks of felsic composition (q) and felsic dyke rocks (f)</p> <p>f. orange and buff weathering light-coloured feldspar porphyry dyke and flow rocks of intermediate to acid composition</p> <p>g. biotite-hornblende granodiorite (locally K-feldspar megacrysts), quartz monzonite, quartz diorite; minor granodiorite-gneiss; hornblende and biotite hornblende diorite; biotite quartz feldspar porphyry and porphyritic biotite quartz monzonite (e.g., Ruby Range Suite)</p> <p>q. leucocratic, biotite granite; miarolitic alaskite; saccharoidal textured, mafic-poor biotite granite; biotite-hornblende granite to leucocratic granodiorite with sparse, white, alkali feldspar phenocrysts; biotite quartz monzonite (e.g., Nisling Range Suite, Nisling Range Alaskite, Coffee Creek Granite, Annie Ned Granite)</p>

Mid-Cretaceous	<p>mKW: WHITEHORSE SUITE grey, medium to coarse grained, generally equigranular granitic rocks of felsic (q), intermediate (g), locally mafic (d) and rarely syenitic (y) composition</p> <p>d. hornblende diorite, biotite-hornblende quartz diorite and mesocratic, often strongly magnetic, hypersthene-hornblende diorite, quartz diorite and gabbro (e.g., Whitehorse Suite, Coast Intrusions)</p> <p>g. biotite-hornblende granodiorite, hornblende quartz diorite and hornblende diorite; leucocratic, biotite hornblende granodiorite locally with sparse grey and pink potassium feldspar phenocrysts (e.g., Whitehorse Suite, Casino granodiorite, McClintock granodiorite, Nisling Range granodiorite)</p> <p>q. biotite quartz-monzonite, biotite granite and leucogranite, pink granophyric quartz monzonite, porphyritic biotite leucogranite, locally porphyritic (K-feldspar) hornblende monzonite to syenite, and locally porphyritic leucocratic quartz monzonite (e.g., Mt. McIntyre Suite, Whitehorse Suite, Casino Intrusions, Mt. Ward Granite, Coffee Creek Granite)</p> <p>y. hornblende syenite, grading to granite or granodiorite (e.g., Whitehorse Suite)</p>
Lower to Middle Jurassic	<p>JL: LABERGE poorly sorted, medium bedded to massive arkosic sandstone and minor shale with interbeds and thick members of resistant heterolithic pebble and boulder conglomerate; recessive, dark brown weathering, thin bedded, dark brown to greenish, silty shale (e.g., Laberge Gp.)</p>

Upper Triassic	<p>uTrAK: AKSALA mixed clastic-carbonate assemblage divisible into three dominant facies including calcareous greywacke (1), locally thick carbonate (2) and red-coloured clastics (3) (Aksala)</p> <ol style="list-style-type: none"> 1. brown shale, black and minor red siltstone, greenish, calcareous greywacke and interbedded bioclastic, argillaceous limestone; igneous- or limestone-clast pebble and cobble conglomerate; lahaaric debris flows; rare feldspar-augite porphyry flows (Casca mb. of Aksala) 2. massive to thick bedded limestone; minor thin bedded argillaceous to sooty limestone; coarsely crystalline, massive dolostone; minor laminated chert; massive to poorly bedded, limestone conglomerate debris flows and fanglomerate (Hancock mb. of Aksala) 3. red weathering, medium bedded, green and red greywacke and pebble conglomerate; red shale partings and minor interbedded, red, bioturbated siltstone; crystal-rich greywacke and shale; coarse-grained, tan to brown, massive, lithic arenite (Mandanna mb. of Aksala)
----------------	--