

GEOCHEMICAL

REPORT

TIN CLAIMS

21 - 28
YC26956 - YC26963

45 - 58
YC26980 - YC26993

61 - 64
YC26996 - YC26999

71 - 90
YC60699 - YC60718

NTS # 116 B \ 03

LAT: 64° 01' N

LONG: 139° 04' W

DAWSON MINING DISTRICT

AUTHOR OF REPORT SHAWN RYAN

WORK PERFORMED JULY 27 - 28, 2008

DATE OF REPORT OCTOBER 21, 2009

TABLE OF CONTENT

SUMMARY	P.3
1.0 INTRODUCTION	P.3
2.0 LOCATIONS AND ACCESS	P.3
3.0 PROPERTY DESCRIPTION	P.3
4.0 PHYSIOGRAPHY	P.3
5.0 REGIONAL AND PROPERTY GEOLOGY	P.4
5.1 PROPERTY GEOLOGY	P.4
6.0 WORK PROGRAM / METHODS	P.4
6.1 SOIL WORK	P.4
7.0 INTERPRETATION	P.4
7.1 SOIL WORK	P.4
8.0 RECOMMENDATION	P.5
9.0 REFERENCES CITED	P.5
10.0 COST	P.5
11.0 QUALIFICATION	P.6
Geology Description	P.9 -10
Location Map	Figure 1
Geology / Claim Map	Figure 2
Tin Soil Location Map	Figure 3
Gold Soil Map	Figure 4
Arsenic Soil Map	Figure 5
Tin 04 - 08 Gold Map	Figure 6
Assay Data / Soil GPS Data	Appendix

SUMMARY

A two day soil survey was undertaken on July 27-28, 2008. A total of 129 soils where collected. The soil survey was targeting a gold anomaly identified in a previous soil survey. The 2008 soil survey help define a 500 meter by 300 meter gold soil anomaly.

1.0 INTRODUCTION

The Tin 21 - 28 YC26956 - YC26963, Tin 45 - 58 YC26980 - YC 26993, Tin 61 - 64 YC26996 - YC 26999, Tin 71 - 90 YC60699 - YC 60718 claims will be renewed for one years.

2.0 LOCATIONS AND ACCESS

The Tin claims are located on NTS 116 B / 3 in the Dawson Mining District. The Property lies 4 kilometer up the Hunker Creek Road which is located 14 kilometers east of Dawson City, Yukon. Access is via pick up truck from Dawson City, Yukon.

3.0 PROPERTY DESCRIPTION

The Tin Property consists of 46 full Quartz mining claims, which are registered in the Dawson Mining District. The Property covers 930 hectares or 2300 acres.

4.0 PHYSIOGRAPHY

The property lies between the elevations of 440 meters and 740 meters. The entire property is covered with boreal forest vegetation such as white spruce and poplar on well-drained soil and black spruce on poorly drained frozen north facing slope.

5.0 REGIONAL AND PROPERTY GEOLOGY

5.1 PROPERTY GEOLOGY

The Tin Claims cover three different rock units. The three units consist of the oldest to youngest, Devonian to Mississippian unit one DMN1, graphitic quartzite and muscovite quartz rich schist, unit two CPA4, dunite, peridotite, gabbro, pyroxenite, harzburgite and minor diorite, hornblendite and diabase; serpentinite. The third Unit is a lower Tertiary or Eocene Devonian and or Permian, a intrusive rhyolite which consist of a light coloured felsic quartz feldspar porphyry and rhyolite; minor acid tuff breccia, crystal lithic tuff and ignimbrite; quartz-feldspar porphyry stocks and dykes.

6.0 WORK PROGRAM / METHODS

The Tin claims seen four man days of soil work conducted with a contract soil sampling crew from Ryanwood Exploration. The Crew consists of Joe McCann, Chris Arsenault, Ben McGrath, and Andy Crowthers. In total there was 128 soil sample collected.

6.1 SOIL WORK

The soil work consists of soil sampling with soil augers at an average depth of 60 centimeter. Soil sample where place in Kraft soil bags with sample numbers marked on the bags. A sample description of the color, depth, slope, and horizon and UTM location was noted in field notes. A Garmin 76 GPS was used to get the exact UTM location. All GPS soil sample location where electronically downloaded every evening back in town. Soil sample where taken at 50 meters intervals on soil traverse. All assay where process at the Acme Lab in Vancouver with Group 1DX: ICP - MS on 15 grams.

7.0 INTERPRETATION

7.1 SOIL WORK

The 2008 soil work indicated a moderate gold soil anomaly with values ranging from .025 to a high of 124.4 ppb Au. The regional background for gold on 35,000 plus soils in Klondike south area is 2.5 ppb Au. The 2008 soils had 38 samples assay between 5-10 ppb Au, 9 samples assay between 10-15 ppb Au, one sample assay between 15 - 25 ppb Au and 7 samples assay between 25 - 125 ppb Au.

8.0 RECOMMENDATION

I would recommend soil sampling a couple of more detail soil lines to the north-west and maybe another soil line to the south-east.

I would also recommended prospecting the gold anomaly area and if any interesting areas are found then I would conduct a small backhoe trenching program.

9.0 REFERENCES CITED

YTG Geology Map and Description

10.0 COST

Assay Cost 128 sample @ \$20.00 per sample	\$2,838.00
Wage 6 man day @ \$330.00 per day	\$1,980.00
Truck + gas 2 day @ \$200.00	\$400.00
Report Writing	\$500.00

Total	\$5,718.00

11.0 QUALIFICATION

I, Shawn Ryan located in Dawson City, Yukon work as a professional prospector. I run a small exploration company located in Dawson city.

I have worked in the exploration business for the last 25 years. I worked the first 13 years as a contractor working on numerous projects in the NWT, Ontario, Quebec and the Yukon. I have worked for the last 12 years as a local prospector for myself.

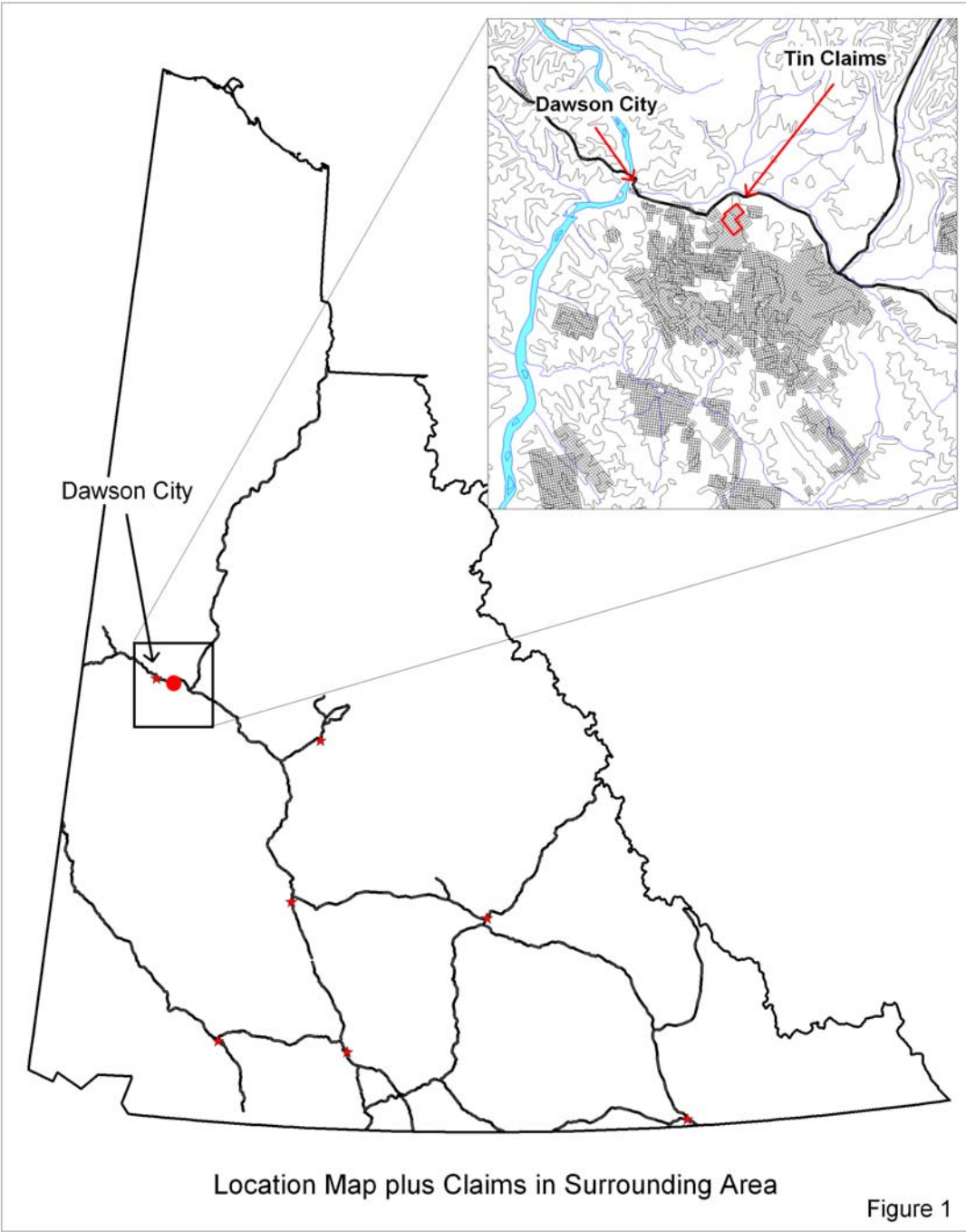
I have overseen the Tin soil Survey.

I own 100 % of the Tin claims.

Dated this 21th of October, 2009 in Dawson City, Yukon.

Respectfully submitted

Shawn Ryan



Claim Map



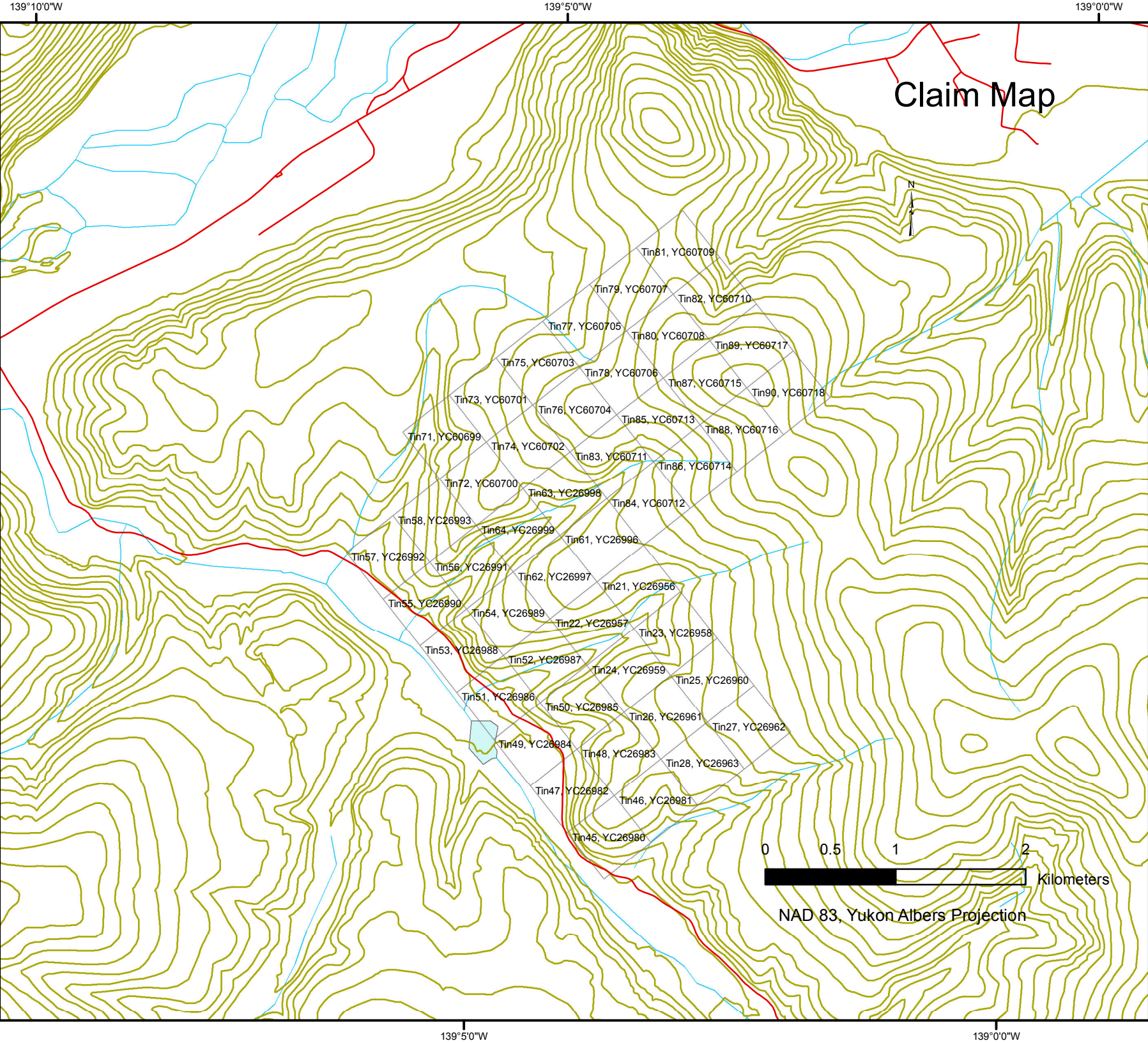
- Tin81, YC60709
- Tin79, YC60707
- Tin82, YC60710
- Tin77, YC60705
- Tin80, YC60708
- Tin89, YC60717
- Tin75, YC60703
- Tin78, YC60706
- Tin87, YC60715
- Tin90, YC60718
- Tin73, YC60701
- Tin76, YC60704
- Tin85, YC60713
- Tin88, YC60716
- Tin71, YC60699
- Tin74, YC60702
- Tin83, YC60711
- Tin86, YC60714
- Tin72, YC60700
- Tin63, YC26998
- Tin84, YC60712
- Tin58, YC26993
- Tin64, YC26999
- Tin61, YC26996
- Tin57, YC26992
- Tin56, YC26991
- Tin62, YC26997
- Tin21, YC26956
- Tin55, YC26990
- Tin54, YC26989
- Tin22, YC26957
- Tin23, YC26958
- Tin53, YC26988
- Tin52, YC26987
- Tin24, YC26959
- Tin25, YC26960
- Tin51, YC26986
- Tin50, YC26985
- Tin26, YC26961
- Tin27, YC26962
- Tin49, YC26984
- Tin48, YC26983
- Tin28, YC26963
- Tin47, YC26982
- Tin46, YC26981
- Tin45, YC26980



NAD 83, Yukon Albers Projection

64°00'N

64°00'N



139°10'0"W

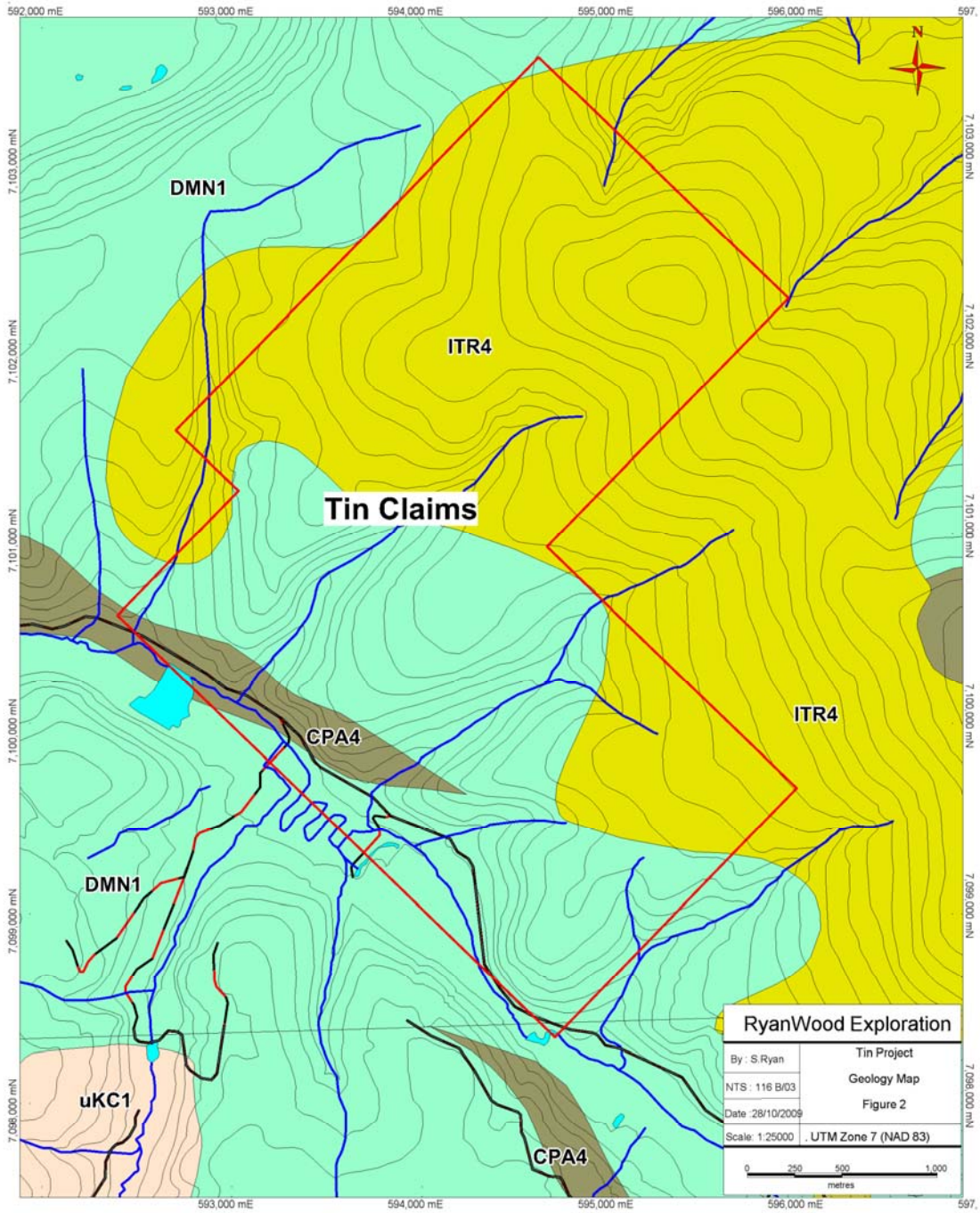
139°5'0"W

139°0'0"W

139°5'0"W

139°0'0"W

Tin YTG Geology Map



Tin Geology Description

LOWER TERTIARY, MOSTLY(?) EOCENE



ITR: ROSS

mixed bimodal volcanics (basalt (1), rhyolite (2)) and terrestrial clastics (3), dominantly along or near Tintina Fault; farther removed, scattered occurrences of rhyolitic lava and dikes (4) are also included

4. light coloured felsic quartz feldspar porphyry and rhyolite; minor acid tuff breccia, crystal lithic tuff and ignimbrite; quartz-feldspar porphyry stocks and dykes

UPPER CRETACEOUS

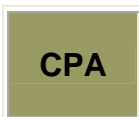


uKC: CARMACKS

a volcanic succession dominated by basic volcanic strata (1), but including felsic volcanic rocks dominantly (?) at the base of the succession (2) and locally, basal clastic strata (3) (70 ma approx)

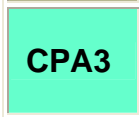
1. augite olivine basalt and breccia; hornblende feldspar porphyry andesite and dacite flows; vesicular, augite phyric andesite and trachyte; minor sandy tuff, granite boulder conglomerate, agglomerate and associated epiclastic rocks (**Carmacks Gp., Little Ridge Volcanics, Casino Volcanics**)

CARBONIFEROUS AND PERMIAN



CPA: ANVIL

dominantly oceanic assemblage of mafic volcanics (1), ultramafics (4), chert and pelite (2), limestone (3) and gabbroic rocks (5)



4. dunite, peridotite, gabbro, pyroxenite, harzburgite and minor diorite, hornblendite and diabase; serpentinite, orange weathering quartz carbonate rock with minor green chromian muscovite, talc-carbonate schist and carbonatized ultramafic rocks

CARBONIFEROUS AND PERMIAN

CPK
CPK2

CPK: KLONDIKE SCHIST

poorly understood assemblage of metamorphosed pelitic/volcanic rocks (1) and minor marble (2), including phyllite of uncertain association (3)

1. tan to rusty and black weathering muscovitic and/or chloritic quartzite and quartz-muscovite-chlorite schist; quartz and/or feldspar augen-bearing quartz-muscovite (+/-chlorite) schist; includes augen gneiss and amphibolite (**Klondike Schist**)

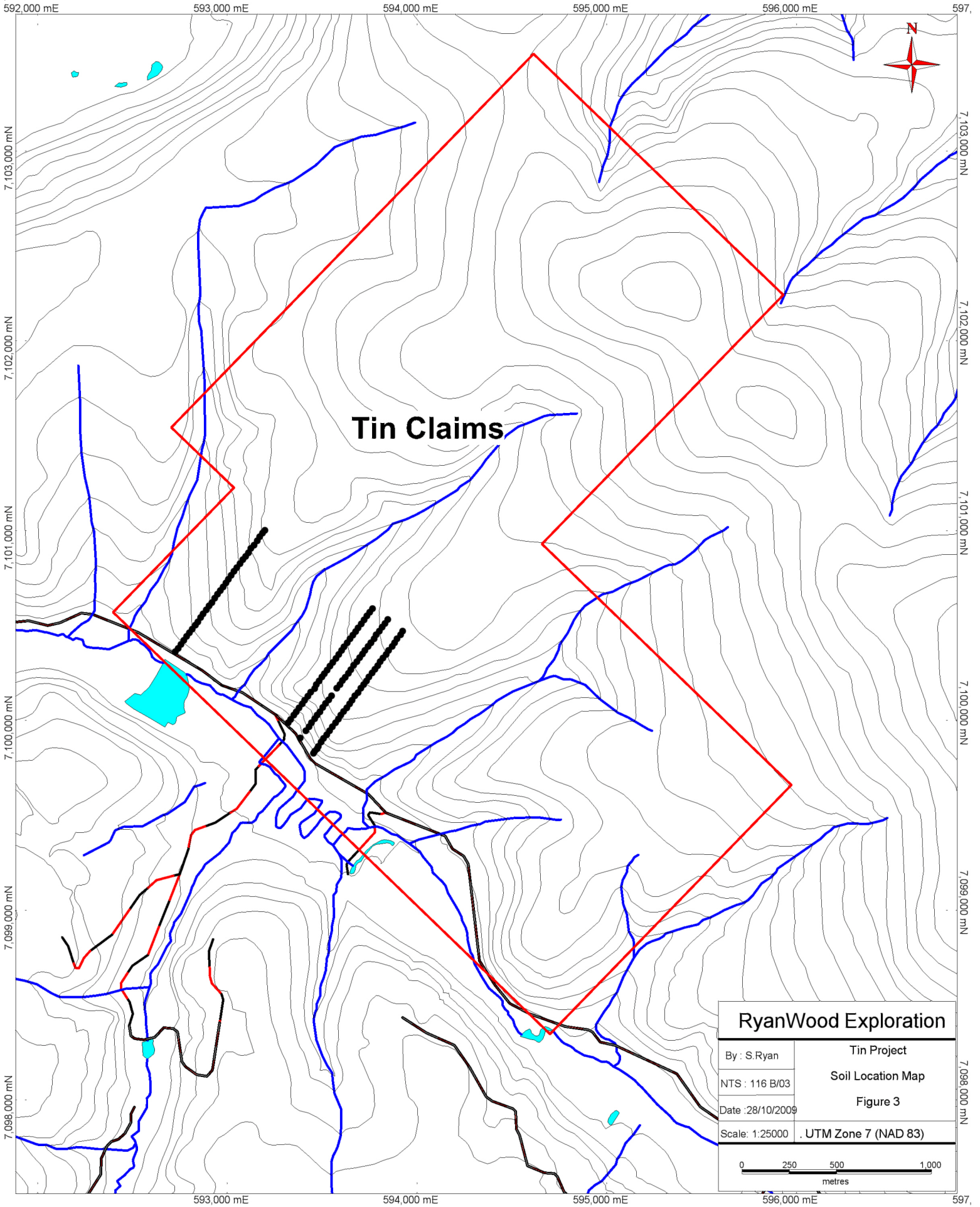
DEVONIAN, MISSISSIPPIAN AND(?) OLDER

DMN
DMN2

DMN: NASINA

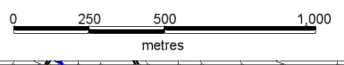
graphitic quartzite and muscovite quartz-rich schist (1), (3)-(5), and(?) (6) with interspersed marble (2) and probable correlative successions (7) - (9)

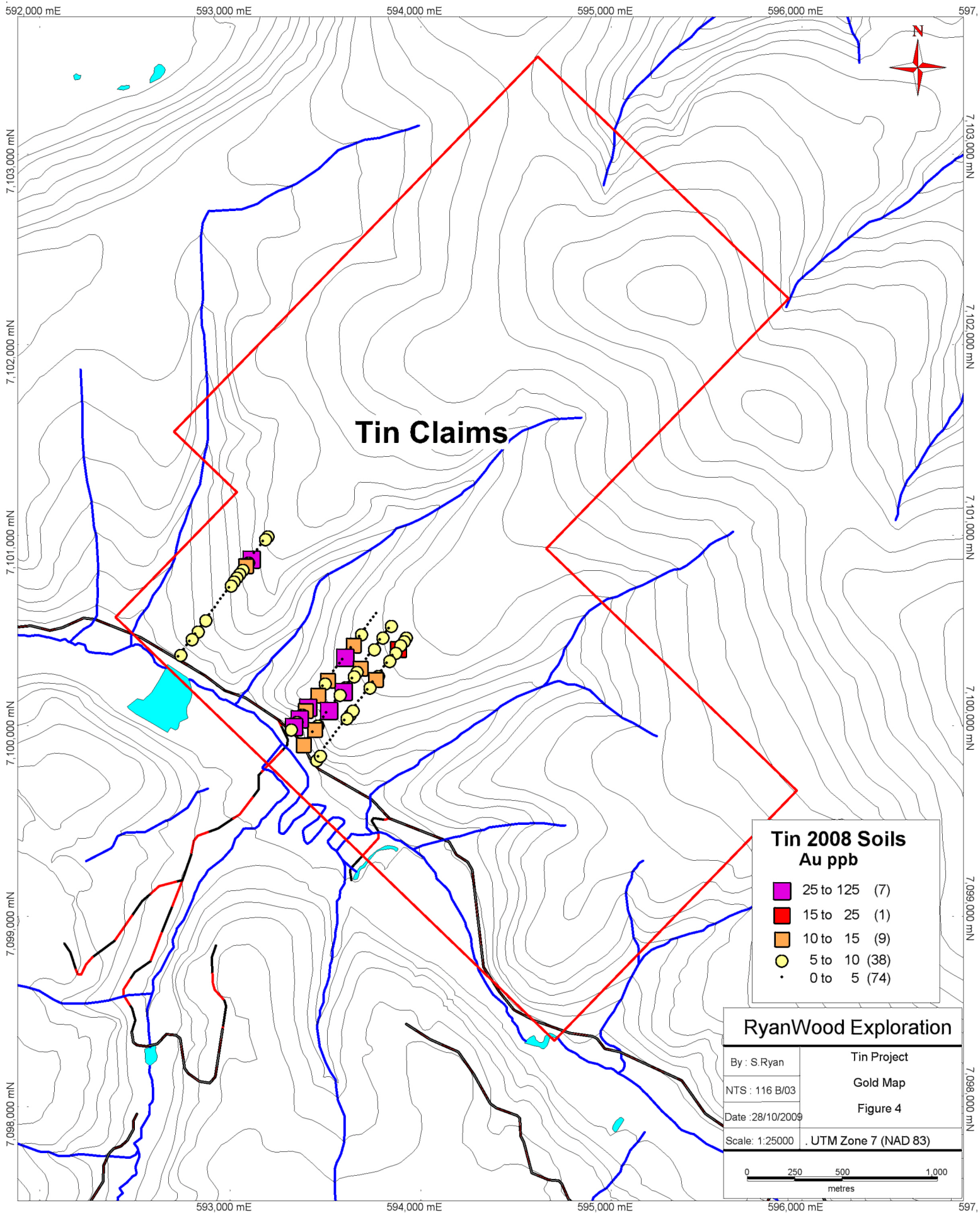
1. dark grey to black, fine grained graphitic and non-graphitic quartzite, grey micaceous quartzite and quartz muscovite (+/-chlorite; +/- feldspar augen) schist, locally garnetiferous; minor graphitic stretched metaconglomerate and metagrit (**Nasina assem.**)

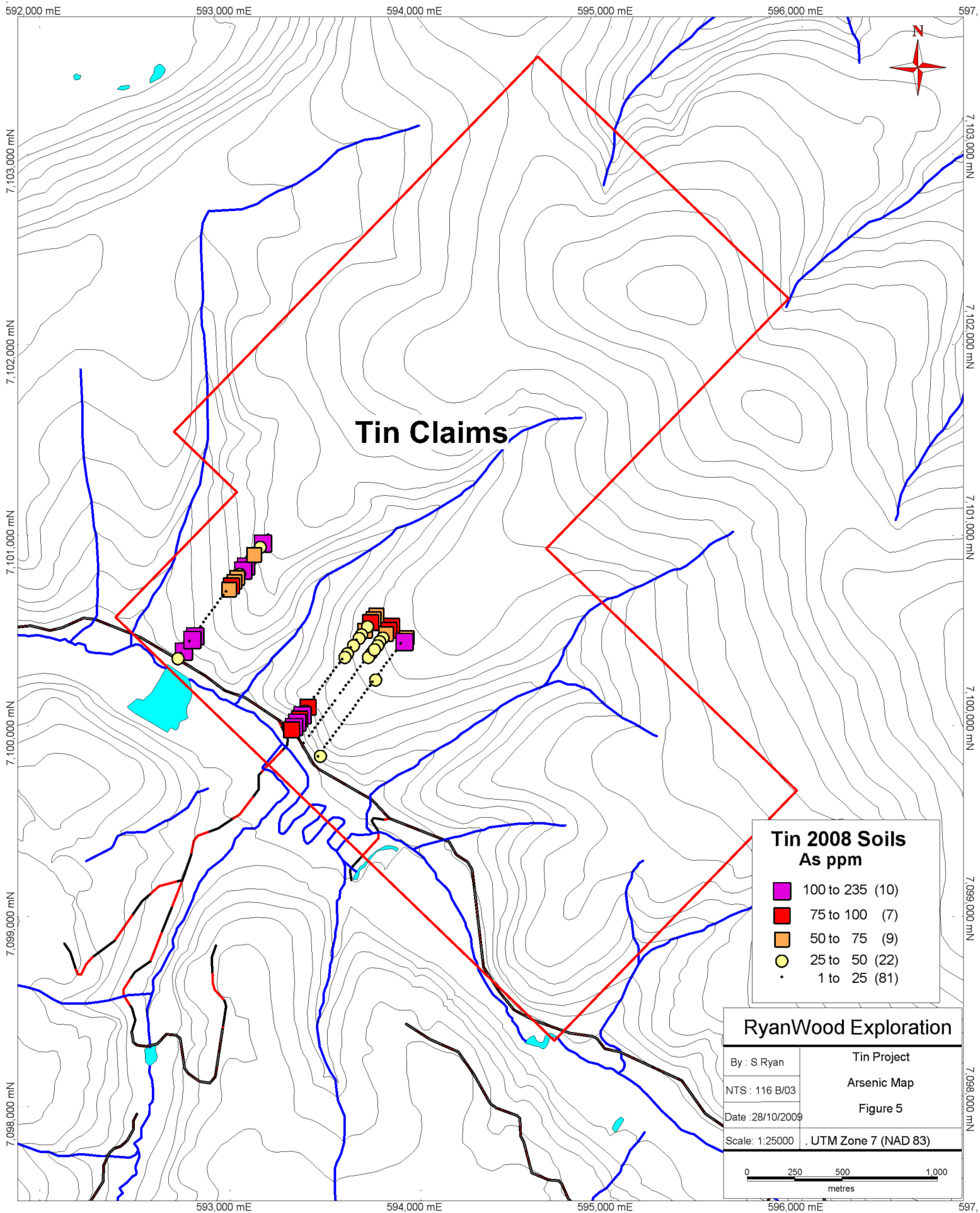


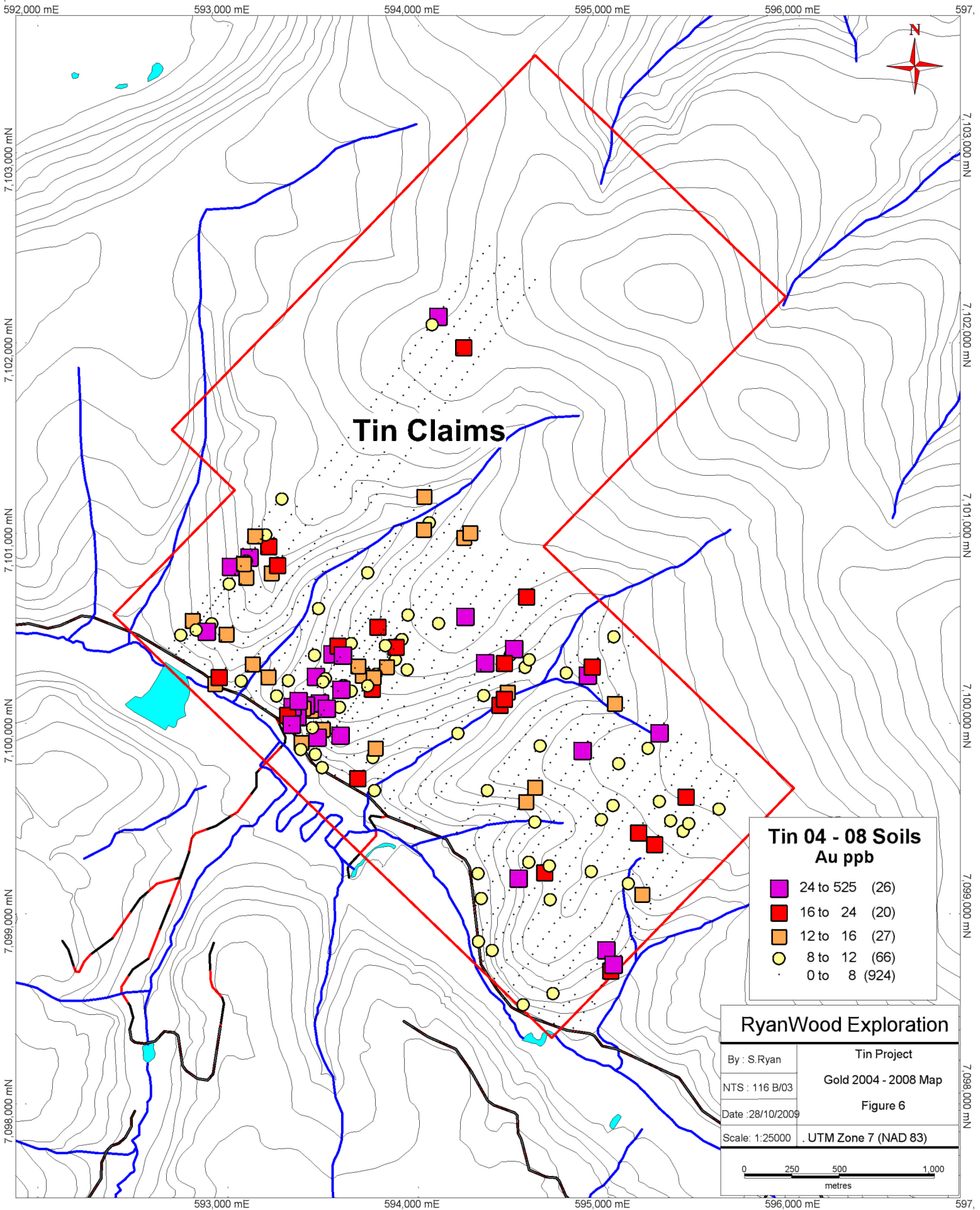
Tin Claims

RyanWood Exploration	
By : S.Ryan	Tin Project
NTS : 116 B/03	Soil Location Map
Date :28/10/2009	Figure 3
Scale: 1:25000	UTM Zone 7 (NAD 83)









Sample	UTM Zone	Easting	Northing	Mo	Cu	Pb	Zn	Ag	Ni	Co	Mn	Fe	As	U
TIN 31540	Nad 83-07W	592770	7100421	1.4	39.3	12.9	59	0.3	60.8	10.8	507	2.45	27.1	1.1
TIN 31541	Nad 83-07W	592756	7100401	1.2	32.4	10.6	60	0.1	295.6	23.4	524	2.63	127.7	1.2
TIN 31542	Nad 83-07W	592740	7100380	0.9	51.9	8.5	68	0.7	64.5	9.8	296	1.89	7.4	1.3
TIN 31543	Nad 83-07W	592726	7100362	6.8	98.1	45.4	159	0.6	74.8	17.9	596	3.85	34.5	1.7
TIN 31751	Nad 83-07W	593112	7100884	2.1	35	16.7	132	0.2	118	18.1	1084	4.82	35.2	1.3
TIN 31752	Nad 83-07W	593096	7100865	2.3	64.6	33.6	156	0.4	65.5	14	603	2.8	32.5	1
TIN 31753	Nad 83-07W	593082	7100846	4.4	107.2	33.5	170	0.9	49.2	11.5	520	2.77	133.3	1.5
TIN 31754	Nad 83-07W	593067	7100825	1.9	73.4	38.7	196	0.3	94.1	29.7	692	5.55	234.5	0.9
TIN 31755	Nad 83-07W	593051	7100805	3.3	62.2	36	152	0.3	53.9	19.6	653	4.38	34.3	1.6
TIN 31756	Nad 83-07W	593036	7100786	4.2	75	78.4	201	0.6	53.2	18.9	774	4.15	71	1.8
TIN 31757	Nad 83-07W	593021	7100764	2.9	73.9	22.4	159	0.3	40.5	15.4	816	3.91	59.4	1.7
TIN 31758	Nad 83-07W	593006	7100744	8.3	109.8	35.9	443	1	90.8	15.2	396	3.7	90.3	3.2
TIN 31759	Nad 83-07W	592993	7100724	3.7	60.2	39.1	162	0.7	94.1	14.1	378	3	73.1	1.2
TIN 31760	Nad 83-07W	592978	7100703	2	31.2	33.8	58	0.3	30	7.6	277	1.94	13.1	1.1
TIN 31761	Nad 83-07W	592963	7100685	2.4	18.1	46.3	54	0.3	17.6	2.8	137	1.01	13.1	1.6
TIN 31762	Nad 83-07W	592949	7100664	1	9.9	47	34	0.2	7.8	2	112	0.85	6.2	2.8
TIN 31763	Nad 83-07W	592933	7100644	1	22.9	21.1	54	0.05	18.3	7.2	299	1.91	9.1	1.1
TIN 31764	Nad 83-07W	592918	7100621	0.9	23	19.1	58	0.05	19.8	7.2	263	2.03	9.4	1
TIN 31765	Nad 83-07W	592904	7100603	1	24.3	31.4	50	0.1	19.3	6.4	240	1.87	9.6	1.1
TIN 31766	Nad 83-07W	592890	7100583	1.2	26.8	26	53	0.1	29.7	7.1	259	1.99	11.5	2.3
TIN 31767	Nad 83-07W	592872	7100561	1.1	30.5	23.6	60	0.2	25.8	8.5	365	2.26	11.1	2.5
TIN 31768	Nad 83-07W	592859	7100543	1.3	23	23.6	52	0.2	19	7.6	342	1.94	9.5	2.6
TIN 31769	Nad 83-07W	592845	7100520	1.3	21.6	30.1	57	0.2	20.1	6.6	239	2.07	9.7	2.3
TIN 31770	Nad 83-07W	593846	7100531	4.2	57.3	11	92	0.2	30.6	7.6	198	2.93	88.9	5
TIN 31771	Nad 83-07W	593830	7100511	2.7	53.8	11.4	80	0.2	33.6	9.3	263	2.99	86.2	3.2
TIN 31772	Nad 83-07W	593816	7100491	2.6	48.6	9.3	66	0.2	25	6.8	181	2.3	58.5	1.4
TIN 31773	Nad 83-07W	593801	7100471	2.1	59.3	13.1	66	0.3	25.8	8.4	244	2.65	43.1	8
TIN 31774	Nad 83-07W	593785	7100451	2.1	38.4	10.3	64	0.3	24.4	5.6	186	2.27	41.4	2.1
TIN 31775	Nad 83-07W	593773	7100430	2.2	36.6	7.4	65	0.05	22.2	4.9	145	1.94	42	1.9
TIN 31776	Nad 83-07W	593757	7100409	2	52.1	8.9	75	0.3	45.4	15.1	555	2.78	44.1	1.5
TIN 31777	Nad 83-07W	593741	7100390	2.2	49.3	11.1	55	0.3	27.3	7.5	300	2.66	48.7	2.8
TIN 31778	Nad 83-07W	593726	7100369	1.6	41.3	9.6	53	0.2	25.4	8.7	342	2.63	41.3	2.8
TIN 31779	Nad 83-07W	593712	7100349	0.2	109.6	1.6	72	0.05	9.9	13.8	652	3.55	4.6	0.7
TIN 31780	Nad 83-07W	593698	7100330	0.2	78	3.1	55	0.05	9.2	8.7	332	2.4	2.2	1
TIN 31781	Nad 83-07W	593682	7100309	0.4	68.1	5.2	60	0.05	8.4	9.3	494	2.9	6.2	1.2
TIN 31782	Nad 83-07W	593666	7100290	3.3	75.6	10.6	142	0.05	34.9	4.2	101	2.33	14.9	2.1
TIN 31783	Nad 83-07W	593652	7100268	1.8	65.4	8	96	0.05	27.1	5.4	228	2.45	12.3	1.4
TIN 31784	Nad 83-07W	593639	7100249	3.4	50.6	6.3	69	0.05	19.4	4.2	199	1.81	16.9	1
TIN 31785	Nad 83-07W	593622	7100228	2.8	134.1	8.1	208	0.2	50.2	9.3	245	3.01	19.5	3.4
TIN 31786	Nad 83-07W	593606	7100209	3.5	98.9	12.8	116	0.9	35.4	10	400	2.68	17.6	4.2
TIN 31787	Nad 83-07W	593593	7100189	3.5	75	8.7	175	0.6	53.1	8.1	246	2.04	20.4	2.5
TIN 31788	Nad 83-07W	593577	7100170	2.3	68.6	11.5	124	0.2	43.5	10.3	349	3.05	21	5.6
TIN 31790	Nad 83-07W	593550	7100129	1.6	14	13.5	50	0.05	25.1	6.6	174	1.56	7.4	1

Sample	Au	Th	Sr	Cd	Sb	Bi	V	Ca	P	La	Cr	Mg	Ba	Ti	B
TIN 31540	2.8	5.1	34	0.05	0.9	0.2	40	0.33	0.019	19	45	0.46	494	0.024	2
TIN 31541	3.2	3.8	182	0.3	0.9	0.1	42	6.13	0.038	10	452	3.2	299	0.026	3
TIN 31542	5	4.6	46	0.1	0.4	0.1	13	0.93	0.022	15	12	0.36	312	0.003	3
TIN 31543	3.3	12.7	32	0.7	0.5	0.7	47	0.34	0.04	33	45	1.53	240	0.001	2
TIN 31751	57.7	4.6	54	0.4	0.5	0.1	31	1.35	0.097	24	54	0.52	395	0.015	2
TIN 31752	9.5	7	53	0.8	0.8	0.3	27	1.89	0.082	27	24	0.38	362	0.004	3
TIN 31753	14.2	4.5	63	2.8	2.9	0.2	54	2.43	0.121	16	21	0.47	472	0.01	2
TIN 31754	6	3.7	80	1.2	1	0.1	75	1.69	0.16	23	73	0.44	910	0.005	4
TIN 31755	5.8	4.6	39	1.4	1.2	0.2	70	0.5	0.096	21	44	0.33	604	0.022	3
TIN 31756	7.1	4.1	53	2.5	1.7	0.2	65	0.74	0.106	19	36	0.37	584	0.023	2
TIN 31757	5.8	3.5	40	0.6	1.3	0.2	58	0.52	0.074	17	25	0.27	939	0.007	2
TIN 31758	8.5	3	91	2.9	3.4	0.2	79	0.34	0.106	13	50	0.21	637	0.009	2
TIN 31759	4	5.6	64	0.7	1.1	0.3	54	0.8	0.046	17	58	0.39	526	0.013	2
TIN 31760	2.3	8	30	0.2	1	0.3	32	0.39	0.028	21	26	0.4	363	0.018	2
TIN 31761	2.1	10.4	22	0.3	0.4	0.3	10	0.39	0.015	48	7	0.16	343	0.003	2
TIN 31762	1.7	17.4	15	0.5	0.4	0.3	9	0.21	0.017	58	7	0.13	319	0.004	2
TIN 31763	1.4	7.5	25	0.2	0.9	0.2	30	0.38	0.043	21	18	0.38	371	0.024	6
TIN 31764	3.2	5.2	23	0.2	0.9	0.2	32	0.31	0.042	18	20	0.41	380	0.028	2
TIN 31765	2.8	9.3	21	0.2	0.8	0.2	30	0.25	0.041	22	18	0.38	340	0.027	1
TIN 31766	0.9	9.5	26	0.1	0.7	0.2	32	0.26	0.025	24	23	0.33	400	0.026	1
TIN 31767	5.2	8.6	31	0.3	0.9	0.3	40	0.3	0.037	23	24	0.43	408	0.029	1
TIN 31768	1.6	9.3	25	0.1	0.8	0.3	33	0.29	0.029	23	20	0.39	374	0.024	1
TIN 31769	3.5	13.5	22	0.1	0.5	0.3	19	0.26	0.04	36	13	0.28	275	0.006	1
TIN 31770	5.5	4.1	36	0.2	8.3	0.2	56	0.13	0.075	13	23	0.26	1154	0.027	1
TIN 31771	4.2	4.3	30	0.1	4.3	0.2	54	0.21	0.059	12	31	0.33	855	0.041	0.5
TIN 31772	3.5	4.5	24	0.1	2.4	0.2	37	0.13	0.042	14	21	0.2	640	0.023	0.5
TIN 31773	5.5	5.2	28	0.05	2.5	0.2	51	0.18	0.037	16	29	0.37	848	0.041	1
TIN 31774	4.9	4.1	27	0.1	2.4	0.2	44	0.11	0.036	13	23	0.27	768	0.032	0.5
TIN 31775	3.8	3.9	26	0.05	2.2	0.1	31	0.1	0.032	12	18	0.15	768	0.016	0.5
TIN 31776	5.6	4.1	21	0.2	1.8	0.2	48	0.18	0.036	14	28	0.43	732	0.028	1
TIN 31777	3.8	4.1	34	0.05	2.5	0.2	50	0.17	0.045	14	26	0.34	786	0.023	0.5
TIN 31778	2.8	4.3	31	0.05	2	0.2	47	0.2	0.04	15	25	0.39	743	0.029	0.5
TIN 31779	4.8	0.7	27	0.05	0.3	0.05	53	0.49	0.107	4	11	0.91	433	0.027	0.5
TIN 31780	3.6	2.3	17	0.05	0.3	0.05	29	0.32	0.079	11	7	0.55	338	0.024	0.5
TIN 31781	12.1	2.5	24	0.05	0.4	0.05	43	0.42	0.079	12	10	0.66	479	0.017	2
TIN 31782	5.1	4.1	4	0.4	0.9	0.2	28	0.02	0.033	10	11	0.05	139	0.004	0.5
TIN 31783	6.1	4.6	10	0.4	0.9	0.1	31	0.07	0.028	15	19	0.25	280	0.023	0.5
TIN 31784	4.6	3.7	7	0.3	0.9	0.1	25	0.05	0.029	9	12	0.1	200	0.011	0.5
TIN 31785	4.8	4	36	0.6	0.8	0.1	69	0.21	0.107	19	50	0.43	438	0.023	0.5
TIN 31786	9.5	3.4	40	0.4	0.8	0.2	55	0.36	0.103	16	28	0.33	702	0.026	0.5
TIN 31787	31.7	3.5	32	0.3	0.5	0.1	36	0.23	0.086	18	33	0.43	493	0.008	0.5
TIN 31788	6.1	4.4	29	0.1	0.8	0.2	50	0.3	0.055	18	34	0.56	618	0.031	0.5
TIN 31790	2.8	3.5	12	0.2	0.6	0.2	25	0.16	0.041	9	30	0.42	158	0.022	0.5

Sample	Al	Na	K	W	Hg	Sc	Tl	S	Ga	Se	Method	Job Number:
TIN 31540	1.21	0.011	0.09	0.1	0.04	3.5	0.1	0.025	3	1	1DX15	VAN08009259
TIN 31541	1.49	0.021	0.06	0.1	0.02	3.9	0.1	0.025	4	0.6	1DX15	VAN08009259
TIN 31542	0.55	0.004	0.08	0.05	0.05	1.5	0.1	0.025	1	1.3	1DX15	VAN08009259
TIN 31543	2.34	0.004	0.07	0.05	0.04	3	0.05	0.025	6	3.8	1DX15	VAN08009259
TIN 31751	0.9	0.003	0.09	0.05	0.05	10.8	0.2	0.025	4	1.1	1DX15	VAN08009259
TIN 31752	0.61	0.005	0.11	0.05	0.09	2.6	0.2	0.025	2	1.4	1DX15	VAN08009259
TIN 31753	0.67	0.007	0.11	0.05	0.11	3.8	0.2	0.025	2	1.9	1DX15	VAN08009259
TIN 31754	0.73	0.005	0.11	0.05	0.07	8.7	0.4	0.025	3	1.1	1DX15	VAN08009259
TIN 31755	1.22	0.008	0.08	0.05	0.08	7.2	0.3	0.025	4	1.1	1DX15	VAN08009259
TIN 31756	1.37	0.009	0.09	0.2	0.17	6.5	0.3	0.025	4	1.4	1DX15	VAN08009259
TIN 31757	1.15	0.006	0.09	0.1	0.07	5.3	0.2	0.025	4	1.4	1DX15	VAN08009259
TIN 31758	0.9	0.008	0.09	0.3	0.16	4.8	0.3	0.025	3	5.3	1DX15	VAN08009259
TIN 31759	0.95	0.009	0.08	0.2	0.13	5.3	0.7	0.025	3	2	1DX15	VAN08009259
TIN 31760	0.89	0.012	0.05	0.2	0.04	2.8	0.1	0.025	2	0.9	1DX15	VAN08009259
TIN 31761	0.44	0.004	0.07	0.1	0.07	1.5	0.2	0.025	1	1	1DX15	VAN08009259
TIN 31762	0.48	0.004	0.07	0.05	0.05	2.2	0.1	0.025	1	1.8	1DX15	VAN08009259
TIN 31763	1	0.011	0.05	0.2	0.04	2.7	0.05	0.025	3	0.25	1DX15	VAN08009259
TIN 31764	1.01	0.011	0.05	0.2	0.03	2.5	0.05	0.025	3	0.6	1DX15	VAN08009259
TIN 31765	0.94	0.01	0.05	0.2	0.04	2.6	0.05	0.025	3	0.25	1DX15	VAN08009259
TIN 31766	1.1	0.011	0.06	0.2	0.04	3.6	0.1	0.025	3	0.8	1DX15	VAN08009259
TIN 31767	1.19	0.014	0.06	0.2	0.04	3.3	0.05	0.025	3	0.25	1DX15	VAN08009259
TIN 31768	1.02	0.009	0.06	0.2	0.04	3.2	0.05	0.025	3	0.8	1DX15	VAN08009259
TIN 31769	0.79	0.004	0.08	0.05	0.03	3.1	0.05	0.025	2	0.9	1DX15	VAN08009259
TIN 31770	1.12	0.008	0.04	0.1	0.06	3.3	0.05	0.025	3	1.6	1DX15	VAN08009259
TIN 31771	1.27	0.011	0.05	0.2	0.05	4.4	0.05	0.025	4	1.1	1DX15	VAN08009259
TIN 31772	0.85	0.005	0.05	0.1	0.04	2.7	0.1	0.025	3	1.4	1DX15	VAN08009259
TIN 31773	1.34	0.01	0.04	0.2	0.09	4.7	0.05	0.025	4	1.4	1DX15	VAN08009259
TIN 31774	1.1	0.007	0.05	0.2	0.04	3	0.2	0.025	3	2.1	1DX15	VAN08009259
TIN 31775	0.82	0.004	0.05	0.1	0.04	2.7	0.1	0.025	2	1.9	1DX15	VAN08009259
TIN 31776	1.39	0.01	0.05	0.1	0.03	4.3	0.2	0.025	4	0.6	1DX15	VAN08009259
TIN 31777	1.32	0.006	0.05	0.1	0.04	4.2	0.05	0.025	4	0.6	1DX15	VAN08009259
TIN 31778	1.4	0.01	0.06	0.1	0.04	4.2	0.05	0.025	4	0.9	1DX15	VAN08009259
TIN 31779	1.6	0.007	0.15	0.05	0.01	3.7	0.05	0.025	5	0.25	1DX15	VAN08009259
TIN 31780	1.05	0.003	0.16	0.05	0.005	4.3	0.05	0.025	4	0.25	1DX15	VAN08009259
TIN 31781	1.45	0.006	0.12	0.05	0.01	5.8	0.05	0.025	5	0.25	1DX15	VAN08009259
TIN 31782	0.37	0.002	0.05	0.2	0.02	1.7	0.2	0.025	1	0.9	1DX15	VAN08009259
TIN 31783	0.99	0.005	0.06	0.2	0.04	2.8	0.2	0.025	3	1.5	1DX15	VAN08009259
TIN 31784	0.53	0.003	0.06	0.1	0.04	1.8	0.1	0.025	2	1.3	1DX15	VAN08009259
TIN 31785	1.08	0.008	0.05	0.05	0.08	5.9	0.3	0.025	4	1.5	1DX15	VAN08009259
TIN 31786	1.27	0.008	0.06	0.2	0.15	4	0.4	0.025	4	1.3	1DX15	VAN08009259
TIN 31787	1	0.003	0.06	0.05	0.08	3.7	0.5	0.025	3	1.6	1DX15	VAN08009259
TIN 31788	1.63	0.012	0.05	0.1	0.07	5.2	0.2	0.025	5	0.8	1DX15	VAN08009259
TIN 31790	0.8	0.004	0.04	0.1	0.005	1.5	0.05	0.025	3	0.25	1DX15	VAN08009259

Sample	UTM Zone	Easting	Northing	Mo	Cu	Pb	Zn	Ag	Ni	Co	Mn	Fe	As	U
TIN 31791	Nad 83-07W	593534	7100108	2.1	78.2	8.8	114	0.2	60.1	14.4	244	3.96	17.6	5.2
TIN 31792	Nad 83-07W	593517	7100089	1	26.6	9.5	105	0.05	31.8	6.9	152	1.83	8.6	1.5
TIN 31793	Nad 83-07W	593502	7100068	0.7	90.4	11.7	143	0.05	136.2	22.7	366	4.13	9	2.3
TIN 31794	Nad 83-07W	593488	7100045	1	47.5	12.2	91	0.05	33.2	13.6	436	2.87	9.4	0.7
TIN 31795	Nad 83-07W	593473	7100027	0.8	37.4	14.1	85	0.05	52.9	13	358	2.08	19	0.7
TIN 31796	Nad 83-07W	593460	7100008	0.8	78.6	9.8	69	0.05	29.1	13.2	594	3.13	8.7	0.6
TIN 31797	Nad 83-07W	593444	7099988	0.8	101.6	9.5	73	0.2	30	20.3	962	4.08	12.9	0.6
TIN 31798	Nad 83-07W	593431	7099967	0.8	92.8	6.2	62	0.2	26.2	15.5	845	3.47	7.6	0.9
TIN 31799	Nad 83-07W	593414	7099946	0.6	101.2	6.8	78	0.1	25.9	19.7	1088	4.41	5	0.9
TIN 31800	Nad 83-07W	593757	7100410	1.7	63.6	9.9	87	0.4	58.4	14.4	551	3.24	38.5	1.5
TIN 31845	Nad 83-07W	593198	7101001	1.3	119.1	7.8	89	0.05	48.6	17.7	1275	3.3	11.5	1.7
TIN 31846	Nad 83-07W	593186	7100987	1.5	61.2	6.6	55	0.1	33	13.5	1440	2.48	9.3	1.1
TIN 31847	Nad 83-07W	593171	7100967	2.3	43.2	20.4	158	0.3	41.3	10.1	338	3.04	213.2	0.9
TIN 31848	Nad 83-07W	593157	7100946	1.4	47.1	13.8	63	0.4	38.5	14.4	642	2.83	25.1	1.5
TIN 31849	Nad 83-07W	593142	7100924	1.4	61.2	5.6	69	0.2	73.6	21.3	685	3.33	15.4	1
TIN 31850	Nad 83-07W	593124	7100907	2.1	48.9	16.4	90	0.2	167.6	22.3	881	3.09	63.4	1.1
TIN 33579	Nad 83-07W	593793	7100288	0.2	68.8	2.4	55	0.05	7.2	6.8	304	2.4	2.3	0.9
TIN 33580	Nad 83-07W	593778	7100270	0.7	85.4	5.2	87	0.05	9.9	6.7	210	3.4	13.8	1.6
TIN 33581	Nad 83-07W	593763	7100250	4.6	102.1	10.8	327	0.3	60.1	6.4	450	3.41	39.5	2.2
TIN 33582	Nad 83-07W	593747	7100230	3.9	46	5.2	122	0.2	28	5.1	235	3.35	13.4	3.9
TIN 33583	Nad 83-07W	593733	7100208	1.3	92.6	5.6	196	0.05	72.5	15.1	998	4.16	11.4	1.2
TIN 33584	Nad 83-07W	593719	7100188	0.9	65.4	3.8	271	0.05	104.8	11.6	1009	3.37	7.8	0.7
TIN 33585	Nad 83-07W	593704	7100169	0.4	97.6	4.3	234	0.05	76.6	16.5	1065	4.54	4.9	1.4
TIN 33586	Nad 83-07W	593689	7100147	0.4	94.3	4.2	210	0.05	63.2	11.7	771	3.57	3.4	1.2
TIN 33587	Nad 83-07W	593672	7100129	0.5	95.2	5.1	169	0.05	71.4	14	1367	4.15	9.1	1.7
TIN 33588	Nad 83-07W	593658	7100107	0.8	23.7	4.7	252	0.05	465.9	47.5	1213	5.73	11.2	1.2
TIN 33589	Nad 83-07W	593644	7100088	1.1	76	2.2	175	0.05	49.9	18.1	857	3.32	7.8	1.3
TIN 33590	Nad 83-07W	593629	7100067	1.2	12.6	11.3	48	0.05	23.9	5.9	163	1.75	8.2	0.6
TIN 33591	Nad 83-07W	593613	7100048	2.4	77.3	14.1	140	0.2	72.2	14.8	314	4.14	23.7	2.1
TIN 33592	Nad 83-07W	593599	7100027	1.3	17.9	16.3	64	0.05	47.4	11.4	223	1.83	10.2	0.8
TIN 33593	Nad 83-07W	593586	7100006	1	17.1	11.3	52	0.05	28	6.7	146	1.65	6.8	0.7
TIN 33594	Nad 83-07W	593570	7099987	0.7	11	9.3	88	0.1	14.8	7.2	442	1.11	2.2	0.4
TIN 33595	Nad 83-07W	593554	7099967	0.9	13.7	11.2	74	0.1	21.1	7.9	250	1.37	5.2	0.5
TIN 33596	Nad 83-07W	593538	7099946	1	20.9	12.7	62	0.05	20.3	3.3	102	1	8	0.8
TIN 33597	Nad 83-07W	593523	7099924	0.5	81.7	5.7	64	0.2	107.9	19.8	754	3.29	5.7	0.5
TIN 33598	Nad 83-07W	593508	7099906	0.6	84.9	3.7	73	0.1	30.6	17.8	1141	3.69	2	0.3
TIN 33599	Nad 83-07W	593494	7099887	0.8	40.9	11.3	52	0.05	152.8	13.3	269	1.59	10.8	0.6
TIN 33600	Nad 83-07W	593454	7099827	0.8	101	6.2	67	0.2	36.8	17.7	870	3.49	8.9	0.9
TIN 33642	Nad 83-07W	593925	7100470	4.6	34.9	15.1	64	0.2	17	3.4	95	2.18	65.1	5.1
TIN 33643	Nad 83-07W	593913	7100451	2.5	55.1	11.1	72	0.2	80	12.5	422	3.01	118.2	2
TIN 33644	Nad 83-07W	593895	7100431	1.2	80.3	6.7	64	0.05	23.9	11.9	604	3.71	12	0.9
TIN 33645	Nad 83-07W	593882	7100410	0.3	65.3	1.9	58	0.05	20.5	11.9	670	2.55	3.9	0.6
TIN 33646	Nad 83-07W	593868	7100390	0.4	88	1.9	55	0.05	12	8.2	555	2.56	4.6	1.1

Sample	Au	Th	Sr	Cd	Sb	Bi	V	Ca	P	La	Cr	Mg	Ba	Ti	B
TIN 31791	4.8	3.2	16	1.2	0.5	0.1	55	0.21	0.057	15	43	0.8	360	0.032	0.5
TIN 31792	45.5	2.6	11	0.6	0.6	0.1	30	0.12	0.028	9	21	0.38	197	0.025	0.5
TIN 31793	2.2	3.1	11	0.6	0.7	0.1	57	0.17	0.042	11	114	1.45	232	0.014	0.5
TIN 31794	4.1	3.9	12	0.2	0.6	0.2	46	0.16	0.033	9	30	0.71	260	0.026	0.5
TIN 31795	1.8	3.6	10	0.2	0.5	0.2	35	0.18	0.032	10	51	0.69	333	0.014	0.5
TIN 31796	5	3.6	20	0.05	0.5	0.1	46	0.42	0.041	15	27	1.01	302	0.01	0.5
TIN 31797	10.1	3.1	34	0.05	0.5	0.2	60	1.3	0.062	21	25	1.46	354	0.007	0.5
TIN 31798	3.2	2.5	123	0.1	0.5	0.1	56	5.38	0.085	16	22	1.2	830	0.005	0.5
TIN 31799	3.2	3.2	159	0.2	0.4	0.1	81	4.74	0.089	17	27	1.47	372	0.009	0.5
TIN 31800	5.1	5.5	23	0.1	1.6	0.2	51	0.26	0.04	18	39	0.66	772	0.033	0.5
TIN 31845	9	3.9	13	0.05	1	0.2	51	0.17	0.021	15	19	0.29	495	0.006	0.5
TIN 31846	5.2	3.4	13	0.05	0.7	0.2	43	0.24	0.053	9	19	0.22	625	0.011	0.5
TIN 31847	4.1	4.8	15	0.5	1.6	0.2	35	0.21	0.021	16	28	0.24	474	0.007	0.5
TIN 31848	4.7	8.8	26	0.1	0.8	0.2	24	1.71	0.035	29	21	0.19	501	0.006	1
TIN 31849	1.7	6.4	44	0.2	0.3	0.05	24	2.31	0.077	21	46	0.49	237	0.003	1
TIN 31850	2.5	5	67	0.3	0.8	0.2	37	2.78	0.06	18	97	0.56	518	0.009	1
TIN 33579	2.5	2.1	19	0.05	0.2	0.05	32	0.34	0.079	10	7	0.5	404	0.016	0.5
TIN 33580	8.2	6.4	11	0.2	0.3	0.05	37	0.25	0.099	23	6	0.41	515	0.004	0.5
TIN 33581	12.2	4	20	0.9	1.7	0.2	47	0.08	0.063	16	13	0.08	303	0.007	0.5
TIN 33582	4.3	4.2	67	0.2	1.3	0.2	52	0.13	0.095	20	17	0.16	874	0.013	0.5
TIN 33583	8.6	3.4	8	0.7	0.4	0.1	51	0.18	0.065	14	25	1.27	340	0.006	0.5
TIN 33584	1.3	2.5	13	0.9	0.4	0.05	52	0.22	0.052	5	33	1.12	308	0.037	0.5
TIN 33585	1	2.8	9	0.4	0.4	0.05	60	0.21	0.085	21	36	1.59	279	0.007	0.5
TIN 33586	1.4	3.1	13	0.4	0.4	0.05	49	0.22	0.074	14	22	1.14	305	0.024	0.5
TIN 33587	4.1	2.8	11	1.1	0.5	0.05	61	0.25	0.101	16	30	1.35	329	0.011	0.5
TIN 33588	2.4	5.3	30	0.5	0.3	0.05	87	0.63	0.108	23	617	5.59	369	0.081	0.5
TIN 33589	7.2	1	25	1.1	0.3	0.05	41	0.35	0.085	5	24	1.07	702	0.013	0.5
TIN 33590	6	3.5	10	0.2	0.6	0.1	32	0.12	0.021	10	29	0.43	196	0.027	0.5
TIN 33591	7.1	6.1	18	0.8	1.3	0.2	71	0.18	0.049	20	57	0.69	592	0.034	0.5
TIN 33592	1.4	5.9	11	0.4	1	0.2	34	0.13	0.015	13	54	0.5	362	0.025	0.5
TIN 33593	1.9	5.5	12	0.1	0.8	0.1	36	0.11	0.011	14	36	0.33	268	0.037	0.5
TIN 33594	3.8	2.3	15	0.2	0.5	0.2	27	0.19	0.031	11	24	0.33	894	0.016	0.5
TIN 33595	2.9	3.1	15	0.2	0.6	0.1	31	0.18	0.021	10	30	0.4	1039	0.021	0.5
TIN 33596	0.9	3.6	9	0.3	0.7	0.2	20	0.09	0.019	11	34	0.42	509	0.016	0.5
TIN 33597	3.7	3.1	54	0.1	0.4	0.05	60	2.1	0.07	15	67	2.16	354	0.044	0.5
TIN 33598	2.3	1.7	34	0.05	0.4	0.05	55	1.08	0.09	13	27	1.47	287	0.02	0.5
TIN 33599	2.7	3.7	63	0.4	0.8	0.1	32	1.67	0.024	9	355	1.17	759	0.027	0.5
TIN 33600	6.1	2.5	81	0.1	0.6	0.1	49	3.13	0.075	16	40	1.23	429	0.008	0.5
TIN 33642	5.3	6.2	138	0.05	6.7	0.2	46	0.11	0.127	19	23	0.16	1311	0.02	0.5
TIN 33643	8.4	7.7	29	0.1	2.7	0.2	44	0.21	0.033	23	43	0.31	791	0.024	0.5
TIN 33644	8.9	3.5	18	0.05	1.1	0.1	69	0.28	0.035	14	18	0.55	477	0.028	0.5
TIN 33645	20.6	1.4	17	0.05	0.6	0.05	36	0.26	0.06	7	11	0.82	229	0.029	0.5
TIN 33646	6.9	2.5	10	0.05	0.5	0.05	23	0.26	0.09	15	10	0.7	331	0.008	1

Sample	Al	Na	K	W	Hg	Sc	Tl	S	Ga	Se	Method	Job Number:
TIN 31791	1.73	0.003	0.05	0.05	0.03	4.6	0.1	0.025	6	0.8	1DX15	VAN08009259
TIN 31792	0.85	0.003	0.06	0.05	0.01	2	0.05	0.025	3	0.25	1DX15	VAN08009259
TIN 31793	2.24	0.003	0.04	0.05	0.005	5.8	0.05	0.025	7	0.25	1DX15	VAN08009259
TIN 31794	1.47	0.004	0.09	0.1	0.005	3.5	0.05	0.025	4	0.25	1DX15	VAN08009259
TIN 31795	1.43	0.003	0.05	0.05	0.005	2.5	0.05	0.025	5	0.6	1DX15	VAN08009259
TIN 31796	1.7	0.004	0.04	0.05	0.02	5.7	0.05	0.025	5	0.25	1DX15	VAN08009259
TIN 31797	2.31	0.003	0.05	0.05	0.02	7.5	0.05	0.025	7	0.25	1DX15	VAN08009259
TIN 31798	1.89	0.004	0.06	0.05	0.02	7.3	0.05	0.025	6	0.6	1DX15	VAN08009259
TIN 31799	2.1	0.004	0.06	0.05	0.01	13.2	0.05	0.025	6	0.25	1DX15	VAN08009259
TIN 31800	1.68	0.015	0.06	0.05	0.04	5	0.2	0.025	5	0.25	1DX15	VAN08009259
TIN 31845	1.1	0.004	0.06	0.05	0.07	9.6	0.05	0.025	4	0.8	1DX15	VAN08009259
TIN 31846	1.16	0.005	0.08	0.1	0.05	4.8	0.05	0.025	4	0.25	1DX15	VAN08009259
TIN 31847	1.14	0.004	0.07	0.2	0.16	2.8	0.3	0.025	3	0.6	1DX15	VAN08009259
TIN 31848	0.91	0.005	0.1	0.05	0.04	2.5	0.2	0.025	3	0.7	1DX15	VAN08009259
TIN 31849	0.44	0.003	0.09	0.05	0.02	2.6	0.1	0.025	2	0.25	1DX15	VAN08009259
TIN 31850	0.93	0.008	0.1	0.05	0.06	3.6	0.2	0.025	3	0.7	1DX15	VAN08009259
TIN 33579	1.12	0.002	0.13	0.05	0.005	3.4	0.05	0.025	4	0.25	1DX15	VAN08009259
TIN 33580	1.07	0.003	0.17	0.05	0.02	5.5	0.2	0.025	4	0.6	1DX15	VAN08009259
TIN 33581	0.54	0.002	0.06	0.2	0.07	2.9	0.4	0.025	2	1.4	1DX15	VAN08009259
TIN 33582	0.67	0.003	0.04	0.05	0.02	6.1	0.2	0.025	3	1.2	1DX15	VAN08009259
TIN 33583	2.24	0.002	0.05	0.05	0.01	5	0.05	0.025	6	0.25	1DX15	VAN08009259
TIN 33584	1.95	0.003	0.05	0.05	0.005	6.9	0.05	0.025	6	0.5	1DX15	VAN08009259
TIN 33585	2.57	0.002	0.04	0.05	0.005	5.8	0.05	0.025	8	0.25	1DX15	VAN08009259
TIN 33586	1.99	0.003	0.04	0.05	0.005	6.2	0.05	0.025	6	0.25	1DX15	VAN08009259
TIN 33587	2.37	0.003	0.04	0.05	0.02	5.6	0.05	0.025	7	0.6	1DX15	VAN08009259
TIN 33588	4.9	0.009	0.01	0.05	0.02	7.5	0.05	0.025	13	0.25	1DX15	VAN08009259
TIN 33589	1.96	0.004	0.05	0.05	0.01	3.2	0.05	0.025	5	0.25	1DX15	VAN08009259
TIN 33590	0.89	0.005	0.04	0.2	0.01	1.5	0.05	0.025	3	0.25	1DX15	VAN08009259
TIN 33591	2.37	0.007	0.07	0.05	0.05	6.8	0.2	0.025	7	0.8	1DX15	VAN08009259
TIN 33592	1.18	0.004	0.06	0.2	0.005	2.5	0.1	0.025	3	0.25	1DX15	VAN08009259
TIN 33593	1.21	0.005	0.05	0.1	0.005	2.1	0.05	0.025	3	0.6	1DX15	VAN08009259
TIN 33594	0.92	0.003	0.07	0.1	0.005	1.5	0.05	0.025	3	0.25	1DX15	VAN08009259
TIN 33595	1.03	0.005	0.08	0.2	0.005	1.6	0.05	0.025	3	0.25	1DX15	VAN08009259
TIN 33596	1.02	0.003	0.06	0.05	0.005	1.3	0.05	0.025	4	0.25	1DX15	VAN08009259
TIN 33597	1.68	0.008	0.05	0.1	0.02	6.8	0.05	0.025	5	0.25	1DX15	VAN08009259
TIN 33598	1.99	0.002	0.17	0.05	0.01	5.9	0.1	0.025	6	0.6	1DX15	VAN08009259
TIN 33599	1.14	0.008	0.06	0.1	0.01	3.2	0.05	0.025	4	0.25	1DX15	VAN08009259
TIN 33600	1.51	0.005	0.06	0.05	0.02	7.2	0.05	0.025	5	0.7	1DX15	VAN08009259
TIN 33642	0.94	0.005	0.06	0.2	0.07	3.1	0.1	0.025	2	3.4	1DX15	VAN08009259
TIN 33643	1.35	0.008	0.09	0.1	0.08	4.6	0.1	0.025	4	1.1	1DX15	VAN08009259
TIN 33644	1.36	0.009	0.07	0.05	0.03	7.9	0.05	0.025	5	0.7	1DX15	VAN08009259
TIN 33645	1.37	0.002	0.12	0.05	0.005	3.8	0.05	0.025	5	0.25	1DX15	VAN08009259
TIN 33646	1.33	0.003	0.05	0.05	0.03	5.1	0.05	0.025	5	0.7	1DX15	VAN08009259

Sample	UTM Zone	Easting	Northing	Mo	Cu	Pb	Zn	Ag	Ni	Co	Mn	Fe	As	U
TIN 33647	Nad 83-07W	593851	7100369	0.3	65.4	2.3	61	0.05	18.2	10.9	662	2.64	3.1	0.7
TIN 33648	Nad 83-07W	593837	7100348	0.3	64.5	3.7	47	0.05	10.7	9.2	362	2.1	2.4	0.5
TIN 33649	Nad 83-07W	593821	7100329	0.2	57.6	1.9	47	0.05	8.3	7.5	347	2.09	1.8	0.6
TIN 33650	Nad 83-07W	593806	7100310	0.3	59.5	2	49	0.05	10.5	8.2	359	2.1	3.1	0.5
TIN 36190	Nad 83-07W	593765	7100589	7.8	47.4	23.2	74	1.5	19.6	4.7	116	1.66	56.8	3.6
TIN 36191	Nad 83-07W	593751	7100569	2.8	122.6	8.1	106	0.5	35.5	9.4	257	2.03	51.3	4.1
TIN 36192	Nad 83-07W	593736	7100550	2.8	135.4	6.3	551	0.6	132.2	30.6	1905	5.31	82.1	2
TIN 36193	Nad 83-07W	593721	7100530	2.4	73.6	5.7	328	0.7	102.6	12.3	2040	2.63	25.3	1.9
TIN 36194	Nad 83-07W	593706	7100509	2.4	93	8.1	389	0.7	126	21.5	1332	4.57	68.5	1.4
TIN 36195	Nad 83-07W	593690	7100487	1.4	59.3	6.9	204	0.5	79.3	12	783	3.28	37.2	1.7
TIN 36196	Nad 83-07W	593676	7100469	1.2	71.1	7.4	386	0.2	72.1	11	866	3.2	26.3	1.3
TIN 36197	Nad 83-07W	593662	7100449	1.3	78.1	5.2	360	0.2	68.3	12.6	1188	3.56	22.7	0.9
TIN 36271	Nad 83-07W	593647	7100430	1.3	35.2	9.3	79	0.2	35.4	6.8	233	2.39	26.1	1.3
TIN 36272	Nad 83-07W	593632	7100409	2.9	42.2	9.3	152	0.2	42	8.9	237	2.04	23.9	1.1
TIN 36273	Nad 83-07W	593616	7100387	3.8	69.5	12	180	0.3	56.7	8.9	212	2.61	32.8	2.5
TIN 36629	Nad 83-07W	593602	7100369	3.3	74.4	6	271	0.6	105.3	20	875	2.68	39.9	3.3
TIN 36630	Nad 83-07W	593587	7100348	3.3	65.5	5.7	465	0.6	198.3	27.3	3984	4	13.1	2.8
TIN 36631	Nad 83-07W	593572	7100327	1.4	66.4	5.6	145	0.05	71.1	10	451	3.07	15.8	1.4
TIN 36632	Nad 83-07W	593556	7100306	0.7	59.4	4.5	70	0.1	40.8	7.8	873	2.23	6.5	1.4
TIN 36633	Nad 83-07W	593541	7100287	0.5	68	4.5	75	0.1	32.8	9.1	736	2.86	6.7	1.3
TIN 36634	Nad 83-07W	593526	7100266	0.8	105.2	5.5	106	0.2	30.9	18.9	1165	3.74	8.3	0.9
TIN 36635	Nad 83-07W	593512	7100247	3.6	140.7	13	226	0.8	54.8	11.6	260	3.47	22.5	5.6
TIN 36636	Nad 83-07W	593499	7100229	2.2	92.9	10.6	233	0.3	65.9	5.9	139	2.86	20.4	3.8
TIN 36637	Nad 83-07W	593483	7100207	1.9	45.3	15.3	189	0.05	64.2	8.4	194	2.54	13.8	2.5
TIN 36638	Nad 83-07W	593469	7100188	1.3	12.3	12.1	78	0.05	31.1	14.4	357	1.05	5.3	1.2
TIN 36639	Nad 83-07W	593454	7100368	2.1	73.2	21.9	346	0.3	130.5	14.6	158	3.26	14	6.4
TIN 36640	Nad 83-07W	593439	7100148	1.2	39.2	16.7	175	0.1	60.2	9.4	103	1.98	10.6	2
TIN 36641	Nad 83-07W	593424	7100127	1.1	26.8	13.1	111	0.2	48.1	10.2	183	1.89	9.5	1.5
TIN 36642	Nad 83-07W	593408	7100106	0.8	80.7	7.1	130	0.2	77.4	21	541	4.07	90.5	0.9
TIN 36643	Nad 83-07W	593394	7100087	2.6	89.4	11.5	130	0.5	135	23.7	1141	4.68	32.9	2.4
TIN 36644	Nad 83-07W	593379	7100067	1.5	76.5	7.5	115	0.3	395.1	36.8	1026	4.55	101.9	0.8
TIN 36645	Nad 83-07W	593363	7100045	1	88.6	7.4	157	0.2	79.2	20.9	337	4.55	90.9	1.1
TIN 36646	Nad 83-07W	593350	7100027	1.2	77.5	14.9	109	0.6	205.9	23.4	772	3.98	137.4	0.8
TIN 36647	Nad 83-07W	593334	7100005	2.9	56	13.2	180	0.5	487.5	31.6	600	5	229.7	0.9
TIN 36648	Nad 83-07W	593320	7099987	1.1	55.4	7.3	96	0.2	196.8	21.1	515	4.07	86.8	0.8
TIN 36649	Nad 83-07W	592831	7100502	0.5	109.5	5.2	69	0.1	46.7	13.2	1365	2.86	3.5	0.7
TIN 36650	Nad 83-07W	592815	7100481	1	28.8	7.9	52	0.1	515.5	43.7	839	2.24	226.2	0.6
TIN 36651	Nad 83-07W	592800	7100461	1.4	48.8	8.7	75	0.3	257.4	25.8	556	2.67	121.3	0.8
TIN 36652	Nad 83-07W	592785	7100443	1.6	57.4	8	80	0.4	63.3	13.1	739	2.3	12.6	0.9
TIN 36898	Nad 83-07W	593384	7099907	0.8	64.2	6.5	51	0.2	26.8	14.5	787	3.19	12.2	0.8
TIN 36930	Nad 83-07W	593479	7099864	0.6	25.2	6	34	0.05	221.3	16.5	160	1.11	12.8	0.4
TIN 36931	Nad 83-07W	593459	7099849	1.6	99.6	6.8	70	0.2	21.4	17.8	900	3.48	43.1	1.3
TIN 36932	Nad 83-07W	593492	7099894	0.6	32.1	9.5	42	0.05	96.1	8.7	175	1.1	8.5	0.5

Sample	Au	Th	Sr	Cd	Sb	Bi	V	Ca	P	La	Cr	Mg	Ba	Ti	B
TIN 33647	3.3	2	12	0.05	0.5	0.05	24	0.19	0.042	9	11	0.81	287	0.01	0.5
TIN 33648	5.3	1.7	11	0.05	0.4	0.05	22	0.16	0.027	10	9	0.5	281	0.005	0.5
TIN 33649	3.3	1.1	16	0.05	0.2	0.05	18	0.26	0.062	5	8	0.5	326	0.028	0.5
TIN 33650	2.3	1.5	18	0.05	0.3	0.05	22	0.28	0.058	6	10	0.58	351	0.029	0.5
TIN 36190	3.6	4.3	64	0.2	19.2	0.2	47	0.06	0.077	14	20	0.09	1019	0.026	2
TIN 36191	3.3	4.5	48	0.5	3.2	0.05	39	0.11	0.057	17	28	0.27	834	0.022	2
TIN 36192	4.3	2.8	20	1.5	2.2	0.1	68	0.14	0.055	12	15	0.56	1080	0.034	2
TIN 36193	2.2	3.4	12	2.3	1	0.05	28	0.1	0.026	14	11	0.37	771	0.021	1
TIN 36194	3.8	3.5	12	1.3	1.4	0.1	42	0.1	0.041	14	18	0.44	774	0.032	1
TIN 36195	7.6	4.2	16	0.7	1.1	0.1	40	0.15	0.028	16	24	0.38	952	0.029	0.5
TIN 36196	3.2	2.7	12	0.8	0.7	0.1	29	0.13	0.032	16	11	0.51	1019	0.011	1
TIN 36197	2.1	2.9	13	0.8	0.5	0.05	45	0.15	0.026	14	11	0.75	820	0.024	1
TIN 36271	10.7	6.2	24	0.2	0.8	0.2	32	0.13	0.025	22	34	0.29	816	0.027	1
TIN 36272	3.4	2.8	8	0.4	0.8	0.1	22	0.04	0.038	12	16	0.1	367	0.01	2
TIN 36273	4.1	4.4	9	0.5	0.8	0.1	24	0.04	0.039	15	20	0.15	486	0.016	1
TIN 36629	53.1	3.5	12	1.8	0.4	0.1	31	0.08	0.059	13	37	0.27	450	0.007	0.5
TIN 36630	2.8	3	18	5.1	0.3	0.05	33	0.23	0.087	14	17	0.44	750	0.012	0.5
TIN 36631	0.25	3.4	12	0.5	0.5	0.05	34	0.25	0.094	15	18	0.35	287	0.013	0.5
TIN 36632	1.5	3.7	7	0.5	0.1	0.05	23	0.18	0.078	13	8	0.27	202	0.006	0.5
TIN 36633	2.3	3.9	13	0.3	0.2	0.05	27	0.26	0.077	16	24	0.61	275	0.007	0.5
TIN 36634	2.6	3.1	16	0.4	0.1	0.05	42	0.31	0.101	16	13	0.6	307	0.004	0.5
TIN 36635	10.4	4.2	41	0.8	0.8	0.2	72	0.43	0.14	24	33	0.31	537	0.034	13
TIN 36636	8.2	5.5	10	0.6	0.5	0.2	46	0.11	0.068	25	28	0.11	272	0.008	0.5
TIN 36637	3.8	4.6	20	0.7	0.8	0.2	43	0.17	0.07	17	35	0.28	250	0.032	0.5
TIN 36638	1.5	3.7	8	0.5	0.6	0.1	21	0.07	0.012	10	28	0.29	168	0.023	0.5
TIN 36639	11.7	8.7	8	1.8	1	0.2	36	0.09	0.044	24	48	0.35	139	0.021	0.5
TIN 36640	4.6	7.5	8	0.9	0.6	0.2	28	0.09	0.025	16	35	0.32	178	0.038	1
TIN 36641	3.8	6.2	13	0.1	0.7	0.1	37	0.12	0.018	16	36	0.33	308	0.036	1
TIN 36642	124.4	3.6	12	0.1	1.7	0.05	33	0.25	0.072	15	37	0.9	257	0.006	0.5
TIN 36643	12.3	3.2	75	0.4	1.1	0.1	49	3.48	0.136	17	106	1.91	264	0.004	0.5
TIN 36644	6.6	4	84	0.1	0.7	0.05	81	3.03	0.077	14	489	3.48	325	0.034	1
TIN 36645	27.5	3.9	15	0.3	1	0.05	34	0.34	0.064	16	34	0.92	246	0.01	0.5
TIN 36646	7.4	3.5	55	0.1	1.1	0.2	60	1.34	0.074	15	221	2.55	178	0.025	1
TIN 36647	77.4	5.1	73	0.3	0.6	0.1	159	1.76	0.076	17	676	4.67	324	0.05	1
TIN 36648	5.2	5	33	0.2	0.5	0.05	41	0.64	0.086	20	209	2.12	215	0.017	0.5
TIN 36649	8.1	2.6	16	0.05	0.4	0.3	24	0.39	0.039	13	11	0.17	187	0.003	2
TIN 36650	4.8	2.6	105	0.2	1.4	0.1	28	3.31	0.03	8	286	2.14	233	0.006	2
TIN 36651	6.2	3.7	116	0.2	0.8	0.1	24	3.73	0.025	11	123	1.26	336	0.004	2
TIN 36652	3.2	3.8	33	0.1	0.5	0.1	16	0.41	0.044	14	21	0.2	211	0.005	1
TIN 36898	14.1	1.6	86	0.2	0.5	0.1	53	1.79	0.052	15	24	0.62	590	0.007	2
TIN 36930	0.25	2	8	0.2	0.6	0.05	20	0.11	0.01	5	413	1.12	383	0.009	0.5
TIN 36931	9.2	2.7	42	0.1	1.3	0.05	28	3.63	0.116	13	7	0.21	198	0.0005	2
TIN 36932	2	2.8	40	0.1	0.5	0.05	19	1.39	0.021	6	172	0.74	520	0.015	0.5

Sample	Al	Na	K	W	Hg	Sc	Tl	S	Ga	Se	Method	Job Number:
TIN 33647	1.41	0.003	0.05	0.05	0.02	4.8	0.05	0.025	5	0.25	1DX15	VAN08009259
TIN 33648	1.02	0.003	0.04	0.05	0.005	5.1	0.05	0.025	4	0.25	1DX15	VAN08009259
TIN 33649	0.95	0.003	0.14	0.05	0.02	2.5	0.05	0.025	3	0.25	1DX15	VAN08009259
TIN 33650	1.12	0.003	0.09	0.05	0.01	2.3	0.05	0.025	3	0.25	1DX15	VAN08009259
TIN 36190	0.6	0.007	0.06	0.3	0.16	2.2	0.2	0.025	2	5.4	1DX15	VAN08009259
TIN 36191	1.3	0.006	0.08	0.05	0.09	7.2	0.6	0.025	4	0.9	1DX15	VAN08009259
TIN 36192	1.89	0.007	0.18	0.1	0.09	8.5	0.6	0.025	7	0.6	1DX15	VAN08009259
TIN 36193	1.17	0.006	0.13	0.05	0.03	5.4	0.1	0.025	4	0.25	1DX15	VAN08009259
TIN 36194	1.29	0.004	0.12	0.05	0.04	6.1	0.4	0.025	4	0.7	1DX15	VAN08009259
TIN 36195	1.42	0.01	0.07	0.1	0.04	4.7	0.2	0.025	4	0.6	1DX15	VAN08009259
TIN 36196	1.41	0.005	0.06	0.05	0.02	5.5	0.05	0.025	5	0.25	1DX15	VAN08009259
TIN 36197	1.66	0.006	0.21	0.05	0.02	6.2	0.05	0.025	6	0.25	1DX15	VAN08009259
TIN 36271	1.19	0.008	0.1	0.1	0.03	2.9	0.1	0.025	4	0.6	1DX15	VAN08009259
TIN 36272	0.63	0.004	0.07	0.2	0.01	1.3	0.2	0.025	2	1.3	1DX15	VAN08009259
TIN 36273	0.8	0.005	0.07	0.2	0.06	2.4	0.4	0.025	2	2.3	1DX15	VAN08009259
TIN 36629	0.91	0.004	0.05	0.05	0.05	5.4	0.4	0.025	3	1	1DX15	VAN08009259
TIN 36630	1.11	0.006	0.08	0.05	0.02	5.2	0.6	0.025	4	0.25	1DX15	VAN08009259
TIN 36631	1	0.005	0.09	0.05	0.01	3.9	0.05	0.025	3	0.25	1DX15	VAN08009259
TIN 36632	0.77	0.003	0.12	0.05	0.005	3.8	0.05	0.025	3	0.25	1DX15	VAN08009259
TIN 36633	1.32	0.004	0.12	0.05	0.005	5	0.05	0.025	4	0.25	1DX15	VAN08009259
TIN 36634	1.38	0.003	0.12	0.05	0.01	6.5	0.05	0.025	5	0.25	1DX15	VAN08009259
TIN 36635	1.57	0.008	0.11	0.2	0.2	5.5	0.8	0.025	6	1.4	1DX15	VAN08009259
TIN 36636	0.6	0.003	0.09	0.1	0.05	2.6	0.6	0.025	2	1.3	1DX15	VAN08009259
TIN 36637	0.98	0.005	0.06	0.1	0.02	2.9	0.2	0.025	3	0.25	1DX15	VAN08009259
TIN 36638	0.78	0.003	0.04	0.05	0.005	1.3	0.2	0.025	2	0.25	1DX15	VAN08009259
TIN 36639	1.13	0.003	0.08	0.1	0.02	3.5	0.5	0.025	4	0.5	1DX15	VAN08009259
TIN 36640	1.16	0.003	0.06	0.05	0.02	2.8	0.2	0.025	4	0.25	1DX15	VAN08009259
TIN 36641	1.38	0.012	0.1	0.1	0.02	3.4	0.2	0.025	5	0.25	1DX15	VAN08009259
TIN 36642	1.63	0.003	0.05	0.05	0.03	3.7	0.05	0.025	5	0.25	1DX15	VAN08009259
TIN 36643	1.95	0.004	0.07	0.05	0.04	3.7	0.05	0.025	6	1	1DX15	VAN08009259
TIN 36644	2.9	0.005	0.2	0.05	0.02	5.5	0.2	0.025	8	0.25	1DX15	VAN08009259
TIN 36645	1.74	0.003	0.07	0.05	0.02	3.4	0.05	0.025	5	0.6	1DX15	VAN08009259
TIN 36646	2.54	0.004	0.1	0.05	0.01	4.7	0.1	0.025	7	1.1	1DX15	VAN08009259
TIN 36647	3.28	0.005	0.25	0.05	0.02	9	0.3	0.025	9	1.3	1DX15	VAN08009259
TIN 36648	2.18	0.003	0.07	0.05	0.005	3.8	0.05	0.025	6	0.6	1DX15	VAN08009259
TIN 36649	0.41	0.002	0.03	0.05	0.03	3.7	0.05	0.07	1	1.1	1DX15	VAN08009259
TIN 36650	0.76	0.008	0.04	0.05	0.04	3	0.2	0.08	2	0.7	1DX15	VAN08009259
TIN 36651	0.74	0.006	0.04	0.1	0.07	2.8	0.2	0.06	2	1.2	1DX15	VAN08009259
TIN 36652	0.38	0.003	0.04	0.05	0.04	1.8	0.1	0.1	2	1.5	1DX15	VAN08009259
TIN 36898	1.27	0.006	0.06	0.1	0.02	5.7	0.05	0.1	4	0.9	1DX15	VAN08009259
TIN 36930	0.66	0.002	0.03	0.05	0.005	2.2	0.05	0.025	2	0.25	1DX15	VAN08009259
TIN 36931	0.35	0.002	0.09	0.05	0.005	8.1	0.05	0.07	1	0.6	1DX15	VAN08009259
TIN 36932	0.75	0.005	0.03	0.05	0.005	1.8	0.05	0.09	2	0.6	1DX15	VAN08009259