

**GEOCHEMICAL REPORT**

**TET 1 - 14 CLAIMS**

**YC46025 – YC46038**

**NTS # 105 F/08**

**LAT: 61. 48° N**

**LONG: 132. 28° W**

**WATSON LAKE MINING DISTRICT**

**AUTHOR OF REPORT: SHAWN RYAN**

**WORK PERFORMED: SEPTEMBER 8, 2008**

**DATE OF REPORT JUNE 30, 2009**

## TABLE OF CONTENTS

<b>1.0</b>	<b>Summary</b>	<b>p.3</b>
<b>2.0</b>	<b>INTRODUCTION</b>	<b>p.3</b>
<b>3.0</b>	<b>PROJECT LOCATION</b>	<b>p.3</b>
<b>4.0</b>	<b>ACCESS</b>	<b>p.3</b>
	<b>LOCATION MAP Figure 1</b>	<b>p.4</b>
<b>5.0</b>	<b>GEOLOGY</b>	<b>p.5</b>
<b>5.1</b>	<b>REGIONAL GEOLOGY</b>	<b>p.5</b>
	<b>GELOGY MAP Figure 2</b>	<b>p.6</b>
<b>6.0</b>	<b>WORK PERFORMED / METHODS</b>	<b>p.7</b>
<b>6.1</b>	<b>Soil Survey</b>	<b>p.7</b>
<b>7.0</b>	<b>INTERPRETATION</b>	<b>p.8</b>
<b>7.1</b>	<b>Soil Survey</b>	<b>p.8</b>
<b>8.0</b>	<b>RECOMMENDATION</b>	<b>p.8</b>
<b>9.0</b>	<b>REFERENCES CITED</b>	<b>p.8</b>
<b>10.0</b>	<b>Cost</b>	<b>p.8</b>
<b>11.0</b>	<b>Qualification</b>	<b>p.9</b>
	<b>Gold Soil geochemistry map</b>	<b>Figure 3</b>
	<b>Silver Soil geochemistry map</b>	<b>Figure 4</b>
	<b>Lead Soil geochemistry map</b>	<b>Figure 5</b>
	<b>Assay / GPS Data</b>	<b>Appendix</b>

## **1.0 SUMMARY**

The TET project had a contract crew of four men; all employees of Ryanwood Exploration mobilize to the TET and conduct a soil sampling survey.

The crew consisted of: Isaac Fage (crew chief) and soil samplers Joe McCann, Ben McGrath and Matthew McHugh,

The soil sampling program was successful in outlining a nice silver - lead soil anomaly measuring 300 meters wide and up to 225 wide.

## **2.0 INTRODUCTION**

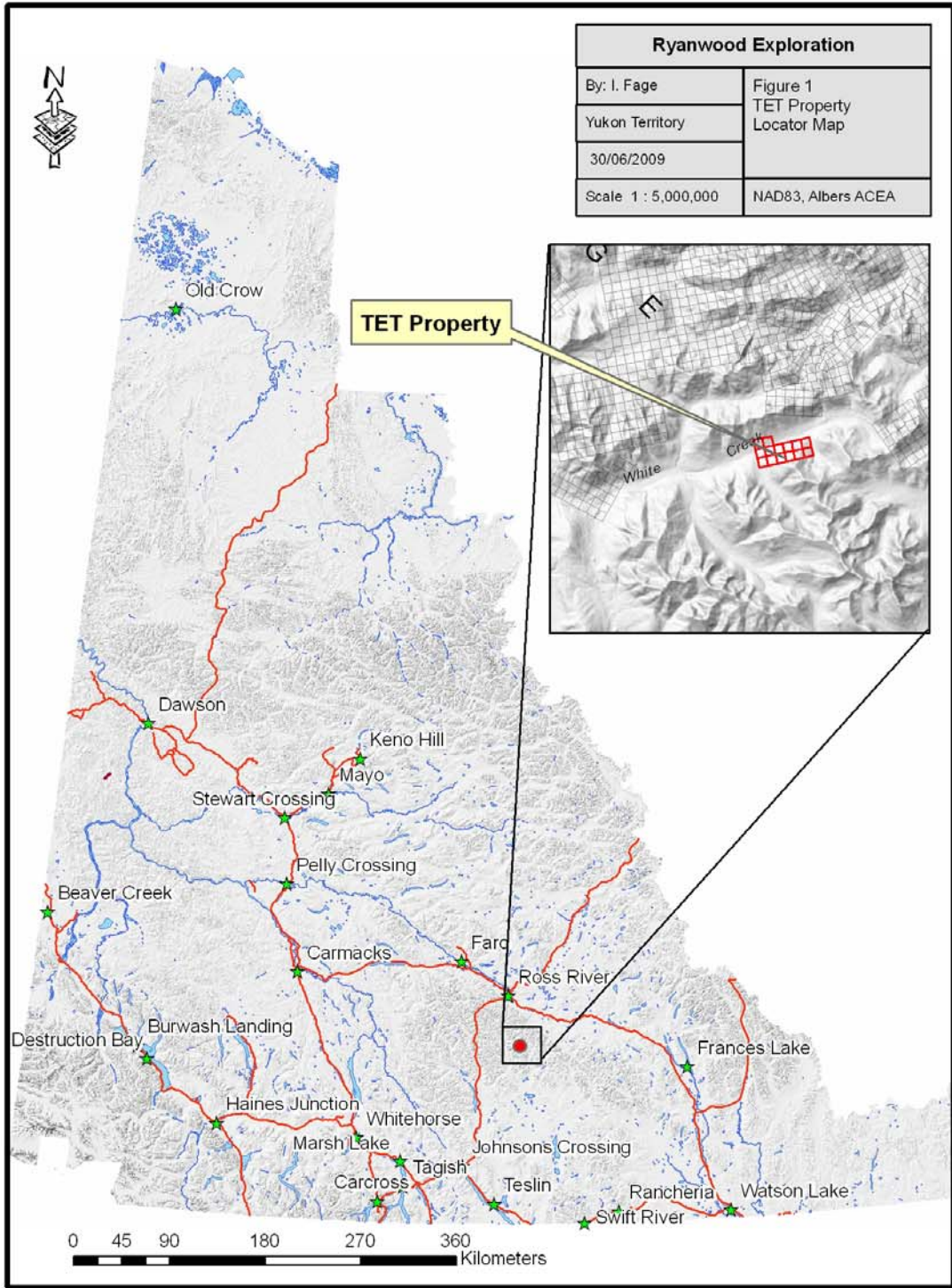
The TET 2008 field program was designed to cover an old lead – silver showing. A small local grid was established on 50 meter line spacing and 25 meter station spacing. A total of 134 soil samples were collected in total.

## **3.0 LOCATION**

The TET 1-14 claims are situated along the upper White Creek, which is located 6 kilometers south of the Ketz River Mine. The claim block lies in the Watson Lake Mining District, on NTS # 105 F/08. The geographic location is: 63.48°N and 132.28°W.

## **4.0 ACCESS**

The TET property can be accessed via helicopter from Ross River.



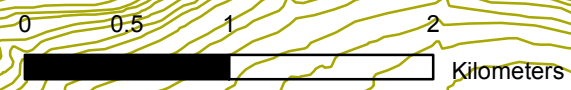
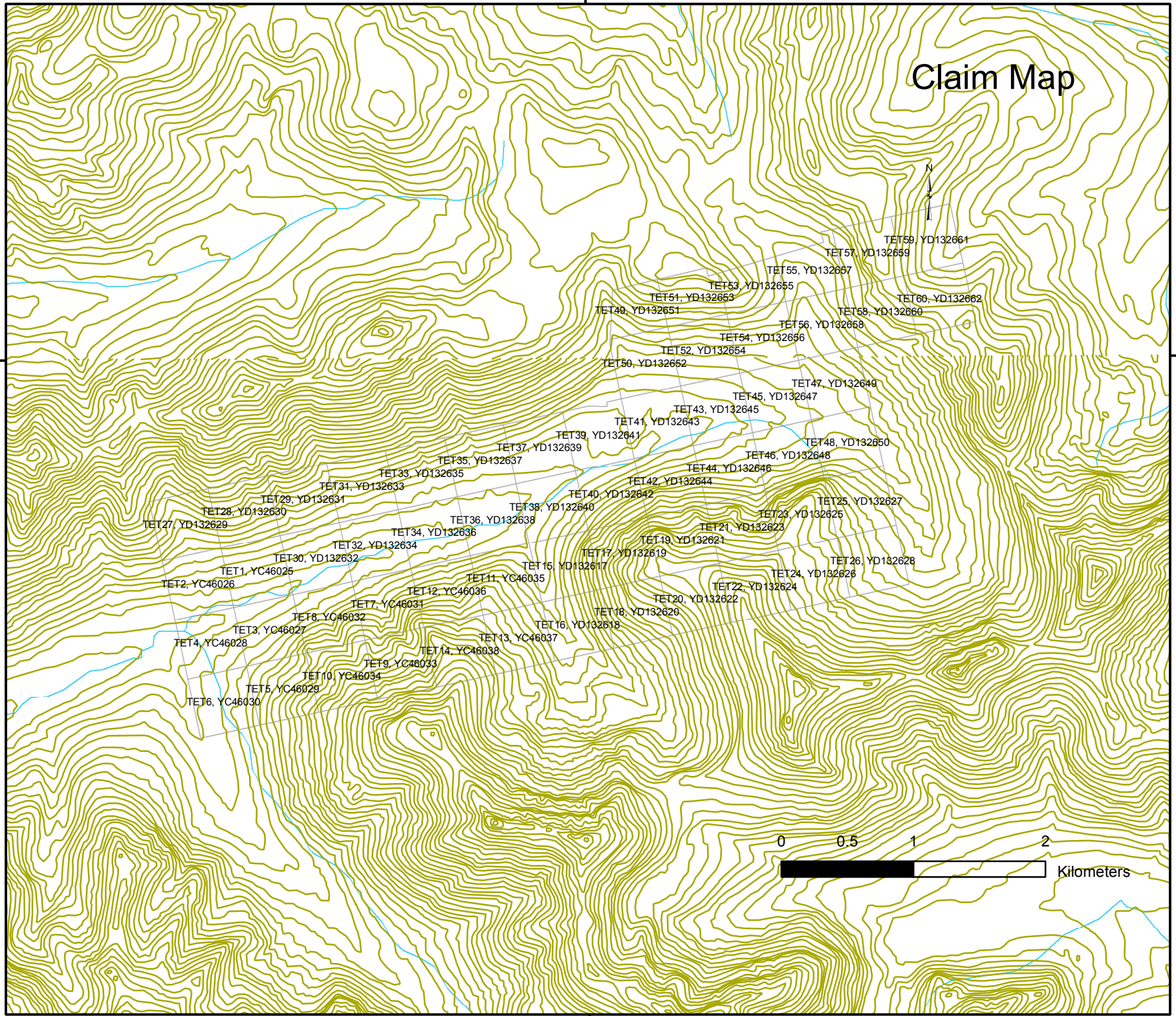
# Claim Map

61°30'0"N

61°30'0"N

132°15'0"W

132°15'0"W



## 5.0 REGIONAL GEOLOGY

### 5.1 REGIONAL GEOLOGY

#### YGS Bedrock Geology Legend:

##### LOWER CAMBRIAN



**ICR: ROSELLA**

resistant, thick bedded to massive, limestone and argillaceous limestone; local archaeocyathid buildups, trilobite fragments, oolites, and pisolites; pisolitic massive dolomite and limestone; marble, calc-silicate, calcareous phyllite and minor schist (**Rosella**)

##### MIDDLE SILURIAN TO MIDDLE DEVONIAN

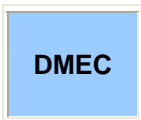


**SDA: ASKIN**

platy dolomitic siltstone (1) overlain by dolostone and orthoquartzite (2) with rare volcanics (3)

2. medium grey to buff weathering, medium to thick bedded dolomite, silty and sandy dolomite, limestone; medium to thick bedded, medium grained mature orthoquartzite; dolomitized laminated mudstone and dolomite with vugs, birdseye and fenestral cavities (**Askin Gp.**)

##### UPPER DEVONIAN TO LOWER MISSISSIPPIAN

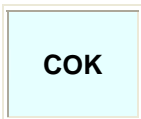


**DMEC: EARN - CASSIAR**

consists upwards of dark clastic rocks (1) capped by tuffaceous chert (2) and felsic volcanic rocks (3), the chert and volcanics in part laterally equivalent; intrusive equivalents of the volcanics are the Pelly Mountains Suite

1. dark grey, recessive weathering, thin bedded, black siliceous slate with interbeds and members of quartz-chert greywacke, chert granule grit and chert pebble to cobble conglomerate; may include lenses of intermediate to felsic volcanoclastic rocks

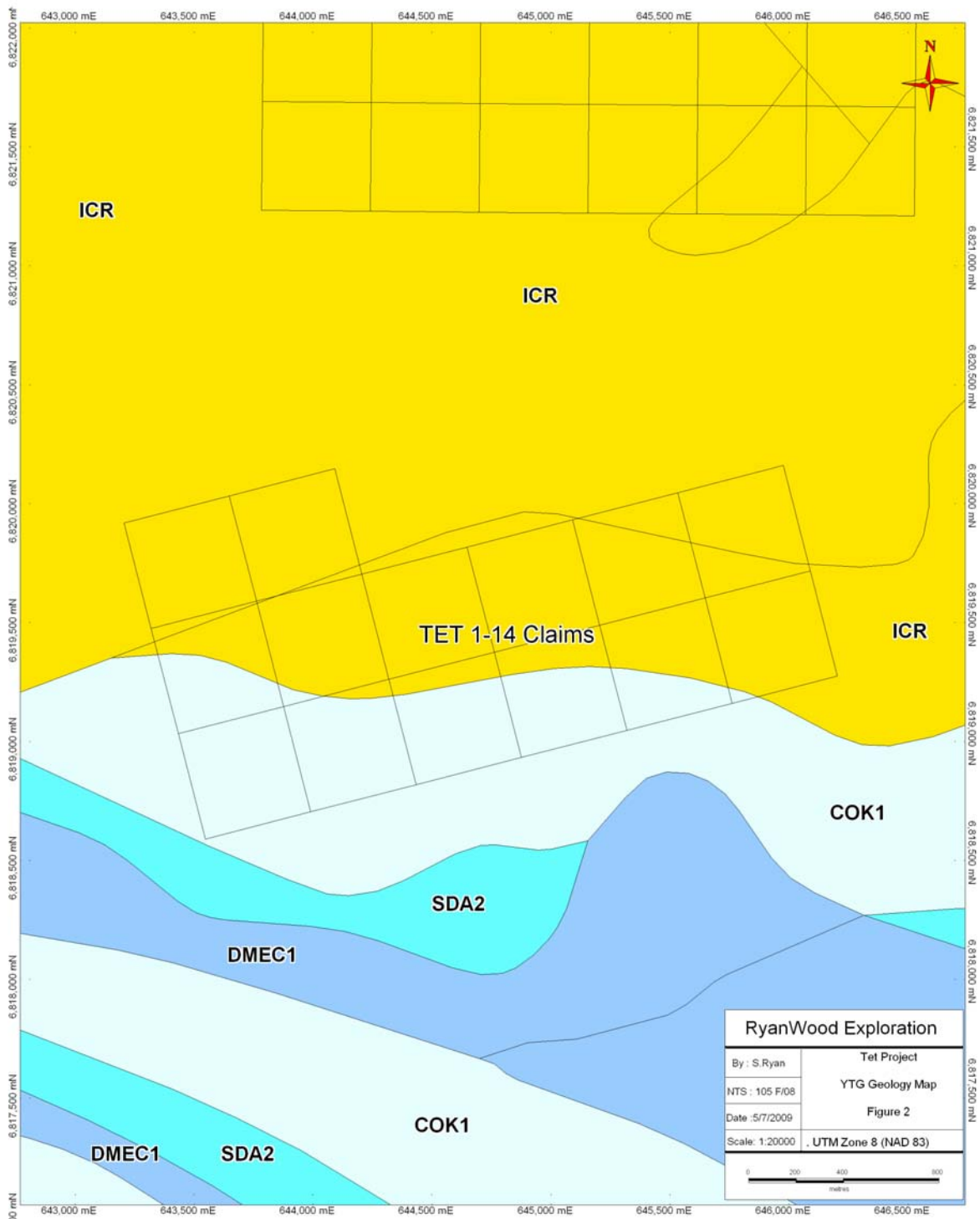
##### UPPER CAMBRIAN AND LOWER ORDOVICIAN



**COK: KECHIKA**

basinal fine grained calcareous pelitic strata (1) with locally intercalated mafic volcanics (2)

1. thin bedded, lustrous, calcareous, grey slate, phyllite, limestone, minor grey dolomite and dolomitic limestone; quartz-carbonate veins; minor sills and flows of basalt and basaltic tuff ; may include Ordovician black slate at top of succession (**Kechika**)



## **6.0 WORK PERFORMED / METHODS**

### **6.1 Soil Survey**

The TET 2008 field program consisted of 4 man days of soil work collecting 134 soils. Samples were collected on a small grid at 25m sample spacing and 50m line spacing. A 1.3 km contoured reconnaissance soil line at 50m station spacing was also collected.

All soil samples are taken with one meter soil probes and sometimes with a prospector pick. We carried both on rocky talus slope. Soil sample locations are marked in the field with pink flagging and aluminum tags. The sample number is inscribed on the aluminum tag and tied to a shrub or rock at the sample site.

The sample number with location is recorded with a Garmin Map76 GPS in coordinate system: UTM NAD 83.

Sample description such as color, depth, slope, sample quality, ground vegetation, tree cover and GPS coordinates (backup) are recorded in a Palm PDA data recorder.

A total of 400-500 grams of soil is collected and place in well mark kraft soil bags.

The GPS and PDA are downloaded every night and stored in the crew chief personal computer. A second backup copy of the data is transferred to a memory stick and the memory stick is relocated to a secondary tent (in case of fire).

All samples are brought back to Dawson City and air dried, repacked in rice bags, and sent to Acme Labs in Vancouver.

Samples are processed with Aqua Regia ICP-MS for 36 elements (Acme Labs 1DX-15 gram).

## **7.0 INTERPRETATION**

### **7.1 Soil Survey**

The soil survey indicated a nice lead silver anomaly sitting over the old Sonny Showing area. The soil anomaly measure 250 meters by 200 meters with values reaching up to 2196 ppm Pb, and 6.6 ppm Ag

## **8.0 RECOMMENDATION**

I would recommend adding more claims to the west and expanding the soil grid in that direction.

## **9.0 REFERENCES CITED**

YGS Bedrock Geology Database: <http://www.geology.gov.yk.ca/>

## **10.0 COST**

Wage for 4 man days @ \$330 per day	\$1,320.00
1 Truck/Gas @ \$200 per day	\$ 200.00
Food for 4 man days @ \$45 per day	\$ 180.00
Assay Cost 134 soil @ \$22.00 per sample	\$2,948.00
Helicopter for 1.7 hours @ \$1,300 per hour	\$2,210.00
Report writing	\$ 350.00
Total	\$7,208.00

## **11.0 QUALIFICATION**

I Shawn Ryan located in Dawson City, Yukon work as a professional prospector. I run a small exploration company located in Dawson City.

I have worked in the exploration business for the last 25 years. I worked the first 12 years as a contractor working on numerous projects in the NWT, Ontario, Quebec and the Yukon. I have worked the last 12 years as a local prospector for myself.

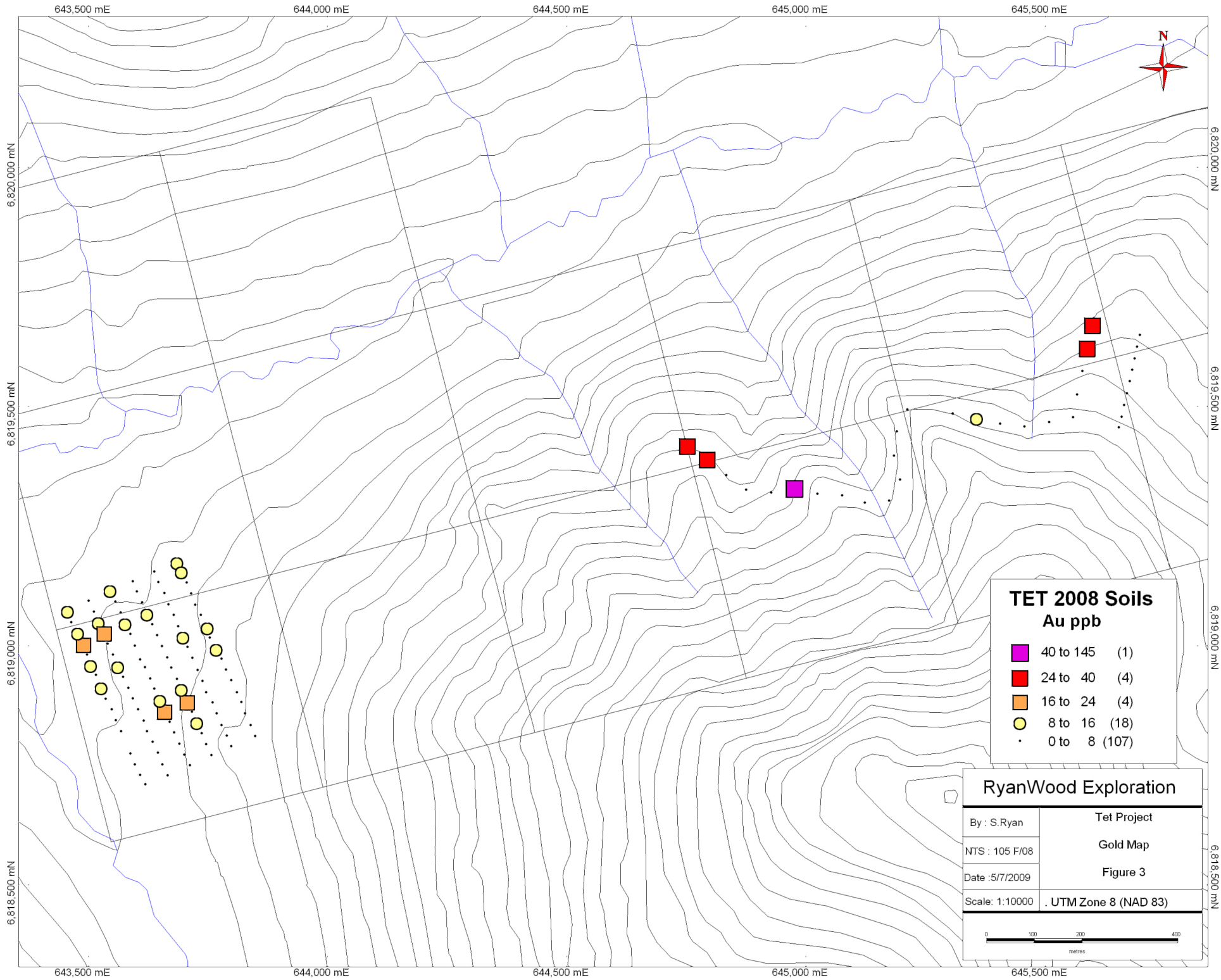
I have overseen the field work conducted on the 2008 TET project.

I own 100% of the TET claims.

Dated this 30th of June 2009 in Dawson City, Yukon.

Respectfully submitted,

Shawn Ryan



643,500 mE

644,000 mE

644,500 mE

645,000 mE

645,500 mE

6.820,000 mN

6.820,000 mN

6.819,500 mN

6.819,500 mN

6.819,000 mN

6.819,000 mN

6.818,500 mN

6.818,500 mN

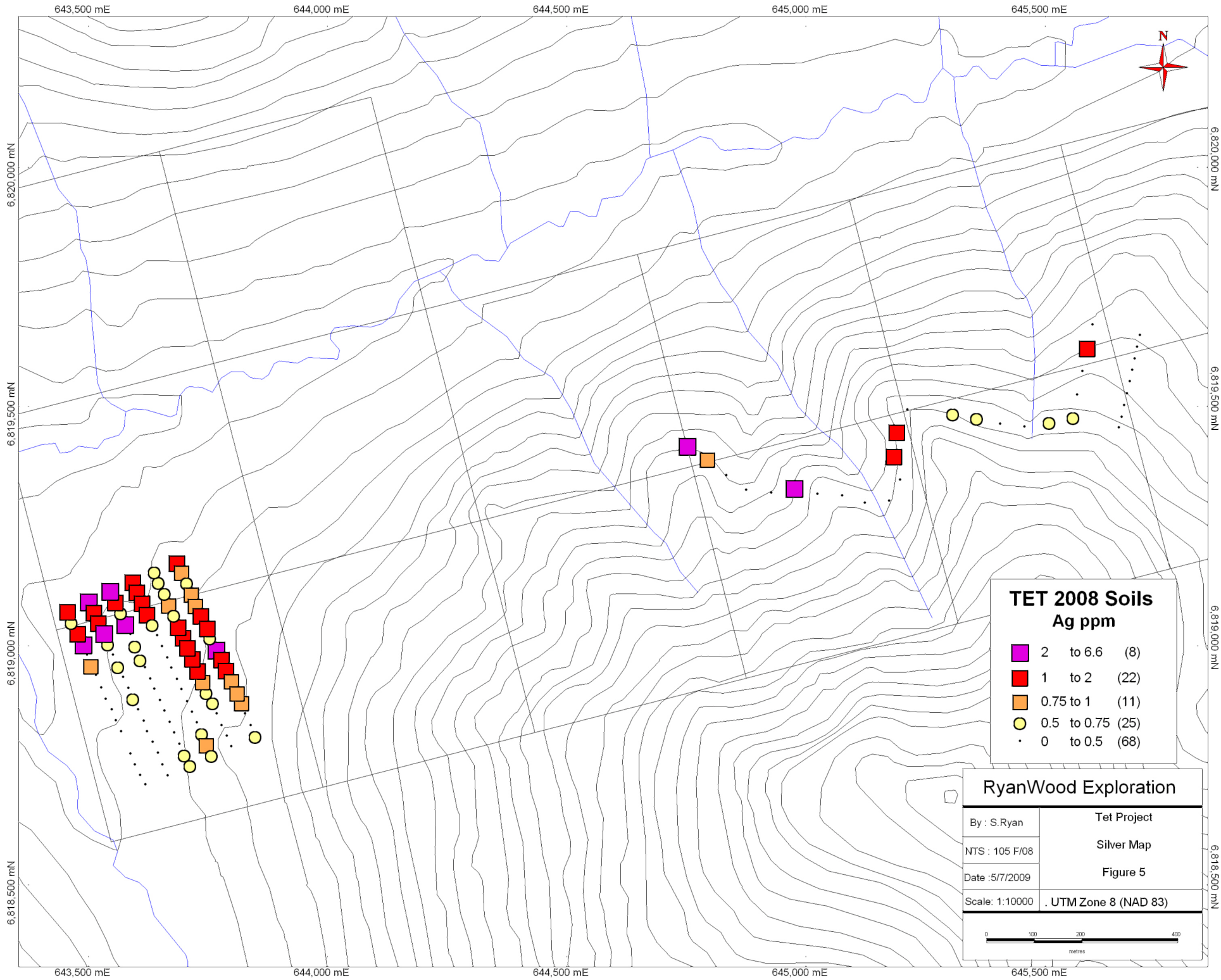
643,500 mE

644,000 mE

644,500 mE

645,000 mE

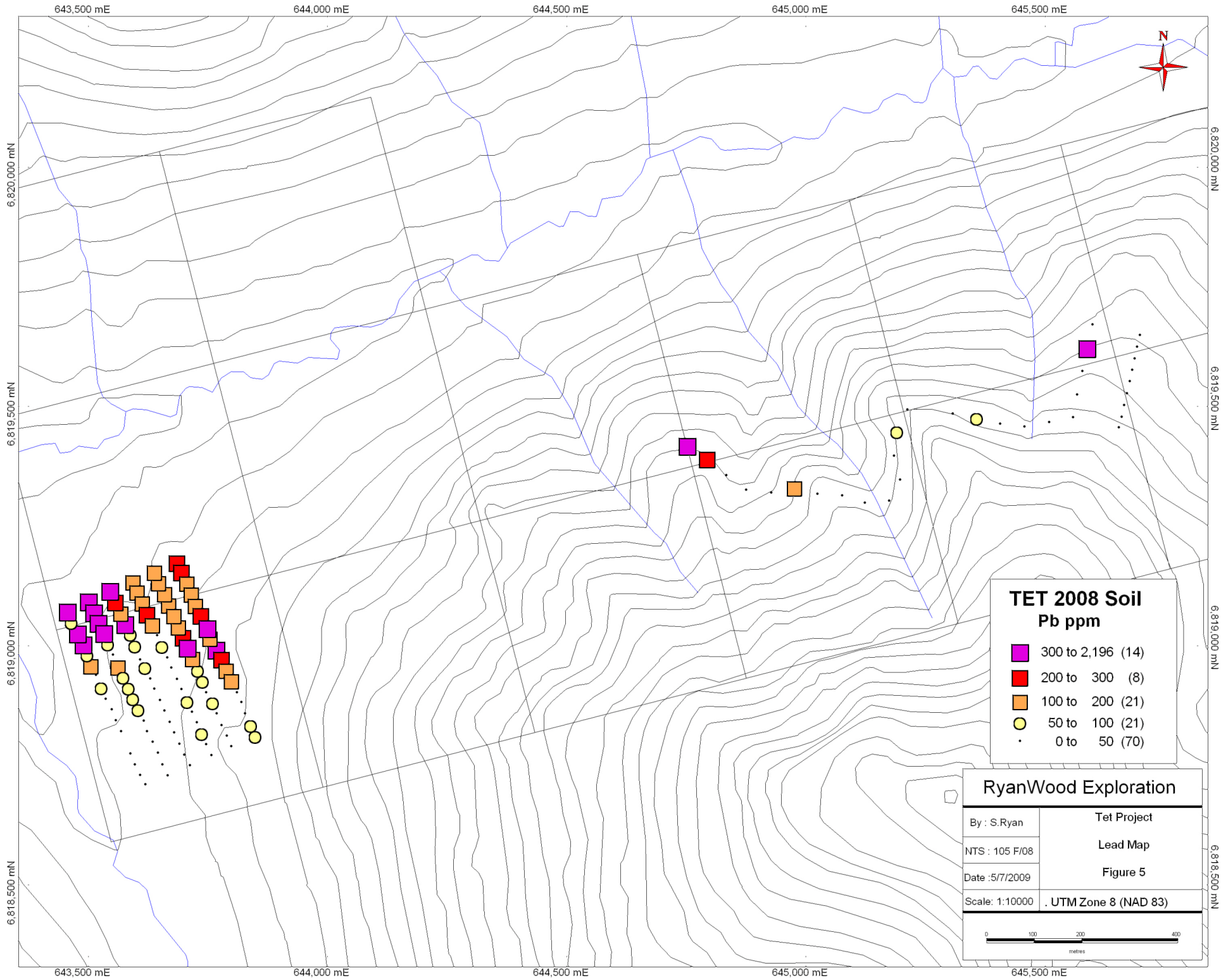
645,500 mE



**RyanWood Exploration**

By : S.Ryan	Tet Project
NTS : 105 F/08	Silver Map
Date :5/7/2009	Figure 5
Scale: 1:10000	. UTM Zone 8 (NAD 83)

0 100 200 400  
metres



**TET 2008 Soil Pb ppm**

- 300 to 2,196 (14)
- 200 to 300 (8)
- 100 to 200 (21)
- 50 to 100 (21)
- 0 to 50 (70)

**RyanWood Exploration**

By : S.Ryan	Tet Project
NTS : 105 F/08	Lead Map
Date :5/7/2009	Figure 5
Scale: 1:10000	. UTM Zone 8 (NAD 83)

0 100 200 400 metres

Sample	UTM Easting	UTM Northing	Mo	Cu	Pb	Zn	Ag	Ni	Co	Mn	Fe	As	U
TET 25367	643501	6819094	1.8	44	1227	637	4.6	45.6	17.3	2172	6.67	74.7	0.7
TET 25368	643512	6819071	1.7	43.2	412.6	256	1.8	43.4	18.9	6065	11.89	102.5	1
TET 25369	643521	6819049	2.5	51.3	361.5	507	1.5	49.8	22.2	2674	7.78	128.4	0.9
TET 25370	643533	6819028	2.6	62.7	500.5	830	2.4	56.2	25.5	2485	8.63	250	1
TET 25371	643541	6819004	2.6	42.8	96.8	211	0.6	46.1	16.1	1821	7.23	93.9	1.6
TET 25372	643552	6818981	3.1	40.7	42.3	139	0.3	44.6	14.2	515	4.13	41.5	1.1
TET 25373	643562	6818957	7.2	64.6	119	248	0.6	77.9	28.4	845	6.24	93.2	1.5
TET 25374	643573	6818935	10.3	69.6	58.3	155	0.4	68.8	29	668	6.1	60	2
TET 25375	643584	6818912	8.7	69.9	74.9	244	0.4	76.1	27.3	766	6.08	66.4	1.6
TET 25376	643593	6818890	3.2	62.8	68.1	167	0.5	59.8	24.7	965	5.36	67.7	1.5
TET 25377	643604	6818867	3.8	58.3	65.2	183	0.3	59.5	26	918	5.15	68.8	1.1
TET 25378	643616	6818843	1.5	34.2	25.3	122	0.2	43.5	17.3	958	4.62	26.1	1.5
TET 25379	643623	6818821	1	43.1	21.3	110	0.2	46.9	21.5	578	4.5	43.4	1.6
TET 25380	643635	6818799	1.5	35.2	26.6	133	0.2	39.6	15.2	485	3.67	29.3	2.7
TET 25381	643646	6818776	3	36.8	29	170	0.2	46.1	17.1	638	3.86	24.8	2.2
TET 25382	643655	6818752	3.7	41.1	30.1	182	0.3	50	16.3	543	3.79	27.1	1.4
TET 25383	643666	6818729	2.9	39.8	28.8	163	0.3	49.7	16	519	3.73	25	3
TET 25384	643620	6818710	0.4	12.3	6.8	34	0.05	9.9	3.8	158	1.09	3.6	3.3
TET 25385	643609	6818730	2.8	32.5	35.3	177	0.3	38	12.7	544	3.28	19.8	3.8
TET 25386	643598	6818752	1.8	28.7	22.3	146	0.2	36.3	11.5	505	3.15	15.2	2.6
TET 25387	643588	6818775	2.6	36.9	35	143	0.2	52.1	18	619	3.89	27.9	1.2
TET 25388	643569	6818821	1.3	27.8	29.7	122	0.2	35.4	12	284	3.07	17.7	1.8
TET 25389	643558	6818844	2.8	36.8	47.8	134	0.3	38.2	16.6	719	4.15	48.8	1.1
TET 25390	643549	6818867	2.3	27.8	29.3	120	0.2	37.3	13.4	596	3.13	21.5	0.9
TET 25391	643537	6818889	2.6	24.5	33.9	167	0.2	35	9.4	532	2.64	15.4	1
TET 25392	643527	6818913	4.3	47.8	55.7	194	0.4	51.9	17.4	574	4.66	58.2	1.3
TET 25393	643516	6818939	6.7	51.8	31.4	74	0.2	45.7	15.3	266	3.78	39.2	1.7
TET 25394	643505	6818959	4.9	72	133.3	220	0.8	57.6	23.7	979	5.9	112.8	1.8
TET 25395	643498	6818981	2.5	41.4	54	126	0.4	46.1	16.9	1171	5.57	53	2
TET 25396	643490	6819004	2.7	51.9	569.9	1102	2.3	44.2	17.3	1946	7.36	200.9	1.2
TET 25397	643478	6819027	2.4	49.7	387.7	763	1.9	45.8	13.3	1015	6.87	111.9	1.2
TET 25398	643465	6819049	1.2	33.2	94.2	193	0.5	33.5	10.6	999	4.51	32.8	1
TET 25435	643593	6819134	4.1	51.1	138.4	235	1.7	55	15.2	1242	5.93	75.5	2.4
TET 25436	643602	6819113	4.2	53.1	187.4	294	1.5	54.1	16.8	2296	7.16	99.7	2.5
TET 25437	643613	6819090	3.9	52	119.8	205	1	55.1	12.9	527	4.35	59.9	4.9
TET 25438	643623	6819067	4.4	59.8	236.6	239	1.3	61.1	20.3	2201	6.95	104.7	2.6
TET 25439	643634	6819045	5.1	59.2	128.3	250	0.7	59.1	21.5	1276	5.67	107.3	3.5
TET 25440	643644	6819022	8.1	63.9	44.2	196	0.4	70.1	21.3	653	4.81	44.4	3.8
TET 25441	643654	6818999	5	49.6	50.2	182	0.4	66.8	21.1	1288	4.65	35.6	3.5
TET 25442	643665	6818975	5.5	49.6	36.6	168	0.4	64.2	20.5	791	4.34	32.7	2.2
TET 25443	643674	6818954	6.8	55.3	32.4	177	0.4	71.4	23.9	1245	5.62	46.1	3.1
TET 25444	643686	6818930	3.8	55.1	34.5	162	0.2	62.2	23.1	1422	7.45	53.7	3.7
TET 25445	643695	6818909	2.2	53.8	35.1	144	0.3	56.5	26.5	960	5.51	63.8	2.6
TET 25446	643707	6818884	2.2	61.5	84.5	202	0.3	65.1	31.7	924	5.48	95	2.7
TET 25447	643717	6818862	2.4	59.8	36.7	143	0.2	57.9	27.9	1020	5.22	55.4	2.9

Sample	Au	Th	Sr	Cd	Sb	Bi	V	Ca	P	La	Cr	Mg	Ba	Ti	B	Al
TET 25367	4.5	8.6	18	1.2	5	0.4	27	0.74	0.088	31	37	0.94	50	0.025	1	1.49
TET 25368	6.5	4.9	31	1.4	5	0.3	19	2.49	0.057	15	23	0.82	39	0.011	0.5	0.97
TET 25369	12.6	7	32	2.3	5	0.4	28	2.2	0.094	24	29	1.15	48	0.02	0.5	1.27
TET 25370	19.8	7.8	15	2.9	6.4	0.5	27	0.5	0.077	26	29	0.72	43	0.02	0.5	1.31
TET 25371	6.1	6.9	23	0.8	3.5	0.4	28	1.22	0.086	23	34	1.01	77	0.019	1	1.43
TET 25372	4.4	5.8	24	0.5	2.9	0.3	30	1.82	0.083	24	28	1.4	76	0.017	0.5	1.34
TET 25373	8.9	6.2	37	1.5	5.1	0.7	59	2.57	0.056	20	44	1.57	57	0.049	0.5	1.67
TET 25374	4.5	7.6	15	0.8	7.6	0.5	25	0.75	0.071	24	22	0.78	52	0.01	0.5	1.17
TET 25375	5.1	7.1	29	1.4	7.1	0.4	30	2.35	0.081	18	19	1.4	48	0.015	0.5	1.03
TET 25376	4.9	6.7	38	0.8	4.1	0.5	63	3.02	0.08	20	36	2.22	71	0.026	0.5	1.57
TET 25377	4.4	5.9	49	1.1	3.7	0.4	67	3.83	0.079	19	33	2.31	67	0.026	0.5	1.44
TET 25378	4	5	21	0.3	1.6	0.3	25	1.26	0.068	22	29	1.04	72	0.017	1	1.3
TET 25379	6.1	7.4	14	0.2	1.7	0.5	15	0.58	0.062	29	18	0.47	41	0.006	0.5	1.04
TET 25380	4.5	4.7	22	0.4	1.8	0.4	22	1.08	0.061	20	24	0.74	65	0.009	0.5	1.22
TET 25381	1.8	6.6	61	1.1	2.5	0.3	39	4.71	0.082	23	31	2.44	84	0.022	2	1.53
TET 25382	1.6	7.9	48	1	2.9	0.3	41	4.16	0.09	25	34	2.53	89	0.025	0.5	1.53
TET 25383	2.5	5.7	31	0.9	2.5	0.3	36	2.68	0.088	22	36	2.03	97	0.02	1	1.57
TET 25384	0.6	0.5	26	0.5	0.4	0.05	16	1.16	0.043	6	11	0.4	61	0.02	0.5	0.79
TET 25385	1.4	4.2	41	0.9	2.2	0.3	38	3.64	0.098	20	28	2.37	100	0.017	0.5	1.27
TET 25386	1.6	3.2	25	0.9	1.6	0.2	36	1.38	0.08	19	34	1.09	120	0.018	1	1.58
TET 25387	2	7.4	27	0.6	2.3	0.3	44	2.28	0.077	26	41	2	102	0.028	1	1.73
TET 25388	1.9	5.1	28	0.4	1.5	0.3	30	1.87	0.087	22	33	1.48	80	0.017	2	1.47
TET 25389	4.4	5.6	40	0.7	2.8	0.4	33	5.22	0.092	18	22	3.11	56	0.016	1	1.17
TET 25390	2.2	7.6	54	0.6	1.9	0.3	37	4.3	0.084	23	32	2.48	83	0.029	1	1.36
TET 25391	1.4	5.9	96	1.1	2.4	0.2	114	6.64	0.08	17	41	3.76	94	0.06	2	1.96
TET 25392	10	8	26	0.8	3.7	0.4	34	1.92	0.081	27	33	1.57	74	0.023	1	1.45
TET 25393	2.4	5.4	8	0.2	5.1	0.4	30	0.13	0.035	26	22	0.44	61	0.006	0.5	1.27
TET 25394	8.2	4.6	28	1.1	6.7	0.5	27	1.64	0.106	16	19	0.81	61	0.012	0.5	1.1
TET 25395	4.9	5.5	22	0.4	3.6	0.4	23	0.77	0.084	21	26	0.63	63	0.014	1	1.23
TET 25396	23.7	7.1	21	4.4	6.1	0.4	27	0.99	0.097	25	28	0.8	45	0.019	1	1.23
TET 25397	15.1	6.9	19	3.3	4.7	0.4	29	0.67	0.087	26	33	0.72	51	0.02	1	1.37
TET 25398	4.1	4	25	0.6	2.1	0.3	24	0.95	0.069	19	31	0.63	70	0.015	0.5	1.35
TET 25435	4.4	6	26	0.9	4.1	0.4	27	1.41	0.083	18	25	0.74	49	0.008	2	1.22
TET 25436	6.8	7	23	0.9	4.7	0.4	28	1.38	0.087	22	27	1.02	54	0.012	1	1.25
TET 25437	4.9	4.7	20	0.9	3.7	0.3	25	0.7	0.078	18	22	0.47	62	0.007	1	1.25
TET 25438	9.8	6.3	24	1.2	5.9	0.4	29	2.03	0.088	21	24	1.35	58	0.011	1	1.14
TET 25439	6.8	6.3	28	1.5	4.9	0.4	32	2.64	0.083	22	26	1.83	74	0.016	2	1.23
TET 25440	5.5	9.9	17	1.3	4.6	0.4	34	0.53	0.081	27	36	0.84	77	0.014	0.5	1.48
TET 25441	2.5	7.5	25	1.6	3.2	0.4	33	1.6	0.082	22	37	1.22	106	0.018	2	1.52
TET 25442	3.5	8	24	1.1	3.8	0.3	33	2.03	0.089	26	29	1.49	69	0.016	1	1.3
TET 25443	5.6	7.1	20	1.4	4.1	0.4	28	1.42	0.1	23	23	1	71	0.011	2	1.13
TET 25444	3.9	8.7	16	0.7	3.5	0.4	28	0.55	0.079	29	28	0.71	81	0.013	1	1.22
TET 25445	14.1	7.2	23	0.4	3	0.5	20	1.12	0.056	24	18	0.8	53	0.008	0.5	1.06
TET 25446	20.6	8.8	22	0.8	3.4	0.6	17	1.31	0.089	26	17	0.83	44	0.007	0.5	1.02
TET 25447	6	9.5	64	0.4	2.8	0.5	24	2.69	0.07	27	25	1.13	60	0.015	1	1.19

Sample	Na	K	W	Hg	Sc	Tl	S	Ga	Se	Method	Acme File
TET 25367	0.006	0.08	0.1	0.04	3.3	0.05	0.025	5	0.7	1DX15	VAN08010013
TET 25368	0.007	0.04	0.1	0.03	3.2	0.05	0.06	3	0.9	1DX15	VAN08010013
TET 25369	0.006	0.06	0.1	0.02	3.3	0.05	0.025	4	1	1DX15	VAN08010013
TET 25370	0.006	0.07	0.1	0.03	3.8	0.05	0.025	4	0.9	1DX15	VAN08010013
TET 25371	0.008	0.08	0.1	0.02	3.1	0.05	0.025	4	0.7	1DX15	VAN08010013
TET 25372	0.011	0.07	0.1	0.02	2.6	0.05	0.025	4	1	1DX15	VAN08010013
TET 25373	0.015	0.04	0.1	0.04	4.5	0.2	0.025	5	1.3	1DX15	VAN08010013
TET 25374	0.011	0.05	0.05	0.02	3	0.2	0.025	4	1	1DX15	VAN08010013
TET 25375	0.01	0.05	0.05	0.02	3.1	0.2	0.025	3	1.3	1DX15	VAN08010013
TET 25376	0.02	0.09	0.1	0.03	3.7	0.2	0.025	5	0.9	1DX15	VAN08010013
TET 25377	0.018	0.07	0.1	0.03	3.3	0.2	0.025	5	1.1	1DX15	VAN08010013
TET 25378	0.014	0.08	0.05	0.02	2.9	0.05	0.025	4	0.8	1DX15	VAN08010013
TET 25379	0.007	0.05	0.05	0.02	3	0.05	0.025	3	1.4	1DX15	VAN08010013
TET 25380	0.011	0.07	0.05	0.03	2.5	0.05	0.025	4	1.7	1DX15	VAN08010013
TET 25381	0.01	0.09	0.1	0.02	2.9	0.1	0.025	5	0.8	1DX15	VAN08010013
TET 25382	0.011	0.11	0.1	0.02	2.9	0.1	0.025	5	0.7	1DX15	VAN08010013
TET 25383	0.01	0.1	0.1	0.03	2.7	0.1	0.025	5	1.3	1DX15	VAN08010013
TET 25384	0.04	0.04	0.05	0.02	0.7	0.05	0.05	2	1.7	1DX15	VAN08010013
TET 25385	0.012	0.07	0.1	0.03	2.4	0.05	0.025	4	1.5	1DX15	VAN08010013
TET 25386	0.019	0.08	0.1	0.03	2.4	0.05	0.025	5	1.3	1DX15	VAN08010013
TET 25387	0.016	0.1	0.1	0.02	3.1	0.1	0.025	5	0.9	1DX15	VAN08010013
TET 25388	0.012	0.07	0.1	0.03	2.3	0.05	0.025	4	1.3	1DX15	VAN08010013
TET 25389	0.009	0.05	0.1	0.02	2.6	0.05	0.025	3	0.9	1DX15	VAN08010013
TET 25390	0.015	0.08	0.1	0.02	2.6	0.1	0.025	4	0.25	1DX15	VAN08010013
TET 25391	0.07	0.14	0.2	0.02	3.4	0.3	0.025	6	0.6	1DX15	VAN08010013
TET 25392	0.01	0.08	0.1	0.02	3	0.1	0.025	4	0.9	1DX15	VAN08010013
TET 25393	0.007	0.04	0.1	0.02	1.7	0.05	0.025	4	1.4	1DX15	VAN08010013
TET 25394	0.008	0.04	0.05	0.05	2.6	0.1	0.11	3	1.6	1DX15	VAN08010013
TET 25395	0.008	0.06	0.05	0.03	2.9	0.05	0.025	4	1	1DX15	VAN08010013
TET 25396	0.007	0.06	0.1	0.04	3.1	0.05	0.07	4	1.3	1DX15	VAN08010013
TET 25397	0.007	0.07	0.1	0.04	3.3	0.05	0.025	4	1	1DX15	VAN08010013
TET 25398	0.014	0.06	0.05	0.04	2.4	0.05	0.025	4	0.6	1DX15	VAN08010013
TET 25435	0.008	0.07	0.05	0.04	3	0.05	0.025	3	2	1DX15	VAN08010013
TET 25436	0.006	0.07	0.1	0.04	3.2	0.05	0.025	4	1.9	1DX15	VAN08010013
TET 25437	0.01	0.06	0.05	0.05	2.5	0.05	0.05	4	2.7	1DX15	VAN08010013
TET 25438	0.008	0.06	0.05	0.04	3.4	0.1	0.06	3	1.4	1DX15	VAN08010013
TET 25439	0.01	0.07	0.1	0.03	3	0.1	0.025	4	1.3	1DX15	VAN08010013
TET 25440	0.008	0.09	0.1	0.03	3.1	0.1	0.025	5	1.7	1DX15	VAN08010013
TET 25441	0.01	0.1	0.1	0.03	3.1	0.05	0.06	4	2.4	1DX15	VAN08010013
TET 25442	0.008	0.08	0.05	0.02	3	0.1	0.025	4	1.7	1DX15	VAN08010013
TET 25443	0.008	0.07	0.05	0.03	3.2	0.1	0.025	4	1.2	1DX15	VAN08010013
TET 25444	0.008	0.08	0.05	0.03	4.1	0.05	0.025	4	1	1DX15	VAN08010013
TET 25445	0.009	0.08	0.05	0.02	3.5	0.05	0.025	3	0.9	1DX15	VAN08010013
TET 25446	0.006	0.06	0.05	0.02	3.5	0.05	0.06	3	1.2	1DX15	VAN08010013
TET 25447	0.007	0.09	0.05	0.01	3.4	0.05	0.025	4	0.9	1DX15	VAN08010013

Sample	UTM Easting	UTM Northing	Mo	Cu	Pb	Zn	Ag	Ni	Co	Mn	Fe	As	U
TET 25448	643727	6818840	3.7	61.6	29.6	149	0.2	62.4	23.6	833	6.25	69.2	2.6
TET 25449	643737	6818817	9.7	92.8	54.8	210	0.6	83.5	25.8	643	6.26	84.4	2.5
TET 25450	643747	6818794	22.6	224.2	45.5	459	0.8	121.5	28.9	385	6.24	108.1	7.1
TET 25901	643840	6818834	18.9	92.1	52.1	375	0.4	98.7	23	355	4.78	54.2	5.4
TET 25902	643849	6818811	9.2	51	63.4	336	0.6	54.2	16	510	3.45	41.8	4
TET 25903	643799	6818790	5.6	59.5	29.1	215	0.3	75.3	26.2	425	4.28	28	3.3
TET 25904	643790	6818812	4.5	54.9	43.6	216	0.4	66.8	21.3	522	4.27	32.8	3
TET 25905	643779	6818834	7.8	57.4	34.4	223	0.4	58.8	18.4	426	4.07	36.1	4.4
TET 25906	643769	6818858	14.8	92.9	29.2	237	0.4	66.8	16.4	322	4.09	55.8	4.4
TET 25907	643760	6818881	9	82.9	50.1	343	0.7	77	20.1	535	4.33	41.9	6
TET 25908	643747	6818902	9	70	35.7	262	0.5	79.1	21.2	582	4.74	38.6	2.4
TET 25909	643739	6818926	8.5	73.2	68.9	269	0.8	112.8	24.2	918	4.43	35.2	4.7
TET 25910	643729	6818949	5.5	66	54.6	213	1	75	15.6	534	3.65	45.7	7.3
TET 25911	643718	6818974	5.9	63.5	112.2	173	1	70	20	1305	4.9	65	2
TET 25912	643708	6818997	5.3	52	538.3	299	1.9	56.1	20.1	1910	5.66	97.8	1.8
TET 25913	643698	6819018	4.1	56	269.3	445	1.8	53.8	17.3	1371	7.42	1170.9	1.6
TET 25914	643688	6819040	3.7	54.3	164.8	198	1.1	54.3	22.6	1116	5.65	165.7	1.6
TET 25951	645654	6819456	I.S.	I.S.	I.S.	I.S.	I.S.	I.S.	I.S.	I.S.	I.S.	I.S.	I.S.
TET 25952	645660	6819478	4.6	56.2	14.1	205	0.3	42.3	14.4	242	3.54	13.7	2.5
TET 25953	645665	6819503	10.3	115.1	19.8	258	0.3	63	23.7	366	4.09	45	2.7
TET 25954	645671	6819527	I.S.	I.S.	I.S.	I.S.	I.S.	I.S.	I.S.	I.S.	I.S.	I.S.	I.S.
TET 25955	645677	6819553	7.3	54.8	17	134	0.05	41.2	13.1	310	3.3	198.9	2
TET 25956	645682	6819576	11.6	92.3	22.6	177	0.2	57.2	21	483	4.12	75.8	2.7
TET 25957	645687	6819600	9.5	96.7	19.9	163	0.2	60.6	23.2	727	4.46	82	3
TET 25958	645692	6819625	3.6	96.1	30.4	97	0.3	69.8	35.3	943	6.13	129.7	2.3
TET 25959	645698	6819649	4.7	96.1	23.3	98	0.3	60.2	26.1	1433	5.56	91.7	1.5
TET 25960	645599	6819671	2	126.6	21.4	56	0.4	65.9	33.7	3033	6.63	151	1.4
TET 25961	645588	6819623	4.8	79.1	468	307	1.5	104.7	48.7	1410	8.85	764.5	1.8
TET 25962	645578	6819574	1.4	100.5	7.1	38	0.2	61.6	33.6	1055	4.19	60.1	1.2
TET 25963	645567	6819525	9.6	90.5	20.3	162	0.3	62.6	24.7	670	4.84	60.1	2.7
TET 25964	645558	6819477	17.9	193.5	25.7	137	0.5	111	35.3	588	4.55	100.8	3.2
TET 25965	645508	6819467	10.5	134.4	24.8	349	0.5	95.5	37.8	632	4.73	207.7	5
TET 25966	645457	6819458	7.7	71.9	24.5	208	0.4	54.3	22.4	443	3.99	45.5	2.5
TET 25967	645406	6819464	4.7	58.1	12	126	0.3	39.1	22	386	3.53	14.5	1.5
TET 25969	645357	6819476	21.1	134.6	66.2	105	0.6	48.3	13.9	743	5.32	131.9	4
TET 25970	645307	6819485	21.3	102.1	21.8	42	0.6	54.1	30.7	701	4.97	95.5	3.4
TET 25972	645212	6819493	0.5	51.3	9.1	59	0.05	48.9	37.4	901	5.19	16.2	0.8
TET 25973	645190	6819448	59.8	223.9	61.7	70	1.1	48.6	12.1	210	6.73	192.8	7.7
TET 25974	645184	6819397	80.7	64.4	47	34	1.9	21.5	3.5	57	4.46	174.4	4.2
TET 25975	645197	6819347	4.9	60.8	11.7	111	0.3	33.7	17.3	252	3.13	14.8	1.7
TET 25976	645174	6819303	8.5	138.6	31.3	188	0.4	65.1	26.2	766	4.8	53.2	2.7
TET 25977	645123	6819299	1.9	33.4	9.9	54	0.05	22.6	14.3	528	2.55	34.5	0.8
TET 25978	645076	6819314	2.9	86.9	12.9	66	0.05	55.8	39.4	1172	5.88	77.2	1.5
TET 25979	645024	6819317	0.8	55.6	9.4	40	0.05	56.7	33	547	4.81	37.5	1.1
TET 25980	644976	6819331	1.4	178.1	189.4	42	2.7	35.1	20.5	8551	35.82	577.9	1

Sample	Au	Th	Sr	Cd	Sb	Bi	V	Ca	P	La	Cr	Mg	Ba	Ti	B	Al
TET 25448	8.1	9.9	34	0.5	4	0.5	25	1.83	0.147	27	22	0.69	70	0.009	1	1.1
TET 25449	1.5	8.6	35	1.5	6.8	0.5	39	3.14	0.101	17	21	1.99	72	0.015	1	1.08
TET 25450	2.8	7.8	11	4.6	9.2	0.4	43	0.3	0.101	19	22	0.34	55	0.003	0.5	1.01
TET 25901	6.4	9.1	13	3.6	6.6	0.4	42	0.33	0.114	23	19	0.42	71	0.005	0.5	1.09
TET 25902	6.4	3.9	21	2.7	3.8	0.3	35	0.73	0.102	15	23	0.46	72	0.011	0.5	1.14
TET 25903	1.8	9.7	15	0.8	4.2	0.4	38	0.32	0.08	31	37	0.81	111	0.016	1	1.79
TET 25904	3.4	8.7	17	1.3	2.9	0.4	39	0.5	0.092	27	44	0.91	115	0.018	0.5	1.69
TET 25905	3.2	7.6	14	1	4.9	0.3	35	0.52	0.085	25	24	0.61	73	0.01	0.5	1.24
TET 25906	2.2	6.1	11	1.6	5.6	0.3	35	0.27	0.077	19	16	0.29	65	0.004	0.5	0.92
TET 25907	4.1	7.5	17	3.6	4.2	0.4	42	0.56	0.091	22	29	0.6	91	0.008	0.5	1.4
TET 25908	2.6	9.2	19	2.4	4.4	0.4	40	1.09	0.087	26	34	1.09	78	0.019	1	1.46
TET 25909	2.9	8	13	4.6	4.6	0.3	31	0.43	0.084	22	23	0.49	64	0.003	0.5	1.19
TET 25910	2.9	4.8	15	2.9	4.5	0.3	23	0.47	0.069	12	15	0.31	57	0.004	1	1
TET 25911	3.9	6.6	22	1.8	5.4	0.3	24	1.3	0.087	16	16	0.55	51	0.005	2	0.82
TET 25912	4.7	5.7	40	2.4	7.1	0.3	23	2.81	0.103	17	16	0.89	43	0.007	7	0.69
TET 25913	12.2	5.3	24	1.8	12	0.4	21	1.16	0.075	15	17	0.57	43	0.007	2	0.75
TET 25914	6.3	5.3	14	1	5.8	0.5	20	0.58	0.066	17	17	0.5	38	0.006	2	0.92
TET 25951	I.S.	I.S.	I.S.	I.S.	I.S.	I.S.	I.S.	I.S.	I.S.	I.S.	I.S.	I.S.	I.S.	I.S.	I.S.	I.S.
TET 25952	1.4	7.7	10	1	3	0.3	15	0.31	0.051	16	8	0.09	51	0.0005	0.5	0.58
TET 25953	3	10.6	7	2.6	6.2	0.3	24	0.1	0.051	33	10	0.17	28	0.002	14	0.6
TET 25954	I.S.	I.S.	I.S.	I.S.	I.S.	I.S.	I.S.	I.S.	I.S.	I.S.	I.S.	I.S.	I.S.	I.S.	I.S.	I.S.
TET 25955	5	6.6	9	0.5	4.6	0.4	29	0.16	0.05	25	17	0.28	62	0.004	0.5	0.76
TET 25956	3.1	8.9	7	0.8	6.6	0.4	30	0.06	0.068	23	12	0.19	35	0.0005	0.5	0.62
TET 25957	4.7	11	9	1.2	6.8	0.4	23	0.14	0.083	31	11	0.16	36	0.0005	0.5	0.61
TET 25958	7.5	13.6	18	0.4	6.9	0.7	15	0.79	0.093	36	15	0.33	34	0.003	2	0.75
TET 25959	7.2	8.1	14	0.6	5	0.5	17	0.5	0.068	27	14	0.26	45	0.002	1	0.83
TET 25960	30.1	7.1	12	0.2	3.9	0.7	9	0.54	0.055	22	11	0.21	30	0.003	2	0.63
TET 25961	33.1	7.8	59	2.1	9.9	2.1	10	3.02	0.053	13	9	0.22	31	0.005	3	0.45
TET 25962	3.5	7.6	20	0.1	2.7	0.4	8	6.32	0.046	11	9	0.22	24	0.003	1	0.51
TET 25963	4.8	8.6	10	1.1	6	0.4	25	0.39	0.066	19	11	0.15	34	0.0005	1	0.56
TET 25964	2	11.6	12	1.2	10.3	0.4	30	0.27	0.118	15	8	0.07	34	0.002	0.5	0.38
TET 25965	7.3	9.1	14	5.3	7.3	0.5	29	0.29	0.081	15	10	0.08	38	0.001	0.5	0.46
TET 25966	3.3	10.3	13	1.8	5.1	0.3	21	0.31	0.069	23	12	0.3	29	0.001	0.5	0.68
TET 25967	1.4	9.7	13	1.2	3.2	0.4	14	0.5	0.061	14	8	0.11	34	0.0005	0.5	0.41
TET 25969	10	2.9	12	0.5	17.5	0.5	32	0.07	0.116	11	10	0.1	42	0.003	0.5	0.51
TET 25970	4.3	4.5	10	0.2	13.1	0.5	41	0.13	0.108	16	12	0.14	29	0.002	0.5	0.5
TET 25972	1.5	4.7	19	0.05	1.9	0.6	8	2.82	0.037	8	21	0.58	15	0.002	0.5	1.28
TET 25973	3.5	3.4	17	0.3	28.8	0.5	101	0.03	0.264	6	28	0.14	45	0.003	0.5	1.09
TET 25974	3.1	2.1	8	0.05	26.9	0.4	90	0.02	0.174	9	16	0.03	51	0.002	0.5	0.48
TET 25975	1.3	10.4	16	1	3.1	0.3	14	0.74	0.054	16	8	0.13	38	0.002	0.5	0.54
TET 25976	3.3	10	10	1.5	4.8	0.4	21	0.17	0.077	24	12	0.24	26	0.003	0.5	0.66
TET 25977	1	1.1	7	0.1	1.4	0.3	13	0.15	0.059	10	10	0.24	38	0.008	0.5	0.87
TET 25978	2.3	6.6	4	0.1	2.7	0.7	15	0.07	0.057	26	21	0.37	35	0.005	2	1.22
TET 25979	1.6	7.8	9	0.05	1.9	0.5	7	0.38	0.047	27	13	0.24	21	0.004	0.5	0.72
TET 25980	145	2.3	14	0.2	8.9	4.2	10	0.67	0.039	3	7	0.24	11	0.002	0.5	0.53

Sample	Na	K	W	Hg	Sc	Tl	S	Ga	Se	Method	Acme File
TET 25448	0.009	0.09	0.05	0.02	3.6	0.1	0.025	3	1	1DX15	VAN08010013
TET 25449	0.011	0.08	0.1	0.02	3.1	0.2	0.08	3	2	1DX15	VAN08010013
TET 25450	0.006	0.05	0.05	0.06	2.5	0.2	0.025	3	5.7	1DX15	VAN08010013
TET 25901	0.007	0.05	0.05	0.03	2.4	0.1	0.025	3	4.4	1DX15	VAN08010013
TET 25902	0.012	0.05	0.1	0.05	1.9	0.05	0.025	3	3.4	1DX15	VAN08010013
TET 25903	0.01	0.1	0.1	0.03	3.6	0.1	0.025	5	1.1	1DX15	VAN08010013
TET 25904	0.008	0.09	0.1	0.03	3.5	0.05	0.025	5	1.1	1DX15	VAN08010013
TET 25905	0.008	0.06	0.1	0.03	2.8	0.1	0.025	4	1.5	1DX15	VAN08010013
TET 25906	0.009	0.04	0.05	0.03	1.9	0.2	0.025	3	2.5	1DX15	VAN08010013
TET 25907	0.01	0.07	0.1	0.04	3	0.1	0.025	4	3	1DX15	VAN08010013
TET 25908	0.01	0.09	0.1	0.03	3.1	0.1	0.025	4	1.9	1DX15	VAN08010013
TET 25909	0.006	0.05	0.05	0.04	2.9	0.1	0.025	3	2.3	1DX15	VAN08010013
TET 25910	0.012	0.04	0.05	0.04	2.6	0.1	0.05	2	3.9	1DX15	VAN08010013
TET 25911	0.006	0.05	0.05	0.03	2.7	0.05	0.025	2	4.1	1DX15	VAN08010013
TET 25912	0.006	0.05	0.05	0.02	3.4	0.05	0.025	2	2.1	1DX15	VAN08010013
TET 25913	0.006	0.05	0.1	0.02	4.2	0.05	0.025	2	0.6	1DX15	VAN08010013
TET 25914	0.006	0.05	0.05	0.02	3.2	0.05	0.025	2	1.3	1DX15	VAN08010013
TET 25951	I.S.	I.S.	I.S.	I.S.	I.S.	I.S.	I.S.	I.S.	I.S.	1DX15	VAN08010013
TET 25952	0.01	0.02	0.05	0.02	3.1	0.05	0.025	2	0.8	1DX15	VAN08010013
TET 25953	0.006	0.02	0.05	0.02	3.4	0.1	0.025	2	1.9	1DX15	VAN08010013
TET 25954	I.S.	I.S.	I.S.	I.S.	I.S.	I.S.	I.S.	I.S.	I.S.	1DX15	VAN08010013
TET 25955	0.005	0.03	0.05	0.02	2.5	0.1	0.025	2	1.8	1DX15	VAN08010013
TET 25956	0.005	0.03	0.05	0.02	2.8	0.2	0.025	2	2.2	1DX15	VAN08010013
TET 25957	0.006	0.03	0.05	0.02	3.1	0.2	0.025	2	2.1	1DX15	VAN08010013
TET 25958	0.006	0.06	0.1	0.005	3.8	0.05	0.025	2	1.1	1DX15	VAN08010013
TET 25959	0.005	0.04	0.05	0.02	3.3	0.1	0.025	2	0.9	1DX15	VAN08010013
TET 25960	0.004	0.05	0.05	0.005	3.2	0.05	0.025	2	0.6	1DX15	VAN08010013
TET 25961	0.006	0.08	0.3	0.03	3.9	0.1	0.15	1	0.8	1DX15	VAN08010013
TET 25962	0.005	0.08	0.05	0.005	3.3	0.05	0.025	1	0.25	1DX15	VAN08010013
TET 25963	0.006	0.03	0.05	0.02	3.3	0.2	0.025	2	1.7	1DX15	VAN08010013
TET 25964	0.006	0.04	0.05	0.02	3.1	0.4	0.025	1	2.7	1DX15	VAN08010013
TET 25965	0.008	0.03	0.05	0.02	4.4	0.2	0.025	2	2.8	1DX15	VAN08010013
TET 25966	0.005	0.03	0.1	0.01	3.2	0.1	0.025	2	1.7	1DX15	VAN08010013
TET 25967	0.009	0.02	0.05	0.01	3.4	0.05	0.025	1	0.7	1DX15	VAN08010013
TET 25969	0.008	0.04	0.05	0.04	1.3	0.6	0.05	2	6.3	1DX15	VAN08010013
TET 25970	0.004	0.03	0.05	0.04	1.9	0.7	0.11	2	8.9	1DX15	VAN08010013
TET 25972	0.003	0.03	0.05	0.005	2.6	0.05	0.1	3	0.25	1DX15	VAN08010013
TET 25973	0.008	0.06	0.1	0.09	1.7	2.3	0.16	3	19.8	1DX15	VAN08010013
TET 25974	0.006	0.07	0.1	0.06	0.7	1.1	0.11	3	12.1	1DX15	VAN08010013
TET 25975	0.013	0.03	0.05	0.02	3.3	0.05	0.025	2	1.4	1DX15	VAN08010013
TET 25976	0.005	0.03	0.05	0.02	3.5	0.2	0.025	2	1.6	1DX15	VAN08010013
TET 25977	0.016	0.03	0.05	0.02	1	0.05	0.025	2	0.9	1DX15	VAN08010013
TET 25978	0.002	0.03	0.2	0.01	2.4	0.05	0.025	3	0.8	1DX15	VAN08010013
TET 25979	0.003	0.04	0.05	0.01	2.3	0.05	0.025	2	0.25	1DX15	VAN08010013
TET 25980	0.002	0.01	0.1	0.02	2	0.05	0.27	2	1	1DX15	VAN08010013

Sample	UTM Easting	UTM Northing	Mo	Cu	Pb	Zn	Ag	Ni	Co	Mn	Fe	As	U
TET 25981	644928	6819320	1	38.2	49.2	91	0.2	37.1	22	361	3.76	26.1	0.7
TET 25982	644875	6819326	0.7	39.5	21.5	82	0.05	35.7	21.6	503	4.03	9.7	0.6
TET 25983	644834	6819356	9.8	98	18.9	80	0.1	39.9	10.9	652	3.55	122.4	5.2
TET 25985	643668	6819086	2.4	51.6	183.9	184	0.9	51	20.5	1010	5.5	107.4	1.6
TET 25986	643686	6819174	2.1	47.8	249.5	207	1	44.8	17.8	1203	5.48	89.5	1.7
TET 25987	643695	6819155	2	41.8	215.2	180	0.8	42.1	17.7	1367	5.23	76.3	1.2
TET 25988	643706	6819132	2.1	46.5	154.2	148	0.6	42.3	17.4	1353	5.21	97.8	1.4
TET 25989	643715	6819109	2.8	53.6	170.1	183	0.8	47.8	23.2	1521	5.62	125.4	1.5
TET 25990	643724	6819085	3.9	46.7	145.5	177	0.8	47.8	18.6	2155	6.14	162.9	2.1
TET 25991	643736	6819064	3.6	51.6	217	290	1	51.2	20.6	1233	6.04	369.9	2.1
TET 25992	643749	6819038	3.6	53.4	330.5	286	1.6	65.9	34.3	2063	7.66	519.9	2.6
TET 25993	643754	6819017	6.6	48.8	112.5	305	0.6	66.4	34.6	1282	6.21	151.7	2.6
TET 25994	643768	6818993	4.4	43.6	1107.2	361	2.9	50	16.8	1490	4.83	75.5	2
TET 25995	643779	6818973	6.2	55.6	248.8	202	1.3	58.8	17.6	959	5	109.9	2.8
TET 25996	643788	6818950	7.5	50	195.4	183	1.2	65.6	20.9	1716	6.54	118.5	3.1
TET 25997	643799	6818928	7.9	73.6	117.6	188	0.9	76.6	19.9	2142	5.7	92	5.6
TET 25998	643811	6818902	10.1	69.2	25.6	291	0.9	86.4	32.9	1159	3.4	26.7	12.4
TET 25999	643820	6818882	5	34.9	12.1	92	0.8	35.4	9.2	263	1.65	13.2	5.1
TET 26000	643828	6818858	14.5	66.6	29.6	227	0.4	67.9	16.7	352	3.53	38.8	6.7
TET 31529	643659	6819110	2	42.5	125.7	203	0.7	37.3	13.1	727	4.71	93.3	3
TET 31631	643647	6819133	1.7	38.2	185.7	184	0.6	43	19	1507	5.13	59.9	1.7
TET 31632	643638	6819155	1.4	42.9	155.1	178	0.7	42	15.3	900	5.39	57.3	2.5
TET 34661	644794	6819391	1	109.2	261.8	150	0.9	83.6	45.1	7700	19.38	133.5	4.7
TET 37534	643457	6819073	1.2	38.3	380.1	207	1.4	33	15.7	1233	5.07	112.5	0.7
TET 25351	643758	6818771	11.7	119.6	33.1	141	0.5	79.3	21.6	380	4.97	50.2	3.2
TET 25352	643713	6818750	11	93.9	36	206	0.5	87.7	23.6	375	5.05	46.4	3.6
TET 25353	643701	6818772	8.7	84.7	38	280	0.6	76.7	23	633	4.95	44.4	2.7
TET 25354	643691	6818795	2.8	43.9	26.8	136	0.2	51.5	18.1	593	4.19	31.8	1.3
TET 25355	643680	6818819	1.5	42.4	20.4	103	0.2	50.4	22.3	674	4.61	49.5	2.2
TET 25356	643670	6818841	1.5	46	27.8	118	0.2	46.9	22.2	652	4.49	49.7	2.9
TET 25357	643659	6818864	1.9	62.4	35.8	150	0.2	65	30.7	1111	6.11	86.7	2
TET 25358	643650	6818886	1.5	53.8	25.7	122	0.2	55.8	22	1403	6.11	58.3	2.6
TET 25359	643638	6818910	1.4	37.4	18.2	96	0.1	46	19.1	840	4.67	22.2	1.3
TET 25360	643630	6818931	11.9	60.9	49.5	117	0.3	90.9	31.3	623	5.96	80.4	1.6
TET 25361	643619	6818955	20.2	95.5	60.6	190	0.3	114.1	33.4	777	7.08	66.5	2.9
TET 25362	643609	6818971	15.6	104.4	42.8	200	0.7	99.5	31.2	760	5.22	51.4	2.8
TET 25363	643598	6819000	6.5	63.1	64.5	148	0.5	60	21.7	814	4.93	63	1.4
TET 25364	643588	6819024	2.3	38.2	63.7	153	0.4	45.6	15.5	1527	5.14	58	0.8
TET 25365	643577	6819046	2.3	60.5	575.2	201	3.3	70.8	39.9	6441	12.45	195.7	1.3
TET 25984(2591	643679	6819064	2.1	44.4	105.4	185	0.7	43.9	16.7	720	4.75	108.6	1.6
TET 31530	643568	6819069	2.3	47.2	135.4	176	0.6	46.2	18.5	1555	5.72	78.6	1
TET 31531	643557	6819092	1.6	34.1	287.5	179	1	38.4	16.7	5065	9.41	75.1	0.9
TET 31549	643546	6819116	1.7	51.8	2195.8	425	6.6	45.1	22.9	3010	7.48	158.9	1
TET 34662	644752	6819419	1.3	221.1	1747	114	6.6	33.6	13.4	1292	25.91	192.5	0.9

Sample	Au	Th	Sr	Cd	Sb	Bi	V	Ca	P	La	Cr	Mg	Ba	Ti	B	Al
TET 25981	0.25	10.1	18	0.2	2.1	0.3	11	0.44	0.055	25	18	0.72	31	0.001	0.5	1.25
TET 25982	1	12.7	49	0.2	1.5	0.3	11	1.83	0.056	30	21	0.85	30	0.004	0.5	1.4
TET 25983	4.9	2.9	4	1.1	7.3	0.4	11	0.03	0.042	16	5	0.06	23	0.002	0.5	0.48
TET 25985	5.4	5.3	29	0.8	4.5	0.5	30	2.31	0.07	14	20	1.53	35	0.009	0.5	0.98
TET 25986	11.1	5.4	37	0.6	4.5	0.4	21	2.21	0.071	16	20	0.93	40	0.009	1	0.9
TET 25987	11.3	5.8	25	0.7	4.5	0.4	25	1.77	0.076	17	23	1.07	49	0.011	1	1
TET 25988	6.3	4.6	36	0.6	4.9	0.4	25	2.1	0.07	16	21	1.03	55	0.009	0.5	0.98
TET 25989	4.2	6	33	0.9	4.7	0.4	42	3.19	0.073	16	21	2.16	131	0.014	1	1
TET 25990	4.4	5.7	25	0.9	5.5	0.4	23	2.43	0.122	15	18	1.45	41	0.008	2	0.84
TET 25991	5.6	4	23	1.2	7.2	0.4	21	1.09	0.068	12	15	0.48	42	0.005	1	0.7
TET 25992	9.1	5	24	1.5	11.1	0.5	12	1.2	0.081	11	7	0.21	25	0.002	0.5	0.36
TET 25993	4.4	8.2	31	2	11.1	0.4	15	2.25	0.066	10	10	0.4	26	0.004	2	0.51
TET 25994	8.4	4.5	49	2.4	7.5	0.3	19	5.28	0.124	11	13	1.39	31	0.005	1	0.54
TET 25995	7	5.6	21	0.9	7.8	0.4	19	1.07	0.103	14	12	0.42	27	0.004	2	0.65
TET 25996	4.4	6.9	27	1	7.8	0.4	22	2.48	0.131	15	14	1.12	30	0.004	1	0.64
TET 25997	2.8	7.5	14	1.8	6.8	0.4	25	0.36	0.122	19	13	0.27	38	0.003	1	0.76
TET 25998	1.9	4.9	15	5.7	4.9	0.3	28	0.41	0.079	14	15	0.28	92	0.003	0.5	1.08
TET 25999	1.4	1.3	12	1.1	2.4	0.2	19	0.34	0.054	8	9	0.16	52	0.006	1	0.7
TET 26000	2.8	5.9	14	2.7	6.2	0.3	36	0.33	0.077	21	19	0.33	79	0.004	0.5	1.01
TET 31529	4.7	3.8	26	0.6	3.8	0.4	28	1.36	0.067	14	22	0.76	51	0.008	1	1.01
TET 31631	3.3	6.9	54	0.6	3.5	0.4	23	3.02	0.081	22	25	1.07	42	0.014	1	1.08
TET 31632	4	5.1	44	0.5	3.3	0.4	24	1.97	0.078	21	26	0.9	48	0.012	3	1.16
TET 34661	37	6	9	0.8	12.6	0.5	7	0.24	0.052	13	9	0.2	26	0.001	0.5	0.52
TET 37534	8.3	4.7	46	1	3.6	0.5	21	2.86	0.053	17	19	0.79	54	0.014	0.5	0.88
TET 25351	2.3	8.1	9	0.9	5.9	0.4	25	0.25	0.067	20	21	0.43	62	0.004	0.5	0.93
TET 25352	1.3	9.2	9	1.7	7.1	0.4	31	0.21	0.061	19	19	0.42	51	0.004	0.5	1.02
TET 25353	1.9	7.4	18	2.6	4.9	0.4	43	1.27	0.081	18	29	1.19	93	0.01	0.5	1.31
TET 25354	2.1	7	45	0.6	2.7	0.4	37	2.7	0.055	22	30	1.44	69	0.02	0.5	1.34
TET 25355	7.8	5.8	18	0.3	2.3	0.4	19	0.85	0.062	19	22	0.57	62	0.007	0.5	0.99
TET 25356	7.9	5.7	24	0.3	2.3	0.5	17	1.22	0.064	19	18	0.69	51	0.008	0.5	0.9
TET 25357	22.4	8.3	28	0.3	3.1	0.6	17	1.08	0.058	25	21	0.6	52	0.008	0.5	0.99
TET 25358	11.1	6.5	15	0.3	2.5	0.5	16	0.67	0.057	26	19	0.6	56	0.007	0.5	0.94
TET 25359	2.1	6.5	31	0.3	1.9	0.4	19	1.85	0.064	22	24	1.06	57	0.011	0.5	1
TET 25360	2.4	7.4	28	0.6	8.1	0.5	21	2.13	0.095	13	15	1.08	46	0.007	0.5	0.68
TET 25361	1.8	7.7	11	1.1	11	0.5	24	0.42	0.062	15	15	0.48	58	0.004	0.5	0.79
TET 25362	0.9	7.3	28	2.6	10.2	0.4	40	2.7	0.088	10	20	1.69	53	0.005	0.5	0.96
TET 25363	3.1	7.1	52	0.9	4.8	0.4	28	3.76	0.082	22	25	1.63	68	0.017	0.5	1.18
TET 25364	2.6	8.4	24	0.4	2.5	0.3	27	1.21	0.074	29	37	1.13	56	0.02	0.5	1.49
TET 25365	11.4	5	21	0.7	10.2	0.7	18	1.03	0.079	14	17	0.62	32	0.009	0.5	0.79
TET 25984(2591	4.7	4.4	22	0.7	4	0.4	25	1.23	0.065	14	21	0.81	37	0.008	2	0.95
TET 31530	3.8	9.3	24	0.6	3.5	0.4	29	1.16	0.097	28	29	0.97	55	0.022	2	1.12
TET 31531	5.2	6.9	48	1	4	0.3	24	2.73	0.077	21	24	0.91	49	0.015	1	1.01
TET 31549	9.2	6.9	23	1.1	8.8	0.5	23	1.37	0.081	24	23	0.84	36	0.017	0.5	0.94
TET 34662	30.7	3.4	5	0.3	9.8	0.4	9	0.11	0.059	4	8	0.1	28	0.003	0.5	0.34

Sample	Na	K	W	Hg	Sc	Tl	S	Ga	Se	Method	Acme File
TET 25981	0.005	0.03	0.05	0.005	2.8	0.05	0.025	4	0.6	1DX15	VAN08010013
TET 25982	0.006	0.05	0.05	0.005	3.8	0.05	0.025	4	0.6	1DX15	VAN08010013
TET 25983	0.006	0.02	0.05	0.02	1.7	0.2	0.025	1	3.1	1DX15	VAN08010013
TET 25985	0.007	0.04	0.1	0.02	3	0.1	0.025	3	0.25	1DX15	VAN08010013
TET 25986	0.006	0.05	0.1	0.02	3.1	0.05	0.025	3	0.7	1DX15	VAN08010013
TET 25987	0.007	0.05	0.05	0.02	2.9	0.05	0.025	3	1.2	1DX15	VAN08010013
TET 25988	0.008	0.05	0.05	0.02	3	0.05	0.025	3	1.2	1DX15	VAN08010013
TET 25989	0.01	0.06	0.1	0.02	3.3	0.1	0.025	3	0.5	1DX15	VAN08010013
TET 25990	0.005	0.05	0.1	0.02	3.1	0.05	0.025	2	1.1	1DX15	VAN08010013
TET 25991	0.006	0.05	0.1	0.02	3.1	0.05	0.05	2	1.3	1DX15	VAN08010013
TET 25992	0.004	0.04	0.05	0.02	4	0.05	0.1	0.5	1.2	1DX15	VAN08010013
TET 25993	0.005	0.04	0.05	0.02	3.7	0.2	0.08	1	1.1	1DX15	VAN08010013
TET 25994	0.005	0.03	0.1	0.02	2.5	0.05	0.025	1	2.2	1DX15	VAN08010013
TET 25995	0.006	0.04	0.05	0.02	2.4	0.1	0.025	2	1.8	1DX15	VAN08010013
TET 25996	0.004	0.05	0.05	0.02	2.7	0.1	0.025	2	1.4	1DX15	VAN08010013
TET 25997	0.004	0.04	0.05	0.03	2.7	0.1	0.025	2	3.6	1DX15	VAN08010013
TET 25998	0.011	0.04	0.05	0.06	2.3	0.1	0.025	3	3.5	1DX15	VAN08010013
TET 25999	0.019	0.03	0.05	0.03	1.2	0.05	0.025	2	1.5	1DX15	VAN08010013
TET 26000	0.007	0.04	0.05	0.03	1.9	0.1	0.025	3	4	1DX15	VAN08010013
TET 31529	0.01	0.05	0.05	0.03	2.5	0.05	0.025	3	1.1	1DX15	VAN08010013
TET 31631	0.005	0.06	0.05	0.02	3	0.05	0.025	3	0.7	1DX15	VAN08010013
TET 31632	0.006	0.06	0.1	0.02	3.2	0.05	0.025	3	1.1	1DX15	VAN08010013
TET 34661	0.002	0.03	0.1	0.02	3.5	0.05	0.07	2	0.8	1DX15	VAN08010013
TET 37534	0.012	0.04	0.05	0.02	2.7	0.05	0.07	3	0.25	1DX15	VAN08010013
TET 25351	0.005	0.04	0.05	0.02	2.4	0.1	0.025	3	1.4	1DX15	VAN08010013
TET 25352	0.005	0.04	0.05	0.02	2.8	0.1	0.025	3	1.8	1DX15	VAN08010013
TET 25353	0.009	0.06	0.1	0.02	3	0.1	0.025	4	2.2	1DX15	VAN08010013
TET 25354	0.01	0.08	0.1	0.02	3.1	0.1	0.025	4	0.6	1DX15	VAN08010013
TET 25355	0.007	0.06	0.05	0.02	2.9	0.05	0.025	3	0.8	1DX15	VAN08010013
TET 25356	0.008	0.05	0.05	0.02	2.6	0.05	0.025	3	0.8	1DX15	VAN08010013
TET 25357	0.005	0.07	0.05	0.02	3.7	0.05	0.025	3	0.25	1DX15	VAN08010013
TET 25358	0.006	0.06	0.05	0.01	3.5	0.05	0.025	3	0.9	1DX15	VAN08010013
TET 25359	0.005	0.07	0.05	0.02	3.1	0.05	0.025	3	0.25	1DX15	VAN08010013
TET 25360	0.007	0.04	0.05	0.02	2.8	0.4	0.025	2	1.3	1DX15	VAN08010013
TET 25361	0.007	0.04	0.05	0.02	3	0.3	0.06	2	1.7	1DX15	VAN08010013
TET 25362	0.016	0.04	0.05	0.02	2.8	0.1	0.08	3	2.7	1DX15	VAN08010013
TET 25363	0.009	0.07	0.1	0.02	2.8	0.1	0.025	4	1.2	1DX15	VAN08010013
TET 25364	0.008	0.08	0.1	0.02	3	0.05	0.025	4	0.5	1DX15	VAN08010013
TET 25365	0.005	0.05	0.05	0.02	3.6	0.05	0.28	3	0.9	1DX15	VAN08010013
TET 25984(2591	0.007	0.05	0.05	0.02	2.6	0.05	0.025	3	1.1	1DX15	VAN08010013
TET 31530	0.006	0.06	0.2	0.02	3.7	0.05	0.025	3	0.6	1DX15	VAN08010013
TET 31531	0.005	0.04	0.05	0.02	3.4	0.05	0.025	3	0.8	1DX15	VAN08010013
TET 31549	0.004	0.05	0.2	0.03	3.4	0.05	0.06	3	0.8	1DX15	VAN08010013
TET 34662	0.003	0.03	0.1	0.02	1.7	0.05	0.7	2	0.9	1DX15	VAN08010013