

**GEOCHEMICAL - GEOPHYSICAL
REPORT**

OREOX 1-40 CLAIMS

GRANT # YC44743 - YC44882

NTS # 116 A \ 4

LAT: 64' 09' N

LONG: 137' 39' W

DAWSON MINING DISTRICT

AUTHOR OF REPORT SHAWN RYAN

WORK PERFORMED AUGUST 09 to AUGUST 11, 2008

DATE OF REPORT FEBRUARY 20, 2009

TABLE OF CONTENT

SUMMARY

1.0 INTRODUCTION	P.3
2.0 LOCATIONS AND ACCESS	P.3
3.0 PROPERTY DESCRIPTION	P.3
4.0 PHYSIOGRAPHY	P.3
5.0 REGIONAL AND PROPERTY GEOLOGY	P.4
6.0 WORK PERFORMED / METHODS	P.5
7.0 INTERPRETATIONS	P.6
8.0 RECOMMENDATION	P.6
9.0 REFERENCES CITED	P.6
10.0 COST	P.7
11.0 QUALIFICATION	P.7
Claim Location / Geology Map	Figure 1
Gold Soil Map	Figure 2
Arsenic Soil Map	Figure 3
Antimony Soil Map	Figure 4
Magnetic Map	Figure 5
Magnetic Map with Gold points	Figure 6
Assay / GPS Data	Appendix

SUMMARY

The Oreox 2008 field season had 150 soils collected on a regional base across ridge top on the Oreox Claims and 10 kilometers of magnetic survey conducted on the Oreox claims .

1.0 INTRODUCTION

The Oreox 2008 work program was design to cover a couple of key ridge top to see if any new gold anomalies could be located. The magnetic survey was conducted over an anomalous gold in soil area discovered in 2007 on the Oreox Claims. The 2008 soil survey found only a couple of gold anomalies. The magnetic survey outlined some coincidental magnetic high that correspond with anomalous (soil) gold anomalies.

2.0 LOCATIONS AND ACCESS

Oreox 1- 140 claims are located 90 kilometers east north east of Dawson City on NTS sheet 116 A / 04. Access is via helicopter from Dawson City. The estimated helicopter time is 1.3 hours return.

3.0 PROPERTY DESCRIPTION

The Oreox 1- 140 claims consist of 140 full Yukon quartz-mining claims.

4.0 PHYSIOGRAPHY (excerpt from Noranda 1989 assessment report)

The property is in glaciated, mountainous, alpine terrain of interconnected ridges with steep scree covered slopes. Intrusive rocks form imposing jagged peaks while metasediments form cliff-like outcroppings on north and east-facing slopes, and steep scree covered south and west-facing slopes (often dip slopes).

Elevation ranges from 900 meters at valley bottom to 1700 meters at the peak of Ida-Oro Tombstone Intrusive. Diamicton and outwash generally cover the valleys while in-situ weathered rock, poorly developed soils, and felsenmeer dominate the ridges. Rock outcrops are common along the ridges and as cliffs along the upper slopes of valleys, becoming rarer at lower elevations, especially in the larger valleys.

The climate is characterized by low precipitation and a wide temperature range. Winters are cold, and temperatures of -30°C to -40°C are common. Summers are moderately cool to hot, with daily highs of 10°C to 25°C. The property is generally snow free from early-June to the end of August.

5.0 REGIONAL AND PROPERTY GEOLOGY

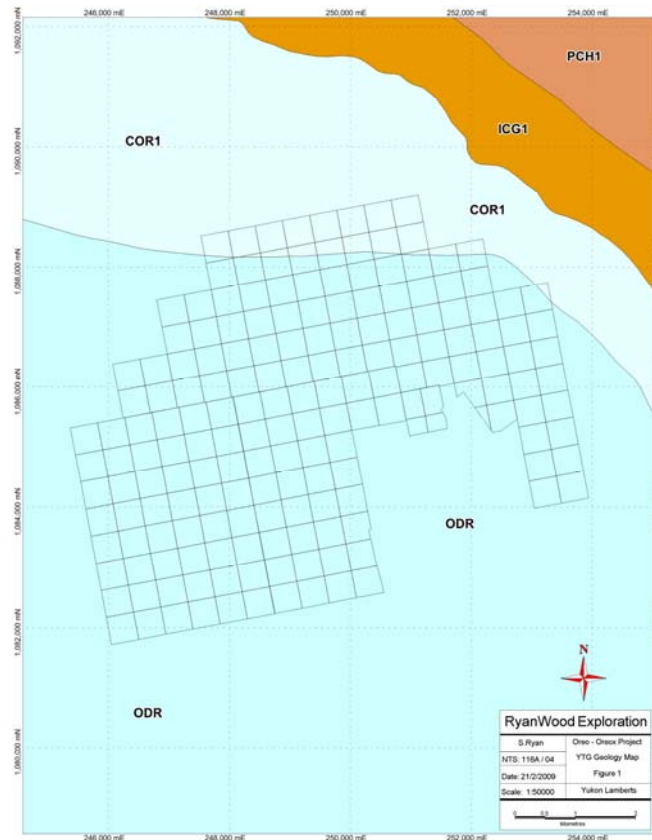
ii) GEOLOGY (excerpt from Noranda 1989 assessment report 092794)

REGIONAL GEOLOGY

The Property lies within rocks of the Selwyn Basin. The basin is dominated by fine grained clastic rocks and chert of Proterozoic to Paleozoic in age. It includes the Road River Formation which occurs in the region of the Oreo property. This is a sequence of shales, black cherty argillites, cherts and chert-pebble conglomerates of Ordovician to Silurian in age. Cretaceous stocks and batholiths, mostly monzonite to granodiorite in composition, intrude Selwyn Basin strata in a number of localities.

PROPERTY GEOLOGY (YTG Geology Map)

The Oreox Property area is underlain by two units, ODR, Road River Formation, and COR1, Rabbitketle Formation.



6.0 WORK PERFORMED / METHODS

6.0 WORK PERFORMED / METHODS

6.1 Soil Survey

The Oreox Project had 5 man days of soil work collecting 150 soils.

All soil sample where collected with one meter soil probes and sometime with a prospector pick. We carried both instruments on rocky talus slope. Soil sample location where marked on the ground with orange flagging and recorded in Garmin GPS. About 400-500 grams of soil was collected and place in pre marked kraft soil bags.

All samples where brought out to Dawson and air dried repacked in rice bags and sent to Acme Labs in Vancouver. Sample where process with Aqua Regia ICP-MS for 36 elements (Acme Labs 1DX-15 gram Assay).

The GPS where downloaded every night and store in a personal computer.

6.2 Magnetic Survey

The magnetic survey was conducted across 10 kilometer of grid lines. The survey uses two GEM proton precessions GSM - 19 T magnetometers. One is the portable field unit and the second is a base station magnetometer that records reading every 15 seconds at a stationary position for the entire survey. The base station monitors the earth daily magnetic drift. At the end of each daily survey both the field and base station magnetometers are plugged in together and the daily drift is corrected out of the field magnetometer.

Only the corrected data is used to plot the survey results.

The field survey used a built in GPS that acts as a guiding system as the operator walks threw the bush and also adds a GPS point to every reading taken by the Mag unit. This is very useful when the operator needs to walk around obstacle such as cliff face or ponds. The walking Mag mode takes continuous reading as the operator walks to specified end points using the built in GPS as a guiding unit. Reading are taken every 1.5 seconds which comes out to about a reading every 1-2 meters.

The survey covered an area of 500 meters by 1.6kilometer for a total line of 10 kilometers.

The magnetic range for the entire survey was a low of 57400 gammas to a high of 57800 gammas.

7.0 INTERPRETATIONS

7.1 Soils

The 2008 soil grid revealed only a couple spotty gold anomalies with values reaching a high of 83.3 ppb Au. Arsenic had two anomalous areas with values reaching over 100 ppm and a maximum high of 205 ppm As. Antimony was a little more anomalous with many scattered highs of over 10 ppm and a maximum high of 48.1 ppm Sb.

7.2 Magnetic

The 2008 magnetic survey was designed to test an area that had anomalous gold soil samples. The magnetic survey covered only a small area but it looks like we could see a northwest magnetic high trend. The magnetic survey revealed a magnetic high sitting under the anomalous gold soil samples.

I feel this magnetic high pattern associated with the anomalous gold soil samples may be helping support the idea that the creeks are following a regional structure and that the gold anomalies are real and not just a local down valley movement of moraine material from the showing located at the headwater of the valley.

8.0 RECOMMENDATION

I would recommend extending the soil grid and conducting a large ground magnetic survey. The property is ready for a large exploration program.

9.0 REFERENCES CITED

Noranda Exploration Co. Ltd. (1989) Assessment Report on 1989 Field Activities on the Ida-Oro Claims # 092794.

YTG Geology Map – Yukon Government web site

10.0 COST

Soil Survey Cost	
Wage five men for one day at \$320.00 per day	\$1,650.00
Helicopter 5.2 hours @ \$1300.00	\$6,760.00
Assay Cost 150 Soils at \$20.00	\$3,000.00
Magnetic Survey	
10 kilometers @ \$250.00 per km	\$2,500.00
Report Writing	\$350.00

Total	\$14,260.00

11.0 QUALIFICATION

I Shawn Ryan located in Dawson City, Yukon work as a professional prospector. I run a small exploration company located in Dawson city.

I have worked in the exploration business for the last 25 years. I worked the first 12 years as a contractor working on numerous projects in the NWT, Ontario, Quebec and the Yukon. I have worked for the last 12 years as a local prospector for myself.

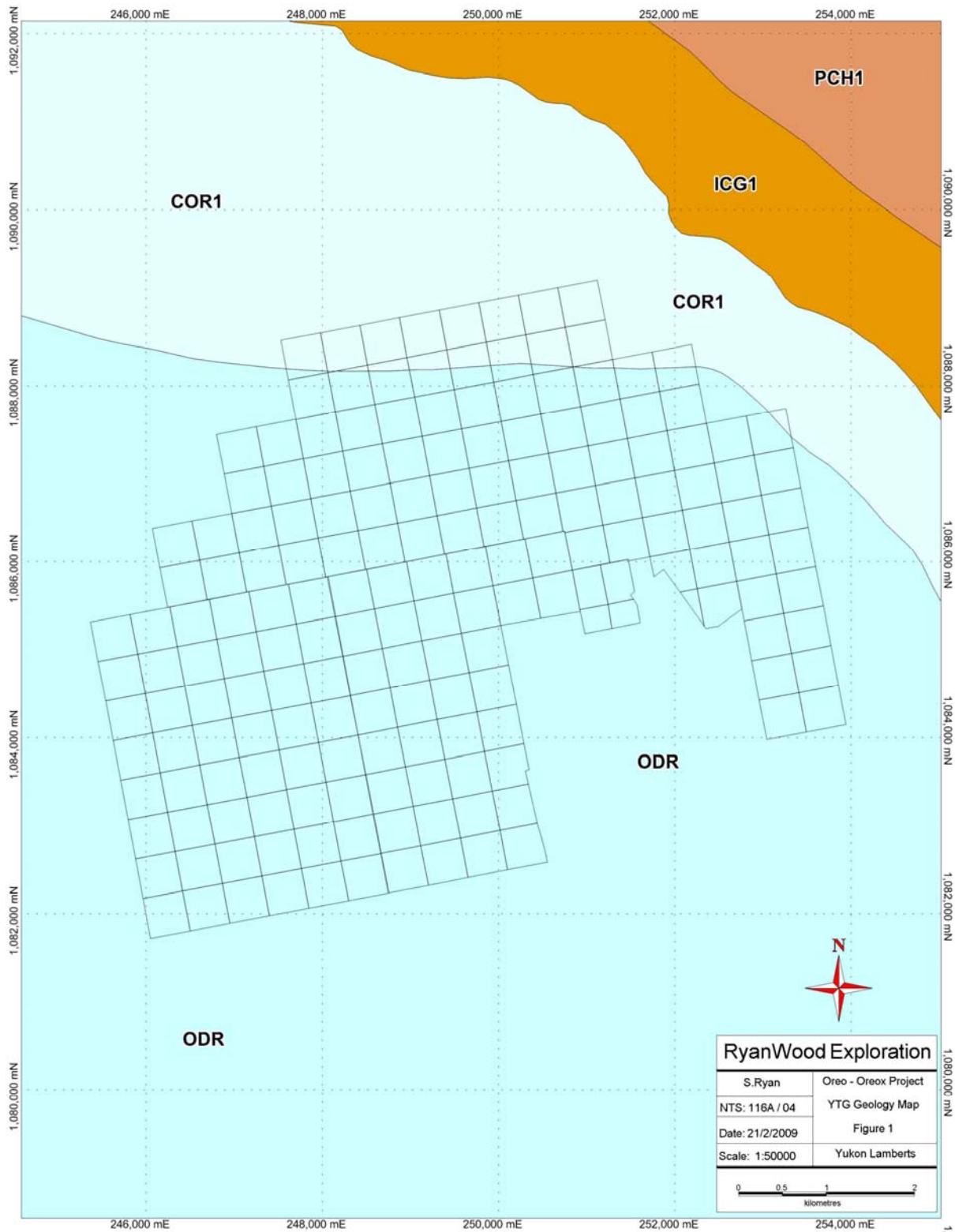
I have overseen the entire Oreox Project.

I own 100 % of the Oreox claims.

Dated this 20 of February 2009 in Dawson City, Yukon.

Respectfully submitted

Shawn Ryan



YUKON GEOLOGY MAP

ORDOVICIAN TO LOWER DEVONIAN

ODR

ODR: ROAD RIVER - SELWYN

black shale and chert (1) overlain by orange siltstone (2) or buff platy limestone (3); locally contains beds as old as Middle Cambrian (4); correlations with basal strata in Richardson Mountains include: ODR1 with CDR2 (upper part) and ODR2 with CDR4 (**Road River Gp.**)

1. black, gun-blue, or silvery white weathering black graptolitic shale and black chert; resistant grey weathering, thin to medium bedded, light grey to black, greenish grey or turquoise chert; minor argillaceous limestone (**Road River Gp., Duo Lake and Elmer Creek**)

UPPER CAMBRIAN AND ORDOVICIAN

COR

COR: RABBITKETTLE

basinal limestone (1) that may locally include older and younger basinal pelitic strata undivided (2)

1. thin bedded, wavy banded, silty limestone and grey lustrous calcareous phyllite; limestone intraclast breccia and conglomerate; massive to laminated, grey quartzose siltstone and chert and rare black slate; local mafic flows, breccia, and tuff (**Rabbitkettle**)

LOWER CAMBRIAN

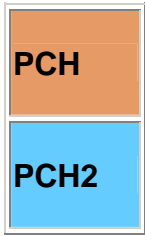
ICG

ICG: GULL LAKE

dominantly fine clastic assemblage (1) with local volcanic units (2)

1. shale, siltstone and mudstone, locally bioturbated, with minor quartz sandstone; rare green-grey chert; local basal limestone and limestone conglomerate; phyllite to quartz-muscovite-biotite schist (+/-garnet +/-sillimanite +/-staurolite +/-andalusite) (**Gull Lake**)

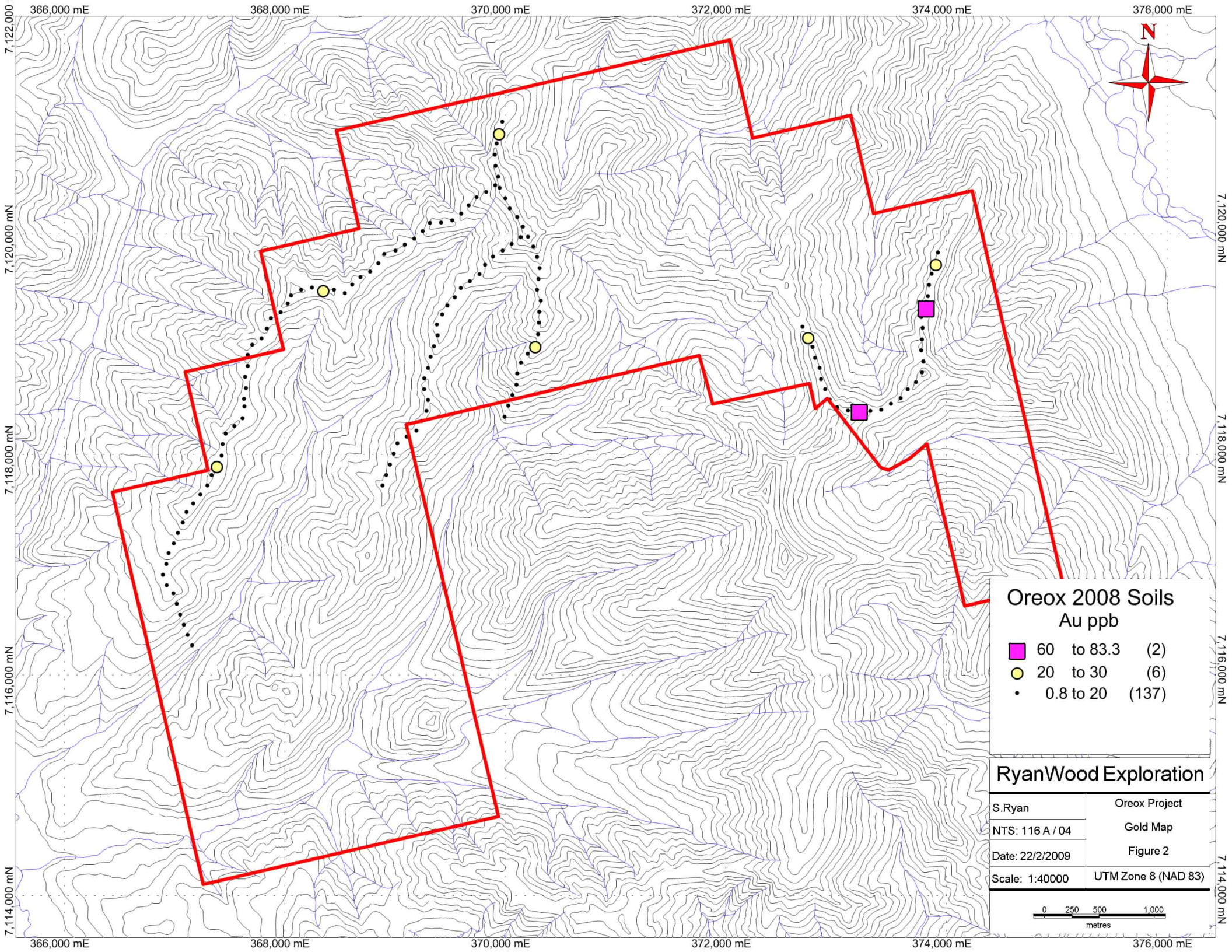
UPPER PROTEROZOIC TO LOWER CAMBRIAN



PCH: HYLAND

consists upwards of coarse turbiditic clastics (1), limestone (2) and fine clastics typified by maroon and green shale (3); may include younger (4) units; includes scattered mafic volcanic rocks (5) **(Hyland Gp.)**

1. thin to thick bedded, brown to pale green shale, fine to coarse grained quartz-rich sandstone, grit, and quartz-pebble conglomerate; minor argillaceous limestone; phyllite, quartzofeldspathic and micaceous psammite, gritty psammite and minor marble **(Hyland Gp., Yusezyu)**

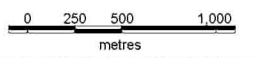


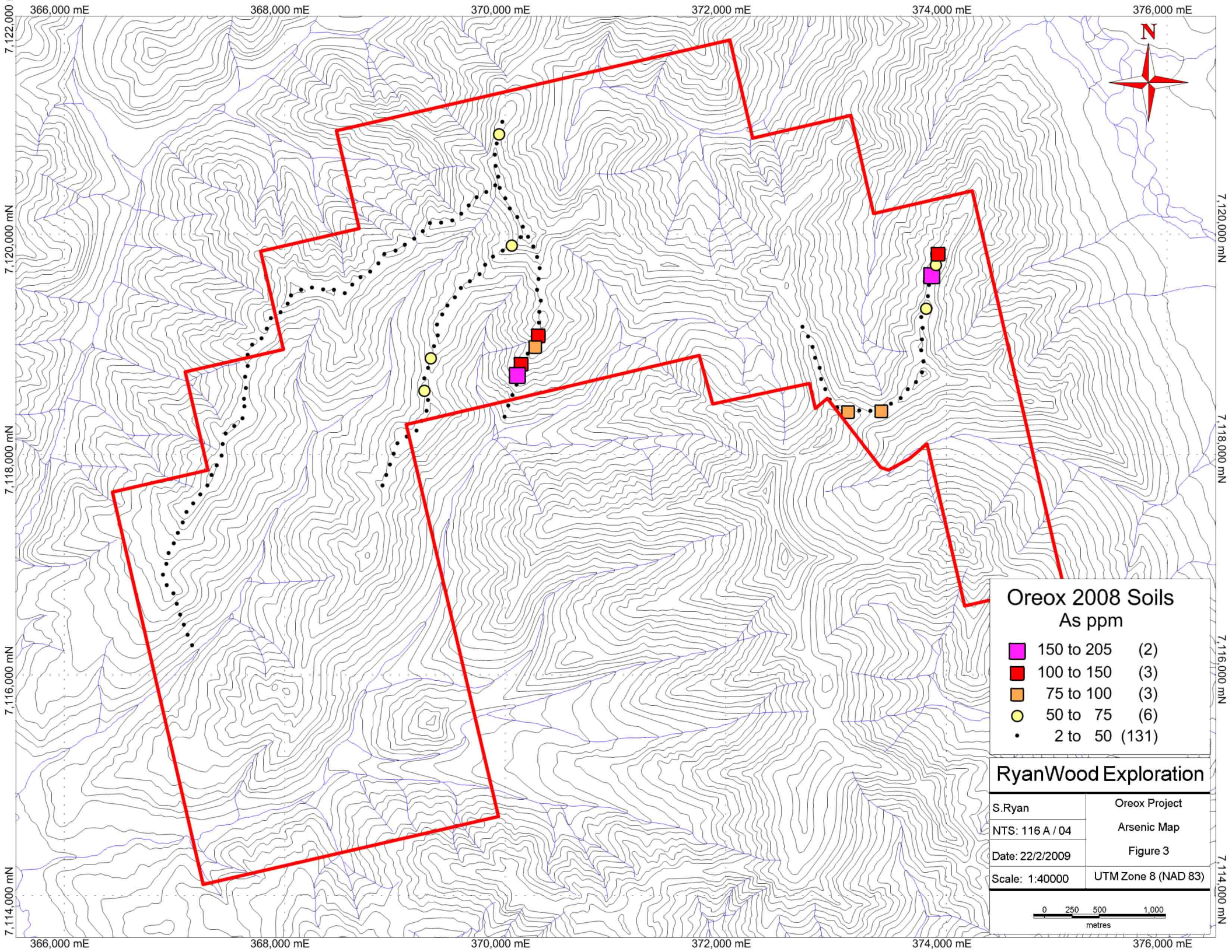
Oreox 2008 Soils
Au ppb

- 60 to 83.3 (2)
- 20 to 30 (6)
- 0.8 to 20 (137)

RyanWood Exploration

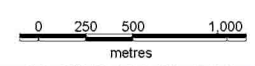
S.Ryan	Oreox Project
NTS: 116 A / 04	Gold Map
Date: 22/2/2009	Figure 2
Scale: 1:40000	UTM Zone 8 (NAD 83)

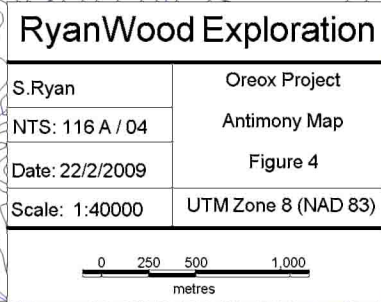
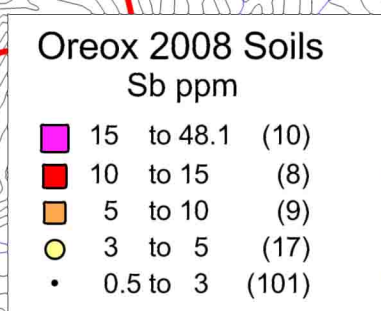
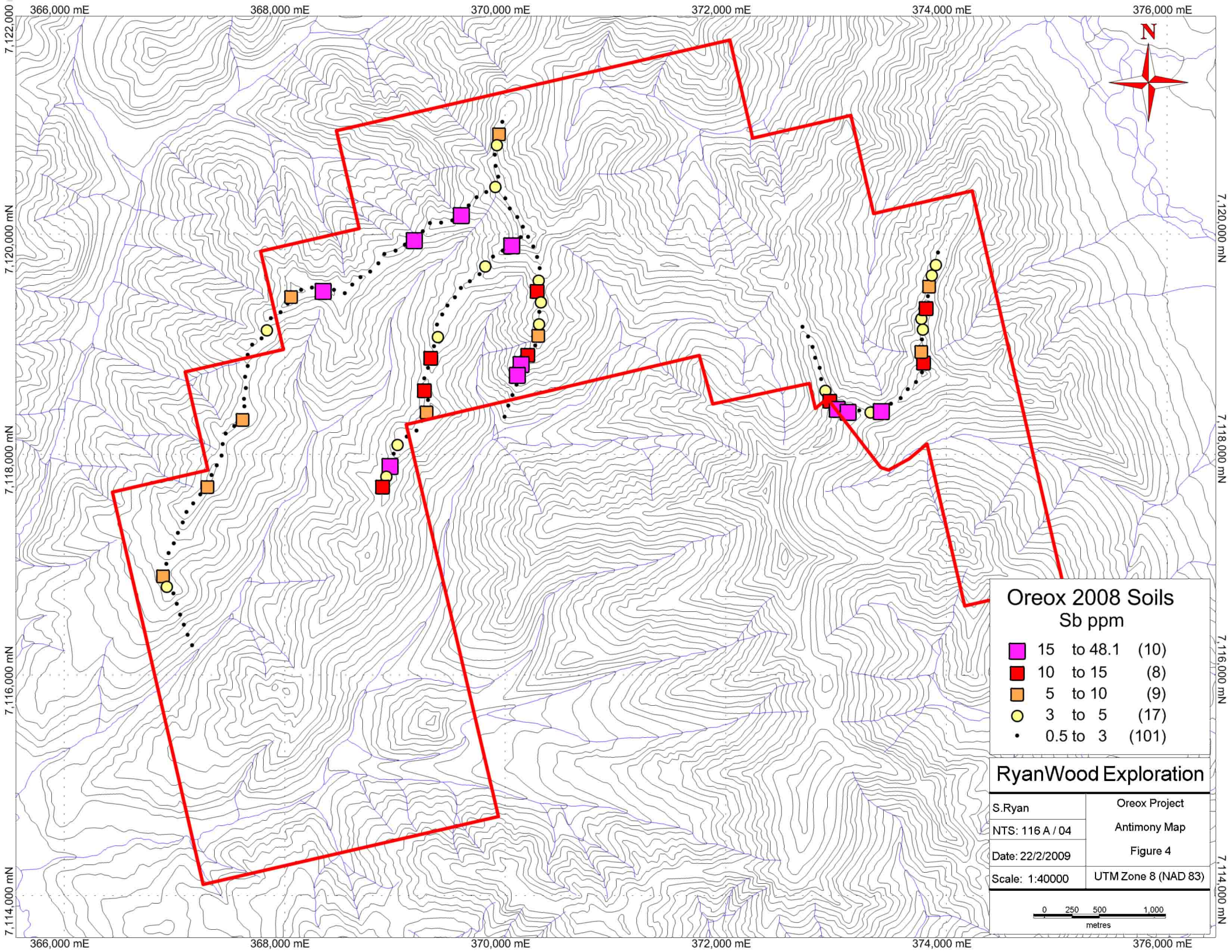


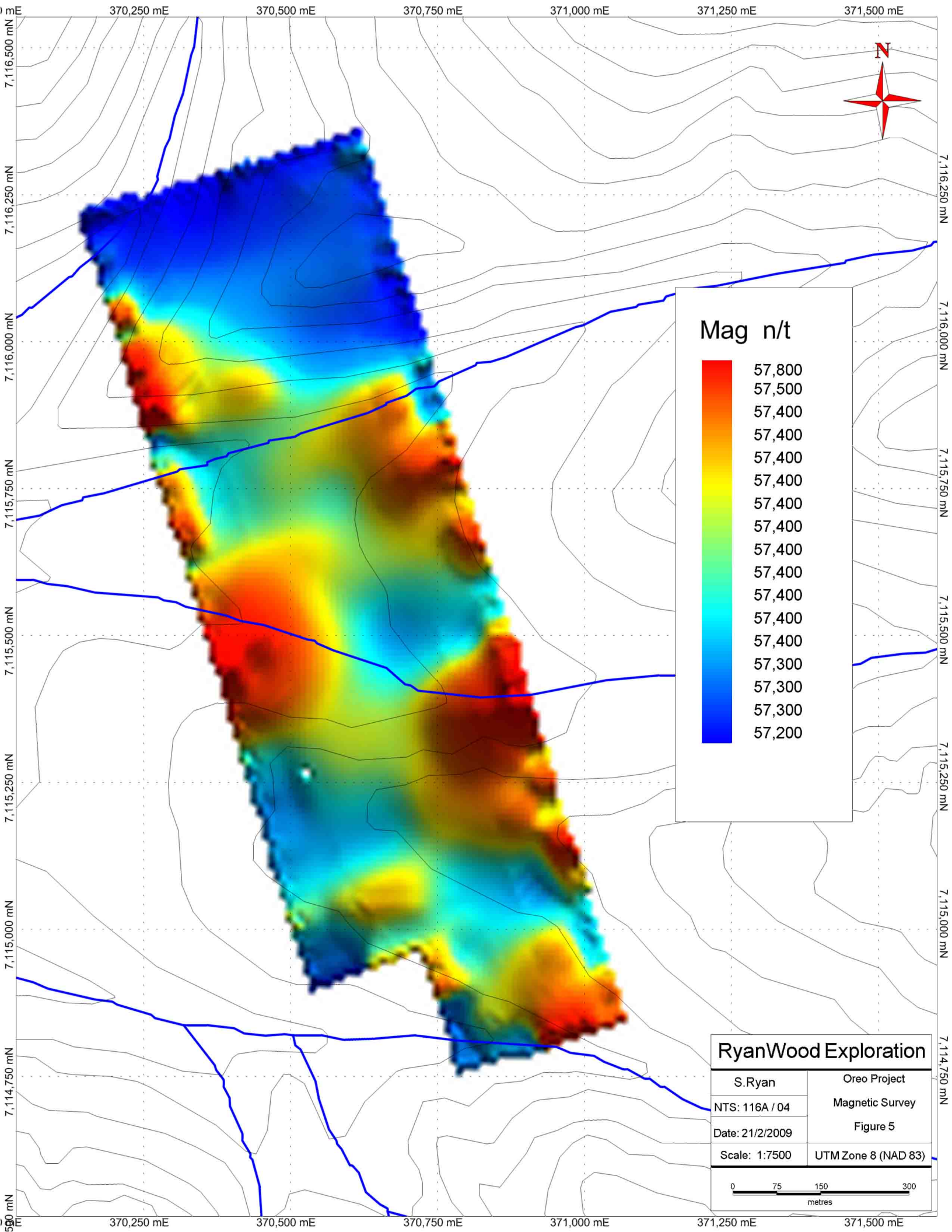


Oreox 2008 Soils As ppm	
■ 150 to 205	(2)
■ 100 to 150	(3)
■ 75 to 100	(3)
● 50 to 75	(6)
• 2 to 50	(131)

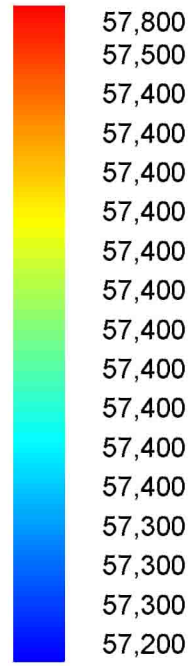
RyanWood Exploration	
S.Ryan	Oreox Project
NTS: 116 A / 04	Arsenic Map
Date: 22/2/2009	Figure 3
Scale: 1:40000	UTM Zone 8 (NAD 83)





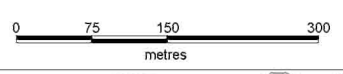


Mag n/t



RyanWood Exploration

S.Ryan	Oreo Project
NTS: 116A / 04	Magnetic Survey
Date: 21/2/2009	Figure 5
Scale: 1:7500	UTM Zone 8 (NAD 83)



Sample	Datum	Easting	Northing	Mo	Cu	Pb	Zn	Ag	Ni	Co	Mn	Fe	As
ORX31906	Nad 83-8W	373727	7118658	1	69.7	10.9	78	0.2	32.5	13.3	515	2.82	11.8
ORX31907	Nad 83-8W	373781	7118745	1.6	74.1	12.9	79	0.2	32.3	14.8	456	4.03	8.7
ORX31908	Nad 83-8W	373792	7118845	4.3	132.8	84.7	387	0.5	143.6	20.2	887	6.95	5.8
ORX31909	Nad 83-8W	373772	7118945	8.9	153	25.5	360	0.6	59.6	7	476	2.21	9.2
ORX31910	Nad 83-8W	373781	7119045	1.4	47.1	13.6	70	0.05	25.6	10.5	339	4.38	17.4
ORX31911	Nad 83-8W	373787	7119148	3.2	29	14.1	90	0.2	20	6.4	226	3.43	11.3
ORX31912	Nad 83-8W	373774	7119248	2.3	46.6	17.8	71	0.2	21	7.9	232	3.52	12.1
ORX31913	Nad 83-8W	373819	7119339	42.8	585.1	51.7	990	1	214.3	39.9	2764	7.01	57.2
ORX31914	Nad 83-8W	373834	7119438	2.3	46.7	22.2	80	0.05	25.8	9.1	270	3.23	28.7
ORX31915	Nad 83-8W	373844	7119540	3.9	52	24.8	132	0.2	33.4	13.4	477	3.25	23.1
ORX31916	Nad 83-8W	373868	7119639	3.3	39.5	20.1	101	0.8	28.3	11.8	315	3.31	204.2
ORX31917	Nad 83-8W	373906	7119734	4.9	156.8	462.1	413	1.8	84.1	37.5	1646	3.4	74.3
ORX31918	Nad 83-8W	373924	7119833	1.8	87.3	32.5	154	0.1	56.4	23.7	615	2.9	117
ORX31958	Nad 83-8W	368545	7119465	3	58.5	12.3	102	0.4	20.4	8	396	2.63	9.2
ORX31959	Nad 83-8W	368449	7119495	3.7	60.8	13.7	146	0.4	40.2	12.8	2091	3.41	8.1
ORX31960	Nad 83-8W	368349	7119499	8.9	154.3	15.5	97	0.7	64	14.1	2564	3.82	17.5
ORX31961	Nad 83-8W	368249	7119515	2.8	41.7	15.5	86	0.05	24.2	13	599	2.93	10.3
ORX31962	Nad 83-8W	368150	7119493	1.5	36	11.8	52	0.05	14.1	4.4	121	2.29	8.1
ORX31963	Nad 83-8W	368060	7119444	22.1	138.9	37.3	384	0.5	90.3	33	1410	5.96	30.7
ORX31964	Nad 83-8W	368030	7119370	4.2	50.8	13.5	104	0.8	24.5	5.9	148	2.24	9.1
ORX31965	Nad 83-8W	367963	7119290	2	103.7	16.5	196	0.05	141.9	37.4	4535	4.42	9.4
ORX31966	Nad 83-8W	367877	7119237	1.6	35.5	12.2	69	0.05	24.8	11	383	3	10.6
ORX31967	Nad 83-8W	367840	7119143	7.6	29.3	13.9	119	0.3	27.7	7.6	245	2.84	13.5
ORX31968	Nad 83-8W	367791	7119055	7.8	49.2	16.2	59	0.2	23.2	9.3	386	2.72	13.1
ORX31969	Nad 83-8W	367708	7118996	1.9	35.9	14.4	108	0.1	37.2	17.4	1180	3.44	13.6
ORX33501	Nad 83-8W	367644	7118707	11	121.7	23.1	299	0.1	61.2	26.5	803	5.64	17
ORX33502	Nad 83-8W	367650	7118605	3.5	51.4	14.4	85	0.5	27.4	7.7	385	2.19	11.7
ORX33503	Nad 83-8W	367634	7118505	5.7	98	16.6	174	0.05	43.3	18.3	874	3.33	7.7
ORX33504	Nad 83-8W	367636	7118437	1.9	20.2	14.1	44	0.05	13	4.6	173	2.73	10.6
ORX33505	Nad 83-8W	367619	7118330	6.3	53.5	12.9	137	3.3	34.7	8.4	270	2.87	22.5
ORX33506	Nad 83-8W	367545	7118258	2.3	26.8	11.7	91	0.1	32.4	12.2	400	3.25	11.3
ORX33507	Nad 83-8W	367468	7118192	1.5	13.8	13.5	52	0.05	13.4	5.7	217	3.43	10.6
ORX33508	Nad 83-8W	367440	7118095	5.4	31.6	9.9	20	0.3	7.3	2.2	119	1.23	11.9
ORX33509	Nad 83-8W	367428	7117993	1.3	28.1	13.4	71	0.05	30.2	9.7	261	3.17	10.1
ORX33510	Nad 83-8W	367387	7117902	1.9	26.9	11.8	132	0.1	29.9	13.4	457	2.83	9
ORX33511	Nad 83-8W	367338	7117815	3.1	34.5	15.2	309	0.2	48.7	14.5	329	3.18	10.4
ORX33512	Nad 83-8W	367300	7117721	4.3	32.3	21.4	221	4.7	31.8	7.8	286	3.07	21.7
ORX33513	Nad 83-8W	367236	7117640	1.1	11.9	12.9	50	0.05	13.7	5.9	173	2.59	10.8
ORX33514	Nad 83-8W	367171	7117559	1	24.4	12	57	0.05	23.5	11.1	281	2.63	13
ORX33515	Nad 83-8W	367112	7117480	1.7	18.8	12.2	73	0.2	16.9	9.4	487	3.05	10.1
ORX33516	Nad 83-8W	367077	7117387	1.6	24.5	12.6	66	0.05	22.6	10.4	359	2.79	10.9
ORX33517	Nad 83-8W	367034	7117292	3.2	36.6	17.6	87	0.3	30.2	12	893	3.66	15.7
ORX33518	Nad 83-8W	366995	7117197	1.1	17.6	11.9	49	0.05	17.8	8.4	281	2.7	11.1
ORX33519	Nad 83-8W	366950	7117107	0.8	14.4	12	45	0.05	16.2	7.3	206	2.31	9.1
ORX33520	Nad 83-8W	366928	7117009	1.6	35.7	12.7	73	0.05	27.3	11	367	2.91	12.1
ORX33521	Nad 83-8W	366899	7116912	3.6	96.3	9.5	41	2	24.4	2.2	70	1.01	9.2
ORX33522	Nad 83-8W	366932	7116817	11.3	172.7	19.1	379	0.3	85.5	16.2	880	4.7	14.5
ORX33523	Nad 83-8W	366994	7116741	1.7	22.6	11.4	66	0.2	23.8	9.7	285	3.15	11.6
ORX33524	Nad 83-8W	367023	7116646	1.6	36.8	11.4	69	0.3	24.5	8.8	215	2.69	9.5
ORX33525	Nad 83-8W	367055	7116550	3	48.6	12.4	97	0.4	26.2	8.5	215	2.87	9
ORX33526	Nad 83-8W	367089	7116457	1.5	37.2	8.6	79	0.5	22.8	9.8	236	2.43	5.6
ORX33527	Nad 83-8W	367121	7116365	6.3	66.6	19.7	103	0.4	33.4	10.5	535	3.18	14.8
ORX33528	Nad 83-8W	367161	7116271	4.2	59.6	16.6	51	1.1	24.5	5.7	350	1.66	8.9
ORX33551	Nad 83-8W	370141	7119973	2.2	43.3	10.6	79	0.3	30.1	10.4	509	3.18	12.4
ORX33552	Nad 83-8W	370059	7119911	37.3	206.5	19	1560	5.6	161.5	8.3	417	2.19	55.2
ORX33553	Nad 83-8W	369977	7119849	1.7	23	11.1	65	0.1	25.7	9.1	408	3.06	12.8
ORX33554	Nad 83-8W	369889	7119797	5.7	88	11.2	236	0.6	39.3	9.2	736	2.62	9
ORX33555	Nad 83-8W	369820	7119723	8.8	40.7	10.7	207	0.7	35.1	10.7	410	2.86	16.3
ORX33556	Nad 83-8W	369767	7119637	9.9	69.2	15	195	0.4	66.4	19.6	616	3.41	13.3
ORX33557	Nad 83-8W	369681	7119574	1.8	43.1	12.6	92	0.4	38	11.1	516	3.54	14.3

Sample	U	Au	Th	Sr	Cd	Sb	Bi	V	Ca	P	La	Cr	Mg	Ba	Ti
ORX31906	0.7	4	1.8	9	0.4	1.3	0.2	56	0.07	0.041	15	31	0.53	124	0.023
ORX31907	0.7	7.9	4.3	15	0.3	2.4	0.2	69	0.08	0.046	18	38	1.13	197	0.076
ORX31908	1.9	2.4	3.9	20	1	12.8	0.2	263	0.45	0.281	23	63	4.31	443	0.087
ORX31909	2.5	11	3.5	20	2.8	5.9	0.2	302	0.47	0.186	15	60	2.52	176	0.047
ORX31910	0.6	2.7	3.8	17	0.2	1.4	0.3	64	0.09	0.058	16	35	0.48	160	0.046
ORX31911	1.1	7.2	3.4	13	0.3	3	0.3	75	0.06	0.039	15	25	0.33	159	0.048
ORX31912	0.6	3.6	2.3	9	0.3	3	0.3	72	0.05	0.046	10	25	0.32	113	0.042
ORX31913	3	83.3	1.1	25	5.2	13.6	0.5	184	0.17	0.301	17	39	1.12	295	0.008
ORX31914	0.7	10.8	2.1	10	0.2	2.7	0.8	67	0.06	0.042	17	28	0.31	102	0.026
ORX31915	1.4	6.4	1	27	0.5	5.7	0.3	63	0.08	0.083	15	28	0.48	229	0.013
ORX31916	1.8	19.7	3.1	14	0.7	4.1	6.7	58	0.09	0.069	15	29	0.49	97	0.03
ORX31917	3.7	21.5	1	13	2.8	3.4	0.4	130	0.1	0.108	15	45	1.07	182	0.038
ORX31918	1	12.9	2.8	11	1.2	2.4	2.4	45	0.11	0.05	15	26	0.5	87	0.034
ORX31958	0.9	6.7	1.5	15	0.5	1.2	0.2	58	0.1	0.075	13	24	0.29	158	0.026
ORX31959	1	9.3	2.6	17	0.6	1.3	0.2	41	0.19	0.06	14	24	0.3	319	0.012
ORX31960	1.6	21.5	0.6	67	0.4	17.1	0.2	60	0.72	0.246	9	19	0.26	639	0.008
ORX31961	1.2	3	3	20	0.5	1.5	0.2	50	0.11	0.079	12	21	0.3	242	0.018
ORX31962	0.6	2.9	0.1	9	0.3	1	0.2	52	0.06	0.048	7	19	0.14	130	0.019
ORX31963	5.9	9.2	5.1	64	3.7	6.1	0.2	94	0.26	0.194	26	26	0.62	1063	0.014
ORX31964	1.2	3.4	1.4	38	0.5	1.6	0.2	97	0.05	0.046	7	22	0.12	382	0.013
ORX31965	1.6	3	2.7	17	1.3	1.1	0.3	62	0.08	0.055	9	36	0.39	396	0.026
ORX31966	0.7	6.2	4.1	10	0.3	1	0.2	67	0.07	0.024	11	31	0.36	225	0.033
ORX31967	2.1	3.2	2.9	15	0.8	3.5	0.3	146	0.06	0.042	11	28	0.27	305	0.028
ORX31968	2.6	7.5	2.2	38	0.2	1.7	0.3	52	0.06	0.058	11	20	0.19	543	0.014
ORX31969	0.7	1.7	3.6	8	0.3	1.5	0.3	81	0.04	0.033	10	30	0.23	185	0.037
ORX33501	2.7	4	3.5	56	1.4	2.4	0.2	95	0.13	0.146	12	24	0.27	372	0.004
ORX33502	1.7	4.5	1.4	48	0.4	1.4	0.2	45	0.03	0.057	9	18	0.14	396	0.01
ORX33503	1.1	8.6	3.7	17	0.6	2.2	0.3	44	0.15	0.113	9	19	0.24	179	0.011
ORX33504	0.5	2.3	2.2	8	0.2	0.7	0.2	73	0.04	0.031	11	21	0.18	91	0.046
ORX33505	5.3	5.7	0.3	60	1.6	5.2	0.2	270	0.15	0.198	13	70	0.26	594	0.018
ORX33506	1	2.6	3.8	17	0.6	0.9	0.2	65	0.08	0.039	11	32	0.39	300	0.033
ORX33507	0.5	0.8	3	8	0.3	0.6	0.3	77	0.05	0.034	10	27	0.26	141	0.046
ORX33508	1.7	7.3	0.4	23	0.05	2.1	0.2	61	0.03	0.032	5	28	0.08	371	0.008
ORX33509	0.6	2.7	3.5	16	0.3	1	0.2	63	0.08	0.029	10	29	0.31	121	0.043
ORX33510	1	29.8	2.8	11	1.6	1	0.2	56	0.1	0.049	13	27	0.3	154	0.039
ORX33511	1.3	5.2	3.3	10	2	1.9	0.3	70	0.06	0.038	11	29	0.3	152	0.048
ORX33512	2.3	3	2.3	29	1.6	5.7	0.2	157	0.07	0.076	11	51	0.34	378	0.025
ORX33513	0.9	2.3	1.4	12	0.2	0.6	0.2	60	0.13	0.054	11	30	0.29	171	0.029
ORX33514	0.7	2.3	4.5	10	0.2	0.9	0.2	56	0.08	0.023	11	30	0.42	158	0.041
ORX33515	0.7	2.7	3.2	12	0.3	0.8	0.2	71	0.07	0.043	12	31	0.29	204	0.042
ORX33516	1.1	4.1	4.1	13	0.2	0.9	0.2	62	0.08	0.033	14	33	0.42	281	0.044
ORX33517	1.4	6.2	3.9	23	0.3	1.9	0.3	85	0.07	0.039	10	34	0.31	272	0.033
ORX33518	0.8	4.6	3.2	12	0.1	0.7	0.2	57	0.1	0.031	12	31	0.42	152	0.038
ORX33519	0.8	1.5	0.4	13	0.05	0.5	0.2	54	0.13	0.063	13	28	0.39	162	0.022
ORX33520	1.1	3.8	3.3	14	0.2	1	0.2	66	0.08	0.047	14	36	0.43	221	0.033
ORX33521	4.8	7.2	1.6	72	0.6	6.4	0.2	191	0.02	0.038	6	47	0.04	459	0.004
ORX33522	1.4	9.8	0.6	75	1	4.7	0.2	101	0.1	0.148	9	20	0.09	757	0.005
ORX33523	0.6	2.6	3.5	11	0.1	0.8	0.2	80	0.08	0.028	12	37	0.38	291	0.045
ORX33524	0.5	5.9	3.2	14	0.4	1	0.2	69	0.09	0.025	11	28	0.27	354	0.028
ORX33525	0.6	2.2	2.6	15	0.4	1	0.2	74	0.12	0.059	11	26	0.26	326	0.023
ORX33526	1.5	11.7	5	31	0.3	0.8	0.2	39	0.37	0.054	19	24	0.63	598	0.016
ORX33527	2.6	6.6	3.4	78	0.4	1.8	0.3	40	0.42	0.079	12	20	0.35	914	0.013
ORX33528	2.6	9.5	1	109	0.5	2.4	0.2	57	0.85	0.087	9	20	0.23	995	0.007
ORX33551	1.2	2.4	2	26	0.1	1	0.2	46	0.07	0.052	11	25	0.43	249	0.025
ORX33552	8.9	7.5	3.4	126	22.7	29.4	0.3	458	0.43	0.132	18	44	0.17	925	0.011
ORX33553	0.6	1	2.1	11	0.2	0.9	0.2	55	0.07	0.042	9	28	0.34	105	0.032
ORX33554	1.6	6.7	0.3	18	1.4	2.1	0.2	52	0.13	0.202	7	19	0.13	219	0.005
ORX33555	2	8.5	1.1	16	1.2	4.9	0.2	150	0.08	0.077	11	30	0.3	262	0.017
ORX33556	2.7	6.4	3.4	25	0.8	2.2	0.2	50	0.11	0.041	12	28	0.6	807	0.023
ORX33557	1.6	3.7	2.9	23	0.4	1	0.3	77	0.05	0.048	10	33	0.3	206	0.031

Sample	B	Al	Na	K	W	Hg	Sc	Tl	S	Ga	Se	Method	Acme File
ORX31906	1	1.83	0.005	0.06	0.2	0.04	2.2	0.2	0.025	5	0.8	1DX15	VAN08009258
ORX31907	5	2.47	0.01	0.27	0.2	0.03	3	0.5	0.13	7	2.1	1DX15	VAN08009258
ORX31908	3	5.12	0.004	0.55	0.1	0.02	4.4	1.9	0.025	17	1.2	1DX15	VAN08009258
ORX31909	2	2.45	0.004	0.16	0.2	0.05	3.8	0.4	0.025	9	3.4	1DX15	VAN08009258
ORX31910	3	1.82	0.007	0.09	0.2	0.05	2.4	0.1	0.06	6	1	1DX15	VAN08009258
ORX31911	2	1.49	0.005	0.07	0.2	0.04	1.8	0.3	0.025	7	1.1	1DX15	VAN08009258
ORX31912	2	1.28	0.004	0.04	0.2	0.03	1.7	0.1	0.025	6	0.9	1DX15	VAN08009258
ORX31913	2	1.64	0.002	0.06	0.05	0.05	2.8	0.7	0.025	6	27.8	1DX15	VAN08009258
ORX31914	0.5	1.44	0.005	0.04	0.2	0.03	1.9	0.1	0.025	6	1.2	1DX15	VAN08009258
ORX31915	1	1.7	0.006	0.08	0.05	0.05	1.4	0.3	0.07	5	1.6	1DX15	VAN08009258
ORX31916	2	1.99	0.007	0.06	0.2	0.06	2.3	0.3	0.025	5	1.6	1DX15	VAN08009258
ORX31917	3	2.55	0.005	0.07	0.1	0.07	2.3	0.7	0.06	7	1.7	1DX15	VAN08009258
ORX31918	2	1.73	0.005	0.05	0.2	0.04	2.3	0.1	0.025	4	1.3	1DX15	VAN08009258
ORX31958	1	1.3	0.005	0.08	0.2	0.09	1.9	0.2	0.025	5	1.3	1DX15	VAN08009258
ORX31959	2	1.7	0.005	0.05	0.1	0.11	3.3	0.2	0.025	3	1.1	1DX15	VAN08009258
ORX31960	2	0.94	0.003	0.08	0.1	0.4	2.3	0.3	0.025	3	4	1DX15	VAN08009258
ORX31961	2	1.46	0.006	0.08	0.1	0.08	2.5	0.1	0.025	4	1	1DX15	VAN08009258
ORX31962	1	0.86	0.003	0.03	0.1	0.04	0.8	0.05	0.025	4	0.7	1DX15	VAN08009258
ORX31963	5	1.82	0.005	0.23	0.05	0.28	4.8	0.8	0.07	6	4.2	1DX15	VAN08009258
ORX31964	2	1.03	0.003	0.09	0.1	0.14	2.1	0.2	0.09	5	2.5	1DX15	VAN08009258
ORX31965	2	1.99	0.005	0.08	0.1	0.09	4.4	0.1	0.07	4	0.6	1DX15	VAN08009258
ORX31966	1	1.62	0.004	0.05	0.2	0.04	2.7	0.1	0.025	5	0.25	1DX15	VAN08009258
ORX31967	2	1.6	0.005	0.06	0.2	0.06	2.7	0.4	0.06	6	2.4	1DX15	VAN08009258
ORX31968	1	1.11	0.004	0.1	0.2	0.13	2.6	0.1	0.15	4	1.4	1DX15	VAN08009258
ORX31969	1	1.8	0.003	0.04	0.2	0.04	3.3	0.1	0.025	7	0.8	1DX15	VAN08009258
ORX33501	1	1.41	0.007	0.11	0.05	0.06	4.4	0.3	0.09	4	3.5	1DX15	VAN08009258
ORX33502	3	0.87	0.003	0.12	0.05	0.18	2.4	0.3	0.18	2	1.5	1DX15	VAN08009258
ORX33503	2	1.01	0.003	0.13	0.05	0.06	3.5	0.2	0.05	3	2.5	1DX15	VAN08009258
ORX33504	0.5	1.15	0.003	0.04	0.1	0.04	1.8	0.1	0.025	7	0.25	1DX15	VAN08009258
ORX33505	2	1.35	0.005	0.08	0.2	0.27	1.1	0.7	0.17	6	10.9	1DX15	VAN08009258
ORX33506	0.5	1.92	0.005	0.05	0.2	0.04	2.8	0.2	0.025	5	0.25	1DX15	VAN08009258
ORX33507	0.5	1.47	0.004	0.04	0.1	0.02	2.1	0.1	0.025	7	0.25	1DX15	VAN08009258
ORX33508	2	0.58	0.006	0.08	0.05	0.13	1.2	0.1	0.16	3	3.2	1DX15	VAN08009258
ORX33509	2	1.51	0.004	0.05	0.05	0.04	2.6	0.2	0.06	5	0.8	1DX15	VAN08009258
ORX33510	2	1.18	0.004	0.06	0.3	0.06	2.1	0.1	0.07	4	0.8	1DX15	VAN08009258
ORX33511	2	1.51	0.004	0.07	0.1	0.04	2.6	0.2	0.07	6	0.9	1DX15	VAN08009258
ORX33512	1	1.79	0.004	0.04	0.2	0.33	2.8	0.5	0.06	6	3.2	1DX15	VAN08009258
ORX33513	0.5	1.85	0.005	0.04	0.1	0.04	2.2	0.2	0.06	5	0.7	1DX15	VAN08009258
ORX33514	1	1.83	0.005	0.04	0.2	0.04	3	0.1	0.025	4	0.9	1DX15	VAN08009258
ORX33515	1	1.76	0.005	0.06	0.2	0.04	2.8	0.2	0.025	6	0.25	1DX15	VAN08009258
ORX33516	0.5	1.86	0.005	0.05	0.1	0.05	3.8	0.1	0.025	5	0.25	1DX15	VAN08009258
ORX33517	1	1.64	0.004	0.07	0.2	0.29	3.4	0.2	0.07	4	1.2	1DX15	VAN08009258
ORX33518	0.5	1.75	0.005	0.05	0.2	0.04	2.8	0.1	0.025	5	0.6	1DX15	VAN08009258
ORX33519	0.5	1.63	0.006	0.04	0.05	0.04	1.5	0.1	0.025	5	0.25	1DX15	VAN08009258
ORX33520	1	2.08	0.005	0.07	0.2	0.06	3.7	0.2	0.025	5	0.9	1DX15	VAN08009258
ORX33521	4	0.81	0.002	0.09	0.05	0.56	2.1	0.4	0.12	2	3.7	1DX15	VAN08009258
ORX33522	1	0.96	0.001	0.09	0.05	0.2	2.6	0.3	0.025	4	2.5	1DX15	VAN08009258
ORX33523	1	2.19	0.005	0.07	0.1	0.03	3.3	0.1	0.06	7	0.5	1DX15	VAN08009258
ORX33524	1	1.48	0.004	0.06	0.1	0.03	2.7	0.1	0.05	5	0.6	1DX15	VAN08009258
ORX33525	2	1.25	0.004	0.12	0.05	0.04	2.6	0.2	0.06	5	0.9	1DX15	VAN08009258
ORX33526	2	1.58	0.009	0.09	0.3	0.21	4	0.2	0.06	5	0.9	1DX15	VAN08009258
ORX33527	3	1.09	0.007	0.11	0.2	0.37	3.4	0.1	0.1	3	1.7	1DX15	VAN08009258
ORX33528	3	0.79	0.005	0.08	0.3	1.8	2.6	0.2	0.15	3	3	1DX15	VAN08009258
ORX33551	2	1.4	0.011	0.09	0.1	0.08	2.2	0.2	0.16	5	1.1	1DX15	VAN08009258
ORX33552	5	0.66	0.007	0.14	0.3	0.99	3.9	1.2	0.13	3	15.5	1DX15	VAN08009258
ORX33553	2	1.79	0.005	0.05	0.3	0.06	2.3	0.1	0.025	5	0.7	1DX15	VAN08009258
ORX33554	2	1.14	0.004	0.08	0.1	0.16	0.4	0.3	0.11	4	2.3	1DX15	VAN08009258
ORX33555	2	1.52	0.005	0.06	0.3	0.19	1.6	0.4	0.07	5	1.5	1DX15	VAN08009258
ORX33556	3	1.52	0.006	0.17	0.05	0.19	3.5	0.4	0.025	6	2.5	1DX15	VAN08009258
ORX33557	1	2.02	0.005	0.06	0.2	0.08	2.9	0.1	0.025	7	0.7	1DX15	VAN08009258

Sample	Datum	Easting	Northing	Mo	Cu	Pb	Zn	Ag	Ni	Co	Mn	Fe	As
ORX33558	Nad 83-8W	369600	7119513	2.4	51.7	10.8	113	0.05	31	11.1	517	3	11.1
ORX33559	Nad 83-8W	369545	7119426	2.6	26.3	13.8	11	1.5	10.3	0.8	11	0.29	2.5
ORX33560	Nad 83-8W	369476	7119354	13	133	31.9	608	0.9	251.8	53.2	10001	9.78	19.6
ORX33561	Nad 83-8W	369430	7119270	2.6	147.3	19	149	0.3	55.2	32.6	1361	4.16	14.7
ORX33562	Nad 83-8W	369381	7119181	2.7	39.2	10.6	82	0.2	35.4	11.3	689	2.64	12
ORX33563	Nad 83-8W	369390	7119081	4.5	129.5	15.5	162	0.5	43	15.4	709	3.52	12.8
ORX33564	Nad 83-8W	369354	7118984	1.4	27.2	9	86	0.2	31.7	11.4	460	2.57	10.3
ORX33565	Nad 83-8W	369325	7118887	17.3	130.5	25.1	140	2.7	41.7	4.9	158	4.72	57.7
ORX33566	Nad 83-8W	369302	7118788	3	27.2	11.5	86	0.05	31.9	14.8	517	3.24	13.3
ORX33567	Nad 83-8W	369266	7118693	1.3	16.7	11.5	60	0.1	20.4	10.1	844	2.94	11.1
ORX33568	Nad 83-8W	369267	7118593	2.4	46.7	22.6	62	0.2	18.2	6.6	309	3.04	54.5
ORX33569	Nad 83-8W	369301	7118497	1.6	28.7	18.7	80	0.2	22.6	9.4	420	3.49	18.6
ORX33570	Nad 83-8W	369289	7118397	2	32.7	27.4	110	0.5	15.8	7	556	3.01	11.7
ORX33571	Nad 83-8W	369244	7118305	1.5	17.8	11.4	66	0.05	20.7	8.5	340	2.46	11.4
ORX33572	Nad 83-8W	369195	7118217	1.4	14.8	10.6	47	0.1	14.1	5.6	223	2.46	10
ORX33573	Nad 83-8W	369107	7118164	3.8	38.9	15.4	103	0.2	40.5	14.6	465	3.3	13
ORX33574	Nad 83-8W	369024	7118102	1.5	59.8	17	96	0.2	74.3	20.9	2002	3.36	14.4
ORX33575	Nad 83-8W	368989	7118008	6.1	55.6	14.8	287	0.6	39.6	12.8	575	2.8	11.5
ORX33576	Nad 83-8W	368957	7117911	3.9	64.3	21.2	197	0.5	76.8	28.1	695	5.83	15.4
ORX33577	Nad 83-8W	368923	7117817	2.4	9	55.4	85	0.1	11	6.7	1177	1.57	6.1
ORX33578	Nad 83-8W	368889	7117722	9	78.9	19.4	195	0.3	71.5	15.5	352	4.09	28.4
ORX33601	Nad 83-8W	369975	7121019	2.1	43.2	16.9	115	0.05	26.1	21.5	308	3	9.1
ORX33602	Nad 83-8W	369944	7120921	19.6	145.3	39.3	235	1.3	81.1	29.4	496	5.31	66.2
ORX33603	Nad 83-8W	369923	7120821	6.2	90.7	31.7	159	1.3	35.7	35.8	809	3.83	16.5
ORX33604	Nad 83-8W	369907	7120720	1.1	70.1	28.8	87	0.2	28.3	34.6	1145	3.07	9.4
ORX33605	Nad 83-8W	369913	7120618	8.4	170.8	27.2	263	0.7	48.2	36.7	780	5.21	14.7
ORX33606	Nad 83-8W	369938	7120519	1.2	166.1	29	124	0.2	51	35.7	1765	3.45	9.9
ORX33607	Nad 83-8W	369950	7120418	1.9	55.8	15.6	85	0.05	21.4	8.6	327	2.73	10.2
ORX33608	Nad 83-8W	370001	7120324	8	87.7	14.9	247	0.7	37.2	15.1	482	3.31	18.3
ORX33609	Nad 83-8W	370043	7120231	5.1	57.8	12.6	90	0.2	19.8	9.6	262	3.13	14.6
ORX33610	Nad 83-8W	370110	7120154	1.3	37.4	11.7	64	0.05	21.3	9.3	382	2.97	11
ORX33611	Nad 83-8W	370161	7120067	4.1	66.8	12.9	141	0.05	34.7	15.5	456	3.48	10.7
ORX33612	Nad 83-8W	370209	7119976	3.8	51.9	14.8	107	0.1	31.5	15.5	642	3.38	11.5
ORX33613	Nad 83-8W	370257	7119888	1.6	50.8	12.2	79	0.2	22.9	10.2	554	3.25	13.2
ORX33614	Nad 83-8W	370290	7119792	9.8	44.3	11.5	124	0.2	64.7	25	1235	4.04	13
ORX33615	Nad 83-8W	370314	7119692	1.6	25.2	12.4	82	0.05	29.5	14.3	499	3.14	13.2
ORX33616	Nad 83-8W	370304	7119592	7.8	101.5	35.3	143	0.6	56.4	19.1	3324	5.86	33.1
ORX33617	Nad 83-8W	370291	7119493	53.5	94.5	13.8	658	1	143.1	9.3	348	2.2	29.4
ORX33618	Nad 83-8W	370325	7119395	5.8	42.5	23	53	1.7	19.4	3.3	92	2.88	41.9
ORX33619	Nad 83-8W	370310	7119295	1.7	89.4	14.3	100	0.2	32.6	11.7	555	4.14	13.6
ORX33620	Nad 83-8W	370307	7119195	2.5	42.9	16.3	116	0.3	26.8	7.3	283	3.77	16
ORX33621	Nad 83-8W	370299	7119091	3.9	71.4	49	167	0.4	29.1	6.5	432	2.3	148.2
ORX33622	Nad 83-8W	370272	7118991	8.1	83.3	21.7	152	0.1	40.2	15.7	699	2.77	89
ORX33623	Nad 83-8W	370206	7118916	3.2	37	56.3	116	1.1	22.6	8.3	456	3.47	36
ORX33624	Nad 83-8W	370144	7118833	32.1	103.4	42	380	1.2	93.9	21.9	3492	9.11	101.3
ORX33625	Nad 83-8W	370112	7118736	3	37.3	151.5	199	1.1	25.6	9.5	1118	3.23	163.1
ORX33626	Nad 83-8W	370104	7118635	1.9	19.2	12.9	58	0.3	12.2	5.5	354	3.31	14.8
ORX33627	Nad 83-8W	370066	7118539	1.3	20.8	10.9	68	0.05	22.6	10.7	584	2.79	15.8
ORX33628	Nad 83-8W	370029	7118445	1.1	16.4	13.9	55	0.05	15.7	6.6	257	2.42	14.7
ORX33629	Nad 83-8W	369997	7118345	2.4	29.6	15.4	79	0.3	19.9	9.2	307	3.47	13
ORX33630	Nad 83-8W	372698	7119159	4.2	33.5	12.4	90	0.5	21.3	3.1	155	2.27	11.5
ORX33631	Nad 83-8W	372748	7119072	7.2	142.5	17	194	0.4	41	7.8	249	4.3	12.4
ORX33632	Nad 83-8W	372787	7118977	1.5	56.1	8.1	48	0.05	19.9	12.5	2790	3.9	10.3
ORX33633	Nad 83-8W	372811	7118878	1.2	27.1	12.2	67	0.05	21.1	11.5	278	2.67	10.4
ORX33634	Nad 83-8W	372851	7118786	2.7	60.6	16.6	84	0.05	26.2	11.2	433	3.85	16.1
ORX33635	Nad 83-8W	372866	7118687	4.1	95.8	29.2	100	0.1	56.9	41.7	3135	5.36	24.6
ORX33636	Nad 83-8W	372902	7118593	6.9	64.1	10.3	104	0.1	36.8	9.8	344	3.78	11.1
ORX33637	Nad 83-8W	372943	7118501	1.8	74.5	20.8	82	0.6	21.7	6.8	277	5.95	23.4
ORX33638	Nad 83-8W	373013	7118429	4.7	148.6	20.5	126	0.4	75.3	29.3	1100	7.84	38.9
ORX33639	Nad 83-8W	373110	7118402	25.9	63.1	109.9	89	3.5	15.5	4.6	108	7.85	76.5

Sample	U	Au	Th	Sr	Cd	Sb	Bi	V	Ca	P	La	Cr	Mg	Ba	Ti
ORX33558	1	4.9	2.5	26	0.4	1.2	0.2	65	0.11	0.088	12	27	0.39	226	0.024
ORX33559	3.6	9.2	1	21	0.2	2.8	0.1	72	0.03	0.012	3	24	0.01	753	0.002
ORX33560	4.1	4.6	4.5	108	22	1.6	0.2	96	0.5	0.095	21	22	0.52	3844	0.009
ORX33561	1.2	8.4	3	14	0.4	2.6	0.3	60	0.06	0.078	13	34	0.4	206	0.016
ORX33562	0.9	8	1.6	17	0.5	1.3	0.2	47	0.13	0.071	14	25	0.34	229	0.029
ORX33563	2.6	16.5	4	67	0.8	3.3	0.2	88	0.34	0.172	19	29	0.82	471	0.024
ORX33564	0.9	3.3	2.8	14	0.5	1.4	0.1	46	0.14	0.065	13	26	0.43	137	0.039
ORX33565	9.3	15.5	3.9	223	0.8	14.3	0.4	219	0.06	0.188	26	64	0.2	171	0.012
ORX33566	1.1	7	3.7	12	0.4	1.1	0.2	46	0.08	0.044	13	28	0.47	308	0.033
ORX33567	0.7	2.3	1.5	9	0.3	1	0.2	57	0.06	0.058	12	25	0.27	243	0.029
ORX33568	0.9	4.7	2.3	38	0.1	11.8	1.1	75	0.09	0.072	15	33	0.32	104	0.033
ORX33569	0.8	4.1	1.4	11	0.2	2	0.3	70	0.09	0.052	11	35	0.56	103	0.053
ORX33570	0.8	6.7	1.4	11	1	5.1	0.3	72	0.08	0.07	9	28	0.31	108	0.039
ORX33571	0.7	3.4	0.9	12	0.4	2	0.2	48	0.11	0.057	12	25	0.4	106	0.033
ORX33572	0.6	2.5	1.6	12	0.2	0.7	0.2	55	0.11	0.026	12	22	0.24	188	0.032
ORX33573	1.4	13.2	3.9	21	0.8	2.6	0.2	55	0.12	0.027	12	31	0.64	322	0.051
ORX33574	0.7	4	2.8	11	0.3	4.8	0.2	52	0.05	0.035	15	23	0.21	207	0.027
ORX33575	1.8	5.1	1.1	38	2.1	2.3	0.2	62	0.38	0.222	18	25	0.29	312	0.016
ORX33576	1.9	4.3	2.8	39	0.8	15.7	0.2	63	0.06	0.097	19	29	0.53	805	0.013
ORX33577	3.1	0.8	6.5	6	0.3	4	0.3	14	0.02	0.02	5	7	0.12	59	0.002
ORX33578	3.4	6.2	4	47	0.8	11.7	0.3	74	0.09	0.052	17	35	0.69	330	0.022
ORX33601	1.4	4.3	4.6	12	0.5	1.4	0.1	50	0.09	0.046	17	24	0.62	152	0.022
ORX33602	7.6	22.9	6.8	120	1.9	5.1	0.3	53	0.55	0.216	25	20	0.58	536	0.004
ORX33603	3.1	11.5	5.6	34	1.5	3.8	0.2	73	0.22	0.111	30	31	0.99	417	0.019
ORX33604	0.9	12.8	3.9	30	0.6	1.3	0.2	49	0.38	0.118	29	34	1.72	383	0.01
ORX33605	5.2	13.9	2.1	61	1	2.9	0.2	101	0.26	0.244	19	27	0.93	684	0.009
ORX33606	0.8	14.6	2	21	0.4	1.6	0.5	47	0.07	0.077	15	32	0.36	309	0.011
ORX33607	0.8	7.6	0.9	13	0.3	1.1	0.2	54	0.13	0.113	12	23	0.41	100	0.019
ORX33608	4.1	11.6	1.2	91	1.7	2.5	0.3	87	0.6	0.461	16	25	0.48	325	0.012
ORX33609	1.9	7.6	0.5	32	0.3	1.4	0.2	66	0.09	0.14	13	25	0.35	219	0.02
ORX33610	0.7	5.4	0.7	12	0.3	0.9	0.2	62	0.12	0.065	13	29	0.44	112	0.033
ORX33611	2.5	5.8	1.7	49	0.5	1.2	0.2	80	0.26	0.2	17	29	1.16	287	0.015
ORX33612	1.4	8	2.7	17	0.8	1.5	0.2	65	0.17	0.115	20	28	1.2	392	0.022
ORX33613	0.8	3.3	1.1	10	0.5	0.9	0.3	66	0.06	0.057	12	32	0.35	134	0.037
ORX33614	2.6	8.2	3	32	0.6	1.3	0.2	44	0.12	0.051	13	23	0.38	886	0.032
ORX33615	1	1.5	3.1	14	0.4	0.8	0.3	69	0.1	0.057	13	37	0.44	218	0.051
ORX33616	3.5	9.4	3.1	152	0.7	3.3	0.4	60	0.21	0.126	25	24	0.21	178	0.011
ORX33617	13.2	3	5.9	181	10.6	14	0.2	309	0.81	0.109	26	19	0.48	566	0.005
ORX33618	3.8	11.4	0.3	71	0.2	4.5	0.3	153	0.09	0.25	12	38	0.13	295	0.016
ORX33619	0.8	9.3	0.5	19	0.4	1.3	0.4	86	0.06	0.099	22	41	0.44	289	0.03
ORX33620	1.5	8.4	3.2	21	0.5	4.8	0.3	68	0.06	0.059	14	28	0.37	237	0.048
ORX33621	2.1	18.3	1.4	23	0.5	8.3	0.3	127	0.22	0.089	14	35	0.8	229	0.05
ORX33622	2.4	21.8	1.3	94	0.7	2.7	0.4	116	0.24	0.095	13	31	0.73	220	0.054
ORX33623	1.2	5.4	1	13	0.3	10	0.4	65	0.08	0.067	12	27	0.39	133	0.042
ORX33624	9.6	12.7	1.5	9	1.3	33.2	0.5	208	0.07	0.127	12	39	0.32	184	0.028
ORX33625	1.6	8	2.6	21	1.1	24.4	0.5	73	0.13	0.118	15	29	0.29	212	0.036
ORX33626	0.6	5	1.9	8	0.3	1.3	0.3	68	0.06	0.05	10	25	0.28	96	0.047
ORX33627	0.8	2.8	3.4	11	0.4	1.3	0.2	58	0.09	0.034	14	31	0.44	270	0.055
ORX33628	0.6	4	2.8	9	0.3	1.5	0.2	57	0.08	0.027	13	26	0.35	166	0.044
ORX33629	0.8	1.8	2	24	0.3	2.7	0.3	99	0.1	0.056	12	26	0.74	270	0.042
ORX33630	1.3	3.8	3.1	45	0.05	1.9	0.2	44	0.01	0.042	26	17	0.14	445	0.003
ORX33631	1.2	22.4	2	50	0.5	2.1	0.3	86	0.07	0.074	18	31	0.71	274	0.024
ORX33632	0.6	4.6	0.4	9	0.1	0.8	0.3	72	0.05	0.088	15	34	0.24	131	0.026
ORX33633	0.8	2.1	2.4	24	0.3	1.5	0.2	52	0.2	0.092	12	22	0.42	109	0.042
ORX33634	0.7	3.7	1.1	13	0.3	1.2	0.3	73	0.06	0.051	14	33	0.34	173	0.043
ORX33635	1.1	6.4	4	29	0.3	2	0.3	60	0.06	0.055	18	29	0.55	325	0.045
ORX33636	2.4	6.2	2.3	33	0.2	4.5	0.3	113	0.08	0.067	26	39	0.99	292	0.059
ORX33637	0.8	8.3	2.2	18	0.2	11	0.3	90	0.04	0.107	18	51	0.41	460	0.039
ORX33638	1.5	10.1	4.5	40	0.3	21	0.7	130	0.03	0.147	44	64	0.75	271	0.05
ORX33639	5.3	11.8	2.7	86	0.1	48.1	1.6	92	0.04	0.199	39	25	0.13	152	0.01

Sample	B	Al	Na	K	W	Hg	Sc	Tl	S	Ga	Se	Method	Acme File
ORX33558	2	1.74	0.005	0.06	0.2	0.05	2.5	0.2	0.025	5	0.8	1DX15	VAN08009258
ORX33559	2	0.18	0.001	0.06	0.1	0.35	0.9	0.1	0.05	1	1.8	1DX15	VAN08009258
ORX33560	3	1.6	0.004	0.08	0.2	0.43	4.2	0.6	0.025	4	3.1	1DX15	VAN08009258
ORX33561	1	1.64	0.005	0.1	0.1	0.07	3.8	0.2	0.025	6	1.2	1DX15	VAN08009258
ORX33562	1	1.42	0.006	0.07	0.3	0.1	1.9	0.2	0.025	4	0.6	1DX15	VAN08009258
ORX33563	5	1.8	0.005	0.16	0.05	0.2	3.9	0.4	0.025	6	1.8	1DX15	VAN08009258
ORX33564	1	1.61	0.005	0.06	0.2	0.04	2.4	0.1	0.025	4	0.7	1DX15	VAN08009258
ORX33565	4	1.6	0.012	0.43	0.1	0.65	3.6	1.6	0.78	5	17.3	1DX15	VAN08009258
ORX33566	2	1.82	0.005	0.07	0.1	0.06	2.9	0.2	0.025	5	0.7	1DX15	VAN08009258
ORX33567	1	1.46	0.004	0.05	0.2	0.07	2.3	0.1	0.06	5	0.6	1DX15	VAN08009258
ORX33568	1	1.5	0.007	0.05	0.2	0.03	2.4	0.5	0.05	5	2.1	1DX15	VAN08009258
ORX33569	2	2.32	0.007	0.05	0.2	0.03	2.5	0.2	0.025	9	0.7	1DX15	VAN08009258
ORX33570	1	1.5	0.005	0.06	0.2	0.07	1.6	0.2	0.06	7	0.7	1DX15	VAN08009258
ORX33571	2	1.6	0.006	0.05	0.2	0.04	1.7	0.05	0.025	5	0.8	1DX15	VAN08009258
ORX33572	1	1.31	0.005	0.04	0.2	0.04	1.4	0.1	0.025	6	0.25	1DX15	VAN08009258
ORX33573	2	2.05	0.008	0.08	0.2	0.03	3.5	0.2	0.06	5	0.7	1DX15	VAN08009258
ORX33574	1	1.28	0.004	0.06	0.2	0.07	2.6	0.2	0.025	6	0.9	1DX15	VAN08009258
ORX33575	2	1.87	0.005	0.07	0.1	0.11	2.7	0.3	0.08	5	1.7	1DX15	VAN08009258
ORX33576	3	1.76	0.004	0.14	0.05	0.05	4.6	0.6	0.06	6	1.4	1DX15	VAN08009258
ORX33577	1	1.36	0.002	0.08	0.05	0.03	0.6	0.2	0.025	2	0.25	1DX15	VAN08009258
ORX33578	2	1.82	0.007	0.13	0.1	0.02	3	0.3	0.09	7	3.2	1DX15	VAN08009258
ORX33601	2	1.57	0.005	0.1	0.05	0.05	2.6	0.3	0.025	5	0.7	1DX15	VAN08009258
ORX33602	2	1.36	0.008	0.15	0.05	0.6	6.5	0.9	0.09	4	5	1DX15	VAN08009258
ORX33603	3	1.84	0.022	0.21	0.05	0.15	4.9	0.6	0.11	6	2.5	1DX15	VAN08009258
ORX33604	2	2.29	0.008	0.12	0.05	0.09	5	0.3	0.06	7	1	1DX15	VAN08009258
ORX33605	4	2.12	0.01	0.22	0.05	0.23	3.3	0.4	0.06	7	3.5	1DX15	VAN08009258
ORX33606	3	1.29	0.004	0.09	0.2	0.1	3.9	0.1	0.025	4	1.1	1DX15	VAN08009258
ORX33607	2	1.24	0.006	0.06	0.1	0.05	1.8	0.1	0.025	5	0.8	1DX15	VAN08009258
ORX33608	5	1.59	0.008	0.17	0.2	0.19	0.8	0.6	0.025	5	1.7	1DX15	VAN08009258
ORX33609	2	1.39	0.012	0.13	0.2	0.11	1.4	0.4	0.11	6	1.8	1DX15	VAN08009258
ORX33610	2	1.76	0.006	0.05	0.2	0.05	1.5	0.1	0.025	6	0.25	1DX15	VAN08009258
ORX33611	4	2.27	0.007	0.16	0.05	0.07	1.8	0.2	0.025	7	0.6	1DX15	VAN08009258
ORX33612	8	2.16	0.007	0.18	0.1	0.1	2.6	0.3	0.025	6	0.25	1DX15	VAN08009258
ORX33613	2	1.77	0.005	0.07	0.2	0.07	2.1	0.1	0.025	6	0.8	1DX15	VAN08009258
ORX33614	3	1.25	0.007	0.11	0.2	0.16	3.4	0.3	0.06	4	0.7	1DX15	VAN08009258
ORX33615	1	2.46	0.006	0.06	0.2	0.04	3	0.2	0.025	6	0.5	1DX15	VAN08009258
ORX33616	3	0.94	0.01	0.37	0.1	0.21	4.1	0.4	0.66	4	3.7	1DX15	VAN08009258
ORX33617	5	0.64	0.005	0.17	0.2	0.26	3.6	1.4	0.18	2	8.9	1DX15	VAN08009258
ORX33618	5	1	0.008	0.09	0.1	0.08	0.5	0.3	0.21	5	4.3	1DX15	VAN08009258
ORX33619	2	1.95	0.005	0.13	0.1	0.07	1.8	0.2	0.06	9	1.2	1DX15	VAN08009258
ORX33620	1	1.56	0.008	0.09	0.2	0.05	2.1	0.2	0.025	6	1.1	1DX15	VAN08009258
ORX33621	2	1.7	0.005	0.06	0.2	0.05	2.2	0.2	0.025	6	0.8	1DX15	VAN08009258
ORX33622	2	2.24	0.01	0.07	0.9	0.04	1.7	0.2	0.025	7	1.4	1DX15	VAN08009258
ORX33623	2	1.59	0.007	0.07	0.2	0.11	1.8	0.4	0.025	6	1.1	1DX15	VAN08009258
ORX33624	0.5	1.48	0.003	0.05	0.2	1.02	8.1	1.7	0.025	6	3.8	1DX15	VAN08009258
ORX33625	1	1.57	0.004	0.07	0.3	0.12	2.3	0.3	0.025	5	2.1	1DX15	VAN08009258
ORX33626	0.5	1.34	0.004	0.05	0.2	0.04	1.8	0.2	0.025	7	0.25	1DX15	VAN08009258
ORX33627	1	1.87	0.006	0.05	0.2	0.04	3	0.1	0.025	6	0.25	1DX15	VAN08009258
ORX33628	1	1.58	0.006	0.04	0.2	0.04	2.3	0.1	0.025	6	0.6	1DX15	VAN08009258
ORX33629	1	1.92	0.01	0.11	0.2	0.04	2.7	0.2	0.025	9	0.6	1DX15	VAN08009258
ORX33630	5	0.79	0.006	0.17	0.05	0.03	2.2	0.5	0.07	3	1.5	1DX15	VAN08009258
ORX33631	5	1.75	0.006	0.21	0.1	0.05	2.3	0.3	0.06	6	2.2	1DX15	VAN08009258
ORX33632	2	1.37	0.004	0.06	0.1	0.08	1.1	0.1	0.025	8	0.7	1DX15	VAN08009258
ORX33633	2	1.29	0.005	0.06	0.2	0.03	1.9	0.05	0.025	5	0.6	1DX15	VAN08009258
ORX33634	2	1.8	0.005	0.06	0.2	0.06	2	0.1	0.025	7	1.1	1DX15	VAN08009258
ORX33635	1	1.93	0.008	0.18	0.2	0.04	3	0.2	0.16	5	1	1DX15	VAN08009258
ORX33636	1	2.19	0.009	0.28	0.1	0.04	2.8	0.5	0.14	7	1.5	1DX15	VAN08009258
ORX33637	1	1.36	0.01	0.35	0.1	0.12	4.4	1	0.42	7	2.8	1DX15	VAN08009258
ORX33638	2	1.75	0.027	0.52	0.1	0.1	5.8	1.4	0.58	8	4.1	1DX15	VAN08009258
ORX33639	2	0.74	0.016	0.46	0.3	1.14	2.2	2	0.99	4	8.9	1DX15	VAN08009258

Sample	Datum	Easting	Northing	Mo	Cu	Pb	Zn	Ag	Ni	Co	Mn	Fe	As
ORX33640	Nad 83-8W	373211	7118400	1.3	48.3	13.5	82	0.05	27.1	14.3	820	3.66	11.1
ORX33641	Nad 83-8W	373312	7118398	5.7	83.7	15.8	112	0.05	48.8	14	585	4.26	17.4
ORX33653	Nad 83-8W	369911	7120443	12.2	183.7	16.1	337	1.3	62.8	10.9	317	3.04	12.3
ORX33654	Nad 83-8W	369831	7120381	7.5	78.5	20.9	171	0.4	42.4	17.5	679	3.57	13.6
ORX33655	Nad 83-8W	369741	7120335	5	40.6	15.7	82	0.2	15.5	5.9	145	2.67	10.3
ORX33656	Nad 83-8W	369672	7120259	1.9	51.3	12.8	68	0.1	19.6	9.3	467	2.98	8.4
ORX33657	Nad 83-8W	369604	7120185	31.2	138	28.5	803	2.1	117.9	23.8	571	4.23	30.7
ORX33658	Nad 83-8W	369520	7120125	1.6	63.5	12.7	103	0.1	61.1	25.6	1709	2.91	10.3
ORX33659	Nad 83-8W	369420	7120104	1.2	42.1	14.2	71	0.2	29.8	13.3	637	2.9	10.1
ORX33660	Nad 83-8W	369320	7120099	3.5	92.9	12.4	138	0.7	31.9	9.4	303	3.11	11.2
ORX33661	Nad 83-8W	369254	7120027	3.8	35.4	13.2	137	0.2	37.5	14.9	490	2.85	10.6
ORX33662	Nad 83-8W	369175	7119960	32.2	142.3	14.5	570	2	70.8	5.9	153	1.91	45.1
ORX33663	Nad 83-8W	369091	7119905	4.5	56.3	18	138	0.6	52.1	11.3	982	3.51	14.6
ORX33664	Nad 83-8W	369007	7119850	1.4	68.9	15.4	85	0.2	34.4	12.5	433	3.42	10.3
ORX33665	Nad 83-8W	368907	7119821	1.1	26.5	13.1	65	0.05	21.3	9.5	314	2.78	11
ORX33666	Nad 83-8W	368850	7119735	2.8	45.8	12.4	70	0.3	27	9.8	779	2.3	17.8
ORX33667	Nad 83-8W	368778	7119662	1.4	24.2	11.7	58	0.2	22.1	9.2	397	2.63	10.9
ORX33668	Nad 83-8W	368690	7119608	3	28.6	13.6	62	0.1	17.7	6.4	324	3.21	10.9
ORX33669	Nad 83-8W	368613	7119543	3.7	41.7	12.5	25	0.5	10.9	1.5	65	1.06	7
ORX33670	Nad 83-8W	367667	7118905	1.3	21.4	13.1	68	0.05	19.9	9.7	422	2.9	11
ORX33697	Nad 83-8W	373412	7118409	6.1	151.1	29.3	64	0.7	26.9	13.7	548	5.27	98.5
ORX33698	Nad 83-8W	373499	7118461	4.8	59.8	23.8	97	0.4	32.3	11.9	571	4.36	25.7
ORX33699	Nad 83-8W	373586	7118514	1	25.2	12.5	68	0.05	25.1	13.7	433	2.88	11
ORX33700	Nad 83-8W	373651	7118593	1.4	20.1	14.4	61	0.05	18.4	8	337	3.13	11.3
ORX35204	Nad 83-8W	367665	7118804	1.4	37.9	15.8	101	0.05	35.4	13	764	3.52	11.4

Sample	U	Au	Th	Sr	Cd	Sb	Bi	V	Ca	P	La	Cr	Mg	Ba	Ti
ORX33640	0.8	68.2	1.5	8	0.2	2.4	0.3	51	0.07	0.05	16	25	0.47	197	0.053
ORX33641	3.6	5	2.8	19	0.2	4.2	0.3	76	0.07	0.057	15	33	0.87	279	0.078
ORX33653	2.7	17.2	0.6	91	2.1	4.7	0.3	65	0.49	0.326	14	21	0.21	633	0.006
ORX33654	3.1	10.3	2.5	65	1.2	2.3	0.2	77	0.39	0.21	21	28	1.07	358	0.018
ORX33655	1.7	5.4	0.2	30	0.3	1.4	0.3	88	0.08	0.116	13	24	0.29	221	0.01
ORX33656	0.7	7.9	2.2	12	0.2	1	0.3	69	0.05	0.044	12	26	0.24	163	0.028
ORX33657	12.5	17.6	2.2	46	4	17.6	0.4	246	0.03	0.109	11	24	0.12	581	0.006
ORX33658	1.2	9.2	3.1	25	0.3	1.3	0.2	49	0.09	0.049	12	27	0.38	231	0.044
ORX33659	0.8	8.4	4.1	13	0.2	1	0.2	60	0.1	0.045	14	30	0.34	159	0.034
ORX33660	1.3	13.9	2.2	21	0.8	1.7	0.2	62	0.14	0.081	16	27	0.36	231	0.027
ORX33661	1.6	9.9	4.3	17	0.6	1.5	0.2	58	0.11	0.039	17	28	0.43	331	0.052
ORX33662	7.6	6.7	0.7	43	12.7	35.2	0.2	652	0.11	0.099	16	51	0.2	544	0.016
ORX33663	1.4	5	1.9	33	0.4	2.1	0.2	57	0.04	0.067	7	21	0.12	517	0.006
ORX33664	0.7	9.3	3.7	12	0.3	1.3	0.3	66	0.06	0.04	12	32	0.34	161	0.032
ORX33665	0.9	4.7	4.1	14	0.2	0.9	0.2	60	0.11	0.043	16	28	0.4	208	0.047
ORX33666	1.3	5.4	1.9	55	0.3	1.8	0.2	56	0.14	0.082	10	33	0.28	336	0.031
ORX33667	0.9	5.3	1.8	15	0.1	1	0.2	59	0.09	0.047	14	29	0.39	167	0.045
ORX33668	1.1	4.9	1.3	16	0.2	1.1	0.3	70	0.1	0.048	13	25	0.27	267	0.047
ORX33669	1.9	5.5	1.4	56	0.2	1.5	0.2	35	0.005	0.048	5	15	0.05	487	0.002
ORX33670	0.7	3.1	4	12	0.3	1	0.3	65	0.09	0.035	14	30	0.37	263	0.045
ORX33697	3.3	13.1	6.2	68	0.4	15.2	5	121	0.13	0.138	20	54	0.89	385	0.134
ORX33698	1.6	4.3	5	93	0.4	2.3	0.3	121	0.07	0.078	17	55	0.83	344	0.138
ORX33699	0.8	1.5	1.8	12	0.3	2.2	0.2	52	0.09	0.04	17	28	0.49	173	0.047
ORX33700	0.8	4.2	0.8	13	0.2	1	0.3	64	0.09	0.047	14	32	0.44	167	0.044
ORX35204	0.8	10.6	3.7	13	0.4	1.1	0.3	64	0.07	0.036	13	31	0.33	166	0.045

Sample	B	Al	Na	K	W	Hg	Sc	Tl	S	Ga	Se	Method	Acme File
ORX33640	1	1.43	0.004	0.11	0.2	0.06	1.8	0.2	0.025	5	0.5	1DX15	VAN08009258
ORX33641	1	2.44	0.011	0.15	0.1	0.03	2.8	0.4	0.13	8	1.1	1DX15	VAN08009258
ORX33653	4	1.03	0.004	0.17	0.05	0.44	1.2	0.4	0.06	3	4.1	1DX15	VAN08009258
ORX33654	6	1.77	0.011	0.24	0.05	0.18	3	0.3	0.025	6	2.6	1DX15	VAN08009258
ORX33655	3	1.31	0.007	0.14	0.1	0.11	0.5	0.2	0.07	6	0.9	1DX15	VAN08009258
ORX33656	3	1.24	0.004	0.09	0.2	0.05	2.2	0.1	0.025	5	0.6	1DX15	VAN08009258
ORX33657	4	1.08	0.003	0.16	0.05	0.75	3.8	0.8	0.06	3	5.9	1DX15	VAN08009258
ORX33658	3	1.45	0.007	0.09	0.1	0.06	3.2	0.2	0.025	4	0.8	1DX15	VAN08009258
ORX33659	2	1.56	0.005	0.06	0.2	0.05	2.6	0.1	0.025	5	0.6	1DX15	VAN08009258
ORX33660	2	1.27	0.005	0.08	0.3	0.17	2.4	0.2	0.025	4	2.2	1DX15	VAN08009258
ORX33661	2	1.45	0.006	0.08	0.2	0.07	3	0.2	0.025	4	1.4	1DX15	VAN08009258
ORX33662	7	1.01	0.004	0.11	0.2	0.84	1.7	1.8	0.025	4	7.8	1DX15	VAN08009258
ORX33663	6	0.94	0.005	0.16	0.05	0.14	2.8	0.4	0.025	3	2.7	1DX15	VAN08009258
ORX33664	2	1.65	0.004	0.08	0.1	0.07	3.3	0.2	0.025	6	0.9	1DX15	VAN08009258
ORX33665	2	1.78	0.005	0.05	0.2	0.04	2.9	0.1	0.025	5	0.25	1DX15	VAN08009258
ORX33666	4	1.06	0.019	0.13	0.1	0.1	2.8	0.3	0.11	5	1.9	1DX15	VAN08009258
ORX33667	3	1.72	0.008	0.07	0.2	0.07	2.4	0.1	0.025	5	0.6	1DX15	VAN08009258
ORX33668	2	1.35	0.005	0.09	0.2	0.07	2	0.2	0.025	6	0.7	1DX15	VAN08009258
ORX33669	5	0.57	0.006	0.13	0.05	0.19	1.9	0.3	0.07	2	2.2	1DX15	VAN08009258
ORX33670	2	1.76	0.006	0.06	0.2	0.04	3.2	0.1	0.025	6	0.8	1DX15	VAN08009258
ORX33697	3	2.22	0.056	0.39	0.6	0.02	5.4	1	0.5	9	3.1	1DX15	VAN08009258
ORX33698	2	1.96	0.08	0.24	0.2	0.02	4.2	0.8	0.57	7	3.2	1DX15	VAN08009258
ORX33699	1	1.77	0.006	0.06	0.1	0.03	2.2	0.2	0.025	5	0.5	1DX15	VAN08009258
ORX33700	1	2.03	0.006	0.06	0.2	0.05	1.9	0.2	0.025	6	0.8	1DX15	VAN08009258
ORX35204	3	1.78	0.005	0.07	0.1	0.05	3.1	0.1	0.025	6	0.5	1DX15	VAN08009258