

TABLE OF CONTENTS

	PAGE
LOCATION AND ACCESS	1
CLIMATE, TOPOGRAPHY AND VEGETATION	1
PROPERTY INFORMATION	2
HISTORY	2
REGIONAL GEOLOGY	5
PROPERTY GEOLOGY	6
PROSPECTING AND FIELDWORK	7
RESULTS, CONCLUSIONS AND RECOMMENDATIONS	7, 8
REFERENCES	11
APPENDIX	
<ul style="list-style-type: none">• ASSAY RESULTS• STATEMENT OF EXPENSES• STATEMENT OF QUALIFICATIONS	
LIST OF FIGURES	
<ul style="list-style-type: none">• FIGURE 1 - LOCATION MAP• FIGURE 2 – CLAIM MAP• FIGURE 3 – TRAVERSE ROUTE.....• FIGURE 4 – TOTAL FIELD MAGNETICS 1996	<ul style="list-style-type: none">34910

LOCATION AND ACCESS

The NI claims are located 26 kilometres south of Whitehorse, Yukon. The claim group is centered at 513000 E - 6711000 N UTM Zone 8 NAD 83, on NTS map # 105D/10 near Mt. Lorne in the Whitehorse Mining District. Access to the property is from the end of a 4 km. long secondary road which turns east off the Klondike Hwy. approximately 20 kilometers southeast of the city of Whitehorse. From this point an ATV trail leads another four kilometers to the property.

CLIMATE, TOPOGRAPHY AND VEGETATION

The NI claims encompass gently rolling hills with a maximum elevation of just over 1400 meters (4600 feet), surrounded by lower lying coniferous forest and swamp with a minimum elevation of 1160 meters (3800 feet). Alpine and sub – alpine hilltops account for roughly thirty percent of the claim area.

This area experiences long cold winters and warm relatively dry summers. Much of the precipitation falls as snow from October through May, effectively limiting the field season to the June – September period.

PROPERTY INFORMATION

The NI property consists of 8 contiguous Yukon quartz claims, held jointly by Brian Carter and Brian Scott, in the Whitehorse Mining District on NTS map # 105D/10.

Claim information is summarized below:

CLAIM NAME	GRANT NUMBER	EXPIRY DATE *
NI 1 – 2	YB57993 – YB57994	2012 – 01 – 12
NI 3 – 4	YB57995 – YB57996	2011 – 01 – 12
NI 13 – 16	YC83110 – YC83113	2009 – 09 - 02

*WITH APPROVAL OF THIS REPORT



HISTORY

The property has been staked approximately a dozen times since 1959. Between 1967 and 1970, Len Doey built a cat trail to the claims from the Klondike Hwy, stripped a total of 1850 cubic yards of frozen ground and rock, and performed bulldozer trenching as well. No further work was done until Brian Carter re-staked the property in 1995. Grab samples from the old trenches by Carter, Kennecott Canada Inc. and Hemlo Gold Ltd. returned values up to 30 g/t Au. The property was optioned to RFH Investments who carried out geological mapping, prospecting, geochemical sampling, magnetic and EM geophysical surveying in 1996. No further work was done until 2006 when a modest prospecting program was carried out on the southern end of the property to follow up on a copper showing discovered during the 1996 program.

ALASKA

YUKON TERRITORY

LEGEND

-  Present or past producer
-  Undeveloped deposit

NORTHWEST TERRITORIES

ALASKA

BRITISH COLUMBIA

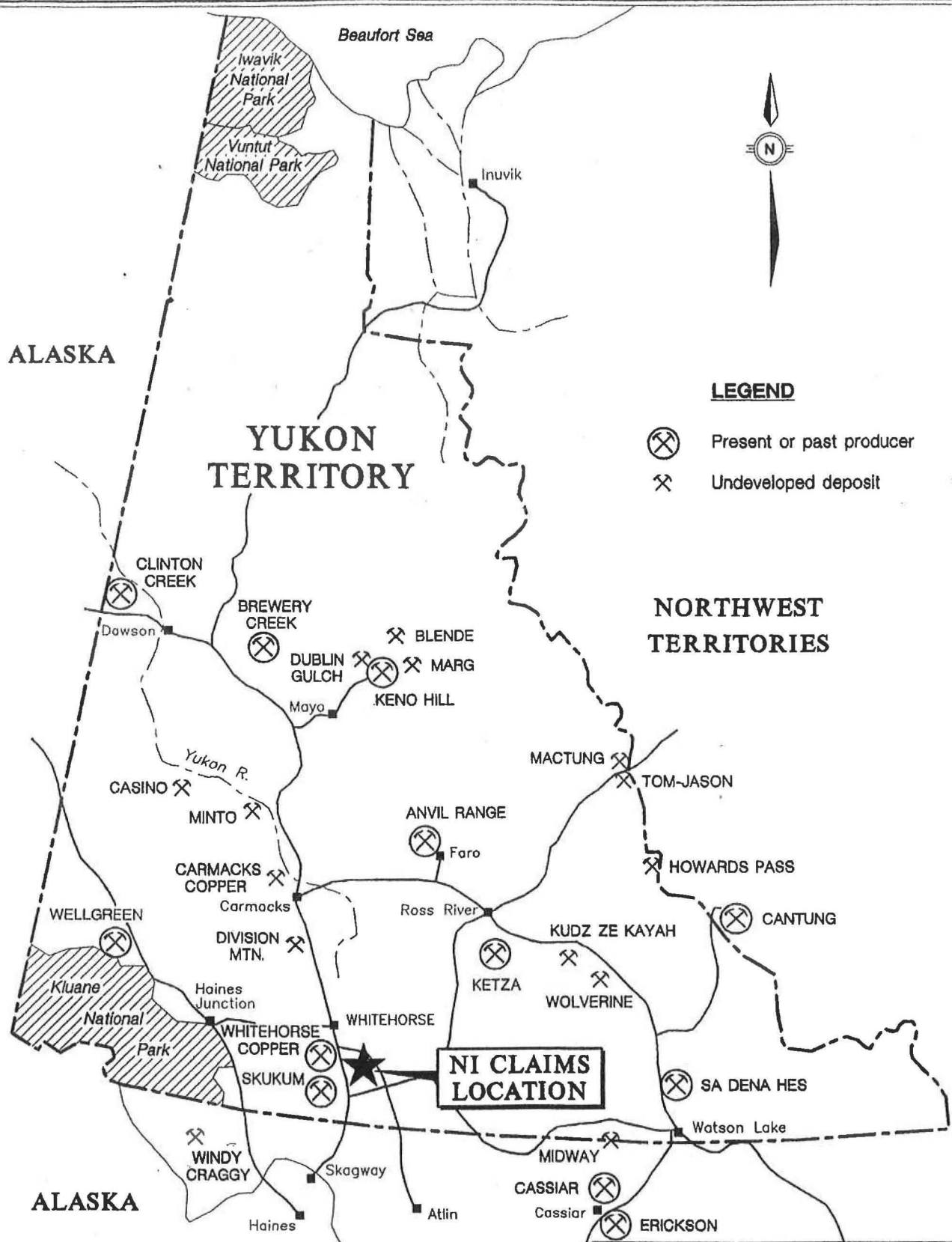
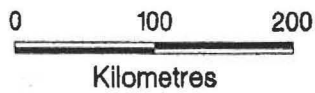
NI CLAIMS LOCATION

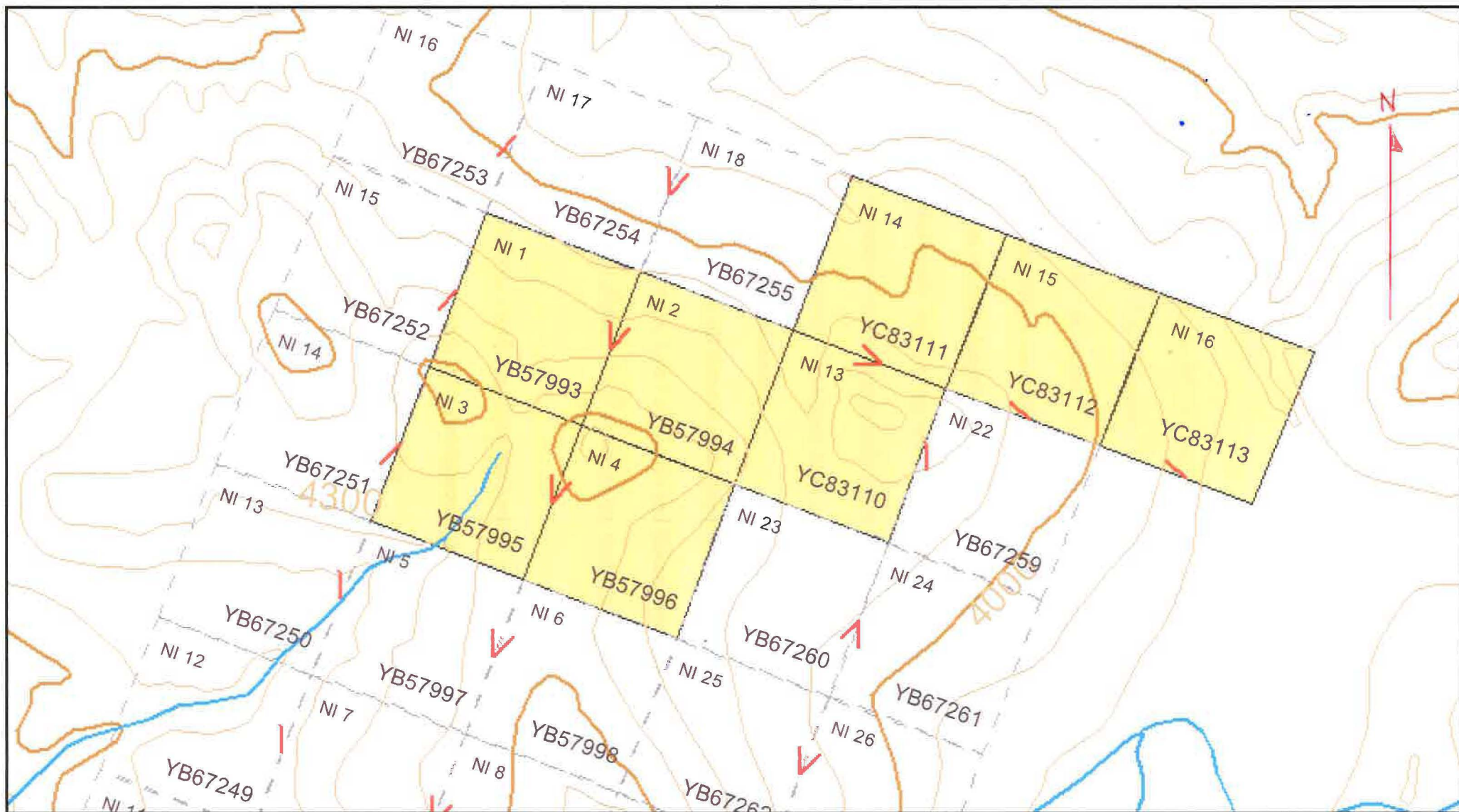
NICHOLSON AND ASSOCIATES

NI PROPERTY
Yukon Territory

PROJECT LOCATION

BY: _____ DATE: MAY 1998
 SCALE: AS SHOWN FIG: 1





CLAIM MAP

FIG. 2

REGIONAL GEOLOGY

The NI claims are located within the Whitehorse Trough, one of several terranes within the Intermontane Belt. The Whitehorse Trough consists of three lithological units: 1 - Lewes River Group – an Upper Triassic island arc assemblage of mafic volcanic and volcano-sedimentary rocks including greywacke, siltstone, argillite and conglomerate, as well as an upper limestone unit. 2 – Laberge Group – a Lower and Middle Jurassic predominantly sedimentary assemblage, lithologically indistinguishable from Lewes River sediments but stratigraphically higher than the Upper Lewes River limestone. 3 – Tantalus Formation – an Upper Jurassic/Lower Cretaceous sedimentary assemblage locally containing coal seams.

The Whitehorse Trough, as with all terranes in the Intermontane Belt, is intruded by plutonic suites of Mid-Cretaceous, Late Cretaceous and Eocene age. The Late Cretaceous quartz monzonite Mt. Lorne pluton, which underlies the south end of the NI property, is one such intrusive.

The Whitehorse Copper Belt, a northwest trending zone of past-producing copper/gold skarns stretching over 30 kilometers, is located approximately 5 kilometers north of the NI property, and shares the same geological setting.

PROPERTY GEOLOGY

The NI property is underlain by a broad package of banded limestone intruded by a feldspar-biotite porphyritic monzonite dike system. This occurred as a series of pulses of fine grained monzonite with each successive injection being more leucocratic and fine grained. Early phases have undergone intensive jointing with gold bearing quartz-arsenopyrite veining structurally controlled by the jointing. One small plug contains roughly 3 - 4% arsenopyrite across a 6 metre width. Minor chalcopyrite and pyrrhotite also occur; massive arsenopyrite has returned values up to 30 g/t Au. This style of mineralization has been documented in two locations approximately 30 metres apart. Late stage, more finely grained phases appear weakly silicified and fractured, with fracture related pyrite, chlorite and rare arsenopyrite. Values up to 0.5 g/t Au were obtained from this material. Localized strong endoskarn development, with up to 20% pyrrhotite and 1% chalcopyrite, occurs near contacts with limestone, which has been thermally altered to marble with minor limonite. The presence of pyrrhotite and minor biotite indicates that emplacement of the intrusives occurred at moderate to high temperatures, favourable conditions for gold emplacement.

PROSPECTING AND FIELDWORK IN 2008

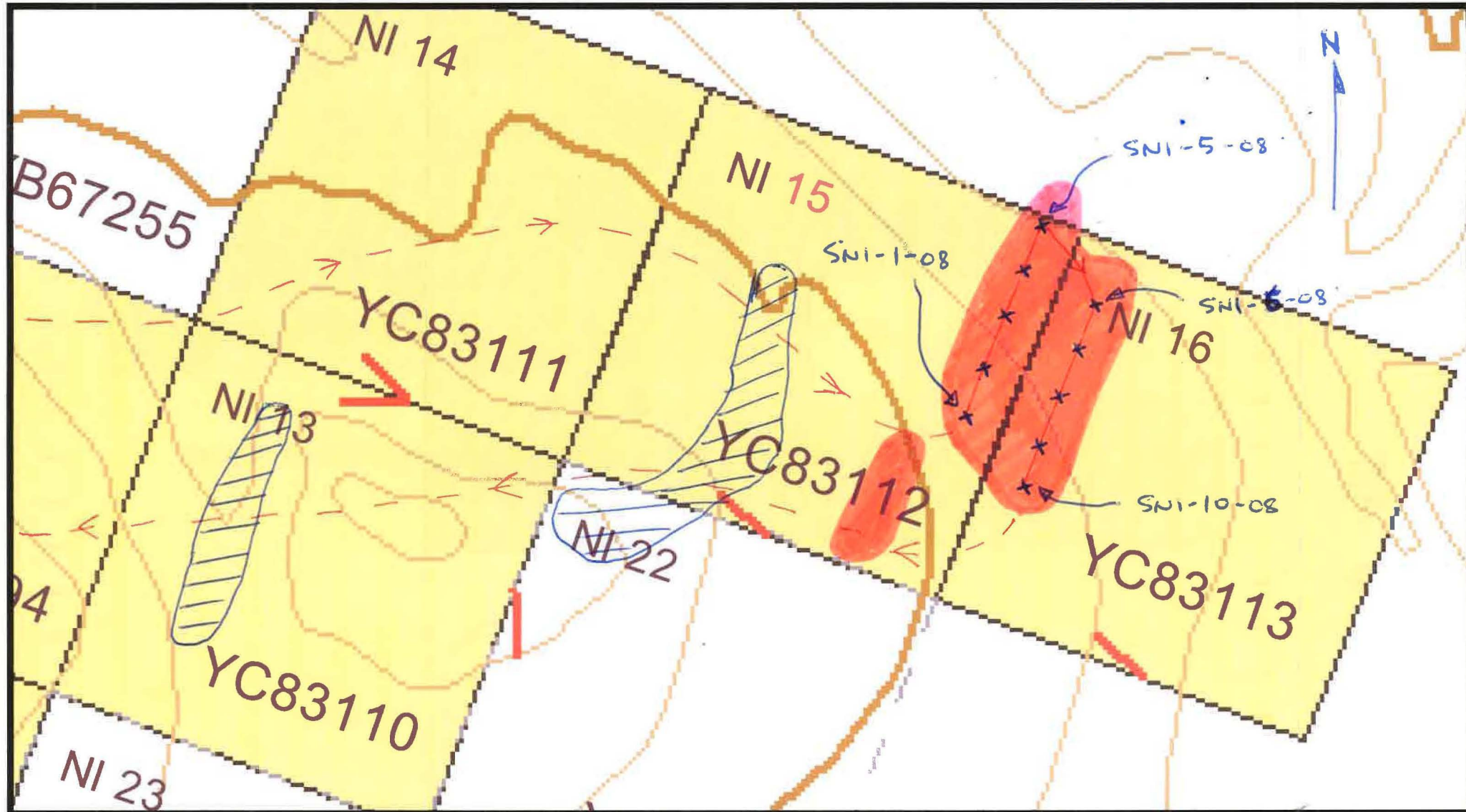
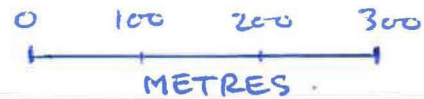
The 2008 fieldwork consisted of a one day prospecting traverse, by the author, over four new claims (NI 13 – 16). These claims were staked to cover a coincident ground magnetic and EM (electro – magnetic) anomaly discovered during the 1996 exploration program by Nicholson and Associates (Ass. report #093737). The geophysical signature in this area was identical to that returned over the historic gold showing on the property on claims NI 1 – 4 (Minfile # 105D066), and thus required investigation.(see figure 4) As well as prospecting, a total of 10 soil samples (at 50 metre intervals in 2 lines) were collected over the projected location of the geophysical anomaly. Sample sites were picketed and flagged. Sample # SNI 1-08 was collected @ 514663E/711435N Nad 83, and sample # SNI 10-08 @ 514762E/711352N.

RESULTS, CONCLUSIONS AND RECOMMENDATIONS

Outcrop on claims NI 13-16 was extremely limited. The only rock in place encountered during the Sept. 16 traverse was weathered, unmineralized limestone exposed in two N/S trending gulches on the NI – 13 and NI -15 (figure 3).

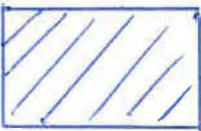
Soil samples collected over the coincident mag and EM anomaly from the 1996 program returned generally low values. Out of 10 samples, 6 returned gold values of 5 ppb, 1 ran 10 ppb, and the remainder were less than 5 ppb. It should be noted that conditions for soil sampling were less than ideal. The area in question was located on a heavily timbered north – east slope. Mossy ground cover was prevalent, and patches of permafrost were encountered. Obtaining a good representative sample from the B or C horizon was difficult. As a result, the geochem results may be suspect and other exploration methods should be used in the future. Overburden appears to be relatively shallow, so a program of hand trenching, done in stages to allow progressive thawing, may be necessary to overcome the permafrost problem. This area remains a high priority exploration target.


Soil samples collected over the coincident mag and EM anomaly from the 1996 program returned generally low values. Out of 10 samples, 6 returned gold values of 5 ppb, 1 ran 10 ppb, and the remainder were less than 5 ppb. It should be noted that conditions for soil sampling were less than ideal. The area in question was located on a heavily timbered north – east slope. Mossy ground cover was prevalent, and patches of permafrost were encountered. Obtaining a good representative sample from the B or C horizon was difficult. As a result, the geochem results may be suspect and other exploration methods should be used in the future. Overburden appears to be relatively shallow, so a program of hand trenching, done in stages to allow progressive thawing, may be necessary to overcome the permafrost problem. This area remains a high priority exploration target.

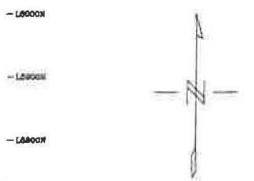
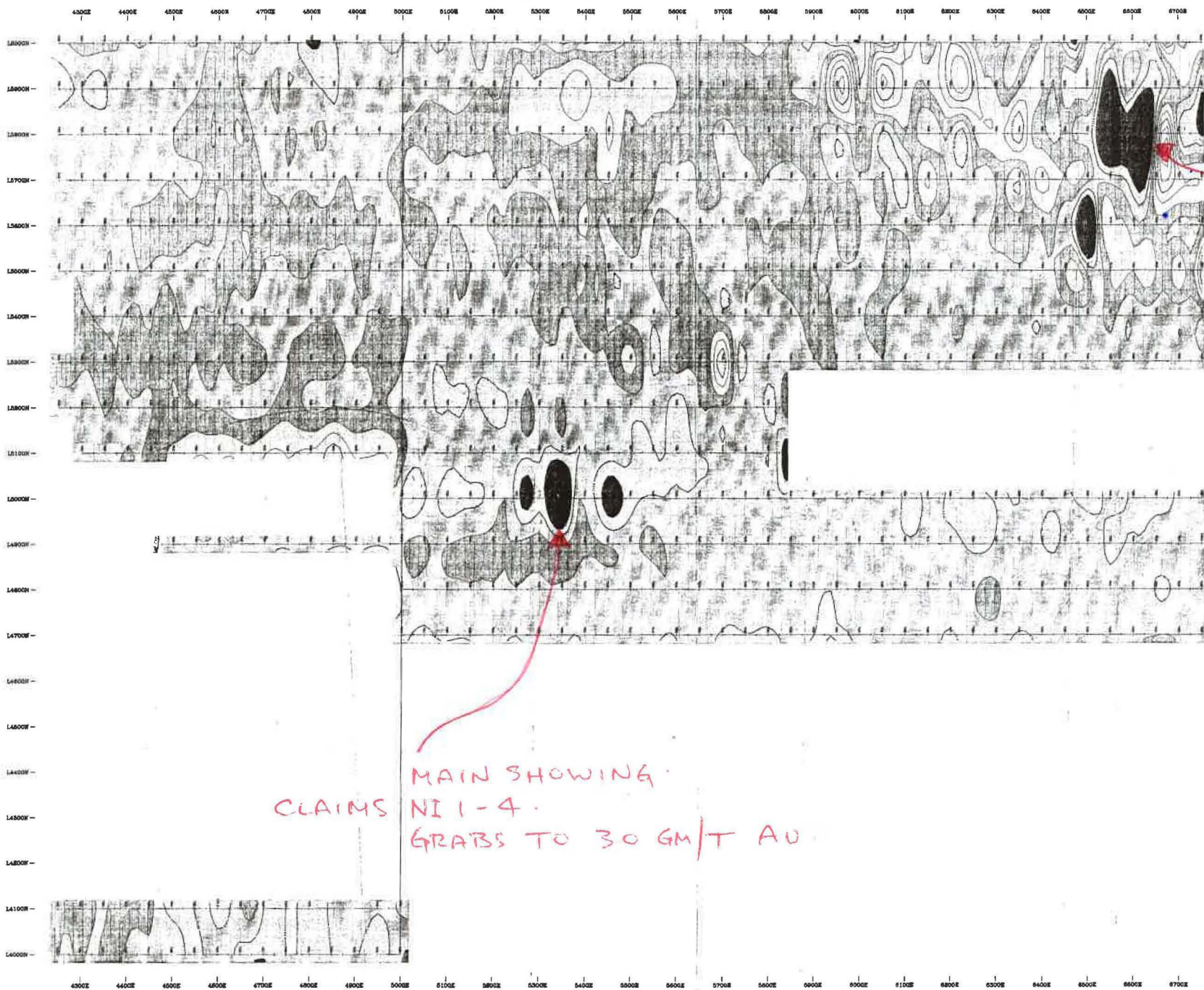


2008 FIELD PROGRAM - FIG. 3

--->--->--->
TRAVERSE ROUTE


LIMESTONE

* SOIL SAMPLE LOCATION.
 - COINCIDENT MAG AND EM ANOMOLIES FROM '96 PROGRAM.



2008
SOIL SAMPLING
CLAIMS
NI 13-16.

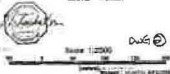
CLAIMS
MAIN SHOWING
NI 1-4.
GRABS TO 30 GM/T AU



LEGEND
CONTOUR INTERVALS
50 nT
100 nT
Magnetic Separation: 20 meters

083737

80% of area has been sampled from each profile.
The nature of sampling may vary somewhat over
and the area shown.



NICHOLSON AND ASSOCIATES
NI CLAIMS
MULTI-FACILITY WIDE AREA SURVEY
TOTAL FIELD
MAGNETIC CONTOURS
Scale: 1:2500
Drawing: NI 13-16
LLOYD GEOPHYSICS INC.

MAGNETIC SURVEY - 1996 FIG. 4.

REFERENCES

Carter, B. J. – 1996 – Assessment Report #093447

Hart, C. J. R. and Radloff, J. K. – 1990 – Geology of Carcross, Fenwick Creek, Alligator Lake, Whitehorse and part of Robinson map area (105D/2,3,6,11, and 7) Yukon. Exploration and Geological Services Division, Open File 1990 – 4

Morrison, G. W. – 1976 – Granitic Rocks and Associated Mineral Deposits of the Whitehorse Map Area, Yukon. Mineral Industry Report 1975 DIAND

Nicholson, G. E. – 1997 – Assessment Report #093737

Schultze, C. – 1995 NI Property Inspection Report – Hemlo Gold Mines Ltd.

Tenney, D. – 1981 – The Whitehorse Copper Belt: Mining, Exploration and Geology (1967 – 1980). DIAND Bulletin 1

Wheeler, J. O. – 1961 – Whitehorse Map Area, Yukon Territory. Geological Survey of Canada Memoir 312

APPENDIX

STATEMENT OF EXPENSES - NI PROPERTY 2008

PROSPECTING & SOIL SAMPLING SEPT. 16/08 1 DAY @ \$300.....	\$300.00
4X4 TRUCK 1 DAY @ \$75/DAY	\$ 75.00
ATV 1 DAY @ \$125/DAY	\$125.00
ASSAYS.....	\$254.78
MISC. SUPPLIES (PICKETS, FLAGGING, BAGS, TOPOSTRING)	\$ 54.10
REPORT PREPARATION AND PRINTING	\$220.00
TOTAL	\$1028.88

STATEMENT OF QUALIFICATIONS

I, Brian Scott, do hereby certify that:

- 1. I am a self-employed prospector, residing at Tagish, Yukon with mailing address Box 77 Tagish, Y0B 1T0.**

- 2. I successfully completed the Yukon Basic Prospecting course in Whitehorse in 1977, and the Advanced Prospecting course in 1988. As well, I completed the Petrology for Prospectors course in Whitehorse in 1994.**

- 3. I have been actively involved in mineral exploration in the Yukon and northern British Columbia since 1977.**

- 4. I performed all work (Sept. 16 2008) described in this report on the NI property.**

Dated at Tagish, Yukon this 15th day of March 2009


.....