

**2008 Assessment Report
for the
Carmacks Copper Project**

Whitehorse Mining District
Yukon Territory
NTS 115I/07
Latitude: 62° 21'
Longitude: 136° 41'

Quartz Claims:

Claim	Grant #
BOY 20	Y 51118
BOY 51	Y 51149
BOY 52	Y 51150
BOY 53	Y 51151
BOY 54	Y 51152
BOY 83	Y 51181
WAR 22	Y 59373
DUN 1	Y 59382
W 1 - 37	YB26708 - 44
W 41 - 43	YB26748 - 50
WAR 23 - 31	YB36240 - 48
W 50 - 53	YB36249 - 52
W 55	YB36254
W 57	YB36256
WAR 32 - 37	YB36446 - 51
WC 5 - 18	YB36693 - 706
WC 23 - 36	YB36711 - 724
WC 40	YB36728
WC 41 - 54	YB36729 - 42

Claim	Grant #
WC 57 - 72	YB36745 - 60
WAR 38 - 50	YB36765 - 77
X 3 - 4	YB36898 - 99
W 91 - 93	YB36929 - 31
W 95	YB36933
X 5 - 7	YB36962 - 64
VW 11	YB96620
VW 13	YB96622
VW 17 - 21	YB96626 - 30
VW 23	YB96632
VW 25	YB96634
VW 27 - 38	YB96636 - 47
VW 40 - 50, 60, 61	YB96986 - 98
TT 1	YB97068
TT 2	YB97251
REM 1 - 35	YC39221 - 54
WCC 1 - 40	YC60381 - 420
GAP 1 - 5	YC65320 - 24
HIP 1 - 27	YC65320 - 80
JIM 1 - 30	YC66844 - 73

By:

S. G. Casselman, B.Sc., P. Geo.
33 Firth Road, Whitehorse, Yukon, Y1A 4R5

For:

Western Copper Corporation
2050 - 1111 West Georgia Street
Vancouver, BC, V6E 4M3

December 15, 2008

SUMMARY

In 2008, Western Copper Corporation conducted an exploration program on the Carmacks Copper Property that consisted geotechnical drilling in the deposit area and prospecting and soil sampling on an exploration target in the eastern part of the property. The drilling was conducted on Mining Leases and does not qualify for assessment work. The soil sampling and prospecting were performed on Quartz Claims and do qualify for assessment purposes. This report documents only the prospecting and soil sampling portion of the 2008 program.

The property is located on Williams Creek, 200 km north of Whitehorse, or 38 km north, northwest of Carmacks, Yukon. It is accessible by 4x4 vehicles via the Freegold Road and the Carmacks Copper access road. The property consists of 318 Quartz Claims and 20 Mining Leases owned 100% by Western Copper Corporation.

The exploration history of the region dates back to the Klondike Gold Rush of 1898, when placer miners traveling the Yukon River started prospecting along the route. The claims forming the core of the property were first staked in 1969. Between 1969 and 2007 a number of companies and partnerships were involved in large exploration programs, and an extensive array of metallurgical test work, engineering and environmental studies were completed on the property. Sixteen zones containing copper mineralization known on or in the immediate vicinity of the property had been identified during that time, of which the No. 1 Zone was the most advanced. The No. 1 Zone hosts copper oxide mineralization in large meta-volcanic xenoliths that have been consumed by granodiorite of the Granite Mountain Batholith. In 2006, the company calculated a NI43-101 compliant reserve estimate for the No. 1 Zone of 10,611,000 tonnes grading 1.04% copper, 0.48 g/t gold and 4.62 g/t silver.

The 2008 prospecting program on the Carmacks Copper Property did not locate any copper mineralization in the granodiorite or in the Pavoas Formation volcanic rocks in the eastern part of the property. There is good exposure in areas of anomalous copper-in-soils, however no copper mineralization was observed.

The soil sample results from 2008 and historical work indicate that soils overlying the Pavoas Formation rocks generally contain on the order of 5 times more copper than granodiorite in the area. These background values should be considered when evaluating soil sample results from areas underlain by the different rock types in future work.

There were no targets identified for follow-up work in this part of the property.

TABLE OF CONTENTS

Volume 1

Summary

1.0	Introduction	1
2.0	Location and Access.....	1
3.0	Claim Information.....	1
4.0	Physiography and Climate	3
5.0	Property History	4
6.0	Geology	
6.1	Regional Geology	6
6.2	Property Geology	8
7.0	2008 Exploration Program	9
8.0	Geochemical Analytical Procedure	10
9.0	Results	10
10.0	Conclusions and Recommendations.....	11
11.0	Statement of Expenditures.....	12
12.0	References	13

FIGURES

Figure 1	Property Location	2
Figure 2	Claim Map	Map Pocket
Figure 3	Regional Geology.....	7
Figure 4	Property Geology	Map Pocket
Figure 5	Soil and Rock Sample Location Map.....	Map Pocket
Figure 6	Soil Sample Copper Geochemistry Dot Plot.....	Map Pocket
Figure 7	Soil Sample Gold Geochemistry Dot Plot.....	Map Pocket

APPENDICES

Appendix I	Statement of Qualifications
Appendix II	Carmacks Copper Property – Quartz Claims and Mining Leases
Appendix III	Geochemical Analytical Certificates

1.0 INTRODUCTION

In 2008, Western Copper Corporation conducted an exploration program on the Carmacks Copper Property that consisted of 1,643.2 m of diamond drilling in 7 holes, 253.5 m of Reverse Circulation drilling in 2 holes, prospecting and soil sampling. The diamond drilling was conducted on Mining Leases in the Zone 1, 4 and 7 areas as part of a geotechnical evaluation of the proposed open pit area in preparation for mining and does not qualify for assessment work. The 2 Reverse Circulation holes were drilled for water wells in the proposed camp area on leases and also do not qualify for assessment. The soil sampling and prospecting were performed on Quartz Claims in the eastern part of the property and do qualify for assessment purposes. This report documents the prospecting and soil sampling work on the Quartz Claims.

The exploration program was managed by Scott Casselman, B.SC, P.Geo, of Casselman Geological Services Ltd. of Whitehorse, Yukon. The soil sampling and prospecting took 5 days to complete and was conducted intermittently from May 6 to May 28, 2008.

2.0 LOCATION AND ACCESS

The Carmacks Copper Property is located on Williams Creek in the Dawson Range Mountains, 200 km north of Whitehorse, or 38 km north, northwest of Carmacks, Yukon (Figure 1). It is located on NTS map sheet 115I/07 at latitude 62° 21'N and longitude 136° 41' W.

Access to the property is by way of the Freegold Road northwest of Carmacks for 34 km then by the Carmacks Copper access road for 13 km to the property. The Freegold Road is a narrow, twisty gravel road that is maintained by the Yukon Government in the spring through fall, but generally not in the winter at this time. The property access road is narrow and rough with steep sections and requires 4x4 capabilities in inclement weather conditions.

3.0 CLAIM INFORMATION

The Carmacks Copper Property is in the Whitehorse Mining District and consists of 318 Quartz Claims and 20 Mining Leases acquired in accordance with the Yukon Quartz Mining Act. The claims are register in the name of, and owned 100% by Western Copper Corporation. The claim location map is included in Figure 2. A list of claim and lease information is provided in Appendix II. Expiry dates listed in the table are based on this report being accepted for assessment purposes.



WESTERN COPPER CORPORATION
CARMACKS COPPER PROPERTY
 Figure 1 Property Location Map

4.0 PHYSIOGRAPHY AND CLIMATE

The property is located in the Dawson Range Mountains. The area is characterized by gently rolling hills that are generally less than 1800 m elevation and are covered by black spruce, white spruce, pine, poplar, birch and alder trees at lower elevations and alpine grasses and scrub willows at higher elevations and in the alpine terrain.

North facing slopes are generally underlain by permafrost and are generally swampy or boggy with much less tree growth and thick sphagnum moss cover. South facing slopes are generally drier and, in some locations, are free of permafrost.

The climate of the property area is generally fairly dry in the summer months with most precipitation occurring in July and early August. In the winter months snow accumulation is generally less than 2 m. Temperatures generally range from -40°C in the winter to 30°C in the summer. Snow begins accumulating in mid to late September and is mostly melted by mid to late May.

5.0 PROPERTY HISTORY

The exploration history of the region dates back to the Klondike Gold Rush of 1898, when placer miners traveling the Yukon River started prospecting along the route. The earliest exploration work in the area was directed to the few outcrops in the Williams Creek, Merrice Creek, Nancy Lee Creek and Hoochekoo Creek canyons. The first claims staked in the region were staked west of the Yukon River on Nancy Lee Creek. There are a number of small adits and workings on the claims targeting vein copper mineralization. A few tons of copper ore were shipped to the Granby Smelter in 1917. These claims are now Crown Grants.

In 1969, the Casino Porphyry Deposit was discovered, which prompted a staking rush in the region. In March of 1970, the Boy Claims were staked by Whitehorse businessmen, G. Wing and A. Arsenault. The original claims consisted of 134 units. The property was optioned to the Dawson Range Joint Venture (DRJV), later that year. The DRJV consisted of Straus Exploration Inc., Great Plains Development of Canada Ltd., Trojan Consolidated Minerals Ltd. and Molybdenum Corporation of America.

The DRJV conducted a program of prospecting and geochemical sampling in the summer of 1970 and discovered two outcrops with copper oxide mineralization; the No. 1 and No. 2 zones. The discovery prompted the staking of a further 185 claims, some trenching and drilling of two x-ray diamond drill holes in the No. 1 Zone for a total of 103 feet (31.4 m).

In 1971, the DRJV conducted a program consisting of 24.5 km of road building, bulldozer trenching, 108 line-km of grid geochemistry, 27 line-km of VLF-EM geophysical surveying, 48 km of line-cutting, geological mapping, an airphoto survey and 5,583 m of diamond drilling in 25 holes in five separate zones (Zones 1, 2, 3, 5 and 6). Highlights of this program included drill indicated reserves in the No. 1 Zone of 16, 334,000 tons grading 1.15% copper at a 0.6% copper cut-off (this reserve figure is not 43-101 compliant). The program also identified copper oxide mineralization in the No. 3 and 4 zones.

In 1972, the DRJV conducted a program consisting of an additional 2.1 km of road construction, bulldozer trenching, 31 km of line cutting, 150 line-km of soil sampling, and 1,531 m of diamond drilling in 8 holes in the No.1, No 4, and No. 8 zones. A recommendation for additional drilling in the No.3, No. 12 and No. 13 zones was made following the exploration program. However, the mining industry went into a slump and no further work was performed for 17 years.

In 1982, the DRJV returned its' interest in the property to Archer, Cathro & Associates, which later sold the property to Archer, Cathro & Associates (1981) Ltd. In 1989, Archer, Cathro optioned the property to Western Copper Holdings Ltd. And Thermal Exploration Company. Western Copper and Thermal conducted metallurgical test work later that year.

In 1990, Western Copper and Thermal upgraded the access road to the property and drilled 322 m in three holes in the Zone 1. Each of the 3 holes intersected copper oxide mineralization. The following year the two companies conducted a program consisting of 3,464 m of diamond drilling in 36 holes; 35 in Zone 1 and 1 in Zone 4. They also dug 22

trenches in zones 1 and 4 for a total of 1,856 m of trenching, surveyed 83.2 line-km of magnetic and VLF-EM geophysics, and initiated baseline environmental studies. The program was successful in delineating and expanding the area of mineralization in Zone 1 and identifying additional copper oxide mineralization in Zone 4.

In 1992, Western Copper and Thermal drilled 1,164 m in 11 holes in zones 1, 4, 12 and 13 and drilled 856 m in 11 Reverse Circulation holes at various locations on the property. The companies also conducted additional metallurgical test work, baseline environmental testing, a biophysical assessment of the area and contracted Knight Piesold Ltd to conduct geotechnical studies on the deposit consisting of test pit excavation, overburden sampling, oriented diamond drill core logging and geologic mapping.

In 1994, the companies expanded the grid on the property and conducted further magnetic and VLF-EM surveying, soil sampling and prospecting. A new area of copper mineralization was identified at the far northern part of the property, the 4000 Zone.

Also in 1994, Kilborn Engineering Pacific Ltd. was contracted to conduct a Feasibility Study. The study indicated that, based on the copper price at the time, the project was viable using open pit mining methods and solvent extraction-electrowinning.

In 1995, the company contracted Knight and Piesold Ltd. to initiate a preliminary mine design and also initiated clearing and grubbing of a site access road and leach pad area. The company submitted a mine permit application later that year.

While the company was awaiting a mine permit, they contracted Kilborn Engineering to produce a basic engineering report, in 1997. The permit was not forthcoming and, due to changing market conditions the company withdrew the permit application. The property sat dormant until the re-initiation of permitting in 2005 and exploration in 2006. During this time the property was consolidated into a single company and it changed its' name to Western Silver Corporation.

In February, 2006 Western Silver Corporation was taken over by Glamis Gold and a new company, Western Copper Corporation, was formed. The Carmacks Copper Property was spun off to Western Copper as part of the arrangement.

In 2006, Western Copper resumed mineral exploration activities on the Carmacks Copper Project after it had lain dormant for 11 years. The company conducted an exploration program that consisted of 7,100 m of diamond drilling in 34 holes, 1,201 m of Rotary Air Blast drilling (RAB) in 61 holes, access road upgrade work, 9.2 km of line-cutting, re-initiation of environmental baseline studies, surveying of drill hole collars and claim posts and re-initiation of the mine permitting process.

In 2007, Western Copper drilled 17,829 m in 123 diamond drill holes, 790 m in 33 overburden geotechnical drill holes and 55 m in one hydro-geological monitoring well. The company also performed line cutting, IP geophysical surveying, prospecting, continuation of baseline environmental studies and engineering work.

6.0 GEOLOGY

6.1 REGIONAL GEOLOGY

The regional geology was described by Bostock in 1936 and more recently by Tempelman-Kluit in 1975, 1980 and 1985 and is shown in Figure 3. Much of the regional geology is taken from Cavey, et. al. (2006).

The Carmacks region lies within the Intermontane Belt, which in the Carmacks map-area is divisible into the Yukon Cataclastic Terrane, Yukon Crystalline Terrane and Whitehorse Trough.

The Whitehorse Trough lies to the east of the Hoochekoo Fault, east of the Carmacks Copper Project. The Whitehorse Trough comprises Upper Triassic intermediate to basic volcanic capped by carbonate reefs (Povoas Formation) and Lower Jurassic greywacke, shale and conglomerate, derived from the underlying Upper Triassic granitic rocks (Laberge Group).

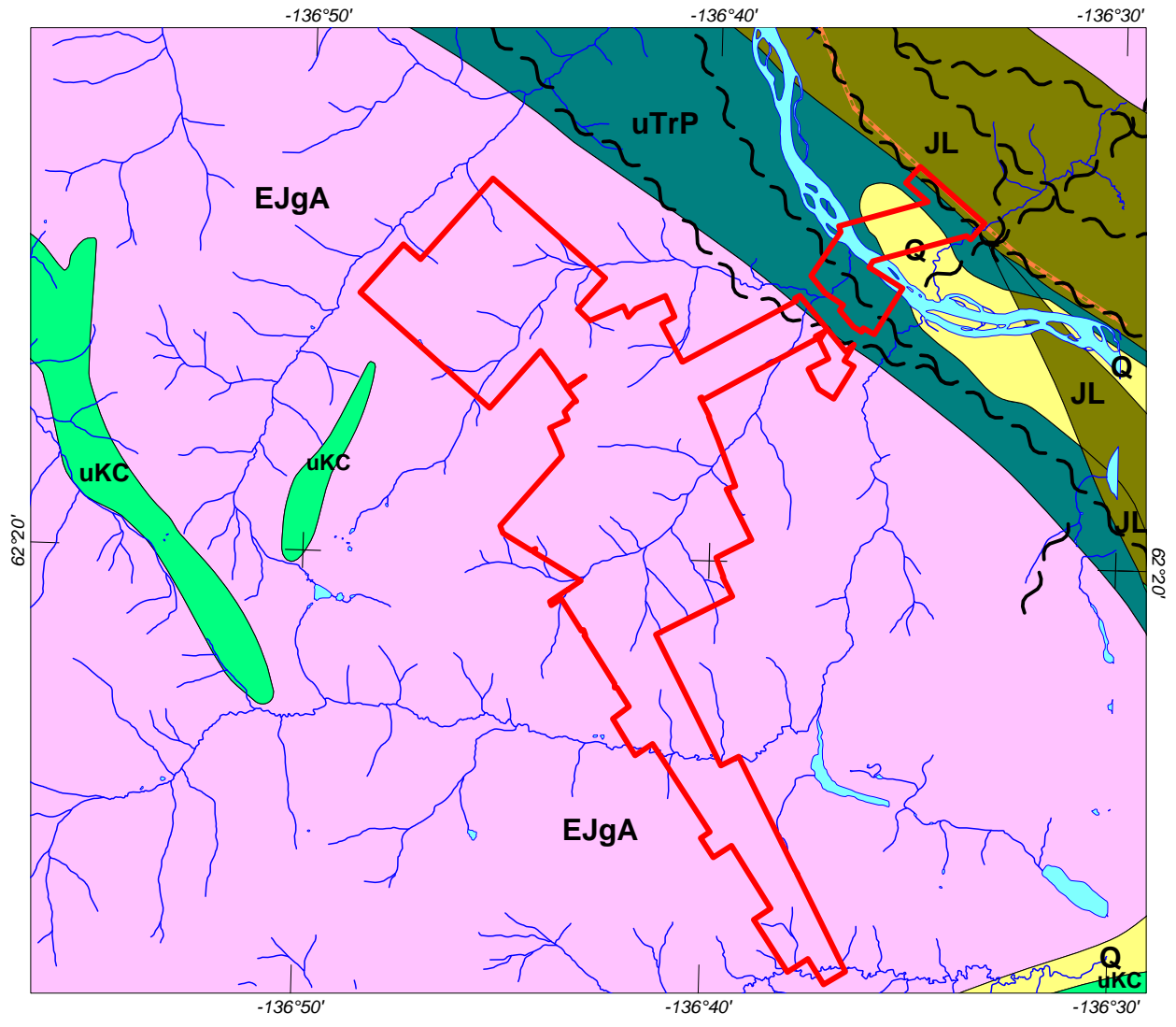
The Yukon Cataclastic Terrane includes hornblende-biotite-chlorite gneiss with interfoliated biotite granite gneiss, Permian Selwyn Gneiss, intruded by Early Jurassic Aishihik Suite Granite Mountain Batholith. Weakly foliated, mesocratic, biotite-hornblende, Granite Mountain granodiorite contains screens or pendants of strongly foliated feldspar-biotite-hornblende-quartz gneisses that host the Carmacks Copper deposit.

Younger plutonic rocks intrude all three divisions of the Intermontane Belt and the contacts between them. Carmacks Group and Mount Nansen volcanic rocks overlie portions of all older rocks, suggesting that they should not be classified in the Yukon Crystalline Terrane, but are younger rocks that obscure relationships between the older terrane rocks. Tempelman-Kluit (1985) has included the Carmacks Group in the Yukon Crystalline Terrane.

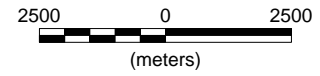
Mesozoic strata of the Whitehorse Trough are only exposed in fault contact with the Yukon Crystalline Terrane and Yukon Cataclastic Terrane, but may rest depositionally on them or certain of their strata. The relationship between the Yukon Crystalline Terrane and Yukon Cataclastic Terrane is unknown.

The predominant northwest structural trend is represented by the major Hoochekoo, Tatchun and Teslin faults to the east of the Carmacks Copper Project and the Big Creek Fault to the west.

East to northeast younger faulting is represented by the major Miller Fault to the south of the Carmacks Copper Project.



- Q** Quaternary - sand and gravel
- uKC** upper Cretaceous - Carmacks Group volcanics
- JL** Jurassic - Laberge Group sediments
- EJgA** Early Jurassic - Aishihik Suite granodiorite
- uTrP** upper Triassic - Povoas Group volcanics and sediments
- Carmacks Copper Property Boundary



WESTERN COPPER CORPORATION
CARMACKS COPPER PROPERTY
 Figure 3 - REGIONAL GEOLOGY MAP

6.2 PROPERTY GEOLOGY

The Carmacks Copper Property lies within the Yukon Cataclastic Terrane. The deposit is hosted by variably metamorphosed volcanic to volcano-sedimentary rocks that form roof pendants and large xenoliths within Jurassic hornblende-biotite granodiorite of the Granite Mountain (Aishihik Suite) Batholith (Figure 4).

The host rocks generally lack or have very low quartz content and high mafic content. An andesitic to basaltic pyroclastic volcanic, probably tuffaceous, agglomerate or breccia precursor rock is considered the most likely source. In some locations, where the degree of metamorphism is low, arkosic sediments, believed to be derived from a basic volcanic or plutonic regime, are observed intermixed with the volcanoclastic rocks. The host rocks are believed to have originated from the upper Triassic Povoas Formation and have been consumed by later intrusions of the Granite Mountain Batholith. The host rocks vary from relatively unmetamorphosed; to slightly metamorphosed; to amphibolites gneiss; to completely re-crystallized hornblende.

The Granite Mountain granodiorite is generally massive in appearance, medium to coarse grained to mega-crystic porphyritic. It occasionally develops a weak foliation near contacts with the meta-volcanic / gneiss units, where the flow has been restricted by the xenoliths. The granodiorite has been separated into five divisions; four based on quartz, biotite, hornblende and K-feldspar contents and a fifth based on assimilated gneiss.

Post mineralization aplite and pegmatites are common. They range in thickness from a few centimetres up to three metres. Quartz veins are uncommon and average two to ten centimetres in thickness. Thin mafic dykes that were feeders for Carmacks Group volcanic are also uncommon. The only copper mineralization in these dykes and veins is non-sulphide secondary copper in aplite and pegmatite.

The deposit constitutes the No. 1 Zone, which is one of 16 identified zones containing copper mineralization known on or in the immediate vicinity of the property (Figure 4). All of the estimated resources are contained in the No. 1, No. 4 and No. 7 Zones which extend over a 1000 m strike length and at least 450 m down dip. The deposit is open at depth and is oxidized to 250 meters in depth. Copper-gold mineralization at Carmacks Copper is hosted primarily in the meta-volcanic rocks, although some copper oxide minerals have “bled out” into fractured zones in the adjacent granodiorite. In a few instances this “bleeding out” has occurred up to 50 m away from the meta-volcanic source.

The copper mineralization in the upper, oxidized, portion of the No.1 Zone consists of malachite>tenorite>azurite and lesser chalcopyrite, bornite, covellite and cuprite. The boundary between oxidized and un-oxidized mineralization is generally sharp and undulating at approximately 250 m vertically below surface. In the transition zone, chalcopyrite and bornite content increase. In the sulphide zone chalcopyrite is the dominant copper mineral. The deposit and encompassing granodiorite contains very little non-copper bearing sulphide minerals, including pyrite, which is estimate at less than 0.5%. Native copper is occasionally observed as dendritic fracture filling in the meta-volcanic and in the granodiorite.

The character of the deposit changes along strike leading to a division into northern and southern halves. The northern half is more regular in thickness, dip angle, width and down dip characteristics. The southern half splays into irregular intercalations, terminating against subparallel faults down dip. Both the north and south ends of the deposit are offset by cross-cutting faults. The No. 7, 7A and 4 zones are interpreted as separate rafts or pull-aparts of a larger raft of meta-volcanic. Although, it is possible they are fault offsets of the No. 1 Zone.

In the northern half of the No. 1 Zone, copper grades are higher in the footwall relative to the hanging wall. Oxide copper grades increase with depth in both the footwall and hanging wall. There is no association of copper values with rock type, mafic mineral content or grain size. Gold values are higher in the north half of the deposit. They average 0.75 g/t compared with 0.27 g/t in the south half. There is no apparent increase in values with depth and the highest grade gold values are not associated with the highest copper values; however, gold values in the northern half are higher in the footwall section. This lack of increase in gold values with depth suggests that the gold distribution reflects a primary distribution rather than a secondary distribution such as oxide copper values. As with oxide copper, gold content does not correlate with rock type, mafic constituents or grain size.

7.0 2008 EXPLORATION PROGRAM

The 2008 exploration program consisted of prospecting and soil sampling and was conducted in the eastern part of the property to evaluate the Povoas Formation intermediate volcanic rocks for copper mineralization. The Povoas Formation rocks are postulated as one of the possible sources for the meta-volcanic roof pendants that form the Carmacks Copper Deposit, because; they are older than the intruding Granite Mountain batholith; they are similar composition to the meta-volcanic roof pendants; and there are a number of copper-bearing quartz vein occurrences hosted in Povoas rocks. Also, previous soil sampling programs conducted in the northern part of the Carmacks Copper Property and sampling by other companies on other properties in the region have found that samples collected in areas underlain by Pavoas Formation rocks have often returned anomalous copper results.

The area worked in 2008 is located on the hills west of the Yukon River. The property is divided by a gap of patented claims that are not held by Western Copper. For the 2008 program, 2 persons collected 125 soil samples on 4 grid lines spaced 200 m apart. Two lines were established east of the patented claim gap and two lines were west of the gap. The prospecting was conducted on both sides of the gap and over the HIP 7 to 12 claims. A total of 5 days was spent on the soil sampling and prospecting program.

8.0 GEOCHEMICAL ANALYTICAL PROCEDURE

The soil sample collection procedure involved collecting approximately 0.5 kg of "B" horizon material from depths of 20 to 30 cm with a soil sampling mattocks at each of the sample sites. Each sample was placed in a uniquely labeled "Kraft wet strength" sample bag and the station was labeled by marking the sample number on a piece of flagging. The samples were dried in camp and later shipped to Acme Analytical Laboratories Ltd in Vancouver, BC for analysis.

When the samples arrived at Acme they were dried at 60° C and sieved to -80 mesh according to the SS80 lab procedure. The sieved sample was then analyzed for 36 elements by Aqua Regia digestion and Inductively Coupled Mass Spectrometry (ICP-MS) according to the Group 1DX analytical package. Geochemical Analytical Certificates are included in Appendix III and are plotted on dot plot maps in Figures 6 and 7 for copper and gold, respectively.

9.0 RESULTS

Prospecting Results

The prospecting program focused on the contact between the Granite Mountain Batholith and Povoas Formation volcanic rocks in the eastern part of the property. A number of traverses were run to cover the area from the contact eastwards down to the Yukon River valley. The traverses went through the gap of patented claims. Outcrop exposure was intermittent on the western part of the prospecting area with approximately 10 % exposure and up to 40 to 50% exposure on the slopes above the river valley. The contact of Granite Mountain granodiorite and Povaos Formation volcanic rocks was generally a recessive feature and not exposed.

The Granite Mountain granodiorite was observed to be coarse-grained, homogeneous to porphyritic, with large plagioclase phenocrysts to 2 cm. It was fairly fresh, unaltered and unmetamorphosed. It contained only traces of very fine-grained disseminated pyrite and had rare quartz veining. There was no evidence of any copper mineralization.

In the gap area there are historic trenches, pits and adits that were dug on chalcopyrite-bearing quartz veins in the Pavoas Formation volcanic rocks. None of these veins were observed on the Carmacks Copper Property. On the property, the Pavoas Formation is intermediate in composition, and consists of flows and bedded andesitic tuff. It is fresh and unaltered and contains rare traces of pyrite with no copper mineralization observed.

In the area of anomalous copper-in-soils in the northern part of the survey area there is good exposure and a good opportunity to get a section through the formation. While the soil sampling results returned anomalous values for copper, there was no copper mineralization observed. No rock samples were collected.

Soil Sampling Survey Results

The soil sample results for copper are plotted on Figure 6 and for gold are plotted on Figure 7. The 2008 soil sample data for copper was merged with historical data to calculate the mean and standard deviation. The historical samples were not analyzed for gold so the gold statistics are for 2008 data only. The plots use mean values for copper and gold as the base value and use mean plus one standard deviation for weakly anomalous, mean plus 2 standard deviations for moderately anomalous and mean plus 3 standard deviations for highly anomalous values. The geochemical statistics for copper and gold are shown below:

	Minimum	Maximum	Mean	Standard Deviation	Population
Copper (ppm)	<5	2,650	21	40	18,714
Gold (ppb)	<0.5	42	2	4	125

The copper plot shows a distinct zonation from west to east. The eastern part of the survey area is underlain by Pavoas Formation rocks and is much more anomalous than the western area, which is underlain by granodiorite. This pattern is observed in the northern part of the property where sampling was conducted over the contact between granodiorite and Pavoas Formation historically.

The gold plot did not return significantly anomalous results. Three isolated values plot as moderate to highly anomalous, with the highest value being 41.6 ppb. The area of anomalous copper values, underlain by Pavoas Formation rocks is weakly anomalous for gold as compared to the area underlain by granodiorite.

10.0 CONCLUSIONS AND RECOMENDATIONS

Chalcopyrite has been observed in quartz veins in Pavoas Formation rocks in the Carmacks area historically and a few small adits have been driven on veins in the area. These occurrences have been small and uneconomic, however. The 2008 prospecting program on the Carmacks Copper Property did not locate any copper mineralization in the granodiorite or in the Pavoas Formation volcanic rocks in the eastern part of the property.

Based on the soil sample results from 2008 and on historical work, the Pavoas Formation rocks appear to be anomalous in copper, relative to the granodiorite. The Pavoas Formation generally contains on the order of 5 times more copper than granodiorite in the area. However, this background concentration, while anomalous, is not economic. This factor should be considered when evaluating soil sample results from areas underlain by the different rock types in future work.

There were no targets identified for follow-up work in this part of the property.

11.0 STATEMENT OF EXPENDITURES

Scott Casselman	5 days @ \$ 693 / day	\$ 3,465.00
Phillipe Michel	5 days @ \$315 / day	1,575.00
Truck rental	5 days @ \$125 /day	625.00
ATV rental (2 ATV's)	5 days @ \$200 /day	1,000.00
Room and board	10 man days @ \$200 /day	2,000.00
Equipment rental	5 days @ \$50 /day	250.00
Equipment and supplies		227.59
Fuel		123.59
Analytical costs 125 samples @ \$15.47 / sample		1,933.75
Shipping costs		98.56
Report Writing and reproduction costs		<u>5,000.00</u>
Total		<u>\$ 12,833.49</u>

12.0 REFERENCES

- Archer, A.R., 1971. Geology and Geochemistry of the Williams Creek Property. Yukon Government assessment report # 060203.
- Archer, A.R., 1972. 1971 Exploration Program, Dawson Range Joint Venture.
- Archer, A.R., 1972. Report on the 1972 Geochemical, Diamond Drilling and Trenching Program, Williams Creek Property, Dawson Range Joint Venture. Yukon Government assessment report # 060114.
- Casselmann, S. G., 2007. 2006 Assessment Report for the Carmacks Copper Project. Yukon Government assessment report.
- Casselmann, S. G., 2008. 2007 Assessment Report for the Carmacks Copper Project. Yukon Government assessment report.
- Cavey, G. Gunning, D. Clegg, J., 1966. Technical Report on the Carmacks Copper Project, Whitehorse Mining Division, Yukon Territory, For Western Copper Corp. Western Copper Corporation private report.
- Archer, A. R., 1991. Assessment Report, Williams Creek Property, Whitehorse Mining Division, Western Copper Holdings Limited. Yukon Government assessment report # 092944.
- Harder, P. A., 1993. Biophysical Assessment of the Williams Creek Mine Site. Yukon Government assessment report # 093083.
- Holtby, M., 1992. Assessment Report, Williams Creek Property, Whitehorse Mining Division, Western Copper Holdings Limited. Yukon Government assessment report # 093023.
- Holtby, M., 1993. Assessment Report, Williams Creek Property, Whitehorse Mining Division, Western Copper Holdings Limited. Yukon Government assessment report # 093100.
- McNaughton, K., 1994. Carmacks Copper Project, 1994 Exploration Program.
- Robinson, R. J., Casselman, S. G., 2006. Mineral Resource Estimate For the Carmacks Copper Project. Western Copper Corporation Private report.

APPENDIX I
STATEMENT OF QUALIFICATIONS

Statement of Qualifications

I, Scott Casselman, P. Geo., certify that:

1. I am a geologist employed by Casselman Geological Services and reside at 33 Firth Road, Whitehorse, Yukon Territory, Y1A 4R5.
2. I graduated from Carleton University in Ottawa, Ontario with a Bachelor of Science Degree in Geology in 1985 and have worked as a geologist since that time.
3. I am a member of the Association of Professional Engineers and Geoscientists of British Columbia, Registration No. 20032.
4. I supervised the 2008 exploration program on the Carmacks Copper Project in Central Yukon, for Western Copper Corporation described in this report.

Dated this ___day of _____, 2008, at Whitehorse, Yukon Territory.

Scott G. Casselman, BSc., P.Geo.

Appendix II

**CARMACKS COPPER PROPERTY
QUARTZ CLAIMS and MINING LEASES**

CARMACKS COPPER PROPERTY CLAIMS AND LEASES

Grant Number	Claim Name	Expiry Date
Y 51118	BOY 20	09/03/2012
Y 51149	BOY 51	09/03/2012
Y 51150	BOY 52	09/03/2014
Y 51151	BOY 53	09/03/2012
Y 51152	BOY 54	09/03/2014
Y 51181	BOY 83	09/03/2012
Y 59373	WAR 22	09/03/2016
Y 59382	DUN 1	09/03/2012
YB26708	W 1	09/03/2012
YB26709	W 2	09/03/2012
YB26710	W 3	09/03/2012
YB26711	W 4	09/03/2012
YB26712	W 5	09/03/2012
YB26713	W 6	09/03/2012
YB26714	W 7	09/03/2015
YB26715	W 8	09/03/2015
YB26716	W 9	09/03/2015
YB26717	W 10	09/03/2015
YB26718	W 11	09/03/2012
YB26719	W 12	09/03/2013
YB26720	W 13	09/03/2012
YB26721	W 14	09/03/2013
YB26722	W 15	09/03/2012
YB26723	W 16	09/03/2013
YB26724	W 17	09/03/2012
YB26725	W 18	09/03/2013
YB26726	W 19	09/03/2012
YB26727	W 20	09/03/2012
YB26728	W 21	09/03/2015
YB26729	W 22	09/03/2015
YB26730	W 23	09/03/2015
YB26731	W 24	09/03/2015
YB26732	W 25	09/03/2013
YB26733	W 26	09/03/2013
YB26734	W 27	09/03/2013
YB26735	W 28	09/03/2013
YB26736	W 29	09/03/2012
YB26737	W 30	09/03/2012
YB26738	W 31	09/03/2015
YB26739	W 32	09/03/2015
YB26740	W 33	09/03/2015
YB26741	W 34	09/03/2015
YB26742	W 35	09/03/2015
YB26743	W 36	09/03/2015
YB26744	W 37	09/03/2015
YB26748	W 41	09/03/2013
YB26749	W 42	09/03/2013
YB26750	W 43	09/03/2013

Grant Number	Claim Name	Expiry Date
YB36240	WAR 23	09/03/2015
YB36241	WAR 24	09/03/2015
YB36242	WAR 25	09/03/2015
YB36243	WAR 26	09/03/2015
YB36244	WAR 27	09/03/2015
YB36245	WAR 28	09/03/2015
YB36246	WAR 29	09/03/2015
YB36247	WAR 30	09/03/2012
YB36248	WAR 31	09/03/2012
YB36249	W 50	09/03/2015
YB36250	W 51	09/03/2015
YB36251	W 52	09/03/2015
YB36252	W 53	09/03/2015
YB36254	W 55	09/03/2013
YB36256	W 57	09/03/2013
YB36446	WAR 32	09/03/2015
YB36447	WAR 33	09/03/2015
YB36448	WAR 34	09/03/2015
YB36449	WAR 35	09/03/2015
YB36450	WAR 36	09/03/2015
YB36451	WAR 37	09/03/2015
YB36693	WC 5	09/03/2012
YB36694	WC 6	09/03/2012
YB36695	WC 7	09/03/2012
YB36696	WC 8	09/03/2012
YB36697	WC 9	09/03/2012
YB36698	WC 10	09/03/2012
YB36699	WC 11	09/03/2012
YB36700	WC 12	09/03/2012
YB36701	WC 13	09/03/2012
YB36702	WC 14	09/03/2012
YB36703	WC 15	09/03/2012
YB36704	WC 16	09/03/2012
YB36705	WC 17	09/03/2012
YB36706	WC 18	09/03/2012
YB36711	WC 23	09/03/2012
YB36712	WC 24	09/03/2012
YB36713	WC 25	09/03/2012
YB36714	WC 26	09/03/2012
YB36715	WC 27	09/03/2012
YB36716	WC 28	09/03/2012
YB36717	WC 29	09/03/2012
YB36718	WC 30	09/03/2012
YB36719	WC 31	09/03/2012
YB36720	WC 32	09/03/2012
YB36721	WC 33	09/03/2012
YB36722	WC 34	09/03/2012
YB36723	WC 35	09/03/2012

CARMACKS COPPER PROPERTY CLAIMS AND LEASES

Grant Number	Claim Name	Expiry Date
YB36724	WC 36	09/03/2012
YB36728	WC 40	09/03/2012
YB36729	WC 41	09/03/2012
YB36730	WC 42	09/03/2012
YB36731	WC 43	09/03/2012
YB36732	WC 44	09/03/2012
YB36733	WC 45	09/03/2012
YB36734	WC 46	09/03/2012
YB36735	WC 47	09/03/2012
YB36736	WC 48	09/03/2012
YB36737	WC 49	09/03/2012
YB36738	WC 50	09/03/2012
YB36739	WC 51	09/03/2012
YB36740	WC 52	09/03/2012
YB36741	WC 53	09/03/2012
YB36742	WC 54	09/03/2012
YB36745	WC 57	09/03/2012
YB36746	WC 58	09/03/2012
YB36747	WC 59	09/03/2012
YB36748	WC 60	09/03/2012
YB36749	WC 61	09/03/2012
YB36750	WC 62	09/03/2012
YB36751	WC 63	09/03/2012
YB36752	WC 64	09/03/2012
YB36753	WC 65	09/03/2012
YB36754	WC 66	09/03/2012
YB36755	WC 67	09/03/2012
YB36756	WC 68	09/03/2012
YB36757	WC 69	09/03/2012
YB36758	WC 70	09/03/2012
YB36759	WC 71	09/03/2012
YB36760	WC 72	09/03/2012
YB36765	WAR 38	09/03/2015
YB36766	WAR 39	09/03/2015
YB36767	WAR 40	09/03/2015
YB36768	WAR 41	09/03/2015
YB36769	WAR 42	09/03/2015
YB36770	WAR 43	09/03/2015
YB36771	WAR 44	09/03/2015
YB36772	WAR 45	09/03/2012
YB36773	WAR 46	09/03/2015
YB36774	WAR 47	09/03/2012
YB36775	WAR 48	09/03/2012
YB36776	WAR 49	09/03/2012
YB36777	WAR 50	09/03/2012
YB36898	X 3	09/03/2015
YB36899	X 4	09/03/2015
YB36929	W 91	09/03/2015

Grant Number	Claim Name	Expiry Date
YB36930	W 92	09/03/2015
YB36931	W 93	09/03/2015
YB36933	W 95	09/03/2015
YB36962	X 5	09/03/2015
YB36963	X 6	09/03/2015
YB36964	X 7	09/03/2015
YB96620	VW 11	09/03/2011
YB96622	VW 13	09/03/2011
YB96626	VW 17	09/03/2015
YB96627	VW 18	09/03/2015
YB96628	VW 19	09/03/2016
YB96629	VW 20	09/03/2016
YB96630	VW 21	09/03/2016
YB96632	VW 23	09/03/2015
YB96634	VW 25	09/03/2015
YB96636	VW 27	09/03/2015
YB96637	VW 28	09/03/2015
YB96638	VW 29	09/03/2015
YB96639	VW 30	09/03/2015
YB96640	VW 31	09/03/2015
YB96641	VW 32	09/03/2015
YB96642	VW 33	09/03/2015
YB96643	VW 34	09/03/2015
YB96644	VW 35	09/03/2015
YB96645	VW 36	09/03/2015
YB96646	VW 37	09/03/2015
YB96647	VW 38	09/03/2015
YB96986	VW 40	09/03/2011
YB96987	VW 41	09/03/2011
YB96988	VW 42	09/03/2011
YB96989	VW 43	09/03/2011
YB96990	VW 44	09/03/2011
YB96991	VW 45	09/03/2011
YB96992	VW 46	09/03/2011
YB96993	VW 47	09/03/2011
YB96994	VW 48	09/03/2011
YB96995	VW 49	09/03/2011
YB96996	VW 50	09/03/2011
YB96997	VW 60	09/03/2015
YB96998	VW 61	09/03/2015
YB97068	TT 1	09/03/2015
YB97251	TT 2	09/03/2011
YC39221	REM 1	11/04/2009
YC39222	REM 2	11/04/2009
YC39223	REM 3	11/04/2009
YC39224	REM 4	11/04/2009
YC39225	REM 5	11/04/2009
YC39226	REM 6	11/04/2009

CARMACKS COPPER PROPERTY CLAIMS AND LEASES

Grant Number	Claim Name	Expiry Date
YC39227	REM 7	11/04/2009
YC39228	REM 8	11/04/2009
YC39229	REM 9	11/04/2009
YC39230	REM 10	11/04/2009
YC39231	REM 11	11/04/2009
YC39232	REM 12	11/04/2009
YC39233	REM 13	11/04/2009
YC39234	REM 14	11/04/2009
YC39239	REM 19	11/04/2012
YC39240	REM 20	11/04/2012
YC39241	REM 21	11/04/2012
YC39242	REM 22	11/04/2012
YC39243	REM 23	11/04/2012
YC39244	REM 24	11/04/2012
YC39245	REM 25	11/04/2012
YC39246	REM 26	11/04/2012
YC39247	REM 27	11/04/2012
YC39248	REM 28	11/04/2012
YC39249	REM 29	11/04/2012
YC39250	REM 30	11/04/2012
YC39251	REM 32	11/04/2009
YC39252	REM 33	11/04/2009
YC39253	REM 34	11/04/2009
YC39254	REM 35	11/04/2009
YC60381	WCC FR. 1	09/03/2013
YC60382	WCC FR. 2	09/03/2013
YC60383	WCC FR. 3	09/03/2013
YC60384	WCC FR. 4	09/03/2013
YC60385	WCC FR. 5	09/03/2013
YC60386	WCC FR. 6	09/03/2013
YC60387	WCC FR. 7	09/03/2013
YC60388	WCC FR. 8	09/03/2013
YC60389	WCC FR. 9	09/03/2013
YC60390	WCC 10	09/03/2013
YC60391	WCC 11	09/03/2013
YC60392	WCC 12	09/03/2013
YC60393	WCC 13	09/03/2013
YC60394	WCC 14	09/03/2013
YC60395	WCC 15	09/03/2013
YC60396	WCC 16	09/03/2013
YC60397	WCC 17	09/03/2013
YC60398	WCC 18	09/03/2013
YC60399	WCC 19	09/03/2013
YC60400	WCC FR. 20	09/03/2013
YC60401	WCC 21	09/03/2013
YC60402	WCC FR. 22	09/03/2013
YC60403	WCC 23	09/03/2013
YC60404	WCC 24	09/03/2013

Grant Number	Claim Name	Expiry Date
YC60405	WCC FR. 25	09/03/2013
YC60406	WCC FR. 26	09/03/2013
YC60407	WCC 27	09/03/2013
YC60408	WCC 28	10/05/2013
YC60409	WCC 29	10/05/2013
YC60410	WCC 30	10/05/2013
YC60411	WCC 31	10/05/2013
YC60412	WCC 32	10/05/2013
YC60413	WCC 33	10/05/2013
YC60414	WCC 34	10/05/2013
YC60415	WCC 35	10/05/2013
YC60416	WCC 36	10/05/2013
YC60417	WCC 37	09/03/2013
YC60418	WCC FR. 38	09/03/2013
YC60419	WCC FR. 39	09/03/2013
YC60420	WCC FR. 40	09/03/2013
YC65320	GAP 1	09/03/2013
YC65321	GAP 2	09/03/2013
YC65322	GAP 3	09/03/2013
YC65323	GAP 4	09/03/2013
YC65324	GAP 5	09/03/2013
YC65554	HIP 1	14/08/2008
YC65555	HIP 2	14/08/2008
YC65556	HIP 3	14/08/2008
YC65557	HIP 4	14/08/2008
YC65558	HIP 5	14/08/2008
YC65559	HIP 6	14/08/2008
YC65560	HIP 7	14/08/2008
YC65561	HIP 8	14/08/2008
YC65562	HIP 9	14/08/2008
YC65563	HIP 10	14/08/2008
YC65564	HIP 11	14/08/2008
YC65565	HIP 12	14/08/2008
YC65566	HIP 13	14/08/2008
YC65567	HIP 14	14/08/2008
YC65568	HIP 15	09/03/2013
YC65569	HIP 16	14/08/2008
YC65570	HIP 17	14/08/2008
YC65571	HIP 18	09/03/2013
YC65572	HIP 19	09/03/2013
YC65573	HIP 20	09/03/2013
YC65574	HIP 21	09/03/2013
YC65575	HIP 22	09/03/2013
YC65576	HIP 23	09/03/2013
YC65577	HIP 24	09/03/2013
YC65578	HIP 25	09/03/2013
YC65579	HIP 26	09/03/2013
YC65580	HIP 27	09/03/2013

CARMACKS COPPER PROPERTY CLAIMS AND LEASES

Grant Number	Claim Name	Expiry Date
YC66844	JIM 1	10/03/2009
YC66845	JIM 2	10/03/2009
YC66846	JIM 3	10/03/2009
YC66847	JIM 4	10/03/2009
YC66848	JIM 5	10/03/2009
YC66849	JIM 6	10/03/2009
YC66850	JIM 7	10/03/2009
YC66851	JIM 8	10/03/2009
YC66852	JIM 9	10/03/2009
YC66853	JIM 10	10/03/2009
YC66854	JIM 11	10/03/2009
YC66855	JIM 12	10/03/2009
YC66856	JIM 13	10/03/2009
YC66857	JIM 14	10/03/2009
YC66858	JIM 15	10/03/2009

Grant Number	Claim Name	Expiry Date
YC66859	JIM 16	10/03/2009
YC66860	JIM 17	10/03/2009
YC66861	JIM 18	10/03/2009
YC66862	JIM 19	10/03/2009
YC66863	JIM 20	10/03/2009
YC66864	JIM 21	10/03/2009
YC66865	JIM 22	10/03/2009
YC66866	JIM 23	10/03/2009
YC66867	JIM 24	10/03/2009
YC66868	JIM 25	10/03/2009
YC66869	JIM F 26	10/03/2009
YC66870	JIM F 27	10/03/2009
YC66871	JIM 28	10/03/2009
YC66872	JIM 29	10/03/2009
YC66873	JIM 30	10/03/2009

Grant Number	Claim Name	Expiry Date	Lease Number
Y 51120	BOY 22	28/10/2019	OW00061
Y 51122	BOY 24	28/10/2019	OW00062
Y 51153	BOY 55	28/10/2019	OW00063
Y 51154	BOY 56	28/10/2019	OW00064
Y 51155	BOY 57	28/10/2019	OW00065
Y 51156	BOY 58	28/10/2019	OW00066
Y 51183	BOY 85	28/10/2019	OW00067
Y 59383	DUN 2	28/10/2019	OW00068
Y 59384	DUN 3	28/10/2019	OW00069
Y 91722	AC # 2	28/10/2019	OW00070
Y 91723	AC # 3	28/10/2019	OW00071
YB26745	W 38	28/10/2019	OW00072
YB26746	W 39	28/10/2019	OW00073
YB26747	W 40	28/10/2019	OW00074
YB26751	W 44	28/10/2019	OW00075
YB26752	W 45	28/10/2019	OW00076
YB26753	W 46	28/10/2019	OW00077
YB26754	W 47	28/10/2019	OW00078
YB26755	W 48	28/10/2019	OW00079
YB26756	W 49	09/03/2025	OW00080

Appendix III
GEOCHEMICAL ANALYTICAL CERTIFICATES



ACME ANALYTICAL LABORATORIES LTD.
852 E. Hastings St. Vancouver BC V6A 1R6 Canada
Phone (604) 253-3158 Fax (604) 253-1716

www.acmelab.com

Client: Western Copper Corporation

2050 -1111 W. Georgia St.
Vancouver BC V6E 4M3 Canada

Submitted By: Jim Marlow

Receiving Lab: Acme Analytical Laboratories (Vancouver) Ltd.

Received: June 02, 2008

Report Date: June 09, 2008

Page: 1 of 6

CERTIFICATE OF ANALYSIS

VAN08006223.1

CLIENT JOB INFORMATION

Project: Carmack Copper
Shipment ID:
P.O. Number
Number of Samples: 125

SAMPLE DISPOSAL

RTRN-PLP Return
RTRN-RJT Return

Acme does not accept responsibility for samples left at the laboratory after 90 days without prior written instructions for sample storage or return.

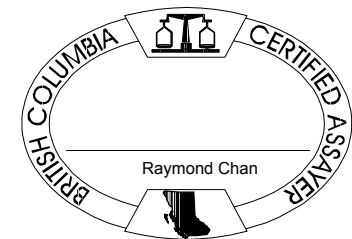
Invoice To: Western Copper Corporation
2050 -1111 W. Georgia St.
Vancouver BC V6E 4M3
Canada

CC:

SAMPLE PREPARATION AND ANALYTICAL PROCEDURES

Method Code	Number of Samples	Code Description	Test Wgt (g)	Report Status
SS80	125	Dry at 60C sieve 100g to -80 mesh		
Dry at 60C	125	Dry at 60C		
Split Reject	125	Reject sample split/packet		
DIS-RJT	125	Warehouse handling / Disposition of reject		
1DX	125	1:1:1 Aqua Regia digestion ICP-MS analysis	0.5	Completed

ADDITIONAL COMMENTS



This report supersedes all previous preliminary and final reports with this file number dated prior to the date on this certificate. Signature indicates final approval; preliminary reports are unsigned and should be used for reference only. All results are considered the confidential property of the client. Acme assumes the liabilities for actual cost of analysis only.



ACME ANALYTICAL LABORATORIES LTD.
 852 E. Hastings St. Vancouver BC V6A 1R6 Canada
 Phone (604) 253-3158 Fax (604) 253-1716

www.acmelab.com

Client: **Western Copper Corporation**

2050 -1111 W. Georgia St.
 Vancouver BC V6E 4M3 Canada

Project: Carmack Copper

Report Date: June 09, 2008

Page: 2 of 6 Part 1

CERTIFICATE OF ANALYSIS

VAN08006223.1

Method	Analyte	Unit	MDL	1DX Mo	1DX Cu	1DX Pb	1DX Zn	1DX Ag	1DX Ni	1DX Co	1DX Mn	1DX Fe	1DX As	1DX U	1DX Au	1DX Th	1DX Sr	1DX Cd	1DX Sb	1DX Bi	1DX V	1DX Ca	1DX P
				ppm	ppm	ppm	ppm	ppm	ppm	ppm	ppm	%	ppm	ppb	ppm	ppm	ppm	ppm	ppm	ppm	%	%	
				0.1	0.1	0.1	1	0.1	0.1	0.1	1	0.01	0.5	0.1	0.5	0.1	1	0.1	0.1	0.1	2	0.01	0.001
L1 1000W	Soil			0.6	19.6	6.0	29	<0.1	11.7	6.7	278	1.60	3.6	0.3	2.9	2.2	21	<0.1	0.3	0.1	49	0.23	0.018
L1 950W	Soil			0.7	17.1	7.2	35	<0.1	10.6	5.3	167	1.81	4.2	0.3	1.3	2.0	24	<0.1	0.2	0.1	53	0.25	0.040
L1 900W	Soil			0.5	11.7	6.0	33	<0.1	10.6	4.9	235	1.51	3.6	0.3	5.0	2.1	23	0.1	0.2	0.1	44	0.21	0.023
L1 875W	Soil			0.5	13.5	6.9	43	<0.1	12.6	6.3	202	1.81	3.3	0.3	1.3	2.3	22	<0.1	0.3	0.1	53	0.25	0.042
L1 850W	Soil			0.7	13.7	5.6	34	<0.1	8.4	4.2	126	1.68	4.0	0.3	0.7	1.7	23	<0.1	0.2	<0.1	55	0.21	0.037
L1 800W	Soil			0.5	11.1	5.2	38	<0.1	11.9	5.2	180	1.80	5.1	0.5	0.8	3.0	27	<0.1	0.3	0.1	51	0.23	0.017
L1 775W	Soil			0.6	11.4	6.6	68	<0.1	12.6	7.8	364	2.29	3.9	0.4	<0.5	2.8	33	<0.1	0.2	0.1	62	0.26	0.059
L1 750W	Soil			0.5	13.2	5.9	93	<0.1	12.5	9.5	387	2.61	3.7	0.4	1.5	2.1	47	<0.1	0.2	0.1	71	0.27	0.047
L1 725W	Soil			0.6	15.5	6.4	39	<0.1	14.5	7.8	353	2.07	7.1	0.4	<0.5	2.9	23	<0.1	0.4	0.1	60	0.28	0.046
L1 700W	Soil			0.6	11.2	6.3	47	<0.1	11.6	5.4	213	1.89	3.7	0.3	1.8	4.1	19	<0.1	0.3	0.1	56	0.19	0.027
L1 675W	Soil			0.5	11.0	6.1	32	<0.1	11.7	5.5	170	1.57	3.2	0.4	0.7	2.4	17	<0.1	0.2	0.1	47	0.23	0.036
L1 650W	Soil			0.6	12.9	6.5	33	<0.1	12.1	5.5	163	1.72	5.3	0.3	0.8	2.1	18	<0.1	0.3	0.1	51	0.22	0.029
L1 625W	Soil			0.5	9.9	6.3	34	<0.1	10.6	6.7	212	1.69	3.4	0.3	1.5	2.2	20	0.1	0.2	0.1	51	0.24	0.035
L1 600W	Soil			0.6	13.5	6.6	45	<0.1	12.9	6.4	189	1.86	3.4	0.4	2.5	2.3	21	0.1	0.3	0.1	58	0.20	0.024
L1 575W	Soil			0.5	11.6	5.8	35	<0.1	10.1	5.8	196	1.53	2.1	0.2	1.4	1.4	18	<0.1	0.2	0.1	45	0.20	0.045
L1 550W	Soil			0.5	18.0	5.2	35	<0.1	11.0	5.0	199	1.63	3.5	0.3	<0.5	1.7	16	<0.1	0.3	0.1	45	0.18	0.024
L1 525W	Soil			0.5	23.2	5.8	60	<0.1	12.5	7.1	403	1.92	3.5	0.2	1.2	1.6	22	0.1	0.3	0.1	59	0.18	0.014
L1 500W	Soil			0.6	23.4	5.5	49	<0.1	10.7	6.6	516	1.70	2.4	0.2	<0.5	1.4	25	<0.1	0.2	0.1	48	0.22	0.017
L1 475W	Soil			0.5	10.1	6.2	28	<0.1	7.7	4.7	152	1.43	3.9	0.3	<0.5	1.6	19	<0.1	0.2	0.1	49	0.19	0.017
L1 425W	Soil			0.5	17.1	6.5	29	<0.1	14.3	5.8	175	1.92	6.2	0.4	3.5	2.5	28	<0.1	0.3	0.1	54	0.32	0.029
L1 350W	Soil			0.5	32.4	5.7	34	<0.1	10.5	5.0	361	1.49	3.3	0.4	1.4	2.0	24	<0.1	0.2	0.1	49	0.22	0.027
L1 325W	Soil			0.5	16.1	5.5	40	<0.1	12.2	5.6	208	1.71	4.4	0.4	<0.5	2.6	25	<0.1	0.2	0.1	50	0.29	0.073
L1 300W	Soil			0.4	15.3	6.3	37	<0.1	12.2	5.3	158	1.68	4.4	0.3	1.7	2.1	24	<0.1	0.3	0.1	51	0.20	0.028
L1 275W	Soil			0.4	25.0	6.6	72	<0.1	10.9	7.7	519	1.90	2.5	0.4	<0.5	1.9	40	<0.1	0.2	0.1	53	0.30	0.043
L1 250W	Soil			0.4	21.6	5.8	70	<0.1	11.0	5.5	296	1.71	2.2	0.3	0.8	2.0	30	<0.1	0.2	0.1	50	0.21	0.019
L1 225W	Soil			0.6	22.7	6.1	45	<0.1	12.4	9.5	1418	1.70	2.5	0.3	1.4	1.8	20	<0.1	0.2	0.1	47	0.25	0.033
L1 200W	Soil			0.4	40.4	6.1	89	<0.1	11.8	12.2	546	2.65	4.4	0.3	0.5	2.5	56	0.1	0.2	0.1	70	0.23	0.045
L1 175W	Soil			0.3	18.6	6.5	67	<0.1	10.0	11.0	497	2.77	4.4	0.4	41.6	2.9	38	<0.1	0.2	<0.1	81	0.29	0.060
L1 150W	Soil			0.5	12.5	5.9	36	<0.1	12.9	6.1	183	1.72	4.8	0.4	0.9	2.4	21	<0.1	0.3	0.1	56	0.22	0.019
L1 125W	Soil			0.5	10.2	5.4	38	<0.1	9.0	6.5	222	2.14	4.8	0.8	1.1	2.1	19	<0.1	0.4	0.1	60	0.29	0.028

This report supersedes all previous preliminary and final reports with this file number dated prior to the date on this certificate. Signature indicates final approval; preliminary reports are unsigned and should be used for reference only.



AcmeLabs ACME ANALYTICAL LABORATORIES LTD.
 852 E. Hastings St. Vancouver BC V6A 1R6 Canada
 Phone (604) 253-3158 Fax (604) 253-1716

www.acmelab.com

Client: Western Copper Corporation

2050 -1111 W. Georgia St.
 Vancouver BC V6E 4M3 Canada

Project: Carmack Copper

Report Date: June 09, 2008

Page: 2 of 6 **Part** 2

CERTIFICATE OF ANALYSIS

VAN08006223.1

Method	Analyte	1DX	1DX	1DX	1DX	1DX	1DX	1DX	1DX	1DX	1DX	1DX	1DX	1DX	1DX	1DX	
		La	Cr	Mg	Ba	Ti	B	Al	Na	K	W	Hg	Sc	Tl	S	Ga	Se
Unit		ppm	ppm	%	ppm	%	ppm	%	%	ppm	ppm	ppm	ppm	%	ppm	ppm	
MDL		1	1	0.01	1	0.001	20	0.01	0.001	0.01	0.1	0.01	0.1	0.05	1	0.5	
L1 1000W	Soil	7	19	0.31	195	0.047	<20	0.90	0.016	0.05	0.1	<0.01	1.8	<0.1	0.13	3	<0.5
L1 950W	Soil	7	20	0.31	140	0.047	<20	1.11	0.014	0.05	0.2	<0.01	1.7	<0.1	0.12	4	<0.5
L1 900W	Soil	6	18	0.32	167	0.048	<20	0.93	0.012	0.06	<0.1	<0.01	1.5	<0.1	0.11	3	<0.5
L1 875W	Soil	7	23	0.35	155	0.056	<20	1.06	0.012	0.05	0.2	<0.01	1.8	<0.1	0.08	4	<0.5
L1 850W	Soil	5	15	0.27	97	0.040	<20	0.96	0.012	0.05	<0.1	<0.01	1.5	<0.1	0.08	3	<0.5
L1 800W	Soil	8	24	0.45	95	0.071	<20	1.00	0.011	0.08	0.1	<0.01	2.2	<0.1	0.08	4	<0.5
L1 775W	Soil	6	19	0.51	177	0.075	<20	1.47	0.008	0.10	0.2	0.01	1.8	<0.1	0.10	5	0.7
L1 750W	Soil	6	18	0.72	168	0.099	<20	1.72	0.015	0.07	<0.1	0.01	1.8	<0.1	0.08	7	<0.5
L1 725W	Soil	8	25	0.39	205	0.065	<20	1.07	0.012	0.09	0.2	<0.01	2.6	<0.1	0.06	3	<0.5
L1 700W	Soil	6	24	0.36	154	0.065	<20	1.08	0.013	0.09	<0.1	<0.01	1.9	<0.1	<0.05	4	<0.5
L1 675W	Soil	7	20	0.31	177	0.059	<20	0.86	0.012	0.07	0.1	<0.01	1.7	<0.1	0.05	3	<0.5
L1 650W	Soil	8	22	0.36	112	0.064	<20	1.00	0.012	0.05	0.2	<0.01	1.8	<0.1	<0.05	3	<0.5
L1 625W	Soil	7	20	0.32	158	0.056	<20	1.00	0.011	0.06	0.2	<0.01	1.7	<0.1	<0.05	4	<0.5
L1 600W	Soil	7	23	0.36	171	0.058	<20	1.16	0.009	0.05	0.1	<0.01	1.8	<0.1	<0.05	4	<0.5
L1 575W	Soil	6	18	0.26	130	0.050	<20	0.94	0.011	0.05	0.1	<0.01	1.3	<0.1	<0.05	3	<0.5
L1 550W	Soil	6	17	0.31	138	0.049	<20	0.82	0.011	0.05	0.2	<0.01	1.5	<0.1	<0.05	3	<0.5
L1 525W	Soil	8	19	0.40	156	0.052	<20	1.25	0.008	0.03	0.1	<0.01	1.4	<0.1	<0.05	5	<0.5
L1 500W	Soil	6	16	0.30	185	0.041	<20	1.02	0.012	0.03	<0.1	<0.01	1.2	<0.1	<0.05	4	0.6
L1 475W	Soil	6	14	0.24	128	0.045	<20	0.80	0.010	0.02	0.1	<0.01	1.3	<0.1	<0.05	4	<0.5
L1 425W	Soil	7	23	0.41	154	0.057	<20	1.14	0.025	0.04	0.1	<0.01	2.4	<0.1	<0.05	4	<0.5
L1 350W	Soil	7	18	0.27	180	0.044	<20	0.95	0.011	0.04	0.2	<0.01	1.7	<0.1	<0.05	3	<0.5
L1 325W	Soil	8	19	0.39	118	0.060	<20	0.95	0.011	0.06	0.1	<0.01	2.2	<0.1	<0.05	4	<0.5
L1 300W	Soil	7	21	0.36	150	0.055	<20	1.02	0.014	0.05	0.1	<0.01	1.7	<0.1	<0.05	4	<0.5
L1 275W	Soil	7	19	0.36	210	0.056	<20	1.42	0.020	0.04	<0.1	<0.01	2.0	<0.1	<0.05	5	<0.5
L1 250W	Soil	7	17	0.34	171	0.049	<20	1.18	0.011	0.03	<0.1	<0.01	1.6	<0.1	<0.05	4	<0.5
L1 225W	Soil	6	18	0.27	331	0.038	<20	1.11	0.013	0.06	0.1	<0.01	2.0	<0.1	<0.05	4	<0.5
L1 200W	Soil	8	19	0.79	187	0.113	<20	1.77	0.016	0.05	0.2	<0.01	1.5	<0.1	<0.05	6	<0.5
L1 175W	Soil	7	12	0.87	89	0.127	<20	1.59	0.014	0.16	0.1	0.01	1.8	0.1	<0.05	6	<0.5
L1 150W	Soil	7	24	0.40	144	0.055	<20	1.11	0.013	0.04	0.1	<0.01	2.0	<0.1	<0.05	3	<0.5
L1 125W	Soil	6	15	0.38	173	0.035	<20	0.97	0.009	0.04	0.1	<0.01	2.1	<0.1	<0.05	4	<0.5

This report supersedes all previous preliminary and final reports with this file number dated prior to the date on this certificate. Signature indicates final approval; preliminary reports are unsigned and should be used for reference only.



ACME ANALYTICAL LABORATORIES LTD.
 852 E. Hastings St. Vancouver BC V6A 1R6 Canada
 Phone (604) 253-3158 Fax (604) 253-1716

www.acmelab.com

Client: **Western Copper Corporation**

2050 -1111 W. Georgia St.
 Vancouver BC V6E 4M3 Canada

Project: Carmack Copper

Report Date: June 09, 2008

Page: 3 of 6 Part 1

CERTIFICATE OF ANALYSIS

VAN08006223.1

Method	Analyte	Unit	MDL	1DX Mo	1DX Cu	1DX Pb	1DX Zn	1DX Ag	1DX Ni	1DX Co	1DX Mn	1DX Fe	1DX As	1DX U	1DX Au	1DX Th	1DX Sr	1DX Cd	1DX Sb	1DX Bi	1DX V	1DX Ca	1DX P
				ppm	ppm	ppm	ppm	ppm	ppm	ppm	ppm	%	ppm	ppb	ppm	ppm	ppm	ppm	ppm	ppm	%	%	
				0.1	0.1	0.1	1	0.1	0.1	0.1	1	0.01	0.5	0.1	0.5	0.1	1	0.1	0.1	0.1	2	0.01	0.001
L1 100W	Soil			0.5	20.4	5.8	25	<0.1	11.6	5.7	347	1.53	4.4	0.4	2.2	1.9	21	<0.1	0.2	0.1	45	0.27	0.035
L1 75W	Soil			0.5	10.7	5.5	31	<0.1	10.9	4.6	153	1.59	3.4	0.3	1.4	2.0	18	<0.1	0.3	0.1	49	0.17	0.015
L1 50W	Soil			0.7	12.3	6.1	27	<0.1	9.6	4.5	141	1.52	4.0	0.3	1.3	1.7	17	<0.1	0.3	0.1	48	0.18	0.015
L1 25W	Soil			0.6	17.5	6.5	31	<0.1	9.3	5.3	181	1.56	2.6	0.2	0.7	1.5	16	<0.1	0.2	0.1	48	0.21	0.017
L1 0W	Soil			0.6	13.8	5.8	34	<0.1	11.8	4.9	142	1.56	5.3	0.3	1.7	2.0	18	<0.1	0.3	0.1	50	0.16	0.010
L2 1000W	Soil			0.3	10.2	5.2	49	<0.1	6.4	5.0	327	1.81	3.8	0.5	0.9	3.1	26	<0.1	0.1	<0.1	43	0.26	0.050
L2 975W	Soil			0.6	13.9	6.2	52	<0.1	13.0	5.1	220	1.69	3.6	0.3	<0.5	2.0	24	<0.1	0.2	0.1	48	0.20	0.025
L2 950W	Soil			0.9	14.7	7.7	47	<0.1	15.7	8.2	355	1.87	4.5	0.3	<0.5	2.4	22	<0.1	0.3	0.2	48	0.23	0.030
L2 925W	Soil			0.5	19.4	6.2	26	<0.1	10.3	4.8	187	1.45	3.0	0.3	<0.5	1.7	24	<0.1	0.2	0.1	39	0.28	0.032
L2 900W	Soil			0.5	10.9	5.4	31	<0.1	10.7	6.0	233	1.43	3.0	0.3	<0.5	1.9	17	<0.1	0.2	0.1	40	0.22	0.040
L2 875W	Soil			0.5	19.4	5.6	34	<0.1	12.7	4.8	167	1.89	6.0	0.4	<0.5	1.7	24	<0.1	0.2	<0.1	51	0.24	0.044
L2 850W	Soil			0.7	19.3	6.5	48	<0.1	12.4	6.1	214	2.18	3.4	0.3	1.9	1.8	30	<0.1	0.3	0.1	62	0.27	0.040
L2 825W	Soil			0.5	13.5	6.1	32	<0.1	15.2	5.2	157	1.69	6.2	0.3	<0.5	2.4	21	<0.1	0.3	0.1	44	0.21	0.035
L2 800W	Soil			0.6	11.5	6.4	35	<0.1	16.0	5.5	151	1.67	5.4	0.3	0.6	2.1	21	<0.1	0.2	0.1	45	0.22	0.034
L2 775W	Soil			0.5	25.7	6.4	40	<0.1	12.5	6.5	182	1.63	4.1	0.3	<0.5	1.7	32	0.1	0.2	0.1	40	0.31	0.063
L2 750W	Soil			0.6	11.9	6.1	34	<0.1	15.8	5.7	146	1.67	4.3	0.3	<0.5	2.3	16	0.1	0.2	0.1	48	0.23	0.031
L2 725W	Soil			0.7	17.1	6.3	34	<0.1	14.6	6.0	236	1.72	4.7	0.3	0.9	2.3	18	<0.1	0.2	0.2	46	0.25	0.027
L2 700W	Soil			0.8	18.8	5.5	29	<0.1	15.3	5.6	163	1.75	5.3	0.3	1.4	2.4	19	<0.1	0.3	0.1	50	0.25	0.025
L2 675W	Soil			0.5	20.8	5.6	34	<0.1	11.3	6.6	216	1.88	3.9	0.3	<0.5	2.3	23	<0.1	0.2	<0.1	51	0.26	0.047
L2 650W	Soil			0.6	16.1	5.9	37	<0.1	15.2	7.0	258	1.90	5.8	0.3	<0.5	2.6	21	0.1	0.3	0.1	47	0.26	0.026
L2 625W	Soil			0.8	38.3	6.3	49	<0.1	17.3	9.9	1847	1.88	3.9	0.3	2.1	1.9	25	0.1	0.2	0.1	46	0.34	0.051
L2 600W	Soil			0.6	16.6	5.9	31	<0.1	12.0	4.7	159	1.72	3.6	0.3	1.0	1.4	19	<0.1	0.2	0.1	44	0.23	0.050
L2 575W	Soil			0.6	11.7	5.3	29	<0.1	12.4	5.1	143	1.52	5.1	0.3	<0.5	1.7	15	<0.1	0.3	0.1	44	0.16	0.015
L2 550W	Soil			0.5	11.2	5.8	35	<0.1	13.6	5.9	213	1.68	6.0	0.3	2.8	2.6	19	<0.1	0.3	0.1	48	0.20	0.030
L2 525W	Soil			0.4	12.6	6.0	48	<0.1	12.9	6.0	241	1.72	4.1	0.3	1.2	2.2	20	<0.1	0.2	0.1	48	0.19	0.027
L2 500W	Soil			0.4	10.8	6.0	47	<0.1	12.0	5.7	206	1.63	4.2	0.3	<0.5	1.9	20	<0.1	0.2	<0.1	48	0.16	0.021
L2 475W	Soil			0.6	11.4	6.5	71	<0.1	12.2	7.1	266	2.22	4.9	0.3	<0.5	1.7	47	<0.1	0.2	0.1	60	0.33	0.041
L2 450W	Soil			0.6	12.4	6.0	53	<0.1	11.6	5.6	178	1.70	4.6	0.3	<0.5	2.2	24	<0.1	0.2	0.1	47	0.19	0.015
L2 425W	Soil			0.5	19.3	6.2	59	<0.1	14.4	7.0	264	1.90	5.0	0.3	<0.5	2.1	21	<0.1	0.2	0.1	48	0.15	0.019
L2 400W	Soil			0.5	12.6	6.0	38	<0.1	13.5	5.0	159	1.54	4.1	0.3	0.9	2.1	19	<0.1	0.2	0.1	40	0.18	0.031

This report supersedes all previous preliminary and final reports with this file number dated prior to the date on this certificate. Signature indicates final approval; preliminary reports are unsigned and should be used for reference only.



AcmeLabs ACME ANALYTICAL LABORATORIES LTD.
 852 E. Hastings St. Vancouver BC V6A 1R6 Canada
 Phone (604) 253-3158 Fax (604) 253-1716

www.acmelab.com

Client: Western Copper Corporation

2050 -1111 W. Georgia St.
 Vancouver BC V6E 4M3 Canada

Project: Carmack Copper

Report Date: June 09, 2008

Page: 3 of 6 **Part** 2

CERTIFICATE OF ANALYSIS

VAN08006223.1

Method	Analyte	1DX	1DX	1DX	1DX	1DX	1DX	1DX	1DX	1DX	1DX	1DX	1DX	1DX	1DX	1DX	
		La	Cr	Mg	Ba	Ti	B	Al	Na	K	W	Hg	Sc	Tl	S	Ga	Se
Unit		ppm	ppm	%	ppm	%	ppm	%	%	ppm	ppm	ppm	ppm	%	ppm	ppm	
MDL		1	1	0.01	1	0.001	20	0.01	0.001	0.01	0.1	0.01	0.1	0.05	1	0.5	
L1 100W	Soil	7	17	0.33	203	0.046	<20	0.94	0.018	0.06	0.2	<0.01	1.7	<0.1	<0.05	3	<0.5
L1 75W	Soil	6	18	0.33	103	0.053	<20	0.89	0.014	0.04	0.1	<0.01	1.6	<0.1	<0.05	3	0.6
L1 50W	Soil	5	16	0.31	97	0.046	<20	0.76	0.012	0.03	0.1	<0.01	1.2	<0.1	0.08	3	<0.5
L1 25W	Soil	6	16	0.27	148	0.035	<20	0.91	0.012	0.03	0.1	<0.01	1.4	<0.1	<0.05	3	<0.5
L1 0W	Soil	7	19	0.37	111	0.038	<20	0.99	0.010	0.02	0.1	<0.01	1.4	<0.1	<0.05	4	<0.5
L2 1000W	Soil	9	10	0.37	182	0.027	<20	0.98	0.011	0.09	<0.1	<0.01	2.0	<0.1	<0.05	5	<0.5
L2 975W	Soil	7	22	0.42	157	0.054	<20	1.07	0.011	0.04	0.1	<0.01	2.0	<0.1	<0.05	5	<0.5
L2 950W	Soil	7	27	0.36	208	0.043	<20	1.22	0.010	0.04	0.2	<0.01	2.3	<0.1	<0.05	4	<0.5
L2 925W	Soil	6	19	0.27	122	0.048	<20	0.81	0.012	0.04	0.2	0.01	1.5	<0.1	<0.05	3	<0.5
L2 900W	Soil	6	20	0.31	153	0.046	<20	0.90	0.010	0.05	0.1	<0.01	1.7	<0.1	<0.05	3	<0.5
L2 875W	Soil	5	20	0.39	113	0.043	<20	1.07	0.018	0.05	<0.1	<0.01	1.8	<0.1	<0.05	3	<0.5
L2 850W	Soil	6	18	0.40	165	0.051	<20	0.97	0.010	0.12	<0.1	0.02	1.8	<0.1	<0.05	5	0.7
L2 825W	Soil	6	24	0.39	138	0.059	<20	0.96	0.016	0.05	0.2	<0.01	1.9	<0.1	<0.05	3	<0.5
L2 800W	Soil	6	25	0.36	144	0.052	<20	1.03	0.013	0.04	0.2	<0.01	1.6	<0.1	<0.05	3	<0.5
L2 775W	Soil	9	20	0.32	172	0.042	<20	1.02	0.014	0.05	0.1	0.01	1.8	<0.1	<0.05	3	<0.5
L2 750W	Soil	7	28	0.36	160	0.052	<20	0.99	0.015	0.06	<0.1	0.02	1.8	<0.1	<0.05	3	<0.5
L2 725W	Soil	7	27	0.34	164	0.050	<20	1.06	0.015	0.07	0.1	0.01	2.1	<0.1	<0.05	3	<0.5
L2 700W	Soil	7	27	0.36	189	0.046	<20	1.08	0.015	0.07	0.1	<0.01	2.1	<0.1	<0.05	3	<0.5
L2 675W	Soil	6	20	0.32	174	0.044	<20	1.01	0.014	0.06	<0.1	<0.01	2.4	<0.1	<0.05	4	<0.5
L2 650W	Soil	6	24	0.35	175	0.051	<20	1.03	0.017	0.08	0.1	<0.01	2.4	<0.1	<0.05	3	<0.5
L2 625W	Soil	7	27	0.27	342	0.043	<20	1.16	0.018	0.05	0.1	0.01	2.3	<0.1	<0.05	4	<0.5
L2 600W	Soil	6	20	0.26	157	0.043	<20	0.88	0.010	0.05	0.1	0.01	1.7	<0.1	<0.05	3	<0.5
L2 575W	Soil	6	22	0.30	128	0.056	<20	0.84	0.012	0.05	0.1	<0.01	1.3	<0.1	<0.05	3	<0.5
L2 550W	Soil	7	24	0.39	157	0.067	<20	0.97	0.009	0.07	0.1	<0.01	1.9	<0.1	<0.05	3	<0.5
L2 525W	Soil	8	22	0.34	186	0.052	<20	1.02	0.010	0.04	0.1	<0.01	1.7	<0.1	<0.05	4	<0.5
L2 500W	Soil	7	21	0.33	122	0.050	<20	1.04	0.010	0.04	0.1	<0.01	1.6	<0.1	<0.05	4	<0.5
L2 475W	Soil	6	21	0.51	116	0.072	<20	1.53	0.016	0.04	<0.1	<0.01	1.7	<0.1	<0.05	6	<0.5
L2 450W	Soil	7	21	0.38	92	0.056	<20	1.16	0.010	0.04	<0.1	<0.01	1.7	<0.1	<0.05	4	<0.5
L2 425W	Soil	9	22	0.42	153	0.054	<20	1.28	0.012	0.03	<0.1	<0.01	1.7	<0.1	<0.05	4	<0.5
L2 400W	Soil	6	20	0.33	109	0.046	<20	0.82	0.014	0.04	0.1	<0.01	1.4	<0.1	<0.05	3	<0.5

This report supersedes all previous preliminary and final reports with this file number dated prior to the date on this certificate. Signature indicates final approval; preliminary reports are unsigned and should be used for reference only.



ACME ANALYTICAL LABORATORIES LTD.
 852 E. Hastings St. Vancouver BC V6A 1R6 Canada
 Phone (604) 253-3158 Fax (604) 253-1716

www.acmelab.com

Client: **Western Copper Corporation**

2050 -1111 W. Georgia St.
 Vancouver BC V6E 4M3 Canada

Project: Carmack Copper

Report Date: June 09, 2008

Page: 4 of 6 Part 1

CERTIFICATE OF ANALYSIS

VAN08006223.1

Method	Analyte	Unit	MDL	1DX Mo	1DX Cu	1DX Pb	1DX Zn	1DX Ag	1DX Ni	1DX Co	1DX Mn	1DX Fe	1DX As	1DX U	1DX Au	1DX Th	1DX Sr	1DX Cd	1DX Sb	1DX Bi	1DX V	1DX Ca	1DX P
				ppm	ppm	ppm	ppm	ppm	ppm	ppm	ppm	%	ppm	ppb	ppm	ppm	ppm	ppm	ppm	ppm	%	%	
				0.1	0.1	0.1	1	0.1	0.1	0.1	1	0.01	0.5	0.1	0.5	0.1	1	0.1	0.1	0.1	2	0.01	0.001
L2 375W	Soil			0.6	18.2	6.2	38	<0.1	15.9	6.8	253	1.81	6.5	0.4	<0.5	3.0	23	<0.1	0.3	0.2	46	0.22	0.024
L2 350W	Soil			0.6	13.4	5.8	36	<0.1	13.0	5.8	173	1.70	6.3	0.3	1.4	2.1	16	<0.1	0.2	0.1	44	0.15	0.032
L2 325W	Soil			0.6	13.8	6.7	32	<0.1	16.0	5.5	159	1.77	6.3	0.3	0.5	2.3	19	<0.1	0.2	0.1	49	0.17	0.025
L2 275W	Soil			0.7	16.3	7.1	34	<0.1	16.1	6.0	172	1.95	6.8	0.4	<0.5	2.5	25	<0.1	0.2	0.1	51	0.29	0.035
L2 250W	Soil			0.8	14.9	7.2	43	<0.1	16.2	6.6	183	2.01	6.2	0.3	<0.5	2.1	21	<0.1	0.2	0.2	54	0.27	0.024
L2 225W	Soil			0.6	12.3	6.4	34	<0.1	15.1	5.7	163	1.94	7.8	0.3	0.6	2.6	21	<0.1	0.3	0.1	50	0.26	0.024
L2 200W	Soil			0.7	14.7	6.1	36	<0.1	18.5	6.4	189	1.99	8.3	0.4	1.1	2.7	23	<0.1	0.3	0.1	53	0.24	0.023
L2 175W	Soil			0.6	22.0	4.7	32	<0.1	19.1	6.1	166	1.86	7.3	0.3	1.0	2.1	25	<0.1	0.3	<0.1	46	0.26	0.046
L2 150W	Soil			0.7	13.2	5.9	31	<0.1	13.0	5.7	180	1.88	5.3	0.3	0.5	1.7	23	<0.1	0.2	0.1	50	0.21	0.026
L2 125W	Soil			0.5	14.3	6.0	37	<0.1	12.2	5.7	198	1.70	3.7	0.3	0.7	1.9	19	<0.1	0.2	0.1	44	0.18	0.030
L2 100W	Soil			0.7	19.1	8.1	45	<0.1	14.9	6.4	853	1.98	4.2	0.4	0.9	2.3	22	<0.1	0.2	0.2	47	0.30	0.125
L2 75W	Soil			0.6	17.8	6.9	32	<0.1	12.8	6.2	301	2.00	5.5	0.3	2.1	2.2	22	<0.1	0.2	0.2	45	0.24	0.109
L2 25W	Soil			0.6	22.0	6.2	40	<0.1	14.1	7.0	508	2.12	5.9	0.3	0.9	2.2	23	<0.1	0.3	0.1	47	0.26	0.032
L2 0W	Soil			0.4	15.8	6.7	32	<0.1	11.3	7.2	363	1.81	3.5	0.3	1.5	1.7	22	<0.1	0.1	0.2	48	0.27	0.038
L3 0E	Soil			0.3	22.6	1.0	7	0.1	2.9	1.6	85	0.45	0.9	0.2	2.1	0.2	18	<0.1	<0.1	<0.1	12	0.27	0.054
L3 25E	Soil			0.5	100.1	4.8	59	<0.1	66.4	22.9	712	3.16	6.0	0.3	1.4	1.5	26	0.2	0.4	0.1	66	0.44	0.077
L3 50E	Soil			0.2	171.4	0.7	41	<0.1	149.1	28.0	533	3.72	3.5	<0.1	1.2	0.3	12	<0.1	<0.1	<0.1	86	0.29	0.051
L3 75E	Soil			0.4	44.7	2.6	31	<0.1	43.6	11.4	244	2.18	5.5	0.2	0.6	1.2	17	<0.1	0.2	<0.1	48	0.28	0.041
L3 100E	Soil			0.4	124.1	3.4	57	<0.1	64.0	22.2	695	2.95	6.8	0.2	1.7	0.4	42	0.2	0.3	<0.1	71	1.27	0.094
L3 125E	Soil			0.5	108.7	2.9	55	<0.1	38.0	18.9	1335	3.27	4.2	0.2	3.1	0.2	57	0.2	0.3	<0.1	78	1.57	0.118
L3 150E	Soil			0.6	275.6	3.8	71	0.2	58.2	33.1	1116	4.16	8.1	0.3	6.8	0.3	73	0.2	0.3	<0.1	103	3.09	0.134
L3 175E	Soil			0.6	101.8	4.6	58	<0.1	45.8	18.6	813	3.64	8.0	0.2	1.2	1.4	31	0.1	0.7	<0.1	78	0.51	0.057
L3 200E	Soil			0.5	133.6	4.6	73	<0.1	42.9	24.7	938	3.93	7.2	0.2	2.5	0.8	42	0.1	0.7	<0.1	99	0.67	0.083
L3 225E	Soil			0.4	184.7	2.5	65	0.2	67.0	30.1	773	4.35	5.2	0.2	4.0	0.4	67	0.2	0.2	<0.1	106	2.16	0.138
L3 250E	Soil			0.5	271.3	4.3	53	0.4	36.5	21.7	465	3.03	13.3	0.5	11.7	0.8	71	0.1	0.4	<0.1	64	2.40	0.108
L3 275E	Soil			0.8	144.0	5.3	87	<0.1	31.8	23.6	1433	4.27	7.8	0.2	2.5	1.0	56	0.2	0.5	0.1	93	0.82	0.098
L3 300E	Soil			1.1	177.7	5.6	71	0.2	31.4	22.3	975	4.20	11.3	0.2	4.9	0.8	62	0.2	0.7	0.2	90	2.08	0.083
L3 325E	Soil			0.5	161.0	2.2	58	<0.1	116.8	32.2	1053	3.94	4.1	0.2	3.8	0.4	60	0.2	0.3	<0.1	90	3.01	0.106
L3 350E	Soil			0.8	84.5	10.1	64	<0.1	47.6	23.5	986	4.39	24.4	0.4	2.4	2.9	71	<0.1	0.4	0.1	87	0.72	0.064
L3 375E	Soil			0.4	96.6	4.2	58	<0.1	32.9	22.1	866	3.83	10.4	0.3	1.0	0.8	56	0.1	0.4	<0.1	102	1.18	0.100

This report supersedes all previous preliminary and final reports with this file number dated prior to the date on this certificate. Signature indicates final approval; preliminary reports are unsigned and should be used for reference only.



AcmeLabs ACME ANALYTICAL LABORATORIES LTD.
 852 E. Hastings St. Vancouver BC V6A 1R6 Canada
 Phone (604) 253-3158 Fax (604) 253-1716

www.acmelab.com

Client: Western Copper Corporation

2050 -1111 W. Georgia St.
 Vancouver BC V6E 4M3 Canada

Project: Carmack Copper

Report Date: June 09, 2008

Page: 4 of 6 **Part** 2

CERTIFICATE OF ANALYSIS

VAN08006223.1

Method	Analyte	1DX	1DX	1DX	1DX	1DX	1DX	1DX	1DX	1DX	1DX	1DX	1DX	1DX	1DX	1DX	
		La	Cr	Mg	Ba	Ti	B	Al	Na	K	W	Hg	Sc	Tl	S	Ga	Se
Unit		ppm	ppm	%	ppm	%	ppm	%	%	ppm	ppm	ppm	ppm	%	ppm	ppm	
MDL		1	1	0.01	1	0.001	20	0.01	0.001	0.01	0.1	0.01	0.1	0.05	1	0.5	
L2 375W	Soil	9	25	0.41	175	0.057	<20	0.96	0.013	0.04	<0.1	<0.01	2.6	<0.1	<0.05	4	<0.5
L2 350W	Soil	5	22	0.32	109	0.049	<20	1.30	0.010	0.04	<0.1	0.01	1.7	<0.1	<0.05	4	<0.5
L2 325W	Soil	8	23	0.38	117	0.054	<20	1.07	0.012	0.03	0.1	<0.01	1.7	<0.1	<0.05	4	<0.5
L2 275W	Soil	9	26	0.43	168	0.050	<20	1.16	0.012	0.03	0.1	0.01	2.5	<0.1	<0.05	4	<0.5
L2 250W	Soil	7	28	0.39	183	0.056	<20	1.41	0.013	0.04	0.1	0.01	2.0	<0.1	<0.05	4	<0.5
L2 225W	Soil	8	25	0.41	148	0.056	<20	1.17	0.013	0.04	<0.1	<0.01	2.3	<0.1	<0.05	4	<0.5
L2 200W	Soil	8	30	0.42	132	0.058	<20	1.32	0.011	0.05	0.1	<0.01	2.3	<0.1	<0.05	4	<0.5
L2 175W	Soil	6	23	0.42	140	0.047	<20	1.19	0.012	0.04	<0.1	<0.01	2.4	<0.1	<0.05	3	<0.5
L2 150W	Soil	6	24	0.38	151	0.041	<20	1.03	0.014	0.03	0.1	<0.01	1.5	<0.1	<0.05	4	<0.5
L2 125W	Soil	6	22	0.35	175	0.041	<20	0.96	0.018	0.04	0.1	<0.01	1.6	<0.1	<0.05	3	<0.5
L2 100W	Soil	8	29	0.34	222	0.049	<20	1.21	0.012	0.08	0.2	<0.01	2.1	<0.1	<0.05	4	<0.5
L2 75W	Soil	7	25	0.36	187	0.046	<20	1.19	0.013	0.08	0.2	<0.01	1.6	<0.1	<0.05	4	<0.5
L2 25W	Soil	7	27	0.42	208	0.055	<20	1.15	0.014	0.07	0.2	<0.01	2.0	<0.1	<0.05	4	<0.5
L2 0W	Soil	7	21	0.37	198	0.041	<20	1.21	0.014	0.04	0.2	<0.01	1.6	<0.1	<0.05	4	<0.5
L3 0E	Soil	3	<1	0.06	37	0.022	<20	0.78	0.047	0.03	<0.1	0.02	0.4	<0.1	<0.05	2	<0.5
L3 25E	Soil	7	126	1.13	203	0.056	<20	1.88	0.013	0.19	0.1	<0.01	3.8	<0.1	<0.05	5	<0.5
L3 50E	Soil	2	335	3.24	27	0.056	<20	2.82	0.005	0.11	<0.1	<0.01	2.6	<0.1	<0.05	8	<0.5
L3 75E	Soil	4	103	0.89	66	0.043	<20	1.29	0.009	0.10	<0.1	<0.01	2.1	<0.1	0.09	4	<0.5
L3 100E	Soil	5	116	1.61	212	0.035	<20	1.86	0.012	0.17	<0.1	0.02	3.4	<0.1	0.13	5	<0.5
L3 125E	Soil	6	56	0.95	366	0.015	<20	1.43	0.013	0.18	0.1	0.04	5.4	<0.1	0.10	4	0.8
L3 150E	Soil	5	113	1.74	277	0.035	<20	1.90	0.016	0.28	0.2	0.04	5.7	<0.1	0.12	6	0.7
L3 175E	Soil	8	83	0.99	230	0.039	<20	1.64	0.012	0.34	0.1	0.04	7.2	<0.1	0.09	5	<0.5
L3 200E	Soil	7	86	1.37	316	0.067	<20	1.95	0.014	0.66	0.2	0.04	5.4	<0.1	0.08	6	<0.5
L3 225E	Soil	4	176	2.25	279	0.091	<20	2.45	0.012	0.92	<0.1	0.02	3.6	<0.1	0.11	6	0.5
L3 250E	Soil	7	58	1.38	206	0.069	<20	1.79	0.012	0.41	0.1	0.03	2.4	<0.1	0.08	4	0.7
L3 275E	Soil	10	46	1.47	425	0.066	<20	2.27	0.014	0.53	0.1	0.02	5.8	<0.1	0.10	6	<0.5
L3 300E	Soil	12	47	1.31	329	0.032	<20	2.12	0.011	0.38	<0.1	0.09	6.6	<0.1	0.10	5	0.8
L3 325E	Soil	4	334	2.92	196	0.037	<20	2.58	0.008	0.23	<0.1	0.02	5.1	<0.1	0.12	6	<0.5
L3 350E	Soil	14	51	0.84	380	0.005	<20	1.49	0.011	0.31	<0.1	0.04	10.3	<0.1	0.09	5	<0.5
L3 375E	Soil	6	53	0.72	325	0.007	<20	1.36	0.011	0.29	<0.1	0.02	11.8	<0.1	0.10	4	0.5

This report supersedes all previous preliminary and final reports with this file number dated prior to the date on this certificate. Signature indicates final approval; preliminary reports are unsigned and should be used for reference only.



ACME ANALYTICAL LABORATORIES LTD.
 852 E. Hastings St. Vancouver BC V6A 1R6 Canada
 Phone (604) 253-3158 Fax (604) 253-1716

www.acmelab.com

Client: Western Copper Corporation

2050 -1111 W. Georgia St.
 Vancouver BC V6E 4M3 Canada

Project: Carmack Copper

Report Date: June 09, 2008

Page: 5 of 6 Part 1

CERTIFICATE OF ANALYSIS

VAN08006223.1

Method	Analyte	Unit	MDL	1DX Mo	1DX Cu	1DX Pb	1DX Zn	1DX Ag	1DX Ni	1DX Co	1DX Mn	1DX Fe	1DX As	1DX U	1DX Au	1DX Th	1DX Sr	1DX Cd	1DX Sb	1DX Bi	1DX V	1DX Ca	1DX P
				ppm	ppm	ppm	ppm	ppm	ppm	ppm	ppm	%	ppm	ppb	ppm	ppm	ppm	ppm	ppm	ppm	ppm	%	%
				0.1	0.1	0.1	1	0.1	0.1	0.1	1	0.01	0.5	0.1	0.5	0.1	1	0.1	0.1	0.1	2	0.01	0.001
L3 400E	Soil			0.7	24.8	5.0	31	<0.1	22.6	10.9	399	2.65	7.1	0.3	2.1	2.0	26	<0.1	0.3	<0.1	68	0.25	0.020
L3 425E	Soil			0.5	68.7	3.3	53	<0.1	21.3	21.5	980	5.05	9.1	0.3	1.2	1.3	32	<0.1	1.6	<0.1	131	0.32	0.074
L3 450E	Soil			0.9	100.5	3.6	45	<0.1	23.7	19.6	925	5.49	18.1	0.5	1.7	1.4	32	<0.1	0.6	<0.1	119	0.31	0.048
L3 475E	Soil			1.9	73.8	9.0	51	0.2	22.6	19.4	919	3.65	16.7	0.3	4.0	1.6	62	0.2	0.3	0.1	38	0.77	0.079
L3 500E	Soil			1.1	24.2	6.3	28	<0.1	14.3	8.3	380	2.41	6.0	0.3	0.8	1.9	20	<0.1	0.4	0.1	54	0.26	0.013
L3 525E	Soil			0.7	21.4	6.4	41	<0.1	19.6	6.9	164	2.17	10.3	0.4	<0.5	3.4	21	<0.1	0.5	0.2	45	0.30	0.070
L3 550E	Soil			0.6	27.3	5.9	31	<0.1	14.1	8.4	388	2.31	3.9	0.2	1.8	1.8	24	<0.1	0.3	0.1	47	0.35	0.026
L3 575E	Soil			0.7	57.5	7.0	32	<0.1	24.6	9.9	278	2.77	12.8	0.5	0.7	4.8	24	<0.1	0.6	0.1	64	0.39	0.026
L3 600E	Soil			0.6	47.3	6.1	25	<0.1	18.5	9.0	244	2.69	10.2	0.6	1.0	3.5	22	<0.1	0.4	0.1	65	0.40	0.019
L3 625E	Soil			0.3	66.7	4.3	36	<0.1	13.1	11.8	810	2.65	6.7	0.5	4.1	1.1	67	0.2	0.4	<0.1	62	4.50	0.064
L3 650E	Soil			0.3	50.1	3.8	60	<0.1	11.9	23.5	1464	4.13	5.6	0.2	1.4	0.4	54	0.2	0.2	<0.1	98	5.59	0.072
L3 675E	Soil			0.5	35.3	6.3	30	<0.1	14.4	12.0	639	2.95	5.3	0.2	1.8	1.7	32	<0.1	0.3	0.1	65	1.13	0.035
L3 700E	Soil			0.4	34.9	5.2	21	<0.1	20.6	8.2	238	1.92	7.5	0.7	3.1	1.8	73	0.1	0.5	0.1	41	4.06	0.036
L4 0E	Soil			0.6	135.1	5.3	77	<0.1	53.5	23.1	1067	4.15	7.3	0.3	1.6	1.2	44	0.2	0.4	0.1	94	0.91	0.082
L4 25E	Soil			0.3	94.4	2.0	37	<0.1	21.6	9.0	777	1.62	1.9	0.1	2.1	0.1	34	0.1	0.2	<0.1	33	0.94	0.076
L4 50E	Soil			0.4	64.5	3.8	45	<0.1	33.2	13.6	463	2.18	5.5	0.2	1.5	0.7	33	0.1	0.3	0.1	44	0.51	0.061
L4 75E	Soil			0.4	66.9	4.3	33	<0.1	35.9	14.9	359	2.61	6.6	0.2	1.1	1.3	24	<0.1	0.2	<0.1	58	0.41	0.037
L4 100E	Soil			0.5	82.6	5.0	33	<0.1	40.0	14.6	292	2.50	9.2	0.3	<0.5	2.2	22	<0.1	0.3	0.1	52	0.38	0.023
L4 125E	Soil			0.5	243.3	2.7	39	<0.1	30.8	17.6	622	2.54	4.8	0.3	2.7	0.4	33	0.2	0.2	0.1	63	0.76	0.056
L4 175E	Soil			0.5	31.0	6.4	50	<0.1	22.6	9.5	415	2.27	7.7	0.3	<0.5	2.6	27	<0.1	0.4	0.1	49	0.40	0.048
L4 250E	Soil			0.5	33.7	5.8	44	<0.1	18.3	8.1	502	1.87	6.8	0.2	1.5	2.0	64	<0.1	0.3	0.1	39	0.76	0.064
L4 275E	Soil			0.6	33.8	5.4	39	<0.1	20.7	8.4	467	2.02	7.7	0.3	1.4	2.3	35	0.1	0.3	0.1	44	0.31	0.038
L4 300E	Soil			0.4	49.0	4.9	36	<0.1	20.5	9.2	489	2.04	6.9	0.2	<0.5	1.4	50	0.1	0.3	<0.1	41	0.51	0.048
L4 325E	Soil			0.4	15.1	3.4	21	<0.1	10.3	5.1	250	1.30	2.9	0.2	0.6	1.3	25	<0.1	0.2	<0.1	26	0.23	0.042
L4 350E	Soil			0.3	29.3	2.9	39	<0.1	9.3	5.7	496	1.48	2.4	0.1	1.6	0.9	27	0.2	0.2	<0.1	35	0.43	0.043
L4 375E	Soil			0.5	96.0	2.5	84	<0.1	12.5	15.0	1006	3.29	3.8	0.2	0.9	0.4	36	0.3	0.2	<0.1	77	0.62	0.092
L4 400E	Soil			0.6	79.4	4.2	48	<0.1	12.7	15.1	783	3.74	6.0	0.4	1.4	1.8	23	<0.1	0.2	<0.1	86	0.36	0.034
L4 425E	Soil			0.7	24.4	4.7	42	<0.1	13.5	10.0	354	2.69	5.4	0.2	0.7	1.9	19	0.1	0.4	<0.1	61	0.24	0.015
L4 450E	Soil			0.4	50.3	3.6	46	<0.1	8.6	11.5	795	2.86	3.0	0.1	0.5	0.7	21	<0.1	0.2	<0.1	59	0.46	0.036
L4 475E	Soil			0.4	77.1	7.3	89	<0.1	13.1	24.6	2239	5.50	6.5	0.2	1.2	0.4	51	0.4	0.3	<0.1	125	1.87	0.078

This report supersedes all previous preliminary and final reports with this file number dated prior to the date on this certificate. Signature indicates final approval; preliminary reports are unsigned and should be used for reference only.



ACME ANALYTICAL LABORATORIES LTD.
 852 E. Hastings St. Vancouver BC V6A 1R6 Canada
 Phone (604) 253-3158 Fax (604) 253-1716

www.acmelab.com

Client: Western Copper Corporation

2050 -1111 W. Georgia St.
 Vancouver BC V6E 4M3 Canada

Project: Carmack Copper

Report Date: June 09, 2008

Page: 5 of 6 Part 2

CERTIFICATE OF ANALYSIS

VAN08006223.1

Method	Analyte	1DX	1DX	1DX	1DX	1DX	1DX	1DX	1DX	1DX	1DX	1DX	1DX	1DX	1DX	1DX	
		La	Cr	Mg	Ba	Ti	B	Al	Na	K	W	Hg	Sc	Tl	S	Ga	Se
Unit		ppm	ppm	%	ppm	%	ppm	%	%	ppm	ppm	ppm	ppm	%	ppm	ppm	
MDL		1	1	0.01	1	0.001	20	0.01	0.001	0.01	0.1	0.01	0.1	0.05	1	0.5	
L3 400E	Soil	7	57	0.41	210	0.042	<20	1.14	0.014	0.14	<0.1	<0.01	4.7	<0.1	<0.05	4	<0.5
L3 425E	Soil	7	28	0.30	297	0.017	<20	1.23	0.010	0.28	<0.1	<0.01	11.9	<0.1	<0.05	3	<0.5
L3 450E	Soil	6	29	0.25	236	0.007	<20	1.02	0.014	0.17	<0.1	0.10	14.8	<0.1	<0.05	3	0.9
L3 475E	Soil	6	10	0.33	1125	0.001	<20	0.99	0.008	0.34	<0.1	0.04	8.4	<0.1	<0.05	3	0.6
L3 500E	Soil	7	23	0.27	366	0.026	<20	0.91	0.022	0.09	<0.1	<0.01	2.9	<0.1	<0.05	3	<0.5
L3 525E	Soil	8	29	0.44	126	0.050	<20	1.17	0.016	0.09	0.3	<0.01	2.7	<0.1	<0.05	3	0.5
L3 550E	Soil	6	24	0.33	193	0.045	<20	1.07	0.041	0.09	0.2	<0.01	2.6	<0.1	<0.05	4	<0.5
L3 575E	Soil	11	32	0.45	153	0.056	<20	1.34	0.020	0.11	0.2	0.01	6.5	<0.1	<0.05	4	0.7
L3 600E	Soil	10	30	0.42	107	0.044	<20	1.38	0.035	0.08	0.1	<0.01	5.6	<0.1	<0.05	4	<0.5
L3 625E	Soil	8	12	0.84	120	0.015	<20	1.27	0.014	0.07	<0.1	0.03	7.3	<0.1	<0.05	4	0.7
L3 650E	Soil	5	9	1.62	148	0.009	<20	2.32	0.009	0.12	<0.1	0.03	10.9	<0.1	0.09	7	<0.5
L3 675E	Soil	9	15	0.75	132	0.025	<20	1.75	0.020	0.11	0.1	<0.01	8.5	<0.1	0.05	5	<0.5
L3 700E	Soil	10	17	0.51	133	0.032	<20	0.95	0.013	0.10	0.4	0.03	3.4	<0.1	<0.05	3	0.7
L4 0E	Soil	9	119	1.44	306	0.040	<20	2.19	0.020	0.25	0.1	0.01	9.1	<0.1	0.09	7	0.8
L4 25E	Soil	4	25	0.43	150	0.013	<20	0.87	0.016	0.13	<0.1	0.01	3.0	<0.1	0.06	2	<0.5
L4 50E	Soil	4	55	0.87	212	0.035	<20	1.62	0.011	0.26	<0.1	0.02	2.4	<0.1	0.07	4	<0.5
L4 75E	Soil	6	65	0.90	128	0.049	<20	1.66	0.011	0.28	<0.1	0.01	3.7	<0.1	<0.05	5	<0.5
L4 100E	Soil	9	58	0.67	107	0.051	<20	1.52	0.013	0.11	0.2	0.01	4.0	<0.1	<0.05	4	<0.5
L4 125E	Soil	4	59	0.95	122	0.042	<20	1.52	0.024	0.08	<0.1	0.03	2.5	<0.1	<0.05	5	<0.5
L4 175E	Soil	9	32	0.47	185	0.056	<20	1.17	0.015	0.13	0.1	0.01	3.8	<0.1	<0.05	4	<0.5
L4 250E	Soil	8	21	0.44	215	0.038	<20	1.11	0.028	0.18	<0.1	0.01	3.3	<0.1	<0.05	4	<0.5
L4 275E	Soil	8	31	0.47	234	0.039	<20	1.20	0.015	0.22	0.1	<0.01	3.6	<0.1	<0.05	3	<0.5
L4 300E	Soil	7	32	0.51	296	0.026	<20	1.03	0.015	0.22	<0.1	0.01	3.4	<0.1	<0.05	3	<0.5
L4 325E	Soil	5	17	0.24	170	0.029	<20	0.75	0.015	0.09	0.2	<0.01	1.9	<0.1	<0.05	2	<0.5
L4 350E	Soil	5	12	0.34	164	0.031	<20	0.88	0.014	0.17	<0.1	<0.01	3.6	<0.1	<0.05	3	<0.5
L4 375E	Soil	5	7	0.34	240	0.013	<20	0.89	0.011	0.19	<0.1	0.02	6.0	<0.1	<0.05	3	<0.5
L4 400E	Soil	9	17	0.35	257	0.016	<20	1.38	0.015	0.11	<0.1	<0.01	10.0	<0.1	<0.05	5	<0.5
L4 425E	Soil	5	27	0.42	125	0.039	<20	1.14	0.045	0.12	<0.1	<0.01	5.0	<0.1	<0.05	4	<0.5
L4 450E	Soil	5	10	0.60	116	0.018	<20	1.32	0.019	0.13	<0.1	<0.01	7.4	<0.1	<0.05	4	<0.5
L4 475E	Soil	8	14	1.36	171	0.009	<20	2.40	0.013	0.14	<0.1	0.02	14.4	<0.1	0.08	7	<0.5

This report supersedes all previous preliminary and final reports with this file number dated prior to the date on this certificate. Signature indicates final approval; preliminary reports are unsigned and should be used for reference only.



ACME ANALYTICAL LABORATORIES LTD.
 852 E. Hastings St. Vancouver BC V6A 1R6 Canada
 Phone (604) 253-3158 Fax (604) 253-1716

www.acmelab.com

Client: **Western Copper Corporation**

2050 -1111 W. Georgia St.
 Vancouver BC V6E 4M3 Canada

Project: Carmack Copper

Report Date: June 09, 2008

Page: 6 of 6 Part 1

CERTIFICATE OF ANALYSIS

VAN08006223.1

Method	1DX	1DX	1DX	1DX	1DX	1DX	1DX	1DX	1DX	1DX	1DX	1DX	1DX	1DX	1DX	1DX	1DX	1DX	1DX	1DX	
Analyte	Mo	Cu	Pb	Zn	Ag	Ni	Co	Mn	Fe	As	U	Au	Th	Sr	Cd	Sb	Bi	V	Ca	P	
Unit	ppm	ppm	ppm	ppm	ppm	ppm	ppm	ppm	%	ppm	ppm	ppb	ppm	ppm	ppm	ppm	ppm	ppm	%	%	
MDL	0.1	0.1	0.1	1	0.1	0.1	0.1	1	0.01	0.5	0.1	0.5	0.1	1	0.1	0.1	0.1	2	0.01	0.001	
L4 500E	Soil	0.3	64.9	3.9	47	<0.1	7.7	13.4	1064	3.33	4.8	0.2	0.8	0.2	44	0.2	0.2	<0.1	73	2.13	0.085
L4 525E	Soil	0.3	80.2	3.2	41	<0.1	7.9	12.4	993	3.34	6.7	0.2	1.0	0.3	57	0.2	0.3	<0.1	76	3.77	0.080
L4 575E	Soil	0.5	71.8	4.1	53	<0.1	11.6	19.7	1586	5.02	7.9	0.2	1.0	0.8	21	0.1	0.3	<0.1	107	0.58	0.034
L4 600E	Soil	0.5	71.6	4.3	48	<0.1	12.4	16.7	1078	4.45	5.1	0.2	<0.5	1.0	21	<0.1	0.2	<0.1	103	0.50	0.024
L4 650E	Soil	0.5	47.5	5.0	26	<0.1	14.0	8.5	338	2.32	6.5	0.4	2.7	2.0	42	<0.1	0.3	<0.1	51	2.08	0.035



ACME ANALYTICAL LABORATORIES LTD.
 852 E. Hastings St. Vancouver BC V6A 1R6 Canada
 Phone (604) 253-3158 Fax (604) 253-1716

www.acmelab.com

Client: **Western Copper Corporation**

2050 -1111 W. Georgia St.
 Vancouver BC V6E 4M3 Canada

Project: Carmack Copper

Report Date: June 09, 2008

Page: 6 of 6 Part 2

CERTIFICATE OF ANALYSIS

VAN08006223.1

Method	1DX	1DX	1DX	1DX	1DX	1DX	1DX	1DX	1DX	1DX	1DX	1DX	1DX	1DX	1DX	1DX	
Analyte	La	Cr	Mg	Ba	Ti	B	Al	Na	K	W	Hg	Sc	Tl	S	Ga	Se	
Unit	ppm	ppm	%	ppm	%	ppm	%	%	%	ppm	ppm	ppm	ppm	%	ppm	ppm	
MDL	1	1	0.01	1	0.001	20	0.01	0.001	0.01	0.1	0.01	0.1	0.1	0.05	1	0.5	
L4 500E	Soil	6	3	0.87	113	0.009	<20	1.77	0.021	0.10	<0.1	<0.01	5.6	<0.1	0.11	5	<0.5
L4 525E	Soil	7	4	0.86	134	0.013	<20	1.86	0.024	0.11	<0.1	0.02	7.3	<0.1	0.10	6	<0.5
L4 575E	Soil	8	11	1.29	161	0.008	<20	2.78	0.010	0.12	<0.1	0.01	12.3	<0.1	0.06	8	<0.5
L4 600E	Soil	9	18	1.06	163	0.010	<20	2.38	0.020	0.10	<0.1	<0.01	12.9	<0.1	<0.05	8	<0.5
L4 650E	Soil	10	17	0.54	99	0.027	<20	1.15	0.011	0.10	0.3	0.01	5.5	<0.1	<0.05	4	0.6

QUALITY CONTROL REPORT

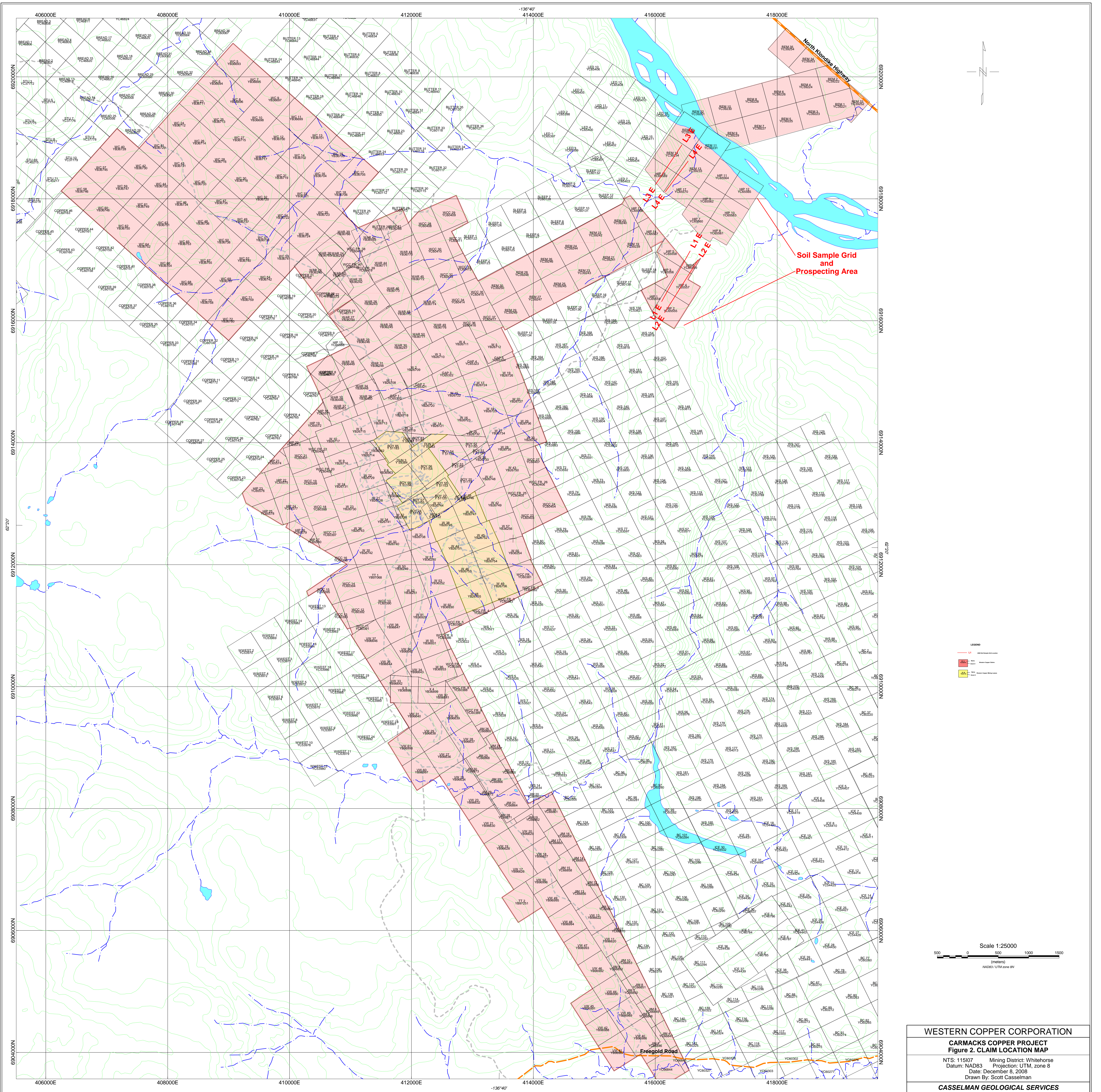
VAN08006223.1

Method	Analyte	Unit	MDL	1DX Mo	1DX Cu	1DX Pb	1DX Zn	1DX Ag	1DX Ni	1DX Co	1DX Mn	1DX Fe	1DX As	1DX U	1DX Au	1DX Th	1DX Sr	1DX Cd	1DX Sb	1DX Bi	1DX V	1DX Ca	1DX P
				ppm	ppm	ppm	ppm	ppm	ppm	ppm	ppm	%	ppm	ppm	ppb	ppm	ppm	ppm	ppm	ppm	ppm	%	%
				0.1	0.1	0.1	1	0.1	0.1	0.1	1	0.01	0.5	0.1	0.5	0.1	1	0.1	0.1	0.1	2	0.01	0.001
Pulp Duplicates																							
L1 75W	Soil			0.5	10.7	5.5	31	<0.1	10.9	4.6	153	1.59	3.4	0.3	1.4	2.0	18	<0.1	0.3	0.1	49	0.17	0.015
REP L1 75W	QC			0.6	11.5	5.5	31	<0.1	10.6	4.6	149	1.47	4.3	0.3	3.2	1.8	16	<0.1	0.3	0.1	46	0.17	0.015
L2 825W	Soil			0.5	13.5	6.1	32	<0.1	15.2	5.2	157	1.69	6.2	0.3	<0.5	2.4	21	<0.1	0.3	0.1	44	0.21	0.035
REP L2 825W	QC			0.5	12.3	6.7	35	<0.1	15.7	5.5	160	1.77	6.7	0.4	<0.5	2.6	22	<0.1	0.3	0.1	49	0.23	0.036
L3 475E	Soil			1.9	73.8	9.0	51	0.2	22.6	19.4	919	3.65	16.7	0.3	4.0	1.6	62	0.2	0.3	0.1	38	0.77	0.079
REP L3 475E	QC			1.9	76.2	9.2	54	0.2	23.4	19.4	947	3.88	17.3	0.3	4.2	1.8	60	0.2	0.3	0.1	40	0.79	0.085
Reference Materials																							
STD DS7	Standard			18.5	102.2	69.6	393	0.8	56.6	9.5	597	2.29	50.6	4.3	118.8	4.0	64	5.8	5.9	4.5	103	0.85	0.078
STD DS7	Standard			18.8	102.4	65.7	402	0.8	59.3	9.0	615	2.29	53.1	4.2	71.7	3.7	64	6.3	5.7	4.3	98	0.83	0.074
STD DS7	Standard			20.0	115.5	72.2	460	0.9	61.5	10.4	670	2.67	63.3	4.8	68.7	4.2	72	7.3	6.0	4.9	91	0.97	0.098
STD DS7	Standard			19.2	110.4	72.6	421	0.9	59.3	10.1	679	2.60	60.5	4.9	59.1	4.0	70	6.9	6.0	4.9	90	0.98	0.088
STD DS7	Standard			20.3	112.3	72.7	435	0.8	60.1	9.6	673	2.45	55.0	4.6	57.6	3.8	65	7.1	5.8	4.9	80	0.95	0.081
STD DS7	Standard			20.2	108.4	74.0	420	0.8	56.1	9.8	692	2.42	52.7	4.5	54.5	3.8	64	7.0	6.0	4.6	86	0.89	0.084
STD DS7	Standard			23.3	102.3	74.2	402	0.8	62.5	9.2	642	2.42	53.2	4.4	55.1	3.7	66	6.0	5.8	4.8	93	0.86	0.079
STD DS7	Standard			19.3	108.1	66.4	407	0.8	54.8	9.6	636	2.29	52.1	4.9	52.7	4.3	61	6.3	5.7	4.6	89	0.84	0.082
STD DS7 Expected				20.92	109	70.6	411	0.89	56	9.7	627	2.39	48.2	4.9	70	4.4	68.7	6.38	5.86	4.51	86	0.93	0.08
BLK	Blank			<0.1	<0.1	<0.1	<1	<0.1	<0.1	<0.1	<1	<0.01	<0.5	<0.1	<0.5	<0.1	<1	<0.1	<0.1	<0.1	<2	<0.01	<0.001
BLK	Blank			<0.1	<0.1	<0.1	<1	<0.1	<0.1	<0.1	<1	<0.01	<0.5	<0.1	<0.5	<0.1	<1	<0.1	<0.1	<0.1	<2	<0.01	<0.001
BLK	Blank			<0.1	<0.1	<0.1	<1	<0.1	<0.1	<0.1	<1	<0.01	<0.5	<0.1	<0.5	<0.1	<1	<0.1	<0.1	<0.1	<2	<0.01	<0.001
BLK	Blank			<0.1	<0.1	<0.1	<1	<0.1	<0.1	<0.1	<1	<0.01	<0.5	<0.1	<0.5	<0.1	<1	<0.1	<0.1	<0.1	<2	<0.01	<0.001

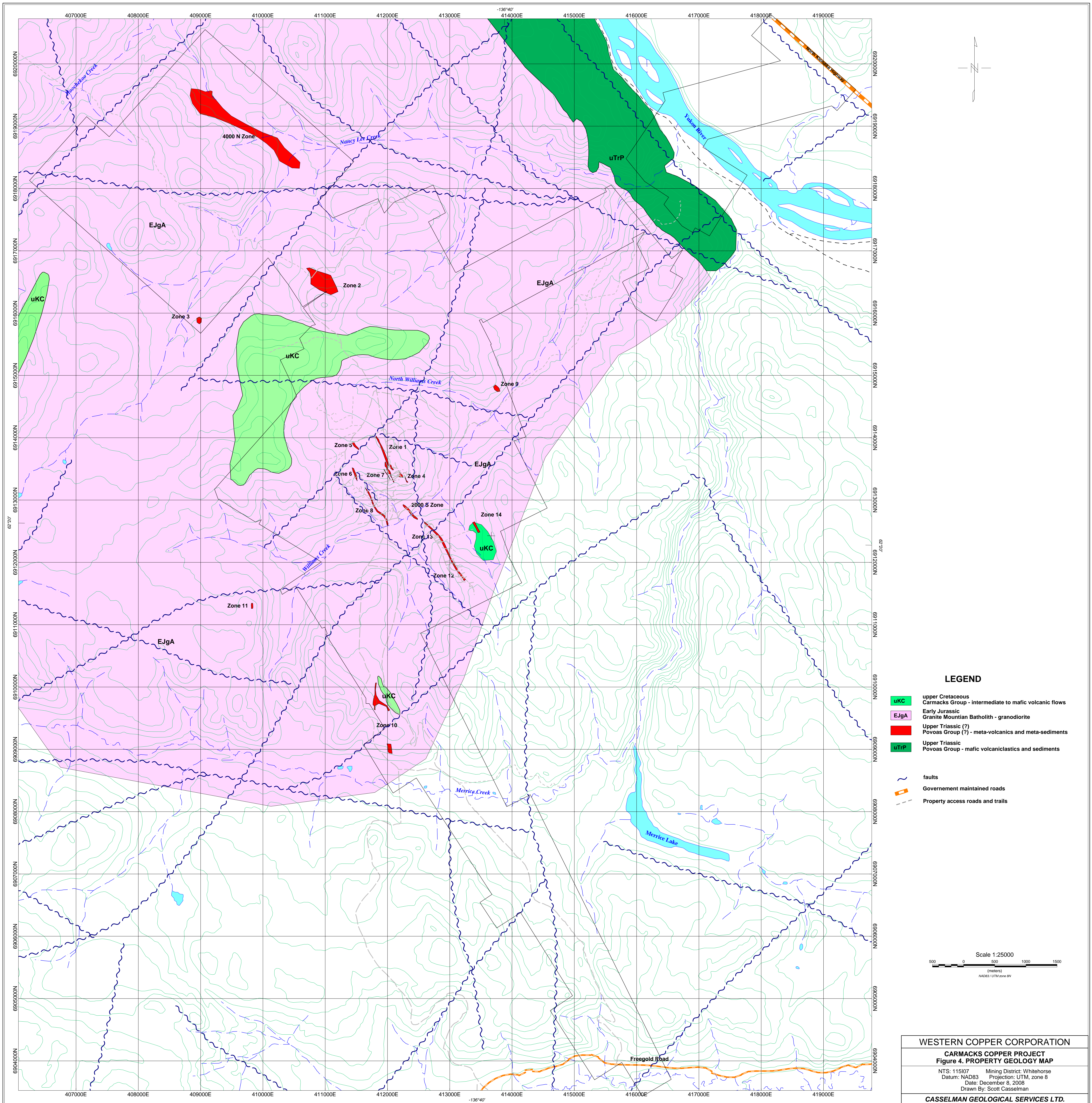
QUALITY CONTROL REPORT

VAN08006223.1

Method	1DX	1DX	1DX	1DX	1DX	1DX	1DX	1DX	1DX	1DX	1DX	1DX	1DX	1DX	1DX	1DX	
Analyte	La	Cr	Mg	Ba	Ti	B	Al	Na	K	W	Hg	Sc	Tl	S	Ga	Se	
Unit	ppm	ppm	%	ppm	%	ppm	%	%	%	ppm	ppm	ppm	ppm	%	ppm	ppm	
MDL	1	1	0.01	1	0.001	20	0.01	0.001	0.01	0.1	0.01	0.1	0.1	0.05	1	0.5	
Pulp Duplicates																	
L1 75W	Soil	6	18	0.33	103	0.053	<20	0.89	0.014	0.04	0.1	<0.01	1.6	<0.1	<0.05	3	0.6
REP L1 75W	QC	6	19	0.32	101	0.050	<20	0.91	0.014	0.03	0.1	<0.01	1.5	<0.1	<0.05	3	<0.5
L2 825W	Soil	6	24	0.39	138	0.059	<20	0.96	0.016	0.05	0.2	<0.01	1.9	<0.1	<0.05	3	<0.5
REP L2 825W	QC	7	25	0.41	141	0.063	<20	0.95	0.017	0.06	<0.1	<0.01	2.4	<0.1	<0.05	3	<0.5
L3 475E	Soil	6	10	0.33	1125	0.001	<20	0.99	0.008	0.34	<0.1	0.04	8.4	<0.1	<0.05	3	0.6
REP L3 475E	QC	6	10	0.35	1057	0.001	<20	1.03	0.008	0.36	<0.1	0.03	8.5	<0.1	0.09	3	0.7
Reference Materials																	
STD DS7	Standard	11	162	1.02	378	0.102	36	0.89	0.061	0.43	3.6	0.21	2.0	4.1	0.32	4	3.9
STD DS7	Standard	10	164	1.02	367	0.105	38	0.88	0.062	0.44	3.7	0.21	2.1	4.1	0.23	4	2.6
STD DS7	Standard	11	196	1.16	421	0.108	48	1.09	0.090	0.51	3.9	0.20	2.2	4.6	0.30	5	4.0
STD DS7	Standard	11	181	1.05	418	0.109	46	0.96	0.087	0.54	3.8	0.21	2.3	4.5	0.28	5	3.9
STD DS7	Standard	11	178	1.07	409	0.107	44	0.96	0.080	0.50	3.9	0.19	2.3	4.5	0.23	5	4.0
STD DS7	Standard	11	180	1.03	409	0.107	47	0.96	0.082	0.51	3.5	0.19	2.4	4.4	0.23	5	3.7
STD DS7	Standard	11	172	1.01	379	0.112	46	0.91	0.066	0.45	3.6	0.19	2.2	4.4	0.14	5	2.6
STD DS7	Standard	10	173	1.01	385	0.108	46	0.96	0.071	0.42	3.6	0.19	2.1	4.1	0.13	5	3.0
STD DS7 Expected		12.7	163	1.05	370.3	0.124	38.6	0.959	0.073	0.44	3.8	0.2	2.5	4.19	0.21	4.6	3.5
BLK	Blank	<1	<1	<0.01	<1	<0.001	<20	<0.01	<0.001	<0.01	<0.1	<0.01	<0.1	<0.1	<0.05	<1	<0.5
BLK	Blank	<1	<1	<0.01	<1	<0.001	<20	<0.01	<0.001	<0.01	<0.1	<0.01	<0.1	<0.1	<0.05	<1	<0.5
BLK	Blank	<1	<1	<0.01	<1	<0.001	<20	<0.01	<0.001	<0.01	<0.1	<0.01	<0.1	<0.1	<0.05	<1	<0.5
BLK	Blank	<1	<1	<0.01	<1	<0.001	<20	<0.01	<0.001	<0.01	<0.1	<0.01	<0.1	<0.1	<0.05	<1	<0.5



WESTERN COPPER CORPORATION
CARMACKS COPPER PROJECT
Figure 2. CLAIM LOCATION MAP
 NTS: 115107 Mining District: Whitehorse
 Datum: NAD83 Projection: UTM, zone 8
 Date: December 8, 2008
 Drawn By: Scott Casselman
CASSELMAN GEOLOGICAL SERVICES

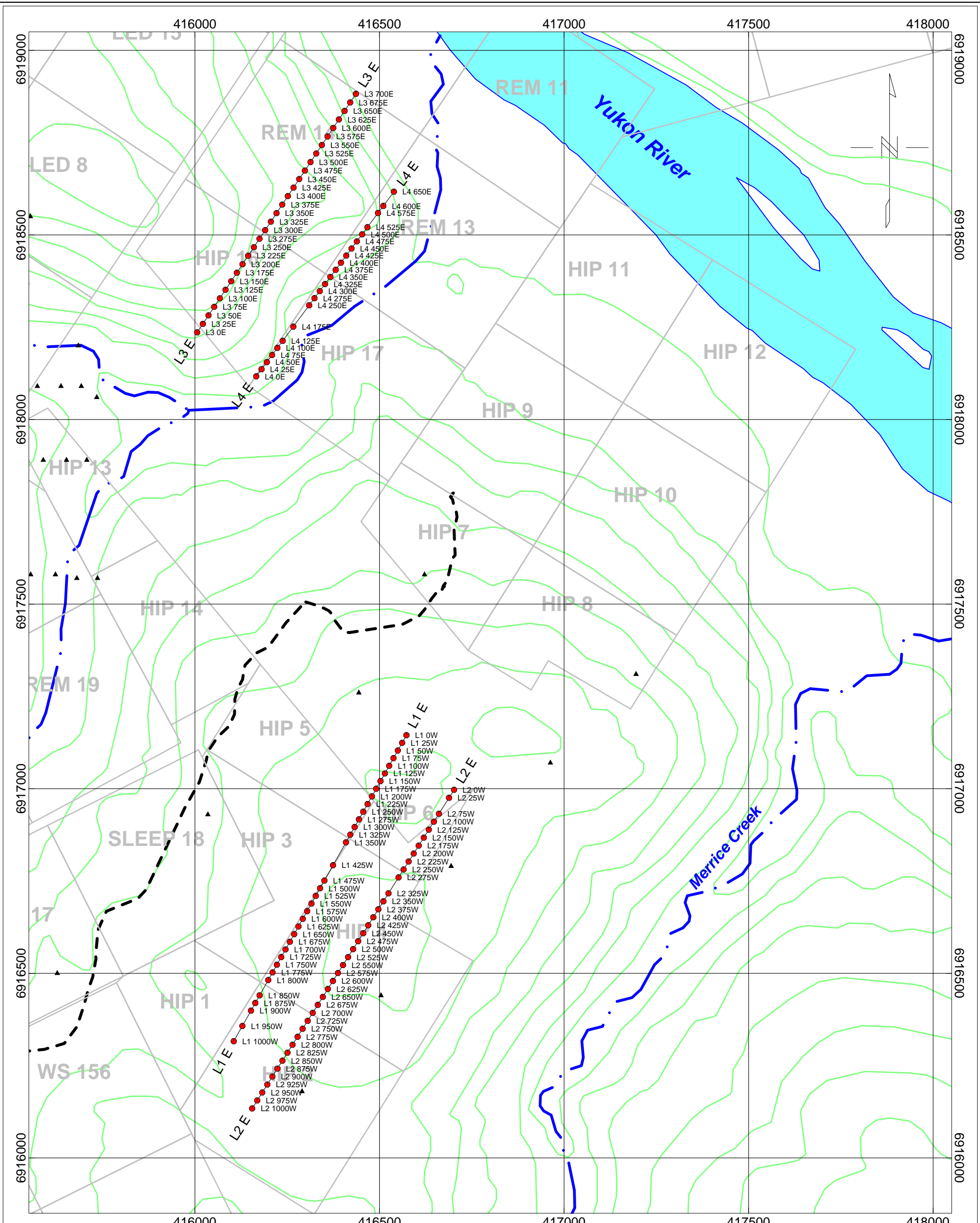


LEGEND

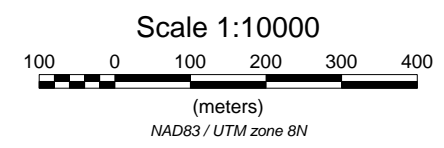
- upper Cretaceous Carmacks Group - intermediate to mafic volcanic flows
- Early Jurassic Granite Mountain Batholith - granodiorite
- Upper Triassic (?) Povoas Group (?) - meta-volcanics and meta-sediments
- Upper Triassic Povoas Group - mafic volcanics and sediments
- faults
- Government maintained roads
- Property access roads and trails

Scale 1:25000
 500 0 500 1000 1500
 (meters)
 NAD83 / UTM zone 8N

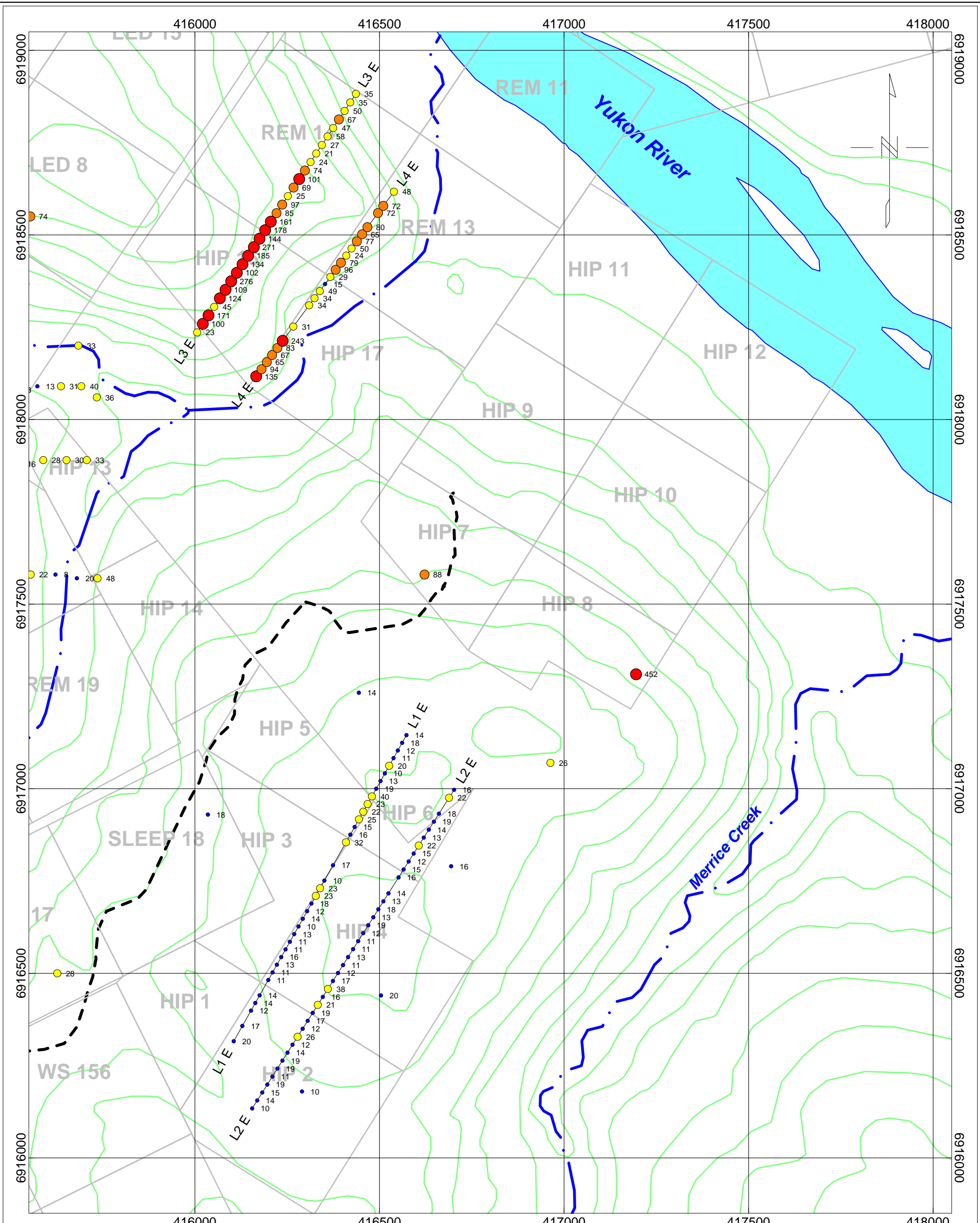
WESTERN COPPER CORPORATION	
CARMACKS COPPER PROJECT	
Figure 4. PROPERTY GEOLOGY MAP	
NTS: 115107	Mining District: Whitehorse
Datum: NAD83	Projection: UTM, zone 8
Date: December 8, 2008	Drawn By: Scott Casselman
CASSELMAN GEOLOGICAL SERVICES LTD.	



- 2008 Soil Sample Location
- ▲ Historic Soil Sample Location



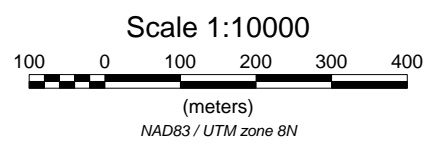
WESTERN COPPER CORPORATION
CARMACKS COPPER PROPERTY Figure 5. SOIL SAMPLE LOCATION MAP
NTS: 115107 Mining District: Whitehorse Datum: NAD83 Projection: UTM, Zone 8 Date: December 8, 2008 Drawn By: S. Casselman
CASSELMAN GEOLOGICAL SERVICES LTD



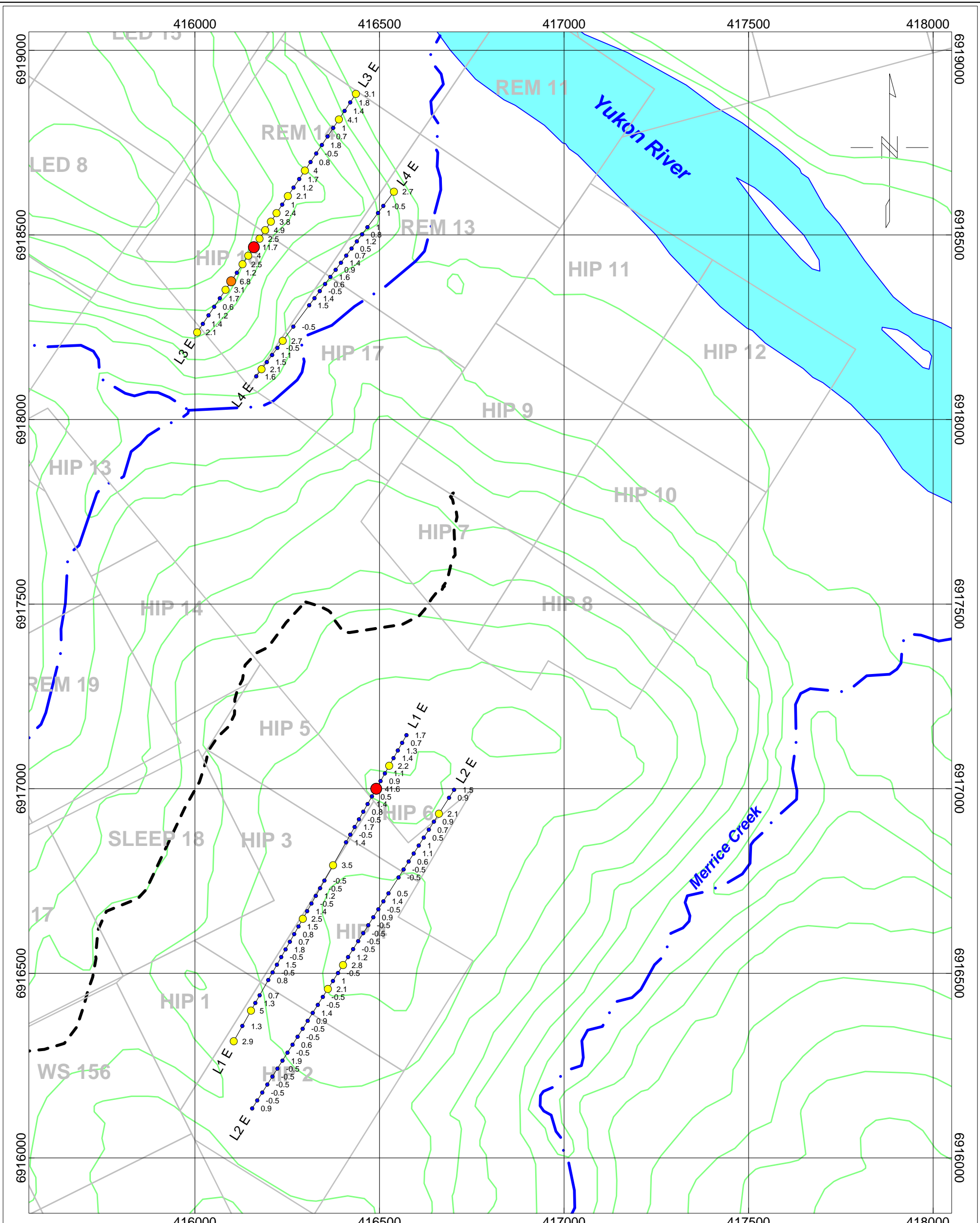
Soil Sample Copper Geochemistry (ppm)

- > 100 ppm
- 60 - 100 ppm (mean plus 2 standard deviations)
- 20 - 60 ppm (mean plus 1 standard deviation)
- < 20 ppm (mean)

includes historic and 2008 soil sample data

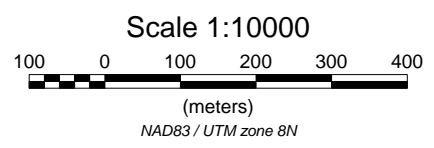


WESTERN COPPER CORPORATION
CARMACKS COPPER PROPERTY
Figure 6. SOIL SAMPLE COPPER GEOCHEMISTRY
NTS: 115107 Mining District: Whitehorse Datum: NAD83 Projection: UTM, Zone 8 Date: December 8, 2008 Drawn By: S. Casselman
CASSELMAN GEOLOGICAL SERVICES LTD



- Gold (ppb)
- > 10
 - 6 - 10 ppb (mean plus 2 Standard Dev)
 - 2 - 6 ppb (mean plus 1 Standard Dev)
 - < 2 ppb (mean)

includes only 2008 data



WESTERN COPPER CORPORATION
CARMACKS COPPER PROPERTY Figure 7. SOIL SAMPLE GOLD GEOCHEMISTRY
NTS: 115107 Mining District: Whitehorse Datum: NAD83 Projection: UTM, Zone 8 Date: December 8, 2008 Drawn By: S. Casselman
CASSELMAN GEOLOGICAL SERVICES LTD