

GEOCHEMICAL

REPORT

HAINÉ 1- 16 CLAIMS

YC60365 – YC60380

NTS # 115 A \ 13

LAT: 60° 48 N

LONG: 137° 48 W

WHITEHORSE MINING DISTRICT

AUTHOR OF REPORT SHAWN RYAN

WORK PERFORMED SEPTEMBER 08, 2007

DATE OF REPORT NOVEMBER 10, 2008

TABLE OF CONTENT

1.0	Summary	p.3
2.0	INTRODUCTION	p.3
3.0	PROJECT LOCATION	p.3
4.0	ACCESS	p.3
5.0	GEOLOGY	p.3
5.1	REGIONAL GEOLOGY	p.3
6.0	WORK PERFORMED / METHODS	p.4
6.1	Soil Survey	p.4
7.0	INTERPRETATION	p.4
7.1	Soil Survey	p.4
8.0	RECOMMENDATION	p.4
9.0	REFERENCES CITED	p.4
10.0	Cost	p.5
11.0	Qualification	p.5
	Geology Description	p.6
	Geology Map	Figure 1
	Claim / Sample Location Map	Figure 2
	Gold Soil geochemistry map	Figure 3
	Arsenic Soil geochemistry map	Figure 4
	Antimony Soil geochemistry map	Figure 5
	Copper Soil geochemistry map	Figure 6
	Assay Data / GPS Soil Location Data	Appendix

1.0 SUMMARY

The Haine Claims had two soil samplers (Phil Burke, Mathew McHugh) visit the property in early September to undertake a soil survey over an historical (Noranda) showing. A total of 58 soils were collected and proved to be anomalous in gold, arsenic, antimony and copper.

2.0 INTRODUCTION

The Haine Claims were stake to cover an old Noranda showing that was worked in 1991. Noranda 1990 work proved the area had good gold in soils and in rocks with rock float sample running as high as 19 g/t gold. The Haine soil work was to retest the area and get ready for a larger soil program the following season (2008).

3.0 LOCATION

The Haine claims are located 16 kilometers west of Haine Junction.; it's in Whitehorse Mining Division, on NTS sheet # 115 A / 13 at the latitude 60°48'N and longitude 137°48'W.

4.0 ACCESS

The Haine claims can be reached via helicopter from Haine Junctions.

5.0 REGIONAL AND PROPERTY GEOLOGY

5.1 REGIONAL GEOLOGY

The Yukon geology map indicates the Haine Claims are straddling two rock units. One known as (uTrN) Upper Triassic Nicolai amygdaloidal basaltic and andesitic flows, with local tuff, breccia, shale and thin-bedded bioclastic limestone; volcanic breccia, pillow lava and conglomerate at base; locally includes dark grey phyllite and minor thin grey limestone of Middle Triassic (**Nicolai Greenstone**). The second unit is an Upper Jurassic to Lower Cretaceous (JKD) Dezadeash interbedded light to dark buff-grey lithic greywacke, sandstone, siltstone, thin dark grey shale, argillite, phyllite and conglomerate; rare tuff (**Dezadeash**).

6.0 WORK PERFORMED / METHODS

6.1 Soil Survey

The Haine Claims had 2 man days of soil work collecting 58 soils.

All soil sample where taken with one meter soil probes and sometime with a prospector pick. We carried both on rocky talus slope. Soil sample location where marked on the ground with orange flagging and recorded in Garmin GPS. About 400-500 grams of soil was collected and place in well mark kraft soil bags.

All samples where brought out to Dawson and air dried repacked in rice bags and sent to Acme Labs in Vancouver. Sample where process with Aqua Regia ICP-MS for 36 elements.

The GPS where downloaded every night and store in a personal computer.

7.0 INTERPRETATION

7.1 Soil Survey

Base on the regional spread of the 2007 soil survey no real data interpretation can be done. What we do see is that the soil survey did produce positive results in gold, arsenic, antimony and copper. Values reached up to 1061 ppb Au, 3138 ppm As, 40 ppm Sb, 1224 ppm Cu.

8.0 RECOMMENDATION

I would recommend expanding the claim block and conducting a detail soil and magnetic survey covering the entire Haine 1-16 claims.

9.0 REFERENCES CITED

NORANDA EXPLORATION CO. LTD, Nov/90. Assessment Report #092902 by D. Heon.

10.0 COST

Wage 6 man days @ \$330.00 per day	\$1,980.00
Assay Cost 58 soil @ \$20.00 per sample	\$1,160.00
Helicopter Cost .56 hour @ \$1,250.00 per hour	\$700.00
Hotel 2 days @\$110.00	\$220
Food 6 man days @ \$45.00	\$270.00
Truck 3 days @ \$150.00 plus gas	\$450.00
Report writing	\$350.00
Total	\$5,130.00

11.0 QUALIFICATION

I Shawn Ryan located in Dawson City, Yukon work as a professional prospector. I run a small exploration company located in Dawson City.

I have worked in the exploration business for the last 25 years. I worked the first 12 years as a contractor working on numerous projects in the NWT, Ontario, Quebec and the Yukon. I have worked the last 12 years as a local prospector for myself.

I have overseen and planed the Haine Soil Survey.

I own 100% of the Haine claims.

Dated this 10 of November 2008 in Dawson City, Yukon.

Respectfully submitted

Shawn Ryan

Haine Geology Description

QUATERNARY



Q: QUATERNARY

unconsolidated glacial, glaciofluvial and glaciolacustrine deposits; fluviatile silt, sand, and gravel, and local volcanic ash, in part with cover of soil and organic deposits

UPPER JURASSIC TO LOWER CRETACEOUS

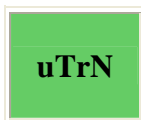


JKD: DEZADEASH

clastic succession (1) but locally including undifferentiated younger strata (2)

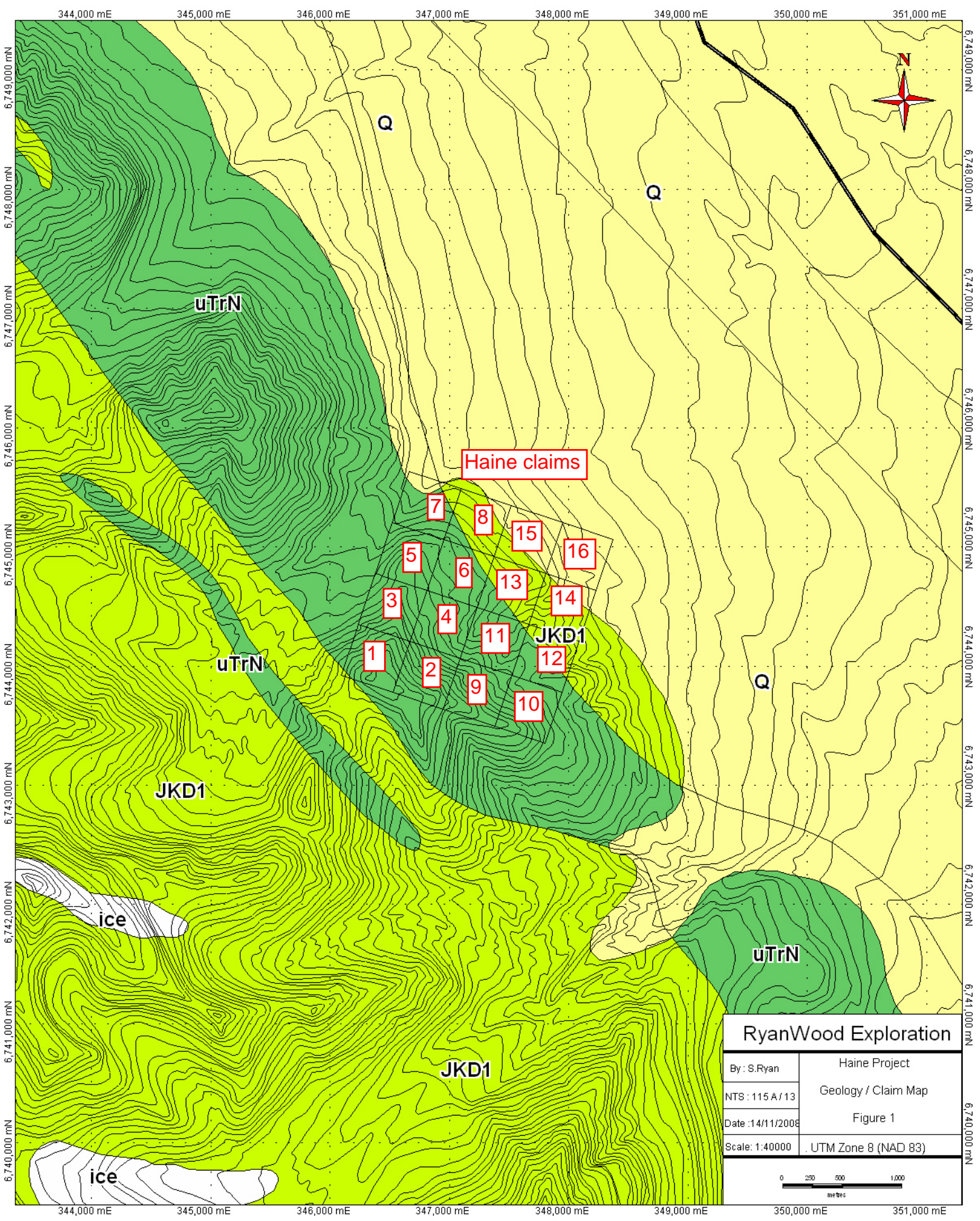
1. interbedded light to dark buff-grey lithic greywacke, sandstone, siltstone, thin dark grey shale, argillite, phyllite and conglomerate; rare tuff (**Dezadeash**)
2. sandstone, conglomerate, shale, siliceous tuff: shallow-marine shelf deposits

UPPER TRIASSIC

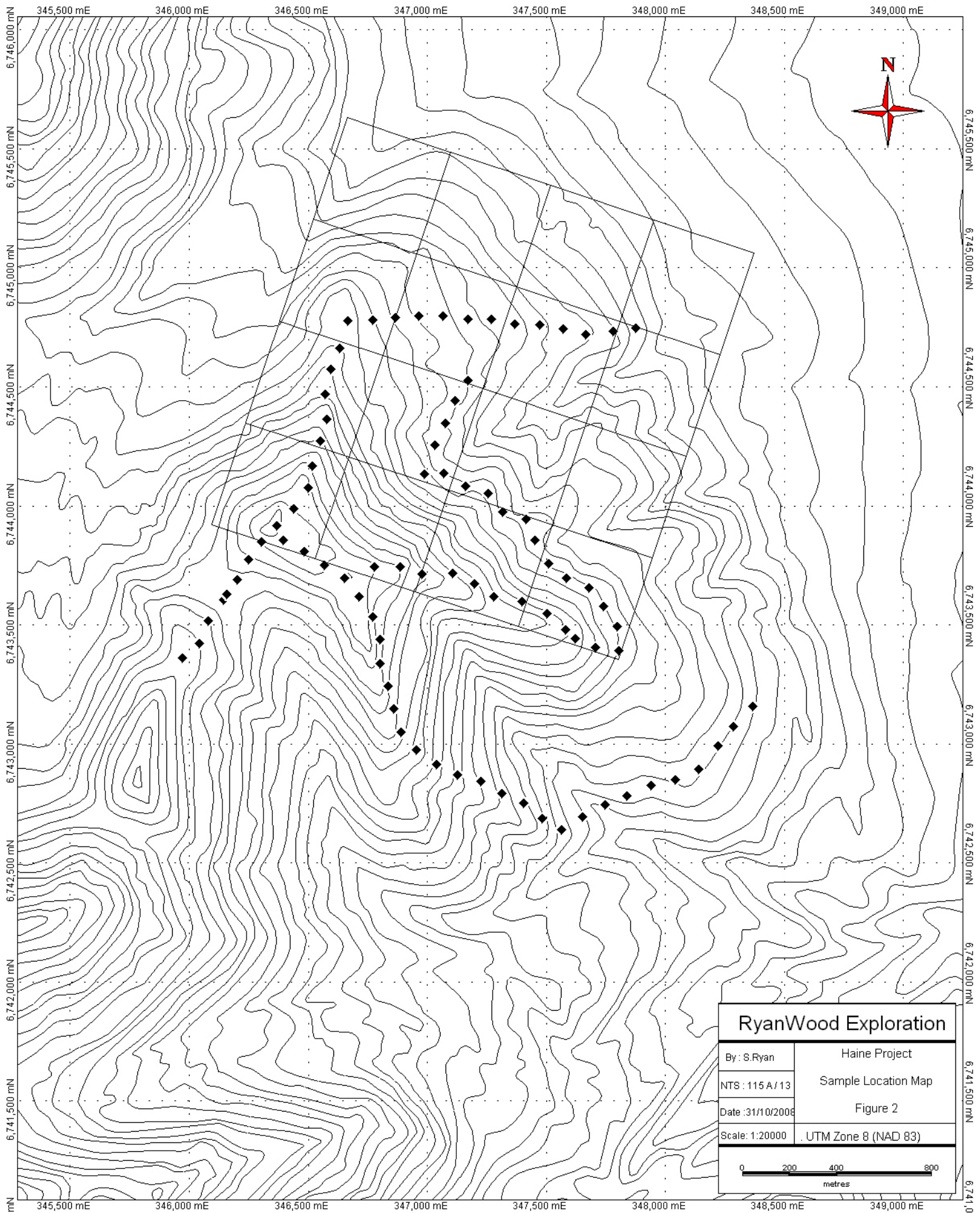


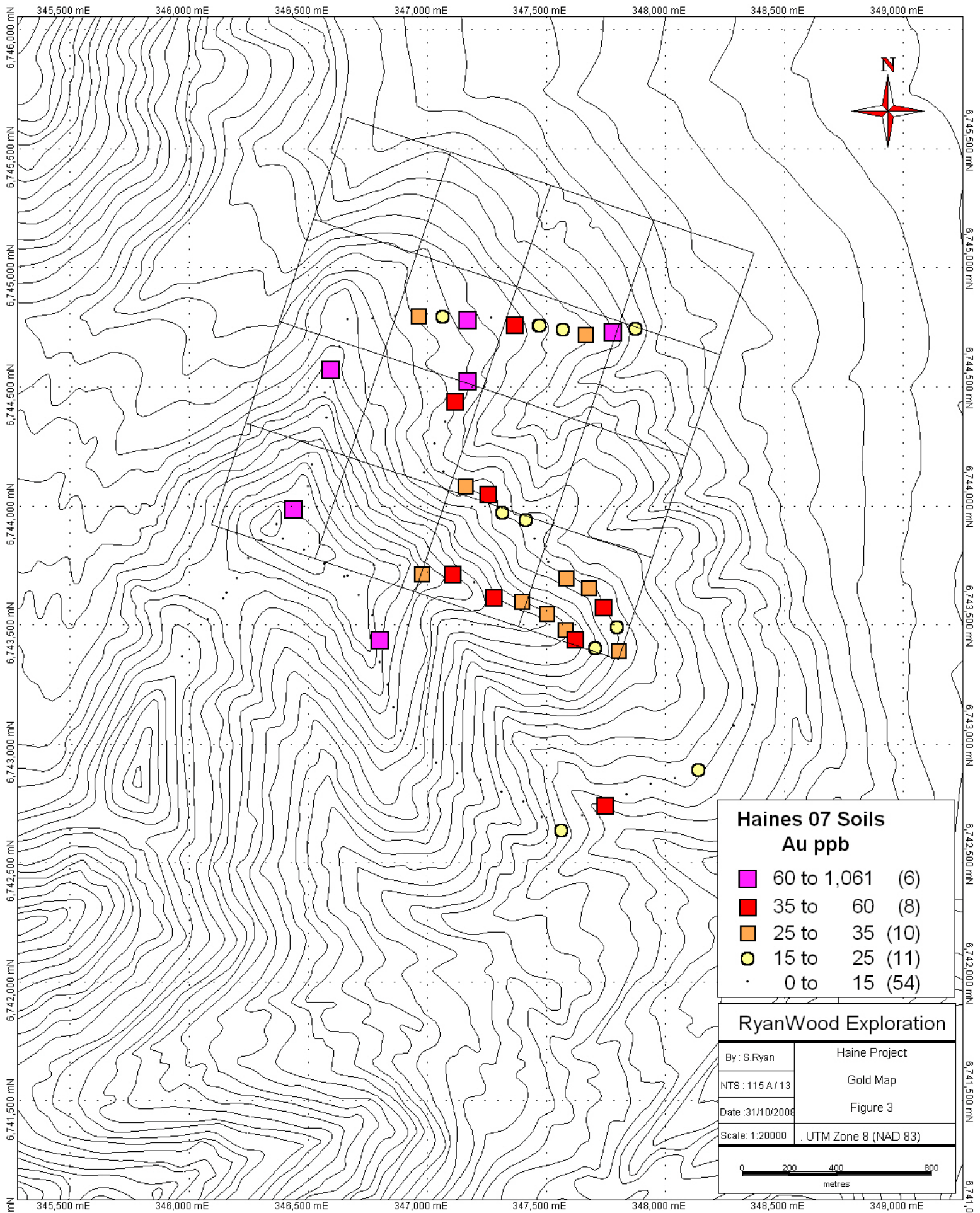
uTrN: NICOLAI

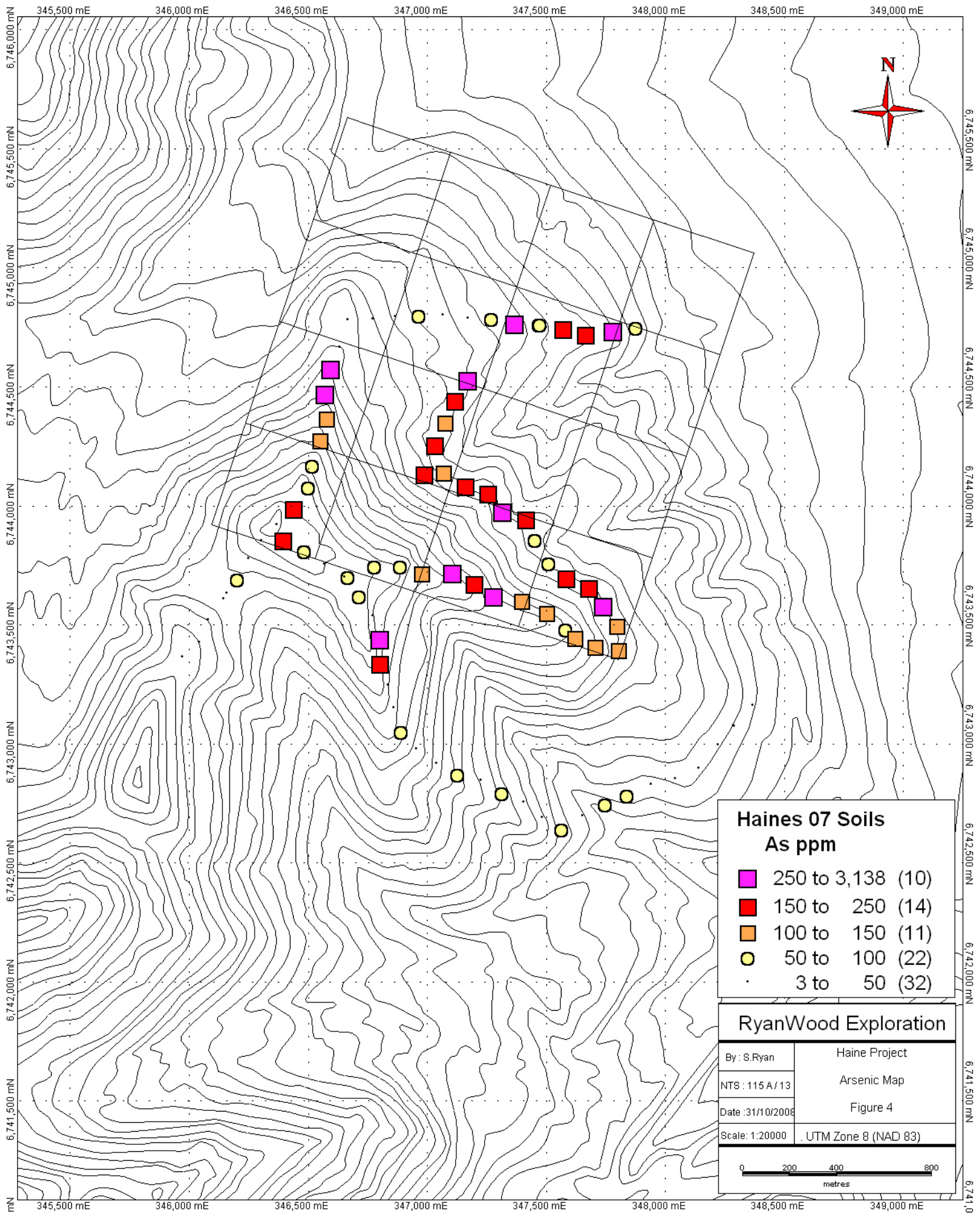
amygdaloidal basaltic and andesitic flows, with local tuff, breccia, shale and thin-bedded bioclastic limestone; volcanic breccia, pillow lava and conglomerate at base; locally includes dark grey phyllite and minor thin grey limestone of Middle Triassic (**Nicolai Greenstone**)

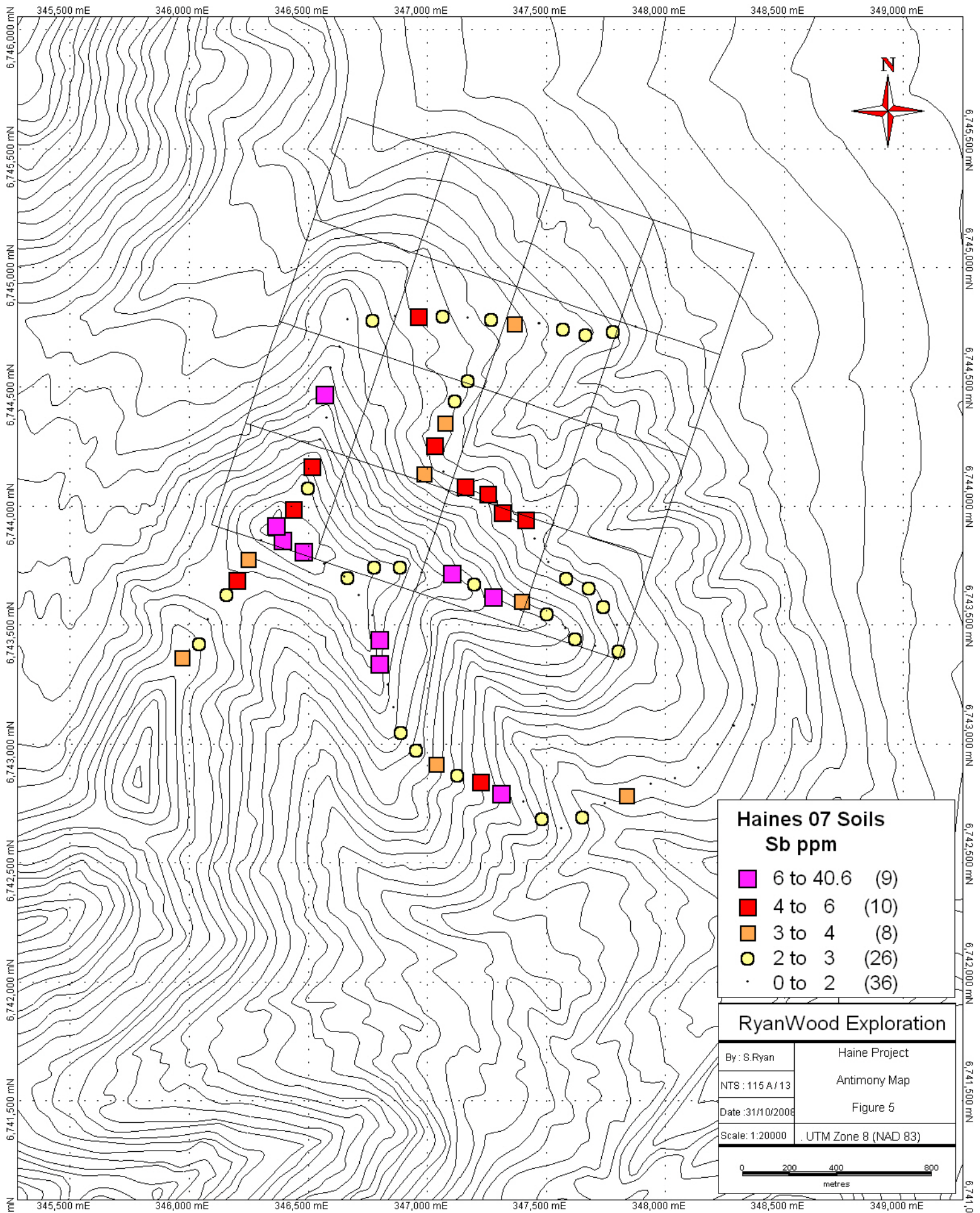


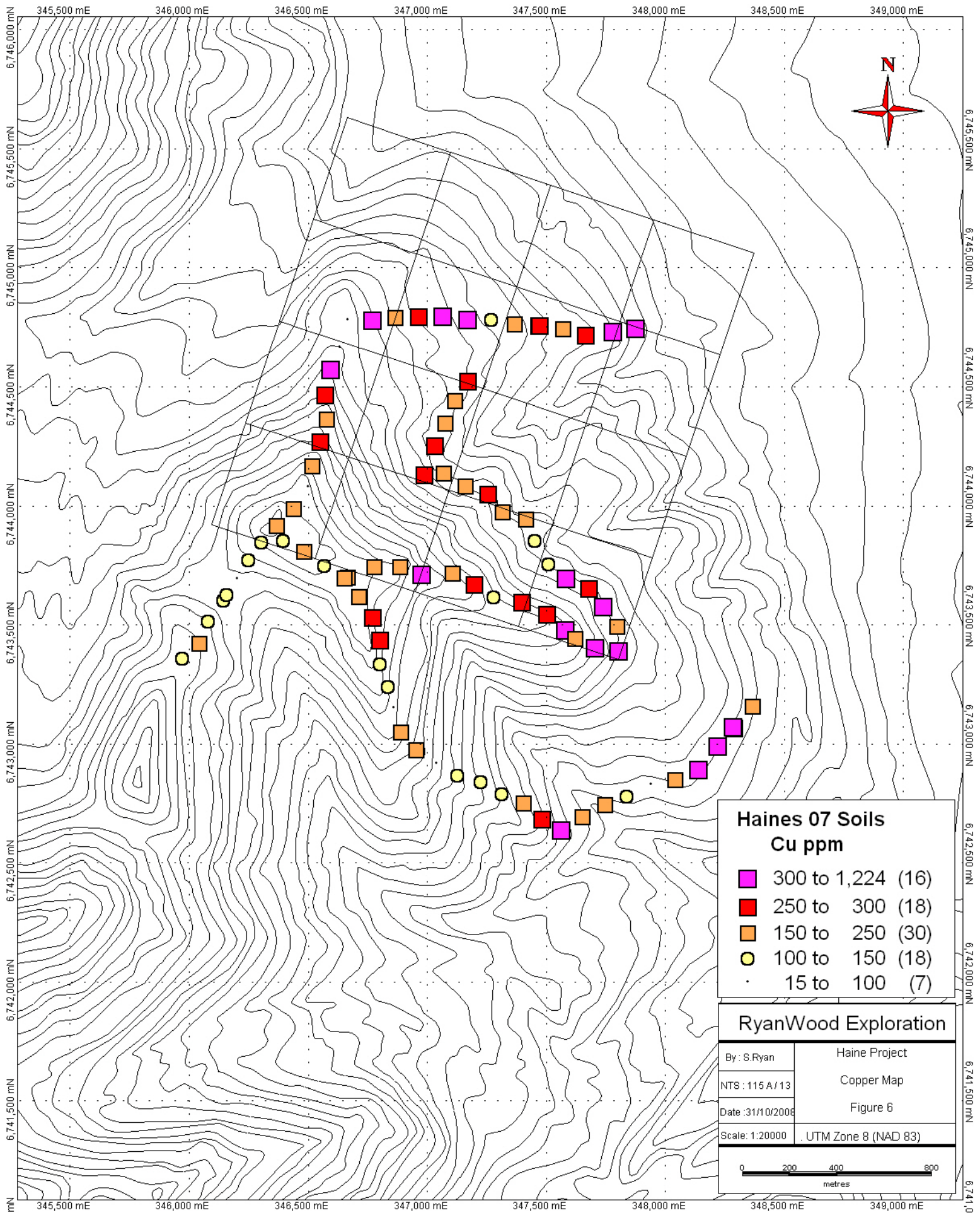
RyanWood Exploration	
By : S.Ryan	Haine Project
NTS : 115 A / 13	Geology / Claim Map
Date : 14/11/2008	Figure 1
Scale: 1:40000	UTM Zone 8 (NAD 83)









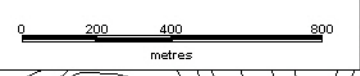


Haines 07 Soils
Cu ppm

■	300 to 1,224	(16)
■	250 to 300	(18)
■	150 to 250	(30)
●	100 to 150	(18)
●	15 to 100	(7)

RyanWood Exploration

By: S.Ryan	Haine Project
NTS: 115 A/13	Copper Map
Date: 31/10/2008	Figure 6
Scale: 1:20000	UTM Zone 8 (NAD 83)



Sample ID	UTM Zone	UTM Easting	UTM Northing	Mo	Cu	Pb	Zn	Ag	Ni	Co	Mn	Fe	As
HNS 05032	Nad 83-08V	346667	6743704	2.2	182.2	8.2	105	0.3	56.2	39.4	1143	5.74	68.4
HNS 05033	Nad 83-08V	346780	6743747	2.9	181.6	10.1	107	0.2	52.7	39.2	985	5.36	74.4
HNS 05034	Nad 83-08V	346887	6743747	2.9	221.4	8	115	0.3	61.6	41.1	1276	5.72	95
HNS 05035	Nad 83-08V	346978	6743717	2.4	417	4.4	113	0.2	83.8	48.8	1562	7.64	142.7
HNS 05036	Nad 83-08V	347107	6743721	5.7	155.6	30.1	213	0.3	120.1	62.5	3281	7.35	676.8
HNS 05037	Nad 83-08V	347199	6743678	1.9	265	4.4	108	0.2	114.1	65.6	1279	7.48	169.7
HNS 05038	Nad 83-08V	347282	6743622	63.6	103.6	8.6	141	0.5	50.5	24.4	900	5.81	3138
HNS 05039	Nad 83-08V	347401	6743601	2.9	283.9	7.8	101	0.2	70.8	36.4	944	5.8	134.3
HNS 05040	Nad 83-08V	347504	6743551	3	299.9	7.1	96	0.2	75.7	40.3	1000	5.5	122.1
HNS 05041	Nad 83-08V	347582	6743484	1.6	304.4	5.6	89	0.2	67.6	35.9	1221	5.94	72.8
HNS 05042	Nad 83-08V	347622	6743445	2.8	228.8	7.8	93	0.2	72.1	36.9	1079	5.73	109.4
HNS 05043	Nad 83-08V	347707	6743408	1.6	358.5	4.1	115	0.2	81.4	53.8	1544	8.03	140.5
HNS 05044	Nad 83-08V	347805	6743396	3.8	379	7.7	103	0.3	91.8	39.4	1036	5.4	145.1
HNS 05045	Nad 83-08V	347798	6743498	3.2	194.5	5.5	84	0.1	102.7	30.9	666	4.44	118.9
HNS 05046	Nad 83-08V	347741	6743581	4.4	353	6.9	120	0.3	141.2	55.9	1485	7.81	301.9
HNS 05047	Nad 83-08V	347681	6743659	4.6	257.9	6.1	95	0.2	187	47.4	818	6.11	153.7
HNS 05048	Nad 83-08V	347586	6743701	7.9	351.6	7.3	103	0.2	137.2	56.1	946	7.09	174.8
HNS 05049	Nad 83-08V	347510	6743760	1.8	111.3	4.8	86	0.1	101.4	56.2	921	7.24	72.9
HNS 05050	Nad 83-08V	347452	6743858	1.2	129.6	5.2	90	0.1	547.3	59.7	1207	6.12	60.6
HNS 05051	Nad 83-08V	347415	6743947	2.6	245.5	7.9	103	0.3	124.7	39.8	1010	5.87	203.7
HNS 05052	Nad 83-08V	347319	6743978	3.6	229.9	8.6	130	0.3	142.1	47.1	1152	6.93	285.9
HNS 05053	Nad 83-08V	347256	6744057	2.7	260.7	9.2	117	0.4	105	44.5	975	6.44	242.4
HNS 05054	Nad 83-08V	347162	6744087	2.5	187.7	6.4	122	0.2	81.3	54.3	1721	7.56	180.4
HNS 05055	Nad 83-08V	347071	6744140	3.1	190.8	3.3	97	0.1	98.6	51.3	995	6.89	113.9
HNS 05056	Nad 83-08V	346988	6744139	5.9	281.3	6.6	159	0.3	232.8	53.2	1027	6.85	169
HNS 05057	Nad 83-08V	347032	6744258	5.2	281.5	8.1	151	0.3	221.3	52.2	1070	6.93	169.9
HNS 05058	Nad 83-08V	347078	6744352	4.9	160.9	6.4	164	0.3	412.9	47.5	930	6.09	139
HNS 05059	Nad 83-08V	347118	6744447	1.4	180.7	1.9	84	0.2	98.2	38.8	832	6.02	222.1
HNS 05060	Nad 83-08V	347173	6744529	2.3	279.8	3.8	97	0.3	127.8	40.2	860	5.39	297.5
HNS 05061	Nad 83-08V	345974	6743365	5.4	145.7	19.7	213	0.5	46.6	29.4	958	6.77	28.4
HNS 05062	Nad 83-08V	346043	6743427	5.9	208.9	32.1	255	0.7	49.3	54.5	1476	8.7	38.7
HNS 05063	Nad 83-08V	346083	6743521	3.1	104.1	11	128	0.3	68.7	33.8	1163	5.35	17.6
HNS 05135	Nad 83-08V	346145	6743609	2.8	112.4	5.9	107	0.2	82.9	29.7	753	4.18	16.7
HNS 05136	Nad 83-08V	346160	6743633	4.9	113.1	7.4	128	0.4	70.5	24.3	754	4.68	21.7
HNS 05137	Nad 83-08V	346205	6743695	8.5	94.6	15.4	222	0.5	40.1	15	926	4.23	64.4
HNS 05138	Nad 83-08V	346251	6743777	12.4	101.7	12.6	304	0.4	45.8	13.1	463	5.43	41.3
HNS 05139	Nad 83-08V	346305	6743854	2.7	139.7	20.1	153	0.2	45.7	42.8	2682	4.81	26.5
HNS 05140	Nad 83-08V	346371	6743920	21	159.3	19	513	1.5	226.8	36.6	2549	5.61	43.3
HNS 05141	Nad 83-08V	346440	6743993	4.9	234.4	6.8	128	0.3	61.1	39.2	1269	5.3	223.7
HNS 05142	Nad 83-08V	346501	6744080	2.9	92.7	8.8	125	0.1	43.5	25.5	1113	4.3	51.5
HNS 05143	Nad 83-08V	346520	6744172	5.5	234.5	16.7	161	0.4	99	57.9	1212	6.5	75.5
HNS 05144	Nad 83-08V	346554	6744277	1.4	281.4	1.8	98	0.05	98	48.8	1088	7.39	136.8
HNS 05145	Nad 83-08V	346578	6744369	0.8	205.4	1.2	105	0.1	102.9	53.6	1252	6.78	116.9
HNS 05146	Nad 83-08V	346571	6744472	0.5	277.5	1.3	129	0.05	91.2	44.3	1230	6.3	350
HNS 05147	Nad 83-08V	346598	6744578	1.7	480.5	3.5	109	0.4	64.3	46	904	8	791.7
HNS 05148	Nad 83-08V	346632	6744667	0.4	90.8	1.2	24	0.05	1671	90.9	960	4.96	28.8
HNS 05149	Nad 83-08V	346667	6744781	0.2	15.1	0.4	23	0.05	2342	107.8	864	3.9	3.3

Sample ID	U	Au	Th	Sr	Cd	Sb	Bi	V	Ca	P	La	Cr	Mg	Ba	Ti	B	Al
HNS 05032	0.9	13.6	0.9	35	0.3	2.1	0.1	136	0.65	0.081	10	69	1.57	196	0.103	1	2.59
HNS 05033	0.9	13.3	0.7	43	0.3	2.3	0.1	126	1.1	0.095	9	60	1.44	270	0.077	2	2.35
HNS 05034	0.8	14.9	0.6	44	0.6	2.4	0.1	131	1.01	0.119	11	65	1.75	413	0.042	0.5	2.61
HNS 05035	0.4	30.2	0.6	45	0.6	1.2	0.05	177	1.93	0.09	4	118	3.12	206	0.266	2	3.21
HNS 05036	1.2	48.9	1.7	51	2.6	21.9	0.3	72	0.66	0.063	16	59	1.32	265	0.051	3	1.93
HNS 05037	0.6	10.9	0.7	32	0.5	2.5	0.05	158	1.47	0.081	7	129	3.6	149	0.28	2	3.45
HNS 05038	0.8	56.1	1.6	61	0.9	14.3	0.2	27	6.05	0.193	11	15	1.64	116	0.002	3	0.39
HNS 05039	0.8	25.8	0.7	48	0.2	3.3	0.2	136	1.17	0.073	9	94	1.62	189	0.085	3	2.3
HNS 05040	0.6	26.8	0.7	47	0.4	2.5	0.2	137	1.25	0.067	8	104	1.73	170	0.115	4	2.36
HNS 05041	0.4	32	0.9	34	0.2	1.2	0.05	145	0.89	0.045	9	111	1.81	123	0.181	2	2.87
HNS 05042	0.5	36.2	1	43	0.4	2	0.2	135	1.12	0.064	9	107	1.83	149	0.127	4	2.59
HNS 05043	0.3	21.7	0.6	77	0.3	1.5	0.1	230	3.58	0.05	6	146	3.59	79	0.117	4	3.9
HNS 05044	0.6	29	0.7	49	0.8	2.5	0.2	127	1.5	0.096	7	108	2.02	168	0.1	6	2.07
HNS 05045	0.4	21.3	0.5	48	0.5	1.9	0.3	109	1.73	0.084	6	103	1.84	134	0.098	5	1.8
HNS 05046	0.3	55.6	0.8	36	0.6	2.5	0.4	203	1	0.087	7	162	3.16	124	0.159	5	3.16
HNS 05047	0.4	32	0.8	63	0.5	2.4	0.5	150	1.7	0.102	6	143	3.39	180	0.15	19	2.54
HNS 05048	0.4	32.5	0.7	61	0.6	2.5	0.5	192	1.75	0.099	6	143	3.28	185	0.209	6	3.21
HNS 05049	0.3	12.4	0.8	188	0.1	1	0.4	127	2.02	0.137	7	133	4.08	413	0.153	5	3.41
HNS 05050	0.4	6.3	0.6	66	0.3	0.7	0.4	101	2.09	0.087	6	235	9.83	194	0.13	7	2.36
HNS 05051	0.5	20.2	0.5	53	0.6	4.2	0.4	156	2.12	0.086	6	144	2.84	194	0.12	6	2.39
HNS 05052	0.6	17	0.9	53	1.1	5.6	0.7	174	1.47	0.106	7	151	3.32	217	0.134	5	2.63
HNS 05053	0.4	44.3	0.7	63	0.7	5.2	0.9	174	2.04	0.101	7	138	3.01	224	0.126	5	2.69
HNS 05054	0.4	31.4	0.9	105	0.9	5.4	1.4	155	2.82	0.106	7	124	2.85	290	0.087	9	2.32
HNS 05055	0.3	14.9	0.5	154	0.4	1.2	0.2	125	2.08	0.073	4	124	4.11	179	0.145	3	3.48
HNS 05056	0.8	9.6	1.1	48	1.7	3.8	0.1	147	1.58	0.112	8	207	4.39	178	0.149	5	2.5
HNS 05057	0.9	12.1	1.3	44	1.4	4.1	0.1	148	1.37	0.116	8	151	3.7	200	0.15	6	2.38
HNS 05058	0.7	14.8	1.1	39	2.2	3.8	0.2	89	1.06	0.111	11	349	5.63	139	0.053	22	1.64
HNS 05059	0.2	35.3	0.3	35	0.3	2.3	0.05	168	1.81	0.051	4	173	2.09	316	0.087	6	2.83
HNS 05060	0.3	69.4	0.4	32	0.6	2.4	0.2	134	1.26	0.079	6	137	2.34	215	0.071	8	2
HNS 05061	0.7	0.7	2.5	112	1.6	3.2	0.4	44	0.36	0.109	17	23	0.65	161	0.034	4	1.36
HNS 05062	0.6	5.3	2.8	35	2	2.1	0.5	60	0.67	0.087	32	34	1.04	258	0.006	4	2.24
HNS 05063	0.5	3.4	1.6	41	0.5	1.5	0.2	59	0.39	0.105	8	102	1.5	138	0.103	16	2.11
HNS 05135	0.5	2.5	1	35	0.7	1.5	0.1	60	0.43	0.07	6	152	1.86	119	0.09	5	2.1
HNS 05136	0.8	2.2	1.2	36	1.1	2.4	0.1	58	0.43	0.073	9	113	1.5	166	0.056	4	1.89
HNS 05137	1	2.7	2	45	1.8	5.6	0.2	35	0.18	0.053	16	15	0.55	210	0.015	2	1.19
HNS 05138	0.7	0.7	2.5	77	1.3	3.6	0.3	23	0.11	0.104	17	9	0.29	337	0.006	2	1.04
HNS 05139	0.6	1.6	4.6	33	0.6	1.5	0.4	32	0.54	0.104	27	17	0.97	133	0.02	4	2.22
HNS 05140	2	5	1.7	45	2.1	6.3	0.2	66	1.35	0.081	17	59	2.65	101	0.01	2	1.99
HNS 05141	0.8	96.3	1	22	0.8	5	0.05	111	0.66	0.074	9	58	1.67	177	0.083	2	2.33
HNS 05142	0.6	7	1.2	30	0.8	2.9	0.1	81	0.58	0.063	8	45	1.14	140	0.093	0.5	2.1
HNS 05143	0.6	3.9	2.3	32	1.1	4	0.2	98	1.34	0.101	17	47	1.77	155	0.077	3	2.48
HNS 05144	0.4	3.9	0.4	41	0.4	0.7	0.05	171	3.17	0.063	4	150	3.37	124	0.262	1	3.53
HNS 05145	0.2	6.1	0.3	87	0.2	1.3	0.05	168	5.12	0.056	6	123	1.99	159	0.018	6	2.66
HNS 05146	0.05	13.3	0.4	71	0.8	40.6	0.6	134	4.32	0.063	4	81	1.81	78	0.004	6	0.42
HNS 05147	0.1	200.5	0.3	19	0.9	1.9	0.1	208	1.43	0.064	4	125	2.23	114	0.212	3	2.35
HNS 05148	0.05	6.1	0.3	25	0.05	1	0.1	43	0.58	0.017	1	955	16.3	33	0.043	33	0.71
HNS 05149	0.05	1.2	0.1	8	0.05	0.05	0.05	25	0.28	0.006	0.5	1620	22.43	12	0.012	84	0.44

Sample ID	Na	K	W	Hg	Sc	Tl	S	Ga	Se	Method	Acme File
HNS 05032	0.012	0.04	0.05	0.04	9.2	0.05	0.05	7	1.3	1DX15	VAN07003022
HNS 05033	0.015	0.04	0.05	0.04	7.1	0.05	0.09	7	2.3	1DX15	VAN07003022
HNS 05034	0.01	0.05	0.05	0.05	8	0.05	0.1	8	2.9	1DX15	VAN07003022
HNS 05035	0.007	0.13	0.1	0.01	10.7	0.05	0.025	12	1.4	1DX15	VAN07003022
HNS 05036	0.01	0.14	0.2	0.12	8.9	0.05	0.05	6	1.7	1DX15	VAN07003022
HNS 05037	0.008	0.12	0.05	0.04	16	0.05	0.025	11	1.2	1DX15	VAN07003022
HNS 05038	0.013	0.11	0.2	0.16	4.9	0.4	0.17	1	2.7	1DX15	VAN07003022
HNS 05039	0.023	0.05	0.2	0.13	9.6	0.05	0.025	8	1.6	1DX15	VAN07003022
HNS 05040	0.031	0.07	0.2	0.07	9.1	0.05	0.08	8	1.6	1DX15	VAN07003022
HNS 05041	0.009	0.05	0.1	0.62	9.8	0.05	0.025	9	0.9	1DX15	VAN07003022
HNS 05042	0.022	0.07	0.2	1.59	10	0.05	0.025	9	1.3	1DX15	VAN07003022
HNS 05043	0.011	0.06	0.05	0.52	22.5	0.05	0.025	12	0.7	1DX15	VAN07003022
HNS 05044	0.027	0.16	0.3	0.09	9.3	0.05	0.08	7	1.6	1DX15	VAN07003022
HNS 05045	0.032	0.09	0.3	0.06	8	0.05	0.11	6	1.4	1DX15	VAN07003022
HNS 05046	0.032	0.17	0.2	0.06	17.3	0.1	0.025	11	1.1	1DX15	VAN07003022
HNS 05047	0.055	0.21	0.4	0.04	11	0.1	0.06	8	1.5	1DX15	VAN07003022
HNS 05048	0.072	0.31	0.5	0.04	13.2	0.1	0.025	11	1.4	1DX15	VAN07003022
HNS 05049	0.111	0.26	0.4	0.02	7.8	0.05	0.025	10	0.9	1DX15	VAN07003022
HNS 05050	0.031	0.22	0.2	0.03	7.6	0.05	0.025	8	0.7	1DX15	VAN07003022
HNS 05051	0.031	0.18	0.2	0.14	11.9	0.05	0.07	9	2.2	1DX15	VAN07003022
HNS 05052	0.046	0.21	0.2	0.12	13.5	0.05	0.06	9	2.3	1DX15	VAN07003022
HNS 05053	0.059	0.26	0.2	0.19	14.7	0.1	0.025	9	1.9	1DX15	VAN07003022
HNS 05054	0.083	0.25	0.3	0.32	17.2	0.2	0.05	7	0.9	1DX15	VAN07003022
HNS 05055	0.14	0.23	0.2	0.03	9.1	0.05	0.025	9	1.3	1DX15	VAN07003022
HNS 05056	0.046	0.11	0.3	0.09	10.7	0.05	0.15	9	5	1DX15	VAN07003022
HNS 05057	0.048	0.1	0.4	0.06	11.6	0.05	0.13	8	3.9	1DX15	VAN07003022
HNS 05058	0.017	0.09	0.4	0.09	8	0.05	0.15	5	4.8	1DX15	VAN07003022
HNS 05059	0.134	0.39	0.1	0.1	14.1	0.1	0.025	10	1.1	1DX15	VAN07003022
HNS 05060	0.047	0.32	0.3	0.06	10.4	0.1	0.12	8	2.2	1DX15	VAN07003022
HNS 05061	0.078	0.2	0.2	0.07	5.9	0.2	0.7	5	6.1	1DX15	VAN07003022
HNS 05062	0.012	0.11	0.2	0.05	5.8	0.05	0.56	6	5	1DX15	VAN07003022
HNS 05063	0.021	0.08	0.3	0.03	4.8	0.05	0.1	5	1.5	1DX15	VAN07003022
HNS 05135	0.019	0.05	0.2	0.03	5.1	0.05	0.08	4	2.2	1DX15	VAN07003022
HNS 05136	0.017	0.05	0.2	0.05	5.5	0.1	0.11	4	3.6	1DX15	VAN07003022
HNS 05137	0.015	0.09	0.2	0.23	3.3	0.2	0.18	4	5.6	1DX15	VAN07003022
HNS 05138	0.019	0.09	0.1	0.18	3.3	0.4	0.18	3	11.9	1DX15	VAN07003022
HNS 05139	0.017	0.09	0.1	0.06	3.9	0.05	0.05	6	0.9	1DX15	VAN07003022
HNS 05140	0.003	0.06	0.1	0.64	2.8	0.2	0.07	6	11.8	1DX15	VAN07003022
HNS 05141	0.01	0.05	0.2	0.07	7.8	0.05	0.025	6	1.8	1DX15	VAN07003022
HNS 05142	0.008	0.06	0.2	0.04	5.6	0.05	0.025	6	1.3	1DX15	VAN07003022
HNS 05143	0.007	0.1	0.2	0.11	8.5	0.05	0.08	8	3.4	1DX15	VAN07003022
HNS 05144	0.006	0.05	0.1	0.02	14.5	0.05	0.025	13	1.2	1DX15	VAN07003022
HNS 05145	0.025	0.1	0.05	0.09	24.8	0.05	0.025	9	1.3	1DX15	VAN07003022
HNS 05146	0.009	0.04	0.2	0.5	25.9	0.05	0.025	2	0.8	1DX15	VAN07003022
HNS 05147	0.024	0.07	0.8	0.08	14.4	0.05	0.025	12	1.7	1DX15	VAN07003022
HNS 05148	0.011	0.01	0.2	0.05	6.9	0.05	0.025	2	0.6	1DX15	VAN07003022
HNS 05149	0.002	0.005	0.05	0.005	5.9	0.05	0.025	1	0.6	1DX15	VAN07003022

Sample ID	UTM Zone	UTM Easting	UTM Northing	Mo	Cu	Pb	Zn	Ag	Ni	Co	Mn	Fe	As
HNS 05150	Nad 83-08V	346771	6744784	2	566.2	3.3	92	0.2	271.5	43.7	1352	5.91	46.3
HNS 05151	Nad 83-08V	346868	6744793	0.9	165	1.8	80	0.1	513.8	51	1095	5.68	35.5
HNS 05152	Nad 83-08V	346967	6744800	1.9	287.4	3.1	96	0.2	103.2	35.6	922	6.72	92.4
HNS 05153	Nad 83-08V	347067	6744803	1.2	312.6	2.3	110	0.1	79.8	36.9	1054	7.03	49
HNS 05154	Nad 83-08V	347172	6744789	1.1	1224	1.4	97	0.3	63.2	40.5	2786	7.01	19.6
HNS 05155	Nad 83-08V	347272	6744787	2.6	102.3	7.3	96	0.1	83.5	30	803	4.87	88.9
HNS 05156	Nad 83-08V	347369	6744767	2	232.7	5.7	82	0.2	76	36.4	990	6.35	341.1
HNS 05157	Nad 83-08V	347471	6744765	2.1	288.1	2.7	103	0.2	178.8	38.4	775	6.33	94.8
HNS 05158	Nad 83-08V	347572	6744748	2.7	225.1	5.8	101	0.2	114.7	34.3	743	5.44	198
HNS 05159	Nad 83-08V	347666	6744725	2.4	273	4.1	96	0.2	134.2	28.3	597	4.96	245.9
HNS 05160	Nad 83-08V	347781	6744736	1.6	372.3	2.6	93	0.2	449.3	59.6	822	7.4	365
HNS 05161	Nad 83-08V	347877	6744751	2.4	436.2	2	113	0.2	311.3	54.5	748	7.33	98.2
HNS 05165	Nad 83-08V	347473	6744764	2.3	289.1	2.9	96	0.2	181.8	39.2	775	6.45	92.9
HNS 23533	Nad 83-08V	346397	6743860	5.9	127	10.2	154	0.3	47.8	34.6	2411	4.97	226.6
HNS 23534	Nad 83-08V	346486	6743812	6.2	239.4	7.8	221	0.5	130	48	3710	7.19	59.4
HNS 23535	Nad 83-08V	346569	6743753	2.1	126.6	6.2	77	0.2	42.8	28.3	891	4.33	29.1
HNS 23536	Nad 83-08V	346655	6743701	2.2	227	6	122	0.3	61.2	40.1	1300	6.42	49.1
HNS 23537	Nad 83-08V	346716	6743621	2.1	245.4	6.3	99	0.2	66.6	51.9	1398	6.51	57.6
HNS 23538	Nad 83-08V	346774	6743539	2	264	6.2	92	0.2	56.7	36.4	1276	5.52	30.3
HNS 23539	Nad 83-08V	346804	6743443	103.9	299.3	3.5	107	0.7	73.2	69.3	2448	9.33	1918
HNS 23540	Nad 83-08V	346804	6743341	17.6	117.8	25.6	317	1.7	26.8	11.4	289	7.57	162.6
HNS 23541	Nad 83-08V	346836	6743247	2.4	132	25.8	122	0.4	44.8	39.8	1376	5.56	36.4
HNS 23542	Nad 83-08V	346859	6743150	2.4	95	15.7	119	0.3	46.7	33.3	963	4.8	26.6
HNS 23543	Nad 83-08V	346892	6743054	5.5	175.1	29.7	167	0.3	75.6	77.5	1541	5.5	86.8
HNS 23544	Nad 83-08V	346957	6742978	18	154.3	13.5	385	0.5	59.7	26.6	897	7.72	48.2
HNS 23545	Nad 83-08V	347041	6742919	9.9	79.8	11.5	172	0.3	45.3	19.1	623	4.92	45.1
HNS 23546	Nad 83-08V	347129	6742873	4.9	122.4	18.6	228	0.3	53.5	33.6	1514	5.24	53
HNS 23547	Nad 83-08V	347228	6742846	3.5	131.4	24.7	151	0.2	69.9	73.6	2875	7.17	38.2
HNS 23548	Nad 83-08V	347316	6742797	13.1	104.9	20.9	246	0.6	61.6	23	466	6.03	52.2
HNS 23549	Nad 83-08V	347406	6742755	1.9	249.3	4.3	121	0.3	84.6	54.3	1740	7.55	41.7
HNS 23550	Nad 83-08V	347483	6742692	3.3	268.2	8.2	140	0.3	70.6	44.1	1043	5.37	33.2
HNS 23551	Nad 83-08V	347564	6742643	5	532.5	2.5	90	0.4	63.5	55.5	1211	8.73	61.6
HNS 23552	Nad 83-08V	347654	6742696	3.3	151.5	10	128	0.2	60.3	32.9	1112	4.9	32.5
HNS 23553	Nad 83-08V	347749	6742748	2.1	198.2	35.7	132	0.2	72.7	34.7	1663	5.11	66
HNS 23554	Nad 83-08V	347841	6742784	4.8	135.2	9.5	164	0.3	55.8	29	1128	4.3	65.2
HNS 23555	Nad 83-08V	347942	6742831	3.1	93.6	8.3	119	0.1	43.6	25.5	859	4	44.1
HNS 23556	Nad 83-08V	348044	6742854	1.6	199	6.4	90	0.05	68.4	26.2	748	4.41	24.7
HNS 23557	Nad 83-08V	348142	6742896	1.3	703.1	7	112	0.2	108.4	36	984	5.93	21.9
HNS 23558	Nad 83-08V	348222	6742996	0.4	303.6	0.6	45	0.05	90.1	27.7	651	2.95	4.1
HNS 23559	Nad 83-08V	348287	6743077	0.6	310.1	2.7	55	0.05	94.2	27.2	738	3.42	12.3
HNS 23560	Nad 83-08V	348369	6743161	0.3	181	2.3	52	0.05	131.1	28.7	554	3.14	11.5
HNS 23575	Nad 83-08V	348289	6743073	0.5	291.1	2.5	52	0.05	90.1	26.1	752	3.23	11

Sample ID	U	Au	Th	Sr	Cd	Sb	Bi	V	Ca	P	La	Cr	Mg	Ba	Ti	B	Al
HNS 05150	0.3	14.1	0.7	26	0.6	2.3	0.05	135	0.76	0.076	7	230	3.23	125	0.14	9	2.19
HNS 05151	0.1	11.3	0.4	15	0.2	0.9	0.05	144	0.55	0.058	3	414	6.06	123	0.193	9	2.67
HNS 05152	0.3	32.4	0.5	27	0.2	5.1	0.05	141	0.81	0.055	6	129	2.03	136	0.081	5	2.3
HNS 05153	0.3	23.9	0.4	24	0.1	2.6	0.05	147	0.77	0.047	6	115	1.81	181	0.038	6	2.39
HNS 05154	0.2	65.2	0.3	27	0.7	1.2	0.05	212	1.19	0.045	8	133	2.05	102	0.115	2	2.57
HNS 05155	0.6	7	1	39	0.3	2.2	0.2	91	0.78	0.051	7	104	1.61	143	0.078	2	1.94
HNS 05156	0.4	56.2	1.1	24	0.05	3.1	0.2	153	0.56	0.028	7	111	1.75	176	0.085	2	2.48
HNS 05157	0.3	16.6	0.6	41	0.3	1.9	0.2	178	1.29	0.054	5	125	2.64	132	0.242	5	2.21
HNS 05158	0.5	23	0.8	36	0.1	2.2	0.2	119	0.91	0.066	7	132	2	205	0.09	3	2.22
HNS 05159	0.5	33	0.4	43	0.2	2.7	0.2	120	1.42	0.069	7	124	1.99	258	0.092	4	1.94
HNS 05160	0.2	72.2	0.5	24	0.3	2.3	0.1	173	0.9	0.032	3	174	4.65	185	0.222	10	2.58
HNS 05161	0.3	20.8	0.4	24	0.2	1.2	0.05	175	1.12	0.047	3	131	3.45	99	0.248	6	2.61
HNS 05165	0.3	16.6	0.6	40	0.3	1.9	0.2	165	1.33	0.056	5	121	2.73	139	0.233	5	2.45
HNS 23533	1.4	1.8	6.2	40	1.6	19	0.4	43	0.84	0.089	29	12	0.59	123	0.009	3	1.14
HNS 23534	0.8	5.8	0.7	44	1.2	11	0.1	179	3.41	0.149	12	56	3.04	174	0.04	2	2.54
HNS 23535	0.7	7.8	0.8	36	0.2	1.6	0.1	102	0.81	0.08	7	66	1.51	212	0.086	2	2.27
HNS 23536	0.6	9	1.2	24	0.6	1.9	0.1	162	0.83	0.083	7	69	2.21	151	0.179	2	3.05
HNS 23537	0.8	14.1	0.9	31	0.4	1.5	0.1	167	0.79	0.071	9	82	2.08	217	0.129	3	3.05
HNS 23538	0.7	14.1	1.2	33	0.4	1.2	0.05	133	0.79	0.051	9	79	1.84	212	0.157	3	3.01
HNS 23539	0.5	1061	0.2	218	0.5	9.9	0.05	220	4.53	0.059	4	63	2.69	514	0.003	4	2.19
HNS 23540	5.3	3.7	3.9	275	1.3	17.8	0.3	84	0.3	0.156	37	18	0.22	188	0.028	2	1.07
HNS 23541	0.8	5.8	2.5	62	0.3	1.8	0.4	52	0.52	0.085	14	28	1.06	205	0.122	3	2.53
HNS 23542	0.8	3.9	1	56	0.4	1.6	0.2	73	0.82	0.125	12	46	1.16	184	0.056	2	2.53
HNS 23543	0.8	7.2	2.6	40	0.6	2.5	0.2	68	0.82	0.143	11	38	1.14	329	0.11	4	2.11
HNS 23544	2.4	0.25	6.3	276	6.5	2.8	0.3	29	0.31	0.224	46	11	0.3	337	0.002	3	1.55
HNS 23545	1.6	2.1	2.7	51	1.6	3.8	0.2	40	0.3	0.123	12	27	0.56	217	0.055	2	1.14
HNS 23546	1.1	6.2	2.9	50	1.8	2.9	0.3	51	0.43	0.067	18	22	0.93	263	0.089	2	2.06
HNS 23547	1.2	3	4.9	121	0.6	4	0.2	34	1.14	0.127	43	25	0.83	370	0.004	3	1.84
HNS 23548	3.3	3.7	3.2	136	2.1	6.4	0.3	68	0.47	0.149	38	27	0.65	275	0.004	4	1.47
HNS 23549	0.4	5.5	0.9	24	0.4	0.8	0.05	225	1.18	0.057	6	159	3.04	198	0.231	3	3.97
HNS 23550	0.9	12.2	1.7	86	0.9	2.3	0.1	115	0.91	0.086	11	89	1.87	363	0.133	4	2.63
HNS 23551	0.3	22.5	0.5	11	0.4	0.6	0.05	271	0.99	0.031	4	84	3.33	152	0.258	2	3.96
HNS 23552	0.8	6.6	1.5	40	0.7	2.2	0.1	104	0.99	0.103	12	72	1.58	176	0.105	3	2.35
HNS 23553	0.2	39	2.4	15	0.1	1.3	0.5	66	0.26	0.059	23	35	2.51	159	0.003	2	2.58
HNS 23554	0.7	10.3	1	50	1.8	3	0.2	76	1.31	0.129	10	51	1.28	137	0.057	7	1.73
HNS 23555	0.7	7.5	1	40	0.4	1.8	0.1	81	0.81	0.086	9	68	1.19	136	0.068	3	1.81
HNS 23556	0.5	6.3	0.9	41	0.2	1.2	0.1	89	1.23	0.059	6	97	1.49	101	0.177	3	2.25
HNS 23557	0.6	23.6	1	41	0.3	1.2	0.1	115	1.05	0.058	7	149	1.96	85	0.288	2	2.86
HNS 23558	0.05	4.8	0.2	10	0.05	0.5	0.05	56	0.76	0.077	0.5	252	2.08	24	0.193	2	1.93
HNS 23559	0.2	11.2	0.6	21	0.1	0.7	0.05	72	1.1	0.063	3	244	1.96	57	0.169	3	2.34
HNS 23560	0.1	5.7	0.5	22	0.05	0.4	0.05	59	1.18	0.079	2	327	2.42	47	0.14	2	2.18
HNS 23575	0.1	8	0.5	20	0.1	0.6	0.05	72	1.06	0.06	3	234	1.85	57	0.161	3	2.2

Sample ID	Na	K	W	Hg	Sc	Tl	S	Ga	Se	Method	Acme File
HNS 05150	0.014	0.06	0.3	0.05	8.2	0.05	0.025	8	1.7	1DX15	VAN07003022
HNS 05151	0.017	0.06	0.3	0.04	8.2	0.05	0.025	10	0.8	1DX15	VAN07003022
HNS 05152	0.012	0.05	0.3	0.31	11.7	0.05	0.025	9	1.6	1DX15	VAN07003022
HNS 05153	0.012	0.08	0.2	0.33	15.5	0.05	0.025	9	1.3	1DX15	VAN07003022
HNS 05154	0.019	0.02	0.2	0.14	17.5	0.05	0.025	10	1.3	1DX15	VAN07003022
HNS 05155	0.02	0.06	0.3	0.05	5.6	0.05	0.025	7	1.7	1DX15	VAN07003022
HNS 05156	0.036	0.05	0.3	0.1	12.1	0.05	0.025	9	1.2	1DX15	VAN07003022
HNS 05157	0.056	0.05	1.2	0.04	10.7	0.05	0.05	11	1.6	1DX15	VAN07003022
HNS 05158	0.031	0.04	0.5	0.06	8.5	0.05	0.025	9	1.5	1DX15	VAN07003022
HNS 05159	0.037	0.05	1.1	0.14	8.3	0.05	0.06	8	2.4	1DX15	VAN07003022
HNS 05160	0.045	0.05	1.4	0.04	11.4	0.05	0.025	13	1	1DX15	VAN07003022
HNS 05161	0.064	0.04	1.1	0.03	10.4	0.05	0.025	13	1.5	1DX15	VAN07003022
HNS 05165	0.055	0.05	1.1	0.04	11	0.05	0.05	10	1.6	1DX15	VAN07003022
HNS 23533	0.048	0.12	0.2	0.18	4.8	0.2	0.18	4	4.8	1DX15	VAN07003022
HNS 23534	0.006	0.04	0.05	0.21	13.2	0.1	0.06	10	4.2	1DX15	VAN07003022
HNS 23535	0.019	0.04	0.1	0.03	5.3	0.05	0.1	6	1.4	1DX15	VAN07003022
HNS 23536	0.014	0.06	0.1	0.04	9.1	0.05	0.025	9	1.4	1DX15	VAN07003022
HNS 23537	0.012	0.04	0.1	0.03	13.5	0.05	0.06	9	1.4	1DX15	VAN07003022
HNS 23538	0.013	0.05	0.2	0.04	10.2	0.05	0.025	7	1.1	1DX15	VAN07003022
HNS 23539	0.012	0.06	0.05	0.27	27.5	0.6	0.18	9	2	1DX15	VAN07003022
HNS 23540	0.142	0.36	0.3	0.48	6.1	0.6	1.04	4	15	1DX15	VAN07003022
HNS 23541	0.021	0.08	0.05	0.09	5	0.05	0.08	6	0.8	1DX15	VAN07003022
HNS 23542	0.019	0.07	0.1	0.05	4.3	0.05	0.08	7	1.4	1DX15	VAN07003022
HNS 23543	0.019	0.09	0.2	0.03	6.7	0.05	0.025	6	1.5	1DX15	VAN07003022
HNS 23544	0.104	0.14	0.2	0.13	4.6	0.6	0.6	3	8.4	1DX15	VAN07003022
HNS 23545	0.028	0.07	0.2	0.07	4	0.2	0.12	3	4.2	1DX15	VAN07003022
HNS 23546	0.024	0.09	0.1	0.1	4.6	0.1	0.13	6	2.4	1DX15	VAN07003022
HNS 23547	0.017	0.08	0.1	0.22	6	0.1	0.25	5	1.9	1DX15	VAN07003022
HNS 23548	0.088	0.26	0.05	0.1	5.8	0.4	0.6	5	4.8	1DX15	VAN07003022
HNS 23549	0.012	0.07	0.1	0.04	24.5	0.05	0.025	12	0.6	1DX15	VAN07003022
HNS 23550	0.022	0.08	0.2	0.04	9.5	0.05	0.07	7	2	1DX15	VAN07003022
HNS 23551	0.006	0.02	0.1	0.05	17	0.05	0.025	13	0.8	1DX15	VAN07003022
HNS 23552	0.017	0.1	0.1	0.04	7.1	0.05	0.06	7	1.7	1DX15	VAN07003022
HNS 23553	0.005	0.08	0.05	0.07	4.7	0.05	0.025	8	0.9	1DX15	VAN07003022
HNS 23554	0.011	0.17	0.1	0.05	4.9	0.05	0.1	5	2.5	1DX15	VAN07003022
HNS 23555	0.014	0.09	0.1	0.04	4.9	0.05	0.025	5	1.8	1DX15	VAN07003022
HNS 23556	0.015	0.12	0.2	0.03	4.4	0.05	0.06	6	1.1	1DX15	VAN07003022
HNS 23557	0.013	0.05	0.1	0.05	5.3	0.05	0.025	8	1.2	1DX15	VAN07003022
HNS 23558	0.007	0.04	0.4	0.02	3.7	0.05	0.025	3	0.25	1DX15	VAN07003022
HNS 23559	0.009	0.06	0.2	0.02	5.2	0.05	0.025	5	0.25	1DX15	VAN07003022
HNS 23560	0.008	0.04	0.1	0.02	3.2	0.05	0.025	4	0.25	1DX15	VAN07003022
HNS 23575	0.009	0.06	0.2	0.02	5	0.05	0.025	4	0.25	1DX15	VAN07003022

Whitehorse Mining District

Grant #	RegType	Name	claim #	ClaimOwner	RecordingI	StakingDate	ClaimExpir	Status	NTS Map
YC60365	Quartz	HAINÉ	1	Shawn Ryan - 100%	5/9/2007	4/20/2007	5/9/2015	Active	115A13
YC60366	Quartz	HAINÉ	2	Shawn Ryan - 100%	5/9/2007	4/20/2007	5/9/2015	Active	115A13
YC60367	Quartz	HAINÉ	3	Shawn Ryan - 100%	5/9/2007	4/20/2007	5/9/2015	Active	115A13
YC60368	Quartz	HAINÉ	4	Shawn Ryan - 100%	5/9/2007	4/20/2007	5/9/2015	Active	115A13
YC60369	Quartz	HAINÉ	5	Shawn Ryan - 100%	5/9/2007	4/20/2007	5/9/2015	Active	115A13
YC60370	Quartz	HAINÉ	6	Shawn Ryan - 100%	5/9/2007	4/20/2007	5/9/2015	Active	115A13
YC60371	Quartz	HAINÉ	7	Shawn Ryan - 100%	5/9/2007	4/20/2007	5/9/2015	Active	115A13
YC60372	Quartz	HAINÉ	8	Shawn Ryan - 100%	5/9/2007	4/20/2007	5/9/2015	Active	115A13
YC60373	Quartz	HAINÉ	9	Shawn Ryan - 100%	5/9/2007	4/20/2007	5/9/2015	Active	115A13
YC60374	Quartz	HAINÉ	10	Shawn Ryan - 100%	5/9/2007	4/20/2007	5/9/2015	Active	115A13
YC60375	Quartz	HAINÉ	11	Shawn Ryan - 100%	5/9/2007	4/20/2007	5/9/2015	Active	115A13
YC60376	Quartz	HAINÉ	12	Shawn Ryan - 100%	5/9/2007	4/20/2007	5/9/2015	Active	115A13
YC60377	Quartz	HAINÉ	13	Shawn Ryan - 100%	5/9/2007	4/20/2007	5/9/2015	Active	115A13
YC60378	Quartz	HAINÉ	14	Shawn Ryan - 100%	5/9/2007	4/20/2007	5/9/2015	Active	115A13
YC60379	Quartz	HAINÉ	15	Shawn Ryan - 100%	5/9/2007	4/20/2007	5/9/2015	Active	115A13
YC60380	Quartz	HAINÉ	16	Shawn Ryan - 100%	5/9/2007	4/20/2007	5/9/2015	Active	115A13