

GEOCHEMICAL

REPORT

ROYAL 1- 12 CLAIMS

YC60328 – YC60339

NTS # 115 J \ 10

LAT: 62° 39 N

LONG: 138° 33 W

WHITEHORSE MINING DISTRICT

AUTHOR OF REPORT SHAWN RYAN

WORK PERFORMED JULY 18, 2008

DATE OF REPORT OCTOBER 19, 2008

TABLE OF CONTENT

1.0	Summary	p.3
2.0	INTRODUCTION	p.3
3.0	PROJECT LOCATION	p.3
4.0	ACCESS	p.3
5.0	GEOLOGY	p.3
5.1	REGIONAL GEOLOGY	p.3
6.0	WORK PERFORMED / METHODS	p.4
6.1	Soil Survey	p.4
7.0	INTERPRETATION	p.4
7.1	Soil Survey	p.4
8.0	RECOMMENDATION	p.4
9.0	REFERENCES CITED	p.4
10.0	Cost	p.5
11.0	Qualification	p.5
12.0	Claim Map	p.6
	Geology Map	Figure 1
	Gold Soil geochemistry map	Figure 2
	Arsenic Soil geochemistry map	Figure 3
	Bismuth Soil geochemistry map	Figure 4
	Assay Data / GPS Soil Location Data	Appendix

1.0 SUMMARY

The Royal Claims had three soil samplers (Chad Cote, Joe McCann and Isaac Fage) visit the property on July 18, 2007. The soil survey was following up on an anomalous gold silt sample taken by the GSC. The anomalous silt came from a small creek draining the western most Royal claims. A total of 96 soils were collected on the project with 20 soils taken off the claims. The results did not indicate any real soil anomalies in the area sample.

2.0 INTRODUCTION

The Royal Claims were staked to cover the headwaters of a small creek named Trombley Creek. The creek indicated a GSC silt sample of 300 ppb Au. A small soil survey was design to follow up on the high silt sample. No real soil anomalies were detected.

3.0 LOCATION

The Royal claims are located 15 kilometers south east of Casino deposit. ; It's in Whitehorse Mining Division, on NTS sheet # 115 J / 10 at the latitude 62°39'N and longitude 138°33'W.

4.0 ACCESS

The Royal claims can be reached via helicopter from Dawson City (160 kilometers north) or Carmacks (133 kilometers south east).

5.0 REGIONAL AND PROPERTY GEOLOGY

5.1 REGIONAL GEOLOGY

The Yukon geology map indicates the Royal Claims are covering one main rock unit (mKdW). A mid- cretaceous , grey, medium to coarse grained, generally equigranular granitic rocks of hornblende diorite, biotite-hornblende quartz diorite and mesocratic, often strongly magnetic, hypersthene-hornblende diorite, quartz diorite and gabbro (**Whitehorse Suite, Coast Intrusions**)

6.0 WORK PERFORMED / METHODS

6.1 Soil Survey

The Royal Claims had 1 man days of soil work on the claims collecting 20 soils.

All soil sample where taken with one meter soil probes and sometime with a prospector pick. We carried both on rocky talus slope. Soil sample location where marked on the ground with orange flagging and recorded in Garmin GPS. About 400-500 grams of soil was collected and place in well mark kraft soil bags.

All sample where brought out to Dawson and air dried repacked in rice bags and sent to Acme Labs in Vancouver. Sample where process with Aqua Regia ICP-MS for 36 elements.

The GPS where downloaded every night and store in a personal computer.

7.0 INTERPRETATION

7.1 Soil Survey

The soil survey indicated a very low geochemical response. Not much could be interpreted from these results other than there is low level gold, arsenic and bismuth anomalies coming from the area.

8.0 RECOMMENDATION

The regional soil work did not indicated any real high soil anomalies but I would recommend more soils over Prospector International anomalous gold soil anomaly as indicated in assessment report number 094213 work.

9.0 REFERENCES CITED

Prospector International Resources Inc, 2000. Assessment Report # 094062 by Bart J. Jaworski , Brian Meyer.

Prospector International Resources Inc, 2001. Assessment Report # 094213 by Bart J. Jaworski , Marcus Vanwermeskerken .

10.0 COST

Wage 1 man days @ \$330.00 per day	\$330.00
Assay Cost 20 soil @ \$20.00 per sample	\$400.00
Helicopter Cost 1.2 hour @ \$1,250.00 per hour	\$1,437.00
Report writing	\$400.00
Total	\$2,567.00

11.0 QUALIFICATION

I Shawn Ryan located in Dawson City, Yukon work as a professional prospector. I run a small exploration company located in Dawson City.

I have worked in the exploration business for the last 25 years. I worked the first 12 years as a contractor working on numerous projects in the NWT, Ontario, Quebec and the Yukon. I have worked the last 12 years as a local prospector for myself.

I have overseen the entire Royal Soil Survey.

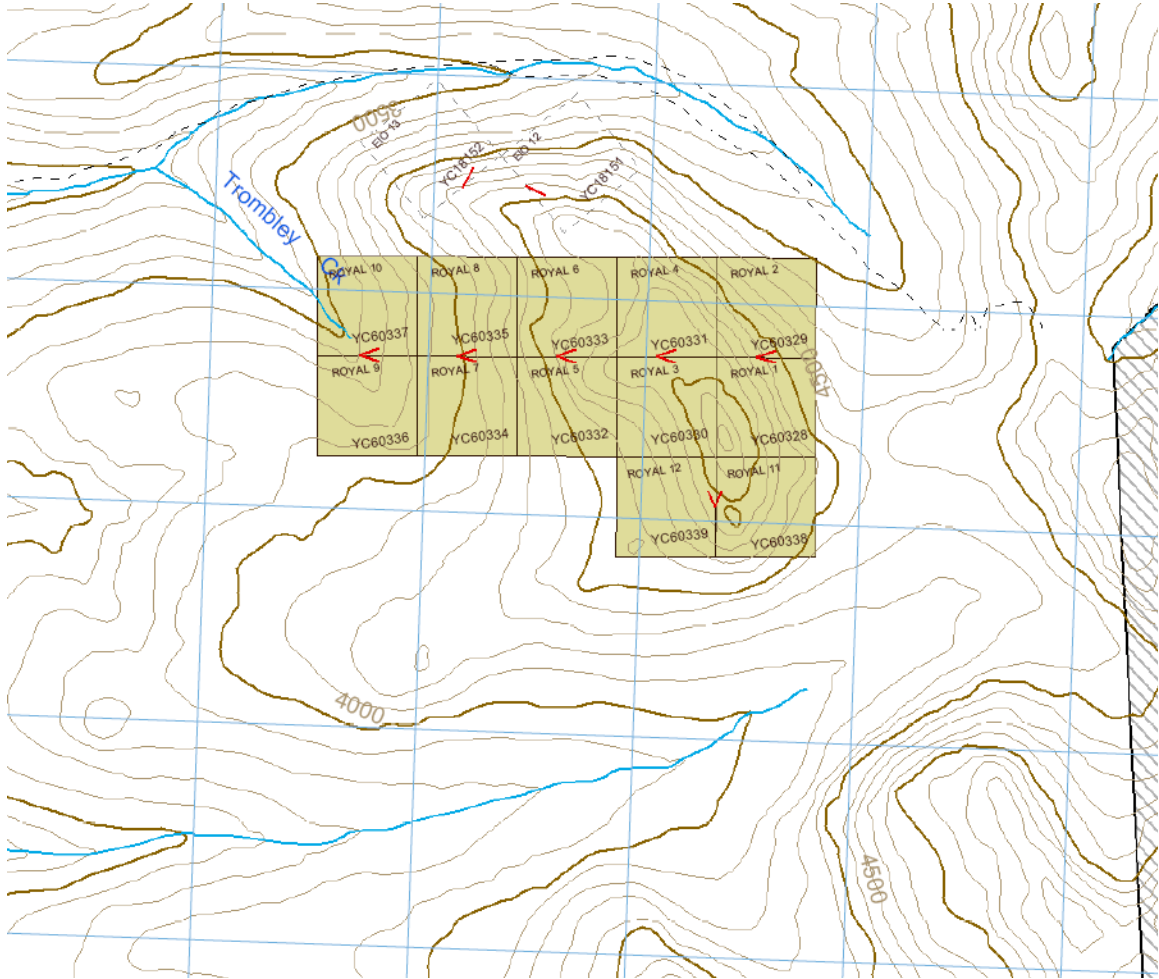
I own 100% of the Royal claims.

Dated this 19 of October 2008 in Dawson City, Yukon.

Respectfully submitted

Shawn Ryan

Claim Map



NTS 115 J / 10

Royal / Flush Claims

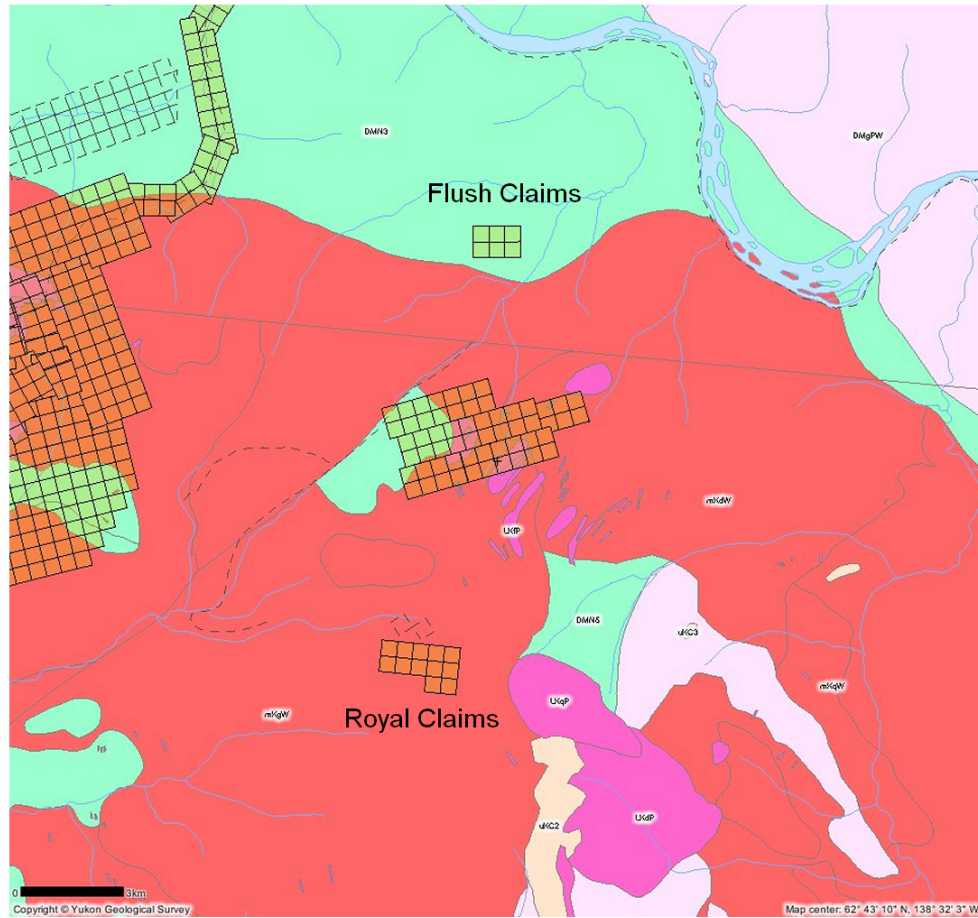


Figure 1

Yukon Geology Map

Yukon Geology Description

UPPER CRETACEOUS



uKC: CARMACKS

a volcanic succession dominated by basic volcanic strata (1), but including felsic volcanic rocks dominantly (?) at the base of the succession (2) and locally, basal clastic strata (3) (70 ma approx)

2. acid vitric crystal tuff, lapilli tuff and welded tuff including feeder plugs and necks; felsic volcanic flow rocks and quartz feldspar porphyries; green and purple massive tuff-breccia with feldspar phyric fragments (**Carmacks Gp., Donjek Volcanics, some rocks formerly mapped as Mt. Nansen Gp.; the felsic part of the Carmacks Gp. is difficult to distinguish from similar Tertiary and mid-Cretaceous (Mt. Nansen) felsic volcanic strata**)

LATE CRETACEOUS TO TERTIARY



LKP: PROSPECTOR MOUNTAIN SUITE

grey, fine to coarse grained, massive, granitic rocks of felsic (q) intermediate (g) rarely mafic (d) composition and related felsic dykes (f)

- d. coarsely crystalline gabbro and diorite
- q. quartz monzonite, biotite quartz-rich granite; porphyritic alaskite and granite with plagioclase and quartz-eye phenocrysts; biotite and hornblende quartz monzodiorite, granite, and leucocratic granodiorite with local alkali feldspar phenocrysts (**Prospector Mountain Suite, Carcross Pluton**)

MID-CRETACEOUS



mKW: WHITEHORSE SUITE

grey, medium to coarse grained, generally equigranular granitic rocks of felsic (q), intermediate (g), locally mafic (d) and rarely syenitic (y) composition

- d. hornblende diorite, biotite-hornblende quartz diorite and mesocratic, often strongly magnetic, hypersthene-hornblende diorite, quartz diorite and gabbro (**Whitehorse Suite, Coast Intrusions**)

LATE DEVONIAN TO MISSISSIPPIAN

DMPW

DMPW: PELLY GNEISS SUITE - SOUTHWEST

variably deformed granitic rocks of predominantly felsic (q) to intermediate composition (g) southwest of Tintina Fault

- g. foliated medium grained, homogeneous biotite granite gneiss to biotite or hornblende granodiorite gneiss; massive to strongly foliated dioritic to granodioritic gneiss; includes interfoliated amphibolite, quartz-mica schist and phyllite (**Selwyn Gneiss, Pelly Gneiss, N. Fiftymile Batholith, Moose Creek Orthogneiss**)

DEVONIAN, MISSISSIPPIAN AND(?) OLDER

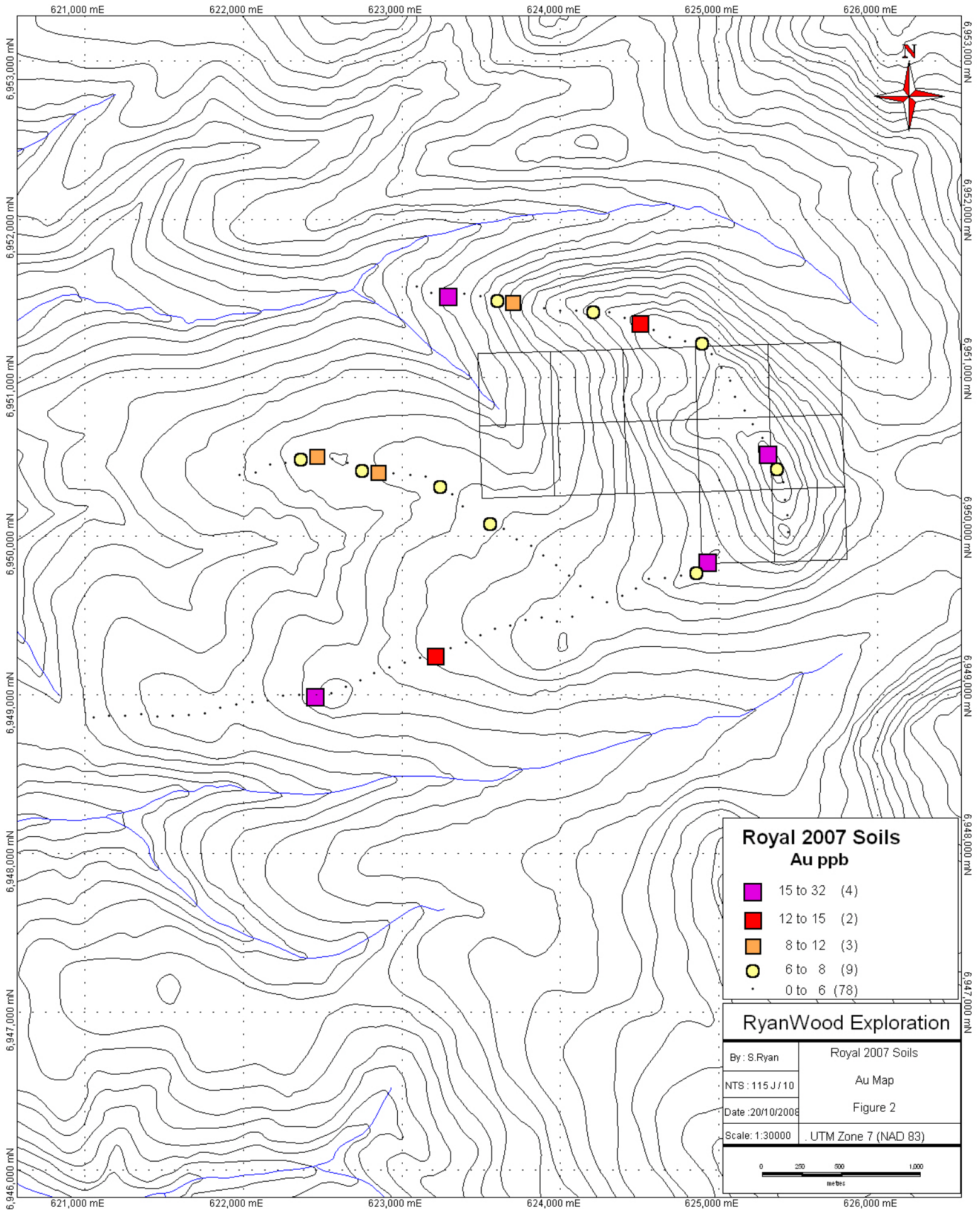
DMN

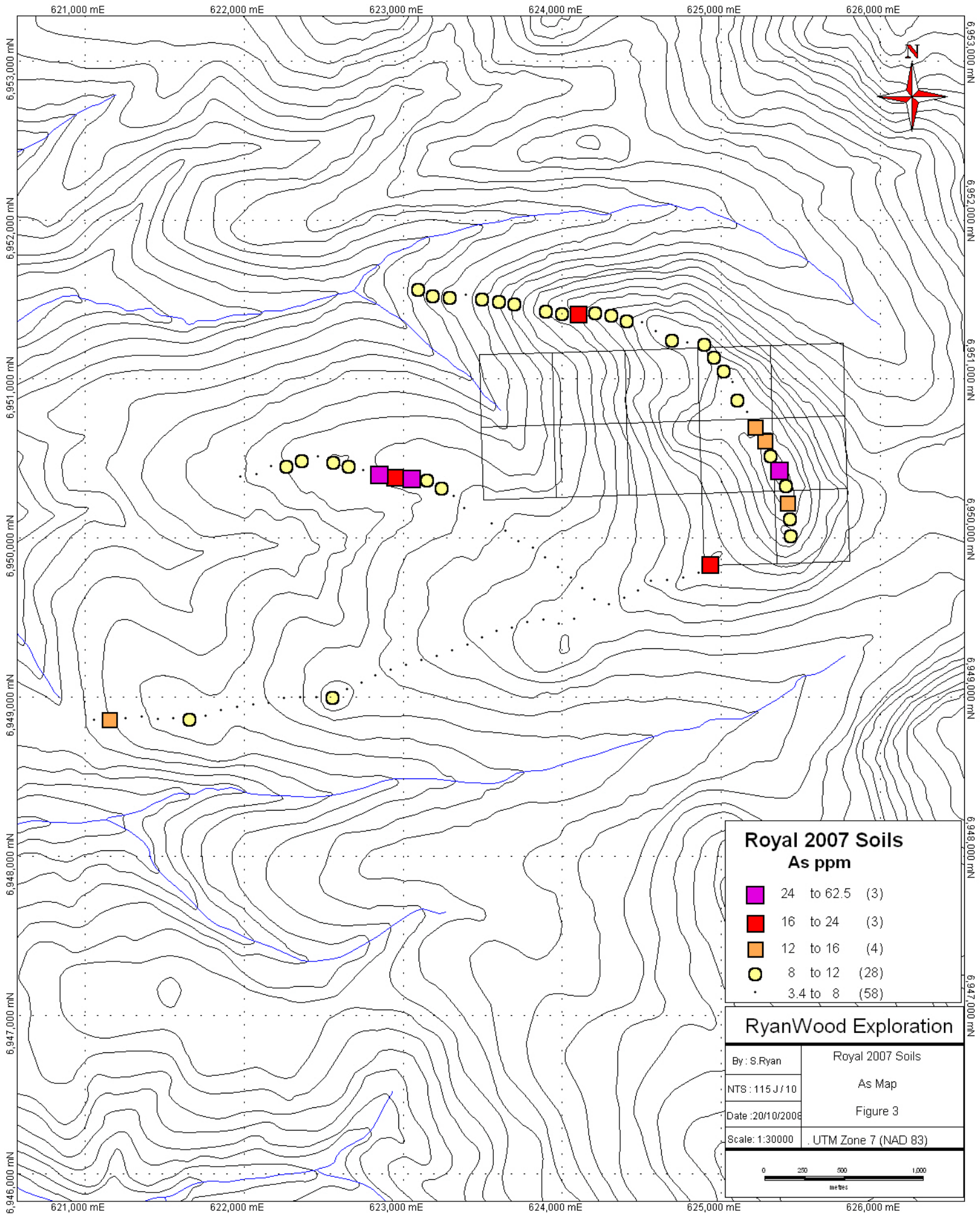
DMN: NASINA

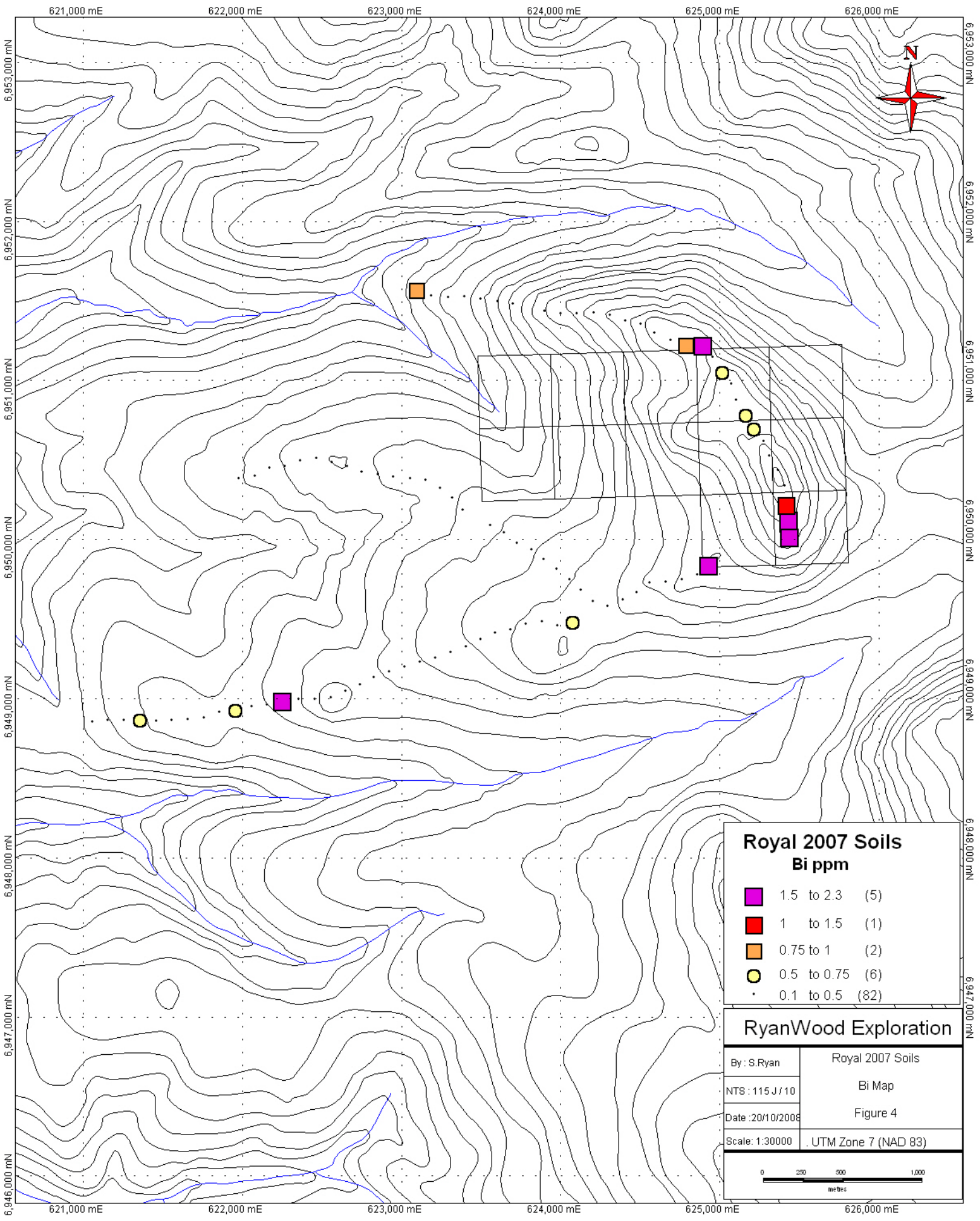
graphitic quartzite and muscovite quartz-rich schist (1), (3)-(5), and(?) (6) with interspersed marble (2) and probable correlative successions (7) - (9)

3. quartzite, micaceous quartzite, quartz muscovite (+/-chlorite; +/- feldspar augen) schist, and minor metaconglomerate and metagrit as in (1), but may locally include significant Nisling Assemblage
5. black-weathering, massive, dark grey to black strongly graphitic quartzite with lesser grey micaceous quartzite and quartz mica schist; commonly shows alternating light and dark grey colour lamination (**Nasina quartzite**)

DMN2





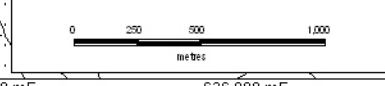


Royal 2007 Soils
Bi ppm

■	1.5 to 2.3	(5)
■	1 to 1.5	(1)
■	0.75 to 1	(2)
●	0.5 to 0.75	(6)
•	0.1 to 0.5	(82)

RyanWood Exploration

By : S.Ryan	Royal 2007 Soils
NTS : 115 J / 10	Bi Map
Date : 20/10/2008	Figure 4
Scale : 1:30000	UTM Zone 7 (NAD 83)



SAMPLES	UTM_	Easting	Northing	Mo	Cu	Pb	Zn	Ag	Ni	Co	Mn	Fe	As
CFR 18478	Nad 83-07V	622467	6950507	0.5	24.5	7.8	60	0	24.9	10.9	431	3.21	6.2
CFR 18479	Nad 83-07V	622367	6950495	0.6	21.6	9.8	65	0.1	20.4	11.6	674	3.43	8.5
CFR 18480	Nad 83-07V	622272	6950458	0.6	20.2	16.5	82	0	20.6	11.2	584	3.44	10.8
CFR 18481	Nad 83-07V	622174	6950447	0.5	20.3	17	70	0.1	20.3	9.9	325	3.24	6.6
CFR 18482	Nad 83-07V	622083	6950398	0.5	19.3	11.6	70	0	19.7	10	388	3.34	6.6
CFR 18483	Nad 83-07V	621982	6950381	0.5	20.7	10.4	68	0	21	11.4	556	3.43	6.2
CFR 19690	Nad 83-07V	623503	6951512	1.5	22.9	13.5	44	0.2	16.8	10.7	522	2.77	9
CFR 19691	Nad 83-07V	623397	6951523	0.8	18.3	8.6	38	0.2	14	5	132	1.77	4
CFR 19692	Nad 83-07V	623295	6951520	1.2	13.7	11.5	46	0	20.9	9.9	286	3.73	11.4
CFR 19693	Nad 83-07V	623192	6951530	1.5	15.5	10.8	42	0	18.6	8.9	268	2.92	9.6
CFR 19694	Nad 83-07V	623099	6951569	0.9	20.3	11.3	54	0	16.6	9.9	430	3.07	11.5
CFR 19709	Nad 83-07V	625438	6950126	4.2	20.5	12.2	55	0	23	12.2	442	3.52	11.3
CFR 19710	Nad 83-07V	625423	6950226	1.9	26	10.5	54	0	28.4	14.5	427	2.96	14.7
CFR 19711	Nad 83-07V	625412	6950338	1.4	18.6	10.4	52	0	22.5	9.3	394	2.82	8.6
CFR 19712	Nad 83-07V	625373	6950432	1.7	28.5	31.3	55	0.4	21.8	9.6	296	2.74	24.6
CFR 19713	Nad 83-07V	625313	6950525	1	20.3	10.1	52	0	25.7	11.3	331	3.39	8.8
CFR 19714	Nad 83-07V	625279	6950616	0.9	25.5	20.9	59	0	22.1	13.8	508	3.05	15.4
CFR 19750	Nad 83-07V	625441	6950019	0.8	24.8	10	53	0	27.2	15.9	373	3.07	8.4
CFR 19887	Nad 83-07V	623904	6951436	0.8	18.2	8.3	52	0	21.6	9.8	486	2.5	9.4
CFR 19888	Nad 83-07V	623705	6951480	0.9	18.7	9.8	55	0.1	19.5	9.8	441	2.64	8.7
CFR 19889	Nad 83-07V	623605	6951496	1.2	16.5	11.1	52	0.1	18.4	9.2	421	2.88	8.9
CFR 24085	Nad 83-07V	624509	6951353	0.8	24.3	7.3	60	0	27.8	13.3	593	2.92	7.3
CFR 24086	Nad 83-07V	624591	6951296	0.7	20.5	6.9	49	0	25.6	10.6	385	2.71	7.5
CFR 24087	Nad 83-07V	624411	6951375	0.6	17	7.9	51	0	25	12.2	399	2.91	8.2
CFR 24088	Nad 83-07V	624313	6951406	1.3	17.3	9.3	48	0.2	22.8	10.7	349	3.25	10.2
CFR 24089	Nad 83-07V	624211	6951422	0.6	19.6	11.8	52	0.1	27.7	12.3	752	2.59	8.9
CFR 24090	Nad 83-07V	624107	6951420	1.2	14.3	12.7	48	0.3	15.6	9.2	404	3.01	18.5
CFR 24091	Nad 83-07V	624006	6951420	0.7	18.3	10.4	51	0	22.6	10.8	475	2.74	8.8
CFR 18071	Nad 83-07V	625219	6950702	2.1	24.7	22.6	53	0.1	19.7	11.2	183	3.95	14.1
CFR 18072	Nad 83-07V	625165	6950789	0.5	24.8	12.1	47	0	19.3	9.4	223	2.64	7.6
CFR 18073	Nad 83-07V	625105	6950877	0.7	31.7	10.8	63	0	25.9	13.6	388	3.23	10.7
CFR 18074	Nad 83-07V	625078	6950975	0.6	18.7	9.8	57	0	22.6	14.1	557	2.46	7.3
CFR 18075	Nad 83-07V	625018	6951058	0.8	24	9.5	52	0	24.9	11.5	409	2.74	8.8
CFR 18076	Nad 83-07V	624959	6951145	0.9	25.3	9.2	55	0	26.2	13.2	464	2.6	9.7
CFR 18077	Nad 83-07V	624896	6951225	1.9	18.6	10.1	48	0	21.7	12.2	369	2.91	10.6
CFR 18078	Nad 83-07V	624792	6951227	1.9	26.9	10.7	52	0.1	18.9	9.5	283	2.8	7.5
CFR 18079	Nad 83-07V	624694	6951249	1.2	21.4	9.9	54	0	22.4	10.4	362	3.17	9.9
CFR 18314	Nad 83-07V	624081	6949487	0.5	21.3	11.6	65	0.1	26.6	9.3	384	2.92	7.5
CFR 18315	Nad 83-07V	623985	6949455	0.5	26.3	8.6	63	0	21.2	11.7	562	3.12	6.5
CFR 18316	Nad 83-07V	623887	6949481	0.3	20.5	9.9	58	0	18.7	11.3	603	2.83	5.7
CFR 18317	Nad 83-07V	623787	6949466	0.7	22	8.8	56	0	18.9	9.9	420	2.8	6.4
CFR 18318	Nad 83-07V	623690	6949433	0.4	26.1	9.1	57	0	19.8	9.4	301	3.23	5.8
CFR 18319	Nad 83-07V	623591	6949411	0.5	21.2	10	54	0	20.2	10.6	391	2.7	6
CFR 18320	Nad 83-07V	623499	6949369	1.2	14.5	8.7	46	0.2	13	6.5	347	2.72	5.2
CFR 18321	Nad 83-07V	623407	6949326	0.5	15.6	6.7	53	0	15.6	7.8	376	2.57	5.7
CFR 18322	Nad 83-07V	623313	6949291	0.3	19.2	7.8	45	0	17.3	9	341	2.91	6.6
CFR 18323	Nad 83-07V	623217	6949255	0.3	16.9	9.7	52	0	15.5	8.7	225	2.78	5.4
CFR 18324	Nad 83-07V	623120	6949227	0.6	21.9	8.3	56	0	19.7	9.9	516	2.92	6.4
CFR 18325	Nad 83-07V	623022	6949198	1	15.3	9	59	0.1	16.1	9.7	546	2.95	5.6
CFR 18326	Nad 83-07V	622926	6949168	0.9	17.1	8.5	46	0	17.4	9	321	2.82	6.7
CFR 18327	Nad 83-07V	622831	6949134	0.6	15.8	11.8	45	0	14.6	8.3	350	2.75	5
CFR 18328	Nad 83-07V	622743	6949087	0.5	22.1	7.9	58	0	20.1	10.2	452	3.01	5.6
CFR 18329	Nad 83-07V	622651	6949046	0.8	20	7	52	0	18.2	9.5	301	2.38	4.4
CFR 18330	Nad 83-07V	622559	6949005	0.8	18.3	8.9	46	0	26.7	12.7	340	3.57	9.8
CFR 18331	Nad 83-07V	622459	6948994	0.7	18.4	7.1	54	0	18.2	9.9	589	2.78	6.1
CFR 18332	Nad 83-07V	622358	6948994	0.4	22.8	8	58	0	17.8	8.5	318	2.66	5
CFR 18333	Nad 83-07V	622256	6948991	0.8	28.4	10.4	66	0.2	19	11.5	571	3.35	6.2
CFR 18334	Nad 83-07V	622161	6948959	0.7	20.4	8.5	53	0	21.2	9.4	350	2.91	7.8
CFR 18335	Nad 83-07V	622061	6948949	0.7	21.1	8.6	49	0	18.8	9.8	363	2.88	7.5
CFR 18336	Nad 83-07V	621960	6948933	0.5	9.4	10	81	0	8	10.3	557	4.24	3.6
CFR 18337	Nad 83-07V	621860	6948913	1.4	10.7	15.1	116	0	7.4	15.5	2247	5.07	3.6

SAMPLES	U	Au	Th	Sr	Cd	Sb	Bi	V	Ca	P	La	Cr	Mg	Ba	Ti	B
CFR 18478	1.7	8.8	6	29	0.1	0.4	0.2	82	0.45	0.07	17	41	0.74	215	0.132	2
CFR 18479	2	7.7	8	42	0.1	0.9	0.2	78	0.48	0.064	20	36	0.69	201	0.107	1
CFR 18480	1.7	4.1	8.1	27	0.2	1	0.2	80	0.49	0.074	16	36	0.72	206	0.124	1
CFR 18481	1.8	3	6.9	26	0.1	0.7	0.2	78	0.47	0.069	15	37	0.67	193	0.115	1
CFR 18482	1.5	1.9	7.3	25	0.1	0.6	0.2	83	0.43	0.066	15	37	0.73	171	0.138	1
CFR 18483	1.6	2.2	8	28	0.2	0.6	0.2	77	0.49	0.066	17	32	0.75	222	0.089	1
CFR 19690	2.5	0	1.4	19	0.2	0.5	0.2	70	0.17	0.071	10	27	0.35	100	0.064	1
CFR 19691	2.2	0	0.4	26	0.2	0.3	0.2	39	0.26	0.064	13	23	0.34	108	0.044	1
CFR 19692	0.7	17.7	4.7	12	0.2	0.7	0.2	91	0.13	0.03	9	31	0.44	81	0.115	1
CFR 19693	0.8	3.6	4.7	14	0.2	0.6	0.2	86	0.13	0.032	10	30	0.4	94	0.094	1
CFR 19694	2.4	2.4	8.1	24	0.2	0.6	0.8	70	0.27	0.068	14	24	0.59	131	0.099	1
CFR 19709	1.9	4.6	4.1	31	0.2	0.5	1.7	70	0.2	0.058	12	31	0.56	108	0.083	1
CFR 19710	1.5	5	4.4	36	0.2	0.6	1.2	70	0.22	0.038	10	29	0.63	90	0.104	1
CFR 19711	0.9	2.5	3.3	14	0.1	0.5	0.2	63	0.19	0.047	13	29	0.49	85	0.06	1
CFR 19712	1.7	7.8	2.5	19	0.3	0.5	0.3	64	0.27	0.066	12	31	0.52	128	0.072	1
CFR 19713	0.6	19.2	2.8	16	0.2	0.5	0.2	81	0.23	0.053	8	35	0.52	82	0.105	1
CFR 19714	2.5	3.6	6.7	20	0.2	0.6	0.3	50	0.24	0.08	22	21	0.38	150	0.027	1
CFR 19750	3.5	5.3	3.3	22	0.1	0.5	2	74	0.3	0.066	12	32	0.61	112	0.107	2
CFR 19887	1.1	5.2	3.8	24	0.2	0.5	0.2	63	0.36	0.065	11	29	0.53	94	0.082	1
CFR 19888	2	9.9	3.5	29	0.2	0.4	0.2	66	0.35	0.069	16	28	0.53	110	0.084	2
CFR 19889	1.6	6.7	4.8	23	0.2	0.5	0.2	74	0.27	0.058	13	27	0.54	86	0.099	2
CFR 24085	1.3	12.6	4.4	23	0.3	0.4	0.3	65	0.32	0.088	10	31	0.65	109	0.096	2
CFR 24086	0.9	5.1	3.5	16	0.1	0.4	0.1	62	0.21	0.039	9	29	0.59	94	0.091	1
CFR 24087	0.7	3.3	3.3	17	0.1	0.4	0.2	61	0.22	0.035	8	32	0.61	115	0.086	1
CFR 24088	1.2	5.4	4	16	0.2	0.6	0.2	71	0.14	0.033	9	30	0.5	72	0.087	1
CFR 24089	3	7.6	4.2	18	0.3	0.5	0.1	51	0.17	0.062	11	28	0.56	101	0.053	1
CFR 24090	2	4.7	4.2	55	0.3	1.2	0.3	67	0.26	0.05	11	24	0.43	85	0.061	1
CFR 24091	2.2	5.3	3	30	0.1	0.5	0.2	60	0.28	0.06	12	30	0.54	111	0.06	2
CFR 18071	8.3	4.2	13.6	22	0.2	0.8	0.5	73	0.3	0.087	29	32	0.51	183	0.048	1
CFR 18072	1.4	3.8	5.1	23	0.2	0.5	0.5	66	0.31	0.072	12	33	0.54	91	0.102	1
CFR 18073	1.9	3.6	4.4	30	0.1	0.4	0.3	78	0.4	0.079	15	44	0.61	138	0.114	1
CFR 18074	1	2.2	4	18	0.4	0.4	0.2	59	0.24	0.077	8	28	0.5	103	0.077	1
CFR 18075	1.3	3	3.9	18	0.2	0.4	0.5	62	0.2	0.057	8	26	0.5	103	0.084	1
CFR 18076	0.9	2.5	2.8	17	0.2	0.5	0.3	58	0.17	0.044	7	29	0.62	107	0.077	1
CFR 18077	0.9	6.6	2.7	25	0.3	0.6	1.7	63	0.18	0.041	8	28	0.5	100	0.068	1
CFR 18078	4.3	5.6	8.4	51	0.2	0.5	0.9	70	0.47	0.095	18	34	0.69	174	0.107	1
CFR 18079	1.1	3.1	2.7	14	0.2	0.7	0.2	74	0.12	0.043	8	30	0.46	74	0.089	1
CFR 18314	2.4	2.8	7.2	32	0.2	0.5	0.5	64	0.45	0.089	19	32	0.67	192	0.094	1
CFR 18315	4.8	0.9	7.7	34	0.1	0.4	0.4	69	0.51	0.083	20	36	0.59	172	0.111	1
CFR 18316	5.2	0.6	7.6	29	0.2	0.5	0.3	62	0.39	0.075	20	29	0.57	186	0.075	1
CFR 18317	5.7	2.3	6.9	36	0.2	0.5	0.2	63	0.51	0.084	20	31	0.59	195	0.089	1
CFR 18318	2.7	2.3	7	51	0.2	0.5	0.3	73	0.49	0.087	18	36	0.57	179	0.104	1
CFR 18319	1.9	1.4	4.2	24	0.2	0.4	0.2	60	0.27	0.064	14	31	0.56	161	0.07	1
CFR 18320	1.4	1.1	2.3	21	0.2	0.4	0.3	67	0.22	0.037	11	24	0.47	112	0.084	2
CFR 18321	1.6	0	4.9	22	0.1	0.4	0.2	58	0.28	0.058	13	24	0.57	93	0.095	1
CFR 18322	1.7	1.6	5.3	27	0.1	0.4	0.2	65	0.38	0.072	17	32	0.58	140	0.091	1
CFR 18323	1.8	12.1	7.6	25	0	0.4	0.2	63	0.34	0.057	16	30	0.59	151	0.074	1
CFR 18324	2.1	2.5	6	30	0.1	0.3	0.2	64	0.39	0.071	17	32	0.61	172	0.094	2
CFR 18325	1.2	1.8	3.4	28	0.2	0.3	0.3	71	0.32	0.056	10	28	0.57	136	0.091	1
CFR 18326	1	0.9	4.2	17	0.2	0.4	0.4	70	0.19	0.043	10	28	0.49	85	0.098	1
CFR 18327	1.7	0	5.5	20	0.1	0.3	0.2	57	0.25	0.06	18	24	0.46	147	0.069	1
CFR 18328	2.5	0	6.2	20	0.1	0.3	0.3	67	0.29	0.057	18	33	0.62	159	0.143	1
CFR 18329	5.2	1.4	4.6	20	0.1	0.3	0.2	55	0.32	0.082	18	28	0.53	114	0.099	2
CFR 18330	0.7	2	4	16	0.2	0.5	0.2	73	0.2	0.04	8	35	0.55	114	0.119	1
CFR 18331	2.2	15	5.7	22	0.1	0.3	0.4	65	0.36	0.082	17	27	0.57	187	0.117	1
CFR 18332	6.4	0	5.4	27	0.1	0.4	0.3	60	0.39	0.072	17	30	0.6	187	0.107	1
CFR 18333	4.5	2.4	8.9	33	0.1	0.4	1.6	76	0.51	0.082	26	37	0.68	208	0.131	1
CFR 18334	1	2.3	5.3	21	0.1	0.3	0.3	68	0.26	0.037	12	31	0.6	158	0.109	2
CFR 18335	1.4	2.7	4.8	19	0.1	0.4	0.3	66	0.23	0.062	18	30	0.58	158	0.098	1
CFR 18336	2.2	0	16.4	10	0.1	0.3	0.7	78	0.27	0.119	19	13	0.6	226	0.157	0
CFR 18337	4.1	0	26.9	13	0.3	1.5	0.2	80	0.39	0.181	36	9	0.44	465	0.089	0

SAMPLES	Al	Na	K	W	Hg	Sc	Tl	S	Ga	Se	Analysis__	Acme_file_#__
CFR 18478	2.45	0.015	0.09	0.1	0.02	6.4	0.2	0	7	0	GROUP 1DX - 15.0 GM	A705673
CFR 18479	2.53	0.013	0.1	0.2	0.04	7.1	0.2	0	8	0	GROUP 1DX - 15.0 GM	A705673
CFR 18480	2.3	0.018	0.12	0.3	0.02	5.8	0.3	0	7	0	GROUP 1DX - 15.0 GM	A705673
CFR 18481	2.25	0.013	0.08	0.2	0.04	5.6	0.2	0	7	0.5	GROUP 1DX - 15.0 GM	A705673
CFR 18482	2.29	0.014	0.1	0.2	0.02	5.6	0.2	0	7	0.5	GROUP 1DX - 15.0 GM	A705673
CFR 18483	2.65	0.011	0.12	0.2	0.02	5.8	0.2	0	8	0	GROUP 1DX - 15.0 GM	A705673
CFR 19690	1.85	0.012	0.05	0.2	0.06	2.6	0.2	0	7	0.6	GROUP 1DX - 15.0 GM	A705673
CFR 19691	1.38	0.014	0.04	0.1	0.05	1.6	0.1	0.06	5	0.5	GROUP 1DX - 15.0 GM	A705673
CFR 19692	2.34	0.008	0.05	0.2	0.02	3.4	0.1	0	9	0	GROUP 1DX - 15.0 GM	A705673
CFR 19693	2.34	0.009	0.04	0.2	0.04	3.6	0.2	0	8	0	GROUP 1DX - 15.0 GM	A705673
CFR 19694	2.13	0.011	0.1	0.4	0.02	3.5	0.2	0	7	0	GROUP 1DX - 15.0 GM	A705673
CFR 19709	2.4	0.012	0.06	0.2	0.05	3.4	0.2	0.06	7	0.6	GROUP 1DX - 15.0 GM	A705673
CFR 19710	2.28	0.016	0.06	0.3	0.03	3.9	0.2	0	6	0.6	GROUP 1DX - 15.0 GM	A705673
CFR 19711	1.88	0.01	0.05	0.1	0.04	3	0.1	0	6	0.5	GROUP 1DX - 15.0 GM	A705673
CFR 19712	2.12	0.014	0.06	0.2	0.03	3.8	0.1	0	5	0.6	GROUP 1DX - 15.0 GM	A705673
CFR 19713	2.53	0.012	0.04	0.2	0.04	3.9	0.1	0	7	0.6	GROUP 1DX - 15.0 GM	A705673
CFR 19714	1.68	0.01	0.07	0.3	0.03	2.5	0.2	0	4	0.5	GROUP 1DX - 15.0 GM	A705673
CFR 19750	2.4	0.014	0.07	0.4	0.03	4	0.2	0	7	0.5	GROUP 1DX - 15.0 GM	A705673
CFR 19887	1.7	0.015	0.06	0.2	0.02	3.1	0.1	0	5	0	GROUP 1DX - 15.0 GM	A705674
CFR 19888	1.7	0.016	0.05	0.3	0.02	3.3	0.1	0	6	0	GROUP 1DX - 15.0 GM	A705674
CFR 19889	1.84	0.012	0.05	0.2	0.03	3.2	0.2	0	7	0	GROUP 1DX - 15.0 GM	A705674
CFR 24085	2.2	0.015	0.06	0.3	0.03	3.5	0.2	0	5	0	GROUP 1DX - 15.0 GM	A705674
CFR 24086	2.08	0.012	0.06	0.2	0.02	3.2	0.1	0	5	0.5	GROUP 1DX - 15.0 GM	A705674
CFR 24087	2.44	0.012	0.06	0.1	0.03	3.7	0.1	0	6	0	GROUP 1DX - 15.0 GM	A705674
CFR 24088	2.21	0.008	0.05	0.1	0.04	2.9	0.1	0	7	0	GROUP 1DX - 15.0 GM	A705674
CFR 24089	2.48	0.011	0.06	0.1	0.04	2.9	0.1	0.06	5	0.8	GROUP 1DX - 15.0 GM	A705674
CFR 24090	1.79	0.009	0.06	0.2	0.05	2.7	0.1	0	7	0.5	GROUP 1DX - 15.0 GM	A705674
CFR 24091	1.9	0.011	0.05	0.1	0.02	3.1	0.1	0	6	0	GROUP 1DX - 15.0 GM	A705674
CFR 18071	2.01	0.011	0.07	0.3	0.04	6.2	0.4	0	7	0.6	GROUP 1DX - 15.0 GM	A705672
CFR 18072	2.52	0.012	0.07	0.2	0.02	4.4	0.2	0	6	0	GROUP 1DX - 15.0 GM	A705672
CFR 18073	2.35	0.012	0.08	0.2	0.03	5.6	0.2	0	6	0	GROUP 1DX - 15.0 GM	A705672
CFR 18074	1.79	0.01	0.05	1.2	0.02	2.8	0.2	0.06	4	0	GROUP 1DX - 15.0 GM	A705672
CFR 18075	1.65	0.01	0.05	0.4	0.03	2.6	0.1	0	5	0.5	GROUP 1DX - 15.0 GM	A705672
CFR 18076	2.22	0.011	0.05	0.2	0.03	3.5	0.1	0	5	0.5	GROUP 1DX - 15.0 GM	A705672
CFR 18077	2.02	0.009	0.04	0.4	0.03	2.8	0.1	0.07	6	0	GROUP 1DX - 15.0 GM	A705672
CFR 18078	1.78	0.015	0.14	0.5	0.02	5.9	0.3	0	6	0.5	GROUP 1DX - 15.0 GM	A705672
CFR 18079	2.16	0.008	0.04	0.2	0.04	3	0.1	0.07	7	0.7	GROUP 1DX - 15.0 GM	A705672
CFR 18314	2.62	0.016	0.11	0.2	0.03	6	0.2	0	7	0	GROUP 1DX - 15.0 GM	A705672
CFR 18315	1.81	0.016	0.09	0.3	0.02	7.1	0.2	0	6	0	GROUP 1DX - 15.0 GM	A705672
CFR 18316	1.77	0.012	0.06	0.2	0.03	5.5	0.2	0	6	0	GROUP 1DX - 15.0 GM	A705672
CFR 18317	1.77	0.021	0.05	0.2	0.03	5.6	0.2	0	6	0	GROUP 1DX - 15.0 GM	A705672
CFR 18318	1.7	0.018	0.07	0.2	0.02	6.3	0.2	0	6	0	GROUP 1DX - 15.0 GM	A705672
CFR 18319	2.11	0.009	0.07	0.1	0.02	4.1	0.2	0	6	0.5	GROUP 1DX - 15.0 GM	A705672
CFR 18320	1.6	0.01	0.06	0.2	0.03	3.1	0.1	0	7	0	GROUP 1DX - 15.0 GM	A705672
CFR 18321	1.61	0.01	0.07	0.2	0.01	3.5	0.2	0	6	0	GROUP 1DX - 15.0 GM	A705672
CFR 18322	1.84	0.012	0.05	0.2	0.02	4.7	0.1	0	5	0	GROUP 1DX - 15.0 GM	A705672
CFR 18323	1.97	0.01	0.07	0.2	0.01	4.8	0.2	0	6	0	GROUP 1DX - 15.0 GM	A705672
CFR 18324	2.05	0.011	0.08	0.2	0.02	5.2	0.2	0	7	0	GROUP 1DX - 15.0 GM	A705672
CFR 18325	2.08	0.011	0.08	0.2	0.02	3.5	0.2	0	8	0	GROUP 1DX - 15.0 GM	A705672
CFR 18326	2.01	0.008	0.06	0.2	0.02	3.4	0.1	0	7	0	GROUP 1DX - 15.0 GM	A705672
CFR 18327	1.72	0.008	0.09	0.2	0.01	3.7	0.2	0	6	0.5	GROUP 1DX - 15.0 GM	A705672
CFR 18328	2.22	0.01	0.12	0.2	0.02	5.4	0.3	0	7	0	GROUP 1DX - 15.0 GM	A705672
CFR 18329	1.81	0.011	0.06	0.2	0.02	4.1	0.2	0	5	0.5	GROUP 1DX - 15.0 GM	A705672
CFR 18330	2.39	0.01	0.07	0.2	0.04	4.2	0.1	0	7	0.5	GROUP 1DX - 15.0 GM	A705672
CFR 18331	1.7	0.013	0.09	0.2	0.02	4.1	0.2	0	6	0	GROUP 1DX - 15.0 GM	A705672
CFR 18332	1.81	0.013	0.06	0.2	0.03	5.2	0.2	0	6	0	GROUP 1DX - 15.0 GM	A705672
CFR 18333	2.17	0.015	0.09	0.5	0.02	7.8	0.2	0	7	0.5	GROUP 1DX - 15.0 GM	A705672
CFR 18334	2.22	0.011	0.07	0.2	0.02	4.7	0.1	0	7	0.5	GROUP 1DX - 15.0 GM	A705672
CFR 18335	2.27	0.01	0.06	0.2	0.03	5	0.2	0	7	0.6	GROUP 1DX - 15.0 GM	A705672
CFR 18336	2.12	0.009	0.36	0.7	0.01	4.5	0.5	0	9	0	GROUP 1DX - 15.0 GM	A705672
CFR 18337	1.7	0.009	0.39	1.2	0.01	12	0.5	0	6	0	GROUP 1DX - 15.0 GM	A705672

SAMPLES	UTM_	Easting	Northing	Mo	Cu	Pb	Zn	Ag	Ni	Co	Mn	Fe	As
CFR 18338	Nad 83-07V	621764	6948880	1.1	13.1	10.7	47	0	15.1	9.2	442	3.09	7.6
CFR 18339	Nad 83-07V	621662	6948868	0.8	25.9	8.6	56	0	24.3	12	451	3.18	8.1
CFR 18340	Nad 83-07V	621561	6948862	0.6	23.5	8.4	57	0	21	10.8	411	3.08	7
CFR 18341	Nad 83-07V	621461	6948858	1.1	14.1	10.4	58	0	18.8	11.4	551	3.24	6.6
CFR 18342	Nad 83-07V	621361	6948873	1.6	22.4	10.1	64	0	21.2	14	654	3.57	6.9
CFR 18343	Nad 83-07V	621260	6948863	1.1	23	9.2	66	0.1	20.3	12.2	792	3.25	5.5
CFR 18344	Nad 83-07V	621159	6948864	1.3	6.9	21	75	0	7.4	14.1	1322	3.83	12.4
CFR 18345	Nad 83-07V	621059	6948853	1.1	10.1	9	62	0	15.5	10.9	686	3.06	5.8
CFR 18451	Nad 83-07V	624934	6949845	0.7	44.2	15	53	0	20.9	20.5	640	3.2	20.6
CFR 18452	Nad 83-07V	624860	6949777	0.8	30.3	9.6	59	0	28.1	11.1	420	3.23	7.5
CFR 18453	Nad 83-07V	624765	6949747	1.1	22.6	9.1	63	0.1	20.3	9.7	528	2.78	6.2
CFR 18454	Nad 83-07V	624665	6949734	0.8	20.7	10	61	0	22.3	10.4	433	3.27	6.3
CFR 18455	Nad 83-07V	624564	6949727	0.8	21.4	10.3	51	0	22.6	11	484	3.15	6.7
CFR 18456	Nad 83-07V	624483	6949666	0.8	18.9	9.3	49	0	22.6	11.1	519	3.11	6.1
CFR 18457	Nad 83-07V	624393	6949619	0.7	22.7	10.2	65	0	27.4	11.9	560	3.51	7.4
CFR 18458	Nad 83-07V	624300	6949578	0.7	17.6	9.4	56	0	20.7	10	428	3.14	5.4
CFR 18459	Nad 83-07V	624205	6949612	0.4	25.9	9.3	65	0	23.4	11.9	420	3.31	4.6
CFR 18460	Nad 83-07V	624132	6949681	0.4	16.4	9.8	63	0	19.3	10.3	358	3.08	4.1
CFR 18461	Nad 83-07V	624058	6949749	0.6	16.1	10.1	65	0	19.7	9.3	261	3.45	5.1
CFR 18462	Nad 83-07V	623977	6949811	0.7	14	11.1	68	0.1	18.6	11.1	399	3.56	4.2
CFR 18463	Nad 83-07V	623897	6949874	0.8	14.4	19.4	80	0	14.8	13.3	1541	3.58	4.2
CFR 18464	Nad 83-07V	623819	6949937	0.8	13	11.9	72	0.1	17.2	14.7	591	3.84	4.9
CFR 18465	Nad 83-07V	623727	6949976	0.6	15	13.1	71	0	18.4	10.4	326	2.96	4.4
CFR 18466	Nad 83-07V	623648	6950039	0.8	15.4	12.3	87	0.1	18.6	11.8	495	3.44	4.7
CFR 18467	Nad 83-07V	623562	6950089	0.4	12.2	12.2	68	0	17.1	7.7	236	2.5	3.4
CFR 18468	Nad 83-07V	623388	6950184	0.5	22.5	10.2	71	0	23	10.8	551	3.09	6.3
CFR 18469	Nad 83-07V	623323	6950259	0.5	17.4	17.6	88	0	18.8	12.4	796	3.29	7
CFR 18470	Nad 83-07V	623246	6950323	0.6	24.9	12.7	77	0	25.2	13.1	717	3.59	11.1
CFR 18471	Nad 83-07V	623156	6950370	0.8	16.9	17.9	55	0	18.2	10.3	467	2.97	8.5
CFR 18472	Nad 83-07V	623056	6950383	0.4	27.8	12.8	75	0.3	25.3	11.4	665	3.25	24.9
CFR 18473	Nad 83-07V	622952	6950391	0.7	20.9	12.1	72	0.1	22	13.6	725	3.52	17.8
CFR 18474	Nad 83-07V	622854	6950405	0.7	19.4	31.3	138	0.6	23.3	11.3	675	3.35	62.5
CFR 18475	Nad 83-07V	622754	6950423	0.4	25.5	8.7	61	0	23	10.5	413	3.13	6.7
CFR 18476	Nad 83-07V	622661	6950460	0.9	20.8	9.8	58	0	26.9	13.5	567	3.61	11.5
CFR 18477	Nad 83-07V	622564	6950483	0.8	23.9	9.1	57	0.1	23.9	13.3	648	3.08	8.4

SAMPLES	U	Au	Th	Sr	Cd	Sb	Bi	V	Ca	P	La	Cr	Mg	Ba	Ti	B
CFR 18338	2.8	2.3	7.8	15	0.1	0.4	0.2	71	0.19	0.067	14	31	0.46	138	0.086	2
CFR 18339	1.9	0.7	6.8	21	0.1	0.4	0.3	68	0.25	0.061	17	36	0.58	194	0.1	1
CFR 18340	1.3	0.9	6.4	19	0.1	0.5	0.2	71	0.28	0.068	15	35	0.59	167	0.101	1
CFR 18341	1	1	6.6	21	0.1	0.5	0.3	65	0.28	0.046	13	29	0.61	224	0.073	1
CFR 18342	1.1	0	7.5	16	0.2	0.5	0.7	72	0.27	0.071	11	32	0.63	145	0.128	1
CFR 18343	3.3	1.9	7	41	0.1	0.4	0.3	66	0.56	0.078	24	32	0.62	365	0.107	1
CFR 18344	3.6	0	15.4	14	0.1	0.9	0.3	51	0.24	0.08	22	13	0.3	130	0.026	1
CFR 18345	1.2	1.7	9.2	19	0.1	0.4	0.4	63	0.28	0.063	17	26	0.64	201	0.085	1
CFR 18451	3.3	32	9.9	21	0.1	1.3	2.3	66	0.3	0.079	28	31	0.62	150	0.075	1
CFR 18452	3.7	6.3	6.5	21	0.1	0.5	0.4	79	0.31	0.086	18	38	0.69	116	0.125	1
CFR 18453	2.3	1.8	1.3	21	0.2	0.5	0.3	70	0.25	0.084	11	29	0.52	94	0.065	1
CFR 18454	1.8	0	5.6	19	0.1	0.5	0.2	78	0.29	0.062	12	35	0.72	83	0.104	1
CFR 18455	2.2	0.7	3.1	21	0.1	0.5	0.2	75	0.24	0.058	16	34	0.6	130	0.062	1
CFR 18456	2.5	0	6.5	22	0.2	0.4	0.2	78	0.33	0.058	14	33	0.58	115	0.099	1
CFR 18457	2	2.3	7.7	25	0.1	0.4	0.2	83	0.43	0.082	14	40	0.78	167	0.113	1
CFR 18458	1.6	0	5	18	0.1	0.3	0.2	74	0.28	0.068	14	32	0.62	103	0.103	1
CFR 18459	3.3	1.7	7.9	28	0.2	0.3	0.2	84	0.46	0.09	23	42	0.73	195	0.129	0
CFR 18460	1.4	4.1	5.8	19	0.1	0.3	0.2	76	0.32	0.086	14	35	0.67	137	0.103	1
CFR 18461	2.2	1.7	4.5	22	0.1	0.3	0.2	81	0.33	0.075	13	36	0.67	134	0.102	1
CFR 18462	3.5	1.4	5.3	27	0.1	0.4	0.2	76	0.35	0.089	16	36	0.67	201	0.08	1
CFR 18463	3.5	0	12.6	34	0.1	0.4	0.2	61	0.44	0.104	18	19	0.62	245	0.067	0
CFR 18464	8.2	1.1	6.3	42	0.1	0.3	0.3	84	0.45	0.086	14	36	0.67	212	0.082	1
CFR 18465	2.2	2.2	4.2	19	0.2	0.3	0.2	75	0.27	0.077	14	37	0.69	157	0.09	1
CFR 18466	2.4	2.2	4	30	0.1	0.3	0.3	77	0.39	0.091	16	36	0.66	218	0.078	0
CFR 18467	1.4	7.6	3.9	21	0.1	0.3	0.2	66	0.31	0.078	13	32	0.63	148	0.086	1
CFR 18468	2	2.7	8.3	35	0.2	0.4	0.2	70	0.44	0.093	19	36	0.65	188	0.113	1
CFR 18469	2.3	2.9	10.8	34	0.4	0.8	0.2	66	0.47	0.081	27	30	0.74	279	0.104	2
CFR 18470	1.8	7	8.6	31	0.3	0.8	0.3	80	0.41	0.071	22	37	0.75	309	0.119	1
CFR 18471	1.6	1.4	5.2	20	0.2	0.9	0.2	67	0.27	0.059	20	30	0.5	162	0.068	1
CFR 18472	2.6	5.1	8.6	46	0.3	5.5	0.1	68	0.48	0.062	28	34	0.69	302	0.1	1
CFR 18473	1.9	4.8	8.2	27	0.3	1.6	0.2	77	0.38	0.069	20	36	0.69	209	0.108	1
CFR 18474	1.8	8.8	7.2	30	0.7	5.6	0.2	73	0.41	0.082	16	32	0.68	153	0.105	1
CFR 18475	1.4	7.6	6.8	31	0.1	0.6	0.2	77	0.43	0.066	23	41	0.72	202	0.135	1
CFR 18476	1	2.1	10	21	0.1	0.8	0.2	80	0.18	0.04	14	38	0.7	160	0.087	2
CFR 18477	3.1	3.4	5.7	28	0.1	0.6	0.3	72	0.33	0.056	27	32	0.64	200	0.098	2

SAMPLES	Al	Na	K	W	Hg	Sc	Tl	S	Ga	Se	Analysis__	Acme_file_#__
CFR 18338	2.39	0.008	0.08	0.2	0.03	4.9	0.2	0	8	0.7	GROUP 1DX - 15.0 GM	A705672
CFR 18339	2.54	0.012	0.07	0.2	0.03	6	0.2	0	7	0.5	GROUP 1DX - 15.0 GM	A705672
CFR 18340	2.13	0.01	0.07	0.2	0.02	5.3	0.1	0	6	0.6	GROUP 1DX - 15.0 GM	A705672
CFR 18341	2.09	0.01	0.08	0.3	0.02	4.8	0.2	0	7	0	GROUP 1DX - 15.0 GM	A705672
CFR 18342	2.53	0.009	0.13	0.7	0.02	5.1	0.3	0	8	0	GROUP 1DX - 15.0 GM	A705672
CFR 18343	2.17	0.014	0.09	0.5	0.1	7.6	0.3	0	8	0	GROUP 1DX - 15.0 GM	A705672
CFR 18344	1.11	0.006	0.13	0.5	2.6	5.9	0.3	0	4	0.5	GROUP 1DX - 15.0 GM	A705672
CFR 18345	1.71	0.01	0.12	0.6	0.06	4.7	0.2	0	6	0	GROUP 1DX - 15.0 GM	A705672
CFR 18451	2.29	0.01	0.19	0.2	0.01	4.8	0.4	0	6	0	GROUP 1DX - 15.0 GM	A705672
CFR 18452	2.43	0.011	0.09	0.2	0.03	5	0.2	0	7	0.5	GROUP 1DX - 15.0 GM	A705672
CFR 18453	1.74	0.016	0.06	0.2	0.03	2.5	0.2	0.12	6	0.5	GROUP 1DX - 15.0 GM	A705672
CFR 18454	2.09	0.009	0.09	0.2	0.02	4	0.2	0.06	7	0	GROUP 1DX - 15.0 GM	A705672
CFR 18455	2.41	0.01	0.05	0.2	0.03	3.6	0.2	0.06	7	0.5	GROUP 1DX - 15.0 GM	A705672
CFR 18456	2.25	0.011	0.06	0.2	0.02	3.9	0.2	0	7	0.5	GROUP 1DX - 15.0 GM	A705672
CFR 18457	2.55	0.012	0.08	0.2	0.01	4.9	0.3	0	7	0	GROUP 1DX - 15.0 GM	A705672
CFR 18458	2.12	0.01	0.07	0.1	0.02	3.9	0.2	0.06	7	0.5	GROUP 1DX - 15.0 GM	A705672
CFR 18459	2.22	0.013	0.1	0.2	0.02	7.1	0.2	0	7	0	GROUP 1DX - 15.0 GM	A705672
CFR 18460	2.22	0.01	0.07	0.2	0.02	4	0.2	0	6	0	GROUP 1DX - 15.0 GM	A705672
CFR 18461	2.29	0.011	0.07	0.2	0.02	4.4	0.2	0	7	0	GROUP 1DX - 15.0 GM	A705672
CFR 18462	2.52	0.011	0.07	0.2	0.03	4.9	0.3	0	8	0.5	GROUP 1DX - 15.0 GM	A705672
CFR 18463	2.58	0.009	0.21	0.2	0.01	5	0.4	0	7	0.5	GROUP 1DX - 15.0 GM	A705672
CFR 18464	2.62	0.012	0.07	0.1	0.02	5.2	0.3	0	8	0	GROUP 1DX - 15.0 GM	A705672
CFR 18465	2.43	0.01	0.07	0.1	0.01	4.1	0.2	0	7	0	GROUP 1DX - 15.0 GM	A705672
CFR 18466	2.41	0.012	0.07	0.2	0.04	4.6	0.2	0.06	7	0	GROUP 1DX - 15.0 GM	A705672
CFR 18467	2.2	0.011	0.07	0.2	0.02	3.6	0.2	0	7	0	GROUP 1DX - 15.0 GM	A705672
CFR 18468	2.39	0.013	0.09	0.2	0.02	5.5	0.2	0	7	0	GROUP 1DX - 15.0 GM	A705672
CFR 18469	2.36	0.015	0.1	0.2	0.03	6.6	0.3	0	7	0	GROUP 1DX - 15.0 GM	A705672
CFR 18470	2.57	0.015	0.11	0.2	0.02	7.4	0.2	0	7	0.5	GROUP 1DX - 15.0 GM	A705672
CFR 18471	2.09	0.012	0.07	0.2	0.03	4.5	0.2	0	6	0.5	GROUP 1DX - 15.0 GM	A705672
CFR 18472	2.37	0.014	0.11	0.1	0.04	8.9	0.2	0	7	0.7	GROUP 1DX - 15.0 GM	A705672
CFR 18473	2.42	0.012	0.11	0.2	0.02	5.8	0.2	0	7	0.6	GROUP 1DX - 15.0 GM	A705672
CFR 18474	2.55	0.013	0.1	0.2	0.03	5.3	0.2	0	7	0.6	GROUP 1DX - 15.0 GM	A705672
CFR 18475	2.37	0.016	0.07	0.2	0.02	7.4	0.2	0	7	0.6	GROUP 1DX - 15.0 GM	A705672
CFR 18476	3.34	0.012	0.07	0.1	0.02	5.6	0.2	0	9	1	GROUP 1DX - 15.0 GM	A705672
CFR 18477	2.35	0.015	0.07	0.2	0.03	5.7	0.2	0	7	0	GROUP 1DX - 15.0 GM	A705672