

**GEOCHEMICAL**

**REPORT**

**VENUS 1- 4 CLAIMS**

**YC60068 – YC60071**

**NTS # 115 G \ 16**

**LAT: 61° 50 N**

**LONG: 138° 22 W**

**WHITEHORSE MINING DISTRICT**

**AUTHOR OF REPORT SHAWN RYAN**

**WORK PERFORMED SEPTEMBER 07, 2007**

**DATE OF REPORT OCTOBER 01, 2008**

## TABLE OF CONTENT

<b>1.0</b>	<b>Summary</b>	<b>p.3</b>
<b>2.0</b>	<b>INTRODUCTION</b>	<b>p.3</b>
<b>3.0</b>	<b>PROJECT LOCATION</b>	<b>p.3</b>
<b>4.0</b>	<b>ACCESS</b>	<b>p.3</b>
<b>5.0</b>	<b>GEOLOGY</b>	<b>p.3</b>
<b>5.1</b>	<b>REGIONAL GEOLOGY</b>	<b>p.3</b>
<b>6.0</b>	<b>WORK PERFORMED / METHODS</b>	<b>p.4</b>
<b>6.1</b>	<b>Soil Survey</b>	<b>p.4</b>
<b>7.0</b>	<b>INTERPRETATION</b>	<b>p.4</b>
<b>7.1</b>	<b>Soil Survey</b>	<b>p.4</b>
<b>8.0</b>	<b>RECOMMENDATION</b>	<b>p.4</b>
<b>9.0</b>	<b>REFERENCES CITED</b>	<b>p.4</b>
<b>10.0</b>	<b>Cost</b>	<b>p.5</b>
<b>11.0</b>	<b>Qualification</b>	<b>p.5</b>
	<b>Geology Map</b>	<b>Figure 1</b>
	<b>Claim / Sample Location Map</b>	<b>Figure 2</b>
	<b>Gold Soil geochemistry map</b>	<b>Figure 3</b>
	<b>Bismuth Soil geochemistry map</b>	<b>Figure 4</b>
	<b>Arsenic Soil geochemistry map</b>	<b>Figure 5</b>
	<b>Copper Soil geochemistry map</b>	<b>Figure 6</b>
	<b>Assay Data / GPS Soil Location Data</b>	<b>Appendix</b>

## **1.0 SUMMARY**

The Venus Claims had one soil sampler (Joe McCann) visit the property in early September to undertake a soil survey over a historical showing area. A total of 19 soils were collected and proved to be anomalous in gold, bismuth, arsenic and copper.

## **2.0 INTRODUCTION**

The Venus Claims are part of a regional soil survey undertaken by Ryanwood Exploration to re evaluated some of Canadian Occidental Petroleum old showing note in assessment report and discovered in 1972.

## **3.0 LOCATION**

The Venus claims are located 3.5 kilometers north of Dwarf Birch Creek.; it's in Whitehorse Mining Division, on NTS sheet # 115 G / 16 at the latitude 61°50'N and longitude 138°22'W.

## **4.0 ACCESS**

The Venus claims can be reached via helicopter from Carmacks or Haine Junctions.

## **5.0 REGIONAL AND PROPERTY GEOLOGY**

### **5.1 REGIONAL GEOLOGY**

The Yukon geology map indicates the Venus Claims are straddling two rock units. One known as (IES) Lower Eocene fesc volcanics and the second unit is a Devonian to Mississippian called the Nasina ; a quartzite, micaceous quartzite, quartz muscovite (+/- chlorite; +/- feldspar augen) schist, and minor metaconglomerate and metagrit

## **6.0 WORK PERFORMED / METHODS**

### **6.1 Soil Survey**

The Venus Claims had 1 man days of soil work collecting 19 soils.

All soil sample where taken with one meter soil probes and sometime with a prospector pick. We carried both on rocky talus slope. Soil sample location where marked on the ground with orange flagging and recorded in Garmin GPS. About 400-500 grams of soil was collected and place in well mark kraft soil bags.

All sample where brought out to Dawson and air dried repacked in rice bags and sent to Acme Labs in Vancouver. Sample where process with Aqua Regia ICP-MS for 36 elements.

The GPS where downloaded every night and store in a personal computer.

## **7.0 INTERPRETATION**

### **7.1 Soil Survey**

The soil survey indicated the eastern lines as being anomalous in gold, bismuth, and copper and slightly in arsenic. The western line was anomalous in mainly arsenic. I feel the geochem signatures are indicating potentially skarn mineralization.

## **8.0 RECOMMENDATION**

I would recommend more soils work and hand trenching on the anomalous gold soil anomalies.

## **9.0 REFERENCES CITED**

Canadian Occidental Petroleum Ltd, 1972. Assessment Report # 061101 by C.F. Gleeson and D.M.S.Bhatia.

## 10.0 COST

Wage 1 man days @ \$325.00 per day	\$325.00
Assay Cost 19 soil @ \$20.00 per sample	\$380.00
Helicopter Cost 1 hour @ \$1,250.00 per hour	\$1,250.00
Report writing	\$350.00
Total	\$2,300.00

## 11.0 QUALIFICATION

I Shawn Ryan located in Dawson City, Yukon work as a professional prospector. I run a small exploration company located in Dawson City.

I have worked in the exploration business for the last 25 years. I worked the first 12 years as a contractor working on numerous projects in the NWT, Ontario, Quebec and the Yukon. I have worked the last 12 years as a local prospector for myself.

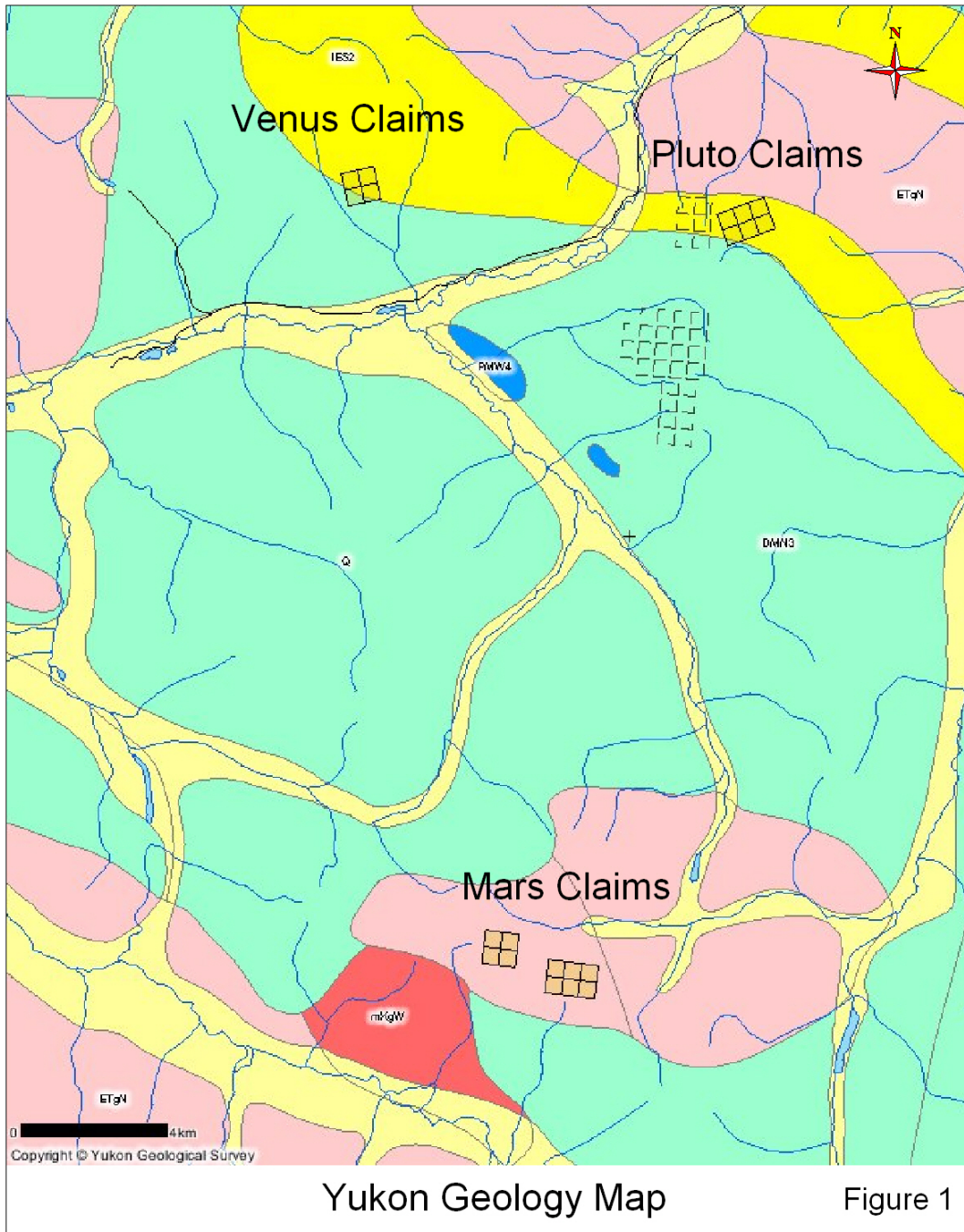
I have overseen the entire Venus Soil Survey and was party chief in charge.

I own 100% of the Venus claims.

Dated this 02 of October 2008 in Dawson City, Yukon.

Respectfully submitted

Shawn Ryan



## LOWER EOCENE



### IES: SKUKUM

various felsic volcanic dykes, plugs, domes, laccoliths and flows (1) and (2)

2. heterogeneous intermediate to felsic, hornblende-feldspar porphyritic tuff, flow breccia; volcanoclastic mudstone, sandstone and conglomerate; aphanitic to feldspar porphyritic dacite flows and dykes; flow-banded rhyolite and felsic dykes and sills (**Mount Creedon Volcanics, some strata formerly mapped as Mt. Nansen Gp.**)

## EARLY TERTIARY



### ETN: NISLING RANGE SUITE

medium to coarse grained equigranular to porphyritic rocks of intermediate composition (g), fine to coarse grained, equigranular and porphyritic granitic rocks of felsic composition (q) and felsic dyke rocks (f)

- q. leucocratic, biotite granite; miarolitic alaskite; saccharoidal textured, mafic-poor biotite granite; biotite-hornblende granite to leucocratic granodiorite with sparse, white, alkali feldspar phenocrysts; biotite quartz monzonite (**Nisling Range Suite, Nisling Range Alaskite, Coffee Creek Granite, Annie Ned Granite**)

## MID-CRETACEOUS

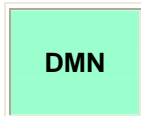


### mKW: WHITEHORSE SUITE

grey, medium to coarse grained, generally equigranular granitic rocks of felsic (q), intermediate (g), locally mafic (d) and rarely syenitic (y) composition

- g. biotite-hornblende granodiorite, hornblende quartz diorite and hornblende diorite; leucocratic, biotite hornblende granodiorite locally with sparse grey and pink potassium feldspar phenocrysts (**Whitehorse Suite, Casino granodiorite, McClintock granodiorite, Nisling Range granodiorite**)

## DEVONIAN, MISSISSIPPIAN AND(?) OLDER

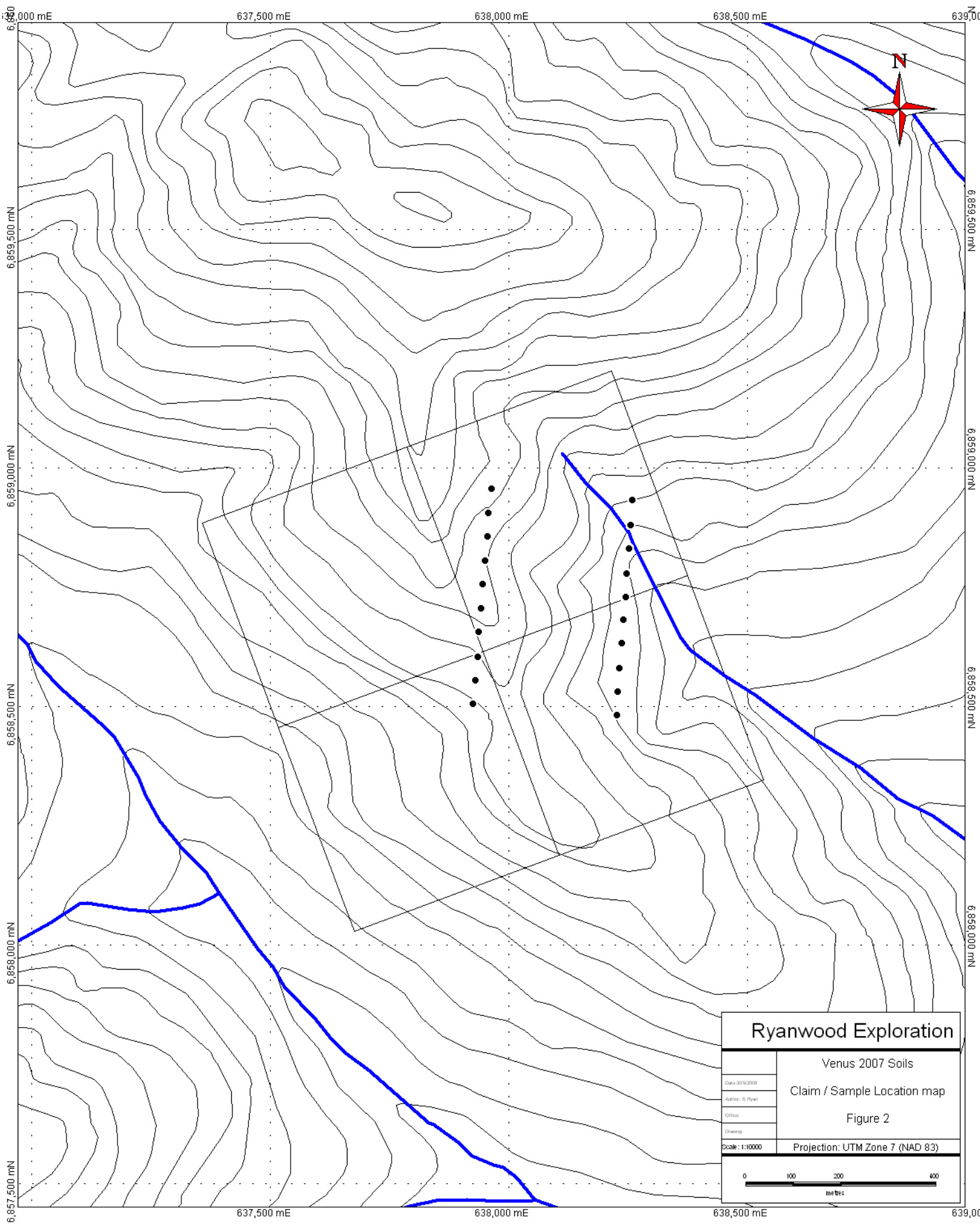


### DMN: NASINA

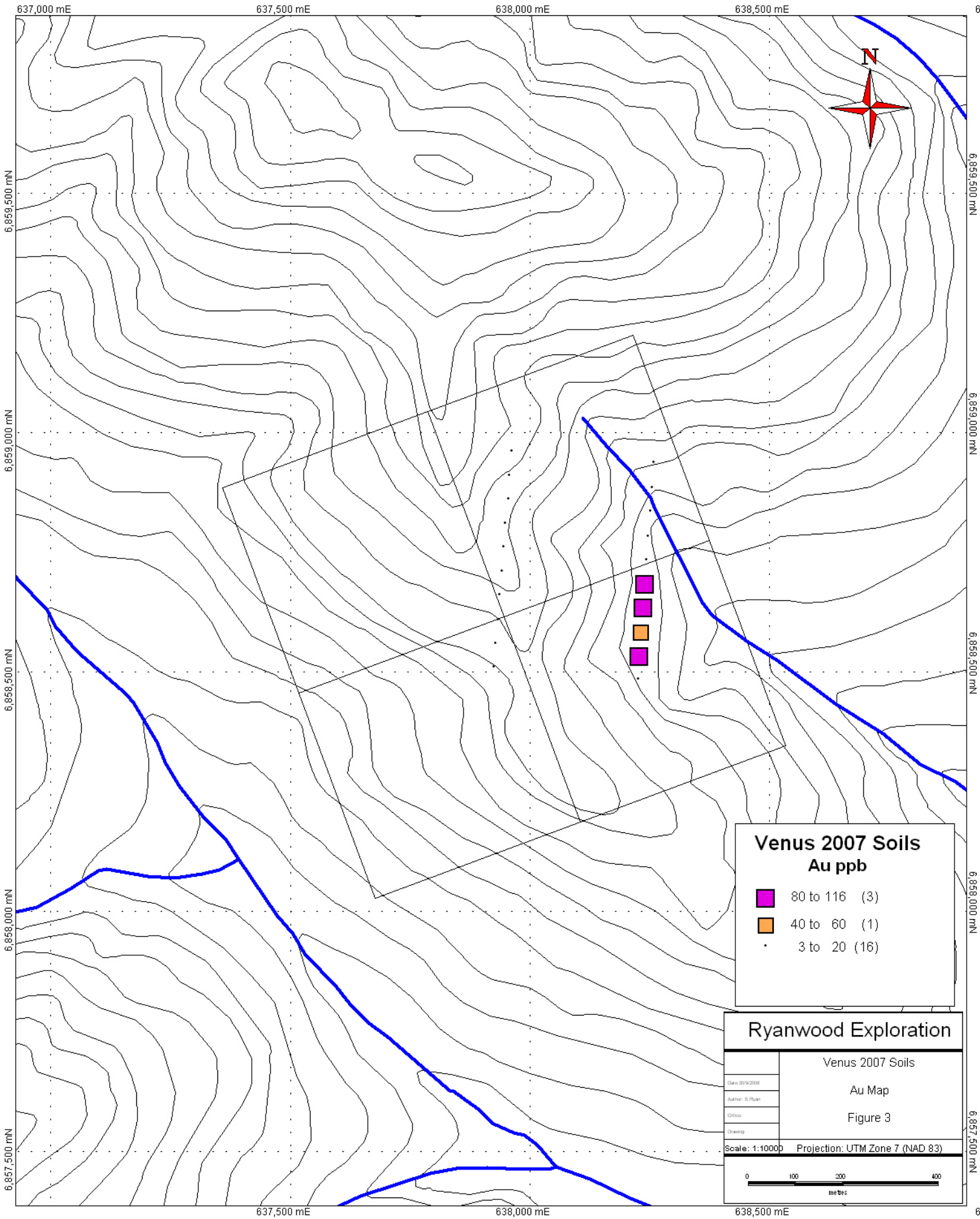
graphitic quartzite and muscovite quartz-rich schist (1), (3)-(5), and(?) (6) with interspersed marble (2) and probable correlative successions (7) - (9)



3. quartzite, micaceous quartzite, quartz muscovite (+/-chlorite; +/- feldspar augen) schist, and minor metaconglomerate and metagrit as in (1), but may locally include significant Nisling Assemblage



<b>Ryanwood Exploration</b>	
Venus 2007 Soils	
Claim / Sample Location map	
Figure 2	
Date: 30/9/2003	Projection: UTM Zone 7 (NAD 83)
Author: S. Ryan	
Client:	
Drawn:	
Scale: 1:10000	
0 100 200 400 metres	

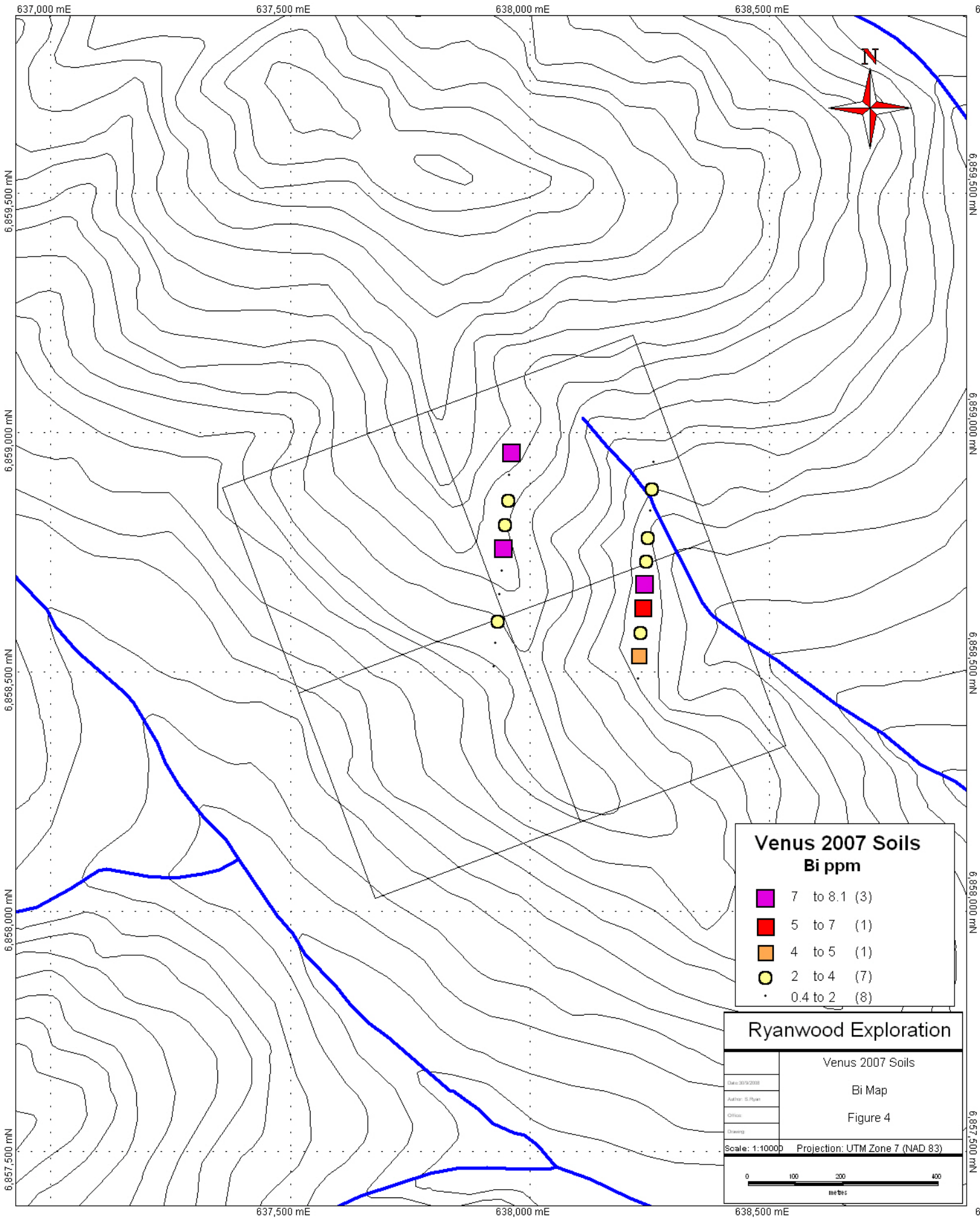


**Venus 2007 Soils  
Au ppb**

- 80 to 116 (3)
- 40 to 60 (1)
- 3 to 20 (16)

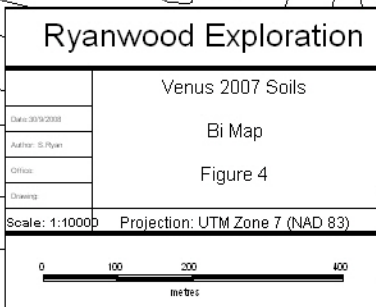
**Ryanwood Exploration**

<small>Date:</small> 30/03/2008	Venus 2007 Soils
<small>Author:</small> S. Ryan	Au Map
<small>Office:</small>	Figure 3
<small>Drawn:</small>	
<small>Scale: 1:10000    Projection: UTM Zone 7 (NAD 83)</small>	



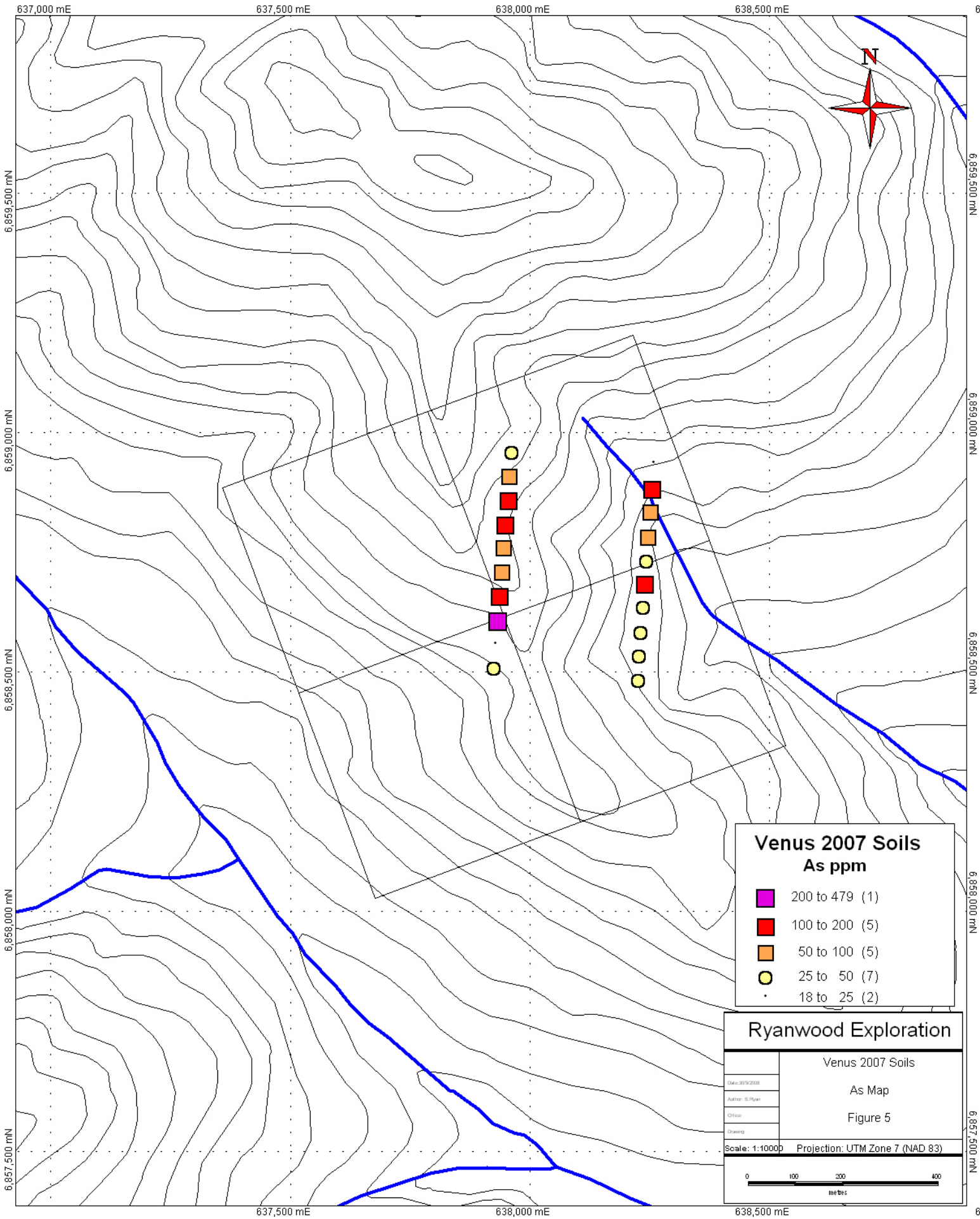
**Ryanwood Exploration**

Venus 2007 Soils	
Date: 30/03/2008	
Author: S. Ryan	
Office:	
Drawn:	
Scale: 1:10000 Projection: UTM Zone 7 (NAD 83)	



637,000 mE 637,500 mE 638,000 mE 638,500 mE

6,857,500 mN 6,858,000 mN 6,858,500 mN 6,859,000 mN 6,859,500 mN



637,000 mE      637,500 mE      638,000 mE      638,500 mE

6,859,500 mN  
6,859,000 mN  
6,858,500 mN  
6,858,000 mN  
6,857,500 mN

6,859,500 mN  
6,859,000 mN  
6,858,500 mN  
6,858,000 mN  
6,857,500 mN



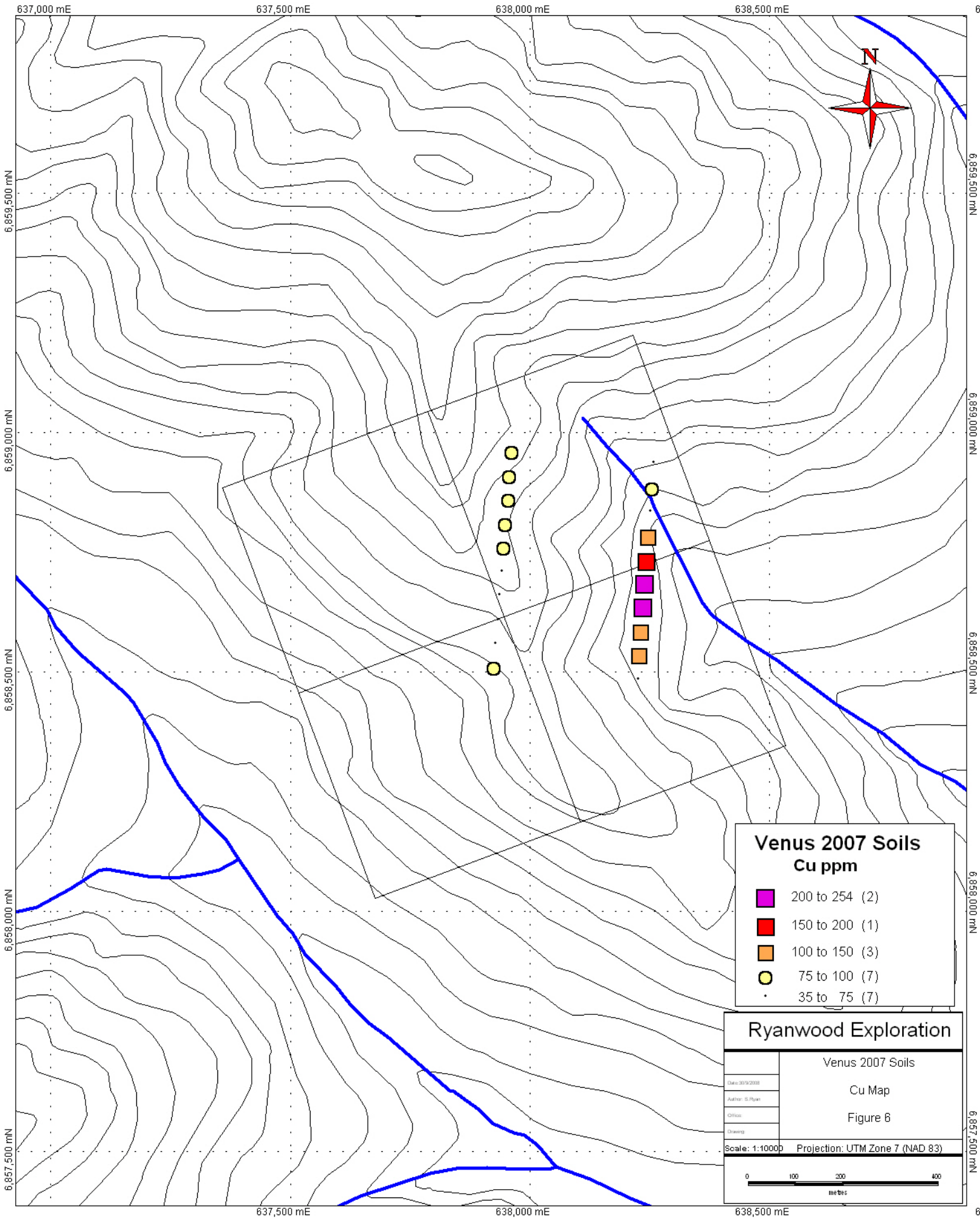
**Venus 2007 Soils  
As ppm**

- 200 to 479 (1)
- 100 to 200 (5)
- 50 to 100 (5)
- 25 to 50 (7)
- 18 to 25 (2)

**Ryanwood Exploration**

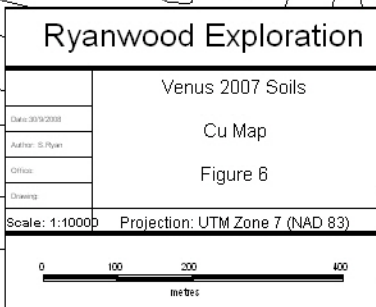
	Venus 2007 Soils
Date: 30/03/2008	As Map
Author: S. Ryan	Figure 5
Office:	
Drawing:	
Scale: 1:10000    Projection: UTM Zone 7 (NAD 83)	

637,500 mE      638,000 mE      638,500 mE



**Ryanwood Exploration**

Venus 2007 Soils	
Date: 30/03/2008	Cu Map
Author: S. Ryan	Figure 6
Office:	
Drawn:	
Scale: 1:10000	Projection: UTM Zone 7 (NAD 83)



637,000 mE 637,500 mE 638,000 mE 638,500 mE

6,857,500 mN 6,858,000 mN 6,858,500 mN 6,859,000 mN 6,859,500 mN

Sample	Project ID	UTM Zone	UTM Easting	UTM Northing	Mo	Cu	Pb	Zn	Ag	Ni	Co	Mn
VEN 21960	VENUS-2007	NAD 83-07V	638259	6858938	5.8	50.5	40.3	238	0.2	28.7	15.2	1555
VEN 21961	VENUS-2007	NAD 83-07V	638256	6858885	7.2	90.1	133.6	469	1	46.3	25.6	1256
VEN 21962	VENUS-2007	NAD 83-07V	638252	6858836	8.9	71.4	51.1	448	0.8	54.5	12.1	597
VEN 21963	VENUS-2007	NAD 83-07V	638247	6858784	8	127.3	84	909	1	67.1	17	890
VEN 21964	VENUS-2007	NAD 83-07V	638245	6858735	5.6	167	65.6	921	1.9	93.9	22.9	1486
VEN 21965	VENUS-2007	NAD 83-07V	638241	6858686	20.4	253.9	42.7	1236	1.3	176.8	32.2	1381
VEN 21966	VENUS-2007	NAD 83-07V	638238	6858637	3.2	202.5	44.3	359	1.9	74.4	27.8	2035
VEN 21967	VENUS-2007	NAD 83-07V	638233	6858585	2.8	112	32.9	389	0.8	37.2	19.1	946
VEN 21968	VENUS-2007	NAD 83-07V	638229	6858536	1.8	119.4	36.9	133	1.6	52.2	16.4	925
VEN 21973	VENUS-2007	NAD 83-07V	638227	6858486	1.8	62.1	63.3	187	0.8	40.2	14.6	1096
VEN 23372	VENUS-2007	NAD 83-07V	637926	6858510	6	97.6	33.9	243	1.1	40.7	10.3	701
VEN 23373	VENUS-2007	NAD 83-07V	637930	6858559	4.1	35.2	101	381	0.7	24	9	632
VEN 23374	VENUS-2007	NAD 83-07V	637935	6858609	3.1	66.5	96.1	349	1.3	35.5	17.1	2316
VEN 23375	VENUS-2007	NAD 83-07V	637937	6858662	2.9	42.7	53.3	187	0.8	40.2	16.7	1007
VEN 23376	VENUS-2007	NAD 83-07V	637942	6858710	5.1	35.9	47.6	172	0.7	24.2	8.4	280
VEN 23377	VENUS-2007	NAD 83-07V	637946	6858761	8	98.6	1383	1176	3.8	26.9	16.8	1072
VEN 23378	VENUS-2007	NAD 83-07V	637950	6858810	11.7	91.5	206.2	765	0.7	46.5	16.2	862
VEN 23379	VENUS-2007	NAD 83-07V	637956	6858861	8.1	80.2	295.6	1098	1.7	64.4	16.8	1156
VEN 24657	VENUS-2007	NAD 83-07V	637958	6858910	5.2	86.7	70.9	247	1.1	33.8	11.4	833
VEN 24658	VENUS-2007	NAD 83-07V	637664	6858983	8.9	94.1	647.4	1407	3.4	39.4	23	2004

Fe	As	U	Au	Th	Sr	Cd	Sb	Bi	V	Ca	P	La	Cr	Mg	Ba	Ti	B	Al
4.26	20.8	2.6	3.7	3.9	24	1.5	1.6	0.4	87	0.14	0.057	20	33	0.43	231	0.05	1	1.99
5.2	137.8	4.3	6.4	4.1	51	5.2	1.3	2.1	99	0.54	0.078	15	37	0.61	225	0.031	0.05	2.14
3.5	81	2.8	3.9	2.9	36	3.8	1.9	1.6	101	0.39	0.094	15	27	0.46	210	0.046	1	1.45
5.28	98.2	4.1	7.8	5.5	58	5.1	1.9	2.8	110	0.79	0.186	18	46	1.05	168	0.062	1	1.8
4.29	37.7	7.4	12.4	3.5	76	10.8	1.8	2.3	106	1.27	0.124	31	66	1.06	291	0.048	2	2.3
9.1	143	7.1	96	7.3	57	9.7	5.5	7.5	196	0.49	0.168	22	65	1.11	298	0.036	0.05	2.19
5.46	41.9	4.4	105.4	3.4	67	5.4	1.7	5.3	74	0.88	0.124	44	50	0.87	373	0.038	1	2.24
5.03	46.8	2.4	44.9	1.8	76	2.4	1.2	2.3	77	1.01	0.127	16	33	1.14	304	0.057	1	2.01
3.59	34.1	5.9	115.9	1.7	97	1.3	2.1	4.7	45	1.81	0.092	25	35	0.71	190	0.046	2	1.4
3.48	31.1	1.5	10.7	4.2	39	1.2	1.7	0.5	75	0.64	0.105	16	35	1.03	324	0.091	2	1.65
2.51	49.2	8.4	8.7	2.2	112	2.4	2.5	0.6	53	1.34	0.107	19	18	0.33	264	0.018	1	1.05
3.08	18.5	3.1	5.2	4.6	31	2.6	1.8	0.9	56	0.32	0.051	24	24	0.39	232	0.029	0.05	1.51
6.08	478.9	2.2	8.2	4.5	50	1.7	5	2.4	82	0.69	0.075	27	34	0.89	304	0.022	0.05	2.32
4.5	108.5	1.4	4	3.5	39	0.8	2.6	0.8	88	0.45	0.05	14	53	0.83	269	0.054	2	2.36
4.36	74	2.6	5.4	5.8	21	1.1	1.5	0.7	84	0.14	0.059	16	32	0.46	124	0.057	1	1.85
5.03	79.5	3.4	8.7	2.5	50	11.1	4.2	7.7	96	0.62	0.133	22	28	0.52	126	0.045	1	1.97
4.84	135.7	3.8	6.1	1.8	27	15.3	2.8	3.3	152	0.35	0.091	17	31	0.52	113	0.065	1	1.65
4.51	119.3	6.2	8.6	2.4	72	12.4	1.4	2.1	134	1.08	0.19	21	39	1.14	215	0.057	1	1.96
3.33	74.4	3.6	4.2	2.7	37	1.8	1.9	1.3	57	0.38	0.114	21	23	0.4	173	0.024	0.05	1.29
6.5	32.4	4	5.1	4.2	69	10.1	2.6	8.1	99	0.91	0.233	13	32	1.12	182	0.025	1	1.65

Na	K	W	Hg	Sc	Tl	S	Ga	Se	Method	Acme File
0.016	0.06	0.05	0.04	2.3	0.1	0.025	9	0.7	1DX15	VAN07003019
0.019	0.12	0.2	0.03	2.7	0.2	0.08	9	4.3	1DX15	VAN07003019
0.016	0.1	0.4	0.02	2.5	0.2	0.025	5	2.1	1DX15	VAN07003019
0.042	0.11	1.9	0.02	4.2	0.1	0.07	6	4	1DX15	VAN07003019
0.02	0.1	0.3	0.06	6.2	0.2	0.1	7	3.2	1DX15	VAN07003019
0.023	0.16	5.8	0.03	5.9	0.2	0.15	7	7.7	1DX15	VAN07003019
0.022	0.08	1.5	0.06	5.8	0.2	0.1	7	3.6	1DX15	VAN07003019
0.058	0.07	3.2	0.03	3.7	0.1	0.07	7	2.1	1DX15	VAN07003019
0.031	0.07	1.1	0.04	3.7	0.2	0.12	4	3.5	1DX15	VAN07003019
0.023	0.11	0.2	0.03	4.4	0.1	0.025	5	1.7	1DX15	VAN07003019
0.018	0.11	0.5	0.04	2.4	0.2	0.14	3	3.3	1DX15	VAN07003019
0.013	0.14	0.2	0.01	1.9	0.2	0.025	5	1.4	1DX15	VAN07003019
0.015	0.15	0.7	0.03	5.7	0.3	0.025	6	3	1DX15	VAN07003019
0.015	0.1	0.4	0.02	3.9	0.2	0.025	8	1.2	1DX15	VAN07003019
0.012	0.08	0.2	0.03	2.3	0.2	0.06	10	1.4	1DX15	VAN07003019
0.015	0.06	0.5	0.05	2.4	0.1	0.025	7	3.6	1DX15	VAN07003019
0.014	0.05	0.5	0.02	2.2	0.2	0.025	8	4	1DX15	VAN07003019
0.064	0.09	0.4	0.03	4.4	0.1	0.025	6	3.1	1DX15	VAN07003019
0.014	0.1	0.4	0.02	2	0.1	0.025	4	1.5	1DX15	VAN07003019
0.017	0.11	0.5	0.06	3.9	0.3	0.09	6	7.3	1DX15	VAN07003019