

**GEOCHEMICAL**

**REPORT**

**CREAM 1- 22CLAIMS**

**YC60088 – YC60109**

**NTS # 115 J \ 13**

**LAT: 62° 55 N**

**LONG: 139° 37 W**

**WHITEHORSE MINING DISTRICT**

**AUTHOR OF REPORT SHAWN RYAN**

**WORK PERFORMED JULY 09, 2007**

**DATE OF REPORT OCTOBER 01, 2008**

## TABLE OF CONTENT

<b>1.0</b>	<b>Summary</b>	<b>p.3</b>
<b>2.0</b>	<b>INTRODUCTION</b>	<b>p.3</b>
<b>3.0</b>	<b>PROJECT LOCATION</b>	<b>p.3</b>
<b>4.0</b>	<b>ACCESS</b>	<b>p.3</b>
<b>5.0</b>	<b>GEOLOGY</b>	<b>p.3</b>
<b>5.1</b>	<b>REGIONAL GEOLOGY</b>	<b>p.3</b>
<b>6.0</b>	<b>WORK PERFORMED / METHODS</b>	<b>p.4</b>
<b>6.1</b>	<b>Soil Survey</b>	<b>p.4</b>
<b>7.0</b>	<b>INTERPRETATION</b>	<b>p.4</b>
<b>7.1</b>	<b>Soil Survey</b>	<b>p.4</b>
<b>8.0</b>	<b>RECOMMENDATION</b>	<b>p.4</b>
<b>9.0</b>	<b>REFERENCES CITED</b>	<b>p.4</b>
<b>10.0</b>	<b>Cost</b>	<b>p.5</b>
<b>11.0</b>	<b>Qualification</b>	<b>p.5</b>
	<b>Geology Map</b>	<b>Figure 1</b>
	<b>Claim / Sample Location Map</b>	<b>Figure 2</b>
	<b>Gold Soil geochemistry map</b>	<b>Figure 3</b>
	<b>Arsenic Soil geochemistry map</b>	<b>Figure 4</b>
	<b>Antimony Soil geochemistry map</b>	<b>Figure 5</b>
	<b>Assay Data / GPS Soil Location Data</b>	<b>Appendix</b>

## **1.0 SUMMARY**

The Cream Claims had three soil samplers (Issac Fage, Andy Crowther, Mathew McHugh) visit the property on July 9 2007. A total of 101 soils were collected and proved to be anomalous in arsenic, antimony and minor gold.

## **2.0 INTRODUCTION**

The Cream Claims are part of a regional soil survey undertaken by Ryanwood Exploration to reevaluate Deltango Gold Limited 1999 regional silt survey. Deltango regional silt survey notice an anomalous population of copper, molybdenum, silver, arsenic and minor lead, zinc, antimony and tungsten.

## **3.0 LOCATION**

The Cream claims are located 128 kilometers south - south west of Dawson City. More specifically 12 kilometers up Independence Creek which is a large creek draining on the south side of the Yukon River. ; It's in Whitehorse Mining Division, on NTS sheet # 115 J / 13 at the latitude 62°55'N and longitude 139°37'W.

## **4.0 ACCESS**

The Cream claims can be reached via helicopter from Dawson City.

## **5.0 REGIONAL AND PROPERTY GEOLOGY**

### **5.1 REGIONAL GEOLOGY**

The Yukon geology map indicates the Cream Claims are straddling two rock units. One known as (EJgA) Coffee Creek Intrusive and the second unit is a (DMN3) Devonian to Mississippian called the Nasina ; a quartzite, micaceous quartzite, quartz muscovite (+/- chlorite; +/- feldspar augen) schist, and minor metaconglomerate and metagrit

## **6.0 WORK PERFORMED / METHODS**

### **6.1 Soil Survey**

The Cream Claims had 4 man days of soil work collecting 101 soils.

All soil sample where taken with one meter soil probes and sometime with a prospector pick. We carried both on rocky talus slope. Soil sample location where marked on the ground with orange flagging and recorded in Garmin GPS. About 400-500 grams of soil was collected and place in well mark kraft soil bags.

All samples where brought out to Dawson and air dried repacked in rice bags and sent to Acme Labs in Vancouver. Sample where process with (1DX 15 gram) Aqua Regia ICP-MS for 36 elements.

The GPS where downloaded every night and store in a personal computer.

## **7.0 INTERPRETATION**

### **7.1 Soil Survey**

The soil survey indicated high arsenic and antimony on the north eastern part of the claim block with minor gold found in center part of the claims. The area has now a new discovery with Rimfire Minerals discovering 7 g/t gold over 6.5 meters in trench sample. Rimfire discovery primary indicator elements were arsenic and antimony. The new discovery is located 11 kilometer south east of the Cream Claims.

## **8.0 RECOMMENDATION**

I would recommend more soil work covering the Cream 1-22 claims and the new Cream claims added just added on. If any soil anomalies are discovered then I would follow up with a small trenching program.

## **9.0 REFERENCES CITED**

Deltango Gold Limited, 1999. Assessment Report # 094174 by Gregg Jilson.

## 10.0 COST

Wage 4 man days @ \$325.00 per day	\$1,300.00
Assay Cost 101 soil @ \$20.00 per sample	\$2020.00
Helicopter Cost 2.7 hour @ \$1,250.00 per hour	\$3,375.00
Report writing	\$400.00
Total	\$7095.00

## 11.0 QUALIFICATION

I Shawn Ryan located in Dawson City, Yukon work as a professional prospector. I run a small exploration company located in Dawson City.

I have worked in the exploration business for the last 25 years. I worked the first 12 years as a contractor working on numerous projects in the NWT, Ontario, Quebec and the Yukon. I have worked the last 12 years as a local prospector for myself.

I have overseen the entire Cream Soil Survey and was party chief in charge.

I own 100% of the Cream claims.

Dated this 02 of October 2008 in Dawson City, Yukon.

Respectfully submitted

Shawn Ryan

# Yukon Geology Map

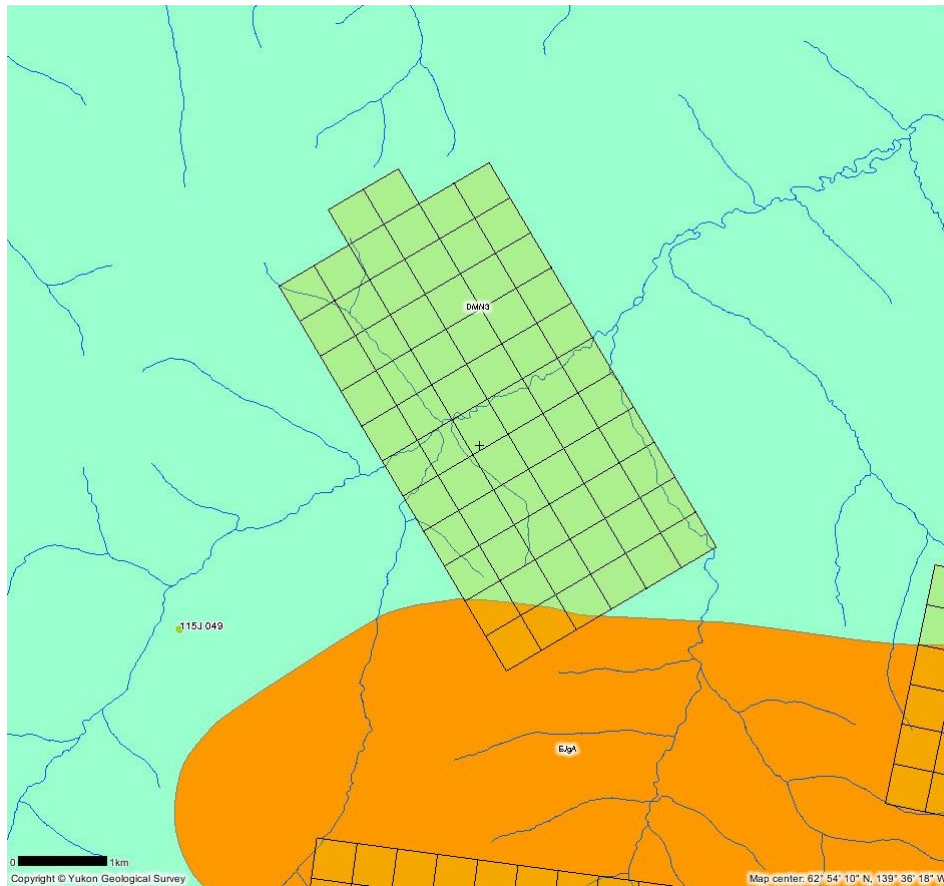


Figure 1

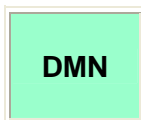
## EARLY JURASSIC



### EJgA: AISHIHIK SUITE

medium- to coarse- grained, foliated biotite-hornblende granodiorite; biotite rich screens and gneiss schlieren; foliated hornblende diorite to monzodiorite with local K-feldspar megacrysts; may include unfoliated monzonite of the Long Lake Suite (**Aishihik Suite**)

## DEVONIAN, MISSISSIPPIAN AND(?) OLDER

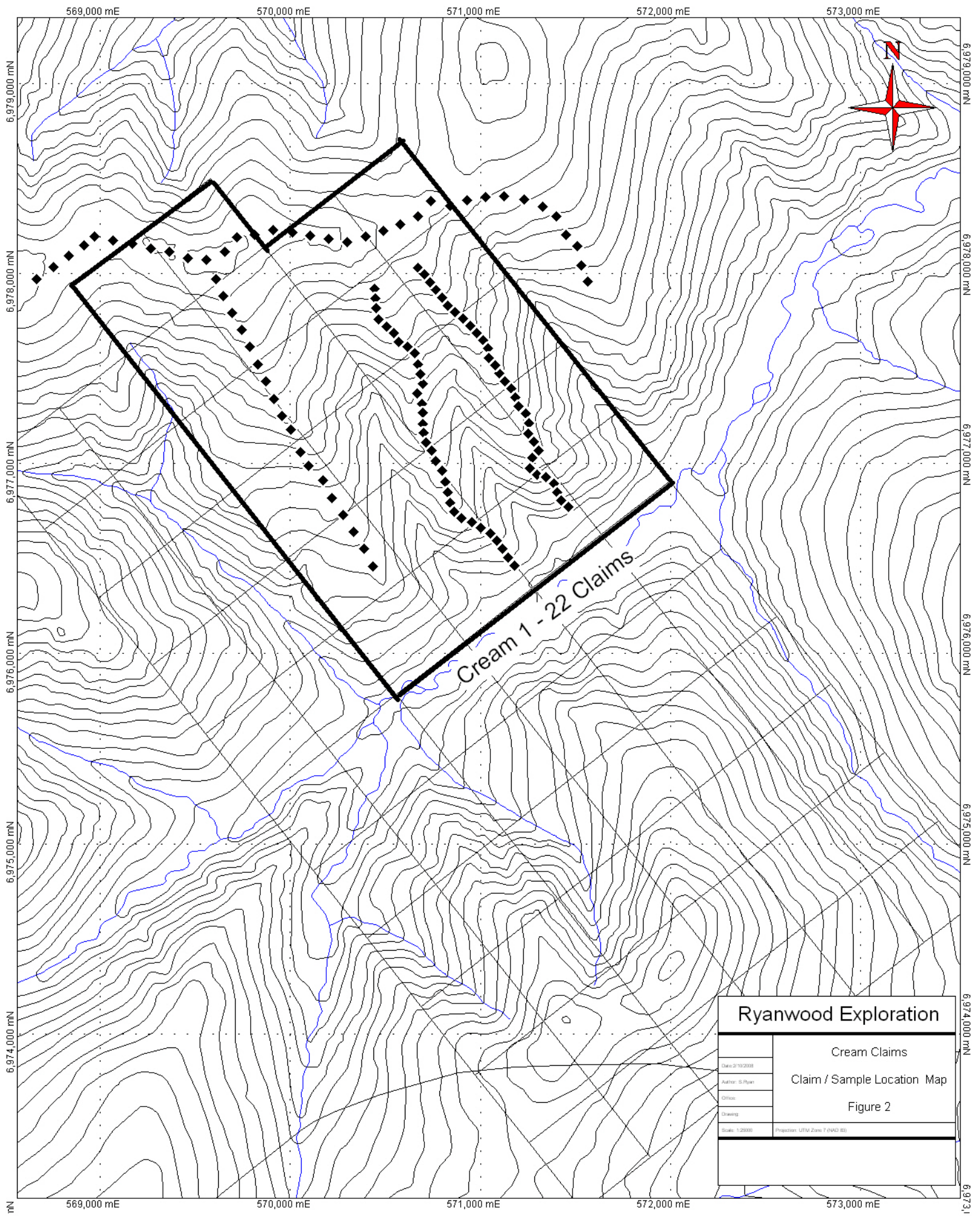


### DMN: NASINA

graphitic quartzite and muscovite quartz-rich schist (1), (3)-(5), and(?) (6) with interspersed marble (2) and probable correlative successions (7) - (9)



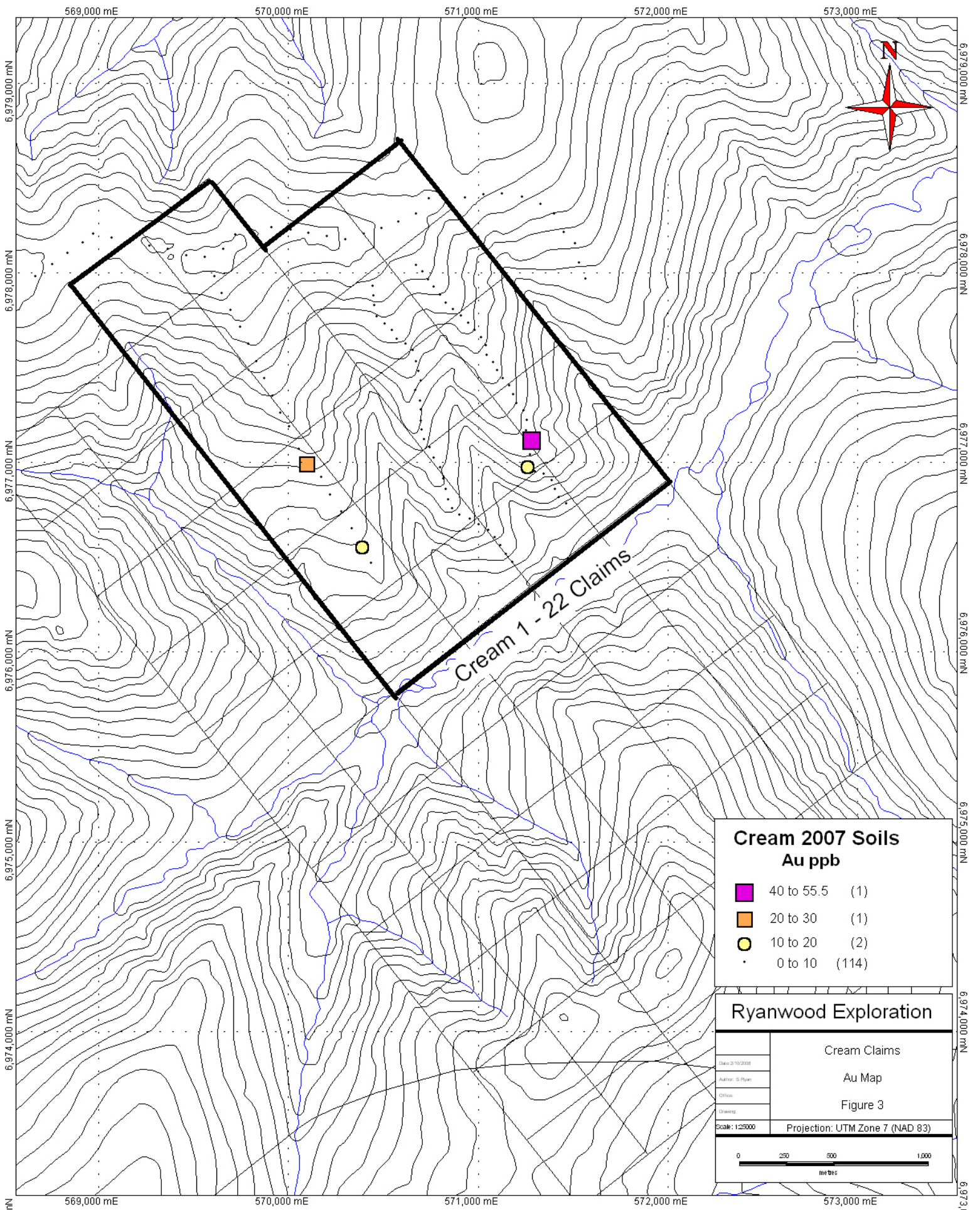
3. quartzite, micaceous quartzite, quartz muscovite (+/-chlorite; +/- feldspar augen) schist, and minor metaconglomerate and metagrit as in (1), but may locally include significant Nisling Assemblage



<b>Ryanwood Exploration</b>													
Cream Claims													
Claim / Sample Location Map													
Figure 2													
<table border="1"> <tr><td>Map No.</td><td>1002000</td></tr> <tr><td>Author</td><td>S. Ryan</td></tr> <tr><td>Office</td><td></td></tr> <tr><td>Drawn</td><td></td></tr> <tr><td>Scale</td><td>1:20000</td></tr> <tr><td>Projection</td><td>UTM Zone 17 (NAD 83)</td></tr> </table>	Map No.	1002000	Author	S. Ryan	Office		Drawn		Scale	1:20000	Projection	UTM Zone 17 (NAD 83)	
Map No.	1002000												
Author	S. Ryan												
Office													
Drawn													
Scale	1:20000												
Projection	UTM Zone 17 (NAD 83)												

mN 569,000 mE 570,000 mE 571,000 mE 572,000 mE 573,000 mE

6,979,000 mN  
6,978,000 mN  
6,977,000 mN  
6,976,000 mN  
6,975,000 mN  
6,974,000 mN  
6,973,000 mN



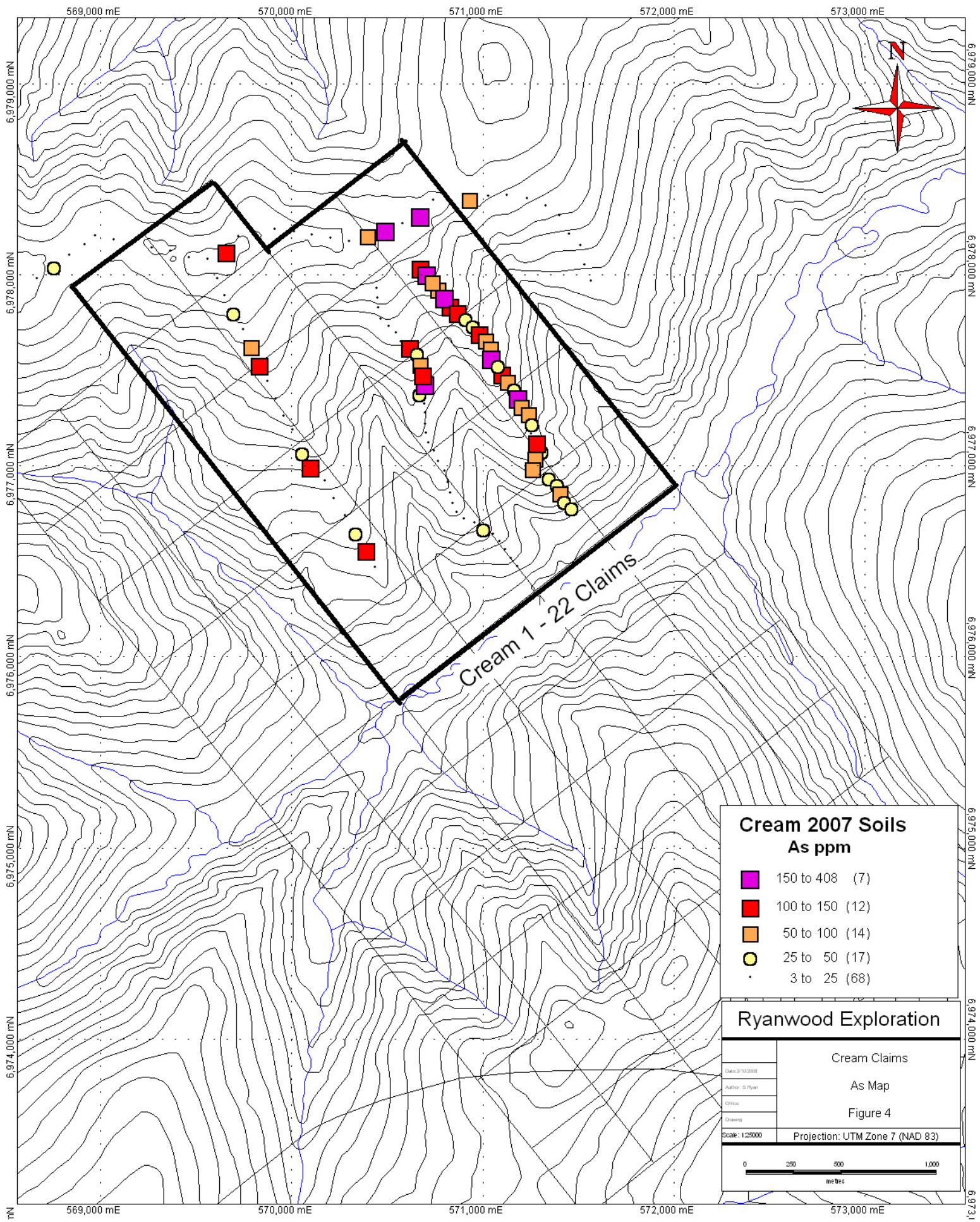
**Cream 2007 Soils**  
**Au ppb**

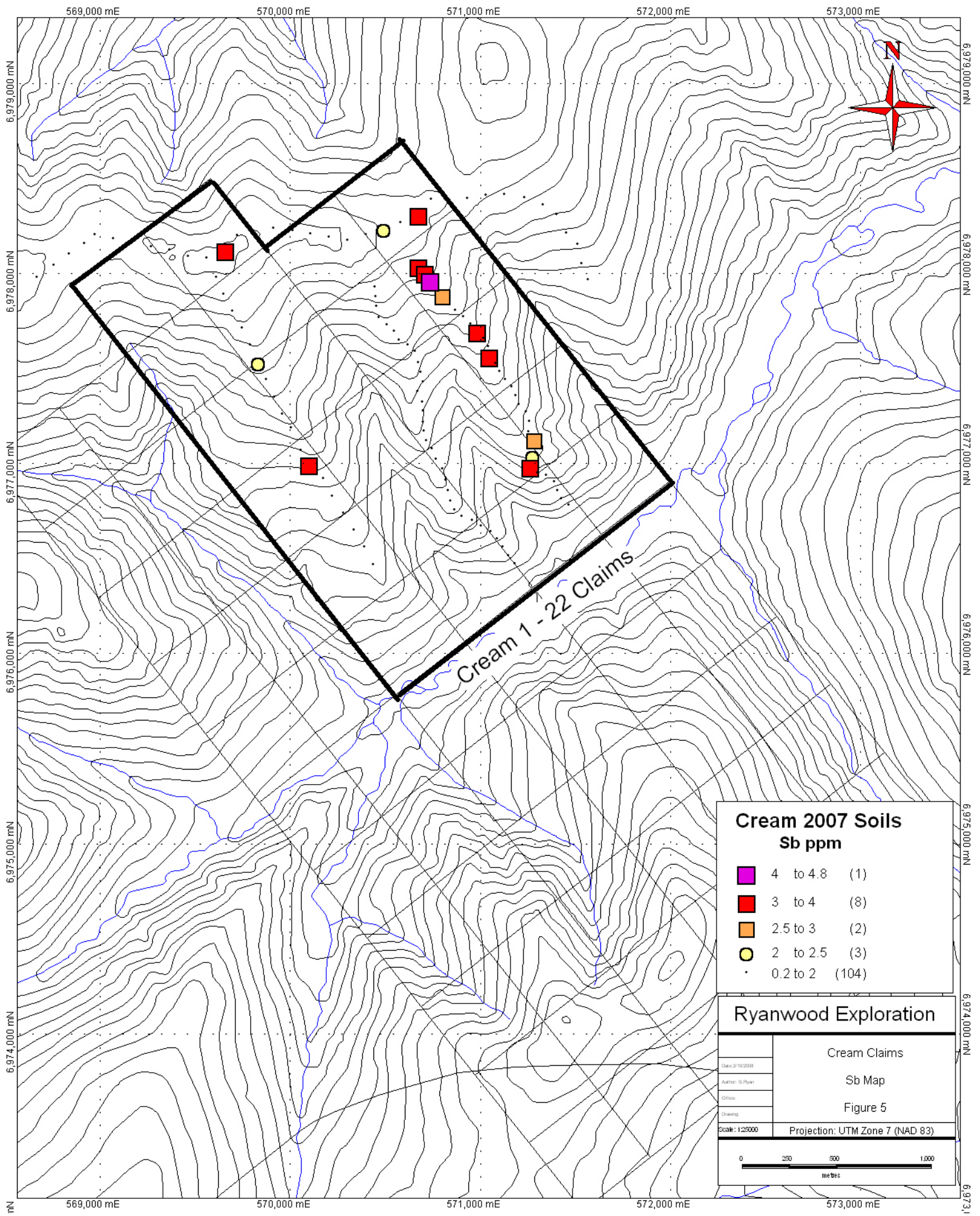
<span style="color: magenta;">■</span>	40 to 55.5	(1)
<span style="color: orange;">■</span>	20 to 30	(1)
<span style="color: yellow;">●</span>	10 to 20	(2)
•	0 to 10	(114)

**Ryanwood Exploration**

Map No: 102008	<b>Cream Claims</b> <b>Au Map</b> <b>Figure 3</b>
Author: S. Ryan	
Editor:	
Drawn:	
Scale: 1:25000	Projection: UTM Zone 7 (NAD 83)

0 250 500 1,000  
metres





**Cream 2007 Soils  
Sb ppm**

■	4 to 4.8	(1)
■	3 to 4	(8)
■	2.5 to 3	(2)
●	2 to 2.5	(3)
•	0.2 to 2	(104)

**Ryanwood Exploration**

Map No: 102008	<p>Cream Claims Sb Map Figure 5</p> <p>Projection: UTM Zone 7 (NAD 83)</p>
Author: S. Poon	
Editor:	
Drawn:	
Scale: 1:25000	

mN 6,974,000 mN 6,975,000 mN 6,976,000 mN 6,977,000 mN 6,978,000 mN 6,979,000 mN

mE 569,000 mE 570,000 mE 571,000 mE 572,000 mE 573,000 mE

SAMPLES	UTM_	Easting	Northing	Mo	Cu	Pb	Zn	Ag	Ni	Co	Mn	Fe	As
CFR 19652	Nad 83-07V	569563	6978079	1.1	27.9	9.5	56	0	25.1	11.7	327	3.08	10.8
CFR 19653	Nad 83-07V	569661	6978124	1.4	42.5	14.6	86	0	27	8.3	258	5.12	142.7
CFR 19654	Nad 83-07V	569724	6978198	0.8	34.5	44.6	73	0	43.1	19.2	388	3.23	13
CFR 19655	Nad 83-07V	569815	6978214	1.1	38.8	10.7	78	0	36.8	12.6	268	3.64	11.9
CFR 19656	Nad 83-07V	569914	6978238	1.7	88.2	16	247	0	98.5	23.1	279	5.3	14.3
CFR 19657	Nad 83-07V	570017	6978225	3.5	61.7	16.4	168	0	76.3	14.9	309	3.8	5.1
CFR 19658	Nad 83-07V	570110	6978207	1	36.6	13.7	61	0.1	34.8	12.3	335	3.69	4.9
CFR 19659	Nad 83-07V	570208	6978191	1.1	23.3	18.2	109	0	81.7	19	400	4.09	5.6
CFR 19660	Nad 83-07V	570302	6978175	1	24.9	17.6	78	0.1	34.7	14.9	419	4.35	7.6
CFR 19661	Nad 83-07V	570400	6978204	1.5	45.3	10.7	76	0.2	29.7	9.9	334	3.22	91.5
CFR 19662	Nad 83-07V	570492	6978235	2.1	67.1	10.6	89	0.2	38.7	12.2	476	3.93	407.1
CFR 19663	Nad 83-07V	570583	6978265	2.1	68	12.3	113	0.2	59.7	12.3	431	4.71	23
CFR 19664	Nad 83-07V	570675	6978311	1.9	56.5	71.5	167	0.2	53.4	16.2	563	4.15	183
CFR 19665	Nad 83-07V	570745	6978388	0.9	15	10.7	54	0	18.5	13.9	423	3.76	15.4
CFR 19666	Nad 83-07V	570845	6978364	0.9	16.3	12	51	0.1	37.3	19.5	395	3.7	9.5
CFR 19667	Nad 83-07V	570934	6978395	1.6	42.2	10.8	104	0.1	53.3	12.8	388	3.05	74.5
CFR 19668	Nad 83-07V	571033	6978409	1.2	19	15.3	58	0.1	16.5	11	760	2.88	7.7
CFR 19669	Nad 83-07V	571127	6978417	0.6	9.2	13.1	53	0	9.8	4.9	306	2.27	4.2
CFR 19670	Nad 83-07V	571236	6978398	1.1	14.4	10.9	54	0	17.8	10.3	376	2.73	7.4
CFR 19671	Nad 83-07V	571332	6978362	1	14.8	11.9	69	0	17	7.1	370	3.29	6.2
CFR 19673	Nad 83-07V	571514	6978154	1.9	15.9	12.4	56	0	15.5	8.3	730	2.51	7
CFR 19674	Nad 83-07V	571455	6978213	1.7	15.8	11.5	53	0.1	15.3	7.8	523	2.45	5.7
CFR 19675	Nad 83-07V	571534	6978051	1.1	15.2	9.9	45	0	15.2	6.4	290	2.45	6.1
CFR 19676	Nad 83-07V	571571	6977968	1.3	13.8	9.6	46	0	15.5	7.9	540	2.65	7
CFR 19677	Nad 83-07V	571405	6978309	0.4	100.9	3.5	49	0	14.1	30	396	4.49	3.3
CFR 24250	Nad 83-07V	570674	6978040	1.8	56.3	20.3	84	0.4	37.7	22.6	1031	3.58	135.8
CFR 24251	Nad 83-07V	570709	6978003	1.6	51.8	12.3	86	0.2	35.3	13.4	398	3.87	289.9
CFR 24252	Nad 83-07V	570738	6977962	2.5	48.6	9.4	108	0.5	39	18.3	422	4.97	67.1
CFR 24253	Nad 83-07V	570768	6977922	3.4	108.8	6.6	157	0.2	49.5	17	854	5.52	71.4
CFR 24254	Nad 83-07V	570801	6977882	2.4	68.5	10.8	91	0.3	33.6	11.3	364	3.95	191.2
CFR 24255	Nad 83-07V	570833	6977841	2.8	95.7	7.6	181	0.2	35.6	12.2	585	5.27	147.7
CFR 24256	Nad 83-07V	570871	6977807	2.7	67.9	8.7	160	0.2	30.7	13.1	397	4.21	104.3
CFR 24257	Nad 83-07V	570913	6977773	2.1	30.6	16	123	0.5	24.9	18.8	877	3.77	32
CFR 24258	Nad 83-07V	570952	6977734	2.1	29.2	9.1	68	0.3	18.3	12.4	456	2.83	35.8
CFR 24259	Nad 83-07V	570987	6977696	4.9	142.8	9.9	73	0.6	47.2	10.4	368	3.49	144.8
CFR 24260	Nad 83-07V	571018	6977659	2.7	61.8	9.7	133	0.5	38.2	12.7	530	4.16	99.1
CFR 24261	Nad 83-07V	571044	6977617	3.3	67.8	12.1	136	0.4	24.9	7.6	427	4.21	60.2
CFR 24262	Nad 83-07V	571050	6977566	4.4	103.6	31.9	113	0.5	35.3	9.3	362	3.66	169.6
CFR 24263	Nad 83-07V	571082	6977528	2.5	107.3	54.2	281	0.1	51.8	13.8	449	3.69	42
CFR 24264	Nad 83-07V	571104	6977482	2.4	19	11.5	54	0.4	9.4	6.2	658	2.45	144.4
CFR 24265	Nad 83-07V	571135	6977441	2.2	50.2	9.8	89	0.2	27.9	15.9	917	3.68	52.6
CFR 24266	Nad 83-07V	571168	6977403	1.6	45.7	8.4	98	0.1	32.1	12.8	626	3.51	42.3
CFR 24267	Nad 83-07V	571187	6977357	3	34.5	40.7	109	0.5	24.5	9.9	404	3.47	308.7
CFR 24268	Nad 83-07V	571207	6977311	1.1	32.6	53.4	163	0	33	12.2	311	3.71	50.4
CFR 24269	Nad 83-07V	571243	6977270	1.1	35.2	69.3	246	0	34.4	11.8	423	3.89	50.3
CFR 24270	Nad 83-07V	571259	6977220	1.7	21.8	14.2	133	0.2	21.4	11	1831	2.7	40.3
CFR 24271	Nad 83-07V	571254	6977168	1.5	27.2	12.7	152	0	30.5	12.5	408	3.55	23.6
CFR 24272	Nad 83-07V	571284	6977124	1.3	45.3	14.3	128	0.1	36.5	10.7	231	3.54	119.2
CFR 24273	Nad 83-07V	571310	6977079	1.8	39.8	16.3	137	0.2	20.4	7.8	336	4.13	31.5
CFR 24274	Nad 83-07V	571276	6977039	1	22.6	9.9	150	0.2	19.2	11.3	540	2.75	55.2
CFR 24275	Nad 83-07V	571266	6976985	1.3	38	14.4	119	0.2	32.1	10.6	317	3.25	97.6
CFR 24276	Nad 83-07V	571303	6976951	1.2	28.9	6.2	155	0.2	105.4	22.2	342	3.11	24.3
CFR 24277	Nad 83-07V	571351	6976937	1.3	23.8	9.5	84	0.1	25.4	12.1	427	3.1	31.4
CFR 24278	Nad 83-07V	571390	6976904	1.1	24.2	9.9	161	0.5	34.7	25.3	643	3.45	25.7
CFR 24279	Nad 83-07V	571409	6976858	1.3	36.9	15.3	129	0.2	27.5	11	348	3.58	60.2
CFR 24280	Nad 83-07V	571429	6976813	1.2	33.3	10.8	140	0.2	30.8	11.9	428	3.38	39.1
CFR 24281	Nad 83-07V	571467	6976782	1.5	30.5	9.8	108	0.2	30.8	12.7	301	3.4	37.4
CFR 24320	Nad 83-07V	570449	6977929	1.4	41.5	9.6	106	0.2	20.1	8.3	314	4.04	9.8

SAMPLES	U	Au	Th	Sr	Cd	Sb	Bi	V	Ca	P	La	Cr	Mg	Ba	Ti	B
CFR 19652	0.8	1	2.3	18	0.3	0.4	0.2	82	0.18	0.037	12	37	0.48	203	0.092	2
CFR 19653	1	1.2	7.1	20	0.2	3.2	0.3	98	0.08	0.045	32	61	0.79	142	0.162	1
CFR 19654	0.7	0.9	3.7	17	0.3	0.6	0.5	70	0.17	0.029	11	43	0.66	128	0.115	2
CFR 19655	1.2	1.1	5.8	23	0.2	0.7	0.2	73	0.14	0.029	21	46	0.68	137	0.104	2
CFR 19656	2.5	0	9.2	22	0.2	0.8	0.2	103	0.09	0.041	23	71	1.01	175	0.158	2
CFR 19657	1.3	0	9	12	0.1	0.2	0.2	81	0.08	0.022	20	57	1	126	0.141	2
CFR 19658	1.7	1.2	6.6	22	0.1	0.3	0.2	76	0.16	0.034	20	50	0.9	176	0.149	2
CFR 19659	0.8	0	4	24	0.1	0.3	0.2	110	0.33	0.068	15	286	1.91	222	0.161	2
CFR 19660	0.7	0.6	5.2	14	0.1	0.4	0.2	80	0.14	0.022	11	50	0.84	86	0.181	2
CFR 19661	1.5	2	4	23	0.2	0.8	0.2	89	0.28	0.039	17	42	0.64	187	0.103	2
CFR 19662	2.6	2.9	4.6	32	0.3	2.4	0.2	110	0.32	0.064	19	57	0.77	437	0.09	2
CFR 19663	2.4	2	5	25	0.2	1.3	0.2	119	0.3	0.058	25	78	0.75	180	0.118	1
CFR 19664	1.3	2.2	5.8	22	0.5	3	0.6	86	0.24	0.083	20	66	0.95	202	0.104	1
CFR 19665	0.9	0	6.5	15	0.1	0.3	0.1	77	0.14	0.031	15	40	0.76	86	0.084	6
CFR 19666	1	0	5.5	43	0.1	0.4	0.1	97	0.52	0.024	19	91	1.32	136	0.12	3
CFR 19667	1.1	0	2.9	15	0.4	1.9	0.2	84	0.13	0.032	10	36	0.48	154	0.066	0
CFR 19668	1.4	0.8	6.2	29	0.1	0.4	0.2	64	0.48	0.034	27	34	0.42	248	0.065	2
CFR 19669	3.7	0	24.3	19	0.1	0.2	0.1	41	0.23	0.029	127	19	0.42	124	0.105	1
CFR 19670	1.5	0.8	13.7	19	0	0.4	0.2	61	0.2	0.025	27	31	0.52	126	0.091	2
CFR 19671	1.5	0	9.1	25	0.1	0.3	0.2	58	0.28	0.032	31	32	0.61	164	0.13	1
CFR 19673	2.8	0	11.4	27	0.2	0.4	0.2	55	0.35	0.035	55	26	0.43	197	0.074	1
CFR 19674	1.2	0	8.7	20	0.1	0.3	0.3	58	0.22	0.027	37	29	0.41	143	0.08	1
CFR 19675	1.5	1.2	11.7	24	0.1	0.4	0.1	58	0.27	0.013	42	29	0.47	198	0.088	1
CFR 19676	0.9	0.6	6.5	20	0.1	0.4	0.2	73	0.2	0.02	27	29	0.43	287	0.086	1
CFR 19677	0.3	1.3	1	46	0.1	0.2	0.1	101	1.29	0.482	4	11	0.8	263	0.084	1
CFR 24250	1.9	2.9	5	31	0.4	3.3	0.2	92	0.29	0.036	21	53	0.74	255	0.109	2
CFR 24251	1.5	3.5	6.3	31	0.2	3.6	0.2	97	0.29	0.031	20	56	0.88	257	0.113	1
CFR 24252	1.5	2	10.4	21	0.3	4.8	0.2	92	0.13	0.053	29	44	1.21	315	0.157	1
CFR 24253	3.2	2.1	5.4	35	0.3	1.4	0.2	164	0.24	0.077	30	129	2.15	541	0.225	0
CFR 24254	1.5	4.8	5.6	30	0.2	2.5	0.2	108	0.21	0.036	17	57	0.92	303	0.125	1
CFR 24255	1.6	0.5	6.4	33	0.5	1	0.2	141	0.23	0.127	36	95	2.07	757	0.191	0
CFR 24256	1.2	1.7	4.2	35	0.3	1.1	0.2	190	0.14	0.073	20	101	1.38	809	0.181	1
CFR 24257	0.7	1.2	2.3	34	0.9	0.9	0.3	93	0.23	0.054	13	39	0.64	432	0.089	1
CFR 24258	0.7	1.1	2.6	23	0.5	0.8	0.2	74	0.18	0.075	11	28	0.55	257	0.086	1
CFR 24259	2.4	8.6	4.4	29	0.2	3.3	0.2	91	0.29	0.041	13	43	0.73	280	0.088	1
CFR 24260	1.3	0.8	3.5	39	0.3	0.8	0.2	116	0.32	0.102	21	65	1.16	352	0.146	1
CFR 24261	1.8	1.3	4.6	39	0.3	0.5	0.2	170	0.2	0.116	25	80	1.11	697	0.156	1
CFR 24262	2.5	5.2	5.7	29	0.6	3.1	0.4	123	0.2	0.054	22	46	0.62	322	0.089	1
CFR 24263	4.9	2.9	8.5	46	0.5	1.1	0.3	236	0.24	0.05	27	68	1.1	360	0.128	4
CFR 24264	0.6	2.2	1.9	23	0.5	0.9	0.3	66	0.21	0.251	10	21	0.26	223	0.088	1
CFR 24265	1.8	4	4.2	31	0.2	0.9	0.2	96	0.28	0.047	15	39	0.74	258	0.125	2
CFR 24266	1.5	5	5.9	30	0.2	1	0.2	81	0.33	0.032	18	40	0.87	239	0.145	2
CFR 24267	1	7.7	3.2	34	0.7	1.9	0.3	101	0.33	0.045	11	40	0.68	221	0.101	2
CFR 24268	0.9	2.8	5.6	23	0.4	1.2	0.2	76	0.18	0.033	16	53	0.89	199	0.177	1
CFR 24269	1.2	3.8	5.8	19	0.8	1.5	0.3	80	0.16	0.046	17	58	1	180	0.197	3
CFR 24270	0.6	6.6	2.7	20	1.5	0.6	0.2	64	0.17	0.053	9	25	0.44	305	0.073	1
CFR 24271	0.8	2.1	5.1	26	0.2	1.1	0.2	73	0.16	0.031	17	49	0.79	200	0.122	1
CFR 24272	1.5	55.5	6.2	26	0.2	2.5	0.3	77	0.19	0.026	18	62	0.75	227	0.131	1
CFR 24273	1.2	0.6	5.6	36	0.3	1.5	0.3	88	0.11	0.093	15	59	0.8	298	0.158	1
CFR 24274	0.6	1.1	3.2	31	0.8	2.2	0.3	64	0.3	0.037	12	35	0.48	426	0.064	0
CFR 24275	0.9	10.1	4.9	19	0.5	3.7	0.2	78	0.13	0.022	14	51	0.69	244	0.12	1
CFR 24276	0.7	0.8	3.5	21	0.3	1.2	0.2	86	0.24	0.022	11	381	1.81	213	0.133	1
CFR 24277	0.6	1.5	3.5	22	0.2	1	0.2	74	0.24	0.046	11	48	0.64	240	0.104	1
CFR 24278	0.6	0.5	3	31	0.6	0.6	0.2	82	0.31	0.035	10	56	0.67	410	0.111	2
CFR 24279	0.8	1.4	4.8	25	0.3	1.5	0.2	95	0.23	0.034	12	65	0.73	281	0.123	1
CFR 24280	0.8	7.8	4	27	0.2	1.2	0.2	91	0.2	0.032	12	71	0.76	272	0.133	1
CFR 24281	0.8	2	4	27	0.3	1	0.2	90	0.28	0.028	13	56	0.67	206	0.112	1
CFR 24320	1.1	0.7	6.5	28	0.4	0.3	0.2	71	0.11	0.059	26	53	0.98	236	0.12	0

SAMPLES	Al	Na	K	W	Hg	Sc	Tl	S	Ga	Se	Analysis__	Acme_file_#__
CFR 19652	2.11	0.014	0.08	0.1	0.03	4.3	0.1	0	7	0.6	1DX - 15.0 GM	A705673
CFR 19653	2.33	0.019	0.5	0.1	0.02	3.7	0.4	0.12	9	0.7	1DX - 15.0 GM	A705673
CFR 19654	2.65	0.017	0.17	0.1	0.03	4.1	0.2	0	6	0.7	1DX - 15.0 GM	A705673
CFR 19655	2.56	0.012	0.17	0.1	0.02	5.1	0.2	0	7	0.8	1DX - 15.0 GM	A705673
CFR 19656	2.72	0.012	0.75	0.1	0	6.9	0.7	0.09	8	0.6	1DX - 15.0 GM	A705673
CFR 19657	2.48	0.011	0.67	0.1	0.01	5.5	0.8	0	7	0.7	1DX - 15.0 GM	A705673
CFR 19658	2.8	0.015	0.34	0.1	0.02	4.8	0.3	0.08	7	0.7	1DX - 15.0 GM	A705673
CFR 19659	3.43	0.016	0.68	0.1	0.03	7.2	0.4	0	10	0.6	1DX - 15.0 GM	A705673
CFR 19660	2.77	0.009	0.28	0.2	0.01	3.6	0.3	0	9	0	1DX - 15.0 GM	A705673
CFR 19661	2.17	0.014	0.09	0.2	0.05	6.5	0.2	0	7	0.7	1DX - 15.0 GM	A705673
CFR 19662	2.52	0.017	0.13	0.1	0.05	9	0.2	0.08	8	1	1DX - 15.0 GM	A705673
CFR 19663	2.48	0.012	0.07	0	0.06	8.3	0.6	0	8	0.6	1DX - 15.0 GM	A705673
CFR 19664	2.19	0.017	0.3	0.4	0.02	4	0.3	0.11	7	1.9	1DX - 15.0 GM	A705673
CFR 19665	2.19	0.011	0.11	0.1	0.19	6.1	0.2	0	7	0.5	1DX - 15.0 GM	A705673
CFR 19666	2.79	0.016	0.13	0	0.01	7.5	0.2	0	9	0	1DX - 15.0 GM	A705673
CFR 19667	1.77	0.01	0.04	0.1	0.03	3.8	0.2	0	5	1	1DX - 15.0 GM	A705673
CFR 19668	2.06	0.015	0.08	0.1	0.03	5.1	0.1	0	7	0	1DX - 15.0 GM	A705673
CFR 19669	1.59	0.013	0.24	0.7	0.01	2.8	0.3	0	8	0	1DX - 15.0 GM	A705673
CFR 19670	1.84	0.015	0.1	0.1	0.01	2.9	0.1	0	7	0	1DX - 15.0 GM	A705673
CFR 19671	1.68	0.011	0.23	0.2	0.01	3.6	0.3	0	8	0	1DX - 15.0 GM	A705673
CFR 19673	1.52	0.016	0.15	0.2	0.03	3	0.2	0	6	0	1DX - 15.0 GM	A705673
CFR 19674	1.54	0.015	0.07	0.2	0.02	2.8	0.1	0	6	0	1DX - 15.0 GM	A705673
CFR 19675	1.58	0.014	0.06	0.1	0.02	3.7	0.1	0	6	0	1DX - 15.0 GM	A705673
CFR 19676	1.64	0.017	0.05	0.2	0.01	3	0.1	0	7	0	1DX - 15.0 GM	A705673
CFR 19677	2.25	0.048	0.17	0.1	0.01	5	0.1	0	5	0.6	1DX - 15.0 GM	A705673
CFR 24250	2.38	0.018	0.11	0.1	0.05	6.4	0.3	0	8	0.8	1DX - 15.0 GM	A705674
CFR 24251	2.77	0.016	0.15	0.1	0.03	6.1	0.3	0	8	1.2	1DX - 15.0 GM	A705674
CFR 24252	3.23	0.015	0.6	0.3	0.01	5.1	0.5	0	10	0.7	1DX - 15.0 GM	A705674
CFR 24253	3.75	0.017	1.1	0.1	0	6.2	0.5	0.14	12	1.4	1DX - 15.0 GM	A705674
CFR 24254	2.66	0.018	0.29	0.3	0.02	4.6	0.3	0.09	8	0.9	1DX - 15.0 GM	A705674
CFR 24255	3.5	0.029	1.39	0.1	0.01	7.1	0.5	0.22	12	1.9	1DX - 15.0 GM	A705674
CFR 24256	2.85	0.02	0.84	0.2	0.01	7.2	0.3	0.13	11	1.7	1DX - 15.0 GM	A705674
CFR 24257	1.78	0.018	0.15	0.2	0.01	3	0.2	0.06	8	0	1DX - 15.0 GM	A705674
CFR 24258	1.64	0.016	0.09	0.1	0	2.6	0.1	0.05	7	0.6	1DX - 15.0 GM	A705674
CFR 24259	2.33	0.015	0.13	0.2	0.03	4.1	0.2	0.05	7	0.9	1DX - 15.0 GM	A705674
CFR 24260	2.82	0.017	0.39	0.2	0.02	4.7	0.3	0.13	10	0.7	1DX - 15.0 GM	A705674
CFR 24261	2.48	0.037	0.64	0.1	0.01	5.6	0.3	0.24	11	1.5	1DX - 15.0 GM	A705674
CFR 24262	2.17	0.013	0.12	0.2	0.08	5.9	0.4	0.09	7	7.7	1DX - 15.0 GM	A705674
CFR 24263	2.32	0.013	0.7	0.1	0.02	10.2	1.5	0	10	3.2	1DX - 15.0 GM	A705674
CFR 24264	1	0.013	0.12	0.2	0.01	2.3	0.2	0.05	8	0	1DX - 15.0 GM	A705674
CFR 24265	2.38	0.021	0.13	0.1	0.03	4.7	0.3	0.05	7	1	1DX - 15.0 GM	A705674
CFR 24266	2.3	0.023	0.22	0.1	0.03	6.2	0.3	0.06	7	0.6	1DX - 15.0 GM	A705674
CFR 24267	2.11	0.019	0.13	0.2	0.06	4	0.4	0.06	7	1.1	1DX - 15.0 GM	A705674
CFR 24268	2.41	0.018	0.47	0.1	0.01	4.6	0.8	0	7	0.8	1DX - 15.0 GM	A705674
CFR 24269	2.57	0.02	0.7	0.2	0.01	4.8	1	0	9	0.9	1DX - 15.0 GM	A705674
CFR 24270	1.35	0.012	0.11	0.3	0.02	2.7	0.3	0	6	0	1DX - 15.0 GM	A705674
CFR 24271	1.91	0.01	0.48	0.2	0.01	4.8	0.5	0	6	0.5	1DX - 15.0 GM	A705674
CFR 24272	2.02	0.012	0.48	0.2	0.03	6.2	0.7	0	6	1	1DX - 15.0 GM	A705674
CFR 24273	2.03	0.014	0.85	0.1	0.01	5	0.7	0.12	7	0.8	1DX - 15.0 GM	A705674
CFR 24274	1.56	0.013	0.15	0.3	0.01	3	0.3	0	5	0	1DX - 15.0 GM	A705674
CFR 24275	2.05	0.011	0.25	0.1	0.02	5.2	0.5	0	6	0	1DX - 15.0 GM	A705674
CFR 24276	2.21	0.012	0.48	0.3	0.01	4.5	0.7	0	6	0.6	1DX - 15.0 GM	A705674
CFR 24277	1.84	0.014	0.26	0.1	0.01	5.7	0.2	0	6	0	1DX - 15.0 GM	A705674
CFR 24278	2.3	0.017	0.27	0.2	0.01	4.1	0.2	0	7	0	1DX - 15.0 GM	A705674
CFR 24279	2.19	0.021	0.61	0.2	0.01	6.6	0.6	0.1	7	1	1DX - 15.0 GM	A705674
CFR 24280	2	0.021	0.62	0.2	0.01	5.3	0.4	0.08	7	0	1DX - 15.0 GM	A705674
CFR 24281	2.16	0.014	0.3	0.3	0.01	6.2	0.2	0	6	0.6	1DX - 15.0 GM	A705674
CFR 24320	2.27	0.03	0.52	0.1	0.01	4	0.4	0.27	7	0	1DX - 15.0 GM	A705674

SAMPLES	UTM_	Easting	Northing	Mo	Cu	Pb	Zn	Ag	Ni	Co	Mn	Fe	As
CFR 24321	Nad 83-07V	570453	6977878	1	14.5	7.5	70	0.2	15.9	9.7	258	2.91	9.2
CFR 24322	Nad 83-07V	570454	6977828	1	16.8	9.1	69	0.2	20.5	11.7	244	3.2	6.9
CFR 24323	Nad 83-07V	570470	6977769	1.3	35.9	16.1	81	0.3	31.8	10.4	222	3.85	10.8
CFR 24324	Nad 83-07V	570511	6977730	1	21.5	8.8	70	0.3	18.7	16.4	514	2.54	7.3
CFR 24325	Nad 83-07V	570549	6977695	1.2	23.3	10.4	64	0.3	20.8	12	426	3.02	8.1
CFR 24326	Nad 83-07V	570575	6977650	1.3	33.6	11.4	70	0.3	29.1	10.3	251	3.49	10.9
CFR 24327	Nad 83-07V	570620	6977623	1.4	45.6	15.4	113	0.3	20.3	7	204	4.05	113.1
CFR 24328	Nad 83-07V	570661	6977588	1.6	27.4	32	127	0.6	24	34.8	2615	3.27	35.8
CFR 24329	Nad 83-07V	570675	6977532	1.1	30.3	10.2	101	0.3	33.6	21.1	1084	3.47	91.3
CFR 24330	Nad 83-07V	570689	6977478	0.8	38.1	14.5	92	0.1	41.5	10	606	3.18	107.1
CFR 24331	Nad 83-07V	570700	6977429	1.2	30.5	10.7	56	0.3	24.5	9.4	444	2.98	335.9
CFR 24332	Nad 83-07V	570672	6977376	0.9	44.3	22.1	82	0.2	35.4	10.2	262	2.76	38.7
CFR 24333	Nad 83-07V	570695	6977323	1.3	17.6	8.7	55	0.1	19.9	14.2	432	2.86	10.4
CFR 24334	Nad 83-07V	570701	6977276	0.8	27.1	9.7	57	0.1	25.1	9.5	281	3.06	14.3
CFR 24335	Nad 83-07V	570701	6977217	1.1	24.8	9.5	56	0.2	20.3	10.6	331	3.02	11
CFR 24336	Nad 83-07V	570704	6977171	1.5	21.4	10.7	103	0.3	23.8	20.3	1045	3.4	11.2
CFR 24337	Nad 83-07V	570717	6977121	1.1	22	10	69	0.3	20.4	9.6	370	3.04	6.9
CFR 24338	Nad 83-07V	570749	6977079	1.1	19.3	8.9	67	0.4	23.7	13.3	703	2.85	9.5
CFR 24339	Nad 83-07V	570769	6977020	1.3	31.5	17	72	0.5	20.5	7.1	321	3.25	11.1
CFR 24340	Nad 83-07V	570802	6976970	1.2	23	7.5	70	0.3	24.8	9.1	205	3.46	8.7
CFR 24341	Nad 83-07V	570820	6976911	1.9	17.8	10.5	91	0.1	23.4	14.5	583	4.86	13.8
CFR 24342	Nad 83-07V	570831	6976857	0.8	24.2	5	70	0	21.5	11.5	613	3.11	5.5
CFR 24343	Nad 83-07V	570846	6976804	0.9	22.8	6.7	71	0.3	19.3	10.1	249	3.11	7.2
CFR 24344	Nad 83-07V	570868	6976755	0.9	56.6	8.8	135	0	63	14.3	333	4.29	10.4
CFR 24345	Nad 83-07V	570904	6976723	0.9	20.7	7.9	81	0.1	26.3	12.6	553	3.01	8.5
CFR 24346	Nad 83-07V	570960	6976702	1.1	25.5	8.6	77	0.1	27.7	12.2	466	2.98	14.1
CFR 24347	Nad 83-07V	571006	6976671	1	25	11.1	93	0.3	27.6	14.2	1135	2.95	29.5
CFR 24348	Nad 83-07V	571057	6976642	1.1	41.3	10.4	85	0.4	42.9	15	482	3.64	11.6
CFR 24349	Nad 83-07V	571089	6976601	1	35.8	7.2	81	0.1	37.1	10.1	372	3.28	18.4
CFR 24350	Nad 83-07V	571122	6976562	1.1	33.4	9	80	0.3	39.2	12.4	420	3.15	14.3
CFR 24351	Nad 83-07V	571150	6976512	1.5	22.4	7.6	70	0.2	29.9	13.7	954	2.98	10.3
CFR 24352	Nad 83-07V	571183	6976470	1.4	21.6	6.7	69	0.1	25.4	10.5	364	2.92	6.5
CFR 24438	Nad 83-07V	568670	6977978	3	54.3	8.8	123	0.2	37.4	14.2	465	4.3	15.9
CFR 24439	Nad 83-07V	568756	6978043	1.8	41.2	12.1	77	0	38	13.1	399	4.21	40.2
CFR 24440	Nad 83-07V	568839	6978101	0.9	42	9.5	82	0.1	33.2	10.2	249	3.29	9.8
CFR 24441	Nad 83-07V	568920	6978158	1.3	26	9.4	56	0.1	22.1	9.5	263	3.33	10.1
CFR 24442	Nad 83-07V	568974	6978204	1	31.6	7.9	69	0.1	28.6	9.7	201	3.38	7.6
CFR 24443	Nad 83-07V	569073	6978183	0.8	33.5	9.7	72	0	24.9	9.1	225	3.01	16.9
CFR 24444	Nad 83-07V	569172	6978166	1.4	20.7	10.1	39	0.1	16.4	6.7	197	3.12	8.6
CFR 24445	Nad 83-07V	569269	6978141	0.9	34	8.8	54	0.2	32.6	9.8	303	2.8	4.7
CFR 24446	Nad 83-07V	569367	6978122	1	43.4	14.3	157	0.3	52.8	11.4	283	4.18	9.2
CFR 24447	Nad 83-07V	569464	6978089	1.1	82.9	8	43	0.7	21.8	8.3	301	2.39	6.3
CFR 24448	Nad 83-07V	569612	6977980	0.9	60.5	16.1	106	0.2	26.2	6.6	248	3.83	11.4
CFR 24449	Nad 83-07V	569653	6977889	0.9	48.8	9.1	99	0.1	38.4	10.2	255	3.74	22.1
CFR 24450	Nad 83-07V	569699	6977801	1.3	47.7	13.2	100	0.2	42.7	11.5	300	4.01	30.4
CFR 24451	Nad 83-07V	569747	6977712	1.2	38.7	22.8	70	0.4	32.6	13.5	294	3.5	21.4
CFR 24452	Nad 83-07V	569790	6977622	1.5	38.8	12.2	75	0.3	34.7	11.3	257	3.38	95.7
CFR 24453	Nad 83-07V	569835	6977531	1.4	32.4	14.4	240	0	45.1	9.5	450	4.54	100.5
CFR 24454	Nad 83-07V	569876	6977441	4.8	63	10.2	171	0.3	18.1	3	223	3.65	13.3
CFR 24455	Nad 83-07V	569920	6977349	2	76	35.4	166	0.2	40.7	8.4	190	6.18	13.7
CFR 24456	Nad 83-07V	569962	6977260	1.2	31.6	8.3	184	0.1	31.7	9.5	300	3.17	14.7
CFR 24457	Nad 83-07V	570009	6977187	1.5	16.5	15.1	261	0.3	21.8	15	474	3.02	8.8
CFR 24458	Nad 83-07V	570059	6977067	1.9	38.9	13.5	169	0.2	33.1	12.1	288	2.86	47.8
CFR 24459	Nad 83-07V	570100	6976997	3.2	50.3	32.4	147	0.4	35.9	7.7	309	3.38	128.7
CFR 24460	Nad 83-07V	570177	6976920	0.6	33.7	7.4	100	0	49	16.8	489	4.91	7.3
CFR 24461	Nad 83-07V	570225	6976827	1.2	42.3	7.2	101	0.3	39.3	9.2	199	2.99	14.9
CFR 24462	Nad 83-07V	570283	6976739	2.3	44	7	88	0.1	32.1	10.5	289	2.99	15.6
CFR 24463	Nad 83-07V	570337	6976648	2.2	29.6	9.4	74	0.4	27.4	11.1	307	3.57	38

SAMPLES	U	Au	Th	Sr	Cd	Sb	Bi	V	Ca	P	La	Cr	Mg	Ba	Ti	B
CFR 24321	0.3	1.2	1.6	14	0.4	0.4	0.2	68	0.11	0.027	7	27	0.46	128	0.064	0
CFR 24322	0.4	1.9	2	17	0.4	0.4	0.2	77	0.16	0.024	7	34	0.56	95	0.076	0
CFR 24323	0.7	1.6	4.6	18	0.1	0.3	0.2	74	0.09	0.026	15	54	0.86	119	0.124	0
CFR 24324	0.4	3.8	2	16	0.4	0.3	0.2	58	0.15	0.036	7	27	0.38	123	0.078	0
CFR 24325	0.5	1.4	2.6	17	0.5	0.4	0.2	72	0.14	0.03	10	37	0.57	153	0.083	0
CFR 24326	0.9	3.4	3.8	22	0.2	0.4	0.2	75	0.19	0.026	11	45	0.72	149	0.113	1
CFR 24327	1	1.2	5.9	29	0.2	0.6	0.3	75	0.08	0.054	20	57	0.98	196	0.144	0
CFR 24328	0.8	1.5	2.6	31	0.8	0.5	0.3	67	0.31	0.079	11	33	0.46	281	0.066	1
CFR 24329	0.8	1.9	3.1	21	0.8	0.8	0.2	78	0.18	0.037	12	45	0.67	196	0.118	0
CFR 24330	1	1.5	4.9	25	0.2	1.2	0.2	71	0.32	0.031	19	51	0.86	173	0.108	0
CFR 24331	0.7	1.8	3.7	22	0.2	1.6	0.2	68	0.2	0.045	12	39	0.66	194	0.094	1
CFR 24332	0.8	0.8	5.7	23	0.2	0.4	0.2	54	0.18	0.022	19	36	0.52	204	0.075	0
CFR 24333	0.4	1	2.3	19	0.2	0.4	0.2	69	0.17	0.022	7	33	0.51	184	0.066	0
CFR 24334	0.5	2.7	2.9	17	0.5	0.5	0.2	75	0.14	0.022	9	37	0.57	163	0.079	0
CFR 24335	0.6	3	3.1	18	0.1	0.4	0.2	67	0.19	0.031	9	32	0.46	173	0.074	0
CFR 24336	0.5	1.4	3.1	17	0.4	0.4	0.2	75	0.13	0.032	10	37	0.48	199	0.088	0
CFR 24337	0.5	1.2	3.1	22	0.2	0.4	0.2	68	0.14	0.025	10	38	0.62	230	0.096	0
CFR 24338	0.5	0.5	3.2	18	0.2	0.4	0.2	68	0.18	0.025	11	36	0.57	245	0.105	0
CFR 24339	0.5	1.6	3.9	27	0.2	0.4	0.2	72	0.12	0.035	13	47	0.65	280	0.106	0
CFR 24340	0.5	0.7	3.7	14	0.3	0.4	0.2	80	0.1	0.032	12	45	0.7	167	0.137	0
CFR 24341	0.4	1.7	2.5	17	0.3	0.6	0.2	106	0.18	0.115	7	45	0.56	130	0.092	1
CFR 24342	0.7	0.8	4.1	29	0.1	0.2	0.4	72	0.27	0.024	6	43	0.7	367	0.145	0
CFR 24343	0.5	0.8	3.1	26	0.2	0.3	0.2	59	0.17	0.044	9	33	0.59	183	0.141	1
CFR 24344	0.9	0.8	6.2	29	0.2	0.2	0.2	138	0.22	0.017	14	103	1.56	227	0.287	0
CFR 24345	0.5	1.3	3.4	26	0.2	0.4	0.2	76	0.33	0.029	9	42	0.59	231	0.086	0
CFR 24346	0.6	1.8	3.4	23	0.4	0.5	0.2	72	0.22	0.032	10	40	0.56	175	0.117	1
CFR 24347	0.6	1.9	3.2	22	0.5	0.8	0.2	71	0.23	0.03	10	39	0.52	241	0.102	1
CFR 24348	1.1	2.5	4.8	26	0.3	0.5	0.2	90	0.26	0.024	13	57	0.75	201	0.151	1
CFR 24349	0.7	1.6	3.5	21	0.3	0.5	0.2	85	0.18	0.029	10	53	0.65	151	0.132	1
CFR 24350	0.8	1.9	5.1	30	0.1	0.5	0.3	91	0.27	0.024	15	59	0.8	226	0.149	1
CFR 24351	0.6	0.7	3.8	26	0.3	0.5	0.2	77	0.28	0.026	11	46	0.63	319	0.121	1
CFR 24352	0.5	0	2.3	20	0.3	0.4	0.2	75	0.13	0.031	8	45	0.55	202	0.115	1
CFR 24438	1.3	4.1	3.8	29	0.5	0.5	0.1	110	0.25	0.09	20	59	0.98	472	0.132	1
CFR 24439	1.3	4.7	5.4	24	0.2	1.4	0.2	96	0.23	0.035	16	55	0.79	214	0.114	2
CFR 24440	1.3	3.1	6.5	14	0.1	0.4	0.2	62	0.13	0.034	26	42	0.72	120	0.095	1
CFR 24441	1.2	4.8	3	21	0.2	0.5	0.2	78	0.22	0.057	16	39	0.58	167	0.079	1
CFR 24442	0.9	0.8	5	18	0.4	0.4	0.2	73	0.19	0.035	16	41	0.75	113	0.123	1
CFR 24443	1.1	1.9	5.3	17	0.2	0.4	0.2	65	0.16	0.033	20	41	0.66	129	0.11	1
CFR 24444	0.6	6.1	1.7	15	0.2	0.5	0.2	82	0.13	0.034	9	31	0.43	132	0.085	1
CFR 24445	0.7	2.3	3.4	19	0.1	0.3	0.2	68	0.19	0.034	16	36	0.58	137	0.124	1
CFR 24446	1.1	2.3	7.4	11	0.4	0.3	0.4	83	0.11	0.025	21	50	0.96	185	0.161	1
CFR 24447	2.4	3.6	0.4	30	1	0.3	0.2	47	0.24	0.068	29	26	0.22	217	0.043	1
CFR 24448	1.6	2.2	9.4	18	0.1	0.3	0.3	68	0.05	0.043	35	43	0.67	182	0.103	1
CFR 24449	1.4	2.9	8.5	18	0.1	0.7	0.2	67	0.11	0.031	22	45	0.67	154	0.098	0
CFR 24450	1.2	1.8	7.7	19	0.3	0.5	0.2	83	0.11	0.043	26	65	0.82	246	0.113	1
CFR 24451	1.1	4	5.9	27	0.3	0.6	0.2	85	0.17	0.023	14	49	0.74	233	0.125	2
CFR 24452	1.3	4.9	4.5	25	0.3	1.5	0.2	80	0.21	0.04	15	43	0.7	184	0.109	1
CFR 24453	1	1.2	5.2	23	0.4	2	0.2	115	0.14	0.061	19	75	1.33	222	0.217	2
CFR 24454	1.5	4.4	5.1	50	0.5	0.3	0.6	151	0.11	0.065	59	70	0.82	420	0.118	1
CFR 24455	2.4	2.1	12	127	0.4	0.5	0.4	91	0.07	0.063	54	59	1.02	222	0.125	2
CFR 24456	0.7	2.5	4.3	37	0.5	0.4	0.2	75	0.26	0.03	13	44	0.75	211	0.117	1
CFR 24457	0.5	1.4	2.4	35	1.3	0.5	0.3	77	0.19	0.032	8	31	0.45	367	0.065	1
CFR 24458	0.9	0	3.8	38	0.4	0.7	0.2	71	0.13	0.038	16	35	0.45	205	0.065	1
CFR 24459	1	25.4	5.6	72	0.6	3	0.4	72	0.23	0.066	22	41	0.59	627	0.081	2
CFR 24460	0.9	0	9.2	26	0.1	0.2	0.2	73	0.23	0.034	17	73	1.28	127	0.27	1
CFR 24461	0.9	1.1	4.8	22	0.4	0.4	0.2	99	0.18	0.028	19	50	0.69	390	0.13	1
CFR 24462	1.5	4.9	3.5	29	0.6	0.5	0.2	84	0.26	0.042	14	45	0.6	411	0.126	3
CFR 24463	0.6	1	2.3	25	0.5	0.6	0.3	106	0.19	0.043	10	42	0.55	496	0.103	1

SAMPLES	Al	Na	K	W	Hg	Sc	Tl	S	Ga	Se	Analysis__	Acme_file_#__
CFR 24321	1.48	0.014	0.07	0.1	0.01	2.2	0.1	0	7	0	1DX - 15.0 GM	A705674
CFR 24322	1.81	0.012	0.11	0.1	0.01	2.6	0.1	0	7	0	1DX - 15.0 GM	A705674
CFR 24323	2.38	0.019	0.32	0.1	0.02	3.9	0.3	0.11	7	0	1DX - 15.0 GM	A705674
CFR 24324	1.48	0.015	0.1	0.1	0.02	2.4	0.1	0	6	0	1DX - 15.0 GM	A705674
CFR 24325	1.86	0.013	0.11	0.1	0.01	3	0.1	0	7	0	1DX - 15.0 GM	A705674
CFR 24326	2.31	0.015	0.14	0.1	0.02	4.3	0.1	0	7	0	1DX - 15.0 GM	A705674
CFR 24327	2.36	0.033	0.62	0.1	0.01	4.3	0.5	0.28	7	1.1	1DX - 15.0 GM	A705674
CFR 24328	1.59	0.013	0.14	0.1	0.03	2.9	0.2	0	6	0	1DX - 15.0 GM	A705674
CFR 24329	1.95	0.013	0.27	0.1	0.02	4	0.2	0	7	0	1DX - 15.0 GM	A705674
CFR 24330	1.88	0.011	0.2	0.1	0.02	5.2	0.2	0	6	0.5	1DX - 15.0 GM	A705674
CFR 24331	1.75	0.015	0.13	0.2	0.02	3.8	0.1	0	6	0.5	1DX - 15.0 GM	A705674
CFR 24332	1.47	0.007	0.2	0.1	0.01	4.2	0.4	0.06	4	0	1DX - 15.0 GM	A705674
CFR 24333	1.72	0.014	0.05	0.1	0.01	2.7	0.1	0	6	0	1DX - 15.0 GM	A705674
CFR 24334	1.96	0.012	0.05	0.1	0.04	3.8	0.1	0	6	0	1DX - 15.0 GM	A705674
CFR 24335	1.78	0.013	0.07	0.1	0.02	3.6	0.1	0	6	0	1DX - 15.0 GM	A705674
CFR 24336	1.85	0.012	0.11	0.2	0.01	2.9	0.2	0	7	0	1DX - 15.0 GM	A705674
CFR 24337	1.76	0.019	0.12	0.1	0.01	3	0.2	0	6	0	1DX - 15.0 GM	A705674
CFR 24338	1.65	0.015	0.1	0.1	0.01	2.6	0.1	0	6	0	1DX - 15.0 GM	A705674
CFR 24339	1.76	0.024	0.17	0.1	0.02	3.4	0.2	0.14	7	0.6	1DX - 15.0 GM	A705674
CFR 24340	2.27	0.01	0.23	0.2	0.02	3	0.2	0	7	0	1DX - 15.0 GM	A705674
CFR 24341	2.08	0.011	0.15	0.2	0.01	3.1	0.1	0	9	0	1DX - 15.0 GM	A705674
CFR 24342	2.58	0.027	0.33	0.8	0.01	6.2	0.3	0	9	0.5	1DX - 15.0 GM	A705674
CFR 24343	1.76	0.019	0.28	0.1	0.02	2.5	0.3	0	6	0	1DX - 15.0 GM	A705674
CFR 24344	3.95	0.013	0.55	0.1	0.01	9.9	0.5	0	14	0.7	1DX - 15.0 GM	A705674
CFR 24345	2.12	0.015	0.08	0.1	0.01	5.5	0.1	0	6	0.5	1DX - 15.0 GM	A705674
CFR 24346	1.7	0.013	0.23	0.1	0.01	3.8	0.2	0	6	0	1DX - 15.0 GM	A705674
CFR 24347	1.83	0.019	0.17	0.1	0.02	3.9	0.2	0	6	0	1DX - 15.0 GM	A705674
CFR 24348	2.36	0.015	0.45	0.1	0.02	6.2	0.3	0	7	0.7	1DX - 15.0 GM	A705674
CFR 24349	2.15	0.012	0.32	0.2	0.01	4.2	0.3	0	7	0.6	1DX - 15.0 GM	A705674
CFR 24350	2.37	0.014	0.34	0.2	0.01	5.8	0.3	0	8	0.6	1DX - 15.0 GM	A705674
CFR 24351	2	0.017	0.23	0.1	0.01	5.2	0.2	0	6	0	1DX - 15.0 GM	A705674
CFR 24352	1.73	0.017	0.21	0.1	0.01	3.6	0.2	0	7	0	1DX - 15.0 GM	A705674
CFR 24438	2.62	0.017	0.44	0.1	0.02	4	0.4	0.16	8	2.1	1DX - 15.0 GM	A705674
CFR 24439	2.7	0.016	0.12	0.1	0.03	6.6	0.3	0	8	0.5	1DX - 15.0 GM	A705674
CFR 24440	1.68	0.011	0.28	0.1	0.01	3.5	0.3	0	5	0.6	1DX - 15.0 GM	A705674
CFR 24441	2.37	0.014	0.07	0.2	0.05	5.2	0.2	0	7	0.7	1DX - 15.0 GM	A705674
CFR 24442	2.14	0.013	0.21	0.1	0.02	3.9	0.2	0	7	0.7	1DX - 15.0 GM	A705674
CFR 24443	1.79	0.011	0.21	0.1	0.01	3.8	0.2	0	5	0.5	1DX - 15.0 GM	A705674
CFR 24444	1.79	0.011	0.08	0.1	0.03	3	0.1	0	7	0	1DX - 15.0 GM	A705674
CFR 24445	1.63	0.017	0.26	0.1	0.01	2.8	0.2	0	6	0.6	1DX - 15.0 GM	A705674
CFR 24446	2.49	0.01	0.37	0.1	0.02	3.7	0.5	0	8	0.6	1DX - 15.0 GM	A705674
CFR 24447	1.92	0.019	0.06	0.1	0.08	3	0.1	0	6	0.7	1DX - 15.0 GM	A705674
CFR 24448	1.45	0.019	0.63	0	0.01	3.7	0.6	0.23	5	1	1DX - 15.0 GM	A705674
CFR 24449	1.89	0.012	0.35	0.1	0.01	4.3	0.4	0.11	5	0.7	1DX - 15.0 GM	A705674
CFR 24450	2.48	0.015	0.44	0.1	0.02	4.7	0.4	0.16	7	1.2	1DX - 15.0 GM	A705674
CFR 24451	2.68	0.016	0.17	0.1	0.03	4.9	0.2	0.07	7	0.7	1DX - 15.0 GM	A705674
CFR 24452	2.33	0.017	0.13	0.1	0.02	4.4	0.2	0	8	0.9	1DX - 15.0 GM	A705674
CFR 24453	2.92	0.014	0.55	0.1	0.01	5.5	0.5	0	13	0	1DX - 15.0 GM	A705674
CFR 24454	2.06	0.017	0.72	0.1	0.01	4.3	0.5	0.14	7	3	1DX - 15.0 GM	A705674
CFR 24455	2.66	0.031	0.81	0.1	0.01	5.7	0.5	0.23	9	3.8	1DX - 15.0 GM	A705674
CFR 24456	2.15	0.015	0.22	0.1	0.02	3.4	0.3	0	7	0.5	1DX - 15.0 GM	A705674
CFR 24457	1.58	0.014	0.16	0.1	0.01	2.3	0.1	0	7	0	1DX - 15.0 GM	A705674
CFR 24458	1.48	0.013	0.12	0.1	0.01	3	0.2	0	5	1.1	1DX - 15.0 GM	A705674
CFR 24459	1.51	0.013	0.27	0.2	0.11	3.4	0.6	0.16	5	4.4	1DX - 15.0 GM	A705674
CFR 24460	3.52	0.02	1.02	0.3	0.01	5.1	0.8	0	13	0	1DX - 15.0 GM	A705674
CFR 24461	1.89	0.02	0.34	0.1	0.01	3.8	0.4	0	6	0.5	1DX - 15.0 GM	A705674
CFR 24462	1.94	0.029	0.15	0.2	0.02	3.8	0.2	0	6	1.4	1DX - 15.0 GM	A705674
CFR 24463	2.16	0.012	0.09	0.1	0.03	3.9	0.2	0	8	0.6	1DX - 15.0 GM	A705674

SAMPLES	UTM_	Easting	Northing	Mo	Cu	Pb	Zn	Ag	Ni	Co	Mn	Fe	As
CFR 24464	Nad 83-07V	570392	6976559	1.9	47	41	162	0.2	44	11	396	4.25	135.9
CFR 24465	Nad 83-07V	570438	6976466	1.4	30.5	11.5	78	0.4	28.5	10	470	3.14	11.1

SAMPLES	U	Au	Th	Sr	Cd	Sb	Bi	V	Ca	P	La	Cr	Mg	Ba	Ti	B
CFR 24464	0.9	10.8	3.4	39	0.4	0.6	2.2	122	0.19	0.049	14	91	0.97	421	0.152	2
CFR 24465	0.7	0.5	4.5	30	0.4	0.4	0.4	73	0.27	0.034	15	39	0.54	294	0.129	1

SAMPLES	Al	Na	K	W	Hg	Sc	Tl	S	Ga	Se	Analysis__	Acme_file_#__
CFR 24464	2.65	0.021	0.51	0.2	0.02	7.3	0.7	0.07	9	1	1DX - 15.0 GM	A705674
CFR 24465	1.74	0.018	0.28	0.1	0.01	3.5	0.3	0	6	0.6	1DX - 15.0 GM	A705674