

# Assessment Report

Describing Line Cutting on the Goalie claims  
(Owned 100 % by Yukon Zinc Corp.)  
at

## Wolverine Project

NTS 105G/08  
444000N to 6802000N and 454500E to 6820000E UTM, NAD 83 – UTM Zone 9

In the Watson Lake Mining District, Yukon Territory

Prepared by:

Jelle De Bruyckere, M.Sc.

August 2008

## Table of contents

1. Introduction	p2
2. Property Description and Location	p3
3. Accessibility, Climate and Physiography	p3
4. Geological Setting	p4
4.1. Introduction	p4
4.2. Regional Geological Framework	p4
4.3. Regional Metamorphism	p6
4.4. Deposit Geology – Wolverine Stratigraphic Sequence	p6
4.4.1. Footwall to Massive Sulphide Lens	p6
4.4.2. Massive Sulphide Lens	p6
4.4.3. Hanging wall to Massive Sulphide Lens	p7
4.5. Hydrothermal Alteration	p8
5. Line Cutting: Description of undertakings on the Goalie claims	p8
6. Recommendations	p9
7. References	p9
8. Appendices	
- List of the Goalie Quartz Mining Claims paid in-lieu	p10
- List of the Goalie Quartz Mining Claims in this assessment report	p12
- Statement of Expenditures	p14
- Statement of Qualifications	p15
- Map showing the grid on the Goalie claims	p16

## 1. Introduction

The Wolverine volcanogenic massive sulphide (VMS) deposit is now owned 100% by Jinduicheng Molybdenum Group Ltd. and Northwest Nonferrous International Investment Company Ltd. It is located in the Yukon Territory, 190 kilometers north-northwest of the town of Watson Lake and 16 kilometers west of the Robert Campbell Highway. The deposit was discovered in 1995 by a Joint Venture between Westmin Resources Limited and Atna Resources Ltd (“Atna”). Atna staked Quartz Mining claims based upon a conceptual idea presented by Mark Baknes of Equity Engineering Ltd in 1993.

From Monday 25 February to Sunday 20 April line cutting was done by a Coureur des Bois crew, consisting of 8 to 10 men. They cut grids on the Foot, Red Line, Goalie, Toe, Jill, Cap and Lin Quartz Mining Claims for a geophysical grid in advance of a surface geophysical survey on these claims.

This report describes shortly the property, property location, accessibility, climate, physiography, geology and the line cutting work that was done in the winter/spring of 2008.

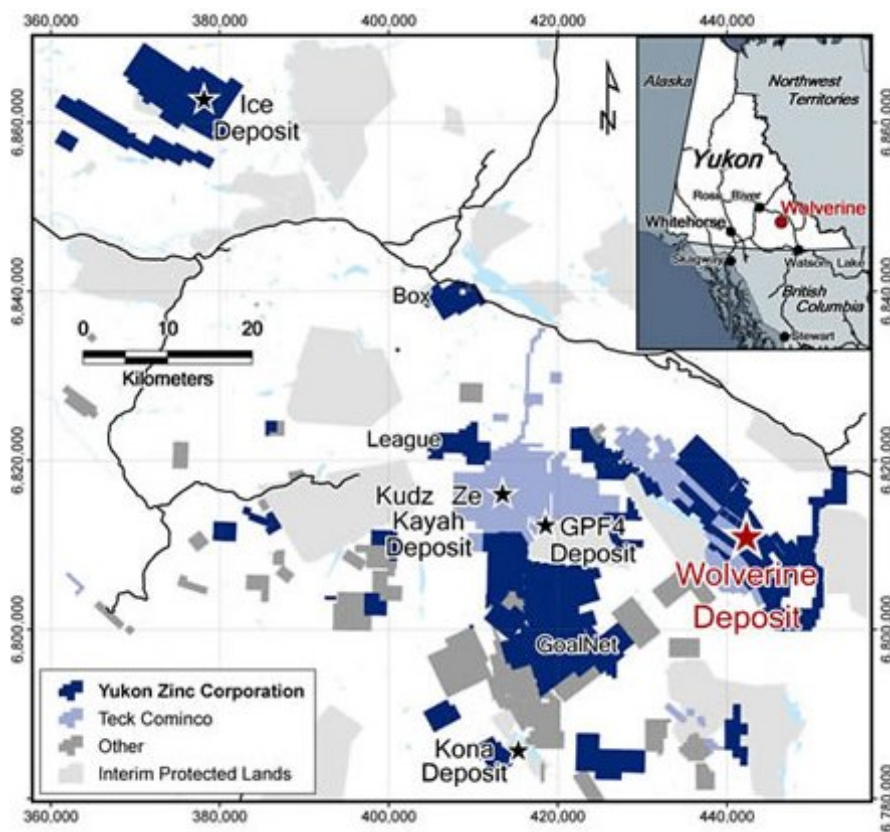


Figure 1: Location map of the Wolverine Property.

## 2. Property Description and Location

The Wolverine property is located 190 kilometers north-northwest of Watson Lake in south central Yukon. Figure 1 presents the location of the Wolverine property and the Wolverine project.

The Wolverine property consists of 1055 quartz mining claims located in the Watson Lake Mining District, Yukon (Figure 2). The project was 100% owned by Yukon Zinc, but its acquisition by Jinduicheng Molybdenum Group Ltd. and Northwest Nonferrous International Investment Company Ltd. has been completed in July 2008.

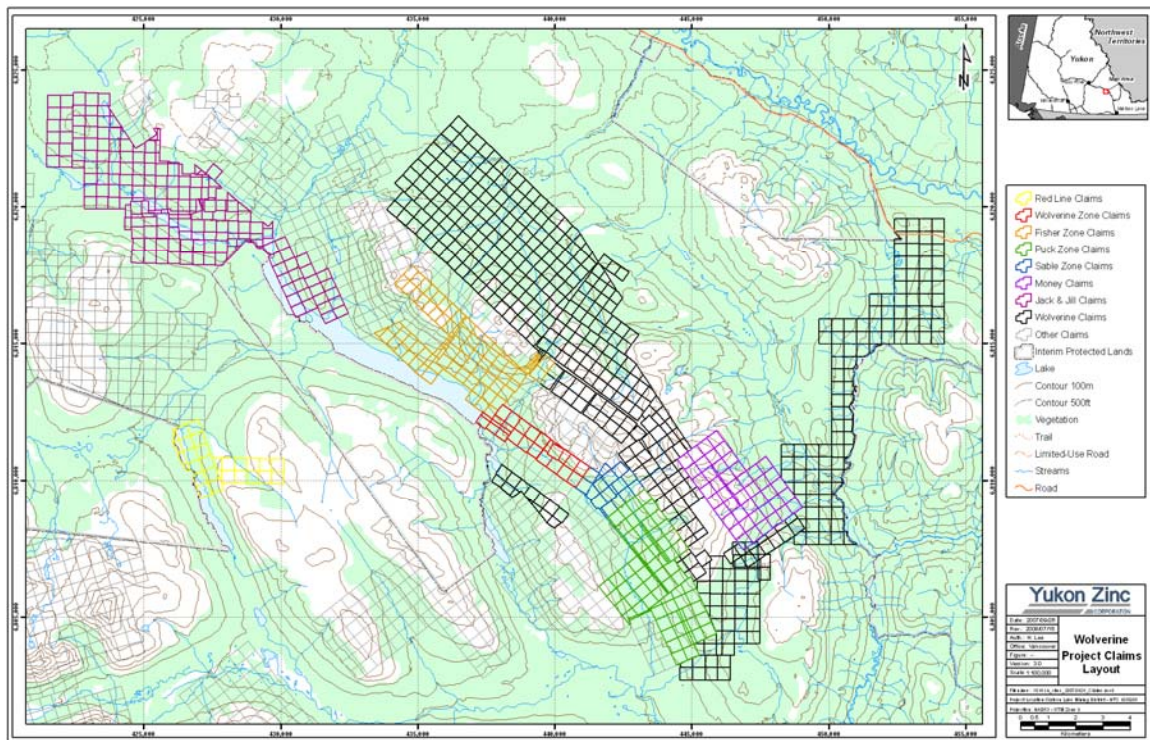


Figure 2: Wolverine Property Claims

## 3. Accessibility, Climate and Physiography

Currently, the property is accessed using fixed-wing aircraft, helicopter or the Wolverine access road to the Robert Campbell Highway. The access road is a 28km gravel road heading southeast and then northeast to the Robert Campbell Highway at a point approximately 198 km north of Watson Lake. The town of Watson Lake is a southern Yukon transportation hub with roads connecting to Whitehorse (441 km), the port at Skagway (615 km) and the rail head at Fort Nelson (531 km).

The climate of the area is cold and dry. Annual average precipitation is approximately 479 mm, equally divided between rain and snow. Site temperatures have been measured between 30°C and -53°C.

The topography and landscape of the area are typical of montane glacially affected areas with rounded peaks and U-shaped valleys. Higher elevation areas are generally mantled with glacial moraine deposits, colluvium and bedrock with vegetation which includes dwarf birch and willow, alpine fir, alpine grasses, sedges and lichens. Valley bottom areas contain thick glaciofluvial, glaciolacustrine and alluvial deposits with wetlands and mixed spruce boreal forests. The area around the Wolverine Project has discontinuous permafrost with poorly drained depressional areas containing peat plateaus, patterned fen and bog complexes. Scree covered slopes are most prominent along steep upper mountain slopes. Deep colluvium occurs on steeper mid to lower slopes.

Wildlife values around the Wolverine Project include the Finlayson Caribou herd, moose, bears, and various small furbearers. The Tintina Trench, a major physiographic feature of the region, is a migration route for several bird species, including the sandhill crane, trumpeter swan and Whitefronted goose. Golden eagles, bald eagles and gyrfalcons have also been observed in the Kudz Ze Kayah – Wolverine Lake area although no nesting sites are known to occur near the proposed development areas. Regional streams and lakes support populations of arctic grayling, lake trout, dolly varden char, bull trout, longnose suckers and slimey sculpin.

## **4. Geological Setting**

### **4.1. Introduction**

The Wolverine Deposit is a polymetallic, Volcanogenic Massive Sulphide (VMS) deposit that was discovered in 1995 by a Joint Venture between Westmin Resources Limited (“Westmin”) and Atna Resources Ltd (“Atna”). Atna staked Quartz Mining claims based upon a conceptual idea presented by Mark Baknes of Equity Engineering Ltd in 1993.

The discovery of the Wolverine Deposit followed the discovery of Kudz Ze Kayah (KZK) in 1994 by Cominco Ltd. (now “Teck Cominco”) and led to the largest staking rush in the history of the Yukon. The Wolverine deposit is part of the Finlayson Lake District (FLD). The FLD is also known to host several other base metal deposits including Fyre Lake, GP4F and Ice (Figure 2).

### **4.2. Regional Geological Framework**

The FLD comprises a dominant portion of the isolated outlier of Yukon-Tanana (YTT) and Slide Mountain (SMT) Terranes northeast of the Tintina Fault. The FLD also lies near the inner, eastern margin of the outlier, where pericratonic rocks of YTT and basinal oceanic rocks of Slide Mountain Terrane are juxtaposed directly against rocks of the North American continental margin along the post-Late Triassic Inconnu Thrust. The YTT and SMT in the Finlayson Lake massive sulphide district comprise variably deformed and metamorphosed lower greenschist to amphibolite facies sedimentary and volcanic rocks and affiliated plutonic suites. Although the rocks of the Terrane are

ubiquitously foliated and variably folded, regionally extensive stratigraphic units have been defined by mapping and drill core logging and protoliths have been determined from locally well preserved primary features and geochemical characteristics.

The YTT and SMT in the FLD can be subdivided into several provisionally named fault- and unconformity-bound groups and formations. According to researchers, the structurally lowermost rocks that are definitely part of the YTT are footwall to the Money Creek Thrust and include the mafic and felsic volcanic and sedimentary rocks of Upper Devonian and older Grass Lakes Group, Late Devonian to early Mississippian granitic plutonic rocks of the Grass Lakes Plutonic Suite and sedimentary and mafic and felsic volcanic rocks of the unconformably overlying lower Mississippian Wolverine Lake Group. It should be noted that the Grass Lakes Group is host to the Fyre Lake, Kudz Ze Kayah, and GP4F deposits, whereas the Wolverine Lake group hosts the Wolverine deposit.

The hanging wall of the Money Creek Thrust is composed of the metasedimentary and felsic to intermediate metavolcanic rocks of the Upper Devonian to lower Mississippian Waters Creek and Tuchitua River Formations, affiliated granitic to granodioritic, metaplutonic rocks of the Simpson Range plutonic suite, the upper Mississippian to Lower Permian Whitefish limestone and, locally, dark grey basinal clastic rocks of the basal Lower Permian Money Creek Formation. These latter rocks are overlain by rocks of an upper thrust sheet which comprises undeformed, predominantly mafic Late Devonian volcanic rocks of the Cleaver Lake Formation, spatially associated and probably co-magmatic felsic, mafic and ultramafic metaplutonic rocks and a cross-cutting early Mississippian pluton of the Simpson Range plutonic suite. Rare coarse-grained metamorphic rocks with early Mississippian metamorphic cooling ages inferred to be highly retrogressed eclogite and mélangé-like dark chert, chert-pebble conglomerate, argillite, and greywacke similar to, and locally mapped as part of, the Money Creek Formation are provisionally included in the upper sheet. None of these rocks units has yielded significant accumulations of VMS mineralization.

To the north and east, the imbricated rocks of YTT are juxtaposed against rocks of SMT along the Jules Creek Fault. In this area, SMT comprises the probably Mississippian to Lower Permian Fortin Creek group, a primarily dark grey argillite and chert succession with locally important variegated chert and phyllite, quartzofeldspathic sandstone, chert-pebble conglomerate, felsic and mafic metavolcanic rocks, barite and dark grey limestone. SMT also includes pristine to weakly foliated Lower Permian basalt and chert of the Campbell Range Formation and presumably co-magmatic Early Permian mafic and ultramafic meta-plutonic rocks that lie within a ca. 20 km-wide magmatic corridor that straddles the Jules Creek Fault. As the Campbell Range Formation unconformably overlies, and the mafic and ultramafic metaplutonic rocks intrude older rocks on both sides of the fault, they link the two terranes in the Early Permian. The mafic rocks of the SMT are host to the Ice VMS deposit.

### **4.3. Regional Metamorphism**

All the rocks in the Wolverine stratigraphy have been metamorphosed to middle to upper greenschist grade, based on the characteristic minerals chlorite, actinolite, albite, sphene, carbonate and, in places, biotite. The rocks have undergone a single recognized major deformational event, which has obliterated most primary volcanic and sedimentary textures and forms a prominent S1 foliation which trends consistently northwest and dips gently to the northeast. This fabric is a curvilinear foliation that is defined by millimeter to centimeter scale seams of fine micaceous minerals that are more widely spaced in the more siliceous units.

### **4.4. Deposit Geology – Wolverine Stratigraphic Sequence**

The Wolverine stratigraphy is a sequence of deformed volcanic and sedimentary rocks for which various protolith rocks have been interpreted. The protolith rocks, which have been divided by Yukon Zinc Corp. into six grouped rock-type units, can be correlated across the entire stratigraphic package hosting the Wolverine deposit. However, to simplify things, the host stratigraphy for sulphide mineralization is presented in three basic, successive units: Hanging Wall, Massive Sulphide Mineralization and Footwall. These three, generalized units are described below from oldest to youngest

#### **4.4.1. Footwall to Massive Sulphide Lens**

One of the dominant units in the Wolverine stratigraphic column is the footwall rocks that are composed of volcanoclastic, carbonaceous sedimentary and porphyritic intrusive rocks. This heterogeneous unit contains the following lithologies: (1) Green to grey quartz- and feldspar- crystal bearing rhyolite volcanoclastic rock with variable amounts of interbedded carbonaceous argillite that contains abundant flattened, fine- to coarse-grained fragments of rhyolite volcanic rock. This lithology can contain up to several volume percent of 1 to 5 mm diameter, subhedral to euhedral, K-feldspar crystals and 1 to 2% rounded greyish blue quartz “eyes”, although either, or both, may be absent. The relative abundances of feldspar crystals, quartz eyes, and volcanic rock fragments vary significantly in this lithology throughout the deposit. (2) Black to grey, aphanitic to fine-grained, carbonaceous tuffaceous argillite. This rock commonly contains several volume percent grey tuff as layers or clasts and may contain up to several volume percent rounded blue quartz eyes up to 1 mm in diameter. This footwall argillite is similar to the carbonaceous argillites in the hanging wall but is distinguished from it locally by a slightly coarser grain size, lighter colour, and presence of quartz. (3) Grey, weakly foliated, K-feldspar-phyric rhyolite porphyry. Contains 5 to 10% subhedral to euhedral, 5 mm to 1 cm diameter K-feldspar phenocrysts in a grey aphanitic siliceous groundmass. This unit only rarely contains quartz eyes.

#### **4.4.2. Massive Sulphide Lens**

The massive sulphide lens typically lies immediately above and in some cases within the felsic volcanoclastic rocks; noting that there is a gradual transition from the upper felsic volcanoclastic rocks to the underlying carbonaceous argillite. The appearance of carbonaceous argillite unit in the footwall rocks marks the base of the sequence that is host to the Wolverine deposit. The potassium feldspar-phyric porphyries occur an average distance of 20 metres below the lower limit of the massive sulphide unit and are

interpreted to be intrusions. The exact role of these intrusions with respect to the mineralizing event is unclear at the present time; however, the intrusions could be emplaced along the growth or scarp faults of the caldera. The immediate host rock package to the massive sulphide mineralization ranges from 85 to 160 m in thickness and hosts up to four distinct exhalative lithologies – the upper two are most commonly magnetite-predominant exhalite, the middle is a carbonate-predominant exhalite and the lowermost is a massive sulphide lens. Their thickness ranges from less than 1 to 30 metres. The magnetite-rich exhalative rocks are laterally extensive and are part of the stratigraphy on a regional scale for up to 12 kilometres. The exhalative units are separated by mixed sequences of interbedded argillite and rhyolite volcanic rocks. Both the massive rhyolite volcanic rocks and carbonaceous argillite units have thicknesses up to 30 metres. Field observations suggest that the rhyolite volcanic rocks were emplaced as flows because of a gradation from a fine-grained base to a microlites-rich top with a breccia unit; which may be a flow breccia.

#### **4.4.3. Hanging wall to Massive Sulphide Lens**

In the hanging wall above the massive sulphide mineralization, there is a sequence of intercalated argillite, felsic volcanoclastic and volcanic rocks, as well as magnetite-carbonate-pyrite exhalative units that are referred to as iron-formations. This sequence of rocks contains the following lithologies: (1) Grey, massive to flow-banded, aphanitic to very fine-grained, aphyric rhyolite volcanic rocks. This rock is comprised of domains of aphanitic rhyolite with sub-millimeter to several centimeter-wide micaceous partings oriented parallel to the dominant SB1B foliation. The rhyolite volcanic rock domains commonly contain minute feldspar microlites. (2) Black, finely laminated, aphanitic, carbonaceous to strongly graphitic, argillite. This rock may contain several volume percent grey tuff layers or clasts. A strongly siliceous variant of this lithology contains abundant flattened and sheared veins of quartz and pyrite suggesting that the silicification may be an alteration phenomenon. (3) Grey to black, magnetite-rich exhalite (iron formation). Contains 5 to 60% disseminated to massive layered magnetite with lesser carbonate and chlorite. The layering is interpreted as primary. Magnetite is interbedded with quartz and lesser micaceous minerals on a millimeter scale. (4) Grey to white carbonate exhalite. Contains up to 90% patchy to massive carbonate (calcite > ankerite > siderite) with lesser magnetite, chlorite and pyrite. Rarely exhibits fine laminations. (5) Finely laminated, very fine-grained polymetallic massive sulphide mineralization.

One clearly identifiable lithology in the hanging wall is a felsic volcanoclastic rock unit known as 'fragmental rhyolite' contains the following facies variations: (1) Grey rhyolite with a distinctive fragmental texture. This texture is defined by wispy sub-millimeter dark green to black, anastomosing micaceous bands which separate centimeter-sized felsic aphanitic rock domains. Fragments are subangular to sub-rounded irregular shapes with jagged boundaries. A variant of this unit has a distinctive greenish hue and 1 to 2% disseminated magnetite which may be a weak chloritic alteration. (2) Grey to black, felsic volcanic rock with abundant (50 to 90 volume percent) siliceous lenses or clasts in a matrix of black carbonaceous argillite. The rock fragments are generally centimeter-sized, ovoid and flattened into the plane of foliation. This lithology is similar to the fragmental rhyolite described above, with the distinguishing criteria being a significantly

greater sedimentary rock component. This felsic volcanoclastic unit occurs above the “mineralized sequence” and its base is generally marked by the presence of the uppermost magnetite-bearing iron formation. Its thickness throughout the deposit is fairly constant, averaging 80 meters.

At the top of the hanging wall stratigraphy is a unit composed of intercalated carbonaceous argillite and wacke with lesser mafic and felsic volcanic rocks. This unit contains the following lithologies: 1) Green, massively fine-grained basalt with biotite and minor epidote on partings. These rocks are interpreted to be flows where massive and homogeneous, although a volcanoclastic origin is preferred where layering is prominent, and where they are interbedded with carbonaceous sedimentary rocks; 2) Interbedded black aphanitic argillite and grey to black, slightly coarser-grained greywacke. Minor interbeds of felsic volcanoclastic rocks are present, and they are similar in appearance to the fragmental rhyolite volcanic rocks. This uppermost sequence probably represents the transition from the Wolverine stratigraphy to the overlying Campbell Range basalts. The upper limit to this unit is unknown, but its thickness is at least 200 metres. The bottom of this unit is recognized by the last occurrence of green basaltic volcanoclastic rock. It should be noted that there are also intercalated carbonaceous sedimentary rocks; which are extremely thin, on the order of centimeters. Individual basalt flow units can attain thicknesses of up to 40 metres.

#### **4.5 Hydrothermal Alteration**

There are four main styles of hydrothermal alteration associated with the VMS sulphide system that formed the Wolverine deposit that occurs principally in the footwall rocks adjacent to the massive sulphide mineralization. The presence of the hydrothermal alteration beneath the massive sulphide mineralization signifies where the both structurally controlled and primary permeability and porosity of the footwall rock has been exploited by hydrothermal fluid passage. The alteration types in order of decreasing abundance are: (1) sericitization; (2) chloritization; (3) silicification; and (4) carbonatization.

### **5. Line Cutting: Description of undertakings on the Goalie claims**

From Friday 14 March until Tuesday 25 March, 8 to 10 people from Coureur des Bois cut lines for a geophysical grid in advance of a surface geophysical survey on the Goalie claims (see ‘List of the Goalie Quartz Mining Claims in the assessment report’ in appendices).

The Goalie claims include a total of 173 Quartz Mining Claims. All the Goalie claims located north of the below described grid (Goalie 34-107, 265-272, 289-292 & 309-310) are all paid in-lieu (see ‘List of the Goalie Quartz Mining Claims paid in-lieu’). The other 85 claims are in this assessment report (see ‘List of the Goalie Quartz Mining Claims in this assessment report’). Please note that Goalie claims #309 (grant# YC31892) and Goalie claim #310 (grant# YC31893) were paid in lieu separately from the others with a cheque that was sent on July 19, 2008. The Goalie claims are situated at roughly 13km

east-southeast from Wolverine camp. The Coureur des Bois crew accessed the claims by snowmobiles.

The linecutters cut 2 baselines on the Goalie claims. Each baseline has every 300m a 4x4 hub station which has a metal tag, flagging tape and orange spray-paint. Every 100m stands a small picket which has also a metal tag, flagging tape and orange spray-paint. Every 25m on the baseline is marked by an orange spray-painted picket. Both baselines are 1.5m wide.

The southern baseline, with a S-N direction (see map in appendices), is 4.9km long and has at every 4x4 hub station (every 300m) a crosscutting gridline. The southern baseline has 17 gridlines, which vary in length between 1,400m and 2,400m. Each gridline has every 100m a picket which is marked by a metal tag, flagging tape and orange spray paint. Every 25m stands an orange spray-painted picket. The cutting of big trees on gridlines has been minimized as much as possible.

The northern baseline, with a S-N direction, is 2.4km long and has 9 gridlines, which vary in length between 1,500m and 3,200m.

A total of 56.5km of lines was cut on the Goalie Claims during a period of 12 days at a minimum cost of \$37,740.00CAD (see 'Statement of Expenditures' in appendices).

## **6. Recommendations**

The Wolverine Property should be maintained in good standing for further geological, geochemical and geophysical investigation for volcanogenic massive sulphide targets.

## **7. References**

**Pearson, C., 2006:** Wolverine Mineral Property Resource Estimation

## **8. Appendices**

See next pages.





Goalie Quartz Mining Claims in Assessment Report

Grant#	Claim	Claim#	Owner	Expiry Date	New Expiry
YC24998	GOALIE	21	YUKON ZINC CORPORATION - 100%.	3/17/2008	3/17/2012
YC24999	GOALIE	22	YUKON ZINC CORPORATION - 100%.	3/17/2008	3/17/2012
YC25000	GOALIE	23	YUKON ZINC CORPORATION - 100%.	3/17/2008	3/17/2012
YC25001	GOALIE	24	YUKON ZINC CORPORATION - 100%.	3/17/2008	3/17/2012
YC25002	GOALIE	25	YUKON ZINC CORPORATION - 100%.	3/17/2008	3/17/2012
YC25003	GOALIE	26	YUKON ZINC CORPORATION - 100%.	3/17/2008	3/17/2012
YC25004	GOALIE	27	YUKON ZINC CORPORATION - 100%.	3/17/2008	3/17/2012
YC25005	GOALIE	28	YUKON ZINC CORPORATION - 100%.	3/17/2008	3/17/2012
YC25006	GOALIE	29	YUKON ZINC CORPORATION - 100%.	3/17/2008	3/17/2012
YC25007	GOALIE	30	YUKON ZINC CORPORATION - 100%.	3/17/2008	3/17/2012
YC25008	GOALIE	31	YUKON ZINC CORPORATION - 100%.	3/17/2008	3/17/2012
YC25009	GOALIE	32	YUKON ZINC CORPORATION - 100%.	3/17/2008	3/17/2012
YC25010	GOALIE	33	YUKON ZINC CORPORATION - 100%.	3/17/2008	3/17/2012
YC25170	GOALIE	193	YUKON ZINC CORPORATION - 100%.	3/17/2008	3/17/2012
YC25171	GOALIE	194	YUKON ZINC CORPORATION - 100%.	3/17/2008	3/17/2012
YC25172	GOALIE	195	YUKON ZINC CORPORATION - 100%.	3/17/2008	3/17/2012
YC25173	GOALIE	196	YUKON ZINC CORPORATION - 100%.	3/17/2008	3/17/2012
YC25174	GOALIE	197	YUKON ZINC CORPORATION - 100%.	3/17/2008	3/17/2012
YC25175	GOALIE	198	YUKON ZINC CORPORATION - 100%.	3/17/2008	3/17/2012
YC25176	GOALIE	199	YUKON ZINC CORPORATION - 100%.	3/17/2008	3/17/2012
YC25177	GOALIE	200	YUKON ZINC CORPORATION - 100%.	3/17/2008	3/17/2012
YC25178	GOALIE	201	YUKON ZINC CORPORATION - 100%.	3/17/2008	3/17/2012
YC25179	GOALIE	202	YUKON ZINC CORPORATION - 100%.	3/17/2008	3/17/2012
YC25180	GOALIE	203	YUKON ZINC CORPORATION - 100%.	3/17/2008	3/17/2012
YC25181	GOALIE	204	YUKON ZINC CORPORATION - 100%.	3/17/2008	3/17/2012
YC25182	GOALIE	205	YUKON ZINC CORPORATION - 100%.	3/17/2008	3/17/2012
YC25183	GOALIE	206	YUKON ZINC CORPORATION - 100%.	3/17/2008	3/17/2012
YC25184	GOALIE	207	YUKON ZINC CORPORATION - 100%.	3/17/2008	3/17/2012
YC25185	GOALIE	208	YUKON ZINC CORPORATION - 100%.	3/17/2008	3/17/2012
YC25186	GOALIE	209	YUKON ZINC CORPORATION - 100%.	3/17/2008	3/17/2012
YC25187	GOALIE	210	YUKON ZINC CORPORATION - 100%.	3/17/2008	3/17/2012
YC25297	GOALIE	211	YUKON ZINC CORPORATION - 100%.	3/17/2008	3/17/2012
YC25298	GOALIE	212	YUKON ZINC CORPORATION - 100%.	3/17/2008	3/17/2012
YC25299	GOALIE	213	YUKON ZINC CORPORATION - 100%.	3/17/2008	3/17/2012
YC25300	GOALIE	214	YUKON ZINC CORPORATION - 100%.	3/17/2008	3/17/2012
YC25301	GOALIE	215	YUKON ZINC CORPORATION - 100%.	3/17/2008	3/17/2012
YC25302	GOALIE	216	YUKON ZINC CORPORATION - 100%.	3/17/2008	3/17/2012
YC25303	GOALIE	217	YUKON ZINC CORPORATION - 100%.	3/17/2008	3/17/2012
YC25304	GOALIE	218	YUKON ZINC CORPORATION - 100%.	3/17/2008	3/17/2012
YC25305	GOALIE	219	YUKON ZINC CORPORATION - 100%.	3/17/2008	3/17/2012
YC25306	GOALIE	220	YUKON ZINC CORPORATION - 100%.	3/17/2008	3/17/2012
YC25307	GOALIE	221	YUKON ZINC CORPORATION - 100%.	3/17/2008	3/17/2012
YC25308	GOALIE	222	YUKON ZINC CORPORATION - 100%.	3/17/2008	3/17/2012
YC25309	GOALIE	223	YUKON ZINC CORPORATION - 100%.	3/17/2008	3/17/2012
YC25310	GOALIE	224	YUKON ZINC CORPORATION - 100%.	3/17/2008	3/17/2012
YC25311	GOALIE	225	YUKON ZINC CORPORATION - 100%.	3/17/2008	3/17/2012

p. fraction

Goalie Quartz Mining Claims in Assessment Report

YC25312	GOALIE	226	YUKON ZINC CORPORATION - 100%.	3/17/2008	3/17/2012
YC25313	GOALIE	227	YUKON ZINC CORPORATION - 100%.	3/17/2008	3/17/2012
YC25314	GOALIE	228	YUKON ZINC CORPORATION - 100%.	3/17/2008	3/17/2012
YC25315	GOALIE	229	YUKON ZINC CORPORATION - 100%.	3/17/2008	3/17/2012
YC25316	GOALIE	230	YUKON ZINC CORPORATION - 100%.	3/17/2008	3/17/2012
YC25317	GOALIE	231	YUKON ZINC CORPORATION - 100%.	3/17/2008	3/17/2012
YC25318	GOALIE	232	YUKON ZINC CORPORATION - 100%.	3/17/2008	3/17/2012
YC25319	GOALIE	233	YUKON ZINC CORPORATION - 100%.	3/17/2008	3/17/2012
YC25320	GOALIE	234	YUKON ZINC CORPORATION - 100%.	3/17/2008	3/17/2012
YC25321	GOALIE	235	YUKON ZINC CORPORATION - 100%.	3/17/2008	3/17/2012
YC25322	GOALIE	236	YUKON ZINC CORPORATION - 100%.	3/17/2008	3/17/2012
YC25323	GOALIE	237	YUKON ZINC CORPORATION - 100%.	3/17/2008	3/17/2012
YC25324	GOALIE	238	YUKON ZINC CORPORATION - 100%.	3/17/2008	3/17/2012
YC25325	GOALIE	239	YUKON ZINC CORPORATION - 100%.	3/17/2008	3/17/2012
YC25326	GOALIE	240	YUKON ZINC CORPORATION - 100%.	3/17/2008	3/17/2012
YC25327	GOALIE	241	YUKON ZINC CORPORATION - 100%.	3/17/2008	3/17/2012
YC25328	GOALIE	242	YUKON ZINC CORPORATION - 100%.	3/17/2008	3/17/2012
YC25329	GOALIE	243	YUKON ZINC CORPORATION - 100%.	3/17/2008	3/17/2012
YC25330	GOALIE	244	YUKON ZINC CORPORATION - 100%.	3/17/2008	3/17/2012
YC25331	GOALIE	245	YUKON ZINC CORPORATION - 100%.	3/17/2008	3/17/2012
YC25332	GOALIE	246	YUKON ZINC CORPORATION - 100%.	3/17/2008	3/17/2012
YC25333	GOALIE	247	YUKON ZINC CORPORATION - 100%.	3/17/2008	3/17/2012
YC25334	GOALIE	248	YUKON ZINC CORPORATION - 100%.	3/17/2008	3/17/2012
YC25335	GOALIE	249	YUKON ZINC CORPORATION - 100%.	3/17/2008	3/17/2012
YC25336	GOALIE	250	YUKON ZINC CORPORATION - 100%.	3/17/2008	3/17/2012
YC25337	GOALIE	251	YUKON ZINC CORPORATION - 100%.	3/17/2008	3/17/2012
YC25338	GOALIE	252	YUKON ZINC CORPORATION - 100%.	3/17/2008	3/17/2012
YC25339	GOALIE	253	YUKON ZINC CORPORATION - 100%.	3/17/2008	3/17/2012
YC25340	GOALIE	254	YUKON ZINC CORPORATION - 100%.	3/17/2008	3/17/2012
YC25341	GOALIE	255	YUKON ZINC CORPORATION - 100%.	3/17/2008	3/17/2012
YC25342	GOALIE	256	YUKON ZINC CORPORATION - 100%.	3/17/2008	3/17/2012
YC25343	GOALIE	257	YUKON ZINC CORPORATION - 100%.	3/17/2008	3/17/2012
YC25344	GOALIE	258	YUKON ZINC CORPORATION - 100%.	3/17/2008	3/17/2012
YC25345	GOALIE	259	YUKON ZINC CORPORATION - 100%.	3/17/2008	3/17/2012
YC25346	GOALIE	260	YUKON ZINC CORPORATION - 100%.	3/17/2008	3/17/2012
YC25347	GOALIE	261	YUKON ZINC CORPORATION - 100%.	3/17/2008	3/17/2012
YC25348	GOALIE	262	YUKON ZINC CORPORATION - 100%.	3/17/2008	3/17/2012
YC25349	GOALIE	263	YUKON ZINC CORPORATION - 100%.	3/17/2008	3/17/2012
YC25350	GOALIE	264	YUKON ZINC CORPORATION - 100%.	3/17/2008	3/17/2012

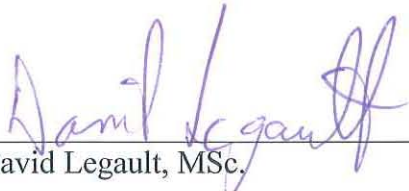
## STATEMENT OF EXPENDITURES

I, David Legault, as agent for Yukon Zinc Corporation, #701-475 Howe Street, Vancouver, B.C. do solemnly declare that line cutting work carried out on the claims (Goalie 21-33, 193-265) between the dates of March 11<sup>th</sup> and March 17<sup>th</sup>, 2008, in preparation for ground geophysical survey.

Wages	\$22,980.00
Rentals	\$3,060.00
Camp costs	\$11,700.00
	\$37,740.00

I make this solemn declaration conscientiously believing it to be true and knowing that it is of the same force and effect as if made under oath and by virtue of the Canada Evidence Act.

Declared before me at Vancouver in the Province of British Columbia this 17<sup>th</sup> day of March 2008.

  
\_\_\_\_\_  
David Legault, MSc.



#701 – 475 Howe Street  
Vancouver, British Columbia  
Canada, V6C 2B3

Telephone: (604) 682-5474  
Toll-free: 1-877-682-5474

Fax: (604) 682-5404  
info@selwynresources.com  
[www.selwynresources.com](http://www.selwynresources.com)

---

## Statement of Qualifications

I, **Jelle De Bruyckere**, resident of Vancouver, British Columbia, Canada, do certify that:

1. I graduated from Ghent University in Belgium in September 2004 with a M.Sc. in Geology;
2. From July 2005 to present, I have been actively engaged in mineral exploration in Northwest Territories and Yukon Territory and I am presently employed with Selwyn Resources Ltd.;
3. I have personally supervised the line cutting on the Wolverine Property, Finlayson Lake District, Yukon Territory, Canada.

Dated at Don Camp, Howard's Pass, Yukon Territory; Wednesday, August 27, 2008

Respectfully submitted,

A handwritten signature in cursive script, appearing to read 'Jelle De Bruyckere', is written over a horizontal line.

Jelle De Bruyckere, M.Sc.  
Project Geologist

