

ARCHER, CATHRO & ASSOCIATES (1981) LIMITED
1016 - 510 West Hastings Street
Vancouver, B.C. V6B 1L8

Telephone: 604-688-2568

Fax: 604-688-2578

ASSESSMENT REPORT

describing

EXCAVATOR TRENCHING AND BULK SAMPLING

at the

STUMP PROPERTY

AT 1-4 YB91866-YB91869

NTS 105F/9

Latitude 61°32'N; Longitude 132°09'W

in the

Watson Lake Mining District,
Yukon Territory

prepared by

Archer, Cathro & Associates (1981) Limited

for

KLONDIKE SILVER CORP.

by

W. Douglas Eaton, B.Sc. Geology
April 2008

CONTENTS

	<u>PAGE</u>
INTRODUCTION	1
PROPERTY LOCATION, CLAIM DATA AND ACCESS	1
PREVIOUS WORK	2
GEOMORPHOLOGY	2
GEOLOGY AND MINERALIZATION	3
METALLURGICAL TESTING	4
EXCAVATOR TRENCHING AND BULK SAMPLING	4
DISCUSSION AND CONCLUSIONS	6

APPENDIX

- I STATEMENT OF QUALIFICATIONS
- II CERTIFICATES OF ANALYSIS

FIGURES

<u>No.</u>	<u>Description</u>	<u>Follows page</u>
1	Property Location	1
2	Claims and Access	1
3	Tectonic Setting	3
4	Trench Samples	in pocket

INTRODUCTION

The Stump property hosts silver-lead mineralization in a vein (A-1 vein) that has been partially delineated by previous trenching, diamond drilling and underground development. Klondike Silver Corp. purchased the property from a group of private investors in spring 2006, subject to a net smelter return royalty.

This report describes results of excavator trenching and bulk sampling that were conducted to determine the extent and continuity of mineralization and its amenability to small-scale, high grade extraction by open cut methods. The trenching and sampling were conducted between August 7 and 24, 2007. An approximately 73 tonne bulk sample was removed from mineralized lenses along the vein and shipped to Klondike Silver's mill at Sandon, B.C., where the material is being crushed and milled to produce a concentrate that will be sent to the Teck-Cominco smelter at Trail, B.C. for smelting. The program was supervised by the author and his Statement of Qualifications appears in Appendix I.

PROPERTY LOCATION, CLAIM DATA AND ACCESS

The property consists of four contiguous mineral claims located in southern Yukon at latitude 61°32'N and longitude 132°09'W on NTS map sheet 105F/9 (Figure 1). The claims are registered with the Watson Lake Mining Recorder in the name of Klondike Silver Corp. Claim registration data are listed below while the locations of individual claims are shown on Figure 2.

<u>Claim Number</u>	<u>Grant Number</u>	<u>Expiry Date*</u>
AT 1-4	YB91866-YB91869	February 04, 2016

* Expiry date includes 2007 assessment work which has been filed for assessment credit but not yet accepted

The Stump property is accessible via an approximately 5 km long, four-wheel drive road (Stump Road) which extends south from Ketza Road (Figure 2), a two-lane haulage road that links the dormant Ketza Gold Mine to the Robert Campbell Highway at a point approximately 36 km by road southeast of the community of Ross River. From the turnoff onto the Stump Road to the highway is about 30 km. At present the Ketza Road is in excellent condition but it is a seasonal road that is not maintained by the government.

The Robert Campbell Highway is part of the main Yukon road network and is maintained by the territorial government year round. It provides access to the seaport at Skagway in Alaska by first traveling west from the property to Carmacks, then south on the Klondike Highway through Whitehorse to Skagway (Figure 1). Alternatively, Watson Lake and the Alaska Highway can be reached by traveling southeast along the Robert Campbell Highway.

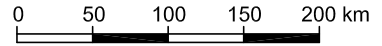
The Stump Road is relatively steep and is locally prone to rutting. It was routinely used by four wheel drive trucks in 2007, but a Hiab-equipped 5 tonne flat-bed truck used to transport ore bags

KLONDIKE SILVER CORP.

FIGURE 1

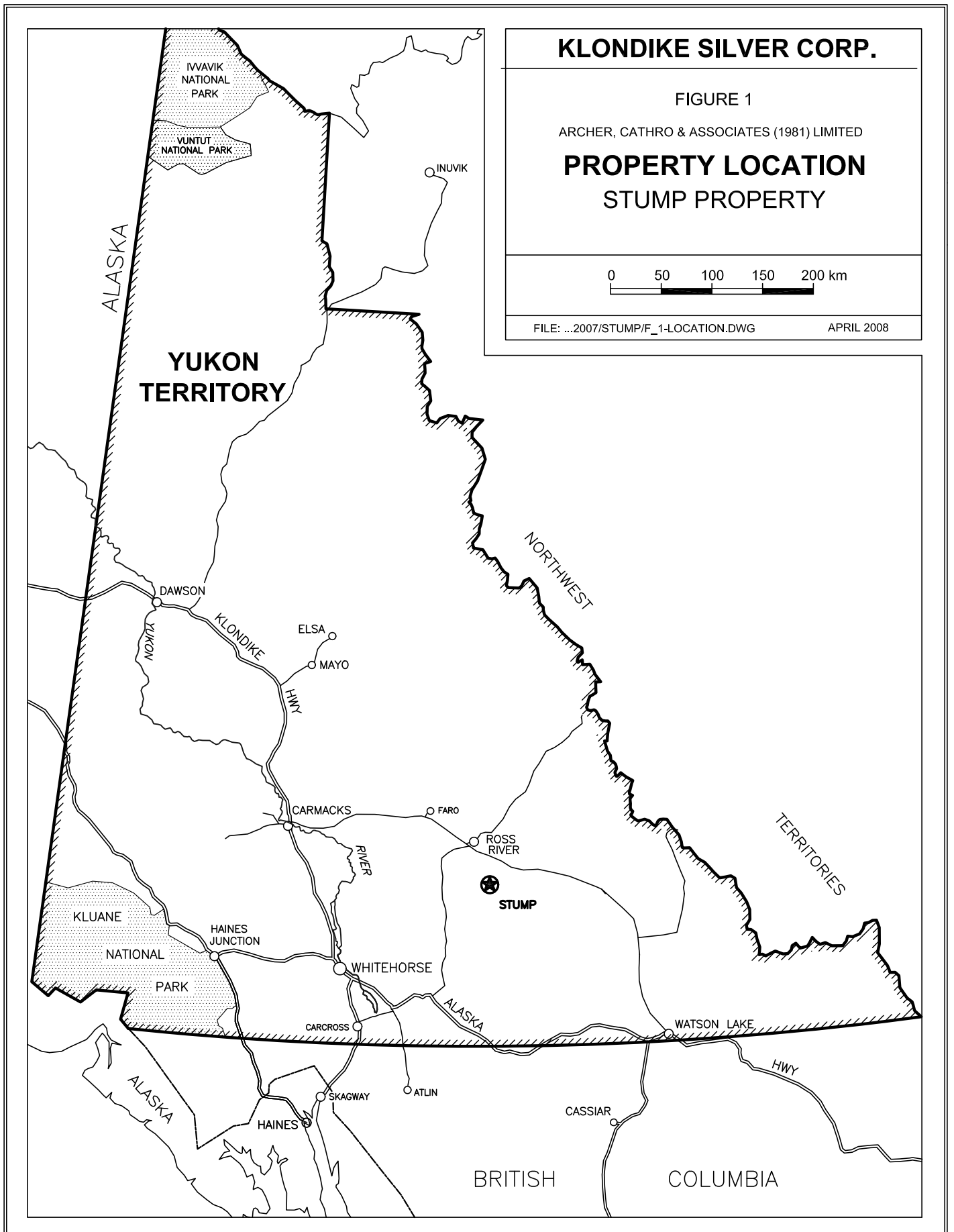
ARCHER, CATHRO & ASSOCIATES (1981) LIMITED

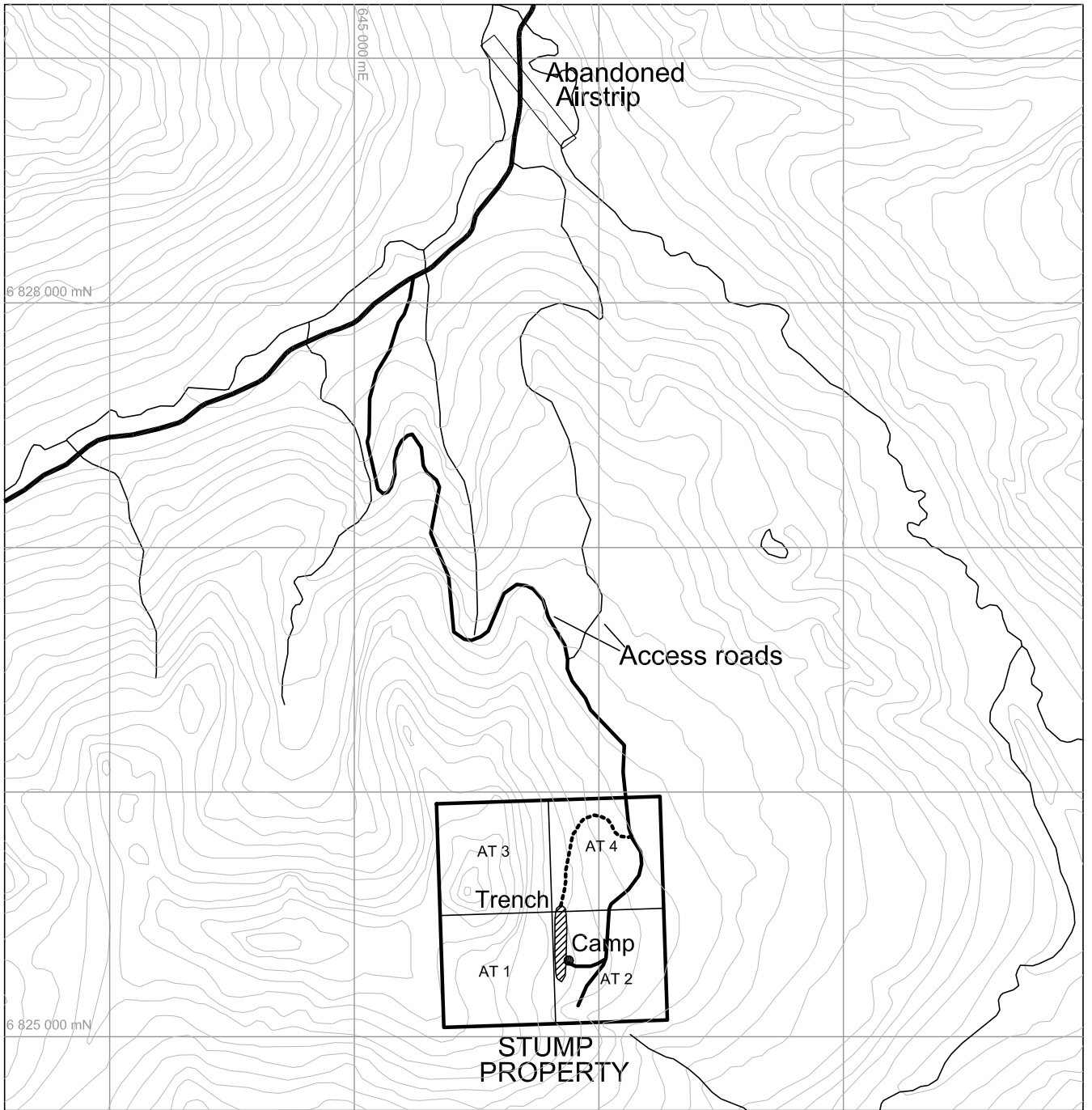
PROPERTY LOCATION STUMP PROPERTY



FILE: ...2007/STUMP/F_1-LOCATION.DWG

APRIL 2008



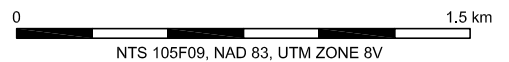


KLONDIKE SILVER CORP.

FIGURE 2

ARCHER, CATHRO & ASSOCIATES (1981) LIMITED

CLAIMS AND ACCESS
STUMP PROPERTY



containing the bulk sample had to be towed up a 50 m long, steep stretch by the excavator. The Stump Road will have to be upgraded if it is to be used by a larger scale operation.

PREVIOUS WORK

The first recorded staking in the area was done in 1954 by Prospector Airways on behalf of a syndicate that included Noranda Exploration Company Ltd. and Kerr Addison Gold Mines Ltd. This syndicate trenched in 1955.

The area was restaked in 1961 by G. Dickson and again in 1965 by a joint venture between Stump Mines Ltd. and Silver Key Mines Ltd. This joint venture conducted grid soil sampling and bulldozer trenching in 1966, drilled five holes totalling 289.6 m in 1967 and completed 427 m of underground development in 1968-69. The underground development included crosscutting, drifting and some raising on an upper level, 37 m below surface, and crosscutting on an uncompleted lower level, 83 m below surface. Silver Key changed its name to Nordev Resources Ltd. in 1972, then optioned Stump Mines' interest in 1974 and conducted a pre-feasibility study in 1975, before dropping the claims.

H. Regeher and partners restaked the property and performed bulldozer trenching in 1976. Late that year they formed Iona Silver Mines Ltd. which conducted more trenching in 1977-78, completed the lower crosscut in 1979 and advanced the lower adit another 66.8 m in 1980. Iona's claims were optioned in 1985 to Canamax Resources Inc., which performed geophysical and geochemical surveys later that year and drilled four holes totalling 1692.2 m in 1987, before dropping the option.

In early 2000, the property was restaked by a group of private investors, which included the author. The following summer the author performed a site visit to identify logistical and geological factors that could influence effectiveness of a small scale mining operations. In spring 2006 the claims were sold to Klondike Silver, which funded a minor program of hand trenching and metallurgical testing later that year.

GEOMORPHOLOGY

The Stump property lies within the St. Cyr Range of the Pelly Mountains. It is drained by creeks that are tributaries of the Ketzka River, which ultimately drains into the Pacific Ocean via the Pelly and Yukon Rivers. Local elevations range from 1300 m along the Ketzka River to 1850 m atop a peak approximately 1 km west of the claim block. The main area of interest is on an easterly trending ridge, about 1500 m above sea level. The vein trace approximately parallels topography on a 10 to 20°, east facing slope.

The claims straddle treeline. Uphill are barren talus slopes. Downhill are scatter clumps of stunted spruce and balsam interspersed with buckbrush and slide alder, which give way to mature spruce forest on lower slopes and on the floor of the Ketzka River valley. Soil development is poor and permafrost is likely present throughout the area of interest.

GEOLOGY AND MINERALIZATION

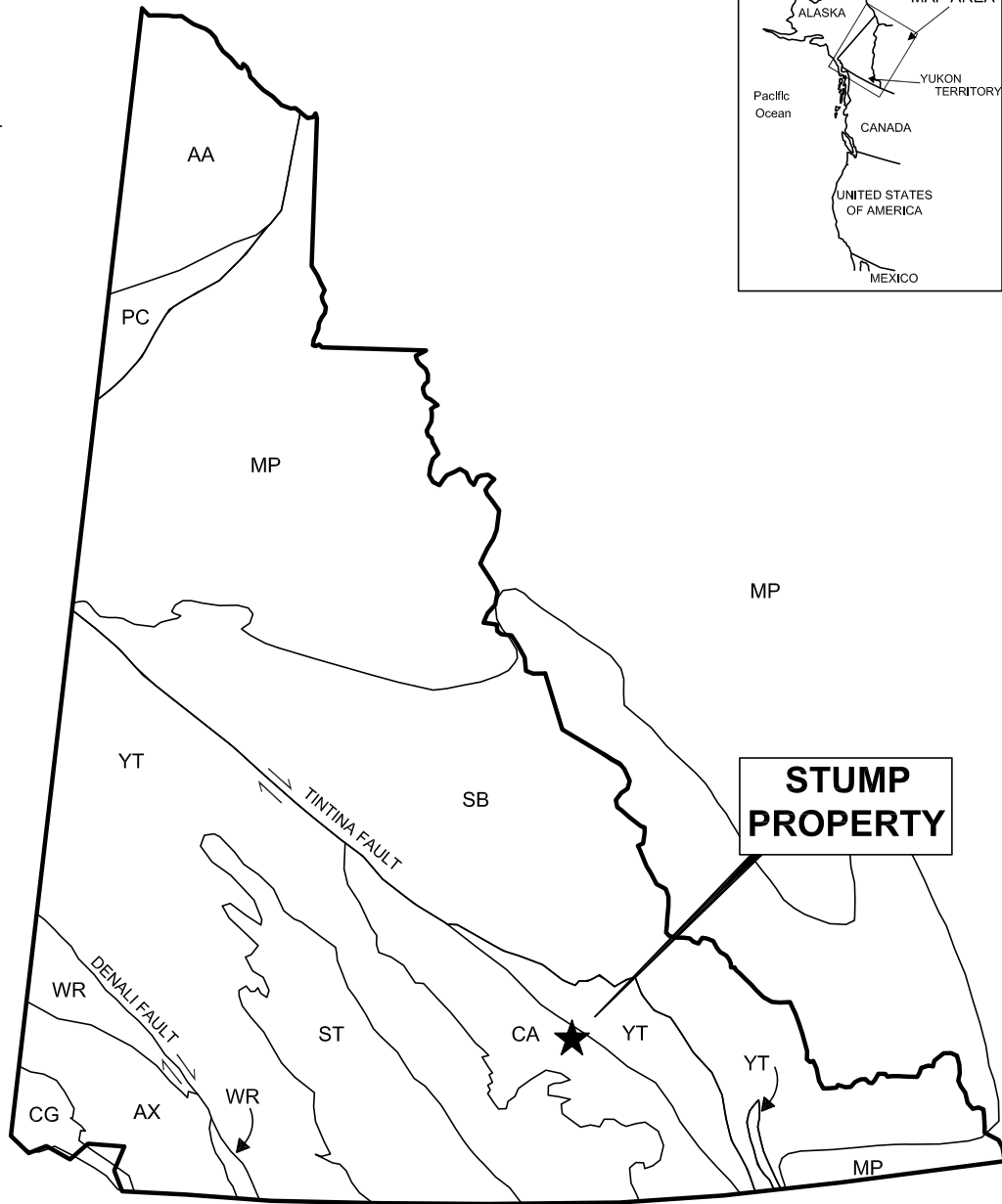
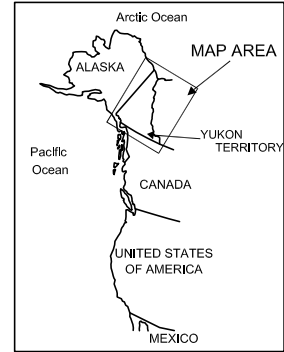
The property lies about 25 km southwest of the Tintina Fault within a package of rocks that are assigned to the Cassiar Platform tectonic element (Figure 3). The Cassiar Platform is a metamorphosed sequence predominantly composed of Paleozoic shallow water carbonate rocks that were deposited atop a Proterozoic clastic wedge on the western margin of the North American craton. The rocks were deformed and metamorphosed during accretion of allochthonous terranes during Mesozoic times. The carbonate strata are widely intruded by pre- and post-deformation plutons. The two major intrusive events are syenitic bodies of Mississippian age and granodiorite to quartz monzonite plutons of Mid-Cretaceous age. The closest mapped intrusion is a syenite stock about 4 km south of the property. Stratigraphy in the vicinity of the property is Cambrian to Lower Ordovician in age and predominantly consists of phyllite that locally grades to limestone or dolomite.

Bedrock exposures are limited in the immediate vicinity of the silver-lead vein and most are found in old bulldozer trenches or the 2007 excavator trench. The wallrocks to the vein are thinly bedded dolomitic phyllite that grades to thicker bedded dolomite. The bedding generally strikes between 140° and 180° and dips shallowly or moderately to the west.

The A-1 silver-lead vein strikes northerly and dips at 58° to the west into the hill. It has been traced about 850 m along strike. The vein typically ranges between 10 and 200 cm in width and has sharp contacts with the wallrocks. Vein width and intensity of mineralization are strongly controlled by wallrock competence, with narrow waxy intervals occurring in thin bedded phyllite sections and wider richer intervals developed where more competent, thick bedded dolomite forms at least one wall of the vein. The best mineralized lenses usually have 10 to 40 cm wide cores of semi-massive to massive sulphide. This sulphide-rich material is mostly fine grained galena in a compact siderite gangue that includes occasional, up to 1 cm diameter clasts of wallrock. Other sulphides such as pyrite and sphalerite are rare. The remainder of the vein consists of siderite, more abundant wallrock clasts and minor galena. The silver to lead ratios in the vein are relatively consistent, averaging about 38 g/t silver for each percent lead.

In 1967 channel sampling was done on the floors of several bulldozer trenches that were dug across the vein. The best sample graded 1,731 g/t (50.1 opt) silver and 45.5% lead across 0.67 m. Samples taken at irregular intervals along a 247 m length of the vein yielded a weighted average grade of 853.6 g/t (24.9 opt) silver and 22.2% lead across an average width of 1.2 m. Underground development and diamond drilling indicated that the grade generally decreases at depth. Samples taken from a drift on the upper level, 37 m below surface, averaged 329.1 g/t (9.6 opt) silver and 7.5% lead across an average width of 1.2 m for a length of 202 m.

The lower adit and step out diamond drilling did not encounter significant mineralization. In 1975, Nordev reported “proven reserves” of 36,280 tonnes grading 353.1 g/t (10.3 opt) silver and 8.4% lead (note: this “reserve” estimate predated NI 43-101 and is not compliant with that policy).



**STUMP
PROPERTY**

ANCESTRAL NORTH AMERICA

- MP** Mackenzie Platform
- SB** Selwyn Basin

TERRANES
Displaced Continental Margin

- AA** Arctic Alaska
- CA** Cassiar
- PC** Porcupine

Pericratonic Terranes

- YT** Yukon-Tanana / Slide Mountain

ACCRETED TERRANES

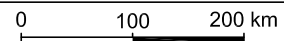
- ST** Stikinia / Cache Creek
- AX** Alexander
- WR** Wrangellia
- CG** Chugach

KLONDIKE SILVER CORP.

FIGURE 3

ARCHER, CATHRO & ASSOCIATES (1981) LIMITED

**TECTONIC SETTING
STUMP PROPERTY**



METALLURGICAL TESTING

Samples were collected in 2006 from old trenches along the surface trace of the A-1 vein. The samples were visually examined and subdivided into oxidized ore (characterized by somewhat friable gangue and galena that is rimmed or partial replacement by secondary lead oxide or carbonate minerals) and unoxidized ore (compact gangue with little or no oxidation of galena grains). The oxidized ore samples were then combined to form Composite A and the unoxidized ore samples were combined to form Composite B. Composite A had a head grade of 38.8% lead and 1429 g/t silver and Composite B had a head grade of 36.7% lead and 1393 g/t silver. The test program involved crushing the samples to minus 1/4" (0.635 cm) followed by gravity concentration using a jig mineral separator.

For Composite A, 34.4% of the material reported to a concentrated grading 55.2% lead and 1738 g/t silver. This represents 49.2% of the total lead and 41.6% of the silver. For Composite B, 40.1% of the material reported to a concentrate grading 53.3% lead and 1673 g/t silver. This represents 56% of the total lead and 49.7% of the silver. At the end of the tests about 39% of the material from each composite was still on the bed of the jig. The tails from Composite A comprised about 27% of the initial sample and contained 17.4% of the lead and 20.8% of the silver. Tails from Composite B comprised 21.5% of the initial sample and contained only 8.2% of the lead and 14.0% of the silver.

EXCAVATOR TRENCHING AND BULK SAMPLING

In August 2007, an approximately 10 to 15 m wide trench was excavated to bedrock for a length of 300 m along the A-1 vein (Figure 4). The work was done with a Hitachi EX200 excavator contracted from 15317 Yukon Inc. of Whitehorse. The trench was dug perpendicular to the old bulldozer trenches (referred to in the Mineralization section), providing nearly continuous bedrock exposure along the mineralized portion of the vein. Overburden averaged about 3 m deep, except where bedrock had previously been exposed in the old trenches.

Mapping generally confirmed earlier observations but showed that the mineralization is more discontinuous than thought. Wallrock competence exercises very strong controls with the vein pinching to one or two centimetres in thin bedded horizons and widen dramatically where it cuts thicker, more competent beds. Semi-massive to massive galena was found in a series of lenses (labeled A1, A2, B, C1, C2, C3, D, E and F on Figure 4). Two areas were not excavated to bedrock. The trench exposed the old raise so trench data is well established relative to the underground workings.

The trench was channel sampled at regular 5 m intervals, where bedrock was exposed. Each sample was collected by first sawing two grooves about 5 cm apart and 5 cm deep, across the vein and into the adjacent wallrocks with a diamond saw, and then chipping the material between the grooves out with a moil to form a continuous channel. At each site, one, two or three samples were collected across a total width of 70 to 300 cm. Where semi-massive to massive galena was encountered, the channel was deepened or widened so that the interval of high grade mineralization could be resampled, independent of adjacent less mineralized intervals. Each sample was placed in a heavy plastic bag along with a unique pre-numbered assay tag. The

samples were stored onsite until a crew member could transport them to Whitehorse, from where they were shipped by commercial courier to ALS Chemex in North Vancouver B.C.

At ALS Chemex, the samples were first dried and crusted to better than 70% passing 2 mm, then a 250 g split was pulverized to better than 85% passing 75 microns. Splits of the pulverized fraction were routinely assayed for gold, silver and lead and geochemically analyzed for 33 elements by inductively coupled-atomic emission spectroscopy (ME-ICP61). Some lead assays were not taken to completion and were reported as greater than 20%.

In general, the best trench results were obtained up-dip from the highest grade intervals in the underground workings. The highest silver and lead assays came from lens A2, which returned 2400 g/t silver and 70.63% lead across 20 cm. The highest gold assay came from a sample 5 m away, which graded 1.3 g/t gold with only 158 g/t silver and 3.87% lead. Sample locations, widths and assay results are shown on Figure 4.

The best mineralized lenses are A1, C1, E and F. Weighted average data for those lenses is tabulated below.

Ore Lens	Length (m)	Average Width (cm)	Average Silver (g/t)	Average Silver (opt)
A1	17	83.4	1089.9	31.8
C1	33	79.2	1326.4	38.7
E & F*	65	71.9	1306.7	38.1

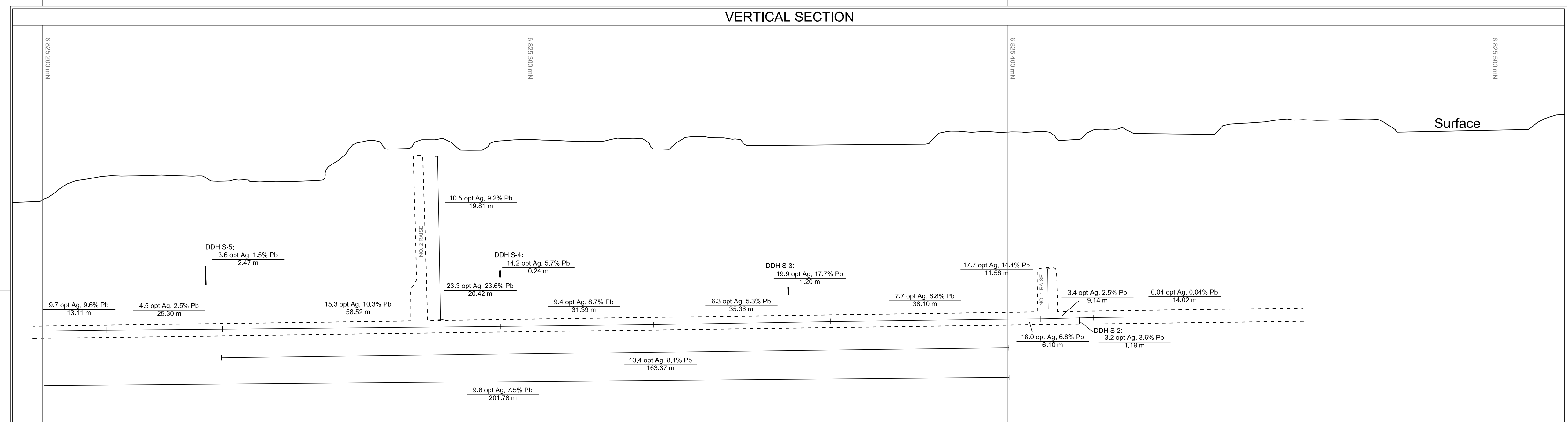
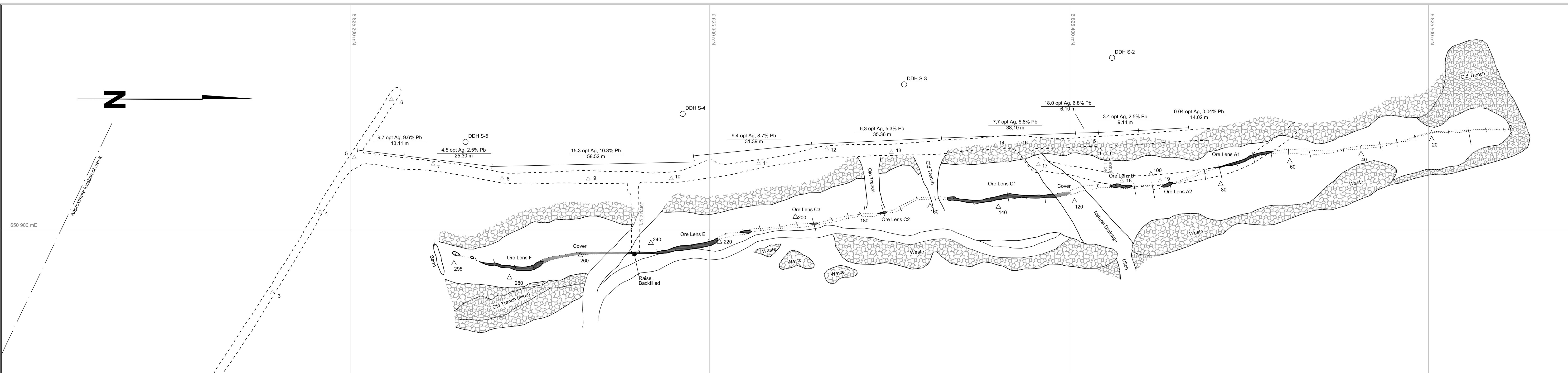
* Lenses E and F are assumed to link up under an area that is still partially covered by overburden. Average lead values are not given because some assays were reported as greater than 20%.

Four bulk samples were collected in 2007 from lenses B, C, E and F. The samples comprised a total of 54 bags with a combined weight of about 73 tonnes. All of the samples were taken from shallow open cuts. The hangingwall was first removed then the mineralization was dug out by the excavator and dumped into 1 m³ fiber-glass ore bags.

The sample from Lens B was taken for a length of about 5 m to a maximum depth of 2.2 m. Most was nearly massive galena, but towards its south end the vein was partially oxidized with only semi-massive galena. Six bags were collected for a total weight of about 7.9 tonnes.

Lens C was tested over a length of about 12 m to a maximum depth 1.75 m. The mineralization was relatively unoxidized and ranged from semi-massive to massive galena. Twenty ore bags were taken for a total weight of about 28.3 tonnes.

The sample from Lens E was taken on the north side of the raise for a distance of 8 m and to a depth of 1.7 m. Eighteen bags totalling about 24.5 tonnes were collected in only 6 hours. This exposure is up to 1.2 m wide and is mostly composed of nearly massive galena.



2007 TRENCH SAMPLE RESULTS

LOCATION	SAMPLE	SAMPLE INTVL. (cm)	TRUE WIDTH (cm)	SILVER (g/t)	LEAD (%)	GOLD (g/t)	ZINC (ppm)
Δ 0	C488451	0-98	96	146	4.59	0.064	98
Δ 5	C488452	0-121	119	135	3.65	0.107	70
Δ 10	C488453	1-115	112	445	16.25	0.291	288
	C488454	115-356	243	175	5.02	0.049	167
	C488455	356-460	104	336	8.03	0.049	140
Δ 15	C488456	0-122	118	120	2.85	0.176	3310
Δ 20	C488457	0-96	94	364	10.05	0.367	2370
Δ 25	C488458	0-144	142	64.3	2.24	0.041	2860
Δ 30	C488459	0-197	196	22.9	0.505	0.025	939
Δ 35	C488460	0-242	240	77.4	1.94	0.027	291
Δ 40	C488461	0-90	90	14.5	0.218	0.081	300
Δ 45	C488462	0-91	90	4.7	0.086	0.022	2140
Δ 50	ns						
Δ 55	C488464	0-219	216	73	2.08	0.033	2720
Δ 60	C488465	0-164	162	127	3.56	0.114	55
Δ 65	C488466	0-70	70	195	3.38	0.754	140
	C488496	0-33	32	1945	46.29	0.723	113
Δ 68	C488467	70-195	125	413	11.15	0.500	54
Δ 70	C488468	0-79	77	14.7	0.260	0.079	25
	C488469	79-153	71	125	31.75	0.578	80
Δ 75	C488470	153-298	142	454	14.50	0.156	147
	C488471	0-180	170	1100	>20.0	0.547	88
	C488497	0-12	11	1475	56.27	0.481	72
Δ 80	C488472	0-119	116	794	>20.0	0.547	82
	C488473	119-416	281	99	2.90	0.134	67
	C488498	0-28	28	1640	46.51	0.593	104
Δ 85	C488474	0-106	103	42.1	0.808	0.134	17
	C488475	106-290	178	49	5.67	0.135	49
	C488476		159	4.98	0.290	0.77	
Δ 90	C488477	0-98	96	589	15.55	0.428	110
Δ 95	C488478	0-207	193	1325	35.06	0.696	50
	C488499	0-20	20	2400	70.63	0.897	33

LOCATION	SAMPLE	SAMPLE INTVL. (cm)	TRUE WIDTH (cm)	SILVER (g/t)	LEAD (%)	GOLD (g/t)	ZINC (ppm)
Δ 100	C488480	0-216	203	158	3.87	1.300	84
	C488481	216-474	242	129	3.70	0.528	122
Δ 105	C488482	0-92	90	603	18.10	0.427	51
	C488483	92-170	77	42.0	1.11	0.147	31
	C488484	170-322	148	41.2	1.12	0.357	59
Δ 110	C488485	0-105	105	584	16.75	0.382	55
	C488500	0-27	26	1655	45.77	0.946	71
	C488501	27-117	88	441	14.80	0.436	46
	C488486	0-97	96	3.3	0.076	0.020	76
Δ 115	ns						
Δ 120	ns						
Δ 125	ns						
Δ 130	ns						
	C488487	0-92	90	1080	20.20	0.559	59
	C488502	0-31	30	1520	39.46	0.280	62
	C488488	92-239	143	110	3.44	0.180	28
Δ 135	C488489	0-56	55	1510	33.68	1.120	63
	C488503	0-52	50	1670	46.96	1.015	68
Δ 140	C488491	0-85	80	85.0	2.19	0.081	35
	C488492	85-320	235	1135	>20.0	0.492	55
	C488504	0-33	31	1675	47.64	0.518	52
Δ 145	C488493	0-104	102	1230	>20.0	0.881	87
	C488506	0-64	63	1530	42.42	0.825	81
	C488505	64-320	92	40.3	1.15	0.257	28
Δ 150	C488494	0-107	105	601	16.35	0.619	74
	C488508	0-28	27	1240	>20.0	1.105	87
	C488507	28-113	83	8.1	0.147	0.063	27
Δ 155	C488495	0-109	107	955	>20.0	0.838	82
	C488509	109-219	108	145	4.49	0.062	26
Δ 160	C488511	0-119	116	19.9	0.894	0.082	98
Δ 165	C488512	0-115	113	6.0	0.160	0.057	22
Δ 170	C488513	0-90	89	178	3.20	0.095	52

LOCATION	SAMPLE	SAMPLE INTVL. (cm)	TRUE WIDTH (cm)	SILVER (g/t)	LEAD (%)	GOLD (g/t)	ZINC (ppm)
Δ 175	C488514	0-71	70	236	6.31	0.588	53
	C488515	71-119	86	1250	>20.0	1.225	48
Δ 180	C488516	119-203	87	133	3.22	0.135	785
	C488517	0-111	110	60.4	0.909	0.252	62
	C488543	111-255	142	15.4	0.396	0.046	117
Δ 185	C488518	0-151	149	8.7	0.138	0.023	21
Δ 190	C488519	0-125	124	25.7	0.506	0.030	1210
Δ 195	C488520	0-107	106	4.9	0.053	0.013	274
	C488521	107-207	80	259	7.21	0.410	241
	C488522	207-262	69	255	6.88	0.191	821
Δ 200	C488523	0-70	69	5.8	0.110	0.037	320
	C488524	70-142	70	265	4.64	0.185	1280
Δ 205	C488525	0-61	61	265	4.64	0.185	1280
	C488545	61-131	69	9.0	0.251	0.076	1050
Δ 210	C488526	0-91	91	16.5	0.269	0.042	37
	C488546	91-134	43	1.6	0.028	0.002	29
Δ 215	C488526	0-68	68	20.9	0.277	0.038	322
	C488547	68-119	51	59.9	1.80	0.117	144
	C488527	0-16	16	1370	41.37	0.477	106
Δ 220	C488528	0-69	69	437	6.45	0.302	100
	C488548	69-124	47	329	7.33	0.200	86
	C488549	124-172	26	418	7.07	0.285	86
Δ 225	C488529	0-40	40	1080	60.30	0.448	64
	C488530	40-107	66	719	>20.0	0.362	46
	C488531	107-207	80	259	7.21	0.410	241
	C488532	207-262	69	255	6.88	0.191	821
Δ 230	C488533	0-84	83	1230	>20.0	0.523	73
	C488534	84-124	47	329	7.33	0.200	86
	C488535	124-172	26	418	7.07	0.285	86
Δ 235	C488533	0-73	71	1230	>20.0	0.427	89
Δ 240	C488534	0-75	68	746	>20.0	0.430	74
Δ 245	C488535	0-51	48	1435	42.70	0.463	192
Δ 250	C488534	0-114	111	741	>20.0	0.304	616

LOCATION	SAMPLE	SAMPLE INTVL. (cm)	TRUE WIDTH (cm)	SILVER (g/t)	LEAD (%)	GOLD (g/t)	ZINC (ppm)
Δ 255	ns						
Δ 260	ns						
Δ 265	ns						
Δ 270	ns						
Δ 275	C488536	0-39	36	1665	52.33	0.432	68
Δ 280	C488538	0-79	76	1920	51.49	0.542	65
Δ 285	C488540	0-43	42	1420	34.26	0.522	124
Δ 290	C488541	0-92	90	13.3	0.289	0.022	32
Δ 295	C488542	0-65	62	268	10.30	0.037	1180

2007 TRENCH SAMPLE HIGHLIGHTS						
ORE LENS	LENGTH (m)	WIDTH (cm)	SILVER (g/t)			
			(g/t)	(%)	GOLD (g/t)	ZINC (ppm)
A1	17	83.4	1089.9	31.8		
C1	33	79.2	1326.4	38.7		
E & F	65	71.9	1306.7	38.1		

- △ △ Underground/surface survey station
- Vein trace
- Ore zone
- Trench sample
- Underground workings
- Underground sample
- Drill collar
- | Drill intersection

KLONDIKE SILVER CORP.

FIGURE 4
ARCHER, CATHRO & ASSOCIATES (1981) LIMITED

TRENCH SAMPLES STUMP PROPERTY

0 50 m
105F/09, UTM ZONE: 8V, NAD 83

DRAWN/REVISED BY: MRD	PROJECT: STUMP
FILE: ...2007/STUMP/F_4-TRENCH.DWG	DATE: APRIL 2008

Lens F was sampled over a length of 8.6 m and to a depth of about 2 m. Near surface and toward the south end of the pit, the vein was relatively siderite rich but elsewhere consisted of semi-massive to massive galena up to 1 m wide. A total of 9 bags were collected for a combined weight of about 12.3 tonnes.

The bulk samples were trucked from the property to the Ketz Road with a Hiab-equipped 5 tonne truck, then shuttled to the Robert Campbell Highway using the 5 tonne truck and a low-boy truck, and finally loaded onto a B-train truck and trailer units which delivered them to Klondike Silver's mill at Sandon B.C.

Milling and smelting data are not yet available.

DISCUSSION AND CONCLUSIONS

The 2007 trench results confirmed that silver is highly correlated with lead, suggesting that most occurs as substitution for lead in galena. The highest assays for both metals came from semi-massive to massive galena, which is found in a series of discrete lenses. These lens range from a few metres to about 60 m in length and average about 75 cm in width. The depth extent of individual lenses has not been established, but mineralization as a whole weakens before it reaches the drift on the first underground level.

Vein width and intensity of mineralization are strongly controlled by wallrock composition, and it is possible that the vein could become stronger again, if it were to cut a particularly brittle or uncommonly reactive unit deeper in the section. A laterally and vertically extensive lens of semi-massive to massive galena, exceeding 1 m width, would be an attractive target for underground development. The economics of a small high grade deposit at the Stump property are relatively favourable. The property is located within a camp of silver veins, which are being explored by other parties, and it is possible that ore could be processed at the dormant mill at the Ketz Gold Mine, about 10 km away by road. Thus, a discovery at the Stump property could take advantage of established infrastructure and could share costs with nearby projects, if they too are successful.

Additional bulk sampling is warranted to determine the depth continuity of the lenses and to better establish their geological controls. The access road will have to be slightly upgraded, if bulk sampling is done at a larger scale. Diamond drilling is also recommended. A deep hole should first be drilled to explore the hangingwall stratigraphy for brittle and chemically reactive units and then one or more holes should target ore shoots that could be developed at the intersection between the vein and the qmmost prospective stratigraphic unit or units.

Respectfully submitted,

ARCHER, CATHRO & ASSOCIATES (1981) LIMITED.

W.D. Eaton, B.Sc. Geology

APPENDIX I
STATEMENT OF QUALIFICATIONS

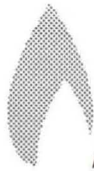
STATEMENT OF QUALIFICATIONS

I, W. Douglas Eaton, geologist, with business address in Whitehorse, Yukon Territory and Vancouver, British Columbia and residential address in North Vancouver, British Columbia, hereby declare that:

1. I graduated from the University of British Columbia in 1980 with a B.Sc. majoring in Geological Sciences.
2. From 1971 to present, I have been actively engaged in mineral exploration in British Columbia and Yukon Territory and on June 1, 1981, became a partner in Archer, Cathro & Associates (1981) Limited.
3. In 1983, 1984 and 1989, I participated in and supervised profitable small-scale, high grade mining operations on mineral claims leased from United Keno Hill Mines Ltd. in central Yukon, and in 1999. I supervised a similar operation on behalf of Nordac Resources Ltd. at its Blue Heaven property in southern Yukon.
4. I have personally participated in or supervised the field work reported herein and have interpreted all data resulting from this work.

W. Douglas Eaton, B.Sc. Geology

APPENDIX II
CERTIFICATES OF ANALYSIS



AcmeLabs

ACME ANALYTICAL LABORATORIES LTD.

852 E. Hastings St. Vancouver BC V6A 1R6 Canada
Phone (604) 253-3158 Fax (604) 253-1716

www.acmelab.com

Client:

Klondike Silver Corp.

711- 675 W. Hastings St.
Vancouver BC V6B 1N2 Canada

Submitted By:

Dave Good

Receiving Lab:

Acme Analytical Laboratories (Vancouver) Ltd.

Received:

November 06, 2007

Report Date:

January 25, 2008

Page:

1 of 2

CERTIFICATE OF ANALYSIS

VAN07002755.2

CLIENT JOB INFORMATION

Project: Sandon Silver
Shipment ID:
P.O. Number
Number of Samples: 17

SAMPLE DISPOSAL

DISP-PLP Dispose of Pulp After 90 days
DISP-RJT Dispose of Reject After 90 days

Acme does not accept responsibility for samples left at the laboratory after 90 days without prior written instructions for sample storage or return.

Invoice To: Klondike Silver Corp.
711- 675 W. Hastings St.
Vancouver BC V6B 1N2
Canada

CC:

SAMPLE PREPARATION AND ANALYTICAL PROCEDURES

Method Code	Number of Samples	Code Description	Test Wgt (g)	Report Status
P150	17	Pulverize To 150 Mesh		
7AR	17	1:1:1 Aqua Regia digestion ICP-ES analysis	1	Completed
7AR	14	1:1:1 Aqua Regia digestion ICP-ES analysis	0.1	Completed

ADDITIONAL COMMENTS

Version 2: Correct sample types - concentrate
Fire assay recommended for Ag > 300 gm/t



This report supersedes all previous preliminary and final reports with this file number dated prior to the date on this certificate. Signature indicates final approval; preliminary reports are unsigned and should be used for reference only. All results are considered the confidential property of the client. Acme assumes the liabilities for actual cost of analysis only.



AcmeLabs

ACME ANALYTICAL LABORATORIES LTD.

852 E. Hastings St. Vancouver BC V6A 1R6 Canada

Phone (604) 253-3158 Fax (604) 253-1716

www.acmelab.com

Client:

Klondike Silver Corp.

711- 675 W. Hastings St.
Vancouver BC V6B 1N2 Canada

Project:

Sandon Silver

Report Date:

January 25, 2008

Page:

2 of 2

Part 1

CERTIFICATE OF ANALYSIS

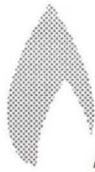
VAN07002755.2

Method	7AR	7AR	7AR	7AR	7AR	7AR	7AR	7AR	7AR	7AR	7AR	7AR	7AR	7AR	7AR	7AR	7AR	7AR	7AR	7AR	
Analyte	Mo	Cu	Pb	Zn	Ag	Ni	Co	Mn	Fe	As	Sr	Cd	Sb	Bi	Ca	P	Cr	Mg	Al	Na	
Unit	%	%	%	%	GM/T	%	%	%	%	%	%	%	%	%	%	%	%	%	%	%	
MDL	0.001	0.001	0.01	0.01	2	0.001	0.001	0.01	0.01	0.01	0.001	0.001	0.001	0.01	0.01	0.001	0.001	0.01	0.01	0.01	
2455	Concentrate	<0.001	0.047	>4	0.42	346	0.002	<0.001	1.48	12.02	0.04	0.013	0.003	0.054	<0.01	1.23	0.065	0.002	0.73	0.73	<0.01
2456	Concentrate	<0.001	0.190	>4	1.34	1559	0.002	<0.001	0.89	9.14	0.04	0.008	0.011	0.184	<0.01	0.67	0.038	<0.001	0.38	0.34	<0.01
2457	Concentrate	<0.001	0.392	>4	2.25	1541	<0.001	<0.001	0.13	3.06	0.04	<0.001	0.019	0.371	<0.01	0.04	0.009	<0.001	0.06	0.06	<0.01
2458	Concentrate	<0.001	0.103	>4	0.20	726	0.002	<0.001	1.22	15.27	0.04	0.008	0.001	0.099	<0.01	0.43	0.056	0.001	0.32	0.35	<0.01
2459	Concentrate	<0.001	0.229	>4	0.38	1578	0.002	0.001	0.86	12.43	0.05	0.006	0.004	0.199	<0.01	0.30	0.046	0.002	0.25	0.25	<0.01
2460	Concentrate	<0.001	0.545	>4	0.52	1643	0.002	0.001	0.11	4.22	0.06	0.002	0.007	0.485	<0.01	0.03	0.017	<0.001	0.06	0.04	<0.01
2461	Concentrate	<0.001	0.256	>4	0.30	1612	0.002	0.001	0.93	12.55	0.05	0.007	0.003	0.199	<0.01	0.31	0.037	0.002	0.32	0.24	<0.01
2462	Concentrate	<0.001	0.737	>4	0.25	1855	0.002	0.001	0.09	3.84	0.09	0.002	0.005	0.552	<0.01	0.02	0.018	<0.001	0.05	0.04	<0.01
2463	Concentrate	<0.001	0.104	>4	0.21	633	0.003	0.001	1.43	17.04	0.03	0.010	0.002	0.083	<0.01	0.50	0.056	0.003	0.47	0.43	<0.01
2464	Concentrate	0.001	0.251	>4	0.37	1416	0.003	0.002	1.18	15.91	0.06	0.006	0.004	0.187	<0.01	0.29	0.044	0.002	0.32	0.21	<0.01
2465	Concentrate	<0.001	0.606	>4	0.55	1834	0.003	0.002	0.14	6.67	0.09	0.001	0.007	0.450	<0.01	0.02	0.020	<0.001	0.07	0.05	<0.01
2466	Concentrate	0.001	0.114	>4	0.12	566	0.003	0.001	1.71	20.36	0.05	0.009	<0.001	0.081	<0.01	0.44	0.059	0.002	0.46	0.39	<0.01
2467	Concentrate	<0.001	0.020	0.99	0.37	58	0.002	<0.001	1.80	6.86	0.03	0.024	0.003	0.006	<0.01	2.53	0.080	0.002	1.02	0.92	<0.01
2468	Concentrate	<0.001	0.330	1.60	>20	1405	0.003	0.001	0.41	5.81	0.11	0.005	0.539	0.085	<0.01	0.62	0.016	0.001	0.22	0.17	<0.01
2469	Concentrate	<0.001	0.313	>4	15.24	1924	0.003	<0.001	0.30	4.88	0.14	0.003	0.133	0.293	<0.01	0.23	0.010	0.002	0.10	0.08	<0.01
2470	Concentrate	<0.001	0.036	2.47	4.44	306	0.002	<0.001	1.66	6.75	0.05	0.022	0.038	0.021	<0.01	2.35	0.073	0.002	0.94	0.76	<0.01
2471	Concentrate	<0.001	0.019	3.59	0.38	145	0.005	<0.001	0.17	4.94	0.02	0.004	0.003	0.015	<0.01	0.23	0.058	0.003	0.57	1.74	0.08

CERTIFICATE OF ANALYSIS

VAN07002755.2

Method	Analyte	7AR	7AR	7AR	7AR	7AR
		K	W	Hg	Pb	Zn
Unit		%	%	%	%	%
MDL		0.01	0.001	0.001	0.01	0.01
2455	Concentrate	0.22	<0.001	<0.001	12.70	N.A.
2456	Concentrate	0.12	0.003	<0.001	39.32	N.A.
2457	Concentrate	0.01	0.005	<0.001	62.77	N.A.
2458	Concentrate	0.10	<0.001	<0.001	21.82	N.A.
2459	Concentrate	0.07	<0.001	<0.001	39.87	N.A.
2460	Concentrate	<0.01	<0.001	<0.001	62.81	N.A.
2461	Concentrate	0.06	<0.001	<0.001	42.62	N.A.
2462	Concentrate	<0.01	<0.001	<0.001	72.30	N.A.
2463	Concentrate	0.11	<0.001	<0.001	21.57	N.A.
2464	Concentrate	0.06	<0.001	<0.001	37.41	N.A.
2465	Concentrate	<0.01	<0.001	<0.001	67.90	N.A.
2466	Concentrate	0.11	<0.001	<0.001	19.08	N.A.
2467	Concentrate	0.34	<0.001	<0.001		
2468	Concentrate	0.03	0.017	<0.001	N.A.	46.72
2469	Concentrate	0.01	<0.001	<0.001	56.31	N.A.
2470	Concentrate	0.29	<0.001	<0.001		
2471	Concentrate	0.32	<0.001	<0.001		



AcmeLabs

ACME ANALYTICAL LABORATORIES LTD.

852 E. Hastings St. Vancouver BC V6A 1R6 Canada

Phone (604) 253-3158 Fax (604) 253-1716

www.acmelab.com

Client:

Klondike Silver Corp.

711- 675 W. Hastings St.
Vancouver BC V6B 1N2 Canada

Project:

Sandon Silver

Report Date:

January 25, 2008

Page:

1 of 2

Part 1

QUALITY CONTROL REPORT

VAN07002755.2

Method		7AR	7AR	7AR	7AR	7AR	7AR	7AR	7AR	7AR	7AR	7AR	7AR	7AR	7AR	7AR	7AR	7AR	7AR	7AR	
Analyte		Mo	Cu	Pb	Zn	Ag	Ni	Co	Mn	Fe	As	Sr	Cd	Sb	Bi	Ca	P	Cr	Mg	Al	Na
Unit		%	%	%	%	GM/T	%	%	%	%	%	%	%	%	%	%	%	%	%	%	%
MDL		0.001	0.001	0.01	0.01	2	0.001	0.001	0.01	0.01	0.01	0.001	0.001	0.001	0.01	0.01	0.001	0.001	0.01	0.01	0.01
Pulp Duplicates																					
2461	Concentrate	<0.001	0.256	>4	0.30	1612	0.002	0.001	0.93	12.55	0.05	0.007	0.003	0.199	<0.01	0.31	0.037	0.002	0.32	0.24	<0.01
REP 2461	QC	<0.001	0.267	>4	0.29	1618	0.002	0.001	0.93	12.60	0.05	0.007	0.003	0.197	<0.01	0.31	0.036	0.002	0.32	0.23	<0.01
Reference Materials																					
STD CCU-1C	Standard																				
STD CCU-1C	Standard																				
STD CZN-3	Standard																				
STD CZN-3	Standard																				
STD MP-2	Standard																				
STD MP-2	Standard																				
STD PBC-1	Standard																				
STD PBC-1	Standard																				
STD PTC-1A	Standard																				
STD PTC-1A	Standard																				
STD R3A	Standard	0.075	0.804	1.96	3.97	196	0.528	0.059	0.07	29.39	0.04	0.003	0.022	0.034	0.01	1.28	0.048	0.011	1.04	1.08	0.04
STD R3A	Standard	0.076	0.806	1.94	3.96	197	0.526	0.060	0.07	29.24	0.04	0.003	0.023	0.033	0.01	1.28	0.048	0.011	1.04	1.07	0.04
STD R3A	Standard	0.078	0.796	1.96	3.99	195	0.539	0.063	0.07	31.80	0.04	0.003	0.024	0.033	<0.01	1.32	0.074	0.014	1.06	1.10	0.05
STD R3A	Standard	0.078	0.786	1.96	3.96	194	0.535	0.063	0.07	31.74	0.04	0.003	0.024	0.033	<0.01	1.31	0.071	0.014	1.06	1.09	0.05
STD R3A Expected		0.077	0.811	1.92	4.03	197	0.524	0.062	0.07	32.47	0.04	0.003	0.023	0.031		1.29	0.05	0.011	1.04	1.08	0.04
STD CZN-3 Expected																					
STD PTC-1A Expected																					
STD CCU-1C Expected																					
STD PBC-1 Expected																					
BLK	Blank	<0.001	<0.001	<0.01	<0.01	<2	<0.001	<0.001	<0.01	<0.01	<0.01	<0.001	<0.001	<0.001	<0.01	<0.01	<0.001	<0.001	<0.01	<0.01	<0.01
BLK	Blank	<0.001	<0.001	<0.01	<0.01	<2	<0.001	<0.001	<0.01	<0.01	<0.01	<0.001	<0.001	<0.001	<0.01	<0.01	<0.001	<0.001	<0.01	<0.01	<0.01
BLK	Blank																				
BLK	Blank																				
Prep Wash																					
G1	Prep Blank	<0.001	<0.001	<0.01	<0.01	<2	<0.001	<0.001	0.06	1.80	<0.01	0.006	<0.001	<0.001	<0.01	0.52	0.075	<0.001	0.60	1.06	0.09



AcmeLabs

ACME ANALYTICAL LABORATORIES LTD.

852 E. Hastings St. Vancouver BC V6A 1R6 Canada

Phone (604) 253-3158 Fax (604) 253-1716

www.acmelab.com

Client:

Klondike Silver Corp.

711- 675 W. Hastings St.
Vancouver BC V6B 1N2 Canada

Project:

Sandon Silver

Report Date:

January 25, 2008

Page:

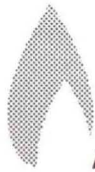
1 of 2

Part 2

QUALITY CONTROL REPORT

VAN07002755.2

Method		7AR	7AR	7AR	7AR	7AR
Analyte		K	W	Hg	Pb	Zn
Unit		%	%	%	%	%
MDL		0.01	0.001	0.001	0.01	0.01
Pulp Duplicates						
2461	Concentrate	0.06	<0.001	<0.001	42.62	N.A.
REP 2461	QC	0.06	<0.001	<0.001		
Reference Materials						
STD CCU-1C	Standard				0.37	3.88
STD CCU-1C	Standard				0.25	3.81
STD CZN-3	Standard				0.04	48.13
STD CZN-3	Standard				<0.01	46.72
STD MP-2	Standard				<0.01	0.31
STD MP-2	Standard				<0.01	0.30
STD PBC-1	Standard				26.90	1.61
STD PBC-1	Standard				27.08	1.60
STD PTC-1A	Standard				<0.01	0.11
STD PTC-1A	Standard				<0.01	0.10
STD R3A	Standard	0.43	0.013	0.002		
STD R3A	Standard	0.43	0.011	0.002		
STD R3A	Standard	0.43	<0.001	0.002		
STD R3A	Standard	0.43	<0.001	0.002		
STD R3A Expected		0.41		0.002		
STD CZN-3 Expected					0.113	50.92
STD PTC-1A Expected					0.05	
STD CCU-1C Expected						3.99
STD PBC-1 Expected					26.7	
BLK	Blank	<0.01	<0.001	<0.001		
BLK	Blank	<0.01	<0.001	<0.001		
BLK	Blank				<0.01	<0.01
BLK	Blank				<0.01	<0.01
Prep Wash						
G1	Prep Blank	0.52	<0.001	<0.001		



AcmeLabs

ACME ANALYTICAL LABORATORIES LTD.

852 E. Hastings St. Vancouver BC V6A 1R6 Canada

Phone (604) 253-3158 Fax (604) 253-1716

www.acmelab.com

Client:

Klondike Silver Corp.

711- 675 W. Hastings St.
Vancouver BC V6B 1N2 Canada

Project:

Sandon Silver

Report Date:

January 25, 2008

Page:

2 of 2

Part 1

QUALITY CONTROL REPORT

VAN07002755.2

	7AR	7AR	7AR	7AR	7AR	7AR	7AR	7AR	7AR	7AR	7AR	7AR	7AR	7AR	7AR	7AR	7AR	7AR	7AR	7AR
	Mo	Cu	Pb	Zn	Ag	Ni	Co	Mn	Fe	As	Sr	Cd	Sb	Bi	Ca	P	Cr	Mg	Al	Na
	%	%	%	%	GM/T	%	%	%	%	%	%	%	%	%	%	%	%	%	%	%
G1	0.001	0.001	0.01	0.01	2	0.001	0.001	0.01	0.01	0.01	0.001	0.001	0.001	0.01	0.01	0.001	0.001	0.01	0.01	0.01
Prep Blank	<0.001	<0.001	<0.01	<0.01	<2	<0.001	<0.001	0.05	1.78	<0.01	0.006	<0.001	<0.001	<0.01	0.47	0.072	<0.001	0.58	0.99	0.09



AcmeLabs

ACME ANALYTICAL LABORATORIES LTD.

852 E. Hastings St. Vancouver BC V6A 1R6 Canada

Phone (604) 253-3158 Fax (604) 253-1716

www.acmelab.com

Client:

Klondike Silver Corp.

711- 675 W. Hastings St.
Vancouver BC V6B 1N2 Canada

Project:

Sandon Silver

Report Date:

January 25, 2008

Page:

2 of 2

Part 2

QUALITY CONTROL REPORT

VAN07002755.2

	7AR	7AR	7AR	7AR	7AR
	K	W	Hg	Pb	Zn
	%	%	%	%	%
	0.01	0.001	0.001	0.01	0.01
G1	Prep Blank	0.50	<0.001	<0.001	



ALS Chemex

EXCELLENCE IN ANALYTICAL CHEMISTRY

ALS Canada Ltd.

212 Brooksbank Avenue

North Vancouver BC V7J 2C1

Phone: 604 984 0221 Fax: 604 984 0218 www.alschemex.com

ARCHER, CATHRO AND ASSOCIATES (1981)

LIMITED

1016-510 W HASTINGS ST

VANCOUVER BC V6B 1L8

Page: 1

Finalized Date: 13-NOV-2007

Account: F

CERTIFICATE VA07104475

Project: STUMP

P.O. No.:

This report is for 104 Rock samples submitted to our lab in Vancouver, BC, Canada on 30-AUG-2007.

The following have access to data associated with this certificate:

AL ARCHER
VANCOUVER OFFICE

DOUG EATON
BILL WENGZYNOWSKI

JOAN MARIACHER

SAMPLE PREPARATION

ALS CODE	DESCRIPTION
WEI-21	Received Sample Weight
LOG-22	Sample login - Rcd w/o BarCode
CRU-QC	Crushing QC Test
PUL-QC	Pulverizing QC Test
CRU-31	Fine crushing - 70% <2mm
SPL-21	Split sample - riffle splitter
PUL-31	Pulverize split to 85% <75 um

ANALYTICAL PROCEDURES

ALS CODE	DESCRIPTION	INSTRUMENT
ME-ICP61	33 element four acid ICP-AES	ICP-AES
Ag-OG62	Ore Grade Ag - Four Acid	VARIABLE
ME-OG62	Ore Grade Elements - Four Acid	ICP-AES
Pb-OG62	Ore Grade Pb - Four Acid	VARIABLE
Ag-GRA21	Ag 30g FA-GRAV finish	WST-SIM
Pb-VOL70	Pb by Titration	
Au-ICP21	Au 30g FA ICP-AES Finish	ICP-AES

To: **ARCHER, CATHRO AND ASSOCIATES (1981) LIMITED**
1016-510 W HASTINGS ST
VANCOUVER BC V6B 1L8

This is the Final Report and supersedes any preliminary report with this certificate number. Results apply to samples as submitted. All pages of this report have been checked and approved for release.

Signature:

Lawrence Ng, Laboratory Manager - Vancouver



ALS Chemex

EXCELLENCE IN ANALYTICAL CHEMISTRY

ALS Canada Ltd.

212 Brooksbank Avenue
North Vancouver BC V7J 2C1

Phone: 604 984 0221 Fax: 604 984 0218 www.alschemex.com

ARCHER, CATHRO AND ASSOCIATES (1981)

LIMITED

1016-510 W HASTINGS ST

VANCOUVER BC V6B 1L8

Page: 2 - A

Total # Pages: 4 (A - C)

Finalized Date: 13-NOV-2007

Account: F

Project: STUMP

CERTIFICATE OF ANALYSIS VA07104475

Sample Description	WEI-21	Au-ICP21	ME-ICP61	ME-ICP61	ME-ICP61	ME-ICP61	ME-ICP61	ME-ICP61	ME-ICP61	ME-ICP61	ME-ICP61	ME-ICP61	ME-ICP61	ME-ICP61	ME-ICP61	ME-ICP61
	Recvd Wt. kg	Au ppm	Ag ppm	Al %	As ppm	Ba ppm	Be ppm	Bi ppm	Ca %	Cd ppm	Co ppm	Cr ppm	Cu ppm	Fe %	Ga ppm	
	0.02	0.001	0.5	0.01	5	10	0.5	2	0.01	0.5	1	1	1	0.01	10	
C488451	7.33	0.064	>100	5.93	969	2940	1.4	<2	0.34	1.4	7	67	364	10.00	10	
C488452	8.17	0.107	>100	6.29	578	3310	1.5	<2	1.91	1.7	30	67	274	12.00	10	
C488453	7.16	0.291	>100	4.54	637	650	1.1	3	0.73	4.3	12	52	711	9.97	10	
C488454	22.10	0.049	>100	6.41	122	3090	1.6	4	6.29	2.8	8	65	305	7.93	10	
C488455	8.12	0.049	>100	5.77	121	830	1.5	2	5.96	3.6	8	58	462	11.05	10	
C488456	11.84	0.176	>100	6.59	591	3320	1.7	<2	4.11	16.5	8	74	178	7.15	10	
C488457	6.09	0.367	>100	4.89	744	990	1.2	<2	0.31	11.3	11	59	744	10.75	10	
C488458	10.07	0.041	64.3	6.19	763	3220	1.6	2	2.52	17.1	9	75	177	8.48	10	
C488459	16.91	0.025	22.9	6.54	85	5050	1.9	<2	10.40	3.6	7	57	53	5.20	10	
C488460	13.26	0.027	77.4	3.41	97	2740	0.9	<2	5.18	2.3	4	31	53	19.05	<10	
C488461	7.32	0.081	14.5	7.29	525	5200	2.3	<2	2.89	2.0	16	90	61	7.49	20	
C488462	5.69	0.022	4.7	6.88	91	6020	2.3	<2	6.08	10.7	8	90	33	4.85	20	
C488464	17.57	0.033	73.0	4.04	80	2850	1.2	<2	1.82	11.5	6	40	103	23.3	<10	
C488465	10.27	0.114	>100	5.79	421	2410	1.3	<2	0.45	1.6	5	63	130	15.05	10	
C488466	9.08	0.754	>100	1.92	401	460	<0.5	5	0.07	8.9	12	26	1800	12.00	<10	
C488467	7.41	0.500	>100	4.86	562	420	1.0	<2	0.24	3.3	4	59	419	11.55	10	
C488468	6.89	0.079	14.7	8.65	385	6180	2.3	<2	1.18	0.8	17	100	32	4.45	20	
C488469	7.79	0.578	>100	3.77	360	640	0.9	<2	0.40	3.7	10	46	1140	8.57	10	
C488470	14.63	0.156	>100	4.49	209	1510	1.0	<2	0.34	3.9	9	47	1120	11.80	10	
C488471	11.42	0.547	>100	2.50	443	210	0.5	2	0.17	5.4	8	32	1350	14.05	<10	
C488472	8.34	0.574	>100	3.00	970	240	0.7	2	0.11	4.1	6	33	1170	14.35	<10	
C488473	10.83	0.134	>100	3.35	395	1730	0.8	<2	0.29	1.5	8	29	274	23.3	<10	
C488474	10.20	0.053	42.1	5.88	433	2570	1.1	<2	0.44	0.8	1	72	60	6.26	10	
C488475	9.87	0.135	>100	7.05	178	2810	1.9	2	0.46	2.5	16	85	344	8.21	20	
C488476	6.06	0.290	>100	5.05	665	2060	1.1	<2	0.34	2.2	12	59	499	14.00	10	
C488477	15.34	0.428	>100	2.10	367	890	0.5	2	0.24	3.3	5	23	678	28.1	<10	
C488478	26.37	0.698	>100	1.81	332	110	0.5	12	0.26	8.4	4	24	1120	18.45	<10	
C488479	1.98	0.007	8.0	0.12	17	50	<0.5	2	21.7	<0.5	<1	1	7	0.64	<10	
C488480	15.78	1.300	>100	1.57	1840	680	<0.5	<2	0.22	1.9	10	17	504	34.5	<10	
C488481	21.81	0.528	>100	4.82	1720	1680	1.1	<2	0.75	1.8	15	61	474	18.00	10	
C488482	8.69	0.427	>100	3.93	348	550	1.1	3	0.30	1.2	13	54	817	14.40	10	
C488483	6.37	0.147	42.0	5.70	144	3820	1.5	3	0.27	<0.5	11	58	98	13.90	10	
C488484	12.33	0.357	41.2	3.83	1140	1110	0.8	4	0.25	<0.5	19	42	129	21.7	10	
C488485	8.30	0.382	>100	3.57	369	480	1.0	5	1.76	2.6	15	50	1020	11.80	10	
C488486	9.10	0.020	3.3	6.27	87	2450	1.3	<2	8.63	<0.5	28	129	28	5.02	10	
C488487	8.51	0.559	>100	1.73	466	170	0.6	13	0.29	5.8	15	23	1870	14.85	<10	
C488488	11.99	0.180	>100	3.80	448	1380	0.9	5	0.59	<0.5	6	45	208	7.57	10	
C488489	9.98	1.120	>100	0.67	439	130	<0.5	21	0.10	6.9	11	6	2710	19.20	<10	
C488490	1.89	0.005	6.0	0.09	<5	30	<0.5	<2	21.6	<0.5	1	1	11	0.54	<10	
C488491	13.55	0.061	85.0	5.08	200	2130	1.2	3	2.00	<0.5	14	83	209	12.55	10	



ALS Chemex

EXCELLENCE IN ANALYTICAL CHEMISTRY

ALS Canada Ltd.

212 Brooksbank Avenue

North Vancouver BC V7J 2C1

Phone: 604 984 0221 Fax: 604 984 0218 www.alschemex.com

ARCHER, CATHRO AND ASSOCIATES (1981)

LIMITED

1016-510 W HASTINGS ST

VANCOUVER BC V6B 1L8

Page: 2 - B

Total # Pages: 4 (A - C)

Finalized Date: 13-NOV-2007

Account: F

Project: STUMP

CERTIFICATE OF ANALYSIS VA07104475

Sample Description	Method	ME-ICP61	ME-ICP61	ME-ICP61	ME-ICP61	ME-ICP61	ME-ICP61	ME-ICP61	ME-ICP61	ME-ICP61	ME-ICP61	ME-ICP61	ME-ICP61	ME-ICP61	ME-ICP61	ME-ICP61
	Analyte	K	La	Mg	Mn	Mo	Na	Ni	P	Pb	S	Sb	Sc	Sr	Th	Ti
Units		%	ppm	%	ppm	ppm	%	ppm	ppm	ppm	%	ppm	ppm	ppm	ppm	%
LOR		0.01	10	0.01	5	1	0.01	1	10	2	0.01	5	1	1	20	0.01
C488451		2.03	10	0.17	6600	11	0.09	39	1670	>10000	0.29	284	9	144	<20	0.14
C488452		2.13	20	0.42	4150	8	0.09	65	2360	>10000	0.50	175	9	230	<20	0.20
C488453		1.46	10	0.13	3750	21	0.06	39	1080	>10000	1.72	559	7	176	<20	0.16
C488454		2.20	20	0.37	6080	5	0.10	38	1820	>10000	0.89	253	10	281	<20	0.25
C488455		1.98	10	0.51	9120	1	0.09	34	1210	>10000	1.36	492	9	274	<20	0.19
C488456		2.18	20	0.33	3280	72	0.10	31	2390	>10000	0.58	138	10	213	<20	0.27
C488457		1.43	20	0.12	4640	36	0.06	40	1470	>10000	1.12	530	8	216	<20	0.16
C488458		2.14	20	0.23	3950	21	0.09	37	1670	>10000	0.31	113	9	162	<20	0.24
C488459		2.14	20	0.59	3340	2	0.12	32	2220	5050	0.09	39	10	274	20	0.27
C488460		1.13	10	0.72	17000	3	0.07	37	1310	>10000	0.29	77	7	155	<20	0.11
C488461		2.48	20	0.22	2870	5	0.12	63	2330	2180	0.12	36	11	227	<20	0.29
C488462		2.60	20	0.26	2500	<1	0.13	41	2070	862	0.11	11	10	249	<20	0.31
C488464		1.39	10	0.24	21000	3	0.07	32	1080	>10000	0.33	90	8	143	<20	0.11
C488465		1.95	10	0.19	9020	8	0.08	28	2180	>10000	0.63	132	9	167	<20	0.15
C488466		0.29	10	0.09	7820	13	0.02	40	420	>10000	6.68	1550	3	256	<20	0.09
C488467		1.55	10	0.15	6340	6	0.06	20	1130	>10000	1.78	563	6	134	<20	0.15
C488468		2.82	10	0.22	1140	7	0.16	64	5290	2600	0.07	25	13	287	<20	0.38
C488469		0.83	10	0.08	3540	16	0.04	37	1980	>10000	2.66	1110	6	283	<20	0.17
C488470		1.39	10	0.12	7640	8	0.06	31	1540	>10000	1.37	680	7	144	<20	0.15
C488471		0.63	10	0.07	7300	9	0.03	27	1130	>10000	4.00	1550	4	158	<20	0.10
C488472		0.86	10	0.07	4900	13	0.04	29	960	>10000	3.49	1130	5	170	<20	0.10
C488473		1.13	10	0.14	19100	6	0.05	42	1180	>10000	0.38	153	8	109	<20	0.10
C488474		1.92	20	0.14	2280	3	0.09	17	2440	8080	0.22	59	6	136	<20	0.25
C488475		2.06	30	0.21	7800	4	0.11	60	2410	>10000	0.19	263	11	218	<20	0.27
C488476		1.65	10	0.14	9370	12	0.08	39	1960	>10000	0.61	230	7	134	<20	0.10
C488477		0.58	10	0.15	22700	1	0.03	28	1130	>10000	2.24	891	4	293	<20	0.07
C488478		0.50	10	0.14	15450	4	0.03	28	1010	>10000	5.61	1840	3	56	<20	0.06
C488479		0.04	<10	13.40	358	<1	<0.01	6	230	1420	0.03	28	<1	50	<20	0.01
C488480		0.43	10	0.16	22300	16	0.02	47	440	>10000	1.12	203	3	67	<20	0.06
C488481		1.61	20	0.24	8400	12	0.07	58	3420	>10000	0.61	159	7	170	<20	0.08
C488482		1.10	10	0.11	9180	8	0.06	22	1330	>10000	1.75	870	6	258	<20	0.16
C488483		1.95	10	0.19	12050	3	0.11	27	780	>10000	0.09	62	9	181	<20	0.17
C488484		1.39	10	0.11	9310	7	0.05	35	1440	>10000	0.27	53	6	108	<20	0.06
C488485		1.08	10	0.22	6150	7	0.05	28	810	>10000	2.06	802	6	214	<20	0.14
C488486		2.24	10	1.69	1975	<1	0.14	59	1590	755	0.19	13	14	389	<20	1.03
C488487		0.46	<10	0.22	10450	3	0.02	20	570	>10000	5.08	1490	3	148	<20	0.08
C488488		1.19	10	0.20	4000	1	0.10	17	860	>10000	0.50	154	6	152	<20	0.15
C488489		0.12	<10	0.19	7770	1	0.01	9	250	>10000	8.72	2390	2	71	<20	0.03
C488490		0.04	<10	12.95	243	<1	0.01	<1	190	1130	0.04	14	<1	52	<20	<0.01
C488491		1.68	10	0.29	8800	7	0.07	42	2510	>10000	0.22	119	9	174	<20	0.15



ALS Chemex

EXCELLENCE IN ANALYTICAL CHEMISTRY

ALS Canada Ltd.

212 Brooksbank Avenue

North Vancouver BC V7J 2C1

Phone: 604 984 0221 Fax: 604 984 0218 www.alschemex.com

ARCHER, CATHRO AND ASSOCIATES (1981)
LIMITED

1016-510 W HASTINGS ST

VANCOUVER BC V6B 1L8

Page: 2 - C
Total # Pages: 4 (A - C)
Finalized Date: 13-NOV-2007
Account: F

Project: STUMP

CERTIFICATE OF ANALYSIS VA07104475

Sample Description	Method	ME-ICP61	ME-ICP61	ME-ICP61	ME-ICP61	ME-ICP61	Ag-OG62	Pb-OG62	Ag-GRA21	Pb-VOL70
	Analyte	Tl	U	V	W	Zn	Ag	Pb	Ag	Pb
	Units	ppm	ppm	ppm	ppm	ppm	ppm	%	ppm	%
	LOR	10	10	1	10	2	1	0.01	5	0.01
C488451		<10	10	133	<10	98	146	4.59		
C488452		<10	10	177	<10	70	135	3.65		
C488453		<10	10	145	<10	288	445	16.25		
C488454		<10	<10	90	10	167	175	5.02		
C488455		<10	<10	85	<10	140	336	8.03		
C488456		<10	<10	268	<10	3310	120	2.85		
C488457		10	10	347	<10	2370	364	10.05		
C488458		10	10	183	<10	2860		2.24		
C488459		<10	<10	125	<10	939				
C488460		<10	10	74	<10	291		1.94		
C488461		<10	10	184	<10	300				
C488462		10	<10	216	<10	2140				
C488464		<10	<10	98	<10	2720		2.08		
C488465		<10	10	134	<10	55	127	3.56		
C488466		<10	10	174	<10	140	>1500	>20.0	1435	36.53
C488467		10	10	129	<10	54	413	11.15		
C488468		<10	<10	409	10	25				
C488469		<10	10	194	<10	80	1200	>20.0	1255	30.70
C488470		10	10	142	<10	147	454	14.50		
C488471		<10	10	127	10	88	1070	>20.0	1100	
C488472		10	10	158	<10	82	794	>20.0		
C488473		10	10	103	10	67	99	2.99		
C488474		<10	<10	286	<10	17				
C488475		10	10	388	<10	49	211	5.67		
C488476		10	10	106	10	77	159	4.98		
C488477		10	10	114	<10	110	589	15.55		
C488478		10	10	111	<10	50	1310	>20.0	1325	35.08
C488479		<10	<10	5	<10	16				
C488480		<10	20	54	<10	84	158	3.87		
C488481		<10	20	139	<10	122	129	3.70		
C488482		<10	10	245	10	51	603	18.10		
C488483		<10	10	295	10	31		1.11		
C488484		<10	10	94	<10	59		1.12		
C488485		<10	10	397	<10	55	584	16.75		
C488486		<10	<10	209	10	76				
C488487		<10	<10	72	<10	59	1125	>20.0	1080	29.20
C488488		<10	<10	106	10	28	110	3.44		
C488489		<10	<10	27	<10	63	>1500	>20.0	1510	39.08
C488490		<10	<10	4	<10	17				
C488491		<10	10	286	<10	35		2.19		



ALS Chemex

EXCELLENCE IN ANALYTICAL CHEMISTRY

ALS Canada Ltd.

212 Brooksbank Avenue
North Vancouver BC V7J 2C1

Phone: 604 984 0221 Fax: 604 984 0218 www.alschemex.com

ARCHER, CATHRO AND ASSOCIATES (1981)
LIMITED
1016-510 W HASTINGS ST
VANCOUVER BC V6B 1L8

Page: 3 - A
Total # Pages: 4 (A - C)
Finalized Date: 13-NOV-2007
Account: F

Project: STUMP

CERTIFICATE OF ANALYSIS VA07104475

Sample Description	Method Analyte Units LOR	WEI-21 Recvd Wt. kg	Au-ICP21 Au ppm	ME-ICP61 Ag ppm	ME-ICP61 Al %	ME-ICP61 As ppm	ME-ICP61 Ba ppm	ME-ICP61 Be ppm	ME-ICP61 Bi ppm	ME-ICP61 Ca %	ME-ICP61 Cd ppm	ME-ICP61 Co ppm	ME-ICP61 Cr ppm	ME-ICP61 Cu ppm	ME-ICP61 Fe %	ME-ICP61 Ga ppm
C488492		18.65	0.492	>100	1.76	806	340	<0.5	15	0.26	3.8	12	19	1940	17.70	<10
C488493		10.27	0.881	>100	0.99	347	120	<0.5	15	0.17	4.8	16	9	3110	24.9	<10
C488494		10.66	0.619	>100	3.35	971	370	0.9	10	1.62	3.7	28	30	2850	20.5	<10
C488495		10.25	0.838	>100	2.65	1120	540	0.7	10	0.10	1.4	19	32	1650	20.0	10
C488496		6.90	0.723	>100	1.45	188	390	<0.5	3	0.04	9.6	9	20	1840	9.49	<10
C488497		2.99	0.481	>100	0.15	48	150	<0.5	2	0.07	12.6	4	<1	2100	15.50	<10
C488498		4.51	0.593	>100	1.72	345	180	<0.5	4	0.04	6.6	10	23	1970	8.68	<10
C488499		3.80	0.897	>100	0.07	53	100	<0.5	31	0.02	14.5	5	1	2410	7.21	<10
C488500		3.57	0.946	>100	1.49	217	140	<0.5	9	0.06	7.3	14	22	2030	9.35	<10
C488501		4.77	0.436	>100	5.84	744	700	1.2	3	0.10	0.9	6	65	405	7.49	10
C488502		5.85	0.280	>100	0.62	301	190	<0.5	22	0.14	8.2	9	6	2570	17.30	<10
C488503		6.83	1.015	>100	0.56	352	130	<0.5	24	0.10	8.4	14	6	2990	17.10	<10
C488504		5.25	0.518	>100	0.99	398	80	<0.5	21	0.02	6.2	8	11	2180	10.05	<10
C488505		5.57	0.257	40.3	5.08	860	1980	1.1	4	0.36	<0.5	12	74	81	16.50	10
C488506		7.47	0.825	>100	0.94	307	130	<0.5	18	0.09	6.3	17	11	3490	15.80	<10
C488507		5.53	0.063	8.1	5.46	209	2130	1.1	4	0.54	<0.5	21	52	25	17.60	10
C488508		5.20	1.105	>100	0.65	499	240	<0.5	13	0.13	4.9	18	5	5880	25.6	<10
C488509		8.36	0.062	>100	6.96	147	1530	1.7	2	3.47	<0.5	14	58	110	7.50	20
C488510		1.20	0.007	11.6	0.14	12	30	<0.5	<2	20.9	<0.5	2	2	42	0.66	<10
C488511		9.66	0.082	19.9	4.21	274	1680	1.0	4	5.84	<0.5	15	49	32	16.45	10
C488512		15.05	0.057	6.0	3.98	229	1870	1.0	3	8.04	<0.5	11	45	25	10.15	10
C488513		10.89	0.095	>100	3.21	260	1050	0.7	2	7.75	<0.5	9	45	254	13.45	10
C488514		5.67	0.588	>100	2.83	1590	640	0.6	8	0.29	<0.5	22	25	291	24.2	10
C488515		8.08	1.225	>100	2.54	1200	130	0.5	7	0.10	<0.5	10	38	921	14.80	10
C488516		9.63	0.135	>100	6.65	338	1510	1.5	3	4.23	2.5	13	71	218	7.78	20
C488517		13.11	0.252	60.4	6.63	780	1910	1.9	3	5.95	0.7	51	168	610	16.60	10
C488518		13.80	0.023	8.7	1.42	90	490	<0.5	<2	14.20	<0.5	8	11	20	7.34	<10
C488519		13.64	0.030	25.7	6.64	210	1740	1.6	2	7.94	4.0	11	72	47	5.39	20
C488520		8.96	0.013	4.9	7.14	109	1790	1.7	2	9.97	<0.5	20	77	23	5.44	20
C488521		13.29	0.410	>100	2.54	710	210	0.7	10	0.77	3.8	19	32	1850	15.85	<10
C488522		8.04	0.133	>100	5.15	218	1720	1.3	3	8.68	1.4	12	50	477	5.43	10
C488523		8.59	0.191	>100	4.93	526	1810	1.2	6	0.63	1.4	17	42	553	17.45	10
C488524		6.68	0.185	>100	2.91	512	2860	1.1	6	0.76	3.2	23	32	574	22.5	<10
C488525		10.91	0.042	16.5	6.44	149	1510	1.5	2	9.06	<0.5	11	60	48	4.93	10
C488526		5.76	0.038	20.9	5.05	100	1710	1.5	<2	10.10	0.7	11	60	59	5.59	20
C488527		2.10	0.477	>100	1.40	710	150	<0.5	15	0.27	7.9	17	17	3300	13.65	<10
C488528		3.53	0.302	>100	2.35	871	460	0.7	3	0.36	1.5	14	26	779	19.50	<10
C488529		10.88	0.448	>100	0.62	156	50	<0.5	23	0.10	12.8	9	7	2810	9.03	<10
C488530		1.29	0.002	8.0	0.07	5	20	<0.5	2	22.2	<0.5	1	1	13	0.60	<10
C488531		12.11	0.523	>100	0.89	232	130	<0.5	18	0.11	11.6	10	11	2620	9.63	<10



ALS Chemex

EXCELLENCE IN ANALYTICAL CHEMISTRY

ALS Canada Ltd.

212 Brooksbank Avenue
North Vancouver BC V7J 2C1

Phone: 604 984 0221 Fax: 604 984 0218 www.alschemex.com

ARCHER, CATHRO AND ASSOCIATES (1981)

LIMITED

1016-510 W HASTINGS ST

VANCOUVER BC V6B 1L8

Page: 3 - B

Total # Pages: 4 (A - C)

Finalized Date: 13-NOV-2007

Account: F

Project: STUMP

CERTIFICATE OF ANALYSIS VA07104475

Sample Description	Method	ME-ICP61	ME-ICP61	ME-ICP61	ME-ICP61	ME-ICP61	ME-ICP61	ME-ICP61	ME-ICP61	ME-ICP61	ME-ICP61	ME-ICP61	ME-ICP61	ME-ICP61	ME-ICP61	ME-ICP61
	Analyte	K	La	Mg	Mn	Mo	Na	Ni	P	Pb	S	Sb	Sc	Sr	Th	Ti
Units		%	ppm	%	ppm	ppm	%	ppm	ppm	ppm	%	ppm	ppm	ppm	ppm	%
LOR		0.01	10	0.01	5	1	0.01	1	10	2	0.01	5	1	1	20	0.01
C488492		0.20	<10	0.15	8480	<1	0.01	17	610	>10000	4.59	1600	3	345	<20	0.08
C488493		0.16	<10	0.13	19550	<1	0.01	20	320	>10000	6.00	1690	2	166	<20	0.04
C488494		0.97	10	0.40	17100	5	0.04	41	770	>10000	3.18	956	6	179	<20	0.11
C488495		0.47	10	0.11	7280	8	0.02	25	1050	>10000	2.98	1310	5	317	<20	0.10
C488496		0.14	<10	0.10	3940	3	0.01	15	340	>10000	9.12	2110	3	305	<20	0.07
C488497		0.04	<10	0.21	12650	4	<0.01	<1	40	>10000	7.76	3230	1	17	<20	0.01
C488498		0.43	10	0.02	2080	2	0.02	16	640	>10000	8.61	1860	3	240	<20	0.09
C488499		0.02	<10	0.05	5320	7	<0.01	5	60	>10000	>10.0	3740	<1	21	<20	<0.01
C488500		0.31	<10	0.01	3880	2	0.01	18	630	>10000	8.92	2100	2	250	<20	0.07
C488501		2.03	10	0.13	1945	2	0.09	14	800	>10000	1.62	471	8	125	<20	0.23
C488502		0.08	<10	0.34	13200	<1	<0.01	7	240	>10000	6.99	2110	2	117	<20	0.03
C488503		0.09	<10	0.20	7090	2	0.01	10	230	>10000	9.87	2550	1	62	<20	0.03
C488504		0.04	<10	<0.01	1795	<1	<0.01	8	530	>10000	8.32	1900	2	350	<20	0.05
C488505		1.64	10	0.17	6650	7	0.08	24	1770	>10000	0.27	56	8	137	<20	0.08
C488506		0.10	<10	0.09	10050	<1	0.01	20	350	>10000	8.37	2140	2	203	<20	0.04
C488507		1.90	10	0.18	14200	<1	0.09	22	2010	1470	0.07	18	12	159	<20	0.19
C488508		0.07	<10	0.18	19450	1	<0.01	22	240	>10000	5.67	1665	2	133	<20	0.03
C488509		2.46	30	1.19	4270	<1	0.12	21	880	>10000	0.58	148	10	286	<20	0.27
C488510		0.05	<10	12.80	331	<1	0.01	<1	220	2530	0.07	16	<1	51	<20	0.01
C488511		1.46	10	2.27	13550	<1	0.09	24	1460	8940	0.15	16	8	228	<20	0.13
C488512		1.40	10	3.07	6580	<1	0.10	27	910	1600	0.12	8	7	220	<20	0.18
C488513		0.94	10	2.60	9640	1	0.06	20	3000	>10000	0.28	203	7	285	<20	0.14
C488514		0.60	<10	0.09	6410	13	0.03	19	1330	>10000	1.72	256	6	186	<20	0.08
C488515		0.58	10	0.05	1080	5	0.03	15	2220	>10000	5.56	956	4	332	<20	0.12
C488516		2.20	20	0.24	3330	3	0.10	38	3370	>10000	0.22	138	10	292	<20	0.26
C488517		2.47	10	0.20	4640	12	0.12	111	>10000	9090	0.52	74	14	734	<20	0.22
C488518		0.42	<10	6.17	4500	2	0.03	9	770	1380	0.12	11	4	230	<20	0.17
C488519		2.24	20	0.43	2250	1	0.10	30	2470	5060	0.14	27	10	338	<20	0.30
C488520		2.57	30	0.61	2450	3	0.13	48	2860	532	0.06	6	13	428	<20	0.31
C488521		0.63	10	0.21	9530	<1	0.03	29	1270	>10000	5.33	1185	5	358	<20	0.11
C488522		1.72	20	0.21	3310	<1	0.08	31	1830	>10000	1.17	317	8	468	<20	0.25
C488523		1.60	10	0.17	9550	15	0.06	40	1000	>10000	0.65	286	8	313	<20	0.11
C488524		0.73	10	0.20	13250	17	0.02	50	1440	>10000	0.33	267	6	233	<20	0.10
C488525		2.16	20	0.54	1830	<1	0.09	25	1770	2690	0.09	22	9	432	<20	0.28
C488526		1.64	20	0.72	2430	3	0.07	36	2920	2770	0.09	22	7	495	<20	0.27
C488527		0.07	10	0.21	5620	15	<0.01	20	380	>10000	9.00	1795	2	438	<20	0.08
C488528		0.42	<10	0.16	11800	4	0.02	35	960	>10000	0.88	696	5	118	<20	0.07
C488529		0.06	<10	0.20	5470	6	0.01	11	220	>10000	>10.0	2770	1	97	<20	0.04
C488530		0.02	<10	13.55	280	<1	<0.01	<1	210	1450	0.05	19	<1	54	<20	<0.01
C488531		0.07	<10	0.11	4610	<1	0.01	10	310	>10000	>10.0	2510	1	141	<20	0.05



ALS Chemex

EXCELLENCE IN ANALYTICAL CHEMISTRY

ALS Canada Ltd.

212 Brooksbank Avenue

North Vancouver BC V7J 2C1

Phone: 604 984 0221 Fax: 604 984 0218 www.alschemex.com

ARCHER, CATHRO AND ASSOCIATES (1981)
LIMITED

1016-510 W HASTINGS ST
VANCOUVER BC V6B 1L8

Page: 3 - C
Total # Pages: 4 (A - C)
Finalized Date: 13-NOV-2007
Account: F

Project: STUMP

CERTIFICATE OF ANALYSIS VA07104475

Sample Description	Method Analyte Units LOR	ME-ICP61	ME-ICP61	ME-ICP61	ME-ICP61	ME-ICP61	Ag-OG62	Pb-OG62	Ag-GRA21	Pb-VOL70
		Tl	U	V	W	Zn	Ag	Pb	Ag	Pb
		ppm	ppm	ppm	ppm	ppm	ppm	%	ppm	%
		10	10	1	10	2	1	0.01	5	0.01
C488492		<10	10	55	10	55	1070	>20.0	1135	
C488493		<10	<10	46	10	87	1295	>20.0	1230	
C488494		<10	10	62	10	74	661	16.35		
C488495		<10	10	90	<10	82	955	>20.0		
C488496		<10	<10	119	<10	113	>1500	>20.0	1845	48.29
C488497		<10	<10	6	<10	72	>1500	>20.0	1475	55.27
C488498		<10	10	98	10	104	1400	>20.0	1440	40.51
C488499		<10	<10	4	<10	33	>1500	>20.0	2400	70.63
C488500		<10	<10	97	<10	71	>1500	>20.0	1665	45.77
C488501		<10	<10	179	<10	46	441	14.80		
C488502		<10	<10	26	10	62	>1500	>20.0	1520	39.40
C488503		<10	<10	24	<10	68	>1500	>20.0	1870	46.86
C488504		<10	<10	40	<10	52	>1500	>20.0	1675	47.84
C488505		<10	10	210	<10	28		1.15		
C488506		<10	<10	47	10	81	>1500	>20.0	1530	42.42
C488507		<10	<10	154	10	27				
C488508		<10	<10	27	<10	87	1260	>20.0	1240	
C488509		<10	<10	88	<10	26	145	4.49		
C488510		<10	<10	4	<10	16				
C488511		<10	10	109	10	31				
C488512		<10	<10	123	10	22				
C488513		<10	10	100	10	52	178	3.20		
C488514		<10	<10	86	10	53	236	6.31		
C488515		<10	<10	78	<10	48	1180	>20.0	1250	
C488516		<10	<10	131	<10	785	133	3.22		
C488517		<10	20	339	10	62				
C488518		<10	<10	49	10	21				
C488519		<10	10	143	<10	1210				
C488520		<10	<10	241	10	274				
C488521		<10	<10	71	10	241	1030	>20.0	1075	
C488522		<10	10	75	<10	198	259	7.21		
C488523		<10	10	61	<10	821	255	6.88		
C488524		<10	10	69	<10	1280	265	4.64		
C488525		<10	<10	86	10	37				
C488526		<10	10	162	10	322				
C488527		<10	<10	22	<10	106	1390	>20.0	1370	44.37
C488528		<10	10	63	<10	100	437	6.45		
C488529		<10	<10	14	<10	64	>1500	>20.0	1980	60.60
C488530		<10	<10	4	<10	19				
C488531		<10	<10	21	10	73	>1500	>20.0	1800	57.16



ALS Chemex

EXCELLENCE IN ANALYTICAL CHEMISTRY

ALS Canada Ltd.

212 Brooksbank Avenue
North Vancouver BC V7J 2C1

Phone: 604 984 0221 Fax: 604 984 0218 www.alschemex.com

ARCHER, CATHRO AND ASSOCIATES (1981)
LIMITED

1016-510 W HASTINGS ST
VANCOUVER BC V6B 1L8

Project: STUMP

CERTIFICATE OF ANALYSIS VA07104475

Sample Description	Method Analyte Units LOR	WEI-21	Au-ICP21	ME-ICP61	ME-ICP61	ME-ICP61	ME-ICP61	ME-ICP61	ME-ICP61	ME-ICP61	ME-ICP61	ME-ICP61	ME-ICP61	ME-ICP61	ME-ICP61	ME-ICP61
		Recvd Wt. kg	Au ppm	Ag ppm	Al %	As ppm	Ba ppm	Be ppm	Bi ppm	Ca %	Cd ppm	Co ppm	Cr ppm	Cu ppm	Fe %	Ga ppm
C488532		1.32	<0.001	4.9	0.07	<5	10	<0.5	<2	21.7	<0.5	1	1	9	0.49	<10
C488533		11.27	0.427	>100	1.11	251	100	<0.5	13	0.13	5.9	13	9	1660	20.3	<10
C488534		9.04	0.430	>100	2.97	227	270	0.8	9	0.97	2.4	15	40	1070	9.13	10
C488535		4.56	0.463	>100	1.75	212	160	0.6	16	0.86	8.2	14	22	2160	11.10	<10
C488536		6.62	0.432	>100	0.97	230	130	<0.5	10	0.13	10.0	10	11	3040	10.30	<10
C488537		1.28	0.008	20.3	0.12	<5	30	<0.5	<2	19.80	<0.5	2	2	31	0.58	<10
C488538		8.12	0.542	>100	0.83	287	150	<0.5	15	0.34	10.6	11	8	3280	11.05	<10
C488539		1.39	0.001	4.8	0.05	<5	10	<0.5	<2	20.9	<0.5	2	1	9	0.51	<10
C488540		4.01	0.522	>100	1.96	346	80	<0.5	4	0.12	5.7	11	20	2260	13.80	<10
C488541		8.69	0.022	13.3	7.04	19	2070	1.3	4	6.00	<0.5	12	56	24	6.73	20
C488542		6.77	0.037	>100	3.43	20	890	0.8	3	10.10	7.1	8	27	173	9.23	10
C488543		13.01	0.046	15.4	5.92	456	1680	1.2	2	2.39	<0.5	16	67	49	14.75	20
C488544		8.50	0.037	5.8	6.42	71	1780	1.7	<2	3.02	0.5	18	64	25	7.11	20
C488545		9.99	0.076	9.9	7.70	251	2050	1.5	3	0.56	2.3	21	66	23	8.79	20
C488546		4.39	0.002	1.6	5.71	8	1710	1.5	<2	12.00	<0.5	7	55	27	2.53	10
C488547		6.64	0.117	59.9	6.32	477	1660	1.4	<2	5.53	<0.5	17	53	156	10.55	10
C488548		5.67	0.200	>100	4.65	391	1060	1.4	5	4.95	1.1	13	61	487	9.80	10
C488549		2.92	0.285	>100	3.68	949	810	1.0	7	0.93	<0.5	16	36	641	20.3	10
C488550		8.46	0.362	>100	3.70	608	230	0.9	9	0.55	3.7	18	53	1240	12.85	10
C491551		3.61	0.504	>100	2.01	693	530	0.6	8	0.17	1.1	23	15	623	31.3	<10
C491552		5.20	0.351	>100	4.52	767	690	1.3	5	0.67	3.3	19	53	806	12.10	10
C491553		5.16	0.189	>100	5.10	215	720	1.3	5	2.52	1.8	14	48	624	15.15	10
C491554		9.24	0.304	>100	4.37	450	170	1.0	9	0.22	3.5	13	49	1170	10.20	10
M011068		2.28	0.619	>100	1.96	387	140	<0.5	6	0.02	5.6	10	29	2690	9.00	<10



ALS Chemex

EXCELLENCE IN ANALYTICAL CHEMISTRY

ALS Canada Ltd.

212 Brooksbank Avenue
North Vancouver BC V7J 2C1

Phone: 604 984 0221 Fax: 604 984 0218 www.alschemex.com

ARCHER, CATHRO AND ASSOCIATES (1981)

LIMITED

1016-510 W HASTINGS ST

VANCOUVER BC V6B 1L8

Page: 4 - B

Total # Pages: 4 (A - C)

Finalized Date: 13-NOV-2007

Account: F

Project: STUMP

CERTIFICATE OF ANALYSIS VA07104475

Sample Description	Method	ME-ICP61	ME-ICP61	ME-ICP61	ME-ICP61	ME-ICP61	ME-ICP61	ME-ICP61	ME-ICP61	ME-ICP61	ME-ICP61	ME-ICP61	ME-ICP61	ME-ICP61	ME-ICP61
	Analyte	K	La	Mg	Mn	Mo	Na	Ni	P	Pb	S	Sb	Sc	Sr	Th
Units		%	ppm	%	ppm	ppm	%	ppm	ppm	ppm	%	ppm	ppm	ppm	ppm
LOR		0.01	10	0.01	5	1	0.01	1	10	2	0.01	5	1	1	20
C488532		0.03	<10	13.30	211	<1	0.01	<1	180	1110	0.04	15	<1	51	<20
C488533		0.14	<10	0.34	16200	<1	0.01	16	240	>10000	5.36	1535	2	79	<20
C488534		0.80	10	0.13	4510	<1	0.04	28	890	>10000	3.69	670	5	112	<20
C488535		0.29	<10	0.14	5570	<1	0.02	21	660	>10000	6.96	1515	3	166	<20
C488536		0.04	<10	0.31	6440	<1	<0.01	14	370	>10000	9.24	2270	2	244	<20
C488537		0.05	<10	12.10	249	<1	0.01	<1	230	5250	0.13	34	<1	49	<20
C488538		0.03	<10	0.37	6970	<1	<0.01	14	250	>10000	9.60	2440	1	213	<20
C488539		0.02	<10	12.75	207	<1	<0.01	<1	200	847	0.06	12	<1	51	<20
C488540		0.21	10	0.04	8140	<1	0.01	17	700	>10000	6.45	1295	4	383	<20
C488541		2.67	20	0.56	3290	<1	0.09	17	3570	2890	0.18	24	11	282	<20
C488542		1.22	10	0.97	5010	<1	0.05	13	1360	>10000	1.53	255	7	319	<20
C488543		1.94	10	0.53	9210	3	0.08	37	2270	3960	0.11	24	10	193	<20
C488544		2.78	10	0.19	5850	<1	0.12	34	810	1100	0.07	8	9	222	<20
C488545		2.96	20	0.18	4300	3	0.11	35	1070	2510	0.07	16	11	198	<20
C488546		2.07	20	0.38	478	<1	0.11	21	2280	257	0.05	<5	8	473	<20
C488547		2.29	20	0.62	6570	4	0.10	32	650	>10000	0.59	80	9	262	<20
C488548		1.29	10	0.81	5720	6	0.06	34	1480	>10000	0.42	423	7	356	<20
C488549		0.85	10	0.13	7690	4	0.04	34	960	>10000	0.44	491	5	325	<20
C488550		0.99	10	0.16	4160	3	0.04	34	2170	>10000	3.46	844	6	121	<20
C491551		0.44	<10	0.15	19600	8	0.02	30	550	>10000	1.08	438	4	179	<20
C491552		0.86	20	0.13	7060	8	0.04	36	2140	>10000	1.45	618	6	204	<20
C491553		1.76	20	0.22	11700	3	0.09	24	820	>10000	1.83	554	8	262	<20
C491554		1.30	10	0.12	2110	1	0.06	26	1540	>10000	3.91	645	7	155	<20
M011068		0.43	10	0.02	1350	2	0.01	13	720	>10000	8.48	1760	3	192	<20



ALS Chemex

EXCELLENCE IN ANALYTICAL CHEMISTRY

ALS Canada Ltd.

212 Brooksbank Avenue
North Vancouver BC V7J 2C1

Phone: 604 984 0221 Fax: 604 984 0218 www.alschemex.com

ARCHER, CATHRO AND ASSOCIATES (1981)

LIMITED

1016-510 W HASTINGS ST

VANCOUVER BC V6B 1L8

Page: 4 - C

Total # Pages: 4 (A - C)

Finalized Date: 13-NOV-2007

Account: F

Project: STUMP

CERTIFICATE OF ANALYSIS VA07104475

Sample Description	Method Analyte Units LOR	ME-ICP61	ME-ICP61	ME-ICP61	ME-ICP61	ME-ICP61	Ag-OG62	Pb-OG62	Ag-GRA21	Pb-VOL70
		Tl ppm 10	U ppm 10	V ppm 1	W ppm 10	Zn ppm 2	Ag ppm 1	Pb % 0.01	Ag ppm 5	Pb % 0.01
C488532		<10	<10	3	<10	16				
C488533		<10	<10	22	<10	89	1300	>20.0	1280	
C488534		<10	<10	65	<10	74	746	>20.0		
C488535		<10	10	33	10	192	1320	>20.0	1435	42.70
C488536		<10	<10	16	<10	68	>1500	>20.0	1685	52.33
C488537		<10	<10	5	<10	18				
C488538		<10	<10	15	<10	65	>1500	>20.0	1920	51.49
C488539		<10	<10	3	<10	15				
C488540		<10	<10	38	<10	124	1410	>20.0	1420	34.26
C488541		<10	10	71	<10	32				
C488542		<10	10	45	<10	1180	268	10.30		
C488543		<10	10	153	10	117				
C488544		<10	<10	61	<10	320				
C488545		<10	<10	60	10	1050				
C488546		<10	<10	106	10	29				
C488547		<10	10	56	10	144		1.80		
C488548		<10	10	122	10	86	329	7.33		
C488549		<10	10	57	<10	86	418	7.07		
C488550		<10	<10	85	10	46	719	>20.0		
C491551		<10	10	39	<10	76	355	7.34		
C491552		<10	10	83	<10	51	525	13.20		
C491553		<10	10	74	<10	69	466	11.10		
C491554		<10	<10	64	<10	616	741	>20.0		
M011068		<10	<10	145	<10	97	1480	>20.0	1490	40.06

095017

ARCHER, CATHRO & ASSOCIATES (1981) LIMITED
1016 - 510 West Hastings Street
Vancouver, B.C. V6B 1L8

Telephone: 604-688-2568


Fax: 604-688-2578

AFFIDAVIT



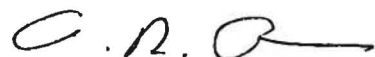
I, Joan Mariacher, of Vancouver, B.C. make oath and say:

That to the best of my knowledge the attached Statement of Expenditures for exploration work on AT 1-4 mineral claims on Claim Sheet 105F/9 is accurate.


Joan Mariacher

Sworn before me at Vancouver, B.C.

this 5th day of February, 2008.


Notary Public, Yukon Territory

Statement of Expenditures
AT 1-4 Mineral Claims
February 4, 2008



Expenses

15317 Yukon Inc.

\$43,514.85

OUR NUMBER	165557
DATE	SEPT 21/07
CUSTOMER'S ORDER	

TO ARCHER CATHRO
 ADDRESS STUMP *PA*

SHIP TO 15317 YUKON INC
 ADDRESS 203/108 ELLIOTT ST
WHITEHORSE YT
Y1A 6B4

TAX REG NO	SALESPERSON	FOB	TERMS	VIA
------------	-------------	-----	-------	-----

INVOICE

QUANTITY	DESCRIPTION	PRICE	AMOUNT
460	KW-MOBE EDGER LAKE - STUMP	3.50	1610
189.5	EX 200 EXCAVATOR HOURS	140	26530
62	MAN HOURS - TRAVEL	70	4340
66	HIAB HOURS MOBE + HAUL ORK	75	4950
16	KW HOURS - HAUL ORK	150	2400
295	KM - DE MOBE HIAB TO HY	1.50	442.50
			40272.50
			889930.582
		GST	2416.55
		PST	
		TOTAL	42683.58

PAID

BlueLine DC32

© BlueLine®, 2006

Handwritten signature

Handwritten initials

