

GEOCHEMICAL

REPORT

CCC 1 - 4 CLAIMS

YC44997 – YC45000

NTS # 115 O \ 3

LAT: 63° 50 N

LONG: 139° 34 W

DAWSON MINING DISTRICT

AUTHOR OF REPORT SHAWN RYAN

WORK PERFORMED OCTOBER 6, 2006

DATE OF REPORT MARCH 15, 2008

TABLE OF CONTENT

Summary	p.3
1.0 INTRODUCTION	p.3
2.0 PROJECT LOCATION / ACCESS	p.3
3.0 PROPERTY DESCRIPTION	p.3
4.0 PHYSIOGRAPHY	p.3
5.0 GEOLOGY	p.4
5.1 REGIONAL GEOLOGY	p.4
6.0 WORK PERFORMED / METHODS	p.5
6.1 PROSPECTING	p.5
7.0 INTERPRETATION	p.5
7.1 PROSPECTING	p.5
8.0 RECOMMENDATION	p.6
9.0 REFERENCES CITED	p.6
10.0 COST	p.6
11.0 QUALIFICATION	p.7
Claim Map	
Claim Location Map	Figure 1
Copper Pictures	Figure 2
Assay /GPS Soil Location Data	Appendix

SUMMARY

The CCC Claims were staked to cover a small copper showing found in a new road cut. Two rock samples were collected and the best results carried .35% Cu and 252 ppb Au.

1.0 INTRODUCTION

The CCC 1-4 will be renewed for 2 years.

2.0 LOCATIONS AND ACCESS

The CCC 1- 4 claims are located on NTS 115 O / 3 in the Dawson Mining District. The Property lies 108 kilometer south of Dawson City, Yukon. The claim block straddles Thistle Creek. Access is via helicopter or River Boat. If a river boat is used then a four wheeler is needed to drive up the road for 5 kilometers.

3.0 PROPERTY DESCRIPTION

The Property consists of 4 full Quartz mining claims, which are registered in the Dawson Mining District. The Property covers 138 hectares or 200 acres.

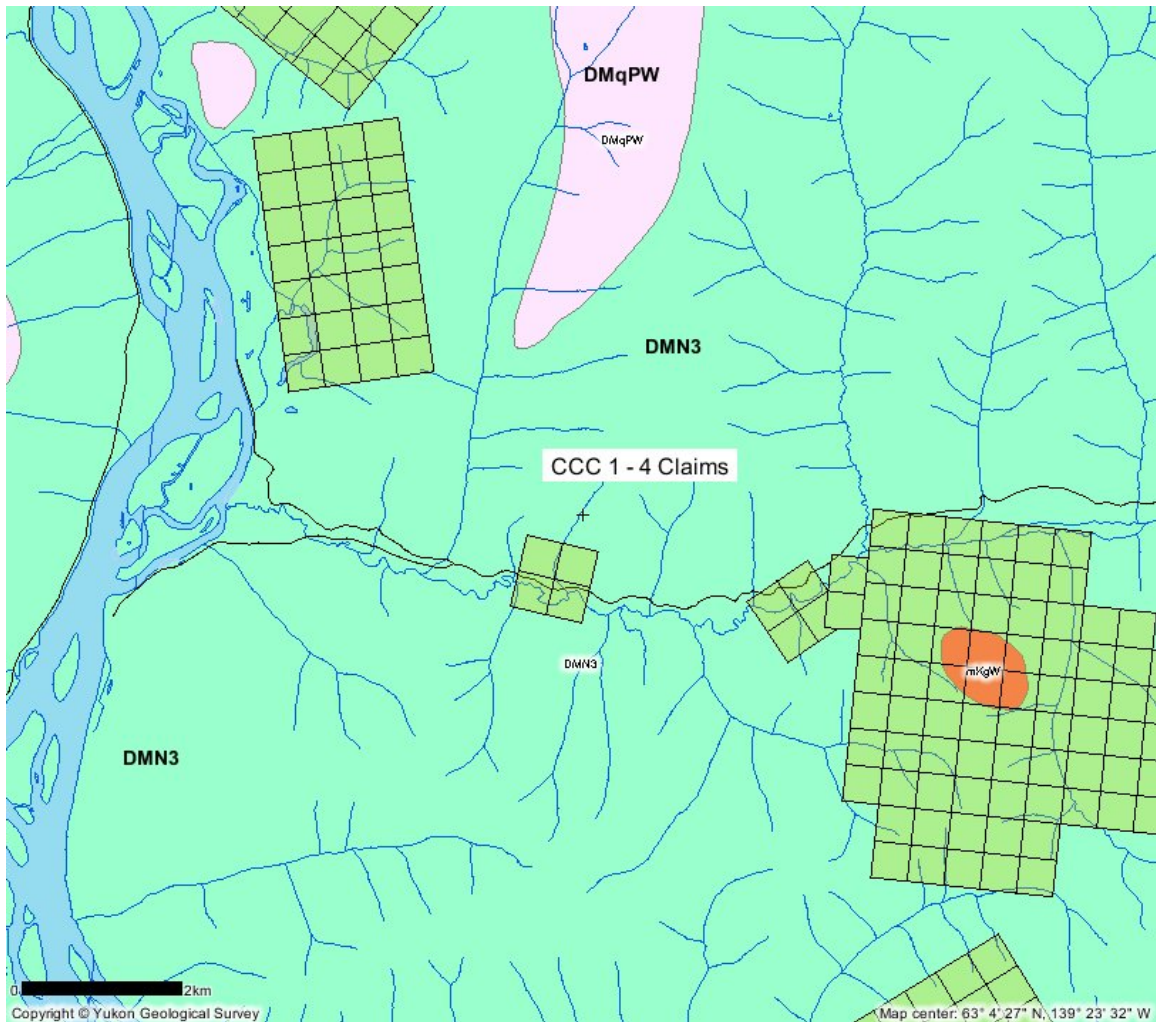
4.0 PHYSIOGRAPHY

The property lies between the elevations of 1400 feet and 2000 feet. The property is covered with boreal forest vegetation such as white spruce and poplar on well-drained soil and black spruce on poorly drained frozen north facing slope.

5.0 REGIONAL AND PROPERTY GEOLOGY

5.1 REGIONAL GEOLOGY (YTG Geology description)

Regionally the CCC Property is underlain by Devonian Mississippian quartzite, micaceous quartzite, quartz muscovite (+/-chlorite; +/- feldspar augen) schist, and minor metaconglomerate and metagrit as in (1), but may locally include significant Nisling Assemblage.



YTG Geology Description

LATE DEVONIAN TO MISSISSIPPIAN

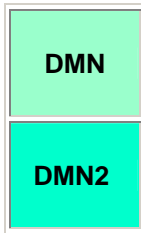


DMPW: PELLY GNEISS SUITE - SOUTHWEST

variably deformed granitic rocks of predominantly felsic (q) to intermediate composition (g) southwest of Tintina Fault

- q. foliated equigranular medium-grained muscovite quartz monzonite; moderately to strongly foliated K-feldspar augen-bearing quartz monzonitic to granitic gneiss (**S. Fiftymile Batholith, Mt. Burnham Orthogneiss,**)

DEVONIAN, MISSISSIPPIAN AND(?) OLDER



DMN: NASINA

graphitic quartzite and muscovite quartz-rich schist (1), (3)-(5), and(?) (6) with interspersed marble (2) and probable correlative successions (7) - (9)

1. dark grey to black, fine grained graphitic and non-graphitic quartzite, grey micaceous quartzite and quartz muscovite (+/-chlorite; +/- feldspar augen) schist, locally garnetiferous; minor graphitic stretched metaconglomerate and metagrit (**Nasina assem.**)
2. marble (**Nasina assem.**)
3. quartzite, micaceous quartzite, quartz muscovite (+/-chlorite; +/- feldspar augen) schist, and minor metaconglomerate and metagrit as in (1), but may locally include significant Nisling Assemblage

6.0 WORK PERFORMED / METHODS

6.1 Prospecting

A total of 2 representative rock samples were collected from the road outcrop. A quick look around did not reveal any more signs of copper but there was very little outcrop to be seen.

7.0 INTERPRETATION

7.1 Rock samples

The two rock sample collect indicated that one of the rocks had .35% copper and was carrying .250 g/t Au. The second rock had very little of copper or gold in it. Interesting even though the copper numbers were low the ratio of copper to gold is almost one to one.

8.0 RECOMMENDATION

I would recommend a trenching program with a large hoe. With road access it would be easy to quickly evaluate both gold anomalies.

9.0 REFERENCES CITED

Ryan,J.J. and Gordey,S.P. 2004: Geology, Stewart River Area, Yukon Territory; Geological Survey of Canada, Open File 4641

Yukon geology web site for geology map

10.0 COST

Wage Prospecting 1 day @ \$300.00 per day	\$300.00
Assay Cost 2 rocks @ \$24.00 per sample Includes pre marked kraft bags, flagging, Drying packing samples and shipping cost to Vancouver.	\$48.00
Boat + Gas Travel 1 day @ \$250.00 per day	\$250.00
Report writing	\$250.00
Total	\$848.00

11.0 QUALIFICATION

I Shawn Ryan located in Dawson City, Yukon work as a professional prospector. I run a small exploration company located in Dawson City.

I have worked in the exploration business for the last 25 years. I worked the first 12 years as a contractor working on numerous projects in the NWT, Ontario, Quebec and the Yukon. I have worked the last 10 years as a local prospector for myself.

I have overseen the entire CCC Project

I own 100% of the CCC claims.

Dated this 15 of March 2008 in Dawson City, Yukon.

Respectfully submitted

Shawn Ryan



New Copper Showing found along the Thistle Creek Road

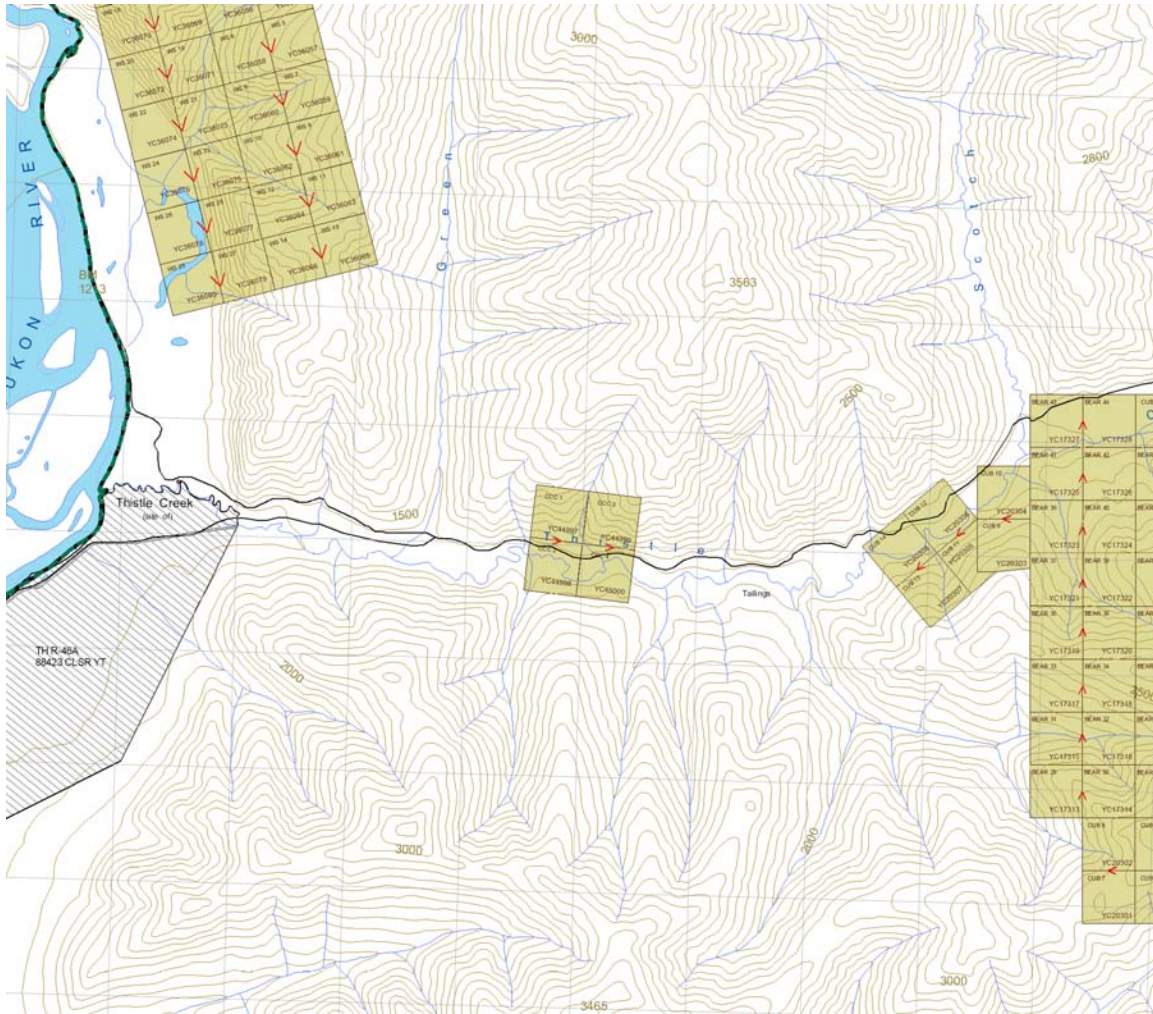


Outcrop Looking North from side of Road



Close Up of Malachite Stain Amphibolite

CCC 1 – 4 Claims



NTS 115 0 / 3

FIGURE 1



Figure 2

New Copper Showing found along the Thistle Creek Road



Figure 3

Outcrop Looking North from side of Road



Figure 4

Close Up of Malachite Stain Amphibolite

SAMPLES	UTM	Easting	Northing	Mo	Cu	Pb	Zn	Ag	Ni	Co	Mn	Fe	As	U	Au
CCC R-01	Nad 83-7V	580826	6993922	0.1	3528.3	0.1	25	1.4	16.5	16.5	289	2.2	0	0.1	252.3
CCC R-02	Nad 83-7V	580826	6993922	0.9	84.5	0.1	1	0	1.2	1.4	16	0.28	0	0	0.8

SAMPLES	Th	Sr	Cd	Sb	Bi	V	Ca	P	La	Cr	Mg	Ba	Ti	B	Al
CCC R-01	0.1	6	0.1	0	0.2	73	0.91	0.06	1	62	0.88	130	0.167	1	0.9
CCC R-02	0	2	0	0	0	2	0.03	0.008	0	11	0.02	23	0.002	1	0.05

SAMPLES	Na	K	W	Hg	Sc	Tl	S	Ga	Se	Analysis:	Acme file #
CCC R-01	0.134	0.2	0.1	0.06	5.8	0	0	4	0.8	GROUP 1DX - 15.0 GM	A609560
CCC R-02	0.009	0.01	0.1	0	0.1	0	0	0	0	GROUP 1DX - 15.0 GM	A609560