

**2007 ASSESSMENT WORK**  
**CAM CLAIMS, LIVINGSTONE AREA**  
WHITEHORSE MINING DISTRICT, YUKON  
NTS 105E/8  
by  
Larry W. Carlyle, F.G.A.C., P. Geol.

Whitehorse, Yukon

May, 2008

## TABLE OF CONTENTS

	<b>Page</b>
Introduction	1
Location, Access and Claims	2
Claim Information	3
Regional Geology	5
Property Geology	5
Placer Gold	7
Work Program	9
Sample Assay Techniques	10
Conclusions	10
Recommendations	11
Statement of Costs	12
References	12
Statement of Qualifications	13

## **FIGURES**

Location Map	3
Claim Map: NTS 105 E/8	4
Colpron Geology Map	6
Tracings of Air Photo Lineations	8

## **APPENDICES**

Appendix A -- GPS Waypoint Coordinates

Appendix B -- Analytical Certificates

Appendix C -- Invoices Supporting Statement of Costs

## **INTRODUCTION:**

Rock sampling done on the property, since it was first staked in 1997, has returned erratic gold assays. This fact has made the writer suspect “nugget effect”. Rock sampling of a quartz vein structure, in what the writer calls the “Lake Creek Camp Road cut”, gives the strongest evidence for this. The writer sampled the vein in 1997 and obtained a gold assay of 262 ppb. (0.26 g/t). During a visit in 1998, a geologist employed by Viceroy Resources sampled the same vein system and obtained a gold assay of 3110 ppb. (3.11 g/t).

Not having the finances needed to do the sophisticated geophysical and geochemical studies to advance specific targets on the property; the 2007 work was done in an attempt to determine if “nugget effect” was, in fact, present on the property. Large samples of vein quartz, having an average weight of 6.56 kilograms, were collected from five veins in the claim block. Three of the veins sampled were in the Livingstone Creek canyon, one was from a vein located at the top of the waterfall on Summit Creek, and another sample was taken from the “Lake Creek Camp Road cut” mentioned earlier. The sixth sample labeled “Bench” was a grab sample of vein material provided by the writer’s partner, Max Fuerstner.

The six samples were first analyzed using the 15 gram basic suite of 37 elements. While attending the British Columbia Mineral Exploration Roundup, the writer learned of an analytical technique described as “Metal Sieve Assaying” used when native metal is expected to occur in samples. The writer requested that this Acme Analytical Laboratories perform this technique to the six samples as well.

## **LOCATION, ACCESS AND CLAIMS:**

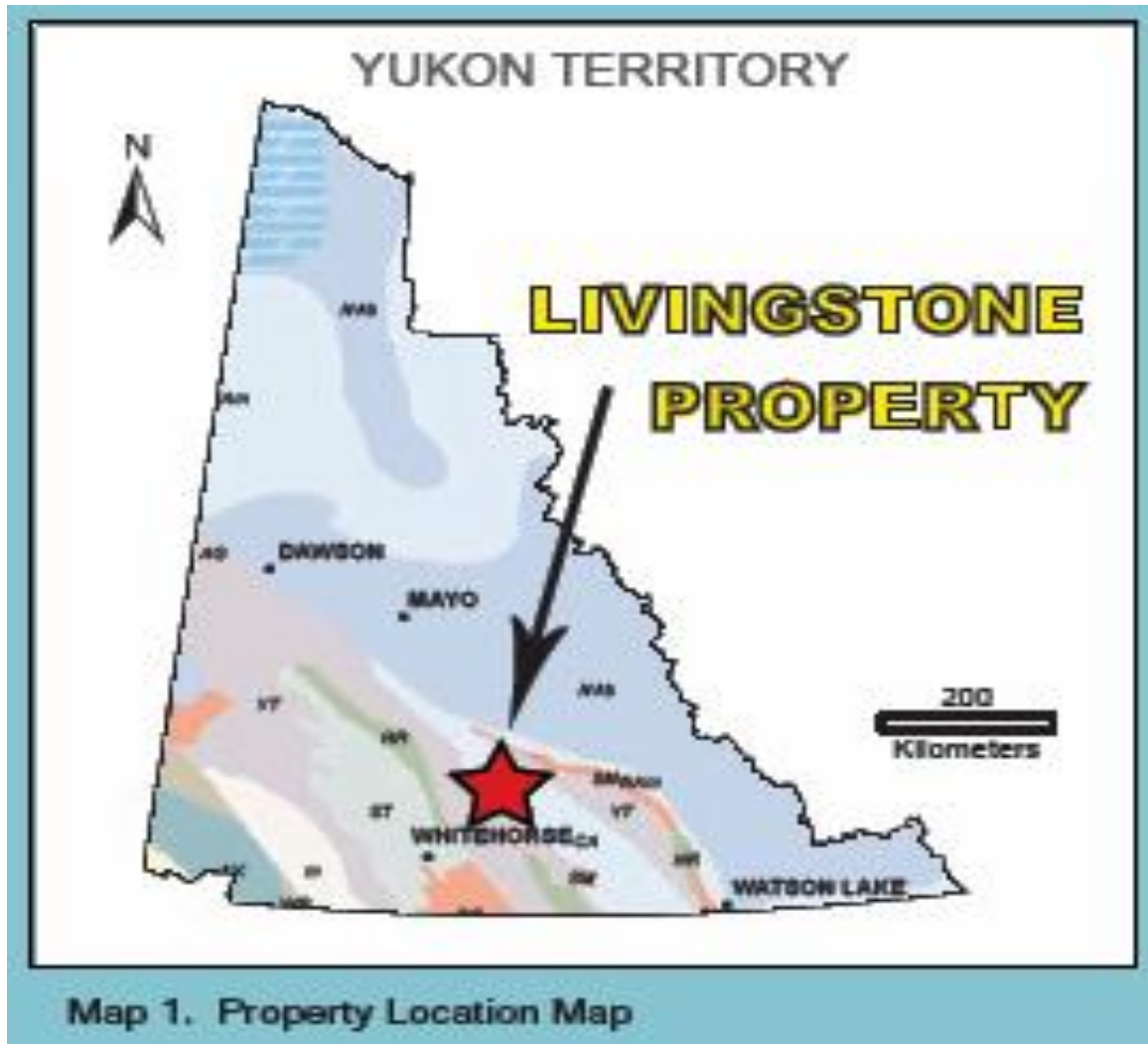
The original 142 CAM Claims were staked in 1997 to cover 5 of the 6 placer creeks which make up the Livingstone placer camp. Sporadic mining is still being carried on in the camp 110 years after the first placer gold was discovered. The CAM Claims are located on NTS Map Sheet 105 E/8 at approximately Latitude  $61^{\circ} 19' N$ ; Longitude  $134^{\circ} 17' W$ ; within the Whitehorse Mining District, Yukon (See Location Map).

Poor exploration results between 1998 and 2000 resulted in more than 50 claims north of Cottoneva Creek being let lapse in the spring of 2005. During the summer of 2005, 65 full and fractional claims were staked adjoining the east and southeast edge of the original CAM Claims. Subsequently, several of these claims have also been let lapse. The claim group presently stands at 131 CAM Claims. 127 claims are in good standing until May 16, 2008; 4 claims are in good standing until May 19, 2008 (See Claim Map).

A 75-mile winter road from Lake Laberge, just north of Whitehorse, provides access to the Livingstone Creek area. The Livingstone area has several airstrips so access is usually via fixed-wing aircraft from Whitehorse; approximately 50 air miles (80 kilometres) to the south-southwest. The main Livingstone airstrip is 4000 feet (1220 metres) long and has had DC-3 and Caribou aircraft landed on it. The extensive placer mining in the area has resulted in the presence of cat trails up most of the creeks within the claim block. These trails have become heavily overgrown since 2000, but still offer fairly good access to many areas with all-terrain vehicles.

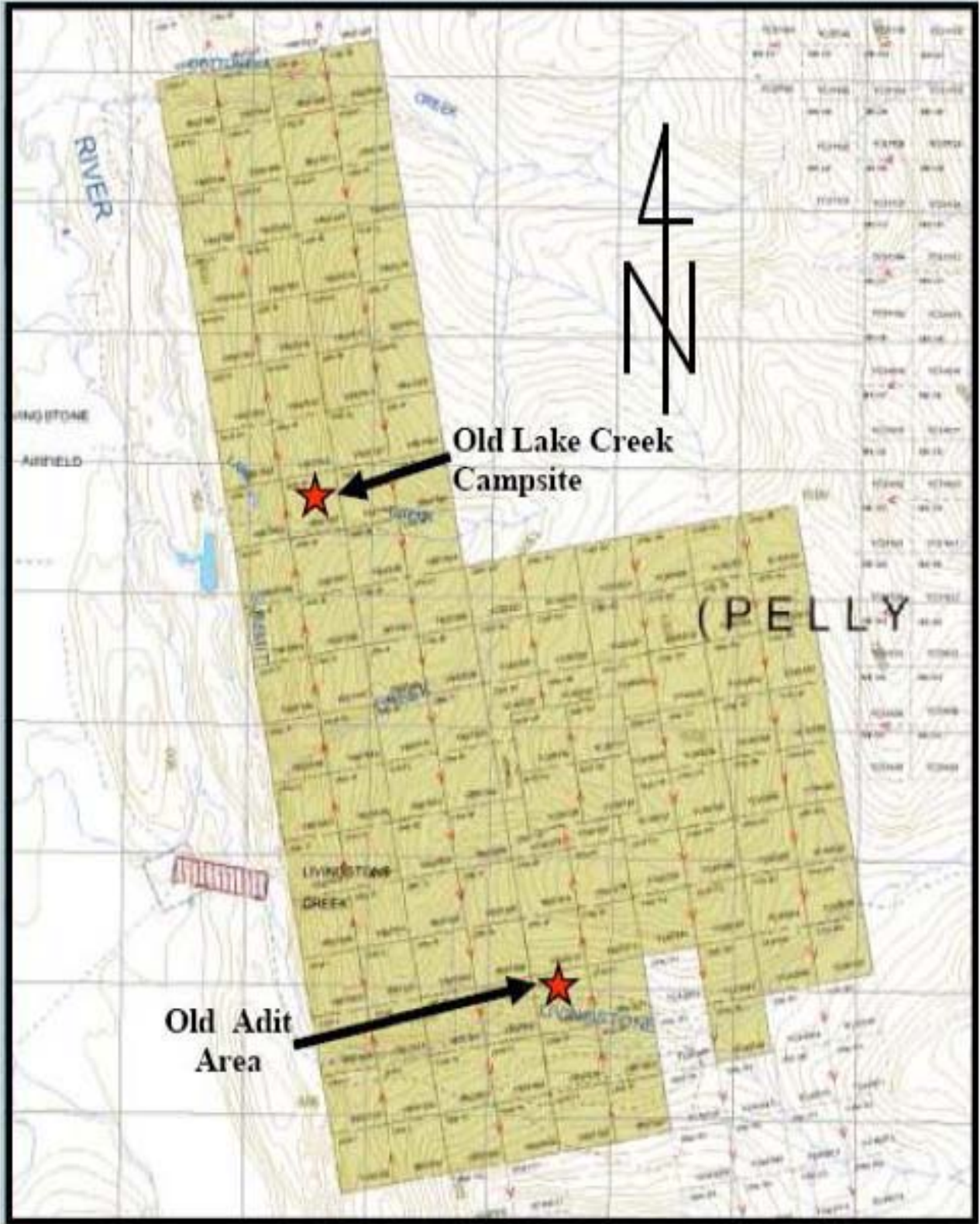
The claims cover areas extending from the fault escarpment near the eastern edge of the Big Salmon Fault at an elevation of approximately 900 metres (2,950 ft.) to the top of the

hills above the headwaters of the creeks at an elevation of approximately 1500 metres (4,920 ft.). The claims are on rounded to steeply sloping hills; the creek canyons have the steepest slopes. Vegetation consists of black spruce, pine, willow and buckbrush.



### Claim Information:

<u>CLAIM NAME</u>	<u>GRANT NUMBERS</u>	<u>EXPIRY DATE</u>
CAM 1 – 86	YB 97530 – YB 97615	May 16, 2008
CAM 143 – 146	YC 08748 – YC 08751	May 19, 2008
CAM 157 – 180	YC 40019 – YC 40042	May 16, 2008
CAM 182	YC 40044	May 16, 2008
CAM 191 – 206	YC 40052 – YC 40067	May 16, 2008



CAM Claims NTS 105 E/8

## **REGIONAL GEOLOGY:**

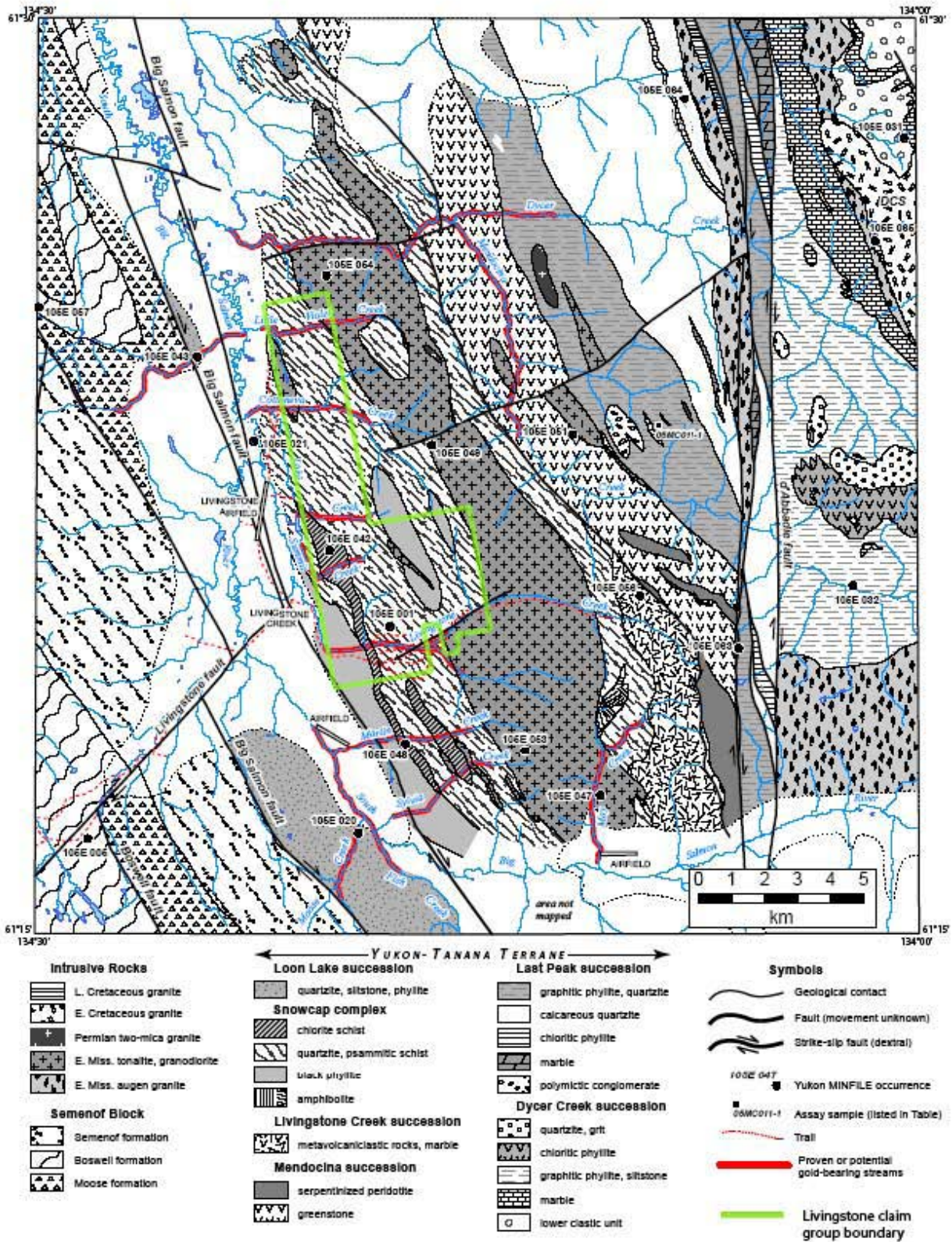
McConnell first described the geology and the placer gold deposits of the Livingstone Creek area in 1901. Cockfield, Lees, and Bostock carried out regional geological mapping between 1929 and 1934. This work resulted in Map 372 A being issued in 1936.

The regional geology was reinterpreted by Tempelman-Kluit in 1977 – 1979. This interpretation identified the Big Salmon Fault, into which the placer creeks drain. He also identified the Teslin Fault (4 -- 6 miles west of the Livingstone camp) as the ancient western margin of North America. Tempelman-Kluit postulated that the rocks west of the Teslin Fault (also known as the Teslin Suture) were pressed against and over the original North America during the Early Cretaceous.

Several geologists such as R.A. Stevens; P. Erdmer; R.A. Creaser; C.S. Gallagher; and M. de Keijzer have reinterpreted Tempelman-Kluit's work since the mid-1980's. Maurice Colpron of the Yukon Geological Survey started geological mapping in the Livingstone area in 2004 and completed it in 2005. His mapping has significantly modified the geological understanding of the region and is probably the most relevant interpretation to the CAM Claims (See Colpron Map, 2005; pg. 6).

## **PROPERTY GEOLOGY:**

An Early Mississippian tonalite-granodiorite intrusive dips westerly under the calcareous and graphitic metasediments which Colpron includes as part of the Snowcap Complex of Lower Mississippian or older age. The Snowcap Complex is part of the Yukon-Tanana Terrane.



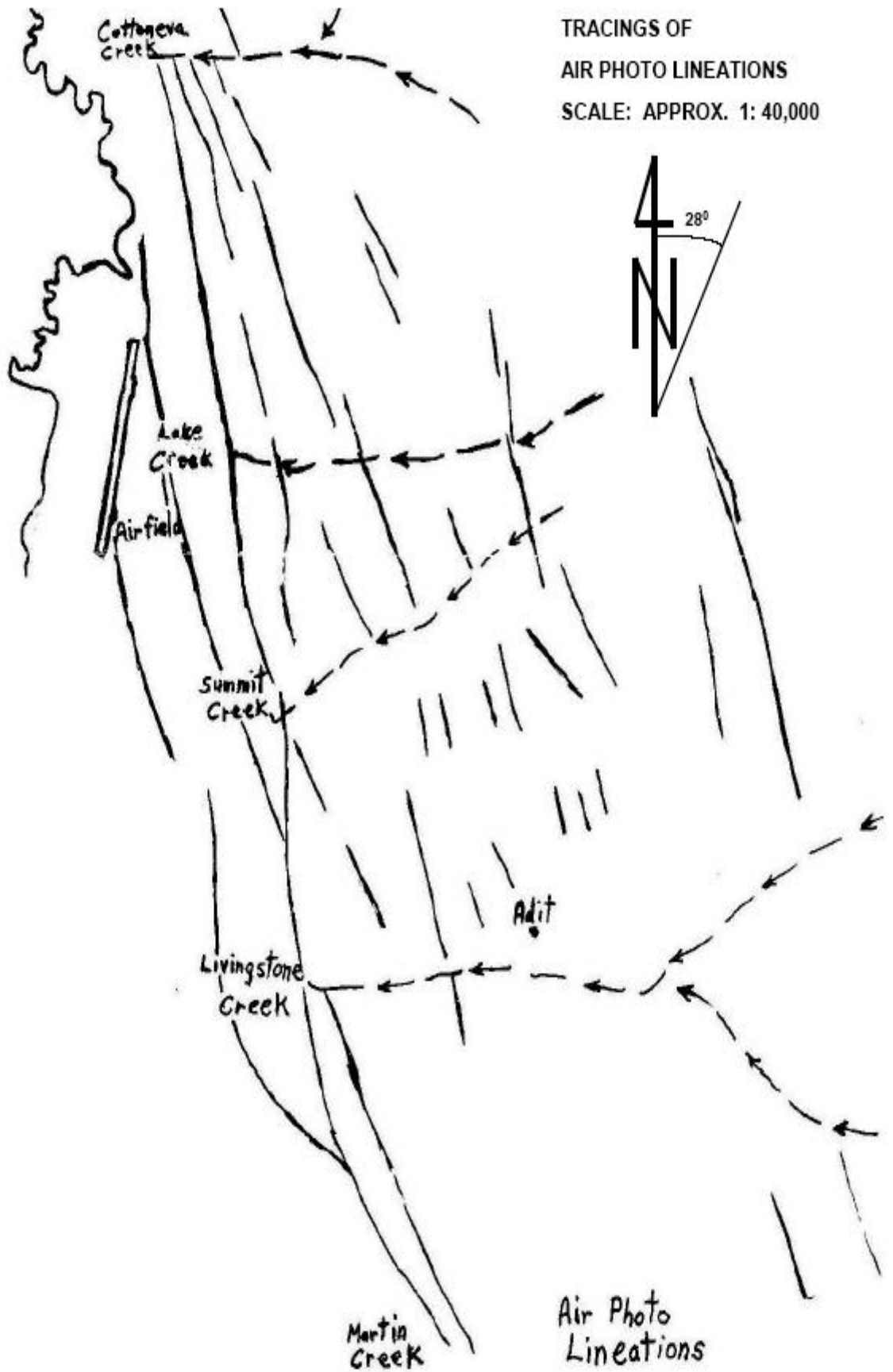
*From* Colpron, M., 2006. Geology and mineral potential of Yukon-Tanana Terrane in the Livingstone Creek area (NTS 105E/8), south-central Yukon. *In*: Yukon Exploration and Geology, 2005, D.S. Emond, G.D. Bradshaw, L.L. Lewis and L.H. Weston (eds.), Yukon Geological Survey, p. 93-107.

The intrusive – metasediments contact extends along the headwaters of all six creeks which have produced placer gold. A similar situation to that described by Dr. Victor Wall in his Thermal Aureole Gold (TAG) model. In Dr. Wall's model, the gold was emplaced in the quartz veins within the calcareous and graphitic metasediments from the underlying intrusive. The gold is believed to have been remobilized and concentrated within faults paralleling the Big Salmon Fault which has an age of approximately 100 Ma. (See Tracings of Air Photo Lineations; pg. 8).

Gold mineralization has also been found associated with galena and chalcopyrite as boudins within the nose of folds at the old adit area along Livingstone Creek (See Claim Map). The hematite mineralization found as fracture fillings in the granodiorite and the strong iron oxide mineralization found in the boudins indicate this is distal mineralization as described in Dr. Wall's TAG model.

### **PLACER GOLD:**

Much of the recovered gold consists of large, rough nuggets. Many of the nuggets are encased or attached to quartz and other country rock. The gold has been eroded primarily from quartz veins and stringers which strike parallel the Big Salmon Fault and perpendicular to the flow of the creeks. The gold has a high purity of 860 – 895 fineness. The amount of gold reported from the Livingstone creeks is 50,000 troy ounces. However, much of the gold produced by the "old-timers" went unreported and, because of this, placer gold production is estimated to be closer to 100,000 troy ounces. The gold was eroded from the country rock during the long erosional period between the Reid and McConnell glaciations. McConnell glaciers moved over the area from the southeast, preserving the placer gold by covering the creeks with variable thicknesses of till.



## WORK PROGRAM:

Carlyle hired a helicopter from Heli Dynamics Ltd. for a flight to the property on August 2, 2007. Carlyle established a camp at the base of the Livingstone Creek canyon near where it was possible to land the helicopter. From this location, Carlyle took bulk rock samples from three quartz veins in the Livingstone Creek canyon which had been sampled earlier; one quartz vein at the top of the waterfall on Summit Creek; and another sample from the "Lake Creek Camp Road cut" quartz vein.

The writer's partner in the claim block, Max Fuerstner, added a vein quartz grab sample which he had obtained during a brief property visit earlier in the year. The sample was taken from an area known locally as the "Bench"; so it was given this designation. The "Bench" is situated approximately 2 kilometres up Livingstone Creek; on the south side of the creek. This sample differed from the samples taken by the writer. First, it was considerably smaller, weighing only 0.4 kilogram; whereas, the samples taken by the writer averaged 6.56 kilograms in weight. Secondly, the "Bench" sample contained less than 1% dark brown iron oxide and fresh pyrite mineralization. The samples taken by the writer were essentially just white bull quartz with minor light brown iron oxide and chalice.

The Heli Dynamic helicopter returned on August 6, 2007 to return the writer to Whitehorse.

<b>Sample Name</b>	<b>Weight Kg.</b>	<b>Previous Au Assay ppb</b>	<b>Bulk Au Assay ppb</b>	<b>Metal Sieve Assay gm/mt = ppm</b>
Bench	0.40	Not Assayed	24.4	0.03
Blake-1	7.80	< 5.0	0.5	< 0.01
LKCKRD-1	7.30	262	138.6	0.15
Puck07-1	6.10	< 5.0	1.2	0.01
SBlake-1	8.60	9.0	1.2	< 0.01
Sum-07	3.00	Not Assayed	0.7	< 0.01

**NOTE:** Sample Puck07-1 was mislabeled by the writer. It should have designated a sample taken at the base of Sheen's Gulch. Sheen's Gulch joins Livingstone Creek from the north approximately 2 kilometres above the base of the canyon.

## Sample Assay Techniques:

### Original Assaying

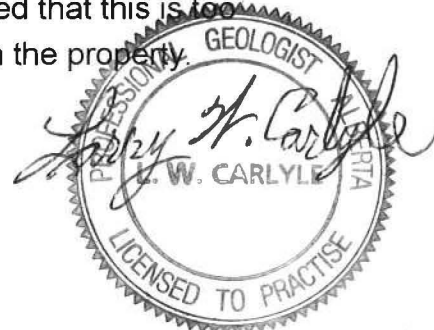
- 1 kg of sample is crushed so 70% passes a 10 mesh screen
- 250 g is split out and pulverized so 85% passes a 200 mesh screen
- 15 grams of the sample is digested in Aqua Regia
- the liquid is then analyzed for the 37 elements by inductively coupled plasma mass spectroscopy

### Metal Sieve Assaying

- 500 grams of sample are crushed, pulverized, and sieved
- both the +150 mesh and -150 mesh fractions are analyzed
- 1 A.T. Sample of both fractions is fire assayed. The two assays have weighted average values calculated and totaled to ensure that any metallic gold is accounted for.

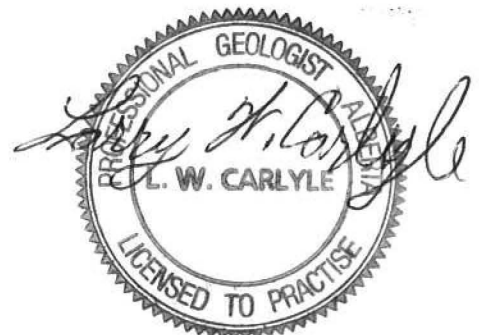
## CONCLUSIONS:

1. The bulk sample assaying showed no difference from the assaying done on the original chip samples taken earlier by the writer.
2. The "metal sieve" assaying technique was thought to be valuable since large, high-purity gold nuggets are obtained from placer mining. "Metal sieve" assaying returned gold values similar to those obtained from the original assaying technique.
3. The "metal sieve" assaying done on the six samples submitted from this program did not demonstrate the existence of "nugget effect". It is considered that this is too small a sampling to disprove the existence of "nugget effect" on the property.



## RECOMMENDATIONS:

1. Significant gold mineralization exists in two widely-spaced zones within the claim group (See Claim Map). The gold mineralization at the "Lake Creek Camp Road cut" has clearly been demonstrated to exist in a low sulphide quartz vein system. Meanwhile, the mineralization at the "Old Adit" site not only occurs in the low sulphide quartz veining but has boudins in the nose of folds enriched in galena, chalcopyrite, sphalerite (?), and arsenopyrite (?). More work is required in both zones to determine their extent and mineral tenure.
2. More work is also required to locate the extent and tenure of mineralization in the areas of the higher gold grade assays obtained from earlier samples taken on Summit and Cottoneva Creeks.
3. The strong likelihood of native gold being present in rock samples taken on the property suggests that samples be analyzed using the "metal sieve" technique. If this option is too expensive, then technique should be used for check assaying of samples analyzed by the ICP – MS technique.
4. The property needs to be optioned to an entity which has the financial resources to do the sophisticated geochemical sampling and aerial geophysical surveys needed to develop targets for intensive exploration within this highly prospective area. Diamond drilling would normally follow exploration success. There has never been a diamond drill in the Livingstone camp. Some possible exploration surveys could include:
  - Mobile Metal Ion (MMI) soil sampling may be an effective exploration tool in areas of the property covered by significant thicknesses of overburden.
  - Some high-level magnetometer surveying done during the 1940's or the early 1950's, is the only airborne geophysical surveying done in the area. Modern aerial magnetometer, VLF, EM, gravity, and TURAM surveying could be useful in delineating exploration targets.



**STATEMENT OF COSTS:**

Helicopter	\$ 2921.21
Geologist wages (Aug. 2 to 6/07 -- 5 days @ \$500/day)	\$ 2500.00
Room & Board (5 days @ \$82.45/day [2007 YTG Rate])	\$ 412.25
Field Supplies (stove fuel, flagging, sample bags, etc.)	\$ 100.00
Office Supplies (photocopying, paper, computer and ink )	\$ 100.00
Satellite Phone Rental	\$ 70.00
Sample Shipment	\$ 72.46
Report Writing	\$ 1500.00
<u>Acme Analytical Lab Expenses</u>	
Discarding of stored samples	\$ 230.09
Sample analysis (VANI004704)	\$ 250.43
Sample analysis (A800392)	\$ 277.73
	<b>\$8434.17</b>

**REFERENCES:**

- Carlyle, Larry W., (1997) **Report on the 1997 Work Program, CAM Claims 1 – 142;** Whitehorse Mining District, Yukon; NTS 105 E/8. Assessment Report filed with Whitehorse Mining Recorder
- Carlyle, Larry W. (1998) **Report on the 1998 Work Program, CAM Claims 1 – 146, Livingstone Area;** Whitehorse Mining District, Yukon; NTS 105 E/8. Assessment Report filed with Whitehorse Mining Recorder
- Carlyle, Larry W. (1999) **Bedrock Geology, VLF-EM Surveying, Rock, Soil, and Stream Sediment Sampling, 1999; CAM Claims 1 – 146, Livingstone Area;** Whitehorse Mining District, Yukon; NTS 105 E/8. Assessment Report filed with Whitehorse Mining Recorder
- Carlyle, Larry W. (2000) **VLF – EM Surveys, Rock and Soil Sampling, and Backhoe Trenching, 2000; CAM Claims 1 – 146, Livingstone Area;** Whitehorse Mining District, Yukon; NTS 105 E/8. Assessment Report filed with Whitehorse Mining Recorder
- Carlyle, Larry W. (2005) **Claim Staking, Magnetometer, and Soil Sampling, 2005; CAM Claims, Livingstone Area;** Whitehorse Mining District, Yukon; NTS 105 E/8. Assessment Report filed with Whitehorse Mining Recorder

Colpron, M., (2006) **Geology and mineral potential of Yukon-Tanana Terrane in the Livingstone Creek area (NTS 105 E.8), south-central Yukon**; in: Yukon Exploration and Geology 2005; D.S. Emond, G.D. Bradshaw, L.L. Lewis, and L.H. Weston (eds.); Yukon Geological Survey, pg. 93 – 107

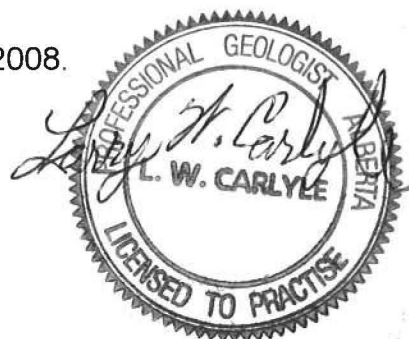
Colpron, M., (2005) **Geological map of Livingstone Creek area (NTS 105 E/8), Yukon (1:50,000 scale)**; Open File 2005 – 9; Yukon Geological Survey, Energy, Mines and Resources; Government of Yukon

### STATEMENT OF QUALIFICATIONS

I, LARRY W. CARLYLE, do certify:

1. That I am a professional geologist, resident at 74 Tamarack Drive, Whitehorse, Yukon Y1A 4Y6.
2. That I hold a B.Sc. Degree in geology from the University of British Columbia (1970).
3. That I am a Fellow of the Geological Association of Canada (F – 4355).
4. That I am a Registered Professional Geologist in the Association of Professional Engineers, Geologists, and Geophysicists of the Province of Alberta (41097).
5. That I have practiced my profession as a mine and exploration geologist for over twenty years.
6. The conclusions and recommendations in the attached report are based on work I performed on the property, and on a review of the references cited.

DATED at Whitehorse, Yukon, this 11<sup>th</sup> day of May, 2008.



## **APPENDIX A**

### **GPS WAYPOINT COORDINATES**

094991

2007 Livingstone Creek GPS Waypoints

Point	UTM Coordinates	
	Northing	Easting
Camp	535569	6799420
Bench	Not Taken	Not Taken
Blake -- 1	536257	6799452
LKCKRD -- 1	535491	6803552
Puck07 -- 1	536657	6799609
SBlake -- 1	536163	6799415
Sum -- 07	535565	6801780

NOTE: GPS Coordinates taken using a Garmin GPS 12 hand-held with 12 Channels



**APPENDIX B**

**ANALYTICAL CERTIFICATES**

ASSAY CERTIFICATE



Carlyle, Larry W. PROJECT Livingstone File # A800392

74 Tamarack Dr., Whitehorse YT Y1A 4Y6 Submitted by: Larry W. Carlyle

SAMPLE#	S.Wt gm	NAu mg	-Au gm/mt	TotAu gm/mt
BENCH	105	<.01	.03	.03
BLAKE-1	575	<.01	<.01	<.01
LKCKRD-1	520	<.01	.15	.15
PUCK07-1	435	<.01	.01	.01
SBLAKE-1	540	<.01	<.01	<.01
SUM-07	500	<.01	<.01	<.01
STANDARD OXK48	-	-	3.58	3.58

-AU : -150 AU BY FIRE ASSAY FROM 1 A.T. SAMPLE. DUPAU: AU DUPLICATED FROM -150 MESH. NAU - NATIVE GOLD, TOTAL SAMPLE FIRE ASSAY.  
 - SAMPLE TYPE: ROCK REJ. M150

Data \_\_\_\_\_ FA \_\_\_\_\_

DATE RECEIVED: FEB 21 2008

DATE REPORT MAILED: ..... MAR 19 2008



**Client:** **Carlyle, Larry W.**  
 74 Tamarack Dr.  
 Whitehorse YT Y1A 4Y6 Canada

**Submitted By:** Larry W. Carlyle  
**Receiving Lab:** Acme Analytical Laboratories (Vancouver) Ltd.  
**Received:** January 04, 2008  
**Report Date:** February 01, 2008  
**Page:** 1 of 2

## CERTIFICATE OF ANALYSIS

VAN08003390.1

### CLIENT JOB INFORMATION

**Project:** Livingstone  
**Shipment ID:**  
**P.O. Number**  
**Number of Samples:** 6

### SAMPLE PREPARATION AND ANALYTICAL PROCEDURES

Method Code	Number of Samples	Code Description	Test Wgt (g)	Report Status
R150	6	Crush, split and pulverize rock to 150 mesh		
1F	6	1:1:1 Aqua Regia digestion Ultratrace ICP-MS analysis	15	Completed

### SAMPLE DISPOSAL

Acme does not accept responsibility for samples left at the laboratory after 90 days without prior written instructions for sample storage or return.

### ADDITIONAL COMMENTS

**Invoice To:** Carlyle, Larry W.  
 74 Tamarack Dr.  
 Whitehorse YT Y1A 4Y6  
 Canada

**CC:**



**CERTIFICATE OF ANALYSIS**

**VAN08003390.1**

Method	WGHT	1F15	1F15	1F15	1F15	1F15	1F15	1F15	1F15	1F15	1F15	1F15	1F15	1F15	1F15	1F15	1F15	1F15	1F15	1F15	
Analyte	Wgt	Mo	Cu	Pb	Zn	Ag	Ni	Co	Mn	Fe	As	U	Au	Th	Sr	Cd	Sb	Bi	V	Ca	
Unit	kg	ppm	ppm	ppm	ppm	ppb	ppm	ppm	ppm	%	ppm	ppm	ppb	ppm	ppm	ppm	ppm	ppm	ppm	%	
MDL	0.01	0.01	0.01	0.01	0.1	2	0.1	0.1	1	0.01	0.1	0.1	0.2	0.1	0.5	0.01	0.02	0.02	2	0.01	
BENCH	Rock	0.40	0.69	10.49	8.99	39.8	104	9.0	6.5	2582	4.40	8.8	0.2	24.4	0.6	481.2	0.28	0.16	0.10	3	8.44
BLAKE-1	Rock	7.80	0.58	4.01	18.08	9.5	54	5.3	2.2	484	0.91	6.6	1.0	0.5	1.2	462.2	0.08	0.84	0.11	<2	13.11
LKCKRD-1*	Rock	7.30	0.72	7.11	3.05	3.9	471	2.6	1.3	251	0.55	3.7	0.2	138.6	4.5	15.0	0.06	0.04	0.46	<2	0.95
PUCK07-1	Rock	6.10	0.71	8.33	5.26	12.8	41	8.6	3.2	123	0.80	3.9	0.2	1.2	1.5	14.6	0.03	0.25	0.10	8	0.34
SBLAKE-1	Rock	8.60	1.76	2.86	4.76	41.0	28	28.2	2.8	389	1.28	4.3	3.6	1.2	1.0	240.4	0.42	0.38	0.08	6	14.42
SUM-07	Rock	3.00	0.41	4.56	48.41	8.2	144	3.4	0.9	190	0.35	1.3	<0.1	0.7	0.2	9.4	0.02	0.05	0.46	<2	0.36



ACME ANALYTICAL LABORATORIES LTD.  
 852 E. Hastings St. Vancouver BC V6A 1R6 Canada  
 Phone (604) 253-3158 Fax (604) 253-1716

www.acmelab.com

Client: **Carlyle, Larry W.**  
 74 Tamarack Dr.  
 Whitehorse YT Y1A 4Y6 Canada

Project: Livingstone  
 Report Date: February 01, 2008

Page: 2 of 2 Part 2

**CERTIFICATE OF ANALYSIS**

**VAN08003390.1**

Method	1F15	1F15	1F15	1F15	1F15	1F15	1F15	1F15	1F15	1F15	1F15	1F15	1F15	1F15	1F15	1F15	1F15	
Analyte	P	La	Cr	Mg	Ba	Ti	B	Al	Na	W	Sc	Tl	S	Hg	Se	Te	Ga	
Unit	%	ppm	ppm	%	ppm	%	ppm	%	%	ppm	ppm	ppm	%	ppb	ppm	ppm	ppm	
MDL	0.001	0.5	0.5	0.01	0.5	0.001	1	0.01	0.001	0.1	0.1	0.02	0.02	5	0.1	0.02	0.1	
BENCH	Rock	0.219	5.2	3.0	3.15	6.6	0.003	<1	0.05	0.039	0.5	4.3	<0.02	0.78	<5	0.3	0.10	0.2
BLAKE-1	Rock	0.017	3.4	6.7	2.47	8.4	<0.001	<1	0.04	0.006	0.2	1.4	<0.02	0.33	7	0.3	0.03	0.1
LKCKRD-1	Rock	0.007	8.9	14.0	0.28	13.5	<0.001	<1	0.06	0.010	<0.1	0.5	<0.02	<0.02	<5	<0.1	0.50	0.2
PUCK07-1	Rock	0.018	4.5	22.6	0.13	21.8	0.002	<1	0.18	0.006	<0.1	1.0	<0.02	0.04	8	<0.1	0.04	0.8
SBLAKE-1	Rock	0.012	2.7	8.3	8.19	259.5	<0.001	<1	0.12	0.004	<0.1	2.7	<0.02	0.24	6	0.6	0.04	0.3
SUM-07	Rock	0.005	0.7	22.9	0.14	21.1	<0.001	<1	0.10	0.003	<0.1	0.2	<0.02	<0.02	<5	0.2	0.07	0.3

**QUALITY CONTROL REPORT** **VAN08003390.1**

Method	WGHT	1F15	1F15	1F15	1F15	1F15	1F15	1F15	1F15	1F15	1F15	1F15	1F15	1F15	1F15	1F15	1F15	1F15	1F15	1F15	1F15
Analyte	Wgt	Mo	Cu	Pb	Zn	Ag	Ni	Co	Mn	Fe	As	U	Au	Th	Sr	Cd	Sb	Bi	V	Ca	
Unit	kg	ppm	ppm	ppm	ppm	ppb	ppm	ppm	ppm	%	ppm	ppm	ppb	ppm	ppm	ppm	ppm	ppm	ppm	%	
MDL	0.01	0.01	0.01	0.01	0.1	2	0.1	0.1	1	0.01	0.1	0.1	0.2	0.1	0.5	0.01	0.02	0.02	2	0.01	
Reference Materials																					
STD DS7	Standard	20.40	104.7	57.54	381.1	807	56.0	9.5	604	2.40	54.1	5.3	69.0	5.0	76.5	7.20	6.53	4.97	85	0.96	
STD DS7 Expected		20.92	109	70.6	411	890	56	9.7	627	2.39	48.2	4.9	70	4.4	68.7	6.38	5.86	4.51	86	0.93	
BLK	Blank	<0.01	<0.01	<0.01	<0.1	<2	<0.1	<0.1	<1	<0.01	<0.1	<0.1	<0.2	<0.1	<0.5	<0.01	<0.02	<0.02	<2	<0.01	
Prep Wash																					
G1	Prep Blank	<0.01	0.39	1.66	2.94	45.9	10	4.8	4.3	530	1.78	0.2	2.8	<0.2	4.5	59.8	0.01	0.02	0.09	34	0.43
G1	Prep Blank	<0.01	0.49	1.77	3.35	47.3	10	4.3	4.1	528	1.82	0.4	2.5	<0.2	4.6	58.5	0.03	0.02	0.07	36	0.45



ACME ANALYTICAL LABORATORIES LTD.  
 852 E. Hastings St. Vancouver BC V6A 1R6 Canada  
 Phone (604) 253-3158 Fax (604) 253-1716

www.acmelab.com

Client: **Carlyle, Larry W.**  
 74 Tamarack Dr.  
 Whitehorse YT Y1A 4Y6 Canada

Project: Livingstone  
 Report Date: February 01, 2008

Page: 1 of 1 Part 2

QUALITY CONTROL REPORT

VAN08003390.1

Method		1F15	1F15	1F15	1F15	1F15	1F15	1F15	1F15	1F15	1F15	1F15	1F15	1F15	1F15	1F15	1F15		
Analyte		P	La	Cr	Mg	Ba	Tl	B	Al	Na	W	Sc	Tl	S	Hg	Se	Te	Ga	
Unit		%	ppm	ppm	%	ppm	%	ppm	%	%	ppm	ppm	ppm	%	ppb	ppm	ppm	ppm	
MDL		0.001	0.5	0.5	0.01	0.5	0.001	1	0.01	0.001	0.1	0.1	0.02	0.02	5	0.1	0.02	0.1	
Reference Materials																			
STD DS7	Standard	0.090	14.3	198.6	1.01	381.3	0.119	39	0.99	0.092	4.0	2.8	4.31	0.20	183	3.4	0.95	4.9	
STD DS7	Expected	0.08	12.7	163	1.05	370.3	0.124	38.6	0.959	0.073	3.8	2.5	4.19	0.21	200	3.5	1.08	4.6	
BLK	Blank	<0.001	<0.5	<0.5	<0.01	<0.5	<0.001	<1	<0.01	<0.001	<0.1	<0.1	<0.02	<0.02	<5	<0.1	<0.02	<0.1	
Prep Wash																			
G1	Prep Blank	0.082	7.7	10.4	0.56	222.5	0.114	<1	0.89	0.063	1.0	2.3	0.37	<0.02	<5	<0.1	<0.02	5.0	
G1	Prep Blank	0.081	8.1	11.3	0.59	227.1	0.122	<1	1.00	0.071	0.6	2.3	0.37	<0.02	<5	<0.1	<0.02	5.0	

**APPENDIX C**

**INVOICES SUPPORTING STATEMENT OF COSTS**



**ACME ANALYTICAL LABORATORIES LTD.**  
 852 East Hastings St, Vancouver, BC, CANADA V6A 1R6  
 Phone: (604) 253-3158 Fax: (604)253-1716  
 Our GST # 100035377 RT

**INVOICE**

Carlyle, Larry W.  
 74 Tamarack Dr.  
 Whitehorse  
 YT  
 Y1A 4Y6

Canada

Inv.# A7ST1201-118

Invoice date: December 1, 2007

Storage Charges for: **2007 JAN TO NOV - STORAGE CHARGE - CAD\$**

FILE NUMBER	DATE REC'D	PROJECT	SAMPLE TYPE	NO. OF SAMPLES	MONTHS OF STORAGE	REJECTS - PRICE / MONTH	PULPS - PRICE / MONTH	AMOUNT (CAD)
A505823	9/21/2005	Livingstone	Soil	54	11.0	\$0.23	\$0.12	\$207.90

*Attention: Sylvia  
 Paid Visa Dec. 13/07  
Discard Samples*

**094991**

GST Taxable	\$207.90
6% GST	\$12.47
<b>Total CAD \$</b>	<b>\$220.37</b>

Please pay last amount shown. Return one copy of this invoice with payment.  
 Please make payment in Canadian Funds:  
 The Royal Bank of Canada, 400 Main Street, Vancouver, BC, V6A 2T5, CANADA  
 Account #100-321-9, Bank Transit #07120-003, Swift Code: ROYCCAT2 (Please specify Invoice # above)  
 TERMS: Net two weeks. 1.5% per month charged on overdue accounts.

*9.72  
~~\$230.09~~*



ACME ANALYTICAL LABORATORIES LTD.  
 852 East Hastings St. Vancouver, BC, CANADA V6A 1R6  
 Phone: (604) 253-3158 Fax: (604)253-1716  
 Our GST # 100035377 RT

Carlyle, Larry W.  
 74 Tamarack Dr.  
 Whitehorse  
 YT  
 Y1A 4Y6 Canada

12/01/07

\*PLEASE SELECT FROM ONE OF BOXES. THANK YOU.

FILE NUMBER	DATE REC'D	PROJECT	SAMPLE TYPE	NO. OF SAMPLES	Rejects			Pulps			COST TO DISPOSE OF SAMPLES		
					STORE	RETURN	DISPOSE	STORE	RETURN	DISPOSE	REJECTS - DISPOSAL (PER SAMPLE)	PULPS - DISPOSAL COST (PER SAMPLE)	AMOUNT (CAD)
				Apply to All	<input type="checkbox"/>	<input type="checkbox"/>	<input type="checkbox"/>	<input type="checkbox"/>	<input type="checkbox"/>	<input type="checkbox"/>			
A505823	9/21/2005	Livingstone	Soil	54	<input type="checkbox"/>	<input type="checkbox"/>	<input type="checkbox"/>	<input type="checkbox"/>	<input type="checkbox"/>	<input type="checkbox"/>	\$0.14	\$0.04	\$9.72

I \_\_\_\_\_ of \_\_\_\_\_  
 \_\_\_\_\_ (name) \_\_\_\_\_ (position) \_\_\_\_\_ (company)  
 authorize Acme Analytical Laboratories (Vancouver) Ltd. to dispose of, store or return samples as indicated above and I understand that charges will apply as indicated for disposal.  
 \_\_\_\_\_  
 Signature Date



Acme Analytical Laboratories (Vancouver) Ltd.  
 852 East Hastings St.  
 Vancouver, BC Canada V6A 1R6  
 Phone 604 253 3158 Fax 604 253 1716  
 GST # 100035377 RT

Bill To: Carlyle, Larry W.  
 74 Tamarack Dr.  
 Whitehorse, YT Y1A 4Y6  
 Canada

Invoice Date: February 2, 2008  
 Invoice Number: **VANI004704**  
 Submitted by: Larry W. Carlyle  
 Job Number: VAN08003390  
 Order Number:  
 Project Code: Livingstone  
 Shipment ID:  
 Quote Number:

Item	Package	Description	Sample No.	Unit Price	Amount
1	R150	Crush and Pulverize Rock & Drill Core	6	\$6.20	\$37.20
2	R150	Overweight Charges for >1kg, per kg	30	\$1.05	\$31.50
3	RXS	Saving rejects over 1kg, per kg	30	\$0.45	\$13.50
4	G1F-15G	15g Basic Suite (37 elements)	6	\$21.05	\$126.30
5	BATCH	Batch Surcharge for <20 samples	1	\$30.00	\$30.00
			Net Total		\$238.50
			Canadian GST		\$11.93
			<b>Grand Total</b>	<b>CAD</b>	<b>\$250.43</b>

Invoice Stated In Canadian Dollars

**Payment Terms:**

This is a professional service. Payment due upon receipt. Please pay the last amount shown on the invoice.

For cheque payments, please remit payment to the above address, made payable to: Acme Analytical Laboratories (Vancouver) Ltd.  
 Please specify Acme invoice number on cheque remittance.

For electronic payments, please wire funds to one of the following accounts:

For payment in Canadian Funds:

Acme Analytical Laboratories (Vancouver) Ltd.  
 The Royal Bank of Canada  
 400 Main Street  
 Vancouver, BC Canada V6A 2T5  
 Account # 1034123  
 Bank Transit # 07120-003  
 Swift Code: ROYCCAT2

For payment in US Funds:

Acme Analytical Laboratories (Vancouver) Ltd.  
 The Royal Bank of Canada  
 400 Main Street  
 Vancouver, BC Canada V6A 2T5  
 Account # 4001533  
 Bank Transit # 07120-003  
 Swift Code: ROYCCAT2

Please specify Acme invoice number for reference on transfer forms when making payment.

**ACME ANALYTICAL LABORATORIES (VANCOUVER) LTD.**

852 East Hastings,, Vancouver, B.C., CANADA V6A 1R6

Phone: (604) 253-3158 Fax: (604) 253-1716

Our GST # 100035377 RT



**CARLYLE, LARRY W.**  
 74 Tamarack Drive  
 Whitehorse, YT  
 Y1A 4Y6

Inv.#: **A800392**  
 Date: Mar 27 2008

QTY	ASSAY	PRICE	AMOUNT
6	GROUP 6 - METALLIC AU @	26.00	156.00
6	M150 - ROCK REJECT @	9.75	58.50
	SURCHARGE FOR UNDER 20 SAMPLES PER BATCH		214.50
			50.00
			264.50
	GST Taxable		13.23
	5.00% GST		
	CAD \$		<b>277.73</b>

Project: Livingstone  
 Samples submitted by Larry W. Carlyle  
 SAMPLES ARE FROM JOB VAN08003390

COPIES 1

Please pay last amount shown. Return one copy of this invoice with payment.  
 TERMS: Net two weeks. 1.5 % per month charged on overdue accounts.

[ COPY 2 ]



Heli Dynamics Ltd.

Heli Dynamics Ltd.

Helicopter Charter Services

P.O. Box 4, Whitehorse, Yukon  
Canada Y1A 5X9

Phone: (867) 668-3536 or 667-4971

Fax: (867) 668-5637

E-mail: helidynamics@northwestel.net

INVOICE No.

7549

<b>Charterer Billing Address</b> Larry Carlyle 74 Thimavack Drive Whitehorse Y1A 4Y6			Customer P.O. #		
Aircraft: HDB			Type: U3 (sub for Jet King)	Rate/Hour: 1050	
Date: Aug 06 07			Fuel: <input checked="" type="checkbox"/> HD <input type="checkbox"/> Customer		Flight Authorized By: Larry Carlyle
From: Whitehorse			To: Livingstone		Pilot: M. Reedl.
pick up Ktn Whitehorse.					Base: Whitehorse
+ Aug 02 ride in (Dylan) Whitehorse -			Livingstone Ktn Whitehorse.		
FUEL @ 114 Litres/hr			TOTAL REV HOURS		2.3
FUEL Costs/Litre \$ 1.30			094991		

G.S.T. Reg. No.: 102320090

SUMMARY	AMOUNT	G.S.T.	TOTAL
2.3 Hours FLYING @ 1050	2415.00	144.90	2559.90
361.20 Hours FUEL & OIL @ 1.30	340.86	20.45	361.31
Expenses			
Misc.			
TOTALS	Cheque # 83		
<b>GRAND TOTAL</b>			2921.21

Payments must be made monthly on accounts, or 2% interest will be charged.

# GREYHOUND CDA TRANS CORP

CGT NO. 891646655RT1 WAYBILL NO. 71497777142

LIABILITY FOR LOSS, DAMAGE OR DELAY IS LIMITED BY CARRIER. LIABILITY LIMITED TO \$50 FOR LOSS OR DAMAGE UNLESS OTHERWISE SPECIFIED UNLESS A GREATER VALUE DECLARED AT TIME OF SHIPPING. REFER TO ERP'S AND CONDITIONS OF CARRIAGE FOR DETAILS OR CONSULT AGENT.



**VANCOUVER BC**

WHITEHORSE 487 394204  
12/28/07 4:27 PM 18  
ACTUAL WEIGHT 78.7 LBS  
DECLARED VALUE 100.00

**PREPAID VISA**

CONSIGNEE . 0320892 REF:

**3 BOXES**

ACME ANALYTICAL LAB LTD  
852 EAST HASTINGS ST  
VANCOUVER BC

604-253-3158

EXPRESS 64.64  
FUEL S/C 3.72  
GSTBC 4.10

**SHIPPER**  
L CARLYLE

WHITEHORSE YT 867-633-3910  
REFERENCE:

**TOTAL 72.46**

SHIPPER RECEIPT

STATION TO DOOR

FORM 256 REV 01/10/07

## DILMAN COMMUNICATIONS LTD.

510 Elliott Street  
WHITEHORSE, Y.T. Y1A 2A5  
Tel. (867) 668-5803 Fax (867) 668-5804

## RECEIPT

0645

RECEIVED FROM Jerry Carlyle DATE Aug 7/2007

FOR Sel Phone Rental

\$ 70.00 DOLLARS

ACCOUNT BALANCE		
THIS PAYMENT		
BALANCE DUE		<u>0</u>

- CASH
- CHEQUE
- DEBIT CARD
- MONEY ORDER
- CHARGE CARD

THANK YOU

BY [Signature]

094991