

GEOCHEMICAL REPORT

PDM 1-20 CLAIMS

GRANT

YC47987 – YC48006

LAT 62° 50 N

LONG 131° 38 W

NTS # 105 J \ 13

MAYO MINING DISTRICT

AUTHOR OF REPORT SHAWN RYAN

WORK PERFORMED JULY 13, 2006

DATE OF REPORT NOVEMBER 5, 2006

Table of Content

| | |
|-------------------------------------|----------|
| Summary | P.3 |
| 1.0 Introduction | P.3 |
| 2.0 Locations and Access | P.3 |
| 3.0 Property Description | P.3 |
| 4.0 Physiographic | P.3 |
| 5.1 Regional Geology | P.4 |
| Geology Map | P.4 |
| Geology Description | P.5-6 |
| 6.0 Work Methods | P.7 |
| 7.0 Interpretation | P.7 |
| 8.0 Recommendation | P.7 |
| 9.0 References Cited | P.8 |
| 10.0 Cost | P.8 |
| 11.0 Qualification | P.9 |
| Copper Mineralization Pictures | P.10-12 |
| Copper Soil Anomaly Map | Figure 1 |
| Gold Soil Anomaly Map | Figure 2 |
| Arsenic Soil Anomaly Map | Figure 3 |
| Bismuth Soil Anomaly Map | Figure 4 |
| Tungsten Soil Anomaly Map | Figure 5 |
| Assay Data / GPS Soil Location Data | Appendix |

SUMMARY

The PDM 2006 field work consists of Kyle McDougal, Adam Fage and Tyson Foxcroft (all employees of Ryanwood Exploration) flying out to the property on July 13, 2006 and collecting 32 soils. The soils survey was design to test the potential of for a copper – gold porphyry target. Historical work (Phelp Dodge, 1972) looked at the copper porphyry potential but never evaluated it for gold. The soil survey confirms the presence of gold with values reaching up to 378 ppb Au in soil samples.

1.0 INTRODUCTION

The PDM claims where staked to cover an old copper porphyry target found by Phelp Dodge in 1972. The soil work confirms the presence of gold, arsenic, bismuth, tungsten with anomalous copper soil samples.

2.0 LOCATIONS AND ACCESS

The PDM claims are located 105 kilometers north northeast of the community of Ross River. Access is via helicopter from a Transnorth Helicopter base located at the Ross River airport. The North Canol Road comes to within 35 kilometers of the PDM property. The crew mobilized 2 hours up the North Canol Road to the Dragon lake camp site and flew in for the one day soil work from this point.

3.0 PROPERTY DESCRIPTION

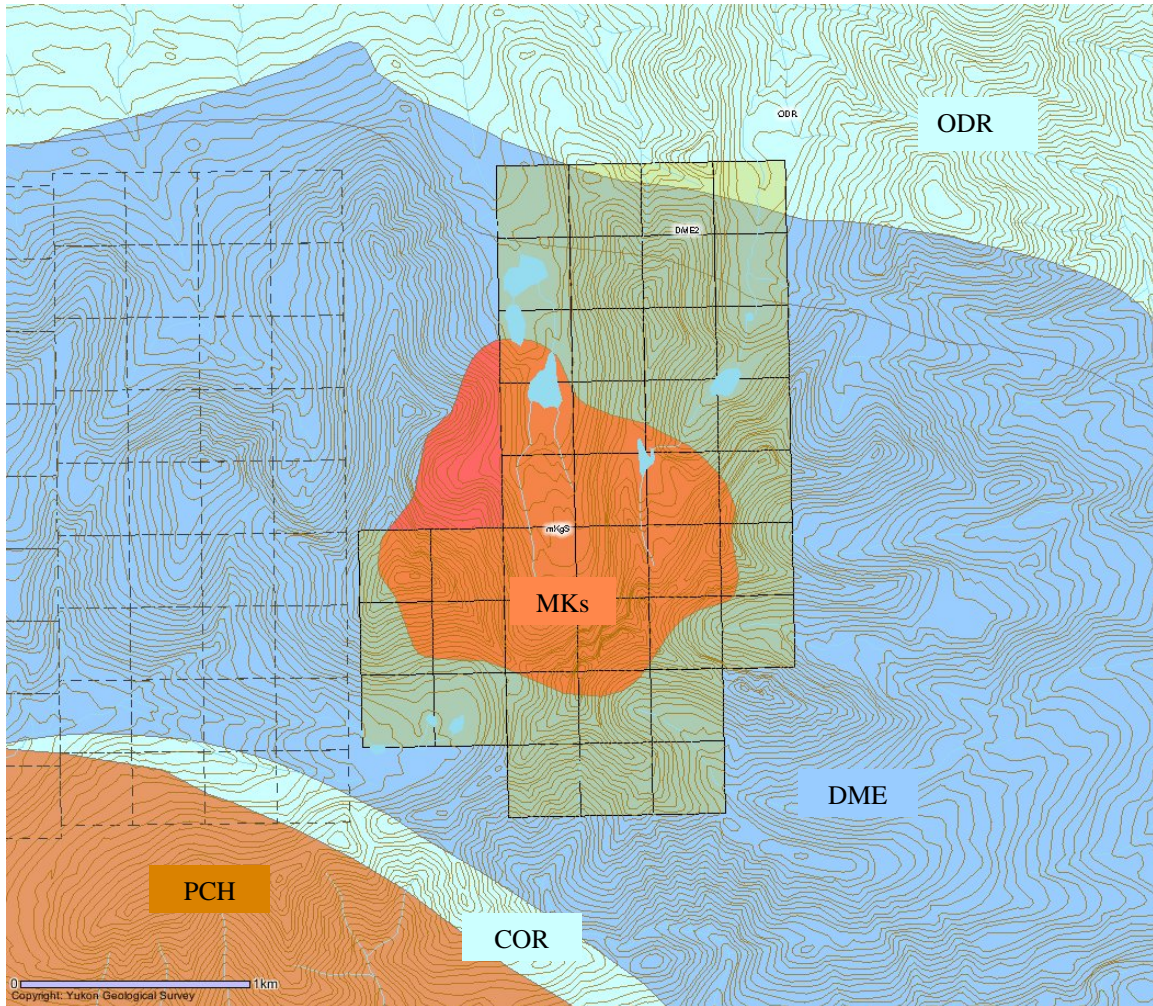
The PDM Claim block consists of 20 full Yukon Quartz Mining claims that are registered in the Mayo Mining district to Shawn Ryan.

4.0 PHYSIOGRAPHY

The PDM claims are covered with mostly spruce and alpine fir in the lower elevation valley bottom and alpine tundra in the upper elevation. The claim block elevation range is from 4500 feet on valley bottom to towering granite cliff face that range up to 6500 feet high.

5.0 REGIONAL GEOLOGY

PDM Geology Map with Claims Location



YTG Geology Map (Web Site)

The Yukon Geology Web site map indicates the PDM property is covering two distinct rock units. The main focus of exploration is centered on Cretaceous granite unit mKs, also known as a Tombstone intrusion. The intrusion is coming up into a Devonian shale unit (DME) known as the EARN group.

MID-CRETACEOUS

mKS

mKS: SELWYN SUITE

plutonic suite of intermediate (g) to more felsic composition (q) and rarely syenitic (y); equivalent felsic dykes (f); complete compositional gradation so that these designations are somewhat arbitrary

- f. felsic dykes (**Selwyn Suite**)
- y. mainly hornblende and hornblende/biotite syenite, commonly porphyritic (potassium feldspar phenocrysts), uneven textured, mostly medium grained, locally fine or coarse grained; minor diorite; hornblende syenite (**Selwyn Suite**)
- q. equigranular to porphyritic (K-feldspar) biotite +/- hornblende +/- muscovite granite, quartz monzonite and granodiorite; porphyritic biotite hornblende granite with large smoky grey quartz phenocrysts and locally K-feldspar phenocrysts (**Selwyn Suite**)
- g. resistant, blocky, fine to coarse grained equigranular to porphyritic (K-feldspar) biotite quartz monzonite and granodiorite and minor quartz diorite; minor leuco-quartz monzonite and syenite (**Selwyn Suite**)

DEVONIAN AND MISSISSIPPIAN

DME

DME: EARN

complex assemblage of submarine fan and channel deposits (1), (5) within black siliceous shale and chert (2), (4) and including separated small occurrences of felsic volcanic rocks (3); barite common, and many occurrences of stratiform Pb-Zn

- 1. thin bedded, laminated slate with thin to thickly interbedded fine to medium grained chert-quartz arenite and wacke; thick members of chert pebble conglomerate; black siliceous siltstone; nodular and bedded barite; rare limestone (**Earn Gp., Portrait Lake and Prevost**)
- 2. silvery blue weathering black shale, argillite, cherty argillite and thin bedded chert; nodular and bedded barite; rare limestone (**Earn Gp., Portrait Lake and Prevost ; may locally include beds as old as Early Devonian**)

ORDOVICIAN TO LOWER DEVONIAN

ODR

ODR: ROAD RIVER - SELWYN

black shale and chert (1) overlain by orange siltstone (2) or buff platy limestone (3); locally contains beds as old as Middle Cambrian (4); correlations with basinal strata in Richardson Mountains include: ODR1 with CDR2 (upper part) and ODR2 with CDR4 (**Road River Gp.**)

UPPER CAMBRIAN AND ORDOVICIAN

COR

COR: RABBITKETTLE

basinal limestone (1) that may locally include older and younger basinal pelitic strata undivided (2)

1. thin bedded, wavy banded, silty limestone and grey lustrous calcareous phyllite; limestone intraclast breccia and conglomerate; massive to laminated, grey quartzose siltstone and chert and rare black slate; local mafic flows, breccia, and tuff (**Rabbitkettle**)

UPPER PROTEROZOIC TO LOWER CAMBRIAN

PCH

PCH: HYLAND

consists upwards of coarse turbiditic clastics (1), limestone (2) and fine clastics typified by maroon and green shale (3); may include younger (4) units; includes scattered mafic volcanic rocks (5) (**Hyland Gp.**)

PCH2

1. thin to thick bedded, brown to pale green shale, fine to coarse grained quartz-rich sandstone, grit, and quartz-pebble conglomerate; minor argillaceous limestone; phyllite, quartzofeldspathic and micaceous psammite, gritty psammite and minor marble (**Hyland Gp., Yusezyu**)

6.0 WORK PERFORMED / METHODS

Soil Work

Soil samples were taken at 100 meter intervals. On rocky ground a grub hoe was used to take sample 30-40 centimeters down or if soil were well developed a one-meter soil auger was used to take sample at a deeper depth. Soil sample taken with augers were gathered at an average depth of 50-70 centimeters. All samples were placed in Kraft soil bags. Exact position location was defined using Garmin GPS. All GPS locations were downloaded nightly onto field computers.

Soil locations were marked in the field with an orange flagging with sample ID number.

Samples were air dried in Dawson City and then sent to Acme Labs in Vancouver. Samples were processed at minus 80 mesh and analysis was 1DX-MS for 35 elements.

7.0 INTERPRETATION

SOIL SURVEY

The soil survey revealed anomalous soil in copper up to 6410 ppm Cu, gold up to 378 ppb Au, bismuth up to 360 ppm Bi, arsenic up to 6110 ppm As, tungsten up to 81 ppm W. The geochemical signature clearly demonstrates that the PBM claims are covering a nice copper-gold porphyry type target. I have appended some pictures of the porphyry style mineralization showing how the copper mineralization is sitting in dry fractures. The dry fracturing has a vein density of one vein 2-4 mm every 5-6 centimeters.

8.0 RECOMMENDATION

I would recommend follow up work with a detail soil grid on 100 meter line spacing and 50 meters station spacing. The outcome of the detail soil survey should be follow up geological mapping and prospecting.

9.0 REFERENCES CITED

PHELPS DODGE CORPORATION OF CANADA LTD, Nov/72. Assessment Report #060122 by R.G. Hilker and G.G. Carlson.

VICEROY EXPLORATION (CANADA) INC, Oct/99. Assessment Report #094043 by R.Diment.

VICEROY EXPLORATION (CANADA) INC, Dec/99. Assessment Report #094050 by R.Diment.

YTG Geology Map (Yukon Web site)

10.0 Cost

| | |
|--|------------|
| Assay Cost 32 soil at \$18.00 | \$576.00 |
| Wages 3 man days at \$250.00 per day | \$750.00 |
| Helicopter travel 2.7 hours at \$1259.00 | \$3399.00 |
| Report | \$350.00 |
| Total | \$5,075.00 |

11.0 QUALIFICATION

I Shawn Ryan located in Dawson City, Yukon work as a professional prospector. I run a small exploration company located in Dawson city.

I have worked in the exploration business for the last 25 years. I worked the first 15 years as a contractor working on numerous projects in the NWT, Ontario, Quebec and the Yukon. I have worked for the last 10 years as a local prospector for myself.

I have been trained to run various geophysical instruments, surveys such as magnetic surveys, max-min surveys, induce polarity surveys, and Vlf surveys.

I have overseen the whole PDM Project and was the party chief in charge.

I own 100 % of the PDM claims and have now option the property to Strategic Minerals.

Dated this 5 of November 2007 in Dawson City, Yukon.

Respectfully submitted

Shawn Ryan



Cliff Face showing the extent of dry rusty fractures



Rusty dry fracture



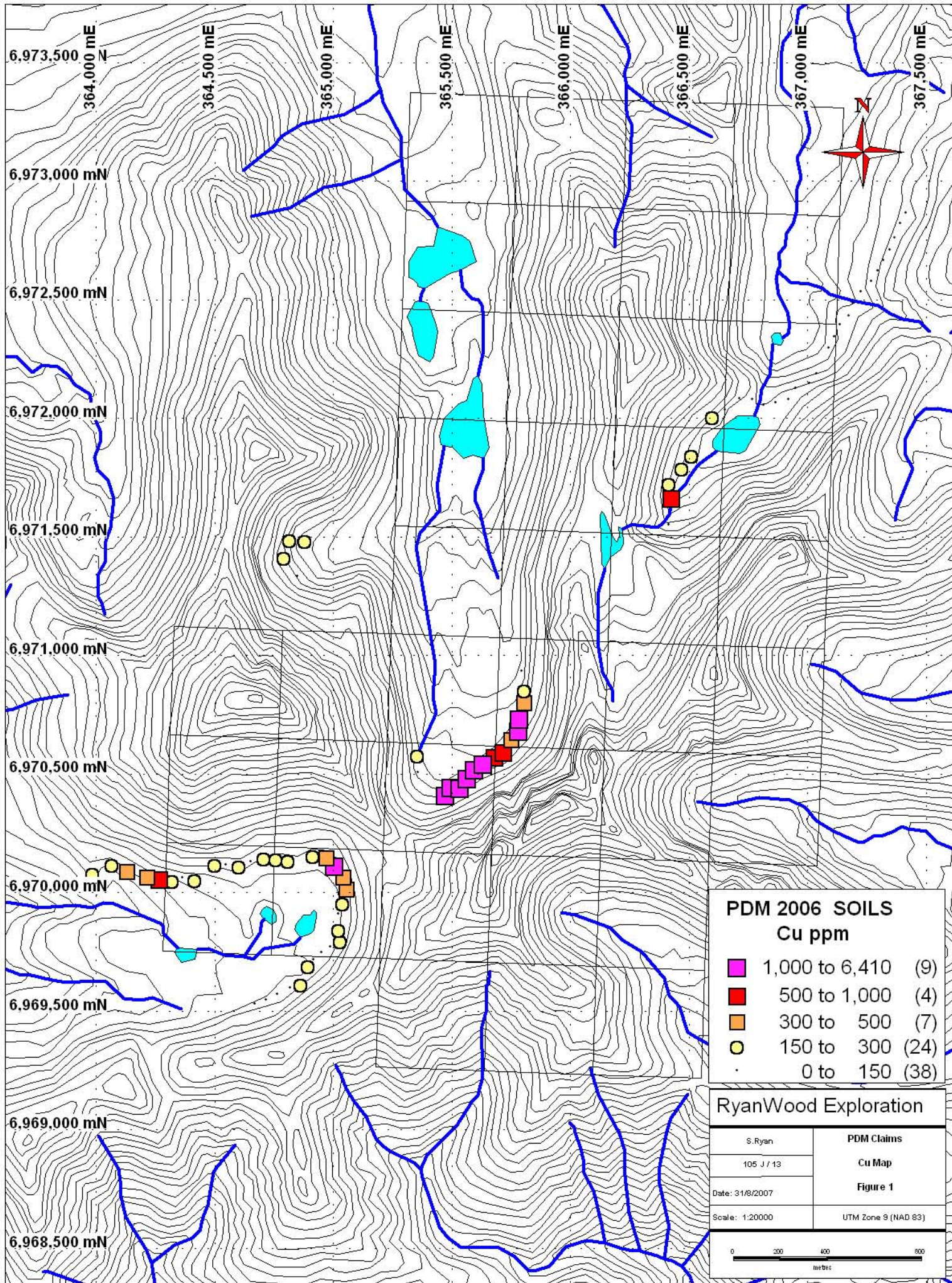
Copper Mineralization



Copper and Arsenopyrite Mineralization



Copper Mineralization



6,973,500 N
 6,973,000 mN
 6,972,500 mN
 6,972,000 mN
 6,971,500 mN
 6,971,000 mN
 6,970,500 mN
 6,970,000 mN
 6,969,500 mN
 6,969,000 mN
 6,968,500 mN

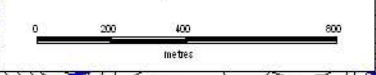
364,000 mE
 364,500 mE
 365,000 mE
 365,500 mE
 366,000 mE
 366,500 mE
 367,000 mE
 367,500 mE

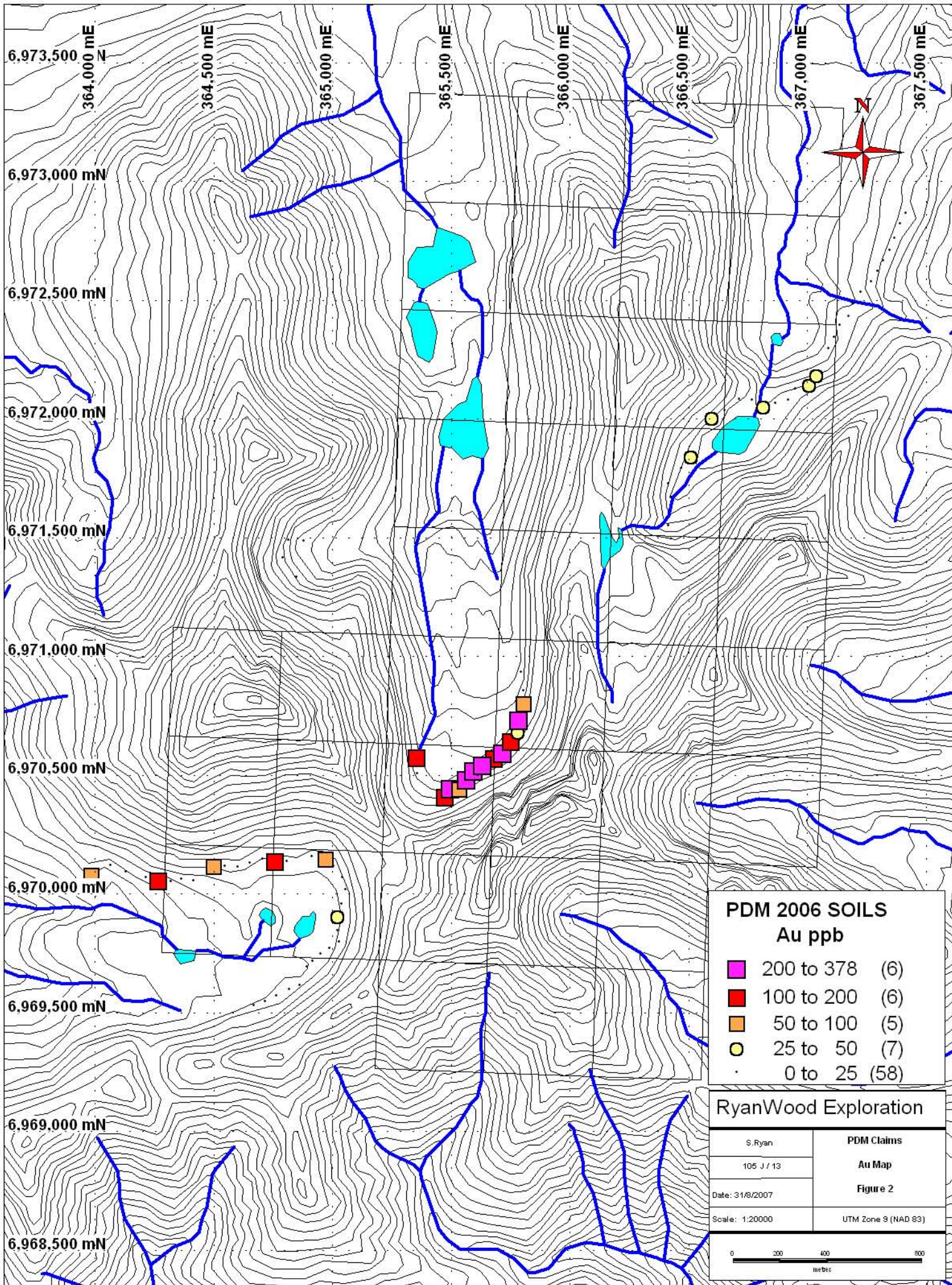
PDM 2006 SOILS
Cu ppm

| | | |
|---|----------------|------|
| ■ | 1,000 to 6,410 | (9) |
| ■ | 500 to 1,000 | (4) |
| ■ | 300 to 500 | (7) |
| ● | 150 to 300 | (24) |
| · | 0 to 150 | (38) |

RyanWood Exploration

| | |
|-----------------|---------------------|
| S. Ryan | PDM Claims |
| 105 J / 13 | Cu Map |
| Date: 31/8/2007 | Figure 1 |
| Scale: 1:20000 | UTM Zone 9 (NAD 83) |





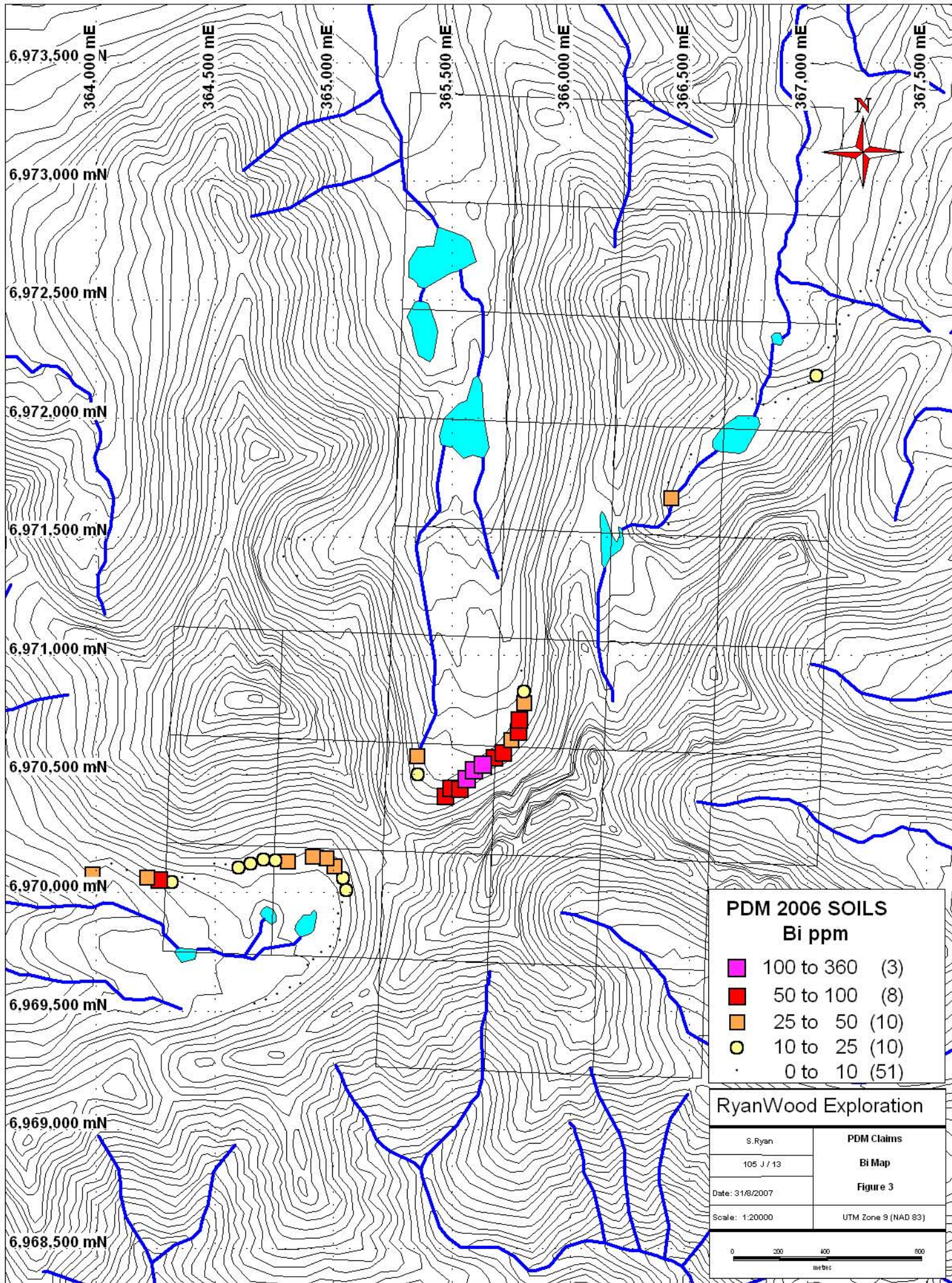
PDM 2006 SOILS
Au ppb

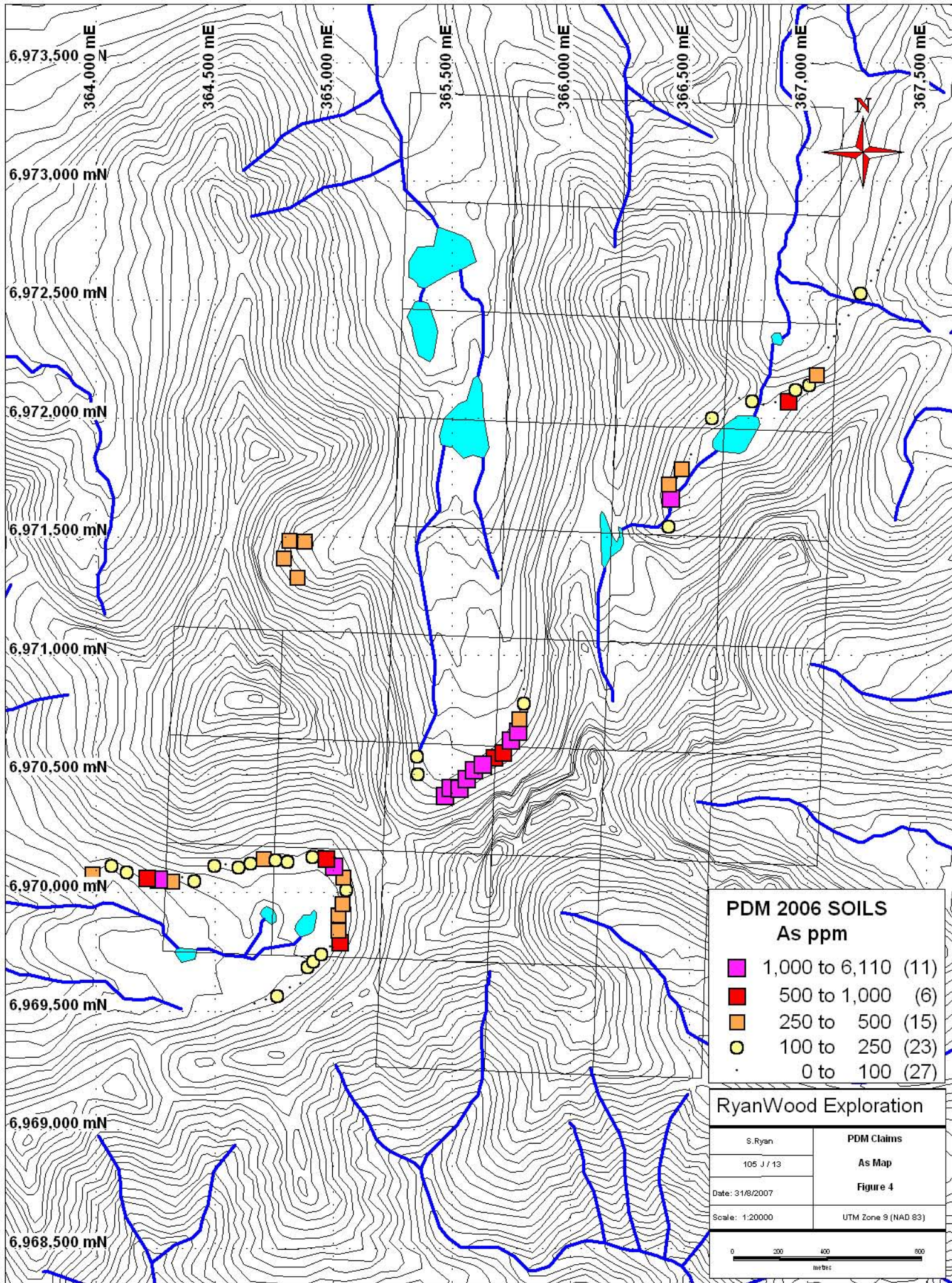
| | | |
|---------------------------------------|------------|------|
| ■ | 200 to 378 | (6) |
| ■ | 100 to 200 | (6) |
| ■ | 50 to 100 | (5) |
| ● | 25 to 50 | (7) |
| • | 0 to 25 | (58) |

RyanWood Exploration

| | |
|-----------------|---------------------|
| S. Ryan | PDM Claims |
| 105 J / 13 | Au Map |
| Date: 31/8/2007 | Figure 2 |
| Scale: 1:20000 | UTM Zone 9 (NAD 83) |

0 200 400 600 metres



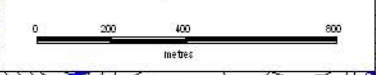


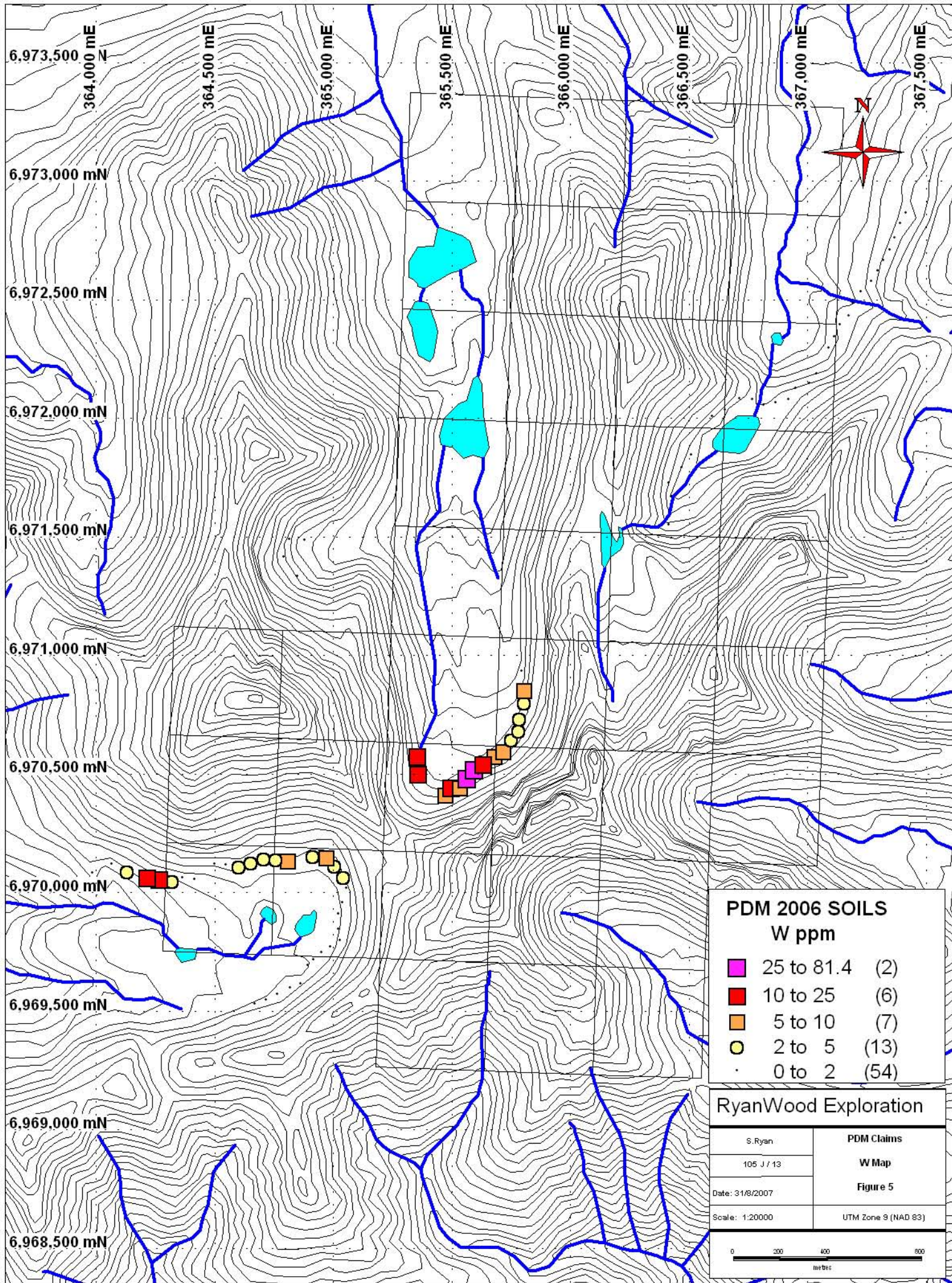
PDM 2006 SOILS
As ppm

| | |
|----------------|------|
| 1,000 to 6,110 | (11) |
| 500 to 1,000 | (6) |
| 250 to 500 | (15) |
| 100 to 250 | (23) |
| 0 to 100 | (27) |

RyanWood Exploration

| | |
|-----------------|---------------------|
| S.Ryan | PDM Claims |
| 105 J / 13 | As Map |
| Date: 31/8/2007 | Figure 4 |
| Scale: 1:20000 | UTM Zone 9 (NAD 83) |



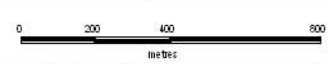


**PDM 2006 SOILS
W ppm**

- 25 to 81.4 (2)
- 10 to 25 (6)
- 5 to 10 (7)
- 2 to 5 (13)
- 0 to 2 (54)

RyanWood Exploration

| | |
|-----------------|---------------------|
| S.Ryan | PDM Claims |
| 105 J / 13 | W Map |
| Date: 31/8/2007 | Figure 5 |
| Scale: 1:20000 | UTM Zone 9 (NAD 83) |



| SAMPLES | Datum | Easting | Northing | Elevation | Mo | Cu | Pb | Zn | Ag | Ni | Co | Mn |
|---------|----------|---------|----------|-----------|------|--------|-------|-----|------|------|------|------|
| MZ-7001 | NAD83-9V | 364549 | 6970116 | 1670.6 | 2.5 | 55 | 9.9 | 43 | 0.3 | 12.4 | 3.7 | 156 |
| MZ-7002 | NAD83-9V | 364501 | 6970119 | 1666 | 2.1 | 250.1 | 13 | 80 | 0.3 | 58.8 | 24.7 | 490 |
| MZ-7003 | NAD83-9V | 364416 | 6970054 | 1633.1 | 3.1 | 253.5 | 14 | 98 | 0.3 | 65.2 | 30.3 | 631 |
| MZ-7004 | NAD83-9V | 364364 | 6970061 | 1624.9 | 2.1 | 121.4 | 11.3 | 85 | 0.2 | 41.6 | 16.2 | 412 |
| MZ-7005 | NAD83-9V | 364321 | 6970052 | 1615.4 | 2.8 | 272.2 | 12.4 | 92 | 0.4 | 43 | 24.2 | 484 |
| MZ-7006 | NAD83-9V | 364266 | 6970063 | 1611.2 | 2.2 | 653.8 | 10.6 | 66 | 1.1 | 33.8 | 29.5 | 565 |
| MZ-7007 | NAD83-9V | 364216 | 6970069 | 1611.2 | 2.5 | 470.4 | 11.2 | 62 | 0.6 | 44.4 | 32.6 | 539 |
| MZ-7008 | NAD83-9V | 364130 | 6970094 | 1599.3 | 2.6 | 311.3 | 11.8 | 48 | 0.3 | 41.4 | 27.7 | 822 |
| MZ-7009 | NAD83-9V | 364067 | 6970118 | 1595 | 2.6 | 264.9 | 16 | 41 | 0.4 | 20.5 | 8.3 | 282 |
| MZ-7010 | NAD83-9V | 363987 | 6970083 | 1583.1 | 6.2 | 206.8 | 20.3 | 53 | 0.6 | 9.4 | 2.8 | 159 |
| MZ-7011 | NAD83-9V | 363999 | 6970032 | 1570.3 | 3.3 | 95 | 10.1 | 54 | 0.2 | 16 | 6.5 | 178 |
| MZ-7051 | NAD83-9V | 365355 | 6970581 | 1615.4 | 1 | 187.4 | 8.7 | 37 | 0.4 | 6 | 16 | 391 |
| MZ-7052 | NAD83-9V | 365357 | 6970505 | 1616 | 1.4 | 92.9 | 14.2 | 36 | 0.2 | 5.1 | 12.2 | 355 |
| MZ-7053 | NAD83-9V | 365474 | 6970413 | 1627 | 0.7 | 1712.6 | 755.5 | 302 | 4.6 | 4.1 | 34.8 | 1036 |
| MZ-7054 | NAD83-9V | 365498 | 6970447 | 1638 | 0.8 | 1486.9 | 269.5 | 111 | 3.6 | 5 | 30.8 | 624 |
| MZ-7055 | NAD83-9V | 365536 | 6970445 | 1661.2 | 0.7 | 1299.8 | 77.6 | 66 | 2.9 | 4.5 | 29.7 | 481 |
| MZ-7056 | NAD83-9V | 365565 | 6970486 | 1646.2 | 2.1 | 2722.4 | 242.8 | 150 | 9.3 | 6.2 | 34.8 | 666 |
| MZ-7057 | NAD83-9V | 365594 | 6970522 | 1602.9 | 5.1 | 6402 | 612.5 | 281 | 22.3 | 9.5 | 20.7 | 618 |
| MZ-7058 | NAD83-9V | 365633 | 6970545 | 1598.4 | 2.9 | 1097.6 | 124.3 | 93 | 3.2 | 5.6 | 22.5 | 509 |
| MZ-7059 | NAD83-9V | 365679 | 6970576 | 1602.6 | 1 | 503.2 | 75.9 | 56 | 1.2 | 5.3 | 20.5 | 464 |
| MZ-7060 | NAD83-9V | 365718 | 6970599 | 1610 | 1.6 | 533.1 | 101.3 | 61 | 1.6 | 5.5 | 21.5 | 500 |
| MZ-7061 | NAD83-9V | 365750 | 6970649 | 1628.2 | 1.1 | 393.2 | 37.1 | 59 | 1 | 4.7 | 23.5 | 471 |
| MZ-7062 | NAD83-9V | 365781 | 6970685 | 1622.8 | 0.9 | 1071 | 64.8 | 73 | 3.1 | 4.8 | 24.5 | 477 |
| MZ-7063 | NAD83-9V | 365785 | 6970737 | 1610.9 | 1 | 1022.2 | 15.7 | 51 | 2.4 | 5.7 | 18.8 | 447 |
| MZ-7064 | NAD83-9V | 365805 | 6970804 | 1591.7 | 0.7 | 445.6 | 13.2 | 50 | 1 | 5.2 | 15.5 | 478 |
| MZ-7065 | NAD83-9V | 365804 | 6970855 | 1588.3 | 0.8 | 238.9 | 9.9 | 36 | 0.5 | 4.6 | 14.7 | 444 |
| MZ-7066 | NAD83-9V | 365796 | 6970934 | 1548.4 | 0.7 | 76.4 | 8.9 | 37 | 0.2 | 4.7 | 12.1 | 452 |
| MZ-7082 | NAD83-9V | 366415 | 6971551 | 1446.3 | 1.4 | 108 | 7.5 | 29 | 0.2 | 4.5 | 4.8 | 208 |
| MZ-7083 | NAD83-9V | 366426 | 6971670 | 1536.8 | 1.6 | 631.2 | 93.7 | 94 | 1.4 | 16.6 | 22.1 | 710 |
| MZ-7084 | NAD83-9V | 366416 | 6971726 | 1525.2 | 4.3 | 171.2 | 10.5 | 51 | 0.2 | 21.2 | 4.5 | 114 |
| MZ-7085 | NAD83-9V | 366470 | 6971790 | 1513.3 | 12.1 | 154.6 | 14.8 | 101 | 0.4 | 14.5 | 1.8 | 113 |
| MZ-7086 | NAD83-9V | 366509 | 6971843 | 1502.1 | 41.6 | 180.9 | 25.5 | 128 | 1.8 | 18.3 | 1.9 | 142 |
| MZ-7087 | NAD83-9V | 366599 | 6972006 | 1542.9 | 16 | 151.1 | 28.2 | 199 | 0.5 | 57 | 14.3 | 306 |
| MZ-7088 | NAD83-9V | 366654 | 6972035 | 1484.4 | 10.5 | 48 | 10.1 | 51 | 0.7 | 11.8 | 2.2 | 66 |
| MZ-7089 | NAD83-9V | 366714 | 6972081 | 1499.6 | 0.3 | 9.3 | 0.8 | 6 | 0 | 1.1 | 1.1 | 21 |
| MZ-7090 | NAD83-9V | 366769 | 6972077 | 1487.7 | 9.7 | 62.9 | 17.7 | 96 | 0.4 | 27 | 6.2 | 196 |

| SAMPLES | Fe | As | U | Au | Th | Sr | Cd | Sb | Bi | V | Ca | P |
|---------|-------|--------|------|-------|------|-----|-----|------|-------|-----|------|-------|
| MZ-7001 | 3.38 | 95.3 | 1.3 | 2.4 | 3.6 | 11 | 0.2 | 1.4 | 6.7 | 90 | 0.03 | 0.048 |
| MZ-7002 | 3.86 | 225.2 | 3.1 | 62.7 | 6 | 15 | 0.3 | 1.5 | 7 | 59 | 0.09 | 0.06 |
| MZ-7003 | 4.41 | 124.2 | 3.3 | 6.8 | 5.9 | 21 | 0.1 | 1.6 | 3.4 | 72 | 0.13 | 0.069 |
| MZ-7004 | 2.87 | 67.8 | 1.7 | 2.9 | 2.6 | 16 | 0.3 | 1.5 | 2.8 | 53 | 0.09 | 0.079 |
| MZ-7005 | 4.25 | 285.3 | 5.3 | 11.6 | 8.7 | 24 | 0.2 | 1.3 | 15 | 75 | 0.22 | 0.082 |
| MZ-7006 | 5.17 | 1217.5 | 7.5 | 104.6 | 11.1 | 43 | 0.2 | 1.4 | 55 | 68 | 0.38 | 0.078 |
| MZ-7007 | 4.58 | 742.2 | 5.2 | 18.1 | 9.5 | 22 | 0.3 | 1.2 | 31.9 | 69 | 0.17 | 0.076 |
| MZ-7008 | 4.69 | 194.8 | 2.7 | 11.7 | 3.7 | 12 | 0.1 | 1.9 | 6.7 | 51 | 0.06 | 0.083 |
| MZ-7009 | 7.19 | 226.8 | 2.2 | 17.9 | 5.3 | 17 | 0.1 | 2.3 | 7.1 | 53 | 0.04 | 0.138 |
| MZ-7010 | 12.82 | 359.8 | 1.8 | 65.8 | 9.9 | 56 | 0.1 | 7.2 | 30.2 | 61 | 0.26 | 0.185 |
| MZ-7011 | 4.85 | 79.5 | 1.1 | 5 | 8.7 | 24 | 0 | 3.2 | 2.9 | 46 | 0.04 | 0.083 |
| MZ-7051 | 3.17 | 195.1 | 7.4 | 135.2 | 18.5 | 137 | 0.1 | 0.9 | 39.4 | 61 | 0.77 | 0.069 |
| MZ-7052 | 2.56 | 188.4 | 15 | 12.3 | 21.9 | 186 | 0.1 | 1.3 | 11.5 | 60 | 0.86 | 0.067 |
| MZ-7053 | 4.39 | 2382.7 | 8.9 | 111.4 | 16.4 | 225 | 2.5 | 41.4 | 72.4 | 53 | 1 | 0.11 |
| MZ-7054 | 4.56 | 1442 | 8.1 | 216.7 | 17 | 137 | 0.9 | 19.3 | 90.4 | 57 | 0.82 | 0.089 |
| MZ-7055 | 4.97 | 1013.8 | 6.8 | 74.9 | 15.3 | 121 | 0.7 | 10.3 | 94.7 | 60 | 0.79 | 0.084 |
| MZ-7056 | 4.59 | 6011.8 | 15.5 | 330.1 | 16.6 | 112 | 1.2 | 35.8 | 216.4 | 43 | 0.62 | 0.081 |
| MZ-7057 | 6.66 | 6106.2 | 34 | 378 | 14.3 | 163 | 2.1 | 83.7 | 359.6 | 45 | 0.55 | 0.096 |
| MZ-7058 | 4.01 | 2376.8 | 11.2 | 279.3 | 19.2 | 112 | 0.7 | 15.7 | 148.4 | 64 | 0.79 | 0.078 |
| MZ-7059 | 3.87 | 984.2 | 15 | 156.5 | 20.8 | 167 | 0.4 | 9 | 61.8 | 62 | 0.83 | 0.082 |
| MZ-7060 | 4.06 | 921.9 | 17 | 237.2 | 20.5 | 126 | 0.5 | 9.9 | 59.3 | 71 | 0.85 | 0.085 |
| MZ-7061 | 4.36 | 1643.5 | 13.9 | 177.1 | 19.6 | 138 | 0.4 | 5.3 | 36.9 | 68 | 0.94 | 0.097 |
| MZ-7062 | 4.65 | 1856.3 | 10.8 | 45.3 | 18.7 | 134 | 0.6 | 7.1 | 56.9 | 70 | 0.8 | 0.092 |
| MZ-7063 | 4.15 | 338.5 | 12.4 | 220 | 17.7 | 138 | 0.3 | 1.6 | 61 | 81 | 0.83 | 0.081 |
| MZ-7064 | 3.51 | 187.2 | 10.8 | 89.5 | 17.7 | 148 | 0.2 | 0.9 | 26.9 | 67 | 0.84 | 0.076 |
| MZ-7065 | 3.22 | 99.5 | 6.8 | 13.7 | 19.5 | 193 | 0.1 | 0.7 | 13.2 | 67 | 0.95 | 0.079 |
| MZ-7066 | 2.88 | 64.5 | 9.3 | 2.1 | 18.3 | 273 | 0.1 | 0.3 | 5 | 64 | 1.44 | 0.073 |
| MZ-7082 | 1.1 | 157.6 | 5 | 5.6 | 0.8 | 34 | 0.2 | 1.1 | 6.9 | 26 | 0.44 | 0.07 |
| MZ-7083 | 3.7 | 1014.7 | 21 | 24.5 | 9.6 | 170 | 0.7 | 6 | 34.6 | 59 | 0.73 | 0.078 |
| MZ-7084 | 6.09 | 284.7 | 2 | 6.8 | 2.2 | 33 | 0.1 | 2.4 | 1.4 | 81 | 0.05 | 0.081 |
| MZ-7085 | 9.01 | 345.8 | 1.6 | 11 | 3.9 | 86 | 0.1 | 4.9 | 1.3 | 161 | 0.06 | 0.113 |
| MZ-7086 | 10.25 | 70.6 | 5.8 | 27.1 | 3.4 | 103 | 0.4 | 5.7 | 1.6 | 269 | 0.12 | 0.238 |
| MZ-7087 | 8.6 | 147.5 | 4.9 | 33 | 9.7 | 78 | 0.9 | 15.2 | 1.9 | 98 | 0.07 | 0.139 |
| MZ-7088 | 2.67 | 61.2 | 2.1 | 5 | 0.8 | 33 | 2.1 | 9 | 1.2 | 114 | 0.05 | 0.061 |
| MZ-7089 | 0.49 | 1.9 | 0.3 | 0 | 0.2 | 6 | 0 | 0.2 | 0.1 | 16 | 0.05 | 0.021 |
| MZ-7090 | 3.97 | 108.1 | 3.6 | 5.5 | 2.4 | 20 | 0.3 | 4.7 | 2.3 | 66 | 0.11 | 0.108 |

| SAMPLES | La | Cr | Mg | Ba | Ti | B | Al | Na | K | W | Hg | Sc | Tl |
|---------|----|----|------|-----|-------|---|------|-------|------|------|------|-----|-----|
| MZ-7001 | 11 | 17 | 0.21 | 124 | 0.091 | 1 | 1.21 | 0.005 | 0.11 | 1.5 | 0.04 | 2 | 0.2 |
| MZ-7002 | 13 | 22 | 0.54 | 137 | 0.072 | 1 | 2 | 0.007 | 0.11 | 1.8 | 0.03 | 3.9 | 0.2 |
| MZ-7003 | 19 | 33 | 0.69 | 172 | 0.085 | 2 | 2.21 | 0.008 | 0.14 | 0.9 | 0.04 | 5 | 0.3 |
| MZ-7004 | 13 | 23 | 0.43 | 129 | 0.058 | 1 | 1.71 | 0.01 | 0.15 | 0.8 | 0.04 | 2.4 | 0.3 |
| MZ-7005 | 19 | 25 | 0.8 | 212 | 0.141 | 1 | 2.41 | 0.011 | 0.17 | 3.4 | 0.03 | 6 | 0.4 |
| MZ-7006 | 23 | 17 | 0.75 | 206 | 0.143 | 2 | 2.48 | 0.047 | 0.25 | 20.4 | 0.03 | 6.7 | 0.3 |
| MZ-7007 | 20 | 22 | 0.76 | 202 | 0.134 | 1 | 3.05 | 0.016 | 0.19 | 10.8 | 0.04 | 6.5 | 0.3 |
| MZ-7008 | 14 | 22 | 0.3 | 104 | 0.047 | 2 | 1.23 | 0.007 | 0.16 | 2.3 | 0.02 | 2.6 | 0.3 |
| MZ-7009 | 13 | 24 | 0.28 | 137 | 0.055 | 1 | 1.11 | 0.009 | 0.22 | 1 | 0.06 | 2.9 | 0.4 |
| MZ-7010 | 11 | 31 | 0.4 | 237 | 0.043 | 0 | 1.93 | 0.008 | 0.5 | 0.6 | 0.03 | 4 | 0.9 |
| MZ-7011 | 21 | 28 | 0.54 | 208 | 0.039 | 0 | 1.65 | 0.006 | 0.43 | 0.4 | 0.01 | 1.8 | 0.7 |
| MZ-7051 | 37 | 10 | 0.82 | 336 | 0.175 | 1 | 2.33 | 0.069 | 0.5 | 11.2 | 0.01 | 6.1 | 0.5 |
| MZ-7052 | 39 | 9 | 0.7 | 355 | 0.205 | 0 | 2.14 | 0.103 | 0.59 | 12.6 | 0.01 | 3.4 | 0.4 |
| MZ-7053 | 37 | 7 | 0.86 | 197 | 0.081 | 1 | 2.41 | 0.017 | 0.29 | 6.8 | 0.02 | 6 | 0.2 |
| MZ-7054 | 35 | 9 | 0.86 | 238 | 0.107 | 1 | 2.16 | 0.026 | 0.41 | 12.7 | 0.01 | 6.2 | 0.3 |
| MZ-7055 | 34 | 9 | 0.99 | 249 | 0.125 | 0 | 2.4 | 0.028 | 0.42 | 5.6 | 0.01 | 6.8 | 0.4 |
| MZ-7056 | 38 | 7 | 0.63 | 246 | 0.101 | 1 | 1.76 | 0.029 | 0.27 | 26.1 | 0.02 | 6.4 | 0.3 |
| MZ-7057 | 47 | 8 | 0.48 | 167 | 0.073 | 2 | 1.68 | 0.022 | 0.15 | 81.4 | 0.05 | 6.9 | 0.3 |
| MZ-7058 | 38 | 9 | 0.79 | 311 | 0.178 | 2 | 1.76 | 0.072 | 0.59 | 19 | 0.02 | 6.3 | 0.5 |
| MZ-7059 | 44 | 9 | 0.86 | 385 | 0.175 | 0 | 2.51 | 0.065 | 0.51 | 7.6 | 0.01 | 5.3 | 0.5 |
| MZ-7060 | 43 | 10 | 0.93 | 437 | 0.232 | 2 | 2.54 | 0.086 | 0.68 | 6.9 | 0.01 | 6.1 | 0.5 |
| MZ-7061 | 44 | 10 | 0.79 | 431 | 0.218 | 0 | 2.41 | 0.068 | 0.64 | 2.6 | 0.02 | 5.8 | 0.4 |
| MZ-7062 | 39 | 10 | 0.94 | 404 | 0.24 | 1 | 2.48 | 0.102 | 0.62 | 3.2 | 0.01 | 6.5 | 0.5 |
| MZ-7063 | 38 | 12 | 1 | 436 | 0.259 | 2 | 2.42 | 0.106 | 0.67 | 4.5 | 0.01 | 7.5 | 0.6 |
| MZ-7064 | 41 | 11 | 0.79 | 409 | 0.214 | 2 | 2.21 | 0.087 | 0.56 | 3.4 | 0.02 | 6.2 | 0.5 |
| MZ-7065 | 39 | 10 | 0.89 | 382 | 0.195 | 0 | 2.49 | 0.089 | 0.54 | 7.7 | 0.01 | 5.3 | 0.4 |
| MZ-7066 | 37 | 9 | 0.73 | 494 | 0.122 | 1 | 2.77 | 0.035 | 0.56 | 1.5 | 0.01 | 5 | 0.4 |
| MZ-7082 | 10 | 6 | 0.1 | 313 | 0.029 | 0 | 0.7 | 0.015 | 0.04 | 0.4 | 0.04 | 0.8 | 0.1 |
| MZ-7083 | 39 | 14 | 0.65 | 354 | 0.064 | 0 | 2.26 | 0.027 | 0.21 | 1.3 | 0.07 | 4.4 | 0.4 |
| MZ-7084 | 13 | 34 | 0.48 | 174 | 0.037 | 0 | 1.52 | 0.012 | 0.2 | 0.4 | 0.03 | 3.3 | 0.3 |
| MZ-7085 | 10 | 42 | 0.65 | 487 | 0.038 | 0 | 1.98 | 0.019 | 0.3 | 0.2 | 0.02 | 4.7 | 0.6 |
| MZ-7086 | 12 | 62 | 0.55 | 263 | 0.039 | 0 | 1.91 | 0.024 | 0.26 | 0.3 | 0.03 | 4.5 | 0.6 |
| MZ-7087 | 14 | 30 | 0.47 | 496 | 0.034 | 1 | 2.08 | 0.028 | 0.22 | 0.3 | 0.03 | 4.1 | 0.5 |
| MZ-7088 | 7 | 16 | 0.13 | 190 | 0.021 | 0 | 1.07 | 0.014 | 0.05 | 0.3 | 0.07 | 1.1 | 0.2 |
| MZ-7089 | 1 | 2 | 0.03 | 20 | 0.033 | 0 | 0.39 | 0.026 | 0.02 | 0 | 0.01 | 0.6 | 0.1 |
| MZ-7090 | 10 | 27 | 0.44 | 282 | 0.03 | 1 | 2.2 | 0.008 | 0.06 | 0.5 | 0.07 | 2.3 | 0.3 |

| SAMPLES | S | Ga | Se | Analysis: | Acme file # |
|---------|------|----|------|----------------------|-------------|
| MZ-7001 | 0.1 | 9 | 1.2 | GROUP 1DX - 15.00 GM | A604856 |
| MZ-7002 | 0.06 | 6 | 1.4 | GROUP 1DX - 15.00 GM | A604856 |
| MZ-7003 | 0 | 6 | 1.3 | GROUP 1DX - 15.00 GM | A604856 |
| MZ-7004 | 0.06 | 5 | 1.1 | GROUP 1DX - 15.00 GM | A604856 |
| MZ-7005 | 0 | 7 | 1.4 | GROUP 1DX - 15.00 GM | A604856 |
| MZ-7006 | 0 | 7 | 2.7 | GROUP 1DX - 15.00 GM | A604856 |
| MZ-7007 | 0 | 8 | 2.5 | GROUP 1DX - 15.00 GM | A604856 |
| MZ-7008 | 0.08 | 4 | 2.2 | GROUP 1DX - 15.00 GM | A604856 |
| MZ-7009 | 0.19 | 4 | 3.8 | GROUP 1DX - 15.00 GM | A604856 |
| MZ-7010 | 0.41 | 8 | 11.2 | GROUP 1DX - 15.00 GM | A604856 |
| MZ-7011 | 0.07 | 5 | 2.3 | GROUP 1DX - 15.00 GM | A604856 |
| MZ-7051 | 0 | 8 | 0.9 | GROUP 1DX - 15.00 GM | A604856 |
| MZ-7052 | 0 | 7 | 1.2 | GROUP 1DX - 15.00 GM | A604856 |
| MZ-7053 | 0 | 7 | 3 | GROUP 1DX - 15.00 GM | A604856 |
| MZ-7054 | 0 | 7 | 5 | GROUP 1DX - 15.00 GM | A604856 |
| MZ-7055 | 0 | 8 | 3.3 | GROUP 1DX - 15.00 GM | A604856 |
| MZ-7056 | 0 | 5 | 2.9 | GROUP 1DX - 15.00 GM | A604856 |
| MZ-7057 | 0.06 | 6 | 3.1 | GROUP 1DX - 15.00 GM | A604856 |
| MZ-7058 | 0.14 | 8 | 2.4 | GROUP 1DX - 15.00 GM | A604856 |
| MZ-7059 | 0 | 8 | 1.5 | GROUP 1DX - 15.00 GM | A604856 |
| MZ-7060 | 0 | 8 | 1.9 | GROUP 1DX - 15.00 GM | A604856 |
| MZ-7061 | 0 | 8 | 1.9 | GROUP 1DX - 15.00 GM | A604856 |
| MZ-7062 | 0 | 8 | 2.4 | GROUP 1DX - 15.00 GM | A604856 |
| MZ-7063 | 0 | 9 | 2 | GROUP 1DX - 15.00 GM | A604856 |
| MZ-7064 | 0 | 8 | 1 | GROUP 1DX - 15.00 GM | A604856 |
| MZ-7065 | 0 | 8 | 1 | GROUP 1DX - 15.00 GM | A604856 |
| MZ-7066 | 0 | 8 | 0 | GROUP 1DX - 15.00 GM | A604856 |
| MZ-7082 | 0.1 | 3 | 1.6 | GROUP 1DX - 15.0 GM | A607421 |
| MZ-7083 | 0 | 8 | 1.6 | GROUP 1DX - 15.0 GM | A607421 |
| MZ-7084 | 0.09 | 6 | 3.8 | GROUP 1DX - 15.0 GM | A607421 |
| MZ-7085 | 0.27 | 8 | 12.1 | GROUP 1DX - 15.0 GM | A607421 |
| MZ-7086 | 0.51 | 10 | 32.7 | GROUP 1DX - 15.0 GM | A607421 |
| MZ-7087 | 0.33 | 7 | 6.9 | GROUP 1DX - 15.0 GM | A607421 |
| MZ-7088 | 0.11 | 5 | 2.9 | GROUP 1DX - 15.0 GM | A607421 |
| MZ-7089 | 0 | 2 | 0 | GROUP 1DX - 15.0 GM | A607421 |
| MZ-7090 | 0.12 | 7 | 4 | GROUP 1DX - 15.0 GM | A607421 |

| SAMPLES | Datum | Easting | Northing | Elevation | Mo | Cu | Pb | Zn | Ag | Ni | Co | Mn |
|---------|----------|---------|----------|-----------|------|-------|------|-----|-----|------|------|------|
| MZ-7091 | NAD83-9V | 366816 | 6972055 | 1483.8 | 3.3 | 39.8 | 11.7 | 35 | 0.4 | 9.6 | 2.5 | 65 |
| MZ-7092 | NAD83-9V | 366868 | 6972065 | 1491.4 | 1.1 | 24 | 3.9 | 14 | 0 | 3.6 | 1.3 | 33 |
| MZ-7093 | NAD83-9V | 366919 | 6972080 | 1495.7 | 9.5 | 117.4 | 19.2 | 92 | 0.5 | 34.2 | 13.1 | 256 |
| MZ-7094 | NAD83-9V | 366952 | 6972125 | 1494.1 | 7 | 77.7 | 33.3 | 94 | 0.4 | 24.9 | 6.2 | 135 |
| MZ-7095 | NAD83-9V | 367010 | 6972146 | 1493.2 | 6.1 | 72.6 | 12.4 | 79 | 0.4 | 23.6 | 5.6 | 98 |
| MZ-7096 | NAD83-9V | 367040 | 6972186 | 1464.3 | 6.2 | 69.9 | 12.7 | 109 | 0.5 | 60.4 | 22.8 | 330 |
| MZ-7097 | NAD83-9V | 367089 | 6972297 | 1438.7 | 5.8 | 35.4 | 10.9 | 40 | 0.3 | 7.6 | 1.8 | 57 |
| MZ-7098 | NAD83-9V | 367114 | 6972343 | 1435.3 | 22.3 | 59 | 55.3 | 140 | 1.7 | 31.6 | 6.2 | 156 |
| MZ-7099 | NAD83-9V | 367138 | 6972392 | 1446.3 | 17.6 | 55.7 | 31.6 | 131 | 0.7 | 27.1 | 4.1 | 108 |
| MZ-7100 | NAD83-9V | 367175 | 6972430 | 1446.3 | 11.6 | 30.5 | 18.7 | 71 | 0.1 | 12.5 | 2.4 | 74 |
| MZ-7101 | NAD83-9V | 367192 | 6972486 | 1454.2 | 16.7 | 22.9 | 18 | 66 | 0.4 | 12 | 2.4 | 132 |
| MZ-7102 | NAD83-9V | 367227 | 6972531 | 1449.9 | 8.8 | 24.3 | 15.3 | 40 | 0.2 | 6.6 | 1.7 | 37 |
| MZ-7103 | NAD83-9V | 367270 | 6972577 | 1466.1 | 7.1 | 99.8 | 26.7 | 95 | 0.8 | 21.6 | 6.1 | 228 |
| MZ-7104 | NAD83-9V | 367298 | 6972620 | 1481.3 | 4.7 | 36.2 | 16.3 | 66 | 0.2 | 13.8 | 4.1 | 238 |
| MZ-7105 | NAD83-9V | 367321 | 6972665 | 1488.6 | 6.5 | 58.6 | 14.9 | 150 | 0.5 | 32.2 | 7.3 | 267 |
| MZ-7106 | NAD83-9V | 367346 | 6972710 | 1487.7 | 3.7 | 27.8 | 8 | 52 | 0.3 | 11.9 | 2.9 | 87 |
| MZ-7107 | NAD83-9V | 367369 | 6972761 | 1497.8 | 1.9 | 16 | 4.2 | 33 | 0.1 | 9.3 | 2.8 | 112 |
| MZ-7108 | NAD83-9V | 367392 | 6972820 | 1497.8 | 6.7 | 30.6 | 14.7 | 93 | 0.2 | 20.8 | 5.2 | 174 |
| MZ-7109 | NAD83-9V | 367414 | 6972866 | 1495.7 | 8.5 | 65.2 | 16 | 152 | 0.4 | 41.9 | 12.1 | 510 |
| MZ-7124 | NAD83-9V | 364849 | 6971333 | 1629.2 | 2.3 | 141.2 | 28.1 | 47 | 0.3 | 17.9 | 7.8 | 320 |
| MZ-7125 | NAD83-9V | 364791 | 6971414 | 1640.7 | 2.7 | 187 | 10.7 | 48 | 0.2 | 51.7 | 21.2 | 581 |
| MZ-7126 | NAD83-9V | 364817 | 6971490 | 1636.2 | 3.5 | 230 | 34.1 | 82 | 0.3 | 58.9 | 32.5 | 839 |
| MZ-7127 | NAD83-9V | 364881 | 6971485 | 1532.8 | 3.4 | 259.6 | 30.3 | 55 | 0.4 | 33.5 | 14.7 | 436 |
| MZ-8029 | NAD83-9V | 364669 | 6969529 | 1636.8 | 4.2 | 74.7 | 11.6 | 80 | 0.9 | 13.9 | 1.8 | 82 |
| MZ-8030 | NAD83-9V | 364717 | 6969548 | 1639.5 | 3.7 | 94.8 | 11.6 | 92 | 0.7 | 15.5 | 2.4 | 93 |
| MZ-8031 | NAD83-9V | 364765 | 6969571 | 1637.4 | 3.9 | 135.2 | 14.1 | 103 | 0.4 | 33 | 8.8 | 266 |
| MZ-8032 | NAD83-9V | 364818 | 6969597 | 1637.4 | 3.4 | 87.3 | 8 | 102 | 0.5 | 15.5 | 4.2 | 189 |
| MZ-8033 | NAD83-9V | 364862 | 6969615 | 1642.9 | 6.7 | 155.8 | 18.9 | 185 | 1 | 56.7 | 9.2 | 242 |
| MZ-8034 | NAD83-9V | 364893 | 6969691 | 1624 | 3.9 | 204.1 | 17.6 | 165 | 0.5 | 70 | 36.4 | 1201 |
| MZ-8035 | NAD83-9V | 364917 | 6969716 | 1634 | 3.2 | 143.4 | 25.3 | 82 | 0.3 | 28.8 | 7.3 | 222 |
| MZ-8036 | NAD83-9V | 364951 | 6969746 | 1636.8 | 2.9 | 87.4 | 12.3 | 90 | 0.2 | 31.5 | 7.3 | 205 |
| MZ-8037 | NAD83-9V | 364988 | 6969772 | 1645.6 | 2.2 | 88.5 | 11 | 60 | 0.3 | 25.1 | 7.9 | 237 |
| MZ-8038 | NAD83-9V | 365029 | 6969797 | 1654.8 | 4 | 163.6 | 21.5 | 70 | 0.3 | 41.9 | 6.5 | 179 |
| MZ-8039 | NAD83-9V | 365021 | 6969844 | 1641.7 | 3.8 | 189.8 | 33.1 | 70 | 0.3 | 32.6 | 6.9 | 182 |
| MZ-8040 | NAD83-9V | 365022 | 6969910 | 1642.9 | 2.9 | 146.7 | 19.4 | 101 | 0.2 | 38.2 | 11.8 | 284 |
| MZ-8041 | NAD83-9V | 365038 | 6969958 | 1646.2 | 3 | 217.5 | 19.7 | 82 | 0.3 | 40.4 | 15.7 | 391 |

| SAMPLES | Fe | As | U | Au | Th | Sr | Cd | Sb | Bi | V | Ca | P |
|---------|------|-------|------|------|-----|-----|-----|------|------|-----|------|-------|
| MZ-7091 | 2.89 | 93.7 | 1.4 | 47.8 | 0.8 | 11 | 0.1 | 3.1 | 3 | 36 | 0.09 | 0.094 |
| MZ-7092 | 0.91 | 21.2 | 0.6 | 1.4 | 0.4 | 11 | 0.1 | 0.9 | 0.6 | 21 | 0.11 | 0.063 |
| MZ-7093 | 3.51 | 655.1 | 12.5 | 22.6 | 3 | 40 | 0.3 | 13.4 | 8.6 | 57 | 0.23 | 0.142 |
| MZ-7094 | 3.17 | 225.2 | 3.2 | 24.6 | 1.6 | 21 | 1.1 | 11.6 | 5.2 | 36 | 0.16 | 0.104 |
| MZ-7095 | 3.77 | 132.2 | 2.3 | 38.4 | 1.9 | 33 | 0.2 | 4.7 | 4.7 | 34 | 0.17 | 0.098 |
| MZ-7096 | 5.39 | 311.1 | 2.4 | 40.6 | 3 | 86 | 0.4 | 4.2 | 13.1 | 32 | 0.48 | 0.125 |
| MZ-7097 | 1.79 | 38.9 | 1.1 | 2.2 | 0.2 | 15 | 0.1 | 4 | 1.4 | 45 | 0.05 | 0.066 |
| MZ-7098 | 3.75 | 90.2 | 5.9 | 6 | 1.4 | 56 | 0.4 | 13.5 | 1.7 | 88 | 0.12 | 0.242 |
| MZ-7099 | 3.33 | 59.7 | 4.9 | 2.5 | 0.8 | 46 | 0.3 | 10.2 | 1.1 | 85 | 0.05 | 0.145 |
| MZ-7100 | 3.5 | 83.3 | 1.3 | 12.3 | 4.2 | 16 | 0.4 | 4.3 | 3.9 | 106 | 0.06 | 0.05 |
| MZ-7101 | 2.07 | 42.8 | 2.1 | 0.9 | 0.2 | 28 | 0.2 | 6.9 | 0.7 | 58 | 0.04 | 0.095 |
| MZ-7102 | 1.83 | 126.6 | 1.1 | 11.6 | 0.6 | 11 | 0.1 | 3.2 | 2 | 64 | 0.06 | 0.063 |
| MZ-7103 | 2.97 | 55.5 | 5.6 | 7.9 | 0.4 | 40 | 0.5 | 5.3 | 1.4 | 61 | 0.08 | 0.177 |
| MZ-7104 | 2.59 | 31.7 | 1.6 | 4.1 | 0.2 | 19 | 0.2 | 3.5 | 0.9 | 48 | 0.04 | 0.108 |
| MZ-7105 | 3.01 | 31.4 | 2.5 | 3.8 | 1.7 | 44 | 0.6 | 5.9 | 0.4 | 47 | 0.16 | 0.152 |
| MZ-7106 | 1.2 | 10.2 | 1.2 | 1.4 | 0.1 | 26 | 0.3 | 2.1 | 0.2 | 28 | 0.05 | 0.079 |
| MZ-7107 | 0.9 | 5.6 | 0.5 | 2.7 | 0.2 | 17 | 0.1 | 1 | 0.1 | 19 | 0.11 | 0.074 |
| MZ-7108 | 2.2 | 15.8 | 0.9 | 2.6 | 0.2 | 26 | 0.2 | 2.5 | 0.4 | 45 | 0.02 | 0.08 |
| MZ-7109 | 3.02 | 21 | 1.8 | 5.4 | 1.7 | 55 | 0.6 | 3.7 | 0.3 | 31 | 0.16 | 0.147 |
| MZ-7124 | 5.78 | 353.2 | 3 | 16.3 | 6.9 | 51 | 0.1 | 8.1 | 4.8 | 80 | 0.17 | 0.098 |
| MZ-7125 | 4.14 | 326.6 | 2.7 | 10.9 | 4.7 | 13 | 0.1 | 3.1 | 2.2 | 41 | 0.06 | 0.062 |
| MZ-7126 | 4.89 | 329.5 | 2.3 | 22.3 | 3.2 | 27 | 0.3 | 10.7 | 3.3 | 58 | 0.07 | 0.07 |
| MZ-7127 | 7.07 | 418 | 2.2 | 17 | 4.6 | 38 | 0.1 | 9.1 | 4.1 | 63 | 0.08 | 0.105 |
| MZ-8029 | 3.98 | 42.1 | 1.1 | 4.5 | 3 | 22 | 0.1 | 7.6 | 0.8 | 80 | 0.05 | 0.074 |
| MZ-8030 | 4.3 | 29.1 | 1.1 | 5.8 | 3.2 | 14 | 0.1 | 6 | 0.6 | 80 | 0.02 | 0.083 |
| MZ-8031 | 6.62 | 138.3 | 1.7 | 6.7 | 4.8 | 45 | 0.2 | 2.9 | 1.8 | 83 | 0.03 | 0.134 |
| MZ-8032 | 5.66 | 50.3 | 1.2 | 7.1 | 3.3 | 38 | 0.1 | 3.6 | 1.5 | 71 | 0.03 | 0.113 |
| MZ-8033 | 9.11 | 53.2 | 1.5 | 8 | 4.4 | 130 | 0.2 | 3.5 | 1 | 80 | 0.06 | 0.186 |
| MZ-8034 | 9.64 | 205.5 | 2.2 | 15.2 | 5.3 | 110 | 0.6 | 3.6 | 2.5 | 60 | 0.04 | 0.179 |
| MZ-8035 | 7.82 | 239.4 | 2.4 | 11.2 | 6.6 | 46 | 0.1 | 3.3 | 2.2 | 58 | 0.03 | 0.142 |
| MZ-8036 | 5.36 | 100.9 | 1.1 | 5.4 | 3.6 | 37 | 0.2 | 2.1 | 1.1 | 51 | 0.04 | 0.105 |
| MZ-8037 | 4.04 | 90.4 | 1.5 | 7.3 | 3.5 | 27 | 0.1 | 1.6 | 1.1 | 47 | 0.07 | 0.104 |
| MZ-8038 | 8.22 | 534.3 | 2.8 | 13.9 | 6.3 | 27 | 0.1 | 3.4 | 4.6 | 65 | 0.02 | 0.156 |
| MZ-8039 | 8.52 | 477.2 | 3.1 | 15.8 | 7.1 | 28 | 0.1 | 3.4 | 4.1 | 72 | 0.02 | 0.138 |
| MZ-8040 | 6.33 | 393.3 | 2.1 | 25.7 | 3.9 | 26 | 0.2 | 2.9 | 3.7 | 58 | 0.05 | 0.102 |
| MZ-8041 | 6.41 | 442.9 | 3.6 | 16.6 | 6.7 | 27 | 0.1 | 4.2 | 4.7 | 69 | 0.04 | 0.109 |

| SAMPLES | La | Cr | Mg | Ba | Ti | B | Al | Na | K | W | Hg | Sc | Tl |
|---------|----|----|------|------|-------|---|------|-------|------|-----|------|-----|-----|
| MZ-7091 | 6 | 19 | 0.23 | 131 | 0.023 | 0 | 1.39 | 0.017 | 0.04 | 0.3 | 0.06 | 1.4 | 0.2 |
| MZ-7092 | 4 | 7 | 0.08 | 47 | 0.025 | 0 | 0.71 | 0.022 | 0.04 | 0.2 | 0.01 | 0.8 | 0.1 |
| MZ-7093 | 16 | 34 | 0.64 | 168 | 0.027 | 1 | 2.78 | 0.011 | 0.05 | 0.5 | 0.08 | 3.3 | 0.3 |
| MZ-7094 | 10 | 19 | 0.34 | 94 | 0.023 | 1 | 2.37 | 0.014 | 0.04 | 0.5 | 0.05 | 2 | 0.2 |
| MZ-7095 | 8 | 15 | 0.3 | 127 | 0.026 | 1 | 2.09 | 0.016 | 0.05 | 0.3 | 0.03 | 1.9 | 0.2 |
| MZ-7096 | 9 | 19 | 0.44 | 217 | 0.017 | 1 | 2.46 | 0.028 | 0.04 | 0.3 | 0.04 | 2.4 | 0.2 |
| MZ-7097 | 8 | 12 | 0.09 | 234 | 0.013 | 0 | 0.84 | 0.016 | 0.04 | 0.2 | 0.02 | 0.6 | 0.2 |
| MZ-7098 | 18 | 29 | 0.37 | 627 | 0.02 | 1 | 1.51 | 0.013 | 0.12 | 0.3 | 0.19 | 1.6 | 0.9 |
| MZ-7099 | 17 | 23 | 0.24 | 552 | 0.017 | 1 | 1.25 | 0.007 | 0.09 | 0.2 | 0.1 | 1.2 | 0.8 |
| MZ-7100 | 14 | 25 | 0.23 | 122 | 0.112 | 2 | 1.17 | 0.009 | 0.05 | 0.4 | 0.03 | 1.7 | 0.4 |
| MZ-7101 | 10 | 13 | 0.15 | 303 | 0.014 | 0 | 0.72 | 0.014 | 0.06 | 0.2 | 0.03 | 0.6 | 0.5 |
| MZ-7102 | 11 | 14 | 0.07 | 98 | 0.039 | 1 | 0.47 | 0.005 | 0.04 | 0.6 | 0.04 | 0.9 | 0.2 |
| MZ-7103 | 15 | 23 | 0.24 | 634 | 0.012 | 1 | 1.51 | 0.008 | 0.07 | 0.3 | 0.08 | 0.9 | 0.3 |
| MZ-7104 | 11 | 19 | 0.14 | 318 | 0.008 | 1 | 0.94 | 0.011 | 0.05 | 0.1 | 0.03 | 0.3 | 0.2 |
| MZ-7105 | 16 | 21 | 0.27 | 893 | 0.02 | 2 | 1 | 0.006 | 0.08 | 0.1 | 0.05 | 1.9 | 0.3 |
| MZ-7106 | 10 | 10 | 0.04 | 791 | 0.005 | 1 | 0.63 | 0.013 | 0.04 | 0.1 | 0.02 | 0.4 | 0.2 |
| MZ-7107 | 6 | 6 | 0.05 | 390 | 0.015 | 1 | 0.39 | 0.017 | 0.04 | 0.1 | 0.02 | 0.6 | 0.1 |
| MZ-7108 | 15 | 12 | 0.04 | 460 | 0.007 | 1 | 0.61 | 0.005 | 0.06 | 0.1 | 0.02 | 0.3 | 0.3 |
| MZ-7109 | 20 | 15 | 0.12 | 1065 | 0.007 | 2 | 0.72 | 0.007 | 0.08 | 0.1 | 0.1 | 2.3 | 0.3 |
| MZ-7124 | 13 | 34 | 0.67 | 550 | 0.085 | 0 | 1.58 | 0.012 | 0.49 | 0.8 | 0.01 | 5 | 0.4 |
| MZ-7125 | 14 | 19 | 0.27 | 85 | 0.031 | 0 | 0.76 | 0.004 | 0.15 | 0.7 | 0.01 | 2.5 | 0.2 |
| MZ-7126 | 13 | 26 | 0.32 | 151 | 0.042 | 0 | 1.2 | 0.006 | 0.18 | 0.5 | 0.03 | 2.7 | 0.3 |
| MZ-7127 | 12 | 28 | 0.35 | 201 | 0.069 | 2 | 1.2 | 0.011 | 0.36 | 0.9 | 0.03 | 3.7 | 0.5 |
| MZ-8029 | 13 | 37 | 0.29 | 328 | 0.031 | 0 | 1.03 | 0.007 | 0.28 | 0 | 0.08 | 2.5 | 0.5 |
| MZ-8030 | 12 | 36 | 0.3 | 304 | 0.04 | 0 | 1.11 | 0.006 | 0.3 | 0.1 | 0.04 | 2.6 | 0.4 |
| MZ-8031 | 11 | 38 | 0.66 | 315 | 0.059 | 2 | 2.47 | 0.02 | 0.44 | 0.2 | 0.02 | 4.1 | 0.6 |
| MZ-8032 | 9 | 31 | 0.48 | 345 | 0.042 | 1 | 1.76 | 0.026 | 0.39 | 0.1 | 0.01 | 2.7 | 0.4 |
| MZ-8033 | 10 | 45 | 0.43 | 263 | 0.058 | 2 | 2.76 | 0.024 | 0.44 | 0.2 | 0.04 | 3.3 | 0.5 |
| MZ-8034 | 10 | 26 | 0.45 | 209 | 0.045 | 1 | 2.94 | 0.018 | 0.31 | 0.4 | 0.04 | 3.9 | 0.4 |
| MZ-8035 | 12 | 31 | 0.5 | 197 | 0.059 | 1 | 2.08 | 0.011 | 0.29 | 0.5 | 0.03 | 3.9 | 0.4 |
| MZ-8036 | 13 | 24 | 0.34 | 205 | 0.028 | 1 | 2 | 0.01 | 0.22 | 0.2 | 0.02 | 2.4 | 0.4 |
| MZ-8037 | 11 | 22 | 0.34 | 139 | 0.043 | 2 | 1.71 | 0.013 | 0.2 | 0.3 | 0.03 | 2.8 | 0.4 |
| MZ-8038 | 16 | 29 | 0.4 | 200 | 0.049 | 1 | 1.71 | 0.008 | 0.38 | 1.3 | 0.03 | 3.8 | 0.7 |
| MZ-8039 | 15 | 30 | 0.48 | 224 | 0.056 | 1 | 1.73 | 0.008 | 0.39 | 1.5 | 0.02 | 4.1 | 0.6 |
| MZ-8040 | 15 | 25 | 0.35 | 172 | 0.042 | 1 | 1.69 | 0.007 | 0.24 | 1.3 | 0.03 | 2.7 | 0.5 |
| MZ-8041 | 17 | 28 | 0.5 | 192 | 0.068 | 1 | 1.65 | 0.006 | 0.28 | 1.1 | 0.02 | 4.3 | 0.4 |

| SAMPLES | S | Ga | Se | Analysis: | Acme file # |
|---------|------|----|-----|----------------------|-------------|
| MZ-7091 | 0.09 | 4 | 2 | GROUP 1DX - 15.0 GM | A607421 |
| MZ-7092 | 0 | 2 | 0.6 | GROUP 1DX - 15.0 GM | A607421 |
| MZ-7093 | 0.12 | 7 | 4.7 | GROUP 1DX - 15.0 GM | A607421 |
| MZ-7094 | 0.15 | 5 | 4.3 | GROUP 1DX - 15.0 GM | A607421 |
| MZ-7095 | 0.12 | 5 | 4.3 | GROUP 1DX - 15.0 GM | A607421 |
| MZ-7096 | 0.1 | 6 | 6.1 | GROUP 1DX - 15.0 GM | A607421 |
| MZ-7097 | 0.06 | 4 | 1.9 | GROUP 1DX - 15.0 GM | A607421 |
| MZ-7098 | 0.23 | 5 | 7.6 | GROUP 1DX - 15.0 GM | A607421 |
| MZ-7099 | 0.16 | 4 | 6.7 | GROUP 1DX - 15.0 GM | A607421 |
| MZ-7100 | 0 | 11 | 2.1 | GROUP 1DX - 15.0 GM | A607421 |
| MZ-7101 | 0.11 | 3 | 5.2 | GROUP 1DX - 15.0 GM | A607421 |
| MZ-7102 | 0 | 6 | 1.5 | GROUP 1DX - 15.0 GM | A607421 |
| MZ-7103 | 0.1 | 6 | 2.6 | GROUP 1DX - 15.0 GM | A607421 |
| MZ-7104 | 0.08 | 5 | 1.6 | GROUP 1DX - 15.0 GM | A607421 |
| MZ-7105 | 0.08 | 3 | 3.2 | GROUP 1DX - 15.0 GM | A607421 |
| MZ-7106 | 0.08 | 3 | 1.4 | GROUP 1DX - 15.0 GM | A607421 |
| MZ-7107 | 0 | 2 | 0 | GROUP 1DX - 15.0 GM | A607421 |
| MZ-7108 | 0.08 | 4 | 2 | GROUP 1DX - 15.0 GM | A607421 |
| MZ-7109 | 0.09 | 2 | 2.1 | GROUP 1DX - 15.0 GM | A607421 |
| MZ-7124 | 0.16 | 6 | 2.8 | GROUP 1DX - 15.00 GM | A604856 |
| MZ-7125 | 0 | 3 | 2.5 | GROUP 1DX - 15.00 GM | A604856 |
| MZ-7126 | 0.07 | 5 | 3.6 | GROUP 1DX - 15.00 GM | A604856 |
| MZ-7127 | 0.21 | 6 | 4.9 | GROUP 1DX - 15.00 GM | A604856 |
| MZ-8029 | 0.22 | 4 | 5.4 | GROUP 1DX - 15.00 GM | A604856 |
| MZ-8030 | 0.22 | 5 | 4.3 | GROUP 1DX - 15.00 GM | A604856 |
| MZ-8031 | 0.46 | 7 | 4.2 | GROUP 1DX - 15.00 GM | A604856 |
| MZ-8032 | 0.42 | 5 | 3.2 | GROUP 1DX - 15.00 GM | A604856 |
| MZ-8033 | 0.51 | 7 | 4.9 | GROUP 1DX - 15.00 GM | A604856 |
| MZ-8034 | 0.46 | 7 | 4.5 | GROUP 1DX - 15.00 GM | A604856 |
| MZ-8035 | 0.3 | 6 | 4.2 | GROUP 1DX - 15.00 GM | A604856 |
| MZ-8036 | 0.23 | 5 | 2.8 | GROUP 1DX - 15.00 GM | A604856 |
| MZ-8037 | 0.15 | 5 | 2.5 | GROUP 1DX - 15.00 GM | A604856 |
| MZ-8038 | 0.25 | 6 | 4.6 | GROUP 1DX - 15.00 GM | A604856 |
| MZ-8039 | 0.24 | 6 | 4.7 | GROUP 1DX - 15.00 GM | A604856 |
| MZ-8040 | 0.16 | 6 | 3.9 | GROUP 1DX - 15.00 GM | A604856 |
| MZ-8041 | 0.16 | 6 | 4.2 | GROUP 1DX - 15.00 GM | A604856 |

| SAMPLES | Datum | Easting | Northing | Elevation | Mo | Cu | Pb | Zn | Ag | Ni | Co | Mn |
|---------|----------|---------|----------|-----------|-----|-------|------|-----|-----|------|------|-----|
| MZ-8042 | NAD83-9V | 365055 | 6970017 | 1649.3 | 2.4 | 323.9 | 30.6 | 136 | 0.3 | 55.5 | 30.6 | 607 |
| MZ-8043 | NAD83-9V | 365042 | 6970070 | 1662.7 | 1.2 | 361.1 | 24.5 | 87 | 0.6 | 25.1 | 22.4 | 543 |
| MZ-8044 | NAD83-9V | 365004 | 6970116 | 1665.7 | 2.5 | 1099 | 53.5 | 138 | 0.8 | 34.5 | 24.1 | 478 |
| MZ-8045 | NAD83-9V | 364971 | 6970149 | 1652 | 1 | 385.5 | 35.2 | 85 | 0.5 | 20.2 | 16.3 | 426 |
| MZ-8046 | NAD83-9V | 364914 | 6970156 | 1655.7 | 1.2 | 189.9 | 14.6 | 66 | 0.3 | 13.2 | 14.8 | 411 |
| MZ-8047 | NAD83-9V | 364808 | 6970137 | 1650.2 | 1.4 | 285.2 | 15.4 | 76 | 0.3 | 22.7 | 22.9 | 511 |
| MZ-8048 | NAD83-9V | 364758 | 6970144 | 1656.3 | 1.5 | 156.3 | 9.9 | 80 | 0.2 | 42.2 | 16.6 | 427 |
| MZ-8049 | NAD83-9V | 364709 | 6970148 | 1656 | 2.2 | 225.9 | 16.5 | 94 | 0.5 | 48.4 | 22.3 | 596 |
| MZ-8050 | NAD83-9V | 364652 | 6970130 | 1663.3 | 1.5 | 119.6 | 7.8 | 52 | 0.2 | 20.8 | 7 | 240 |
| MZ-8504 | NAD83-9V | 364602 | 6970114 | 1669.7 | 2.4 | 175.9 | 11.5 | 72 | 0.3 | 30.5 | 10.5 | 350 |

| SAMPLES | Fe | As | U | Au | Th | Sr | Cd | Sb | Bi | V | Ca | P |
|---------|------|--------|------|-------|------|----|-----|-----|------|----|------|-------|
| MZ-8042 | 4.71 | 206.6 | 3.6 | 9.5 | 9.5 | 28 | 0.7 | 2.9 | 13 | 76 | 0.13 | 0.07 |
| MZ-8043 | 3.66 | 314.2 | 3.3 | 7.6 | 12 | 35 | 0.4 | 2.4 | 18.6 | 73 | 0.28 | 0.079 |
| MZ-8044 | 4.99 | 2510.5 | 12.1 | 21.6 | 9 | 33 | 0.4 | 4.2 | 44.2 | 81 | 0.26 | 0.096 |
| MZ-8045 | 3.28 | 940.6 | 9.7 | 51.9 | 10.2 | 28 | 0.4 | 3.8 | 32.1 | 58 | 0.25 | 0.068 |
| MZ-8046 | 3.02 | 118 | 6.2 | 20.1 | 7.4 | 33 | 0.3 | 1.3 | 28.9 | 63 | 0.3 | 0.085 |
| MZ-8047 | 4.23 | 160.4 | 9.9 | 22 | 9.7 | 22 | 0.2 | 1 | 26.5 | 86 | 0.22 | 0.071 |
| MZ-8048 | 2.97 | 204.2 | 2.1 | 101.8 | 2.2 | 16 | 0.3 | 1.4 | 11.8 | 57 | 0.11 | 0.08 |
| MZ-8049 | 3.78 | 348.1 | 7.2 | 15.9 | 7.9 | 20 | 0.2 | 1.8 | 10.7 | 74 | 0.16 | 0.066 |
| MZ-8050 | 2.61 | 137.4 | 1.7 | 10 | 2.3 | 16 | 0.1 | 1.2 | 11.2 | 44 | 0.09 | 0.077 |
| MZ-8504 | 4.74 | 248.4 | 2.7 | 21.7 | 4.4 | 23 | 0.2 | 2.3 | 14.4 | 75 | 0.07 | 0.086 |

| SAMPLES | La | Cr | Mg | Ba | Ti | B | Al | Na | K | W | Hg | Sc | Tl |
|---------|----|----|------|-----|-------|---|------|-------|------|-----|------|-----|-----|
| MZ-8042 | 20 | 28 | 0.71 | 294 | 0.111 | 2 | 2.26 | 0.008 | 0.22 | 1.1 | 0.02 | 5.2 | 0.5 |
| MZ-8043 | 22 | 19 | 0.89 | 420 | 0.19 | 1 | 2.87 | 0.017 | 0.26 | 3.4 | 0.01 | 6.1 | 0.5 |
| MZ-8044 | 30 | 25 | 0.9 | 325 | 0.101 | 2 | 3.64 | 0.012 | 0.2 | 3.1 | 0.05 | 5.4 | 0.6 |
| MZ-8045 | 27 | 14 | 0.71 | 213 | 0.141 | 2 | 2.69 | 0.025 | 0.22 | 5.8 | 0.02 | 5 | 0.4 |
| MZ-8046 | 22 | 13 | 0.71 | 229 | 0.143 | 2 | 2.57 | 0.026 | 0.24 | 4.3 | 0.03 | 4.4 | 0.4 |
| MZ-8047 | 39 | 19 | 1.01 | 236 | 0.194 | 3 | 3.23 | 0.019 | 0.22 | 6.7 | 0.03 | 6.6 | 0.5 |
| MZ-8048 | 13 | 18 | 0.41 | 147 | 0.069 | 1 | 2.09 | 0.009 | 0.13 | 3.9 | 0.03 | 2.8 | 0.2 |
| MZ-8049 | 24 | 28 | 0.67 | 202 | 0.103 | 2 | 2.33 | 0.011 | 0.15 | 2.8 | 0.05 | 5.8 | 0.4 |
| MZ-8050 | 9 | 16 | 0.26 | 140 | 0.052 | 1 | 1.28 | 0.017 | 0.15 | 2.5 | 0.03 | 2.2 | 0.2 |
| MZ-8504 | 13 | 29 | 0.46 | 279 | 0.071 | 1 | 1.42 | 0.014 | 0.35 | 2.3 | 0.03 | 3.9 | 0.4 |

| SAMPLES | S | Ga | Se | Analysis: | Acme file # |
|---------|------|----|-----|----------------------|-------------|
| MZ-8042 | 0.07 | 7 | 1.7 | GROUP 1DX - 15.00 GM | A604856 |
| MZ-8043 | 0 | 8 | 1.3 | GROUP 1DX - 15.00 GM | A604856 |
| MZ-8044 | 0.08 | 11 | 1.8 | GROUP 1DX - 15.00 GM | A604856 |
| MZ-8045 | 0 | 8 | 1.5 | GROUP 1DX - 15.00 GM | A604856 |
| MZ-8046 | 0 | 8 | 1.5 | GROUP 1DX - 15.00 GM | A604856 |
| MZ-8047 | 0 | 10 | 1.6 | GROUP 1DX - 15.00 GM | A604856 |
| MZ-8048 | 0 | 6 | 1.4 | GROUP 1DX - 15.00 GM | A604856 |
| MZ-8049 | 0 | 6 | 1.2 | GROUP 1DX - 15.00 GM | A604856 |
| MZ-8050 | 0.1 | 4 | 1.6 | GROUP 1DX - 15.00 GM | A604856 |
| MZ-8504 | 0.25 | 5 | 3.2 | GROUP 1DX - 15.00 GM | A604856 |