

**GEOCHEMICAL**

**REPORT**

**ALBERT 11 - 18 CLAIMS  
YC38887 - YC38894**

**ALBERT 21 - 24 CLAIMS  
YC38897 - YC389000**

**ALBERT 31 - 32 CLAIMS  
YC38907 - YC38908**

**NTS # 105 M \ 13**

**LAT: 63° 58' N**

**LONG: 135° 45' W**

**MAYO MINING DISTRICT**

**AUTHOR OF REPORT SHAWN RYAN**

**WORK PERFORMED SEPTEMBER 14, 2005**

**DATE OF REPORT SEPTEMBER 05, 2006**

## TABLE OF CONTENT

<b>SUMMARY</b>	<b>P.3</b>
<b>1.0 INTRODUCTION</b>	<b>P.3</b>
<b>2.0 LOCATIONS AND ACCESS</b>	<b>P.3</b>
<b>3.0 PROPERTY DESCRIPTION</b>	<b>P.3</b>
<b>4.0 PHYSIOGRAPHY</b>	<b>P.3</b>
<b>5.0 REGIONAL AND PROPERTY GEOLOGY</b>	<b>P.4</b>
<b>5.1 PROPERTY GEOLOGY</b>	<b>P.4</b>
<b>6.0 WORK PROGRAM / METHODS</b>	<b>P.4</b>
<b>6.1 SOIL WORK</b>	<b>P.4</b>
<b>7.0 INTERPRETATION</b>	<b>P.4</b>
<b>7.1 SOIL WORK</b>	<b>P.4</b>
<b>8.0 RECOMMENDATION</b>	<b>P.5</b>
<b>9.0 REFERENCES CITED</b>	<b>P.5</b>
<b>10.0 COST</b>	<b>P.5</b>
<b>11.0 QUALIFICATION</b>	<b>P.6</b>
<b>Claim Map</b>	<b>p.7</b>
<b>Geology Map</b>	<b>p.8</b>
<b>Geology description</b>	<b>P.9-10</b>
<b>Sample Location Map</b>	<b>Figure 1</b>
<b>Assay Data / Soil GPS Data</b>	<b>Appendix</b>

## **SUMMARY**

The Albert Claims had a crew of two soil sample the claim block for one day. The crews consist of Issac Fage, and Kyle McDougal. The crew collected a total of 62 soil sample. Soil sampling indicated no geochemical anomalies.

### **1.0 INTRODUCTION**

The Albert 11-18, YC38887 -YC38894, Albert 21-24, YC38897- YC38900 and Albert 31-32 , YC38907-YC38908 claims will be renewed for two year.

### **2.0 LOCATIONS AND ACCESS**

The Albert claims are located on NTS 105 M / 13 in the Mayo Mining District. The Property lies 40 kilometer north east of the community of Mayo. Access to the property is via helicopter from the community of Mayo.

### **3.0 PROPERTY DESCRIPTION**

The Property consists of 14 full Quartz mining claims, which are registered in the Mayo Mining District. The Property covers 483 hectares or 700 acres.

### **4.0 PHYSIOGRAPHY**

The property lies between the elevations of 3000 feet and 4300 feet. The property is partially covered with boreal forest in valley bottom. Most of the property lies above the tree line with only willow brush being found on the ridge top.

## **5.0 REGIONAL AND PROPERTY GEOLOGY**

### **5.1 LOCAL GEOLOGY**

The Yukon Geology Web Site indicates the Albert claims are located in Upper Proterozoic to Lower Cambrian Hyland Group. Also known as the Yusezyu Formation. The rock units consist of thin to thick bedded, brown to pale green shale, fine to coarse grained quartz-rich sandstone, grit, and quartz-pebble conglomerate; minor argillaceous limestone; phyllite, quartzofeldspathic and micaceous psammite, gritty psammite and minor marble (Hyland Gp., Yusezyu)

## **6.0 WORK PROGRAM / METHODS**

The Albert claims seen 2 man days of soil work. The crew worked on claim block on September 14, 2005. They collected 62 soil samples in total. The crew travel to and from the claim block via helicopter from the community of Mayo.

### **6.1 SOIL WORK**

The soil work consists of soil sampling with soil augers at an average depth of 60 centimeter. Soil sample were placed in Kraft soil bags with sample numbers marked on the bags. A sample description of the color, depth, slope, horizon and UTM location was noted in field notes. A Garmin 76 GPS was used to get the exact UTM location. All GPS soil sample location were electronically downloaded every evening back in base camp. Soil sample were taken at 50 meters intervals on soil traverse. All assays were processed at the Acme Lab in Vancouver with Group 1DX: ICP - MS on 15 grams.

## **7.0 INTERPRETATION**

### **7.1 SOIL WORK**

The soil work indicated no real gold anomalies (highest value reaching 11.7 ppb Au) and arsenic (16.9 ppm As). The soil program was designed to sample across a magnetic high feature that may be an intrusive at depth. The soil work was done during early September which would have had maximum thaw depth across any swampy ground.

## 8.0 RECOMMENDATION

I would recommend one more run of soil work and if results are still poor then I will drop the claims.

## 9.0 REFERENCES CITED

YTG Geology Web site.

## 10.0 COST

Assay Cost 62sample @ \$18.00 per sample	\$1,116.00
Wage 2 man days @ \$250.00 per day	\$500.00
Helicopter Access 1.2 hours @ \$1200 per hour	\$1,440.00
Truck plus Gas, Dawson to Mayo	\$160.00
Report Writing	\$400.00
	-----
Total	\$3,616.00

## 11.0 QUALIFICATION

I Shawn Ryan located in Dawson City, Yukon work as a professional prospector. I run a small exploration company located in Dawson city.

I have worked in the exploration business for the last 24 years. I worked the first 12 years as a contractor working on numerous projects in the NWT, Ontario, Quebec and the Yukon. I have worked for the last 8 years as a local prospector for myself.

I have being trained to run various geophysical instruments and surveys such as magnetic surveys, max-min surveys, induce polarity surveys and Vlf surveys.

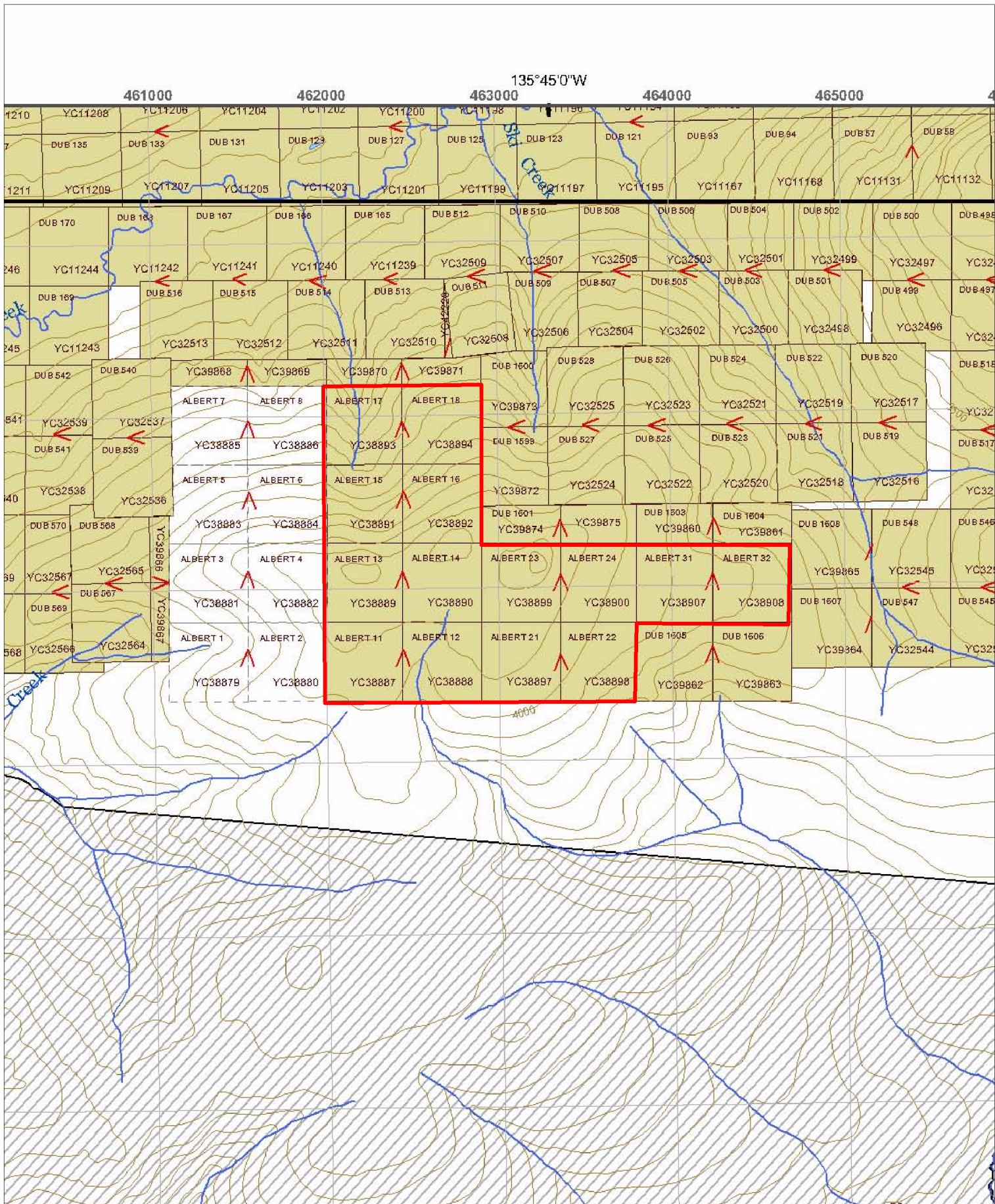
I have overseen the Albert soil Survey.

I own 100 % of the Albert claims.

Dated this 05 of September 2006 in Dawson City, Yukon.

Respectfully submitted

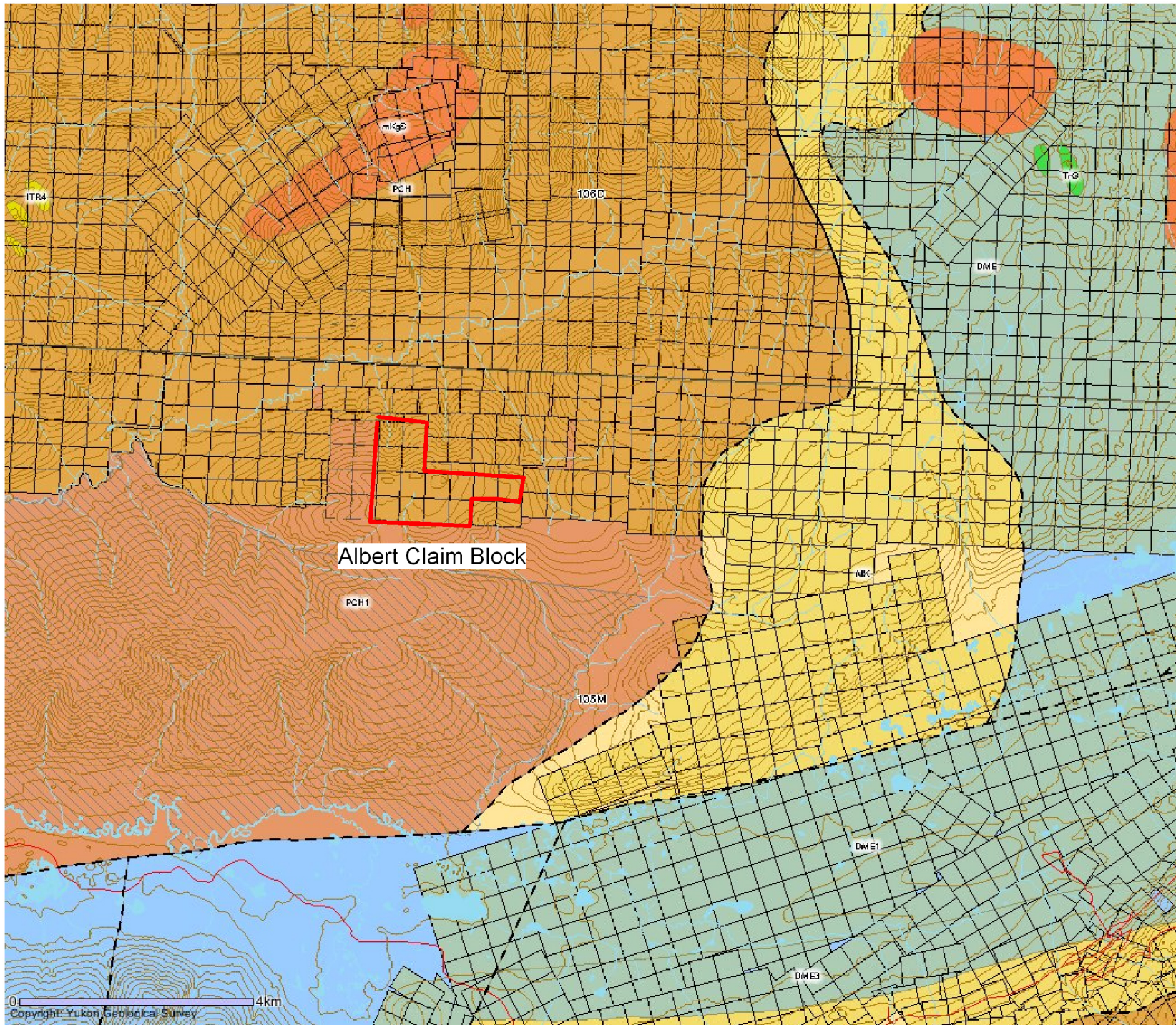
Shawn Ryan



# Albert Claims



NTS 105 M / 13



Albert Claim Block

# Albert Geology Description (YTG Geology Web Site)

## MID-CRETACEOUS



### **mKS: SELWYN SUITE**

plutonic suite of intermediate (g) to more felsic composition (q) and rarely syenitic (y); equivalent felsic dykes (f); complete compositional gradation so that these designations are somewhat arbitrary

g. resistant, blocky, fine to coarse grained equigranular to porphyritic (K-feldspar) biotite quartz monzonite and granodiorite and minor quartz diorite; minor leuco-quartz monzonite and syenite (**Selwyn Suite**)

## MISSISSIPPIAN



### **MK: KENO HILL**

massive to thick bedded quartz arenite; thin to medium bedded quartz arenite interstratified with black shale or carbonaceous phyllite; local scour surfaces and shale intraclasts; locally foliated and lineated (**Keno Hill Quartzite**)

## DEVONIAN AND MISSISSIPPIAN

DME

### DME: EARN

complex assemblage of submarine fan and channel deposits (1), (5) within black siliceous shale and chert (2), (4) and including separated small occurrences of felsic volcanic rocks (3); barite common, and many occurrences of stratiform Pb-Zn

1. thin bedded, laminated slate with thin to thickly interbedded fine to medium grained chert-quartz arenite and wacke; thick members of chert pebble conglomerate; black siliceous siltstone; nodular and bedded barite; rare limestone (**Earn Gp., Portrait Lake and Prevost**)
3. massive felsic to intermediate volcanic flows, tuffs and subvolcanic plug(s); locally highly altered; greenish chert and minor black slate; quartz eye quartz-sericite chlorite phyllite; local vesicular or amygdaloidal basalt, locally pillowed

## UPPER PROTEROZOIC TO LOWER CAMBRIAN

PCH

PCH2

### PCH: HYLAND

consists upwards of coarse turbiditic clastics (1), limestone (2) and fine clastics typified by maroon and green shale (3); may include younger (4) units; includes scattered mafic volcanic rocks (5) (**Hyland Gp.**)

1. thin to thick bedded, brown to pale green shale, fine to coarse grained quartz-rich sandstone, grit, and quartz-pebble conglomerate; minor argillaceous limestone; phyllite, quartzofeldspathic and micaceous psammite, gritty psammite and minor marble (**Hyland Gp., Yusezyu**)



SAMPLES	GPS ID	UTM	Easting	Northing	Date Time	Elevation	Project	Mo	Cu	Pb	Zn	Ag	Ni
RW-04306	RW04306	NAD83-8V	462533	7095081	14/09/2005 12:40	1278.3	Albert 2005	1	17.7	14.7	56	0	17.9
RW-04266	RW04266	NAD83-8V	464535	7095060	14/09/2005 13:53	1148.8	Albert 2005	0.6	41.1	36	70	0	44.4
RW-04321	RW04321	NAD83-8V	461830	7094900	14/09/2005 14:24	1245.7	Albert 2005	1.4	17.9	13.8	59	0	19
RW-04269	RW04269	NAD83-8V	464233	7094869	14/09/2005 14:23	1164	Albert 2005	0.7	19	21.8	59	0	19.5
RW-04307	RW04307	NAD83-8V	462437	7095088	14/09/2005 12:50	1281.4	Albert 2005	0.8	30.8	27	71	0	24.7
RW-04262	RW04262	NAD83-8V	464135	7095066	14/09/2005 13:29	1182.3	Albert 2005	0.8	27.4	16.1	65	0	22.7
RW-04310	RW04310	NAD83-8V	462135	7095083	14/09/2005 13:07	1288.7	Albert 2005	0.9	23.2	22.4	56	0	21
RW-04308	RW04308	NAD83-8V	462335	7095089	14/09/2005 12:55	1287.2	Albert 2005	1	12.4	20.6	50	0	16.3
RW-04263	RW04263	NAD83-8V	464234	7095065	14/09/2005 13:35	1179.6	Albert 2005	0.4	23.6	22.2	56	0	23.7
RW-04254	RW04254	NAD83-8V	463340	7095075	14/09/2005 12:34	1285.3	Albert 2005	0.8	29.7	14.7	57	0	23.8
RW-04255	RW04255	NAD83-8V	463438	7095075	14/09/2005 12:39	1261.3	Albert 2005	0.9	21.3	16.8	63	0	19.7
RW-04252	RW04252	NAD83-8V	463137	7095077	14/09/2005 12:22	1288.4	Albert 2005	1	23.9	15	65	0	21.2
RW-04253	RW04253	NAD83-8V	463239	7095078	14/09/2005 12:28	1293.6	Albert 2005	0.4	14.3	11	45	0	16.2
RW-04326	RW04326	NAD83-8V	462333	7094889	14/09/2005 14:54	1274.7	Albert 2005	1.2	16.6	16	58	0	15.7
RW-04278	RW04278	NAD83-8V	463334	7094871	14/09/2005 15:25	1241.8	Albert 2005	0.8	22.1	11.4	62	0	19.5
RW-04318	RW04318	NAD83-8V	461532	7094900	14/09/2005 14:05	1197.6	Albert 2005	0.9	15.2	15.4	46	0	16.4
RW-04309	RW04309	NAD83-8V	462236	7095092	14/09/2005 13:01	1294.5	Albert 2005	0.9	15.3	18.5	50	0	19.4
RW-04320	RW04320	NAD83-8V	461733	7094899	14/09/2005 14:18	1227.1	Albert 2005	0.8	19	14.3	57	0	19.9
RW-04319	RW04319	NAD83-8V	461630	7094899	14/09/2005 14:11	1214.3	Albert 2005	1	22.8	14.3	57	0	18.9
RW-04271	RW04271	NAD83-8V	464034	7094870	14/09/2005 14:36	1180.5	Albert 2005	0.8	16.3	15.3	56	0	17.6
RW-04267	RW04267	NAD83-8V	464434	7094863	14/09/2005 14:02	1154	Albert 2005	0.6	20	14.8	55	0	17.6
RW-04304	RW04304	NAD83-8V	462739	7095083	14/09/2005 12:29	1276.5	Albert 2005	0.8	19.7	10	52	0	19.2
RW-04317	RW04317	NAD83-8V	461432	7094893	14/09/2005 13:58	1186.9	Albert 2005	0.6	20.2	16.9	41	0.1	13.1
RW-04279	RW04279	NAD83-8V	463234	7094877	14/09/2005 15:31	1264.6	Albert 2005	0.8	23.4	13.5	64	0	23.4
RW-04264	RW04264	NAD83-8V	464337	7095065	14/09/2005 13:40	1172.3	Albert 2005	0.4	29	28	47	0	31.5
RW-04276	RW04276	NAD83-8V	463531	7094871	14/09/2005 15:10	1224.1	Albert 2005	0.8	23.7	13.3	63	0	20.6
RW-04323	RW04323	NAD83-8V	462034	7094889	14/09/2005 14:37	1264	Albert 2005	0.7	16.4	12.6	55	0	14.8
RW-04305	RW04305	NAD83-8V	462635	7095084	14/09/2005 12:35	1279.9	Albert 2005	0.7	16.5	13.6	43	0	18.5
RW-04251	RW04251	NAD83-8V	463037	7095080	14/09/2005 12:10	1284.1	Albert 2005	0.8	23.4	17.3	61	0	20.2
RW-04303	RW04303	NAD83-8V	462841	7095080	14/09/2005 12:23	1277.1	Albert 2005	0.7	19.7	13.2	51	0	18.3
RW-04260	RW04260	NAD83-8V	463940	7095069	14/09/2005 13:11	1195.1	Albert 2005	0.7	19.2	10.9	55	0	17.3
RW-04277	RW04277	NAD83-8V	463431	7094874	14/09/2005 15:18	1235	Albert 2005	0.6	23	13.4	61	0	20.6
RW-04274	RW04274	NAD83-8V	463732	7094872	14/09/2005 14:58	1202.1	Albert 2005	0.8	19.7	12.4	59	0	18.6
RW-04328	RW04328	NAD83-8V	462536	7094881	14/09/2005 15:06	1262.8	Albert 2005	0.8	16.1	14.7	53	0	15.5
RW-04331	RW04331	NAD83-8V	462838	7094880	14/09/2005 15:26	1270.4	Albert 2005	0.9	26.7	14.1	68	0	25.5
RW-04312	RW04312	NAD83-8V	461933	7095093	14/09/2005 13:20	1268	Albert 2005	0.8	15.9	13	50	0	19.1
RW-04272	RW04272	NAD83-8V	463931	7094866	14/09/2005 14:43	1190.2	Albert 2005	0.7	20.7	11.1	55	0	17.7
RW-04325	RW04325	NAD83-8V	462231	7094895	14/09/2005 14:48	1279.2	Albert 2005	0.7	20.4	14.1	59	0	17.7
RW-04330	RW04330	NAD83-8V	462736	7094878	14/09/2005 15:19	1262.2	Albert 2005	0.8	18.5	12.4	61	0	18.7
RW-04259	RW04259	NAD83-8V	463840	7095073	14/09/2005 13:02	1206.4	Albert 2005	0.6	19	10.2	56	0	18.1
RW-04261	RW04261	NAD83-8V	464042	7095070	14/09/2005 13:17	1188.7	Albert 2005	0.8	19.4	11.8	53	0	15.9
RW-04275	RW04275	NAD83-8V	463632	7094869	14/09/2005 15:04	1208.8	Albert 2005	0.7	17.4	11	51	0	16.6
RW-04280	RW04280	NAD83-8V	463134	7094877	14/09/2005 15:38	1274.7	Albert 2005	0.8	19.6	13.3	54	0	17.9
RW-04257	RW04257	NAD83-8V	463639	7095073	14/09/2005 12:51	1235	Albert 2005	0.6	21	12.3	56	0	18.4
RW-04316	RW04316	NAD83-8V	461535	7095095	14/09/2005 13:43	1238.7	Albert 2005	0.8	20.2	19.6	58	0	20
RW-04302	RW04302	NAD83-8V	462935	7095078	14/09/2005 12:13	1274.7	Albert 2005	0.7	16.7	11.4	56	0	15.7
RW-04324	RW04324	NAD83-8V	462137	7094893	14/09/2005 14:43	1275.3	Albert 2005	0.7	15.3	13.8	42	0	14.4
RW-04258	RW04258	NAD83-8V	463739	7095070	14/09/2005 12:56	1219.8	Albert 2005	0.7	18.8	13.9	50	0	16
RW-04273	RW04273	NAD83-8V	463833	7094871	14/09/2005 14:51	1189.6	Albert 2005	0.6	19.3	11.1	51	0	17
RW-04311	RW04311	NAD83-8V	462035	7095093	14/09/2005 13:14	1281.7	Albert 2005	0.6	4.4	15.1	19	0	5.8
RW-04322	RW04322	NAD83-8V	461935	7094896	14/09/2005 14:30	1261.6	Albert 2005	0.7	18.7	14.2	54	0	17.9
RW-04281	RW04281	NAD83-8V	463030	7094875	14/09/2005 15:45	1275.3	Albert 2005	0.8	17.8	10.7	50	0	16.8
RW-04329	RW04329	NAD83-8V	462634	7094889	14/09/2005 15:12	1268.6	Albert 2005	0.7	19.4	12	55	0	18.2
RW-04256	RW04256	NAD83-8V	463540	7095070	14/09/2005 12:45	1246.3	Albert 2005	0.6	18.8	11.1	47	0	17.4
RW-04268	RW04268	NAD83-8V	464333	7094864	14/09/2005 14:17	1159.2	Albert 2005	0.3	18.7	14.5	47	0	19.9
RW-04332	RW04332	NAD83-8V	462932	7094880	14/09/2005 15:32	1273.1	Albert 2005	0.8	18.9	10.8	54	0	19.2
RW-04327	RW04327	NAD83-8V	462433	7094889	14/09/2005 15:00	1268.6	Albert 2005	0.6	18.1	13.8	49	0	16.6
RW-04265	RW04265	NAD83-8V	464436	7095063	14/09/2005 13:47	1158.8	Albert 2005	0.7	33.7	60.4	64	0	40.7
RW-04314	RW04314	NAD83-8V	461733	7095091	14/09/2005 13:31	1260.3	Albert 2005	0.6	18.4	16.6	45	0	12.8
RW-04313	RW04313	NAD83-8V	461832	7095092	14/09/2005 13:26	1266.7	Albert 2005	0.5	6.3	16.2	23	0	6.4
RW-04315	RW04315	NAD83-8V	461636	7095088	14/09/2005 13:37	1248.8	Albert 2005	0.6	12.9	17.8	32	0	9.9
RW-04270	RW04270	NAD83-8V	464133	7094869	14/09/2005 14:29	1170.4	Albert 2005	0.3	22.7	17.4	68	0	22.7

SAMPLES	Co	Mn	Fe	As	U	Au	Th	Sr	Cd	Sb	Bi	V	Ca	P	La	Cr	Mg	Ba	Ti	B	Al
RW-04306	9.4	315	2.52	16.9	0.7	4.1	4.6	8	0.1	0.8	0.2	43	0.08	0.028	13	25	0.38	101	0.027	1	1.56
RW-04266	21.9	618	3.04	15.5	1.1	1.6	15.5	6	0.1	0.6	0.4	25	0.06	0.034	25	24.4	0.46	108	0.015	0	1.56
RW-04321	7.5	309	2.92	14.6	0.5	1.1	2.8	7	0.1	0.9	0.2	51	0.05	0.031	11	23.5	0.3	62	0.037	0	1.06
RW-04269	8.6	263	2.54	14.3	0.7	1.6	2.6	12	0.1	0.6	0.3	31	0.11	0.029	26	20.5	0.38	126	0.013	0	1.29
RW-04307	11.2	340	3.79	14.2	0.9	1.4	9.2	6	0.1	0.6	0.3	38	0.05	0.03	25	27.9	0.53	74	0.018	1	1.72
RW-04262	10.4	418	2.49	13.9	0.9	2.4	5.7	9	0.2	1	0.2	32	0.09	0.047	16	21.5	0.36	110	0.027	1	1.17
RW-04310	8.7	221	2.57	13.8	0.6	1.4	5.9	7	0.1	0.6	0.3	35	0.07	0.032	13	21.3	0.33	63	0.02	1	1.35
RW-04308	6.7	221	3.1	13.8	0.6	1.1	4.3	6	0.1	0.7	0.3	57	0.05	0.024	13	26.7	0.36	62	0.028	1	1.52
RW-04263	10.1	384	2.58	13.6	0.6	4.9	6.3	26	0.1	1.2	0.2	17	0.45	0.055	30	12.3	0.3	85	0.01	0	0.8
RW-04254	9.6	253	2.33	12.6	1	1.3	4.7	10	0.1	0.6	0.2	35	0.1	0.046	22	22.6	0.4	198	0.03	1	1.37
RW-04255	10.2	353	2.48	12.1	1	3.4	1.2	11	0.2	0.6	0.2	40	0.11	0.047	16	23.5	0.4	134	0.021	1	1.42
RW-04252	10.3	358	2.74	12.1	1	1.8	5.6	9	0.1	0.6	0.2	40	0.07	0.044	23	25.6	0.48	178	0.03	1	1.55
RW-04253	5.9	174	2.44	11.8	0.6	4.6	3.9	7	0.1	0.6	0.1	34	0.06	0.037	16	21.3	0.33	66	0.028	1	1.08
RW-04326	7.6	288	2.92	11.6	0.9	6.5	2.4	8	0.1	0.7	0.2	54	0.06	0.032	14	32.3	0.39	120	0.031	1	1.72
RW-04278	7.3	223	2.26	11.3	0.8	2.1	1.7	10	0.1	0.6	0.1	38	0.09	0.048	15	22.8	0.36	116	0.026	1	1.15
RW-04318	6.4	166	2.33	10.9	0.5	6	4.8	7	0.1	0.5	0.2	35	0.04	0.02	15	21.3	0.29	108	0.018	0	1.41
RW-04309	9.2	336	2.59	10.8	0.6	2.3	3.7	6	0.1	0.6	0.2	40	0.05	0.03	17	21.4	0.33	69	0.018	0	1.34
RW-04320	9.4	378	2.36	10.6	0.9	1.6	1.5	9	0.1	0.5	0.2	37	0.09	0.038	17	23.3	0.36	127	0.02	0	1.25
RW-04319	7.2	218	2.43	10.6	0.9	1.5	5.1	8	0.1	0.7	0.2	39	0.05	0.022	17	23	0.34	95	0.03	1	1.23
RW-04271	8.7	295	2.39	10.5	0.7	7.2	2.3	13	0.1	0.6	0.2	30	0.16	0.046	18	19.5	0.36	139	0.015	0	1.14
RW-04267	6.8	257	2.35	10.1	0.6	3.5	6	5	0	0.8	0.2	23	0.04	0.03	25	17.1	0.36	76	0.015	0	1.06
RW-04304	8.1	279	2.04	10	0.6	1.6	3	12	0.1	0.6	0.1	33	0.19	0.048	15	21.5	0.36	136	0.025	2	1.17
RW-04317	4.6	184	2.85	9.8	0.7	0.6	2.3	7	0.1	0.3	0.3	21	0.03	0.043	23	12.9	0.27	56	0.005	1	1.21
RW-04279	9.6	338	2.5	9.7	0.9	2.1	4.9	9	0.1	0.6	0.1	35	0.08	0.033	21	22.8	0.43	119	0.027	0	1.24
RW-04264	13	959	3.24	9.7	0.7	1.9	14.5	32	0.1	1	0.2	20	0.31	0.048	34	14.2	0.26	134	0.015	0	0.91
RW-04276	7.8	301	2.25	9.5	0.8	7.9	1.7	18	0.1	0.7	0.1	40	0.2	0.054	17	25.1	0.43	282	0.028	0	1.19
RW-04323	5.4	189	2.18	9.4	0.9	2.1	0.5	10	0.1	0.5	0.2	41	0.11	0.055	16	24.4	0.35	96	0.022	1	1.27
RW-04305	7.5	234	2.29	9.4	0.6	1.6	2.3	6	0	0.5	0.2	31	0.06	0.03	19	20.8	0.34	99	0.014	1	1.24
RW-04251	7.8	274	2.55	9.2	0.9	1.5	3	8	0.1	0.5	0.2	33	0.07	0.04	26	23.5	0.46	100	0.018	2	1.46
RW-04303	7	213	2.24	9.1	0.7	1	4.4	8	0.1	0.8	0.1	30	0.06	0.02	26	20.2	0.36	134	0.017	0	1.23
RW-04260	7.2	303	2	8.8	0.8	1.6	1	12	0.1	0.5	0.1	31	0.12	0.054	18	19.9	0.34	158	0.018	0	1.14
RW-04277	8.1	279	2.24	8.7	0.7	1.8	3.3	11	0.1	0.7	0.1	36	0.11	0.044	19	21.9	0.43	149	0.033	0	1.17
RW-04274	7.6	245	2.28	8.7	0.7	1.2	1.1	13	0.1	0.5	0.2	38	0.15	0.047	17	23.5	0.38	157	0.019	0	1.32
RW-04328	6.7	230	2.38	8.6	0.6	1.2	1.7	8	0.1	0.4	0.2	40	0.06	0.035	18	25	0.35	94	0.022	1	1.36
RW-04331	11.8	400	2.66	8.6	0.7	0.8	3.7	9	0.2	0.7	0.3	35	0.11	0.046	20	24.3	0.47	90	0.025	1	1.36
RW-04312	8.2	428	1.93	8.5	0.6	1.3	2.5	11	0.1	0.6	0.2	29	0.12	0.041	16	17.5	0.31	114	0.021	1	0.95
RW-04272	7.1	243	2.09	8.4	0.7	11.7	1.5	11	0.1	0.6	0.1	29	0.13	0.052	20	18.6	0.35	132	0.019	0	1.09
RW-04325	7.6	220	2.53	8.4	0.8	2.1	3.4	7	0.1	0.4	0.2	35	0.06	0.03	23	23.2	0.4	96	0.019	0	1.4
RW-04330	7.7	232	2.32	8.4	0.9	1.4	0.8	11	0.1	0.5	0.1	38	0.12	0.053	16	23.6	0.39	140	0.02	1	1.43
RW-04259	7	283	2.04	8.3	0.8	2.6	3.4	16	0.1	0.5	0.2	31	0.16	0.046	18	19.7	0.39	218	0.027	0	1.08
RW-04261	6.2	220	1.89	8.3	0.7	2.3	0.4	10	0.1	1.1	0.1	32	0.11	0.057	17	19.4	0.31	140	0.017	1	1.09
RW-04275	6.3	242	1.87	8.3	1.2	2	1.4	23	0.1	0.6	0.1	34	0.25	0.056	14	20.8	0.34	211	0.019	0	1.06
RW-04280	7.3	233	2.33	8.3	0.7	1.2	1.5	7	0	0.4	0.2	32	0.06	0.036	19	21.9	0.37	88	0.016	0	1.21
RW-04257	8.2	231	2.17	8.2	0.8	1	3.7	9	0.1	0.5	0.2	29	0.08	0.033	21	19.4	0.36	126	0.02	0	1.26
RW-04316	9.1	305	2.24	8.2	0.9	0	5	7	0.1	2.3	0.2	22	0.04	0.023	30	13.1	0.22	69	0.012	0	0.87
RW-04302	5.5	130	2.12	8.1	0.8	3.1	0.5	9	0.2	0.5	0.2	39	0.08	0.057	16	24.5	0.35	150	0.02	1	1.3
RW-04324	6.3	198	2.04	8	0.6	1.1	0.5	6	0	0.4	0.2	34	0.04	0.032	18	20.2	0.28	66	0.014	0	1.11
RW-04258	6.5	222	2.15	7.8	0.7	1.7	1.1	8	0.1	0.5	0.1	30	0.05	0.036	20	19	0.34	136	0.013	0	1.28
RW-04273	6.6	202	1.97	7.7	0.7	5	0.9	13	0.1	0.6	0.1	30	0.15	0.044	19	18.5	0.32	168	0.016	0	1.08
RW-04311	2	51	1.62	7.7	0.4	1.7	0	5	0	0.4	0.2	37	0.02	0.041	10	15.4	0.14	37	0.004	1	0.77
RW-04322	7.4	265	2.2	7.6	0.5	1.5	1.4	8	0.1	0.4	0.2	33	0.08	0.036	19	20	0.36	98	0.022	0	1.15
RW-04281	5.9	175	2.1	7.5	0.7	1.7	1.3	9	0.1	0.5	0.1	36	0.08	0.034	16	22.4	0.37	104	0.026	1	1.19
RW-04329	7.2	206	2.21	7.1	0.6	2.3	1	10	0.1	0.5	0.2	37	0.1	0.042	18	23.2	0.39	121	0.021	0	1.25
RW-04256	6.9	244	2.02	7	0.5	0.6	1.6	15	0	0.3	0.2	29	0.21	0.044	18	18.4	0.41	122	0.017	1	1.11
RW-04268	6.8	299	2.1	6.8	0.6	0.7	7.8	12	0	0.6	0.2	18	0.13	0.029	31	14.5	0.34	176	0.009	0	1.04
RW-04332	7.2	242	2.34	6.7	0.6	2.7	0.6	8	0.1	0.5	0.2	38	0.08	0.038	22	24.7	0.39	97	0.017	0	1.41
RW-04327	6.1	190	2.32	6.4	0.7	6	1	7	0.1	0.3	0.2	28	0.05	0.029	24	20.4	0.39	70	0.013	1	1.3
RW-04265	15.8	1140	3.24	6.2	1.3	1.6	13	8	0.1	0.6	0.4	25	0.08	0.041	40	18.8	0.37	134	0.015	0	1.25
RW-04314	4.6	154	2.26	6.1	0.8	1.2	2.7	6	0	0.5	0.2	24	0.04	0.029	21	17.1	0.29	53	0.011	1	1.06
RW-04313	2.2	61	1.8	5.4	0.5	1.3	0.1	5	0.1	0.3	0.2	34	0.03	0.022	13	16.6	0.16	68	0.012	1	0.97
RW-04315	3.2	101	1.74	5.3	0.6	0.8	0.3	5	0	0.4	0.2	20	0.02	0.028	21	11.7	0.17	39	0.006	0	0.91
RW-04270	10.3	393	2.68	5.2	0.8	0.8	5.2	10	0.1	0.5	0.2	19	0.1	0.048	38	18.5	0.51	97	0.008	0	1.31

SAMPLES	Na	K	W	Hg	Sc	Tl	S	Ga	Se	Analysis	Acme file
RW-04306	0.004	0.03	0.2	0.04	2.3	0.1	0	4	0.7	GROUP 1DX - 15.00 GM	A508113
RW-04266	0.002	0.03	0.1	0.03	2.8	0.1	0	3	0.6	GROUP 1DX - 15.00 GM	A508113
RW-04321	0.003	0.03	0.2	0.02	1.8	0.1	0	4	0	GROUP 1DX - 15.00 GM	A508113
RW-04269	0.003	0.03	0.1	0.02	1.5	0.1	0	4	0	GROUP 1DX - 15.00 GM	A508113
RW-04307	0.003	0.03	0.1	0.03	2	0.1	0	5	0.6	GROUP 1DX - 15.00 GM	A508113
RW-04262	0.003	0.03	0.2	0.02	2.4	0.1	0	3	0	GROUP 1DX - 15.00 GM	A508113
RW-04310	0.003	0.03	0.2	0.02	1.7	0.1	0	4	0	GROUP 1DX - 15.00 GM	A508113
RW-04308	0.003	0.02	0.1	0.03	1.9	0.1	0	5	0	GROUP 1DX - 15.00 GM	A508113
RW-04263	0.003	0.04	0.1	0.03	2	0.1	0	2	0	GROUP 1DX - 15.00 GM	A508113
RW-04254	0.004	0.03	0.2	0.05	3	0.1	0	3	0.6	GROUP 1DX - 15.00 GM	A508113
RW-04255	0.004	0.04	0.2	0.04	1.9	0.1	0	4	0.6	GROUP 1DX - 15.00 GM	A508113
RW-04252	0.004	0.03	0.1	0.04	3.4	0.1	0	4	0	GROUP 1DX - 15.00 GM	A508113
RW-04253	0.003	0.03	0.2	0.03	2	0.1	0	3	0.6	GROUP 1DX - 15.00 GM	A508113
RW-04326	0.004	0.03	0.2	0.04	2.4	0.1	0	4	0.7	GROUP 1DX - 15.00 GM	A508113
RW-04278	0.004	0.03	0.2	0.03	2	0.1	0	3	0	GROUP 1DX - 15.00 GM	A508113
RW-04318	0.003	0.05	0.2	0.03	1.7	0.1	0	3	0	GROUP 1DX - 15.00 GM	A508113
RW-04309	0.003	0.02	0.1	0.04	1.4	0.1	0	5	0	GROUP 1DX - 15.00 GM	A508113
RW-04320	0.003	0.04	0.1	0.04	1.9	0.1	0	3	0	GROUP 1DX - 15.00 GM	A508113
RW-04319	0.003	0.05	0.2	0.02	2.1	0.1	0	4	0	GROUP 1DX - 15.00 GM	A508113
RW-04271	0.004	0.03	0.1	0.02	1.5	0.1	0	3	0	GROUP 1DX - 15.00 GM	A508113
RW-04267	0.002	0.03	0.2	0.02	1.9	0.1	0	3	0	GROUP 1DX - 15.00 GM	A508113
RW-04304	0.004	0.03	0.2	0.03	1.9	0.1	0	3	0	GROUP 1DX - 15.00 GM	A508113
RW-04317	0.002	0.04	0	0.01	0.7	0.1	0	4	0	GROUP 1DX - 15.00 GM	A508113
RW-04279	0.004	0.03	0.1	0.02	2.1	0.1	0	4	0	GROUP 1DX - 15.00 GM	A508113
RW-04264	0.003	0.04	0.1	0.04	5	0.1	0	2	0	GROUP 1DX - 15.00 GM	A508113
RW-04276	0.005	0.03	0.1	0.03	2.5	0.1	0	4	0	GROUP 1DX - 15.00 GM	A508113
RW-04323	0.004	0.03	0.2	0.03	1.5	0.1	0	4	0	GROUP 1DX - 15.00 GM	A508113
RW-04305	0.003	0.03	0.1	0.03	1.5	0.1	0	4	0.6	GROUP 1DX - 15.00 GM	A508113
RW-04251	0.004	0.03	0.1	0.02	1.7	0.1	0	4	0	GROUP 1DX - 15.00 GM	A508113
RW-04303	0.003	0.04	0.1	0.02	2.1	0.1	0	3	0	GROUP 1DX - 15.00 GM	A508113
RW-04260	0.004	0.03	0.1	0.03	1.5	0.1	0	3	0	GROUP 1DX - 15.00 GM	A508113
RW-04277	0.004	0.03	0.1	0.03	2.3	0.1	0	3	0	GROUP 1DX - 15.00 GM	A508113
RW-04274	0.004	0.03	0.2	0.03	1.7	0.1	0	4	0	GROUP 1DX - 15.00 GM	A508113
RW-04328	0.003	0.03	0.1	0.02	1.6	0.1	0	4	0	GROUP 1DX - 15.00 GM	A508113
RW-04331	0.003	0.03	0.2	0.02	1.9	0.1	0	4	0.6	GROUP 1DX - 15.00 GM	A508113
RW-04312	0.004	0.03	0.1	0.01	1.6	0.1	0	3	0	GROUP 1DX - 15.00 GM	A508113
RW-04272	0.004	0.02	0.1	0.02	1.5	0.1	0	3	0	GROUP 1DX - 15.00 GM	A508113
RW-04325	0.003	0.03	0.1	0.04	2	0.1	0	4	0	GROUP 1DX - 15.00 GM	A508113
RW-04330	0.004	0.03	0.1	0.03	1.5	0.1	0	4	0.6	GROUP 1DX - 15.00 GM	A508113
RW-04259	0.004	0.03	0.1	0.03	2.2	0.1	0	3	0	GROUP 1DX - 15.00 GM	A508113
RW-04261	0.004	0.03	0.2	0.03	1.2	0.1	0	3	0	GROUP 1DX - 15.00 GM	A508113
RW-04275	0.005	0.02	0.2	0.03	1.9	0.1	0	3	0	GROUP 1DX - 15.00 GM	A508113
RW-04280	0.003	0.02	0.1	0.02	1.4	0.1	0	4	0	GROUP 1DX - 15.00 GM	A508113
RW-04257	0.004	0.03	0.2	0.02	2.1	0.1	0	3	0	GROUP 1DX - 15.00 GM	A508113
RW-04316	0.003	0.06	0.1	0.02	1.2	0.1	0	3	0	GROUP 1DX - 15.00 GM	A508113
RW-04302	0.004	0.02	0.1	0.03	1.4	0.1	0	4	0	GROUP 1DX - 15.00 GM	A508113
RW-04324	0.003	0.03	0.1	0.02	0.9	0.1	0	4	0	GROUP 1DX - 15.00 GM	A508113
RW-04258	0.003	0.03	0.1	0.02	1.3	0.1	0	3	0	GROUP 1DX - 15.00 GM	A508113
RW-04273	0.004	0.02	0.1	0.03	1.5	0.1	0	3	0	GROUP 1DX - 15.00 GM	A508113
RW-04311	0.002	0.02	0.1	0.03	0.2	0.1	0	5	0	GROUP 1DX - 15.00 GM	A508113
RW-04322	0.003	0.03	0.1	0.02	1.3	0.1	0	4	0	GROUP 1DX - 15.00 GM	A508113
RW-04281	0.004	0.03	0.1	0.01	1.7	0.1	0	4	0	GROUP 1DX - 15.00 GM	A508113
RW-04329	0.004	0.03	0.1	0.03	1.4	0.1	0	4	0	GROUP 1DX - 15.00 GM	A508113
RW-04256	0.004	0.03	0.1	0.03	1.4	0.1	0	3	0	GROUP 1DX - 15.00 GM	A508113
RW-04268	0.003	0.03	0.1	0.02	2.1	0.1	0	3	0	GROUP 1DX - 15.00 GM	A508113
RW-04332	0.004	0.03	0.1	0.02	1.2	0.1	0	4	0	GROUP 1DX - 15.00 GM	A508113
RW-04327	0.003	0.03	0.1	0.02	1.1	0.1	0	4	0	GROUP 1DX - 15.00 GM	A508113
RW-04265	0.003	0.03	0.1	0.04	4.4	0.1	0	3	0	GROUP 1DX - 15.00 GM	A508113
RW-04314	0.003	0.04	0.1	0.03	1.1	0.1	0	3	0	GROUP 1DX - 15.00 GM	A508113
RW-04313	0.003	0.04	0.1	0.04	0.6	0.1	0	5	0	GROUP 1DX - 15.00 GM	A508113
RW-04315	0.002	0.04	0.1	0.01	0.4	0.1	0	3	0	GROUP 1DX - 15.00 GM	A508113
RW-04270	0.003	0.03	0.1	0.02	1.4	0	0	4	0	GROUP 1DX - 15.00 GM	A508113