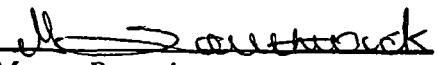




TABLE OF CONTENTS

- **Geochemical Report 2007 Gloria Kerwin.**
- **Statement of qualifications.**
- **Claim status report**
- **ICP analysis reports/assay certificates.**
- **Claim map 115f 16. appendice 1.B,CD**
- **Sample locations**
- **Statement of expenditures.**
- **Appendicies A,B,C,D.**

Costs associated with this report have been approved in the amount of \$ 9600.00 for assessment credit under Certificate of Work No Q1028160


Mining Recorder
Whitehorse Mining District

Assessment work report Eagle Eye claims YC65087-YC65128 & YC65699-YC65704 Owner Gloria Kerwin

Introduction

The objective of the geochemical silt sampling program was to explore the potential for Ni, Cu, Au PGE in an area that displayed a significant magnetic feature as well as previous work illustrated in minfile reports on the area of interest

2007 Work program

Silt sampling was conducted along the drainages on the Eagle Eye property. The level of overburden consists of deep moss, black organic material and volcanic ash to a considerable depth. It has been noted in previous reports and suggests a lateral moraine exists over this area. Rock samples taken within the drainage areas reveal a Triassic era mafic gabbro* Steve Isreal, Yukon Geological Survey, 2007

Silt sampling along the Koidern River, east end of the property was more conducive to sampling and resulted in significant Au, Cu values*. Appendix # 1 ICP lab results and GPS sample locations *Chip samples along a 200' outcrop on the south end of the 47/48 claims are referenced in samples 050-055

A magnetometer survey was undertaken along the base line of the Eagle Eye claims but proved ineffective due to the inexperience of the prospector in using this tool. Consultation with Bob Sterling, Geologist indicated that the survey was inconclusive.

Previous work in this area was conducted on the Liberty property minfile 115F038 and 039, 040 and 041 Cats and Dogs property* see attached map Appendix A Urivan Minerals, Ian Frazer, 2001* see map Appendix B Au, Cu, Co, PGE including rare PGEs
D Eaton's report 1987 page 4, Geomorphology
G Kerwin, 2000, 2006 Au values 7000 plus and Cu 12,599 MMI survey resulted in significant Ag and Pd, Au, Cu on the Bolder Claim 17 (this property is upstream from the Eagle Eye claims)

Local Geology is outlined in Appendix C * Steve Traynor and Steve Isreal of the Yukon Geological Survey team. Bedrock Geology of the Koidern

Page 2

River area was conducted in the summer of 2007. Personal contacts with Steve Isreal revealed a significant structure extending from the White River Resources (Cats and dogs) onto the Eagle eye property where significant Mo, Ni values were found in the drainages crossing the property*see map, appendice D. There is considerable overburden consisting of volcanic ash to depth (10 to 30mtrs) covered by moss and buckbrush (reference to this feature is made in D. Eaton's report on the Liberty property, 1987, minfile 038)

The east end of the claims 43-48 include the same magnetic feature but results are in Au, Cu values (see map appendice D where further sampling will take place in 2008 season. A significant Au value of 25.28 is shown in the silt sampling results from a geological survey of this area *appendice E. *it is assumed that the structure outlined in the map may well be continuous across the entire property but too deep to be mapped at this time.

Conclusions/recommendations

Further sampling based on 2007 work program should take place in 2008, following the drainages to the south where Ni, Mo values indicate exploration. Extend claim areas attach to the white River Resources Cats and Dogs property as well as the Liberty property which lies to the south of the Eagle Eye claims. Further sampling and an MMI survey to follow earlier ICP analysis. Consultations with program and other geologists will determine the scope of these projects.

Two separate projects will be required to cover off the east and west end of the property as the mineral values have proved to be different in the west end and east end of Eagle Eye claims.

References

Steve Isreal and Steve Traynor Yukon Geologic Survey- personal consultations

Bob Sterling Yukon Geologist consultation re magnetometer survey

Minfile references 115F 038,039,040,041 see appendice A

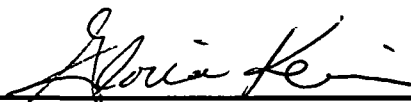
D. Eaton Liberty property report 1987 minfile 038

Ian Frazer Uravan Minerals open file 3057

Statement of qualifications.

Fourteen years prospecting in the Koidern and Edith Creek areas (115F- 9 and 115F- 16) Basic and Advanced prospecting courses Participation in Geoscience and Roundup venues Two Confidentiality Agreements, Falconbridge and White River Resources Conducted Grassroots, Regional Focus 1998 and target Evaluation programs Liaison with local First Nations has resulted in a good working relationship

An MMI survey on the Bolder 17 property was part of the 2006 program, Staking of the Eagle Eye claims and geochem sampling program in 2007 Staked the co-discovery and one mile placer lease on the Koidern River in 2007 Staked Bolder 1 in 2007 over Au,Cu anomaly recorded in the Silt sampling survey conducted by the Yukon Geological survey



Gloria Kerwin

Claim Status Report

25 January 2008

Claim Name and Nbr.	Grant No	Expiry Date	Registered Owner	% Owned	NTS #'s
BOLDER 1	YC60346	2008/04/24	Gloria Jean Kerwin	100 00	115F16
R BOLDER 4	YC08190	2015/09/12	Gloria Jean Kerwin	100 00	115F09
R BOLDER 6	YC08192	2015/09/12	Gloria Jean Kerwin	100 00	115F09
BOLDER 17	YC09085	2010/09/09	Gloria Jean Kerwin	100 00	115F16
BOLDER 18 - 21	YC39412 - YC39415	2010/06/14	Gloria Jean Kerwin	100 00	115F16
R CLAIM 1 - 6	YC47248 - YC47253	2011/09/29	Gloria Jean Kerwin	100 00	115F09
R EAGLEEYE 1 - 10	YC65087 - YC65096	2011/06/12	Gloria Jean Kerwin	100 00	115F16
R EAGLEEYE 11 - 26	YC65097 - YC65112	2010/06/12	Gloria Jean Kerwin	100 00	115F16
R EAGLEEYE 27 - 42	YC65113 - YC65128	2009/06/12	Gloria Jean Kerwin	100 00	115F16
R EAGLEEYE 43 - 48	YC65699 - YC65704	2011/08/24	Gloria Jean Kerwin	100 00	115F16

Criteria(s) used for search

CLAIM STATUS ACTIVE & PENDING OWNER(S) KERWIN GLORIA JEAN REGULATION TYPE QUARTZ

Left column indicator legend

Indicates the claim is on one or more pending renewal(s)
 - Indicates the claim is pending

Right column indicator legend

L Indicates the Quartz Lease
 F Indicates Full Quartz fraction (25+ acres)
 P Indicates Partial Quartz fraction (<25 acres)

Total claims selected 62

D Indicates Placer Discovery
 C - Indicates Placer Codiscovery
 B - Indicates Placer Fraction



AcmeLabs

ACME ANALYTICAL LABORATORIES LTD

852 E Hastings St Vancouver BC V6A 1R6 Canada

Phone (604) 253-3158 Fax (604) 253-1716

www acmelab com

Client

Bolder Ventures

208 - 502 Wheeler St.
Whitehorse YT Y1A 2P2 Canada

Project

None Given

Report Date

November 27 2007

Page

2 of 2

Part 2

CERTIFICATE OF ANALYSIS **VAN07001735-1**

Method	1F	1F	1F	1F	1F	1F	1F	1F	1F	1F	1F	1F	1F	1F	1F	1F	1F	1F	1F	1F	1F
Analyte	La	Cr	Mg	Ba	Tl	B	Al	Na	K	W	Sc	Tl	S	Hg	Se	Te	Ga	Ca	Ge	Hf	
Unit	ppm	ppm	%	ppm	%	ppm	%	%	%	ppm	ppm	ppm	%	ppb	ppm	ppm	ppm	ppm	ppm	ppm	ppm
MDL	0.5	0.5	0.01	0.5	0.001	20	0.01	0.001	0.01	0.1	0.02	0.02	0.02	5	0.1	0.02	0.1	0.02	0.1	0.02	0.02
EE-07 050	Rock	15	235.0	1.98	75.4	0.076	41	2.15	0.014	0.22	<0.1	2.3	0.02	<0.02	<5	0.2	0.04	2.9	0.08	<0.1	<0.02
EE-07 051	Rock	1.9	163.1	1.58	45.8	0.116	37	1.88	0.047	0.08	<0.1	3.5	<0.02	<0.02	<5	0.3	<0.02	2.6	0.06	<0.1	0.05
EE-07 052	Rock	2.1	53.8	1.14	120.7	0.118	43	1.39	0.064	0.28	<0.1	2.5	0.09	0.09	<5	0.5	<0.02	3.0	0.26	<0.1	0.11
EE-07 053	Rock	2.1	57.5	1.26	60.2	0.073	40	1.57	0.029	0.13	<0.1	3.0	0.03	0.02	<5	0.2	<0.02	2.2	0.07	<0.1	0.03
EE-07 054	Rock	2.1	89.4	1.29	68.0	0.071	37	1.61	0.027	0.22	<0.1	2.8	0.04	<0.02	<5	<0.1	<0.02	2.5	0.10	<0.1	0.05
EE-07 055	Rock	1.9	62.6	1.14	70.4	0.085	35	1.62	0.049	0.23	0.2	3.3	0.07	<0.02	<5	0.2	0.04	5.1	0.17	<0.1	0.07



AcmeLabs ACME ANALYTICAL LABORATORIES LTD
 852 E Hastings St Vancouver BC V6A 1R6 Canada
 Phone (604) 253-3158 Fax (604) 253-1716
www.acmelab.com

Client **Bolder Ventures**
 208 - 502 Wheeler St.
 Whitehorse YT Y1A 2P2 Canada

Project None Given
Report Date November 27 2007

Page 2 of 2 **Part** 3

CERTIFICATE OF ANALYSIS

VAN07001735 1

Method		1F	1F	1F	1F	1F	1F	1F	1F	1F	1F	1F	1F
Analyte		Nb	Rb	Sn	Ta	Zr	Y	Ce	In	Re	Be	Li	Pd
Unit		ppm	ppm	ppm	ppm	ppm	ppm	ppm	ppm	ppb	ppm	ppm	ppb
MDL		0.02	0.1	0.1	0.05	0.1	0.01	0.1	0.02	1	0.1	0.1	10
EE-07 050	Rock	<0.02	4.9	<0.1	<0.05	0.5	3.63	3.6	<0.02	<1	<0.1	10.9	<10
EE-07 051	Rock	<0.02	2.3	<0.1	<0.05	1.0	5.46	4.5	<0.02	<1	0.1	7.9	13
EE-07 052	Rock	<0.02	8.3	0.1	<0.05	2.6	2.90	5.9	<0.02	<1	0.1	6.6	14
EE-07 053	Rock	<0.02	4.1	<0.1	<0.05	1.1	5.72	5.1	<0.02	<1	<0.1	6.8	12
EE-07 054	Rock	<0.02	6.9	<0.1	<0.05	0.9	4.79	4.9	<0.02	<1	0.1	9.8	12
EE-07 055	Rock	0.07	7.7	0.1	<0.05	1.3	5.50	4.5	<0.02	<1	0.2	7.3	<10





AcmeLabs

ACME ANALYTICAL LABORATORIES LTD

852 E Hastings St Vancouver BC V6A 1R6 Canada

Phone (604) 253-3158 Fax (604) 253-1716

www acmelab com

Client

Bolder Ventures

208 - 502 Wheeler St.
Whitehorse YT Y1A 2P2 Canada

Project

None Given

Report Date

November 27, 2007

Page

1 of 1

Part 1

QUALITY CONTROL REPORT

VAN07001735.1

Method		1F	1F	1F	1F	1F	1F	1F	1F	1F	1F	1F	1F	1F	1F	1F	1F	1F	1F	1F	1F
Analyte		Mo	Cu	Pb	Zn	Ag	Ni	Co	Mn	Fe	As	U	Au	Th	Sr	Cd	Sb	Bi	V	Ca	P
Unit		ppm	ppm	ppm	ppm	ppb	ppm	ppm	ppm	%	ppm	ppm	ppb	ppm	ppm	ppm	ppm	ppm	ppm	%	%
MDL		0.01	0.01	0.01	0.1	2	0.1	0.1	1	0.01	0.1	0.1	0.2	0.1	0.5	0.01	0.02	0.02	2	0.01	0.001
Pulp Duplicates																					
EE-07 055	Rock	0.17	58.37	10.54	50.3	92	28.1	13.5	719	3.04	4.9	0.2	0.8	0.6	11.8	0.13	0.24	0.11	42	0.42	0.045
REP EE-07 055	QC	0.17	59.43	11.67	50.5	104	28.8	14.5	740	3.07	5.2	0.2	0.9	0.7	12.5	0.12	0.24	0.18	45	0.42	0.045
Reference Materials																					
STD DS7	Standard	20.33	127.7	70.92	413.9	886	57.0	9.7	650	2.46	50.9	4.5	66.8	4.2	72.5	6.66	6.11	4.88	81	0.97	0.086
STD DS7	Standard	22.33	114.0	72.16	425.4	942	63.0	10.6	684	2.58	57.7	5.1	81.0	4.7	77.2	7.33	6.50	5.27	87	1.04	0.088
STD DS7 Expected		20.92	109	70.6	411	890	56	9.7	627	2.39	48.2	4.9	70	4.4	68.7	6.38	5.86	4.51	86	0.93	0.08
BLK	Blank	<0.01	<0.01	<0.01	<0.1	<2	<0.1	<0.1	<1	<0.01	<0.1	<0.1	<0.2	<0.1	<0.5	<0.01	<0.02	<0.02	<2	<0.01	<0.001
Prep Wash																					
G1	Prep Blank	0.33	16.20	3.32	61.7	21	6.2	4.7	571	2.00	<0.1	2.2	1.9	3.9	80.8	0.22	0.03	0.08	38	0.57	0.080
G1	Prep Blank	0.69	11.97	3.66	63.5	21	4.7	4.9	581	2.09	<0.1	2.4	1.6	4.2	81.2	0.29	0.03	0.08	39	0.58	0.081





AcmeLabs

ACME ANALYTICAL LABORATORIES LTD

852 E Hastings St Vancouver BC V6A 1R6 Canada

Phone (604) 253-3158 Fax (604) 253-1716

www acmelab com

Client

Bolder Ventures

208 - 502 Wheeler St.
Whitehorse YT Y1A 2P2 Canada

Project

None Given

Report Date

November 27 2007

Page

1 of 1

Part 2

QUALITY CONTROL REPORT

VAN07001735 1

Method		1F	1F	1F	1F	1F	1F	1F	1F	1F	1F	1F	1F	1F	1F	1F	1F	1F	1F	1F	1F
Analyte		La	Cr	Mg	Ba	Tl	B	Al	Na	K	W	Sc	Tl	S	Hg	Se	Te	Ga	Cs	Ge	Hf
Unit		ppm	ppm	%	ppm	%	ppm	%	%	%	ppm	ppm	ppm	%	ppb	ppm	ppm	ppm	ppm	ppm	ppm
MDL		0.5	0.5	0.01	0.5	0.001	20	0.01	0.001	0.01	0.1	0.1	0.02	0.02	5	0.1	0.02	0.1	0.02	0.1	0.02
Pulp Duplicates																					
EE-07 055	Rock	1.9	62.6	1.14	70.4	0.085	35	1.62	0.049	0.23	0.2	3.3	0.07	<0.02	<5	0.2	0.04	5.1	0.17	<0.1	0.07
REP EE-07 055	QC	2.0	67.9	1.20	73.3	0.093	41	1.68	0.048	0.24	0.2	3.5	0.07	<0.02	<5	0.1	0.05	5.3	0.17	<0.1	0.08
Reference Materials																					
STD DS7	Standard	11.8	195.0	1.07	429.4	0.116	73	1.04	0.094	0.48	4.2	2.6	4.78	0.20	243	3.7	1.15	4.8	6.38	<0.1	0.10
STD DS7	Standard	12.6	205.0	1.17	443.8	0.121	86	1.11	0.097	0.50	4.8	2.7	5.13	0.22	238	3.9	1.28	5.2	6.68	0.1	0.12
STD DS7 Expected		12.7	163	1.05	370.3	0.124	38.6	0.959	0.073	0.44	3.8	2.5	4.19	0.21	200	3.5	1.08	4.6	6.36	0.1	0.11
BLK	Blank	<0.5	<0.5	<0.01	<0.5	<0.001	45	<0.01	<0.001	<0.01	<0.1	<0.1	<0.02	<0.02	<5	<0.1	<0.02	<0.1	<0.02	<0.1	<0.02
Prep Wash																					
G1	Prep Blank	8.2	94.3	0.63	268.3	0.136	35	1.34	0.181	0.67	<0.1	2.8	0.44	<0.02	<5	0.1	<0.02	5.8	3.66	<0.1	0.12
G1	Prep Blank	8.5	9.6	0.64	281.9	0.136	38	1.34	0.196	0.70	0.2	2.7	0.46	<0.02	<5	0.2	<0.02	6.0	3.68	<0.1	0.11





AcmeLabs

ACME ANALYTICAL LABORATORIES LTD

852 E Hastings St Vancouver BC V6A 1R6 Canada

Phone (604) 253-3158 Fax (604) 253-1716

www.acmelab.com

Client

Bolder Ventures

208 - 502 Wheeler St.
Whitehorse YT Y1A 2P2 Canada

Project

None Given

Report Date

November 27 2007

Page

1 of 1

Part 3

QUALITY CONTROL REPORT

VAN07001735-1

Method		1F	1F	1F	1F	1F	1F	1F	1F	1F	1F	1F	1F	1F
Analyte		Nb	Rb	Sn	Ta	Zr	Y	Ce	In	Re	Be	Li	Pd	Pt
Unit		ppm	ppm	ppm	ppm	ppm	ppm	ppm	ppm	ppb	ppm	ppm	ppb	ppb
MDL		0.02	0.1	0.1	0.05	0.1	0.01	0.1	0.02	1	0.1	0.1	10	2
Pulp Duplicates														
EE-07 055	Rock	0.07	7.7	0.1	<0.05	1.3	5.50	4.5	<0.02	<1	0.2	7.3	<10	3
REP EE-07 055	QC	0.07	7.9	<0.1	<0.05	1.6	5.73	4.8	<0.02	<1	0.1	7.3	10	3
Reference Materials														
STD DS7	Standard	0.71	37.5	4.9	<0.05	4.6	5.60	36.9	1.55	5	1.8	27.2	112	45
STD DS7	Standard	0.83	39.5	5.2	<0.05	4.8	5.90	39.1	1.63	2	1.4	27.9	123	42
STD DS7 Expected		0.71	35.8	5.4		5.4	5.18	38	1.57	4	1.6	29.3	58	37
BLK	Blank	<0.02	<0.1	<0.1	<0.05	<0.1	<0.01	<0.1	<0.02	<1	<0.1	<0.1	<10	<2
Prep Wash														
G1	Prep Blank	0.70	52.9	0.7	<0.05	1.3	6.50	17.5	<0.02	<1	0.4	33.5	10	<2
G1	Prep Blank	0.68	52.1	0.7	<0.05	1.3	6.79	18.9	<0.02	<1	0.3	32.2	<10	<2

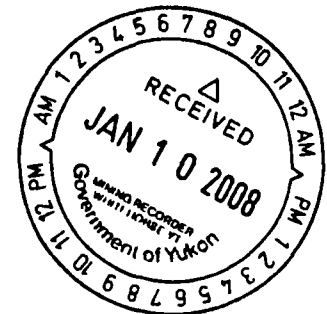
Statement of expenditures 2007

Eagle Eye claims 115 F16

Travel by truck to Koidern River 792 klm x 3 trips @ .53	\$1259.28
Daily travel to claim sites @ 20 klm per day x 10 days @ 53	31 80
Per diem @ \$35 Per day x 10 days x 2 persons	700
Contract wages @ \$250 per day x 10 days x 2 persons Dick Brost, Rusty Green, Gloria Kerwin	5000
Assay costs	1769 43
Transportation of samples to lab	262 69
4x4 rental	390
Equipment rentals chainsaw/ brush hook	180
Magnetometer rental and consultation (Bob Sterling)	166 07
Report preparation 2 days @ \$250 per day	500
Personal communication with Steve Isreal re Geological Survey	
Total expenditures	<u>\$10,259.27</u>

Gloria Kerwin
Apt 208, 502 Wheeler St
Whitehorse, Yukon Y1A 2P2
867-667-2071

Gloria Kerwin





ACME ANALYTICAL LABORATORIES LTD
 852 E Hastings St Vancouver BC V6A 1R6 Canada
 Phone (604) 253-3158 Fax (604) 253-1716

www acmelab com

Client

Bolder Ventures

208-502 Wheeler St
 Whitehorse
 YT Y1A 2P2 Canada

Submitted By

Gloria Kerwin

Receiving Lab

Acme Analytical Laboratories (Vancouver) Ltd

Received

August 27 2007

Report Date

October 22 2007

Page

1 of 3

CERTIFICATE OF ANALYSIS

VAN07000806.1

CLIENT JOB INFORMATION

Project NONE GIVEN
 Shipment ID
 P O Number
 Number of Samples 44

SAMPLE DISPOSAL

DISP-PLP Dispose of Pulp After 90 days
 DISP RJT Dispose of Reject After 90 days

SAMPLE PREPARATION AND ANALYTICAL PROCEDURES

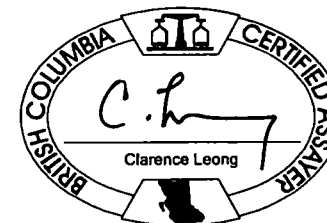
Method Code	Number of Samples	Code Description	Test Wgt (g)	Report Status
Split Reject	44	Reject sample split/packet		
S230	44	Sieve soil to 230 mesh		
1F	44	1 1 1 Aqua Regia digestion Ultratrace ICP MS analysis	30	Completed

ADDITIONAL COMMENTS

Acme does not accept responsibility for samples left at the laboratory after 90 days without prior written instructions for sample storage or return

Invoice To **Bolder Ventures**
 208-502 Wheeler St
 Whitehorse
 YT Y1A 2P2
 Canada

CC



This report supersedes all previous preliminary and final reports with this file number dated prior to the date on this certificate. Signature indicates final approval. preliminary reports are unsigned and should be used for reference only. All results are considered the confidential property of the client. Acme assumes the liabilities for actual cost of analysis only.



ACME ANALYTICAL LABORATORIES LTD
 852 E Hastings St Vancouver BC V6A 1R6 Canada
 Phone (604) 253-3158 Fax (604) 253-1716
 www.acmelab.com

Client **Bolder Ventures**
 208-502 Wheeler St
 Whitehorse
 YT Y1A 2P2 Canada

Project NONE GIVEN
 Report Date October 22 2007

Page 1 of 1 Part 1

QUALITY CONTROL REPORT VAN07000806.1

Method		1F30	1F30	1F30	1F30	1F30	1F30	1F30	1F30	1F30	1F30	1F30	1F30	1F30	1F30	1F30	1F30	1F30	1F30	1F30	1F30
Analyte		Mo	Cu	Pb	Zn	Ag	Ni	Co	Mn	Fe	As	U	Au	Th	Sr	Cd	Sb	Bi	V	Ca	P
Unit		ppm	ppm	ppm	ppm	ppb	ppm	ppm	ppm	%	ppm	ppm	ppb	ppm	ppm	ppm	ppm	ppm	ppm	%	%
MDL		0.01	0.01	0.01	0.1	2	0.1	0.1	1	0.01	0.1	0.1	0.2	0.1	0.5	0.01	0.02	0.02	2	0.01	0.001
Pulp Duplicates																					
EE 07-18	Silt	1.19	66.16	4.51	58.4	73	37.2	18.8	602	4.19	6.6	0.7	23.9	2.1	46.7	0.18	0.44	0.07	135	1.04	0.120
REP EE-07 18	QC	1.18	67.27	4.51	58.2	68	39.0	19.7	622	4.21	8.2	0.7	2.3	2.4	45.1	0.18	0.43	0.07	134	1.03	0.120
GR 07-04	Silt	0.82	32.01	5.05	55.3	61	27.1	10.8	373	2.09	6.7	0.9	1.3	1.9	39.7	0.25	0.45	0.08	42	1.19	0.088
REP GR-07 04	QC	0.85	35.05	5.54	58.9	68	28.4	12.0	409	2.24	7.4	0.9	1.4	2.1	42.9	0.24	0.48	0.08	44	1.28	0.096
GR-07 13	Silt	0.46	36.01	4.39	47.1	40	21.0	8.8	261	1.92	5.0	0.7	<0.2	1.8	33.1	0.11	0.28	0.26	46	1.01	0.122
REP GR 07 13	QC	0.42	24.10	3.30	44.6	38	21.6	9.0	249	1.89	4.9	0.8	<0.2	1.7	33.5	0.13	0.25	0.05	47	0.96	0.115
Reference Materials																					
STD DS7	Standard	21.95	115.7	72.16	407.6	926	59.4	9.9	617	2.46	48.0	5.2	86.1	4.7	72.1	6.21	6.28	4.58	86	0.96	0.078
STD DS7	Standard	21.70	113.4	72.66	394.7	928	60.9	9.9	643	2.47	47.9	4.9	88.7	4.5	74.8	6.49	6.17	4.64	87	0.97	0.078
STD DS7	Standard	22.41	108.1	71.47	398.4	849	61.1	10.2	626	2.41	43.6	4.9	89.6	4.7	75.2	5.99	5.45	4.08	83	0.99	0.069
STD DS7 Expected		20.92	109	70.6	411	890	56	9.7	627	2.39	48.2	4.9	70	4.4	68.7	6.38	5.86	4.51	86	0.93	0.08
BLK	Blank	<0.01	<0.01	<0.01	<0.1	<2	<0.1	<0.1	<1	<0.01	<0.1	<0.1	<0.2	<0.1	<0.5	<0.01	<0.02	<0.02	<2	<0.01	<0.001
BLK	Blank	<0.01	<0.01	<0.01	<0.1	<2	<0.1	<0.1	<1	<0.01	<0.1	<0.1	<0.2	<0.1	<0.5	<0.01	<0.02	<0.02	<2	<0.01	<0.001
BLK	Blank	<0.01	<0.01	<0.01	<0.1	<2	<0.1	<0.1	<1	<0.01	<0.1	<0.1	<0.2	<0.1	<0.5	<0.01	<0.02	<0.02	<2	<0.01	<0.001

This report supersedes all previous preliminary and final reports with this file number dated prior to the date on this certificate. Signature indicates final approval; preliminary reports are unsigned and should be used for reference only.



ACME ANALYTICAL LABORATORIES LTD
 852 E Hastings St Vancouver BC V6A 1R6 Canada
 Phone (604) 253-3158 Fax (604) 253-1716

www.acmelab.com

Client

Bolder Ventures

208 502 Wheeler St
 Whitehorse
 YT Y1A 2P2 Canada

Project

NONE GIVEN

Report Date

October 22 2007

Page

2 of 3

Part 1

CERTIFICATE OF ANALYSIS

VAN07000806.1

Method	Analyte	1F30	1F30	1F30	1F30	1F30	1F30	1F30	1F30	1F30	1F30	1F30	1F30	1F30	1F30	1F30	1F30	1F30	1F30	1F30	
		Mo	Cu	Pb	Zn	Ag	Ni	Co	Mn	Fe	As	U	Au	Th	Sr	Cd	Sb	Bi	V	Ca	P
Unit		ppm	ppm	ppm	ppm	ppb	ppm	ppm	ppm	%	ppm	ppm	ppb	ppm	ppm	ppm	ppm	ppm	ppm	%	%
MDL		0.01	0.01	0.01	0.1	2	0.1	0.1	1	0.01	0.1	0.1	0.2	0.1	0.5	0.01	0.02	0.02	2	0.01	0.001
EE-07-01	Silt	4.15	49.61	8.85	71.9	62	47.4	18.5	1048	3.40	10.3	0.4	1.3	1.0	25.1	0.32	0.43	0.07	50	0.66	0.074
EE-07-02	Silt	12.19	48.33	10.71	65.9	92	80.0	15.4	826	2.76	9.1	0.4	1.5	0.8	31.8	0.32	0.53	0.08	40	0.95	0.065
EE-07-03	Silt	4.06	56.77	8.15	68.8	80	42.8	17.7	879	3.11	10.7	0.4	0.9	0.8	31.0	0.33	0.48	0.07	45	0.88	0.067
EE-07-04	Silt	LNR	LNR	LNR	LNR	LNR	LNR	LNR	LNR	LNR	LNR	LNR	LNR	LNR	LNR	LNR	LNR	LNR	LNR	LNR	LNR
EE-07-05	Silt	21.60	58.90	11.14	84.4	148	135.3	20.0	1292	3.41	8.6	0.5	3.5	1.2	49.4	0.35	0.38	0.09	60	1.35	0.078
EE-07-06	Silt	4.28	63.43	8.47	82.8	118	57.9	19.7	1408	3.44	9.2	0.6	2.5	1.3	49.0	0.39	0.37	0.09	64	1.37	0.079
EE-07-07	Silt	36.68	56.57	8.97	70.2	96	204.5	20.7	1337	3.56	7.7	0.4	7.2	1.4	42.7	0.26	0.30	0.07	70	1.39	0.075
EE-07-08	Silt	2.02	82.94	6.77	70.9	160	51.7	17.1	499	2.60	9.7	0.6	5.6	1.3	49.1	0.33	0.66	0.10	50	1.38	0.072
EE-07-09	Silt	1.61	55.60	7.23	84.5	88	42.1	19.7	906	3.65	9.8	0.4	1.6	1.2	38.5	0.27	0.46	0.16	65	1.22	0.064
EE-07-10	Silt	3.26	84.60	8.28	97.3	91	49.0	25.9	1072	4.73	10.7	0.3	1.4	1.1	46.3	0.23	0.62	0.08	81	1.46	0.106
EE-07-11	Silt	2.29	79.63	8.72	93.5	113	42.7	24.8	950	4.69	9.2	0.3	1.5	1.2	40.8	0.27	0.45	0.08	83	1.27	0.079
EE-07-12	Silt	1.37	48.45	7.42	85.2	91	39.0	17.3	646	2.97	7.6	0.4	7.7	1.3	34.6	0.25	0.48	0.08	57	1.05	0.066
EE-07-13	Silt	1.95	92.84	8.16	79.6	95	35.4	25.8	957	5.01	15.5	0.3	2.2	0.9	50.2	0.22	1.29	0.07	85	2.38	0.072
EE-07-14	Silt	2.44	85.44	9.20	86.8	121	38.2	20.2	765	3.54	9.7	0.5	2.5	1.2	42.0	0.30	0.62	0.08	63	1.25	0.069
EE-07-15	Silt	11.28	71.22	8.13	85.2	89	82.3	22.0	788	4.17	11.1	0.5	1.4	1.2	42.5	0.27	0.59	0.08	71	1.26	0.078
EE-07-16	Silt	2.78	87.95	8.01	79.6	119	62.2	25.3	995	3.67	8.8	0.7	5.1	1.8	67.0	0.37	0.54	0.18	89	1.35	0.107
EE-07-17	Silt	1.24	61.09	4.25	58.6	125	38.0	18.1	570	3.76	5.6	0.7	3.3	1.9	49.7	0.16	0.37	0.06	113	1.21	0.108
EE-07-18	Silt	1.19	66.16	4.51	58.4	73	37.2	18.8	602	4.19	6.6	0.7	23.9	2.1	46.7	0.18	0.44	0.07	135	1.04	0.120
EE-07-19	Silt	2.00	92.85	6.51	72.7	126	53.1	22.7	782	4.01	10.8	0.8	103.5	1.9	48.1	0.25	0.67	0.11	98	0.97	0.096
EE-07-20	Silt	1.29	73.30	5.01	64.6	80	44.2	21.0	674	3.74	7.2	0.7	8.0	1.8	48.2	0.22	0.42	0.08	98	1.05	0.104
EE-07-21	Silt	2.11	91.53	7.81	78.0	136	55.2	24.4	964	4.11	11.2	0.6	5.5	1.8	48.3	0.31	0.56	0.11	93	0.93	0.097
EE-07-22	Silt	LNR	LNR	LNR	LNR	LNR	LNR	LNR	LNR	LNR	LNR	LNR	LNR	LNR	LNR	LNR	LNR	LNR	LNR	LNR	LNR
EE-07-23	Silt	1.57	89.58	6.08	72.9	114	52.2	23.9	930	4.17	9.3	0.6	5.0	1.9	49.7	0.26	0.46	0.09	98	1.02	0.130
EE-07-24	Silt	1.15	70.08	4.94	62.9	86	43.9	20.3	690	3.88	7.5	0.6	81.6	1.8	46.6	0.21	0.44	0.07	109	1.01	0.100
EE-07-25	Silt	1.08	64.15	4.43	61.4	73	40.8	19.8	684	3.67	6.4	0.5	4.1	1.6	45.7	0.17	0.39	0.06	97	0.92	0.094
EE-07-26-SS	Silt	0.91	122.7	6.28	69.2	101	49.1	24.7	786	4.28	7.9	0.6	5.8	2.1	50.1	0.22	0.40	0.08	124	1.10	0.110
EE-07-27-SS	Silt	0.93	125.1	5.84	69.6	95	47.8	25.3	765	4.45	7.9	0.6	14.4	2.1	53.6	0.22	0.40	0.08	132	1.18	0.118
EE-07-28-SS	Silt	0.92	113.7	5.40	66.3	90	45.8	24.4	732	4.05	7.8	0.6	15.7	2.0	48.4	0.20	0.45	0.08	114	1.14	0.107
EE-07-29-SS	Silt	0.86	76.65	4.16	56.0	61	39.1	20.5	604	4.17	6.1	0.7	3.3	2.0	51.2	0.15	0.35	0.09	134	1.19	0.115
EE-07-30-SS	Silt	0.96	102.8	5.42	65.8	90	44.7	23.3	765	4.18	7.7	0.6	7.0	1.9	51.9	0.20	0.41	0.08	122	1.11	0.110

This report supersedes all previous preliminary and final reports with this file number dated prior to the date on this certificate. Signature indicates final approval. Preliminary reports are unsigned and should be used for reference only.



ACME ANALYTICAL LABORATORIES LTD
 852 E Hastings St Vancouver BC V6A 1R6 Canada
 Phone (604) 253-3158 Fax (604) 253-1716

www.acmelab.com

Client

Bolder Ventures

208 502 Wheeler St
 Whitehorse
 YT Y1A 2P2 Canada

Project

NONE GIVEN

Report Date

October 22 2007

Page

2 of 3

Part 2

CERTIFICATE OF ANALYSIS

VAN07000806.1

Method	Analyte	Unit	MDL	1F30	1F30	1F30	1F30	1F30	1F30	1F30	1F30	1F30	1F30	1F30	1F30	1F30	1F30			
				La	Cr	Mg	Ba	Ti	B	Al	Na	K	W	Sc	Tl	S	Hg	Se	Te	Ga
				ppm	ppm	%	ppm	%	ppm	%	%	ppm	ppm	ppm	%	ppb	ppm	ppm	ppm	
				0.5	0.5	0.01	0.5	0.001	1	0.01	0.001	0.01	0.1	0.1	0.02	0.02	5	0.1	0.02	0.1
EE-07-01	Silt			6.2	70.1	1.01	47.3	0.056	23	1.47	0.021	0.05	<0.1	3.1	0.02	0.04	17	0.7	0.03	4.2
EE-07-02	Silt			4.9	126.1	0.85	50.5	0.042	23	1.31	0.028	0.06	0.1	3.0	0.02	0.05	28	1.1	<0.02	3.5
EE-07-03	Silt			5.7	63.7	0.95	50.7	0.050	25	1.43	0.024	0.05	<0.1	3.4	0.02	0.05	25	1.0	0.06	3.8
EE-07-04	Silt			LNR	LNR	LNR	LNR	LNR	LNR	LNR	LNR	LNR	LNR	LNR	LNR	LNR	LNR	LNR	LNR	LNR
EE-07-05	Silt			8.8	252.5	1.22	101.3	0.079	35	1.71	0.051	0.09	0.1	4.8	0.05	0.05	35	1.4	0.02	4.5
EE-07-06	Silt			9.3	88.1	1.12	96.4	0.079	30	1.65	0.046	0.08	<0.1	5.1	0.05	0.05	36	1.0	0.03	4.6
EE-07-07	Silt			8.6	393.0	1.42	78.0	0.103	29	1.64	0.049	0.08	0.2	4.3	0.04	0.02	22	0.7	0.02	4.6
EE-07-08	Silt			9.5	63.4	0.85	101.8	0.064	4	1.38	0.035	0.09	0.2	4.6	0.08	0.06	37	0.8	0.05	3.9
EE-07-09	Silt			7.8	63.7	1.12	65.1	0.101	25	1.83	0.033	0.07	0.1	4.6	0.03	0.04	29	0.5	0.03	5.0
EE-07-10	Silt			8.7	69.7	1.41	67.3	0.096	26	2.13	0.029	0.11	0.1	6.6	<0.02	0.08	32	0.8	0.04	5.8
EE-07-11	Silt			8.3	60.2	1.35	60.7	0.104	22	2.23	0.029	0.08	0.2	6.3	<0.02	0.04	30	0.9	0.04	6.2
EE-07-12	Silt			8.3	53.9	0.90	79.1	0.076	3	1.56	0.030	0.07	0.2	4.2	0.05	0.03	24	0.5	0.04	4.3
EE-07-13	Silt			7.3	49.4	1.40	42.8	0.094	24	2.27	0.027	0.06	<0.1	7.5	<0.02	0.10	40	0.7	0.06	5.6
EE-07-14	Silt			7.5	59.6	1.10	50.3	0.097	26	1.91	0.032	0.06	0.1	5.5	0.02	0.05	34	1.3	0.03	4.8
EE-07-15	Silt			7.3	138.3	1.31	51.0	0.109	29	2.07	0.030	0.07	0.2	5.1	0.02	0.06	25	1.4	0.03	5.3
EE-07-16	Silt			10.5	92.5	1.45	120.6	0.109	28	2.14	0.061	0.14	<0.1	6.4	0.07	0.06	58	0.9	0.03	6.0
EE-07-17	Silt			9.0	76.8	1.15	90.8	0.104	3	1.65	0.049	0.09	0.1	4.9	0.03	0.04	23	0.3	0.05	5.4
EE-07-18	Silt			9.8	85.9	1.13	90.0	0.113	4	1.72	0.050	0.10	0.2	5.2	0.03	0.03	32	0.4	0.03	5.3
EE-07-19	Silt			9.9	91.9	1.44	100.5	0.111	8	2.03	0.047	0.11	0.2	6.4	0.06	0.04	51	0.6	0.06	5.7
EE-07-20	Silt			9.0	78.8	1.35	95.4	0.112	4	1.95	0.048	0.11	0.1	5.6	0.04	0.03	39	0.4	0.04	5.5
EE-07-21	Silt			9.7	81.4	1.51	114.1	0.118	31	2.15	0.054	0.11	<0.1	6.7	0.06	0.04	32	0.5	0.06	5.8
EE-07-22	Silt			LNR	LNR	LNR	LNR	LNR	LNR	LNR	LNR	LNR	LNR	LNR	LNR	LNR	LNR	LNR	LNR	LNR
EE-07-23	Silt			10.3	86.3	1.55	128.4	0.121	4	2.29	0.053	0.13	0.1	6.5	0.07	<0.02	196	0.5	0.07	6.1
EE-07-24	Silt			9.2	89.8	1.30	90.8	0.116	4	1.89	0.047	0.10	0.1	5.4	0.03	0.02	63	0.4	0.05	5.7
EE-07-25	Silt			7.9	76.6	1.38	82.8	0.120	3	1.91	0.052	0.09	0.2	5.1	0.04	<0.02	44	0.3	0.04	5.6
EE-07-26-SS	Silt			9.5	91.0	1.43	131.2	0.113	3	2.21	0.046	0.13	0.1	6.8	0.05	<0.02	29	0.2	0.04	6.5
EE-07-27-SS	Silt			9.5	96.2	1.48	131.3	0.116	3	2.29	0.049	0.14	0.2	6.6	0.06	<0.02	34	0.5	0.04	6.7
EE-07-28-SS	Silt			9.2	80.7	1.38	120.5	0.109	3	2.10	0.045	0.13	0.1	6.2	0.05	0.02	25	0.3	0.05	6.1
EE-07-29-SS	Silt			9.2	89.9	1.22	96.2	0.113	3	1.82	0.049	0.10	0.1	5.5	0.03	0.02	24	0.3	0.04	5.7
EE-07-30-SS	Silt			9.2	89.6	1.35	111.7	0.118	4	2.07	0.047	0.12	0.1	6.2	0.04	<0.02	31	0.4	0.06	6.2

This report supersedes all previous preliminary and final reports with this file number dated prior to the date on this certificate. Signature indicates final approval: preliminary reports are unsigned and should be used for reference only.



ACME ANALYTICAL LABORATORIES LTD
 852 E Hastings St Vancouver BC V6A 1R6 Canada
 Phone (604) 253-3158 Fax (604) 253-1716

www acmelab com

Client **Bolder Ventures**

208-502 Wheeler St
 Whitehorse
 YT Y1A 2P2 Canada

Project NONE GIVEN

Report Date October 22 2007

Page 3 of 3 Part 1

CERTIFICATE OF ANALYSIS

VAN07000806.1

Method	Analyte	1F30	1F30	1F30	1F30	1F30	1F30	1F30	1F30	1F30	1F30	1F30	1F30	1F30	1F30	1F30	1F30	1F30	1F30	1F30	
		Mo	Cu	Pb	Zn	Ag	Ni	Co	Mn	Fe	As	U	Au	Th	Sr	Cd	Sb	Bi	V	Ca	P
Unit		ppm	ppm	ppm	ppm	ppb	ppm	ppm	ppm	%	ppm	ppm	ppb	ppm	ppm	ppm	ppm	ppm	%	%	
MDL		0.01	0.01	0.01	0.1	2	0.1	0.1	1	0.01	0.1	0.1	0.2	0.1	0.5	0.01	0.02	0.02	2	0.01	0.001
EE 07 31 SS	Silt	0.93	71.93	3.96	55.5	62	38.9	18.9	596	3.73	5.8	0.6	5.0	1.9	48.1	0.14	0.33	0.06	113	1.21	0.112
GR-07 01	Silt	1.75	62.95	7.22	59.5	72	38.3	18.2	810	3.66	7.9	0.5	1.6	1.7	46.0	0.21	0.39	0.06	103	1.17	0.106
GR-07 02	Silt	0.83	30.00	4.98	53.4	65	25.7	10.3	370	1.93	6.7	0.8	6.8	1.7	39.3	0.22	0.42	0.06	39	1.13	0.081
GR 07 03	Silt	0.81	28.76	4.61	60.0	58	26.8	11.2	415	2.07	5.6	0.8	1.8	1.9	44.9	0.18	0.42	0.07	43	1.24	0.083
GR 07-04	Silt	0.82	32.01	5.05	55.3	61	27.1	10.8	373	2.09	6.7	0.9	1.3	1.9	39.7	0.25	0.45	0.08	42	1.19	0.088
GR 07-05	Silt	1.10	26.70	5.46	63.3	59	32.6	13.0	580	2.58	8.4	1.6	1.9	3.3	43.0	0.22	0.44	0.07	60	1.39	0.128
GR 07-06	Silt	0.68	20.94	3.99	54.1	42	25.1	10.2	380	1.98	4.7	0.8	1.5	2.3	37.5	0.15	0.34	0.06	44	1.02	0.101
GR-07 07	Silt	0.72	23.34	4.28	57.7	57	28.7	10.9	438	2.19	5.2	0.7	25.5	2.4	42.8	0.17	0.37	0.07	48	1.21	0.107
GR-07 08	Silt	0.70	26.00	4.16	55.2	53	27.2	11.0	415	2.01	5.2	0.8	2.3	2.0	41.7	0.17	0.36	0.06	43	1.23	0.090
GR-07 09	Silt	0.65	23.76	4.27	55.1	46	26.8	10.4	403	2.07	4.9	0.8	2.1	2.3	41.0	0.16	0.38	0.06	45	1.12	0.102
GR 07-10	Silt	0.65	23.00	4.14	53.5	48	25.9	10.5	391	1.99	4.9	0.7	2.5	2.1	38.6	0.15	0.34	0.06	44	1.08	0.101
GR 07-11	Silt	0.61	39.28	5.88	46.4	55	22.2	8.9	379	1.80	5.8	0.6	2.6	1.4	40.8	0.18	0.35	0.39	36	1.19	0.090
GR-07-12	Silt	0.56	23.13	3.42	47.4	44	21.2	8.0	227	1.75	4.0	0.7	3.0	1.7	34.1	0.15	0.31	0.06	41	0.79	0.089
GR 07 13	Silt	0.46	36.01	4.39	47.1	40	21.0	8.8	261	1.92	5.0	0.7	<0.2	1.8	33.1	0.11	0.28	0.26	46	1.01	0.122

This report supersedes all previous preliminary and final reports with this file number dated prior to the date on this certificate. Signature indicates final approval. Preliminary reports are unsigned and should be used for reference only.



AcmeLabs

ACME ANALYTICAL LABORATORIES LTD

852 E Hastings St Vancouver BC V6A 1R6 Canada

Phone (604) 253-3158 Fax (604) 253-1716

www.acmelab.com

Client

Bolder Ventures

208-502 Wheeler St
Whitehorse
YT Y1A 2P2 Canada

Project

NONE GIVEN

Report Date

October 22 2007

Page

2 of 3

Part 2

CERTIFICATE OF ANALYSIS

VAN07000806.1

Method	Analyte	Unit	MDL	1F30	1F30	1F30	1F30	1F30	1F30	1F30	1F30	1F30	1F30	1F30	1F30	1F30	1F30	1F30		
				La	Cr	Mg	Ba	Tl	B	Al	Na	K	W	Sc	Tl	S	Hg	Se	Te	Ga
				ppm	ppm	%	ppm	%	ppm	%	ppm	ppm	ppm	%	ppb	ppm	ppm	ppm		
EE-07-01	Silt			6.2	70.1	1.01	47.3	0.056	23	1.47	0.021	0.05	<0.1	3.1	0.02	0.04	17	0.7	0.03	4.2
EE-07-02	Silt			4.9	126.1	0.85	50.5	0.042	23	1.31	0.028	0.06	0.1	3.0	0.02	0.05	28	1.1	<0.02	3.5
EE-07-03	Silt			5.7	63.7	0.95	50.7	0.050	25	1.43	0.024	0.05	<0.1	3.4	0.02	0.05	25	1.0	0.06	3.8
EE-07-04	Silt			LNR	LNR	LNR	LNR	LNR	LNR	LNR	LNR	LNR	LNR	LNR	LNR	LNR	LNR	LNR	LNR	LNR
EE-07-05	Silt			8.8	252.5	1.22	101.3	0.079	35	1.71	0.051	0.09	0.1	4.8	0.05	0.05	35	1.4	0.02	4.5
EE-07-06	Silt			9.3	88.1	1.12	96.4	0.079	30	1.65	0.046	0.08	<0.1	5.1	0.05	0.05	38	1.0	0.03	4.6
EE-07-07	Silt			8.6	393.0	1.42	78.0	0.103	29	1.64	0.049	0.08	0.2	4.3	0.04	0.02	22	0.7	0.02	4.6
EE-07-08	Silt			9.5	63.4	0.85	101.8	0.064	4	1.38	0.035	0.09	0.2	4.6	0.08	0.06	37	0.8	0.05	3.9
EE-07-09	Silt			7.8	63.7	1.12	65.1	0.101	25	1.83	0.033	0.07	0.1	4.6	0.03	0.04	29	0.5	0.03	5.0
EE-07-10	Silt			8.7	69.7	1.41	67.3	0.096	26	2.13	0.029	0.11	0.1	6.6	<0.02	0.08	32	0.8	0.04	5.8
EE-07-11	Silt			8.3	60.2	1.35	60.7	0.104	22	2.23	0.029	0.08	0.2	6.3	<0.02	0.04	30	0.9	0.04	6.2
EE-07-12	Silt			8.3	53.9	0.90	79.1	0.076	3	1.56	0.030	0.07	0.2	4.2	0.05	0.03	24	0.5	0.04	4.3
EE-07-13	Silt			7.3	49.4	1.40	42.8	0.094	24	2.27	0.027	0.06	<0.1	7.5	<0.02	0.10	40	0.7	0.06	5.6
EE-07-14	Silt			7.5	59.6	1.10	50.3	0.097	26	1.91	0.032	0.06	0.1	5.5	0.02	0.05	34	1.3	0.03	4.8
EE-07-15	Silt			7.3	138.3	1.31	51.0	0.109	29	2.07	0.030	0.07	0.2	5.1	0.02	0.06	25	1.4	0.03	5.3
EE-07-16	Silt			10.5	92.5	1.45	120.6	0.109	28	2.14	0.061	0.14	<0.1	6.4	0.07	0.06	58	0.9	0.03	6.0
EE-07-17	Silt			9.0	76.8	1.15	90.8	0.104	3	1.65	0.049	0.09	0.1	4.9	0.03	0.04	23	0.3	0.05	5.4
EE-07-18	Silt			9.8	85.9	1.13	90.0	0.113	4	1.72	0.050	0.10	0.2	5.2	0.03	0.03	32	0.4	0.03	5.3
EE-07-19	Silt			9.9	91.9	1.44	100.5	0.111	8	2.03	0.047	0.11	0.2	6.4	0.06	0.04	51	0.6	0.06	5.7
EE-07-20	Silt			9.0	78.8	1.35	95.4	0.112	4	1.95	0.048	0.11	0.1	5.8	0.04	0.03	39	0.4	0.04	5.5
EE-07-21	Silt			9.7	81.4	1.51	114.1	0.118	31	2.15	0.054	0.11	<0.1	6.7	0.06	0.04	32	0.5	0.06	5.8
EE-07-22	Silt			LNR	LNR	LNR	LNR	LNR	LNR	LNR	LNR	LNR	LNR	LNR	LNR	LNR	LNR	LNR	LNR	LNR
EE-07-23	Silt			10.3	86.3	1.55	128.4	0.121	4	2.29	0.053	0.13	0.1	6.5	0.07	<0.02	196	0.5	0.07	6.1
EE-07-24	Silt			9.2	89.8	1.30	90.8	0.116	4	1.89	0.047	0.10	0.1	5.4	0.03	0.02	63	0.4	0.05	5.7
EE-07-25	Silt			7.9	76.6	1.38	82.8	0.120	3	1.91	0.052	0.09	0.2	5.1	0.04	<0.02	44	0.3	0.04	5.6
EE-07-26-SS	Silt			9.5	91.0	1.43	131.2	0.113	3	2.21	0.046	0.13	0.1	6.8	0.05	<0.02	29	0.2	0.04	6.5
EE-07-27-SS	Silt			9.5	96.2	1.48	131.3	0.116	3	2.29	0.049	0.14	0.2	6.6	0.06	<0.02	34	0.5	0.04	6.7
EE-07-28-SS	Silt			9.2	80.7	1.38	120.5	0.109	3	2.10	0.045	0.13	0.1	6.2	0.05	0.02	25	0.3	0.05	6.1
EE-07-29-SS	Silt			9.2	89.9	1.22	96.2	0.113	3	1.82	0.049	0.10	0.1	5.5	0.03	0.02	24	0.3	0.04	5.7
EE-07-30-SS	Silt			9.2	89.6	1.35	111.7	0.118	4	2.07	0.047	0.12	0.1	6.2	0.04	<0.02	31	0.4	0.06	6.2



ACME ANALYTICAL LABORATORIES LTD
 852 E Hastings St Vancouver BC V6A 1R6 Canada
 Phone (604) 253-3158 Fax (604) 253-1716
 www acmelab com

Client

Bolder Ventures

208-502 Wheeler St
 Whitehorse
 YT Y1A 2P2 Canada

Project

NONE GIVEN

Report Date

October 22 2007

Page

3 of 3

Part 2

CERTIFICATE OF ANALYSIS

VAN07000806.1

	Method	1F30																
		Analyte	La	Cr	Mg	Ba	Tl	B	Al	Na	K	W	Sc	Ti	S	Hg	Se	Te
	Unit	ppm	ppm	%	ppm	%	ppm	%	%	%	ppm	ppm	ppm	%	ppb	ppm	ppm	ppm
	MDL	0.5	0.5	0.01	0.5	0.001	1	0.01	0.001	0.01	0.1	0.1	0.02	0.02	5	0.1	0.02	0.1
EE 07 31-SS	Silt	9.0	79.2	1.17	91.3	0.099	2	1.71	0.046	0.10	0.1	4.9	0.03	0.02	33	0.3	0.04	5.3
GR 07-01	Silt	8.9	74.8	1.14	120.1	0.105	35	1.58	0.050	0.10	0.3	4.4	0.04	0.02	17	0.4	0.03	5.1
GR-07 02	Silt	10.1	30.7	0.58	114.4	0.071	33	1.10	0.048	0.07	<0.1	2.8	0.07	0.03	17	0.3	0.02	3.3
GR 07-03	Silt	11.2	33.6	0.68	121.5	0.081	3	1.27	0.043	0.08	0.1	3.2	0.09	0.03	20	0.4	<0.02	4.0
GR 07-04	Silt	11.9	30.1	0.59	118.7	0.072	28	1.18	0.046	0.07	<0.1	3.1	0.08	0.04	23	0.4	0.02	3.5
GR 07-05	Silt	13.3	40.2	0.95	149.6	0.103	31	1.39	0.056	0.14	0.2	3.5	0.11	0.03	14	0.3	<0.02	4.4
GR-07 06	Silt	11.4	33.8	0.66	113.3	0.085	2	1.19	0.041	0.08	0.2	2.9	0.08	<0.02	18	0.3	<0.02	3.7
GR-07 07	Silt	12.6	35.5	0.72	115.3	0.092	2	1.30	0.044	0.08	0.2	3.2	0.08	<0.02	13	0.3	<0.02	4.0
GR-07-08	Silt	11.1	33.9	0.67	120.1	0.079	2	1.22	0.040	0.08	0.1	3.0	0.08	0.02	13	0.3	<0.02	3.8
GR-07-09	Silt	11.9	33.1	0.68	110.2	0.085	2	1.22	0.040	0.08	0.2	2.9	0.08	<0.02	17	0.3	<0.02	3.7
GR-07 10	Silt	11.7	31.7	0.65	105.1	0.082	2	1.21	0.040	0.08	0.2	2.9	0.08	<0.02	15	0.3	<0.02	3.7
GR-07-11	Silt	8.8	27.3	0.59	112.5	0.061	28	0.95	0.037	0.08	<0.1	2.5	0.08	<0.02	21	0.3	0.02	2.9
GR 07 12	Silt	9.1	28.0	0.52	95.7	0.072	2	1.01	0.039	0.09	0.3	2.4	0.08	0.03	17	0.1	<0.02	3.2
GR-07 13	Silt	11.3	30.6	0.57	135.6	0.076	27	1.01	0.039	0.10	0.2	2.6	0.08	<0.02	11	0.3	<0.02	3.4



ACME ANALYTICAL LABORATORIES LTD
 852 E Hastings St Vancouver BC V6A 1R6 Canada
 Phone (604) 253-3158 Fax (604) 253-1716
 www.acmelab.com

Client **Bolder Ventures**
 208-502 Wheeler St
 Whitehorse
 YT Y1A 2P2 Canada

Project NONE GIVEN
 Report Date October 22 2007

Page 1 of 1 Part 2

QUALITY CONTROL REPORT

VAN07000806.1

Method		1F30	1F30	1F30	1F30	1F30	1F30	1F30	1F30	1F30	1F30	1F30	1F30	1F30	1F30	1F30	1F30	
Analyte		La	Cr	Mg	Ba	Ti	B	Al	Na	K	W	Sc	Tl	S	Hg	Se	Te	Ga
Unit		ppm	ppm	%	ppm	%	ppm	%	%	%	ppm	ppm	ppm	%	ppb	ppm	ppm	ppm
MDL		0.5	0.5	0.01	0.5	0.001	1	0.01	0.001	0.01	0.1	0.1	0.02	0.02	5	0.1	0.02	0.1
Pulp Duplicates																		
EE-07-18	Silt	9.8	85.9	1.13	90.0	0.113	4	1.72	0.050	0.10	0.2	5.2	0.03	0.03	32	0.4	0.03	5.3
REP EE-07 18	QC	9.8	88.1	1.15	88.9	0.106	32	1.70	0.054	0.10	0.1	5.1	0.03	0.03	259	0.4	0.05	5.4
GR-07-04	Silt	11.9	30.1	0.59	118.7	0.072	28	1.18	0.046	0.07	<0.1	3.1	0.08	0.04	23	0.4	0.02	3.5
REP GR 07 04	QC	12.3	33.5	0.64	126.9	0.075	28	1.29	0.049	0.08	0.2	3.4	0.08	0.04	23	0.5	0.03	3.8
GR-07 13	Silt	11.3	30.6	0.57	135.6	0.076	27	1.01	0.039	0.10	0.2	2.6	0.08	<0.02	11	0.3	<0.02	3.4
REP GR 07 13	QC	11.1	28.6	0.55	127.5	0.075	27	0.98	0.038	0.10	0.1	2.5	0.07	<0.02	13	0.3	<0.02	3.3
Reference Materials																		
STD DS7	Standard	13.2	211.0	1.08	378.0	0.118	43	1.02	0.091	0.44	3.9	2.6	4.36	0.20	227	3.8	1.13	4.7
STD DS7	Standard	13.6	217.6	1.09	387.5	0.122	42	1.05	0.097	0.46	3.8	2.7	4.30	0.17	219	3.3	1.05	4.7
STD DS7	Standard	14.1	253.2	1.08	359.3	0.123	38	1.06	0.094	0.43	3.9	2.7	4.22	0.19	192	3.7	1.08	4.9
STD DS7 Expected		12.7	163	1.05	370.3	0.124	38.6	0.959	0.073	0.44	3.8	2.5	4.19	0.21	200	3.5	1.08	4.6
BLK	Blank	<0.5	<0.5	<0.01	<0.5	<0.001	<1	<0.01	<0.001	<0.01	<0.1	<0.1	<0.02	<0.02	<5	<0.1	<0.02	<0.1
BLK	Blank	<0.5	<0.5	<0.01	<0.5	<0.001	<1	<0.01	<0.001	<0.01	<0.1	<0.1	<0.02	<0.02	<5	<0.1	<0.02	<0.1
BLK	Blank	<0.5	<0.5	<0.01	<0.5	<0.001	<1	<0.01	<0.001	<0.01	<0.1	<0.1	<0.02	<0.02	<5	<0.1	<0.02	<0.1



AcmeLabs

ACME ANALYTICAL LABORATORIES LTD

852 E Hastings St Vancouver BC V6A 1R6 Canada

Phone (604) 253-3158 Fax (604) 253-1716

www acmelab com

Client

Bolder Ventures

208 - 502 Wheeler St
Whitehorse YT Y1A 2P2 Canada

Submitted By

Gloria Kerwin

Receiving Lab

Acme Analytical Laboratories (Vancouver) Ltd

Received

September 24 2007

Report Date

November 27 2007

Page

1 of 2

CERTIFICATE OF ANALYSIS

VAN07001735.1

CLIENT JOB INFORMATION

Project None Given
Shipment ID
P O Number
Number of Samples 6

SAMPLE PREPARATION AND ANALYTICAL PROCEDURES

Method Code	Number of Samples	Code Description	Test Wgt (g)	Report Status
R150	6	Crush split and pulverize rock to 150 mesh		
1F	6	1 1 1 Aqua Regia digestion Ultratrace ICP MS analysis	0.5	Completed

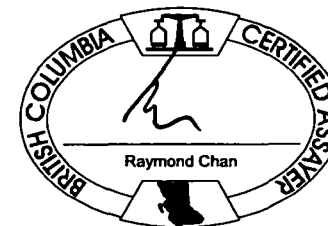
SAMPLE DISPOSAL

ADDITIONAL COMMENTS

Acme does not accept responsibility for samples left at the laboratory after 90 days without prior written instructions for sample storage or return

Invoice To **Bolder Ventures**
208 - 502 Wheeler St
Whitehorse YT Y1A 2P2
Canada

CC



This report supersedes all previous preliminary and final reports with this file number dated prior to the date on this certificate. Signature indicates final approval. preliminary reports are unsigned and should be used for reference only. All results are considered the confidential property of the client. Acme assumes the liabilities for actual cost of analysis only.



ACME ANALYTICAL LABORATORIES LTD

852 E Hastings St Vancouver BC V6A 1R6 Canada

Phone (604) 253-3158 Fax (604) 253-1716

www acmelab com

Client

Bolder Ventures

208 - 502 Wheeler St
Whitehorse YT Y1A 2P2 Canada

Project

None Given

Report Date

November 27 2007

Page

2 of 2

Part 1

CERTIFICATE OF ANALYSIS

VAN07001735.1

Method	1F	1F	1F	1F	1F	1F	1F	1F	1F	1F	1F	1F	1F	1F	1F	1F	1F	1F	1F	1F	1F
Analyte	Mo	Cu	Pb	Zn	Ag	Ni	Co	Mn	Fe	As	U	Au	Th	Sr	Cd	Sb	Bi	V	Ca	P	
Unit	ppm	ppm	ppm	ppm	ppb	ppm	ppm	ppm	%	ppm	ppm	ppb	ppm	ppm	ppm	ppm	ppm	ppm	%	%	
MDL	0.01	0.01	0.01	0.1	2	0.1	0.1	1	0.01	0.1	0.1	0.2	0.1	0.5	0.01	0.02	0.02	2	0.01	0.001	
EE 07 050	Rock	0.20	41.47	0.38	39.4	19	53.3	18.4	694	3.21	2.0	<0.1	1.5	0.1	8.5	0.14	0.13	<0.02	58	0.32	0.030
EE-07 051	Rock	0.56	101.2	0.57	36.3	34	63.2	26.2	436	2.61	2.4	0.2	0.9	0.2	79.8	0.10	0.47	<0.02	52	0.92	0.041
EE 07 052	Rock	0.34	98.74	0.93	29.7	43	31.1	20.7	304	2.75	1.0	0.2	1.7	0.2	101.2	0.08	0.40	<0.02	43	0.68	0.091
EE-07 053	Rock	0.26	96.85	0.74	37.2	89	43.5	24.7	471	2.65	3.7	<0.1	1.4	0.1	31.5	0.08	0.25	<0.02	44	0.57	0.053
EE-07 054	Rock	0.18	102.2	1.79	38.7	81	38.4	19.8	474	2.62	4.4	<0.1	1.4	0.2	14.5	0.07	0.21	<0.02	44	0.47	0.049
EE-07 055	Rock	0.17	58.37	10.54	50.3	92	28.1	13.5	719	3.04	4.9	0.2	0.8	0.6	11.8	0.13	0.24	0.11	42	0.42	0.045



ACME ANALYTICAL LABORATORIES LTD
 852 E Hastings St Vancouver BC V6A 1R6 Canada
 Phone (604) 253-3158 Fax (604) 253-1716
 www.acmelab.com

Client **Bolder Ventures**
 208 502 Wheeler St
 Whitehorse YT Y1A 2P2 Canada

Project None Given
 Report Date November 27 2007

Page 2 of 2 Part 2

CERTIFICATE OF ANALYSIS

VAN07001735.1

Method	1F	1F	1F	1F	1F	1F	1F	1F	1F	1F	1F	1F	1F	1F	1F	1F	1F	1F	1F	1F	
Analyte	La	Cr	Mg	Ba	Tl	B	Al	Na	K	W	Sc	Tl	S	Hg	Se	Te	Ga	Cs	Ge	Hf	
Unit	ppm	ppm	%	ppm	%	ppm	%	%	%	ppm	ppm	ppm	%	ppb	ppm	ppm	ppm	ppm	ppm	ppm	
MDL	0.5	0.5	0.01	0.5	0.001	20	0.01	0.001	0.01	0.1	0.1	0.02	0.02	5	0.1	0.02	0.1	0.02	0.1	0.02	
EE-07 050	Rock	1.5	235.0	1.98	75.4	0.076	41	2.15	0.014	0.22	<0.1	2.3	0.02	<0.02	<5	0.2	0.04	2.9	0.08	<0.1	<0.02
EE-07 051	Rock	1.9	163.1	1.58	45.8	0.116	37	1.88	0.047	0.08	<0.1	3.5	<0.02	<0.02	<5	0.3	<0.02	2.6	0.06	<0.1	0.05
EE-07 052	Rock	2.1	53.8	1.14	120.7	0.118	43	1.39	0.064	0.28	<0.1	2.5	0.09	0.09	<5	0.5	<0.02	3.0	0.26	<0.1	0.11
EE-07 053	Rock	2.1	57.5	1.26	60.2	0.073	40	1.57	0.029	0.13	<0.1	3.0	0.03	0.02	<5	0.2	<0.02	2.2	0.07	<0.1	0.03
EE-07 054	Rock	2.1	89.4	1.29	68.0	0.071	37	1.61	0.027	0.22	<0.1	2.8	0.04	<0.02	<5	<0.1	<0.02	2.5	0.10	<0.1	0.05
EE-07 055	Rock	1.9	62.6	1.14	70.4	0.085	35	1.62	0.049	0.23	0.2	3.3	0.07	<0.02	<5	0.2	0.04	5.1	0.17	<0.1	0.07



ACME ANALYTICAL LABORATORIES LTD
 852 E Hastings St Vancouver BC V6A 1R6 Canada
 Phone (604) 253-3158 Fax (604) 253-1716
 www acmelab com

Client **Bolder Ventures**
 208 - 502 Wheeler St
 Whitehorse YT Y1A 2P2 Canada

Project None Given
 Report Date November 27 2007

Page 2 of 2 Part 3

CERTIFICATE OF ANALYSIS

VAN07001735.1

Method		1F	1F	1F	1F	1F	1F	1F	1F	1F	1F	1F	1F	
Analyte		Nb	Rb	Sn	Ta	Zr	Y	Ce	In	Re	Be	Li	Pd	Pt
Unit		ppm	ppm	ppm	ppm	ppm	ppm	ppm	ppm	ppb	ppm	ppm	ppb	ppb
MDL		0.02	0.1	0.1	0.05	0.1	0.01	0.1	0.02	1	0.1	0.1	10	2
EE-07 050	Rock	<0.02	4.9	<0.1	<0.05	0.5	3.63	3.6	<0.02	<1	<0.1	10.9	<10	9
EE-07 051	Rock	<0.02	2.3	<0.1	<0.05	1.0	5.46	4.5	<0.02	<1	0.1	7.9	13	6
EE-07 052	Rock	<0.02	8.3	0.1	<0.05	2.6	2.90	5.9	<0.02	<1	0.1	6.6	14	<2
EE-07 053	Rock	<0.02	4.1	<0.1	<0.05	1.1	5.72	5.1	<0.02	<1	<0.1	6.8	12	5
EE-07 054	Rock	<0.02	6.9	<0.1	<0.05	0.9	4.79	4.9	<0.02	<1	0.1	9.8	12	7
EE 07 055	Rock	0.07	7.7	0.1	<0.05	1.3	5.50	4.5	<0.02	<1	0.2	7.3	<10	3

QUALITY CONTROL REPORT

VAN07001735.1

Method	Analyte	Unit	MDL	1F	1F	1F	1F	1F	1F	1F	1F	1F	1F	1F	1F	1F	1F	1F	1F	1F	1F		
				Mo	Cu	Pb	Zn	Ag	Ni	Co	Mn	Fe	As	U	Au	Th	Sr	Cd	Sb	Bi	V	Ca	P
				ppm	ppm	ppm	ppm	ppb	ppm	ppm	ppm	%	ppm	ppm	ppb	ppm	ppm	ppm	ppm	ppm	ppm	%	%
Pulp Duplicates																							
EE-07 055	Rock			0 17	58 37	10 54	50 3	92	28 1	13 5	719	3 04	4 9	0 2	0 8	0 6	11 8	0 13	0 24	0 11	42	0 42	0 045
REP EE-07 055	QC			0 17	59 43	11 67	50 5	104	28 8	14 5	740	3 07	5 2	0 2	0 9	0 7	12 5	0 12	0 24	0 18	45	0 42	0 045
Reference Materials																							
STD DS7	Standard			20 33	127 7	70 92	413 9	886	57 0	9 7	650	2 46	50 9	4 5	66 8	4 2	72 5	6 66	6 11	4 88	81	0 97	0 086
STD DS7	Standard			22 33	114 0	72 16	425 4	942	63 0	10 6	684	2 58	57 7	5 1	81 0	4 7	77 2	7 33	6 50	5 27	87	1 04	0 088
STD DS7 Expected				20 92	109	70 6	411	890	56	9 7	627	2 39	48 2	4 9	70	4 4	68 7	6 38	5 86	4 51	86	0 93	0 08
BLK	Blank			<0 01	<0 01	<0 01	<0 1	<2	<0 1	<0 1	<1	<0 01	<0 1	<0 1	<0 2	<0 1	<0 5	<0 01	<0 02	<0 02	<2	<0 01	<0 001
Prep Wash																							
G1	Prep Blank			0 33	16 20	3 32	61 7	21	6 2	4 7	571	2 00	<0 1	2 2	1 9	3 9	80 8	0 22	0 03	0 08	38	0 57	0 080
G1	Prep Blank			0 69	11 97	3 66	63 5	21	4 7	4 9	581	2 09	<0 1	2 4	1 6	4 2	81 2	0 29	0 03	0 08	39	0 58	0 081



AcmeLabs

ACME ANALYTICAL LABORATORIES LTD

852 E Hastings St Vancouver BC V6A 1R6 Canada

Phone (604) 253-3158 Fax (604) 253-1716

www.acmelab.com

Client

Bolder Ventures

208 502 Wheeler St
Whitehorse YT Y1A 2P2 Canada

Project

None Given

Report Date

November 27 2007

Page

1 of 1

Part 2

QUALITY CONTROL REPORT

VAN07001735.1

Method		1F	1F	1F	1F	1F	1F	1F	1F	1F	1F	1F	1F	1F	1F	1F	1F	1F	1F	1F	1F
Analyte		La	Cr	Mg	Ba	Tl	B	Al	Na	K	W	Sc	Tl	S	Hg	Se	Te	Ga	Cs	Ge	Hf
Unit		ppm	ppm	%	ppm	%	ppm	%	%	%	ppm	ppm	ppm	%	ppb	ppm	ppm	ppm	ppm	ppm	ppm
MDL		0.5	0.5	0.01	0.5	0.001	20	0.01	0.001	0.01	0.1	0.1	0.02	0.02	5	0.1	0.02	0.1	0.02	0.1	0.02
Pulp Duplicates																					
EE 07 055	Rock	1.9	62.6	1.14	70.4	0.085	35	1.62	0.049	0.23	0.2	3.3	0.07	<0.02	<5	0.2	0.04	5.1	0.17	<0.1	0.07
REP EE-07 055	QC	2.0	67.9	1.20	73.3	0.093	41	1.68	0.048	0.24	0.2	3.5	0.07	<0.02	<5	0.1	0.05	5.3	0.17	<0.1	0.08
Reference Materials																					
STD DS7	Standard	11.8	195.0	1.07	429.4	0.116	73	1.04	0.094	0.48	4.2	2.6	4.78	0.20	243	3.7	1.15	4.8	6.38	<0.1	0.10
STD DS7	Standard	12.6	205.0	1.17	443.8	0.121	86	1.11	0.097	0.50	4.8	2.7	5.13	0.22	238	3.9	1.28	5.2	6.68	0.1	0.12
STD DS7 Expected		12.7	163	1.05	370.3	0.124	38.6	0.959	0.073	0.44	3.8	2.5	4.19	0.21	200	3.5	1.08	4.6	6.36	0.1	0.11
BLK	Blank	<0.5	<0.5	<0.01	<0.5	<0.001	45	<0.01	<0.001	<0.01	<0.1	<0.1	<0.02	<0.02	<5	<0.1	<0.02	<0.1	<0.02	<0.1	<0.02
Prep Wash																					
G1	Prep Blank	8.2	94.3	0.63	268.3	0.136	35	1.34	0.181	0.67	<0.1	2.8	0.44	<0.02	<5	0.1	<0.02	5.8	3.66	<0.1	0.12
G1	Prep Blank	8.5	9.6	0.64	281.9	0.136	38	1.34	0.196	0.70	0.2	2.7	0.46	<0.02	<5	0.2	<0.02	6.0	3.68	<0.1	0.11

QUALITY CONTROL REPORT

VAN07001735.1

Method		1F	1F	1F	1F	1F	1F	1F	1F	1F	1F	1F	1F
Analyte		Nb	Rb	Sn	Ta	Zr	Y	Ce	In	Re	Be	Li	Pd
Unit		ppm	ppm	ppm	ppm	ppm	ppm	ppm	ppm	ppb	ppm	ppm	ppb
MDL		0.02	0.1	0.1	0.05	0.1	0.01	0.1	0.02	1	0.1	0.1	10
Pulp Duplicates													
EE-07 055	Rock	0.07	7.7	0.1	<0.05	1.3	5.50	4.5	<0.02	<1	0.2	7.3	<10
REP EE-07 055	QC	0.07	7.9	<0.1	<0.05	1.6	5.73	4.8	<0.02	<1	0.1	7.3	10
Reference Materials													
STD DS7	Standard	0.71	37.5	4.9	<0.05	4.6	5.60	36.9	1.55	5	1.8	27.2	112
STD DS7	Standard	0.83	39.5	5.2	<0.05	4.8	5.90	39.1	1.63	2	1.4	27.9	123
STD DS7 Expected		0.71	35.8	5.4		5.4	5.18	38	1.57	4	1.6	29.3	58
BLK	Blank	<0.02	<0.1	<0.1	<0.05	<0.1	<0.01	<0.1	<0.02	<1	<0.1	<0.1	<10
Prep Wash													
G1	Prep Blank	0.70	52.9	0.7	<0.05	1.3	6.50	17.5	<0.02	<1	0.4	33.5	10
G1	Prep Blank	0.68	52.1	0.7	<0.05	1.3	6.79	18.9	<0.02	<1	0.3	32.2	<10

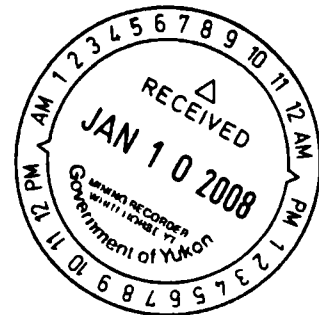
Statement of expenditures 2007

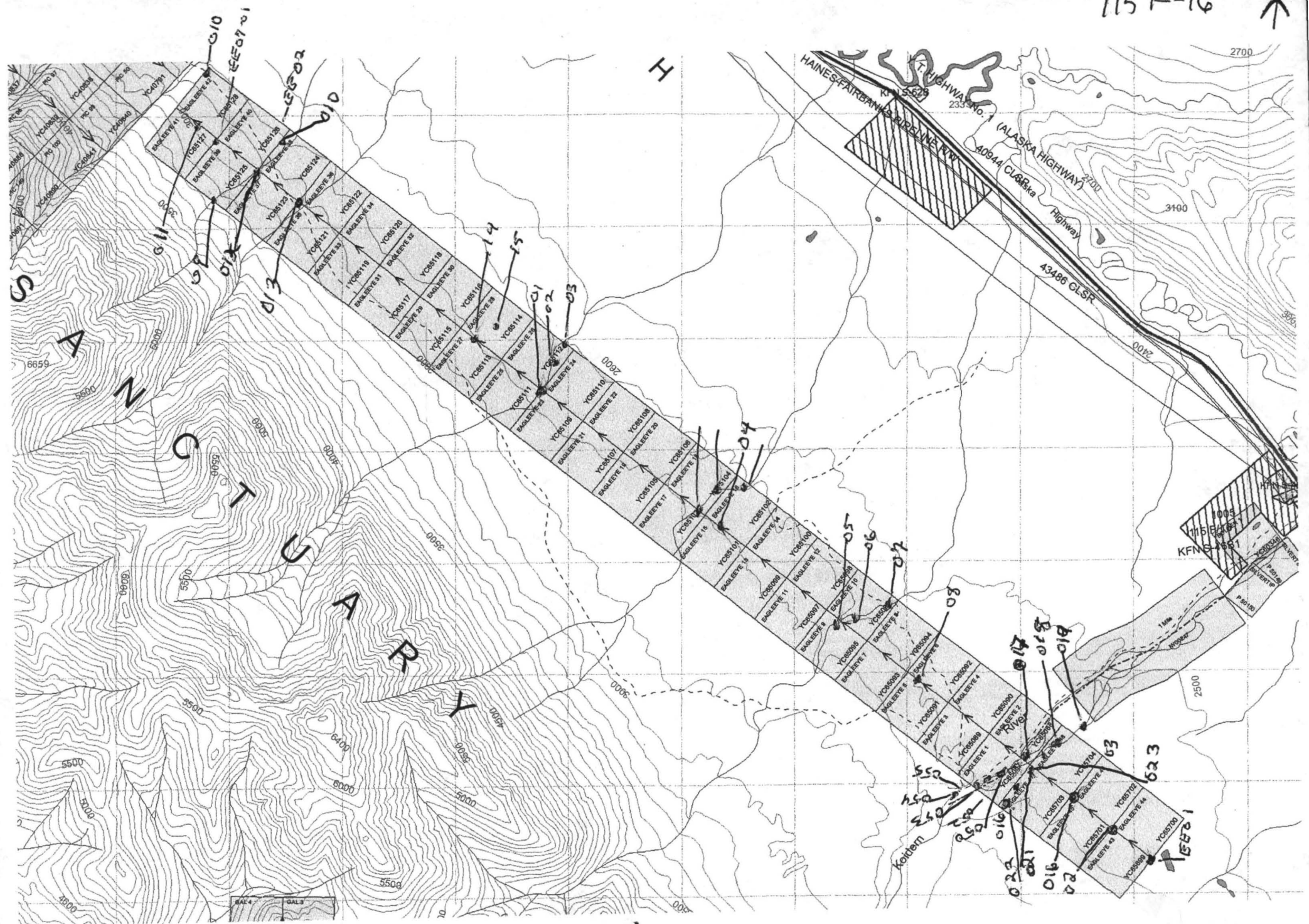
Eagle Eye claims 115 F16

Travel by truck to Koidern River 792 klm x 3 trips @ .53	\$1259.28
Daily travel to claim sites @ 20 klm per day x 10 days @ 53	31 80
Per diem @ \$35 Per day x 10 days x 2 persons	700
Contract wages @ \$250 per day x 10 days x 2 persons Dick Brost, Rusty Green, Gloria Kerwin	5000
Assay costs	1769 43
Transportation of samples to lab	262 69
4x4 rental	390
Equipment rentals chainsaw/ brush hook	180
Magnetometer rental and consultation (Bob Sterling)	166 07
Report preparation 2 days @ \$250 per day	500
Personal communication with Steve Isreal re Geological Survey	
Total expenditures	<u>\$10,259.27</u>

Gloria Kerwin
Apt 208, 502 Wheeler St
Whitehorse, Yukon Y1A 2P2
867-667-2071

Gloria Kerwin





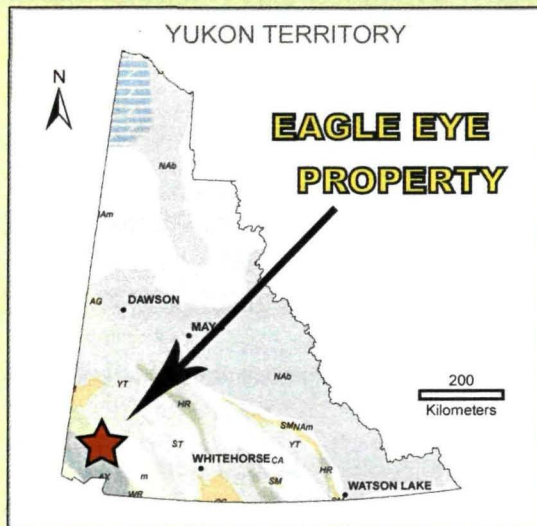
Paul Eye samples

Location and comments on samples taken on the Eagle Eye claims 2007

sample #	07V	UTM	Comments
EE-07-01	546336	6851331	stream sample (crossing c claims # 25 & 26) 10.3 As,
EE-07-02	543697	6853475	Steam sample " "
EE-07-03	543697	6853475	stream sample " "
EE-07-04	545329	8652011	stream sample stream crossing claims #14/15
EE-07-05	21.60 Mo 546093	6851507	stream sample stream crossing claim's #9/10 148. Ag, 135.3 Ni,
EE-07-06	116 Ag 546093	6851507	stream sample stream crossing claims # 9/10
EE-07-07	36.68 Mo 546093	6851507	rock sample -mafic gabbro, dark green/maroon 204. Ni,
EE-07-08	544949	6850979	stream sample stream crossing claim's # 13/14 160. Ag
EE-07-09	544949	6852260	stream sample crossing claims # 15/16
EE-07-10	544949	6852260	stream sample crossing claims # 15/16
EE-07-11	541016	6856122	stream sample crossing claims # 41/42
EE-07-12	541016	6855858	stream sample crossing claims #39/40
EE-07-13	541396	6855393	stream sample crossing claims # 37/38
EE-07-14	543072	6854126	stream sample crossing claims # 27/28
EE-07-15	543072	6854126	stream sample crossing claims /27/28
EE-07-16	547951	6850206	stream sample crossing claims # 1/2 Koidern River
EE-07-17	547516	6850428	stream sample crossing claims # 2/3 " "
EE-07-18	547516	6850428	Steam sample " " " "
EE-07-18	547516	6850428	stream sample " " " "
EE-07-19	103.5 Au 549155	12E Ag 6850212	stream sample " " " " 126. Ag
EE-07-20	548201	6850247	stream sample " " " "
EE-07-21	548235	6850268	stream sample " " " "
EE-07-22	548235	6850268	stream sample " "" " "
EE-07-23	548294	6850250	soil sample claim # 43
EE-07-24	548333	6850265	soil sample Claim #44
EE-07-26	133 Ni 548387	6850312	soil sample claim # 47
EE-07-28	113.7 Cu 549148	6849395	soil sample claim #44
EE-07-30	548681	6849701	soil sample claim # 45
EE=07-31	548381	6849972	soil sample claim # 46
EE-07-050	547451	6849875	chip sample claim # 46
EE-07-051	547474	6849888	chip sample claim # 47
EE=07-052	547490	6849886	chip sample claim # 47
EE-07-053	547512	6849890	chip sample claim # 48
EE-07-054	547524	6849847	chip sample claim # 48
EE-07-055	547504	6849890	chip sample claim #48

appendix C

Discover Yukon's mineral wealth



Map 1. Property Location Map



Eagle Eye claim 1 and 2 (post #1) - lower reaches of the claim group underlain by glacial outwash

Eagle Eye Property Ni-Cu-Au

(Yukon MINFILE occurrence - 115F 038 and 115F 039)

The Eagle Eye property consists of 48 quartz mineral claims, located approximately 300 km west and northwest from Whitehorse, Yukon as shown on Claim Map sheet 115F/16. The Alaska highway connects to an old cat trail along the Koidern River and provides access to the southeast end of the claims.

Exploration History

The area immediately northwest of the Eagle Eye property has experienced over 30 years of intermittent exploration activity and has resulted in the identification of magmatic Ni-Cu-PGE mineralization associated with rocks of the Kluane ultramafic complex. A serpentinized sill about 30 m thick is mapped in this area just northwest of the Eagle Eye claims and is coincident with a distinct first vertical derivative magnetic feature that is seen to extend onto the Eagle Eye property (Fig. 3, on back).

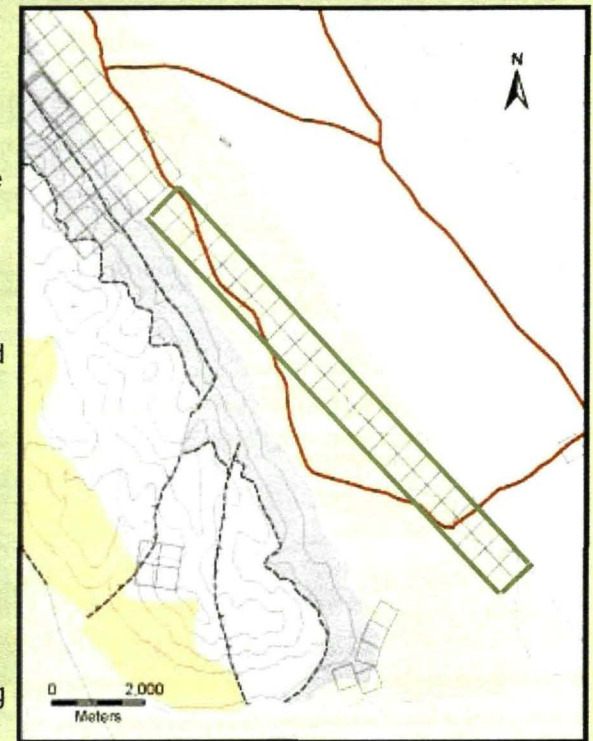
Regional Geology

Volcanic and sedimentary rocks of the Skolai Group which are the most abundant within Wrangellia in the southwest Yukon are assumed to underlie the claim group. Glacial deposits of varying thickness, are found discontinuously across the property. Mafic gabbro related to the Kluane Ultramafic complex has recently been identified on the claim group coincident with the previously discussed magnetic feature.

Geochemistry

Stream sediment sampling carried out during the 2007 season has identified Ni-Mo anomalies and a Cu anomaly coincident with the targeted geophysical feature. Along strike to the southeast a second Ni-Mo anomaly has been identified. Cu-Au vein and porphyry mineralization occur in the region and may provide a target model for two distinct anomalies detected at the south end of the claims, coincident with a circular magnetic feature.

- Accessible, new discovery in an under explored area
- Coincident geochemical and geophysical anomalies directly along strike from known mineralization
- Distinct Ni-Cu-(PGE) and Cu-Au targets outlined



Map 2. Geology Map

FOR MORE INFORMATION CONTACT:

Eagle Eye Exploration



G. Kerwin
Owner

208 - 502 Wheeler Street Whitehorse YT Y1A 2P2
phone: (1) 867-667-2071

010 heavy 10 - C.

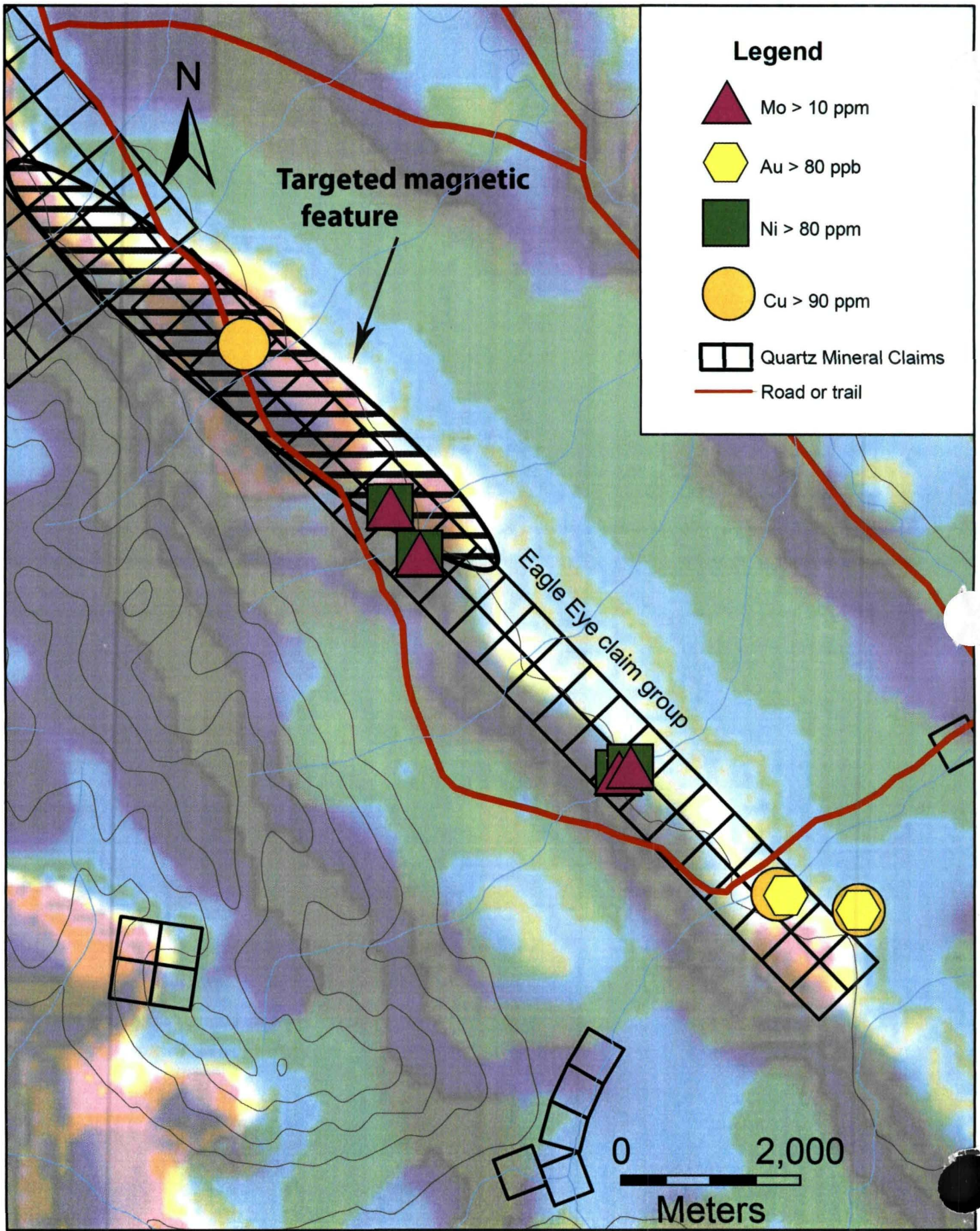


Fig. 3 - Plot of first vertical derivative magnetics and anomalous results of stream sediment geochemical sampling carried out on the Eagle Eye claim group during 2007.