

094931



RED RIDGE PROPERTY

TRENCHING PROGRAM

PRELIMINARY REPORT

WHITEHORSE MINING DISTRICT

AUGUST 12 - AUGUST 17 2007

NTS MAP # 105D06

AZURITE 1 - 7

LA 1 - 11

WG 1 - 2

BB 1 - 4

WS 1 - 5

UNION - 1

REGISTERED OWNERS - B. SCOTT - 50% L. BRATVOLD - 50%

LOCATED AT 495000 E - 6691500 N

UTM ZONE 8 - NAD 83

REPORT PREPARED BY BRIAN SCOTT

FEB. 12 / 2008

Costs associated with this report have been approved in the amount of \$ 3000.00 for assessment credit under Certificate of Work No. QW28142

J. Southwick
Mining Recorder
Whitehorse Mining District

094931

This report has been examined by
the Geological Evaluation Unit
under Section 53 (4) Yukon Quartz
Mining Act and is allowed as
representation work in the amount
of \$ 3000.00.



Regional Manager, Exploration and
Geological Services for Commissioner
of Yukon Territory

SUMMARY

Following up on encouraging results from prospecting in 2006, Brian Scott and Larry Bratvold, co-owners of the Red Ridge project, spent six days during August 2007, trenching with a mini – excavator at three separate areas on the property. Later in the season, personnel from Prize Mining Corp. (TSX-V: PRZ) made two brief visits to the property and grab sampled the newly trenched zones. Due to an early snowfall, plans to return to map and systematically sample the trenches had to be deferred until the 2008 field season. Prize Mining optioned the property in Oct/07.

Notable results from trench grab samples included:

- values up to 8662 g/t Ag and 2.1% Cu from a 10 to 20 cm. wide quartz vein at the historic East Zone**
- up to 0.874% Mo from a 50 cm. wide quartz lense at the newly discovered Moly Zone**

TABLE OF CONTENTS

	PAGE
SUMMARY	
LOCATION AND ACCESS	1
PROPERTY STATUS	1
CLIMATE, TOPOGRAPHY & VEGETATION	5
HISTORY	5
REGIONAL GEOLOGY	6
PROPERTY GEOLOGY	8
TRENCHING AND SAMPLING.....	9
RESULTS AND RECOMMENDATIONS	10
	11
 APPENDIX	
• STATEMENT OF QUALIFICATIONS	
• STATEMENT OF EXPENSES	
• ANALYTICAL RESULTS	
• REFERENCES	
 LIST OF FIGURES	
• PROPERTY LOCATION MAP	2
• PROPERTY LOCATION MAP	3
• CLAIM MAP 105D/06	4
• REGIONAL GEOLOGY MAP	7
• TRENCHING MAP #1	12
• TRENCHING MAP #2	13
• TRENCHING PHOTO	14

LOCATION AND ACCESS

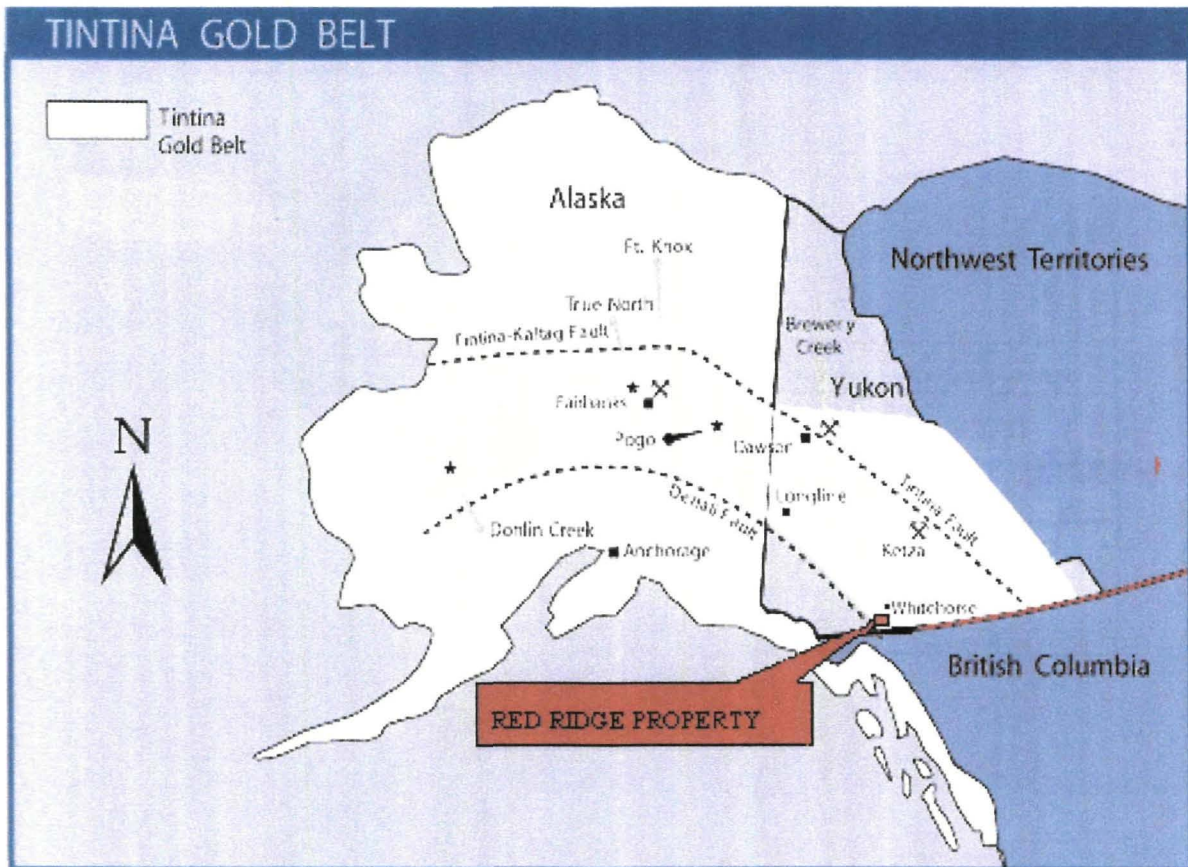
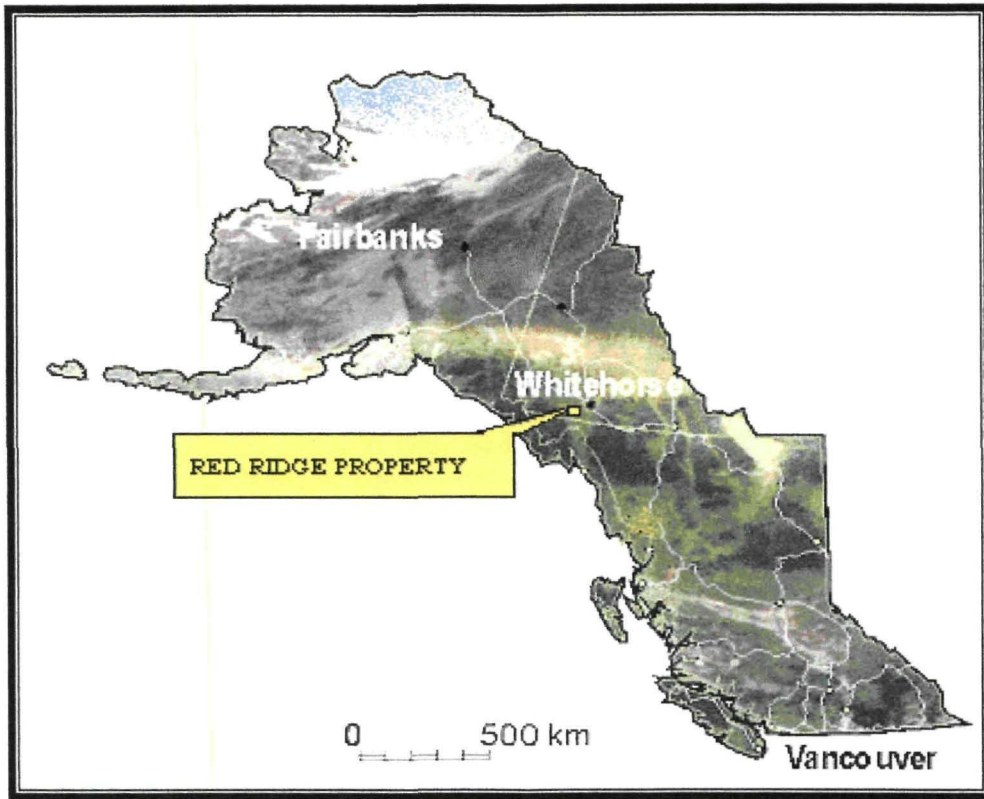
The Red Ridge property is located in the southwestern Yukon Territory approximately 40 kilometers south of Whitehorse. The claims cover part of the gossanous ridge known as Red Ridge, separating Thompson and Morrison Creeks from the Watson River.

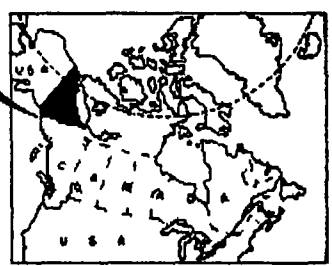
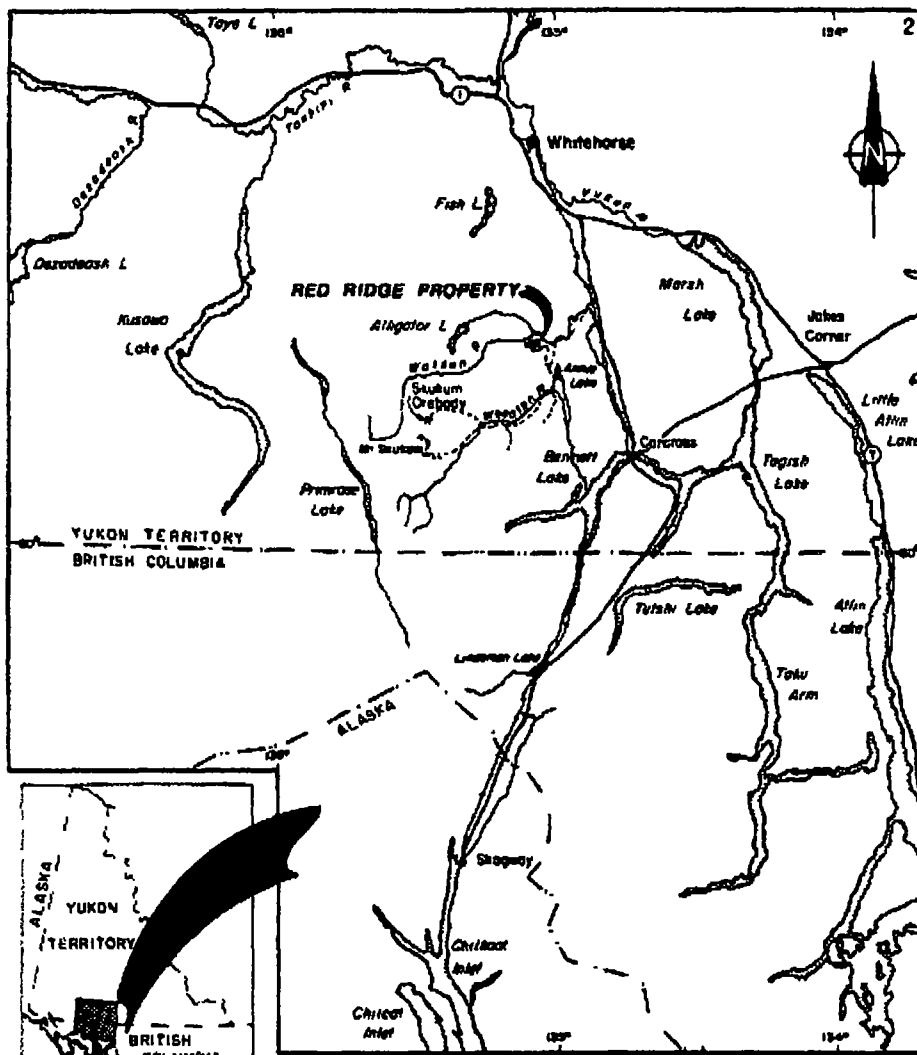
Access to the property is from the paved South Klondike Highway and then 19 kilometers on the gravel Annie Lake road. From kilometer post 19, a four wheel drive road leads to the property. ATV roads throughout the property give access to the mineralized occurrences.

PROPERTY STATUS

The property consists of 30 unsurveyed quartz claims. The recorded owners of the claims are Brian Scott and Larry Bratvold, each holding a 50% interest. A list of claims, claim numbers, and expiry date (with acceptance of this report) follows:

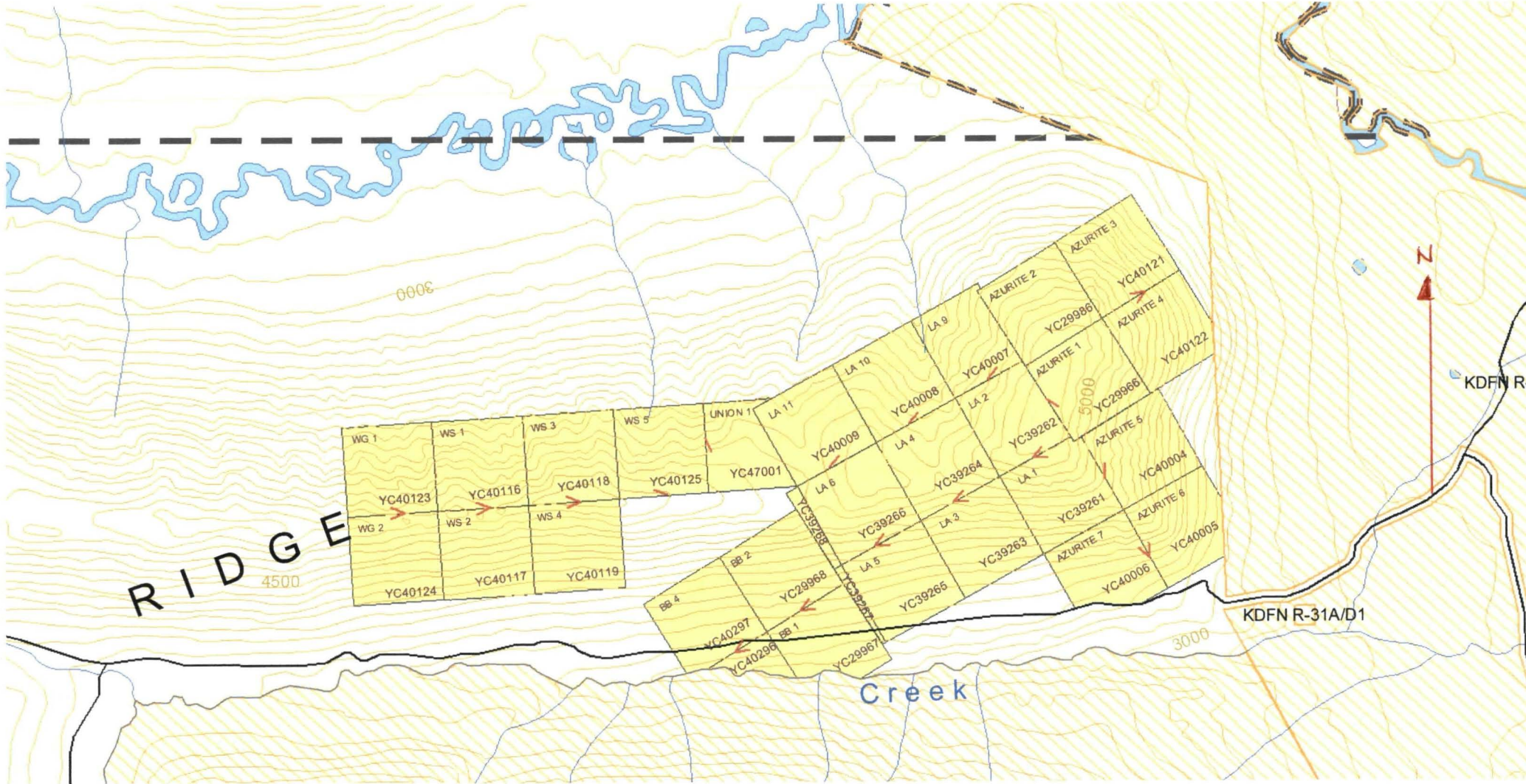
AZURITE 1	YC29966	2009 - 01 - 02
AZURITE 2	YC29986	2009 - 01 - 13
AZURITE 3 - 4	YC40121 - 2	2009 - 01 - 04
AZURITE 5 - 7	YC40004 - 7	2008 - 12 - 15
BB 1 - 2	YC29967 - 8	2009 - 01 - 02
BB 3 - 4	YC40296 - 7	2009 - 03 - 20
LA 1 - 8	YC39261 - 8	2009 - 05 - 10
LA 9 - 11	YC40007 - 9	2008 - 12 - 15
WS 1 - 4	YC40116 - 9	2009 - 01 - 27
WS 5	YC40125	2009 - 01 - 27
WG 1 - 2	YC40123 - 4	2009 - 01 - 27
UNION 1	YC47001	2009 - 12 - 14



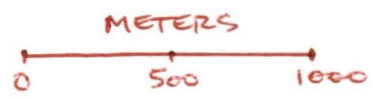


BRATVOLD/SCOTT
RED RIDGE PROPERTY
LOCATION

Scale 1:1,000,000 FIGURE 1



RED RIDGE PROPERTY - NTS 105 D 06.



CLIMATE, TOPOGRAPHY AND VEGETATION

The climate in the area of the Red Ridge property is variable with hot summers and long cold winters. Precipitation is light, averaging about 40 cm annually with heavy snowfalls occurring during the winter months.

Red Ridge is situated at the eastern flank of the Coast Mountains, topography in the area is rugged. Elevations on the property range from 1050 to 1650 meters above sea level. Glaciation has greatly modified the area, and glacial features such as u-shaped valleys, arêtes and cirques are common.

Vegetation consists of stunted spruce, jack pine, and poplar. Alpine shrubs and willows occur above 1150 elevation along with alpine grasses.

HISTORY

Considerable prospecting was carried out in the Wheaton and Watson River areas starting in the early 1900s, culminating in the discovery of numerous gold and silver deposits and occurrences. The Legal Tender (gold/silver vein), Gold Hill (gold vein), and the Idaho Hill (gold/silver/lead/zinc) veins were discovered within 5 kilometers of the Red Ridge property during this period. Intermittent exploration and prospecting in the district has been ongoing since that time.

In 1981 Agip Canada Ltd discovered a gold ore body at Mt. Skukum, some 23 kilometers from Red Ridge, and started a resurgence of exploration activity in the area. This era of exploration resulted in Omni Resources Ltd discovering additional ore bodies at Skukum Creek and Goddell Gully which have since been acquired by Tagish Lake Gold Corp. Tagish Lake Gold Corp has announced that they have a currently defined, measured, plus indicated resource of 1,120,000 tonnes grading 8g/t Au and 153.1 g/t Ag in their Skukum Creek and Goddell Gully deposits. Current work is underway to extend their reserves before going into production.

Exploration for porphyry copper/molybdenum on Red Ridge was done by Inco Limited in the early 1970s.

Precious metal exploration wasn't initiated on Red Ridge until 1985 when Havilah Gold Mines and New Era Developments discovered several gold/silver veins on Red Ridge. Exploration consisted of prospecting, soil and rock geochemistry, mechanical trenching, and exploratory diamond drilling.

Veins consist of bleached and sheared wall rock up to 5 meters wide which contain quartz veins mineralized with pyrite, galena, chalcopyrite and sphalerite. Mineralized quartz assayed up to 1.12 oz/t Au. A barite/tetrahedrite vein returned values to 810 oz/t Ag. Precious metal values, wallrock associations, structural control, and surface expressions of mineralization are considered to be consistent with those that led to the discovery of the Rainbow-Road Zone located at nearby Skukum Creek.

Prospector Larry Bratvold staked the property in 2004 and 2005 to cover the known mineral occurrences and to investigate the bulk tonnage potential of the calcareous sediments and felsic intrusives. During the 2006 field season, Bratvold and Scott, co-owners of the property spent six m/days prospecting with encouraging results. A new showing, dubbed the Moly Zone, was discovered where grab samples returned values up to 0.785% Mo. As well, samples from the historic East Zone returned bonanza silver grades (6565 and 9887 g/t Ag)

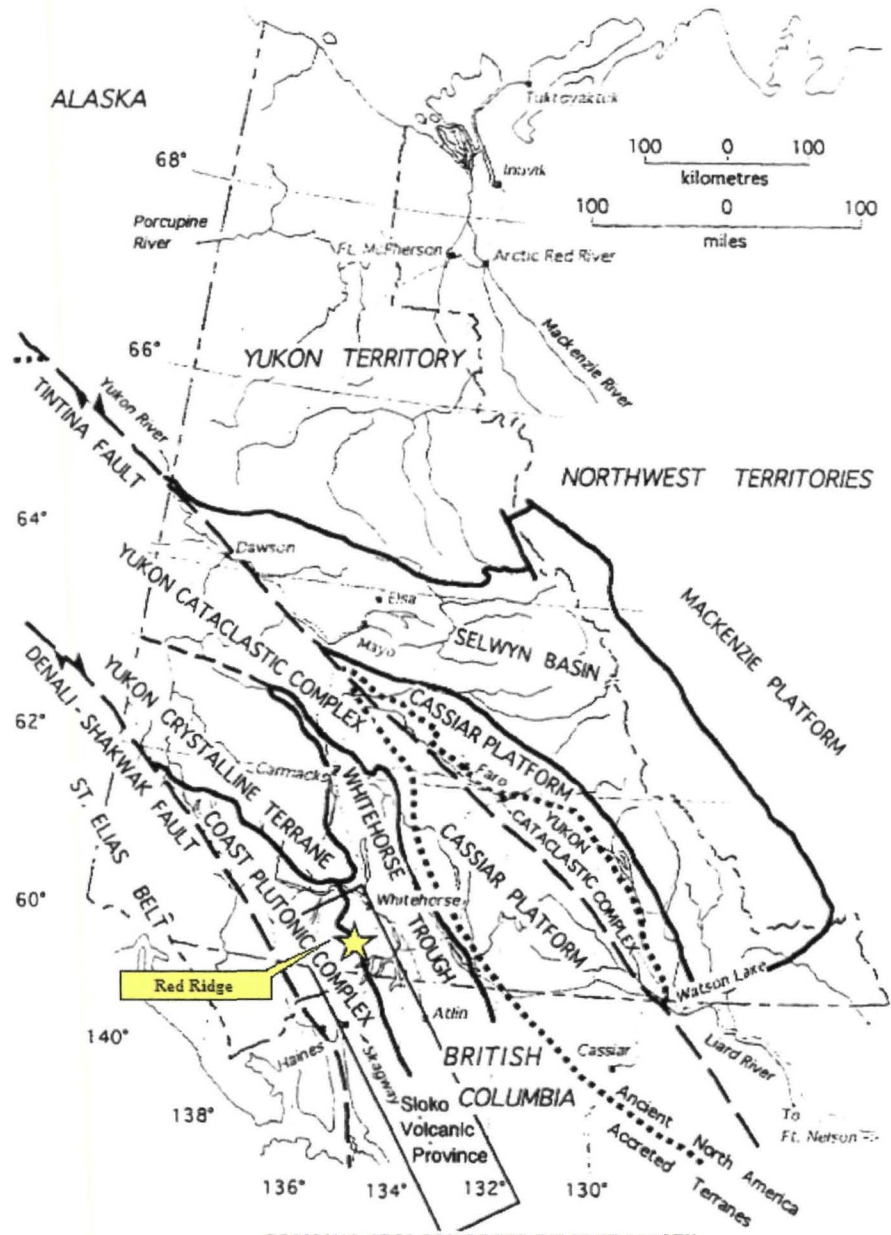
REGIONAL GEOLOGY (summarized from Doherty and Hart 1988)

The Red Ridge property is situated on the eastern flank of the Coast Plutonic Belt. Regionally, the district is underlain by a Jurassic-Triassic volcano-sedimentary package intruded by the Cretaceous Coast Plutonic Complex. These units are unconformably overlain by the Tertiary Skukum Group volcanics. Precious metal mineralization in quartz veins and shear zones throughout the district are associated with hypabyssal intrusives of the Skukum Group volcanics.

Jurassic-Triassic andesitic flows and breccias outcrop throughout the district. These flows are overlain by the Lewes River Group rocks. Disconformably overlying the Lewes River Group are the Jurassic Laberge and Tantalus Formation. The Laberge Group consists of siliclastic sedimentary rocks with minor andesite. The Tantalus Formation is comprised of finer siliclastic sedimentary rocks including chert pebble conglomerate.

The Jurassic-Triassic assemblage has been intruded by quartz monzonites, granites, granodiorites and diorites of the Cretaceous Coast Plutonic Complex. The Jurassic-Triassic package and the Coast Plutonic Complex outcrop throughout the district.

The Skukum Group Volcanics unconformably overlie the older units. This group is comprised of felsic pyroclastics, tuffs and flows, andesitic flows and breccias, dacite flows, basalt and volcanoclastic sediments. Associated low level intrusives complete the Skukum Group lithologies.



REGIONAL GEOLOGY OF RED RIDGE PROPERTY

PROPERTY GEOLOGY

Property geology is much more complex than can be shown on the previously described regional mapping. Rock outcrops are restricted to ridge flanks, and probably constitute less than 25% of the total property area.

Mafic to intermediate unnamed volcanic rocks of probable lower Mesozoic age are exposed throughout the Red Ridge property. They are typically black, fine grained basaltic andesite flows. Minor volcanic breccias and intervolcanic sediments are also present. Alteration includes silicification and propylitization. These units are in fault contact with other Mesozoic sediments and volcanics and are intruded by granodiorite.

Fine grained sedimentary rocks of the Jurassic Laberge Group are exposed at the east-central part of the ground. Argillites, limestones, cherts and quartzites comprise this unit. Silicification and skarnification are present, particularly near intrusive contacts.

Light coloured, sometimes rusty weathering, rhyolite and andesite has intruded all other rock units on the property as dykes and possible sills. These are probably a hypabyssal equivalent to the Eocene Skukum group. Remnant porphyritic to subporphyritic and flow banded textures are present, but they are commonly aphanitic. Pyrite, usually weathered, is a common constituent. These late stage magmatic dykes and sills are emplaced along zones of structural weakness, including faults and sedimentary bedding planes.

A large prominent gossan occurs along the central part of Red Ridge. It is attributed to hornfelsed metasediments where primary pyrite has been reduced to pyrrhotite during contact metamorphism with subsequent surface oxidation. Gossans not directly associated with exposed intrusive dykes and the overall size of the metamorphic aureole on the Red Ridge property could be suggestive of a large buried intrusion as a possible source of alteration and mineralization.

Cretaceous medium grained granodiorite intrudes the lower Mesozoic strata in several locations on the Red Ridge property. The intrusion is the prominent rock type on the east half of the property. Porphyry copper style mineralization occurs within the granodiorite on this part of the property. Although the granodiorite in this zone is texturally similar to the granodiorite on other parts of the property, it may represent a younger phase. This intrusive body underlies a large significant gold/silver geochemical anomaly.

Many structures, including bedding and dykes display a preferred steeply dipping northeast trend, discordant with the regional trend. Mafic minerals in the

granodiorite locally show parallelism, suggesting that regional deformation took place after the intrusion.

TRENCHING - Aug 12 – 17 2007

To follow up on encouraging prospecting results in 2006, a modest trenching program was initiated during the 2007 field season. A Kubota KH41 mini – excavator was mobilized to the property on Aug. 12. Exceptionally high spring runoff had washed out the road at Perkins Creek, so the excavator was offloaded at this point and walked in the remaining 9 kilometres to Red Ridge. This narrow (1.2 m) low ground pressure machine was ideal for negotiating the exploration trails on the property, which were constructed in the 1980's, and are now sloughed in at various spots. Very little road repair was necessary, and no new trails were required to access the areas of interest. This kept the environmental footprint to a minimum, however, the tradeoff was the relatively slow trenching rate of this small machine. A total of 12 m/days were spent trenching on three separate areas of the property, and 6 trenches with a combined length of 38 meters were excavated.

EAST ZONE

Trench #1-07 was located at the historic East Zone @ 496135E – 6692000N UTM Zone 8 NAD 83 on claim Azurite 1 (YC29966). Dimensions were length – 14 m, width – 2 m. and depth – 2 m. and exposed a 6 to 15 cm. wide quartz/barite vein carrying tetrahedrite, azurite and malachite. A total of five samples were collected (RR-7, RR-8, WP 299, WP 299B, WP 299C)

MOLY ZONE

New zone discovered by prospecting in 2006 on claim Azurite 2 (YC29986)

Trench #2-07 was located @496135E – 6692222N. Dimensions were length – 2.2 m, width – 2 m. and depth 1m. and exposed a 6 to 15 cm. quartz vein with chalcopyrite and MoS. One sample was collected (WP 300)

Trench #3-07 was located 3 m. west of Tr. #2-07. Dimensions were length – 9 m,

width – 1.8 m. and depth – 2 m. A 20 to 50 cm. wide quartz vein with molybdenite, moly oxides and chalcopyrite was uncovered. Five samples were collected (WP 300B, WP300C, WP300D, WP300E, WP300F)

Trench #4-07 was located @496110E – 6692228N. Dimensions were length – 3.2 m, width – 1.8 m., depth – 1.2 m. This trench failed to reach bedrock due to permafrost.

MILLER ZONE

The final two trenches were excavated at the historic Miller zone on claim BB 2 (YC29968)

Trench #5-07 was located @494670E – 6690980N. Dimensions were length – 4.5 m. width – 2 m. and depth – 1 m. A silicified shear zone with quartz/galena pods was exposed. One sample (RR-1) collected.

Trench #6-07 was located 8 m southwest of Tr. #5-07. Dimensions were length – 5 m width - 3 m and depth 1 m. Sparcely mineralized wallrock was uncovered. One sample collected (RR-2).

RESULTS AND RECOMMENDATIONS

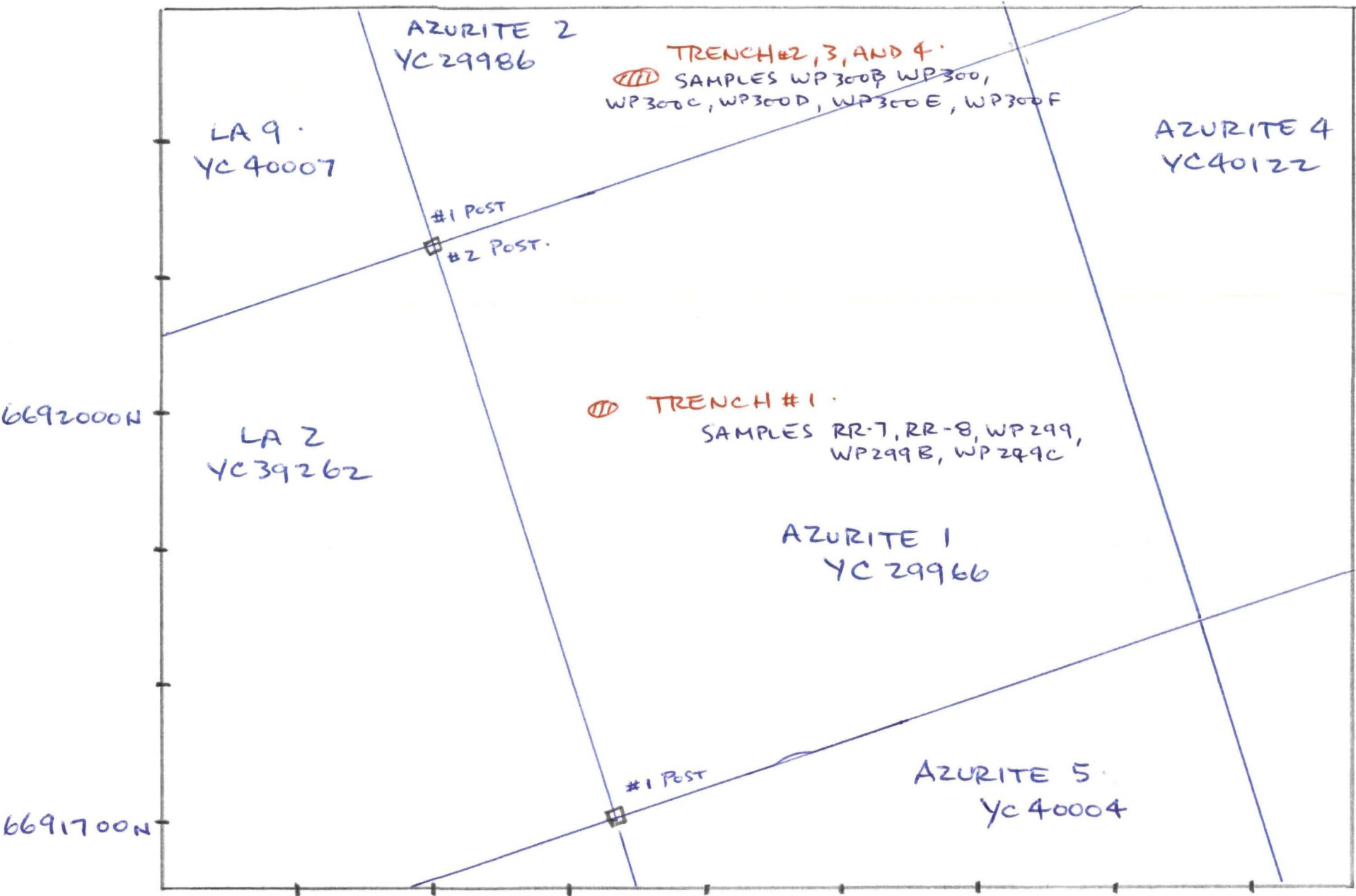
Although thorough sampling and mapping of the 2007 trenches was prevented by an early snowfall, the preliminary results were very impressive. The East Zone trench #1-07 returned values up to 8662 g/t Ag and 2.1% Cu. Trench #3-07 at the newly discovered Moly Zone returned up to 0.874% Mo and 2.15% Cu. At the Miller Zone, trench #5-07 returned values of 153 g/t Ag and 8.46% Pb. Additional sample results follow on the next page.

Since optioning the property in Oct/07, Prize Mining Corp. has committed to a comprehensive exploration program in 2008, including complete sampling and mapping of these trenches, as well as a 100 line/km property wide grid for soil sampling and geophysics.

**PRIZE MINING CORP.
RED RIDGE PROPERTY**

SAMPLE RESULTS

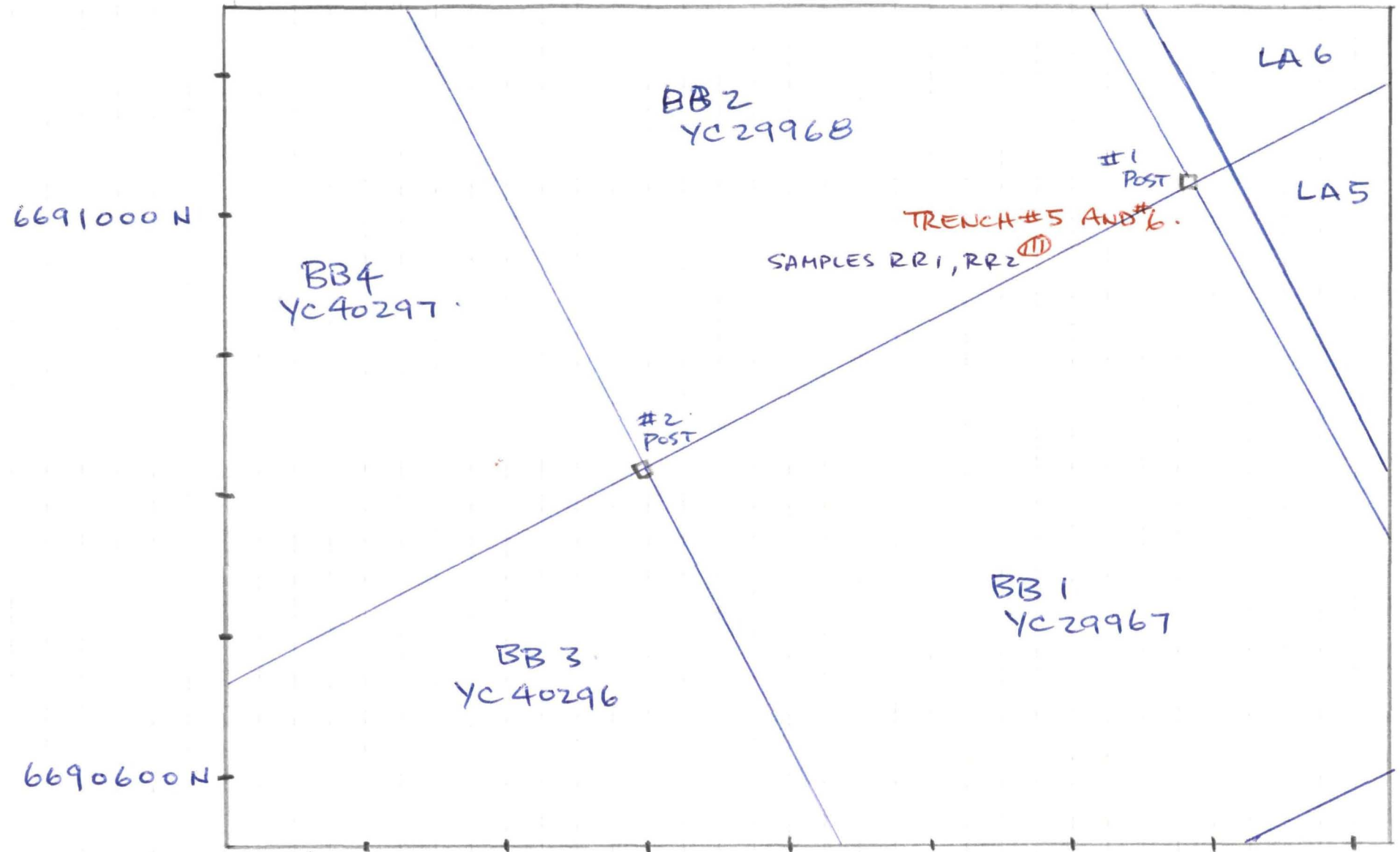
SAMPLE #	ZONE	DESCRIPTION	Au (g/t)	Ag (g/t)	Cu (ppm)	Mo (ppm)
RR-1	MILLER	Grab – qtz-ga-mal	0.81	153	2368.4	16.5
RR-2	MILLER	Grab – min wall rock	0.12	<2	27.4	7.2
RR-3	DON	3m chip – rusty shear	1.09	158	461.5	5.1
RR-4	DON	Grab – mal-cpy in intrusive	0.13	9	3023.9	0.8
RR-5	SADDLE	15cm chip – north vein	1.91	4	41.5	2.7
RR-6	SADDLE	50cm chip – south vein	5.07	33	265.9	4.2
RR-7	EAST	Grab- qtz-mal-az-tetra	0.17	2681	5258.6	1.3
RR-8	EAST	1m chip – flat lying shear	0.17	760	4649.7	4.9
RR-9	MOLY	Grab – vein qtz-Mo-mal-cpy	0.04	71	3105.7	802.2
RR-10	CORE	20cm unsampled drill core with sulphides	0.05	5	75.5	33.7
WP293	SADDLE	20 cm vuggy qtz	3.25	155	285.5	29.5
WP295	SADDLE	5cm msv tetra	4.12	3387	3840.1	3.4
WP298	SADDLE	2 m chip rusty shear	0.64	77	317.8	4.3
WP299	EAST	1 m green shear	0.75	6082	2.067%	4.2
WP299B	EAST	1m rusty shear	0.19	2160	2490.5	2.5
WP299C	EAST	20 cm tetra	0.41	8662	2.144%	4
WP300	MOLY	20 cm MoS, Chpy	0.02	45	3480.6	1089.6
WP300B	MOLY	20 cm MoS and yellow Mo oxide	0.02	123	630.8	665.9
WP300C	MOLY	20 cm MoS and yellow Mo oxide	< 0.1	3	64.8	680.9
WP300D	MOLY	20 cm MoS, Chpy	0.03	19	3104.5	3901.2
WP300E	MOLY	20 cm MoS and yellow Mo oxide	0.01	<2	169.9	0.45%
WP300F	MOLY	20 cm MoS and yellow Mo oxide	< 0.1	2	138.2	0.874%
WP301	NORTH SLOPE	20 cm MoS and yellow Mo oxide	0.01	5	61.4	1899.2



■ CLAIM POSTS.
 UTM ZONE 8
 NAD 83

RED RIDGE PROPERTY.
 2007 TRENCHING PROGRAM.

■ AREA OF TRENCHING. 0 50 100 METERS.



6691000 N

6690600 N

BB4
YC40297

BB2
YC29968

LA6

LA5

TRENCH #5 AND #6.
SAMPLES RR1, RR2

#2
POST

#1
POST

BB3
YC40296

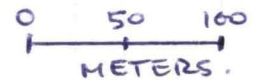
BB1
YC29967

CLAIM POSTS

RED RIDGE PROPERTY.
2007 TRENCHING PROGRAM

UTM ZONE 8
NAD 83.

AREA OF TRENCHING



494300E

494800E





TRENCHING ON THE EAST ZONE
RED RIDGE PROPERTY - AUGUST 2007

APPENDIX

STATEMENT OF QUALIFICATIONS

BRIAN SCOTT - BOX 77 TAGISH YUKON

I am the author of this report, as well as the operator of the 2007 trenching program described therein. I am also co-owner, along with Larry Bratvold, of the Red Ridge property. I have prospected in northern B.C. and the Yukon for the last thirty years. I completed the basic prospecting course in Whitehorse in 1977, the advanced course in 1988, and the Petrology for Prospectors program in 1994.

FEBRUARY 29 2008

A handwritten signature in black ink that reads "Brian Scott". The signature is written in a cursive style with a large, looped "B" and "S".

STATEMENT OF EXPENSES – RED RIDGE
TRENCHING PROGRAM - AUG. 12 – AUG. 17 2008

Labour

Brian Scott – Excavator Operator – 6days @ \$275	\$1650.00
Larry Bratvold – Field Assistant – 6 days @ \$250	\$1500.00

Equipment Rental

Kubota KH-41 Excavator - 6 days	\$800.00
2X – 4X4 trucks – 6days @ \$80	\$960.00
2X – ATV – 6 days @ \$100	\$1200.00

Fuel	\$277.50
Camp supplies	\$186.00
Bags, flagging, batteries, etc.	\$63.80
Assays and shipping	\$417.75
Report preparation	\$450.00

GRAND TOTAL **\$7505.05**

All expenses incurred during 2007 field program


.....

ACME ANALYTICAL LABORATORIES LTD 852 E HASTINGS ST VANCOUVER BC V6A 1R6 PHO

Prize Mining Corporation PROJECT Red Ridge

Acme file # A706755 Received SEP 20 2007 * 25 samples in this disk file

Analysis GROUP 1EX - 0.25 GM SAMPLE DIGESTED WITH HClO4-HNO3-HCL-HF TO 10 ML (>) C

ELEMENT Mo SAMPLES ppm	Cu ppm	Pb ppm	Zn ppm	Ag ppm	Ni ppm	Co ppm	Mn ppm	
G-1	1.1	9.9	21.1	55	0.1	58.8	9.8	785
RR-1	16.5	2368.4	>10000	1447	159.2	63.1	6.9	879
RR-2	7.2	27.4	214.5	269	0.9	16.6	7.6	777
RR-3	5.1	461.5	4564.4	5182	177.7	46.8	15.9	2437
RR-4	0.8	3023.9	38.5	56	8.5	39.2	9.6	668
RR-5	2.7	41.5	288.3	265	4	9.4	1.7	3069
RR-6	4.4	260.6	5016.7	9434	33.5	16.9	2.3	1049
RE RR-6	4.2	265.9	5125.7	9647	34.7	17.3	2.3	1112
RR-7	1.3	5258.6	153.5	735	>200	4.5	1.5	66
RR-8	4.9	4649.7	1510.7	1542	>200	29.4	12.3	1255
RR-9	802.2	3105.7	37.8	69	73.2	14.7	2.8	490
RR-10	33.7	75.5	45.5	72	4.7	75.9	33.6	1038
WP293	29.5	285.5	>10000	2324	168.2	6.8	0.2	319
WP295	3.4	3840.1	>10000	2190	>200	3	1.2	197
WP298	4.3	317.8	3264	4602	75.1	41.7	14.3	2525
WP299	4.2	>10000	>10000	2511	>200	37.8	12.3	1746
WP299B	2.5	2490.5	253.9	393	>200	7.7	1.1	51
WP299C	4	>10000	2178.9	1882	>200	10.4	4.9	52
WP300	1089.6	3480.6	43.2	26	39	16.5	4.9	122
WP300B	665.9	630.8	208.3	41	133.8	7.2	0.3	375
WP300C	680.9	64.8	42.4	22	2.5	3.4	0.4	91
WP300D	3901.2	3104.5	106.9	23	20.1	13.4	2.5	101
WP300E	>4000	169.9	25.1	15	2.6	11.1	1.3	157
WP300F	>4000	138.2	64.1	8	2.9	9.5	1	80
WP301	1899.2	61.4	295	105	5.1	4	0.4	565
STANDAR	12.9	118.6	34.9	162	0.3	29.1	13.2	952

V ppm	Ca %	P %	La ppm	Cr ppm	Mg %	Ba ppm	Ti %	Al %	ELEMENT SAMPLES
59	2.37	0.087	23.6	65.8	1.24	1082	0.277	7.41	G-1
46	2.99	0.038	6.9	52.1	1.24	503	0.096	3.28	RR-1
73	1.4	0.122	11.5	26.2	1.35	213	0.185	8.05	RR-2
129	0.26	0.088	9.5	111.2	1.36	653	0.253	6.72	RR-3
102	2.91	0.09	9.9	85	1.35	2068	0.225	7.27	RR-4
10	0.07	0.008	6.3	9.6	0.16	256	0.033	2.19	RR-5
18	0.12	0.016	2.5	35.4	0.2	132	0.039	1.61	RR-6
19	0.13	0.017	2.6	35.4	0.21	140	0.04	1.65	RE RR-6
6	0.08	0.004	< 1	5.7	0.05	129	0.011	0.62	RR-7
94	0.2	0.079	11.5	84.1	1.06	2014	0.227	6.96	RR-8
60	2.37	0.005	3.5	20.6	0.55	694	0.011	0.48	RR-9
140	5.62	0.113	19.2	49.1	3.15	239	0.226	7.27	RR-10
11	0.09	0.013	3.3	14	0.07	372	0.018	1.21	WP293
3	0.09	0.005	< 1	7.1	0.04	41	0.003	0.14	WP295
114	0.21	0.084	9.6	116.8	1.54	628	0.278	7	WP298
111	0.62	0.066	10.6	100.3	1.52	1015	0.242	6.74	WP299
27	0.11	0.015	< 1	22.9	0.12	383	0.053	2.21	WP299B
20	0.1	0.012	< 1	21.9	0.12	192	0.035	1.69	WP299C
30	0.16	0.014	2.1	33	0.21	1509	0.031	0.94	WP300
38	3.93	0.004	3.6	16.8	0.3	1841	0.009	0.51	WP300B
4	0.37	0.007	25.7	6.6	0.03	282	0.048	5.34	WP300C
15	0.21	0.004	1.5	23.9	0.18	145	0.018	0.37	WP300D
34	1.04	0.009	2	22.5	0.28	186	0.024	0.67	WP300E
6	0.22	< 0.01	0.8	16.9	0.12	176	0.002	0.57	WP300F
3	0.36	0.001	14.1	9	0.03	90	0.024	5.83	WP301
113	2.17	0.097	24.5	220.8	1.04	683	0.426	6.85	STANDAR

Na %	K %	W ppm	Zr ppm	Ce ppm	Sn ppm	Y ppm	Nb ppm	Ta ppm	ELEMENT SAMPLES
2 607	2 76	0 2	11 5	45	1 4	14 4	22 3	1 7	G-1
0 246	1 82	1 9	11 2	12	0 6	4 2	1 5	0 1	RR-1
2 491	4 2	1 2	3 4	24	0 7	7 2	4 1	0 2	RR-2
0 076	2 85	6 1	19 8	18	0 6	7 8	4	0 3	RR-3
3 401	2 42	1 8	1 3	19	0 7	5 3	4 5	0 3	RR-4
0 033	1	0 8	22 6	11	0 4	3 3	1 5	0 2	RR-5
0 038	0 63	0 7	4 2	4	0 5	1 5	0 9	0 1	RR-6
0 039	0 64	0 8	4 7	4	0 4	1 7	0 9	0 1	RE RR-6
0 007	0 24	0 3	0 8	1	0 1	0 2	0 1	< 1	RR-7
0 051	3 25	4 3	17 9	21	0 7	8 3	3 9	0 3	RR-8
0 007	0 06	0 6	1 1	6	0 2	1 7	0 1	< 1	RR-9
2 321	2 56	1 3	25 5	32	0 7	11 6	4 9	0 3	RR-10
0 014	0 49	0 5	10 5	6	0 4	1 2	0 8	0 1	WP293
0 015	0 03	0 1	0 4	1	0 1	1 1	< 1	< 1	WP295
0 053	3 05	7 5	21 4	20	0 6	7 1	3 7	0 3	WP298
0 065	2 64	4 7	25 9	21	0 7	8 6	2 8	0 2	WP299
0 02	0 99	0 7	5 3	3	0 3	1 2	0 7	< 1	WP299B
0 015	0 77	0 4	2 2	1	0 3	0 8	0 6	< 1	WP299C
0 024	0 69	1	2	4	0 5	1 3	0 5	< 1	WP300
0 013	0 25	0 4	1	6	0 2	1 9	0 2	< 1	WP300B
2 584	3 03	3 1	33 5	54	4 3	18 1	15 7	2 3	WP300C
0 014	0 14	0 7	1 4	3	0 3	0 9	0 3	< 1	WP300D
0 049	0 5	1 5	1 9	4	0 3	1 4	0 6	< 1	WP300E
0 023	0 61	0 6	0 7	1	0 3	0 5	0 3	< 1	WP300F
2 67	2 84	188 8	66 8	31	41 4	24 5	1 9	1 8	WP301
1 631	1 46	8 2	56 9	51	6 7	15 2	9 6	0 7	STANDAR

Be ppm	Sc ppm	Li ppm	S %	Rb ppm	Hf ppm	Sample kg	ELEMENT SAMPLES
	2	7	38.5	0.1	111.3	0.7	G-1
	1	3	20.3	0.9	62.7	0.5	RR-1
	1	7	21.7	2.2	99.8	1.2	RR-2
	2	11	23.9	0.1	93.3	1	RR-3
	1	10	12.9	0.2	59.7	0.8	RR-4
	1	1	20.7	< 1	32.4	0.8	RR-5
	1	2	20.4	0.3	20.4	0.2	RR-6
	1	2	21.8	0.4	21.1	0.2	RE RR-6
< 1	< 1		4	0.4	10.6	0.1	RR-7
	1	10	17	0.4	122.7	0.8	RR-8
< 1		1	8.6	0.1	2.2	< 1	RR-9
	1	10	28.7	4	52.1	0.9	RR-10
< 1	< 1		42.4	0.2	18.6	0.4	WP293
< 1	< 1		2.2	6.8	1	< 1	WP295
	2	11	28.5	0.1	97.5	1	WP298
	1	11	22.8	0.5	91.4	1	WP299
< 1		2	10.6	0.4	39.8	0.2	WP299B
	1	1	12.3	1.8	30.6	0.1	WP299C
< 1		1	6.3	0.2	16.6	0.1	WP300
< 1	< 1		5.5	0.1	6.3	< 1	WP300B
	6	1	14.7	< 1	194.7	2.1	WP300C
< 1		1	4.9	< 1	4	0.1	WP300D
< 1		1	4.8	0.1	12.2	0.1	WP300E
< 1	< 1		3	0.2	14.2	< 1	WP300F
	5	1	67.9	0.3	247.3	3.4	WP301
	3	12	26.4	< 1	57.8	1.8	STANDAR

ACME ANALYTICAL LABORATORIES LTD 852 E HASTINGS ST VANCOUVER BC V6A 1R6 PHO
 Prize Mining Corporation PROJECT Red Ridge
 Acme file # A706755R Received NOV 6 2007 * 8 samples in this disk file
 Analysis GROUP 7TD - 0 500 GM SAMPLE, 4 ACID (HF-HCLO4-HNO3-HCL) DIGESTION TO 100 MI

ELEMENT	Mo	Cu	Pb
SAMPLES	%	%	%
RR-1	-	-	8 46
WP293	-	-	1 39
WP295	-	-	63 7
WP299	-	2 067	3 25
WP299C	-	2 144	-
WP300E	0 45	-	-
WP300F	0 874	-	-
STANDAR	0 078	0 819	2 07

REFERENCES

Assessment Report # 091928 - Mar/87 - H. J. Keyser

Assessment Report # 091738 - Aug/87 - H. J. Keyser

Assessment Report # 092128 - Apr/88 - T. Garagan

Assessment Report # 092577 - Nov/88 - R. Henneberry

Assessment Report # 092736 - June/89 - R. Henneberry

Assessment Report # 094136 - Jan/2000 - M. Glynn

Assessment Report # 094748 - Jan/2007 - B. Scott

Yukon Geology and Exploration 1979 – 80 pg 164

Yukon Minfile #105D 100

Hart, C.J. and Radloff, J.K. - Geology of Whitehorse, Alligator Lk etc.
(105D/11, 6, 3, and 7)