

GEOCHEMICAL REPORT

OG 31 - 36 CLAIMS

GRANT

YC44737– YC44742

NTS # 116 B \ 13

LAT: 64° 49' N

LONG: 139° 58' W

DAWSON MINING DISTRICT

AUTHOR OF REPORT SHAWN RYAN

WORK PERFORMED AUGUST 8, 2007

DATE OF REPORT JANUARY 23, 2008

Table of Content

Summary	P.3
1.0 Introduction	P.3
2.0 Locations and Access	P.3
3.0 Property Description	P.3
4.0 Physiography	P.3
5.1 Regional Geology	P.4
5.2 Property Geology	P.4
6.0 Work Methods	P.5
6.1 Soil Work	P.5
7.0 Interpretation	P.5
8.0 Recommendation	P.5
9.0 References Cited	P.5
10.0 Cost	P.6
11.0 Qualification	P.6
Zinc Soil Anomaly Map	Figure 1
Lead Soil Anomaly Map	Figure 2
Assay Data	Appendix
GPS Soil Location Data	Appendix

SUMMARY

The Og 31 - 36 claims were covered with large soil survey during the 2007 field season. A nice new lead – zinc soil anomaly has appeared on the east side of the creek running through the Og 31 – 36 Claims.

1.0 INTRODUCTION

The Og claims were staked to cover an old Hudson Bay Showing. Hudson Bay Company held the claims for the last 25 years and has just dropped the claims during the last couple of years. I re staked the original showing area and have now added the Og 31 - 36 claims. .

2.0 LOCATIONS AND ACCESS

The Og claims are located 90 kilometers north northwest of Dawson City. The claims can be reached via helicopter from Dawson City.

3 PROPERTY DESCRIPTION

The Og 31 – 36 consists of 12 full quartz claims all recorded and registered in the Dawson Mining District.

4 PHYSIOGRAPHY

The Og Property is located in the tundra between the elevation of 3700 ft and 4600 ft.

Regional Bedrock Geology Legend

(from Gordey and Makepeace, 2001, YGSD Open File 2001-1 and GSC Open File 3754)

uPH: HARPER: lower: grey dolostone, dolostone conglomerate and dolomitic mudstone redbeds; upper: volcanic and carbonate clast conglomerate; rare basalt, volcanic tuff, and pyroclastic bombs; intercalated dolomitic mudstone and dolostone conglomerate (Mt. Harper Gp.)

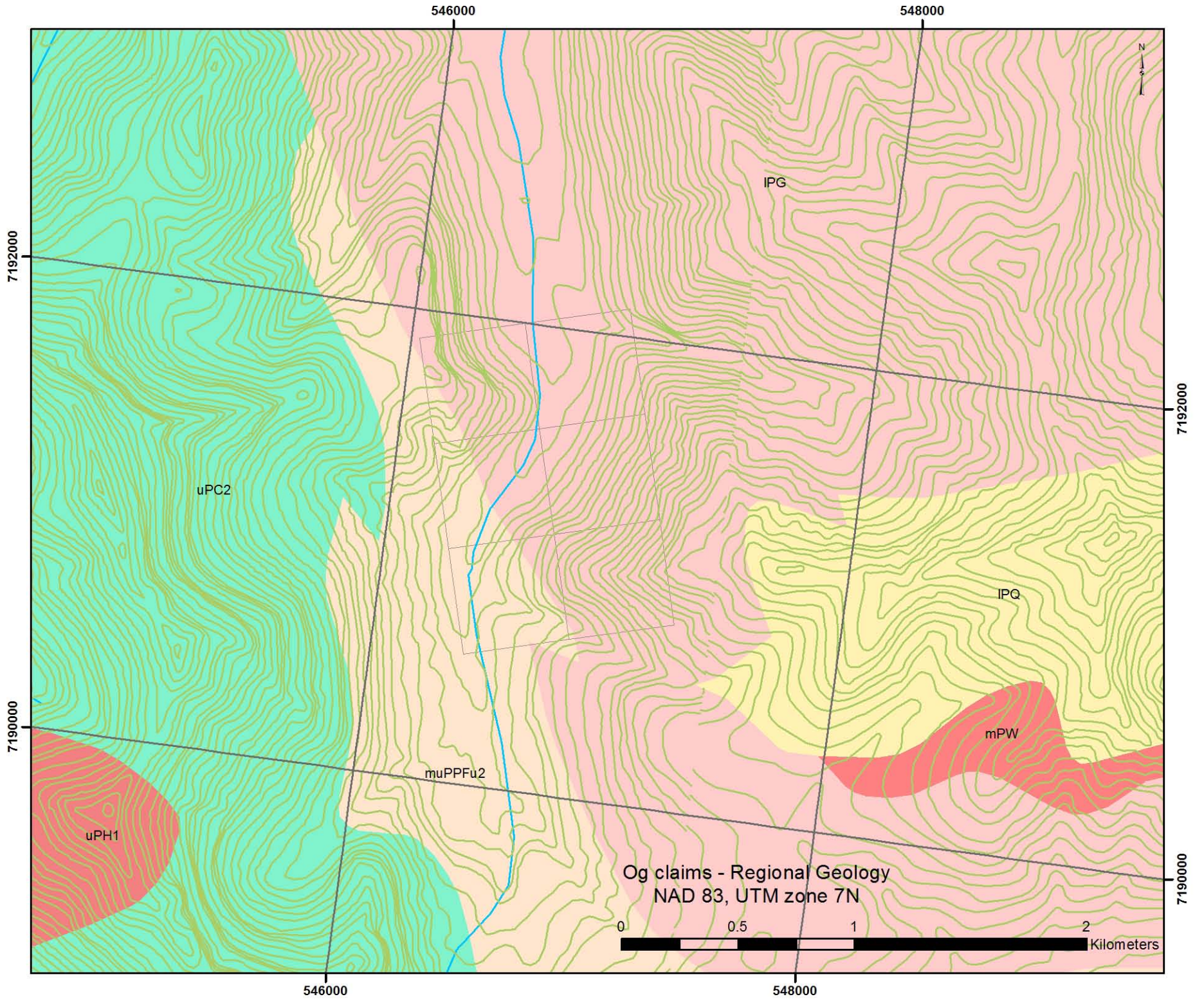
uPC2: CALLISON: cryptalgal dolostone; medium to light grey fine crystalline, laminated to thinly bedded and stromatolitic dolostone; includes chert and dolomitic breccia; craggy, medium to dark grey, massive, medium crystalline dolostone with abundant silicification (Fifteen Mile Gp. (upper))

muPPFu2: PINGUICULA/FIFTEEN MILE (UPPER): light-grey, finely crystalline dolostone; shale; pebbly mudstone; gritty mudstone; stromatolitic limestone; quartz sandstone (Fifteen Mile Gp. (upper))

mPW: WERNECKE BRECCIAS: hematitic and dolomitic breccia and related metasomatized country rock; breccia contains variably altered rotated siliceous and carbonate clasts (Wernicke Supergroup) and minor dyke rock; breccia and metasomatites enriched in Cu, Co, U, Ag and Au (Wernicke Breccias)

IPG: GILLESPIE LAKE: dolostone and silty dolostone, locally stromatolitic, locally with chert nodules and sparry karst infillings, interbedded with lesser black siltstone and shale, laminated mudstone, and quartzose sandstone; local dolostone boulder conglomerate (Gillespie Lake Gp.)

IPQ: QUARTET: black weathering shale, finely laminated dark grey weathering siltstone, and thin to thickly interbedded planar to cross laminated light grey weathering siltstone and fine grained sandstone; minor interbeds of orange weathering dolostone in upper part (Quartet Gp.)



5 REGIONAL AND PROPERTY GEOLOGY

5.1 REGIONAL GEOLOGY (Excerpts from GSC Open file 2849)

The southern Ogilvie Mountains lie within the northwestern extremity of the the Cordilleran fold-thrust belts. The Dawson Thrust marks a major tectonostratigraphic boundary between carbonate-dominated platform rocks to the north (the Mackenzie Platform) and generally finer clastics to the south (Selwyn Basin). All rock units were displaced northward in middle Jurassic to Cretaceous time and most have been tectonically thickened. The Selwyn Basin strata were thrust northward in three overlapping structural sheets. Subcircular syenitic intrusions of about 90-110 Ma age cut these thrusts.

The Mackenzie Platform in the southern Ogilvies consists of thickly bedded Cambrian to Devonian dolostone near Mount Harper. Beneath this Paleozoic carbonates a tripartite succession of Middle and Upper Proterozoic strata are well exposed in an erosional inlier (the Coal Creek Dome of Green, 1972, termed the Coal Creek Inlier). In descending order, the Mount Harper Group consists of thick volcanic and carbonate units separated by thinner or wedge-shaped clastic units; the Fifteenmile group, an informal name, consists of stromatolitic and cherty dolostones; and the Wernecke Supergroup consists of fine-grained clastic rocks. These three groups are bounded by unconformities whose ages can be estimated from spatially related intrusions (Wernecke breccias; about 1280 Ma, as in Parrish and Bell (1987) and the ca. 750 Ma Mount Harper Group volcanics). They were deposited during periods of repeated extension, including late Proterozoic continental rifting. These middle to late Proterozoic events formed structural features, which to some extent controlled, and are reflected in, the early Paleozoic evolution of the Cordilleran miogeocline.

5.2 PROPERTY GEOLOGY

The Og claims are sitting in between two Wernecke Breccia bodies and lying in Gillespie Lake Group limestone.

6.0 WORK PROGRAM / METHODS

6.1 SOIL WORK

A one day soil program was conducted over all of the OG 31 – 36 Claims. A total of 114 soils were collected by a four man crew of Ryanwood Exploration Inc. The crew consists of Issac Fage, Joe McCann, Adam Fage and Mathew Mc Hugh.

All soil sample where taken with one meter soil probes and sometime with a prospector pick. We carried both on rocky talus slope. Soil sample location where marked on the ground with orange flagging and recorded in Garmin GPS. About 400-500 grams of soil was collected and place in well mark kraft soil bags.

All samples where brought out to Dawson and air dried repacked in rice bags and sent to Acme Labs in Vancouver. Sample where process with Aqua Regia ICP-MS for 36 elements.

The GPS where downloaded every night and store in a personal computer.

7.0 INTERPRETATION

The soil survey indicated a nice lead-zinc soil anomaly following the valley in a northwest direction. The soil anomaly on the OG 31 – 36 is part of a large lead – zinc anomaly that is circular in form and measure 1600 meter across.

Values on the OG 31 – 36 claims have reached up to 38,100 ppm in lead and 7,680 ppm in zinc.

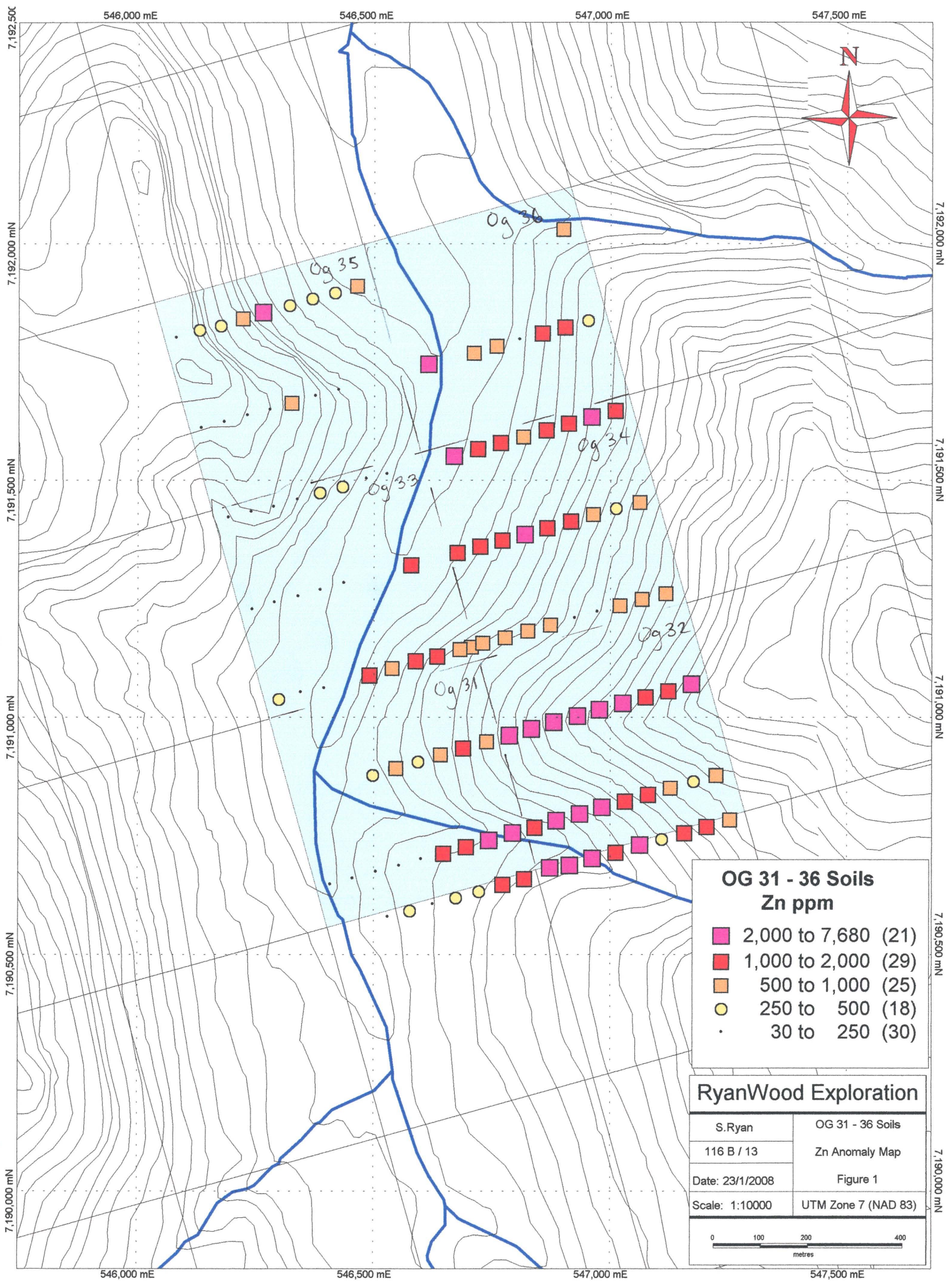
8.0 RECOMMENDATION

I would recommend following up the soil anomaly with geological mapping and ground gravity survey. The geological mapping should help in explaining the large soil anomaly and the gravity should help with finding the higher density location in the anomaly which will prove to be the best drill targets.

9.0 REFERENCES CITED

Thompson R.I. GSC Open File 3223, Geological Compilation (1-250,000) of Dawson Map Area (116B,C) (northeast of Tintina Trench)

10.0 Cost



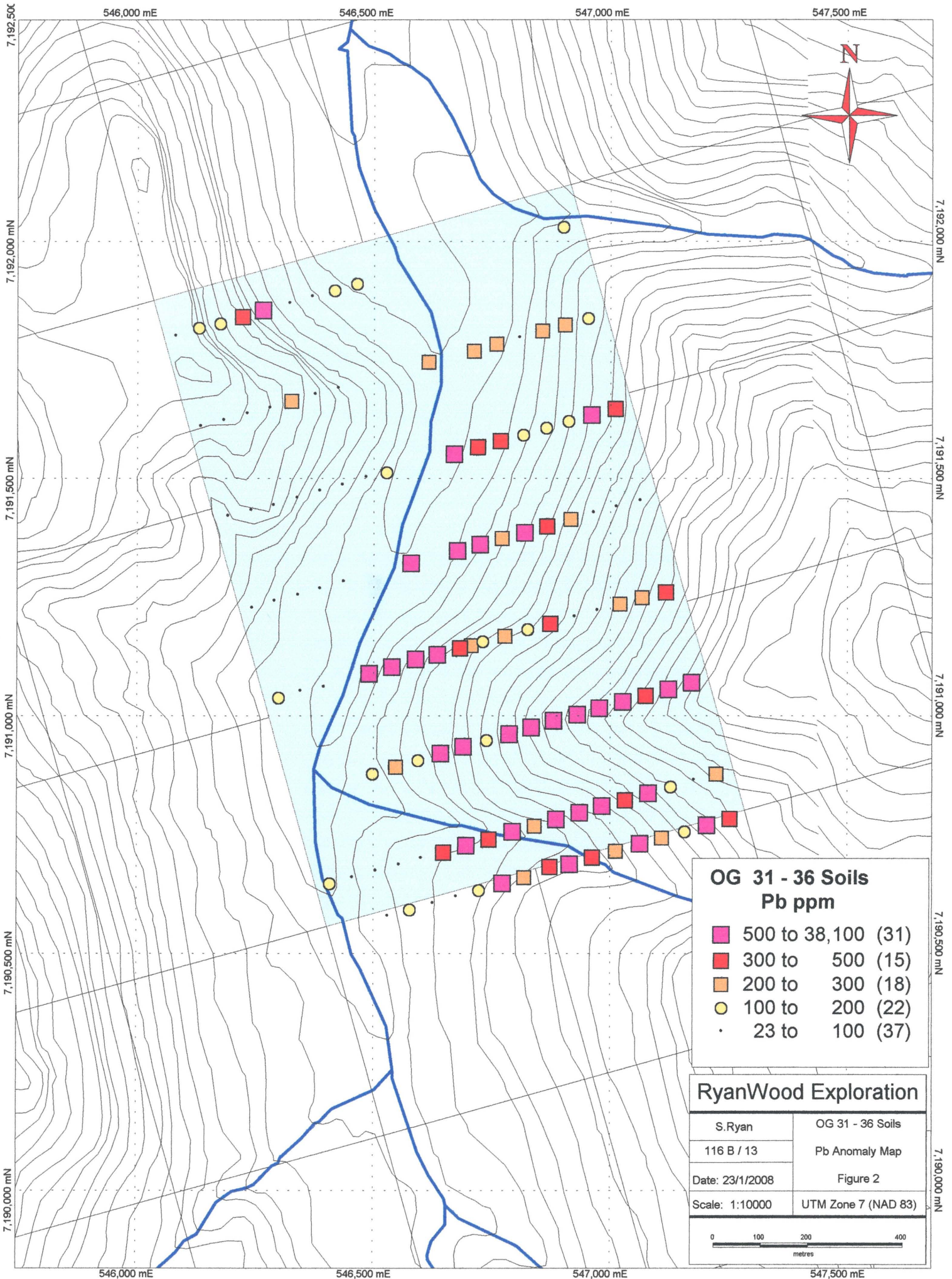
**OG 31 - 36 Soils
Zn ppm**

- 2,000 to 7,680 (21)
- 1,000 to 2,000 (29)
- 500 to 1,000 (25)
- 250 to 500 (18)
- 30 to 250 (30)

RyanWood Exploration

S.Ryan	OG 31 - 36 Soils
116 B / 13	Zn Anomaly Map
Date: 23/1/2008	Figure 1
Scale: 1:10000	UTM Zone 7 (NAD 83)

0 100 200 400
metres



ELEMENT	Datum	Easting	Northing	Mo	Cu	Pb	Zn	Ag	Ni	Co
OGG05415	Nad 83-7W	546130	7191820	0.66	36.3	121.5	346	0.25	34.5	26.7
OGG05416	Nad 83-7W	546175	7191829	1.22	186.5	181.5	377	0.7	38.8	33.8
OGG05417	Nad 83-7W	546222	7191844	0.68	51.4	300	710	0.62	35.1	27.6
OGG05418	Nad 83-7W	546265	7191857	0.93	77.8	806	4470	3.87	48.8	44.3
OGG05419	Nad 83-7W	546321	7191872	0.72	94.1	98.9	319	0.37	42.5	30.7
OGG05420	Nad 83-7W	546369	7191886	1.12	110.5	94.4	287	0.45	48.8	36.4
OGG05421	Nad 83-7W	546417	7191899	0.86	138.5	121.5	344	0.54	55.7	40.4
OGG05422	Nad 83-7W	546464	7191913	1.01	91.2	144	511	0.61	39.6	26.1
OGG14727	Nad 83-7W	546867	7191402	0.58	197.5	441	1760	1.15	48.2	24.4
OGG14728	Nad 83-7W	546917	7191416	0.47	72	254	1055	0.81	30.7	15.5
OGG14729	Nad 83-7W	546964	7191430	0.22	29.7	64.1	604	0.33	23.9	8.4
OGG14730	Nad 83-7W	547012	7191443	0.23	18.9	45.8	365	0.21	14.2	6.1
OGG14731	Nad 83-7W	547062	7191456	0.28	23.6	69.9	516	0.24	14.4	6
OGG17018	Nad 83-7W	546080	7191803	0.89	14.4	47.3	160	0.34	24.3	15.1
OGG17382	Nad 83-7W	546527	7191515	0.79	40	110.5	246	0.39	29.5	23.4
OGG17383	Nad 83-7W	546483	7191505	0.7	29.3	45.9	152	0.24	21	13.1
OGG17384	Nad 83-7W	546433	7191489	0.71	22.1	50.6	324	0.19	15	10.2
OGG17385	Nad 83-7W	546385	7191476	0.78	34.4	36.8	384	0.27	20.7	11.4
OGG17386	Nad 83-7W	546337	7191461	0.95	25.3	66.3	171	0.23	18.9	11.6
OGG17387	Nad 83-7W	546287	7191446	0.84	33.8	39.4	134	0.26	26	15.8
OGG17388	Nad 83-7W	546240	7191435	1.1	22.9	62.9	128	0.34	28.5	14.8
OGG17389	Nad 83-7W	546191	7191423	0.64	24.3	53.1	196	0.28	14.6	11.5
OGG20569	Nad 83-7W	547109	7190745	0.76	30.1	231	452	0.35	21.3	9.5
OGG20602	Nad 83-7W	547224	7190880	1.42	894	235	578	0.95	36.8	52.8
OGG20603	Nad 83-7W	547176	7190867	0.84	53.3	92.5	422	0.55	13.1	10.4
OGG20604	Nad 83-7W	547127	7190853	0.91	31.4	181	732	0.58	17.8	11.3
OGG20605	Nad 83-7W	547081	7190840	1.77	34.1	821	1890	1.76	21.2	15
OGG20606	Nad 83-7W	547032	7190826	1.46	28.6	498	1600	1.42	19.5	13.6
OGG20607	Nad 83-7W	546983	7190813	2.12	48.7	742	2500	2.36	29.3	20.1
OGG20608	Nad 83-7W	546936	7190799	1.86	56.4	1170	3140	3.26	35.1	21.4
OGG20609	Nad 83-7W	546887	7190785	1.92	31.5	998	2320	1.97	23	15.6
OGG20610	Nad 83-7W	546841	7190771	0.77	18.2	203	1575	0.61	11.9	7.9
OGG20611	Nad 83-7W	546794	7190759	1.55	46.5	622	3240	1.86	28.1	17.2
OGG20612	Nad 83-7W	546744	7190743	1.02	29.8	302	2440	1.5	25.2	14.7
OGG20613	Nad 83-7W	546696	7190730	1.52	43.7	528	1510	2.45	35.5	19.1
OGG20614	Nad 83-7W	546648	7190716	3.45	116	348	1325	3.03	184	69.2
OGG20648	Nad 83-7W	546616	7191748	1.46	443	259	3640	0.94	59.9	108.5
OGG20649	Nad 83-7W	546712	7191771	2.29	2040	252	671	1.4	57.9	189
OGG20650	Nad 83-7W	546760	7191786	1.47	1440	286	665	1.31	57.6	134
OGG20651	Nad 83-7W	546808	7191799	0.79	28.4	73.8	155	0.22	19.8	9
OGG20652	Nad 83-7W	546856	7191813	0.78	79.2	235	1280	1.05	61.7	29.7
OGG20653	Nad 83-7W	546904	7191826	0.61	52.8	249	1080	0.81	37.3	17.8
OGG20714	Nad 83-7W	546725	7191363	1.41	287	929	1260	3.92	61.6	37.1
OGG20715	Nad 83-7W	546772	7191376	0.44	70.8	244	1120	0.72	20.3	14.6
OGG20716	Nad 83-7W	546820	7191388	0.84	164	731	2220	1.61	50.6	28.55
OGG20751	Nad 83-7W	546589	7191121	0.64	58.8	916	1585	1.31	13.7	16.5
OGG20752	Nad 83-7W	546539	7191105	0.9	103.5	744	981	1.12	27.1	20.9
OGG20753	Nad 83-7W	546491	7191091	1.38	78.1	727	1050	1.33	26.8	18.6
OGG20754	Nad 83-7W	546394	7191063	0.58	16.7	52.9	172	0.17	10.9	6.7
OGG20755	Nad 83-7W	546345	7191054	0.57	14.5	49.3	168	0.15	9.5	6.3
OGG20756	Nad 83-7W	546299	7191040	0.96	31.7	143	425	0.62	25.4	14.1
OGG20769	Nad 83-7W	546242	7191229	0.61	23.1	44.9	138	0.26	16.8	8.1
OGG20770	Nad 83-7W	546289	7191244	0.53	20.6	43.9	117	0.21	16	6
OGG20771	Nad 83-7W	546339	7191257	0.41	18.1	42.7	132	0.2	10.9	5.1
OGG20772	Nad 83-7W	546386	7191270	0.96	24.3	56.4	174	0.27	20.1	9.6
OGG20773	Nad 83-7W	546436	7191285	0.96	19.4	64.7	159	0.23	21.3	10.7
OGG20774	Nad 83-7W	546579	7191324	1.34	143	548	1395	2.46	57.9	35

ELEMENT	Mn	Fe	As	U	Au	Th	Sr	Cd	Sb	Bi	V	Ca
OGG05415	1430	4.33	8.9	0.52	0	3.5	26.6	0.48	1.36	0.27	49	6.44
OGG05416	1940	3.9	31.2	0.44	0	2.2	20.4	1.28	0.95	1.23	56	1.9
OGG05417	2670	3.61	13.2	0.49	0	2	19.6	0.71	1.14	0.37	33	3.68
OGG05418	2390	4.07	47.7	0.63	0	1.5	17.1	3.2	2.71	0.44	28	2.21
OGG05419	2180	4.35	9.4	0.24	0	2	19.3	0.6	0.9	0.39	93	4.29
OGG05420	1945	4.81	12.5	0.31	0	2.3	16.4	0.63	1	0.61	102	2.37
OGG05421	2050	5.29	12.4	0.33	0	2.3	16.1	0.73	1	0.48	121	1.66
OGG05422	2140	4.48	16.9	0.88	0	2.1	17.4	0.85	1.09	0.42	84	0.79
OGG14727	3310	2.72	19	0.67	0	0.3	19.9	5.41	2.82	0.35	40	11.8
OGG14728	2740	2.05	11	0.71	0	0.4	19.5	2.96	2.51	0.17	32	12.8
OGG14729	1665	1.19	10	0.53	0	0.5	23	1.69	1.81	0.11	23	17.9
OGG14730	1230	0.96	11	0.52	0	0.6	21.7	1.04	1.37	0.09	20	17.4
OGG14731	1080	1.04	7	0.62	0	0.6	21.4	1.43	1.6	0.09	21	16.95
OGG17018	1175	3.14	12.6	0.47	0	3.4	21.4	0.66	1.64	0.13	18	7.66
OGG17382	2160	2.97	11	0.52	0	0.8	18.1	0.8	0.9	0.28	27	3.15
OGG17383	1750	2.3	6	0.51	0	0.4	15.9	0.53	0.81	0.21	24	2.44
OGG17384	636	2.41	6.4	0.93	0	0.4	19	0.69	0.54	0.19	55	2.58
OGG17385	785	2.25	7.9	0.44	0	0.5	20.9	1.25	0.71	0.15	51	3.06
OGG17386	853	2.64	9.5	0.93	0	0.6	15.7	0.55	0.59	0.23	45	1.9
OGG17387	1770	3.99	9.3	0.56	0	1.2	15.4	0.55	0.68	0.25	60	1.27
OGG17388	434	3.78	9.5	0.68	0	4.6	10.1	0.35	0.58	0.33	36	0.15
OGG17389	1470	3.65	7.4	0.31	0	2	33.8	0.28	0.5	0.22	14	7.17
OGG20569	854	2.71	12.7	1.21	0	2.2	12.1	0.58	0.9	0.21	37	0.24
OGG20602	2210	3.32	64	1.07	0	1.3	17	1.05	1.97	0.23	50	11
OGG20603	1100	1.18	19	0.89	0	0.3	17.6	0.78	1.23	0.04	21	17.65
OGG20604	1420	3.67	14.2	0.89	0	2.8	12.4	1.17	1.03	0.39	17	0.4
OGG20605	1260	2.66	43	1.17	0	0.5	18.6	2.35	4.19	0.02	16	18.1
OGG20606	1250	2.39	37	1.05	0	0.4	22	2.57	3.33	0.02	19	18.3
OGG20607	1230	3.24	58	1.28	0	0.6	23.9	3.57	5.63	0.04	23	17.1
OGG20608	1180	3.26	74	1.39	0	0.9	22	3.76	6.64	0.11	25	16.4
OGG20609	1180	2.14	40	1.27	0	0.5	23.5	2.81	4.49	0.11	21	18.65
OGG20610	1150	1.3	21	0.97	0	0.5	19.9	2.43	1.62	0.05	23	18.3
OGG20611	1190	2.3	37	1.19	0	0.6	20.4	4.65	4.05	0.11	29	13.85
OGG20612	1290	1.83	35	0.89	0	0.2	18.7	2.83	3.43	0.1	23	15.4
OGG20613	1890	2.56	36	1.22	0	0.7	24.4	2.08	4.93	0.37	27	13.35
OGG20614	2840	7.55	48.6	1.59	0	4.8	12.1	2.02	8.16	0.31	33	4.8
OGG20648	9570	9.1	131	0.58	0	1.2	28.5	9.34	3.29	0.61	205	3.93
OGG20649	4720	5.24	300	0.79	0	1	13.9	1.56	2.9	0.56	70	5.29
OGG20650	3930	5.59	214	0.76	0	0.6	12.9	1.6	3.09	0.43	66	4.8
OGG20651	510	2.64	11.3	0.6	0	1.1	18.9	0.41	0.69	0.2	29	3.35
OGG20652	2130	3.14	30.7	0.86	0	0.7	14.1	2.97	2.95	0.27	41	4.71
OGG20653	2210	2.97	12.3	0.68	0	1	16.2	2.71	2.1	0.22	36	4.33
OGG20714	1845	3.71	33.4	1.31	0	2.2	19.9	4.35	5.23	0.38	34	9.4
OGG20715	3310	2.25	9	0.64	0	0.4	33	3.55	3.94	0.15	27	15.7
OGG20716	4710	3.6	18.4	0.81	0	0.3	17.4	7.24	3.53	0.39	54	9.57
OGG20751	1370	1.78	31	1.17	0	0.4	20.5	3.61	2.53	0.2	22	15.8
OGG20752	2030	2.72	34	0.93	0	0.5	18.8	1.79	2.82	0.24	33	12.05
OGG20753	2150	3.07	36	0.96	0	0.6	17.9	1.81	3.04	0.2	28	10.05
OGG20754	307	1.83	6.5	0.71	0	1.2	30.7	0.56	0.36	0.15	16	9.74
OGG20755	315	1.62	6	0.56	0	1.1	31.6	0.56	0.39	0.14	15	10.15
OGG20756	1190	3.77	18.4	1.07	0	1.5	21.9	1.41	0.92	0.3	26	4.13
OGG20769	502	2.29	9	0.78	0	0.7	24.4	0.59	0.47	0.2	29	3.53
OGG20770	171	2.5	11.5	0.59	0	2.3	11.6	0.18	0.31	0.29	22	0.65
OGG20771	384	1.63	7.9	0.59	0	0.5	15.1	0.24	0.42	0.17	18	1.25
OGG20772	677	3.39	13.1	0.71	0	1.9	17.8	0.5	0.53	0.25	21	1.89
OGG20773	826	3.78	13.5	0.81	0	2.4	15.2	0.57	0.45	0.31	26	0.76
OGG20774	2440	3.61	43	1.75	0	1.2	20.4	3.31	5.04	0.43	32	12.2

ELEMENT	P	La	Cr	Mg	Ba	Ti	B	Al	Na	K	W	Hg
OGG05415	450	18.5	23	7.06	740	0.013	10	2.66	0.01	0.2	0.05	0.07
OGG05416	860	26.2	39	2.28	270	0.027	0	1.85	0.02	0.12	0.14	0.12
OGG05417	900	20.2	22	3.49	340	0.016	10	1.7	0.02	0.2	0.07	0.13
OGG05418	900	16.5	18	1.71	190	0.021	0	1.17	0.02	0.15	0.14	0.45
OGG05419	690	18.2	44	5.37	170	0.038	10	2.57	0.01	0.13	0.06	0.07
OGG05420	640	21.8	49	4.63	140	0.035	10	2.89	0.01	0.12	0.06	0.09
OGG05421	640	24.8	56	4.44	150	0.039	10	3.04	0.01	0.13	0.06	0.1
OGG05422	790	27.8	44	1.85	210	0.03	0	2.35	0.01	0.11	0.11	0.17
OGG14727	660	11.1	24	7.51	210	0.007	0	0.56	0.02	0.06	0.07	0.35
OGG14728	530	9.7	15	8.25	200	0.007	0	0.42	0.01	0.05	0.06	0.25
OGG14729	270	5.7	17	11.4	260	0.006	0	0.23	0.02	0.03	0	0.14
OGG14730	250	6.4	7	11.1	570	0.005	0	0.19	0.02	0.03	0	0.08
OGG14731	240	6.3	7	10.75	770	0.006	0	0.19	0.01	0.03	0.1	0.11
OGG17018	450	24.5	11	4.62	140	0.01	0	0.58	0.01	0.15	0.07	0.09
OGG17382	1270	22.8	17	1.9	130	0.015	10	1.13	0.01	0.12	0.09	0.1
OGG17383	1210	19.3	16	1.32	140	0.011	10	1.09	0.01	0.11	0.07	0.08
OGG17384	920	10	21	0.94	130	0.019	0	1.2	0.01	0.05	0.08	0.1
OGG17385	900	9.1	24	1.41	150	0.022	0	1.15	0.01	0.06	0.11	0.09
OGG17386	820	14.1	24	0.98	160	0.024	0	1.34	0.01	0.06	0.11	0.06
OGG17387	690	21.7	31	0.94	180	0.027	0	1.52	0.01	0.06	0.11	0.07
OGG17388	280	15.7	24	0.43	210	0.016	0	1.74	0	0.21	0.09	0.04
OGG17389	590	12.5	9	3.8	190	0.008	10	0.78	0.01	0.19	0.05	0.09
OGG20569	630	22.4	23	0.47	170	0.039	0	1.26	0.01	0.11	0.1	0.08
OGG20602	430	10	12	7.24	180	0.009	0	0.69	0.03	0.1	0.07	0.06
OGG20603	210	3.6	3	11.2	40	0	0	0.21	0.03	0.03	0	0.07
OGG20604	350	14.5	10	0.29	370	0.008	0	0.88	0.01	0.29	0	0.11
OGG20605	100	3.7	2	11.4	20	0.005	0	0.12	0.03	0.02	0.05	0.66
OGG20606	120	4.1	2	11.45	30	0.005	0	0.12	0.03	0.02	0	0.32
OGG20607	180	5.2	3	10.65	50	0.006	0	0.19	0.03	0.04	0	0.69
OGG20608	230	5.4	4	10.25	40	0.01	0	0.23	0.03	0.03	0.06	0.83
OGG20609	150	4.1	2	11.7	20	0	0	0.13	0.03	0.02	0	0.57
OGG20610	160	4.3	3	11.5	30	0	0	0.13	0.03	0.02	0	0.13
OGG20611	420	6.9	6	8.67	60	0.011	0	0.36	0.03	0.06	0.07	0.94
OGG20612	390	5.8	4	9.58	60	0.006	0	0.27	0.03	0.04	0.05	0.34
OGG20613	470	6.3	6	8.38	300	0.006	0	0.32	0.02	0.06	0.06	0.22
OGG20614	730	16.2	10	3.27	190	0	0	0.26	0.01	0.09	0.07	0.57
OGG20648	1060	32.3	42	2.64	300	0.019	0	1.84	0.02	0.1	0.17	0.23
OGG20649	780	14.5	19	4.16	400	0.009	0	0.92	0.02	0.14	0.1	0.09
OGG20650	810	13	20	3.39	360	0.008	0	0.84	0.01	0.14	0.11	0.13
OGG20651	850	12.1	15	1.89	120	0.019	0	0.93	0.01	0.11	0.08	0.07
OGG20652	680	13.8	41	3.08	280	0.015	0	0.85	0.02	0.08	0.07	0.18
OGG20653	850	17.9	23	3.35	150	0.016	0	0.84	0.02	0.07	0.13	0.24
OGG20714	480	7.7	23	5.99	220	0	0	0.43	0.02	0.09	0.05	0.35
OGG20715	370	8.6	10	9.87	170	0.006	0	0.33	0.02	0.03	0.24	0.34
OGG20716	950	14.8	26	6.01	240	0.007	0	0.74	0.02	0.06	0.11	0.39
OGG20751	330	5.3	6	9.7	50	0.01	0	0.38	0.03	0.03	0.05	0.35
OGG20752	540	8.5	12	7.38	160	0.016	0	0.73	0.03	0.05	0.1	0.27
OGG20753	690	11.8	12	6	130	0.014	0	0.64	0.03	0.05	0.11	0.26
OGG20754	590	6.3	7	5.82	140	0.007	10	0.56	0.02	0.14	0.05	0.04
OGG20755	570	5.3	7	5.98	130	0.008	10	0.48	0.03	0.14	0	0.03
OGG20756	950	11.7	12	2.33	260	0.008	0	0.98	0.02	0.17	0.09	0.11
OGG20769	1060	12.7	15	1.65	180	0.02	0	1.15	0.02	0.08	0.09	0.07
OGG20770	510	11.3	13	0.28	150	0.009	10	0.93	0.01	0.15	0.06	0.06
OGG20771	750	6	9	0.31	130	0.015	0	0.75	0.02	0.1	0.05	0.04
OGG20772	640	9.5	11	0.9	250	0.008	10	0.79	0.01	0.21	0.06	0.05
OGG20773	740	10.8	15	0.47	230	0.014	0	1.07	0.01	0.21	0.07	0.03
OGG20774	520	8.5	22	7.42	180	0	0	0.35	0.02	0.08	0.16	0.36

ELEMENT	Sc	Tl	S	Ga	Se	Analysis____	Chemex_file
OGG05415	9.5	0.91	0.24	6.44	0.6	ICP-MS	ALS_VA07107508
OGG05416	10.4	0.23	0.1	5.64	0.8	ICP-MS	ALS_VA07107508
OGG05417	9.3	0.3	0.18	4.64	0.9	ICP-MS	ALS_VA07107508
OGG05418	6.5	0.96	0.2	3.89	1.2	ICP-MS	ALS_VA07107508
OGG05419	17	0.31	0.11	8.02	1.2	ICP-MS	ALS_VA07107508
OGG05420	20.1	0.4	0.1	10	1.4	ICP-MS	ALS_VA07107508
OGG05421	28.4	0.3	0.08	11.2	1.5	ICP-MS	ALS_VA07107508
OGG05422	16.8	0.35	0.07	8.52	1.8	ICP-MS	ALS_VA07107508
OGG14727	5.4	0.12	0.11	2.26	1.9	ICP-MS	ALS_VA07107508
OGG14728	4.2	0.09	0.09	1.82	1.5	ICP-MS	ALS_VA07107508
OGG14729	3.2	0.04	0.06	1.09	0.9	ICP-MS	ALS_VA07107508
OGG14730	2.4	0.02	0.06	0.87	0.9	ICP-MS	ALS_VA07107508
OGG14731	2.1	0.03	0.07	0.89	0.9	ICP-MS	ALS_VA07107508
OGG17018	6.9	0.84	0.06	1.77	0.9	ICP-MS	ALS_VA07107508
OGG17382	4.7	0.17	0.15	3.02	1.1	ICP-MS	ALS_VA07107508
OGG17383	3	0.14	0.12	3	1	ICP-MS	ALS_VA07107508
OGG17384	3.6	0.13	0.1	3.65	0.9	ICP-MS	ALS_VA07107508
OGG17385	5	0.16	0.14	3.57	0.9	ICP-MS	ALS_VA07107508
OGG17386	3.1	0.16	0.1	3.97	0.8	ICP-MS	ALS_VA07107508
OGG17387	9.3	0.14	0.07	4.37	0.8	ICP-MS	ALS_VA07107508
OGG17388	5.2	0.23	0.1	4.23	0.8	ICP-MS	ALS_VA07107508
OGG17389	4.2	0.25	0.11	2.2	1	ICP-MS	ALS_VA07107508
OGG20569	5.1	0.18	0.04	3.94	0.7	ICP-MS	ALS_VA07107509
OGG20602	11.5	0.3	0.12	1.64	0.7	ICP-MS	ALS_VA07107509
OGG20603	1.9	0.7	0.05	0.43	0.5	ICP-MS	ALS_VA07107509
OGG20604	5	0.21	0.31	2.27	0.6	ICP-MS	ALS_VA07107509
OGG20605	1.3	1.26	0.25	0.39	1.1	ICP-MS	ALS_VA07107509
OGG20606	1.4	1.39	0.18	0.38	0.7	ICP-MS	ALS_VA07107509
OGG20607	3	1.5	0.33	0.58	0.9	ICP-MS	ALS_VA07107509
OGG20608	2.6	1.62	0.39	0.7	1.1	ICP-MS	ALS_VA07107509
OGG20609	1.4	1.4	0.24	0.45	0.8	ICP-MS	ALS_VA07107509
OGG20610	2.1	0.49	0.08	0.36	0.6	ICP-MS	ALS_VA07107509
OGG20611	4.2	1.07	0.19	0.98	1.3	ICP-MS	ALS_VA07107509
OGG20612	2.2	0.95	0.15	0.63	0.9	ICP-MS	ALS_VA07107509
OGG20613	5.2	0.74	0.26	0.77	1.1	ICP-MS	ALS_VA07107509
OGG20614	9.4	2.17	0.84	0.75	1.2	ICP-MS	ALS_VA07107509
OGG20648	86.1	0.41	0.15	9.41	4.3	ICP-MS	ALS_VA07107509
OGG20649	20.5	0.33	0.13	3.85	2.1	ICP-MS	ALS_VA07107509
OGG20650	19.6	0.33	0.22	3.22	1.9	ICP-MS	ALS_VA07107509
OGG20651	3.6	0.12	0.06	2.83	1.1	ICP-MS	ALS_VA07107509
OGG20652	7.8	0.15	0.07	3.22	1.8	ICP-MS	ALS_VA07107509
OGG20653	6.8	0.13	0.07	3	1.7	ICP-MS	ALS_VA07107509
OGG20714	10.3	0.57	0.43	1.77	2.4	ICP-MS	ALS_VA07109920
OGG20715	3.3	0.24	0.07	1.57	1.5	ICP-MS	ALS_VA07109920
OGG20716	5.2	0.18	0.15	2.93	2.6	ICP-MS	ALS_VA07109920
OGG20751	1.9	0.6	0.09	1.1	1.8	ICP-MS	ALS_VA07109920
OGG20752	5.5	0.72	0.09	1.93	1.9	ICP-MS	ALS_VA07109920
OGG20753	3.8	0.68	0.1	1.87	1.9	ICP-MS	ALS_VA07109920
OGG20754	3	0.17	0.18	1.53	1	ICP-MS	ALS_VA07109920
OGG20755	2.7	0.14	0.19	1.37	1	ICP-MS	ALS_VA07109920
OGG20756	4.6	0.3	0.15	2.76	1.4	ICP-MS	ALS_VA07109920
OGG20769	3	0.14	0.11	3.12	1.7	ICP-MS	ALS_VA07109920
OGG20770	4.1	0.15	0.07	2.94	1	ICP-MS	ALS_VA07109920
OGG20771	1.8	0.11	0.12	2.38	1	ICP-MS	ALS_VA07109920
OGG20772	5	0.27	0.25	2.62	1.3	ICP-MS	ALS_VA07109920
OGG20773	4.7	0.21	0.21	3.2	1	ICP-MS	ALS_VA07109920
OGG20774	8.6	0.66	0.29	1.22	2.1	ICP-MS	ALS_VA07109920

ELEMENT	Datum	Easting	Northing	Mo	Cu	Pb	Zn	Ag	Ni	Co
OGG20775	Nad 83-7W	546677	7191350	0.86	112	512	1295	1.97	32.4	23
OGG20823	Nad 83-7W	547253	7190786	0.78	24.3	488	958	1	5.4	9.7
OGG20824	Nad 83-7W	547204	7190772	1.41	34.3	545	1680	1.81	14.2	15.1
OGG20825	Nad 83-7W	547157	7190759	0.74	20.1	194.5	1380	0.92	6.6	10
OGG20863	Nad 83-7W	547117	7191263	0.66	440	376	994	0.92	34.4	24.8
OGG20864	Nad 83-7W	547067	7191251	0.88	578	220	637	1.35	49.9	36.5
OGG20865	Nad 83-7W	547021	7191238	0.77	147.5	208	723	1.18	25	15.3
OGG20866	Nad 83-7W	546972	7191224	5.01	5410	31.8	39	9.24	103.5	98.4
OGG20867	Nad 83-7W	546924	7191211	3.45	8890	69	50	10.05	111.5	113.5
OGG20868	Nad 83-7W	546874	7191197	1.85	375	361	867	2.08	134.5	71.4
OGG20869	Nad 83-7W	546826	7191184	0.65	58.6	142.5	647	0.67	19.3	11.9
OGG20870	Nad 83-7W	546778	7191170	0.64	95	242	953	0.84	20.4	15.3
OGG20871	Nad 83-7W	546731	7191159	0.67	34.8	144.5	540	0.52	11.4	8.2
OGG20877	Nad 83-7W	546953	7191840	0.56	64.4	113	303	0.36	25.3	16.3
OGG20896	Nad 83-7W	547011	7191650	0.41	50	300	1740	1.59	35.5	14.7
OGG20897	Nad 83-7W	546961	7191636	0.56	92.3	635	3850	3.8	55.5	21.4
OGG20898	Nad 83-7W	546912	7191623	0.51	49.8	142	1050	0.63	35.7	23.2
OGG20899	Nad 83-7W	546865	7191609	0.53	51.8	157	1070	0.78	48.7	25.3
OGG20900	Nad 83-7W	546816	7191594	0.62	34.5	123.5	691	0.53	24	11.3
OGG20901	Nad 83-7W	546768	7191582	0.58	62.8	369	1330	0.81	31.6	15.5
OGG20902	Nad 83-7W	546720	7191569	0.64	379	349	1390	0.95	42.8	23
OGG20903	Nad 83-7W	546670	7191554	0.76	302	685	2420	1.65	53.5	29
OGG21142	Nad 83-7W	546901	7192033	0.63	43.6	143.5	608	0.32	26.2	13.8
OGG21245	Nad 83-7W	546544	7190895	1.27	33.7	188.5	435	0.78	37.4	18.1
OGG21246	Nad 83-7W	546498	7190881	0.93	30.8	126	337	0.55	25.5	17.1
OGG21518	Nad 83-7W	547172	7191072	22.1	753	38100	5150	154	139	64.3
OGG21519	Nad 83-7W	547123	7191058	1	38.2	610	1880	2.47	31.6	18.1
OGG21520	Nad 83-7W	547075	7191045	0.64	31.7	303	1620	1.35	25.1	16.1
OGG21521	Nad 83-7W	547027	7191032	1.03	134	3000	2330	3.47	42.8	30
OGG21522	Nad 83-7W	546978	7191018	1.61	53.1	504	2110	2.08	31.7	21
OGG21523	Nad 83-7W	546931	7191005	1.58	77.9	1020	3420	2.16	30.9	23.3
OGG21524	Nad 83-7W	546881	7190992	2.91	98.3	1075	5110	3.95	41.5	28.1
OGG21525	Nad 83-7W	546834	7190978	1.5	31.9	546	2600	1.8	24.8	17.6
OGG21526	Nad 83-7W	546787	7190964	1.47	46.4	821	2560	2.58	32.6	18.6
OGG21527	Nad 83-7W	546739	7190951	0.99	29.7	156.5	800	0.7	14.2	8
OGG21528	Nad 83-7W	546690	7190938	1.31	34.7	625	1200	1.94	21.7	12.8
OGG21529	Nad 83-7W	546642	7190924	1.45	98.4	768	993	2.02	145	46.3
OGG21530	Nad 83-7W	546594	7190909	0.92	25.3	124	311	0.51	26.8	12.7
OGG21569	Nad 83-7W	546600	7190703	0.56	18.2	78.6	217	0.19	18.9	11.4
OGG21570	Nad 83-7W	546554	7190689	0.83	25	38.9	108	0.31	18.5	7.6
OGG21571	Nad 83-7W	546504	7190676	0.78	13.8	46.5	91	0.13	22.8	9.4
OGG21572	Nad 83-7W	546455	7190662	0.85	17	48.8	122	0.12	19.3	7.9
OGG21573	Nad 83-7W	546408	7190649	1.13	35.2	113.5	246	0.29	31.2	27.3
OGG21617	Nad 83-7W	546547	7190895	1.2	34.9	217	524	0.68	36.8	17.9
OGG21723	Nad 83-7W	546915	7190690	3.25	49	774	2740	3.17	40.4	21.2
OGG21724	Nad 83-7W	546873	7190685	2.97	46.2	369	2750	3.33	43.2	22
OGG21725	Nad 83-7W	546819	7190662	1.76	16.7	296	1090	1.11	19.5	11.5
OGG21726	Nad 83-7W	546773	7190650	2.39	43.8	534	1685	3.34	43.3	22.6
OGG21727	Nad 83-7W	546723	7190635	1.3	42.6	130.5	471	0.73	26.6	14.2
OGG21728	Nad 83-7W	546674	7190622	0.97	111	73.2	278	0.45	22.6	21.4
OGG21729	Nad 83-7W	546625	7190608	0.74	127	54.5	140	0.43	26.6	31
OGG21730	Nad 83-7W	546577	7190594	0.93	37.2	160	272	0.47	53.7	11.1
OGG21731	Nad 83-7W	546530	7190581	0.62	18.6	63.8	125	0.18	14.8	6.4
OGG22063	Nad 83-7W	546133	7191612	0.37	28.6	23.1	81	0.05	26.9	18.3
OGG22064	Nad 83-7W	546182	7191625	1.31	16	24.2	86	0.16	21.8	13.2
OGG22065	Nad 83-7W	546231	7191639	1.54	28.7	82.4	175	0.15	22.8	34.3
OGG22066	Nad 83-7W	546279	7191651	1.18	78.6	52.9	230	0.28	36.1	25.7

ELEMENT	Mn	Fe	As	U	Au	Th	Sr	Cd	Sb	Bi	V	Ca
OGG20775	2330	2.43	25	1.43	0	0.6	22.9	3.24	3.49	0.23	27	16.2
OGG20823	1100	0.97	22	0.94	0	0.3	23	2.56	2.22	0	13	18.25
OGG20824	1110	1.87	33	0.97	0	0.4	19.4	3.21	3.95	0.01	15	16.95
OGG20825	815	0.89	13	0.99	0	0.3	19.2	4.23	2.4	0.03	16	17.6
OGG20863	2910	2.92	14	0.75	0	1.2	23.7	2.3	1.7	0.45	30	13.4
OGG20864	3100	4.31	20.1	1.28	0	2.6	23.9	1.57	4.4	0.71	34	6.24
OGG20865	2370	2.78	11.1	1.33	0	1.8	23.2	1.87	2.95	1.81	37	9.05
OGG20866	1115	11.85	58.1	1.96	0	10.6	5.9	0.19	5.74	1.69	36	1.54
OGG20867	1650	15.1	64.6	2.84	0	9.8	7.7	0.17	10.15	2.48	32	2.04
OGG20868	2400	5.09	37.8	1.34	0	2.7	13.9	1.54	4.66	1.15	44	4.34
OGG20869	2160	1.91	17	0.83	0	0.8	22.1	1.47	2.4	0.55	28	14.65
OGG20870	2470	2.07	19	1.11	0	0.4	21.3	2.17	2.41	0.4	31	14.75
OGG20871	1040	1.34	20	1.2	0	0.5	17.1	1.03	1.48	0.21	26	16.8
OGG20877	1300	2.8	7.4	0.59	0	1.3	16.2	0.56	1.13	0.24	26	3.35
OGG20896	3490	2.78	7	0.67	0	0.7	30.4	7.7	3.79	0.17	20	10.95
OGG20897	5060	4.77	14.9	0.73	0	0.7	17.2	19.9	5.22	0.27	34	5.28
OGG20898	1650	1.84	21	0.6	0	1	24.6	2.83	2.17	0.19	27	13.55
OGG20899	1795	2.06	25	0.65	0	0.8	22.5	2.81	2.36	0.24	27	11.9
OGG20900	1475	2.04	10.7	0.73	0	0.7	21.7	1.85	1.39	0.17	29	7.9
OGG20901	2360	2.14	4	0.76	0	0.3	20.8	3.86	2.35	0.26	37	12.5
OGG20902	2320	2.65	14	0.74	0	0.9	23.7	3.9	2.48	0.33	36	11.9
OGG20903	2550	3.24	28	0.87	0	0.7	21	5.55	3.96	0.44	39	11.85
OGG21142	1320	2.45	9.1	0.86	0	1.4	20.5	0.6	1.13	0.24	27	3.15
OGG21245	961	3.33	15.4	0.65	0	2.4	11.9	0.61	1.64	0.33	35	0.44
OGG21246	766	3.18	12.8	0.77	0	1.7	10.4	0.62	1.26	0.3	25	0.53
OGG21518	796	38.5	986	2.7	0	0.8	7.7	4.94	145	0.6	39	4.03
OGG21519	1485	1.93	37	1.51	0	0.4	27.2	3.38	6.47	0.1	17	18.6
OGG21520	1230	1.9	35	1.15	0	0.4	25.5	2.01	4.45	0.16	14	19.05
OGG21521	2450	3.3	43	1.62	0	0.3	29.6	5.63	7.62	0.05	22	16.95
OGG21522	1840	3.12	52	1.84	0	1.1	26.4	2.65	4.36	0.12	24	11.9
OGG21523	2280	3.46	53	1.49	0	1.1	28.1	6.32	3.98	0.1	27	13.65
OGG21524	1905	5.61	84	1.96	0	0.9	23.3	10.1	7.1	0.11	23	12.05
OGG21525	1805	2.77	40	1.29	0	0.6	22.2	7.39	3.35	0.09	23	12.9
OGG21526	1310	3.3	39.7	1.11	0	0.8	20.7	5.56	3.69	0.23	38	7.49
OGG21527	1635	1.4	19	0.77	0	0.4	21.1	1.32	1.86	0.24	23	16.8
OGG21528	1570	1.98	25	0.84	0	0.4	25.4	2.78	3.96	0.26	23	15.2
OGG21529	2520	3.4	26.1	0.75	0	0.8	17.2	1.74	3.85	0.39	46	9.15
OGG21530	880	2.95	14.5	0.55	0	0.7	15.8	0.88	1.29	0.24	45	1.88
OGG21569	1860	6.17	9.6	1.33	0	1.7	22.3	0.27	0.6	0.29	20	0.85
OGG21570	946	4.44	10	1.19	0	2.5	10.4	0.19	0.57	0.26	23	0.57
OGG21571	423	3	10.9	0.73	0	2.6	13.9	0.19	0.46	0.26	41	0.36
OGG21572	425	2.86	10	0.8	0	2.2	11.3	0.16	0.37	0.29	37	0.34
OGG21573	374	3.69	23.9	0.79	0	5.5	17.1	0.21	0.84	0.43	19	0.23
OGG21617	1050	3.4	18.1	0.79	0	2.4	15.2	0.81	1.6	0.35	38	0.59
OGG21723	1580	3.67	48	1.22	0	1.3	20.3	5.38	6.2	0.26	32	10.5
OGG21724	1800	4.2	57.1	0.99	0	1.2	14.9	5.85	5.65	0.24	40	4.82
OGG21725	1400	1.69	29	1.43	0	0.5	20.8	1.82	2.22	0.07	24	16.5
OGG21726	1590	4.37	54.4	0.77	0	2.2	11.9	3.2	5.5	0.28	35	2.38
OGG21727	820	3.22	17.3	1.01	0	3	11.1	0.81	1.41	0.28	35	0.56
OGG21728	1270	3.04	65.1	1.1	0	1	17	0.49	0.81	0.38	40	0.55
OGG21729	2490	3.64	35.2	1.09	0	2.3	13.1	0.37	0.51	1.42	43	0.43
OGG21730	443	3.94	35.6	7.17	0	4.8	41.6	0.51	1.21	0.43	18	0.3
OGG21731	87	2.74	12.6	1.14	0	4.5	12.5	0.19	0.39	0.27	26	0.31
OGG22063	528	2.92	5.8	0.35	0	3.5	8.5	0.16	0.25	0.22	76	0.13
OGG22064	361	4.88	9.1	0.44	0	1.8	13.8	0.15	0.52	0.27	149	0.23
OGG22065	4430	4.78	9.3	0.54	0	0.5	17.9	0.83	0.88	0.35	148	0.36
OGG22066	1750	4.09	10.9	0.62	0	2	16.9	0.48	0.73	0.54	82	0.39

ELEMENT	P	La	Cr	Mg	Ba	Ti	B	Al	Na	K	W	Hg
OGG20775	440	6.6	9	9.85	120	0	10	0.26	0.03	0.05	0	0.29
OGG20823	110	3.1	2	11.95	10	0	0	0.07	0.03	0.02	0	0.08
OGG20824	180	4.1	3	11.05	30	0.006	0	0.17	0.03	0.02	0	0.27
OGG20825	170	3.8	3	11.55	20	0.006	0	0.17	0.03	0.02	0	0.09
OGG20863	440	7.3	11	8.3	240	0	0	0.36	0.02	0.09	0.05	0.19
OGG20864	810	11.7	16	3.85	220	0.01	0	0.78	0.01	0.18	0.09	0.24
OGG20865	520	11.2	14	5.44	130	0.018	0	0.65	0.01	0.07	0.1	0.53
OGG20866	980	17.3	7	0.67	290	0	0	0.18	0	0.08	0.08	0.22
OGG20867	790	15.9	8	0.98	170	0	0	0.27	0.02	0.08	0.11	0.37
OGG20868	880	17.7	29	2.85	330	0.005	0	0.77	0.02	0.15	0.07	0.51
OGG20869	450	8.9	7	9.08	110	0.008	10	0.31	0.04	0.05	0.07	0.23
OGG20870	560	8.4	7	9.14	110	0.008	0	0.38	0.04	0.04	0.07	0.23
OGG20871	270	5.5	5	10.7	80	0.01	0	0.31	0.04	0.03	0.05	0.08
OGG20877	940	19.8	20	1.95	160	0.017	0	0.85	0.02	0.15	0.27	0.12
OGG20896	640	14.7	21	6.56	160	0.007	10	0.36	0.01	0.07	0	0.28
OGG20897	750	24	43	2.87	210	0.009	0	0.78	0.01	0.09	0.08	0.67
OGG20898	420	8.9	16	8.67	200	0	0	0.34	0.01	0.08	0	0.12
OGG20899	460	10.3	25	7.3	200	0	10	0.37	0	0.08	0	0.2
OGG20900	710	11.9	18	4.82	170	0.016	0	0.75	0.01	0.07	0.06	0.13
OGG20901	570	10.4	18	7.94	180	0.011	0	0.6	0.01	0.05	0.05	0.22
OGG20902	460	8.5	21	7.54	190	0.005	0	0.51	0.01	0.09	0	0.25
OGG20903	510	8.5	21	7.51	240	0	0	0.49	0.01	0.1	0	0.69
OGG21142	750	16	19	1.89	160	0.029	0	0.89	0.03	0.1	0.16	0.11
OGG21245	550	17.8	24	0.51	280	0.025	0	1.39	0	0.14	0.15	0.1
OGG21246	480	14.2	19	0.34	310	0.015	10	1.08	0	0.23	0.07	0.08
OGG21518	130	2.6	0	2.31	10	0	0	0.05	0	0.03	0	2.62
OGG21519	150	3.6	2	11.3	240	0	0	0.08	0	0.04	0	1.02
OGG21520	90	3.1	2	11.65	40	0	0	0.06	0	0.03	0	0.12
OGG21521	160	4.5	4	10.1	180	0	0	0.15	0	0.07	0	0.31
OGG21522	650	11.4	9	6.95	110	0.009	30	0.37	0.01	0.06	0.14	0.31
OGG21523	500	8.5	7	7.9	140	0	10	0.23	0	0.07	0	0.21
OGG21524	590	10.5	6	7.01	130	0.005	10	0.32	0	0.05	0.07	0.74
OGG21525	560	12	7	7.73	80	0.007	20	0.35	0.01	0.05	0.05	0.29
OGG21526	940	14.6	14	4.47	160	0.019	0	0.86	0	0.08	0.1	0.52
OGG21527	360	6.4	5	10.4	220	0.011	10	0.38	0.01	0.03	0.06	0.24
OGG21528	470	7	6	9.32	190	0.012	0	0.48	0.01	0.03	0.07	0.52
OGG21529	500	11.8	96	5.54	230	0.009	10	0.67	0	0.11	0.06	0.29
OGG21530	830	16.1	23	1.08	150	0.03	10	1.34	0	0.09	0.19	0.14
OGG21569	940	22.7	13	0.33	120	0.007	0	1.41	0	0.13	0.05	0.07
OGG21570	710	16.3	17	0.35	290	0.009	0	1.26	0	0.15	0.08	0.08
OGG21571	600	14.4	22	0.43	140	0.021	0	1.76	0	0.09	0.14	0.02
OGG21572	720	15.5	21	0.4	270	0.011	0	1.68	0	0.13	0.1	0.03
OGG21573	600	26.9	15	0.46	680	0.011	0	1.32	0	0.23	0.05	0.05
OGG21617	580	18.3	24	0.57	280	0.028	0	1.37	0.01	0.14	0.1	0.1
OGG21723	480	9.9	8	6.74	220	0.01	0	0.72	0.01	0.11	0.07	0.68
OGG21724	710	15.2	13	3.63	290	0.012	0	0.97	0.01	0.12	0.08	0.86
OGG21725	320	6.2	5	10.35	100	0.01	0	0.44	0.02	0.03	0	0.28
OGG21726	640	16.1	14	1.47	300	0.011	0	1.13	0.01	0.19	0.07	1.12
OGG21727	640	19.3	20	0.48	230	0.013	0	1.35	0	0.16	0.07	0.23
OGG21728	900	14.1	25	0.49	200	0.031	0	1.68	0.02	0.08	0.11	0.08
OGG21729	770	18.6	24	0.5	150	0.022	0	1.66	0.01	0.12	0.1	0.1
OGG21730	550	13.4	16	0.32	470	0.007	0	1.98	0	0.37	0	0.09
OGG21731	540	17.7	16	0.38	270	0.007	0	1.45	0	0.2	0.06	0.06
OGG22063	330	12.9	33	1.21	160	0.016	10	1.77	0	0.24	0.05	0.01
OGG22064	400	12.2	39	0.81	120	0.054	0	2.08	0.01	0.07	0.18	0.04
OGG22065	1060	13.7	31	0.86	260	0.04	0	2.11	0.01	0.08	0.22	0.06
OGG22066	700	17.6	42	1.43	220	0.046	0	2.09	0.01	0.07	0.15	0.04

ELEMENT	Sc	Tl	S	Ga	Se	Analysis____	Chemex_file
OGG20775	5.7	0.48	0.21	0.84	1.9	ICP-MS	ALS_VA07109920
OGG20823	1.7	0.39	0.09	0.65	1.3	ICP-MS	ALS_VA07109920
OGG20824	2.1	0.85	0.12	0.93	1.8	ICP-MS	ALS_VA07109920
OGG20825	1.9	0.3	0.07	0.75	1.7	ICP-MS	ALS_VA07109920
OGG20863	9.7	0.14	0.21	1.14	0.8	ICP-MS	ALS_VA07109920
OGG20864	9.2	0.19	0.3	2.57	1.9	ICP-MS	ALS_VA07109920
OGG20865	5.4	0.23	0.09	2.26	1.7	ICP-MS	ALS_VA07109920
OGG20866	12.4	0.16	0.76	1.14	2.8	ICP-MS	ALS_VA07109920
OGG20867	11	0.47	1.22	0.86	3	ICP-MS	ALS_VA07109920
OGG20868	11	0.61	0.39	2.16	1.6	ICP-MS	ALS_VA07109920
OGG20869	2.1	0.29	0.08	0.87	0.7	ICP-MS	ALS_VA07109920
OGG20870	1.8	0.37	0.11	0.97	0.8	ICP-MS	ALS_VA07109920
OGG20871	1.7	0.27	0.07	0.76	0.5	ICP-MS	ALS_VA07109920
OGG20877	6	0.14	0.1	2.55	0.8	ICP-MS	ALS_VA07109920
OGG20896	4.3	0.14	0.12	1.38	1.3	ICP-MS	ALS_VA07109921
OGG20897	5.5	0.18	0.13	2.66	1.8	ICP-MS	ALS_VA07109921
OGG20898	7.3	0.1	0.07	1.35	1	ICP-MS	ALS_VA07109921
OGG20899	7.3	0.11	0.07	1.42	1.1	ICP-MS	ALS_VA07109921
OGG20900	3.3	0.13	0.04	2.22	1.1	ICP-MS	ALS_VA07109921
OGG20901	4.3	0.12	0.07	1.65	1.3	ICP-MS	ALS_VA07109921
OGG20902	7.7	0.15	0.13	1.62	1.1	ICP-MS	ALS_VA07109921
OGG20903	8.2	0.2	0.2	1.44	1.6	ICP-MS	ALS_VA07109921
OGG21142	4.7	0.09	0.04	2.79	0.9	ICP-MS	ALS_VA07109921
OGG21245	5.8	0.33	0.06	3.85	0.7	ICP-MS	ALS_VA07109922
OGG21246	3.7	0.34	0.07	3.08	0.4	ICP-MS	ALS_VA07109922
OGG21518	2.8	60.8	3.56	0.34	10.4	ICP-MS	ALS_VA07109922
OGG21519	3.6	0.48	0.29	0.28	0.8	ICP-MS	ALS_VA07109922
OGG21520	2	0.43	0.13	0.21	0.6	ICP-MS	ALS_VA07109922
OGG21521	7	0.64	0.54	0.46	1.3	ICP-MS	ALS_VA07109922
OGG21522	5.2	1.47	0.21	1.06	1	ICP-MS	ALS_VA07109922
OGG21523	9.5	1.23	0.33	0.86	1	ICP-MS	ALS_VA07109922
OGG21524	4.4	1.75	0.41	1.16	1.3	ICP-MS	ALS_VA07109922
OGG21525	3	0.8	0.15	1.08	0.9	ICP-MS	ALS_VA07109922
OGG21526	3.9	0.72	0.09	2.36	1.1	ICP-MS	ALS_VA07109922
OGG21527	1.4	0.47	0.04	0.9	0.6	ICP-MS	ALS_VA07109922
OGG21528	1.6	0.6	0.11	1.14	0.7	ICP-MS	ALS_VA07109922
OGG21529	13.2	0.6	0.07	1.95	1.2	ICP-MS	ALS_VA07109922
OGG21530	2.6	0.23	0.07	3.57	0.7	ICP-MS	ALS_VA07109922
OGG21569	5.7	0.21	0.07	3.67	0.8	ICP-MS	ALS_VA07109922
OGG21570	5.2	0.19	0.06	3.49	0.7	ICP-MS	ALS_VA07109922
OGG21571	3.8	0.19	0.03	4.71	0.4	ICP-MS	ALS_VA07109922
OGG21572	4	0.21	0.03	4.93	0.4	ICP-MS	ALS_VA07109922
OGG21573	5.2	0.29	0.07	3.89	0.8	ICP-MS	ALS_VA07109922
OGG21617	6	0.37	0.08	3.77	0.7	ICP-MS	ALS_VA07109922
OGG21723	3.8	1.1	0.25	1.86	1	ICP-MS	ALS_VA07109922
OGG21724	3.8	1.06	0.19	2.59	1	ICP-MS	ALS_VA07109922
OGG21725	1.4	0.44	0.09	0.91	0.7	ICP-MS	ALS_VA07109922
OGG21726	5.7	0.75	0.09	3.08	1	ICP-MS	ALS_VA07109922
OGG21727	6.8	0.47	0.06	4.03	0.7	ICP-MS	ALS_VA07109922
OGG21728	4	0.2	0.07	5.4	0.9	ICP-MS	ALS_VA07109922
OGG21729	5.4	0.19	0.05	4.87	0.7	ICP-MS	ALS_VA07109922
OGG21730	7.7	0.27	0.4	3.75	0.7	ICP-MS	ALS_VA07109922
OGG21731	4.9	0.18	0.04	4.14	0.5	ICP-MS	ALS_VA07109922
OGG22063	8.9	0.2	0.03	5.67	0.4	ICP-MS	ALS_VA07109922
OGG22064	5.8	0.23	0.03	10.1	0.5	ICP-MS	ALS_VA07109922
OGG22065	5.6	0.34	0.09	9.31	0.9	ICP-MS	ALS_VA07109922
OGG22066	8.2	0.27	0.05	6.66	0.9	ICP-MS	ALS_VA07109922

ELEMENT	Datum	Easting	Northing	Mo	Cu	Pb	Zn	Ag	Ni	Co
OGG22067	Nad 83-7W	546326	7191665	1.42	166	249	567	1.29	32.3	53.7
OGG22068	Nad 83-7W	546375	7191680	0.8	29.9	39.4	133	0.26	24.9	14.9
OGG22069	Nad 83-7W	546424	7191693	0.7	23.1	33.6	130	0.19	22.4	11.4
OGG22139	Nad 83-7W	546963	7190705	2.68	81.5	343	2120	2.77	54.6	33.5
OGG22140	Nad 83-7W	547012	7190718	1.35	210	215	1585	1.6	78.1	54.4
OGG22141	Nad 83-7W	547063	7190733	1.38	66.5	2150	7680	7.18	40.6	22.3
OGG22488	Nad 83-7W	546707	7191150	0.47	41.3	278	518	0.5	10	6.9
OGG22489	Nad 83-7W	546683	7191145	0.77	61.7	343	838	1.09	18.9	13.3
OGG22490	Nad 83-7W	546635	7191131	0.5	99.3	728	1490	1.21	20.5	16

ELEMENT	Mn	Fe	As	U	Au	Th	Sr	Cd	Sb	Bi	V	Ca
OGG22067	6710	5.15	36	0.8	0	1.1	18.3	1.35	1.72	0.47	35	1.52
OGG22068	1835	2.89	10.7	0.56	0	1.3	21.5	0.45	0.63	0.17	44	1.66
OGG22069	639	2.38	10.8	0.47	0	0.6	17.7	0.54	0.62	0.14	44	2.08
OGG22139	1595	3.45	62	1.13	0	0.6	19.8	2.44	5.83	0.11	31	14.55
OGG22140	2010	7.75	25.6	0.73	0	0.4	16.2	1.68	3.91	0.28	52	7.35
OGG22141	981	2.42	57	1.34	0	0.5	20.8	13.9	18.95	0.03	17	18.2
OGG22488	1030	1.02	12	1.03	0	0.4	19.5	1.72	1.68	0.3	19	17.55
OGG22489	1725	1.89	15	1.19	0	0.5	20.8	2.08	2.98	0.25	23	16.4
OGG22490	1410	1.68	25	1.04	0	0.5	21.8	3.3	3.04	0.17	22	17.05

ELEMENT	P	La	Cr	Mg	Ba	Ti	B	Al	Na	K	W	Hg
OGG22067	1080	52.2	21	1.04	160	0.018	0	1.42	0.01	0.08	0.09	0.36
OGG22068	650	20	23	1.13	130	0.044	0	1.31	0.02	0.07	0.05	0.07
OGG22069	800	13.2	22	1.21	130	0.033	0	1.3	0.01	0.06	0	0.06
OGG22139	330	7.2	7	9	130	0	0	0.3	0.02	0.09	0	0.36
OGG22140	600	10.1	12	3.82	450	0	0	0.53	0.01	0.23	0	0.38
OGG22141	130	4.7	1	11.5	30	0.005	0	0.13	0.03	0.02	0	0.49
OGG22488	170	4.1	2	11.15	160	0	0	0.13	0.02	0.01	0	0.14
OGG22489	340	6.4	4	10.4	430	0.009	0	0.29	0.02	0.03	0	0.24
OGG22490	240	5.5	4	10.75	40	0.009	0	0.26	0.03	0.02	0	0.38

ELEMENT	Sc	Tl	S	Ga	Se	Analysis____	Chemex_file
OGG22067	9.9	0.19	0.1	5.32	3.6	ICP-MS	ALS_VA07109922
OGG22068	4.7	0.12	0.06	4.16	1.3	ICP-MS	ALS_VA07109922
OGG22069	2.2	0.11	0.08	3.68	1.1	ICP-MS	ALS_VA07109922
OGG22139	11	1.4	0.3	1.05	1.5	ICP-MS	ALS_VA07109923
OGG22140	30.7	1.45	0.84	1.66	1.6	ICP-MS	ALS_VA07109923
OGG22141	1.8	0.95	0.3	1.08	1.8	ICP-MS	ALS_VA07109923
OGG22488	1.1	0.29	0.06	0.3	0.7	ICP-MS	ALS_VA07109924
OGG22489	1.7	0.37	0.09	0.66	0.9	ICP-MS	ALS_VA07109924
OGG22490	1.9	0.78	0.1	0.61	1.1	ICP-MS	ALS_VA07109924