

**GEOCHEMICAL  
REPORT**

**NPRINCE 1 - 16**

**YC44334 - YC44349**

**PRINCE 86 - 92**

**YC36117 - YC36123**

**NTS # 115 O \ 15**

**LAT: 63° 52' N**

**LONG: 138° 58' W**

**DAWSON MINING DISTRICT**

**AUTHOR OF REPORT SHAWN RYAN**

**WORK PERFORMED MAY 30 - JUNE 01, 2007**

**DATE OF REPORT NOVEMBER 23, 2007**

## TABLE OF CONTENT

SUMMARY	P.3
1.0 INTRODUCTION	P.3
2.0 LOCATIONS AND ACCESS	P.3
3.0 PROPERTY DESCRIPTION	P.3
4.0 PHYSIOGRAPHY	P.3
GEOLOGY MAP	Figure 2
5.0 REGIONAL AND PROPERTY GEOLOGY	P.5
5.1 REGIONAL GEOLOGY	P.5
GEOLOGY DESCRIPTION	P.5-6
6.0 WORK PROGRAM / METHODS	P.6
6.1 SOIL WORK	P.6
7.0 INTERPRETATION	P.7
7.1 SOIL WORK	P.7
8.0 RECOMMENDATION	P.7
9.0 REFERENCES CITED	P.7
10.0 COST	P.8
11.0 QUALIFICATION	P.9
Location Map	Figure1
Zinc Soil Map	Figure 3
Lead Soil Map	Figure 4
Arsenic Soil Map	Figure 5
NPrince Sample Location Map	Figure 6
Prince Sample Location Map	Figure 7
Assay Data / Soil GPS Data	Appendix

## **SUMMARY**

The NPrince and Prince Claims has seen 6 man days of soil work take place during the last week of May and the first week of June 2007. In total there was 132 soil collected by Adam Fage, Matthew McHugh, Jeremy Duplisea and Joe McCann.

### **1.0 INTRODUCTION**

The NPrince 1 -16 and Prince 86 - 92 will be renewed for 2 years.

### **2.0 LOCATIONS AND ACCESS**

The NPrince and Prince claims are located on NTS 115 O / 15 in the Dawson Mining District. The Property lies 30 kilometer south of Dawson City, Yukon. The claim block covers the head waters of Gold Bottom Creek. Access is via the Hunker Creek road. The Hunker road run right threw the property.

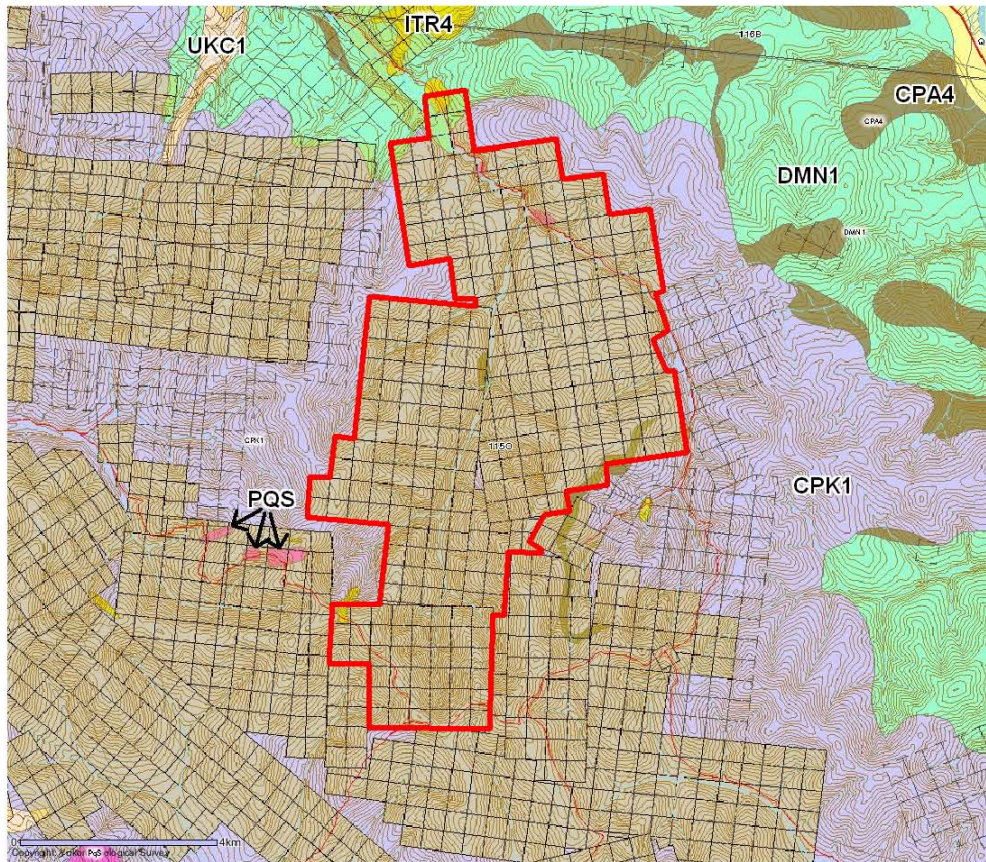
### **3.0 PROPERTY DESCRIPTION**

The NPrince and Prince claims are part of a large 300 plus claim block. The NPrince and Prince claims are registered in the Dawson Mining District to Shawn Ryan.

### **4.0 PHYSIOGRAPHY**

The property lies between the elevations of 3200 feet and 4200 feet. The property is partially covered with boreal forest vegetation such as white spruce and poplar on well-drained soil and black spruce on poorly drained frozen north facing slope. The ridge top is open with only low lying willow shrubs.

# Crown Jewel - King - Prince Claims



**YTG Geology Map**

**Figure 2**

## 5.0 REGIONAL AND PROPERTY GEOLOGY

### 5.1 REGIONAL GEOLOGY

According to the YTG Web site Geology map the Crown jewel Claim block is covering Unit (CPK1) known as the Permian Klondike Shist. Ultra mafic units (CPA4) know as Anvil also runs threwh the eastern edge of the property.

#### LOWER TERTIARY, MOSTLY(?) EOCENE

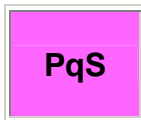


##### **ITR: ROSS**

mixed bimodal volcanics (basalt (1), rhyolite (2)) and terrestrial clastics (3), dominantly along or near Tintina Fault; farther removed, scattered occurrences of rhyolitic lava and dikes (4) are also included

4. light coloured felsic quartz feldspar porphyry and rhyolite; minor acid tuff breccia, crystal lithic tuff and ignimbrite; quartz-feldspar porphyry stocks and dykes

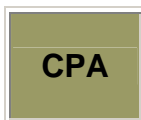
#### MIDDLE PERMIAN



##### **PqS: SULPHUR CREEK SUITE**

moderately to strongly foliated biotite quartz monzonite gneiss, the Sulphur Creek Orthogneiss; coarse grained, homogeneous, hornblende-biotite-bearing granite, granodiorite and quartz-monzonite with narrow foliated and mylonitic zones of the Ram Stock (**Sulphur Creek Orthogneiss, Ram Stock**)

#### CARBONIFEROUS AND PERMIAN



##### **CPA: ANVIL**

dominantly oceanic assemblage of mafic volcanics (1), ultramafics (4), chert and pelite (2), limestone (3) and gabbroic rocks (5)

4. dunite, peridotite, gabbro, pyroxenite, harzburgite and minor diorite, hornblendite and diabase; serpentinite, orange weathering quartz carbonate rock with minor green chromian muscovite, talc-carbonate schist and carbonatized ultramafic rocks

## CARBONIFEROUS AND PERMIAN

CPK

### CPK: KLONDIKE SCHIST

poorly understood assemblage of metamorphosed pelitic/volcanic rocks (1) and minor marble (2), including phyllite of uncertain association (3)

1. tan to rusty and black weathering muscovitic and/or chloritic quartzite and quartz-muscovite-chlorite schist; quartz and/or feldspar augen-bearing quartz-muscovite (+/-chlorite) schist; includes augen gneiss and amphibolite (**Klondike Schist**)

## DEVONIAN, MISSISSIPPIAN AND(?) OLDER

DMN

### DMN: NASINA

graphitic quartzite and muscovite quartz-rich schist (1), (3)-(5), and(?) (6) with interspersed marble (2) and probable correlative successions (7) - (9)

1. dark grey to black, fine grained graphitic and non-graphitic quartzite, grey micaceous quartzite and quartz muscovite (+/-chlorite; +/- feldspar augen) schist, locally garnetiferous; minor graphitic stretched metaconglomerate and metagrit (**Nasina assem.**)
2. marble (**Nasina assem.**)

## 6.0 WORK PROGRAM / METHODS

The NPrince had 4 man days of soil work and the Prince 86 - 92 had 2 man days of soil work. A total of 98 soils were collected off the NPrince and 34 soils collected off the Prince claims.

## **6.1 SOIL WORK**

The soil work consists of soil sampling with 1 meter soil augers at an average depth of 60 centimeter. Soil sample were place in Kraft soil bags with sample numbers marked on the bags. A sample description of the color, depth, slope, and horizon and UTM location was noted in field notes. A Garmin 76 GPS was used to get the exact UTM location. All GPS soil sample location were electronically downloaded every evening back in town. Soil sample were taken at 50 - 100 meters intervals on soil traverse. All assay were process at the Acme Lab in Vancouver with Group 1DX: ICP - MS on 15 grams.

## **7.0 INTERPRETATION**

### **7.1 SOIL WORK**

The NPrince soil work indicated a nice zinc and lead soil anomaly forming mid way up the Soda Creek ridge. The Prince Soil work indicated a nice arsenic and zinc anomaly forming with spotty lead values.

The NPrince soil anomaly may be indicating a potential VMS type deposit, more work will be needed to better understand the anomaly.

The Prince Soil anomaly located in the south part of Figure 3, 4, 5 is indicating the same anomalous elements found on the Sheba and Michel showing located 1000 meters to the south east along the same ridge.

## **8.0 RECOMMENDATION**

I would recommend more soil work on line spacing of 100 meters and station spacing of 50 meters in both areas.

The grid should continue from the eastern grid and grid the gap along the ridge top towards the western anomalous soil lines. Any new anomalous soil can be easily followed up with mechanical trenching since it's on the road system.

## **9.0 REFERENCES CITED**

YTG Geology Map (Web Site)

## 10.0 COST

### NPRINCE 1 - 16

Assay Cost 98 sample @ \$18.00 per sample	\$1,764.00
Wage 4 man days @ \$325.00 per day (contracting)	\$1300.00
Truck and gas 1 Days @ \$150.00	\$150.00
Report Writing (Map Preparation)	\$350.00
	-----
Total	\$3,564.00

### PRINCE 86 - 92

Assay Cost 34 sample @ \$18.00 per sample	\$612.00
Wage 2 man days @ \$250.00 per day	\$500.00
Truck and gas 1 Days @ \$150.00	\$150.00
Report Writing (Map Preparation)	\$300.00
	-----
Total	\$1,562.00

## 11.0 QUALIFICATION

I Shawn Ryan located in Dawson City, Yukon work as a professional prospector. I run a small exploration company located in Dawson city.

I have worked in the exploration business for the last 25 years. I worked the first 12 years as a contractor working on numerous projects in the NWT, Ontario, Quebec and the Yukon. I have worked for the last 10 years as a local prospector for myself.

I have being trained to run various geophysical instruments and surveys such as magnetic surveys, max-min surveys, induce polarity surveys and Vlf surveys.

I have overseen the NPrince and Prince soil Survey.

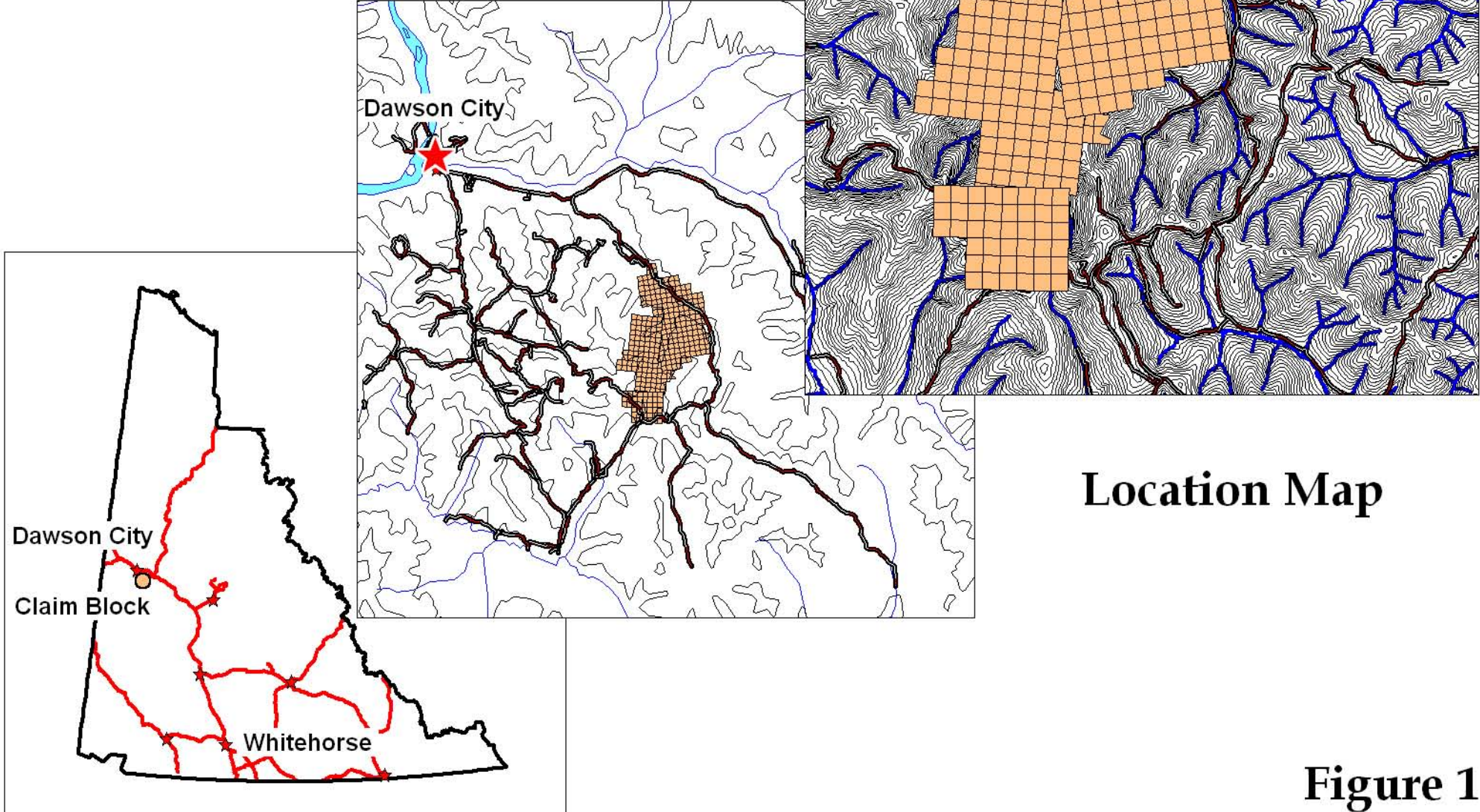
I own 100 % of the NPrince and Prince claims.

Dated this 23 of November 2007 in Dawson City, Yukon.

Respectfully submitted

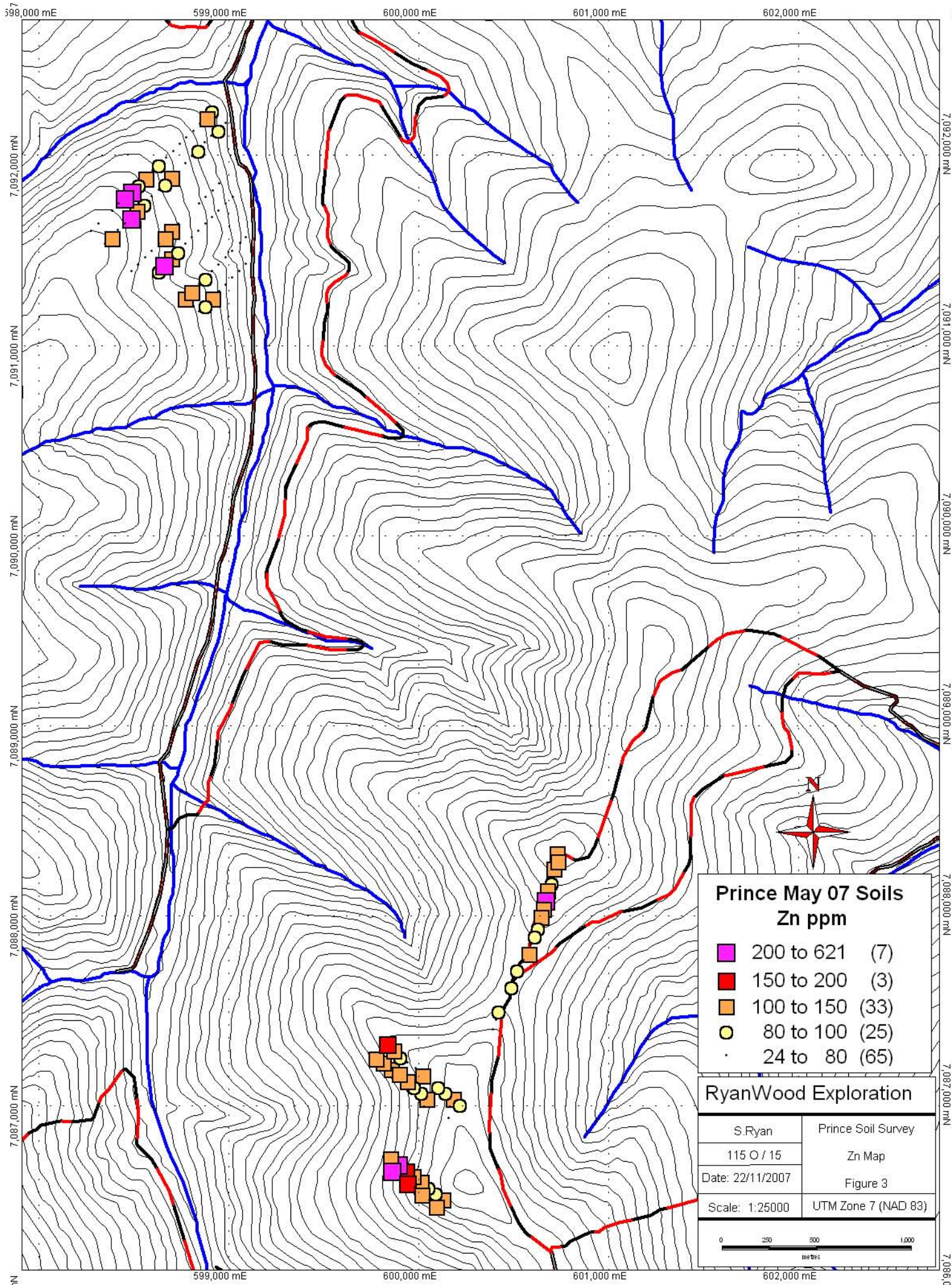
Shawn Ryan

# Crown Jewel - Prince - King Claims



Location Map

Figure 1



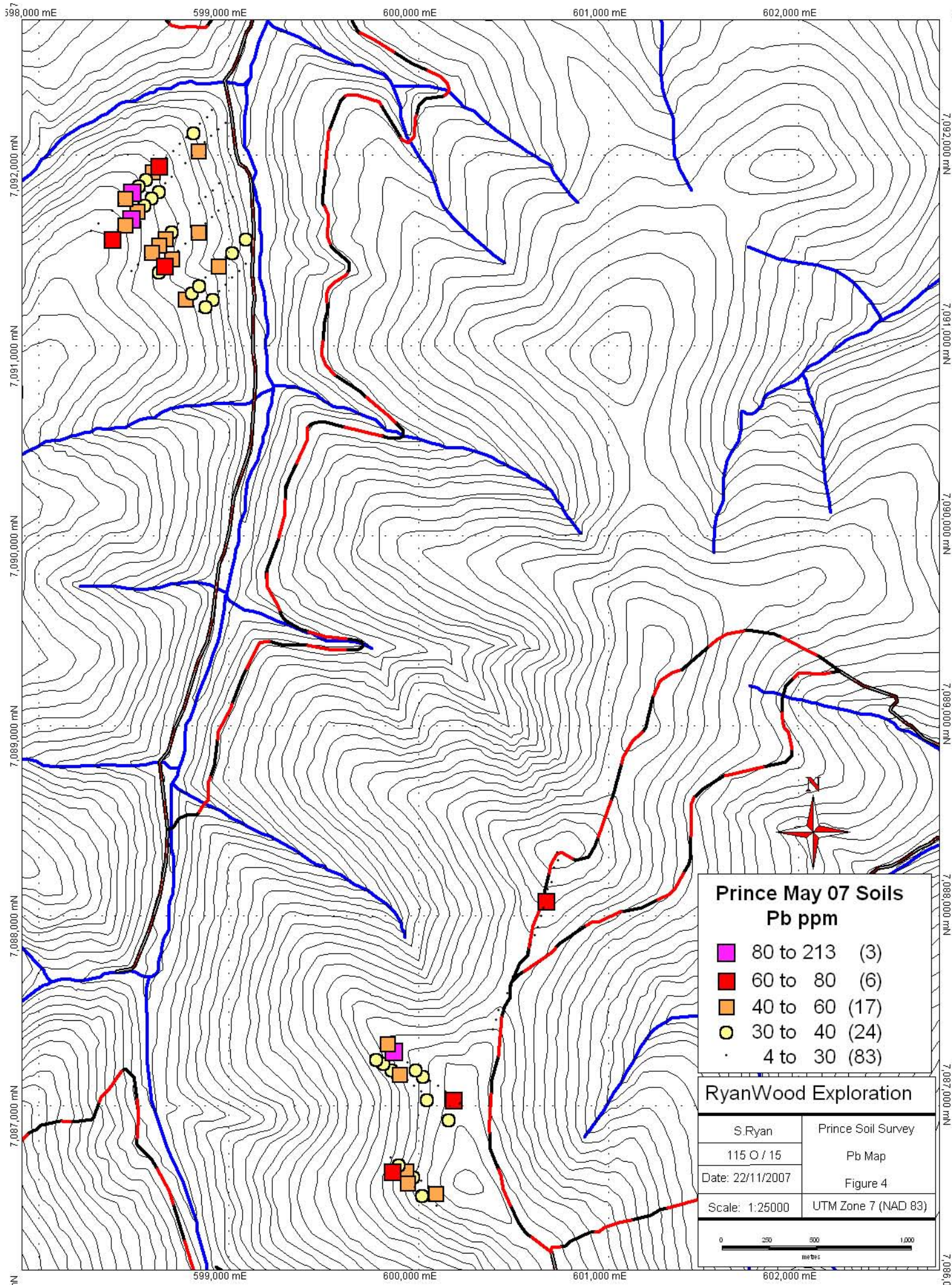
**Prince May 07 Soils  
Zn ppm**

- 200 to 621 (7)
- 150 to 200 (3)
- 100 to 150 (33)
- 80 to 100 (25)
- 24 to 80 (65)

**RyanWood Exploration**

S.Ryan	Prince Soil Survey
115 O / 15	Zn Map
Date: 22/11/2007	Figure 3
Scale: 1:25000	UTM Zone 7 (NAD 83)

0 250 500 1,000  
metres



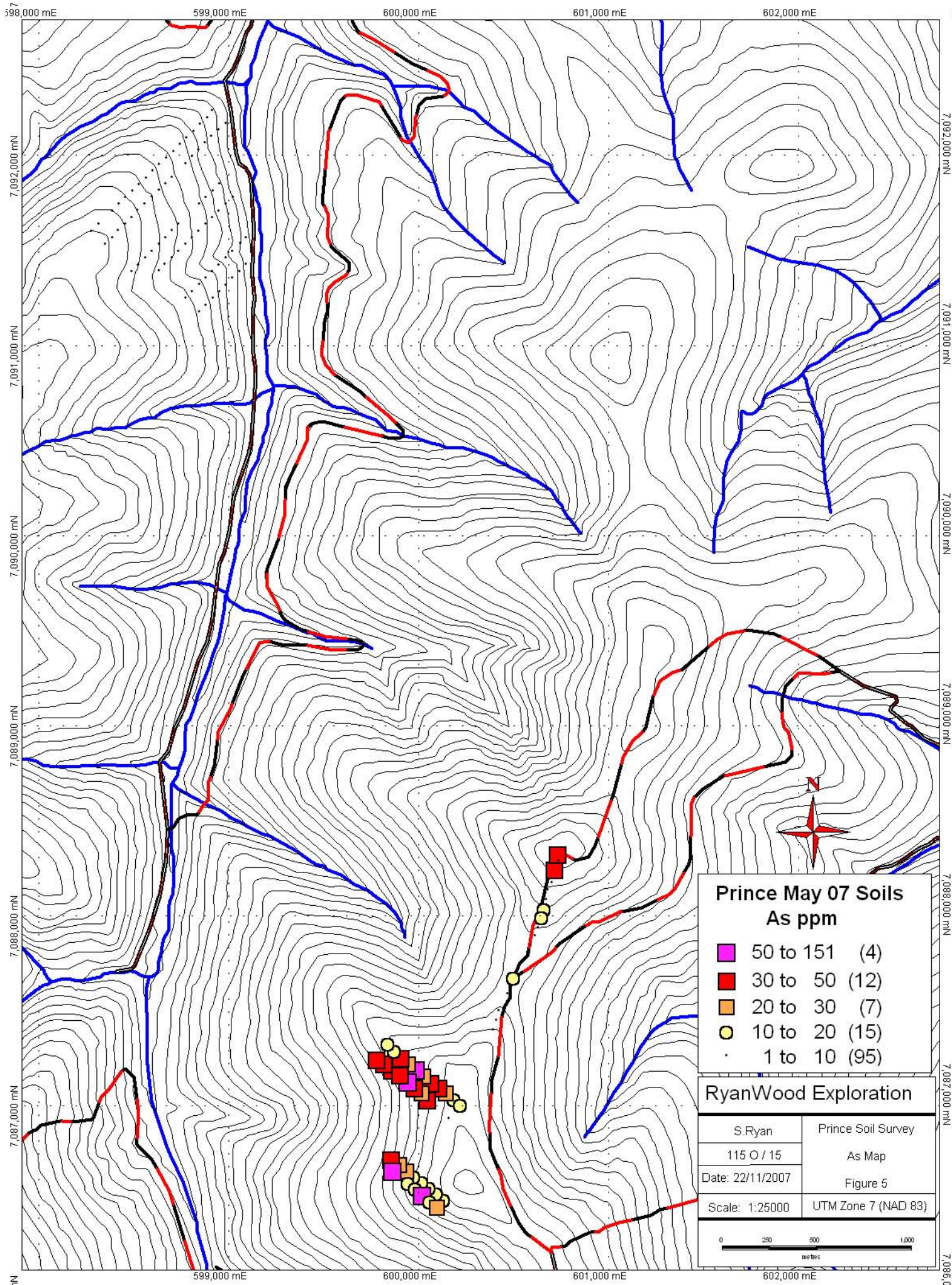
**Prince May 07 Soils  
Pb ppm**

- 80 to 213 (3)
- 60 to 80 (6)
- 40 to 60 (17)
- 30 to 40 (24)
- 4 to 30 (83)

**RyanWood Exploration**

S.Ryan	Prince Soil Survey
115 O / 15	Pb Map
Date: 22/11/2007	Figure 4
Scale: 1:25000	UTM Zone 7 (NAD 83)

0 250 500 1,000  
metres

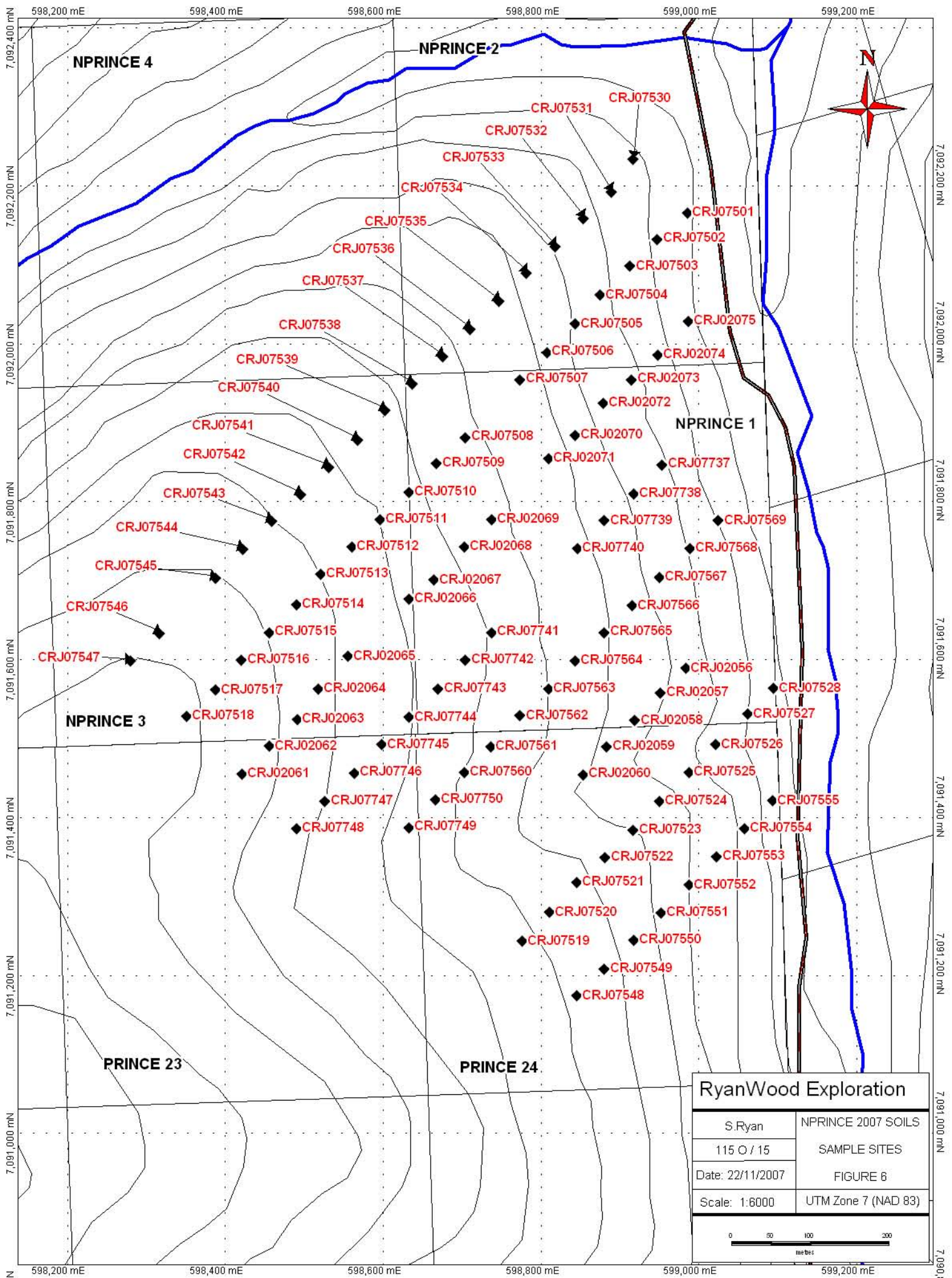


**Prince May 07 Soils  
As ppm**

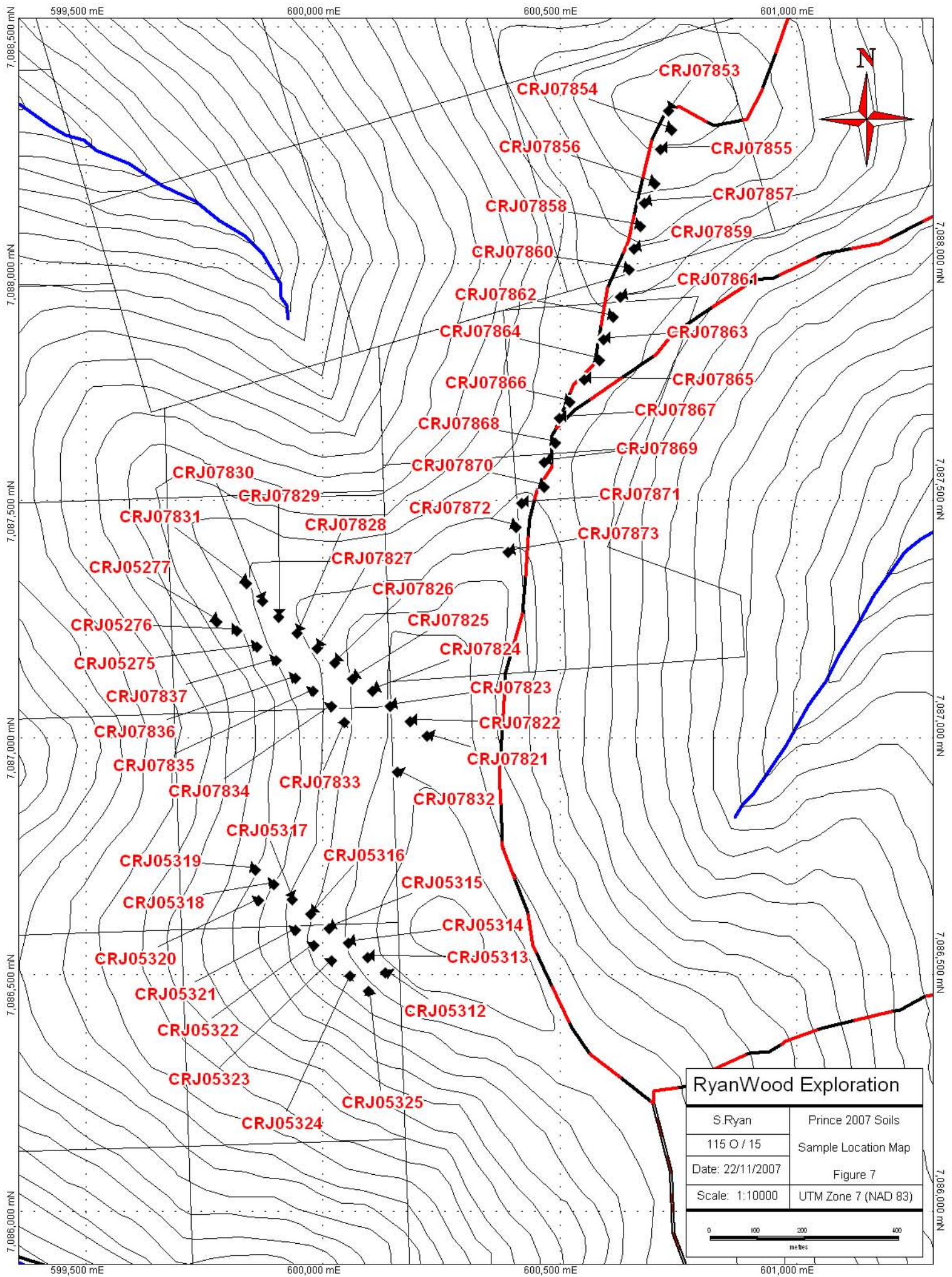
- 50 to 151 (4)
- 30 to 50 (12)
- 20 to 30 (7)
- 10 to 20 (15)
- 1 to 10 (95)

<b>RyanWood Exploration</b>	
S.Ryan	Prince Soil Survey
115 O / 15	As Map
Date: 22/11/2007	Figure 5
Scale: 1:25000	UTM Zone 7 (NAD 83)





RyanWood Exploration	
S.Ryan	NPRINCE 2007 SOILS
115 O / 15	SAMPLE SITES
Date: 22/11/2007	FIGURE 6
Scale: 1:6000	UTM Zone 7 (NAD 83)



RyanWood Exploration	
S.Ryan	Prince 2007 Soils
115 O / 15	Sample Location Map
Date: 22/11/2007	Figure 7
Scale: 1:10000	UTM Zone 7 (NAD 83)

SAMPLES	UTM Zone	UTM Easting	UTM Northing	Mo	Cu	Pb	Zn	Ag	Ni	Co
CRJ 05275	07V	599862	7087195	2.3	23.3	38.6	127	0.2	21.4	9.5
CRJ 05276	07V	599820	7087229	1.6	35.1	37.4	131	0.1	27.4	12.4
CRJ 05277	07V	599778	7087249	1.6	21.4	37.5	109	0.2	18.7	9.9
CRJ 05312	07V	600133	7086508	0.8	25.9	12.6	103	0.2	24.9	12.7
CRJ 05313	07V	600095	7086540	1.2	31.4	41	93	0.2	18.2	7.5
CRJ 05314	07V	600055	7086570	1.6	28.6	11.6	94	0	18	7.8
CRJ 05315	07V	600015	7086601	0.9	29	15.7	101	0.1	23.3	10.4
CRJ 05316	07V	599976	7086632	1.3	22.2	30.1	110	0	19.2	9
CRJ 05317	07V	599937	7086662	1.6	33.4	46.3	194	0.1	16.6	10.6
CRJ 05318	07V	599898	7086694	1.5	42	32.2	234	0.4	18.7	8.6
CRJ 05319	07V	599858	7086724	1.5	38.9	23	143	0.7	21	7.8
CRJ 05320	07V	599866	7086661	1.8	55.3	66.6	308	0.3	24.1	18.9
CRJ 05321	07V	599943	7086597	1.3	28.4	55.1	161	0.2	25.5	11.9
CRJ 05322	07V	599982	7086565	0.8	9.1	9.3	48	0	6.5	2.5
CRJ 05323	07V	600020	7086534	2.7	29.7	36.7	122	0.3	6.6	2.5
CRJ 05324	07V	600059	7086501	0.8	33.8	14.5	77	0.1	24.4	9.4
CRJ 05325	07V	600098	7086469	1.3	38.3	18.8	103	0.4	23.6	10.8
CRJ 07501	07V	598986	7092168	0.8	19.6	22.5	71	0	15.7	9.8
CRJ 07502	07V	598948	7092135	0.9	22.3	14	82	0	19.9	15.1
CRJ 07503	07V	598913	7092101	0.7	15.4	25.1	66	0	12.9	6.4
CRJ 07504	07V	598876	7092065	0.7	7.9	28.3	45	0	7.4	4
CRJ 07505	07V	598844	7092028	0.4	11.1	55.5	91	0	8.5	4.8
CRJ 07506	07V	598808	7091992	0.5	6.2	5.4	27	0	5.1	3.5
CRJ 07507	07V	598774	7091957	2.6	9.9	19.3	64	0	9.2	3.6
CRJ 07508	07V	598705	7091884	0.7	18.1	18.4	109	0	11.3	8.7
CRJ 07509	07V	598668	7091851	0.5	12.9	20.7	81	0	12.3	8.7
CRJ 07510	07V	598634	7091815	0.4	11.6	34.6	70	0	5.9	3.3
CRJ 07511	07V	598597	7091780	0.3	13.9	30.8	63	0	11.5	7.4
CRJ 07512	07V	598561	7091745	0.3	31.4	32.6	88	0	30.2	20.4
CRJ 07513	07V	598522	7091711	0.5	18.2	41.8	128	0	14.7	6.7
CRJ 07514	07V	598491	7091672	1	37.2	212.1	481	0	28.2	12.3

SAMPLES	Mn	Fe	As	U	Au	Th	Sr	Cd	Sb	Bi	V
CRJ 05275	529	4.26	40.8	0.8	2.2	5.1	18	0.3	0.4	0.3	63
CRJ 05276	649	4.26	48.4	1.4	4	6.2	11	0.3	0.5	0.2	58
CRJ 05277	765	3.75	32.7	0.8	2.1	4.8	12	0.3	0.4	0.2	60
CRJ 05312	546	3.8	13.6	0.6	1	4.2	10	0.3	0.3	0.2	70
CRJ 05313	408	3.22	11.1	0.8	1.7	4	10	0.4	0.4	0.3	71
CRJ 05314	458	3.3	16.7	0.8	2.2	2.6	10	0.4	0.3	0.2	65
CRJ 05315	433	3.09	10.9	1.3	3.5	3	14	0.4	0.5	0.2	56
CRJ 05316	509	2.88	16.6	1.1	2.8	2.2	13	0.4	0.4	0.3	57
CRJ 05317	744	3.11	27.5	0.9	1.3	2.1	17	0.7	0.4	0.4	54
CRJ 05318	633	3.5	23.2	1	0.9	1.8	19	1.3	0.4	0.4	49
CRJ 05319	408	3.24	32.5	0.9	1.2	1.2	15	0.8	0.3	0.4	65
CRJ 05320	1016	3.96	106.7	1.1	0.7	3	27	1.2	0.3	0.6	55
CRJ 05321	726	3.58	12.7	1.2	3.1	4.1	22	0.4	0.3	0.4	52
CRJ 05322	166	1.42	10.9	0.5	0.6	0.3	9	0.2	0.2	0.2	41
CRJ 05323	376	4.05	150.4	1.2	0	5.6	38	0.2	0.2	0.4	47
CRJ 05324	413	2.96	14.4	1	3.9	5.3	16	0.1	0.5	0.2	64
CRJ 05325	489	3.61	22.2	1.1	2.6	5.5	11	0.4	0.4	0.3	70
CRJ 07501	389	2.49	3.2	1.6	1.5	11.1	14	0.1	0.3	0.2	44
CRJ 07502	423	2.81	3	1.8	0.7	9	16	0.1	0.3	0.1	44
CRJ 07503	345	2.13	2.8	1.9	1.3	15.8	16	0.1	0.3	0.2	30
CRJ 07504	242	1.64	3.9	0.9	0.7	16.2	9	0.1	0.3	0.2	26
CRJ 07505	389	1.63	1	2.2	0.7	29.3	29	0.2	0.2	0.2	16
CRJ 07506	254	1.1	1	2.4	1.1	28.3	11	0	0.2	0.1	10
CRJ 07507	411	2.3	1.7	4	1.6	33.9	14	0.1	0.3	0.4	15
CRJ 07508	564	3.25	3.5	2.5	0.8	14.7	19	0.2	0.4	0.1	47
CRJ 07509	403	2.47	3.9	1.2	0	12.6	14	0.1	0.4	0.1	41
CRJ 07510	381	1.18	1.9	1.4	0	27.8	11	0.2	0.3	0.2	14
CRJ 07511	303	1.56	1.5	1.1	0	20.4	11	0.1	0.2	0.3	20
CRJ 07512	614	3.78	3.7	1.4	1	7.8	21	0.1	0.5	0.1	78
CRJ 07513	279	1.92	3	2.1	0.6	12	14	0.7	0.5	0.1	34
CRJ 07514	445	2.99	2.8	1.5	0.5	7.1	29	1	1	0.4	64

SAMPLES	Ca	P	La	Cr	Mg	Ba	Ti	B	Al	Na	K
CRJ 05275	0.1	0.061	14	35	1.23	104	0.06	0	2.23	0.005	0.06
CRJ 05276	0.09	0.049	20	35	1.53	102	0.055	0	2.38	0.004	0.04
CRJ 05277	0.11	0.065	16	31	1.17	103	0.047	0	2.18	0.005	0.04
CRJ 05312	0.17	0.042	13	50	1.61	87	0.046	0	2.32	0.004	0.03
CRJ 05313	0.12	0.042	20	33	0.94	135	0.04	0	2.17	0.005	0.05
CRJ 05314	0.15	0.048	16	32	1.02	127	0.036	0	2.04	0.005	0.04
CRJ 05315	0.17	0.055	19	38	1.02	150	0.044	0	1.97	0.006	0.06
CRJ 05316	0.14	0.064	15	37	0.9	126	0.041	0	1.84	0.006	0.05
CRJ 05317	0.19	0.077	16	30	1.02	83	0.05	1	1.64	0.005	0.06
CRJ 05318	0.24	0.069	16	31	1.42	92	0.049	0	1.91	0.005	0.08
CRJ 05319	0.15	0.056	13	36	1.19	92	0.05	0	1.98	0.007	0.08
CRJ 05320	0.29	0.077	12	36	1.85	81	0.061	1	2.11	0.005	0.1
CRJ 05321	0.2	0.07	14	41	2.11	108	0.037	1	2.5	0.006	0.06
CRJ 05322	0.08	0.025	19	21	0.56	84	0.029	0	1.25	0.004	0.03
CRJ 05323	0.06	0.055	18	33	1.63	99	0.05	1	2.14	0.007	0.08
CRJ 05324	0.19	0.036	23	37	0.85	177	0.055	0	1.76	0.008	0.05
CRJ 05325	0.11	0.031	17	38	1.18	128	0.051	0	2.31	0.005	0.05
CRJ 07501	0.25	0.047	29	38	1.2	270	0.077	0	1.63	0.005	0.08
CRJ 07502	0.37	0.07	21	64	1.57	226	0.097	0	1.73	0.004	0.08
CRJ 07503	0.27	0.052	40	22	0.96	243	0.067	0	1.33	0.005	0.08
CRJ 07504	0.12	0.038	30	14	0.46	120	0.032	0	1.15	0.004	0.09
CRJ 07505	0.3	0.037	49	14	1.22	169	0.05	0	1.24	0.004	0.08
CRJ 07506	0.17	0.024	40	8	0.76	114	0.048	0	0.92	0.003	0.05
CRJ 07507	0.08	0.025	86	20	1.87	105	0.076	0	1.84	0.003	0.05
CRJ 07508	0.44	0.091	49	23	1.31	209	0.105	0	1.98	0.004	0.18
CRJ 07509	0.24	0.033	26	25	0.86	178	0.077	0	1.75	0.005	0.1
CRJ 07510	0.19	0.042	51	9	0.58	63	0.024	0	0.98	0.002	0.09
CRJ 07511	0.15	0.033	24	23	0.86	53	0.059	0	1.21	0.002	0.08
CRJ 07512	0.46	0.052	16	81	2.08	118	0.139	1	2.41	0.005	0.06
CRJ 07513	0.21	0.02	39	29	0.67	131	0.073	0	1.22	0.004	0.07
CRJ 07514	0.36	0.088	17	83	1.61	77	0.106	1	2.06	0.003	0.12

SAMPLES	W	Hg	Sc	Tl	S	Ga	Se	Analysis:	Acme file #
CRJ 05275	0.2	0.01	3.2	0.1	0.07	7	1.2	GROUP 1DX - 15.0	A705298
CRJ 05276	0.2	0.02	4.5	0.1	0	7	1.2	GROUP 1DX - 15.0	A705298
CRJ 05277	0.2	0.02	3.4	0.1	0	7	0.6	GROUP 1DX - 15.0	A705298
CRJ 05312	0.3	0.01	3.7	0.1	0	8	0	GROUP 1DX - 15.0	A705298
CRJ 05313	0.2	0.02	3.6	0.1	0	7	0	GROUP 1DX - 15.0	A705298
CRJ 05314	0.1	0.02	3.3	0.1	0	7	0	GROUP 1DX - 15.0	A705298
CRJ 05315	0.2	0.02	2.9	0.1	0	5	0.7	GROUP 1DX - 15.0	A705298
CRJ 05316	0.1	0.02	2.6	0.1	0	6	0	GROUP 1DX - 15.0	A705298
CRJ 05317	0.2	0.02	2.5	0.1	0	6	0.5	GROUP 1DX - 15.0	A705298
CRJ 05318	0.2	0.01	2.8	0.2	0	6	1.1	GROUP 1DX - 15.0	A705298
CRJ 05319	0.2	0.04	2.7	0.2	0	7	0.5	GROUP 1DX - 15.0	A705298
CRJ 05320	0.2	0.02	3	0.2	0.08	6	1.2	GROUP 1DX - 15.0	A705298
CRJ 05321	0.2	0.01	3.1	0.1	0	7	0.9	GROUP 1DX - 15.0	A705298
CRJ 05322	0.1	0.01	0.9	0.1	0	7	0	GROUP 1DX - 15.0	A705298
CRJ 05323	0.2	0.01	2.4	0.1	0.12	6	1.9	GROUP 1DX - 15.0	A705298
CRJ 05324	0.2	0.02	4.7	0.1	0	5	0	GROUP 1DX - 15.0	A705298
CRJ 05325	0.2	0.03	4	0.1	0	7	0.8	GROUP 1DX - 15.0	A705298
CRJ 07501	0.1	0.01	3.3	0.1	0	5	0	GROUP 1DX - 15.0	A705298
CRJ 07502	0.1	0.01	3.1	0.1	0	5	0	GROUP 1DX - 15.0	A705298
CRJ 07503	0.1	0.01	2.9	0.1	0	5	0	GROUP 1DX - 15.0	A705298
CRJ 07504	0.2	0.01	1.9	0.1	0	4	0	GROUP 1DX - 15.0	A705298
CRJ 07505	0.2	0.01	2.5	0.1	0	5	0	GROUP 1DX - 15.0	A705298
CRJ 07506	0.1	0.01	2.4	0.1	0	3	0	GROUP 1DX - 15.0	A705298
CRJ 07507	0	0.01	1.7	0.1	0	7	0	GROUP 1DX - 15.0	A705298
CRJ 07508	0.1	0.01	5.2	0.2	0	8	0.6	GROUP 1DX - 15.0	A705298
CRJ 07509	0.2	0.01	3	0.2	0	6	0	GROUP 1DX - 15.0	A705298
CRJ 07510	0.2	0.01	1.4	0.1	0	4	0	GROUP 1DX - 15.0	A705298
CRJ 07511	0.1	0.01	2.2	0.1	0	4	0	GROUP 1DX - 15.0	A705298
CRJ 07512	0.2	0.01	7.8	0.2	0	8	0	GROUP 1DX - 15.0	A705298
CRJ 07513	0.1	0.01	2.7	0.1	0	5	0	GROUP 1DX - 15.0	A705298
CRJ 07514	0.2	0.01	4.2	0.2	0	8	0.5	GROUP 1DX - 15.0	A705298

SAMPLES	UTM Zone	UTM Easting	UTM Northing	Mo	Cu	Pb	Zn	Ag	Ni	Co
CRJ 07515	07V	598457	7091637	0.8	24.7	43.4	61	0	21.1	7.9
CRJ 07516	07V	598421	7091602	1.1	8.7	20.6	53	0.1	8.9	5.6
CRJ 07517	07V	598389	7091565	0.7	11.9	67.7	120	0	9.1	4.1
CRJ 07518	07V	598352	7091531	1.4	1.9	14.8	38	0	1.7	1.4
CRJ 07519	07V	598777	7091246	0.5	32.4	41.5	104	0	29.4	14.8
CRJ 07520	07V	598811	7091283	0.7	34.4	31	138	0	31.7	11.4
CRJ 07521	07V	598846	7091321	0.6	15.8	30.6	72	0	17.2	6.6
CRJ 07522	07V	598882	7091352	0.8	23.3	27	83	0	19.2	10.2
CRJ 07523	07V	598917	7091387	0.8	18	23.6	62	0	14.7	7.2
CRJ 07524	07V	598951	7091423	2.1	18.6	55	61	0	12.4	5.9
CRJ 07525	07V	598988	7091460	2.8	11.5	23.4	59	0	3.3	1.6
CRJ 07526	07V	599022	7091495	1.8	20.5	34.1	79	0	7.5	4.4
CRJ 07527	07V	599063	7091534	0.4	7	22.2	42	0	3.6	2.1
CRJ 07528	07V	599095	7091567	0.8	9	30.4	42	0	3.2	2.4
CRJ 07530	07V	598917	7092237	1.6	26.5	27	94	0	24.1	11.7
CRJ 07531	07V	598890	7092195	1.1	22.6	27.2	112	0	22.4	10.1
CRJ 07532	07V	598854	7092161	0.6	8.7	19.6	57	0	7.1	5.8
CRJ 07533	07V	598819	7092126	0.6	7.6	31.5	74	0	4.2	5.7
CRJ 07534	07V	598782	7092092	0.8	12.5	24.2	68	0	11.7	8.4
CRJ 07535	07V	598747	7092057	0.6	20.9	26	52	0	16.3	7.1
CRJ 07536	07V	598711	7092021	0.7	27.7	27	73	0	15.2	8.8
CRJ 07537	07V	598676	7091986	0.8	15.1	29.2	52	0	12.6	5.4
CRJ 07538	07V	598638	7091952	0.5	17.1	66	96	0	7.9	5.8
CRJ 07539	07V	598603	7091918	0.2	9.4	42.7	34	0	3.6	3.4
CRJ 07540	07V	598568	7091881	0.3	17.3	36.5	121	0	14	9.1
CRJ 07541	07V	598532	7091846	0.6	24.4	33.6	80	0	30	16.4
CRJ 07542	07V	598496	7091812	1.1	23.2	91.8	282	0	13.5	9.6
CRJ 07543	07V	598460	7091778	0.6	8.6	47.1	201	0	6.8	4.8
CRJ 07544	07V	598423	7091742	0.9	10.8	12.4	68	0	9.5	3.8
CRJ 07545	07V	598389	7091706	0.9	10.8	14.6	47	0.2	14.2	9.2
CRJ 07546	07V	598317	7091636	0.8	13	25.5	67	0	32.2	34.9

SAMPLES	Mn	Fe	As	U	Au	Th	Sr	Cd	Sb	Bi	V
CRJ 07515	267	2.15	5.2	1.6	3.2	12.6	14	0.1	0.6	0.3	46
CRJ 07516	326	2.2	7.1	0.8	0.6	6.5	8	0.2	0.6	0.3	51
CRJ 07517	212	1.31	2.5	1.4	0	18.3	6	0.3	0.4	0.1	21
CRJ 07518	128	0.76	1	1.8	0.7	20.2	23	0.1	0.1	0.6	5
CRJ 07519	363	2.38	3.2	1.3	1.4	6.9	17	0.2	0.3	0.1	42
CRJ 07520	316	2.73	3	0.7	0.5	3.2	12	0.3	0.3	0.1	51
CRJ 07521	193	2.12	4.4	1	2.5	3.4	13	0.2	0.3	0.1	43
CRJ 07522	321	2.44	5.7	2.1	2.2	9.7	17	0.2	0.4	0.2	47
CRJ 07523	224	2.21	5.9	1.8	1.2	9.7	14	0.1	0.4	0.2	47
CRJ 07524	184	1.78	3.6	3.4	1.3	23.3	10	0.2	0.3	0.8	21
CRJ 07525	127	1.12	1.4	3.9	1.3	31	5	0.2	0.2	0.7	2
CRJ 07526	184	2.35	5.8	2.4	70.1	16.6	11	0.1	0.5	0.4	24
CRJ 07527	133	1.09	1.6	2.1	0	13.1	7	0.1	0.3	0.1	8
CRJ 07528	145	1.17	2.2	1.6	0	6.1	8	0	0.4	0.2	13
CRJ 07530	488	3.15	2.9	2.5	1	13.5	12	0.1	0.2	0.3	50
CRJ 07531	464	3.13	2.3	2.3	0	12.9	15	0.2	0.2	0.4	47
CRJ 07532	327	2.22	2.8	0.7	0	7.9	10	0.1	0.2	0.2	35
CRJ 07533	685	2.41	2.4	1.3	0.6	15.5	14	0.2	0.1	0.1	21
CRJ 07534	547	2.72	5.1	0.9	0.6	10.9	12	0.2	0.3	0.2	40
CRJ 07535	252	2.35	5.1	1.3	2.2	17.6	11	0.1	0.4	0.2	41
CRJ 07536	311	2.27	4.2	2	1.8	23.6	11	0.1	0.4	0.3	33
CRJ 07537	206	2.22	6.4	0.9	1.4	8.6	10	0.2	0.4	0.2	46
CRJ 07538	248	2.35	3.8	1.9	1.4	22.8	11	0.1	0.4	0.2	31
CRJ 07539	415	0.76	1.1	1.3	0	24.1	9	0.1	0.2	0.3	7
CRJ 07540	415	2.02	1.2	1.2	0	22.1	16	0.2	0.2	0.3	23
CRJ 07541	414	3.36	5	0.9	1.6	8.8	13	0.4	0.5	0.1	67
CRJ 07542	545	3.52	5	2.2	1.5	7.2	16	1.4	0.7	0.1	94
CRJ 07543	384	1.67	2.5	2	0.9	13.2	11	0.8	0.4	0.1	21
CRJ 07544	218	1.73	5.3	0.7	0	4.7	9	0.2	0.4	0.1	36
CRJ 07545	762	2.8	9.8	0.6	1.3	5	10	0.2	0.5	0.2	63
CRJ 07546	1655	4	6.8	0.3	1.7	1.8	25	0.2	0.5	0.1	104

SAMPLES	Ca	P	La	Cr	Mg	Ba	Ti	B	Al	Na	K
CRJ 07515	0.19	0.031	39	32	0.64	206	0.059	0	1.53	0.006	0.07
CRJ 07516	0.07	0.067	14	18	0.31	100	0.04	1	1.05	0.004	0.08
CRJ 07517	0.08	0.017	44	25	0.52	66	0.009	0	1.18	0.002	0.08
CRJ 07518	0.08	0.006	42	4	0.82	101	0.033	1	0.89	0.002	0.07
CRJ 07519	0.38	0.039	15	76	1.38	169	0.115	0	1.71	0.005	0.04
CRJ 07520	0.25	0.035	10	81	1.49	134	0.111	0	1.91	0.005	0.03
CRJ 07521	0.19	0.034	14	37	0.65	166	0.058	0	1.56	0.006	0.04
CRJ 07522	0.25	0.03	24	41	0.75	251	0.071	0	1.58	0.007	0.05
CRJ 07523	0.18	0.022	23	35	0.57	338	0.067	1	1.51	0.007	0.05
CRJ 07524	0.11	0.021	65	19	0.43	384	0.032	0	1.19	0.005	0.06
CRJ 07525	0.03	0.01	55	4	0.3	284	0.009	0	0.56	0.002	0.05
CRJ 07526	0.05	0.025	50	12	0.35	99	0.02	0	1.17	0.006	0.09
CRJ 07527	0.05	0.012	13	6	0.22	145	0.032	0	0.58	0.002	0.11
CRJ 07528	0.05	0.023	22	7	0.23	98	0.016	0	0.59	0.004	0.13
CRJ 07530	0.13	0.039	27	54	2.37	194	0.134	0	2.47	0.004	0.16
CRJ 07531	0.19	0.054	29	57	2.02	147	0.1	1	1.98	0.004	0.1
CRJ 07532	0.22	0.092	17	15	0.77	176	0.061	0	1.16	0.003	0.1
CRJ 07533	0.41	0.131	35	7	0.85	358	0.08	0	1.14	0.003	0.39
CRJ 07534	0.22	0.087	24	23	0.69	154	0.041	0	1.64	0.005	0.06
CRJ 07535	0.11	0.018	39	29	0.73	153	0.036	0	1.83	0.006	0.05
CRJ 07536	0.15	0.035	47	28	0.75	134	0.037	1	1.68	0.005	0.06
CRJ 07537	0.1	0.029	29	24	0.52	129	0.034	0	1.49	0.005	0.07
CRJ 07538	0.16	0.047	61	14	0.61	147	0.03	0	1.55	0.005	0.08
CRJ 07539	0.13	0.036	96	6	0.31	56	0.014	0	0.63	0.002	0.05
CRJ 07540	0.21	0.048	27	31	1.2	41	0.05	0	1.51	0.002	0.04
CRJ 07541	0.24	0.023	14	81	1.65	101	0.169	0	2.44	0.004	0.04
CRJ 07542	0.26	0.062	18	24	0.95	111	0.158	0	1.91	0.006	0.15
CRJ 07543	0.16	0.044	31	14	0.54	56	0.049	0	1	0.003	0.1
CRJ 07544	0.1	0.034	12	18	0.34	55	0.042	0	0.92	0.004	0.08
CRJ 07545	0.11	0.033	14	27	0.41	125	0.054	0	1.31	0.006	0.06
CRJ 07546	0.38	0.105	6	75	1.87	98	0.121	0	2.26	0.005	0.05

SAMPLES	W	Hg	Sc	Tl	S	Ga	Se	Analysis:	Acme file #
CRJ 07515	0.2	0.02	3.9	0.2	0	5	0	GROUP 1DX - 15.0	A705298
CRJ 07516	0.2	0.01	1.5	0.1	0	5	0	GROUP 1DX - 15.0	A705298
CRJ 07517	0.1	0.01	2.1	0.1	0	5	0	GROUP 1DX - 15.0	A705298
CRJ 07518	0.1	0.01	0.9	0.1	0	3	0	GROUP 1DX - 15.0	A705298
CRJ 07519	0.1	0.01	3.2	0.1	0	5	0.5	GROUP 1DX - 15.0	A705298
CRJ 07520	0	0.01	2.9	0	0	6	0	GROUP 1DX - 15.0	A705298
CRJ 07521	0.1	0.01	2.4	0.1	0	5	0	GROUP 1DX - 15.0	A705298
CRJ 07522	0.1	0.02	4.2	0.1	0	5	0	GROUP 1DX - 15.0	A705298
CRJ 07523	0.1	0.02	3.5	0.1	0	5	0	GROUP 1DX - 15.0	A705298
CRJ 07524	0.1	0.02	2.5	0.1	0	3	0.5	GROUP 1DX - 15.0	A705298
CRJ 07525	0.1	0.01	1.4	0.1	0	2	0.5	GROUP 1DX - 15.0	A705298
CRJ 07526	0.4	0.01	1.6	0.1	0	6	0.6	GROUP 1DX - 15.0	A705298
CRJ 07527	0.1	0	1.2	0.1	0	3	0	GROUP 1DX - 15.0	A705298
CRJ 07528	0.2	0.01	1.2	0.1	0	4	0.6	GROUP 1DX - 15.0	A705298
CRJ 07530	0	0.01	3.9	0.2	0	8	0.6	GROUP 1DX - 15.0	A705298
CRJ 07531	0.1	0.01	4	0.1	0	8	0	GROUP 1DX - 15.0	A705298
CRJ 07532	0.1	0.01	2.6	0.1	0	5	0	GROUP 1DX - 15.0	A705298
CRJ 07533	0.2	0.01	3.2	0.2	0	5	0	GROUP 1DX - 15.0	A705298
CRJ 07534	0.2	0.01	3.2	0.1	0	6	0	GROUP 1DX - 15.0	A705298
CRJ 07535	0.1	0.01	3.1	0.1	0	5	0	GROUP 1DX - 15.0	A705298
CRJ 07536	0.1	0.01	3.5	0.1	0	5	0	GROUP 1DX - 15.0	A705298
CRJ 07537	0.1	0.01	2.3	0.1	0	6	0	GROUP 1DX - 15.0	A705298
CRJ 07538	0.1	0.01	3.3	0.1	0	6	0	GROUP 1DX - 15.0	A705298
CRJ 07539	0.2	0.01	1.2	0.1	0	2	0	GROUP 1DX - 15.0	A705298
CRJ 07540	0.2	0.01	3.1	0.1	0	4	0	GROUP 1DX - 15.0	A705298
CRJ 07541	0.2	0.01	3.6	0.1	0	7	0	GROUP 1DX - 15.0	A705298
CRJ 07542	0.1	0.02	3.1	0.2	0	10	0.5	GROUP 1DX - 15.0	A705298
CRJ 07543	0.1	0	1.4	0.1	0	5	0	GROUP 1DX - 15.0	A705298
CRJ 07544	0.1	0.01	1.6	0.1	0	4	0	GROUP 1DX - 15.0	A705298
CRJ 07545	0.2	0.02	2.4	0.1	0	6	0	GROUP 1DX - 15.0	A705298
CRJ 07546	0.2	0.01	5	0.1	0	9	0.5	GROUP 1DX - 15.0	A705298

SAMPLES	UTM Zone	UTM Easting	UTM Northing	Mo	Cu	Pb	Zn	Ag	Ni	Co
CRJ 07547	07V	598281	7091601	0.3	3.2	15.5	24	0	2.6	1.7
CRJ 07548	07V	598846	7091177	0.6	15.4	21.9	63	0	16.3	7.5
CRJ 07549	07V	598881	7091211	0.7	18.6	36.1	83	0	14.6	8.2
CRJ 07550	07V	598918	7091247	0.8	18.1	36	105	0.1	18.1	9
CRJ 07551	07V	598953	7091282	0.9	16.4	25.8	72	0	15.3	8.2
CRJ 07552	07V	598988	7091317	1.5	13.3	25.3	67	0	12.5	6.3
CRJ 07553	07V	599023	7091353	1.6	10.1	18.4	66	0	9.3	4.4
CRJ 07554	07V	599058	7091389	1.3	15.2	27.8	59	0	10.1	4.4
CRJ 07555	07V	599094	7091424	1.7	10.1	23.9	44	0	8.1	3.2
CRJ 07560	07V	598704	7091460	1	28.8	49.7	137	0	22	12.3
CRJ 07561	07V	598737	7091492	0.5	26.5	21.2	86	0	24.1	9.9
CRJ 07562	07V	598774	7091532	1.8	13.3	9	58	0	9.2	6.7
CRJ 07563	07V	598810	7091566	0.5	12.4	9.9	58	0	7.6	6.4
CRJ 07564	07V	598844	7091601	0.7	11.5	44.2	77	0	10.5	6.3
CRJ 07565	07V	598881	7091637	0.9	8.6	19.8	58	0	6.2	2.8
CRJ 07566	07V	598916	7091671	4.7	6.4	20.3	43	0	3.8	3.2
CRJ 07567	07V	598951	7091707	1.7	10.3	17.8	51	0	8.4	4
CRJ 07568	07V	598989	7091743	1.6	10.1	16.3	53	0	8.8	5.9
CRJ 07569	07V	599025	7091779	2.3	9.6	17.3	52	0.1	6	3
CRJ 07737	07V	598954	7091849	1.9	6.5	13.4	50	0	5.7	2.7
CRJ 07738	07V	598918	7091813	0.8	7.7	14.1	44	0	7.6	5.6
CRJ 07739	07V	598881	7091779	0.7	15.6	19	52	0	13	6.9
CRJ 07740	07V	598847	7091743	0.6	10.1	23.1	62	0	16.4	7.7
CRJ 07741	07V	598738	7091637	0.4	12.3	8.3	48	0	8.4	4.3
CRJ 07742	07V	598705	7091602	0.9	15.4	30.4	112	0	8.5	5
CRJ 07743	07V	598670	7091566	0.8	12.8	59	132	0	6.7	3.9
CRJ 07744	07V	598634	7091530	0.5	23.2	47.7	75	0	16.9	10.4
CRJ 07745	07V	598599	7091495	0.6	14.7	57.1	72	0	16.2	7
CRJ 07746	07V	598564	7091459	0.6	10.1	25.4	42	0	10.4	4.4
CRJ 07747	07V	598527	7091423	0.7	10.7	28.6	49	0	11.3	5.1
CRJ 07748	07V	598491	7091389	0.4	7.6	19.6	37	0	6.5	4.3

SAMPLES	Mn	Fe	As	U	Au	Th	Sr	Cd	Sb	Bi	V
CRJ 07547	108	0.77	3.5	0.6	0.6	12.1	4	0.1	0.1	0.2	12
CRJ 07548	221	2.03	4.6	0.7	1.7	4.6	12	0.3	0.4	0.1	48
CRJ 07549	343	2.38	4.2	2.2	2.6	10.8	14	0.3	0.5	0.2	43
CRJ 07550	327	2.34	4.2	1.9	0.9	7.4	16	0.4	0.3	0.2	45
CRJ 07551	252	2.18	5	1.1	1.5	6.5	12	0.2	0.3	0.2	45
CRJ 07552	226	1.88	4.6	1.9	1.1	10.6	14	0.2	0.3	0.2	38
CRJ 07553	211	1.96	4.1	1.8	2.7	13	10	0.2	0.3	0.3	30
CRJ 07554	186	1.84	4.7	2.4	3	16.3	12	0.1	0.4	0.3	27
CRJ 07555	151	1.87	4.9	1.5	2	10.2	11	0.2	0.3	0.4	31
CRJ 07560	564	2.95	4.7	2.7	2.6	15	20	0.5	0.6	0.2	46
CRJ 07561	337	2.12	3.2	2.3	2.1	16	13	0.2	0.4	0.1	33
CRJ 07562	441	2.08	3.6	2.8	11.4	17.9	16	0.1	0.3	0.1	26
CRJ 07563	198	1.69	1.7	0.8	2.1	8.5	9	0.1	0.3	0.1	25
CRJ 07564	234	1.41	2.3	1.2	2	16.5	8	0.1	0.3	0.2	21
CRJ 07565	192	0.86	1.5	2.4	1.3	19.7	10	0.2	0.2	0.2	10
CRJ 07566	201	1.14	1.8	2.9	1.8	21.8	6	0.2	0.2	0.5	8
CRJ 07567	174	1.53	3.7	2.9	11.8	15.8	13	0.1	0.3	0.3	24
CRJ 07568	211	1.71	3.4	2.5	1.4	14.4	11	0.1	0.3	0.3	25
CRJ 07569	131	1.57	2.8	2.1	2.6	15.8	9	0.1	0.2	0.5	19
CRJ 07737	148	1.28	2	2.7	1.7	16.9	10	0.2	0.2	0.4	12
CRJ 07738	227	1.4	2.5	1.5	0	14.6	7	0.1	0.3	0.1	19
CRJ 07739	250	1.89	4.2	2	3	10.5	10	0.1	0.3	0.2	35
CRJ 07740	259	1.77	1.7	1.8	1	13.6	12	0.1	0.2	0.2	25
CRJ 07741	343	1.75	2.1	1.5	2	19.1	9	0	0.2	0.1	21
CRJ 07742	262	2.63	4.6	1.6	1.1	12.5	16	0.3	0.5	0.1	35
CRJ 07743	193	1.74	5.1	1	1.4	11.1	7	0.4	0.5	0.2	28
CRJ 07744	314	2.21	4.9	0.9	1.5	9.1	18	0.2	0.4	0.1	39
CRJ 07745	182	1.92	3.6	0.8	1	6.7	10	0.2	0.4	0.1	33
CRJ 07746	143	1.54	3.1	1	0.6	8.6	7	0.1	0.5	0.1	29
CRJ 07747	173	1.76	3.3	1.2	1.2	10.1	8	0.1	0.5	0.2	31
CRJ 07748	166	1.4	1.7	1.5	0.7	12.5	7	0.1	0.6	0.2	22

SAMPLES	Ca	P	La	Cr	Mg	Ba	Ti	B	Al	Na	K
CRJ 07547	0.03	0.015	22	5	0.13	53	0.01	0	0.47	0.002	0.07
CRJ 07548	0.21	0.045	13	39	0.72	87	0.081	0	1.25	0.005	0.04
CRJ 07549	0.23	0.04	38	44	0.97	197	0.059	0	1.68	0.005	0.05
CRJ 07550	0.27	0.047	24	49	1.05	247	0.079	0	1.59	0.006	0.06
CRJ 07551	0.17	0.036	16	37	0.67	216	0.065	0	1.49	0.006	0.05
CRJ 07552	0.18	0.028	26	29	0.67	349	0.061	0	1.36	0.006	0.05
CRJ 07553	0.11	0.019	21	21	0.67	191	0.045	0	1.29	0.004	0.05
CRJ 07554	0.11	0.02	35	21	0.41	369	0.04	0	1.05	0.006	0.08
CRJ 07555	0.1	0.027	20	15	0.36	216	0.028	0	1.17	0.005	0.08
CRJ 07560	0.49	0.081	33	50	1.27	219	0.111	0	1.73	0.006	0.2
CRJ 07561	0.24	0.025	27	57	1.45	136	0.092	1	1.6	0.004	0.04
CRJ 07562	0.33	0.058	24	14	0.92	207	0.075	0	1.19	0.004	0.17
CRJ 07563	0.19	0.041	17	30	0.79	145	0.063	0	1.07	0.003	0.16
CRJ 07564	0.13	0.021	35	36	0.86	140	0.055	1	1.2	0.003	0.09
CRJ 07565	0.1	0.011	41	11	0.43	178	0.034	1	0.68	0.002	0.07
CRJ 07566	0.05	0.018	54	8	0.24	215	0.016	0	0.52	0.002	0.06
CRJ 07567	0.13	0.028	38	16	0.42	408	0.037	1	0.96	0.004	0.06
CRJ 07568	0.13	0.025	32	21	0.54	250	0.048	1	1.06	0.005	0.05
CRJ 07569	0.09	0.021	29	13	0.41	188	0.036	0	0.88	0.005	0.06
CRJ 07737	0.08	0.018	41	10	0.39	341	0.026	1	0.8	0.004	0.06
CRJ 07738	0.11	0.025	24	17	0.52	112	0.037	1	0.95	0.003	0.06
CRJ 07739	0.15	0.028	27	29	0.67	351	0.06	1	1.18	0.005	0.04
CRJ 07740	0.19	0.022	37	37	1.06	254	0.062	0	1.32	0.004	0.15
CRJ 07741	0.17	0.026	37	19	1.52	85	0.066	1	1.57	0.003	0.03
CRJ 07742	0.21	0.044	30	15	0.79	120	0.078	0	1.53	0.004	0.08
CRJ 07743	0.1	0.018	17	13	0.37	85	0.025	0	1.08	0.003	0.06
CRJ 07744	0.31	0.036	21	31	1.03	137	0.073	0	1.45	0.005	0.05
CRJ 07745	0.17	0.028	13	34	0.75	86	0.061	0	1.25	0.004	0.04
CRJ 07746	0.09	0.019	11	21	0.42	65	0.049	0	0.87	0.004	0.06
CRJ 07747	0.1	0.012	21	23	0.48	123	0.062	0	1.05	0.004	0.06
CRJ 07748	0.14	0.022	16	14	0.49	79	0.042	1	0.87	0.002	0.09

SAMPLES	W	Hg	Sc	Tl	S	Ga	Se	Analysis:	Acme file #
CRJ 07547	0.1	0	0.6	0	0	2	0	GROUP 1DX - 15.0	A705298
CRJ 07548	0.2	0.01	2.3	0.1	0	4	0	GROUP 1DX - 15.0	A705298
CRJ 07549	0.1	0.01	3.6	0.1	0	5	0	GROUP 1DX - 15.0	A705298
CRJ 07550	0.1	0.02	3	0.1	0	5	0.5	GROUP 1DX - 15.0	A705298
CRJ 07551	0.1	0.01	2.3	0.1	0	5	0	GROUP 1DX - 15.0	A705298
CRJ 07552	0.1	0.01	2.7	0.1	0	4	0	GROUP 1DX - 15.0	A705298
CRJ 07553	0.1	0.01	1.8	0.1	0	4	0	GROUP 1DX - 15.0	A705298
CRJ 07554	0.1	0.01	2.8	0.1	0	3	0	GROUP 1DX - 15.0	A705298
CRJ 07555	0.1	0.01	1.6	0.1	0	4	0.5	GROUP 1DX - 15.0	A705298
CRJ 07560	0.1	0.01	4.7	0.2	0	6	0.5	GROUP 1DX - 15.0	A705298
CRJ 07561	0.1	0.01	3.8	0.1	0	5	0	GROUP 1DX - 15.0	A705298
CRJ 07562	0.1	0.01	2.9	0.1	0	4	0	GROUP 1DX - 15.0	A705298
CRJ 07563	0.1	0	2.3	0.1	0	4	0	GROUP 1DX - 15.0	A705298
CRJ 07564	0.1	0	2.4	0.1	0	3	0	GROUP 1DX - 15.0	A705298
CRJ 07565	0.1	0.01	2.1	0.1	0	2	0	GROUP 1DX - 15.0	A705298
CRJ 07566	0.1	0.01	1.6	0.1	0	2	0	GROUP 1DX - 15.0	A705298
CRJ 07567	0.1	0.01	2.1	0.1	0	3	0	GROUP 1DX - 15.0	A705298
CRJ 07568	0.1	0.01	2.1	0.1	0	3	0	GROUP 1DX - 15.0	A705298
CRJ 07569	0.1	0.01	1.7	0.1	0	3	0	GROUP 1DX - 15.0	A705298
CRJ 07737	0.1	0.01	1.6	0.1	0	3	0	GROUP 1DX - 15.0	A705298
CRJ 07738	0.1	0.01	1.7	0.1	0	3	0	GROUP 1DX - 15.0	A705298
CRJ 07739	0.1	0.02	3.2	0.1	0	4	0.5	GROUP 1DX - 15.0	A705298
CRJ 07740	0.1	0.01	2.8	0.1	0	4	0	GROUP 1DX - 15.0	A705298
CRJ 07741	0.1	0	2.6	0.1	0	5	0	GROUP 1DX - 15.0	A705298
CRJ 07742	0.3	0.01	2.6	0.2	0	6	0	GROUP 1DX - 15.0	A705298
CRJ 07743	0.3	0.01	1.5	0.1	0	5	0	GROUP 1DX - 15.0	A705298
CRJ 07744	0.3	0	3.2	0.2	0	4	0	GROUP 1DX - 15.0	A705298
CRJ 07745	0.1	0.01	2.1	0.1	0	4	0	GROUP 1DX - 15.0	A705298
CRJ 07746	0.2	0.01	1.7	0.1	0	4	0	GROUP 1DX - 15.0	A705298
CRJ 07747	0.1	0.01	2	0.1	0	4	0	GROUP 1DX - 15.0	A705298
CRJ 07748	0.2	0.01	2	0.1	0	4	0	GROUP 1DX - 15.0	A705298

SAMPLES	UTM Zone	UTM Easting	UTM Northing	Mo	Cu	Pb	Zn	Ag	Ni	Co
CRJ 07749	07V	598634	7091390	0.8	27.5	34.4	87	0.1	22.9	10.2
CRJ 07750	07V	598667	7091425	0.8	20.8	78.1	240	0	10.9	5.5
CRJ 07821	07V	600221	7087007	1.8	25.8	20	85	0.1	22.5	11.6
CRJ 07822	07V	600185	7087039	1.3	47.6	69.9	129	0.1	25.2	10.7
CRJ 07823	07V	600143	7087070	1.7	28.8	29.9	87	0	17	7.7
CRJ 07824	07V	600106	7087102	2	33.8	21.7	95	0.1	16.4	6.2
CRJ 07825	07V	600063	7087128	1.9	24.7	20.4	73	0	19.1	7.9
CRJ 07826	07V	600027	7087162	1.8	27.1	34.9	104	0.1	14.8	11.7
CRJ 07827	07V	599989	7087192	2.7	24.9	32	75	0.1	12.5	4.8
CRJ 07828	07V	599946	7087224	2	17.9	23.4	56	0	12.3	4.1
CRJ 07829	07V	599908	7087258	2.1	37.3	23.2	84	0	24	10.7
CRJ 07830	07V	599874	7087292	2.2	43.3	94.8	144	0.1	13.8	5.9
CRJ 07831	07V	599840	7087330	1.9	44.3	54.8	154	0	23.9	12
CRJ 07832	07V	600159	7086931	1.2	26.7	38.9	69	0.2	16.3	5.9
CRJ 07833	07V	600047	7087037	1.7	26.8	33.8	100	0	17.7	6.5
CRJ 07834	07V	600019	7087070	2	22.6	22.5	92	0.1	20.6	8.5
CRJ 07835	07V	599981	7087102	1.8	35	17.9	92	0.2	24.3	8.3
CRJ 07836	07V	599944	7087130	1.9	27.3	23.6	115	0.1	25	10.5
CRJ 07837	07V	599903	7087167	2.5	22.5	45.3	135	0	18.8	8.3
CRJ 07853	07V	600732	7088328	3.8	49	13.7	107	0.3	36.7	20
CRJ 07854	07V	600738	7088287	1.1	32.1	15	119	0	37.9	16.5
CRJ 07855	07V	600715	7088247	1.4	24.8	11.4	103	0.2	19.7	10.2
CRJ 07856	07V	600703	7088173	0.8	15.3	17	92	0.3	13.6	11.5
CRJ 07857	07V	600681	7088133	1.1	22.7	21	140	0.6	22.7	14.8
CRJ 07858	07V	600672	7088084	1.5	42.7	74.5	621	0.7	17.8	16.1
CRJ 07859	07V	600659	7088036	1.1	28	26.1	147	0.4	24.1	14.3
CRJ 07860	07V	600649	7087993	1.1	25.1	13.9	109	0.2	21.1	9.2
CRJ 07861	07V	600630	7087935	0.9	34.3	7.1	84	0.2	13.2	18
CRJ 07862	07V	600614	7087893	0.9	38.3	22.7	95	0	10.3	23.4
CRJ 07863	07V	600594	7087844	0.6	19.9	14.1	65	0	14.3	7.8
CRJ 07864	07V	600586	7087800	0.8	31.8	10	102	0	36.5	14.3

SAMPLES	Mn	Fe	As	U	Au	Th	Sr	Cd	Sb	Bi	V
CRJ 07749	321	2.55	6.6	2.3	2.7	8.6	21	0.2	0.6	0.1	43
CRJ 07750	395	2.33	4	3.2	1.3	16.3	17	0.9	0.7	0.2	35
CRJ 07821	511	4.13	18.4	0.7	2.6	5.6	8	0.3	0.6	0.2	74
CRJ 07822	400	3.15	19	1	4.3	2.6	12	0.4	0.7	0.3	59
CRJ 07823	290	3.09	28.8	0.9	3.6	2.8	8	0.4	0.5	0.2	55
CRJ 07824	331	4.42	34.4	1	1.7	3.6	16	0.2	0.4	0.4	45
CRJ 07825	303	3.38	30.9	0.8	2.5	4.3	13	0.2	0.5	0.3	58
CRJ 07826	714	5.03	28.9	1.3	4.3	5.6	23	0.1	0.4	0.6	48
CRJ 07827	335	5.26	77.7	0.5	3.8	3.4	20	0.1	0.5	0.3	72
CRJ 07828	204	3.21	20.7	0.6	2	2.6	13	0.1	0.4	0.2	64
CRJ 07829	334	3.82	36.2	1.3	5.1	6.1	13	0.1	0.7	0.3	62
CRJ 07830	443	4.94	19.8	1.2	1	7.3	17	0.4	0.4	0.7	33
CRJ 07831	635	4.28	11.5	1.1	1.4	7.9	10	0.4	0.3	0.1	31
CRJ 07832	198	2.43	9	0.8	3.1	0.6	14	0.4	0.3	0.2	50
CRJ 07833	309	3.21	34.7	0.9	3.6	1.2	11	0.3	0.4	0.3	61
CRJ 07834	388	3.33	29.5	0.8	3.1	2.2	19	0.3	0.4	0.2	59
CRJ 07835	355	3.48	34.9	1.2	3.9	5.3	14	0.1	0.5	0.2	67
CRJ 07836	523	3.64	50.3	1.4	2	6	17	0.3	0.4	0.4	58
CRJ 07837	619	3.91	39.2	0.8	0	4.1	13	0.2	0.4	0.7	70
CRJ 07853	847	4.36	35.6	0.7	0	2.4	7	0.3	0.2	0.2	62
CRJ 07854	629	3.98	9	0.5	1.8	5	9	0.2	0.3	0.2	81
CRJ 07855	614	4.12	38.8	0.4	0.5	2.9	5	0.3	0.3	0.2	63
CRJ 07856	506	3.62	6.5	0.4	0	2.9	10	0.2	0.3	0.3	78
CRJ 07857	1291	3.87	9.5	0.5	0.5	3.4	11	0.6	0.4	0.2	86
CRJ 07858	866	4.9	9.7	0.5	0	3.2	12	1.5	0.4	0.9	103
CRJ 07859	484	4.36	13.1	0.5	0	3.2	13	0.5	0.6	0.2	98
CRJ 07860	523	3.71	16.2	0.9	0	4.2	17	0.3	1.6	0.2	80
CRJ 07861	611	4.35	8.4	0.4	0	2.2	15	0.1	0.5	0.1	149
CRJ 07862	993	5.67	5.6	0.5	0	1.3	11	0.2	0.4	0.3	188
CRJ 07863	441	2.89	2	0.9	3.8	6.1	11	0.1	0.3	0.1	71
CRJ 07864	726	4.16	5.5	0.8	0	7.9	12	0.2	0.3	0.1	65

SAMPLES	Ca	P	La	Cr	Mg	Ba	Ti	B	Al	Na	K
CRJ 07749	0.32	0.029	22	36	0.77	297	0.063	0	1.48	0.008	0.05
CRJ 07750	0.34	0.058	37	18	0.94	147	0.078	0	1.59	0.003	0.09
CRJ 07821	0.08	0.036	15	39	0.78	131	0.036	0	2.69	0.006	0.04
CRJ 07822	0.15	0.054	16	29	0.61	150	0.031	1	1.78	0.006	0.04
CRJ 07823	0.07	0.044	20	27	0.74	112	0.024	0	1.78	0.004	0.03
CRJ 07824	0.05	0.058	17	27	1.35	83	0.042	0	1.74	0.006	0.03
CRJ 07825	0.08	0.029	13	30	0.85	103	0.047	0	1.86	0.004	0.04
CRJ 07826	0.08	0.076	12	34	2.18	60	0.079	0	2.44	0.004	0.05
CRJ 07827	0.04	0.068	10	33	1.4	87	0.06	0	1.94	0.004	0.06
CRJ 07828	0.06	0.035	14	28	0.85	99	0.039	0	1.84	0.004	0.04
CRJ 07829	0.06	0.039	17	35	0.89	141	0.045	0	2.16	0.005	0.04
CRJ 07830	0.08	0.093	19	22	1.5	59	0.068	0	1.87	0.003	0.03
CRJ 07831	0.07	0.053	23	27	1.47	49	0.046	0	1.9	0.002	0.03
CRJ 07832	0.18	0.056	12	26	0.57	111	0.029	1	1.59	0.007	0.04
CRJ 07833	0.1	0.057	13	30	0.86	116	0.034	0	1.81	0.005	0.03
CRJ 07834	0.12	0.045	14	28	1.27	95	0.05	1	2.02	0.005	0.06
CRJ 07835	0.09	0.039	17	38	1.06	124	0.061	1	2.21	0.006	0.05
CRJ 07836	0.17	0.064	18	38	1.25	120	0.059	0	2.15	0.004	0.05
CRJ 07837	0.15	0.081	14	36	1.63	78	0.085	1	2.38	0.003	0.05
CRJ 07853	0.2	0.099	17	33	1.46	55	0.03	1	2.19	0.002	0.03
CRJ 07854	0.24	0.037	11	48	1.9	64	0.019	0	3.03	0.002	0.04
CRJ 07855	0.05	0.041	18	33	1.41	85	0.023	1	2.42	0.003	0.04
CRJ 07856	0.13	0.03	12	26	1.25	127	0.038	1	2.59	0.004	0.06
CRJ 07857	0.18	0.044	14	36	1.3	152	0.03	1	2.46	0.004	0.07
CRJ 07858	0.2	0.08	10	30	1.64	177	0.046	0	2.95	0.003	0.05
CRJ 07859	0.2	0.037	13	33	1.64	128	0.055	1	3.16	0.004	0.05
CRJ 07860	0.26	0.054	13	26	1.44	112	0.121	1	2.2	0.003	0.12
CRJ 07861	0.2	0.056	7	19	1.23	273	0.172	1	2.29	0.007	0.27
CRJ 07862	0.17	0.079	5	16	1.46	166	0.163	0	2.64	0.005	0.26
CRJ 07863	0.11	0.019	14	25	1.01	75	0.179	0	1.61	0.002	0.2
CRJ 07864	0.14	0.028	27	76	2.06	94	0.055	1	2.48	0.003	0.11

SAMPLES	W	Hg	Sc	Tl	S	Ga	Se	Analysis:	Acme file #
CRJ 07749	0.2	0.03	4.6	0.1	0	5	0.5	GROUP 1DX - 15.0	A705298
CRJ 07750	0.2	0.01	3	0.2	0	7	0	GROUP 1DX - 15.0	A705298
CRJ 07821	0.2	0.03	4	0.2	0	7	0.5	GROUP 1DX - 15.0	A705298
CRJ 07822	0.2	0.03	3.3	0.1	0	6	1	GROUP 1DX - 15.0	A705298
CRJ 07823	0.1	0.02	3	0.1	0	6	0.7	GROUP 1DX - 15.0	A705298
CRJ 07824	0.2	0.01	2.5	0.1	0	6	1.4	GROUP 1DX - 15.0	A705298
CRJ 07825	0.2	0.01	2.9	0.1	0	6	0.6	GROUP 1DX - 15.0	A705298
CRJ 07826	0.2	0.01	3.6	0.1	0	7	1.8	GROUP 1DX - 15.0	A705298
CRJ 07827	0.3	0.01	2.5	0.1	0.07	8	1.4	GROUP 1DX - 15.0	A705298
CRJ 07828	0.2	0.02	2.5	0.1	0	7	1	GROUP 1DX - 15.0	A705298
CRJ 07829	0.2	0.02	4.4	0.1	0	6	1	GROUP 1DX - 15.0	A705298
CRJ 07830	0.2	0	3	0.1	0	5	1.1	GROUP 1DX - 15.0	A705298
CRJ 07831	0.2	0.01	2.8	0.1	0	5	0.9	GROUP 1DX - 15.0	A705298
CRJ 07832	0.2	0.03	1.9	0.1	0	6	0.7	GROUP 1DX - 15.0	A705298
CRJ 07833	0.2	0.02	2.9	0.1	0	7	0.8	GROUP 1DX - 15.0	A705298
CRJ 07834	0.2	0.02	2.7	0.1	0.06	6	0.8	GROUP 1DX - 15.0	A705298
CRJ 07835	0.2	0.02	4.2	0.1	0	6	0.7	GROUP 1DX - 15.0	A705298
CRJ 07836	0.2	0.01	3.8	0.1	0	6	0.8	GROUP 1DX - 15.0	A705298
CRJ 07837	0.3	0.01	3.6	0.1	0	8	0.9	GROUP 1DX - 15.0	A705298
CRJ 07853	0.1	0.02	2.7	0.1	0	7	0.5	GROUP 1DX - 15.0	A705298
CRJ 07854	0.2	0.01	4.8	0.1	0	8	0	GROUP 1DX - 15.0	A705298
CRJ 07855	0.1	0.01	2.8	0.1	0	7	0.6	GROUP 1DX - 15.0	A705298
CRJ 07856	0.1	0.01	3.9	0.2	0	9	0	GROUP 1DX - 15.0	A705298
CRJ 07857	0.1	0.01	4.6	0.2	0	10	0	GROUP 1DX - 15.0	A705298
CRJ 07858	0.3	0.01	4.5	0.2	0	10	0.8	GROUP 1DX - 15.0	A705298
CRJ 07859	0.3	0.01	4.5	0.2	0	10	0.5	GROUP 1DX - 15.0	A705298
CRJ 07860	0.5	0.01	4	0.2	0	7	0	GROUP 1DX - 15.0	A705298
CRJ 07861	0.2	0.01	5.5	0.2	0	9	0	GROUP 1DX - 15.0	A705298
CRJ 07862	0.2	0.01	6.1	0.2	0	11	0	GROUP 1DX - 15.0	A705298
CRJ 07863	0.7	0.01	3.5	0.5	0	6	0	GROUP 1DX - 15.0	A705298
CRJ 07864	0.4	0.01	5.2	0.2	0	8	0.7	GROUP 1DX - 15.0	A705298

SAMPLES	UTM Zone	UTM Easting	UTM Northing	Mo	Cu	Pb	Zn	Ag	Ni	Co
CRJ 07865	07V	600554	7087760	1	30.7	5.4	77	0	22.2	14.3
CRJ 07866	07V	600523	7087713	0.5	37.3	4.6	86	0	23.7	19.5
CRJ 07867	07V	600501	7087678	1.5	23.8	9.7	75	0.6	19.1	10.4
CRJ 07868	07V	600492	7087627	1.3	18.4	12.4	85	0	15.6	8.7
CRJ 07869	07V	600469	7087586	0.8	19.6	5.1	65	0	13.9	9.6
CRJ 07870	07V	600469	7087533	0.9	26.2	6.4	70	0	17.5	10.3
CRJ 07871	07V	600422	7087499	0.9	23	7.2	85	0	23.4	11.9
CRJ 07872	07V	600409	7087448	0.6	16.3	8.2	58	0	18.9	8.5
CRJ 07873	07V	600393	7087396	0.5	26.9	10.9	79	0	16.7	13.6

SAMPLES	Mn	Fe	As	U	Au	Th	Sr	Cd	Sb	Bi	V
CRJ 07865	563	3.65	7.9	1.1	0	4.9	21	0.2	1.6	0.1	66
CRJ 07866	714	4.27	4.6	0.5	0.6	2.3	16	0.1	0.3	0.1	114
CRJ 07867	641	3.64	11	0.6	2.6	3.8	14	0.2	0.7	0.2	103
CRJ 07868	505	3.03	3.7	0.9	0.5	6.3	11	0.1	0.2	0.1	43
CRJ 07869	669	2.99	5.2	0.5	0	2.3	12	0.2	0.2	0.1	75
CRJ 07870	629	3.01	4.6	1	0	3.9	15	0.1	0.1	0.1	74
CRJ 07871	536	3.98	6.5	0.5	0.7	3.8	9	0.1	0.2	0.1	98
CRJ 07872	517	3.13	7.8	0.4	0	2.6	6	0.1	0.2	0.1	68
CRJ 07873	790	3.65	5.1	0.6	0	2.4	13	0.1	0.2	0.1	83

SAMPLES	Ca	P	La	Cr	Mg	Ba	Ti	B	Al	Na	K
CRJ 07865	0.38	0.079	19	23	1.97	101	0.144	0	2.16	0.003	0.36
CRJ 07866	0.34	0.071	11	31	1.78	196	0.136	0	2.42	0.004	0.24
CRJ 07867	0.16	0.041	13	32	0.69	239	0.086	2	2.51	0.008	0.08
CRJ 07868	0.17	0.038	15	17	1.6	74	0.124	0	1.85	0.002	0.25
CRJ 07869	0.15	0.065	8	25	0.89	67	0.077	1	1.52	0.003	0.1
CRJ 07870	0.23	0.085	8	22	1.09	139	0.125	0	1.65	0.001	0.39
CRJ 07871	0.15	0.056	14	30	1.49	177	0.269	0	2.32	0.003	0.52
CRJ 07872	0.09	0.037	8	26	1.12	89	0.145	0	1.62	0.002	0.23
CRJ 07873	0.26	0.065	7	21	1.44	101	0.146	0	2.01	0.002	0.35

SAMPLES	W	Hg	Sc	Tl	S	Ga	Se	Analysis:	Acme file #
CRJ 07865	0.7	0	4.7	0.6	0	6	0.5	GROUP 1DX - 15.0	A705298
CRJ 07866	0.1	0.01	5.2	0.2	0	8	0	GROUP 1DX - 15.0	A705298
CRJ 07867	0.2	0.04	4.4	0.2	0	8	0	GROUP 1DX - 15.0	A705298
CRJ 07868	0.4	0	3.1	0.2	0	5	0	GROUP 1DX - 15.0	A705298
CRJ 07869	0.1	0	3.8	0.1	0	6	0	GROUP 1DX - 15.0	A705298
CRJ 07870	0.1	0	4.9	0.2	0	6	0.5	GROUP 1DX - 15.0	A705298
CRJ 07871	0.1	0.01	6.2	0.3	0	8	0	GROUP 1DX - 15.0	A705298
CRJ 07872	0.1	0	4.1	0.1	0	6	0	GROUP 1DX - 15.0	A705298
CRJ 07873	0.2	0	5.3	0.2	0	8	0	GROUP 1DX - 15.0	A705298