

GEOCHEMICAL REPORT

Oz 1-14 CLAIMS

GRANT # YC35959-YC35972

NTS # 116 B \ 12

LAT: 64° 44' N

LONG: 139° 45' W

DAWSON MINING DISTRICT

AUTHOR OF REPORT SHAWN RYAN

WORK PERFORMED AUGUST 13, 2006

DATE OF REPORT NOVEMBER 23, 2007

Table of Content

Summary	P.3
1.0 Introduction	P.3
2.0 Locations and Access	P.3
3.0 Property Description	P.3
4.0 Physiography	P.3
5.1 Regional Geology	P.4
5.2 Property Geology	P.4
Geology Map (Figure1)	P.5
Geology Description	P.6
6.0 Work Methods	P.7
6.1 Soil Work	P.8
7.0 Interpretation	P.8
8.0 Recommendation	P.8
9.0 References Cited	P.8
10.0 Qualification	P.9
11.0 Cost	P.9
Zinc Soil Anomaly Map	Figure 2
Lead Soil Anomaly Map	Figure 3
Claim Location Map	Figure 4
Assay Data + GPS Soil Location Data	Appendix

SUMMARY

The Oz Property was visited for one day during the 2006 field season. Tyson Foxcroft spent one a day taking 32 soils. The soil survey revealed very anomalous values in zinc (up to 4370 ppm) and lead (up to 2570 ppm).

1.0 INTRODUCTION

The Oz claim block was staked to cover old Zinc and Lead showing similar to the Og claims situated 18 kilometer west.

2.0 LOCATIONS AND ACCESS

The Oz claims are located 80 kilometers north northwest of Dawson City. The claims can be reached via helicopter from Dawson City.

3.0 PROPERTY DESCRIPTION

The Oz Property consists of 14 full quartz claims all recorded and registered in the Dawson Mining District. The total land mass covered by the claim block is 483 hectares or 700 acres.

4.0 PHYSIOGRAPHY

The Oz Property is located in the tundra between the elevation of 4200 ft and 5300 ft. The only vegetation seen is willow bushes in the valley bottom.

5.0 REGIONAL AND PROPERTY GEOLOGY

5.1 REGIONAL GEOLOGY (Excerpts from GSC Open file 2849)

The southern Ogilvie Mountains lie within the northwestern extremity of the the Cordilleran fold-thrust belts. The Dawson Thrust marks a major tectonostratigraphic boundary between carbonate-dominated platform rocks to the north (the Mackenzie Platform) and generally finer clastics to the south (Selwyn Basin). All rock units were displaced northward in middle Jurassic to Cretaceous time and most have been tectonically thickened. The Sewyn Basin strata were thrust northward in three overlapping structural sheets. Subcircular syenitic intrusions of about 90-110 Ma age cut these thrusts.

The Mackenzie Platform in the southern Ogilvies consists of thickly bedded Cambrian to Devonian dolostone near Mount Harper. Beneath this Paleozoic carbonates a tripartite succession of Middle and Upper Proterozoic strata are well exposed in an erosional inlier (the Coal Creek Dome of Green, 1972, termed the Coal Creek Inlier). In descending order, the Mount Harper Group consists of thick volcanic and carbonate units separated by thinner or wedge-shaped clastic units; the Fifteenmile group, an informal name, consists of stromatolitic and cherty dolostones; and the Wernecke Supergroup consists of fine-grained clastic rocks. These three groups are bounded by unconformities whose ages can be estimated from spatially related intrusions (Wernecke breccias; about 1280 Ma, as in Parrish and Bell (1987) and the ca. 750 Ma Mount Harper Group volcanics). They were deposited during periods of repeated extension, including late Proterozoic continental rifting. These middle to late Proterozoic events formed structural features, which to some extent controlled, and are reflected in, the early Paleozoic evolution of the Cordilleran miogeocline.

5.2 PROPERTY GEOLOGY

The Oz claims are covering Middle Proterozoic, Fifteen Mile (mPPFI) and Lower Proterozoic Gillespie Lake Group (IPG) rock units.

OZ YTG GEOLOGY MAP

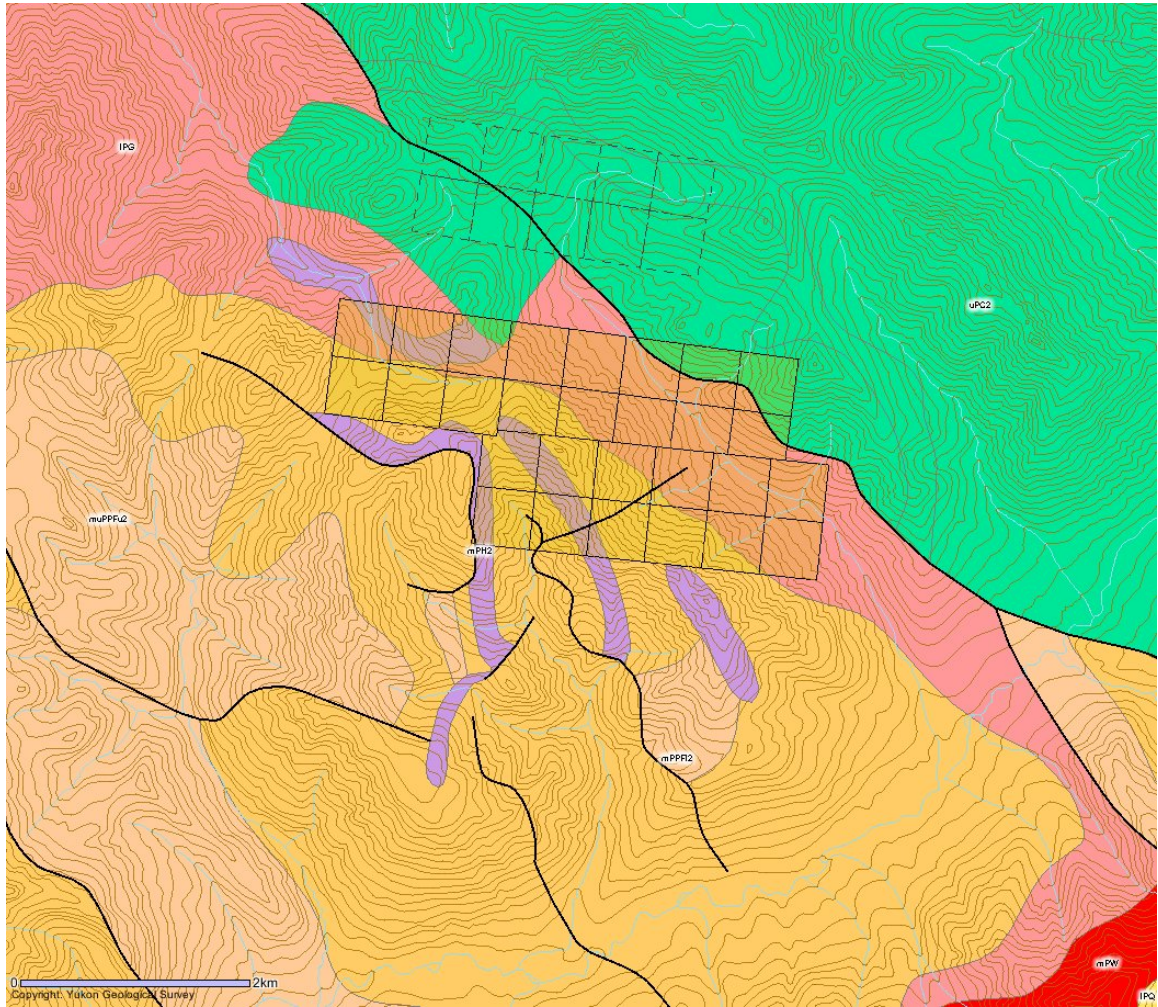


Figure 1

Yukon Geological Survey Geology Description

UPPER PROTEROZOIC



uPC: CALLISON

dolostone assemblage comprising two regionally correlated units (1) and (2)

2. cryptalgal dolostone; medium to light grey fine crystalline, laminated to thinly bedded and stromatolitic dolostone; includes chert and dolomitic breccia; craggy, medium to dark grey, massive, medium crystalline dolostone with abundant silicification (**Fifteen Mile Gp. (upper)**)

MIDDLE TO UPPER PROTEROZOIC



muPPFu: PINGUICULA/FIFTEEN MILE (UPPER)

siliclastic-carbonate assemblage comprising two regionally correlated units (1) and (2)

2. light-grey, finely crystalline dolomite; shale; pebbly mudstone; gritty mudstone; stromatolitic limestone; quartz sandstone (**Fifteen Mile Gp. (upper)**)

MIDDLE PROTEROZOIC

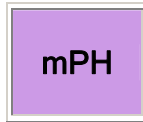


mPPFI: PINGUICULA/FIFTEEN MILE (LOWER)

dominantly carbonate assemblage with basal clastics comprising two regionally correlated units (1) and (2); includes possible other correlative carbonate, clastic and volcanic rocks (3) and (4)

2. basal shale to silty dolomite; medium to thick bedded dolomitic mudstone and dolostone breccia, massive dolostone; medium-bedded dolostone with mudstone interbeds; dolostone breccia, oolitic packstone and uncommon stromatolitic dolostone (**Fifteen Mile Gp. (lower)**)

MIDDLE PROTEROZOIC



mPH: HART RIVER

mafic volcanic flows (1) and (3) and their possible intrusive equivalents (2)

-
2. resistant dark weathering diorite and gabbro sills and dikes (**Hart River Sills**)

LOWER PROTEROZOIC



IPG: GILLESPIE LAKE

dolostone and silty dolostone, locally stromatolitic, locally with chert nodules and sparry karst infillings, interbedded with lesser black siltstone and shale, laminated mudstone, and quartzose sandstone; local dolomite boulder conglomerate (**Gillespie Lake Gp.**)

6.0 WORK PROGRAM / METHODS

6.1 SOIL WORK

A one day soil program was conducted by Tyson Foxcroft on the Oz Claims. In all there was 32 soil collected using one-meter soil augers or prospector picks in heavy talus slopes. Soils were collected at a average depth of 60-70 centimeters with augers and shallower with prospector picks, all sample were place in paper kraft soil bags with sample site marked in the field with orange flagging. All sample sites were GPS as to exact ground position and GPS numbers were downloaded into excel format.

Sample spacing was at 50 meter station spacing.

Assay method was the 1DX-15 gram, ICP-MS. Analysis by Acme Labs of Vancouver, B.C.

7.0 INTERPRETATION

The soil sample indicated a very nice zinc anomaly located on Oz 1-6 claims values reached up to 4370 Zn ppm. The lead values correlated with the zinc with values reaching 2570 ppm Pb.

8.0 RECOMMENDATION

I would recommend a soil grid covering the entire claim block. Line should be at 100 meter spacing and soil collected on 50 meter station spacing.

9.0 REFERENCES CITED

Thompson R.I. GSC Open File 3223, Geological Compilation (1-250,000) of Dawson Map Area (116B,C) (northeast of Tintina Trench)

10.0 QUALIFICATION

I Shawn Ryan located in Dawson City, Yukon work as a professional prospector. I run a small exploration company located in Dawson city.

I have worked in the exploration business for the last 25 years. I worked the first 15 years as a contractor working on numerous projects in the NWT, Ontario, Quebec and the Yukon. I have worked for the last 10 years as a local prospector for myself.

I have being train to run various geophysical instrument and surveys such as magnetic surveys, max-min surveys, induce polarity surveys and Vlf surveys.

I have overseen the whole Oz Project and was the party chief in charge.

I own 100 % of the Oz claims and now have option the claim block to Full Metal Minerals.

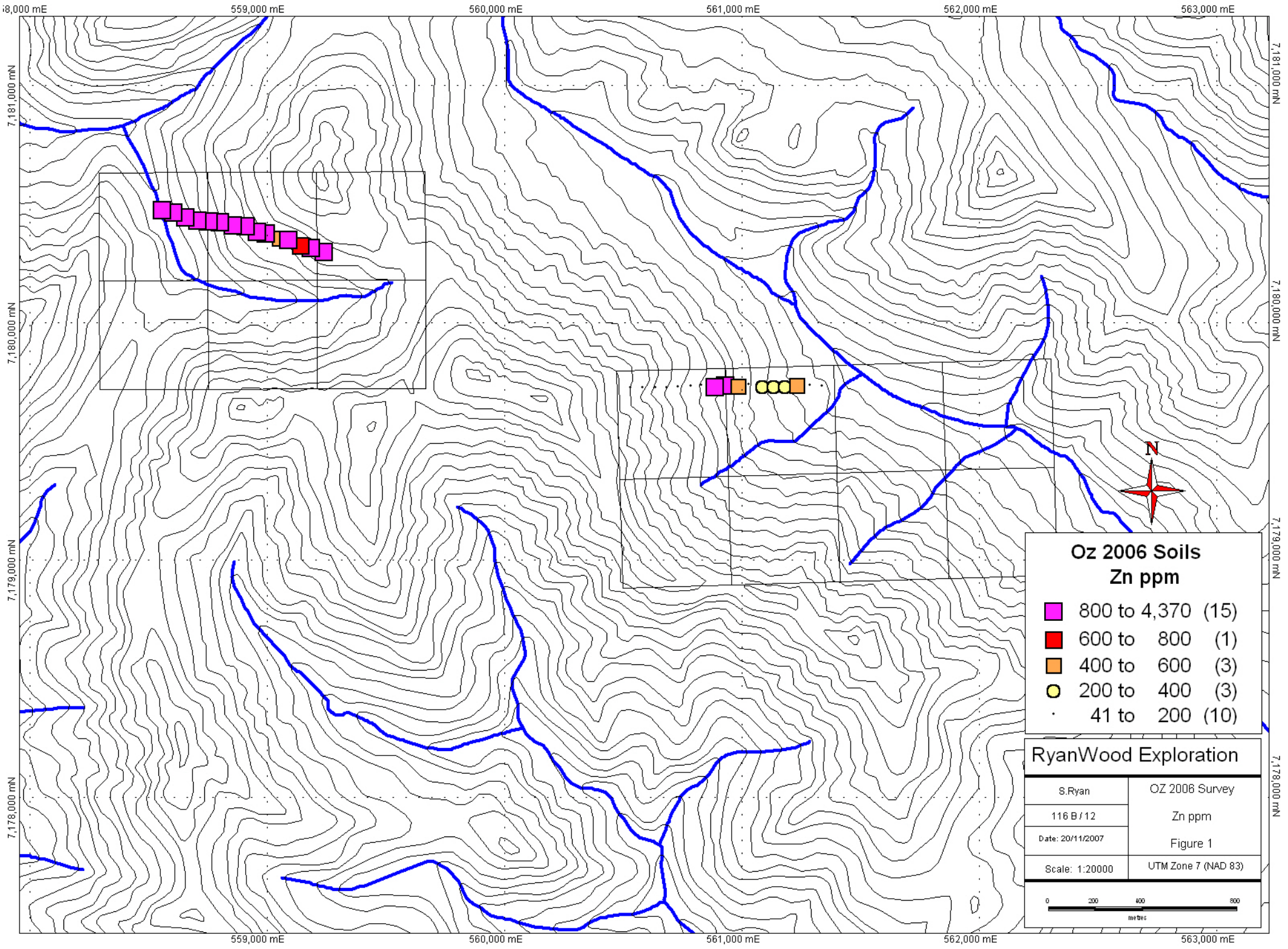
Dated this 23 of November, 2007 in Dawson City, Yukon.

Respectfully submitted

Shawn Ryan

11.0 Cost

Assay 32 soils @ \$18.00 per sample	\$576.00
1 men @ \$250.00 per day	\$250.00
Helicopter Cost 1.2 hours @ \$1259.00	\$1,510.00
Report	\$300.00
Total	\$2,636.00



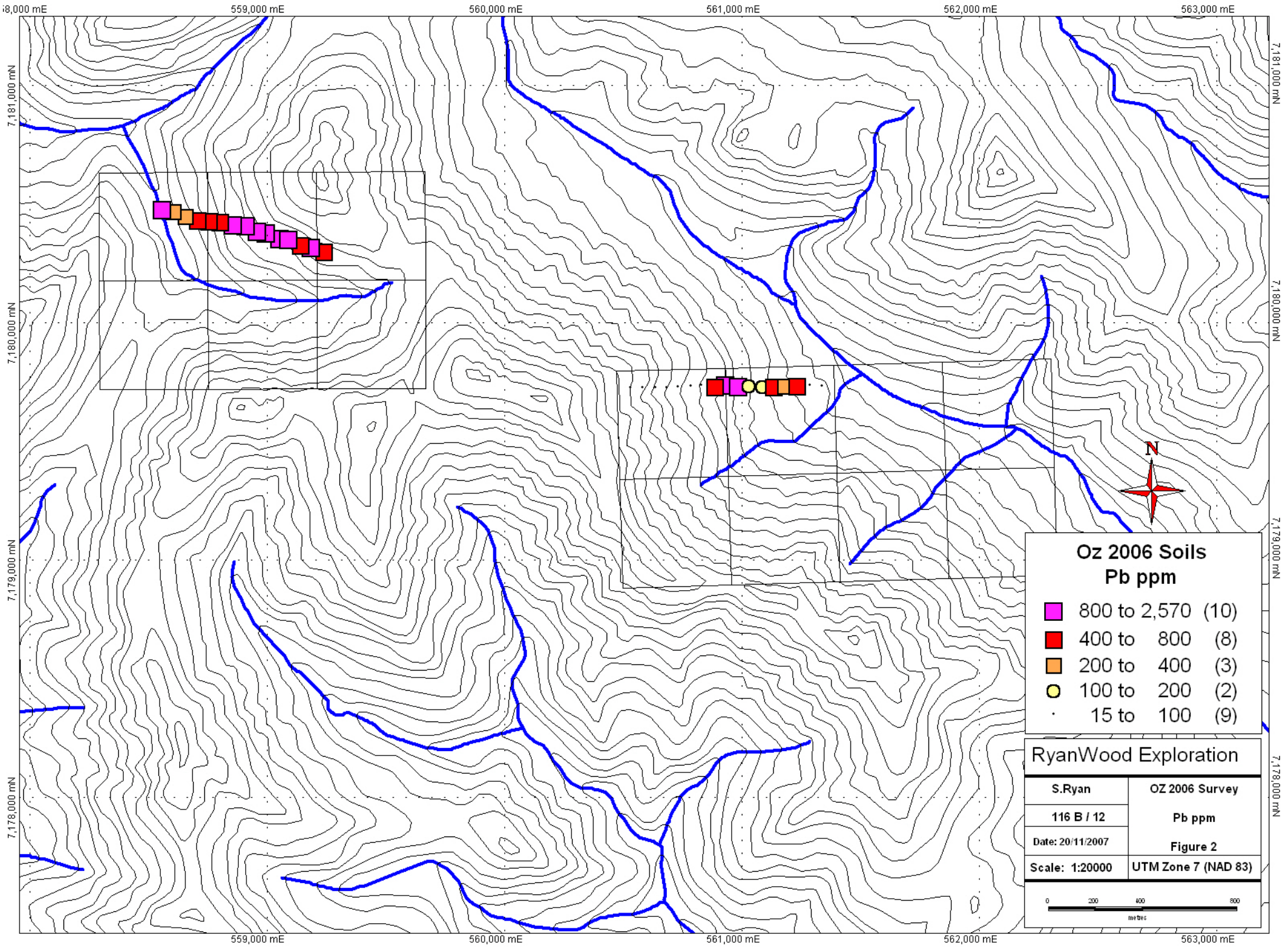
**Oz 2006 Soils
Zn ppm**

- 800 to 4,370 (15)
- 600 to 800 (1)
- 400 to 600 (3)
- 200 to 400 (3)
- 41 to 200 (10)

RyanWood Exploration

S.Ryan	OZ 2006 Survey
116 B / 12	Zn ppm
Date: 20/11/2007	Figure 1
Scale: 1:20000	UTM Zone 7 (NAD 83)

0 200 400 800
metres



OZ Claim Location Map

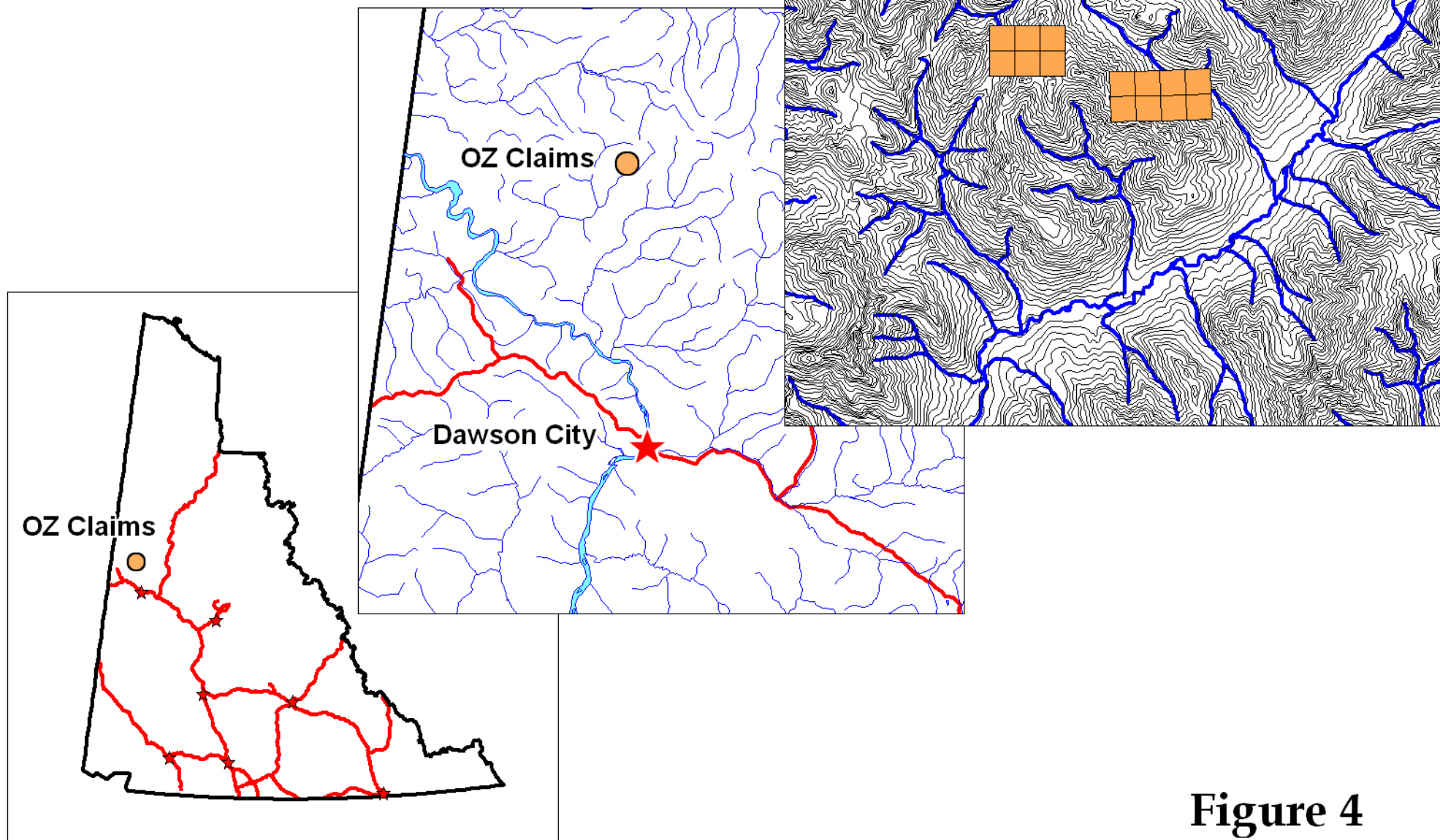


Figure 4

SAMPLES	Datum	Easting	Northing	Mo	Cu	Pb	Zn	Ag	Ni	Co
OZ 00636	NAD83-7W	559055	7180359	0.7	25.7	851.2	581	0.8	29.1	11.2
OZ 00637	NAD83-7W	558999	7180382	0.6	41.5	1423.5	1306	1	30.3	16.6
OZ 00638	NAD83-7W	558960	7180388	0.7	46.7	1623.6	2171	1.3	29.9	14.1
OZ 00639	NAD83-7W	558912	7180413	0.7	41.8	906.7	4370	1	24.4	10.1
OZ 00640	NAD83-7W	558858	7180416	0.7	56.2	1182.2	3966	1.6	33.9	15.9
OZ 00641	NAD83-7W	558805	7180428	0.9	49.2	608.7	1331	0.9	46.9	17.9
OZ 00642	NAD83-7W	558757	7180432	0.8	54.8	663.2	3032	1.1	38.3	15.8
OZ 00643	NAD83-7W	558709	7180436	0.8	38	661.8	4096	1.1	26.8	10.9
OZ 00644	NAD83-7W	558658	7180451	0.7	34.5	368.5	2522	0.8	33	13.1
OZ 00645	NAD83-7W	558607	7180470	0.8	29.3	359.2	2082	0.8	21.6	10.3
OZ 00646	NAD83-7W	558559	7180481	0.8	53.4	2569.2	4235	2.1	27.3	15.6
OZ 00917	NAD83-7W	560933	7179742	1.4	64	863.1	2288	2.4	34.3	13.1
OZ 00918	NAD83-7W	560986	7179734	1.7	165.2	832.1	565	0.6	60.7	49.2
OZ 00919	NAD83-7W	561032	7179737	1.3	31.2	119.5	158	0.2	23.1	16.7
OZ 00920	NAD83-7W	561089	7179734	0.9	38.6	198.1	285	0.4	35.5	18.7
OZ 00921	NAD83-7W	561137	7179734	0.8	26.7	401.5	353	0.4	31.8	10.3
OZ 00922	NAD83-7W	561182	7179733	0.6	21	351.5	380	0.4	34.3	10.5
OZ 00923	NAD83-7W	561233	7179739	1.1	38.6	410.7	529	0.5	39	13.7
OZ 00924	NAD83-7W	561287	7179734	0.9	20.5	56.3	123	0.1	27.5	13.5
OZ 00925	NAD83-7W	561338	7179731	0.5	13.8	20.7	92	0.1	19.5	7.5
OZ 00926	NAD83-7W	559242	7180304	0.5	31.9	674.5	1045	0.6	18.5	7.2
OZ 00927	NAD83-7W	559187	7180321	0.8	65.6	1177.9	1498	0.9	38	18.4
OZ 00928	NAD83-7W	559144	7180332	0.3	31.1	484.5	674	0.5	13.9	7.1
OZ 00929	NAD83-7W	559092	7180355	0.4	24.7	1903.2	1170	1.2	16.2	7
OZ 02956	NAD83-7W	560534	7179723	0.2	6.3	42.3	64	0.2	6.8	2.7
OZ 02957	NAD83-7W	560583	7179723	0.5	13.3	32.1	71	0.2	15.5	6
OZ 02958	NAD83-7W	560636	7179725	0.2	8.5	15.1	41	0.1	15.3	4
OZ 02959	NAD83-7W	560686	7179724	0.4	19.3	16.7	48	0	34.4	8.8
OZ 02960	NAD83-7W	560733	7179727	0.2	18.6	19.8	52	0	51.4	10.7
OZ 02961	NAD83-7W	560787	7179732	0.2	15	22.5	48	0	37.3	9.3
OZ 02962	NAD83-7W	560830	7179733	0.3	11	29.1	57	0	19.9	5
OZ 02963	NAD83-7W	560888	7179733	1.2	37.5	423.6	1230	0.6	31.8	12.6

SAMPLES	Mn	Fe	As	U	Au	Th	Sr	Cd	Sb	Bi	V	Ca
OZ 00636	1858	2.77	21	0.7	3.4	0.5	13	1.4	2.7	0.1	28	4.6
OZ 00637	2101	2.78	22	1	3.3	1.5	22	3	3.9	0.1	34	8.95
OZ 00638	2481	3.17	30.6	0.8	6.1	1.4	25	5.1	3.8	0.1	34	10.38
OZ 00639	2406	2.6	20.9	0.8	3	0.8	23	13	2.7	0.1	32	11.55
OZ 00640	3146	3.56	37.9	0.7	3.6	0.9	25	12	4.3	0.1	35	10.17
OZ 00641	1969	3.63	24.4	0.7	4.8	1.3	18	3	3.1	0.2	59	3.98
OZ 00642	2029	3.84	24.1	0.7	3.2	1.1	14	8.2	3.2	0.2	59	2.69
OZ 00643	1730	2.8	19	0.7	3.5	0.8	19	10.4	2.8	0.1	40	6.4
OZ 00644	1623	3.02	16.4	0.6	2.3	0.7	15	7	2.1	0.1	52	3.39
OZ 00645	1257	2.91	14.1	0.8	2.2	0.5	15	5.5	1.6	0.2	45	1.31
OZ 00646	2022	3.8	18.9	0.7	1.3	1.8	16	6	4.5	0.2	27	5.42
OZ 00917	1401	5.09	42.3	0.7	3.9	4	11	3.8	4.3	0.4	36	0.25
OZ 00918	2855	6.44	24.5	0.8	1.7	3.6	10	0.8	3.1	0.5	115	0.24
OZ 00919	1106	3.61	13.8	0.6	2.2	1	11	0.6	1.2	0.4	61	0.14
OZ 00920	1044	3.4	17.7	0.8	1.9	3	13	0.5	1.5	0.4	45	0.21
OZ 00921	873	2.11	9.7	0.5	2.2	2.7	30	0.7	1.3	0.1	34	8.31
OZ 00922	2052	2.71	9.6	0.7	1.8	1.3	21	1.6	1.3	0.2	38	7.68
OZ 00923	921	2.49	13.7	0.6	2.6	3.9	23	0.9	1.5	0.2	41	2.89
OZ 00924	2408	3.51	11.9	1	0.8	1.6	14	0.5	1.3	0.3	49	1.13
OZ 00925	1020	2.25	7.3	0.5	4.4	1.7	20	0.3	0.7	0.1	37	5.21
OZ 00926	2724	2.26	19.7	0.9	1.6	0.4	20	2.4	2.7	0.1	32	12.7
OZ 00927	3336	3.43	32.7	1	3	0.7	20	4.5	5.1	0.1	54	9.91
OZ 00928	2399	2.09	14.7	0.8	3.1	0.5	27	2	1.9	0	30	14.31
OZ 00929	1919	2.17	21.9	1.1	1.1	0.9	24	2.5	3.2	0.1	15	12.78
OZ 02956	1148	1.01	3.7	0.6	0.7	0.5	29	0.3	1.1	0	10	17.43
OZ 02957	1348	1.71	6.1	0.6	3.3	0.9	25	0.4	1.2	0.1	24	12.7
OZ 02958	1444	1.1	2.9	0.4	0	0.5	22	0.1	0.8	0	15	16.62
OZ 02959	929	1.86	4.6	0.5	5.2	2	30	0.2	0.8	0.1	37	11.88
OZ 02960	1187	1.83	3.2	0.4	0.6	0.9	27	0.2	0.8	0	34	13.48
OZ 02961	1084	1.67	3.8	0.4	0	1	26	0.3	1.1	0.1	30	14.45
OZ 02962	1041	1.26	3.4	0.4	1	0.7	24	0.2	0.7	0.1	21	13.98
OZ 02963	1482	4.68	48	0.6	1.4	1.6	11	1.2	2.9	0.4	37	0.21

SAMPLES	P	La	Cr	Mg	Ba	Ti	B	Al	Na	K	W	Hg
OZ 00636	0.111	17	20	2.46	116	0.007	17	0.57	0.008	0.06	0	0.2
OZ 00637	0.066	14	22	5.12	191	0.014	21	0.7	0.009	0.04	0.1	0.56
OZ 00638	0.049	11	28	5.96	228	0.02	15	0.75	0.01	0.04	0.1	0.97
OZ 00639	0.048	11	27	6.73	129	0.015	13	0.61	0.01	0.03	0.1	1.31
OZ 00640	0.053	14	27	6.03	465	0.013	13	0.75	0.009	0.03	0.1	1.71
OZ 00641	0.072	16	62	2.95	568	0.021	9	1.18	0.009	0.06	0.2	0.32
OZ 00642	0.085	18	47	2.14	514	0.016	10	1.23	0.008	0.05	0.1	0.6
OZ 00643	0.075	14	30	3.94	307	0.016	12	0.8	0.009	0.05	0.1	0.55
OZ 00644	0.095	14	49	2.21	419	0.017	11	1.07	0.008	0.06	0.1	0.29
OZ 00645	0.107	14	27	0.76	376	0.017	5	1.24	0.014	0.05	0.1	0.28
OZ 00646	0.062	14	14	3.51	114	0.02	3	0.89	0.008	0.08	0.1	1.05
OZ 00917	0.045	19	19	0.39	82	0.039	2	1.13	0.007	0.09	0.1	1.45
OZ 00918	0.068	17	65	0.58	124	0.024	2	2.15	0.006	0.07	0.1	0.11
OZ 00919	0.056	13	29	0.39	138	0.026	2	1.39	0.005	0.07	0.2	0.06
OZ 00920	0.057	17	27	0.5	148	0.037	2	1.48	0.007	0.08	0.1	0.09
OZ 00921	0.054	10	34	4.74	161	0.048	2	0.75	0.015	0.06	0.1	0.12
OZ 00922	0.059	15	44	4.52	149	0.03	3	1	0.013	0.06	0.1	0.11
OZ 00923	0.07	15	27	2.01	140	0.056	3	0.98	0.015	0.09	0.2	0.14
OZ 00924	0.072	16	31	1	218	0.034	2	1.58	0.009	0.08	0.1	0.1
OZ 00925	0.056	13	22	3.07	144	0.037	2	1.01	0.015	0.05	0.2	0.07
OZ 00926	0.042	11	15	7.49	186	0.011	21	0.45	0.011	0.02	0	0.29
OZ 00927	0.072	13	49	6.01	399	0.01	18	0.99	0.008	0.05	0	0.44
OZ 00928	0.028	9	16	8.36	167	0.011	25	0.46	0.01	0.02	0.1	0.25
OZ 00929	0.06	11	8	7.03	63	0.007	32	0.29	0.011	0.05	0.1	0.34
OZ 02956	0.017	5	4	9.34	63	0.009	2	0.22	0.013	0.02	0.1	0.06
OZ 02957	0.034	9	12	7.24	123	0.023	3	0.67	0.013	0.04	0.1	0.06
OZ 02958	0.018	6	21	9.13	71	0.012	2	0.34	0.014	0.02	0	0.03
OZ 02959	0.042	9	61	6.97	154	0.049	3	0.76	0.016	0.04	0.1	0.04
OZ 02960	0.017	5	93	8.15	160	0.036	3	0.77	0.014	0.03	0	0.03
OZ 02961	0.017	6	64	8.57	136	0.037	3	0.59	0.013	0.03	0	0.03
OZ 02962	0.024	7	34	7.99	100	0.021	4	0.49	0.016	0.03	0	0.06
OZ 02963	0.069	16	20	0.38	110	0.033	4	1.2	0.006	0.14	0.1	0.25

SAMPLES	Sc	Tl	S	Ga	Se	Analysis:	Acme file #
OZ 00636	3	1.1	0.13	2	0.6	GROUP 1DX - 15.0 GM	A606506
OZ 00637	5.3	1.5	0	2	0.6	GROUP 1DX - 15.0 GM	A606506
OZ 00638	4.4	0.9	0.07	2	0.6	GROUP 1DX - 15.0 GM	A606506
OZ 00639	3.2	0.5	0.07	3	0.6	GROUP 1DX - 15.0 GM	A606506
OZ 00640	4.8	1.5	0.06	3	0.7	GROUP 1DX - 15.0 GM	A606506
OZ 00641	6.6	0.6	0.08	3	0.6	GROUP 1DX - 15.0 GM	A606506
OZ 00642	5.7	0.5	0.11	4	0.7	GROUP 1DX - 15.0 GM	A606506
OZ 00643	4.1	0.4	0.09	3	0.7	GROUP 1DX - 15.0 GM	A606506
OZ 00644	4.1	0.4	0.12	3	0.7	GROUP 1DX - 15.0 GM	A606506
OZ 00645	3.2	0.3	0.15	4	0.7	GROUP 1DX - 15.0 GM	A606506
OZ 00646	4.9	1.4	0.1	3	0.6	GROUP 1DX - 15.0 GM	A606506
OZ 00917	5	1.2	0	3	0.6	GROUP 1DX - 15.0 GM	A606506
OZ 00918	14.6	0.5	0	8	0.5	GROUP 1DX - 15.0 GM	A606506
OZ 00919	2.5	0.2	0	6	0	GROUP 1DX - 15.0 GM	A606506
OZ 00920	4.6	0.2	0	4	0	GROUP 1DX - 15.0 GM	A606506
OZ 00921	3.5	0.2	0	2	0	GROUP 1DX - 15.0 GM	A606506
OZ 00922	3.7	0.3	0	3	0	GROUP 1DX - 15.0 GM	A606506
OZ 00923	4.4	0.4	0	3	0	GROUP 1DX - 15.0 GM	A606506
OZ 00924	3.6	0.2	0	5	0.5	GROUP 1DX - 15.0 GM	A606506
OZ 00925	2.7	0.2	0	3	0	GROUP 1DX - 15.0 GM	A606506
OZ 00926	2	0.9	0	1	0.5	GROUP 1DX - 15.0 GM	A606506
OZ 00927	5.3	1.5	0	3	0.7	GROUP 1DX - 15.0 GM	A606506
OZ 00928	2.9	1	0	1	0	GROUP 1DX - 15.0 GM	A606506
OZ 00929	2.8	2.5	0	1	0	GROUP 1DX - 15.0 GM	A606506
OZ 02956	0.8	0.2	0	1	0	GROUP 1DX - 15.0 GM	A606506
OZ 02957	1.7	0.2	0	2	0.5	GROUP 1DX - 15.0 GM	A606506
OZ 02958	1.5	0.1	0	1	0.5	GROUP 1DX - 15.0 GM	A606506
OZ 02959	3.4	0.1	0	2	0	GROUP 1DX - 15.0 GM	A606506
OZ 02960	3.6	0.1	0	2	0	GROUP 1DX - 15.0 GM	A606506
OZ 02961	2.9	0.2	0	1	0	GROUP 1DX - 15.0 GM	A606506
OZ 02962	2	0.1	0	1	0	GROUP 1DX - 15.0 GM	A606506
OZ 02963	3.2	2	0.07	4	0	GROUP 1DX - 15.0 GM	A606506