

**GEOCHEMICAL**

**REPORT**

**KING 1 - 12  
YC19934 - YC19945**

**KING 13 - 19  
YC44350 - YC44357**

**KING 33 - 36  
YC20693 - YC20696**

**KING 37 - 42  
YC20697 - YC20702**

**NTS # 115 O \ 15**

**LAT: 63° 52' N**

**LONG: 138° 58' W**

**DAWSON MINING DISTRICT**

**AUTHOR OF REPORT SHAWN RYAN**

**WORK PERFORMED OCTOBER 5 - 20, 2006**

**DATE OF REPORT NOVEMBER 1, 2007**

## TABLE OF CONTENT

<b>SUMMARY</b>	<b>P.3</b>
<b>1.0 INTRODUCTION</b>	<b>P.3</b>
<b>2.0 LOCATIONS AND ACCESS</b>	<b>P.3</b>
<b>3.0 PROPERTY DESCRIPTION</b>	<b>P.3</b>
<b>4.0 PHYSIOGRAPHY</b>	<b>P.3</b>
<b>5.0 REGIONAL AND PROPERTY GEOLOGY</b>	<b>P.4</b>
<b>5.1 REGIONAL GEOLOGY</b>	<b>p.4</b>
<b>6.0 WORK PROGRAM / METHODS</b>	<b>P.4</b>
<b>6.1 SOIL WORK</b>	<b>P.4</b>
<b>7.0 INTERPRETATION</b>	<b>P.5</b>
<b>7.1 SOIL WORK</b>	<b>P.5</b>
<b>8.0 RECOMMENDATION</b>	<b>P.5</b>
<b>9.0 REFERENCES CITED</b>	<b>P.5</b>
<b>10.0 COST</b>	<b>P.5</b>
<b>11.0 QUALIFICATION</b>	<b>P.6</b>
<b>Claim Map</b>	<b>Figure 1</b>
<b>Lead Soil Map</b>	<b>Figure 2</b>
<b>Zinc Soil Map</b>	<b>Figure 3</b>
<b>Arsenic Soil Map</b>	<b>Figure 4</b>
<b>Gold Soil Map</b>	
<b>Assay Data / Soil GPS Data</b>	<b>Appendix</b>

## **SUMMARY**

The King Claims has seen 6 man days of soil work take place during the first 3 weeks of October 2006. In total there was 159 soil collected by Jim Skailes and Jeremy Duplisea.

### **1.0 INTRODUCTION**

The King 1 -12, 13 - 19, 33 - 36 and 37- 42 will be renewed for 1 year.

### **2.0 LOCATIONS AND ACCESS**

The King claims are located on NTS 115 O / 15 in the Dawson Mining District. The Property lies 30 kilometer south of Dawson City, Yukon. The claim block covers the head waters of Gold Bottom Creek. Access is via the Hunker Creek road. The Hunker road run right threw the property.

### **3.0 PROPERTY DESCRIPTION**

The King claims are part of a large 300 plus claim block. The King claims are registered in the Dawson Mining District. The 41 claims cover 1414 hectares or 2050 acres.

### **4.0 PHYSIOGRAPHY**

The property lies between the elevations of 3200 feet and 4200 feet. The property is partially covered with boreal forest vegetation such as white spruce and poplar on well-drained soil and black spruce on poorly drained frozen north facing slope. The ridge top is open with only low lying willow shrubs.

## **5.0 REGIONAL AND PROPERTY GEOLOGY**

### **5.1 REGIONAL GEOLOGY**

According to Mortensen geology map # 115 0 / 15 Open - File 1996-1(G) the King claim block covers three various rock types of Permian Klondike Schist. Unit Psc is located in the north part of the claim block and is a medium to dark green chlorite-quartz-muscovite schist. Unit Psq located in the central part of the claim block is a tan weathering muscovite and / or chloritic quartzite and quartz-muscovite-chlorite schist. Unit Psqm is located on the ridge top at the southern end of claim block.

## **6.0 WORK PROGRAM / METHODS**

The King claims have seen 6 man days of soil work. Jim Skailes and Jeremy Duplisea worked on the property for three days during the month of October. In total there was 159 soils collected.

### **6.1 SOIL WORK**

The soil work consists of soil sampling with soil augers at an average depth of 60 centimeter. Soil sample where place in Kraft soil bags with sample numbers marked on the bags. A sample description of the color, depth, slope, horizon and UTM location was noted in field notes. A Garmin 76 GPS was used to get the exact UTM location. All GPS soil sample location where electronically downloaded every evening back in town. Soil sample where taken at 100 meters intervals on soil traverse. All assay where process at the Acme Lab in Vancouver with Group 1DX: ICP - MS on 15 grams.

## 7.0 INTERPRETATION

### 7.1 SOIL WORK

The soil work indicated a nice lead, zinc, arsenic and spotty gold anomaly with samples ranging from 4 - 1008 ppm Pb, 16 - 886 ppm Zn, 4 - 735 ppm As, and 8 - 61 ppb Au. I feel these soil anomalies may be representing the same kind of gold target as found on the Sheba and Michel showing 1400 meters to the North west. The Sheba showing soil geochemical signature is anomalous in lead, silver, arsenic and gold.

## 8.0 RECOMMENDATION

I would recommend more soil work on line spacing of 100 meters and station spacing of 25 meters. The grid should continue from the eastern grid and grid the gap along the ridge top towards the western anomalous soil lines. Any new anomalous soil can be easily followed up with mechanical trenching since it's on the road system.

## 9.0 REFERENCES CITED

Mortensen, J.K. Open File 1996-1(G) Geological Compilation Maps of the Northern Stewart River Map Area Klondike and Sixtymile Districts.

## 10.0 COST

Assay Cost 159 sample @ \$18.00 per sample	\$2862.00
Wage 6 man days @ \$250.00 per day	\$1500.00
Truck and gas 3 Days @ \$150.00	\$450.00
Report Writing	\$300.00
	-----
Total	\$5112.00

## 11.0 QUALIFICATION

I Shawn Ryan located in Dawson City, Yukon work as a professional prospector. I run a small exploration company located in Dawson city.

I have worked in the exploration business for the last 25 years. I worked the first 12 years as a contractor working on numerous projects in the NWT, Ontario, Quebec and the Yukon. I have worked for the last 10 years as a local prospector for myself.

I have being trained to run various geophysical instruments and surveys such as magnetic surveys, max-min surveys, induce polarity surveys and Vlf surveys.

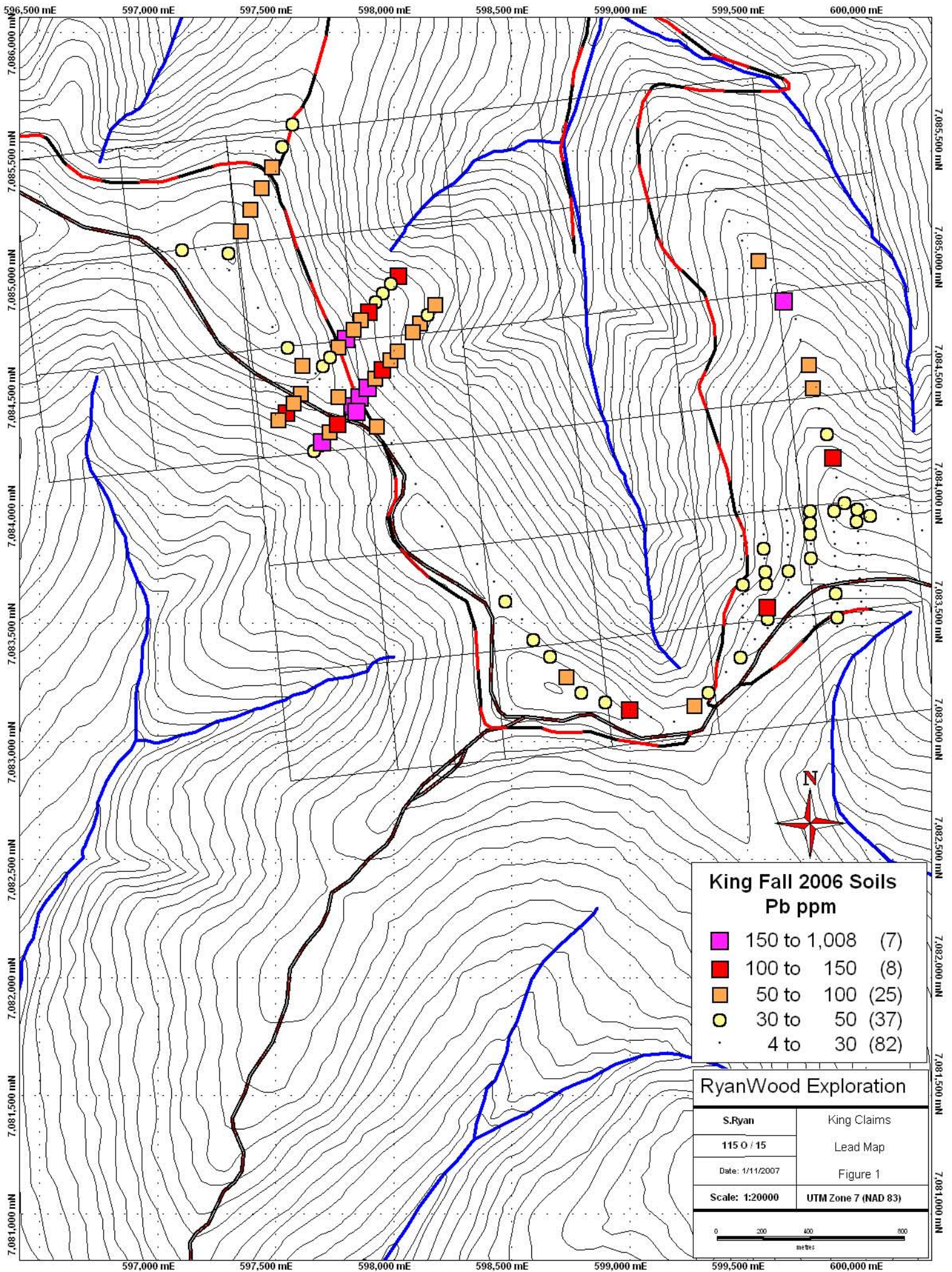
I have overseen the King soil Survey.

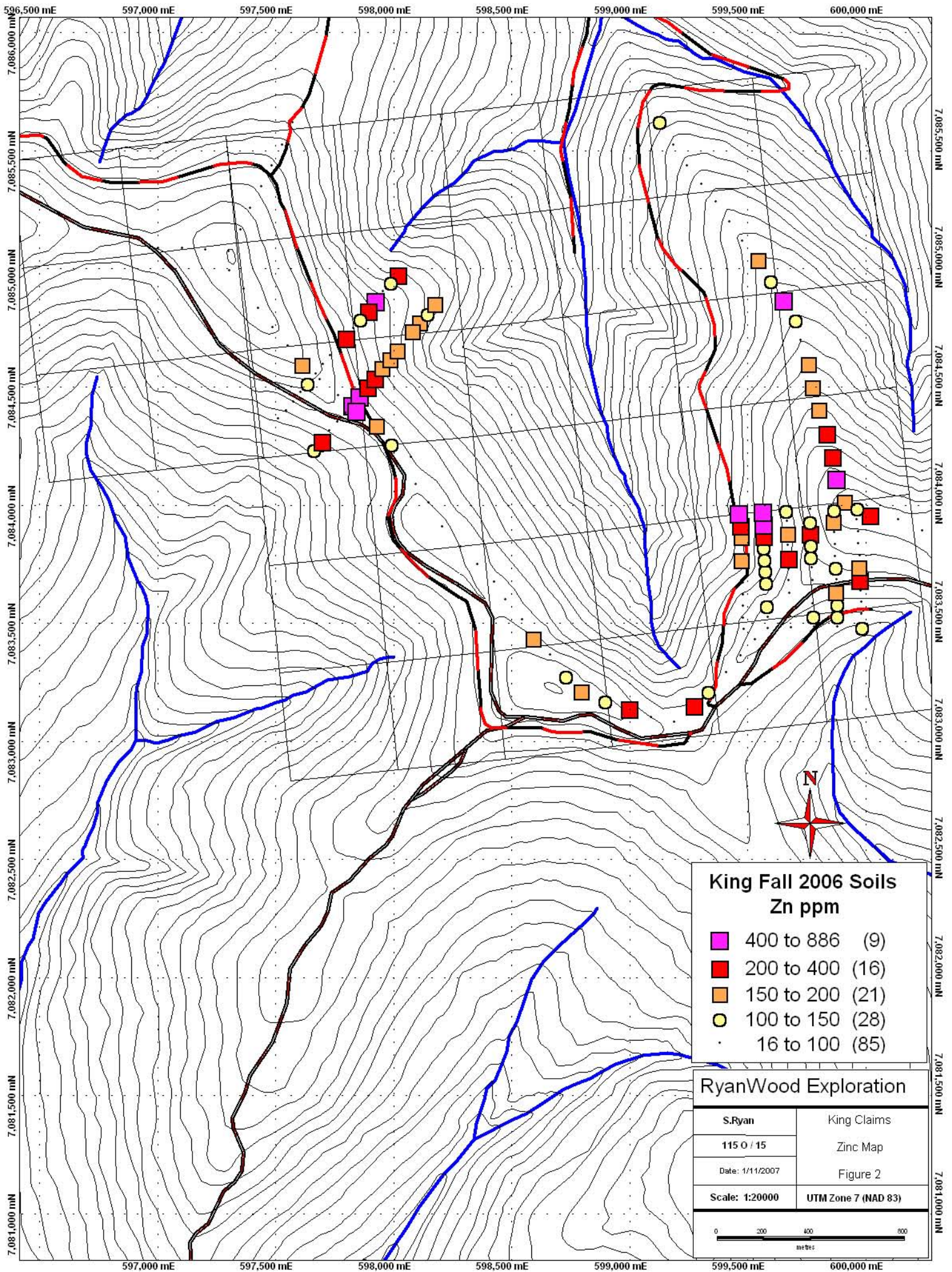
I own 100 % of the King claims.

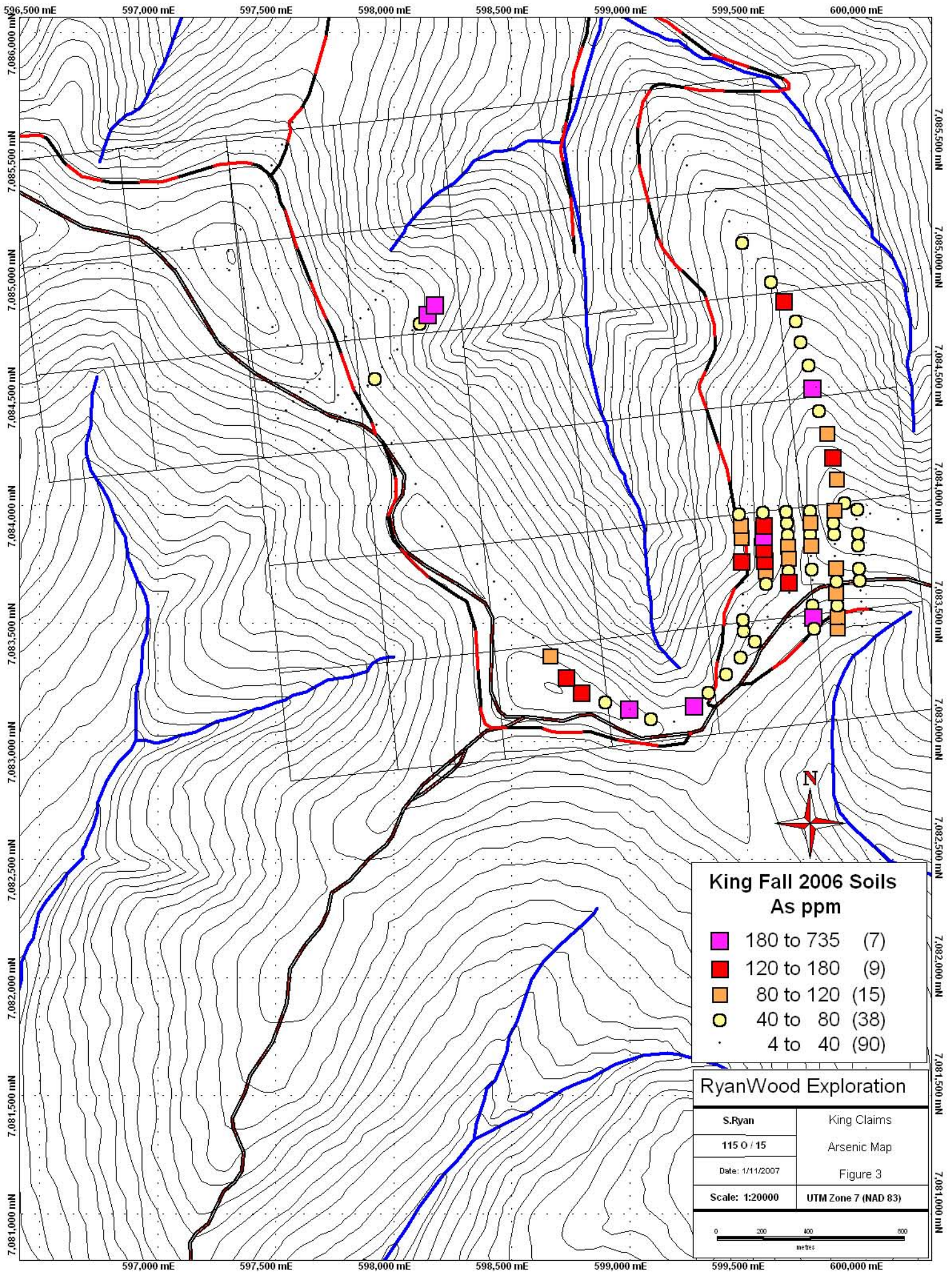
Dated this 1 of November 2007 in Dawson City, Yukon.

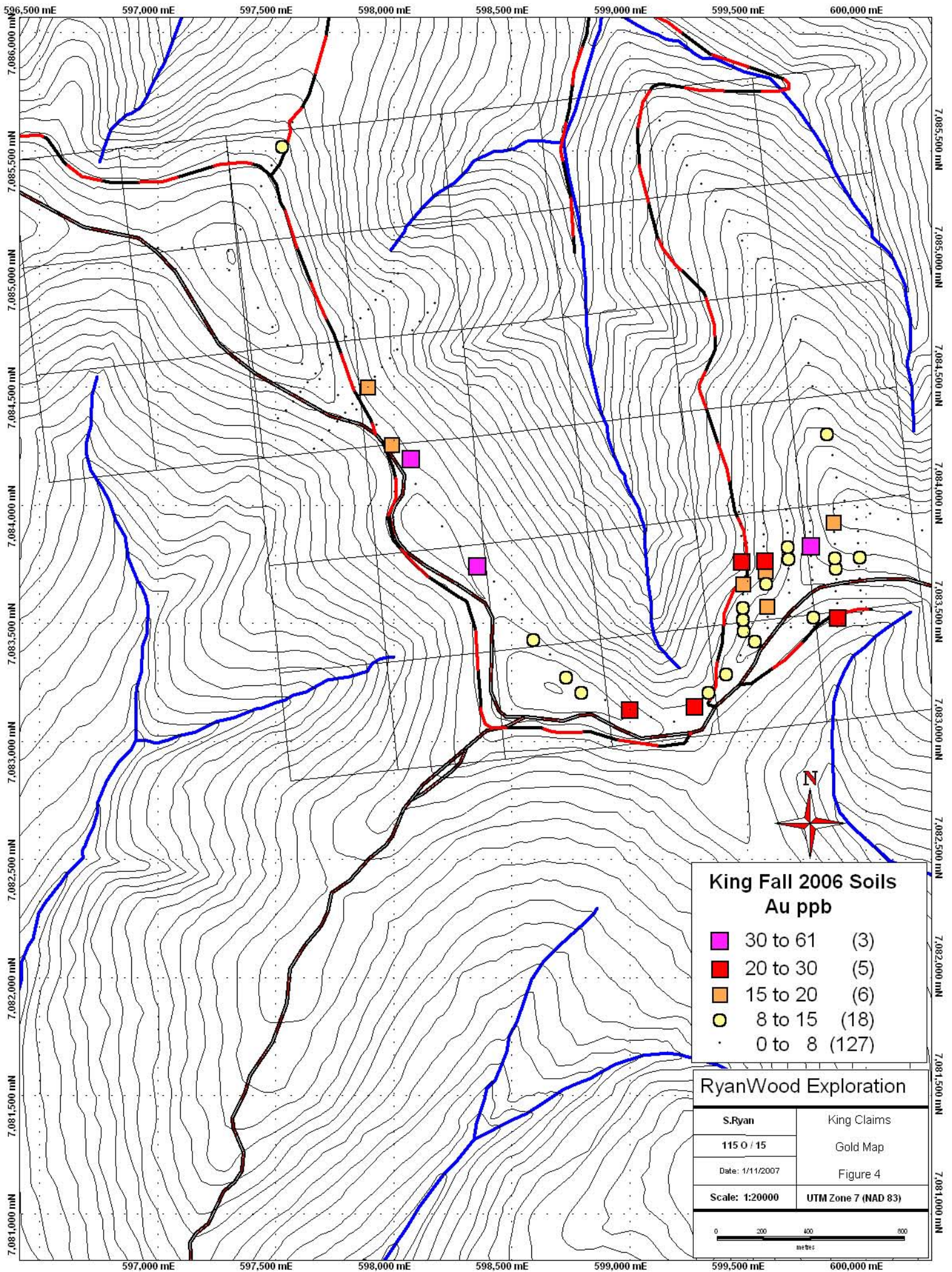
Respectfully submitted

Shawn Ryan









SAMPLES	Datum	Easting	Northing	Mo	Cu	Pb	Zn	Ag	Ni	Co	Mn	Fe
CJ-01281	NAD83-7V	600241	7083890	0.7	53	10.5	52	0	11.6	12.7	581	3.45
CJ-01282	NAD83-7V	600139	7083936	0.4	69.5	4.2	70	0.2	15.6	16.9	454	4.28
CJ-01283	NAD83-7V	600019	7083962	1.7	51.2	30.3	239	0.1	33.4	18	872	3.24
CJ-01284	NAD83-7V	599912	7084014	2.4	55.1	41.1	190	0.2	37.4	20.7	1099	4.02
CJ-01285	NAD83-7V	599879	7084113	3.1	130.2	28.5	419	2.4	23.4	15	632	4.12
CJ-01286	NAD83-7V	599861	7084207	2.6	86	112.9	363	0.4	33.9	15.2	791	3.51
CJ-01287	NAD83-7V	599839	7084308	2	71.9	32.1	261	0.5	38.1	16.4	868	3.11
CJ-01288	NAD83-7V	599805	7084406	1.5	108.8	22.2	159	0.5	33.1	18.7	914	3.27
CJ-01289	NAD83-7V	599778	7084501	2.7	66.4	51.2	177	0.1	26	11.5	541	3.83
CJ-01290	NAD83-7V	599758	7084597	2.8	66	55.3	185	0.1	33.4	18.1	872	4.03
CJ-01291	NAD83-7V	599727	7084695	1.7	46.4	21.6	93	0.3	30	12.7	512	3.17
CJ-01292	NAD83-7V	599704	7084786	1.3	29.6	19.2	102	0.1	26.8	11.8	403	3.03
CJ-01293	NAD83-7V	599655	7084871	3.7	118.8	179.6	409	1.5	19.8	6.1	310	4.7
CJ-01294	NAD83-7V	599599	7084950	2.4	74.4	11.4	141	0.2	25.1	16.9	641	4.26
CJ-01295	NAD83-7V	599546	7085038	1.6	70.7	72.6	196	0.1	25	18.6	911	3.34
CJ-01296	NAD83-7V	599479	7085117	1	36.6	18.5	88	0	18.4	12.8	468	2.93
CJ-01297	NAD83-7V	599424	7085198	2.2	50	9.1	92	0	21.6	11.7	492	3.64
CJ-01298	NAD83-7V	599365	7085284	1	35.7	10.8	80	0	22.4	10.7	374	2.65
CJ-01299	NAD83-7V	599305	7085359	1.2	55	12.6	99	0.1	22.4	11.5	423	3.04
CJ-01300	NAD83-7V	599244	7085435	1.1	186.9	18	97	0.3	22.5	14.1	529	3.1
CJ-06891	NAD83-7V	597004	7085087	0.4	11.2	23.7	49	0	7.7	5.9	196	1.49
CJ-06892	NAD83-7V	597106	7085086	1	13.5	45	49	0	11.8	4.4	160	1.82
CJ-06893	NAD83-7V	597203	7085078	1.6	15	28.1	49	0.1	12.8	5.7	191	1.97
CJ-06894	NAD83-7V	597304	7085074	1.3	36.7	37.1	97	0.1	10.2	10	622	1.87
CJ-06895	NAD83-7V	597354	7085166	1.4	19.3	67.8	68	0.4	12.6	5.7	245	2.63
CJ-06896	NAD83-7V	597394	7085257	1.2	14.6	80.1	74	0.1	10.6	5.1	264	1.72
CJ-06897	NAD83-7V	597441	7085346	1.4	18.8	59.6	69	0.1	11.4	5.2	243	1.84
CJ-06898	NAD83-7V	597486	7085436	1.2	18.4	88.8	73	0.1	10.5	4.9	206	1.82
CJ-06899	NAD83-7V	597528	7085525	1.2	12.1	45.4	73	0	10.8	5	230	1.87
CJ-06900	NAD83-7V	597572	7085618	1	13.5	40.9	67	0.1	4.7	4.2	360	1.29
CJ-06927	NAD83-7V	599185	7085523	1	73	13.3	91	0	15.4	9.3	433	2.94
CJ-06928	NAD83-7V	599129	7085626	1.2	62.1	14.3	134	0.5	20.8	12	357	2.73
CJ-09031	NAD83-7V	599484	7083473	2	30.6	21.2	71	0.2	24.8	13.3	522	3.31
CJ-09032	NAD83-7V	599482	7083521	2	42	23.1	95	0.4	28	13.4	599	3.24
CJ-09033	NAD83-7V	599481	7083572	1.8	32.6	25.4	69	0.4	17.9	8.2	283	2.99
CJ-09034	NAD83-7V	599480	7083620	1	14.1	9.9	31	0	7.2	3.6	161	2.25

SAMPLES	As	U	Au	Th	Sr	Cd	Sb	Bi	V	Ca	P	La	Cr	Mg	Ba	Ti
CJ-01281	5.9	0.3	3.4	1.9	4	0.1	0.4	0.2	76	0.04	0.027	8	20	1.13	61	0.02
CJ-01282	4.9	0.3	0	1.9	2	0.2	0.2	0.1	110	0.03	0.025	6	19	2.5	56	0.009
CJ-01283	31.1	1	1.9	0.7	8	1.9	0.5	0.5	41	0.1	0.074	12	22	0.72	103	0.016
CJ-01284	72.7	0.7	1.6	5.8	4	1.3	0.2	1	28	0.09	0.088	10	22	1.18	46	0.007
CJ-01285	113.8	1.8	3.3	5	11	2.5	0.5	1.6	28	0.17	0.095	10	17	1.47	64	0.005
CJ-01286	132.4	1.5	4.5	4.5	12	2.3	0.3	0.9	37	0.17	0.105	13	29	1.45	116	0.009
CJ-01287	100.4	0.9	10.4	3.7	13	1.4	0.2	0.8	40	0.19	0.099	12	32	1.59	79	0.014
CJ-01288	57.4	0.9	2.2	5.5	14	0.9	0.2	0.5	37	0.17	0.092	9	26	1.64	66	0.014
CJ-01289	286.9	1	1	5.6	5	0.7	0.5	0.8	58	0.06	0.063	19	34	1.28	51	0.022
CJ-01290	60.7	0.8	1.2	4.4	6	0.6	0.4	0.9	57	0.09	0.066	13	39	1.42	55	0.011
CJ-01291	59.6	1.5	5.9	4.2	11	0.5	0.7	0.4	59	0.09	0.064	19	37	0.75	153	0.036
CJ-01292	46.7	0.8	3.1	3.8	11	0.6	0.6	0.6	60	0.1	0.036	14	35	0.76	154	0.041
CJ-01293	177.1	1.7	2.3	5.5	11	1	0.5	4.4	66	0.05	0.049	16	45	1.01	147	0.028
CJ-01294	48.4	1.4	5.9	7.5	21	0.6	0.3	1	26	0.22	0.121	11	18	1.24	76	0.037
CJ-01295	25.3	0.9	1.2	7.6	11	1	0.3	0.5	44	0.16	0.07	17	27	1.3	92	0.024
CJ-01296	44	0.9	0	7.3	7	0.2	0.1	0.1	33	0.12	0.059	14	27	1.6	45	0.024
CJ-01297	23.1	1.4	0.7	4.8	17	0.6	0.3	0.5	46	0.1	0.055	11	22	1.02	50	0.039
CJ-01298	10.8	0.9	1.5	2.8	14	0.3	0.4	0.3	56	0.16	0.056	13	30	0.78	164	0.045
CJ-01299	11.4	0.8	3.5	3.2	13	0.3	0.4	0.4	59	0.15	0.042	11	34	0.98	160	0.048
CJ-01300	9.4	0.6	3.7	2.1	12	0.3	0.5	0.6	58	0.18	0.06	8	31	1.11	111	0.047
CJ-06891	4.8	1.3	0.9	13.7	10	0.1	0.3	0.2	18	0.08	0.022	60	18	0.77	133	0.035
CJ-06892	13.3	1.1	3.6	3.6	8	0.2	0.6	0.2	36	0.07	0.024	14	20	0.34	101	0.029
CJ-06893	19	1.9	4.3	4	8	0.2	0.6	0.2	40	0.07	0.036	19	21	0.33	134	0.03
CJ-06894	12.7	4.1	1	10.7	13	0.6	0.7	0.2	14	0.14	0.069	21	13	0.61	137	0.032
CJ-06895	21.7	1.3	3.8	9.1	7	0.3	0.9	0.3	41	0.06	0.03	14	21	0.37	128	0.024
CJ-06896	18	1	2	4.8	7	0.3	0.7	0.2	34	0.06	0.03	12	18	0.28	97	0.031
CJ-06897	19.6	1.8	5	5.9	9	0.2	0.7	0.3	34	0.08	0.029	23	18	0.38	210	0.026
CJ-06898	15	1.8	5.1	8.3	8	0.3	0.7	0.3	34	0.07	0.027	29	17	0.35	171	0.031
CJ-06899	23	1.5	8	7.7	8	0.4	0.6	0.2	36	0.07	0.021	19	18	0.31	133	0.032
CJ-06900	28.5	2.7	1.9	14.7	12	0.3	0.6	0.2	9	0.05	0.022	29	7	0.34	79	0.021
CJ-06927	7.9	0.6	2	3.5	10	0.4	0.3	0.8	45	0.13	0.076	12	24	0.91	88	0.039
CJ-06928	11.2	1.1	3.7	4.4	20	2.3	0.6	0.8	45	0.27	0.083	16	27	0.95	228	0.038
CJ-09031	56.6	1	10.4	1.9	10	0.3	0.6	0.3	45	0.13	0.076	14	26	0.73	125	0.028
CJ-09032	70.3	1.1	11.9	1.6	17	0.7	0.7	0.3	44	0.15	0.089	15	27	1	151	0.021
CJ-09033	11.4	1.4	14.8	2.2	14	0.3	0.6	0.2	50	0.13	0.079	18	28	0.82	181	0.027
CJ-09034	4.6	0.6	0	0.1	7	0.4	0.4	0.2	49	0.06	0.075	7	14	0.66	62	0.018

SAMPLES	B	Al	Na	K	W	Hg	Sc	Tl	S	Ga	Se	Analysis__	Acme_file_#
CJ-01281	1	1.99	0.002	0.02	0.1	0	6.1	0.1	0	7	0	GROUP 1DX - 15.0 GM	A608934
CJ-01282	0	3.26	0.002	0.02	0.1	0.02	7.5	0.1	0	8	0	GROUP 1DX - 15.0 GM	A608934
CJ-01283	1	1.42	0.003	0.03	0.1	0.02	1.3	0.1	0	4	0.8	GROUP 1DX - 15.0 GM	A608934
CJ-01284	0	1.55	0.001	0.01	0	0.02	2	0	0	4	1.8	GROUP 1DX - 15.0 GM	A608934
CJ-01285	1	1.56	0.001	0.02	0	0.01	1.9	0	0	4	2.2	GROUP 1DX - 15.0 GM	A608934
CJ-01286	0	1.72	0.002	0.03	0.1	0.02	1.8	0	0	5	1.4	GROUP 1DX - 15.0 GM	A608934
CJ-01287	1	1.64	0.002	0.03	0.1	0.01	1.9	0	0	5	0.9	GROUP 1DX - 15.0 GM	A608934
CJ-01288	0	1.83	0.002	0.03	0.1	0.02	2.1	0	0	5	0.9	GROUP 1DX - 15.0 GM	A608934
CJ-01289	0	1.89	0.002	0.03	0.1	0.01	2.2	0.1	0	6	1.4	GROUP 1DX - 15.0 GM	A608934
CJ-01290	1	1.9	0.002	0.03	0.1	0.01	2.3	0	0	6	1.4	GROUP 1DX - 15.0 GM	A608934
CJ-01291	1	1.98	0.005	0.05	0.2	0.04	3.7	0.1	0	6	0.8	GROUP 1DX - 15.0 GM	A608934
CJ-01292	1	1.88	0.005	0.04	0.2	0.03	3.3	0.1	0	6	0.8	GROUP 1DX - 15.0 GM	A608934
CJ-01293	0	2.02	0.003	0.04	0.1	0.01	3.1	0.1	0.07	7	3.6	GROUP 1DX - 15.0 GM	A608934
CJ-01294	0	1.36	0.002	0.06	0.2	0.01	2.5	0.1	0.07	4	1.8	GROUP 1DX - 15.0 GM	A608934
CJ-01295	0	1.64	0.002	0.02	0.2	0.02	3.2	0.1	0	6	0.9	GROUP 1DX - 15.0 GM	A608934
CJ-01296	0	1.72	0.001	0.02	0.1	0.01	2.6	0	0	5	0.5	GROUP 1DX - 15.0 GM	A608934
CJ-01297	0	1.62	0.003	0.02	0.2	0.01	2.7	0	0	5	1.2	GROUP 1DX - 15.0 GM	A608934
CJ-01298	1	1.74	0.005	0.03	0.1	0.02	3.4	0.1	0	5	0.6	GROUP 1DX - 15.0 GM	A608934
CJ-01299	1	1.96	0.005	0.04	0.2	0.01	3.8	0.1	0	6	0.5	GROUP 1DX - 15.0 GM	A608934
CJ-01300	1	1.93	0.005	0.03	0.2	0.01	2.6	0.1	0	6	0.5	GROUP 1DX - 15.0 GM	A608934
CJ-06891	0	1.11	0.003	0.1	0.1	0.02	2.5	0.1	0	3	0	GROUP 1DX - 15.0 GM	A608935
CJ-06892	1	1.13	0.004	0.05	0.1	0.03	1.5	0.1	0	4	0	GROUP 1DX - 15.0 GM	A608935
CJ-06893	1	1.35	0.004	0.05	0.2	0.03	1.7	0.1	0.06	5	0	GROUP 1DX - 15.0 GM	A608935
CJ-06894	1	1.26	0.002	0.12	0.2	0.02	2.9	0.1	0	3	0	GROUP 1DX - 15.0 GM	A608935
CJ-06895	0	1.39	0.004	0.07	0.2	0.03	2	0.1	0	5	0	GROUP 1DX - 15.0 GM	A608935
CJ-06896	1	0.97	0.004	0.05	0.2	0.02	1.4	0.1	0	4	0	GROUP 1DX - 15.0 GM	A608935
CJ-06897	1	1.1	0.004	0.06	0.2	0.03	1.9	0.1	0	4	0	GROUP 1DX - 15.0 GM	A608935
CJ-06898	1	1.12	0.004	0.05	0.2	0.02	1.8	0.1	0	4	0	GROUP 1DX - 15.0 GM	A608935
CJ-06899	1	1.14	0.005	0.05	0.2	0.02	1.6	0.1	0	4	0	GROUP 1DX - 15.0 GM	A608935
CJ-06900	0	0.72	0.003	0.1	0.1	0.01	1.4	0.1	0	3	0	GROUP 1DX - 15.0 GM	A608935
CJ-06927	2	1.55	0.006	0.03	0.3	0.02	2.4	0.1	0	6	0	GROUP 1DX - 15.0 GM	A608935
CJ-06928	2	1.48	0.013	0.04	0.3	0.05	3.2	0.1	0	5	1.2	GROUP 1DX - 15.0 GM	A608935
CJ-09031	1	1.62	0.005	0.04	0.1	0.02	2.2	0.1	0	5	1	GROUP 1DX - 15.0 GM	A608935
CJ-09032	0	1.69	0.006	0.05	0.1	0.03	2.1	0.1	0	5	1	GROUP 1DX - 15.0 GM	A608935
CJ-09033	1	1.63	0.006	0.05	0.2	0.06	3.1	0.1	0	5	0.8	GROUP 1DX - 15.0 GM	A608935
CJ-09034	1	1.23	0.004	0.03	0.1	0.03	0.8	0	0	8	0.5	GROUP 1DX - 15.0 GM	A608935

SAMPLES	Datum	Easting	Northing	Mo	Cu	Pb	Zn	Ag	Ni	Co	Mn	Fe
CJ-09035	NAD83-7V	599480	7083669	1.6	32.8	42.9	62	2.4	10.5	4	172	2.9
CJ-09036	NAD83-7V	599475	7083769	2.4	58.8	27.7	183	0.6	27.7	17.6	850	3.76
CJ-09037	NAD83-7V	599474	7083868	1.8	45.8	28.5	164	0.5	19.1	19.6	639	2.95
CJ-09038	NAD83-7V	599471	7083916	2.3	58.4	27.5	289	0.6	24.8	15.1	688	3.4
CJ-09039	NAD83-7V	599466	7083969	2.3	98.6	16.6	504	0.4	24	13.3	909	3.2
CJ-09040	NAD83-7V	599665	7083977	3	69.8	16.4	109	0.2	35.1	20.6	908	3.71
CJ-09041	NAD83-7V	599668	7083931	1.7	59.3	14	86	0.3	29.3	15.5	797	3.43
CJ-09042	NAD83-7V	599670	7083879	1.9	37	23.2	152	0.3	16.7	10.3	607	2.71
CJ-09043	NAD83-7V	599670	7083828	1.7	36.2	22.6	87	0.1	25.9	10.5	454	3.2
CJ-09044	NAD83-7V	599673	7083777	1.7	93.3	23.2	205	0.4	28.6	11.8	495	3.17
CJ-09045	NAD83-7V	599675	7083728	1.8	28.6	34	88	0	16.7	9.7	352	3.31
CJ-09046	NAD83-7V	599674	7083679	3.3	40.6	29.9	82	0.4	14.3	8.7	421	4.42
CJ-09047	NAD83-7V	599677	7083627	1.7	27.9	13	87	0.2	14.8	12.4	466	3.22
CJ-09048	NAD83-7V	599681	7083527	1.9	46.6	17.4	88	0.2	24.6	9.4	353	3.25
CJ-09049	NAD83-7V	599684	7083479	1.8	43.7	16	98	0.1	19.1	7	281	3.27
CJ-09050	NAD83-7V	599883	7083483	1.8	34.1	19	97	0.3	20.3	9.7	413	3.24
CJ-09109	NAD83-7V	599586	7083475	1.8	21.6	16.9	70	0	19.7	8.3	293	3.98
CJ-09110	NAD83-7V	599586	7083524	2.2	35.8	38.2	90	0.3	18.9	9.6	341	3.64
CJ-09111	NAD83-7V	599583	7083574	3.7	50.6	112.8	109	1.4	16.3	8.5	207	4.53
CJ-09112	NAD83-7V	599580	7083673	4.3	61.5	30.4	134	0.4	17	8.1	395	3.92
CJ-09113	NAD83-7V	599577	7083724	2.8	64.8	31.9	143	0.7	26.3	11.5	413	3.65
CJ-09114	NAD83-7V	599573	7083773	2.1	50	21.6	130	0.5	20.6	11.3	576	3.66
CJ-09115	NAD83-7V	599571	7083823	2	49.8	36.2	137	0.4	24.1	15.6	919	3.07
CJ-09116	NAD83-7V	599571	7083872	2.6	49.9	27.3	205	0.5	20.4	14.9	974	3.26
CJ-09117	NAD83-7V	599568	7083922	3.1	106.4	21.5	886	0.6	32.6	19.2	1360	4.21
CJ-09118	NAD83-7V	599566	7083975	2.4	72	23.8	442	0.4	30.2	16.2	890	3.54
CJ-09119	NAD83-7V	599766	7083981	1.8	35.7	49.3	99	0.1	20.9	10.2	483	3.13
CJ-09120	NAD83-7V	599766	7083931	2	79.5	46.9	147	0.1	43.3	17.9	990	4.19
CJ-09121	NAD83-7V	599881	7083532	1.7	47.2	33.2	127	0.3	22.3	10.2	448	3.48
CJ-09122	NAD83-7V	599881	7083583	1.9	56.2	29.1	114	0.2	25.2	13.2	625	3.49
CJ-09123	NAD83-7V	599876	7083633	2.2	74.8	46.6	178	0.4	31.8	17.2	856	3.77
CJ-09124	NAD83-7V	599879	7083684	1.3	108.9	14.8	95	0.2	28.4	11.9	374	2.96
CJ-09125	NAD83-7V	599876	7083738	2.9	195.7	17.1	119	0.2	36.5	16.1	607	3.78
CJ-09126	NAD83-7V	599871	7083783	1.3	55.3	21.1	85	0.4	23.3	10.1	233	2.73
CJ-09127	NAD83-7V	599872	7083833	1.5	17.2	27	70	0.2	10	4.2	208	3.13
CJ-09128	NAD83-7V	599869	7083883	1.3	40.1	15.8	87	0.2	29	17.1	896	3.42

SAMPLES	As	U	Au	Th	Sr	Cd	Sb	Bi	V	Ca	P	La	Cr	Mg	Ba	Ti
CJ-09035	10.9	1.4	15	2.4	19	0.2	0.5	0.3	29	0.16	0.104	15	17	0.79	152	0.012
CJ-09036	121.1	1.4	25	3.8	12	1.2	0.3	0.4	36	0.17	0.093	11	24	1.34	86	0.022
CJ-09037	92.3	1.1	4.4	2.3	17	0.8	0.4	0.4	35	0.22	0.075	11	21	1.16	132	0.013
CJ-09038	114.7	1.2	2.6	4.2	12	1.6	0.5	0.5	41	0.19	0.063	11	25	1.23	146	0.017
CJ-09039	60.2	1	2.9	1.3	16	3.7	0.3	0.5	50	0.34	0.073	15	29	1.34	151	0.017
CJ-09040	48.7	1.2	3.8	6.4	6	0.5	0.2	0.3	38	0.13	0.083	13	26	1.36	59	0.01
CJ-09041	46.7	1.2	4.4	2.1	10	0.4	0.4	0.2	53	0.19	0.057	14	28	1.05	160	0.018
CJ-09042	77.3	0.9	4.3	0.5	10	0.7	0.3	0.5	35	0.13	0.092	11	20	0.85	101	0.011
CJ-09043	116.2	1.1	8.1	1.1	8	0.4	0.4	0.3	43	0.11	0.071	12	28	0.76	114	0.016
CJ-09044	88.4	1.6	8.5	5.1	7	1.1	0.5	0.4	36	0.09	0.05	14	23	0.78	113	0.023
CJ-09045	68	0.8	2.4	1.7	7	0.3	0.4	0.5	42	0.06	0.067	11	25	0.67	96	0.019
CJ-09046	124.2	0.9	5.6	4.4	10	0.2	0.4	0.4	32	0.05	0.089	9	22	1.05	125	0.013
CJ-09047	20.7	0.7	5.5	2.7	8	0.3	0.4	0.4	54	0.08	0.067	12	25	0.84	114	0.027
CJ-09048	13.2	1	6.5	3.7	6	0.3	0.5	0.5	50	0.05	0.043	11	32	0.84	118	0.033
CJ-09049	25.3	1	5.8	3.7	6	0.2	0.3	0.4	40	0.05	0.051	12	27	1	83	0.024
CJ-09050	89.8	1	6.9	3.2	9	0.2	0.3	0.3	46	0.05	0.05	13	29	1.04	132	0.022
CJ-09109	34.3	0.7	2.6	1.5	8	0.4	0.8	0.3	63	0.08	0.074	11	30	0.53	103	0.031
CJ-09110	12.2	0.7	4.7	3	8	0.2	0.7	0.2	54	0.05	0.06	13	33	1.38	120	0.016
CJ-09111	9.1	1.3	16.6	3.7	43	0.4	1.1	0.4	34	0.04	0.096	6	24	1.21	187	0.007
CJ-09112	52.8	1.2	8.5	3.5	10	0.2	0.4	0.6	37	0.04	0.115	9	33	1.36	85	0.012
CJ-09113	119.6	1.5	19.5	1.1	9	0.7	0.3	0.6	33	0.09	0.117	9	26	0.92	82	0.011
CJ-09114	124.1	1.7	28.6	3.4	19	0.8	0.2	0.5	31	0.18	0.117	10	22	1.15	73	0.014
CJ-09115	171.3	1.2	3.7	1.2	9	1.1	0.4	0.6	39	0.14	0.081	10	23	0.73	104	0.017
CJ-09116	203.5	0.9	2.6	1.5	21	1.1	0.4	0.7	37	0.51	0.09	10	21	1.08	115	0.014
CJ-09117	157	1.1	4.8	5.1	11	4.6	0.4	0.7	54	0.18	0.094	13	33	1.62	143	0.016
CJ-09118	67	1	4.4	5.2	14	1.9	0.5	0.6	54	0.27	0.065	13	33	1.33	169	0.018
CJ-09119	61.9	1	3.4	0.6	8	0.4	0.5	0.4	53	0.1	0.068	13	30	0.66	125	0.018
CJ-09120	118.2	1	7.8	5	6	0.6	0.5	0.7	45	0.11	0.066	14	32	1.02	82	0.018
CJ-09121	97	1.4	24.6	4.6	6	0.4	0.5	0.5	39	0.04	0.053	13	26	1.02	93	0.019
CJ-09122	61.3	1.2	5.9	4	5	0.5	0.5	0.4	40	0.04	0.048	13	28	0.89	113	0.019
CJ-09123	103.8	1.5	5.4	6.2	4	0.7	0.5	0.5	37	0.03	0.047	14	26	1	85	0.016
CJ-09124	40	1.3	6.3	4.3	5	0.5	0.6	0.3	43	0.05	0.036	12	30	0.85	115	0.028
CJ-09125	101.5	1	8.5	5.4	5	0.5	0.7	0.4	50	0.06	0.051	13	37	1.33	80	0.02
CJ-09126	14.5	0.8	8.5	6	8	0.4	0.7	0.2	38	0.07	0.033	11	25	0.7	117	0.037
CJ-09127	10.3	0.4	2.7	1.6	7	0.1	0.6	0.5	54	0.05	0.055	13	20	0.7	95	0.029
CJ-09128	40.5	0.8	3.7	4.6	8	0.4	0.5	0.2	62	0.08	0.047	17	36	0.96	248	0.02

SAMPLES	B	Al	Na	K	W	Hg	Sc	Tl	S	Ga	Se	Analysis__	Acme_file_#
CJ-09035	1	1.32	0.004	0.04	0.1	0.11	2.9	0.1	0	4	2.2	GROUP 1DX - 15.0 GM	A608935
CJ-09036	0	1.61	0.004	0.03	0.1	0.02	2.5	0.1	0	5	1.2	GROUP 1DX - 15.0 GM	A608935
CJ-09037	0	1.51	0.004	0.03	0.1	0.06	1.9	0.1	0	5	1.1	GROUP 1DX - 15.0 GM	A608935
CJ-09038	1	1.8	0.004	0.04	0.3	0.03	2.4	0.1	0	5	1.2	GROUP 1DX - 15.0 GM	A608935
CJ-09039	1	1.84	0.005	0.04	0.1	0.03	2.1	0.1	0	6	0.9	GROUP 1DX - 15.0 GM	A608935
CJ-09040	0	1.76	0.002	0.02	0.1	0	2.3	0	0	5	0.6	GROUP 1DX - 15.0 GM	A608935
CJ-09041	0	1.94	0.005	0.03	0.1	0.03	3.9	0.1	0	6	0.6	GROUP 1DX - 15.0 GM	A608935
CJ-09042	1	1.26	0.004	0.03	0.1	0.02	0.9	0.1	0	5	0.9	GROUP 1DX - 15.0 GM	A608935
CJ-09043	1	1.54	0.004	0.03	0.1	0.03	1.7	0.1	0	5	0.8	GROUP 1DX - 15.0 GM	A608935
CJ-09044	0	1.44	0.004	0.03	0.1	0.04	2.9	0.1	0	4	1.1	GROUP 1DX - 15.0 GM	A608935
CJ-09045	0	1.4	0.003	0.03	0.1	0.02	1.9	0.1	0	5	0.9	GROUP 1DX - 15.0 GM	A608935
CJ-09046	0	1.38	0.012	0.04	0.1	0.02	2.3	0	0.09	4	1.7	GROUP 1DX - 15.0 GM	A608935
CJ-09047	1	1.75	0.004	0.03	0.1	0.02	2.1	0.1	0	6	0.6	GROUP 1DX - 15.0 GM	A608935
CJ-09048	1	2.05	0.004	0.03	0.1	0.03	2.6	0.1	0	5	0.5	GROUP 1DX - 15.0 GM	A608935
CJ-09049	1	1.75	0.003	0.02	0.1	0.02	2.3	0.1	0	4	0.9	GROUP 1DX - 15.0 GM	A608935
CJ-09050	0	1.89	0.004	0.03	0.1	0.03	2.8	0.1	0	6	0.7	GROUP 1DX - 15.0 GM	A608935
CJ-09109	1	1.57	0.005	0.04	0.2	0.03	2	0.1	0	6	0.7	GROUP 1DX - 15.0 GM	A608935
CJ-09110	1	1.71	0.007	0.03	0.1	0.04	3.7	0.1	0	5	1.2	GROUP 1DX - 15.0 GM	A608935
CJ-09111	0	1.26	0.011	0.1	0.1	0.05	2.2	0.1	0.29	4	2.3	GROUP 1DX - 15.0 GM	A608935
CJ-09112	1	1.56	0.004	0.03	0.1	0.02	2.2	0	0	5	2.6	GROUP 1DX - 15.0 GM	A608935
CJ-09113	0	1.41	0.004	0.02	0.1	0.06	1.8	0.1	0	4	1.7	GROUP 1DX - 15.0 GM	A608935
CJ-09114	1	1.4	0.005	0.02	0.1	0.02	1.7	0	0	4	1.3	GROUP 1DX - 15.0 GM	A608935
CJ-09115	0	1.34	0.004	0.03	0.1	0.03	1.6	0.1	0	5	0.9	GROUP 1DX - 15.0 GM	A608935
CJ-09116	0	1.34	0.005	0.03	0.2	0.02	1.5	0.1	0	5	1.2	GROUP 1DX - 15.0 GM	A608935
CJ-09117	0	2.16	0.004	0.04	0.1	0.04	3.4	0.1	0	7	1.1	GROUP 1DX - 15.0 GM	A608935
CJ-09118	0	2	0.004	0.03	0.1	0.03	3.3	0.1	0	6	0.8	GROUP 1DX - 15.0 GM	A608935
CJ-09119	0	1.58	0.007	0.03	0.1	0.02	1.4	0.1	0	6	0.8	GROUP 1DX - 15.0 GM	A608935
CJ-09120	0	1.71	0.003	0.04	0.2	0.02	2.6	0.1	0	6	0.9	GROUP 1DX - 15.0 GM	A608935
CJ-09121	0	1.67	0.004	0.04	0.1	0.03	2.8	0.1	0	5	1.1	GROUP 1DX - 15.0 GM	A608935
CJ-09122	0	1.67	0.004	0.03	0.1	0.04	2.5	0.1	0	5	0.6	GROUP 1DX - 15.0 GM	A608935
CJ-09123	0	1.65	0.003	0.03	0.1	0.04	3.1	0.1	0	5	1	GROUP 1DX - 15.0 GM	A608935
CJ-09124	0	1.89	0.003	0.03	0.2	0.04	3	0.1	0	5	0.8	GROUP 1DX - 15.0 GM	A608935
CJ-09125	0	2.14	0.003	0.03	0.1	0.03	2.5	0.1	0	6	1.1	GROUP 1DX - 15.0 GM	A608935
CJ-09126	0	1.61	0.007	0.05	0.2	0.04	2.7	0.1	0	4	0.7	GROUP 1DX - 15.0 GM	A608935
CJ-09127	0	1.31	0.004	0.03	0.1	0.02	1.5	0.1	0	8	0.9	GROUP 1DX - 15.0 GM	A608935
CJ-09128	0	2.21	0.004	0.04	0.2	0.03	4	0.1	0	7	0.6	GROUP 1DX - 15.0 GM	A608935

SAMPLES	Datum	Easting	Northing	Mo	Cu	Pb	Zn	Ag	Ni	Co	Mn	Fe
CJ-09129	NAD83-7V	599865	7083932	2.6	57.1	17.2	159	0	42.2	15.9	610	4.08
CJ-09130	NAD83-7V	599868	7083981	2.8	74.1	30.5	114	0.3	58.8	27.4	1138	4.53
CJ-09131	NAD83-7V	599533	7083430	1.9	36.1	25.5	88	0.3	18.5	7.2	238	3.44
CJ-09132	NAD83-7V	599472	7083363	2.4	21.9	46.6	66	0.1	16.8	11.2	497	3.73
CJ-09133	NAD83-7V	599409	7083289	1.5	31.4	22.1	71	0.2	31.7	13.4	445	2.9
CJ-09134	NAD83-7V	599337	7083214	2.7	39.1	49.1	118	0.2	26.6	11.3	560	3.75
CJ-09135	NAD83-7V	599275	7083154	6.4	46	89.2	214	0.5	35.6	24.8	1083	4.6
CJ-09136	NAD83-7V	599190	7083081	1.4	16.6	14.3	57	0.1	14.5	6.9	262	2.69
CJ-09137	NAD83-7V	599092	7083101	1.8	31.6	22.2	80	0.3	22	11	523	3.11
CJ-09138	NAD83-7V	598999	7083140	9	159.3	131	267	1.3	30.1	14.4	557	5.46
CJ-09139	NAD83-7V	598899	7083173	3.7	51.4	37.8	137	0.5	13.3	6.9	202	4.25
CJ-09140	NAD83-7V	598796	7083211	2.1	49	44.8	159	0.5	18.2	8.5	299	3.41
CJ-09141	NAD83-7V	598734	7083277	3.1	61.1	98.2	143	0.6	13.7	4.9	265	3.76
CJ-09142	NAD83-7V	598665	7083364	3.4	33.6	43.3	80	0.5	14.3	7.9	381	3.31
CJ-09143	NAD83-7V	598595	7083435	1.6	50.1	30.5	153	0.4	35.4	24.4	860	4.15
CJ-09144	NAD83-7V	598546	7083513	0.8	32.9	24.6	68	0.1	8.4	6.2	346	1.6
CJ-09145	NAD83-7V	598476	7083597	0.9	30.2	40.5	89	0.1	11.1	5.9	305	1.89
CJ-09146	NAD83-7V	598427	7083672	0.6	5.8	13	26	0	4.4	2.4	118	1.19
CJ-09147	NAD83-7V	598355	7083747	0.5	11	11.4	62	0	8.8	5.8	318	1.68
CJ-09148	NAD83-7V	598285	7083822	1.4	11.7	18.2	41	0	8.8	3.8	158	2.1
CJ-09149	NAD83-7V	598207	7083908	0.7	3.7	9.9	16	0	2.3	1.5	81	0.74
CJ-09150	NAD83-7V	598150	7084010	1.3	8.8	28.9	34	0.1	5.6	3.6	183	1.58
CJ-09151	NAD83-7V	599766	7083882	2.2	65.1	35.8	270	0.8	22.6	12	716	3.2
CJ-09152	NAD83-7V	599770	7083832	2.6	43.8	23.4	121	0.1	27.2	14.5	669	3.43
CJ-09153	NAD83-7V	599770	7083782	2.2	35.8	40.9	130	0.1	17.7	14.3	822	3.75
CJ-09154	NAD83-7V	599772	7083733	1.7	15.5	14.6	47	0.1	10.6	4.6	168	2.63
CJ-09155	NAD83-7V	599775	7083681	1.5	16.4	13.5	96	0.2	15.8	8.1	299	3.2
CJ-09156	NAD83-7V	599778	7083583	2.4	25.5	24.4	69	0.3	19.8	7	202	3.59
CJ-09157	NAD83-7V	599780	7083531	2.4	54.2	15.5	105	0.3	21.7	10.4	464	3.73
CJ-09158	NAD83-7V	599784	7083482	1.1	24.1	11.8	61	0.1	13.8	9.3	418	2.13
CJ-09159	NAD83-7V	599988	7083482	0.9	33	12.1	104	0.2	20.3	11.6	457	3.48
CJ-09160	NAD83-7V	599983	7083539	1	24.2	12.8	75	0.4	15.1	12.1	692	2.83
CJ-09161	NAD83-7V	599982	7083588	0.7	20.2	12	83	0.3	15.7	12.9	654	2.87
CJ-09162	NAD83-7V	599979	7083636	0.8	33.1	12.3	74	0.3	21.7	11.2	504	2.79
CJ-09163	NAD83-7V	599975	7083687	1.2	43.8	29.8	206	0.6	19.9	12.2	864	3.16
CJ-09164	NAD83-7V	599973	7083738	1.3	37.2	18.4	156	0.5	20.4	11.2	537	3.03

SAMPLES	As	U	Au	Th	Sr	Cd	Sb	Bi	V	Ca	P	La	Cr	Mg	Ba	Ti
CJ-09129	68.4	1.2	18.1	7.9	4	0.5	0.2	0.3	32	0.11	0.097	16	31	1.17	50	0.005
CJ-09130	112.8	1.9	3.5	4.4	7	0.8	0.3	0.5	32	0.15	0.126	15	28	1.14	88	0.008
CJ-09131	60.6	1.2	8.2	4.4	10	0.2	0.6	0.2	46	0.1	0.082	13	27	0.78	133	0.027
CJ-09132	40.9	0.7	2.4	2.3	9	0.2	0.8	0.4	50	0.07	0.064	12	25	0.87	108	0.022
CJ-09133	54	0.9	12.1	3.4	10	0.3	0.7	0.3	50	0.12	0.064	13	30	0.7	135	0.036
CJ-09134	55.3	1.3	8.5	1.3	8	0.6	0.6	0.3	44	0.09	0.085	11	25	0.82	122	0.016
CJ-09135	734.5	1.4	25.6	4.1	5	1.2	0.5	0.4	36	0.07	0.092	12	24	1.61	111	0.012
CJ-09136	22.6	0.5	3.8	0.2	9	0.3	0.6	0.2	54	0.12	0.111	9	24	0.47	91	0.019
CJ-09137	67.9	0.9	5.4	2.8	10	0.7	0.6	0.2	53	0.09	0.06	12	28	0.75	150	0.031
CJ-09138	200.2	0.8	28.3	4.2	24	0.5	0.5	3	36	0.04	0.113	7	24	1.5	94	0.008
CJ-09139	53	0.9	3.4	3.6	28	0.3	0.3	0.3	25	0.03	0.075	8	14	0.89	127	0.011
CJ-09140	131.4	0.8	12.1	2.3	19	0.6	0.7	0.7	43	0.07	0.058	9	23	0.65	167	0.022
CJ-09141	150.1	0.7	12.5	2.1	15	0.1	0.9	0.9	44	0.06	0.069	10	23	1	132	0.02
CJ-09142	93.3	0.6	7	0.5	12	0.3	0.8	0.3	39	0.05	0.089	8	19	1.1	70	0.008
CJ-09143	35.4	0.9	10.8	3.7	15	0.5	0.6	0.2	89	0.07	0.063	8	57	2.39	126	0.063
CJ-09144	5.9	2.4	5.2	2.8	7	0.3	0.4	0.3	17	0.05	0.035	28	11	0.42	133	0.014
CJ-09145	9	2.1	3.7	9.6	10	0.3	0.5	0.3	26	0.09	0.033	23	15	0.52	138	0.042
CJ-09146	5.4	0.6	2.3	1.5	6	0	0.3	0.3	26	0.05	0.018	17	9	0.35	144	0.04
CJ-09147	17.9	0.9	61	13	5	0.1	0.4	0.2	15	0.04	0.013	28	11	0.71	186	0.017
CJ-09148	18.5	0.9	5.2	5.4	6	0.1	0.5	0.1	32	0.04	0.025	15	14	0.29	99	0.045
CJ-09149	9.4	0.8	3.8	5.2	4	0.1	0.2	0.1	16	0.02	0.013	21	4	0.1	85	0.015
CJ-09150	34.3	1.6	6.1	5.3	10	0.2	0.4	0.2	25	0.04	0.028	25	10	0.26	164	0.016
CJ-09151	48	1	6.4	4.6	18	1.2	0.4	0.6	26	0.13	0.078	15	18	1.26	111	0.007
CJ-09152	114	1.1	39.1	2.8	6	0.6	0.4	0.5	38	0.09	0.083	11	23	0.9	97	0.015
CJ-09153	38.4	1.2	2.4	3.2	3	0.5	0.6	0.4	20	0.05	0.063	15	14	0.95	52	0.008
CJ-09154	67.4	0.6	5.9	0.3	10	0.2	0.5	0.3	48	0.07	0.052	11	24	0.63	115	0.016
CJ-09155	38.9	0.5	2.4	2	8	0.3	0.7	0.3	62	0.07	0.057	9	27	0.55	141	0.03
CJ-09156	46.4	0.8	6.5	4	8	0.2	0.6	0.4	49	0.05	0.047	10	27	0.75	114	0.032
CJ-09157	322.8	1.8	13.5	4.8	16	0.8	0.8	0.4	34	0.03	0.065	15	20	1.2	81	0.011
CJ-09158	45.1	0.6	5.2	2.3	6	0.3	0.3	0.2	27	0.06	0.045	8	13	0.72	56	0.016
CJ-09159	20.7	0.7	5.7	3.8	6	0.2	0.3	0.2	59	0.06	0.041	11	26	1.1	169	0.023
CJ-09160	16.6	0.7	5	1.5	6	0.3	0.3	0.2	46	0.08	0.071	9	22	0.87	127	0.02
CJ-09161	18.1	0.6	2.6	2.4	7	0.3	0.3	0.2	48	0.08	0.062	10	24	0.96	138	0.02
CJ-09162	19.4	1.4	2.7	3.6	8	0.3	0.6	0.2	49	0.09	0.056	12	26	0.76	131	0.034
CJ-09163	48.2	1.5	5.7	3	6	0.7	0.6	0.7	42	0.05	0.054	14	25	0.9	132	0.023
CJ-09164	46.5	0.9	3.9	3.2	6	0.5	0.5	0.5	43	0.05	0.047	14	25	0.97	117	0.017

SAMPLES	B	Al	Na	K	W	Hg	Sc	Tl	S	Ga	Se	Analysis__	Acme_file_#
CJ-09129	0	1.69	0.002	0.02	0.1	0.02	2.1	0	0	5	1.5	GROUP 1DX - 15.0 GM	A608935
CJ-09130	0	1.43	0.002	0.02	0.1	0.02	2.1	0	0	4	1.6	GROUP 1DX - 15.0 GM	A608935
CJ-09131	0	1.78	0.006	0.04	0.1	0.03	2.6	0.1	0	5	1	GROUP 1DX - 15.0 GM	A608935
CJ-09132	0	1.79	0.005	0.04	0.2	0.02	2.2	0.1	0	6	0.8	GROUP 1DX - 15.0 GM	A608935
CJ-09133	2	1.73	0.005	0.04	0.2	0.03	2.8	0.1	0	6	0.7	GROUP 1DX - 15.0 GM	A608935
CJ-09134	0	1.71	0.004	0.04	0.1	0.03	1.8	0.1	0	6	1.4	GROUP 1DX - 15.0 GM	A608935
CJ-09135	0	1.98	0.002	0.03	0.1	0.02	2.5	0.1	0	5	2.2	GROUP 1DX - 15.0 GM	A608935
CJ-09136	0	1.33	0.005	0.08	0.1	0.04	0.8	0.1	0	6	0.5	GROUP 1DX - 15.0 GM	A608935
CJ-09137	0	1.69	0.005	0.04	0.1	0.03	2.6	0.1	0	6	0.9	GROUP 1DX - 15.0 GM	A608935
CJ-09138	0	1.87	0.007	0.05	0.1	0.02	2.2	0	0.1	5	6.9	GROUP 1DX - 15.0 GM	A608935
CJ-09139	0	1.19	0.02	0.05	0.1	0.01	1.5	0	0.14	3	1.8	GROUP 1DX - 15.0 GM	A608935
CJ-09140	0	1.56	0.009	0.05	0.1	0.03	1.9	0.1	0	5	1.6	GROUP 1DX - 15.0 GM	A608935
CJ-09141	0	1.61	0.006	0.05	0.1	0.03	1.5	0.1	0.09	5	2.7	GROUP 1DX - 15.0 GM	A608935
CJ-09142	0	1.36	0.005	0.03	0.1	0.04	0.8	0.1	0.08	5	1.8	GROUP 1DX - 15.0 GM	A608935
CJ-09143	0	2.41	0.004	0.09	0.2	0.03	7.1	0.2	0.06	7	1.1	GROUP 1DX - 15.0 GM	A608935
CJ-09144	0	0.85	0.003	0.07	0.1	0.02	0.9	0.1	0	3	0	GROUP 1DX - 15.0 GM	A608935
CJ-09145	0	1.18	0.004	0.08	0.2	0.02	2	0.1	0	4	0.6	GROUP 1DX - 15.0 GM	A608935
CJ-09146	0	0.83	0.003	0.05	0.1	0.01	1	0.1	0	5	0	GROUP 1DX - 15.0 GM	A608935
CJ-09147	0	1.27	0.003	0.06	0.1	0.02	2.1	0.1	0	3	0	GROUP 1DX - 15.0 GM	A608935
CJ-09148	0	1.08	0.004	0.05	0.2	0.02	1.4	0.1	0	4	0	GROUP 1DX - 15.0 GM	A608935
CJ-09149	0	0.56	0.003	0.05	0.1	0	0.6	0.1	0	4	0	GROUP 1DX - 15.0 GM	A608935
CJ-09150	0	0.82	0.004	0.08	0.1	0.01	1	0.1	0	3	0	GROUP 1DX - 15.0 GM	A608935
CJ-09151	0	1.39	0.004	0.02	0.1	0.03	2.1	0	0	4	1.3	GROUP 1DX - 15.0 GM	A608935
CJ-09152	0	1.53	0.003	0.02	0.1	0.01	1.9	0.1	0	5	1	GROUP 1DX - 15.0 GM	A608935
CJ-09153	0	1.23	0.002	0.02	0.1	0.01	1.3	0	0	3	1.6	GROUP 1DX - 15.0 GM	A608935
CJ-09154	0	1.56	0.005	0.03	0.1	0.02	0.9	0.1	0	6	0.8	GROUP 1DX - 15.0 GM	A608935
CJ-09155	0	1.92	0.006	0.04	0.2	0.02	2.3	0.1	0	6	0.6	GROUP 1DX - 15.0 GM	A608935
CJ-09156	0	1.94	0.005	0.03	0.2	0.04	2.6	0.1	0	6	1	GROUP 1DX - 15.0 GM	A608935
CJ-09157	0	1.82	0.004	0.02	0.1	0.03	2.5	0.1	0	5	1.3	GROUP 1DX - 15.0 GM	A608935
CJ-09158	0	1.06	0.003	0.02	0.1	0.02	1.5	0	0	3	0.7	GROUP 1DX - 15.0 GM	A608935
CJ-09159	0	2.25	0.005	0.03	0.1	0.02	4	0.1	0	6	0.5	GROUP 1DX - 15.0 GM	A608935
CJ-09160	0	1.71	0.004	0.02	0.1	0.01	2.3	0.1	0	5	0	GROUP 1DX - 15.0 GM	A608935
CJ-09161	0	1.84	0.004	0.02	0.1	0.02	2.6	0.1	0	6	0	GROUP 1DX - 15.0 GM	A608935
CJ-09162	0	1.7	0.006	0.03	0.2	0.02	3.4	0.1	0	5	0.6	GROUP 1DX - 15.0 GM	A608935
CJ-09163	0	1.8	0.005	0.03	0.1	0.03	2.9	0.1	0	5	0.9	GROUP 1DX - 15.0 GM	A608935
CJ-09164	0	1.9	0.004	0.03	0.1	0.02	2.4	0.1	0	5	0.7	GROUP 1DX - 15.0 GM	A608935

SAMPLES	Datum	Easting	Northing	Mo	Cu	Pb	Zn	Ag	Ni	Co	Mn	Fe
CJ-09165	NAD83-7V	599977	7083785	1	38.8	13.7	75	0.3	22.9	10.3	396	2.95
CJ-09166	NAD83-7V	599971	7083837	1.3	42.2	23.9	93	0.1	21	10.7	493	3.54
CJ-09167	NAD83-7V	599968	7083887	1.3	31.3	20.8	79	0	22.3	8.3	270	3.09
CJ-09168	NAD83-7V	599964	7083937	1.8	42.9	42.2	91	0.1	34.2	14.6	582	3.46
CJ-09169	NAD83-7V	599966	7083987	2	36.1	36	138	0.3	26.3	15	695	3.12
CJ-09170	NAD83-7V	597796	7084387	1.3	12	29.7	61	0.3	9	4.4	145	1.61
CJ-09171	NAD83-7V	597828	7084424	0.7	175.5	979.5	716	0.4	116.1	66.7	2788	5.08
CJ-09173	NAD83-7V	597859	7084464	0.6	165.5	1007.3	705	0.7	67.6	10.1	1151	4.99
CJ-09174	NAD83-7V	597891	7084502	0.7	257.5	226.3	341	1.3	21.5	53.3	2700	4.62
CJ-09175	NAD83-7V	597924	7084540	1.3	92.6	98.1	333	0.6	20.8	12.8	769	3.53
CJ-09176	NAD83-7V	597954	7084580	1.3	57.5	133.4	190	0.7	15.5	5.2	446	3.05
CJ-09177	NAD83-7V	597988	7084619	0.9	42.8	77.7	158	0.5	14.9	6.4	364	2.32
CJ-09178	NAD83-7V	598019	7084657	0.8	35.4	68.3	161	0.5	12.3	4.2	278	2.42
CJ-09179	NAD83-7V	598082	7084736	0.7	44.3	85.2	197	0.5	18.8	7.6	435	2.57
CJ-09180	NAD83-7V	598111	7084775	0.9	34.3	82.2	175	0.4	24.3	8.5	420	2.29
CJ-09181	NAD83-7V	598145	7084813	1.8	42.7	32.9	135	0.4	24.4	11.1	607	3.38
CJ-09182	NAD83-7V	598176	7084852	1.8	51.4	58.7	171	0.3	29.4	13.2	705	3.75
CJ-09183	NAD83-7V	598022	7084979	1.4	32.2	115.4	206	0.3	18.6	11.6	564	2.6
CJ-09184	NAD83-7V	597989	7084943	0.8	35.3	36	139	0.3	13.8	8.6	323	2.13
CJ-09185	NAD83-7V	597958	7084903	0.7	29	40.9	99	0.4	16.6	5.5	214	2.12
CJ-09186	NAD83-7V	597927	7084865	0.6	192.3	35.8	414	0.8	25	14.8	1130	4.3
CJ-09187	NAD83-7V	597895	7084826	0.8	72.1	130.7	273	0.7	48.9	13.8	831	3.27
CJ-09188	NAD83-7V	597863	7084787	0.8	40.8	91.6	141	0.4	26.6	8.7	362	2.07
CJ-09189	NAD83-7V	597832	7084749	1.2	22.4	89.5	80	0.2	15.3	5.1	192	1.99
CJ-09190	NAD83-7V	597799	7084710	0.9	49.1	204.4	265	0.3	23.9	7.2	394	2.52
CJ-09191	NAD83-7V	597768	7084673	1	19.8	73.1	65	0.2	10.1	5	212	1.47
CJ-09192	NAD83-7V	597734	7084632	0.8	16.7	35.8	63	0	9.4	4.7	168	1.4
CJ-09193	NAD83-7V	597704	7084594	1.1	24.2	39.6	56	0.2	18.4	8.2	261	2.5
CJ-09194	NAD83-7V	597671	7084555	1.5	17.3	27.4	80	0.3	22	9.9	407	2.81
CJ-09195	NAD83-7V	597638	7084517	1.4	19.6	27.4	119	0.4	13.7	5	270	2.06
CJ-09196	NAD83-7V	597606	7084477	1.2	15	54.8	86	0.3	11.6	4.5	173	1.89
CJ-09197	NAD83-7V	597578	7084437	1	14.2	51.7	78	0.5	4.5	2.3	118	0.85
CJ-09198	NAD83-7V	597547	7084399	0.9	29.8	103.2	84	0.3	13.4	5.1	196	1.67
CJ-09199	NAD83-7V	597513	7084363	0.8	9.6	57.5	64	0.2	5.5	2.7	167	1.13
CJ-09200	NAD83-7V	597666	7084236	0.4	84.9	34.5	123	0.1	66.5	28	839	3.42
CJ-09201	NAD83-7V	597698	7084274	0.4	230.4	400	380	0.5	96.4	48.7	2614	4.77

SAMPLES	As	U	Au	Th	Sr	Cd	Sb	Bi	V	Ca	P	La	Cr	Mg	Ba	Ti
CJ-09165	27.1	1	9.1	4.6	6	0.3	0.5	0.3	48	0.05	0.038	16	29	0.86	141	0.018
CJ-09166	56.9	0.9	3.8	4	4	0.4	0.4	0.4	42	0.04	0.047	14	26	0.89	105	0.011
CJ-09167	66.9	0.7	4.2	3.7	5	0.3	0.4	0.3	42	0.05	0.036	13	26	0.67	101	0.019
CJ-09168	24.9	1	4.8	4	7	0.4	0.6	0.4	44	0.06	0.05	15	27	0.61	109	0.029
CJ-09169	72.5	0.7	0.9	2.3	9	1	0.5	0.8	48	0.12	0.076	13	22	0.51	108	0.026
CJ-09170	6.1	0.8	1.1	9.9	7	0.1	0.4	0.2	30	0.04	0.014	11	15	0.49	303	0.035
CJ-09171	9.1	1.6	1.9	3.1	7	2.3	0.4	0.5	130	0.05	0.023	12	299	5.91	132	0.013
CJ-09173	17.4	0.6	6.6	1.9	15	0.8	0.5	0.4	118	0.16	0.028	5	209	5.6	243	0.045
CJ-09174	6.4	0.6	19.4	2.4	6	2.5	0.4	2.5	51	0.12	0.058	9	27	2.74	157	0.046
CJ-09175	41.3	1.3	2.3	5.8	26	1.4	0.3	1	36	0.24	0.076	8	34	2.61	133	0.042
CJ-09176	23.5	1.5	2.6	6.5	28	0.5	0.4	1.1	40	0.11	0.049	14	35	1.81	319	0.053
CJ-09177	8	1.4	2.5	3.2	15	0.6	0.4	0.7	36	0.1	0.046	15	29	1.13	357	0.03
CJ-09178	7.9	1.2	1.4	2.1	15	0.3	0.3	0.9	35	0.12	0.051	15	26	1.16	427	0.023
CJ-09179	7.7	1.3	1.4	4.3	18	0.5	0.3	0.8	38	0.24	0.041	15	46	1.46	338	0.03
CJ-09180	79	1.2	1.2	5.2	22	0.7	0.3	0.5	41	0.41	0.038	14	64	1.55	224	0.03
CJ-09181	197.5	1.2	6.2	6	14	0.6	0.3	0.3	39	0.24	0.067	15	27	1.27	150	0.036
CJ-09182	199.9	1.1	7.3	6.2	8	0.6	0.4	0.4	42	0.13	0.058	15	27	1.24	104	0.024
CJ-09183	39.7	1.3	5.6	8.8	11	1.8	0.3	0.4	19	0.18	0.08	24	23	0.88	105	0.02
CJ-09184	17.9	1.7	2.7	7	10	0.4	0.3	0.3	24	0.13	0.055	24	22	0.81	146	0.019
CJ-09185	7.8	1.1	5.2	1.2	11	0.4	0.3	0.5	40	0.13	0.053	14	38	0.87	232	0.023
CJ-09186	5.4	2	5.6	6.7	27	2.3	0.2	1	39	0.19	0.078	19	43	3.05	192	0.051
CJ-09187	12.6	1.8	2.8	5	9	0.5	0.4	0.6	67	0.13	0.028	16	147	3.01	237	0.058
CJ-09188	7.1	1.9	1.7	7.8	14	0.4	0.5	0.3	44	0.15	0.027	23	59	1.18	435	0.046
CJ-09189	8	1.6	2.4	3.2	11	0.2	0.5	0.4	37	0.1	0.041	22	27	0.52	301	0.039
CJ-09190	6.5	2.5	1.4	10.4	19	0.4	0.5	0.3	34	0.11	0.035	28	59	1.45	508	0.059
CJ-09191	6.9	2.2	2.9	10.7	9	0.2	0.4	0.3	24	0.08	0.029	27	13	0.3	379	0.028
CJ-09192	6.9	1.8	2.7	9.4	9	0.1	0.4	0.2	27	0.07	0.02	32	16	0.29	336	0.031
CJ-09193	10.6	2.2	5.4	9.8	11	0.1	0.6	0.2	51	0.11	0.027	36	29	0.46	374	0.054
CJ-09194	12.7	0.8	0.6	6.5	11	0.3	0.6	0.2	62	0.1	0.028	16	32	0.5	316	0.055
CJ-09195	11.8	1.4	0	9.1	7	0.3	0.4	0.2	42	0.07	0.023	19	20	0.32	227	0.03
CJ-09196	10.9	1.8	1.6	11.3	7	0.2	0.5	0.2	37	0.06	0.019	28	20	0.33	245	0.028
CJ-09197	7.7	2.5	2	13.1	4	0.2	0.3	0.3	13	0.04	0.018	39	7	0.16	168	0.012
CJ-09198	9.3	2.7	2.3	12.8	9	0.3	0.5	0.2	31	0.09	0.022	41	18	0.36	272	0.036
CJ-09199	6.3	1.3	0.8	10.1	6	0.2	0.3	0.2	19	0.05	0.015	23	10	0.19	205	0.016
CJ-09200	11	0.4	1.9	1.1	4	0.2	0.3	0.2	61	0.1	0.009	3	188	2.71	122	0.095
CJ-09201	8.9	0.2	2.7	0.6	4	3	0.2	0.9	160	0.13	0.022	2	339	5.16	106	0.085

SAMPLES	B	Al	Na	K	W	Hg	Sc	Tl	S	Ga	Se	Analysis__	Acme_file_#
CJ-09165	0	1.99	0.005	0.03	0.1	0.02	3.1	0.1	0	6	0.6	GROUP 1DX - 15.0 GM	A608935
CJ-09166	0	2.07	0.003	0.03	0.1	0.02	2.2	0.1	0	5	0.8	GROUP 1DX - 15.0 GM	A608935
CJ-09167	1	1.72	0.003	0.03	0.1	0.02	2	0.1	0	5	0.6	GROUP 1DX - 15.0 GM	A608935
CJ-09168	0	1.75	0.005	0.03	0.1	0.02	2.8	0.1	0	5	0.8	GROUP 1DX - 15.0 GM	A608935
CJ-09169	0	1.63	0.004	0.03	0.1	0.03	1.6	0.1	0	6	0.8	GROUP 1DX - 15.0 GM	A608935
CJ-09170	0	1.33	0.005	0.05	0.1	0.01	1.7	0.1	0	4	0	GROUP 1DX - 15.0 GM	A608935
CJ-09171	0	4.52	0.002	0.03	0	0.02	15.9	0.1	0	10	0.6	GROUP 1DX - 15.0 GM	A608935
CJ-09173	0	4.04	0.005	0.27	0.1	0.1	12.8	0.2	0	10	1.2	GROUP 1DX - 15.0 GM	A608935
CJ-09174	0	2.63	0.002	0.03	0.1	0.02	7.2	0	0	6	1.1	GROUP 1DX - 15.0 GM	A608935
CJ-09175	0	2.1	0.004	0.13	0.1	0.02	3.4	0.1	0.1	6	1.4	GROUP 1DX - 15.0 GM	A608935
CJ-09176	1	1.71	0.005	0.12	0.2	0.03	3.3	0.1	0.16	5	1.3	GROUP 1DX - 15.0 GM	A608935
CJ-09177	1	1.41	0.005	0.06	0.2	0.03	2.5	0.1	0.07	5	0.7	GROUP 1DX - 15.0 GM	A608935
CJ-09178	0	1.43	0.005	0.04	0.2	0.03	2.2	0.1	0.06	5	1	GROUP 1DX - 15.0 GM	A608935
CJ-09179	0	1.52	0.005	0.05	0.2	0.02	3.8	0.1	0.06	5	1.2	GROUP 1DX - 15.0 GM	A608935
CJ-09180	0	1.49	0.004	0.06	0.1	0.02	3.5	0.1	0	5	0.8	GROUP 1DX - 15.0 GM	A608935
CJ-09181	0	1.67	0.004	0.05	0.1	0.02	2.5	0.1	0	5	0.8	GROUP 1DX - 15.0 GM	A608935
CJ-09182	0	1.85	0.003	0.04	0.2	0.03	2.7	0.1	0	5	0.9	GROUP 1DX - 15.0 GM	A608935
CJ-09183	0	1.17	0.003	0.06	0.1	0.01	1.6	0.1	0	4	0.6	GROUP 1DX - 15.0 GM	A608935
CJ-09184	0	1.16	0.004	0.06	0.1	0.01	2	0.1	0	4	0.6	GROUP 1DX - 15.0 GM	A608935
CJ-09185	0	1.44	0.005	0.04	0.2	0.05	2.2	0.1	0	5	0.6	GROUP 1DX - 15.0 GM	A608935
CJ-09186	0	2.48	0.004	0.13	0.1	0.01	5.2	0.1	0.12	7	1.3	GROUP 1DX - 15.0 GM	A608935
CJ-09187	0	2.53	0.003	0.03	0.1	0.02	6.6	0.1	0	7	0	GROUP 1DX - 15.0 GM	A608935
CJ-09188	1	1.41	0.005	0.05	0.2	0.02	4.2	0.1	0	4	0.5	GROUP 1DX - 15.0 GM	A608935
CJ-09189	1	1.28	0.006	0.06	0.1	0.03	2	0.1	0	4	0.5	GROUP 1DX - 15.0 GM	A608935
CJ-09190	0	1.45	0.007	0.08	0.1	0.02	3.5	0.1	0.11	4	0.5	GROUP 1DX - 15.0 GM	A608935
CJ-09191	1	0.89	0.004	0.06	0.1	0.02	1.6	0.1	0	3	0	GROUP 1DX - 15.0 GM	A608935
CJ-09192	1	0.94	0.004	0.06	0.1	0.01	1.9	0.1	0	3	0	GROUP 1DX - 15.0 GM	A608935
CJ-09193	1	1.73	0.006	0.05	0.2	0.03	3.6	0.1	0	5	0	GROUP 1DX - 15.0 GM	A608935
CJ-09194	1	2.01	0.006	0.06	0.2	0.04	2.8	0.1	0	6	0	GROUP 1DX - 15.0 GM	A608935
CJ-09195	0	1.53	0.004	0.07	0.2	0.03	1.9	0.1	0	5	0	GROUP 1DX - 15.0 GM	A608935
CJ-09196	0	1.5	0.004	0.07	0.2	0.02	2	0.1	0	4	0	GROUP 1DX - 15.0 GM	A608935
CJ-09197	0	0.79	0.002	0.07	0.1	0.01	1	0.1	0	2	0	GROUP 1DX - 15.0 GM	A608935
CJ-09198	0	1.2	0.004	0.06	0.2	0.02	2.2	0.1	0	4	0	GROUP 1DX - 15.0 GM	A608935
CJ-09199	1	0.75	0.002	0.06	0.1	0.01	1.1	0.1	0	2	0	GROUP 1DX - 15.0 GM	A608935
CJ-09200	0	2.36	0.002	0.02	0.1	0.01	4.5	0	0	5	0	GROUP 1DX - 15.0 GM	A608935
CJ-09201	0	4.01	0.002	0.02	0.6	0.02	25.5	0.1	0	10	0	GROUP 1DX - 15.0 GM	A608935

SAMPLES	Datum	Easting	Northing	Mo	Cu	Pb	Zn	Ag	Ni	Co	Mn	Fe
CJ-09202	NAD83-7V	597729	7084313	1.1	24.2	59.5	63	0.3	18.9	7.9	249	2.43
CJ-09203	NAD83-7V	597765	7084351	1.6	27.4	121	80	0.6	18	6.6	206	2.46
CJ-09211	NAD83-7V	598095	7084088	0.8	7.2	17.2	24	0	4.6	2.6	76	1.56
CJ-09212	NAD83-7V	598074	7084201	0.9	15.4	23.7	75	0	13.4	7.6	249	2.67
CJ-09213	NAD83-7V	597993	7084260	0.3	11.9	28	111	0	9.3	5.5	216	2.15
CJ-09214	NAD83-7V	597929	7084336	0.6	33.6	76.6	192	0.3	1.5	0.5	560	4.39
CJ-09215	NAD83-7V	597845	7084401	0.4	129.4	302.3	533	0.3	86.4	30.3	1573	5.75
CJ-09216	NAD83-7V	597767	7084464	2.5	20	54.7	67	0	13.9	5.6	152	2.41
CJ-09217	NAD83-7V	597688	7084531	1.3	10.8	19.8	45	0.2	11.5	5.8	203	1.92
CJ-09218	NAD83-7V	597613	7084595	2.5	10.8	67.5	155	0.8	8	9.8	1533	2.32
CJ-09219	NAD83-7V	597552	7084673	1.9	18.2	33.6	59	0.3	19.7	10.8	376	2.98
CJ-09220	NAD83-7V	597489	7084752	0.7	5.4	17	29	0	2.6	1.7	133	1.17
CJ-09221	NAD83-7V	597427	7084833	0.7	9.2	23.1	46	0	5	4.8	282	1.42
CJ-09222	NAD83-7V	597368	7084913	0.9	7.7	18.8	37	0.4	7.2	2.8	133	1.33
CJ-09223	NAD83-7V	597306	7084990	1.2	16.2	17.3	55	0	17.3	7.7	238	3.05

SAMPLES	As	U	Au	Th	Sr	Cd	Sb	Bi	V	Ca	P	La	Cr	Mg	Ba	Ti
CJ-09202	8.1	1.1	3	6.3	16	0.1	0.7	0.6	53	0.13	0.017	17	32	0.6	391	0.068
CJ-09203	8.8	1.1	3.2	9	13	0.2	1.1	0.9	43	0.08	0.02	16	33	0.59	287	0.047
CJ-09211	14.8	0.9	2.3	0.3	8	0.1	0.3	0.2	33	0.05	0.037	23	11	0.19	204	0.014
CJ-09212	17	0.7	53	6.7	7	0.2	0.4	0.1	30	0.06	0.023	23	19	0.65	175	0.036
CJ-09213	4.5	1.9	15.4	14.6	12	0.2	0.1	0.3	9	0.1	0.041	39	6	1.48	114	0.061
CJ-09214	28.2	0.1	0.6	3.3	18	0.1	0.3	1.3	8	0.04	0.068	6	2	1.84	197	0.017
CJ-09215	9.1	0.1	3.3	0.6	2	0.8	0.2	0.6	143	0.04	0.024	2	266	6.11	54	0.023
CJ-09216	8.4	1.3	5.4	10.4	6	0.2	0.6	0.3	39	0.05	0.023	12	20	0.36	128	0.035
CJ-09217	7.5	0.6	0.6	6.8	7	0.3	0.5	0.2	46	0.06	0.018	13	23	0.32	224	0.045
CJ-09218	7.2	0.9	0.6	4.5	6	0.8	0.5	0.5	59	0.06	0.027	16	18	0.24	413	0.038
CJ-09219	10.9	1.1	2.2	5.3	9	0.2	0.7	0.3	67	0.08	0.025	16	33	0.4	253	0.062
CJ-09220	6.4	1	0	9	5	0.1	0.3	0.2	17	0.03	0.018	14	5	0.19	131	0.013
CJ-09221	5.3	1.1	2.4	7.9	9	0.1	0.4	0.2	29	0.07	0.027	10	11	0.29	88	0.041
CJ-09222	6.6	0.7	1.4	10	5	0.1	0.4	0.2	28	0.04	0.01	17	12	0.25	309	0.018
CJ-09223	13.8	0.6	1.1	3.3	9	0.4	0.8	0.2	62	0.08	0.03	13	28	0.4	135	0.056

SAMPLES	B	Al	Na	K	W	Hg	Sc	Tl	S	Ga	Se	Analysis__	Acme_file_#
CJ-09202	1	1.62	0.009	0.06	0.1	0.02	3.9	0.1	0	5	0.8	GROUP 1DX - 15.0 GM	A608935
CJ-09203	1	1.58	0.006	0.08	0.1	0.02	2.9	0.1	0	5	0.8	GROUP 1DX - 15.0 GM	A608935
CJ-09211	0	0.91	0.004	0.09	0.1	0.03	0.5	0.1	0	5	0	GROUP 1DX - 15.0 GM	A608935
CJ-09212	1	1.51	0.004	0.09	0.1	0.01	1.8	0.2	0	5	0.5	GROUP 1DX - 15.0 GM	A608935
CJ-09213	0	1.24	0.003	0.28	0.1	0	2.2	0.3	0	4	0	GROUP 1DX - 15.0 GM	A608935
CJ-09214	0	1.54	0.025	0.23	0	0.01	1.2	0.1	0.48	6	1.8	GROUP 1DX - 15.0 GM	A608935
CJ-09215	1	5.18	0.001	0.02	0.1	0.02	13.5	0.1	0	11	0.5	GROUP 1DX - 15.0 GM	A608935
CJ-09216	1	1.32	0.004	0.04	0.2	0.02	1.8	0.1	0	4	0.7	GROUP 1DX - 15.0 GM	A608935
CJ-09217	1	1.46	0.004	0.05	0.2	0.02	2.6	0.1	0	4	0.9	GROUP 1DX - 15.0 GM	A608935
CJ-09218	0	1.7	0.004	0.04	0.2	0.03	1.8	0.2	0	7	0.5	GROUP 1DX - 15.0 GM	A608935
CJ-09219	2	2.06	0.006	0.05	0.2	0.04	3.6	0.1	0	6	0.8	GROUP 1DX - 15.0 GM	A608935
CJ-09220	0	0.74	0.002	0.08	0.1	0	1.3	0.1	0	4	0	GROUP 1DX - 15.0 GM	A608935
CJ-09221	0	0.95	0.003	0.13	0.1	0	1.9	0.2	0	4	0.5	GROUP 1DX - 15.0 GM	A608935
CJ-09222	1	1.19	0.003	0.08	0.1	0.01	1.9	0.1	0	4	0.5	GROUP 1DX - 15.0 GM	A608935
CJ-09223	1	1.68	0.005	0.05	0.2	0.03	2.6	0.1	0	6	1.4	GROUP 1DX - 15.0 GM	A608935