

GEOCHEMICAL

REPORT

JAM 1 - 24

YC46854 – YC46877

NTS # 115 I \ 07

LAT: 62° 26 N

LONG: 136° 56 W

WHITEHORSE MINING DISTRICT

AUTHOR OF REPORT SHAWN RYAN

WORK PERFORMED AUGUST 04, 2006

DATE OF REPORT OCTOBER 10, 2007

TABLE OF CONTENT

1.0	SUMMARY	p.3
2.0	INTRODUCTION	p.3
3.0	PROJECT LOCATION	p.3
4.0	ACCESS	p.3
5.0	GEOLOGY	p.3
	GEOLOGY MAP	p.4
6.0	WORK PERFORMED / METHODS	p.5
7.0	INTERPRETATION	p.5
8.0	RECOMMENDATION	p.5
9.0	REFERENCES CITED	p.5
10.0	Cost	p.6
11.0	Qualification	p.6
	Claim Location Map	Figure 1
	Copper Anomaly Map	Figure 2
	Sample Location Map	Figure 3
	Assay / GPS Data	Appendix

1.0 SUMMARY

The Jam 1 – 24 Claims were staked to cover a magnetic high sitting north west of the Stu Property.

2.0 INTRODUCTION

The Jam Claims had two men; Issac Fage and Don Marshall collect a total of 48 soil samples on August 4, 2007. The soil sampling was conducted to see if deeper auger (1 meter) soil sampling assayed with normal ICP-MS could come up with anomalous results. Due to heavy overburden no anomalies were detected.

3.0 LOCATION

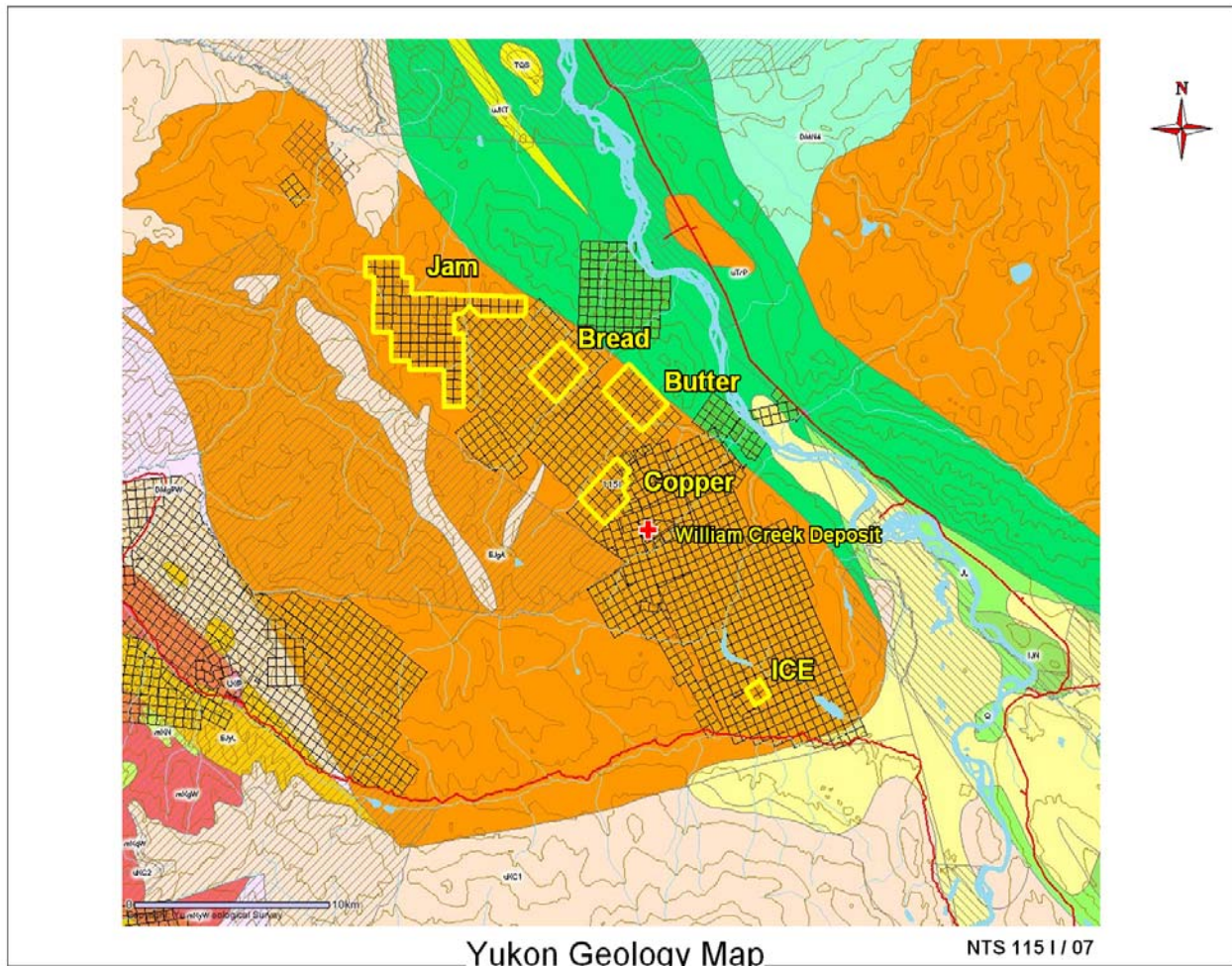
The Jam Claims are located 47 kilometers North West of the community of Carmacks. The claims block consists of 24 claims all located in the Whitehorse mining district on NTS 115 I / 11.

4.0 ACCESS

The Jam Claims can be reached via helicopter from Carmacks.

5.0 PROPERTY GEOLOGY

The Yukon Geology web site indicates the Jam Claims are sitting on one distinct rock unit. The claims are sitting on early Jurassic granodiorite.



EARLY JURASSIC



EJgA: AISHIHIK SUITE

medium- to coarse- grained, foliated biotite-hornblende granodiorite; biotite rich screens and gneiss schlieren; foliated hornblende diorite to monzodiorite with local K-feldspar megacrysts; may include unfoliated monzonite of the Long Lake Suite (**Aishihik Suite**)

6.0 WORK PERFORMED / METHODS

Soil Survey

The Jam Claims had 2 man days of soil work with a total of 48 soil samples collected.

The ICP Samples are collected as such;

All soil sample where taken with one meter soil probes and sometime with a prospector pick. We carried both on rocky talus slope. Soil sample location where marked in the field with pink flagging and sample number inscribe on flagging with black permanent markers. Sample location where recorded with Garmin GPS. About 400-500 grams of soil were collected and place in well mark kraft soil bags.

All samples where brought out to Dawson and air dried repacked in rice bags and sent to Acme Labs in Vancouver. Sample where process with Aqua Regia ICP-MS for 36 elements.

The GPS where downloaded every night and store in a personal computer.

7.0 INTERPRETATION

Soil Survey

The soil survey was design to test the response of the magnetic high found on the Jam property. Soil values in copper where generally low with the highest value being 55 ppm Cu. All though value where low the highest soils were over the magnetic high areas. This potentially may be indicating that normal ICP-MS soil assay are working but very low numbers must be reviewed as very anomalous for the area.

8.0 RECOMMENDATION

I would recommend trying more normal ICP-MS soil plus a new soil technique called MMI. I would conduct it on a small grid pattern of 500 meter by 500 meters with soil lines on 100 meter spacing and station should be on 50 meter spacing.

9.0 REFERENCES CITED

YTG Geology Map, Yukon geology web site.

10.0 COST

Wage 2 man days @ \$250.00 per day	\$500.00
Assay Cost ICP 48 soil @ \$18.00 per sample	\$864.00
Transportation Cost, Helicopter 1.0 hour @\$1259.00 per hour	\$1,259.00
Report writing	\$350.00
Total	\$2,973.00

11.0 QUALIFICATION

I Shawn Ryan located in Dawson City, Yukon work as a professional prospector. I run a small exploration company located in Dawson City.

I have worked in the exploration business for the last 25 years. I worked the first 12 years as a contractor working on numerous projects in the NWT, Ontario, Quebec and the Yukon. I have worked the last 8 years as a local prospector for myself.

I have being trained to run various geophysical instruments and surveys such as magnetic surveys, max-min surveys, induce polarity surveys and VLF surveys.

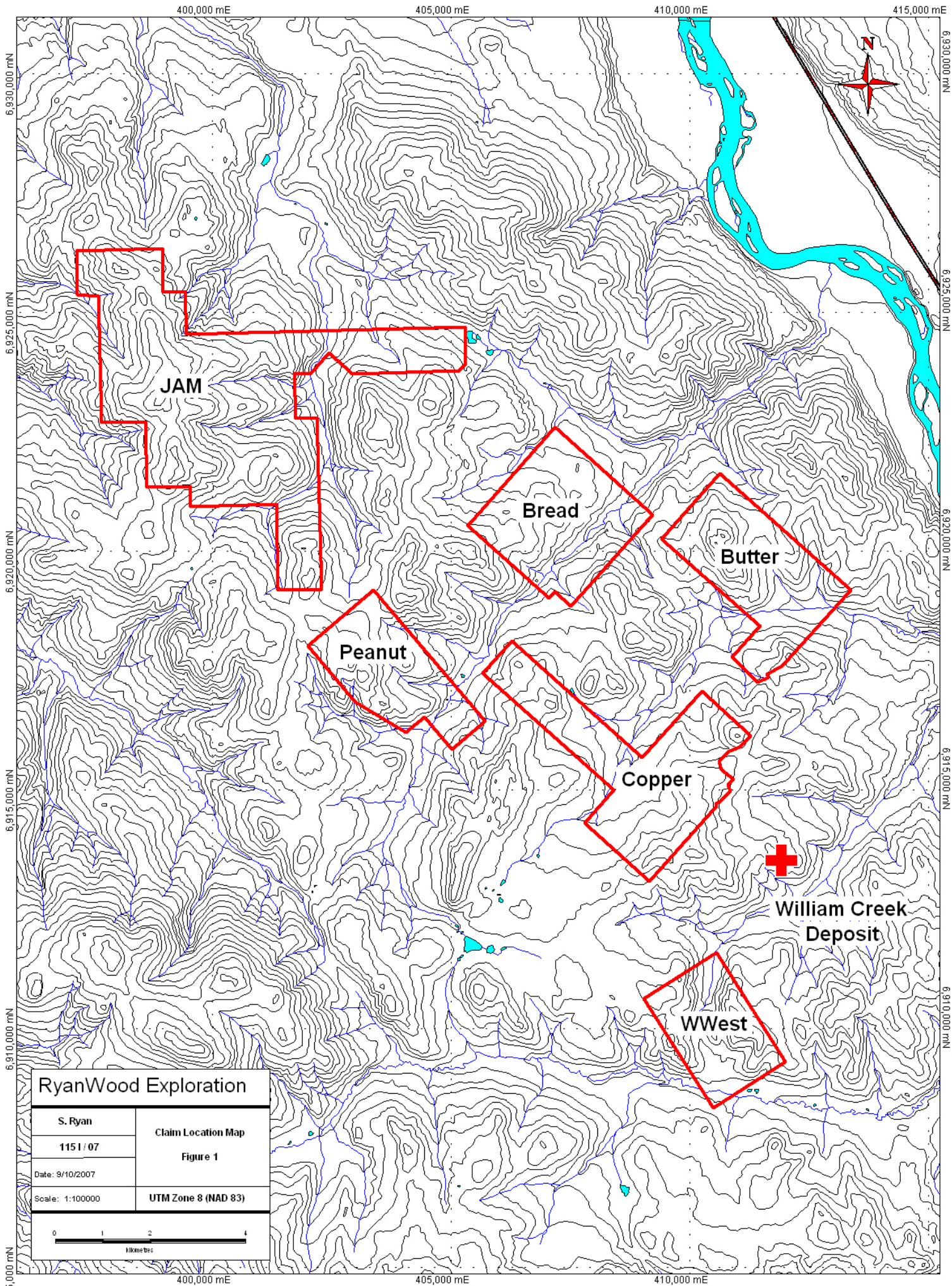
I have overseen the entire Jam Project and was party chief in charge.

I own 100% of the Jam claims.

Dated this 10 of October 2007 in Dawson City, Yukon.

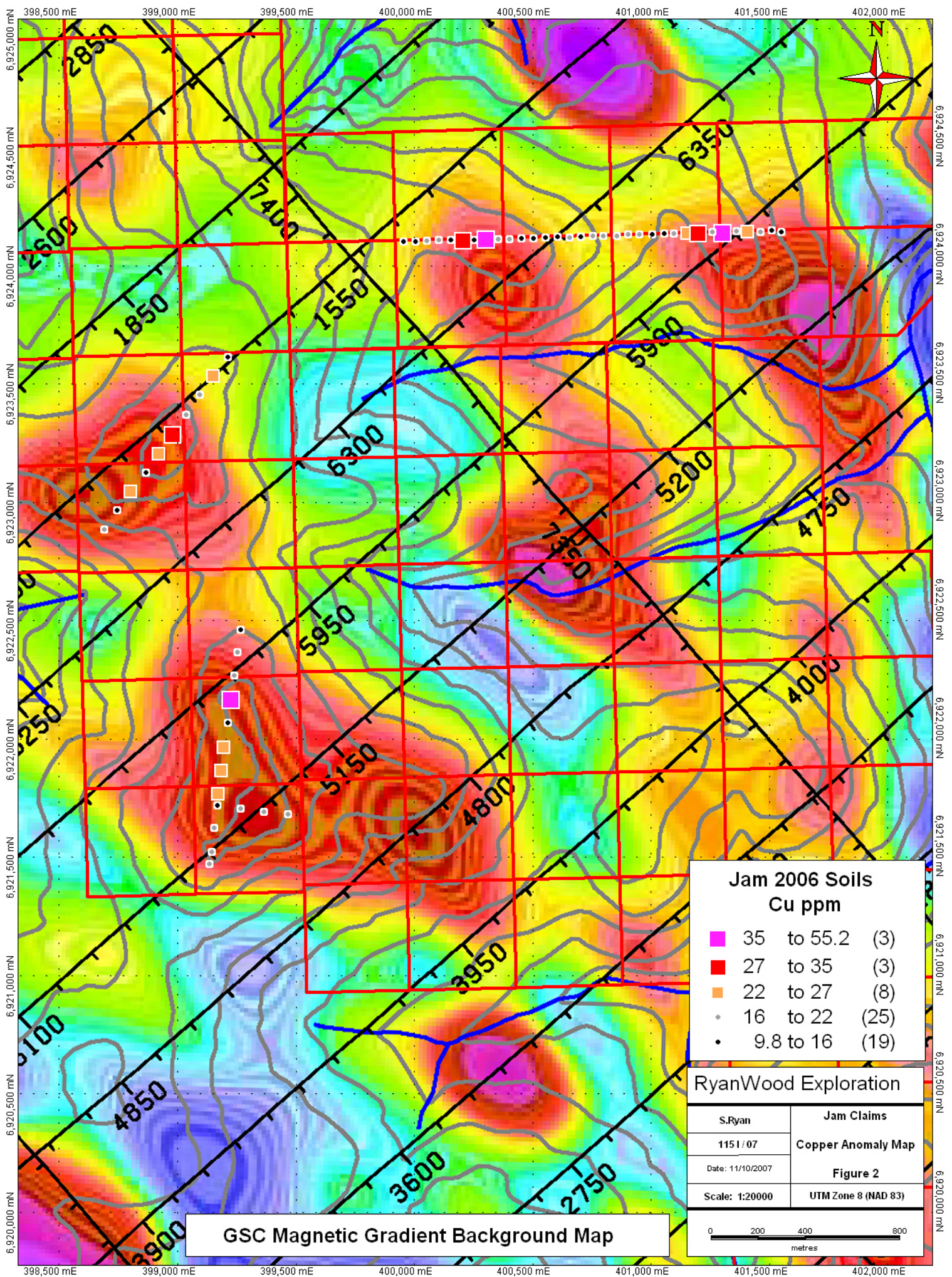
Respectfully submitted

Shawn Ryan



RyanWood Exploration

S. Ryan	Claim Location Map Figure 1
1151 / 07	
Date: 9/10/2007	UTM Zone 8 (NAD 83)
Scale: 1:100000	

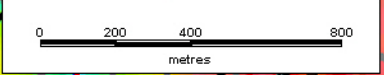


**Jam 2006 Soils
Cu ppm**

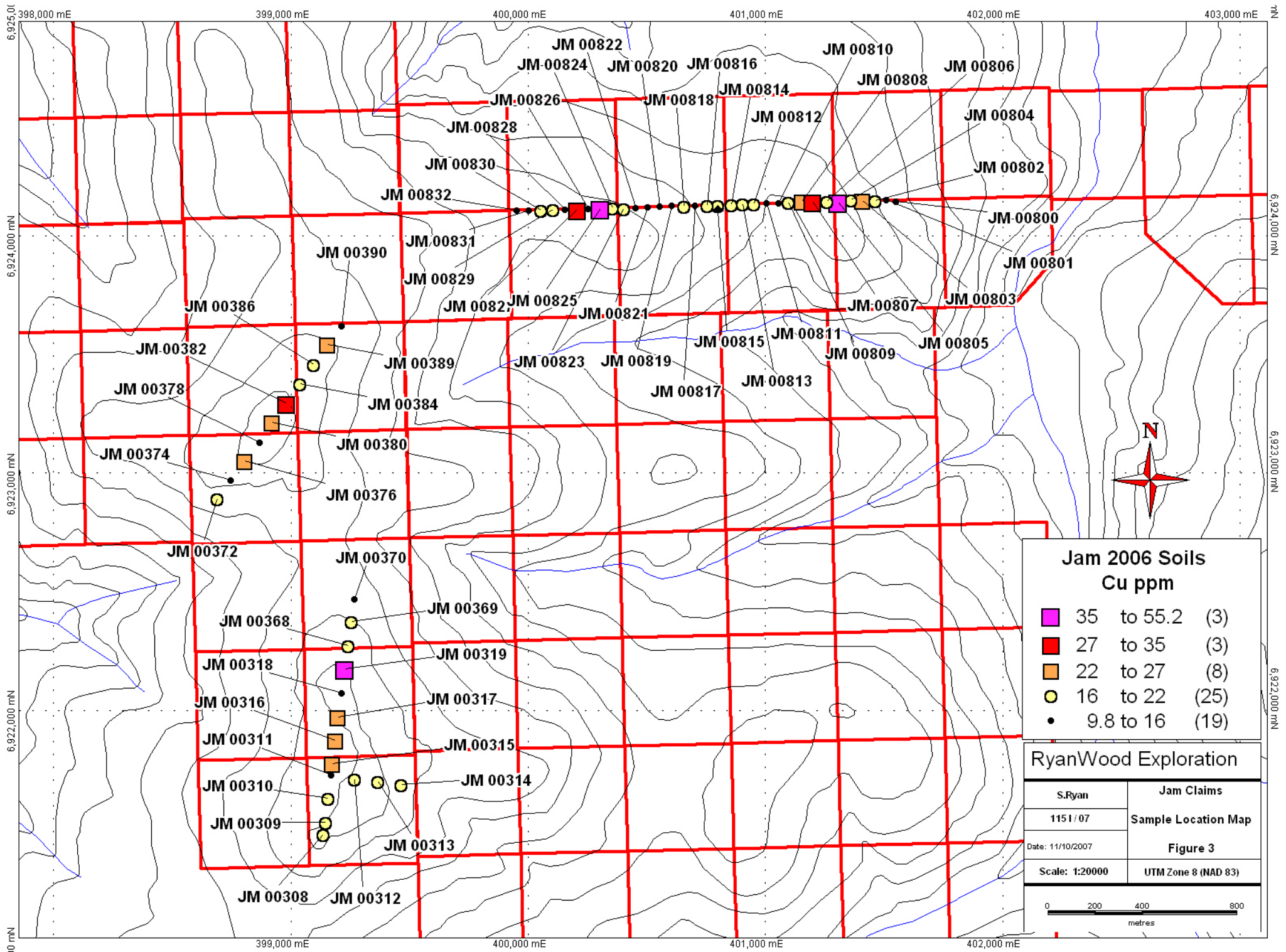
- 35 to 55.2 (3)
- 27 to 35 (3)
- 22 to 27 (8)
- 16 to 22 (25)
- 9.8 to 16 (19)

RyanWood Exploration

S.Ryan	Jam Claims
1151/07	Copper Anomaly Map
Date: 11/10/2007	Figure 2
Scale: 1:20000	UTM Zone 8 (NAD 83)



GSC Magnetic Gradient Background Map



SAMPLES	GPS ID	UTM	Easting	Northing	Elevation	Mo	Cu	Pb	Zn	Ag	Ni
JM 00308	JM00308	NAD83-8V	399137	6921478	1161.3	0.7	21.6	7.9	54	0	20.8
JM 00309	JM00309	NAD83-8V	399145	6921527	1152.4	0.7	18.3	7.3	51	0	19.6
JM 00310	JM00310	NAD83-8V	399157	6921628	1148.8	0.8	21.9	8.4	62	0	19.2
JM 00311	JM00311	NAD83-8V	399169	6921726	1147.3	0.4	12.6	2.8	20	0	3.6
JM 00312	JM00312	NAD83-8V	399267	6921711	1162.5	0.9	19	8.2	60	0	13.1
JM 00313	JM00313	NAD83-8V	399367	6921699	1166.8	0.7	20.5	8.3	74	0	20.5
JM 00314	JM00314	NAD83-8V	399466	6921687	1141.5	0.7	19.1	7	70	0	13.8
JM 00315	JM00315	NAD83-8V	399173	6921775	1146	0.8	22	7	57	0	19.7
JM 00316	JM00316	NAD83-8V	399188	6921874	1144.8	0.6	23.7	8.9	73	0	16.7
JM 00317	JM00317	NAD83-8V	399198	6921973	1152.4	0.7	26.6	7.8	60	0	20
JM 00318	JM00318	NAD83-8V	399214	6922073	1161.3	0.6	10.7	10.2	85	0	7.9
JM 00319	JM00319	NAD83-8V	399227	6922173	1160.1	0.5	38.2	9	102	0	11.5
JM 00368	JM00368	NAD83-8V	399241	6922272	1147.9	0.8	17	8.5	54	0	21
JM 00369	JM00369	NAD83-8V	399254	6922373	1129	0.8	21.4	8.4	52	0	16.3
JM 00370	JM00370	NAD83-8V	399268	6922468	1112.8	0.7	14	8.4	77	0	8
JM 00372	JM00372	NAD83-8V	398691	6922891	1116.2	0.8	19.4	7.6	66	0	16.2
JM 00374	JM00374	NAD83-8V	398746	6922971	1129.3	0.7	14.7	8.3	50	0	14.8
JM 00376	JM00376	NAD83-8V	398804	6923052	1147.6	0.7	25.1	9	61	0	16.4
JM 00378	JM00378	NAD83-8V	398869	6923131	1163.4	0.7	13.3	6.6	34	0	8.5
JM 00380	JM00380	NAD83-8V	398921	6923213	1171	0.9	24.7	9.8	62	0	22.1
JM 00382	JM00382	NAD83-8V	398981	6923294	1163.4	0.7	27.6	8.8	67	0	20.2
JM 00384	JM00384	NAD83-8V	399038	6923376	1154	0.7	19.1	6.9	57	0	13.2
JM 00386	JM00386	NAD83-8V	399095	6923459	1141.2	0.9	17.1	7.2	51	0	14.3
JM 00389	JM00389	NAD83-8V	399154	6923542	1132.9	0.8	26.2	7.8	48	0	19.9
JM 00390	JM00390	NAD83-8V	399213	6923620	1119.2	0.9	15.8	8.2	70	0	8.4
JM 00800	JM00800	NAD83-8V	401551	6924147	891.5	0.9	10.3	6.1	59	0	8.4
JM 00801	JM00801	NAD83-8V	401510	6924154	897.6	0.7	13.7	7.5	63	0	10.8
JM 00802	JM00802	NAD83-8V	401463	6924149	910.4	0.7	20.2	8	62	0	14.9
JM 00803	JM00803	NAD83-8V	401410	6924150	925.1	0.7	23.6	6.6	52	0	15.1
JM 00804	JM00804	NAD83-8V	401361	6924152	936.3	0.9	19.7	9.1	79	0	13.9
JM 00805	JM00805	NAD83-8V	401306	6924144	943.1	0.7	55.2	7.5	52	0	7.8
JM 00806	JM00806	NAD83-8V	401260	6924146	947.6	0.9	17.9	7.9	39	0	11.4
JM 00807	JM00807	NAD83-8V	401199	6924145	952.2	0.6	32.1	3.9	52	0	3.6
JM 00808	JM00808	NAD83-8V	401156	6924145	942.4	0.5	24	4	32	0	5.3
JM 00809	JM00809	NAD83-8V	401098	6924141	938.2	0.7	17.2	7.1	40	0	6.3
JM 00810	JM00810	NAD83-8V	401056	6924140	941.8	0.7	14.7	6	37	0	4.9

SAMPLES	Co	Mn	Fe	As	U	Au	Th	Sr	Cd	Sb	Bi	V	Ca
JM 00308	10.1	248	2.63	7.3	0.6	1.3	7	15	0.1	0.6	0.1	61	0.15
JM 00309	10.5	272	2.58	7.9	0.7	0.7	5.8	15	0.1	0.4	0.1	59	0.16
JM 00310	11	317	2.95	8.7	0.8	0.6	9.3	17	0.2	0.5	0.1	60	0.16
JM 00311	3.2	126	1.18	1.6	0.3	0	0.8	11	0	0.1	0.1	36	0.11
JM 00312	10.7	433	3.27	7.6	0.8	1.7	9.1	14	0.1	0.4	0.1	66	0.13
JM 00313	11.6	397	3.27	9.1	1.1	0	10.9	16	0.1	0.5	0.1	66	0.14
JM 00314	11.1	419	3.34	6.7	1.8	0	9.7	20	0.1	0.4	0.1	66	0.25
JM 00315	10.8	340	3.07	6.9	0.9	1.2	7.8	18	0.1	0.4	0.1	65	0.18
JM 00316	11.3	486	3.47	6.6	1.6	1	15.9	15	0	0.3	0.1	64	0.14
JM 00317	10.7	295	3.17	7.9	0.7	1.1	7.9	17	0.1	0.4	0.1	62	0.15
JM 00318	12	619	3.54	5.2	3.2	0.5	23.7	10	0.1	0.2	0.1	50	0.11
JM 00319	12.3	621	4.4	5.6	1.4	1.4	33.9	14	0	0.2	0.1	49	0.16
JM 00368	13.2	379	2.8	8.2	0.8	1	5.7	21	0.1	0.4	0.2	61	0.2
JM 00369	11.1	353	2.88	7.2	0.7	1.6	6.7	16	0	0.4	0.2	59	0.14
JM 00370	11	739	3.66	4.3	1.1	2.5	15.2	15	0.1	0.2	0.1	50	0.16
JM 00372	11.1	368	3.33	7.7	1	1	9.7	18	0.1	0.5	0.1	66	0.17
JM 00374	10.5	477	2.91	8.7	0.4	0.7	3.6	12	0.1	0.4	0.2	66	0.14
JM 00376	9.8	280	3.28	9.9	0.6	3.4	4.2	23	0.1	0.5	0.2	79	0.26
JM 00378	5.6	212	1.91	5.3	0.4	0	2.4	16	0.1	0.3	0.1	51	0.15
JM 00380	9.4	248	2.76	9.9	0.7	1.9	7.6	12	0.1	0.6	0.2	66	0.11
JM 00382	11.6	533	3.18	6.7	1.2	0.8	12	16	0.1	0.4	0.1	52	0.14
JM 00384	7.6	337	2.56	6.3	0.9	0	10.7	10	0.1	0.4	0.1	46	0.09
JM 00386	10.5	411	2.41	6.7	0.7	0	6.8	15	0.1	0.4	0.1	58	0.13
JM 00389	8.4	244	2.51	9.3	0.5	0.5	4.7	15	0.1	0.5	0.1	56	0.14
JM 00390	9	520	3.28	6.1	1.1	0.7	12.5	18	0.1	0.3	0.1	62	0.14
JM 00800	7.6	301	1.99	3.7	0.7	0	6.3	18	0.1	0.3	0.1	47	0.2
JM 00801	7.3	240	2.17	4.7	0.6	0	7.3	14	0.1	0.3	0.1	49	0.13
JM 00802	8.8	288	2.52	6.1	0.6	0	6.7	20	0.1	0.4	0.1	56	0.21
JM 00803	8.1	398	2.42	6.5	1.9	1	9.9	20	0.1	0.4	0.1	50	0.19
JM 00804	12.7	482	3.5	7.9	0.8	0	11	12	0.1	0.4	0.2	65	0.11
JM 00805	7.7	236	2.33	7.3	0.7	0.8	10.5	11	0.2	0.4	0.1	40	0.1
JM 00806	6.1	216	2.11	6.7	0.5	0.8	3.9	15	0.1	0.3	0.1	48	0.16
JM 00807	6.2	708	2.15	5.1	0.5	0.5	7.5	17	0.1	0.1	0.1	30	0.15
JM 00808	5.7	696	1.51	3.1	0.3	0	2.2	19	0.1	0.2	0.1	31	0.17
JM 00809	6.1	325	1.94	5.4	0.5	0.5	4.7	17	0.1	0.2	0.1	30	0.16
JM 00810	6.3	310	1.85	4.6	0.5	1.6	5.3	18	0.1	0.2	0.1	26	0.16

SAMPLES	P	La	Cr	Mg	Ba	Ti	B	Al	Na	K	W	Hg
JM 00308	0.019	11	31	0.56	133	0.087	1	2.09	0.012	0.08	0.1	0.01
JM 00309	0.034	13	28	0.54	123	0.082	2	2.04	0.01	0.09	0.2	0.02
JM 00310	0.033	12	28	0.58	125	0.071	2	2.24	0.007	0.11	0.1	0.02
JM 00311	0.04	6	7	0.12	48	0.049	1	0.54	0.018	0.05	0.1	0
JM 00312	0.055	14	27	0.59	119	0.112	1	2.18	0.008	0.24	0.2	0.01
JM 00313	0.032	13	27	0.64	132	0.128	2	2.62	0.008	0.17	0.1	0.02
JM 00314	0.059	33	25	0.69	142	0.134	2	2.45	0.011	0.17	0.2	0.02
JM 00315	0.03	13	31	0.66	121	0.111	1	2.18	0.011	0.11	0.1	0.01
JM 00316	0.043	35	25	0.8	173	0.105	2	2.87	0.009	0.29	0.1	0.01
JM 00317	0.037	12	28	0.66	131	0.091	1	2.34	0.008	0.16	0.1	0.01
JM 00318	0.061	63	14	0.68	123	0.077	2	3.01	0.01	0.53	0.1	0.02
JM 00319	0.065	51	17	0.79	108	0.098	1	2.59	0.007	0.5	0.1	0
JM 00368	0.04	15	29	0.56	136	0.085	2	2.16	0.011	0.08	0.2	0.01
JM 00369	0.03	9	27	0.54	111	0.063	2	2.34	0.009	0.1	0.1	0.01
JM 00370	0.072	21	15	0.71	81	0.084	2	1.95	0.011	0.27	0.1	0.01
JM 00372	0.022	11	22	0.62	121	0.08	1	2.2	0.012	0.15	0.1	0
JM 00374	0.093	10	23	0.5	82	0.091	1	1.37	0.008	0.11	0.2	0.01
JM 00376	0.213	12	25	0.66	175	0.094	2	2.1	0.009	0.1	0.2	0.01
JM 00378	0.034	8	18	0.26	86	0.063	1	1.14	0.015	0.05	0.2	0.03
JM 00380	0.02	13	34	0.56	112	0.089	2	2.36	0.008	0.07	0.1	0.01
JM 00382	0.035	11	33	0.67	96	0.082	1	2.39	0.008	0.15	0.1	0.01
JM 00384	0.041	19	18	0.47	122	0.089	1	1.87	0.011	0.23	0.1	0.01
JM 00386	0.029	21	27	0.54	162	0.083	1	1.97	0.011	0.08	0.1	0.01
JM 00389	0.025	9	26	0.5	132	0.063	1	1.97	0.013	0.07	0.1	0.02
JM 00390	0.059	24	16	0.5	122	0.123	1	1.49	0.007	0.22	0.1	0
JM 00800	0.028	18	20	0.44	127	0.069	1	1.16	0.009	0.11	0.1	0.01
JM 00801	0.022	37	21	0.36	161	0.056	0	1.49	0.011	0.07	0.1	0.01
JM 00802	0.037	22	25	0.47	197	0.069	1	1.77	0.013	0.12	0.1	0.01
JM 00803	0.03	31	24	0.54	178	0.079	1	1.54	0.014	0.15	0.1	0.01
JM 00804	0.076	12	25	0.72	129	0.076	1	2.2	0.009	0.25	0.1	0
JM 00805	0.036	25	14	0.23	186	0.009	0	1.35	0.012	0.09	0.1	0
JM 00806	0.024	11	21	0.38	173	0.044	0	1.42	0.015	0.06	0.2	0
JM 00807	0.042	21	5	0.12	213	0.013	0	0.63	0.014	0.09	0.1	0
JM 00808	0.03	10	9	0.17	202	0.031	1	0.72	0.018	0.06	0.1	0
JM 00809	0.019	18	11	0.22	150	0.02	0	0.83	0.012	0.1	0.1	0.01
JM 00810	0.023	23	9	0.19	163	0.015	1	0.77	0.013	0.1	0.1	0.01

SAMPLES	Sc	Tl	S	Ga	Se	Analysis:	Acme file #
JM 00308	3.8	0.1	0	6	0	GROUP 1DX - 15.0 GM	A606510
JM 00309	4.2	0.1	0	6	0	GROUP 1DX - 15.0 GM	A606510
JM 00310	4.4	0.1	0	7	0	GROUP 1DX - 15.0 GM	A606510
JM 00311	1.1	0.1	0	3	0	GROUP 1DX - 15.0 GM	A606510
JM 00312	4.6	0.2	0	8	0	GROUP 1DX - 15.0 GM	A606510
JM 00313	4.7	0.2	0	8	0	GROUP 1DX - 15.0 GM	A606510
JM 00314	5.4	0.1	0	8	0	GROUP 1DX - 15.0 GM	A606510
JM 00315	4.1	0.2	0	7	0	GROUP 1DX - 15.0 GM	A606510
JM 00316	5.6	0.2	0	9	0	GROUP 1DX - 15.0 GM	A606510
JM 00317	4.4	0.2	0	7	0	GROUP 1DX - 15.0 GM	A606510
JM 00318	7	0.4	0	10	0	GROUP 1DX - 15.0 GM	A606510
JM 00319	4.5	0.3	0	11	0	GROUP 1DX - 15.0 GM	A606510
JM 00368	3.7	0.1	0	6	0.6	GROUP 1DX - 15.0 GM	A606510
JM 00369	3.6	0.1	0	7	0	GROUP 1DX - 15.0 GM	A606510
JM 00370	4.6	0.2	0	10	0	GROUP 1DX - 15.0 GM	A606510
JM 00372	4.9	0.2	0	8	0	GROUP 1DX - 15.0 GM	A606510
JM 00374	2.5	0.1	0	7	0	GROUP 1DX - 15.0 GM	A606510
JM 00376	3.3	0.1	0	8	0	GROUP 1DX - 15.0 GM	A606510
JM 00378	1.9	0.1	0	5	0	GROUP 1DX - 15.0 GM	A606510
JM 00380	4.1	0.1	0	7	0	GROUP 1DX - 15.0 GM	A606510
JM 00382	4.3	0.1	0	8	0.5	GROUP 1DX - 15.0 GM	A606510
JM 00384	4.7	0.2	0	6	0	GROUP 1DX - 15.0 GM	A606510
JM 00386	5	0.1	0	6	0	GROUP 1DX - 15.0 GM	A606510
JM 00389	3.1	0.1	0	6	0	GROUP 1DX - 15.0 GM	A606510
JM 00390	4.5	0.2	0	9	0.6	GROUP 1DX - 15.0 GM	A606510
JM 00800	3.1	0.1	0	5	0	GROUP 1DX - 15.0 GM	A606510
JM 00801	2.8	0.1	0	5	0	GROUP 1DX - 15.0 GM	A606510
JM 00802	3.5	0.1	0	6	0	GROUP 1DX - 15.0 GM	A606510
JM 00803	4.6	0.1	0	5	0	GROUP 1DX - 15.0 GM	A606510
JM 00804	4.5	0.2	0	9	0	GROUP 1DX - 15.0 GM	A606510
JM 00805	3.3	0.1	0	4	0	GROUP 1DX - 15.0 GM	A606510
JM 00806	2.4	0.1	0	4	0	GROUP 1DX - 15.0 GM	A606510
JM 00807	1.3	0.1	0	3	0	GROUP 1DX - 15.0 GM	A606510
JM 00808	1.6	0.1	0	3	0	GROUP 1DX - 15.0 GM	A606510
JM 00809	1.8	0.1	0	3	0	GROUP 1DX - 15.0 GM	A606510
JM 00810	1.9	0.1	0	3	0	GROUP 1DX - 15.0 GM	A606510

SAMPLES	GPS ID	UTM	Easting	Northing	Elevation	Mo	Cu	Pb	Zn	Ag	Ni
JM 00811	JM00811	NAD83-8V	401007	6924138	934.5	0.6	9.8	4.8	29	0	5.4
JM 00812	JM00812	NAD83-8V	400953	6924137	941.5	0.5	21.1	4.7	49	0	5.6
JM 00813	JM00813	NAD83-8V	400904	6924136	945.2	0.6	21.6	6.2	51	0	8.4
JM 00814	JM00814	NAD83-8V	400856	6924132	946.4	0.8	17.4	6.7	42	0	13.1
JM 00815	JM00815	NAD83-8V	400800	6924130	963.2	0.6	16.7	7	83	0	9.4
JM 00816	JM00816	NAD83-8V	400756	6924129	968.3	0.7	21.3	7.3	103	0	10.1
JM 00817	JM00817	NAD83-8V	400705	6924128	966.5	0.7	10.7	9.2	38	0	10.2
JM 00818	JM00818	NAD83-8V	400656	6924124	971.4	0.5	17.2	6.1	37	0	74.3
JM 00819	JM00819	NAD83-8V	400606	6924128	979.3	0.3	15	4.5	43	0	151.4
JM 00820	JM00820	NAD83-8V	400555	6924124	987.6	0.7	14.4	8.4	67	0	10.5
JM 00821	JM00821	NAD83-8V	400506	6924122	994.6	0.5	12.2	7	39	0	5.9
JM 00822	JM00822	NAD83-8V	400454	6924120	1000.4	0.7	11.9	15.9	56	0	4.7
JM 00823	JM00823	NAD83-8V	400403	6924116	1002.8	0.8	21.6	9.9	76	0	11.2
JM 00824	JM00824	NAD83-8V	400356	6924118	1004.6	0.7	20.3	14.7	69	0	15.6
JM 00825	JM00825	NAD83-8V	400304	6924116	1005.2	0.6	47.3	14.9	126	0	2.6
JM 00826	JM00826	NAD83-8V	400253	6924115	1011.3	0.5	12.9	7.1	40	0	4.8
JM 00827	JM00827	NAD83-8V	400208	6924113	1011	0.9	27.7	9.4	62	0	12.9
JM 00828	JM00828	NAD83-8V	400157	6924112	1013.5	0.8	15.8	7.8	46	0	14.2
JM 00829	JM00829	NAD83-8V	400104	6924113	1011.6	1	16.6	9.9	57	0	15.3
JM 00830	JM00830	NAD83-8V	400053	6924109	1007.7	0.7	16.2	7	50	0	8.5
JM 00831	JM00831	NAD83-8V	400005	6924108	1007.7	0.7	15.9	5.4	56	0	9.2
JM 00832	JM00832	NAD83-8V	399954	6924107	1008.9	0.6	12.9	6.3	53	0	10.9

SAMPLES	Co	Mn	Fe	As	U	Au	Th	Sr	Cd	Sb	Bi	V	Ca
JM 00811	4.5	219	1.31	2.9	0.4	0	2.5	13	0.1	0.1	0.1	26	0.1
JM 00812	6.2	520	2.24	2.9	0.5	0	5.6	22	0.1	0.2	0.1	37	0.22
JM 00813	5.1	298	1.95	3.1	0.3	0	2.3	19	0.1	0.3	0.1	46	0.17
JM 00814	7.3	241	2.16	6.6	0.8	1.1	7.4	18	0	0.4	0.1	45	0.14
JM 00815	6.3	269	2.56	4.6	0.4	1.4	6	16	0	0.3	0.1	43	0.12
JM 00816	8	406	2.69	5	0.4	1	6.6	15	0.1	0.3	0.1	46	0.13
JM 00817	6	210	2.08	4.5	0.4	0.7	3.8	13	0.1	0.3	0.1	48	0.13
JM 00818	10.6	242	2.33	6.2	1.6	1.6	5.4	17	0	0.1	0.1	44	0.2
JM 00819	17	277	2.55	6.7	1.9	3.9	5.5	20	0	0.2	0.1	52	0.24
JM 00820	8.9	503	2.27	4.5	0.3	1.1	2.8	17	0.2	0.3	0.1	53	0.16
JM 00821	4.4	132	1.58	3.6	0.6	0.7	4.1	12	0	0.2	0.1	35	0.13
JM 00822	6.3	248	2.2	3.6	0.9	7.6	8.3	14	0	0.2	0	26	0.17
JM 00823	8.7	321	3.29	7.6	0.6	0.9	8.4	17	0.1	0.3	0.1	62	0.15
JM 00824	9.6	312	3.16	6.1	0.7	1.3	8.7	13	0.1	0.3	0.1	59	0.11
JM 00825	5.3	299	2.52	6.4	0.4	0	2.9	11	0.1	0.2	0.1	51	0.08
JM 00826	5.8	256	2.07	3.4	0.5	0.9	5.8	13	0.1	0.2	0.1	44	0.14
JM 00827	10.9	385	3.06	5.3	1.9	2.6	12.5	16	0.1	0.4	0.1	53	0.13
JM 00828	9.8	324	2.66	6.1	0.5	1	5.2	16	0	0.3	0.1	55	0.15
JM 00829	10.3	308	2.98	7	0.6	1.3	7.9	13	0	0.4	0.1	61	0.13
JM 00830	8.2	240	2.78	5.2	0.7	0.5	5.9	14	0	0.2	0.1	49	0.12
JM 00831	9.9	500	2.8	4.9	0.7	0	11.8	11	0.1	0.1	0.1	43	0.1
JM 00832	8.5	409	2.62	5.1	0.9	0.5	13.6	13	0.1	0.2	0.1	48	0.13

SAMPLES	P	La	Cr	Mg	Ba	Ti	B	Al	Na	K	W	Hg
JM 00811	0.031	7	10	0.17	113	0.031	1	0.78	0.014	0.09	0.1	0.01
JM 00812	0.056	11	10	0.31	189	0.04	1	0.97	0.023	0.18	0.1	0
JM 00813	0.034	6	15	0.26	174	0.067	0	0.98	0.018	0.07	0.1	0
JM 00814	0.019	20	21	0.39	123	0.053	1	1.39	0.01	0.06	0.1	0.01
JM 00815	0.024	10	15	0.41	106	0.042	0	1.42	0.014	0.09	0.1	0.01
JM 00816	0.026	12	17	0.49	122	0.059	0	1.59	0.015	0.11	0.1	0.01
JM 00817	0.024	8	18	0.33	113	0.059	1	1.29	0.01	0.05	0.1	0.01
JM 00818	0.033	21	131	1.04	109	0.056	1	1.71	0.012	0.04	0.1	0.01
JM 00819	0.039	32	253	1.81	99	0.067	0	2.05	0.011	0.04	0.1	0.01
JM 00820	0.061	7	18	0.3	125	0.059	0	1.11	0.014	0.05	0.1	0
JM 00821	0.034	12	12	0.26	115	0.038	1	1.08	0.016	0.07	0.1	0.01
JM 00822	0.021	22	10	0.28	156	0.022	1	1.12	0.007	0.16	0.1	0.01
JM 00823	0.046	21	21	0.56	130	0.09	1	1.89	0.012	0.29	0.2	0.01
JM 00824	0.021	8	24	0.55	130	0.087	1	2.15	0.007	0.21	0.1	0.01
JM 00825	0.022	5	7	0.33	89	0.127	0	1.36	0.006	0.24	0.1	0.01
JM 00826	0.074	17	10	0.29	125	0.075	0	1.1	0.016	0.18	0.1	0
JM 00827	0.019	40	24	0.58	212	0.101	1	1.84	0.014	0.22	0.1	0.02
JM 00828	0.028	9	25	0.4	175	0.063	1	1.82	0.016	0.08	0.1	0.01
JM 00829	0.035	12	28	0.47	180	0.063	0	2.19	0.013	0.09	0.1	0.02
JM 00830	0.031	16	19	0.3	135	0.024	0	1.57	0.012	0.1	0.1	0.01
JM 00831	0.077	18	12	0.3	134	0.049	1	1.74	0.013	0.21	0.1	0.01
JM 00832	0.04	26	18	0.36	146	0.066	1	1.68	0.011	0.18	0.1	0.01

SAMPLES	Sc	Tl	S	Ga	Se	Analysis:	Acme file #
JM 00811	1.7	0.1	0	3	0	GROUP 1DX - 15.0 GM	A606510
JM 00812	3	0.1	0	5	0	GROUP 1DX - 15.0 GM	A606510
JM 00813	1.8	0.1	0	5	0	GROUP 1DX - 15.0 GM	A606510
JM 00814	2.9	0.1	0	4	0	GROUP 1DX - 15.0 GM	A606510
JM 00815	2.4	0.1	0	6	0	GROUP 1DX - 15.0 GM	A606510
JM 00816	2.6	0.1	0	6	0.6	GROUP 1DX - 15.0 GM	A606510
JM 00817	2	0.1	0	6	0	GROUP 1DX - 15.0 GM	A606510
JM 00818	3.2	0.1	0	6	0	GROUP 1DX - 15.0 GM	A606510
JM 00819	3.5	0.1	0	6	0	GROUP 1DX - 15.0 GM	A606510
JM 00820	1.7	0.1	0	5	0	GROUP 1DX - 15.0 GM	A606510
JM 00821	2.1	0.1	0	4	0	GROUP 1DX - 15.0 GM	A606510
JM 00822	2.8	0.1	0	3	0	GROUP 1DX - 15.0 GM	A606510
JM 00823	3.8	0.2	0	8	0	GROUP 1DX - 15.0 GM	A606510
JM 00824	4.2	0.2	0	7	0	GROUP 1DX - 15.0 GM	A606510
JM 00825	3.2	0.2	0	8	0	GROUP 1DX - 15.0 GM	A606510
JM 00826	2.5	0.1	0	6	0	GROUP 1DX - 15.0 GM	A606510
JM 00827	6.7	0.2	0	6	0	GROUP 1DX - 15.0 GM	A606510
JM 00828	2.8	0.1	0	6	0	GROUP 1DX - 15.0 GM	A606510
JM 00829	3.5	0.1	0	7	0	GROUP 1DX - 15.0 GM	A606510
JM 00830	4	0.1	0	5	0	GROUP 1DX - 15.0 GM	A606510
JM 00831	3.7	0.2	0	6	0	GROUP 1DX - 15.0 GM	A606510
JM 00832	3.9	0.2	0	5	0	GROUP 1DX - 15.0 GM	A606510