

GEOCHEMICAL REPORT

Pelly 1 - 22 CLAIMS

GRANT # YC46652 – YC46673

NTS # 115 I \ 15

LAT: 62° 50' N

LONG: 136° 51' W

WHITEHORSE MINING DISTRICT

AUTHOR OF REPORT SHAWN RYAN

WORK PERFORMED JULY 6 , 2006

DATE OF REPORT SEPTEMBER 18, 2007

Table of Content

Summary	P.3
1.0 Introduction	P.3
2.0 Locations and Access	P.3
3.0 Property Description	P.3
4.0 Physiography	P.3
5.1 Regional Geology	P.3
5.2 Property Geology	P.4
6.0 Work Methods	P.4
6.1 Soil Work	P.4
7.0 Interpretation	P.4
8.0 Recommendation	P.4
9.0 References Cited	P.4
10.0 Qualification	P.5
11.0 Cost	P.5
Claim Location Map	Figure 1
Copper Soil Anomaly Map	Figure 2
Assay Data	Appendix
GPS Soil Location Data	Appendix

SUMMARY

The Pelly 1 - 22 claims covered an old copper showing describe in the minefiles 115I / 019. A soil survey was conducted on the ridge top above the copper showing with little success mainly due to the thick overburden. A new technique such as MMI is recommended.

1.0 INTRODUCTION

The Pelly Claims were staked to cover the old Braden Copper showing. I visited the old showing and found large boulders sitting on the river edge with plenty of visual copper mineralization on the surface of the large 1.5 meters by 2 meters float boulders.

2.0 LOCATIONS AND ACCESS

The Pelly claims are located 12 kilometers west of Pelly Crossing. The claims can be reached via helicopter from Carmacks or by river boat along the Pelly River.

3 PROPERTY DESCRIPTION

The Pelly 1 – 22 consists of 22 full quartz claims all recorded and registered in the Whitehorse Mining District.

4 PHYSIOGRAPHY

The Pelly Property is located along the Pelly river valley. The property sits between an elevation of 1500 feet and 1800 feet.

5 REGIONAL AND PROPERTY GEOLOGY

5.1 REGIONAL GEOLOGY (Excerpts from Minefile 115I019)

The YTG Geology places the claim block as covering unit CPA1 described as dominantly oceanic assemblage of mafic volcanics, specifically ultramafics.

5.2 PROPERTY GEOLOGY

A 1.2 m wide lens of hornblende gneiss in Paleozoic? schist is mineralized with chalcopyrite. The schistosity trends east and dips about 74° south. A chip sample across 1.2 m assayed 0.5% Cu and 2.1 g/t Ag. Boulder float (up to 3 m by 2.4 m by 1.2 m) of hornblende gneiss mineralized with bornite is found immediately downhill from the showing along the river bank. Chip samples of the boulders assayed between 1.3% and 3.6% copper with minor gold, silver and molybdenum values.

6.0 WORK PROGRAM / METHODS

6.1 SOIL WORK

A one day soil program was conducted over the western part of the Pelly Claims block. The crew consists of Adam Fage, Tyson Foxcroft and Kyle McDougal all residence of Dawson City. A total of 64 soils were collected using one-meter soil augers. Soils were collected at an average depth of 60-70 centimeters, all samples were placed in paper kraft soil bags with sample site marked in the field with orange flagging. All sample sites were GPS as to exact ground position and GPS numbers were downloaded into excel format.

7.0 INTERPRETATION

The soil survey indicated only low level copper anomalies. The soil sampler noted thick glacial till which would have hampered getting a quality soil sample. So no interpretation could be arrived with poor soil data.

8.0 RECOMMENDATION

I would recommend trying MMI soil samples on 50 meter station spacing and 100 meter line spacing.

9.0 REFERENCES CITED

YTG Mine file Geology description YTG web site.

10.0 QUALIFICATION

I Shawn Ryan located in Dawson City, Yukon work as a professional prospector. I run a small exploration company located in Dawson city.

I have worked in the exploration business for the last 25 years. I worked the first 15 years as a contractor working on numerous project in the NWT, Ontario, Quebec and the Yukon. I have worked for the last 8 years as a local prospector for myself.

I have being train to run various geophysical instrument and surveys such as magnetic surveys, max-min surveys, induce polarity surveys and Vlf surveys.

I have overseen the whole Pelly Project and was the party chief in charge.

I own 100 % of the Pelly claims.

Dated this 18 of September 1, 2007 in Dawson City, Yukon.

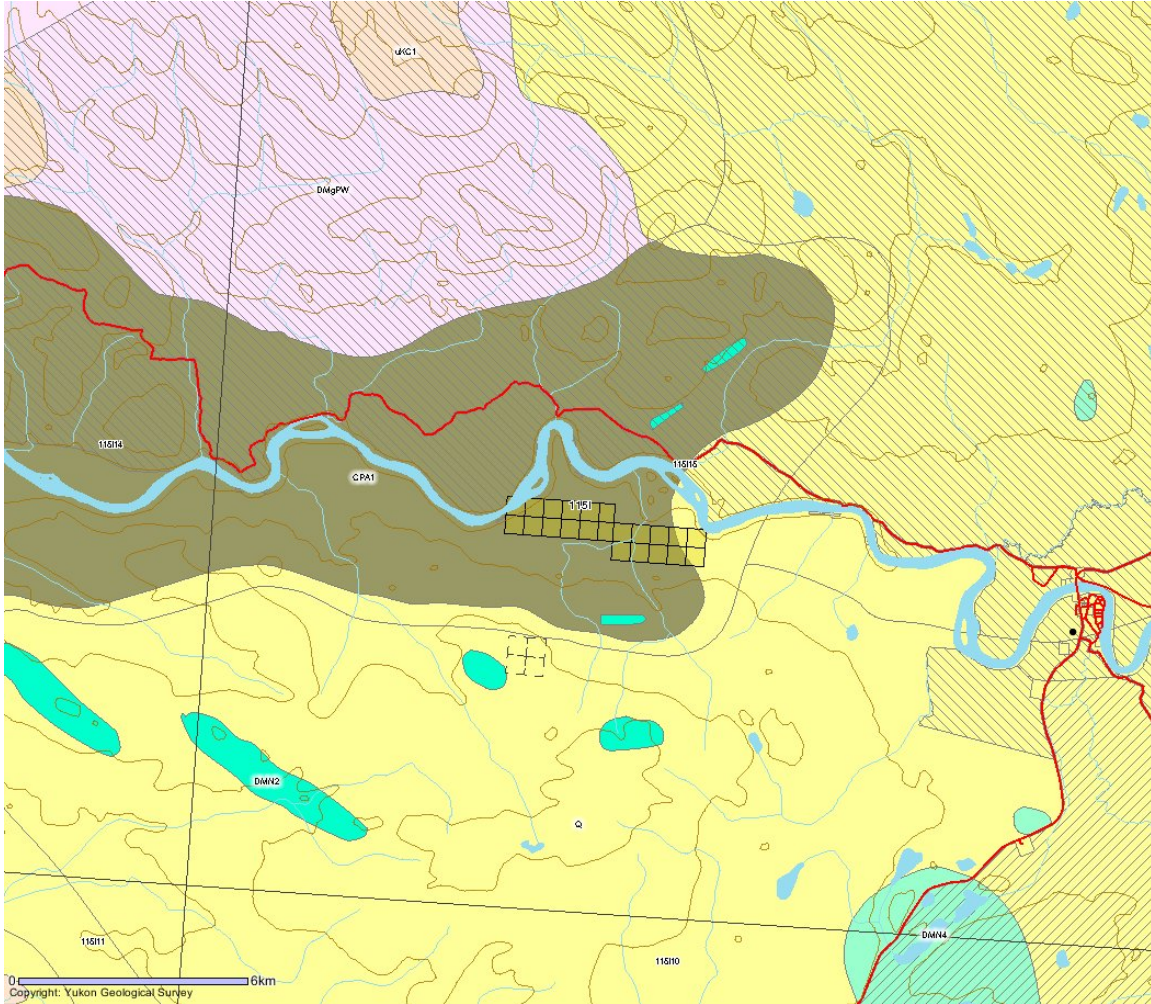
Respectfully submitted

Shawn Ryan

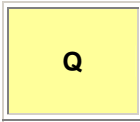
11.0 Cost

Assay 64 soils @ \$18.00 per sample	\$1,152.00
3 men @ \$250.00 per day	\$750.00
1 Day Mobe / Demode for 3 men @ \$250.00 per day	\$750.00
Truck + gas for 2 days @ \$150.00 per day	\$300.00
Helicopter Cost 1.4 hours @ \$1259.00	\$1,762.00
Report	\$300.00
Total	\$5,014.00

Geology and Claim Block Location Map



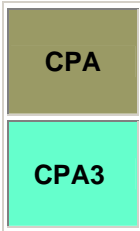
QUATERNARY



Q: QUATERNARY

unconsolidated glacial, glaciofluvial and glaciolacustrine deposits; fluvial silt, sand, and gravel, and local volcanic ash, in part with cover of soil and organic deposits

CARBONIFEROUS AND PERMIAN

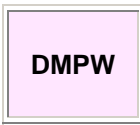


CPA: ANVIL

dominantly oceanic assemblage of mafic volcanics (1), ultramafics (4), chert and pelite (2), limestone (3) and gabbroic rocks (5)

1. variably altered and foliated, locally augite-phyric basalt (local pillows), diorite and gabbro, chloritic greenstone, amphibolitic greenstone and amphibolite; minor metachert, siliceous argillite or siltstone, greywacke, tuff, and siliceous limestone

LATE DEVONIAN TO MISSISSIPPIAN

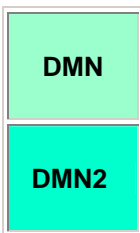


DMPW: PELLY GNEISS SUITE - SOUTHWEST

variably deformed granitic rocks of predominantly felsic (q) to intermediate composition (g) southwest of Tintina Fault

- g. foliated medium grained, homogeneous biotite granite gneiss to biotite or hornblende granodiorite gneiss; massive to strongly foliated dioritic to granodioritic gneiss; includes interfoliated amphibolite, quartz-mica schist and phyllite (**Selwyn Gneiss, Pelly Gneiss, N. Fiftymile Batholith, Moose Creek Orthogneiss**)

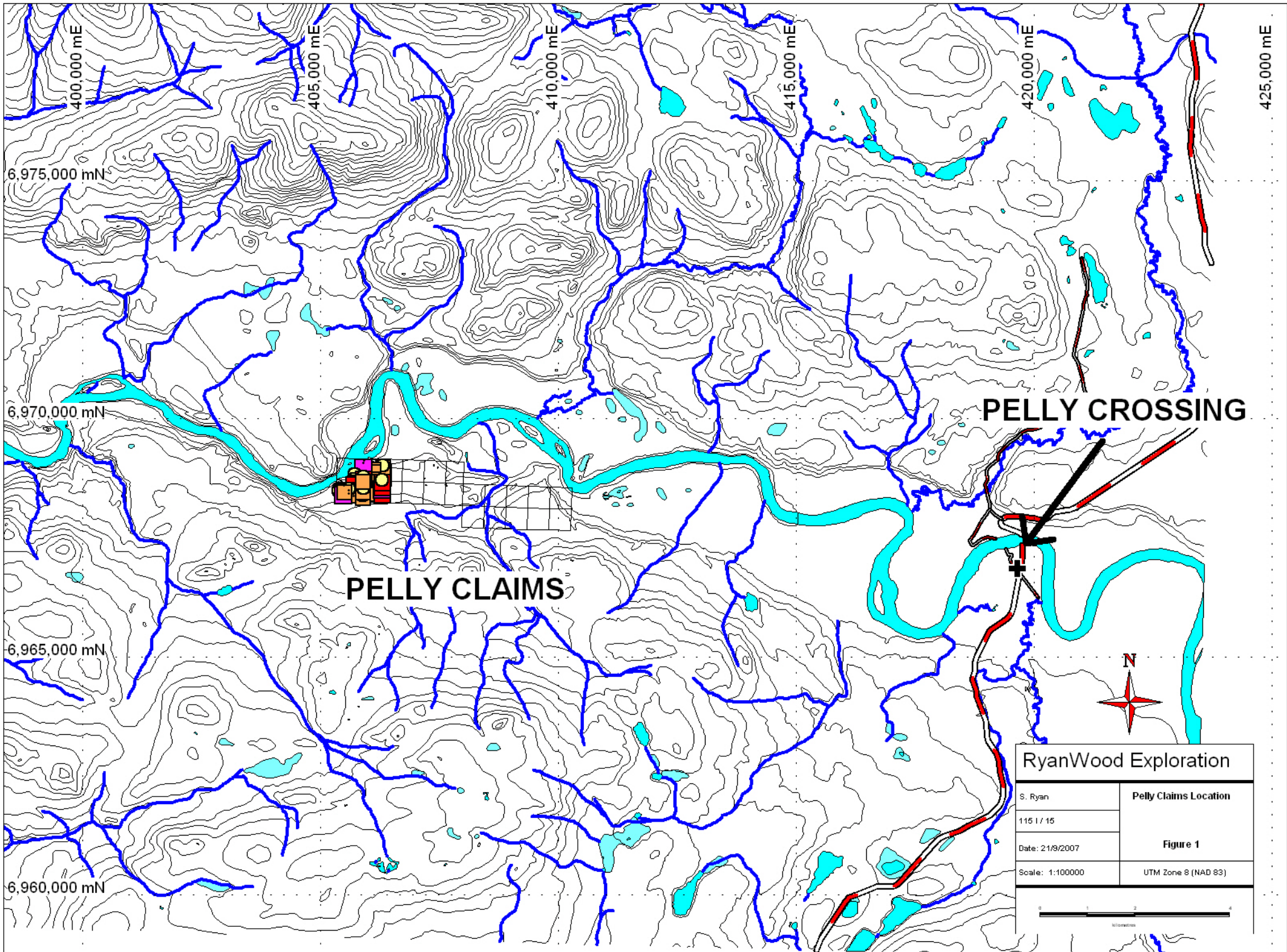
DEVONIAN, MISSISSIPPIAN AND(?) OLDER



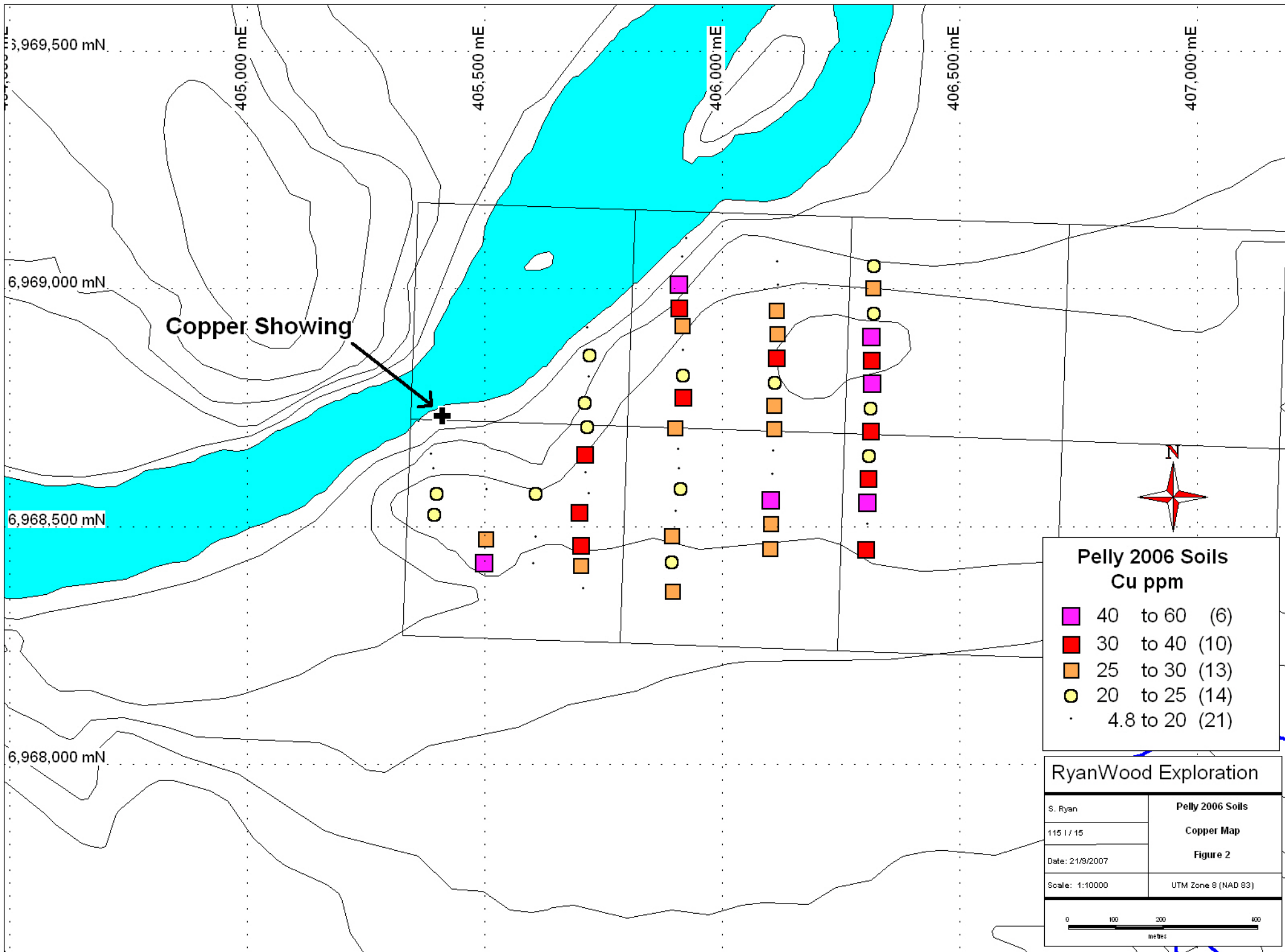
DMN: NASINA

graphitic quartzite and muscovite quartz-rich schist (1), (3)-(5), and(?) (6) with interspersed marble (2) and probable correlative successions (7) - (9)

2. marble (**Nasina assem.**)



RyanWood Exploration	
S. Ryan	Pelly Claims Location
115 / 15	Figure 1
Date: 21/9/2007	
Scale: 1:100000	UTM Zone 8 (NAD 83)



**Pelly 2006 Soils
Cu ppm**

■	40 to 60	(6)
■	30 to 40	(10)
■	25 to 30	(13)
●	20 to 25	(14)
•	4.8 to 20	(21)

RyanWood Exploration

S. Ryan	Pelly 2006 Soils Copper Map Figure 2
115 / 15	
Date: 21/8/2007	
Scale: 1:10000	UTM Zone 8 (NAD 83)

0 100 200 400
metres

SAMPLES	Soil Bag ID	UTM Zone	UTM Easting	UTM Northing	Mo	Cu	Pb
PL 00551	PL00551	NAD 83 - 08V	405919	6968871	1	18.2	8
PL 00552	PL00552	NAD 83 - 08V	405917	6968924	1.1	29	8.6
PL 00553	PL00553	NAD 83 - 08V	405910	6968964	0.7	33.2	6
PL 00554	PL00554	NAD 83 - 08V	405911	6969012	0.5	47.3	3.9
PL 00555	PL00555	NAD 83 - 08V	405917	6969066	1	17.3	8.7
PL 00556	PL00556	NAD 83 - 08V	405925	6969106	1.5	17.7	8.6
PL 00557	PL00557	NAD 83 - 08V	405717	6968917	1.4	18.2	10.3
PL 00558	PL00558	NAD 83 - 08V	405722	6968864	1.2	22.4	9.7
PL 00559	PL00559	NAD 83 - 08V	405720	6968814	1.4	16	11
PL 00560	PL00560	NAD 83 - 08V	405712	6968763	1	24.3	8.6
PL 00561	PL00561	NAD 83 - 08V	405717	6968712	1	22.8	8
PL 00562	PL00562	NAD 83 - 08V	405712	6968655	1.2	32.5	7.7
PL 00563	PL00563	NAD 83 - 08V	405714	6968613	1.5	17.5	7.7
PL 00564	PL00564	NAD 83 - 08V	405720	6968568	1.4	17.3	9.9
PL 00565	PL00565	NAD 83 - 08V	405701	6968533	1	30.8	8.9
PL 00566	PL00566	NAD 83 - 08V	405704	6968463	0.9	35.5	6.3
PL 00567	PL00567	NAD 83 - 08V	405703	6968420	0.8	25.3	7.2
PL 00568	PL00568	NAD 83 - 08V	405709	6968368	0.6	18.6	5.2
PL 00569	PL00569	NAD 83 - 08V	405896	6968366	0.8	25.9	7.5
PL 00570	PL00570	NAD 83 - 08V	405895	6968428	0.6	24.9	5.7
PL 00571	PL00571	NAD 83 - 08V	405895	6968483	1.4	25.9	32.3
PL 00572	PL00572	NAD 83 - 08V	405903	6968531	0.9	19	10.4
PL 00573	PL00573	NAD 83 - 08V	405913	6968583	1.1	21.4	8.9
PL 00574	PL00574	NAD 83 - 08V	405911	6968622	1	16.6	6.1
PL 00584	PL00584	NAD 83 - 08V	406115	6968858	0.9	32.3	9.4
PL 00585	PL00585	NAD 83 - 08V	406112	6968806	2.3	21.7	6.1
PL 00586	PL00586	NAD 83 - 08V	406111	6968756	1	28.7	7.8
PL 00587	PL00587	NAD 83 - 08V	406110	6968707	0.8	28.3	9.4
PL 00588	PL00588	NAD 83 - 08V	406108	6968658	1.3	15.8	7
PL 00589	PL00589	NAD 83 - 08V	406106	6968609	1.4	15.9	7.7
PL 00590	PL00590	NAD 83 - 08V	406104	6968558	0.9	44.6	7.8
PL 00591	PL00591	NAD 83 - 08V	406103	6968507	1.2	28.8	10
PL 00592	PL00592	NAD 83 - 08V	406102	6968456	0.7	29.5	7.2
PL 00593	PL00593	NAD 83 - 08V	406304	6968456	1	37.9	8.3
PL 00594	PL00594	NAD 83 - 08V	406306	6968505	1.7	15.7	8.7
PL 00595	PL00595	NAD 83 - 08V	406307	6968553	0.9	41.1	9.3
PL 00596	PL00596	NAD 83 - 08V	406308	6968604	0.7	33.7	7.4
PL 00597	PL00597	NAD 83 - 08V	406311	6968652	1.4	24.8	8.3
PL 00598	PL00598	NAD 83 - 08V	406314	6968705	1.1	37	9.1
PL 00599	PL00599	NAD 83 - 08V	406313	6968752	0.7	23.2	6.3
PL 00600	PL00600	NAD 83 - 08V	406317	6968804	0.8	47.9	4.4
PL 00601	PL00601	NAD 83 - 08V	406316	6968853	0.4	32.4	1
PL 00602	PL00602	NAD 83 - 08V	406316	6968903	0.7	52.9	4.1
PL 00603	PL00603	NAD 83 - 08V	406321	6968952	0.7	23.4	7.7
PL 00604	PL00604	NAD 83 - 08V	406318	6969004	0.9	26.1	7.7
PL 00605	PL00605	NAD 83 - 08V	406321	6969052	0.8	23.5	7
PL 00606	PL00606	NAD 83 - 08V	406117	6969057	1.1	16.2	8.4
PL 00607	PL00607	NAD 83 - 08V	406118	6969007	1	11.7	8
PL 00608	PL00608	NAD 83 - 08V	406115	6968956	0.9	28	8.6
PL 00609	PL00609	NAD 83 - 08V	406117	6968907	0.8	28.3	8.4
PL 00624	PL00624	NAD 83 - 08V	405388	6968652	1	14.3	8.3

SAMPLES	Zn	Ag	Ni	Co	Mn	Fe	As	U
PL 00551	63	0	27	8.1	327	1.85	9	0.9
PL 00552	62	0.1	39.2	9.2	365	2.04	8.5	1
PL 00553	53	0	56	15.2	420	2.77	6.5	0.8
PL 00554	116	0	106.3	42.4	1390	4.01	3.9	0.4
PL 00555	62	0.1	26.3	7.9	388	1.73	8.6	0.8
PL 00556	102	0.1	26.7	7.2	345	1.62	9.4	1
PL 00557	74	0	28.9	8	302	1.92	11.2	0.7
PL 00558	69	0.1	31.1	7.1	344	1.68	9.8	0.9
PL 00559	83	0	30.9	8.9	280	2.24	11.6	0.6
PL 00560	70	0.2	34.4	7.1	301	1.58	9	0.9
PL 00561	52	0	35	8.4	340	1.79	9.9	0.9
PL 00562	57	0	43.9	8.9	295	2.12	8.2	0.9
PL 00563	40	0	30.1	8.9	207	2.14	9.8	0.5
PL 00564	50	0	25	9.4	221	2.44	15.9	0.6
PL 00565	47	0	34	9.2	334	2.21	11.1	0.8
PL 00566	41	0.3	26.9	7.7	219	1.69	10.3	0.9
PL 00567	44	0	25.4	8.3	296	2.35	9.1	0.8
PL 00568	41	0	18.8	7.8	312	2.11	7.7	0.5
PL 00569	68	0.1	23.7	7.7	287	2.03	7.2	1.1
PL 00570	44	0	23.8	7.5	298	1.83	7.7	0.7
PL 00571	50	0	29	9.5	273	2.67	14.6	0.7
PL 00572	52	0	26.6	9.1	290	2.4	12.9	0.6
PL 00573	41	0	27.7	9.2	245	2.57	12.4	0.9
PL 00574	38	0	27	8.1	180	1.86	5.6	0.4
PL 00584	45	0	29.2	9.7	223	2.66	13.9	0.8
PL 00585	39	0.1	46.6	17.7	366	2.5	6	0.4
PL 00586	55	0.2	29.1	8.7	378	2.2	10.5	1
PL 00587	60	0	34	9.7	363	2.2	10.2	0.8
PL 00588	38	0	23.1	7.7	225	1.83	5.8	0.4
PL 00589	39	0	22.2	8.2	249	2.2	9.4	0.5
PL 00590	49	0.2	34.3	9.6	268	2.46	14.4	0.8
PL 00591	51	0	40.7	10.1	269	2.67	15.1	0.9
PL 00592	47	0	29.9	8.8	329	2.48	11.4	0.7
PL 00593	54	0	32.9	9	329	2.47	11.3	0.7
PL 00594	58	0.2	24.2	9	356	2.62	8.2	0.4
PL 00595	65	0.1	80.2	14.1	415	2.91	11.7	0.8
PL 00596	51	0.1	27.6	8.9	376	2.36	11	0.7
PL 00597	50	0	28.1	8	248	2.3	12.3	0.8
PL 00598	49	0.1	35.2	8.8	301	2.21	11	0.7
PL 00599	43	0.1	21.1	7.8	359	2.26	8.6	0.7
PL 00600	36	0	54.9	14.9	475	2.64	6.6	0.4
PL 00601	42	0	105.1	24.1	569	3.18	1.4	0.6
PL 00602	57	0	71.5	27.4	426	4.16	5	0.6
PL 00603	60	0.1	23	8.3	375	1.98	9.2	0.7
PL 00604	52	0.1	23.6	8.2	365	1.98	9.7	0.6
PL 00605	58	0.1	20	7.3	343	1.88	9.4	0.6
PL 00606	70	0	28	7.6	258	1.76	7.8	0.9
PL 00607	63	0	25	7.3	262	1.66	8.2	0.8
PL 00608	62	0.2	42.8	8.8	380	1.83	8.7	0.9
PL 00609	60	0.1	31.2	8.5	345	1.81	10	0.8
PL 00624	63	0	35.1	10.4	269	2.34	5.8	0.3

SAMPLES	Au	Th	Sr	Cd	Sb	Bi	V	Ca
PL 00551	2.2	4.2	25	0.3	1.1	0.1	38	0.26
PL 00552	6.3	4.5	64	0.2	1	0.2	43	1.61
PL 00553	15	4	36	0.1	0.6	0.1	65	0.83
PL 00554	1.4	1.8	34	0.2	0.2	0	109	1.16
PL 00555	3.2	3.2	39	0.3	0.8	0.1	38	0.59
PL 00556	0	3.8	41	0.7	1.2	0.1	33	0.78
PL 00557	0	3.9	30	0.3	1.2	0.1	35	0.57
PL 00558	9.8	3.2	92	0.6	1.1	0.2	27	3.24
PL 00559	2.3	5	16	0.3	1.1	0.2	48	0.17
PL 00560	10.5	3.2	41	0.3	1.2	0.1	37	0.79
PL 00561	1.7	4.6	22	0.2	1	0.1	36	0.26
PL 00562	2.2	5.1	26	0.1	0.9	0.1	47	0.3
PL 00563	0	3.6	19	0	0.7	0.1	55	0.24
PL 00564	0	4.7	22	0.1	1	0.2	58	0.25
PL 00565	2	5.1	29	0.1	0.9	0.1	43	0.38
PL 00566	3.8	2.3	177	0.2	1.3	0.1	43	8.43
PL 00567	1.4	4.2	29	0.1	0.8	0.1	58	0.34
PL 00568	0	2.8	37	0.1	0.5	0.1	58	0.55
PL 00569	2.4	2.4	51	0.5	0.6	0.1	47	0.88
PL 00570	6	3.4	81	0.3	0.8	0.1	42	3.19
PL 00571	0.7	5.5	24	0	0.9	0.2	63	0.29
PL 00572	3.7	5.5	23	0.1	0.9	0.2	51	0.31
PL 00573	3	5.2	27	0	0.8	0.2	67	0.31
PL 00574	0	2.7	17	0.1	0.5	0.1	54	0.26
PL 00584	0	5.2	27	0	0.9	0.2	51	0.38
PL 00585	0	2.7	21	0.1	0.5	0.1	60	0.4
PL 00586	1.5	4.2	76	0.1	0.9	0.1	51	1.68
PL 00587	1.7	5.2	31	0.1	0.8	0.1	46	0.41
PL 00588	0	2.9	17	0.1	0.5	0.1	48	0.27
PL 00589	0	4.2	21	0.1	0.7	0.1	56	0.27
PL 00590	9.1	4.7	47	0.1	1.3	0.2	63	1.57
PL 00591	13.2	5.9	23	0.1	0.9	0.2	59	0.29
PL 00592	7	4.1	30	0.1	0.8	0.1	67	0.39
PL 00593	2	4.4	26	0.1	0.9	0.1	49	0.34
PL 00594	1.1	2.9	20	0.1	0.6	0.1	67	0.31
PL 00595	17.9	8.4	29	0.1	1	0.2	59	0.67
PL 00596	5.7	3.5	60	0.1	0.8	0.1	56	1.72
PL 00597	1.3	5.5	21	0.1	0.9	0.1	52	0.27
PL 00598	3.4	4.8	55	0.1	1.3	0.2	45	2.35
PL 00599	8.2	2.8	116	0.3	0.7	0.1	54	3.78
PL 00600	15.6	2.8	83	0.1	0.4	0.1	67	2.38
PL 00601	1.1	0.9	255	0.3	0.1	0	86	13.57
PL 00602	0	2.6	52	0.1	0.2	0.1	123	0.74
PL 00603	1.4	2.8	101	0.4	1	0.1	38	2.81
PL 00604	3.3	3.6	76	0.3	1	0.1	37	2.61
PL 00605	1.4	3.1	64	0.3	1	0.1	37	1.38
PL 00606	0	4.4	19	0.3	1	0.1	35	0.2
PL 00607	0	4.2	20	0.3	0.9	0.1	33	0.21
PL 00608	1.1	4.3	36	0.4	1	0.2	35	0.66
PL 00609	2.7	3.5	67	0.4	1	0.1	32	2.96
PL 00624	0	2.8	15	0.2	0.5	0.1	51	0.35

SAMPLES	P	La	Cr	Mg	Ba	Ti	B	Al
PL 00551	0.082	15	22	0.36	392	0.029	3	0.72
PL 00552	0.072	15	34	0.61	480	0.042	3	0.92
PL 00553	0.074	15	52	1.16	344	0.144	2	1.4
PL 00554	0.266	9	77	1.76	265	0.248	2	2.13
PL 00555	0.077	14	21	0.41	448	0.022	2	0.68
PL 00556	0.091	13	16	0.56	432	0.018	2	0.57
PL 00557	0.05	18	20	0.41	389	0.021	3	0.71
PL 00558	0.094	14	18	0.85	488	0.019	2	0.55
PL 00559	0.029	17	27	0.38	355	0.038	3	0.99
PL 00560	0.069	12	20	0.42	432	0.015	3	0.58
PL 00561	0.058	16	26	0.41	329	0.039	2	0.74
PL 00562	0.029	17	32	0.48	316	0.059	2	1.04
PL 00563	0.029	10	35	0.42	261	0.05	1	1.16
PL 00564	0.02	13	31	0.41	379	0.047	1	1.42
PL 00565	0.07	18	25	0.42	341	0.047	1	0.91
PL 00566	0.047	11	22	0.55	763	0.043	3	0.82
PL 00567	0.061	14	27	0.42	209	0.058	2	0.88
PL 00568	0.074	11	21	0.45	178	0.056	2	0.73
PL 00569	0.083	12	28	0.56	251	0.045	2	1.14
PL 00570	0.073	12	22	0.61	312	0.051	3	0.75
PL 00571	0.035	16	33	0.44	302	0.061	2	1.35
PL 00572	0.051	18	30	0.38	331	0.055	3	1.18
PL 00573	0.051	15	35	0.39	264	0.063	2	1.23
PL 00574	0.038	8	42	0.52	253	0.083	2	1.38
PL 00584	0.074	19	33	0.41	171	0.057	3	1.13
PL 00585	0.028	8	61	0.93	189	0.134	3	1.52
PL 00586	0.082	15	25	0.64	442	0.052	4	0.8
PL 00587	0.074	18	28	0.52	460	0.055	3	0.95
PL 00588	0.04	8	27	0.39	312	0.069	2	1.21
PL 00589	0.016	12	30	0.35	327	0.06	2	1.31
PL 00590	0.03	17	31	0.5	333	0.061	3	1.08
PL 00591	0.05	19	44	0.53	306	0.065	1	1.29
PL 00592	0.047	14	29	0.44	249	0.062	2	0.9
PL 00593	0.036	14	26	0.49	278	0.053	1	0.96
PL 00594	0.034	9	34	0.54	441	0.056	0	1.71
PL 00595	0.046	18	104	0.89	347	0.086	1	1.38
PL 00596	0.068	13	25	0.53	379	0.052	2	0.85
PL 00597	0.02	14	27	0.48	368	0.058	1	1.39
PL 00598	0.043	16	27	0.51	387	0.055	2	1.07
PL 00599	0.076	11	23	0.63	420	0.052	2	0.68
PL 00600	0.492	14	70	1.39	96	0.072	2	1.33
PL 00601	0.132	7	168	2.79	159	0.252	1	2.22
PL 00602	0.076	11	111	1.93	203	0.307	0	2.59
PL 00603	0.088	12	20	0.71	390	0.041	1	0.69
PL 00604	0.08	13	20	0.61	403	0.04	1	0.71
PL 00605	0.089	11	17	0.58	351	0.037	2	0.62
PL 00606	0.079	13	24	0.31	267	0.016	1	0.76
PL 00607	0.097	11	23	0.33	198	0.019	1	0.71
PL 00608	0.087	14	25	0.61	457	0.036	2	0.73
PL 00609	0.08	14	22	0.59	540	0.034	2	0.7
PL 00624	0.092	9	37	0.5	336	0.042	1	1.3

SAMPLES	Na	K	W	Hg	Sc	Tl	S	Ga
PL 00551	0.007	0.09	0.1	0.03	2.4	0.1	0	2
PL 00552	0.013	0.12	0.2	0.05	3.1	0.2	0	3
PL 00553	0.014	0.39	0.2	0.04	4.8	0.1	0	5
PL 00554	0.012	0.57	0.1	0.01	8.1	0.1	0	8
PL 00555	0.009	0.09	0.2	0.06	2.3	0.1	0	2
PL 00556	0.007	0.08	0.2	0.05	1.6	0.1	0.09	2
PL 00557	0.007	0.12	0.3	0.02	2.2	0.1	0.07	2
PL 00558	0.008	0.08	0.2	0.06	1.9	0.1	0	2
PL 00559	0.007	0.11	0.2	0.03	2.6	0.1	0	3
PL 00560	0.007	0.08	0.1	0.08	2.2	0.1	0	2
PL 00561	0.009	0.07	0.2	0.07	2.6	0.1	0	3
PL 00562	0.009	0.12	0.1	0.04	4	0.1	0	4
PL 00563	0.007	0.08	0.1	0.01	2.7	0.1	0	4
PL 00564	0.007	0.1	0.1	0.02	3.6	0.1	0	4
PL 00565	0.012	0.07	0.2	0.04	3.7	0.1	0	3
PL 00566	0.019	0.1	0.3	0.05	2.4	0.1	0.07	3
PL 00567	0.014	0.07	0.1	0.09	3.6	0.1	0	3
PL 00568	0.016	0.06	0.2	0.04	3.3	0.1	0	3
PL 00569	0.017	0.07	0.1	0.04	3.4	0.1	0	4
PL 00570	0.017	0.06	0.3	0.03	2.7	0	0	3
PL 00571	0.008	0.1	0.2	0.04	4.6	0.1	0	4
PL 00572	0.01	0.12	0.2	0.03	3.9	0.1	0	4
PL 00573	0.009	0.1	0.2	0.03	4.5	0.1	0	4
PL 00574	0.009	0.12	0.1	0.01	2.8	0.1	0	4
PL 00584	0.011	0.11	0.2	0.02	4.9	0.1	0	4
PL 00585	0.014	0.2	0.1	0	2.9	0.1	0	5
PL 00586	0.016	0.08	0.3	0.06	3.2	0.1	0	3
PL 00587	0.018	0.07	0.2	0.05	3.5	0.1	0	3
PL 00588	0.008	0.09	0.1	0.01	2.2	0.1	0	3
PL 00589	0.007	0.08	0.2	0.02	3.3	0.1	0	4
PL 00590	0.013	0.08	0.3	0.07	3.9	0.1	0	4
PL 00591	0.009	0.1	0.3	0.02	4.5	0.1	0	4
PL 00592	0.014	0.07	0.1	0.06	3.9	0.1	0	4
PL 00593	0.013	0.06	0.2	0.05	4.2	0.1	0	3
PL 00594	0.006	0.06	0.2	0.01	2.8	0.1	0	6
PL 00595	0.013	0.1	0.2	0.05	4.8	0.1	0	5
PL 00596	0.015	0.06	0.3	0.07	3.4	0.1	0	3
PL 00597	0.007	0.11	0.1	0.03	5	0.1	0	4
PL 00598	0.012	0.09	0.2	0.05	4.2	0.2	0	3
PL 00599	0.015	0.06	0.2	0.04	3	0.1	0	3
PL 00600	0.042	0.13	0.1	0.03	4.2	0.1	0	5
PL 00601	0.035	0.86	0	0.01	3.8	0.1	0	7
PL 00602	0.021	0.32	0.1	0.01	6.5	0.1	0	8
PL 00603	0.014	0.07	0.1	0.03	2.8	0.1	0	2
PL 00604	0.012	0.06	0.2	0.05	2.9	0.1	0	2
PL 00605	0.012	0.05	0.1	0.03	2.7	0.1	0	2
PL 00606	0.005	0.06	0.1	0.02	2.3	0.1	0	2
PL 00607	0.005	0.07	0.1	0.01	1.7	0.1	0	2
PL 00608	0.011	0.09	0.2	0.05	2.8	0.1	0	2
PL 00609	0.011	0.1	0.3	0.04	2.5	0.1	0	2
PL 00624	0.007	0.06	0.2	0.01	2.4	0.1	0	4

SAMPLES	Se	Analysis:	Acme file #
PL 00551	0.6	GROUP 1DX - 15.0 GM	A606513
PL 00552	0	GROUP 1DX - 15.0 GM	A606513
PL 00553	0	GROUP 1DX - 15.0 GM	A606513
PL 00554	0.5	GROUP 1DX - 15.0 GM	A606513
PL 00555	0	GROUP 1DX - 15.0 GM	A606513
PL 00556	0.5	GROUP 1DX - 15.0 GM	A606513
PL 00557	0.5	GROUP 1DX - 15.0 GM	A606513
PL 00558	0.5	GROUP 1DX - 15.0 GM	A606513
PL 00559	0	GROUP 1DX - 15.0 GM	A606513
PL 00560	0	GROUP 1DX - 15.0 GM	A606513
PL 00561	0	GROUP 1DX - 15.0 GM	A606513
PL 00562	0	GROUP 1DX - 15.0 GM	A606513
PL 00563	0.5	GROUP 1DX - 15.0 GM	A606513
PL 00564	0	GROUP 1DX - 15.0 GM	A606513
PL 00565	0	GROUP 1DX - 15.0 GM	A606513
PL 00566	0.8	GROUP 1DX - 15.0 GM	A606513
PL 00567	0	GROUP 1DX - 15.0 GM	A606513
PL 00568	0	GROUP 1DX - 15.0 GM	A606513
PL 00569	0	GROUP 1DX - 15.0 GM	A606513
PL 00570	0.5	GROUP 1DX - 15.0 GM	A606513
PL 00571	0	GROUP 1DX - 15.0 GM	A606513
PL 00572	0	GROUP 1DX - 15.0 GM	A606513
PL 00573	0	GROUP 1DX - 15.0 GM	A606513
PL 00574	0	GROUP 1DX - 15.0 GM	A606513
PL 00584	0	GROUP 1DX - 15.0 GM	A606513
PL 00585	0	GROUP 1DX - 15.0 GM	A606513
PL 00586	0	GROUP 1DX - 15.0 GM	A606513
PL 00587	0	GROUP 1DX - 15.0 GM	A606513
PL 00588	0	GROUP 1DX - 15.0 GM	A606513
PL 00589	0	GROUP 1DX - 15.0 GM	A606513
PL 00590	0	GROUP 1DX - 15.0 GM	A606513
PL 00591	0	GROUP 1DX - 15.0 GM	A606513
PL 00592	0	GROUP 1DX - 15.0 GM	A606513
PL 00593	0	GROUP 1DX - 15.0 GM	A606513
PL 00594	0	GROUP 1DX - 15.0 GM	A606513
PL 00595	0.7	GROUP 1DX - 15.0 GM	A606513
PL 00596	0	GROUP 1DX - 15.0 GM	A606513
PL 00597	0.8	GROUP 1DX - 15.0 GM	A606513
PL 00598	0	GROUP 1DX - 15.0 GM	A606513
PL 00599	0	GROUP 1DX - 15.0 GM	A606513
PL 00600	0	GROUP 1DX - 15.0 GM	A606513
PL 00601	0	GROUP 1DX - 15.0 GM	A606513
PL 00602	0	GROUP 1DX - 15.0 GM	A606513
PL 00603	0.6	GROUP 1DX - 15.0 GM	A606513
PL 00604	0	GROUP 1DX - 15.0 GM	A606513
PL 00605	0	GROUP 1DX - 15.0 GM	A606513
PL 00606	0	GROUP 1DX - 15.0 GM	A606513
PL 00607	0.8	GROUP 1DX - 15.0 GM	A606513
PL 00608	0	GROUP 1DX - 15.0 GM	A606513
PL 00609	0.7	GROUP 1DX - 15.0 GM	A606513
PL 00624	0	GROUP 1DX - 15.0 GM	A606513

SAMPLES	Soil Bag ID	UTM Zone	UTM Easting	UTM Northing	Mo	Cu	Pb
PL 00625	PL00625	NAD 83 - 08V	405394	6968621	1.4	15.1	11.7
PL 00626	PL00626	NAD 83 - 08V	405400	6968572	1.4	21.9	12.3
PL 00627	PL00627	NAD 83 - 08V	405395	6968528	1.3	22.5	5
PL 00628	PL00628	NAD 83 - 08V	405501	6968427	2.4	60	5.7
PL 00629	PL00629	NAD 83 - 08V	405503	6968475	1.3	27.1	8.7
PL 00630	PL00630	NAD 83 - 08V	405505	6968578	0.7	4.8	6.7
PL 00631	PL00631	NAD 83 - 08V	405609	6968572	1.4	20.2	9.3
PL 00632	PL00632	NAD 83 - 08V	405609	6968478	1.1	18.1	12.5
PL 00633	PL00633	NAD 83 - 08V	405604	6968422	1.4	17.9	9.3
PL 08697	PL08697	NAD 83 - 08V	405909	6968662	0.8	14.3	6.4
PL 08698	PL08698	NAD 83 - 08V	405902	6968709	0.7	27.2	7.8
PL 08699	PL08699	NAD 83 - 08V	405919	6968775	1.1	34.9	7.5
PL 08700	PL08700	NAD 83 - 08V	405919	6968821	0.7	21.6	7.2

SAMPLES	Zn	Ag	Ni	Co	Mn	Fe	As	U
PL 00625	79	0	30.4	10.3	303	2.55	14.2	0.6
PL 00626	79	0.1	31.5	10.3	419	2.47	15.7	0.7
PL 00627	96	0	28.8	20.6	612	4.27	4.3	0.7
PL 00628	101	0.3	236.7	31.4	432	3.5	4.3	1
PL 00629	45	0	33.2	11.5	294	2.64	12.3	0.8
PL 00630	34	0	9.9	5	226	1.41	1.8	0.3
PL 00631	48	0	28.3	8.6	269	2.57	16.3	0.6
PL 00632	60	0	27.7	9.1	333	2.44	15.3	0.6
PL 00633	66	0.1	48.9	13.2	414	2.41	7.7	0.5
PL 08697	39	0	21.1	6.8	178	1.74	6.5	0.4
PL 08698	44	0	29.5	7.8	265	2.12	10.2	0.7
PL 08699	56	0	55.8	12.4	334	2.54	8.3	1
PL 08700	52	0.1	27.1	7.5	366	1.92	9.4	0.9

SAMPLES	Au	Th	Sr	Cd	Sb	Bi	V	Ca
PL 00625	0	4.5	18	0.3	1.1	0.2	47	0.29
PL 00626	1.2	5.3	27	0.2	1.2	0.2	42	0.38
PL 00627	0	2.6	46	0.2	0.4	0.1	100	0.7
PL 00628	0	3.6	23	0.2	0.3	0.1	85	0.44
PL 00629	3.1	5	16	0	0.9	0.1	57	0.19
PL 00630	0	2	18	0.2	0.3	0.1	39	0.3
PL 00631	0.8	5.2	20	0.1	1	0.1	62	0.27
PL 00632	0	5.4	19	0.1	1.1	0.2	49	0.25
PL 00633	1.3	3.9	18	0.2	0.8	0.2	50	0.28
PL 08697	0	2.6	14	0.1	0.4	0.1	44	0.21
PL 08698	4.7	4.9	28	0.1	0.9	0.1	42	0.43
PL 08699	2.3	5.7	17	0.1	0.7	0.1	55	0.25
PL 08700	6	3.5	28	0.3	0.9	0.1	35	0.37

SAMPLES	P	La	Cr	Mg	Ba	Ti	B	Al
PL 00625	0.056	15	30	0.46	242	0.048	2	1.09
PL 00626	0.09	19	28	0.41	401	0.041	2	0.96
PL 00627	0.182	10	39	1.24	314	0.213	1	2.06
PL 00628	0.074	13	213	2.07	488	0.173	2	2.39
PL 00629	0.023	20	36	0.46	167	0.073	1	1.1
PL 00630	0.032	9	18	0.26	348	0.048	1	0.88
PL 00631	0.025	11	34	0.36	396	0.045	1	1.49
PL 00632	0.068	16	28	0.35	432	0.031	2	1.17
PL 00633	0.071	12	62	0.61	472	0.068	2	1.18
PL 08697	0.04	8	24	0.37	299	0.053	1	1.27
PL 08698	0.05	17	26	0.43	286	0.05	2	0.93
PL 08699	0.046	35	39	1.67	264	0.044	2	1.79
PL 08700	0.092	13	20	0.4	333	0.032	2	0.71

SAMPLES	Na	K	W	Hg	Sc	Tl	S	Ga
PL 00625	0.006	0.13	0.2	0.02	3.3	0.1	0	3
PL 00626	0.008	0.15	0.2	0.02	3.8	0.1	0	3
PL 00627	0.012	0.6	0.1	0.01	5.4	0.1	0	8
PL 00628	0.014	0.71	0.1	0	4.6	0.3	0	8
PL 00629	0.009	0.11	0.2	0.03	5.2	0.1	0	4
PL 00630	0.006	0.04	0.1	0	1.7	0.1	0	4
PL 00631	0.006	0.09	0.2	0.02	4.1	0.1	0	4
PL 00632	0.006	0.09	0.3	0.02	3.5	0.1	0	4
PL 00633	0.01	0.2	0.2	0.02	3.4	0.1	0	4
PL 08697	0.007	0.09	0.1	0.01	2.2	0.1	0	4
PL 08698	0.013	0.07	0.2	0.03	4.2	0.1	0	3
PL 08699	0.008	0.08	0.1	0.04	5.2	0.1	0	4
PL 08700	0.01	0.06	0.2	0.04	2.7	0.1	0	2

SAMPLES	Se	Analysis:	Acme file #
PL 00625	0.6	GROUP 1DX - 15.0 GM	A606513
PL 00626	0.7	GROUP 1DX - 15.0 GM	A606513
PL 00627	0	GROUP 1DX - 15.0 GM	A606513
PL 00628	0.6	GROUP 1DX - 15.0 GM	A606513
PL 00629	0.7	GROUP 1DX - 15.0 GM	A606513
PL 00630	0	GROUP 1DX - 15.0 GM	A606513
PL 00631	0	GROUP 1DX - 15.0 GM	A606513
PL 00632	0	GROUP 1DX - 15.0 GM	A606513
PL 00633	0	GROUP 1DX - 15.0 GM	A606513
PL 08697	0	GROUP 1DX - 15.0 GM	A606513
PL 08698	0	GROUP 1DX - 15.0 GM	A606513
PL 08699	0	GROUP 1DX - 15.0 GM	A606513
PL 08700	0.6	GROUP 1DX - 15.0 GM	A606513