

GEOCHEMICAL REPORT

OREO 1-40 CLAIMS

GRANT # YC30233-YC30272

NTS # 116 A \ 4

LAT: 64' 09' N

LONG: 137' 39' W

DAWSON MINING DISTRICT

AUTHOR OF REPORT SHAWN RYAN

WORK PERFORMED JULY 20 to SEPT 15, 2006

DATE OF REPORT OCTOBER 05, 2007

TABLE OF CONTENT

SUMMARY

1.0 INTRODUCTION	P.3
2.0 LOCATIONS AND ACCESS	P.3
3.0 PROPERTY DESCRIPTION	P.3
4.0 PHYSIOGRAPHY	P.3
5.0 REGIONAL AND PROPERTY GEOLOGY	P.4
6.0 WORK PERFORMED / METHODS	P.4
7.0 INTERPRETATIONS	P.5
8.0 RECOMMENDATION	P.5
9.0 REFERENCES CITED	P.5
10.0 COST	P.6
11.0 QUALIFICATION	P.7
Claim Location / Geology Map	
Gold Soil / Silt Anomaly Map	Figure 1
Arsenic Soil / Silt Anomaly Map	Figure 2
Antimony Soil / Silt Anomaly Map	Figure 3
Soil GPS Points	Appendix
Assay Data	Appendix

SUMMARY

The Oreo 2006 field season has seen some soil work (90 Soils), silt work (13 Silts) and 3 man days of geological work conducted by Aurum Geological.

1.0 INTRODUCTION

The Oreo 2006 work program was design to follow up on the 2005 soil Program. The soil survey was successful in extending the 2005 Gold anomaly.

2.0 LOCATIONS AND ACCESS

Oreo 1-40 claims are located 90 kilometers east north east of Dawson City on NTS sheet 116 A / 04. Access is via helicopter from Dawson City. The estimated helicopter time is 1.3 hours there and back.

3.0 PROPERTY DESCRIPTION

The Oreo 1-40 claims consist of 40 full Yukon quartz-mining claims. The claim block was staked in two separated blocks.

4.0 PHYSIOGRAPHY

The property is in glaciated, mountainous, alpine terrain of interconnected ridges with steep scree covered slopes. Intrusive rocks form imposing jagged peaks while metasediments form cliff-like outcroppings on north and east-facing slopes, and steep scree covered south and west-facing slopes (often dip slopes).

Elevation ranges from 900 meters at valley bottom to 1700 meters at the peak of Ida-Oro Tombstone Intrusive. Diamicton and outwash generally cover the valleys while in-situ weathered rock, poorly developed soils, and felsenmeer dominate the ridges. Rock outcrops are common along the ridges and as cliffs along the upper slopes of valleys, becoming rarer at lower elevations, especially in the larger valleys.

The climate is characterized by low precipitation and a wide temperature range. Winters are cold, and temperatures of -30°C to -40°C are common. Summers are moderately cool to hot, with daily highs of 10°C to 25°C. The property is generally snow free from early-June to the end of August.

5.0 REGIONAL AND PROPERTY GEOLOGY

ii) GEOLOGY (excerpt from Noranda 1989 assessment report 092794)

REGIONAL GEOLOGY

The Property lies within rocks of the Selwyn Basin. The basin is dominated by fine grained clastic rocks and chert of Proterozoic to Paleozoic in age. It includes the Road River Formation which occurs in the region of the Oreo property. This is a sequence of shales, black cherty argillites, cherts and chert-pebble conglomerates of Ordovician to Silurian in age. Cretaceous stocks and batholiths, mostly monzonite to granodiorite in composition, intrude Selwyn Basin strata in a number of localities.

PROPERTY GEOLOGY

The Oreo Property area is underlain by three units of Road River Formation, as describe in Noranda reports plus numerous east west trending Tombstone intrusive dikes.

6.0 WORK PERFORMED / METHODS

6.1 Soil Work

The soil survey was undertaken by four employees of Ryanwood Exploration they consist of Issac Fage, Adam Fage and Matthew McHugh.

Soil where taken at 100 meters line spacing and 50 station spacing. The crew used one-meter soil augers or prospector picks where ground was too rocky for augers.

Soil sample where taken at an average depth of 50-70 centimeters. All sample where placed in kraft soil bags. Exact position location where define using Garmin GPS. All GPS location where downloaded nightly into field computers.

Soil location where marked in the field with an orange flagging with sample number.

Sample where air dried in Dawson City and then sent to Acme Labs in Vancouver. Sample where processed at minus 80 mesh and analysis was 1DX-MS for 35 elements.

6.2 Silt Work

A regional silt program was undertaken across both the Oreo and Oreox Claim blocks. The idea was to see if any new targets would appear on either claim block. The silt work was conducted using shovels and collecting a two pound sample from high energy site such as gravel bar in mid stream or if no gravel bar where available we collected samples with shovel directly from submerged gravel beds. Large gravel piece were thrown out and only the fine sand was kept for assay. All sample location were GPS in and sample location in the field were marked with pink flagging. Sample number was marked on pink flagging with permanent black markers.

7.0 INTERPRETATIONS

7.1 Soils

The 2006 soil grid revealed a nice gold, arsenic and antimony anomaly appearing at the southern part of the 2006 grid. It is still unsure if the multi element anomaly is related to a regional structure feature or is anomalous soils transported down valley from the Ida Oro Property.

7.2 Silts

The 2006 silt survey indicated that all of the anomalous silt values are coming from the Oreo and Ida Oro Claim areas. No new silt anomaly areas were detected on the Oreo Claim block.

8.0 RECOMMENDATION

I recommend extending the grid to the east covering the ground up to the edge of the Ida Oro Claim block. This would help with the question as to whether the soil anomaly is related to structure or is it just transported soils. I would conduct the soil grid on the same line spacing (100 meters) and station spacing (50 meters).

9.0 REFERENCES CITED

Noranda Exploration Co. Ltd. (1989) Assessment Report on 1989 Field Activities on the Ida-Oro Claims # 092794.

10.0 COST

Soil Survey Cost

Wage three men for one day at \$250.00 per day	\$750.00
Helicopter Travel 2.4 hours for drop off and pick up	
Total 2.4 hours at \$1259.00	\$3,021.00
Assay Cost 90 Soils at \$18.00	\$1,620.00

Geology Cost

Geologist Al Doherty 2 days @ \$500.00 per day	\$1,000.00
Geologist Joan Vanranden 1 day @ \$600.00 per day	\$600.00
Helicopter travel 2.4 hours, drop off pick	\$3,021.00

Silt Survey

Prorated the silt survey per silt sample to included assay, wage and helicopter work for the Oreo and Oreox silt survey

17 silts at \$117.00 per sample	\$1521.00
Report Writing	\$500.00

Total	\$5768.00

11.0 QUALIFICATION

I Shawn Ryan located in Dawson City, Yukon work as a professional prospector. I run a small exploration company located in Dawson city.

I have worked in the exploration business for the last 25 years. I worked the first 12 years as a contractor working on numerous projects in the NWT, Ontario, Quebec and the Yukon. I have worked for the last 9 years as a local prospector for myself.

I have being trained to run various geophysical instruments, surveys such as magnetic surveys, max-min surveys, induce polarity surveys, and VLF surveys.

I have overseen the entire Oreo Project and was the party chief in charge.

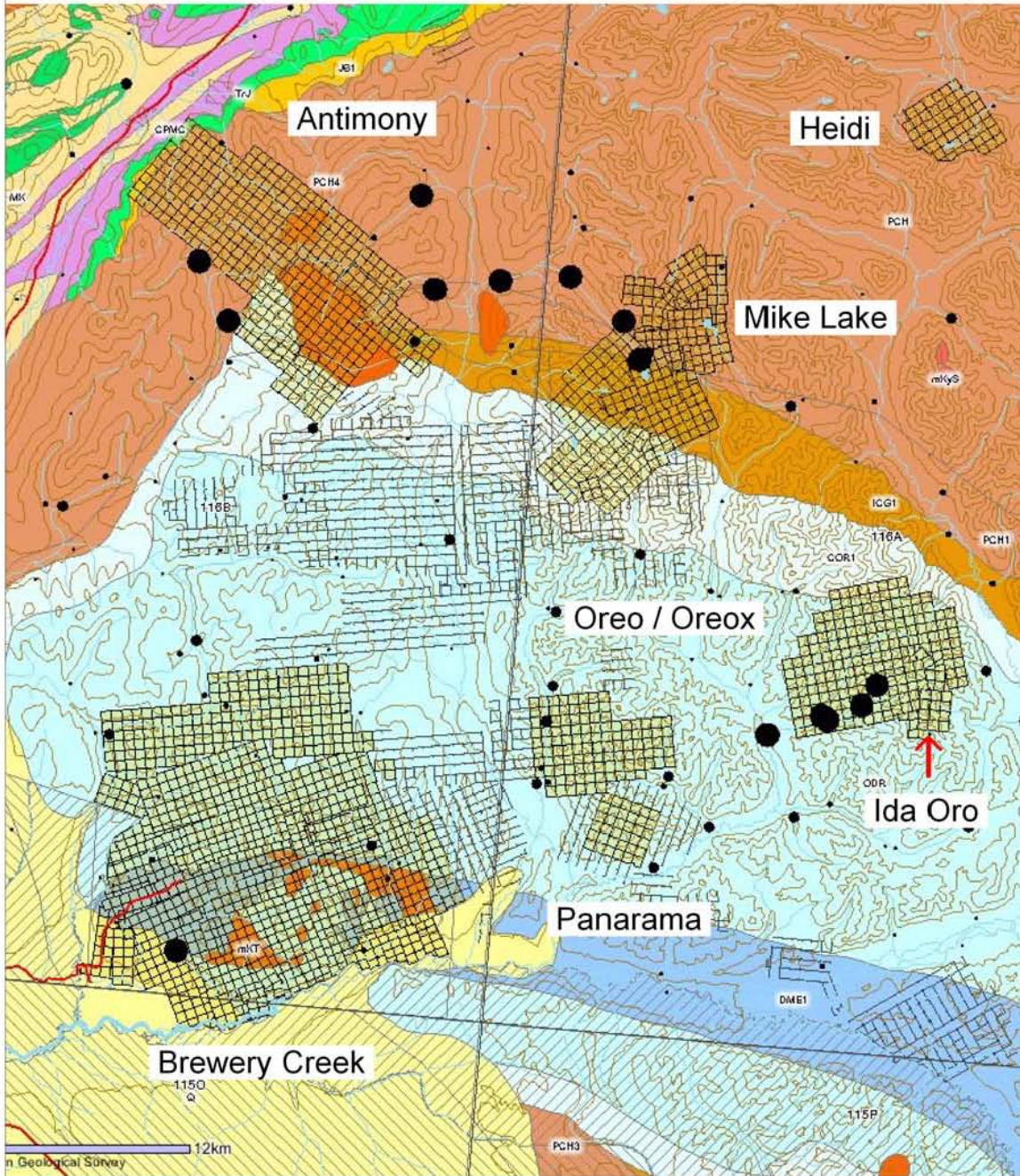
I own 100 % of the Oreo claims.

Dated this 05 of October 2007 in Dawson City, Yukon.

Respectfully submitted

Shawn Ryan

YTG Regional Geology



Black Dot Represent GSC Regional Gold in Silts

MID-CRETACEOUS

mKT

mKT: TOMBSTONE SUITE

plutonic suite dominated by felsic (q) to syenitic (y) compositions

- y. medium- to coarse-grained biotite-hornblende-clinopyroxene syenite, quartz syenite; tourmaline orbicular granite; hornblende +/- biotite alkali-feldspar syenite; hornblende-biotite monzogranite; clinopyroxenite, diorite, and pseudoleucite tinguaite (**Tombstone Suite**)

DEVONIAN AND MISSISSIPPIAN

DME

DME: EARN

complex assemblage of submarine fan and channel deposits (1), (5) within black siliceous shale and chert (2), (4) and including separated small occurrences of felsic volcanic rocks (3); barite common, and many occurrences of stratiform Pb-Zn

1. thin bedded, laminated slate with thin to thickly interbedded fine to medium grained chert-quartz arenite and wacke; thick members of chert pebble conglomerate; black siliceous siltstone; nodular and bedded barite; rare limestone (**Earn Gp., Portrait Lake and Prevost**)

ORDOVICIAN TO LOWER DEVONIAN

ODR

ODR: ROAD RIVER - SELWYN

black shale and chert (1) overlain by orange siltstone (2) or buff platy limestone (3); locally contains beds as old as Middle Cambrian (4); correlations with basinal strata in Richardson Mountains include: ODR1 with CDR2 (upper part) and ODR2 with CDR4 (**Road River Gp.**)

1. black, gun-blue, or silvery white weathering black graptolitic shale and black chert; resistant grey weathering, thin to medium bedded, light grey to black, greenish grey or turquoise chert; minor argillaceous limestone (**Road River Gp., Duo Lake and Elmer Creek**)

UPPER CAMBRIAN AND ORDOVICIAN

COR

COR: RABBITKETTLE

basinal limestone (1) that may locally include older and younger basinal pelitic strata undivided (2)

1. thin bedded, wavy banded, silty limestone and grey lustrous calcareous phyllite; limestone intraclast breccia and conglomerate; massive to laminated, grey quartzose siltstone and chert and rare black slate; local mafic flows, breccia, and tuff (**Rabbitkettle**)

LOWER CAMBRIAN

ICG

ICG: GULL LAKE

dominantly fine clastic assemblage (1) with local volcanic units (2)

1. shale, siltstone and mudstone, locally bioturbated, with minor quartz sandstone; rare green-grey chert; local basal limestone and limestone conglomerate; phyllite to quartz-muscovite-biotite schist (+/-garnet +/-sillimanite +/-staurolite +/-andalusite) (**Gull Lake**)

UPPER PROTEROZOIC TO LOWER CAMBRIAN

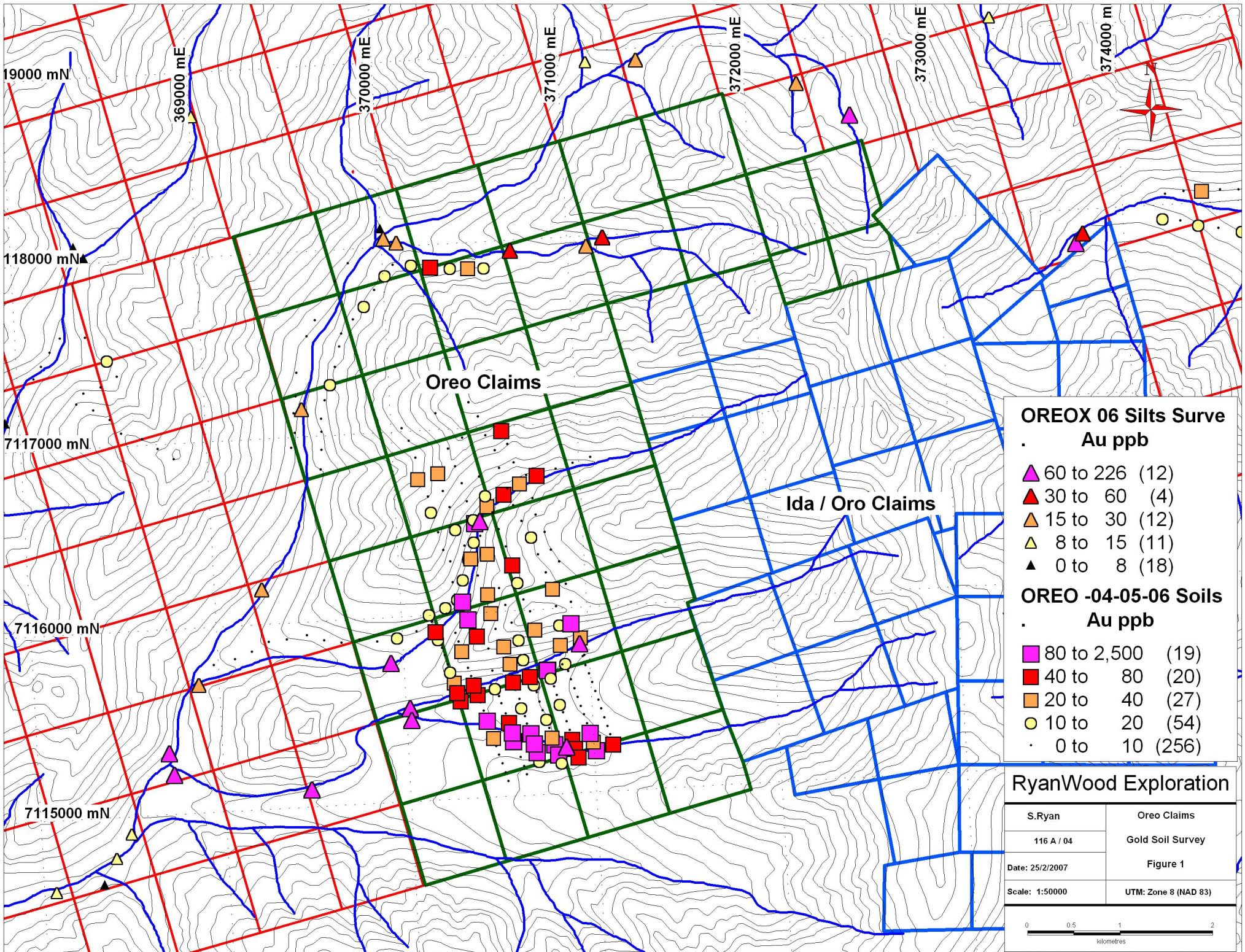
PCH

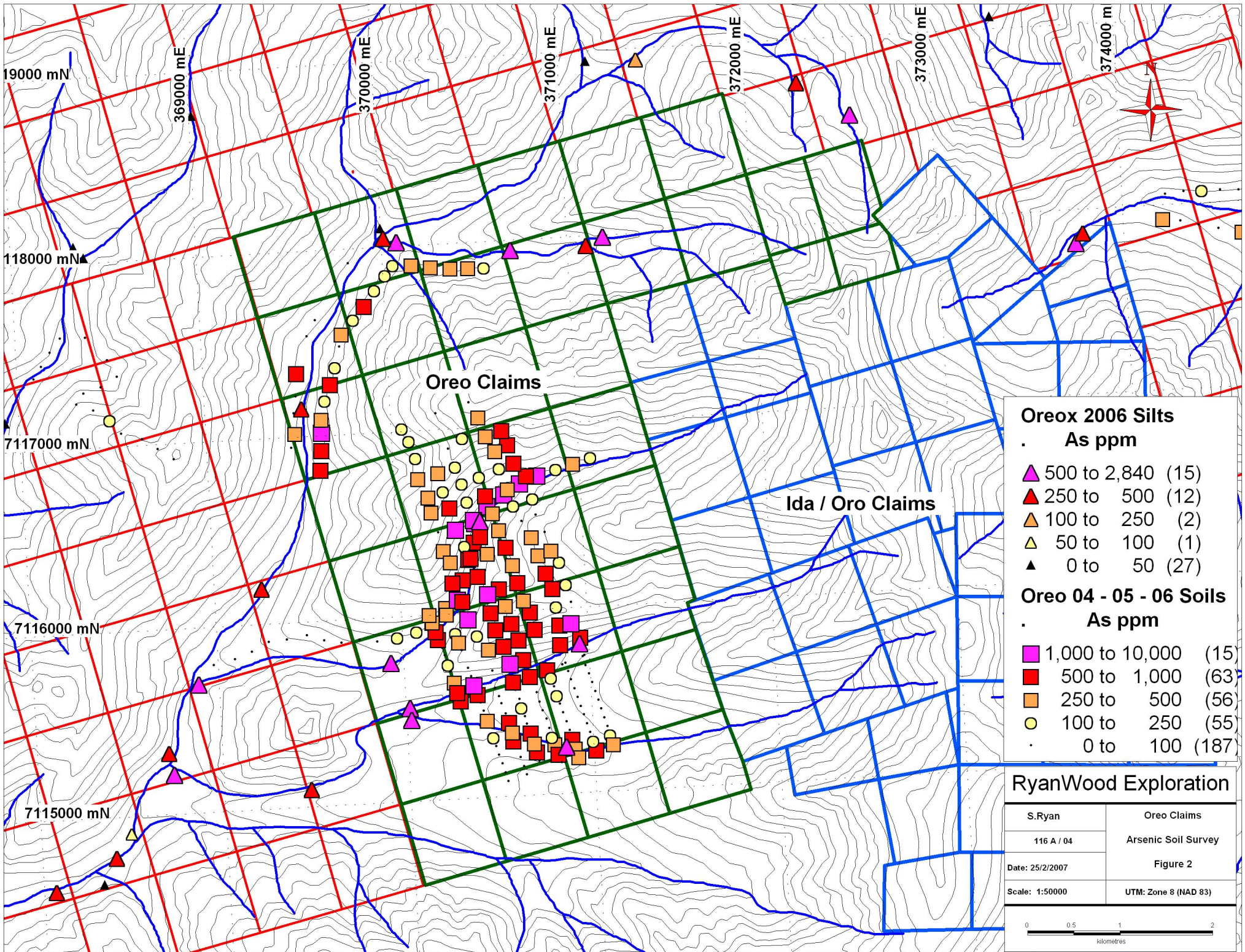
PCH: HYLAND

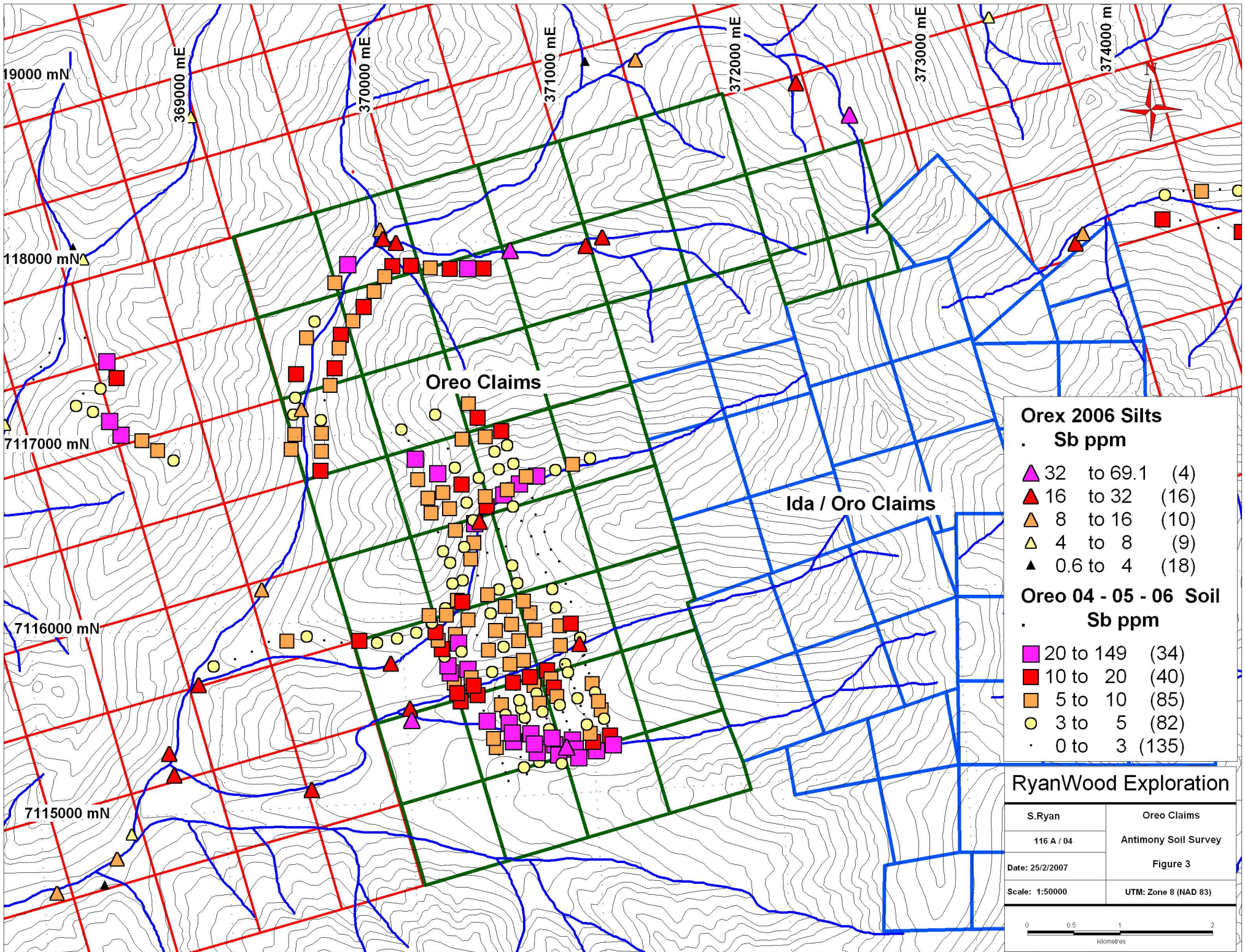
consists upwards of coarse turbiditic clastics (1), limestone (2) and fine clastics typified by maroon and green shale (3); may include younger (4) units; includes scattered mafic volcanic rocks (5) (**Hyland Gp.**)

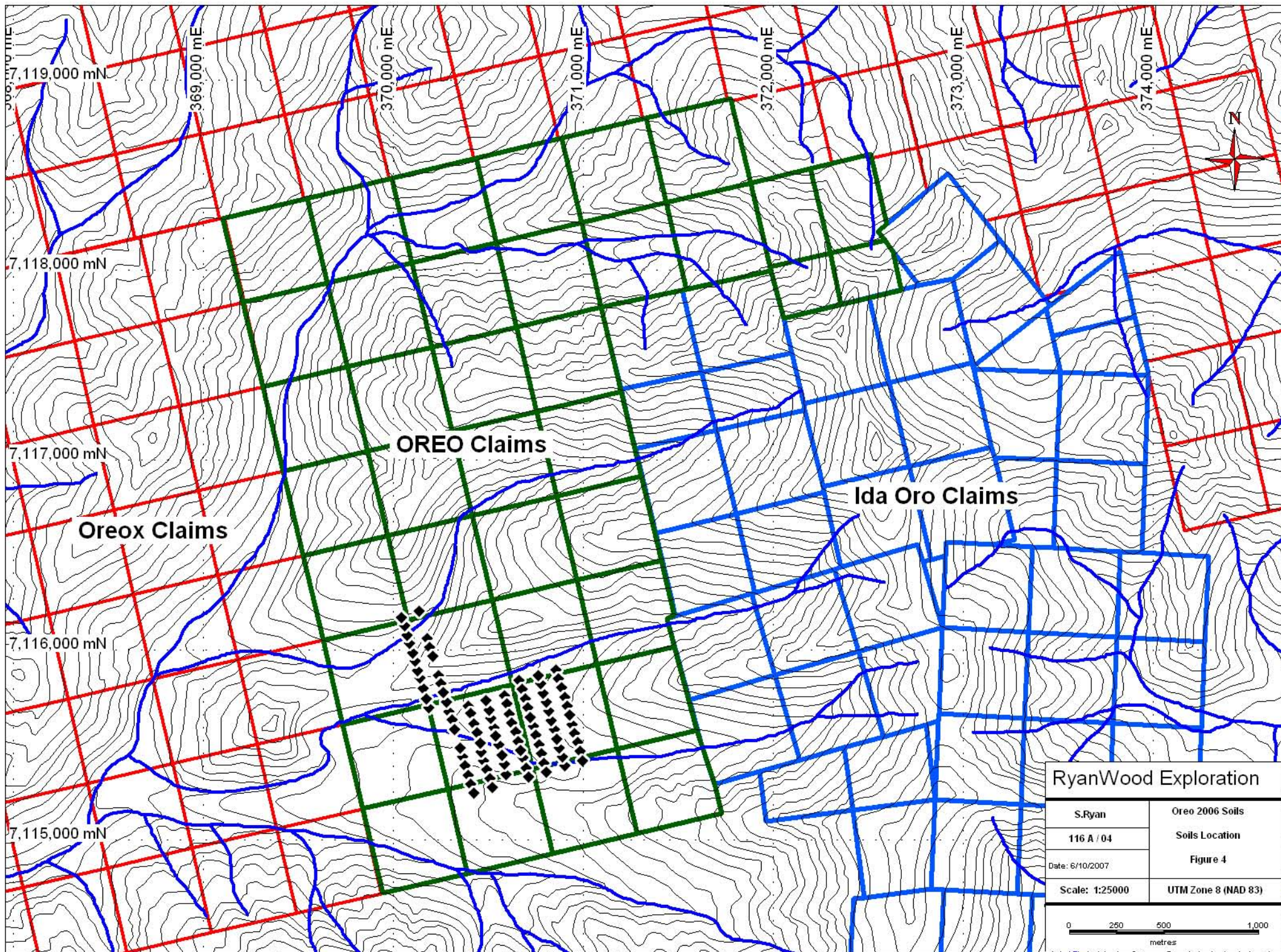
PCH2

1. thin to thick bedded, brown to pale green shale, fine to coarse grained quartz-rich sandstone, grit, and quartz-pebble conglomerate; minor argillaceous limestone; phyllite, quartzofeldspathic and micaceous psammite, gritty psammite and minor marble (**Hyland Gp., Yusezyu**)







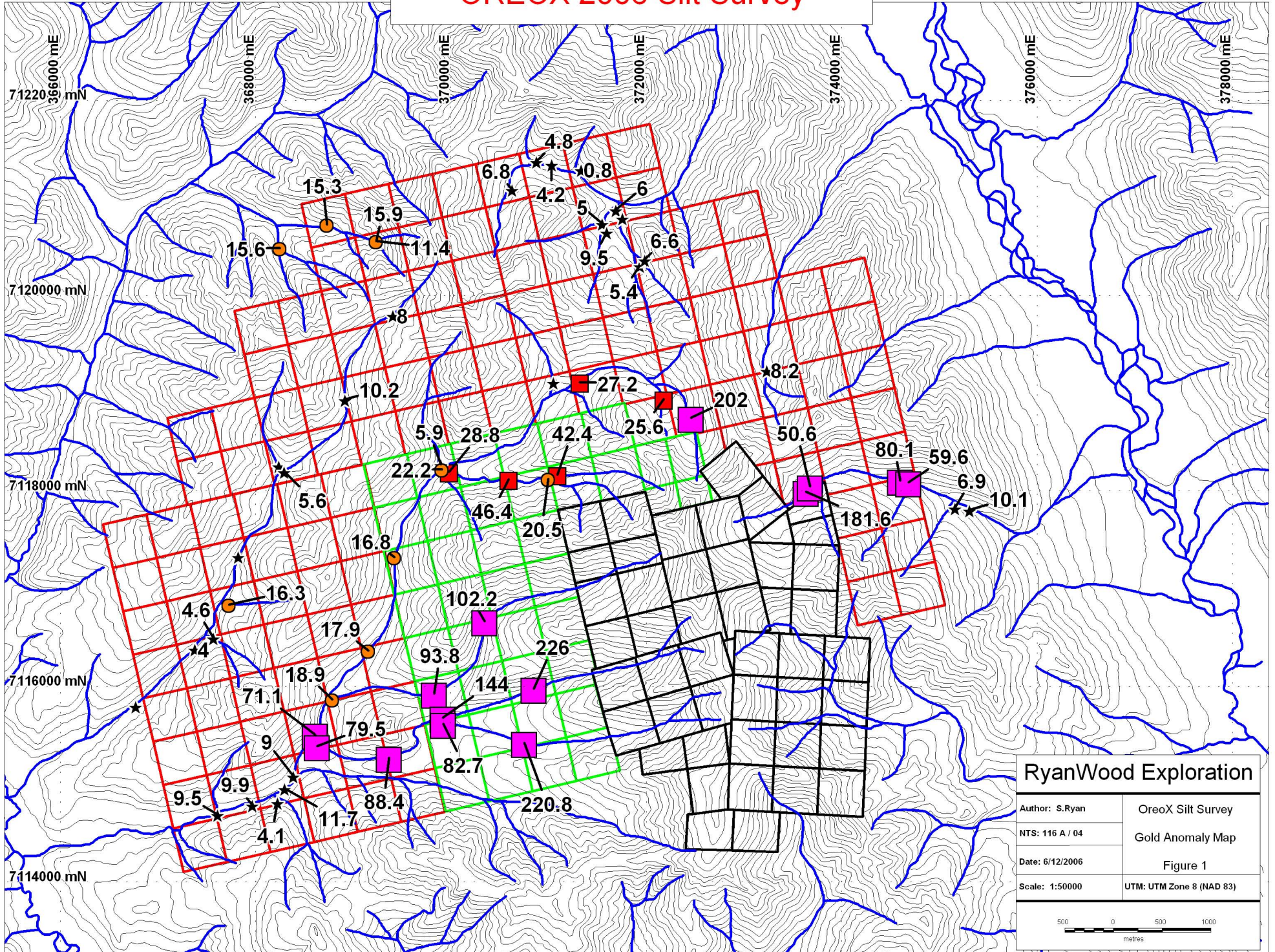


RyanWood Exploration

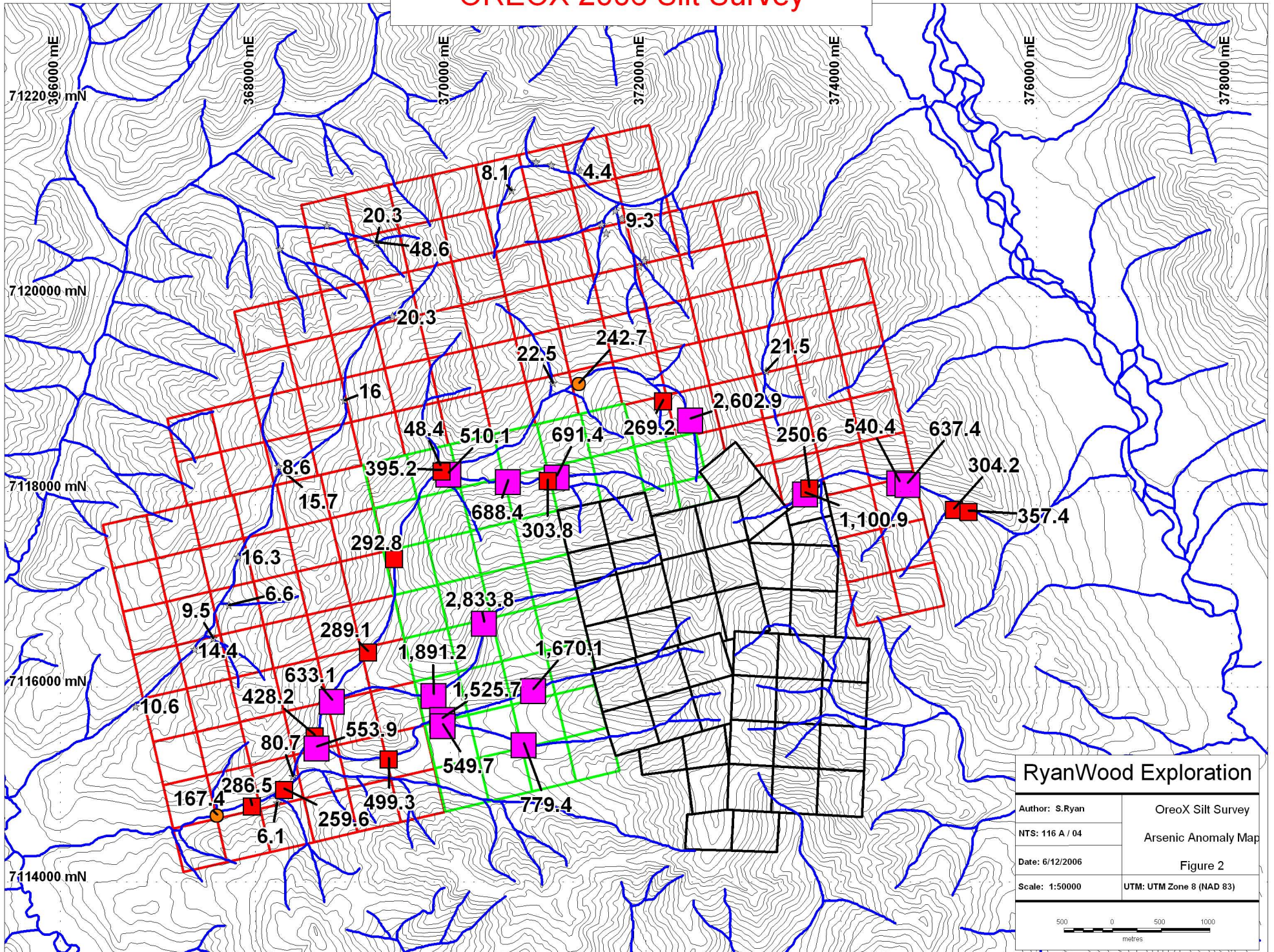
S.Ryan	Oreo 2006 Soils
116 A / 04	Soils Location
Date: 6/10/2007	Figure 4
Scale: 1:25000	UTM Zone 8 (NAD 83)

0 250 500 1,000 metres

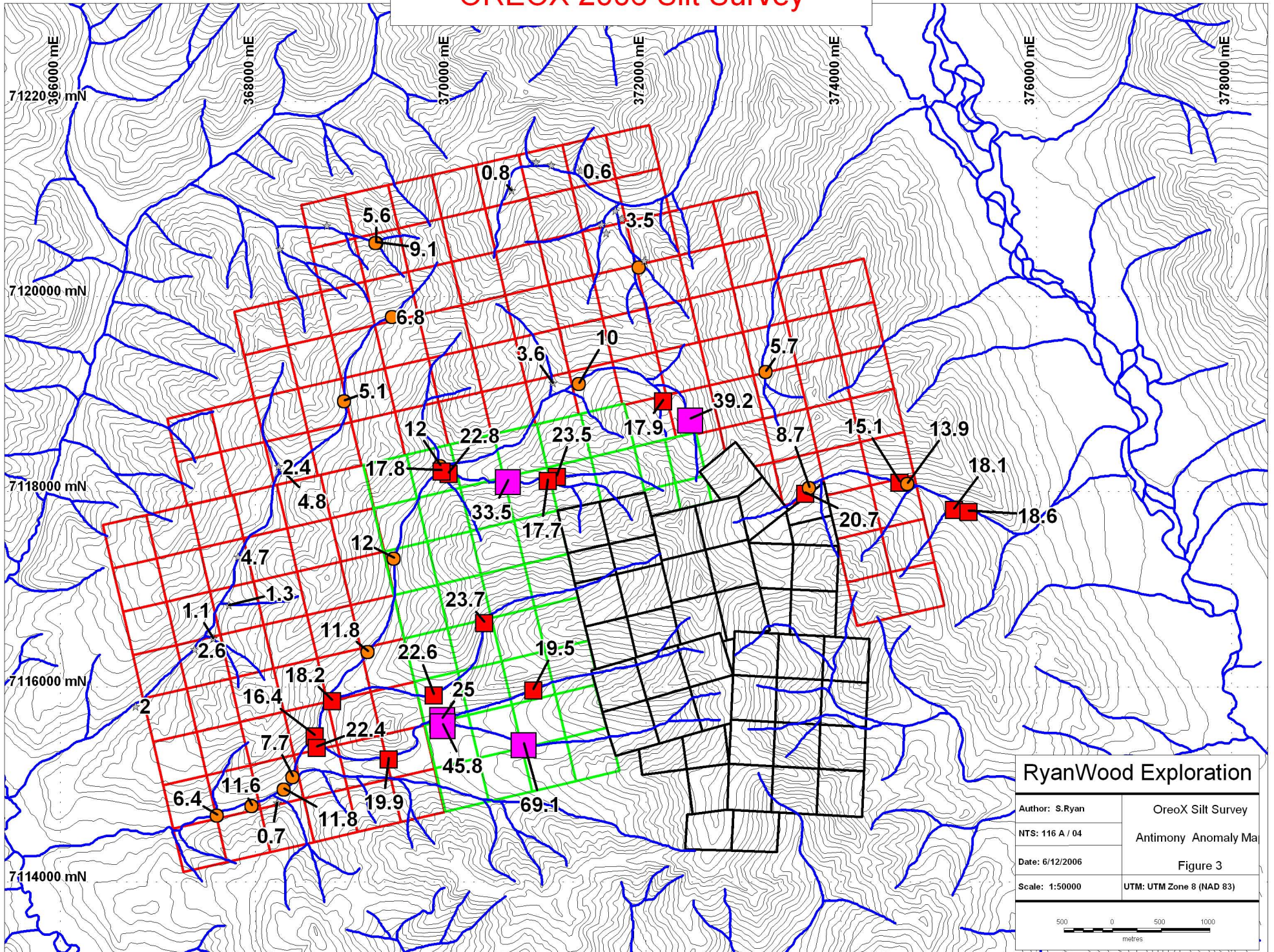
OREOX 2006 Silt Survey



OREOX 2006 Silt Survey

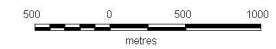


OREOX 2006 Silt Survey



RyanWood Exploration

Author: S.Ryan	Oreox Silt Survey
NTS: 116 A / 04	Antimony Anomaly Map
Date: 6/12/2006	Figure 3
Scale: 1:50000	UTM: UTM Zone 8 (NAD 83)



SAMPLES	Datum	Easting	Northing	Mo	Cu	Pb	Zn	Ag	Ni	Co	Mn
IO-7072	NAD83-8W	370358	7115498	3	45.6	15.9	119	0.4	33.7	19.7	717
IO-7073	NAD83-8W	370371	7115449	2.5	37.4	13.6	148	0.2	40	10.4	269
IO-7074	NAD83-8W	370384	7115402	0.9	16.7	7.7	43	0	13.2	5.3	152
IO-7075	NAD83-8W	370399	7115353	1.4	27.4	7.4	75	0.1	23	8.3	319
IO-7079	NAD83-8W	370413	7115304	1.6	29.6	9.2	74	0	22.7	9.1	339
IO-7080	NAD83-8W	370427	7115257	1.8	25	9.1	64	0.1	19.7	6.7	220
IO-8165	NAD83-8W	370164	7115808	2.5	91	12.8	67	1	23.6	6.7	384
IO-8167	NAD83-8W	370145	7115864	49.7	63	19.7	663	1.2	108.5	8.4	101
IO-8168	NAD83-8W	370134	7115903	81.8	190.6	30.3	994	1.8	125.2	12.8	415
IO-8169	NAD83-8W	370120	7115953	4.6	53.3	29.2	213	0.4	36.5	15.1	448
IO-8170	NAD83-8W	370107	7115995	3.8	53.6	19.9	92	0.2	34.5	16.8	414
IO-8171	NAD83-8W	370090	7116045	3.1	79.8	15.2	45	0.2	19.8	5.9	180
IO-8176	NAD83-8W	370078	7116088	4.4	110	16.6	62	0.4	33.2	13.8	392
IO-8177	NAD83-8W	370063	7116139	1.2	34.9	13.4	53	0.3	25.5	9	237
IO-8178	NAD83-8W	370048	7116181	1.1	42.6	14.2	54	0.2	27.4	10.5	272
IO-8379	NAD83-8W	370741	7115612	1.1	26.8	9	71	0	25.1	10.3	433
IO-8380	NAD83-8W	370756	7115562	1	25.4	8.8	64	0	22.3	8.7	297
IO-8381	NAD83-8W	370770	7115515	1.4	18.1	10.9	57	0	15.3	6.7	215
IO-8382	NAD83-8W	370783	7115466	4	76.4	75.2	102	0.5	23.7	12.2	473
IO-8401	NAD83-8W	370796	7115417	3	83.4	58.5	102	0.5	26.9	11.9	359
IO-8438	NAD83-8W	370852	7115594	1.3	28.4	9.1	84	0	25	8.4	354
IO-8439	NAD83-8W	370836	7115639	0.9	18.9	8.7	56	0	18	7.4	225
IO-8440	NAD83-8W	370823	7115689	1.1	30.8	8.3	70	0	24.2	8.4	280
IO-8441	NAD83-8W	370809	7115737	1.2	21.2	8.1	68	0.1	21	9.1	287
IO-8442	NAD83-8W	370793	7115786	1.1	31	7.8	70	0	25	9.5	249
IO-8443	NAD83-8W	370863	7115908	1.1	23.2	9	55	0	18.6	7.8	254
IO-8444	NAD83-8W	370875	7115860	1.5	27.8	11.5	84	0	26.1	13.9	532
IO-8445	NAD83-8W	370890	7115813	0.9	24	7.8	74	0.1	21.6	8.3	253
IO-8446	NAD83-8W	370906	7115765	4.6	38.9	12.8	207	0.3	38.9	11.9	323
IO-8447	NAD83-8W	370919	7115717	1.7	21.8	9.4	83	0	22.1	8.8	290
IO-8448	NAD83-8W	370933	7115669	2	21.5	10.7	100	0	21.2	6.2	194
IO-8449	NAD83-8W	370946	7115621	4	25.3	11.6	232	0.2	31.8	11.1	390
IO-8450	NAD83-8W	370960	7115572	2.1	25.1	11	75	0.1	20.9	7.3	222
IO-8451	NAD83-8W	370975	7115525	1.6	21	10	69	0	15.9	6.9	220
IO-8452	NAD83-8W	370988	7115478	5.1	25.6	11.4	136	0.2	23.2	9.7	333
IO-8453	NAD83-8W	371001	7115429	2.6	61.1	38.9	83	0.3	21	9.7	411
IO-8454	NAD83-8W	370908	7115402	3.1	106.2	84.2	139	0.7	28.6	14.1	493
IO-8455	NAD83-8W	370895	7115449	2.7	53.4	27.6	81	0.4	20.5	10.1	546
IO-8456	NAD83-8W	370880	7115498	2.7	25.8	12.5	109	0.1	20.3	9.1	351
IO-8457	NAD83-8W	370866	7115544	3.2	31.8	10.7	127	0.1	26.7	10.2	297
IO-8494	NAD83-8W	370780	7115833	1.3	21.7	13	92	0	19.6	8.2	366
IO-8495	NAD83-8W	370768	7115878	1.3	23.3	8.4	73	0	16.8	6.4	242
IO-8496	NAD83-8W	370668	7115850	4.4	83.3	17.8	45	0.5	21.2	6.9	318
IO-8497	NAD83-8W	370684	7115804	2	64.3	12.3	101	0.1	35.9	13.2	449
IO-8498	NAD83-8W	370698	7115754	2.5	53.4	18.3	108	0.1	34.3	16	524
IO-8499	NAD83-8W	370711	7115707	2.6	64.6	22.9	113	0.1	37.2	11.7	446
IO-8500	NAD83-8W	370725	7115659	1.6	27	9.9	64	0	17.8	8.7	330
IO-8668	NAD83-8W	370401	7115718	1.6	36.6	10.5	84	0.2	27.9	10.7	387
IO-8669	NAD83-8W	370410	7115678	2	33.1	14.4	77	0.3	23.6	9.6	305
IO-8670	NAD83-8W	370430	7115622	1.4	41.9	9	71	0.1	25.1	10.2	358
IO-8671	NAD83-8W	370447	7115576	2.9	98	126.9	158	0.8	26.2	11.4	472
IO-8672	NAD83-8W	370462	7115522	3.1	108	71.9	123	0.6	30	12.5	489
IO-8673	NAD83-8W	370466	7115475	3.6	90.6	80.3	118	0.7	26.4	10.7	337
IO-8674	NAD83-8W	370481	7115430	6.1	67.8	15.9	148	0.4	38.6	17	596
IO-8675	NAD83-8W	370498	7115383	2	33.7	9.1	74	0.4	17.7	6.7	239
IO-8676	NAD83-8W	370515	7115333	10.2	59.7	17.8	205	0.3	48.3	22.7	630
IO-8677	NAD83-8W	370527	7115287	2.9	46	11.7	114	0.1	32.6	16.8	507
IO-8678	NAD83-8W	370599	7115357	6.5	89.4	9.2	238	1.4	41.2	8.6	423

SAMPLES	Fe	As	U	Au	Th	Sr	Cd	Sb	Bi	V	Ca	P	La
IO-7072	2.48	101.6	1.3	27.9	0.6	13	0.4	5.8	0.8	52	0.09	0.07	11
IO-7073	2.76	98.4	1.8	6.9	0.6	12	0.5	8.1	0.4	41	0.1	0.058	11
IO-7074	1.67	7.3	0.7	1.5	0.3	10	0.1	0.6	0.1	31	0.1	0.051	9
IO-7075	2.01	6.3	0.6	3.4	1.9	21	0.4	0.8	0.1	37	0.24	0.071	11
IO-7079	2.18	7.3	0.9	6.4	1	15	0.2	1.1	0.2	44	0.15	0.057	12
IO-7080	2.02	7.9	0.8	5.2	0.7	12	0.2	1.2	0.2	41	0.13	0.062	12
IO-8165	2.04	449.7	2.6	30.4	1	30	0.5	8	4.8	55	0.21	0.125	12
IO-8167	2.83	35	4.9	10	5.9	47	2.3	22.2	0.2	631	0.08	0.052	23
IO-8168	3.41	115.1	8.3	8.9	3.7	54	11.7	80.7	0.3	412	0.19	0.067	24
IO-8169	2.92	11	2.3	9.2	6.1	43	0.9	3	0.2	145	0.56	0.105	14
IO-8170	2.9	31.7	1.8	5.5	5	57	0.3	13.6	0.8	89	0.45	0.085	13
IO-8171	2.4	770.5	3	13	0.5	24	0.6	5	3.4	60	0.16	0.079	11
IO-8176	2.61	839.3	4.7	49.9	0.7	35	0.6	10	5.2	67	0.21	0.081	14
IO-8177	2.53	272.6	1	5.8	4	21	0.2	4.2	0.5	69	0.23	0.05	13
IO-8178	2.54	323.6	1.2	11.3	3.1	24	0.1	5.1	0.5	72	0.22	0.064	14
IO-8379	2.14	19.9	0.8	1.5	3.3	16	0.4	2.3	0.2	42	0.18	0.077	12
IO-8380	2.05	19.9	0.9	3.9	4.8	17	0.2	2.6	0.2	38	0.18	0.066	13
IO-8381	2.14	25.6	0.9	5.2	1.2	11	0.2	2.6	0.2	43	0.12	0.061	12
IO-8382	2.81	520.1	3.1	71.1	5.1	33	0.8	36.1	3.2	68	0.2	0.111	16
IO-8401	2.67	467.6	3.8	68.2	5.3	28	1.1	32.3	2.5	68	0.18	0.087	16
IO-8438	2.04	14.5	1	6.7	3.9	19	0.4	2.9	0.2	45	0.21	0.061	14
IO-8439	1.96	15.9	0.7	3.5	1.8	14	0.2	1.7	0.2	38	0.17	0.067	11
IO-8440	2.06	12.7	1.3	2.2	2.7	15	0.3	3.5	0.3	41	0.18	0.071	14
IO-8441	2.14	12.9	1	3	4.2	17	0.2	1.4	0.2	41	0.19	0.074	14
IO-8442	2.01	38	1.4	7.1	2.9	16	0.2	1.6	0.3	40	0.18	0.06	13
IO-8443	2.03	39.7	1	5.1	1.4	15	0.1	2	0.3	48	0.15	0.069	11
IO-8444	2.58	19.8	1	2.7	3.2	21	0.3	2.6	0.3	73	0.22	0.095	12
IO-8445	1.92	12.2	1.2	1.4	3.6	17	0.1	1.9	0.1	49	0.18	0.062	13
IO-8446	2.53	18.8	2.5	6.9	4.2	21	1	9.9	0.3	95	0.19	0.058	14
IO-8447	2.35	14.5	1	3.5	2.1	10	0.4	4.4	0.3	47	0.09	0.051	10
IO-8448	2.49	25.8	1.1	3.9	1.7	10	0.3	9.2	0.4	57	0.09	0.045	11
IO-8449	2.39	20.6	2.3	3.8	3.8	14	0.9	9.3	0.4	63	0.14	0.067	13
IO-8450	2.05	18.2	1.2	6.7	2.1	17	0.5	4.2	0.2	62	0.2	0.07	12
IO-8451	2.17	24.2	0.9	3.2	0.8	12	0.4	2.7	0.2	50	0.12	0.069	11
IO-8452	2.05	136.9	1.4	3.8	2.4	22	0.3	11.4	0.3	62	0.3	0.082	12
IO-8453	2.31	296.1	2.2	71.6	1.9	23	0.7	23.2	1.7	59	0.15	0.081	12
IO-8454	3.03	572.6	3.9	90.4	6.4	39	1.8	42.8	3.4	68	0.28	0.106	19
IO-8455	2.33	231.4	2	38.1	1.5	21	0.4	16.7	1.2	63	0.2	0.086	12
IO-8456	2.21	28.7	1.3	195.1	1.9	12	0.4	5.9	0.3	68	0.12	0.055	11
IO-8457	2.25	15.6	2.1	5.9	3.8	14	0.7	4.9	0.3	55	0.16	0.061	13
IO-8494	2.07	39.2	1.2	3.6	1.2	11	0.4	3.6	0.3	53	0.12	0.059	11
IO-8495	2.04	65.7	1	14.5	0.9	11	0.4	4.2	0.4	52	0.11	0.053	10
IO-8496	2.43	542.2	2.1	140.8	1.7	20	0.2	13.2	4.3	84	0.09	0.07	11
IO-8497	2.29	139.9	2.2	19.2	2.5	16	0.5	5.2	0.8	56	0.16	0.072	12
IO-8498	2.62	91.1	3.3	4.6	3.8	13	0.4	11.4	0.4	53	0.13	0.051	14
IO-8499	2.47	195.3	3.2	9	3.3	19	0.8	8.1	0.8	60	0.18	0.062	14
IO-8500	2.02	47.6	1.3	14.5	1.1	11	0.2	4.1	0.4	44	0.12	0.059	11
IO-8668	2.58	30.5	0.9	5.5	3.9	31	0.3	1.9	0.3	54	0.33	0.078	14
IO-8669	2.48	59.2	1.5	4.1	2.6	24	0.4	6.6	0.5	54	0.23	0.072	14
IO-8670	2.23	69.6	1.3	6.3	3.7	20	0.2	3.4	0.4	49	0.2	0.061	15
IO-8671	2.81	554.2	5.2	68.7	7.4	42	1.8	55.1	3.3	62	0.27	0.109	22
IO-8672	2.76	483.3	4.5	177.7	5.2	39	0.9	37.2	3.2	68	0.34	0.107	20
IO-8673	3.06	525.1	2.7	96.3	6.4	43	0.6	39.5	3.6	74	0.29	0.135	19
IO-8674	3.53	17.1	2.5	7.5	1.9	38	0.7	2	0.2	60	0.22	0.149	21
IO-8675	1.92	6.8	1.1	6	0.3	14	0.4	1.3	0.2	36	0.13	0.082	13
IO-8676	3.83	17.9	2.5	5.5	1.7	47	0.9	3.1	0.2	59	0.21	0.182	17
IO-8677	2.93	12.3	1.4	7.8	1.3	23	0.4	2.3	0.2	53	0.16	0.121	14
IO-8678	1.92	6.4	1.8	10	1	59	2.6	4.5	0.1	43	1.67	0.129	17

SAMPLES	Cr	Mg	Ba	Ti	B	Al	Na	K	W	Hg	Sc	Tl	S
IO-7072	21	0.37	149	0.024	1	1.25	0.004	0.06	0.5	0.06	1.3	0.2	0
IO-7073	18	0.32	152	0.02	1	1.28	0.004	0.04	0.5	0.12	1.3	0.2	0
IO-7074	16	0.26	88	0.016	0	1.05	0.004	0.03	0.1	0.04	0.9	0.1	0
IO-7075	19	0.46	240	0.041	1	1.11	0.007	0.05	0.2	0.03	2.5	0.1	0
IO-7079	23	0.46	189	0.032	0	1.34	0.006	0.05	0.1	0.04	2.1	0.1	0
IO-7080	20	0.39	158	0.022	1	1.29	0.005	0.04	0.1	0.07	1.7	0.1	0
IO-8165	22	0.5	211	0.034	0	1.18	0.012	0.13	1.5	0.16	1.7	0.3	0.09
IO-8167	53	0.84	2155	0.012	4	1.68	0.007	0.26	0.2	1.13	3.5	1.1	0
IO-8168	31	0.86	465	0.016	2	1.54	0.005	0.23	0.4	13.93	4.3	1.3	0.14
IO-8169	42	2.5	212	0.094	2	3.25	0.023	0.28	0.2	0.05	4.8	0.4	0
IO-8170	28	1.32	294	0.043	1	2.25	0.015	0.34	0.2	0.04	3.3	0.5	0.1
IO-8171	26	0.33	238	0.04	0	1.2	0.006	0.08	0.4	0.1	1.3	0.3	0.06
IO-8176	24	0.55	237	0.034	1	1.37	0.01	0.12	0.6	0.12	1.7	0.4	0.1
IO-8177	27	0.91	189	0.072	1	1.91	0.01	0.16	0.2	0.03	2.9	0.4	0
IO-8178	28	0.95	230	0.066	1	1.96	0.011	0.17	0.2	0.04	3	0.4	0
IO-8379	19	0.43	142	0.044	1	1.26	0.006	0.06	0.2	0.07	2.6	0.2	0
IO-8380	18	0.42	177	0.046	1	1.2	0.005	0.04	0.2	0.07	3.2	0.1	0
IO-8381	20	0.35	105	0.031	0	1.33	0.005	0.04	0.2	0.08	1.9	0.1	0
IO-8382	25	0.59	245	0.058	1	1.55	0.009	0.17	0.3	1.39	3.2	0.6	0.06
IO-8401	25	0.61	239	0.057	2	1.63	0.009	0.12	0.3	0.97	3.4	0.5	0
IO-8438	19	0.48	202	0.053	0	1.22	0.006	0.05	0.2	0.07	3.3	0.1	0
IO-8439	18	0.39	97	0.038	1	1.2	0.005	0.04	0.2	0.04	2	0.1	0
IO-8440	18	0.41	133	0.047	1	1.1	0.006	0.06	0.2	0.07	2.8	0.2	0
IO-8441	19	0.41	148	0.047	1	1.18	0.006	0.05	0.2	0.04	2.9	0.1	0
IO-8442	17	0.4	162	0.041	0	1.17	0.005	0.04	0.3	0.06	2.9	0.1	0
IO-8443	20	0.47	100	0.042	1	1.41	0.006	0.07	0.3	0.04	2	0.2	0
IO-8444	27	0.84	135	0.073	1	1.91	0.009	0.14	0.2	0.02	2.9	0.3	0
IO-8445	20	0.51	167	0.055	1	1.26	0.006	0.06	0.2	0.05	2.7	0.1	0
IO-8446	30	0.83	198	0.08	1	1.67	0.008	0.09	0.1	0.26	4.1	0.3	0
IO-8447	21	0.44	115	0.035	0	1.47	0.005	0.04	0.2	0.07	2.4	0.2	0
IO-8448	26	0.52	135	0.041	0	1.55	0.005	0.05	0.2	0.08	2.6	0.4	0
IO-8449	25	0.62	155	0.051	2	1.7	0.006	0.08	0.2	0.15	3.8	0.3	0
IO-8450	22	0.52	144	0.048	1	1.42	0.007	0.08	0.2	0.07	2.3	0.2	0
IO-8451	21	0.43	105	0.027	1	1.31	0.005	0.06	0.2	0.05	1.4	0.1	0
IO-8452	25	0.71	239	0.036	1	1.5	0.007	0.07	0.2	0.1	2.5	0.3	0
IO-8453	23	0.49	191	0.04	1	1.19	0.009	0.12	0.4	1.23	2	0.4	0.06
IO-8454	27	0.67	321	0.055	1	1.66	0.008	0.16	0.4	1.49	3.5	0.6	0.06
IO-8455	24	0.55	197	0.036	1	1.31	0.007	0.1	0.2	0.3	1.9	0.4	0
IO-8456	23	0.5	109	0.036	1	1.39	0.005	0.06	0.2	0.09	2.1	0.2	0
IO-8457	20	0.49	159	0.043	0	1.3	0.005	0.05	0.2	0.1	3	0.2	0
IO-8494	21	0.42	102	0.03	1	1.28	0.004	0.05	0.3	0.05	2	0.1	0
IO-8495	21	0.45	108	0.023	1	1.26	0.004	0.06	0.3	0.05	1.5	0.2	0
IO-8496	29	0.58	182	0.046	0	1.39	0.008	0.16	0.5	0.21	2.1	0.5	0.06
IO-8497	23	0.49	149	0.04	1	1.41	0.006	0.08	0.6	0.05	2.5	0.3	0
IO-8498	24	0.58	197	0.049	1	1.68	0.005	0.07	0.4	0.06	4.1	0.2	0
IO-8499	24	0.55	225	0.046	0	1.43	0.005	0.09	0.7	0.3	3.5	0.3	0
IO-8500	19	0.35	94	0.029	0	1.12	0.004	0.05	0.3	0.06	1.7	0.2	0
IO-8668	27	0.55	344	0.055	1	1.32	0.011	0.05	0.3	0.04	4	0.1	0
IO-8669	25	0.48	280	0.045	1	1.25	0.008	0.04	0.3	0.11	3.3	0.1	0
IO-8670	21	0.49	293	0.05	1	1.18	0.006	0.04	0.3	0.05	3.4	0.1	0
IO-8671	22	0.58	287	0.055	1	1.38	0.009	0.15	0.4	1.72	3.6	0.5	0
IO-8672	25	0.65	325	0.056	2	1.53	0.01	0.15	0.3	1.54	3.6	0.5	0
IO-8673	26	0.66	389	0.061	1	1.55	0.009	0.16	0.5	1.61	3.3	0.5	0
IO-8674	20	0.7	467	0.013	24	1.58	0.004	0.15	0.2	0.06	2.4	0.2	0
IO-8675	17	0.35	231	0.01	1	1.15	0.004	0.06	0.2	0.11	0.9	0.1	0
IO-8676	19	0.45	371	0.018	3	1.41	0.005	0.15	0.1	0.05	2.3	0.3	0.07
IO-8677	19	0.39	199	0.027	1	1.36	0.005	0.08	0.2	0.05	2	0.1	0
IO-8678	12	0.36	270	0.008	4	0.68	0.005	0.08	0.1	0.36	3.2	0.2	0.1

SAMPLES	Ga	Se	Analysis	Acme file
IO-7072	5	1	GROUP 1DX - 15 GM	A604857
IO-7073	4	0.6	GROUP 1DX - 15 GM	A604857
IO-7074	4	0.5	GROUP 1DX - 15 GM	A604857
IO-7075	3	0.5	GROUP 1DX - 15 GM	A604857
IO-7079	5	0	GROUP 1DX - 15 GM	A604857
IO-7080	4	0.6	GROUP 1DX - 15 GM	A604857
IO-8165	4	1	GROUP 1DX - 15 GM	A604857
IO-8167	7	15.3	GROUP 1DX - 15 GM	A604857
IO-8168	6	12.2	GROUP 1DX - 15 GM	A604857
IO-8169	11	0.9	GROUP 1DX - 15 GM	A604857
IO-8170	8	1.4	GROUP 1DX - 15 GM	A604857
IO-8171	7	1.3	GROUP 1DX - 15 GM	A604857
IO-8176	5	1.7	GROUP 1DX - 15 GM	A604857
IO-8177	6	0	GROUP 1DX - 15 GM	A604857
IO-8178	6	0	GROUP 1DX - 15 GM	A604857
IO-8379	3	0.5	GROUP 1DX - 15 GM	A604857
IO-8380	3	0	GROUP 1DX - 15 GM	A604857
IO-8381	4	0.6	GROUP 1DX - 15 GM	A604857
IO-8382	5	1.1	GROUP 1DX - 15 GM	A604857
IO-8401	6	1	GROUP 1DX - 15 GM	A604857
IO-8438	4	0	GROUP 1DX - 15 GM	A604857
IO-8439	3	0.5	GROUP 1DX - 15 GM	A604857
IO-8440	4	0.5	GROUP 1DX - 15 GM	A604857
IO-8441	3	0	GROUP 1DX - 15 GM	A604857
IO-8442	3	0.5	GROUP 1DX - 15 GM	A604857
IO-8443	4	0.6	GROUP 1DX - 15 GM	A604857
IO-8444	6	0.5	GROUP 1DX - 15 GM	A604857
IO-8445	4	0	GROUP 1DX - 15 GM	A604857
IO-8446	5	0	GROUP 1DX - 15 GM	A604857
IO-8447	4	0.6	GROUP 1DX - 15 GM	A604857
IO-8448	6	0.9	GROUP 1DX - 15 GM	A604857
IO-8449	5	0.9	GROUP 1DX - 15 GM	A604857
IO-8450	4	0.8	GROUP 1DX - 15 GM	A604857
IO-8451	5	0.5	GROUP 1DX - 15 GM	A604857
IO-8452	5	1.1	GROUP 1DX - 15 GM	A604857
IO-8453	5	0.9	GROUP 1DX - 15 GM	A604857
IO-8454	5	1.2	GROUP 1DX - 15 GM	A604857
IO-8455	5	0.8	GROUP 1DX - 15 GM	A604857
IO-8456	4	0.6	GROUP 1DX - 15 GM	A604857
IO-8457	4	0.5	GROUP 1DX - 15 GM	A604857
IO-8494	4	0.5	GROUP 1DX - 15 GM	A604857
IO-8495	5	0.5	GROUP 1DX - 15 GM	A604857
IO-8496	7	1.3	GROUP 1DX - 15 GM	A604857
IO-8497	4	0.6	GROUP 1DX - 15 GM	A604857
IO-8498	5	0	GROUP 1DX - 15 GM	A604857
IO-8499	4	0.7	GROUP 1DX - 15 GM	A604857
IO-8500	4	0.5	GROUP 1DX - 15 GM	A604857
IO-8668	4	0	GROUP 1DX - 15 GM	A604857
IO-8669	4	0.5	GROUP 1DX - 15 GM	A604857
IO-8670	4	0	GROUP 1DX - 15 GM	A604857
IO-8671	5	1.1	GROUP 1DX - 15 GM	A604857
IO-8672	5	1.4	GROUP 1DX - 15 GM	A604857
IO-8673	5	1.4	GROUP 1DX - 15 GM	A604857
IO-8674	5	1.3	GROUP 1DX - 15 GM	A604857
IO-8675	4	0.8	GROUP 1DX - 15 GM	A604857
IO-8676	4	2.2	GROUP 1DX - 15 GM	A604857
IO-8677	4	1.1	GROUP 1DX - 15 GM	A604857
IO-8678	2	3	GROUP 1DX - 15 GM	A604857

SAMPLES	Datum	Easting	Northing	Mo	Cu	Pb	Zn	Ag	Ni	Co	Mn
IO-8679	NAD83-8W	370590	7115410	3.8	129.1	88.9	145	1	31.4	14.9	521
IO-8680	NAD83-8W	370576	7115456	2.9	91.4	50.5	109	0.4	27.2	12.2	467
IO-8681	NAD83-8W	370561	7115512	2.9	181	174.7	280	1.4	67	15.3	431
IO-8682	NAD83-8W	370543	7115561	1.4	19.4	9.6	52	0	13.9	4.9	155
IO-8683	NAD83-8W	370533	7115601	2.5	34.3	11.7	88	0.1	24.1	10.4	486
IO-8684	NAD83-8W	370518	7115651	1.7	52	10.4	85	0.1	30.4	14.5	438
IO-8685	NAD83-8W	370510	7115696	1.7	36.5	11.2	82	0.2	25.4	11.4	448
IO-8686	NAD83-8W	370491	7115747	1.6	34.4	10.3	77	0.1	24.5	10.1	337
IO-8687	NAD83-8W	370591	7115772	1.9	41.8	11	102	0.1	30.2	11.9	450
IO-8688	NAD83-8W	370604	7115727	1.7	41.1	9.4	88	0.2	27.5	11.3	403
IO-8689	NAD83-8W	370616	7115676	3	43.4	15.8	104	0.3	36.6	11.2	798
IO-8690	NAD83-8W	370630	7115627	1.6	31	7.8	80	0	26.2	8.6	391
IO-8691	NAD83-8W	370649	7115582	1	21	10.3	64	0	19.3	9.8	420
IO-8692	NAD83-8W	370661	7115531	1.3	17.3	11.2	58	0	15.5	7.6	309
IO-8693	NAD83-8W	370674	7115484	2.9	57.5	38.6	84	0.6	20.3	6.2	159
IO-8694	NAD83-8W	370686	7115446	3.1	83.9	77.4	118	0.5	24.2	11.7	377
IO-8695	NAD83-8W	370704	7115391	2.9	103.1	76.4	125	0.9	29.6	11.7	406
IO-8696	NAD83-8W	370718	7115342	7.3	128.4	16	211	0.7	39.4	8.9	433
IO-8877	NAD83-8W	370812	7115370	2.7	69.4	51.8	96	0.5	22	8	316
IO-9642	NAD83-8W	370313	7115643	1.2	25.4	10.7	67	0.1	21.4	8.9	298
IO-9643	NAD83-8W	370329	7115594	3	95	74	123	0.5	27	12.4	424
IO-9908	NAD83-8W	370193	7115707	3.2	112.1	18.4	55	0.2	30	10.4	279
IO-9909	NAD83-8W	370178	7115753	3.3	137.5	17.1	79	0.3	38.9	16.1	385
IO-9910	NAD83-8W	370139	7116215	1.3	41.5	12	49	0.4	31.2	13.8	203
IO-9911	NAD83-8W	370185	7116071	2.2	45.9	23.5	89	0.3	24.1	12.1	292
IO-9912	NAD83-8W	370198	7116024	2.1	63.5	307.9	314	1.1	27	14.8	645
IO-9913	NAD83-8W	370241	7115879	31.2	108.5	38.6	815	1	116	14.1	305
IO-9914	NAD83-8W	370256	7115834	9.2	33.1	11.5	152	0.3	31.8	6.3	129
IO-9916	NAD83-8W	370212	7115977	2.2	19.9	12.5	50	0.1	12.4	4.4	132
IO-9917	NAD83-8W	370269	7115789	3.5	173.2	18.1	71	0.3	46.2	16.7	445
IO-9918	NAD83-8W	370286	7115737	3.4	124.7	15.3	58	0.3	33.1	12.6	309
IO-9919	NAD83-8W	370298	7115688	1.1	30.7	9.4	80	0.1	29.6	8.7	381

SAMPLES	Fe	As	U	Au	Th	Sr	Cd	Sb	Bi	V	Ca	P	La
IO-8679	3.21	627.6	5.2	181.5	6.6	47	1.2	44.9	4	80	0.36	0.135	23
IO-8680	2.51	412.2	3.2	108.7	4	34	1.3	30.4	2.2	64	0.26	0.107	17
IO-8681	2.91	692.2	19.7	106.8	5.8	65	4.2	68.9	4	63	0.7	0.148	31
IO-8682	2.08	23.5	0.9	3.5	0.6	10	0.2	2.4	0.3	45	0.1	0.055	11
IO-8683	2.4	84.9	2	6.7	3	15	0.4	4.9	0.4	58	0.14	0.067	12
IO-8684	2.28	120.9	1.9	13.6	3.6	17	0.3	4	0.7	52	0.19	0.085	15
IO-8685	2.69	59.3	2.3	9.9	3.2	19	0.2	3.2	0.3	60	0.19	0.069	16
IO-8686	2.4	55	1.6	5	2.7	17	0.2	2.3	0.3	55	0.2	0.058	15
IO-8687	2.52	90.9	2.4	12.1	2.3	18	0.4	5.4	0.3	52	0.18	0.06	13
IO-8688	2.42	65.4	1.7	7.8	3.5	20	0.4	4.1	0.3	55	0.2	0.049	15
IO-8689	2.49	73	2	6.1	3.1	26	0.4	5.8	0.3	58	0.22	0.062	16
IO-8690	2.09	69.7	1.7	6.9	2.8	16	0.4	3.1	0.4	47	0.19	0.076	12
IO-8691	2.18	20.9	0.8	10.5	2.4	12	0.3	2.7	0.2	42	0.16	0.069	12
IO-8692	2.19	39.7	0.9	9.6	1	10	0.3	3	0.2	46	0.1	0.05	11
IO-8693	2.26	237.8	2.5	37.9	1.7	24	0.4	20.2	1.7	57	0.28	0.093	14
IO-8694	2.53	455.3	3.6	169.8	4.6	32	1.5	40.8	2.6	58	0.23	0.096	18
IO-8695	2.98	601.6	3.6	82.1	5.7	38	1.3	41.8	3.3	73	0.28	0.106	18
IO-8696	2.4	20.7	1.3	15.2	0.1	40	1.5	4.7	0.2	51	0.93	0.16	16
IO-8877	2.65	417	2.4	64.5	2.9	27	0.6	27.3	2.5	73	0.19	0.098	15
IO-9642	2.33	27.9	0.8	4.1	1.5	17	0.2	2	0.3	49	0.19	0.067	13
IO-9643	2.66	492.9	4	96.9	5.2	36	1.4	39.3	2.7	65	0.29	0.113	19
IO-9908	2.36	734.4	2.7	63.1	2.4	35	0.4	15.1	4.6	79	0.2	0.101	14
IO-9909	2.41	805.1	3.3	67.4	2.5	46	1.1	14.1	7.5	69	0.45	0.114	15
IO-9910	2.74	464.8	1.1	12.3	4	36	0.3	4.4	0.7	81	0.22	0.05	13
IO-9911	2.63	157.2	2.7	8.3	4.1	94	0.4	7.9	0.6	74	0.27	0.101	19
IO-9912	3.95	352.8	6.5	5.9	10.3	93	1.9	81.3	1.3	54	0.51	0.079	78
IO-9913	3.57	57.8	6.5	7	7.5	83	4.9	24.6	0.2	340	0.57	0.092	26
IO-9914	1.9	20.3	1.4	2.1	2.3	29	2.1	8.1	0.3	109	0.36	0.034	14
IO-9916	2.01	57.6	1.5	36.2	0.2	23	0.2	4	0.5	101	0.13	0.052	9
IO-9917	2.72	1004	3.8	76.2	3.3	44	0.5	15.1	6	78	0.37	0.114	17
IO-9918	2.26	700.2	2.9	61.7	1.8	33	0.5	13.3	4	67	0.24	0.1	14
IO-9919	2.51	15.3	0.7	6.3	3.6	25	0.2	1.1	0.2	50	0.32	0.08	14

SAMPLES	Cr	Mg	Ba	Ti	B	Al	Na	K	W	Hg	Sc	Tl	S
IO-8679	30	0.73	427	0.064	2	1.78	0.01	0.16	0.3	2.93	4.4	0.7	0.08
IO-8680	23	0.57	259	0.055	1	1.33	0.009	0.15	0.4	1.12	3	0.4	0.06
IO-8681	25	0.67	455	0.047	3	1.71	0.014	0.2	0.4	2.9	4.7	0.6	0.14
IO-8682	18	0.34	94	0.028	1	1.22	0.005	0.04	0.2	0.07	1.5	0.2	0
IO-8683	22	0.45	182	0.05	1	1.39	0.006	0.07	0.5	0.07	2.7	0.2	0
IO-8684	21	0.46	166	0.048	1	1.4	0.005	0.06	0.3	0.09	3.3	0.2	0
IO-8685	27	0.55	190	0.052	1	1.66	0.008	0.05	0.2	0.07	4.5	0.2	0
IO-8686	25	0.51	177	0.058	1	1.42	0.008	0.05	0.3	0.06	3.3	0.1	0
IO-8687	25	0.53	278	0.045	1	1.42	0.007	0.05	0.3	0.06	3.4	0.1	0
IO-8688	22	0.56	291	0.054	1	1.39	0.006	0.05	0.3	0.05	3.9	0.1	0
IO-8689	22	0.47	467	0.048	1	1.31	0.006	0.05	0.3	0.21	4.2	0.2	0
IO-8690	22	0.47	188	0.043	1	1.25	0.005	0.06	1.2	0.04	2.5	0.1	0
IO-8691	20	0.37	94	0.037	1	1.29	0.005	0.05	0.4	0.05	2	0.1	0
IO-8692	19	0.34	89	0.033	1	1.23	0.005	0.04	0.2	0.08	1.5	0.2	0
IO-8693	24	0.54	213	0.042	2	1.54	0.009	0.09	0.2	0.96	2.3	0.4	0
IO-8694	22	0.55	231	0.051	1	1.23	0.008	0.18	0.4	1.77	2.8	0.5	0
IO-8695	29	0.71	255	0.055	1	1.8	0.008	0.12	0.5	2.63	3.5	0.6	0
IO-8696	16	0.45	220	0.004	3	0.91	0.005	0.09	0.1	0.13	0.5	0.2	0.08
IO-8877	27	0.62	194	0.06	1	1.49	0.008	0.16	0.4	0.75	2.5	0.5	0.06
IO-9642	23	0.45	199	0.041	1	1.29	0.007	0.04	0.2	0.05	2.5	0.1	0
IO-9643	23	0.6	269	0.054	1	1.38	0.009	0.15	0.4	1.91	3.2	0.5	0
IO-9908	26	0.66	206	0.055	1	1.32	0.012	0.17	2	0.76	2.5	0.5	0.06
IO-9909	23	0.67	221	0.044	2	1.3	0.013	0.17	2.3	0.38	2.5	0.5	0.07
IO-9910	31	1.05	189	0.08	1	2.16	0.01	0.16	0.2	0.03	3.1	0.4	0
IO-9911	26	0.94	159	0.057	1	1.78	0.008	0.23	0.2	0.04	3.1	0.4	0
IO-9912	25	0.82	162	0.017	1	1.97	0.01	0.08	0.2	0.14	6.2	0.2	0
IO-9913	41	1.98	368	0.039	4	2.18	0.011	0.35	0.2	1.02	5.5	1.2	0.12
IO-9914	18	0.62	158	0.027	2	0.94	0.007	0.13	0.2	0.1	1.9	0.3	0.06
IO-9916	25	0.66	91	0.038	1	1.32	0.007	0.11	0.2	0.04	0.9	0.2	0
IO-9917	26	0.75	259	0.048	2	1.53	0.013	0.19	4.1	0.61	2.9	0.5	0.07
IO-9918	23	0.54	210	0.04	1	1.2	0.009	0.13	1.4	0.21	2.1	0.4	0.07
IO-9919	24	0.48	391	0.055	1	1.1	0.01	0.05	0.3	0.04	3.6	0.1	0

SAMPLES	Ga	Se	Analysis	Acme file
IO-8679	6	1.3	GROUP 1DX - 15 GM	A604857
IO-8680	5	1	GROUP 1DX - 15 GM	A604857
IO-8681	5	4.1	GROUP 1DX - 15 GM	A604857
IO-8682	4	0.7	GROUP 1DX - 15 GM	A604857
IO-8683	5	0.5	GROUP 1DX - 15 GM	A604857
IO-8684	4	0.5	GROUP 1DX - 15 GM	A604857
IO-8685	5	0.5	GROUP 1DX - 15 GM	A604857
IO-8686	5	0	GROUP 1DX - 15 GM	A604857
IO-8687	5	0	GROUP 1DX - 15 GM	A604857
IO-8688	4	0	GROUP 1DX - 15 GM	A604857
IO-8689	4	0.6	GROUP 1DX - 15 GM	A604857
IO-8690	3	0.5	GROUP 1DX - 15 GM	A604857
IO-8691	4	0.5	GROUP 1DX - 15 GM	A604857
IO-8692	4	0.5	GROUP 1DX - 15 GM	A604857
IO-8693	5	1.6	GROUP 1DX - 15 GM	A604857
IO-8694	4	1.1	GROUP 1DX - 15 GM	A604857
IO-8695	6	1.2	GROUP 1DX - 15 GM	A604857
IO-8696	3	3.5	GROUP 1DX - 15 GM	A604857
IO-8877	6	1	GROUP 1DX - 15 GM	A604857
IO-9642	4	0.6	GROUP 1DX - 15 GM	A604857
IO-9643	5	1.1	GROUP 1DX - 15 GM	A604857
IO-9908	5	1.2	GROUP 1DX - 15 GM	A604857
IO-9909	5	1.4	GROUP 1DX - 15 GM	A604857
IO-9910	8	0.5	GROUP 1DX - 15 GM	A604857
IO-9911	7	1.5	GROUP 1DX - 15 GM	A604857
IO-9912	6	1.6	GROUP 1DX - 15 GM	A604857
IO-9913	9	4.8	GROUP 1DX - 15 GM	A604857
IO-9914	6	0.9	GROUP 1DX - 15 GM	A604857
IO-9916	8	1	GROUP 1DX - 15 GM	A604857
IO-9917	5	1.2	GROUP 1DX - 15 GM	A604857
IO-9918	4	1.3	GROUP 1DX - 15 GM	A604857
IO-9919	4	0	GROUP 1DX - 15 GM	A604857

ELEMENT	NAD83	Easting	Northing	Elevation	Mo	Cu	Pb	Zn	Ag
IOIF SS01	NAD83-8W	371091	7118167	1197.3	9.5	242.7	53.2	383	0.6
IOIF SS02	NAD83-8W	370999	7118125	1188.4	3.8	164.8	26.8	130	0.5
IOIF SS03	NAD83-8W	370591	7118122	1129.9	7.6	180.6	76.2	277	0.5
IOIF SS04	NAD83-8W	369980	7118198	1058.6	6	154.8	43.5	227	0.5
IOIF SS05	NAD83-8W	369897	7118274	1044.2	9.9	100.4	65.2	1731	0.8
IOIF SS06	NAD83-8W	369911	7118222	1053.4	7.7	352.2	34.6	1028	0.5
IOIF SS07	NAD83-8W	369421	7117326	977.8	4.6	184.1	28.1	560	0.5
IOIF SS08	NAD83-8W	369154	7116366	921.7	6.6	233.9	32.5	1093	0.5
IOIF SS09	NAD83-8W	368788	7115869	895.2	6.2	141.9	36.9	222	1
IOIF SS10	NAD83-8W	368610	7115506	878.1	5.4	144.6	35.7	502	0.6
IOIF SS11	NAD83-8W	368631	7115388	874.8	3.4	118	42	146	0.4
IOIF SS12	NAD83-8W	368386	7115083	855.6	4	53.7	31.7	224	0.6
IOIF SS13	NAD83-8W	368298	7114957	844.3	5	91.9	35.2	350	0.8
IOIF SS14	NAD83-8W	368224	7114814	847.3	1.4	27.6	8.2	110	0.2
IOIF SS15	NAD83-8W	367965	7114790	833.9	4.7	74.4	31.8	285	0.4
IOIF SS16	NAD83-8W	367609	7114692	824.8	3	71.2	20.2	290	0.3
IOJS SS01	NAD83-8W	369406	7119802	1276.8	13.2	105.5	20.3	1016	0.7
IOJS SS02	NAD83-8W	368913	7118937	1155.5	9.6	74.4	14.1	724	0.6
IOJS SS03	NAD83-8W	368292	7118200	1055.5	6.6	62.2	13.1	630	0.7
IOJS SS04	NAD83-8W	368239	7118262	1077.5	3.9	52	9.9	258	0.4
IOJS SS05	NAD83-8W	367823	7117331	975.1	6.6	59.5	16.2	520	0.5
IOJS SS06	NAD83-8W	367729	7116836	-9999	1.7	34.6	11	108	0.2
IOJS SS07	NAD83-8W	367567	7116497	903.4	2.4	32.9	13.9	106	0.3
IOJS SS08	NAD83-8W	367376	7116385	886.4	4.7	52.2	16.4	453	0.3
IOJS SS09	NAD83-8W	366771	7115801	823.6	3.4	35.8	12.6	265	0.3
IOJS SS10	NAD83-8W	370849	7115979	1108.9	7.4	1022.1	30.6	354	0.8
IOJS SS11	NAD83-8W	369919	7115680	994.6	5.1	285.9	37.9	142	0.8
IOJS SS12	NAD83-8W	369924	7115616	992.7	3.7	126.6	93.2	183	0.7
IOJS SS13	NAD83-8W	369366	7115269	931.8	2.7	93.8	43.3	110	0.4
IOKM SS01	NAD83-8W	370625	7121088	1237.2	1.4	25.3	9.3	75	0
IOKM SS02	NAD83-8W	370876	7121376	1207	0.8	22.9	10.5	86	0
IOKM SS03	NAD83-8W	371030	7121346	1180.5	2.6	49	12.4	129	0.1
IOKM SS04	NAD83-8W	371331	7121292	1144.5	0.6	27.6	9.9	85	0
IOKM SS05	NAD83-8W	371687	7120879	1093	4.8	61.1	17.3	207	0.2
IOKM SS06	NAD83-8W	371755	7120795	1095.5	5.2	49.2	13.1	237	0.5
IOKM SS07	NAD83-8W	371546	7120743	1119.2	2.1	53.3	9.2	112	0.3
IOKM SS08	NAD83-8W	371596	7120650	1125.3	3.9	45.3	13.4	218	0.2
IOKM SS09	NAD83-8W	371932	7120311	1111.9	9.9	65.4	16.4	235	0.8
IOKM SS10	NAD83-8W	371983	7120370	1181.4	3.7	55.8	13.6	152	0.3
IOKM SS11	NAD83-8W	370347	7116669	1117.4	14.8	458.7	24	284	0.6
IOKM SS12	NAD83-8W	369829	7115929	1013.2	10.5	285.3	25.3	169	0.5
IOMM SS01	NAD83-8W	373636	7117993	1275.9	3.9	146.2	28.8	166	0.4
IOMM SS02	NAD83-8W	373677	7118047	1278.3	5.6	103.8	19	163	0.4
IOMM SS03	NAD83-8W	374602	7118107	1166.8	4	97.8	34.2	113	0.4
IOMM SS04	NAD83-8W	374686	7118091	1149.4	3.4	101.6	37.8	122	0.4
IOMM SS05	NAD83-8W	375160	7117827	1114.3	2.8	69.6	42.2	157	0.4
IOMM SS06	NAD83-8W	375309	7117808	-9999	2.1	72.6	45	126	0.5
IOSR SS01	NAD83-8W	372457	7118752	1330.8	15.3	358.9	114.5	400	2.2
IOSR SS02	NAD83-8W	372179	7118941	1275.6	7.1	160.8	108	353	1.1
IOSR SS03	NAD83-8W	371320	7119114	1169.8	7.4	204	37.6	961	0.6
IOSR SS04	NAD83-8W	371050	7119116	1156.1	9.8	75.2	20	679	0.3
IOSR SS05	NAD83-8W	369244	7120557	1167.7	16.8	198.6	26.9	391	1.5
IOSR SS06	NAD83-8W	369236	7120560	-9999	13.6	139.9	21.9	738	1
IOSR SS07	NAD83-8W	368731	7120728	1111.6	6.9	69.2	15.1	180	0.6
IOSR SS08	NAD83-8W	368250	7120488	1038.5	6.7	114.3	17.1	578	0.7
IOSR SS09	NAD83-8W	373235	7119240	1213.7	10.3	101.9	21.7	637	0.6
IOSR SS10	NAD83-8W	370750	7115425	1083	4	200.5	161.2	271	1.4

ELEMENT	Ni	Co	Mn	Fe	As	U	Au	Th	Sr
IOIF SS01	179	72.4	1901	4.01	691.4	5.4	42.4	4.8	63
IOIF SS02	63.2	26.5	618	3.27	303.8	3.8	20.5	3.2	52
IOIF SS03	122.4	40.9	1115	4.41	688.4	5.4	46.4	4.6	62
IOIF SS04	105.5	31.5	802	4.2	510.1	5.3	28.8	4.6	56
IOIF SS05	258.6	21.3	4089	2.92	48.4	4.9	5.9	1.1	74
IOIF SS06	251	101.5	4404	3.58	395.2	10.6	22.2	3.3	60
IOIF SS07	146.6	39.7	1375	2.97	292.8	8.7	16.8	2.1	54
IOIF SS08	287.8	52.6	3979	3	289.1	9.8	17.9	1.9	62
IOIF SS09	79.6	20.9	807	3.38	633.1	5.2	18.9	4.3	71
IOIF SS10	147.8	29.3	1421	3.07	428.2	8.5	71.1	2.6	70
IOIF SS11	52.2	13.3	436	2.66	553.9	4.8	79.5	4.8	50
IOIF SS12	44.4	13.8	663	2.96	80.7	2.7	9	4.4	43
IOIF SS13	88.4	23.3	1146	3.15	259.6	4.1	11.7	4.5	51
IOIF SS14	24.7	9.2	312	2.03	6.1	1.1	4.1	4.2	47
IOIF SS15	71.5	18.3	780	3.39	286.5	4.1	9.9	5	52
IOIF SS16	77.3	18.3	832	2.71	167.4	2.8	9.5	3.9	46
IOJS SS01	125.5	14.9	989	3.18	20.3	21.2	8	1.2	72
IOJS SS02	122.3	10.8	2255	2.65	16	7.9	10.2	0.5	72
IOJS SS03	87.9	8.9	1090	2.39	15.7	5.2	5.6	0.5	73
IOJS SS04	64.7	7.9	587	1.97	8.6	4.6	5.6	0.8	81
IOJS SS05	70.6	10	890	2.61	16.3	4.5	6	1.1	74
IOJS SS06	27.3	10.4	291	2.35	6.6	1.5	16.3	4.8	53
IOJS SS07	26.7	14.4	572	2.75	9.5	1.3	4.6	2.9	43
IOJS SS08	65.5	14.6	966	3.27	14.4	3.4	4	3.6	75
IOJS SS09	42.2	12.4	882	2.59	10.6	3	6	2.2	57
IOJS SS10	245.9	120.9	2283	2.83	1670.1	16.5	226	4.1	66
IOJS SS11	103.2	19.4	520	2.91	1525.7	12	144	5.2	51
IOJS SS12	48.2	13.3	506	2.92	549.7	5.8	82.7	6.4	53
IOJS SS13	37.7	13.5	471	2.27	499.3	3.7	88.4	4.9	43
IOKM SS01	18.6	7.9	331	2.3	8.1	1.8	6.8	0.9	33
IOKM SS02	19	8.2	330	2.37	5.6	0.6	4.8	1.5	46
IOKM SS03	28.7	10.8	471	2.7	7.7	2	4.2	1.1	57
IOKM SS04	16.6	6.8	251	1.87	4.4	1	0.8	1.1	61
IOKM SS05	44.6	12.7	652	3.11	10.6	3.3	6	1.3	67
IOKM SS06	66.7	7.1	517	1.88	9.3	6.2	6	0.6	78
IOKM SS07	25.8	7.5	267	1.92	4.9	1.6	5	0.3	68
IOKM SS08	47.3	10.5	631	2.65	10.5	3.5	9.5	0.7	62
IOKM SS09	45.1	7.8	722	2.08	14.7	4.4	5.4	1	78
IOKM SS10	30.1	11.4	479	2.89	11.2	3.4	6.6	0.5	52
IOKM SS11	177.5	93.4	2542	4.81	2833.8	19.5	102.2	4.7	39
IOKM SS12	112.2	39.9	990	4.21	1891.2	11.4	93.8	4.3	41
IOMM SS01	71.9	20.4	706	2.9	1100.9	10.1	181.6	4.8	95
IOMM SS02	60.3	18	402	2.85	250.6	4.1	50.6	1	38
IOMM SS03	44.4	13.4	373	2.74	540.4	7.1	80.1	3.3	64
IOMM SS04	48.8	14.2	475	2.72	637.4	6.9	59.6	2.8	56
IOMM SS05	63.6	16.8	904	2.62	304.2	7.9	6.9	9.1	54
IOMM SS06	39.5	13.7	532	2.72	357.4	8.9	10.1	7.8	51
IOSR SS01	110	41.2	1026	4.77	2602.9	17	202	4.9	46
IOSR SS02	117.6	37.1	926	3.87	269.2	5.5	25.6	2.6	44
IOSR SS03	194.3	56.7	2555	3.35	242.7	18.7	27.2	1.4	52
IOSR SS04	154.3	25.4	4659	3.68	22.5	7.1	10.2	0.9	70
IOSR SS05	142.4	27.2	2676	5.83	48.6	7.7	11.4	2.6	128
IOSR SS06	103	21.7	1002	3.97	20.3	7.6	15.9	2	85
IOSR SS07	46.8	10.9	1134	2.45	14.1	5.8	15.3	0.7	67
IOSR SS08	237	112.2	8020	2.66	18.1	8.2	15.6	1.8	93
IOSR SS09	458	20.9	8069	3.81	21.5	9.5	8.2	0.9	62
IOSR SS10	74.1	22.8	800	3.28	779.4	19.9	220.8	8.6	63

ELEMENT	Cd	Sb	Bi	V	Ca	P	La	Cr	Mg
IOIF SS01	5	23.5	4.1	147	0.66	0.184	22	45	1.37
IOIF SS02	1.5	17.7	5.6	84	0.59	0.159	21	37	0.86
IOIF SS03	4.2	33.5	4	143	0.51	0.191	19	43	1.07
IOIF SS04	2.6	22.8	3.9	121	0.51	0.159	22	47	1.09
IOIF SS05	16.4	12	0.5	159	0.61	0.146	21	33	0.53
IOIF SS06	15.7	17.8	2.9	112	0.59	0.192	23	43	0.89
IOIF SS07	6	12	2.4	93	0.54	0.149	22	31	0.62
IOIF SS08	15.2	11.8	2.3	95	0.69	0.156	22	33	0.67
IOIF SS09	2.2	18.2	2.9	98	0.51	0.143	29	32	0.68
IOIF SS10	6.1	16.4	3	87	0.6	0.139	22	31	0.61
IOIF SS11	2	22.4	3.2	78	0.58	0.124	24	29	0.6
IOIF SS12	2	7.7	0.9	85	0.41	0.101	19	29	0.49
IOIF SS13	3.8	11.8	2.3	82	0.44	0.112	20	29	0.53
IOIF SS14	0.6	0.7	0.1	57	0.52	0.081	17	24	0.69
IOIF SS15	2.7	11.6	1.8	88	0.47	0.121	22	31	0.7
IOIF SS16	3.2	6.4	1	70	0.5	0.102	19	27	0.58
IOJS SS01	8.7	6.8	0.2	229	0.56	0.147	16	39	0.66
IOJS SS02	9.5	5.1	0.2	171	0.52	0.135	14	36	0.45
IOJS SS03	5.9	4.8	0.2	147	0.59	0.13	14	33	0.43
IOJS SS04	4.7	2.4	0.1	80	0.84	0.128	14	25	0.47
IOJS SS05	4.6	4.7	0.2	143	0.52	0.123	16	34	0.43
IOJS SS06	0.5	1.3	0.1	61	0.59	0.102	23	33	0.9
IOJS SS07	0.8	1.1	0.2	76	0.46	0.095	15	29	0.64
IOJS SS08	3.5	2.6	0.2	121	0.6	0.14	22	38	0.84
IOJS SS09	2.2	2	0.1	91	0.54	0.109	17	30	0.59
IOJS SS10	4.8	19.5	6.6	84	0.71	0.172	33	34	0.72
IOJS SS11	1.4	25	7.5	96	0.6	0.145	27	34	0.74
IOJS SS12	3.4	45.8	3.2	76	0.55	0.139	29	31	0.71
IOJS SS13	1.5	19.9	2.7	68	0.5	0.124	24	26	0.57
IOKM SS01	0.4	0.8	0.2	41	0.39	0.093	13	23	0.52
IOKM SS02	0.4	0.6	0.2	28	0.7	0.108	16	21	0.62
IOKM SS03	0.9	1.3	0.2	44	0.67	0.134	17	23	0.71
IOKM SS04	0.5	0.6	0.1	18	1.16	0.119	15	18	0.51
IOKM SS05	2.2	2.8	0.2	54	0.57	0.138	15	23	0.65
IOKM SS06	3.8	3.5	0.2	61	0.52	0.124	14	18	0.35
IOKM SS07	2.7	1.1	0.2	37	0.83	0.137	14	19	0.62
IOKM SS08	2.7	1.8	0.2	49	0.57	0.126	13	23	0.51
IOKM SS09	3.5	6.8	0.2	88	0.27	0.088	19	17	0.19
IOKM SS10	1.5	1.7	0.2	58	0.56	0.157	20	25	0.73
IOKM SS11	1.8	23.7	11.1	71	0.24	0.149	28	28	0.53
IOKM SS12	1	22.6	8.8	69	0.31	0.139	30	28	0.63
IOMM SS01	1.7	20.7	7.2	68	0.55	0.133	26	32	0.73
IOMM SS02	1.2	8.7	2.2	78	0.28	0.118	18	31	0.57
IOMM SS03	1.1	15.1	3.9	67	0.55	0.119	22	29	0.59
IOMM SS04	1.2	13.9	3.7	60	0.5	0.119	21	28	0.6
IOMM SS05	3.1	18.1	2.6	55	0.45	0.101	27	24	0.55
IOMM SS06	1.4	18.6	3.2	53	0.44	0.097	25	25	0.56
IOSR SS01	2.6	39.2	6.2	159	0.22	0.176	15	46	0.73
IOSR SS02	6.3	17.9	1.8	94	0.35	0.123	20	42	0.95
IOSR SS03	12	10	1	93	0.48	0.181	22	33	0.58
IOSR SS04	11.6	3.6	0.3	110	0.65	0.16	14	29	0.5
IOSR SS05	6.8	9.1	0.4	201	0.25	0.178	11	44	0.27
IOSR SS06	10.3	5.6	0.3	141	0.64	0.155	18	31	0.86
IOSR SS07	3.3	3.2	0.2	82	0.35	0.12	11	26	0.38
IOSR SS08	15.2	3.3	0.2	70	0.55	0.188	13	23	0.29
IOSR SS09	25.5	5.7	0.2	95	0.61	0.239	18	33	0.64
IOSR SS10	4.5	69.1	4.2	76	0.7	0.16	32	34	0.8

ELEMENT	Ba	Ti	B	Al	Na	K	W	Hg
IOIF SS01	412	0.064	3	2.6	0.022	0.34	0.6	0.11
IOIF SS02	315	0.058	2	1.84	0.017	0.17	0.7	0.11
IOIF SS03	434	0.045	2	1.9	0.022	0.34	0.5	0.09
IOIF SS04	393	0.066	2	2.2	0.02	0.29	0.7	0.1
IOIF SS05	630	0.013	6	1.45	0.007	0.15	0.2	0.17
IOIF SS06	559	0.043	3	2.81	0.017	0.26	0.4	0.12
IOIF SS07	422	0.039	4	1.7	0.014	0.16	0.4	0.11
IOIF SS08	539	0.035	4	2.02	0.014	0.17	1	0.14
IOIF SS09	594	0.026	9	1.74	0.01	0.32	0.7	0.18
IOIF SS10	499	0.034	5	1.61	0.013	0.19	1.2	0.38
IOIF SS11	435	0.052	3	1.48	0.013	0.17	2.6	1.66
IOIF SS12	564	0.038	5	1.28	0.011	0.16	0.2	0.17
IOIF SS13	536	0.026	4	1.33	0.01	0.19	0.3	0.18
IOIF SS14	363	0.022	6	1.51	0.007	0.24	0.2	0.2
IOIF SS15	658	0.028	7	1.65	0.01	0.27	0.9	0.24
IOIF SS16	451	0.039	5	1.39	0.013	0.19	0.4	0.21
IOJS SS01	899	0.013	10	1.54	0.008	0.3	0.1	0.33
IOJS SS02	835	0.014	7	1.3	0.007	0.21	0.1	0.23
IOJS SS03	841	0.014	7	1.21	0.007	0.17	0.1	0.27
IOJS SS04	667	0.017	8	1.14	0.007	0.15	0.1	0.23
IOJS SS05	641	0.016	8	1.24	0.006	0.18	0.1	0.21
IOJS SS06	359	0.024	8	1.66	0.008	0.27	0.1	0.07
IOJS SS07	801	0.021	8	1.66	0.007	0.25	0.1	0.22
IOJS SS08	726	0.015	11	1.83	0.008	0.33	0	0.15
IOJS SS09	536	0.02	8	1.49	0.007	0.22	0.1	0.19
IOJS SS10	437	0.047	5	1.99	0.022	0.27	2.9	0.97
IOJS SS11	378	0.058	3	1.77	0.018	0.25	2.9	1.55
IOJS SS12	560	0.061	4	1.74	0.014	0.22	0.8	2.67
IOJS SS13	314	0.051	3	1.37	0.012	0.15	3.2	1.18
IOKM SS01	225	0.02	3	1.35	0.007	0.06	0.1	0.04
IOKM SS02	247	0.008	4	1.16	0.006	0.07	0.1	0.06
IOKM SS03	339	0.01	3	1.29	0.006	0.09	0.1	0.08
IOKM SS04	234	0.006	4	0.98	0.017	0.06	0.3	0.08
IOKM SS05	551	0.013	3	1.27	0.006	0.09	0.1	0.09
IOKM SS06	667	0.006	5	0.71	0.005	0.11	0.2	0.19
IOKM SS07	595	0.011	4	1.22	0.007	0.08	0.1	0.17
IOKM SS08	519	0.018	3	1.18	0.007	0.08	0.2	0.09
IOKM SS09	595	0.005	3	0.59	0.004	0.13	0.1	0.24
IOKM SS10	326	0.011	3	1.54	0.007	0.11	0.1	0.09
IOKM SS11	261	0.037	2	2.67	0.012	0.18	1.8	1.26
IOKM SS12	245	0.038	2	2.22	0.014	0.18	2.5	0.47
IOMM SS01	273	0.044	3	2.05	0.014	0.16	0.5	0.35
IOMM SS02	234	0.035	2	1.8	0.013	0.12	0.4	0.1
IOMM SS03	274	0.045	2	1.7	0.014	0.13	0.5	0.34
IOMM SS04	252	0.033	3	1.69	0.014	0.09	0.7	0.26
IOMM SS05	249	0.076	2	1.58	0.024	0.14	0.7	0.13
IOMM SS06	249	0.062	2	1.49	0.017	0.13	0.6	0.14
IOSR SS01	243	0.042	3	4.07	0.016	0.17	0.3	0.19
IOSR SS02	473	0.043	3	2.3	0.012	0.18	0.1	0.32
IOSR SS03	478	0.025	3	1.98	0.009	0.16	0.2	0.11
IOSR SS04	713	0.016	5	1.22	0.006	0.11	0.2	0.09
IOSR SS05	687	0.007	5	1.12	0.01	0.19	0.1	0.87
IOSR SS06	502	0.011	8	1.4	0.009	0.23	0.2	0.48
IOSR SS07	518	0.012	3	1	0.006	0.11	0.1	0.38
IOSR SS08	908	0.008	5	1.76	0.01	0.14	0.1	0.36
IOSR SS09	1084	0.021	7	1.38	0.011	0.15	0.1	0.07
IOSR SS10	492	0.058	3	1.95	0.016	0.23	0.3	5.74

ELEMENT	Sc	Ti	S	Ga	Se	Analysis:	Acme file
IOIF SS01	3.7	0.7	0.14	8	3.2	GROUP 1DX - 15.0 GM	A608149
IOIF SS02	3.1	0.5	0.11	6	2.2	GROUP 1DX - 15.0 GM	A608149
IOIF SS03	3.2	0.6	0.16	7	3.2	GROUP 1DX - 15.0 GM	A608149
IOIF SS04	3.6	0.6	0.13	7	2.7	GROUP 1DX - 15.0 GM	A608149
IOIF SS05	2	0.4	0.13	4	4.9	GROUP 1DX - 15.0 GM	A608149
IOIF SS06	3	0.6	0.15	6	5.2	GROUP 1DX - 15.0 GM	A608149
IOIF SS07	2.5	0.4	0.11	5	3.5	GROUP 1DX - 15.0 GM	A608149
IOIF SS08	2.7	0.4	0.12	5	4.7	GROUP 1DX - 15.0 GM	A608149
IOIF SS09	3.6	0.4	0.11	6	2.4	GROUP 1DX - 15.0 GM	A608149
IOIF SS10	2.9	0.4	0.12	5	3.4	GROUP 1DX - 15.0 GM	A608149
IOIF SS11	3.2	0.4	0.06	5	2.4	GROUP 1DX - 15.0 GM	A608149
IOIF SS12	3.1	0.3	0	5	1.5	GROUP 1DX - 15.0 GM	A608149
IOIF SS13	3.1	0.3	0	5	2.2	GROUP 1DX - 15.0 GM	A608149
IOIF SS14	3.2	0.2	0	5	0.9	GROUP 1DX - 15.0 GM	A608149
IOIF SS15	3.3	0.3	0.09	6	2	GROUP 1DX - 15.0 GM	A608149
IOIF SS16	3.2	0.3	0	4	1.7	GROUP 1DX - 15.0 GM	A608149
IOJS SS01	2.8	0.7	0.13	6	4.8	GROUP 1DX - 15.0 GM	A608150
IOJS SS02	1.8	0.4	0.11	5	4.1	GROUP 1DX - 15.0 GM	A608150
IOJS SS03	1.8	0.4	0.12	5	3.7	GROUP 1DX - 15.0 GM	A608150
IOJS SS04	2.2	0.3	0.11	4	4.1	GROUP 1DX - 15.0 GM	A608150
IOJS SS05	2.3	0.4	0.09	4	3.4	GROUP 1DX - 15.0 GM	A608150
IOJS SS06	3.3	0.2	0	6	1	GROUP 1DX - 15.0 GM	A608150
IOJS SS07	3.5	0.2	0	6	1	GROUP 1DX - 15.0 GM	A608150
IOJS SS08	3.5	0.3	0.07	7	2.4	GROUP 1DX - 15.0 GM	A608150
IOJS SS09	3	0.2	0.06	5	2	GROUP 1DX - 15.0 GM	A608150
IOJS SS10	3.5	1.1	0.13	6	6.4	GROUP 1DX - 15.0 GM	A608150
IOJS SS11	3.9	0.8	0.12	6	3.4	GROUP 1DX - 15.0 GM	A608150
IOJS SS12	3.9	0.5	0.09	6	2.4	GROUP 1DX - 15.0 GM	A608150
IOJS SS13	3	0.4	0.06	5	2.6	GROUP 1DX - 15.0 GM	A608150
IOKM SS01	1.7	0.1	0.07	4	1.1	GROUP 1DX - 15.0 GM	A608151
IOKM SS02	2.5	0.1	0.11	4	0.7	GROUP 1DX - 15.0 GM	A608151
IOKM SS03	2.1	0.1	0.09	4	1.9	GROUP 1DX - 15.0 GM	A608151
IOKM SS04	2	0.1	0.17	3	1.7	GROUP 1DX - 15.0 GM	A608151
IOKM SS05	2.2	0.2	0.11	4	3.2	GROUP 1DX - 15.0 GM	A608151
IOKM SS06	1.3	0.3	0.13	2	4.2	GROUP 1DX - 15.0 GM	A608151
IOKM SS07	1	0.2	0.13	4	3.6	GROUP 1DX - 15.0 GM	A608151
IOKM SS08	1.8	0.2	0.13	4	3.1	GROUP 1DX - 15.0 GM	A608151
IOKM SS09	2	0.5	0.13	2	3.4	GROUP 1DX - 15.0 GM	A608151
IOKM SS10	1.3	0.2	0.08	5	1.6	GROUP 1DX - 15.0 GM	A608151
IOKM SS11	3.6	0.6	0.29	5	3.8	GROUP 1DX - 15.0 GM	A608151
IOKM SS12	3.2	0.5	0.17	5	3.5	GROUP 1DX - 15.0 GM	A608151
IOMM SS01	4	0.5	0.07	6	1.9	GROUP 1DX - 15.0 GM	A608152
IOMM SS02	2.3	0.4	0.12	5	3.4	GROUP 1DX - 15.0 GM	A608152
IOMM SS03	3.3	0.4	0.1	5	6.8	GROUP 1DX - 15.0 GM	A608152
IOMM SS04	2.7	0.4	0.1	5	2.1	GROUP 1DX - 15.0 GM	A608152
IOMM SS05	3.5	0.4	0.06	5	0.9	GROUP 1DX - 15.0 GM	A608152
IOMM SS06	3.6	0.4	0	5	1.3	GROUP 1DX - 15.0 GM	A608152
IOSR SS01	3.9	0.7	0.39	6	4.4	GROUP 1DX - 15.0 GM	A608153
IOSR SS02	3.7	0.6	0.12	7	2.4	GROUP 1DX - 15.0 GM	A608153
IOSR SS03	2.3	0.5	0.13	4	4.8	GROUP 1DX - 15.0 GM	A608153
IOSR SS04	2	0.3	0.12	4	4.8	GROUP 1DX - 15.0 GM	A608153
IOSR SS05	5.5	0.8	0.27	4	6.2	GROUP 1DX - 15.0 GM	A608153
IOSR SS06	3.4	0.6	0.18	5	4.2	GROUP 1DX - 15.0 GM	A608153
IOSR SS07	1.8	0.3	0.09	3	2.7	GROUP 1DX - 15.0 GM	A608153
IOSR SS08	3	0.3	0.21	3	4.7	GROUP 1DX - 15.0 GM	A608153
IOSR SS09	2.1	0.5	0.16	5	5.6	GROUP 1DX - 15.0 GM	A608153
IOSR SS10	5	0.8	0.13	6	4.2	GROUP 1DX - 15.0 GM	A608153