

StrataGold Corporation
#701, 475 Howe Street
Vancouver, BC, Canada
V6C 2B3

094788
C.2

DUB CLAIMS, ASSESSMENT REPORT 2004

Title: 2004 Geophysical Survey
LQ00090

Location: Mayo Mining District, Yukon, approximately 75 kilometers
northeast of Mayo and 370 kilometers due north of Whitehorse

Dates of Work: October 27th - December 20th, 2004 (Geophysics)

Prepared by: D Hladky Geologist I.T., StrataGold Corporation

Supervised by: Jim Sparling, MBA, B.Sc., P.Geo, Exploration Manager
StrataGold Corporation (Canada) Ltd.

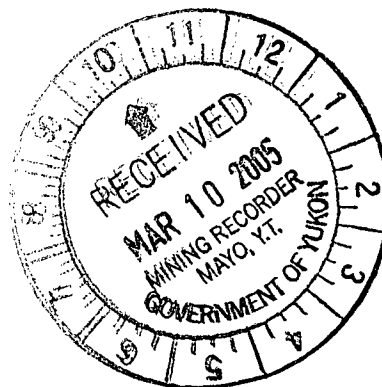


TABLE OF CONTENTS

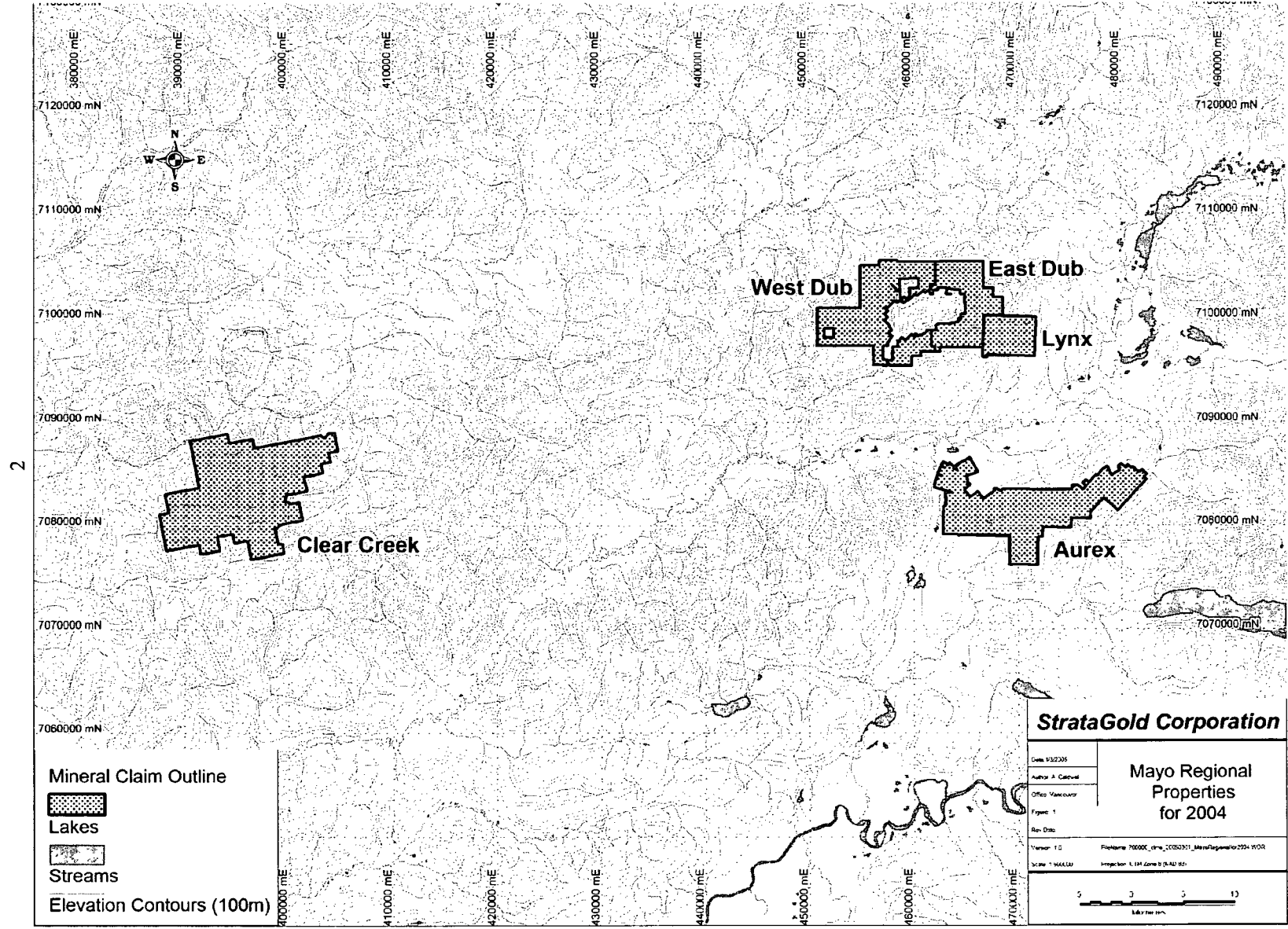
| ITEM | PAGE |
|--|------|
| 1. INTRODUCTION AND LOCATION | 1 |
| a. Figure 1: Mayo Regional Properties for 2004 Map | 2 |
| b. Table 1: (East) Dub Claims | 3 |
| c. Table 2: (West) Dub Claims | 9 |
| d. Figure 2: Dub Claims Map | 15 |
| 2. GEOPHYSICAL SURVEY - GENERAL INFORMATION | 16 |
| 3. GEOPHYSICAL SURVEY - DESCRIPTION OF WORK AND DATA PRESENTATION | 16 |
| a. Figure 3: AeroMag Geophysical Survey with Dub Claims Map | 17 |
| 4. GEOPHYSICAL SURVEY - STATEMENT OF EXPENDITURES | 18 |
| a. Table 3: Dub Claims Statement of Expenditures | 18 |
| 5. RECOMMENDATIONS | 18 |
| 6. CERTIFICATE OF QUALIFICATIONS | 19 |

1. INTRODUCTION AND LOCATION

The Dub dispositions are located, in the Mayo Mining District, Yukon Territory, approximately 75 kilometers northeast of Mayo and 370 kilometres due north of Whitehorse, located on NTS map sheets 106D04 and 105M13 at latitude 64°01'00" and longitude 135°37'00" W. The property outlined for assessment comprises 572 contiguous quartz mining claims covering approximately 111.5 square kilometers of land. The registered owner of the Len 1-32 and Jan 1-4 fractional claims is Janet Dickson, while the Lynx and Dub claims are registered to StrataGold Corporation. The Len and Jan claims are subject to an option agreement wherein StrataGold may earn a 100% interest.

In previous reports, the Dub (East), Lynx and Contiguous Claims have been separated from the Dub (West) Claims. In this and subsequent reports, these claims are hereby collectively referred to as the Dub Claims.

This report summarizes the high resolution geophysical survey successfully completed between October 27th and December 20th, 2004, on the Dub Claims.



2

Figure 1: Location Map of Dub Claims

Table 1: (East) Dub Claims
 (The "Current Expiry Date" column is in the process of being updated in the Government Database)

| Grant Number | Label | Current Expiry Date |
|--------------|--------|---------------------|
| YC11075 | DUB 1 | January 16 2005 |
| YC11076 | DUB 2 | January 16 2005 |
| YC11077 | DUB 3 | January 16 2005 |
| YC11078 | DUB 4 | January 16 2005 |
| YC11079 | DUB 5 | January 16 2005 |
| YC11080 | DUB 6 | January 16 2005 |
| YC11081 | DUB 7 | January 16 2005 |
| YC11082 | DUB 8 | January 16 2005 |
| YC11083 | DUB 9 | January 16 2005 |
| YC11084 | DUB 10 | January 16 2005 |
| YC11085 | DUB 11 | January 16 2005 |
| YC11086 | DUB 12 | January 16 2005 |
| YC11087 | DUB 13 | January 16 2005 |
| YC11088 | DUB 14 | January 16 2005 |
| YC11089 | DUB 15 | January 16 2005 |
| YC11090 | DUB 16 | January 16 2005 |
| YC11091 | DUB 17 | January 16 2005 |
| YC11092 | DUB 18 | January 16 2005 |
| YC11093 | DUB 19 | January 16 2005 |
| YC11094 | DUB 20 | January 16 2005 |
| YC11095 | DUB 21 | January 16 2005 |
| YC11096 | DUB 22 | January 16 2005 |
| YC11097 | DUB 23 | January 16 2005 |
| YC11098 | DUB 24 | January 16 2005 |
| YC11099 | DUB 25 | January 16 2005 |
| YC11100 | DUB 26 | January 16 2005 |
| YC11101 | DUB 27 | January 16 2005 |
| YC11102 | DUB 28 | January 16 2005 |
| YC11103 | DUB 29 | January 16 2005 |
| YC11104 | DUB 30 | January 16 2005 |
| YC11105 | DUB 31 | January 16 2005 |
| YC11106 | DUB 32 | January 16 2005 |
| YC11107 | DUB 33 | January 16 2005 |
| YC11108 | DUB 34 | January 16 2005 |
| YC11109 | DUB 35 | January 16 2005 |
| YC11110 | DUB 36 | January 16 2005 |
| YC11111 | DUB 37 | January 16 2005 |
| YC11112 | DUB 38 | January 16 2005 |
| YC11113 | DUB 39 | January 16 2005 |
| YC11114 | DUB 40 | January 16 2005 |
| YC11115 | DUB 41 | January 16 2005 |
| YC11116 | DUB 42 | January 16 2005 |
| YC11117 | DUB 43 | January 16 2005 |
| YC11118 | DUB 44 | January 16 2005 |
| YC11119 | DUB 45 | January 16 2005 |

| | | |
|---------|--------|-----------------|
| YC11120 | DUB 46 | January 16 2005 |
| YC11121 | DUB 47 | January 16 2005 |
| YC11122 | DUB 48 | January 16 2005 |
| YC11123 | DUB 49 | January 16 2005 |
| YC11124 | DUB 50 | January 16 2005 |
| YC11125 | DUB 51 | January 16 2005 |
| YC11126 | DUB 52 | January 16 2005 |
| YC11127 | DUB 53 | January 16 2005 |
| YC11128 | DUB 54 | January 16 2005 |
| YC11129 | DUB 55 | January 16 2005 |
| YC11130 | DUB 56 | January 16 2005 |
| YC11131 | DUB 57 | January 16 2005 |
| YC11132 | DUB 58 | January 16 2005 |
| YC11133 | DUB 59 | January 16 2005 |
| YC11134 | DUB 60 | January 16 2005 |
| YC11135 | DUB 61 | January 16 2005 |
| YC11136 | DUB 62 | January 16 2005 |
| YC11137 | DUB 63 | January 16 2005 |
| YC11138 | DUB 64 | January 16 2005 |
| YC11139 | DUB 65 | January 16 2005 |
| YC11140 | DUB 66 | January 16 2005 |
| YC11141 | DUB 67 | January 16 2005 |
| YC11142 | DUB 68 | January 16 2005 |
| YC11143 | DUB 69 | January 16 2005 |
| YC11144 | DUB 70 | January 16 2005 |
| YC11145 | DUB 71 | January 16 2005 |
| YC11146 | DUB 72 | January 16 2005 |
| YC11147 | DUB 73 | January 16 2005 |
| YC11148 | DUB 74 | January 16 2005 |
| YC11149 | DUB 75 | January 16 2005 |
| YC11150 | DUB 76 | January 16 2005 |
| YC11151 | DUB 77 | January 16 2005 |
| YC11152 | DUB 78 | January 16 2005 |
| YC11153 | DUB 79 | January 16 2005 |
| YC11154 | DUB 80 | January 16 2005 |
| YC11155 | DUB 81 | January 16 2005 |
| YC11156 | DUB 82 | January 16 2005 |
| YC11157 | DUB 83 | January 16 2005 |
| YC11158 | DUB 84 | January 16 2005 |
| YC11159 | DUB 85 | January 16 2005 |
| YC11160 | DUB 86 | January 16 2005 |
| YC11161 | DUB 87 | January 16 2005 |
| YC11162 | DUB 88 | January 16 2005 |
| YC11163 | DUB 89 | January 16 2005 |
| YC11164 | DUB 90 | January 16 2005 |
| YC11165 | DUB 91 | January 16 2005 |
| YC11166 | DUB 92 | January 16 2005 |
| YC11167 | DUB 93 | January 16 2005 |
| YC11168 | DUB 94 | January 16 2005 |

| | | |
|---------|---------|-----------------|
| YC11169 | DUB 95 | January 16 2005 |
| YC11170 | DUB 96 | January 16 2005 |
| YC11171 | DUB 97 | January 16 2005 |
| YC11172 | DUB 98 | January 16 2005 |
| YC11173 | DUB 99 | January 16 2005 |
| YC11174 | DUB 100 | January 16 2005 |
| YC11175 | DUB 101 | January 16 2005 |
| YC11176 | DUB 102 | January 16 2005 |
| YC11177 | DUB 103 | January 16 2005 |
| YC11178 | DUB 104 | January 16 2005 |
| YC11179 | DUB 105 | January 16 2005 |
| YC11180 | DUB 106 | January 16 2005 |
| YC11181 | DUB 107 | January 16 2005 |
| YC11182 | DUB 108 | January 16 2005 |
| YC11183 | DUB 109 | January 16 2005 |
| YC11184 | DUB 110 | January 16 2005 |
| YC11185 | DUB 111 | January 16 2005 |
| YC11186 | DUB 112 | January 16 2005 |
| YC11187 | DUB 113 | January 16 2005 |
| YC11188 | DUB 114 | January 16 2005 |
| YC11189 | DUB 115 | January 16 2005 |
| YC11190 | DUB 116 | January 16 2005 |
| YC11191 | DUB 117 | January 16 2005 |
| YC11192 | DUB 118 | January 16 2005 |
| YC11193 | DUB 119 | January 16 2005 |
| YC11194 | DUB 120 | January 16 2005 |
| YC11195 | DUB 121 | January 16 2005 |
| YC11196 | DUB 122 | January 16 2005 |
| YC11197 | DUB 123 | January 16 2005 |
| YC11198 | DUB 124 | January 16 2005 |
| YC11199 | DUB 125 | January 16 2005 |
| YC11200 | DUB 126 | January 16 2005 |
| YC11201 | DUB 127 | January 16 2005 |
| YC11202 | DUB 128 | January 16 2005 |
| YC11203 | DUB 129 | January 16 2005 |
| YC11217 | DUB 143 | January 16 2005 |
| YC11218 | DUB 144 | January 16 2005 |
| YC11219 | DUB 145 | January 16 2005 |
| YC11220 | DUB 146 | January 16 2005 |
| YC11221 | DUB 147 | January 16 2005 |
| YC11222 | DUB 148 | January 16 2005 |
| YC11223 | DUB 149 | January 16 2005 |
| YC11224 | DUB 150 | January 16 2005 |
| YC11225 | DUB 151 | January 16 2005 |
| YC11226 | DUB 152 | January 16 2005 |
| YC11234 | DUB 160 | January 16 2005 |
| YC11235 | DUB 161 | January 16 2005 |
| YC11236 | DUB 162 | January 16 2005 |
| YC11237 | DUB 163 | January 16 2005 |

| | | |
|---------|----------|-----------------|
| YC11238 | DUB 164 | January 16 2005 |
| YC11239 | DUB 165 | January 16 2005 |
| YC11255 | DUB 181 | January 16 2005 |
| YC11256 | DUB 182 | January 16 2005 |
| YC11257 | DUB 183 | January 16 2005 |
| YC11258 | DUB 184 | January 16 2005 |
| YC11259 | DUB 185 | January 16 2005 |
| YC11260 | DUB 186 | January 16 2005 |
| YC11261 | DUB 187 | January 16 2005 |
| YC11262 | DUB 188 | January 16 2005 |
| YC11263 | DUB 189 | January 16 2005 |
| YC11265 | DUB 191 | January 16 2005 |
| YC11272 | DUB 198 | January 16 2005 |
| YC11283 | DUB 209 | January 16 2005 |
| YC11284 | DUB 210 | January 16 2005 |
| YC11285 | DUB 211 | January 16 2005 |
| YC11286 | DUB 212 | January 16 2005 |
| YC11287 | DUB 213 | January 16 2005 |
| YC11288 | DUB 214 | January 16 2005 |
| YC11289 | DUB 215 | January 16 2005 |
| YC11290 | DUB 216 | January 16 2005 |
| YC11307 | DUB 233 | January 16 2005 |
| YC11308 | DUB 234 | January 16 2005 |
| YC11309 | DUB 235 | January 16 2005 |
| YC11310 | DUB 236 | January 16 2005 |
| YC11311 | DUB 237 | January 16 2005 |
| YC11312 | DUB 238 | January 16 2005 |
| YC11313 | DUB 239 | January 16 2005 |
| YC11314 | DUB 240 | January 16 2005 |
| YB65585 | JAN 1 FR | July 19 2010 |
| YB65586 | JAN 2 FR | July 19 2010 |
| YB65587 | JAN 3 FR | July 19 2010 |
| YB65588 | JAN 4 FR | July 19 2010 |
| YC02730 | LEN 1 | May 15 2009 |
| YA30524 | LEN 4 | May 15 2007 |
| YA30526 | LEN 6 | May 15 2007 |
| YA30528 | LEN 8 | May 15 2007 |
| YA30530 | LEN 10 | May 15 2007 |
| YA30544 | LEN 24 | May 15 2007 |
| YA30546 | LEN 26 | May 15 2007 |
| YA30548 | LEN 28 | May 15 2007 |
| YA30550 | LEN 30 | May 15 2007 |
| YC02731 | LEN 2 | May 15 2007 |
| YC02732 | LEN 3 | May 15 2007 |
| YC02733 | LEN 5 | May 15 2007 |
| YC02734 | LEN 7 | May 15 2007 |
| YC02735 | LEN 9 | May 15 2007 |
| YC02736 | LEN 11 | May 15 2007 |
| YC02737 | LEN 12 | May 15 2007 |

| | | |
|---------|---------|-------------|
| YC02738 | LEN 13 | May 15 2007 |
| YC02739 | LEN 14 | May 15 2007 |
| YC02740 | LEN 15 | May 15 2007 |
| YC02741 | LEN 16 | May 15 2007 |
| YC02742 | LEN 17 | May 15 2007 |
| YC02743 | LEN 18 | May 15 2007 |
| YC02744 | LEN 19 | May 15 2007 |
| YC02745 | LEN 20 | May 15 2007 |
| YC02746 | LEN 21 | May 15 2007 |
| YC02747 | LEN 22 | May 15 2007 |
| YC02748 | LEN 23 | May 15 2007 |
| YC02749 | LEN 25 | May 15 2007 |
| YC02750 | LEN 27 | May 15 2007 |
| YC02751 | LEN 29 | May 15 2007 |
| YC02752 | LEN 31 | May 15 2007 |
| YC02753 | LEN 32 | May 15 2007 |
| YC10463 | LYNX 1 | July 2 2008 |
| YC10464 | LYNX 2 | July 2 2008 |
| YC10465 | LYNX 3 | July 2 2008 |
| YC10466 | LYNX 4 | July 2 2008 |
| YC10467 | LYNX 5 | July 2 2008 |
| YC10468 | LYNX 6 | July 2 2008 |
| YC10469 | LYNX 7 | July 2 2008 |
| YC10470 | LYNX 8 | July 2 2008 |
| YC10471 | LYNX 9 | July 2 2008 |
| YC10472 | LYNX 10 | July 2 2008 |
| YC10473 | LYNX 11 | July 2 2008 |
| YC10474 | LYNX 12 | July 2 2008 |
| YC10475 | LYNX 13 | July 2 2008 |
| YC10476 | LYNX 14 | July 2 2008 |
| YC10477 | LYNX 15 | July 2 2008 |
| YC10478 | LYNX 16 | July 2 2008 |
| YC10479 | LYNX 17 | July 2 2008 |
| YC10480 | LYNX 18 | July 2 2008 |
| YC10481 | LYNX 19 | July 2 2008 |
| YC10482 | LYNX 20 | July 2 2008 |
| YC10483 | LYNX 21 | July 2 2008 |
| YC10484 | LYNX 22 | July 2 2008 |
| YC10485 | LYNX 23 | July 2 2008 |
| YC10486 | LYNX 24 | July 2 2008 |
| YC10487 | LYNX 25 | July 2 2008 |
| YC10488 | LYNX 26 | July 2 2008 |
| YC10489 | LYNX 27 | July 2 2008 |
| YC10490 | LYNX 28 | July 2 2008 |
| YC10491 | LYNX 29 | July 2 2008 |
| YC10492 | LYNX 30 | July 2 2008 |
| YC10493 | LYNX 31 | July 2 2008 |
| YC10494 | LYNX 32 | July 2 2008 |
| YC10495 | LYNX 33 | July 2 2009 |

| | | |
|---------|---------|-------------|
| YC10496 | LYNX 34 | July 2 2009 |
| YC10497 | LYNX 35 | July 2 2009 |
| YC10498 | LYNX 36 | July 2 2009 |
| YC10499 | LYNX 37 | July 2 2009 |
| YC10500 | LYNX 38 | July 2 2009 |
| YC10501 | LYNX 39 | July 2 2009 |
| YC10502 | LYNX 40 | July 2 2009 |
| YC10503 | LYNX 41 | July 2 2009 |
| YC10504 | LYNX 42 | July 2 2008 |
| YC10505 | LYNX 43 | July 2 2008 |
| YC10506 | LYNX 44 | July 2 2008 |
| YC10507 | LYNX 45 | July 2 2008 |
| YC10508 | LYNX 46 | July 2 2008 |
| YC10509 | LYNX 47 | July 2 2008 |
| YC10510 | LYNX 48 | July 2 2008 |
| YC10511 | LYNX 49 | July 2 2008 |
| YC10512 | LYNX 50 | July 2 2008 |
| YC10513 | LYNX 51 | July 2 2008 |
| YC10514 | LYNX 52 | July 2 2008 |
| YC10515 | LYNX 53 | July 2 2008 |
| YC10516 | LYNX 54 | July 2 2008 |
| YC10517 | LYNX 55 | July 2 2009 |
| YC10518 | LYNX 56 | July 2 2009 |
| YC11555 | LYNX 57 | July 2 2008 |

Table 1: (West) Dub Claims

(The "Current Expiry Date" column is in the process of being updated in the Government Database)

| GRANT NUMBER | LABEL | CURRENT EXPIRY DATE |
|--------------|---------|---------------------|
| YC11204 | DUB 130 | January 16 2005 |
| YC11205 | DUB 131 | January 16 2005 |
| YC11206 | DUB 132 | January 16 2005 |
| YC11207 | DUB 133 | January 16 2005 |
| YC11208 | DUB 134 | January 16 2005 |
| YC11209 | DUB 135 | January 16 2005 |
| YC11210 | DUB 136 | January 16 2005 |
| YC11211 | DUB 137 | January 16 2005 |
| YC11212 | DUB 138 | January 16 2005 |
| YC11213 | DUB 139 | January 16 2005 |
| YC11214 | DUB 140 | January 16 2005 |
| YC11215 | DUB 141 | January 16 2005 |
| YC11216 | DUB 142 | January 16 2005 |
| YC11227 | DUB 153 | January 16 2005 |
| YC11228 | DUB 154 | January 16 2005 |
| YC11229 | DUB 155 | January 16 2005 |
| YC11230 | DUB 156 | January 16 2005 |
| YC11231 | DUB 157 | January 16 2005 |
| YC11232 | DUB 158 | January 16 2005 |
| YC11233 | DUB 159 | January 16 2005 |
| YC11240 | DUB 166 | January 16 2005 |
| YC11241 | DUB 167 | January 16 2005 |
| YC11242 | DUB 168 | January 16 2005 |
| YC11243 | DUB 169 | January 16 2005 |
| YC11244 | DUB 170 | January 16 2005 |
| YC11245 | DUB 171 | January 16 2005 |
| YC11246 | DUB 172 | January 16 2005 |
| YC11247 | DUB 173 | January 16 2005 |
| YC11248 | DUB 174 | January 16 2005 |
| YC11249 | DUB 175 | January 16 2005 |
| YC11250 | DUB 176 | January 16 2005 |
| YC11251 | DUB 177 | January 16 2005 |
| YC11252 | DUB 178 | January 16 2005 |
| YC11253 | DUB 179 | January 16 2005 |
| YC11254 | DUB 180 | January 16 2005 |
| YC11264 | DUB 190 | January 16 2005 |
| YC11266 | DUB 192 | January 16 2005 |
| YC11267 | DUB 193 | January 16 2005 |
| YC11268 | DUB 194 | January 16 2005 |
| YC11269 | DUB 195 | January 16 2005 |
| YC11270 | DUB 196 | January 16 2005 |
| YC11271 | DUB 197 | January 16 2005 |
| YC11274 | DUB 200 | January 16 2005 |
| YC11275 | DUB 201 | January 16 2005 |
| YC11276 | DUB 202 | January 16 2005 |
| YC11277 | DUB 203 | January 16 2005 |
| YC11278 | DUB 204 | January 16 2005 |
| YC11279 | DUB 205 | January 16 2005 |
| YC11280 | DUB 206 | January 16 2005 |

| | | |
|---------|---------|-----------------|
| YC11281 | DUB 207 | January 16 2005 |
| YC11282 | DUB 208 | January 16 2005 |
| YC11291 | DUB 217 | January 16 2005 |
| YC11292 | DUB 218 | January 16 2005 |
| YC11293 | DUB 219 | January 16 2005 |
| YC11294 | DUB 220 | January 16 2005 |
| YC11295 | DUB 221 | January 16 2005 |
| YC11296 | DUB 222 | January 16 2005 |
| YC11297 | DUB 223 | January 16 2005 |
| YC11298 | DUB 224 | January 16 2005 |
| YC11299 | DUB 225 | January 16 2005 |
| YC11300 | DUB 226 | January 16 2005 |
| YC11301 | DUB 227 | January 16 2005 |
| YC11302 | DUB 228 | January 16 2005 |
| YC11303 | DUB 229 | January 16 2005 |
| YC11304 | DUB 230 | January 16 2005 |
| YC11305 | DUB 231 | January 16 2005 |
| YC11306 | DUB 232 | January 16 2005 |
| YC11315 | DUB 241 | January 16 2005 |
| YC11316 | DUB 242 | January 16 2005 |
| YC11317 | DUB 243 | January 16 2005 |
| YC11318 | DUB 244 | January 16 2005 |
| YC11319 | DUB 245 | January 16 2005 |
| YC11320 | DUB 246 | January 16 2005 |
| YC11321 | DUB 247 | January 16 2005 |
| YC11322 | DUB 248 | January 16 2005 |
| YC11323 | DUB 249 | January 16 2005 |
| YC11324 | DUB 250 | January 16 2005 |
| YC11325 | DUB 251 | January 16 2005 |
| YC11326 | DUB 252 | January 16 2005 |
| YC11327 | DUB 253 | January 16 2005 |
| YC11328 | DUB 254 | January 16 2005 |
| YC11329 | DUB 255 | January 16 2005 |
| YC11330 | DUB 256 | January 16 2005 |
| YC11331 | DUB 257 | January 16 2005 |
| YC11332 | DUB 258 | January 16 2005 |
| YC11333 | DUB 259 | January 16 2005 |
| YC11334 | DUB 260 | January 16 2005 |
| YC11335 | DUB 261 | January 16 2005 |
| YC11336 | DUB 262 | January 16 2005 |
| YC11337 | DUB 263 | January 16 2005 |
| YC11338 | DUB 264 | January 16 2005 |
| YC11339 | DUB 265 | January 16 2005 |
| YC11340 | DUB 266 | January 16 2005 |
| YC11341 | DUB 267 | January 16 2005 |
| YC11342 | DUB 268 | January 16 2005 |
| YC11343 | DUB 269 | January 16 2005 |
| YC11344 | DUB 270 | January 16 2005 |
| YC11345 | DUB 271 | January 16 2005 |
| YC11346 | DUB 272 | January 16 2005 |
| YC11347 | DUB 273 | January 16 2005 |
| YC11348 | DUB 274 | January 16 2005 |
| YC11349 | DUB 275 | January 16 2005 |
| YC11350 | DUB 276 | January 16 2005 |

| | | |
|---------|---------|-----------------|
| YC11351 | DUB 277 | January 16 2005 |
| YC11352 | DUB 278 | January 16 2005 |
| YC11353 | DUB 279 | January 16 2005 |
| YC11354 | DUB 280 | January 16 2005 |
| YC11355 | DUB 281 | January 16 2005 |
| YC11356 | DUB 282 | January 16 2005 |
| YC11357 | DUB 283 | January 16 2005 |
| YC11358 | DUB 284 | January 16 2005 |
| YC11359 | DUB 285 | January 16 2005 |
| YC11360 | DUB 286 | January 16 2005 |
| YC11361 | DUB 287 | January 16 2005 |
| YC11362 | DUB 288 | January 16 2005 |
| YC11363 | DUB 289 | January 16 2005 |
| YC11364 | DUB 290 | January 16 2005 |
| YC11365 | DUB 291 | January 16 2005 |
| YC11366 | DUB 292 | January 16 2005 |
| YC11367 | DUB 293 | January 16 2005 |
| YC11368 | DUB 294 | January 16 2005 |
| YC11369 | DUB 295 | January 16 2005 |
| YC11370 | DUB 296 | January 16 2005 |
| YC11371 | DUB 297 | January 16 2005 |
| YC11372 | DUB 298 | January 16 2005 |
| YC11373 | DUB 299 | January 16 2005 |
| YC11374 | DUB 300 | January 16 2005 |
| YC11375 | DUB 301 | January 16 2005 |
| YC11376 | DUB 302 | January 16 2005 |
| YC11377 | DUB 303 | January 16 2005 |
| YC11378 | DUB 304 | January 16 2005 |
| YC11379 | DUB 305 | January 16 2005 |
| YC11380 | DUB 306 | January 16 2005 |
| YC11381 | DUB 307 | January 16 2005 |
| YC11382 | DUB 308 | January 16 2005 |
| YC11383 | DUB 309 | January 16 2005 |
| YC11384 | DUB 310 | January 16 2005 |
| YC11385 | DUB 311 | January 16 2005 |
| YC11386 | DUB 312 | January 16 2005 |
| YC11387 | DUB 313 | January 16 2005 |
| YC11388 | DUB 314 | January 16 2005 |
| YC11389 | DUB 315 | January 16 2005 |
| YC11390 | DUB 316 | January 16 2005 |
| YC11391 | DUB 317 | January 16 2005 |
| YC11392 | DUB 318 | January 16 2005 |
| YC11393 | DUB 319 | January 16 2005 |
| YC11394 | DUB 320 | January 16 2005 |
| YC11395 | DUB 321 | January 16 2005 |
| YC11396 | DUB 322 | January 16 2005 |
| YC11397 | DUB 323 | January 16 2005 |
| YC11398 | DUB 324 | January 16 2005 |
| YC11399 | DUB 325 | January 16 2005 |
| YC11400 | DUB 326 | January 16 2005 |
| YC11401 | DUB 327 | January 16 2005 |
| YC11402 | DUB 328 | January 16 2005 |
| YC11403 | DUB 329 | January 16 2005 |
| YC11404 | DUB 330 | January 16 2005 |

| | | |
|---------|---------|-----------------|
| YC11405 | DUB 331 | January 16 2005 |
| YC11406 | DUB 332 | January 16 2005 |
| YC11407 | DUB 333 | January 16 2005 |
| YC11408 | DUB 334 | January 16 2005 |
| YC11409 | DUB 335 | January 16 2005 |
| YC11410 | DUB 336 | January 16 2005 |
| YC11411 | DUB 337 | January 16 2005 |
| YC11412 | DUB 338 | January 16 2005 |
| YC11413 | DUB 339 | January 16 2005 |
| YC11414 | DUB 340 | January 16 2005 |
| YC11415 | DUB 341 | January 16 2005 |
| YC11416 | DUB 342 | January 16 2005 |
| YC11417 | DUB 343 | January 16 2005 |
| YC11418 | DUB 344 | January 16 2005 |
| YC11419 | DUB 345 | January 16 2005 |
| YC11420 | DUB 346 | January 16 2005 |
| YC11421 | DUB 347 | January 16 2005 |
| YC11422 | DUB 348 | January 16 2005 |
| YC11423 | DUB 349 | January 16 2005 |
| YC11424 | DUB 350 | January 16 2005 |
| YC11425 | DUB 351 | January 16 2005 |
| YC11426 | DUB 352 | January 16 2005 |
| YC11427 | DUB 353 | January 16 2005 |
| YC11428 | DUB 354 | January 16 2005 |
| YC11429 | DUB 355 | January 16 2005 |
| YC11430 | DUB 356 | January 16 2005 |
| YC11431 | DUB 357 | January 16 2005 |
| YC11432 | DUB 358 | January 16 2005 |
| YC11433 | DUB 359 | January 16 2005 |
| YC11434 | DUB 360 | January 16 2005 |
| YC11435 | DUB 361 | January 16 2005 |
| YC11436 | DUB 362 | January 16 2005 |
| YC11437 | DUB 363 | January 16 2005 |
| YC11438 | DUB 364 | January 16 2005 |
| YC11439 | DUB 365 | January 16 2005 |
| YC11440 | DUB 366 | January 16 2005 |
| YC11441 | DUB 367 | January 16 2005 |
| YC11442 | DUB 368 | January 16 2005 |
| YC11443 | DUB 369 | January 16 2005 |
| YC11444 | DUB 370 | January 16 2005 |
| YC11445 | DUB 371 | January 16 2005 |
| YC11446 | DUB 372 | January 16 2005 |
| YC11447 | DUB 373 | January 16 2005 |
| YC11448 | DUB 374 | January 16 2005 |
| YC11449 | DUB 375 | January 16 2005 |
| YC11450 | DUB 376 | January 16 2005 |
| YC11451 | DUB 377 | January 16 2005 |
| YC11452 | DUB 378 | January 16 2005 |
| YC11453 | DUB 379 | January 16 2005 |
| YC11454 | DUB 380 | January 16 2005 |
| YC11455 | DUB 381 | January 16 2005 |
| YC11456 | DUB 382 | January 16 2005 |
| YC11457 | DUB 383 | January 16 2005 |
| YC11458 | DUB 384 | January 16 2005 |

| | | |
|---------|---------|-----------------|
| YC11459 | DUB 385 | January 16 2005 |
| YC11460 | DUB 386 | January 16 2005 |
| YC11461 | DUB 387 | January 16 2005 |
| YC11462 | DUB 388 | January 16 2005 |
| YC11463 | DUB 389 | January 16 2005 |
| YC11464 | DUB 390 | January 16 2005 |
| YC11465 | DUB 391 | January 16 2005 |
| YC11466 | DUB 392 | January 16 2005 |
| YC11467 | DUB 393 | January 16 2005 |
| YC11468 | DUB 394 | January 16 2005 |
| YC11469 | DUB 395 | January 16 2005 |
| YC11470 | DUB 396 | January 16 2005 |
| YC11471 | DUB 397 | January 16 2005 |
| YC11472 | DUB 398 | January 16 2005 |
| YC11473 | DUB 399 | January 16 2005 |
| YC11474 | DUB 400 | January 16 2005 |
| YC11475 | DUB 401 | January 16 2005 |
| YC11476 | DUB 402 | January 16 2005 |
| YC11477 | DUB 403 | January 16 2005 |
| YC11478 | DUB 404 | January 16 2005 |
| YC11479 | DUB 405 | January 16 2005 |
| YC11480 | DUB 406 | January 16 2005 |
| YC11481 | DUB 407 | January 16 2005 |
| YC11482 | DUB 408 | January 16 2005 |
| YC11483 | DUB 409 | January 16 2005 |
| YC11484 | DUB 410 | January 16 2005 |
| YC11485 | DUB 411 | January 16 2005 |
| YC11486 | DUB 412 | January 16 2005 |
| YC11487 | DUB 413 | January 16 2005 |
| YC11488 | DUB 414 | January 16 2005 |
| YC11489 | DUB 415 | January 16 2005 |
| YC11490 | DUB 416 | January 16 2005 |
| YC11491 | DUB 417 | January 16 2005 |
| YC11492 | DUB 418 | January 16 2005 |
| YC11493 | DUB 419 | January 16 2005 |
| YC11494 | DUB 420 | January 16 2005 |
| YC11495 | DUB 421 | January 16 2005 |
| YC11496 | DUB 422 | January 16 2005 |
| YC11497 | DUB 423 | January 16 2005 |
| YC11498 | DUB 424 | January 16 2005 |
| YC11499 | DUB 425 | January 16 2005 |
| YC11500 | DUB 426 | January 16 2005 |
| YC11501 | DUB 427 | January 16 2005 |
| YC11502 | DUB 428 | January 16 2005 |
| YC11503 | DUB 429 | January 16 2005 |
| YC11504 | DUB 430 | January 16 2005 |
| YC11505 | DUB 431 | January 16 2005 |
| YC11506 | DUB 432 | January 16 2005 |
| YC11507 | DUB 433 | January 16 2005 |
| YC11508 | DUB 434 | January 16 2005 |
| YC11509 | DUB 435 | January 16 2005 |
| YC11510 | DUB 436 | January 16 2005 |
| YC11511 | DUB 437 | January 16 2005 |
| YC11512 | DUB 438 | January 16 2005 |

| | | |
|---------|---------|-----------------|
| YC11513 | DUB 439 | January 16 2005 |
| YC11514 | DUB 440 | January 16 2005 |
| YC11515 | DUB 441 | January 16 2005 |
| YC11516 | DUB 442 | January 16 2005 |
| YC11517 | DUB 443 | January 16 2005 |
| YC11518 | DUB 444 | January 16 2005 |
| YC11519 | DUB 445 | January 16 2005 |
| YC11520 | DUB 446 | January 16 2005 |
| YC11521 | DUB 447 | January 16 2005 |
| YC11522 | DUB 448 | January 16 2005 |
| YC11523 | DUB 449 | January 16 2005 |
| YC11524 | DUB 450 | January 16 2005 |
| YC11525 | DUB 451 | January 16 2005 |
| YC11526 | DUB 452 | January 16 2005 |
| YC11527 | DUB 453 | January 16 2005 |
| YC11528 | DUB 454 | January 16 2005 |
| YC11529 | DUB 455 | January 16 2005 |
| YC11530 | DUB 456 | January 16 2005 |
| YC11531 | DUB 457 | January 16 2005 |
| YC11532 | DUB 458 | January 16 2005 |
| YC11533 | DUB 459 | January 16 2005 |
| YC11534 | DUB 460 | January 16 2005 |
| YC11535 | DUB 461 | January 16 2005 |
| YC11536 | DUB 462 | January 16 2005 |
| YC11537 | DUB 463 | January 16 2005 |
| YC11538 | DUB 464 | January 16 2005 |
| YC11539 | DUB 465 | January 16 2005 |
| YC11540 | DUB 466 | January 16 2005 |
| YC11541 | DUB 467 | January 16 2005 |
| YC11542 | DUB 468 | January 16 2005 |
| YC11543 | DUB 469 | January 16 2005 |
| YC11544 | DUB 470 | January 16 2005 |
| YC11545 | DUB 471 | January 16 2005 |
| YC11546 | DUB 472 | January 16 2005 |
| YC11547 | DUB 473 | January 16 2005 |
| YC11548 | DUB 474 | January 16 2005 |
| YC11549 | DUB 475 | January 16 2005 |
| YC11550 | DUB 476 | January 16 2005 |
| YC11551 | DUB 477 | January 16 2005 |
| YC11552 | DUB 478 | January 16 2005 |
| YC11553 | DUB 479 | January 16 2005 |
| YC11554 | DUB 480 | January 16 2005 |

2. GEOPHYSICAL SURVEY - GENERAL INFORMATION

The Dub Claims group for 2004 assessment consists of 572 claims comprising a total of approximately 111.8 square kilometers. A High Resolution AeroMag Survey was flown over the area during the period from October 27th through December 20th, 2004. This included 954.65 line kilometres being flown over the Dub claims.

3. GEOPHYSICAL SURVEY - DESCRIPTION OF WORK AND DATA PRESENTATION

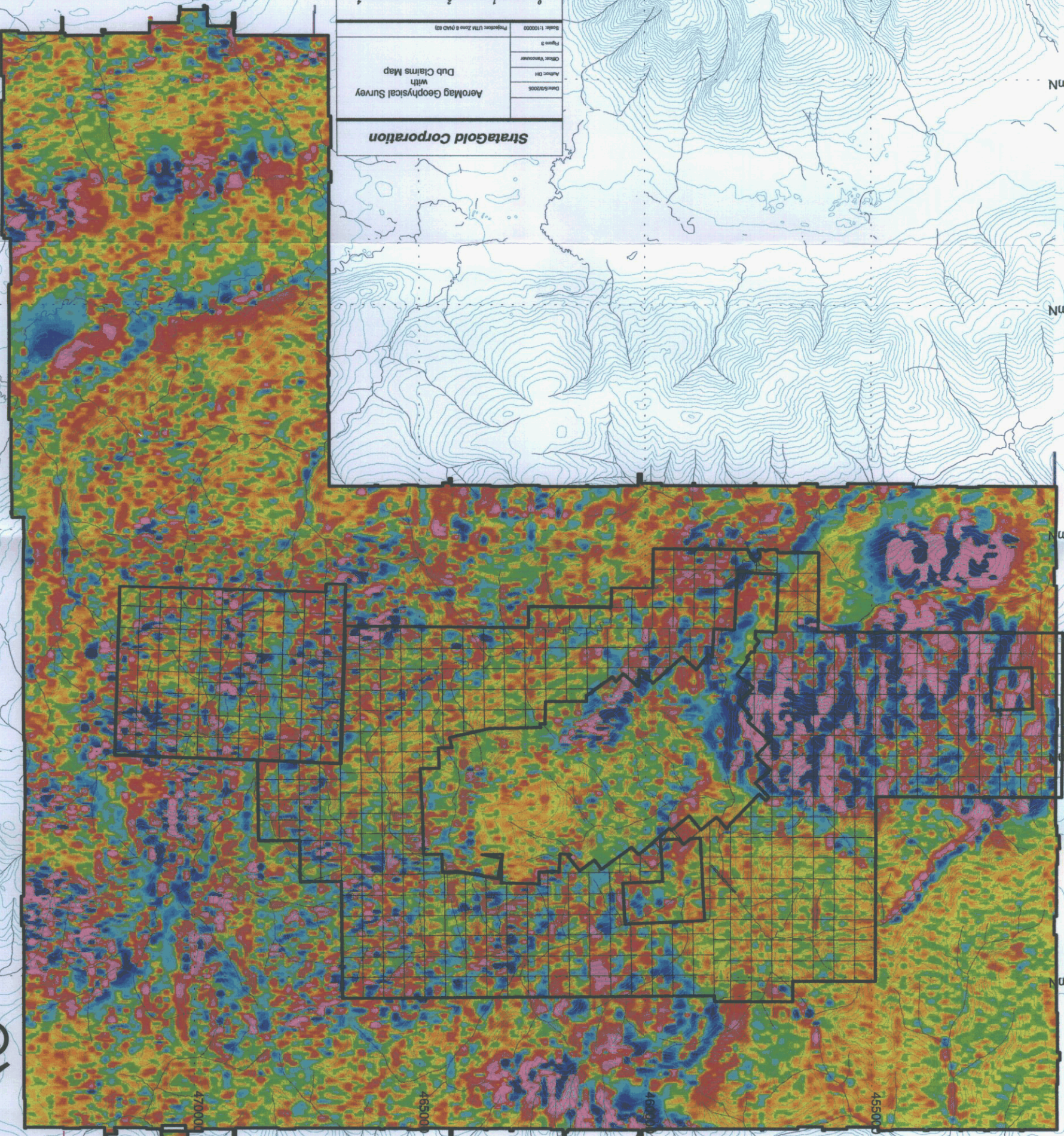
During the period from October 27th to December 20th, 2004, a High Resolution AeroMag survey was flown over the Dub Claims. The EM survey was DIGHEM (DIGital Helicopter ElectroMagnetics), and the magnetic survey was with a horizontal magnetic gradiometer consisting of a rigid Kevlar boom transversely mounted on the EM bird with a sensor separation of 5m. A helicopter mounted GPS system with an altimeter, was used to navigate the flight path, with data related to the CFI base station designed and set up by Fugro Airborne Surveys, west of the Village of Mayo. The survey consisted of a total of 3,416.80 line kilometres, of which 954.65 line kilometers were flown over the Dub Claims. Data from this survey has since been presented to StrataGold in the form of 1:20,000 scale hard copy and digital maps showing Total Magnetic Field, Apparent Resistivity 7200 Hz Coplanar, and Apparent Resistivity 5600 Hz Coplanar. Figure 3 consists of the Magnetic Field map overlain by the Dub Claims.

StrataGold Corporation

Aeromag Geophysical Survey
with
Dub Claims Map

| | |
|-------------------|---------------------------------|
| Date: 5/2005 | Author: DJH |
| Client: Vancouver | |
| Figure 3 | |
| Scale: 1:10000 | Projection: UTM Zone 8 (NAD 83) |

Kilometres
0 1 2 4



7085000 mN
7090000 mN
7095000 mN
7100000 mN
7105000 mN
450000 mE
455000 mE
460000 mE
465000 mE
470000 mE
475000 mE



475000 mE

4. STATEMENT OF EXPENDITURES

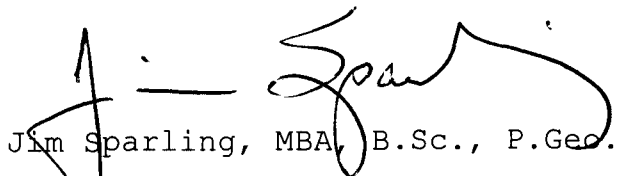
Table 2: Dub Claims Statement of Expenditures

| | |
|---|--------------------|
| Total Cost of Project | \$285,258.30 |
| Total Survey Area Flown | 399.2 Sq Km |
| Total Area of Dub Claims | 111.52 Sq Km |
| Percentage of Total Area applicable to Dub Claims | 27.94% |
| Total Number of claims included | 572 |
| Total Cost of Geophysical Survey applicable to Dub Claims | <u>\$79,689.39</u> |

5. RECOMMENDATIONS

It is recommended that the Dub mineral dispositions described within this assessment report be held pending further review of the acquired geophysical data.

Respectfully submitted,



Jim Sparling, MBA, B.Sc., P.Geol.

Exploration Manager - StrataGold Corporation

6.0 CERTIFICATE OF QUALIFICATIONS

1. I **Jim Sparling**, of 839 Old Lillooet Rd, North Vancouver, British Columbia, Canada, hereby state - that I am the Exploration Manager with StrataGold Corporation, with offices at 701 Howe Street, Vancouver, British Columbia, V6C 2B3, and that:
2. I hold a BA (Economics Major) from the University of Manitoba, Winnipeg, Manitoba (1978), a B.Sc. (Advanced Geology) from the University of Saskatchewan, Saskatoon, Saskatchewan (1984) and an MBA from Royal Roads University, Victoria, British Columbia (2003).
3. I have 17 years experience with various mining and oil and gas companies in Canada. My primary employment since 1992 has been in the field of mineral exploration.
 - 2004 - 2005 Exploration Manager, North and Central America, StrataGold Corporation
 - 2003 Project Geologist, StrataGold Corporation
 - 1994 - 2003 Project Geologist and Geophysical Crew Chief Hudson Bay Exploration & Development Co. Ltd.
 - 1992 - 1994 Geophysical Crew Chief/ Technician, Brad Koop Exploration Ltd.
 - 1989 - 1992 Geological Systems and Data Base Analyst, Petro Canada Resources Ltd.
 - 1988 - 1989 Geological Consultant, Schindler Exploration, Indian and Northern Affairs (Minerals West)
 - 1987 - 1988 Field Exploration Geologist, Hudson Bay Exploration & Development Co. Ltd.
 - 1985 - 1987 Wellsite Geologist, Geotemp Consulting Ltd.
 - 1984 - 1985 Field Exploration Geologist, Hudson Bay Exploration & Development Co. Ltd.
4. I am a practicing member in good standing with the Association of Professional Engineers and Geoscientists of Manitoba and Saskatchewan.
5. I have extensive exploration and development project experience with volcanic massive sulphide ore deposit geology and hydrothermal alteration, and experience with gold ore deposit geology. This experience has allowed me to become familiar with the evaluation of both regional and property geology, prospecting, geophysical surveys, diamond core drilling, underground exploration, development and production, and permitting processes

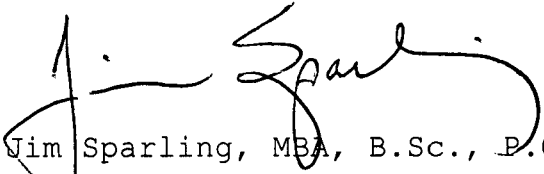
in Manitoba, Saskatchewan, Nunavut Territory and the Yukon Territory.

6. This report is based upon the geophysical program carried out in The Yukon Territory, Canada in 2004.

Dated at Vancouver, British Columbia, Thursday, March 3, 2005.

Respectfully submitted,

Jim Sparling

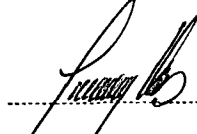


Jim Sparling, MBA, B.Sc., P.Geo.

Exploration Manager - StrataGold Corporation



Costs associated with this report have been
approved in the amount of \$ 42,400⁰⁰
for assessment credit under Certificate of
Work No. QMC0551



.....

Mining Recorder
Mayo Mining District