

GEOCHEMICAL REPORT

OD 1-16 CLAIMS

GRANT # YC35973-YC35988

NTS # 116 B \ 13

LAT: 64° 48' N

LONG: 139° 35' W

DAWSON MINING DISTRICT

AUTHOR OF REPORT SHAWN RYAN

WORK PERFORMED SEPTEMBER 02, 2005

DATE OF REPORT DECEMBER 02, 2006
Table of Content

Summary	P.3
1.0 Introduction	P.3
2.0 Locations and Access	P.3
3.0 Property Description	P.3
4.0 Physiography	P.3
5.1 Regional Geology	P.4
5.2 Property Geology	P.4
6.0 Work Methods	P.5
6.1 Soil Work	P.5
7.0 Interpretation	P.5
8.0 Recommendation	P.5
9.0 References Cited	P.5
10.0 Qualification	P.6
11.0 Cost	P.6
Geology Map + Claim Location	Appendix
Zinc Soil Anomaly Map	Figure 1
Lead Soil Anomaly Map	Figure 2
Sample Location Map	Figure 3
Assay Data + GPS Soil Location Data	Appendix

SUMMARY

The Od Property was visited for one day during the 2005 field season. Scott Fleming and Joe McCann spent half a day taking 30 soils. The soil survey revealed very anomalous values in zinc (up to 2480 ppm) and lead (up to 1070 ppm).

1.0 INTRODUCTION

The Od claims were staked to cover an old Zinc and Lead showing similar to the Og claims situated 18 kilometers west.

2.0 LOCATIONS AND ACCESS

The Od claims are located 87 kilometers north northwest of Dawson City. The claims can be reached via helicopter from Dawson City.

3.0 PROPERTY DESCRIPTION

The Od Property consists of 16 full quartz claims all recorded and registered in the Dawson Mining District. The total land mass covered by the claim block is 552 hectares or 800 acres.

4.0 PHYSIOGRAPHY

The Og Property is located in the tundra between the elevation of 3700 ft and 4400 ft. The only vegetation seen is willow bushes in the valley bottom.

5.0 REGIONAL AND PROPERTY GEOLOGY

5.1 REGIONAL GEOLOGY (Excerpts from GSC Open file 2849)

The southern Ogilvie Mountains lie within the northwestern extremity of the the Cordilleran fold-thrust belts. The Dawson Thrust marks a major tectonostratigraphic boundary between carbonate-dominated platform rocks to the north (the Mackenzie Platform) and generally finer clastics to the south (Selwyn Basin). All rock units were displaced northward in middle Jurassic to Cretaceous time and most have been tectonically thickened. The Selwyn Basin strata were thrust northward in three overlapping structural sheets. Subcircular syenitic intrusions of about 90-110 Ma age cut these thrusts.

The Mackenzie Platform in the southern Ogilvies consists of thickly bedded Cambrian to Devonian dolostone near Mount Harper. Beneath this Paleozoic carbonates a tripartite succession of Middle and Upper Proterozoic strata are well exposed in an erosional inlier (the Coal Creek Dome of Green, 1972, termed the Coal Creek Inlier). In descending order, the Mount Harper Group consists of thick volcanic and carbonate units separated by thinner or wedge-shaped clastic units; the Fifteenmile group, an informal name, consists of stromatolitic and cherty dolostones; and the Wernecke Supergroup consists of fine-grained clastic rocks. These three groups are bounded by unconformities whose ages can be estimated from spatially related intrusions (Wernecke breccias; about 1280 Ma, as in Parrish and Bell (1987) and the ca. 750 Ma Mount Harper Group volcanics). They were deposited during periods of repeated extension, including late Proterozoic continental rifting. These middle to late Proterozoic events formed structural features, which to some extent controlled, and are reflected in, the early Paleozoic evolution of the Cordilleran miogeocline.

5.2 PROPERTY GEOLOGY

The Od claims are covering Lower Proterozoic Gillespie Lake Group and Quartet Group rock units.

6.0 WORK PROGRAM / METHODS

6.1 SOIL WORK

A Haft day soil program was conducted by two men on the Od Claims. In all there was 30 soil collected using one-meter soil augers or prospector picks in heavy talus slopes. Soils were collected at a average depth of 60-70 centimeters with augers and shallower with prospector picks, all sample were place in paper kraft soil bags with sample site marked in the field with orange flagging. All sample sites were GPS as to exact ground position and GPS numbers were downloaded into excel format.

Sample spacing was at 50 meter station spacing.

7.0 INTERPRETATION

The soil sample indicated a very nice zinc anomaly with values reaching up to 2480 ppm. The lead values seem to be found on the flanks of the zinc anomalies. Not too much should be interpreted until more data is collected.

8.0 RECOMMENDATION

I would recommend a soil grid covering the claim block. Line should be at 100 meter spacing and soil collected on 50 meter station spacing.

9.0 REFERENCES CITED

Thompson R.I. GSC Open File 3223, Geological Compilation (1-250,000) of Dawson Map Area (116B,C) (northeast of Tintina Trench)

10.0 QUALIFICATION

I Shawn Ryan located in Dawson City, Yukon work as a professional prospector. I run a small exploration company located in Dawson city.

I have worked in the exploration business for the last 24 years. I worked the first 15 years as a contractor working on numerous project in the NWT, Ontario, Quebec and the Yukon. I have worked for the last 8 years as a local prospector for myself.

I have being train to run various geophysical instrument and surveys such as magnetic surveys, max-min surveys, induce polarity surveys and Vlf surveys.

I have overseen the whole Od Project and was the party chief in charge.

I own 100 % of the Od claims.

Dated this 02 of December, 2006 in Dawson City, Yukon.

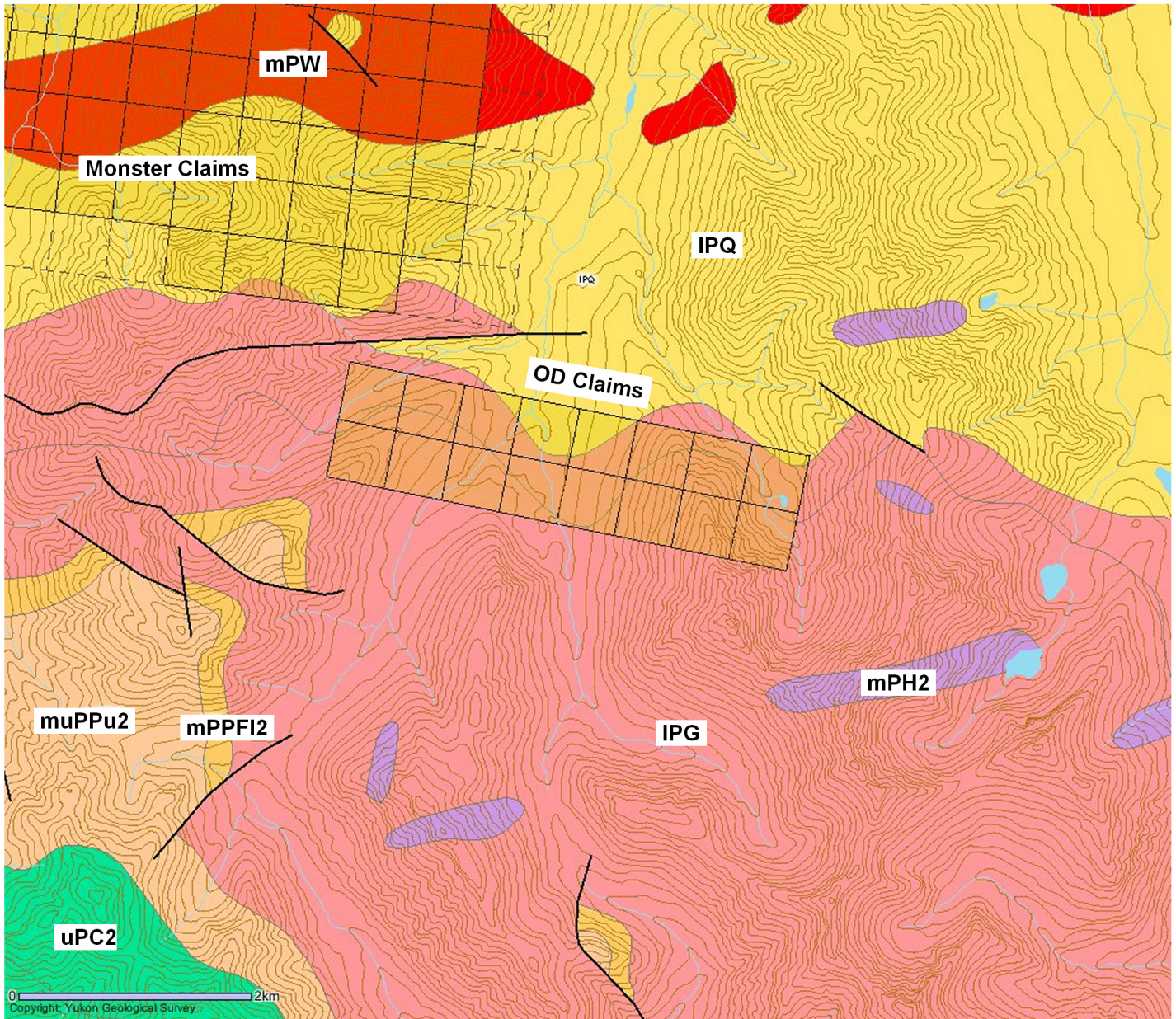
Respectfully submitted

Shawn Ryan

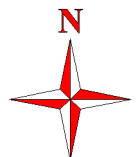
11.0 Cost

Assay 30 soils @ \$18.00 per sample	\$540.00
1 men @ \$250.00 per day	\$250.00
Helicopter Cost 1.0 hours @ \$1200.00	\$1,200.00
Report	\$300.00
Total	\$2,290.00

Yukon Geological Survey Geology Map



Od Claim Block Area



Yukon Geological Survey Geology Description

UPPER PROTEROZOIC



uPC: CALLISON

dolostone assemblage comprising two regionally correlated units (1) and (2)

-
2. cryptalgal dolostone; medium to light grey fine crystalline, laminated to thinly bedded and stromatolitic dolostone; includes chert and dolomitic breccia; craggy, medium to dark grey, massive, medium crystalline dolostone with abundant silicification (**Fifteen Mile Gp. (upper)**)

MIDDLE TO UPPER PROTEROZOIC



muPPFu: PINGUICULA/FIFTEEN MILE (UPPER)

siliclastic-carbonate assemblage comprising two regionally correlated units (1) and (2)

-
2. light-grey, finely crystalline dolomite; shale; pebbly mudstone; gritty mudstone; stromatolitic limestone; quartz sandstone (**Fifteen Mile Gp. (upper)**)

MIDDLE PROTEROZOIC

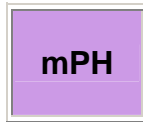


mPPFI: PINGUICULA/FIFTEEN MILE (LOWER)

dominantly carbonate assemblage with basal clastics comprising two regionally correlated units (1) and (2); includes possible other correlative carbonate, clastic and volcanic rocks (3) and (4)

-
2. basal shale to silty dolomite; medium to thick bedded dolomitic mudstone and dolostone breccia, massive dolostone; medium-bedded dolostone with mudstone interbeds; dolostone breccia, oolitic packstone and uncommon stromatolitic dolostone (**Fifteen Mile Gp. (lower)**)

MIDDLE PROTEROZOIC



mPH: HART RIVER

mafic volcanic flows (1) and (3) and their possible intrusive equivalents (2)

-
2. resistant dark weathering diorite and gabbro sills and dikes (**Hart River Sills**)

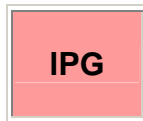
MIDDLE PROTEROZOIC



mPW: WERNECKE BRECCIAS

hematitic and dolomitic breccia and related metasomatized country rock; breccia contains variably altered rotated siliceous and carbonate clasts (Wernicke Supergroup) and minor dyke rock; breccia and metasomatites enriched in Cu, Co, U, Ag and Au (**Wernicke Breccias**)

LOWER PROTEROZOIC



IPG: GILLESPIE LAKE

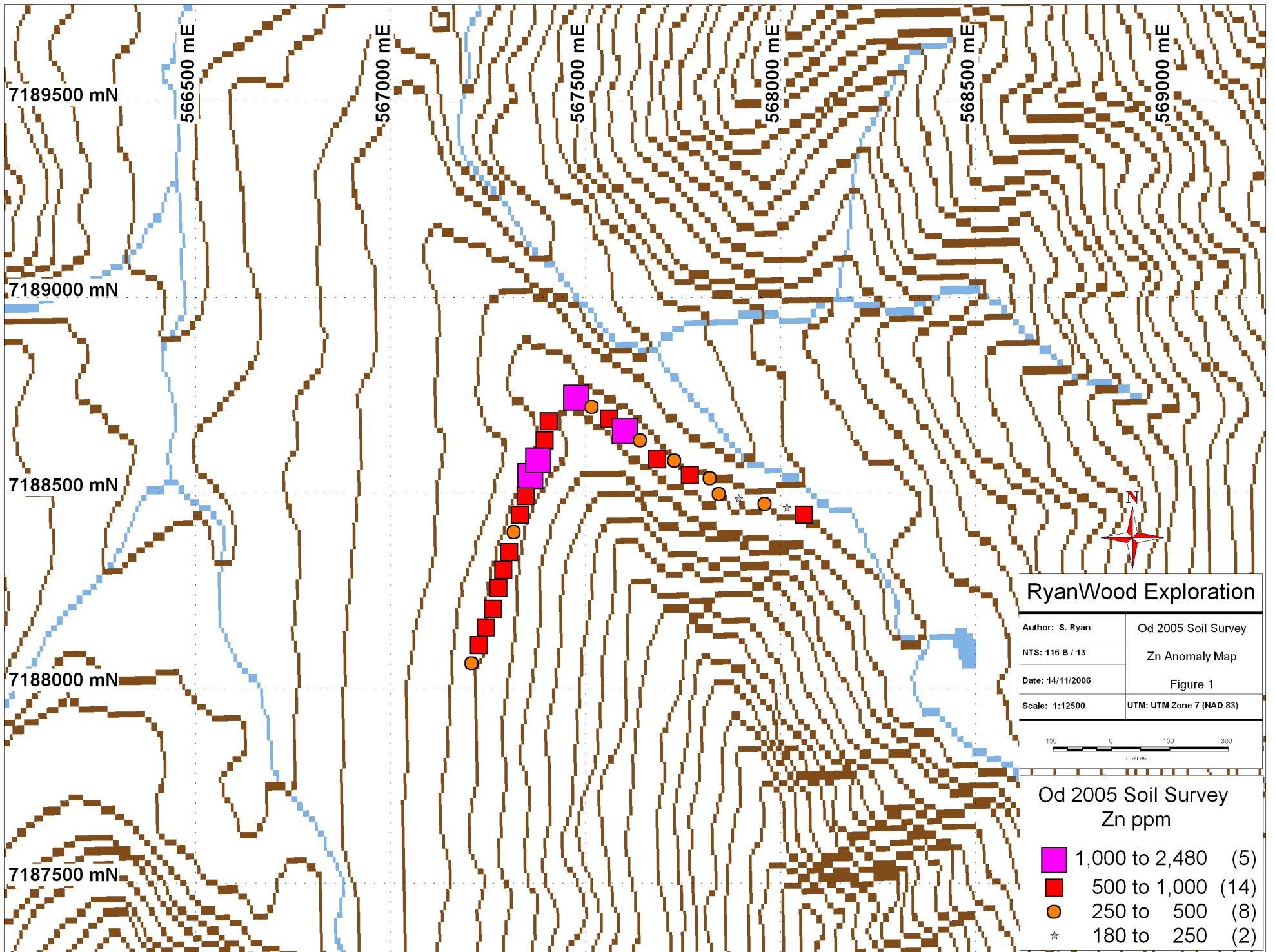
dolostone and silty dolostone, locally stromatolitic, locally with chert nodules and sparry karst infillings, interbedded with lesser black siltstone and shale, laminated mudstone, and quartzose sandstone; local dolomite boulder conglomerate (**Gillespie Lake Gp.**)

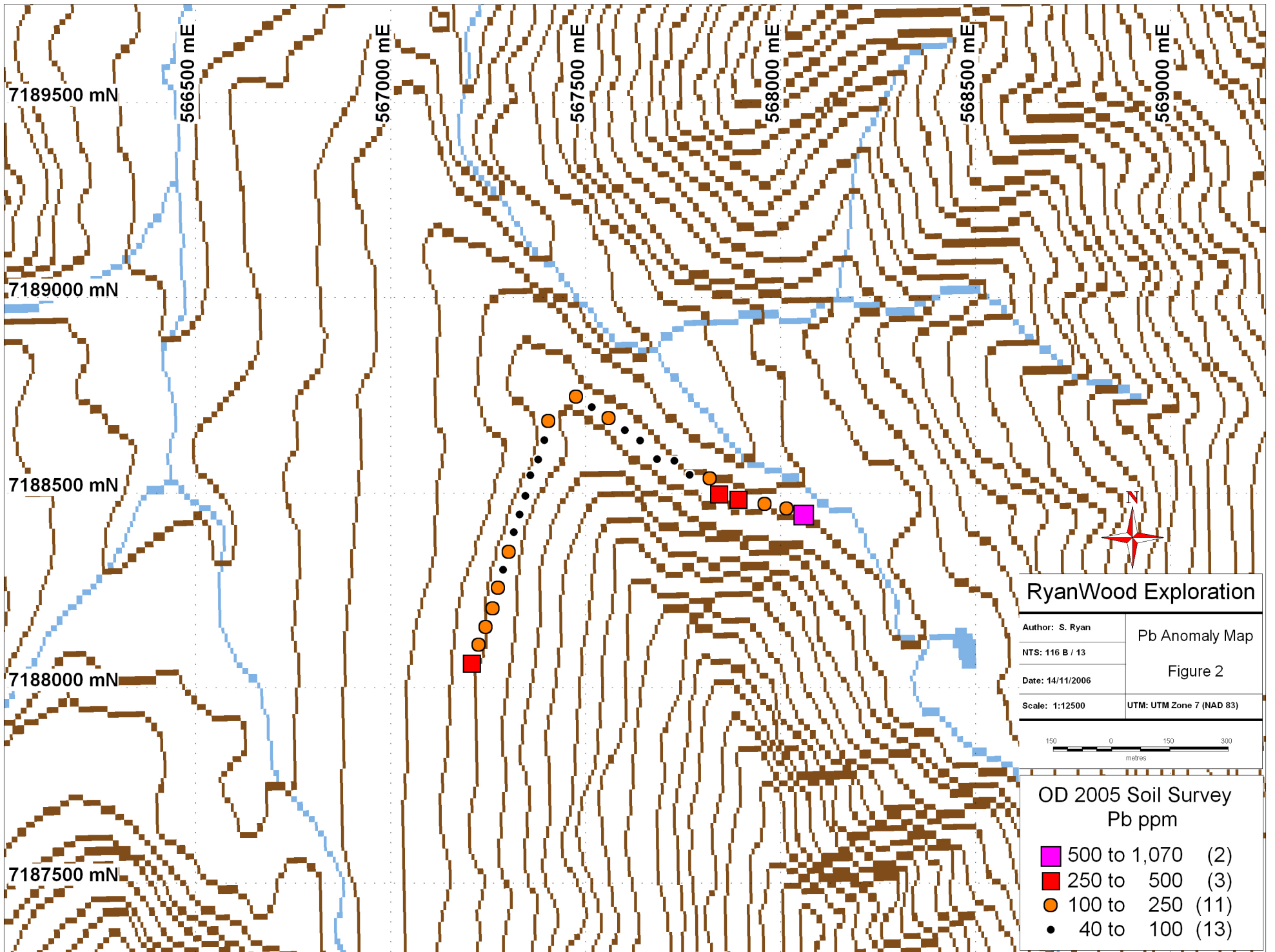
LOWER PROTEROZOIC

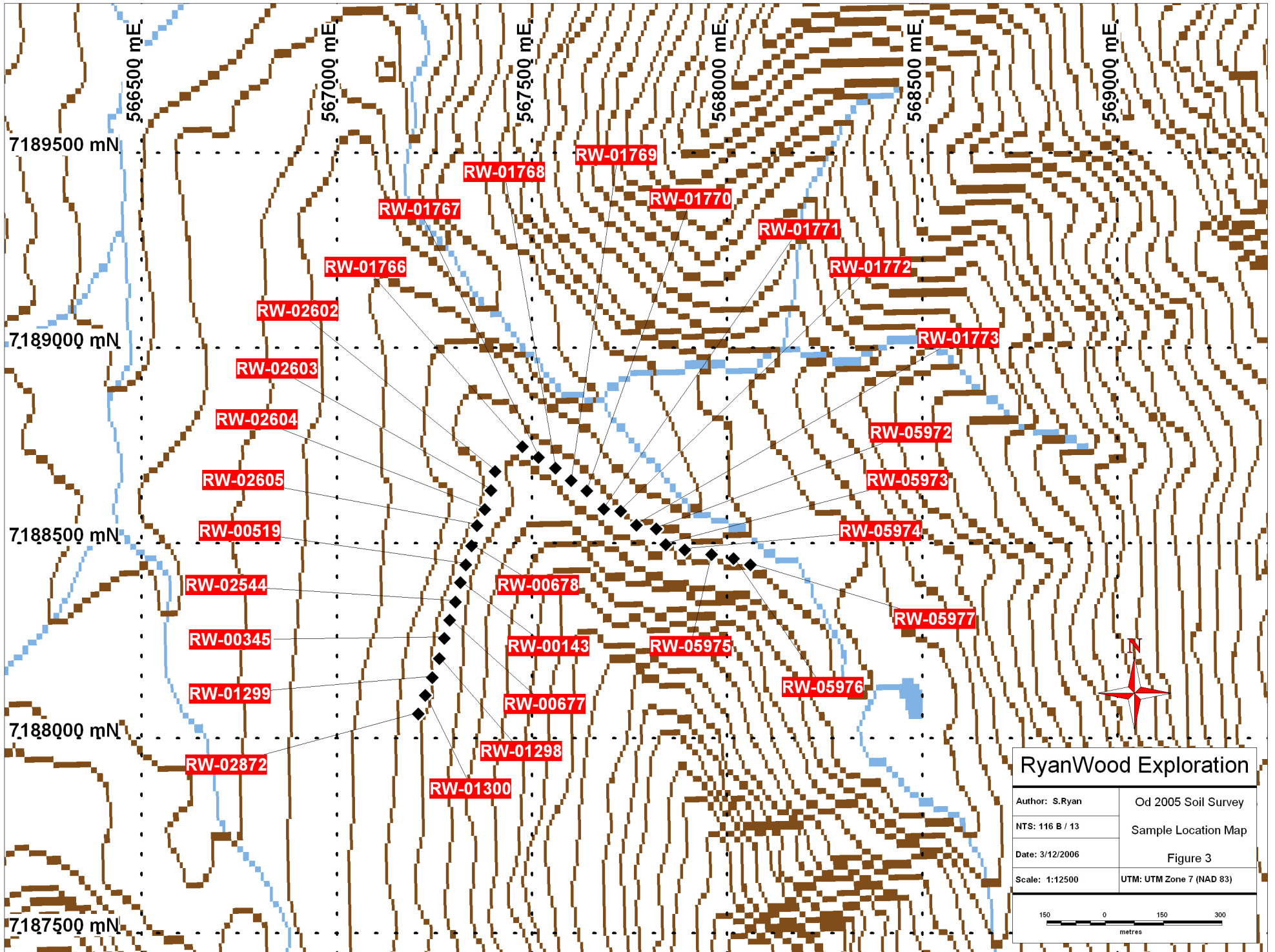


IPQ: QUARTET

black weathering shale, finely laminated dark grey weathering siltstone, and thin to thickly interbedded planar to cross laminated light grey weathering siltstone and fine grained sandstone; minor interbeds of orange weathering dolostone in upper part (**Quartet Gp.**)







RyanWood Exploration	
Author: S.Ryan	Od 2005 Soil Survey
NTS: 116 B / 13	Sample Location Map
Date: 3/12/2006	Figure 3
Scale: 1:12500	UTM: UTM Zone 7 (NAD 83)

150 0 150 300
metres

GPS ID	Datum	Easting	Northing	Elevation	Project	Mo	Cu	Pb	Zn	Ag
RW00143	Nad 83-7W	567317	7188402	1325	Od 2005	0.3	8.1	75.1	479	0
RW00345	Nad 83-7W	567276	7188259	1320.4	Od 2005	0.4	12.9	111.8	525	0.2
RW00519	Nad 83-7W	567331	7188448	1327.4	Od 2005	0.3	9.3	95.7	742	0.1
RW00677	Nad 83-7W	567289	7188306	1323.4	Od 2005	0.4	14.5	95.2	769	0.1
RW00678	Nad 83-7W	567346	7188496	1325.9	Od 2005	0.4	12.4	52.6	773	0.1
RW01298	Nad 83-7W	567263	7188207	1308.5	Od 2005	0.4	14.8	117	634	0.2
RW01299	Nad 83-7W	567245	7188159	1303.9	Od 2005	0.5	26.4	237.3	595	0.2
RW01300	Nad 83-7W	567227	7188113	1298.1	Od 2005	0.6	26	249.9	558	0.3
RW01766	Nad 83-7W	567476	7188750	1339.6	Od 2005	1.6	28.6	213.9	1604	0.7
RW01767	Nad 83-7W	567517	7188723	1339.6	Od 2005	1.7	24.1	75	389	0.4
RW01768	Nad 83-7W	567560	7188695	1338.4	Od 2005	2.8	36.2	159	520	0.5
RW01769	Nad 83-7W	567601	7188664	1332.3	Od 2005	1.4	18.4	98.2	1380	0.4
RW01770	Nad 83-7W	567641	7188637	1330.5	Od 2005	0.3	6	78.3	454	0.1
RW01771	Nad 83-7W	567684	7188590	1338.7	Od 2005	0.3	6.9	42.7	586	0
RW01772	Nad 83-7W	567728	7188585	1325	Od 2005	0.2	4.2	45.4	394	0
RW01773	Nad 83-7W	567768	7188549	1329.8	Od 2005	0.2	5.3	46.7	576	0
RW02544	Nad 83-7W	567304	7188352	1322.2	Od 2005	0.3	8.8	158.1	697	0.1
RW02574	Nad 83-7W	558502	7180293	1346.9	Od 2005	0.6	38.5	1068.4	2479	0.9
RW02602	Nad 83-7W	567406	7188687	1322.5	Od 2005	1	20.7	158.9	821	0.4
RW02603	Nad 83-7W	567395	7188638	1315.2	Od 2005	2.1	30.8	92.9	595	0.5
RW02604	Nad 83-7W	567379	7188589	1319.8	Od 2005	1.3	16	53.8	1512	0.3
RW02605	Nad 83-7W	567359	7188548	1318.9	Od 2005	0.8	17.6	62.7	1021	0.2
RW02872	Nad 83-7W	567209	7188066	1298.4	Od 2005	0.7	29.8	366.8	445	0.4
RW05972	Nad 83-7W	567819	7188540	1327.1	Od 2005	0.5	21.2	217.4	350	0.3
RW05973	Nad 83-7W	567843	7188500	1325.9	Od 2005	1.1	17.4	474.9	402	0.3
RW05974	Nad 83-7W	567892	7188486	1331.4	Od 2005	0.6	9.9	258.7	246	0.2
RW05975	Nad 83-7W	567960	7188474	1333.5	Od 2005	0.4	11.2	153.6	463	0.1
RW05976	Nad 83-7W	568016	7188463	1341.4	Od 2005	0.3	8	144.7	181	0
RW05977	Nad 83-7W	568060	7188448	1344.2	Od 2005	0.2	17.4	557.9	946	0.2

GPS ID	Ni	Co	Mn	Fe	As	U	Au	Th	Sr	Cd	Sb	Bi	V
RW00143	7	2.6	906	0.76	2.7	1	1.7	0.3	28	0.9	0.3	0.1	20
RW00345	11.2	5.4	1041	1.51	5.1	1	1.3	1.1	25	0.9	0.5	0.1	27
RW00519	7.1	3.1	1328	0.93	2.8	1	1.3	0.3	26	1.6	0.3	0.1	22
RW00677	11.5	4.6	1182	1.33	4.3	0.9	1.8	0.4	24	1.5	0.4	0.1	27
RW00678	9.2	4.2	1120	1.17	4.2	1	1.7	0.4	26	1.7	0.3	0.1	29
RW01298	10.5	5.7	1044	1.47	4.7	1	2.6	0.5	26	1.3	0.4	0.1	32
RW01299	18	7.9	1253	2.31	7	0.8	1.4	1	20	1.1	0.6	0.2	40
RW01300	21.1	9	1600	2.34	7.7	0.7	1.4	1.1	18	1.1	0.8	0.2	37
RW01766	28.8	9.4	1589	2.9	20.3	1.2	2.9	1	24	2.6	2.6	0.1	43
RW01767	28.8	11	1570	2.6	12.2	0.9	8.9	1	17	1	1.1	0.2	69
RW01768	39.3	11.4	954	1.73	14	1.2	2.8	2	25	1.1	1.2	0.2	51
RW01769	21.2	6.3	1046	1.35	9.9	1	2.4	0.8	20	2.1	0.9	0.1	31
RW01770	5.4	2.1	839	0.64	3.2	1	0	0.3	26	1.1	0.3	0	18
RW01771	6.4	2.6	1144	0.75	3.3	0.8	0	0.2	24	0.8	0.4	0.1	17
RW01772	3.8	1.8	755	0.54	2.4	0.8	0.6	0.3	26	1.2	0.3	0	16
RW01773	4.6	2.1	852	0.63	2.4	0.9	0.5	0.2	24	0.9	0.3	0	20
RW02544	7.6	3	1036	0.88	3.4	1	0	0.3	27	1.4	0.3	0	22
RW02574	16.3	7.8	2158	2.73	19.1	0.4	1.3	0.7	22	7.1	1.8	0.1	21
RW02602	23.4	8.7	1488	2.39	10.5	0.7	2.1	0.8	21	1.7	1	0.1	44
RW02603	31.2	7.5	879	1.71	10.9	1.2	3.1	1.2	20	0.9	0.8	0.2	46
RW02604	18.5	4.7	945	1.18	7.8	1.2	0.7	0.6	20	2.9	0.6	0.1	31
RW02605	13.1	5.4	1267	1.47	6.9	1.1	0.8	0.4	22	1.7	0.5	0.1	40
RW02872	23.5	10.9	1814	2.74	11.3	0.7	1.2	1.3	14	0.9	1	0.2	42
RW05972	22.9	10.7	1266	1.63	7.6	0.9	0.7	0.9	24	0.8	0.8	0.1	44
RW05973	18.9	11.4	1243	2.15	9.9	0.8	0.6	2	24	1.2	1.3	0.1	15
RW05974	9.3	4.2	782	1.06	4.9	0.8	1.2	0.9	18	0.9	0.4	0.1	16
RW05975	8.2	4	758	0.93	3.6	0.7	0	0.6	20	1.5	0.3	0.1	19
RW05976	7	3.9	785	0.76	3	0.7	0	1	19	0.3	0.3	0	14
RW05977	10.7	3.7	1140	0.83	4.4	0.9	0.9	0.5	26	2.5	0.3	0	20

GPS ID	Ca	P	La	Cr	Mg	Ba	Ti	B	Al	Na	K	W
RW00143	17.24	0.028	5	5.6	9.33	46	0.008	6	0.32	0.014	0.02	0.1
RW00345	12.9	0.031	8	11.9	7.48	99	0.023	6	0.56	0.013	0.03	0.1
RW00519	16.53	0.03	6	5.8	9.49	52	0.006	6	0.36	0.014	0.02	0
RW00677	15.47	0.04	8	10.9	8.36	84	0.011	6	0.59	0.012	0.03	0.1
RW00678	15.84	0.032	7	9.7	8.84	60	0.015	7	0.53	0.015	0.03	0.1
RW01298	11.15	0.048	9	12.7	6.49	169	0.016	7	0.79	0.016	0.03	0.1
RW01299	7.32	0.061	14	20.6	4.74	211	0.019	7	1.15	0.014	0.06	0.1
RW01300	6.85	0.069	16	21.7	4.52	208	0.017	9	1.13	0.012	0.07	0.1
RW01766	12.66	0.041	9	14.4	7.22	140	0.022	6	0.81	0.013	0.05	0.1
RW01767	4.27	0.076	18	26.5	2.7	129	0.023	5	1.22	0.013	0.07	0.1
RW01768	8.32	0.113	19	16.6	4.62	108	0.018	6	0.68	0.014	0.09	0.1
RW01769	13.27	0.072	15	11	7.64	73	0.013	6	0.64	0.016	0.06	0
RW01770	19.58	0.019	4	3.6	11.27	30	0.006	5	0.19	0.013	0.01	0
RW01771	18.93	0.027	4	4.2	10.93	49	0.007	7	0.26	0.016	0.02	0
RW01772	20.05	0.017	3	3.6	11.33	36	0.007	6	0.22	0.012	0.01	0
RW01773	19.09	0.023	4	4.7	10.93	44	0.008	5	0.27	0.014	0.01	0
RW02544	16.27	0.033	6	6.5	9.8	49	0.007	7	0.36	0.014	0.02	0
RW02574	11.58	0.046	11	11.4	6.49	116	0.012	6	0.56	0.011	0.04	0
RW02602	7.12	0.051	11	19.2	4.17	151	0.028	5	0.97	0.014	0.05	0.1
RW02603	8.78	0.115	22	18.2	4.95	95	0.017	7	0.83	0.015	0.11	0
RW02604	13.22	0.058	13	9.6	7.5	54	0.011	6	0.49	0.014	0.04	0
RW02605	12.38	0.055	11	12.5	7.2	74	0.013	7	0.7	0.017	0.04	0
RW02872	4.87	0.081	18	25.8	3.8	195	0.017	12	1.35	0.009	0.1	0.1
RW05972	15.14	0.035	7	21.7	9.68	79	0.006	6	0.81	0.01	0.05	0
RW05973	13.13	0.038	14	10.3	7.69	297	0.009	11	0.47	0.009	0.09	0
RW05974	14.03	0.05	13	9.4	7.97	60	0.007	9	0.32	0.01	0.06	0
RW05975	14.69	0.036	9	10	8.2	53	0.014	8	0.38	0.013	0.04	0
RW05976	16.57	0.026	8	6.7	9.69	57	0.008	8	0.26	0.01	0.05	0
RW05977	18.85	0.016	4	4.3	10.72	45	0.008	5	0.21	0.011	0.02	0

GPS ID	Hg	Sc	Tl	S	Ga	Se	Analysis	Acme file
RW00143	0.03	0.9	0.1	0	1	0.5	GROUP 1DX - 15 GM	A507808
RW00345	0.05	1.7	0.1	0	2	0.5	GROUP 1DX - 15 GM	A507808
RW00519	0.03	0.8	0.1	0	1	0.6	GROUP 1DX - 15 GM	A507808
RW00677	0.04	1.6	0.1	0	2	0.7	GROUP 1DX - 15 GM	A507808
RW00678	0.04	1.3	0.1	0	1	0.7	GROUP 1DX - 15 GM	A507808
RW01298	0.04	1.6	0.1	0	2	0.7	GROUP 1DX - 15 GM	A507808
RW01299	0.05	3	0.1	0	3	0.6	GROUP 1DX - 15 GM	A507808
RW01300	0.08	3.9	0.1	0	3	0.7	GROUP 1DX - 15 GM	A507808
RW01766	0.19	2.2	4.6	0	2	0.8	GROUP 1DX - 15 GM	A507808
RW01767	0.08	2.9	0.6	0	3	0.6	GROUP 1DX - 15 GM	A507808
RW01768	0.11	4.2	0.3	0	2	1	GROUP 1DX - 15 GM	A507808
RW01769	0.12	2.7	0.8	0	2	1	GROUP 1DX - 15 GM	A507808
RW01770	0.04	0.8	0.2	0	0	0	GROUP 1DX - 15 GM	A507808
RW01771	0.04	0.6	0.5	0	1	0.6	GROUP 1DX - 15 GM	A507808
RW01772	0.05	0.6	0.2	0	1	0	GROUP 1DX - 15 GM	A507808
RW01773	0.02	0.6	0.1	0.08	1	0.6	GROUP 1DX - 15 GM	A507808
RW02544	0.04	0.9	0.1	0	1	0.6	GROUP 1DX - 15 GM	A507808
RW02574	0.58	2.4	0.9	0	2	0.9	GROUP 1DX - 15 GM	A507808
RW02602	0.09	2.1	3.2	0	3	0.8	GROUP 1DX - 15 GM	A507808
RW02603	0.11	3.9	0.6	0.08	3	1	GROUP 1DX - 15 GM	A507808
RW02604	0.1	1.9	0.4	0	1	0.8	GROUP 1DX - 15 GM	A507808
RW02605	0.06	1.7	0.3	0	2	0.9	GROUP 1DX - 15 GM	A507808
RW02872	0.07	4.5	0.2	0	4	0.8	GROUP 1DX - 15 GM	A507808
RW05972	0.06	5.6	0.2	0	2	0	GROUP 1DX - 15 GM	A507808
RW05973	0.08	3.2	0.7	0	2	0.6	GROUP 1DX - 15 GM	A507808
RW05974	0.04	2.9	0.2	0	1	0.5	GROUP 1DX - 15 GM	A507808
RW05975	0.02	2.1	0.1	0	1	0.5	GROUP 1DX - 15 GM	A507808
RW05976	0.02	1.9	0.1	0	1	0.5	GROUP 1DX - 15 GM	A507808
RW05977	0.06	0.9	0.1	0	1	0.7	GROUP 1DX - 15 GM	A507808