

**GEOLOGICAL and GEOCHEMICAL
ASSESSMENT REPORT
on the
TAD/TORO PROPERTY**

Tad 5 to 8, 17 (YC40974 to YC40978)
Tad 19 to 67 (YC26506 to YC26554)

NTS: 115I/12

Latitude 62°33'N

Longitude 137°57'W

Whitehorse Mining District

Work performed between October 17 and 22, 2006

For :

Mr. Bill Harris
Box 31293
Whitehorse, YT
Y1A 4Z2

By:
Jean Pautler, P.Geo.
JP Exploration Services Inc.
#103-108 Elliott Street
Whitehorse, Yukon
Y1A 6C4

January 20, 2007

SUMMARY:

The 1800 hectare Tad/Toro property, NTS map sheet 115I/12, is located on Hayes Creek, within the Dawson Range of central Yukon, 100 km northwest of Carmacks which is 177 km by road from Whitehorse, Yukon Territory. The property is situated in the Whitehorse Mining District with a latitude and longitude of 62°33'N, 137°57'W. Mr. Bill Harris of Whitehorse, Yukon is the registered owner and funded the current program.

The Tad/Toro property is situated within the 100 km long Big Creek portion of the 250 km long Dawson Range Copper-Gold Belt which hosts several deposits and mineralized showings of several deposit models including calc-alkalic porphyry copper-gold±molybdenum, associated adjacent epithermal vein and breccia systems and peripheral polymetallic veins.

Deposits within the belt are hosted by similar rocks to the Tad/Toro property and include the Casino porphyry copper-gold-molybdenum deposit (55 km northwest of the Tad/Toro property) with a reserve estimate of 964 million tonnes grading 0.22% Cu, 0.24 g/t Au and 0.028% Mo, the Laforma low sulphidation epithermal vein deposit and the Antoniuk porphyry gold deposit (60 km southeast of the Tad/Toro property) with historical resource estimates of 602,000 tonnes, grading 4.31 g/t gold and 4 million tonnes of oxide mineralization averaging 1.44 g/t Au, respectively.

The 2006 program on Tad/Toro consisted of an evaluation of the showings within a property wide and regional context, with concurrent geochemical sampling and GPS surveying of the old trenches and drill sites.

The Tad/Toro property is primarily underlain by quartz-hornblende-biotite granitic rocks of the Mid Cretaceous Dawson Range Batholith that intrude meta-igneous and meta-sedimentary rocks of the Yukon-Tanana Terrane. The above units are intruded by quartz feldspar porphyry stocks and dykes of the Late Cretaceous Prospector Mountain Suite, which are known to be associated with gold-copper mineralization within this belt, and are overlain by basalt flows of the Upper Cretaceous Carmacks Group.

Mineralization consists of disseminated pyrite within the Tad Porphyry, and narrow sphalerite, galena, and arsenopyrite bearing quartz veins along shear zones. The pyrite mineralization may represent a pyritic halo to a porphyry Cu-Mo-Au system with associated low grade gold-pyrite-arsenopyrite in sericite-phyllic alteration zones within the quartz monzonite porphyry and in breccia zones and northwest trending fault zones. Minor potassic alteration of the porphyry has been reported with molybdenite occurring within potassically altered porphyritic monzonite in the Moly Zone in the southeast property area. The Pb-Zn veins may represent polymetallic veins outboard of the porphyry system.

The old drill core exhibits extreme oxidation with many unsplit oxidized and brecciated sections. A supergene enrichment zone occurs near the top of many of the drill holes in the centre of the mineralized zone. The sulphide minerals are oxidized to a depth of 80m and the gold-bearing oxide zone lies in brecciated and intensely altered quartz monzonite porphyry, below which is a hypogene zone containing up to 10% disseminated pyrite in porphyritic granite with lesser alteration.

Previous results from the Tad/Toro property include 1.03 g/t Au and 12.3 g/t Ag across 8.23m from DDH T69-2, 1.25 g/t Au and 7.5 g/t Ag across 5.79m from DDH T70-12 and 1.75 g/t Au and 12.0 g/t Ag across 7.0m from DDH T70-14, despite previous limited sampling of the core.

Strong similarities exist with the Nucleus Zone on the Golden Revenue property of Northern Freegold Resources Limited, approximately 40 km southeast of the Tad/Toro property. A near-surface bulk tonnage gold \pm copper target has partially been defined here with significant intersections including 1.35 g/t Au over 110.8m from DN04-8, 1.16 g/t Au with 0.11% Cu over 126.0m from DN04-3 and 1.13 g/t Au over 115.1m from DN01-3.

The core on the Tad/Toro property should be labelled, unstacked and remaining core systematically sampled for Au and ICP. The collar locations are known and results can then be more completely correlated and interpreted. A multi-parameter airborne geophysical survey (magnetic, electromagnetic and radiometric) with a 100m line spacing would be useful over the property.

The above program should be followed by diamond drilling. Several drill targets proposed by Davidson (2000) remain valid and can be modified by results of the detailed core sampling and airborne geophysical survey.

TABLE OF CONTENTS

	Page
SUMMARY.....	i
1.0 LOCATION AND ACCESS.....	1
2.0 LEGAL DESCRIPTION	2
3.0 PHYSIOGRAPHY	3
4.0 HISTORY.....	3
5.0 CURRENT WORK PROGRAM.....	4
6.0 GEOLOGY.....	4
6.1 Regional.....	4
6.2 Property	6
6.3 Mineralization.....	7
7.0 DEPOSIT MODEL	7
8.0 GEOCHEMISTRY.....	9
8.1 Procedure	9
8.2 Results and Interpretation	9
9.0 GPS SURVEY	11
10.0 DISCUSSION	13
11.0 CONCLUSIONS AND RECOMMENDATIONS.....	15

LIST OF FIGURES

		Page
Figure 1	Location Map.....	1
Figure 2	Claim Map	2
Figure 3	Regional Geology Map	5
Figure 4	Property Geology Map	6
Figure 5	Main Zone Detail.....	10
Figure 6	Moly Zone Detail	11

TABLES

Table 1:	Claim data	2
Table 2:	Diamond drillhole locations and specifications	12
Table 3:	Trench locations	12
Table 4:	Significant GPS locations	13
Table 5:	Significant drillhole intersections	13

APPENDICES

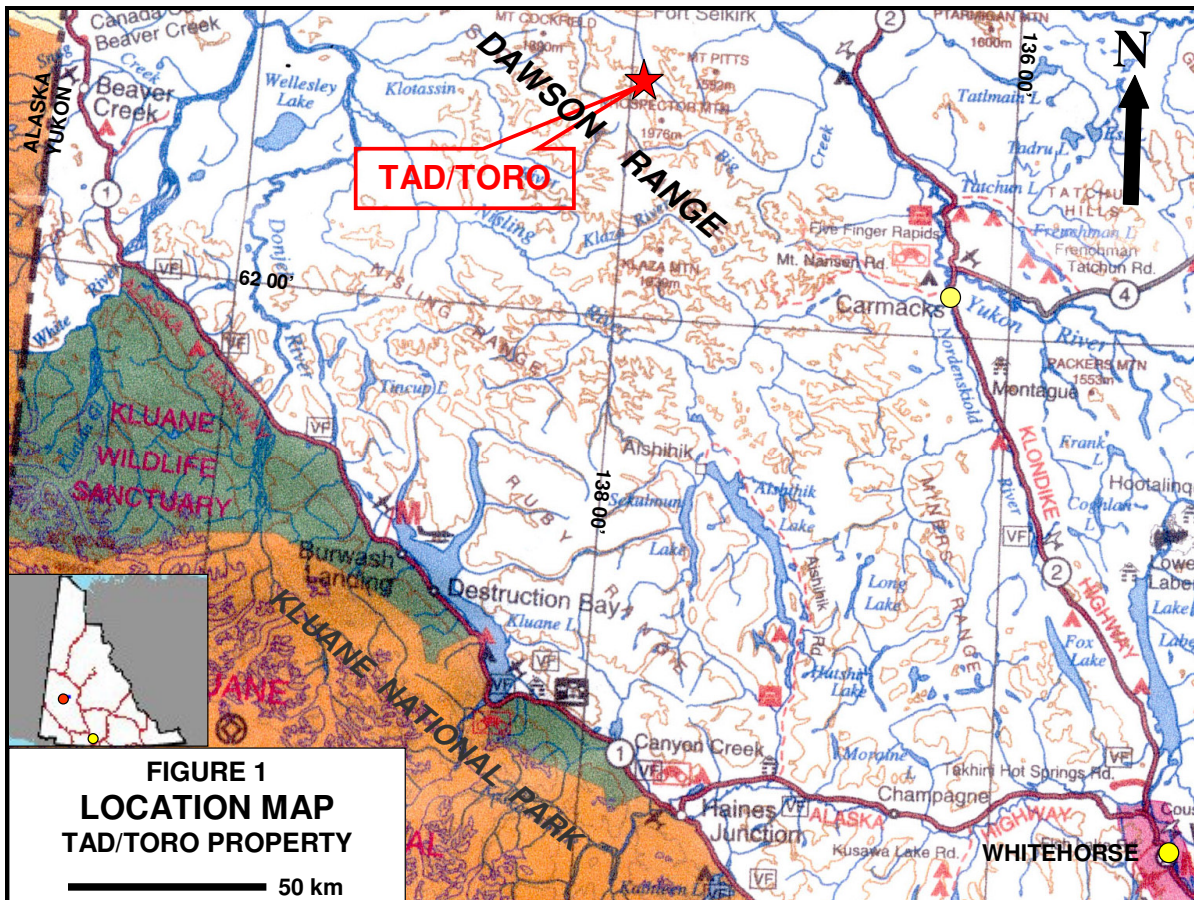
Appendix I	Selected References
Appendix II	Statement of Claims
Appendix III	Sample Descriptions
Appendix IV	Geochemical Procedure and Results
Appendix V	Statement of Expenditures
Appendix VI	Statement of Qualifications

1.0 LOCATION AND ACCESS (Figure 1)

The Tad/Toro property, NTS map sheet 115I/12, is located on Hayes Creek within the Dawson Range of central Yukon, approximately 100 km northwest of Carmacks which is 177 km by road from Whitehorse, Yukon Territory. The property is centered at a latitude of 62°33'N and a longitude of 137°57'W.

The property is accessible by helicopter or fixed-wing aircraft from Whitehorse or Carmacks. A small gravel airstrip, adequate for small fixed wing aircraft, is located in the central property area on the Tad 52 claim. The Casino Trail (connecting the Freegold Road, 40 km south of the property, to the Casino deposit) provides four wheel drive access to within 15 km of the property. The Casino winter road continues along the northeastern margin of the property to the Casino deposit, 53 km north of the property. The Freegold Road is a government maintained gravel road, accessible from Carmacks. The road distance from Whitehorse is 330 km. A winter trail connects the Casino Trail to the property and is passable by all terrain vehicles in summer and can be utilized for the transport of heavy equipment, supplies and fuel in February and March. Several cat trails on the claims, variably overgrown, provide access to trenches and drill sites.

Carmacks is the closest town, with a population of approximately 450. Facilities include a grocery store, nursing station, two service stations, a restaurant and a café. Complete services are available in Whitehorse, less than two hours by road from Carmacks.



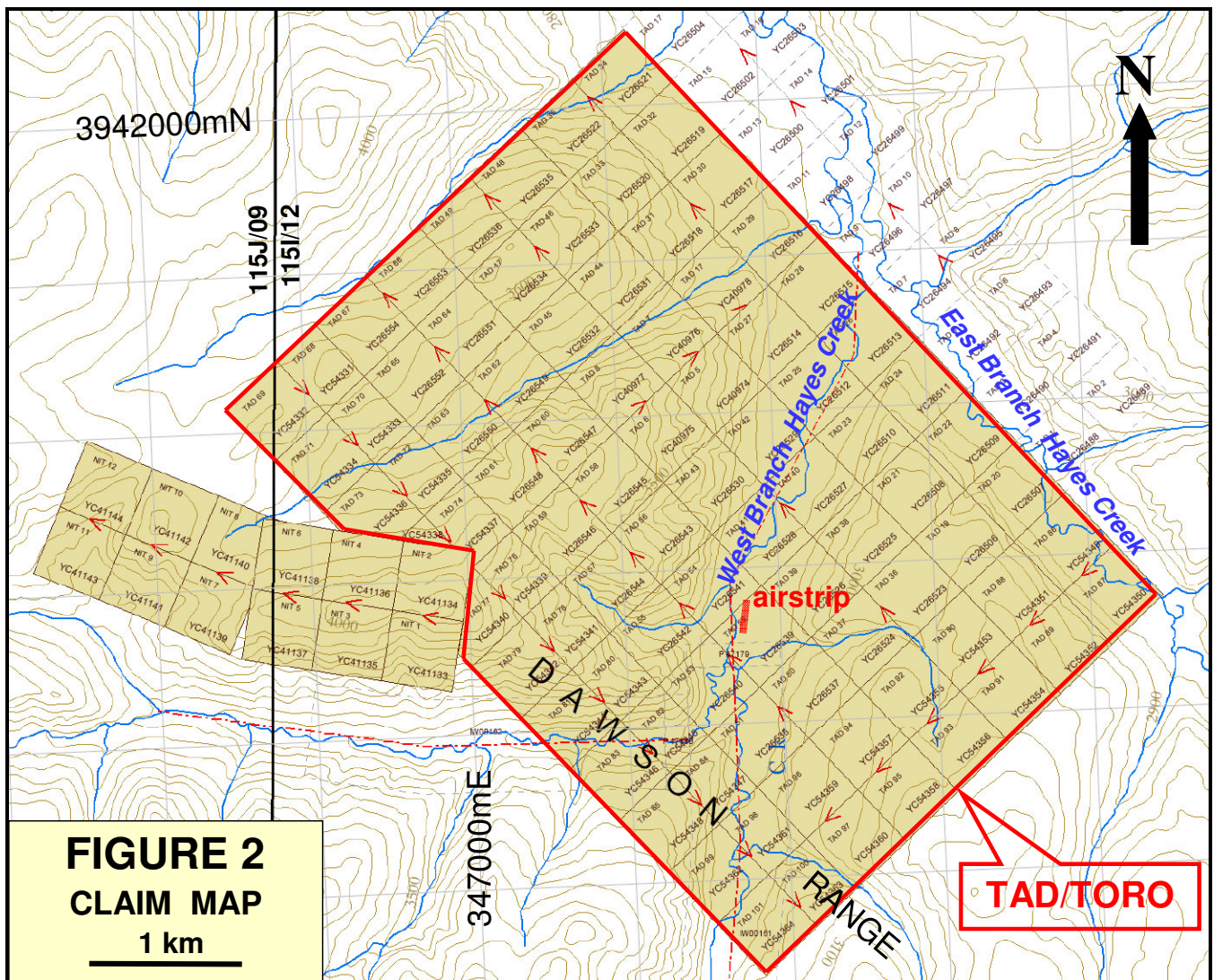
2.0 LEGAL DESCRIPTION (Figure 2)

The Tad/Toro property consists of 88 contiguous Quartz claims covering an area of approximately 1800 hectares in the Whitehorse Mining District. The property is owned and the current program funded by Mr. Bill Harris of Whitehorse, Yukon Territory. The Tad 68 to 101 claims were added subsequent to the 2006 program. A table summarizing pertinent claim data follows and a detailed statement of claims is shown in Appendix II.

TABLE 1: Claim data

Claim Name	Grant No.	No. of Claims	Expiry Date	New Expiry Date
Tad 5-8, 17	YC40974-978	5	November 25, 2006	November 25, 2008*
Tad 19-22	YC26506-509	4	November 26, 2006	November 26, 2008*
Tad 23-26	YC26510-513	4	November 26, 2006	November 26, 2007*
Tad 28-35	YC26515-522	8	November 26, 2006	November 26, 2007*
Tad 27, 36-67	YC26514, 523-554	33	November 26, 2006	November 25, 2008*
Tad 68-101	YC54331-364	34	October 31, 2006	October 31, 2007
TOTAL		88		

* new expiry date based on acceptance of this report



3.0 PHYSIOGRAPHY (Figures 1 and 2)

The Tad/Toro property is located on Hayes Creek, a tributary of the Selwyn River, within the unglaciated Dawson Range of the Yukon Plateau (*Figure 1*). The topography is moderate with long sinuous ridges incised by narrow valleys that descend to the swampy flat-bottomed valleys of the larger creeks and rivers (*Figure 2*). Elevations range from about 860m above sea level in the Hayes Creek Valley to 1280m. The southern slopes on the property are moderately treed with poplar and spruce and covered by colluvium. The northern slopes are sparsely treed with alder and dwarf spruce and are covered by a veneer of frozen overburden.

Outcrop is sparse, except on steeper slopes and knolls, but amounts to less than 1%. Previous bulldozer trenching failed to penetrate the overburden that averages 6m deep on hillsides and 10m in the Hayes Creek valley. Permafrost is limited to north facing slopes and valley bottoms.

The area has a northern interior climate with warm summers, long cold winters and light precipitation, most of which is snow. The exploration season lasts from May until October. Drilling can be conducted in the winter. Summer temperatures range up to 30° Celsius and winter temperatures down to -50° Celsius.

4.0 HISTORY (Figure 3)

The Tad/Toro property covers the Tad Minfile occurrence (Minfile No. 115I 031), a drilled prospect, as documented by the Yukon Geological Survey (*Deklerk and Traynor, 2005*). A summary of the work completed by various operators is outlined below:

Placer gold activity reportedly dating back to 1898 has been undertaken on the creeks within the property area. Mr. G. Wilson has placer mined on a small creek (Wham Creek) in the southern property area from the 1980's, with some placer mining on Waugh Creek. There is no record of how much gold has been produced.

- 1969-71 Program of grid soil sampling, magnetic and induced polarization geophysical surveys, trenching and 2708m of diamond drilling in 18 holes by International Mine Services following their discovery of lead-zinc mineralization in quartz monzonite porphyry along Hayes Creek. The drill program intersected intensely altered and oxidized granitic rock with narrow intervals of anomalous gold (maximum values of 4.11 g/t Au, 50 g/t Ag over 1.06m), despite poor core recovery and incomplete sampling, and three induced polarization chargeability anomalies were outlined (*Waugh, 1970 and 1972*).
- 1986-87 Programs of soil sampling, re-sampling of portions of the 1969 drill core, VLF electromagnetic and magnetic geophysical surveys, trenching and 372m of diamond drilling in four holes by Noranda Exploration Company, identifying a large gold in soil anomaly and returning an intersection of 1.03 g/t Au over 8.2m from the 1969 drill core (*Hart, 1987 and Starr, 1987*).

1996 Geological mapping, soil sampling and magnetic and VLF-EM surveys by International Kodiak Resources Inc. under option, reproducing the gold in soil anomaly, with coincident arsenic, silver and zinc (*Davidson, 1997*).

5.0 CURRENT WORK PROGRAM

A total of 7 man-days were spent on the Tad/Toro property, between October 17 and 22, 2006. The 2006 work program consisted of an evaluation of the showings within a property wide and regional context, with concurrent geochemical sampling. The old trenches and drill sites were located and surveyed in by GPS. Control was provided by property scale topographic maps, compass and GPS.

6.0 GEOLOGY

6.1 Regional (Figure 3)

The regional geology is summarized from Gordey and Makepeace (2003), Carlson (1987) and Pautler (2006).

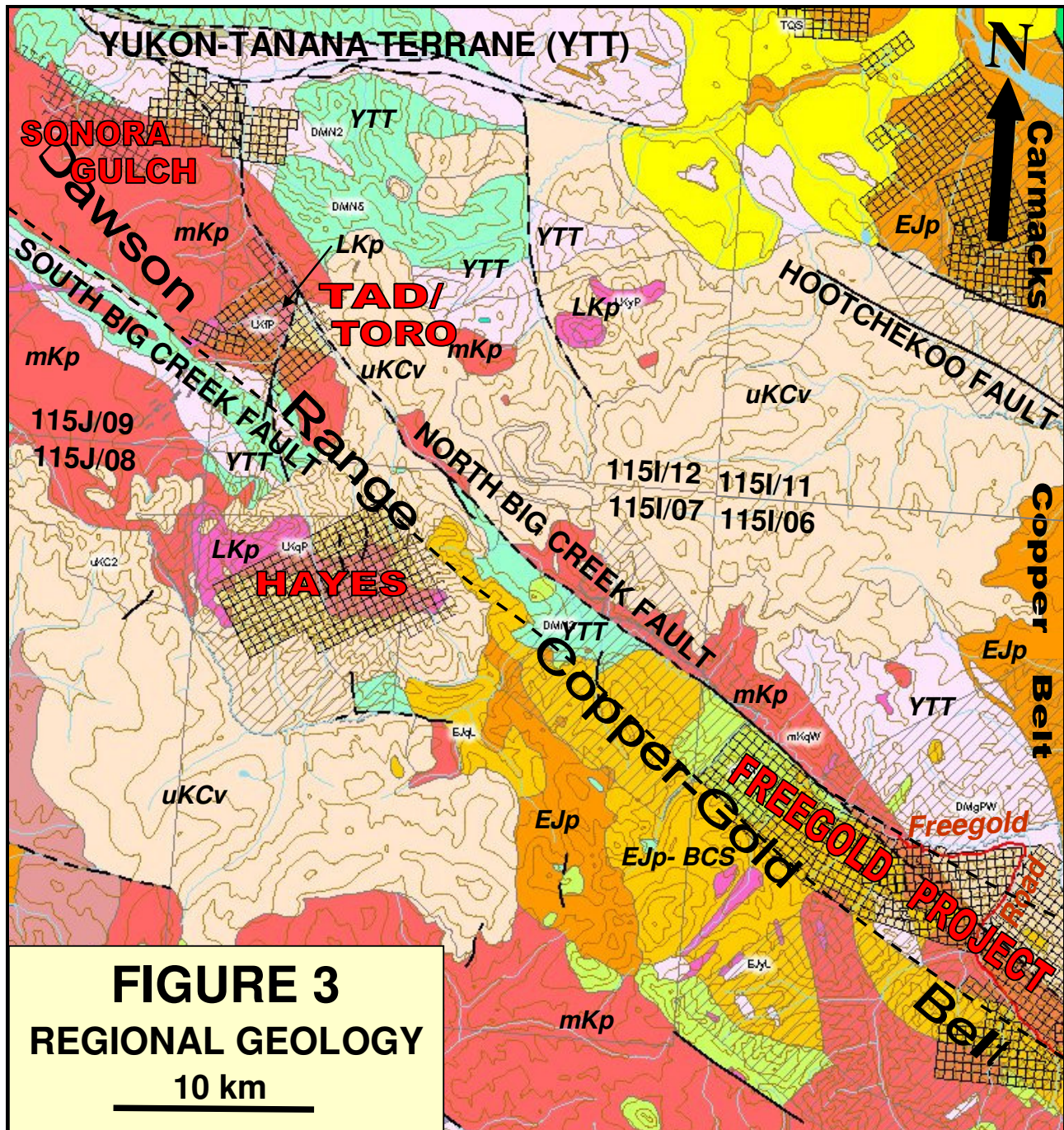
The Tad/Toro property is situated within the unglaciated Dawson Range portion of the Yukon-Tanana Terrane, between the northwest striking Tintina Fault to the northeast and the Denali Fault to the southwest. The Dawson Range is characterized by metamorphosed basement rocks of the Yukon-Tanana Terrane (**YTT**) intruded by numerous and voluminous Jurassic to Cretaceous intrusions. In the region the Yukon-Tanana Terrane consists of the Nasina Subterrane, which includes dominantly Mid Paleozoic basement schists and gneisses of continental margin origin (**DMgPW**) superposed with Devonian-Mississippian arc volcanic to plutonic rocks (**DMN**).

The 250 km long northwest trending Dawson Range copper-gold-(molybdenum) and gold porphyry belt extends from Freegold Mountain into Alaska. Within this belt, significant porphyry style and related epithermal style mineralization is associated with the northwest to north-northwest trending Big Creek Fault, extending from Freegold Mountain in the southeast to the Casino Deposit in the northwest (964 mt grading 0.22% Cu, 0.24 g/t Au and 0.02% Mo), a distance of 100 km. Mineralization is associated with Mid to Late Cretaceous intrusions (primarily small plugs and breccia bodies of the Late Cretaceous Prospector Mountain Suite) that have intruded within an extensional rift environment, bounded by northwest trending faults (North and South Big Creek Faults) and is hosted by the intrusions and/or the older metamorphosed basement complex of the Yukon-Tanana Terrane.

The major structural feature in the region is the northwest trending Big Creek Graben bounded by the North and South Big Creek Faults, normal faults that are thought to form the flanks of a graben related to Late Cretaceous extension (*Carlson, 1987*). The Big Creek Graben appears to have provided the locus for the intrusion of batholiths of

Early Jurassic (**EJp**) age, including the Big Creek Syenite (**EJp-BCS**), and Mid Cretaceous age, the Dawson Range Batholith (**mKp**).

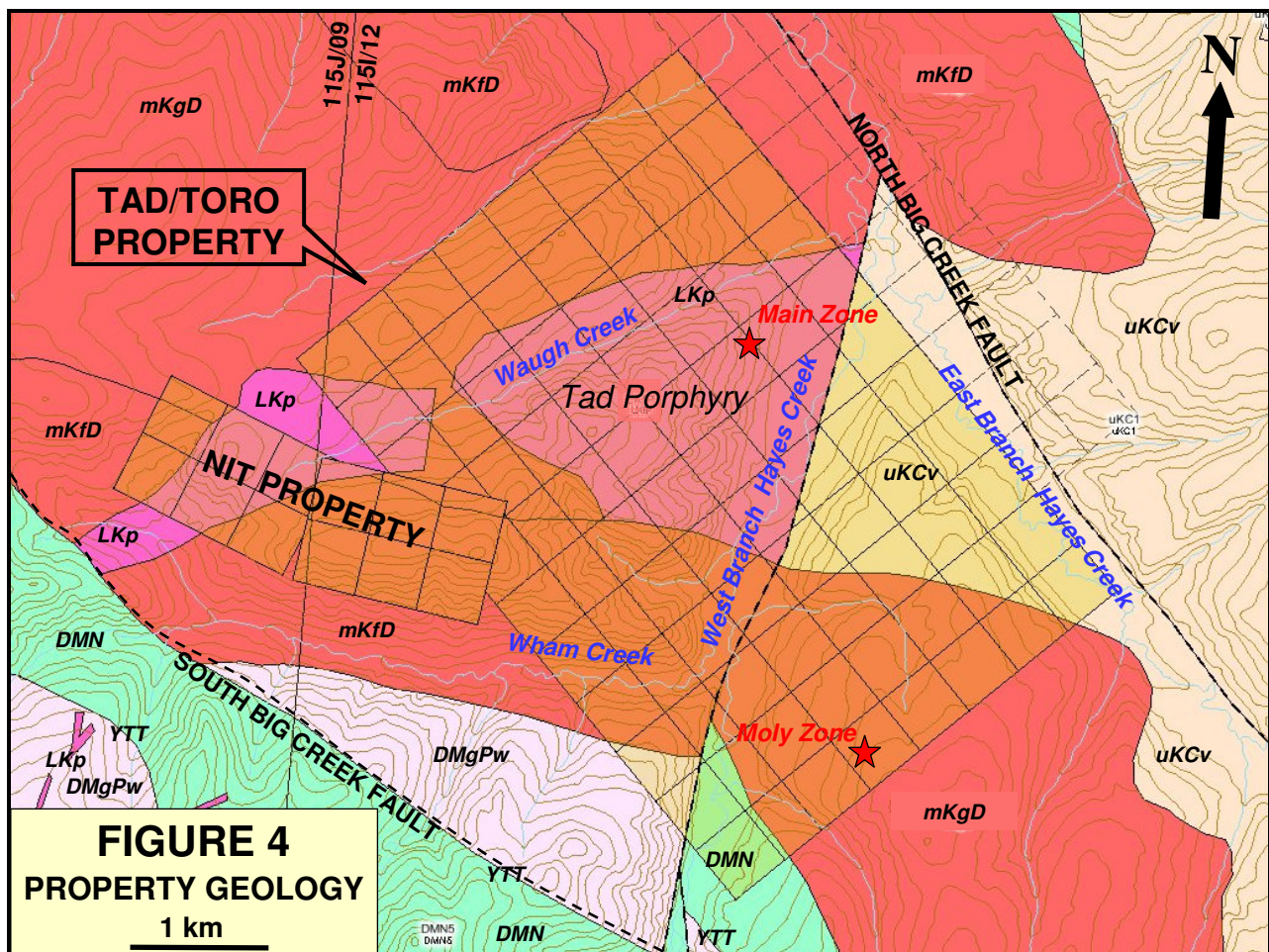
The above lithologies are intruded by small plutons, stocks and dykes of the Late Cretaceous Prospector Mountain Suite (**LKp**), which consists of felsic, commonly quartz and/or feldspar porphyritic, and are overlain by the Late Cretaceous Carmacks Group (**uKCv**), which is dominated by mafic flows and pyroclastic rocks. Mineralization within the Big Creek portion of the Dawson Range copper-gold belt is intimately associated with rocks of the Prospector Mountain Suite.



6.2 Property (Figure 4)

The Tad/Toro property is primarily underlain by quartz-hornblende-biotite granitic rocks of the Mid Cretaceous Dawson Range Batholith (**mKp**) that intrude meta-igneous and meta-sedimentary rocks of the Yukon-Tanana Terrane (**YTT**) consisting of quartz biotite schist, hornblende schist, gneissic equivalents, quartzite and minor limestone with a northwest trending foliation. On the property the Dawson Range Batholith includes a biotite-hornblende granodiorite phase (**mKgD**) and a biotite rich leucocratic quartz monzonite to granite phase (**mKfD**).

The above units are intruded by granite to monzonite stocks and dykes of the Late Cretaceous Prospector Mountain Suite (**LKp**). One such body in the central property area, referred to as the Tad Porphyry, consists of quartz-feldspar-biotite porphyry with clear quartz and feldspar phenocrysts and lesser biotite. Two phases of the Tad Porphyry have been recognized, a quartz monzonite porphyry and a biotite granite porphyry. Fresh specimens of quartz monzonite are typically pale gray with abundant muscovite. Argillic and propylitic alteration, brecciation and iron oxide staining of these rocks is extensive in the 1969-70 drill core.



The metamorphic and igneous rocks are intruded by mafic dykes and are overlain by basalt flows of the Upper Cretaceous Carmacks Group (**uKCv**) primarily on the north

side of Hayes Creek. These weather brown to reddish-brown and vary from olivine-rich to feldspathic.

The northwesterly trending North Big Creek Fault trends across the northeastern edge of the property, following Hayes Creek. The sub-parallel South Big Creek Fault lies 5 to 6 km to the southwest. A northerly trending extensional fault follows the West Branch of Hayes Creek. This is the same structural environment present on the Nucleus Zone of the Freegold Project of Northern Freegold Resources situated 40 km to the southeast.

6.3 Mineralization and Alteration

The property covers the Tad Minfile drilled prospect as documented by the Yukon Geological Survey as Minfile Number 115I 031 (*Deklerk and Traynor, 2005*).

Mineralization generally occurs as disseminated pyrite (up to 10%) within the Tad Porphyry, and narrow sphalerite, galena, and arsenopyrite bearing quartz veins along shear zones. The pyrite mineralization may represent a pyritic halo to a porphyry Cu-Mo-Au system with associated low grade gold-pyrite-arsenopyrite in sericite-phyllitic alteration zones within the quartz monzonite porphyry and in breccia zones and northwest trending fault zones. Minor potassic alteration of the porphyry has been reported. The Pb-Zn veins may represent polymetallic veins outboard of the porphyry system.

Placer gold has been mined from Hayes Creek and its tributaries. Gold has been reported on quartz clasts recovered from Apex Creek to the south and placer concentrate from lower Hayes Creek contains galena, sphalerite and other sulphide minerals (*Davidson, 1997*). Fine gold can be panned from Hayes Creek where it flows past the Tad/Toro camp (*Starr, 1987*).

The old drill core exhibits extreme oxidation with many unsplit oxidized and brecciated sections. A supergene enrichment zone occurs near the top of many of the drill holes in the centre of the mineralized zone. The sulphide minerals are oxidized to a depth of 80m and the gold-bearing oxide zone lies in brecciated and intensely altered quartz monzonite porphyry, below which is a hypogene zone containing up to 10% disseminated pyrite in porphyritic granite with lesser alteration (*Davidson, 2000*).

Molybdenite occurs within potassically altered porphyritic monzonite in the Moly Zone in the southeast property area (*Waugh, 1970*).

7.0 DEPOSIT MODEL

The 100 km long Big Creek portion of the 250 km long Dawson Range Copper-Gold Belt hosts several deposits and mineralized showings of several deposit models which include calc-alkalic porphyry copper-gold±molybdenum, associated adjacent epithermal vein and breccia systems and peripheral polymetallic veins.

The Casino porphyry copper-gold-molybdenum deposit (Minfile 115J 028), at the northwestern end of the Big Creek portion of the Belt and 55 km northwest of the Tad/Toro property, contains a 43-101 compliant reserve estimate of 964 million tonnes grading 0.22% Cu, 0.24 g/t Au and 0.028% Mo (*Lumina Resources Corp website, April 2006*).

The Laforma deposit (Minfile 115I 054) of FM Resources Corporation, 60 km southeast of the Tad/Toro property at the southeastern end of the Big Creek portion of the Belt, covers a low sulphidation epithermal vein deposit on the flank of Mt. Freegold. An historical drill indicated resource estimate (not 43-101 compliant) calculated by FM Resources Corporation in 1999 consists of 602,000 tonnes, grading 4.31 g/t gold (*Deklerk and Traynor, 2005*).

The Antoniuk deposit (Minfile 115I 111), also of FM Resources Corporation in the Mount Freegold area, consists of a heap leachable low grade, bulk tonnage gold-copper-silver deposit hosted by a Late Cretaceous intrusive breccia and porphyry complex of the Prospector Mountain Suite. It contains an historical resource estimate of 4 million tonnes of oxide mineralization averaging 1.44 g/t Au (168,000 ounces contained gold) to a depth of 185m, mineable by open pit methods at a waste to ore ratio of 1.14 to 1 (*Main, 1989*). This resource was calculated prior to the implementation of NI 43-101 standards and may not conform to current NI 43-101 standards.

The Cash porphyry deposit, approximately 17 km southeast of the Tad/Toro property within the Selkirk First Nation R9-A Land Claim Block, covers a 3 km by 0.9 km area of porphyry style mineralization, hosted by Late Cretaceous feldspar porphyry dykes and plugs of the Prospector Mountain Suite. A resource of 36.3 million tonnes grading 0.17% Cu, 0.018% Mo, with about 0.2 g/t Au (233,440 ounces contained gold), open in three directions and at depth, was estimated based on 20 shallow drill holes at 150m centers from 1975-77. This resource was calculated prior to the implementation of NI 43-101 standards and may not conform to current NI 43-101. Since the resource estimate only two diamond holes were drilled in 1991 returning 0.21% Cu, 0.015% Mo and 0.14 g/t Au over 235m from hole 91-2.

A near-surface bulk tonnage gold \pm copper target, within which are two subparallel bands of higher grade mineralization, has partially been defined at the Nucleus deposit on the Golden Revenue property, approximately 40 km southeast of the Tad/Toro property. An independent resource calculation of the body has not been prepared to NI 43-101 standards. The potential quantity and grade of this body, thought to represent the upper part of a porphyry gold-copper system, ranges from 13 to 18 million tonnes of 0.8 to 1.0 g/t Au, with additional values in copper, based on a review of the results from 34 diamond drill holes completed between 1984 to 2004 and geological data from the above drilling and surface mapping and trenching programs (*ATAC private data*).

Strong similarities exist with the Kemess-Toodoggone Camp in northern British Columbia which is characterized by calc-alkalic porphyry gold-copper deposits (Kemess Mine) and low sulphidation epithermal deposits (past producing Baker and Cheni mines).

8.0 GEOCHEMISTRY (Figures 5 and 6)

8.1 Procedure

A total of 12 rock samples were collected from the property for geochemical analysis. The samples were sent to Eco Tech Laboratory Ltd., Kamloops, British Columbia and analyzed for Al, Sb, As, Ba, Bi, Cd, Ca, Cr, Co, Cu, Fe, La, Pb, Mg, Mn, Mo, Na, Ni, P, Ag, Sr, Ti, Sn, W, U, V, Y and Zn using a 28 element ICP package which involves a nitric-aqua regia digestion. Gold was analyzed by fire assay with an atomic absorption finish.

The rock samples across the property primarily consisted of grab samples of mineralized and altered zones, exposed as float and subcrop. There is extremely poor exposure on the property, particularly in the mineralized zones including in the trenches. The samples were located and recorded by GPS in the field using UTM coordinates, Nad 83 datum, Zone 8 projection, placed in clear plastic sample bags, numbered and secured in the field. Sample descriptions, locations and select results (Au, Ag, As, Cu, Mo and Zn) are documented in Appendix III and locations are plotted on Figures 5 and 6. Complete results are outlined in Appendix IV.

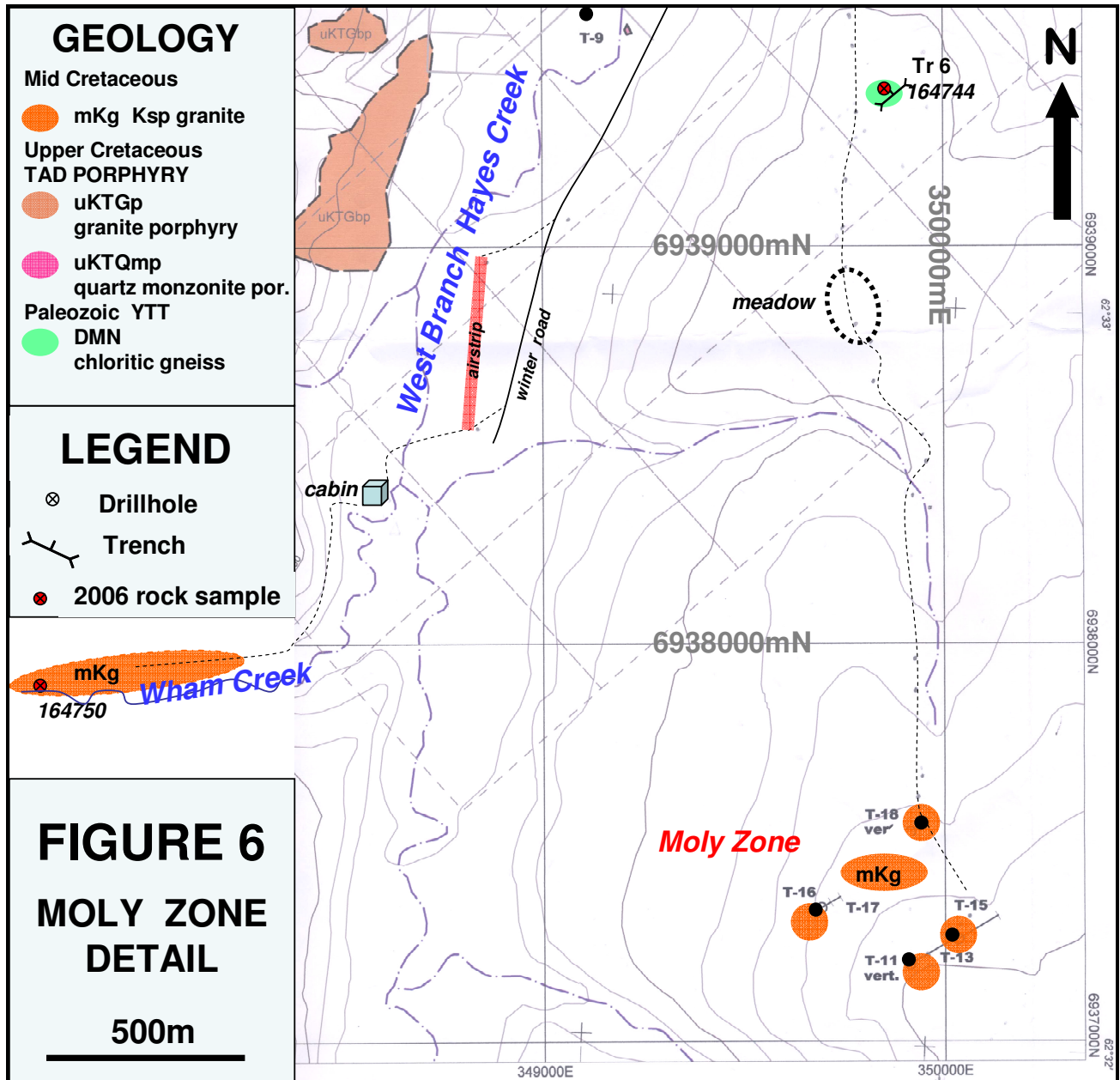
8.2 Results and Interpretation

Samples collected from the Main Zone (*Figure 5*) were generally enhanced in zinc, silver and arsenic (Samples 164737-43, 45). Zinc values ranged up to 6581 ppm Zn in sample 164741 from Trench 2, accompanied by anomalous silver and arsenic of 3.0 ppm Ag and 190 ppm As. The highest silver value was 7.5 ppm Ag in sample 164739 from Trench 1, accompanied by anomalous zinc and arsenic of 1433 ppm Zn and 310 ppm As. The more anomalous values occur in the limonitic quartz feldspar porphyry quartz monzonite phase of the Tad Porphyry.

The quartz feldspar porphyry phase of the Tad Porphyry has strong similarities to the quartz feldspar porphyry bodies in the Freegold Project area of Northern Freegold Resources Limited which have a strong association with gold ±copper mineralization. The zinc-silver-arsenic mineralization may represent a distal signature to a porphyry style system.

The Moly Zone was examined in the southeastern property area but no outcrop is exposed through this zone (*Figure 6*). An examination of the drill core from the Moly Zone showed unsplit sections of the potassium feldspar (Ksp) megacrystic granite with molybdenite as disseminations within the host and as flakes within up to 1 cm wide quartz veinlets. A grab of some of the unsplit sections that were scattered on the ground returned anomalous molybdenum of 188 ppm Mo (Sample 164746). Similar material without molybdenite mineralization did not return significant values (Sample 164747).

The placer cut along Wham Creek was also found to be underlain by the potassium feldspar megacrystic granite. However a sample of variably limonite and chlorite altered granite from the cut did not return anomalous results (Sample 164750).



9.0 GPS SURVEY (Figures 5 and 6)

Diamond drillhole collars, trenches, trails and significant reference locations were surveyed in by GPS in the field while completing the property evaluation using UTM coordinates, Nad 83 datum, Zone 8 projection and utilizing a Garmin 12XL GPS instrument. The data is plotted in Figures 5 and 6, drillhole collars are documented in Table 2 below and trench locations are documented in Table 3 below. The core is stored, partially in racks and the remainder is stacked, at UTM coordinates 6940399mN, 349501mE, Nad 83 datum, Zone 8 projection, which is located beside the old camp, situated at 6938381mN, 348597mE.

Table 2: Diamond drillhole locations and specifications

Drill Hole	UTM Northing	NAD83 Easting	Az. (°)	Dip (°)	Depth (m)	No. of Samples
DDH T69-01*	6940138	348753	-	-90	177.7	6
DDH T69-02 *	6940314	348801	-	-90	177.7	66
DDH T69-03	6940240	349042	-	-90	73.8	0
DDH T69-04	6940271	348902	-	-90	118.6	0
DDH T70-05 *	6940401	348667	-	-90	194.2	1
DDH T70-06	6940012	349363	-	-90	119.8	1
DDH T70-07 *	6939743	349380	-	-90	114.3	0
DDH T70-08 *	6940429	348534	-	-90	159.4	0
DDH T70-09	6939572	349129	-	-90	121.9	1
DDH T70-10	6940360	348816	220	-60	182.9	4
DDH T70-11	6937201	349915	-	-90	182.3	3
DDH T70-12	6940263	348835	315	-60	218.2	7
DDH T70-13	6937201	349915	060	-63	262.1	11
DDH T70-14	6940473	348950	-	-90	96.0	0
DDH T70-15	6937261	350039	060	-50	176.2	1
DDH T70-16	6937338	349690	060	-50	41.8	0
DDH T70-17	6937338	349690	060	-55	94.5	0
DDH T70-18 *	6937544	349936	-	-90	195.4	10
DDH T87-01*	6939833	348835	270	-45	91.4	complete
DDH T87-02 *	6939833	348735	270	-45	91.4	complete
DDH T87-03	6940401	348667	270	-45	77.4	complete
DDH T87-04	6940346	347922	135	-45	111.6	complete

* collars located in 2006

The condition of the core (initially referring to the 1969-1970 core) is described by Casselman (2006) as follows:

“...much of the hole and interval markings were not legible due to the age and weathering of the core boxes. Many of the core boxes and one core rack were destroyed or disintegrating. The drill core, core boxes and footage blocks from the 1987 drilling were in much better shape than the 1969 core. However the core box containing the intercept from hole T-87-2 was not in the core rack.”

Table 3: Trench locations

Trench No.	UTM Northing	NAD83 Easting
T-TR1 end	6940422	348526
T-TR1 start	6940447	348522
T-TR2 end	6940371	348587
T-TR2 start	6940389	348576
T-TR3 start	6940362	348672
T-TR4 end	6939833	348829
T-TR5 end	6940080	348798
T-TR5 start	6940065	348798
T-TR6 end	6939367	349867
T-TR6 start	6939340	349826
T-TR7 start	6939841	348690

Other significant GPS locations are documented in Table 4 below.

Table 4: Significant GPS locations

Waypoint Name	UTM Northing	NAD83 Easting	Description
T-AIR1	6938988	348889	Start of airstrip
T-AIR2	6938549	348844	End of airstrip
T-CP44	6940396	348492	Initial post TAD 44
T-HELI	6940483	348459	Helicopter landing site, upper Main Zone
T-KILL	6938849	349895	Large meadow

10.0 DISCUSSION (Figures 5 and 6)

Significant previous drill results have been obtained from the property despite limited sampling of the core. Only 111 samples were originally collected from the 1969-70 core and seven holes were not sampled. Gold was not analyzed in the original samples from DDH T69-01. In the 1986 re-sampling of the core by Noranda 114 drill core samples were analyzed for gold and silver from DDH T-1 to -6, T-8 to -10, T-12 and T-14 with As, Cu, Pb, Zn added in DDH T-2, -9 and -14 and Mo in DDH T-9 and -14. The holes were still not completely sampled and samples were generally collected over large intervals, up to 16m wide. Significant results are summarized in Table 5, below.

Table 5: Significant drill intercepts

DDH No.	Interval (m)	Length (m)	Width (m)	Au g/t	Ag (g/t)	MoS ₂ (%)	Cu (%)
DDH T69-02 *	49.68	57.91	8.23	1.03	12.3	NA	NA
including	56.39	57.45	1.06	4.114	50.06	trace	0.07
and	66.9	68.28	1.38	2.057	21.26	NA	0.01
DDH T70-05 *	17.6	33.5	15.8	0.15	20.0	NA	NA
DDH T70-08 *	26.5	38.7	12.2	0.15	7.5	NA	NA
DDH T70-09	19.51	20.42	0.91	1.371	30.17	trace	NA
DDH T70-12 *	43.59	49.38	5.79	1.25	7.5	NA	NA
and	70.41	70.71	0.3	trace	116.57	NA	NA
DDH T70-14 *	19.2	26.2	7.0	1.75	12.0	trace	trace
Including *	24.38	26.21	1.83	2.09	14.1	trace	trace
DDH T87-02	81.50	83.00	1.50	0.780	4.30	NA	NA
DDH T70-11	148.4	149.5	1.07	NA	NA	0.053	NA
DDH T70-13	85.34	86.56	1.22	NA	NA	0.027	NA
and	255.7	256.3	0.6	NA	NA	0.041	NA
DDH T70-15	134.7	136.2	1.5	NA	NA	0.025	0.04
DDH T70-18	178.0	183.2	5.2	NA	NA	0.016	NA

* denotes re-sampling by Noranda NA denotes not analyzed

A review of the core from the Main Zone showed extensive oxidation and breccia zones similar to the breccia zones in the Freegold Project area, particularly in the Nucleus Zone. Many of the zones within the core from the Main Zone remain unsampled. Noranda sampled some of the previously unsplit sections in 1986, yielding longer intervals with significant gold results. Unsplit altered, pyritic and brecciated zones remain untested.

It should be noted that at the Nucleus Zone on the Golden Revenue property within the Freegold Project of Northern Freegold Resources Limited, the gold grades are unpredictable and all core must be analyzed. Intersections from the Nucleus Zone include 1.35 g/t Au over 110.8m from DN04-8, 1.16 g/t Au with 0.11% Cu over 126.0m from DN04-3 and 1.13 g/t Au over 115.1m from DN01-3 (*Pautler, 2006*).

The intercept in hole T69-02 at 56.39 to 57.45m is described as strongly brecciated, intensely altered feldspar-quartz porphyry. It is hematite stained with up to 10% pyrite, 5% sphalerite and 1 to 2% galena. The intercept in hole T69-02 at 66.90 to 68.28m is described as a fault zone with 5% pyrite and 2% sphalerite. It appears that the gold is associated with higher pyrite concentrations and with sphalerite. The intersections in the drill core could not be identified due to the degradation of the core box labels and footage marker blocks (*Casselman, 2006*). The intercept in hole T87-02, which has been removed from the site, is described as a sheared interval in quartz monzonite porphyry with some carbonate veining and traces of molybdenum along fractures (*Casselman, 2006*).

Noranda's drill holes are thought to have been collared at topographic levels that placed them below the base of the oxide horizon and that these holes were drilled into the hypogene and not the overlying supergene zone (*Hart, 1998*). The holes were also generally drilled too far below (downslope of) the soil anomalies to adequately test them. Significant gold (>100 ppb), silver (>5.0 ppm) and arsenic (>1.5 ppm) in soil anomalies exist on the Tad/Toro property that have not been adequately tested and large portions remain untested. (*Refer to Figure 5*).

From observations made in 2006, it appears that the core can be salvaged with some care and the core contains significant unsampled mineralized intervals, particularly breccia sections, that have not been sampled.

The potassium feldspar (Ksp) megacrystic biotite granite observed in drill core from the Moly Zone appears to represent a phase of the Dawson Range Batholith. This phase is similar to the phase observed along Wham Creek. More detailed observations from the core would be necessary to make an adequate correlation between the two areas. The core from the Moly Zone is stacked in good shape and can be systematically unstacked and reviewed. The core should be rough logged and unsplit mineralized intervals sampled.

A large meadow occurs approximately 1.5 km north of the Moly Zone (*Figure 6*). The meadow appears to represent a natural basin as opposed to a kill zone, but the basin could be controlled by the presence of less resistant underlying bedrock through the area. This could be due to alteration of the bedrock and may represent a valid exploration target.

The radiometric signature over the property, from the coarsely spaced (one line km spacing) government airborne survey in 1993, indicates a large area with a low Th/K ratio. The signature is similar to, although larger and slightly less intense, than the Casino deposit (*Hart, 1998*).

11.0 CONCLUSIONS AND RECOMMENDATIONS

There is excellent exploration potential on the Tad/Toro property to host gold-copper mineralization similar to that of the Casino deposit and the Nucleus Zone, all located within the Dawson Range Copper-Gold Belt. The geological environment, host rocks, structures and alteration at Tad/Toro are similar to the Nucleus Zone, which appears to be part of a high level porphyry gold-copper system grading to epithermal. Intersections from the Nucleus Zone include 1.35 g/t Au over 110.8m from DN04-8, 1.16 g/t Au with 0.11% Cu over 126.0m from DN04-3 and 1.13 g/t Au over 115.1m from DN01-3 (*Pautler, 2006*).

Exploration on the Tad/Toro property has been hampered by lack of exposure, thick overburden cover, variable but generally poor soil profiles, and lack of recent exploration in the context of new developments within the belt. The core on the Tad/Toro property should be labelled, unstacked and remaining core systematically sampled for Au and ICP. The collar locations are known and results can then be more completely correlated and interpreted.

A multi-parameter airborne geophysical survey (magnetic, electromagnetic and radiometric) with a 100m line spacing would be useful over the property. The previous government survey utilized a 1 km line spacing.

The above program should be followed by diamond drilling. Several drill targets proposed by Davidson (2000) remain valid and can be modified by results of the detailed core sampling and airborne geophysical survey.

APPENDIX I

Selected References

- Carlson, G.G. (1987): Geology of Mount Nansen (115I/3) and Stoddart Creek (115I/6) Map Areas, Dawson Range, Central Yukon. Exploration and Geological Services Division, Yukon Region, Indian and Northern Affairs Open File 1987-2
- Carlson, G. C., Hilker, R. G., 1970. Geological, geochemical and geophysical report on the Apex 1-40 (Y49679-Y49718), Apex 41-72 (Y52957-Y52988), Pat 1-24 (Y40407-Y40430), Hooch 101-164 (Y38873-Y38936) and Hooch 165-172 (Y52991-Y52998) Mineral Claims, Dawson Range Area, Yukon Territory. Yukon Government Assessment Report # 060212.
- Davidson, G. S., 2000. Summary report on the Toro Property. Yukon Government Assessment Report # 094126.
1997. Assessment report on the Toro property. Yukon Government Assessment Report # 093686.
- Deklerk, R. and Traynor, S. (compilers), 2005. Yukon MINFILE 2005 - A database of mineral occurrences. Yukon Geological Survey, CD-ROM.
- Gordey, S. P. and Makepeace, A. J., 2003. Yukon Digital Geology. Exploration and Geological Services Division, Yukon, Indian and Northern Affairs Canada, Open File 1999-1 (D).
- Hart, C. J. R., 2002. The geological framework of the Yukon Territory. Yukon Geological Survey website.
1998. Tad - an unusual porphyry occurrence in the Dawson Range, Yukon. In: Yukon Exploration and Geology 1997; Exploration and Geological Services Division, Yukon, Indian and Northern Affairs Canada, p.145-151.
1987. Geological and geochemical report on the Toro 1 to 46 Claims. Yukon Territorial Government Assessment Report # 091906.
- Johnston, S.T., 1995. Geological compilation with interpretation from geophysical surveys of the northern Dawson Range, central Yukon (115J/9 and 10; 115 I/12) (1:100 000 scale). Exploration and Geological Services Division, Yukon, Indian and Northern Affairs Canada, Open File 1995-2 (G).
1993. Geological map of Wolverine Creek (115I/12), Dawson Range, Yukon. Exploration and Geological Services Division, Yukon, Indian and Northern Affairs Canada, Open File 1993-3.
- Johnston, S.T., and Hachey, N., 1993. Preliminary results of 1:50 000 scale geological mapping in Wolverine Creek map area (115I/12), Dawson Range, southwest Yukon. In: Yukon Exploration and Geology 1992, Exploration and Geological Services Division, Yukon, Indian and Northern Affairs Canada, p. 49-60.

Johnson, S.T., and Shives, R.B.K., 1995. Interpretation of an airborne multiparameter geophysical survey of the northern Dawson Range, central Yukon: A progress report. In: Yukon Exploration and Geology, 1994. Exploration and Geological Services Division, Yukon, Indian and Northern Affairs Canada, p. 105-111.

Lumina Resources Corp. 2006. Website www.luminaresources.com.

Main, C.A. (1989): Trenching program on the Goldstar Property, Big Creek Joint Venture, Mount Freegold, Yukon; Archer, Cathro & Associates Ltd. Assessment Report # 092699.

Pautler, J.M., 2006. Evaluation report on the Freegold Project. For Northern Freegold Resources Ltd.

Starr, A. M., 1987. Geochemical and drilling report on the Toro Claims. Yukon Government Assessment Report # 091967.

Tempelman-Kluit, D. J., 1984. Geology of the Laberge and Carmacks map sheets. Geological Survey of Canada Open File 1101.

Waugh, D. H., 1972. A property report on the TAD Claim Group. International Mines Services Ltd. Yukon Government Assessment Report # 061250.

1970. A property report on the TAD Claim Group. International Mines Services Ltd. Yukon Government Assessment Report #091343.

Appendix II: Statement of Claims

Grant Number	Claim Name	Claim Nbr	Claim Owner	Recording Date	Expiry Date
YC26506	TAD	19	Bill Harris - 100%.	2/26/2004	11/26/2008
YC26507	TAD	20	Bill Harris - 100%.	2/26/2004	11/26/2008
YC26508	TAD	21	Bill Harris - 100%.	2/26/2004	11/26/2008
YC26509	TAD	22	Bill Harris - 100%.	2/26/2004	11/26/2008
YC26510	TAD	23	Bill Harris - 100%.	2/26/2004	11/26/2007
YC26511	TAD	24	Bill Harris - 100%.	2/26/2004	11/26/2007
YC26512	TAD	25	Bill Harris - 100%.	2/26/2004	11/26/2007
YC26513	TAD	26	Bill Harris - 100%.	2/26/2004	11/26/2007
YC26514	TAD	27	Bill Harris - 100%.	2/26/2004	11/26/2008
YC26515	TAD	28	Bill Harris - 100%.	2/26/2004	11/26/2007
YC26516	TAD	29	Bill Harris - 100%.	2/26/2004	11/26/2007
YC26517	TAD	30	Bill Harris - 100%.	2/26/2004	11/26/2007
YC26518	TAD	31	Bill Harris - 100%.	2/26/2004	11/26/2007
YC26519	TAD	32	Bill Harris - 100%.	2/26/2004	11/26/2007
YC26520	TAD	33	Bill Harris - 100%.	2/26/2004	11/26/2007
YC26521	TAD	34	Bill Harris - 100%.	2/26/2004	11/26/2007
YC26522	TAD	35	Bill Harris - 100%.	2/26/2004	11/26/2007
YC26523	TAD	36	Bill Harris - 100%.	2/26/2004	11/26/2008
YC26524	TAD	37	Bill Harris - 100%.	2/26/2004	11/26/2008
YC26525	TAD	38	Bill Harris - 100%.	2/26/2004	11/26/2008
YC26526	TAD	39	Bill Harris - 100%.	2/26/2004	11/26/2008
YC26527	TAD	40	Bill Harris - 100%.	2/26/2004	11/26/2008
YC26528	TAD	41	Bill Harris - 100%.	2/26/2004	11/26/2008
YC26529	TAD	42	Bill Harris - 100%.	2/26/2004	11/26/2008
YC26530	TAD	43	Bill Harris - 100%.	2/26/2004	11/26/2008
YC26531	TAD	44	Bill Harris - 100%.	2/26/2004	11/26/2008
YC26532	TAD	45	Bill Harris - 100%.	2/26/2004	11/26/2008
YC26533	TAD	46	Bill Harris - 100%.	2/26/2004	11/26/2008
YC26534	TAD	47	Bill Harris - 100%.	2/26/2004	11/26/2008
YC26535	TAD	48	Bill Harris - 100%.	2/26/2004	11/26/2008
YC26536	TAD	49	Bill Harris - 100%.	2/26/2004	11/26/2008
YC26537	TAD	50	Bill Harris - 100%.	2/26/2004	11/26/2008
YC26538	TAD	51	Bill Harris - 100%.	2/26/2004	11/26/2008
YC26539	TAD	52	Bill Harris - 100%.	2/26/2004	11/26/2008
YC26540	TAD	53	Bill Harris - 100%.	2/26/2004	11/26/2008
YC26541	TAD	54	Bill Harris - 100%.	2/26/2004	11/26/2008
YC26542	TAD	55	Bill Harris - 100%.	2/26/2004	11/26/2008
YC26543	TAD	56	Bill Harris - 100%.	2/26/2004	11/26/2008
YC26544	TAD	57	Bill Harris - 100%.	2/26/2004	11/26/2008
YC26545	TAD	58	Bill Harris - 100%.	2/26/2004	11/26/2008
YC26546	TAD	59	Bill Harris - 100%.	2/26/2004	11/26/2008
YC26547	TAD	60	Bill Harris - 100%.	2/26/2004	11/26/2008
YC26548	TAD	61	Bill Harris - 100%.	2/26/2004	11/26/2008
YC26549	TAD	62	Bill Harris - 100%.	2/26/2004	11/26/2008

Grant Number	Claim Name	Claim Nbr	Claim Owner	Recording Date	Expiry Date
YC26550	TAD	63	Bill Harris - 100%.	2/26/2004	11/26/2008
YC26551	TAD	64	Bill Harris - 100%.	2/26/2004	11/26/2008
YC26552	TAD	65	Bill Harris - 100%.	2/26/2004	11/26/2008
YC26553	TAD	66	Bill Harris - 100%.	2/26/2004	11/26/2008
YC26554	TAD	67	Bill Harris - 100%.	2/26/2004	11/26/2008
YC40974	TAD	5	Bill Harris - 100%.	11/25/2005	11/25/2008
YC40975	TAD	6	Bill Harris - 100%.	11/25/2005	11/25/2008
YC40976	TAD	7	Bill Harris - 100%.	11/25/2005	11/25/2008
YC40977	TAD	8	Bill Harris - 100%.	11/25/2005	11/25/2008
YC40978	TAD	17	Bill Harris - 100%.	11/25/2005	11/25/2008
YC54331	TAD	68	Bill Harris - 100%.	10/31/2006	10/31/2007
YC54332	TAD	69	Bill Harris - 100%.	10/31/2006	10/31/2007
YC54333	TAD	70	Bill Harris - 100%.	10/31/2006	10/31/2007
YC54334	TAD	71	Bill Harris - 100%.	10/31/2006	10/31/2007
YC54335	TAD	72	Bill Harris - 100%.	10/31/2006	10/31/2007
YC54336	TAD	73	Bill Harris - 100%.	10/31/2006	10/31/2007
YC54337	TAD	74	Bill Harris - 100%.	10/31/2006	10/31/2007
YC54338	TAD	75	Bill Harris - 100%.	10/31/2006	10/31/2007
YC54339	TAD	76	Bill Harris - 100%.	10/31/2006	10/31/2007
YC54340	TAD	77	Bill Harris - 100%.	10/31/2006	10/31/2007
YC54341	TAD	78	Bill Harris - 100%.	10/31/2006	10/31/2007
YC54342	TAD	79	Bill Harris - 100%.	10/31/2006	10/31/2007
YC54343	TAD	80	Bill Harris - 100%.	10/31/2006	10/31/2007
YC54344	TAD	81	Bill Harris - 100%.	10/31/2006	10/31/2007
YC54345	TAD	82	Bill Harris - 100%.	10/31/2006	10/31/2007
YC54346	TAD	83	Bill Harris - 100%.	10/31/2006	10/31/2007
YC54347	TAD	84	Bill Harris - 100%.	10/31/2006	10/31/2007
YC54348	TAD	85	Bill Harris - 100%.	10/31/2006	10/31/2007
YC54349	TAD	86	Bill Harris - 100%.	10/31/2006	10/31/2007
YC54350	TAD	87	Bill Harris - 100%.	10/31/2006	10/31/2007
YC54351	TAD	88	Bill Harris - 100%.	10/31/2006	10/31/2007
YC54352	TAD	89	Bill Harris - 100%.	10/31/2006	10/31/2007
YC54353	TAD	90	Bill Harris - 100%.	10/31/2006	10/31/2007
YC54354	TAD	91	Bill Harris - 100%.	10/31/2006	10/31/2007
YC54355	TAD	92	Bill Harris - 100%.	10/31/2006	10/31/2007
YC54356	TAD	93	Bill Harris - 100%.	10/31/2006	10/31/2007
YC54357	TAD	94	Bill Harris - 100%.	10/31/2006	10/31/2007
YC54358	TAD	95	Bill Harris - 100%.	10/31/2006	10/31/2007
YC54359	TAD	96	Bill Harris - 100%.	10/31/2006	10/31/2007
YC54360	TAD	97	Bill Harris - 100%.	10/31/2006	10/31/2007
YC54361	TAD	98	Bill Harris - 100%.	10/31/2006	10/31/2007
YC54362	TAD	99	Bill Harris - 100%.	10/31/2006	10/31/2007
YC54363	TAD	100	Bill Harris - 100%.	10/31/2006	10/31/2007
YC54364	TAD	101	Bill Harris - 100%.	10/31/2006	10/31/2007

APPENDIX III

Sample Descriptions

**TAD/TORO PROJECT, Yukon Territory
2006 ROCK SAMPLE DESCRIPTIONS AND RESULTS**

SAMPLE NUMBER	LOCATION	NAD 83 EASTING	ZONE 8 NORTHING	TYPE	GEOLOGY	Au ppb	Ag ppm	As ppm	Cu ppm	Mo ppm	Zn ppm
164737	Main Zone	348522	6940485	grab	Mn stained feldspar porphyry with trace pyrite and sauseritized fsps, along cat trail	10	0.6	15	6	5	556
164738	Main Zone	348530	6940466	grab	limonite altered quartz monzonite, along cat trail	<5	0.3	15	4	4	321
164739	Trench 1	348528	6940413	grab	strongly limonitic rhyolite quartz feldspar porphyry, from Trench 1 dump	20	7.5	310	151	4	1432
164740	Trench 1	348528	6940413	grab	Mn stained rhyolite quartz feldspar porphyry, minor sphalerite?, from Trench 1 dump	20	2.1	200	92	14	3513
164741	Trench 2	348580	6940380	grab	very rusty, highly oxidized and pitted, limonitic rhyolite quartz feldspar porphyry, weak argillic alteration, minor sphalerite, from Trench 2	20	3.0	190	42	2	6581
164742	Main Zone	348669	6940370	grab	limonitic rhyolite quartz feldspar porphyry	20	4.4	45	25	3	2778
164743	below DDH 12	348851	6940220	grab	rusty, clay altered rhyolite quartz feldspar porphyry	35	2.8	75	6	3	365
164744	Trench 6	349849	6939357	grab	chlorite altered gneiss with quartz stringers to 1 cm, minor pyrite, from pit in centre of Trench	5	<0.2	15	6	<1	27
164745	below DDH 1	348820	6940056	grab	silicified, variably limonite and Mn stained rhyolite quartz feldspar porphyry	10	0.5	10	3	2	30
164746	DDH T-13	349520	6940443	grab	red stained Ksp megacrystic granite with quartz veinlets to 1 cm, with molybdenite	5	<0.2	5	5	188	72
164747	DDH T-13	349520	6940443	grab	red stained Ksp megacrystic granite with quartz veinlets to 1 cm, with no visible moly	5	<0.2	<5	8	25	61
164750	placer cut	347750	6937996	grab	red stained Ksp megacrystic granite some with chlorite alteration, some limonitic	5	<0.2	<5	4	3	30

APPENDIX IV

Geochemical Procedure and Results

Analytical Procedure

GEOCHEMICAL GOLD ANALYSIS

Samples are catalogued and dried. Soils are prepared by sieving through an 80 mesh screen to obtain a minus 80 mesh fraction. Samples unable to produce adequate minus 80 mesh material are screened at a coarser fraction. These samples are flagged with the relevant mesh. Rock samples are 2 stage crushed to minus 10 mesh and a 250 gram subsample is pulverized on a ring mill pulverizer to -140 mesh. The subsample is rolled, homogenized and bagged in a pre-numbered bag.

The sample is weighed to 10/15/30 grams and fused along with proper fluxing materials. The bead is digested in aqua regia and analyzed on an atomic absorption instrument. Over-range values for rocks are re-analyzed using gold assay methods.

Appropriate reference materials accompany the samples through the process allowing for quality control assessment. Results are entered and printed along with quality control data (repeats and standards). The data is faxed and/or mailed to the client.

GOLD ASSAY

Samples are sorted and dried (if necessary). The samples are crushed through a jaw crusher and cone or rolls crusher to -10 mesh. The sample is split through a Jones riffle until a -250 gram subsample is achieved. The subsample is pulverized in a ring & puck pulverizer to 95% - 140 mesh. The sample is rolled to homogenize.

A 1/2 or 1.0 A.T. sample size is fire assayed using appropriate fluxes. The resultant dore bead is parted and then digested with aqua regia and then analyzed on a Perkin Elmer AA instrument.

Appropriate standards and repeat sample (Quality Control components) accompany the samples on the data sheet.

METALLIC GOLD ASSAY

Samples are catalogued and dried. Rock samples are two stage crushed to minus 10 mesh, then split to achieve a 250 gram (approximate) sub sample. The sample is pulverized to 95% - 140 mesh. The sample is weighed, then rolled and homogenized and screened at 140 mesh.

The -140 mesh fraction is homogenized and 2 samples are fire assayed for Au. The +140 mesh material is assayed entirely. The resultant fire assay bead is digested with acid and after parting is analyzed on a Perkin Elmer atomic absorption machine using air-acetylene flame to .03 grams/t detection limit.

The entire set of samples is redone if the quality control standard is outside 2 standard deviations or if the blank is greater than .015 g/t.

The values are calculated back to the original sample weight providing a net gold value as well as 2-140 values and a single +140 mesh value.

MULTI ELEMENT ICP ANALYSIS

Samples are catalogued and dried. Soil samples are screened to obtain a -80 mesh sample. Samples unable to produce adequate -80 mesh material are screened at a coarser fraction. These samples are flagged with the relevant mesh. Rock samples are 2 stage crushed to minus 10 mesh and pulverized on a ring mill pulverizer to minus 140 mesh, rolled and homogenized.

A 0.5 gram sample is digested with aqua regia which contains beryllium which acts as an internal standard. The sample is analyzed on a Jarrell Ash ICP unit.

Results are collated by computer and are printed along with accompanying quality control data (repeats and standards). Results are printed on a laser printer and are faxed and/or mailed to the client.

BASE METAL ASSAYS (Ag, Cu, Pb, Zn)

Samples are catalogued and dried. Rock samples are 2 stage crushed followed by pulverizing a 250 gram subsample. The subsample is rolled and homogenized and bagged in a prenumbered bag.

A suitable sample weight is digested with aqua regia. The sample is allowed to cool, bulked up to a suitable volume and analyzed by an atomic absorption instrument, to .01 % detection limit.

Appropriate certified reference materials accompany the samples through the process providing accurate quality control.

Result data is entered along with standards and repeat values and are faxed and/or mailed to the client.

K:Methods/methicp K:methods/methauas

6-Dec-06

ECO TECH LABORATORY LTD.

10041 Dallas Drive

KAMLOOPS, B.C.

V2C 6T4

Phone: 250-573-5700

Fax : 250-573-4557

ICP CERTIFICATE OF ANALYSIS AK 2006- 1975**Bushmaster Exploration Services Ltd.**

P.O. Box 31293

Whitehorse, Yukon

Y1A 5P7

*No. of samples received: 14**Sample Type: Rock***Project: Tad/NFR Goldstar***Submitted by: J. Pautler***Values in ppm unless otherwise reported**

Et #.	Tag #	Au(ppb)	Ag	Al %	As	Ba	Bi	Ca %	Cd	Co	Cr	Cu	Fe %	La	Mg %	Mn	Mo	Na %	Ni	P	Pb	Sb	Sn	Sr	Ti %	U	V	W	Y	Zn
1	164737	10	0.6	0.59	15	105	<5	0.19	13	8	48	6	2.10	20	0.14	2725	5	0.02	6	850	124	<5	<20	7	<0.01	<10	14	<10	4	556
2	164738	<5	0.3	0.84	15	65	<5	0.28	3	5	58	4	2.30	<10	0.37	930	4	0.03	4	750	38	<5	<20	10	<0.01	<10	25	<10	5	321
3	164739	20	7.5	0.25	310	120	<5	0.08	13	2	47	151	2.85	10	<0.01	261	4	0.03	3	650	200	<5	<20	51	<0.01	<10	8	<10	5	1432
4	164740	20	2.1	0.33	200	55	<5	0.21	46	10	38	92	2.20	20	0.09	4827	14	0.01	4	750	142	<5	<20	13	<0.01	<10	9	<10	27	3513
5	164741	20	3.0	0.28	190	215	<5	4.78	185	3	29	42	3.81	60	0.29	4307	2	0.01	7	580	462	<5	<20	88	<0.01	<10	9	<10	40	6581
6	164742	20	4.4	0.25	45	135	<5	0.13	53	13	40	25	2.68	20	<0.01	5188	3	0.02	3	690	538	<5	<20	51	<0.01	<10	12	<10	18	2778
7	164743	35	2.8	0.30	75	160	15	0.06	4	2	37	6	2.37	20	<0.01	332	3	0.04	1	530	90	<5	<20	76	<0.01	<10	6	<10	2	365
8	164744	5	<0.2	0.29	15	30	<5	0.08	<1	4	71	6	0.81	<10	0.16	185	<1	0.02	5	90	20	<5	<20	9	0.02	<10	12	<10	5	27
9	164745	10	0.5	0.21	10	160	<5	0.04	<1	<1	49	3	1.50	10	<0.01	42	2	0.04	<1	420	34	<5	<20	33	<0.01	<10	2	<10	<1	30
10	164746	5	<0.2	0.52	5	65	65	1.63	<1	4	61	5	1.54	20	0.23	688	188	0.03	3	690	28	<5	<20	31	<0.01	<10	15	<10	23	72
11	164747	5	<0.2	0.32	<5	550	30	1.64	<1	2	64	8	1.66	20	0.30	826	25	0.02	4	710	22	<5	<20	50	<0.01	<10	13	<10	22	61
14	164750	5	<0.2	0.32	<5	140	<5	0.39	<1	4	67	4	1.21	20	0.11	460	3	0.02	4	610	18	<5	<20	11	<0.01	<10	10	<10	18	30

QC DATA:**Repeat:**

1	164737	10	0.7	0.56	15	100	<5	0.19	13	8	49	6	2.08	20	0.14	2684	5	0.02	6	870	122	<5	<20	8	<0.01	<10	14	<10	5	564
10	164746	5																												
12	164748	500																												

Resplit:

1	164737	10	0.6	0.60	15	105	<5	0.19	13	8	56	7	2.09	20	0.15	2653	5	0.02	6	860	132	<5	<20	9	<0.01	<10	14	<10	5	541
---	--------	----	-----	------	----	-----	----	------	----	---	----	---	------	----	------	------	---	------	---	-----	-----	----	-----	---	-------	-----	----	-----	---	-----

Standard:

Pb106			>30	0.50	275	95	<5	1.69	29	3	43	6360	1.37	<10	0.26	547	39	0.02	6	240	5320	55	<20	144	<0.01	<10	3	10	<1	8404
OXE42		615																												

JJ/kc/sa

dt/1979

XLS/D6

ECO TECH LABORATORY LTD.

Jutta Jealous

B.C. Certified Assayer

APPENDIX V
Statement of Expenditures

Wages:	J. Pautler	5 days @ 600.00/day	\$ 3,000.00
	Matthius Bindig	2 days @ 300.00/day	<u>600.00</u>
		Total: 7 man-days	\$ 3,600.00
Geochemistry:	12 rock samples @ 25ea.	Au, ICP	300.00
	3 rock assays @ 10/ea.	Au, Cu	30.00
	Shipping		<u>45.00</u>
		Total:	375.00
Helicopter:	Helidynamics Ltd.		2,790.00
	Whitehorse, Yukon Territory		
Equipment Rental:	Truck:	2 days @ 100./day	200.00
	Radios:	7 mds @ 10/day	70.00
	Satellite Phone:	4 days @ 20/day	<u>80.00</u>
		Total:	350.00
Fuel:			200.00
Camp cost:	(propane, supplies, satellite phone)		
	7 man-days @ 10./md		70.00
Groceries:	7 man-days @ 35./md		245.00
Field Supplies:	(flagging tape, thread, sample bags)		
	7 man-days @ 15./md		105.00
Copying:			50.00
Report & Drafting:			<u>2,400.00</u>
GRAND TOTAL:			\$ 10,185.00
Total applied for assessment			9,600.00

APPENDIX VI
STATEMENT OF QUALIFICATION

I, Jean Marie Pautler, do hereby certify that:

- 1) I, Jean Marie Pautler of 103-108 Elliott Street, Whitehorse, Yukon Territory am self-employed as a consultant geologist and authored this report.
- 2) I am a graduate of Laurentian University, Sudbury, Ontario with an Honours B.Sc. degree in geology (May, 1980).
- 3) I am a registered member of the Association of Professional Engineers and Geoscientists of British Columbia, Registration Number 19804.
- 4) I am a geologist with more than twenty-five years of experience in the Canadian Cordillera.
- 5) I supervised and participated in the 2006 program on the Tad/Toro property between October 17 and 22, 2006.
- 6) I have no direct or indirect interest in the Tad/Toro property, which is the subject of this report.

Jean Pautler, P.Geol.
JP Exploration Services Inc.
#103-108 Elliott St
Whitehorse, Yukon
Y1A 6C4

