

GEOCHEMICAL REPORT

OREO 1-40 CLAIMS

GRANT # YC30233-YC30272

NTS # 116 A \ 4

LAT: 64' 09' N

LONG: 137' 39' W

DAWSON MINING DISTRICT

AUTHOR OF REPORT SHAWN RYAN

WORK PERFORMED AUGUST 9, 2005

DATE OF REPORT OCTOBER 05, 2006

TABLE OF CONTENT

SUMMARY

1.0 INTRODUCTION	P.3
2.0 LOCATIONS AND ACCESS	P.3
3.0 PROPERTY DESCRIPTION	P.3
4.0 PHYSIOGRAPHY	P.3
5.0 REGIONAL AND PROPERTY GEOLOGY	P.4
6.0 WORK PERFORMED / METHODS	P.4
7.0 INTERPRETATIONS	P.5
8.0 RECOMMENDATION	P.5
9.0 REFERENCES CITED	P.5
10.0 COST	P.5
11.0 QUALIFICATION	P.6
Claim Location Map	
Gold Anomaly Map	Figure 1
Arsenic Anomaly Map	Figure 2
Antimony Anomaly Map	Figure 3
Soil GPS Points	Appendix
Assay Data	Appendix

SUMMARY

The Oreo Claims project seen 3 man days of soil work collecting 86 soils. The soil work was successful in expanding the 2004 gold target.

1.0 INTRODUCTION

The Oreo claims were staked to cover a potassium anomaly found next to the Ida-Oro claims. Assessment records indicate no previous work over the new potassium anomalies

2.0 LOCATIONS AND ACCESS

Oreo 1-40 claims are located 90 kilometers east north east of Dawson City on NTS sheet 116 A / 04. Access is via helicopter from Dawson City. The estimated helicopter time is 1.3 hours there and back.

3.0 PROPERTY DESCRIPTION

The Oreo 1-40 claims consist of 40 full Yukon quartz-mining claims. The claim block was staked in two separated blocks.

4.0 PHYSIOGRAPHY

The property is in glaciated, mountainous, alpine terrain of interconnected ridges with steep scree covered slopes. Intrusive rocks form imposing jagged peaks while metasediments form cliff-like outcroppings on north and east-facing slopes, and steep scree covered south and west-facing slopes (often dip slopes).

Elevation ranges from 900 meters at valley bottom to 1700 meters at the peak of Ida-Oro Tombstone Intrusive. Diamicton and outwash generally cover the valleys while in-situ weathered rock, poorly developed soils, and felsenmeer dominate the ridges. Rock outcrops are common along the ridges and as cliffs along the upper slopes of valleys, becoming rarer at lower elevations, especially in the larger valleys.

The climate is characterized by low precipitation and a wide temperature range. Winters are cold, and temperatures of -30°C to -40°C are common. Summers are moderately cool to hot, with daily highs of 10°C to 25°C. The property is generally snow free from early-June to the end of August.

5.0 REGIONAL AND PROPERTY GEOLOGY

ii) GEOLOGY (excerpt from Noranda 1989 assessment report 092794)

REGIONAL GEOLOGY

The Property lies within rocks of the Selwyn Basin. The basin is dominated by fine grained clastic rocks and chert of Proterozoic to Paleozoic in age. It includes the Road River Formation which occurs in the region of the Oreo property. This is a sequence of shales, black cherty argillites, cherts and chert-pebble conglomerates of Ordovician to Silurian in age. Cretaceous stocks and batholiths, mostly monzonite to granodiorite in composition, intrude Selwyn Basin strata in a number of localities.

PROPERTY GEOLOGY

The Oreo Property area is underlain by three units of Road River Formation, as describe in Noranda reports plus numerous east west trending Tombstone intrusive dikes.

6.0 WORK PERFORMED / METHODS

Soil Work

The soil survey was undertaken by four employees of Ryanwood Exploration they consist of Jim Skailles, Tyson Foxcroft, and Isaac Fage.

Soil where taken at 100 meters intervals using one-meter soil augers or prospector picks.

Soil sample where taken at an average depth of 50-70 centimeters. All sample where placed in kraft soil bags. Exact position location where define using Garmin GPS. All GPS location where downloaded nightly into field computers.

Soil location where marked in the field with an orange flagging with sample number.

Sample where air dried in Dawson City and then sent to Acme Labs in Vancouver. Sample where processed at minus 80 mesh and analysis was 1DX-MS for 35 elements.

7.0 INTERPRETATIONS

The soil grid revealed a nice gold, arsenic and antimony anomaly appearing at the southern part of the grid. Arsenic is also very anomalous along the western edge of the 2005 grid. The maximum values for gold where 376 ppb Au, over 10,000 ppm for arsenic and 81 ppm antimony.

8.0 RECOMMENDATION

I recommend a detail soil grid extending the grid to the south and to the west of the 2005 grid work. Lines should be placed on 100 meter spacing and soil station should be every 50 meter.

9.0 REFERENCES CITED

Noranda Exploration Co. Ltd. (1989) Assessment Report on 1989 Field Activities on the Ida-Oro Claims # 092794.

10.0 COST

Wage three men for one day at \$250.00 per day	\$750.00
Helicopter Travel 2.6 hours for drop off and pick up	
Total 2.6 hours at \$1200.00	\$3,120.00
Assay Cost 86 Soils at \$18.00	\$1,548.00
Report Writing	\$350.00

Total	\$5768.00

11.0 QUALIFICATION

I Shawn Ryan located in Dawson City, Yukon work as a professional prospector. I run a small exploration company located in Dawson city.

I have worked in the exploration business for the last 23 years. I worked the first 12 years as a contractor working on numerous projects in the NWT, Ontario, Quebec and the Yukon. I have worked for the last 9 years as a local prospector for myself.

I have being trained to run various geophysical instruments, surveys such as magnetic surveys, max-min surveys, induce polarity surveys, and VLF surveys.

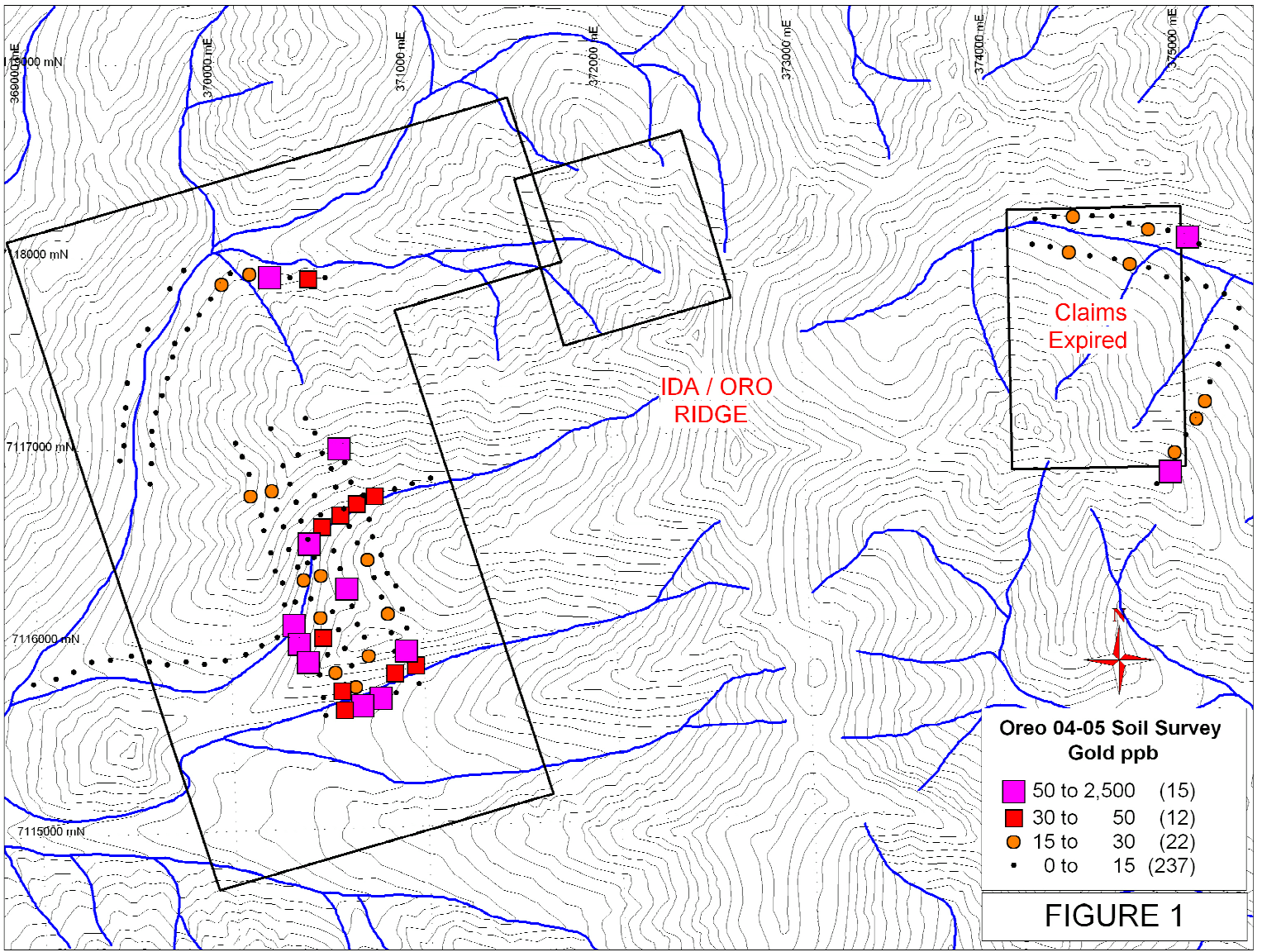
I have overseen the entire Oreo Project and was the party chief in charge.

I own 100 % of the Oreo claims.

Dated this 05 of October 2006 in Dawson City, Yukon.

Respectfully submitted

Shawn Ryan

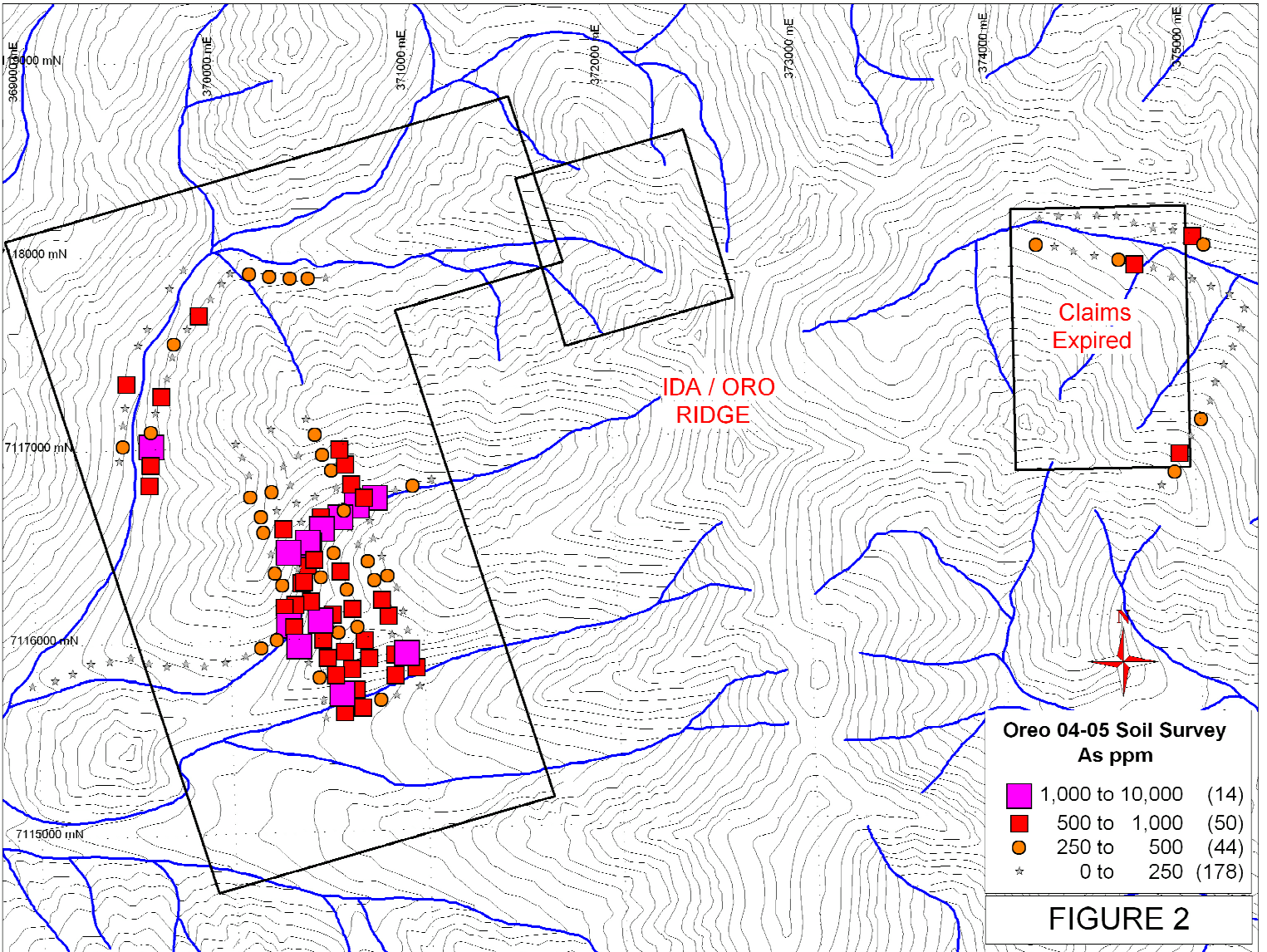


NTS 116 A / 04 Nad 83

Oreo Claims

Scale 1:25,000

FIGURE 1

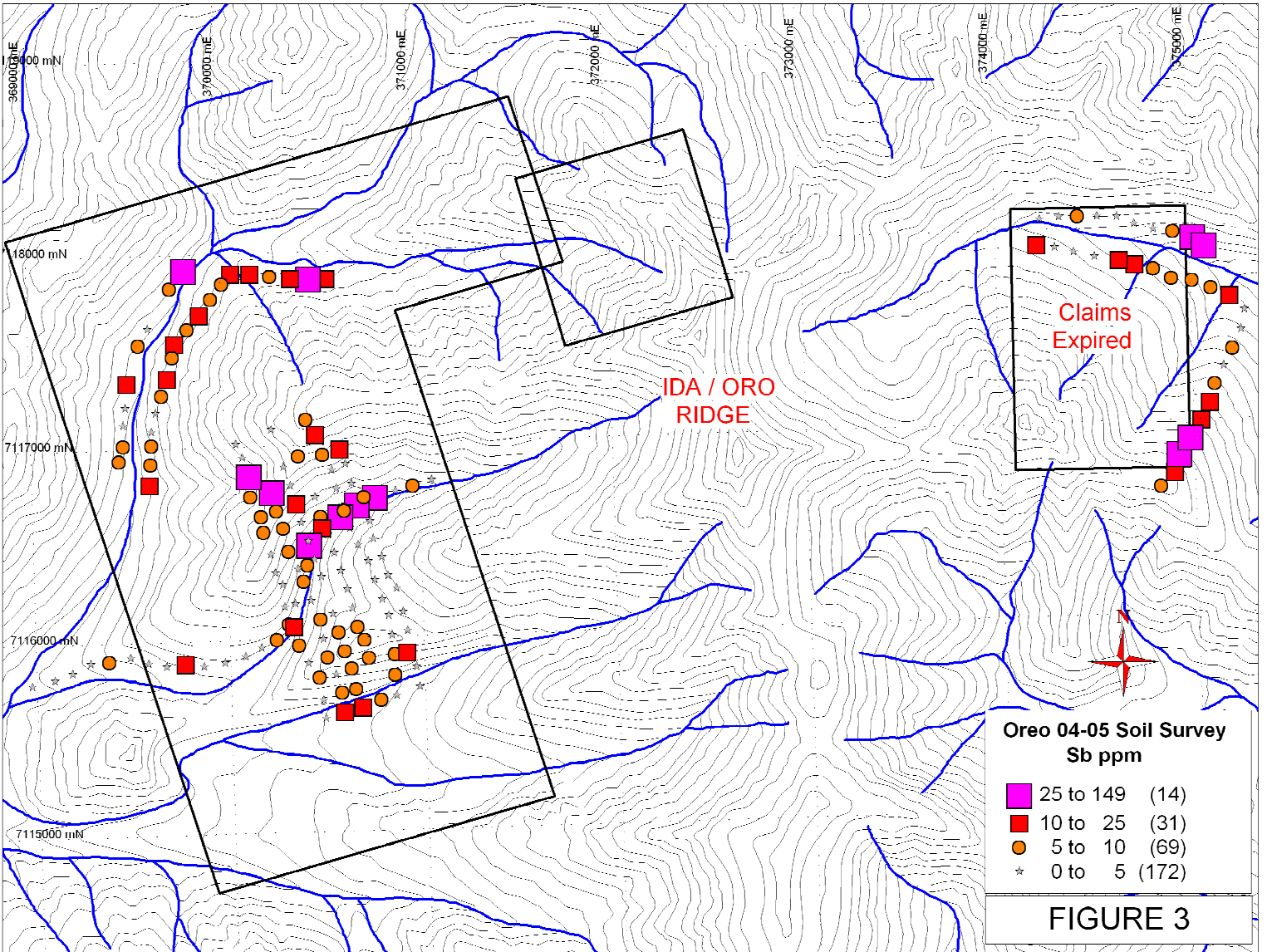


NTS 116 A / 04 Nad 83

Oreo Claims

Scale 1:25,000

FIGURE 2

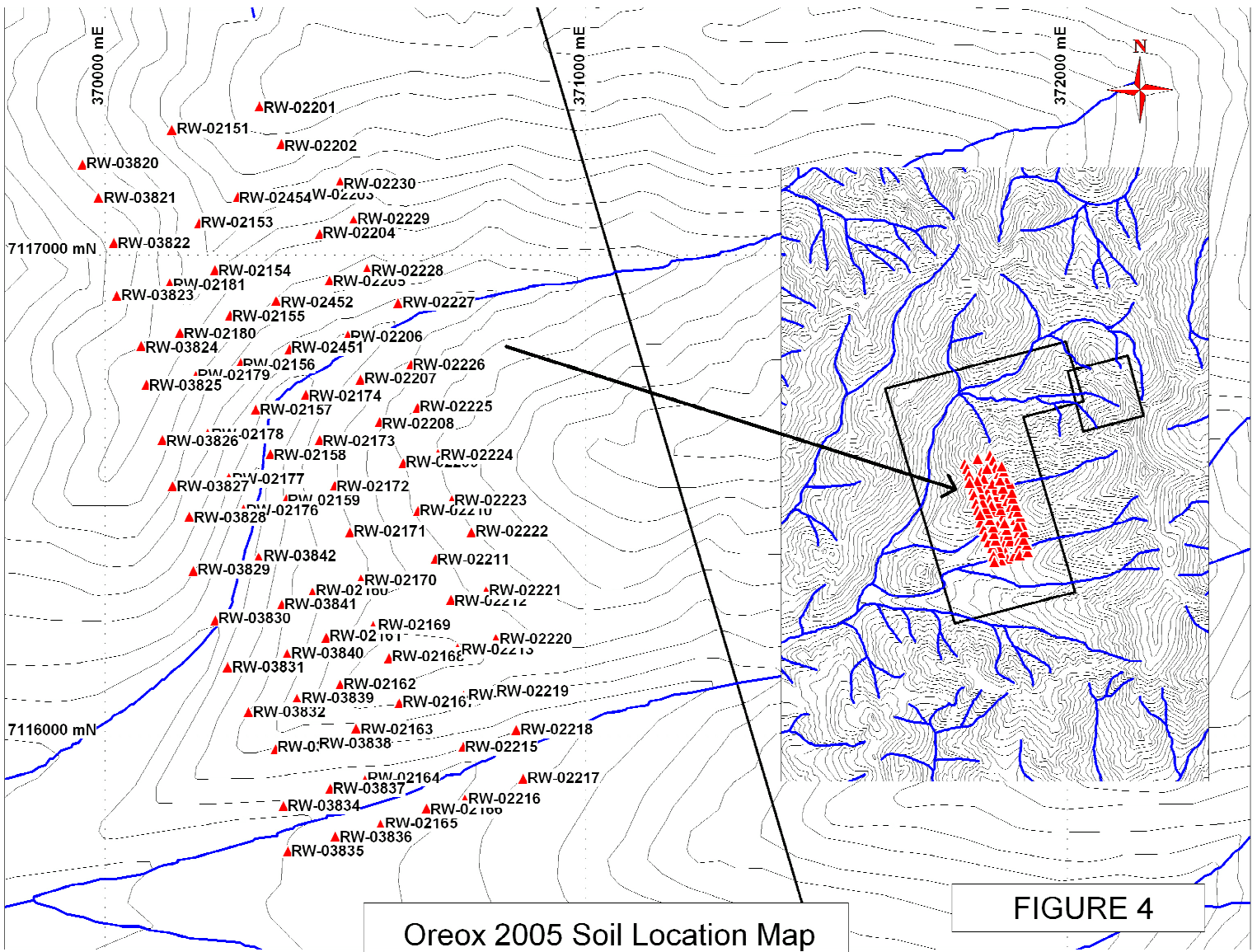


NTS 116 A / 04 Nad 83

Oreo Claims

Scale 1:25,000

FIGURE 3



Oreox 2005 Soil Location Map

FIGURE 4
Scale 1:10,000

SAMPLES	GPS ID	Datum	Easting	Northing	Date_Time	Elevation	Mo	Cu
RW-02151	RW02151	NAD83-8W	370140	7117263	09-AUG-05 10:02	1351.5	1.9	30.5
RW-02153	RW02153	NAD83-8W	370197	7117068	09-AUG-05 10:50	1315.5	2.5	17.8
RW-02154	RW02154	NAD83-8W	370230	7116971	09-AUG-05 11:02	1301.8	2.3	24.6
RW-02155	RW02155	NAD83-8W	370261	7116877	09-AUG-05 11:14	1239.6	5	19.7
RW-02156	RW02156	NAD83-8W	370283	7116778	09-AUG-05 11:32	1180.8	2.1	38.6
RW-02157	RW02157	NAD83-8W	370315	7116681	09-AUG-05 11:48	1125.9	1.8	61.4
RW-02158	RW02158	NAD83-8W	370345	7116588	09-AUG-05 12:39	1092.4	2.7	35.7
RW-02159	RW02159	NAD83-8W	370378	7116495	09-AUG-05 12:51	1100.9	2.3	28.8
RW-02160	RW02160	NAD83-8W	370432	7116301	09-AUG-05 13:07	1154.3	1.9	41.1
RW-02161	RW02161	NAD83-8W	370461	7116207	09-AUG-05 13:18	1180.5	1.5	52.8
RW-02162	RW02162	NAD83-8W	370490	7116109	09-AUG-05 13:30	1211.3	1.1	40.1
RW-02163	RW02163	NAD83-8W	370523	7116018	09-AUG-05 13:42	1164.9	1.9	77.9
RW-02164	RW02164	NAD83-8W	370542	7115912	09-AUG-05 13:56	1114.7	1.9	66.3
RW-02165	RW02165	NAD83-8W	370574	7115818	09-AUG-05 14:05	1058.9	4.6	90.1
RW-02166	RW02166	NAD83-8W	370670	7115852	09-AUG-05 14:14	1060.4	5.1	91.6
RW-02167	RW02167	NAD83-8W	370613	7116071	09-AUG-05 14:51	1186	8.5	159.9
RW-02168	RW02168	NAD83-8W	370592	7116165	09-AUG-05 15:09	1221.6	1.6	44.5
RW-02169	RW02169	NAD83-8W	370559	7116232	09-AUG-05 15:18	1214.6	2.1	73.9
RW-02170	RW02170	NAD83-8W	370533	7116328	09-AUG-05 15:25	1180.5	1	84
RW-02171	RW02171	NAD83-8W	370510	7116426	09-AUG-05 15:34	1131.7	2	39.7
RW-02172	RW02172	NAD83-8W	370479	7116523	09-AUG-05 15:45	1155.5	2.5	38.7
RW-02173	RW02173	NAD83-8W	370448	7116618	09-AUG-05 15:58	1158.5	1.1	38.7
RW-02174	RW02174	NAD83-8W	370419	7116712	09-AUG-05 16:08	1132.9	2.7	34.3
RW-02176	RW02176	NAD83-8W	370289	7116474	09-AUG-05 15:39	1088.7	5.4	89.8
RW-02177	RW02177	NAD83-8W	370259	7116539	09-AUG-05 15:56	1126.2	2.4	41.2
RW-02178	RW02178	NAD83-8W	370215	7116632	09-AUG-05 16:19	1169.2	7.1	257.1
RW-02179	RW02179	NAD83-8W	370190	7116751	09-AUG-05 16:42	1219.5	2.8	35.4
RW-02180	RW02180	NAD83-8W	370157	7116841	09-AUG-05 17:03	1286	1.8	40.5
RW-02181	RW02181	NAD83-8W	370136	7116943	09-AUG-05 17:11	1263.7	7.1	38.7
RW-02201	RW02201	NAD83-8W	370322	7117311	09-AUG-05 09:56	1438.4	2	50.4
RW-02202	RW02202	NAD83-8W	370368	7117233	09-AUG-05 10:14	1410.9	5.5	88.4
RW-02203	RW02203	NAD83-8W	370403	7117128	09-AUG-05 10:22	1345.4	2.9	45.7
RW-02204	RW02204	NAD83-8W	370448	7117046	09-AUG-05 10:37	1278	2.2	35.8
RW-02205	RW02205	NAD83-8W	370468	7116949	09-AUG-05 10:58	1211.3	1.8	36.7
RW-02206	RW02206	NAD83-8W	370506	7116835	09-AUG-05 11:08	1160.1	3.4	117.8
RW-02207	RW02207	NAD83-8W	370532	7116743	09-AUG-05 11:34	1135.4	2.8	35.9
RW-02208	RW02208	NAD83-8W	370572	7116655	09-AUG-05 11:48	1196.3	1.4	30.9
RW-02209	RW02209	NAD83-8W	370621	7116570	09-AUG-05 12:01	1228.3	1.6	58.8
RW-02210	RW02210	NAD83-8W	370652	7116471	09-AUG-05 12:30	1211.3	1.3	25.5
RW-02211	RW02211	NAD83-8W	370688	7116371	09-AUG-05 12:34	1205.5	1.7	47.4
RW-02212	RW02212	NAD83-8W	370720	7116286	09-AUG-05 12:47	1221.6	1.5	84.1
RW-02213	RW02213	NAD83-8W	370734	7116185	09-AUG-05 12:53	1239.6	2.2	63.6
RW-02214	RW02214	NAD83-8W	370747	7116087	09-AUG-05 13:16	1208.2	2	71.5
RW-02215	RW02215	NAD83-8W	370746	7115980	09-AUG-05 13:38	1094.2	2.4	80.5
RW-02216	RW02216	NAD83-8W	370749	7115871	09-AUG-05 13:55	1079.6	1.2	13.5
RW-02217	RW02217	NAD83-8W	370870	7115914	09-AUG-05 14:05	1104	1.1	22.6
RW-02218	RW02218	NAD83-8W	370856	7116016	09-AUG-05 14:24	1102.2	1.6	99.3
RW-02219	RW02219	NAD83-8W	370809	7116094	09-AUG-05 14:40	1156.7	1.5	738.3
RW-02220	RW02220	NAD83-8W	370814	7116205	09-AUG-05 14:52	1223.5	1.3	12.9
RW-02221	RW02221	NAD83-8W	370793	7116304	09-AUG-05 15:05	1228.3	1.4	35.8
RW-02222	RW02222	NAD83-8W	370763	7116426	09-AUG-05 15:15	1238.4	1.6	30.6
RW-02223	RW02223	NAD83-8W	370722	7116493	09-AUG-05 15:24	1256.7	1.5	56.6
RW-02224	RW02224	NAD83-8W	370693	7116589	09-AUG-05 15:32	1252.4	1.4	31.1
RW-02225	RW02225	NAD83-8W	370651	7116685	09-AUG-05 15:40	1231.7	2	25.9
RW-02226	RW02226	NAD83-8W	370637	7116775	09-AUG-05 15:48	1204.3	2.9	35
RW-02227	RW02227	NAD83-8W	370610	7116902	09-AUG-05 16:10	1167.1	3	171.8
RW-02228	RW02228	NAD83-8W	370546	7116973	09-AUG-05 16:27	1213.4	2.1	35.3
RW-02229	RW02229	NAD83-8W	370518	7117075	09-AUG-05 16:43	1267.4	2.4	29

SAMPLES	Pb	Zn	Ag	Ni	Co	Mn	Fe	As	U	Au	Th	Sr
RW-02151	9.2	37	0.3	16.1	5.8	275	2.33	99.9	1.9	6.3	0.4	17
RW-02153	10.6	30	0	9	4.2	242	1.96	61	0.6	3.2	0.3	10
RW-02154	7	36	0.2	11.9	4.1	118	2.57	154.9	0.7	9.7	2.6	10
RW-02155	9	25	0.6	8.9	3.9	142	1.92	137.1	1.7	7.5	1.4	23
RW-02156	8.6	51	0.1	31.8	10	255	2.98	107.2	1	6.5	3.7	12
RW-02157	9.3	52	0.2	29.1	9.3	294	3.05	1713.5	1	12.9	2.5	17
RW-02158	10.8	47	0	16.9	7.1	352	2.31	647.6	1.5	9.1	0.9	15
RW-02159	6.9	43	0.1	16.9	4.9	157	2.04	275.5	1	20	0.9	16
RW-02160	6.7	50	0.1	20.9	7.3	204	2.4	541.5	1.4	3	2	19
RW-02161	15.5	61	0.1	24.3	10.5	357	2.48	451.2	1.2	8.7	4.4	32
RW-02162	22.4	51	0.1	16.8	8.3	223	2.79	516.3	0.8	6.5	5.2	20
RW-02163	17.8	54	0.3	24.8	16.1	506	2.66	700.8	2.3	13.2	3.9	81
RW-02164	14.4	55	0.3	29.5	14.5	283	2.96	792.5	1.8	18.6	6.3	75
RW-02165	16.3	44	0.4	24.4	6.1	166	2.47	692.1	2	65.2	4.4	23
RW-02166	13.2	39	0.6	19.5	5.7	173	1.94	467.9	2.9	126.5	0.9	20
RW-02167	10.4	57	0.2	48.4	12.7	212	3.63	598.5	3.9	25.3	4.5	96
RW-02168	12.5	53	0	22.8	11.8	325	2.67	653	1.1	4.5	3.3	26
RW-02169	8.8	67	0.3	31.3	15.2	308	2.8	469.1	1.9	5.4	6	42
RW-02170	7.2	59	0.1	24.7	11.6	321	2.35	645.8	1	14.1	3.4	19
RW-02171	8.6	53	0.2	22.6	8	238	2.71	482.8	1.1	79.7	1.7	22
RW-02172	8.4	62	0.1	25.3	11.5	415	3	529	1.1	7.2	3.4	24
RW-02173	8	64	0	26	11.3	357	2.52	390.7	1.1	6.7	3.2	17
RW-02174	8.7	43	0.3	12.7	5.8	249	2.43	382.3	1.8	7	0.4	14
RW-02176	18.9	61	0.6	30.8	9.9	460	3.16	834.6	3.3	25	1	41
RW-02177	12.4	62	0.2	34.4	16.5	404	2.93	178.9	1.1	4.5	2.5	28
RW-02178	10.7	94	0.4	76.9	20.2	219	3.49	1606.4	6.9	11.8	1.6	70
RW-02179	11.3	56	0.3	18	10.8	475	3.03	580.7	2	6	2.5	28
RW-02180	8.1	76	0.3	39	15.1	257	3.01	159.8	1.5	2	4.2	13
RW-02181	19.2	44	0.6	12.9	6.5	323	2.94	250.9	1.4	26.2	3.6	29
RW-02201	16.5	69	0	33.9	11	399	3.38	93.3	1.3	4.7	3.2	15
RW-02202	34.1	84	0.6	34.1	27.4	2210	2.79	396.1	3.1	8	1.3	48
RW-02203	19.8	59	0.4	17	8.3	495	2.54	372.3	3.3	2.9	0.3	59
RW-02204	14.4	52	0.2	19.7	7.8	334	2.83	337.5	1.7	1.4	1.9	16
RW-02205	8.4	52	0.1	20.1	7.6	279	2.48	205.8	1.3	2.5	2.5	19
RW-02206	9.5	86	0.2	69.3	27.7	385	3.37	343.5	2.4	6.7	4.2	36
RW-02207	7.4	57	0.1	27	7.6	319	2.53	123.1	1.8	4.6	2.1	21
RW-02208	10.6	61	0	26.9	13.7	513	3.02	63.2	1	9.1	3.8	15
RW-02209	8.8	50	0	21.2	8.2	288	2.55	341	1.1	15.7	2.5	13
RW-02210	9.9	35	0	13.3	5.3	217	2.47	320.3	1	3.6	0.9	9
RW-02211	7.7	46	0.1	20.3	6.6	264	2.32	593.2	1.3	6.1	1.3	14
RW-02212	9.1	65	0.3	30	7.7	242	2.29	840.7	1.7	25.1	3.8	24
RW-02213	9.9	55	0	39.9	13	208	2.93	137.9	1.2	7.9	3.9	23
RW-02214	10.2	91	0.2	34.2	21.6	888	3.2	695.8	1.7	10.6	2.8	34
RW-02215	10.7	58	0.4	32.6	12.9	324	2.47	611.2	1.4	35.9	3.4	63
RW-02216	8.7	45	0	10.2	2.9	109	1.77	29.3	0.9	1.1	0.3	10
RW-02217	8.9	55	0	18.3	7.9	285	2.08	27.7	0.9	1.6	1.2	13
RW-02218	12.8	44	0.4	27.4	9.2	265	2.4	938.5	1.3	34.4	3.7	38
RW-02219	34.2	61	3.4	74.1	50.7	591	4.08	6238.9	3.1	98.7	2.8	155
RW-02220	10.8	35	0.3	10.7	4.9	182	2.7	82.3	0.4	1.3	2.9	7
RW-02221	10.3	37	0.1	15.2	4	114	2.35	110.6	1.2	5.1	0.5	11
RW-02222	8.7	45	0	15.6	5.4	227	2.59	198.1	1.2	9.3	0.9	10
RW-02223	7.5	63	0.2	25.8	9.9	367	2.48	409.8	1.2	9.6	3.7	16
RW-02224	10.3	57	0	22.4	10	393	3.13	40.2	1	2.8	1.8	11
RW-02225	8.3	55	0	19.1	5.7	259	2.84	54.7	0.7	3.4	1.4	14
RW-02226	7.3	30	0.4	15.8	2.9	97	1.78	159.5	1.4	3.5	0.3	12
RW-02227	11.8	41	0.3	26.3	7.1	174	2.49	716.3	2	6	1.4	39
RW-02228	13.9	36	0.1	15.6	5.6	180	2.5	516.3	0.7	3.5	2.4	23
RW-02229	13.1	38	0.3	16.3	5.5	184	2.63	611.9	0.8	1.9	1.8	25

SAMPLES	Cd	Sb	Bi	V	Ca	P	La	Cr	Mg	Ba	Ti
RW-02151	0.2	3.3	1.4	72	0.11	0.101	13	29.8	0.48	192	0.021
RW-02153	0.2	2.5	1.4	65	0.06	0.058	13	21.7	0.34	94	0.027
RW-02154	0.1	3.8	0.9	61	0.06	0.04	12	24.2	0.33	192	0.043
RW-02155	0.2	19.9	2.4	101	0.08	0.079	12	26.4	0.19	319	0.017
RW-02156	0.1	3.6	0.8	74	0.09	0.036	12	40.3	0.72	162	0.071
RW-02157	0.3	4	1.8	64	0.09	0.059	13	36.3	0.54	174	0.039
RW-02158	0.3	2.7	2.4	63	0.11	0.08	14	28.3	0.35	144	0.032
RW-02159	0.1	1.7	0.4	50	0.14	0.067	14	26.6	0.43	139	0.033
RW-02160	0.2	3.2	0.5	65	0.17	0.06	16	30.8	0.75	164	0.058
RW-02161	0.3	5.8	1.2	67	0.24	0.075	16	32.5	0.82	233	0.065
RW-02162	0.2	8.6	2.7	50	0.12	0.036	14	27.6	0.56	161	0.031
RW-02163	0.5	8.5	3.1	94	0.69	0.107	23	34.9	1.31	205	0.052
RW-02164	0.3	7.1	2.6	103	0.46	0.078	20	42	1.52	293	0.101
RW-02165	0.3	14.3	4.3	98	0.14	0.073	16	39	0.73	229	0.088
RW-02166	0.4	9.6	3.4	67	0.11	0.094	15	25.9	0.42	186	0.033
RW-02167	0.1	5.4	1.2	123	0.53	0.296	17	37.5	0.99	221	0.073
RW-02168	0.2	7.9	4	90	0.14	0.055	16	33.2	0.75	224	0.076
RW-02169	0.3	9.4	1.1	64	0.34	0.098	22	29.9	0.75	222	0.074
RW-02170	0.3	3.8	0.9	49	0.21	0.082	16	23.8	0.48	134	0.047
RW-02171	0.2	4.3	0.9	66	0.19	0.067	16	30.3	0.6	175	0.044
RW-02172	0.2	2.7	0.7	70	0.18	0.077	15	33.4	0.56	210	0.061
RW-02173	0.3	1.8	0.5	53	0.16	0.066	16	29.2	0.5	149	0.053
RW-02174	0.2	2.9	1.3	67	0.1	0.078	14	27.5	0.27	170	0.021
RW-02176	0.2	9.9	8.3	84	0.14	0.112	14	34.7	0.53	250	0.025
RW-02177	0.4	3.1	1.6	88	0.18	0.069	15	37.7	0.81	227	0.061
RW-02178	0.4	7.6	1.5	104	0.5	0.163	18	33.7	0.92	200	0.048
RW-02179	0.2	7.8	3.4	66	0.16	0.197	15	31.7	0.38	356	0.048
RW-02180	0.2	8.2	15.3	107	0.15	0.033	14	54.2	1.22	329	0.096
RW-02181	0.2	55	3.8	113	0.17	0.123	16	28.3	0.26	291	0.035
RW-02201	0.3	5.4	1	103	0.1	0.038	13	45.1	0.78	255	0.089
RW-02202	1.5	10	16.5	93	0.49	0.214	24	30	0.54	287	0.018
RW-02203	0.3	9	11.6	63	0.29	0.114	11	25.4	0.43	188	0.013
RW-02204	0.3	4.1	6.6	63	0.12	0.066	13	28.6	0.5	154	0.036
RW-02205	0.1	4.1	3.4	67	0.13	0.059	12	29.5	0.65	140	0.053
RW-02206	0.6	7.7	3.8	68	0.2	0.115	14	33	0.69	302	0.053
RW-02207	0.3	3.6	0.6	80	0.09	0.057	9	38.8	0.61	200	0.085
RW-02208	0.3	1.7	0.4	71	0.16	0.074	14	51.2	0.62	228	0.073
RW-02209	0.2	2.4	1.2	56	0.1	0.051	13	28.8	0.48	207	0.041
RW-02210	0.2	1.4	0.8	58	0.08	0.047	10	28.9	0.37	129	0.036
RW-02211	0.1	2.9	0.8	65	0.15	0.066	13	27.9	0.48	129	0.035
RW-02212	0.2	4.2	4.8	66	0.31	0.102	15	30.1	0.82	183	0.052
RW-02213	0.3	4.4	1.1	71	0.19	0.088	11	35.3	0.78	179	0.066
RW-02214	0.5	6.3	3.7	86	0.34	0.135	14	39.3	1.14	341	0.067
RW-02215	0.2	5.3	2.4	72	0.39	0.111	14	30.7	0.83	154	0.055
RW-02216	0.3	1.6	0.2	49	0.07	0.041	10	24.2	0.3	76	0.023
RW-02217	0.1	1.7	0.2	49	0.15	0.063	13	27.3	0.5	117	0.036
RW-02218	0.4	4.8	11	65	0.54	0.067	13	30.3	0.83	165	0.061
RW-02219	1	13.4	150	65	1.58	0.122	21	31	1.22	185	0.039
RW-02220	0.2	1	0.7	63	0.06	0.027	10	21.1	0.22	72	0.05
RW-02221	0.1	2	1.6	70	0.08	0.054	11	28.9	0.38	120	0.025
RW-02222	0.2	1.5	0.8	74	0.08	0.062	11	33.2	0.42	147	0.031
RW-02223	0.3	2.5	0.7	53	0.16	0.07	14	25.4	0.41	162	0.046
RW-02224	0.2	1.2	0.3	72	0.09	0.05	13	49.5	0.47	239	0.065
RW-02225	0.1	2	0.4	69	0.07	0.038	9	32	0.43	123	0.066
RW-02226	0.2	2.1	1.4	124	0.06	0.065	7	27.7	0.16	150	0.034
RW-02227	0.2	6.4	10.9	52	0.19	0.066	14	26.5	0.43	140	0.038
RW-02228	0.1	4.2	5.3	58	0.11	0.029	12	24.5	0.34	161	0.044
RW-02229	0.5	3.4	5.8	75	0.16	0.039	11	26.9	0.38	148	0.048

SAMPLES	B	Al	Na	K	W	Hg	Sc	Tl
RW-02151	1	1.52	0.006	0.11	0.1	0.05	1.2	0.4
RW-02153	2	1.05	0.005	0.08	0.2	0.03	0.8	0.2
RW-02154	1	1.27	0.005	0.09	0.3	0.03	1.9	0.4
RW-02155	1	0.71	0.004	0.07	0.3	0.14	1.7	1.4
RW-02156	2	2.19	0.007	0.1	0.3	0.03	3.2	0.4
RW-02157	1	1.88	0.008	0.09	0.4	0.04	2.8	0.3
RW-02158	1	1.48	0.006	0.07	0.5	0.03	1.6	0.3
RW-02159	1	1.3	0.007	0.08	0.3	0.04	1.7	0.3
RW-02160	2	1.8	0.009	0.14	0.2	0.03	2.6	0.4
RW-02161	1	1.82	0.009	0.14	0.5	0.03	2.9	0.3
RW-02162	2	1.98	0.005	0.07	0.2	0.05	2.9	0.2
RW-02163	1	2.54	0.02	0.2	0.4	0.04	3.6	0.4
RW-02164	1	2.93	0.019	0.22	0.2	0.02	4.1	0.4
RW-02165	2	1.62	0.009	0.21	0.9	0.17	3.1	0.5
RW-02166	1	1.33	0.01	0.14	0.6	0.12	1.7	0.4
RW-02167	1	2.51	0.024	0.18	0.4	0.03	3.2	0.5
RW-02168	1	1.93	0.007	0.17	0.7	0.02	2.8	0.3
RW-02169	2	1.65	0.011	0.21	0.6	0.03	3.1	0.4
RW-02170	1	1.23	0.007	0.09	0.8	0.02	2.3	0.2
RW-02171	1	1.53	0.008	0.09	0.9	0.03	2.2	0.3
RW-02172	1	1.76	0.008	0.11	0.6	0.02	2.6	0.2
RW-02173	1	1.59	0.008	0.07	0.5	0.04	2.7	0.2
RW-02174	0	1.08	0.007	0.06	0.3	0.04	1	0.2
RW-02176	1	1.66	0.011	0.15	0.4	0.09	1.8	0.5
RW-02177	1	2.07	0.009	0.11	0.3	0.03	2.7	0.3
RW-02178	1	2.52	0.011	0.2	0.2	0.04	2.7	0.4
RW-02179	1	1.23	0.006	0.13	0.2	0.05	2.3	0.5
RW-02180	1	2.83	0.006	0.16	0.2	0.02	3.3	0.4
RW-02181	2	0.79	0.005	0.06	0.5	6.16	2.1	1.8
RW-02201	2	2.22	0.008	0.09	0.3	0.03	3.2	0.5
RW-02202	1	1.81	0.01	0.06	0.5	0.07	1.7	0.3
RW-02203	2	1.11	0.01	0.13	0.4	0.07	0.8	0.4
RW-02204	0	1.56	0.007	0.08	0.3	0.05	2.1	0.2
RW-02205	1	1.63	0.007	0.08	0.5	0.03	2.5	0.3
RW-02206	0	1.78	0.012	0.16	0.8	0.03	2.9	0.4
RW-02207	0	1.87	0.008	0.17	0.2	0.04	2.6	0.4
RW-02208	3	1.67	0.007	0.09	1	0.04	3	0.2
RW-02209	1	1.51	0.006	0.07	0.6	0.02	2.5	0.2
RW-02210	0	1.46	0.006	0.06	0.3	0.06	1.7	0.2
RW-02211	0	1.29	0.006	0.07	0.6	0.06	1.9	0.2
RW-02212	2	1.5	0.009	0.09	0.5	0.04	3.1	0.3
RW-02213	0	2.37	0.007	0.12	0.2	0.03	2.9	0.3
RW-02214	1	2.39	0.01	0.32	0.3	0.03	3.1	0.4
RW-02215	2	1.68	0.01	0.18	0.9	0.02	3	0.3
RW-02216	0	1.17	0.006	0.04	0.2	0.05	1	0.2
RW-02217	1	1.48	0.007	0.07	0.2	0.03	2	0.2
RW-02218	1	1.69	0.014	0.12	5.8	0.05	2.7	0.3
RW-02219	1	2.2	0.049	0.17	6.3	0.07	2.7	0.5
RW-02220	1	1.3	0.006	0.04	0.3	0.05	1.6	0.1
RW-02221	0	1.34	0.006	0.05	0.3	0.03	1.5	0.2
RW-02222	0	1.56	0.006	0.06	0.2	0.05	1.9	0.2
RW-02223	0	1.25	0.006	0.07	0.9	0.05	2.3	0.2
RW-02224	3	1.81	0.007	0.08	0.3	0.05	2.7	0.2
RW-02225	0	1.51	0.007	0.09	0.3	0.05	1.9	0.3
RW-02226	1	0.76	0.008	0.06	1.4	0.07	0.9	0.2
RW-02227	2	1.46	0.009	0.08	0.6	0.05	2.2	0.3
RW-02228	0	1.25	0.008	0.07	0.5	0.04	2.1	0.2
RW-02229	0	1.11	0.007	0.08	0.4	0.04	1.9	0.2

SAMPLES	S	Ga	Se	Analysis	Acme file
RW-02151	0.1	7	1	GROUP 1DX - 15 GM	A505558R
RW-02153	0	7	0.5	GROUP 1DX - 15 GM	A505558R
RW-02154	0.06	7	1	GROUP 1DX - 15 GM	A505558R
RW-02155	0.09	4	5.2	GROUP 1DX - 15 GM	A505558R
RW-02156	0	7	0.8	GROUP 1DX - 15 GM	A505558R
RW-02157	0	6	1.3	GROUP 1DX - 15 GM	A505558R
RW-02158	0	7	1	GROUP 1DX - 15 GM	A505558R
RW-02159	0	5	0.5	GROUP 1DX - 15 GM	A505558R
RW-02160	0	7	0.8	GROUP 1DX - 15 GM	A505558R
RW-02161	0	6	0.5	GROUP 1DX - 15 GM	A505558R
RW-02162	0	6	0.7	GROUP 1DX - 15 GM	A505558R
RW-02163	0	9	1	GROUP 1DX - 15 GM	A505558R
RW-02164	0	11	0.7	GROUP 1DX - 15 GM	A505558R
RW-02165	0	7	1.6	GROUP 1DX - 15 GM	A505558R
RW-02166	0	5	1.5	GROUP 1DX - 15 GM	A505558R
RW-02167	0.08	8	2.9	GROUP 1DX - 15 GM	A505558R
RW-02168	0	8	0.7	GROUP 1DX - 15 GM	A505558R
RW-02169	0	5	1	GROUP 1DX - 15 GM	A505558R
RW-02170	0	4	0.8	GROUP 1DX - 15 GM	A505558R
RW-02171	0	6	0.8	GROUP 1DX - 15 GM	A505558R
RW-02172	0	6	0.9	GROUP 1DX - 15 GM	A505558R
RW-02173	0	4	0.8	GROUP 1DX - 15 GM	A505558R
RW-02174	0	6	1	GROUP 1DX - 15 GM	A505558R
RW-02176	0.15	6	2.1	GROUP 1DX - 15 GM	A505558R
RW-02177	0	7	0.7	GROUP 1DX - 15 GM	A505558R
RW-02178	0.06	8	2.6	GROUP 1DX - 15 GM	A505558R
RW-02179	0	6	0.9	GROUP 1DX - 15 GM	A505558R
RW-02180	0	9	0.9	GROUP 1DX - 15 GM	A505558R
RW-02181	0	5	7.1	GROUP 1DX - 15 GM	A505558R
RW-02201	0	9	0.9	GROUP 1DX - 15.0 GM	A508313
RW-02202	0.13	7	1.2	GROUP 1DX - 15.0 GM	A508313
RW-02203	0.13	6	1.3	GROUP 1DX - 15.0 GM	A508313
RW-02204	0	6	0.9	GROUP 1DX - 15.0 GM	A508313
RW-02205	0	6	0.9	GROUP 1DX - 15.0 GM	A508313
RW-02206	0.1	6	2.4	GROUP 1DX - 15.0 GM	A508313
RW-02207	0	8	0.8	GROUP 1DX - 15.0 GM	A508313
RW-02208	0	6	0.6	GROUP 1DX - 15.0 GM	A508313
RW-02209	0	5	0.8	GROUP 1DX - 15.0 GM	A508313
RW-02210	0	6	0.8	GROUP 1DX - 15.0 GM	A508313
RW-02211	0	5	0.9	GROUP 1DX - 15.0 GM	A508313
RW-02212	0	5	0.5	GROUP 1DX - 15.0 GM	A508313
RW-02213	0	6	0.8	GROUP 1DX - 15.0 GM	A508313
RW-02214	0	8	0.9	GROUP 1DX - 15.0 GM	A508313
RW-02215	0	6	0.7	GROUP 1DX - 15.0 GM	A508313
RW-02216	0	5	0	GROUP 1DX - 15.0 GM	A508313
RW-02217	0	5	0.6	GROUP 1DX - 15.0 GM	A508313
RW-02218	0	7	0.9	GROUP 1DX - 15.0 GM	A508313
RW-02219	0	8	2	GROUP 1DX - 15.0 GM	A508313
RW-02220	0	6	0.5	GROUP 1DX - 15.0 GM	A508313
RW-02221	0	5	0.8	GROUP 1DX - 15.0 GM	A508313
RW-02222	0	7	0.7	GROUP 1DX - 15.0 GM	A508313
RW-02223	0	4	0.7	GROUP 1DX - 15.0 GM	A508313
RW-02224	0	7	0.6	GROUP 1DX - 15.0 GM	A508313
RW-02225	0	7	0.7	GROUP 1DX - 15.0 GM	A508313
RW-02226	0.1	5	0.8	GROUP 1DX - 15.0 GM	A508313
RW-02227	0	5	1.5	GROUP 1DX - 15.0 GM	A508313
RW-02228	0	6	1	GROUP 1DX - 15.0 GM	A508313
RW-02229	0	6	0.7	GROUP 1DX - 15.0 GM	A508313

SAMPLES	GPS ID	Datum	Easting	Northing	Date_Time	Elevation	Mo	Cu
RW-02230	RW02230	NAD83-8W	370490	7117154	09-AUG-05 17:01	1324.7	2.8	150
RW-02451	RW02451	NAD83-8W	370385	7116807	09-AUG-05 16:30	1137.8	9.1	169.8
RW-02452	RW02452	NAD83-8W	370357	7116907	09-AUG-05 16:48	1226.8	1.9	31.7
RW-02454	RW02454	NAD83-8W	370277	7117123	09-AUG-05 17:21	1355.4	2.6	33.5
RW-03820	RW03820	NAD83-8W	369955	7117191	09-AUG-05 10:22	1238.1	1.2	31.6
RW-03821	RW03821	NAD83-8W	369988	7117121	09-AUG-05 10:36	1218.6	1.6	17.2
RW-03822	RW03822	NAD83-8W	370020	7117028	09-AUG-05 10:47	1188.4	10.3	41.9
RW-03823	RW03823	NAD83-8W	370026	7116917	09-AUG-05 11:01	1199.1	12.3	77
RW-03824	RW03824	NAD83-8W	370077	7116814	09-AUG-05 11:17	1242.4	2.5	39.6
RW-03825	RW03825	NAD83-8W	370088	7116733	09-AUG-05 11:25	1285.6	1.5	77.1
RW-03826	RW03826	NAD83-8W	370121	7116618	09-AUG-05 11:40	1235.7	1.5	17.6
RW-03827	RW03827	NAD83-8W	370142	7116522	09-AUG-05 11:51	1194.8	1.3	52
RW-03828	RW03828	NAD83-8W	370177	7116459	09-AUG-05 12:03	1162.5	1.6	61.1
RW-03829	RW03829	NAD83-8W	370185	7116346	09-AUG-05 12:18	1113.4	1.6	47.4
RW-03830	RW03830	NAD83-8W	370231	7116244	09-AUG-05 12:31	1053.7	4.8	144.3
RW-03831	RW03831	NAD83-8W	370256	7116146	09-AUG-05 12:45	1080.5	1.3	99.5
RW-03832	RW03832	NAD83-8W	370299	7116052	09-AUG-05 13:04	1131.4	0.7	18.5
RW-03833	RW03833	NAD83-8W	370356	7115976	09-AUG-05 13:20	1102.8	2.6	48.4
RW-03834	RW03834	NAD83-8W	370372	7115857	09-AUG-05 13:32	1057.4	3.7	58.3
RW-03835	RW03835	NAD83-8W	370382	7115763	09-AUG-05 13:42	1040.3	1.1	24.9
RW-03836	RW03836	NAD83-8W	370480	7115794	09-AUG-05 13:51	1045.5	4.1	98.9
RW-03837	RW03837	NAD83-8W	370470	7115894	09-AUG-05 14:06	1064.7	1.9	70.8
RW-03838	RW03838	NAD83-8W	370440	7115989	09-AUG-05 14:23	1125.6	1.2	55
RW-03839	RW03839	NAD83-8W	370400	7116080	09-AUG-05 14:41	1185.4	1.2	30.9
RW-03840	RW03840	NAD83-8W	370380	7116173	09-AUG-05 14:55	1147.6	1.3	37.7
RW-03841	RW03841	NAD83-8W	370369	7116276	09-AUG-05 15:06	1122	1.9	76.6
RW-03842	RW03842	NAD83-8W	370321	7116374	09-AUG-05 15:19	1088.1	1.4	62.5

SAMPLES	Pb	Zn	Ag	Ni	Co	Mn	Fe	As	U	Au	Th	Sr
RW-02230	17.2	65	0.6	53.3	19	500	3.85	554.4	3.4	75.1	6.1	52
RW-02451	15	61	1.1	52.6	6.1	293	2.41	762	4.3	10.5	0.9	33
RW-02452	9	44	0.1	17.3	8.2	369	2.29	239.2	1.1	1.9	2	20
RW-02454	10.8	55	0.3	17.7	8	255	2.9	178.7	0.9	4.8	2.6	15
RW-03820	10.9	51	0	18.6	8.4	272	2.59	212.8	1.4	4.1	4.7	18
RW-03821	13.6	48	0.2	11.1	6.4	328	2.45	166.6	0.7	1.9	1.4	12
RW-03822	37.6	18	0.7	8.8	2.7	98	1.56	249.9	14.8	9.1	3.5	47
RW-03823	14.7	59	2.6	19.6	5.9	315	3.52	411.6	6.5	26.9	1.9	16
RW-03824	8.8	53	0.2	20.7	7.5	373	3.68	285.8	0.8	3.3	1.9	14
RW-03825	7.8	64	0.2	26.8	8.6	235	2.76	363.3	0.7	14.4	4.1	12
RW-03826	11.1	58	0.2	17	9.3	423	2.85	45.5	0.5	3.8	2.6	9
RW-03827	10.5	58	0.1	33.4	11.5	256	3.04	424.3	0.6	6.6	3.1	14
RW-03828	10	50	0.3	30.6	13.9	468	2.58	421.1	0.9	8.8	1.6	15
RW-03829	11.2	41	0.4	22.5	8.5	158	2.43	698.3	1.3	9.2	3.8	33
RW-03830	23.8	89	0.2	53.6	17.3	528	2.55	874	5.9	105.2	3	48
RW-03831	21.2	69	0.5	42.8	21.7	435	2.68	1179.2	2.7	376.2	7.1	85
RW-03832	19.3	63	0.2	26.2	14	469	2.45	212.7	1	60.7	4.8	121
RW-03833	15.3	69	0.2	28.6	10.7	197	2.98	469.2	1.2	8.7	4.8	79
RW-03834	14.7	122	0.2	34	16.1	350	2.45	73.1	2.7	9.4	4.3	113
RW-03835	7.7	59	0.1	18	6	224	2.14	34.2	0.7	13.8	1.9	18
RW-03836	18.4	73	0.2	27.6	11.9	542	2.5	714.4	2.2	46.2	2.1	33
RW-03837	15.7	64	0.3	32.4	19.7	376	3.07	1026.8	2.1	32.9	6.5	158
RW-03838	19	67	0.1	33.8	18.4	303	3.07	837.3	1.7	29.2	6.9	87
RW-03839	17.6	50	0	14.2	8.9	280	2.56	541.3	0.9	6.3	3.8	24
RW-03840	9.4	51	0.1	21	10.6	536	2.2	531.7	1.2	32.3	1.3	27
RW-03841	12	61	0.2	27.8	10.2	360	2.4	1066.9	3.4	26	3.1	36
RW-03842	8.4	42	0.4	17.8	6.5	262	2.64	677.9	0.7	8.4	1.3	13

SAMPLES	Cd	Sb	Bi	V	Ca	P	La	Cr	Mg	Ba	Ti
RW-02230	0.3	12.5	9.3	84	0.39	0.12	26	37.2	0.96	269	0.057
RW-02451	0.5	8.2	12.4	229	0.16	0.079	14	32.3	0.44	241	0.032
RW-02452	0.1	3.1	3.2	61	0.16	0.092	14	27.5	0.5	175	0.043
RW-02454	0.2	9.6	1.2	65	0.07	0.059	12	31.6	0.38	208	0.027
RW-03820	0.2	3.6	2.5	57	0.13	0.057	17	28.6	0.47	153	0.052
RW-03821	0.2	1.7	1.4	65	0.09	0.078	10	21.9	0.31	111	0.041
RW-03822	0.1	33.5	9.6	276	0.11	0.178	20	56.1	0.13	377	0.023
RW-03823	0.7	6.3	4.1	290	0.07	0.092	12	46.8	0.27	202	0.043
RW-03824	0.2	7.4	1.2	72	0.06	0.061	11	59.9	0.4	221	0.054
RW-03825	0.3	7.1	0.4	57	0.12	0.033	12	31.3	0.4	148	0.043
RW-03826	0.3	1.7	0.4	63	0.07	0.051	11	29.3	0.37	132	0.046
RW-03827	0.2	3.8	0.4	57	0.07	0.042	10	30.2	0.35	168	0.036
RW-03828	0.3	3	0.5	57	0.11	0.055	13	46.6	0.39	226	0.042
RW-03829	0.3	3.7	0.6	107	0.26	0.038	12	31.9	0.85	122	0.092
RW-03830	0.9	17.3	8.3	64	0.46	0.118	19	26.2	0.51	248	0.047
RW-03831	0.3	6.6	4.6	80	0.64	0.089	25	34.6	1.53	216	0.049
RW-03832	0.3	2.6	3.5	60	0.83	0.068	16	34.8	1.09	196	0.069
RW-03833	0.6	6.7	1.1	88	0.31	0.057	15	36	1.04	152	0.089
RW-03834	0.6	4	0.4	82	1.43	0.093	13	37.5	1.65	157	0.076
RW-03835	0.2	1.4	0.2	45	0.22	0.068	14	25.8	0.43	159	0.043
RW-03836	0.6	12.6	5.1	79	0.21	0.112	14	32	0.58	202	0.042
RW-03837	0.5	7.5	3.1	87	0.55	0.085	25	36.7	1.33	260	0.077
RW-03838	0.4	4	3.5	111	0.5	0.05	17	49.8	1.7	157	0.132
RW-03839	0.2	6	1.8	49	0.13	0.049	17	25.7	0.42	130	0.032
RW-03840	0.1	3.6	1.5	71	0.25	0.062	15	31.7	0.84	182	0.051
RW-03841	0.2	6.2	1.1	68	0.38	0.08	18	30.6	0.83	225	0.052
RW-03842	0.2	1.8	0.5	65	0.13	0.06	12	33.8	0.52	124	0.048

SAMPLES	B	Al	Na	K	W	Hg	Sc	Tl
RW-02230	0	2.01	0.009	0.18	1.2	0.05	4	0.6
RW-02451	0	1.15	0.007	0.09	3.4	0.07	1.8	0.5
RW-02452	1	1.37	0.007	0.11	0.4	0.03	2.1	0.2
RW-02454	0	1.45	0.007	0.09	0.2	0.04	2.5	0.4
RW-03820	0	1.57	0.006	0.08	0.3	0.04	2.6	0.3
RW-03821	1	1.04	0.006	0.06	0.3	0.02	1.5	0.2
RW-03822	1	0.62	0.004	0.04	0.7	0.34	6.1	0.3
RW-03823	2	1.99	0.005	0.04	0.3	0.24	2.8	0.6
RW-03824	0	1.65	0.007	0.09	0.2	0.11	2.4	0.4
RW-03825	1	1.53	0.007	0.04	0.2	0.05	4.3	0.2
RW-03826	1	1.53	0.006	0.06	0.2	0.03	2.6	0.2
RW-03827	1	1.78	0.006	0.07	0.2	0.04	2.4	0.2
RW-03828	2	1.34	0.006	0.06	0.3	0.04	2.5	0.2
RW-03829	2	1.72	0.012	0.14	0.4	0.03	3.2	0.4
RW-03830	3	1.29	0.013	0.17	1.1	0.24	3	0.5
RW-03831	2	2.22	0.031	0.2	0.7	0.04	4.9	0.3
RW-03832	2	2.49	0.025	0.16	0.4	0.04	3.4	0.2
RW-03833	2	2.32	0.01	0.26	0.3	0.04	3.6	0.4
RW-03834	2	2.52	0.072	0.31	0.2	0.04	4	0.3
RW-03835	1	1.22	0.009	0.06	0.3	0.05	2.4	0.1
RW-03836	8	1.34	0.011	0.14	1.1	0.15	2.3	0.5
RW-03837	2	2.51	0.025	0.32	1.5	0.02	4.2	0.4
RW-03838	2	3.01	0.027	0.14	0.8	0.04	4.8	0.4
RW-03839	2	1.76	0.006	0.06	0.4	0.02	2.8	0.2
RW-03840	2	1.84	0.014	0.1	0.2	0.02	2.4	0.3
RW-03841	1	1.68	0.01	0.15	0.5	0.03	3	0.3
RW-03842	1	1.28	0.007	0.09	0.8	0.02	1.9	0.3

SAMPLES	S	Ga	Se	Analysis	Acme file
RW-02230	0	6	1.6	GROUP 1DX - 15.0 GM	A508313
RW-02451	0.08	6	2	GROUP 1DX - 15 GM	A505558R
RW-02452	0	6	1	GROUP 1DX - 15 GM	A505558R
RW-02454	0.1	6	1.8	GROUP 1DX - 15 GM	A505558R
RW-03820	0	5	0.8	GROUP 1DX - 15 GM	A505558R
RW-03821	0.07	7	0	GROUP 1DX - 15 GM	A505558R
RW-03822	0	4	2.2	GROUP 1DX - 15 GM	A505558R
RW-03823	0	8	2.6	GROUP 1DX - 15 GM	A505558R
RW-03824	0	6	0.9	GROUP 1DX - 15.0 GM	A508313
RW-03825	0	4	1.1	GROUP 1DX - 15 GM	A505558R
RW-03826	0	7	0	GROUP 1DX - 15 GM	A505558R
RW-03827	0	5	0.8	GROUP 1DX - 15 GM	A505558R
RW-03828	0	5	0.5	GROUP 1DX - 15 GM	A505558R
RW-03829	0	9	0.6	GROUP 1DX - 15 GM	A505558R
RW-03830	0.15	4	2.5	GROUP 1DX - 15 GM	A505558R
RW-03831	0	7	0.7	GROUP 1DX - 15 GM	A505558R
RW-03832	0	8	0	GROUP 1DX - 15 GM	A505558R
RW-03833	0	9	1	GROUP 1DX - 15 GM	A505558R
RW-03834	0.08	8	1.9	GROUP 1DX - 15 GM	A505558R
RW-03835	0	3	0	GROUP 1DX - 15.0 GM	A508313
RW-03836	0	5	1.3	GROUP 1DX - 15 GM	A505558R
RW-03837	0	9	1	GROUP 1DX - 15 GM	A505558R
RW-03838	0	14	0.5	GROUP 1DX - 15 GM	A505558R
RW-03839	0	6	0.7	GROUP 1DX - 15 GM	A505558R
RW-03840	0	7	0.5	GROUP 1DX - 15 GM	A505558R
RW-03841	0	6	0.7	GROUP 1DX - 15 GM	A505558R
RW-03842	0	6	0.6	GROUP 1DX - 15.0 GM	A508313