

GEOPHYSICAL / SOIL SURVEY

REPORT

May Creek 1- 40 CLAIMS

GRANT # YC11556- YC11595

NTS # 115 P \ 15

LAT: 63°46' N

LONG: 136°44' W

MAYO MINING DISTRICT

AUTHOR OF REPORT SHAWN RYAN

WORK PERFORMED JULY 12 – JULY 21, 2004

DATE OF REPORT JULY 23, 2005

TABLE OF CONTENT

1.0	Summary	P.3
2.0	Project Location	P.3
3.0	Access	P.3
4.0	Exploration Target	P.3
5.0	Geology	P.4
6.0	Work Program / Methods	P.5
6.1	Grid Work	P.5
6.2	Magnetic Survey	P.5
6.3	Soil Survey	P.5
7.0	Results / Interpretation	P.6
8.0	Recommendations	P.6
	Gold Soil Anomaly Map	Figure 1
	Arsenic Soil Anomaly Map	Figure 2
	Magnetic Anomaly Map	Figure 3
	Grid Location Map	Appendix
	Soil Assay Data	Appendix
	Rock Description and Location	Appendix
	Magnetic Data	(CD)

1.0 Summary

The May Creek Project area was targeted for Intrusion related skarn type targets. A flagged grid was established and 44 kilometers of magnetic surveys was complete over the property. A total of 300 soil where taken across known anomalous soil anomalies. Soil sampling revealed anomalous copper, zinc and gold associated with a magnetic low area.

2.0 PROJECT LOCATION

May Creek Project is located on the May 1-40 claims.

The May Creek Project is located 45 kilometers northeast of Mayo. The claims lie in the Mayo Mining District, on NTS # 115 P /15 at the latitude 63°46'N and longitude 136°44'W.

3.0 ACCESS

The May target is accessible by helicopter from Dawson City or Mayo. There is several old bulldozer trails leading to the property but they are all currently impassable.

4.0 EXPLORATION TARGET

DEPOSIT TYPE

The model deposit for the May Project is intrusion related gold, copper skarn, with mineralization found in the limy horizon of the Hyland Group.

5.0 Geology

Regional Geology (*Excerpt from Diane S. Emond, Yukon Geology Volume #3*)

The McQuesten River region lies in Selwyn Basin, within the Omineca Crystalline Belt of the Canadian Cordillera. North American miogeoclinal rocks of the late Proterozoic-Early Cambrian Hyland Group (formally known as the Grit Unit) were thrust northward onto Ordovician to Silurian Road River Formation and Missipian Keno Hill Quartzite during Late Triassic to Early Jurassic arc-continent collision. Thrusting formed a prominent east-northeast-striking cataclastic foliation, as well as the McQuesten Anticline, the limbs of which dip north and south at a shallow angle (Boyle 1965).

Felsic intrusion was emplaced in the metasedimentary rocks of the ancient continental margin in the mid-Cretaceous (83 to 108 Ma; biotite, K/Ar) and coeval lavas were extruded (85 Ma; whole rock, K/Ar). Igneous rocks from the McQuesten River region have high initial Sr isotope ratios indicating addition of radiogenic Sr from sialic Precambrian crust. Field relations and regional geology show that the plutons were emplaced at a high level in Precambrian to Paleozoic sialic crust after a period of major deformation related to arc-continent collision. However, the coincidence of the suite along the McQuesten Anticline may indicate that some crustal warping was due to plutonism, and large batholiths may underlie the area.

Geology of the May Claims

According to Don Murphy "Geological map of Sprague Creek area Western Selwyn Basin, Yukon " situated on NTS 115P/15, Don indicates that the property lays predominately in the Upper Proterozoic-Lower Cambrian, Hyland Group. In the Hyland Group, Don Murphy place the rocks in the Yusezyu Formation (in Tombstone Strain Zone): prominently foliated and lineated muscovite-chlorite phyllite, quartzofeldspathic and micaceous psammite, gritty psammite, rare calc-silicate rock and marble. The Hyland group is intruded by granite intrusion of the Tombstone suite. Don personal field map indicates skarn mineralization sitting on the eastern contact of the Bostock Tombstone Intrusion. Don also indicates on his personal field map that there are limy horizons found in the Hyland Group along the western contact of the Bostock Intrusion.

6.0 Work Program / Methods

6.1 Grid Work

A total of 46 kilometers of grid was established using Garmin GPS 76 instruments. The beauty of Garmin 76 GPS are that they have a left right function and can keep you right on track within a ± 5 meters error. Station where flagged using Artic orange flagging tape and marked with black permanent markers as to the line and station co-ordinates. In total 1840 station where established. The grid lines ran in a northeast direction with the intension to cross the regional magnetic anomaly at a 90-degree angle.

6.2 Magnetic Survey

The magnetic survey was conducted across the entire grid. The survey uses two Envi-Mag, Scintrex magnetometers. One is the portable field unit and the second is a base station magnetometer that records reading every 10 seconds at a stationary position for the entire survey. The base station monitors the earth daily magnetic drift. At the end of each daily survey both the field and base station magnetometers are plugged in together and the daily drift is corrected out of the field mag.

Only the corrected data is used to plot the survey results. The field survey took reading every 12.5 meters for a total of 3520 readings.

6.3 Soil Survey

A total of 300 soil sample where taken using one-meter soil augers. All sample where extracted at an average depth of 50-60 centimeters. All sample where placed in paper Kraft soil bags. About a 400 gram sample is collected at each site. Soil color, depth, slope, dampness, GPS location and quality were noted in field books. All soil sample where sent to Acme Labs in Vancouver to process. Sample where process with Aqua Regia ICP-MS for 36 elements.

.1 Rock Survey

A total of 46 rocks were collected across the property. All rock sample sites were marked in the field with orange flagging and rock sample number was noted with a permanent black marker. Samples were placed in plastic rock sample bags and sample number was inscribed on the bag. The rock sample description and UTM location was noted in field books plus in GPS.

7.0 Results / Interpretation

Magnetic Survey

The Magnetic Survey revealed three magnetic anomalies. Anomaly A is located in the northern part of the grid. The Anomaly is a magnetic high probably related to Tombstone Intrusive. Anomaly B is located south center part of the grid. It's located on Tombstone intrusive granite stock. Anomaly C is a large magnetic low associated with skarn mineralization and quartz breccias. This anomaly seems to be the most interesting and should be followed up with more magnetic work.

Soil Survey

The soil survey revealed a large area of 500 meters by 500 meters of anomalous soil in zinc. The zinc soil anomaly is also anomalous in arsenic, copper and gold. The nature of the soil anomaly matches the geochemistry of certain selected rock found such as skarn mineralization anomalous in gold, zinc and copper. There also quartz breccias found that ran up to 5.1 g/t Au, 8% Pb and 402 g/t Ag.

Rock Survey

Prospecting the May Creek area revealed lots of manganese associated with calc silicate skarn. The rock ran anomalously in zinc (5.4%), copper (1.1%), and gold (1.1 g/t). There was also quartz breccias vein found in old cat trenches that ran 5.1 g/t Au, 8 % Pb and 402 g/t Ag.

The calc silicate skarn rocks anomalous in zinc, copper and gold seem to be associated with the magnetic low trend seen on the magnetic survey map.

8.0 Recommendations

I would recommend follow up work on the magnetic low zone. I would propose expanding the grid in a northwest direction. A magnetic survey should be conducted followed by detail soil on a 50 meters station spacing. This should help define the extent of the magnetic and soil anomaly.

9.0 Cost

Helicopter Cost 2.1 hours @\$1150.00 per Hour	\$2416.00
Assay Cost 300 soil @ \$16.20 per Sample	\$4859.00
Assay Cost 46 Rocks @\$25.39 per Sample	\$1167.00
Grid Work 46 Kilometers @\$150.00 per KL	\$6900.00
Magnetic Survey 44 KL @\$250.00 per KL	\$11000.00
Wage for Soil Work \$250.00 per day for 10 days	\$2500.00
Report Writing	\$300.00
Total	\$29,142.00

10.0 Qualification

I Shawn Ryan located in Dawson City, Yukon work as a professional prospector. I run a small exploration company located in Dawson City.

I have worked in the exploration business for the last 23 years. I worked the first 12 years as a contractor working on numerous projects in the NWT, Ontario, Quebec and the Yukon. I have worked for the last 8 years (in the Yukon) as a local prospector for myself.

I have being trained to run various geophysical instruments and surveys such as magnetic surveys, max-min surveys, induce polarity surveys and Vlf surveys.

I have overseen the May Creek Project and was the party chief in charge.

I own 100 % of the May Claims.

Dated this 25 of July 2005 in Dawson City, Yukon.

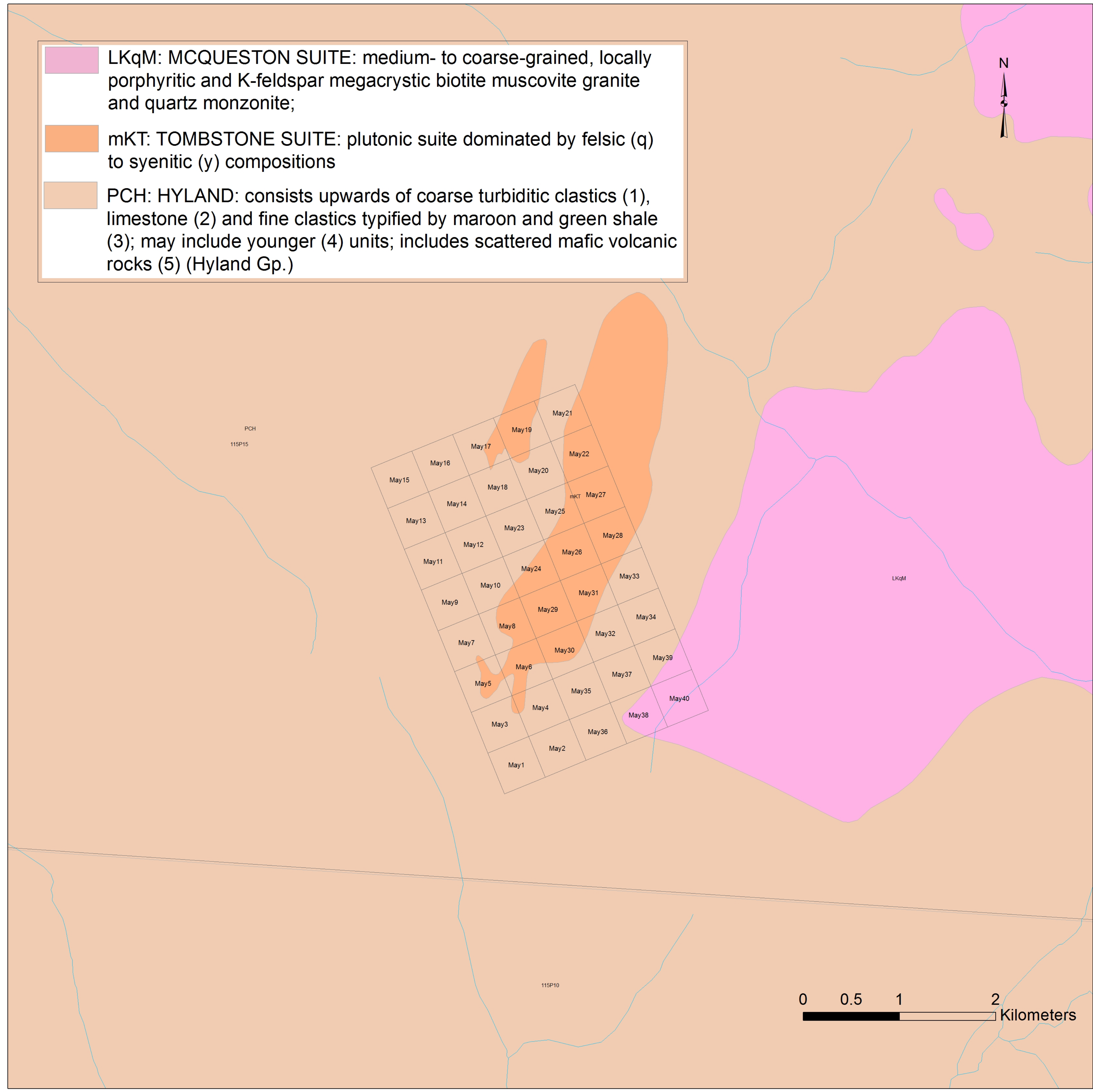
Respectfully submitted

Shawn Ryan

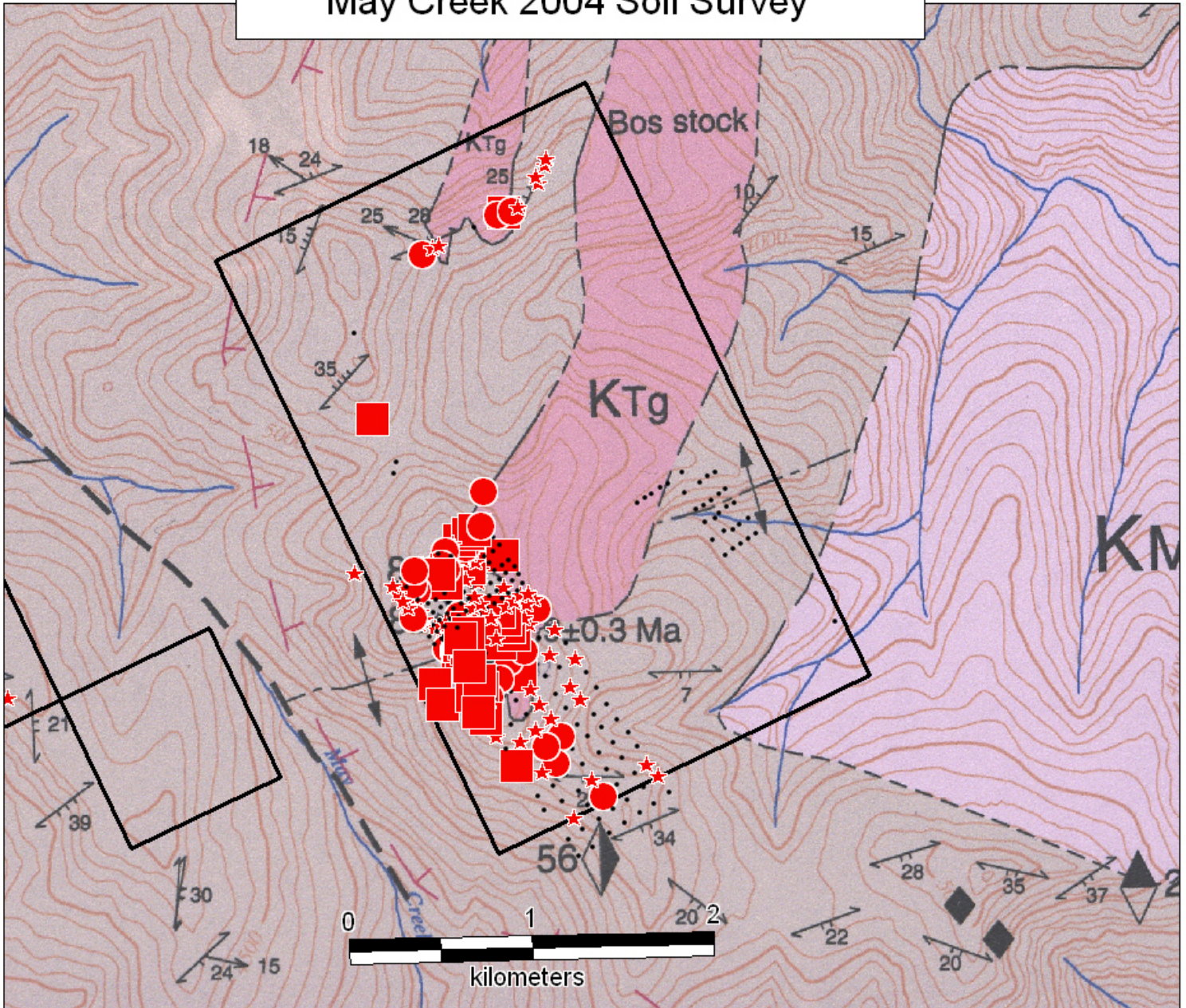
LKqM: MCQUESTON SUITE: medium- to coarse-grained, locally porphyritic and K-feldspar megacrystic biotite muscovite granite and quartz monzonite;

mKT: TOMBSTONE SUITE: plutonic suite dominated by felsic (q) to syenitic (y) compositions

PCH: HYLAND: consists upwards of coarse turbiditic clastics (1), limestone (2) and fine clastics typified by maroon and green shale (3); may include younger (4) units; includes scattered mafic volcanic rocks (5) (Hyland Gp.)



May Creek 2004 Soil Survey



Background Geology Map from D.Murphy YTG Open File 1996-2

May Creek 2004

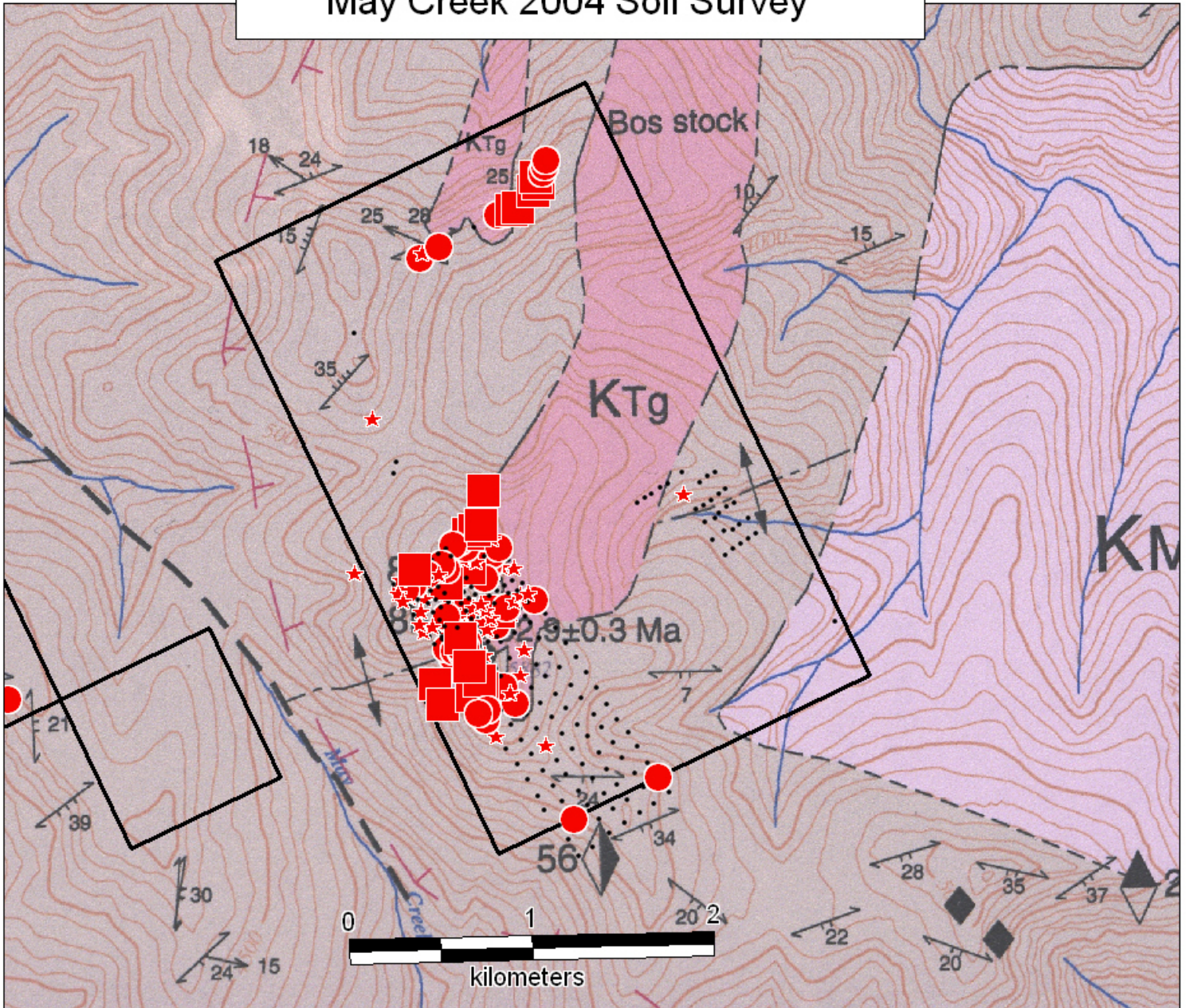
Gold ppb

- 60 to 256
- 40 to 60
- ★ 20 to 40
- 0 to 20

May 1-40 Claims

NTS 115 P / 15
Figure 1

May Creek 2004 Soil Survey



Background Geology Map from D.Murphy YTG Open File 1996-2

May Creek 2004

Arsenic ppm

- 500 to 1,720
- 250 to 500
- ★ 150 to 250
- 0 to 150

May 1-40 Claims

NTS 115 P / 15
Figure 2

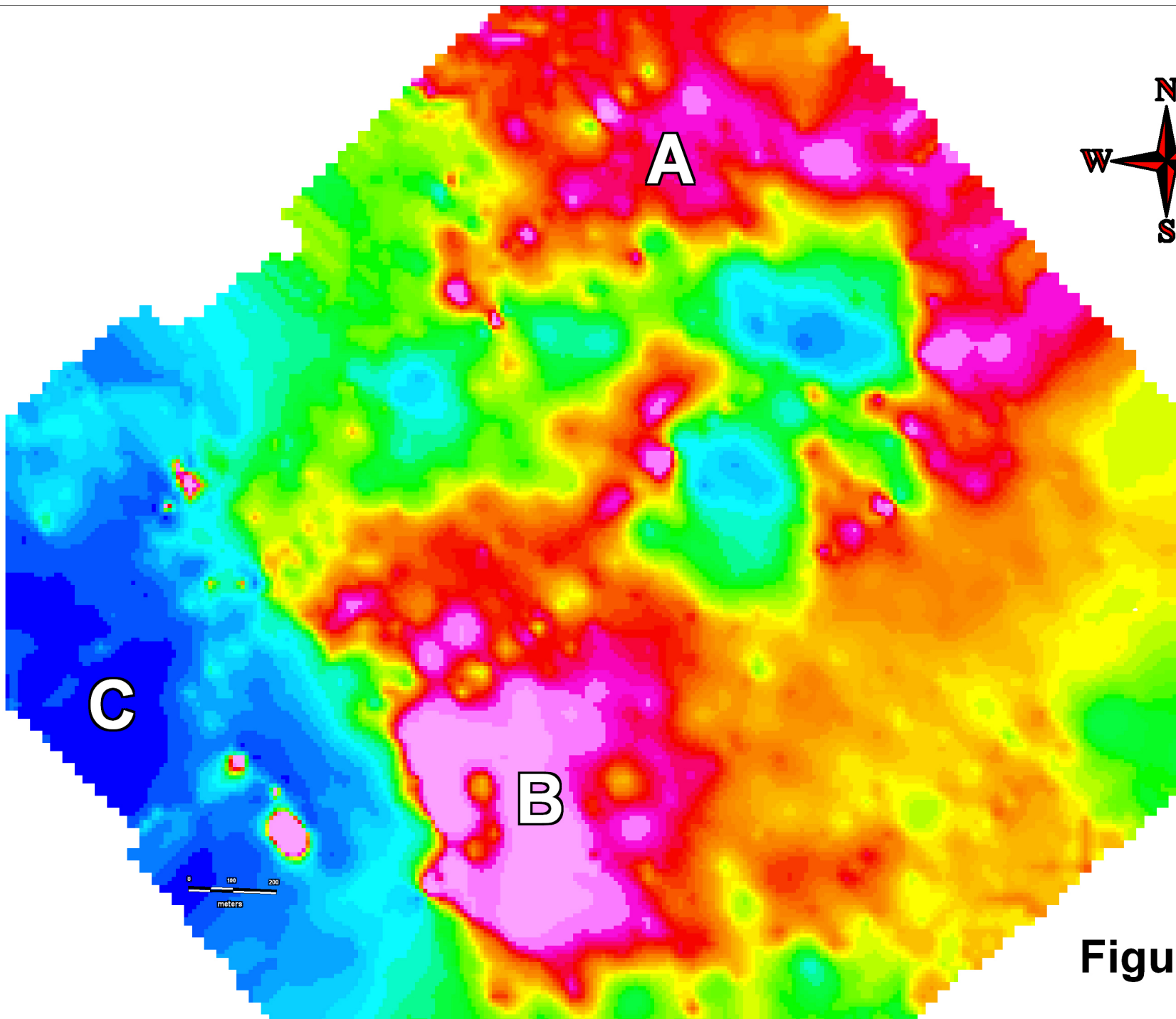


Figure 3

MAY CREEK 2004 MAGNETIC SURVEY ANOMALY MAP

Sample	UTM	Easting	Northing	Mo	Cu	Pb	Zn	Ag	Ni	Co	Mn	Fe	As	U	Au	Th	Sr	Cd	Sb	Bi	V	Ca	Analysis:	Acme file
MA00-000	UTM NAD 83-8V	416031	7071306	0.8	27.5	9.2	67	0.1	26	11.3	335	2.36	41.2	0.7	2.7	8.6	11	0.2	0.9	0.5	36	0.08	GROUP 1DX - 15.0 GM	A405753
MA00-100N	UTM NAD 83-8V	416113	7071361	0.6	27.9	28.4	67	0.2	19.5	6.1	214	2.11	22.1	0.8	2.6	4.7	10	0.2	0.9	0.6	33	0.13	GROUP 1DX - 15.0 GM	A405753
MA00-100S	UTM NAD 83-8V	415936	7071237	0.8	21.1	12.4	60	0.1	18	8.9	442	2.32	25.6	1	6.3	2.5	9	0.2	0.9	0.3	37	0.09	GROUP 1DX - 15.0 GM	A405753
MA00-200N	UTM NAD 83-8V	416196	7071415	0.8	12.6	14.3	43	0.1	12.5	4.4	170	1.98	11.9	0.4	1.3	1.9	5	0.2	0.6	0.3	38	0.04	GROUP 1DX - 15.0 GM	A405753
MA00-200S	UTM NAD 83-8V	415859	7071190	0.8	20.8	12.3	55	0.3	14.6	5.8	232	2.1	36.9	1	3.4	1	8	0.2	0.8	0.3	32	0.06	GROUP 1DX - 15.0 GM	A405753
MA00-300N	UTM NAD 83-8V	416278	7071465	0.9	29.3	12.2	68	0.1	20.8	8.8	338	2.38	15.2	1	7.2	2.8	10	0.3	0.8	0.9	40	0.12	GROUP 1DX - 15.0 GM	A405753
MA00-400N	UTM NAD 83-8V	416364	7071521	1.2	32.1	15.1	82	0.2	22.5	12.1	479	2.38	23.7	1.1	7.4	1.9	11	0.4	0.9	1.3	47	0.14	GROUP 1DX - 15.0 GM	A405753
MA01-000	UTM NAD 83-8V	415971	7071383	0.5	45.7	12.2	85	0.1	39.9	16.2	635	3.45	49	1.3	2.7	11	8	0.1	0.9	0.7	43	0.07	GROUP 1DX - 15.0 GM	A405753
MA01-100N	UTM NAD 83-8V	416052	7071442	0.9	20.3	9.8	49	0	18.5	7.4	272	2.34	14	0.6	2.5	2.1	6	0.1	0.7	0.2	33	0.05	GROUP 1DX - 15.0 GM	A405753
MA01-100S	UTM NAD 83-8V	415880	7071332	1.1	130.5	11.1	67	0.7	21.9	6.6	248	2.53	114.2	1.2	4.3	0.5	13	0.2	0.7	2.6	43	0.1	GROUP 1DX - 15.0 GM	A405753
MA01-200N	UTM NAD 83-8V	416127	7071490	0.8	25.9	16.4	72	0.3	17.1	6.6	328	2.1	31.8	0.9	3.6	2.8	8	0.3	1.1	0.8	34	0.08	GROUP 1DX - 15.0 GM	A405753
MA01-200S	UTM NAD 83-8V	415804	7071279	1	30.2	12.5	61	0.4	16.8	6.7	295	2.56	91.4	1	5	0.6	7	0.2	0.7	0.6	44	0.06	GROUP 1DX - 15.0 GM	A405753
MA01-300N	UTM NAD 83-8V	416218	7071554	1.1	39.9	14.5	96	0.3	25.9	12.3	560	2.62	20.9	1.4	8.1	6.2	15	0.5	1.2	1.7	43	0.17	GROUP 1DX - 15.0 GM	A405753
MA01-400N	UTM NAD 83-8V	416306	7071620	1.8	123.9	13.6	99	0.7	18.2	20.8	510	3.61	355.2	3	33.2	8.3	43	0.6	1.4	4	47	0.11	GROUP 1DX - 15.0 GM	A405753
MA02-000	UTM NAD 83-8V	415913	7071466	1.2	30.1	10.7	74	0.1	26.1	10.2	306	2.63	16.6	0.9	2	3.8	13	0.1	0.8	0.4	49	0.14	GROUP 1DX - 15.0 GM	A405753
MA02-100N	UTM NAD 83-8V	416001	7071525	1.3	43.7	10.9	75	0.6	26	12.4	436	2.49	47	1.3	57.8	5	15	0.3	1	0.7	40	0.18	GROUP 1DX - 15.0 GM	A405753
MA02-100S	UTM NAD 83-8V	415841	7071405	0.7	36.6	12.7	76	1	21	9.5	342	2.62	267.4	0.9	25.4	4.5	14	0.3	3.3	1.6	30	0.06	GROUP 1DX - 15.0 GM	A405753
MA02-200N	UTM NAD 83-8V	416078	7071570	0.9	42.1	11.6	87	0.2	30	13.3	531	2.88	41	1.3	10.8	7	16	0.3	0.9	0.9	42	0.17	GROUP 1DX - 15.0 GM	A405753
MA02-200S	UTM NAD 83-8V	415753	7071354	1.1	31.6	11.4	69	0.2	24.4	9.7	379	2.81	65	1.1	6.9	1.6	10	0.2	0.9	0.8	44	0.07	GROUP 1DX - 15.0 GM	A405753
MA02-300N	UTM NAD 83-8V	416171	7071630	1	37.4	31.5	101	0.4	25.6	12.4	672	2.7	37.7	1.4	12.1	3.5	11	0.7	1.2	1.1	40	0.12	GROUP 1DX - 15.0 GM	A405753
MA02-400N	UTM NAD 83-8V	416247	7071687	1.5	69.6	15.1	86	0.5	23.1	13.2	481	2.68	104	1.6	29.5	3.8	16	0.5	0.9	4	39	0.14	GROUP 1DX - 15.0 GM	A405753
MA03-000	UTM NAD 83-8V	415862	7071543	1.1	19.6	6.7	24	0.3	9.9	2.7	49	1.27	6.7	1.1	1.6	0.1	15	0.2	0.4	0.4	27	0.14	GROUP 1DX - 15.0 GM	A405753
MA03-100N	UTM NAD 83-8V	415944	7071611	1.1	44.1	11.4	95	0.2	35	13.3	504	3.11	25.7	1.2	27.5	3.8	16	0.3	0.8	0.9	42	0.13	GROUP 1DX - 15.0 GM	A405753
MA03-100S	UTM NAD 83-8V	415775	7071489	0.8	24.5	8	72	0.1	25.7	8	244	2.55	29.2	0.9	4.8	4.3	11	0.1	0.7	0.5	35	0.12	GROUP 1DX - 15.0 GM	A405753
MA03-200N	UTM NAD 83-8V	416024	7071660	1.1	38.9	15.2	72	0.2	21.3	10.1	430	2.61	25.7	1.2	8.3	3.7	11	0.2	0.8	1	42	0.09	GROUP 1DX - 15.0 GM	A405753
MA03-200S	UTM NAD 83-8V	415677	7071443	0.9	26.6	9.2	56	0.1	20.5	6.6	230	2.43	37.1	0.9	3.7	1.8	12	0.2	0.7	0.6	37	0.07	GROUP 1DX - 15.0 GM	A405753
MA03-300N	UTM NAD 83-8V	416105	7071718	1.3	61.8	46.5	128	0.4	28.8	17.9	1081	2.96	136.6	1.6	14.3	4.4	13	1	1.2	3	40	0.13	GROUP 1DX - 15.0 GM	A405753
MA03-400N	UTM NAD 83-8V	416190	7071777	1.1	39.5	16.8	77	0.8	18.6	7.5	333	2.41	39.7	1.1	8.7	1.2	10	0.3	0.9	1.5	43	0.09	GROUP 1DX - 15.0 GM	A405753
MA0704S01	UTM NAD 83-8V	414663	7072768	0.6	472.4	49.8	2151	2.8	13.1	7.4	883	9.87	227.4	1.1	27	8.4	20	31.7	0.7	47	30	0.15	GROUP 1DX - 15.0 GM	A405753
MA0704S02	UTM NAD 83-8V	415093	7072155	4.8	235.7	60.2	382	2.1	47.5	34.8	2849	4.56	871.5	6.4	178.1	9.7	38	3.6	3.2	4.4	59	0.27	GROUP 1DX - 15.0 GM	A405753
MA0704S03	UTM NAD 83-8V	415133	7072037	2.9	64	1243.2	438	19.5	22.1	9.8	572	5.28	1498.1	7.2	196.5	15.1	62	2.1	363.9	4.2	8	0.16	GROUP 1DX - 15.0 GM	A405753
MA0704S04	UTM NAD 83-8V	415381	7073207	1.3	197.5	120.2	993	2.4	32.2	20.7	3389	3.75	611.3	2.5	59.9	13.2	36	13.5	4.3	4.1	39	0.36	GROUP 1DX - 15.0 GM	A405753
MA0704S05	UTM NAD 83-8V	415269	7072894	0.8	94.5	26.7	178	1.4	8.9	4	271	1.86	753.9	1.6	38.3	12.1	12	1.9	15.1	0.7	12	0.13	GROUP 1DX - 15.0 GM	A405753
MA0704S06	UTM NAD 83-8V	417286	7072437	0.7	4.9	15.8	64	0	6.1	5	612	1.77	10.6	10	1.6	14.4	20	0.2	0.6	1.1	24	0.4	GROUP 1DX - 15.0 GM	A405753
MA10-000	UTM NAD 83-8V	415471	7072138	1.6	60.1	13	201	0.7	19.9	13.1	777	2.93	255.2	3.8	25.1	8.4	25	1.5	3.8	1	55	0.28	GROUP 1DX - 15.0 GM	A405753
MA10-100N	UTM NAD 83-8V	415559	7072188	1.4	47.7	16.9	123	0.6	24.9	10.5	629	2.74	208.1	2.7	76.8	9.1	19	0.8	3.7	0.7	53	0.26	GROUP 1DX - 15.0 GM	A405753
MA10-100S	UTM NAD 83-8V	415394	7072084	2	163.5	47.7	230	0.6	31.5	19.4	1139	3.12	108.5	3	44.4	2	19	1.4	2.4	1.4	43	0.17	GROUP 1DX - 15.0 GM	A405753
MA10-1400N	UTM NAD 83-8V	416625	7072898	2.4	13.1	15.2	101	0.1	11.6	8.8	500	2.05	86.5	1.8	10.3	0.6	7	0.2	0.6	0.3	37	0.06	GROUP 1DX - 15.0 GM	A405753
MA10-1450N	UTM NAD 83-8V	416686	7072947	2.3	114.5	64.4	1072	0.4	23.5	15.1	785	2.59	146.4	1.7	8.6	4	14	4.5	1.8	3.7	41	0.15	GROUP 1DX - 15.0 GM	A405753
MA10-1500N	UTM NAD 83-8V	416736	7072955	1.7	13.4	11.5	122	0.1	11.5	7.6	530	2.28	45.9	1	3.7	1.3	12	1.1	0.5	0.9	47	0.09	GROUP 1DX - 15.0 GM	A405753
MA10-1550N	UTM NAD 83-8V	416775	7072981	1.3	15.2	12.2	139	0.1	12.7	8.8	503	2.43	38.6	0.9	2.8	0.7	9	1.3	0.6	0.9	41	0.08	GROUP 1DX - 15.0 GM	A405753
MA10-1600N	UTM NAD 83-8V	416820	7073011	1.1	11.8	8.9	60	0	9.2	10.3	717	2.11	25.8	0.7	1.9	0.4	7	0.4	0.5	0.4	47	0.05	GROUP 1DX - 15.0 GM	A405753
MA10-200N	UTM NAD 83-8V	415644	7072241	1.4	51.8	12.2	210	0.2	25	17.1	1051	3.4	61	1.2	17.7	2.5	14	1.8	1.7	0.6	60	0.14	GROUP 1DX - 15.0 GM	A405753

Sample	UTM	Easting	Northing	Mo	Cu	Pb	Zn	Ag	Ni	Co	Mn	Fe	As	U	Au	Th	Sr	Cd	Sb	Bi	V	Ca	Analysis:	Acme file
MA10-300N	UTM NAD 83-8V	415728	7072298	1.3	50.3	10.9	175	0.3	23.1	14.1	870	3.21	106.6	1.4	31.5	3.5	14	1.2	2.5	0.8	58	0.14	GROUP 1DX - 15.0 GM	A405753
MA10-400N	UTM NAD 83-8V	415809	7072355	1	27	9.7	115	0.1	19.3	8.9	490	2.55	43.9	1.1	12.9	3.3	11	0.7	1.2	0.6	45	0.12	GROUP 1DX - 15.0 GM	A405753
MA1050-000	UTM NAD 83-8V	415447	7072176	1.4	71.2	13.8	182	0.2	38.6	19.2	909	3.04	107.7	2	50.9	4.4	19	2	1.2	0.4	51	0.17	GROUP 1DX - 15.0 GM	A405753
MA1050-050S	UTM NAD 83-8V	415410	7072150	1.2	20.2	12.9	57	0.1	16.2	5.3	228	2.07	61.4	0.8	3.4	0.9	11	0.2	0.8	0.2	43	0.09	GROUP 1DX - 15.0 GM	A405753
MA1050-100S	UTM NAD 83-8V	415349	7072128	2.3	160	74.6	342	2.4	37.2	25.7	1763	3.93	537.7	8.1	76.2	8.6	27	2.8	2	2.6	55	0.22	GROUP 1DX - 15.0 GM	A405753
MA1050-150S	UTM NAD 83-8V	415339	7072107	2.3	163.8	36.7	257	2.1	33.8	28.6	1262	3.76	560.2	5.3	78.2	8.9	29	2.5	5.5	2.8	53	0.22	GROUP 1DX - 15.0 GM	A405753
MA1050-200S	UTM NAD 83-8V	415292	7072083	3.4	154.6	132.6	491	2.1	40.5	21.4	10765	4.57	1617.4	5.4	115.5	7.7	24	4	8.6	3	51	0.19	GROUP 1DX - 15.0 GM	A405753
MA11-000	UTM NAD 83-8V	415420	7072222	1.2	29.2	10	156	0.1	24	12.2	399	2.53	51.5	0.8	8.5	3	13	1.2	1.3	0.2	44	0.12	GROUP 1DX - 15.0 GM	A405753
MA11-100N	UTM NAD 83-8V	415504	7072275	1.3	40.3	8.7	157	0.2	24.6	10.2	827	3.11	49.7	1.2	52.3	3.9	17	1.2	1.2	0.6	56	0.23	GROUP 1DX - 15.0 GM	A405753
MA11-100S	UTM NAD 83-8V	415338	7072168	2.3	136.7	199.1	463	4	37.6	27.9	1314	3.67	987.3	3.7	167.5	4.5	22	2.8	6.9	1.9	53	0.16	GROUP 1DX - 15.0 GM	A405753
MA11-1400N	UTM NAD 83-8V	416585	7072998	2	18.1	13.2	169	0.1	14.8	5.9	325	2.55	69.1	1	5.3	2.2	9	0.6	1	1.2	45	0.07	GROUP 1DX - 15.0 GM	A405753
MA11-1450N	UTM NAD 83-8V	416639	7073018	1.8	24.1	11.1	151	0.1	7.7	6.5	552	2.03	24.4	0.6	3.5	1.3	7	2.7	0.5	13.6	43	0.06	GROUP 1DX - 15.0 GM	A405753
MA11-1500N	UTM NAD 83-8V	416666	7073047	1.4	15.4	9.8	232	0.1	11	4.9	306	2.41	36.8	0.6	6.9	1.3	10	2	0.6	3.1	42	0.08	GROUP 1DX - 15.0 GM	A405753
MA11-1550N	UTM NAD 83-8V	416707	7073079	1.8	23.5	9.3	165	0.1	18	7	240	2.53	141.7	1	6.3	2.3	9	0.9	3.2	0.6	46	0.08	GROUP 1DX - 15.0 GM	A405753
MA11-1600N	UTM NAD 83-8V	416749	7073101	1.1	13.5	9.9	66	0	12.6	6.9	301	2.28	15.7	0.7	3.5	2.7	8	0.5	0.5	0.4	42	0.07	GROUP 1DX - 15.0 GM	A405753
MA11-200N	UTM NAD 83-8V	415588	7072332	1.2	66.9	10.9	367	0.2	27.9	13.6	849	3.39	212.8	1.7	53.9	7.3	16	2.3	4	1.7	51	0.19	GROUP 1DX - 15.0 GM	A405753
MA11-300N	UTM NAD 83-8V	415666	7072384	1.2	23.1	9.9	113	0.1	19.4	8.1	554	2.69	116.1	1	8.4	1.4	10	0.6	1	0.4	54	0.09	GROUP 1DX - 15.0 GM	A405753
MA11-400N	UTM NAD 83-8V	415754	7072436	1.7	62.9	11.8	303	0.2	30.8	14.7	1138	3.4	143.7	2.2	29.3	6	23	2.1	1.5	1.5	55	0.26	GROUP 1DX - 15.0 GM	A405753
MA12-000	UTM NAD 83-8V	415368	7072304	1	25.8	15.5	154	0.2	24.6	12.2	623	2.32	222.8	1	13.6	6.3	13	1.6	2.4	0.2	38	0.15	GROUP 1DX - 15.0 GM	A405753
MA12-100N	UTM NAD 83-8V	415452	7072365	1.5	55.6	12.5	126	0.2	41.4	20.9	1087	3.8	140.5	2.1	68.5	7.4	23	0.7	1.9	0.7	52	0.26	GROUP 1DX - 15.0 GM	A405753
MA12-100S	UTM NAD 83-8V	415283	7072248	2.7	59	13	183	0.2	19.4	15.7	795	2.99	995.7	2.5	173.5	1.8	23	2.1	2.2	2.4	50	0.23	GROUP 1DX - 15.0 GM	A405753
MA12-1400N	UTM NAD 83-8V	416538	7073068	1.5	21.7	14.3	299	0.3	14.9	7.4	442	2.35	61.5	1.3	2.3	1.2	7	1.6	1.1	1.4	40	0.06	GROUP 1DX - 15.0 GM	A405753
MA12-1450N	UTM NAD 83-8V	416578	7073087	0.9	12.6	10.7	61	0.1	4.9	2.5	128	1.52	30.2	0.7	3.1	0.2	5	0.3	0.5	1.9	30	0.03	GROUP 1DX - 15.0 GM	A405753
MA12-1500N	UTM NAD 83-8V	416620	7073117	1.5	37.1	17	290	0.6	17.9	7.8	359	2.54	43.2	0.9	5	1.7	7	1.2	1.8	2.7	40	0.06	GROUP 1DX - 15.0 GM	A405753
MA12-1550N	UTM NAD 83-8V	416665	7073150	1	16.1	12.5	145	0	15	5.9	307	2.51	21	0.7	4	1.5	9	1.2	0.9	0.6	38	0.09	GROUP 1DX - 15.0 GM	A405753
MA12-1600N	UTM NAD 83-8V	416703	7073176	0.8	20.4	8.8	163	0.1	15.6	4.9	274	2	15.9	0.7	1.6	1.3	10	1.1	0.7	0.6	34	0.11	GROUP 1DX - 15.0 GM	A405753
MA12-200N	UTM NAD 83-8V	415533	7072415	1.2	54.2	9.9	314	0.2	28.7	11.9	827	3.25	91.2	2	83.6	8.6	21	3.3	1.3	0.7	49	0.26	GROUP 1DX - 15.0 GM	A405753
MA12-300N	UTM NAD 83-8V	415614	7072468	1.2	50.9	12	226	0.2	27.4	12.6	950	3.01	135.9	2.9	20.8	4.7	17	1.6	1.4	1.4	51	0.19	GROUP 1DX - 15.0 GM	A405753
MA12-400N	UTM NAD 83-8V	415702	7072513	1.2	34.6	10.4	168	0.1	25.9	11.4	802	2.71	105.9	2.6	14.7	2.5	14	1.7	1	0.7	53	0.16	GROUP 1DX - 15.0 GM	A405753
MA125-000	UTM NAD 83-8V	415334	7072344	1.1	32.1	7.5	111	0.1	21.9	8	471	2.03	49.5	0.9	4.8	5.3	16	0.7	0.9	0.4	36	0.2	GROUP 1DX - 15.0 GM	A405753
MA125-050N	UTM NAD 83-8V	415383	7072371	1.1	27.5	8	92	0.2	24.5	8	560	2.26	57.3	1.3	13.6	6.7	18	0.5	0.9	0.6	38	0.28	GROUP 1DX - 15.0 GM	A405753
MA125-050S	UTM NAD 83-8V	415298	7072317	1	21.1	8.4	66	0.1	19.1	7.2	311	2.11	113.3	0.8	15	3.1	10	0.3	0.9	0.2	33	0.13	GROUP 1DX - 15.0 GM	A405753
MA125-100N	UTM NAD 83-8V	415432	7072396	1.2	79.2	10.9	178	0.5	46.7	33.2	740	3.19	146.4	2.8	22.6	13.4	86	1.1	1.2	0.9	55	0.41	GROUP 1DX - 15.0 GM	A405753
MA125-100S	UTM NAD 83-8V	415260	7072288	1.2	63	69.3	277	1.3	22.4	8.4	1156	2.41	182.9	1.4	21.3	4.6	24	1.4	1.5	1.4	39	0.39	GROUP 1DX - 15.0 GM	A405753
MA125-150N	UTM NAD 83-8V	415467	7072431	1.5	72	12.2	186	0.4	29.9	15.1	752	3.06	127.2	1.9	28.5	7.9	20	1.6	1.5	0.8	44	0.19	GROUP 1DX - 15.0 GM	A405753
MA125-200N	UTM NAD 83-8V	415506	7072458	1	34.1	10	382	0.2	24.7	10.4	644	2.74	57.2	1.6	88.9	6.7	18	3.2	1	0.5	49	0.24	GROUP 1DX - 15.0 GM	A405753
MA125-250N	UTM NAD 83-8V	415542	7072485	1.8	55.1	15	297	0.3	28.4	15.6	913	3.16	146.2	2.6	20.7	3.7	19	1.5	1.3	1.3	51	0.18	GROUP 1DX - 15.0 GM	A405753
MA125-300N	UTM NAD 83-8V	415588	7072505	1.3	30.7	10.6	158	0.1	21.4	8.8	521	2.7	67.2	1.6	27.3	2.5	12	1.1	1	0.6	50	0.1	GROUP 1DX - 15.0 GM	A405753
MA125-350N	UTM NAD 83-8V	415624	7072537	1.4	35.2	11.6	128	0.2	23.8	10.3	615	2.63	85.3	2.6	18.2	7.2	18	0.9	1.2	0.8	46	0.22	GROUP 1DX - 15.0 GM	A405753
MA125-400N	UTM NAD 83-8V	415663	7072557	1.3	31.7	10.8	99	0.2	23.7	10.7	716	2.71	51.2	2.8	54.9	6.8	17	0.7	1	0.5	52	0.2	GROUP 1DX - 15.0 GM	A405753
MA13-000	UTM NAD 83-8V	415312	7072385	0.3	49.1	15.2	137	0.3	12.7	5.4	929	2.07	100.1	1.4	13.6	8.3	14	0.7	1.5	1.6	29	0.24	GROUP 1DX - 15.0 GM	A405753
MA13-050N	UTM NAD 83-8V	415355	7072420	1.1	45.1	97	209	0.3	25.6	9.9	568	2.53	128.7	0.9	10.2	4	10	1.1	1.4	0.7	40	0.11	GROUP 1DX - 15.0 GM	A405753
MA13-050S	UTM NAD 83-8V	415264	7072355	1.5	106.1	8.3	259	0.5	18.5	6.7	532	2.39	297.8	1	28.3	1.1	14	1.6	1.7	1.1	44	0.15	GROUP 1DX - 15.0 GM	A405753

Sample	UTM	Easting	Northing	Mo	Cu	Pb	Zn	Ag	Ni	Co	Mn	Fe	As	U	Au	Th	Sr	Cd	Sb	Bi	V	Ca	Analysis:	Acme file
MA13-100N	UTM NAD 83-8V	415387	7072449	1.5	68.7	92.6	357	0.4	37.3	20.5	722	2.94	189.8	2.4	56.6	7.3	19	2.5	2.3	0.7	43	0.21	GROUP 1DX - 15.0 GM	A405753
MA13-100S	UTM NAD 83-8V	415226	7072332	1.2	115.5	8.6	226	0.4	23	7.7	444	2.43	230.5	1	26.2	3.8	28	1.4	1.5	1.2	40	0.19	GROUP 1DX - 15.0 GM	A405753
MA13-1400N	UTM NAD 83-8V	416474	7073162	2.5	16.6	26.3	169	0.1	13.3	5.7	249	2.17	202.8	4.9	9.3	1.3	8	1.1	0.7	0.4	39	0.08	GROUP 1DX - 15.0 GM	A405753
MA13-1500N	UTM NAD 83-8V	416564	7073213	1	17.6	8.7	101	0	12.9	6.5	240	2.15	70.3	1.2	2.6	1.5	9	0.5	0.8	0.9	40	0.1	GROUP 1DX - 15.0 GM	A405753
MA13-150N	UTM NAD 83-8V	415436	7072469	1.9	99.4	326.1	710	1.1	28.9	13.9	1428	3.3	301	2.6	31	4.6	19	2.6	3	1	51	0.2	GROUP 1DX - 15.0 GM	A405753
MA13-1550N	UTM NAD 83-8V	416607	7073246	0.9	16.3	9.1	101	0	14.7	5.7	213	2.01	48.1	0.6	13.8	1.4	8	0.5	0.6	0.9	36	0.1	GROUP 1DX - 15.0 GM	A405753
MA13-1600N	UTM NAD 83-8V	416646	7073268	1.2	18.6	9.4	108	0.1	17.9	6.4	241	2.4	24.7	0.9	1.1	0.7	8	0.6	0.7	0.3	45	0.08	GROUP 1DX - 15.0 GM	A405753
MA13-200N	UTM NAD 83-8V	415482	7072501	1.3	49.2	137.1	357	0.5	23.7	9.6	1504	2.83	173.7	2.2	64.2	8.2	14	2.1	1.8	0.8	45	0.19	GROUP 1DX - 15.0 GM	A405753
MA13-250N	UTM NAD 83-8V	415518	7072526	1.1	43	45.8	268	0.3	20.8	9.8	741	2.71	157.5	3.1	17.3	5.5	18	1.8	1.9	2.6	45	0.24	GROUP 1DX - 15.0 GM	A405753
MA13-300N	UTM NAD 83-8V	415559	7072547	0.9	34.5	37.1	218	0.2	21.1	9	680	2.59	95.3	2.3	15.8	6.4	13	1.7	1.4	0.9	44	0.18	GROUP 1DX - 15.0 GM	A405753
MA13-350N	UTM NAD 83-8V	415603	7072578	0.8	37.7	11.1	210	0.2	19.2	7.7	474	2.29	126.7	2	24	3.6	16	1.7	1.3	0.9	42	0.21	GROUP 1DX - 15.0 GM	A405753
MA13-400N	UTM NAD 83-8V	415649	7072609	1.4	56.3	14.8	313	0.2	24.9	13	851	3	312.6	1.9	20.4	2.6	12	1.7	2.1	1	51	0.12	GROUP 1DX - 15.0 GM	A405753
MA135-000	UTM NAD 83-8V	415282	7072429	1.6	152.7	6.9	316	1	21.4	6.9	433	2.91	183.9	1	89.6	2.8	13	1.3	1.4	8.8	39	0.14	GROUP 1DX - 15.0 GM	A405753
MA135-050N	UTM NAD 83-8V	415325	7072454	0.9	203.6	4.7	624	1	17.2	5.4	456	2.1	125.2	0.9	39.2	2.6	18	4.5	1.2	1.9	35	0.36	GROUP 1DX - 15.0 GM	A405753
MA135-050S	UTM NAD 83-8V	415237	7072400	1.6	543.3	7.2	1130	1.2	24.6	13.7	1088	3.29	530.2	1.3	208.2	4.8	19	11.3	1.3	8.3	37	0.25	GROUP 1DX - 15.0 GM	A405753
MA135-100N	UTM NAD 83-8V	415365	7072485	1.2	89.2	6.7	376	0.6	20	7	380	2.28	167.7	1	44.2	4	16	2	1.3	2.3	34	0.26	GROUP 1DX - 15.0 GM	A405753
MA135-100S	UTM NAD 83-8V	415198	7072375	1.6	61.1	8.5	127	0.2	25.7	9.8	458	2.74	108.1	1.5	17.7	4.1	21	0.9	1.5	0.9	49	0.23	GROUP 1DX - 15.0 GM	A405753
MA135-150N	UTM NAD 83-8V	415411	7072509	1.1	87.2	8	317	0.4	19.2	7.5	393	2.16	212.5	1.2	36.4	4.5	14	2	2.6	1.4	33	0.24	GROUP 1DX - 15.0 GM	A405753
MA135-200N	UTM NAD 83-8V	415451	7072540	1.8	83.2	14	543	0.4	29	16.1	1066	2.69	553.8	3.4	92	10.6	46	9.8	2.3	1.1	38	0.28	GROUP 1DX - 15.0 GM	A405753
MA135-250N	UTM NAD 83-8V	415490	7072566	1.2	42	10.2	289	0.2	24.2	9	587	2.73	331.5	1.6	29.3	1.7	14	2	1.4	0.9	47	0.11	GROUP 1DX - 15.0 GM	A405753
MA135-300N	UTM NAD 83-8V	415534	7072593	1.3	45.7	12.9	357	0.3	29.7	13.2	979	3.05	201.3	1.7	26.9	2.3	13	2.5	1.1	1	53	0.12	GROUP 1DX - 15.0 GM	A405753
MA135-350N	UTM NAD 83-8V	415570	7072628	0.8	36.4	15.1	214	0.3	22.8	8.4	533	2.42	176.2	1.9	21.7	4.9	15	1.3	1.2	0.6	40	0.2	GROUP 1DX - 15.0 GM	A405753
MA135-400N	UTM NAD 83-8V	415616	7072638	0.9	27.7	31.2	111	0.3	19.4	8.7	550	2.15	199.7	2.4	34.5	5.4	15	0.9	1	0.7	37	0.18	GROUP 1DX - 15.0 GM	A405753
MA14-000N	UTM NAD 83-8V	415258	7072470	1	36.9	8.2	90	0.2	23.5	12.3	425	2.33	193.5	1.4	21.6	5.6	17	0.5	1.5	0.4	40	0.19	GROUP 1DX - 15.0 GM	A405753
MA14-050N	UTM NAD 83-8V	415297	7072496	1	28.9	8.6	103	0.2	23.8	8.3	425	2.42	89.3	1	10	4.4	10	0.5	0.9	0.4	41	0.09	GROUP 1DX - 15.0 GM	A405753
MA14-050S	UTM NAD 83-8V	415216	7072447	1.1	32.1	9.1	87	0.2	24.9	8.2	295	2.61	62.4	1.1	7.7	3.4	11	0.4	0.8	0.3	45	0.14	GROUP 1DX - 15.0 GM	A405753
MA14-100N	UTM NAD 83-8V	415338	7072524	1.1	37.3	10	221	0.2	24.8	11.4	642	2.67	100.5	1.2	13.6	5	12	1.3	1	0.5	43	0.11	GROUP 1DX - 15.0 GM	A405753
MA14-100S	UTM NAD 83-8V	415172	7072416	1.5	60.1	7.7	218	0.3	22	9.6	749	2.43	65.4	1.1	9	4.6	24	2.2	1	0.6	42	0.25	GROUP 1DX - 15.0 GM	A405753
MA14-1150N	UTM NAD 83-8V	416214	7073109	1.4	14.3	12.9	77	0.1	13.1	6	349	2.08	53.8	2.1	5	0.6	7	0.3	0.8	0.3	42	0.06	GROUP 1DX - 15.0 GM	A405753
MA14-1200N	UTM NAD 83-8V	416258	7073137	1.1	15.3	21.6	60	0.1	13.8	5.9	290	2.15	45.2	2.1	4.8	1.1	7	0.1	0.7	0.2	40	0.07	GROUP 1DX - 15.0 GM	A405753
MA14-1250N	UTM NAD 83-8V	416298	7073161	0.9	14.1	14.7	62	0	12.9	5.3	222	1.96	31	1.4	8.4	1	8	0.2	0.6	0.2	37	0.08	GROUP 1DX - 15.0 GM	A405753
MA14-1300N	UTM NAD 83-8V	416341	7073190	0.7	9.7	28.2	72	0	11.4	4.5	191	1.83	19.7	1.1	0.8	1.4	8	0.3	0.5	0.2	36	0.08	GROUP 1DX - 15.0 GM	A405753
MA14-1350N	UTM NAD 83-8V	416384	7073215	1.2	9.9	23.1	66	0.1	9	3.3	150	1.41	22.8	1.1	2.1	0.4	8	0.2	0.5	0.4	43	0.06	GROUP 1DX - 15.0 GM	A405753
MA14-1450N	UTM NAD 83-8V	416462	7073270	1.2	17.8	14.8	109	0.1	14.6	6.2	236	2.07	44.2	1.9	4.7	1.7	9	0.5	0.7	0.3	42	0.1	GROUP 1DX - 15.0 GM	A405753
MA14-150N	UTM NAD 83-8V	415380	7072553	1.2	73.8	25.1	421	0.9	27.2	13.5	1213	2.96	185.5	1.6	17.2	4.5	20	4	1.1	1.7	46	0.2	GROUP 1DX - 15.0 GM	A405753
MA14-150S	UTM NAD 83-8V	415132	7072389	0.8	17.8	8.5	52	0	16.2	5.6	231	2.2	15.9	0.6	0.8	1.2	10	0.2	0.8	0.2	39	0.09	GROUP 1DX - 15.0 GM	A405753
MA14-200N	UTM NAD 83-8V	415423	7072574	1.1	32.5	18.5	258	0.1	24.3	10.9	706	2.97	141	1.8	8.4	2	14	1.9	0.9	0.6	56	0.12	GROUP 1DX - 15.0 GM	A405753
MA14-200S	UTM NAD 83-8V	415090	7072361	1.2	37.4	11.2	150	0.1	28	10.5	407	2.67	111.8	1.3	11.5	4.8	13	0.7	0.9	0.4	47	0.13	GROUP 1DX - 15.0 GM	A405753
MA14-250N	UTM NAD 83-8V	415468	7072607	1.2	44.8	19.6	396	0.2	25.1	11.1	682	3.11	121.6	1.7	10.5	1.8	15	2	0.8	0.7	56	0.12	GROUP 1DX - 15.0 GM	A405753
MA14-300N	UTM NAD 83-8V	415503	7072634	1.1	17	11.6	69	0.1	16	6.8	298	2.49	21.8	0.9	2.1	1.1	10	0.5	0.7	0.2	52	0.09	GROUP 1DX - 15.0 GM	A405753
MA14-350N	UTM NAD 83-8V	415548	7072642	0.9	31.1	11	96	0	19.1	9	389	2.46	72	1.8	11.6	3.3	11	0.5	0.7	0.5	44	0.12	GROUP 1DX - 15.0 GM	A405753
MA14-400N	UTM NAD 83-8V	415582	7072683	0.8	22.4	11.6	85	0.1	16.8	8.2	410	2.23	114.8	1.5	10.1	4.8	10	0.6	0.8	0.4	39	0.1	GROUP 1DX - 15.0 GM	A405753
MA145-000	UTM NAD 83-8V	415229	7072511	0.7	48	8	371	0.3	21.6	9.3	490	2.17	187.5	1	13.3	5.8	16	2.9	0.8	0.5	37	0.19	GROUP 1DX - 15.0 GM	A405753

Sample	UTM	Easting	Northing	Mo	Cu	Pb	Zn	Ag	Ni	Co	Mn	Fe	As	U	Au	Th	Sr	Cd	Sb	Bi	V	Ca	Analysis:	Acme file
MA145-050N	UTM NAD 83-8V	415271	7072539	1.6	26.6	12.5	173	0.2	16.6	7.1	393	2.59	91.2	0.8	6.3	1	10	1.1	0.9	0.4	60	0.07	GROUP 1DX - 15.0 GM	A405753
MA145-050S	UTM NAD 83-8V	415187	7072484	0.9	27.5	8.2	88	0.2	24.6	9.6	719	2.36	50.7	1.3	7.4	6	17	0.3	0.7	0.3	41	0.18	GROUP 1DX - 15.0 GM	A405753
MA145-100N	UTM NAD 83-8V	415314	7072567	1.1	50	16.1	573	0.4	25.6	11.7	900	2.64	162.7	1.5	23.3	5.6	17	5.2	1.1	0.6	46	0.21	GROUP 1DX - 15.0 GM	A405753
MA145-100S	UTM NAD 83-8V	415146	7072457	0.7	18.3	8.7	68	0.1	15.5	5.4	207	2.14	30	0.6	2.8	2.6	11	0.3	0.8	0.2	35	0.14	GROUP 1DX - 15.0 GM	A405753
MA145-150N	UTM NAD 83-8V	415356	7072589	2.1	93.4	554.8	1241	7.3	26.9	11.7	5190	3.66	220.8	3.7	26.4	8.6	31	10.7	1.2	12.9	47	0.35	GROUP 1DX - 15.0 GM	A405753
MA145-150S	UTM NAD 83-8V	415105	7072428	0.9	19.3	8	177	0.1	16.6	6	299	2.37	68.5	0.6	6.3	2.3	12	0.7	0.9	0.3	40	0.12	GROUP 1DX - 15.0 GM	A405753
MA145-200N	UTM NAD 83-8V	415396	7072621	1.4	49.6	23.9	412	0.3	28.3	12.4	659	3.18	148.1	1.2	13	1.8	13	2	0.8	0.9	56	0.13	GROUP 1DX - 15.0 GM	A405753
MA145-200S	UTM NAD 83-8V	415062	7072402	1	19.1	9.4	67	0.1	14.9	4.6	216	2.21	93.2	0.7	6.1	1	9	0.4	0.8	0.3	50	0.07	GROUP 1DX - 15.0 GM	A405753
MA145-250N	UTM NAD 83-8V	415438	7072648	1.1	23.8	10.8	97	0.1	17.5	6.7	327	2.61	52.2	1	11.8	1.3	10	0.7	0.8	0.5	54	0.08	GROUP 1DX - 15.0 GM	A405753
MA145-300N	UTM NAD 83-8V	415481	7072676	0.9	19	10	87	0.1	15.2	5.5	303	2.47	32.4	0.8	28.4	0.8	8	0.6	0.6	0.4	50	0.07	GROUP 1DX - 15.0 GM	A405753
MA145-350N	UTM NAD 83-8V	415522	7072704	1.3	47.6	23.5	270	0.3	24.8	11.5	714	3.03	121.6	2.1	7.2	2.2	13	1.3	0.9	1	52	0.1	GROUP 1DX - 15.0 GM	A405753
MA145-400N	UTM NAD 83-8V	415562	7072734	1.3	38.1	17.2	170	0.3	22.5	10	609	2.7	100.4	1.9	10.7	1.7	11	0.9	0.7	1	49	0.09	GROUP 1DX - 15.0 GM	A405753
MA15-000	UTM NAD 83-8V	415201	7072553	1.1	73.3	11.1	702	0.4	24.1	12.1	482	2.33	174	1.1	14.3	6.1	22	6.8	1	0.9	41	0.28	GROUP 1DX - 15.0 GM	A405753
MA15-050N	UTM NAD 83-8V	415244	7072583	1.2	51.3	15.8	340	0.2	26.8	12.5	545	2.51	119.9	1.3	6.9	6	19	2.7	0.9	0.4	45	0.21	GROUP 1DX - 15.0 GM	A405753
MA15-050S	UTM NAD 83-8V	415162	7072524	0.9	54.8	7.2	627	0.1	31.1	12.5	407	2.64	321.5	1.1	15.9	6.5	30	4.3	0.9	0.6	42	0.29	GROUP 1DX - 15.0 GM	A405753
MA15-100N	UTM NAD 83-8V	415286	7072606	0.9	35.2	12.3	335	0.2	18.3	7.4	593	2.35	57.2	1	17.1	2.9	13	2.4	1	0.4	43	0.13	GROUP 1DX - 15.0 GM	A405753
MA15-100S	UTM NAD 83-8V	415119	7072495	0.7	44.4	7.2	114	0.1	25.6	11.4	307	2.31	71.7	1.2	6.9	5.3	21	0.6	0.7	0.4	41	0.21	GROUP 1DX - 15.0 GM	A405753
MA15-150N	UTM NAD 83-8V	415322	7072629	1.3	30.7	21.9	185	0.6	23.4	9.7	528	2.94	120.6	1.1	24.4	3.2	16	1.1	1.1	0.3	50	0.12	GROUP 1DX - 15.0 GM	A405753
MA15-150S	UTM NAD 83-8V	415082	7072469	1.1	66.3	11.9	261	0.6	25.5	11.7	683	2.87	227.9	1.2	11.8	4.7	13	1.7	1	1.3	50	0.14	GROUP 1DX - 15.0 GM	A405753
MA15-200N	UTM NAD 83-8V	415357	7072662	1.1	57.9	11	410	0.3	35.7	15.4	700	3.25	97.2	1.7	10.6	8.8	19	3.2	1	0.5	53	0.2	GROUP 1DX - 15.0 GM	A405753
MA15-200S	UTM NAD 83-8V	415038	7072438	1	34.2	11.2	161	0.4	27.3	13.1	864	2.57	150.1	1.2	12.8	4.4	15	1.2	1.2	0.4	43	0.17	GROUP 1DX - 15.0 GM	A405753
MA15-250N	UTM NAD 83-8V	415406	7072692	1.3	61.4	33.5	396	0.6	27.7	13	780	3.51	135.5	1.9	8.7	2.3	18	1.7	1	1.2	57	0.14	GROUP 1DX - 15.0 GM	A405753
MA15-300N	UTM NAD 83-8V	415454	7072710	1.3	27	16.3	128	0.2	20	9.7	495	2.83	58.1	1.4	10	1.3	12	0.8	0.8	0.7	57	0.1	GROUP 1DX - 15.0 GM	A405753
MA15-350N	UTM NAD 83-8V	415491	7072742	1.4	48	21.4	202	0.4	22.4	9.7	716	3.13	120.6	1.8	6.7	1	13	1.2	0.9	1.1	59	0.1	GROUP 1DX - 15.0 GM	A405753
MA15-400N	UTM NAD 83-8V	415537	7072775	1.4	38	19.2	142	0.3	17.9	8.6	787	2.77	218.7	2.3	11.5	1	10	0.6	0.9	2.1	48	0.08	GROUP 1DX - 15.0 GM	A405753
MA155-000	UTM NAD 83-8V	415172	7072593	0.9	30.9	7.9	208	0.1	21.4	7.8	336	2.52	20.5	0.7	4.1	4.1	15	1	0.7	0.3	48	0.19	GROUP 1DX - 15.0 GM	A405753
MA155-050N	UTM NAD 83-8V	415217	7072621	0.9	50.7	10.6	555	0.2	23.3	14.3	891	2.49	102.8	1.3	17.7	7.9	29	6	0.9	0.9	43	0.27	GROUP 1DX - 15.0 GM	A405753
MA155-050S	UTM NAD 83-8V	415129	7072564	1	42.9	7.8	127	0.1	38.1	14.3	428	3.16	41.6	1.3	5.1	7.6	23	0.6	1	0.3	48	0.22	GROUP 1DX - 15.0 GM	A405753
MA155-100N	UTM NAD 83-8V	415254	7072646	1	36.5	12.3	287	0.2	28.8	12.7	552	3.22	62.2	1.3	18.1	7.8	16	1.7	0.8	0.4	55	0.19	GROUP 1DX - 15.0 GM	A405753
MA155-100S	UTM NAD 83-8V	415088	7072537	1.1	33.2	8.7	87	0.1	29	12.7	379	2.84	37.3	1.3	6.4	5.7	20	0.4	0.9	0.3	48	0.16	GROUP 1DX - 15.0 GM	A405753
MA155-150N	UTM NAD 83-8V	415296	7072673	1	50.9	62.1	291	0.5	23.5	9.9	513	3.03	119.4	1.3	17.4	4.9	17	1.5	1.2	1	48	0.16	GROUP 1DX - 15.0 GM	A405753
MA155-150S	UTM NAD 83-8V	415044	7072507	1.1	23.7	9.3	80	0.1	20.7	9	348	2.76	41.1	0.8	25.7	4	10	0.4	0.9	0.3	51	0.09	GROUP 1DX - 15.0 GM	A405753
MA155-200N	UTM NAD 83-8V	415341	7072705	1.2	68	27.6	486	0.4	32.9	17.1	1059	3.45	131.6	1.7	29.2	7.5	21	2.2	1.2	1.2	52	0.19	GROUP 1DX - 15.0 GM	A405753
MA155-200S	UTM NAD 83-8V	415012	7072480	1.1	40.7	8.9	159	0.3	25.7	14.9	510	2.57	225.1	1.4	23.4	7.1	17	1.5	1	0.8	48	0.21	GROUP 1DX - 15.0 GM	A405753
MA155-250N	UTM NAD 83-8V	415380	7072730	2.1	84.9	54.3	289	1.2	12.5	8.9	780	3.86	397.8	13.4	19.6	20	40	3.6	3.3	5	33	0.28	GROUP 1DX - 15.0 GM	A405753
MA155-300N	UTM NAD 83-8V	415427	7072761	1.2	54.4	19.4	228	0.9	19.9	8.6	998	2.88	176.5	1.6	18.3	1.2	12	1.4	1.1	1.5	49	0.1	GROUP 1DX - 15.0 GM	A405753
MA155-350N	UTM NAD 83-8V	415467	7072789	1.4	31.2	18.2	141	0.2	17.2	8.3	662	2.71	157.6	1.9	4.4	1.2	11	0.9	0.9	1.2	49	0.09	GROUP 1DX - 15.0 GM	A405753
MA155-400N	UTM NAD 83-8V	415505	7072815	1	28.7	15.6	115	0.4	17.1	8.4	638	2.31	122.3	2.8	17.1	3.6	13	0.8	0.7	1.3	43	0.13	GROUP 1DX - 15.0 GM	A405753
MA16-000	UTM NAD 83-8V	415149	7072637	0.8	48.2	7	77	0.1	25	8.8	248	3.08	28.2	1.4	6.1	7.7	38	0.2	0.9	0.3	43	0.27	GROUP 1DX - 15.0 GM	A405753
MA16-050N	UTM NAD 83-8V	415193	7072658	0.8	52.6	12.8	90	0.5	24	11.1	477	2.86	73.9	1.3	4.3	7.7	23	0.6	1.1	0.7	42	0.2	GROUP 1DX - 15.0 GM	A405753
MA16-050S	UTM NAD 83-8V	415103	7072608	1	26.6	7.7	64	0	17.7	6.1	240	2.36	24.4	0.9	0	2	16	0.2	0.8	0.2	41	0.11	GROUP 1DX - 15.0 GM	A405753
MA16-100N	UTM NAD 83-8V	415227	7072691	1	21.4	18.9	91	0.2	16.2	6.5	355	2.48	40.4	0.7	7.7	1.4	8	0.6	1	0.5	46	0.07	GROUP 1DX - 15.0 GM	A405753
MA16-100S	UTM NAD 83-8V	415061	7072586	1	43.8	9.7	112	0.1	35.7	16.8	386	2.98	50.3	1.3	6.4	4.7	17	0.5	0.8	0.5	53	0.13	GROUP 1DX - 15.0 GM	A405753

Sample	UTM	Easting	Northing	Mo	Cu	Pb	Zn	Ag	Ni	Co	Mn	Fe	As	U	Au	Th	Sr	Cd	Sb	Bi	V	Ca	Analysis:	Acme file
MA16-150N	UTM NAD 83-8V	415270	7072721	0.9	47	20.6	271	0.2	24.4	9.7	816	2.52	84.5	1.3	28.9	7.8	14	2.4	1.2	0.7	45	0.17	GROUP 1DX - 15.0 GM	A405753
MA16-150S	UTM NAD 83-8V	415023	7072553	1.7	74.9	63.5	147	0.8	41.9	23	788	3.77	185.1	2.2	23.2	6.6	30	0.6	1.3	0.8	54	0.17	GROUP 1DX - 15.0 GM	A405753
MA16-200N	UTM NAD 83-8V	415316	7072748	1.2	34.2	22.6	256	0.3	24.5	10.7	919	3.04	68.8	1.2	8.1	3	12	1.5	1	0.5	53	0.09	GROUP 1DX - 15.0 GM	A405753
MA16-200S	UTM NAD 83-8V	414980	7072527	1.3	47.4	20.7	114	0.2	22.5	9	420	2.94	82.9	1.7	40.9	2.5	15	0.8	0.8	0.5	50	0.12	GROUP 1DX - 15.0 GM	A405753
MA16-250N	UTM NAD 83-8V	415355	7072775	1.3	44.2	15.9	170	0.4	21	8.6	675	2.96	133.2	1.1	20.2	1.5	12	1.2	1.1	1	57	0.1	GROUP 1DX - 15.0 GM	A405753
MA16-300N	UTM NAD 83-8V	415399	7072803	1.4	76.8	40	301	0.7	23.6	11.1	1101	3.11	312.1	4.2	14.1	2.7	17	1.5	1.3	3.4	53	0.15	GROUP 1DX - 15.0 GM	A405753
MA16-400N	UTM NAD 83-8V	415476	7072849	1	26.3	11.8	88	0.2	17.3	7.9	384	2.43	96	1.5	69.9	2.7	11	0.7	0.8	1.4	45	0.1	GROUP 1DX - 15.0 GM	A405753
MA165-000	UTM NAD 83-8V	415118	7072678	1.1	28.2	14.5	135	0.1	18.7	6.8	349	2.73	55.4	0.7	3.4	2.2	11	0.5	0.8	0.4	49	0.1	GROUP 1DX - 15.0 GM	A405753
MA165-050N	UTM NAD 83-8V	415164	7072703	0.9	184.2	19.1	1495	0.8	24.1	11.7	647	2.5	652.2	1.1	130.9	7	24	20.5	0.9	3.4	38	0.28	GROUP 1DX - 15.0 GM	A405753
MA165-050S	UTM NAD 83-8V	415076	7072656	1	42.9	13.2	294	0.4	22.3	9.8	516	2.55	64.2	0.9	9.9	4.4	11	1.8	0.9	0.6	47	0.12	GROUP 1DX - 15.0 GM	A405753
MA165-100N	UTM NAD 83-8V	415198	7072731	0.9	27.9	11.5	170	0.1	15.4	6.7	480	2.44	98.7	0.7	9.1	2	8	0.9	0.9	0.4	42	0.06	GROUP 1DX - 15.0 GM	A405753
MA165-100S	UTM NAD 83-8V	415045	7072621	1.2	68.8	12.1	139	0.2	40.5	40.6	678	3.09	212.9	1.6	17	10	35	1.2	1.1	0.8	44	0.19	GROUP 1DX - 15.0 GM	A405753
MA165-150N	UTM NAD 83-8V	415255	7072764	1	65	14.7	475	0.3	22.3	9	657	2.51	254.2	1.2	39.7	7.8	13	4	1.4	1	40	0.13	GROUP 1DX - 15.0 GM	A405753
MA165-150S	UTM NAD 83-8V	415003	7072606	1.5	69.1	12.4	158	0.4	28.8	10.3	365	3.23	133.7	1.5	11.4	3	18	0.9	1.1	0.7	49	0.1	GROUP 1DX - 15.0 GM	A405753
MA165-200N	UTM NAD 83-8V	415292	7072785	1	323.1	25.9	541	2.3	25.7	13.5	1008	3.3	877.4	1.7	84.2	7.1	21	3.2	1.3	8.3	47	0.2	GROUP 1DX - 15.0 GM	A405753
MA165-200S	UTM NAD 83-8V	414953	7072574	1.7	50.8	12	145	0.2	28.9	15.3	523	3.25	132.5	1.4	27.8	4.1	23	0.7	1.1	0.7	54	0.16	GROUP 1DX - 15.0 GM	A405753
MA165-250N	UTM NAD 83-8V	415332	7072819	1.4	75.8	42.6	404	0.9	26.2	9.7	1209	3.35	239.2	1.8	20.2	5.3	17	2	1.7	1.2	50	0.16	GROUP 1DX - 15.0 GM	A405753
MA165-300N	UTM NAD 83-8V	415369	7072838	0.9	28.3	13.5	110	0.1	16.2	7.5	449	2.48	81.5	1	8.2	1.6	10	0.8	0.9	0.7	44	0.09	GROUP 1DX - 15.0 GM	A405753
MA165-350N	UTM NAD 83-8V	415419	7072861	1.3	73.7	21.4	199	0.7	23.5	9.7	727	2.93	476.5	4.6	18.4	5.3	20	1.1	1.3	4.6	48	0.23	GROUP 1DX - 15.0 GM	A405753
MA165-400N	UTM NAD 83-8V	415457	7072897	1.3	28.3	30.6	127	1.4	18.2	8.3	588	2.37	340.6	1.6	17.6	2	13	0.7	1.8	1.6	43	0.15	GROUP 1DX - 15.0 GM	A405753
MA17-000	UTM NAD 83-8V	415097	7072716	1.1	25.6	10.8	92	0.1	15.2	5.3	235	2.21	48.3	0.6	6.2	1.4	10	0.5	0.7	0.3	45	0.09	GROUP 1DX - 15.0 GM	A405753
MA17-050N	UTM NAD 83-8V	415127	7072748	0.9	76.2	90.7	1003	0.6	26.8	12.8	1426	2.66	198.3	1.2	107.3	8	22	6.9	1.5	0.7	38	0.28	GROUP 1DX - 15.0 GM	A405753
MA17-050S	UTM NAD 83-8V	415044	7072694	1.1	48.9	16.6	139	0.1	27.7	13.1	487	2.88	58.3	1	9.3	4.3	12	0.6	0.9	0.4	43	0.1	GROUP 1DX - 15.0 GM	A405753
MA17-100N	UTM NAD 83-8V	415165	7072784	1.2	267.6	12	693	1.1	27.9	11.1	593	2.82	314	1.3	51.5	7.6	22	4.7	0.9	2.6	46	0.28	GROUP 1DX - 15.0 GM	A405753
MA17-100S	UTM NAD 83-8V	415008	7072670	1.5	180.8	140.6	1175	5.7	40	16.7	834	3.01	199.8	2.3	51.1	8.8	24	4.2	1.5	1.2	48	0.25	GROUP 1DX - 15.0 GM	A405753
MA17-150N	UTM NAD 83-8V	415215	7072800	1.1	23.9	74.2	135	0.5	14.4	5.4	355	2.3	34.4	0.6	36	1.9	9	0.7	0.8	0.3	41	0.08	GROUP 1DX - 15.0 GM	A405753
MA17-150S	UTM NAD 83-8V	414962	7072627	1.5	121.3	29.6	713	1	33.5	18.4	1049	3.54	169.3	1.9	31.1	6.3	21	3.7	1.1	1.5	56	0.19	GROUP 1DX - 15.0 GM	A405753
MA17-200N	UTM NAD 83-8V	415259	7072830	1.2	71.6	30.7	424	0.6	28.6	12.7	886	2.81	181.2	1.7	21.9	6.4	15	3.2	1.2	0.7	46	0.17	GROUP 1DX - 15.0 GM	A405753
MA17-200S	UTM NAD 83-8V	414925	7072608	1.5	80.3	17.7	561	0.5	30.4	17.6	698	3.3	233.2	1.7	32.5	4.8	19	3.9	1	1	53	0.17	GROUP 1DX - 15.0 GM	A405753
MA17-250N	UTM NAD 83-8V	415301	7072856	1	50.7	15.4	245	0.3	26.7	10	710	2.71	85.2	1.4	25	8.8	14	2	1.1	0.4	46	0.18	GROUP 1DX - 15.0 GM	A405753
MA17-300N	UTM NAD 83-8V	415337	7072879	1.3	44.5	11.6	264	0.1	22.7	8.6	540	2.67	101	1.4	5.9	4.7	14	1.6	1	1.2	44	0.16	GROUP 1DX - 15.0 GM	A405753
MA17-400N	UTM NAD 83-8V	415426	7072938	1.5	50.5	11.4	155	0.3	18.8	8.9	526	2.53	198.5	2.5	5.1	5.1	15	1	1	1.8	46	0.16	GROUP 1DX - 15.0 GM	A405753
MA175-000	UTM NAD 83-8V	415065	7072760	1.7	188.8	44.2	714	1.6	31.4	14.2	1215	3.53	403.9	1.3	43.3	4.5	17	2.3	1.4	2.2	51	0.15	GROUP 1DX - 15.0 GM	A405753
MA175-050N	UTM NAD 83-8V	415107	7072790	1	147.8	16.3	292	0.5	22.5	9.2	712	2.57	240.2	0.9	46.9	4.3	16	2.1	0.8	1.6	40	0.18	GROUP 1DX - 15.0 GM	A405753
MA175-050S	UTM NAD 83-8V	415021	7072730	1.4	40.7	63.1	156	0.5	17.2	7.3	611	2.54	118.7	0.9	12.9	1.7	12	1.5	0.9	0.5	50	0.09	GROUP 1DX - 15.0 GM	A405753
MA175-100N	UTM NAD 83-8V	415144	7072816	1	227.8	30.9	482	1.3	38	16.3	1276	2.75	365.9	1.4	48.6	7.4	15	4	1	2.6	42	0.18	GROUP 1DX - 15.0 GM	A405753
MA175-100S	UTM NAD 83-8V	414982	7072703	1.1	79.4	49.1	736	1	28.7	13.5	1166	2.91	464.7	1.9	58.1	6.8	15	6.3	1.4	2	44	0.17	GROUP 1DX - 15.0 GM	A405753
MA175-150N	UTM NAD 83-8V	415190	7072841	1.2	60.7	12.5	207	0.4	19.9	9	633	2.63	90.4	0.9	5.2	2	11	1.6	0.7	0.5	54	0.1	GROUP 1DX - 15.0 GM	A405753
MA175-150S	UTM NAD 83-8V	414940	7072679	1.6	73.6	49.6	329	1.9	21.5	11.1	946	3.36	372.8	1.7	18.6	1.3	15	3.1	1.7	1.7	51	0.08	GROUP 1DX - 15.0 GM	A405753
MA175-200N	UTM NAD 83-8V	415233	7072873	1.1	83.5	33	464	1	23.1	9.9	1234	2.7	212.5	1.4	25.1	6.3	15	3	1.6	1.3	45	0.17	GROUP 1DX - 15.0 GM	A405753
MA175-200S	UTM NAD 83-8V	414898	7072651	1.6	135	136.9	757	1.8	32.7	16.4	1678	3.55	248.5	2.2	22.5	3.7	22	6	1.3	1.4	54	0.15	GROUP 1DX - 15.0 GM	A405753
MA175-250N	UTM NAD 83-8V	415274	7072900	1	76.8	16.9	357	0.7	25.9	12.4	933	2.78	353.7	1.6	41.4	6.8	15	2.6	3.2	0.8	41	0.17	GROUP 1DX - 15.0 GM	A405753
MA175-300N	UTM NAD 83-8V	415314	7072930	1.3	69	11.1	409	0.2	26.6	17.7	1068	2.89	244.9	1.4	20.5	5.7	12	3.1	2.4	1.3	42	0.1	GROUP 1DX - 15.0 GM	A405753

Sample	UTM	Easting	Northing	Mo	Cu	Pb	Zn	Ag	Ni	Co	Mn	Fe	As	U	Au	Th	Sr	Cd	Sb	Bi	V	Ca	Analysis:	Acme file
MA175-350N	UTM NAD 83-8V	415359	7072952	1.6	49.6	22	205	0.4	17.2	8.9	645	2.85	204.4	1.7	7.7	2	10	0.9	1.1	2.4	47	0.08	GROUP 1DX - 15.0 GM	A405753
MA18-000	UTM NAD 83-8V	415037	7072802	1.3	55.2	26.7	271	0.9	26.2	11.5	950	3.01	117.6	1.3	27.7	6.4	15	1.7	1.3	0.8	49	0.15	GROUP 1DX - 15.0 GM	A405753
MA18-050N	UTM NAD 83-8V	415082	7072824	1.3	78.4	24.1	227	0.6	32.4	14	738	2.94	106.1	1.4	33.7	8.6	19	1.9	1	0.6	52	0.26	GROUP 1DX - 15.0 GM	A405753
MA18-050S	UTM NAD 83-8V	414994	7072780	1.5	284.3	333.8	1937	3.7	30.9	15.2	2490	3.47	506.8	1.9	47.9	9.2	21	13.1	2.9	7	41	0.23	GROUP 1DX - 15.0 GM	A405753
MA18-100N	UTM NAD 83-8V	415121	7072855	1.1	60	37.9	301	1	26	9.7	1045	2.79	148.4	1.6	16.1	5.8	16	1.8	1.3	0.6	46	0.18	GROUP 1DX - 15.0 GM	A405753
MA18-100S	UTM NAD 83-8V	414953	7072753	1.4	48.8	53.7	453	0.4	21.8	9.2	667	3	173.7	1.1	12.8	3.7	13	3.5	1.4	1	57	0.12	GROUP 1DX - 15.0 GM	A405753
MA18-150N	UTM NAD 83-8V	415160	7072884	1.2	69.8	14	285	0.5	25.4	8.7	625	2.46	87.6	1.3	56.3	6.5	17	2.4	1.1	0.7	45	0.24	GROUP 1DX - 15.0 GM	A405753
MA18-150S	UTM NAD 83-8V	414915	7072726	1.2	71.6	128.4	428	0.9	21.4	8.4	694	2.92	236.6	1.2	13.5	2.8	17	3.3	1.5	1.1	41	0.13	GROUP 1DX - 15.0 GM	A405753
MA18-200N	UTM NAD 83-8V	415203	7072915	1.1	106.4	30.6	405	0.5	29	13.2	718	2.78	266.5	1.7	25.7	8	26	3.6	1.5	1	41	0.2	GROUP 1DX - 15.0 GM	A405753
MA18-200S	UTM NAD 83-8V	414871	7072693	1.3	32.6	30.7	279	0.1	17.7	7.5	486	2.84	77.2	0.8	25.8	3.2	12	1.5	0.9	0.5	49	0.09	GROUP 1DX - 15.0 GM	A405753
MA18-250N	UTM NAD 83-8V	415243	7072938	1.2	132.3	140.5	1048	1.3	26.3	14.6	2976	2.99	364.1	1.9	63.9	9.1	32	11.4	3.6	2.6	40	0.26	GROUP 1DX - 15.0 GM	A405753
MA18-300N	UTM NAD 83-8V	415292	7072973	1.5	232.7	412	2658	3.4	36.9	24.7	7382	4.62	970.4	3.9	72.9	14.4	39	29.9	10.5	4.1	36	0.29	GROUP 1DX - 15.0 GM	A405753
MA18-350N	UTM NAD 83-8V	415324	7072989	5.5	436.4	61.8	1023	3.1	41.5	30.7	3933	12.05	1462	6.3	255.9	17.4	37	7.4	3.8	17.4	62	0.1	GROUP 1DX - 15.0 GM	A405753
MA18-400N	UTM NAD 83-8V	415362	7073018	2.8	279.1	63.8	919	2.1	27.5	29.2	3366	5.26	747.1	4	55.5	13.8	32	12.4	3.4	10.4	44	0.16	GROUP 1DX - 15.0 GM	A405753
MA4-000	UTM NAD 83-8V	415799	7071636	1.2	17.9	13.8	59	0.2	16.5	7.7	357	2.66	32.2	0.7	9.2	0.7	8	0.3	0.9	0.3	47	0.08	GROUP 1DX - 15.0 GM	A405753
MA4-100N	UTM NAD 83-8V	415891	7071687	1.4	48.2	25.7	106	0.3	32.1	17.6	922	3.64	73.9	1.5	14.1	1.9	14	0.4	0.9	1.4	59	0.12	GROUP 1DX - 15.0 GM	A405753
MA4-100S	UTM NAD 83-8V	415725	7071576	1	28.7	9.3	67	0.1	24.8	10.3	305	2.75	54.1	1	11.3	4.1	11	0.2	0.9	0.5	42	0.07	GROUP 1DX - 15.0 GM	A405753
MA4-200N	UTM NAD 83-8V	415979	7071750	1	31.6	13.6	78	0.2	20.3	9.9	508	2.79	35.5	1.2	18.7	1.9	12	0.3	0.8	1.2	49	0.09	GROUP 1DX - 15.0 GM	A405753
MA4-200S	UTM NAD 83-8V	415639	7071517	1.1	32.1	13.3	79	0.2	21.4	8.4	386	2.59	56.5	1.1	7.1	1.7	10	0.4	1.4	0.6	41	0.07	GROUP 1DX - 15.0 GM	A405753
MA4-300N	UTM NAD 83-8V	416061	7071800	1	55.7	11	78	1.8	15	7.3	460	2.92	29.1	1.3	4.5	1.3	9	0.4	0.9	2.2	38	0.08	GROUP 1DX - 15.0 GM	A405753
MA4-400N	UTM NAD 83-8V	416143	7071857	1	18	19	93	0.3	15.5	7.9	467	2.48	30.8	0.9	3.5	1.2	8	0.8	0.8	1.1	42	0.07	GROUP 1DX - 15.0 GM	A405753
MA5-000	UTM NAD 83-8V	415749	7071710	0.9	43	11.3	77	0.3	24	8.6	325	2.76	140.3	1.5	45.5	3.8	15	0.4	1.4	1.7	43	0.13	GROUP 1DX - 15.0 GM	A405753
MA5-100N	UTM NAD 83-8V	415834	7071771	1.3	41.2	15	90	0.1	20.6	7.8	399	3.18	54	1.2	8.9	0.8	13	0.4	0.9	2.4	55	0.08	GROUP 1DX - 15.0 GM	A405753
MA5-100S	UTM NAD 83-8V	415668	7071660	1	30.3	10.6	63	0.1	22.3	7.8	270	2.74	48.9	1	22.5	3.9	13	0.2	1.1	0.6	46	0.1	GROUP 1DX - 15.0 GM	A405753
MA5-200N	UTM NAD 83-8V	415919	7071843	1.3	28.4	12.8	86	0.2	21.5	11	603	3.06	35.7	1.4	6.8	1.4	11	0.4	1	1.1	55	0.07	GROUP 1DX - 15.0 GM	A405753
MA5-200S	UTM NAD 83-8V	415588	7071611	1	33.2	9.5	66	0.3	22.1	7.9	286	2.86	47.7	1.1	15.7	1.6	14	0.3	1.1	0.8	47	0.07	GROUP 1DX - 15.0 GM	A405753
MA5-300N	UTM NAD 83-8V	415999	7071888	1	31.3	10.4	80	0.2	20.8	8.5	441	2.85	25.6	1	4.9	1.1	13	0.4	0.8	1.5	48	0.09	GROUP 1DX - 15.0 GM	A405753
MA5-400N	UTM NAD 83-8V	416079	7071930	1.1	25.6	17.6	98	0.3	15.8	6.4	513	2.52	16.6	1	8.2	0.6	11	0.6	1.1	0.6	43	0.07	GROUP 1DX - 15.0 GM	A405753
MA6-000	UTM NAD 83-8V	415695	7071802	0.9	97.6	10.5	104	0.2	23.6	9.1	357	3.19	157.8	1.6	50.8	8.1	28	0.7	1.2	6	45	0.17	GROUP 1DX - 15.0 GM	A405753
MA6-100N	UTM NAD 83-8V	415781	7071855	1	72.1	9.6	92	0.3	25.3	9.8	381	3.09	109.8	1.7	44.3	5.1	24	0.5	1	2.6	46	0.13	GROUP 1DX - 15.0 GM	A405753
MA6-100S	UTM NAD 83-8V	415611	7071747	1	21.2	8.1	61	0.1	20	7.6	295	2.39	34.6	0.7	3.8	4.3	10	0.4	1.1	0.4	41	0.09	GROUP 1DX - 15.0 GM	A405753
MA6-200N	UTM NAD 83-8V	415864	7071902	1	32.3	13.3	86	0.1	21.4	12.2	541	2.83	40	1.3	6.8	2.1	11	0.3	1	0.8	48	0.09	GROUP 1DX - 15.0 GM	A405753
MA6-200S	UTM NAD 83-8V	415530	7071697	0.9	33.7	8.8	74	0.1	22.9	11.2	416	2.66	57	1.2	63.4	4.3	13	0.2	0.9	0.8	41	0.11	GROUP 1DX - 15.0 GM	A405753
MA6-300N	UTM NAD 83-8V	415953	7071961	1.2	28.6	11.5	75	0.1	20	9	413	2.98	24	1.2	3	1.2	10	0.4	0.9	0.6	52	0.07	GROUP 1DX - 15.0 GM	A405753
MA6-400N	UTM NAD 83-8V	416030	7072016	0.8	21.3	9.1	68	0.1	16.9	6.9	308	2.43	22	0.8	3.9	1.7	8	0.2	1	0.4	38	0.06	GROUP 1DX - 15.0 GM	A405753
MA7-000	UTM NAD 83-8V	415642	7071892	1.2	64.2	14.1	128	0.3	31.1	19.6	805	3.27	124.6	1.6	36.3	5.3	17	1	1.4	2.1	49	0.15	GROUP 1DX - 15.0 GM	A405753
MA7-100N	UTM NAD 83-8V	415724	7071948	1.1	78.6	18.7	129	0.3	30.7	19.3	799	3.28	120	2.3	37.1	7.7	23	1	1.4	2.7	51	0.2	GROUP 1DX - 15.0 GM	A405753
MA7-100S	UTM NAD 83-8V	415552	7071828	1	32.5	12.1	98	0.2	22.1	8.7	369	2.99	58.8	1.1	23.7	2.5	11	0.5	1.3	0.8	51	0.08	GROUP 1DX - 15.0 GM	A405753
MA7-200N	UTM NAD 83-8V	415806	7071997	1.1	26.5	15.8	75	0.1	16.9	6.7	348	2.69	50.4	1	5	0.9	9	0.4	0.9	0.7	52	0.07	GROUP 1DX - 15.0 GM	A405753
MA7-200S	UTM NAD 83-8V	415473	7071781	0.9	25.3	8.6	69	0.1	17.1	6.8	251	2.16	41.7	0.8	14.2	2.5	8	0.3	1.6	0.8	39	0.07	GROUP 1DX - 15.0 GM	A405753
MA7-300N	UTM NAD 83-8V	415886	7072051	0.9	42.2	10.7	80	0.1	22.4	8.8	346	2.75	45.8	1.4	23.5	4.4	15	0.3	1.5	1.4	43	0.11	GROUP 1DX - 15.0 GM	A405753
MA7-400N	UTM NAD 83-8V	415974	7072106	1.1	19.1	9.9	58	0.1	16.7	7.7	343	2.52	17.4	0.7	2.4	1.6	8	0.3	0.9	0.4	44	0.06	GROUP 1DX - 15.0 GM	A405753
MA8-000	UTM NAD 83-8V	415587	7071967	1.2	17.9	13.2	61	0	15	6.7	315	2.5	24.6	0.7	4.5	1.1	6	0.3	0.8	0.3	49	0.05	GROUP 1DX - 15.0 GM	A405753

Sample	UTM	Easting	Northing	Mo	Cu	Pb	Zn	Ag	Ni	Co	Mn	Fe	As	U	Au	Th	Sr	Cd	Sb	Bi	V	Ca	Analysis:	Acme file
MA8-100N	UTM NAD 83-8V	415665	7072028	0.9	21.2	10.3	63	0.1	14.9	7.1	352	2.7	49.8	1	35	2.1	8	0.4	0.9	0.6	47	0.07	GROUP 1DX - 15.0 GM	A405753
MA8-100S	UTM NAD 83-8V	415499	7071911	0.8	21.6	11.5	99	0	23.1	9.9	491	2.77	28.4	0.7	7.8	3	9	0.5	0.8	0.8	48	0.09	GROUP 1DX - 15.0 GM	A405753
MA8-200N	UTM NAD 83-8V	415750	7072072	1.1	39.7	14.9	111	0.1	26.7	11.1	501	2.79	82.8	1.4	10.3	4.8	13	0.6	1.2	1.1	47	0.1	GROUP 1DX - 15.0 GM	A405753
MA8-200S	UTM NAD 83-8V	415421	7071859	1.1	55	10.7	189	0.3	25.2	13.5	593	2.91	194.2	1.3	36.1	2.5	16	2	8.1	2.8	41	0.12	GROUP 1DX - 15.0 GM	A405753
MA8-300N	UTM NAD 83-8V	415832	7072125	0.7	40.8	10.6	76	0.3	13.8	9.3	582	2.13	76	1.2	24.4	1.3	7	0.3	1.9	2.3	34	0.05	GROUP 1DX - 15.0 GM	A405753
MA8-400N	UTM NAD 83-8V	415920	7072193	1.2	36.2	8.6	59	0.4	16	4.9	158	2.32	29.1	1.4	8.3	0.6	14	0.3	1.4	1.1	40	0.09	GROUP 1DX - 15.0 GM	A405753
MA9-000	UTM NAD 83-8V	415532	7072047	1.3	73.9	8.9	98	0.3	23	12.9	589	2.87	315.8	2.1	17.7	3.7	18	1.1	1.2	1.5	50	0.17	GROUP 1DX - 15.0 GM	A405753
MA9-100N	UTM NAD 83-8V	415618	7072111	1.2	32.8	12.2	105	0.2	22.7	9.5	446	2.4	99.4	1.5	31.1	5.4	12	0.6	1.6	0.8	45	0.17	GROUP 1DX - 15.0 GM	A405753
MA9-100S	UTM NAD 83-8V	415447	7071992	0.9	28.6	8.8	83	0.1	18.5	8.1	292	2.43	39.3	0.9	8.9	3	9	0.4	0.9	0.5	40	0.08	GROUP 1DX - 15.0 GM	A405753
MA9-1400N	UTM NAD 83-8V	416692	7072816	1.1	13.3	12.3	70	0.1	11.1	5.7	412	2.34	25.7	0.5	5.3	1.1	6	0.4	0.8	0.3	43	0.05	GROUP 1DX - 15.0 GM	A405753
MA9-1450N	UTM NAD 83-8V	416737	7072851	1	11.5	12.5	50	0	8.9	3.7	135	2.03	14.2	0.8	2	0.5	6	0.2	0.5	0.2	46	0.05	GROUP 1DX - 15.0 GM	A405753
MA9-1500N	UTM NAD 83-8V	416782	7072876	1.5	14.7	12.4	86	0	12.5	5	216	2.08	43.8	1.2	1.9	0.4	7	0.4	0.6	0.3	37	0.06	GROUP 1DX - 15.0 GM	A405753
MA9-1550N	UTM NAD 83-8V	416824	7072904	0.9	12.3	9.1	91	0.1	11.9	4.6	225	2.19	31.5	0.8	3.4	0.7	9	0.6	0.6	0.5	47	0.07	GROUP 1DX - 15.0 GM	A405753
MA9-1600N	UTM NAD 83-8V	416863	7072929	1.1	17.5	14.1	151	0.1	20.7	8.9	387	2.8	19.6	0.8	2.8	3.6	11	1.1	0.7	0.4	39	0.12	GROUP 1DX - 15.0 GM	A405753
MA9-200N	UTM NAD 83-8V	415696	7072172	1.3	39	11.3	99	0.2	25.9	11.2	523	2.93	104.3	2	15.4	5.4	15	0.5	2	0.8	52	0.17	GROUP 1DX - 15.0 GM	A405753
MA9-200S	UTM NAD 83-8V	415371	7071961	0.5	115.3	14.1	103	1.7	13.4	5.8	422	5.57	333.2	2.7	90.3	19.1	116	0.5	77.6	8.2	34	0.24	GROUP 1DX - 15.0 GM	A405753
MA9-300N	UTM NAD 83-8V	415771	7072219	1	41.8	10	108	0.3	25.3	11.2	545	2.8	62.8	1.5	16	5.8	17	0.8	1.3	0.8	51	0.18	GROUP 1DX - 15.0 GM	A405753
MA9-400N	UTM NAD 83-8V	415863	7072278	1.3	65	21.2	247	0.3	28.6	14	704	3.17	65.5	1.7	21.7	7	21	1.7	1.5	1.7	49	0.17	GROUP 1DX - 15.0 GM	A405753
MA950-000	UTM NAD 83-8V	415505	7072094	1.7	41.1	10.2	112	0.1	18.1	8.8	357	2.72	159.4	1.8	18.6	1.9	10	0.6	1.1	1.5	53	0.09	GROUP 1DX - 15.0 GM	A405753
MA950-050S	UTM NAD 83-8V	415464	7072064	1.2	24.3	9.9	79	0.1	21.3	9.8	391	2.38	25	1	5.8	4.5	10	0.4	0.8	0.5	50	0.09	GROUP 1DX - 15.0 GM	A405753
MA950-100S	UTM NAD 83-8V	415412	7072053	1.3	41.8	10.5	90	0.1	25.5	9.8	352	2.48	23	1.1	4.1	3.9	21	0.2	0.9	0.5	46	0.13	GROUP 1DX - 15.0 GM	A405753
MA950-150S	UTM NAD 83-8V	415380	7072010	1.7	100	14.1	164	0.2	37	22.6	634	3.48	310.1	2	22.2	3.3	25	1.1	5.4	2.9	42	0.12	GROUP 1DX - 15.0 GM	A405753
MA950-200S	UTM NAD 83-8V	415331	7071995	1.3	87.6	12.8	168	1.2	26.6	18.5	737	3.46	254.1	2.1	142.8	4.2	33	1.2	8.4	2	39	0.09	GROUP 1DX - 15.0 GM	A405753
MAIF-001	UTM NAD 83-8V	414887	7073302	0.8	41	21.3	688	0.3	25	9.7	905	2.26	88.7	1.2	16.2	6.8	18	3.8	0.8	0.9	35	0.22	GROUP 1DX - 15.0 GM	A405753
MAIF-002	UTM NAD 83-8V	414899	7073366	0.8	30.8	20.8	164	0.2	21.6	9.8	405	2.42	43.2	1.1	6.6	7.1	19	1	0.7	0.4	36	0.16	GROUP 1DX - 15.0 GM	A405753
MAIF-003	UTM NAD 83-8V	414777	7073611	0.8	34.2	27.5	117	0.3	29.7	11.2	639	2.88	178.5	1.6	69.7	5.3	21	0.3	0.9	0.7	39	0.13	GROUP 1DX - 15.0 GM	A405753
MAIF-004	UTM NAD 83-8V	414682	7074072	1.1	41.3	19.9	686	0.5	22.4	10.1	624	2.88	140.3	0.8	5.3	2.1	22	5.3	1	3.5	43	0.25	GROUP 1DX - 15.0 GM	A405753
MAIF-005	UTM NAD 83-8V	415052	7074492	1.4	57.7	13.2	133	0.2	16.6	23.7	5302	2.96	258	2.8	31.8	13.3	116	0.8	4.2	1	42	1.1	GROUP 1DX - 15.0 GM	A405753
MAIF-006	UTM NAD 83-8V	415067	7074511	0.7	36.7	88.1	413	0.6	21.6	11.8	826	2.56	221.7	1.4	59.2	11.2	21	2.6	2.6	1.5	33	0.33	GROUP 1DX - 15.0 GM	A405753
MAIF-007	UTM NAD 83-8V	415124	7074535	1	29	48.1	354	0.2	32.8	28	842	2.95	241.8	1.4	31.1	4.5	33	1.3	1.1	0.6	39	0.17	GROUP 1DX - 15.0 GM	A405753
MAIF-008	UTM NAD 83-8V	415162	7074552	1.6	54.3	111.8	473	1.4	30.1	33.7	1625	3.25	350.8	3.8	25.4	3.9	39	2.3	1.4	1.1	46	0.22	GROUP 1DX - 15.0 GM	A405753
MAIF-009	UTM NAD 83-8V	415353	7074636	1.1	67.9	140.1	1147	2.1	21.9	22.3	1942	3.87	148.8	10.3	17.5	7.3	81	5.6	2	1.3	48	0.31	GROUP 1DX - 15.0 GM	A405753
MAIF-010	UTM NAD 83-8V	415487	7074717	0.7	74.3	101.1	1866	1.1	39.6	28	1662	4.12	305.8	2	52	7.1	58	9.9	0.9	3.7	69	0.59	GROUP 1DX - 15.0 GM	A405753
MAIF-011	UTM NAD 83-8V	415523	7074725	0.9	62.8	45.5	1068	0.6	33.4	24	1048	3.61	477.9	1.6	149.3	7.1	41	7.3	1.1	3.1	60	0.65	GROUP 1DX - 15.0 GM	A405753
MAIF-012	UTM NAD 83-8V	415560	7074739	1.3	338.2	1396.6	6116	13.9	25.6	37.3	6426	5.89	1717.1	2.2	56.3	9.6	46	66.9	9.7	14.4	56	0.74	GROUP 1DX - 15.0 GM	A405753
MAIF-013	UTM NAD 83-8V	415597	7074753	1	59.9	225.5	1936	1.9	29.8	23.8	2297	3.29	783.5	1.5	35	4.7	36	21.9	1.9	2.2	41	0.29	GROUP 1DX - 15.0 GM	A405753
MAIF-014	UTM NAD 83-8V	415681	7074838	0.6	171.1	607.9	2065	5.9	28.4	22.9	3596	4.27	687.4	1.1	19.9	8.1	40	19.3	3.3	11.6	57	0.82	GROUP 1DX - 15.0 GM	A405753
MAIF-015	UTM NAD 83-8V	415712	7074878	0.5	87.6	118.4	1909	11.7	31.8	16.6	3350	3.23	523.5	1.3	32.4	8.5	50	17.5	4.6	1.8	41	0.44	GROUP 1DX - 15.0 GM	A405753
MAIF-016	UTM NAD 83-8V	415703	7074912	0.9	57	63.5	325	0.6	38.5	29.3	2208	3.32	717.7	2	33.5	6	41	2	1.7	0.7	46	0.26	GROUP 1DX - 15.0 GM	A405753
MAIF-017	UTM NAD 83-8V	415734	7074944	0.9	23.4	30.7	158	0.2	22.2	11.4	1463	2.73	471.6	1.3	11.5	2	21	0.8	1.8	0.3	46	0.18	GROUP 1DX - 15.0 GM	A405753
MAIF-018	UTM NAD 83-8V	415751	7074977	0.8	32.1	37.4	192	0.2	26.7	16.1	847	2.34	340.7	1.4	26.8	4.5	21	1.3	0.8	0.4	40	0.2	GROUP 1DX - 15.0 GM	A405753
MAIF-019	UTM NAD 83-8V	415761	7075014	0.6	30.5	24.2	134	0.1	21.9	11.1	631	2.3	304.4	1.2	24.1	5.6	22	0.6	0.8	0.2	38	0.21	GROUP 1DX - 15.0 GM	A405753
QUIF-001A	UTM NAD 83-8V	411704	7072568	0.5	19.4	25.4	91	1.5	21.6	6.5	861	1.98	36.4	1	13.6	8.6	13	0.4	1.7	0.1	27	0.2	GROUP 1DX - 15.00 GM	A405769

Sample	UTM	Easting	Northing	Mo	Cu	Pb	Zn	Ag	Ni	Co	Mn	Fe	As	U	Au	Th	Sr	Cd	Sb	Bi	V	Ca	Analysis:	Acme file
QUIF-001B	UTM NAD 83-8V	411718	7072574	0.8	20.1	21.1	85	1	19.6	6.5	420	2.09	38.5	1.1	9.2	6.5	13	0.3	1.7	0.2	32	0.17	GROUP 1DX - 15.00 GM	A405769
QUIF-002	UTM NAD 83-8V	411757	7072621	0.4	26.8	168.3	285	6.2	25.6	12.8	2368	2.47	240.2	1.2	39.8	15.9	16	2.6	5.2	0.2	10	0.13	GROUP 1DX - 15.00 GM	A405769
QUIF-003	UTM NAD 83-8V	411853	7072643	0.9	40.5	235.1	267	15.8	38.3	24.2	3336	2.87	369.9	1.8	39.7	13.6	16	2	9.9	0.3	15	0.14	GROUP 1DX - 15.00 GM	A405769
QUIF-004	UTM NAD 83-8V	411990	7072639	0.7	22.4	111.3	108	2.4	22.9	10.6	1127	2.09	89.6	1	15	9	13	0.6	3.1	0.2	19	0.14	GROUP 1DX - 15.00 GM	A405769
QUIF-005	UTM NAD 83-8V	412109	7072395	0.6	271.6	2137.5	1386	100	23.7	10.1	14660	3.35	899.3	6.3	72.4	17.8	30	11.9	87.8	0.2	3	0.09	GROUP 1DX - 15.00 GM	A405769
QUIF-006	UTM NAD 83-8V	412009	7072357	0.3	33.4	131	281	10.7	42.4	20.5	4502	2.81	371.7	1.4	28.1	33.4	26	1.9	14.9	0.4	5	0.19	GROUP 1DX - 15.00 GM	A405769
QUIF-007	UTM NAD 83-8V	412089	7072308	1	49	77.2	181	2.5	43.7	18.6	1945	4.21	133.4	2.8	12.3	26.6	15	0.7	7.1	0.5	9	0.12	GROUP 1DX - 15.00 GM	A405769
QUIF-008	UTM NAD 83-8V	412128	7072372	0.7	20	22.2	63	0.3	23	10.9	465	2.56	30.7	1	5.8	8	10	0.2	1.5	0.2	29	0.1	GROUP 1DX - 15.00 GM	A405769
QUIF-009	UTM NAD 83-8V	412268	7072270	0.5	30.1	52.9	117	2	30.8	15.4	2433	2.23	226.6	1.6	97.9	14.7	21	0.5	6.3	0.3	14	0.17	GROUP 1DX - 15.00 GM	A405769
QUIF-010	UTM NAD 83-8V	412435	7072310	0.1	40.2	62.1	77	0.4	54.2	26.1	1676	3.39	220.7	1	55.6	26.8	12	0.1	11.6	0.6	5	0.19	GROUP 1DX - 15.00 GM	A405769
QUIF-011	UTM NAD 83-8V	412748	7072128	0.5	42.3	75.9	141	2.1	40.9	21.4	1920	3.05	324	2.1	38	21.2	19	0.7	14.2	0.4	11	0.14	GROUP 1DX - 15.00 GM	A405769

Sample	UTM	Easting	Northing	P	La	Cr	Mg	Ba	Ti	B	Al	Na	K	W	Hg	Sc	Tl	S	Ga	Se	Analysis:	Acme file
MA00-000	UTM NAD 83-8V	416031	7071306	0.031	22	25.4	0.47	125	0.033	0	1.46	0.006	0.17	0.4	0.03	2.1	0.3	0	5	0.6	GROUP 1DX - 15.0 GM	A405753
MA00-100N	UTM NAD 83-8V	416113	7071361	0.056	19	21.4	0.39	83	0.028	0	1.17	0.004	0.07	0.3	0.03	1.8	0.3	0	3	0.6	GROUP 1DX - 15.0 GM	A405753
MA00-100S	UTM NAD 83-8V	415936	7071237	0.055	18	20.8	0.37	124	0.026	0	1.21	0.005	0.06	0.3	0.04	1.8	0.2	0	4	0.7	GROUP 1DX - 15.0 GM	A405753
MA00-200N	UTM NAD 83-8V	416196	7071415	0.027	11	16.8	0.24	45	0.025	0	0.86	0.003	0.03	0.3	0.03	1.1	0.2	0	4	0.5	GROUP 1DX - 15.0 GM	A405753
MA00-200S	UTM NAD 83-8V	415859	7071190	0.045	16	18.7	0.31	114	0.015	1	1.09	0.004	0.05	0.3	0.04	1.2	0.2	0	4	0.7	GROUP 1DX - 15.0 GM	A405753
MA00-300N	UTM NAD 83-8V	416278	7071465	0.062	15	22.5	0.39	123	0.028	0	1.13	0.005	0.05	1.4	0.03	1.7	0.2	0	3	0.8	GROUP 1DX - 15.0 GM	A405753
MA00-400N	UTM NAD 83-8V	416364	7071521	0.088	16	24.6	0.4	111	0.028	1	1.08	0.005	0.05	1.8	0.04	1.7	0.2	0	4	0.9	GROUP 1DX - 15.0 GM	A405753
MA01-000	UTM NAD 83-8V	415971	7071383	0.033	33	40.2	0.75	126	0.034	2	2.17	0.005	0.35	0.5	0.02	3.5	1	0	7	0	GROUP 1DX - 15.0 GM	A405753
MA01-100N	UTM NAD 83-8V	416052	7071442	0.033	14	17.9	0.31	71	0.022	0	1	0.003	0.05	0.2	0.04	1.2	0.2	0	4	0	GROUP 1DX - 15.0 GM	A405753
MA01-100S	UTM NAD 83-8V	415880	7071332	0.08	20	25.6	0.36	124	0.017	1	1.38	0.006	0.11	0.4	0.07	0.8	0.4	0	6	0.7	GROUP 1DX - 15.0 GM	A405753
MA01-200N	UTM NAD 83-8V	416127	7071490	0.045	20	19.9	0.31	74	0.023	1	1	0.004	0.06	0.4	0.04	1.4	0.4	0	3	0.5	GROUP 1DX - 15.0 GM	A405753
MA01-200S	UTM NAD 83-8V	415804	7071279	0.055	15	24.4	0.36	101	0.017	2	1.33	0.004	0.05	0.4	0.05	1.1	0.3	0	4	0.6	GROUP 1DX - 15.0 GM	A405753
MA01-300N	UTM NAD 83-8V	416218	7071554	0.08	26	25.8	0.43	144	0.043	1	1.14	0.005	0.09	2.6	0.05	2.4	0.3	0	4	0.6	GROUP 1DX - 15.0 GM	A405753
MA01-400N	UTM NAD 83-8V	416306	7071620	0.086	26	32.2	0.52	161	0.057	0	1.46	0.018	0.27	9.9	0.06	3.9	0.7	0.14	5	0.7	GROUP 1DX - 15.0 GM	A405753
MA02-000	UTM NAD 83-8V	415913	7071466	0.058	15	30.6	0.54	175	0.038	1	1.74	0.007	0.11	0.5	0.03	2.6	0.4	0	5	0.7	GROUP 1DX - 15.0 GM	A405753
MA02-100N	UTM NAD 83-8V	416001	7071525	0.079	24	23.9	0.48	118	0.037	1	1.24	0.007	0.09	1.7	0.04	2.1	0.3	0	4	0.7	GROUP 1DX - 15.0 GM	A405753
MA02-100S	UTM NAD 83-8V	415841	7071405	0.041	21	21.9	0.4	95	0.013	1	1.25	0.004	0.09	0.5	0.04	1.7	0.6	0	4	0	GROUP 1DX - 15.0 GM	A405753
MA02-200N	UTM NAD 83-8V	416078	7071570	0.068	28	28	0.48	145	0.043	0	1.43	0.006	0.14	0.9	0.03	2.3	0.3	0	4	0	GROUP 1DX - 15.0 GM	A405753
MA02-200S	UTM NAD 83-8V	415753	7071354	0.056	21	28.3	0.43	160	0.021	1	1.55	0.004	0.11	0.7	0.05	1.5	0.5	0	6	0.6	GROUP 1DX - 15.0 GM	A405753
MA02-300N	UTM NAD 83-8V	416171	7071630	0.066	22	27.6	0.42	181	0.027	2	1.24	0.006	0.08	0.7	0.04	1.9	0.3	0	4	0.6	GROUP 1DX - 15.0 GM	A405753
MA02-400N	UTM NAD 83-8V	416247	7071687	0.078	18	25	0.41	126	0.034	1	1.16	0.008	0.1	7.9	0.06	2	0.4	0	4	0.7	GROUP 1DX - 15.0 GM	A405753
MA03-000	UTM NAD 83-8V	415862	7071543	0.14	8	17.2	0.08	153	0.013	0	0.87	0.008	0.04	0.6	0.1	0.7	0.2	0.21	3	0.8	GROUP 1DX - 15.0 GM	A405753
MA03-100N	UTM NAD 83-8V	415944	7071611	0.063	22	33.2	0.57	165	0.03	2	1.82	0.008	0.15	1.1	0.04	2.4	0.5	0	6	0.6	GROUP 1DX - 15.0 GM	A405753
MA03-100S	UTM NAD 83-8V	415775	7071489	0.045	18	26.2	0.56	125	0.038	1	1.76	0.006	0.15	0.4	0.03	2.1	0.5	0	5	0.5	GROUP 1DX - 15.0 GM	A405753
MA03-200N	UTM NAD 83-8V	416024	7071660	0.05	20	26.7	0.45	162	0.034	1	1.37	0.005	0.07	1.4	0.05	2.3	0.3	0	4	0	GROUP 1DX - 15.0 GM	A405753
MA03-200S	UTM NAD 83-8V	415677	7071443	0.042	19	23.8	0.39	103	0.023	1	1.23	0.005	0.07	0.4	0.04	1.4	0.3	0	4	0	GROUP 1DX - 15.0 GM	A405753
MA03-300N	UTM NAD 83-8V	416105	7071718	0.072	25	28.3	0.43	144	0.032	0	1.43	0.006	0.1	3	0.06	2.5	0.4	0	5	0.6	GROUP 1DX - 15.0 GM	A405753
MA03-400N	UTM NAD 83-8V	416190	7071777	0.048	18	25.5	0.4	103	0.031	1	1.31	0.005	0.08	1.6	0.04	1.5	0.4	0	4	0.5	GROUP 1DX - 15.0 GM	A405753
MA0704S01	UTM NAD 83-8V	414663	7072768	0.048	14	26.1	0.28	272	0.071	1	1.57	0.017	0.59	33.4	0.04	3.1	5	0.43	18	1.1	GROUP 1DX - 15.0 GM	A405753
MA0704S02	UTM NAD 83-8V	415093	7072155	0.093	31	51.7	0.86	194	0.056	2	2.07	0.016	0.16	12.9	0.09	5	0.6	0.08	6	1.4	GROUP 1DX - 15.0 GM	A405753
MA0704S03	UTM NAD 83-8V	415133	7072037	0.052	20	8.1	0.09	136	0.002	1	0.53	0.006	0.26	0.4	25.79	1.6	65.1	0.57	2	1.9	GROUP 1DX - 15.0 GM	A405753
MA0704S04	UTM NAD 83-8V	415381	7073207	0.042	26	34.9	0.7	81	0.037	1	2.01	0.005	0.27	7.6	0.05	4.5	0.6	0	7	0.6	GROUP 1DX - 15.0 GM	A405753
MA0704S05	UTM NAD 83-8V	415269	7072894	0.022	28	8.5	0.14	66	0.003	0	0.6	0.002	0.1	1.5	0.05	2.1	0.3	0	2	0.5	GROUP 1DX - 15.0 GM	A405753
MA0704S06	UTM NAD 83-8V	417286	7072437	0.102	29	8.8	0.26	151	0.05	0	1.05	0.007	0.28	0.5	0.03	3.9	0.6	0	6	0.5	GROUP 1DX - 15.0 GM	A405753
MA10-000	UTM NAD 83-8V	415471	7072138	0.088	29	32.9	0.6	203	0.055	1	1.38	0.008	0.08	1.7	0.05	3.9	0.5	0	5	0.7	GROUP 1DX - 15.0 GM	A405753
MA10-100N	UTM NAD 83-8V	415559	7072188	0.104	25	28.7	0.39	144	0.046	1	1.06	0.006	0.07	4.9	0.16	2.5	0.5	0	3	0	GROUP 1DX - 15.0 GM	A405753
MA10-100S	UTM NAD 83-8V	415394	7072084	0.12	22	27.5	0.46	116	0.026	1	1.76	0.011	0.09	2.5	0.08	2.1	0.4	0	5	1.5	GROUP 1DX - 15.0 GM	A405753
MA10-1400N	UTM NAD 83-8V	416625	7072898	0.048	11	22.4	0.33	69	0.022	0	1.2	0.004	0.03	0.9	0.03	1.1	0.1	0	4	0	GROUP 1DX - 15.0 GM	A405753
MA10-1450N	UTM NAD 83-8V	416686	7072947	0.059	18	24.3	0.42	109	0.037	1	1.21	0.005	0.06	18.4	0.03	2.1	0.2	0	4	0.7	GROUP 1DX - 15.0 GM	A405753
MA10-1500N	UTM NAD 83-8V	416736	7072955	0.046	11	23.5	0.31	107	0.036	1	1.24	0.004	0.05	1.1	0.05	1.5	0.2	0	5	0	GROUP 1DX - 15.0 GM	A405753
MA10-1550N	UTM NAD 83-8V	416775	7072981	0.039	13	22.7	0.35	122	0.029	0	1.33	0.004	0.05	1.6	0.04	1.4	0.2	0	5	0	GROUP 1DX - 15.0 GM	A405753
MA10-1600N	UTM NAD 83-8V	416820	7073011	0.034	11	19.7	0.23	87	0.028	0	1.07	0.004	0.05	0.8	0.04	0.9	0.2	0	5	0	GROUP 1DX - 15.0 GM	A405753
MA10-200N	UTM NAD 83-8V	415644	7072241	0.076	19	33.9	0.55	164	0.048	2	1.73	0.009	0.09	3.3	0.05	3	0.4	0	6	0.6	GROUP 1DX - 15.0 GM	A405753

Sample	UTM	Easting	Northing	P	La	Cr	Mg	Ba	Ti	B	Al	Na	K	W	Hg	Sc	Tl	S	Ga	Se	Analysis:	Acme file
MA10-300N	UTM NAD 83-8V	415728	7072298	0.066	20	29.6	0.46	150	0.039	0	1.54	0.007	0.09	5	0.07	2.9	0.5	0	5	0.6	GROUP 1DX - 15.0 GM	A405753
MA10-400N	UTM NAD 83-8V	415809	7072355	0.055	17	25.6	0.38	141	0.036	0	1.18	0.005	0.05	4.5	0.05	2	0.2	0	4	0	GROUP 1DX - 15.0 GM	A405753
MA1050-000	UTM NAD 83-8V	415447	7072176	0.105	24	32.4	0.5	170	0.039	1	1.77	0.008	0.11	1.6	0.08	2.9	0.3	0.06	5	1.2	GROUP 1DX - 15.0 GM	A405753
MA1050-050S	UTM NAD 83-8V	415410	7072150	0.048	11	22.9	0.33	100	0.027	1	1.18	0.005	0.05	0.4	0.05	1.4	0.2	0	5	0.8	GROUP 1DX - 15.0 GM	A405753
MA1050-100S	UTM NAD 83-8V	415349	7072128	0.12	37	39.2	0.68	206	0.044	1	1.99	0.01	0.12	4.3	0.09	5.3	0.5	0	6	1.8	GROUP 1DX - 15.0 GM	A405753
MA1050-150S	UTM NAD 83-8V	415339	7072107	0.104	32	40.5	0.63	189	0.044	1	1.98	0.011	0.19	4.9	0.12	4.7	0.9	0	6	1.8	GROUP 1DX - 15.0 GM	A405753
MA1050-200S	UTM NAD 83-8V	415292	7072083	0.085	36	30.3	0.48	280	0.026	1	1.48	0.007	0.08	7.7	0.17	3.6	0.6	0	5	1.4	GROUP 1DX - 15.0 GM	A405753
MA11-000	UTM NAD 83-8V	415420	7072222	0.057	14	25.4	0.39	126	0.04	2	1.43	0.006	0.08	1.4	0.04	2.1	0.2	0.06	4	0	GROUP 1DX - 15.0 GM	A405753
MA11-100N	UTM NAD 83-8V	415504	7072275	0.093	21	31.4	0.4	159	0.044	0	1.36	0.008	0.07	11.2	0.12	2.4	0.2	0.06	4	0.6	GROUP 1DX - 15.0 GM	A405753
MA11-100S	UTM NAD 83-8V	415338	7072168	0.087	25	36.9	0.59	125	0.027	1	1.93	0.007	0.11	4	0.11	3.3	0.7	0.09	6	1.4	GROUP 1DX - 15.0 GM	A405753
MA11-1400N	UTM NAD 83-8V	416585	7072998	0.041	14	23.9	0.37	83	0.033	1	1.26	0.005	0.06	9.6	0.04	1.7	0.2	0	5	0	GROUP 1DX - 15.0 GM	A405753
MA11-1450N	UTM NAD 83-8V	416639	7073018	0.031	11	20	0.2	87	0.031	1	1.02	0.004	0.04	12	0.03	1.3	0.2	0	5	0	GROUP 1DX - 15.0 GM	A405753
MA11-1500N	UTM NAD 83-8V	416666	7073047	0.04	11	22.1	0.32	101	0.028	1	1.25	0.004	0.04	4.3	0.07	1.3	0.1	0	5	0	GROUP 1DX - 15.0 GM	A405753
MA11-1550N	UTM NAD 83-8V	416707	7073079	0.047	13	23.5	0.34	67	0.031	0	1.23	0.004	0.08	2.1	0.06	1.7	0.3	0	5	0	GROUP 1DX - 15.0 GM	A405753
MA11-1600N	UTM NAD 83-8V	416749	7073101	0.036	13	22.4	0.33	96	0.032	1	1.27	0.004	0.04	4	0.03	1.7	0.1	0	5	0	GROUP 1DX - 15.0 GM	A405753
MA11-200N	UTM NAD 83-8V	415588	7072332	0.072	23	28.9	0.39	123	0.041	1	1.27	0.006	0.07	28.2	0.06	3	0.4	0	5	0.7	GROUP 1DX - 15.0 GM	A405753
MA11-300N	UTM NAD 83-8V	415666	7072384	0.059	14	28.3	0.42	137	0.033	1	1.62	0.006	0.05	3.8	0.06	2	0.2	0	5	0.5	GROUP 1DX - 15.0 GM	A405753
MA11-400N	UTM NAD 83-8V	415754	7072436	0.092	22	32.6	0.51	253	0.058	1	1.65	0.015	0.1	20.8	0.07	3.5	0.3	0	5	1.1	GROUP 1DX - 15.0 GM	A405753
MA12-000	UTM NAD 83-8V	415368	7072304	0.05	20	32.4	0.45	128	0.028	0	1.28	0.004	0.14	1.4	0.03	2.4	0.3	0	5	0	GROUP 1DX - 15.0 GM	A405753
MA12-100N	UTM NAD 83-8V	415452	7072365	0.103	24	36.7	0.53	201	0.046	1	1.44	0.009	0.16	13.5	0.11	3.5	0.4	0	6	1	GROUP 1DX - 15.0 GM	A405753
MA12-100S	UTM NAD 83-8V	415283	7072248	0.087	20	30.4	0.5	155	0.018	1	1.47	0.007	0.06	3.4	0.08	1.9	0.4	0	6	1	GROUP 1DX - 15.0 GM	A405753
MA12-1400N	UTM NAD 83-8V	416538	7073068	0.04	15	27.5	0.35	93	0.016	0	1.38	0.003	0.05	12.1	0.04	1.7	0.3	0	5	0.6	GROUP 1DX - 15.0 GM	A405753
MA12-1450N	UTM NAD 83-8V	416578	7073087	0.044	9	17.1	0.13	54	0.011	1	0.75	0.003	0.02	0.8	0.05	0.4	0.2	0	4	0.6	GROUP 1DX - 15.0 GM	A405753
MA12-1500N	UTM NAD 83-8V	416620	7073117	0.033	13	24	0.34	77	0.018	0	1.25	0.003	0.04	2	0.05	1.8	0.3	0	4	0.7	GROUP 1DX - 15.0 GM	A405753
MA12-1550N	UTM NAD 83-8V	416665	7073150	0.047	12	23.7	0.34	76	0.021	1	1.29	0.004	0.04	1	0.04	1.5	0.2	0	4	0	GROUP 1DX - 15.0 GM	A405753
MA12-1600N	UTM NAD 83-8V	416703	7073176	0.049	15	20.1	0.32	116	0.022	1	1.06	0.004	0.04	2.6	0.03	1.6	0.2	0	4	0	GROUP 1DX - 15.0 GM	A405753
MA12-200N	UTM NAD 83-8V	415533	7072415	0.074	23	32.1	0.42	180	0.049	1	1.13	0.009	0.09	12.4	0.11	3.3	0.2	0	4	0.7	GROUP 1DX - 15.0 GM	A405753
MA12-300N	UTM NAD 83-8V	415614	7072468	0.08	21	32.7	0.5	186	0.041	1	1.48	0.009	0.08	9.1	0.04	3.2	0.3	0	6	0.8	GROUP 1DX - 15.0 GM	A405753
MA12-400N	UTM NAD 83-8V	415702	7072513	0.067	20	32.1	0.5	250	0.038	2	1.52	0.008	0.06	4	0.04	2.7	0.2	0	6	0.9	GROUP 1DX - 15.0 GM	A405753
MA125-000	UTM NAD 83-8V	415334	7072344	0.076	17	19.8	0.37	112	0.038	0	0.91	0.006	0.05	3.1	0.04	1.7	0.2	0	3	0.6	GROUP 1DX - 15.0 GM	A405753
MA125-050N	UTM NAD 83-8V	415383	7072371	0.08	21	20.9	0.4	196	0.044	1	0.98	0.007	0.06	13.4	0.03	2.4	0.1	0	3	0	GROUP 1DX - 15.0 GM	A405753
MA125-050S	UTM NAD 83-8V	415298	7072317	0.059	15	20.1	0.35	73	0.027	0	1	0.005	0.05	0.7	0.04	1.6	0.2	0	3	0.5	GROUP 1DX - 15.0 GM	A405753
MA125-100N	UTM NAD 83-8V	415432	7072396	0.1	30	41.8	0.76	80	0.067	0	2.03	0.009	0.3	7.7	0.03	4.9	0.7	0	7	0.5	GROUP 1DX - 15.0 GM	A405753
MA125-100S	UTM NAD 83-8V	415260	7072288	0.057	24	24.6	0.51	217	0.021	2	1.38	0.006	0.08	5.8	0.05	2.9	0.3	0	4	0.5	GROUP 1DX - 15.0 GM	A405753
MA125-150N	UTM NAD 83-8V	415467	7072431	0.08	27	31.2	0.51	147	0.05	2	1.47	0.007	0.11	12.5	0.05	3.1	0.3	0	5	0.7	GROUP 1DX - 15.0 GM	A405753
MA125-200N	UTM NAD 83-8V	415506	7072458	0.078	24	29	0.46	151	0.054	1	1.19	0.006	0.08	11.4	0.06	3	0.2	0	4	0.6	GROUP 1DX - 15.0 GM	A405753
MA125-250N	UTM NAD 83-8V	415542	7072485	0.085	24	33.1	0.57	198	0.037	1	1.99	0.009	0.08	10.1	0.06	3.3	0.4	0	6	0.7	GROUP 1DX - 15.0 GM	A405753
MA125-300N	UTM NAD 83-8V	415588	7072505	0.05	22	29.9	0.48	192	0.035	1	1.51	0.005	0.05	4.5	0.06	2.4	0.3	0	5	0.6	GROUP 1DX - 15.0 GM	A405753
MA125-350N	UTM NAD 83-8V	415624	7072537	0.094	26	26.1	0.51	172	0.046	2	1.27	0.006	0.06	4.3	0.05	2.7	0.2	0	4	0.7	GROUP 1DX - 15.0 GM	A405753
MA125-400N	UTM NAD 83-8V	415663	7072557	0.084	26	26.5	0.45	186	0.046	1	1.26	0.006	0.06	5.2	0.07	2.9	0.2	0	4	0.5	GROUP 1DX - 15.0 GM	A405753
MA13-000	UTM NAD 83-8V	415312	7072385	0.052	22	23.6	0.51	85	0.028	1	1.13	0.004	0.09	18.4	0.01	2.7	0.3	0	4	0	GROUP 1DX - 15.0 GM	A405753
MA13-050N	UTM NAD 83-8V	415355	7072420	0.041	16	24.1	0.43	112	0.035	1	1.19	0.006	0.07	8.8	0.04	2.1	0.2	0	4	0	GROUP 1DX - 15.0 GM	A405753
MA13-050S	UTM NAD 83-8V	415264	7072355	0.065	13	27.5	0.42	164	0.032	2	1.33	0.007	0.06	2.1	0.06	1.8	0.2	0	6	0.5	GROUP 1DX - 15.0 GM	A405753

Sample	UTM	Easting	Northing	P	La	Cr	Mg	Ba	Ti	B	Al	Na	K	W	Hg	Sc	Tl	S	Ga	Se	Analysis:	Acme file
MA13-100N	UTM NAD 83-8V	415387	7072449	0.082	22	28.4	0.51	132	0.041	1	1.32	0.006	0.12	14.1	0.04	2.8	0.4	0	4	0.9	GROUP 1DX - 15.0 GM	A405753
MA13-100S	UTM NAD 83-8V	415226	7072332	0.053	16	24.6	0.44	245	0.035	1	1.38	0.006	0.08	3	0.05	2.2	0.2	0	4	0.7	GROUP 1DX - 15.0 GM	A405753
MA13-1400N	UTM NAD 83-8V	416474	7073162	0.04	14	22.3	0.36	89	0.024	1	1.24	0.004	0.03	1.4	0.05	1.6	0.2	0	5	0.7	GROUP 1DX - 15.0 GM	A405753
MA13-1500N	UTM NAD 83-8V	416564	7073213	0.053	14	28.9	0.44	140	0.029	1	1.53	0.004	0.05	1.3	0.02	1.9	0.3	0	5	0.7	GROUP 1DX - 15.0 GM	A405753
MA13-150N	UTM NAD 83-8V	415436	7072469	0.084	21	39.5	0.63	147	0.035	0	1.74	0.01	0.11	13.7	0.08	3.9	0.4	0	6	0.7	GROUP 1DX - 15.0 GM	A405753
MA13-1550N	UTM NAD 83-8V	416607	7073246	0.041	12	22.5	0.36	83	0.03	0	1.13	0.004	0.05	6.7	0.03	1.7	0.2	0	4	0.6	GROUP 1DX - 15.0 GM	A405753
MA13-1600N	UTM NAD 83-8V	416646	7073268	0.052	12	28	0.4	96	0.028	1	1.33	0.005	0.06	2.8	0.04	1.4	0.2	0	5	0.7	GROUP 1DX - 15.0 GM	A405753
MA13-200N	UTM NAD 83-8V	415482	7072501	0.063	23	32.5	0.53	166	0.03	1	1.25	0.005	0.07	15	0.04	3.6	0.3	0	5	0.5	GROUP 1DX - 15.0 GM	A405753
MA13-250N	UTM NAD 83-8V	415518	7072526	0.068	26	29.5	0.47	237	0.028	1	1.31	0.006	0.08	9.6	0.04	3.2	0.3	0	5	0.6	GROUP 1DX - 15.0 GM	A405753
MA13-300N	UTM NAD 83-8V	415559	7072547	0.066	22	28.4	0.43	151	0.033	0	1.08	0.005	0.06	8.5	0.04	2.7	0.2	0	4	0.5	GROUP 1DX - 15.0 GM	A405753
MA13-350N	UTM NAD 83-8V	415603	7072578	0.066	19	26.7	0.44	178	0.04	1	1.26	0.007	0.06	6	0.04	2.5	0.2	0	4	0.5	GROUP 1DX - 15.0 GM	A405753
MA13-400N	UTM NAD 83-8V	415649	7072609	0.062	18	33.7	0.54	153	0.032	2	1.68	0.005	0.07	5.1	0.03	2.7	0.3	0	6	0.6	GROUP 1DX - 15.0 GM	A405753
MA135-000	UTM NAD 83-8V	415282	7072429	0.046	15	25	0.43	144	0.029	1	1.27	0.005	0.07	10	0.04	2.9	0.3	0	4	0.8	GROUP 1DX - 15.0 GM	A405753
MA135-050N	UTM NAD 83-8V	415325	7072454	0.08	16	24.3	0.47	175	0.03	2	1.2	0.006	0.06	10.1	0.03	2.7	0.2	0	3	0.7	GROUP 1DX - 15.0 GM	A405753
MA135-050S	UTM NAD 83-8V	415237	7072400	0.066	19	23.4	0.46	160	0.044	4	1.13	0.006	0.06	10.1	0.02	2.8	0.2	0	4	0.8	GROUP 1DX - 15.0 GM	A405753
MA135-100N	UTM NAD 83-8V	415365	7072485	0.062	17	24.1	0.45	149	0.031	2	1.14	0.006	0.08	7.1	0.02	2.6	0.2	0	4	0.6	GROUP 1DX - 15.0 GM	A405753
MA135-100S	UTM NAD 83-8V	415198	7072375	0.077	18	29.5	0.55	218	0.047	1	1.52	0.008	0.1	1.4	0.05	3.4	0.3	0	4	0.5	GROUP 1DX - 15.0 GM	A405753
MA135-150N	UTM NAD 83-8V	415411	7072509	0.057	18	22.1	0.43	138	0.027	1	1.11	0.005	0.07	5.7	0.03	2.2	0.2	0	3	0.5	GROUP 1DX - 15.0 GM	A405753
MA135-200N	UTM NAD 83-8V	415451	7072540	0.068	28	25.7	0.48	265	0.042	0	1.97	0.008	0.13	2.8	0.04	4.6	0.4	0	6	0	GROUP 1DX - 15.0 GM	A405753
MA135-250N	UTM NAD 83-8V	415490	7072566	0.064	18	28.4	0.48	144	0.027	1	1.59	0.007	0.07	2.3	0.06	2.1	0.3	0	5	0.7	GROUP 1DX - 15.0 GM	A405753
MA135-300N	UTM NAD 83-8V	415534	7072593	0.083	20	31.4	0.57	165	0.037	2	1.74	0.007	0.08	2	0.05	2.7	0.3	0	6	0.9	GROUP 1DX - 15.0 GM	A405753
MA135-350N	UTM NAD 83-8V	415570	7072628	0.07	21	21.9	0.41	153	0.035	0	1.04	0.006	0.05	2.4	0.05	2.4	0.2	0	4	0	GROUP 1DX - 15.0 GM	A405753
MA135-400N	UTM NAD 83-8V	415616	7072638	0.078	22	19.9	0.4	149	0.033	0	1.03	0.005	0.05	2.4	0.03	2.4	0.2	0	3	0.5	GROUP 1DX - 15.0 GM	A405753
MA14-000N	UTM NAD 83-8V	415258	7072470	0.063	20	27.8	0.45	106	0.042	1	1.29	0.005	0.1	1.9	0.03	2.5	0.3	0	4	0.6	GROUP 1DX - 15.0 GM	A405753
MA14-050N	UTM NAD 83-8V	415297	7072496	0.043	17	26	0.43	121	0.036	1	1.47	0.005	0.11	1.3	0.04	2.4	0.3	0	4	0.6	GROUP 1DX - 15.0 GM	A405753
MA14-050S	UTM NAD 83-8V	415216	7072447	0.059	16	28.4	0.48	118	0.033	2	1.68	0.005	0.08	0.6	0.05	2.8	0.3	0	4	0.6	GROUP 1DX - 15.0 GM	A405753
MA14-100N	UTM NAD 83-8V	415338	7072524	0.061	19	29.2	0.47	137	0.037	1	1.5	0.006	0.11	1.6	0.05	2.6	0.3	0	5	0.7	GROUP 1DX - 15.0 GM	A405753
MA14-100S	UTM NAD 83-8V	415172	7072416	0.067	19	25.4	0.45	120	0.047	1	1.16	0.008	0.08	2.4	0.02	2.9	0.2	0	4	0.6	GROUP 1DX - 15.0 GM	A405753
MA14-1150N	UTM NAD 83-8V	416214	7073109	0.051	14	20.7	0.31	92	0.025	0	1.15	0.004	0.04	1.3	0.03	1	0.2	0	5	0	GROUP 1DX - 15.0 GM	A405753
MA14-1200N	UTM NAD 83-8V	416258	7073137	0.047	13	22.8	0.35	84	0.024	1	1.24	0.004	0.04	1	0.04	1.3	0.1	0	4	0.6	GROUP 1DX - 15.0 GM	A405753
MA14-1250N	UTM NAD 83-8V	416298	7073161	0.046	12	19.9	0.31	71	0.023	1	1.03	0.003	0.03	1.2	0.04	1.3	0.1	0	4	0	GROUP 1DX - 15.0 GM	A405753
MA14-1300N	UTM NAD 83-8V	416341	7073190	0.055	13	18.9	0.33	68	0.026	1	1.19	0.003	0.03	0.9	0.05	1.2	0.2	0	4	0.6	GROUP 1DX - 15.0 GM	A405753
MA14-1350N	UTM NAD 83-8V	416384	7073215	0.046	10	17	0.2	71	0.023	0	0.94	0.004	0.03	1.3	0.04	0.9	0.2	0	5	0	GROUP 1DX - 15.0 GM	A405753
MA14-1450N	UTM NAD 83-8V	416462	7073270	0.059	13	23.2	0.38	92	0.031	0	1.14	0.004	0.04	3.2	0.03	1.5	0.1	0	4	0	GROUP 1DX - 15.0 GM	A405753
MA14-150N	UTM NAD 83-8V	415380	7072553	0.07	24	30.1	0.53	175	0.033	2	1.57	0.009	0.1	1.9	0.05	3.1	0.3	0	5	0.6	GROUP 1DX - 15.0 GM	A405753
MA14-150S	UTM NAD 83-8V	415132	7072389	0.053	12	21.6	0.31	82	0.023	1	1.09	0.004	0.04	0.3	0.03	1.6	0.2	0	4	0.5	GROUP 1DX - 15.0 GM	A405753
MA14-200N	UTM NAD 83-8V	415423	7072574	0.051	20	33.8	0.55	210	0.031	1	1.77	0.006	0.06	0.9	0.05	3	0.2	0	5	0.6	GROUP 1DX - 15.0 GM	A405753
MA14-200S	UTM NAD 83-8V	415090	7072361	0.048	18	28.1	0.44	124	0.041	1	1.33	0.007	0.06	1.3	0.04	2.6	0.2	0	4	0.7	GROUP 1DX - 15.0 GM	A405753
MA14-250N	UTM NAD 83-8V	415468	7072607	0.055	18	33.9	0.53	165	0.037	2	1.76	0.007	0.06	2.1	0.04	2.5	0.3	0.07	6	0.7	GROUP 1DX - 15.0 GM	A405753
MA14-300N	UTM NAD 83-8V	415503	7072634	0.047	10	27.1	0.4	131	0.03	0	1.55	0.006	0.03	0.4	0.04	2	0.1	0	5	0	GROUP 1DX - 15.0 GM	A405753
MA14-350N	UTM NAD 83-8V	415548	7072642	0.05	18	26.1	0.43	153	0.036	1	1.38	0.007	0.05	1.6	0.05	2.3	0.2	0	4	0.7	GROUP 1DX - 15.0 GM	A405753
MA14-400N	UTM NAD 83-8V	415582	7072683	0.054	17	21.8	0.38	102	0.037	1	1.13	0.005	0.05	2	0.03	2	0.2	0	3	0.6	GROUP 1DX - 15.0 GM	A405753
MA145-000	UTM NAD 83-8V	415229	7072511	0.057	21	23.4	0.49	110	0.045	0	1.3	0.005	0.09	1.4	0.03	2.6	0.3	0	4	0.8	GROUP 1DX - 15.0 GM	A405753

Sample	UTM	Easting	Northing	P	La	Cr	Mg	Ba	Ti	B	Al	Na	K	W	Hg	Sc	Tl	S	Ga	Se	Analysis:	Acme file
MA145-050N	UTM NAD 83-8V	415271	7072539	0.066	14	26.1	0.32	108	0.034	0	1.56	0.005	0.05	0.9	0.07	1.7	0.2	0	7	0.6	GROUP 1DX - 15.0 GM	A405753
MA145-050S	UTM NAD 83-8V	415187	7072484	0.062	23	25	0.47	134	0.05	0	1.19	0.006	0.1	0.5	0.02	2.9	0.3	0	4	0	GROUP 1DX - 15.0 GM	A405753
MA145-100N	UTM NAD 83-8V	415314	7072567	0.067	23	28	0.49	168	0.05	1	1.41	0.006	0.09	2.4	0.05	3.5	0.3	0	4	0.7	GROUP 1DX - 15.0 GM	A405753
MA145-100S	UTM NAD 83-8V	415146	7072457	0.065	13	21	0.39	76	0.029	1	1.32	0.004	0.05	0.5	0.04	2.1	0.2	0	4	0	GROUP 1DX - 15.0 GM	A405753
MA145-150N	UTM NAD 83-8V	415356	7072589	0.08	31	29	0.66	150	0.045	1	1.63	0.011	0.09	4	0.05	4.3	0.3	0	6	0.7	GROUP 1DX - 15.0 GM	A405753
MA145-150S	UTM NAD 83-8V	415105	7072428	0.054	15	24	0.44	90	0.034	1	1.22	0.005	0.06	2.3	0.03	2.1	0.2	0	4	0.6	GROUP 1DX - 15.0 GM	A405753
MA145-200N	UTM NAD 83-8V	415396	7072621	0.07	16	33.3	0.52	152	0.037	1	1.9	0.007	0.06	2.2	0.08	2.4	0.3	0	6	0.8	GROUP 1DX - 15.0 GM	A405753
MA145-200S	UTM NAD 83-8V	415062	7072402	0.063	12	22.7	0.29	93	0.025	0	1.16	0.004	0.05	0.5	0.06	1.5	0.3	0	5	0.5	GROUP 1DX - 15.0 GM	A405753
MA145-250N	UTM NAD 83-8V	415438	7072648	0.041	17	26.1	0.35	112	0.033	1	1.25	0.005	0.05	2.3	0.04	1.7	0.2	0	5	0	GROUP 1DX - 15.0 GM	A405753
MA145-300N	UTM NAD 83-8V	415481	7072676	0.046	14	25.9	0.37	87	0.033	2	1.38	0.005	0.04	0.8	0.05	1.5	0.2	0	5	0.6	GROUP 1DX - 15.0 GM	A405753
MA145-350N	UTM NAD 83-8V	415522	7072704	0.064	20	31.6	0.55	164	0.036	1	1.79	0.007	0.08	2.6	0.04	2.9	0.3	0	5	0.7	GROUP 1DX - 15.0 GM	A405753
MA145-400N	UTM NAD 83-8V	415562	7072734	0.062	19	27.2	0.47	129	0.03	0	1.59	0.005	0.06	2.1	0.04	2.3	0.2	0	5	0.6	GROUP 1DX - 15.0 GM	A405753
MA15-000	UTM NAD 83-8V	415201	7072553	0.077	20	23.6	0.47	133	0.057	1	1.13	0.007	0.08	2.1	0.02	2.7	0.2	0	4	0.5	GROUP 1DX - 15.0 GM	A405753
MA15-050N	UTM NAD 83-8V	415244	7072583	0.066	20	26.8	0.45	139	0.054	1	1.2	0.006	0.09	1	0.02	2.8	0.2	0	4	0.7	GROUP 1DX - 15.0 GM	A405753
MA15-050S	UTM NAD 83-8V	415162	7072524	0.068	22	27.5	0.53	99	0.059	1	1.3	0.012	0.14	2.4	0.02	2.7	0.3	0	4	0.5	GROUP 1DX - 15.0 GM	A405753
MA15-100N	UTM NAD 83-8V	415286	7072606	0.055	19	26.4	0.44	123	0.026	1	1.37	0.005	0.07	1.2	0.06	1.8	0.2	0	4	0.5	GROUP 1DX - 15.0 GM	A405753
MA15-100S	UTM NAD 83-8V	415119	7072495	0.069	20	24.9	0.48	104	0.055	1	1.25	0.008	0.12	0.4	0.03	2.6	0.3	0	4	0	GROUP 1DX - 15.0 GM	A405753
MA15-150N	UTM NAD 83-8V	415322	7072629	0.071	22	30.6	0.39	116	0.036	2	1.25	0.007	0.09	3.9	0.07	2	0.3	0	5	0.6	GROUP 1DX - 15.0 GM	A405753
MA15-150S	UTM NAD 83-8V	415082	7072469	0.06	19	29.1	0.45	134	0.037	1	1.38	0.005	0.09	2.3	0.04	2.5	0.3	0	4	0.8	GROUP 1DX - 15.0 GM	A405753
MA15-200N	UTM NAD 83-8V	415357	7072662	0.077	24	31.7	0.56	170	0.064	2	1.54	0.007	0.12	6.5	0.04	3.3	0.3	0	5	0.5	GROUP 1DX - 15.0 GM	A405753
MA15-200S	UTM NAD 83-8V	415038	7072438	0.069	24	25.5	0.42	129	0.033	1	1.22	0.005	0.09	0.9	0.05	2.2	0.3	0	4	0.6	GROUP 1DX - 15.0 GM	A405753
MA15-250N	UTM NAD 83-8V	415406	7072692	0.073	21	37	0.59	197	0.035	1	1.93	0.01	0.09	2.9	0.05	3	0.5	0	7	0.5	GROUP 1DX - 15.0 GM	A405753
MA15-300N	UTM NAD 83-8V	415454	7072710	0.06	17	32.7	0.49	137	0.032	1	1.74	0.007	0.06	1.2	0.05	2.2	0.2	0	6	0.8	GROUP 1DX - 15.0 GM	A405753
MA15-350N	UTM NAD 83-8V	415491	7072742	0.079	22	36.2	0.56	140	0.027	1	1.93	0.007	0.08	1.1	0.06	2	0.4	0	6	0.7	GROUP 1DX - 15.0 GM	A405753
MA15-400N	UTM NAD 83-8V	415537	7072775	0.067	16	27.2	0.42	106	0.023	2	1.47	0.006	0.06	2.9	0.05	1.6	0.3	0	5	0.5	GROUP 1DX - 15.0 GM	A405753
MA155-000	UTM NAD 83-8V	415172	7072593	0.062	17	28.1	0.55	122	0.062	2	1.57	0.007	0.07	0.5	0.04	2.8	0.2	0	4	0	GROUP 1DX - 15.0 GM	A405753
MA155-050N	UTM NAD 83-8V	415217	7072621	0.067	23	26	0.53	95	0.049	1	1.46	0.006	0.09	11.3	0.02	3.6	0.3	0	4	0	GROUP 1DX - 15.0 GM	A405753
MA155-050S	UTM NAD 83-8V	415129	7072564	0.062	20	33.5	0.73	254	0.099	1	1.96	0.01	0.29	0.5	0.03	4.5	0.4	0	6	0	GROUP 1DX - 15.0 GM	A405753
MA155-100N	UTM NAD 83-8V	415254	7072646	0.067	22	32.6	0.56	183	0.066	1	1.63	0.007	0.13	1.8	0.07	3.3	0.3	0	5	0.5	GROUP 1DX - 15.0 GM	A405753
MA155-100S	UTM NAD 83-8V	415088	7072537	0.065	21	26.7	0.55	168	0.053	1	1.67	0.008	0.12	0.5	0.04	3.2	0.3	0	5	0.5	GROUP 1DX - 15.0 GM	A405753
MA155-150N	UTM NAD 83-8V	415296	7072673	0.067	23	30.4	0.5	150	0.044	1	1.57	0.008	0.13	1.9	0.06	3.2	0.4	0	5	0.7	GROUP 1DX - 15.0 GM	A405753
MA155-150S	UTM NAD 83-8V	415044	7072507	0.042	17	27.6	0.43	79	0.052	1	1.27	0.005	0.07	1.7	0.06	2.3	0.3	0	4	0.5	GROUP 1DX - 15.0 GM	A405753
MA155-200N	UTM NAD 83-8V	415341	7072705	0.07	23	30.2	0.54	186	0.054	2	1.65	0.008	0.09	7	0.06	4	0.2	0	5	0.5	GROUP 1DX - 15.0 GM	A405753
MA155-200S	UTM NAD 83-8V	415012	7072480	0.086	23	25.5	0.37	127	0.045	1	0.98	0.005	0.07	3.5	0.08	2.2	0.2	0	3	0.5	GROUP 1DX - 15.0 GM	A405753
MA155-250N	UTM NAD 83-8V	415380	7072730	0.094	44	22.7	0.31	180	0.009	1	1.12	0.005	0.16	4.7	0.03	5	0.5	0.06	5	0.5	GROUP 1DX - 15.0 GM	A405753
MA155-300N	UTM NAD 83-8V	415427	7072761	0.07	22	29	0.42	116	0.025	1	1.52	0.007	0.09	2.3	0.05	2	0.4	0	5	0.9	GROUP 1DX - 15.0 GM	A405753
MA155-350N	UTM NAD 83-8V	415467	7072789	0.066	18	24.9	0.45	119	0.028	1	1.45	0.005	0.06	1.9	0.04	1.8	0.2	0	5	0.5	GROUP 1DX - 15.0 GM	A405753
MA155-400N	UTM NAD 83-8V	415505	7072815	0.063	21	23.6	0.44	175	0.038	1	1.39	0.007	0.06	3.4	0.05	2.4	0.2	0	4	0.5	GROUP 1DX - 15.0 GM	A405753
MA16-000	UTM NAD 83-8V	415149	7072637	0.082	22	28.2	0.55	136	0.069	2	1.37	0.021	0.2	0.5	0.02	2.7	0.4	0.1	4	0	GROUP 1DX - 15.0 GM	A405753
MA16-050N	UTM NAD 83-8V	415193	7072658	0.077	27	27.8	0.5	170	0.051	2	1.31	0.01	0.18	0.8	0.03	2.7	0.4	0.08	5	0.7	GROUP 1DX - 15.0 GM	A405753
MA16-050S	UTM NAD 83-8V	415103	7072608	0.052	17	23.4	0.4	93	0.038	0	1.22	0.01	0.1	0.3	0.04	1.7	0.2	0.08	4	0	GROUP 1DX - 15.0 GM	A405753
MA16-100N	UTM NAD 83-8V	415227	7072691	0.046	15	25.6	0.33	86	0.029	2	1.19	0.004	0.05	0.7	0.05	1.5	0.3	0	5	0.5	GROUP 1DX - 15.0 GM	A405753
MA16-100S	UTM NAD 83-8V	415061	7072586	0.052	22	31	0.53	168	0.057	0	1.59	0.009	0.15	0.6	0.06	2.6	0.3	0.07	5	0.5	GROUP 1DX - 15.0 GM	A405753

Sample	UTM	Easting	Northing	P	La	Cr	Mg	Ba	Ti	B	Al	Na	K	W	Hg	Sc	Tl	S	Ga	Se	Analysis:	Acme file
MA16-150N	UTM NAD 83-8V	415270	7072721	0.064	23	27.5	0.4	132	0.052	1	1.12	0.005	0.1	3.8	0.06	2.3	0.2	0	4	0.5	GROUP 1DX - 15.0 GM	A405753
MA16-150S	UTM NAD 83-8V	415023	7072553	0.095	28	36.2	0.69	217	0.047	1	2.18	0.012	0.18	1.2	0.06	3.8	0.5	0.08	7	0.8	GROUP 1DX - 15.0 GM	A405753
MA16-200N	UTM NAD 83-8V	415316	7072748	0.049	22	30.9	0.44	135	0.039	1	1.48	0.006	0.09	1.3	0.07	2.3	0.3	0	5	0.7	GROUP 1DX - 15.0 GM	A405753
MA16-200S	UTM NAD 83-8V	414980	7072527	0.074	23	30.1	0.49	127	0.04	1	1.69	0.007	0.09	2.2	0.13	1.7	0.5	0	5	1	GROUP 1DX - 15.0 GM	A405753
MA16-250N	UTM NAD 83-8V	415355	7072775	0.058	20	33	0.42	102	0.032	2	1.62	0.006	0.08	1.5	0.06	1.8	0.4	0.06	6	0.6	GROUP 1DX - 15.0 GM	A405753
MA16-300N	UTM NAD 83-8V	415399	7072803	0.08	31	34.4	0.55	202	0.025	1	1.88	0.008	0.1	4.5	0.06	3.1	0.5	0.07	6	0.6	GROUP 1DX - 15.0 GM	A405753
MA16-400N	UTM NAD 83-8V	415476	7072849	0.055	16	25.4	0.39	137	0.035	0	1.48	0.005	0.05	3.5	0.05	1.9	0.3	0	5	0	GROUP 1DX - 15.0 GM	A405753
MA165-000	UTM NAD 83-8V	415118	7072678	0.058	15	30.5	0.48	119	0.044	1	1.59	0.006	0.1	0.7	0.04	2.3	0.4	0	6	0	GROUP 1DX - 15.0 GM	A405753
MA165-050N	UTM NAD 83-8V	415164	7072703	0.077	21	25.2	0.53	110	0.062	2	1.29	0.008	0.12	5.3	0.02	2.7	0.2	0	4	0.6	GROUP 1DX - 15.0 GM	A405753
MA165-050S	UTM NAD 83-8V	415076	7072656	0.044	20	25.8	0.46	130	0.05	1	1.35	0.006	0.08	1.2	0.05	2.4	0.2	0	4	0	GROUP 1DX - 15.0 GM	A405753
MA165-100N	UTM NAD 83-8V	415198	7072731	0.04	16	24.8	0.38	101	0.038	1	1.38	0.005	0.07	1.3	0.05	1.9	0.2	0	5	0	GROUP 1DX - 15.0 GM	A405753
MA165-100S	UTM NAD 83-8V	415045	7072621	0.078	25	28	0.55	160	0.057	1	1.68	0.012	0.18	2	0.04	3	0.4	0	4	0.6	GROUP 1DX - 15.0 GM	A405753
MA165-150N	UTM NAD 83-8V	415255	7072764	0.036	23	24.2	0.43	192	0.048	1	1.24	0.005	0.08	2.8	0.04	3.1	0.3	0	4	0	GROUP 1DX - 15.0 GM	A405753
MA165-150S	UTM NAD 83-8V	415003	7072606	0.064	22	32.3	0.52	166	0.04	1	1.89	0.01	0.13	1	0.06	2.7	0.4	0.06	5	0	GROUP 1DX - 15.0 GM	A405753
MA165-200N	UTM NAD 83-8V	415292	7072785	0.062	25	32.3	0.52	166	0.053	1	1.67	0.008	0.12	7.2	0.05	4.1	0.3	0	6	0.5	GROUP 1DX - 15.0 GM	A405753
MA165-200S	UTM NAD 83-8V	414953	7072574	0.084	21	32.5	0.52	178	0.049	2	1.94	0.011	0.14	1.3	0.08	2.9	0.4	0	6	0.8	GROUP 1DX - 15.0 GM	A405753
MA165-250N	UTM NAD 83-8V	415332	7072819	0.065	26	30.9	0.52	171	0.038	1	1.69	0.007	0.08	2.9	0.04	3.9	0.3	0	5	0.7	GROUP 1DX - 15.0 GM	A405753
MA165-300N	UTM NAD 83-8V	415369	7072838	0.045	15	24.1	0.37	94	0.031	1	1.41	0.005	0.04	1.9	0.06	1.7	0.2	0	4	0	GROUP 1DX - 15.0 GM	A405753
MA165-350N	UTM NAD 83-8V	415419	7072861	0.104	25	27.3	0.52	215	0.046	1	1.8	0.009	0.09	5	0.06	3.1	0.3	0	5	0	GROUP 1DX - 15.0 GM	A405753
MA165-400N	UTM NAD 83-8V	415457	7072897	0.065	17	21.2	0.35	92	0.031	1	1.22	0.005	0.04	3.7	0.06	1.7	0.2	0	4	0	GROUP 1DX - 15.0 GM	A405753
MA17-000	UTM NAD 83-8V	415097	7072716	0.044	14	22	0.35	89	0.031	1	1.16	0.005	0.05	0.7	0.03	1.5	0.3	0	4	0	GROUP 1DX - 15.0 GM	A405753
MA17-050N	UTM NAD 83-8V	415127	7072748	0.059	25	26.8	0.56	109	0.062	1	1.25	0.008	0.12	1.6	0.01	3.3	0.3	0	4	0.6	GROUP 1DX - 15.0 GM	A405753
MA17-050S	UTM NAD 83-8V	415044	7072694	0.046	21	27.2	0.5	127	0.045	1	1.45	0.007	0.09	1.4	0.04	2.4	0.3	0	5	0.6	GROUP 1DX - 15.0 GM	A405753
MA17-100N	UTM NAD 83-8V	415165	7072784	0.062	26	29.6	0.56	131	0.069	3	1.46	0.01	0.1	5.9	0.03	3.4	0.2	0	5	0.7	GROUP 1DX - 15.0 GM	A405753
MA17-100S	UTM NAD 83-8V	415008	7072670	0.1	33	29.6	0.55	125	0.058	2	1.47	0.008	0.13	3.1	0.11	3	0.4	0	5	0.5	GROUP 1DX - 15.0 GM	A405753
MA17-150N	UTM NAD 83-8V	415215	7072800	0.04	16	23.5	0.36	77	0.029	2	1.22	0.004	0.05	0.7	0.06	1.7	0.3	0	5	0.5	GROUP 1DX - 15.0 GM	A405753
MA17-150S	UTM NAD 83-8V	414962	7072627	0.09	30	38.8	0.63	214	0.056	2	1.98	0.01	0.14	2.1	0.08	3.7	0.4	0	6	1	GROUP 1DX - 15.0 GM	A405753
MA17-200N	UTM NAD 83-8V	415259	7072830	0.053	26	27.2	0.46	135	0.051	1	1.3	0.005	0.09	3.2	0.04	2.9	0.2	0	4	0.5	GROUP 1DX - 15.0 GM	A405753
MA17-200S	UTM NAD 83-8V	414925	7072608	0.075	25	33.3	0.54	220	0.046	1	1.77	0.01	0.12	1.8	0.07	3	0.4	0	6	0.6	GROUP 1DX - 15.0 GM	A405753
MA17-250N	UTM NAD 83-8V	415301	7072856	0.06	25	30.2	0.48	148	0.055	0	1.24	0.005	0.08	2.3	0.05	2.9	0.2	0	4	0.6	GROUP 1DX - 15.0 GM	A405753
MA17-300N	UTM NAD 83-8V	415337	7072879	0.059	19	27.5	0.43	130	0.04	1	1.28	0.006	0.06	4.1	0.04	2.2	0.2	0	4	0.6	GROUP 1DX - 15.0 GM	A405753
MA17-400N	UTM NAD 83-8V	415426	7072938	0.063	22	26.3	0.44	147	0.044	0	1.32	0.006	0.07	4.1	0.05	2.5	0.3	0	4	0.6	GROUP 1DX - 15.0 GM	A405753
MA175-000	UTM NAD 83-8V	415065	7072760	0.062	23	34.5	0.57	162	0.046	1	1.95	0.007	0.13	3.5	0.08	3.4	0.4	0	6	0.5	GROUP 1DX - 15.0 GM	A405753
MA175-050N	UTM NAD 83-8V	415107	7072790	0.058	19	23.8	0.46	115	0.052	1	1.22	0.007	0.09	2.4	0.03	2.6	0.2	0	4	0	GROUP 1DX - 15.0 GM	A405753
MA175-050S	UTM NAD 83-8V	415021	7072730	0.049	19	24.5	0.36	174	0.043	1	1.32	0.006	0.07	0.9	0.07	1.6	0.3	0	5	0	GROUP 1DX - 15.0 GM	A405753
MA175-100N	UTM NAD 83-8V	415144	7072816	0.063	23	25.5	0.42	143	0.047	0	1.46	0.007	0.08	6.4	0.06	3	0.2	0	5	0.7	GROUP 1DX - 15.0 GM	A405753
MA175-100S	UTM NAD 83-8V	414982	7072703	0.072	26	25.4	0.4	115	0.039	1	1.14	0.005	0.08	4	0.07	2.6	0.2	0	4	0	GROUP 1DX - 15.0 GM	A405753
MA175-150N	UTM NAD 83-8V	415190	7072841	0.069	16	30.3	0.4	128	0.041	2	1.74	0.007	0.07	1.3	0.08	2.3	0.2	0	6	0.5	GROUP 1DX - 15.0 GM	A405753
MA175-150S	UTM NAD 83-8V	414940	7072679	0.096	23	28.6	0.4	158	0.024	2	1.67	0.008	0.09	1.4	0.1	1.7	0.4	0.07	6	0.6	GROUP 1DX - 15.0 GM	A405753
MA175-200N	UTM NAD 83-8V	415233	7072873	0.063	25	29.6	0.47	142	0.048	1	1.41	0.006	0.11	2.7	0.06	3.5	0.2	0	5	0.5	GROUP 1DX - 15.0 GM	A405753
MA175-200S	UTM NAD 83-8V	414898	7072651	0.093	24	32.8	0.49	226	0.035	2	1.86	0.009	0.12	1.2	0.08	3.2	0.3	0.14	6	0.8	GROUP 1DX - 15.0 GM	A405753
MA175-250N	UTM NAD 83-8V	415274	7072900	0.055	22	25.9	0.44	140	0.046	1	1.49	0.005	0.11	3.4	0.05	3.3	0.3	0	5	0.5	GROUP 1DX - 15.0 GM	A405753
MA175-300N	UTM NAD 83-8V	415314	7072930	0.046	20	25.4	0.39	99	0.041	1	1.31	0.005	0.07	6.6	0.05	2.4	0.3	0	4	0.7	GROUP 1DX - 15.0 GM	A405753

Sample	UTM	Easting	Northing	P	La	Cr	Mg	Ba	Ti	B	Al	Na	K	W	Hg	Sc	Tl	S	Ga	Se	Analysis:	Acme file
MA175-350N	UTM NAD 83-8V	415359	7072952	0.072	15	26.2	0.39	115	0.025	0	1.54	0.005	0.05	3.5	0.08	2.1	0.3	0	5	0	GROUP 1DX - 15.0 GM	A405753
MA18-000	UTM NAD 83-8V	415037	7072802	0.059	26	31.2	0.5	157	0.054	1	1.49	0.006	0.11	3.5	0.06	3.2	0.3	0	5	0.6	GROUP 1DX - 15.0 GM	A405753
MA18-050N	UTM NAD 83-8V	415082	7072824	0.092	27	29.4	0.48	146	0.061	1	1.24	0.007	0.09	3.4	0.07	2.9	0.2	0	4	0.8	GROUP 1DX - 15.0 GM	A405753
MA18-050S	UTM NAD 83-8V	414994	7072780	0.088	32	25.7	0.48	142	0.042	2	1.26	0.005	0.09	5.8	0.06	3.2	0.3	0	4	0.8	GROUP 1DX - 15.0 GM	A405753
MA18-100N	UTM NAD 83-8V	415121	7072855	0.071	27	29.2	0.49	167	0.043	1	1.56	0.007	0.09	1.5	0.07	3.1	0.2	0	5	0.5	GROUP 1DX - 15.0 GM	A405753
MA18-100S	UTM NAD 83-8V	414953	7072753	0.045	23	30.2	0.44	182	0.04	1	1.39	0.005	0.07	3.1	0.05	2.2	0.3	0	5	0.5	GROUP 1DX - 15.0 GM	A405753
MA18-150N	UTM NAD 83-8V	415160	7072884	0.089	26	26.1	0.44	143	0.052	2	1.23	0.008	0.07	3.2	0.07	3.2	0.2	0	4	0.7	GROUP 1DX - 15.0 GM	A405753
MA18-150S	UTM NAD 83-8V	414915	7072726	0.072	23	27.1	0.4	151	0.031	2	1.33	0.007	0.1	1.5	0.09	1.7	0.4	0.08	5	0.7	GROUP 1DX - 15.0 GM	A405753
MA18-200N	UTM NAD 83-8V	415203	7072915	0.059	27	25.4	0.45	107	0.054	1	1.27	0.006	0.1	3.1	0.04	3.1	0.2	0	4	0.5	GROUP 1DX - 15.0 GM	A405753
MA18-200S	UTM NAD 83-8V	414871	7072693	0.041	21	25.8	0.39	124	0.041	1	1.38	0.005	0.07	0.9	0.05	2	0.3	0	5	0.6	GROUP 1DX - 15.0 GM	A405753
MA18-250N	UTM NAD 83-8V	415243	7072938	0.072	26	24.5	0.55	144	0.044	1	1.29	0.008	0.12	7.6	0.07	3.3	0.3	0	4	0.5	GROUP 1DX - 15.0 GM	A405753
MA18-300N	UTM NAD 83-8V	415292	7072973	0.03	33	28.2	0.71	69	0.032	1	1.87	0.004	0.21	11.8	0.02	4.5	0.8	0	8	0.5	GROUP 1DX - 15.0 GM	A405753
MA18-350N	UTM NAD 83-8V	415324	7072989	0.079	21	58.3	0.7	70	0.062	1	2.35	0.016	0.31	25.2	0.08	9.3	0.8	0.21	10	1.6	GROUP 1DX - 15.0 GM	A405753
MA18-400N	UTM NAD 83-8V	415362	7073018	0.057	29	38	0.63	95	0.048	1	2.03	0.008	0.23	17.6	0.06	4.8	0.6	0	7	0.9	GROUP 1DX - 15.0 GM	A405753
MA4-000	UTM NAD 83-8V	415799	7071636	0.063	13	26.8	0.39	104	0.023	1	1.5	0.005	0.05	0.4	0.04	1.2	0.3	0	5	0.6	GROUP 1DX - 15.0 GM	A405753
MA4-100N	UTM NAD 83-8V	415891	7071687	0.084	20	42.4	0.63	183	0.039	1	2.21	0.007	0.15	1.7	0.05	2.4	0.5	0	7	0.9	GROUP 1DX - 15.0 GM	A405753
MA4-100S	UTM NAD 83-8V	415725	7071576	0.037	17	23.4	0.38	117	0.031	1	1.17	0.005	0.07	0.6	0.04	1.7	0.3	0	4	0.6	GROUP 1DX - 15.0 GM	A405753
MA4-200N	UTM NAD 83-8V	415979	7071750	0.051	18	30.2	0.46	166	0.034	0	1.63	0.006	0.08	1.6	0.06	2	0.4	0	5	0.5	GROUP 1DX - 15.0 GM	A405753
MA4-200S	UTM NAD 83-8V	415639	7071517	0.052	17	21.8	0.38	92	0.02	2	1.19	0.004	0.06	0.5	0.04	1.1	0.4	0.08	4	0.6	GROUP 1DX - 15.0 GM	A405753
MA4-300N	UTM NAD 83-8V	416061	7071800	0.045	16	26.8	0.41	69	0.033	0	1.39	0.005	0.06	3	0.06	1.6	0.9	0	5	0.5	GROUP 1DX - 15.0 GM	A405753
MA4-400N	UTM NAD 83-8V	416143	7071857	0.049	14	23.3	0.36	99	0.03	1	1.39	0.005	0.06	1	0.05	1.4	0.2	0	5	0.5	GROUP 1DX - 15.0 GM	A405753
MA5-000	UTM NAD 83-8V	415749	7071710	0.061	21	25.2	0.4	181	0.033	1	1.3	0.006	0.09	2	0.05	1.6	0.4	0	4	0.7	GROUP 1DX - 15.0 GM	A405753
MA5-100N	UTM NAD 83-8V	415834	7071771	0.074	16	29.2	0.43	129	0.028	2	1.71	0.007	0.08	1.6	0.05	1.3	0.4	0	7	0.9	GROUP 1DX - 15.0 GM	A405753
MA5-100S	UTM NAD 83-8V	415668	7071660	0.048	20	23.1	0.36	98	0.033	1	1.14	0.005	0.06	1.2	0.03	1.3	0.3	0	4	0.6	GROUP 1DX - 15.0 GM	A405753
MA5-200N	UTM NAD 83-8V	415919	7071843	0.065	16	29.5	0.46	156	0.035	1	1.73	0.005	0.09	1.6	0.05	1.6	0.5	0	7	0.6	GROUP 1DX - 15.0 GM	A405753
MA5-200S	UTM NAD 83-8V	415588	7071611	0.062	21	25.7	0.37	173	0.031	1	1.29	0.006	0.1	0.8	0.06	0.9	0.5	0	5	0.8	GROUP 1DX - 15.0 GM	A405753
MA5-300N	UTM NAD 83-8V	415999	7071888	0.057	16	26.6	0.4	173	0.031	1	1.51	0.005	0.11	2	0.04	1.2	0.3	0	6	0.5	GROUP 1DX - 15.0 GM	A405753
MA5-400N	UTM NAD 83-8V	416079	7071930	0.072	13	21.6	0.31	98	0.022	1	1.48	0.004	0.09	0.7	0.05	0.5	0.3	0.09	5	0.6	GROUP 1DX - 15.0 GM	A405753
MA6-000	UTM NAD 83-8V	415695	7071802	0.062	24	26.7	0.4	164	0.049	0	1.28	0.008	0.13	8	0.03	2.3	0.6	0	5	0.9	GROUP 1DX - 15.0 GM	A405753
MA6-100N	UTM NAD 83-8V	415781	7071855	0.063	23	27.6	0.5	180	0.045	2	1.62	0.01	0.16	4.2	0.04	2.4	0.7	0	6	1	GROUP 1DX - 15.0 GM	A405753
MA6-100S	UTM NAD 83-8V	415611	7071747	0.035	15	21.6	0.34	77	0.04	1	0.99	0.005	0.05	1.4	0.04	1.4	0.2	0	3	0.5	GROUP 1DX - 15.0 GM	A405753
MA6-200N	UTM NAD 83-8V	415864	7071902	0.048	18	26.2	0.44	165	0.04	2	1.5	0.005	0.09	1.7	0.05	1.8	0.3	0	5	0.9	GROUP 1DX - 15.0 GM	A405753
MA6-200S	UTM NAD 83-8V	415530	7071697	0.053	18	23.2	0.41	106	0.037	1	1.19	0.006	0.08	1.8	0.07	1.4	0.4	0	4	0.7	GROUP 1DX - 15.0 GM	A405753
MA6-300N	UTM NAD 83-8V	415953	7071961	0.049	17	27.8	0.39	127	0.032	1	1.48	0.005	0.08	0.9	0.05	1.3	0.3	0	6	0.8	GROUP 1DX - 15.0 GM	A405753
MA6-400N	UTM NAD 83-8V	416030	7072016	0.031	15	19.9	0.34	83	0.032	1	1.04	0.004	0.05	0.5	0.02	1.2	0.3	0	4	0	GROUP 1DX - 15.0 GM	A405753
MA7-000	UTM NAD 83-8V	415642	7071892	0.081	27	30.7	0.45	155	0.047	2	1.53	0.006	0.12	5.7	0.07	2	0.5	0	5	0.9	GROUP 1DX - 15.0 GM	A405753
MA7-100N	UTM NAD 83-8V	415724	7071948	0.088	26	31.5	0.51	189	0.053	1	1.66	0.011	0.18	5.2	0.06	2.9	0.6	0	5	0.8	GROUP 1DX - 15.0 GM	A405753
MA7-100S	UTM NAD 83-8V	415552	7071828	0.042	18	29.3	0.47	148	0.037	1	1.68	0.005	0.1	1.7	0.05	1.7	0.5	0	5	0.6	GROUP 1DX - 15.0 GM	A405753
MA7-200N	UTM NAD 83-8V	415806	7071997	0.057	14	28.5	0.33	81	0.029	1	1.51	0.005	0.07	1.2	0.08	1	0.3	0	6	0.6	GROUP 1DX - 15.0 GM	A405753
MA7-200S	UTM NAD 83-8V	415473	7071781	0.032	15	20	0.34	78	0.029	1	1.02	0.004	0.07	1	0.03	1.4	0.4	0	3	0	GROUP 1DX - 15.0 GM	A405753
MA7-300N	UTM NAD 83-8V	415886	7072051	0.057	21	24.5	0.41	123	0.038	2	1.41	0.006	0.09	1.8	0.05	1.5	0.4	0	5	0.6	GROUP 1DX - 15.0 GM	A405753
MA7-400N	UTM NAD 83-8V	415974	7072106	0.037	15	22.8	0.31	94	0.034	2	1.32	0.004	0.06	0.6	0.04	1.3	0.3	0	5	0.6	GROUP 1DX - 15.0 GM	A405753
MA8-000	UTM NAD 83-8V	415587	7071967	0.03	15	23.7	0.31	69	0.032	1	1.23	0.003	0.04	0.8	0.05	1	0.3	0	5	0.5	GROUP 1DX - 15.0 GM	A405753

Sample	UTM	Easting	Northing	P	La	Cr	Mg	Ba	Ti	B	Al	Na	K	W	Hg	Sc	Tl	S	Ga	Se	Analysis:	Acme file
MA8-100N	UTM NAD 83-8V	415665	7072028	0.04	17	26.5	0.32	71	0.039	1	1.27	0.004	0.04	2.9	0.05	1.5	0.2	0	5	0.7	GROUP 1DX - 15.0 GM	A405753
MA8-100S	UTM NAD 83-8V	415499	7071911	0.042	14	29.1	0.5	130	0.045	1	1.6	0.005	0.1	0.5	0.06	2	0.4	0	5	0.6	GROUP 1DX - 15.0 GM	A405753
MA8-200N	UTM NAD 83-8V	415750	7072072	0.041	21	31.4	0.45	166	0.045	2	1.44	0.005	0.1	2.3	0.03	2.4	0.4	0	5	0.5	GROUP 1DX - 15.0 GM	A405753
MA8-200S	UTM NAD 83-8V	415421	7071859	0.059	19	25.8	0.41	126	0.03	1	1.46	0.007	0.09	3.2	0.14	1.6	1.3	0	5	0.8	GROUP 1DX - 15.0 GM	A405753
MA8-300N	UTM NAD 83-8V	415832	7072125	0.061	14	22.4	0.27	62	0.017	2	1.22	0.004	0.09	1.1	0.06	0.8	0.4	0	5	0.7	GROUP 1DX - 15.0 GM	A405753
MA8-400N	UTM NAD 83-8V	415920	7072193	0.075	18	22.7	0.32	134	0.02	1	1.26	0.006	0.06	1.2	0.06	1	0.6	0.09	5	0.7	GROUP 1DX - 15.0 GM	A405753
MA9-000	UTM NAD 83-8V	415532	7072047	0.104	22	32	0.44	170	0.045	0	1.61	0.012	0.08	10.6	0.11	2.1	0.4	0	5	1.1	GROUP 1DX - 15.0 GM	A405753
MA9-100N	UTM NAD 83-8V	415618	7072111	0.068	18	27.3	0.42	95	0.048	1	1.13	0.005	0.06	3.1	0.06	2.1	0.3	0	3	0	GROUP 1DX - 15.0 GM	A405753
MA9-100S	UTM NAD 83-8V	415447	7071992	0.037	14	22.7	0.33	111	0.033	0	1.17	0.005	0.04	2.6	0.06	1.8	0.2	0	4	0	GROUP 1DX - 15.0 GM	A405753
MA9-1400N	UTM NAD 83-8V	416692	7072816	0.042	10	19	0.24	48	0.023	1	0.93	0.003	0.03	0.6	0.05	1	0.1	0	4	0	GROUP 1DX - 15.0 GM	A405753
MA9-1450N	UTM NAD 83-8V	416737	7072851	0.037	11	19.7	0.24	57	0.025	0	1.09	0.004	0.03	0.5	0.05	0.9	0.1	0	5	0	GROUP 1DX - 15.0 GM	A405753
MA9-1500N	UTM NAD 83-8V	416782	7072876	0.049	12	22	0.32	63	0.02	1	1.08	0.004	0.03	0.8	0.03	0.6	0.1	0	4	0.7	GROUP 1DX - 15.0 GM	A405753
MA9-1550N	UTM NAD 83-8V	416824	7072904	0.039	13	22.3	0.29	70	0.036	2	0.96	0.005	0.06	1.6	0.06	1.1	0.1	0.06	5	0.6	GROUP 1DX - 15.0 GM	A405753
MA9-1600N	UTM NAD 83-8V	416863	7072929	0.068	14	26.3	0.41	70	0.043	3	1.23	0.004	0.1	1.1	0.05	1.9	0.2	0	4	0.6	GROUP 1DX - 15.0 GM	A405753
MA9-200N	UTM NAD 83-8V	415696	7072172	0.07	22	32.2	0.47	194	0.042	0	1.43	0.006	0.08	2.8	0.04	2.8	0.4	0	5	0	GROUP 1DX - 15.0 GM	A405753
MA9-200S	UTM NAD 83-8V	415371	7071961	0.066	42	29.8	0.29	202	0.012	0	1.26	0.058	0.4	0.8	0.65	3.2	8.1	0.69	6	0.8	GROUP 1DX - 15.0 GM	A405753
MA9-300N	UTM NAD 83-8V	415771	7072219	0.07	21	29	0.44	175	0.048	0	1.35	0.006	0.11	3	0.04	2.7	0.3	0	5	0.5	GROUP 1DX - 15.0 GM	A405753
MA9-400N	UTM NAD 83-8V	415863	7072278	0.065	24	30.7	0.51	172	0.055	0	1.64	0.008	0.14	4	0.04	3.2	0.4	0	6	0.5	GROUP 1DX - 15.0 GM	A405753
MA950-000	UTM NAD 83-8V	415505	7072094	0.054	16	31.6	0.4	111	0.031	0	1.62	0.006	0.04	2.9	0.05	2	0.3	0	5	0.7	GROUP 1DX - 15.0 GM	A405753
MA950-050S	UTM NAD 83-8V	415464	7072064	0.034	14	29	0.46	125	0.049	1	1.51	0.006	0.05	1.6	0.04	2.7	0.2	0	4	0.9	GROUP 1DX - 15.0 GM	A405753
MA950-100S	UTM NAD 83-8V	415412	7072053	0.049	18	27.6	0.51	172	0.046	2	1.55	0.007	0.07	1.5	0.03	2.9	0.3	0	5	0.9	GROUP 1DX - 15.0 GM	A405753
MA950-150S	UTM NAD 83-8V	415380	7072010	0.073	22	27.7	0.54	124	0.023	1	1.82	0.011	0.12	2.5	0.11	2.3	0.7	0.09	5	1.4	GROUP 1DX - 15.0 GM	A405753
MA950-200S	UTM NAD 83-8V	415331	7071995	0.084	24	28.2	0.39	119	0.019	2	1.51	0.02	0.15	2.1	0.12	2.3	0.9	0.17	5	1.5	GROUP 1DX - 15.0 GM	A405753
MAIF-001	UTM NAD 83-8V	414887	7073302	0.071	21	21.7	0.35	153	0.035	3	1.03	0.007	0.05	1.1	0.06	2.3	0.2	0	4	0.5	GROUP 1DX - 15.0 GM	A405753
MAIF-002	UTM NAD 83-8V	414899	7073366	0.063	22	25.5	0.45	181	0.05	1	1.3	0.018	0.09	0.4	0.04	3.1	0.3	0	4	0.6	GROUP 1DX - 15.0 GM	A405753
MAIF-003	UTM NAD 83-8V	414777	7073611	0.053	21	27	0.5	201	0.032	1	1.61	0.01	0.09	0.6	0.06	2.6	0.2	0	5	0.6	GROUP 1DX - 15.0 GM	A405753
MAIF-004	UTM NAD 83-8V	414682	7074072	0.056	13	24.8	0.41	157	0.04	3	1.2	0.007	0.12	0.5	0.1	1.8	0.3	0.08	5	0.5	GROUP 1DX - 15.0 GM	A405753
MAIF-005	UTM NAD 83-8V	415052	7074492	0.084	54	29.2	0.69	294	0.009	0	2.66	0.008	0.2	0.3	0.04	4.5	0.3	0	6	0.9	GROUP 1DX - 15.0 GM	A405753
MAIF-006	UTM NAD 83-8V	415067	7074511	0.053	25	33	0.51	84	0.012	0	1.72	0.004	0.21	0.1	0.02	4	0.4	0	6	1	GROUP 1DX - 15.0 GM	A405753
MAIF-007	UTM NAD 83-8V	415124	7074535	0.068	18	24.2	0.43	127	0.038	1	1.4	0.007	0.1	1	0.03	2.3	0.2	0	5	0.8	GROUP 1DX - 15.0 GM	A405753
MAIF-008	UTM NAD 83-8V	415162	7074552	0.111	23	29.6	0.54	199	0.044	1	1.91	0.013	0.11	1.2	0.13	3.7	0.3	0.07	5	1.2	GROUP 1DX - 15.0 GM	A405753
MAIF-009	UTM NAD 83-8V	415353	7074636	0.106	42	34.2	0.64	217	0.028	1	1.68	0.009	0.09	2.2	0.11	6	0.3	0	5	1.2	GROUP 1DX - 15.0 GM	A405753
MAIF-010	UTM NAD 83-8V	415487	7074717	0.125	21	33.8	0.97	262	0.101	2	2.25	0.024	0.23	2.3	0.06	5.7	0.4	0	8	1	GROUP 1DX - 15.0 GM	A405753
MAIF-011	UTM NAD 83-8V	415523	7074725	0.266	20	24.5	0.6	234	0.071	1	1.73	0.011	0.17	6.8	0.06	4.4	0.3	0	5	0.7	GROUP 1DX - 15.0 GM	A405753
MAIF-012	UTM NAD 83-8V	415560	7074739	0.272	20	24.9	0.81	155	0.034	2	2.62	0.012	0.2	3.6	0.06	6.1	0.5	0.06	9	1.3	GROUP 1DX - 15.0 GM	A405753
MAIF-013	UTM NAD 83-8V	415597	7074753	0.105	20	25.7	0.49	172	0.034	2	1.74	0.013	0.1	4.1	0.06	3.1	0.3	0.08	6	0.5	GROUP 1DX - 15.0 GM	A405753
MAIF-014	UTM NAD 83-8V	415681	7074838	0.234	23	24.9	0.78	128	0.034	1	2.29	0.011	0.19	1.2	0.04	5.3	0.8	0	8	0.5	GROUP 1DX - 15.0 GM	A405753
MAIF-015	UTM NAD 83-8V	415712	7074878	0.059	27	36.1	0.74	135	0.046	2	1.96	0.008	0.21	2.4	0.06	4.4	0.4	0	7	0.5	GROUP 1DX - 15.0 GM	A405753
MAIF-016	UTM NAD 83-8V	415703	7074912	0.076	23	38.5	0.55	217	0.038	2	1.94	0.01	0.2	1.6	0.07	4	0.4	0	7	0.7	GROUP 1DX - 15.0 GM	A405753
MAIF-017	UTM NAD 83-8V	415734	7074944	0.065	19	30.1	0.48	132	0.035	2	1.72	0.008	0.11	0.8	0.07	2.3	0.3	0.07	6	0.5	GROUP 1DX - 15.0 GM	A405753
MAIF-018	UTM NAD 83-8V	415751	7074977	0.065	20	24.4	0.44	202	0.04	2	1.5	0.009	0.1	2.4	0.04	2.4	0.2	0	4	0	GROUP 1DX - 15.0 GM	A405753
MAIF-019	UTM NAD 83-8V	415761	7075014	0.059	19	24.9	0.46	166	0.034	2	1.44	0.007	0.1	2.2	0.03	2.5	0.2	0	5	0.5	GROUP 1DX - 15.0 GM	A405753
QUIF-001A	UTM NAD 83-8V	411704	7072568	0.074	28	15.1	0.29	150	0.025	1	0.76	0.004	0.06	0.4	0.03	1.7	0.1	0	2	0	GROUP 1DX - 15.00 GM	A405769

Sample	UTM	Easting	Northing	P	La	Cr	Mg	Ba	Ti	B	Al	Na	K	W	Hg	Sc	Tl	S	Ga	Se	Analysis:	Acme file
QUIF-001B	UTM NAD 83-8V	411718	7072574	0.063	23	19	0.38	92	0.033	1	0.99	0.005	0.06	0.2	0.03	1.9	0.1	0	3	0.6	GROUP 1DX - 15.00 GM	A405769
QUIF-002	UTM NAD 83-8V	411757	7072621	0.049	45	9.1	0.26	120	0.004	2	0.77	0.003	0.09	0.1	0.02	1.3	0.2	0	2	0	GROUP 1DX - 15.00 GM	A405769
QUIF-003	UTM NAD 83-8V	411853	7072643	0.048	45	13.4	0.3	110	0.007	1	0.9	0.004	0.08	0.1	0.02	1.8	0.2	0	3	0	GROUP 1DX - 15.00 GM	A405769
QUIF-004	UTM NAD 83-8V	411990	7072639	0.058	29	12	0.29	131	0.014	0	0.83	0.004	0.07	0.1	0.02	1.6	0.1	0	2	0.5	GROUP 1DX - 15.00 GM	A405769
QUIF-005	UTM NAD 83-8V	412109	7072395	0.049	35	2.9	0.06	58	0.001	2	0.3	0.003	0.12	0.1	0.02	1	0.5	0	1	0	GROUP 1DX - 15.00 GM	A405769
QUIF-006	UTM NAD 83-8V	412009	7072357	0.042	60	6.4	0.27	18	0	0	0.73	0.003	0.08	0.1	0.01	1.2	0.5	0	2	0	GROUP 1DX - 15.00 GM	A405769
QUIF-007	UTM NAD 83-8V	412089	7072308	0.04	62	6.6	0.13	74	0.003	2	0.56	0.003	0.08	0	0.02	1.7	0.2	0	1	0.5	GROUP 1DX - 15.00 GM	A405769
QUIF-008	UTM NAD 83-8V	412128	7072372	0.037	31	16.9	0.34	109	0.022	1	1.17	0.004	0.11	0.1	0.02	1.5	0.2	0	3	0.7	GROUP 1DX - 15.00 GM	A405769
QUIF-009	UTM NAD 83-8V	412268	7072270	0.054	45	9.4	0.21	135	0.006	1	0.67	0.003	0.08	0.1	0.03	2	0.2	0.06	2	0.5	GROUP 1DX - 15.00 GM	A405769
QUIF-010	UTM NAD 83-8V	412435	7072310	0.038	58	3.9	0.1	29	0	1	0.5	0.003	0.06	0	0.04	2.4	0.1	0	1	0.5	GROUP 1DX - 15.00 GM	A405769
QUIF-011	UTM NAD 83-8V	412748	7072128	0.036	58	9.7	0.22	38	0.001	1	0.81	0.003	0.1	0.1	0.01	1.8	0.4	0	3	0	GROUP 1DX - 15.00 GM	A405769

SAMPLE ID	DATUM	EASTING	NORTHING	DATE AND TIME	ELEVATION	NOTES
MA0704R01	NAD83-8V	415451	7071890	14-JUL-04 15:48	0	Float skarn
MA0704R02	NAD83-8V	415197	7072429	14-JUL-04 15:48	0	Trench skarn, north end of trench, Cu
MA0704R02B	NAD83-8V	415190	7072425	14-JUL-04 15:48	0	Trench skarn, south end of trench, Cu
MA0704R03	NAD83-8V	415053	7072661	14-JUL-04 15:48	0	Float, quartz breccia, Pb
MA0704R04	NAD83-8V	415036	7072716	14-JUL-04 15:48	0	Trench, Subcrop, skarn, pyrite
MA0704R04B	NAD83-8V	415036	7072716	14-JUL-04 15:48	0	Trench, Subcrop, skarn, pyrite
MA0704R05	NAD83-8V	415042	7072706	14-JUL-04 15:48	0	Trench, Float, large quartz vein, manganese stained
MA0704R06	NAD83-8V	415046	7072733	14-JUL-04 15:48	0	Trench,Float, subcrop,minor quartz vein
MA0704R07	NAD83-8V	414657	7072779	14-JUL-04 15:48	0	Trench, Subcrop, skarn, pyrite
MA0704R08	NAD83-8V	415181	7072300	14-JUL-04 15:48	1752	Float, granite with quartz vein, creek draw north side of cu trench
MA0704R09	NAD83-8V	415163	7072216	14-JUL-04 16:17	1695.3	Float, granite with quartz vein
MA0704R10	NAD83-8V	415147	7072198	14-JUL-04 16:45	1680.7	Outcrop, skarn,
MA0704R11	NAD83-8V	415162	7072668	15-JUL-04 11:39	1790.7	Trench, subcrop, quartz breccia, Mg, Pb, Py
MA0704R12	NAD83-8V	415251	7072948	15-JUL-04 13:01	1734.3	Outcrop, cal silicate slightly magnetic malachite stained
MA0704R12B	NAD83-8V	415251	7072948	15-JUL-04 13:01	1734.3	Outcrop, cal silicate, malachite stained
MA0704R13	NAD83-8V	415309	7072979	15-JUL-04 13:43	1704.4	Subcrop, cal-silicate skarn
MA0704R14	NAD83-8V	416597	7073180	16-JUL-04 14:12	1463	Float, ridge top, lots of quartz vein
MA0704R15	NAD83-8V	416773	7073145	16-JUL-04 15:04	1453.6	Float , subcrop, skarn visible sulphides
MA0704R16	NAD83-8V	416867	7073136	16-JUL-04 15:29	1442.6	Outcrop, quartz vein, 2 meter wide, no sulphides
MA0704R17	NAD83-8V	417285	7072436	16-JUL-04 17:14	1320.4	Float, granite
MA0704R18	NAD83-8V	416698	7072438	16-JUL-04 17:49	1419.1	Float, rusty mafic sediments
MA0704R19	NAD83-8V	416238	7072146	16-JUL-04 19:03	1573.4	Float, on flat plateau, breccia quartz, rusty malachite stained
MA0704R20	NAD83-8V	414803	7072893	17-JUL-04 12:13	1666.6	Float, skarn, green, slightly magnetic
MA0704R21	NAD83-8V	414889	7073296	17-JUL-04 13:08	1588.9	Float, road, large peroxine skarn, po
MA0704R22	NAD83-8V	414739	7073609	17-JUL-04 13:52	1654.1	Float, side hill, large 3 ft by 1.5 ft angular rock, quartz pebble conglomerate with quartz veinlets
MA0704R23	NAD83-8V	414648	7073973	17-JUL-04 14:51	1685.5	Trench,quartz breccia, Pb
MA0704R24	NAD83-8V	414916	7074457	17-JUL-04 15:35	1662.4	Float,quartz manganese breccia, Pb
MA0704R24B	NAD83-8V	414924	7074460	17-JUL-04 15:43	1662.1	Float,quartz manganese breccia, Pb, As
MA0704R25	NAD83-8V	415495	7074693	17-JUL-04 17:05	1598.4	Outcrop, Skarn, massive Rusty pyrrhotite
MA0704R26	NAD83-8V	415662	7074790	17-JUL-04 18:11	1575.8	Outcrop, Skarn rusty pyrrhotite
MA0704R27	NAD83-8V	415705	7074824	17-JUL-04 18:40	1567.9	Outcrop,quartz vein 2 ft thick in sediments, copper
MA0704R28	NAD83-8V	412111	7072395	18-JUL-04 13:31	1542	Trench, outcrop, manganese stain
Qu0704R29	NAD83-8V	411855	7072638	18-JUL-04 13:31	0	Trench, Float, rusty manganese stained sediments
Qu0704R30	NAD83-8V	412028	7072358	18-JUL-04 13:31	0	Trench, Float, fracture quartz flooded sediments

SAMPLE ID	DATUM	EASTING	NORTHING	DATE AND TIME	ELEVATION	NOTES
Qu0704R31	NAD83-8V	412752	7072130	18-JUL-04 13:31	0	Trench, outcrop, top of hill manganese quartz mica sediments
MA0704R32	NAD83-8V	415277	7072349	19-JUL-04 12:29	1779.1	Trench, Float, peroxine skarn some pyrrhotite and Cu
MA0704R33	NAD83-8V	415267	7072383	19-JUL-04 12:52	1781.6	Float, lower main skarn showing, lighter green with manganese
MA0704R34	NAD83-8V	415115	7072734	19-JUL-04 14:53	1785.2	Trench, outcrop, bottom of trench, manganese stain sediments maby skarn
MA0704R35	NAD83-8V	415116	7072731	19-JUL-04 15:08	1785.2	Trench, subcrop, quartz breccia manganese stained Pb visible and maby As
MA0704R36	NAD83-8V	415199	7072739	19-JUL-04 15:47	1786.4	Trench, subcrop, rusty limonite clay altered silicious sediments
MA0704R37	NAD83-8V	415189	7072738	19-JUL-04 16:07	1786.1	Trench, outcrop, manganese skarn
MA0704R38	NAD83-8V	415170	7072759	19-JUL-04 16:28	1788.3	Trench, outcrop, skarn sediments, heavy manganese stained
MA0704R39	NAD83-8V	415171	7072757	19-JUL-04 16:31	1786.4	Trench, outcrop, quartz manganese breccia next to skarn
MA0704R40	NAD83-8V	415137	7072787	19-JUL-04 17:15	1787.3	Trench, outcrop, skarn manganese and copper stained
MA0704R41	NAD83-8V	415169	7072684	19-JUL-04 17:45	1789.5	Trench, float, quartz breccia minor sulphide Pb
MA0704R42	NAD83-8V	415146	7072508	19-JUL-04 17:57	1789.5	Float, skarn, visible Cu, found on road