

094714

#701 - 475 Howe Street
Vancouver, British Columbia
Canada V6C 2B3
Telephone: (604) 682-5474
Toll-free: 1-877-682-5474
Fax: (604) 682-5404
www.yukonzinc.com

ASSESSMENT REPORT

describing

PROSPECTING

on the:

HAT TRICK PROPERTY

Hat Trick 247-262, 275-290, & 303-316

Claims are 100% owned by Yukon Zinc Corporation.

NTS 105G/2&7

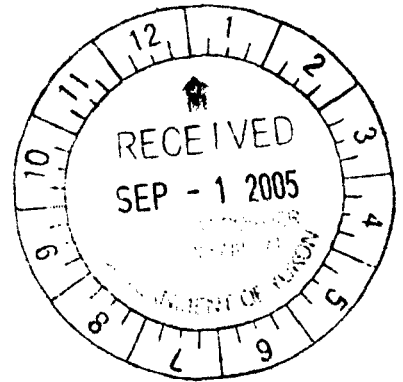
Latitude 61°11'N and Longitude 130°37'W

In the Watson Lake Mining District
Yukon Territory

Prepared by

Phu Van Bui, B.Sc., G.I.T.

August 2005



Costs associated with this report have been
approved in the amount of \$ 21,300.00
for assessment credit under Certificate of
Work No. Q485786

Knowlton

A. Mining Recorder,
Watson Lake Mining District

Table of Contents

	Page
Introduction	1
Accessibility	1
List of claims by name and grant number being renewed	1
Description of Undertakings	2
Results	3
Discussion and Conclusions	3

Tables

	Page
Table 1 – List of claims by name and grant number being renewed.	1
Table 2 – Station location and sample number for rock samples collected.	3

Appendixes

Appendix A – List of Personnel	i
Appendix B – Statement of Expenditures	ii
Appendix C – Statement of Qualification	iii
Appendix D – Assay Certificates	iv

Figures

Figure 01 – Location Map of the Hat Trick Property	
Figure 02 – Hat Trick Property, YT. Claim Map and Sample Location	
Figure 03 – Hat Trick Property, YT. Rock Chemistry by Copper (Cu_ppm)	
Figure 04 – Hat Trick Property, YT. Rock Chemistry by Lead (Pb_ppm)	
Figure 05 – Hat Trick Property, YT. Rock Chemistry by Zinc (Zn_ppm)	

1. Introduction

The Hat Trick property is 100% owned by Yukon Zinc Corporation (“Yukon Zinc”). Between 1995 and 1996, 396 claims were staked by Archer, Cathro and Associates (1981) Ltd. In 1995, grid soil sampling, geological mapping and prospecting was carried out on the property’s south central claims. In 1996, geophysical surveying (airborne magnetic, ground magnetic, and max-min surveys), soil sampling, and 998 m of diamond drilling (five holes) were conducted. Please review Eaton 1997¹ for full details.

Between June 01 and December 31, 2004, Expatriate Resources Ltd. (“Expatriate”) conducted a regional prospecting, geological mapping, and soil sampling program in the Finalyson, to which Hat Trick property was part of. In November 2004, Expatriate changed its name to Yukon Zinc Corporation. The claims subject to this report (Table 01) were worked on August 14 and October 17-19, 2004 by a five-man crew fly camping on the property. Prospecting was the primary undertaking for claims reported in this assessment report.

2. Accessibility

The Hat Trick property is located in the Watson Lake Mining District in southeast Yukon on NTS sheet 105G/2 at coordinate 61°11’N, 130°37’W (Figure 01). Access into site is 245km by fixed wing charters from Whitehorse to Wolverine airstrip (61°01’N, 131°20’W) and 39 km via helicopter from Wolverine airstrip to the Hat Trick property. In 2004, air transportation was provided by Trans North Helicopter (Astar 350B) and Alkan Air (Single Turbo Otter).

3. List of claims by name and grant number being renewed

Table 01. List of claims being renewed in this assessment report.

Claim Name	Grant #	Expiry Date
HAT TRICK 247	YB63718	March 17, 2010
HAT TRICK 248	YB63719	March 17, 2010
HAT TRICK 249	YB63720	March 17, 2010
HAT TRICK 250	YB63721	March 17, 2010
HAT TRICK 251	YB63722	March 17, 2007
HAT TRICK 252	YB63723	March 17, 2010
HAT TRICK 253	YB63724	March 17, 2009
HAT TRICK 254	YB63725	March 17, 2009
HAT TRICK 255	YB63726	March 17, 2009
HAT TRICK 256	YB63727	March 17, 2009
HAT TRICK 257	YB63728	March 17, 2009
HAT TRICK 258	YB63729	March 17, 2009
HAT TRICK 259	YB63730	March 17, 2010
HAT TRICK 260	YB63731	March 17, 2009

¹ Eaton, W.D. 1997. Assessment Report describing Geological Mapping, Soil Sampling, Geophysical Surveys and Diamond Drilling at the Hat Trick Property. Archer, Cathro & Associates (1981) Ltd.

HAT TRICK	261	YB63732	March 17, 2010
HAT TRICK	262	YB63733	March 17, 2010
HAT TRICK	275	YB63902	March 17, 2010
HAT TRICK	276	YB63903	March 17, 2010
HAT TRICK	277	YB63904	March 17, 2010
HAT TRICK	278	YB63905	March 17, 2009
HAT TRICK	279	YB63906	March 17, 2010
HAT TRICK	280	YB63907	March 17, 2009
HAT TRICK	281	YB63908	March 17, 2010
HAT TRICK	282	YB63909	March 17, 2009
HAT TRICK	283	YB63910	March 17, 2010
HAT TRICK	284	YB63911	March 17, 2009
HAT TRICK	285	YB63912	March 17, 2010
HAT TRICK	286	YB63913	March 17, 2007
HAT TRICK	287	YB63914	March 17, 2010
HAT TRICK	288	YB63915	March 17, 2010
HAT TRICK	289	YB63916	March 17, 2010
HAT TRICK	290	YB63917	March 17, 2010
HAT TRICK	303	YB63746	March 17, 2010
HAT TRICK	304	YB63747	March 17, 2010
HAT TRICK	305	YB63748	March 17, 2010
HAT TRICK	306	YB63749	March 17, 2010
HAT TRICK	307	YB63750	March 17, 2010
HAT TRICK	308	YB63751	March 17, 2010
HAT TRICK	309	YB63752	March 17, 2010
HAT TRICK	310	YB63753	March 17, 2010
HAT TRICK	311	YB63754	March 17, 2010
HAT TRICK	312	YB63755	March 17, 2010
HAT TRICK	313	YB63756	March 17, 2010
HAT TRICK	314	YB63757	March 17, 2010
HAT TRICK	315	YB63758	March 17, 2010
HAT TRICK	316	YB63759	March 17, 2010

*****Please note the expiry dates include 2004 assessment credits*****

4. Description of Undertakings

Prospecting and Soil Sampling

Rock samples were collected where outcrops expressed iron-oxide and sulphide mineralization. Hand samples approximately 1-1.5 kg were collected and stored in properly labeled plastic sample bags. Please refer to table 02 for all rock GPS data. Note that coordinates were collected in NAD27 Zone 9 datum.

Table 02. Station location, and samples numbers for rock samples collected.

Target	Station	Geologist	Date	Easting	Northing	CODE	Assay	CERTIFICATE
HAT	RHT-01	RS	10/17/2004	406382	6790539	ROCK	B001251	VA04075795
HAT	RHT-02	RS	10/17/2004	406214	6790444	ROCK	B001252	VA04075795
HAT	RHT-03	RS	10/17/2004	405959	6790136	ROCK	B001253	VA04075795
HAT	RHT-04	RS	10/17/2004	405923	6790106	ROCK	B001254	VA04075795
HAT	RHT-05	RS	10/17/2004	405906	6790086	ROCK	B001255	VA04075795
HAT	RHT-06	RS	10/17/2004	405488	6790420	ROCK	B001256	VA04075795
HAT	RHT-07	RS	10/17/2004	405515	6790424	ROCK	B001257	VA04075795
HAT	RHT-08	RS	10/17/2004	405544	6790469	ROCK	B001258	VA04075795
HAT	RHT-09	RS	10/17/2004	405537	6790503	ROCK	B001259	VA04075795
HAT	RHT-10	RS	10/17/2004	405527	6790536	ROCK	B001260	VA04075795
HAT	RHT-11	RS	10/17/2004	405523	6790578	ROCK	B001261	VA04075795
HAT	RHT-12	RS	10/17/2004	405539	6790607	ROCK	B001262	VA04075795
HAT	RHT-13	RS	10/17/2004	405525	6790629	ROCK	B001263	VA04075795
HAT	RHT-14	RS	10/17/2004	405519	6790648	ROCK	B001264	VA04075795
HAT	RHT-15	RS	10/17/2004	405501	6790667	ROCK	B001265	VA04075795
HAT	RHT-16	RS	10/17/2004	405529	6790750	ROCK	B001266	VA04075795
HAT	RHT-17	RS	10/17/2004	405562	6790752	ROCK	B001267	VA04075795
HAT	RHT-18	RS	10/17/2004	405502	6790781	ROCK	B001268	VA04075795
HAT	RHT-19	RS	10/17/2004	406537	6789049	ROCK	B001269	VA04075795
HAT	RHT-20	RS	10/17/2004	406513	6789017	ROCK	B001270	VA04075795
HAT	RHT-21	RS	10/17/2004	406545	6789014	ROCK	B001271	VA04075795
HAT	RHT-22	RS	10/17/2004	406571	6788995	ROCK	B001272	VA04075795
HAT	RHT-23	RS	10/17/2004	406649	6788932	ROCK	B001273	VA04075795

5. Results

All rock samples with potential for hosting sulphide mineralization were sent for assay at ALS-Chemex, 212 Brooksbank Avenue, North Vancouver, British Columbia, V6J 2C1. Those collected for archives were documented and stored at the Wolverine Lake camp. Please see Appendix D for assay certificates and figures 2 through 5 for plotted results.

6. Discussion and Conclusions

Although the 2004 exploration program provided valuable insight into the Hat Trick property's geology for field crews, there are no significant chemistry values above background to report from the rock samples collected on the aforementioned claims. It is recommended that all geochemical, geological, and geophysical data collected between 1995-2005 be compiled in detail to better determine the scope of the anomalies reported in Eaton 1997.

End of Report.

Appendix A - List of Personnel

Name	Position	Period
David Legault	Geologist	Aug. 14, Oct. 17-19, 2004
Anthony Peter	Field Assistant	Aug. 14, Oct. 17-19, 2004
Robert Savard	Field Assistant	Aug. 14, Oct. 17-19, 2004
Doug Copping	Field Assistant	Aug. 14, 2004
Vashti A. Etzel	Field Assistant	Aug. 14, 2004

Appendix B - Statement of Expenditures

I, Phu Van Bui, an agent for Yukon Zinc Corporation, #701-475 Howe Street, Vancouver, B.C., do solemnly declare that geological prospecting and logistical support costs for undertakings carried out on the aforementioned claims (see Table 01) between the dates of August 14, October 17-19, 2004 were as follows:

Assays/Geochemical Analysis	\$4,107.05
Helicopter	\$12,548.70
Communications/Telephone	\$183.93
Geological Consultants	\$4,365.76
Workers' Compensation	\$101.64
Total	\$21,307.08
Expenditures used for this Assessment Filing:	\$21,300.00
Excess Expenditures not used for this Assessment Filing:	\$7.08

I make this solemn declaration conscientiously believing it to be true and knowing that it is of the same force and effect as if made under oath and by virtue of the Canada Evidence Act.

Declared before me at the city of Vancouver, in the Province of British Columbia, this 27th day of August, 2005.

Respectfully Submitted,



Phu Van Bui, B.Sc., G.I.T.

Appendix C – Statement of Qualification

I, Phu Van Bui, resident of Vancouver, British Columbia, do certify that:

1. I graduated from the University of British Columbia in May 2004 with a B.Sc. in Earth and Ocean Sciences;
2. From November 2004, I have been registered as a Geologist In Training, G.I.T., with the Association of Professional Engineers and Geosciences of British Columbia (Reg. No. 143538);
3. From 2002 to present, I have been actively engaged in mineral exploration in British Columbia and the Yukon Territory and am presently employed with the Expatriate Group of Companies to which Yukon Zinc Corporation is part of;
4. I have personally participated in the logistical support during the fieldwork and analysis of data for the filed undertakings herein.

Respectfully Submitted,



Phu Van Bui, B.Sc., G.I.T.

Appendix D – Assay Certificates

Please note that there are more assay results enclosed in the following certificates than reported in this Hat Trick Property Assessment Report for work in 2004. These assay results belong to a set of Hat Trick claims that are not associated with the aforementioned claim groupings.



ALS Chemex
EXCELLENCE IN ANALYTICAL CHEMISTRY
ALS Canada Ltd.
212 Brooksbank Avenue
North Vancouver BC V7J 2C1 Canada
Phone: 604 984 0221 Fax: 604 984 0218

EXPATRIATE RESOURCES LTD.
701-475 HOWE ST
VANCOUVER BC V6C 2B3

Page: 1
Finalized Date: 8-NOV-2004
Account: MPO

CERTIFICATE VA04075795

Project: 1641
P.O. No.:
This report is for 124 Rock samples submitted to our lab in Vancouver, BC, Canada on 29-OCT-2004.

The following have access to data associated with this certificate:

JASON DUNNING

ACCOUNTS PAYABLE

SAMPLE PREPARATION

ALS CODE	DESCRIPTION
WEI-21	Received Sample Weight
LOG-22	Sample login - Rcd w/o BarCode
CRU-31	Fine crushing - 70% <2mm
SPL-21	Split sample - riffle splitter
PUL-31	Pulverize split to 85% <75 um

ANALYTICAL PROCEDURES

ALS CODE	DESCRIPTION	INSTRUMENT
ME-XRF05	Trace Level XRF Analysis	XRF
Au-AA23	Au 30g FA-AA finish	AAS
ME-ICP61	27 element four acid ICP-AES	ICP-AES
Hg-CV41	Trace Hg - cold vapor/AAS	FIMS

To: **EXPATRIATE RESOURCES LTD.**
ATTN: ACCOUNTS PAYABLE
701-475 HOWE ST
VANCOUVER BC V6C 2B3

This is the Final Report and supersedes any preliminary report with this certificate number. Results apply to samples as submitted. All pages of this report have been checked and approved for release.

Signature:



ALS Chemex
EXCELLENCE IN ANALYTICAL CHEMISTRY
 ALS Canada Ltd.
 212 Brooksbank Avenue
 North Vancouver BC V7J 2C1 Canada
 Phone: 604 984 0221 Fax: 604 984 0218

EXPATRIATE RESOURCES LTD.
 701-475 HOWE ST
 VANCOUVER BC V6C 2B3

Page: 2 - A
 Total # Pages: 5 (A - C)
 Finalized Date: 8-NOV-2004
 Account: MPO

Project: 1641

CERTIFICATE OF ANALYSIS VA04075795

Sample Description	Method	WEI-21	Au-AA23	ME-ICP61	ME-ICP61	ME-ICP61	ME-ICP61	ME-ICP61	ME-ICP61	ME-ICP61	ME-ICP61	ME-ICP61	ME-ICP61	ME-ICP61	ME-ICP61	ME-ICP61
	Analyte	Recvd Wt.	Au	Ag	Al	As	Ba	Be	Bi	Ca	Cd	Co	Cr	Cu	Fe	K
Units		kg	ppm	ppm	%	ppm	ppm	ppm	ppm	%	ppm	ppm	ppm	ppm	%	%
LOR		0.02	0.005	0.5	0.01	5	10	0.5	2	0.01	0.5	1	1	1	0.01	0.01
M243040		3.06	<0.005	<0.5	5.90	<5	670	1.9	<2	1.00	0.5	7	267	75	2.56	1.54
M243041		2.12	<0.005	<0.5	5.48	<5	420	1.4	<2	3.03	1.3	11	304	19	3.01	0.84
M243042		1.16	<0.005	0.7	8.28	<5	1160	2.1	<2	0.51	<0.5	5	182	65	3.94	2.16
M243043		1.62	0.005	<0.5	8.80	<5	200	<0.5	<2	5.37	<0.5	23	192	86	6.70	0.14
M243044		1.32	<0.005	<0.5	8.29	<5	60	<0.5	<2	4.78	<0.5	37	184	149	6.14	0.10
M243045		0.72	<0.005	<0.5	7.57	<5	960	<0.5	<2	3.42	<0.5	22	122	61	6.95	0.52
M243046		1.88	0.033	<0.5	7.85	<5	280	<0.5	<2	3.78	<0.5	24	87	184	4.62	0.08
M243047		1.08	<0.005	<0.5	1.78	<5	10	<0.5	<2	8.03	<0.5	44	1600	15	4.59	0.03
M243048		1.80	1.055	1.3	9.00	<5	10	<0.5	<2	11.50	<0.5	8	148	830	8.06	<0.01
M243049		1.34	0.047	0.8	6.20	8	1580	<0.5	<2	0.29	<0.5	1	122	163	7.96	0.52
M243050		1.82	0.006	<0.5	7.60	<5	40	<0.5	<2	6.47	<0.5	32	182	16	6.76	0.06
B001251		0.86	<0.005	0.8	8.85	6	1610	2.8	<2	0.38	<0.5	8	234	39	3.34	3.42
B001252		1.92	<0.005	0.5	9.36	<5	1190	3.3	<2	0.65	<0.5	5	164	22	4.87	2.49
B001253		2.30	<0.005	<0.5	9.22	<5	360	<0.5	<2	5.33	<0.5	31	127	107	6.95	0.43
B001254		2.18	0.005	<0.5	8.42	<5	80	<0.5	<2	7.82	<0.5	24	125	112	6.03	0.19
B001255		1.74	0.007	<0.5	7.79	5	210	<0.5	<2	3.43	<0.5	12	131	51	6.80	0.24
B001256		2.56	<0.005	<0.5	1.16	12	<10	<0.5	<2	4.15	<0.5	60	1530	21	4.85	<0.01
B001257		1.36	<0.005	<0.5	7.45	<5	70	<0.5	<2	7.03	<0.5	32	356	71	5.01	0.15
B001258		1.44	<0.005	<0.5	8.48	<5	70	<0.5	<2	6.70	<0.5	36	112	70	5.55	0.09
B001259		1.62	<0.005	<0.5	5.21	6	30	<0.5	<2	6.90	<0.5	43	530	38	5.90	0.05
B001260		1.00	0.043	<0.5	6.79	<5	260	<0.5	<2	2.73	<0.5	24	106	122	5.34	0.12
B001261		1.30	<0.005	<0.5	6.39	<5	40	<0.5	<2	3.14	<0.5	30	485	27	5.46	0.05
B001262		1.70	<0.005	<0.5	7.88	<5	580	<0.5	<2	4.65	<0.5	31	146	119	6.13	0.28
B001263		1.52	<0.005	<0.5	6.89	<5	240	<0.5	<2	2.58	<0.5	28	244	54	5.78	0.15
B001264		1.56	<0.005	<0.5	6.79	<5	250	<0.5	<2	6.08	<0.5	29	128	24	5.11	0.17
B001265		1.58	<0.005	<0.5	7.73	<5	160	<0.5	<2	6.06	<0.5	22	105	64	6.00	0.13
B001266		1.22	<0.005	<0.5	7.42	<5	260	<0.5	<2	5.05	<0.5	24	213	13	5.61	0.09
B001267		0.96	<0.005	<0.5	7.16	<5	450	<0.5	<2	6.24	<0.5	20	248	55	6.03	0.27
B001268		1.48	<0.005	<0.5	7.73	<5	450	<0.5	<2	4.18	<0.5	24	104	193	7.21	0.31
B001269		1.20	<0.005	<0.5	8.67	<5	420	0.8	<2	5.08	<0.5	33	156	16	5.41	0.61
B001270		1.78	0.014	<0.5	4.37	<5	360	1.2	<2	0.47	<0.5	7	316	13	2.42	0.92
B001271		2.34	0.007	<0.5	5.83	<5	630	0.9	<2	2.13	0.7	7	293	7	3.31	1.26
B001272		1.86	<0.005	0.6	10.15	<5	880	2.9	<2	0.70	<0.5	6	170	43	4.70	3.21
B001273		1.34	0.025	<0.5	5.91	<5	400	1.2	<2	1.56	1.1	12	196	9	3.52	0.96
B001274		0.80	<0.005	<0.5	4.65	<5	20	0.9	<2	1.84	<0.5	1	128	6	0.41	0.12
B001275		1.06	<0.005	<0.5	7.52	<5	170	1.9	<2	0.34	<0.5	10	112	1	3.44	0.67
B001276		0.90	<0.005	<0.5	2.03	<5	170	0.6	<2	6.82	<0.5	3	85	52	1.35	1.36
B001277		0.98	<0.005	<0.5	4.86	<5	270	2.9	<2	22.8	<0.5	8	31	8	1.91	1.02
B001278		0.78	<0.005	<0.5	0.74	<5	10	0.5	<2	35.0	<0.5	1	12	3	0.41	0.13
B001279		1.26	<0.005	<0.5	5.86	<5	340	1.7	<2	0.28	<0.5	11	254	4	2.84	1.28



ALS Chemex

EXCELLENCE IN ANALYTICAL CHEMISTRY

ALS Canada Ltd.
 212 Brooksbank Avenue
 North Vancouver BC V7J 2C1 Canada
 Phone: 604 984 0221 Fax: 604 984 0218



EXPATRIATE RESOURCES LTD.
 701-475 HOWE ST
 VANCOUVER BC V6C 2B3

Page: 2 - B
 Total # Pages: 5 (A - C)
 Finalized Date: 8-NOV-2004
 Account: MPO

Project: 1641

CERTIFICATE OF ANALYSIS VA04075795

Sample Description	Method	ME-ICP61	ME-ICP61	ME-ICP61	ME-ICP61	ME-ICP61	ME-ICP61	ME-ICP61	ME-ICP61	ME-ICP61	ME-ICP61	ME-ICP61	ME-ICP61	ME-ICP61	ME-ICP61	Hg-CV41
	Analyte	Mg	Mn	Mo	Na	Ni	P	Pb	S	Sb	Sr	Tl	V	W	Zn	Hg
	Units	%	ppm	ppm	%	ppm	ppm	ppm	%	ppm	ppm	%	ppm	ppm	ppm	ppm
	LOR	0.01	5	1	0.01	1	10	2	0.01	5	1	0.01	1	10	2	0.01
M243040		0.72	364	1	1.14	29	640	19	0.06	<5	134	0.09	72	<10	59	<0.01
M243041		1.75	640	8	0.84	59	520	15	0.02	<5	144	0.16	154	<10	150	<0.01
M243042		1.52	283	3	1.35	15	670	20	0.05	<5	172	0.41	162	<10	120	<0.01
M243043		3.48	1545	3	1.27	55	250	2	0.02	<5	144	0.29	320	<10	88	<0.01
M243044		4.49	1430	<1	2.61	82	210	5	0.22	<5	74	0.23	257	<10	138	<0.01
M243045		1.95	1405	2	1.69	7	360	11	0.02	<5	82	0.39	289	<10	122	<0.01
M243046		3.48	675	<1	2.46	39	180	4	0.01	<5	66	0.11	225	<10	53	<0.01
M243047		11.60	1070	1	0.23	289	10	<2	<0.01	<5	4	0.03	190	<10	34	<0.01
M243048		0.89	893	<1	0.05	19	150	2	0.07	<5	256	0.21	188	<10	5	<0.01
M243049		3.52	884	3	1.46	18	200	5	0.29	<5	32	0.10	276	<10	97	<0.01
M243050		4.38	754	<1	1.30	75	150	6	<0.01	<5	59	0.16	295	<10	74	<0.01
B001251		1.34	147	5	0.60	22	580	16	0.17	<5	147	0.32	124	<10	118	<0.01
B001252		1.74	401	12	1.24	9	1010	23	0.05	<5	221	0.53	182	<10	144	<0.01
B001253		4.72	1205	2	2.51	51	260	7	0.01	<5	126	0.29	341	<10	82	<0.01
B001254		2.50	1005	<1	1.14	41	290	4	0.01	<5	193	0.30	276	<10	44	<0.01
B001255		3.40	1080	3	2.14	23	220	3	0.44	<5	100	0.28	297	<10	378	0.01
B001256		18.10	1345	<1	0.01	804	20	3	0.03	<5	43	0.02	68	<10	49	<0.01
B001257		5.99	966	1	2.59	128	40	8	0.01	<5	111	0.09	182	<10	39	<0.01
B001258		5.21	1035	<1	2.26	87	90	5	0.11	<5	85	0.11	217	<10	33	<0.01
B001259		8.06	1165	1	0.97	284	70	3	0.06	<5	33	0.10	230	<10	42	<0.01
B001260		3.79	949	<1	1.73	28	240	9	0.01	<5	93	0.20	240	<10	93	<0.01
B001261		5.51	2280	3	1.33	175	120	3	0.28	<5	29	0.03	191	<10	293	<0.01
B001262		4.44	1530	<1	1.78	65	130	7	<0.01	<5	85	0.15	240	<10	75	<0.01
B001263		4.74	1365	2	2.29	83	110	4	0.02	<5	22	0.10	258	<10	239	<0.01
B001264		3.52	899	<1	1.12	46	90	<2	<0.01	<5	51	0.12	227	<10	57	<0.01
B001265		2.65	739	2	0.93	33	210	4	<0.01	<5	85	0.20	363	<10	55	<0.01
B001266		3.61	981	<1	1.75	66	110	5	<0.01	<5	56	0.10	238	<10	48	<0.01
B001267		1.70	1000	5	0.15	13	350	17	0.22	<5	178	0.21	370	<10	66	<0.01
B001268		2.76	930	<1	1.60	10	240	5	0.16	<5	70	0.34	377	<10	73	<0.01
B001269		4.63	890	2	2.66	132	1600	14	0.01	<5	233	0.22	172	<10	65	<0.01
B001270		0.58	297	2	0.51	18	430	14	0.01	<5	110	0.21	58	<10	43	<0.01
B001271		1.60	518	7	0.53	45	460	16	0.01	<5	98	0.31	112	<10	104	<0.01
B001272		1.32	648	<1	1.02	9	730	31	0.09	<5	241	0.64	128	<10	97	<0.01
B001273		1.35	483	5	0.74	54	500	14	0.01	<5	105	0.30	97	<10	98	<0.01
B001274		0.04	69	<1	3.53	4	60	4	0.02	<5	257	0.02	7	<10	4	<0.01
B001275		3.28	137	<1	3.56	31	380	6	<0.01	<5	241	0.11	53	<10	37	<0.01
B001276		0.43	248	<1	0.08	12	160	22	0.03	<5	526	0.10	23	<10	32	<0.01
B001277		0.89	473	1	1.84	17	350	10	0.02	<5	2070	0.18	38	<10	31	<0.01
B001278		0.21	320	<1	0.26	2	410	5	<0.01	<5	3620	0.02	3	<10	4	<0.01
B001279		1.40	170	6	1.35	26	150	10	<0.01	<5	145	0.24	54	<10	25	<0.01



ALS Chemex
EXCELLENCE IN ANALYTICAL CHEMISTRY
ALS Canada Ltd.
212 Brooksbank Avenue
North Vancouver BC V7J 2C1 Canada
Phone: 604 984 0221 Fax: 604 984 0218

EXPATRIATE RESOURCES LTD.
701-475 HOWE ST
VANCOUVER BC V6C 2B3

Page: 2 - C
Total # Pages: 5 (A - C)
Finalized Date: 8-NOV-2004
Account: MPO

Project: 1641

CERTIFICATE OF ANALYSIS VA04075795

Sample Description	Method Analyte Units LOR	ME-XRF05 Se ppm 2
M243040		4
M243041		<2
M243042		11
M243043		<2
M243044		<2
M243045		<2
M243046		<2
M243047		<2
M243048		3
M243049		7
M243050		<2
B001251		7
B001252		3
B001253		<2
B001254		<2
B001255		<2
B001256		<2
B001257		<2
B001258		<2
B001259		<2
B001260		<2
B001261		<2
B001262		<2
B001263		<2
B001264		<2
B001265		<2
B001266		<2
B001267		<2
B001268		<2
B001269		<2
B001270		<2
B001271		<2
B001272		4
B001273		<2
B001274		<2
B001275		<2
B001276		<2
B001277		<2
B001278		<2
B001279		<2



ALS Chemex

EXCELLENCE IN ANALYTICAL CHEMISTRY

ALS Canada Ltd.
 212 Brooksbank Avenue
 North Vancouver BC V7J 2C1 Canada
 Phone: 604 984 0221 Fax: 604 984 0218

EXPATRIATE RESOURCES LTD.
 701-475 HOWE ST
 VANCOUVER BC V6C 2B3

Page: 3 - A
 Total # Pages: 5 (A - C)
 Finalized Date: 8-NOV-2004
 Account: MPO

Project: 1641

CERTIFICATE OF ANALYSIS VA04075795

Sample Description	Method	WEI-21	Au-AA23	ME-ICP61	ME-ICP61	ME-ICP61	ME-ICP61	ME-ICP61	ME-ICP61	ME-ICP61	ME-ICP61	ME-ICP61	ME-ICP61	ME-ICP61	ME-ICP61	ME-ICP61
	Analyte	Recvd Wt.	Au	Ag	Al	As	Ba	Be	Bi	Ca	Cd	Co	Cr	Cu	Fe	K
Units		kg	ppm	ppm	%	ppm	ppm	ppm	ppm	%	ppm	ppm	ppm	ppm	%	%
LOR		0.02	0.005	0.5	0.01	5	10	0.5	2	0.01	0.5	1	1	1	0.01	0.01
B001280		1.40	<0.005	<0.5	5.51	<5	330	1.4	<2	0.33	<0.5	9	396	13	2.10	0.91
B001281		1.14	<0.005	<0.5	8.19	<5	630	2.2	<2	0.26	<0.5	11	184	1	4.36	2.55
B001282		0.86	<0.005	<0.5	4.17	<5	120	0.6	<2	0.18	<0.5	5	247	7	1.68	0.32
B001283		0.74	<0.005	<0.5	6.19	<5	240	1.1	<2	19.90	<0.5	11	93	38	2.77	1.60
B001284		1.42	<0.005	<0.5	8.74	7	810	2.0	<2	0.82	<0.5	18	208	37	6.98	2.43
B001285		0.56	<0.005	<0.5	6.84	<5	50	12.7	8	0.32	<0.5	2	97	2	0.47	3.09
B001286		1.74	<0.005	<0.5	3.49	<5	170	0.7	<2	0.12	<0.5	6	272	4	2.10	0.51
B001287		0.96	<0.005	<0.5	5.00	<5	70	0.9	<2	0.39	<0.5	5	259	9	1.64	0.32
B001288		0.72	<0.005	<0.5	6.74	<5	1700	1.4	<2	0.15	<0.5	1	156	3	0.97	3.11
B001289		1.32	<0.005	<0.5	8.22	<5	4040	2.4	2	0.99	<0.5	4	97	4	2.54	3.53
B001290		1.10	<0.005	<0.5	7.03	<5	3960	2.8	<2	0.60	<0.5	3	140	3	1.69	4.74
B001291		0.94	<0.005	<0.5	7.36	<5	2450	1.7	<2	0.68	<0.5	4	149	7	2.01	3.62
B001292		0.96	<0.005	<0.5	6.47	<5	2430	2.1	<2	0.10	<0.5	1	161	6	1.37	3.16
B001293		0.94	<0.005	<0.5	6.38	7	2720	2.5	<2	0.09	<0.5	1	92	2	1.44	4.91
B001294		0.90	<0.005	<0.5	6.22	7	2600	2.6	<2	0.16	<0.5	1	140	3	1.52	3.83
B001295		1.42	<0.005	<0.5	6.27	<5	2310	2.4	<2	0.26	<0.5	1	199	2	1.54	3.49
B001296		1.02	<0.005	<0.5	6.45	<5	2360	2.5	<2	0.37	<0.5	1	199	11	1.58	2.24
B001297		1.00	<0.005	<0.5	6.10	<5	1820	2.1	<2	0.16	<0.5	1	90	2	1.19	1.85
B001298		1.18	<0.005	<0.5	3.37	<5	1320	0.9	<2	0.09	<0.5	1	238	15	1.39	1.25
B001299		0.66	<0.005	<0.5	7.13	<5	1400	1.7	<2	2.71	<0.5	7	178	19	3.82	1.67
B001300		0.56	<0.005	<0.5	6.57	<5	2110	2.1	<2	1.33	<0.5	1	240	4	1.64	2.61
B001301		1.82	0.047	<0.5	7.31	12	480	<0.5	<2	4.31	<0.5	23	180	344	4.53	0.17
B001302		1.20	<0.005	<0.5	9.42	<5	780	2.6	<2	0.44	<0.5	9	237	29	4.64	3.00
B001303		1.04	<0.005	<0.5	8.17	<5	270	0.8	<2	5.39	<0.5	26	142	6	4.30	0.19
B001304		0.92	0.012	0.5	7.93	<5	140	<0.5	<2	3.81	<0.5	17	97	148	5.98	0.30
B001305		1.48	0.007	<0.5	7.97	5	180	<0.5	<2	2.33	<0.5	17	122	49	5.46	0.19
B001306		2.18	<0.005	<0.5	5.99	<5	600	<0.5	<2	1.38	<0.5	23	200	24	4.26	0.18
B001307		1.72	<0.005	<0.5	5.86	<5	190	<0.5	<2	0.05	<0.5	14	150	273	10.85	0.15
B001308		1.00	<0.005	0.6	6.17	<5	2060	<0.5	<2	0.03	<0.5	8	112	179	10.80	0.54
B001309		1.52	<0.005	<0.5	8.27	<5	100	<0.5	<2	5.32	<0.5	32	180	123	6.22	0.27
B001310		1.02	<0.005	<0.5	7.93	<5	280	<0.5	<2	5.41	<0.5	32	218	7	5.70	0.43
B001311		0.72	<0.005	<0.5	7.03	<5	1610	1.9	<2	0.28	<0.5	3	319	7	2.01	4.76
B001312		1.54	<0.005	<0.5	8.12	<5	800	1.9	<2	5.00	<0.5	30	138	30	7.39	1.70
B001313		1.68	<0.005	<0.5	6.58	<5	2080	3.4	<2	1.98	<0.5	10	219	45	5.19	2.25
B001314		2.66	<0.005	<0.5	8.42	<5	90	1.2	<2	6.01	<0.5	33	80	36	6.86	0.29
B001315		1.04	<0.005	<0.5	8.62	<5	110	2.4	<2	5.74	<0.5	27	78	18	6.21	0.31
B001316		0.94	<0.005	<0.5	7.30	<5	2580	1.6	<2	0.68	<0.5	8	142	40	2.33	2.47
B001317		1.22	0.029	<0.5	7.59	<5	1120	1.7	<2	1.26	<0.5	12	175	8	3.48	2.61
B001318		1.08	<0.005	<0.5	2.27	<5	990	0.5	<2	0.36	<0.5	4	145	22	1.39	0.64
B001319		1.14	<0.005	<0.5	2.89	<5	740	<0.5	<2	0.03	<0.5	<1	177	11	1.07	0.98



ALS Chemex
EXCELLENCE IN ANALYTICAL CHEMISTRY
 ALS Canada Ltd.
 212 Brooksbank Avenue
 North Vancouver BC V7J 2C1 Canada
 Phone: 604 984 0221 Fax: 604 984 0218

EXPATRIATE RESOURCES LTD.
 701-475 HOWE ST
 VANCOUVER BC V6C 2B3

Page: 3 - B
 Total # Pages: 5 (A - C)
 Finalized Date: 8-NOV-2004
 Account: MPO

Project: 1641

CERTIFICATE OF ANALYSIS VA04075795

Sample Description	Method	ME-ICP61	ME-ICP61	ME-ICP61	ME-ICP61	ME-ICP61	ME-ICP61	ME-ICP61	ME-ICP61	ME-ICP61	ME-ICP61	ME-ICP61	ME-ICP61	ME-ICP61	ME-ICP61	ME-ICP61	Hg-CV41
	Analyte Units LOR	Mg %	Mn ppm	Mo ppm	Na %	Ni ppm	P ppm	Pb ppm	S %	Sb ppm	Sr ppm	Ti %	V ppm	W ppm	Zn ppm	Hg ppm	
		0.01	5	1	0.01	1	10	2	0.01	5	1	0.01	1	10	2	0.01	
B001280		0.86	225	12	1.92	26	190	12	<0.01	<5	128	0.15	32	<10	18	<0.01	
B001281		2.41	374	<1	1.18	38	580	13	<0.01	<5	153	0.36	80	<10	49	<0.01	
B001282		0.89	137	1	2.09	14	110	6	0.03	<5	65	0.08	27	<10	10	<0.01	
B001283		0.82	422	2	0.82	25	370	16	0.04	<5	2710	0.22	40	<10	31	<0.01	
B001284		1.46	1970	3	0.67	28	720	18	0.01	<5	172	0.67	130	<10	92	<0.01	
B001285		0.05	296	<1	2.93	3	280	36	<0.01	<5	69	0.02	1	<10	38	<0.01	
B001286		1.80	74	6	0.73	32	160	3	<0.01	<5	44	0.07	35	<10	19	<0.01	
B001287		0.59	44	<1	2.80	17	130	7	<0.01	<5	75	0.22	33	<10	13	<0.01	
B001288		0.62	185	4	1.23	3	60	33	0.06	<5	57	0.06	12	<10	49	<0.01	
B001289		1.23	454	2	2.33	7	470	25	0.03	<5	346	0.26	30	<10	82	<0.01	
B001290		1.26	247	6	0.79	7	270	30	0.01	<5	138	0.17	17	<10	57	<0.01	
B001291		0.70	230	<1	2.45	5	370	30	0.06	<5	288	0.21	29	<10	44	<0.01	
B001292		0.67	219	4	2.97	6	110	24	<0.01	<5	71	0.10	5	<10	56	<0.01	
B001293		0.89	205	1	0.87	3	40	21	<0.01	<5	64	0.08	5	<10	63	<0.01	
B001294		0.49	166	4	1.99	2	120	20	0.01	<5	67	0.11	9	<10	67	<0.01	
B001295		0.58	209	1	1.47	3	90	19	0.03	<5	75	0.10	7	<10	60	<0.01	
B001296		0.59	217	6	2.62	7	80	14	0.04	<5	96	0.09	14	<10	47	<0.01	
B001297		0.50	140	<1	3.05	2	80	11	0.01	<5	57	0.09	11	<10	46	<0.01	
B001298		0.46	75	9	0.50	12	220	10	0.05	<5	40	0.13	58	<10	37	<0.01	
B001299		1.12	772	<1	1.65	8	880	23	0.01	<5	428	0.42	54	<10	83	0.01	
B001300		1.06	223	8	1.61	7	160	40	<0.01	<5	276	0.11	7	<10	42	<0.01	
B001301		3.29	735	<1	1.71	61	180	4	<0.01	6	55	0.09	189	<10	46	<0.01	
B001302		1.49	443	3	0.62	18	890	21	0.07	<5	150	0.43	124	<10	100	<0.01	
B001303		4.50	981	<1	2.31	104	1570	15	<0.01	<5	389	0.50	162	<10	48	<0.01	
B001304		3.85	1215	2	2.08	36	160	13	0.06	<5	326	0.21	289	<10	71	<0.01	
B001305		2.80	609	4	4.71	33	230	8	1.85	<5	178	0.11	143	<10	19	0.01	
B001306		3.72	1335	<1	2.12	42	70	6	0.44	<5	24	0.08	188	<10	203	<0.01	
B001307		3.72	959	3	1.29	11	130	<2	1.08	<5	19	0.05	192	<10	281	<0.01	
B001308		4.34	1040	1	0.28	4	80	<2	0.17	<5	7	0.06	216	<10	355	<0.01	
B001309		3.89	1120	3	2.15	60	180	<2	0.01	<5	110	0.31	253	<10	66	<0.01	
B001310		5.34	1035	<1	1.83	70	310	6	<0.01	<5	86	0.15	230	<10	92	<0.01	
B001311		0.33	191	9	1.36	10	300	27	<0.01	<5	65	0.18	20	<10	39	<0.01	
B001312		3.36	1125	2	1.79	28	1750	12	0.02	<5	458	1.22	288	<10	116	<0.01	
B001313		1.68	554	3	1.23	63	230	9	0.06	<5	278	0.48	118	<10	114	<0.01	
B001314		4.04	1190	1	2.21	36	1450	5	0.01	<5	357	1.10	305	<10	74	<0.01	
B001315		3.32	1500	<1	2.91	26	1700	5	<0.01	<5	332	1.16	259	<10	91	<0.01	
B001316		0.67	353	<1	1.24	19	570	19	0.08	<5	132	0.28	98	<10	58	<0.01	
B001317		0.90	719	1	1.07	30	400	15	0.01	<5	128	0.36	60	<10	89	<0.01	
B001318		0.59	229	1	0.25	22	280	4	0.04	<5	38	0.11	53	<10	45	<0.01	
B001319		0.38	102	2	0.15	8	180	12	0.02	<5	34	0.07	77	<10	24	<0.01	



ALS Chemex
EXCELLENCE IN ANALYTICAL CHEMISTRY
ALS Canada Ltd.
212 Brooksbank Avenue
North Vancouver BC V7J 2C1 Canada
Phone: 604 984 0221 Fax: 604 984 0218

EXPATRIATE RESOURCES LTD.
701-475 HOWE ST
VANCOUVER BC V6C 2B3

Page: 3 - C
Total # Pages: 5 (A - C)
Finalized Date: 8-NOV-2004
Account: MPO

Project: 1641

CERTIFICATE OF ANALYSIS VA04075795

Sample Description	Method Analyte Units LOR	ME-XRF05 Se ppm 2
B001280		<2
B001281		<2
B001282		<2
B001283		<2
B001284		<2
B001285		<2
B001286		<2
B001287		<2
B001288		<2
B001289		<2
B001290		<2
B001291		<2
B001292		<2
B001293		<2
B001294		<2
B001295		<2
B001296		<2
B001297		<2
B001298		<2
B001299		<2
B001300		<2
B001301		<2
B001302		<2
B001303		<2
B001304		<2
B001305		<2
B001306		<2
B001307		6
B001308		7
B001309		<2
B001310		<2
B001311		<2
B001312		<2
B001313		<2
B001314		<2
B001315		<2
B001316		<2
B001317		<2
B001318		<2
B001319		<2



ALS Chemex

EXCELLENCE IN ANALYTICAL CHEMISTRY

ALS Canada Ltd.
 212 Brooksbank Avenue
 North Vancouver BC V7J 2C1 Canada
 Phone: 604 984 0221 Fax: 604 984 0218

EXPATRIATE RESOURCES LTD.
 701-475 HOWE ST
 VANCOUVER BC V6C 2B3

Page: 4 - A
 Total # Pages: 5 (A - C)
 Finalized Date: 8-NOV-2004
 Account: MPO

Project: 1641

CERTIFICATE OF ANALYSIS VA04075795

Sample Description	Method	WEI-21	Au-AA23	ME-ICP61	ME-ICP61	ME-ICP61	ME-ICP61	ME-ICP61	ME-ICP61	ME-ICP61	ME-ICP61	ME-ICP61	ME-ICP61	ME-ICP61	ME-ICP61	ME-ICP61
	Analyte	Recvd Wt.	Au	Ag	Al	As	Ba	Be	Bi	Ca	Cd	Co	Cr	Cu	Fe	K
Units		kg	ppm	ppm	%	ppm	ppm	ppm	ppm	%	ppm	ppm	ppm	ppm	%	%
LOR		0.02	0.005	0.5	0.01	5	10	0.5	2	0.01	0.5	1	1	1	0.01	0.01
B001320		1.22	<0.005	<0.5	1.88	<5	2560	0.5	<2	0.03	<0.5	2	154	17	1.06	0.56
B001321		1.00	<0.005	<0.5	5.80	<5	1320	1.6	<2	0.08	<0.5	1	144	2	0.99	2.43
B001322		1.82	<0.005	<0.5	6.71	<5	2670	1.9	<2	0.07	<0.5	1	79	7	1.24	3.34
B001323		1.10	<0.005	<0.5	8.77	<5	1030	1.1	<2	9.34	<0.5	28	386	1	3.87	1.05
B001324		0.94	0.158	<0.5	7.72	<5	1980	1.6	<2	1.06	<0.5	3	208	41	2.55	1.62
B001325		0.66	<0.005	<0.5	5.63	5	1830	1.4	<2	0.87	<0.5	6	337	11	2.83	0.98
B001326		0.88	<0.005	<0.5	3.19	<5	2060	1.2	<2	0.78	<0.5	5	329	53	2.50	1.03
B001327		0.92	<0.005	<0.5	3.54	<5	1950	1.4	2	0.65	<0.5	6	231	39	2.14	1.26
B001328		1.26	<0.005	<0.5	2.02	<5	370	0.5	<2	0.16	<0.5	9	343	35	3.16	0.56
B001329		0.94	<0.005	<0.5	1.28	6	490	<0.5	<2	0.13	<0.5	12	312	33	1.28	0.49
B001330		1.32	<0.005	<0.5	7.58	7	2850	1.9	<2	1.49	<0.5	3	144	71	2.92	1.80
B001331		1.26	<0.005	<0.5	2.56	6	500	0.8	<2	0.71	<0.5	9	136	49	2.27	1.01
B001332		1.66	<0.005	<0.5	5.36	5	1280	1.1	<2	1.25	<0.5	3	122	20	2.18	1.10
B001333		1.36	<0.005	<0.5	4.75	<5	2420	1.4	<2	0.19	<0.5	2	128	23	2.66	2.08
B001334		1.24	0.007	<0.5	2.80	<5	2200	1.2	<2	0.58	2.4	11	785	67	2.79	1.12
B001335		1.00	<0.005	<0.5	2.67	5	1240	0.8	<2	0.37	<0.5	6	305	44	2.09	1.10
B001336		1.42	<0.005	<0.5	7.76	<5	2140	1.0	<2	2.56	<0.5	10	191	18	4.32	2.26
B001337		0.68	<0.005	<0.5	7.01	<5	1820	1.6	<2	1.69	<0.5	12	190	3	3.61	2.37
B001338		1.52	<0.005	<0.5	7.83	5	1520	2.6	<2	2.44	<0.5	12	107	10	4.12	2.93
B001339		1.26	0.006	<0.5	6.92	<5	3080	2.1	<2	0.94	<0.5	5	140	5	2.02	2.72
B001340		1.44	<0.005	<0.5	5.56	5	1120	1.0	<2	0.91	<0.5	3	194	31	2.11	1.28
B001341		1.60	<0.005	<0.5	4.48	<5	2710	1.4	<2	0.45	<0.5	5	265	48	3.05	2.16
B001342		1.16	<0.005	<0.5	5.37	<5	950	1.0	<2	1.10	<0.5	3	162	19	2.01	1.34
B001343		1.24	<0.005	<0.5	6.97	<5	1680	1.4	<2	0.69	<0.5	4	198	6	2.45	2.27
B001344		1.38	<0.005	<0.5	4.74	7	2450	1.5	<2	0.29	<0.5	5	232	71	2.79	2.34
B001345		1.50	<0.005	<0.5	5.68	<5	1080	0.9	<2	0.89	<0.5	5	211	26	2.42	1.61
B001346		1.34	<0.005	<0.5	3.89	5	1440	1.2	<2	0.67	<0.5	4	328	54	2.66	1.46
B001347		1.04	<0.005	<0.5	7.22	12	1240	1.0	<2	0.75	<0.5	5	130	21	2.31	1.64
B001348		1.38	0.008	<0.5	8.12	<5	1440	2.1	<2	1.98	<0.5	11	158	47	3.88	2.52
B001349		1.28	<0.005	<0.5	6.80	<5	1630	1.1	<2	2.21	<0.5	28	412	37	6.58	2.96
B001401		0.80	<0.005	<0.5	6.85	10	1400	2.2	<2	0.20	<0.5	1	109	2	1.30	3.92
B001402		0.96	<0.005	<0.5	7.01	5	3510	3.2	<2	0.91	<0.5	<1	160	4	1.44	3.57
B001403		3.24	<0.005	<0.5	7.16	<5	2760	2.4	<2	0.74	<0.5	2	137	7	1.50	1.90
B001404		2.12	<0.005	<0.5	7.58	<5	3250	1.9	<2	0.56	<0.5	1	205	12	1.73	4.57
B001405		0.56	<0.005	<0.5	5.96	<5	1560	3.6	<2	0.67	<0.5	1	196	8	1.50	1.72
B001406		0.80	<0.005	<0.5	5.52	<5	1550	1.6	<2	0.36	<0.5	<1	160	3	1.00	1.88
B001407		2.90	<0.005	<0.5	5.96	7	1960	1.9	<2	0.06	<0.5	1	142	4	1.02	2.88
B001408		1.10	<0.005	<0.5	6.80	5	3560	1.5	<2	0.30	<0.5	4	207	37	3.43	3.76
B001409		2.56	<0.005	<0.5	4.70	<5	1700	1.2	<2	0.38	<0.5	9	343	21	2.29	1.70
B001410		1.04	<0.005	<0.5	8.19	6	1180	1.7	<2	0.92	<0.5	12	192	21	4.23	3.41



ALS Chemex
EXCELLENCE IN ANALYTICAL CHEMISTRY
 ALS Canada Ltd.
 212 Brooksbank Avenue
 North Vancouver BC V7J 2C1 Canada
 Phone: 604 984 0221 Fax: 604 984 0218

EXPATRIATE RESOURCES LTD.
 701-475 HOWE ST
 VANCOUVER BC V6C 2B3

Page: 4 - B
 Total # Pages: 5 (A - C)
 Finalized Date: 8-NOV-2004
 Account: MPO

Project: 1641

CERTIFICATE OF ANALYSIS VA04075795

Sample Description	Method Analyte Units LOR	ME-ICP61	ME-ICP61	ME-ICP61	ME-ICP61	ME-ICP61	ME-ICP61	ME-ICP61	ME-ICP61	ME-ICP61	ME-ICP61	ME-ICP61	ME-ICP61	ME-ICP61	ME-ICP61	Hg-CV41
		Mg %	Mn ppm	Mo ppm	Na %	Ni ppm	P ppm	Pb ppm	S %	Sb ppm	Sr ppm	Ti %	V ppm	W ppm	Zn ppm	Hg ppm
		0.01	5	1	0.01	1	10	2	0.01	5	1	0.01	1	10	2	0.01
B001320		0.54	345	1	0.03	11	150	6	0.01	<5	12	0.07	57	<10	35	<0.01
B001321		0.78	129	1	1.65	4	80	29	0.01	<5	33	0.06	6	<10	46	<0.01
B001322		0.84	159	1	1.67	3	120	35	0.04	<5	61	0.09	7	<10	45	<0.01
B001323		4.66	1180	<1	1.62	108	290	18	<0.01	<5	445	0.29	162	<10	44	<0.01
B001324		0.71	386	1	2.74	9	750	24	0.12	<5	240	0.32	60	<10	52	<0.01
B001325		1.51	452	2	1.93	23	350	9	<0.01	<5	99	0.26	55	<10	81	<0.01
B001326		0.85	368	4	0.53	19	860	7	0.09	<5	74	0.20	152	<10	59	<0.01
B001327		0.82	347	5	0.47	22	520	7	0.06	<5	57	0.19	129	<10	59	<0.01
B001328		0.68	2220	6	0.21	26	310	11	0.01	<5	17	0.11	52	<10	39	<0.01
B001329		0.32	606	3	0.17	51	130	4	0.02	<5	26	0.08	33	<10	33	<0.01
B001330		0.87	525	1	1.90	8	370	20	0.18	<5	213	0.39	73	<10	55	<0.01
B001331		0.72	1090	3	0.30	39	1040	17	0.01	<5	67	0.14	88	<10	46	<0.01
B001332		1.02	326	2	1.74	12	310	14	0.01	<5	245	0.25	41	<10	68	<0.01
B001333		0.86	178	2	0.56	8	360	5	0.11	<5	58	0.33	138	<10	74	<0.01
B001334		0.86	536	18	0.24	54	830	8	0.12	<5	49	0.27	186	10	86	0.02
B001335		0.74	340	3	0.24	20	350	4	0.05	<5	43	0.18	80	<10	87	<0.01
B001336		3.00	491	4	0.82	18	850	9	0.04	<5	207	0.46	126	<10	118	<0.01
B001337		2.26	751	3	1.72	30	420	26	<0.01	<5	199	0.31	106	<10	144	<0.01
B001338		1.64	527	1	2.66	15	960	30	<0.01	<5	392	0.57	73	<10	87	<0.01
B001339		1.24	473	2	0.97	13	300	20	<0.01	<5	128	0.21	39	<10	81	<0.01
B001340		0.90	322	3	1.86	10	280	12	0.02	<5	144	0.21	35	<10	66	<0.01
B001341		0.91	330	4	0.46	18	1140	8	0.12	<5	82	0.33	164	<10	65	<0.01
B001342		0.85	334	2	1.48	11	300	18	<0.01	<5	144	0.22	32	<10	72	<0.01
B001343		1.44	341	2	2.42	12	420	19	<0.01	<5	134	0.25	34	<10	82	<0.01
B001344		1.16	340	4	0.27	16	490	6	0.08	<5	54	0.31	150	<10	70	<0.01
B001345		1.35	338	2	1.70	16	330	20	<0.01	<5	125	0.24	49	<10	60	<0.01
B001346		0.92	422	5	0.50	19	700	9	0.09	<5	74	0.28	124	<10	77	<0.01
B001347		1.33	280	2	3.14	7	430	18	0.01	<5	150	0.22	33	<10	86	<0.01
B001348		1.04	1335	1	1.96	40	490	25	0.02	<5	331	0.43	92	<10	93	<0.01
B001349		4.05	1280	2	0.31	295	1100	5	0.05	<5	108	0.74	165	<10	142	<0.01
B001401		0.28	201	2	2.24	5	110	34	<0.01	<5	75	0.09	7	<10	43	<0.01
B001402		1.11	146	3	0.68	6	70	26	0.02	<5	236	0.10	5	<10	61	<0.01
B001403		0.37	207	3	3.41	9	150	31	0.01	<5	174	0.16	14	<10	47	<0.01
B001404		0.92	279	2	1.18	5	160	46	0.06	<5	115	0.14	12	<10	49	<0.01
B001405		1.00	311	3	1.33	4	100	19	0.02	<5	134	0.11	8	<10	77	<0.01
B001406		0.90	157	2	1.94	3	70	22	<0.01	<5	108	0.05	2	<10	37	<0.01
B001407		0.86	98	2	1.64	3	40	29	0.01	<5	67	0.06	5	<10	65	<0.01
B001408		0.83	317	4	0.36	15	800	11	0.05	<5	71	0.37	134	<10	106	<0.01
B001409		0.68	249	5	0.50	37	280	9	0.02	<5	76	0.19	85	<10	69	<0.01
B001410		1.08	624	2	1.62	34	880	20	0.01	<5	188	0.55	78	<10	91	0.01



ALS Chemex
EXCELLENCE IN ANALYTICAL CHEMISTRY

ALS Canada Ltd.
212 Brooksbank Avenue
North Vancouver BC V7J 2C1 Canada
Phone: 604 984 0221 Fax: 604 984 0218

EXPATRIATE RESOURCES LTD.
701-475 HOWE ST
VANCOUVER BC V6C 2B3

Page: 4 - C
Total # Pages: 5 (A - C)
Finalized Date: 8-NOV-2004
Account: MPO

Project: 1641

CERTIFICATE OF ANALYSIS VA04075795

Sample Description	Method Analyte Units LOR	ME-XRF05 Se ppm 2
B001320		<2
B001321		<2
B001322		<2
B001323		<2
B001324		2
B001325		<2
B001326		<2
B001327		<2
B001328		<2
B001329		<2
B001330		<2
B001331		<2
B001332		<2
B001333		<2
B001334		<2
B001335		<2
B001336		<2
B001337		<2
B001338		<2
B001339		<2
B001340		<2
B001341		<2
B001342		<2
B001343		<2
B001344		2
B001345		<2
B001346		<2
B001347		<2
B001348		<2
B001349		<2
B001401		<2
B001402		<2
B001403		<2
B001404		<2
B001405		<2
B001406		<2
B001407		<2
B001408		<2
B001409		<2
B001410		<2



ALS Chemex
EXCELLENCE IN ANALYTICAL CHEMISTRY

ALS Canada Ltd.
 212 Brooksbank Avenue
 North Vancouver BC V7J 2C1 Canada
 Phone: 604 984 0221 Fax: 604 984 0218

EXPATRIATE RESOURCES LTD.
 701-475 HOWE ST
 VANCOUVER BC V6C 2B3

Page: 5 - A
 Total # Pages: 5 (A - C)
 Finalized Date: 8-NOV-2004
 Account: MPO

Project: 1641

CERTIFICATE OF ANALYSIS VA04075795

Sample Description	Method Analyte Units LOR	WEI-21	Au-AA23	ME-ICP61	ME-ICP61	ME-ICP61	ME-ICP61	ME-ICP61	ME-ICP61	ME-ICP61	ME-ICP61	ME-ICP61	ME-ICP61	ME-ICP61	ME-ICP61	ME-ICP61
		Recvd Wt. kg	Au ppm	Ag ppm	Al %	As ppm	Ba ppm	Be ppm	Bi ppm	Ca %	Cd ppm	Co ppm	Cr ppm	Cu ppm	Fe %	K %
		0.02	0.005	0.5	0.01	5	10	0.5	2	0.01	0.5	1	1	1	0.01	0.01
B001411		1.20	<0.005	<0.5	8.15	<5	2270	1.9	<2	1.60	<0.5	11	134	13	4.09	2.14
B001412		0.76	<0.005	<0.5	7.10	12	1960	1.7	<2	0.99	<0.5	15	290	45	4.59	2.65
B001413		0.98	<0.005	<0.5	7.64	16	1710	1.4	<2	1.29	<0.5	7	185	22	3.81	2.34
B001414		1.10	<0.005	<0.5	7.75	9	1360	1.2	<2	1.94	<0.5	13	110	13	5.09	2.22



ALS Chemex
EXCELLENCE IN ANALYTICAL CHEMISTRY
 ALS Canada Ltd.
 212 Brooksbank Avenue
 North Vancouver BC V7J 2C1 Canada
 Phone: 604 984 0221 Fax: 604 984 0218

EXPATRIATE RESOURCES LTD.
 701-475 HOWE ST
 VANCOUVER BC V6C 2B3

Page: 5 - B
 Total # Pages: 5 (A - C)
 Finalized Date: 8-NOV-2004
 Account: MPO

Project: 1641

CERTIFICATE OF ANALYSIS VA04075795

Sample Description	Method Analyte Units LOR	ME-ICP61	ME-ICP61	ME-ICP61	ME-ICP61	ME-ICP61	ME-ICP61	ME-ICP61	ME-ICP61	ME-ICP61	ME-ICP61	ME-ICP61	ME-ICP61	ME-ICP61	ME-ICP61	Hg-CV41
		Mg %	Mn ppm	Mo ppm	Na %	Ni ppm	P ppm	Pb ppm	S %	Sb ppm	Sr ppm	Tl %	V ppm	W ppm	Zn ppm	Hg ppm
		0.01	5	1	0.01	1	10	2	0.01	5	1	0.01	1	10	2	0.01
B001411		1.91	718	2	3.14	19	850	11	0.05	<5	467	0.54	97	<10	81	<0.01
B001412		2.03	582	2	1.59	77	640	22	0.03	<5	129	0.46	156	<10	258	<0.01
B001413		1.74	539	3	2.39	19	680	29	0.12	<5	226	0.43	102	<10	86	<0.01
B001414		1.90	694	2	2.20	14	1060	21	0.01	<5	468	0.75	136	<10	98	<0.01



ALS Chemex
EXCELLENCE IN ANALYTICAL CHEMISTRY

ALS Canada Ltd.
212 Brooksbank Avenue
North Vancouver BC V7J 2C1 Canada
Phone: 604 984 0221 Fax: 604 984 0218

EXPATRIATE RESOURCES LTD.
701-475 HOWE ST
VANCOUVER BC V6C 2B3

Page: 5 - C
Total # Pages: 5 (A - C)
Finalized Date: 8-NOV-2004
Account: MPO

Project: 1641

CERTIFICATE OF ANALYSIS VA04075795

Sample Description	Method Analyte Units LOR	ME-XRF05 Se ppm 2
B001411		<2
B001412		<2
B001413		<2
B001414		<2



ALS Chemex

EXCELLENCE IN ANALYTICAL CHEMISTRY

ALS Canada Ltd.
212 Brooksbank Avenue
North Vancouver BC V7J 2C1 Canada
Phone: 604 984 0221 Fax: 604 984 0218

EXPATRIATE RESOURCES LTD.
701-475 HOWE ST
VANCOUVER BC V6C 2B3

Page: 1
Finalized Date: 8-NOV-2004
Account: MPO

QC CERTIFICATE VA04075795

Project: 1641
P.O. No.:
This report is for 124 Rock samples submitted to our lab in Vancouver, BC, Canada on 29-OCT-2004.

The following have access to data associated with this certificate:

JASON DUNNING

ACCOUNTS PAYABLE

SAMPLE PREPARATION

ALS CODE	DESCRIPTION
WEI-21	Received Sample Weight
LOG-22	Sample login - Rcd w/o BarCode
CRU-31	Fine crushing - 70% <2mm
SPL-21	Split sample - riffle splitter
PUL-31	Pulverize split to 85% <75 um

ANALYTICAL PROCEDURES

ALS CODE	DESCRIPTION	INSTRUMENT
ME-XRF05	Trace Level XRF Analysis	XRF
Au-AA23	Au 30g FA-AA finish	AAS
ME-ICP61	27 element four acid ICP-AES	ICP-AES
Hg-CV41	Trace Hg - cold vapor/AAS	FIMS

To: **EXPATRIATE RESOURCES LTD.**
ATTN: ACCOUNTS PAYABLE
701-475 HOWE ST
VANCOUVER BC V6C 2B3

This is the Final Report and supersedes any preliminary report with this certificate number. Results apply to samples as submitted. All pages of this report have been checked and approved for release.

Signature:



ALS Chemex
EXCELLENCE IN ANALYTICAL CHEMISTRY

ALS Canada Ltd.
 212 Brooksbank Avenue
 North Vancouver BC V7J 2C1 Canada
 Phone: 604 984 0221 Fax: 604 984 0218



EXPATRIATE RESOURCES LTD.
 701-475 HOWE ST
 VANCOUVER BC V6C 2B3



Page: 6 - B
 Total # Pages: 6 (A - B)
 Finalized Date: 8-NOV-2004
 Account: MPO

Project: 1641

QC CERTIFICATE OF ANALYSIS VA04075795

Sample Description	Method	ME-ICP61	ME-ICP61	ME-ICP61	ME-ICP61	ME-ICP61	ME-ICP61	ME-ICP61	ME-ICP61	ME-ICP61	ME-ICP61	ME-ICP61	ME-ICP61	ME-ICP61	Hg-CV41	ME-XRF05
	Analyte	Mn	Mo	Na	Ni	P	Pb	S	Sb	Sr	Tl	V	W	Zn	Hg	Se
Units		ppm	ppm	%	ppm	ppm	ppm	%	ppm	ppm	%	ppm	ppm	ppm	ppm	ppm
LOR		5	1	0.01	1	10	2	0.01	5	1	0.01	1	10	2	0.01	2
DUPLICATES																
B001420 DUP Target Range - Lower Bound Upper Bound																

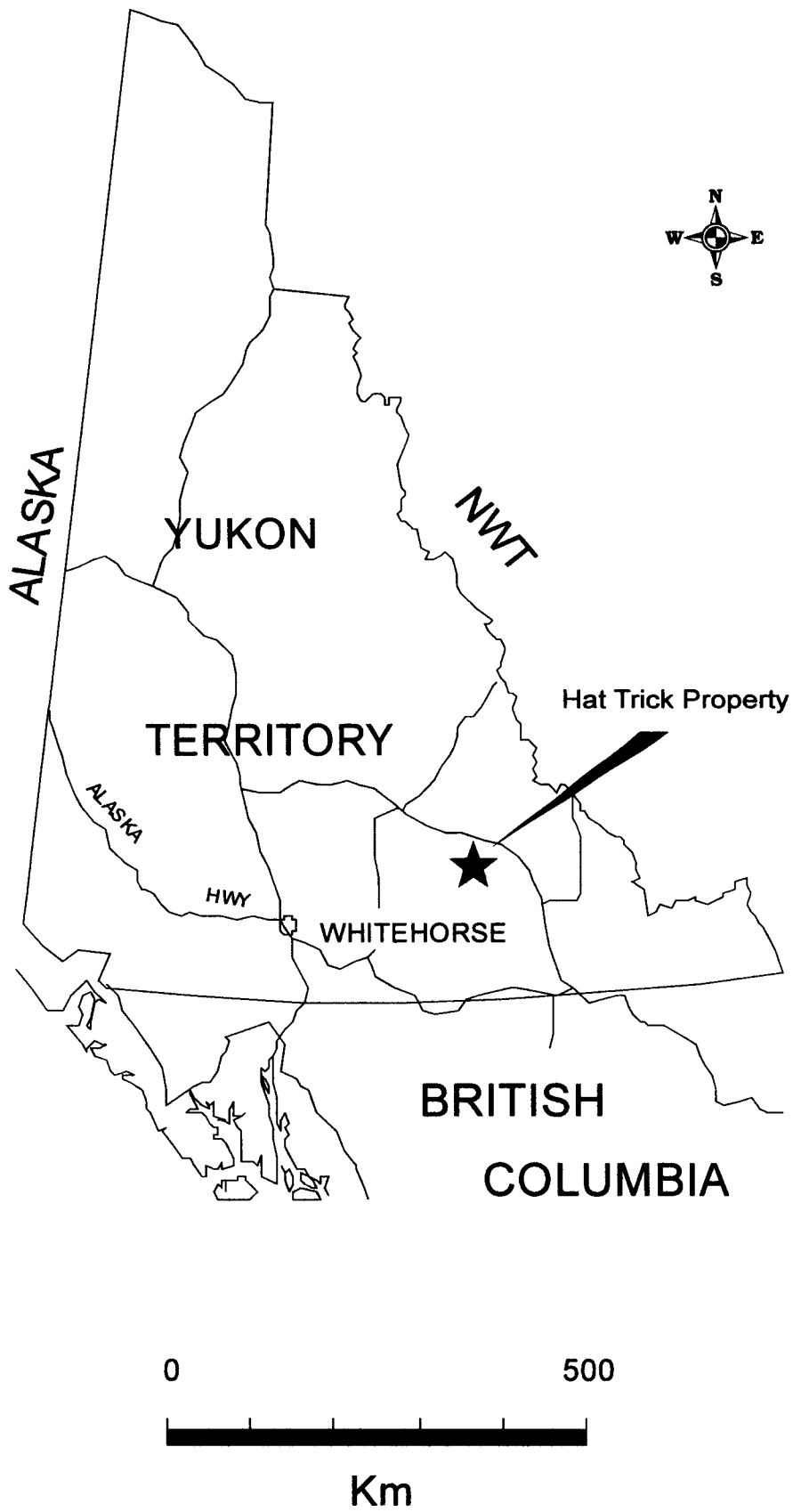
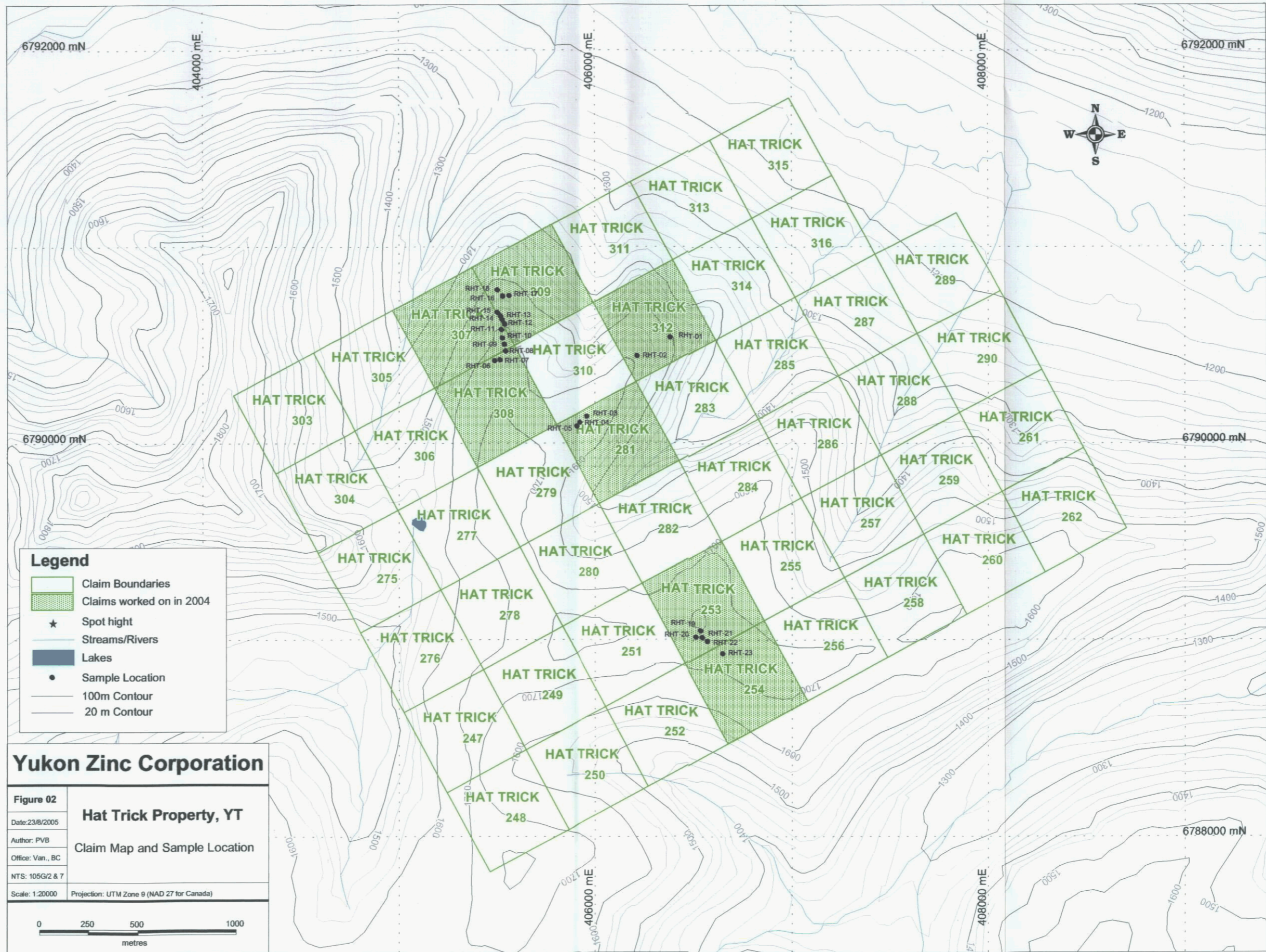
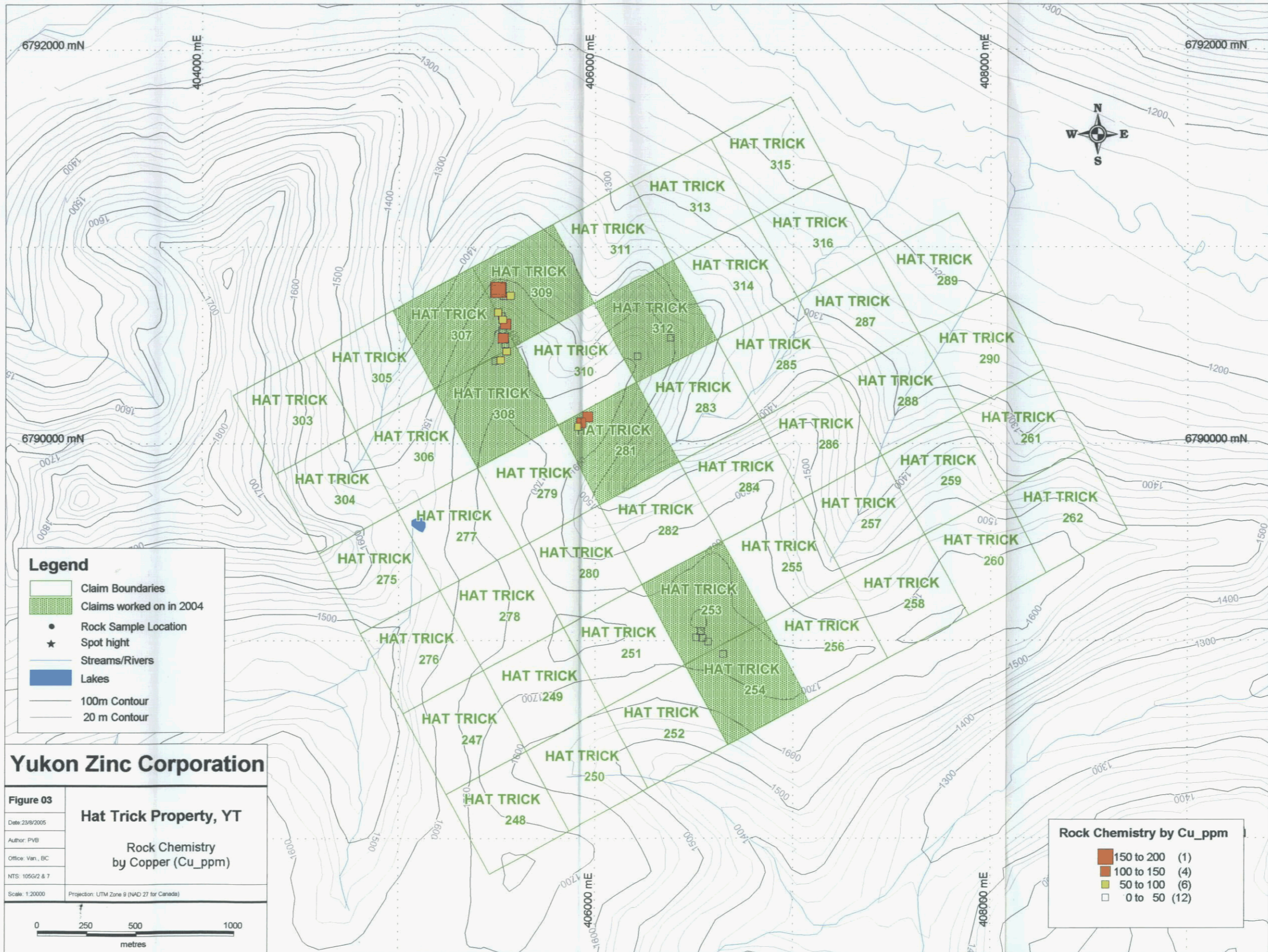


Figure 01. Location Map of the Hat Trick Property.





Legend

- Claim Boundaries
- Claims worked on in 2004
- Rock Sample Location
- ★ Spot hight
- Streams/Rivers
- Lakes
- 100m Contour
- 20 m Contour

Yukon Zinc Corporation

Figure 03
 Date: 23/8/2005
 Author: PVB
 Office: Van., BC
 NTS: 105G/2 & 7
 Scale: 1:20000
 Projection: UTM Zone 9 (NAD 27 for Canada)

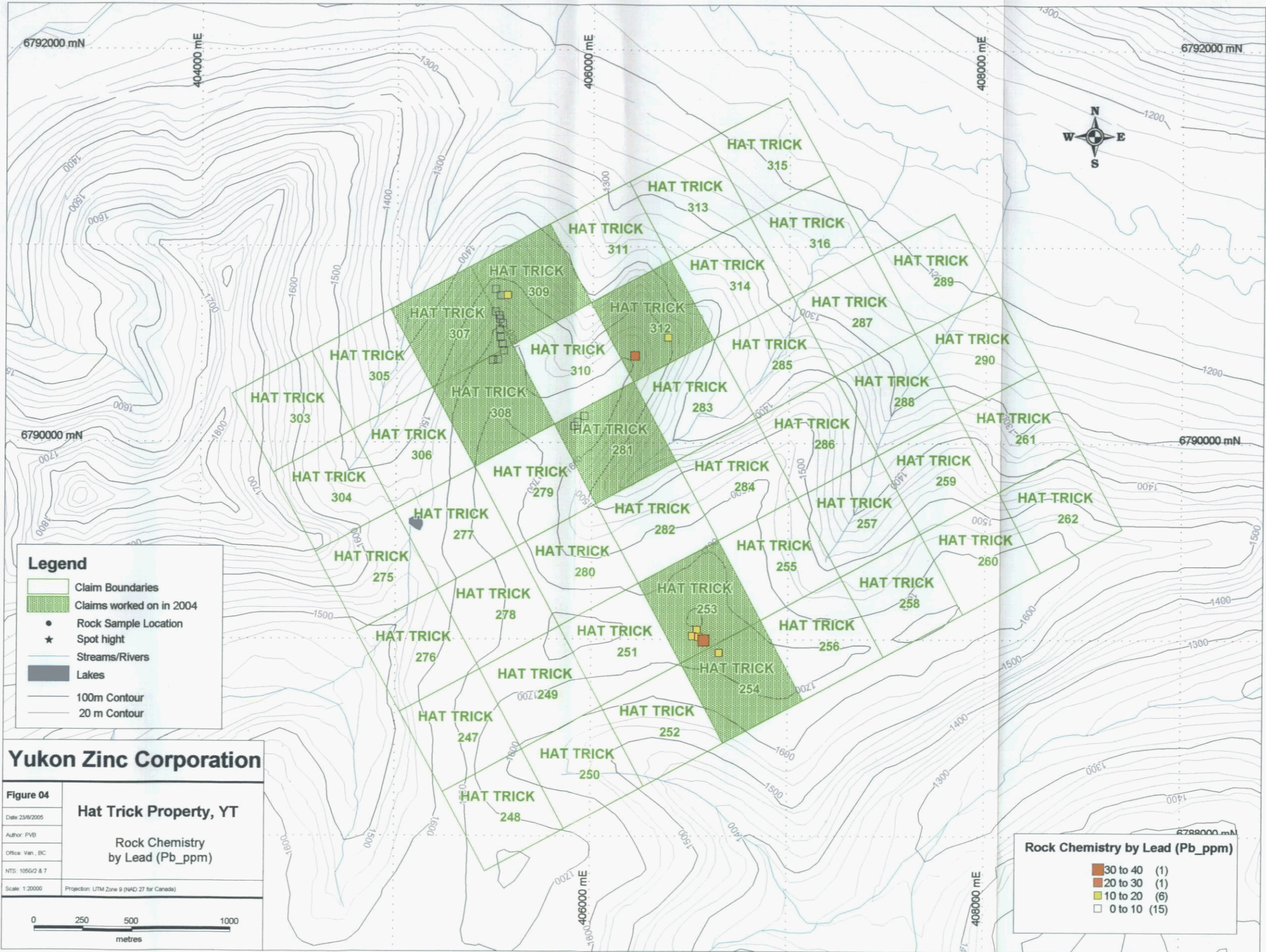
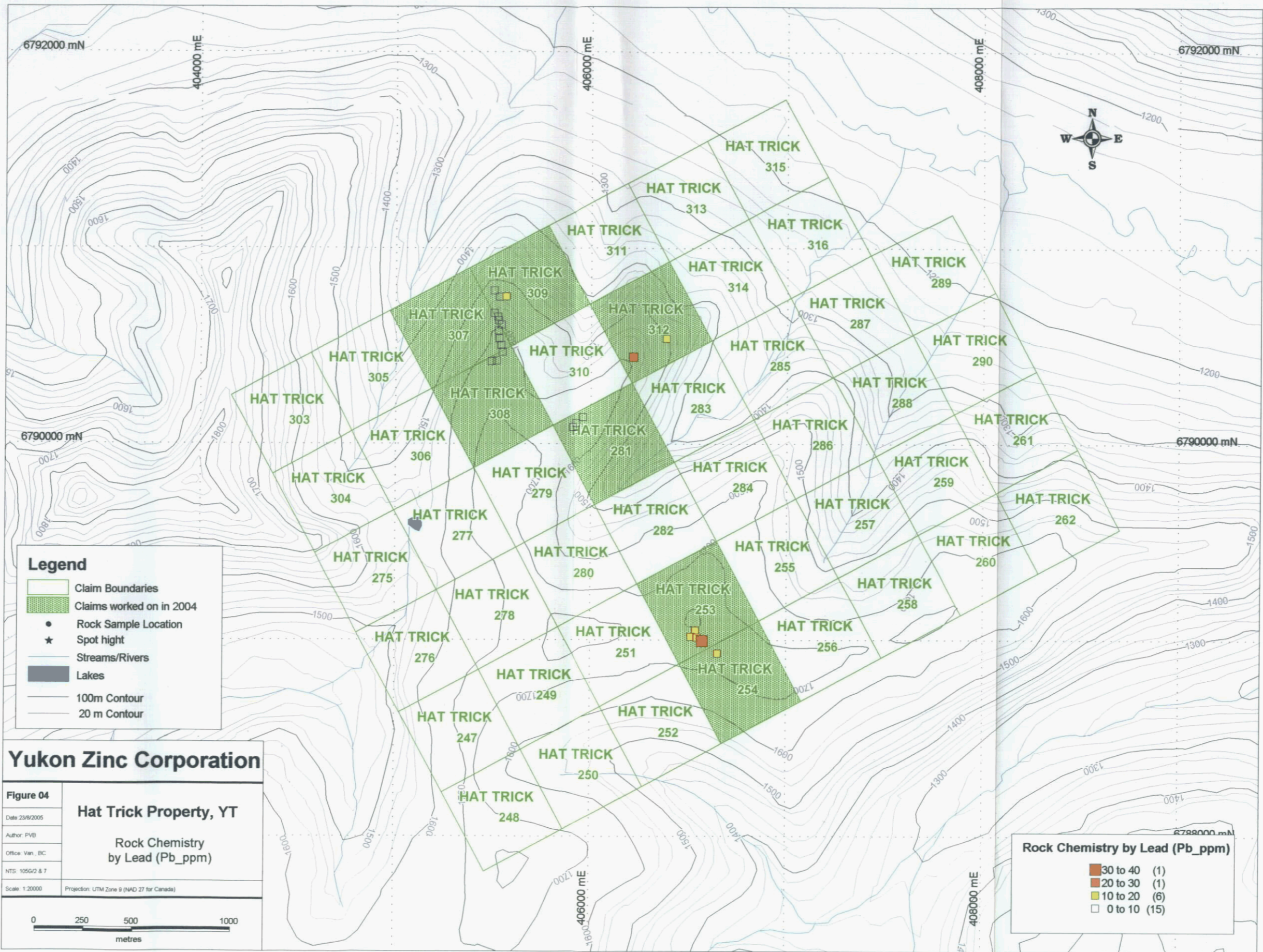
Hat Trick Property, YT

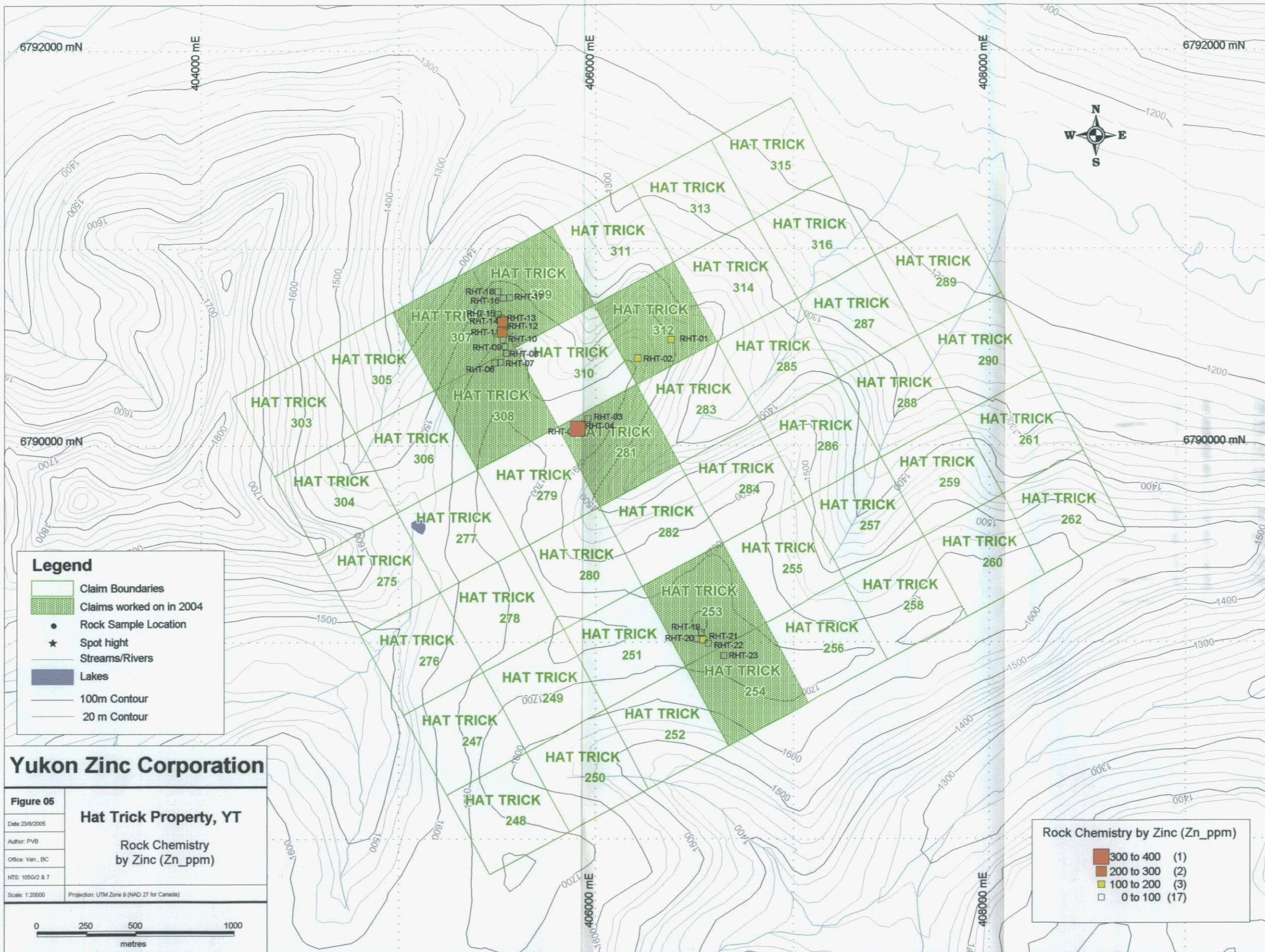
**Rock Chemistry
 by Copper (Cu_ppm)**

0 250 500 1000
 metres

Rock Chemistry by Cu_ppm

- 150 to 200 (1)
- 100 to 150 (4)
- 50 to 100 (6)
- 0 to 50 (12)





Legend

- Claim Boundaries
- Claims worked on in 2004
- Rock Sample Location
- ★ Spot hight
- Streams/Rivers
- Lakes
- 100m Contour
- 20 m Contour

Yukon Zinc Corporation

Figure 05

Hat Trick Property, YT

Rock Chemistry by Zinc (Zn_ppm)

Date: 23/8/2005
 Author: PVB
 Office: Van., BC
 NTS: 1056/2 & 7
 Scale: 1:20000 Projection: UTM Zone 9 (NAD 27 for Canada)

0 250 500 1000
 metres

Rock Chemistry by Zinc (Zn_ppm)

- 300 to 400 (1)
- 200 to 300 (2)
- 100 to 200 (3)
- 0 to 100 (17)