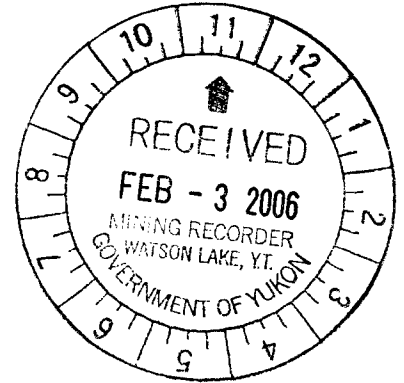


0947071



**Assessment Report for
Work performed
on the
Money Claims
Between October 18 and October 26, 2005**

List of claims and Grant Numbers

Money 1-20 (YB16726-YB16745)

Money 21-46 (YB51926-YB51951)

NTS Map sheet number

105G/08, Wolverine Lake

In the

Watson Lake Mining District, Yukon Territory

Prepared by:

Gilles R. Dessureau, M.Sc.

Project Geologist, Yukon Zinc Corporation.

Supervised by:

Jason K. Dunning, M.Sc., P. Geo

V.P. Exploration, Yukon Zinc Corporation.

Submitted:

January, 2006

Costs associated with this report have been
approved in the amount of \$ 20,400.00
for assessment credit under Certificate of
Work No. QL25895



Mining Recorder
Watson Lake Mining District

Table of Contents

Introduction..... 3
Exploration History..... 3
Property Location and Access..... 4
Regional Geology 5
Geology of the Money Property..... 6
Methods 6
Expenditures 9
References..... 10

List of Tables

- Table 1. List of claims, grant numbers, and expiry date.
Table 2. List of claims surveyed by Underhill Geomatics Ltd.
Table 3. Summary of expenditures for the Money Property 2005.

List of Figures

- Figure 1. Map of the Finlayson District showing the location of the Money Claims and surrounding Claims.
Figure 2. Map of the Money Claims.
Figure 3. Location of the Wolverine, Kudz Ze Kayah, Fyre Lake, and Ice Deposits, as well as the location of the Money Property with respect to the Yukon-Tanana Terrane, Yukon, Canada (modified from Piercey, 2001; Wheeler and McFeely, 1991 and Hunt, 1998).
Figure 4. Claim post location for the Money Claims, as surveyed by Underhill Geomatics Ltd.

Appendices

- I – Author’s statement of qualifications

Introduction

The Money Property consists of 46 claims covering approximately 1030 hectares of the Yukon Tanana Terrain in south central Yukon (NTS Map Sheet 105G/08 and 105H/05). It is wholly owned by YGC Resources Ltd; Yukon Zinc Corporation (YZC) however, entered an option agreement to acquire an initial 25% interest in the property in August 2005 following cash payment, and exploration expenditures. Upon vesting the initial option, Yukon Zinc may acquire an additional 26% interest by payment and continuing exploration expenditures over two years.

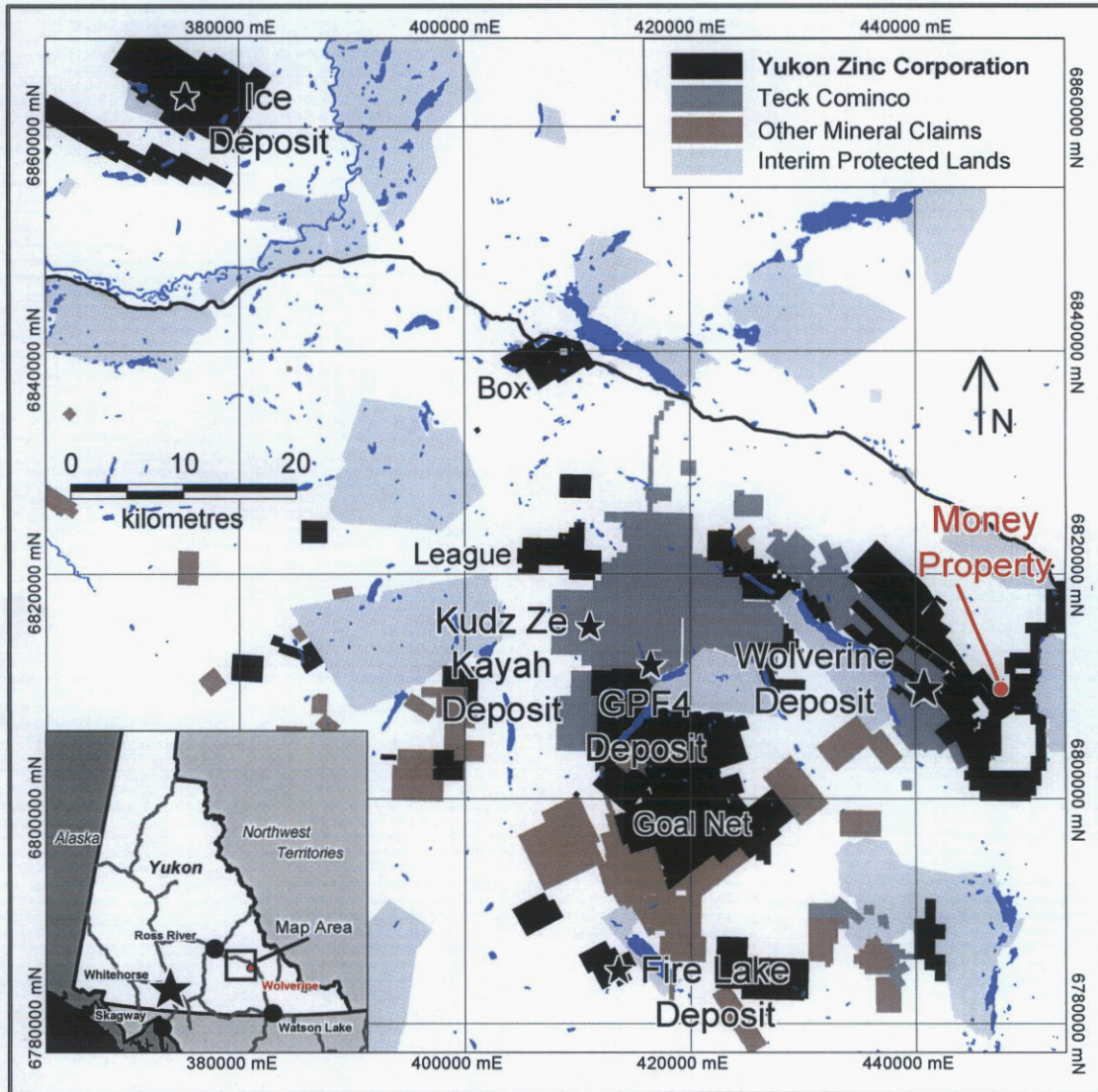


Figure 1. Map of the Finlayson District showing the location of the Money Claims and surrounding Claims.

The Money Property mineralization represents a VMS (volcanogenic massive sulphide) containing primarily copper, and lesser amounts of zinc, silver and gold. Mineralization is hosted in a thin sequence of maroon to green shales and cherty sediments within a thick pillowed basaltic flows and associated volcanoclastics (Baknes, 1997). Two distinct styles of mineralization occur on the property: concordant, laminated massive sulphide, and discordant, stockwork style massive sulphide.

Exploration History

The original discovery and claim location (Julia 1-10) was made by Welcome North Mines Ltd. and Esperanza Exploration Ltd. in 1980. The property was immediately optioned to Arbor Resources Inc. which carried out electromagnetic and geochemical surveys in the same year. In 1981, electromagnetic, magnetic, and additional geochemical surveys were followed up with three diamond drill holes totalling 329m funded by a joint venture with Esso Resources Canada Limited. After the Property was allowed to lapse, YGC Resources Ltd. restaked the property in 1990 (Money 1-20), and added additional claims in 1994 (Money 21-46). In 1994 the property was optioned to Atna Resources, who, in 1995 and 1996, conducted several programs consisting of geological mapping, rock and soil sampling, hand trenching, horizontal loop EM geophysics, and diamond drilling. Seven diamond drill holes were drilled in 1996 for a total of 965.6m. All core from the 1996 drill program was stored at the Money creek camp site (UTM co-ordinates 446400E, 6810200N). In 1997 Atna Resources conducted a program consisting of GPS surveying, geological mapping, geo-electric and geophysical surveying, and diamond drilling. Four diamond drill holes were drilled in 1997 for a total of 827.8m. The best drill intersection in 1996 was 1.0 metre of massive sulphide grading 1.75 % copper, 21 g/t silver and 0.4 g/t gold.

Property Location and Access

The property is located approximately 280 kilometres north-east of Whitehorse, 15 kilometres south of the Robert Campbell Highway, approximately halfway between Ross River and Watson Lake (Kilometre 198 on Robert Campbell). The property is approximately five kilometres east of the Wolverine deposit and another 3 km east of the Wolverine Camp, where crews stayed while they worked on the property. Access to the property is restricted to helicopter, and is about a 5 min flight from Wolverine to the Property.

Grant Number	Claim Name	Date	Grant Number	Claim Name	Date
YB16726	MONEY 1	3/20/2006	YB51926	MONEY 21	2/28/2007
YB16727	MONEY 2	3/20/2006	YB51927	MONEY 22	2/28/2007
YB16728	MONEY 3	3/20/2006	YB51928	MONEY 23	2/28/2007
YB16729	MONEY 4	3/20/2006	YB51929	MONEY 24	2/28/2007
YB16730	MONEY 5	3/20/2006	YB51930	MONEY 25	2/28/2007
YB16731	MONEY 6	3/20/2006	YB51931	MONEY 26	2/28/2007
YB16732	MONEY 7	3/20/2006	YB51932	MONEY 27	2/28/2007
YB16733	MONEY 8	3/20/2006	YB51933	MONEY 28	2/28/2007
YB16734	MONEY 9	3/20/2006	YB51934	MONEY 29	2/28/2007
YB16735	MONEY 10	3/20/2006	YB51935	MONEY 30	2/28/2007
YB16736	MONEY 11	3/20/2006	YB51936	MONEY 31	2/28/2007
YB16737	MONEY 12	3/20/2006	YB51937	MONEY 32	2/28/2007
YB16738	MONEY 13	3/20/2006	YB51938	MONEY 33	2/28/2007
YB16739	MONEY 14	3/20/2006	YB51939	MONEY 34	2/28/2007
YB16740	MONEY 15	3/20/2006	YB51940	MONEY 35	2/28/2007
YB16741	MONEY 16	3/20/2006	YB51941	MONEY 36	2/28/2007
YB16742	MONEY 17	3/20/2006	YB51942	MONEY 37	2/28/2007
YB16743	MONEY 18	3/20/2006	YB51943	MONEY 38	2/28/2007
YB16744	MONEY 19	3/20/2006	YB51944	MONEY 39	2/28/2007
YB16745	MONEY 20	3/20/2006	YB51945	MONEY 40	2/28/2007
			YB51946	MONEY 41	2/28/2007
			YB51947	MONEY 42	2/28/2007
			YB51948	MONEY 43	2/28/2007
			YB51949	MONEY 44	2/28/2007
			YB51950	MONEY 45	2/28/2007
			YB51951	MONEY 46	2/28/2007

Table 1. List of claims, grant numbers, and expiry date.

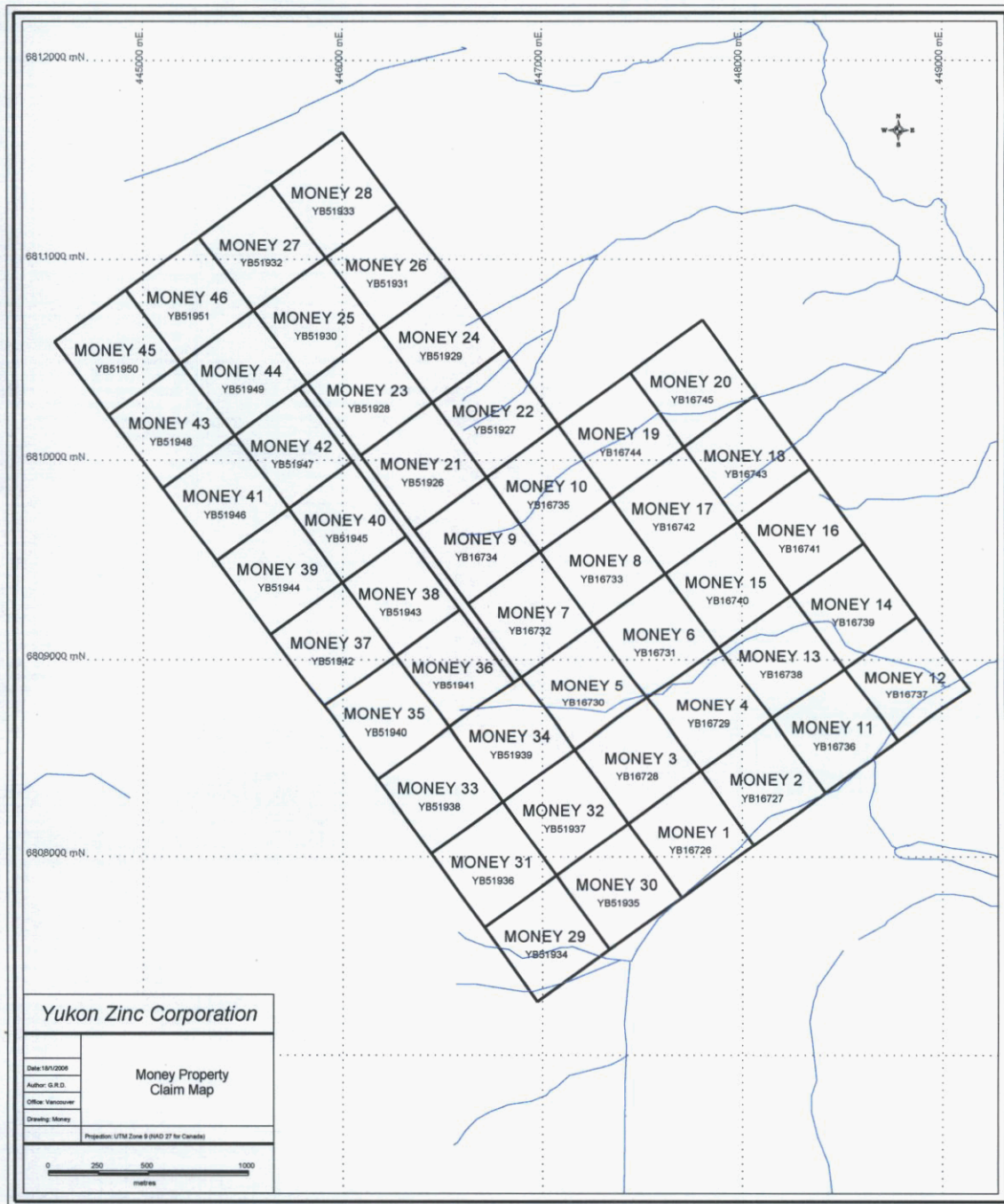


Figure 2. Map of the Money Claims.

Regional Geology

The Yukon-Tanana Terrane is a large autochthonous geological province extending from Alaska, through The Yukon Territory and into north-central British Columbia (Figure 3). It consists of mid-late Paleozoic volcanic, plutonic, and sedimentary rocks. The volcanic-hosted massive sulphide deposits of the Finlayson Lake District are located in the eastern most section of the Yukon Tanana Terrane, which has been displaced to the south-east by the Tintina Fault Zone (Figure 1). The Finlayson Lake District has been divided into 3 distinct successions separated by regional unconformities (Murphy, 1998; Piercey and Murphy, 2000). The lower most unit (called the Grass Lakes Succession) consists of mafic and felsic metavolcanic rocks, carbonaceous metaclastic rocks, marbles, and granitic orthogneiss. The Fyre Lake (Cu-rich, massive sulphide) deposit is located near the base of this succession, while the Kudz Ze Kayah and GP4F (polymetallic, massive sulphide) deposits are located within

the upper portion of this succession. The middle unit (called the Wolverine Succession) consists of carbonaceous argillite, felsic volcanics and high level intrusions, and as well as exhalative carbonate and/or iron oxides. The Wolverine (polymetallic, sediment hosted, massive sulphide) deposit occurs near the base of Wolverine Succession. The upper most unit (called the Campbell Range Succession) consists of mafic metavolcanic rocks and wackes, and is host to the Ice (Cu-rich massive sulphide) deposit. The Money Property covers approximately 1030ha of the Campbell Range Succession, and contains known massive sulphide mineralization.

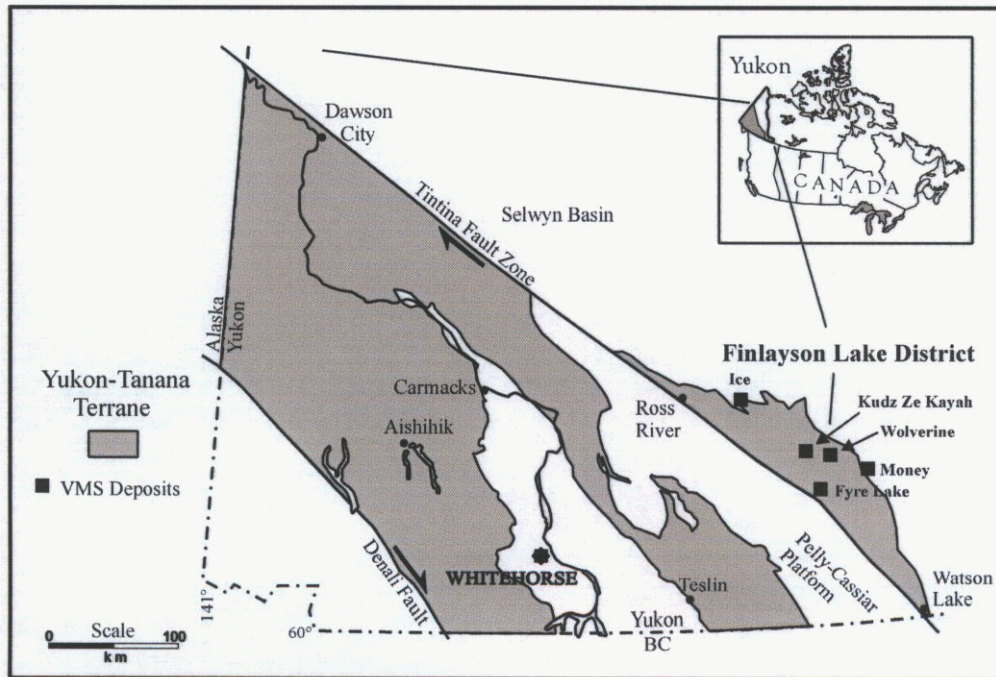


Figure 3. Location of the Wolverine, Kudz Ze Kayah, Fyre Lake, and Ice Deposits, as well as the location of the Money Property with respect to the Yukon-Tanana Terrane, Yukon, Canada (modified from Piercey, 2001; Wheeler and McFeely, 1991 and Hunt, 1998).

Geology of the Money Property

Mapping (Plint, 1996) has suggested that the Money claims cover a portion of the Slide Mountain Terrane in the Campbell Range which consists of the north-west trending irregular lens of mafic volcanics. These mafic volcanics include a thick sequence of dark green, fine grained pillowed basalts. Locally minor amounts of inter-pillow breccias, hyaloclastites, and lapilli tuffs, have been altered to chlorite-quartz-epidote, and have developed and heterogeneous foliation. Within the basalts on the Money property at least one and possibly three horizons of fine to medium grained interflow sediments and/or tuffs occur associated with hematite and jasper as a pervasive maroon alteration or exhalative sediment. The most well defined sedimentary unit host the massive sulphide mineralization.

Mineralization on the Money Property has been subdivided into two distinct types: discordant, quartz-pyrite-chlorite+sericite stockwork and conformable, massive to moderately-well banded pyrite. It has been described in detail in two locations: Welcome North Creek and Boulder Creek. In Welcome North Creek, massive, moderately well banded pyrite with a siliceous matrix is exposed as boulder float.

Methods

In 2005 the claims posts were surveyed by Underhill Geomatics Ltd. The results were presented to Yukon Zinc in the form of a data table and map. The table and a revised copy of the map (with the non-surveyed claim locations for comparison) are presented below.

CLS 77 monument set	NORTHING	EASTING	ELEVATION
200	6807613.87	446475.90	1552.69
201	6807865.35	446834.05	1516.53
202	6808120.77	447197.06	1432.97
203	6808376.00	447553.56	1375.67
204	6808629.88	447920.20	1275.03
205	6808895.14	448281.03	1208.27
206	6809151.86	448633.00	1170.64
207	6809396.43	448988.30	1144.67
M100	6808075.53	447880.06	1235.25
M101	6808396.78	447593.00	1369.71
M102	6808694.01	447273.81	1421.01
M103	6808980.15	446955.21	1549.01
M104	6809305.93	446640.19	1613.54
M105	6809613.53	446284.93	1618.96
M106 (no Monument set)	6809960	445981	<--- Handheld GPS
M108	6810641.39	445810.81	1730.74
M109	6810995.49	445531.28	1759.35
M110	6808696.44	448522.47	1177.82
M111	6809033.84	448234.61	1211.51
M112	6809381.40	447958.20	1213.31
M113	6809730.25	447666.95	1237.03
M114	6810070.45	447361.58	1270.94
M115	6810391.75	447054.11	1342.77
M116	6810752.21	446797.00	1336.43
M117	6811100.11	446555.75	1448.15
M118	6811465.79	446289.25	1471.74
M119	6811830.18	446024.44	1391.26
M120	6809233.71	449217.43	1119.73
M121	6809584.77	448925.19	1142.25
M122	6809923.73	448620.20	1148.51
M123	6810263.60	448339.79	1147.11
M124	6810622.31	448058.62	1156.92
M125	6810958.14	447749.18	1168.24

Table 2. List of claims surveyed by Underhill Geomatics Ltd.



Figure 4. Claim post location for the Money Claims, as surveyed by Underhill Geomatics Ltd.

STATEMENT OF EXPENDITURES

I, Gilles Dessureau, as an agent for Yukon Zinc Corporation, #701-475 Howe Street, Vancouver, B.C. do solemnly declare that survey work carried out on the Money Claims (see attached list) between the dates of October 18th and ~~August~~^{October} 26th, 2005.

Expenditure Type	Description	Cost
Helicopter	Trans North Helicopters - Helicopter supported Survey	\$24,442.25
Fuel - Jet B	North of 60 Fuels - Jet B for helicopter	\$5,140.56
Labour	Underhill Geomatics Ltd. - Survey	\$22,197.50
Option Costs	YGC Resources Ltd. - Option Payment	\$5,000.00
	Total	\$56,780.31


No 8.

I make this solemn declaration conscientiously believing it to be true and knowing that it is of the same force and effect as if made under oath and by virtue of the Canada Evidence Act.

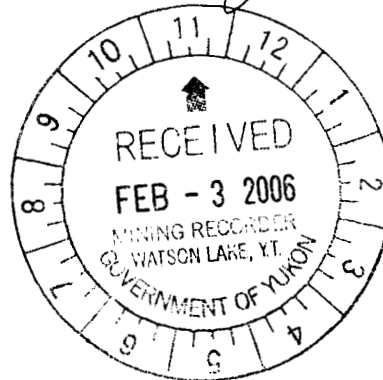
Declared before me at Vancouver in the Province of British Columbia this 27th day of January, 2006.



Gilles Dessureau, MSc.,



Notary Public



References

Baknes, M.E., 1997. Geological and Diamond Drilling Report on the Money Property. Atna Resources Internal report.

Bradshaw, G.D., Tucker, T.L., Peter, J.M., Paradis, S., and Rowins, S.M., 2001. Geology of the Wolverine polymetallic volcanic hosted massive sulphide deposit, Finlayson Lake district, Yukon Territory, Canada. Yukon Exploration and Geology, 2001. D.S. Emond and L.H. Weston (eds), Exploration and Geological Services Division, Yukon, Indian and Northern Affairs Canada, p. 269-287.

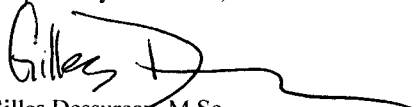
Hunt, J.A., 1998. Recent discoveries of volcanic-associated massive sulphide deposits in the Yukon: Canadian Institute of Mining and Metallurgy Bulletin, v. 90, p. 56-65.

Piercey, S.J. 2001. Petrology and tectonic setting of the felsic and mafic volcanic and intrusive rocks in the Finlayson Lake Volcanic-hosted massive sulphide (VHMS) District, Yukon, Canada: A record of Mid-Paleozoic Arc and Back Arc Magmatism and Metallogeny. PhD. Thesis, University of British Columbia, Canada.

Plint, H.E., 1996. Structural Evolution and Rock Types of the Slide Mountain and Yukon Tanana Terranes in the Campbell Range, South-Eastern Yukon Territory, G.S.C. Current Research.

Wheeler, J.O., and McFeely, P., 1991. Tectonic Assemblage Map of the Canadian Cordillera and Adjacent Parts of the United States of America: Geological Survey of Canada, Map 1712A, Scale 1: 2000 000.

Respectfully Submitted,



Gilles Dessureau, M.Sc.
Project Geologist
Yukon Zinc Corporation

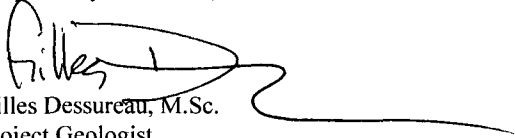
Appendix I

Author's statement of qualifications

I, Gilles Dessureau, Project Geologist, for Yukon Zinc Corporation, do hereby certify that:

1. I graduated from St. Mary's University in Halifax, Nova Scotia with a Bachelor of Science with Honors in Geology in 1998.
2. I graduated from Laurentian University in Sudbury, Ontario with a Masters of Science in Geology in 2003.
3. From 2004 to present I have been an employee of Yukon Zinc Corporation (formerly Expatriate Resources Ltd.)
4. I have personally supervised and participated in the work described herein.

Respectfully Submitted,

A handwritten signature in black ink, appearing to read "Gilles Dessureau", with a long horizontal flourish extending to the right.

Gilles Dessureau, M.Sc.
Project Geologist
Yukon Zinc Corporation